

Microsoft

Exam Questions AZ-600

Configuring and Operating a Hybrid Cloud with Microsoft Azure Stack Hub



NEW QUESTION 1

- (Exam Topic 1)

You need to identify the certificate for the integrated system in Chicago. The solution must meet the technical requirements.

What should you identify? To answer, select the appropriate options in the answer area. NOTE: Each correct selection is worth one point.

Certificate issuer:

Enterprise CA

Public CA

Self-signed

Certificate subject name:

adminmanagement.northcentralus.litwareinc.com

adminportal.northcentralus.litwareinc.com

management.northcentralus.litwareinc.com

- A. Mastered
- B. Not Mastered

Answer: A

Explanation:

When deploying Azure Stack Hub in disconnected mode it is recommended to use certificates issued by an enterprise certificate authority. This is important because clients accessing Azure Stack Hub endpoints must be able to contact the certificate revocation list (CRL).

Reference:

<https://docs.microsoft.com/en-us/azure-stack/operator/azure-stack-pki-certs?view=azs-2008>

NEW QUESTION 2

- (Exam Topic 1)

You need to identify the procedure for creating the subscriptions on the integrated system in Chicago. The solution must meet the technical requirements.

What should you include in the solution? To answer, select the appropriate options in the answer area.

NOTE: Each correct selection is worth one point.

Configure an offer that has a state of:

Decommissioned

Private

Public

Create the subscriptions by using https://:

adfs

adminportal

portal

- A. Mastered
- B. Not Mastered

Answer: A

Explanation:

Graphical user interface, text, application Description automatically generated

Reference:

<https://docs.microsoft.com/en-us/azure-stack/operator/azure-stack-subscribe-plan-provision-vm?view=azs-2008> <https://docs.microsoft.com/en-us/azure-stack/operator/azure-stack-create-offer?view=azs-2008>

NEW QUESTION 3

- (Exam Topic 1)

You need to implement the App Service infrastructure to address the current issues and support the planned changes for Azure Functions in Boston.

What should you do? To answer, select the appropriate options in the answer area.

NOTE: Each correct selection is worth one point.

To implement the planned changes, deploy:

	▼
Web worker – dedicated instances – medium	
Web worker – dedicated instances – small	
Web worker – shared instances	

To address the current issues, scale out the following App Service role:

	▼
Controller	
Front End	
Worker	

- A. Mastered
- B. Not Mastered

Answer: A

Explanation:

Table Description automatically generated

Reference:

<https://docs.microsoft.com/en-us/azure-stack/operator/azure-stack-app-service-capacity-planning?view=azs-200>

NEW QUESTION 4

- (Exam Topic 1)

You need to implement the management app. The solution must meet the technical requirements. What should you use?

- A. a PowerShell session to litwareinc.com
- B. a browser session to litwareinc.com
- C. a PowerShell remoting session to the PEP
- D. a browser session to the administrator portal

Answer: D

Explanation:

Reference:

<https://docs.microsoft.com/en-us/azure-stack/operator/azure-stack-manage-portals?view=azs-2008>

NEW QUESTION 5

- (Exam Topic 2)

The priv2 region is redeployed according to the planned changes. You need to restore App Service.

Which three components should you restore? Each correct answer presents part of the solution.

NOTE: Each correct selection is worth one point.

- A. the App Service roles and services
- B. the file server share content
- C. the infrastructure backup
- D. the worker role virtual machine
- E. the App Service databases
- F. the default domain certificate

Answer: ABE

Explanation:

Reference:

<https://docs.microsoft.com/en-us/azure-stack/operator/app-service-recover?view=azs-2008>

NEW QUESTION 6

- (Exam Topic 2)

You remove all the workloads from the int1 region and change the registration model to capacity.

You prepare additional Azure AD tenants for each partner. You need to configure multitenancy.

Which two actions should you perform for each guest tenant? Each correct answer presents part of the solution.

NOTE: Each correct selection is worth one point.

- A. Run the Register-AzSWithMyDirectoryTenant cmdlet and specify https://management.int1.northwind.com as the endpoint.
- B. Run the Register-AzSGuestDirectoryTenant cmdlet and specify https://management.int1.northwind.com as the endpoint.
- C. Run the Register-AzSGuestDirectoryTenant cmdlet and specify https:// adminmanagement.int1.northwind.com as the endpoint.
- D. Change the registration model to pay-as-you-use.
- E. Run the Register-AzSWithMyDirectoryTenant cmdlet and specify https:// adminmanagement.int1.northwind.com as the endpoint.

Answer: AC

Explanation:

Reference:

<https://docs.microsoft.com/en-us/azure-stack/operator/azure-stack-enable-multitenancy?view=azs-2008>

NEW QUESTION 7

- (Exam Topic 3)

You have an Azure Stack Hub integrated system that is disconnected from the Internet.

You need to make a new image available in Azure Stack Hub Marketplace in the disconnected environment. From a computer that has Internet access, you download all the required tools.

Which four actions should you perform in sequence next? To answer, move the appropriate actions from the list of actions to the answer area and arrange them in the correct order.

Actions

Run the `Select-AzsMarketplaceItem cmdlet`

Run the `Install-Module -Name Azs.Syndication.Admin` command

Run the `Import-AzsMarketplaceItem cmdlet`

Run the `Export-AzsMarketplaceItem cmdlet`

Sign in to the Azure subscription used to register Azure Stack Hub

Answer Area

>

<

↑

↓

- A. Mastered
- B. Not Mastered

Answer: A

Explanation:

Reference:

<https://docs.microsoft.com/en-us/azure-stack/operator/azure-stack-download-azure-marketplace-item?view=azs>

NEW QUESTION 8

- (Exam Topic 3)

You have an Azure Stack Hub integrated system that was recently moved to a new datacenter and powered on. You need to verify whether the infrastructure components are fully operational.

Which three actions should you perform? Each correct answer presents part of the solution.

NOTE: Each correct selection is worth one point.

- A. Run the `Start-AzureStack` cmdlet
- B. Run the `Test-AzureStack` cmdlet
- C. Connect to the privileged endpoint (PEP)
- D. Connect to the administrator portal
- E. Run the `Get-AzureStackStampInformation` cmdlet

Answer: ABC

Explanation:

Reference:

<https://docs.microsoft.com/en-us/azure-stack/operator/azure-stack-diagnostic-test?view=azs-2008>

NEW QUESTION 9

- (Exam Topic 3)

You have an Azure Stack Hub integrated system that has 10 user subscriptions. Each subscription contains approximately 50 virtual machines.

You are planning a backup and restore strategy for the integrated system.

You need to identify which type of backup to use to back up specific resources.

What should you identify for each resource? To answer, select the appropriate options in the answer area. NOTE: Each correct selection is worth one point.

Answer Area

Role-based access control (RBAC) permissions and roles:

Azure Resource Manager template export

Infrastructure backup

Virtual machine backup

Operating system disks:

Azure Resource Manager template export

Infrastructure backup

Virtual machine backup

Storage quotas:

Azure Resource Manager template export

Infrastructure backup

Virtual machine backup

- A. Mastered
- B. Not Mastered

Answer: A

Explanation:

Reference:
<https://docs.microsoft.com/en-us/azure-stack/operator/azure-stack-backup-enable-backup-console?view=azs-200>

NEW QUESTION 10

- (Exam Topic 3)
You deploy an Azure Stack Hub integrated system that contains an Azure App Service deployment. The integrated system uses an Azure Active Directory (Azure AD) identity provider.
You need to provide users with the ability to deploy App Service web apps directly from their GitHub repositories.
Which three actions should you perform in sequence? To answer, move the appropriate actions from the list of actions to the answer area and arrange them in the correct order.

Actions

Register an Azure AD application

Create a GitHub action

Modify the Source control configuration settings of the App Service resource provider

Register a GitHub application

Create a GitHub account

Answer Area

- A. Mastered
- B. Not Mastered

Answer: A

Explanation:

Reference:
<https://docs.microsoft.com/en-us/azure-stack/operator/azure-stack-app-service-configure-deployment-sources?vi>

NEW QUESTION 10

- (Exam Topic 3)
You have an Azure Stack Hub integrated system.
You are an operator, and you have read access to a user subscription named Fabrikam1.
Users in Fabrikam1 request help creating a custom role-based access control (RBAC) role based on an existing built-in Azure role.
You connect to the Azure subscription, create the respective role definition, and save the role definition as a JSON file.
Which three actions should you perform to create the custom role? Each correct answer presents part of the solution.
NOTE: Each correct selection is worth one point.

- A. Request owner access to the user subscription.
- B. Modify the custom role definition to include the target subscription ID as an AssignableScope, set the IsCustom field to true, and set Id to Null.
- C. Connect to the administrator management endpoint and run the New-AzureRmRoleDefinition cmdlet.

Passing Certification Exams Made Easy

visit - <https://www.surepassexam.com>

- D. Connect to the user management endpoint and run the New-AzureRmRoleDefinition cmdlet.
- E. Modify the custom role definition to include the target default provider subscription ID as an AssignableScope, set the IsCustom field to true, and set Id to Null.

Answer: ABD

Explanation:

Reference:

<https://docs.microsoft.com/en-us/azure/role-based-access-control/tutorial-custom-role-powershell>

NEW QUESTION 15

- (Exam Topic 3)

Note: This question is part of a series of questions that present the same scenario. Each question in the series contains a unique solution that might meet the stated goals. Some question sets might have more than one correct solution, while others might not have a correct solution.

After you answer a question in this section, you will NOT be able to return to it. As a result, these questions will not appear in the review screen.

You plan to install an update to an Azure Stack Hub integrated system.

You need to verify whether the integrated system is healthy, and whether you can apply the update. You must achieve the goal as quickly as possible.

Solution: From a privileged endpoint (PEP) session, you run Test-AzureStack –Group "UpdateReadiness".

Does this meet the goal?

- A. Yes
- B. No

Answer: A

Explanation:

Reference:

<https://docs.microsoft.com/en-us/azure-stack/operator/azure-stack-diagnostic-test?view=azs-2008>

NEW QUESTION 19

- (Exam Topic 3)

You plan to deploy an Azure Stack Hub integrated system that will connect to the internet.

You are planning the network design. You plan the address space for the public VIP network and the private network.

Which three additional networks are required for the Azure Stack Hub deployment? Each correct answer presents part of the solution.

NOTE: Each correct selection is worth one point.

- A. a switch infrastructure network
- B. a DNS network
- C. a storage network
- D. a hypervisor network
- E. a BMC network
- F. an infrastructure network

Answer: AEF

Explanation:

Reference:

<https://docs.microsoft.com/en-us/azure-stack/operator/azure-stack-network?view=azs-2008>

NEW QUESTION 24

- (Exam Topic 3)

You have an Azure Stack Hub integrated system that connects to the Internet. You need to enable multitenant billing.

What should you do first?

- A. Generate a service principal to connect the Azure Billing API to Azure Commerce
- B. Run the New-AzResource cmdlet
- C. Create a blob storage account named AzSCommerceStaging that stores CSV usage metadata before you send the metadata to Azure Commerce
- D. Email the registration subscription ID, resource group name, and registration name to azstcsp@microsoft.com

Answer: D

Explanation:

Reference:

<https://docs.microsoft.com/en-us/azure-stack/operator/azure-stack-csp-howto-register-tenants?view=azs-2008&t>

NEW QUESTION 27

- (Exam Topic 3)

You have a multitenant Azure Stack Hub integrated system for a Cloud Solution Provider (CSP). The integrated system is used by several customers.

You hire a new support technician to help manage the integrated system.

You need to configure access for the support technician. The solution must meet the following requirements: ➤ The technician must be prevented from accessing customer resources.

➤ The technician must be able to monitor the status of infrastructure backups.

➤ The technician must be able to create and manage plans, offers, and quotas.

Which built-in role should you assign to the support technician?

- A. Reader
- B. Owner
- C. User Access Administrator
- D. Contributor

E. Backup Operator

Answer: D

Explanation:

Reference:
<https://docs.microsoft.com/en-us/azure-stack/operator/azure-stack-manage-permissions?view=azs-2008>

NEW QUESTION 28

- (Exam Topic 3)
You have an Azure Stack Hub integrated system.
You need to ensure that you can recover managed and unmanaged disks that are deleted from user subscriptions.
Which three actions should you perform in sequence? To answer, move the appropriate actions from the list of actions to the answer area and arrange them in the correct order.

Actions

Modify the retention period for deleted storage accounts

Create a storage account that uses the Cool access tier

Open the configurations for the Storage resource provider

Connect to the administrator portal

Connect to the user portal

Connect to the privileged endpoint (PEP)

Open the configurations for the Compute resource provider

Answer Area

>

<

^

v

- A. Mastered
- B. Not Mastered

Answer: A

Explanation:

Reference:
<https://docs.microsoft.com/en-us/azure-stack/operator/azure-stack-manage-storage-accounts?view=azs-2008>

NEW QUESTION 32

- (Exam Topic 3)
Your company is a Cloud Solution Provider (CSP).
You plan to create an Azure subscription for a new Azure Stack Hub integrated system and configure Azure Stack Hub to be available to multiple customers. Your company will also have its own workloads deployed to the Azure Stack Hub.
You need to perform the deployment so that usage data for future customers is directed to their Azure subscription.
Which three actions should you perform in sequence? To answer, move the appropriate actions from the list of actions to the answer area and arrange them in the correct order.

Actions

Create a Pay-As-You-Go (PAYG) subscription.

Create an Azure Partner Shared Services (APSS) subscription.

Enable multitenant billing.

Associate the user subscriptions to a Digital Partner of Record (DPOR).

Register Azure Stack Hub.

Answer Area

<

>

↑

↓

A. Mastered

B. Not Mastered

Answer: A

Explanation:

A picture containing text Description automatically generated

Reference:

<https://docs.microsoft.com/en-us/azure-stack/operator/azure-stack-add-manage-billing-as-a-csp?view=azs-2008> <https://docs.microsoft.com/en-us/azure-stack/operator/azure-stack-csp-howto-register-tenants?view=azs-2008&t>

NEW QUESTION 36

- (Exam Topic 3)

You have an Azure Stack Hub integrated system that uses an Azure Active Directory (Azure AD) identity provider.

You have a group named AppGroup1.

You need to provide an application with the ability to access Azure Stack Hub resources by using AppGroup1. Which four actions should you perform in sequence? To answer, move the appropriate actions from the list of actions to the answer area and arrange them in the correct order.

Actions

Sign in to the Azure portal

Connect to the administrator portal

Add a certificate to an Azure key vault

Create an app registration

Generate a client secret

Create a managed identify

Add the app to a group

Answer Area

>

<

↑

↓

- A. Mastered
- B. Not Mastered

Answer: A

Explanation:

Reference:

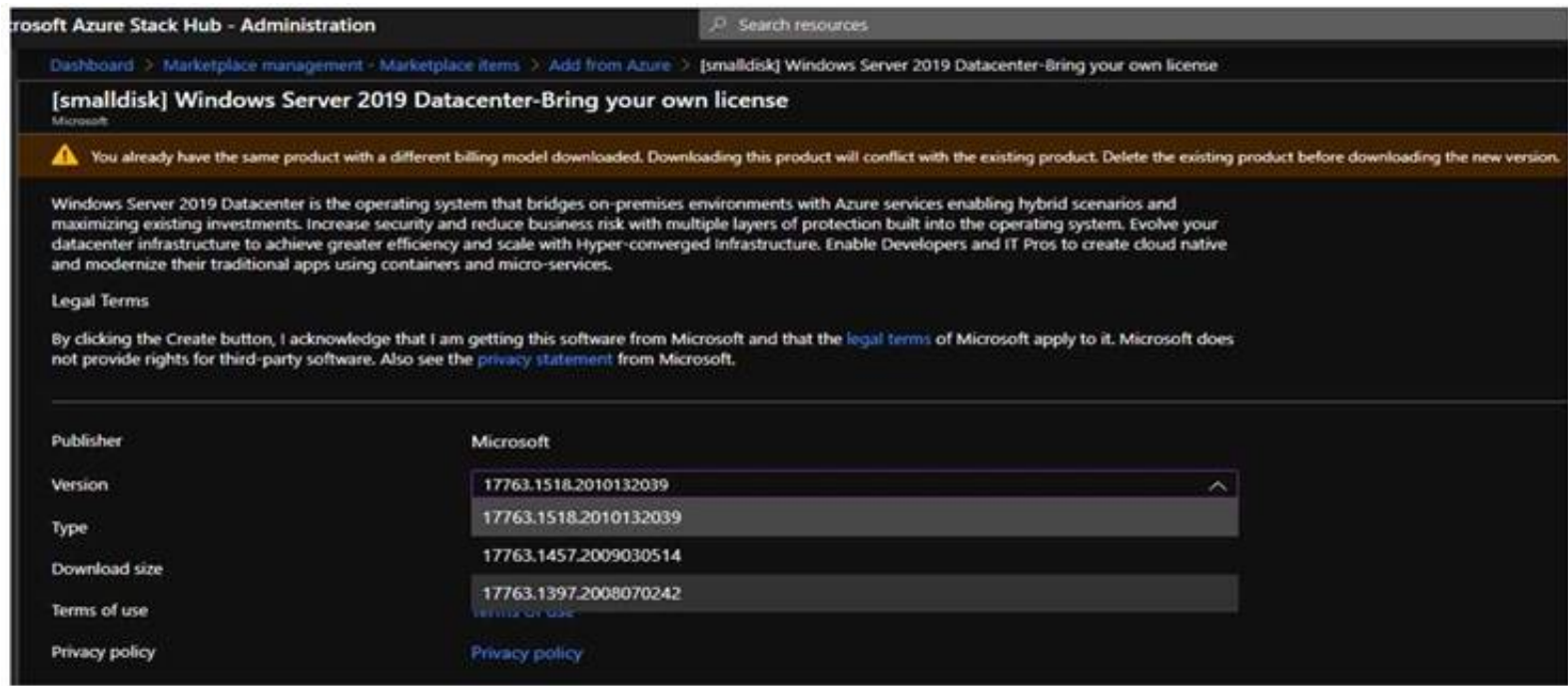
<https://docs.microsoft.com/en-us/azure-stack/operator/azure-stack-create-service-principals?view=azs-2008&tab>

NEW QUESTION 38

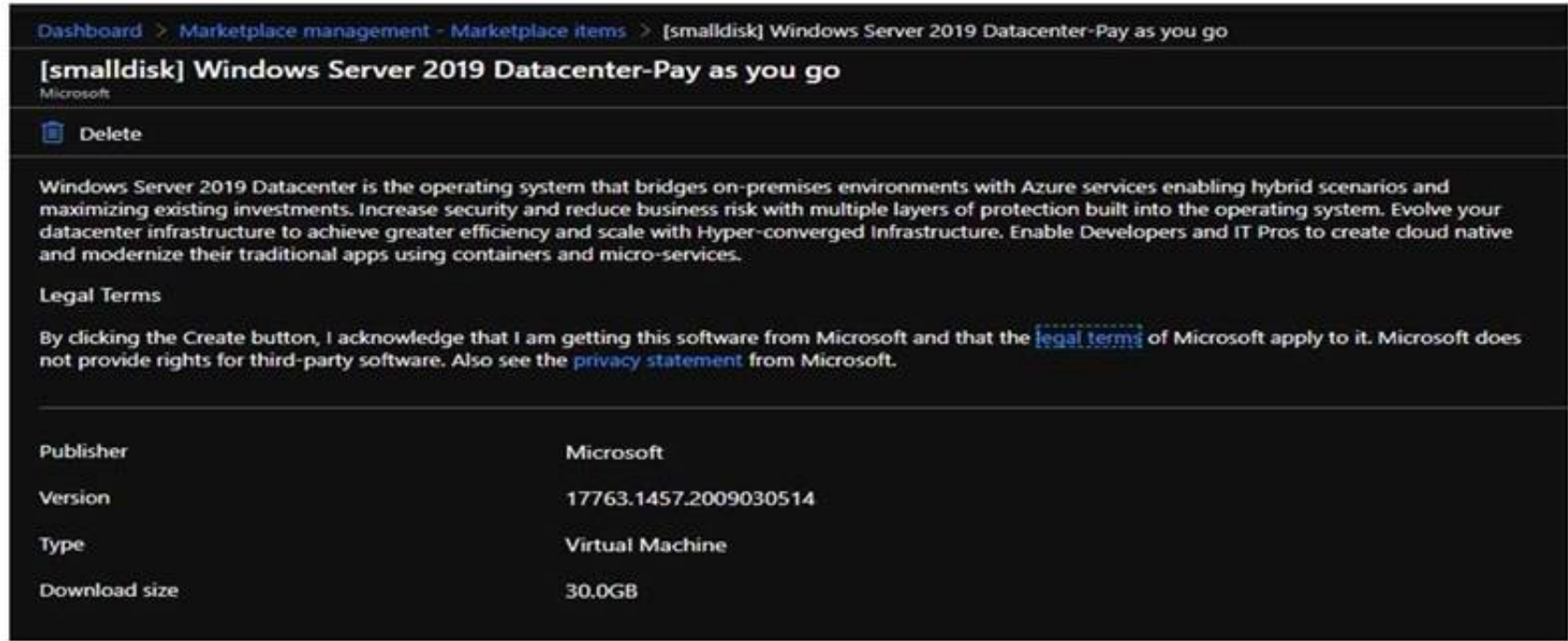
- (Exam Topic 3)

You have an Azure Stack Hub integrated system that connects to the Internet.

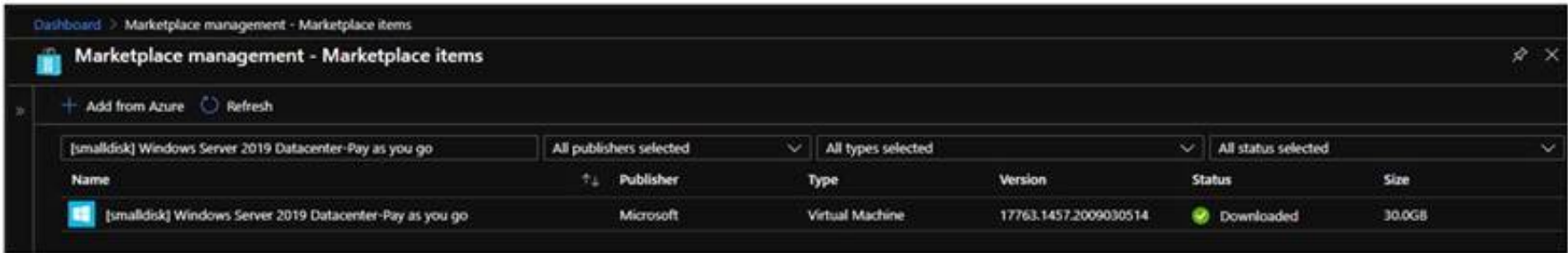
You attempt to download an image as shown in the Add from Azure exhibit. (Click the Add from Azure tab.)



The Marketplace item blade for [smalldisk] Windows Server 2019 Datacenter-Pay as you go is shown in the item exhibit. (Click the Item tab.)



The marketplace items are shown in the Marketplace Items exhibit. (Click the Marketplace Items tab.)



For each of the following statements, select Yes if the statement is true. Otherwise, select No.
NOTE: Each correct selection is worth one point.

Statements	Yes	No
Before you can make the [smalldisk] Windows Server 2019 Datacenter-Bring your own license image available, the currently installed image must be deleted.	<input type="radio"/>	<input type="radio"/>
There is an updated version of the [smalldisk] Windows Server 2019 Datacenter-Pay as you go image that can be downloaded.	<input type="radio"/>	<input type="radio"/>
You can delete the [smalldisk] Windows Server 2019 Datacenter-Pay as you go image.	<input type="radio"/>	<input type="radio"/>

- A. Mastered
B. Not Mastered

Answer: A

Explanation:

Graphical user interface, text, application, email Description automatically generated

Reference:

https://docs.microsoft.com/en-us/azure-stack/operator/azure-stack-windows-server-faq?view=azs-2102&tabs=az

NEW QUESTION 42

- (Exam Topic 3)

Note: This question is part of a series of questions that present the same scenario. Each question in the series contains a unique solution that might meet the stated goals. Some question sets might have more than one correct solution, while others might not have a correct solution.

After you answer a question in this section, you will NOT be able to return to it. As a result, these questions will not appear in the review screen.

You plan to install an update to an Azure Stack Hub integrated system.

You need to verify whether the integrated system is healthy, and whether you can apply the update. You must achieve the goal as quickly as possible.

Solution: From the administrator management endpoint, you run Test-AzureStack –Group "UpdateReadiness".

Does this meet the goal?

A. Yes

B. No

Answer: B

Explanation:

Reference:

<https://docs.microsoft.com/en-us/azure-stack/operator/azure-stack-diagnostic-test?view=azs-2008>

NEW QUESTION 47

- (Exam Topic 3)

You have an Azure Stack Hub integrated system.

You need to delegate the management of offers to a user named User1.

Which three actions should you perform in a sequence? To answer, move the appropriate actions from the list of actions to the answer area and arrange them in the correct order.

Actions

From the administrator portal, create a subscription

From the administrator portal, create a plan that contains a subscription service and an offer based on the plan

From the administrator portal, create a plan and a delegated offer based on the plan

From the user portal, create a subscription

From the delegated provider user portal, sign up for the offer

Answer Area



A. Mastered

B. Not Mastered

Answer: A

Explanation:

Reference:

<https://docs.microsoft.com/en-us/azure-stack/operator/azure-stack-delegated-provider?view=azs-2008>

NEW QUESTION 50

- (Exam Topic 3)

You have an Azure Stack Hub integrated system that uses an Azure Active Directory (Azure AD) tenant named fabrikam.com as an identity provider. The integrated system region name is region1, and the external domain name is fabrikam.com.

The integrated system has the following domains enabled for multitenancy:

> fabrikam.onmicrosoft.com

> contoso.onmicrosoft.com

> fabrikam.com

> contoso.com

You need to disable multitenancy for contoso.com.

How should you complete the PowerShell script? To answer, select the appropriate options in the answer area.

NOTE: Each correct selection is worth one point.

<div><div></div><div>-AdminResourceManagerEndpoint</div></div>		<div><div></div></div>	
<div>Unregister-AzSGuestDirectoryTenant</div>		<div>"https://adminmanagement.region1.contoso.com"</div>	
<div>Unregister-AzsWithMyDirectoryTenant</div>		<div>"https://adminmanagement.region1.fabrikam.com"</div>	
<div>Unregister-AzureRmResourceProvider</div>		<div>"https://adminportal.region1.contoso.com"</div>	
<div>Update-AzsHomeDirectoryTenant</div>		<div>"https://adminportal.region1.fabrikam.com"</div>	

<div>-DirectoryTenantName</div>	<div><div></div></div>	<div>-GuestDirectoryTenantName</div>	<div><div></div></div>
	<div>"contoso.com"</div>		<div>"contoso.com"</div>
	<div>"contoso.onmicrosoft.com"</div>		<div>"contoso.onmicrosoft.com"</div>
	<div>"fabrikam.com"</div>		<div>"fabrikam.com"</div>
	<div>"fabrikam.onmicrosoft.com"</div>		<div>"fabrikam.onmicrosoft.com"</div>

-ResourceGroupName

 \$RGName

- A. Mastered
- B. Not Mastered

Answer: A

Explanation:

Graphical user interface, application Description automatically generated

Reference:

<https://docs.microsoft.com/en-us/azure-stack/operator/azure-stack-enable-multitenancy?view=azs-2008>

NEW QUESTION 51

- (Exam Topic 3)

You plan to deploy an Azure Stack Hub integrated system that will connect to the Internet. You need to define the public VIP pool.

What is the smallest subnet mask that you can use for the public VIP pool?

- A. /22
- B. /25
- C. /26
- D. /27

Answer: C

Explanation:

Reference:

<https://docs.microsoft.com/en-us/azure-stack/operator/azure-stack-network?view=azs-2008>

NEW QUESTION 54

- (Exam Topic 3)

Note: This question is part of a series of questions that present the same scenario. Each question in the series contains a unique solution that might meet the stated goals. Some question sets might have more than one correct solution, while others might not have a correct solution.

After you answer a question in this section, you will NOT be able to return to it. As a result, these questions will not appear in the review screen.

You have an Azure Stack Hub integrated system that connects to the Internet. You need to update the Azure Event Hubs service.

Solution: From the Updates blade of the administrator portal, you select the latest update in the infrastructure section.

Does this meet the goal?

- A. Yes
- B. No

Answer: B

Explanation:

Reference:

<https://docs.microsoft.com/en-us/azure-stack/operator/resource-provider-apply-updates?view=azs-2008>

NEW QUESTION 56

- (Exam Topic 3)

You are planning the deployment of two Azure Stack Hub integrated systems that will be located in Seattle and Redmond, respectively.

Workloads will run on infrastructure as a service (IaaS) virtual machines that have a static IIS web front-end and a Microsoft SQL Server 2019 cluster backend for database storage.

You plan to leverage Azure Traffic Manager to direct DNS requests to the integrated system in Seattle by default and use the Redmond integrated system in the event of a disaster.

What should you use to replicate application consistent database changes to the Redmond site?

- A. Hyper-V Replica
- B. Azure Blob storage replication
- C. SQL Server replication
- D. Azure SQL Database replication

Answer: C

Explanation:
Reference:
<https://azure.microsoft.com/en-gb/blog/protecting-applications-and-data-on-azure-stack/>

NEW QUESTION 61

- (Exam Topic 3)
You plan to deploy an Azure Stack Hub integrated system that will use an Azure Active Directory (Azure AD) identity provider. You obtain certificates for the deployment. You need to ensure that the certificates meet the prerequisites for Azure Stack Hub. Which PowerShell cmdlet should you run?

- A. Invoke-AzsHubDeploymentCertificateValidation
- B. Test-Certificate
- C. ConvertTo-AzsPFX
- D. Get-PfxCertificate
- E. New-AzsHubDeploymentCertificateSigningRequest

Answer: A

Explanation:
Reference:
<https://docs.microsoft.com/en-us/azure-stack/operator/azure-stack-validate-pki-certs?view=azs-2008>

NEW QUESTION 62

- (Exam Topic 3)
Note: This question is part of a series of questions that present the same scenario. Each question in the series contains a unique solution that might meet the stated goals. Some question sets might have more than one correct solution, while others might not have a correct solution. After you answer a question in this section, you will NOT be able to return to it. As a result, these questions will not appear in the review screen. You have an Azure Stack Hub integrated system. The security department at your company wants a list of all the users who can manage the integrated system from the privileged endpoint (PEP). You need to create the list. Solution: From a privileged endpoint (PEP) session, you run the Get-AzureStackStampInformation cmdlet. Does this meet the goal?

- A. Yes
- B. No

Answer: B

NEW QUESTION 66

- (Exam Topic 3)
You have an Azure Stack Hub integrated system that uses an Azure Active Directory (Azure AD) tenant named contoso.onmicrosoft.com as an identity provider. You need to ensure that users from an Azure AD tenant named fabrikam.onmicrosoft.com can authenticate to the integrated system. Which four actions should you perform in sequence? To answer, move the appropriate actions from the list of actions to the answer area and arrange them in the correct order.

Actions

Import the Directory module

Download AzureStack-Tools

From the fabrikam.onmicrosoft.com Azure AD tenant, register the Azure Stack Hub directory

Configure the contoso.onmicrosoft.com Azure AD tenant to allow sign-ins from fabrikam.onmicrosoft.com

Generate a service principal for identity synchronization

Answer Area

>

<

↑

↓

- A. Mastered
- B. Not Mastered

Answer: A

Explanation:
Reference:
<https://docs.microsoft.com/en-us/azure-stack/operator/azure-stack-enable-multitenancy?view=azs-2008>

NEW QUESTION 71

- (Exam Topic 3)

You have an Azure Stack Hub integrated system. You perform infrastructure backups twice daily.

User workloads are protected by using Azure Site Recovery.

The architect of the user workloads is planning a business continuity disaster recovery (BCDR) strategy. You need to recommend to the architect which resources to include in the BCDR strategy.

Which two resources should you recommend? Each correct answer presents part of the solution.

NOTE: Each correct selection is worth one point.

- A. Azure Key Vault secrets
- B. plans, quotas, and offers
- C. role-based access control (RBAC) permissions and roles
- D. user subscriptions
- E. Azure Resource Manager templates for resources used by Azure Stack Hub virtual machines
- F. Azure Site Recovery workloads

Answer: EF

Explanation:

Reference:

<https://docs.microsoft.com/en-us/azure/architecture/hybrid/azure-stack-vm-dr>

NEW QUESTION 75

- (Exam Topic 3)

In which three situations should you update the registration of an Azure Stack Hub integrated system? Each correct answer presents a complete solution.

NOTE: Each correct selection is worth one point.

- A. when you add or remove nodes for capacity-based billing
- B. when you change the billing model
- C. when you add or remove nodes for consumption-based billing
- D. when you renew an annual capacity subscription
- E. when you enable Azure Stack Hub for multitenancy
- F. when you update the Azure Active Directory (Azure AD) home directory

Answer: ABD

Explanation:

Reference:

<https://docs.microsoft.com/en-us/azure-stack/operator/azure-stack-registration?view=azs-2008&tabs=az1%2Caz>

NEW QUESTION 78

- (Exam Topic 3)

You plan to deploy a highly available Azure App Service resource provider to an Azure Stack Hub integrated system.

You need to ensure that the App Service resource meets the prerequisites. The solution must minimize costs. Which two resources should you deploy? Each correct answer presents part of the solution.

NOTE: Each correct selection is worth one point.

- A. a highly available Microsoft SQL Server 2019 instance in the default provider subscription
- B. a highly available file server in a dedicated user subscription
- C. a highly available file server in the default provider subscription
- D. a highly available Microsoft SQL Server 2019 instance in a dedicated user subscription
- E. a single file server in the default provider subscription
- F. a single Microsoft SQL Server 2019 instance in the default provider subscription

Answer: AC

Explanation:

Reference:

<https://blog.apps.id.au/adventures-cloud-operator-highly-available-app-service-1-4-azure-stack-step-2-deployme>

NEW QUESTION 81

- (Exam Topic 3)

You have an Azure Stack Hub integrated system that uses an Azure Active Directory (Azure AD) identity provider.

You have a computer that runs Windows 10. You use the computer to manage the integrated system.

You create a custom marketplace item on the computer.

You need to publish the item to Azure Stack Hub Marketplace. You create a storage account.

What should you create next?

- A. a container that has a public access level of private
- B. a file share that has the performance tier set to Hot
- C. a container that has a public access level of blob
- D. a file share that has the performance tier set to Transaction optimized

Answer: C

Explanation:

Reference:

<https://docs.microsoft.com/en-us/azure-stack/operator/azure-stack-create-and-publish-marketplace-item?view=a>

NEW QUESTION 82

- (Exam Topic 3)

You plan to deploy two Azure Stack Hub integrated systems named AZStack1 and AZStack2. AZStack1 must meet the following requirements:

- > Connect to the Internet.
- > Have minimal capital expenditures.
- > Use the minimum number of on-premises servers for identity.
- > Have no existing licenses for Windows virtual machines deployed. AZStack2 must meet the following requirements:
- > Be disconnected from the Internet.
- > Use the minimum number of on-premises servers for identity.
- > Support the syndication of Azure Stack Hub Marketplace items.

Which identity provider and licensing model should you use for each integrated system? To answer, select the appropriate options in the answer area.

NOTE: Each correct selection is worth one point.

Answer Area

AZStack1:	<div><div></div><div>Capacity and Active Directory Federation Services (AD FS)</div><div>Capacity and Azure Active Directory (Azure AD)</div><div>Pay-as-you-use and Active Directory Federation Services (AD FS)</div><div>Pay-as-you-use and Azure Active Directory (Azure AD)</div></div>
AZStack2:	<div><div></div><div>Capacity and Active Directory Federation Services (AD FS)</div><div>Capacity and Azure Active Directory (Azure AD)</div><div>Pay-as-you-use and Active Directory Federation Services (AD FS)</div><div>Pay-as-you-use and Azure Active Directory (Azure AD)</div></div>

- A. Mastered
- B. Not Mastered

Answer: A

Explanation:

Reference:

<https://docs.microsoft.com/en-us/azure-stack/operator/azure-stack-connected-deployment?view=azs-2008>

NEW QUESTION 83

- (Exam Topic 3)

You have an Azure Stack Hub integrated system.

A scale unit node has a hardware failure.

You replace the physical server based on the field replacement unit (FRU) documentation of the OEM hardware vendor.

You need to reintroduce the node to the scale unit. Which PowerShell cmdlet should you run?

- A. Enable-AzsScaleUnitNode
- B. Repair-AzsScaleUnitNode
- C. Start-AzsScaleUnitNode
- D. Restart-AzsInfrastructureRole
- E. Add-AzsScaleUnitNode

Answer: B

Explanation:

Reference:

<https://docs.microsoft.com/en-us/azure-stack/operator/azure-stack-node-actions?view=azs-2008&tabs=az1#repair>

NEW QUESTION 87

- (Exam Topic 3)

Note: This question is part of a series of questions that present the same scenario. Each question in the series contains a unique solution that might meet the stated goals. Some question sets might have more than one correct solution, while others might not have a correct solution.

After you answer a question in this section, you will NOT be able to return to it. As a result, these questions will not appear in the review screen.

You have an Azure Stack Hub integrated system.

The security department at your company wants a list of all the users who can manage the integrated system from the privileged endpoint (PEP).

You need to create the list.

Solution: You connect to the administrator portal and view the users who are assigned the Owner role for the default provider subscription.

Does this meet the goal?

- A. Yes
- B. No

Answer: B

Explanation:

Reference:
<https://docs.microsoft.com/en-us/azure-stack/reference/pep-2002/get-cloudadminuserlist>

NEW QUESTION 91

- (Exam Topic 3)
You have an Azure Stack Hub integrated system.
You need to give a new operator access to the privileged endpoint (PEP) as soon as possible. Which two actions should you perform? Each correct answer presents part of the solution. NOTE: Each correct selection is worth one point.

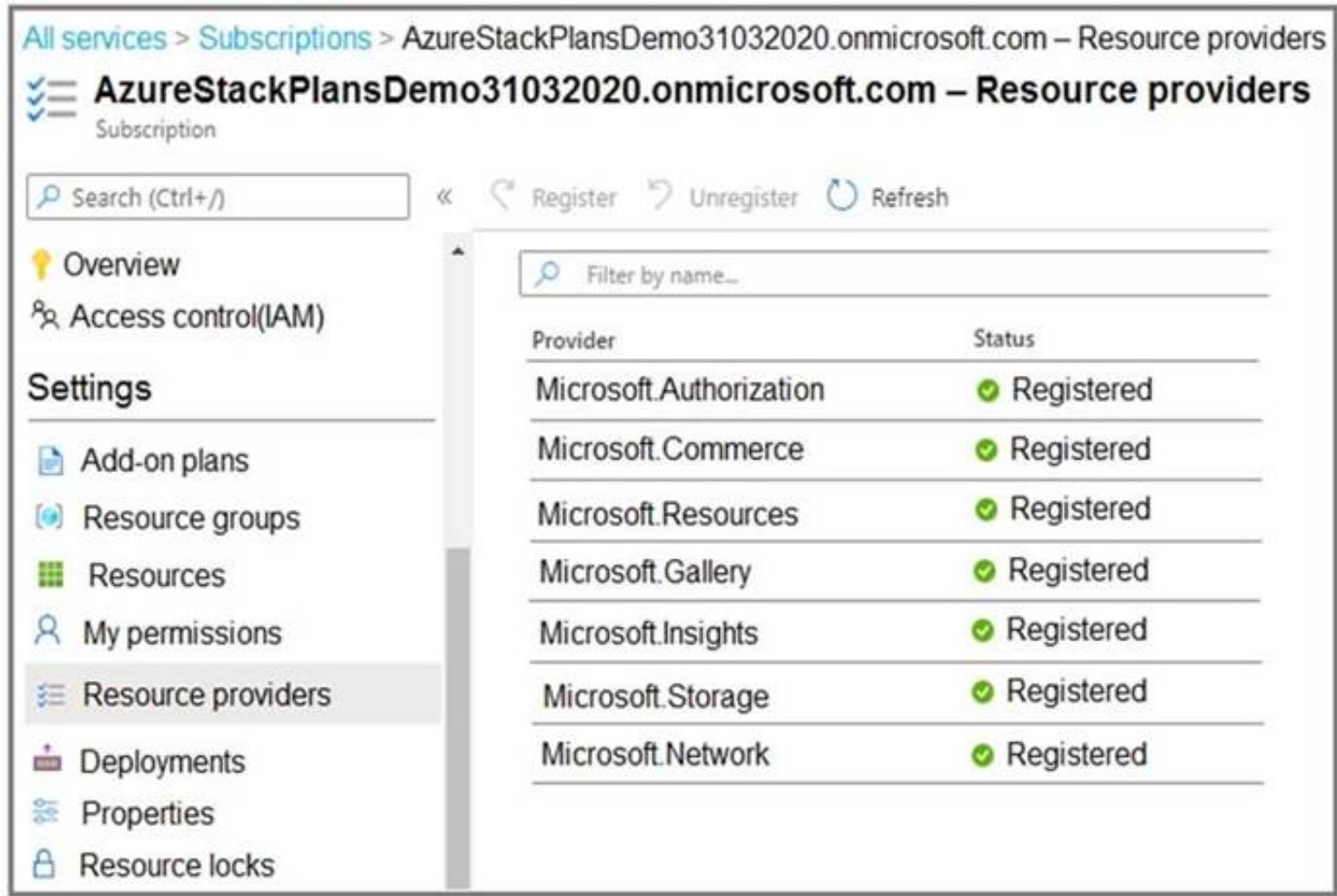
- A. Run the New-CloudAdminUser cmdlet.
- B. Run the New-AzureADUser cmdlet.
- C. Connect to the PEP.
- D. Connect to and unlock the PEP.
- E. Connect to the administrator management endpoint.

Answer: AC

Explanation:
Reference:
<https://docs.microsoft.com/en-us/azure-stack/operator/azure-stack-privileged-endpoint?view=azs-2008>

NEW QUESTION 94

- (Exam Topic 3)
You open the Resource providers blade for a user subscription as shown in the following exhibit.



Use the drop-down menus to select the answer choice that completes each statement based on the information presented in the graphic.
NOTE: Each correct selection is worth one point.

Users of the user subscription can deploy **[answer choice]** successfully.

an App Service plan

an event hub

a key vault

a virtual network

You must make the **[answer choice]** resource provider available before users of the user subscription can create virtual machines.

Microsoft.Compute

Microsoft.KeyVault

Microsoft.Subscription

Microsoft.VirtualMachineImages

- A. Mastered
- B. Not Mastered

Answer: A

Explanation:
Graphical user interface, text, application, email Description automatically generated
Reference:
<https://docs.microsoft.com/en-us/azure/azure-resource-manager/management/azure-services-resource-providers>

NEW QUESTION 97
.....

Thank You for Trying Our Product

We offer two products:

1st - We have Practice Tests Software with Actual Exam Questions

2nd - Questions and Answers in PDF Format

AZ-600 Practice Exam Features:

- * AZ-600 Questions and Answers Updated Frequently
- * AZ-600 Practice Questions Verified by Expert Senior Certified Staff
- * AZ-600 Most Realistic Questions that Guarantee you a Pass on Your FirstTry
- * AZ-600 Practice Test Questions in Multiple Choice Formats and Updatesfor 1 Year

100% Actual & Verified — Instant Download, Please Click
[Order The AZ-600 Practice Test Here](#)