

Exam Questions MS-500

Microsoft 365 Security Administrator

<https://www.2passeasy.com/dumps/MS-500/>



NEW QUESTION 1

You need to recommend a solution for the user administrators that meets the security requirements for auditing. Which blade should you recommend using from the Azure Active Directory admin center?

- A. Sign-ins
- B. Azure AD Identity Protection
- C. Authentication methods
- D. Access review

Answer: A

Explanation:

References:

<https://docs.microsoft.com/en-us/azure/active-directory/reports-monitoring/concept-sign-ins>

NEW QUESTION 2

You need to recommend a solution to protect the sign-ins of Admin1 and Admin2. What should you include in the recommendation?

- A. a device compliance policy
- B. an access review
- C. a user risk policy
- D. a sign-in risk policy

Answer: C

Explanation:

References:

<https://docs.microsoft.com/en-us/azure/active-directory/identity-protection/howto-user-risk-policy>

NEW QUESTION 3

HOTSPOT

You install Azure ATP sensors on domain controllers.

You add a member to the Domain Admins group. You view the timeline in Azure ATP and discover that information regarding the membership change is missing.

You need to meet the security requirements for Azure ATP reporting.

What should you configure? To answer, select the appropriate options in the answer area. NOTE: Each correct selection is worth one point.

Policy to edit:

	▼
Default Domain Controllers Policy	
Default Domain Policy	
A local policy on one domain controller	

Audit setting to configure:

	▼
Audit User Account Management	
Audit Computer Account Management	
Audit Other Account Management Events	
Audit Security Group Management	

- A. Mastered
- B. Not Mastered

Answer: A

Explanation:

References:

<https://docs.microsoft.com/en-us/azure-advanced-threat-protection/atp-advanced-audit-policy>

NEW QUESTION 4

You need to recommend a solution that meets the technical and security requirements for sharing data with the partners.

What should you include in the recommendation? Each correct answer presents part of the solution. NOTE: Each correct selection is worth one point.

- A. Create an access review.
- B. Assign the Global administrator role to User1.
- C. Assign the Guest inviter role to User1.
- D. Modify the External collaboration settings in the Azure Active Directory admin center.

Answer: AC

NEW QUESTION 5

You need to resolve the issue that targets the automated email messages to the IT team. Which tool should you run first?

- A. Synchronization Service Manager
- B. Azure AD Connect wizard

C. Synchronization Rules Editor
D. IdFix

Answer: B

Explanation:

References:

<https://docs.microsoft.com/en-us/office365/enterprise/fix-problems-with-directory-synchronization>

Case Study: 2 Litware, Inc Overview

Litware, Inc. is a financial company that has 1,000 users in its main office in Chicago and 100 users in a branch office in San Francisco.

Existing Environment

Internal Network Infrastructure

The network contains a single domain forest. The forest functional level is Windows Server 2016. Users are subject to sign-in hour restrictions as defined in Active Directory.

The network has the IP address range shown in the following table.

Location	IP address range
Chicago office internal network	192.168.0.0/20
Chicago office perimeter network	172.16.0.0/24
Chicago office external network	131.107.83.0/28
San Francisco office internal network	192.168.16.0/20
San Francisco office perimeter network	172.16.16.0/24
San Francisco office external network	131.107.16.218/32

The offices connect by using Multiprotocol Label Switching (MPLS).

The following operating systems are used on the network:

- Windows Server 2016
- Windows 10 Enterprise
- Windows 8.1 Enterprise

The internal network contains the systems shown in the following table.

Office	Name	Configuration
Chicago	DC1	Domain controller
Chicago	DC2	Domain controller
San Francisco	DC3	Domain controller
Chicago	Server1	SIEM-server

Litware uses a third-party email system.

Cloud Infrastructure

Litware recently purchased Microsoft 365 subscription licenses for all users.

Microsoft Azure Active Directory (Azure AD) Connect is installed and uses the default authentication settings. User accounts are not yet synced to Azure AD.

You have the Microsoft 365 users and groups shown in the following table.

Name	Object type	Description
Group 1	Security group	A group for testing Azure and Microsoft 365 functionality
User1	User	A test user who is a member of Group1
User2	User	A test user who is a member of Group1
User3	User	A test user who is a member of Group1
User4	User	An administrator
Guest1	Guest user	A guest user

Planned Changes

Litware plans to implement the following changes: Migrate the email system to Microsoft Exchange Online Implement Azure AD Privileged Identity Management

Security Requirements

Litware identifies the following security requirements:

- Create a group named Group2 that will include all the Azure AD user accounts. Group2 will be used to provide limited access to Windows Analytics
- Create a group named Group3 that will be used to apply Azure Information Protection policies to pilot users. Group3 must only contain user accounts
- Use Azure Advanced Threat Protection (ATP) to detect any security threats that target the forest
- Prevent users locked out of Active Directory from signing in to Azure AD and Active Directory
- Implement a permanent eligible assignment of the Compliance administrator role for User1
- Integrate Windows Defender and Windows Defender ATP on domain-joined servers
- Prevent access to Azure resources for the guest user accounts by default
- Ensure that all domain-joined computers are registered to Azure AD

Multi-factor authentication (MFA) Requirements

Security features of Microsoft Office 365 and Azure will be tested by using pilot Azure user accounts. You identify the following requirements for testing MFA.

Pilot users must use MFA unless they are signing in from the internal network of the Chicago office. MFA must NOT be used on the Chicago office internal network.

If an authentication attempt is suspicious, MFA must be used, regardless of the user location Any disruption of legitimate authentication attempts must be minimized

General Requirements

Litware want to minimize the deployment of additional servers and services in the Active Directory forest.

NEW QUESTION 6

Which IP address space should you include in the MFA configuration?

- A. 131.107.83.0/28
- B. 192.168.16.0/20
- C. 172.16.0.0/24
- D. 192.168.0.0/20

Answer: B

NEW QUESTION 7

You need to meet the technical requirements for User9. What should you do?

- A. Assign the Privileged administrator role to User9 and configure a mobile phone number for User9
- B. Assign the Compliance administrator role to User9 and configure a mobile phone number for User9
- C. Assign the Security administrator role to User9
- D. Assign the Global administrator role to User9

Answer: A

Explanation:

<https://docs.microsoft.com/en-us/azure/active-directory/privileged-identity-management/pim-how-to-give-access-to-pim>

NEW QUESTION 8

What should User6 use to meet the technical requirements?

- A. Supervision in the Security & Compliance admin center
- B. Service requests in the Microsoft 365 admin center
- C. Security & privacy in the Microsoft 365 admin center
- D. Data subject requests in the Security & Compliance admin center

Answer: B

NEW QUESTION 9

Note: This question is part of a series of questions that present the same scenario. Each question in the series contains a unique solution that might meet the stated goals. Some question sets might have more than one correct solution, while others might not have a correct solution.

After you answer a question in this section, you will NOT be able to return to it. As a result, these questions will not appear in the review screen.

You have a Microsoft 365 subscription that contains the users shown in the following table.

Name	Role
User1	Compliance Manager Contributor
User2	Compliance Manager Assessor
User3	Compliance Manager Administrator
User4	Portal Admin

You discover that all the users in the subscription can access Compliance Manager reports. The Compliance Manager Reader role is not assigned to any users. You need to recommend a solution to prevent a user named User5 from accessing the Compliance Manager reports.

Solution: You recommend modifying the licenses assigned to User5. Does this meet the goal?

- A. Yes
- B. No

Answer: A

Explanation:

Case Study: 4 Mix Questions

NEW QUESTION 10

Note: This question is part of series of questions that present the same scenario. Each question in the series contains a unique solution that might meet the stated goals. Some question sets might have more than one correct solution, while others might not have a correct solution.

After you answer a question in this section, you will NOT be able to return to it. As a result, these questions will not appear in the review screen.

You have a Microsoft 365 E5 subscription that is associated to a Microsoft Azure Active Directory (Azure AD) tenant named contoso.com.

You use Active Directory Federation Services (AD FS) to federate on-premises Active Directory and the tenant. Azure AD Connect has the following settings:

- Source Anchor: objectGUID
- Password Hash Synchronization: Disabled
- Password writeback: Disabled
- Directory extension attribute sync: Disabled
- Azure AD app and attribute filtering: Disabled
- Exchange hybrid deployment: Disabled
- User writeback: Disabled

You need to ensure that you can use leaked credentials detection in Azure AD Identity Protection. Solution: You modify the Azure AD app and attribute filtering settings.

Does that meet the goal?

- A. Yes
- B. No

Answer: B

NEW QUESTION 10

HOTSPOT

You have a Microsoft 365 subscription that uses a default domain name of contoso.com.

The multi-factor authentication (MFA) service settings are configured as shown in the exhibit. (Click the Exhibit tab.)

multi-factor authentication

users service settings

app passwords [\(earn more\)](#)

- ☒ Allow users to create app passwords to sign in to non-browser apps
☐ Do not allow users to create app passwords to sign in to non-browser apps

trusted ips [\(earn more\)](#)

- ☐ Skip multi-factor authentication for requests from federated users on my intranet

Skip multi-factor authentication for requests from following range of IP address subnets

verification options [\(earn more\)](#)

Methods available to users:

- ☐ Call to phone
☒ Text message to phone
☒ Notification through mobile app
☒ Verification code from mobile app or hardware token

remember multi-factor authentication [\(earn more\)](#)

- ☐ Allow users to remember multi-factor authentication on devices they trust

Days before a device must re-authenticate (1-60)

In contoso.com, you create the users shown in the following table.

Display name	Username	MFA status
User1	User1@contoso.com	Enabled
User2	User2@contoso.com	Enabled
User3	User3@contoso.com	Disabled

What is the effect of the configuration? To answer, select the appropriate options in the answer area. NOTE: Each correct selection is worth one point.

User1:

Can sign in to the My Apps portal without using MFA	V
Completed the MFA registration	
Must complete the MFA registration at the next sign-in	

User2:

Can sign in to the My Apps portal without using MFA	V
Must use app passwords for legacy apps	
Must use an app password to sign in to the My-Apps portal	

- A. Mastered
B. Not Mastered

Answer: A

Explanation:

User1:

Can sign in to the My Apps portal without using MFA	V
Completed the MFA registration	
Must complete the MFA registration at the next sign-in	

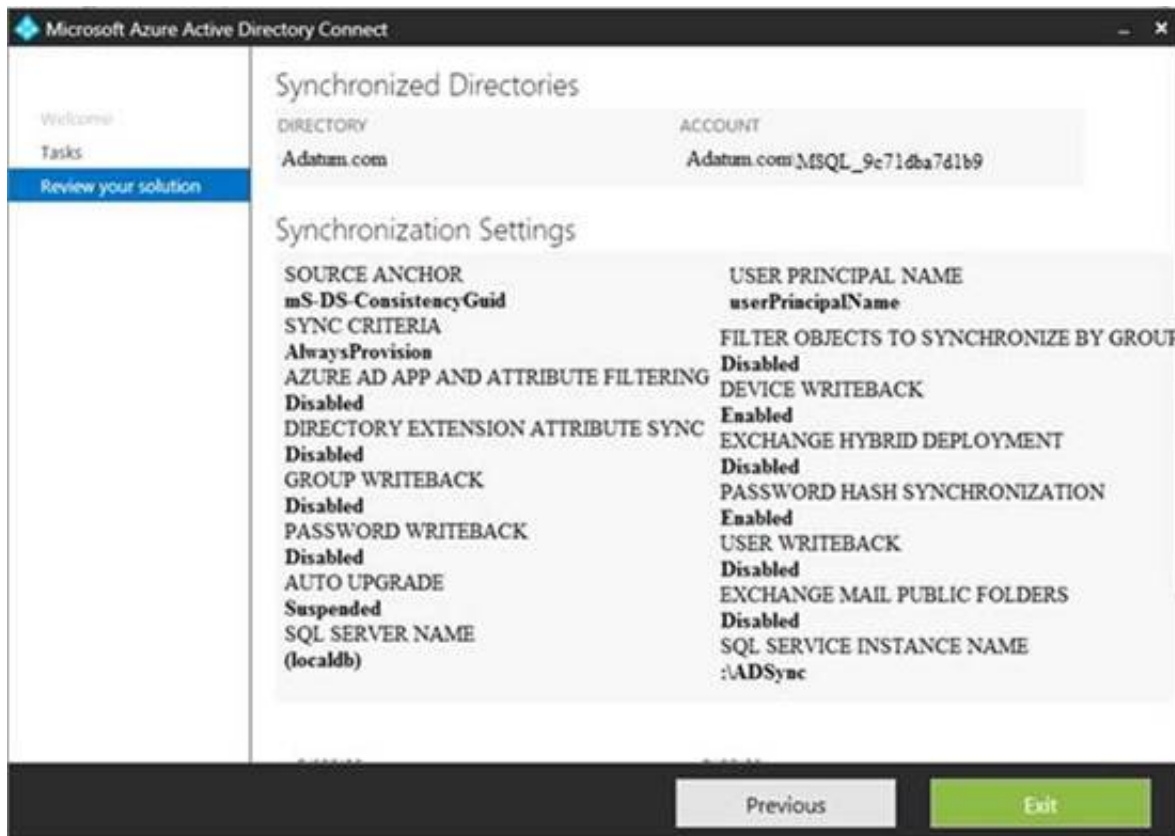
User2:

Can sign in to the My Apps portal without using MFA	V
Must use app passwords for legacy apps	
Must use an app password to sign in to the My-Apps portal	

NEW QUESTION 11

HOTSPOT

You configure Microsoft Azure Active Directory (Azure AD) Connect as shown in the following exhibit.



Use the drop-down menus to select the answer choice that completes each statement based on the information presented in the graphic.

NOTE: Each correct selection is worth one point.

If you reset a password in Azure AD, the password will [answer choice].

be overwritten	V
be synced to Active Directory	
be subject to the Active Directory password policy	

If you join a computer to Azure AD, [answer choice].

an object will be provisioned in the Computers container	V
an object will be provisioned in the RegisteredDevices container	
the device object in Azure will be deleted during synchronization	

- A. Mastered
B. Not Mastered

Answer: A

Explanation:

Reference:

<https://docs.microsoft.com/en-us/azure/active-directory/hybrid/how-to-connect-device-writeback>

NEW QUESTION 15

You have a Microsoft 365 subscription.

You need to ensure that all users who are assigned the Exchange administrator role have multi-factor authentication (MFA) enabled by default.

What should you use to achieve the goal?

- A. Security & Compliance permissions
B. Microsoft Azure Active Directory (Azure AD) Privileged Identity Management
C. Microsoft Azure AD group management
D. Microsoft Office 365 user management

Answer: B

NEW QUESTION 17

You configure several Advanced Threat Protection (ATP) policies in a Microsoft 365 subscription. You need to allow a user named User1 to view ATP reports in the Threat management dashboard. Which role provides User1 with the required role permissions?

- A. Security reader
B. Message center reader
C. Compliance administrator
D. Information Protection administrator

Answer: A

Explanation:

Reference:

<https://docs.microsoft.com/en-us/office365/securitycompliance/view-reports-for-atp#what-permissions-areneeded-to-view-the-atp-reports>

NEW QUESTION 18

You have a Microsoft 365 Enterprise E5 subscription.

You use Windows Defender Advanced Threat Protection (Windows Defender ATP). You plan to use Microsoft Office 365 Attack simulator.

What is a prerequisite for running Attack simulator?

- A. Enable multi-factor authentication (MFA)
- B. Configure Advanced Threat Protection (ATP)
- C. Create a Conditional Access App Control policy for accessing Office 365
- D. Integrate Office 365 Threat Intelligence and Windows Defender ATP

Answer: A

Explanation:

Reference:

<https://docs.microsoft.com/en-us/office365/securitycompliance/attack-simulator>

NEW QUESTION 23

You have a Microsoft 365 E5 subscription and a hybrid Microsoft Exchange Server organization.

Each member of a group named Executive has an on-premises mailbox. Only the Executive group members have multi-factor authentication (MFA) enabled. Each member of a group named Research has a mailbox in Exchange Online.

You need to use Microsoft Office 365 Attack simulator to model a spear-phishing attack that targets the Research group members.

The email address that you intend to spoof belongs to the Executive group members. What should you do first?

- A. From Azure ATP admin center, configure the primary workspace settings
- B. From the Microsoft Azure portal, configure the user risk settings in Azure AD Identity Protection
- C. Enable MFA for the Research group members
- D. Migrate the Executive group members to Exchange Online

Answer: C

Explanation:

Reference:

<https://docs.microsoft.com/en-us/office365/securitycompliance/attack-simulator>

NEW QUESTION 28

HOTSPOT

You have a Microsoft 365 subscription that uses a default domain name of contoso.com. Microsoft Azure Active Directory (Azure AD) contains the users shown in the following table.

Name	Member of
User1	Group1
User2	Group1, Group2
User3	Group3

Microsoft Intune has two devices enrolled as shown in the following table:

Name	Platform
Device1	Android
Device2	Windows 10

Both devices have three apps named App1, App2, and App3 installed.

You create an app protection policy named ProtectionPolicy1 that has the following settings:

- Protected apps: App1
- Exempt apps: App2
- Windows Information Protection mode: Block

You apply ProtectionPolicy1 to Group1 and Group3. You exclude Group2 from ProtectionPolicy1. For each of the following statements, select Yes if the statement is true. Otherwise, select No.

NOTE: Each correct selection is worth one point.

Answer Area

Yes No

From Device1, User1 can copy data from App1 to App3.

☐
☐

From Device2, User1 can copy data from App1 to App2.

☐
☐

From Device2, User1 can copy data from App1 to App3.

☐
☐

- A. Mastered
- B. Not Mastered

Answer: A

Explanation:

Answer Area

Yes No

From Device1, User1 can copy data from App1 to App3.
 From Device2, User1 can copy data from App1 to App2.
 From Device2, User1 can copy data from App1 to App3.

<input type="radio"/>	<input type="radio"/>
<input type="radio"/>	<input type="radio"/>
<input type="radio"/>	<input type="radio"/>

NEW QUESTION 32

You have a Microsoft 365 tenant.

You have 500 computers that run Windows 10.

You plan to monitor the computers by using Windows Defender Advanced Threat Protection (Windows Defender ATP) after the computers are enrolled in Microsoft Intune.

You need to ensure that the computers connect to Windows Defender ATP. How should you prepare Intune for Windows Defender ATP?

- A. Configure an enrollment restriction
- B. Create a device configuration profile
- C. Create a conditional access policy
- D. Create a Windows Autopilot deployment profile

Answer: B

Explanation:

Reference:

<https://docs.microsoft.com/en-us/intune/advanced-threat-protection>

NEW QUESTION 33

Note: This question is part of series of questions that present the same scenario. Each question in the series contains a unique solution that might meet the stated goals. Some question sets might have more than one correct solution, while others might not have a correct solution.

After you answer a question in this section, you will NOT be able to return to it. As a result, these questions will not appear in the review screen.

You have a Microsoft 365 tenant. You create a label named CompanyConfidential in Microsoft Azure Information Protection.

You add CompanyConfidential to a global policy.

A user protects an email message by using CompanyConfidential and sends the label to several external recipients. The external recipients report that they cannot open the email message.

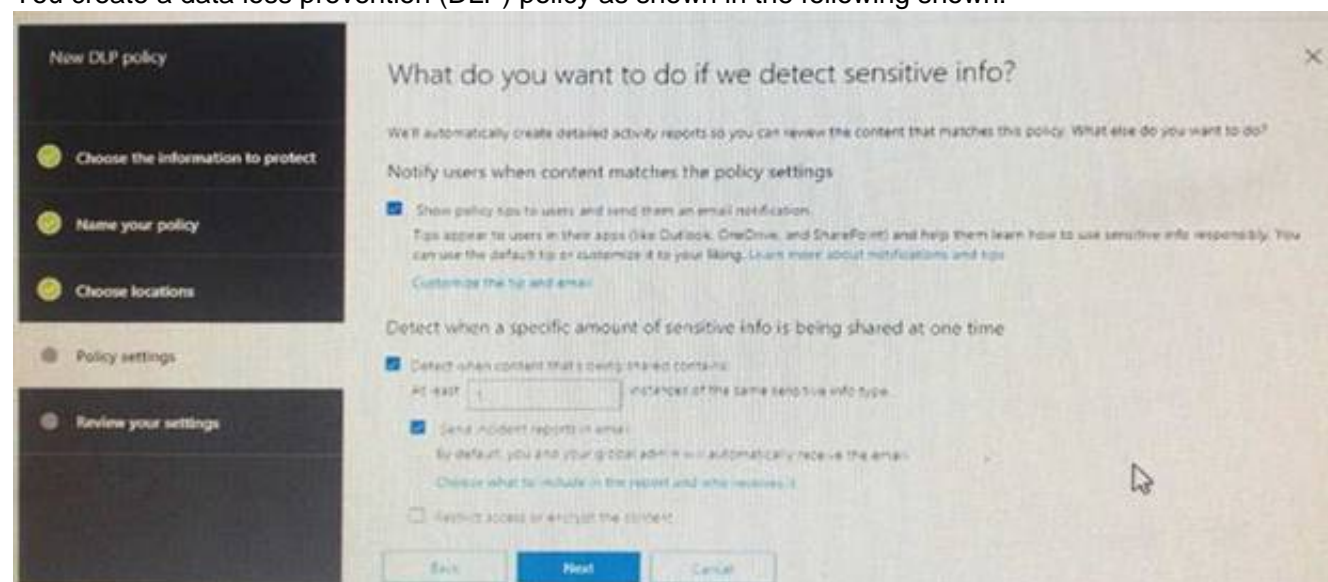
You need to ensure that the external recipients can open protected email messages sent to them. Solution: You modify the content expiration settings of the label. Does this meet the goal?

- A. Yes
- B. No

Answer: B

NEW QUESTION 34

You create a data loss prevention (DLP) policy as shown in the following shown:



What is the effect of the policy when a user attempts to send an email messages that contains sensitive information?

- A. The user receives a notification and can send the email message
- B. The user receives a notification and cannot send the email message
- C. The email message is sent without a notification
- D. The email message is blocked silently

Answer: A

Explanation:

<https://docs.microsoft.com/en-us/office365/securitycompliance/data-loss-prevention-policies>

NEW QUESTION 37

You have a Microsoft 365 subscription.

You need to create data loss prevention (DLP) queries in Microsoft SharePoint Online to find sensitive data stored in sites.

Which type of site collection should you create first?

- A. Records Center
- B. Compliance Policy Center
- C. eDiscovery Center
- D. Enterprise Search Center
- E. Document Center

Answer: C

Explanation:

Reference:

<https://support.office.com/en-us/article/overview-of-data-loss-prevention-in-sharepoint-server-2016-80f907bbb944-448d-b83d-8fec4abcc24c>

NEW QUESTION 40

HOTSPOT

You have a Microsoft 365 subscription.

You are creating a retention policy named Retention1 as shown in the following exhibit.

Decide if you want to retain content, delete it, or both

Do you want to retain content? ⓘ

☒ Yes, I want to retain it ⓘ

For this long... ▾ 2 years ▾

Retain the content based on when it was last modified ▾ ⓘ

Do you want us to delete it after this time? ⓘ

☒ Yes ☐ No

☐ No, just delete content that's older than ⓘ

1 years ▾

Need more options?

☐ Use advanced retention settings ⓘ

Back

Next

Cancel

You apply Retention1 to SharePoint sites and OneDrive accounts.

Use the drop-down menus to select the answer choice that completes each statement based on the information presented in the graphic.

NOTE: Each correct selection is worth one point.

If a user creates a file in a Microsoft SharePoint library on January 1, 2019, and modifies the file every six months, the file will be [answer choice].

retained ▾

deleted on January 1, 2021

deleted on July 1, 2021

If a user creates a file in Microsoft OneDrive on January 1, 2019, modifies the file on March 1, 2019, and deletes the file on May 1, 2019, the user [answer choice].

cannot recover the file ▾

can recover the file until January 1, 2020

can recover the file until March 1, 2020

can recover the file until May 1, 2020

- A. Mastered
- B. Not Mastered

Answer: A

Explanation:

If a user creates a file in a Microsoft SharePoint library on January 1, 2019, and modifies the file every six months, the file will be [answer choice].

retained	▼
deleted on January 1, 2021	
deleted on July 1, 2021	

If a user creates a file in Microsoft OneDrive on January 1, 2019, modifies the file on March 1, 2019, and deletes the file on May 1, 2019, the user [answer choice].

cannot recover the file	▼
can recover the file until January 1, 2020	
can recover the file until March 1, 2020	
can recover the file until May 1, 2020	

NEW QUESTION 44

You have a Microsoft 365 subscription. You need to ensure that users can apply retention labels to individual documents in their Microsoft SharePoint libraries. Which two actions should you perform? Each correct answer presents part of the solution. NOTE: Each correct selection is worth one point.

- A. From the Cloud App Security admin center, create a file policy.
- B. From the SharePoint admin center, modify the Site Settings.
- C. From the SharePoint & Compliance admin center, create a label.
- D. From the SharePoint admin center, modify the records management settings.
- E. From the Security & Compliance admin center, publish a label.

Answer: CE

Explanation:

Reference:

<https://docs.microsoft.com/en-us/office365/securitycompliance/protect-sharepoint-online-files-with-office-365-labels-and-dlp>

NEW QUESTION 46

You recently created and published several labels policies in a Microsoft 365 subscription. You need to view which labels were applied by users manually and which labels were applied automatically. What should you do from the Security & Compliance admin center?

- A. From Search & investigation, select Content search
- B. From Data governance, select Events
- C. From Search & investigation, select eDiscovery
- D. From Reports, select Dashboard

Answer: B

NEW QUESTION 51

HOTSPOT

You have a Microsoft 365 subscription. From the Security & Compliance admin center, you create the retention policies shown in the following table.

Name	Location
Policy1	OneDrive accounts
Polciy2	Exchange email, SharePoint sites, OneDrive accounts, Office 365 groups

Policy1 if configured as showing in the following exhibit.

Decide if you want to retain content, delete it, or both

Do you want to retain content? ⓘ

☒ Yes, I want to retain it ⓘ

For this long... ▼ 1 years ▼

☐ No, just delete content that's older than ⓘ

1 years ▼

Delete the content based on when it was created ▼ ⓘ

Need more options?

☐ Use advanced retention settings ⓘ

Back

Next

Cancel

Policy2 is configured as shown in the following exhibit.

Decide if you want to retain content, delete it, or both

Do you want to retain content? ⓘ

☒ Yes, I want to retain it ⓘ

For this long... ▾ 3 years ▾

Retain the content based on when it was created ▾ ⓘ

Do you want us to delete it after this time?

☐ Yes ☒ No

☐ No, just delete content that's older than ⓘ

1 years ▾

Need more options?

☐ Use advanced retention settings ⓘ

Back Next Cancel

For each of the following statements, select Yes if the statement is true. Otherwise, select No.

Answer Area	Yes	No
If a user creates a file in Microsoft OneDrive on January 1, 2018, users can access the file on January 15, 2019	<input type="radio"/>	<input type="radio"/>
If a user deletes a Microsoft OneDrive file created on January 1, 2018, an administrator can recover the file on April 15, 2019	<input type="radio"/>	<input type="radio"/>
If a user deletes a Microsoft OneDrive file created on January 1, 2018, an administrator can recover the file on April 15, 2022	<input type="radio"/>	<input type="radio"/>

- A. Mastered
- B. Not Mastered

Answer: A

Explanation:

Reference:

<https://docs.microsoft.com/en-us/office365/securitycompliance/retention-policies?redirectSourcePath=%252fen-us%252farticle%252fOverview-of-retention-policies-5e377752-700d-4870-9b6d-12bfc12d2423#the-principles-of-retention-or-what-takes-precedence>

NEW QUESTION 56

You have a Microsoft 365 subscription.

You need to enable auditing for all Microsoft Exchange Online users. What should you do?

- A. From the Exchange admin center, create a journal rule
- B. Run the Set-MailboxDatabase cmdlet
- C. Run the Set-Mailbox cmdlet
- D. From the Exchange admin center, create a mail flow message trace rule.

Answer: C

Explanation:

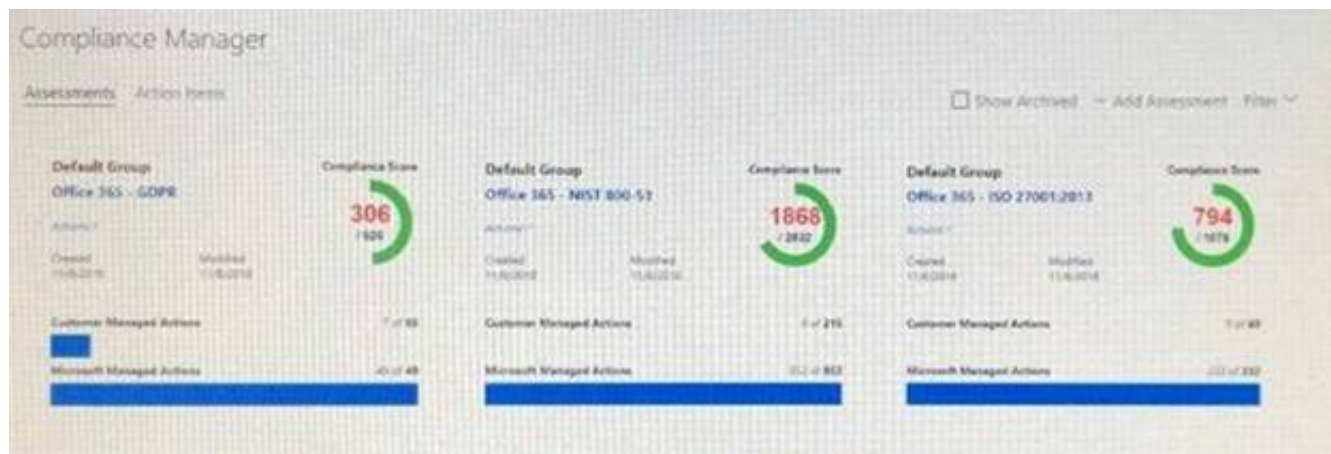
Reference:

<https://docs.microsoft.com/en-us/office365/securitycompliance/enable-mailbox-auditing>

NEW QUESTION 58

HOTSPOT

You view Compliance Manager as shown in the following exhibit.



Use the drop-down menus to select the answer choice that completes each statement based on the information presented in the graphic.
 NOTE: Each correct selection is worth one point.

To increase the GDPR Compliance Score for Microsoft Office 365, you must [answer choice].

assign action items	V
review actions	
perform an assessment	
create a service request with Microsoft	

The current GDPR Compliance Score [answer choice].

proves that the organization is non-compliant	V
proves that the organization is compliant	
shows that actions are required to evaluate compliance	

- A. Mastered
- B. Not Mastered

Answer: A

Explanation:

Reference:

<https://docs.microsoft.com/en-us/office365/securitycompliance/meet-data-protection-and-regulatory-reqs-using-microsoft-cloud>

NEW QUESTION 60

You have a hybrid Microsoft 365 environment.

All computers run Windows 10 Enterprise and have Microsoft Office 365 ProPlus installed. All the computers are joined to Active Directory.

You have a server named Server1 that runs Windows Server 2016. Server1 hosts the telemetry database. You need to prevent private details in the telemetry data from being transmitted to Microsoft.

What should you do?

- A. On Server1, run readinessreportcreator.exe
- B. Configure a registry on Server1
- C. Configure a registry on the computers
- D. On the computers, run tdadm.exe

Answer: C

NEW QUESTION 65

HOTSPOT

You have a Microsoft Azure Active Directory (Azure AD) tenant named contoso.com that contains the users shown in the following table.

Name	Member	Multi-factor authentication (MFA) status
User1	Group1	Disabled
User2	Group1, Group2	Enabled

You create and enforce an Azure AD Identity Protection user risk policy that has the following settings:

- Assignments: Include Group1, Exclude Group2
- Conditions: Sign in risk of Low and above
- Access: Allow access, Require password change

You need to identify how the policy affects User1 and User2.

What occurs when User1 and User2 sign in from an unfamiliar location? To answer, select the appropriate options in the answer area.

NOTE: Each correct selection is worth one point.

Must change their password:

	▼
User1 only	
User2 only	
Both User1 and User2	
Neither User1 not User2	

Prompted for MFA:

	▼
User1 only	
User2 only	
Both User1 and User2	
Neither User1 not User2	

- A. Mastered
- B. Not Mastered

Answer: A

Explanation:

Must change their password:

	▼
User1 only	
User2 only	
Both User1 and User2	
Neither User1 not User2	

Prompted for MFA:

	▼
User1 only	
User2 only	
Both User1 and User2	
Neither User1 not User2	

NEW QUESTION 66

Note: This question is part of a series of questions that present the same scenario. Each question in the series contains a unique solution that might meet the stated goals. Some questions sets might have more than one correct solution, while others might not have a correct solution.

After you answer a question in this section, you will NOT be able to return to it. As a result, these questions will not appear in the review screen.

You have a Microsoft 365 subscription.

You have a user named User1. Several users have full access to the mailbox of User1.

Some email messages sent to User1 appear to have been read and deleted before the user viewed them.

When you search the audit log in Security & Compliance to identify who signed in to the mailbox of User1, the results are blank.

You need to ensure that you can view future sign-ins to the mailbox of User1. You run the Set-AuditConfig -Workload Exchange command.

Does that meet the goal?

- A. Yes
- B. No

Answer: B

Explanation:

References:

<https://docs.microsoft.com/en-us/powershell/module/exchange/policy-and-compliance-audit/set-auditconfig?view=exchange-ps>

NEW QUESTION 67

Note: This question is part of a series of questions that present the same scenario. Each question in the series contains a unique solution that might meet the stated goals. Some questions sets might have more than one correct solution, while others might not have a correct solution.

After you answer a question in this section, you will NOT be able to return to it. As a result, these questions will not appear in the review screen.

You have a Microsoft 365 subscription.

You have a user named User1. Several users have full access to the mailbox of User1.

Some email messages sent to User1 appear to have been read and deleted before the user viewed them.

When you search the audit log in Security & Compliance to identify who signed in to the mailbox of User1, the results are blank.

You need to ensure that you can view future sign-ins to the mailbox of User1.

You run the Set-AdminAuditLogConfig -AdminAuditLogEnabled \$true-AdminAuditLogCmdlets *Mailbox* command. Does that meet the goal?

- A. Yes
- B. No

Answer: B

Explanation:

References:

<https://docs.microsoft.com/en-us/powershell/module/exchange/policy-and-compliance-audit/setadmindauditlogconfig?view=exchange-ps>

NEW QUESTION 68

You have a Microsoft 365 subscription.

You have a Microsoft SharePoint Online site named Site1. The files in Site1 are protected by using Microsoft Azure Information Protection.

From the Security & Compliance admin center, you create a label that designates personal data. You need to auto-apply the new label to all the content in Site1.

What should you do first?

- A. From PowerShell, run Set-ManagedContentSettings.
- B. From PowerShell, run Set-ComplianceTag.
- C. From the Security & Compliance admin center, create a Data Subject Request (DSR).
- D. Remove Azure Information Protection from the Site1 files.

Answer: D

Explanation:

References:

<https://docs.microsoft.com/en-us/office365/securitycompliance/apply-labels-to-personal-data-in-office-365>

NEW QUESTION 71

You have a Microsoft 365 subscription.

You create a retention policy and apply the policy to Exchange Online mailboxes.

You need to ensure that the retention policy tags can be assigned to mailbox items as soon as possible.

What should you do?

- A. From Exchange Online PowerShell, run Start-RetentionAutoTagLearning
- B. From Exchange Online PowerShell, run Start-ManagedFolderAssistant
- C. From the Security & Compliance admin center, create a data loss prevention (DLP) policy
- D. From the Security & Compliance admin center, create a label policy

Answer: D

Explanation:

References:

<https://docs.microsoft.com/en-us/office365/securitycompliance/labels>

NEW QUESTION 75

You have a Microsoft 365 subscription.

You have a team named Team1 in Microsoft Teams. You plan to place all the content in Team1 on hold.

You need to identify which mailbox and which Microsoft SharePoint site collection are associated to Team1.

Which cmdlet should you use?

- A. Get-UnifiedGroup
- B. Get-MailUser
- C. Get-TeamMessagingSettings
- D. Get-TeamChannel

Answer: A

NEW QUESTION 78

You have a Microsoft 365 subscription. You enable auditing for the subscription.

You plan to provide a user named Auditor with the ability to review audit logs. You add Auditor to the Global administrator role group.

Several days later, you discover that Auditor disabled auditing.

You remove Auditor from the Global administrator role group and enable auditing.

- A. Security operator
- B. Security reader
- C. Security administrator
- D. Compliance administrator

Answer: D

NEW QUESTION 83

You have a Microsoft 365 subscription.

You create an Advanced Threat Protection (ATP) safe attachments policy.

You need to configure the retention duration for the attachments in quarantine. Which type of threat management policy should you create?

- A. Anti-malware
- B. DKIM
- C. Anti-spam
- D. ATP anti-phishing

Answer: A

NEW QUESTION 88

Your network contains an on-premises Active Directory domain. The domain contains servers that

run Windows Server and have advanced auditing enabled.

The security logs of the servers are collected by using a third-party SIEM solution.

You purchase a Microsoft 365 subscription and plan to deploy Azure Advanced Threat Protection (ATP) by using standalone sensors.

You need to ensure that you can detect when sensitive groups are modified and when malicious services are created.

What should you do?

- A. Configure Event Forwarding on the domain controllers
- B. Configure auditing in the Office 365 Security & Compliance center.
- C. Turn on Delayed updates for the Azure ATP sensors.
- D. Enable the Audit account management Group Policy setting for the servers.

Answer: A

Explanation:

Reference:

<https://docs.microsoft.com/en-us/azure-advanced-threat-protection/configure-event-forwarding>

NEW QUESTION 89

.....

THANKS FOR TRYING THE DEMO OF OUR PRODUCT

Visit Our Site to Purchase the Full Set of Actual MS-500 Exam Questions With Answers.

We Also Provide Practice Exam Software That Simulates Real Exam Environment And Has Many Self-Assessment Features. Order the MS-500 Product From:

<https://www.2passeasy.com/dumps/MS-500/>

Money Back Guarantee

MS-500 Practice Exam Features:

- * MS-500 Questions and Answers Updated Frequently
- * MS-500 Practice Questions Verified by Expert Senior Certified Staff
- * MS-500 Most Realistic Questions that Guarantee you a Pass on Your FirstTry
- * MS-500 Practice Test Questions in Multiple Choice Formats and Updatesfor 1 Year