



Microsoft

Exam Questions MS-100

Microsoft 365 Identity and Services

NEW QUESTION 1

- (Exam Topic 1)

You company has a Microsoft Azure Active Directory (Azure AD) tenant that contains the users shown in the following table.

The tenant includes a security group named Admin1. Admin1 will be used to manage administrative accounts. You need to identify which users can perform the following administrative tasks:

- ▶ Create guest user accounts.
- ▶ Add User3 to Admin1.

Which users should you identify for each task? To answer, select the appropriate options in the answer area. NOTE: Each correct selection is worth one point.

Create guest user accounts:

▼
User4 only
User2 only
User3 only
User2 and User3 only
User1, User2 and User3 only
User1, User2, User3, and User4

Add User3 to Admin1:

▼
User4 only
User2 only
User3 only
User2 and User3 only
User1, User2 and User3 only
User1, User2, User3, and User4

- A. Mastered
- B. Not Mastered

Answer: A

Explanation:

References:

<https://docs.microsoft.com/en-us/azure/active-directory/users-groups-roles/directory-assign-admin-roles>

NEW QUESTION 2

- (Exam Topic 1)

Your network contains an Active Directory domain and a Microsoft Azure Active Directory (Azure AD) tenant.

The network uses a firewall that contains a list of allowed outbound domains. You began to implement directory synchronization.

You discover that the firewall configuration contains only the following domain names in the list of allowed domains:

- *.microsof.com
- *.office.com

Directory synchronization fails.

You need to ensure that directory synchronization completes successfully.

What is the best approach to achieve the goal? More than one answer choice may achieve the goal. Select the BEST answer.

- A. From the firewall, allow the IP address range of the Azure data center for outbound communication.
- B. From Azure AD Connect, modify the Customize synchronization options task
- C. Deploy an Azure AD Connect sync server in staging mode.
- D. From the firewall, create a list of allowed inbound domains.
- E. From the firewall, modify the list of allowed outbound domains.

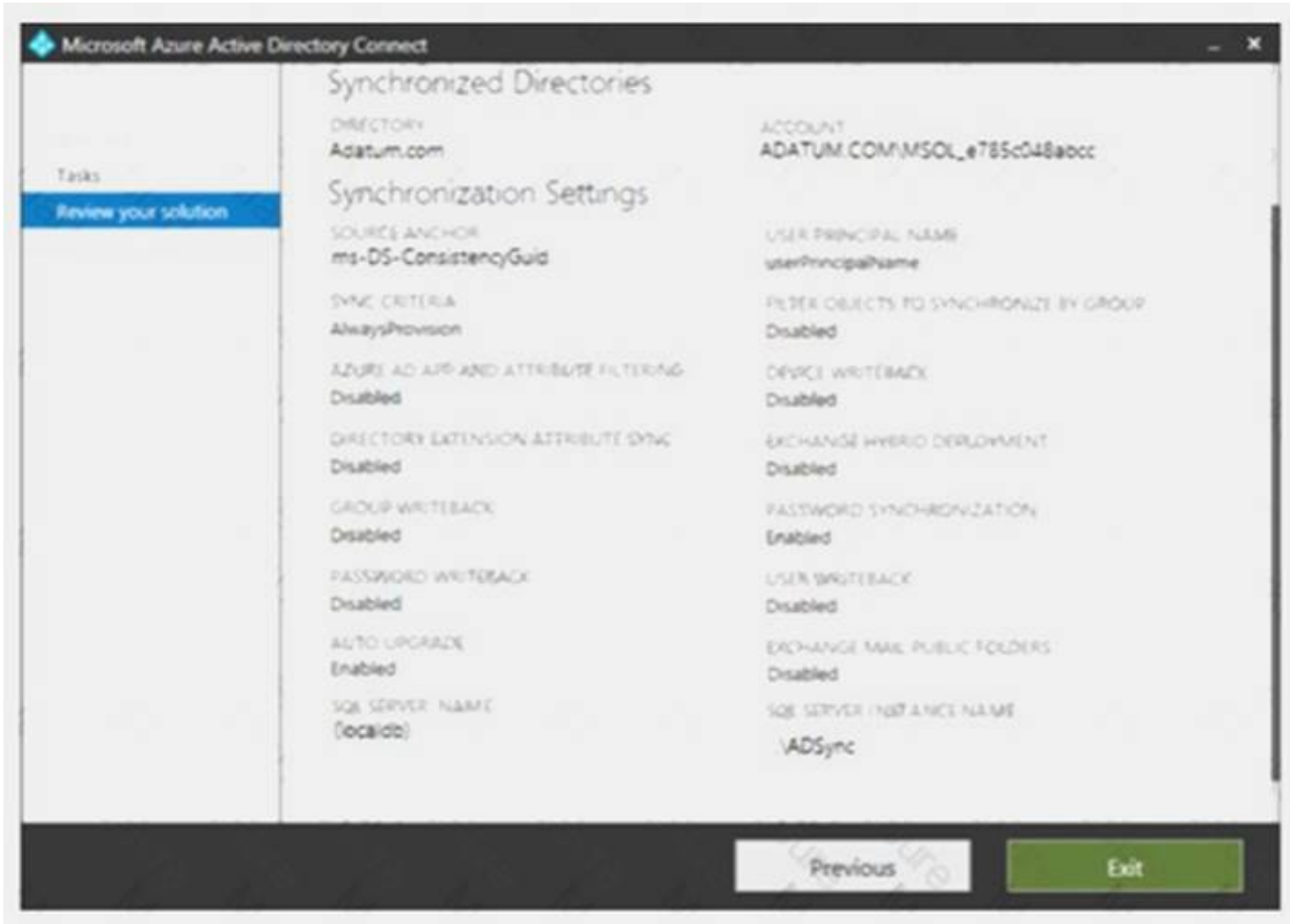
Answer: E

NEW QUESTION 3

- (Exam Topic 1)

Your company has a hybrid deployment of Microsoft 365.

An on-premises user named User1 is synced to Microsoft Azure Active Directory (Azure AD). Azure AD Connect is configured as shown in the following exhibit.



Use the drop-down menus to select the answer choice that completes each statement based on the information presented in the graphic.
NOTE: Each correct selection is worth one point.

User1 [answer choice].

cannot change her password from any Microsoft portals

can change her password by using self-service password reset feature only

an change her password from the Office 365 admin center only

If the password for User1 is changed in Active Directory, [answer choice].

the password will be synchronized to Azure AD

a new randomly generated password will be assigned to User1

the password in Azure AD will be unchanged

- A. Mastered
- B. Not Mastered

Answer: A

Explanation:

User1 [answer choice].

cannot change her password from any Microsoft portals

can change her password by using self-service password reset feature only

an change her password from the Office 365 admin center only

If the password for User1 is changed in Active Directory, [answer choice].

the password will be synchronized to Azure AD

a new randomly generated password will be assigned to User1

the password in Azure AD will be unchanged

NEW QUESTION 4
- (Exam Topic 1)

Note: This question is part of a series of questions that present the same scenario. Each question in the series contains a unique solution that might meet the stated goals. Some question sets might have more than one correct solution, while others might not have a correct solution.
After you answer a question in this section, you will NOT be able to return to it. As a result these questions will not appear in the review screen.
Your company has a main office and three branch offices. All the branch offices connect to the main office by using a WAN link. The main office has a high-speed Internet connection. All the branch offices connect to the Internet by using the main office connection.
Users use Microsoft Outlook 2016 to connect to 4 Microsoft Exchange Server mailbox hosted in the main office.
The users report that when the WAN link in their office becomes unavailable, they cannot access their mailbox.
You create a Microsoft 365 subscription, and then migrate all the user data to Microsoft 365.
You need to ensure that all the users can continue to use Outlook to receive email messages if a WAN link fails.
Solution: You deploy a site-to-site VPN from each branch office to Microsoft Azure. Does this meet the goal?

- A. Yes
- B. NO

Answer: B

NEW QUESTION 5

- (Exam Topic 1)

You have a Microsoft 365 tenant that contains Microsoft Exchange Online.

You plan to enable calendar sharing with a partner organization named adatum.com. The partner organization also has a Microsoft 365 tenant.

You need to ensure that the calendar of every user is available to the users in adatum.com immediately. What should you do?

- A. From the Exchange admin center, create a sharing policy.
- B. From the Exchange admin center, create a new organization relationship
- C. From the Microsoft 365 admin center, modify the Organization profile settings.
- D. From the Microsoft 365 admin center, configure external site sharing.

Answer: B

Explanation:

References:

<https://docs.microsoft.com/en-us/exchange/sharing/organization-relationships/create-an-organization-relationshi>

NEW QUESTION 6

- (Exam Topic 1)

Your company has a Microsoft Office 365 subscription that contains the groups shown in the following table.

Name	Members
Group1	User1, User2
Group2	User3

You have the licenses shown in the following table.

License	Included service	Assigned to
Microsoft 365	Microsoft Exchange Online	Group1
Microsoft 365	Microsoft SharePoint Online	User1, User2, User3

Another administrator removes User1 from Group1 and adds Group2 to Group1.

For each of the following statements, select Yes if the statement is true. Otherwise, select No. NOTE: Each correct selection is worth one point.

Statements	Yes	No
User1 is licensed for SharePoint Online.	<input type="radio"/>	<input type="radio"/>
User2 is licensed for SharePoint Online.	<input type="radio"/>	<input type="radio"/>
User3 is licensed for SharePoint Online.	<input type="radio"/>	<input type="radio"/>

- A. Mastered
- B. Not Mastered

Answer: A

Explanation:

The users are assigned SharePoint licenses directly. Their group memberships have no effect on licenses directly assigned to the user accounts.

NEW QUESTION 7

- (Exam Topic 1)

You are configuring an enterprise application named TestApp in Microsoft Azure as shown in the following exhibit.

Test Application

Click here to verify application configuration.

Basic Settings

* Internal Url ⓘ

https://

testapp

-m365x289755.msappproxy...

External Url ⓘ

https://testapp-m365x289755.msappproxy.net/

Pre Authentication ⓘ

Azure Active Directory

Connector Group ⓘ

Default

Additional Settings

Backend Application Timeout ⓘ

Default

Use HTTP-Only-Cookie ⓘ

Yes

No

Translate URLs In

Headers ⓘ

Yes

No

Application Body ⓘ

Yes

No

Use the drop-down menus to select the answer choice that completes each statement based on the information presented in the graphic.
NOTE: Each correct selection is worth one point.

To ensure that when users access TestApp, the proxy automatically scans for internal URLs published through the Application Proxy, set [answer choice].

Use Http-Only Cookie to Yes

Translate URLs in Headers to No

Translate URLs in Application Body to Yes

To protect TestApp from Cross-Site Scripting (XSS), set [answer choice].

Use Http-Only Cookie to Yes

Translate URLs in Headers to No

Translate URLs in Application Body to Yes

- A. Mastered
- B. Not Mastered

Answer: A

Explanation:

References:
https://docs.microsoft.com/en-us/azure/active-directory/manage-apps/application-proxy-configure-hard-coded-li

NEW QUESTION 8

- (Exam Topic 1)
You have a Microsoft Azure Active Directory (Azure AD) tenant named contoso.com. You add an app named App1 to the enterprise applications in contoso.com. You need to configure self-service for App1. What should you do first?

- A. Assign App1 to users and groups.
- B. Add an owner to App1.

- C. Configure the provisioning mode for App1.
- D. Configure an SSO method for App1.

Answer: A

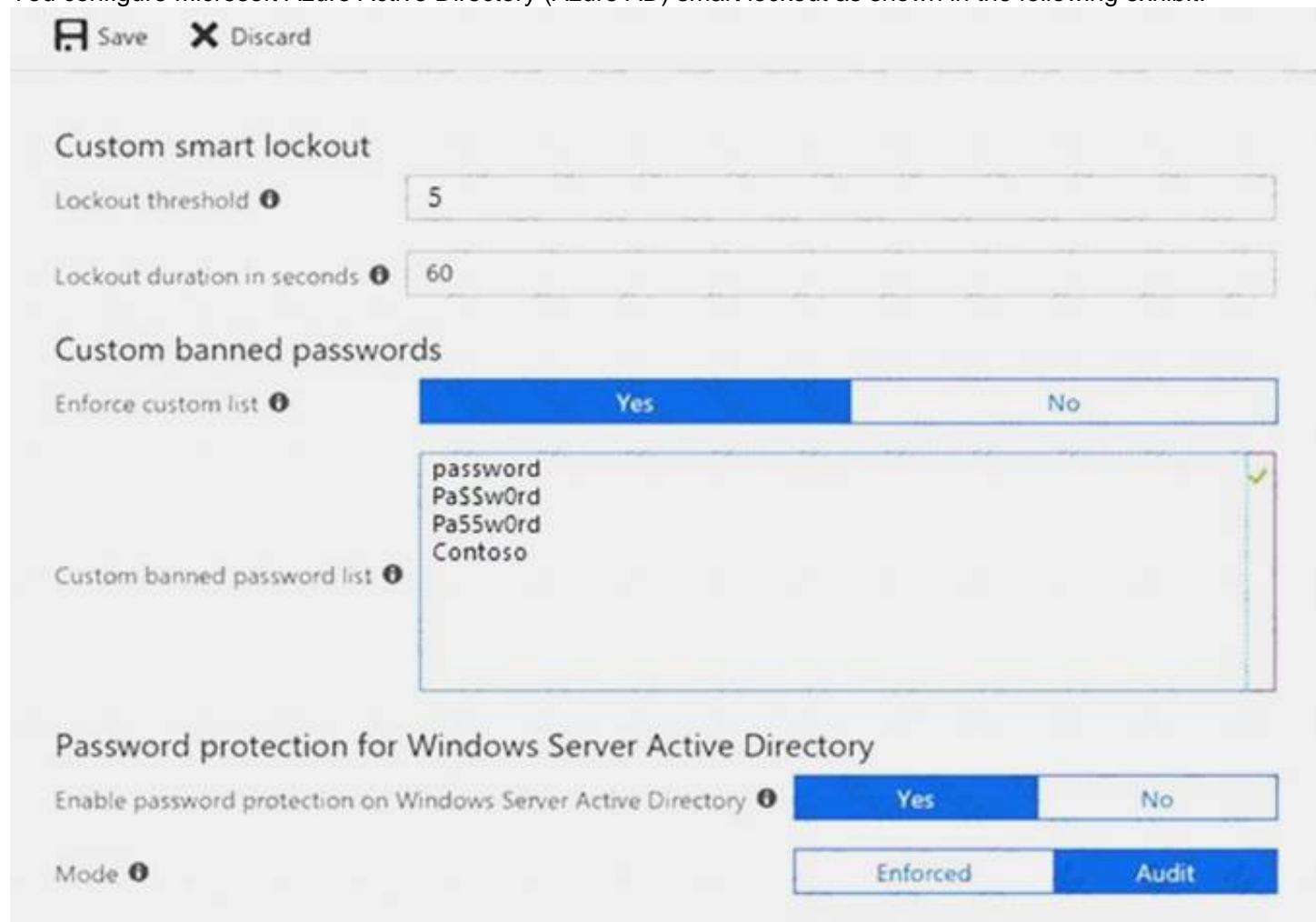
Explanation:

References:
<https://docs.microsoft.com/en-us/azure/active-directory/manage-apps/manage-self-service-access>

NEW QUESTION 9

- (Exam Topic 1)

Your network contains an on-premises Active Directory domain. You have a Microsoft 365 subscription. You implement a directory synchronization solution that uses pass-through authentication. You configure Microsoft Azure Active Directory (Azure AD) smart lockout as shown in the following exhibit.



Save Discard

Custom smart lockout

Lockout threshold ⓘ 5

Lockout duration in seconds ⓘ 60

Custom banned passwords

Enforce custom list ⓘ Yes No

Custom banned password list ⓘ

password
Pa\$\$w0rd
Pa55w0rd
Contoso

Password protection for Windows Server Active Directory

Enable password protection on Windows Server Active Directory ⓘ Yes No

Mode ⓘ Enforced Audit

You discover that Active Directory users can use the passwords in the custom banned passwords list. You need to ensure that banned passwords are effective for all users.

Which three actions should you perform? Each correct answer presents part of the solution. NOTE: Each correct selection is worth one point.

- A. From a domain controller, install the Azure AD Password Protection Proxy.
- B. From a domain controller, install the Microsoft AAD Application Proxy connector.
- C. From Custom banned passwords, modify the Enforce custom list setting.
- D. From Password protection for Windows Server Active Directory, modify the Mode setting.
- E. From all the domain controllers, install the Azure AD Password Protection DC Agent.
- F. From Active Directory, modify the Default Domain Policy.

Answer: ACE

NEW QUESTION 10

- (Exam Topic 1)

Your network contains an on-premises Active Directory domain that is synced to Microsoft Azure Active Directory (Azure AD) as shown in the following two exhibits.

Microsoft Azure Active Directory Connect

Tasks

- Connect to Azure AD
- Sync
 - Connect Directories
 - Domain/OU Filtering
 - Optional Features
 - Azure AD Apps
 - Azure AD Attributes**
 - Directory Extensions
 - Configure

Azure AD attributes

These attributes will be exported to Azure AD based on the previously selected application. Remove an individual attribute only if required to meet string organizational security policy.

EXPORTED ATTRIBUTES

- ☒ domainNetBios
- ☒ employeeID
- ☒ extensionAttribute1
- ☐ extensionAttribute10
- ☐ extensionAttribute11
- ☒ extensionAttribute12
- ☒ extensionAttribute13
- ☒ extensionAttribute14
- ☒ extensionAttribute15
- ☒ extensionAttribute2
- ☒ extensionAttribute3
- ☒ extensionAttribute4

☒ I want to further limit the attributes exported to Azure AD. ?

☐ View the list of attribute as comma-separated values

Previous Next

Microsoft Azure Active Directory Connect

Tasks

- Connect to Azure AD
- Sync
 - Connect Directories
 - Domain/OU Filtering
 - Optional Features
 - Azure AD Apps
 - Azure AD Attributes**
 - Directory Extensions
 - Configure

Directory extensions

Synchronize directory extension attributes from on-premises to Azure AD to make them available to cloud-based apps.

Available Attributes

- accountExpires (user) [LargeInteger]
- accountNameHistory (group) [String]
- accountNameHistory (user) [String]
- aCSPolicyName (user) [String]
- adminCount (group) [Integer]
- adminCount (user) [Integer]
- adminDescription (group) [String]
- adminDescription (user) [String]
- adminDisplayName (group) [String]
- adminDisplayName (user) [String]
- altSecurityIdentities (group) [String]
- altSecurityIdentities (user) [String]

Selected Attributes

- extensionAttribute10 (user) [String]
- extensionAttribute12 (user) [String]

Previous Next

You create a user named User1 in Active Directory as shown in the following exhibit.

The screenshot shows the "user1 Properties" dialog box with the "Attributes" tab selected. The dialog has a title bar with a question mark icon and a close button (X). Below the title bar are several tabs: Published Certificates, Member Of, Password Replication, Dial-in, Object, Security, Environment, Sessions, Remote control, General, Address, Account, Profile, Telephones, Organization, Remote Desktop Services Profile, COM+, and Attribute Editor. The "Attribute Editor" tab is active, displaying a list of attributes and their values.

Attribute	Value
employeeType	<not set>
enabledProtocols	<not set>
expirationTime	<not set>
extensionAttribute1	Value1
extensionAttribute10	Value10
extensionAttribute11	Value11
extensionAttribute12	Value12
extensionAttribute13	<not set>
extensionAttribute14	<not set>
extensionAttribute15	<not set>
extensionAttribute2	<not set>
extensionAttribute3	<not set>
extensionAttribute4	<not set>
extensionAttribute5	<not set>

At the bottom of the "Attribute Editor" tab, there are navigation controls: "<" and ">" arrows, a search box containing "III", and up/down arrow icons. Below the attribute list are two buttons: "Edit" and "Filter". At the very bottom of the dialog are three buttons: "OK", "Cancel", and "Apply", followed by a "Help" button.

For each of the following statements, select Yes if the statement is true. Otherwise, select No. NOTE: Each correct selection is worth one point.

Statements	Yes	No
The value of extensionAttribute1 is synchronized to Azure AD.	<input type="radio"/>	<input type="radio"/>
The value of extensionAttribute10 is synchronized to Azure AD.	<input type="radio"/>	<input type="radio"/>
The value of extensionAttribute11 is synchronized to Azure AD.	<input type="radio"/>	<input type="radio"/>
The value of extensionAttribute12 is synchronized to Azure AD.	<input type="radio"/>	<input type="radio"/>

- A. Mastered
B. Not Mastered

Answer: A

Explanation:

Statements	Yes	No
The value of extensionAttribute1 is synchronized to Azure AD.	<input checked="" type="radio"/>	<input type="radio"/>
The value of extensionAttribute10 is synchronized to Azure AD.	<input checked="" type="radio"/>	<input type="radio"/>
The value of extensionAttribute11 is synchronized to Azure AD.	<input type="radio"/>	<input checked="" type="radio"/>
The value of extensionAttribute12 is synchronized to Azure AD.	<input checked="" type="radio"/>	<input type="radio"/>

NEW QUESTION 10

- (Exam Topic 1)

Your network contains an on premises Active Directory domain named contoso.com. The domain contains five domain controllers.

Your company purchases Microsoft 365 and creates a Microsoft Azure Active Directory (Azure AD) tenant named `contoso.onmicrosoft.com`.

You plan to establish federation authentication between on premises Active Directory and the Azure AD tenant by using Active Directory Federation Services (AD FS).

You need to establish the federation.

What should you do? To answer, select the appropriate options in the answer area. NOTE: Each correct selection is worth one point.

Action to perform before establishing the federation:

▼
From the Azure portal, add a custom domain name.
From the Azure portal, configure an authentication method.
From a domain controller, install a Pass-through Authentication Agent.
From a domain controller, install Windows Identity Foundation 3.5.

Tool to use to establish the federation:

▼
Active Directory Domains and Trusts
Azure AD Connect
The AD FS console
The Azure portal

- A. Mastered
 B. Not Mastered

Answer: A

Explanation:

Action to perform before establishing the federation:

▼
From the Azure portal, add a custom domain name.
From the Azure portal, configure an authentication method.
From a domain controller, install a Pass-through Authentication Agent.
From a domain controller, install Windows Identity Foundation 3.5.

Tool to use to establish the federation:

▼
Active Directory Domains and Trusts
Azure AD Connect
The AD FS console
The Azure portal

NEW QUESTION 12

- (Exam Topic 1)

Your company has three main offices and one branch office. The branch office is used for research. The company plans to implement a Microsoft 365 tenant and to deploy multi-factor authentication.

You need to recommend a Microsoft 365 solution to ensure that multi-factor authentication is enforced only for users in the branch office.

What should you include in the recommendation?

- A. Microsoft Azure Active Directory (Azure AD) conditional access.
 B. Microsoft Azure Active Directory (Azure AD) password protection.
 C. a device compliance policy
 D. a Microsoft Intune device configuration profile

Answer: A

NEW QUESTION 14

- (Exam Topic 1)

Your network contains the servers shown in the following table.

Server name	Software	Configuration
Server1	Windows Server 2008	Domain controller
Server2	Windows Server 2012	Domain controller
Server3	Microsoft Exchange Server 2007	Not applicable
Server4	Microsoft SharePoint Server 2010	Not applicable
Server5	Microsoft Lync Server 2013	Not applicable

You purchase Microsoft 365 Enterprise E5 and plan to move all workloads to Microsoft 365 by using a hybrid identity solution and a hybrid deployment for all workloads.

You need to identify which server must be upgraded before you move to Microsoft 365. What should you identify?

- A. Server 2
 B. Server 3
 C. Server 5
 D. Server 1
 E. Server 4

Answer: B

NEW QUESTION 19

- (Exam Topic 1)

Your company has a Microsoft Azure Active Directory (Azure AD) directory tenant named contoso.onmicrosoft.com. All users have client computers that run Windows 10 Pro and are joined to Azure AD. The company purchases a Microsoft 365 E3 subscription. You need to upgrade all the computers to Windows 10 Enterprise. The solution must minimize administrative effort. You assign licenses from the Microsoft 365 admin center. What should you do next?

- A. Add a custom domain name to the subscription.
- B. Deploy Windows 10 Enterprise by using Windows Autopilot.
- C. Create provisioning package, and then deploy the package to all the computers.
- D. Instruct all the users to log off of their computer, and then to log in again.

Answer: B

NEW QUESTION 23

- (Exam Topic 1)

You have a Microsoft 365 subscription. You need to prevent phishing email messages from being delivered to your organization. What should you do?

- A. From the Exchange admin center, create an anti-malware policy.
- B. From Security & Compliance, create a DLP policy.
- C. From Security & Compliance, create a new threat management policy.
- D. From the Exchange admin center, create a spam filter policy.

Answer: C

Explanation:

References:
<https://docs.microsoft.com/en-us/office365/securitycompliance/set-up-anti-phishing-policies>

NEW QUESTION 24

- (Exam Topic 1)

You have several Microsoft SharePoint document libraries in your on-premises environment. You have a Microsoft 365 tenant that has directory synchronization implemented. You plan to move all the document libraries to SharePoint Online. You need to recommend a migration strategy for the document libraries. Which three actions should you perform in sequence? To answer, move the appropriate actions from the list of actions to the answer area and arrange them in the correct order.

Actions	Answer Area
Use the SharePoint Migration Tool to migrate the SharePoint data.	
Create new SharePoint sites.	
Run azcopy . exe to migrate the SharePoint data.	
Create a Microsoft Azure Storage account.	
Create new SharePoint libraries.	

- A. Mastered
- B. Not Mastered

Answer: A

Explanation:

References:
<https://docs.microsoft.com/en-us/sharepointmigration/how-to-use-the-sharepoint-migration-tool>

NEW QUESTION 29

- (Exam Topic 1)

Your company has a Microsoft 365 subscription that contains the users shown in the following table.

Name	Role
User1	Global administrator
User2	Security administrator, Guest inviter
User3	None
User4	Password administrator

You need to identify which users can perform the following administrative tasks:

- ▶ Modify the password protection policy.
- ▶ Create guest user accounts.

Which users should you identify for each task? To answer, select the appropriate options in the answer area. NOTE: Each correct selection is worth one point.

Modify the password protection policy:

▼

User1 only

User1 and User2 only

User1, User2, and User4 only

User1, User2, User3, and User4

Create new guest users in Microsoft Azure Active Directory (Azure AD):

▼

User1 only

User1 and User2 only

User1, User2, and User4 only

User1, User2, User3, and User4

- A. Mastered
- B. Not Mastered

Answer: A

Explanation:

Modify the password protection policy:

▼

User1 only

User1 and User2 only

User1, User2, and User4 only

User1, User2, User3, and User4

Create new guest users in Microsoft Azure Active Directory (Azure AD):

▼

User1 only

User1 and User2 only

User1, User2, and User4 only

User1, User2, User3, and User4

NEW QUESTION 33

- (Exam Topic 1)

You have a Microsoft Azure Active Directory (Azure AD) tenant named contoso.com that includes a user named User1.

You enable multi-factor authentication for contoso.com and configure the following two fraud alert settings: ▶ Set Allow users to submit fraud alerts: On

- ▶ Automatically block users who report fraud: On

You need to instruct the users in your organization to use the fraud reporting features correctly. What should you tell the users to do? To answer, select the appropriate options in the answer area. NOTE: Each correct selection is worth one point.

A user can report fraud on her account by:

▼

Typing a special code after receiving an alert call

Sending an email message to an administrator

Using the Microsoft Authenticator app

If User1 reports fraud on his account, the account will be blocked automatically for:

▼

6 hours

1 day

7 days

90 days

- A. Mastered
- B. Not Mastered

Answer: A

Explanation:

References:

<https://docs.microsoft.com/en-us/azure/active-directory/authentication/howto-mfa-mfasettings#fraud-alert>

NEW QUESTION 35

- (Exam Topic 1)

You have an on premises web application that is published by using a URL of <https://app.contoso.local>. You purchase a Microsoft 365 subscription.

Several external users must be able to connect to the web application

You need to recommend a solution for external access to the application. The solution must support multi-factor authentication.

Which two actions should you recommend? Each correct answer presents part of the solution. NOTE: Each correct selection is worth one point.

- A. From an on-premises server, install a connector, and then publish the app.
- B. From the Azure Active Directory admin center, enable an Application Proxy.
- C. From the Azure Active Directory admin center, create a conditional access policy.
- D. From an on premises server, install an Authentication Agent.
- E. Republish the web-application by using <http://app.contoso.com>

Answer: AB

Explanation:

References:

<https://docs.microsoft.com/en-us/azure/active-directory/manage-apps/application-proxy-add-on-premises-applic>

NEW QUESTION 39

- (Exam Topic 1)

Your company has a Microsoft 365 subscription.

You need to identify all the users in the subscription who are licensed for Microsoft Office 365 through a group membership. The solution must include the name of the group used to assign the license.

What should you use?

- A. the Licenses blade in the Azure portal
- B. Reports in the Microsoft 365 admin center
- C. Active users in the Microsoft 365 admin center
- D. Report in Security & Compliance

Answer: A

NEW QUESTION 43

- (Exam Topic 1)

You have a Microsoft 365 Enterprise E5 subscription.

You need to enforce multi-factor authentication on all cloud-based applications for the users in the finance department.

What should you do?

- A. Create an activity policy.
- B. Create a Sign-in risk policy.
- C. Create a session policy.
- D. Create an app permission policy.

Answer: B

Explanation:

References:

<https://docs.microsoft.com/en-us/azure/active-directory/identity-protection/howto-sign-in-risk-policy>

NEW QUESTION 46

- (Exam Topic 1)

You have a Microsoft 365 subscription.

Your company deploys an Active Directory Federation Services (AD FS) solution. You need to configure the environment to audit AD FS user authentication.

Which two actions should you perform? Each correct answer presents part of the solution. NOTE: Each correct selection is worth one point.

- A. From all the AD FS servers, run `audtpol.exe`.
- B. From all the domain controllers, run the `set-AdminAuditLogConfig` cmdlet and specify the `-LogiLevel` parameter.
- C. On a domain controller install Azure AD Connect Health for AD DS.
- D. From the Azure AD Connect server, run the `Register-AzureADConnectHealthSyncAgent` cmdlet.
- E. On a server, install Azure AD Connect Health (or AD FS).

Answer: DE

NEW QUESTION 50

- (Exam Topic 1)

You have an on-premises Microsoft SharePoint Server 2016 environment. You create a Microsoft 365 tenant.

You need to migrate some of the SharePoint sites to SharePoint Online. The solution must meet the following requirements:

- ▶ Microsoft OneDrive sites must redirect users to online content.
- ▶ Users must be able to follow both on-premises and cloud-based sites.
- ▶ Users must have a single SharePoint profile for both on-premises and on the cloud.

When users search for a document by using keywords, the results must include online and on-premises results. From the SharePoint Hybrid Configuration Wizard, you select the following features:

- ☒ Hybrid business to business (B2B) sites
- ☒ Hybrid OneDrive
- ☒ Hybrid Search

Which two requirements are met by using the SharePoint Hybrid Configuration Wizard features? Each correct answer presents a complete solution.
 NOTE: Each correct selection is worth one point.

- A. Users must have a single SharePoint profile for both on-premises and on the cloud.
- B. OneDrive sites must redirect users to online content.
- C. Users must be able to follow both on-premises and cloud-based sites.
- D. When users search for a document by using keywords, the results must include online and on-premises results.

Answer: BD

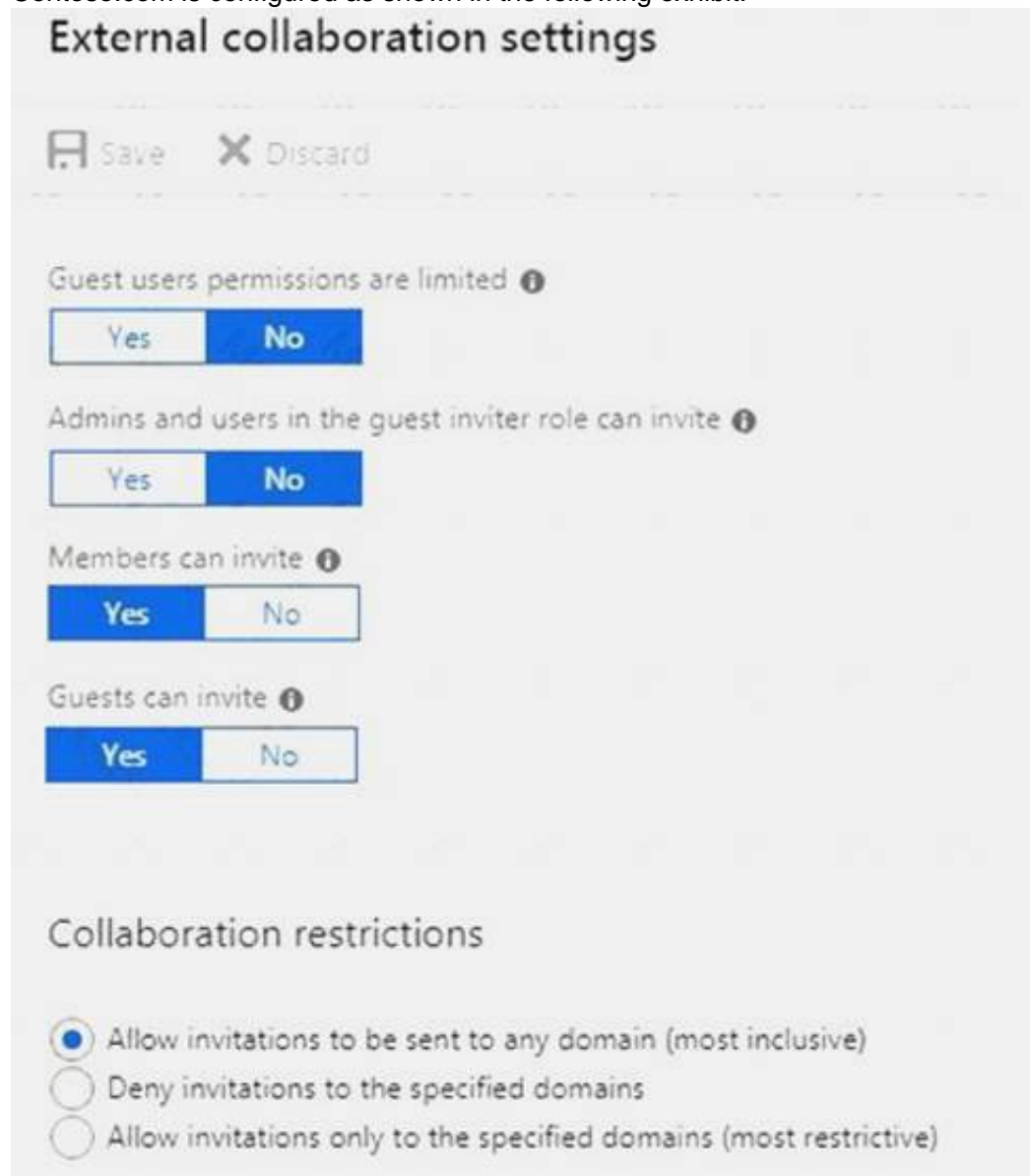
NEW QUESTION 53

- (Exam Topic 1)

You have a Microsoft 365 subscription and a Microsoft Azure Active Directory (Azure AD) tenant named contoso.com. Contoso.com contains the users shown in the following table.

Name	Type	Role
User1	Member	None
User2	Member	Security administrator, Guest inviter
User3	Member	User administrator
User4	Guest	None

Contoso.com is configured as shown in the following exhibit.



External collaboration settings

Save Discard

Guest users permissions are limited ⓘ

Yes No

Admins and users in the guest inviter role can invite ⓘ

Yes No

Members can invite ⓘ

Yes No

Guests can invite ⓘ

Yes No

Collaboration restrictions

☒ Allow invitations to be sent to any domain (most inclusive)

☐ Deny invitations to the specified domains

☐ Allow invitations only to the specified domains (most restrictive)

You need to ensure that guest users can be created in the tenant. Which setting should you modify?

- A. Guests can invite.
- B. Guest users permissions are limited.
- C. Members can invite.
- D. Admins and users in the guest inviter role can invite.
- E. Deny invitations to the specified domains

Answer: D

Explanation:

References:

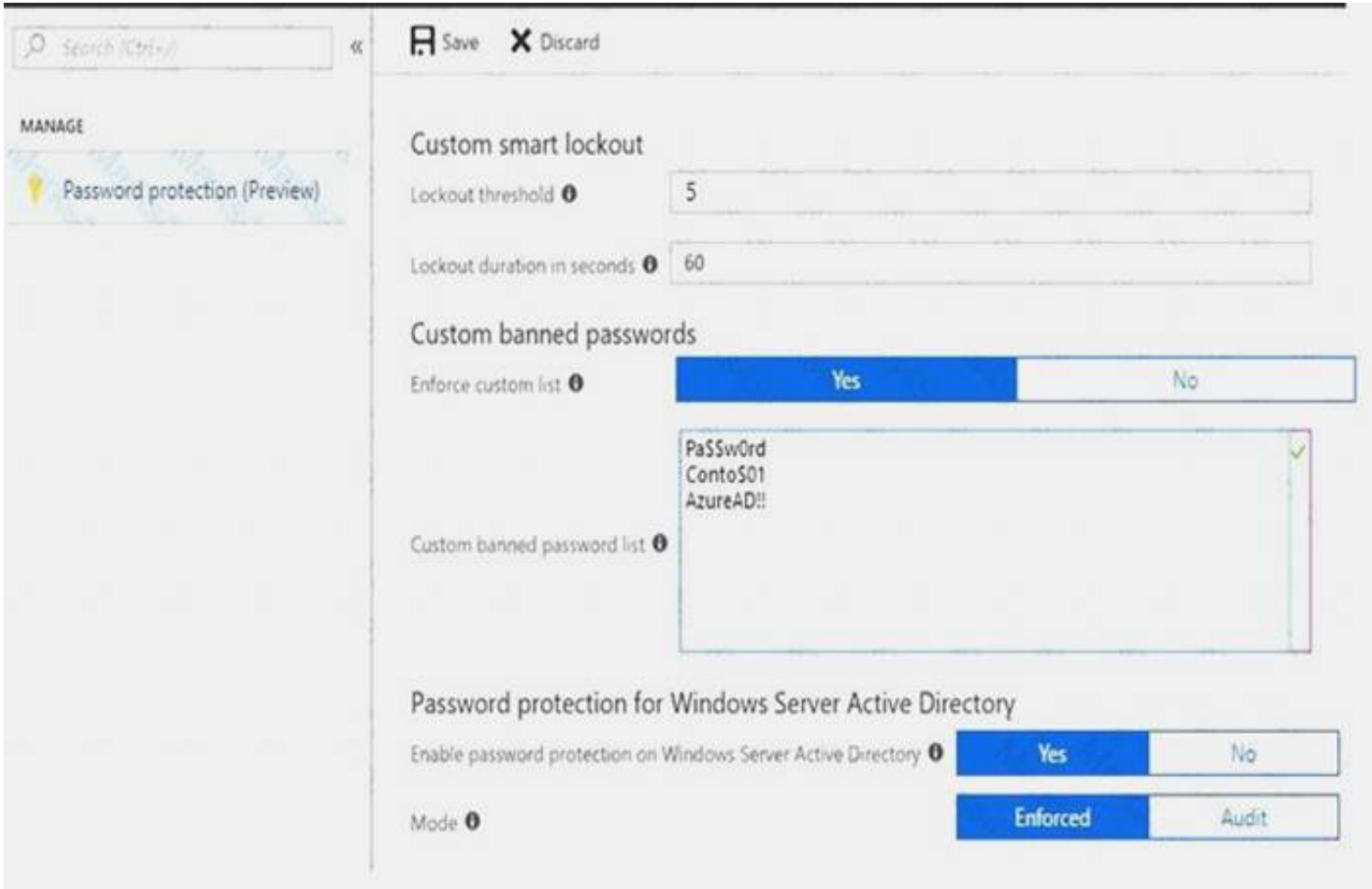
<https://docs.microsoft.com/en-us/azure/active-directory/b2b/delegate-invitations> <https://docs.microsoft.com/en-us/azure/active-directory/fundamentals/users-default-permissions>

NEW QUESTION 56

- (Exam Topic 1)

You have a Microsoft 365 Enterprise subscription.

You create a password policy as shown in the following exhibit.



Use the drop-down menus to select the answer choice that completes each statement based on the information presented in the graphic.
NOTE: Each correct selection is worth one point.

If users are locked out of their account, they have [answer choice].

five sign-in attempts each subsequent minute

one sign-in attempt each subsequent minute

five sign-in attempts every five minutes

one sign-in attempt every five minutes

Users can create a password of [answer choice].

Password11

ContoS01Pa\$\$word

AzureAD!!!111

pa\$\$w0rd

- A. Mastered
- B. Not Mastered

Answer: A

Explanation:

References:
<https://docs.microsoft.com/en-us/azure/active-directory/authentication/concept-password-ban-bad>

NEW QUESTION 57

- (Exam Topic 1)
Note: This question is part of a series of questions that present the same scenario. Each question in the series contains a unique solution that might meet the stated goals. Some question sets might have more than one correct solution, while others might not have a correct solution.
After you answer a question in this section, you will NOT be able to return to it. As a result, these questions will not appear in the review screen.
Your company has a Microsoft Office 365 tenant.
You suspect that several Office 365 features were recently updated.
You need to view a list of the features that were recently updated in the tenant. Solution: You use Message center in the Microsoft 365 admin center.
Does this meet the goal?

- A. Yes
- B. NO

Answer: A

NEW QUESTION 60

- (Exam Topic 1)
Your company has 10,000 users who access all applications from an on-premises data center. You plan to create a Microsoft 365 subscription and to migrate data to the cloud.
You plan to implement directory synchronization.
User account and group accounts must sync to Microsoft Azure Directory (Azure AD) successfully. You discover that several user accounts fail to sync to Azure

AD.
You need to identify which user accounts failed to sync. You must resolve the issue as quickly as possible. What should you do?

- A. From Active Directory Administrative Center, search for all the users, and then modify the properties of the user accounts.
- B. Run idfix.exe, and then click Complete.
- C. From Windows PowerShell, run the Start-AdSyncSyncCycle –PolicyType Delta command.
- D. Run idfix.exe, and then click Edit.

Answer: D

NEW QUESTION 65

- (Exam Topic 1)

You have a Microsoft 365 subscription that contains a Microsoft Azure Active Directory (Azure AD) tenant named contoso.com. The tenant includes a user named User1

You enable Azure AD Identity Protection.

You need to ensure that User1 can review the list in Azure AD Identity Protection of users nagged for risk. The solution must use the principle of least privilege. To which role should you add User1?

- A. Security reader
- B. Compliance administrator
- C. Reports reader
- D. Global administrator

Answer: A

NEW QUESTION 69

- (Exam Topic 1)

Note: This question is part of a series of questions that present the same scenario. Each question in the series contains a unique solution that might meet the stated goals. Some question sets might have more than one correct solution, while others might not have a correct solution.

After you answer a question in this section, you will NOT be able to return to it. As a result, these questions will not appear in the review screen.

Your network contains an Active Directory forest. You deploy Microsoft 365.

You plan to implement directory synchronization.

You need to recommend a security solution for the synchronized identities. The solution must meet the following requirements:

- ▶ Users must be able to authenticate successfully to Microsoft 365 services if Active Directory becomes unavailable.
- ▶ Users passwords must be 10 characters or more.

Solution: Implement password hash synchronization and configure password protection in the Azure AD tenant.

Does this meet the goal?

- A. Yes
- B. No

Answer: B

NEW QUESTION 73

- (Exam Topic 1)

You have a Microsoft 365 subscription.

A new corporate security policy states that you must automatically send DLP incident reports to the users in the legal department.

You need to schedule the email delivery of the reports. The solution must ensure that the reports are sent as frequently as possible.

How frequently can you share the reports?

- A. hourly
- B. monthly
- C. weekly
- D. daily

Answer: C

NEW QUESTION 76

- (Exam Topic 1)

Your network contains three Active Directory forests.

You create a Microsoft Azure Active Directory (Azure AD) tenant. You plan to sync the on premises Active Directory (Azure AD).

You need to recommend a synchronization solution. The solution must ensure that the synchronization can complete successfully and as quickly as possible if a single server fails.

What should you include in the recommendation?

- A. Three Azure AD Connect sync servers and three Azure AD Connect sync servers in staging mode
- B. One Azure AD Connect sync servers one Azure AD Connect sync servers in staging mode
- C. Three Azure AD Connect sync servers and one Azure AD Connect sync servers in staging mode
- D. six Azure AD Connect sync servers and three Azure AD Connect sync servers in staging mode

Answer: B

NEW QUESTION 79

- (Exam Topic 1)

You have a Microsoft 365 subscription.

You view the service advisories shown in the following exhibit.

Home > Service health

Some services have posted advisories

2018-10-05 (02:43UTC) View history

All services	Office 365 Portal	1 advisory
Incidents	SharePoint Online	1 advisory
Advisories	Office Subscription	Service is healthy
	Microsoft Intune	Service is healthy
	Microsoft StaffHub	Service is healthy
	Microsoft Teams	Service is healthy
	Mobile Device Management for Office 365	Service is healthy
	Azure Information Protection	Service is healthy
	Exchange Online	Service is healthy

You need to ensure that users who administer Microsoft SharePoint Online can view the advisories to investigate health issues. Which role should you assign to the users?

- A. SharePoint administrator
- B. Message Center reader
- C. Reports reader
- D. Service administrator

Answer: D

Explanation:

References:

<https://docs.microsoft.com/en-us/office365/admin/add-users/about-admin-roles?view=o365-worldwide>

NEW QUESTION 83

- (Exam Topic 1)

Your network contains an Active Directory domain named .Ki.ituin.com that is synced to Microsoft Azure Active Directory (Azure AD).

The domain contains 100 user accounts.

The city attribute for all the users is set to the city where the user resides.

You need to modify the value of the city attribute to the three letter airport code of each city. What should you do?

- A. from Active Directory Administrative Center, select the Active Directory users, and then modify the Property settings.
- B. From the Microsoft 365 admin center, select the users, and then use the Bulk actions option.
- C. From Azure Cloud Shell, run the Get-AzureADUsers, and then use the Bulk actions option.
- D. From Windows PowerShell on a domain controller, run the Get-AzureADUser and Set-AzureADUser cmdlets.

Answer: A

NEW QUESTION 86

- (Exam Topic 1)

Note: This question is part of a series of questions that present the same scenario. Each question in the series contains a unique solution that might meet the stated goals. Some question sets might have more than one correct solution, while others might not have a correct solution.

After you answer a question in this section, you will NOT be able to return to it. As a result, these questions will not appear in the review screen.

Your company has a Microsoft Office 365 tenant.

You suspect that several Office 365 features were recently updated.

You need to view a list of the features that were recently updated in the tenant. Solution: You use Dashboard in Security & Compliance.

Does this meet the goal?

- A. Yes
- B. NO

Answer: B

NEW QUESTION 91

- (Exam Topic 1)

Your company has a Microsoft 365 subscription.

Your plan to add 100 newly hired temporary users to the subscription next week. You create the user accounts for the new users.

You need to assign licenses to the new users. Which command should you run?


```
A. $NewStaff = Get-AzureADUser -All -Department "Temp" -UsageLocation "";
    $NewStaff | foreach {Set-AzureADUser -LicenseOptions "contoso:ENTERPRISEPACK"}

B. $NewStaff = Get-AzureADUser -All -Department "Temp" -UsageLocation "US" -UnlicensedUsersOnly;
    $NewStaff | foreach {Set-AzureADUserLicense -AddLicenses "contoso:ENTERPRISEPACK"}

C. $NewStaff = Get-AzureADUser -All -Department "Temp" -UsageLocation "";
    $NewStaff | foreach {Set-AzureADUserLicense -LicenseOptions "contoso:ENTERPRISEPACK"}

D. $NewStaff = Get-AzureADUser -All -Department "Temp" -UsageLocation "US" -UnlicensedUsersOnly;
    $NewStaff | foreach {Set-AzureADUser -AddLicenses "contoso:ENTERPRISEPACK"}
```

- A. Option A
- B. Option B
- C. Option C
- D. Option D

Answer: B

NEW QUESTION 93

- (Exam Topic 2)
 To which Azure AD role should you add User4 to meet the security requirement?

- A. Password administrator
- B. Global administrator
- C. Security administrator
- D. Privileged role administrator

Answer: B

NEW QUESTION 95

- (Exam Topic 2)
 You need to meet the security requirements for User3. The solution must meet the technical requirements. What should you do? To answer, select the appropriate options in the answer area.
 NOTE: Each correct selection is worth one point.

Tool to use to add User3 to the role:

the Azure portal
the Exchange admin center
the Microsoft 365 admin center
the Security & Compliance admin center

Role to assign to User3:

Cloud application administrator
Global administrator
Organization Management
Security Administrator

- A. Mastered
- B. Not Mastered

Answer: A

Explanation:
 References:
<https://docs.microsoft.com/en-us/office365/SecurityCompliance/eop/feature-permissions-in-eop>

NEW QUESTION 98

- (Exam Topic 3)
 You create the Microsoft 365 tenant.
 You implement Azure AD Connect as shown in the following exhibit.

Azure Active Directory admin center

Home > Azure AD Connect

Azure AD Connect

Azure Active Directory

Troubleshoot

Refresh

SYNC STATUS

Sync Status

Enabled

Last Sync

Less than 1 hour ago

Password Sync

Enabled

USER SIGN-IN

Federation

Disabled

0 domains

Seamless single sign-on

Disabled

0 domain

Pass-through authentication

Disabled

0 agents

Use the drop-down menus to select the answer choice that completes each statement based on the information presented in the graphic.
NOTE: Each correct selection is worth one point.

Answer Area

Sales department users can access [answer choice] applications by using SSO.

both on-premises and cloud-based

only cloud-based

only on-premises

If Active Directory becomes unavailable, users can access the resource [answer choice].

both on-premises and in the cloud

in the cloud only

on-premises only

- A. Mastered
- B. Not Mastered

Answer: A

Explanation:

Answer Area

Sales department users can access [answer choice] applications by using SSO.

both on-premises and cloud-based

only cloud-based

only on-premises

If Active Directory becomes unavailable, users can access the resource [answer choice].

both on-premises and in the cloud

in the cloud only

on-premises only

NEW QUESTION 100

Guaranteed success with Our exam guides

visit - https://www.certshared.com

- (Exam Topic 3)

You are evaluating the required processes for Project1.

You need to recommend which DNS record must be created before you begin the project. Which DNS record should you recommend?

- A. mail exchanger (MX)
- B. alias (CNAME)
- C. host (A)
- D. host (AAA)

Answer: A

NEW QUESTION 104

.....

Thank You for Trying Our Product

We offer two products:

1st - We have Practice Tests Software with Actual Exam Questions

2nd - Questions and Answers in PDF Format

MS-100 Practice Exam Features:

- * MS-100 Questions and Answers Updated Frequently
- * MS-100 Practice Questions Verified by Expert Senior Certified Staff
- * MS-100 Most Realistic Questions that Guarantee you a Pass on Your FirstTry
- * MS-100 Practice Test Questions in Multiple Choice Formats and Updatesfor 1 Year

100% Actual & Verified — Instant Download, Please Click
[Order The MS-100 Practice Test Here](#)