

# Cisco

## Exam Questions 300-420

Designing Cisco Enterprise Networks (ENSLD)



#### NEW QUESTION 1

A company is running BGP on a single router, which has two connections to the same ISP. Which BGP feature ensures traffic is load balanced across the two links to the ISP?

- A. Multihop
- B. Multipath Load Sharing
- C. Next-Hop Address Tracking
- D. AS-Path Prepending

**Answer: B**

#### NEW QUESTION 2

An engineer is working with NETCONF and Cisco NX-OS based devices. The engineer needs a YANG model that supports a specific feature relevant only to Cisco NX-OS. Which model must the engineer choose?

- A. Native
- B. IEEE
- C. OpenConfig
- D. IETF

**Answer: D**

#### NEW QUESTION 3

Which OSPF area blocks LSA Type 3, 4 and 5, but allows a default summary route?

- A. normal
- B. stub
- C. NSSA
- D. totally stubby

**Answer: D**

#### NEW QUESTION 4

When a first hop redundancy solution is designed, which protocol ensures that load balancing occurs over multiple routers using a single virtual IP address and multiple virtual MAC addresses?

- A. GLBP
- B. IRDP
- C. VRRP
- D. HSRP

**Answer: A**

#### NEW QUESTION 5

Which design consideration must be made when dual vEdge routers are deployed at a branch site?

- A. Use BGP AS-path prepending to influence egress traffic and use MED to influence ingress traffic from the branch.
- B. HSRP priorities must match the OMP routing policy to prefer one vEdge over the other.
- C. Traffic must be symmetrical as it egresses the vEdges and returns from remote sites for DPI to function properly.
- D. Configure BFD between vEdge routers to detect sub-second link failures.

**Answer: A**

#### NEW QUESTION 6

Which solution allows overlay VNs to communicate with each other in an SD-WAN Architecture?

- A. External fusion routers can be used to map VNs to VRFs and selectively route traffic between VRFs.
- B. GRE tunneling can be configured between fabric edges to connect one VN to another.
- C. SGTs can be used to permit traffic from one VN to another.
- D. Route leaking can be used on the fabric border nodes to inject routes from one VN to another.

**Answer: B**

#### NEW QUESTION 7

An engineer must design a multicast network for a financial application. Most of the multicast sources also receive multicast traffic (many-to-many deployment model). To better scale routing tables, the design must not use source trees. Which multicast protocol satisfies these requirements?

- A. PIM-SSM
- B. PIM-SM
- C. MSDP
- D. BIDIR-PIM

**Answer: B**

**NEW QUESTION 8**

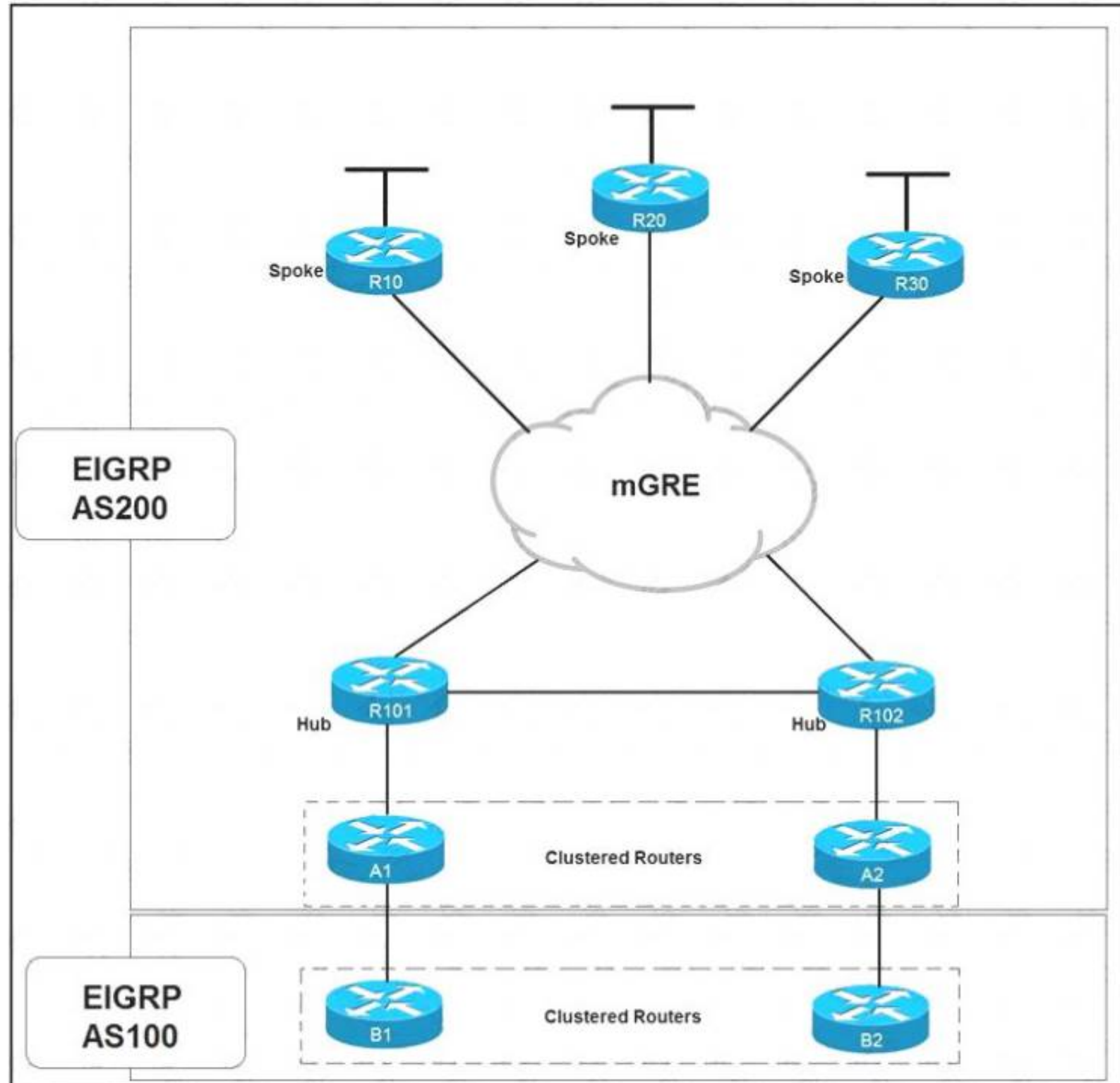
A branch office has a primary L3VPN MPLS connection back to the main office and an IPSEC VPN tunnel that serves as backup. Which design ensures that data is sent over the backup connection only if the primary MPLS circuit is down?

- A. Use EIGRP to establish a neighbor relationship with the main office via L3VPN MPLS and the IPSECVPN tunnel.
- B. Use BGP with the multipath feature enabled to force traffic via the primary path when available.
- C. Use static routes tied to an IP SLA to prefer the primary path while a floating static route points to the backup connection.
- D. Use OSPF with a passive-interface command on the backup connection.

**Answer: C**

**NEW QUESTION 9**

Refer to the exhibit.



Which solution decreases the EIGRP convergence time?

- A. Enable subsecond timers
- B. Increase the hold time value
- C. Increase the dead timer value
- D. Enable stub routing on the spokes

**Answer: D**

**NEW QUESTION 10**

Which feature must be incorporated into the campus LAN design to enable Wake on LAN?

- A. dynamic ARP Inspection Snooping on layer 2 devices
- B. directed broadcasts on layer 3 devices
- C. proxy ARP on layer 3 devices
- D. DHCP Snooping on layer 2 devices

**Answer: B**

**NEW QUESTION 10**

In an SD-WAN architecture, which methods are used to bootstrap a vEdge router?

- A. DHCP options or manual configuration
- B. vManage or DNS records
- C. ZTP or manual configuration
- D. DNS records or DHCP options

**Answer:** C

#### NEW QUESTION 13

Which two steps can be taken to improve convergence in an OSPF network? (Choose two.)

- A. Use Bidirectional Forwarding Detection
- B. Merge all the areas into one backbone area
- C. Tune OSPF parameters
- D. Make all non-backbone areas stub areas
- E. Span the same IP network across multiple areas.

**Answer:** CD

#### NEW QUESTION 16

A company with multiple service providers wants to speed up BGP convergence time in the event a failure occurs with their primary link. Which approach achieves this goal and does not impact router CPU utilization?

- A. Utilize BFD and tune the multiplier to 50
- B. Lower the BGP hello interval
- C. Decrease the BGP keepalive timer
- D. Utilize BFD and keep the default BGP timers

**Answer:** C

#### NEW QUESTION 18

An infrastructure team is concerned about the shared memory utilization of a device, and for this reason, they need to monitor the device state. Which solution limits impact on the device and provides the required data?

- A. IPFIX
- B. static telemetry
- C. on-change subscription
- D. periodic subscription

**Answer:** A

#### NEW QUESTION 19

A customer with an IPv4 only network topology wants to enable IPv6 connectivity while preserving the IPv4 topology services. The customer plans to migrate IPv4 services to the IPv6 topology, then decommission the IPv4 topology. Which topology supports these requirements?

- A. dual stack
- B. 6VPE
- C. 6to4
- D. NAT64

**Answer:** A

#### NEW QUESTION 21

Which routes does the overlay management protocol advertise in an SD-WAN overlay?

- A. underlay, MPLS, and overlay
- B. primary, backup, and load-balanced
- C. prefix, TLOC, and service
- D. Internet, MPLS, and backup

**Answer:** C

#### NEW QUESTION 24

Company A recently acquired another company. Users of the newly acquired company must be able to access a server that exists on Company A's network, both companies use overlapping IP address ranges. Which action conserves IP address space and provides access to the server?

- A. Use a single IP address to create overload NAT
- B. Use a single IP address to create a static NAT entry
- C. Build one-to-one NAT translation for every user that needs access
- D. Re-IP overlapping address space in the acquired company

**Answer:** A

#### NEW QUESTION 28

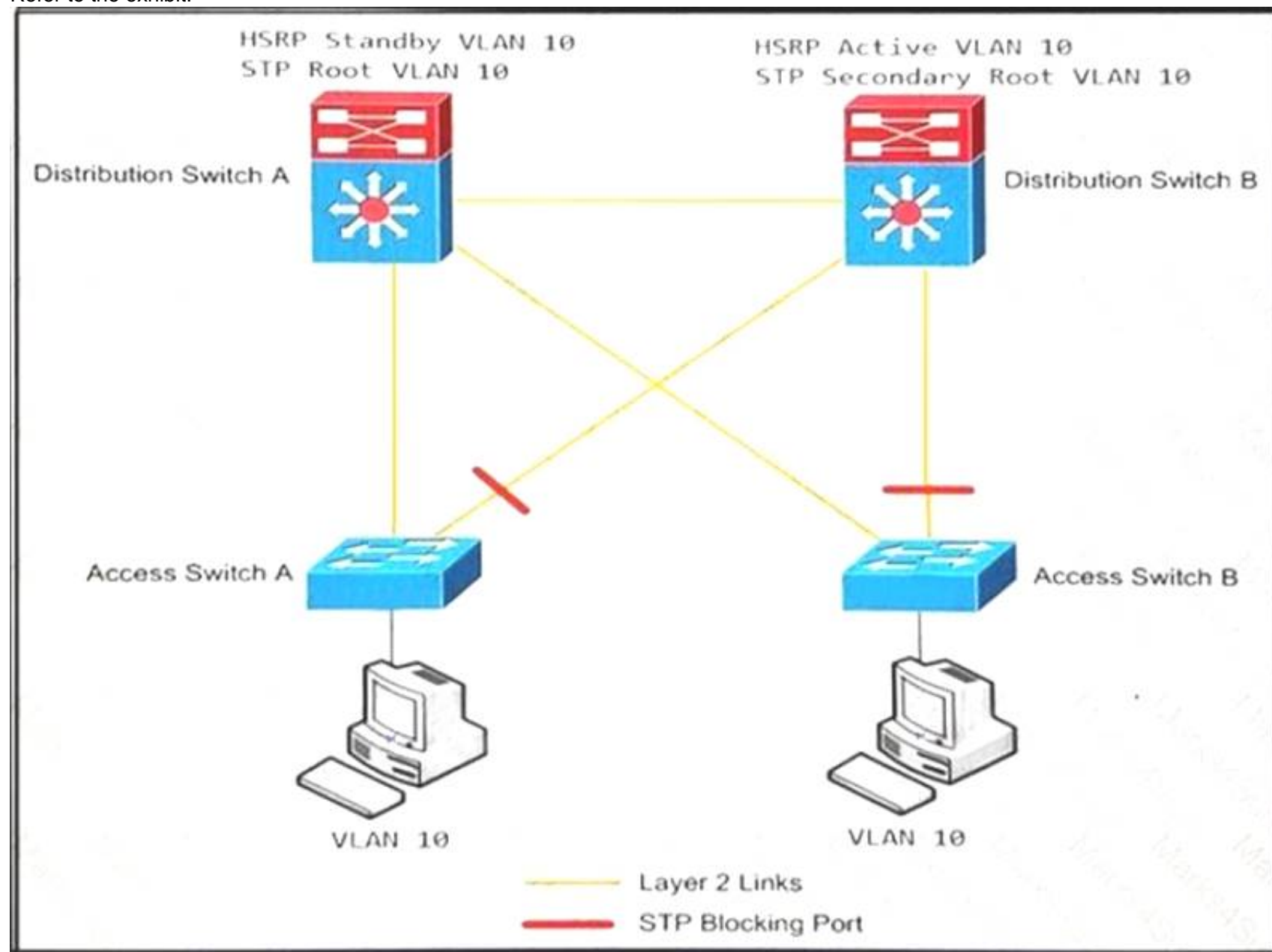
How do endpoints inside an SD-Access network reach resources outside the fabric?

- A. a VRF fusion router is used to map resources in one VN to another VN
- B. Fabric borders use VRFs to map VNs to VRFs
- C. SD-Access transit links are used to transport encapsulated traffic from one fabric to another
- D. A fabric edge is used to de-encapsulate VXLAN traffic to normal IP traffic then transported over the outside network

**Answer: D**

#### NEW QUESTION 29

Refer to the exhibit.



An engineer must optimize the traffic flow of the network. Which change provides a more efficient design between the access and the distribution layer?

- A. Add a link between access switch A and access switch B
- B. Reconfigure the distribution switch A to become the HSRP Active
- C. Change the link between distribution switch A and distribution switch B to be a routed link
- D. Create an EtherChannel link between distribution switch A and distribution switch B

**Answer: B**

#### NEW QUESTION 34

A network solution is being designed for a company that connects to multiple Internet service providers. Which Cisco proprietary BGP path attribute will influence outbound traffic flow?

- A. Local Preference
- B. MED
- C. Weight
- D. AS Path
- E. Community

**Answer: C**

#### NEW QUESTION 39

Which NETCONF operation creates filtering that is specific to the session notifications?

- A. <create-subscription>
- B. <commit>
- C. <notification>
- D. <logging>

**Answer: A**

#### NEW QUESTION 41

A company is using OSPF between its HQ location and a branch office. HQ is assigned area 0 and the branch office is assigned area 1. The company purchases

a second branch office, but due to circuit delays to HQ, it decides to connect the new branch office to the creating branch office as a temporary measure. The new branch office is assigned area 2. Which OSPF configuration enables all three locations to exchange routes?

- A. The existing branch office must be configured as a stub area
- B. A virtual link must be configured between the new branch office and HQ
- C. A sham link must be configured between the new branch office and HQ
- D. The new branch office must be configured as a stub area

**Answer:** B

#### **NEW QUESTION 46**

.....

## Thank You for Trying Our Product

### We offer two products:

1st - We have Practice Tests Software with Actual Exam Questions

2nd - Questions and Answers in PDF Format

### 300-420 Practice Exam Features:

- \* 300-420 Questions and Answers Updated Frequently
- \* 300-420 Practice Questions Verified by Expert Senior Certified Staff
- \* 300-420 Most Realistic Questions that Guarantee you a Pass on Your First Try
- \* 300-420 Practice Test Questions in Multiple Choice Formats and Updates for 1 Year

**100% Actual & Verified — Instant Download, Please Click**  
**[Order The 300-420 Practice Test Here](#)**