

Exam Questions 200-901

Developing Applications and Automating Workflows using Cisco Core Platforms (DEVASC)

<https://www.2passeasy.com/dumps/200-901/>



NEW QUESTION 1

- (Exam Topic 3)

Developer is working on a new feature and made changes on a branch named 'branch-413667549a-new'. When merging the branch to production, conflicts occurred. Which Git command must the developer use to recreate the pre-merge state?

- A. git merge -no-edit
- B. git merge -commit
- C. git merge -revert
- D. git merge -abort

Answer: D

Explanation:

<https://www.git-tower.com/learn/git/ebook/en/command-line/advanced-topics/merge-conflicts>

NEW QUESTION 2

- (Exam Topic 3)

Drag and drop the code from the bottom onto the box where the code is missing to construct a Python script that calls a REST API request. The Python script retrieves a list of tasks from a to-do list for effective project management purposes. Not all options are used.

```
import requests

response = .get('https://todolist.example.com/tasks/')

if .status_code != 200:
    raise ApiError('GET /tasks/ {}'.format(response.))

for item in response.json():
    print('{} {}'.format(item['id'], ['summary']))
```

item	response
requests	get()
status_code	status

- A. Mastered
- B. Not Mastered

Answer: A

Explanation:

```
import requests

response = requests.get('https://todolist.example.com/tasks/')

if response.status_code != 200:
    raise ApiError('GET /tasks/ {}'.format(response.status_code))

for item in response.json():
    print('{} {}'.format(item['id'], item['summary']))
```

item

response

requests

get()

status_code

status

NEW QUESTION 3

- (Exam Topic 3)

Which TCP port is used to connect to a network device by using Telnet?

- A. 23
- B. 69
- C. 400
- D. 830

Answer: A

NEW QUESTION 4

- (Exam Topic 3)

What is a comparison of YAML and JSON?

- A. YAML has a more consistent approach to representing data compared to JSON.
- B. JSON does not support comments and YAML does.
- C. YAML is a more verbose data structure compared to JSON.
- D. JSON has more common usage in configuration management tools compared to YAML.

Answer: B

Explanation:

Reference: <https://stackoverflow.com/questions/244777/can-comments-be-used-in-json>

Can I use comments in JSON? No, JSON is a data-only format. Comments in the form //, #, or /* */, which are used in popular programming languages, are not allowed in JSON. You can add comments to JSON as custom JSON elements that will hold your comments, but these elements will still be data.

NEW QUESTION 5

- (Exam Topic 3)



Refer to the exhibit. Drag and drop the code from the bottom onto the box where the code is missing to construct a request that generates a security token and gets a list of network devices. Not all options are used.

```
import json, requests, urllib3
from requests.auth import HTTPBasicAuth
from config import host, username, password

headers = { 'content-type': "application/json", 'x-auth-token': "" }
def dna_api_auth(host, username, password):
    url = "https://{}/api/system/v1/auth/token".format(host)
    response = .post(url, auth=HTTPBasicAuth(username, password),
        headers=headers, verify=False)
    return response.json()["Token"]

def list_dna_devices(token):
    url = "https://{}/api/v1/network-device".format(host)
    headers["x-auth-token"] = token
    response = requests.get(url, headers=headers, verify=False)
    data = .json()
    for item in data['response']:
        print(item["hostname"])

token =  (host, username, password)
 (token)
```

response	reply	dna_api_auth	requests
json	list_dna_devices	list devices	

A. Mastered
 B. Not Mastered

Answer: A

Explanation:


```
import json, requests, urllib3
from requests.auth import HTTPBasicAuth
from config import host, username, password

headers = { 'content-type': "application/json", 'x-auth-token': "" }
def dna_api_auth(host, username, password):
    url = "https://{}/api/system/v1/auth/token".format(host)
    response = requests.post(url, auth=HTTPBasicAuth(username, password),
                             headers=headers, verify=False)
    return response.json()["Token"]

def list_dna_devices(token):
    url = "https://{}/api/v1/network-device".format(host)
    headers["x-auth-token"] = token
    response = requests.get(url, headers=headers, verify=False)
    data = response.json()
    for item in data['response']:
        print(item["hostname"])

token = dna_api_auth(host, username, password)
list_dna_devices(token)
```

response	reply	dna_api_auth	requests
json	list_dna_devices	list devices	

NEW QUESTION 6

- (Exam Topic 3)

```
import os
import requests

# username and password

API_USER_NAME = "devnetuser"
API_PASSWORD = os.environ['API_PASSWORD']

requests.get('https://api.cisco.com/end-service', auth=(API_USER_NAME, API_PASSWORD))
```

Refer to the exhibit. An engineer must authorize a REST API call. The API password is "Cisco123!". Which Bash command must be placed in the code to authorize the call?

- A. mkdir API_PASSWORD=Cisco123!
- B. set API_PASSWORD=Cisco123!
- C. cp API_PASSWORD=Cisco123!
- D. export API_PASSWORD=Cisco123!

Answer: D

NEW QUESTION 7

- (Exam Topic 3)

A developer is working on a new feature in a branch named 'newfeat123456789' and the current working primary branch is named 'prim987654321'. The developer requires a merge commit during a fast forward merge for record-keeping purposes. Which Git command must be used?

- A. git merge --no-ff newfeat123456789
- B. git commit --no-ff newfeat123456789
- C. git add --commit-ff newfeat123456789
- D. git reset --commit-ff newfeat123456789

Answer: A

NEW QUESTION 8

- (Exam Topic 3)

Which Cisco platform is used to manage data center infrastructure through third-party tools and system integrations?

- A. Cisco DNA Center
- B. Cisco UCS Manager
- C. Cisco Intersight

D. Cisco UCS Director

Answer: D

NEW QUESTION 9

- (Exam Topic 3)

A developer has addressed a bug that was found in the production code of an application. A separate file named 'bug427896191v_fix' has been created with the changes to the code. Which Git command must be used to incorporate the bug fix into the production code?

- A. git rebase
- B. git cat-file
- C. git merge-file
- D. git bisert

Answer: C

NEW QUESTION 10

- (Exam Topic 3)

Which Python function is used to parse a string that contains JSON data into a Python dictionary?

- A. json.dumps()
- B. json.to_json()
- C. json.parse()
- D. json.loads()

Answer: D

Explanation:

loads() function is present in python built-in 'json' module. This function is used to parse the JSON string.

NEW QUESTION 10

- (Exam Topic 3)

To which stage of development do Infrastructure as Code principles relate?

- A. manual configuration
- B. service provisioning
- C. physical deployment
- D. requirement collection

Answer: B

NEW QUESTION 15

- (Exam Topic 3)

```

- name: Configure Interfaces
  with_items: "{{ interfaces }}"
  netconf_config:
    <<: *host_info
    xml: |
      <config>
        <interfaces xmlns="urn:ietf:params:xml:ns:yang:ietf-interfaces">
          <interface>
            <name>{{ item.interface_type }}{{ item.interface_id }}</name>
            <description>{{ item.description }}</description>
            <type xmlns:ianaift="urn:ietf:params:xml:ns:yang:iana-if-type">ianaift:ethernetCsmacd</type>
            <enabled>true</enabled>
            <ipv4 xmlns="urn:ietf:params:xml:ns:yang:ietf-ip">
              <address>
                <ip>{{ item.ip_address }}</ip>
                <netmask>{{ item.subnet_mask }}</netmask>
              </address>
            </ipv4>
          </interface>
        </interfaces>
      </config>

```

Refer to the exhibit. A network engineer must configure new interfaces on a set of devices and is planning to use an Ansible playbook for the task. All devices support SSH and NETCONF protocol, and the interface variables are unique per device. In which directory are the YAML files including variables hosted to automate the task with the netconf_config module?

- A. current working directory
- B. host_vars directory
- C. group_vars directory
- D. home directory

Answer: A

NEW QUESTION 19

- (Exam Topic 3)

A developer is developing a web application that uses username and password to authenticate to the next service. The user credentials must be available at any

time in the application. The developer must choose and implement a secure method of storing the authentication credentials that are used in the automation code. Which password handling method must be used to minimize the security risk?

- A. Store the username and password in a separate configuration file.
- B. Store the username and password in a vault.
- C. Store the passwords in a dictionary.
- D. Store the username and password in code.

Answer: B

NEW QUESTION 23

- (Exam Topic 3)

```
FROM myImage
VOLUME ["/data"]
ENTRYPOINT ["/bin/sh"]
```

Refer to the exhibit. Drag and drop the actions from the left that the contents of this Dockerfile accomplish onto the right. Not all options are used.

Inject the image myImage.	step 1
Pull the image myImage.	step 2
Execute the "data" script under "/bin/sh".	step 3
Establish a volume whose root is "/data".	
Put the user in a shell inside the container.	

- A. Mastered
- B. Not Mastered

Answer: A

Explanation:

Inject the image myImage.	Pull the image myImage.
Pull the image myImage.	Establish a volume whose root is "/data".
Execute the "data" script under "/bin/sh".	Put the user in a shell inside the container.
Establish a volume whose root is "/data".	
Put the user in a shell inside the container.	

NEW QUESTION 25

- (Exam Topic 3)

What is a benefit of using a code review process in application development?

- A. accelerates the deployment of new features in an existing application
- B. provides version control during code development
- C. enables the quick deployment of new code
- D. eliminates common mistakes during development

Answer: D

NEW QUESTION 27

- (Exam Topic 3)


```

import requests
from requests.auth import HTTPBasicAuth
BASE_URL = 'https://<IP ADDRESS or FQDN>'
AUTH_URL = '/dna/system/api/v1/auth/token'
TOKEN = '<TOKEN>'

headers = {'X-Auth-Token': TOKEN, 'Content-Type': 'application/json'}

DEVICES_COUNT_URL = '/dna/intent/api/v1/network-device/count'
DEVICES_URL = '/dna/intent/api/v1/network-device'
DEVICES_BY_ID_URL = '/dna/intent/api/v1/network-device/'

def devices_func(headers):
    response = requests.get(BASE_URL + DEVICES_COUNT_URL,
                            headers = headers, verify=False)
    return response.json()['response']

def devices_test(headers, query_string_params):
    response = requests.get(BASE_URL + DEVICES_URL, headers = headers,
                            params = query_string_params, verify=False)
    return response.json()['response']

def devices_info(headers, device_id):
    response = requests.get(BASE_URL + DEVICES_BY_ID_URL + device_id,
                            headers = headers, verify=False)
    return response.json()['response']

print(devices_func(headers))
print(devices_test(headers, {}))
print(devices_test(headers, {'hostname': 'CSR1Kv-01.devnet.local'}))
response = devices_test(headers, {'platformId': 'C9500-40X'})
print(devices_info(headers, response[0]['id']))

```

Refer to the exhibit. An engineer prepares a script to automate workflow by using Cisco DNA Center APIs to display:

total count of devices

list of the network devices

information of one device with a hostname filter

What is displayed in the final step after the Python script is executed?

- A. information about a device of type C9500-40x.
- B. filtered results by the hostname and the platformId C9500-40X
- C. information about the test devices
- D. list of devices with platformId C9500-40x

Answer: B

NEW QUESTION 30

- (Exam Topic 3)

CISCO INTERSIGHT

Introduction

- Create Server Profile and Re...
- Create Server VMedia Policy
- Retrieve Server VMedia Policy...
- Create Server Boot Policy
- Retrieve Server Boot Policy by...
- Create Server NTP Policy
- Retrieve NTP Policy by Mold
- Create 'server-01' Server Profi...
- Retrieve 'server-01' Server Pr...
- Create 'server-02' Server Profi...
- Retrieve 'server-02' Server Pr...
- Update vmedia/Profiles Profi...
- Update Boot/PrecisionPolice...
- Update NTP/Policies Profiles ...
- Retrieve Server RackUnit Res...

Create Server Profile and Resources

POST Create Server VMedia Policy

<https://www.intersight.com/api/v1/vmedia/Policies>

HEADERS

Accept	application/json
Authorization	Signature {{(httpsig)}}
Digest	{{(computed-digest)}}
Date	{{(current-date)}}
Content-Type	application/json

Refer to the exhibit. Drag and drop the code from the bottom onto the box where the code is missing to construct a Python script by using the Cisco SDK. Not all options are used.


```
import sys, json, argparse
from intersight.intersight_api_client import IntersightApiClient
from intersight.apis import asset_device_registration_api, asset_device_claim_api

result = dict(changed=False)

parser = argparse.ArgumentParser()
parser.add_argument('-a', '--api_params', default='intersight_api_params.json')
parser.add_argument('-t', '--target_host', dest='hostname', required=True)
args = parser.parse_args()
with open(args.api_params, 'r') as api_file:
    intersight_api_params = json.load( )
api_instance = IntersightApiClient(
    host=intersight_api_params[' '],
    private_key=intersight_api_params['api_private_key_file'],
    api_key_id=intersight_api_params['api_key_id'],
)
api_handle = asset_device_registration_api.AssetDeviceRegistrationApi(api_instance)

kwargs = dict(filter="ConnectionStatus eq 'Connected'")
    = api_handle.asset_device_registrations_get(** )
for device in api_result.results:
    if device.device_ip_address[0] == args.hostname:
        api_handle = asset_device_claim_api.AssetDeviceClaimApi(api_instance)
        api_handle.asset_device_claims_moid_delete(moid=device.device_claim.moid)
        result['changed'] = True
        break
```

kwargs

args

api_file

api_key

api_base_uri

result

api_result

- A. Mastered
- B. Not Mastered

Answer: A

Explanation:

```
import sys, json, argparse
from intersight.intersight_api_client import IntersightApiClient
from intersight.apis import asset_device_registration_api, asset_device_claim_api

result = dict(changed=False)

parser = argparse.ArgumentParser()
parser.add_argument('-a', '--api_params', default='intersight_api_params.json')
parser.add_argument('-t', '--target_host', dest='hostname', required=True)
args = parser.parse_args()
with open(args.api_params, 'r') as api_file:
    intersight_api_params = json.load( api_file )
api_instance = IntersightApiClient(
    host=intersight_api_params[' api_base_uri '],
    private_key=intersight_api_params['api_private_key_file'],
    api_key_id=intersight_api_params['api_key_id'],
)
api_handle = asset_device_registration_api.AssetDeviceRegistrationApi(api_instance)

kwargs = dict(filter="ConnectionStatus eq 'Connected'")
result = api_handle.asset_device_registrations_get(** kwargs )
for device in api_result.results:
    if device.device_ip_address[0] == args.hostname:
        api_handle = asset_device_claim_api.AssetDeviceClaimApi(api_instance)
        api_handle.asset_device_claims_moid_delete(moid=device.device_claim.moid)
        result['changed'] = True
        break
```

kwargs

args

api_file

api_key

api_base_uri

result

api_result

NEW QUESTION 32

- (Exam Topic 3)

What is a benefit of a CI/CD pipeline for infrastructure?

- A. removes manual errors
- B. enables manual steps

- C. removes the need for operations
- D. provides variety for deployments

Answer: A

NEW QUESTION 33

- (Exam Topic 3)

How are operations on REST APIs performed as compared to RPC APIs?

- A. In a REST API, operations are performed on an object (node) that is identified by a URL, but RPC APIs are operation-oriented.
- B. In a REST API, operations are performed on an external resource that is defined on the API, but the RCP APIs are resource-oriented.
- C. In a REST API, operations are performed on a platform that is identified by the URL, but RPC APIs are platform-oriented.
- D. In a REST API, operations are performed on an internal resource that is defined on the API, but RPC APIs are resource-oriented.

Answer: D

Explanation:

In a REST API, operations are performed on resources, which are accessed and manipulated using HTTP verbs such as GET, POST, PUT, and DELETE. These resources are identified by a URL and are defined within the API. For example, an API may define a resource called "customers", which can be accessed using the URL "http://api.example.com/customers". To retrieve a list of customers, the client could make a GET request to this URL. To create a new customer, the client could make a POST request to the same URL with the necessary data in the request body. In contrast, in an RPC API, operations are performed by making function calls. The client makes a request to the server, specifying the function to be called and any necessary parameters. The server then executes the function and returns the result to the client. RPC APIs are operation-oriented, meaning that the focus is on the function being called rather than the resource being accessed.

NEW QUESTION 38

- (Exam Topic 3)

Which standard supported by Cisco IOS XE and Cisco NX-OS is used for automating the configuration of multiple devices across a network?

- A. SNMP – YANG
- B. SYSLOG – YANG
- C. CLI – YANG
- D. NETCONF – YANG

Answer: D

NEW QUESTION 40

- (Exam Topic 3)

A developer plans to deploy a new application that will use an API to implement automated data collection from Webex with these requirements:

The application was created by using the request library. Requires HTTP basic authentication.

Provides data in JSON or XML formats.

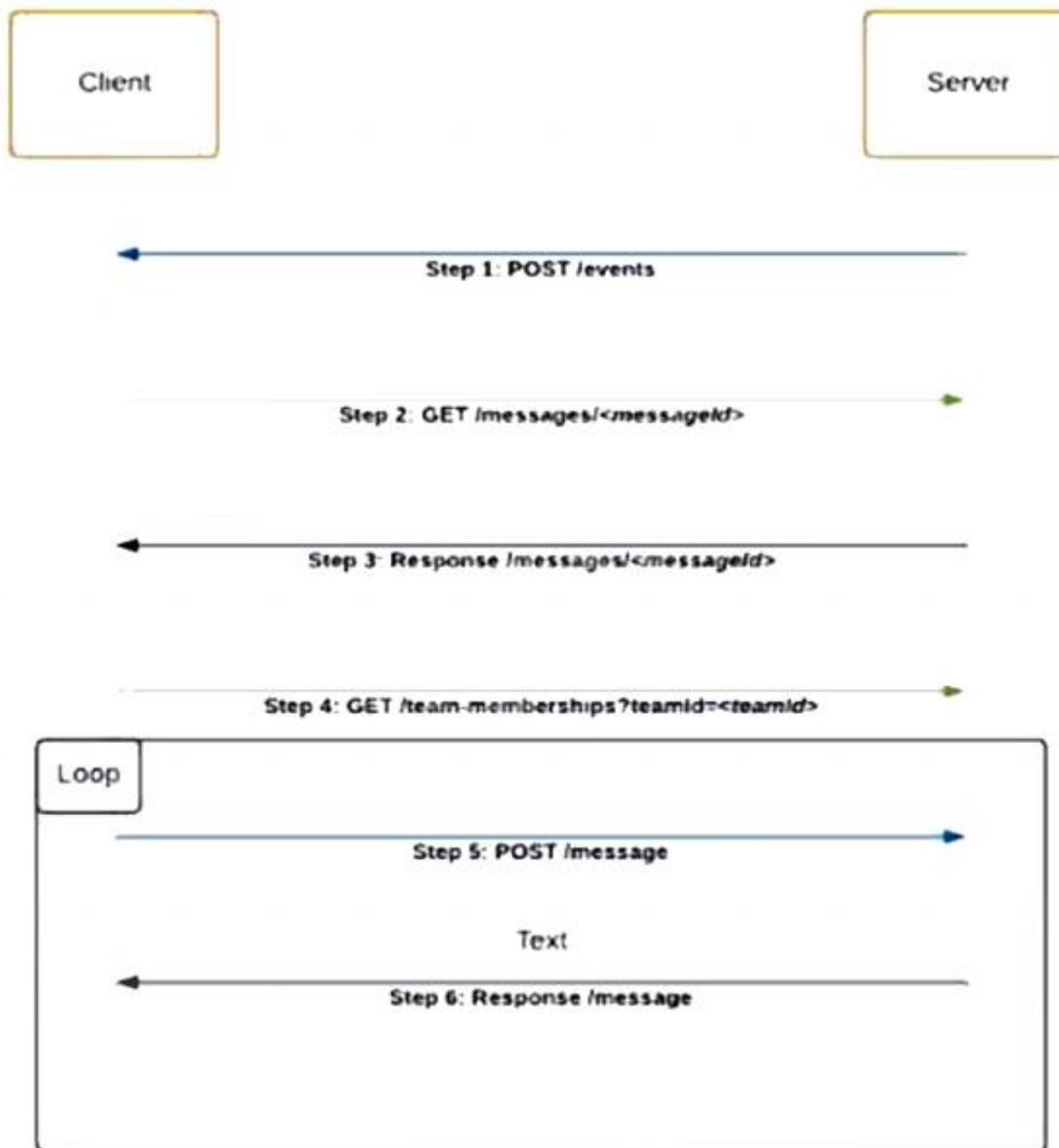
Which Cisco DevNet resource helps the developer with how to use the API?

- A. DevNet sandbox
- B. API documentation
- C. forums
- D. DevNet code exchange

Answer: B

NEW QUESTION 44

- (Exam Topic 3)



Refer to the exhibit. Which code snippet represents the sequence.

- A.

```
@flask_app.route('/events', methods=['POST'])
def webex_teams_webhook_events():
    json_data = request.json['data']
    response = requests.get(MESSAGE_URL +
    json_data['id'], headers=headers)
    if response.json()['text'] == 'Alert':
        response = requests.get(Team_MEMBERSHIPS_URL,
        headers=headers, params=params)
        for info in response.json()['items']:
            data = {'personId': info['personId'], 'text':
            'Alert'}
            response = requests.post(MESSAGES_URL,
            headers=headers, params=params)
```
- B.

```
@flask_app.route('/events', methods=['POST'])
def webex_teams_webhook_events():
    json_data = request.json['data']
    if response.json()['text'] == 'Alert':
        response = requests.get(MESSAGE_URL +
        json_data['id'], headers=headers)
        response = requests.get(Team_MEMBERSHIPS_URL,
        headers=headers, params=params)
        for info in response.json()['items']:
            data = {'personId': info['personId'],
            'text': 'Alert'}
            response = requests.post(MESSAGES_URL,
            headers=headers, params=params)
```

C.


```
@flask_app.route('/events', methods=['POST'])
def webex_teams_webhook_events():
    json_data = request.json['data']
    response = requests.post(MESSAGE_URL +
                             json_data['id'], headers=headers)
    if response.json()['text'] == 'Alert':
        for info in response.json()['items']:
            response = requests.get(Team_MEMBERSHIPS_URL,
                                     headers=headers, params=params)
            data = ('personId': info['personId'], 'text':
                    'Alert')
            response = requests.get(MESSAGES_URL,
                                     headers=headers, params=params)
```

D.

```
@flask_app.route('/events', methods=['POST'])
def webex_teams_webhook_events():
    json_data = request.json['data']
    response = requests.get(Team_MEMBERSHIPS_URL,
                             headers=headers, params=params)
    if response.json()['text'] == 'Alert':
        response = requests.get(MESSAGE_URL +
                                 json_data['id'], headers=headers)
        for info in response.json()['items']:
            data = ('personId': info['personId'], 'text':
                    'Alert')
            response = requests.post(MESSAGES_URL,
                                     headers=headers, params=params)
```

Answer: C

NEW QUESTION 45

- (Exam Topic 3)

Which OWASP threat occurs when untrusted data is supplied as input to an interpreter as part of a command or query?

- A. broken authentication
- B. data exposure
- C. injection
- D. cross-site scripting

Answer: C

NEW QUESTION 48

- (Exam Topic 3)

Which traffic is handled on the control plane?

- A. BGP
- B. SMB
- C. NTP
- D. NETCONF

Answer: A

NEW QUESTION 51

- (Exam Topic 3)

An engineer must configure Cisco Nexus devices and wants to automate this workflow. The engineer will use an Ansible playbook to configure devices through Cisco NX REST API. Before the code is run, which resource must be used to verify that the REST API requests work as expected?

- A. Cisco Open NX-OS
- B. Cisco NX-OS SDK
- C. Cisco Learning Labs
- D. Cisco Code Exchange for Nexus

Answer: C

NEW QUESTION 52

- (Exam Topic 3)

What is a feature of XML compared to other data formats?

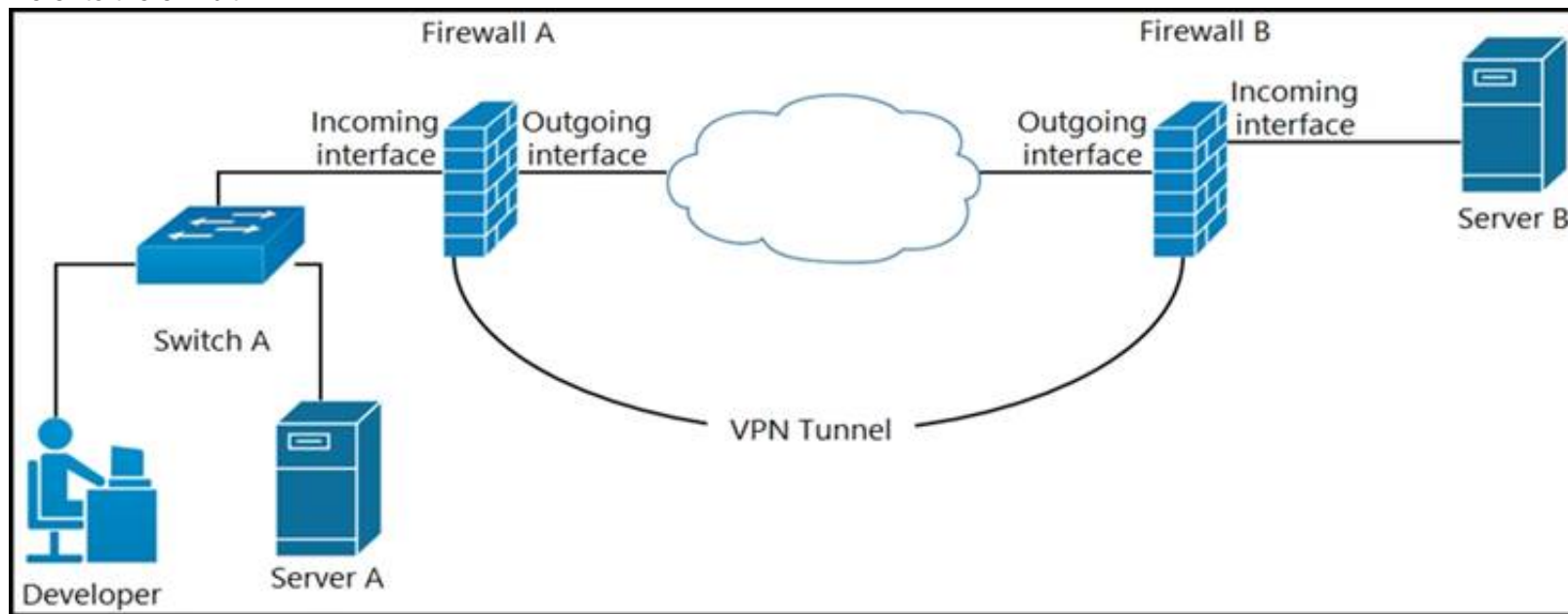
- A. It uses tags to define the structure.
- B. It uses parenthesis for key-value pairs.
- C. It uses indentation to define the structure.
- D. It uses namespaces for list representation.

Answer: A

NEW QUESTION 53

- (Exam Topic 3)

Refer to the exhibit.



A developer can access the TLS REST API on server A, but cannot access the API on server B. The developer can ping server B. When the developer performs a packet capture on the TLS REST API port on server B, the capture shows that the packet arrived and the server responded. What causes the issue?

- A. Port 80 is blocked on the outgoing interface of firewall B.
- B. Port 443 is blocked on the outgoing interface of firewall A.
- C. Port 443 is blocked on the incoming interface of firewall B.
- D. Port 80 is blocked on the incoming interface of firewall A.

Answer: C

NEW QUESTION 55

- (Exam Topic 3)

Which two details are captured from the subnet mask? (Choose two.)

- A. portion of an IP address that refers to the subnet
- B. default gateway of the host
- C. unique number ID assigned to the host
- D. part of an IP address that refers to the host
- E. network connection of a host or interface

Answer: AD

NEW QUESTION 57

- (Exam Topic 3)

What are two benefits of implementing common data structures when working with APIs in remote systems? (Choose two.)

- A. ensures that developers are limited to using one data schema type
- B. prevents multivendor interoperability
- C. improves security in RESTful web services
- D. enforces standardized data structures
- E. leverages code that is easily managed and reused

Answer: BE

NEW QUESTION 58

- (Exam Topic 3)

Why would a developer compare a current version of code to a previous version?

- A. to provide the single source of truth
- B. to troubleshoot code failures
- C. to track who made a change
- D. to aid in collaboration

Answer: B

NEW QUESTION 62

- (Exam Topic 3)

Which HTTP error code series relates to redirection?

- A. 400
- B. 500
- C. 200
- D. 300

Answer: D

Explanation:

1xx - Informational: The server has received the request and is continuing the process

2xx - Successful: The request was successful and the browser has received the expected information 3xx (Redirection): You have been redirected and the completion of the request requires further action

4xx (Client Error): The website or the page could not be reached, either the page is unavailable or the request contains bad syntax

5xx (Server Error): While the request appears to be valid, the server could not complete the request

NEW QUESTION 66

- (Exam Topic 3)

A developer writes an application that refines data in temporary secure file storage hosted on the public cloud. Data will be deleted after processing and does not contain any private information. What is the advantage that a public cloud deployment provides to the developer?

- A. high security with encryption
- B. ease in infrastructure management
- C. flexible development
- D. bespoke services

Answer: B

NEW QUESTION 68

- (Exam Topic 3)

Which protocol runs over TCP port 830?

- A. NETCONF
- B. Telnet
- C. RESTCONF
- D. HTTP

Answer: A

NEW QUESTION 72

- (Exam Topic 3)

What is the purpose of grouping devices in a VLAN?

- A. Devices communicate as if they are connected on the same wire.
- B. Multicast network traffic is limited to the VLAN connected devices.
- C. Unicast messages are limited to the clients connected on the same VLAN.
- D. Network traffic is load balanced between the devices connected to the VLAN.

Answer: B

NEW QUESTION 74

- (Exam Topic 3)

Refer to the exhibit.

```
cd ~/development/project01
mkdir info
cd info
[REDACTED]
cp ./requirements.txt ~/Documents/backup/requirements.txt
```

A developer just finished testing a Python script and wants to save the list of packages and versions installed on the current machine. The developer must make sure that it will not cause any issues if tested on another device due to different library versions. Which line of code needs to be placed on the snippet where the code is missing?

- A. pip freeze 2> requirements.txt
- B. pip freeze > requirements.txt
- C. pip freeze => requirements.txt
- D. pip freeze | requirements.txt

Answer: B

Explanation:

pip freeze requirements.txt ile ilgili görsel sonucu The most common command is pip freeze > requirements.txt , which records an environment's current package list into requirements.txt. If you want to install the dependencies in a virtual environment, create and activate that environment first, then use the Install from requirements.

NEW QUESTION 76

- (Exam Topic 3)

What is a characteristic of the Cisco Finesse platform?

- A. Applications allow services to be invoked on a network triggered event.
- B. The platform provides a ready-to-go platform for HD video and audio conferencing.
- C. Applications are added to the platform from the desktop remotely.
- D. The platform includes an enterprise-class IM engine.

Answer: A

Explanation:

A characteristic of the Cisco Finesse platform is that applications allow services to be invoked on a network triggered event. Cisco Finesse is a next-generation agent and supervisor desktop designed to provide a rich, browser-based experience for contact center agents and supervisors. It offers a flexible, open development platform that allows developers to build custom applications and integrations to meet the specific needs of their contact center. One of the key features of Cisco Finesse is the ability to trigger actions based on events within the contact center network, such as an incoming call or a change in the status of a customer's account. This allows developers to build applications that can react to real-time events and provide relevant information or services to agents as they handle customer interactions.

NEW QUESTION 77

- (Exam Topic 3)

POST

/v1/meetings

Body Parameters

title

string Required

Meeting title. The title can be a maximum of 128 characters long.

agenda

string

Meeting agenda. The agenda can be a maximum of 2500 characters long.

password

string

Meeting password. Must conform to the site's password complexity settings. Read [password management](#) for details. If not specified, a random password conforming to the site's password rules will be generated automatically.

start

string Required

Date and time for the start of meeting in any [ISO 8601](#) compliant format. start cannot be before current date and time or after end. Duration between start and end cannot be shorter than 10 minutes or longer than 24 hours.

end

string Required

Date and time for the end of meeting in any [ISO 8601](#) compliant format. end cannot be before current date and time or before start. Duration between start and end cannot be shorter than 10 minutes or longer than 24 hours.

Refer to the exhibit. A bespoke meeting booking system must be integrated with Cisco Webex so that meetings are created automatically. Drag and drop the code from the bottom onto the box where the code is missing to create a sample meeting. Not all options are used.

```
import requests, json

[ ] = 'eyJhbGc ... yJbN8'

headers = {
    'Authorization': f'Bearer {token}',
    'Content-Type': 'application/json'
}

payload = {
    "title": "DevNet Webex Discussion",
    "password": "AGrtgl234",
    "start": "2020-11-10T15:00:00Z",
    "end": "2020-11-10T17:00:00Z",
    "enabledAutoRecordMeeting": False,
    "allowAnyUserToBeCoHost": False
}

response = requests.request(" [ ] ", f'{BASE_URL}/ [ ] ',
    headers=headers, data=json.dumps( [ ] ))
print(response.text.encode('utf8'))
```

payload	PUT	token
vl/meeting	vl/meetings	POST

- A. Mastered
B. Not Mastered

Answer: A

Explanation:

```
import requests, json

token = 'eyJhbGc ... yJbN8'

headers = {
    'Authorization': f'Bearer {token}',
    'Content-Type': 'application/json'
}

payload = {
    "title": "DevNet Webex Discussion",
    "password": "AGrtgl234",
    "start": "2020-11-10T15:00:00Z",
    "end": "2020-11-10T17:00:00Z",
    "enabledAutoRecordMeeting": False,
    "allowAnyUserToBeCoHost": False
}

response = requests.request(" POST ", f'{BASE_URL}/ vl/meetings ',
    headers=headers, data=json.dumps( payload ))
print(response.text.encode('utf8'))
```

payload	PUT	token
vl/meeting	vl/meetings	POST

NEW QUESTION 79

- (Exam Topic 3)

What is a capability of Ansible playbooks?

- A. They execute scheduled tasks regularly.
B. They define the state for a device configuration.
C. They collect SNMP logs from networking devices.
D. They utilize the target device agent to execute.

Answer: A

NEW QUESTION 84

- (Exam Topic 3)

Refer to the exhibit.

```

1  <routing xmlns="urn:ietf:params:xml:ns:yang:ietf-routing">
2    <routing-instance>
3      <name>default</name>
4      <description>default-vrf [read-only]</description>
5      <routing-protocols>
6        <routing-protocol>
7          <type xmlns:ospf="urn:ietf:params:xml:ns:yang:ietf-
*          ospf">ospf:ospfv2</type>
8          <name>100</name>
9          <ospf xmlns="urn:ietf:params:xml:ns:yang:ietf-ospf">
10             <instance>
11               <af xmlns:rt="urn:ietf:params:xml:ns:yang:ietf-
*               routing">rt:ipv4</af>
12               <router-id>1.1.1.1</router-id>
13               <nsr>
14                 <enable>false</enable>
15               </nsr>
16               <auto-cost>
17                 <enable>false</enable>
18               </auto-cost>
19               <redistribution
*               xmlns="urn:ietf:params:xml:ns:yang:cisco-ospf">
20                 <rip/>
21               </redistribution>
22             </instance>
23           </ospf>
24         </routing-protocol>
25       </routing-protocols>
26     </routing-instance>
27   </routing>

```

What are two characteristics of the NETCONF response? (Choose two.)

- A. ospf is defined by the ietf-ospf module.
- B. ietf-ospf imports ietf-routing.
- C. redistribution is a module of type cisco-ospf.
- D. routing protocols is a list.
- E. The main module is routing.

Answer: BC

NEW QUESTION 86

- (Exam Topic 3)

A developer must test the performance and reliability of an application. After functional and load tests are run, the application crashes due to traffic spikes from users. Which type of API constraint must be implemented to maintain reliability?

- A. rate limiting
- B. pagination
- C. payload limits
- D. filtering

Answer: A

NEW QUESTION 90

- (Exam Topic 3)

Which technology is responsible for matching a name to an IP address of an application running on a host?

- A. firewall
- B. proxy
- C. load balancer
- D. DNS

Answer: D

NEW QUESTION 95

- (Exam Topic 3)

An engineer must make changes on a network device through the management platform API. The engineer prepares a script to send the request and analyze the response, check headers, and read the body according to information inside response headers. Drag and drop the HTTP header values from the left onto the elements of an HTTP response on the right.

16974	cache-control
no-store, must-revalidate	content-length
timeout=5, max=100	keep-alive
application/json;charset=UTF-8	content-type

- A. Mastered
- B. Not Mastered

Answer: A

Explanation:

16974	no-store, must-revalidate
no-store, must-revalidate	16974
timeout=5, max=100	timeout=5, max=100
application/json;charset=UTF-8	application/json;charset=UTF-8

NEW QUESTION 100

- (Exam Topic 3)
What is a characteristic of Waterfall compared to Agile software development method?

- A. Waterfall focuses on continuous improvement, and Agile focuses on the design phase.
- B. Waterfall separates the project development lifecycle into sprints, and Agile does not use cycles.
- C. Waterfall specifies requirements before development begins, and Agile responds flexibly to changes in requirements.
- D. Waterfall uses reviews with step by step approach, and Agile uses a serially phased approach.

Answer: C

NEW QUESTION 103

- (Exam Topic 3)
What is a characteristic of RPC APIs compared to REST APIs?

- A. Authentication is done over provisions for the service caller and vice versa for RPC API, and REST API uses HTTP headers for authentication.
- B. All communications between the client and server must be stateless for RPC API, and REST API is stateful.
- C. The architecture model for RPC API is resource-focused, and REST API is procedure-focused.
- D. The data payload must be in JSON format for RPC API, and REST API allows JSON and XML formats.

Answer: A

NEW QUESTION 107

- (Exam Topic 3)
Which technology is responsible for resolving a host name to an IP address?

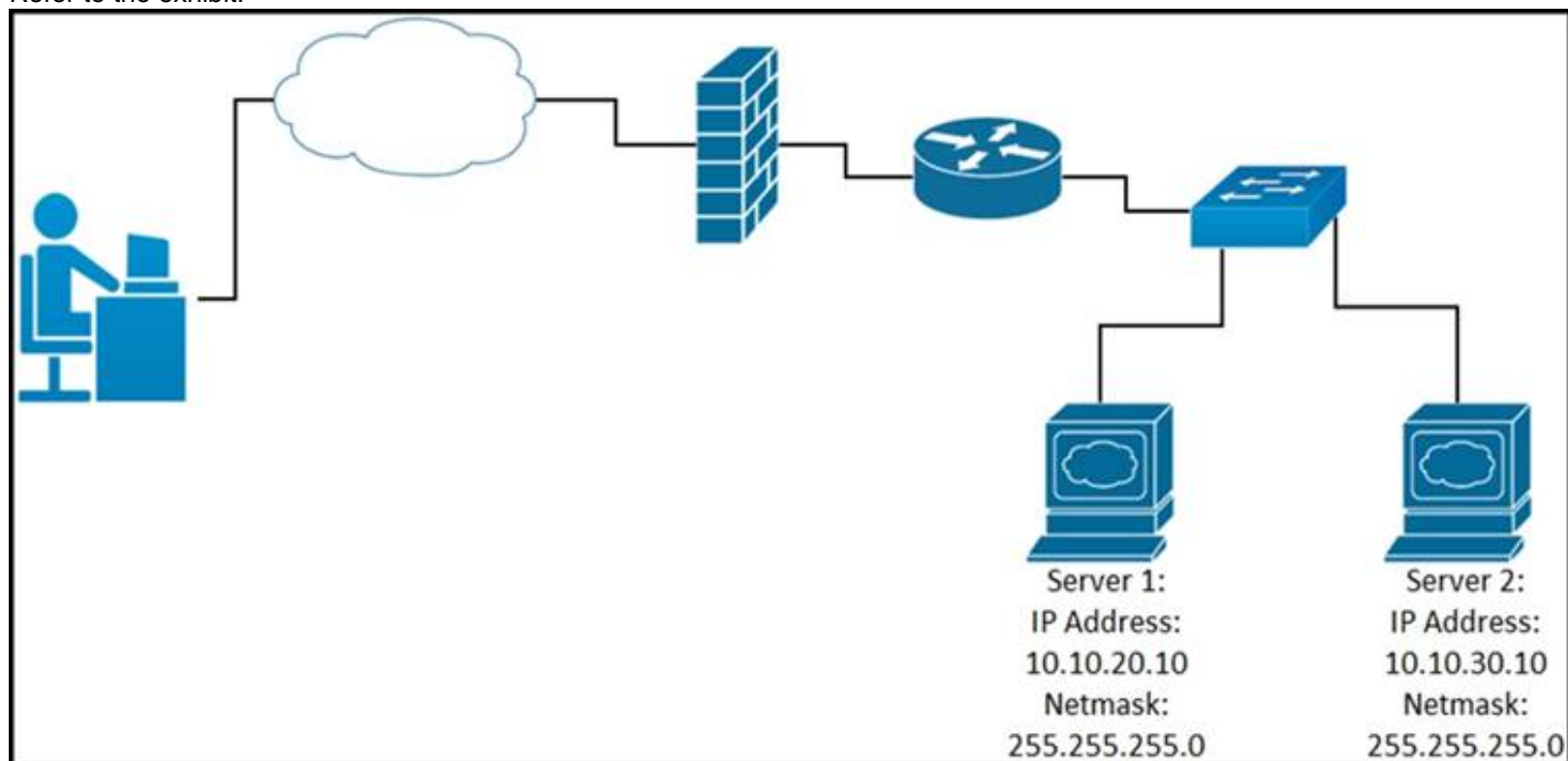
- A. DNS
- B. SNMP
- C. DHCP
- D. NTP

Answer: A

NEW QUESTION 108

- (Exam Topic 3)

Refer to the exhibit.



While developing a Cisco Webex bot, an application reaches the public IP address of the firewall, but traffic is forwarded to the IP address of server 1 instead of the IP address of server 2. What causes this issue?

- A. The proxy server that rewrites traffic is misconfigured.
- B. The router is sending the traffic to server 1 instead of server 2.
- C. The switch is forwarding IP traffic to the wrong VLAN.
- D. NAT is misconfigured on the firewall.

Answer: D

NEW QUESTION 112

- (Exam Topic 3)

A developer has experienced security issues with a previously developed application. The API offered by that application is open and without any constraints. During a recent attack, the application was overloaded with API requests. To address this issue, an API constraint is implemented to protect the application from future attacks or any sudden throttling. Which API constraint must the application developer implement in this situation?

- A. pagination
- B. rate limiting
- C. filtering
- D. payload limiting

Answer: B

NEW QUESTION 114

- (Exam Topic 3)

What is the meaning of the HTTP status code 204?

- A. request completed; new resource created
- B. server successfully processed request; no content returned
- C. standard response for successful requests
- D. invalid query parameters

Answer: B

NEW QUESTION 117

- (Exam Topic 3)

Drag and drop the code from the bottom onto the box where the code is missing to enable ports on a switch by using RESTCONF. Not all options are used.

```
def enable_function(if_name, if_status, if_type):
    headers = {'Accept': 'application/yang-data+json',
               'Content-Type': 'application/ ' }
    payload = {
        " ": {
            "name": if_name,
            "enabled": if_status,
            "type": if_type,
        }
    }
    = 'https://192.168.1.1:8443'
    restconf_url = '/restconf/data/ietf-interfaces:interfaces/interface'
    res = requests.put(f'{base_url}{restconf}={if_name}',
                       headers=headers, json=payload,
                       auth=('cisco', 'secret'), verify=False)

enable_function('Loopback1', true, ' ')
```

yang-data+json

application/xml

ietf-interfaces:interface

iana-if-type:softwareLoopback

base_url

run_function

iana-if-type:ethernetCsmacd

- A. Mastered
B. Not Mastered

Answer: A

Explanation:

```
def enable_function(if_name, if_status, if_type):
    headers = {'Accept': 'application/yang-data+json',
               'Content-Type': 'application/ yang-data+json ' }
    payload = {
        " ietf-interfaces:interface ": {
            "name": if_name,
            "enabled": if_status,
            "type": if_type,
        }
    }
    base_url = 'https://192.168.1.1:8443'
    restconf_url = '/restconf/data/ietf-interfaces:interfaces/interface'
    res = requests.put(f'{base_url}{restconf}={if_name}',
                       headers=headers, json=payload,
                       auth=('cisco', 'secret'), verify=False)

enable_function('Loopback1', true, ' iana-if-type:ethernetCsmacd ')
```

yang-data+json

application/xml

ietf-interfaces:interface

iana-if-type:softwareLoopback

base_url

run_function

iana-if-type:ethernetCsmacd

NEW QUESTION 121

- (Exam Topic 3)

Drag and drop the capabilities from the left onto the Cisco Network Management Platforms that support the capabilities on the right.

receives AI/ML network performance insights, and uses guided issue remediation	Meraki
achieves automation through common policy for data center operations	Cisco DNA Center
establishes an overlay fabric to connect data centers, branches, and campuses through vManage	ACI
provisions and manages networks, networking devices, and clients through a fully managed cloud service	Cisco SD-WAN
supports multivendor networks through Network Element Drivers	NSO

- A. Mastered
 B. Not Mastered

Answer: A

Explanation:

receives AI/ML network performance insights, and uses guided issue remediation	provisions and manages networks, networking devices, and clients through a fully managed cloud service
achieves automation through common policy for data center operations	receives AI/ML network performance insights, and uses guided issue remediation
establishes an overlay fabric to connect data centers, branches, and campuses through vManage	achieves automation through common policy for data center operations
provisions and manages networks, networking devices, and clients through a fully managed cloud service	establishes an overlay fabric to connect data centers, branches, and campuses through vManage
supports multivendor networks through Network Element Drivers	supports multivendor networks through Network Element Drivers

NEW QUESTION 124

- (Exam Topic 3)

A business needs to create a simulated environment that mimics a production infrastructure to make changes to the OSPF process and analyze the impact. What should be used?

- A. Cisco VIRL / Cisco CML
 B. Cisco DevNet Sandbox labs
 C. pyATS
 D. Puppet

Answer: A

Explanation:

<https://www.cisco.com/c/en/us/products/cloud-systems-management/modeling-labs/index.html>

NEW QUESTION 126

- (Exam Topic 3)

What is the function of an Ethernet switch in a networking environment?

- A. to switch a frame from one port to another port based on IP address
 B. to switch a frame from one port to another port based on MAC address
 C. to provide IP addressing to connected hosts
 D. to block unwanted traffic

Answer: B

NEW QUESTION 129

- (Exam Topic 3)

```
import requests, json
url = https://sandboxdnac.cisco.com:443/dna/intent/api/v1/3daa70bdcd5b
headers = {
    'x-auth-token': 'eyJhbGc ... yJbN8',
    'Content-Type': 'application/json',
}
payload = {
    "settings": {
        "dhcpServer": ["172.30.200.5"],
        "dnsServer": {
            "domainName": "devnet.local",
            "primaryIpAddress": "172.30.200.6",
            "secondaryIpAddress": "172.30.200.7"},
        "syslogServer": {"ipAddresses": ["10.255.0.1"], "configureDnacIP": True}
    }
}
response = requests.request('POST', url, headers=headers, data=payload)
print(response.status_code)
```

Refer to the exhibit. A developer writes a script to create a new network by using the Cisco DNA Center API. After running the script for the first time, the developer observes that HTTP code 404 is printed to the console. Which action resolves the problem?

- A. The x-auth-token value must be changed to a valid token.
- B. The API URL must be changed with a valid URL.
- C. The requested payload must be fixed to include missing parts.
- D. Internal errors on the code of API server must be fixed.

Answer: B

NEW QUESTION 133

- (Exam Topic 3)

```
$ find /home/user/backup -mtime +30 -type f -print
$ find /home/user/backup -mtime +30 -type f -delete
```

Refer to the exhibit. An engineer is managing the network of an enterprise. The network is using a distributed deployment model. The enterprise uses database to store logs. The current policy requires logs to be stored if changes are made to the infrastructure in any of the devices on the data centers. Which workflow is being automated by the Bash script?

- A. returning backup files that are older than 30 days
- B. deleting backup files that are older than 30 days
- C. configuring the directory to delete files automatically
- D. automating deletion of all backup files every 30 days

Answer: B

NEW QUESTION 138

- (Exam Topic 3)

A developer is attempting to retrieve all the messages from a Cisco Webex space. The server responds by sending the first 1,000 messages. The developer must make additional requests to retrieve the rest of the messages. Which API constraint is described in this scenario?

- A. payload limiting
- B. throttling
- C. pagination
- D. rate limiting

Answer: C

Explanation:

<https://developer.atlassian.com/server/confluence/pagination-in-the-rest-api/>

NEW QUESTION 142

- (Exam Topic 3)

```
HTTPS/1.1 201 Created
Date: Tue, 08 Nov 2020 09:37:27 GMT
Server: example-server
Location: https://example.com/restconf/data\
    example-jukebox/library/dogbreed=Australian%20Cattle%20Dog
Last Modified: Tue 08 Nov 2020 09:37:27 GMT
ETag: "s1878124t4c"
```

Refer to the exhibit. Which RESTCONF request results in this response?

A.

```
GET /restconf/data/example-jukebox:jukebox/library HTTP/1.1
Host: example.com
Content-Type: application/yang-data-json

{
  "Example-jukebox:dogbreed" : [
    {
      "name" : "Australian Cattle Dog"
    }
  ]
}
```

B. CONFIG /restconf/data/example-jukebox:jukebox/library HTTP/1.1
 Host: example.com
 Content-Type: application/yang-data-json

```
{
  "Example-jukebox:dogbreed" : [
    {
      "name" : "Australian Cattle Dog"
    }
  ]
}
```

C. PUT /restconf/data/example-jukebox:jukebox/library HTTP/1.1
 Host: example.com
 Content-Type: application/yang-data-json

```
{
  "Example-jukebox:dogbreed" : [
    {
      "name" : "Australian Cattle Dog"
    }
  ]
}
```

D. POST /restconf/data/example-jukebox:jukebox/library HTTP/1.1
 Host: example.com
 Content-Type: application/yang-data+json

```
{
  "Example:dogbreed" : [
    {
      "name" : "Australian Cattle Dog"
    }
  ]
}
```

Answer: D

NEW QUESTION 145

- (Exam Topic 3)

Users cannot access a webserver and after the traffic is captured, the capture tool shows an ICMP packet that reports "time exceeded in-transit". What is the cause of this webserver access issue?

- A. The large distance between the server and the users means that the packets require too much time to reach the destination.
- B. A router along the path is misrouting the packets in a wrong direction.
- C. A router along the path has the wrong time.
- D. The server is overloaded and the connection was not able to be processed in time.

Answer: B

NEW QUESTION 150

- (Exam Topic 3)

Which solution reduces costs from MPLS, improves application performance, and simplifies operations?

- A. Cisco NSO

- B. Cisco SD-WAN
- C. Cisco ACI
- D. Cisco DNA Center

Answer: B

NEW QUESTION 154

- (Exam Topic 3)

Drag and drop the characteristics from the left onto the corresponding categories on the right to compare RESTful and RPC APIs.

Answer Area

stateless

session-based

must use HTTP

sometimes uses HTTP

RESTful

RPC

- A. Mastered
- B. Not Mastered

Answer: A

Explanation:

stateless

session-based

must use HTTP

sometimes uses HTTP

RESTful

stateless

sometimes uses HTTP

RPC

session-based

must use HTTP

NEW QUESTION 155

- (Exam Topic 3)

Which OWASP threat takes advantage of a web application that the user has already authenticated to execute an attack?

- A. phishing
- B. DoS
- C. brute force attack
- D. CSRF

Answer: D

Explanation:

Cross-Site Request Forgery (CSRF) is an attack that forces an end user to execute unwanted actions on a web application in which they're currently authenticated.

<https://owasp.org/www-community/attacks/csrf>

NEW QUESTION 159

- (Exam Topic 3)

CISCO SECURITY APIS

Introduction

- API Workflow
 - 1.) Find all events where Malwar...
 - 2.) Find Endpoint Details for Rem...
 - 3.) Nuke the Endpoint to Prevent...
 - 4.) Find samples in Threat Grid
 - 5.) Get all sample domains to an...
 - 6.) Check all domains against Inv...
 - 7.) For suspect domains get mor...
 - 8.) Enforce on bad Domains in U...
 - 9.) Research other Ransomware ...
 - Generate Authentication Token ...
 - 10.) Add custom intelligence Fee...
- NGFW
 - Generate Authentication Token
 - Access Policies
 - Access Rules
 - Access Rule Details
 - New Access Rule in Policy
 - New Bulk Access Rule in Policy

Cisco Security APIs

The main goal of this collection to help the developer understand the various API capabilities of Cisco NGFW, Malware Protection, Threat Grid, ISE and Umbrella. It will cover useful API features for each of the products and how to properly use them. Simple workflow is also included in the collection to *Collect* all the characteristics/signatures of the possible attack using AMP. *Validate* the collected intelligence with Threat Grid and Umbrella. *Deploy* the intelligence to the NGFW, Umbrella and ISE to protect and contain the threat.

API Workflow

GET 1.) Find all events where Malware Executed

`https://amp.dcloud.cisco.com/v1/events?connector_guid[]=&event_type[]=1107296272`

Get a listing of all the events for a specific computer when the quarantine failed

PARAMS

Refer to the exhibit. Drag and drop the code from the bottom onto the box where the code is missing to construct a Python script that calls a REST API request. Not all options are used.

```

import requests

url = "https://fmc-hostname/api/fmc_tld/v1/domain//tid/source"

payload = {
    "name": "Threat Grid Ransomware DNS",
    "delivery": "url",
    "uri": "https://panacea.threatgrid.com/api/v3/feeds"+
    "/ransomware-dns 2017-12-08.stix?api_key=",
    "refresh": 1440,
    "version": "1.0.0",
    "params": {
        "selfSignedServerCertificate": "true",
        "hostnameVerifier": "allow_all"
    },
    "property": {
        "ttl": 90,
        "publish": true,
        "action": "monitor"
    }
}

headers = {
    'X-auth-access-token': 'access_token', 'Content-Type': 'application/json'
}

response = requests. ("POST", url,
    headers=headers, data =
)

print(response.text.encode('utf8'))

```

url

Encoding

base_url

Content-Type

post

request

payload

- A. Mastered
- B. Not Mastered

Answer: A

Explanation:

```
import requests

url = "https://fmc-hostname/api/fmc_tid/v1/domain//tid/source"

payload = {
    "name": "Threat Grid Ransomware DNS",
    "delivery": "url",
    "uri": "https://panacea.threatgrid.com/api/v3/feeds"+
    "/ransomware-dns 2017-12-08.stix?api_key=",
    "refresh": 1440,
    "version": "1.0.0",
    "params": {
        "selfSignedServerCertificate": "true",
        "hostnameVerifier": "allow_all"
    },
    "property": {
        "ttl": 90,
        "publish": true,
        "action": "monitor"
    }
}

headers = {
    'X-auth-access-token': 'access_token', 'Content-Type': 'application/json'
}

response = requests.request("POST", url,
    headers=headers, data = base_url )
print(response.text.encode('utf8'))
```

url Encoding base_url Content-Type post
request payload

NEW QUESTION 160

- (Exam Topic 3)

A developer creates a program in which an object maintains a list of classes based on the observer pattern. The classes are dependent on the object. Whenever the state of the object changes, it notifies the dependent classes directly through callbacks. Which advantage of the observer pattern offers minimum dependencies and maximum flexibility between dependent objects or classes?

- A. tight coupling
- B. cohesion
- C. mediation
- D. loose coupling

Answer: D

NEW QUESTION 162

- (Exam Topic 3)

```
1 - hosts: nxos_rtr
2   gather_facts: false
3   tasks:
4     - nxos_hsrp:
5       group: "{{ item.group }}"
6       vip: "{{ item.vip }}"
7       priority: 115
8       interface: "{{ item.interface }}"
9       preempt: enabled
10      auth_type: md5
11      auth_string: "s3cuR3"
12      version: 2
13      host: "{{ hostvars['rtr-1a']['ansible_ssh_host'] }}"
14    with_items:
15      - "{{ hsrp_groups }}"
16    delegate_to: "{{ hostvars['srv-1a']['ansible_ssh_host'] }}"
```

Refer to the exhibit. An engineer runs a network that consists of Cisco Nexus devices. The network is distributed between data centers in different locations. The switches are configured using standalone connections and a single point of failure. Which process is being automated by the Ansible playbook?

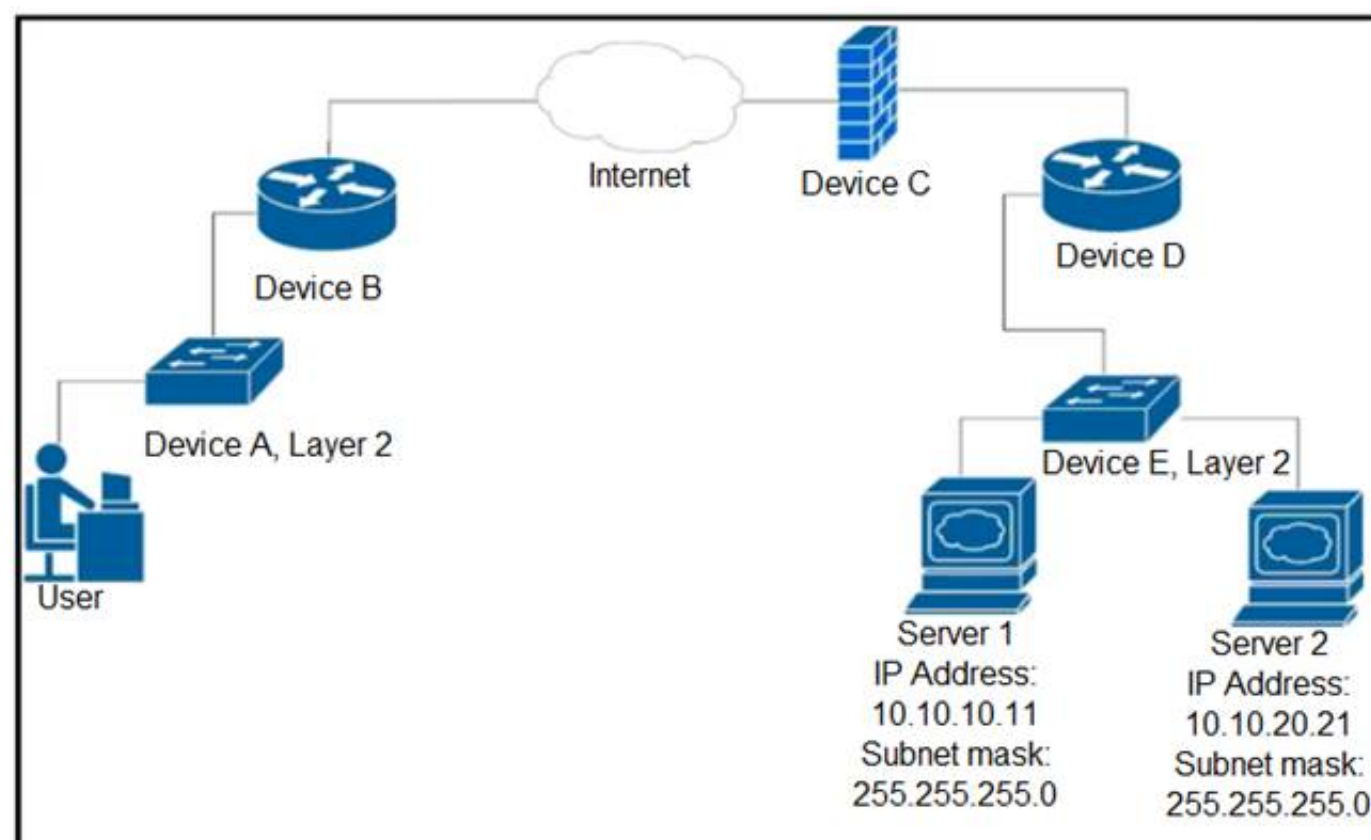
- A. enabling HSRP on the nxos_rtr inventory host
- B. enabling HSRP on the rtr-1a inventory host
- C. executing HSRP configuration from the Ansible controller node
- D. executing HSRP configuration from the srv-1a inventory host

Answer: B

NEW QUESTION 167

- (Exam Topic 3)

Refer to the exhibit.



Up to which device does the communication server 1 and server 2 go?

- A. device B
- B. device C
- C. device D
- D. device E

Answer: C

NEW QUESTION 169

- (Exam Topic 3)

Drag and drop the code snippets from the bottom onto the blanks in the code to complete the happy path scenario. Not all options are used.

```

import member as m
import pytest
class Team:
    def __init__(self, name):
        self.name = name
        self.members = []
    def add_member(self, member):
        if member:
            if member not in self.members:
                [ ]
                return True
            else:
                [ ]
        else:
            [ ]

@pytest.fixture
def team():
    team = Team('Reds')
    yield team
    del team

@pytest.fixture
def member():
    member = m.Member('Chris George')
    yield member
    del member

@pytest.mark.usefixtures('team', 'member')
class TestHappyPathAddMemberToTeam:
    def test_add_member_to_team(self, team, member):
        assert [ ] is True
  
```

- return True
- team.add_member(member)
- self.members.append(member)
- yield member
- return False
- member.add_member()

- A. Mastered
- B. Not Mastered

Answer: A

Explanation:

```
import member as m
import pytest
class Team:
    def __init__(self, name):
        self.name = name
        self.members = []
    def add_member(self, member):
        if member:
            if member not in self.members:
                member.add_member()
            return True
        else:
            return False
    else:
        team.add_member(member)

@pytest.fixture
def team():
    team = Team('Reds')
    yield team
    del team

@pytest.fixture
def member():
    member = m.Member('Chris George')
    yield member
    del member

@pytest.mark.usefixtures('team', 'member')
class TestHappyPathAddMemberToTeam:
    def test_add_member_to_team(self, team, member):
        assert yield member is True
```

return True

team.add_member(member)

self.members.append(member)

yield member

return False

member.add_member()

NEW QUESTION 170

- (Exam Topic 3)

Which port does HTTPS use by default?

- A. 433
- B. 443
- C. 803
- D. 883

Answer: B

NEW QUESTION 174

- (Exam Topic 3)

Refer to the exhibit.

```
url = 'https://api.amp.cisco.com/v1/computers'
response = session.get (url)
response_json = response.json ()

for item in response_json ['data'] :
    print (item['connector_guid'], item['hostname'])

while 'next' in response_json['metadata'] ['links']:
    response = session.get (next_url)
    response_json = response.json()
    for item in response_json['data']:
        print(item['connector_guid'], item['hostname'])
```

An engineer sends the request to collect data over Cisco AMP for Endpoints API. The Engineer must list guide and hostname data for all computers, but the first request returns only 500 items out of 2,000. Then, the engineer adds the loop to collect all the data. What must be added to the script where the code is missing to complete the requests?

- A. next_url = response_json ['metadata'] ['links'] ['next']
- B. next_url = response_json ['metadata'] ['next']
- C. next_url = response_json ['next']
- D. next_url = response_json ['metadata'] ['links']

- A. Option A
- B. Option B
- C. Option C
- D. Option D

Answer: A

Explanation:

```
https://github.com/CiscoSecurity/amp-03-pagination/blob/master/01_paginate.py while 'next' in response_json['metadata']['links']:  
next_url = response_json['metadata']['links']['next'] response = session.get(next_url)  
response_json = response.json()  
for computer in response_json['data']: print(computer['connector_guid'], computer['hostname'])
```

NEW QUESTION 176

- (Exam Topic 3)

A developer attempts to refactor and improve the application code. It is noticed that the code contains several pieces of key information that could be a security threat if this code is accessible by those who are not authorized to this data. Which approach addresses the security concerns noticed by the developer?

- A. Host the application code on a machine located in a secure data center.
- B. Utilize environment variables for username and password details.
- C. Rely on the security teams' goodwill to not give access to those who do not need it.
- D. Move the hardware that the application is deployed on to a secure location.

Answer: B

NEW QUESTION 180

- (Exam Topic 3)

A developer creates a new application, but the application must be tested before being released to a customer. When a mobile phone that uses 4G is used to access the application, the request fails. Why does the connection to the application fail?

- A. The application is hosted on premises and VPN connectivity is required
- B. The application must be added to the production server before testing.
- C. The application must be moved to the cloud before testing is possible.
- D. The application connectivity is limited to HTTPS protocol.

Answer: A

NEW QUESTION 182

- (Exam Topic 3)

Which platform has an API that has the capability to obtain a list of vulnerable software on user devices?

- A. Cisco Advanced Malware Protection
- B. Cisco Umbrella
- C. Cisco Identity Services Engine
- D. Cisco Firepower

Answer: A

NEW QUESTION 186

- (Exam Topic 3)

A development team is creating an application used for contactless payments. The application must: Be web-based Capture and process the credit card information for a purchase.

Which security action must the web application use to gather and process the private customer data?

- A. Enable RATs to monitor the web application remotely.
- B. Disable botnets to eliminate risks.
- C. Disable TLS to increase the connection speed.
- D. Enable the encryption of network traffic.

Answer: D

NEW QUESTION 187

- (Exam Topic 2)

What is the main purpose of a code review?

- A. To provide the technical lead visibility into all code
- B. To identify and review errors with the team
- C. To ensure that all code is checked in simultaneously
- D. To detect logical errors

Answer: B

NEW QUESTION 188

- (Exam Topic 3)

What is a benefit of a distributed version control system?

- A. encourages users to commit small pieces of work to the system more frequently

- B. ensures that all code meets minimum standards before being committed to the system
- C. allows users to work on the codebase even when not connected to the Internet
- D. ensures that all code is tested before being committed to the system

Answer: C

Explanation:

Reference: <https://about.gitlab.com/topics/version-control/benefits-distributed-version-control-system/>

NEW QUESTION 190

- (Exam Topic 3)

```
#!/bin/bash
apt-get update
apt-get -y install git
cd Code/Network_Config
mkdir PRODUCTION
cd PRODUCTION
touch state.yml
vi state.yml
```

Refer to the exhibit. A network engineer executes the bash script shown. Which two things are achieved by running the script? (Choose two.)

- A. A directory called PRODUCTION is created.
- B. The engineer changes to the parent directory.
- C. A YAML file is created.
- D. A YAML file is removed.
- E. A directory called state.yml is created.

Answer: AC

NEW QUESTION 193

- (Exam Topic 3)

```
api_endpoint = f"https://veryusefulapi/v2/authenticate"

headers = {
    "Authorization": "Basic YWRtaW46c3VwZXJzZWNyZXQ="
    "Accept": "application/json"
}

req = requests.get(api_endpoint, headers=headers)
```

Refer to the exhibit. A developer is part of a team that is working on an open-source project in which source code is hosted in a public GitHub repository. While the application was built, security concerns were addressed by encrypting the credentials on the server. After a few months, the developer realized that a hacker managed to gain access to the account. The exhibit contains part of the source code for the login process. Why was the attacker able to access the developer's account?

- A. The encoded credentials were available in the source code.
- B. The application was not encrypting the communication with the server.
- C. The credentials were encrypted in the source code.
- D. An SSL certificate was used instead of the TLS protocol to authenticate.

Answer: A

NEW QUESTION 194

- (Exam Topic 3)

Which tool provides a testing environment to run tests on network devices and perform network automation scenarios?

- A. Visual Studio Code
- B. Cisco VIRL
- C. pyATS
- D. Cisco Packet Tracer

Answer: B

NEW QUESTION 198

- (Exam Topic 3)

Refer to the exhibit.

HTTP Request

```
curl http://hello-api.info -v
```

HTTP Response

```
* Trying hello-app.info...
* TCP_NODELAY set
* Connected to hello-app.info (hello-app.info) port 80 (#0)
> GET / HTTP/1.1
> Host:hello-app.info
> User-Agent: curl/7.64.1
> Accept: */*
>

< HTTP/1.1 502 Bad Gateway
< Server: nginx/1.14.0 (Ubuntu)
< Date: Sat, 21 Nov 2020 11:09:54 GMT
< Content-Type: text/html
< Content-Length: 182
< Connection: keep-alive
```

A developer cannot reach the web application behind an NGINX load balancer. The developer sends a request to an application FQDN with cURL but gets an HTTP 502 response. Which action solves the problem?

- A. Fix errors in the server configuration, which is behind the load balancer.
- B. Bring up the load balancer to the active state.
- C. Fix errors in the cURL request sent by the client.
- D. Change the default gateway on the load balancer to an active one.

Answer: A

Explanation:

The HyperText Transfer Protocol (HTTP) 502 Bad Gateway server error response code indicates that the server, while acting as a gateway or proxy, received an invalid response from the upstream server.

<https://developer.mozilla.org/en-US/docs/Web/HTTP/Status/502#:~:text=The%20HyperText%20Transfer%20P>

NEW QUESTION 203

- (Exam Topic 2)

Which configuration management tool has an agentless capability?

- A. Chef
- B. Puppet
- C. Ansible
- D. CFEngine

Answer: C

NEW QUESTION 205

- (Exam Topic 2)

In test-driven development, what are two of the green bar patterns? (Choose two.)

- A. another test
- B. break
- C. triangulate
- D. starter test
- E. fake it

Answer: CE

Explanation:

<https://blog.baudson.de/blog/test-driven-development-green-bar-patterns>

NEW QUESTION 206

- (Exam Topic 2)

Refer to the exhibit.

API Documentation:

Integrations are how you request permission to invoke the Webex REST API on behalf of another Webex Teams user. To do this in a secure way the API supports the OAuth 2 standard which allows third-party integrations to get a temporary access token for authenticating API calls instead of asking users for their password.

Script:

```
01 import requests
02
03 base_url = "https://webexapis.com/v1"
04 header = {"Key": "Value"}
05
06 url = "{}/{}/".format(base_url, "/teams")
07 print(requests.get(url, headers=header).status_code)
```

A developer creates a Python script that queries Cisco Webex. When the script is executed, a 401 code is returned. After troubleshooting, the developer discovers that the service is missing privileges. Which change to the header in line 4 of the script results in the code 200?

A)

```
header = {"Authentication": "Bearer YOUR_TOKEN"}
```

B)

```
header = {"Authentication Bearer" : "YOUR_TOKEN"}
```

C)

```
header = {"Authorization" : "Bearer YOUR_TOKEN"}
```

D)

```
header = {"Authorization Bearer" : "YOUR_TOKEN"}
```

- A. Option A
- B. Option B
- C. Option C
- D. Option D

Answer: C

NEW QUESTION 209

- (Exam Topic 2)

Refer to the exhibit.

```
1  #!/bin/bash
2  apt install nginx
3  export AVAILABLE_SITES_DIR = '/etc/nginx/sites-available'
4  export ENABLED_SITES_DIR = '/etc/nginx/sites_enabled'
5  cd /opt/nginx
6  cat sites.txt | while read site;
7      do
8          cp template.conf "$AVAILABLE_SITES_DIR/$site";
9          ln -s "$AVAILABLE_SITES_DIR/$site" "$ENABLED_SITES_DIR";
10         chown www-data:www-data "$AVAILABLE_SITES_DIR/$site";
11     done
```

An engineer must configure a load balancer server. The engineer prepares a script to automate workflow by using Bash. The script install the nginx package, moves to the /optAtginx directory, and reads the sites M We (or further processing Based on the script workflow, which process is being automated within the loop by using the information mi sites txt?

- A. creating a new Me Based on template .conf in the /etc/nginx/sites_enabled directory for each lie in the sites txt fil
- B. and then changing the file execution permission.
- C. creating a Me per each the in sites txt with the information in template con
- D. creating a link for the previously created fil
- E. and then changing the ownership of the created files
- F. using the content of the file to create the template conf fil
- G. creating a link from the created file to the/etc/nginx/files.enable
- H. and then changing the file execution permissions.
- I. using the information in the file to create a set of empty files in the /etchginx/sites_enabled directory and then assigning the owner of the file.

Answer: B

NEW QUESTION 214

- (Exam Topic 2)

Drag and drop the code snippets from the bottom to the blanks in the code to test the API response through the Python unittest library. Not all options are used.


```
import unittest
import json
from apidogs import app

class TestsAPIDogs(unittest.TestCase):

    def setUp(self):
        self.app = app.test_client()

    # Check status response of API
    def test_status(self):
        resp =self.app.get('/dogs/all')
        status_code = response.
        self.assertEqual(status_code, )

    # Check for content type is in application/json
    def test_content_type(self):
        resp =self.app.get('/dogs/all')
        self.assertEqual(resp. , 'application/json')

    def test_item_not_exist(self):
        resp =self.app.get('/dogs?id= ')
        self.assertEqual(response.status_code,404)
```

none	content	
status_code	200	content_type
403	status	

- A. Mastered
B. Not Mastered

Answer: A

Explanation:

Graphical user interface, text Description automatically generated

NEW QUESTION 218

- (Exam Topic 2)

What is a capability of an agentless configuration management system?

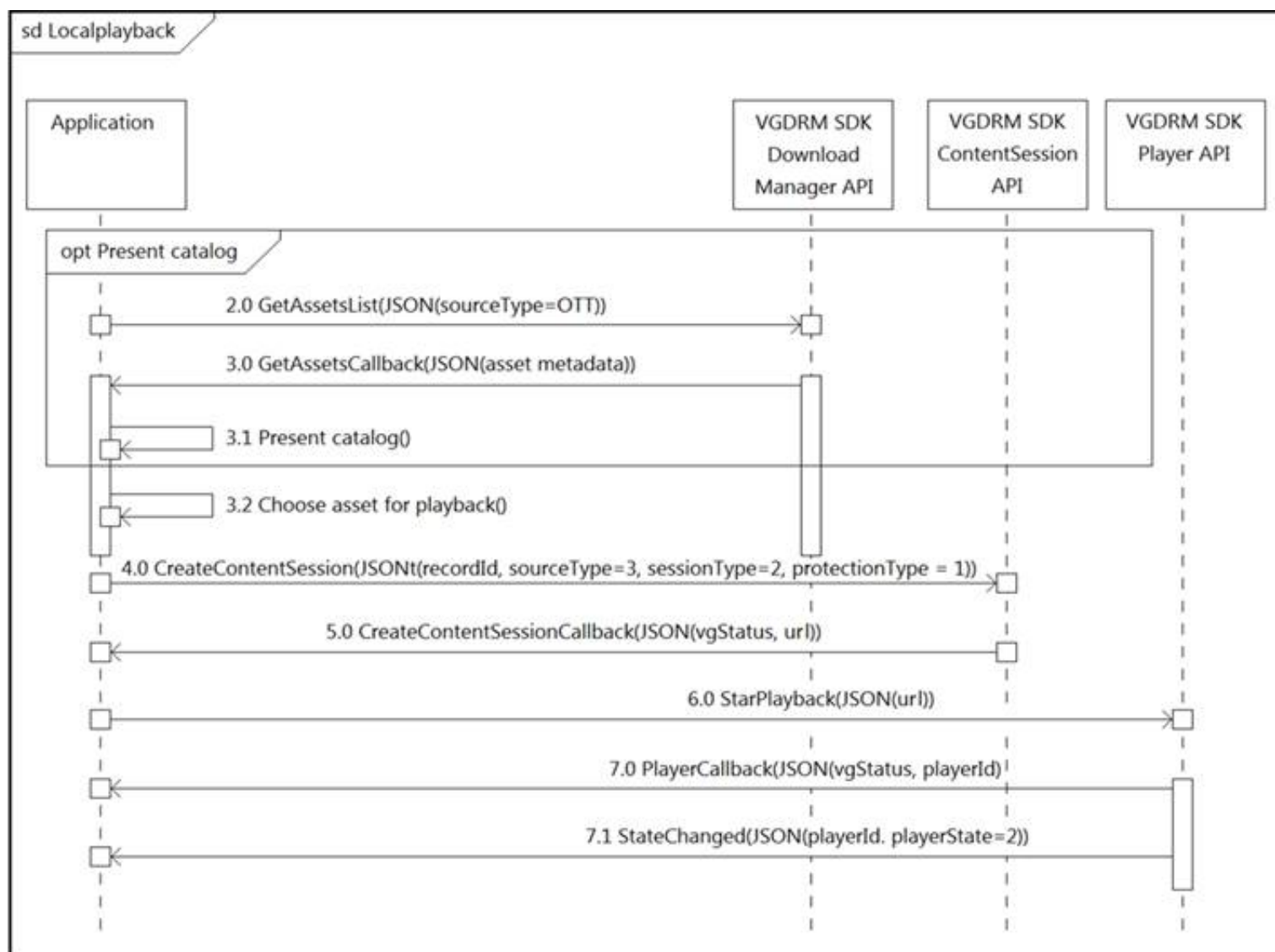
- A. It requires managed hosts to have an interpreter for a high-level language such as Python or Ruby.
B. It requires managed hosts to connect to a centralized host to receive updated configurations.
C. It uses compiled languages as the basis of the domain-specific language to interface with managed hosts.
D. It uses existing protocols to interface with the managed host.

Answer: D

NEW QUESTION 222

- (Exam Topic 2)

Refer to the exhibit.



What do all the calls shown in the sequence diagram have in common?

- A. All the calls are optional.
- B. All the calls are asynchronous.
- C. All the calls are synchronous.
- D. All the calls depend on the catalog.

Answer: D

NEW QUESTION 225

- (Exam Topic 2)

Which application should be used to externally access all applications deployed in the same host machine with a single public IP address and port, when each application listens on different local ports?

- A. reverse proxy
- B. load balancer
- C. DNS
- D. firewall

Answer: D

NEW QUESTION 229

- (Exam Topic 2)

A developer has created a new image to use in a Docker build and has added a tag for the image by using the command:

\$ docker tag 84fe411926287 local/app:0.4

Which command must be executed next to build the Docker image using the tag?

- A. \$ docker build -p local/app:0.4
- B. \$ docker run -t local/app:0.4
- C. \$ docker run -p local/app:0.4
- D. \$ docker build -t local/app:0.4

Answer: D

NEW QUESTION 234

- (Exam Topic 2)

Which protocol runs over TCP port 22?

- A. SSH
- B. HTTP
- C. Telnet
- D. NETCONF

Answer: A

NEW QUESTION 235

- (Exam Topic 2)
Refer to the exhibit.

```
1 import requests
2 import json
3
4 BASE_URL = "https://<IP Address>"
5 FIRST_URL = "/dna/intent/api/v1/network-device"
6 SECOND_URL = "/dna/intent/api/v1/network-device-poller/cli/read-request"
7 THIRD_URL = "/dna/intent/api/v1/task/{task_id}"
8 FOURTH_URL = "/dna/intent/api/v1/file/{file_id}"
9
10 headers = {"X-Auth-Token": "TOKEN", "Content-Type": "application/json"}
11
12 params = {"platformId": "C9500-40X"}
13 response = requests.get(BASE_URL + FIRST_URL, headers=headers, params=params)
14 devices = []
15 for device in response.json()["response"]:
16     devices.append(device["id"])
17
18     payload = {
19         "commands": ["show version", "show ip int brief"],
20         "deviceUuids": devices,
21         "timeout": 0,
22     }
23 response = requests.post(BASE_URL + SECOND_URL, data=json.dumps(payload),
24     · headers=headers)
25 task_id = response.json()["response"]["taskId"]
26
27 response = requests.get(BASE_URL + THIRD_URL.format(task_id=task_id),
28     · headers=headers)
29 progress_json = json.loads(response.json()["response"]["progress"])
30 file_id = progress_json("fileId")
31
32 response = requests.get(BASE_URL + FOURTH_URL.format(file_id=file_id),
33     · headers=headers)
34 file_json = response.json()
35
36 for cmd in file_json:
37     print(file_json[cmd]["commandResponses"]["SUCCESS"]["show ip int brief"])
```

A network engineer must collect information from the network using Cisco DNA Center APIs. The script must query for the devices with 'platformId' 'C9540-x' and then send commands to be executed. Which process is automated by the Python script?

- A. results gathering of the show version and show ip int brief commands
- B. output of show ip int brief command on devices of type C9500-40X
- C. execution information of the show version and show ip int brief commands
- D. list of executed commands on C9500-40X and the information of show ip int brief command

Answer: B

NEW QUESTION 237

- (Exam Topic 2)
Refer to the exhibit.

```
import requests
from requests.auth import HTTPBasicAuth
from config import url, username, password
response = requests.login(url, auth=HTTPBasicAuth (username, password), verify=False)
print response.status_code
```

The script returns an output of 401. To use the supplied URL, an HTTP GET request must be sent with an Authorization header. The header value is a Base64 encoded concatenation of the username and password. Which action must be taken to return an output of 200?

- A. Change the verify=False setting in the request to verify=True to enable HTTP Basic authentication
- B. Modify the method from LOGIN to GET and supply the username ;password value as JSON payload
- C. Verify that the username and password values imported from the configuration file are still valid.
- D. Insert an Authorization header with the values username password from the supplied configuration file.

Answer: C

NEW QUESTION 238

- (Exam Topic 2)

Access to the management interface of devices must be restricted by using SSH and HTTPS. Which two ports must be included in the ACLs for the protocols to work? (Choose two.)

- A. 22
- B. 23
- C. 80

D. 443
 E. 880

Answer: AD

NEW QUESTION 239

- (Exam Topic 2)

Refer to the exhibit.

Generating Client ID and API Key:

- Log in to your AMP for Endpoints Console.
- Go to Accounts > Business Settings.
- Click Configure API Credentials under Features to generate the Client ID and secure API Key.

Once you have the API client ID and API key, you can make the API calls as follows:

```
https://<your_client_id>:<your_api_key>@<api_endpoint>
```

Alternatively you can use Basic HTTP Authentication. Base 64 encode the string ":", and send that prefixed with the string "Basic" as the authorization header. For instance, if your client_id was 1234, and your api_key was "atest", then it would be base64 encoded to "MTIzNDphdGVzdA==", and your header would be:

```
Authorization: Basic MTIzNDphdGVzdA==
```

The documentation outlines how to use credentials for the AMP API Which script successfully performs an API call using basic authentication?

A)

```
import requests
amp_client_id = 'a1b2c3d4e5f6g7h8i9j0'
amp_login_password = 'l0g1n_p@ssw0rd'
url = 'https://api.amp.cisco.com/v1/version'
request = requests.get(url,
    auth=(amp_client_id, amp_login_password))
print(request.json())
```

B)

```
import requests
amp_client_id = 'a1b2c3d4e5f6g7h8i9j0'
amp_api_key = 'a1b2c3d4-e5f6-g7h8-i9j0-k1l2m3n4o5p6'
url = 'https://api.amp.cisco.com/v1/version'
request = requests.get(url)
print(request.json())
```

C)

```
import requests
amp_auth_token = 'a1b2c3d4e5f6g7h8i9j0 k1l2m3n4o5p6'
url = 'https://api.amp.cisco.com/v1/version'
request = requests.get(url,
    auth=(amp_auth_token))
print(request.json())
```

D)

```
import requests
amp_client_id = 'alb2c3d4e5f6g7h8i9j0'
amp_api_key = 'alb2c3d4-e5f6-g7h8-i9j0-k1l2m3n4o5p6'
url = 'https://api.amp.cisco.com/v1/version'
request = requests.get(url,
    auth=(amp_client_id, amp_api_key))
print(request.json())
```

- A. Option
- B. Option
- C. Option
- D. Option

Answer: D

NEW QUESTION 241

- (Exam Topic 2)

Refer to the exhibit.

```
1 def enable_function(if_name, if_status, if_type):
2     headers = {'Accept': 'application/yang-data+json',
3               'Content-Type': 'application/yang-data+json'}
4     payload = {
5         "ietf-interfaces:interface": {
6             "name": if_name,
7             "enabled": if_status,
8             "type": if_type,
9         }
10    }
11    base_url = 'https://192.168.1.1:8443'
12    restconf_url = '/restconf/data/ietf-interfaces:interfaces/interface'
13
14    res = requests.put(f'{base_url}{restconf_url}={if_name}',
15                      headers=headers, json=payload,
16                      auth=('cisco', 'secret'), verify=False)
```

A network engineer wants to automate the port enable/disable process on specific Cisco switches. The engineer creates a script to send a request through RESTCONF and uses ietf as the YANG model and JSON as payload. Which command enables an interface named Loopback1?

- A. enable_function(Loopback1, true, 'iana-if-type:softwareLoopback')
- B. enable_function('iana-if-type:softwareLoopback', Loopback1, true,)
- C. def enable_function('iana-if-type:softwareLoopback', Loopback1, false,)
- D. def enable_function(Loopback1, true, 'iana-if-type:softwareLoopback')

Answer: D

NEW QUESTION 245

- (Exam Topic 2)

What are two properties of private IP addresses? (Choose two.)

- A. They can be used to access the Internet directly.
- B. They are more secure than public IP addresses.
- C. They are not globally unique.
- D. They can be repeated within the same local network.
- E. They are controlled globally by an IP address registry.

Answer: BD

NEW QUESTION 247

- (Exam Topic 2)

Refer to the exhibit.

```
import requests
from requests.auth import HTTPBasicAuth
from dnac_config import DNAC, DNAC_PORT, DNAC_USER, DNAC_PASSWORD

def get_auth_token():
    url = 'https://sandboxdnac.cisco.com/dna/system/api/v1/auth/token'
    # API Endpoint: requires POST method
    

def get_device_list():
    """
    Building out function to retrieve list of devices. Using requests.get to make a call
    to the network de-vice Endpoint
    """
    token = get_auth_token() # Get Token
    url = 'https://sandboxdnac.cisco.com/api/v1/network-device'
    hdr = {'x-auth-token': token, 'content-type' : 'application/json'}
    resp = requests.get(url, headers=hdr)
    device_list = resp.json()
    print_device_list(device_list)

if __name__ == "__main__":
    get_device_list()
```

A developer creates a script to obtain a list of devices by using the Cisco DNA Center API. The remote server authorizes the request only if an authentication token is supplied in the headers. A function named `get_auth_token()` must retrieve a valid token by using HTTP Basic Authentication. Which code must be added to complete the `get_auth_token()` function?

- A. `resp = requests.post(url, auth=HTTPBasicAuth(DNAC_USER, DNAC_PASSWORD)) token = resp.json()['Token']return token`
- B. `resp = requests.post(url, auth=(DNAC_USER, DNAC_PASSWORD)) token = resp.json ()['Token']return token`
- C. `resp = http.post(url, auth=HTTPBasicAuth(DNAC_USER, DNAC_PASSWORD)) token = resp.json()['Token']return token`
- D. `resp = http.post(url, auth=(DNAC_USER, DNAC_PASSWORD)) token = resp.json()['Token']return token`

Answer: A

NEW QUESTION 249

- (Exam Topic 2)

What are two considerations when selecting the "best route" for a network device to reach its destination? (Choose two.)

- A. MAC address
- B. metrics
- C. administrative distance
- D. IP address
- E. subnet mask

Answer: BC

NEW QUESTION 251

- (Exam Topic 2)

A new application is being developed with specific platform requirements. The platform and application deployment and the ongoing platform management must be fully automated. The application includes a large database component that has significant disk I/O requirements. Which application deployment type meets the requirements?

- A. Python virtual environment
- B. virtual machine
- C. bare metal
- D. container

Answer: B

NEW QUESTION 255

- (Exam Topic 2)

What is the purpose of a MAC address on a network device?

- A. unique network address that identifies the network interface of a device
- B. unique network interlace address that is provided by the DHCP server
- C. unique hardware address that identifies the network interface of a device
- D. unique hardware interface address that is provided by the central switch

Answer: C

NEW QUESTION 257

- (Exam Topic 2)

A developer is trying to retrieve data over a REST API. The API server responds with an HTTP client error response code. After investigating the response the developer realizes the response has a Retry-After header. What is the root cause of this error?

- A. The REST service is unreachable at the time of the REST request
- B. Too many requests were sent to the REST service in a given amount of time.
- C. An appliance limited the rate of requests to the transport layer.

D. An appliance limited the rate of requests to the application layer

Answer: B

NEW QUESTION 262

- (Exam Topic 2)

A developer creates a web application that receives a username and password and uses them to sync the credentials to other services through HTTPS. API keys to services are part of the configuration files of the application, but the credentials to the database that stores the synchronization logs are obtained through an external vault service. What is the security issue in this scenario?

- A. Communication between the application and the services is not encrypted.
- B. The database credentials should be stored in the configuration files so that they are secured on the same server.
- C. The API keys are stored in the configuration files but should be stored in the vault service.
- D. The synchronization logs should be encrypted and not stored in a relational database.

Answer: A

NEW QUESTION 264

- (Exam Topic 2)

What is a benefit of test-driven development?

- A. early customer involvement
- B. increased code quality
- C. faster releases that have minimal features
- D. strict adherence to product requirements

Answer: D

NEW QUESTION 266

- (Exam Topic 2)

What is a benefit of organizing code into modules?

- A. improves overall performance
- B. reduces the length of code
- C. enables code to be multifunctional
- D. enables the reuse of code

Answer: D

NEW QUESTION 267

- (Exam Topic 2)

In which two ways is an application characterized when interacting with a webhook? (Choose two.)

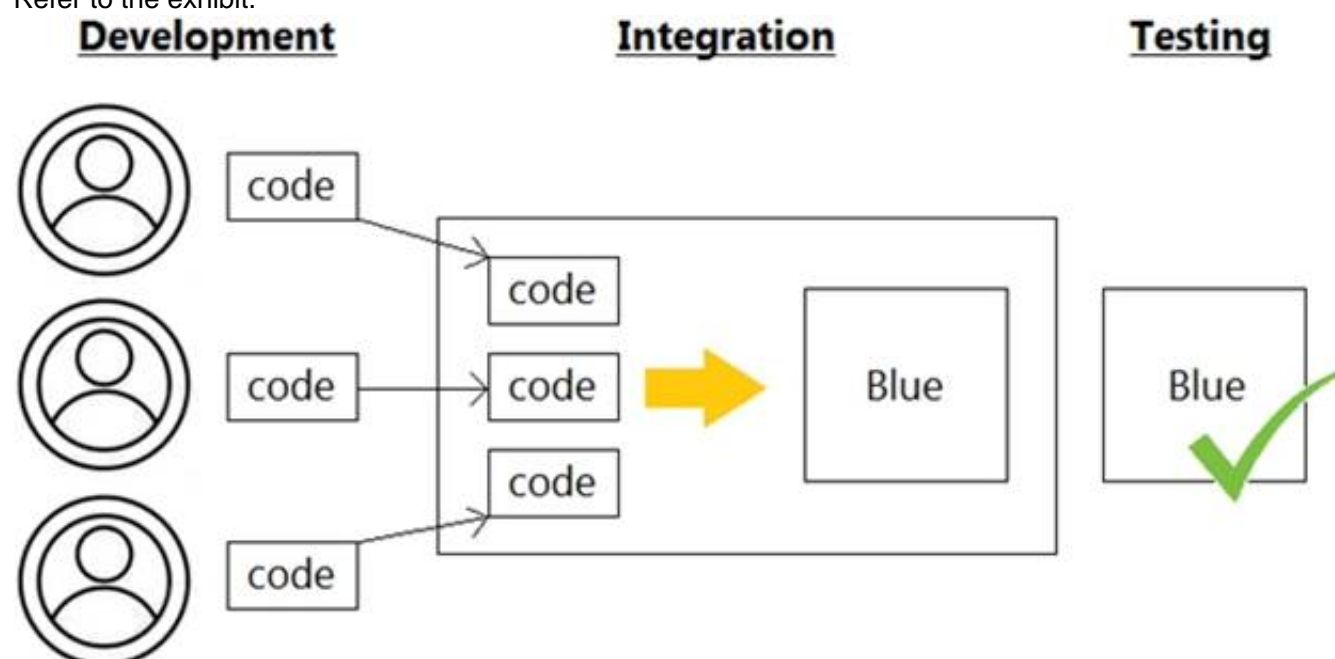
- A. codec
- B. receiver
- C. transaction monitor
- D. processor
- E. listener

Answer: BE

NEW QUESTION 270

- (Exam Topic 2)

Refer to the exhibit.



Which infrastructure automation method is shown?

- A. Waterfall
- B. CI/CD pipeline

C. Agile
D. Lean

Answer: C

NEW QUESTION 272

- (Exam Topic 2)

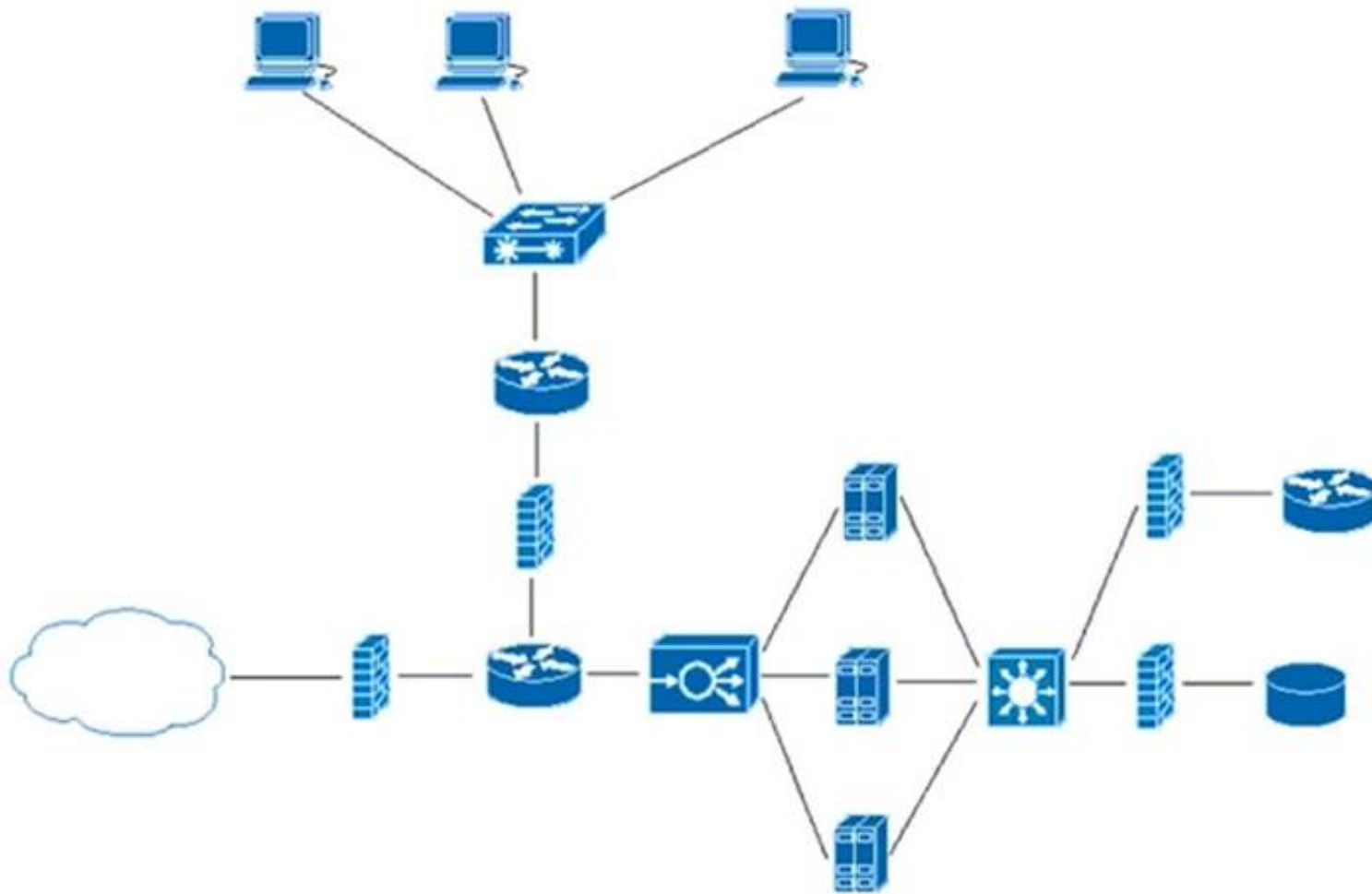
What is the purpose of the first three pairs of digits in a MAC address?

- A. defines a routing identifier for the client
- B. indicates the IP address of the client in Hex
- C. defines packet forwarding priority sent or received by the adapter
- D. indicates vendor of the network card or adapter

Answer: D

NEW QUESTION 277

- (Exam Topic 2)



Refer to the exhibit. What does the load balancer enable in the network topology?

- A. hosted application to access Internet services
- B. external requests to be routed to the application servers
- C. workstations to access the Internet
- D. application to access the database server

Answer: C

NEW QUESTION 280

- (Exam Topic 2)

Refer to the exhibit.

```

1 #import dnac sdk
2 from dnacentersdk import DNACenterAPI
3 #connection to dnac
4
5 username = 'user1'
6 password = 'secret'
7 base_url = 'https://192.168.1.1'
8
9 dnac = DNACenterAPI(username=username, password=password, base_url=base_url,
• version='1.3.3', verify=False)
10
11 # Get list of ports on device using get all interfaces API call
12 port_list_1 = [item['portName'] for item in
• dnac.devices.get_all_interfaces()['response']]
13
14
15 # Sort list items
16 port_list_1.sort()
17 # Check the number of ports on the device
18 print(f'The list of interfaces contains {len(port_list_1)} items.')
19
20 # Output
21 # The list of interfaces contains 38 items.
22
23
24 # Get list of interfaces using the get interface info by device id api call
25 port_list_2 = [item['portName'] for item in
26 dnac.devices.get_interface_info_by_id('da4606c3-63ad-4ed4-8f35-
• 6bfec7c2df04')['response']]
27
28 # Sort list items
29 port_list_2.sort()
30 # Check the number of ports on the device
31 print(f'The list of interfaces contains {len(port_list_2)} items.')
32
33 # Output
34 # The list of interfaces contains 54 items.

```

An engineer writes a Python script that uses two different API calls to query Cisco DNA Center for the number of interfaces on a device. The engineer notices that the two API calls produce different results. Why are fewer interfaces returned for the same device when the 'get_all_interfaces' API call is used?

- A. times out
- B. rate limit
- C. pagination
- D. invalid password

Answer: C

NEW QUESTION 284

- (Exam Topic 2)

Drag and drop the code from the bottom onto the box where the code is missing in the Bash script to complete the missing assignment.

```
#!/bin/bash
```

```

= 'date +%b-%d-%y'
= /home/usr/path/backup-$BACKUPTIME.tar.gz
= /home/usr/path/data_folder

```

```
tar -cpzf $DESTINATION $SOURCEFOLDER
```

BACKUPTIME

SOURCEFOLDER

DESTINATION

- A. Mastered
- B. Not Mastered

Answer: A

Explanation:


```
#!/bin/bash
```

```
BACKUPTIME = `date +%b-%d-%y`
```

```
DESTINATION = /home/usr/path/backup-$BACKUPTIME.tar.gz
```

```
SOURCEFOLDER = /home/usr/path/data_folder
```

```
tar -cpzf $DESTINATION $SOURCEFOLDER
```

```
BACKUPTIME
```

```
SOURCEFOLDER
```

```
DESTINATION
```

NEW QUESTION 285

- (Exam Topic 2)

Refer to the exhibit.

user_manager.py

```
1 import psycopg2
2 import json, sys
3
4 # Load config file
5 config = None
6 with open('config.json') as config_file:
7     config = json.load(config_file)
8 if not config:
9     print("Error loading configuration file.")
10    sys.exit(1)
11
12 connection = psycopg2.connect(
13     database="users",
14     host=config["DB_USER"], user=config["DB_USER"], password=config["DB_PWD"]
15 )
16 connection.set_session()
17
18 def has_admin_role(username):
19     with connection.cursor() as cursor:
20         query = 'SELECT admin_role FROM users WHERE username = {0}'
21         cursor.execute(query.format(username))
22         result = cursor.fetchone()
23     return result
24
25 has_admin_role("ops.shared")
```

config.json

```
1 {
2     "DB_USER": "pguser",
3     "DB_PWD": "@123Qwer%4",
4     "DB_HOST": "devnetdb.example.com"
5 }
```

An engineer must check the admin rights of users on a database regularly and prepares the Python script to automate the process. The script connects to the database and runs a query. What is a security issue about the secrets in the code that relates to secret protection?

- A. They must be stored in configuration files if there is a possibility of leakage.
- B. They must be Base64-encoded if stored in the user database.
- C. They must be encrypted if stored in the user database.
- D. They must be stored in configuration files if no authentication will be used.

Answer: D

NEW QUESTION 288

- (Exam Topic 2)

A new application is being developed that must be hardware independent. The application includes an administrative component which is accessed using a Windows desktop GUI. Installation and management of the environment must be fully automated. Which application deployment type meets the requirements?

- A. bare metal
- B. virtual Python environment
- C. container
- D. virtual machine

Answer: C

NEW QUESTION 291

In the test-driven development model, what is changed after a test fails?

- Answer: D**

Reference:

<https://www.guru99.com/test-driven-development.html#:~:text=In%20simple%20terms%2C%20test%20cases,c>

- (Exam Topic 2)

Refer to the exhibit.

<h2>List Messages</h2> <p>Lists all messages in a room. Each message will include content attachments if present.</p> <p>The list sorts the messages in descending order by creation date. Long result sets will be split into pages.</p> <p>GET <code>/v1/messages</code></p> <h3>Query Parameters</h3> <p>roomId string <i>Required</i> List messages in a room, by ID.</p> <p>parentId string List messages with a parent, by ID.</p>	<div> <div>Try it</div> <div>Example</div> </div> <div> <div>Request</div> <div>Response</div> </div> <pre> https://webexapis.com/v1/messages?roomId=Y2IzY 29zcGFyYXovL3VzL1JPT00vYmJjZWlxYWQtdNDNmMS 0zYjU4LTkxNDctZjE0YmlwYzRkMTU0&parentId=Y2Iz Y29zcGFyYXovL3VzL01FU1NBR0UvZW11ZTlZjA1N2 RhMS0xMWU5LTg2NTgtZTkzYzNiODZjZmFm&mentio nedPeople=Y2IzY29zcGFyYXovL3VzL1BFT1BMRS8yN DlmNzRkOS1kYjhhLTQzY2EtODk2Yi04NzllZDI0MGFjN TM&before=2016-04-21T19:01:55.966Z&beforeMes sage=Y2IzY29zcGFyYXovL3VzL01FU1NBR0UvOTJkYj NiZTAtdNDNiZC0xMWU2LTlhZTk1ZGQ1YjNkZmM1NjV k&max=100 </pre>
---	--

A developer needs to automatically retrieve all of the messages of a Webex room with the roomId of HY2I2Y292cGFyazovL3Vz397748444YjU5NjAtNTk0Zj0xMWVhLTk0Mj". Using the Webex API documentation shown, drag and drop the code snippets from below onto the code to complete the Python script to list all of the messages in the room. Not all options are used.

```
import requests

webex_token = "NDA2OGV...f0-4434-a696-B4fee4047e0a"

room_id = "Y2liY29zcGF...jU5NjAtNTk0Zi0xMmVhLTk0Mj"

url = "https://webexapis.com/v1/ [ ] [ ] =" + [ ]

payload = {}
headers = {
    'Authorization': 'Bearer ' + [ ]
}

response = requests.request("GET", url, headers=headers, data = payload)

print(response.text.encode('utf8'))
```

- ```
webex_token room room_id
messages? roomId messages
```

- Answer: A**

Graphical user interface Description automatically generated with medium confidence

**NEW QUESTION**  
- (Exam Topic 2)

What are two benefits of using VLANs? (Choose two.)

- A. limits the devices that can join the network
- B. segments the broadcast domain
- C. extends the broadcast domain
- D. allows all network devices to be accessible from any host on the network
- E. enables the logical grouping of devices that belong to different Layer 2 devices

Answer: BE

#### NEW QUESTION 299

- (Exam Topic 2)

**class Native.Interface.FastEthernet**

Bases: Entity

Class Hierarchy: Native Interface FastEthernet

This class represents configuration data.

FastEthernet IEEE 802.3

**name(key)**

type: str

pattern: ([0-9]/)/([0-9]/)/([1-3][0-9]|4[0-8]|([0-9])\([0-9]+\))?

**description**

Interface specific description

type: str

pattern: \*

**flowcontrol**

Configure flow operation

type: Flowcontrol

**isis**

IS-IS commands

type: Isis

**keepalive**

Enable keepalive

type: bool

**keepalive\_settings**

type: KeepaliveSettings

Refer to the exhibit. Drag and drop the code snippets from the bottom to the blanks in the code to enable keepalive for the FastEthernet 2/0 interface. Not all options are used.

```

from ydk.services import CRUDService
from ydk.providers import NetconfServiceProvider as nc
from ydk.models.cisco ios xe import Cisco IOS XE native as model
ip = '10.10.20.48'
prtc1 = 'ssh'
user = 'developer'
psw = 'P@s$W0rD'
port = 830
provider = nc(address=ip, port=port, username=user, password=psw, protocol=prtc1)
crud = CRUDService()

interface.name = '2/0'

if interface data:
 print('Keepalive is enabled.')
else:
 print('Keepalive is not enabled.')

```

- interface\_data = crud.update(provider, interface)
- interface.keepalive = True
- interface\_data = crud.read(provider, interface)
- interface = model.Native.Interface.FastEthernet()
- interface.FastEthernet.keepalive\_settings.keepalive = True
- interface = model.Native.Interface()

- A. Mastered
- B. Not Mastered

Answer: A

Explanation:



```

from ydk.services import CRUDService
from ydk.providers import NetconfServiceProvider as nc
from ydk.models.cisco ios xe import Cisco IOS XE native as model
ip = '10.10.20.48'
prtc1 = 'ssh'
user = 'developer'
psw = 'P@s$W0rD'
port = 830
provider = nc(address=ip, port=port, username=user, password=psw, protocol=prtc1)
crud = CRUDService()

interface = model.Native.Interface.FastEthernet()
interface.name = '2/0'
interface.keepalive = True
interface_data = crud.read(provider, interface)

if interface_data:
 print('Keepalive is enabled.')
else:
 print('Keepalive is not enabled.')

interface_data = crud.update(provider, interface)

interface.FastEthernet.keepalive_settings.keepalive = True

interface = model.Native.Interface()

```

### NEW QUESTION 303

- (Exam Topic 2)

Why is refactoring done during test-driven development?

- A. to enable larger objects and longer methods
- B. to improve maintainability and readability
- C. to ensure that the previous uses of the objects are explained
- D. to ensure the duplication of essential code

**Answer:** B

### NEW QUESTION 307

- (Exam Topic 2)

A company is adopting DevOps as part of an internal transformation, and is reviewing the success of the first deployments. Developers and engineers are working together to resolve any resulting issues. However, this new way of working has increased overhead, and the team is finding it difficult to complete releases in time. Which area of the CALMS framework must the company target for improvement?

- A. Collaboration
- B. Lean
- C. Sharing
- D. Measurement

**Answer:** B

#### Explanation:

Reference: <https://blog.sonatype.com/principle-based-devops-frameworks-calms>

### NEW QUESTION 312

- (Exam Topic 2)

Refer to the exhibit.

Returns the wireless lan controller info with given device ID:

```
{
 "response": {
 "adminEnabledPorts": [0],
 "apGroupName": "string",
 "deviceId": "string",
 "ethMacAddress": "string",
 "flexGroupName": "string",
 "id": "string",
 "instanceTenantId": "string",
 "instanceUuid": "string",
 "lagModeEnabled": true,
 "netconfEnabled": true,
 "wirelessLicenseInfo": "ADVANTAGE",
 "wirelessPackageInstalled": true
 },
 "version": "string"
}
```

Drag and drop the code from the bottom onto the blanks in the code to construct a cURL command using the Cisco DNA Center API. which will provide the details of a WLAN controller with Id af397748444. Not at options are used.

#### Answer Area

```
curl -L --request GET \
--url https://dna/intent/api/v1/ / / \
--header 'Content-Type: application/json' \
--header 'Accept:application/json'
```

network-device

id

wireless

wireless-info

controller

details

- A. Mastered
- B. Not Mastered

**Answer:** A

#### Explanation:

Diagram Description automatically generated

#### NEW QUESTION 315

- (Exam Topic 2)

An engineer must configure Cisco Nexus devices and wants to automate this workflow. The engineer enables the Cisco NX-OS REST API to configure the devices by using an Ansible playbook. Before running the code, which resource must be used to verify that the code works correctly?

- A. Cisco NX-OS SDK
- B. Cisco Learning Labs
- C. Cisco Code Exchange
- D. Cisco Modeling Labs

**Answer:** A

#### NEW QUESTION 320

- (Exam Topic 2)

What is used in JSON to represent a Python Tuple?

- A. Object
- B. Array
- C. Dict
- D. Collection

**Answer:** B

#### NEW QUESTION 324

- (Exam Topic 2)

What is a difference between a synchronous API and an asynchronous API?

- A. An asynchronous API can make offline calls while synchronous APIs do not have this capability.
- B. Synchronous API calls are returned immediately while asynchronous calls do not guarantee an immediate response.
- C. Synchronous API calls require an authentication header to be sent while asynchronous calls do not require authentication.
- D. An asynchronous API can make a larger number of calls in a specified time period than a synchronous API.

**Answer:** B

**Explanation:**

Reference:

<https://stackoverflow.com/questions/36213948/what-is-the-difference-between-asynchronous-calls-and-callback>

#### NEW QUESTION 329

- (Exam Topic 2)

Refer to the exhibit.

```
1 #/bin/bash
2
3 curl https://ciscoDevnet.com/devnet-0.13.tar.gz -o /tmp/devnet.tar.gz
4 tar -zxvf /tmp/devnet.tar.gz
5 mkdir /tmp/devnet && pushd /tmp/devnet
6
7 ./configure && make && make install
8
9 systemctl enable devnet
10 systemctl start devnet
```

A network engineer works on a Cisco DevNet application that is available for download on the Cisco DevNet website. The engineer prepares a bash script to automate operations that relate to the application. Which workflow is being automated in the bash script?

- A. compilation and configuration of the Cisco DevNet application so that it must be started manually
- B. compilation, installation, and configuration of the Cisco DevNet application so that it starts automatically
- C. compilation and installation of the Cisco DevNet application for an autonomous deployment model
- D. installation and configuration of the Cisco DevNet application so that it starts manually

**Answer:** B

#### NEW QUESTION 333

- (Exam Topic 2)

A developer is working on a feature for a new application. The changes in the existing branch named 'feat00304' must be integrated into a single commit with the current working primary branch named 'prodapp411926287'. Which git command must be used?

- A. git rebase --merge feat00304
- B. git merge --squash feat00304
- C. git push --rebase feat00304
- D. git checkout --squash feat00304

**Answer:** B

#### NEW QUESTION 336

- (Exam Topic 2)

Refer to the exhibit.



```

1 - hosts: servers
2 tasks:
3
4 - name: task1
5 apt:
6 name: apache2
7 state: absent
8
9 - name: task2
10 apt:
11 name: nginx
12 state: present
13
14 - name: task3
15 apt:
16 name: "*"
17 state: latest

```

A developer must check packages on web load balancers that use nginx packages. The developer updates the servers as required in Ansible inventory and prepares an Ansible playbook to automate this workflow on related servers. Which process is being automated by the Ansible playbook?

- A. verifying that nginx is installed only if apache2 is unavailable on the system, and then updating all the other packages
- B. verifying, without installing, that apache2 is unavailable and that nginx is installed, and then updating the repository to the latest version
- C. uninstalling the apache2 server, installing the nginx server, and then updating all the packages to the latest version
- D. installing nginx, uninstalling apache2, and then verifying that the package repository is at the latest version

**Answer: B**

#### NEW QUESTION 340

- (Exam Topic 2)

What is a benefit of model-driven programmability?

- A. It addresses the static architecture of traditional networks being decentralized and complex.
- B. By modeling data, it ensures that vast quantities of data are usable for monitoring.
- C. It provides a programmatic and standards-based way of writing configurations to any network device.
- D. It simplifies management and operations by decoupling the networking hardware from its control mechanism.

**Answer: D**

#### NEW QUESTION 342

- (Exam Topic 2)

Refer to the exhibit.

|                                                                                                                                                                                                                                                                                                                                                                                                                                                                                                                                                                                                                                                                         |                                                                                                                                                                                                                                                                                                                                                                                                                                                                                                                                                                                                          |
|-------------------------------------------------------------------------------------------------------------------------------------------------------------------------------------------------------------------------------------------------------------------------------------------------------------------------------------------------------------------------------------------------------------------------------------------------------------------------------------------------------------------------------------------------------------------------------------------------------------------------------------------------------------------------|----------------------------------------------------------------------------------------------------------------------------------------------------------------------------------------------------------------------------------------------------------------------------------------------------------------------------------------------------------------------------------------------------------------------------------------------------------------------------------------------------------------------------------------------------------------------------------------------------------|
| <pre> module ietf-ip {   namespace "urn:ietf:params:xml:ns:yang:ietf-ip";   prefix ip;   import ietf-interfaces {     prefix if;   }   augment "/if:interfaces/if:interface" {     container ipv4 {       leaf enabled {         type boolean;         default true;       }       list address {         key "ip";         leaf ip {           type inet:ipv4-address-no-zone;         }         choice subnet {           mandatory true;           leaf prefix-length {             type uint8 {               range "0..32";             }           }           leaf netmask {             type yang:dotted-quad;           }         }       }     }   } } </pre> | <pre> module ietf-interfaces {   namespace "urn:ietf:params:xml:ns:yang:ietf-interfaces";   prefix if;   typedef interface-ref {     type leafref {       path "/if:interfaces/if:interface/if:name";     }   }   container interfaces {     list interface {       key "name";       leaf name {         type string;       }       leaf description {         type string;       }       leaf type {         type identityref {           base interface-type;         }         mandatory true;       }       leaf enabled {         type boolean;         default "true";       }     }   } } </pre> |
|-------------------------------------------------------------------------------------------------------------------------------------------------------------------------------------------------------------------------------------------------------------------------------------------------------------------------------------------------------------------------------------------------------------------------------------------------------------------------------------------------------------------------------------------------------------------------------------------------------------------------------------------------------------------------|----------------------------------------------------------------------------------------------------------------------------------------------------------------------------------------------------------------------------------------------------------------------------------------------------------------------------------------------------------------------------------------------------------------------------------------------------------------------------------------------------------------------------------------------------------------------------------------------------------|

Which JSON snippet configures a new interface according to YANG model?

A)

```
“ietf-interfaces:interface”: {
 “name”: “Loopback100”,
 “enabled”: true,
 “ietf-ip:ipv4”: {
 “address”: [
 {
 “ip”: “10.255.254.1”,
 “netmask”: “255.255.255.0”
 }] }
}
```

B)

```
“ietf-interfaces”: {
 interface: {
 “name”: “Loopback100”,
 “enabled”: true,
 “ietf-ip”: {
 ipv4: {
 “address”: [
 {
 “ip”: “10.255.254.1”,
 “netmask”: “255.255.255.0”
 }] } }
}
```

C)

```
“ interface” {
 “name”: “Loopback100”,
 “enabled”: true,
 “ipv4”: {
 “address”: [
 {
 “ip”: “10.255.254.1”,
 “netmask”: “255.255.255.0”
 }] }
}
```

D)

```
“ietf-interfaces:interface”: {
 “name”: “Loopback100”,
 “enabled”: true,
 “ietf-ip:ipv4:address”: [
 {
 “ip”: “10.255.254.1”,
 “netmask”: “255.255.255.0”
 }]
}
```

- A. Option A
- B. Option B
- C. Option C
- D. Option D

**Answer: B****NEW QUESTION 344**

- (Exam Topic 2)

Which implementation creates a group of devices on one or more LANs that are configured to communicate as if they were attached to the same wire?

- A. WLAN
- B. VLAN
- C. IPsec
- D. HSRP

**Answer: B****NEW QUESTION 345**

- (Exam Topic 2)

Refer to the exhibit.

```
$ sh script.sh
Traceback (most recent call last):
 File "script.py", line 2, in <module>
 api = WebexTeamsAPI()
 File "/opt/.venv/pyvenv35/lib/python3.5/site-packages/webexteamssdk/api/__init__.py", line 112,
in __init__
 "You must provide a Webex Teams access token to interact with "
webexteamssdk.exceptions.AccessTokenError: You must provide a Webex Teams access token to interact
with the Webex Teams APIs, either via a WEBEX_TEAMS_ACCESS_TOKEN environment variable or via the
access_token argument.
$
$
$ cat script.sh
#!/bin/bash

python script.py
$
```

Which line must be included in the Bash script for the Python code to succeed?

- A. define WEBEX\_TEAMS\_ACCESS\_TOKEN=your\_access\_token\_here
- B. export WEBEX\_TEAMS\_ACCESS\_TOKEN=your\_access\_token\_here
- C. set WEBEX\_TEAMS\_ACCESS\_TOKEN=your\_access\_token\_here
- D. WEBEX\_TEAMS\_ACCESS\_TOKEN=your\_access\_token\_here

**Answer: B**

#### NEW QUESTION 346

- (Exam Topic 2)

Refer to the exhibit.

```
<rpc message-id="101" xmlns="urn:ietf:params:xml:ns:Netconf:base:1.0">
 <get-conflg>
 <source>
 <running/>
 </source>
 <filter>
 <interfaces xmlns=" urn:ietf:params:xml:ns:yang:ietf-interfaces">
 <interface>
 <name/>
 </interface>
 </interfaces>
 </filter>
 </get-config>
</rpc>
```

A network engineer uses model-driven programmability to monitor and perform changes on the network. The network engineer decides to use the NETCONF RPC message to complete one of their tasks. What is accomplished by sending the RPC message?

- A. The running-config of the device is returned.
- B. The name of each interface is reset to a default name.
- C. All the YANG capabilities supported by the device are returned.
- D. A list of interface names is returned.

**Answer: D**

#### NEW QUESTION 349

- (Exam Topic 2)

What is a benefit of organizing into modules?

- A. improves collaboration of the development team
- B. makes it easier to deal with large and complex systems
- C. enables the code to be broken down into layers
- D. enables the inclusion of more programming languages in the code

**Answer: B**

#### Explanation:

From Wikipedia ([https://en.wikipedia.org/wiki/Modular\\_programming](https://en.wikipedia.org/wiki/Modular_programming)) "Modular programming is closely related to structured programming and object-oriented programming, all having the same goal of facilitating the construction of large software programs and systems by decomposition into smaller pieces."

#### NEW QUESTION 354

- (Exam Topic 2)

Which HTTP response code should be returned when the request is completed, but there is no content to send for the request?

- A. A.-100B.204C.302D.402

**Answer: B**



**Explanation:**

Reference: [https://developer.mozilla.org/en-US/docs/Web/HTTP/Status#successful\\_responses](https://developer.mozilla.org/en-US/docs/Web/HTTP/Status#successful_responses)

**NEW QUESTION 358**

- (Exam Topic 2)

What does a load balancer distribute in a network environment?

- A. outgoing connections to the network
- B. incoming traffic across multiple servers
- C. different TCP connections to the routers
- D. traffic in the network by leveraging the switch architecture

**Answer:** B

**NEW QUESTION 361**

- (Exam Topic 2)

How does a developer create and switch to a new branch called "my-bug-fix" to develop a product fix?

- A. git checkout -b my-bug-fix
- B. git branch -b my-bug-fix
- C. git branch my-bug-fix
- D. git checkout my-bug-fix

**Answer:** A

**Explanation:**

<https://www.shellhacks.com/git-create-new-branch-and-checkout/>

**NEW QUESTION 365**

- (Exam Topic 1)

What should a CI/CD pipeline aim to achieve?

- A. to allow manual testing before deployment
- B. to require minimal manual interaction
- C. to support new deployments on a fixed monthly schedule
- D. to provide a documented process for feedback

**Answer:** A

**NEW QUESTION 370**

- (Exam Topic 2)

```
HTTP/1.1 200 OK
Date: Mon, 27 Jul 2009 12:28:53 GMT
Server: nginx
Last-Modified: Wed, 22 Jan 2020 19:15:56 GMT
Content-Length: 88
Content-Type: application/json
Connection: keep-alive

{
 "id": "y123987jdkl",
 "status": "online",
 "type": "switch"
}
```

Which data is specified in the response header?

- A. {"id": "y123987jdkl". HTTP/1.1 200 OK"status: "online", "type": "switch"}
- B. HTTP/1.1 200 OK
- C. "type", "switch"
- D. Content-Type

**Answer:** B

**NEW QUESTION 373**

- (Exam Topic 1)

Refer to the exhibit.

For CLI commands that support XML, the `clid()` method returns JSON output. An exception is thrown when XML is not used. Executes CLI commands. Takes CLI command string and returns show command output in a JSON form.

“

Note: The “clid” API can be useful when searching the output of show commands using JSON tools as shown in the example.

## PYTHON

```
Example:
>>> import json
>>> from cli import *
>>> jversion = json.loads(clid("show
version"))
>>> jversion['bios_ver_str']
'08.06'
```

### Arguments:

- `cmd`: Single CLI command or a batch of CLI commands. Delimiter for multiple CLI commands is a space followed by a semicolon. Configuration commands must be in a fully qualified form.

### Returns:

- string: JSON-formatted output of show commands.

```
>>> from cli import *
>>> import json

>>>
>>> cli('configure terminal ; interface loopback 5 ; no shut')
''
>>> intflist=json.loads(clid('show interface brief'))
>>> i=0
>>> while i < len (intflist['TABLE_interface']['ROW_interface']):
... intf=intflist['TABLE_interface']['ROW_interface'][i]
... i=i+1
... if intf['state'] == 'up':
... print intf['interface']
```

The python interpreter and the Cisco python SDK are available by default in the Cisco NX-OS software. The SDK documentation shows how the `cild()` API can be used when working with working with JSON and XML. What are two effect of running the script? (Choose two.)

- configure interlace loopback 5
- issue shutdown on interface loopback 5
- show only the interfaces In the up status
- show only the interfaces in admin shut status
- show details for the TABLE interface

**Answer:** AC

**Explanation:**

Reference:

[https://www.cisco.com/c/en/us/td/docs/switches/datacenter/nexus9000/sw/7-x/programmability/guide/b\\_Cisco\\_](https://www.cisco.com/c/en/us/td/docs/switches/datacenter/nexus9000/sw/7-x/programmability/guide/b_Cisco_)

## NEW QUESTION 378

- (Exam Topic 1)

Refer to the exhibit.

```
class ucsm sdk.ucshandle.UcsHandle(ip, username, password, port=None, secure=None, proxy=None)
```

Bases: ucsm sdk.ucssession.UcsSession

[source]

UcsHandle class is the user interface point for any Ucs related communication.

- Parameters:**
- **ip (str)** – The IP or Hostname of the UCS Server
  - **username (str)** – The username as configured on the UCS Server
  - **password (str)** – The password as configured on the UCS Server
  - **port (int or None)** – The port number to be used during connection
  - **secure (bool or None)** – True for secure connection, otherwise False
  - **proxy (str)** – The proxy object to be used to connect

Given the API documentation for the UCS SDK python class, UcsHandle, which code snippet creates a handle instance?

```
#!/usr/bin/env python3
from ucsm sdk.ucshandle import UcsHandle
handle = UcsHandle("10.1.2.254", "admin", "password",
 port="443", secure=True)
```

```
#!/usr/bin/env python3
import ucsm sdk.ucshandle.UcsHandle
handle = UcsHandle("10.1.2.254", "admin", "password",
 port=443, secure=1)
```

```
#!/usr/bin/env python3
from ucsm sdk.ucshandle import UcsHandle
handle = UcsHandle(ip="10.1.2.254", username="admin",
 password="password", port=443, secure=True)
```

```
#!/usr/bin/env python3
from ucsm sdk.ucshandle import UcsHandle
handle = UcsHandle("10.1.2.254", "admin", "password",
 port="443", secure=1)
```

- A. Option A  
B. Option B  
C. Option C  
D. Option D

Answer: C

### NEW QUESTION 383

- (Exam Topic 1)

Which action resolves a 401 error in response to an HTTP GET that is issued to retrieve statement using RESTCONF on a CSR 1000V?

- A. Change the HTTP method to PUT.  
B. Change the transport protocol to HTTPS.  
C. Check the MIMF types in the HTTP headers.  
D. Check the authentication credentials.

Answer: D

### NEW QUESTION 385

- (Exam Topic 1)

What are two advantages of version control software? (Choose two.)

- A. It supports tracking and comparison of changes in binary formate files.  
B. It allows old versions of packaged applications to be hosted on the Internet  
C. It provides wiki collaboration software for documentation.  
D. It supports comparisons between revisions of source code files.  
E. It allows new team members to access the current code and history.

Answer: DE



#### NEW QUESTION 386

- (Exam Topic 1)

Which device is a system that monitors and controls incoming and outgoing network traffic based on predetermined security rules?

- A. Switch
- B. Router
- C. Firewall
- D. Load balancer

**Answer: C**

#### NEW QUESTION 391

- (Exam Topic 1)

Drag and drop the characteristics from the left onto the corresponding software development methodologies on the right?

- A. Mastered
- B. Not Mastered

**Answer: A**

**Explanation:**

#### NEW QUESTION 393

- (Exam Topic 1)

Which HTTP status Code means that the server cannot or will not process the request because of perceived client error?

- A. 100
- B. 203
- C. 303
- D. 400

**Answer: D**

#### NEW QUESTION 394

- (Exam Topic 1)

What is a function of the default gateway in a network?

- A. to drop traffic that is destined to the default gateway
- B. to drop traffic that is not destined to the default gateway
- C. to forward traffic to the same subnet
- D. to forward traffic to different subnets

**Answer: D**

#### NEW QUESTION 399

- (Exam Topic 1)

Drag and drop the capability on the left onto the Cisco compute management platform that supports the capability on the right.

Multi-Cloud automation and orchestration platform for Cisco and third-party servers, networks, storage, and converged infrastructure.	UCS Manager
Software as a Service Platform that enables Cisco infrastructure management, automation and orchestration from anywhere.	UCS Director
Embedded software that enables Cisco server, fabric, and storage provisioning.	Intersight

A. Mastered

B. Not Mastered

**Answer:** A

**Explanation:**

Multi-Cloud automation and orchestration platform for Cisco and third-party servers, networks, storage, and converged infrastructure.	Embedded software that enables Cisco server, fabric, and storage provisioning.
Software as a Service Platform that enables Cisco infrastructure management, automation and orchestration from anywhere.	Multi-Cloud automation and orchestration platform for Cisco and third-party servers, networks, storage, and converged infrastructure.
Embedded software that enables Cisco server, fabric, and storage provisioning.	Software as a Service Platform that enables Cisco infrastructure management, automation and orchestration from anywhere.

#### NEW QUESTION 401

- (Exam Topic 1)

When using the Bash shell, how is the output of the devnet command saved to a file named "output.txt"?

A. devnet & output.txt

B. devnet > output.txt

C. devnet < output.txt

D. devnet | output.txt

**Answer:** B

**Explanation:**

Reference: <https://askubuntu.com/questions/420981/how-do-i-save-terminal-output-to-a-file>

#### NEW QUESTION 406

- (Exam Topic 1)

Which service provides a directory lookup for IP addresses and host names?

A. DNS

B. DHCP

C. SNMP

D. NAT

**Answer:** A

#### NEW QUESTION 410

- (Exam Topic 1)

Fill in the blanks to complete the python script to retrieve a list of network devices using the Cisco DNA center API.



```
import requests
url = "https://myDNAserver/dna/intent/api/v1/network-device"
payload = {}
headers = {'x-auth-token': 'eyJ0eXAiOiJKV1QiLCJhbGciOiJIUzI1NiJ9.eyJzdWUiOiI1ZDE0OWZkMjhlZTY2MmQ3NGM5YzE5ZTIiLmYzMCIsImV4cCI6MTU3MjM3ODE5MCwidXNlcm5hbWUiOiJraXN371274739.zhK5LPQd501ZUpZi0IH_qrgOXtItINbxSFFF7JOEtRIs'}
}
response = requests.request(, url,
headers = , data =)
print(response.text.encode('utf8'))
```

- A. Mastered
- B. Not Mastered

Answer: A

#### Explanation:

Solution as below.

```
import requests
url = "https://myDNAserver/dna/intent/api/v1/network-device"
payload = {}
headers = {'x-auth-token': 'eyJ0eXAiOiJKV1QiLCJhbGciOiJIUzI1NiJ9.eyJzdWUiOiI1ZDE0OWZkMjhlZTY2MmQ3NGM5YzE5ZTIiLmYzMCIsImV4cCI6MTU3MjM3ODE5MCwidXNlcm5hbWUiOiJraXN371387657.zhK5LPQd501ZUpZi0IH_qrgOXtItINbxSFFF7JOEtRIs'}
}
response = requests.request("GET", url,
headers = headers, data = payload)
print(response.text.encode('utf8'))
```

#### NEW QUESTION 414

- (Exam Topic 1)

Refer to the exhibit.



```
[
 {
 "type": "fruit",
 "items": [
 {
 "color": "green",
 "items": [
 "kiwi",
 "grape"
]
 },
 {
 "color": "red",
 "items": [
 "strawberry",
 "apple"
]
 }
]
 },
 {
 "type": "vegs",
 "items": [
 {
 "color": "green",
 "items": [
 "lettuce"
]
 },
 {
 "color": "red",
 "items": [
 "pepper"
]
 }
]
 }
]
```

A REST API return this JSON output for a GET HTTP request, Which has assigned to a variable called "vegetables" Using python, which output is the result of this command?

```
print(filter(lambda l: l['type'] == 'fruit', vegetables)[0]['items'][0]['items'][0])
```

- A. Lettuce
- B. Kiwi
- C. ['kiwi', 'grape']
- D. {'color': 'green', 'items': ['kiwi', 'grape']}

**Answer: B**

#### NEW QUESTION 418

- (Exam Topic 1)

Before which process is code review performed when version control is used?

- A. committing code
- B. branching code
- C. merge of code
- D. checkout of code

**Answer: C**

#### NEW QUESTION 421

- (Exam Topic 1)

Drag and drop the HTTP methods from the left onto their generally accepted corresponding create, read, update, and delete operations on the right.

DELETE	Create
GET	Read
PATCH	Update
POST	Update
PUT	Delete

- A. Mastered
- B. Not Mastered

**Answer:** A

#### Explanation:

1 – D, 2 – B, 3 – C, 4 – E, 5 – A

Reference:

<https://www.cisco.com/c/en/us/td/docs/cloud-systems-management/application-policy-infrastructure-controller-e>

OR

Answer : Post

Get Put Delete

#### NEW QUESTION 424

- (Exam Topic 1)

Which CI/CD tool is an automation tool used to build, test, and deploy software?

- A. Nagios
- B. Gradle
- C. Jenkins
- D. Git

**Answer:** C

#### Explanation:

Reference:

<https://www.infoworld.com/article/3271126/what-is-cicd-continuous-integration-and-continuous-delivery-expla>

#### NEW QUESTION 429

- (Exam Topic 1)

Refer to the exhibit.

```
$ diff -u5 fish.py cat.py
--- fish.py 2020-01-02 09:41:02.840000000 +0100
+++ cat.py 2020-01-02 09:41:06.8859999800 +0100
@@ -160,11 +160,12 @@

 @single_request_timeout.setter
 def single_request_timeout(self, value):
 """The timeout (seconds) for a single HTTP REST API request."""
 check_type(value, int, optional=True)
- assert value is None or value > 0
+ if value is not None and value <= 0:
+ raise ValueError("single_request_timeout must be positive integer")
 self._single_request_timeout = value

 @property
 def wait_on_rate_limit(self)
 """Automatic rate-limit handling.
```

The output of a unified diff when comparing two versions of a python script is shown. Which two “single\_request\_timeout ()”

- A.

file: cat.py

```
160
161 @single_request_timeout.setter
162 def single_request_timeout(self, value):
163 """The timeout (seconds) for a single HTTP REST API request."""
164 check_type(value, int, optional=True)
165 assert value is None or value > 0
166 if value is not None and value <= 0:
167 raise ValueError("single_request_timeout must be positive integer")
168 self._single_request_timeout = value
169
```

B.

file: fish.py

```
160
161 @single_request_timeout.setter
162 def single_request_timeout(self, value):
163 """The timeout (seconds) for a single HTTP REST API request."""
164 check_type(value, int, optional=True)
165 assert value is None or value > 0
166 self._single_request_timeout = value
167
```

C.

file: cat.py

```
160
161 @single_request_timeout.setter
162 def single_request_timeout(self, value):
163 """The timeout (seconds) for a single HTTP REST API request."""
164 check_type(value, int, optional=True)
165 if value is not None and value <= 0:
166 raise ValueError("single_request_timeout must be positive integer")
167 self._single_request_timeout = value
168
169
```

D.

file: fish.py

```
160
161 @single_request_timeout.setter
162 def single_request_timeout(self, value):
163 """The timeout (seconds) for a single HTTP REST API request."""
164 check_type(value, int, optional=True)
165 self._single_request_timeout = value
```

E.

file: cat.py

```
172
173 @single_request_timeout.setter
174 def single_request_timeout(self, value):
175 """The timeout (seconds) for a single HTTP REST API request."""
176 check_type(value, int, optional=True)
177 if value is not None and value <= 0:
178 raise ValueError("single_request_timeout must be positive integer")
179 self._single_request_timeout = value
180
```

F. Option A

G. Option B

H. Option C

I. Option D

J. Option E

Answer: BC

#### NEW QUESTION 434

- (Exam Topic 1)

A Company is looking for cloud deployment which will use the on-premise infrastructure, is user self-service, and easy to scale. Which cloud solution should be selected for these requirements?

A. multi



- B. public
- C. private
- D. hybrid

Answer: C

#### NEW QUESTION 435

- (Exam Topic 1)

Refer to the exhibit.

List the clients that have used this network in the timespan

#### HTTP REQUEST

GET /networks/ {networkId}/clients

#### PARAMETERS

t0

The beginning of the timespan for the data. The maximum lookback period is 31 days from today.

timespan

The timespan for which the information will be fetched. If specifying timespan, do not specify parameter t0. The value must be in seconds and be less than or equal to 31 days. The default is 1 day.

perPage

The number of entries per page returned. Acceptable range is 3 – 1000. Default is 10.

startingAfter

A token used by the server to indicate the start of the page. Often this is a timestamp or an ID but it is not limited to those. This parameter should not be defined by client applications. The link for the first, last, prev, or next page in the HTTP Link header should define it.

endingBefore

A token used by the server to indicate the end of the page. Often this is a timestamp or an ID but it is not limited to those. This parameter should not be defined by client applications. The link for the first, last, prev, or next page in the HTTP Link header should define it.

```
base_url = "https://api.meraki.com/api/v0"
network_id = "L_12345678910"
api_key = "1098hadpfsiapsf8ahf8ohp"
requests.<item 1> (
 <item 2> + "<item 3>/" + <item 4>, "<item 5>",
 headers = {
 "X-Cisco-Meraki-API-Key": <item 6> ,
 "Content-Type": "<item 7>"
 },
 <item 8>={"<item 9>":<item 10>})
```

Drag and drop the code from the left code from the left onto the item number on the right to complete the Meraki code to obtain a list of client which have used this network.

params	<item 1>
networks	<item 2>
timespan	<item 3>
get	<item 4>
432000	<item 5>
base_url	<item 6>
application/json	<item 7>
network_id	<item 8>
clients	<item 9>
api_key	<item 10>

- A. Mastered
- B. Not Mastered

Answer: A

Explanation:

1 - d, 2 - f, 3 - b, 4 - h, 5 - i, 6 – j, 7 - g, 8 - a, 9 - c, 10 - e

NEW QUESTION 439

- (Exam Topic 1)

A developer is writing an application that a REST API and the application requires a valid from the API which element of the response is used in the conditional check?

- A. URL
- B. Status code
- C. Link
- D. Body
- E. Headers

Answer: B

NEW QUESTION 444

- (Exam Topic 1)

What are two security benefits of a Docker-based application?

- A. easier to patch because Docker containers include only dependencies that the application requires
- B. prevents information leakage that can occur when unhandled exceptions are returned in HTTP responses
- C. allows for separation of application that traditionally run in the same host
- D. natively secures access to secrets that are used by the running application
- E. guarantees container images are secured and free of vulnerabilities

Answer: AC

NEW QUESTION 445

- (Exam Topic 1)

Users cannot access a webserver and after the traffic is captured, the capture too\* shows an ICMP packet that reports "communication administratively prohibited" What Is the cause of this webserver access Issue?

- A. An access list along the path is blocking the traffic
- B. The traffic is not allowed to be translated with NAT and dropped.
- C. Users must authenticate on the webserver to access It
- D. A router along the path is overloaded and thus dropping traffic

Answer: A

#### NEW QUESTION 449

- (Exam Topic 1)

Refer to the exhibit.

```
def process_devices(dnac, token):
 url = "https://{}/api/v1/network-device".format(dnac['host'])
 headers["x-auth-token"] = token
 response = requests.get(url, headers=headers, verify=False)
 data = response.json()
 for item in data['response']:
 print(item["hostname"], " ", item["managementIpAddress"])
```

What is the function of the python script?

- A. Count and print the total number of available devices.
- B. Iterate over a list of network devices and write all device names and management IP addresses to an output file.
- C. Iterate over a list of network devices and write all device type and associated management IP address.
- D. For each device that is returned, display the device and, for each device, print the device name and management IP address.
- E. Loop through the returned list of network devices and, for each device, print the device name management IP address.

**Answer:** E

#### NEW QUESTION 450

- (Exam Topic 1)

Which two statements are true about Cisco UCS manager, Cisco Intersight APIs? (Choose two.)

- A. Cisco Intersight API interactions can be encoded in XML or JSON and require an APIs key in the HTTP header for authentication.
- B. USC Director API interactions can be XML- or JSON-encoded and require an APLs key in the HTTP header for authentication.
- C. UCS manager API interactions are XML-encoded and require a cookie in the method for authentication.
- D. Cisco Intersight uses XML to encoded API interactions and requires an API key pair for authentication.
- E. UCS manager uses JSON to encode API interactions and utilizes Base64-encoded credentials in the HTTP header for authentication.

**Answer:** BC

#### Explanation:

Reference:

[https://www.cisco.com/c/en/us/td/docs/unified\\_computing/ucs/ucs-director/rest-api-getting-started-guide/6-5/cis](https://www.cisco.com/c/en/us/td/docs/unified_computing/ucs/ucs-director/rest-api-getting-started-guide/6-5/cis)

[https://www.cisco.com/c/en/us/td/docs/unified\\_computing/ucs/sw/api/b\\_ucs\\_api\\_book.pdf](https://www.cisco.com/c/en/us/td/docs/unified_computing/ucs/sw/api/b_ucs_api_book.pdf)

#### NEW QUESTION 453

- (Exam Topic 1)

Which model-driven programmability protocol does Cisco IOS XE Software support?

- A. CORBA
- B. SSH
- C. gNMI
- D. SOAP

**Answer:** C

#### Explanation:

Reference:

[https://www.cisco.com/c/en/us/td/docs/ios-xml/ios/prog/configuration/1610/b\\_1610\\_programmability\\_cg/gnmi\\_](https://www.cisco.com/c/en/us/td/docs/ios-xml/ios/prog/configuration/1610/b_1610_programmability_cg/gnmi_)

#### NEW QUESTION 455

- (Exam Topic 1)

Drag and drop the network automation interfaces from the left onto the transport protocols that they support on the right. Not all options are used.

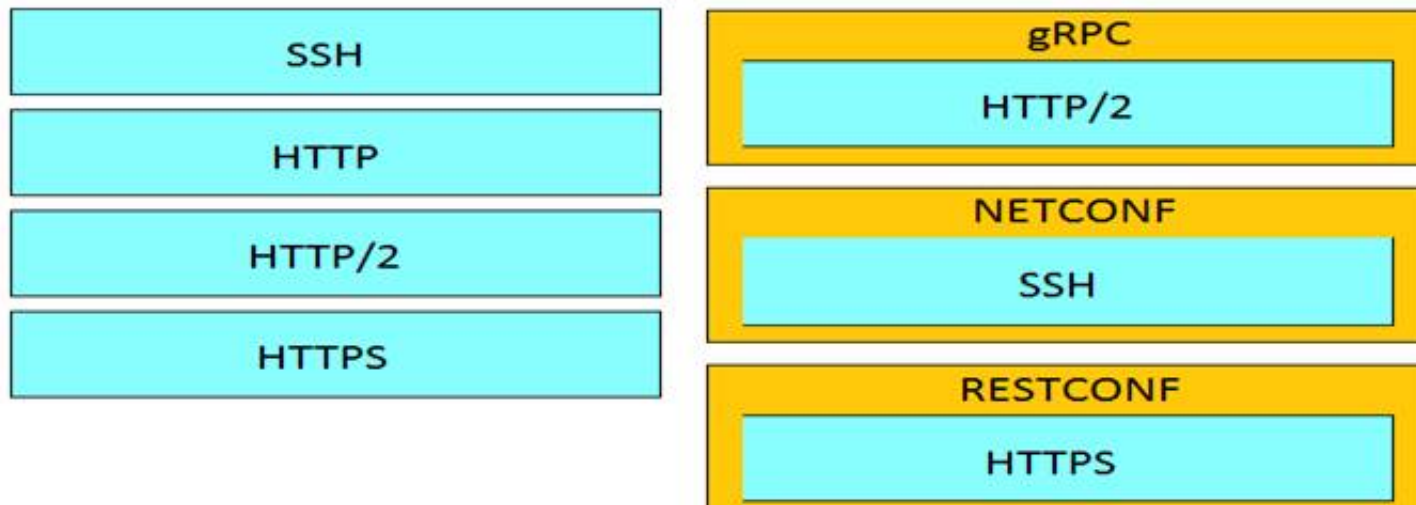
SSH	gRPC
HTTP	
HTTP/2	NETCONF
HTTPS	
	RESTCONF

- A. Mastered
- B. Not Mastered

**Answer:** A



**Explanation:**



**NEW QUESTION 459**

- (Exam Topic 1)

Which platform has an API that be used to obtain a list of vulnerable software on user devices?

- A. Cisco Umbrella
- B. Cisco Firepower
- C. Cisco Identity Services Engine
- D. Cisco Advanced Malware Protection

**Answer:** D

**NEW QUESTION 462**

- (Exam Topic 1)

In DNS, which record specifies an alias that refers to another name that ultimately resolves to an IP address?

- A. AAA
- B. SOA
- C. NS
- D. CNAME

**Answer:** D

**Explanation:**

Reference: <https://ns1.com/resources/dns-types-records-servers-and-queries>

**NEW QUESTION 465**

- (Exam Topic 1)

Which network device monitors incoming and outgoing traffic and decides whether to allow or block specific traffic based on a defined set of rules?

- A. switch
- B. load balancer
- C. reverse proxy
- D. firewall

**Answer:** D

**NEW QUESTION 467**

- (Exam Topic 1)

Which description of a default gateway is true?

- A. It is a device that receives IP packets that have no explicit next-hop in the routing table.
- B. It is a feature that translates between public and private addresses.
- C. It is a security feature that denies certain traffic.
- D. It is a device that receives Layer 2 frames with an unknown destination address.

**Answer:** A

**Explanation:**

Refe

<https://www.certificationkits.com/cisco-certification/ccna-articles/cisco-ccna-intro-to-routing-basics/cisco-ccna>

**NEW QUESTION 469**

- (Exam Topic 1)

Which two statement describe the role of an artifact repository in a CI/CD pipeline? (Choose two.)

- A. An artifact repository allows to compare and merge changes in the source code of files involved in a build process.
- B. An artifact repository is needed only for CI/CD pipeline executed on a public cloud infrastructure.
- C. An artifact repository provides traceability, search, and management of binary files.
- D. An artifact repository is needed only for managing open source software.
- E. An artifact repository stores files needed and generated during the build process.

Answer: CE

#### NEW QUESTION 472

- (Exam Topic 1)

Which two statements about JSON and XML are true? (Choose two.)

- A. JSON objects are collection of key value pair.
- B. The syntax of JSON contains tags, elements, and attributes.
- C. JSON arrays are an unordered set of key value pairs.
- D. The syntax of XML contains tags, elements, and attributes.
- E. XML objects are collections of key-value pairs.

Answer: AD

#### NEW QUESTION 477

- (Exam Topic 1)

Which device is used to transport traffic from one broadcast domain to another broadcast domain?

- A. load balancer
- B. layer 2 switch
- C. router
- D. proxy server

Answer: C

#### NEW QUESTION 478

- (Exam Topic 1)

What are two advantages of YANG-based approaches for infrastructure automation? (Choose two.)

- A. directly maps to JavaScript
- B. multi-platform vendor abstraction
- C. designed to reflect networking concepts
- D. compiles to executables that run on network devices
- E. command line driven interface

Answer: BC

#### NEW QUESTION 479

- (Exam Topic 1)

Refer to the exhibit.

**URL:** https://<ASA\_IP>/api/access/global/rules

**Method:** POST

**Payload:**

```
{
 "destinationAddress": {
 "kind": "IPv4Address",
 "value": "10.1.1.1"
 },
 "remarks": [],
 "active": true,
 "permit": true,
 "sourceAddress": {
 "kind": "IPv4Address",
 "value": "192.168.1.1"
 }
}
```

**Response Status Code:** 400 Bad Request

```
{ "messages": [{ "level": "Error", "code": "JSON-PARSE-ERROR", "details":
 "Unexpected character ('\"' (code 34)):"
```

What caused the error in this API request?

- A. The API resource does not support the POST operation.
- B. The API resource does not support JSON format payloads.
- C. The submitted JSON payload includes a field that is not supported by the API resources.
- D. The submitted JSON payload has a formatting issue.

Answer: D

## NEW QUESTION 481

- (Exam Topic 1)

Refer to the exhibit.

### HTTP REQUEST

**POST** /organizations/ {organizationId}/networks

### PARAMETERS

#### name

The name of the new network.

#### type

The type of the new network. Valid types are wireless, appliance, switch, systemsManager, camera, cellularGateway, or a space-separated list of those for a combined network.

#### tags

A space-separated list of tags to be applied to the network.

#### timeZone

The timezone of the network. For a list of allowed timezones, please see the 'TZ' column in the table in [this article](#).

#### copyFromNetworkId

The ID of the network to copy configuration from. Other provided parameters will override the copied configuration, except type which must match this network's type exactly.

#### disableMyMerakiCom

Disables the local device status pages ([my.meraki.com](#), [ap.meraki.com](#), [switch.meraki.com](#), [wired.meraki.com](#)). Optional (defaults to false).

#### disableRemoteStatusPage

Disables access to the device status page ([http://\[device's LAN IP\]](#)). Optional. Can only be set if disableMyMerakiCom is set to false.

```
base_url = https://api.meraki.com/api/v0
org_id = 123456789
api_key = 1098hadpfsiapsf8ahf8ohp
network_name = "New Network"
requests.<item 1> (
 <item 2> + "/" + org_id + "/" + <item 4>,
 headers = {
 "X-Cisco-Meraki-API-Key": "<item 5>",
 "Content-Type": "<item 6>"
 },
 <item 7>=json.dumps ({ "name": <item 8>,
 "type": "wireless switch"
 })
)
```

Drag and drop the code from the left onto the item numbers on the right to complete to Meraki python script shown in the exhibit.



base_url	<item 1>
network_name	<item 2>
data	<item 3>
post	<item 4>
application/json	<item 5>
networks	<item 6>
api_key	<item 7>
organizations	<item 8>

- A. Mastered  
 B. Not Mastered

**Answer:** A

**Explanation:**

1 – D, 2 – A, 3 – H, 4 – F, 5 – G, 6 – E, 7 – C, 8 – B

#### NEW QUESTION 486

- (Exam Topic 1)

Which status code is used by a REST API to indicate that the submitted payload is incorrect?

- A. A.-400B.403C.405D.429

**Answer:** A

**Explanation:**

Reference:

<https://community.cisco.com/t5/application-centric/apic-rest-api-produces-inconsistent-response/td-p/2758230>

#### NEW QUESTION 491

- (Exam Topic 1)

In python, which expression checks whether the script returns a success status code when the Requests library is used?

- A. response.status\_code== requests.ok  
 B. response.status\_code== requests.codes.ok  
 C. response.code== requests.codes.ok  
 D. response.status\_code ! == requests.codes.ok

**Answer:** B

**Explanation:**

Reference: <https://realpython.com/python-requests/>

#### NEW QUESTION 493

- (Exam Topic 1)

Which Cisco DevNet resource allows access to products in a development lab to explore, learn, and build application that use Cisco APLs?

- A. DevNet communities  
 B. DevNet code Exchange  
 C. DevNet Automation Exchange  
 D. DevNet sandbox

**Answer:** D

**Explanation:**

Reference: <https://developer.cisco.com/site/sandbox/>

#### NEW QUESTION 497

- (Exam Topic 1)

Which statement describes the benefit of using functions in programming?

- A. Functions allow problems to be split into simpler, smaller groups, and reduce code repetition, which makes the code easier to read.
- B. Functions ensure that a developer understands the inner logic contained before using them as part of a script or application.
- C. Functions create the implementation of secret and encrypted algorithms.
- D. Functions store mutable values within a script 01 application.

**Answer:** A

#### NEW QUESTION 500

- (Exam Topic 1)

Drag and drop the requests from the left into the correct order on the right to create and check the path trace between two devices using Cisco DNA center API.

GET /api/v1/flow-analysis/{flowAnalysisId}	Step 1
POST /api/v1/flow-analysis	Step 2
POST /api/system/v1/auth/token	Step 3
GET /api/v1/network-device/ and choose IP of source and destination devices	Step 4

- A. Mastered
- B. Not Mastered

**Answer:** A

#### Explanation:

1 – C, 2 – D, 3 – B, 4 - A

#### NEW QUESTION 504

- (Exam Topic 1)

Which way should be used to safely the API keys?

- A. In an environment variable unique to the system database
- B. Encrypted in a configuration file that is separate from the code
- C. Encrypted in the code in a function
- D. Plain text in the code as a constant

**Answer:** B

#### NEW QUESTION 506

- (Exam Topic 1)

Drag and drop the network automation interfaces from the left onto the transport protocols that they support on the right.

SSH	gRPC
HTTP	
HTTP/2	NETCONF
HTTPS	RESTCONF

- A. Mastered
- B. Not Mastered

Answer: A

Explanation:  
gRPC = C, NETCONF = A, RESTCONF = B, D OR

**NEW QUESTION 510**  
- (Exam Topic 1)  
Drag and drop elements of the RESTCONF protocol stack from the left onto the correct description on the right. Not all elements on the left are used.

<data>	content
XML or JSON	operations
SSH	transport
<rpc>, <rpc-reply>	
GET, POST, PUT, PATCH, DELETE	
HTTPS	

- A. Mastered
- B. Not Mastered

Answer: A

Explanation:  
1 – B, 2 – E, 3 - F  
Reference:  
[https://www.cisco.com/c/en/us/td/docs/ios-xml/ios/prog/configuration/169/b\\_169\\_programmability\\_cg/restconf](https://www.cisco.com/c/en/us/td/docs/ios-xml/ios/prog/configuration/169/b_169_programmability_cg/restconf)

**NEW QUESTION 514**  
- (Exam Topic 1)  
What are the two purposes for using a VLAN in a network? (Choose two)

- A. It is used to create the routing table.
- B. It creates a collection of MAC addresses.
- C. It is used for VM network traffic.
- D. It segments a network.
- E. It creates a broadcast domain.

Answer: DE

**NEW QUESTION 515**  
- (Exam Topic 1)  
When a Cisco IOS XE networking device is configured using RESTCONF, what is the default data-encoding method?

- A. XML
- B. x-form-encoding
- C. YANG
- D. YAML

Answer: A

**NEW QUESTION 517**  
- (Exam Topic 1)  
Drag and drop the function on the left onto the type of plane that handles the function on the right.



- handles transit traffic
- handles signaling protocols destined to the device
- handles hardware forwarding decisions
- handles configuration change protocols destined to the device
- handles BGP destined to the device
- handles NETCONF destined to the device

**Control Plane**

**Management Plane**

**Data Plane**

- A. Mastered  
B. Not Mastered

Answer: A

Explanation:

- handles transit traffic
- handles signaling protocols destined to the device
- handles hardware forwarding decisions
- handles configuration change protocols destined to the device
- handles BGP destined to the device
- handles NETCONF destined to the device

**Control Plane**

handles signaling protocols destined to the device

handles BGP destined to the device

**Management Plane**

handles configuration change protocols destined to the device

handles NETCONF destined to the device

**Data Plane**

handles transit traffic

handles hardware forwarding decisions

NEW QUESTION 519

- (Exam Topic 1)  
What is the purpose of a firewall in application deployment?

- A. adds TLS support to an application that does not support it natively  
B. forwards traffic to a pool of instances of the application  
C. provides translation for an application's hostname to its IP address  
D. limits traffic to only ports required by the application

Answer: D

NEW QUESTION 523

- (Exam Topic 1)  
Which two protocols are used to apply a configuration change on a Cisco IOS XE device? (Choose two)

- A. CCX  
B. RESTCONF  
C. NETCONF  
D. HSRP  
E. CDP

Answer: BC

#### NEW QUESTION 528

- (Exam Topic 1)

Drag and drop the descriptions from the left onto correct application deployment models on the right.

provides a low-latency compute capability close to the data source
environment where you pay only for the resources that you consume
offers a self-service, elastic compute environment from a dedicated set of physical resources
provides an approach for overflow traffic to burst out to meet peak demands
shared compute platform that is offered over the Internet

<b>Public Cloud</b> <div></div> <div></div>
<b>Private Cloud</b> <div></div>
<b>Hybrid Cloud</b> <div></div>
<b>Edge Computing</b> <div></div>

- A. Mastered  
B. Not Mastered

Answer: A

#### Explanation:

1 – B, 2 – E, 3 – C, 4 – D, 5 – A

#### NEW QUESTION 529

- (Exam Topic 1)

Which platform is run directly using a hypervisor?

- A. bare metal systems  
B. containers  
C. virtual machines  
D. applications

Answer: C

#### NEW QUESTION 533

- (Exam Topic 1)

Drag and drop the Docker file instructions from the onto correct descriptions on the right. Not all options are used.

FROM ubuntu:12.04
VOLUME["/var/www","/var/log/apache2","/etc/apache2"]
RUN apt-get update && apt-get install -y -force-yes apache2
ENTRYPOINT["/usr/sbin/apache2ctl","-D","FOREGROUND"]
EXPOSE 1521

informs Docker that the container listens on the specified network port(s) at runtime
creates a mount point with the specified name
configures a container that runs as an executable
must be the first instruction in the Docker file

- A. Mastered  
B. Not Mastered

Answer: A

#### Explanation:

1 – E, 2 – B, 3 – D, 4 – A

#### NEW QUESTION 535

- (Exam Topic 1)

Which product provides network controller-level management features?

- A. Cisco DNA Center
- B. Cisco NX-OS
- C. Cisco UCS Manager
- D. Cisco ISE

**Answer:** A

**Explanation:**

Reference: <https://www.cisco.com/c/en/us/products/cloud-systems-management/index.html>

#### NEW QUESTION 536

- (Exam Topic 1)

Refer to the exhibit.

```
<books>
 <science>
 <biology>10.00</biology>
 <geology>9.00</geology>
 <chemistry>8.00</chemistry>
 </science>
 <math>
 <calculus>20.00</calculus>
 <algebra>12.00</algebra>
 </math>
</books>
```

Which JSON is equivalent to the XML –encoded data?

```
A. [{
 "books": {
 "science": {
 "biology": "10.00",
 "geology": "9.00",
 "chemistry": "8.00"
 },
 "math": {
 "calculus": "20.00",
 "algebra": "12.00"
 }
 }
}]
```

```
B. {
 "books": [
 "science": {
 "biology": "10.00",
 "geology": "9.00",
 "chemistry": "8.00"
 },
 "math": {
 "calculus": "20.00",
 "algebra": "12.00"
 }
]
}
```



```
C. {
 "books": [
 "science": {
 "biology": "10.00",
 "geology": "9.00",
 "chemistry": "8.00"
 },
 "math": {
 "calculus": "20.00",
 "algebra": "12.00"
 }
]
}

D. {
 "books": [
 "science", {
 "biology": "10.00",
 "geology": "9.00",
 "chemistry": "8.00"
 },
 "math", {
 "calculus": "20.00",
 "algebra": "12.00"
 }
]
}
```

- A. Option A
- B. Option B
- C. Option C
- D. Option D

Answer: A

#### NEW QUESTION 541

- (Exam Topic 1)

Refer to the exhibit.

```
{
 "items": [{
 "kind": "object#NetworkObj",
 "selfLink": "https://10.201.230.5/api/objects/networkobjects/db01",
 "name": "db01",
 "host": {
 "kind": "IPv4address",
 "value": "172.16.0.11"
 },
 "objectId": "db01"
 },
]
}
```

The JSON data in the exhibit has been parsed and stored in a variable, "data". What returns the value "172.16.0.11" ?

- A. data['items'][0]['host']['value']
- B. data['items']['1']['host']['value']
- C. data['items']['host'][1]
- D. data['items']['host']['value']

Answer: A

#### NEW QUESTION 542

- (Exam Topic 1)

Fill in the blanks to complete the cURL command that invokes a RESTful API to retrieve a resource in JSON format using OAuth.

```
curl -X [] -H "[]: application/json" \
-H "[]: Bearer AbCdEf123456" https://localhost/api/myresource
```

- A. Mastered
- B. Not Mastered

Answer: A

**Explanation:**

```
curl -X GET [url] -H "Accept: application/json" \
-H "Authorization: Bearer AbCdEf123456" https://localhost/api/myresource
```

Reference: <https://webcache.googleusercontent.com/search?q=cache:Se6d2trvMsEJ:https://blogs.cisco.com/developer/secu>

**NEW QUESTION 545**

- (Exam Topic 1)

Which REST architectural constraint indicates that no client context should be stored on the server between requests?

- A. stateless
- B. uniform interface
- C. cacheable
- D. client-server

**Answer:** A

**Explanation:**

Reference: <https://developer.cisco.com/docs/nx-os/#!representational-state-transfer-rest>

**NEW QUESTION 550**

- (Exam Topic 1)

Which two NETCONF operations cover the RESTCONF GET operation? (Choose two.)

- A. <get>
- B. <edit>
- C. <get-update>
- D. <modify-config>
- E. <get-config>

**Answer:** AE

**Explanation:**

Reference:

<https://www.cisco.com/c/en/us/support/docs/storage-networking/management/200933-YANG-NETCONF-Conf>

**NEW QUESTION 554**

- (Exam Topic 1)

What is the purpose of the Cisco VIRL software tool?

- A. To verify configurations against compliance standards
- B. To simulate and model networks
- C. To automate API workflows
- D. To test performance of an application

**Answer:** B

**Explanation:**

Reference: <https://www.speaknetworks.com/cisco-virl-better-gns3/>

**NEW QUESTION 556**

- (Exam Topic 1)

Which platform is run directly using a hypervisor?

- A. Virtual
- B. Bare metal systems
- C. Containers
- D. Applications

**Answer:** C

**NEW QUESTION 558**

- (Exam Topic 1)

Which mechanism is used to consume a RESTful API design when large amounts of data are returned?

- A. Data sets
- B. Scrolling
- C. Blobs
- D. Pagination

**Answer:** D

**Explanation:**

Reference: <https://nordicapis.com/everything-you-need-to-know-about-api-pagination/>

**NEW QUESTION 561**

- (Exam Topic 1)

A developer is reviewing a code that was written by a colleague. It runs fine, but there are many lines of code to do a seemingly simple task repeatedly. Which action organizes the code?

- A. Refactor the code by removing any unnecessary tests
- B. Using functions, rewrite any pieces of code that are repeated
- C. Reverse engineer and rewrite the code logic
- D. Modify the code to use loops

**Answer:** B

#### NEW QUESTION 565

- (Exam Topic 1)

Refer to the exhibit.

```
def get_result()

 url = "https://sandboxdnac.cisco.com/dna/system/api/v1/auth/token"

 resp = requests.post(url, auth=HTTPBasicAuth(DNAC_USER, DNAC_PASSWORD))

 result = resp.json()['Token']

 return result
```

What does the python function do?

- A. It returns DNAC user and password.
- B. It returns HTTP Basic Authentication.
- C. It returns an authorization token.
- D. It reads a token from a local JSON file and posts the token to the DNAC URL.

**Answer:** C

#### NEW QUESTION 566

- (Exam Topic 1)

Package updates from a local server fail to download. However, the same updates work when a much slower external repository is used. Way are local updates failing?

- A. The update utility is trying to use a proxy to access the internal resource.
- B. The Internet connection is too slow.
- C. The Internet is down at the moment, which causes the local server to not be able to respond.
- D. The server is running out of disk space.

**Answer:** A

#### NEW QUESTION 569

- (Exam Topic 1)

How is a branch called "my-bug-fix" started to develop a fix needed in a product?

- A. git branch -b my-bug-fix
- B. git checkout -b my-bug-fix
- C. git checkout my-bug-fix
- D. git branch my-bug-fix

**Answer:** B

#### NEW QUESTION 574

- (Exam Topic 1)

Refer to the exhibit.



```
$ pyang -f tree Cisco-IOS-XE-native.yang
module: Cisco-IOS-XE-native
 +--rw native
 +--rw logging
 +--rw monitor|
 +--rw severity? logging-level-type

$ curl --insecure -v -X PATCH \
 "https://ios-xe-mgmt-latest.cisco.com:9443/restconf/data/Cisco-IOS-XE-native:native" \
 -H 'Authorization: Basic ZGV2ZWxvcGVyOkMxc2NvMTIzNDU=' -H 'Accept: application/yang-data+json' \
 -H 'Content-Type: application/yang-data+json' \
 -d '{ "Cisco-IOS-XE-native:native" : { "logging" : { "monitor" : { "severity" : "alerts" }} } }'
> ...
< ...
< HTTP/1.1 204 No Content
```

The definition of the YANG module and a RESTCONF query sent to a Cisco Ioc XE device is shown. Which statement is correct if the RESTCONF interface responds with a 204 status code?

- A. The query failed at retrieving the logging seventy level.
- B. The query failed to set the logging seventy level due to an invalid path.
- C. The query retrieved the logging seventy level.
- D. The query updated the logging seventy level or created it if not present on the device.

**Answer:** D

**Explanation:**

Reference:

[https://www.cisco.com/c/en/us/td/docs/ios-xml/ios/prog/configuration/1611/b\\_1611\\_programmability\\_cg/restco](https://www.cisco.com/c/en/us/td/docs/ios-xml/ios/prog/configuration/1611/b_1611_programmability_cg/restco)

#### NEW QUESTION 579

- (Exam Topic 1)

A REST API service requires authentication based on the username and password. The user "john" has the password "384279060" and the Base64 encoding of those credentials is "am9objowMTIzNDU2Nzg=". Which method completes an authentication request?

- A. The header must include: Authorization: Bearer am9objowMTIzNDU2Nzg=
- B. The payload must include: Authorization: Bearer am9objowMTIzNDU2Nzg=
- C. The payload must include: Authorization: Basic am9objowMTIzNDU2Nzg=
- D. The header must include: Authorization: Basic am9objowMTIzNDU2Nzg=

**Answer:** D

#### NEW QUESTION 581

- (Exam Topic 1)

Refer to the exhibit.

```

- hosts: CISCO_ROUTER_01
 gather_facts: true
 connection: network_cli

 tasks:
 - name: show conf
 ios_command:
 commands:
 - show conf
 register: config

 - name: save output to /etc/ansible/configs
 copy:
 content: "{{ config.stdout[0] }}"
 dest: "/etc/ansible/configs/show_conf_{{ inventory_hostname }}.txt"
```

What is the result of executing this Ansible playbook?

- A. The playbook copies a new start-up configuration to CISCO\_ROUTER\_01.
- B. The playbook backs up the running configuration of CISCO\_ROUTER\_01.
- C. The playbook backs up the start-up configuration of CISCO\_ROUTER\_01.
- D. The playbook copies a new running configuration to CISCO\_ROUTER\_01.

**Answer:** C

#### NEW QUESTION 582

- (Exam Topic 1)

Refer to the exhibit.

```

- hosts: switch2960cx
 gather_facts: no

 tasks:
 - ios_l2_interface:
 name: GigabitEthernet0/1
 state: unconfigured

 - ios_l2_interface:
 name: GigabitEthernet0/1
 mode: trunk
 native_vlan: 1
 trunk_allowed_vlans: 6-8
 state: present

 - ios_vlan:
 vlan_id: 6
 name: guest-vlan
 interfaces:
 - GigabitEthernet0/2
 - GigabitEthernet0/3

 - ios_vlan:
 vlan_id: 7
 name: corporate-vlan
 interfaces:
 - GigabitEthernet0/4

 - ios_vlan:
 vlan_id: 8
 name: iot-vlan
 interfaces:
 - GigabitEthernet0/5
```

Which two statements describe the configuration of the Ansible script if run? (Choose two.)

- A. Traffic on port 0/2 and 0/3 is connected to port 0/6.
- B. Traffic from ports 0/2 to 0/5 can flow on port 0/1 due to the trunk.
- C. Traffic can flow between ports 0/2 to 0/5 due to the trunk on port 0/1.
- D. GigabitEthernet0/2 and GigabitEthernet0/3 are access ports for VLAN 6.
- E. GigabitEthernet0/1 is left unconfigured.

**Answer:** BD

#### NEW QUESTION 587

- (Exam Topic 1)

What are the two principles of an infrastructure as code environment? (Choose two)

- A. Complete complex systems must be able to be built from reusable infrastructure definitions.
- B. Environments must be provisioned consistently using the same inputs.
- C. Redeployments cause varying environment definitions.
- D. Service overlap is encouraged to cater for unique environment needs.
- E. Components are coupled, and definitions must be deployed for the environment to function.

**Answer:** AB

#### NEW QUESTION 592

.....

## THANKS FOR TRYING THE DEMO OF OUR PRODUCT

Visit Our Site to Purchase the Full Set of Actual 200-901 Exam Questions With Answers.

We Also Provide Practice Exam Software That Simulates Real Exam Environment And Has Many Self-Assessment Features. Order the 200-901 Product From:

<https://www.2passeasy.com/dumps/200-901/>

## Money Back Guarantee

### 200-901 Practice Exam Features:

- \* 200-901 Questions and Answers Updated Frequently
- \* 200-901 Practice Questions Verified by Expert Senior Certified Staff
- \* 200-901 Most Realistic Questions that Guarantee you a Pass on Your FirstTry
- \* 200-901 Practice Test Questions in Multiple Choice Formats and Updatesfor 1 Year