

# HP

## Exam Questions HPE0-S60

Delta - HPE Compute Solutions



#### NEW QUESTION 1

Your customer manages an HPE Synergy platform using HPE OneView 5.6. To leverage new functionalities, the customer wants to update HPE OneView to version 6.1

Which statement about this update process is true?

- A. To update to 6.1, the customer has to first update to 6.0, which is a milestone edition.
- B. The customer can update directly to 6.1, but HPE OneView downtime will be longer.
- C. Before updating to 6.1, customer should increase memory size on the HPE Composer.
- D. The customer must check the HPE Composer version, as 6.1 is supported only with HPE Composer2.

**Answer: D**

#### NEW QUESTION 2

The proposal consists of.

- 3 HPE Synergy 12000 frames
- 6 HPE Composer 2 modules
- 2 HPE Virtual Connect SE 100 Gb F32 Module
- 4 HPE Synergy 50 Gb interconnect Link Module

Which statements about this proposed design are true? (Select two.)

- A. The selected interconnect modules do not provide the requested WWN virtualization
- B. HPE Synergy 50Gb ILMs must be replaced with HPE Virtual Connect SE 100 Gb F32 modules
- C. The current setup can support up to 18 HPE Synergy 480 Gen10 Plus compute modules
- D. FC upgrade licenses for HPE Virtual Connect SE 100 Gb F32 Module must be added
- E. Remove 4 HPE Composer 2 modules from the design, as they are not required

**Answer: BD**

#### NEW QUESTION 3

Your customer has the following HPE Synergy setup

- Three frames fully populated with HPE Synergy 480 Gen10 Plus modules and 25Gb/s downlink speed formulating a single logical enclosure
  - Two HPE Virtual Connect SE 100Gb F32 Module for Synergy
  - Four HPE Synergy 50Gb interconnect Link Module
  - Six HPE Synergy Virtual Connect SE 32Gb FC Modules
- The customer needs to add a frame.

Which statement about the expansion of this setup is true?

- A. The additional frame must have HPE Virtual Connect FC modules installed
- B. The customer can grow the existing logical enclosure up to 5 frames
- C. The customer has to create a new logical enclosure for the additional frame
- D. The additional frame cannot have 12Gb SAS connection modules installed

**Answer: C**

#### NEW QUESTION 4

Your customer has a logical enclosure configured using a single HPE Synergy frame with the following configuration

- two HPE Virtual Connect SE 100Gb F32 Modules for Synergy
  - two HPE Synergy Virtual Connect SE 32Gb FC Modules
- 12 HPE Synergy 480 Gen10 Plus compute nodes with appropriate mezzanine cards

They plan to add a new HPE Synergy frame to an existing logical enclosure with the following configuration

- two HPE Synergy Virtual Connect SE 32Gb FC Modules
  - two HPE Synergy 20Gb interconnect Link Modules
  - Eight HPE Synergy 480 Gen 10 Plus compute nodes with appropriate mezzanine cards
- Which statement about the planned configuration change is true?

- A. Four compute modules must be moved to the second frame to balance the configuration
- B. The two HPE Synergy 20Gb interconnect Link Modules must be replaced with the 50Gb option
- C. A license for an extended logical enclosure must be added to HPE OneView through GUI
- D. The HPE Synergy virtual Connect SE 32Gb FC Modules from both frames should be stacked

**Answer: D**

#### NEW QUESTION 5

A logical interconnect group can span on multiple HPE Synergy frames for which interconnect type?

- A. Brocade 32GB Fibre Channel Switch Module for HPE Synergy
- B. HPE virtual Connect SE 32 Gb FC Module for Synergy
- C. HPE Virtual Connect SE 100 Gb F32 Module for Synergy
- D. HPE Synergy 12 Gb SAS Connection Module

**Answer: C**

#### NEW QUESTION 6

Refer to the exhibit.

Create Logical Interconnect Group

General

?

General

Name

LIG-FC

Logical Interconnect Group

Using the selectors below, describe the logical interconnect group to be created and then click "Select interconnects" to see the bay and interconnect choices.

Interconnect type

Virtual Connect SE 32Gb FC Module for Synergy

Enclosure count

1

Interconnect bay set

1

Redundancy

Redundant

Select interconnects

Changed: Interconnect type t...

Create

Create +

Cancel

Which statement about this logical interconnect group is true?

- A. Both modules are located in different frames for redundancy
- B. For an uplink set, ports from different modules can be selected
- C. interconnect modules are installed in interconnect bays 1 and 4
- D. An additional license is required to change the enclosure count

**Answer: D**

#### NEW QUESTION 7

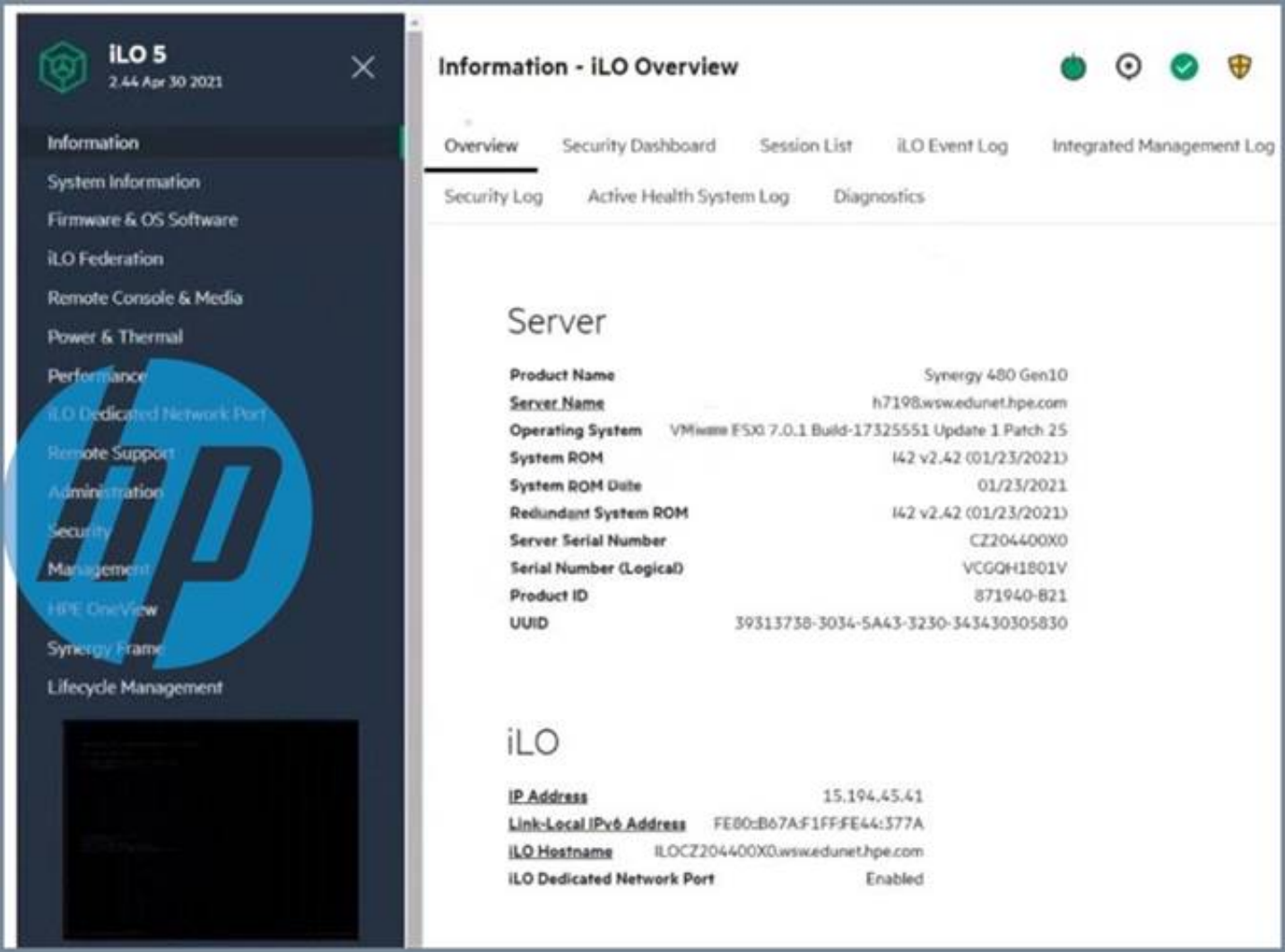
Your customer needs to move an application from an HPE Synergy 480 Gen10 Compute Module to an HPE Synergy 660 Gen 10 Compute Module. The 480 has a switch that has been manually zoned outside of HPE OneView. What must the customer do before migrating the application?

- A. Migrate the application to a Logical JBOD and connect it to the new server
- B. Copy the server profile and assign the clone to the new hardware
- C. Edit the server profile and change server hardware type
- D. Create a new server profile template and apply to the new hardware

**Answer: C**

#### NEW QUESTION 8

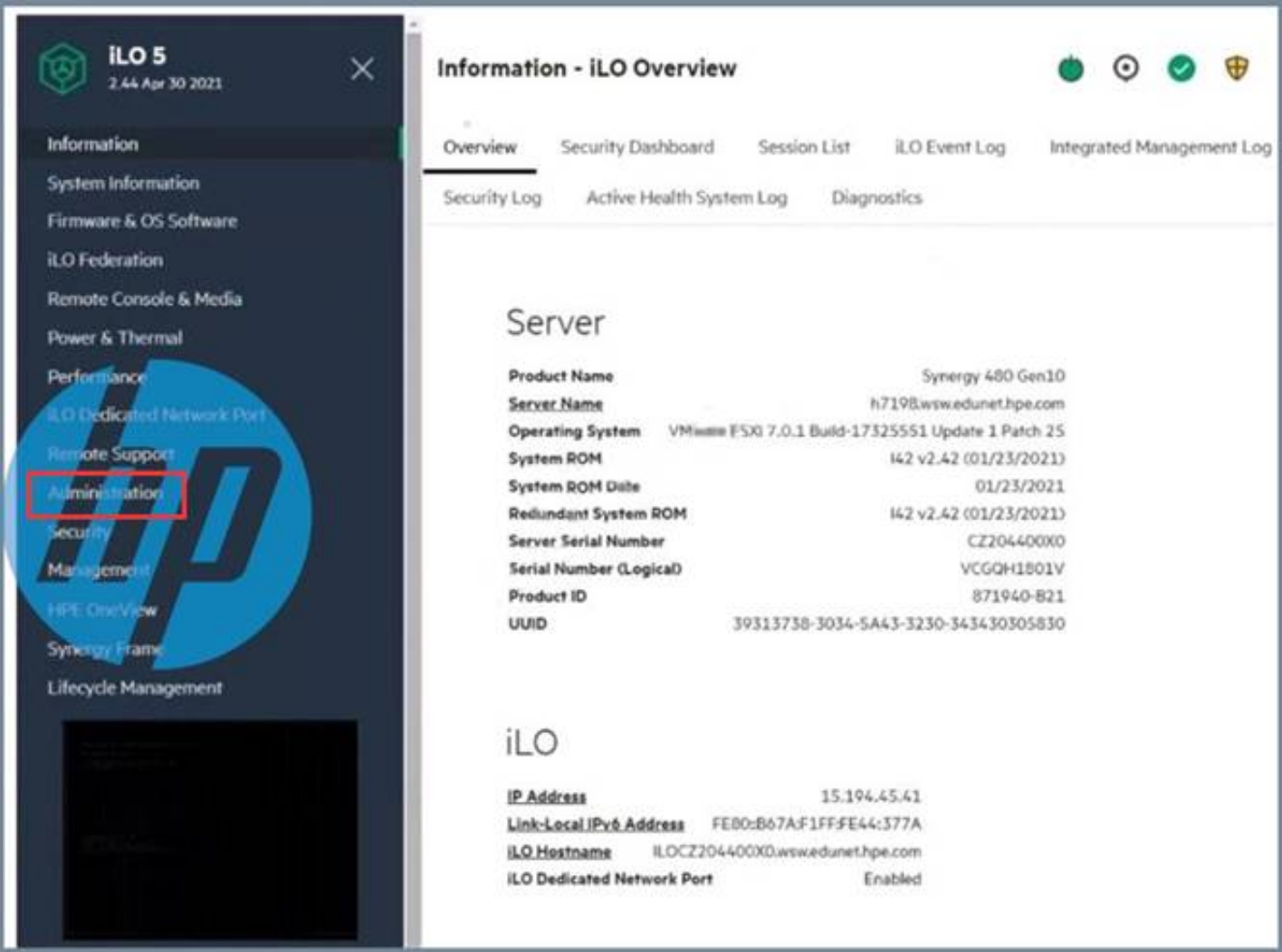
Click the area within the iLO management interface that will allow you to access workload Advisor.



- A. Mastered
- B. Not Mastered

**Answer: A**

**Explanation:**



**NEW QUESTION 9**

An HPE Synergy customer needs to prevent a timeout and loss of communication during an external switch firmware upgrade. Click the parameter that the customer should configure within an uplink set to meet this requirement

Create Uplink Set ?

General

Name

Prod-US

Consistency checking

Exact match

Type

Ethernet

Connection mode

Automatic

LACP timer

Short (1s)

LACP load balancing

Source & Destination MAC Address

LACP failover trigger

All active uplinks transition to offline

LACP distribute uplink ports

☒

- A. Mastered  
B. Not Mastered

Answer: A

Explanation:

Create Uplink Set ?

General

Name

Prod-US

Consistency checking

Exact match

Type

Ethernet

Connection mode

Automatic

LACP timer

Short (1s)

LACP load balancing

Source & Destination MAC Address

LACP failover trigger

All active uplinks transition to offline

LACP distribute uplink ports

☒

NEW QUESTION 10

Match HPE Superdome Flex system with its specific feature.

Answer Area		
System		Feature
HPE Superdome Flex		Support for 2 Sockets and 48TB of memory
HPE Superdome Flex 280		Support for nPar with16 sockets
		Maximum of 24TB memory
		Minimum of 768 GB of memory

- A. Mastered  
B. Not Mastered

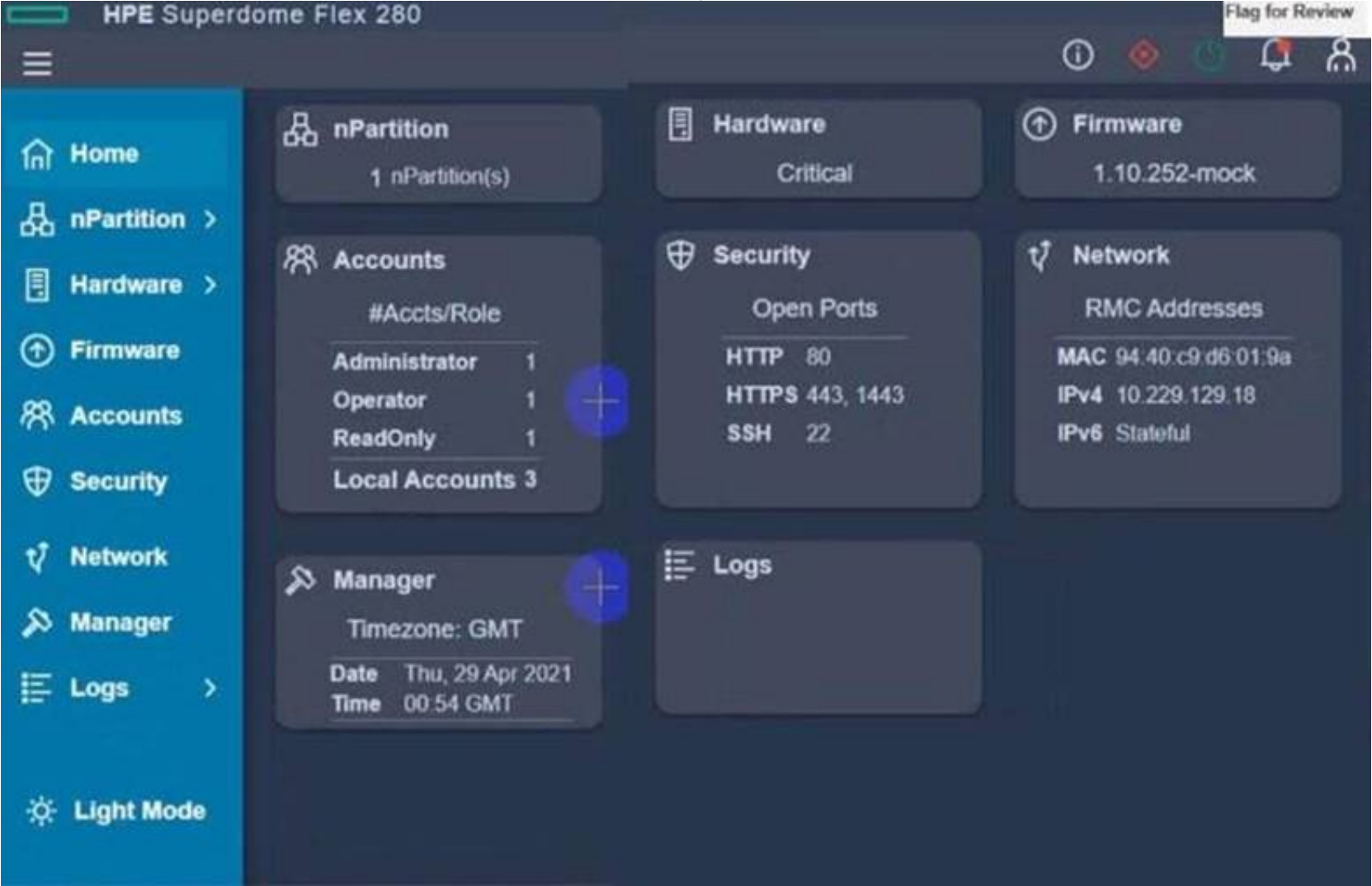


Answer: A

Explanation:  
HPE Superdome flex in all 4

NEW QUESTION 10

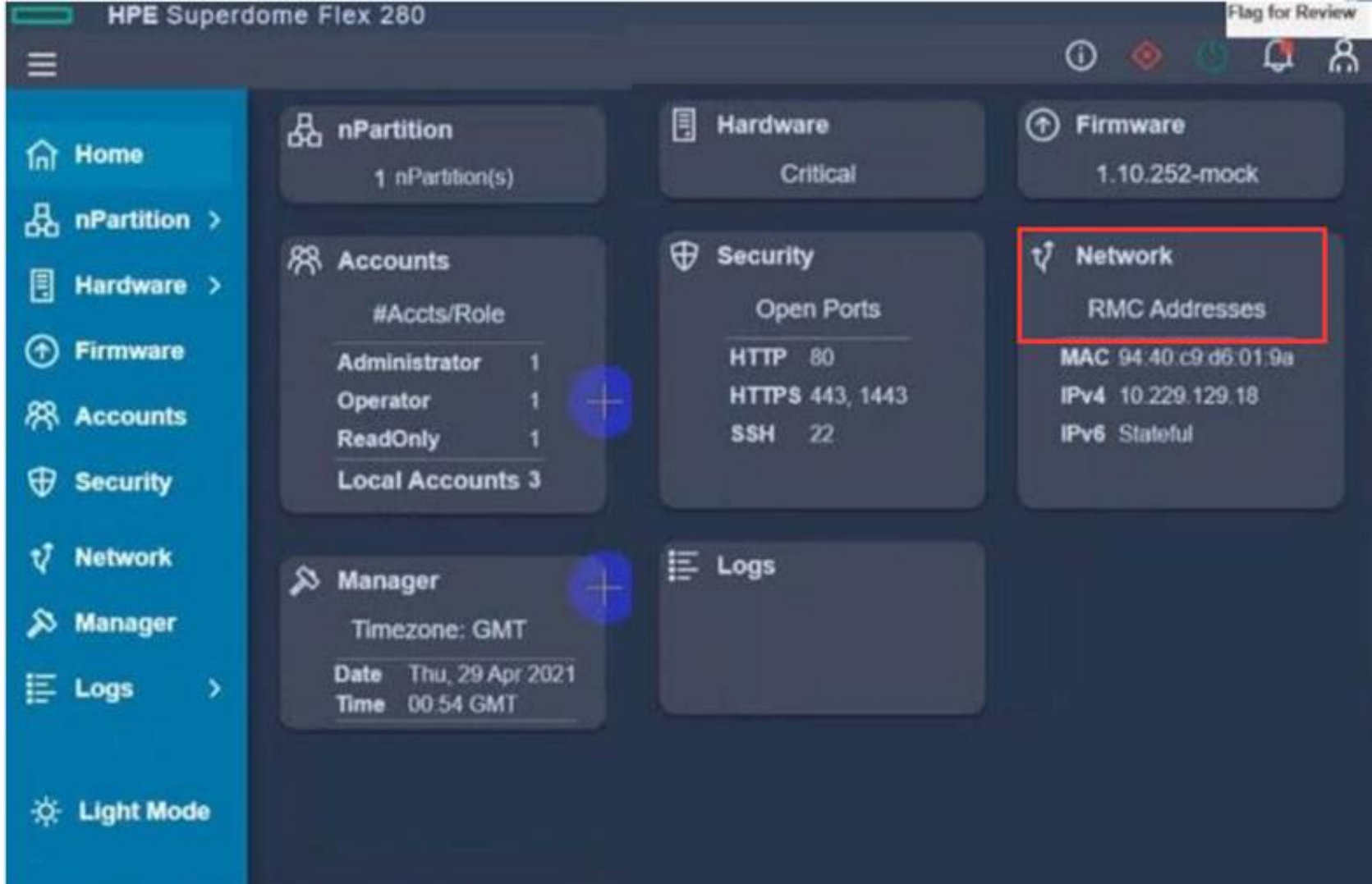
After deploying HPE Superdome Flex 280 you need to check Core Analysis Engine (CAE) Log.  
Click the appropriate section in the HPE Superdome Flex 280 management interface that will allow you to complete this task.



- A. Mastered
- B. Not Mastered

Answer: A

Explanation:



NEW QUESTION 12

Click the drop-down menu that will allow you to define the location of the master modules within the logical interconnect group.

Create Logical Interconnect Group

General

?

General

Name

LIG-ETH

Logical Interconnect Group

Using the selectors below, describe the logical interconnect group to be created and then click "Select interconnects" to see the bay and interconnect choices.

Interconnect type

Virtual Connect SE 100Gb F32 Module for Synergy

Enclosure count

3

Interconnect bay set

3

Redundancy

Redundant

Downlink speed

25 Gb/s

Select interconnects

- A. Mastered
- B. Not Mastered

Answer: A

Explanation:

Create Logical Interconnect Group

General

?

General

Name

LIG-ETH

Logical Interconnect Group

Using the selectors below, describe the logical interconnect group to be created and then click "Select interconnects" to see the bay and interconnect choices.

Interconnect type

Virtual Connect SE 100Gb F32 Module for Synergy

Enclosure count

3

Interconnect bay set

3

Redundancy

Redundant

Downlink speed

25 Gb/s

Select interconnects

NEW QUESTION 15

Put the steps of the HPE infosight flow in the correct order.

Steps

Observing

Learning

Recommending

Predicting

Acting

>

<

Answer Area

1

2

3

4

5

&u2191

&u2193

- A. Mastered
- B. Not Mastered

Answer: A

Explanation:  
(observing, learning, predicting, recommending, acting)

NEW QUESTION 16

Refer to the exhibit.

Create Logical Interconnect Group

General

?

General

Name

LIG-ETH

Logical Interconnect Group

Using the selectors below, describe the logical interconnect group to be created and then click "Select interconnects" to see the bay and interconnect choices.

Interconnect type

Virtual Connect SE 100Gb F32 Module for Synergy

Enclosure count

3

Interconnect bay set

3

Redundancy

Redundant

Downlink speed

25 Gb/s

Select interconnects

Changed: Name to "LIG-ETH"

Create

Create +

Cancel

Which statement about this logical interconnect group is true?

- A. The master modules are located in the interconnect bays 2 and 5
- B. For the given downlink speed, the maximum number of frames is reached
- C. Both master modules are located in the same HPE Synergy frame
- D. To use interconnect bay set 3, all compute nodes must be half-height

Answer: C

NEW QUESTION 21

Which statement about HPE Superdome Flex 280 is true?

- A. It supports 2 to 8 sockets in 2-socket increments.
- B. it cannot be managed using HPE OneView.
- C. It must be equipped with at least 768 GB of memory.
- D. It can support up to two nPars with an external RMC.

Answer: C



#### NEW QUESTION 25

Your customer reports that an external FC boot volume for Windows server is visible four times in the Disk Management 1 online and 3 offline. What should you do to resolve this issue?

- A. Disable deduplication for this volume at the array level
- B. Remove the offline disks using array management tools
- C. Install and configure MPIO on the Windows system
- D. Remove the offline disks using Windows Disk Management

**Answer: C**

#### NEW QUESTION 30

Which statement about manual orchestration during the firmware update is true?

- A. It is supported only for logical enclosures with at least three frames
- B. It provides an ability to select and update one side of the Interconnect topology at a time
- C. It provides the ability to install an older firmware version than currently installed in the interconnect
- D. It allows all the interconnect modules to be activated manually at the same time.

**Answer: B**

#### NEW QUESTION 32

Your customer plans to use HPE OneView for VMware vCenter Server to deploy ESXi systems. They created a server profile template that they want to use in HPE OneView.

Put the steps required to configure HPE OneView for VMware vCenter Server on the left into their correct order on the right.

Steps	Answer Area
Add HPE OneView credentials to the vCenter Server and create OS Deployment Plan	
Add vCenter Server to HPE OneView for VMware vCenter Server	
Deploy new ESXi systems using vCenter Server interface.	
Upload HPE-friendly ESXi image.	

- A. Mastered
- B. Not Mastered

**Answer: A**

**Explanation:**

Steps	Answer Area
Add HPE OneView credentials to the vCenter Server and create OS Deployment Plan	
Add vCenter Server to HPE OneView for VMware vCenter Server	
Deploy new ESXi systems using vCenter Server interface.	
Upload HPE-friendly ESXi image.	

#### NEW QUESTION 36

Your customer plans to deploy HPE OneView for VMware vCenter Server together with HPE Storage Integration Pack for VMware vCenter. The customer wants to use them to manage HPE Synergy Gen10 compute modules, HPE ProLiant Gen 10 servers and an MSA array. Which statement about compatibility of the existing environment with the planned software components is true?

- A. Both HPE Synergy Gen10 full-height compute module plugins will require a license
- B. HPE OneView for VMware vCenter Server does not support standalone HPE ProLiant servers
- C. To use the required plugins HPE ProLiant Gen10 systems must be managed using HPE OneView
- D. HPE Storage integration Pack for VMware vCenter does not support MSA arrays

**Answer: B**

#### NEW QUESTION 38

Your customer wants to add a second HPE Synergy frame to an existing logical enclosure Based on a single HPE Synergy frame. The customer wants to use a highly available master setup.

Which procedures should be performed during the expansion process? (Select two.)

- A. Create a new logical interconnect group and enclosure group for two frames setup

- B. Create a new logical enclosure based on both HPE Synergy frames.
- C. Re-parent an existing enclosure group to the new logical interconnect group.
- D. Modify an existing logical interconnect to include second HPE Synergy frame.
- E. Move one of the master modules to the appropriate interconnect bay in the second frame.

Answer: BD

NEW QUESTION 41

Your customer plans to expand an existing nPar based on a single HPE Superdome Flex chassis. Which statement about workload availability during expansion is true?

- A. Powered nPar can be expanded only if HPE Superdome Flex 280 is used
- B. Online expansion is available only if RMC is used for management.
- C. HPE Superdome Flex does not support expansion of powered on nPars
- D. Powered nPar can be expanded if it does not use HPE Persistent Memory

Answer: C

NEW QUESTION 44

Your customer wants to compare HPE Superdome Flex with HPE Superdome Flex 280. Which statement about these two systems is true?

- A. Only HPE Superdome Rex 280 can be managed using HPE OneView
- B. Only HPE Superdome Flex supports HPE Persistent Memory
- C. Only HPE Superdome Flex 280 can support multiple nPars
- D. Only HPE Superdome Flex supports 32 sockets and 48TB of memory

Answer: A

NEW QUESTION 46

Match each HPE Synergy logical component with the definition.

Component		Definition
Enclosure group		Acts as a recipe for creating a group that represents the available networks, uplink sets, and interconnect settings for a set of physical interconnects in a set of enclosures.
Logical enclosure		A single administrative entity that consists of the configuration for a set of interconnects in a single enclosure or a frame link topology.
Logical interconnect		A logical resource that defines a consistent configuration for an enclosure or a set of enclosures making up a logical enclosure.
Logical interconnect group		Contains the configuration intended for a set of physical enclosures.

- A. Mastered
- B. Not Mastered

Answer: A

Explanation:

Component		Definition
Enclosure group	Logical interconnect group	Acts as a recipe for creating a group that represents the available networks, uplink sets, and interconnect settings for a set of physical interconnects in a set of enclosures.
Logical enclosure	Logical interconnect	A single administrative entity that consists of the configuration for a set of interconnects in a single enclosure or a frame link topology.
Logical interconnect	Enclosure group	A logical resource that defines a consistent configuration for an enclosure or a set of enclosures making up a logical enclosure.
Logical interconnect group	Logical enclosure	Contains the configuration intended for a set of physical enclosures.

NEW QUESTION 50

After HPE Superdome Flex deployment and nPar setup, you need to verify health status of HPE Superdome Flex components. Put the steps on the left into the coned order on the right to perform this task.



Enter show health command	1
Confirm health status	2
Open SSH client	3
Open session to RMC	4

- A. Mastered  
 B. Not Mastered

**Answer: A**

**Explanation:**

Enter show health command.	1	Open SSH client
Confirm health status	2	Open session to RMC.
Open SSH client	3	Enter show health command.
Open session to RMC.	4	Confirm health status.

#### NEW QUESTION 54

Your customer added a new Ethernet network in HPE Oneview mat is used to manage their HPE Synergy platform. When the customer tries to connect one of the compute nodes to this network through the server profile, this network is not available. What must be done to fix this issue?

- A. Check the Logical Enclosure settings and verify if the maximum number of networks allowed for this LE is reached.  
 B. To make this network available to use in the server profile, the customer must enable the Smart Link feature within network definition.  
 C. The newly created network must be added to the uplink set within the LIG, and Logical interconnect configuration must be updated from the LIG.  
 D. Check within the server profile which server hardware is used and perform the Refresh operation on this compute node to get the latest adapter information.

**Answer: C**

#### NEW QUESTION 57

Your customer is trying to grow a VMware duster using HPE OneView for VMware vCenter Server. They get an error and cannot proceed Which tool should you use to troubleshoot the problem?

- A. HPE One View for VMware vCenter Server to verify if server profile template s property imported and registered  
 B. vCenter Server to verify if an OS Bund Plans property defined and has ESXi image uploaded  
 C. HPE OneView interface to import an existing cluster using the hypervisor cluster profile functionality.  
 D. ILO interlace of a given HPE Synergy compute node to verify whether this node is registered within HPE Oneview.

**Answer: A**

#### NEW QUESTION 60

Your customer has the following HPE Synergy setup:

- 15 HPE Synergy 12000 frames with 50Gb connectivity to each server port
- 2 HPE Composer 2 modules
- 15 HPE D3940 Storage Modules, one per frame
- 2 HPE 12Gb SAS switches per frame Which statement about this setup is true?

- A. The customer must create at least five logical enclosures for this setup.  
 B. To manage 15 frames, additional HPE Composers are required.  
 C. The customer can install up to 12 HPE Synergy 480 compute nodes per frame.  
 D. If properly cabled, any compute node can access any HPE D3490 storage module

**Answer: A**

#### NEW QUESTION 63

Your customer wants to add dedicated Fibre Channel connectivity to the HPE Synergy frame running HPE Synergy 480 Gen10 compute modules, each with one CPU socket populated Currently they use two 12 Gb SAS switches and two HPE Virtual Connect SE 100Gb F32 Modules for HPE Synergy installed in third fabric. What must be done to enable dedicated FC connectivity for this HPE Synergy frame?

- A. A second CPU must be installed for all HPE Synergy 480 Gen10 compute nodes.  
 B. For Brocade switches, a logical interconnect group must be created in HPE OneView.

- C. For VC-FC modules, all of server facing ports must be property licensed.
- D. SAS switches must be moved to second fabric and FC modules Installed in the first one.

Answer: D

NEW QUESTION 66

Match HPE SimpliVity team with the definition.

Term		Definition
Arbiter		Non-hyperconverged servers that can exist in an HPE SimpliVity environment and provide additional compute capacity while consuming the storage provided by the hyperconverged nodes.
Compute node		Provides centralized management and events end-point for vCenter.
Intelligent Workload Optimizer		Integrates with VMware Distributed Resources Scheduler to ensure optimal placement of the VM compute resources.
Management Virtual Controller		Facilitates communication between nodes and resolves state conflicts to ensure service continuity

- A. Mastered
- B. Not Mastered

Answer: A

Explanation:

Term		Definition
Arbiter		Non-hyperconverged servers that can exist in an HPE SimpliVity environment and provide additional compute capacity while consuming the storage provided by the hyperconverged nodes.
Compute node		Provides centralized management and events end-point for vCenter.
Intelligent Workload Optimizer		Integrates with VMware Distributed Resources Scheduler to ensure optimal placement of the VM compute resources.
Management Virtual Controller		Facilitates communication between nodes and resolves state conflicts to ensure service continuity

NEW QUESTION 70

Your customer experienced some problems caused by outdated HPE Superdome Flex firmware. Which update method should they use to avoid these issues in the future?

- A. HPE OneView method for I/O firmware update procedure
- B. RMC CLI to update I/O and HPE Persistent Memory firmware
- C. HPE OneView IT HPE Persistent Memory firmware must be updated.
- D. HPE SUM if HPE Persistent Memory firmware must be updated

Answer: B

NEW QUESTION 72

Refer to the exhibit.



Logical JBODs 1

+ Create Logical JBOD

Name	Number of physical drives
Logical JBOD	1

Logical-JBOD

Overview

General

Description	none
State	Configured
Drive enclosure	CZ204400XB, bay 11
Used by	none
Number of physical drives	1
Drive technology	SAS HDD
Minimum drive size	600 GB
Maximum drive size	600 GB
Erase on delete	Yes

Drives

Bay	Drive Enclosure	Model	Type	Capacity
19	CZ204400XB, bay 11	EG000600JWJNH	SAS HDD	600 GB

Which statement about this logical JBOD is true?

- A. This logical JBOD can be connected to multiple systems to formulate a shared datastore.
- B. After deleting this logical JBOD drives will be blocked for 12h in case this JBOD must be re-created
- C. After deleting this logical JBOD, its drives will not be available until a clean-up procedure is done
- D. This logical JBOD can be presented to the compute nodes in a different frame.

Answer: C

NEW QUESTION 75

What is a limitation when creating a server profile?

- A. BIOS settings can be changed only when UEFI optimized is selected as boot mode
- B. ILO management is limited to the integration with Active Directory or LDAP
- C. Administrator cannot define more than 8 connections within a server profile
- D. It is not possible to create shared volumes on demand through a server profile

Answer: B

NEW QUESTION 78

Your customer reports that they cannot deploy HPE Synergy compute nodes using HPE OneView for VMware vCenter Server (HPE OV4VC). What should you check during troubleshooting process?

- A. If HPE OneView credentials are added in vCenter Server
- B. If any compute nodes are added to the vCenter Server
- C. If the HPE Oneview instance is integrated with HPE OV4VC.
- D. If vCenter Server is licensed in the HPE Oneview interface

Answer: B

NEW QUESTION 79

.....

## Thank You for Trying Our Product

### We offer two products:

1st - We have Practice Tests Software with Actual Exam Questions

2nd - Questions and Answers in PDF Format

### HPE0-S60 Practice Exam Features:

- \* HPE0-S60 Questions and Answers Updated Frequently
- \* HPE0-S60 Practice Questions Verified by Expert Senior Certified Staff
- \* HPE0-S60 Most Realistic Questions that Guarantee you a Pass on Your FirstTry
- \* HPE0-S60 Practice Test Questions in Multiple Choice Formats and Updatesfor 1 Year

**100% Actual & Verified — Instant Download, Please Click**  
**[Order The HPE0-S60 Practice Test Here](#)**