

HP

Exam Questions HPE6-A73

Aruba Certified Switching Professional Exam



NEW QUESTION 1

A network engineer is using NetEdit to manage AOS-CX switches. The engineer notices that a lot of thirdparty VoIP phones are showing up in the NetEdit topology. The engineer deletes these, but they are automatically rediscovered by NetEdit and added back in. What should the administrator do to solve this problem?

- A. Change the VoIP phone SNMP community string to something unknown by NetEdit
- B. Disable LLDP globally on the AOS-CX switches where phones are connected
- C. Disable SSH access on all the VoIP phones
- D. Disable the RESTful API on all the VoIP phones

Answer: A

Explanation:

"NetEdit will now also discover and display third-party devices that are using the standard MIB's. Using SNMP with NetEdit, administrators can also enter SSH credentials for third-party devices.

NEW QUESTION 2

What must a network administrator implement in order to run an NAE script on an AOS-CX switch?

- A. Deployment
- B. Schedule
- C. Plan
- D. Agent

Answer: D

NEW QUESTION 3

When an AOS-CX switch uses a temporary copy of the Configuration State database, what kind of analysis does NetEdit perform to ensure that the configuration is correct?

- A. Syntax validation
- B. Semantic validation
- C. Conformance validation
- D. Change validation

Answer: D

Explanation:

- Validation processes
 - + Syntax validation
 - When: while typing
 - What: command syntax including in-line help
 - + Semantics validation
 - When: VALIDATE button (in multi-editor) or before DEPLOY
 - What: configuration consistency
 - + Conformance validation
 - When: while editing
 - What: compliance with conformance rules: corporate policies, minimum connectivity requirements, etc.
 - + Change validation
 - When: during DEPLOY (before and after configuration deployment)
 - What: compares device state before and after changes are applied (using show commands)

NEW QUESTION 4

An administrator is managing a pair of core AOS-CX switches configured for VSX. Connected to this core are pairs of aggregation layer AOS-CX switches configured for VSX. OSPF is running between the aggregation and core layers. To speed up OSPF convergence, the administrator has configured BFD between the core and aggregation switches.

What is a best practice the administrator should implement to reduce CPU processing on the switches if a BFD neighbor fails?

- A. Disable ICMP redirects
- B. Implement graceful restart
- C. Increase the BFD echo timers
- D. Increase the VSX keepalive timer

Answer: A

NEW QUESTION 5

An administrator wants to implement a virtual switching technology that implements a single control-plane solution. Which S-CX switches would meet these criteria?

- A. All AOS-CX switching platforms
- B. AOS-CX 6300 and 6400 switches
- C. AOS-CX 6300, 6400, and 83xx switches
- D. AOS-CX 6300 switches

Answer: C

NEW QUESTION 6

An administrator implements interim accounting for guest users so that ClearPass can track the amount of bandwidth that guests upload and download. Guests that abuse bandwidth consumption should be disconnected from the network. The administrator configures the following on the AOS-CX access switches:

```
Access1(config)# ip dns host cppm.arubatraining.com 10.254.1.23 vrf mgmt
Access1(config)# radius-server host cppm.arubatraining.com key plaintext aruba123 vrf mgmt
Access1(config)# aaa group server radius cppm
Access1(config-sg)# server cppm.arubatraining.com vrf mgmt
Access1(config-sg)# exit
Access1(config)# aaa accounting port-access start-stop interim 5 group cppm
Access1(config)# radius dyn-authorization client cppm.arubatraining.com secret-key plaintext aruba123 vrf mgmt replay-
protection disable
```

After performing this configuration, the administrator notices that guest users that have exceeded the guest bandwidth limit are not being disconnected. Upon further investigation, Access Tracker in ClearPass indicates a disconnect CoA message is being sent to the AOS-CX switch. What is causing this issue?

- A. RADIUS change of authorization is not enabled on the AOS-CX switch.
- B. Bandwidth consumption of the guests is not being reported by the AOS-CX switch.
- C. NTP is not configured on the AOS-CX switch.
- D. There is a time discrepancy between the AOS-CX switch and ClearPass.

Answer: A

NEW QUESTION 7

An administrator wants to implement dynamic segmentation policies. The network consists of AOS-CX and Aruba gateways.

Which type of forwarding should the administrator implement for users that already connect via wireless, but will also be connecting on Ethernet switch ports?

- A. User-based tunneling (UBT)
- B. Port-based tunneling (PBT)
- C. Switch-to-switch tunneling (SST)
- D. Local switching

Answer: A

NEW QUESTION 8

What is correct regarding multicasting and AOS-CX switches?

- A. IGMP snooping is disabled, by default, on Layer-2 VLAN interfaces
- B. IGMP query functions are enabled, by default, on Layer-2 VLAN interfaces
- C. IGMP snooping is enabled, by default, on Layer-3 VLAN interfaces
- D. IGMP-enabled AOS-CX switches flood unknown multicast destinations

Answer: A

NEW QUESTION 9

What is correct regarding policy-based routing?

- A. Policies can only be applied to routed interfaces.
- B. Policies can be applied inbound and outbound.
- C. Monitoring of policy interfaces occurs every 60 seconds.
- D. Policy actions include routing permitting or dropping traffic.

Answer: A

NEW QUESTION 10

How does PIM build the IP multicast routing table to route traffic between a multicast source and one or more receivers?

- A. It uses the unicast routing table and reverse path forwarding (RPF)
- B. It uses IGMP and calculates a shortest path tree (SPT)
- C. It uses the shortest path first (SPF) algorithm derived from link state protocols
- D. It uses the Bellman-Ford algorithm derived from distance vector protocols

Answer: A

Explanation:

"PIM also relies on the unicast routing tables to identify the path back to a multicast source. This routing method is known as reverse path forwarding (RPF). The unicast routing protocols create the unicast routing tables. With this information, PIM sets up the distribution tree for the multicast traffic.

NEW QUESTION 10

When cutting and pasting configurations into NetEdit, which character is used to enter commands within the context of the previous command?

- A. <ESC>
- B. ">"
- C. Space
- D. Tab

Answer: D

NEW QUESTION 11

The AOS-CX mobile app allows a network engineer or technician to perform which tasks? (Choose two.)

- A. Use NetEdit to manage switch configuration.
- B. Create a stack of AOS-CX switches.
- C. Transfer files between the switch and your mobile device.
- D. Securely access the switch using SSH.
- E. Schedule an operating system upgrade.

Answer: BC

Explanation:

ACSP Study Guide Page 66 - Key Features (Transfer files between the switch and your mobile device)

NEW QUESTION 14

How should a network administrator add NAE scripts and implement NAE agents that will run on an AOS-CX switch?

- A. Use the web interface of the NetEdit server
- B. Use the web interface of the AOS-CX switch
- C. Use the web interface of Aruba Central
- D. Use the CLI of the AOS-CX switch

Answer: B

NEW QUESTION 15

An administrator is configuring BGP and has two connections to a service provider to two different local routers.

Which BGP metric should the administrator configure to influence which local router the service provider will use to reach certain routes?

- A. Weight
- B. Multiple exit discriminator
- C. Local preference
- D. Origin

Answer: C

NEW QUESTION 20

A company has implemented 802.1X authentication on AOS-CX access switches, where two ClearPass servers are used to implement AAA. Each switch has the two servers defined. A network engineer notices the following command configured on the AOS-CX switches:

```
radius-server tracking user-name monitor password plaintext aruba123
```

What is the purpose of this configuration?

- A. Implement replay protection for AAA messages
- B. Define the account to implement downloadable user roles
- C. Speed up the AAA authentication process
- D. Define the account to implement change of authorization

Answer: C

Explanation:

Radius service tracking locates the availability of the RADIUS service configured on the switch. It helps to minimize the waiting period for new clients in the unauth-vid (Guest Vlan) when authentication fails because of service is not available, as well as previously authenticated clients in unauth-vid (Guest Vlan) when re-authentication fails because service is not available during the re-authentication period. Note that this feature is disabled by default.

https://techhub.hpe.com/eginfolib/networking/docs/switches/WB/16-02/5200-1650_WB_ASG/content/ch04s04.

NEW QUESTION 24

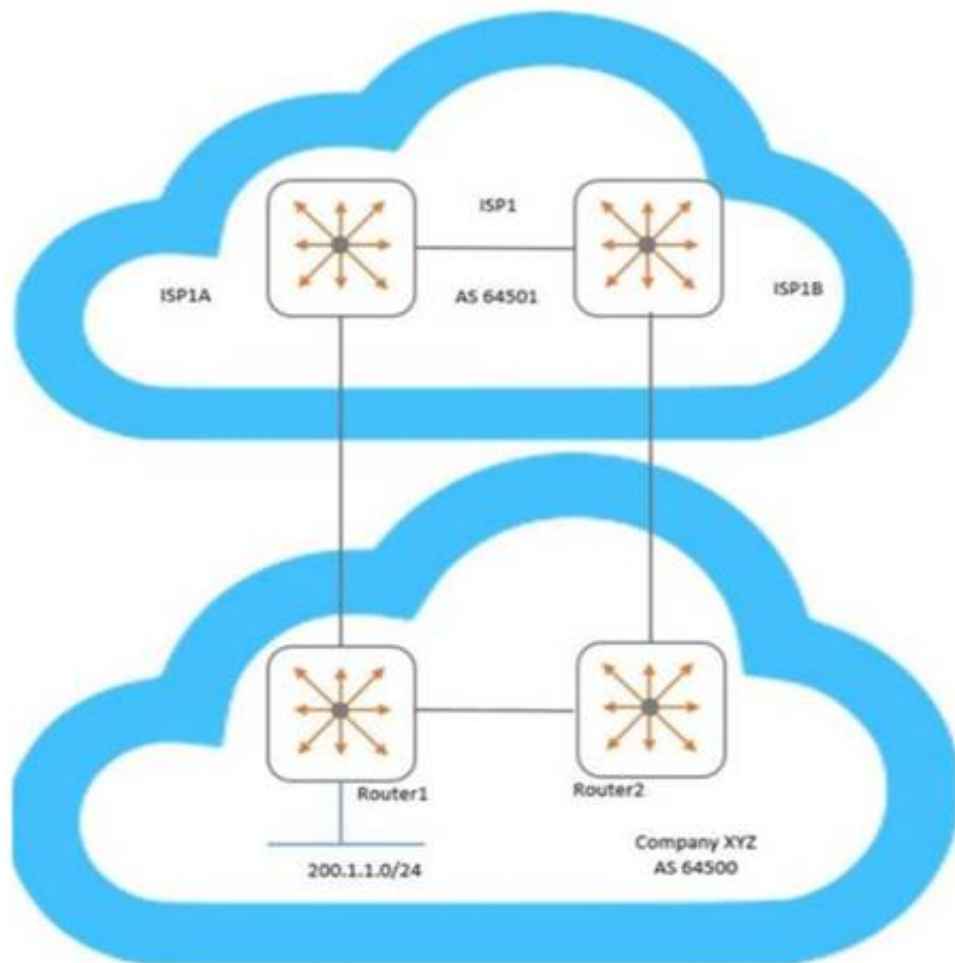
How is voice traffic prioritized correctly on AOS-CX switches?

- A. By defining device profiles with QOS settings
- B. By placing it in the strict priority queue
- C. By implementing voice VLANs
- D. By implementing weighted fair queueing (WFQ)

Answer: B

NEW QUESTION 25

Examine the network topology.



Company XYZ has two connections to a service provider (ISP1). Here is the configuration of Router1:

```
Router1(config)# ip prefix-list AS64500-routes permit 200.1.1.0/24
Router1(config)# route-map To-AS64501 permit seq 10
Router1(config-route-map)# match ip address prefix-list AS64500-routes
Router1(config-route-map)# set metric 100
Router1(config-route-map)# exit
Router1(config)# router bgp 64500
Router1(config-bgp)# address-family ipv4 unicast
Router1(config-bgp-ipv4-uc)# neighbor 192.168.1.1 route-map To-AS64501 out
```

Here is the configuration of Router2:

```
Router2(config)# ip prefix-list AS64500-routes permit 200.1.1.0/24
Router2(config)# route-map To-AS64501 permit seq 10
Router2(config-route-map)# match ip address prefix-list AS64500-routes
Router2(config-route-map)# set metric 200
Router2(config-route-map)# exit
Router2(config)# router bgp 64500
Router2(config-bgp)# address-family ipv4 unicast
Router2(config-bgp-ipv4-uc)# neighbor 192.168.2.1 route-map To-AS64501 out
```

Based on configuration of Router1 and Router2, which BGP metric is being manipulated?

- A. Weight
- B. Multiple exit discriminator
- C. Local preference
- D. AS path length

Answer: B

NEW QUESTION 29

An administrator of a large campus network needs a solution that will provide root cause analytics to quickly identify problems so that they can quickly be fixed. Which AOS-CX switch feature should the administrator utilize to help with root cause analytics?

- A. NAE
- B. VoQ
- C. NetEdit
- D. VSX

Answer: A

NEW QUESTION 34

A customer has twenty AOS-CX switches that will be managed by NetEdit and would like support for NetEdit these switches will exist in the network for at least five years. Which type of licensing should be used by this customer?

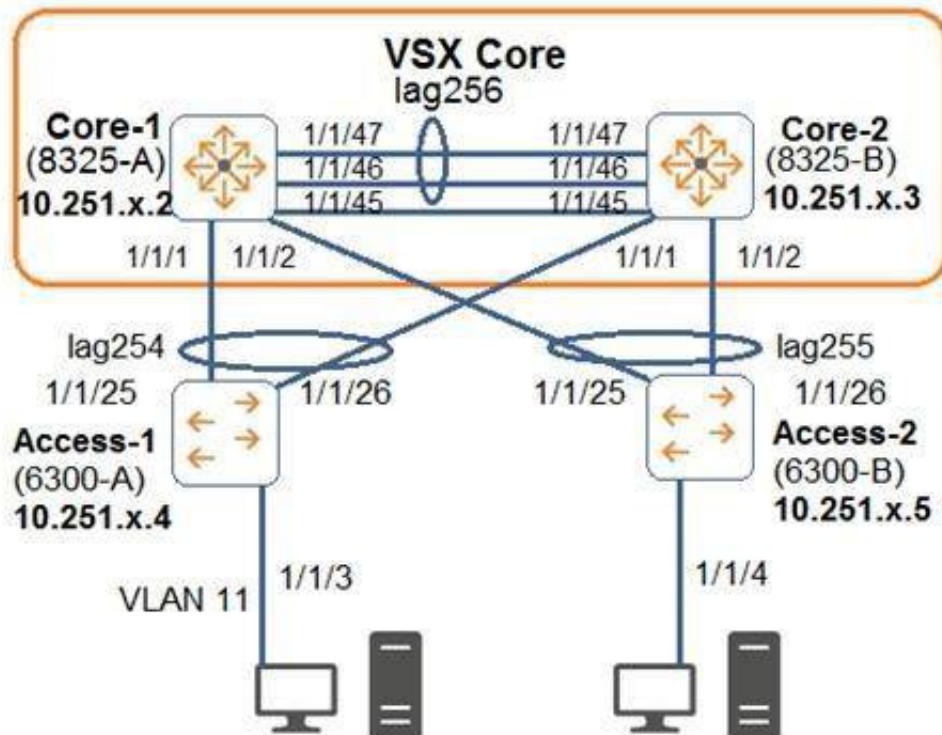
- A. 20 Aruba NetEdit permanent licenses
- B. 20 Aruba NetEdit single node subscription licenses
- C. 25 Aruba NetEdit permanent licenses

D. 1 Aruba NetEdit SMB License

Answer: B

NEW QUESTION 37

Examine the attached diagram.



The two PCs are located in VLAN 11 (10.1.11.0/24). Which example defines how to implement active gateway on the VSX core for VLAN 11?

- A. interface vlan 11active-gateway ip 10.1.11.1active-gateway mac 02:02:00:00:01:00
- B. interface lag 254active-gateway vlan 11 ip 10.1.11.1active-gateway vlan 11 mac 02:02:00:00:01:00
- C. interface lag 254active-gateway ip 10.1.11.1active-gateway mac 02:02:00:00:01:00
- D. vsxvrrp group 1

Answer: A

NEW QUESTION 38

What would prevent two OSPF routers from forming an adjacency? (Select two.)

- A. Different priorities
- B. Different area types
- C. Different MTU sizes
- D. Different IP addresses
- E. Different router IDs

Answer: BC

NEW QUESTION 43

Examine the AOS-CX configuration:

```
interface mgmt
no shutdown
ip static 10.1.1.1/24
default-gateway 10.1.1.254
exit
ssh server vrf mgmt
https-server vrf mgmt
https-server rest access-mode read-write
```

The switches have a default factory password setting NetEdit fails to access the configuration of the AOS-CX switches. What should the administrator do to solve this problem?

- A. Set a password for the default admin user account.
- B. Disable telnet globally.
- C. Use the default VRF instead of the mgmt VRF
- D. Enable IP routing globally

Answer: D

NEW QUESTION 46

An administrator wants to drop traffic from VLAN 6 (10.1.6.0/24) to VLAN 5 (10.1.5.0/24), but allow all other traffic. What is correct configuration to accomplish

this?

- A.
- ```
class ip VLAN5
 10 match ip 10.1.6.0/24 10.1.5.0/24
 exit
policy VLAN5
 10 class ip VLAN5 action drop
 exit
interface vlan 5
 apply access-list ip VLAN5 in
```
- B.
- ```
access-list ip VLAN5
  10 permit ip 10.1.6.0/0.0.0.255 10.1.5.0/0.0.0.255
  20 permit ip any any
  exit
interface vlan 5
  apply access-list ip
  VLAN5 in
  exit
```
- C.
- ```
access-list ip VLAN5
 10 deny ip 10.1.6.0/24 10.1.5.0/24
 20 permit ip any any
 exit
interface vlan 5
 apply access-list ip VLAN5 in
 exit
```
- D.
- ```
class ip VLAN5
  10 match ip 10.1.6.0/24 10.1.5.0/24
  exit
policy VLAN5
  10 class ip VLAN5 action drop
  exit
vlan 5
  apply policy VLAN5 in
```

- A. Option A
B. Option B
C. Option C
D. Option D

Answer: C

NEW QUESTION 49

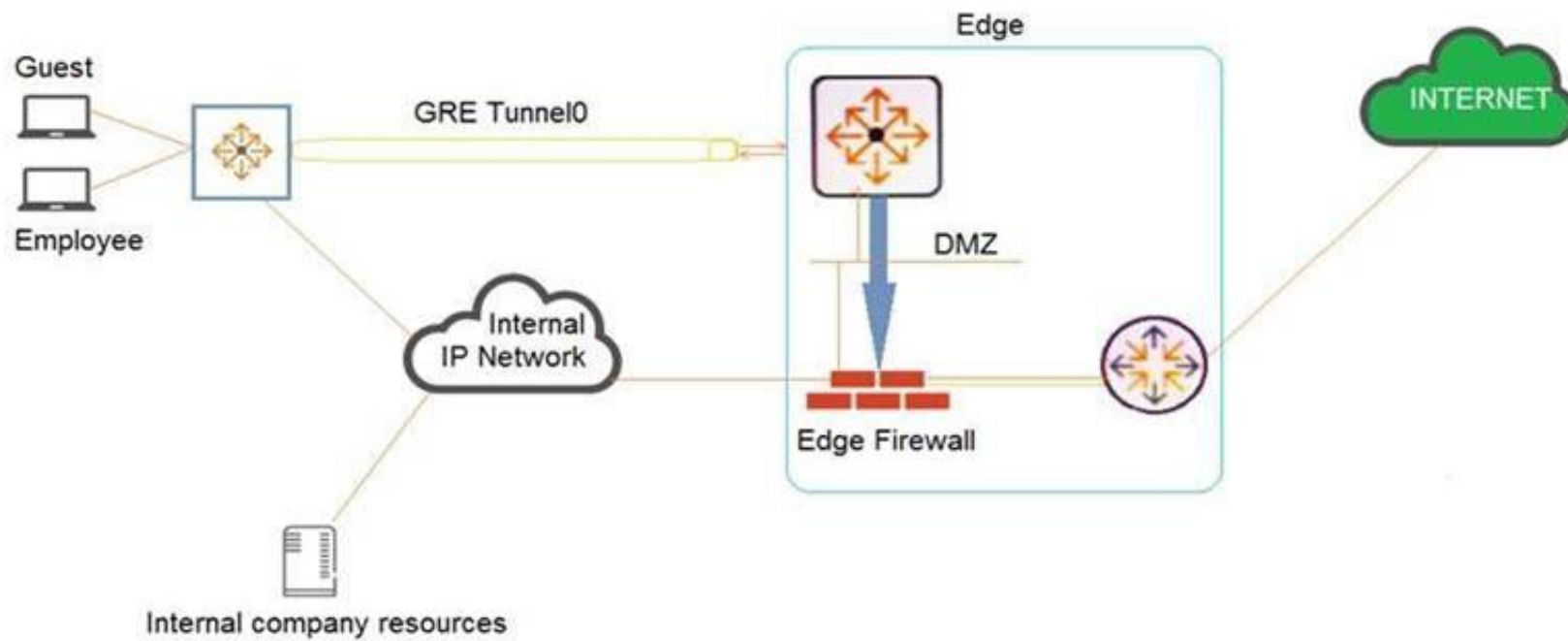
A network has two AOS-CX switches connected to two different service providers. The administrator is concerned about bandwidth consumption on the service provider links and learned that the service providers were using the company as a transit AS. Which feature should the administrator implement to prevent this situation?

- A. Configure route maps and apply them to BGP
B. Configure the two switches as route reflectors
C. Configure a classifier policy to disable MED
D. Configure bi-directional forwarding detection on both switches

Answer: A

NEW QUESTION 52

Examine the network exhibit.



A company has a guest implementation for wireless and wired access. Wireless access is implemented through a third-party vendor. The company is concerned about wired guest traffic traversing the same network as the employee traffic. The network administrator has established a GRE tunnel between AOS-CX switches where guests are connected to a routing switch in the DMZ.

Which feature should the administrator implement to ensure that the guest traffic is tunneled to the DMZ while the employee traffic is forwarded using OSPF?

- A. OSPF route maps using the “set metric” command
- B. Policy-based routing (PBR)
- C. User-based tunneling (UBT)
- D. Classifier policies

Answer: B

Explanation:

Guest traffic can be routed with PBR to use GRE tunnels that terminate in the DMZ.

NEW QUESTION 56

An administrator will be replacing a campus switching infrastructure with AOS-CX switches that support VSX capabilities. The campus involves a core, as well as multiple access layers. Which feature should the administrator implement to allow both VSX-capable core switches to process traffic sent to the default gateway in the campus VLANs?

- A. VRF
- B. VRRP
- C. IP helper
- D. Active gateway

Answer: D

Explanation:

Active gateway = both devices route/forward traffic VRRP = Active-standby, only active member routes/forwards traffic

Understand the Active Gateway principle In a VSX system, active gateway provides redundant default gateway functionality for the end-hosts. The default gateway of the end-host is automatically handled by both the VSX systems.

NEW QUESTION 61

What are best practices when implementing VSX on AOS-CX switches? (Choose two.)

- A. The ISL lag should use the default MTU size.
- B. Timers should be left at their default values.
- C. The default system MAC addresses should be used.
- D. The keepalive connection should use a direct layer-3 connection.
- E. The ISL lag should use at least 10GbE links or faster.

Answer: BD

NEW QUESTION 65

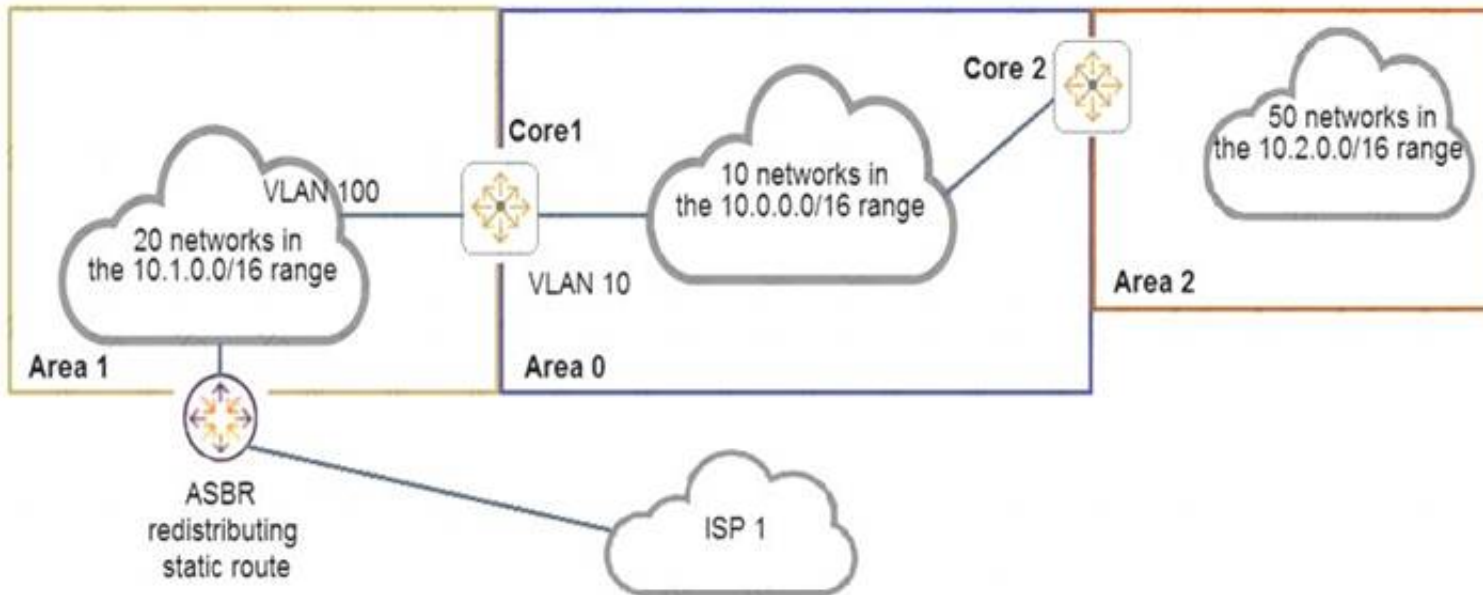
In AOS-CX switching, what determines when a frame is forwarded by the switch between the ingress and the egress port?

- A. Egress port
- B. Ingress port
- C. VSX switch tables
- D. Fabric Load Balancer

Answer: B

NEW QUESTION 68

Examine the network topology.



_ The network is configured for OSPF with the following attributes:

Core1 and Core2 and ABRs

- _ Area 1 has 20 networks in the 10.1.0.0/16 range
- _ Area 0 has 10 networks in the 10.0.0.0/16 range
- _ Area 2 has 50 networks in the 10.2.0.0/16 range
- _ The ASBR is importing a static route into Area 1
- _ Core2 has a summary for Area 2: area 0.0.0.2 range 10.2.0.0/16 type inter-area

Here is the OSPF configuration performed on Core1:

```
router ospf 1
  router-id 10.0.0.1
  area 0.0.0.0
  area 0.0.0.1 stub
  area 0.0.0.1 range 10.1.0.0/16 type inter-area
  area 0.0.0.2
  area 0.0.0.0 range 10.1.0.0/16 type inter-area
  exit
interface vlan 10
  ip ospf 1 area 0
  exit
interface vlan 100
  ip ospf 1 area 1
  exit
```

Based on the above information, what is correct?

- A. ISP 1 is not reachable from any area.
- B. Core1 has received one type 5 LSA from the ASBR.
- C. Area 0 has 81 routes
- D. Area 1 has 23 routes

Answer: C

NEW QUESTION 71

A network engineer is having a problem adding a custom-written script to an AOS-CX switch's NAE GUI. The script was written in Python and was successfully added on other AOS-CX switches. The engineer examines the following items from the CLI of the switch:

```
switch# show capacities-status nae
```

System Capacities Status: Filter NAE

Capacity Status Name	Value	Maximum
Number of configured NAE agents currently active in the system	1	100
Number of configured NAE monitors currently active in the system	7	500
Number of configured NAE scripts currently active in the system	50	50

```
switch# show ntp status
```

NTP Status Information

NTP : Disabled

NTP Authentication : Disabled

NTP Server Connections : Using the default VRF

System time : Sat May 2 11:50:55 UTC 2020

NTP uptime : 0 minutes, 0 seconds

Not synchronized with an NTP server.

```
switch# show crypto pki certificate
```

Certificate Name	Cert Status	Associated Applications
local-cert	installed	captive-portal, hsc, https-server,
syslog-client		

```
switch# show crypto pki application
```

Associated Applications	Certificate Name	Cert Status
captive-portal		not configured, using local-cert
hsc		not configured, using local-cert
https-server		not configured, using local-cert
syslog-client		not configured, using local-cert

What should the engineer perform to fix this issue?

- A. Install the script's signature before installing the new script
- B. Ensure the engineer's desktop and the AOS-CX switch are synchronized to the same NTP server
- C. Enable trust settings for the AOS-CX switch's SSL certificate
- D. Remove a script that is no longer used before installing the new script

Answer: D

NEW QUESTION 73

When implementing deficit weighted round robin queuing, what importance does the weight value have?

- A. Prioritizing latency-sensitive traffic
- B. Queue priority in processing traffic
- C. Strict priority queue
- D. Percentage of interface bandwidth

Answer: B

NEW QUESTION 75

An administrator wants to use an existing Aruba gateway's firewall policies to filter both wireless and wired traffic. Which AOS-CX switch feature should a customer implement to ensure the gateway applies the same or similar firewall policies to users' wired and wireless traffic?

- A. GRE tunneling
- B. User-based tunneling
- C. Port-based tunneling
- D. IPSec tunneling

Answer: A

NEW QUESTION 80

A network engineer is examining NAE graphs from the Dashboard but notices that the time shown in the graph does not represent the current time. The engineer verifies that the AOS-CX switch is configured for NTP and is successfully synchronized. What should be done to fix this issue?

- A. Ensure the engineer's web browser is configured for the same timezone as the AOS-CX switch
- B. Ensure the engineer's PC is synchronized to the same NTP server as the AOS-CX switch
- C. Ensure NetEdit and the AOS-CX switch are synchronized to the same NTP server
- D. Enable trust settings for the AOS-CX switch's SSL certificate

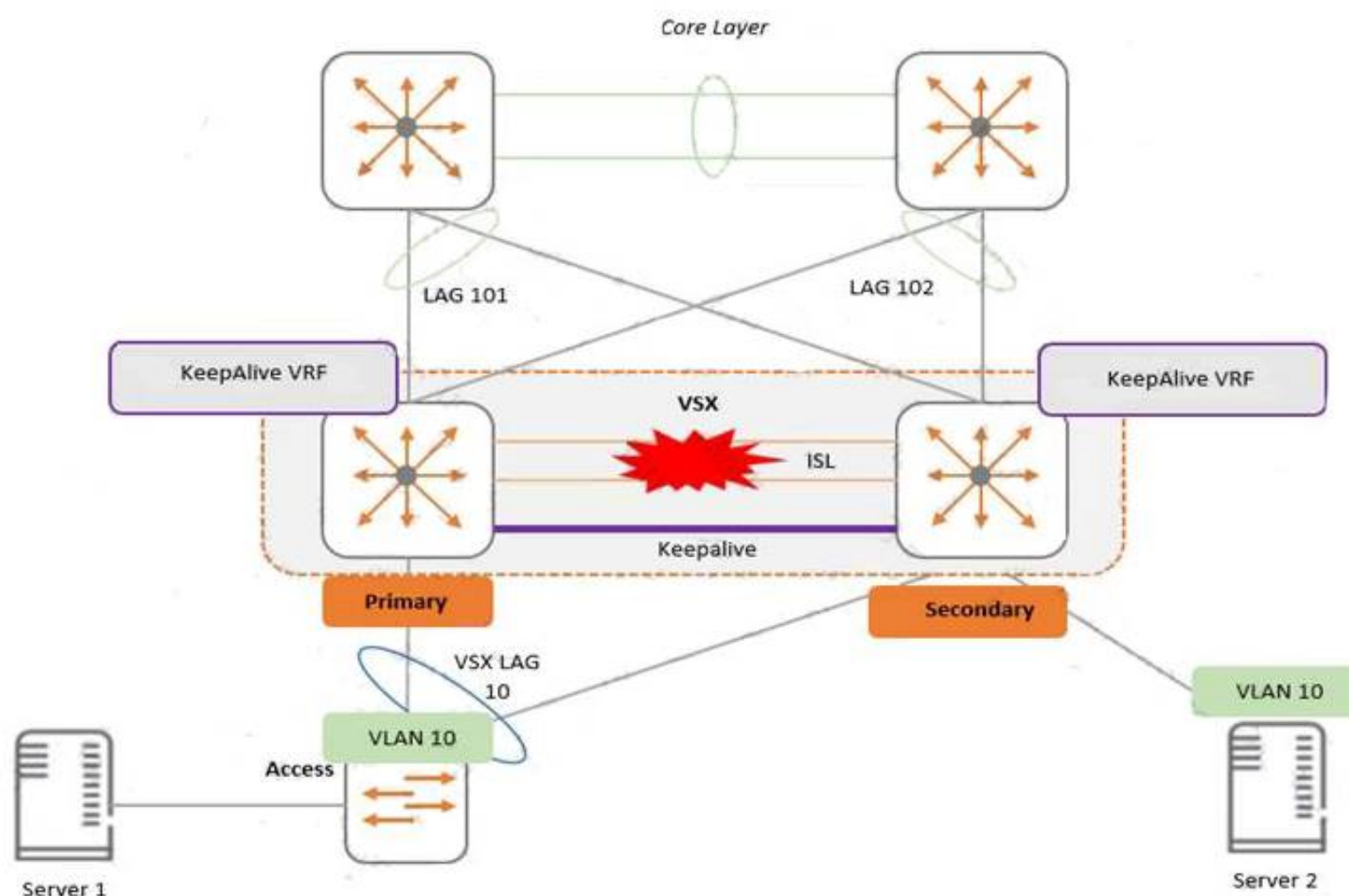
Answer: B

Explanation:

https://techhub.hpe.com/eginfolib/Aruba/OS-CX_10.04/5200-6724/index.html#GUID-2048A4D8-5458-4C00-A

NEW QUESTION 84

Examine the attached diagram



Two AOS-CX switches are configured for VSX at the access layer, where servers attached to them. An SVI interface is configured for VLAN 10 and serves as the default gateway for VLAN 10. The ISL link between the switches fails, but the keepalive interface functions. Active gateway has been configured on the switches. What is correct about access from the servers to the Core?

- A. Server 2 can successfully access the core layer via the keepalive link.
- B. Server 1 and Server 2 can communicate with each other via the core layer.
- C. Server 2 cannot access the core layer.
- D. Server 1 can access the core layer via both uplinks.

Answer: B

NEW QUESTION 87

Examine the output from an AOS-CX switch implementing a dynamic segmentation solution involving downloadable user roles:

Switch# show port-access role clearpass Role information:

Name : icxarubadur_employee-3044-2 Type : clearpass

Status: failed, parsing_failed Reauthentication Period : Authentication Mode : Session Timeout :

The downloadable user roles are not being downloaded to the AOS-CX switch. Based on the above output, what is the problem?

- A. The certificate that ClearPass uses is invalid
- B. The AOS-CX switch does not have the ClearPass certificate involved
- C. DNS fails to resolve the ClearPass server's FQDN
- D. There is a date/time issue between the ClearPass server and the switch

Answer: C

Explanation:

"The top-right example shows a parsing_failed status, typically indicative of either a DNS or network connectivity issue."

NEW QUESTION 88

Examine the AOS-CS switch output:


```
Switch# show aaa authentication port-access interface 1/1/1 client-status
```

Port Access Client Status Details

```
Client 00:50:56:b1:7a:37, icx-employee
```

Session Details

```
Port      : 1/1/3
Session Time : 31273s
```

Authentication Details

```
Status      : dot1x Authenticated
Auth Precedence : dot1x - Authenticated, mac-auth - Not attempted
```

Authorization Details

```
Role       : aruba_contractor-3044-7
Status     : Applied
```

Based on this output, what is correct?

- A. 802.1X authentication was successful, but MAC authentication is yet to start
- B. 802.1X authentication occurred and downloadable user roles are deployed
- C. A local user role was deployed using a ClearPass solution
- D. Only 802.1X authentication is configured on the port

Answer: B

NEW QUESTION 92

A network administrator is tasked to set up BGP in the company's network. The administrator is defining an eBGP peering between an AOS-CX switch and a directly-connected service provider. The administrator has configured the following on the AOS-CX switch:

```
switch(config)# interface loopback 0
switch(config-loopback-if)# ip address 10.1.1.1/32
switch(config-loopback-if)# exit
switch(config)# interface 1/1/1
switch(config-if)# no shutdown
switch(config-if)# routing
switch(config-if)# ip address 192.168.1.2/30
switch(config-if)# exit
switch(config)# router bgp 64500
switch(config-bgp)# neighbor 192.168.1.1 remote-as 64511
switch(config-bgp)# bgp router-id 192.168.1.2
switch(config-bgp)# address-family ipv4 unicast
switch(config-bgp-ipv4-uc)# exit
```

However, when using the "show bgp all summary" command, the state does not display "Established" for the eBGP peer. What must the administrator configure to fix this issue?

- A. router bgp 64500 neighbor 192.168.1.1 ebgp-multihop
- B. router bgp 64500 enable
- C. router bgp 64500 address-family ipv4 unicast neighbor 192.168.1.1 activate
- D. router bgp 64500 neighbor 192.168.1.1 update-source loopback0

Answer: C

NEW QUESTION 93

A network engineer is setting up BGP on AOS-CX switches. The engineer is establishing two different eBGP peering's to two different service providers. The engineer has dozens of contiguous C-class public networks that need to be advertised to the two service providers. The engineer manually defines the networks to be advertised individually with the "network" command.

How can an administrator advertise only a summarized route to the two service providers?

- A. Create a summarized static route and redistribute this into OSPF
- B. Summarize the networks with the "aggregate-address" BGP command
- C. Enable auto-summarization in the IPv4 address family of the BGP configuration
- D. Create a summarized route in OSPF

Answer: B

NEW QUESTION 95

An administrator creates an ACL rule with both the "count" and "log" option enabled. What is correct about the action taken by an AOS-CX switch when there is a match on this rule?

- A. By default, a summarized log is created every minute with a count of the number of matches

- B. Logging will not include certificate and TLS events, but counting will
- C. The “count” and “log” options are processed by the AOS-CX switch’s hardware ASIC
- D. The total in the “log” record and the count could contain different rule matching statistics

Answer: D

Explanation:

From the "AOS-CX 10.08 ACLs and Classifier Policies Guide" : "You may see a minor discrepancy between the ACL logging statistics and the hit counts statistics due to the time required to record the log message."

NEW QUESTION 98

A company is implementing AOS-CX switches at the access layer. The company wants to implement access control for employees and guests. Which security features will require a ClearPass server to be installed and used by the company?

- A. Downloadable user roles
- B. Dynamic segmentation
- C. User-based tunneling (UBT)
- D. Change of authorization (CoA)

Answer: A

NEW QUESTION 101

A company has a few servers in a secure, remote location storing highly-confidential documents connected to two AOS-CX 6400 switches configured in a VSX pair. The AOS-CX switches perform access control with 802.1X and will be implementing user-based tunneling (UBT) so that Aruba gateway application inspection and stateful firewall policies can be applied to the traffic. The gateways are running version 84 and implement the AP, PEF, and RFP licenses. Which licensing is needed for the two AOS-CX switches?

- A. 2 AP and 2 PEF licenses only
- B. 1 AP license only
- C. 2 AP, 2 PEF, and 2 RFP licenses only
- D. 1 AP, 1 PEF, and 1 RFP licenses only

Answer: D

NEW QUESTION 103

What is a best practice concerning voice traffic and dynamic segmentation on AOS-CX switches?

- A. Controller authentication and user-based tunneling of the voice traffic
- B. Switch authentication and user-based tunneling of the voice traffic
- C. Controller authentication and port-based tunneling of the voice traffic
- D. Switch authentication and local forwarding of the voice traffic

Answer: D

NEW QUESTION 105

Examine the commands entered on an AOS-CX switch:

What is true regarding this configuration for traffic received on interface 100?

- A. The default next-hop address supersedes the two preceding next-hop addresses
- B. The traffic is always dropped if the next-hop addresses are unreachable
- C. The traffic will be routed with the IP routing table entries if the next-hop addresses are unreachable
- D. The next-hop address of 1.1.1.1 is overwritten by the next-hop address of 2.2.2.2

Answer: C

Explanation:

"interface null: equivalent to the policy drop policing action. Any packets matching the class criteria for that policy entry will be dropped and not routed any further."
<https://www.arubanetworks.com/techdocs/AOS-CX/10.05/HTML/5200-7300/index.html#GUID-DC7E5E47-8F>

More than one next hop can be assigned with an ACL and they work by priority (based on the sequence number: lower sequence number -> higher priority). So next-hop 2.2.2.2 will be used if 1.1.1.1 is not reachable. If both are unreachable, then the packet will be routed looking at the default routing table, if no specific entry will be found, then the packet will be routed to the default next hop defined in the ACL.

NEW QUESTION 109

Which AOS-CX switches support weighted fair queuing (WFQ)?

- A. Both 8320 and 8325
- B. Both 6300 and 6400
- C. 8400 only
- D. 6300 only

Answer: C

Explanation:

https://www.arubanetworks.com/techdocs/AOS-CX/AOS-CX-CLI-Bank/cli_8400/Content/QoS_cmds/wfq-que-x

NEW QUESTION 112

A network administrator is implementing OSPF, where there are two exit points. Each exit point has a stateful, application inspection firewall to implement company policies.

What would the best practice be to ensure that one firewall will see both directions of the traffic, preventing asynchronous connections in the network?

- A. Both ASBRs should define External Type 1 routes for the
- B. Both ASBRs should define External Type 1 routes for the
- C. Both ASBRs should define External Type 2 routes for the
- D. Both ASBRs should define External Type 2 routes for the

Answer: A

NEW QUESTION 114

A company has recently purchased a ClearPass AAA solution. Their network consists of AOS-CX switches at the access layer. The company is implementing a rollout of IoT devices for smart building management to control the lighting and HVAC systems. The network administrator is concerned about allowing secure access to these devices since they only support MAC-Auth.

Which ClearPass feature should the administrator leverage to help determine that MAC address spoofing is not occurring for this group of devices?

- A. User-based tunneling
- B. Device fingerprinting
- C. RADIUS change of authorization
- D. Downloadable user roles

Answer: B

NEW QUESTION 115

An administrator is replacing the current access switches with AOS-CX switches. The access layer switches must authenticate user and networking devices connecting to them. Some devices support no form of authentication, and some support 802.1X. Some ports have a VoIP phone and a PC connected to the same port, where the PC is connected to the data port of the phone and the phone's LAN port is connected to the switch.

Which statement is correct about this situation?

- A. 802.1X must be configured to work in fallback mode
- B. Device fingerprinting is required for authentication
- C. The client-limit setting for port access needs to be changed
- D. Device mode should be implemented

Answer: C

Explanation:

fallback mode if for the radius part; client limit is for multiple authentic on one port (ie phone + pc) From doc :

aaa port-access authenticator <port-list> client-limit <1-32>

Used after executing aaa port-access authenticator <port-list> to convert authentication from port-based to user-based. Specifies user-based 802.1X authentication and the maximum number of 802.1X-authenticated client sessions allowed on each of the ports in <port-list>. If a port currently has no authenticated client sessions, the next authenticated client session the port accepts determines the untagged VLAN membership to which the port is assigned during the session. If another client session begins later on the same port while an earlier session is active, the later session will be on the same untagged VLAN membership as the earlier session.

NEW QUESTION 119

An administrator of a company has concerns about upgrading the access layer switches. The users rely heavily on wireless and VoIP telephony. Which is the best recommendation to ensure a short downtime for the users during upgrading the access layer switches?

- A. Install the in-service software upgrade (ISSU) feature with clustering enabled
- B. Install AOS-CX 6300 or 6400 switches with always-on POE
- C. Implement VSF on the AOS-CX access switches
- D. Implement VSX on the AOS-CX access switches

Answer: B

Explanation:

The key is to reduce the impact. VSF or not will have same impact when the switch reboots. But if the switch support always on poe then at least the POE clients will be ready before the switch finish booting up. If you dont have always on POE, then the poe clients will reboot AFTER the switch boots up.

NEW QUESTION 121

An administrator has configured the following on an AOS-CX switch:

```
object-group ip address web-servers
 10.1.12.2
 10.1.12.3
exit
object-group port web-ports
eq 80
eq 443
```

What is the correct ACL rule configuration that would allow traffic from anywhere to reach the web ports on the two specified servers?

- A. access-list ip server 10 permit tcp any web-servers group web-ports
- B. access-list ip server 10 permit tcp any object-group web-servers object-group web-ports
- C. access-list ip server 10 permit tcp any group web-servers group web-ports
- D. access-list ip server 10 permit tcp any web-servers web-ports

Answer: A

Explanation:

Switch1(config-acl-ip)# show run cur access-list ip server
10 permit tcp any web-servers group web-ports

NEW QUESTION 124

What is required when implementing captive portal on AOS-CX switches?

- A. Certificate installed on the switch
- B. Web server running on the switch
- C. Device fingerprinting
- D. AAA server

Answer: D

NEW QUESTION 128

When implementing user-based tunneling on an AOS-CX switch, which component defines the primary and backup Aruba gateways?

- A. Transit VLAN
- B. Gateway role
- C. Server group
- D. Zone

Answer: D

NEW QUESTION 129

How does an administrator install a script and create an agent and actions for the Network Analysis Engine running on AOS-CX switches?

- A. Access the switches' command-line interface.
- B. Access the switches' web user interface
- C. Use Aruba Central's web user interface
- D. Use the NetEdit web user interface

Answer: B

NEW QUESTION 133

A company uses NetEdit to manage a network of 700 AOS-CX switches and approximately 1,000 other SNMP-capable devices.

Which management solution should the company use to monitor all the devices, as well as see a topology picture of how all the devices are connected together?

- A. NetEdit
- B. Aruba AirWave
- C. Aruba Activate
- D. Network Analysis Engine (NAE)

Answer: A

NEW QUESTION 138

Examine the following ACL rule policies:

Permit traffic from 10.2.2.1 through 10.2.2.30 to anywhere Permit traffic from 10.2.2.40 through 10.2.2.55 to anywhere Deny all others

Based on this policy, place the following ACL rule statements in the correct order to accomplish the above filtering policy.

- A. deny ip 10.2.2.31 255.255.255.255 any permit ip 10.2.2.40 255.255.255.248 any permit ip 10.2.2.48 255.255.255.248 any deny ip 10.2.2.32 255.255.255.224 any permit ip 10.2.2.0 255.255.255.192 any
- B. permit ip 10.2.2.40 255.255.255.248 any permit ip 10.2.2.48 255.255.255.248 any permit ip 10.2.2.0 255.255.255.192 any deny ip 10.2.2.31 255.255.255.255 any deny ip 10.2.2.32 255.255.255.224 any
- C. deny ip 10.2.2.31 255.255.255.255 any deny ip 10.2.2.32 255.255.255.224 any permit ip 10.2.2.40 255.255.255.248 any permit ip 10.2.2.48 255.255.255.248 any permit ip 10.2.2.0 255.255.255.192 any
- D. deny ip 10.2.2.31 255.255.255.255 any permit ip 10.2.2.40 255.255.255.248 any deny ip 10.2.2.32 255.255.255.224 any permit ip 10.2.2.48 255.255.255.248 any permit ip 10.2.2.0 255.255.255.192 any

Answer: A

NEW QUESTION 141

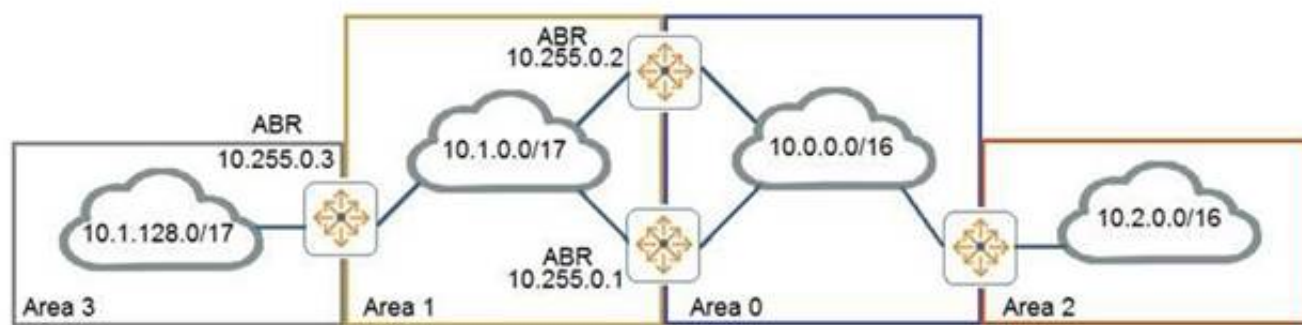
A network engineer for a company with 896 users across a multi-building campus wants to gather statistics on an important switch uplink and create actions based on issues that occur on the uplink. How often does an NAE agent gather information from the current state database in regard to the uplink interfaces?

- A. Once every 60 seconds
- B. Once every 1 second
- C. Once every 30 seconds
- D. Once every 5 seconds

Answer: D

NEW QUESTION 143

Examine the attached exhibit.



The network administrators is trying to add a remote location as area 3 to the network shown in the diagram. Based on current connection restrictions, the administrator cannot connect area 3 directly to area 0. The network is using AOS-CX switches. Which feature should the administrator implement to provide connectivity to the remote location?

- A. Not-so-stubby areas
- B. Bidirectional forward detection (BFD)
- C. OSPFv3
- D. Virtual links

Answer: D

NEW QUESTION 148

.....

Thank You for Trying Our Product

We offer two products:

1st - We have Practice Tests Software with Actual Exam Questions

2nd - Questions and Answers in PDF Format

HPE6-A73 Practice Exam Features:

- * HPE6-A73 Questions and Answers Updated Frequently
- * HPE6-A73 Practice Questions Verified by Expert Senior Certified Staff
- * HPE6-A73 Most Realistic Questions that Guarantee you a Pass on Your FirstTry
- * HPE6-A73 Practice Test Questions in Multiple Choice Formats and Updatesfor 1 Year

100% Actual & Verified — Instant Download, Please Click
[Order The HPE6-A73 Practice Test Here](#)