

Exam Questions NSE7_SDW-7.0

Fortinet NSE 7 - SD-WAN 7.0

https://www.2passeasy.com/dumps/NSE7_SDW-7.0/



NEW QUESTION 1

Which diagnostic command can you use to show the member utilization statistics measured by performance SLAs for the last 10 minutes?

- A. diagnose sys sdwan intf-sla-log
- B. diagnose sys sdwan health-check
- C. diagnose sys sdwan log
- D. diagnose sys sdwan sla-log

Answer: D

Explanation:

SD-WAN 7.2 Study Guide page 321 You can view the stored member metrics by running the diagnose sys sdwan sla-log command. Note that you must include the name of the performance SLA followed by the member configuration index number. To display the SLA logs per interface, you run the diagnose sys sdwan intf-sla-log command.

NEW QUESTION 2

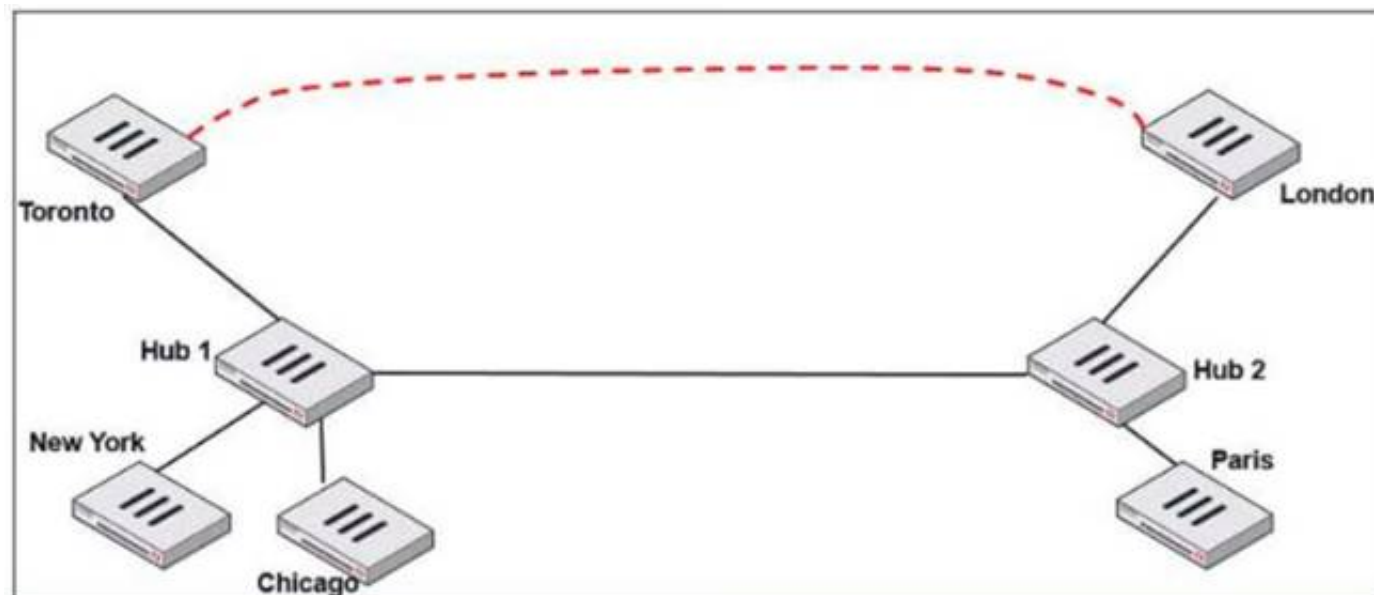
In a hub-and-spoke topology, what are two advantages of enabling ADVPN on the IPsec overlays? (Choose two.)

- A. It provides the benefits of a full-mesh topology in a hub-and-spoke network.
- B. It provides direct connectivity between spokes by creating shortcuts.
- C. It enables spokes to bypass the hub during shortcut negotiation.
- D. It enables spokes to establish shortcuts to third-party gateways.

Answer: AB

NEW QUESTION 3

Refer to the exhibit.



Two hub-and-spoke groups are connected through a site-to-site IPsec VPN between Hub 1 and Hub 2. Which two configuration settings are required for Toronto and London spokes to establish an ADVPN shortcut? (Choose two.)

- A. On the hubs, auto-discovery-sender must be enabled on the IPsec VPNs to spokes.
- B. On the spokes, auto-discovery-receiver must be enabled on the IPsec VPN to the hub.
- C. auto-discovery-forwarder must be enabled on all IPsec VPNs.
- D. On the hubs, net-device must be enabled on all IPsec VPNs.

Answer: AB

NEW QUESTION 4

Which are two benefits of using CLI templates in FortiManager? (Choose two.)

- A. You can reference meta fields.
- B. You can configure interfaces as SD-WAN members without having to remove references first.
- C. You can configure FortiManager to sync local configuration changes made on the managed device, to the CLI template.
- D. You can configure advanced CLI settings.

Answer: AD

NEW QUESTION 5

Which two statements describe how IPsec phase 1 main mode is different from aggressive mode when performing IKE negotiation? (Choose two)

- A. A peer ID is included in the first packet from the initiator, along with suggested security policies.
- B. XAuth is enabled as an additional level of authentication, which requires a username and password.
- C. A total of six packets are exchanged between an initiator and a responder instead of three packets.
- D. The use of Diffie Hellman keys is limited by the responder and needs initiator acceptance.

Answer: BC

NEW QUESTION 6

Refer to the exhibit.

```
ike 0:T_INET_0_0:214: received informational request
ike 0:T_INET_0_0:214: processing notify type SHORTCUT_QUERY
ike 0:T_INET_0_0: recv shortcut-query 9065761962601467474
07409008f7fbd17e/0000000000000000 192.2.0.1 10.0.1.101->10.0.2.101 psk 64 ppk 0 ttl 32
nat 0 ver 2 mode 0
ike 0:T_INET_0: iif 20 10.0.1.101->10.0.2.101 route lookup oif 20 T_INET_0 gwy
10.201.1.1
ike 0:T_INET_0_1: forward shortcut-query 9065761962601467474
07409008f7fbd17e/0000000000000000 192.2.0.1 10.0.1.101->10.0.2.101 psk 64 ppk 0 ttl 31
ver 2 mode 0, ext-mapping 192.2.0.1:500
```

Which statement about the role of the ADVPN device in handling traffic is true?

- A. This is a spoke that has received a query from a remote hub and has forwarded the response to its hub.
- B. Two hubs, 10.0.1.101 and 10.0.2.101, are receiving and forwarding queries between each other.
- C. This is a hub that has received a query from a spoke and has forwarded it to another spoke.
- D. Two spokes, 192.2.0.1 and 10.0.2.101, forward their queries to their hubs.

Answer: C

NEW QUESTION 7

What does enabling the exchange-interface-ip setting enable FortiGate devices to exchange?

- A. The gateway address of their IPsec interfaces
- B. The tunnel ID of their IPsec interfaces
- C. The IP address of their IPsec interfaces
- D. The name of their IPsec interfaces

Answer: C

NEW QUESTION 8

Which two statements about SLA targets and SD-WAN rules are true? (Choose two.)

- A. When configuring an SD-WAN rule, you can select multiple SLA targets of the same performance SLA.
- B. SD-WAN rules use SLA targets to check if the preferred members meet the SLA requirements.
- C. SLA targets are used only by SD-WAN rules that are configured with Lowest Cost (SLA) or Maximize Bandwidth (SLA) as strategy.
- D. Member metrics are measured only if an SLA target is configured.

Answer: BC

NEW QUESTION 9

Which are three key routing principles in SD-WAN? (Choose three.)

- A. FortiGate performs route lookups for new sessions only.
- B. Regular policy routes have precedence over SD-WAN rules.
- C. SD-WAN rules have precedence over ISDB routes.
- D. By default, SD-WAN members are skipped if they do not have a valid route to the destination.
- E. By default, SD-WAN rules are skipped if the best route to the destination is not an SD-WAN member.

Answer: BDE

NEW QUESTION 10

In the default SD-WAN minimum configuration, which two statements are correct when traffic matches the default implicit SD-WAN rule? (Choose two)

- A. Traffic has matched none of the FortiGate policy routes.
- B. Matched traffic failed RPF and was caught by the rule.
- C. The FIB lookup resolved interface was the SD-WAN interface.
- D. An absolute SD-WAN rule was defined and matched traffic.

Answer: AC

NEW QUESTION 10

Exhibit A –

	#	Name	Type	Normalized Interface	Addressing Mode	IP/Netmask	Access
	▼ Physical (10)						
	1	port1	Physical	port1	Manual	203.0.113.1/255.255.255.2	PING
	2	port2	Physical	port2	Manual	203.0.113.9/255.255.255.2	PING
	3	port3	Physical	port3	Manual	0.0.0.0/0.0.0.0	
	4	port4	Physical	port4	Manual	172.16.0.9/255.255.255.24	PING
	5	port5	Physical	port5	Manual	10.0.2.254/255.255.255.0	PING
	6	port6	Physical	port6	Manual	0.0.0.0/0.0.0.0	
	7	port7	Physical	port7	Manual	0.0.0.0/0.0.0.0	
	8	port8	Physical	port8	Manual	0.0.0.0/0.0.0.0	
	9	port9	Physical	port9	Manual	0.0.0.0/0.0.0.0	
	10	port10	Physical	port10	Manual	192.168.0.32/255.255.255.	HTTPS, PING, SSH, HT
	▼ Aggregate (1)						
	11	fortilink	Aggregate		Manual	169.254.1.1/255.255.255.0	PING, Security Fabric C
	▼ Tunnel (3)						
	12	nat.root	Tunnel		Manual	0.0.0.0/0.0.0.0	
	13	i2t.root	Tunnel		Manual	0.0.0.0/0.0.0.0	
	14	ssl.root (SSL VPN interf	Tunnel		Manual	0.0.0.0/0.0.0.0	
	▼ EMAC VLAN (1)						
	15	vl_lan_ts	EMAC VLAN		Manual	10.0.102.1/255.255.255.0	PING
	▼ SD-WAN Zone (2)						
	16	virtual-wan-link	SD-WAN Zone				
	17	SASE	SD-WAN Zone	SASE			

	#	ID	Destination	Gateway	Interface	Distance	Priority	Status	Description
	▼ Static Route (2)								
	1	1	0.0.0.0/0.0.0.0	203.0.113.2	port1	10	0	Enable	
	2	2	0.0.0.0/0.0.0.0	203.0.113.10	port2	10	0	Enable	

Exhibit B –

	#	Name	From	To	Source	Destination	Schedule	Service
	1	Internet_Access	port5	port1	all	all	always	ALL
	▼ Implicit (2-2 / Total: 1)							
	2	Implicit Deny	any	any	all	all	always	ALL

Exhibit A shows the system interface with the static routes and exhibit B shows the firewall policies on the managed FortiGate. Based on the FortiGate configuration shown in the exhibits, what issue might you encounter when creating an SD-WAN zone for port1 and port2?

- A. port1 is assigned a manual IP address.
- B. port1 is referenced in a firewall policy.
- C. port2 is referenced in a static route.
- D. port1 and port2 are not administratively down.

Answer: B

NEW QUESTION 14

Refer to the exhibit.

```
FortiGate # diagnose sys session list

session info: proto=1 proto_state=00 duration=25 expire=34 timeout=0 flags=00000000
socktype=0 sockport=0 av_idx=0 use=3
origin-shaper=
reply-shaper=
per_ip_shaper=
class_id=0 ha_id=0 policy_dir=0 tunnel=/ vlan_cos=0/255
state=dirty may_dirty
statistic(bytes/packets/allow_err): org=84/1/1 reply=84/1/1 tuples=2
tx speed(Bps/kbps): 0/0 rx speed(Bps/kbps): 0/0
origin->sink: org pre->post, reply pre->post dev=5->4/4->5 gwy=192.168.73.2/10.0.1.10
hook=post dir=org act=snat 10.0.1.10:2246->8.8.8.8:8 (192.168.73.132:62662)
hook=pre dir=reply act=dnat 8.8.8.8:62662->192.168.73.132:0 (10.0.1.10:2246)
misc=0 policy_id=1 auth_info=0 chk_client_info=0 vd=0
serial=00000a2c tos=ff/ff app_list=0 app=0 url_cat=0
rpd_b_link_id= 80000000 rpd_b_svc_id=0 ngfwid=n/a
npu_state=0x040000
total session 1
```

Based on the exhibit, which statement about FortiGate re-evaluating traffic is true?

- A. The type of traffic defined and allowed on firewall policy ID 1 is UDP.
- B. FortiGate has terminated the session after a change on policy ID 1.
- C. Changes have been made on firewall policy ID 1 on FortiGate.
- D. Firewall policy ID 1 has source NAT disabled.

Answer: C

NEW QUESTION 18

Which two settings can you configure to speed up routing convergence in BGP? (Choose two.)

- A. update-source
- B. set-route-tag
- C. holdtime-timer
- D. link-down-failover

Answer: CD

NEW QUESTION 21

Which components make up the secure SD-WAN solution?

- A. Application, antivirus, and URL, and SSL inspection
- B. Datacenter, branch offices, and public cloud
- C. FortiGate, FortiManager, FortiAnalyzer, and FortiDeploy
- D. Telephone, ISDN, and telecom network.

Answer: C

NEW QUESTION 26

Refer to the exhibits.

Exhibit A

Network Properties	
Service	Critical-DIA
Identity	
Device ID	FGVM01TM22000077
Device Name	branch1_fgt
Type	
Sub Type	sdwan
Type	event
Alerts	
Level	notice
General	
Log Description	SDWAN status
Log ID	0113022923
Message	Service prioritized by performance metric will be redirected in sequence order.
Sequence Number	2,1
Virtual Domain	root
Others	
Date/Time	23:57:29
Destination End User ID	3
Destination Endpoint ID	3
Device Time	2022-03-04 14:57:27
Event Time	1646434647595788893
Event Type	Service
Metric	latency
Service ID	1
Time Stamp	2022-03-04 23:57:29
Time Zone	-0800
UEBA Endpoint ID	3
UEBA User ID	3
logver	700030237

Exhibit B

branch1_fgt # diagnose sys sdwan member
Member(1): interface: port1, flags=0x0 , gateway: 192.2.0.2, priority: 0 1024, weight: 0
Member(2): interface: port2, flags=0x0 , gateway: 192.2.0.10, priority: 0 1024, weight: 0
config service
edit 1
set name "Critical-DIA"
set mode priority
set src "LAN-net"
set internet-service enable
set internet-service-app-ctrl 16354 41468 16920
set health-check "Level3_DNS"
set priority-members 1 2
next
end

Exhibit A shows an SD-WAN event log and exhibit B shows the member status and the SD-WAN rule configuration.

Based on the exhibits, which two statements are correct? (Choose two.)

- A. FortiGate updated the outgoing interface list on the rule so it prefers port2.

- B. Port2 has the highest member priority.
- C. Port2 has a lower latency than port1.
- D. SD-WAN rule ID 1 is set to lowest cost (SLA) mode.

Answer: AC

NEW QUESTION 28

Refer to the exhibits.
 Exhibit A

```
config system global
    set snat-route-change enable
end
```

Exhibit B

```
branch1_fgt # get router info routing-table all
Codes: K - kernel, C - connected, S - static, R - RIP, B - BGP
       O - OSPF, IA - OSPF inter area
       N1 - OSPF NSSA external type 1, N2 - OSPF NSSA external type 2
       E1 - OSPF external type 1, E2 - OSPF external type 2
       i - IS-IS, L1 - IS-IS level-1, L2 - IS-IS level-2, ia - IS-IS inter area
       * - candidate default

Routing table for VRF=0
S*    0.0.0.0/0 [1/0] via 192.2.0.2, port2, [1/0]
      [1/0] via 192.2.0.10, port1 [10/0]
...
```

Exhibit A shows the source NAT (SNAT) global setting and exhibit B shows the routing table on FortiGate.

Based on the exhibits, which two actions does FortiGate perform on existing sessions established over port2, if the administrator increases the static route priority on port2 to 20? (Choose two.)

- A. FortiGate flags the sessions as dirty.
- B. FortiGate continues routing the sessions with no SNAT, over port2.
- C. FortiGate performs a route lookup for the original traffic only.
- D. FortiGate updates the gateway information of the sessions with SNAT so that they use port1 instead of port2.

Answer: AD

NEW QUESTION 33

Which diagnostic command can you use to show the configured SD-WAN zones and their assigned members?

- A. diagnose sys sdwan zone
- B. diagnose sys sdwan service
- C. diagnose sys sdwan member
- D. diagnose sys sdwan interface

Answer: A

NEW QUESTION 34

Refer to the exhibit.

Create New SD-WAN Interface Member

Sequence Number

1

Interface Member

SD-WAN Zone

virtual-wan-link

Gateway IP

0.0.0.0

Cost

0

Status

☒

Priority

0

Advanced Options >

Which two SD-WAN template member settings support the use of FortiManager meta fields? (Choose two.)

- A. Cost
- B. Interface member
- C. Priority
- D. Gateway IP

Answer: BD

NEW QUESTION 35

Which two conclusions for traffic that matches the traffic shaper are true? (Choose two.)

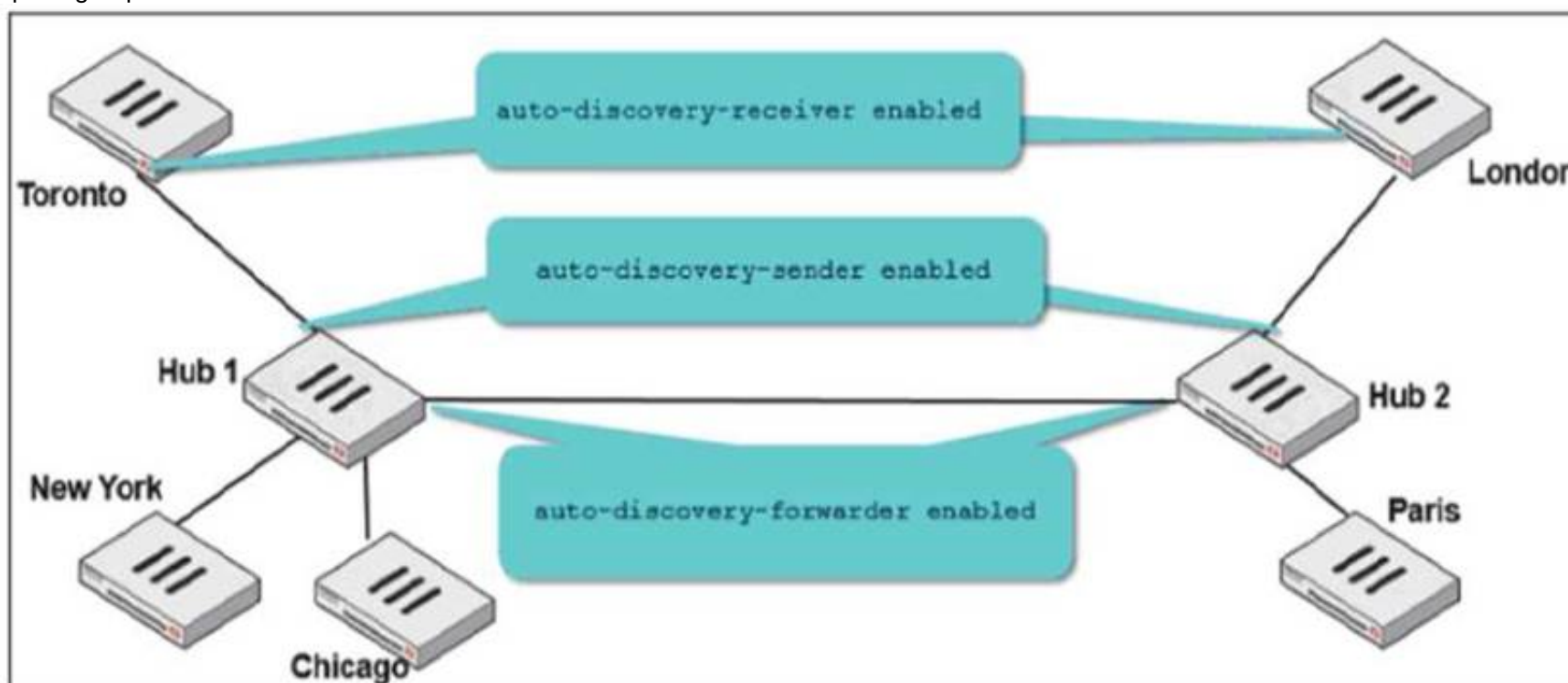
```
# diagnose firewall shaper traffic-shaper list name VoIP_Shaper
name VoIP_Shaper
maximum-bandwidth 6250 KB/sec
guaranteed-bandwidth 2500 KB/sec
current-bandwidth 93 KB/sec
priority 2
overhead 0
tos ff
packets dropped 0
bytes dropped 0
```

- A. The traffic shaper drops packets if the bandwidth is less than 2500 KBps.
- B. The measured bandwidth is less than 100 KBps.
- C. The traffic shaper drops packets if the bandwidth exceeds 6250 KBps.
- D. The traffic shaper limits the bandwidth of each source IP to a maximum of 6250 KBps.

Answer: BC

NEW QUESTION 37

Two hub-and-spoke groups are connected through a site-to-site IPsec VPN between Hub 1 and Hub 2. The administrator configured ADVPN on both hub-and-spoke groups.



Which two outcomes are expected if a user in Toronto sends traffic to London? (Choose two.)

- A. London generates an IKE information message that contains the Toronto public IP address.
- B. Traffic from Toronto to London triggers the dynamic negotiation of a direct site-to-site VPN.
- C. Toronto needs to establish a site-to-site tunnel with Hub 2 to bypass Hub 1.
- D. The first packets from Toronto to London are routed through Hub 1 then to Hub 2.

Answer: BD

NEW QUESTION 42

Which statement is correct about SD-WAN and ADVPN?

- A. Routes for ADVPN shortcuts must be manually configured.
- B. SD-WAN can steer traffic to ADVPN shortcuts, established over IPsec overlays, configured as SD-WAN members.
- C. SD-WAN does not monitor the health and performance of ADVPN shortcuts.
- D. You must use IKEv2 on IPsec tunnels.

Answer: B

NEW QUESTION 46

Which three matching traffic criteria are available in SD-WAN rules? (Choose three.)

- A. Type of physical link connection
- B. Internet service database (ISDB) address object
- C. Source and destination IP address
- D. URL categories
- E. Application signatures

Answer: BCE

NEW QUESTION 48

Refer to the exhibit.

```
config system settings
    set firewall-session-dirty check-new
end
```

Based on the exhibit, which two actions does FortiGate perform on sessions after a firewall policy change? (Choose two.)

- A. FortiGate flushes all sessions.
- B. FortiGate terminates the old sessions.
- C. FortiGate does not change existing sessions.
- D. FortiGate evaluates new sessions.

Answer: CD

Explanation:

FortiGate not to flag existing impacted session as dirty by setting firewall-session-dirty to check new. The results is that FortiGate evaluates only new session against the new firewall policy.

NEW QUESTION 49

Refer to the exhibit.

```
config system interface
    edit "port2"
        set vdom "root"
        set ip 192.2.0.9 255.255.255.248
        set allowaccess ping
        set type physical
        set role wan
        set snmp-index 2
        set preserve-session-route enable
    next
end
```

Based on the exhibit, which two actions does FortiGate perform on traffic passing through port2? (Choose two.)

- A. FortiGate does not change the routing information on existing sessions that use a valid gateway, after a route change.
- B. FortiGate performs routing lookups for new sessions only, after a route change.
- C. FortiGate always blocks all traffic, after a route change.
- D. FortiGate flushes all routing information from the session table, after a route change.

Answer: AB

NEW QUESTION 54

What are two benefits of using the Internet service database (ISDB) in an SD-WAN rule? (Choose two.)

- A. The ISDB is dynamically updated and reduces administrative overhead.
- B. The ISDB requires application control to maintain signatures and perform load balancing.
- C. The ISDB applies rules to traffic from specific sources, based on application type.
- D. The ISDB contains the IP addresses and port ranges of well-known internet services.

Answer: AD

NEW QUESTION 56

Which two statements about SD-WAN central management are true? (Choose two.)

- A. The objects are saved in the ADOM common object database.
- B. It does not support meta fields.
- C. It uses templates to configure SD-WAN on managed devices.
- D. It supports normalized interfaces for SD-WAN member configuration.

Answer: AC

Explanation:

Normalized interfaces are not supported for SD-WAN templates. You can create multiple SD-WAN zones and add interface members to the SD-WAN zones. You must bind the interface members by name to physical interfaces or VPN interfaces. <https://docs.fortinet.com/document/fortigate/7.0.0/sd-wan-new-features/794804/new-sd-wan-template>

NEW QUESTION 60

Refer to the exhibits.


```
dcl_fgt # show vpn ipsec phase1-interface T_INET_1_0
config vpn ipsec phase1-interface
  edit "T_INET_1_0"
    set type dynamic
    set interface "port2"
    set ike-version 2
    set keylife 28800
    set peertype any
    set net-device disable
    set proposal aes128-sha256
    set add-route disable
    set psksecret ENC
GayzHJ/UhxCc9FYtwas5o4rkNCMjjNUEj4Q4f2NS6I65RIVF9zum6sJALsU9Cg+1jsXz3ZtIM+WNkHLsXkHqydgS
G/2x8Vp9Rcht6zKHPEctOcFVbaG+UeO3Rw41pmGP/Z3rIz3tdXJxfYSzKjRqggqahsmDovkrKRHTVFU1zA07Zt6W
iPL9co/Zf3cX+Qpnmm38MQ==
  next
end
```

```
dcl_fgt # diagnose vpn tunnel list name T_INET_1_0_0
list ipsec tunnel by names in vd 0
-----
name=T_INET_1_0_0 ver=2 serial=7 100.64.1.9:0->192.2.0.9:0 tun_id=192.2.0.9 dst_mtu=0
dpd-link=on weight=1
bound_if=4 lgwy=static/1 tun=tunnel/255 mode=dial_inst/3 encaps=none/8832
options[2280]=rgwy-chg frag-rfc run_state=0 accept_traffic=1 overlay_id=0
parent=T_INET_1_0 index=0
proxyid_num=1 child_num=0 refcnt=6 ilast=17 olast=23464 ad=/0
stat: rxp=0 txp=0 rxb=0 txb=0
dpd: mode=on-demand on=1 idle=20000ms retry=3 count=0 seqno=1
natt: mode=none draft=0 interval=0 remote_port=0
proxyid=T_INET_1_0_0 proto=0 sa=1 ref=2 serial=1 add-route
src: 0:0.0.0.0-255.255.255.255:0
dst: 0:10.0.1.0-10.0.1.255:0
SA: ref=3 options=20683 type=00 soft=0 mtu=1280 expire=972/0B replaywin=2048
seqno=1 esn=0 replaywin_lastseq=00000000 itn=0 qat=0 hash_search_len=1
life: type=01 bytes=0/0 timeout=1790/1800
dec: spi=02f9844e esp=aes key=16 7fb5011247248d3a45ac3d802d8c8d64
ah=sha1 key=20 bb217ce87ae060f27823b005005233811993a303
enc: spi=ffc6576a esp=aes key=16 825bddbc5c995feb70411a773867c2d0
ah=sha1 key=20 02db4176f7f21fae7d141526099a707f639893f1
dec:pkts/bytes=0/0, enc:pkts/bytes=0/0
```

Which two statements about the IPsec VPN configuration and the status of the IPsec VPN tunnel are true? (Choose two.)

- A. FortiGate does not install IPsec static routes for remote protected networks in the routing table.
- B. The phase 1 configuration supports the network-overlay setting.
- C. FortiGate facilitated the negotiation of the T_INET_1_0_0 ADVPN shortcut over T_INET_1_0.
- D. Dead peer detection is disabled.

Answer: AB

NEW QUESTION 62

Exhibit.

```
id=20010 trace_id=1402 func=print_pkt_detail line=5588 msg="vd-root:0 received a
packet(proto=6, 10.1.10.1:52490->42.44.50.10:443) from port3. flag [.), seq 1213725680,
ack 1169005655, win 65535"
id=20010 trace_id=1402 func=resolve_ip_tuple_fast line=5669 msg="Find an existing
session, id-00001ca4, original direction"
id=20010 trace_id=1402 func=fw_forward_dirty_handler line=447 msg="Denied by quota
check"
```

Which conclusion about the packet debug flow output is correct?

- A. The total number of daily sessions for 10.1.10.1 exceeded the maximum number of concurrent sessions configured in the traffic shaper, and the packet was dropped.
- B. The packet size exceeded the outgoing interface MTU.
- C. The number of concurrent sessions for 10.1.10.1 exceeded the maximum number of concurrent sessions configured in the traffic shaper, and the packet was dropped.
- D. The number of concurrent sessions for 10.1.10.1 exceeded the maximum number of concurrent sessions configured in the firewall policy, and the packet was dropped.

Answer: C

Explanation:

In a Per-IP shaper configuration, if an IP address exceeds the configured concurrent session limit, the message "Denied by quota check" appears. SD-WAN 7.0 Study Guide page 287

NEW QUESTION 64

Which statement about using BGP for ADVPN is true?

- A. IBGP is preferred over EBGp, because IBGP preserves next hop information.
- B. You must use BGP to route traffic for both overlay and underlay links.
- C. You must configure BGP communities.
- D. You must configure AS path prepending.

Answer: A

NEW QUESTION 66

Refer to the exhibit.

```
config vpn ipsec phase1-interface
edit "FIRST_VPN"
    set type dynamic
    set interface "port1"
    set peertype any
    set proposal aes128-sha256 aes256-sha38
    set dhgrp 14 15 19
    set xauthtype auto
    set authusrgrp "first-group"
    set psksecret fortinet1
next
edit "SECOND_VPN"
    set type dynamic
    set interface "port1"
    set peertype any
    set proposal aes128-sha256 aes256-sha38
    set dhgrp 14 15 19
    set xauthtype auto
    set authusrgrp "second-group"
    set psksecret fortinet2
next
edit
```

FortiGate has multiple dial-up VPN interfaces incoming on port1 that match only FIRST_VPN.

Which two configuration changes must be made to both IPsec VPN interfaces to allow incoming connections to match all possible IPsec dial-up interfaces? (Choose two.)

- A. Specify a unique peer ID for each dial-up VPN interface.
- B. Use different proposals are used between the interfaces.
- C. Configure the IKE mode to be aggressive mode.
- D. Use unique Diffie Hellman groups on each VPN interface.

Answer: AC

NEW QUESTION 67

Refer to the exhibit.

Edit Performance SLA

Name

VPN_HTTP

IP Version

IPv4

IPv6

Probe Mode

Active

Passive

Prefer Passive

Protocol

Ping

TCP ECHO

UDP ECHO

HTTP

TWAMP

DNS

TC

Server

10.1.0.7

Port

0

Participants

All SD-WAN Members

Specify

T_INET_0_0

T_INET_1_0

T_MPLS_0

3 Entries Selected

Enable Probe Packets

http-get

/

http-match

successfully

Based on the exhibit, which two statements are correct about the health of the selected members? (Choose two.)

- A. After FortiGate switches to active mode, FortiGate never fails back to passive monitoring.
- B. During passive monitoring, FortiGate can't detect dead members.
- C. FortiGate can offload the traffic that is subject to passive monitoring to hardware.
- D. FortiGate passively monitors the member if TCP traffic is passing through the member.

Answer: BD

NEW QUESTION 72

.....

THANKS FOR TRYING THE DEMO OF OUR PRODUCT

Visit Our Site to Purchase the Full Set of Actual NSE7_SDW-7.0 Exam Questions With Answers.

We Also Provide Practice Exam Software That Simulates Real Exam Environment And Has Many Self-Assessment Features. Order the NSE7_SDW-7.0 Product From:

https://www.2passeasy.com/dumps/NSE7_SDW-7.0/

Money Back Guarantee

NSE7_SDW-7.0 Practice Exam Features:

- * NSE7_SDW-7.0 Questions and Answers Updated Frequently
- * NSE7_SDW-7.0 Practice Questions Verified by Expert Senior Certified Staff
- * NSE7_SDW-7.0 Most Realistic Questions that Guarantee you a Pass on Your FirstTry
- * NSE7_SDW-7.0 Practice Test Questions in Multiple Choice Formats and Updatesfor 1 Year