



CompTIA

Exam Questions CS0-003

CompTIA CySA+ Certification Beta Exam

About Exambible

[Your Partner of IT Exam](#)

Found in 1998

Exambible is a company specialized on providing high quality IT exam practice study materials, especially Cisco CCNA, CCDA, CCNP, CCIE, Checkpoint CCSE, CompTIA A+, Network+ certification practice exams and so on. We guarantee that the candidates will not only pass any IT exam at the first attempt but also get profound understanding about the certificates they have got. There are so many alike companies in this industry, however, Exambible has its unique advantages that other companies could not achieve.

Our Advances

* 99.9% Uptime

All examinations will be up to date.

* 24/7 Quality Support

We will provide service round the clock.

* 100% Pass Rate

Our guarantee that you will pass the exam.

* Unique Gurantee

If you do not pass the exam at the first time, we will not only arrange FULL REFUND for you, but also provide you another exam of your claim, ABSOLUTELY FREE!

NEW QUESTION 1

A security analyst recently joined the team and is trying to determine which scripting language is being used in a production script to determine if it is malicious. Given the following script:

```
foreach ($user in Get-Content .\this.txt)
{
    Get-ADUser $user -Properties primaryGroupID |select-object primaryGroupID
    Add-ADGroupMember "Domain Users" -Members $user
    Set-ADUser $user -Replace @{primaryGroupID=513}
}
```

Which of the following scripting languages was used in the script?

- A. PowerShell
- B. Ruby
- C. Python
- D. Shell script

Answer: A

Explanation:

The script uses PowerShell syntax, such as cmdlets, parameters, variables, and comments. PowerShell is a scripting language that can be used to automate tasks and manage systems.

NEW QUESTION 2

A malicious actor has gained access to an internal network by means of social engineering. The actor does not want to lose access in order to continue the attack. Which of the following best describes the current stage of the Cyber Kill Chain that the threat actor is currently operating in?

- A. Weaponization
- B. Reconnaissance
- C. Delivery
- D. Exploitation

Answer: D

Explanation:

The Cyber Kill Chain is a framework that describes the stages of a cyberattack from reconnaissance to actions on objectives. The exploitation stage is where attackers take advantage of the vulnerabilities they have discovered in previous stages to further infiltrate a target's network and achieve their objectives. In this case, the malicious actor has gained access to an internal network by means of social engineering and does not want to lose access in order to continue the attack. This indicates that the actor is in the exploitation stage of the Cyber Kill Chain. Official References:

<https://www.lockheedmartin.com/en-us/capabilities/cyber/cyber-kill-chain.html>

NEW QUESTION 3

During the log analysis phase, the following suspicious command is detected

```
<?php preg_replace('/./e', 'system("ping -c 4 10.0.0.1");', ''); ?>
```

Which of the following is being attempted?

- A. Buffer overflow
- B. RCE
- C. ICMP tunneling
- D. Smurf attack

Answer: B

Explanation:

RCE stands for remote code execution, which is a type of attack that allows an attacker to execute arbitrary commands on a target system. The suspicious command in the question is an example of RCE, as it tries to download and execute a malicious file from a remote server using the wget and chmod commands. A buffer overflow is a type of vulnerability that occurs when a program writes more data to a memory buffer than it can hold, potentially overwriting other memory locations and corrupting the program's execution. ICMP tunneling is a technique that uses ICMP packets to encapsulate and transmit data that would normally be blocked by firewalls or filters. A smurf attack is a type of DDoS attack that floods a network with ICMP echo requests, causing all devices on the network to reply and generate a large amount of traffic. Verified References: What Is Buffer Overflow? Attacks, Types & Vulnerabilities - Fortinet1, What Is a Smurf Attack? Smurf DDoS Attack | Fortinet2, exploit - Interpreting CVE ratings: Buffer Overflow vs. Denial of ...3

NEW QUESTION 4

A security analyst discovers an LFI vulnerability that can be exploited to extract credentials from the underlying host. Which of the following patterns can the security analyst use to search the web server logs for evidence of exploitation of that particular vulnerability?

- A. /etc/ shadow
- B. curl localhost
- C. ; printenv
- D. cat /proc/self/

Answer: A

Explanation:

/etc/shadow is the pattern that the security analyst can use to search the web server logs for evidence of exploitation of the LFI vulnerability that can be exploited to extract credentials from the underlying host. LFI stands for Local File Inclusion, which is a vulnerability that allows an attacker to include local files on the web

server into the output of a web application. LFI can be exploited to extract sensitive information from the web server, such as configuration files, passwords, or source code. The `/etc/shadow` file is a file that stores the encrypted passwords of all users on a Linux system. If an attacker can exploit the LFI vulnerability to include this file into the web application output, they can obtain the credentials of the users on the web server. Therefore, the security analyst can look for `/etc/shadow` in the request line of the web server logs to see if any attacker has attempted or succeeded in exploiting the LFI vulnerability. Official References:

- <https://partners.comptia.org/docs/default-source/resources/comptia-cysa-cs0-002-exam-objectives>
- <https://www.comptia.org/certifications/cybersecurity-analyst>
- <https://www.comptia.org/blog/the-new-comptia-cybersecurity-analyst-your-questions-answered>

NEW QUESTION 5

A company's user accounts have been compromised. Users are also reporting that the company's internal portal is sometimes only accessible through HTTP, other times; it is accessible through HTTPS. Which of the following most likely describes the observed activity?

- A. There is an issue with the SSL certificate causing port 443 to become unavailable for HTTPS access
- B. An on-path attack is being performed by someone with internal access that forces users into port 80
- C. The web server cannot handle an increasing amount of HTTPS requests so it forwards users to port 80
- D. An error was caused by BGP due to new rules applied over the company's internal routers

Answer: B

Explanation:

An on-path attack is a type of man-in-the-middle attack where an attacker intercepts and modifies network traffic between two parties. In this case, someone with internal access may be performing an on-path attack by forcing users into port 80, which is used for HTTP communication, instead of port 443, which is used for HTTPS communication. This would allow the attacker to compromise the user accounts and access the company's internal portal.

NEW QUESTION 6

Which of the following would help to minimize human engagement and aid in process improvement in security operations?

- A. OSSTMM
- B. SIEM
- C. SOAR
- D. QVVASP

Answer: C

Explanation:

SOAR stands for security orchestration, automation, and response, which is a term that describes a set of tools, technologies, or platforms that can help streamline, standardize, and automate security operations and incident response processes and tasks. SOAR can help minimize human engagement and aid in process improvement in security operations by reducing manual work, human errors, response time, or complexity. SOAR can also help enhance collaboration, coordination, efficiency, or effectiveness of security operations and incident response teams.

NEW QUESTION 7

The security analyst received the monthly vulnerability report. The following findings were included in the report

- Five of the systems only required a reboot to finalize the patch application.
- Two of the servers are running outdated operating systems and cannot be patched

The analyst determines that the only way to ensure these servers cannot be compromised is to isolate them. Which of the following approaches will best minimize the risk of the outdated servers being compromised?

- A. Compensating controls
- B. Due diligence
- C. Maintenance windows
- D. Passive discovery

Answer: A

Explanation:

Compensating controls are the best approach to minimize the risk of the outdated servers being compromised, as they can provide an alternative or additional layer of security when the primary control is not feasible or effective. Compensating controls are security measures that are implemented to mitigate the risk of a vulnerability or an attack when the primary control is not feasible or effective. For example, if the servers are running outdated operating systems and cannot be patched, a compensating control could be to isolate them from the rest of the network, or to implement a firewall or an intrusion prevention system to monitor and block any malicious traffic to or from the servers. Compensating controls can help reduce the likelihood or impact of an exploit, but they do not eliminate the risk completely. Therefore, the security analyst should also consider upgrading or replacing the outdated servers as soon as possible.

NEW QUESTION 8

Which of the following is described as a method of enforcing a security policy between cloud customers and cloud services?

- A. CASB
- B. DMARC
- C. SIEM
- D. PAM

Answer: A

Explanation:

A CASB (Cloud Access Security Broker) is a security solution that acts as an intermediary between cloud users and cloud providers, and monitors and enforces security policies for cloud access and usage. A CASB can help organizations protect their data and applications in the cloud from unauthorized or malicious access, as well as comply with regulatory standards and best practices. A CASB can also provide visibility, control, and analytics for cloud activity, and identify and mitigate potential threats¹²

The other options are not correct. DMARC (Domain-based Message Authentication, Reporting and Conformance) is an email authentication protocol that helps

email domain owners prevent spoofing and phishing attacks by verifying the sender's identity and instructing the receiver how to handle unauthenticated messages³⁴ SIEM (Security Information and Event Management) is a security solution that collects, aggregates, and analyzes log data from various sources across an organization's network, such as applications, devices, servers, and users, and provides real-time alerts, dashboards, reports, and incident response capabilities to help security teams identify and mitigate cyberattacks⁵⁶ PAM (Privileged Access Management) is a security solution that helps organizations manage and protect the access and permissions of users, accounts, processes, and systems that have elevated or administrative privileges. PAM can help prevent credential theft, data breaches, insider threats, and compliance violations by monitoring, detecting, and preventing unauthorized privileged access to critical resources⁷⁸

NEW QUESTION 9

While reviewing web server logs, a security analyst found the following line:

```
<IMG SRC='vbscript:msgbox("test")'>
```

Which of the following malicious activities was attempted?

- A. Command injection
- B. XML injection
- C. Server-side request forgery
- D. Cross-site scripting

Answer: D

Explanation:

XSS is a type of web application attack that exploits the vulnerability of a web server or browser to execute malicious scripts or commands on the client-side. XSS attackers inject malicious code, such as JavaScript, VBScript, HTML, or CSS, into a web page or application that is viewed by other users. The malicious code can then access or manipulate the user's session, cookies, browser history, or personal information, or perform actions on behalf of the user, such as stealing credentials, redirecting to phishing sites, or installing malware¹²

The line in the web server log shows an example of an XSS attack using VBScript. The attacker tried to insert an tag with a malicious SRC attribute that contains a VBScript code. The VBScript code is intended to display a message box with the text "test" when the user views the web page or application. This is a simple and harmless example of XSS, but it could be used to test the vulnerability of the web server or browser, or to launch more sophisticated and harmful attacks³

NEW QUESTION 10

An incident response team is working with law enforcement to investigate an active web server compromise. The decision has been made to keep the server running and to implement compensating controls for a period of time. The web service must be accessible from the internet via the reverse proxy and must connect to a database server. Which of the following compensating controls will help contain the adversary while meeting the other requirements? (Select two).

- A. Drop the tables on the database server to prevent data exfiltration.
- B. Deploy EDR on the web server and the database server to reduce the adversaries capabilities.
- C. Stop the httpd service on the web server so that the adversary can not use web exploits
- D. use micro segmentation to restrict connectivity to/from the web and database servers.
- E. Comment out the HTTP account in the / etc/passwd file of the web server
- F. Move the database from the database server to the web server.

Answer: BD

Explanation:

Deploying EDR on the web server and the database server to reduce the adversaries capabilities and using micro segmentation to restrict connectivity to/from the web and database servers are two compensating controls that will help contain the adversary while meeting the other requirements. A compensating control is a security measure that is implemented to mitigate the risk of a vulnerability or an attack when the primary control is not feasible or effective. EDR stands for Endpoint Detection and Response, which is a tool that monitors endpoints for malicious activity and provides automated or manual response capabilities. EDR can help contain the adversary by detecting and blocking their actions, such as data exfiltration, lateral movement, privilege escalation, or command execution. Micro segmentation is a technique that divides a network into smaller segments based on policies and rules, and applies granular access controls to each segment. Micro segmentation can help contain the adversary by isolating the web and database servers from other parts of the network, and limiting the traffic that can flow between them. Official References:

- > <https://partners.comptia.org/docs/default-source/resources/comptia-cysa-cs0-002-exam-objectives>
- > <https://www.comptia.org/certifications/cybersecurity-analyst>
- > <https://www.comptia.org/blog/the-new-comptia-cybersecurity-analyst-your-questions-answered>

NEW QUESTION 10

Which of the following best describes the document that defines the expectation to network customers that patching will only occur between 2:00 a.m. and 4:00 a.m.?

- A. SLA
- B. LOI
- C. MOU
- D. KPI

Answer: A

Explanation:

SLA (Service Level Agreement) is the best term to describe the document that defines the expectation to network customers that patching will only occur between 2:00 a.m. and 4:00 a.m., as it reflects the agreement between a service provider and a customer that specifies the services, quality, availability, and responsibilities that are agreed upon. An SLA is a common type of document that is used in various industries and contexts, such as IT, telecom, cloud computing, or outsourcing. An SLA typically includes metrics and indicators to measure the performance and quality of the service, such as uptime, response time, or resolution time. An SLA also defines the consequences or remedies for any breaches or failures of the service, such as penalties, refunds, or credits. An SLA can help to manage customer expectations, formalize communication, improve productivity, and strengthen relationships. The other terms are not as accurate as SLA, as they describe different types of documents or concepts. LOI (Letter of Intent) is a document that outlines the main terms and conditions of a proposed agreement between two or more parties, before a formal contract is signed. An LOI is usually non-binding and expresses the intention or interest of the parties to enter into a future agreement. An LOI can help to clarify the key points of a deal, facilitate negotiations, or demonstrate commitment. MOU (Memorandum of Understanding) is a document that describes a mutual agreement or cooperation between two or more parties, without creating any legal obligations or commitments. An MOU is

usually more formal than an LOI, but less formal than a contract. An MOU can help to establish a common ground, define roles and responsibilities, or outline expectations and goals. KPI (Key Performance Indicator) is a concept that refers to a measurable value that demonstrates how effectively an organization or individual is achieving its key objectives or goals. A KPI is usually quantifiable and specific, such as revenue growth, customer satisfaction, or employee retention. A KPI can help to track progress, evaluate performance, or identify areas for improvement.

NEW QUESTION 15

A company is in the process of implementing a vulnerability management program, and there are concerns about granting the security team access to sensitive data. Which of the following scanning methods can be implemented to reduce the access to systems while providing the most accurate vulnerability scan results?

- A. Credentialed network scanning
- B. Passive scanning
- C. Agent-based scanning
- D. Dynamic scanning

Answer: C

Explanation:

Agent-based scanning is a method that involves installing software agents on the target systems or networks that can perform local scans and report the results to a central server or console. Agent-based scanning can reduce the access to systems, as the agents do not require any credentials or permissions to scan the local system or network. Agent-based scanning can also provide the most accurate vulnerability scan results, as the agents can scan continuously or on-demand, regardless of the system or network status or location.

NEW QUESTION 18

An incident response team finished responding to a significant security incident. The management team has asked the lead analyst to provide an after-action report that includes lessons learned. Which of the following is the most likely reason to include lessons learned?

- A. To satisfy regulatory requirements for incident reporting
- B. To hold other departments accountable
- C. To identify areas of improvement in the incident response process
- D. To highlight the notable practices of the organization's incident response team

Answer: C

Explanation:

The most likely reason to include lessons learned in an after-action report is to identify areas of improvement in the incident response process. The lessons learned process is a way of reviewing and evaluating the incident response activities and outcomes, as well as identifying and documenting any strengths, weaknesses, gaps, or best practices. Identifying areas of improvement in the incident response process can help enhance the security posture, readiness, or capability of the organization for future incidents, as well as provide feedback or recommendations on how to address any issues or challenges.

NEW QUESTION 23

During an incident, a security analyst discovers a large amount of PII has been emailed externally from an employee to a public email address. The analyst finds that the external email is the employee's personal email. Which of the following should the analyst recommend be done first?

- A. Place a legal hold on the employee's mailbox.
- B. Enable filtering on the web proxy.
- C. Disable the public email access with CASB.
- D. Configure a deny rule on the firewall.

Answer: A

Explanation:

Placing a legal hold on the employee's mailbox is the best action to perform first, as it preserves all mailbox content, including deleted items and original versions of modified items, for potential legal or forensic purposes. A legal hold is a feature that allows an administrator to retain mailbox data for a user indefinitely or for a specified period, regardless of the user's actions or retention policies. A legal hold can be applied to a mailbox using Litigation Hold or In-Place Hold in Exchange Server or Exchange Online. A legal hold can help to ensure that evidence of data exfiltration or other malicious activities is not lost or tampered with, and that the organization can comply with any legal or regulatory obligations. The other actions are not as urgent or effective as placing a legal hold on the employee's mailbox, as they do not address the immediate threat of data loss or compromise. Enabling filtering on the web proxy may help to prevent some types of data exfiltration or malicious traffic, but it does not help to recover or preserve the data that has already been emailed externally. Disabling the public email access with CASB (Cloud Access Security Broker) may help to block or monitor the use of public email services by employees, but it does not help to recover or preserve the data that has already been emailed externally. Configuring a deny rule on the firewall may help to block or monitor the network traffic from the employee's laptop, but it does not help to recover or preserve the data that has already been emailed externally.

NEW QUESTION 24

The developers recently deployed new code to three web servers. A daffy automated external device scan report shows server vulnerabilities that are failure items according to PCI DSS.

If the vulnerability is not valid, the analyst must take the proper steps to get the scan clean.

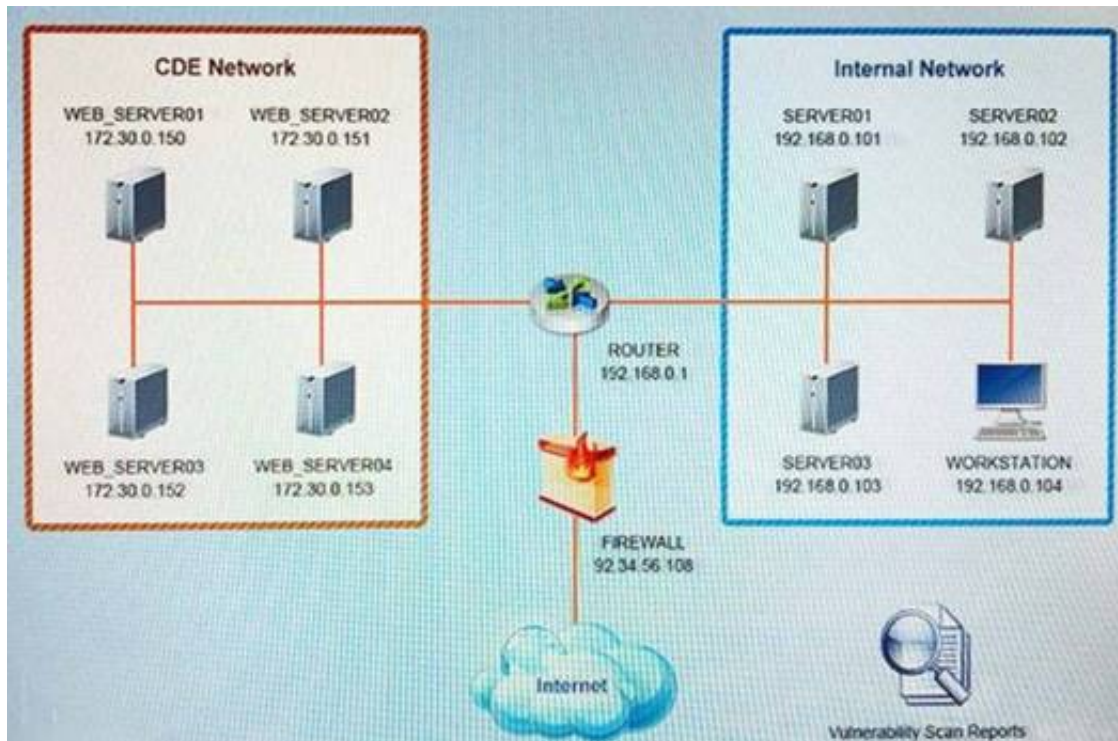
If the vulnerability is valid, the analyst must remediate the finding.

After reviewing the information provided in the network diagram, select the STEP 2 tab to complete the simulation by selecting the correct Validation Result and Remediation Action for each server listed using the drop-down options.

INSTRUCTIONS:

The simulation includes 2 steps.

Step1: Review the information provided in the network diagram and then move to the STEP 2 tab.



Vulnerability Scan Report

HIGH SEVERITY

Title: Cleartext Transmission of Sensitive Information
Description: The software transmits sensitive or securitycritical data in Cleartext in a communication channel that can be sniffed by authorized users.
Affected Asset: 172.30.0.15
Risk: Anyone can read the information by gaining access to the channel being used for communication.
Reference: CVE-2002-1949

MEDIUM SEVERITY

Title: Sensitive Cookie in HTTPS session without 'Secure' Attribute
Description: The Secure attribute for sensitive cookies in HTTPS sessions is not set, which could cause the use agent to send those cookies in plaintext over HTTP session.
Affected Asset: 172.30.0.152
Risk: Session Sidejacking
Reference: CVE-2004-0462

LOW SEVERITY

Title: Untrusted SSL/TLS Server X.509 Certificate
Description: The server's TLS/SSL certificate is signed by a Certification Authority that is untrusted or unknown.
Affected Asset: 172.30.0.153
Risk: May allow man-in-the-middle attackers to insert a spoofed certificate for any Distinguished Name (DN).
Reference: CVE-2005-1234

STEP 2: Given the Scenario, determine which remediation action is required to address the vulnerability.

Network Diagram

INSTRUCTIONS

STEP 2: Given the scenario, determine which remediation action is required to address the vulnerability.

System	Validate Result	Remediation Action
WEB_SERVER01	<div>False Positive</div> <div>False Negative</div> <div>True Positive</div> <div>True Negative</div>	<div>Encrypt Entire Session</div> <div>Encrypt All Session Cookies</div> <div>Implement Input Validation</div> <div>Submit as Non-Issue</div> <div>Employ Unique Token in Hidden Field</div> <div>Avoid Using Redirects and Forwards</div> <div>Disable HTTP</div> <div>Request Certificate from a Public CA</div> <div>Renew the Current Certificate</div>
WEB_SERVER02	<div>False Positive</div> <div>False Negative</div> <div>True Positive</div> <div>True Negative</div>	<div>Encrypt Entire Session</div> <div>Encrypt All Session Cookies</div> <div>Implement Input Validation</div> <div>Submit as Non-Issue</div> <div>Employ Unique Token in Hidden Field</div> <div>Avoid Using Redirects and Forwards</div> <div>Disable HTTP</div> <div>Request Certificate from a Public CA</div> <div>Renew the Current Certificate</div>
WEB_SERVER03	<div>False Positive</div> <div>False Negative</div> <div>True Positive</div> <div>True Negative</div>	<div>Encrypt Entire Session</div> <div>Encrypt All Session Cookies</div> <div>Implement Input Validation</div> <div>Submit as Non-Issue</div> <div>Employ Unique Token in Hidden Field</div> <div>Avoid Using Redirects and Forwards</div> <div>Disable HTTP</div> <div>Request Certificate from a Public CA</div> <div>Renew the Current Certificate</div>

- A. Mastered
 B. Not Mastered

Answer: A

Explanation:

INSTRUCTIONS

STEP 2: Given the scenario, determine which remediation action is required to address the vulnerability.

System	Validate Result	Remediation Action
WEB_SERVER01	<div>True Positive</div>	<div>Encrypt Entire Session</div>
WEB_SERVER02	<div>True Positive</div>	<div>Encrypt All Session Cookies</div>
WEB_SERVER03	<div>True Positive</div>	<div>Request Certificate from a Public CA</div>

NEW QUESTION 27

Patches for two highly exploited vulnerabilities were released on the same Friday afternoon. Information about the systems and vulnerabilities is shown in the tables below:

Vulnerability name	Description
inter.drop	Remote Code Execution (RCE)
slow.roll	Denial of Service (DoS)

System name	Vulnerability	Network segment
manning	slow.roll	internal
brees	inter.drop	internal
brady	inter.drop	external
rogers	slow.roll; inter.drop	isolated vlan

Which of the following should the security analyst prioritize for remediation?

- A. rogers
- B. brady
- C. breees
- D. manning

Answer: B

Explanation:

Brady should be prioritized for remediation, as it has the highest risk score and the highest number of affected users. The risk score is calculated by multiplying the CVSS score by the exposure factor, which is the percentage of systems that are vulnerable to the exploit. Brady has a risk score of 9 x 0.8 = 7.2, which is higher than any other system. Brady also has 500 affected users, which is more than any other system. Therefore, patching brady would reduce the most risk and impact for the organization. The other systems have lower risk scores and lower numbers of affected users, so they can be remediated later.

NEW QUESTION 32

A security analyst obtained the following table of results from a recent vulnerability assessment that was conducted against a single web server in the environment:

Finding	Impact	Credential required?	Complexity
Self-signed certificate in use	High	No	High
Old copyright date	Low	No	N/A
All user input accepted on forms	High	No	Low
Full error messages displayed	Medium	No	Low
Control panel login open to public	High	Yes	Medium

Which of the following should be completed first to remediate the findings?

- A. Ask the web development team to update the page contents
- B. Add the IP address allow listing for control panel access
- C. Purchase an appropriate certificate from a trusted root CA
- D. Perform proper sanitization on all fields

Answer: D

Explanation:

The first action that should be completed to remediate the findings is to perform proper sanitization on all fields. Sanitization is a process that involves validating, filtering, or encoding any user input or data before processing or storing it on a system or application. Sanitization can help prevent various types of attacks, such as cross-site scripting (XSS), SQL injection, or command injection, that exploit unsanitized input or data to execute malicious scripts, commands, or queries on a system or application. Performing proper sanitization on all fields can help address the most critical and common vulnerability found during the vulnerability assessment, which is XSS.

NEW QUESTION 35

Which of the following best describes the goal of a disaster recovery exercise as preparation for possible incidents?

- A. To provide metrics and test continuity controls
- B. To verify the roles of the incident response team
- C. To provide recommendations for handling vulnerabilities
- D. To perform tests against implemented security controls

Answer: A

Explanation:

The correct answer is A. To provide metrics and test continuity controls.

A disaster recovery exercise is a simulation or a test of the disaster recovery plan, which is a set of procedures and resources that are used to restore the normal operations of an organization after a disaster or a major incident. The goal of a disaster recovery exercise is to provide metrics and test continuity controls, which are the measures that ensure the availability and resilience of the critical systems and processes of an organization. A disaster recovery exercise can help evaluate the effectiveness, efficiency, and readiness of the disaster recovery plan, as well as identify and address any gaps or issues.

The other options are not the best descriptions of the goal of a disaster recovery exercise. Verifying the roles of the incident response team (B) is a goal of an incident response exercise, which is a simulation or a test of the incident response plan, which is a set of procedures and roles that are used to detect, contain, analyze, and remediate an incident. Providing recommendations for handling vulnerabilities © is a goal of a vulnerability assessment, which is a process of identifying and prioritizing the weaknesses and risks in an organization's systems or network. Performing tests against implemented security controls (D) is a goal of a penetration test, which is an authorized and simulated attack on an organization's systems or network to evaluate their security posture and identify any vulnerabilities or misconfigurations.

NEW QUESTION 39

A security analyst performs a vulnerability scan. Based on the metrics from the scan results, the analyst must prioritize which hosts to patch. The analyst runs the tool and receives the following output:

```
Host    CVE: (Vulnerability Name)  Metrics
----    -
host01  CVE-2003-99992: (TransAtl) DDS:NOA:HVT
host02  CVE-2004-99993: (TjBeP)   DDS:AEX:NOA
host03  CVE-2007-99996:          RCE:AEX:HVT
        (NarrowStairs)
host04  CVE-2009-99998:          UDD:NOA
        (Topendoor)

--- metrics ---
DDS: Denial of service vulnerability
RCE: Remote code execution vulnerability
UDD: Unauthorized disclosure of data vulnerability
AEX: Vulnerability is being exploited actively exploited
NOA: No authentication required
HVT: Host is a high value target
HEX: Host is externally available to public Internet
```

Which of the following hosts should be patched first, based on the metrics?

- A. host01
- B. host02
- C. host03
- D. host04

Answer: C

Explanation:

Host03 should be patched first, based on the metrics, as it has the highest risk score and the highest number of critical vulnerabilities. The risk score is calculated by multiplying the CVSS score by the exposure factor, which is the percentage of systems that are vulnerable to the exploit. Host03 has a risk score of $10 \times 0.9 = 9$, which is higher than any other host. Host03 also has 5 critical vulnerabilities, which are the most severe and urgent to fix, as they can allow remote code execution, privilege escalation, or data loss. The other hosts have lower risk scores and lower numbers of critical vulnerabilities, so they can be patched later.

NEW QUESTION 42

An organization has experienced a breach of customer transactions. Under the terms of PCI DSS, which of the following groups should the organization report the breach to?

- A. PCI Security Standards Council
- B. Local law enforcement
- C. Federal law enforcement
- D. Card issuer

Answer: D

Explanation:

Under the terms of PCI DSS, an organization that has experienced a breach of customer transactions should report the breach to the card issuer. The card issuer is the financial institution that issues the payment cards to the customers and that is responsible for authorizing and processing the transactions. The card issuer may have specific reporting requirements and procedures for the organization to follow in the event of a breach. The organization should also notify other parties that may be affected by the breach, such as customers, law enforcement, or regulators, depending on the nature and scope of the breach. Official References: <https://www.pcisecuritystandards.org/>

NEW QUESTION 47

A vulnerability management team is unable to patch all vulnerabilities found during their weekly scans. Using the third-party scoring system described below, the team patches the most urgent vulnerabilities:

Metric	Description
Cobain	Exploitable by malware
Grohl	Externally facing
Novo	Exploit PoC available
Smear	Older than 2 years
Channing	Vulnerability research activity

Additionally, the vulnerability management team feels that the metrics Smear and Channing are less important than the others, so these will be lower in priority. Which of the following vulnerabilities should be patched first, given the above third-party scoring system?

- A. InLoud:Cobain: Yes Grohl: No Novo: Yes Smear: Yes Channing: No
- B. TSpirit:Cobain: Yes Grohl: Yes Novo: Yes Smear: No Channing: No
- C. ENameless: Cobain: Yes Grohl: No Novo: Yes Smear: No Channing: No
- D. PBleach: Cobain: Yes Grohl: No Novo: No Smear: No Channing: Yes

Answer: B

Explanation:

The vulnerability that should be patched first, given the above third-party scoring system, is: TSpirit: Cobain: Yes Grohl: Yes Novo: Yes Smear: No Channing: No. This vulnerability has three out of five metrics marked as Yes, which indicates a high severity level. The metrics Cobain, Grohl, and Novo are more important than Smear and Channing, according to the vulnerability management team. Therefore, this vulnerability poses a greater risk than the other vulnerabilities and should be patched first.

NEW QUESTION 51

Joe, a leading sales person at an organization, has announced on social media that he is leaving his current role to start a new company that will compete with his current employer. Joe is soliciting his current employer's customers. However, Joe has not resigned or discussed this with his current supervisor yet. Which of the following would be the best action for the incident response team to recommend?

- A. Isolate Joe's PC from the network
- B. Reimage the PC based on standard operating procedures
- C. Initiate a remote wipe of Joe's PC using mobile device management
- D. Perform no action until HR or legal counsel advises on next steps

Answer: D

Explanation:

The best action for the incident response team to recommend in this scenario is to perform no action until HR or legal counsel advises on next steps. This action can help avoid any potential legal or ethical issues, such as violating employee privacy rights, contractual obligations, or organizational policies. This action can also help ensure that any evidence or information collected from the employee's system or network is admissible and valid in case of any legal action or dispute. The incident response team should consult with HR or legal counsel before taking any action that may affect the employee's system or network.

NEW QUESTION 53

Given the following CVSS string- CVSS:3.0/AV:N/AC:L/PR:N/UI:N/3:U/C:K/I:K/A:H
 Which of the following attributes correctly describes this vulnerability?

- A. A user is required to exploit this vulnerability.
- B. The vulnerability is network based.
- C. The vulnerability does not affect confidentiality.
- D. The complexity to exploit the vulnerability is high.

Answer: B

Explanation:

The vulnerability is network based is the correct attribute that describes this vulnerability, as it can be inferred from the CVSS string. CVSS stands for Common Vulnerability Scoring System, which is a framework that assigns numerical scores and ratings to vulnerabilities based on their characteristics and severity. The CVSS string consists of several metrics that define different aspects of the vulnerability, such as the attack vector, the attack complexity, the privileges required, the user interaction, the scope, and the impact on confidentiality, integrity and availability. The first metric in the CVSS string is the attack vector (AV), which indicates how the vulnerability can be exploited. The value of AV in this case is N, which stands for network. This means that the vulnerability can be exploited remotely over a network connection, without physical or logical access to the target system. Therefore, the vulnerability is network based. Official References:

- > <https://partners.comptia.org/docs/default-source/resources/comptia-cysa-cs0-002-exam-objectives>
- > <https://www.comptia.org/certifications/cybersecurity-analyst>
- > <https://packitforwarding.com/index.php/2019/01/10/comptia-cysa-common-vulnerability-scoring-system>

NEW QUESTION 57

After conducting a cybersecurity risk assessment for a new software request, a Chief Information Security Officer (CISO) decided the risk score would be too high. The CISO refused the software request. Which of the following risk management principles did the CISO select?

- A. Avoid
- B. Transfer
- C. Accept
- D. Mitigate

Answer: A

Explanation:

Avoid is a risk management principle that describes the decision or action of not engaging in an activity or accepting a risk that is deemed too high or unacceptable. Avoiding a risk can eliminate the possibility or impact of the risk, as well as the need for any further risk management actions. In this case, the CISO decided the risk score would be too high and refused the software request. This indicates that the CISO selected the avoid principle for risk management.

NEW QUESTION 61

While reviewing web server logs, an analyst notices several entries with the same time stamps, but all contain odd characters in the request line. Which of the following steps should be taken next?

- A. Shut the network down immediately and call the next person in the chain of command.
- B. Determine what attack the odd characters are indicative of
- C. Utilize the correct attack framework and determine what the incident response will consist of.
- D. Notify the local law enforcement for incident response

Answer: B

Explanation:

Determining what attack the odd characters are indicative of is the next step that should be taken after reviewing web server logs and noticing several entries with the same time stamps, but all contain odd characters in the request line. This step can help the analyst identify the type and severity of the attack, as well as the possible source and motive of the attacker. The odd characters in the request line may indicate that the attacker is trying to exploit a vulnerability or inject malicious code into the web server or application, such as SQL injection, cross-site scripting, buffer overflow, or command injection. The analyst can use tools and techniques such as log analysis, pattern matching, signature detection, or threat intelligence to determine what attack the odd characters are indicative of, and then proceed to the next steps of incident response, such as containment, eradication, recovery, and lessons learned. Official References:

- <https://partners.comptia.org/docs/default-source/resources/comptia-cysa-cs0-002-exam-objectives>
- <https://www.comptia.org/certifications/cybersecurity-analyst>
- <https://www.comptia.org/blog/the-new-comptia-cybersecurity-analyst-your-questions-answered>

NEW QUESTION 64

Which of the following is the first step that should be performed when establishing a disaster recovery plan?

- A. Agree on the goals and objectives of the plan
- B. Determine the site to be used during a disaster
- C. Demonstrate adherence to a standard disaster recovery process
- D. Identity applications to be run during a disaster

Answer: A

Explanation:

The first step that should be performed when establishing a disaster recovery plan is to agree on the goals and objectives of the plan. The goals and objectives of the plan should define what the plan aims to achieve, such as minimizing downtime, restoring critical functions, ensuring data integrity, or meeting compliance requirements. The goals and objectives of the plan should also be aligned with the business needs and priorities of the organization and be measurable and achievable.

NEW QUESTION 68

While performing a dynamic analysis of a malicious file, a security analyst notices the memory address changes every time the process runs. Which of the following controls is most likely preventing the analyst from finding the proper memory address of the piece of malicious code?

- A. Address space layout randomization
- B. Data execution prevention
- C. Stack canary
- D. Code obfuscation

Answer: A

Explanation:

The correct answer is A. Address space layout randomization.

Address space layout randomization (ASLR) is a security control that randomizes the memory address space of a process, making it harder for an attacker to exploit memory-based vulnerabilities, such as buffer overflows¹. ASLR can also prevent a security analyst from finding the proper memory address of a piece of malicious code, as the memory address changes every time the process runs².

The other options are not the best explanations for why the memory address changes every time the process runs. Data execution prevention (B) is a security control that prevents code from being executed in certain memory regions, such as the stack or the heap³. Stack canary © is a security technique that places a random value on the stack before a function's return address, to detect and prevent stack buffer overflows. Code obfuscation (D) is a technique that modifies the source code or binary of a program to make it more difficult to understand or reverse engineer. These techniques do not affect the memory address space of a process, but rather the execution or analysis of the code.

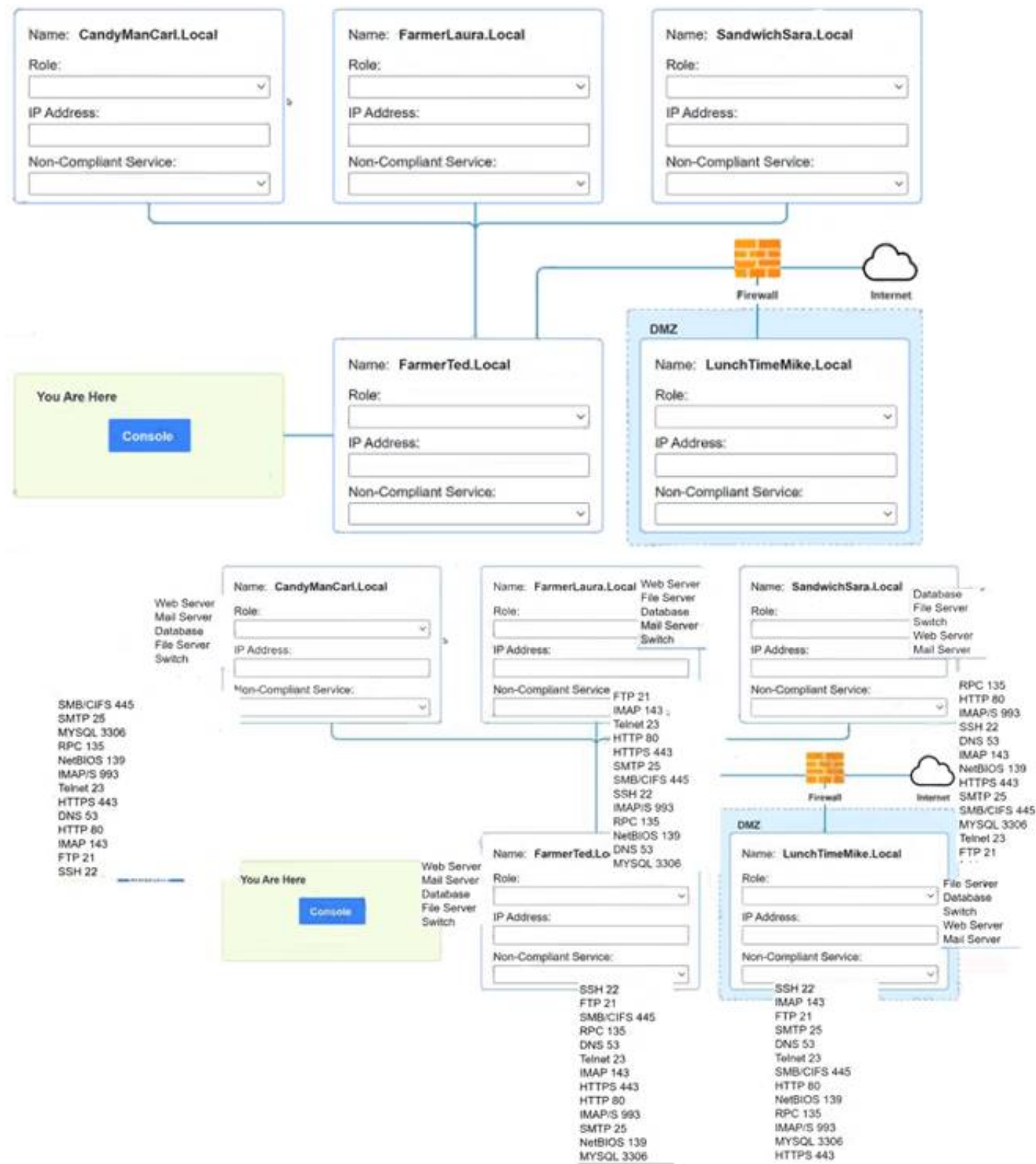
NEW QUESTION 69

You are a penetration tester who is reviewing the system hardening guidelines for a company. Hardening guidelines indicate the following.

- There must be one primary server or service per device.
 - Only default port should be used
 - Non-secure protocols should be disabled.
 - The corporate internet presence should be placed in a protected subnet
- Instructions :
- Using the available tools, discover devices on the corporate network and the services running on these devices.

You must determine

- ip address of each device
- The primary server or service each device
- The protocols that should be disabled based on the hardening guidelines

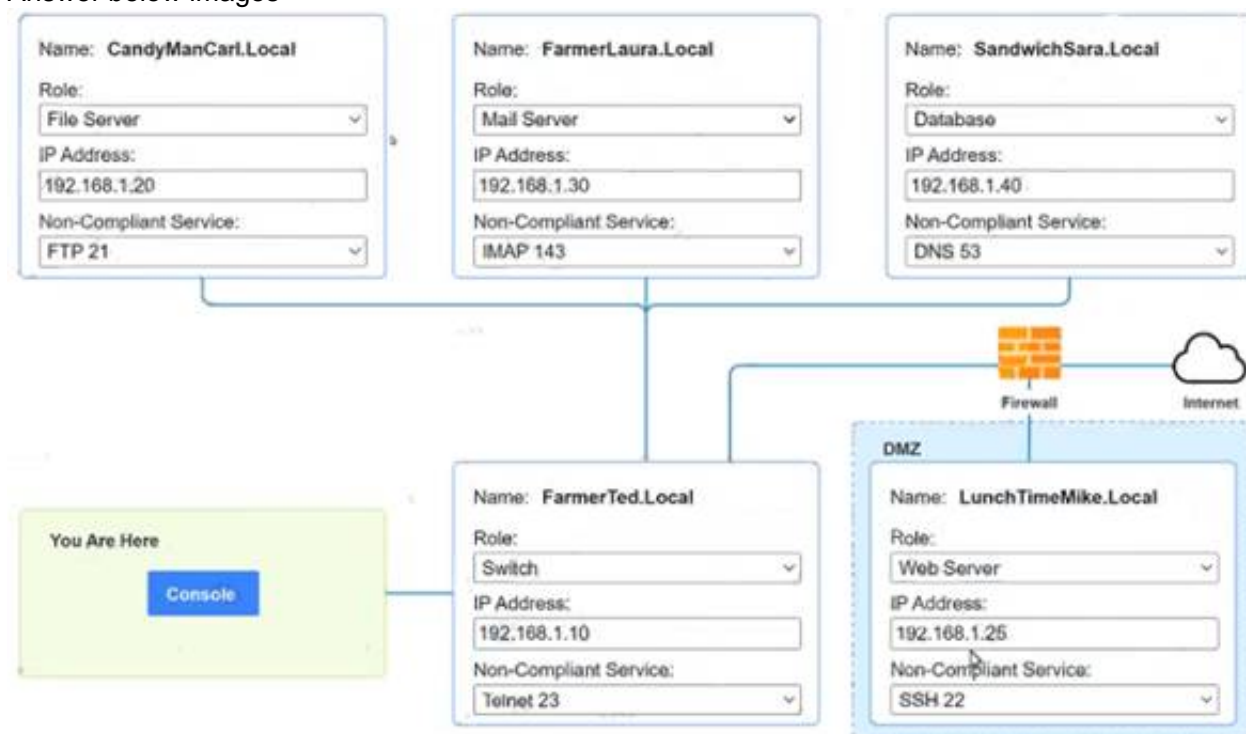


- A. Mastered
- B. Not Mastered

Answer: A

Explanation:

Answer below images




```

PC1
nmap <host>
ping <host>
help

[root@server1 ~]# nmap candymancarl.local

Starting Nmap 7.01 ( http://www.insecure.org/nmap/ ) at 2016-03-02 16:20 EST
Interesting ports on CandyManCarl.Local (192.168.1.20):
Not shown: 1676 closed ports
PORT      STATE      SERVICE
21/tcp    open       ftp
135/tcp   open       msrpc Microsoft Windows RPC
139/tcp   open       netbios-ssn
445/tcp   open       microsoft-ds
MAC Address: 09:00:27:D9:8E:D4 (Symmetrical Systems Industries Consortium)

Nmap finished: 1 IP address (1 host up) scanned in 0.420 seconds

[root@server1 ~]# nmap farmerlaura.local

Starting Nmap 7.01 ( http://www.insecure.org/nmap/ ) at 2016-03-02 16:20 EST
Interesting ports on FarmerLaura.Local (192.168.1.30):
Not shown: 1678 closed ports
PORT      STATE      SERVICE
143/tcp   open       imap
993/tcp   open       imap/s
MAC Address: 09:00:27:D9:8E:D3 (Symmetrical Systems Industries Consortium)

Nmap finished: 1 IP address (1 host up) scanned in 0.420 seconds

[root@server1 ~]# nmap sandwichsara.local

Starting Nmap 7.01 ( http://www.insecure.org/nmap/ ) at 2016-03-02 16:20 EST
Interesting ports on SandwichSara.Local (192.168.1.40):

```

A computer screen with white text Description automatically generated

```

PC1

Starting Nmap 7.01 ( http://www.insecure.org/nmap/ ) at 2016-03-02 16:20 EST
Interesting ports on SandwichSara.Local (192.168.1.40):
Not shown: 1677 closed ports
PORT      STATE      SERVICE
22/tcp    open       ssh
53/udp    open       dns
3306/tcp  open       mysql
MAC Address: 09:00:27:D9:8E:D1 (Symmetrical Systems Industries Consortium)

Nmap finished: 1 IP address (1 host up) scanned in 0.420 seconds

[root@server1 ~]# nmap farmerted.local

Starting Nmap 7.01 ( http://www.insecure.org/nmap/ ) at 2016-03-02 16:20 EST
Interesting ports on FarmerTed.Local (192.168.1.10):
Not shown: 1678 closed ports
PORT      STATE      SERVICE
22/tcp    open       ssh
23/tcp    open       telnet
MAC Address: 09:00:27:D9:8E:D6 (Symmetrical Systems Industries Consortium)

Nmap finished: 1 IP address (1 host up) scanned in 0.420 seconds

[root@server1 ~]# nmap lunchtimemike.local

Starting Nmap 7.01 ( http://www.insecure.org/nmap/ ) at 2016-03-02 16:20 EST
Interesting ports on LunchTimeMike.Local (10.10.10.25):
Not shown: 1677 closed ports
PORT      STATE      SERVICE
22/tcp    open       ssh
80/tcp    open       http
443/tcp    open       https
MAC Address: 09:00:27:D9:8E:D5 (Symmetrical Systems Industries Consortium)

Nmap finished: 1 IP address (1 host up) scanned in 0.420 seconds

[root@server1 ~]#

```

NEW QUESTION 74

An analyst finds that an IP address outside of the company network that is being used to run network and vulnerability scans across external-facing assets. Which of the following steps of an attack framework is the analyst witnessing?

- A. Exploitation
- B. Reconnaissance
- C. Command and control
- D. Actions on objectives

Answer: B

Explanation:

Reconnaissance is the first stage in the Cyber Kill Chain and involves researching potential targets before carrying out any penetration testing. The

reconnaissance stage may include identifying potential targets, finding their vulnerabilities, discovering which third parties are connected to them (and what data they can access), and exploring existing entry points as well as finding new ones. Reconnaissance can take place both online and offline. In this case, an analyst finds that an IP address outside of the company network is being used to run network and vulnerability scans across external-facing assets. This indicates that the analyst is witnessing reconnaissance activity by an attacker. Official References:
<https://www.lockheedmartin.com/en-us/capabilities/cyber/cyber-kill-chain.html>

NEW QUESTION 75

Which of the following best describes the key elements of a successful information security program?

- A. Business impact analysis, asset and change management, and security communication plan
- B. Security policy implementation, assignment of roles and responsibilities, and information asset classification
- C. Disaster recovery and business continuity planning, and the definition of access control requirements and human resource policies
- D. Senior management organizational structure, message distribution standards, and procedures for the operation of security management systems

Answer: B

Explanation:

A successful information security program consists of several key elements that align with the organization's goals and objectives, and address the risks and threats to its information assets.

➤ Security policy implementation: This is the process of developing, documenting, and enforcing the rules and standards that govern the security of the organization's information assets. Security policies define the scope, objectives, roles, and responsibilities of the security program, as well as the acceptable use, access control, incident response, and compliance requirements for the information assets.

➤ Assignment of roles and responsibilities: This is the process of identifying and assigning the specific tasks and duties related to the security program to the appropriate individuals or groups within the organization. Roles and responsibilities define who is accountable, responsible, consulted, and informed for each security activity, such as risk assessment, vulnerability management, threat detection, incident response, auditing, and reporting.

➤ Information asset classification: This is the process of categorizing the information assets based on their value, sensitivity, and criticality to the organization. Information asset classification helps to determine the appropriate level of protection and controls for each asset, as well as the impact and likelihood of a security breach or loss. Information asset classification also facilitates the prioritization of security resources and efforts based on the risk level of each asset.

NEW QUESTION 78

An analyst recommends that an EDR agent collect the source IP address, make a connection to the firewall, and create a policy to block the malicious source IP address across the entire network automatically. Which of the following is the best option to help the analyst implement this recommendation?

- A. SOAR
- B. SIEM
- C. SLA
- D. IoC

Answer: A

Explanation:

SOAR (Security Orchestration, Automation, and Response) is the best option to help the analyst implement the recommendation, as it reflects the software solution that enables security teams to integrate and coordinate separate tools into streamlined threat response workflows and automate repetitive tasks. SOAR is a term coined by Gartner in 2015 to describe a technology that combines the functions of security incident response platforms, security orchestration and automation platforms, and threat intelligence platforms in one offering. SOAR solutions help security teams to collect inputs from various sources, such as EDR agents, firewalls, or SIEM systems, and perform analysis and triage using a combination of human and machine power. SOAR solutions also allow security teams to define and execute incident response procedures in a digital workflow format, using automation to perform low-level tasks or actions, such as blocking an IP address or quarantining a device. SOAR solutions can help security teams to improve efficiency, consistency, and scalability of their operations, as well as reduce mean time to detect (MTTD) and mean time to respond (MTTR) to threats. The other options are not as suitable as SOAR, as they do not match the description or purpose of the recommendation. SIEM (Security Information and Event Management) is a software solution that collects and analyzes data from various sources, such as logs, events, or alerts, and provides security monitoring, threat detection, and incident response capabilities. SIEM solutions can help security teams to gain visibility, correlation, and context of their security data, but they do not provide automation or orchestration features like SOAR solutions. SLA (Service Level Agreement) is a document that defines the expectations and responsibilities between a service provider and a customer, such as the quality, availability, or performance of the service. SLAs can help to manage customer expectations, formalize communication, and improve productivity and relationships, but they do not help to implement technical recommendations like SOAR solutions. IoC (Indicator of Compromise) is a piece of data or evidence that suggests a system or network has been compromised by a threat actor, such as an IP address, a file hash, or a registry key. IoCs can help to identify and analyze malicious activities or incidents, but they do not help to implement response actions like SOAR solutions.

NEW QUESTION 79

Which of the following will most likely ensure that mission-critical services are available in the event of an incident?

- A. Business continuity plan
- B. Vulnerability management plan
- C. Disaster recovery plan
- D. Asset management plan

Answer: C

NEW QUESTION 81

A security analyst needs to ensure that systems across the organization are protected based on the sensitivity of the content each system hosts. The analyst is working with the respective system

owners to help determine the best methodology that seeks to promote confidentiality, availability, and integrity of the data being hosted. Which of the following should the security analyst perform first to categorize and prioritize the respective systems?

- A. Interview the users who access these systems,
- B. Scan the systems to see which vulnerabilities currently exist.
- C. Configure alerts for vendor-specific zero-day exploits.

D. Determine the asset value of each system.

Answer: D

Explanation:

Determining the asset value of each system is the best action to perform first, as it helps to categorize and prioritize the systems based on the sensitivity of the data they host. The asset value is a measure of how important a system is to the organization, in terms of its financial, operational, or reputational impact. The asset value can help the security analyst to assign a risk level and a protection level to each system, and to allocate resources accordingly. The other actions are not as effective as determining the asset value, as they do not directly address the goal of promoting confidentiality, availability, and integrity of the data. Interviewing the users who access these systems may provide some insight into how the systems are used and what data they contain, but it may not reflect the actual value or sensitivity of the data from an organizational perspective. Scanning the systems to see which vulnerabilities currently exist may help to identify and remediate some security issues, but it does not help to categorize or prioritize the systems based on their data sensitivity. Configuring alerts for vendor-specific zero-day exploits may help to detect and respond to some emerging threats, but it does not help to protect the systems based on their data sensitivity.

NEW QUESTION 85

Due to reports of unauthorized activity that was occurring on the internal network, an analyst is performing a network discovery. The analyst runs an Nmap scan against a corporate network to evaluate which devices were operating in the environment. Given the following output:

```
Nmap scan report for officerokuplayer.lan (192.168.86.22)
Host is up (0.11s latency).
All 100 scanned ports on officerokuplayer.lan (192.168.86.22) are filtered
MAC Address: B8:3E:59:86:1A:13 (Roku)
```

```
Nmap scan report for p4wnp1_aloa.lan (192.168.86.56)
Host is up (0.022s latency).
Not shown: 96 closed ports
PORT      STATE SERVICE
22/tcp    open  ssh
111/tcp   open  rpcbind
139/tcp   open  netbios-ssn
445/tcp   open  microsoft-ds
8000/tcp  open  http-alt
MAC Address: B8:27:EB:D0:8E:D1 (Raspberry Pi Foundation)
```

```
Nmap scan report for wh4dc-748gy.lan (192.168.86.152)
Host is up (0.033s latency).
Not shown: 95 filtered ports
PORT      STATE SERVICE
80/tcp    open  http
135/tcp   open  msrpc
139/tcp   open  netbios-ssn
443/tcp   open  https
139/tcp   open  netbios-ssn
445/tcp   open  microsoft-ds
3389/tcp  open  ms-wbt-server
5357/tcp  open  wsapi
MAC Address: 38:BA:F8:E3:41:CB (Intel Corporate)
```

```
Nmap scan report for xlaptop.lan (192.168.86.249)
Host is up (0.024s latency).
Not shown: 93 filtered ports
PORT      STATE SERVICE
22/tcp    open  ssh
135/tcp   open  msrpc
139/tcp   open  netbios-ssn
443/tcp   open  https
445/tcp   open  microsoft-ds
3389/tcp  open  ms-wbt-server
5357/tcp  open  wsapi
MAC Address: 64:00:6A:8E:D8:F5 (Dell)
```

```
Nmap scan report for imaging.lan (192.168.86.150)
Host is up (0.0013s latency).
Not shown: 95 closed ports
PORT      STATE SERVICE
135/tcp   open  msrpc
139/tcp   open  netbios-ssn
445/tcp   open  microsoft-ds
3389/tcp  open  ms-wbt-server
5357/tcp  open  wsapi
MAC Address: 38:BA:F8:F4:32:CA (Intel Corporate)
```

Which of the following choices should the analyst look at first?

- A. wh4dc-748gy.lan (192.168.86.152)
- B. lan (192.168.86.22)
- C. imaging.lan (192.168.86.150)
- D. xlaptop.lan (192.168.86.249)
- E. p4wnp1_aloa.lan (192.168.86.56)

Answer: E

Explanation:

The analyst should look at p4wnp1_aloa.lan (192.168.86.56) first, as this is the most suspicious device on the network. P4wnP1 ALOA is a tool that can be used to create a malicious USB device that can perform various attacks, such as keystroke injection, network sniffing, man-in-the-middle, or backdoor creation. The presence of a device with this name on the network could indicate that an attacker has plugged in a malicious USB device to a system and gained access to the network. Official References: https://github.com/mame82/P4wnP1_aloa

NEW QUESTION 86

When starting an investigation, which of the following must be done first?

- A. Notify law enforcement
- B. Secure the scene
- C. Seize all related evidence
- D. Interview the witnesses

Answer: B

Explanation:

The first thing that must be done when starting an investigation is to secure the scene. Securing the scene involves isolating and protecting the area where the incident occurred, as well as any potential evidence or witnesses. Securing the scene can help prevent any tampering, contamination, or destruction of evidence, as well as any interference or obstruction of the investigation.

NEW QUESTION 88

During security scanning, a security analyst regularly finds the same vulnerabilities in a critical application. Which of the following recommendations would best mitigate this problem if applied along the SDLC phase?

- A. Conduct regular red team exercises over the application in production
- B. Ensure that all implemented coding libraries are regularly checked
- C. Use application security scanning as part of the pipeline for the CI/CDflow
- D. Implement proper input validation for any data entry form

Answer: C

Explanation:

Application security scanning is a process that involves testing and analyzing applications for security vulnerabilities, such as injection flaws, broken authentication, cross-site scripting, and insecure configuration. Application security scanning can help identify and fix security issues before they become exploitable by attackers. Using application security scanning as part of the pipeline for the continuous integration/continuous delivery (CI/CD) flow can help mitigate the problem of finding the same vulnerabilities in a critical application during security scanning. This is because application security scanning can be integrated into the development lifecycle and performed automatically and frequently as part of the CI/CD process.

NEW QUESTION 89

A company that has a geographically diverse workforce and dynamic IPs wants to implement a vulnerability scanning method with reduced network traffic. Which of the following would best meet this requirement?

- A. External
- B. Agent-based
- C. Non-credentialed
- D. Credentialed

Answer: B

Explanation:

Agent-based vulnerability scanning is a method that involves installing software agents on the target systems or networks that can perform local scans and report the results to a central server or console. Agent-based vulnerability scanning can reduce network traffic, as the scans are performed locally and only the results are transmitted over the network. Agent-based vulnerability scanning can also provide more accurate and up-to-date results, as the agents can scan continuously or on-demand, regardless of the system or network status or location.

NEW QUESTION 90

A security analyst performs various types of vulnerability scans. Review the vulnerability scan results to determine the type of scan that was executed and if a false positive occurred for each device.

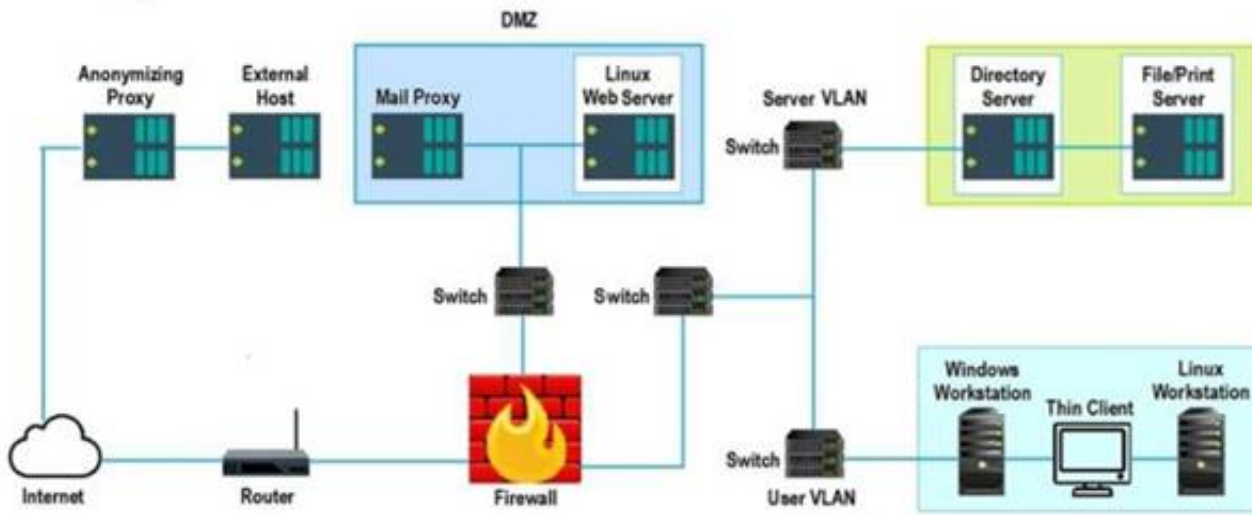
Instructions:

Select the Results Generated drop-down option to determine if the results were generated from a credentialed scan, non-credentialed scan, or a compliance scan. For ONLY the credentialed and non-credentialed scans, evaluate the results for false positives and check the findings that display false positives. NOTE: If you would like to uncheck an option that is currently selected, click on the option a second time.

Lastly, based on the vulnerability scan results, identify the type of Server by dragging the Server to the results. The Linux Web Server, File-Print Server and Directory Server are draggable.

If at any time you would like to bring back the initial state of the simulation, please select the Reset All button. When you have completed the simulation, please select the Done button to submit. Once the simulation is submitted, please select the Next button to continue.

Network Diagram



Hot Area:

Findings Listing 1	Results Generated
<p>False Positive</p> <p>Critical (10.0) 12209 Security Update for Microsoft Windows (835732)</p> <p>Critical (10.0) 13852 Microsoft Windows Task Scheduler Remote Overflow (841873)</p> <p>Critical (10.0) 18502 Vulnerability in SMB Could Allow Remote Code Execution (896422)</p> <p>Critical (10.0) 58662 Samba 3.x:3.6.4/3.5.14/3.4.16 RPC Multiple Buffer Overflows (20161146)</p> <p>Critical (10.0) 19407 Vulnerability in Printer Spooler Service Could Allow Remote Code Execution (896423)</p>	<p>Credentialed</p> <p>Non-Credentialed</p> <p>Compliance</p>
<p>Findings Listing 2</p> <p>Critical (10.0) 19407 Vulnerability in Printer Spooler Service Could Allow Remote Code Execution (896423)</p> <p>Critical (10.0) 11890 Ubuntu 5.04/5.10/6.06 LTS : Buffer Overrun in Messenger Service (CVE-2016-8035)</p> <p>Critical (10.0) 27942 Ubuntu 5.04/5.10/6.06 LTS : php5 vulnerabilities (CVE-2016-362-1)</p> <p>Critical (10.0) 27978 Ubuntu 5.10/6.06 LTS / 6.10 : gnupg vulnerability (CVE-2016-3931)</p> <p>Critical (10.0) 28017 Ubuntu 5.10/6.06 LTS / 6.10 : php5 regression (CVE-2016-4242)</p>	<p>Credentialed</p> <p>Non-Credentialed</p> <p>Compliance</p>
<p>Findings Listing 3</p> <p>WARNING (1.0.1) System cryptography. Force strong key protection for user keys stored on the computer. Prompt the User each time a key is first used</p> <p>INFORM (1.2.4) Network access: Do not allow anonymous enumeration of SAM accounts: Enabled</p> <p>INFORM (1.3.4) Network access: Do not allow anonymous enumeration of SAM accounts and shares: Enabled</p> <p>INFORM (1.5.0) Network access: Let everyone permissions apply to anonymous users: Disabled</p> <p>INFORM (1.6.5) Network access: Sharing and security model for local accounts Classic - local users authenticate as themselves</p>	<p>Credentialed</p> <p>Non-Credentialed</p> <p>Compliance</p>

- A. Mastered
 B. Not Mastered

Answer: A

Explanation:

Hot Area:

Findings Listing 1	Results Generated
<p>False Positive</p> <p>Critical (10.0) 12209 Security Update for Microsoft Windows (835732)</p> <p>Critical (10.0) 13852 Microsoft Windows Task Scheduler Remote Overflow (841873)</p> <p>Critical (10.0) 18502 Vulnerability in SMB Could Allow Remote Code Execution (896422)</p> <p>Critical (10.0) 58662 Samba 3.x:3.6.4/3.5.14/3.4.16 RPC Multiple Buffer Overflows (20161146)</p> <p>Critical (10.0) 19407 Vulnerability in Printer Spooler Service Could Allow Remote Code Execution (896423)</p>	<p>Credentialed</p> <p>Non-Credentialed</p> <p>Compliance</p>
<p>Findings Listing 2</p> <p>Critical (10.0) 19407 Vulnerability in Printer Spooler Service Could Allow Remote Code Execution (896423)</p> <p>Critical (10.0) 11890 Ubuntu 5.04/5.10/6.06 LTS : Buffer Overrun in Messenger Service (CVE-2016-8035)</p> <p>Critical (10.0) 27942 Ubuntu 5.04/5.10/6.06 LTS : php5 vulnerabilities (CVE-2016-362-1)</p> <p>Critical (10.0) 27978 Ubuntu 5.10/6.06 LTS / 6.10 : gnupg vulnerability (CVE-2016-3931)</p> <p>Critical (10.0) 28017 Ubuntu 5.10/6.06 LTS / 6.10 : php5 regression (CVE-2016-4242)</p>	<p>Credentialed</p> <p>Non-Credentialed</p> <p>Compliance</p>
<p>Findings Listing 3</p> <p>WARNING (1.0.1) System cryptography. Force strong key protection for user keys stored on the computer. Prompt the User each time a key is first used</p> <p>INFORM (1.2.4) Network access: Do not allow anonymous enumeration of SAM accounts: Enabled</p> <p>INFORM (1.3.4) Network access: Do not allow anonymous enumeration of SAM accounts and shares: Enabled</p> <p>INFORM (1.5.0) Network access: Let everyone permissions apply to anonymous users: Disabled</p> <p>INFORM (1.6.5) Network access: Sharing and security model for local accounts Classic - local users authenticate as themselves</p>	<p>Credentialed</p> <p>Non-Credentialed</p> <p>Compliance</p>

NEW QUESTION 93

A zero-day command injection vulnerability was published. A security administrator is analyzing the following logs for evidence of adversaries attempting to exploit the vulnerability:

Log entry #	Message
Log entry 1	comptia.org/S{@java.lang.Runtime@getRuntime().exec("nslookup example.com"))/
Log entry 2	<script type="text/javascript">var test='../index.php?cookie_data='+escape(document.cookie);</script>
Log entry 3	example.com/butler.php?id=1 and nullif (1337,1337)
Log entry 4	requestObj = ... {scopes: ["Mail.ReadWrite", "Mail.send", "Files.ReadWrite.All"] }

Which of the following log entries provides evidence of the attempted exploit?

- A. Log entry 1
- B. Log entry 2
- C. Log entry 3
- D. Log entry 4

Answer: D

Explanation:

Log entry 4 shows an attempt to exploit the zero-day command injection vulnerability by appending a malicious command (;cat /etc/passwd) to the end of a legitimate request (/cgi-bin/index.cgi?name=John). This command would try to read the contents of the /etc/passwd file, which contains user account information, and could lead to further compromise of the system. The other log entries do not show any signs of command injection, as they do not contain any special characters or commands that could alter the intended behavior of the application. Official References:

- > <https://www.imperva.com/learn/application-security/command-injection/>
- > <https://www.zerodayinitiative.com/advisories/published/>

NEW QUESTION 94

A security analyst discovers an ongoing ransomware attack while investigating a phishing email. The analyst downloads a copy of the file from the email and isolates the affected workstation from the network. Which of the following activities should the analyst perform next?

- A. Wipe the computer and reinstall software
- B. Shut down the email server and quarantine it from the network.
- C. Acquire a bit-level image of the affected workstation.
- D. Search for other mail users who have received the same file.

Answer: D

Explanation:

Searching for other mail users who have received the same file is the best activity to perform next, as it helps to identify and contain the scope of the ransomware attack and prevent further damage. Ransomware is a type of malware that encrypts files on a system and demands payment for their decryption. Ransomware can spread through phishing emails that contain malicious attachments or links that download the ransomware. By searching for other mail users who have received the same file, the analyst can alert them not to open it, delete it from their inboxes, and scan their systems for any signs of infection. The other activities are not as urgent or effective as searching for other mail users who have received the same file, as they do not address the immediate threat of ransomware spreading or affecting more systems. Wiping the computer and reinstalling software may restore the functionality of the affected workstation, but it will also erase any evidence of the ransomware attack and make recovery of encrypted files impossible. Shutting down the email server and quarantining it from the network may stop the delivery of more phishing emails, but it will also disrupt normal communication and operations for the organization. Acquiring a bit-level image of the affected workstation may preserve the evidence of the ransomware attack, but it will not help to stop or remove the ransomware or decrypt the files.

NEW QUESTION 95

A security alert was triggered when an end user tried to access a website that is not allowed per organizational policy. Since the action is considered a terminable offense, the SOC analyst collects the authentication logs, web logs, and temporary files, reflecting the web searches from the user's workstation, to build the case for the investigation. Which of the following is the best way to ensure that the investigation complies with HR or privacy policies?

- A. Create a timeline of events detailing the date stamps, user account hostname and IP information associated with the activities
- B. Ensure that the case details do not reflect any user-identifiable information Password protect the evidence and restrict access to personnel related to the investigation
- C. Create a code name for the investigation in the ticketing system so that all personnel with access will not be able to easily identify the case as an HR-related investigation
- D. Notify the SOC manager for awareness after confirmation that the activity was intentional

Answer: B

Explanation:

The best way to ensure that the investigation complies with HR or privacy policies is to ensure that the case details do not reflect any user-identifiable information, such as name, email address, phone number, or employee ID. This can help protect the privacy and confidentiality of the user and prevent any potential discrimination or retaliation. Additionally, password protecting the evidence and restricting access to personnel related to the investigation can help preserve the integrity and security of the evidence and prevent any unauthorized or accidental disclosure or modification.

NEW QUESTION 100

New employees in an organization have been consistently plugging in personal webcams despite the company policy prohibiting use of personal devices. The SOC manager discovers that new employees are not aware of the company policy. Which of the following will the SOC manager most likely recommend to help ensure new employees are accountable for following the company policy?

- A. Human resources must email a copy of a user agreement to all new employees
- B. Supervisors must get verbal confirmation from new employees indicating they have read the user agreement
- C. All new employees must take a test about the company security policy during the onboarding process
- D. All new employees must sign a user agreement to acknowledge the company security policy

Answer: D

Explanation:

The best action that the SOC manager can recommend to help ensure new employees are accountable for following the company policy is to require all new employees to sign a user agreement to acknowledge the company security policy. A user agreement is a document that defines the rights and responsibilities of the users regarding the use of the company's systems, networks, or resources, as well as the consequences of violating the company's security policy. Signing a user agreement can help ensure new employees are aware of and agree to comply with the company security policy, as well as hold them accountable for any breaches or incidents caused by their actions or inactions.

NEW QUESTION 101

An attacker has just gained access to the syslog server on a LAN. Reviewing the syslog entries has allowed the attacker to prioritize possible next targets. Which of the following is this an example of?

- A. Passive network foot printing
- B. OS fingerprinting
- C. Service port identification
- D. Application versioning

Answer: A

Explanation:

Passive network foot printing is the best description of the example, as it reflects the technique of collecting information about a network or system by monitoring or sniffing network traffic without sending any packets or interacting with the target. Foot printing is a term that refers to the process of gathering information about a target network or system, such as its IP addresses, open ports, operating systems, services, or vulnerabilities. Foot printing can be done for legitimate purposes, such as penetration testing or auditing, or for malicious purposes, such as reconnaissance or intelligence gathering. Foot printing can be classified into two types: active and passive. Active foot printing involves sending packets or requests to the target and analyzing the responses, such as using tools like ping, traceroute, or Nmap. Active foot printing can provide more accurate and detailed information, but it can also be detected by firewalls or intrusion detection systems (IDS). Passive foot printing involves observing or capturing network traffic without sending any packets or requests to the target, such as using tools like tcpdump, Wireshark, or Shodan. Passive foot printing can provide less information, but it can also avoid detection by firewalls or IDS. The example in the question shows that the attacker has gained access to the syslog server on a LAN and reviewed the syslog entries to prioritize possible next targets. A syslog server is a server that collects and stores log messages from various devices or applications on a network. A syslog entry is a record of an event or activity that occurred on a device or application, such as an error, a warning, or an alert. By reviewing the syslog entries, the attacker can obtain information about the network or system, such as its configuration, status, performance, or security issues. This is an example of passive network foot printing, as the attacker is not sending any packets or requests to the target, but rather observing or capturing network traffic from the syslog server. The other options are not correct, as they describe different techniques or concepts. OS fingerprinting is a technique of identifying the operating system of a target by analyzing its responses to certain packets or requests, such as using tools like Nmap or Xprobe2. OS fingerprinting can be done actively or passively, but it is not what the attacker is doing in the example. Service port identification is a technique of identifying the services running on a target by scanning its open ports and analyzing its responses to certain packets or requests, such as using tools like Nmap or Netcat. Service port identification can be done actively or passively, but it is not what the attacker is doing in the example. Application versioning is a concept that refers to the process of assigning unique identifiers to different versions of an application, such as using numbers, letters, dates, or names. Application versioning can help to track changes, updates, bugs, or features of an application, but it is not related to what the attacker is doing in the example.

NEW QUESTION 106

A company is in the process of implementing a vulnerability management program. Which of the following scanning methods should be implemented to minimize the risk of OT/ICS devices malfunctioning due to the vulnerability identification process?

- A. Non-credentialed scanning
- B. Passive scanning
- C. Agent-based scanning
- D. Credentialed scanning

Answer: B

Explanation:

Passive scanning is a method of vulnerability identification that does not send any packets or probes to the target devices, but rather observes and analyzes the network traffic passively. Passive scanning can minimize the risk of OT/ICS devices malfunctioning due to the vulnerability identification process, as it does not interfere with the normal operation of the devices or cause any network disruption. Passive scanning can also detect vulnerabilities that active scanning may miss, such as misconfigured devices, rogue devices or unauthorized traffic. Official References:

- > <https://partners.comptia.org/docs/default-source/resources/comptia-cysa-cs0-002-exam-objectives>
- > <https://www.comptia.org/blog/the-new-comptia-cybersecurity-analyst-your-questions-answered>
- > <https://www.comptia.org/certifications/cybersecurity-analyst>

NEW QUESTION 107

A systems administrator notices unfamiliar directory names on a production server. The administrator reviews the directory listings and files, and then concludes the server has been compromised. Which of the following steps should the administrator take next?

- A. Inform the internal incident response team.
- B. Follow the company's incident response plan.
- C. Review the lessons learned for the best approach.
- D. Determine when the access started.

Answer: B

Explanation:

An incident response plan is a set of predefined procedures and guidelines that an organization follows when faced with a security breach or attack. An incident response plan helps to ensure that the organization can quickly and effectively contain, analyze, eradicate, and recover from the incident, as well as prevent or minimize the damage and impact to the business operations, reputation, and customers. An incident response plan also defines the roles and responsibilities of the incident response team, the communication channels and protocols, the escalation and reporting procedures, and the tools and resources available for the incident response.

By following the company's incident response plan, the administrator can ensure that they are following the best practices and standards for handling a security

incident, and that they are coordinating and collaborating with the relevant stakeholders and authorities. Following the company's incident response plan can also help to avoid or reduce any legal, regulatory, or contractual liabilities or penalties that may arise from the incident.

The other options are not as effective or appropriate as following the company's incident response plan. Informing the internal incident response team (A) is a good step, but it should be done according to the company's incident response plan, which may specify who, when, how, and what to report. Reviewing the lessons learned for the best approach © is a good step, but it should be done after the incident has been resolved and closed, not during the active response phase. Determining when the access started (D) is a good step, but it should be done as part of the analysis phase of the incident response plan, not before following the plan.

NEW QUESTION 109

Which of the following describes how a CSIRT lead determines who should be communicated with and when during a security incident?

- A. The lead should review what is documented in the incident response policy or plan
- B. Management level members of the CSIRT should make that decision
- C. The lead has the authority to decide who to communicate with at any time
- D. Subject matter experts on the team should communicate with others within the specified area of expertise

Answer: A

Explanation:

The incident response policy or plan is a document that defines the roles and responsibilities, procedures and processes, communication and escalation protocols, and reporting and documentation requirements for handling security incidents. The lead should review what is documented in the incident response policy or plan to determine who should be communicated with and when during a security incident, as well as what information should be shared and how. The incident response policy or plan should also be aligned with the organizational policies and legal obligations regarding incident notification and disclosure.

NEW QUESTION 114

A systems analyst is limiting user access to system configuration keys and values in a Windows environment. Which of the following describes where the analyst can find these configuration items?

- A. confi
- B. ini
- C. ntds.dit
- D. Master boot record
- E. Registry

Answer: D

Explanation:

The correct answer is D. Registry.

The registry is a database that stores system configuration keys and values in a Windows environment. The registry contains information about the hardware, software, users, and preferences of the system. The registry can be accessed and modified using the Registry Editor tool (regedit.exe) or the command-line tool (reg.exe). The registry is organized into five main sections, called hives, which are further divided into subkeys and values.

The other options are not the best descriptions of where the analyst can find system configuration keys and values in a Windows environment. config.ini (A) is a file that stores configuration settings for some applications, but it is not a database that stores system configuration keys and values. ntds.dit (B) is a file that stores the Active Directory data for a domain controller, but it is not a database that stores system configuration keys and values. Master boot record © is a section of the hard disk that contains information about the partitions and the boot loader, but it is not a database that stores system configuration keys and values.

NEW QUESTION 117

Which of the following describes the best reason for conducting a root cause analysis?

- A. The root cause analysis ensures that proper timelines were documented.
- B. The root cause analysis allows the incident to be properly documented for reporting.
- C. The root cause analysis develops recommendations to improve the process.
- D. The root cause analysis identifies the contributing items that facilitated the event

Answer: D

Explanation:

The root cause analysis identifies the contributing items that facilitated the event is the best reason for conducting a root cause analysis, as it reflects the main goal and benefit of this problem-solving approach. A root cause analysis (RCA) is a process of discovering the root causes of problems in order to identify appropriate solutions. A root cause is the core issue or factor that sets in motion the entire cause-and-effect chain that leads to the problem. A root cause analysis assumes that it is more effective to systematically prevent and solve underlying issues rather than just treating symptoms or putting out fires. A root cause analysis can be performed using various methods, tools, and techniques that help to uncover the causes of problems, such as events and causal factor analysis, change analysis, barrier analysis, or fishbone diagrams. A root cause analysis can help to improve quality, performance, safety, or efficiency by finding and eliminating the sources of problems. The other options are not as accurate as the root cause analysis identifies the contributing items that facilitated the event, as they do not capture the essence or value of conducting a root cause analysis. The root cause analysis ensures that proper timelines were documented is a possible outcome or benefit of conducting a root cause analysis, but it is not the best reason for doing so. Documenting timelines can help to establish the sequence of events and actions that led to the problem, but it does not necessarily identify or address the root causes. The root cause analysis allows the incident to be properly documented for reporting is also a possible outcome or benefit of conducting a root cause analysis, but it is not the best reason for doing so. Documenting and reporting incidents can help to communicate and share information about problems and solutions, but it does not necessarily identify or address the root causes. The root cause analysis develops recommendations to improve the process is another possible outcome or benefit of conducting a root cause analysis, but it is not the best reason for doing so. Developing recommendations can help to implement solutions and prevent future problems, but it does not necessarily identify or address the root causes.

NEW QUESTION 121

An analyst is examining events in multiple systems but is having difficulty correlating data points. Which of the following is most likely the issue with the system?

- A. Access rights
- B. Network segmentation
- C. Time synchronization

D. Invalid playbook

Answer: C

Explanation:

Time synchronization is the process of ensuring that all systems in a network have the same accurate time, which is essential for correlating data points from different sources. If the system has an issue with time synchronization, the analyst may have difficulty matching events that occurred at the same time or in a specific order. Access rights, network segmentation, and invalid playbook are not directly related to the issue of correlating data points. Verified References: [CompTIA CySA+ CS0-002 Certification Study Guide], page 23

NEW QUESTION 124

A security analyst is trying to detect connections to a suspicious IP address by collecting the packet captures from the gateway. Which of the following commands should the security analyst consider running?

- A. `grep [IP address] packets.pcap`
- B. `cat packets.pcap | grep [IP Address]`
- C. `tcpdump -n -r packets.pcap host [IP address]`
- D. `strings packets.pcap | grep [IP Address]`

Answer: C

Explanation:

tcpdump is a command-line tool that can capture and analyze network packets from a given interface or file. The -n option prevents tcpdump from resolving hostnames, which can speed up the analysis. The -r option reads packets from a file, in this case packets.pcap. The host [IP address] filter specifies that tcpdump should only display packets that have the given IP address as either the source or the destination. This command can help the security analyst detect connections to a suspicious IP address by collecting the packet captures from the gateway. Official References:

- > <https://partners.comptia.org/docs/default-source/resources/comptia-cysa-cs0-002-exam-objectives>
- > <https://www.techtarget.com/searchsecurity/quiz/Sample-CompTIA-CySA-test-questions-with-answers>
- > https://www.reddit.com/r/CompTIA/comments/tmxx84/passed_cysa_heres_my_experience_and_how_i_s

NEW QUESTION 128

An analyst is reviewing a vulnerability report for a server environment with the following entries:

Vulnerability	Severity	CVSS v3	Host IP	Crown jewel	Exploit available
EOL/Obsolete Log4j v1.x	5	-	54.73.224.15	No	No
EOL/Obsolete Log4j v1.x	5	-	54.73.225.17	Yes	No
EOL/Obsolete Log4j v1.x	5	-	10.101.27.98	Yes	No
Microsoft Windows Security Update	4	8.2	10.100.10.52	No	Yes
Microsoft Windows Security Update	4	8.2	54.74.110.26	No	Yes
Microsoft Windows Security Update	4	8.2	54.74.110.228	Yes	Yes
Oracle Java Critical Patch	3	6.9	10.101.25.65	Yes	No
Oracle Java Critical Patch	3	6.9	54.73.225.17	Yes	No
Oracle Java Critical Patch	3	6.9	10.101.27.98	Yes	No

Which of the following systems should be prioritized for patching first?

- A. 10.101.27.98
- B. 54.73.225.17
- C. 54.74.110.26
- D. 54.74.110.228

Answer: D

Explanation:

The system that should be prioritized for patching first is 54.74.110.228, as it has the highest number and severity of vulnerabilities among the four systems listed in the vulnerability report. According to the report, this system has 12 vulnerabilities, with 8 critical, 3 high, and 1 medium severity ratings. The critical vulnerabilities include CVE-2019-0708 (BlueKeep), CVE-2019-1182 (DejaBlue), CVE-2017-0144 (EternalBlue), and CVE-2017-0145 (EternalRomance), which are all remote code execution vulnerabilities that can allow an attacker to compromise the system without any user interaction or authentication. These vulnerabilities pose a high risk to the system and should be patched as soon as possible.

NEW QUESTION 131

After a security assessment was done by a third-party consulting firm, the cybersecurity program recommended integrating DLP and CASB to reduce analyst alert fatigue. Which of the following is the best possible outcome that this effort hopes to achieve?

- A. SIEM ingestion logs are reduced by 20%.
- B. Phishing alerts drop by 20%.
- C. False positive rates drop to 20%.
- D. The MTTR decreases by 20%.

Answer: D

Explanation:

The MTTR (Mean Time to Resolution) decreases by 20% is the best possible outcome that this effort hopes to achieve, as it reflects the improvement in the efficiency and effectiveness of the incident response process by reducing analyst alert fatigue. Analyst alert fatigue is a term that refers to the phenomenon of security analysts becoming overwhelmed, desensitized, or exhausted by the large number of alerts they receive from various security tools or systems, such as DLP (Data Loss Prevention) or CASB (Cloud Access Security Broker). DLP is a security solution that helps to prevent unauthorized access, use, or transfer of sensitive data, such as personal information, intellectual property, or financial records. CASB is a security solution that helps to monitor and control the use of cloud-based applications and services, such as SaaS (Software as a Service), PaaS (Platform as a Service), or IaaS (Infrastructure as a Service). Both DLP and CASB can generate alerts when they detect potential data breaches, policy violations, or malicious activities, but they can also produce false positives, irrelevant information, or duplicate notifications that can overwhelm or distract the security analysts. Analyst alert fatigue can have negative consequences for the security posture and performance of an organization, such as missing or ignoring critical alerts, delaying or skipping investigations or remediations, making errors or mistakes, or losing motivation or morale. Therefore, it is important to reduce analyst alert fatigue and optimize the alert management process by using various strategies, such as tuning the alert thresholds and rules, prioritizing and triaging the alerts based on severity and context, enriching and correlating the alerts with additional data sources, automating or orchestrating repetitive or low-level tasks or actions, or integrating and consolidating different security tools or systems into a unified platform. By reducing analyst alert fatigue and optimizing the alert management process, the effort hopes to achieve a decrease in the MTTR, which is a metric that measures the average time it takes to resolve an incident from the moment it is reported to the moment it is closed. A lower MTTR indicates a faster and more effective incident response process, which can help to minimize the impact and damage of security incidents, improve customer satisfaction and trust, and enhance security operations and outcomes. The other options are not as relevant or realistic as the MTTR decreases by 20%, as they do not reflect the best possible outcome that this effort hopes to achieve. SIEM ingestion logs are reduced by 20% is not a relevant outcome, as it does not indicate any improvement in the incident response process or any reduction in analyst alert fatigue. SIEM (Security Information and Event Management) is a security solution that collects and analyzes data from various sources, such as logs, events, or alerts, and provides security monitoring, threat detection, and incident response capabilities. SIEM ingestion logs are records of the data that is ingested by the SIEM system from different sources. Reducing SIEM ingestion logs may imply less data volume or less data sources for the SIEM system, which may not necessarily improve its performance or accuracy. Phishing alerts drop by 20% is not a realistic outcome, as it does not depend on the integration of DLP and CASB or any reduction in analyst alert fatigue. Phishing alerts are notifications that indicate potential phishing attempts or attacks, such as fraudulent emails, websites, or messages that try to trick users into revealing sensitive information or installing malware. Phishing alerts can be generated by various security tools or systems, such as email security solutions, web security solutions, endpoint security solutions, or user awareness training programs. Reducing phishing alerts may imply less phishing attempts or attacks on the organization, which may not necessarily be influenced by the integration of DLP and CASB or any reduction in analyst alert fatigue. False positive rates drop to 20% is not a realistic outcome

NEW QUESTION 132

Which of the following is a reason why proper handling and reporting of existing evidence are important for the investigation and reporting phases of an incident response?

- A. To ensure the report is legally acceptable in case it needs to be presented in court
- B. To present a lessons-learned analysis for the incident response team
- C. To ensure the evidence can be used in a postmortem analysis
- D. To prevent the possible loss of a data source for further root cause analysis

Answer: A

Explanation:

The correct answer is A. To ensure the report is legally acceptable in case it needs to be presented in court. Proper handling and reporting of existing evidence are important for the investigation and reporting phases of an incident response because they ensure the integrity, authenticity, and admissibility of the evidence in case it needs to be presented in court. Evidence that is mishandled, tampered with, or poorly documented may not be accepted by the court or may be challenged by the opposing party. Therefore, incident responders should follow the best practices and standards for evidence collection, preservation, analysis, and reporting¹.

The other options are not reasons why proper handling and reporting of existing evidence are important for the investigation and reporting phases of an incident response. They are rather outcomes or benefits of conducting a thorough and effective incident response process. A lessons-learned analysis (B) is a way to identify the strengths and weaknesses of the incident response team and improve their performance for future incidents. A postmortem analysis © is a way to determine the root cause, impact, and timeline of the incident and provide recommendations for remediation and prevention. A root cause analysis (D) is a way to identify the underlying factors that led to the incident and address them accordingly.

NEW QUESTION 134

A company receives a penetration test report summary from a third party. The report summary indicates a proxy has some patches that need to be applied. The proxy is sitting in a rack and is not being used, as the company has replaced it with a new one. The CVE score of the vulnerability on the proxy is a 9.8. Which of the following best practices should the company follow with this proxy?

- A. Leave the proxy as is.
- B. Decommission the proxy.
- C. Migrate the proxy to the cloud.
- D. Patch the proxy

Answer: B

Explanation:

The best practice that the company should follow with this proxy is to decommission the proxy. Decommissioning the proxy involves removing or disposing of the proxy from the rack and the network, as well as deleting or wiping any data or configuration on the proxy. Decommissioning the proxy can help eliminate the vulnerability on the proxy, as well as reduce the attack surface, complexity, or cost of maintaining the network. Decommissioning the proxy can also free up space or resources for other devices or systems that are in use or needed by the company.

NEW QUESTION 136

A security analyst is reviewing the following alert that was triggered by FIM on a critical system:

Host	Path	Key added
WEBSERVER01	HKLM\Software\Microsoft\Windows\CurrentVersion\Personalization	Allow (1)
WEBSERVER01	HKLM\Software\Microsoft\Windows\CurrentVersion\Run	RunMe (%appdata%\abc.exe)
WEBSERVER01	HKCU\Printers\ConvertUserDevModesCount	Microsoft XPS Writer (2)
WEBSERVER01	HKCU\Network\Z	Remote Path (192.168.1.10 CorpZ_Drive)
WEBSERVER01	HKLM\Software\Microsoft\PCHealthCheck	Installed (1)

Which of the following best describes the suspicious activity that is occurring?

- A. A fake antivirus program was installed by the user.
- B. A network drive was added to allow exfiltration of data
- C. A new program has been set to execute on system start
- D. The host firewall on 192.168.1.10 was disabled.

Answer: C

Explanation:

A new program has been set to execute on system start is the most likely cause of the suspicious activity that is occurring, as it indicates that the malware has modified the registry keys of the system to ensure its persistence. File Integrity Monitoring (FIM) is a tool that monitors changes to files and registry keys on a system and alerts the security analyst of any unauthorized or malicious modifications. The alert triggered by FIM shows that the malware has created a new registry key under the Run subkey, which is used to launch programs automatically when the system starts. The new registry key points to a file named “update.exe” in the Temp folder, which is likely a malicious executable disguised as a legitimate update file. Official References:

- > <https://www.comptia.org/blog/the-new-comptia-cybersecurity-analyst-your-questions-answered>
- > <https://partners.comptia.org/docs/default-source/resources/comptia-cysa-cs0-002-exam-objectives>
- > <https://www.comptia.org/training/books/cysa-cs0-002-study-guide>

NEW QUESTION 141

You are a cybersecurity analyst tasked with interpreting scan data from Company A’s servers. You must verify the requirements are being met for all of the servers and recommend changes if you find they are not.

The company's hardening guidelines indicate the following

- TLS 1.2 is the only version of TLS running.
- Apache 2.4.18 or greater should be used.
- Only default ports should be used.

INSTRUCTIONS

Using the supplied data, record the status of compliance with the company’s guidelines for each server.

The question contains two parts: make sure you complete Part 1 and Part 2. Make recommendations for Issues based ONLY on the hardening guidelines provided.

Part 1:

AppServ1:

Part 1

Scan Data

AppServ1AppServ2AppServ3AppServ4

```
root@INFOSEC:~# curl --head appserv1.fictionalorg.com:443

HTTP/1.1 200 OK
Date: Wed, 26 Jun 2019 21:15:15 GMT
Server: Apache/2.4.48 (CentOS)
Last-Modified: Wed, 26 Jun 2019 21:10:22 GMT
ETag: "13520-58c407930177d"
Accept-Ranges: bytes
Content-Length: 79136
Vary: Accept-Encoding
Cache-Control: max-age=3600
Expires: Wed, 26 Jun 2019 22:15:15 GMT
Content-Type: text/html

root@INFOSEC:~# nmap --script ssl-enum-ciphers appserv1.fictionalorg.com -p 443

Starting Nmap 6.40 ( http://nmap.org ) at 2019-06-26 16:07 CDT

Nmap scan report for AppSrv1.fictionalorg.com (10.21.4.68)
Host is up (0.042s latency).
rDNS record for 10.21.4.68: inaddrArpa.fictionalorg.com
PORT      STATE SERVICE
443/tcp   open  https
| ssl-enum-ciphers:
|   TLSv1.2:
|     ciphers:
|       TLS_RSA_WITH_3DES_EDE_CBC_SHA - strong
|       TLS_RSA_WITH_AES_128_CBC_SHA - strong
|       TLS_RSA_WITH_AES_128_GCM_SHA256 - strong
|       TLS_RSA_WITH_AES_256_CBC_SHA - strong
|       TLS_RSA_WITH_AES_256_GCM_SHA384 - strong
|     compressors:
|       NULL
|_  least strength: strong

Nmap done: 1 IP address (1 host up) scanned in 8.63 seconds

root@INFOSEC:~# nmap --top-ports 10 appserv1.fictionalorg.com

Starting Nmap 6.40 ( http://nmap.org ) at 2019-06-27 10:13 CDT

Nmap scan report for appserv1.fictionalorg.com (10.21.4.68)
Host is up (0.15s latency).
rDNS record for 10.21.4.68: appserv1.fictionalorg.com
PORT      STATE SERVICE
80/tcp    open  http
443/tcp    open  https

Nmap done: 1 IP address (1 host up) scanned in 0.42 seconds
```

Compliance Report

Fill out the following report based on your analysis of the scan data.

☐ AppServ1 is only using TLS 1.2

☐ AppServ2 is only using TLS 1.2

☐ AppServ3 is only using TLS 1.2

☐ AppServ4 is only using TLS 1.2

☐ AppServ1 is using Apache 2.4.18 or greater

☐ AppServ2 is using Apache 2.4.18 or greater

☐ AppServ3 is using Apache 2.4.18 or greater

☐ AppServ4 is using Apache 2.4.18 or greater

AppServ2:

Part 1

Scan Data	Compliance Report
AppServ1AppServ2AppServ3AppServ4	Fill out the following report based on your analysis of the scan data.
<pre>root@INFOSEC:~# curl --head appserv2.fictionalorg.com:443 HTTP/1.1 200 OK Date: Wed, 26 Jun 2019 21:15:15 GMT Server: Apache/2.3.48 (CentOS) Last-Modified: Wed, 26 Jun 2019 21:10:22 GMT ETag: "13520-58c407930177d" Accept-Ranges: bytes Content-Length: 79136 Vary: Accept-Encoding Cache-Control: max-age=3600 Expires: Wed, 26 Jun 2019 22:15:15 GMT Content-Type: text/html root@INFOSEC:~# nmap --script ssl-enum-ciphers appserv2.fictionalorg.com -p 443 Starting Nmap 6.40 (http://nmap.org) at 2019-06-26 16:07 CDT Nmap scan report for AppSrv2.fictionalorg.com (10.21.4.69) Host is up (0.042s latency). rDNS record for 10.21.4.69: inaddrarpa.fictionalorg.com Not shown: 998 filtered ports PORT STATE SERVICE 80/tcp open http 443/tcp open https ssl-enum-ciphers: TLSv1.0: ciphers: TLS_RSA_WITH_3DES_EDE_CBC_SHA - strong TLS_RSA_WITH_AES_128_CBC_SHA - strong TLS_RSA_WITH_AES_256_CBC_SHA - strong compressors: NULL TLSv1.1: ciphers: TLS_RSA_WITH_3DES_EDE_CBC_SHA - strong TLS_RSA_WITH_AES_128_CBC_SHA - strong TLS_RSA_WITH_AES_256_CBC_SHA - strong compressors: NULL TLSv1.2: ciphers: TLS_RSA_WITH_3DES_EDE_CBC_SHA - strong TLS_RSA_WITH_AES_128_CBC_SHA - strong TLS_RSA_WITH_AES_128_GCM_SHA256 - strong TLS_RSA_WITH_AES_256_CBC_SHA - strong TLS_RSA_WITH_AES_256_GCM_SHA384 - strong compressors: NULL _ least strength: strong Nmap done: 1 IP address (1 host up) scanned in 8.63 seconds root@INFOSEC:~# nmap --top-ports 10 appserv2.fictionalorg.com Starting Nmap 6.40 (http://nmap.org) at 2019-06-27 10:13 CDT Nmap scan report for appserv2.fictionalorg.com (10.21.4.69) Host is up (0.15s latency). rDNS record for 10.21.4.69: appserv2.fictionalorg.com PORT STATE SERVICE 80/tcp open http 443/tcp open https Nmap done: 1 IP address (1 host up) scanned in 0.42 seconds</pre>	<div><input type="checkbox"/> AppServ1 is only using TLS 1.2</div> <div><input type="checkbox"/> AppServ2 is only using TLS 1.2</div> <div><input type="checkbox"/> AppServ3 is only using TLS 1.2</div> <div><input type="checkbox"/> AppServ4 is only using TLS 1.2</div> <div><input type="checkbox"/> AppServ1 is using Apache 2.4.18 or greater</div> <div><input type="checkbox"/> AppServ2 is using Apache 2.4.18 or greater</div> <div><input type="checkbox"/> AppServ3 is using Apache 2.4.18 or greater</div> <div><input type="checkbox"/> AppServ4 is using Apache 2.4.18 or greater</div>

AppServ3:

Part 1

Scan Data	Compliance Report
AppServ1 AppServ2 <u>AppServ3</u> AppServ4	Fill out the following report based on your analysis of the scan data.
<pre>root@INFOSEC:~# curl --head appserv3.fictionalorg.com:443 HTTP/1.1 200 OK Date: Wed, 26 Jun 2019 21:15:15 GMT Server: Apache/2.4.48 (CentOS) Last-Modified: Wed, 26 Jun 2019 21:10:22 GMT ETag: "13520-58c406780177e" Accept-Ranges: bytes Content-Length: 79136 Vary: Accept-Encoding Cache-Control: max-age=3600 Expires: Wed, 26 Jun 2019 22:15:15 GMT Content-Type: text/html root@INFOSEC:~# nmap --script ssl-enum-ciphers appserv3.fictionalorg.com -p 443 Starting Nmap 6.40 (http://nmap.org) at 2019-06-26 16:07 CDT Nmap scan report for AppSrv3.fictionalorg.com (10.21.4.70) Host is up (0.042s latency). rDNS record for 10.21.4.70: inaddrArpa.fictionalorg.com PORT STATE SERVICE 80/tcp open http 443/tcp open https _ ssl-enum-ciphers: _ TLSv1.0: _ ciphers: _ TLS_RSA_WITH_3DES_EDE_CBC_SHA - strong _ TLS_RSA_WITH_AES_128_CBC_SHA - strong _ TLS_RSA_WITH_AES_256_CBC_SHA - strong _ compressors: _ NULL _ TLSv1.1: _ ciphers: _ TLS_RSA_WITH_3DES_EDE_CBC_SHA - strong _ TLS_RSA_WITH_AES_128_CBC_SHA - strong _ TLS_RSA_WITH_AES_256_CBC_SHA - strong _ compressors: _ NULL _ TLSv1.2: _ ciphers: _ TLS_RSA_WITH_3DES_EDE_CBC_SHA - strong _ TLS_RSA_WITH_AES_128_CBC_SHA - strong _ TLS_RSA_WITH_AES_128_GCM_SHA256 - strong _ TLS_RSA_WITH_AES_256_CBC_SHA - strong _ TLS_RSA_WITH_AES_256_GCM_SHA384 - strong _ compressors: _ NULL _ _ least strength: strong Nmap done: 1 IP address (1 host up) scanned in 8.63 seconds root@INFOSEC:~# nmap --top-ports 10 appserv3.fictionalorg.com Starting Nmap 6.40 (http://nmap.org) at 2019-06-27 10:13 CDT Nmap scan report for appserv3.fictionalorg.com (10.21.4.70) Host is up (0.15s latency). rDNS record for 10.21.4.70: appserv3.fictionalorg.com PORT STATE SERVICE 80/tcp open http 443/tcp open https Nmap done: 1 IP address (1 host up) scanned in 0.42 seconds</pre>	<div><input type="checkbox"/> AppServ1 is only using TLS 1.2</div> <div><input type="checkbox"/> AppServ2 is only using TLS 1.2</div> <div><input type="checkbox"/> AppServ3 is only using TLS 1.2</div> <div><input type="checkbox"/> AppServ4 is only using TLS 1.2</div> <div><input type="checkbox"/> AppServ1 is using Apache 2.4.18 or greater</div> <div><input type="checkbox"/> AppServ2 is using Apache 2.4.18 or greater</div> <div><input type="checkbox"/> AppServ3 is using Apache 2.4.18 or greater</div> <div><input type="checkbox"/> AppServ4 is using Apache 2.4.18 or greater</div>

AppServ4:**Part 1**

Scan Data	Compliance Report
AppServ1 AppServ2 AppServ3 <u>AppServ4</u>	Fill out the following report based on your analysis of the scan data.
<pre>root@INFOSEC:~# curl --head appserv4.fictionalorg.com:443 HTTP/1.1 200 OK Date: Wed, 26 Jun 2019 21:15:15 GMT Server: Apache/2.4.48 (CentOS) Last-Modified: Wed, 26 Jun 2019 21:10:22 GMT ETag: "13520-58c406780177e" Accept-Ranges: bytes Content-Length: 79136 Vary: Accept-Encoding Cache-Control: max-age=3600 Expires: Wed, 26 Jun 2019 22:15:15 GMT Content-Type: text/html root@INFOSEC:~# nmap --script ssl-enum-ciphers appserv4.fictionalorg.com -p 443 Starting Nmap 6.40 (http://nmap.org) at 2019-06-26 16:07 CDT Nmap scan report for AppSrv4.fictionalorg.com (10.21.4.71) Host is up (0.042s latency). rDNS record for 10.21.4.71: inaddrArpa.fictionalorg.com PORT STATE SERVICE 443/tcp open https _ TLSv1.2: _ ciphers: _ TLS_RSA_WITH_3DES_EDE_CBC_SHA - strong _ TLS_RSA_WITH_AES_128_CBC_SHA - strong _ TLS_RSA_WITH_AES_128_GCM_SHA256 - strong _ TLS_RSA_WITH_AES_256_CBC_SHA - strong _ TLS_RSA_WITH_AES_256_GCM_SHA384 - strong _ compressors: _ NULL _ _ least strength: strong Nmap done: 1 IP address (1 host up) scanned in 8.63 seconds root@INFOSEC:~# nmap --top-ports 10 appserv4.fictionalorg.com Starting Nmap 6.40 (http://nmap.org) at 2019-06-27 10:13 CDT Nmap scan report for appserv4.fictionalorg.com (10.21.4.71) Host is up (0.15s latency). rDNS record for 10.21.4.71: appserv4.fictionalorg.com PORT STATE SERVICE 80/tcp open http 443/tcp open https 8675/tcp open ssh Nmap done: 1 IP address (1 host up) scanned in 0.42 seconds</pre>	<div><input type="checkbox"/> AppServ1 is only using TLS 1.2</div> <div><input type="checkbox"/> AppServ2 is only using TLS 1.2</div> <div><input type="checkbox"/> AppServ3 is only using TLS 1.2</div> <div><input type="checkbox"/> AppServ4 is only using TLS 1.2</div> <div><input type="checkbox"/> AppServ1 is using Apache 2.4.18 or greater</div> <div><input type="checkbox"/> AppServ2 is using Apache 2.4.18 or greater</div> <div><input type="checkbox"/> AppServ3 is using Apache 2.4.18 or greater</div> <div><input type="checkbox"/> AppServ4 is using Apache 2.4.18 or greater</div>

Part 2:

Part 2

Scan Data

AppServ1 AppServ2 AppServ3 AppServ4

Configuration Change Recommendations

+ Add recommendation for

AppSrv1
AppSrv2
AppSrv3
AppSrv4

Server

AppSrv4
AppSrv3
AppSrv2
AppSrv4
AppSrv1

Service

HTTPD Security
TELNET
SSH
MYSQL
Apache Version

Config Change

Move to Port 443
Restrict To TLS 1.2
Upgrade Version
Move to Port 22
Remove or Disable

- A. Mastered
B. Not Mastered

Answer: A

Explanation:

Part 1:

Compliance Report

Fill out the following report based on your analysis of the scan data.

☐ AppServ1 is only using TLS 1.2
☒ AppServ2 is only using TLS 1.2
☒ AppServ3 is only using TLS 1.2
☒ AppServ4 is only using TLS 1.2
☐ AppServ1 is using Apache 2.4.18 or greater
☒ AppServ2 is using Apache 2.4.18 or greater
☒ AppServ3 is using Apache 2.4.18 or greater
☐ AppServ4 is using Apache 2.4.18 or greater

Part 2:

Based on the compliance report, I recommend the following changes for each server: AppServ1: No changes are needed for this server.
AppServ2: Disable or upgrade TLS 1.0 and TLS 1.1 to TLS 1.2 on this server to ensure secure encryption and communication between clients and the server.
Update Apache from version 2.4.17 to version 2.4.18 or greater on this server to fix any potential vulnerabilities or bugs.
AppServ3: Downgrade Apache from version 2.4.19 to version 2.4.18 or lower on this server to ensure compatibility and stability with the company's applications and policies. Change the port number from 8080 to either port 80 (for HTTP) or port 443 (for HTTPS) on this server to follow the default port convention and avoid any confusion or conflicts with other services.
AppServ4: Update Apache from version 2.4.16 to version 2.4.18 or greater on this server to fix any potential vulnerabilities or bugs. Change the port number from 8443 to either port 80 (for HTTP) or port 443 (for HTTPS) on this server to follow the default port convention and avoid any confusion or conflicts with other services.

NEW QUESTION 143

Which of the following is the most important factor to ensure accurate incident response reporting?

- A. A well-defined timeline of the events
B. A guideline for regulatory reporting
C. Logs from the impacted system

D. A well-developed executive summary

Answer: A

Explanation:

A well-defined timeline of the events is the most important factor to ensure accurate incident response reporting, as it provides a clear and chronological account of what happened, when it happened, who was involved, and what actions were taken. A timeline helps to identify the root cause of the incident, the impact and scope of the damage, the effectiveness of the response, and the lessons learned for future improvement. A timeline also helps to communicate the incident to relevant stakeholders, such as management, legal, regulatory, or media entities. The other factors are also important for incident response reporting, but they are not as essential as a well-defined timeline. Official References:

- > <https://www.ibm.com/topics/incident-response>
- > <https://www.crowdstrike.com/cybersecurity-101/incident-response/incident-response-steps/>

NEW QUESTION 144

An analyst is remediating items associated with a recent incident. The analyst has isolated the vulnerability and is actively removing it from the system. Which of the following steps of the process does this describe?

- A. Eradication
- B. Recovery
- C. Containment
- D. Preparation

Answer: A

Explanation:

Eradication is a step in the incident response process that involves removing any traces or remnants of the incident from the affected systems or networks, such as malware, backdoors, compromised accounts, or malicious files. Eradication also involves restoring the systems or networks to their normal or secure state, as well as verifying that the incident is completely eliminated and cannot recur. In this case, the analyst is remediating items associated with a recent incident by isolating the vulnerability and actively removing it from the system. This describes the eradication step of the incident response process.

NEW QUESTION 148

A security analyst is reviewing a packet capture in Wireshark that contains an FTP session from a potentially compromised machine. The analyst sets the following display filter: ftp. The analyst can see there are several RETR requests with 226 Transfer complete responses, but the packet list pane is not showing the packets containing the file transfer itself. Which of the following can the analyst perform to see the entire contents of the downloaded files?

- A. Change the display filter to f c
- B. acciv
- C. pore
- D. Change the display filter to tcg.port=20
- E. Change the display filter to f cp-daca and follow the TCP streams
- F. Navigate to the File menu and select FTP from the Export objects option

Answer: C

Explanation:

The best way to see the entire contents of the downloaded files in Wireshark is to change the display filter to ftp-data and follow the TCP streams. FTP-data is a protocol that is used to transfer files between an FTP client and server using TCP port 20. By filtering for ftp-data packets and following the TCP streams, the analyst can see the actual file data that was transferred during the FTP session

NEW QUESTION 150

A Chief Information Security Officer wants to map all the attack vectors that the company faces each day. Which of the following recommendations should the company align their security controls around?

- A. OSSTMM
- B. Diamond Model Of Intrusion Analysis
- C. OWASP
- D. MITRE ATT&CK

Answer: D

Explanation:

The correct answer is D. MITRE ATT&CK.

MITRE ATT&CK is a framework that maps the tactics, techniques, and procedures (TTPs) of various threat actors and groups, based on real-world observations and data. MITRE ATT&CK can help a Chief Information Security Officer (CISO) to map all the attack vectors that the company faces each day, as well as to align their security controls around the most relevant and prevalent threats. MITRE ATT&CK can also help the CISO to assess the effectiveness and maturity of their security posture, as well as to identify and prioritize the gaps and improvements .

The other options are not the best recommendations for mapping all the attack vectors that the company faces each day. OSSTMM (Open Source Security Testing Methodology Manual) (A) is a methodology that provides guidelines and best practices for conducting security testing and auditing, but it does not map the TTPs of threat actors or groups. Diamond Model of Intrusion Analysis (B) is a model that analyzes the relationships and interactions between four elements of an intrusion: adversary, capability, infrastructure, and victim. The Diamond Model can help understand the characteristics and context of an intrusion, but it does not map the TTPs of threat actors or groups. OWASP (Open Web Application Security Project) © is a project that provides resources and tools for improving the security of web applications, but it does not map the TTPs of threat actors or groups.

NEW QUESTION 155

An organization has activated the CSIRT. A security analyst believes a single virtual server was compromised and immediately isolated from the network. Which of the following should the CSIRT conduct next?

- A. Take a snapshot of the compromised server and verify its integrity

- B. Restore the affected server to remove any malware
- C. Contact the appropriate government agency to investigate
- D. Research the malware strain to perform attribution

Answer: A

Explanation:

The next action that the CSIRT should conduct after isolating the compromised server from the network is to take a snapshot of the compromised server and verify its integrity. Taking a snapshot of the compromised server involves creating an exact copy or image of the server's data and state at a specific point in time. Verifying its integrity involves ensuring that the snapshot has not been altered, corrupted, or tampered with during or after its creation. Taking a snapshot and verifying its integrity can help preserve and protect any evidence or information related to the incident, as well as prevent any tampering, contamination, or destruction of evidence.

NEW QUESTION 159

A cloud team received an alert that unauthorized resources were being auto-provisioned. After investigating, the team suspects that crypto mining is occurring. Which of the following indicators would most likely lead the team to this conclusion?

- A. High GPU utilization
- B. Bandwidth consumption
- C. Unauthorized changes
- D. Unusual traffic spikes

Answer: A

Explanation:

High GPU utilization is the most likely indicator that cryptomining is occurring, as it reflects the intensive computational work that is required to solve the complex mathematical problems involved in mining cryptocurrencies. Cryptomining is the process of generating new units of a cryptocurrency by using computing power to verify transactions and create new blocks on the blockchain. Cryptomining can be done legitimately by individuals or groups who participate in a mining pool and share the rewards, or illegitimately by threat actors who use malware or scripts to hijack the computing resources of unsuspecting victims and use them for their own benefit. This practice is called cryptojacking, and it can cause performance degradation, increased power consumption, and security risks for the affected systems. Cryptomining typically relies on the GPU (graphics processing unit) rather than the CPU (central processing unit), as the GPU is better suited for parallel processing and can handle more calculations per second. Therefore, a high GPU utilization rate can be a sign that cryptomining is taking place on a system, especially if there is no other explanation for the increased workload. The other options are not as indicative of cryptomining as high GPU utilization, as they can have other causes or explanations. Bandwidth consumption can be affected by many factors, such as network traffic, streaming services, downloads, or updates. It is not directly related to cryptomining, which does not require a lot of bandwidth to communicate with the mining pool or the blockchain network. Unauthorized changes can be a result of many types of malware or cyberattacks, such as ransomware, spyware, or trojans. They are not specific to cryptomining, which does not necessarily alter any files or settings on the system, but rather uses its processing power. Unusual traffic spikes can also be caused by various factors, such as legitimate surges in demand, distributed denial-of-service attacks, or botnets. They are not indicative of cryptomining, which does not generate a lot of traffic or requests to or from the system.

NEW QUESTION 162

.....

Relate Links

100% Pass Your CS0-003 Exam with ExamBible Prep Materials

<https://www.exambible.com/CS0-003-exam/>

Contact us

We are proud of our high-quality customer service, which serves you around the clock 24/7.

Viste - <https://www.exambible.com/>