

Fortinet

Exam Questions NSE5_FMG-7.2

Fortinet NSE 5 - FortiManager 7.2



NEW QUESTION 1

- (Exam Topic 1)

An administrator has assigned a global policy package to a new ADOM called ADOM1. What will happen if the administrator tries to create a new policy package in ADOM1?

- A. When creating a new policy package, the administrator can select the option to assign the global policy package to the new policy package
- B. When a new policy package is created, the administrator needs to reapply the global policy package to ADOM1.
- C. When a new policy package is created, the administrator must assign the global policy package from the global ADOM.
- D. When the new policy package is created, FortiManager automatically assigns the global policy package to the new policy package.

Answer: D

Explanation:

Reference:

https://help.fortinet.com/fmgr/50hlp/56/5-6-2/FortiManager_Admin_Guide/1200_Policy%20and%20Objects/08

NEW QUESTION 2

- (Exam Topic 1)

You are moving managed FortiGate devices from one ADOM to a new ADOM. Which statement correctly describes the expected result?

- A. Any pending device settings will be installed automatically
- B. Any unused objects from a previous ADOM are moved to the new ADOM automatically
- C. The shared policy package will not be moved to the new ADOM
- D. Policy packages will be imported into the new ADOM automaticallyD

Answer: C

Explanation:

Reference:

<https://community.fortinet.com/t5/FortiManager/Technical-Note-How-to-move-objects-to-new-ADOM-on-Forti>

NEW QUESTION 3

- (Exam Topic 1)

An administrator with the Super_User profile is unable to log in to FortiManager because of an authentication failure message. Which troubleshooting step should you take to resolve the issue?

- A. Make sure FortiManager Access is enabled in the administrator profile
- B. Make sure Offline Mode is disabled
- C. Make sure the administrator IP address is part of the trusted hosts.
- D. Make sure ADOMs are enabled and the administrator has access to the Global ADOM

Answer: C

Explanation:

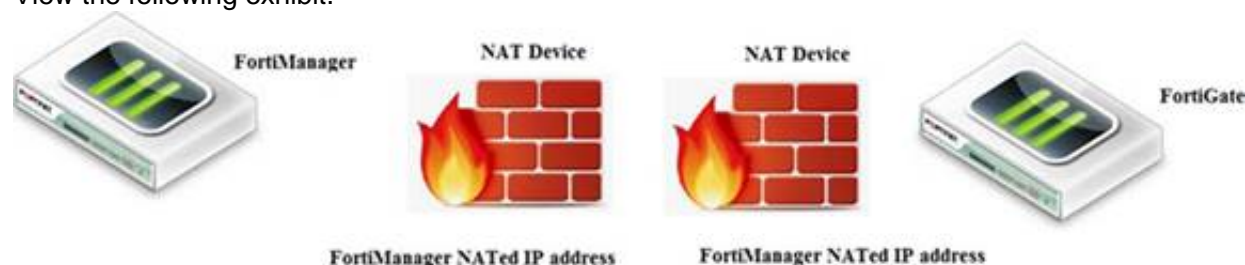
Even if a user entered the correct userid/password, the FMG denies access if a user is logging in from an untrusted source IP subnets.

Reference: <https://docs.fortinet.com/document/fortimanager/6.0.3/administration-guide/107347/trusted-hosts>

NEW QUESTION 4

- (Exam Topic 1)

View the following exhibit.



If both FortiManager and FortiGate are behind the NAT devices, what are the two expected results? (Choose two.)

- A. FortiGate is discovered by FortiManager through the FortiGate NATed IP address.
- B. FortiGate can announce itself to FortiManager only if the FortiManager IP address is configured on FortiGate under central management.
- C. During discovery, the FortiManager NATed IP address is not set by default on FortiGate.
- D. If the FCFM tunnel is torn down, FortiManager will try to re-establish the FGFM tunnel.

Answer: AC

Explanation:

Fortimanager can discover FortiGate through a NATed FortiGate IP address. If a FortiManager NATed IP address is configured on FortiGate, then FortiGate can announce itself to FortiManager. FortiManager will not attempt to re-establish the FGFM tunnel to the FortiGate NATed IP address, if the FGFM tunnel is interrupted. Just like it was in the NATed FortiManager scenario, the FortiManager NATed IP address in this scenario is not configured under FortiGate central management configuration.

NEW QUESTION 5

- (Exam Topic 1)

In the event that the primary FortiManager fails, which of the following actions must be performed to return the FortiManager HA to a working state?

- A. Secondary device with highest priority will automatically be promoted to the primary role, and manually reconfigure all other secondary devices to point to the new primary device
- B. Reboot one of the secondary devices to promote it automatically to the primary role, and reconfigure all other secondary devices to point to the new primary device.
- C. Manually promote one of the secondary devices to the primary role, and reconfigure all other secondary devices to point to the new primary device.
- D. FortiManager HA state transition is transparent to administrators and does not require any reconfiguration.

Answer: C

Explanation:

FortiManager_6.4_Study_Guide-Online – page 346

FortiManager HA doesn't support IP takeover where an HA state transition is transparent to administrators. If a failure of the primary occurs, the administrator must take corrective action to resolve the problem that may include invoking the state transition. If the primary device fails, the administrator must do the following in order to return the FortiManager HA to a working state:

- * 1. Manually reconfigure one of the secondary devices to become the primary device
- * 2. Reconfigure all other secondary devices to point to the new primary device

NEW QUESTION 6

- (Exam Topic 1)

In addition to the default ADOMs, an administrator has created a new ADOM named Training for FortiGate devices. The administrator sent a device registration to FortiManager from a remote FortiGate. Which one of the following statements is true?

- A. The FortiGate will be added automatically to the default ADOM named FortiGate.
- B. The FortiGate will be automatically added to the Training ADOM.
- C. By default, the unregistered FortiGate will appear in the root ADOM.
- D. The FortiManager administrator must add the unregistered device manually to the unregistered device manually to the Training ADOM using the Add Device wizard

Answer: C

Explanation:

Reference: <https://docs.fortinet.com/document/fortimanager/7.0.0/administration-guide/718923/root-adom>

NEW QUESTION 7

- (Exam Topic 1)

Refer to the exhibits. Exhibit one.

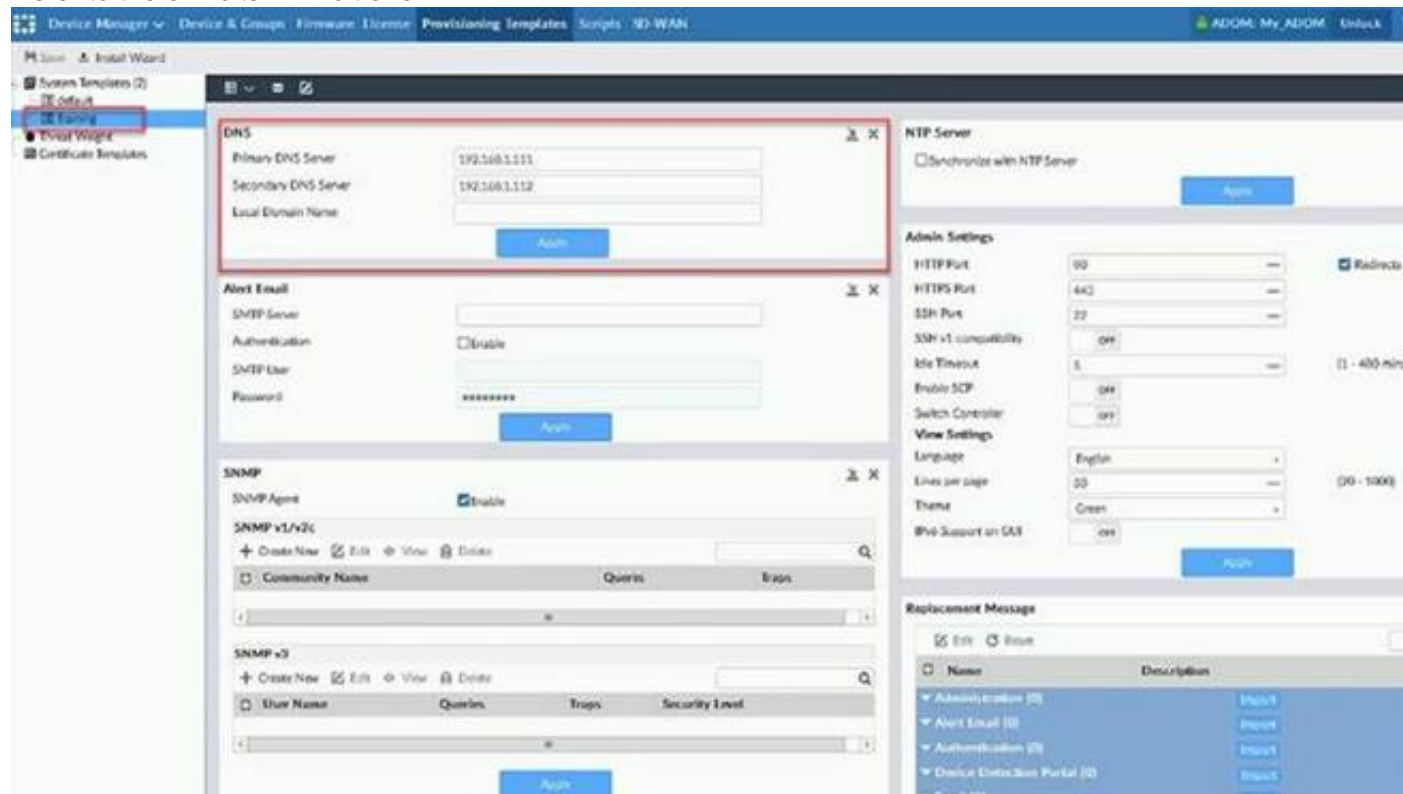
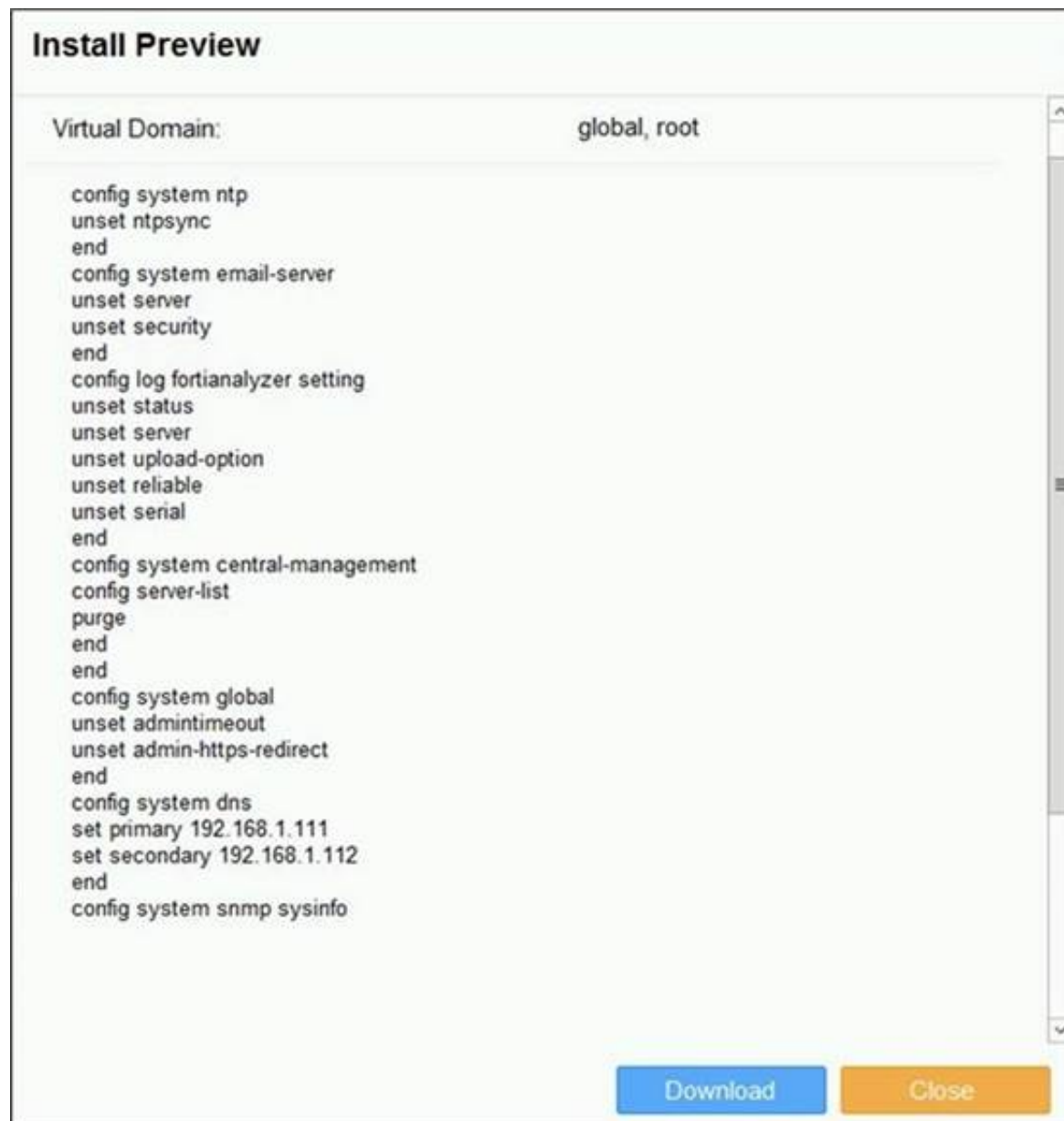


Exhibit two.



An administrator created a new system template named Training with two new DNS addresses on FortiManager. During the installation preview stage, the administrator notices that many unset commands need to be pushed. What can be the main reason for these unset commands?

- A. The DNS addresses in the default system settings are the same as the Training system template
- B. The Training system template has other default settings
- C. The ADOM is locked by another administrator
- D. The Training system template does not have assigned devices

Answer: B

NEW QUESTION 8

- (Exam Topic 1)

Which two conditions trigger FortiManager to create a new revision history? (Choose two.)

- A. When configuration revision is reverted to previous revision in the revision history
- B. When FortiManager installs device-level changes to a managed device
- C. When FortiManager is auto-updated with configuration changes made directly on a managed device
- D. When changes to device-level database is made on FortiManager

Answer: BC

Explanation:

Reference:

https://help.fortinet.com/fmgr/50hlp/56/5-6-1/FortiManager_Admin_Guide/1000_Device%20Manager/1500_M

NEW QUESTION 9

- (Exam Topic 1)

An administrator would like to review, approve, or reject all the firewall policy changes made by the junior administrators. How should the Workspace mode be configured on FortiManager?

- A. Set to workflow and use the ADOM locking feature
- B. Set to read/write and use the policy locking feature
- C. Set to normal and use the policy locking feature
- D. Set to disable and use the policy locking feature

Answer: A

Explanation:

Reference:

https://help.fortinet.com/fmgr/50hlp/52/5-2-0/FMG_520_Online_Help/200_What's-New.03.03.html

NEW QUESTION 10

- (Exam Topic 1)

View the following exhibit:

```
#diagnose fmuupdate view-serverlist fds
Fortiguard Server Comm: Enabled
Server Override Mode: Loose
FDS server list :
```

Index	Address	Port	Timezone	Distance	Source
*0	10.0.1.50	8890	-5	0	CLI
1	96.45.33.89	443	-5	0	FDNI
2	96.45.32.81	443	-5	0	FDNI
....					
38	fds1.fortinet.com	443	-5	0	DEFAULT

How will FortiManager try to get updates for antivirus and IPS?

- A. From the list of configured override servers with ability to fall back to public FDN servers
- B. From the configured override server list only
- C. From the default server fds1.fortinet.com
- D. From public FDNI server with highest index number only

Answer: A

Explanation:

Reference:

<https://community.fortinet.com/t5/Fortinet-Forum/Clarification-of-FortiManager-s-quot-Server-Override-Mode>

NEW QUESTION 10

- (Exam Topic 1)

Refer to the following exhibit:

```
config system global
set workspace-mode normal
end
```

Which of the following statements are true based on this configuration? (Choose two.)

- A. The same administrator can lock more than one ADOM at the same time
- B. Ungraceful closed sessions will keep the ADOM in a locked state until the administrator session times out
- C. Unlocking an ADOM will submit configuration changes automatically to the approval administrator
- D. Unlocking an ADOM will install configuration automatically on managed devices

Answer: AB

Explanation:

Reference: http://help.fortinet.com/fmgr/cli/5-6-2/Document/0800_ADOMs/200_Configuring+.htm

NEW QUESTION 15

- (Exam Topic 1)

An administrator wants to delete an address object that is currently referenced in a firewall policy. What can the administrator expect to happen?

- A. FortiManager will not allow the administrator to delete a referenced address object
- B. FortiManager will disable the status of the referenced firewall policy
- C. FortiManager will replace the deleted address object with the none address object in the referenced firewall policy
- D. FortiManager will replace the deleted address object with all address object in the referenced firewall policy

Answer: C

Explanation:

Reference:

https://help.fortinet.com/fmgr/50hlp/56/5-6-2/FortiManager_Admin_Guide/1200_Policy%20and%20Objects/12

NEW QUESTION 20

- (Exam Topic 1)

Which two settings must be configured for SD-WAN Central Management? (Choose two.)

- A. SD-WAN must be enabled on per-ADOM basis
- B. You can create multiple SD-WAN interfaces per VDOM
- C. When you configure an SD-WAN, you must specify at least two member interfaces.
- D. The first step in creating an SD-WAN using FortiManager is to create two SD-WAN firewall policies.

Answer: AC

NEW QUESTION 24

- (Exam Topic 2)

An administrator is replacing a device on FortiManager by running the following command: execute device replace sn <devname> <serialnum>.

What device name and serial number must the administrator use?

- A. Device name and serial number of the original device.
- B. Device name and serial number of the replacement device.
- C. Device name of the replacement device and serial number of the original device.
- D. Device name of the original device and serial number of the replacement device.

Answer: D

NEW QUESTION 26

- (Exam Topic 2)

An administrator configures a new firewall policy on FortiManager and has not yet pushed the changes to the managed FortiGate. In which database will the configuration be saved?

- A. Device-level database
- B. Revision history database
- C. ADOM-level database
- D. Configuration-level database

Answer: C

Explanation:

<https://kb.fortinet.com/kb/documentLink.do?externalID=FD47942>

NEW QUESTION 27

- (Exam Topic 2)

Which two statements regarding device management on FortiManager are true? (Choose two.)

- A. FortiGate devices in HA cluster devices are counted as a single device.
- B. FortiGate in transparent mode configurations are not counted toward the device count on FortiManager.
- C. FortiGate devices in an HA cluster that has five VDOMs are counted as five separate devices.
- D. The maximum number of managed devices for each ADOM is 500.

Answer: AC

NEW QUESTION 32

- (Exam Topic 2)

Which two statements about Security Fabric integration with FortiManager are true? (Choose two.)

- A. The Security Fabric license, group name and password are required for the FortiManager Security Fabric integration
- B. The Fabric View module enables you to generate the Security Fabric ratings for Security Fabric devices
- C. The Security Fabric settings are part of the device level settings
- D. The Fabric View module enables you to view the Security Fabric ratings for Security Fabric devices

Answer: CD

NEW QUESTION 34

- (Exam Topic 2)

An administrator has enabled Service Access on FortiManager.

What is the purpose of Service Access on the FortiManager interface?

- A. Allows FortiManager to download IPS packages
- B. Allows FortiManager to respond to request for FortiGuard services from FortiGate devices
- C. Allows FortiManager to run real-time debugs on the managed devices
- D. Allows FortiManager to automatically configure a default route

Answer: B

Explanation:

FortiManager 6.2 Study guide page 350

NEW QUESTION 36

- (Exam Topic 2)

What will be the result of reverting to a previous revision version in the revision history?

- A. It will install configuration changes to managed device automatically
- B. It will tag the device settings status as Auto-Update
- C. It will generate a new version ID and remove all other revision history versions
- D. It will modify the device-level database

Answer: D

NEW QUESTION 39

- (Exam Topic 2)

What does a policy package status of Conflict indicate?

- A. The policy package reports inconsistencies and conflicts during a Policy Consistency Check.
- B. The policy package does not have a FortiGate as the installation target.

- C. The policy package configuration has been changed on both FortiManager and the managed device independently.
- D. The policy configuration has never been imported after a device was registered on FortiManager.

Answer: C

NEW QUESTION 43

- (Exam Topic 2)

Refer to the exhibit.

```
config system global
set workspace-mode normal
end
```

Given the configuration shown in the exhibit, which two statements are true? (Choose two.)

- A. It allows two or more administrators to make configuration changes at the same time, in the same ADOM.
- B. It disables concurrent read-write access to an ADOM.
- C. It allows the same administrator to lock more than one ADOM at the same time.
- D. It is used to validate administrator login attempts through external servers.

Answer: BC

Explanation:

Reference:

<https://docs.fortinet.com/document/fortimanager/6.0.4/administration-guide/86456/concurrentadom-access>

NEW QUESTION 45

- (Exam Topic 2)

An administrator has assigned a global policy package to custom ADOM1. Then the administrator creates a new policy package, Fortinet, in the custom ADOM1. Which statement about the global policy package assignment to the newly-created policy package Fortinet is true?

- A. When a new policy package is created, it automatically assigns the global policies to the new package.
- B. When a new policy package is created, you need to assign the global policy package from the global ADOM.
- C. When a new policy package is created, you need to reapply the global policy package to the ADOM.
- D. When a new policy package is created, you can select the option to assign the global policies to the new package.

Answer: A

Explanation:

Global Policy Package is applied at the ADOM level and you have the option to choose which ADOM policy packages you want to exclude (there is no option to choose Policy Packages to include).

NEW QUESTION 47

- (Exam Topic 3)

An administrator has added all the devices in a Security Fabric group to FortiManager. How does the administrator identify the root FortiGate?

- A. By a dollar symbol (\$) at the end of the device name
- B. By an at symbol (@) at the end of the device name
- C. By a QUESTION NO: mark(?) at the end of the device name
- D. By an Asterisk (*) at the end of the device name

Answer: D

NEW QUESTION 50

- (Exam Topic 3)

What does the diagnose dvm check-integrity command do? (Choose two.)

- A. Internally upgrades existing ADOMs to the same ADON version in order to clean up and correct the ADOM syntax
- B. Verifies and corrects unregistered, registered, and deleted device states
- C. Verifies and corrects database schemas in all object tables
- D. Verifies and corrects duplicate VDOM entries

Answer: BD

Explanation:

* 6.2 Study Guide page 305 verify and correct parts of the device manager databases, including:– inconsistent device-to-group and group-to-ADOM memberships– unregistered, registered, and deleted device states– device lock statuses– duplicate VDOM entries

NEW QUESTION 52

- (Exam Topic 3)

Which of the following statements are true regarding VPN Gateway configuration in VPN Manager? (Choose two.)

- A. Managed gateways are devices managed by FortiManager in the same ADOM
- B. External gateways are third-party VPN gateway devices only
- C. Protected subnets are the subnets behind the device that you don't want to allow access to over the IPsec VPN
- D. Managed devices in other ADOMs must be treated as external gateways

Answer: AD

Explanation:

Reference: http://help.fortinet.com/fmgr/50hlp/56/5-6-1/FMG-FAZ/1300_VPN_Manager/0800_IPsec_VPN_Gateway/0400_Create_mngd_gateway.htm

NEW QUESTION 54

- (Exam Topic 3)

Which of the following statements are true regarding schedule backup of FortiManager? (Choose two.)

- A. Backs up all devices and the FortiGuard database.
- B. Does not back up firmware images saved on FortiManager
- C. Supports FTP, SCP, and SFTP
- D. Can be configured from the CLI and GUI

Answer: BC

NEW QUESTION 55

- (Exam Topic 3)

Which of the following statements are true regarding VPN Manager? (Choose three.)

- A. VPN Manager must be enabled on a per ADOM basis.
- B. VPN Manager automatically adds newly-registered devices to a VPN community.
- C. VPN Manager can install common IPsec VPN settings on multiple FortiGate devices at the same time.
- D. Common IPsec settings need to be configured only once in a VPN Community for all managed gateways.
- E. VPN Manager automatically creates all the necessary firewall policies for traffic to be tunneled by IPsec.

Answer: ACD

NEW QUESTION 60

- (Exam Topic 3)

In addition to the default ADOMs, an administrator has created a new ADOM named Training for FortiGate devices. The administrator authorized the FortiGate device on FortiManager using the Fortinet Security Fabric.

Given the administrator's actions, which statement correctly describes the expected result?

- A. The FortiManager administrator must add the authorized device to the Training ADOM using the Add Device wizard only.
- B. The authorized FortiGate will be automatically added to the Training ADOM.
- C. The authorized FortiGate will appear in the root ADOM.
- D. The authorized FortiGate can be added to the Training ADOM using FortiGate Fabric Connectors.

Answer: C

NEW QUESTION 63

- (Exam Topic 3)

View the following exhibit.

Edit Address

Address Name

Type

IP/Network

Interface



Static Route Configuration
☐ OFF

Comments
 0/255

Add to Groups

Advanced Options >

Per-Device Mapping
☒ ON

+ Add  Edit  Delete

<input type="checkbox"/>	Name	VDOM	Details
<input type="checkbox"/>	Local-FortiGate	root	IP/Netmask10.0.10/255.255.255.0

An administrator has created a firewall address object, Training, which is used in the Local-FortiGate policy package. When the install operation is performed, which IP Netmask will be installed on the Local-FortiGate, for the Training firewall address object?

- A. 10.0.1.0/24
- B. It will create firewall address group on Local-FortiGate with 192.168.0.1/24 and 10.0.1.0/24 object values
- C. 192.168.0.1/24
- D. Local-FortiGate will automatically choose an IP Network based on its network interface settings.

Answer: A

NEW QUESTION 68

- (Exam Topic 3)

What will happen if FortiAnalyzer features are enabled on FortiManager?

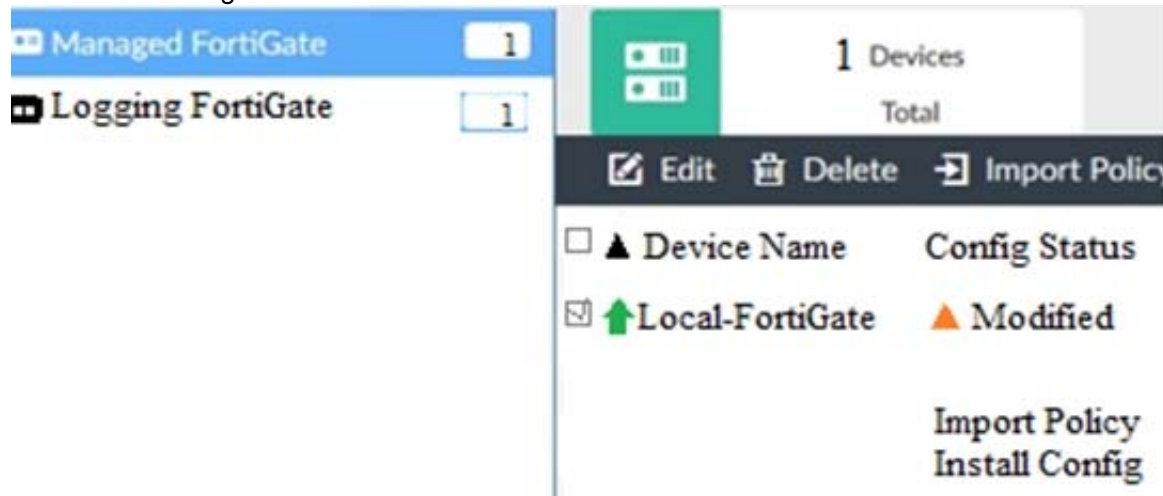
- A. FortiManager will keep all the logs and reports on the FortiManager.
- B. FortiManager will enable ADOMs to collect logs automatically from non-FortiGate devices.
- C. FortiManager will install the logging configuration to the managed devices
- D. FortiManager can be used only as a logging device.

Answer: C

NEW QUESTION 73

- (Exam Topic 3)

View the following exhibit.



When using Install Config option to install configuration changes to managed FortiGate, which of the following statements are true? (Choose two.)

- A. Once initiated, the install process cannot be canceled and changes will be installed on the managed device
- B. Will not create new revision in the revision history
- C. Installs device-level changes to FortiGate without launching the Install Wizard
- D. Provides the option to preview configuration changes prior to installing them

Answer: AC

NEW QUESTION 74

- (Exam Topic 3)

What does a policy package status of Modified indicate?

- A. FortiManager is unable to determine the policy package status
- B. The policy package was never imported after a device was registered on FortiManager
- C. The Policy configuration has been changed on a managed device and changes have not yet been imported into FortiManager
- D. The Policy package configuration has been changed on FortiManager and changes have not yet been installed on the managed device.

Answer: D

Explanation:

Reference: http://help.fortinet.com/fmgr/50hlp/56/5-6-1/FortiManager_Admin_Guide/1200_Policy%20and%20Objects/0800_Managing%20policy%20packages/2200_Policy%20Packag

NEW QUESTION 77

- (Exam Topic 3)

Which of the following statements are true regarding reverting to previous revision version from the revision history? (Choose two.)

- A. To push these changes to a managed device, it required an install operation to the managed FortiGate.
- B. Reverting to a previous revision history will generate a new version ID and remove all other historyversions.
- C. Reverting to a previous revision history will tag the device settings status as Auto-Update.
- D. It will modify device-level database

Answer: AD

NEW QUESTION 81

- (Exam Topic 3)

Refer to the exhibit.

```
Start to import config from device(Local-FortiGate) vdom(root) to
adom(My_ADOM), package(Local-FortiGate_root)

"firewall service category",SKIPPED,"(name=General, oid=697, DUPLICATE)"

"firewall address",SUCCESS,"(name=LOCAL_SUBNET, oid=684, new object)"

"firewall service custom",SUCCESS,"(name=ALL, oid=863, update previous
object)"

"firewall policy",SUCCESS,"(name=1, oid=1090, new object)"
```

Given the configuration shown in the exhibit, how did FortiManager handle the service category named General?

- A. FortiManager ignored the firewall service category General but created a new service category in its database.
- B. FortiManager ignored the firewall service category general and deleted the duplicate value In Its database
- C. FortiManager ignored the firewall service category General and updated the FortiGate duplicate value in the FortiGate database.
- D. FortiManager ignored the firewall service category General and did not update Its database with the value

Answer: C

NEW QUESTION 82

- (Exam Topic 3)

View the following exhibit.

```
Start to import config from device(Local-FortiGate) vdom(root) to adom(My_ADOM), package(Local-
Fortigate_root)

"firewall service category",SKIPPED,"(name=General,oid=697, DUPLICATE)"

"firewall address", SUCCESS,"(name=LOCAL_SUBNET,oid=684,new object)"

"firewall service custom",SUCCESS,"(name=ALL,oid=863,update previous object)"

"firewall policy",SUCCESS,"(name=1,oid-1090, new object)"
```

Which one of the following statements is true regarding the object named ALL?

- A. FortiManager updated the object ALL using FortiGate's value in its database
- B. FortiManager updated the object ALL using FortiManager's value in its database
- C. FortiManager created the object ALL as a unique entity in its database, which can be only used by this managed FortiGate.
- D. FortiManager installed the object ALL with the updated value.

Answer: A

NEW QUESTION 86

.....

Thank You for Trying Our Product

We offer two products:

1st - We have Practice Tests Software with Actual Exam Questions

2nd - Questions and Answers in PDF Format

NSE5_FMG-7.2 Practice Exam Features:

- * NSE5_FMG-7.2 Questions and Answers Updated Frequently
- * NSE5_FMG-7.2 Practice Questions Verified by Expert Senior Certified Staff
- * NSE5_FMG-7.2 Most Realistic Questions that Guarantee you a Pass on Your First Try
- * NSE5_FMG-7.2 Practice Test Questions in Multiple Choice Formats and Updates for 1 Year

100% Actual & Verified — Instant Download, Please Click
[Order The NSE5_FMG-7.2 Practice Test Here](#)