

HP

Exam Questions HPE6-A73

Aruba Certified Switching Professional Exam



NEW QUESTION 1

A network engineer is using NetEdit to manage AOS-CX switches. The engineer notices that a lot of thirdparty VoIP phones are showing up in the NetEdit topology. The engineer deletes these, but they are automatically rediscovered by NetEdit and added back in. What should the administrator do to solve this problem?

- A. Change the VoIP phone SNMP community string to something unknown by NetEdit
- B. Disable LLDP globally on the AOS-CX switches where phones are connected
- C. Disable SSH access on all the VoIP phones
- D. Disable the RESTful API on all the VoIP phones

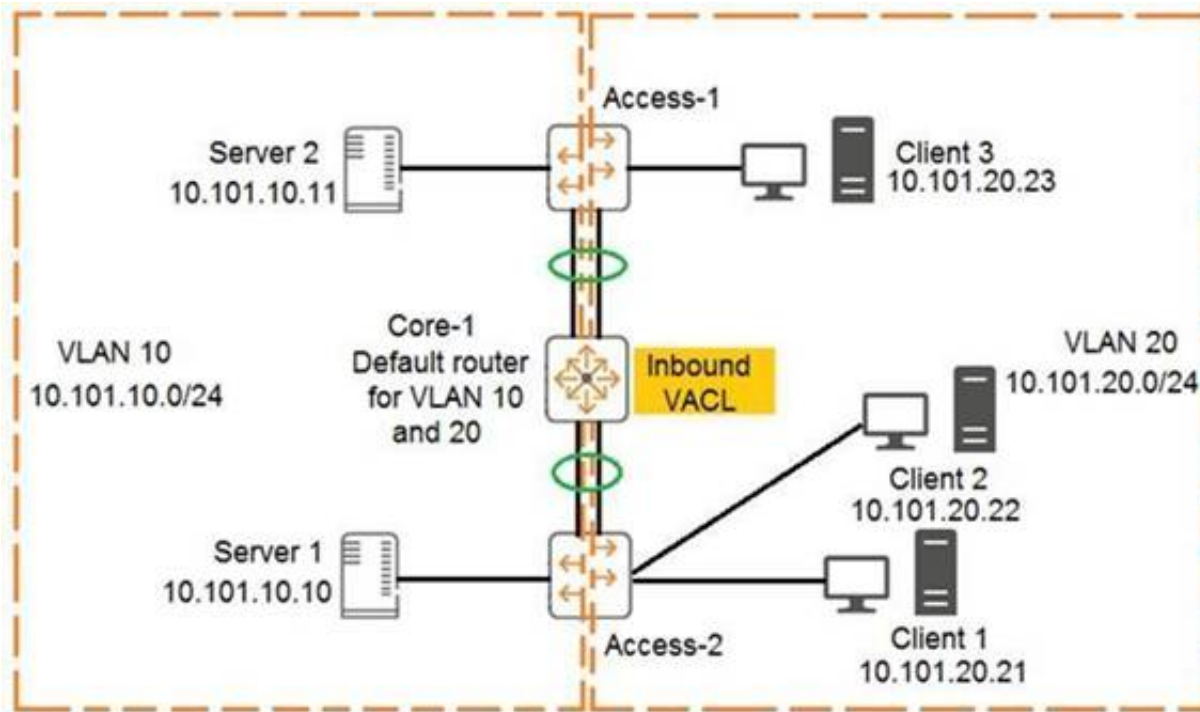
Answer: A

Explanation:

"NetEdit will now also discover and display third-party devices that are using the standard MIB's. Using SNMP with NetEdit, administrators can also enter SSH credentials for third-party devices.

NEW QUESTION 2

Examine the network exhibit:



The ACL configuration defined on Core-1 is as follows:

```
Core-1(config)# access-list ip example
Core-1(config-acl-ip)# permit ip 10.101.20.21/32 any eq 23
Core-1(config-acl-ip)# permit ip 10.101.20.21/32 eq 23 any
Core-1(config-acl-ip)# exit
Core-1(config)# vlan 20
Core-1(config-if)# apply access-list example in
```

The ACL configuration defined on Core-1 is as follows:

If telnet was being used, which device connection would be permitted and functional in both directions? (Choose two.)

- A. Client 3 to Client 2
- B. Client 1 to Client 2
- C. Server 2 to Client 2
- D. Server 1 to Client 1
- E. Client 1 to Client 3

Answer: BD

Explanation:

CL3 - CL2 - drop on forward path by core1 cause match VLAN 20 and CL3 not CL1 as SRC IP CL1 - CL2 - pass - no ACL cause forwarded by Access2
 SR2 - CL2 - pass on forward path by core1 cause match VLAN 10
 Drop on return path by core1 cause match VLAN 20 and no CL1 as SRC IP SR1 - CL1 - pass on forward path by core1 cause match VLAN 10
 pass on return path by core1 cause match VLAN 20 and CL1 as SRC IP
 CL1 - CL3 - pass on forward path by core1 cause match VLAN 20 and CL1 as SRC IP drop on return path by core1 cause match VLAN 20 and not CL1 but CL3 as SRC IP

NEW QUESTION 3

An administrator wants to leverage always-on PoE on AOS-CX switches. Which statement is correct regarding this feature?

- A. Provides up to 60W of power per port
- B. Supports all AOS-CX switches
- C. Provides surge protection for PoE and non-PoE ports
- D. Requires NetEdit to implement

Answer: A

NEW QUESTION 4

What must a network administrator implement in order to run an NAE script on an AOS-CX switch?

- A. Deployment
- B. Schedule
- C. Plan
- D. Agent

Answer: D

NEW QUESTION 5

A company requires access by all users, guests, and employees to be authenticated. Employees will be authenticated using 802.1X, whereas guests will be authenticated using captive portal. Which type of authentication must be configured on an AOS-CX switch ports where both guests and employees connect?

- A. Both 802.1X and captive portal
- B. 802.1X only
- C. Both 802.1X and MAC-Auth
- D. 802.1X, captive portal, and MAC-Auth

Answer: C

Explanation:

Employees use 802.1x
The Aruba guest solution uses MAC-auth.
The Portal is not configured on the switch port.

NEW QUESTION 6

What is a concept associated with PIM sparse mode (SM)?

- A. Reverts to forwarding when the pruning state times out.
- B. Requires periodic joins to maintain the shortest path tree (SPT).
- C. Recommended for use when high bandwidth connections exist.
- D. Implements a push content to forward traffic from the multicast source.

Answer: B

Explanation:

<https://www.youtube.com/watch?v=PhzMtUcS6UA>

NEW QUESTION 7

When an AOS-CX switch uses a temporary copy of the Configuration State database, what kind of analysis does NetEdit perform to ensure that the configuration is correct?

- A. Syntax validation
- B. Semantic validation
- C. Conformance validation
- D. Change validation

Answer: D

Explanation:

Validation processes
+ Syntax validation
– When: while typing
– What: command syntax including in-line help
+ Semantics validation
– When: VALIDATE button (in multi-editor) or before DEPLOY
– What: configuration consistency
+ Conformance validation
– When: while editing
– What: compliance with conformance rules: corporate policies, minimum connectivity requirements, etc.
+ Change validation
– When: during DEPLOY (before and after configuration deployment)
– What: compares device state before and after changes are applied (using show commands)

NEW QUESTION 8

An administrator is implementing a downloadable user role solution involving AOS-CX switches. The AAA solution and the AOS-CX switches can successfully authenticate users; however, the role information fails to download to the switches. What policy should be added to an intermediate firewall to allow the downloadable role function to succeed?

- A. Allow TCP 443
- B. Allow UDP 1811
- C. Allow UDP 8211
- D. Allow TCP 22

Answer: A

Explanation:

pg 681 from the Aruba guide - "When using DUR, the ClearPass HPE-CPPM-Role VSA is used in combination with HTTPS to transfer the role to the switch." UDP 8211 (PAPI) is related to dynamic segmentation and the communication to the MC not DUR.

NEW QUESTION 9

An administrator is managing a pair of core AOS-CX switches configured for VSX. Connected to this core are pairs of aggregation layer AOS-CX switches configured for VSX. OSPF is running between the aggregation and core layers. To speed up OSPF convergence, the administrator has configured BFD between the core and aggregation switches.

What is a best practice the administrator should implement to reduce CPU processing on the switches if a BFD neighbor fails?

- A. Disable ICMP redirects
- B. Implement graceful restart
- C. Increase the BFD echo timers
- D. Increase the VSX keepalive timer

Answer: A

NEW QUESTION 10

An administrator wants to implement a virtual switching technology that implements a single control-plane solution. Which S-CX switches would meet these criteria?

- A. All AOS-CX switching platforms
- B. AOS-CX 6300 and 6400 switches
- C. AOS-CX 6300, 6400, and 83xx switches
- D. AOS-CX 6300 switches

Answer: C

NEW QUESTION 10

Examine the following AOS-CX configuration:

```
Switch(config)# class ip IoT-traffic
Switch(config-class-ip)# match ip 192.168.0.0/16 any
Switch(config-class-ip)# exit
Switch(config)# pbr-action-list reroute
Switch(config-prb-action-list)# default-nexthop 10.100.1.2
Switch(config-prb-action-list)# exit
Switch(config)# policy IoT-policy
Switch(config-policy)# class ip IoT-traffic action pbr reroute
Switch(config-policy)# exit
Switch(config)# interface vlan 999
Switch(config-if)# apply policy IoT-policy routed-in
Switch(config-if)# exit
```

Based on this configuration, which statement is correct regarding IoT traffic?

- A. If 10.100.1.2 is not reachable, the IoT traffic will be automatically dropped by the switch
- B. If a specific route is not available in the routing table, the traffic will be routed to 10.100.1.2
- C. The next hop of 10.100.1.2 can be one or more hops away from the AOS-CX switch
- D. All routes are ignored in the routing table for IoT traffic, which is routed to 10.100.1.2

Answer: B

NEW QUESTION 11

An administrator implements interim accounting for guest users so that ClearPass can track the amount of bandwidth that guests upload and download. Guests that abuse bandwidth consumption should be disconnected from the network. The administrator configures the following on the AOS-CX access switches:

```
Access1(config)# ip dns host cppm.arubatraining.com 10.254.1.23 vrf mgmt
Access1(config)# radius-server host cppm.arubatraining.com key plaintext aruba123 vrf mgmt
Access1(config)# aaa group server radius cppm
Access1(config-sg)# server cppm.arubatraining.com vrf mgmt
Access1(config-sg)# exit
Access1(config)# aaa accounting port-access start-stop interim 5 group cppm
Access1(config)# radius dyn-authorization client cppm.arubatraining.com secret-key plaintext aruba123 vrf mgmt replay-
protection disable
```

After performing this configuration, the administrator notices that guest users that have exceeded the guest bandwidth limit are not being disconnected. Upon further investigation, Access Tracker in ClearPass indicates a disconnect CoA message is being sent to the AOS-CX switch.

What is causing this issue?

- A. RADIUS change of authorization is not enabled on the AOS-CX switch.
- B. Bandwidth consumption of the guests is not being reported by the AOS-CX switch.
- C. NTP is not configured on the AOS-CX switch.
- D. There is a time discrepancy between the AOS-CX switch and ClearPass.

Answer: A

NEW QUESTION 13

What is correct regarding policy-based routing?

- A. Policies can only be applied to routed interfaces.
- B. Policies can be applied inbound and outbound.
- C. Monitoring of policy interfaces occurs every 60 seconds.
- D. Policy actions include routing permitting or dropping traffic.

Answer: A

NEW QUESTION 14

An administrator will be implementing tunneling between AOS-CX switches and Aruba gateways. Which list of protocols must minimally be allowed by an intermediate firewall between two sets of devices?

- A. IP protocol 50 and UDP 8209
- B. UDP 4500 and IP protocol 47
- C. UDP 8211 and IP protocol 47
- D. UDP 4500 and UDP 8209

Answer: C

Explanation:

ACSP Study Guide Page 788 - Allow the following protocols/ports

- PAPI: UDP 8211
- GRE: Protocol 47

NEW QUESTION 19

When cutting and pasting configurations into NetEdit, which character is used to enter commands within the context of the previous command?

- A. <ESC>
- B. ">"
- C. Space
- D. Tab

Answer: D

NEW QUESTION 24

An administrator is managing a network comprised of AOS-CX switches deployed at the aggregation layer. The switches are paired in a VSX stack and run the OSPF routing protocol. The administrator is concerned about how long it takes for OSPF to converge when one of the VSX switches has to reboot. What should the administrator do to speed up the OSPF convergence of the switch that is rebooting?

- A. Change the VSXISL link from an OSPF broadcast link point-to-point.
- B. Implement graceful restart on the VSX switches and their neighboring OSPF switches.
- C. Decrease the VSX initial synchronization timer on the two VSX switches.
- D. Define non-backbone areas on the VSX switches as totally stubby areas.

Answer: B

NEW QUESTION 27

Which protocol should be configured to allow NetEdit to discover third-party devices?

- A. SNMP
- B. SSH
- C. HTTPS
- D. HTTP

Answer: A

NEW QUESTION 30

When comparing PIM-DM and PIM-SM, which multicast components are only found with PIM-SM in multicast routing? (Choose two.)

- A. IGMP querier
- B. Rendezvous point
- C. Bootstrap router
- D. Shortest path tree
- E. Designated router

Answer: BD

NEW QUESTION 35

An AOS-CX switch is configured to implement downloadable user roles. Examine the AOS-CX switch output:


```
Access1(config)# show aaa authentication port-access interface all client-status
```

```
Port Access Client Status Details
```

```
Client 00:50:56:b1:7a:37
```

```
=====
```

```
Session Details
```

```
-----
```

```
Port : 1/1/3
```

```
Session Time : 1887s
```

```
Authentication Details
```

```
-----
```

```
Status : mac-auth Authenticated
```

```
Auth Precedence : dot1x - Not attempted, mac-auth - Authenticated
```

```
Authorization Details
```

```
-----
```

```
Role :
```

```
Status : Not ready
```

Based on this output, what is the state of the user's access?

- A. No downloadable user role exists
- B. MAC authentication has passed, but 802.1X authentication is in progress
- C. The RADIUS request timed out to the AAA server
- D. The port should be configured for 802.1X

Answer: A

Explanation:

User role "Authenticated" was passed down but does not exist

NEW QUESTION 39

Examine the following AOS-CX switch configuration:

```
Switch(config-addgroup-ip)# object-group ip address servers
Switch(config-addgroup-ip)# 10.1.0.100
Switch(config-addgroup-ip)# 10.1.1.100
Switch(config-addgroup-ip)# exit
```

Which access control entries would allow web traffic to the web servers 10.1.0.100 and 10.1.1.100?

- A. permit tcp servers eq 80
- B. permit tcp any 10.1.0.100 0.0.1.0 eq 80
- C. permit tcp any 10.1.0.100/10.1.1.100 eq 80
- D. permit tcp any 10.1.0.100/255.255.254.255 eq 80

Answer: B

NEW QUESTION 42

An administrator of a large campus network needs a solution that will provide root cause analytics to quickly identify problems so that they can quickly be fixed. Which AOS-CX switch feature should the administrator utilize to help with root cause analytics?

- A. NAE
- B. VoQ
- C. NetEdit
- D. VSX

Answer: A

NEW QUESTION 46

Examine the following AOS-CX switch configuration:

```
Access(config)# access-list ip ext
Access(config-acl-ip)# permit ip any 10.0.11.0/255.0.255.0 count
Access(config-acl-ip)# permit ip any 10.0.12.0/255.0.255.0 log
Access(config-acl-ip)# exit
Access(config)# interface 1/1/3
Access(config-if)# apply access-list ip ext in
Access(config-if)# exit
```

Which statement correctly describes what is allowed for traffic entering interface 1/1/3?

- A. IP traffic from 10.1.11.0/24 is allowed to access 10.1.110.0/24
- B. IP traffic from 10.0.11.0/24 is allowed to access 10.1.12.0/24
- C. Traffic from 10.0.12.0/24 will generate a log record when accessing 10.0.11.0/24
- D. IP traffic from 10.1.12.0/24 is allowed to access 172.0.1.0/23

Answer: B

Explanation:

People seem to be confused by inverted mask/wildcard masks. They would be correct for Cisco switches, but AOS-CX does NOT use wildcard masks; "AOS-CX switches do not support wildcard masks - only prefixes or subnet masks - when created ACEs."
 Cisco: 255.0.255.0 = xx.123.xx.123 AOS-CX: 255.0.255.0 = 123.xx.123.xx

NEW QUESTION 49

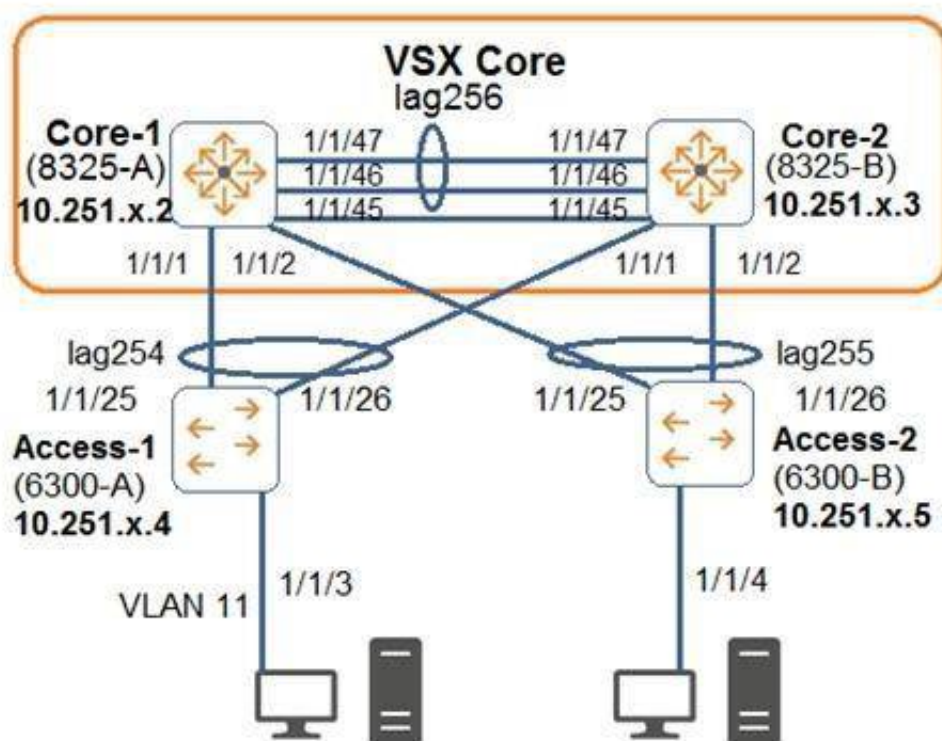
An administrator is concerned about the security of the control plane connection between an AOS-CX switch and an Aruba Mobility Controller (MC) when implementing user-based tunneling. How should the administrator protect this traffic?

- A. IPSec with a digital certificate
- B. GRE with a pre-shared key
- C. PAPI with an MD5 pre-shared key
- D. IPSec with a pre-shared key

Answer: C

NEW QUESTION 51

Examine the attached diagram.



The two PCs are located in VLAN 11 (10.1.11.0/24). Which example defines how to implement active gateway on the VSX core for VLAN 11?

- A. interface vlan 11 active-gateway ip 10.1.11.1 active-gateway mac 02:02:00:00:01:00
- B. interface lag 254 active-gateway vlan 11 ip 10.1.11.1 active-gateway vlan 11 mac 02:02:00:00:01:00
- C. interface lag 254 active-gateway ip 10.1.11.1 active-gateway mac 02:02:00:00:01:00
- D. vsxvrrp group 1

Answer: A

NEW QUESTION 55

An administrator will be deploying NetEdit to manage an Aruba solution. What does NetEdit support?

- A. Manages AOS-CX switches and Aruba gateways
- B. Support for Aruba-supplied security updates
- C. Tracks configuration and hardware information
- D. Can be purchased as a VM and/or hardware appliance

Answer: A

NEW QUESTION 58

Examine the AOS-CX configuration:

```
interface mgmt
  no shutdown
  ip static 10.1.1.1/24
  default-gateway 10.1.1.254
  exit
ssh server vrf mgmt
https-server vrf mgmt
https-server rest access-mode read-write
```

The switches have a default factory password setting NetEdit fails to access the configuration of the AOS-CX switches. What should the administrator do to solve this problem?

- A. Set a password for the default admin user account.
- B. Disable telnet globally.
- C. Use the default VRF instead of the mgmt VRF
- D. Enable IP routing globally

Answer: D

NEW QUESTION 60

A company has a third-party AAA server solution. The campus access layer was just upgraded to AOS-CX switches that perform access control with MAC-Auth and 802.1X. The company has an Aruba Mobility Controller (MC) solution for wireless, and they want to leverage the firewall policies on the controllers for the wired traffic.

What is correct about how the company should implement a security solution where the wired traffic is processed by the gateways?

- A. Implement downloadable user roles with a gateway role defined on the AOS-CX switches
- B. Implement local user roles with a gateway role defined on the AOS-CX switches
- C. Implement standards-based RADIUS VSAs to pass policy information directly to the AOS-CX switches and MCs
- D. Implement downloadable user roles with a device role defined on the AOS-CX switches and MCs

Answer: B

NEW QUESTION 61

In AOS-CX switching, what determines when a frame is forwarded by the switch between the ingress and the egress port?

- A. Egress port
- B. Ingress port
- C. VSX switch tables
- D. Fabric Load Balancer

Answer: B

NEW QUESTION 62

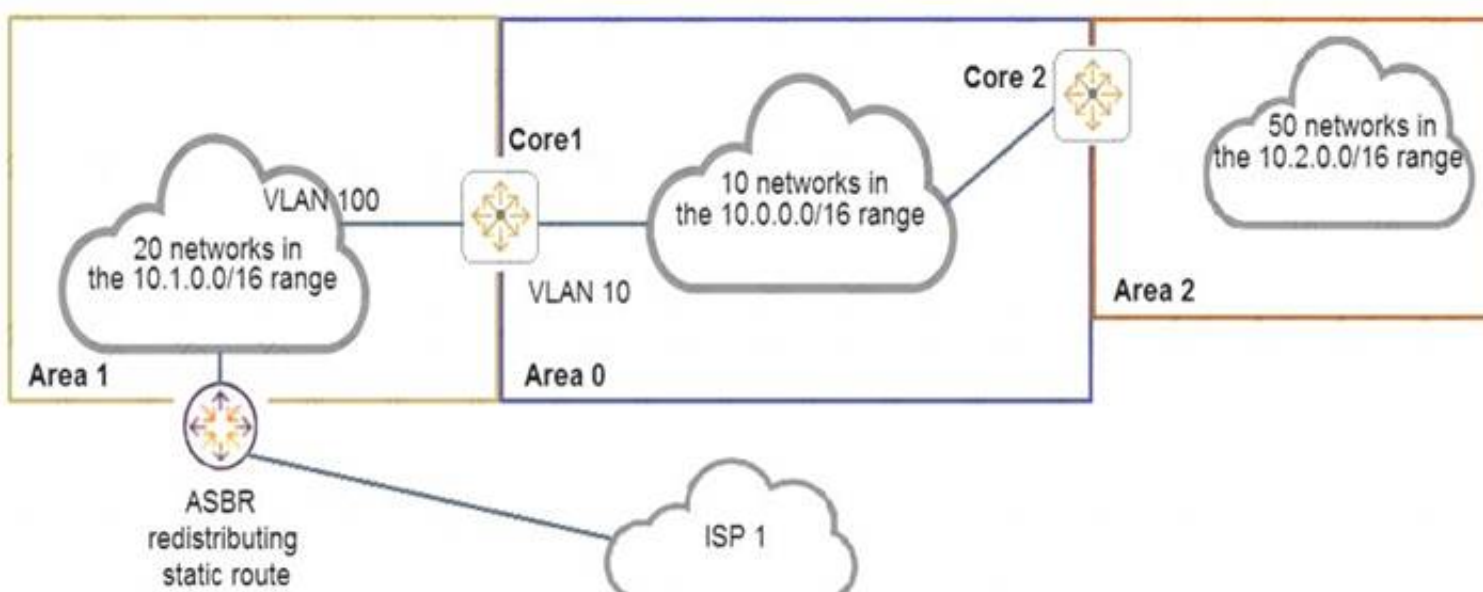
What is the purpose of the transit VLAN when implementing dynamic segmentation policies involving AOS-CX switches and an Aruba gateway solution?

- A. It identifies the VLAN that the user traffic will be assigned to when it comes out of the tunnel and is forwarded by the gateway.
- B. It identifies the VLAN that the user traffic will be assigned to, whether the traffic is tunneled or locally switched
- C. It defines the VXLAN identifier to identified UBT traffic between the AOS-CX switches and the gateway solution
- D. It identifies the VLAN that the switch will use when tunneling the traffic to the gateway

Answer: D

NEW QUESTION 67

Examine the network topology.



_ The network is configured for OSPF with the following attributes:
 Core1 and Core2 and ABRs
 _ Area 1 has 20 networks in the 10.1.0.0/16 range
 _ Area 0 has 10 networks in the 10.0.0.0/16 range
 _ Area 2 has 50 networks in the 10.2.0.0/16 range
 _ The ASBR is importing a static route into Area 1
 _ Core2 has a summary for Area 2: area 0.0.0.2 range 10.2.0.0/16 type inter-area
 Here is the OSPF configuration performed on Core1:

```
router ospf 1
  router-id 10.0.0.1
  area 0.0.0.0
  area 0.0.0.1 stub
  area 0.0.0.1 range 10.1.0.0/16 type inter-area
  area 0.0.0.2
  area 0.0.0.0 range 10.1.0.0/16 type inter-area
  exit
interface vlan 10
  ip ospf 1 area 0
  exit
interface vlan 100
  ip ospf 1 area 1
  exit
```

Based on the above information, what is correct?

- A. ISP 1 is not reachable from any area.
- B. Core1 has received one type 5 LSA from the ASBR.
- C. Area 0 has 81 routes
- D. Area 1 has 23 routes

Answer: C

NEW QUESTION 71

A network engineer is having a problem adding a custom-written script to an AOS-CX switch's NAE GUI. The script was written in Python and was successfully added on other AOS-CX switches. The engineer examines the following items from the CLI of the switch:

```
switch# show capacities-status nae
```

System Capacities Status: Filter NAE

Capacity Status Name	Value	Maximum
Number of configured NAE agents currently active in the system	1	100
Number of configured NAE monitors currently active in the system	7	500
Number of configured NAE scripts currently active in the system	50	50

```
switch# show ntp status
NTP Status Information
```

NTP : Disabled
 NTP Authentication : Disabled
 NTP Server Connections : Using the default VRF

System time : Sat May 2 11:50:55 UTC 2020
 NTP uptime : 0 minutes, 0 seconds

Not synchronized with an NTP server.

```
switch# show crypto pki certificate
```

Certificate Name	Cert Status	Associated Applications
local-cert	installed	captive-portal, hsc, https-server,
syslog-client		

```
switch# show crypto pki application
```

Associated Applications	Certificate Name	Cert Status
captive-portal		not configured, using local-cert
hsc		not configured, using local-cert
https-server		not configured, using local-cert
syslog-client		not configured, using local-cert

What should the engineer perform to fix this issue?

- A. Install the script's signature before installing the new script
- B. Ensure the engineer's desktop and the AOS-CX switch are synchronized to the same NTP server
- C. Enable trust settings for the AOS-CX switch's SSL certificate
- D. Remove a script that is no longer used before installing the new script

Answer: D

NEW QUESTION 73

When implementing deficit weighted round robin queuing, what importance does the weight value have?

- A. Prioritizing latency-sensitive traffic
- B. Queue priority in processing traffic
- C. Strict priority queue
- D. Percentage of interface bandwidth

Answer: B

NEW QUESTION 77

Examine the partial output of the BGP routing table of an AOS-CX switch:

Switch# show bgp

<-output omitted->

Network	Nexthop	Metric	LocPrf	Weight	Path
* e 1.0.0.0/8	192.168.1.5	0	100	0	100 ?
* e 1.0.0.0/8	192.168.2.5	0	100	0	200 100 i
* e 1.0.0.0/8	192.168.3.5	0	200	20	300 400 100 ?
* e 1.0.0.0/8	192.168.4.5	0	50	0	400 200 100 i

The switch is learning about four possible path to reach the 1.0.0.0/8 network. Based on this output, which next-hop route will the AOS-CX select to be placed in the IP routing table?

- A. 192.168.1.5
- B. 192.168.2.5
- C. 192.168.3.5
- D. 192 1684 5

Answer: C

NEW QUESTION 79

Examine the AOS-CS switch output:

Switch# show aaa authentication port-access interface 1/1/1 client-status

Port Access Client Status Details

Client 00:50:56:b1:7a:37, icx-employee

Session Details

Port : 1/1/3
Session Time : 31273s

Authentication Details

Status : dot1x Authenticated
Auth Precedence : dot1x - Authenticated, mac-auth - Not attempted

Authorization Details

Role : aruba_contractor-3044-7
Status : Applied

Based on this output, what is correct?

- A. 802.1X authentication was successful, but MAC authentication is yet to start
- B. 802.1X authentication occurred and downloadable user roles are deployed
- C. A local user role was deployed using a ClearPass solution
- D. Only 802.1X authentication is configured on the port

Answer: B

NEW QUESTION 83

A network administrator is tasked to set up BGP in the company's network. The administrator is defining an eBGP peering between an AOS-CX switch and a directly-connected service provider. The administrator has configured the following on the AOS-CX switch:

```
switch(config)# interface loopback 0
switch(config-loopback-if)# ip address 10.1.1.1/32
switch(config-loopback-if)# exit
switch(config)# interface 1/1/1
switch(config-if)# no shutdown
switch(config-if)# routing
switch(config-if)# ip address 192.168.1.2/30
switch(config-if)# exit
switch(config)# router bgp 64500
switch(config-bgp)# neighbor 192.168.1.1 remote-as 64511
switch(config-bgp)# bgp router-id 192.168.1.2
switch(config-bgp)# address-family ipv4 unicast
switch(config-bgp-ipv4-uc)# exit
```

However, when using the "show bgp all summary" command, the state does not display "Established" for the eBGP peer. What must the administrator configure to fix this issue?

- A. router bgp 64500 neighbor 192.168.1.1 ebgp-multihop
- B. router bgp 64500 enable
- C. router bgp 64500 address-family ipv4 unicast neighbor 192.168.1.1 activate
- D. router bgp 64500 neighbor 192.168.1.1 update-source loopback0

Answer: C

NEW QUESTION 84

A network engineer is setting up BGP on AOS-CX switches. The engineer is establishing two different eBGP peering's to two different service providers. The engineer has dozens of contiguous C-class public networks that need to be advertised to the two service providers. The engineer manually defines the networks to be advertised individually with the "network" command.

How can an administrator advertise only a summarized route to the two service providers?

- A. Create a summarized static route and redistribute this into OSPF
- B. Summarize the networks with the "aggregate-address" BGP command
- C. Enable auto-summarization in the IPv4 address family of the BGP configuration
- D. Create a summarized route in OSPF

Answer: B

NEW QUESTION 87

A company has an existing wireless solution involving Aruba APs and Mobility controllers running 8.4 code. The solution leverages a third-party AAA solution. The company is replacing existing access switches with AOS-CX 6300 and 6400 switches. The company wants to leverage the same security and firewall policies for both wired and wireless traffic.

Which solution should the company implement?

- A. RADIUS dynamic authorization
- B. Downloadable user roles
- C. IPSec
- D. User-based tunneling

Answer: D

NEW QUESTION 90

An administrator is designing an access layer solution in a data center. A key requirement is to dual-home mission-critical server connections to two different switches, ensuring that the servers always have network access, even during switch software upgrades. This feature should support strictly-controlled provisioning. What would best meet the administrator's needs when deploying AOS-CX switches?

- A. VSF
- B. Dynamic segmentation
- C. VSX
- D. NAE

Answer: C

NEW QUESTION 92

A company is implementing AOS-CX switches at the access layer. The company wants to implement access control for employees and guests. Which security features will require a ClearPass server to be installed and used by the company?

- A. Downloadable user roles
- B. Dynamic segmentation
- C. User-based tunneling (UBT)
- D. Change of authorization (CoA)

Answer: A

NEW QUESTION 95

A network has an ABR that connects area 0 and 1. A network engineer configures a summarized route for area 1. The ABR is a designated router (DR) for the

segment it uses to connect to area 1.

Which LSA type is assigned to this route when the summarized route is advertised into area 1 by the ABR?

- A. LSA1
- B. LSA4
- C. LSA3
- D. LSA2

Answer: B

NEW QUESTION 96

The company has just upgraded their access layer switches with AOS-CX switches and implemented an AAA solution with ClearPass. The company has become concerned about what actually connects to the user ports on the access layer switch, Therefore, the company is implementing 802.1X authentication on the AOS-CX switches. An administrator has globally enabled 802.1X, and has enabled it on all the access ports connected to user devices, including VoIP phones, security cameras, and wireless Aruba IAPs. Wireless users are complaining that they successfully authenticate to the IAPs; however, they do not have access to network resources. Previously, this worked before 802.1X was implemented on the AOS-CX switches.

What should the company do to solve this problem?

- A. Implement device-based mode on the IAP-connected AOS-CX switch ports.
- B. Implement local user roles and local forwarding on the AOS-CX switches.
- C. Implement downloadable user roles and user-based tunneling (UBT) on the AOS-CX switches.
- D. Implement AAA RADIUS change of authorization on the AOS-CX switches.

Answer: C

NEW QUESTION 100

A network administrator is implementing OSPF, where there are two exit points. Each exit point has a stateful, application inspection firewall to implement company policies.

What would the best practice be to ensure that one firewall will see both directions of the traffic, preventing asynchronous connections in the network?

- A. Both ASBRs should define External Type 1 routes for the
- B. Both ASBRs should define External Type 1 routes for the
- C. Both ASBRs should define External Type 2 routes for the
- D. Both ASBRs should define External Type 2 routes for the

Answer: A

NEW QUESTION 105

What is correct regarding the operation of VSX and multicasting with PIM-SM routing configured?

- A. Each VSX peers runs PIM and builds its own group databas
- B. One of the VSX peers is elected as the designated router (DR) to forward multicast streams to a receiver VLAN
- C. Each VSX peers runs PIM and creates a shared group databas
- D. Both VSX peers can forward multicast streams to receivers in a VLAN, achieving load sharing
- E. Each VSX peers runs PIM and builds its own group databas
- F. Both VSX peers can forward multicast streams to receivers in a VLAN, achieving load sharing
- G. Each VSX peers runs PIM and creates a shared group databas
- H. One of the VSX peers is elected as the designated router (DR) to forward multicast streams to a receiver VLAN

Answer: A

Explanation:

"both VSX switches as a PIM Designate Router (DR). One node is the actual DR, the other node is the proxy DR." "Only the actual DR performs multicast routing and forward traffic destined to groups to its downstream VLANs in the data-path."

https://www.arubanetworks.com/techdocs/AOS-CX/10.07/HTML/5200-7888/Content/Chp_Pre_tra_loss/ip-mul

NEW QUESTION 109

An administrator has an AOS-CX switch configured with: router ospf 1

area 0

area 1 stub no-summary

It is the only ABR for area 1. The switch has the appropriate adjacencies to routing switches in areas 0 and 1. The current routes in each area are:

Area 0: 5 routes (LSA Type 1 and 2)

Area 1: 10 routes (LSA Type 1 and 2)

External routes: 2 (LSA Type 5)

Based on the above configuration, how many OSPF routes will routing switches see in Area 1?

- A. 15
- B. 6
- C. 11
- D. 12

Answer: C

NEW QUESTION 113

When implementing user-based tunneling on an AOS-CX switch, which component defines the primary and backup Aruba gateways?

- A. Transit VLAN
- B. Gateway role

- C. Server group
- D. Zone

Answer: D

NEW QUESTION 115

A company has just purchased AOS-CX switches. The company has a free and open-source AAA solution. The company wants to implement access control on the Ethernet ports of the AOS-CX switches.

Which security features can the company implement given the equipment that they are using?

- A. Port-based tunneling
- B. Device fingerprinting
- C. Local user roles
- D. Downloadable user roles

Answer: C

NEW QUESTION 118

.....

Thank You for Trying Our Product

We offer two products:

1st - We have Practice Tests Software with Actual Exam Questions

2nd - Questions and Answers in PDF Format

HPE6-A73 Practice Exam Features:

- * HPE6-A73 Questions and Answers Updated Frequently
- * HPE6-A73 Practice Questions Verified by Expert Senior Certified Staff
- * HPE6-A73 Most Realistic Questions that Guarantee you a Pass on Your FirstTry
- * HPE6-A73 Practice Test Questions in Multiple Choice Formats and Updatesfor 1 Year

100% Actual & Verified — Instant Download, Please Click
[Order The HPE6-A73 Practice Test Here](#)