

## Exam Questions 350-401

Implementing and Operating Cisco Enterprise Network Core Technologies

<https://www.2passeasy.com/dumps/350-401/>



### NEW QUESTION 1

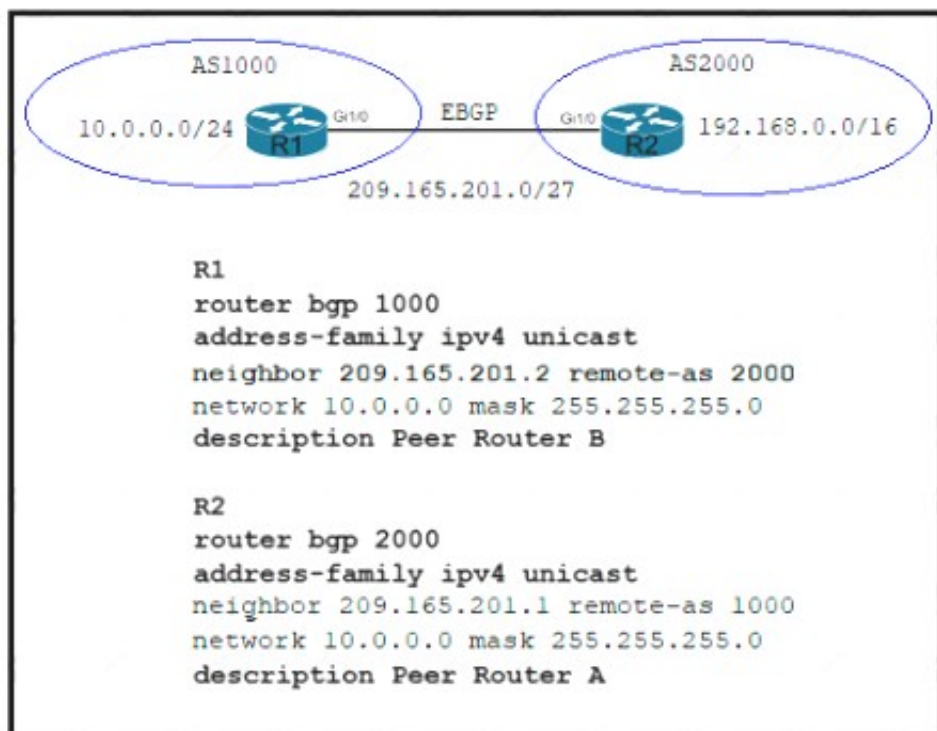
How does EIGRP differ from OSPF?

- A. EIGRP is more prone to routing loops than OSPF
- B. EIGRP supports equal or unequal path cost, and OSPF supports only equal path cost.
- C. EIGRP has a full map of the topology, and OSPF only knows directly connected neighbors
- D. EIGRP uses more CPU and memory than OSPF

Answer: B

### NEW QUESTION 2

Refer to the exhibit.



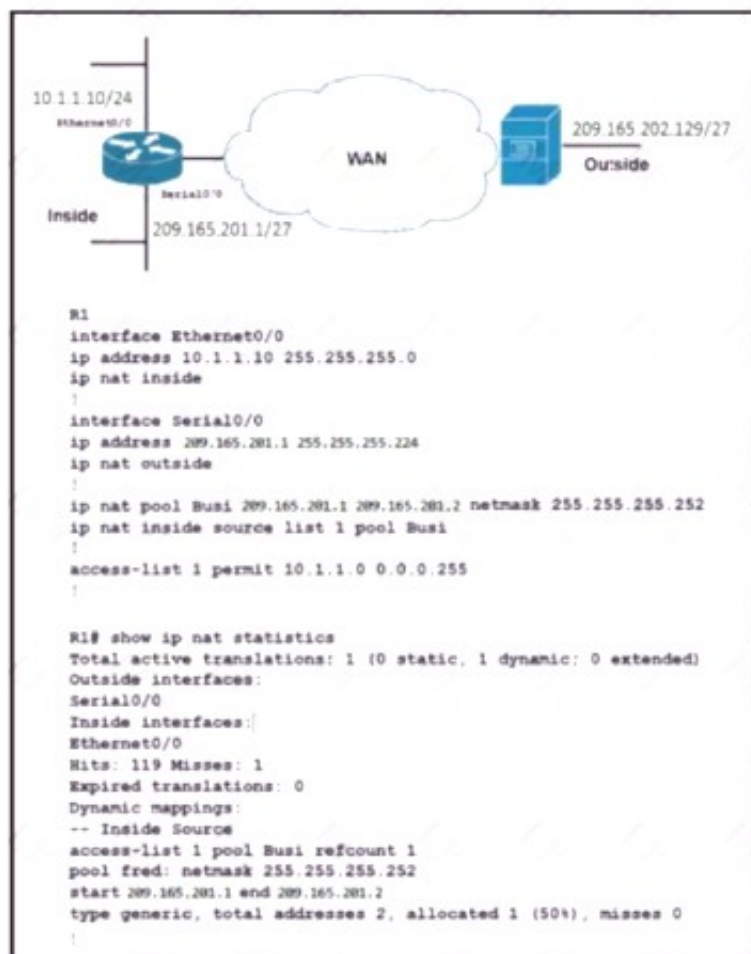
Which two commands are needed to allow for full reachability between AS 1000 and AS 2000? (Choose two)

- A. R1#network 19.168.0.0 mask 255.255.0.0
- B. R2#no network 10.0.0.0 255.255.255.0
- C. R2#network 19.168.0.0 mask 255.255.0.0
- D. R2#network 209.165.201.0 mask 255.255.192.0
- E. R1#no network 10.0.0.0 255.255.255.0

Answer: BC

### NEW QUESTION 3

Refer to the exhibit.



A network engineer configures NAT on R1 and enters the show command to verify the configuration. What does the output confirm?

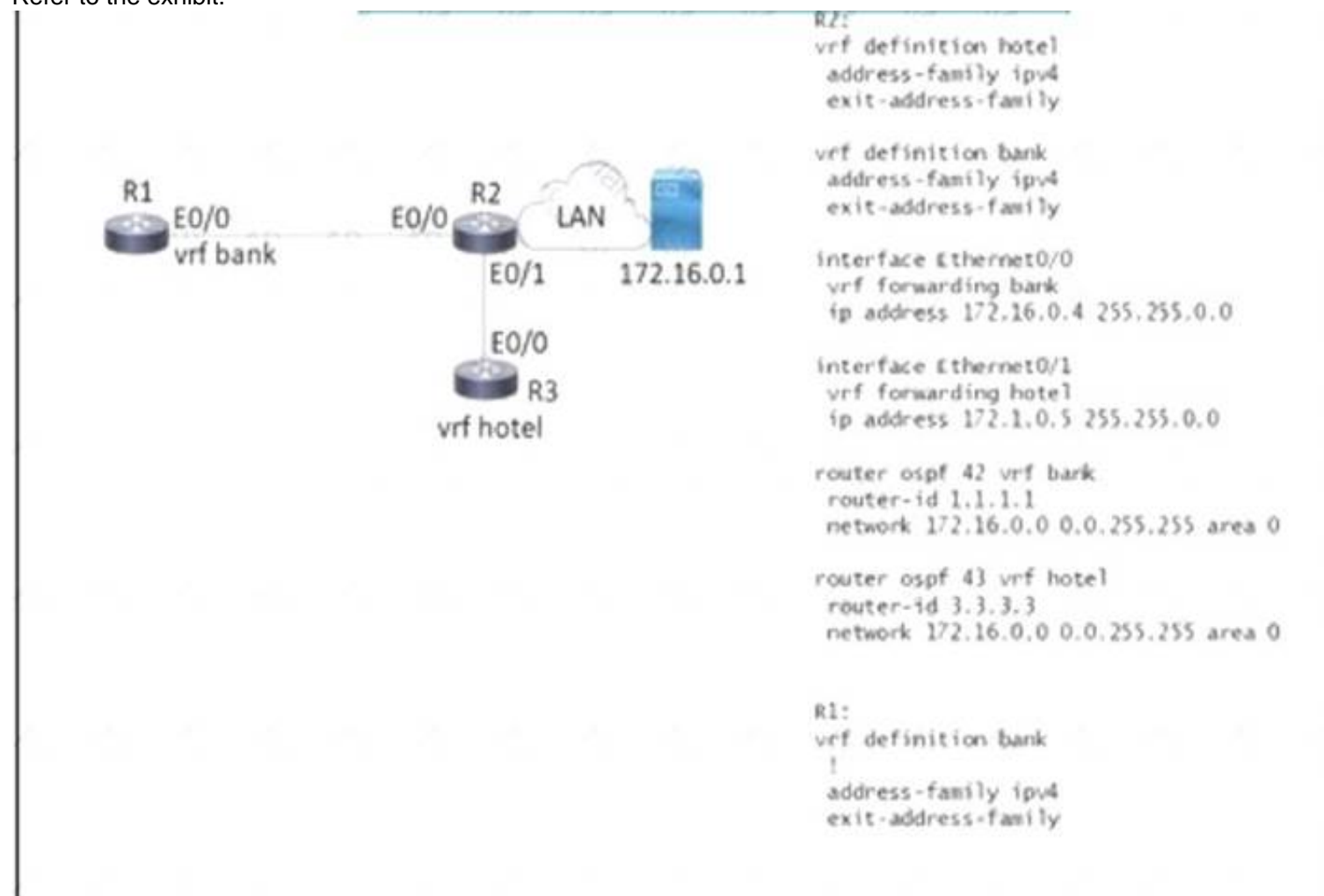
- A. The first packet triggered NAT to add an entry to NAT table
- B. R1 is configured with NAT overload parameters
- C. A Telnet from 160.1.1.1 to 10.1.1.10 has been initiated.

D. R1 to configured with PAT overload parameters

Answer: A

#### NEW QUESTION 4

Refer to the exhibit.



Which configuration must be applied to R to enable R to reach the server at 172.16.0.1?

A)

```
interface Ethernet0/0
vrf forwarding hotel
ip address 172.16.0.7 255.255.0.0

router ospf 44 vrf Hotel
network 172.16.0.0 0.0.255.255 area 0
```

B)

```
interface Ethernet0/0
ip address 172.16.0.7 255.255.0.0

router ospf 44 vrf hotel
network 172.16.0.0 255.255.0.0
```

C)

```
interface Ethernet0/0
ip address 172.16.0.7 255.255.0.0

router ospf 44 vrf bank
network 172.16.0.0 255.255.0.0
```

D)

```
interface Ethernet0/0
vrf forwarding bank
ip address 172.16.0.7 255.255.0.0

router ospf 44 vrf bank
network 172.16.0.0 0.0.255.255 area 0
```

- A. Option A
- B. Option B
- C. Option C
- D. Option D

Answer: D

#### NEW QUESTION 5

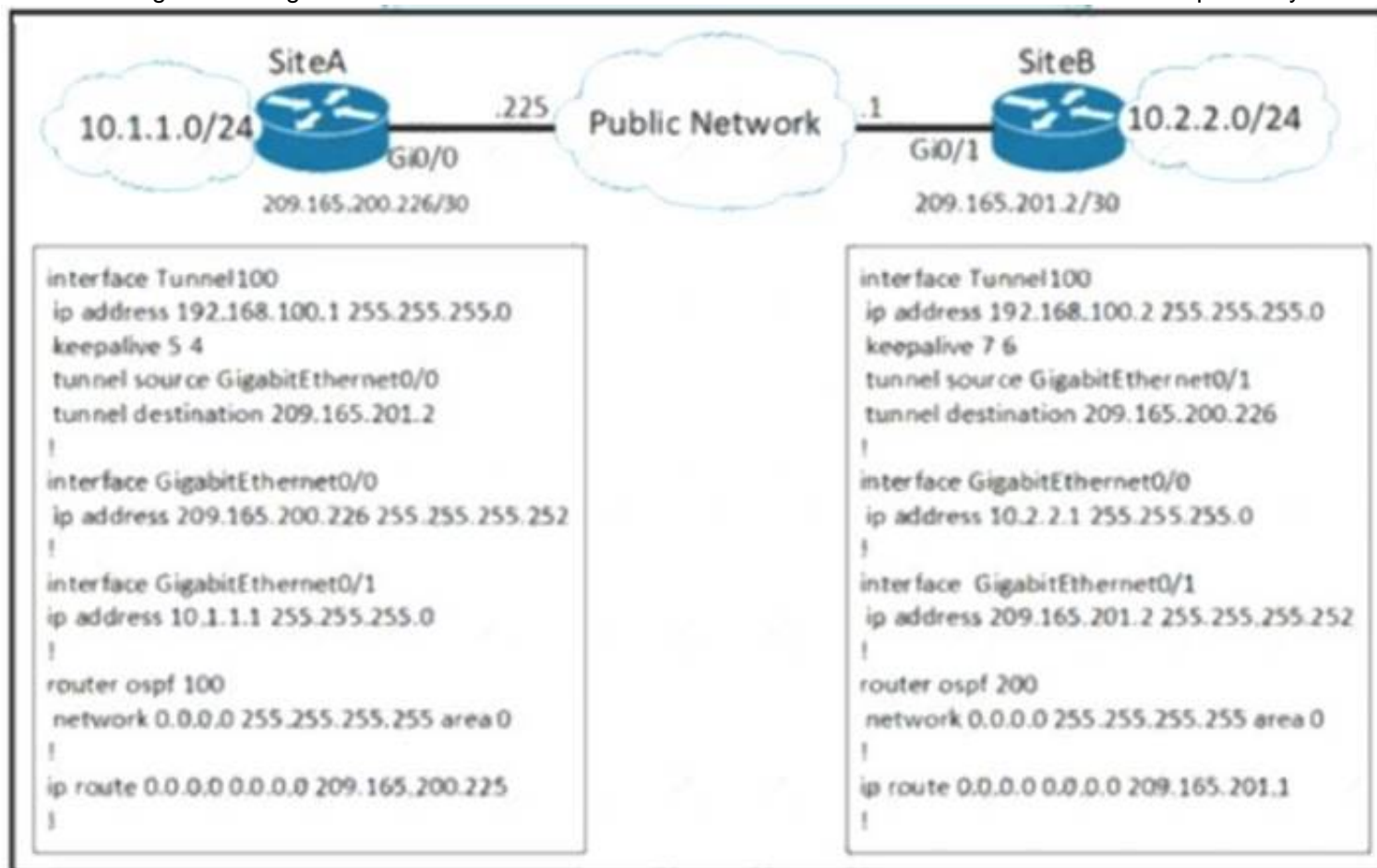
An engineer is configuring a new SSID to present users with a splash page for authentication. Which WLAN Layer 3 setting must be configured to provide this functionality?

- A. CCKM
- B. WPA2 Policy
- C. Local Policy
- D. Web Policy

**Answer: C**

#### NEW QUESTION 6

A network engineer configures a new GRE tunnel and enters the show run command. What does the output verify?



- A. The tunnel will be established and work as expected
- B. The tunnel destination will be known via the tunnel interface
- C. The tunnel keepalive is configured incorrectly because they must match on both sites
- D. The default MTU of the tunnel interface is 1500 byte.

**Answer: B**

#### NEW QUESTION 7

A customer has several small branches and wants to deploy a WI-FI solution with local management using CAPWAP. Which deployment model meets this requirement?

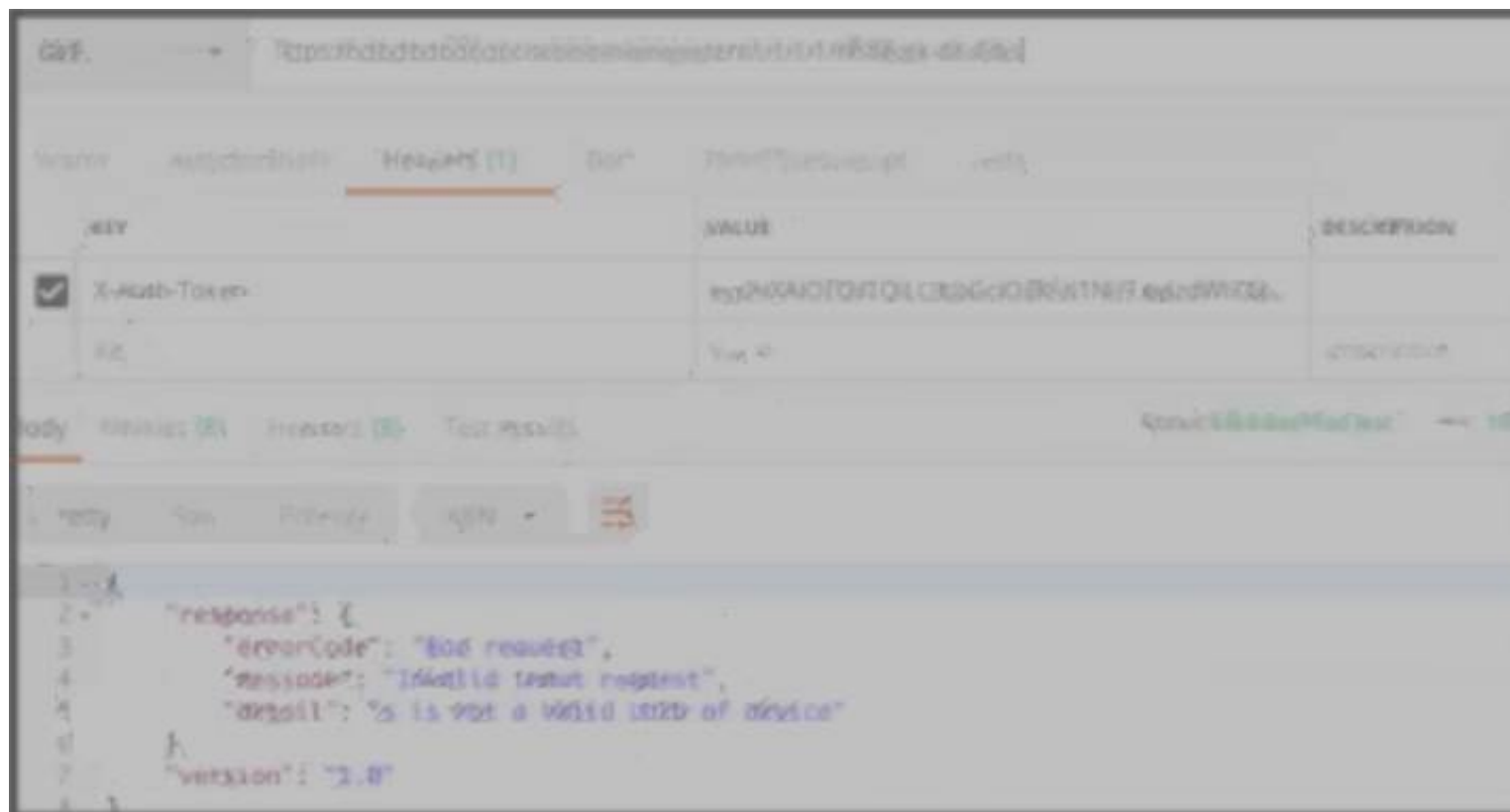
- A. Autonomous
- B. Mobility Express
- C. SD-Access wireless
- D. Local mode

**Answer: B**

#### NEW QUESTION 8

Refer to the exhibit.





POSTMAN is showing an attempt to retrieve network device information from Cisco DNA Center API. What is the issue?

- A. The URI string is incorrect
- B. The token has expired.
- C. Authentication has failed
- D. The JSON payload contains the incorrect UUID

**Answer: D**

#### NEW QUESTION 9

What are two considerations when using SSO as a network redundancy feature? (Choose two)

- A. both supervisors must be configured separately
- B. the multicast state is preserved during switchover
- C. must be combined with NSF to support uninterrupted Layer 2 operations
- D. must be combined with NSF to support uninterrupted Layer 3 operations
- E. requires synchronization between supervisors in order to guarantee continuous connectivity

**Answer: DE**

#### Explanation:

Text Description automatically generated

against failure due to the Supervisor or loss of service because of software problems. The access layer typically provides Layer 2 services, with redundant switches making up the distribution layer. The Layer 2 access layer can benefit from SSO deployed without NSF. Some Enterprises have deployed Layer 3 routing at the access layer. In that case, NSF/SSO can be used.

Cisco IOS Nonstop Forwarding(NSF) always runs with stateful switchover (SSO) and provides redundancy for Layer 3 traffic.

#### NEW QUESTION 10

When is an external antenna used inside a building?

- A. only when using Mobility Express
- B. when it provides the required coverage
- C. only when using 2.4 GHz
- D. only when using 5 GHz

**Answer: A**

#### NEW QUESTION 10

Which entity is responsible for maintaining Layer 2 isolation between segments in a VXLAN environment?

- A. switch fabric
- B. VTEP
- C. VNID
- D. host switch

**Answer: C**

#### Explanation:

The 24-bit VNID is used to identify Layer 2 segments and to maintain Layer 2 isolation between the segments.

VXLAN uses an 8-byte VXLAN header that consists of a 24-bit VNID and a few reserved bits. The VXLAN header together with the original Ethernet frame goes in the UDP payload. The 24-bit VNID is used to identify Layer 2 segments and to maintain Layer 2 isolation between the segments.

Which method creates an EEM applet policy that is registered with EEM and runs on demand or manually?

- A. event manager applet ondemand event registeraction 1.0 syslog priority critical msg 'This is a message from ondemand'
- B. event manager applet ondemand event manualaction 1.0 syslog priority critical msg 'This is a message from ondemand'
- C. event manager applet ondemand event noneaction 1.0 syslog priority critical msg 'This is a message from ondemand'
- D. event manager applet ondemandaction 1.0 syslog priority critical msg 'This is a message from ondemand'

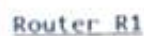
**Explanation:**

An EEM policy is an entity that defines an event and the actions to be taken when that event occurs. There are two types of EEM policies: an applet or a script. An applet is a simple form of policy that is defined within the CLI configuration. answer 'event manager applet ondemand event register action 1.0 syslog priority critical msg 'This is a message from ondemand'

<="" p="" style="box-sizing: border-box;">

There are two ways to manually run an EEM policy. EEM usually schedules and runs policies on the basis of an event specification that is contained within the policy itself. The event none command allows EEM to identify an EEM policy that can be manually triggered. To run the policy, use either the action policy command in applet configuration mode or the event manager run command in privileged EXEC mode.

Refer to the exhibit.



```
router ospf 1
  router-id 1.1.1.1
  network 1.1.1.1 0.0.0.0 area 0
  network 10.0.0.0 0.0.0.255 area 0
```

Router R2

```
router ospf 1
  router-id 2.2.2.2
  network 2.2.2.2 0.0.0.0 area 0
  network 10.0.0.0 0.0.0.255 area 0
```

A network engineer is configuring OSPF between router R1 and router R2. The engineer must ensure that a DR/BDR election does not occur on the Gigabit Ethernet interfaces in area 0. Which configuration set accomplishes this goal?

A)

- ☒ R1(config-if)interface Gi0/0  
R1(config-if)ip ospf network point-to-point
- R2(config-if)interface Gi0/0  
R2(config-if)ip ospf network point-to-point
- B)
- ☐ R1(config-if)interface Gi0/0  
R1(config-if)ip ospf network broadcast
- R2(config-if)interface Gi0/0  
R2(config-if)ip ospf network broadcast
- C)
- ☐ R1(config-if)interface Gi0/0  
R1(config-if)ip ospf database-filter all out
- R2(config-if)interface Gi0/0  
R2(config-if)ip ospf database-filter all out
- D)
- ☐ R1(config-if)interface Gi0/0  
R1(config-if)ip ospf priority 1
- R2(config-if)interface Gi0/0  
R2(config-if)ip ospf priority 1

- A. Option A  
B. Option B  
C. Option C  
D. Option D

**Answer: A**

#### Explanation:

Broadcast and Non-Broadcast networks elect DR/BDR while Point-to-point/ multipoint do not elect DR/BDR. Therefore we have to set the two Gi0/0 interfaces to point-to-point or point-to-multipoint network to ensure that a DR/BDR election does not occur.

#### NEW QUESTION 22

What is a characteristic of MACsec?

- A. 802.1AE provides encryption and authentication services
- B. 802.1AE is built between the host and switch using the MKA protocol, which negotiates encryption keys based on the master session key from a successful 802.1X session
- C. 802.1AE is built between the host and switch using the MKA protocol using keys generated via the Diffie-Hellman algorithm (anonymous encryption mode)
- D. 802.1AE is negotiated using Cisco AnyConnect NAM and the SAP protocol

Answer: A

#### Explanation:

MACsec, defined in 802.1AE, provides MAC-layer encryption over wired networks by using out-of-band methods for encryption keying. The MACsec Key Agreement (MKA) Protocol provides the required session keys and manages the required encryption keys. MKA and MACsec are implemented after successful authentication using the 802.1x Extensible Authentication Protocol (EAP-TLS) or Pre Shared Key (PSK) framework.

#### NEW QUESTION 24

Running the script causes the output in the exhibit. Which change to the first line of the script resolves the error?

```
import ncclient
```

```
with ncclient.manager.connect(  
    host = '192.168.1.1',  
    port=830,  
    username = 'root',  
    password = 'test398345152!',  
    allow_agent = False) as m:  
    print(m.get_config('running').data_xml)
```

#### Output

```
$ python get_config.py  
Traceback (most recent call last) :  
  File "get_config.py", line 3, in <module>  
    with ncclient.manager.connect (host = '192.168.1.1, port = 830, username = 'root',  
AttributeError: 'module' object has no attribute 'manager'
```

- A. from ncclient import
- B. import manager
- C. from ncclient import\*
- D. import ncclient manager

Answer: A

#### NEW QUESTION 27

Drag and drop the characteristics from the left onto the routing protocols they describe on the right.

The default Administrative Distance is equal to 110.	<b>EIGRP</b> <div></div> <div></div> <div></div>
It requires an Autonomous System number to create a routing instance for exchanging routing information.	
It uses virtual links to connect two parts of a partitioned backbone through a non-backbone area.	
It is an Advanced Distance Vector routing protocol.	<b>OSPF</b> <div></div> <div></div> <div></div>
It relies on the Diffused Update Algorithm to calculate the shortest path to a destination.	
It requires a process ID that is local to the router.	

- A. Mastered
- B. Not Mastered

Answer: A



Explanation:

	<b>EIGRP</b> It requires an Autonomous System number to create a routing instance for exchanging routing information. It is an Advanced Distance Vector routing protocol. It relies on the Diffused Update Algorithm to calculate the shortest path to a destination.
	<b>OSPF</b> The default Administrative Distance is equal to 110. It uses virtual links to connect two parts of a partitioned backbone through a non-backbone area. It requires a process ID that is local to the

### NEW QUESTION 31

Drag and drop the virtual components from the left onto their deceptions on the right.

VNIC	zip file connecting a virtual machine configuration file and a virtual disk
OVA	file containing a virtual machine disk drive
VMDK	configuration file containing settings for a virtual machine such as guest OS
VMX	component of a virtual machine responsible for sending packets to the hypervisor

- A. Mastered  
B. Not Mastered

Answer: A

Explanation:

VNIC	zip file connecting a virtual machine configuration file and a virtual disk
OVA	file containing a virtual machine disk drive
VMDK	configuration file containing settings for a virtual machine such as guest OS
VMX	component of a virtual machine responsible for sending packets to the hypervisor

### NEW QUESTION 33

Refer to the exhibit.

```
Extended IP access list EGRESS
10 permit ip 10.0.0.0 0.0.0.255 any
|
<Output Omitted>
|
interface GigabitEthernet0/0
ip address 209.165.200.225 255.255.255.0
ip access-group EGRESS out
duplex auto
speed auto
media-type rj45
|
```

An engineer must block all traffic from a router to its directly connected subnet 209.165.200.0/24. The engineer applies access control list EGRESS in the outbound direction on the GigabitEthernet0/0 interface of the router. However, the router can still ping hosts on the 209.165.200.0/24 subnet. Which explanation of this behavior is true?

- A. Access control lists that are applied outbound to a router interface do not affect traffic that is sourced from the router.  
B. Only standard access control lists can block traffic from a source IP address.  
C. After an access control list is applied to an interface, that interface must be shut and no shut for the access control list to take effect.



D. The access control list must contain an explicit deny to block traffic from the router.

**Answer:** A

#### NEW QUESTION 35

When using TLS for syslog, which configuration allows for secure and reliable transportation of messages to its default port?

- A. logging host 10.2.3.4 vrf mgmt transport tcp port 6514
- B. logging host 10.2.3.4 vrf mgmt transport udp port 6514
- C. logging host 10.2.3.4 vrf mgmt transport tcp port 514
- D. logging host 10.2.3.4 vrf mgmt transport udp port 514

**Answer:** A

#### Explanation:

The TCP port 6514 has been allocated as the default port for syslog over Transport Layer Security (TLS).

#### NEW QUESTION 39

Refer to the exhibit.

```
aaa new-model
aaa authentication login default local-case enable
aaa authentication login ADMIN local-case
username CCNP secret Str0ngP@ssw0rd!
line 0 4
  login authentication ADMIN
```

An engineer must create a configuration that executes the show run command and then terminates the session when user CCNP logs in. Which configuration change is required"

- A. Add the access-class keyword to the username command
- B. Add the access-class keyword to the aaa authentication command
- C. Add the autocommand keyword to the username command
- D. Add the autocommand keyword to the aaa authentication command

**Answer:** C

#### Explanation:

The autocommand causes the specified command to be issued automatically after the user logs in. When the command is complete, the session is terminated. Because the command can be any length and can contain embedded spaces, commands using the autocommand keyword must be the last option on the line. In this specific question, we have to enter this line username CCNP autocommand show running-config.

#### NEW QUESTION 42

How is MSDP used to interconnect multiple PIM-SM domains?

- A. MSDP depends on BGP or multiprotocol BGP for mterdomam operation
- B. MSDP SA request messages are used to request a list of active sources for a specific group
- C. SDP allows a rendezvous point to dynamically discover active sources outside of its domain
- D. MSDP messages are used to advertise active sources in a domain

**Answer:** A

#### NEW QUESTION 47

What is one difference between saltstack and ansible?

- A. SaltStack uses an API proxy agent to program Cisco boxes on agent mode, whereas Ansible uses a Telnet connection
- B. SaltStack uses the Ansible agent on the box, whereas Ansible uses a Telnet server on the box
- C. SaltStack is constructed with minion, whereas Ansible is constructed with YAML
- D. SaltStack uses SSH to interact with Cisco devices, whereas Ansible uses an event bus

**Answer:** A

#### NEW QUESTION 48

After a redundant route processor failure occurs on a Layer 3 device, which mechanism allows for packets to be forwarded from a neighboring router based on the most recent tables?

- A. BFD
- B. RPSVST+
- C. RP failover
- D. NSF

**Answer:** D

#### NEW QUESTION 49

Refer to the exhibit.



An engineer attempts to configure a trunk between switch sw1 and switch SW2 using DTP, but the trunk does not form. Which command should the engineer apply to switch SW2 to resolve this issue?

- A. switchport mode dynamic desirable
- B. switchport nonegotiate
- C. no switchport
- D. switchport mode access

**Answer: A**

#### NEW QUESTION 54

Refer to me exhibit.

```

%OSPF-5-ADJCHG: Process 1, Nbr 10.0.0.2 on FastEthernet0/0 from
FULL to DOWN, Neighbor Down: Interface down or detached
%OSPF-6-AREACHG: 10.0.0.1/32 changed from area 0 to area 1
%OSPF-4-ERRRCV: Received invalid packet: mismatch area ID, from
backbone area must be virtual-link but not found from 10.0.0.2,
FastEthernet0/0
    
```

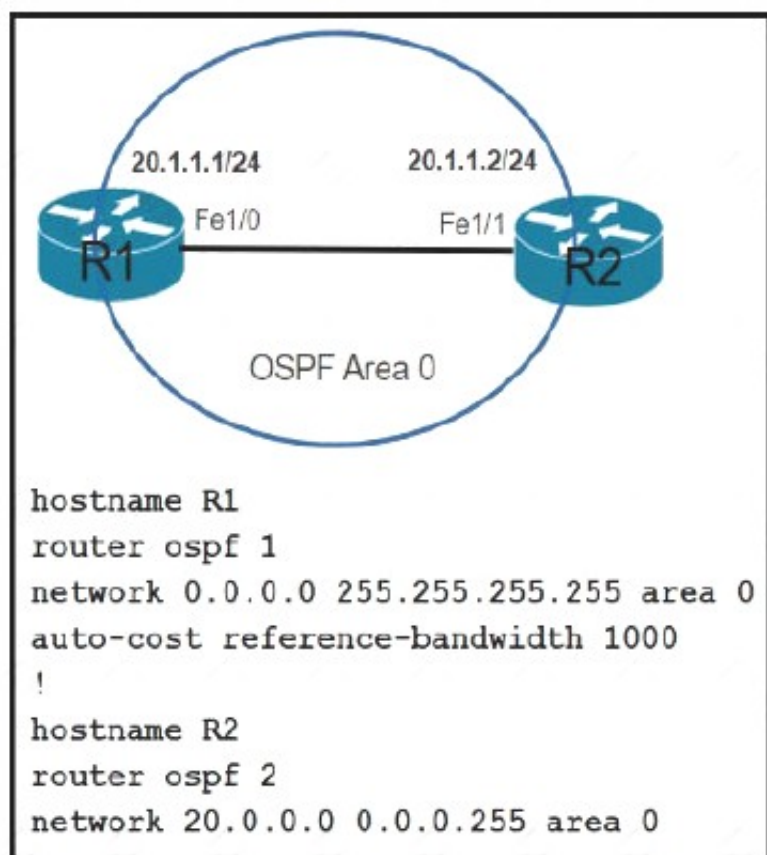
What is the cause of the log messages?

- A. hello packet mismatch
- B. OSPF area change
- C. MTU mismatch
- D. IP address mismatch

**Answer: B**

#### NEW QUESTION 58

Which command must be applied to R2 for an OSPF neighborship to form?



- A. network 20.1.1.2.0.0.0 area 0
- B. network 20.1.1.2 255.255.0.0 area 0
- C. network 20.1.1.2.0.0.255.255 area 0
- D. network 20.1.1.2 255.255.255 area 0

**Answer: A**

#### Explanation:

The network 20.0.0.0 0.0.0.255 area 0 command on R2 did not cover the IP address of Fa1/1 interface of R2 so OSPF did not run on this interface. Therefore we have to use the command network 20.1.1.2 0.0.255.255 area 0 to turn on OSPF on this interface.

Note: The command network 20.1.1.2 0.0.255.255 area 0 can be used too so this answer is also correct but answer C is the best answer here.

The network 0.0.0.0 255.255.255.255 area 0 command on R1 will run OSPF on all active

#### NEW QUESTION 60

Drag and drop the REST API authentication methods from the left onto their descriptions on the right.

## Answer Area

HTTP basic authentication	public API resource
OAuth	username and password in an encoded string
secure vault	authorization through identity provider

- A. Mastered  
 B. Not Mastered

**Answer:** A

### Explanation:

A close-up of a graph Description automatically generated with low confidence

## NEW QUESTION 64

Refer to the exhibit.

```

R1
interface GigabitEthernet0/0
ip address 192.168.250.2 255.255.255.0
standby 20 ip 192.168.250.1
standby 20 priority 120

R2
interface GigabitEthernet0/0
ip address 192.168.250.3 255.255.255.0
standby 20 ip 192.168.250.1
standby 20 priority 110
    
```

What are two effects of this configuration? (Choose two.)

- A. R1 becomes the active router.  
 B. R1 becomes the standby router.  
 C. If R2 goes down, R1 becomes active but reverts to standby when R2 comes back online.  
 D. If R1 goes down  
 E. R2 becomes active and remains the active device when R1 comes back online.  
 F. If R1 goes down, R2 becomes active but reverts to standby when R1 comes back online.

**Answer:** AD

## NEW QUESTION 69

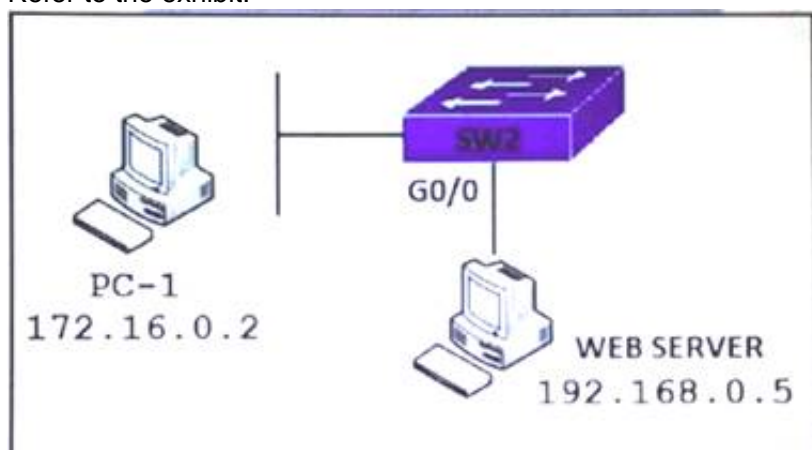
In an SD-WAN deployment, which action in the vSmart controller responsible for?

- A. handle, maintain, and gather configuration and status for nodes within the SD-WAN fabric  
 B. distribute policies that govern data forwarding performed within the SD-WAN fabric  
 C. gather telemetry data from vEdge routers  
 D. onboard vEdge nodes into the SD-WAN fabric

**Answer:** B

## NEW QUESTION 73

Refer to the exhibit.



PC-1 must access the web server on port 8080. To allow this traffic, which statement must be added to an access control list that is applied on SW2 port G0/0 in the inbound direction?

- A. permit host 172.16.0.2 host 192.168.0.5 eq 8080  
 B. permit host 192.168.0.5 host 172.16.0.2 eq 8080

- C. permit host 192.168.0.5 eq 8080 host 172.16.0.2  
 D. permit host 192.168.0.5 it 8080 host 172.16.0.2

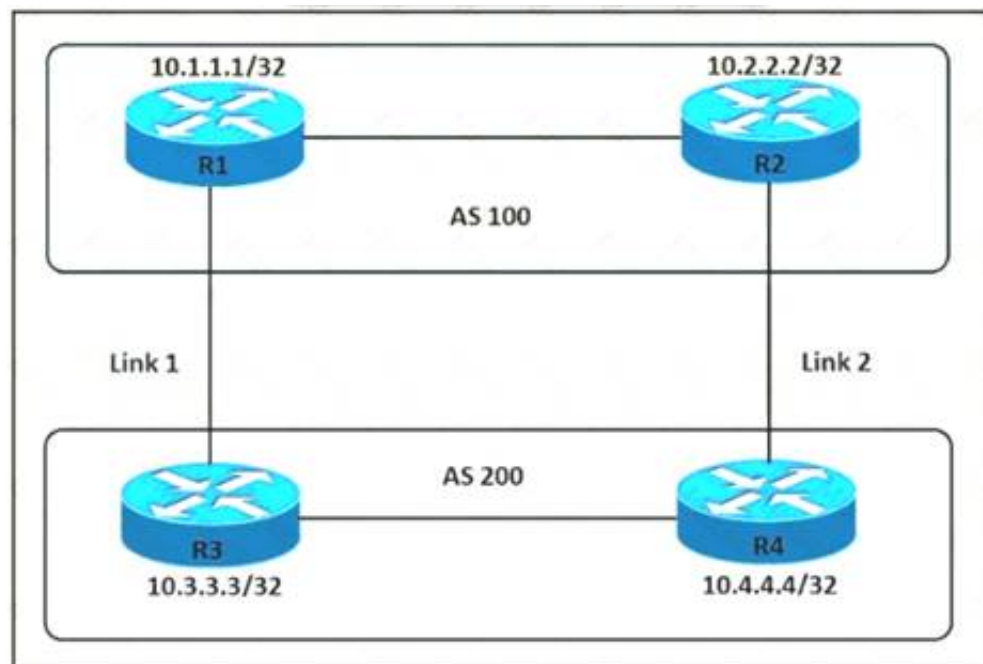
**Answer:** C

**Explanation:**

The inbound direction of G0/0 of SW2 only filter traffic from Web Server to PC-1 so the source IP address and port is of the Web Server.

**NEW QUESTION 77**

Refer to the exhibit.



An engineer must ensure that all traffic leaving AS 200 will choose Link 2 as an entry point. Assuming that all BGP neighbor relationships have been formed and that the attributes have not been changed on any of the routers, which configuration accomplish task?

- ☐ R3(config)#route-map PREPEND permit 10  
 R3(config-route-map)#set as-path prepend 200 200 200
- ☐ R3(config)#router bgp 200  
 R3(config-router)#neighbor 10.1.1.1 route-map PREPEND out
- ☐ R4(config)#route-map PREPEND permit 10  
 R4(config-route-map)#set as-path prepend 100 100 100
- ☐ R4(config)#router bgp 200  
 R4(config-router)#neighbor 10.2.2.2 route-map PREPEND in
- ☐ R3(config)#route-map PREPEND permit 10  
 R3(config-route-map)#set as-path prepend 100 100 100
- ☐ R3(config)#router bgp 200  
 R3(config-router)#neighbor 10.1.1.1 route-map PREPEND in
- ☐ R4(config)#route-map PREPEND permit 10  
 R4(config-route-map)#set as-path prepend 200 200 200
- ☐ R4(config)#router bgp 200  
 R4(config-router)#neighbor 10.2.2.2 route-map PREPEND out

- A. Option A  
 B. Option B  
 C. Option C  
 D. Option D

**Answer:** A

**Explanation:**

R3 advertises BGP updates to R1 with multiple AS 100 so R3 believes the path to reach AS 200 via R3 is farther than R2 so R3 will choose R2 to forward traffic to AS 200.

**NEW QUESTION 80**

What is the purpose of the LISP routing and addressing architecture?

- A. It creates two entries for each network node, one for its identity and another for its location on the network.  
 B. It allows LISP to be applied as a network visualization overlay though encapsulation.  
 C. It allows multiple Instances of a routing table to co-exist within the same router.  
 D. It creates head-end replication used to deliver broadcast and multicast frames to the entire network.

**Answer:** A

**NEW QUESTION 83**



What are two differences between the RIB and the FIB? (Choose two.)

- A. The FIB is derived from the data plane, and the RIB is derived from the FIB.
- B. The RIB is a database of routing prefixes, and the FIB is the Information used to choose the egress interface for each packet.
- C. FIB is a database of routing prefixes, and the RIB is the information used to choose the egress interface for each packet.
- D. The FIB is derived from the control plane, and the RIB is derived from the FIB.
- E. The RIB is derived from the control plane, and the FIB is derived from the RIB.

**Answer:** BE

#### NEW QUESTION 84

A network is being migrated from IPV4 to IPV6 using a dual-stack approach. Network management is already 100% IPV6 enabled. In a dual-stack network with two dual-stack NetFlow collections, how many flow exporters are needed per network device in the flexible NetFlow configuration?

- A. 1
- B. 2
- C. 4
- D. 8

**Answer:** B

#### NEW QUESTION 86

A customer has recently implemented a new wireless infrastructure using WLC-5520 at a site directly next to a large commercial airport. Users report that they intermittently lose WI-FI connectivity, and troubleshooting reveals it is due to frequent channel changes. Which two actions fix this issue? (Choose two)

- A. Remove UNII-2 and Extended UNII-2 channels from the 5 Ghz channel list
- B. Restore the DCA default settings because this automatically avoids channel interference.
- C. Configure channels on the UNIk2 and the Extended UNII-2 sub-bands of the 5 Ghz band only
- D. Enable DFS channels because they are immune to radar interference.
- E. Disable DFS channels to prevent interference with Doppler radar

**Answer:** AE

#### NEW QUESTION 88

Drag and drop the solutions that comprise Cisco Cyber Threat Defense from the left onto the objectives they accomplish on the right.

StealthWatch	detects suspicious web activity
Identity Services Engine	analyzes network behavior and detects anomalies
Web Security Appliance	uses pxGrid to remediate security threats

- A. Mastered
- B. Not Mastered

**Answer:** A

#### Explanation:

Graphical user interface, application Description automatically generated with medium confidence

#### NEW QUESTION 92

Where is radio resource management performed in a cisco SD-access wireless solution?

- A. DNA Center
- B. control plane node
- C. wireless controller
- D. Cisco CMX

**Answer:** C

#### Explanation:

Fabric wireless controllers manage and control the fabric-mode APs using the same general model as the traditional local-mode controllers which offers the same operational advantages such as mobility control and radio resource management. A significant difference is that client traffic from wireless endpoints is not tunnelled from the APs to the wireless controller. Instead, communication from wireless clients is encapsulated in VXLAN by the fabric APs which build a tunnel to their first-hop fabric edge node. Wireless traffic it tunneled to the edge nodes as the edge nodes provide fabric services such as the Layer 3 Anycast Gateway, policy, and traffic enforcement. <https://www.cisco.com/c/en/us/td/docs/solutions/CVD/Campus/cisco-sda-design-guide.html>

#### NEW QUESTION 97

An engineer is troubleshooting the Ap join process using DNS. Which FQDN must be resolvable on the network for the access points to successfully register to the WLC?

- A. wlcbostrname.domain.com
- B. cisco-capwap-controller.domain.com
- C. ap-manager.domain.com
- D. primary-wlc.domain.com

Answer: B

#### NEW QUESTION 99

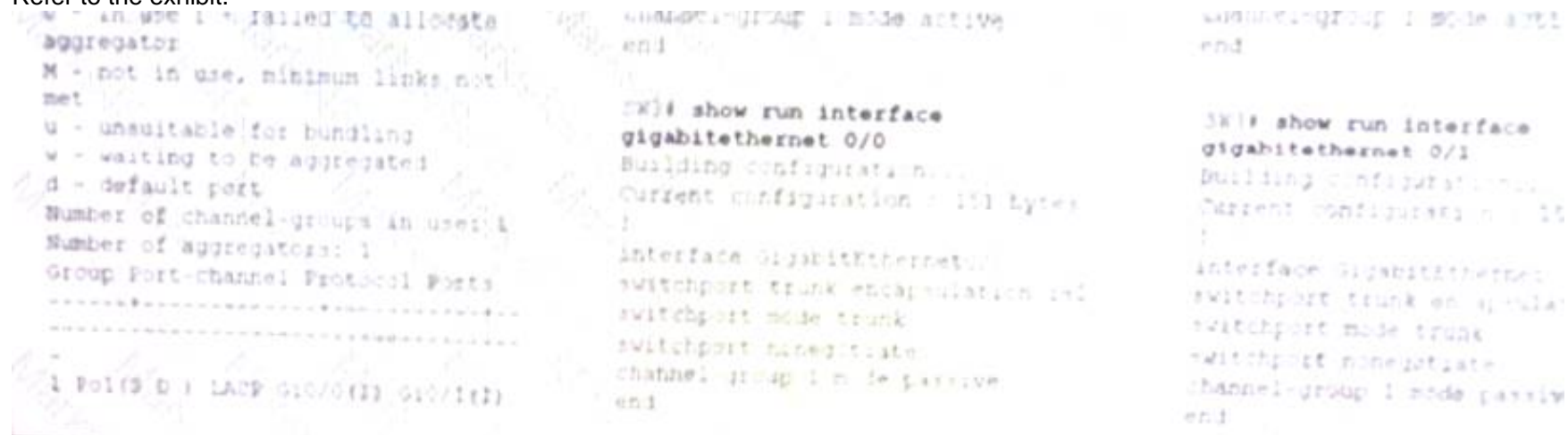
An engineer is concerned with the deployment of new application that is sensitive to inter-packet delay variance. Which command configures the router to be the destination of jitter measurements?

- A. Router(config)# ip sla responder udp-connect 172.29.139.134 5000
- B. Router(config)# ip sla responder tcp-connect 172.29.139.134 5000
- C. Router(config)# ip sla responder udp-echo 172.29.139.134 5000
- D. Router(config)# ip sla responder tcp-echo 172.29.139.134 5000

Answer: D

#### NEW QUESTION 103

Refer to the exhibit.



The EtherChannel between SW2 and SW3 is not operational which action resolves this issue?

- A. Configure the channel-group mode on SW2 Gi0/1 and Gi0/1 to on.
- B. Configure the channel-group mode on SW3 Gi0/1 to active
- C. Configure the mode on SW2 Gi0/0 to trunk
- D. Configure the mode on SW2 Gi0/1 to access.

Answer: C

#### NEW QUESTION 106

At which Layer does Cisco DNA Center support REST controls?

- A. EEM applets or scripts
- B. Session layer
- C. YMAL output from responses to API calls
- D. Northbound APIs

Answer: D

#### NEW QUESTION 108

Refer to the exhibit.

General Security QoS Advanced Policy Mapping

Layer 2 Layer 3 AAA Servers

Fast Transition

Fast Transition ☐

Protected Management Frame

PMF Disabled

WPA+WPA2 Parameters

WPA Policy ☐

WPA2 Policy-AES ☒

Authentication Key Management

802.1X ☐ Enable

CCKM ☐ Enable

PSK ☒ Enable

FT 802.1X ☐ Enable

FT PSK ☐ Enable

PSK Format ASCII

Based on the configuration in this WLAN security setting, Which method can a client use to authenticate to the network?

- A. text string
- B. username and password
- C. certificate
- D. RADIUS token

Answer: A

#### NEW QUESTION 113

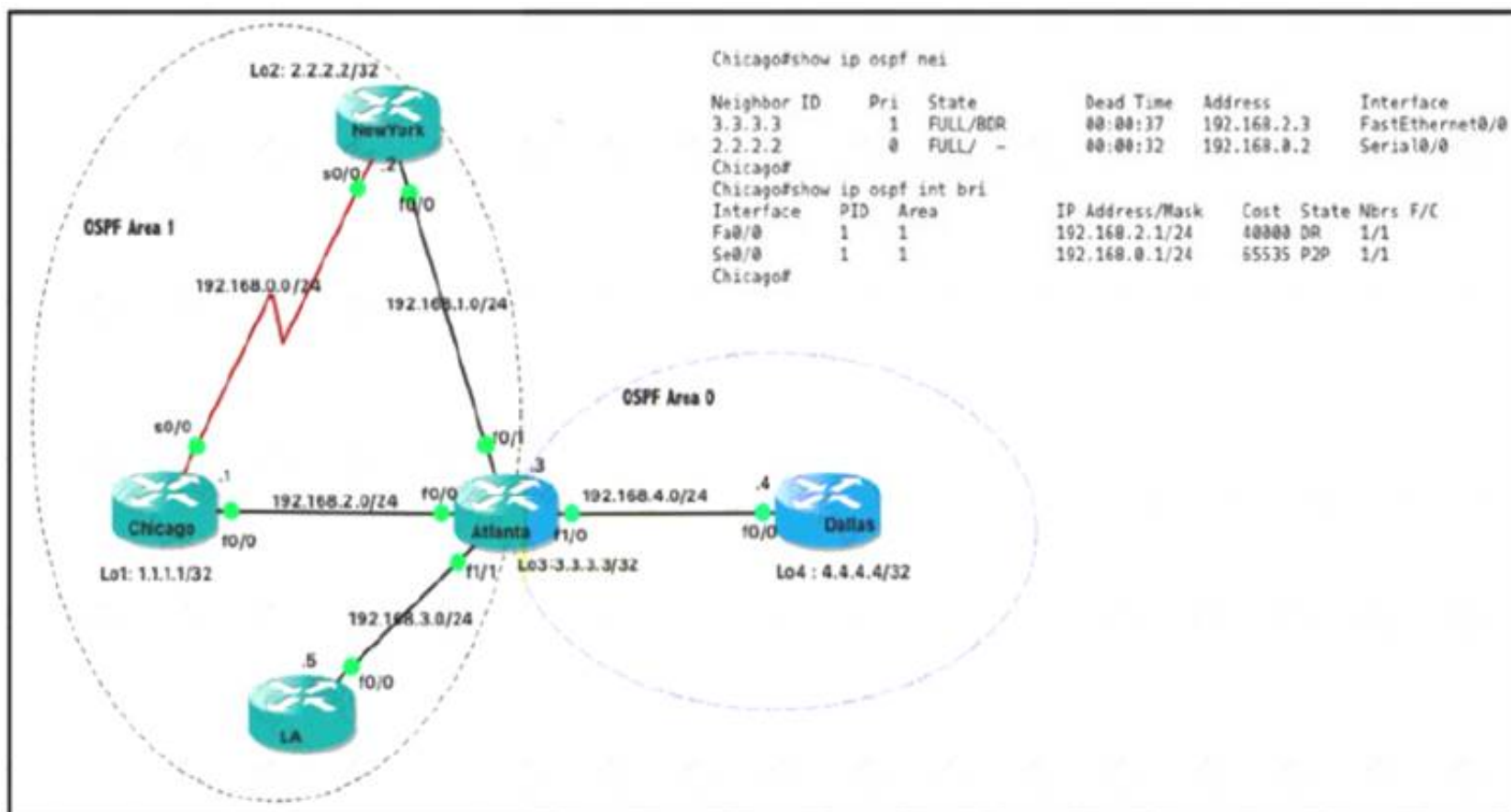
How does an on-premises infrastructure compare to a cloud infrastructure?

- A. On-premises can increase compute power faster than cloud
- B. On-premises requires less power and cooling resources than cloud
- C. On-premises offers faster deployment than cloud
- D. On-premises offers lower latency for physically adjacent systems than cloud.

Answer: D

#### NEW QUESTION 117

Refer the exhibit.



Which router is the designated router on the segment 192.168.0.0/24?

- A. This segment has no designated router because it is a nonbroadcast network type.
- B. This segment has no designated router because it is a p2p network type.
- C. Router Chicago because it has a lower router ID
- D. Router NewYork because it has a higher router ID



Answer: B

NEW QUESTION 119

When configuration WPA2 Enterprise on a WLAN, which additional security component configuration is required?

- A. NTP server
- B. PKI server
- C. RADIUS server
- D. TACACS server

Answer: C

NEW QUESTION 120

Drag and drop the characteristics from the left onto the appropriate infrastructure deployment types on the right.

customizable hardware, purpose-built systems

easy to scale and upgrade

more suitable for companies with specific regulatory or security requirements

resources can be over or underutilized as requirements vary

requires a strong and stable internet connection

built-in, automated data backups and recovery

On Premises

Cloud

- A. Mastered
- B. Not Mastered

Answer: A

Explanation:

customizable hardware, purpose-built systems

easy to scale and upgrade

more suitable for companies with specific regulatory or security requirements

resources can be over or underutilized as requirements vary

requires a strong and stable internet connection

built-in, automated data backups and recovery

On Premises

customizable hardware, purpose-built systems

more suitable for companies with specific regulatory or security requirements

resources can be over or underutilized as requirements vary

Cloud

easy to scale and upgrade

requires a strong and stable internet connection

built-in, automated data backups and recovery

NEW QUESTION 124

Which outbound access list, applied to the WAN interface of a router, permits all traffic except for http traffic sourced from the workstation with IP address 10.10.10.1?

- A)  
ip access-list extended 100  
deny tcp host 10.10.10.1 any eq 80  
permit ip any any

B)



```
ip access-list extended 200
deny tcp host 10.10.10.1 eq 80 any
permit ip any any
```

C)

```
ip access-list extended NO_HTTP
deny tcp host 10.10.10.1 any eq 80
```

D)

```
ip access-list extended 10
deny tcp host 10.10.10.1 any eq 80
permit ip any any
```

- A. Option A
- B. Option B
- C. Option C
- D. Option D

**Answer:** A

#### NEW QUESTION 129

.....

## THANKS FOR TRYING THE DEMO OF OUR PRODUCT

Visit Our Site to Purchase the Full Set of Actual 350-401 Exam Questions With Answers.

We Also Provide Practice Exam Software That Simulates Real Exam Environment And Has Many Self-Assessment Features. Order the 350-401 Product From:

<https://www.2passeasy.com/dumps/350-401/>

## Money Back Guarantee

### 350-401 Practice Exam Features:

- \* 350-401 Questions and Answers Updated Frequently
- \* 350-401 Practice Questions Verified by Expert Senior Certified Staff
- \* 350-401 Most Realistic Questions that Guarantee you a Pass on Your FirstTry
- \* 350-401 Practice Test Questions in Multiple Choice Formats and Updatesfor 1 Year