



Fortinet

Exam Questions NSE5_FMG-7.2

Fortinet NSE 5 - FortiManager 7.2

NEW QUESTION 1

- (Topic 1)

When an installation is performed from FortiManager, what is the recovery logic used between FortiManager and FortiGate for an FGFM tunnel?

- A. After 15 minutes, FortiGate will unset all CLI commands that were part of the installation that caused the tunnel to go down.
- B. FortiManager will revert and install a previous configuration revision on the managed FortiGate.
- C. FortiGate will reject the CLI commands that will cause the tunnel to go down.
- D. FortiManager will not push the CLI commands as a part of the installation that will cause the tunnel to go down.

Answer: A

Explanation:

The configuration change will break the fgfm connection, causing the FortiGate unit to attempt to reconnect for 900 seconds. If the FortiGate cannot reconnect, it will rollback to its previous configuration.

NEW QUESTION 2

- (Topic 1)

An administrator would like to create an SD-WAN using central management in the Training ADOM.

To create an SD-WAN using central management, which two steps must be completed? (Choose two.)

- A. Specify a gateway address when you create a default SD-WAN static route
- B. Enable SD-WAN central management in the Training ADOM
- C. Configure and install the SD-WAN firewall policy and SD-WAN static route before installing the SD-WAN template settings
- D. Remove all the interface references such as routes or policies that will be a part of SD-WAN member interfaces

Answer: BD

Explanation:

Reference: <https://docs.fortinet.com/document/fortigate/6.0.0/cookbook/676493/removing-existing-configuration-references-to-interfaces>

NEW QUESTION 3

- (Topic 1)

Which two statements about the scheduled backup of FortiManager are true? (Choose two.)

- A. It does not back up firmware images saved on FortiManager.
- B. It can be configured using the CLI and GUI.
- C. It backs up all devices and the FortiGuard database.
- D. It supports FTP, SCP, and SFTP.

Answer: AD

Explanation:

Reference: https://docs.ansible.com/ansible/latest/collections/fortinet/fortimanager/fmgr_system_backup_allsettings_module.html

NEW QUESTION 4

- (Topic 1)

An administrator runs the reload failure command: `diagnose test deploymanager reload config <deviceid>` on FortiManager. What does this command do?

- A. It downloads the latest configuration from the specified FortiGate and performs a reload operation on the device database.
- B. It installs the latest configuration on the specified FortiGate and updates the revision history database.
- C. It compares and provides differences in configuration on FortiManager with the current running configuration of the specified FortiGate.
- D. It installs the provisioning template configuration on the specified FortiGate.

Answer: A

Explanation:

Reference: <https://community.fortinet.com/t5/FortiManager/Technical-Note-Retrieve-configuration-file-using-CLI-from-a/ta-p/191000?externalID=FD36387>

NEW QUESTION 5

- (Topic 1)

You are moving managed FortiGate devices from one ADOM to a new ADOM. Which statement correctly describes the expected result?

- A. Any pending device settings will be installed automatically
- B. Any unused objects from a previous ADOM are moved to the new ADOM automatically
- C. The shared policy package will not be moved to the new ADOM
- D. Policy packages will be imported into the new ADOM automatically

Answer: C

Explanation:

Reference: <https://community.fortinet.com/t5/FortiManager/Technical-Note-How-to-move-objects-to-new-ADOM-on-FortiManager/ta-p/198342>

NEW QUESTION 6

- (Topic 1)

What are two outcomes of ADOM revisions? (Choose two.)

- A. ADOM revisions can significantly increase the size of the configuration backups.
- B. ADOM revisions can save the current size of the whole ADOM
- C. ADOM revisions can create System Checkpoints for the FortiManager configuration
- D. ADOM revisions can save the current state of all policy packages and objects for an ADOM

Answer: AD

Explanation:

Reference: <https://docs2.fortinet.com/document/fortimanager/6.0.0/best-practices/101837/adom-revisions>

NEW QUESTION 7

- (Topic 1)

View the following exhibit, which shows the Download Import Report:

```
Start to import config from devices(Remote-FortiGate) vdom (root)to adom (MyADOM),
Package(Remote-FortiGate)
"firewall address", SUCCESS,"(name=REMOTE_SUBNET,oid=580, new object)"
"firewall policy",SUCCESS,"(name=1, oid=990,new object)"
"firewall policy",FAIL,"(name=ID:2(#2), oid=991, reason=interface(interface binding
Contradiction.detail:any<-port6)binding fail)"
```

Why it is failing to import firewall policy ID 2?

- A. The address object used in policy ID 2 already exist in ADON database with any as interface association and conflicts with address object interface association locally on the FortiGate
- B. Policy ID 2 is configured from interface any to port6 FortiManager rejects to import this policy because any interface does not exist on FortiManager
- C. Policy ID 2 does not have ADOM Interface mapping configured on FortiManager
- D. Policy ID 2 for this managed FortiGate already exists on FortiManager in policy package named Remote-FortiGate.

Answer: A

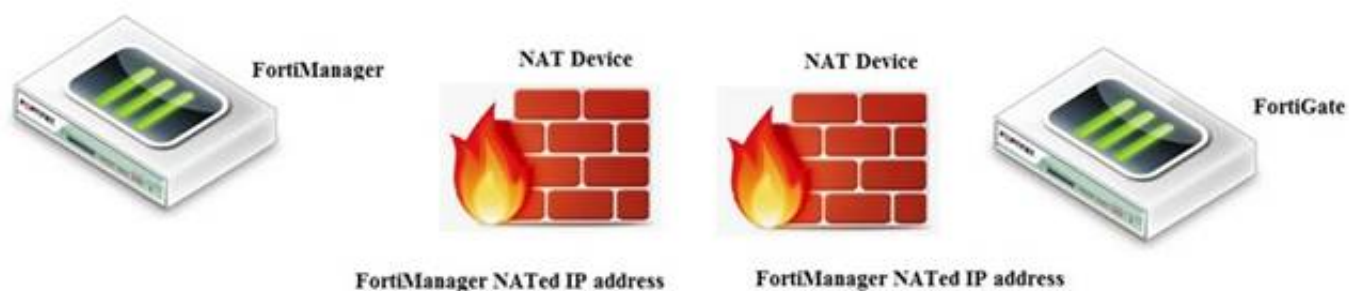
Explanation:

FortiManager_6.4_Study_Guide-Online – page 331 & 332

NEW QUESTION 8

- (Topic 1)

View the following exhibit.



If both FortiManager and FortiGate are behind the NAT devices, what are the two expected results? (Choose two.)

- A. FortiGate is discovered by FortiManager through the FortiGate NATed IP address.
- B. FortiGate can announce itself to FortiManager only if the FortiManager IP address is configured on FortiGate under central management.
- C. During discovery, the FortiManager NATed IP address is not set by default on FortiGate.
- D. If the FCFM tunnel is torn down, FortiManager will try to re-establish the FGFM tunnel.

Answer: AC

Explanation:

Fortimanager can discover FortiGate through a NATed FortiGate IP address. If a FortiManager NATed IP address is configured on FortiGate, then FortiGate can announce itself to FortiManager. FortiManager will not attempt to re-establish the FGFM tunnel to the FortiGate NATed IP address, if the FGFM tunnel is interrupted. Just like it was in the NATed FortiManager scenario, the FortiManager NATed IP address in this scenario is not configured under FortiGate central management configuration.

NEW QUESTION 9

- (Topic 1)

What is the purpose of the Policy Check feature on FortiManager?

- A. To find and provide recommendation to combine multiple separate policy packages into one common policy package
- B. To find and merge duplicate policies in the policy package
- C. To find and provide recommendation for optimizing policies in a policy package
- D. To find and delete disabled firewall policies in the policy package

Answer: C

Explanation:

Reference: https://help.fortinet.com/fmgr/50hlp/56/5-6-2/FortiManager_Admin_Guide/1200_Policy%20and%20Objects/0800_Managing%20policy%20packages/2400_Perform%20a%20policy%20consistency%20check.htm

NEW QUESTION 10

- (Topic 1)

Which three settings are the factory default settings on FortiManager? (Choose three.)

- A. Username is admin
- B. Password is fortinet
- C. FortiAnalyzer features are disabled
- D. Reports and Event Monitor panes are enabled
- E. port1 interface IP address is 192.168.1.99/24

Answer: ACE

NEW QUESTION 10

- (Topic 1)

What will happen if FortiAnalyzer features are enabled on FortiManager?

- A. FortiManager will reboot
- B. FortiManager will send the logging configuration to the managed devices so the managed devices will start sending logs to FortiManager
- C. FortiManager will enable ADOMs automatically to collect logs from non-FortiGate devices
- D. FortiManager can be used only as a logging device.

Answer: A

Explanation:

Reference: https://help.fortinet.com/fmgr/50hlp/56/5-6-1/FortiManager_Admin_Guide/1800_FAZ%20Features/0200_Enable%20FAZ%20Features.htm

NEW QUESTION 11

- (Topic 1)

Refer to the exhibit.

Start to import config from device(Local-FortiGate) vdom(root) to
 adom(My_ADOM), package(Local-FortiGate_root)

"firewall service category",SKIPPED,"(name=General, oid=697, DUPLICATE)"

"firewall address",SUCCESS,"(name=LOCAL_SUBNET, oid=684, new object)"

"firewall service custom",SUCCESS,"(name=ALL, oid=863, update previous
 object)"

"firewall policy",SUCCESS,"(name=1, oid = 1090, new object)"

Which statement about the object named ALL is true?

- A. FortiManager updated the object ALL using the FortiGate value in its database.
- B. FortiManager installed the object ALL with the updated value.
- C. FortiManager created the object ALL as a unique entity in its database, which can be only used by this managed FortiGate.
- D. FortiManager updated the object ALL using the FortiManager value in its database.

Answer: A

NEW QUESTION 14

- (Topic 1)

An administrator, Trainer, who is assigned the Super_User profile, is trying to approve a workflow session that was submitted by another administrator, Student. However, Trainer is unable to approve the workflow session.

What can prevent an admin account that has Super_User rights over the device from approving a workflow session?

Session List

View Diff					
<input type="checkbox"/>	ID	Name	User	Date Submitt...	Approved/To... Comments
<input checked="" type="checkbox"/>	1	Firewall p..	Student	2017-06-01...	0/1 firewall policies

+ Add Comment

[Student] - 2017-06-01 13:31:35
 firewall policies
 [Student] - 2017-06-01 16:29:27

- A. Trainer is not a part of workflow approval group
- B. Trainer does not have full rights over this ADOM
- C. Trainer must close Student's workflow session before approving the request

D. Student, who submitted the workflow session, must first self-approve the request

Answer: A

Explanation:

Reference:https://help.fortinet.com/fmgr/50hlp/56/5-6-1/FMG-FAZ/0800_ADOMs/1800_Workflow/0600_Workflow%20sessions.htm

NEW QUESTION 16

- (Topic 1)

Which two items does an FGFM keepalive message include? (Choose two.)

- A. FortiGate uptime
- B. FortiGate license information
- C. FortiGate IPS version
- D. FortiGate configuration checksum

Answer: CD

Explanation:

Reference:<https://docs.fortinet.com/document/fortimanager/6.2.0/fortigate-fortimanager-communications-protocol-guide/579138/keep-alive-messages>

NEW QUESTION 19

- (Topic 1)

An administrator has assigned a global policy package to a new ADOM called ADOM1. What will happen if the administrator tries to create a new policy package in ADOM1?

- A. When creating a new policy package, the administrator can select the option to assign the global policy package to the new policy package
- B. When a new policy package is created, the administrator needs to reapply the global policy package toADOM1.
- C. When a new policy package is created, the administrator must assign the global policy package from the global ADOM.
- D. When the new policy package is created, FortiManager automatically assigns the global policy package to the new policy package.

Answer: A

Explanation:

Reference:https://help.fortinet.com/fmgr/50hlp/56/5-6-2/FortiManager_Admin_Guide/1200_Policy%20and%20Objects/0800_Managing%20policy%20packages/1200_Assign%20a%20global%20policy%20package.htm

NEW QUESTION 22

- (Topic 1)

View the following exhibit.

The exhibit shows two screenshots from the FortiManager web interface. The top screenshot shows the 'Device Manager' tab with a list of devices under 'Managed FortiGate'. The bottom screenshot shows the 'Policy Packages' tab with a table of installation targets.

Seq.#	Install On	Name	From	To
1	Remote-FortiGate(Student)	Ping_Access	port3	port1
2	Local-FortiGate(root)	Web	port3	port1
3	Installation Targets	Source_Device	port3	port1

Given the configurations shown in the exhibit, what can you conclude from the installation targets in theInstall Oncolumn?

- A. The Install On column value represents successful installation on the managed devices
- B. Policy seq#3 will be installed on all managed devices and VDOMs that are listed under Installation Targets
- C. Policy seq#3 will be installed on the Trainer[NAT] VDOM only
- D. Policy seq#3 will be not installed on any managed device

Answer: B

NEW QUESTION 23

- (Topic 1)

In addition to the default ADOMs, an administrator has created a new ADOM named Training for FortiGate devices. The administrator sent a device registration to FortiManager from a remote FortiGate. Which one of the following statements is true?

- A. The FortiGate will be added automatically to the default ADOM named FortiGate.
- B. The FortiGate will be automatically added to the Training ADOM.
- C. By default, the unregistered FortiGate will appear in the root ADOM.
- D. The FortiManager administrator must add the unregistered device manually to the unregistered device manually to the Training ADOM using the Add Device wizard

Answer: C

Explanation:

Reference: <https://docs.fortinet.com/document/fortimanager/7.0.0/administration-guide/718923/root-adom>

NEW QUESTION 28

- (Topic 2)

What will be the result of reverting to a previous revision version in the revision history?

- A. It will install configuration changes to managed device automatically
- B. It will tag the device settings status as Auto-Update
- C. It will generate a new version ID and remove all other revision history versions
- D. It will modify the device-level database

Answer: D

NEW QUESTION 31

- (Topic 2)

What does a policy package status of Conflict indicate?

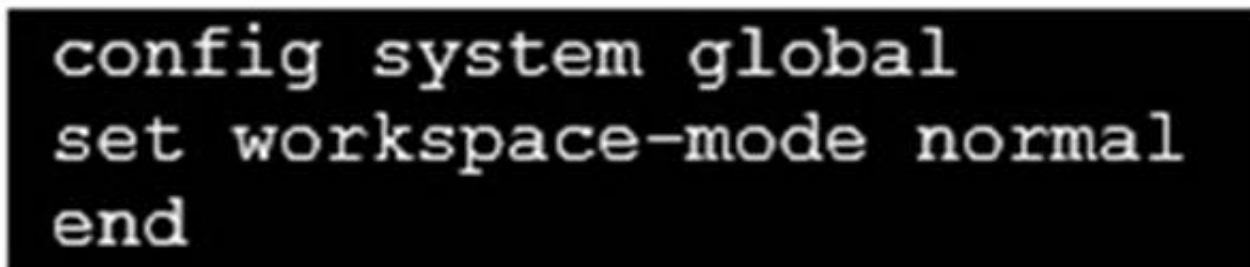
- A. The policy package reports inconsistencies and conflicts during a Policy Consistency Check.
- B. The policy package does not have a FortiGate as the installation target.
- C. The policy package configuration has been changed on both FortiManager and the managed device independently.
- D. The policy configuration has never been imported after a device was registered on FortiManager.

Answer: C

NEW QUESTION 33

- (Topic 2)

Refer to the exhibit.



```
config system global
set workspace-mode normal
end
```

Given the configuration shown in the exhibit, which two statements are true? (Choose two.)

- A. It allows two or more administrators to make configuration changes at the same time, in the same ADOM.
- B. It disables concurrent read-write access to an ADOM.
- C. It allows the same administrator to lock more than one ADOM at the same time.
- D. It is used to validate administrator login attempts through external servers.

Answer: BC

Explanation:

Reference: <https://docs.fortinet.com/document/fortimanager/6.0.4/administration-guide/86456/concurrent-adom-access>

NEW QUESTION 35

- (Topic 2)

What is the purpose of ADOM revisions?

- A. To create System Checkpoints for the FortiManager configuration.
- B. To save the current state of the whole ADOM.
- C. To save the current state of all policy packages and objects for an ADOM.
- D. To revert individual policy packages and device-level settings for a managed FortiGate by reverting to a specific ADOM revision

Answer: C

Explanation:

Fortimanager 6.4 Study guide page 198

NEW QUESTION 36

- (Topic 2)
Refer to the exhibit.



An administrator logs into the FortiManager GUI and sees the panes shown in the exhibit.
Which two reasons can explain why the FortiAnalyzer feature panes do not appear? (Choose two.)

- A. The administrator logged in using the unsecure protocol HTTP, so the view is restricted.
- B. The administrator profile does not have full access privileges like the Super_User profile.
- C. The administrator IP address is not a part of the trusted hosts configured on FortiManager interfaces.
- D. FortiAnalyzer features are not enabled on FortiManager.

Answer: BD

NEW QUESTION 37

- (Topic 2)
Which two statements regarding device management on FortiManager are true? (Choose two.)

- A. FortiGate devices in HA cluster devices are counted as a single device.
- B. FortiGate in transparent mode configurations are not counted toward the device count on FortiManager.
- C. FortiGate devices in an HA cluster that has five VDOMs are counted as five separate devices.
- D. The maximum number of managed devices for each ADOM is 500.

Answer: AC

NEW QUESTION 42

- (Topic 2)
An administrator has assigned a global policy package to custom ADOM1. Then the administrator creates a new policy package, Fortinet, in the custom ADOM1.
Which statement about the global policy package assignment to the newly-created policy package Fortinet is true?

- A. When a new policy package is created, it automatically assigns the global policies to the new package.
- B. When a new policy package is created, you need to assign the global policy package from the global ADOM.
- C. When a new policy package is created, you need to reapply the global policy package to the ADOM.
- D. When a new policy package is created, you can select the option to assign the global policies to the new package.

Answer: A

Explanation:

Global Policy Package is applied at the ADOM level and you have the option to choose which ADOM policy packages you want to exclude (there is no option to choose Policy Packages to include).

NEW QUESTION 45

- (Topic 3)
What does a policy package status of Modified indicate?

- A. FortiManager is unable to determine the policy package status
- B. The policy package was never imported after a device was registered on FortiManager
- C. The Policy configuration has been changed on a managed device and changes have not yet been imported into FortiManager
- D. The Policy package configuration has been changed on FortiManager and changes have not yet been installed on the managed device.

Answer: B

Explanation:

Reference: http://help.fortinet.com/fmgr/50hlp/56/5-6-1/FortiManager_Admin_Guide/1200_Policy%20and%20Objects/0800_Managing%20policy%20packages/2200_Policy%20Package%20Installation%20targets.htm

NEW QUESTION 49

- (Topic 3)
Which two conditions trigger FortiManager to create a new revision history? (Choose two.)

- A. When FortiManager is auto-updated with configuration changes made directly on a managed device
- B. When changes to the device-level database are made on FortiManager
- C. When FortiManager installs device-level changes on a managed device
- D. When a configuration revision is reverted to a previous revision in the revision history

Answer:

BC

NEW QUESTION 51

- (Topic 3)

An administrator would like to create an SD-WAN using central management. What steps does the administrator need to perform to create an SD-WAN using central management?

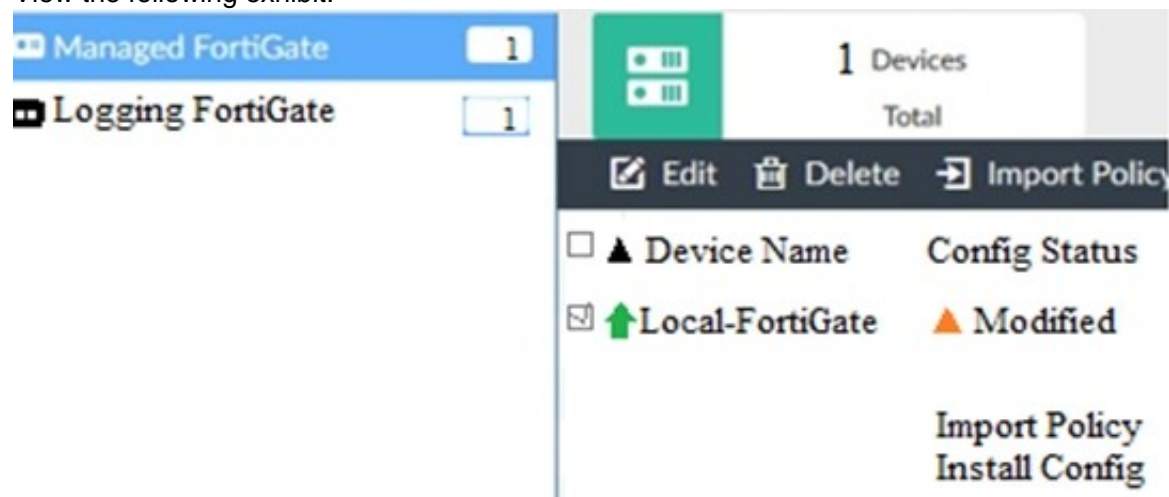
- A. First create an SD-WAN firewall policy, add member interfaces to the SD-WAN template and create a static route
- B. You must specify a gateway address when you create a default static route
- C. Remove all the interface references such as routes or policies
- D. Enable SD-WAN central management in the ADOM, add member interfaces, create a static route and SDWAN firewall policies.

Answer: D

NEW QUESTION 56

- (Topic 3)

View the following exhibit.



When using Install Config option to install configuration changes to managed FortiGate, which of the following statements are true? (Choose two.)

- A. Once initiated, the install process cannot be canceled and changes will be installed on the managed device
- B. Will not create new revision in the revision history
- C. Installs device-level changes to FortiGate without launching the Install Wizard
- D. Provides the option to preview configuration changes prior to installing them

Answer: AC

NEW QUESTION 58

- (Topic 3)

Which two settings are required for FortiManager Management Extension Applications (MEA)? (Choose two.)

- A. When you configure MEA, you must open TCP or UDP port 540.
- B. You must open the ports to the Fortinet registry
- C. You must create a MEA special policy on FortiManager using the super user profile
- D. The administrator must have the super user profile.

Answer: CD

NEW QUESTION 62

- (Topic 3)

An administrator is replacing a failed device on FortiManager by running the following command:

execute device replace sn <devname> <serialnum>.

Which device name and serial number must the administrator use?

- A. The device name of the new device and serial number of the failed device
- B. The device name and serial number of the failed device
- C. The device name of the failed device and serial number of the new device
- D. The device name and serial number of the new device

Answer: C

NEW QUESTION 65

- (Topic 3)

An administrator created a header and footer global policy package and assigned it to an ADOM.

What are two outcomes from this action? (Choose two.)

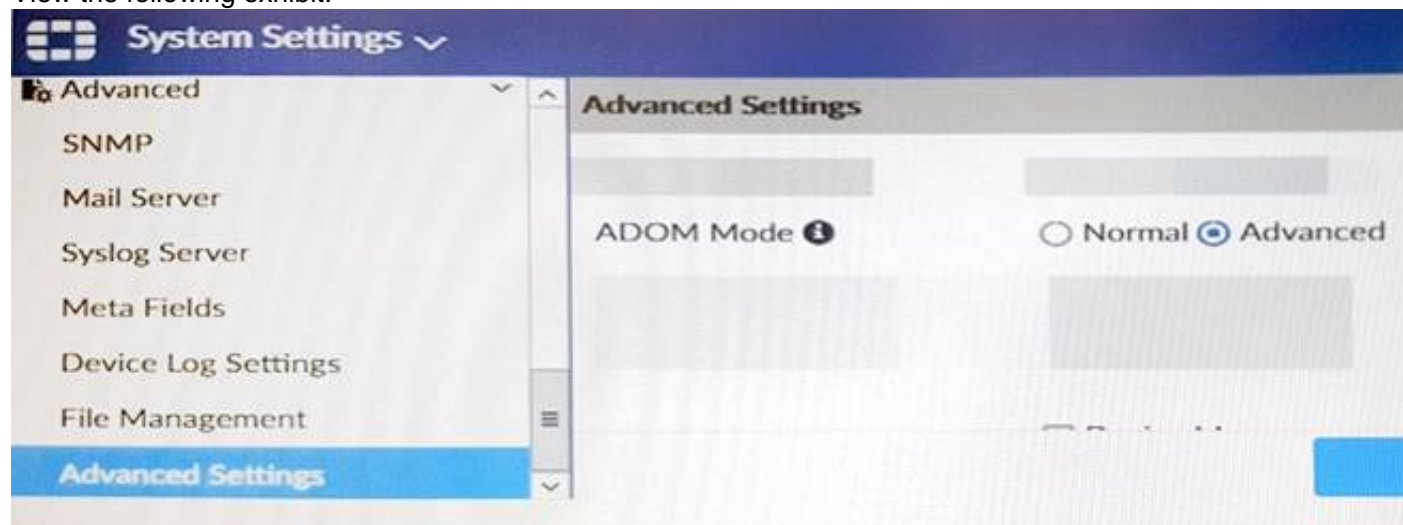
- A. You must manually move the header and footer policies after the policy assignment.
- B. After you assign the global policy package to an ADOM, the policy package is hidden from the ADOM and cannot be viewed.
- C. If you assign an additional global policy package to the same ADOM, FortiManager removes previously assigned policies.
- D. You can edit or delete all the global objects in the global ADOM.

Answer: AD

NEW QUESTION 69

- (Topic 3)

View the following exhibit.



Which of the following statements are true based on this configuration setting? (Choose two.)

- A. This setting will enable the ADOMs feature on FortiManager.
- B. This setting is applied globally to all ADOMs.
- C. This setting will allow assigning different VDOMs from the same FortiGate to different ADOMs.
- D. This setting will allow automatic updates to the policy package configuration for a managed device.

Answer: BC

NEW QUESTION 72

- (Topic 3)

In the event that one of the secondary FortiManager devices fails, which action must be performed to return the FortiManager HA manual mode to a working state?

- A. The FortiManager HA state transition is transparent to administrators and does not require any reconfiguration.
- B. Manually promote one of the working secondary devices to the primary role, and reboot the old primary device to remove the peer IP of the failed device.
- C. Reconfigure the primary device to remove the peer IP of the failed device.
- D. Reboot the failed device to remove its IP from the primary device.

Answer: C

NEW QUESTION 77

- (Topic 3)

In addition to the default ADOMs, an administrator has created a new ADOM named Training for FortiGate devices. The administrator authorized the FortiGate device on FortiManager using the Fortinet Security Fabric.

Given the administrator's actions, which statement correctly describes the expected result?

- A. The FortiManager administrator must add the authorized device to the Training ADOM using the Add Device wizard only.
- B. The authorized FortiGate will be automatically added to the Training ADOM.
- C. The authorized FortiGate will appear in the root ADOM.
- D. The authorized FortiGate can be added to the Training ADOM using FortiGate Fabric Connectors.

Answer: C

NEW QUESTION 80

- (Topic 3)

Which three settings are the factory default settings on FortiManager? (Choose three.)

- A. The administrative domain is disabled.
- B. The Port1 interface IP address is 192.168.1.99/24.
- C. Management Extension applications are enabled.
- D. The FortiManager setup wizard is disabled.
- E. FortiAnalyzer features are disabled.

Answer: ABE

NEW QUESTION 84

- (Topic 3)

Refer to the exhibit.

```
Start to import config from device(Local-FortiGate) vdom(root) to
adom(My_ADOM), package(Local-FortiGate_root)

"firewall service category",SKIPPED,"(name=General, oid=697, DUPLICATE)"

"firewall address",SUCCESS,"(name=LOCAL_SUBNET, oid=684, new object)"

"firewall service custom",SUCCESS,"(name=ALL, oid=863, update previous
object)"

"firewall policy",SUCCESS,"(name=1, oid=1090, new object)"
```

Given the configuration shown in the exhibit, how did FortiManager handle the service category named General?

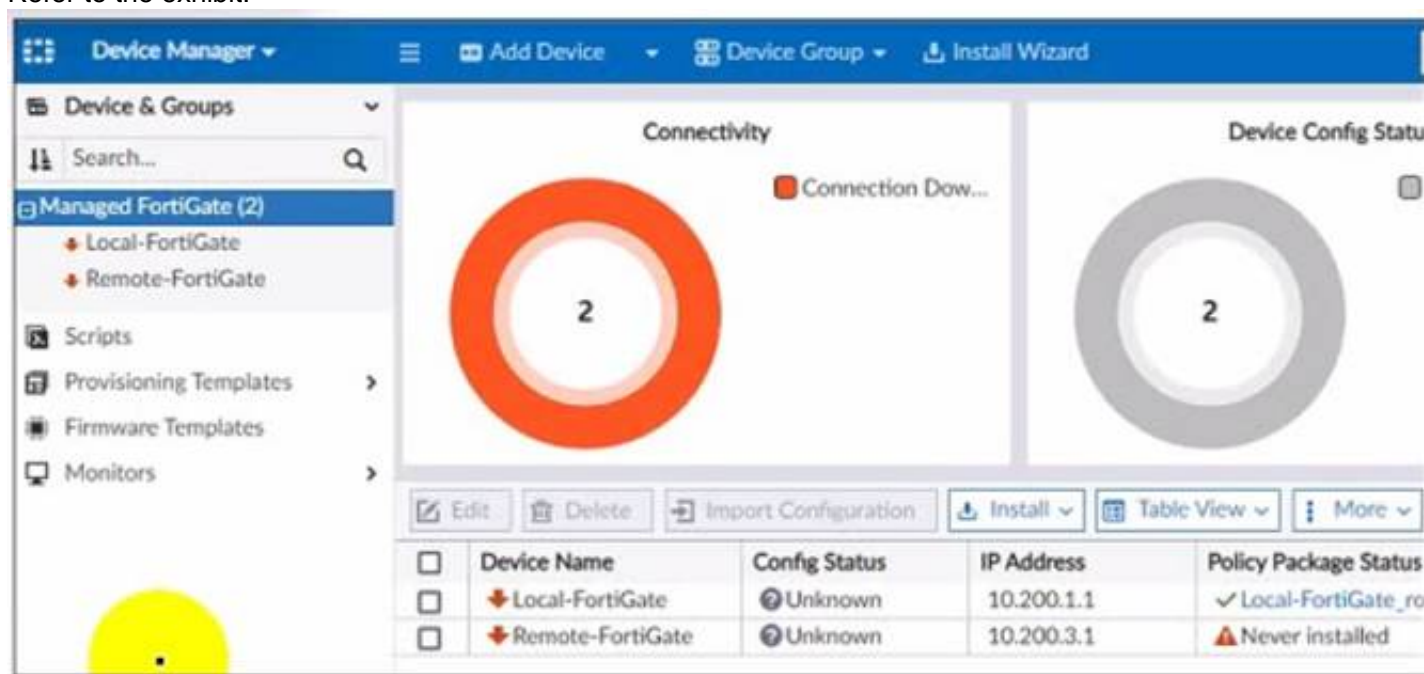
- A. FortiManager ignored the firewall service category General but created a new service category in its database.
- B. FortiManager ignored the firewall service category general and deleted the duplicate value In Its database
- C. FortiManager ignored the firewall service category General and updated the FortiGate duplicate value in the FortiGate database.
- D. FortiManager ignored the firewall service category General and did not update Its database with the value

Answer: D

NEW QUESTION 87

- (Topic 3)

Refer to the exhibit.



A junior administrator is troubleshooting a FortiManager connectivity issue that rs occurring with managed FortiGate devices
 Given the FortiManager device manager settings shown in the exhibit what can you conclude from the exhibit?

- A. The administrator had restored the FortiManager configuration file
- B. The administrator must refresh both devices to restore connectivity
- C. FortiManager test internet connectivity therefore, both devices appear to be down
- D. The administrator can reclaim the FGFM tunnel to get both devices online

Answer: C

NEW QUESTION 89

- (Topic 3)

Which of the following statements are true regarding VPN Gateway configuration in VPN Manager? (Choose two.)

- A. Managed gateways are devices managed by FortiManager in the same ADOM
- B. External gateways are third-party VPN gateway devices only
- C. Protected subnets are the subnets behind the device that you don't want to allow access to over the IPsec VPN
- D. Managed devices in other ADOMs must be treated as external gateways

Answer: AD

Explanation:

Reference:http://help.fortinet.com/fmgr/50hlp/56/5-6-1/FMG-FAZ/1300_VPN_Manager/0800_IPsec_VPN_Gateway/0400_Create_mngd_gateway.htm

NEW QUESTION 93

- (Topic 3)

View the following exhibit.

Start to import config from device(Local-FortiGate) vdom(root) to adom(My_ADOM), package(Local-Fortigate_root)

“firewall service category”,SKIPPED,”(name=General,oid=697, DUPLICATE)”

“firewall address”, SUCCESS,”(name=LOCAL_SUBNET,oid=684,new object)”

“firewall service custom”,SUCCESS,”(name=ALL,oid=863,update previous object)”

“firewall policy”,SUCCESS,”(name=1,oid-1090, new object)”

Which one of the following statements is true regarding the object named ALL?

- A. FortiManager updated the object ALL using FortiGate’s value in its database
- B. FortiManager updated the object ALL using FortiManager’s value in its database
- C. FortiManager created the object ALL as a unique entity in its database, which can be only used by thismanaged FortiGate.
- D. FortiManager installed the object ALL with the updated value.

Answer: A

NEW QUESTION 98

- (Topic 3)

An administrator would like to create an SD-WAN default static route for a newly created SD-WAN using the FortiManager GUI. Both port1 and port2 are part of the SD-WAN member interfaces.

Which interface must the administrator select in the static route device drop-down list?

- A. port2
- B. virtual-wan-link
- C. port1
- D. auto-discovery

Answer: B

NEW QUESTION 103

.....

Thank You for Trying Our Product

We offer two products:

1st - We have Practice Tests Software with Actual Exam Questions

2nd - Questions and Answers in PDF Format

NSE5_FMG-7.2 Practice Exam Features:

- * NSE5_FMG-7.2 Questions and Answers Updated Frequently
- * NSE5_FMG-7.2 Practice Questions Verified by Expert Senior Certified Staff
- * NSE5_FMG-7.2 Most Realistic Questions that Guarantee you a Pass on Your First Try
- * NSE5_FMG-7.2 Practice Test Questions in Multiple Choice Formats and Updates for 1 Year

100% Actual & Verified — Instant Download, Please Click
[Order The NSE5_FMG-7.2 Practice Test Here](#)