



Cisco

Exam Questions 300-615

Troubleshooting Cisco Data Center Infrastructure (DCIT)

NEW QUESTION 1

A mission-critical server is connected to site A. Connectivity to this server is lost from site B because the MAC route is missing in the OTV VDC of the Nexus 7000 in site B due to MAC aging. Which action allows the flooding of the unknown unicast MAC on the Nexus 7000 in the OTV VDC?

- A. Use route-map to advertise this MAC statically and redistribute with ISIS.
- B. Unknown unicast flooding is not allowed.
- C. Use the otv flood mac <> command to selectively flood traffic for a given MAC.
- D. Use the otv isis bfd <> command to configure BFD protocol.

Answer: B

NEW QUESTION 2

Refer to the exhibit. The HSRP configuration in the exhibit fails to function. Which action resolves this issue?

- A. Enable IP redirects.
- B. Set the MTU to 1500 bytes.
- C. Configure HSRP version 2.
- D. Configure the same HSRP group on both devices.

Answer: A

NEW QUESTION 3

Refer to the exhibit. A network engineer has connected the Nexus switch management port to the Internet using DHCP to allow the Guest shell running on the switch to download Python packages. The engineer can ping google.com successfully from the Nexus switch, but the Guest shell failed to download any Python packages. Which action resolves the problem?

- A. Update the Python packages on the Cisco Nexus switch directly.
- B. Manually configure DNS in the Guest shell, even if it is claimed on the Cisco Nexus switch through DHCP.
- C. Manually configure NTP in the Guest shell.
- D. Connect Guest shell to data plane interfaces to be able to connect to the networks outside the Cisco Nexus switch.

Answer: B

NEW QUESTION 4

```
switch1# show vpc brief
Legend:
(*) - local vPC is down, forwarding via vPC peer-link

vPC domain id : 500
Peer status : peer link is down
vPC keep-alive status : Suspended (Destination IP not reachable)
Configuration consistency status : success
vPC role : secondary, operational primary
Number of vPCs configured : 4
Peer Gateway : Disabled
Dual-active exluded VLANs : -

vPC Peer-link status
-----
id  Port  Status  Active  vlans
---  ---  ---
1  Po500  down  -

switch2# show vpc brief
Legend:
(*) - local vPC is down, forwarding via vPC peer-link

vPC domain id : 20
Peer status : peer link is down
vPC keep-alive status : Suspended (Destination IP not reachable)
Configuration consistency status : success
vPC role : secondary, operational primary
Number of vPCs configured : 4
Peer Gateway : Disabled
Dual-active exluded VLANs : -

vPC Peer-link status
-----
id  Port  Status  Active  vlans
---  ---  ---
1  Po500  down  -
```

Refer to the exhibit. vPC between switch1 and switch2 is not working. Which two actions are needed to fix the problem? (Choose two.)

- A. Match vPC domain ID between the two devices.
- B. Configure IP address on the interface.
- C. Activate VLANs on the vPC.
- D. Configure vPC peer link and vPC peer keepalive correctly.
- E. Configure one of the switches as primary for the vPC.

Answer: AC

NEW QUESTION 5

Refer to the exhibit. Sw1 and Sw2 are two Cisco Nexus 9000 Series Switches that run Cisco NX-OS. They are VTEPs in the same vPC domain. Which statement describes what happens in this scenario?

- A. Sw1 drops all traffic because there is no (S, G) OIF list to encapsulate VXLAN multicast packets and send them out to the underlay network through the uplink interfaces.
- B. Sw1 performs the VxLAN multicast encapsulation and decapsulation for all traffic associated with the VxLAN VNIs.
- C. Sw1 and switch 2 perform the VxLAN multicast encapsulation and decapsulation for all traffic associated with the VxLAN VNIs, depending on the hashing.
- D. Sw2 did not send an IP PIM register to the rendezvous point for the multicast group of the VxLAN VNI.

Answer: B

NEW QUESTION 6

An engineer removes a VMM domain from an endpoint group called EPG-1, but the distributed port group fails to be deleted. Which action must be taken to resolve the issue?

- A. Remove the port group manually.
- B. Migrate all virtual machines in the EPG-1 to different hypervisors.
- C. Remove the remaining EPGs from the VMM domain.
- D. Migrate all virtual machines in the EPG-1 to different port groups.

Answer: C

NEW QUESTION 7

```
switch# show interface fc1/5
fc1/5 is down (NPV upstream port not available)
Hardware is Fibre Channel, SFP is short wave laser w/o OFC (SN)
Port WWN is 20:47:00:0d:ac:a4:3b:83
Admin port mode is F, turnk mode is off
snmp link state traps are enabled
Port vsan is 100
    Receive data field Size is 2112
```

Refer to the exhibit. Interface fc1/5 is offline. Which action should be taken to troubleshoot the issue?

- A. Activate the correct zoneset for VSAN 100.
- B. Update the FLOGI database to contain the FLOGI entries for interface fc1/5 in VSAN 100.
- C. Update the FCNs database to contain names for VSAN 100.
- D. Configure the upstream ports and the server ports to be in VSAN 100.

Answer: D

NEW QUESTION 8

DRAG DROP

An engineer is troubleshooting issues in Cisco UCS Director. Drag and drop the possible causes from the left onto the correct issues on the right. Select and Place:

- A. Mastered
- B. Not Mastered

Answer: A

NEW QUESTION 9

Refer to the exhibit. A switch is being downgraded to an earlier release because of a problem with the current release. After the switch is downgraded, it can no longer forward traffic. Which action resolves the issue?

- A. Enable ISSD after the downgrade is complete.
- B. Roll back to the original image.
- C. Reload the switch.
- D. Shut and no shut the interfaces to the FEX.

Answer: B

NEW QUESTION 10

An engineer attempts to register Cisco UCS Manager to Cisco UCS Central, but the registration fails. The engineer can ping Cisco UCS Central from UCS Manager. Which two actions must the engineer attempt to resolve the problem? (Choose two.)

- A. Synchronize the date and time to NTP for Cisco UCS Central and the Cisco UCS domains.
- B. Apply the UCS Central license to UCS Central.
- C. Place Cisco UCS Manager on the same subnet as Cisco UCS Central.
- D. Allow port 443 between Cisco UCS Manager and Cisco UCS Central.
- E. Allow port 9443 between Cisco UCS Manager and Cisco UCS Central.

Answer: AD

NEW QUESTION 10

You have an ACI environment with three APICs, two spine switches, and four-leaf switches. You wipe and reboot all APICs first then leaf and spine switches one-by-one and successfully go through the Initial Setuo dialogue on the APIC 1 CIMC KVM console. When you log in to the APIC1 WebGUI, you notice that you do not see any directly connected leaf switches being discovered under Fabric > Inventory > Fabric Membership. What is the cause of the issue?

- A. The leaf nodes were not erased properly, which caused a fabric parameters mismatch with the APIC1.
- B. Rebooting the APICs and the leaf and spine switches after wiping them is not required.
- C. You forgot to enter the TEP Pool value during the Initial Setup dialogue on APIC1.
- D. The same Fabric Name value should be used before after wiping all devices.

Answer: C

NEW QUESTION 14

DRAG DROP

Drag and drop the Cisco UCS SNMP fault types from the left onto the correct issues on the right. Select and Place:

| | |
|--------------|---|
| connectivity | A server discovery fails. |
| environment | An adapter is unreachable. |
| operational | A voltage issue is detected. |
| server | A service profile is unable to associate. |

- A. Mastered
- B. Not Mastered

Answer: A

Explanation:

| | |
|--------------|--------------|
| connectivity | operational |
| environment | connectivity |
| operational | environment |
| server | server |

NEW QUESTION 16

Cisco Unified Computing System Manager raises a critical error message that indicates that the system has overlapping Ethernet and FCoE VLANs. All of the Ethernet traffic on the overlapping VLANs drops. Which action resolves the issue?

- A. Modify the VLAN assignment to vNICs.
- B. Change the PIN groups on the vHBAs.
- C. Modify the FCoE VLAN.
- D. Set the FCoE VLAN as the native VLAN on server uplinks.

Answer: A

NEW QUESTION 19

An engineer is implementing a storage VDC, but fails. Which two prerequisites must be in place before a storage VDC is implemented? (Choose two.)

- A. M-Series module
- B. ESSENTIALS license
- C. STORAGE-ENT license
- D. FCoE license
- E. F-Series module

Answer: DE

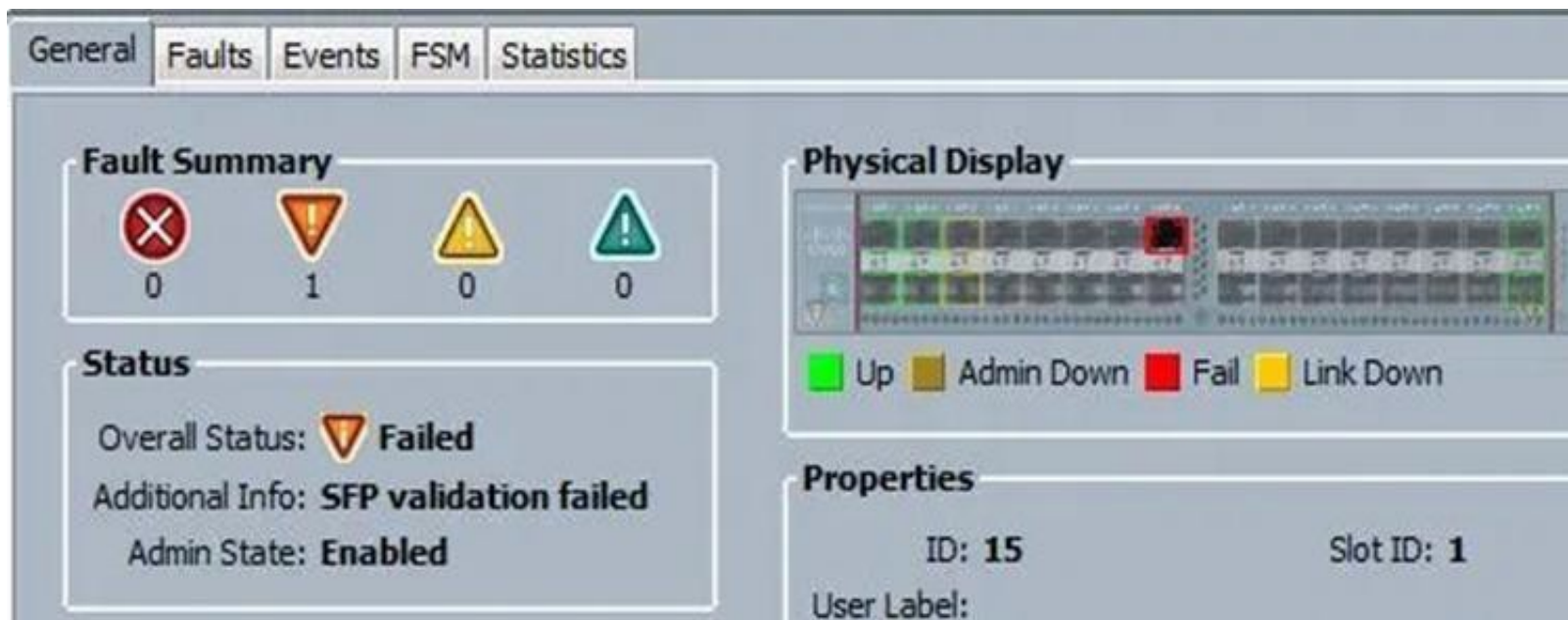
NEW QUESTION 21

Refer to the exhibit. A new Cisco Nexus 5548 Switch connects to a network. SAN switching is configured on the switch. The switch fc2/10 NP uplink is shown in the exhibit. Which action ensures that fc2/10 is in an up state?

- A. Replace the SFP port module in fc2/10.
- B. Configure the admin port type E on the upstream switch that connects the port.
- C. Enable NPIV on the upstream switch that connects the port.
- D. Configure the BB_credit buffers on the upstream switch that connects the port.

Answer: C

NEW QUESTION 26



Refer to the exhibit. When an engineer inserts 8-Gb FC SFP port 15 on a Cisco UCS Fabric Interconnect, the port fails. What is a possible cause of the issue?

- A. Port 15 is configured as an Ethernet port.
- B. Port 15 is configured for 4-Gb FC.
- C. Port 15 is missing a license.
- D. The polarity of the fiber cable is reversed.

Answer: B

NEW QUESTION 31

One of Cisco Nexus Series interfaces has become errdisabled with the error message "DCX-No ACK in 100 PDUs". What is the cause of this error?

- A. The host has not responded to the Control Sub-TLV DCBX exchanges of the switch.
- B. The acknowledgement number in the server response has not incremented for 100 exchanges.
- C. Cisco Discovery Protocol is disabled on the switch.
- D. LLDP is disabled on the switch.

Answer: B

NEW QUESTION 32

```
event manager applet config_monitor
event cli match "conf t"
action 1.0 snmp-trap strdata "User has entered into configuration mode"
```

Refer to the exhibit. The EEM script fails to send an SNMP trap when a user attempts to enter configuration mode. Which configuration is missing from the script?

- A. event statement
- B. event-default action statement
- C. policy-default action statement
- D. IP address of the SNMP server

Answer: D

NEW QUESTION 37

```
serverteam Cleartext-Password := "<password>"

Cisco-avpair = "shell:domains = user/admin/,common//read-
all(16000) "
```

Refer to the exhibit. An engineer is investigating a role mapping issue on a switch. The users report that they cannot view the IP addresses under the tenant "corp". Which action resolves the issue?

- A. Add the users to the RADIUS server.
- B. Update the UNIX ID.
- C. Configure the correct secret password between the APIC and the RADIUS server.
- D. Add the updated avpair to include/corp/admin/

Answer: C

NEW QUESTION 38

DRAG DROP

Drag and drop the commands from the left onto the correct categories on the right.

Select and Place:

- A. Mastered
- B. Not Mastered

Answer: A

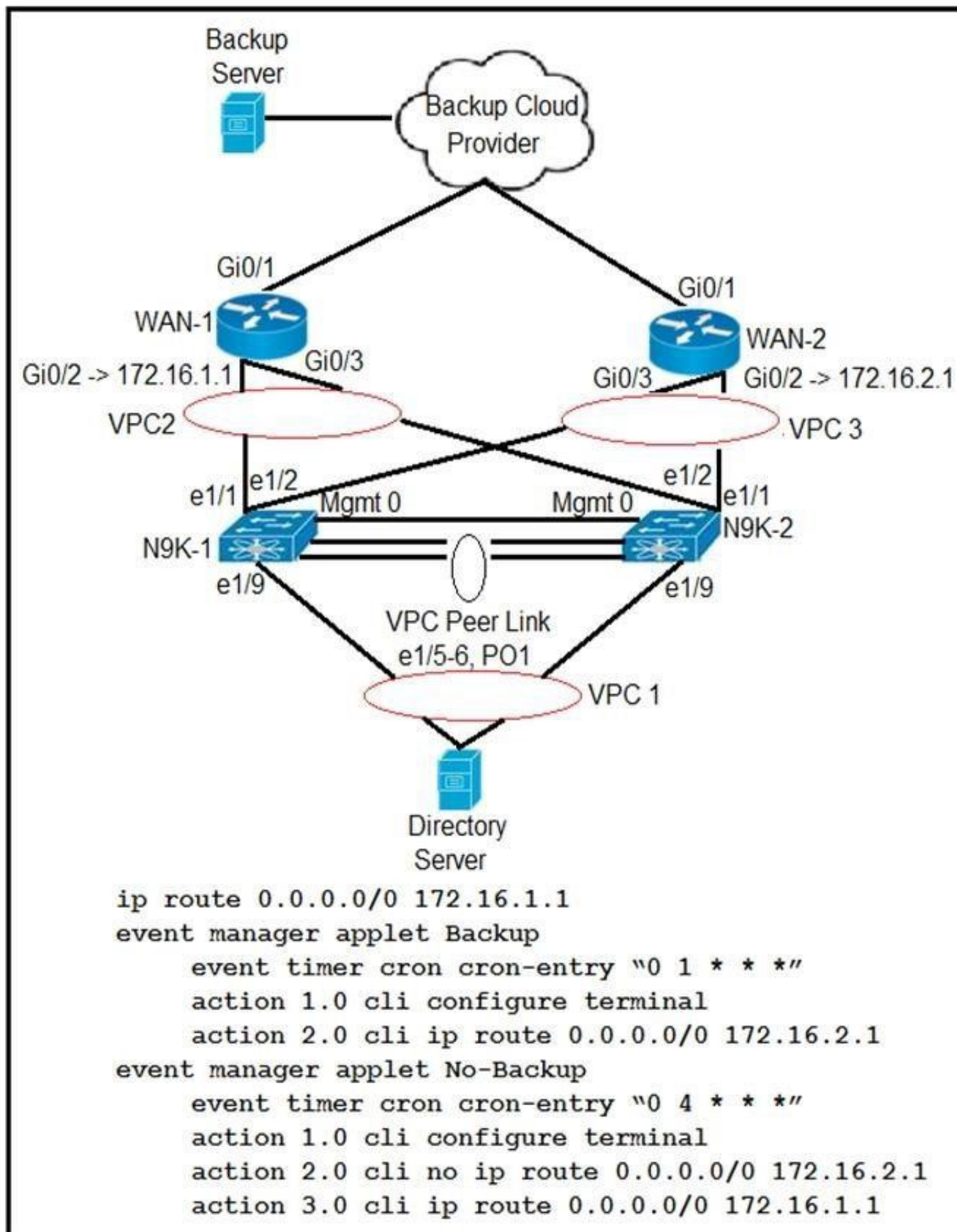
NEW QUESTION 42

An upgrade of protected RPMs from the Bash shell did not take effect. Which action is required for the changes to take effect?

- A. Restart the Bash shell.
- B. Reload the switch.
- C. Upgrade the RPMs from the Guest shell.
- D. Disable and reenale the Bash feature.

Answer: D

NEW QUESTION 44



Refer to the exhibit. Partial configuration from N9K-1 and N9K-2 is included. The client has two WANs connected. WAN-1 is for normal business-day activities. WAN-2 is for server backups during nonworking hours of 1:00 a.m. to 5:00 a.m. daily. The client says that at the scheduled time for backup, the data center server failed to use the WAN-2 link to back up the servers to the cloud backup system. What is the solution to this problem?

- A. The event timer must be written in epoch time format.
- B. The Cisco Nexus switch must be configured with one applet because a configuration with two applets will fail.
- C. The Cron entry must be configured without double quotes.
- D. The applet called "Backup" must include an action to remove the current static route.

Answer: D

NEW QUESTION 47

An engineer is troubleshooting a custom AV pair that was created by a client on an external authentication server to map a read-only role for a specific security domain. Which AV pair solves the problem?

- A. shell:domains=Security_Domain_1//Read_Role_1|Read_Role_2
- B. shell:domains=Security_Domain_1/Write_Role_1|Read_Role_2
- C. shell=Security_Domain_1/Read_Role_1|Read_Role_2
- D. shell:domains=Security_Domain_1/Read_Role_1|Read_Role_2

Answer: A

NEW QUESTION 51

A request to activate the port security database is rejected. Which action do you perform to investigate the cause of the issue?

- A. Enable the auto-learning feature.
- B. Use the force option to identify rejected devices.
- C. Find conflicting entries between the active and configuration databases.
- D. Verify that devices are fully attached to the active database.

Answer: B

NEW QUESTION 54

A server administrator attempts to change the Cisco IMC KVM certificate to one signed by a private CA, but the certificate is not being accepted. What can cause this process to fail?

- A. using a certificate with a password-protected private key
- B. RSA encryption being used in the generation of the certificate.
- C. AES encryption being used in the generation of the certificate.
- D. public IP address of the Cisco IMC not being included in the SAN.

Answer: A

NEW QUESTION 55

DRAG DROP

A firmware upgrade on a fabric interconnect fails. A bootflash contains a valid image. Drag and drop the recovery steps from the left onto the correct order on the right.

Select and Place:

- A. Mastered
- B. Not Mastered

Answer: A

NEW QUESTION 56

Refer to the exhibit. Cisco UCS Manager is being upgraded using the Auto Install feature, but the FSM fails. Which action resolves the issue?

- A. Acknowledge the primary fabric interconnect.
- B. Remove the service pack from the subordinate fabric interconnect.
- C. Clear the startup version of the default infrastructure pack.
- D. Upgrade the firmware of the infrastructure firmware by using the force option.

Answer: C

NEW QUESTION 60

An IOM fails during a firmware upgrade and is unresponsive. Which action recovers the module?

- A. Restore UCSM configuration from backup.
- B. Roll back to the previous firmware.
- C. Use AutoInstall to reinstall the firmware.
- D. From the peer IOM, reset the faulty module.

Answer: B

NEW QUESTION 63


```
N5k-A-199# sh install all impact system
N5000-uk9.7.1.4.N1.1.bin kickstart
N5000-uk9-kickstart.7.3.4.N1.1.bin
Verifying image bootflash:/n5000-uk9-
kickstart.7.3.4.N1.1.bin for boot
variable "kickstart".
[#####] 100% -- SUCCESS
Verifying image bootflash:/n5000-
uk9.7.1.4.N1.1.bin for boot variable
"system".
[# ] 0% -- FAIL. Return code 0x4045001F
(image MD5 checksum error).
Install has failed. Image verification
failed (0x40930011)
```

Refer to an exhibit. An engineer is troubleshooting an upgrade failure on a switch. Which action resolves the issue?

- A. Save the system image in NVRAM.
- B. Use the same system image as the kickstart image.
- C. Load a new system image.
- D. Reload the same system image.

Answer: C

NEW QUESTION 66

.....

Thank You for Trying Our Product

We offer two products:

1st - We have Practice Tests Software with Actual Exam Questions

2nd - Questions and Answers in PDF Format

300-615 Practice Exam Features:

- * 300-615 Questions and Answers Updated Frequently
- * 300-615 Practice Questions Verified by Expert Senior Certified Staff
- * 300-615 Most Realistic Questions that Guarantee you a Pass on Your First Try
- * 300-615 Practice Test Questions in Multiple Choice Formats and Updates for 1 Year

100% Actual & Verified — Instant Download, Please Click
[Order The 300-615 Practice Test Here](#)