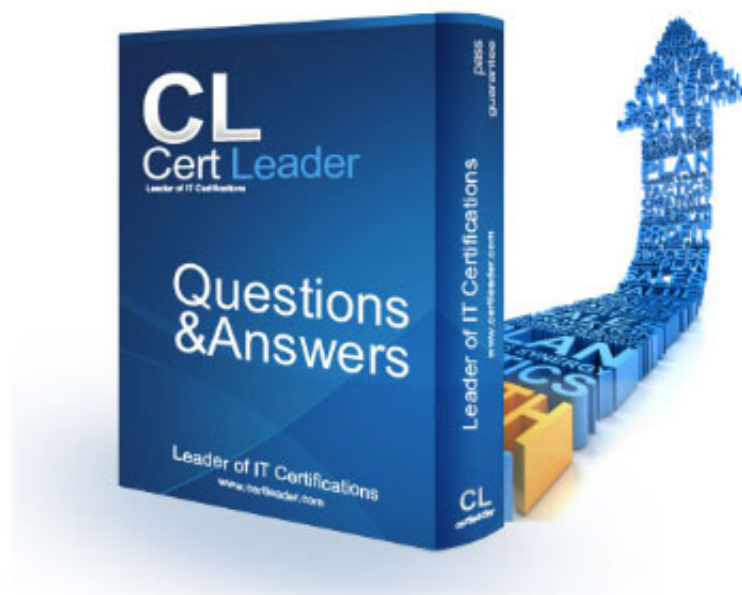


NSE4_FGT-7.2 Dumps

Fortinet NSE 4 - FortiOS 7.2

https://www.certleader.com/NSE4_FGT-7.2-dumps.html



NEW QUESTION 1

To complete the final step of a Security Fabric configuration, an administrator must authorize all the devices on which device?

- A. FortiManager
- B. Root FortiGate
- C. FortiAnalyzer
- D. Downstream FortiGate

Answer: B

NEW QUESTION 2

An administrator wants to simplify remote access without asking users to provide user credentials. Which access control method provides this solution?

- A. ZTNA IP/MAC filtering mode
- B. ZTNA access proxy
- C. SSL VPN
- D. L2TP

Answer: B

Explanation:

FortiGate Infrastructure 7.2 Study Guide (p.165): "ZTNA access proxy allows users to securely access resources through an SSL-encrypted access proxy. This simplifies remote access by eliminating the use of VPNs."

This is true because ZTNA access proxy is a feature that allows remote users to access internal applications without requiring VPN or user credentials. ZTNA access proxy uses a secure tunnel between the user's device and the FortiGate, and authenticates the user based on device identity and context. The user only needs to install a lightweight agent on their device, and the FortiGate will automatically assign them to the appropriate application group based on their device profile. This simplifies remote access and enhances security by reducing the attack surface¹²

NEW QUESTION 3

Which two statements are correct about SLA targets? (Choose two.)

- A. You can configure only two SLA targets per one Performance SLA.
- B. SLA targets are optional.
- C. SLA targets are required for SD-WAN rules with a Best Quality strategy.
- D. SLA targets are used only when referenced by an SD-WAN rule.

Answer: BD

NEW QUESTION 4

Which two statements explain antivirus scanning modes? (Choose two.)

- A. In proxy-based inspection mode, files bigger than the buffer size are scanned.
- B. In flow-based inspection mode, FortiGate buffers the file, but also simultaneously transmits it to the client.
- C. In proxy-based inspection mode, antivirus scanning buffers the whole file for scanning, before sending it to the client.
- D. In flow-based inspection mode, files bigger than the buffer size are scanned.

Answer: BC

Explanation:

An antivirus profile in full scan mode buffers up to your specified file size limit. The default is 10 MB. That is large enough for most files, except video files. If your FortiGate model has more RAM, you may be able to increase this threshold. Without a limit, very large files could exhaust the scan memory. So, this threshold balances risk and performance. Is this tradeoff unique to FortiGate, or to a specific model? No. Regardless of vendor or model, you must make a choice. This is because of the difference between scans in theory, that have no limits, and scans on real-world devices, that have finite RAM. In order to detect 100% of malware regardless of file size, a firewall would need infinitely large RAM--something that no device has in the real world. Most viruses are very small. This table shows a typical tradeoff. You can see that with the default 10 MB threshold, only 0.01% of viruses pass through.

FortiGate Security 7.2 Study Guide (p.350 & 352): "In flow-based inspection mode, the IPS engine reads the payload of each packet, caches a local copy, and forwards the packet to the receiver at the same time. Because the file is ransmitted simultaneously, flow-based mode consumes more CPU cycles than proxy-based." "Each protocol's proxy picks up a connection and buffers the entire file first (or waits until the oversize limit is reached) before scanning. The client must wait for the scanning to finish."

NEW QUESTION 5

Refer to the exhibit.

```
1: date=2020-08-14 time=06:28:24 logid= "0316013056" type= "utm" subtype= "webfilter"
eventtype= "ftgd_blk" level= "warning" vd= "root" eventtime= 1597343304867252750
policyid=2 sessionid=83212 srcip=10.0.1.10 srcport=53742 srcintf= "port3" srci ntfrole=
"undefined" dstip=159.65.216.232 dstport=443 dstintf= "port1" dstintfrole= "wan" proto=6
service= "HTTPS" hostname= "etp-experiment-1.dummytracker.org" profile= "default"
action= "blocked" reqtype= "direct" url= "https://etp-experiment-1.dummytracker.org/"
sentbyte=517 rcvdbyte=0 direction= "outgoing" msg= "URL belongs to a denied category in
policy" method= "domain" cat=26 catdesc= "Malicious Websites" crscore=30 craction=
4194304 crlevel= "high"
```

Based on the raw log, which two statements are correct? (Choose two.)

- A. Traffic is blocked because Action is set to DENY in the firewall policy.
- B. Traffic belongs to the root VDOM.

- C. This is a security log.
- D. Log severity is set to error on FortiGate.

Answer: AC

NEW QUESTION 6

What inspection mode does FortiGate use if it is configured as a policy-based next-generation firewall (NGFW)?

- A. Full Content inspection
- B. Proxy-based inspection
- C. Certificate inspection
- D. Flow-based inspection

Answer: D

NEW QUESTION 7

Which statement about the policy ID number of a firewall policy is true?

- A. It is required to modify a firewall policy using the CLI.
- B. It represents the number of objects used in the firewall policy.
- C. It changes when firewall policies are reordered.
- D. It defines the order in which rules are processed.

Answer: A

NEW QUESTION 8

Which engine handles application control traffic on the next-generation firewall (NGFW) FortiGate?

- A. Antivirus engine
- B. Intrusion prevention system engine
- C. Flow engine
- D. Detection engine

Answer: B

Explanation:

<http://docs.fortinet.com/document/fortigate/6.0.0/handbook/240599/application-control>

NEW QUESTION 9

Refer to the exhibit.

Name	Severity	Target	OS	Action	CVE-ID
FTP.Login.Failed	Server	All		Pass	

Review the Intrusion Prevention System (IPS) profile signature settings. Which statement is correct in adding the FTP.Login.Failed signature to the IPS sensor profile?

- A. The signature setting uses a custom rating threshold.
- B. The signature setting includes a group of other signatures.
- C. Traffic matching the signature will be allowed and logged.
- D. Traffic matching the signature will be silently dropped and logged.

Answer: D

Explanation:

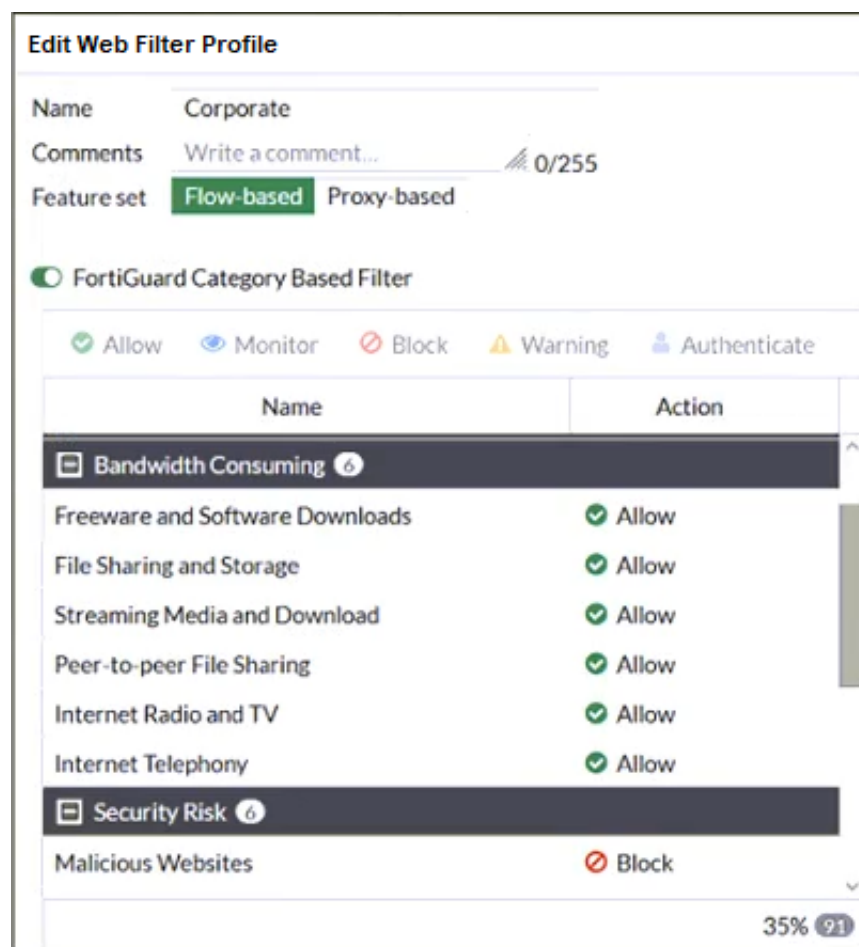
Select Block to silently drop traffic matching any of the signatures included in the entry. So, while the default action would be 'Pass' for this signature the administrator is specifically overriding that to set the Block action. To use the default action the setting would have to be 'Default'. Action is drop, signature default action is listed only in the signature, it would only match if action was set to default.

NEW QUESTION 10

Refer to the exhibit.

The exhibit shows the FortiGuard Category Based Filter section of a corporate web filter profile.

An administrator must block access to download.com, which belongs to the Freeware and Software Downloads category. The administrator must also allow other websites in the same category.



What are two solutions for satisfying the requirement? (Choose two.)

- A. Configure a separate firewall policy with action Deny and an FQDN address object for *.download.com as destination address.
- B. Configure a web override rating for download.com and select Malicious Websites as the subcategory.
- C. Set the Freeware and Software Downloads category Action to Warning.
- D. Configure a static URL filter entry for download.com with Type and Action set to Wildcard and Block, respectively.

Answer: BD

Explanation:

FortiGate Security 7.2 Study Guide (p.268-269): "If you want to make an exception, for example, rather than unblock access to a potentially unwanted category, change the website to an allowed category. You can also do the reverse. You can block a website that belongs to an allowed category." "Static URL filtering is another web filter feature. Configured URLs in the URL filter are checked against the visited websites. If a match is found, the configured action is taken. URL filtering has the same patterns as static domain filtering: simple, regular expressions, and wildcard."

* B. Configure a web override rating for download.com and select Malicious Websites as the subcategory. This is true because a web override rating is a feature that allows the administrator to change the FortiGuard category of a specific website or domain, and apply a different action to it based on the web filter profile. By configuring a web override rating for download.com and selecting Malicious Websites as the subcategory, the administrator can block access to download.com, which belongs to the Freeware and Software Downloads category by default, without affecting other websites in the same category. The Malicious Websites category has the action Block in the web filter profile shown in the exhibit.

* D. Configure a static URL filter entry for download.com with Type and Action set to Wildcard and Block, respectively.

This is true because a static URL filter entry is a feature that allows the administrator to define custom rules for filtering specific URLs or domains, and apply an action to them based on the web filter profile. By configuring a static URL filter entry for download.com with Type and Action set to Wildcard and Block, respectively, the administrator can block access to download.com and any subdomains or paths under it, without affecting other websites in the Freeware and Software Downloads category. The static URL filter entries have higher priority than the FortiGuard category based filter entries in the web filter profile.

NEW QUESTION 10

What are two functions of the ZTNA rule? (Choose two.)

- A. It redirects the client request to the access proxy.
- B. It applies security profiles to protect traffic.
- C. It defines the access proxy.
- D. It enforces access control.

Answer: BD

Explanation:

A ZTNA rule is a policy that enforces access control and applies security profiles to protect traffic between the client and the access proxy¹. A ZTNA rule defines the following parameters¹:

- Incoming interface: The interface that receives the client request.
- Source: The address and user group of the client.
- ZTNA tag: The tag that identifies the domain that the client belongs to.
- ZTNA server: The server that hosts the access proxy.
- Destination: The address of the application that the client wants to access.
- Action: The action to take for the traffic that matches the rule. It can be accept, deny, or redirect.
- Security profiles: The security features to apply to the traffic, such as antivirus, web filter, application control, and so on.

A ZTNA rule does not redirect the client request to the access proxy. That is the function of a policy route that matches the ZTNA tag and sends the traffic to the ZTNA server².

A ZTNA rule does not define the access proxy. That is done by creating a ZTNA server object that specifies the IP address, port, and certificate of the access proxy³.

FortiGate Infrastructure 7.2 Study Guide (p.177): "A ZTNA rule is a proxy policy used to enforce access control. You can define ZTNA tags or tag groups to enforce zero-trust role-based access. To create a rule, type a rule name, and add IP addresses and ZTNA tags or tag groups that are allowed or blocked access. You also select the ZTNA server as the destination. You can also apply security profiles to protect this traffic."

NEW QUESTION 13

An administrator is running the following sniffer command:

```
diagnose sniffer packet any "host 192.168.2.12" 5
```

Which three pieces of Information will be Included in me sniffer output? {Choose three.}

- A. Interface name
- B. Packet payload
- C. Ethernet header
- D. IP header
- E. Application header

Answer: ABD

NEW QUESTION 18

If Internet Service is already selected as Source in a firewall policy, which other configuration objects can be added to the Source filed of a firewall policy?

- A. IP address
- B. Once Internet Service is selected, no other object can be added
- C. User or User Group
- D. FQDN address

Answer: B

NEW QUESTION 20

Which two protocols are used to enable administrator access of a FortiGate device? (Choose two.)

- A. SSH
- B. HTTPS
- C. FTM
- D. FortiTelemetry

Answer: AB

NEW QUESTION 21

Examine this PAC file configuration.

Which of the following statements are true? (Choose two.)

- A. Browsers can be configured to retrieve this PAC file from the FortiGate.
- B. Any web request to the 172.25. 120.0/24 subnet is allowed to bypass the proxy.
- C. All requests not made to Fortinet.com or the 172.25. 120.0/24 subnet, have to go through altproxy.corp.com: 8060.
- D. Any web request fortinet.com is allowed to bypass the proxy.

Answer: AD

NEW QUESTION 26

Which three CLI commands can you use to troubleshoot Layer 3 issues if the issue is in neither the physical layer nor the link layer? (Choose three.)

- A. diagnose sys top
- B. execute ping
- C. execute traceroute
- D. diagnose sniffer packet any
- E. get system arp

Answer: BCD

NEW QUESTION 31

Which two settings are required for SSL VPN to function between two FortiGate devices? (Choose two.)

- A. The client FortiGate requires a client certificate signed by the CA on the server FortiGate.
- B. The client FortiGate requires a manually added route to remote subnets.
- C. The client FortiGate uses the SSL VPN tunnel interface type to connect SSL VPN.
- D. The server FortiGate requires a CA certificate to verify the client FortiGate certificate.

Answer: CD

Explanation:

<https://docs.fortinet.com/document/fortigate/7.0.9/administration-guide/508779/fortigate-as-ssl-vpn-client>

To establish an SSL VPN connection between two FortiGate devices, the following two settings are required:

The server FortiGate requires a CA certificate to verify the client FortiGate certificate: The server FortiGate will use a CA (Certificate Authority) certificate to verify the client FortiGate certificate, ensuring that the client device is trusted and allowed to establish an SSL VPN connection.

The client FortiGate requires the SSL VPN tunnel interface type to connect SSL VPN: The client FortiGate must have an SSL VPN tunnel interface type configured in order to establish an SSL VPN connection. This interface type will be used to connect to the server FortiGate over the SSL VPN.

NEW QUESTION 33

Which two actions can you perform only from the root FortiGate in a Security Fabric? (Choose two.)

- A. Shut down/reboot a downstream FortiGate device.
- B. Disable FortiAnalyzer logging for a downstream FortiGate device.
- C. Log in to a downstream FortiSwitch device.
- D. Ban or unban compromised hosts.

Answer: AB

NEW QUESTION 36

An administrator has configured a strict RPF check on FortiGate. Which statement is true about the strict RPF check?

- A. The strict RPF check is run on the first sent and reply packet of any new session.
- B. Strict RPF checks the best route back to the source using the incoming interface.
- C. Strict RPF checks only for the existence of at least one active route back to the source using the incoming interface.
- D. Strict RPF allows packets back to sources with all active routes.

Answer: B

Explanation:

Strict Reverse Path Forwarding (RPF) is a security feature that is used to detect and prevent IP spoofing attacks on a network. It works by checking the routing information for incoming packets to ensure that they are coming from the source address that is indicated in the packet's header. In strict RPF mode, the firewall will check the best route back to the source of the incoming packet using the incoming interface. If the packet's source address does not match the route back to the source, the packet is dropped. This helps to prevent attackers from spoofing their IP address and attempting to access the network.

NEW QUESTION 40

Refer to the exhibit, which contains a static route configuration. An administrator created a static route for Amazon Web Services.

The screenshot shows the 'Edit Static Route' configuration in FortiGate. The 'Destination' field is set to 'Subnet' with a value of 'Internet Service'. The 'Gateway Address' is '10.200.1.254'. The 'Interface' is 'port1'. The 'Status' is 'Enabled'.

Which CLI command must the administrator use to view the route?

- A. get router info routing-table database
- B. diagnose firewall route list
- C. get internet-service route list
- D. get router info routing-table all

Answer: B

Explanation:

ISDB static route will not create entry directly in routing-table. Reference: <https://community.fortinet.com/t5/FortiGate/Technical-Tip-Creating-a-static-route-for-Predefined-Internet/ta-p/1>

and here

<https://community.fortinet.com/t5/FortiGate/Technical-Tip-Verify-the-matching-policy-route/ta-p/190640>

FortiGate Infrastructure 7.2 Study Guide (p.16 and p.59): "Even though they are configured as static routes, ISDB routes are actually policy routes and take precedence over any other routes in the routing table. As such, ISDB routes are added to the policy routing table." "FortiOS maintains a policy route table that you can view by running the diagnose firewall proute list command."

NEW QUESTION 45

Refer to the exhibits to view the firewall policy (Exhibit A) and the antivirus profile (Exhibit B).

Edit Policy

Inspection Mode

Flow-based

Proxy-based

Firewall / Network Options

NAT

IP Pool Configuration

Use Outgoing Interface Address

Use Dynamic IP Pool

Preserve Source Port

Protocol Options

PRX default

Security Profiles

AntiVirus

AV default

Web Filter

DNS Filter

Application Control

IPS

SSL Inspection

SSL deep-inspection

Decrypted Traffic Mirror

Edit AntiVirus Profile

Name

default

Comments

Scan files and block viruses.

29/255

Detect Viruses

Block

Monitor

Feature set

Flow-based

Proxy-based

Inspected Protocols

HTTP

SMTP

POP3

IMAP

FTP

CIFS

APT Protection Options

Treat Windows Executables in Email Attachments as Viruses

Include Mobile Malware Protection

Virus Outbreak Prevention

Use FortiGuard Outbreak Prevention Database

Use External Malware Block List

Which statement is correct if a user is unable to receive a block replacement message when downloading an infected file for the first time?

- A. The firewall policy performs the full content inspection on the file.
- B. The flow-based inspection is used, which resets the last packet to the user.
- C. The volume of traffic being inspected is too high for this model of FortiGate.
- D. The intrusion prevention security profile needs to be enabled when using flow-based inspection mode.

Answer: B

Explanation:

- "ONLY" If the virus is detected at the "START" of the connection, the IPS engine sends the block replacement message immediately
- When a virus is detected on a TCP session (FIRST TIME), but where "SOME PACKETS" have been already forwarded to the receiver, FortiGate "resets the connection" and does not send the last piece of the file. Although the receiver got most of the file content, the file has been truncated and therefore, can't be opened. The IPS engine also caches the URL of the infected file, so that if a "SECOND ATTEMPT" to transmit the file is made, the IPS engine will then send a block replacement message to the client instead of scanning the file again.

In flow mode, the FortiGate drops the last packet killing the file. But because of that the block replacement message cannot be displayed. If the file is attempted to download again the block message will be shown.

NEW QUESTION 47

The IPS engine is used by which three security features? (Choose three.)

- A. Antivirus in flow-based inspection
- B. Web filter in flow-based inspection
- C. Application control
- D. DNS filter
- E. Web application firewall

Answer: ABC

Explanation:

FortiGate Security 7.2 Study Guide (p.385): "The IPS engine is responsible for most of the features shown in this lesson: IPS and protocol decoders. It's also responsible for application control, flow-based antivirus protection, web filtering, and email filtering."

NEW QUESTION 50

Which statement about the deployment of the Security Fabric in a multi-VDOM environment is true?

- A. VDOMs without ports with connected devices are not displayed in the topology.
- B. Downstream devices can connect to the upstream device from any of their VDOMs.
- C. Security rating reports can be run individually for each configured VDOM.
- D. Each VDOM in the environment can be part of a different Security Fabric.

Answer: A

Explanation:

FortiGate Security 7.2 Study Guide (p.436): "When you configure FortiGate devices in multi-vdom mode and add them to the Security Fabric, each VDOM with its assigned ports is displayed when one or more devices are detected. Only the ports with discovered and connected devices appear in the Security Fabric view and, because of this, you must enable Device Detection on ports you want to have displayed in the Security Fabric. VDOMs without ports with connected devices are not displayed. All VDOMs configured must be part of a single Security Fabric."

NEW QUESTION 51

Refer to the exhibit.

```
vcluster_nr=1
vcluster_0: start_time=1593701974(2020-07-02 10:59:34), state/o/chg_time=2(work)/2
(work)/1593701169(2020-07-02 10:46:09)
    pingsvr_flip_timeout/expire=3600s/2781s
    'FGVM010000064692': ha_prio/o=1/1, link_failure=0, pingsvr_failure=0, flag=
0x00000000, uptime/reset_cnt=198/0
    'FGVM010000065036': ha_prio/o=0/0, link_failure=0, pingsvr_failure=0, flag=
0x00000001, uptime/reset_cnt=0/1
```

The exhibit displays the output of the CLI command: diagnose sys ha dump-by vcluster. Which two statements are true? (Choose two.)

- A. FortiGate SN FGVM010000065036 HA uptime has been reset.
- B. FortiGate devices are not in sync because one device is down.
- C. FortiGate SN FGVM010000064692 is the primary because of higher HA uptime.
- D. FortiGate SN FGVM010000064692 has the higher HA priority.

Answer: AD

Explanation:

* 1. Override is disable by default - OK

* 2. "If the HA uptime of a device is AT LEAST FIVE MINUTES (300 seconds) MORE than the HA Uptime of the other FortiGate devices, it becomes the primary"

The QUESTION NO: here is : HA Uptime of FGVM01000006492 > 5 minutes? NO - 198 seconds < 300 seconds (5 minutes) Page 314 Infra Study Guide.

<https://docs.fortinet.com/document/fortigate/6.0.0/handbook/666653/primary-unit-selection-with-override-disab>

NEW QUESTION 53

Why does FortiGate Keep TCP sessions in the session table for several seconds, even after both sides (client and server) have terminated the session?

- A. To allow for out-of-order packets that could arrive after the FIN/ACK packets
- B. To finish any inspection operations
- C. To remove the NAT operation
- D. To generate logs

Answer: A

Explanation:

TCP provides the ability for one end of a connection to terminate its output while still receiving data from the other end. This is called a half-close. FortiGate unit implements a specific timer before removing an entry in the firewall session table.

NEW QUESTION 54

Which scanning technique on FortiGate can be enabled only on the CLI?

- A. Heuristics scan
- B. Trojan scan
- C. Antivirus scan
- D. Ransomware scan

Answer: A

NEW QUESTION 58

Which of the following SD-WAN load balancing method use interface weight value to distribute traffic? (Choose two.)

- A. Source IP
- B. Spillover
- C. Volume
- D. Session

Answer: CD

Explanation:

<https://docs.fortinet.com/document/fortigate/6.0.0/handbook/49719/configuring-sd-wan-load-balancing>

NEW QUESTION 59

What are two characteristics of FortiGate HA cluster virtual IP addresses? (Choose two.)

- A. Virtual IP addresses are used to distinguish between cluster members.
- B. Heartbeat interfaces have virtual IP addresses that are manually assigned.
- C. The primary device in the cluster is always assigned IP address 169.254.0.1.
- D. A change in the virtual IP address happens when a FortiGate device joins or leaves the cluster.

Answer: AD

Explanation:

Fortigate Infrastructure 7.2 Study Guide page 301 FortiGate Infrastructure 7.2 Study Guide (p.301):

"FGCP automatically assigns the heartbeat IP addresses based on the serial number of each device. The IP address 169.254.0.1 is assigned to the device with the highest serial number."

"A change in the heartbeat IP addresses may happen when a FortiGate device joins or leaves the cluster." "The HA cluster uses the heartbeat IP addresses to distinguish the cluster members and synchronize data." <https://networkinterview.com/fortigate-ha-high-availability/>

NEW QUESTION 63

Which two inspection modes can you use to configure a firewall policy on a profile-based next-generation firewall (NGFW)? (Choose two.)

- A. Proxy-based inspection
- B. Certificate inspection
- C. Flow-based inspection
- D. Full Content inspection

Answer: AC

NEW QUESTION 64

Refer to the exhibits.

Exhibit A shows the application sensor configuration. Exhibit B shows the Excessive-Bandwidth and Apple filter details.

Exhibit A Exhibit B

Edit Application Sensor

Categories

- All Categories
- Business (179, 6)
- Collaboration (293, 6)
- Game (124)
- Mobile (3)
- P2P (85)
- Remote.Access (91)
- Storage.Backup (296, 16)
- Video/Audio (206, 13)
- Web.Client (18)
- Cloud.IT (31)
- Email (87, 12)
- General.Interest (241, 9)
- Network.Service (332)
- Proxy (106)
- Social.Media (150, 31)
- Update (48)
- VoIP (31)
- Unknown Applications

☐ Network Protocol Enforcement

Application and Filter Overrides

[+ Create New](#) [Edit](#) [Delete](#)

Priority	Details	Type	Action
1	BHVR Excessive-Bandwidth	Filter	Block
2	VEND Apple	Filter	Monitor

Exhibit A Exhibit B

Edit Override

Type: Application **Filter**

Action: Block

Filter: **BHVR** Excessive-Bandwidth

FaceTime

Name	Category	Technology
Application Signature 1/1262		
FaceTime	VoIP	Client-Server

Edit Override

Type: Application **Filter**

Action: Monitor

Filter: **VEND** Apple

FaceTime

Name	Category	Technology
Application Signature 1/33		
FaceTime	VoIP	Client-Server

Based on the configuration, what will happen to Apple FaceTime if there are only a few calls originating or incoming?

- A. Apple FaceTime will be allowed, based on the Categories configuration.
- B. Apple FaceTime will be blocked, based on the Excessive-Bandwidth filter configuration.
- C. Apple FaceTime will be allowed, based on the Apple filter configuration.
- D. Apple FaceTime will be allowed only if the Apple filter in Application and Filter Overrides is set to Allow.

Answer: B

Explanation:

FortiGate Security 7.2 Study Guide (p.310): "Then, FortiGate scans packets for matches, in this order, for the application control profile: 1. Application and filter overrides: If you have configured any application overrides or filter overrides, the application control profile considers those first. It looks for a matching override starting at the top of the list, like firewall policies. 2. Categories: Finally, the application control profile applies the action that you've configured for applications in your selected categories."

NEW QUESTION 65

Refer to the exhibit.

Outgoing interfaces

☐ Manual

Manually assign outgoing interfaces.

☒ Best Quality

The interface with the best measured performance is selected.

☐ Lowest Cost (SLA)

The interface that meets SLA targets is selected. When there is a tie, the interface with the lowest assigned cost is selected.

☐ Maximize Bandwidth (SLA)

Traffic is load balanced among interfaces that meet SLA targets.

Interface preference

port1

port2

port3

port4

Measured SLA

SLA_1

Quality criteria

Latency

Status

Enable

Disable

```
NGFW-1 # diagnose sys virtual-wan-link health-check
Health Check(DC_PBX_SLA):
Seq(1 port1): state(alive), packet-loss(0.000%) latency(21.566), jitter(2.685) sla_map=0x
Seq(2 port2): state(alive), packet-loss(0.000%) latency(54.349), jitter(4.287) sla_map=0x
Seq(3 port3): state(alive), packet-loss(0.100%) latency(32.683), jitter(5.685) sla_map=0x
Seq(4 port4): state(alive), packet-loss(2.010%) latency(48.881), jitter(4.287) sla_map=0x
```

The exhibit contains the configuration for an SD-WAN Performance SLA, as well as the output of diagnose sys virtual-wan-link health-check . Which interface will be selected as an outgoing interface?

- A. port2
- B. port4
- C. port3
- D. port1

Answer: D

Explanation:

Port 1 shows the lowest latency.

NEW QUESTION 67

Which two statements are correct regarding FortiGate HA cluster virtual IP addresses? (Choose two.)

- A. Heartbeat interfaces have virtual IP addresses that are manually assigned.
- B. A change in the virtual IP address happens when a FortiGate device joins or leaves the cluster.
- C. Virtual IP addresses are used to distinguish between cluster members.
- D. The primary device in the cluster is always assigned IP address 169.254.0.1.

Answer: BD

NEW QUESTION 72

Refer to the exhibit.

Name

SLA1

Protocol

Ping

HTTP

DNS

Server

4.2.2.2

4.2.2.1

Participants

All SD-WAN Members

Specify

port1

port2

Enable probe packets

☐

An administrator has configured a performance SLA on FortiGate, which failed to generate any traffic. Why is FortiGate not sending probes to 4.2.2.2 and 4.2.2.1 servers? (Choose two.)

- A. The Detection Mode setting is not set to Passive.
- B. Administrator didn't configure a gateway for the SD-WAN members, or configured gateway is not valid.
- C. The configured participants are not SD-WAN members.
- D. The Enable probe packets setting is not enabled.

Answer: BD

NEW QUESTION 76

Refer to the exhibit.

The exhibit shows the output of a diagnose command.

```
# diagnose firewall proute list
list route policy info(vf=root):
id=2130903041(0x7f030001) vwl_service=1(Critical-DIA) vwl_mbr_seq=1 2 desc_tag=0xff 0xff
flags=0x0 tos=0x00 tos_mask=0x00 protocol=0 sport=0-65535 iif=0 dport=1-65535 path(2)
oif=3(port1) oif=4(port2)
source(1): 10.0.1.0-10.0.1.255
destination wildcard(1): 0.0.0.0/0.0.0.0
internet service(3): GoToMeeting(4294836966,0,0,0, 16354)
Microsoft.Office.365.Portal(4294837474,0,0,0, 41468) Salesforce(4294837976,0,0,0, 16920)
hit_count=0 last_used=2022-02-23 05:46:43
```

What does the output reveal about the policy route?

- A. It is an ISDB route in policy route.
- B. It is a regular policy route.
- C. It is an ISDB policy route with an SDWAN rule.
- D. It is an SDWAN rule in policy route.

Answer: D

Explanation:

FortiGate Infrastructure 7.2 Study Guide (p.59): "ISDB routes and SD-WAN rules are assigned an ID higher than 65535. However, SD-WAN rule entries include the vwl_service field, and ISDB route entries don't."

NEW QUESTION 79

Which three options are the remote log storage options you can configure on FortiGate? (Choose three.)

- A. FortiCache
- B. FortiSIEM
- C. FortiAnalyzer
- D. FortiSandbox
- E. FortiCloud

Answer: BCE

NEW QUESTION 81

Which CLI command will display sessions both from client to the proxy and from the proxy to the servers?

- A. diagnose wad session list
- B. diagnose wad session list | grep hook-pre&&hook-out
- C. diagnose wad session list | grep hook=pre&&hook=out
- D. diagnose wad session list | grep "hook=pre"&"hook=out"

Answer: A

NEW QUESTION 83

Which two types of traffic are managed only by the management VDOM? (Choose two.)

- A. FortiGuard web filter queries
- B. PKI
- C. Traffic shaping
- D. DNS

Answer: AD

NEW QUESTION 84

A network administrator is configuring a new IPsec VPN tunnel on FortiGate. The remote peer IP address is dynamic. In addition, the remote peer does not support a dynamic DNS update service.

What type of remote gateway should the administrator configure on FortiGate for the new IPsec VPN tunnel to work?

- A. Static IP Address
- B. Dialup User
- C. Dynamic DNS
- D. Pre-shared Key

Answer: B

Explanation:

Dialup user is used when the remote peer's IP address is unknown. The remote peer whose IP address is unknown acts as the dialup clien and this is often the case for branch offices and mobile VPN clients that use dynamic IP address and no dynamic DNS

NEW QUESTION 85

Refer to the web filter raw logs.

```
date=2020-07-09 time=12:51:51 logid="0316013057" type="utm"
subtype="webfilter" eventtype="ftgd_blk" level="warning"
vd="root" eventtime=1594313511250173744 tz="-0400" policyid=1
sessionid=5526 srcip=10.0.1.10 srcport=48660 srcintf="port2"
srcintfrole="undefined" dstip=104.244.42.193 dstport=443
dstintf="port1" dstintfrole="undefined" proto=6 service="HTTPS"
hostname="twitter.com" profile="all_users_web" action="blocked"
reqtype="direct" url="https://twitter.com/" sentbyte=517
rcvdbyte=0 direction="outgoing" msg="URL belongs to a category
with warnings enabled" method="domain" cat=37 catdesc="Social
Networking"

date=2020-07-09 time=12:52:16 logid="0316013057" type="utm"
subtype="webfilter" eventtype="ftgd_blk" level="warning"
vd="root" eventtime=1594313537024536428 tz="-0400" policyid=1
sessionid=5552 srcip=10.0.1.10 srcport=48698 srcintf="port2"
srcintfrole="undefined" dstip=104.244.42.193 dstport=443
dstintf="port1" dstintfrole="undefined" proto=6 service="HTTPS"
hostname="twitter.com" profile="all_users_web"
action="passthrough" reqtype="direct" url="https://twitter.com/"
sentbyte=369 rcvdbyte=0 direction="outgoing" msg="URL belongs to
a category with warnings enabled" method="domain" cat=37
catdesc="Social Networking"
```

Based on the raw logs shown in the exhibit, which statement is correct?

- A. Social networking web filter category is configured with the action set to authenticate.
- B. The action on firewall policy ID 1 is set to warning.
- C. Access to the social networking web filter category was explicitly blocked to all users.
- D. The name of the firewall policy is all_users_web.

Answer: A

NEW QUESTION 86

Which timeout setting can be responsible for deleting SSL VPN associated sessions?

- A. SSL VPN idle-timeout
- B. SSL VPN http-request-body-timeout
- C. SSL VPN login-timeout
- D. SSL VPN dtls-hello-timeout

Answer: A

NEW QUESTION 89

The HTTP inspection process in web filtering follows a specific order when multiple features are enabled in the web filter profile. What order must FortiGate use when the web filter profile has features enabled, such as safe search?

- A. DNS-based web filter and proxy-based web filter
- B. Static URL filter, FortiGuard category filter, and advanced filters
- C. Static domain filter, SSL inspection filter, and external connectors filters
- D. FortiGuard category filter and rating filter

Answer: B

Explanation:

FortiGate Security 7.2 Study Guide (p.285): "Remember that the web filtering profile has several features. So, if you have enabled many of them, the inspection order flows as follows: 1. The local static URL filter 2. FortiGuard category filtering (to determine a rating) 3. Advanced filters (such as safe search or removing Active X components)"

NEW QUESTION 91

Which two statements are true about the FGCP protocol? (Choose two.)

- A. FGCP elects the primary FortiGate device.
- B. FGCP is not used when FortiGate is in transparent mode.
- C. FGCP runs only over the heartbeat links.
- D. FGCP is used to discover FortiGate devices in different HA groups.

Answer: AC

Explanation:

The FGCP (FortiGate Clustering Protocol) is a protocol that is used to manage high availability (HA) clusters of FortiGate devices. It performs several functions, including the following:

FGCP elects the primary FortiGate device: In an HA cluster, FGCP is used to determine which FortiGate device will be the primary device, responsible for handling traffic and making decisions about what to allow or block. FGCP uses a variety of factors, such as the device's priority, to determine which device should be the primary.

FGCP runs only over the heartbeat links: FGCP communicates between FortiGate devices in the HA cluster using the heartbeat links. These are dedicated links that are used to exchange status and control information between the devices. FGCP does not run over other types of links, such as data links.

NEW QUESTION 95

When a firewall policy is created, which attribute is added to the policy to support recording logs to a FortiAnalyzer or a FortiManager and improves functionality when a FortiGate is integrated with these devices?

- A. Log ID
- B. Universally Unique Identifier
- C. Policy ID
- D. Sequence ID

Answer: B

Explanation:

FortiGate Security 7.2 Study Guide (p.67): "When creating firewall objects or policies, a universally unique identifier (UUID) attribute is added so that logs can record these UUIDs and improve functionality when integrating with FortiManager or FortiAnalyzer."

NEW QUESTION 97

Which two statements are true about the Security Fabric rating? (Choose two.)

- A. It provides executive summaries of the four largest areas of security focus.
- B. Many of the security issues can be fixed immediately by clicking Apply where available.
- C. The Security Fabric rating must be run on the root FortiGate device in the Security Fabric.
- D. The Security Fabric rating is a free service that comes bundled with all FortiGate devices.

Answer: BC

NEW QUESTION 102

Refer to the exhibits.

Exhibit A
Exhibit B

The screenshot displays the FortiGate Security Fabric configuration interface. At the top, there is a search bar and a dropdown menu set to 'Upstream: Internet'. Below this, a network diagram shows a cloud icon connected to a 'Local-FortiGate Fabric Root' icon, which is in turn connected to an 'ISFW' icon. In the bottom-left corner, an 'Edit Address' dialog box is open, showing the following fields:

- Name: Net_Add_1
- Color: (icon) Change
- Type: Subnet
- IP/Netmask: 1.1.1.0 255.255.255.0
- Interface: any
- Fabric synchronization: ☒
- Static route configuration: ☐
- Comments: Write a comment... (0/255)

Exhibit A Exhibit B

<pre>Local-FortiGate # show full-configuration system csf config system csf set status enable set upstream '' set upstream-port 8013 set group-name "fortinet" set group-password ENC Y9ynT+64RpCTpVdgSmoQH242mYSIzNNzLNvgzMXjyN 9hsj1JE3KYJlo3XxygldvNxPId8T5xctBUszy7rgIcHcA/qHrByXSxfPEeHC6ufkqlPJr W6GypwDUB5O3VFgPbASFYyteQesmwoJtGe848Lqa+hUcgunLD1z/97sBp+PLt5nrA== set accept-auth-by-cert enable set log-unification enable set authorization-request-type serial set fabric-workers 2 set downstream-access disable set configuration-sync default set fabric-object-unification default set saml-configuration-sync default</pre>	<pre>ISFW # show full-configuration system csf config system csf set status enable set upstream "10.0.1.254" set upstream-port 8013 set group-name '' set accept-auth-by-cert enable set log-unification enable set authorization-request-type serial set fabric-workers 2 set downstream-access disable set configuration-sync default set saml-configuration-sync local end ISFW #</pre>
--	---

An administrator creates a new address object on the root FortiGate (Local-FortiGate) in the security fabric. After synchronization, this object is not available on the downstream FortiGate (ISFW).
What must the administrator do to synchronize the address object?

- A. Change the csf setting on ISFW (downstream) to set configuration-sync local.
- B. Change the csf setting on ISFW (downstream) to set authorization-request-type certificate.
- C. Change the csf setting on both devices to set downstream-access enable.
- D. Change the csf setting on Local-FortiGate (root) to set fabric-object-unification default.

Answer: C

NEW QUESTION 103

FortiGuard categories can be overridden and defined in different categories. To create a web rating override for example.com home page, the override must be configured using a specific syntax.
Which two syntaxes are correct to configure web rating for the home page? (Choose two.)

- A. www.example.com:443
- B. www.example.com
- C. example.com
- D. www.example.com/index.html

Answer: BC

Explanation:

When using FortiGuard category filtering to allow or block access to a website, one option is to make a web rating override and define the website in a different category. Web ratings are only for host names - no URLs or wildcard characters are allowed.
OK: google.com or www.google.com
NO OK: www.google.com/index.html or google.* FortiGate_Security_6.4 page 384
When using FortiGuard category filtering to allow or block access to a website, one option is to make a web rating override and define the website in a different category. Web ratings are only for host names-- "no URLs or wildcard characters are allowed".

NEW QUESTION 104

Refer to the exhibits.
The exhibits show the firewall policies and the objects used in the firewall policies.
The administrator is using the Policy Lookup feature and has entered the search criteria shown in the exhibit.

Exhibit A Exhibit B

Address Object

Name	Details
IP Range/Subnet 10	
LOCAL_CLIENT	10.0.1.10/32
all	0.0.0.0
FQDN 5	
facebook.com	facebook.com

Internet Service Object

Name	Direction	Number of Entries
Predefined Internet Services 1,633		
Facebook-Web	Destination	26,578
IP	Port	Protocol
1.9.91.17 - 1.9.91.18	80	TCP
	443	
	8443	
1.9.91.17 - 1.9.91.18	443	UDP
1.9.91.30	443	UDP

Firewall Policies

ID	From	To	Source	Destination	Schedule	Service	Action	NAT
3	port3	port1	LOCAL_CLIENT	facebook.com	always	ULL_UDP	✓ ACCEPT	Enabled
1	port1	port3	facebook.com	LOCAL_CLIENT	always	ULL_UDP	✓ ACCEPT	Enabled
4	port4	port1	LOCAL_CLIENT	all	always	HTTP DNS HTTPS	✓ ACCEPT	Enabled
5	port3	port1	LOCAL_CLIENT	Facebook-Web	always	Internet Service	✓ ACCEPT	Enabled
2	port3	port1	all	all	always	ALL	✓ ACCEPT	Enabled

Exhibit A Exhibit B

Policy Lookup

Incoming Interface

port3

IP Version

IPv4

Protocol

TCP

Source

10.0.1.10

Source Port

Optional (1-65535)

Destination

facebook.com

Destination Port

443

Search

Close

Which policy will be highlighted, based on the input criteria?

- A. Policy with ID 4.
- B. Policy with ID 5.
- C. Policies with ID 2 and 3.
- D. Policy with ID 4.

Answer: B

NEW QUESTION 108

By default, FortiGate is configured to use HTTPS when performing live web filtering with FortiGuard servers. Which CLI command will cause FortiGate to use an unreliable protocol to communicate with FortiGuard servers for live web filtering?

- A. set fortiguard-anycast disable
- B. set webfilter-force-off disable

- C. set webfilter-cache disable
- D. set protocol tcp

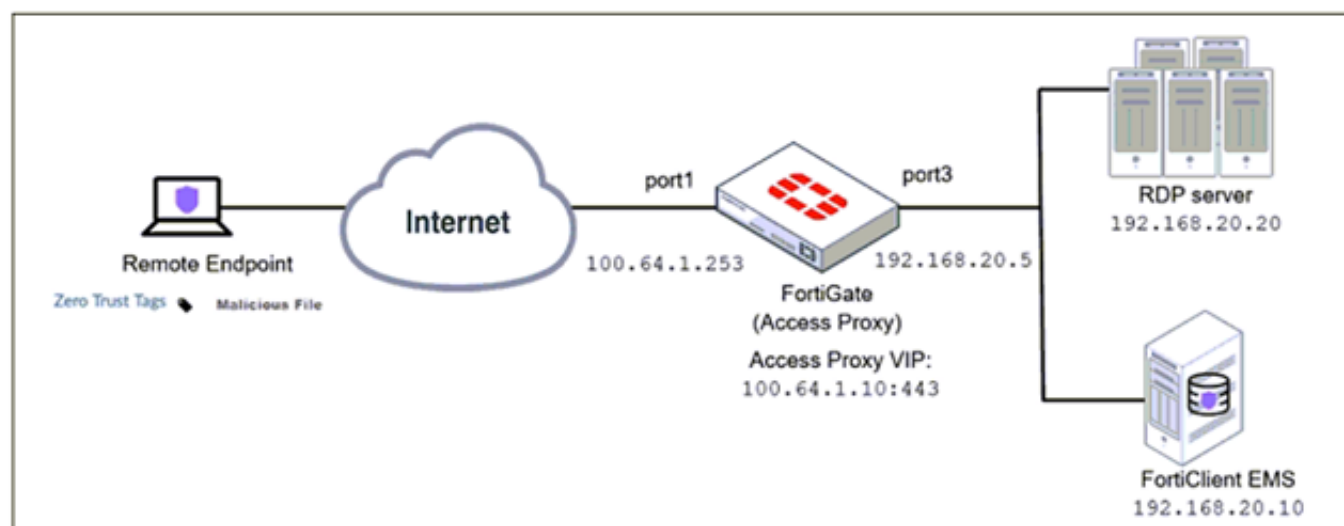
Answer: A

Explanation:

By default, "fortiguard-anycast" is enabled, and this setting only works with "set protocol https". To use udp (ie. "set protocol udp"), "fortiguard-anycast" must be disabled.

NEW QUESTION 112

Refer to the exhibit.



Based on the ZTNA tag, the security posture of the remote endpoint has changed. What will happen to endpoint active ZTNA sessions?

- A. They will be re-evaluated to match the endpoint policy.
- B. They will be re-evaluated to match the firewall policy.
- C. They will be re-evaluated to match the ZTNA policy.
- D. They will be re-evaluated to match the security policy.

Answer: C

Explanation:

<https://docs.fortinet.com/document/fortigate/7.0.0/new-features/580880/posture-check-verification-for-active-zt> FortiGate Infrastructure 7.2 Study Guide (p.182): "Endpoint posture changes trigger active ZTNA proxy sessions to be re-verified and terminated if the endpoint is no longer compliant with the ZTNA policy."

NEW QUESTION 116

How does FortiGate act when using SSL VPN in web mode?

- A. FortiGate acts as an FDS server.
- B. FortiGate acts as an HTTP reverse proxy.
- C. FortiGate acts as DNS server.
- D. FortiGate acts as router.

Answer: B

NEW QUESTION 118

Which two statements about FortiGate FSSO agentless polling mode are true? (Choose two.)

- A. FortiGate uses the AD server as the collector agent.
- B. FortiGate uses the SMB protocol to read the event viewer logs from the DCs.
- C. FortiGate does not support workstation check .
- D. FortiGate directs the collector agent to use a remote LDAP server.

Answer: BC

Explanation:

You can deploy FSSO w/o installing an agent. FG polls the DCs directly, instead of receiving logon info indirectly from a collector agent. Because FG collects all of the data itself, agentless polling mode requires greater system resources, and it doesn't scale as easily. Agentless polling mode operates in a similar way to WinSecLog, but with only two event IDs: 4768 and 4769. Because there's no collector agent, FG uses the SMB protocol to read the event viewer logs from the DCs. FG acts as a collector. It 's responsible for polling on top of its normal FSSO tasks but does not have all the extra features, such as workstation checks, that are available with the external collector agent.

NEW QUESTION 120

Examine the exhibit, which contains a virtual IP and firewall policy configuration.

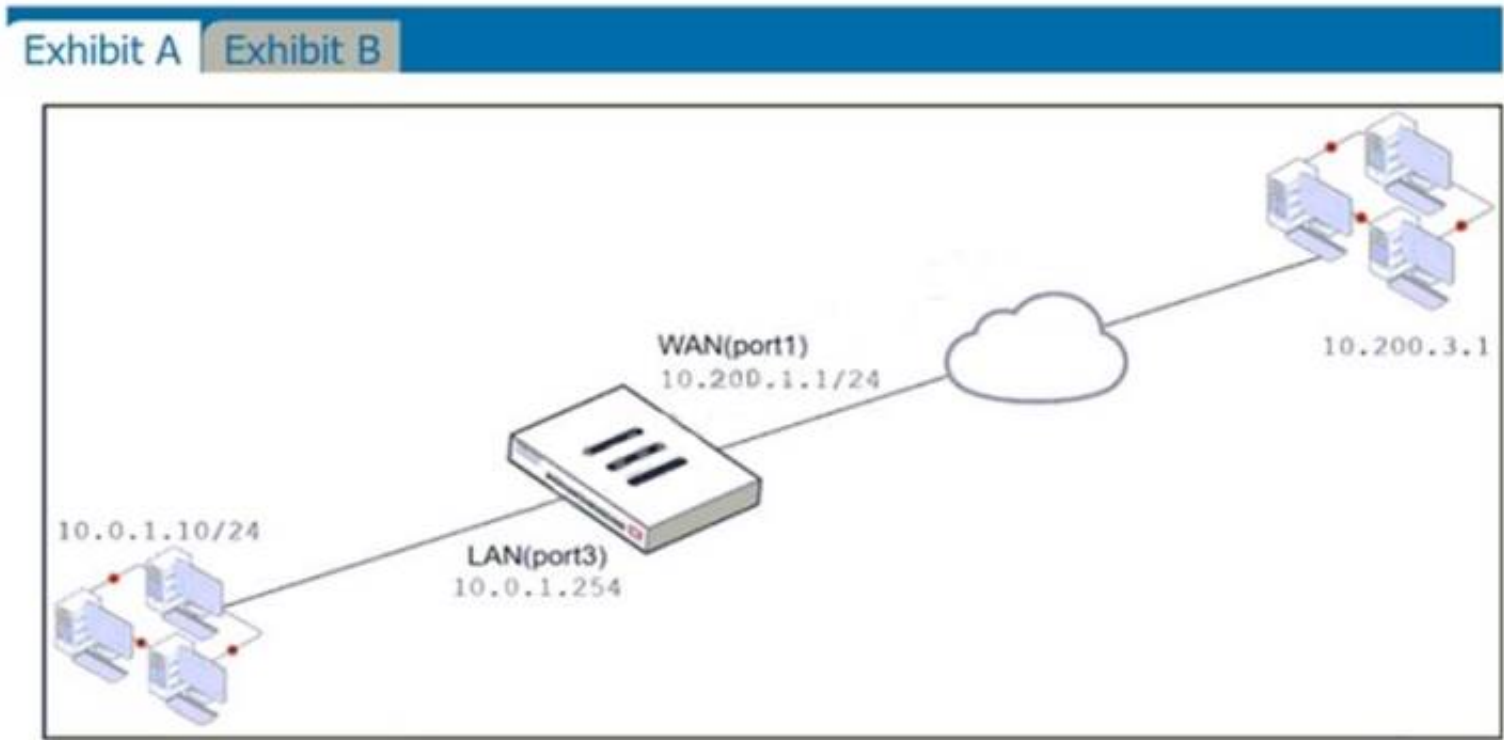


Exhibit AExhibit B

Name	From	To	Source	Destination	Schedule	Service	Action	NAT
WebServer	WAN (port1)	LAN (port3)	all	VIP	always	ALL	ACCEPT	Enabled

Edit Virtual IP

VIP type

IPv4

Name

VIP

Comments

Write a comment...

0/255

Color

Change

Network

Interface

WAN (port1)

Type

Static NAT

External IP address/range

10.200.1.10

Map to

IPv4 address/range

10.0.1.10

Optional Filters

Port Forwarding

Protocol

TCPUDP SCTP ICMP

Port Mapping Type

One to oneMany to many

External service port

10443

Map to IPv4 port

443

The WAN (port1) interface has the IP address 10.200. 1. 1/24. The LAN (port2) interface has the IP address 10.0. 1.254/24. The first firewall policy has NAT enabled on the outgoing interface address. The second firewall policy is configured with a VIP as the destination address. Which IP address will be used to source NAT the Internet traffic coming from a workstation with the IP address 10.0. 1. 10/24?

- A. 10.200. 1. 10
- B. Any available IP address in the WAN (port1) subnet 10.200. 1.0/24 66 of 108
- C. 10.200. 1. 1
- D. 10.0. 1.254

Answer: A

Explanation:
<https://help.fortinet.com/fos50hlp/54/Content/FortiOS/fortigate-firewall-52/Firewall%20Objects/Virtual%20IPs>.

NEW QUESTION 125

An administrator observes that the port1 interface cannot be configured with an IP address. What can be the reasons for that? (Choose three.)

- A. The interface has been configured for one-arm sniffer.
- B. The interface is a member of a virtual wire pair.
- C. The operation mode is transparent.
- D. The interface is a member of a zone.
- E. Captive portal is enabled in the interface.

Answer: ABC

Explanation:

https://help.fortinet.com/fos50hlp/54/Content/FortiOS/fortigate-whats-new-54/Top_VirtualWirePair.htm

NEW QUESTION 127

An administrator must disable RPF check to investigate an issue.

Which method is best suited to disable RPF without affecting features like antivirus and intrusion prevention system?

- A. Enable asymmetric routing, so the RPF check will be bypassed.
- B. Disable the RPF check at the FortiGate interface level for the source check.
- C. Disable the RPF check at the FortiGate interface level for the reply check .
- D. Enable asymmetric routing at the interface level.

Answer: B

NEW QUESTION 130

Which statement regarding the firewall policy authentication timeout is true?

- A. It is an idle timeou
- B. The FortiGate considers a user to be "idle" if it does not see any packets coming from the user's source IP.
- C. It is a hard timeou
- D. The FortiGate removes the temporary policy for a user's source IP address after this timer has expired.
- E. It is an idle timeou
- F. The FortiGate considers a user to be "idle" if it does not see any packets coming from the user's source MAC.
- G. It is a hard timeou
- H. The FortiGate removes the temporary policy for a user's source MAC address after this timer has expired.

Answer: A

NEW QUESTION 131

Which of the following are valid actions for FortiGuard category based filter in a web filter profile ui proxy-based inspection mode? (Choose two.)

- A. Warning
- B. Exempt
- C. Allow
- D. Learn

Answer: AC

NEW QUESTION 135

Which of the following statements about central NAT are true? (Choose two.)

- A. IP tool references must be removed from existing firewall policies before enabling central NAT .
- B. Central NAT can be enabled or disabled from the CLI only.
- C. Source NAT, using central NAT, requires at least one central SNAT policy.
- D. Destination NAT, using central NAT, requires a VIP object as the destination address in a firewall.

Answer: AB

NEW QUESTION 139

Refer to the exhibit.



Which contains a session diagnostic output. Which statement is true about the session diagnostic output?

- A. The session is in SYN_SENT state.

- B. The session is in FIN_ACK state.
- C. The session is in FTN_WAIT state.
- D. The session is in ESTABLISHED state.

Answer: A

Explanation:

Indicates TCP (proto=6) session in SYN_SENT state (proto=state=2) <https://kb.fortinet.com/kb/viewContent.do?externalId=FD30042>

NEW QUESTION 140

Consider the topology:

Application on a Windows machine <--(SSL VPN)-->FGT--> Telnet to Linux server.

An administrator is investigating a problem where an application establishes a Telnet session to a Linux server over the SSL VPN through FortiGate and the idle session times out after about 90 minutes. The administrator would like to increase or disable this timeout.

The administrator has already verified that the issue is not caused by the application or Linux server. This issue does not happen when the application establishes a Telnet connection to the Linux server directly on the LAN.

What two changes can the administrator make to resolve the issue without affecting services running through FortiGate? (Choose two.)

- A. Set the maximum session TTL value for the TELNET service object.
- B. Set the session TTL on the SSLVPN policy to maximum, so the idle session timeout will not happen after 90 minutes.
- C. Create a new service object for TELNET and set the maximum session TTL.
- D. Create a new firewall policy and place it above the existing SSLVPN policy for the SSL VPN traffic, and set the new TELNET service object in the policy.

Answer: CD

NEW QUESTION 141

An administrator needs to increase network bandwidth and provide redundancy.

What interface type must the administrator select to bind multiple FortiGate interfaces?

- A. VLAN interface
- B. Software Switch interface
- C. Aggregate interface
- D. Redundant interface

Answer: C

Explanation:

An aggregate interface is a logical interface that combines two or more physical interfaces into one virtual interface¹. An aggregate interface can increase network bandwidth and provide redundancy by distributing traffic across multiple physical interfaces using a load balancing algorithm¹. An aggregate interface can also support link aggregation control protocol (LACP) to negotiate the link aggregation settings with the connected device¹.

NEW QUESTION 142

Refer to the exhibit.

```
# diagnose test application ipsmonitor
1: Display IPS engine information
2: Toggle IPS engine enable/disable status
3: Display restart log
4: Clear restart log
5: Toggle bypass status
98: Stop all IPS engines
99: Restart all IPS engines and monitor
```

Examine the intrusion prevention system (IPS) diagnostic command.

Which statement is correct If option 5 was used with the IPS diagnostic command and the outcome was a decrease in the CPU usage?

- A. The IPS engine was inspecting high volume of traffic.
- B. The IPS engine was unable to prevent an intrusion attack .
- C. The IPS engine was blocking all traffic.
- D. The IPS engine will continue to run in a normal state.

Answer: A

Explanation:

fortinet-fortigate-security-study-guide-for-fortios-72 page 417 If there are high-CPU use problems caused by the IPS, you can use the diagnose test application ipsmonitor command with option 5 to isolate where the problem might be. Option 5 enables IPS bypass mode. In this mode, the IPS engine is still running, but it is not inspecting traffic. If the CPU use decreases after that, it usually indicates that the volume of traffic being inspected is too high for that FortiGate model.

NEW QUESTION 145

Which two configuration settings are synchronized when FortiGate devices are in an active-active HA cluster? (Choose two.)

- A. FortiGuard web filter cache
- B. FortiGate hostname
- C. NTP
- D. DNS

Answer: CD

Explanation:

In the 7.2 Infrastructure Guide (page 306) the list of configuration settings that are NOT synchronized includes both 'FortiGate host name' and 'Cache'

NEW QUESTION 146

FortiGate is configured as a policy-based next-generation firewall (NGFW) and is applying web filtering and application control directly on the security policy. Which two other security profiles can you apply to the security policy? (Choose two.)

- A. Antivirus scanning
- B. File filter
- C. DNS filter
- D. Intrusion prevention

Answer: AD

NEW QUESTION 148

An administrator wants to configure timeouts for users. Regardless of the userTMs behavior, the timer should start as soon as the user authenticates and expire after the configured value.

Which timeout option should be configured on FortiGate?

- A. auth-on-demand
- B. soft-timeout
- C. idle-timeout
- D. new-session
- E. hard-timeout

Answer: E

Explanation:

<https://community.fortinet.com/t5/FortiGate/Technical-TipExplanation:-of-auth-timeout-types-for-Firewall/ta-p/>

NEW QUESTION 150

Which CLI command allows administrators to troubleshoot Layer 2 issues, such as an IP address conflict?

- A. get system status
- B. get system performance status
- C. diagnose sys top
- D. get system arp

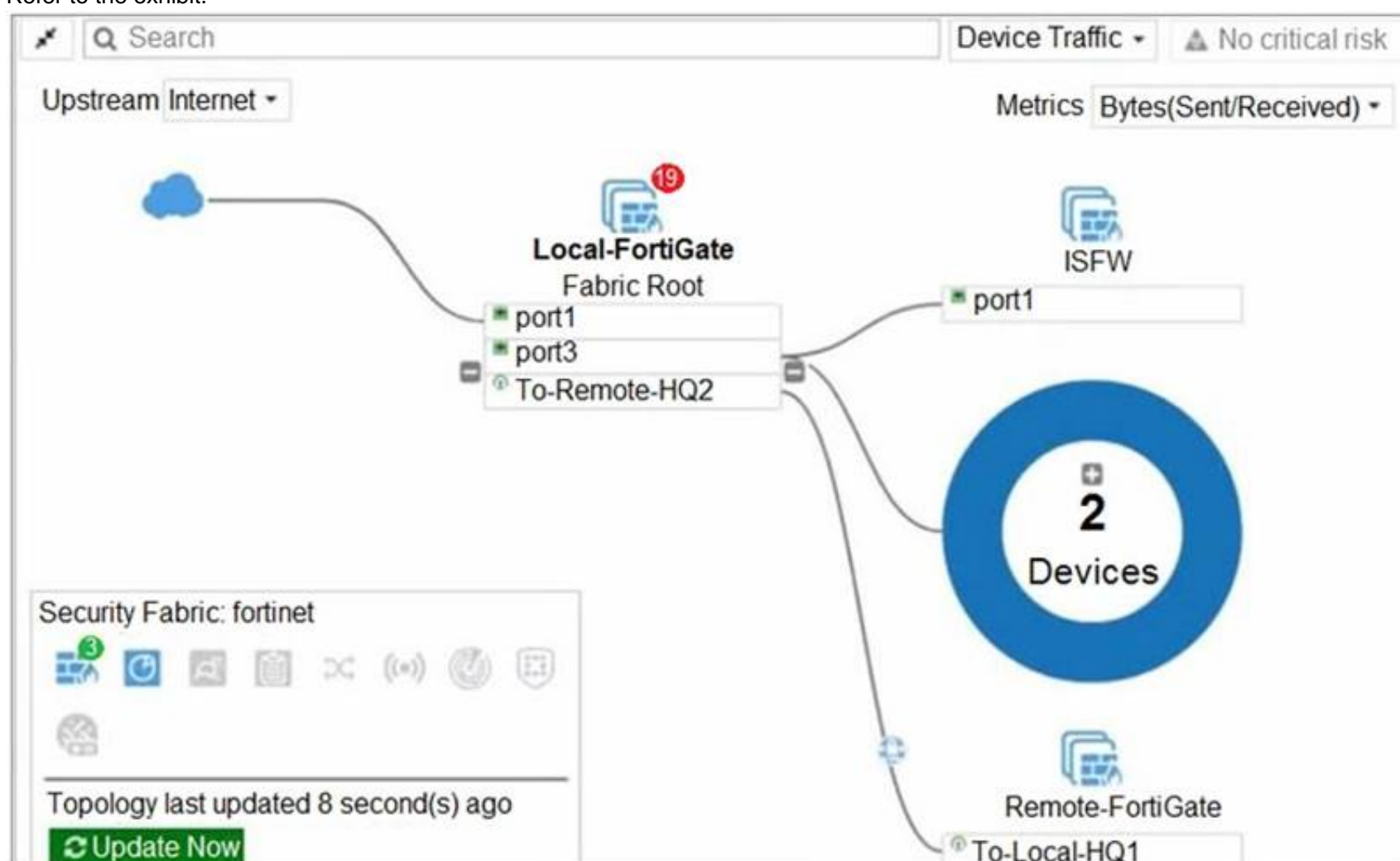
Answer: D

Explanation:

"If you suspect that there is an IP address conflict, or that an IP has been assigned to the wrong device, you may need to look at the ARP table."

NEW QUESTION 155

Refer to the exhibit.



Given the security fabric topology shown in the exhibit, which two statements are true? (Choose two.)

- A. There are five devices that are part of the security fabric.
- B. Device detection is disabled on all FortiGate devices.
- C. This security fabric topology is a logical topology view.
- D. There are 19 security recommendations for the security fabric.

Answer: CD

Explanation:

References: <https://docs.fortinet.com/document/fortigate/5.6.0/cookbook/761085/results>

<https://docs.fortinet.com/document/fortimanager/6.2.0/new-features/736125/security-fabric-topology>

NEW QUESTION 158

Which certificate value can FortiGate use to determine the relationship between the issuer and the certificate?

- A. Subject Key Identifier value
- B. SMMIE Capabilities value
- C. Subject value
- D. Subject Alternative Name value

Answer: A

NEW QUESTION 160

What is the limitation of using a URL list and application control on the same firewall policy, in NGFW policy-based mode?

- A. It limits the scope of application control to the browser-based technology category only.
- B. It limits the scope of application control to scan application traffic based on application category only.
- C. It limits the scope of application control to scan application traffic using parent signatures only
- D. It limits the scope of application control to scan application traffic on DNS protocol only.

Answer: B

NEW QUESTION 164

If the Issuer and Subject values are the same in a digital certificate, which type of entity was the certificate issued to?

- A. A CRL
- B. A person
- C. A subordinate CA
- D. A root CA

Answer: D

NEW QUESTION 167

Which statement correctly describes the use of reliable logging on FortiGate?

- A. Reliable logging is enabled by default in all configuration scenarios.
- B. Reliable logging is required to encrypt the transmission of logs.
- C. Reliable logging can be configured only using the CLI.
- D. Reliable logging prevents the loss of logs when the local disk is full.

Answer: B

Explanation:

FortiGate Security 7.2 Study Guide (p.192): "if using reliable logging, you can encrypt communications using SSL-encrypted OFTP traffic, so when a log message is generated, it is safely transmitted across an unsecure network. You can choose the level of SSL protection used by configuring the enc-algorithm setting on the CLI."

NEW QUESTION 171

Which statement about the IP authentication header (AH) used by IPsec is true?

- A. AH does not provide any data integrity or encryption.
- B. AH does not support perfect forward secrecy.
- C. AH provides data integrity but no encryption.
- D. AH provides strong data integrity but weak encryption.

Answer: C

NEW QUESTION 175

You have enabled logging on a FortiGate device for event logs and all security logs, and you have set up logging to use the FortiGate local disk. What is the default behavior when the local disk is full?

- A. No new log is recorded after the warning is issued when log disk use reaches the threshold of 95%.
- B. No new log is recorded until you manually clear logs from the local disk.
- C. Logs are overwritten and the first warning is issued when log disk use reaches the threshold of 75%.
- D. Logs are overwritten and the only warning is issued when log disk use reaches the threshold of 95%.

Answer: C

Explanation:

config log disk setting

set diskfull [overwrite | nolog]

Action to take when disk is full. The system can overwrite the oldest log messages or stop logging when the disk is full. (default --> overwrite)

config log memory global-setting

set full-first-warning-threshold {integer}

Log full first warning threshold as a percent. (default --> 75)

NEW QUESTION 177

Refer to the exhibit, which contains a session diagnostic output.

```
session info: proto=17 proto_state=01 duration=254 expire=179 timeout=0 flags=00000000 socktype=0 sockport=0 av_idx=0 use=3
origin-shaper=
reply-shaper=
per_ip_shaper=
class_id=0 ha_id=0 policy_dir=0 tunnel=/ helper=dns-udp vlan_cos=0/255
state=log may_dirty f00 log-start
statistic(bytes/packets/allow_err): org=1420/22/1 reply=5678/22/1 tuples=2
tx speed(Bps/kbps): 5/0 rx speed(Bps/kbps): 22/0
origin->sink: org pre->post, reply pre->post dev=5->3/3->5 gwy=10.200.1.254/10.0.1.200
hook=post dir=org act=snat 10.0.1.200:2486->208.91.112.53:53(10.200.1.1:62902)
hook=pre dir=reply act=dnat 208.91.112.53:53->10.200.1.1:62902(10.0.1.200:2486)
misc=0 policy_id=3 auth_info=0 chk_client_info=0 vd=0
serial=0001fc1e tos=ff/ff app_list=0 app=0 url_cat=0
rpd_b_link_id= 00000000 rpd_b_svc_id=0 ngfwid=n/a
npu_state=0x040000
```

Which statement is true about the session diagnostic output?

- A. The session is a UDP unidirectional state.
- B. The session is in TCP ESTABLISHED state.
- C. The session is a bidirectional UDP connection.
- D. The session is a bidirectional TCP connection.

Answer: C

Explanation:

<https://kb.fortinet.com/kb/viewContent.do?externalId=FD30042>

NEW QUESTION 181

Refer to the exhibit showing a debug flow output.

```
id=20085 trace_id=1 func=print_pkt_detail line=5594 msg="vd-root:0 received a packet(proto=1,
10.0.1.10:19938->10.0.1.250:2048) form port1. type=8, code=0, id=19938, seq=1."
id=20085 trace_id=1 func=init_ip_session_common line=5760 msg="allocate a new session-00003dd5"
id=20085 trace_id=1 func=vf_ip_route_input_common line=2598 msg="find a route: flag=84000000 gw-
10.0.1.250 via root"
id=20085 trace_id=2 func=print_pkt_detail line=5594 msg="vd-root:0 received a packet(proto=1,
10.0.1.250:19938->10.0.1.10:0) form local. type=0, code=0, id=19938, seq=1."
id=20085 trace_id=2 func=resolve_ip_tuple_fast line=5675 msg="Find an existing session, id-
00003dd5, reply direction"
```

Which two statements about the debug flow output are correct? (Choose two.)

- A. The debug flow is of ICMP traffic.
- B. A firewall policy allowed the connection.
- C. A new traffic session is created.
- D. The default route is required to receive a reply.

Answer: AC

NEW QUESTION 184

Which statement is correct regarding the inspection of some of the services available by web applications embedded in third-party websites?

- A. The security actions applied on the web applications will also be explicitly applied on the third-party websites.
- B. The application signature database inspects traffic only from the original web application server.
- C. FortiGuard maintains only one signature of each web application that is unique.
- D. FortiGate can inspect sub-application traffic regardless where it was originate

Answer: D

NEW QUESTION 189

Which three authentication timeout types are availability for selection on FortiGate? (Choose three.)

- A. hard-timeout
- B. auth-on-demand
- C. soft-timeout

D. new-session
E. Idle-timeout

Answer: ADE

Explanation:

<https://kb.fortinet.com/kb/documentLink.do?externalID=FD37221>

NEW QUESTION 191

.....

Thank You for Trying Our Product

* 100% Pass or Money Back

All our products come with a 90-day Money Back Guarantee.

* One year free update

You can enjoy free update one year. 24x7 online support.

* Trusted by Millions

We currently serve more than 30,000,000 customers.

* Shop Securely

All transactions are protected by VeriSign!

100% Pass Your NSE4_FGT-7.2 Exam with Our Prep Materials Via below:

https://www.certleader.com/NSE4_FGT-7.2-dumps.html