



Cisco

Exam Questions 350-401

Implementing and Operating Cisco Enterprise Network Core Technologies

About ExamBible

[Your Partner of IT Exam](#)

Found in 1998

ExamBible is a company specialized on providing high quality IT exam practice study materials, especially Cisco CCNA, CCDA, CCNP, CCIE, Checkpoint CCSE, CompTIA A+, Network+ certification practice exams and so on. We guarantee that the candidates will not only pass any IT exam at the first attempt but also get profound understanding about the certificates they have got. There are so many alike companies in this industry, however, ExamBible has its unique advantages that other companies could not achieve.

Our Advances

* 99.9% Uptime

All examinations will be up to date.

* 24/7 Quality Support

We will provide service round the clock.

* 100% Pass Rate

Our guarantee that you will pass the exam.

* Unique Gurantee

If you do not pass the exam at the first time, we will not only arrange FULL REFUND for you, but also provide you another exam of your claim, ABSOLUTELY FREE!

NEW QUESTION 1

A network administrator is implementing a routing configuration change and enables routing debugs to track routing behavior during the change. The logging output on the terminal is interrupting the command typing process. Which two actions can the network administrator take to minimize the possibility of typing commands incorrectly? (Choose two.)

- A. Configure the logging synchronous global configuration command
- B. Configure the logging delimiter feature
- C. Configure the logging synchronous command under the vty
- D. Press the TAB key to reprint the command in a new line
- E. increase the number of lines on the screen using the terminal length command

Answer: CD

NEW QUESTION 2

Which function is handled by vManage in the Cisco SD-WAN fabric?

- A. Establishes BFD sessions to test liveliness of links and nodes.
- B. Distributes policies that govern data forwarding.
- C. Performs remote software upgrades for WAN Edge vSmart and vBond.
- D. Establishes IPsec tunnels with nodes

Answer: C

NEW QUESTION 3

Which DHCP option helps lightweight APs find the IP address of a wireless LAN controller?

- A. Option 43
- B. Option 60
- C. Option 67
- D. Option 150

Answer: A

NEW QUESTION 4

Refer to the exhibit.

```
<?xml version="1.0" encoding="utf-8"?>
  <data xmlns="urn:ietf:params:xml:ns:netconf:base:1.0"/>
```

What does the error message relay to the administrator who is trying to configure a Cisco IOS device?

- A. A NETCONF request was made for a data model that does not exist.
- B. The device received a valid NETCONF request and serviced it without error.
- C. A NETCONF message with valid content based on the YANG data models was made, but the request failed.
- D. The NETCONF running datastore is currently locked.

Answer: A

Explanation:

3. Missing Data Model RPC Error Reply Message

If a request is made for a data model that doesn't exist on the Catalyst 3 response. This is expected behavior.



Tip: Use the NETCONF capabilities functionality to determine which

```
<?xml version="1.0" encoding="utf-8"?>
<data xmlns="urn:ietf:params:xml:ns:netconf:base:1.0"/>
```

NEW QUESTION 5

Which devices does Cisco DNA Center configure when deploying an IP-based access control policy?

- A. All devices integrating with ISE
- B. selected individual devices
- C. all devices in selected sites
- D. all wired devices

Answer: A

Explanation:

When you click Deploy, Cisco DNA Center requests the Cisco Identity Services Engine (Cisco ISE) to send notifications about the policy changes to the network devices.

NEW QUESTION 6

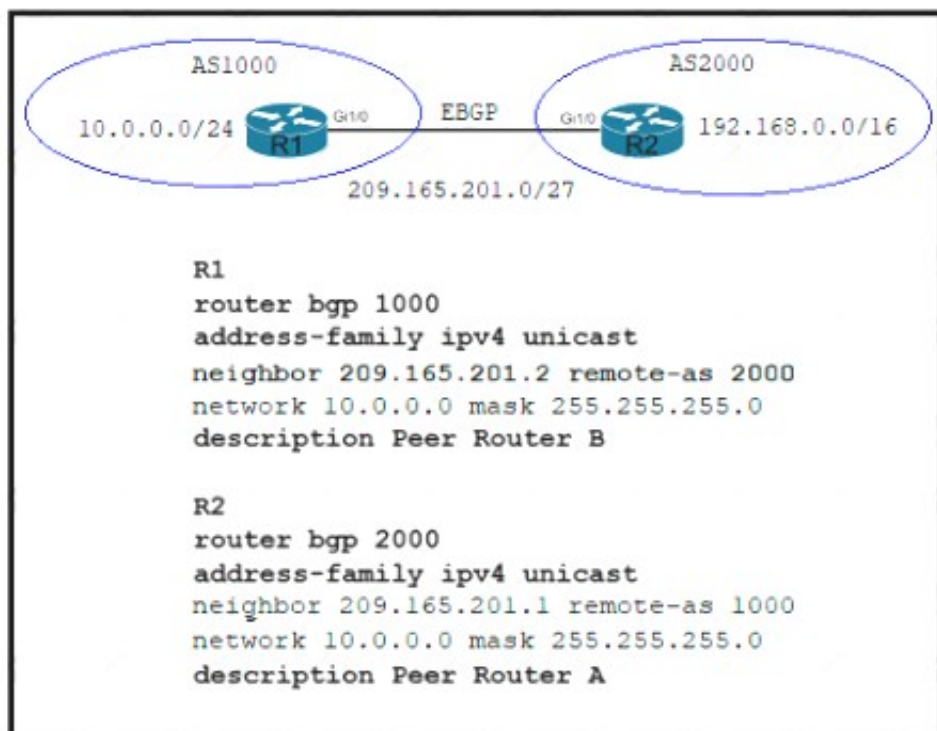
How does EIGRP differ from OSPF?

- A. EIGRP is more prone to routing loops than OSPF
- B. EIGRP supports equal or unequal path cost, and OSPF supports only equal path cost.
- C. EIGRP has a full map of the topology, and OSPF only knows directly connected neighbors
- D. EIGRP uses more CPU and memory than OSPF

Answer: B

NEW QUESTION 7

Refer to the exhibit.



Which two commands are needed to allow for full reachability between AS 1000 and AS 2000? (Choose two)

- A. R1#network 19.168.0.0 mask 255.255.0.0
- B. R2#no network 10.0.0.0 255.255.255.0
- C. R2#network 19.168.0.0 mask 255.255.0.0
- D. R2#network 209.165.201.0 mask 255.255.192.0
- E. R1#no network 10.0.0.0 255.255.255.0

Answer: BC

NEW QUESTION 8

Which technology provides a secure communication channel for all traffic at Layer 2 of the OSI model?

- A. MACsec
- B. IPsec
- C. SSL
- D. Cisco Trustsec

Answer: A

Explanation:

MACsec, defined in 802.1AE, provides MAC-layer encryption over wired networks by using out-ofband methods for encryption keying. The MACsec Key Agreement (MKA) Protocol provides the

NEW QUESTION 9

How does the RIB differ from the FIB?

- A. The RIB is used to create network topologies and routing table
- B. The FIB is a list of routes to particular network destinations.
- C. The FIB includes many routes a single destination
- D. The RIB is the best route to a single destination.
- E. The RIB includes many routes to the same destination prefi
- F. The FIB contains only the best route
- G. The FIB maintains network topologies and routing table
- H. The RIB is a list of routes to particular network destinations.

Answer: A

Explanation:

RIB is derived from the control plane, FIB is used for forwarding,

NEW QUESTION 10

Refer to the exhibit.

```
R2#show standby
FastEthernet1/0 - Group 50
  State is Active
    2 state changes, last state change 00:04:02
  Virtual IP address is 10.10.1.1
  Active virtual MAC address is 0000.0c07.ac32 (MAC In Use)
  Local virtual MAC address is 0000.0c07.ac32 (v1 default)
  Hello time 3 sec, hold time 10 sec
  Next hello sent in 1.504 secs
  Preemption enabled, delay reload 90 secs
  Active router is local
  Standby router is unknown
  Priority 200 (configured 200)
  Track interface FastEthernet0/0 state Up decrement 20
  Group name is "harp-Fal/0-50" (default)
R2#
%IP-4-DUPADDR: Duplicate address 10.10.1.1 on FastEthernet1/0, sourced by 0000.0c07.ac28
R2#
```

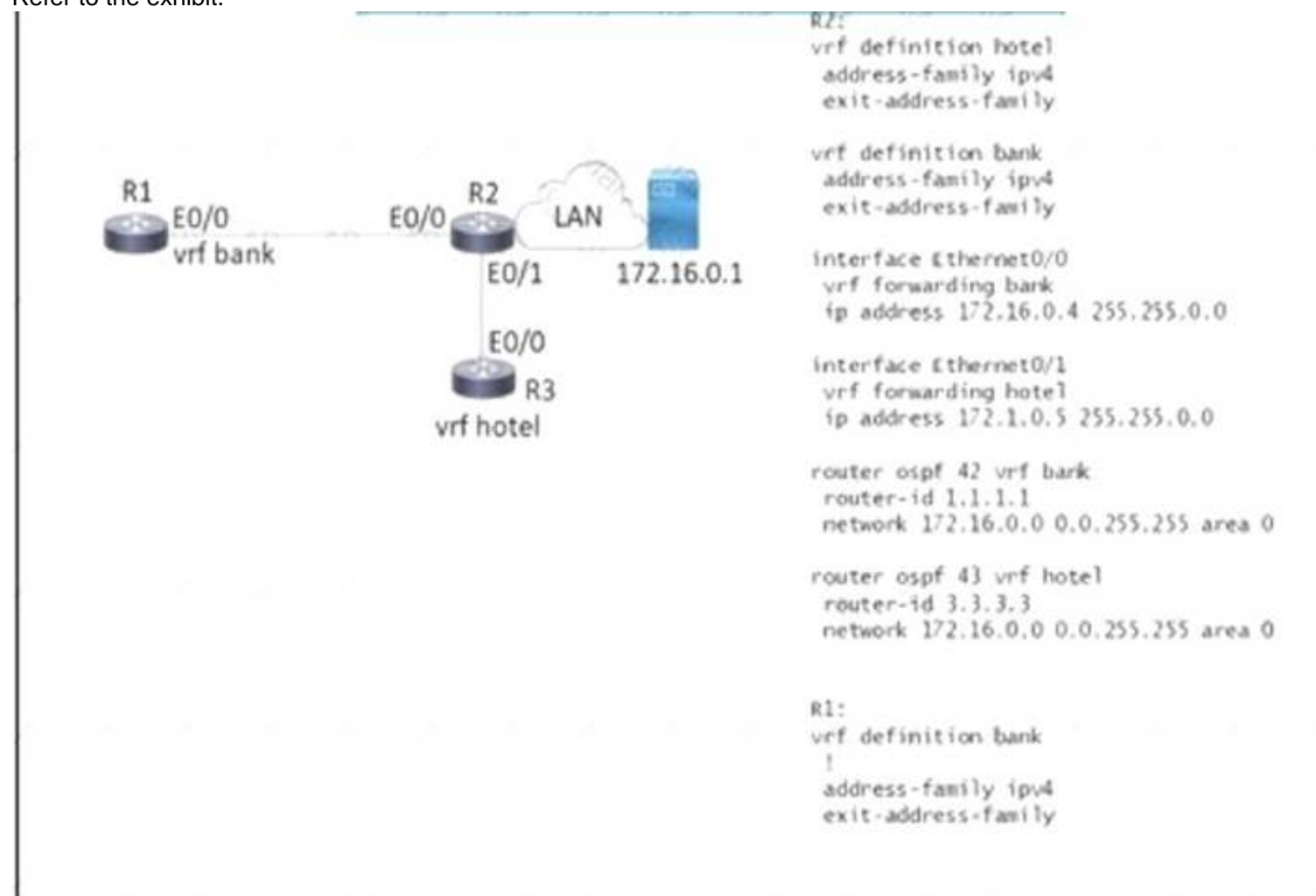
An engineer configures a new HSRP group. While reviewing the HSRP status, the engineer sees the logging message generated on R2. Which is the cause of the message?

- A. The same virtual IP address has been configured for two HSRP groups
- B. The HSRP configuration has caused a spanning-tree loop
- C. The HSRP configuration has caused a routing loop
- D. A PC is on the network using the IP address 10.10.1.1

Answer: A

NEW QUESTION 10

Refer to the exhibit.



Which configuration must be applied to R to enable R to reach the server at 172.16.0.1?

A)

```
interface Ethernet0/0
vrf forwarding hotel
ip address 172.16.0.7 255.255.0.0

router ospf 44 vrf Hotel
network 172.16.0.0 0.0.255.255 area 0
```

B)

```
interface Ethernet0/0
ip address 172.16.0.7 255.255.0.0

router ospf 44 vrf hotel
network 172.16.0.0 255.255.0.0
```

C)


```
interface Ethernet0/0
ip address 172.16.0.7 255.255.0.0
```

```
router ospf 44 vrf bank
network 172.16.0.0 255.255.0.0
```

D)

```
interface Ethernet0/0
 vrf forwarding bank
ip address 172.16.0.7 255.255.0.0
```

```
router ospf 44 vrf bank
network 172.16.0.0 0.0.255.255 area 0
```

- A. Option A
- B. Option B
- C. Option C
- D. Option D

Answer: D

NEW QUESTION 14

What is the function of the LISP map resolver?

- A. to send traffic to non-LISP sites when connected to a service provider that does not accept nonroutable EIDs as packet sources
- B. to connect a site to the LISP-capable part of a core network publish the EID-to-RLOC mappings for the site, and respond to map-request messages
- C. to decapsulate map-request messages from ITRs and forward the messages to the MS.
- D. to advertise routable non-LISP traffic from one address family to LISP sites in a different address family

Answer: C

NEW QUESTION 17

What are two benefits of virtual switching when compared to hardware switching? (Choose two.)

- A. increased MTU size
- B. hardware independence
- C. VM-level isolation
- D. increased flexibility
- E. extended 802.1Q VLAN range

Answer: CD

NEW QUESTION 21

What is YANG used for?

- A. scraping data via CLI
- B. processing SNMP read-only polls
- C. describing data models
- D. providing a transport for network configuration data between client and server

Answer: C

NEW QUESTION 24

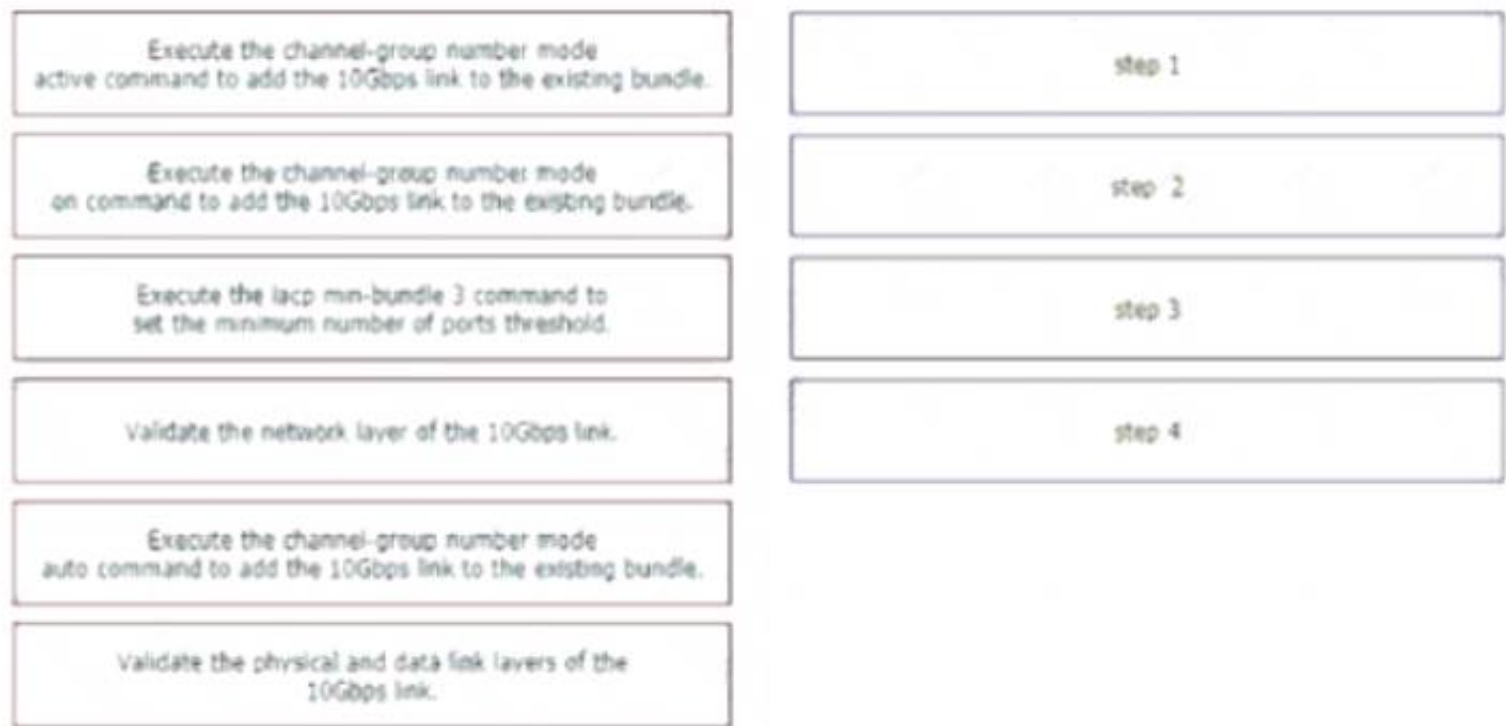
AN engineer is implementing MPLS OAM to monitor traffic within the MPLS domain. Which action must the engineer perform to prevent from being forwarded beyond the service provider domain when the LSP is down?

- A. Disable IP redirects only on outbound interfaces
- B. Implement the destination address for the LSP echo request packet in the 127.x.y.z/8 network
- C. Disable IP redirects on all ingress interfaces
- D. Configure a private IP address as the destination address of the headend router of Cisco MPLS TE.

Answer: C

NEW QUESTION 29

A network engineer is adding an additional 10Gps link to an exiting 2x10Gps LACP-based LAG to augment its capacity. Network standards require a bundle interface to be taken out of service if one of its member links goes down, and the new link must be added with minimal impact to the production network. Drag and drop the tasks that the engineer must perform from the left into the sequence on the right. Not all options are used.



- A. Mastered
- B. Not Mastered

Answer: A

Explanation:

A picture containing diagram Description automatically generated

NEW QUESTION 31

What is a consideration when designing a Cisco SD-Access underlay network?

- A. End user subnets and endpoints are part of the underlay network.
- B. The underlay switches provide endpoint physical connectivity for users.
- C. Static routing is a requirement,
- D. It must support IPv4 and IPv6 underlay networks

Answer: A

NEW QUESTION 36

What are two considerations when using SSO as a network redundancy feature? (Choose two)

- A. both supervisors must be configured separately
- B. the multicast state is preserved during switchover
- C. must be combined with NSF to support uninterrupted Layer 2 operations
- D. must be combined with NSF to support uninterrupted Layer 3 operations
- E. requires synchronization between supervisors in order to guarantee continuous connectivity

Answer: DE

Explanation:

Text Description automatically generated

against failure due to the Supervisor or loss of service because of software problems. The access layer typically provides Layer 2 services, with redundant switches making up the distribution layer. The Layer 2 access layer can benefit from SSO deployed without NSF. Some Enterprises have deployed Layer 3 routing at the access layer. In that case, NSF/SSO can be used.

Cisco IOS Nonstop Forwarding(NSF) always runs with stateful switchover (SSO) and provides redundancy for Layer 3 traffic.

NEW QUESTION 37

Drag and drop the DHCP messages that are exchanged between a client and an AP into the order they are exchanged on the right.



- A. Mastered
- B. Not Mastered

Answer: A

Explanation:

Table Description automatically generated

There are four messages sent between the DHCP Client and DHCP Server: DHCPDISCOVER, DHCP OFFER, DHCPREQUEST and DHCPACKNOWLEDGEMENT.

This process is often abbreviated as DORA (for Discover, Offer, Request, Acknowledgement).

NEW QUESTION 38

What does the cisco REST response indicate?

```
{
  "response": [
    {
      "family": "Routers",
      "interfaceCount": "12",
      "lineCardCount": "8",
      "platformId": "ASR1001-X",
      "reachabilityFailureReason": "",
      "reachabilityStatus": "Reachable",
      "hostname": "RouterASR-1",
      "macAddress": "00:c8:8b:80:bb:00",
    },
    {
      "family": "Switches and Hubs",
      "interfaceCount": "41",
      "lineCardCount": "2",
      "platformId": "C9300-24UX",
      "reachabilityFailureReason": "",
      "reachabilityStatus": "Authentication Failed",
      "hostname": "cat9000-1",
      "macAddress": "78:7b:20:87:62:80",
    },
    {
      "family": "Switches and Hubs",
      "interfaceCount": "56",
      "lineCardCount": "2",
      "platformId": "WS-C3850-48U-E",
      "reachabilityFailureReason": "",
      "reachabilityStatus": "Unreachable",
      "hostname": "cat3850-1",
      "macAddress": "cc:d8:c1:15:d2:80",
    }
  ],
  "version": "1.0"
}
```

- A. Cisco DNA Center has the Incorrect credentials for cat3850-1
- B. Cisco DNA Center is unable to communicate with cat9000-1
- C. Cisco DNA Center has the incorrect credentials for cat9000-1
- D. Cisco DNA Center has the Incorrect credentials for RouterASR-1

Answer: C

NEW QUESTION 43

What is the output of this code?

```
def get_credentials():
    creds={'username': 'cisco', 'password': 'c3577dc8ae4e36c0bfb6fe5398614245'}
    return (creds.get('username'))

print(get_credentials())
```

- A. username Cisco
- B. get_credentials
- C. username
- D. CISCO

Answer: D

NEW QUESTION 44

Drag and drop the snippets onto the blanks within the code to construct a script that configures BGP according to the topology. Not all options are used, and some options may be used twice.


```
<config xmlns:xc="urn:ietf:params:xml:ns:netconf:base:1.0" xmlns="urn:ietf:params:xml:ns:netconf:base:1.0">
  <native xmlns="http://cisco.com/ns/yang/Cisco-IOS-XE-native" xmlns:ios-bgp="http://cisco.com/ns/yang/Cisco-IOS-XE-bgp">
    <router>
      <ios-bgp:bgp>
        <ios-bgp:id> /ios-bgp:id>
        <ios-bgp:neighbor>
          <ios-bgp:id> /ios-bgp:id>
          <ios-bgp:remote-as> /ios-bgp:remote-as>
        </ios-bgp:neighbor>
        <ios-bgp:address-family>
          <ios-bgp:no-vrf>
            <ios-bgp:ipv4>
              <ios-bgp:af-name>unicast</ios-bgp:af-name>
              <ios-bgp:ipv4-unicast>
                <ios-bgp:neighbor>
                  <ios-bgp:id> /ios-bgp:id>
                  <ios-bgp:soft-reconfiguration>inbound</ios-bgp:soft-reconfiguration>
                </ios-bgp:neighbor>
              </ios-bgp:ipv4-unicast>
            </ios-bgp:ipv4>
          </ios-bgp:no-vrf>
        </ios-bgp:address-family>
      </ios-bgp:bgp>
    </router>
  </native>
</config>
```

	
Client	ISP
IP: 192.168.1.2	IP: 192.168.1.1
BGP AS: 65001	BGP AS: 65000

192.168.1.1 192.168.1.2 65000 65001 Client ISP

- A. Mastered
B. Not Mastered

Answer: A

Explanation:

Graphical user interface, text, application, email Description automatically generated

NEW QUESTION 47

Which LISP component is required for a LISP site to communicate with a non-LISP site?

- A. ETR
B. ITR
C. Proxy ETR
D. Proxy ITR

Answer: C

NEW QUESTION 51

Refer to the exhibit

```
{
  "Cisco-IOS-XE-native:GigabitEthernet": {
    "name": "1",
    "vrf": {
      "forwarding": "MANAGEMENT"
    },
    "ip": {
      "address": {
        "primary": {
          "address": "10.0.0.151",
          "mask": "255.255.255.0"
        }
      },
      "mop": {
        "enabled": false
      }
    },
    "Cisco-IOS-XE-ethernet:negotiation": {
      "auto": true
    }
  }
}
```

Drag and drop the snippets into the RESTCONF request to form the request that returns this response Not all options are used

URL - http://10.10.10.10/restconf/api/running/native/

HTTP Verb-

Body- N/A

Headers- -application/vnd.yang.data+json

Authentication-privileged level 15 credentials

POST	Accept	Cisco-IOS-XE
interface/GigabitEthernet/1/	GET	PUT

- A. Mastered
B. Not Mastered

Answer: A

Explanation:

URL - http://10.10.10.10/restconf/api/running/native/

HTTP Verb-

Body- N/A

Headers- -application/vnd.yang.data+json

Authentication-privileged level 15 credentials

POST	Cisco-IOS-XE
	PUT

NEW QUESTION 53

What is a characteristic of MACsec?

- A. 802.1AE provides encryption and authentication services
B. 802.1AE is built between the host and switch using the MKA protocol, which negotiates encryption keys based on the master session key from a successful 802.1X session
C. 802.1AE is built between the host and switch using the MKA protocol using keys generated via the Diffie-Hellman algorithm (anonymous encryption mode)
D. 802.1AE is negotiated using Cisco AnyConnect NAM and the SAP protocol

Answer: A

Explanation:

MACsec, defined in 802.1AE, provides MAC-layer encryption over wired networks by using out-of-band methods for encryption keying. The MACsec Key Agreement (MKA) Protocol provides the required session keys and manages the required encryption keys. MKA and MACsec are implemented after successful authentication using the 802.1x Extensible Authentication Protocol (EAP-TLS) or Pre Shared Key (PSK) framework.

NEW QUESTION 55

Refer to the exhibit.



An engineer has configured Cisco ISE to assign VLANs to clients based on their method of authentication, but this is not working as expected. Which action will resolve this issue?

- A. require a DHCP address assignment
- B. utilize RADIUS profiling
- C. set a NAC state
- D. enable AAA override

Answer: B

NEW QUESTION 58

In cisco SD_WAN, which protocol is used to measure link quality?

- A. OMP
- B. BFD
- C. RSVP
- D. IPsec

Answer: B

NEW QUESTION 61

Drag and drop the characteristics from the left onto the routing protocols they describe on the right.

The default Administrative Distance is equal to 110.

It requires an Autonomous System number to create a routing instance for exchanging routing information.

It uses virtual links to connect two parts of a partitioned backbone through a non-backbone area.

It is an Advanced Distance Vector routing protocol.

It relies on the Diffused Update Algorithm to calculate the shortest path to a destination.

It requires a process ID that is local to the router.

EIGRP

OSPF

- A. Mastered
- B. Not Mastered

Answer: A

Explanation:

	EIGRP It requires an Autonomous System number to create a routing instance for exchanging routing information. It is an Advanced Distance Vector routing protocol. It relies on the Diffused Update Algorithm to calculate the shortest path to a destination.
	OSPF The default Administrative Distance is equal to 110. It uses virtual links to connect two parts of a partitioned backbone through a non-backbone area. It requires a process ID that is local to the

NEW QUESTION 65

Refer to the exhibit.

```

Person#1:
First Name is Johnny
Last Name is Table
Hobbies are:
• Running
• Video games

Person#2:
First Name is Billy
Last Name is Smith
Hobbies are:
• Napping
• Reading
  
```

Which JSON syntax is derived from this data?

- A)
`{[{"First Name": "Johnny", "Last Name": "Table", "Hobbies": ["Running", "Video games"]}, {"First Name": "Billy", "Last Name": "Smith", "Hobbies": ["Napping", "Reading"]}]}`
- B)
`{'Person': [{"First Name": "Johnny", "Last Name": "Table", "Hobbies": "Running", "Video games"}, {"First Name": "Billy", "Last Name": "Smith", "Hobbies": "Napping", "Reading"}]}`
- C)
`{[{"First Name": "Johnny", "Last Name": "Table", "Hobbies": "Running", "Hobbies": "Video games"}, {"First Name": "Billy", "Last Name": "Smith", "Hobbies": "Napping", "Hobbies": "Reading"}]}`
- D)
`{'Person': [{"First Name": "Johnny", "Last Name": "Table", "Hobbies": ["Running", "Video games"]}, {"First Name": "Billy", "Last Name": "Smith", "Hobbies": ["Napping", "Reading"]}]}`

- A. Option A
 B. Option B
 C. Option C
 D. Option D

Answer: D

NEW QUESTION 66

“HTTP/1.1 204 content” is returned when `curl -I -x delete` command is issued. Which situation has occurred?

- A. The object could not be located at the URI path.
 B. The command succeeded in deleting the object
 C. The object was located at the URI, but it could not be deleted.
 D. The URI was invalid

Answer: B

NEW QUESTION 68

What is the function of cisco DNA center in a cisco SD-access deployment?

- A. It is responsible for routing decisions inside the fabric

- B. It is responsible for the design, management, deployment, provisioning and assurance of the fabric network devices.
- C. It possesses information about all endpoints, nodes and external networks related to the fabric
- D. It provides integration and automation for all nonfabric nodes and their fabric counterparts.

Answer: B

NEW QUESTION 69

Refer to the exhibit.

```
aaa new-model
aaa authentication login default local-case enable
aaa authentication login ADMIN local-case
username CCNP secret Str0ngP@ssw0rd!
line 0 4
  login authentication ADMIN
```

An engineer must create a configuration that executes the show run command and then terminates the session when user CCNP logs in. Which configuration change is required"

- A. Add the access-class keyword to the username command
- B. Add the access-class keyword to the aaa authentication command
- C. Add the autocommand keyword to the username command
- D. Add the autocommand keyword to the aaa authentication command

Answer: C

Explanation:

The autocommand causes the specified command to be issued automatically after the user logs in. When the command is complete, the session is terminated. Because the command can be any length and can contain embedded spaces, commands using the autocommand keyword must be the last option on the line. In this specific question, we have to enter this line username CCNP autocommand show running-config.

NEW QUESTION 71

Refer to the exhibit.

R1 key chain cisco123 key 1 key-string cisco123! Ethernet0/0 - Group 10 State is Active 4 state changes, last state change 00:02:49 Virtual IP address is 192.168.0.1 Active virtual MAC address is 0000.0c07.ac0a	R2 key chain cisco123 key 1 key-string cisco123! Ethernet0/0 - Group 10 State is Active 17 state changes, last state change 00:02:17 Virtual IP address is 192.168.0.1 Active virtual MAC address is 0000.0c07.ac0a
---	--

An engineer is installing a new pair of routers in a redundant configuration. Which protocol ensures that traffic is not disrupted in the event of a hardware failure?

- A. HSRPv1
- B. GLBP
- C. VRRP
- D. HSRPv2

Answer: A


Explanation:

The virtual MAC address is 0000.0c07.acXX (XX is the hexadecimal group number) so it is using HSRPv1. Note: HSRP Version 2 uses a new MAC address which ranges from 0000.0C9F.F000 to 0000.0C9F.FFFF.

NEW QUESTION 76

Refer to the exhibit.

London NewYork



```

London(config)#interface range fa0/1-2
London(config-if-range)#switchp trunk encapsulation dot1q
London(config-if-range)#switchp mode trunk
London(config-if-range)#channel-group 1 mode active
London(config-if-range)#end
London#
        
```

```

NewYork#show etherchannel summary
Flags: D - down          P - in port-channel
       I - stand-alone s - suspended
       H - Hot-standby (LACP only)
       R - Layer3        S - Layer2
       U - in use        f - failed to allocate aggregator
       u - unsuitable for bundling
       w - waiting to be aggregated
       d - default port
Number of channel-groups in use: 1
Number of aggregators:          1
Group  Port-channel  Protocol    Ports
-----
1      Po1(S0)        PAgP       Fa0/1(I) Fa0/2(O)
NewYork#
NewYork#show etherchannel port-channel
Channel-group listing:
-----
Group: 1
-----
Port-channels in the group:
-----
Port-channel: Po1
-----
Age of the Port-channel   = 00d:00h:14m:20s
Logical slot/port         = 2/1      Number of ports = 0
GC                         = 0x00000000    HotStandBy port = null
Port state                 = Port-channel |
Protocol                   = PAgP
Port Security              = Disabled
        
```

Communication between London and New York is down. Which command set must be applied to the NewYork switch to resolve the issue?

A)

```

NewYork(config)#no interface po1
NewYork(config)#interface range fa0/1-2
NewYork(config-if)#channel-group 1 mode negotiate
NewYork(config-if)#end
NewYork#
        
```

B)

```

NewYork(config)#no interface po1
NewYork(config)#interface range fa0/1-2
NewYork(config-if)#channel-group 1 mode on
NewYork(config-if)#end
NewYork#
        
```

C)

```

NewYork(config)#no interface po1
NewYork(config)#interface range fa0/1-2
NewYork(config-if)#channel-group 1 mode auto
NewYork(config-if)#end
NewYork#
        
```

D)

```

NewYork(config)#no interface po1
NewYork(config)#interface range fa0/1-2
NewYork(config-if)#channel-group 1 mode passive
NewYork(config-if)#end
NewYork#
        
```

- A. Option A
- B. Option B
- C. Option C
- D. Option D

Answer: D

NEW QUESTION 80

Which line must be added in the Python function to return the JSON object {"cat_9k": "FXS193202SE"}?

```
import json
def get_data():
    test_json = """
    {
        "response": [{
            "managementIpAddress": "10.10.2.253",
            "memorySize": "3398345152",
            "serialNumber": "FXS1932Q2SE",
            "softwareVersion": "16.3.2",
            "hostname": "cat_9k"
        }],
        "version": "1.0"
    }
    """
```

- A)
 return (json.dumps({d['hostname']: d['serialNumber'] for d in json.loads(test_json)['response']}))
- B)
 return (json.dumps({for d in json.loads(test_json)['response']: d['hostname']: d['serialNumber']}))
- C)
 return (json.loads({d['hostname']: d['serialNumber'] for d in json.dumps(test_json)['response']}))
- D)
 return (json.loads({for d in json.dumps(test_json)['response']: d['hostname']: d['serialNumber']}))

- A. Option A
 B. Option B
 C. Option C
 D. Option D

Answer: D

NEW QUESTION 85

An engineer runs the code against an API of Cisco DNA Center, and the platform returns this output What does the response indicate?

```
import requests
import sys
import urllib3

urllib3.disable_warnings(urllib3.exceptions.InsecureRequestWarning)

def main():
    device_uri = "https://192.168.1.1/dna/system/api/v1/auth/token"
    http_result = requests.get(device_uri, auth=("root", "test398586070!"))
    print(http_result)
    if http_result.status_code != requests.codes.ok:
        print('Call failed! Review get_token() . ')
        sys.exit()
    print(http_result.json()['Token'])

if __name__ == "__main__":
    sys.exit(main())
```

Output

```
$ python get_token.py
<Response [405]>
Call failed! Review get_token ().
```

- A. The authentication credentials are incorrect
 B. The URI string is incorrect.
 C. The Cisco DNA Center API port is incorrect
 D. The HTTP method is incorrect

Answer: A

NEW QUESTION 88

Which exhibit displays a valid JSON file?

- ☐

```
{
  "hostname": "edge_router_1"
  "interfaces": {
    "GigabitEthernet1/1"
    "GigabitEthernet1/2"
    "GigabitEthernet1/3"
  }
}
```
- ☐

```
{
  "hostname": "edge_router_1",
  "interfaces": {
    "GigabitEthernet1/1",
    "GigabitEthernet1/2",
    "GigabitEthernet1/3",
  },
}
```
- ☐

```
{
  "hostname": "edge_router_1"
  "interfaces": [
    "GigabitEthernet1/1"
    "GigabitEthernet1/2"
    "GigabitEthernet1/3"
  ]
}
```
- ☒

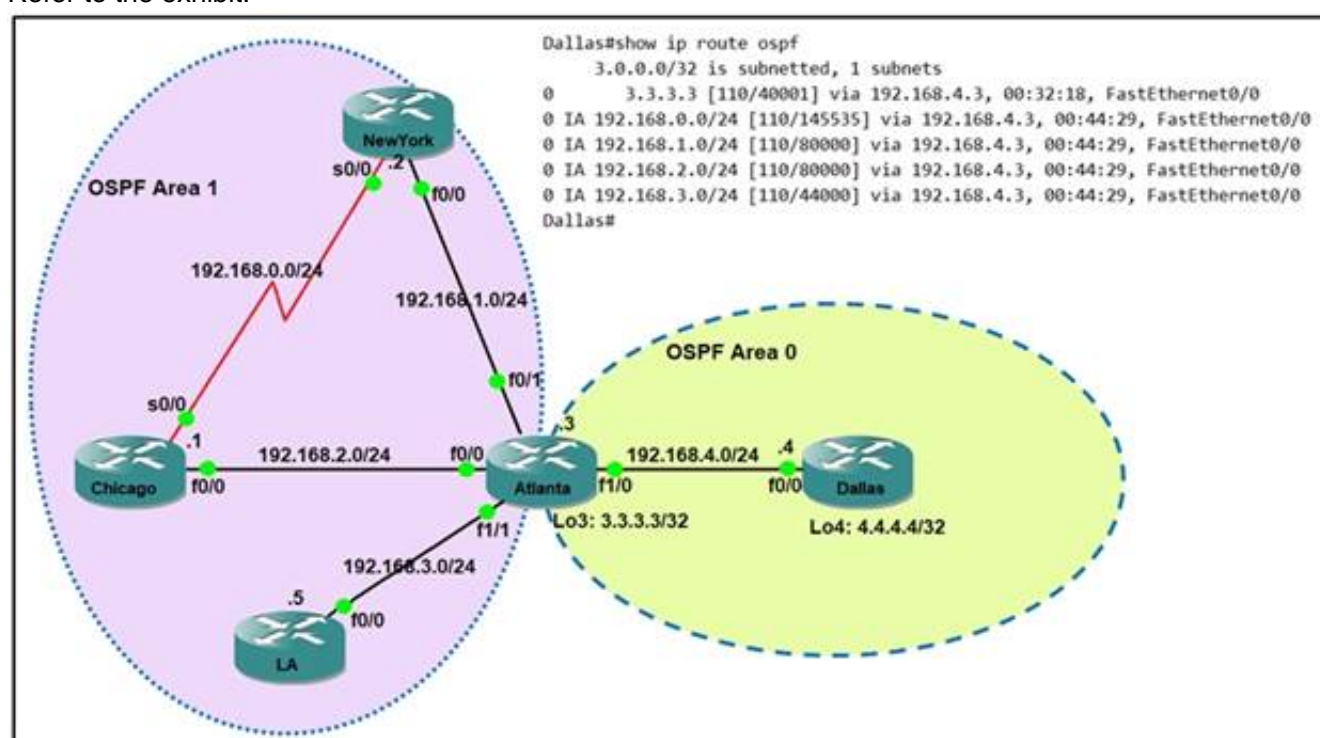
```
{
  "hostname": "edge_router_1",
  "interfaces": [
    "GigabitEthernet1/1",
    "GigabitEthernet1/2",
    "GigabitEthernet1/3"
  ]
}
```

- A. Option A
 B. Option B
 C. Option C
 D. Option D

Answer: D

NEW QUESTION 91

Refer to the exhibit.



Which command when applied to the Atlanta router reduces type 3 LSA flooding into the backbone area and summarizes the inter-area routes on the Dallas router?

- A. Atlanta(config-route)#area 0 range 192.168.0.0 255.255.248.0
 B. Atlanta(config-route)#area 0 range 192.168.0.0 255.255.252.0
 C. Atlanta(config-route)#area 1 range 192.168.0.0 255.255.252.0
 D. Atlanta(config-route)#area 1 range 192.168.0.0 255.255.248.0

Answer: C

NEW QUESTION 93

What is one difference between saltstack and ansible?

- A. SaltStack uses an API proxy agent to program Cisco boxes on agent mode, whereas Ansible uses a Telnet connection
 B. SaltStack uses the Ansible agent on the box, whereas Ansible uses a Telnet server on the box
 C. SaltStack is constructed with minion, whereas Ansible is constructed with YAML
 D. SaltStack uses SSH to interact with Cisco devices, whereas Ansible uses an event bus

Answer: A

NEW QUESTION 94

Refer to the exhibit.

```
Name is Bob Johnson
Age is 75
Is alive

Favorite foods are:
• Cereal
• Mustard
• Onions
```

What is the Json syntax that is formed from the data?

- A. Name: Bob Johnson, Age: 75, Alive': true, Favourite Foods: [Cereal, Mustard, Onions]}
- B. Name: Bob Johnson, Age: 75, Alive': true, Favourite Foods: Cereal Mustard Onions
- C. Name: Bob Johnson, Age: 75, Alive': true, Favourite Foods: ['Cereal', 'Mustard', 'Onions']}
- D. Name: Bob Johnson, Age: seventy-five, Alive': true, Favourite Foods: [Cereal, Mustard, Onions]}

Answer: C

Explanation:

```
1 {
2     "Name": "Bob Johnson",
3     "Age": 75,
4     "Alive": true,
5     "Favorite Foods": ["Cereal", "Mustard", "Onions"]
6 }
```

Results

valid JSON

NEW QUESTION 99

Which data is properly formatted with JSON?

A)

```
{
    "name": "Peter",
    "age": "25",
    "likesJson": true,
    "characteristics": ["small", "strong", 18]
}
```

B)

```
{
    "name": "Peter",
    "age": "25",
    "likesJson": true,
    "characteristics": ["small", "strong", "18"],
}
```

C)

```
{
    "name": "Peter"
    "age": "25"
    "likesJson": true
    "characteristics": ["small", "strong", 18]
}
```

D)


```
{
  "name": Peter,
  "age": 25,
  "likesJson": true,
  "characteristics": ["small", "strong", "18"],
}
```

- A. Option A
- B. Option B
- C. Option C
- D. Option D

Answer: A

NEW QUESTION 104

After a redundant route processor failure occurs on a Layer 3 device, which mechanism allows for packets to be forwarded from a neighboring router based on the most recent tables?

- A. BFD
- B. RPVST+
- C. RP failover
- D. NSF

Answer: D

NEW QUESTION 105

Refer to the exhibit.

```
username admin privilege 15 password 0 Cisco13579!
aaa new-model
!
aaa authentication login default local
aaa authentication enable default none
!
aaa common-criteria policy Administrators
  min-length 1
  max-length 127
  char-changes 4
  lifetime month 2
!
```

A network engineer must configure a password expiry mechanism on the gateway router for all local passwords to expire after 60 days. What is required to complete this task?

- A. The password expiry mechanism is on the AAA server and must be configured there.
- B. Add the aaa authentication enable default Administrators command.
- C. Add the username admin privilege 15 common-criteria*policy Administrators password 0 Cisco13579! command.
- D. No further action is required.
- E. The configuration is complete.

Answer: A

NEW QUESTION 106

Refer to the exhibit.

```
%OSPF-5-ADJCHG: Process 1, Nbr 10.0.0.2 on FastEthernet0/0 from
FULL to DOWN, Neighbor Down: Interface down or detached
%OSPF-6-AREACHG: 10.0.0.1/32 changed from area 0 to area 1
%OSPF-4-ERRRCV: Received invalid packet: mismatch area ID, from
backbone area must be virtual-link but not found from 10.0.0.2,
FastEthernet0/0
```

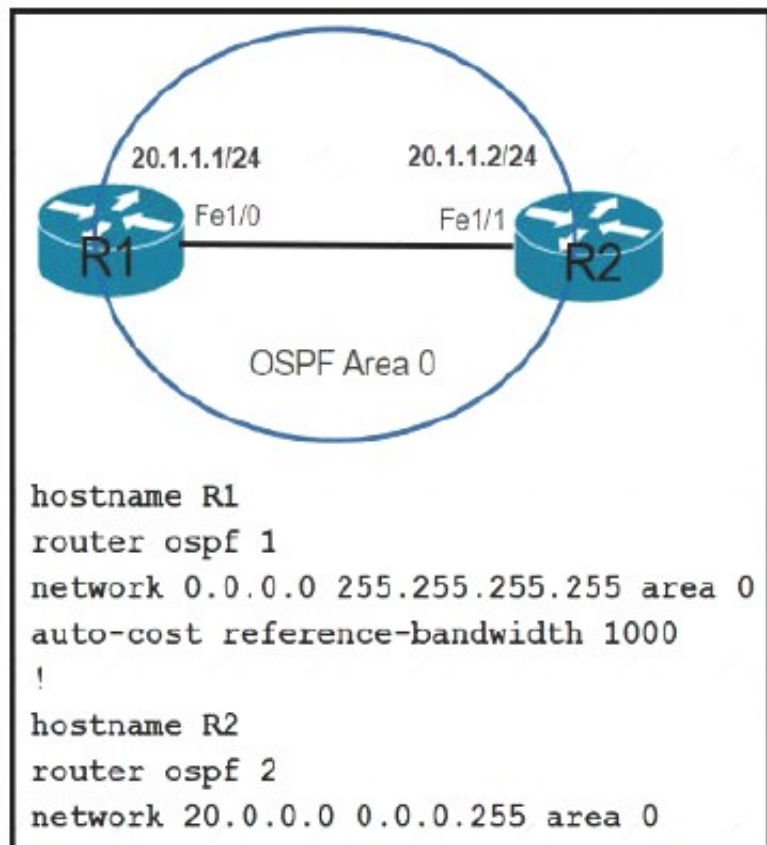
What is the cause of the log messages?

- A. hello packet mismatch
- B. OSPF area change
- C. MTU mismatch
- D. IP address mismatch

Answer: B

NEW QUESTION 110

Which command must be applied to R2 for an OSPF neighborship to form?



- A. network 20.1.1.2.0.0.0.0 area 0
- B. network 20.1.1.2 255.255.0.0. area 0
- C. network 20.1.1.2.0.0.255.255 area 0
- D. network 20.1.1.2 255.255.255 area 0

Answer: A

Explanation:

The network 20.0.0.0 0.0.0.255 area 0 command on R2 did not cover the IP address of Fa1/1 interface of R2 so OSPF did not run on this interface. Therefore we have to use the command network 20.1.1.2 0.0.255.255 area 0 to turn on OSPF on this interface.

Note: The command network 20.1.1.2 0.0.255.255 area 0 can be used too so this answer is also correct but answer C is the best answer here.

The network 0.0.0.0 255.255.255.255 area 0 command on R1 will run OSPF on all active

NEW QUESTION 113

Drag and drop the REST API authentication methods from the left onto their descriptions on the right.

Answer Area

HTTP basic authentication	public API resource
OAuth	username and password in an encoded string
secure vault	authorization through identity provider

- A. Mastered
- B. Not Mastered

Answer: A

Explanation:

A close-up of a graph Description automatically generated with low confidence

NEW QUESTION 117

A network engineer must configure a router to send logging messages to a syslog server based on these requirements:

- uses syslog IP address: 10.10.10.1
- uses a reliable protocol
- must not use any well-known TCP/UDP ports

Which configuration must be used?

- A. logging host 10.10.10.1 transport tcp port 1024
- B. logging origin-id 10.10.10.1
- C. logging host 10.10.10.1 transport udp port 1023
- D. logging host 10.10.10.1 transport udp port 1024

Answer: A

NEW QUESTION 122

In an SD-WAN deployment, which action in the vSmart controller responsible for?

- A. handle, maintain, and gather configuration and status for nodes within the SD-WAN fabric
- B. distribute policies that govern data forwarding performed within the SD-WAN fabric
- C. gather telemetry data from vEdge routers
- D. onboard vEdge nodes into the SD-WAN fabric

Answer: B

NEW QUESTION 124

Which component of the Cisco Cyber Threat Defense solution provides user and flow context analysis?

- A. Cisco Firepower and FireSIGHT
- B. Cisco Stealth watch system
- C. Advanced Malware Protection
- D. Cisco Web Security Appliance

Answer: B

NEW QUESTION 129

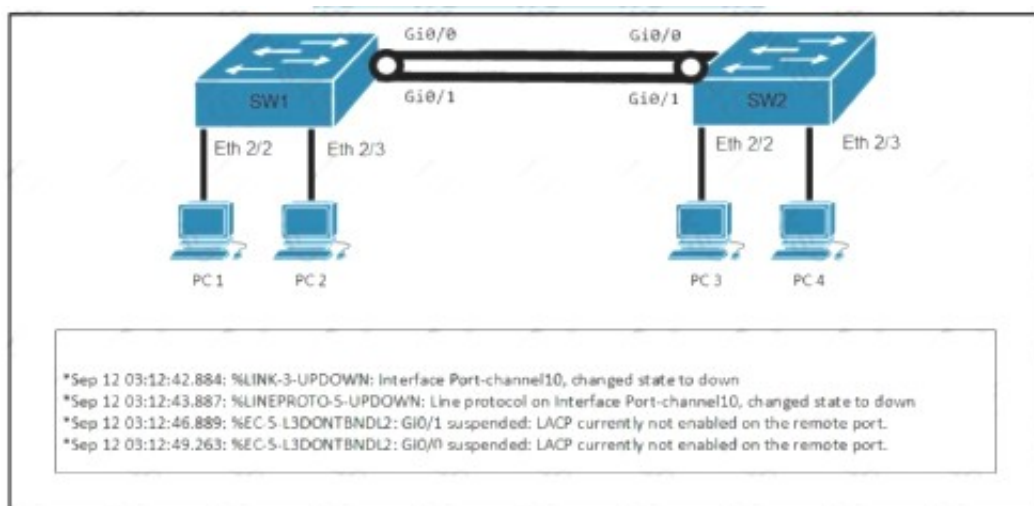
Which method should an engineer use to deal with a long-standing contention issue between any two VMs on the same host?

- A. Adjust the resource reservation limits
- B. Live migrate the VM to another host
- C. Reset the VM
- D. Reset the host

Answer: A

NEW QUESTION 132

Refer to the exhibit.



A network engineer troubleshoots an issue with the port channel between SW1 and SW2. which command resolves the issue?

A)

SW1(config-if)#channel-group 10 mode desirable

B)

SW1(config-if)#channel-group 10 mode active

C)

SW2(config-if)#switchport mode trunk

D)

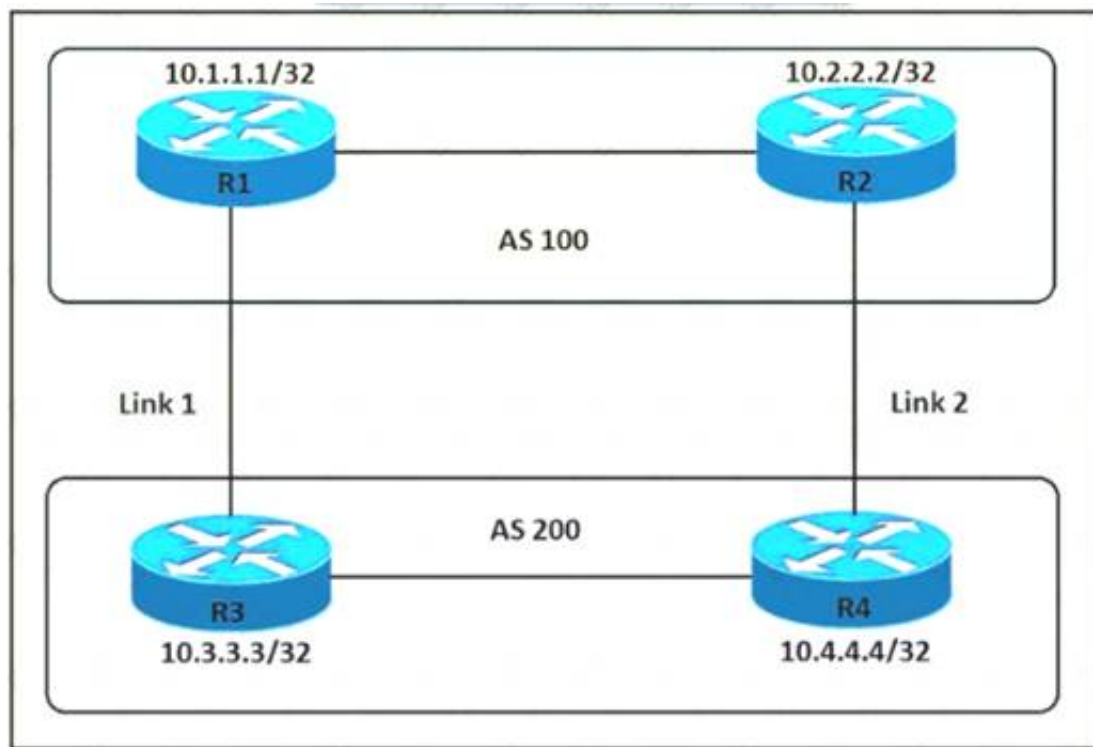
SW2(config-if)#channel-group 10 mode on

- A. Option A
- B. Option B
- C. Option C
- D. Option D

Answer: B

NEW QUESTION 135

Refer to the exhibit.



An engineer must ensure that all traffic leaving AS 200 will choose Link 2 as the exit point. Assuming that all BGP neighbor relationships have been formed and that the attributes have not been changed on any of the routers, which configuration accomplish task?

- A. R4(config-router)bgp default local-preference 200
- B. R3(config-router)neighbor 10.1.1.1 weight 200
- C. R3(config-router)bgp default local-preference 200
- D. R4(config-router)nighbor 10.2.2.2 weight 200

Answer: A

Explanation:

Local preference is an indication to the AS about which path has preference to exit the AS in order to reach a certain network. A path with a higher local preference is preferred. The default value for local preference is 100.

Unlike the weight attribute, which is only relevant to the local router, local preference is an attribute that routers exchange in the same AS. The local preference is set with the “bgp default local-preference value” command.

In this case, both R3 & R4 have exit links but R4 has higher local-preference so R4 will be chosen as the preferred exit point from AS 200.

NEW QUESTION 140

Where is radio resource management performed in a cisco SD-access wireless solution?

- A. DNA Center
- B. control plane node
- C. wireless controller
- D. Cisco CMX

Answer: C

Explanation:

Fabric wireless controllers manage and control the fabric-mode APs using the same general model as the traditional local-mode controllers which offers the same operational advantages such as mobility control and radio resource management. A significant difference is that client traffic from wireless endpoints is not tunnelled from the APs to the wireless controller. Instead, communication from wireless clients is encapsulated in VXLAN by the fabric APs which build a tunnel to their first-hop fabric edge node. Wireless traffic it tunneled to the edge nodes as the edge nodes provide fabric services such as the Layer 3 Anycast Gateway, policy, and traffic enforcement. <https://www.cisco.com/c/en/us/td/docs/solutions/CVD/Campus/cisco-sda-design-guide.html>

NEW QUESTION 141

An engineer is troubleshooting the Ap join process using DNS. Which FQDN must be resolvable on the network for the access points to successfully register to the WLC?

- A. wlcbostrname.domain.com
- B. cisco-capwap-controller.domain.com
- C. ap-manager.domain.com
- D. primary-wlc.domain.com

Answer: B

NEW QUESTION 145

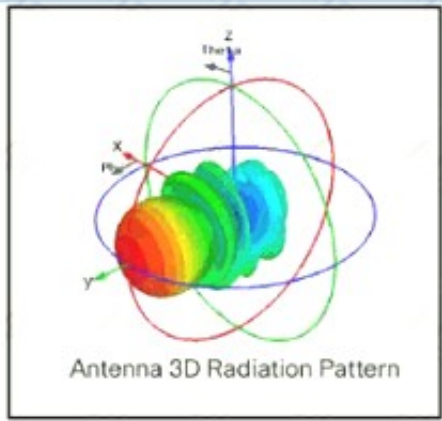
which features does Cisco EDR use to provide threat detection and response protection?

- A. containment, threat intelligence, and machine learning
- B. firewalling and intrusion prevention
- C. container-based agents
- D. cloud analysis and endpoint firewall controls

Answer: A

NEW QUESTION 149

Refer to the exhibit.



Which type of antenna does the radiation pattern represent?

- A. Yagi
- B. multidirectional
- C. directional patch
- D. omnidirectional

Answer: A

Explanation:

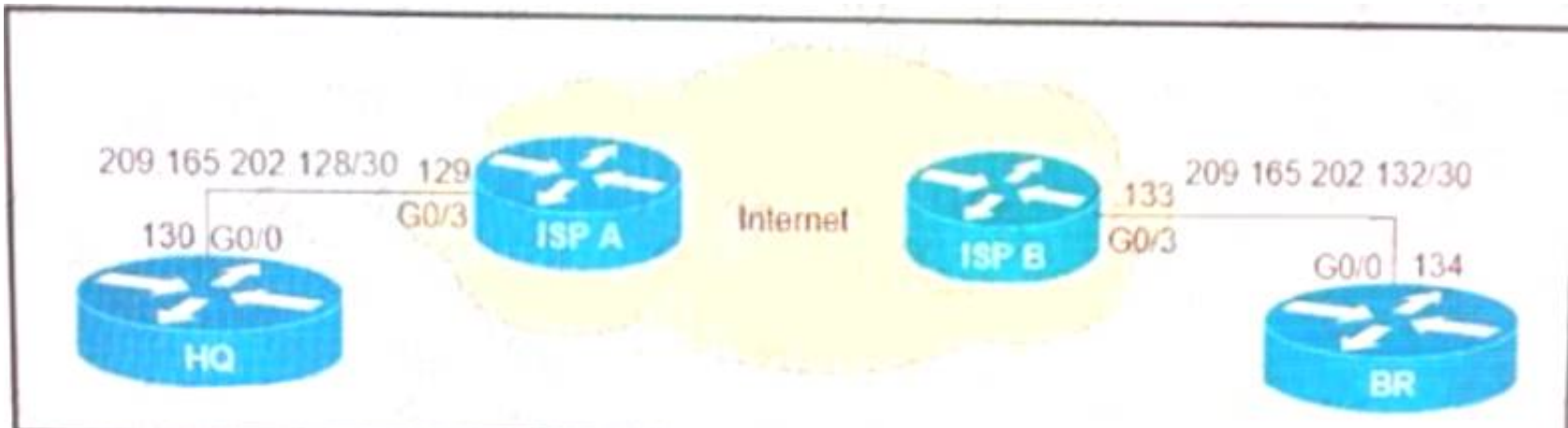
A Yagi antenna is formed by driving a simple antenna, typically a dipole or dipolelike antenna, and shaping the beam using a well-chosen series of non-driven elements whose length and spacing are tightly controlled.



Reference: https://www.cisco.com/c/en/us/products/collateral/wireless/aironetantennas-accessories/prod_white_paper0900aecd806a1a3e.htm

NEW QUESTION 152

Refer to the exhibit.



What is the effect of these commands on the BR and HQ tunnel interfaces?

```
BR(config)#interface tunnel1
BR(config-if)#keepalive 5 3
```

```
HQ(config)#interface tunnel1
HQ(config-if)#keepalive 5 3
```

- A. The tunnel line protocol goes down when the keepalive counter reaches 6
- B. The keepalives are sent every 5 seconds and 3 retries
- C. The keepalives are sent every 3 seconds and 5 retries
- D. The tunnel line protocol goes down when the keepalive counter reaches 5

Answer: B

NEW QUESTION 157

How does Cisco Trustsec enable more access controls for dynamic networking environments and data centers?

- A. classifies traffic based on advanced application recognition
- B. uses flexible NetFlow
- C. classifies traffic based on the contextual identity of the endpoint rather than its IP address correct
- D. assigns a VLAN to the endpoint

Answer: C

NEW QUESTION 161

At which Layer does Cisco DNA Center support REST controls?

- A. EEM applets or scripts
- B. Session layer
- C. YMAL output from responses to API calls
- D. Northbound APIs

Answer: D

NEW QUESTION 164

A network engineer configures BGP between R1 and R2. Both routers use BGP peer group CORP and are set up to use MD5 authentication. This message is logged to the console of router R1:

```
*May 5 39:55:56.070: %TCP-6-BADAUTH" Invalid MD5 digest from 10.10.10.1 (29832) to 10.120.10.1 (179) tebleid -0
```

Which two configurations allow a peering session to form between R1 and R2? (Choose two.)

Which two configuration allow peering session to form between R1 and R2? Choose two.)

- A)
R2(config-router)#neighbor 10.10.10.1 peer-group CORP
R2(config-router)#neighbor PEER password Cisco
- B)
R2(config-router)#neighbor 10.10.10.1 peer-group CORP
R2(config-router)#neighbor CORP password Cisco
- C)
R1(config-router)#neighbor 10.10.10.1 peer-group CORP
R1(config-router)#neighbor CORP password Cisco
- D)
R1(config-router)#neighbor 10.120.10.1 peer-group CORP
R1(config-router)#neighbor CORP password Cisco
- E)
R2(config-router)#neighbor 10.120.10.1 peer-group CORP
R2(config-router)#neighbor CORP password Cisco

- A. Option A
- B. Option B
- C. Option C
- D. Option D
- E. Option E

Answer: BE

NEW QUESTION 165

How is Layer 3 roaming accomplished in a unified wireless deployment?

- A. An EoIP tunnel is created between the client and the anchor controller to provide seamless connectivity as the client is associated with the new AP.
- B. The client entry on the original controller is passed to the database on the new controller.
- C. The new controller assigns an IP address from the new subnet to the client
- D. The client database on the original controller is updated the anchor entry, and the new controller database is updated with the foreign entry.

Answer: A

NEW QUESTION 170

How cloud deployments differ from on-prem deployments?

- A. Cloud deployments require longer implementation times than on-premises deployments
- B. Cloud deployments are more customizable than on-premises deployments.
- C. Cloud deployments require less frequent upgrades than on-premises deployments.
- D. Cloud deployments have lower upfront costs than on-premises deployments.

Answer: B

NEW QUESTION 172

A server running Linux is providing support for virtual machines along with DNS and DHCP services for a small business. Which technology does this represent?

- A. container
- B. Type 1 hypervisor
- C. hardware pass-thru
- D. Type 2 hypervisor

Answer: D

NEW QUESTION 176

What are two characteristics of VXLAN? (Choose two)

- A. It uses VTEPs to encapsulate and decapsulate frames.
- B. It has a 12-bit network identifier
- C. It allows for up to 16 million VXLAN segments
- D. It lacks support for host mobility
- E. It extends Layer 2 and Layer 3 overlay networks over a Layer 2 underlay.

Answer: AC

NEW QUESTION 178

Which two operational models enable an AP to scan one or more wireless channels for rouge access points and at the same time provide wireless services to clients? (Choose two.)

- A. Rouge detector
- B. Sniffer
- C. FlexConnect
- D. Local
- E. Monitor

Answer: DE

NEW QUESTION 179

What is a characteristic of a virtual machine?

- A. It must be aware of other virtual machines, in order to allocate physical resources for them
- B. It is deployable without a hypervisor to host it
- C. It must run the same operating system as its host
- D. It relies on hypervisors to allocate computing resources for it

Answer: D

NEW QUESTION 182

Drag and drop the characteristics from the left onto the protocols they apply to on the right?

uses Dijkstra's Shortest Path First algorithm	OSPF
uses Diffused Update Algorithm	
uses bandwidth, delay, reliability, and load for routing metric	EIGRP
uses an election process	

- A. Mastered
- B. Not Mastered

Answer: A

Explanation:

Diagram Description automatically generated

NEW QUESTION 187

An engineer configures HSRP group 37. The configuration does not modify the default virtual MAC address. Which virtual MAC address does the group use?

- A. C0:00:00:25:00:00
- B. 00:00:0c:07:ac:37
- C. C0:39:83:25:258:5
- D. 00:00:0c:07:ac:25

Answer: D

NEW QUESTION 188

Which outbound access list, applied to the WAN interface of a router, permits all traffic except for http traffic sourced from the workstation with IP address 10.10.10.1?

A)

```
ip access-list extended 100
deny tcp host 10.10.10.1 any eq 80
permit ip any any
```

- B)
ip access-list extended 200
deny tcp host 10.10.10.1 eq 80 any
permit ip any any
- C)
ip access-list extended NO_HTTP
deny tcp host 10.10.10.1 any eq 80
- D)
ip access-list extended 10
deny tcp host 10.10.10.1 any eq 80
permit ip any any

- A. Option A
B. Option B
C. Option C
D. Option D

Answer: A

NEW QUESTION 192

Which characteristic distinguishes Ansible from Chef?

- A. Ansible lacks redundancy support for the master serve
B. Chef runs two masters in an active/active mode.
C. Ansible uses Ruby to manage configuration
D. Chef uses YAML to manage configurations.
E. Ansible pushes the configuration to the clien
F. Chef client pulls the configuration from the server.
G. The Ansible server can run on Linux, Unix or Window
H. The Chef server must run on Linux or Unix.

Answer: C

NEW QUESTION 194

.....

Relate Links

100% Pass Your 350-401 Exam with ExamBible Prep Materials

<https://www.exambible.com/350-401-exam/>

Contact us

We are proud of our high-quality customer service, which serves you around the clock 24/7.

Viste - <https://www.exambible.com/>