

SC-400 Dumps

Microsoft Information Protection Administrator

<https://www.certleader.com/SC-400-dumps.html>



NEW QUESTION 1

- (Topic 1)

You have a Microsoft 365 subscription.

You create and run a content search from the Microsoft Purview compliance portal. You need to download the results of the content search.

What should you obtain first?

- A. a certificate
- B. a password
- C. a pin
- D. an export key

Answer: D

NEW QUESTION 2

- (Topic 1)

You are implementing a data classification solution.

The research department at your company requires that documents containing programming code be labeled as Confidential. The department provides samples of the code from its document library.

The solution must minimize administrative effort. What should you do?

- A. Create a custom classifier.
- B. Create a sensitive info type that uses Exact Data Match (EDM).
- C. Use the source code classifier.
- D. Create a sensitive info type that uses a regular expression.

Answer: C

Explanation:

Reference:

<https://docs.microsoft.com/en-us/microsoft-365/compliance/classifier-learn-about?view=o365-worldwide>

NEW QUESTION 3

HOTSPOT - (Topic 1)

You have a Microsoft 365 tenant that uses Microsoft Teams.

You create a data loss prevention (DLP) policy to prevent Microsoft Teams users from sharing sensitive information.

You need to identify which locations must be selected to meet the following requirements:

? Documents that contain sensitive information must not be shared inappropriately in Microsoft Teams.

? If a user attempts to share sensitive information during a Microsoft Teams chat






session, the message must be deleted immediately.

Which three locations should you select? To answer, select the appropriate locations in the answer area. (Choose three.)

NOTE: Each correct selection is worth one point.

Choose locations to apply the policy

We'll apply the policy to data that's stored in the locations you choose.

Status	Location	Included
<input type="checkbox"/> Off	 Exchange email	
<input type="checkbox"/> Off	 SharePoint sites	
<input type="checkbox"/> Off	 OneDrive accounts	
<input type="checkbox"/> Off	 Teams chat and channel messages	
<input type="checkbox"/> Off	 Microsoft Cloud App Security	






- A. Mastered
- B. Not Mastered

Answer: A

Explanation:

Choose locations to apply the policy

We'll apply the policy to data that's stored in the locations you choose.

Status	Location	Included
<input type="checkbox"/> Off	 Exchange email	
<input type="checkbox"/> Off	 SharePoint sites	
<input type="checkbox"/> Off	 OneDrive accounts	
<input type="checkbox"/> Off	 Teams chat and channel messages	
<input type="checkbox"/> Off	 Microsoft Cloud App Security	

NEW QUESTION 4

- (Topic 1)

Note: This question is part of a series of questions that present the same scenario. Each question in the series contains a unique solution that might meet the stated goals. Some question sets might have more than one correct solution, while others might not have a correct solution.

After you answer a question in this section, you will NOT be able to return to it. As a result, these questions will not appear in the review screen.

You are configuring a file policy in Microsoft Cloud App Security.

You need to configure the policy to apply to all files. Alerts must be sent to every file owner who is affected by the policy. The policy must scan for credit card numbers, and alerts must be sent to the Microsoft Teams site of the affected department.

Solution: You use the Build-in DLP inspection method and send alerts to Microsoft Power Automate.

Does this meet the goal?

- A. Yes
- B. No

Answer: B

Explanation:

Reference:

<https://docs.microsoft.com/en-us/cloud-app-security/dcs-inspection> <https://docs.microsoft.com/en-us/cloud-app-security/data-protection-policies>

NEW QUESTION 5

- (Topic 1)

You have a Microsoft 365 E5 subscription that contains a user named User1.

You need to ensure that all email messages that contain attachments are encrypted automatically by using Microsoft Purview Message Encryption.

What should you create?

- A. a sensitivity label
- B. an information barrier segment
- C. a data loss prevention (DLP) policy
- D. a mail flow rule

Answer: D

NEW QUESTION 6

- (Topic 1)

You need to recommend a solution that meets the compliance requirements for protecting the documents in the Data shared folder. What should you recommend?

- A. From the Microsoft 365 compliance center, configure a DLP policy.
- B. From the Microsoft 365 compliance center, configure a Content Search query.
- C. From the Microsoft 365 compliance center, configure an auto-labeling policy.
- D. From Azure Information Protection, configure a content scan job.

Answer: D

Explanation:

Reference:

<https://docs.microsoft.com/en-us/azure/information-protection/deploy-aip-scanner>

NEW QUESTION 7

HOTSPOT - (Topic 1)

You have a Microsoft 365 E5 subscription.
You receive the data loss prevention (DIP) alert shown in the following exhibit.

Contoso Electronics

Microsoft Purview

Sensitive info in email with subject 'Message1'

Details

Sensitive info types

Metadata

Event details

ID

173fe9ac-3a65-41b0-9914-1db451bba639

Location

Exchange

Time of activity

Jun 6, 2022 8:22 PM

Impacted entities

User

M

Megan Bowen

Email recipients

v

victoria@fabrikam.com

Email subject

Message1

Policy details

DLP policy matched

Policy1

Rule matched

Rule1

Sensitive info types detected

Credit Card Number (19, 85%)

Actions taken

GenerateAlert

User override policy

Yes

Override justification text

Manager approved

Sensitive info detected in

Document1.docx

Use the drop-down menus to select the answer choice that completes each statement based on the information presented in the graph.
NOTE: Each correct selection is worth one point.

Answer Area

The email was [answer choice].

sent to a manager for approval

delivered immediately

quarantined and undelivered

sent to a manager for approval

The sender's manager [answer choice].

overrode Rule1

approved the email by using a workflow

overrode Rule1

was uninvolved in the override process

- A. Mastered
- B. Not Mastered

Answer: A

Explanation:

Answer Area

The email was [answer choice].

sent to a manager for approval

delivered immediately

quarantined and undelivered

sent to a manager for approval

The sender's manager [answer choice].

overrode Rule1

approved the email by using a workflow

overrode Rule1

was uninvolved in the override process

NEW QUESTION 8

- (Topic 1)

Your company has a Microsoft 365 tenant.

The company performs annual employee assessments. The assessment results are recorded in a document named Assessment1 cmplatc.docx that is created by using Microsoft Word template. Copies of the employee assessments are sent to employees and their managers. The assessment copies are stored in mailboxes, Microsoft SharePoint Online sites, and OneDrive for Business folders. A copy of each assessment is also stored in a SharePoint Online folder named

Assessments.

You need to create a data loss prevention (DLP) policy that prevents the employee assessments from being emailed to external users. You will use a document fingerprint to identify the assessment documents.

What should you include in the solution?

- A. Create a fingerprint of AssessmentTemplate.docx.
- B. Create a sensitive info type that uses Exact Data Match (EDM).
- C. Create a fingerprint of TOO sample documents in the Assessments folder.
- D. Import 100 sample documents from the Assessments folder to a seed folder.

Answer: A

Explanation:

Reference:

<https://docs.microsoft.com/en-us/microsoft-365/compliance/document-fingerprinting?view=o365-worldwide>

NEW QUESTION 9

HOTSPOT - (Topic 1)

You have a Microsoft SharePoint Online site named Site1 that contains the files shown in the following table.

Name	Number of IP addresses in the file
File1.txt	2
File2.docx	6
File3.dat	4

You have a data loss prevention (DLP) policy named DLP1 that has the advanced DIP rules shown in the following table.

Name	Content contains	Policy tip	Priority
Rule1	1 or more IP addresses	Tip1	0
Rule2	2 or more IP addresses	Tip2	1
Rule3	6 or more IP addresses	Tip3	2

You apply DLP1 to Site1.

For each of the following statements, select Yes if the statement is true. Otherwise, select No.

NOTE: Each correct selection is worth one point.

Answer Area

Statements	Yes	No
File1.txt has the Tip1 policy tip.	<input type="radio"/>	<input type="radio"/>
File2.docx has the Tip3 policy tip.	<input type="radio"/>	<input type="radio"/>
File3.dat has the Tip2 policy tip.	<input type="radio"/>	<input type="radio"/>

- A. Mastered
- B. Not Mastered

Answer: A

Explanation:

Answer Area

Statements	Yes	No
File1.txt has the Tip1 policy tip.	<input checked="" type="radio"/>	<input type="radio"/>
File2.docx has the Tip3 policy tip.	<input type="radio"/>	<input checked="" type="radio"/>
File3.dat has the Tip2 policy tip.	<input checked="" type="radio"/>	<input type="radio"/>

NEW QUESTION 10

HOTSPOT - (Topic 1)

You have a Microsoft 365 ES subscription.

You plan to create a custom trainable classifier by uploading 1,000 machine-generated files as seed content.

The files have sequential names and are uploaded in one-minute intervals as shown in the following table.

Number	Name	Upload time
1	File001.docx	3:01 AM
2	File002.docx	3:02 AM
3	File003.docx	3:03 AM
994 rows not shown		
998	File998.docx	7:38 PM
999	File999.docx	7:39 PM
1000	File000.docx	7:40 PM

Which files were processed first and last when you created the custom trainable classifier? To answer, select the appropriate options in the answer area.
NOTE: Each correct selection is worth one point.

Answer Area

First:

File301.docx
File501.docx
File801.docx
File951.docx

Last:

File200.docx
File300.docx
File500.docx
File000.docx

- A. Mastered
B. Not Mastered

Answer: A

Explanation:

Answer Area

First:

File301.docx
File501.docx
File801.docx
File951.docx

Last:

File200.docx
File300.docx
File500.docx
File000.docx

NEW QUESTION 10

- (Topic 1)

You have a Microsoft 365 tenant that uses 100 data loss prevention (DLP) policies.

A Microsoft Exchange administrator frequently investigates emails that were blocked due to DLP policy violations.

You need to recommend which DLP report the Exchange administrator can use to identify how many messages were blocked based on each DLP policy.

Which report should you recommend?

- A. False positive and override
B. Third-party DLP policy matches
C. DLP policy matches
D. DLP incidents

Answer: C

NEW QUESTION 11

HOTSPOT - (Topic 1)

You have a Microsoft 365 ES subscription that uses data loss prevention (DLP) to protect sensitive information. You need to create scheduled reports that generate.

* DLP policy matches reported over the shortest frequency of time

* DLP incidents reported over the longest frequency of time

Which frequency should you configure for each report? To answer, select the appropriate options in the answer area.

NOTE: Each correct selection is worth one point.

Answer Area

DLP policy matches:

- Daily
- Every two days
- Weekly
- Every two weeks
- Monthly

DLP incidents:

- Weekly
- Every two weeks
- Monthly
- Every three months
- Every six months

- A. Mastered
- B. Not Mastered

Answer: A

Explanation:

Answer Area

DLP policy matches:

- Daily
- Every two days
- Weekly
- Every two weeks
- Monthly

DLP incidents:

- Weekly
- Every two weeks
- Monthly
- Every three months
- Every six months

NEW QUESTION 15

- (Topic 1)

Note: This question is part of a series of questions that present the same scenario. Each question in the series contains a unique solution that might meet the stated goals. Some question sets might have more than one correct solution, while others might not have a correct solution.

After you answer a question in this section, you will NOT be able to return to it. As a result, these questions will not appear in the review screen.

You recently discovered that the developers at your company emailed Azure Storage keys in plain text to third parties.

You need to ensure that when Azure Storage keys are emailed, the emails are encrypted. Solution: You create a data loss prevention (DLP) policy that has only the Exchange email location selected.

Does this meet the goal?

- A. Yes
- B. No

Answer: B

NEW QUESTION 17

- (Topic 1)

After you answer a question in this section, you will NOT be able to return to it. As a result, these questions will not appear in the review screen.

You implement Microsoft 365 Endpoint data loss prevention (Endpoint DLP).

You have computers that run Windows 10 and have Microsoft 365 Apps installed. The computers are joined to Azure Active Directory (Azure AD).

You need to ensure that Endpoint DLP policies can protect content on the computers. Solution: You onboard the computers to Microsoft Defender for Endpoint.

Does this meet the goal?

- A. Yes
- B. No

Answer: A

Explanation:

Reference:

<https://docs.microsoft.com/en-us/microsoft-365/compliance/endpoint-dlp-getting-started?view=o365-worldwide>

NEW QUESTION 19

- (Topic 1)

You need to create a retention policy to delete content after seven years from the following locations:

- ? Exchange email
- ? SharePoint sites
- ? OneDrive accounts
- ? Office 365 groups
- ? Teams channel messages
- ? Teams chats

What is the minimum number of retention policies that you should create?

- A. 1
- B. 2
- C. 3
- D. 4

Answer: A

Explanation:

Reference:

<https://docs.microsoft.com/en-us/microsoft-365/compliance/retention?view=o365-worldwide>

NEW QUESTION 23

- (Topic 1)

Note: This question is part of a series of questions that present the same scenario. Each question in the series contains a unique solution that might meet the stated goals. Some question sets might have more than one correct solution, while others might not have a correct solution.

After you answer a question in this section, you will NOT be able to return to it. As a result, these questions will not appear in the review screen.

You have a Microsoft 365 tenant and 500 computers that run Windows 10. The computers are onboarded to the Microsoft 365 compliance center.

You discover that a third-party application named Tailspin_scanner.exe accessed protected sensitive information on multiple computers. Tailspin_scanner.exe is installed locally on the computers.

You need to block Tailspin_scanner.exe from accessing sensitive documents without preventing the application from accessing other documents.

Solution: From the Cloud App Security portal, you create an app discovery policy. Does this meet the goal?

- A. Yes
- B. No

Answer: B

Explanation:

You can create app discovery policies to alert you when new apps are detected within your organization.

Use the unallowed apps list instead.

Reference:

<https://docs.microsoft.com/en-us/cloud-app-security/cloud-discovery-policies>

<https://docs.microsoft.com/en-us/microsoft-365/compliance/endpoint-dlp-using?view=o365-worldwide>

NEW QUESTION 25

- (Topic 1)

Note: This question is part of a series of questions that present the same scenario. Each question in the series contains a unique solution that might meet the stated goals. Some question sets might have more than one correct solution, while others might not have a correct solution.

After you answer a question in this section, you will NOT be able to return to it. As a result, these questions will not appear in the review screen.

You have a Microsoft 365 subscription.

You have a user named User1. Several users have full access to the mailbox of User1. Some email messages sent to User1 appear to have been read and deleted before the user viewed them.

When you search the audit log in the Microsoft Purview compliance portal to identify who signed in to the mailbox of User1, the results are blank.

You need to ensure that you can view future sign-ins to the mailbox of User1. Solution: You run the Set-AuditConfig -Workload Exchange command.

Does that meet the goal?

- A. Yes
- B. No

Answer: A

NEW QUESTION 30

- (Topic 1)

You have a Microsoft 365 tenant that uses trainable classifiers. You are creating a custom trainable classifier.

You collect 300 sample file types from various geographical locations to use as seed content. Some of the file samples are encrypted.

You organize the files into categories as shown in the following table.

Category	Type	Language	Encryption status
Category1	.docx	French	Not encrypted
Category2	.xlsx	English	Encrypted
Category3	.pptx	German	Encrypted
Category4	.docx	English	Not encrypted
Category5	.mht	English	Not encrypted
Category6	.htm	English	Not encrypted

Which file categories can be used as seed content?

- A. Category4 and Category5 only
- B. Category4 and Category6 only
- C. Category3. and Category5 only
- D. Category1 and Category3 only

Answer: C

Explanation:

Reference:

<https://docs.microsoft.com/en-us/microsoft-365/compliance/classifier-get-started-with?view=o365-worldwide>

<https://docs.microsoft.com/en-us/sharepoint/technical-reference/default-crawled-file-name-extensions-andparsed-file-types>

NEW QUESTION 34

- (Topic 1)

You have a Microsoft 365 E5 subscription that contains a Microsoft SharePoint Online site named Site1.

You need to implement Microsoft Purview data lifecycle management. What should you create first?

- A. a sensitivity label policy
- B. a retention label
- C. a data loss prevention (DLP) policy
- D. an auto-labeling policy

Answer: B

NEW QUESTION 37

- (Topic 1)

You need to test Microsoft Office 365 Message Encryption (OME) capabilities for your company. The test must verify the following information:

The acquired default template names

The encryption and decryption verification status Which PowerShell cmdlet should you run?

- A. Test-ClientAccessRule
- B. Test-Mailflow
- C. Test-OAuthConnectivity
- D. Test-IRMConfiguration

Answer: D

Explanation:

Reference:

[https://docs.microsoft.com/en-us/microsoft-365/compliance/set-up-new-message-encryption-capabilities?](https://docs.microsoft.com/en-us/microsoft-365/compliance/set-up-new-message-encryption-capabilities?view=o365-worldwide)

[view=o365-worldwide](https://docs.microsoft.com/en-us/microsoft-365/compliance/set-up-new-message-encryption-capabilities?view=o365-worldwide)

NEW QUESTION 42

- (Topic 1)

You have a Microsoft 365 tenant.

You have a database that stores customer details. Each customer has a unique 13-digit identifier that consists of a fixed pattern of numbers and letters.

You need to implement a data loss prevention (DLP) solution that meets the following requirements:

- Email messages that contain a single customer identifier can be sent outside your company,
- Email messages that contain two or more customer identifiers must be approved by the company s data privacy team.

Which two components should you include in the solution? Each correct answer presents part of the solution. NOTE Each correct selection is worth one point.

- A. a sensitive information type
- B. a DLP policy
- C. a mail flow rule
- D. a sensitivity label
- E. a retention label

Answer: AC

NEW QUESTION 45

HOTSPOT - (Topic 1)

You have a Microsoft 365 E5 tenant.

Data loss prevention (DLP) policies are applied to Exchange email, SharePoint sites, and OneDrive accounts locations.

You need to use PowerShell to retrieve a summary of the DLP rule matches from the last seven days.

Which PowerShell module and cmdlet should you use? To answer, select the appropriate options in the answer area.

NOTE: Each correct selection is worth one point.

Module:

	▼
Azure Active Directory (Azure AD)	
Exchange Online	
SharePoint Online	

Cmdlet:

	▼
Get-DlpDetailReport	
Get-DlpDetectionsReport	
Get-DlpPolicy	
Get-DlpSiDetectionsReport	

- A. Mastered
B. Not Mastered

Answer: A

Explanation:

Module:

	▼
Azure Active Directory (Azure AD)	
Exchange Online	
SharePoint Online	

Cmdlet:

	▼
Get-DlpDetailReport	
Get-DlpDetectionsReport	
Get-DlpPolicy	
Get-DlpSiDetectionsReport	

NEW QUESTION 49

- (Topic 1)

Note: This question is part of a series of questions that present the same scenario. Each question in the series contains a unique solution that might meet the stated

goals. Some question sets might have more than one correct solution, while others might not have a correct solution.

After you answer a question in this section, you will NOT be able to return to it. As a result, these questions will not appear in the review screen.

You have a Microsoft 365 tenant and 500 computers that run Windows 10. The computers are onboarded to the Microsoft 365 compliance center.

You discover that a third-party application named Tailspin_scanner.exe accessed protected sensitive information on multiple computers. Tailspin_scanner.exe is installed locally on the computers.

You need to block Tailspin_scanner.exe from accessing sensitive documents without preventing the application from accessing other documents.

Solution: From the Cloud App Security portal, you mark the application as Unsanctioned. Does this meet the goal?

- A. Yes
B. No

Answer: B

Explanation:

Reference:

<https://docs.microsoft.com/en-us/microsoft-365/compliance/endpoint-dlp-using?view=o365-worldwide>

NEW QUESTION 53

- (Topic 1)

You have a Microsoft 365 E5 subscription that contains a user named User1 and a Microsoft SharePoint Online site named Site 1. You create the alert policy shown in the following exhibit.

Review your settings

New alert policy

- ✓ Name your alert
- ✓ Create alert settings
- ✓ Set your recipients

Review your settings

Name AlertPolicy1

Description [Add a description](#)

Severity ● Medium

Category Others

Filter Activity is Uploaded file and File extension is Like any of

Aggregation Trigger an alert when any activity ma

Scope All users

Recipients User1@sk220416.onmicrosoft.com

Daily notification limit Do not send email notifications

[Edit](#)

Do you want to turn the policy on right away?

- ☒ Yes, turn it on right away.
- ☐ No, keep it off, I will turn it on later.

[Back](#)

[Finish](#)

[Cancel](#)

To Site1, User1 uploads the files shown in the following table.

Name	Upload time (hh:mm:ss)
File1.docx	8:00:00
File2.docx	8:00:40
File3.xlsx	8:01:30
File4.docx	8:04:50
File5.docx	8:05:10

For each of the following statements, select Yes if the statement is true. Otherwise, select No. NOTE: Each correct selection is worth one point.
How many alerts will be generated in response to the file uploads?

- A. 1
- B. 2
- C. 3
- D. 4
- E. 5

Answer: C

NEW QUESTION 56

HOTSPOT - (Topic 1)

You have a Microsoft 365 E5 subscription that contains the devices shown in the following table.

Name	Platform	Microsoft Intune
Device1	Windows 11	Not enrolled
Device2	macOS	Enrolled

You need to onboard the devices to Microsoft Purview. The solution must ensure that you can apply Endpoint data loss prevention (Endpoint DLP) policies to the devices. What can you use to onboard each device? To answer, select the appropriate options in the answer area.

NOTE: Each correct selection is worth one point.

Answer Area

Device1: ▼

- The Company Portal app only
- Microsoft Endpoint Manager only
- A local script and Group Policy only
- The Company Portal app and Microsoft Endpoint Manager only
- A local script, Group Policy, and Microsoft Endpoint Manager

Device2: ▼

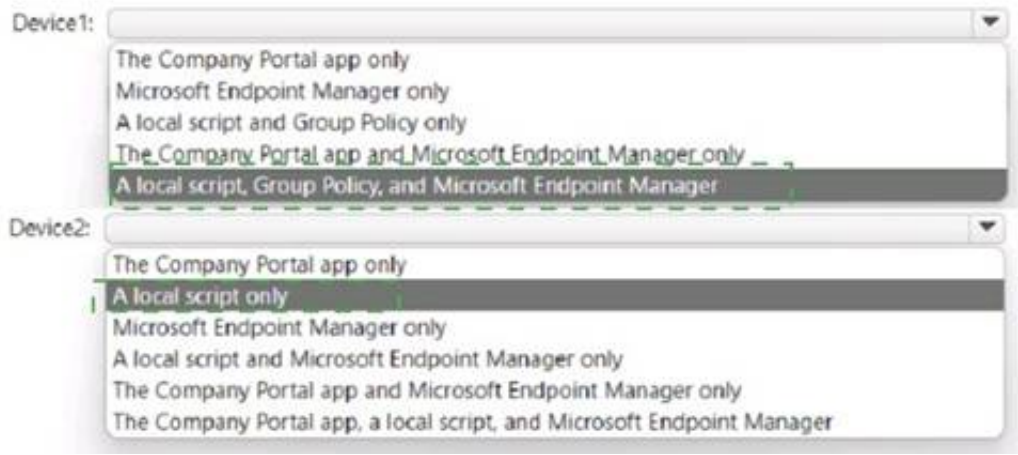
- The Company Portal app only
- A local script only
- Microsoft Endpoint Manager only
- A local script and Microsoft Endpoint Manager only
- The Company Portal app and Microsoft Endpoint Manager only
- The Company Portal app, a local script, and Microsoft Endpoint Manager

- A. Mastered
- B. Not Mastered

Answer: A

Explanation:

Answer Area



NEW QUESTION 57

- (Topic 1)

You have a Microsoft 365 tenant.

All Microsoft OneDrive for Business content is retained roe five years.

A user named User1 left your company a year ago, after which the account of User 1 was deleted from Azure Active Directory (Azure AD)

You need to recover an important file that was stored in the OneDrive of User1. What should you use?

- A. the Restore-SPODeletedSite PowerShell cmdlet
- B. the OneDrive recycle bin
- C. the Restore-ADObject PowerShell cmdlet
- D. Deleted users in the Microsoft 365 admin center

Answer: B

Explanation:

Reference:

<https://docs.microsoft.com/en-us/onedrive/set-retention> <https://docs.microsoft.com/en-us/onedrive/retention-and-deletion>

NEW QUESTION 59

- (Topic 1)

Note: This question is part of a series of questions that present the same scenario. Each question in the series contains a unique solution that might meet the stated goals. Some question sets might have more than one correct solution, while others might not have a correct solution.

After you answer a question in this section, you will NOT be able to return to it. As a result, these questions will not appear in the review screen.

You are configuring a file policy in Microsoft Cloud App Security.

You need to configure the policy to apply to all files. Alerts must be sent to every file owner who is affected by the policy. The policy must scan for credit card numbers, and alerts must be sent to the Microsoft Teams site of the affected department.

Solution: You use the Built-in DLP inspection method and send alerts as email. Does this meet the goal?

- A. Yes
- B. No

Answer: B

Explanation:

Alerts must be sent to the Microsoft Teams site of the affected department. A Microsoft Power Automate playbook should be used.

Reference:

<https://docs.microsoft.com/en-us/cloud-app-security/content-inspection-built-in> <https://docs.microsoft.com/en-us/cloud-app-security/flow-integration>

NEW QUESTION 64

HOTSPOT - (Topic 1)

You have a Microsoft 365 E5 subscription.

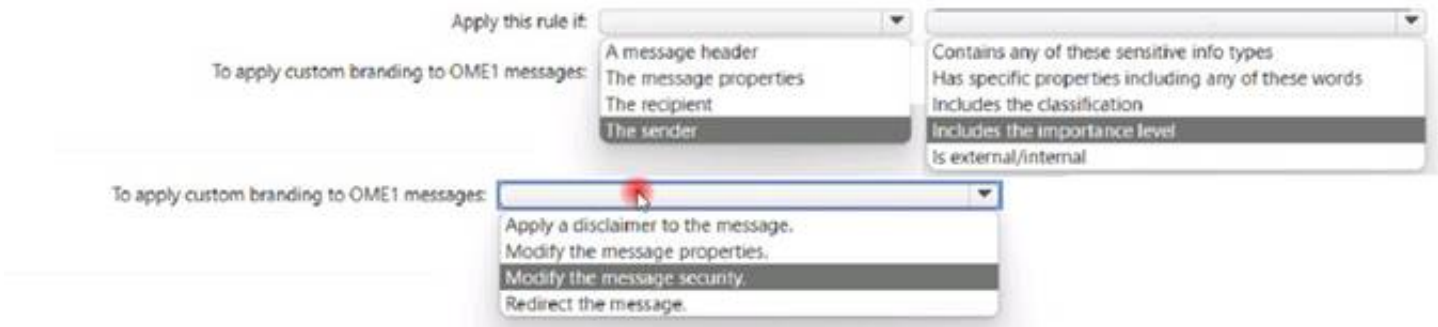
You have a Microsoft Office 365 Advanced Message Encryption branding template named OME1.

You need to create a Microsoft Exchange Online mail flow rule to apply OME1 to email.

How should you configure the rule? To answer, select the appropriate options in the answer area.

NOTE: Each correct selection is worth one point.

Answer Area

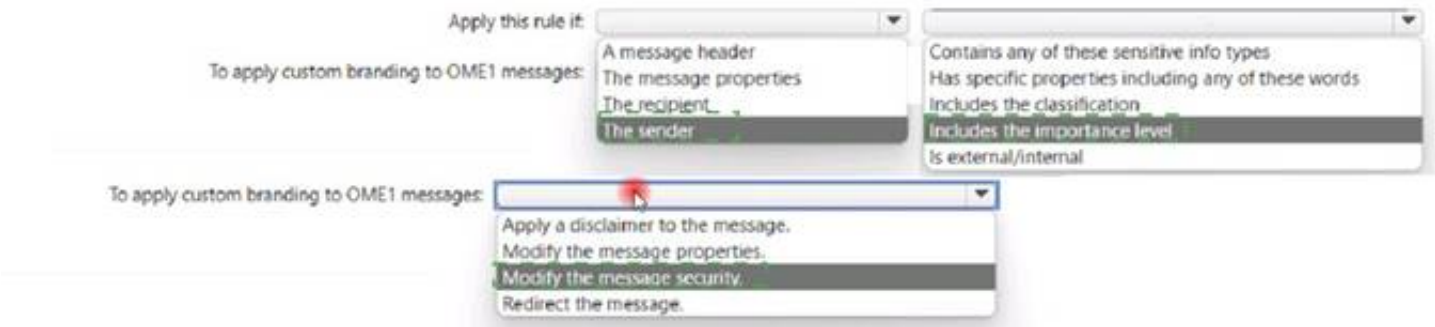


- A. Mastered
- B. Not Mastered

Answer: A

Explanation:

Answer Area



NEW QUESTION 69

- (Topic 1)

You need to ensure that documents in a Microsoft SharePoint Online site that contain a reference to Project Alpha are retained for two years, and then deleted.

Which two objects should you create? Each correct answer presents part of the solution. (Choose two.)

NOTE: Each correct selection is worth one point.

- A. a retention policy
- B. an auto-apply label policy
- C. a sensitive info type
- D. a retention label
- E. a sensitivity label
- F. a publishing label policy

Answer: BD

Explanation:

Reference:

<https://docs.microsoft.com/en-us/microsoft-365/compliance/apply-retention-labels-automatically?view=o365Worldwide>

NEW QUESTION 72

DRAG DROP - (Topic 1)

You have a Microsoft 365 tenant.

A new regulatory requirement states that all documents containing a patent ID be labeled, retained for 10 years, and then deleted. The policy used to apply the retention settings must never be disabled or deleted by anyone.

You need to implement the regulatory requirement.

Which three actions should you perform in sequence? To answer, move the appropriate actions from the list of actions to the answer area and arrange them in the correct order. (Choose three.)

Actions

Answer Area

- Create a retention policy.
- Add a preservation lock.
- Add a management lock.
- Create a retention label.
- Create a retention label policy.

- A. Mastered
- B. Not Mastered

Answer: A

Explanation:

Actions

Answer Area

- Create a retention policy.
- Add a preservation lock.
- Add a management lock.
- Create a retention label.
- Create a retention label policy.

- Create a retention label.
- Create a retention label policy.
- Add a preservation lock.

NEW QUESTION 76

- (Topic 1)

You have a Microsoft 365 E5 subscription that contains multiple data loss prevention (DLP) policies.

You need to identify which DLP rules include conditions that can trigger the DLP policies. Which report should you use from the Microsoft Purview compliance portal?

- A. DLP policy matches
- B. False positives and overrides
- C. DLP incidents
- D. Third-party DLP policy matches

Answer: A

NEW QUESTION 79

- (Topic 1)

You have a Microsoft 365 E5 subscription that contains the users shown in the following table.

Name	Role	Role group
Admin1	Global Administrator	None
Admin2	None	Compliance Administrator
Admin3	None	Records Management

You create the retention label shown in the following exhibit.

Create retention label

✓ Name

✓ File plan descriptors

✓ Label Settings

✓ Period

● Finish

Finish

Review and finish

Name
Name
Retention1
[Edit](#)

File plan descriptors
Retention settings
Retention period
7 years
[Edit](#)

Based on
Based on when it was created
[Edit](#)

Retention action
Preserve, review and delete
[Edit](#)

Disposition stages and reviewers
Stage 1 name: Stage1
Stage 1 reviewers:
Admin1@LODSe270626.onmicrosoft.com,
Admin2@LODSe270626.onmicrosoft.com,
Admin3@LODSe270626.onmicrosoft.com
[Edit](#)

Use label to classifv

Which users can perform a disposition review of content that has Retention 1 applied?

- A. Admin2 only
- B. Admin3 only
- C. Admin1 and Admin2 only
- D. Admin1 and Admin3 only
- E. Admin2 and Admin3 only
- F. Admin1, Admin2, and Admin3

Answer: E

NEW QUESTION 81

HOTSPOT - (Topic 1)

You create a retention label policy named Contoso_policy that contains the following labels.

? 10 years then delete

? 5 years then delete

? Do not retain

Contoso_Policy is applied to content In Microsoft Sharepoint Online sites.

After a couple of days, yon discover the following messages on the Properties page of the label policy.

* Statue Off (Error)

* It's taking longer than expected to deploy the policy You need to reinitiate the policy.

How should you complete the command? To answer, select the appropriate options in the; answer area.

NOTE: Each correct selection is worth one point.

<div><div>▼</div><div>Set-RetentionCompliancePolicy</div><div>Set-RetentionPolicy</div><div>Start-EdgeSynchronization</div><div>Start-RetentionAutoTagLearning</div></div>	-id Contoso_Policy	<div><div>▼</div><div>-ForceFullSync</div><div>-FullCrawl</div><div>-RetryDistribution</div><div>-Train</div></div>
--	--------------------	---

A. Mastered

B. Not Mastered

Answer: A

Explanation:

<div><div>▼</div><div>Set-RetentionCompliancePolicy</div><div>Set-RetentionPolicy</div><div>Start-EdgeSynchronization</div><div>Start-RetentionAutoTagLearning</div></div>	-id Contoso_Policy	<div><div>▼</div><div>-ForceFullSync</div><div>-FullCrawl</div><div>-RetryDistribution</div><div>-Train</div></div>
--	--------------------	---

NEW QUESTION 85

- (Topic 1)

You have a Microsoft 365 subscription.

You have a user named User1. Several users have full access to the mailbox of User1. Some email messages sent to User1 appear to have been read and deleted before the user viewed them.

When you search the audit log in the Microsoft Purview compliance portal to identify who signed in to the mailbox of User1, the results are blank.

You need to ensure that you can view future sign-ins to the mailbox of User1.

YOU run the Set-MailboxFolderPernission -Identity "User1" -User User1fcontoso.com - AccessRights Owner command.

Does that meet the goal?

A. Yes

B. No

Answer: B

NEW QUESTION 90

HOTSPOT - (Topic 1)

You create a data loss prevention (DLP) policy that meets the following requirements:

? Prevents guest users from accessing a sensitive document shared during a Microsoft Teams chat

? Prevents guest users from accessing a sensitive document stored in a Microsoft

Teams channel

Which location should you select for each requirement? To answer, select the appropriate options in the answer area.

NOTE: Each correct selection is worth one point.

Prevents guest users from accessing a sensitive

document shared during a Microsoft Teams chat:

<div><div>▼</div><div>Exchange email</div><div>OneDrive accounts</div><div>SharePoint sites</div><div>Teams chat and channel messages</div></div>

Prevents guest users from accessing a sensitive

document stored in a Microsoft Teams channel:

<div><div>▼</div><div>Exchange email</div><div>OneDrive accounts</div><div>SharePoint sites</div><div>Teams chat and channel messages</div></div>

A. Mastered

B. Not Mastered

Answer: A

Explanation:

Prevents guest users from accessing a sensitive document shared during a Microsoft Teams chat:

▼
Exchange email
OneDrive accounts
SharePoint sites
Teams chat and channel messages

Prevents guest users from accessing a sensitive document stored in a Microsoft Teams channel:

▼
Exchange email
OneDrive accounts
SharePoint sites
Teams chat and channel messages

NEW QUESTION 94

- (Topic 1)

You implement Microsoft 365 Endpoint data loss prevention (Endpoint DLP).

You have computers that run Windows 10 and have Microsoft 365 Apps installed. The computers are joined to Azure Active Directory (Azure AD).

You need to ensure that Endpoint DLP policies can protect content on the computers. Solution: You onboard the computers to Microsoft Defender for Endpoint. Does this meet the goal?

- A. Yes
- B. No

Answer: A

NEW QUESTION 95

- (Topic 1)

You create three sensitivity labels named Sensitivity1, Sensitivity2, and Sensitivity3 and perform the following actions:

? Publish Sensitivity1.

? Create an auto-labeling policy for Sensitivity2.

You plan to create a file policy named Policy1 in Microsoft Cloud App Security. Which sensitivity labels can you apply to Microsoft SharePoint Online in Policy1?

- A. Sensitivity1 only
- B. Sensitivity1, Sensitivity2, and Sensitivity3
- C. Sensitivity2 only
- D. Sensitivity1 and Sensitivity2 only

Answer: D

Explanation:

Reference:

<https://docs.microsoft.com/en-us/microsoft-365/compliance/apply-sensitivity-label-automatically?view=o365-worldwide>

<https://docs.microsoft.com/en-us/cloud-app-security/azip-integration>

NEW QUESTION 97

HOTSPOT - (Topic 1)

You have a Microsoft 365 E5 subscription that contains the groups shown in the following table.

Name	Type
Group1	Microsoft 365
Group2	Security

The subscription contains the resources shown in the following table.

Name	Type
Site1	Microsoft SharePoint Online site
Team1	Microsoft Teams team

You create a sensitivity label named Label 1.

You need to publish Label 1 and have the label apply automatically.

To what can you publish Label 1, and to what can Label 1 be auto-applied? To answer, select the appropriate options in the answer area.

NOTE: Each correct selection is worth one point.

Answer Area

Publish to:

- Site1 only
- Group1 only
- Group1 and Group2 only
- Group1 and Site1 only**
- Site1 and Team1 only
- Group1, Group2, Site1, and Team1

Auto-apply to:

- Site1 only**
- Group1 only
- Group1 and Group2 only
- Group1 and Site1 only
- Site1 and Team1 only
- Group1, Group2, Site1, and Team1

- A. Mastered
- B. Not Mastered

Answer: A

Explanation:

Answer Area

Publish to:

- Site1 only
- Group1 only
- Group1 and Group2 only
- Group1 and Site1 only**
- Site1 and Team1 only
- Group1, Group2, Site1, and Team1

Auto-apply to:

- Site1 only**
- Group1 only
- Group1 and Group2 only
- Group1 and Site1 only
- Site1 and Team1 only
- Group1, Group2, Site1, and Team1

NEW QUESTION 102

- (Topic 1)

Your company has a Microsoft 365 tenant that uses a domain named contoso.com. You are implementing data loss prevention (DLP).

The company's default browser is Microsoft Edge.

During a recent audit, you discover that some users use Firefox and Google Chrome browsers to upload files labeled as Confidential to a third-party Microsoft SharePoint Online site that has a URL of <https://m365x076709.sharepoint.com>. Users are blocked from uploading the confidential files to the site from Microsoft Edge.

You need to ensure that the users cannot upload files labeled as Confidential from Firefox and Google Chrome to any cloud services.

Which two actions should you perform? Each correct answer presents part of the solution. (Choose two.)

NOTE: Each correct selection is worth one point.

- A. From the Microsoft 365 Endpoint data loss prevention (Endpoint) DLP settings, add m365x076709.sharepoint.com as a blocked service domain.
- B. Create a DLP policy that applies to the Devices location.
- C. From the Microsoft 365 Endpoint data loss prevention (Endpoint DLP) settings, add Firefox and GoogleChrome to the unallowed browsers list.
- D. From the Microsoft 365 compliance center, onboard the devices.
- E. From the Microsoft 365 Endpoint data loss prevention (Endpoint) DLP settings, add contoso.com as an allowed service domain.

Answer: CD

Explanation:

Reference:

<https://docs.microsoft.com/en-us/microsoft-365/compliance/endpoint-dlp-learn-about?view=o365-worldwide>

NEW QUESTION 107

- (Topic 1)

You are creating a custom trainable classifier to identify organizational product codes referenced in Microsoft 365 content.

You identify 300 files to use as seed content. Where should you store the seed content?

- A. a Microsoft SharePoint Online folder
- B. a Microsoft OneDrive for Business folder
- C. an Azure file share

D. Microsoft Exchange Online shared mailbox

Answer: A

Explanation:

Reference:

<https://docs.microsoft.com/en-us/microsoft-365/compliance/classifier-get-started-with?view=o365-worldwide>

NEW QUESTION 111

HOTSPOT - (Topic 1)

You have a Microsoft 365 E5 subscription that contains a user named User1 and the groups shown in the following table.

Name	Type
Group1	Microsoft 365
Group2	Security

You have the Compliance Manager improvement action shown in the following exhibit

Compliance Manager > Improvement actions > Enable self-service password reset

E Enable self-service password reset

Overview

Details

Implementation Status	Test Status
Not Implemented	Failed high risk
Points achieved	Group
0 / 27	Default Group
Managed by	Action scope
Your organization	Tenant
Action type	Products
Technical	Microsoft 365

Edit implementation details

How to implement

Technical

Documents

None

Assign action

Testing Source

Manual

Implementation Testing Standards and Regulations Documents

Implementation status

Not Implemented

Implementation date

Not Available

Implementation notes

This action hasn't been implemented yet. Refer to the implementation instructions for this action.

Edit implementation details

How to implement

Microsoft recommends that your organization enable self-service password reset to allow users who have either forgotten their password or whose account has been locked out as a result of malicious attempts, using an alternate factor to reset their password without the assistance of the help desk.

How to Use Microsoft Solutions to Implement

Your organization can use Azure Active Directory (Azure AD) to give users the ability to change or reset their password with no administrator or help desk involvement. Select **Launch Now** to enable Self-Service Password Reset (SSPR) by selecting "All" or "Selected" on the "Properties" page to determine applicable users.

Launch Now

Learn More

Let users reset their own passwords in Office 365

How it works: Azure Active Directory self-service password reset

Use the drop-down menus to select the answer choice that completes each statement based on the information presented in the graphic.

NOTE: Each correct selection is worth one point.

Answer Area

The Enable self-service password reset improvement action can be assigned to **[answer choice]**.

▼

User1 only
Group1 only
User1 and Group1 only
Group1 and Group2 only
User1, Group1, and Group2

Twenty-four hours after self-service password reset (SSPR) is enabled for all users, Points achieved will be **[answer choice]**.

▼

0/27
1/27
2/27
5/27
27/27

- A. Mastered
- B. Not Mastered

Answer: A

Explanation:

User 1, Group 1, and Group 2 27/27

SSPR (Self-Service Password Reset) does not require an E5 license. SSPR is included in Microsoft 365 and Office 365 subscriptions, including lower-tiered plans such as Microsoft 365 Business Standard and Office 365 E3.

Microsoft 365 Groups can be configured to use SSPR (Self-Service Password Reset). In fact, Microsoft 365 Groups inherit the SSPR settings from the underlying Azure Active Directory (Azure AD) tenant.

SSPR (Self-Service Password Reset) can also be configured for security groups in Microsoft 365.

Like Microsoft 365 Groups, security groups in Microsoft 365 inherit the SSPR settings from the underlying Azure Active Directory (Azure AD) tenant. To enable SSPR for security groups, you need to ensure that SSPR is enabled in your Azure AD tenant and that the appropriate user accounts are registered for SSPR.

NEW QUESTION 116

- (Topic 1)

You have a Microsoft 365 tenant that uses Microsoft Office 365 Message Encryption (OME).

You need to ensure that any emails containing attachments and sent to user1@contoso.com are encrypted automatically by using OME.

What should you do?

- A. From the Exchange admin center, create a new sharing policy.
- B. From the Microsoft 365 security center, create a Safe Attachments policy.
- C. From the Exchange admin center, create a mail flow rule.
- D. From the Microsoft 365 compliance center, configure an auto-apply retention label policy.

Answer: C

Explanation:

You can create mail flow rules to help protect email messages you send and receive. You can set up rules to encrypt any outgoing email messages and remove encryption from encrypted messages coming from inside your organization or from replies to encrypted messages sent from your organization.

Reference:

<https://docs.microsoft.com/en-us/microsoft-365/compliance/define-mail-flow-rules-to-encrypt-email?view=o365-worldwide>

NEW QUESTION 121

- (Topic 1)

Note: This question is part of a series of questions that present the same scenario. Each question in the series contains a unique solution that might meet the stated goals. Some question sets might have more than one correct solution, while others might not have a correct solution.

After you answer a question in this section, you will NOT be able to return to it. As a result, these questions will not appear in the review screen.

You recently discovered that the developers at your company emailed Azure Storage keys in plain text to third parties.

You need to ensure that when Azure Storage keys are emailed, the emails are encrypted. Solution: You configure a mail flow rule that matches a sensitive info type.

Does this meet the goal?

- A. Yes
- B. No

Answer: A

NEW QUESTION 126

- (Topic 1)

You need to implement a solution that meets the compliance requirements for the Windows 10 computers.

Which two actions should you perform? Each correct answer presents part of the solution. NOTE: Each coned selection is worth one point.

- A. Deploy a Microsoft 365 Endpoint data loss prevention (Endpoint DLP) configuration package to the computers.
- B. Configure hybrid Azure AD join for all the computers.
- C. Configure the Microsoft Intune device enrollment settings.
- D. Configure a compliance policy in Microsoft Intune.
- E. Enroll the computers in Microsoft Defender for Endpoint protection.

Answer: BE

Explanation:

Reference:

<https://docs.microsoft.com/en-us/microsoft-365/compliance/endpoint-dlp-getting-started?view=o365-worldwide>

NEW QUESTION 128

- (Topic 1)

Note: This question is part of a series of questions that present the same scenario. Each question in the series contains a unique solution that might meet the stated goals. Some

question sets might have more than one correct solution, while others might not have a correct solution.

After you answer a question in this section, you will NOT be able to return to it. As a result, these questions will not appear in the review screen.

You have a Microsoft 365 subscription.

You have a user named User1. Several users have full access to the mailbox of User1. Some email messages sent to User1 appear to have been read and deleted before the user viewed them.

When you search the audit log in the Microsoft Purview compliance portal to identify who signed in to the mailbox of User1, the result are blank.

You need to ensure that you can view future sign-ins to the mailbox of User1. Solution: You run the Set-MailboxFolderPermission -Identity "User1" -User User1@contoso.com -AccessRights Owner command.

Does that meet the goal?

- A. Yes
- B. NO

Answer: B

NEW QUESTION 130

HOTSPOT - (Topic 1)

You have a Microsoft SharePoint Online site that contains the following files.

Name	Modified by	Data loss prevention (DLP) status
File1.docx	Manager1	None
File2.docx	Manager1	Matched by DLP
File3.docx	Manager1	Blocked by DLP

Users are assigned roles for the site as shown in the following table.

Name	Role
User1	Site owner
User2	Site member

Which files can User1 and User2 view? To answer, select the appropriate options in the answer area.

NOTE: Each correct selection is worth one point.

User1:

User2:

- A. Mastered
- B. Not Mastered

Answer: A

Explanation:

User1:

User2:

NEW QUESTION 135

- (Topic 1)

You implement Microsoft 365 Endpoint data loss prevention (Endpoint DLP).

You have computers that run Windows 10 and have Microsoft 365 Apps installed. The computers are joined to Azure Active Directory (Azure AD).

You need to ensure that Endpoint DLP policies can protect content on the computers. Solution: You enroll the computers in Microsoft intune.

Does this meet the goal?

- A. Yes
- B. No

Answer: B

Explanation:

Reference:

<https://docs.microsoft.com/en-us/microsoft-365/compliance/endpoint-dlp-getting-started?view=o365-worldwide>

NEW QUESTION 140

- (Topic 1)

You have a Microsoft 365 tenant that uses the following sensitivity labels:

- * Confidential
- * Internal
- * External

The labels are published by using a label policy named Policy1.

Users report that Microsoft Office for the web apps do not display the Sensitivity button. The Sensitivity button appears in Microsoft 365 Apps that are installed locally.

You need to ensure that the users can apply sensitivity labels to content when they use Office for the web apps.

Solution: You run the Execute-AzureAdLabelSync cmdlet. Does this meet the goal?

- A. Yes
- B. No

Answer: A

NEW QUESTION 141

- (Topic 1)

You are planning a data loss prevention (DLP) solution that will apply to computers that run Windows 10.

You need to ensure that when users attempt to copy a file that contains sensitive information to a USB storage device, the following requirements are met:

- * If the users are members of a group named Group1, the users must be allowed to copy the file, and an event must be recorded in the audit log.
- * All other users must be blocked from copying the file. What should you create?

- A. one DLP policy that contains one DLP rule
- B. two DLP policies that each contains one DLP rule
- C. one DLP policy that contains two DLP rules

Answer: B

NEW QUESTION 146

- (Topic 1)

You need to provide a user with the ability to view data loss prevention (DLP) alerts in the Microsoft 365 compliance center. The solution must use the principle of least privilege.

Which role should you assign to the user?

- A. Compliance data administrator
- B. Security operator
- C. Security reader
- D. Compliance administrator

Answer: C

Explanation:

Reference:

<https://docs.microsoft.com/en-us/microsoft-365/compliance/dlp-configure-view-alerts-policies?view=o365-worldwide>

NEW QUESTION 151

- (Topic 1)

You create a retention label that has a retention period of seven years.

You need to ensure that documents containing a credit card number are retained for seven years. Other documents must not be retained.

What should you create?

- A. a retention label policy of type publish
- B. a retention policy that retains files automatically
- C. a retention policy that deletes files automatically
- D. a retention label policy of type auto-apply

Answer: D

Explanation:

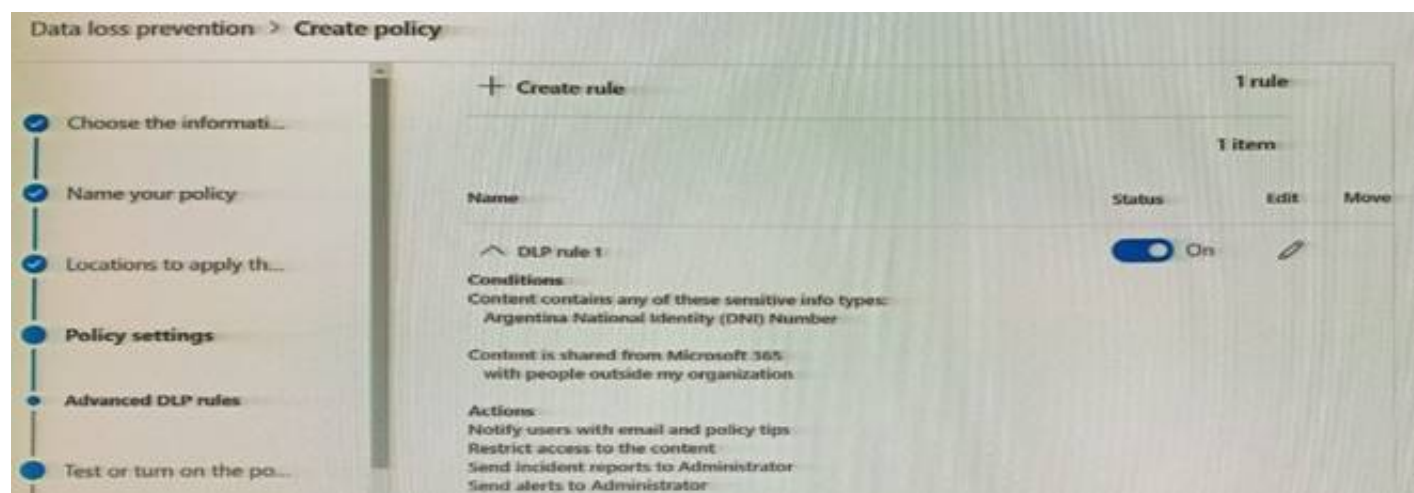
Reference:

<https://docs.microsoft.com/en-us/microsoft-365/compliance/apply-retention-labels-automatically?view=o365-worldwide>

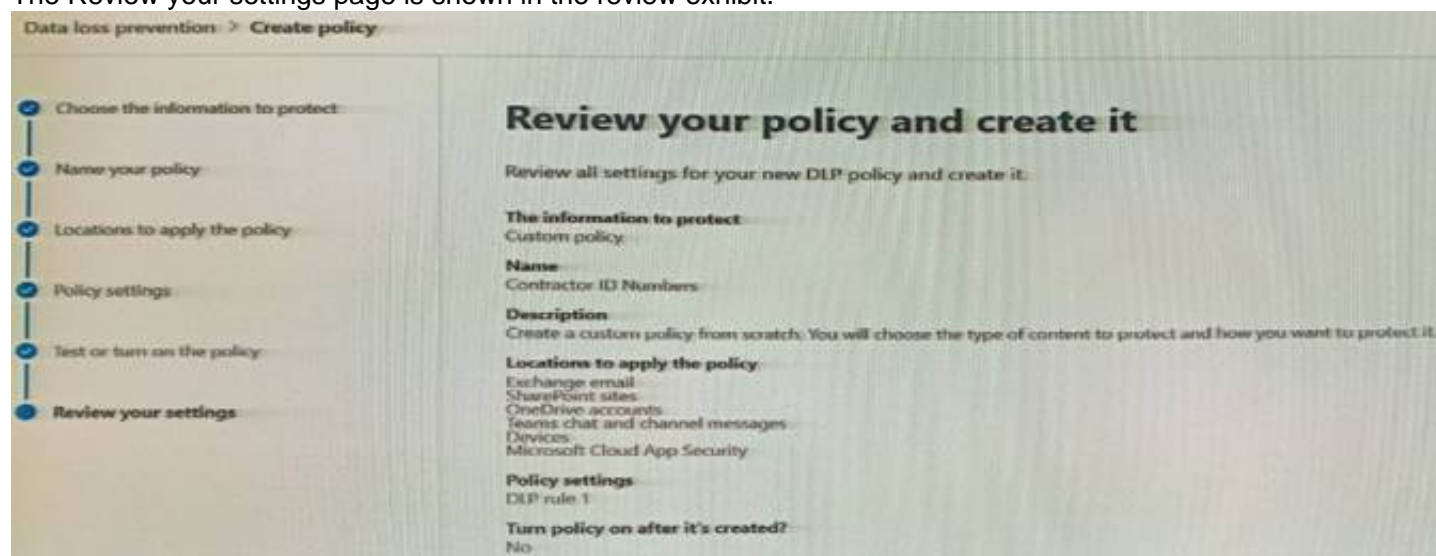
NEW QUESTION 154

- (Topic 1)

You create a data loss prevention (DLP) policy. The Advanced DLP rules page is shown in the Rules exhibit.



The Review your settings page is shown in the review exhibit.



You need to review the potential impact of enabling the policy without applying the actions. What should you do?

- A. Edit the policy, remove all the actions in DLP rule 1, and select I'd like to test it out first.
- B. Edit the policy, remove the Restrict access to the content and Send incident report to Administrator actions, and then select Yes, turn it on right away.
- C. Edit the policy, remove all the actions in DLP rule 1, and select Yes, turn it on right away.
- D. Edit the policy, and then select I'd like to test it out first.

Answer: D

Explanation:

Reference:

<https://docs.microsoft.com/en-us/microsoft-365/compliance/create-a-dlp-policy-from-a-template?view=o365-worldwide>

NEW QUESTION 158

- (Topic 2)

You need to meet the technical requirements for the creation of the sensitivity labels. To which user or users must you grant the Sensitivity label administrator role?

- A. Admin1, Admin2, Admin4, and Admin5 only
- B. Admin1, Admin2, and Admin3 only
- C. Admin1 only
- D. Admin1 and Admin4 only
- E. Admin1 and Admin5 only

Answer: D

Explanation:

Compliance Data Administrator, Compliance Administrator, and Security Administrator already have the required permissions to create the labels. Reference:

<https://docs.microsoft.com/en-us/microsoft-365/compliance/get-started-with-sensitivity-labels?view=o365-worldwide#permissions-required-to-create-and-manage-sensitivity-labels>

NEW QUESTION 162

.....

Thank You for Trying Our Product

* 100% Pass or Money Back

All our products come with a 90-day Money Back Guarantee.

* One year free update

You can enjoy free update one year. 24x7 online support.

* Trusted by Millions

We currently serve more than 30,000,000 customers.

* Shop Securely

All transactions are protected by VeriSign!

100% Pass Your SC-400 Exam with Our Prep Materials Via below:

<https://www.certleader.com/SC-400-dumps.html>