

Exam Questions 300-730

Implementing Secure Solutions with Virtual Private Networks (SVPN)

<https://www.2passeasy.com/dumps/300-730/>



NEW QUESTION 1

Refer to the exhibit.

```
HUB#show ip nhrp
10.0.0.2/32 via 10.0.0.2
    Tunnel0 created 00:02:09, expire 00:00:01
    Type: dynamic, Flags: unique registered used nhop
    NBMA address: 2.2.2.1
10.0.0.3/32 via 10.0.0.3
    Tunnel0 created 00:13:25, 01:46:34
    Type: dynamic, Flags: unique registered used nhop
    NBMA address: 3.3.3.1
```

The DMVPN tunnel is dropping randomly and no tunnel protection is configured. Which spoke configuration mitigates tunnel drops?

A.

```
interface Tunnel0
ip address 10.0.0.2 255.255.255.0
no ip redirects
ip nhrp map 10.0.0.1 1.1.1.1
ip nhrp map multicast 1.1.1.1
ip nhrp network-id 1
ip nhrp holdtime 20
ip nhrp nhs 10.0.0.1
ip nhrp registration timeout 120
ip nhrp shortcut
tunnel source GigabitEthernet0/1
tunnel mode gre multipoint
end
```

A. interface Tunnel0

```
ip address 10.0.0.2 255.255.255.0
no ip redirects
ip nhrp map 10.0.0.1 1.1.1.1
ip nhrp map multicast 1.1.1.1
ip nhrp network-id 1
ip nhrp holdtime 120
ip nhrp nhs 10.0.0.1
ip nhrp registration timeout 120
ip nhrp shortcut
tunnel source GigabitEthernet0/1
tunnel mode gre multipoint
end
```

B. interface Tunnel0

```
ip address 10.0.0.2 255.255.255.0
no ip redirects
ip nhrp map 10.0.0.1 1.1.1.1
ip nhrp map multicast 1.1.1.1
ip nhrp network-id 1
ip nhrp holdtime 120
ip nhrp nhs 10.0.0.1
ip nhrp registration timeout 20
ip nhrp shortcut
tunnel source GigabitEthernet0/1
tunnel mode gre multipoint
end
```

D.

```
interface Tunnel0
  ip address 10.0.0.2 255.255.255.0
  no ip redirects
  ip nhrp map 10.0.0.1 1.1.1.1
  ip nhrp map multicast 1.1.1.1
  ip nhrp network-id 1
  ip nhrp holdtime 120
  ip nhrp nhs 10.0.0.1
  ip nhrp registration timeout 150
  ip nhrp shortcut
  tunnel source GigabitEthernet0/1
  tunnel mode gre multipoint
end
```

Answer: D

NEW QUESTION 2

Which statement about GETVPN is true?

- A. The configuration that defines which traffic to encrypt originates from the key server.
- B. TEK rekeys can be load-balanced between two key servers operating in COOP.
- C. The pseudotime that is used for replay checking is synchronized via NTP.
- D. Group members must acknowledge all KEK and TEK rekeys, regardless of configuration.

Answer: A

NEW QUESTION 3

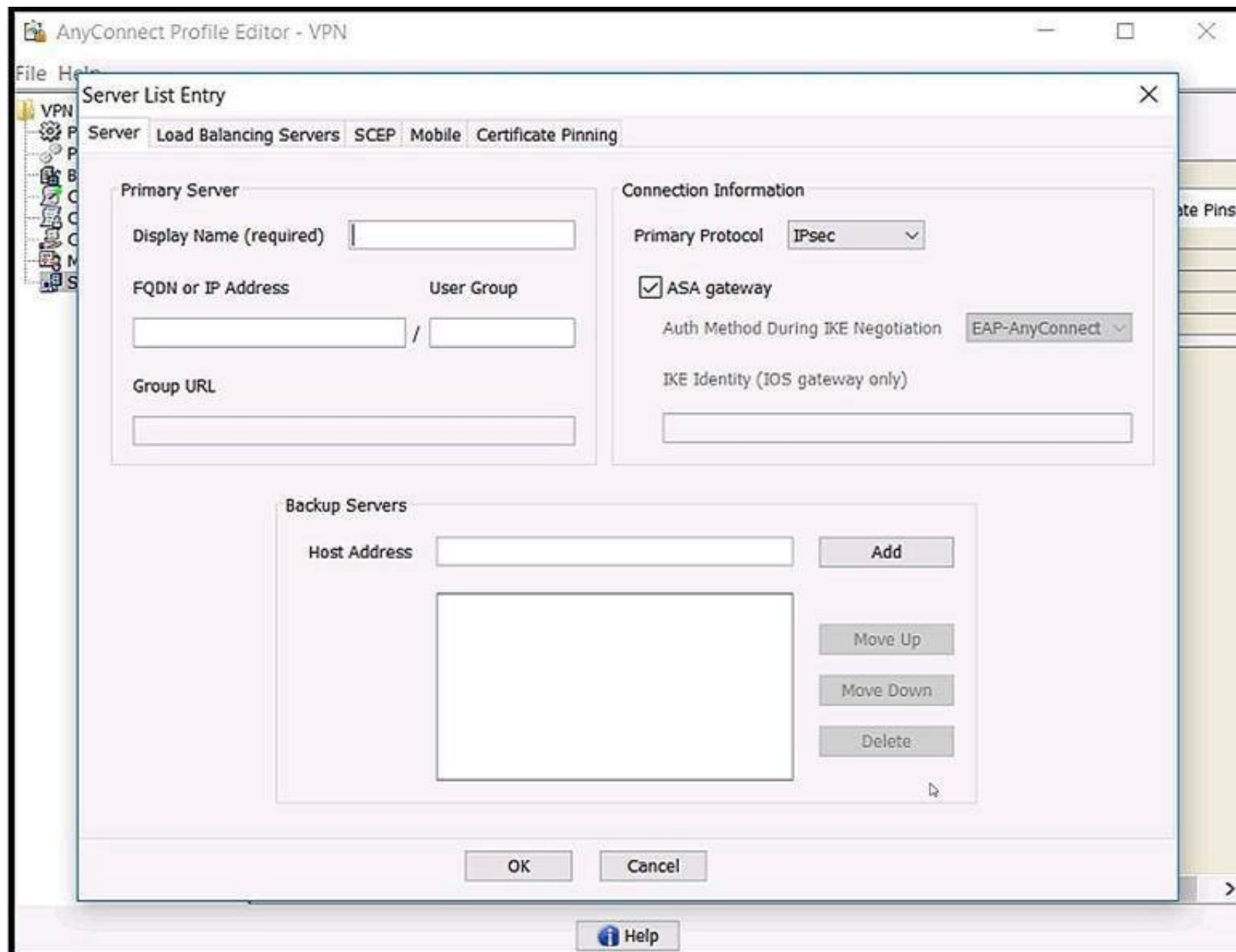
Which two parameters help to map a VPN session to a tunnel group without using the tunnel-group list? (Choose two.)

- A. group-alias
- B. certificate map
- C. optimal gateway selection
- D. group-url
- E. AnyConnect client version

Answer: BD

NEW QUESTION 4

Refer to the exhibit.



Which value must be configured in the User Group field when the Cisco AnyConnect Profile is created to connect to an ASA headend with IPsec as the primary protocol?

- A. address-pool
- B. group-alias
- C. group-policy
- D. tunnel-group

Answer: D

Explanation:

Reference: https://www.cisco.com/c/en/us/td/docs/security/vpn_client/anyconnect/anyconnect41/administration/guide/b_AnyConnect_Administrator_Guide_4-1/configure-vpn.html

NEW QUESTION 5

Refer to the exhibit.


```

aaa new-model
!
aaa authorization network local-group-author-list local
!
crypto pki trustpoint trustpoint1
  enrollment url http://192.168.3.1:80
  revocation-check crl
!
crypto pki certificate map certmap1 1
  subject-name co cisco
!
crypto ikev2 authorization policy author-policy1
  ipv6 pool v6-pool
  ipv6 dns 2001:DB8:1::11 2001:DB8:1::12
  ipv6 subnet-acl v6-acl
!
crypto ikev2 profile ikev2-profile1
  match certificate certmap1
  authentication local rsa-sig
  authentication remote rsa-sig
  pki trustpoint trustpoint1
  aaa authorization group cert list local-group-author-list
author-policy1
  virtual-template 1
!
crypto ipsec transform-set transform1 esp-aes esp-sha-hmac
!
crypto ipsec profile ipsec-profile1
  set transform-set trans transform1
  set ikev2-profile ikev2-profile1
!
interface Ethernet0/0
  ipv6 address 2001:DB8:1::1/32
!
interface Virtual-Template1 type tunnel
  ipv6 unnumbered Ethernet0/0
  tunnel mode ipsec ipv6
  tunnel protection ipsec profile ipsec-profile1
!
ipv6 local pool v6-pool 2001:DB8:1::10/32 48
!
ipv6 access-list v6-acl
  permit ipv6 host 2001:DB8:1::20 any
  permit ipv6 host 2001:DB8:1::30 any

```

What is configured as a result of this command set?

- A. FlexVPN client profile for IPv6
- B. FlexVPN server to authorize groups by using an IPv6 external AAA
- C. FlexVPN server for an IPv6 dVTI session
- D. FlexVPN server to authenticate IPv6 peers by using EAP

Answer: A

Explanation:

Reference: https://www.cisco.com/c/en/us/td/docs/ios-xml/ios/sec_conn_ike2vpn/configuration/xr-3s/sec-flex-vpn-xr-3s-book/sec-cfg-flex-clnt.html

NEW QUESTION 6

Which two types of web resources or protocols are enabled by default on the Cisco ASA Clientless SSL VPN portal? (Choose two.)

- A. HTTP
- B. ICA (Citrix)
- C. VNC
- D. RDP
- E. CIFS

Answer: DE

Explanation:

Reference: <https://www.cisco.com/c/en/us/td/docs/security/asa/asa94/config-guides/cli/vpn/asa-94-vpn-config/webvpn-configure-gateway.html>

NEW QUESTION 7

Which configuration construct must be used in a FlexVPN tunnel?

- A. EAP configuration
- B. multipoint GRE tunnel interface
- C. IKEv1 policy
- D. IKEv2 profile

Answer: D

NEW QUESTION 8

Which two features provide headend resiliency for Cisco AnyConnect clients? (Choose two.)

- A. AnyConnect Auto Reconnect
- B. AnyConnect Network Access Manager
- C. AnyConnect Backup Servers
- D. ASA failover
- E. AnyConnect Always On

Answer: CD

NEW QUESTION 9

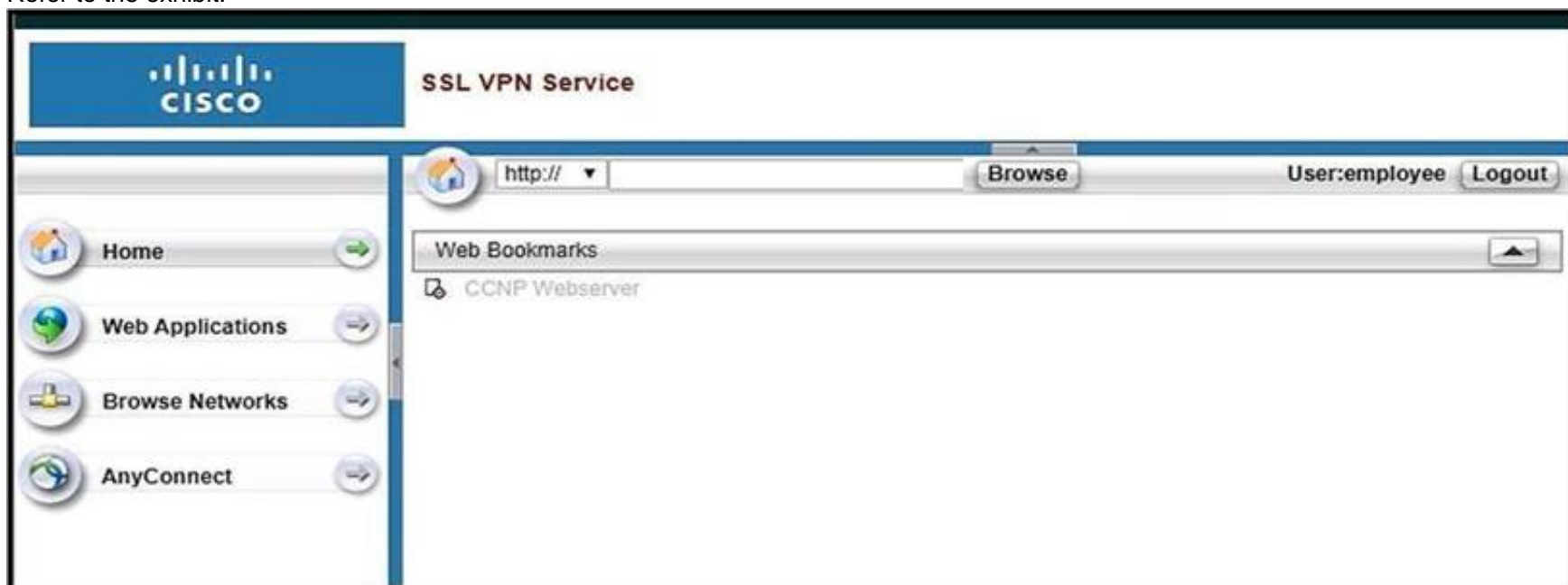
Under which section must a bookmark or URL list be configured on a Cisco ASA to be available for clientless SSLVPN users?

- A. tunnel-group (general-attributes)
- B. tunnel-group (webvpn-attributes)
- C. webvpn (group-policy)
- D. webvpn (global configuration)

Answer: D

NEW QUESTION 10

Refer to the exhibit.



Based on the exhibit, why are users unable to access CCNP Webserver bookmark?

- A. The URL is being blocked by a WebACL.
- B. The ASA cannot resolve the URL.
- C. The bookmark has been disabled.
- D. The user cannot access the URL.

Answer: C

NEW QUESTION 10

Which two statements about the Cisco ASA Clientless SSL VPN solution are true? (Choose two.)

- A. When a client connects to the Cisco ASA WebVPN portal and tries to access HTTP resources through the URL bar, the client uses the local DNS to perform FQDN resolution.
- B. The rewriter enable command under the global webvpn configuration enables the rewriter functionality because that feature is disabled by default.
- C. A Cisco ASA can simultaneously allow Clientless SSL VPN sessions and AnyConnect client sessions.
- D. When a client connects to the Cisco ASA WebVPN portal and tries to access HTTP resources through the URL bar, the ASA uses its configured DNS servers to perform FQDN resolution.
- E. Clientless SSLVPN provides Layer 3 connectivity into the secured network.

Answer: CD

NEW QUESTION 13

Refer to the exhibit.



The customer must launch Cisco AnyConnect in the RDP machine. Which IOS configuration accomplishes this task?

- A. `crypto vpn anyconnect profile Profile 1 flash:RDP.xml`
`webvpn context Context1`
`svc platform win seq 1`
`policy group PolicyGroup1`
`functions svc-enabled`
- B. `crypto vpn anyconnect profile Profile 1 flash:RDP.xml`
`webvpn context Context1`
`browser-attribute import flash:RDP.xml`
- C. `crypto vpn anyconnect profile Profile 1 flash:RDP.xml`
`webvpn context Context1`
`policy group PolicyGroup1`
`svc profile Profile1`
- D. `crypto vpn anyconnect profile Profile 1 flash:RDP.xml`
`webvpn context Context1`
`policy group PolicyGroup1`
`svc module RDP`

Answer: C

Explanation:

Reference: <https://community.cisco.com/t5/vpn/starting-anyconnect-vpn-through-rdp-session-on-cisco-891/td-p/2128284>

NEW QUESTION 15

Refer to the exhibit.



Which two commands under the tunnel-group webvpn-attributes result in a Cisco AnyConnect user receiving the AnyConnect prompt in the exhibit? (Choose two.)

- A. `group-url https://172.16.31.10/General enable`
- B. `group-policy General internal`
- C. `authentication aaa`
- D. `authentication certificate`
- E. `group-alias General enable`

Answer: BE

NEW QUESTION 18

Refer to the exhibit.


```

Spoke1#
  local ident (addr/mask/prot/port): (192.168.1.1/255.255.255.255/ 47/0)
  remote ident (addr/mask/prot/port): (192.168.2.1/255.255.255.255/ 47/0)
  #pkts encaps: 200, #pkts encrypt: 200
  #pkts decaps: 0, #pkts decrypt: 0,
local crypto endpt.: 192.168.1.1,
remote crypto endpt.: 192.168.2.1
  inbound esp sas:
  spi: 034B32CA36 (1261619766)
  outbound esp sas:
  spi:0xD601918E (1760427022)

Spoke2#
  local ident (addr/mask/prot/port): (192.168.2.1/255.255.255.255/ 47/0)
  remote ident (addr/mask/prot/port): (192.168.1.1/255.255.255.255/ 47/0)
  #pkts encaps: 210, #pkts encrypt: 210,
  #pkts decaps: 200, #pkts decrypt: 200,
local crypto endpt.: 192.168.2.1,
remote crypto endpt.: 192.168.1.1
  inbound esp sas:
  spi: 03D601918E (1760427022)
  outbound esp sas:
  spi: 034BS2CA36 (1261619766)

```

An engineer is troubleshooting a new GRE over IPsec tunnel. The tunnel is established but the engineer cannot ping from spoke 1 to spoke 2. Which type of traffic is being blocked?

- A. ESP packets from spoke2 to spoke1
- B. ISAKMP packets from spoke2 to spoke1
- C. ESP packets from spoke1 to spoke2
- D. ISAKMP packets from spoke1 to spoke2

Answer: A

NEW QUESTION 19

Refer to the exhibit.

An SSL client is connecting to an ASA headend. The session fails with the message "Connection attempt has timed out. Please verify Internet connectivity." Based on how the packet is processed, which phase is causing the failure?

- A. phase 9: rpf-check
- B. phase 5: NAT
- C. phase 4: ACCESS-LIST
- D. phase 3: UN-NAT

Answer: D

NEW QUESTION 20

Which technology works with IPsec stateful failover?

- A. GLBR
- B. HSRP
- C. GRE
- D. VRRP

Answer: B

Explanation:

Reference: https://www.cisco.com/c/en/us/td/docs/ios/12_2/12_2y/12_2yx11/feature/guide/ft_vpnha.html#wp1122512

NEW QUESTION 24

Which VPN solution uses TBAR?

- A. GETVPN
- B. VTI
- C. DMVPN
- D. Cisco AnyConnect

Answer: A

Explanation:

Reference: https://www.cisco.com/c/en/us/td/docs/ios-xml/ios/sec_conn_getvpn/configuration/xr-3s/sec-get-vpn-xr-3s-book/sec-get-vpn.html

NEW QUESTION 29

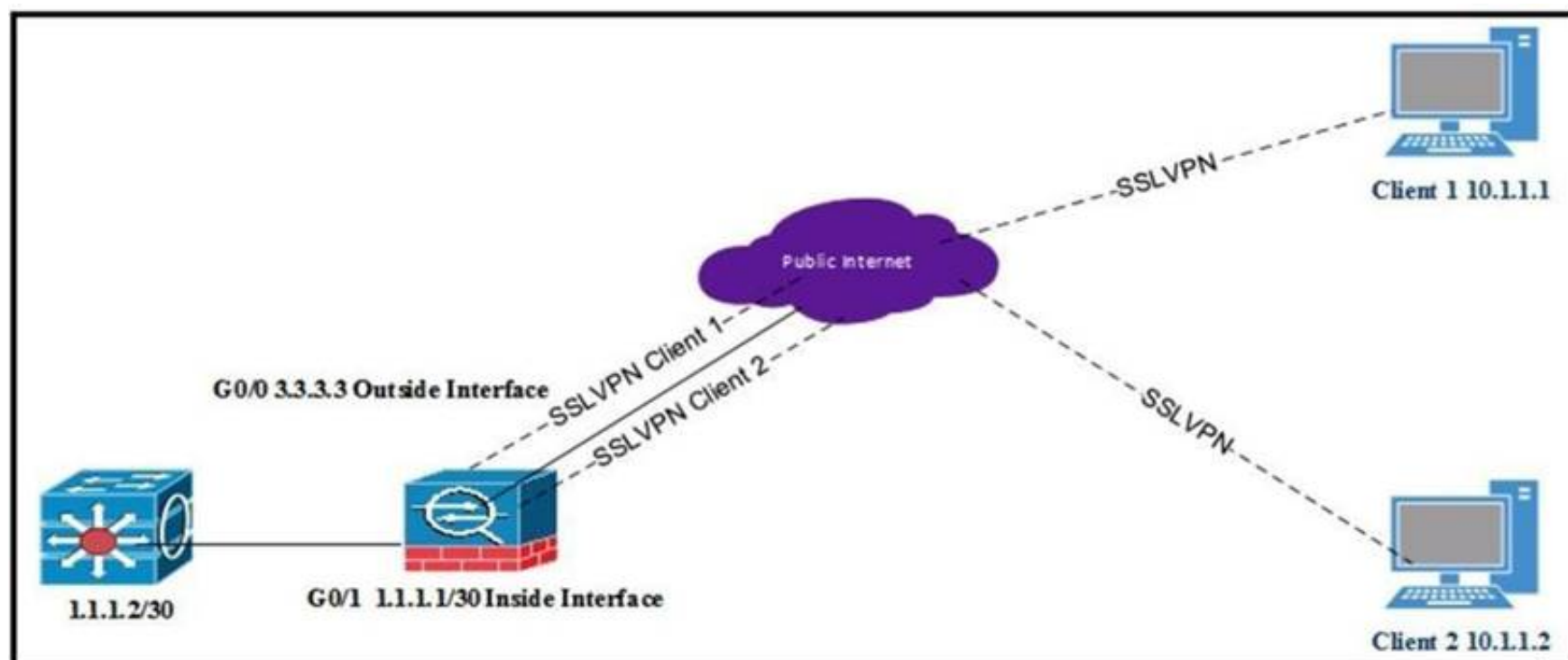
Which two commands help determine why the NHRP registration process is not being completed even after the IPsec tunnel is up? (Choose two.)

- A. show crypto isakmp sa
- B. show ip traffic
- C. show crypto ipsec sa
- D. show ip nhrp traffic
- E. show dmvpn detail

Answer: AD

NEW QUESTION 32

Refer to the exhibit.



All internal clients behind the ASA are port address translated to the public outside interface that has an IP address of 3.3.3.3. Client 1 and client 2 have established successful SSL VPN connections to the ASA. What must be implemented so that "3.3.3.3" is returned from a browser search on the IP address?

- A. Same-security-traffic permit inter-interface under Group Policy
- B. Exclude Network List Below under Group Policy
- C. Tunnel All Networks under Group Policy
- D. Tunnel Network List Below under Group Policy

Answer: D

NEW QUESTION 34

A Cisco ASA is configured in active/standby mode. What is needed to ensure that Cisco AnyConnect users can connect after a failover event?

- A. AnyConnect images must be uploaded to both failover ASA devices.
- B. The vpnsession-db must be cleared manually.
- C. Configure a backup server in the XML profile.
- D. AnyConnect client must point to the standby IP address.

Answer: A

Explanation:

Reference: https://www.cisco.com/c/en/us/td/docs/security/asa/asa90/configuration/guide/asa_90_cli_config/ha_active_standby.html

NEW QUESTION 36

.....

THANKS FOR TRYING THE DEMO OF OUR PRODUCT

Visit Our Site to Purchase the Full Set of Actual 300-730 Exam Questions With Answers.

We Also Provide Practice Exam Software That Simulates Real Exam Environment And Has Many Self-Assessment Features. Order the 300-730 Product From:

<https://www.2passeasy.com/dumps/300-730/>

Money Back Guarantee

300-730 Practice Exam Features:

- * 300-730 Questions and Answers Updated Frequently
- * 300-730 Practice Questions Verified by Expert Senior Certified Staff
- * 300-730 Most Realistic Questions that Guarantee you a Pass on Your FirstTry
- * 300-730 Practice Test Questions in Multiple Choice Formats and Updatesfor 1 Year