

## 1Z0-518 Dumps

### Oracle EBS R12.1 Receivables Essentials

<https://www.certleader.com/1Z0-518-dumps.html>



**NEW QUESTION 1**

Identify the two benefits of using Multi-Org Access Control. (Choose two.)

- A. View asset Information across multiple asset books.
- B. Restrict access to users based on their Organization assignments.
- C. Submit and view data across different Ledgers using a single responsibility.
- D. Enter Payables invoices for different Operating Units using a single responsibility.
- E. View Consolidated requisitions across Operating Units using a single responsibility.

**Answer:** DE

**NEW QUESTION 2**

Which two statements are true regarding partitioning of data by an application? (Choose two.)

- A. General Ledger is partitioned by Ledgers.
- B. Accounts Payable is partitioned by Ledgers.
- C. Fixed Assets are partitioned by Operating Unit.
- D. Accounts Receivable is partitioned by Operating Unit.
- E. Order Management is partitioned by Inventory Organization.

**Answer:** AD

**NEW QUESTION 3**

Identify four tasks that you can perform using Oracle Workflow in Oracle E-Business Suite Release 12, (choose four)

- A. Automata business processes,
- B. Generate account code combinations,
- C. Approve standard business documents,
- D. Send notifications using Advanced Queuing,
- E. Generate Inventory item numbers using item generator workflow,
- F. Integrate with third party business systems that are not on a company network.

**Answer:** ABDF

**NEW QUESTION 4**

Identify two correct statements related to Key Performance Indicators and the KPI region in Daily Business Intelligence. (Choose two.)

- A. can be of table format only
- B. can be configured for each dashboard
- C. organizes data into reporting hierarchies
- D. is a strategic business factor that is used for reporting
- E. contains a unique set of graphical information on a dashboard

**Answer:** BD

**NEW QUESTION 5**

Ten analysts are assigned the same Receivables responsibility and are given their own logins.

The requirement is to restrict three of the analysts from creating chargebacks or adjustments.

What would be your advice to ensure compliance with this internal control?

- A. Use forms personalization to restrict function access.
- B. Set the "AR: Cash - Allow Actions" system profile to no at the responsibility level.
- C. Set the "AR: Cash - Allow Actions" system profile to no at the user level for the three analysts.
- D. Set the "AR: Cash - Allow Actions" system profile to yes at the user level for the three analysts.
- E. Set the "AR: Cash - Allow Actions" system profile to yes at the application level for the three analysts.

**Answer:** C

**NEW QUESTION 6**

Several fields are required during manual Invoice entry. Which are the fields required at the header level?

- A. date, customer, source, type, GL date, legal entity
- B. date, legal entity, bill-to, source, type, class, remit-to
- C. terms, date, bill-to, source, legal entity, type, remit-to
- D. date, customer, source, type, General Ledger (GL) date, class
- E. date, source, class, type, GL date, legal entity, bill-to, terms, remit-to

**Answer:** E

**NEW QUESTION 7**

You are setting up Receivable Accounting Events in Subledger Accounting. Identify Event Entity.

- A. Invoices
- B. deposits
- C. guarantees

- D. transactions
- E. chargebacks

**Answer:** D

#### NEW QUESTION 8

Which three statements are true about Balance Forward Billing? (Choose three.)

- A. Billing date is an optional grouping rule.
- B. Billing date value is mandatory when cycle is external.
- C. Accept Consolidated Billing Invoices program is available.
- D. Print New Consolidated Billing Invoices program is available.
- E. It considers both manual transactions and imported transactions.
- F. Activity can be consolidated across account sites, or by each billing site.

**Answer:** BEF

#### NEW QUESTION 9

Select four key system options in Oracle Receivables that are related to customers. (Choose four.)

- A. default country
- B. receipt method
- C. automatic site numbering
- D. create reciprocal customer
- E. customer credit classification
- F. automatic customer numbering
- G. allow payment of unrelated transactions

**Answer:** CDFG

#### NEW QUESTION 10

Identify two statements that apply to Oracle Collections. (Choose two.)

- A. It Is a Web-based self-service application.
- B. It can be used to place an invoice in dispute.
- C. It enables customers to see their own Oracle Receivables account information, such as balances.
- D. It can be used to initiate the Oracle Approvals Management (AME) credit memo request workflow from Oracle Collections.

**Answer:** BD

#### NEW QUESTION 10

A clerk from ABC Inc. receives a customer receipt that does not have sufficient Information to identify the customer or invoice. Which is the correct method of entering the receipt In Oracle Accounts Receivable?

- A. Enter the receipt as an unapplied receipt.
- B. Enter the receipt as an unidentified receipt.
- C. Enter the receipt as an on-account receipt.
- D. Enter the receipt as a miscellaneous receipt.
- E. Enter the receipt by applying it to a dummy customer account.

**Answer:** B

#### NEW QUESTION 14

A receipt of \$2,000 Is received for an Invoice that has \$1,500 as the amount due. The remittance advice does not state a reason for the overpayment Identify the receipt state that should be displayed;

- A. applied
- B. unapplied
- C. on-account
- D. unidentified
- E. partially applied

**Answer:** B

#### NEW QUESTION 18

MT Services has several operating companies set up as balancing segment values In Its chart of accounts. There is only one sales tax rate that is applicable to its services. However, for accounting purposes, MT Services must track the sales tax by operating company. Except for some government agencies that are customers, sales tax is applicable to all customers. The controller wants to know the minimum setup steps that MT Services must perform. Choose the three minimum setups needed in Receivables and E-Business Tax to charge sales tax. (Choose three.)

- A. tax groups
- B. location sales tax
- C. AutoAccounting for tax
- D. tax classification codes
- E. assigning tax code to transaction type

F. tax exemptions for customers and customer sites

**Answer:** BCF

#### NEW QUESTION 19

Organizations have unique credit policies that aid for managing their collections and establishing relationships with customers. Describe the two dimensions on which Oracle Credit Management is based. (Choose two.)

- A. various customer credit classifications
- B. various credit review types identified by collectors
- C. various analysis of prior billing period and receipt history of customers
- D. various analysis of customers on the basis of the aging of their outstanding balances

**Answer:** AB

#### NEW QUESTION 24

A user is reconciling transaction balances in the closing process. Why would the user run the Invoice Exceptions Report?

- A. to identify unposted transactions
- B. to Identify AutoInvoice validation errors
- C. to Identify order lines with workflow stuck
- D. to identify order lines with a back order credit hold
- E. to identify transactions that do not appear In the Aging report
- F. to identify transactions that do not appear In the Transaction Register

**Answer:** E

#### NEW QUESTION 28

AutoLockbox execution employs a multistep process. These steps can be submitted individually or at the same time from the Submit lockbox Processing window. Identify the correct sequential combination of steps that are executed while running the AutoLockbox concurrent process in Oracle Receivables.

- A. enter receipts, validate data, apply QuickCash
- B. import bank file, validate data, post QuickCash
- C. Import bank file, enter receipts, validate QuickCash
- D. enter receipt
- E. Import bank file, validate data, post QuickCash
- F. enter receipt
- G. Import bank file, validate data, post QuickCash, apply receipts

**Answer:** B

#### NEW QUESTION 29

Select four values that default from profile classes in Oracle Accounts Receivable. (Choose four.)

- A. currency
- B. legal entity
- C. payment terms
- D. statement cycle
- E. business purpose
- F. credit classification

**Answer:** ACDF

#### NEW QUESTION 32

BT Inc. is implementing Oracle Accounts Receivable to interface with an external non-Oracle legacy billing system. The client wants Receivables to generate accounting entries, instead of sending accounting data through the interface.

Identify four setup items that are used by Receivables to generate the General Ledger (GL) code combinations. (Choose four.)

- A. AutoAccounting
- B. transaction type
- C. accounting rules
- D. transaction source
- E. customer bill-to site
- F. standard memo line

**Answer:** ABEF

#### NEW QUESTION 37

Which three statements are true about accounting rules? (Choose three.)

- A. Accounting rules enable you to defer revenue.
- B. Accounting rules enable you to define fixed and variable rules to recognize revenue.
- C. Accounting rules enable you to define the number of periods and percentage of total revenue that you can record in each accounting period.
- D. Accounting rules enable you to define the number of periods and amount of invoice that you can bill your customer in each accounting period.

**Answer:** ABC

**NEW QUESTION 39**

Which statement best describes stages In the credit review process?

- A. initiating a credit review, data collection, data analysis, making and implementing the recommendations
- B. defining a profile class, assigning it to customers, setting up the scoring model, and starting the workflow background process
- C. manually reviewing customers' past billing and payment history, initiating discussions with customers, and implementing recommendations
- D. manually initiating a review by sending out mails to customers requesting information, reviewing and making recommendations, and implementing recommendations after approval

**Answer:** A

**NEW QUESTION 41**

Identify two correct statements about Oracle Receivables. (Choose two.)

- A. AutoAccounting is only used for the imported transactions.
- B. Errors in the AutoInvoice are sent to the Interface Exceptions table.
- C. Receivables transactions cannot be changed after they are printed.
- D. Receipt accounting can be transferred after the receipts are entered and saved.
- E. Transfer to General Ledger can transfer transaction accounting entries after the transactions are entered and saved.

**Answer:** BD

**NEW QUESTION 43**

Your client has requirements to enter customers, suppliers, and remit-to addresses In countryspecific formats for the United States, United Kingdom, and Ireland. Which are the three steps required to set up new flexible address formats in Oracle Applications? (Choose three.)

- A. creating address style lookup
- B. creating flexible address code
- C. setting up the "Default Address" profile option
- D. assigning address style to a specific country
- E. setting up flexible address format in a descriptive flexfield

**Answer:** ADE

**NEW QUESTION 48**

Identify three tables that can be used to import billing data Into Oracle Receivables. (Choose three.)

- A. RA\_INTERFACE\_LINES\_ALL
- B. RA\_INTERFACE\_SALES\_ALL
- C. RA\_INTERFACE\_HEADERS\_ALL
- D. RA\_INTERFACE\_SALESCREDITS\_ALL
- E. RA\_INTERFACE\_DISTRIBUTIONS\_ALL

**Answer:** ADE

**NEW QUESTION 51**

To create a party paying relationship, the relationship type must be hierarchical and the party type must be\_\_\_\_\_.

- A. child
- B. parent
- C. person
- D. organization
- E. person or organization

**Answer:** D

**NEW QUESTION 53**

You want an invoice to be due in four stages.  
What should you do when creating the invoice to accomplish this?

- A. Assign an invoicing rule with four schedules.
- B. Assign an accounting rule with four schedules.
- C. Assign payment terms that have four payment schedules.
- D. Assign payment terms that have four discount periods defined.
- E. Create four lines and assign different payment terms to each line.

**Answer:** C

**NEW QUESTION 57**

Horizon Real Estate Company usually Issues rent Invoices to its tenants at the beginning of every quarter. It recognizes the monthly rent revenue on the first day of each month. However, some tenants are required to make the monthly rent payments in two installments that is on the 15th and the fast day of the month. Which two statements are correct about the possible solutions for this business requirement? (Choose two.)

- A. Payment term can be set to defer the monthly rent revenue.
- B. Invoicing rules can be set to defer the monthly rent revenue.
- C. Accounting rules can be set to defer the monthly rent revenue.

- D. Payment term can be set to allow customers to make payments in two installments.
- E. Invoicing rules can be set to allow customers to make payments in two installments.
- F. Accounting rules can be set to allow customers to make payments in two installments.

**Answer:** CD

#### NEW QUESTION 59

Which three statements are true about AutoInvoice? (Choose three)

- A. it determine the General Ledger (GL) accounts by using AutoAccounting.
- B. It imports Invoices that have only transaction types that are of the "Imported\*" translation class.
- C. It determine the GL accounts from the rows in the RA\_INTERFACE\_DISTRIBUTIONS\_ALL table.
- D. It determine whether the invoice should have open or closed status on the basic of the line amount.
- E. It uses the AutoInvoice clearing account if it cannot determine the Receivable account by using AutoAccounting.
- F. It uses the AutoInvoice clearing account if it price multiplied by quantity does not equal the total amount for a line.

**Answer:** ACF

#### NEW QUESTION 61

Journal creation rules in Subledger Accounting are defined by event type and event class. Identify the event type associated with the event class of reverse.

- A. invoice
- B. receipts
- C. adjustment
- D. chargeback
- E. transactions
- F. credit memo
- G. bills receivable

**Answer:** B

#### NEW QUESTION 66

Select three features that Multi-Org provides to satisfy business needs. (Choose three.)

- A. secures user access to data
- B. supports fixed asset management
- C. procures from one Legal Entity and receives in another
- D. supports multiple language installations of Oracle Applications
- E. supports any number of business units within a single installation

**Answer:** ACE

#### NEW QUESTION 69

You have logged In to the Oracle E-Business Suite Release 12 Instance and accessed your worklist. You see four FYI notifications in your default Worklist view. You opened the first notification and clicked the "OK" button after reviewing the content. Identify three things that can happen after you return to your worklist. (Choose three.)

- A. You see four notifications in your worklist.
- B. You see three notifications in your worklist.
- C. Status of the first notification has been updated to "Delete."
- D. Status of the first notification has been updated to "Closed."
- E. You can view the first notification by choosing the "All Notifications" view from your worklist.
- F. You can view the first notification by choosing the "FYI Notifications" view from your worklist.

**Answer:** BDE

#### NEW QUESTION 70

In the Multi-Org model of Oracle E-Business Suite Release 12, which organization type owns Bank Account?

- A. Ledger
- B. Legal Entity
- C. Operating Unit
- D. Balancing Entity
- E. Business Group

**Answer:** B

#### NEW QUESTION 73

ABC Corp. uses Orade E-Business Suite Release 12 and wants to design an Order Status Web inquiry screen to make order statuses visible to its customers online.

Hon can ABC Corp. ensure that customers view only their individual order statuses?

- A. by securing attributes for each customer
- B. by excluding attributes for individual customers
- C. by assigning a separate attribute value for INTERBNAL\_CONTACT\_ID
- D. by assigning the same attribute value for CUSTOMER\_CONTACT\_ID



**Answer:** A

**NEW QUESTION 74**

Identify three features of a Balancing Entity. (Choose three.)

- A. Balance sheets are prepared for a Balancing Entity.
- B. A Legal Entity may comprise one or more than one balancing segments.
- C. Multiple Balancing Entities within the same Operating Unit structure is not supported.
- D. A Balancing Entity is represented as a balancing segment value in the accounting flexfield structure.
- E. Oracle E-Business Suite Release 12 automatically secures balancing segment values within your chart of accounts with specific Legal Entities or Operating Units.

**Answer:** ABD

**NEW QUESTION 76**

A global company uses Oracle E-Business Suite Release 12 for its operations in the U.S. and Canada. The company is now adding Mexico to the Oracle E-Business Suite Release 12 Applications. As a system administrator, you need to set the MO: Operating Unit profile option for Mexico. Customer is not using Multi-Org Access Control.

You set the MO: Operating Unit profile option at the \_\_\_\_\_ level.

- A. Site
- B. User
- C. Application
- D. Responsibility

**Answer:** D

**NEW QUESTION 80**

Which three statements are true about modifying flexfield values? (Choose three.)

- A. The values cannot be disabled.
- B. The value description can be changed.
- C. The effective dates for a value can be limited.
- D. The values can be deleted after they are defined.
- E. The values cannot be modified after they are defined.

**Answer:** BCE

**NEW QUESTION 83**

Identify three features of a Value Set. (Choose three.)

- A. Value Sets are mandatory.
- B. Value Sets must contain a list of values.
- C. Value Sets control the values for many report parameters.
- D. The same Value Set can be shared between different Flexfields.
- E. A Value Set is a definition of the values approved for entry by a particular Flexfield Segment

**Answer:** CDE

**NEW QUESTION 84**

XYZ Corp. has operations In the U.S. and Canada. Within Canada, it has two separate Divisions due to Statutory requirements: one in Quebec and another in Ontario.

How would you define the organization structure for XYZ Corp. from the Information given above?

- A. two Ledgers, two Legal Entitles, and two Operating Units
- B. two Ledgers, two Legal Entitles, and three Operating Units
- C. two Ledgers, three Legal Entities, and two Operating Units
- D. two Ledgers, three Legal Entitles, and three Operating Units
- E. three Ledgers, three Legal Entities, and three Operating Units

**Answer:** D

**NEW QUESTION 86**

Company ABC is implementing Oracle User Management (OUM). It has decided to implement the Self Service and Approvals access control layer.

What are the three self-service registration tasks an end user can perform? (Choose three.)

- A. Reset passwords.
- B. Obtain new user accounts.
- C. Request deactivation of responsibility
- D. Request reports to be added to request set.
- E. Request additional access to the applications

**Answer:** ABE

**NEW QUESTION 88**

Identify the component in Subledger Accounting that enables you to meet the requirements for multiple accounting representations for an event.

- A. Event Definition
- B. Event Classification
- C. Subledger Accounting method
- D. Application Accounting Definition

**Answer:** D

#### NEW QUESTION 89

ABC Corp. has set up the Asset Category Key Flexfield. It has also set up a Descriptive Flexfield to store vehicle Information associated with the asset category "Vehicle." Identify two correct statements (Choose two.)

- A. The setting up of the Descriptive Flexfield is mandatory.
- B. The Asset Category Flexfield is owned by the Oracle Assets module.
- C. The Descriptive Flexfield attributes are associated with tables in the Oracle Assets module.
- D. Only the Asset Category Key Flexfield is associated with tables in the Oracle Assets module.

**Answer:** BC

#### NEW QUESTION 93

Oracle Daily Business Intelligence functions are secured using standard Oracle Applications function security. Choose three dashboards that are secured by the Inventory Organization. (Choose three.)

- A. Inventory Management
- B. Warehouse Management
- C. Procurement Management
- D. Commodity Supplier Management
- E. Customer Fulfillment Management

**Answer:** ABE

#### NEW QUESTION 98

Identify three true statements about defining actions in Oracle Alert. (Choose three.)

- A. An alert can contain only one Action Set.
- B. An alert can contain any number of Action Sets.
- C. When multiple actions are defined they must be included in an Action Set.
- D. Oracle Alert waits for user response before executing next action in an Action Set.
- E. When multiple actions are defined, they do not need to be included in an Action Set.
- F. Oracle Alert does not wait for user response before executing next action in an Action Set.

**Answer:** BCF

#### NEW QUESTION 101

Identify the two values that the Reporting Level parameter can have when using cross organization reports with the Multi-Org Access Control feature. (Choose two.)

- A. Ledger
- B. Legal Entity
- C. Operating Unit
- D. Security Profile
- E. Business Group

**Answer:** AC

#### NEW QUESTION 103

ABC Corp. has the following Organization Structure:

- 1) Legal Entity: A
- 2) Operating Units: B and C
- 3) Balancing Entities: 10, 20, and 30

Identify three correct statements regarding the Balancing Entity. (Choose three.)

- A. Each Balancing Entity must balance within itself.
- B. There can be multiple Balancing Entities within an Operating Unit.
- C. Balancing Entity is the lowest postable unit in the Chart of Accounts.
- D. Balancing Entities can be automatically secured at the Legal Entity level.
- E. Balancing Entities can be secured at the Operating Unit level through Security Rules.

**Answer:** ABE

#### NEW QUESTION 105

Company X has three Operating Units: A, B, and C. Each Operating Unit has the MO: Security Access profile option called ABC Security assigned. Operating Unit A has both MO: Operating Units profile option and the MO: Default Operating Units profile option assigned to it. Which statement is true?

- A. Paul can create transactions for A, B, and C Operating Units.



- B. All transactions created by Paul are automatically assigned to Operating Units A.
- C. Paul can report on data across A, B, and C Operating Units, but enter transactions only against A.
- D. The profile option did not include Operating Unit B and Operating Unit C due to an error by system administrator.
- E. The Payables responsibility is linked to the Operating Unit A by the MO: Operating Unit profile option and can create transactions for that Operating Unit alone.

**Answer:** A

#### **NEW QUESTION 109**

What are the four required fields when defining a request set? (Choose four.)

- A. Set
- B. Owner
- C. Set Code
- D. Application
- E. Description
- F. Active Date

**Answer:** ACDF

#### **NEW QUESTION 111**

Identify two features of a Value Set that has a validation type of "None." (Choose two.)

- A. It has an approved list of values associated with it
- B. The entered value must meet the formatting requirements.
- C. The Flexfield value security rules cannot be used for a segment that uses this Value Set
- D. Users can enter any value that they want even if It does not meet formatting requirements.

**Answer:** BC

#### **NEW QUESTION 116**

Which two statements are true regarding ownership of shared entities? (Choose two)

- A. Items is owned by Oracle Purchasing, whereas Locations Is owned by Oracle Receivables,
- B. Suppliers is owned by Oracle Purchasing, whereas Units of Measure Is owned by Oracle Inventory.
- C. Ledger is owned by Oracle General Ledger, whereas Locations Is owned by Oracle Human Resources.
- D. Customers is owned by Oracle Human Resources, whereas Locations is owned by Oracle Receivables.
- E. Sales Force is owned by Oracle Order Management, whereas Employees is owned by Oracle Human Resources.

**Answer:** BC

#### **NEW QUESTION 118**

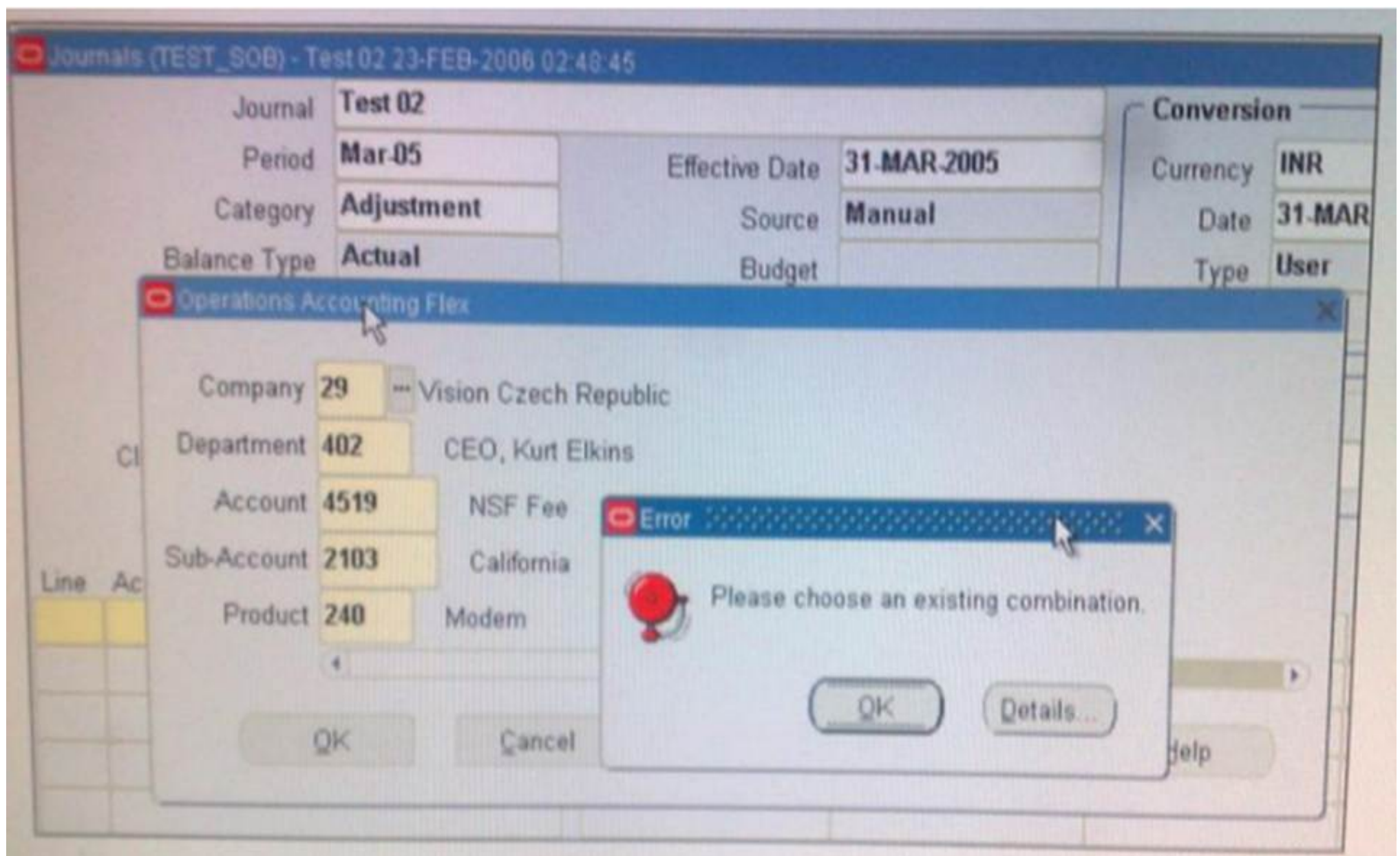
XYZ Corp. has acquired ABC Corp. XYZ operates with Multi-Org Access Control. Consequently XYZ Corp. needs to add additional Operating Units. Identify the statement that describes the sequence for adding additional Operating Units.

- A. It is not possible to add additional Operating Units.
- B. Set the MO: Operating Unit profile option, run the Replicate Seed Data concurrent request, create the Operating Unit, and create new responsibilities as necessary.
- C. Set the MO: Security Profile profile option, run the Replicate Seed Data concurrent request, create the Operating Unit, and create new responsibilities as necessary.
- D. Create the Operating Unit, run the Replicate Seed Data concurrent request, create new responsibilities as necessary, and set up the MO: Default Operating Unit profile option.
- E. Create the Operating Unit, run the Replicate Seed Data concurrent request, assign the Operating Unit to a security hierarchy, run Security List maintenance concurrent program, create new responsibilities as necessary, and set up the MO: Security Profile profile option.

**Answer:** E

#### **NEW QUESTION 121**

View the Exhibit.



While entering a journal in the Journals form, you enter a code combination of 29.402.4519.2103.240 in the five-segment Accounting Flexfield. However, you are unable to proceed after entering this account combination. What could be the problem in the structure definition of the Accounting Flexfield?

- A. The "Freeze Rollup Groups" check box is selected.
- B. The "Allow Dynamic Inserts" check box is deselected.
- C. The "Freeze Flexfield Definition" check box is selected.
- D. The "Cross-Validate Segments" check box is selected.

**Answer: B**

#### NEW QUESTION 122

.....

## Thank You for Trying Our Product

\* 100% Pass or Money Back

All our products come with a 90-day Money Back Guarantee.

\* One year free update

You can enjoy free update one year. 24x7 online support.

\* Trusted by Millions

We currently serve more than 30,000,000 customers.

\* Shop Securely

All transactions are protected by VeriSign!

**100% Pass Your 1Z0-518 Exam with Our Prep Materials Via below:**

<https://www.certleader.com/1Z0-518-dumps.html>