

# Cisco

## Exam Questions 300-370

Troubleshooting Cisco Wireless Enterprise Network



#### NEW QUESTION 1

An engineer must open a support case with Cisco TAC. Which two commands verify the model and serial number of a controller? (Choose two)

- A. show sysinfo
- B. show udi
- C. show inventory
- D. show boot
- E. show tech-support

**Answer: AB**

#### NEW QUESTION 2

While reviewing CleanAir data in Cisco Prime Infrastructure, an engineer notices that a wideband jammer is not sending its Interferer Security Trap correctly. The engineer determines that the default severity level has been changed. Which value does the engineer select to reset the severity level to its factory setting?

- A. informational
- B. major
- C. minor
- D. warning
- E. critical

**Answer: D**

#### NEW QUESTION 3

Which Cisco WLC debug command allows you to determine if the certificate process is failing in the CAPWAP messages?

- A. debug pm pki enable
- B. debug cert events enable
- C. debug capwap events enable
- D. debug capwap packet enable
- E. debug capwap errors enable

**Answer: E**

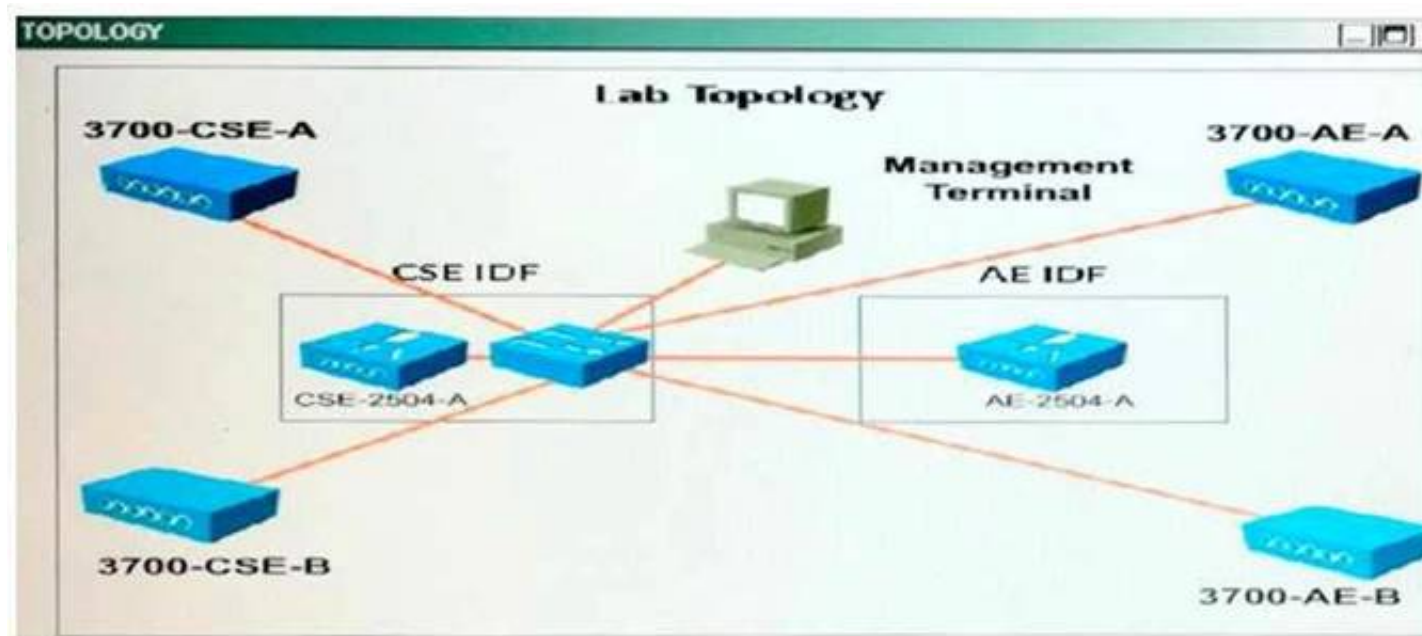
#### NEW QUESTION 4

Scenario

The big Engineering IT team has been in the lab to test some new features that the existing network does not support. The AP Groups, AP Failover, and Local Web Auth features are having problems. In this test environment, the controllers support the only Composite Structural Engineering and Aerodynamic Engineering groups. All SSIDs must omit the department name.

Refer to the exhibit. The diagram is the floor plan for the Big Engineering office and the distribution of the departments. These tables show how the controllers have been configured.

Note, not all menu items, text boxes, or radio buttons are active.



BE-GA

Controller Management Interfaces

Name	IP address	Gateway	DHCP Interface
CSE-2504A	192.168.2.98/24	192.168.2.1	192.168.2.98
AE-2504A	192.168.3.98/24	192.168.3.1	192.168.3.98
HF-2504A	192.168.4.98/24	192.168.4.1	192.168.4.98

Composite and Structural Engineering (CSE) WLANs

Profile Name	SSID
CSE-Engineering	CSE-Engineering
CSE-Contractors	CSE-Contractors
CSE-Employees	CSE-Employees

AP Groups-CSE-WLANs

WLANs	APs
CSE-Engineering	3700-CSE-A
CSE-Contractors	3700-CSE-B
CSE-Employees	

AE-User Names and Passwords

User Name	Password
Joan Smith	aetest
Carol Black	aetest

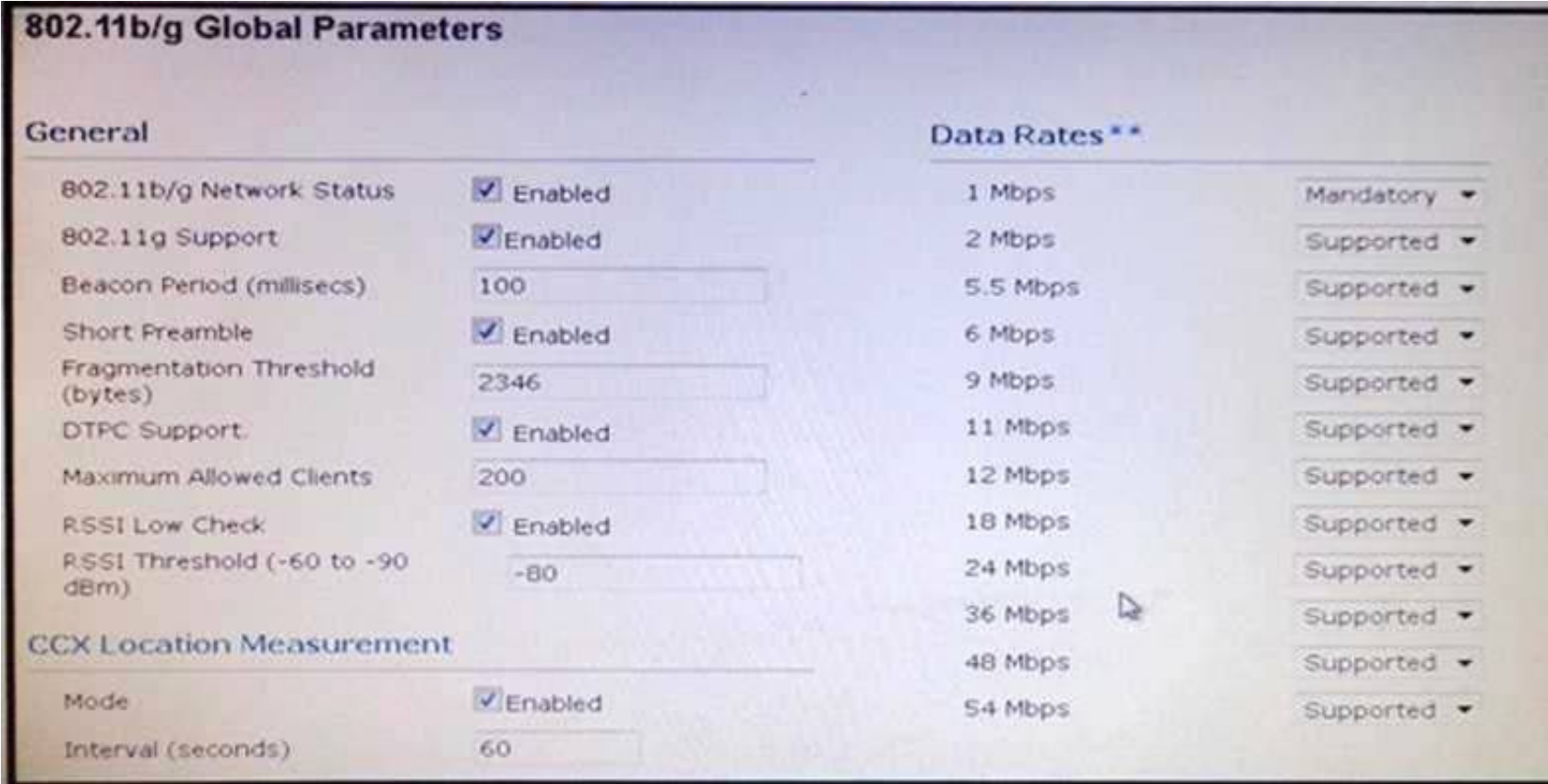
You review the configuration of the test network controller. Which four changes must be made to resolve the problems? (Choose four.)  
When you review the configuration of the test network controller what needs to be changed to resolve the problems? (Choose four.)

- A. Change the High Availability Primary Controller Management Interface IP address.
- B. Remove the current WLANs and replace them with WLANs that have the same SSID names as on the AE-2504A controller.
- C. Add the Local Net User names and passwords
- D. Change the Layer 2 security to none and Layer 3 Security to Web Policy for the CSE-Contractors WLAN
- E. Remove me current WLAN from the CSE-WLAN AP Group and add all three of the WLANs configured in the CSE-2504A
- F. Add the CSE APs to the CSE-WLANs AP-Grou

Answer: BCDF

NEW QUESTION 5

A new wireless deployment with high AP density is experiencing high latency and connectivity issues on the 24 GHz band, despite an initial site survey done by a certified partner. Which option is the most impactful change a wireless consultant recommends?  
Refer to the exhibit.



- A. Increase the fragmentation threshold to allow larger packets over the air.
- B. Reduce the beacon period because it reduces the RF interference.
- C. Disable lower data rate, such as 1 Mbps and 2 Mbps.
- D. Disable the short preamble.
- E. Disable 80211g support to reduce interferenc

Answer: C

NEW QUESTION 6

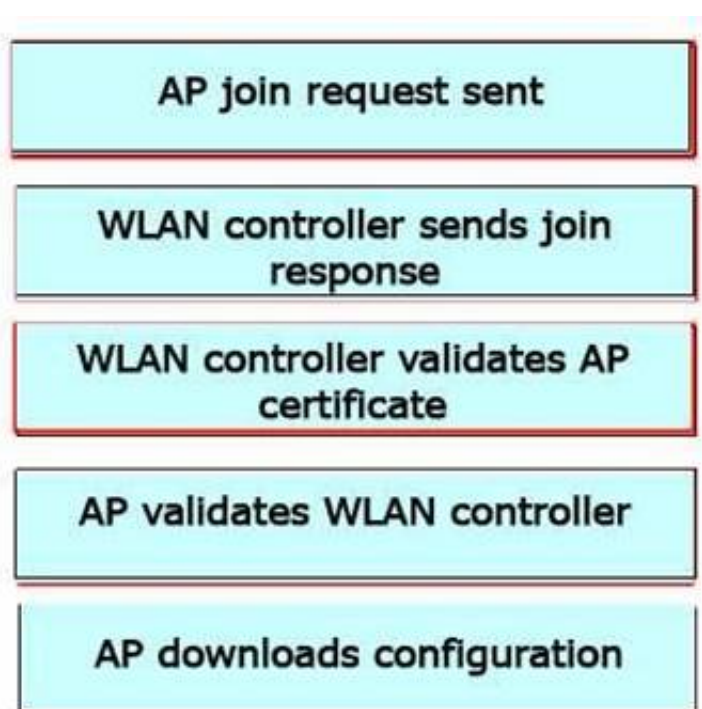
DRAG DROP

Drag and drop the Layer 3 WLAN controller mutual authentication join process events on the left into the order in which they occur on the right Not all options are used.



**Answer:**

**Explanation:**



#### NEW QUESTION 7

Which ports require unrestricted port access for CleanAir RF spectrum analysis between the AP and Cisco Spectrum Expert?

- A. UDP 5246 and 5247
- B. UDP 37540 and 37550
- C. TCP 16113 and 16114
- D. TCP 37540 and 37550
- E. TCP 5246 and 5247
- F. UDP 16113 and 16114

**Answer:** D

#### NEW QUESTION 8

A network engineer is troubleshooting why EAP authentication with a client is failing. Which two commands should be used to resolve the issue? (Choose two)

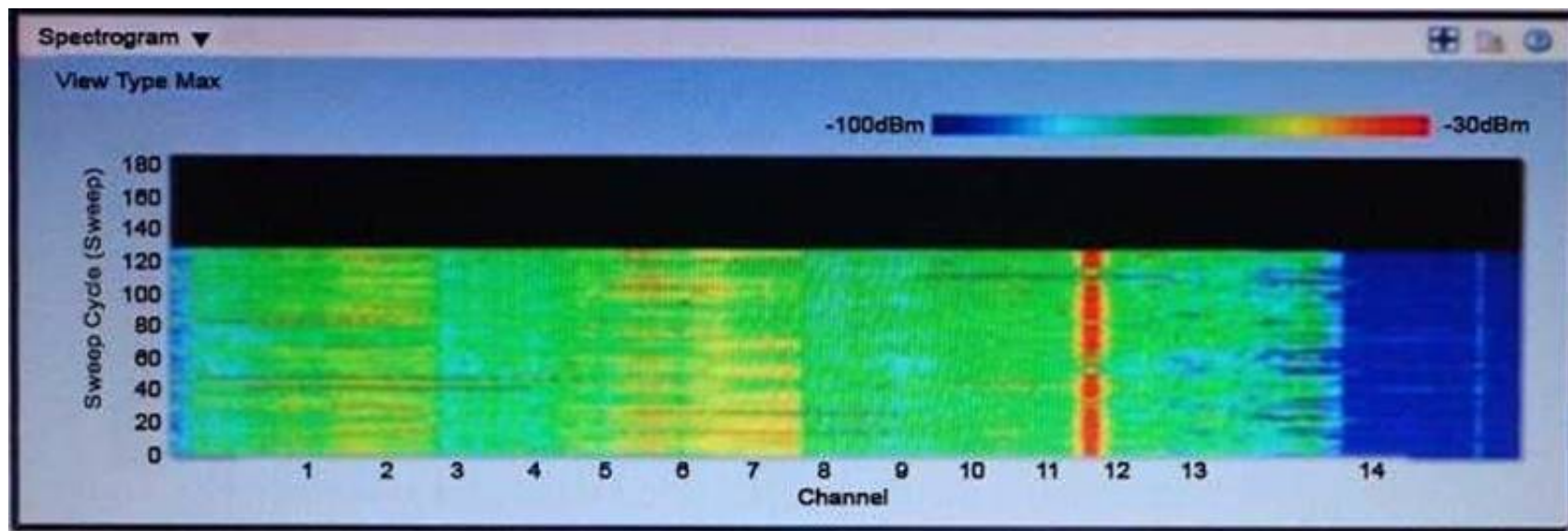
- A. debug dot1x notifications enable
- B. debug dot1x events enable
- C. debug arp
- D. debug aaa detail enable
- E. debug aaa events detail enable

**Answer:** BE

#### NEW QUESTION 9

Refer to the exhibit.





An engineer is troubleshooting non-802.11 interference and observes this output. Which type of interference signatures can the engineer identify?

- A. microwave
- B. DECT phone
- C. Bluetooth
- D. jammer

**Answer:** A

#### NEW QUESTION 10

A recently acquired Cisco Aironet 1550 series AP is unable to join the WLC. This message is observed on the AP console:  
 AAA Authentication Failure for UserName:CC93.1981.0035 User Type: WLAN USER Which action must be taken for the AP to associate with the controller?

- A. Add MAC address CC93.1981.0035 to the Security AAA AP policy Authorization List.
- B. Authenticate the AP to the WLC from the console using an admin account on the WLC.
- C. Add MAC address CC93.1981.035 to the Security AAA MAC Filtering tab.
- D. Import the self-signed certificate of the AP to the Security:Certificate:LSC tab.
- E. Import the self-signed certificate of the AP to the Security:Certificate:SSC ta

**Answer:** A

#### NEW QUESTION 10

Which feature should a network engineer enable within a mixed-client network to ensure that the legacy client operates at the best possible rates?

- A. ClientLink
- B. RRM
- C. DCA
- D. Band Select

**Answer:** A

**Explanation:** In mixed client environments, 802.11a/g clients may delay communications for 802.11n clients and reduce overall system performance. Organizations can improve the reliability and coverage for legacy 802.11a/g clients, assist these clients in operating at the best possible rates, and help ensure that these legacy clients get on and off the wireless network faster by implementing Cisco ClientLink. Cisco ClientLink is easily enabled through the wireless LAN controller or Cisco Wireless Control System (WCS) control panel.

#### NEW QUESTION 12

Which visual cue accurately describes a characteristic of the zone of impact displayed in Cisco Prime Infrastructure?

- A. The closer the circle is to blue, the more localized the impact is.
- B. The smaller the circle, the more localized the impact is.
- C. The larger the circle, the more severe the impact is.
- D. The more translucent the circle is, the more localized the impact i

**Answer:** B

#### NEW QUESTION 13

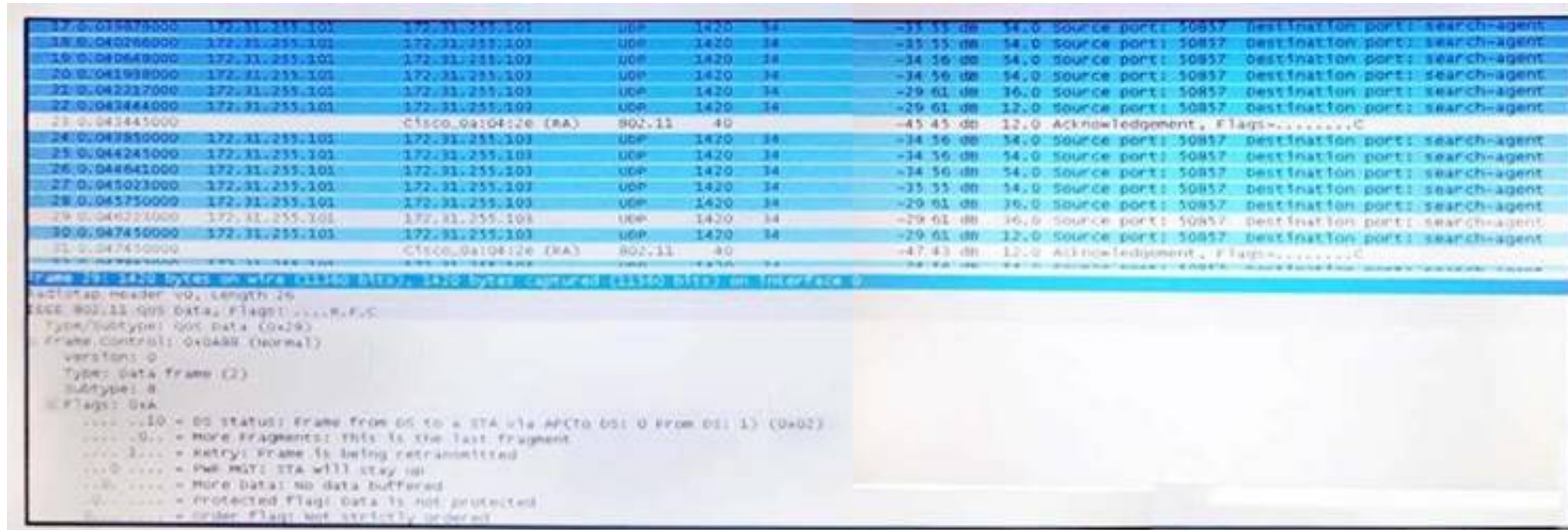
A mobile workstation in a factory contains an AP that is configured as a workgroup bridge. When the workstation moves, it loses connectivity and disrupts operation. What can the engineer implement to minimize roaming problems?

- A. Use 802.1X authentication.
- B. Use Cisco Centralized Key Management for fast roaming.
- C. Use AES for encryption.
- D. Use the mobile station comman

**Answer:** B

#### NEW QUESTION 14

Refer to the exhibit.



A VoWLAN has been deployed at a customer site, and users report that audio is choppy in some areas. The exhibit captures a voice exchange between one phone that is associated to the AP at the end of the corridor (172.31.255.101) and another phone that is positioned in a conference room nearby. Which action enhances the voice application quality of experience?

- A. Change the basic rate configuration on the WLC to include 54 Mbps.
- B. Change the WLAN QoS profile to platinum.
- C. Decrease the AP power level.
- D. Disable higher data rates on the controller

**Answer: A**

#### NEW QUESTION 15

A WLAN engineer has just completed a wireless network installation using Cisco 2700 series access points. After checking the WLC, it seems that the APs are running in medium power. What effect will this have in the APs?

- A. Due to insufficient power, the access points are not broadcasting any Wireless networks.
- B. Due to insufficient power, only the 2.4 GHz radio is up.
- C. Due to insufficient power the access points have dynamically shifted from 3x4 to 3x3.
- D. Due to insufficient power the access points have dynamically shifted from 4x4 to 3x3.

**Answer: C**

#### NEW QUESTION 19

A user reports being unable to connect to a server with a certain program while connected to wireless. Which troubleshooting methodology can be used to begin the troubleshooting process?

- A. top-down
- B. shoot from the hip
- C. follow the path
- D. bottom-up
- E. divide and conquer

**Answer: A**

#### NEW QUESTION 23

Clients are failing EAP authentication. A debug shows that an EAP handshake started and the clients are then de-authenticated. Which two issues can cause this problem? (Choose two.)

- A. The clients are configured for machine authentication, but the RADIUS server is configured for user authentication.
- B. The WLC has not been added to the RADIUS server as a client.
- C. The WLC certificate has changed.
- D. The shared secret of the WLC and RADIUS server do not match.
- E. The WLAN is not configured for the correct EAP supplicant type

**Answer: BE**

#### NEW QUESTION 27

A network engineer has identified clients who are experiencing delays while roaming. The network is configured with WPA2-Enterprise, AES encryption, 802.1X authentication, and Cisco Centralized Key Management. Which change resolves the roaming delays?

- A. Utilize a supplicant that supports Cisco Centralized Key Management.
- B. Enable AES and TKIP encryption
- C. Disable client session timeout
- D. Install wireless device drivers from Cisco

**Answer: A**

#### NEW QUESTION 29

Refer to the exhibit.



```
(Cisco Controller) > show ap join state detailed 00:ab:00:ab:00:ab

Discovery phase statistics
- Discovery requests received ..... 2
- Successful discovery responses sent ..... 1
- Unsuccessful discovery request processing..... 2234562
- Reason for last unsuccessful discovery attempt.....
  Discovery request received on unsupported VLAN
- Time at last successful discovery attempt.....
  Mar 06 19:03:50.779
- Time at last unsuccessful discovery attempt.....
  Mar 06 19:03:50.782

Join phase statistics
- Join requests received..... 1
- Successful join responses sent..... 0
- Unsuccessful join request processing..... 1
- Reason for last unsuccessful join attempt.....
  Certificate payload in join request contains
  invalid certificate
- Time at last successful join attempt.....
  Not applicable
- Time at last unsuccessful join attempt.....
  Mar 06 19:04:00.810

Configuration phase statistics
- Configuration requests received..... 2
- Successful configuration responses sent ..... 0
- Unsuccessful configuration request processing..... 0
- Reason for last unsuccessful configuration attempt....
  Not applicable
- Time at last successful configuration attempt.....
  Not applicable
- Time at last unsuccessful configuration attempt.....
  Not applicable

Last AP message decryption failure details
- Reason for last message decryption failure.....
  Not applicable

Last AP disconnect details
- Reason for last AP connection failure.....
  Not applicable

Last join error summary
- Type of error that occurred last.....
  Lwapp join request rejected
- Reason for error that occurred last.....
  Certificate payload in join request contains invalid
  certificate
- Time at which the last join error occurred.....
  Mar 06 19:04:00.810
```

Which statement about the join process of the access point is true?

- A. The AP failed to join because the self-signed certificate of the AP was not correct on the controller.
- B. The time on the controller is outside of the certificates validity time interval so the join phase failed.
- C. The AP moved from this controller to its primary controller.
- D. The AP successfully joined the controller.

**Answer: B**

#### NEW QUESTION 31

DRAG DROP

Drag and drop the IP address range on the left onto the specific purpose for multicast groups on the right. Not all options are used.

224.0.1.0 through 238.255.255.255	Limited scope
214.0.0.0 through 224.0.0.255	Reserved link local
239.0.0.0. through 239.255.x.y/16	Globally scoped
224.0.0.0 through 224.0.0.255	
239.0.0.0 through 240.255.x.y/16	

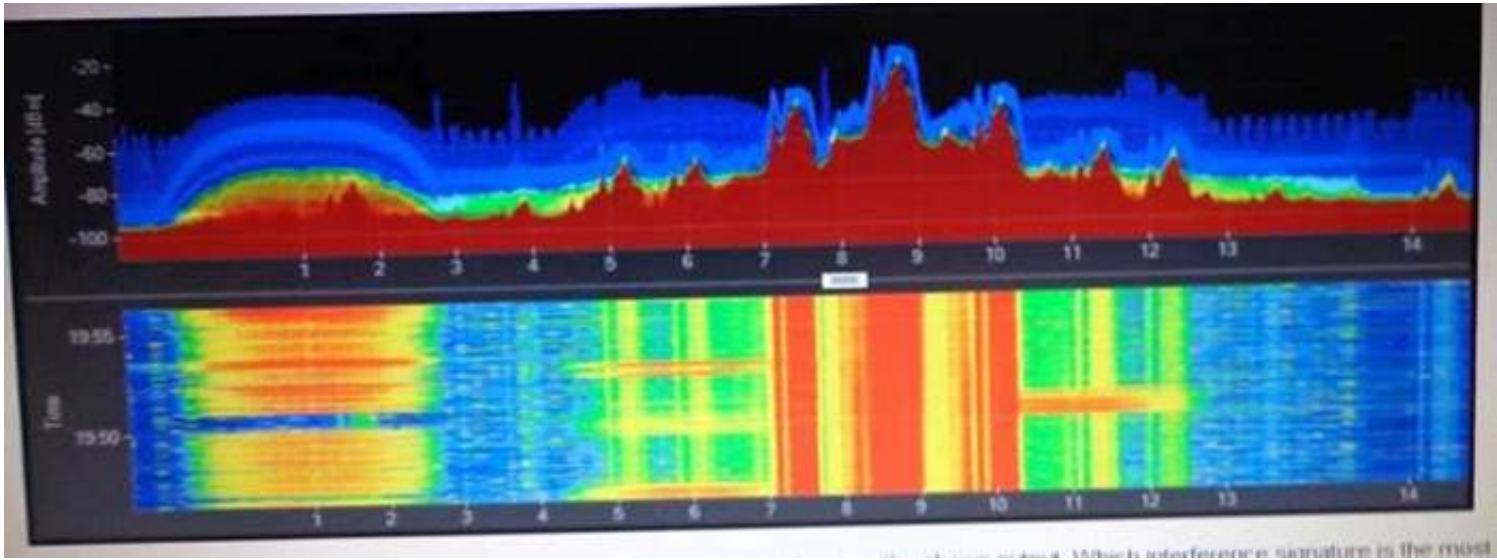
**Answer:**

**Explanation:**

239.0.0.0. through 239.255.x.y/16
224.0.0.0 through 224.0.0.255
224.0.1.0 through 238.255.255.255

#### NEW QUESTION 34

An engineer is troubleshooting non-802.11 interference and observes the shown output. Which interference signature is the most harmful to Wi-Fi? Refer to the exhibit.



- A. cordless phone
- B. microwave oven
- C. 2.4 GHz wideband jammer
- D. FHSS Bluetooth
- E. analog video camera

**Answer: A**

#### NEW QUESTION 36

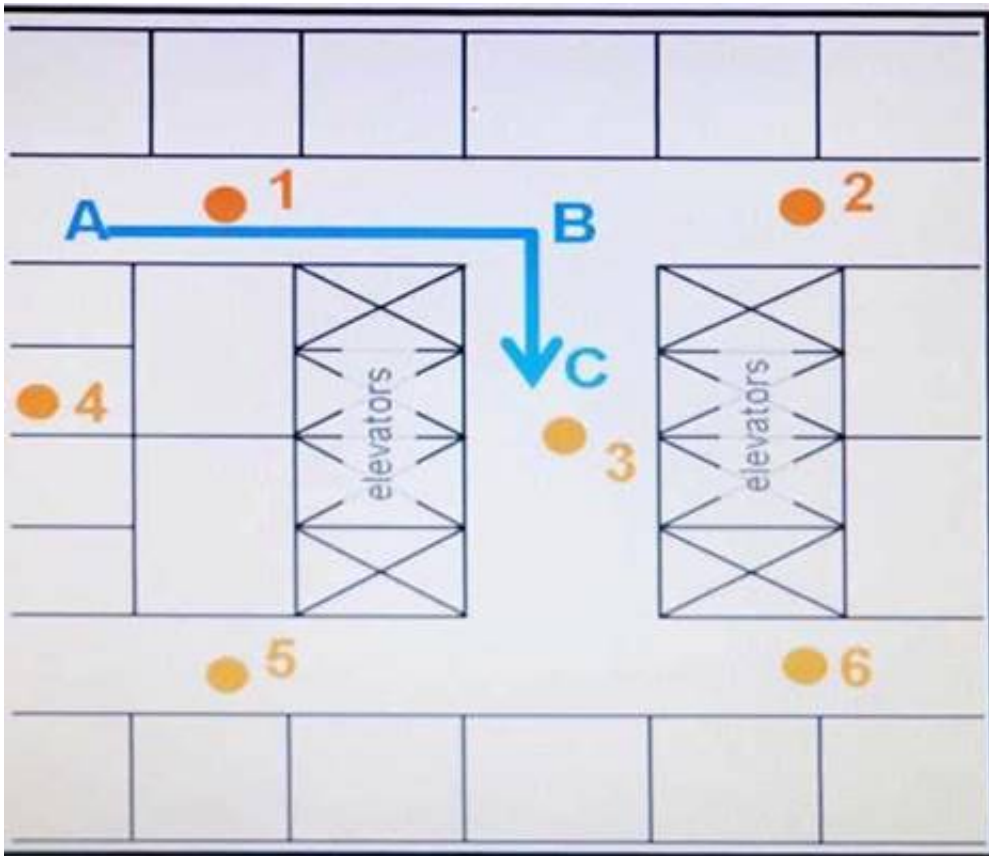
Which three steps would a network engineer use to troubleshoot an AP join problem? (Choose three.)

- A. Validate the STP configuration.
- B. Verify the ping AP from the controller.
- C. Verify the ping AP from the client.
- D. Verify that the AP is getting an address from the DHCP server.
- E. Validate the SNMP configuration.
- F. Verify the authentication configuration parameter

**Answer: ABF**

#### NEW QUESTION 37

Access points are deployed in an office building and users report that the real-time communications quality of experience is poor when users walk between the elevators. The elevators are a heavy metallic obstacle, and AP 3 was installed to cover the elevator area, which AP 1 and AP 2 signal does not reach. Communications are captured for a user walking from point A to point C, and it is observed that the user iPhone device suddenly scans all bands and then roams from AP 1 to AP 3 somewhere between points B and C. WLAN is set to 5 GHz only. Open, default rate configuration. Which action improves the real-time application quality of experience in this area? Refer to the exhibit.



- A. Enable 802.11v on the WLAN
- B. Enable 802.11r on the WLAN
- C. Enable 802.11k on the WLAN
- D. Move AP 2 to point B

**Answer: B**

#### NEW QUESTION 40



An engineer is concerned about rogue-on-wire and wants to enable port security. Which guideline must the engineer follow?

- A. Configure Switched Port Analyzer destination ports as secure.
- B. Use 802.1x with port security to prevent MAC spoofing.
- C. Enable port security on dynamic access ports.
- D. Employ static MAC address configuration for APs with port security.

**Answer:** A

#### NEW QUESTION 42

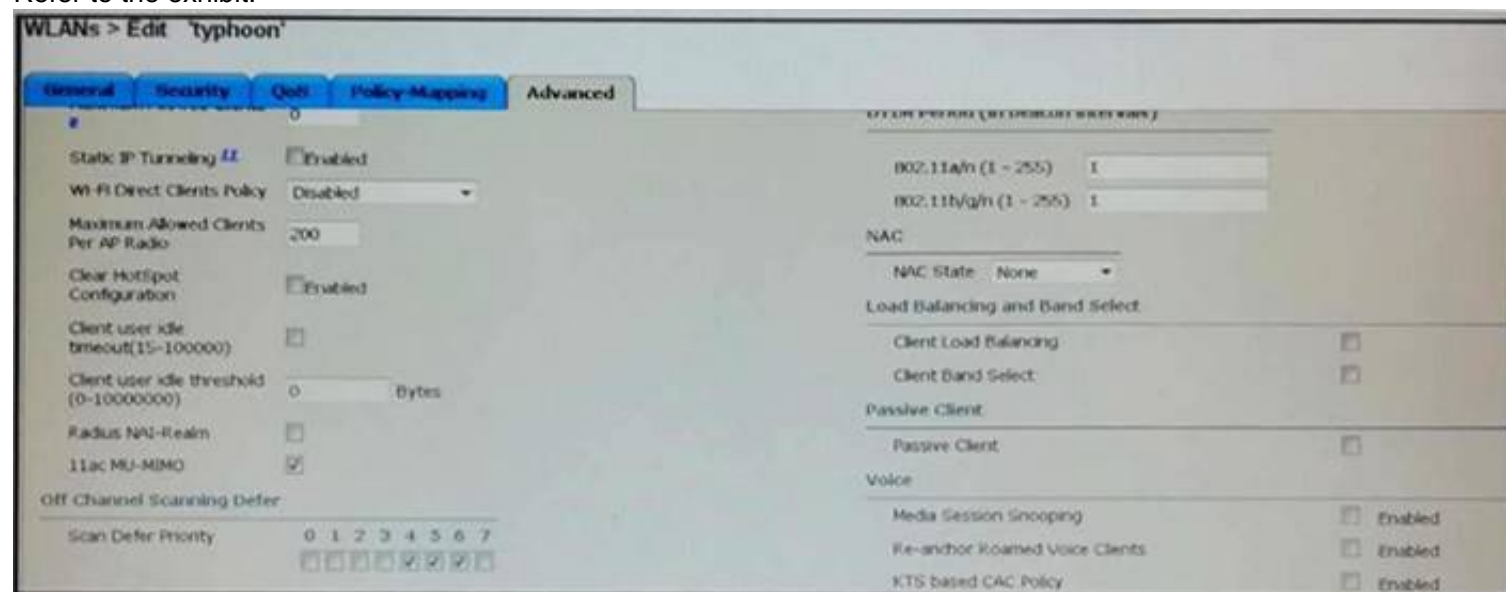
Which statement about the usage of the debug command in a Cisco Unified Wireless Network is true?

- A. Debug is enabled until manual shut off.
- B. Debug is a message logging severity 7.
- C. Debug is a restricted command and is not available in the AP CLI.
- D. Debug is available on the WLC serial console and web interface.

**Answer:** B

#### NEW QUESTION 44

Refer to the exhibit.



Which statement describes how the Band Select feature works on the wireless controller?

- A. The access point uses the load balancing feature to move the clients to 5 GHz.
- B. The access point changes the DTIM period on the 2.4 GHz band.
- C. The access point recommends the band in the association response to the client.
- D. The access point ignores and delays the probe request of the client on the 2.4 GHz.

**Answer:** C

#### NEW QUESTION 46

An engineer is creating a custom rogue classification rule directly on a controller. Which two conditions are possible when adding a custom rule to a controller? (Choose two.)

- A. internal
- B. ad hoc
- C. client-count
- D. duration
- E. WLAN
- F. open authentication

**Answer:** AD

#### NEW QUESTION 48

A wireless engineer is unable to join lightweight access points to the Cisco Wireless Controller. The access points receive IP addresses from a DHCP pool configured on the core switch. Which action must be taken to resolve the issue?

- A. Upgrade the Wireless Controller to a newer IOS release.
- B. Configure option 43 on the DHCP pool.
- C. Configure option 82 on the Wireless controller.
- D. Change the management IP address on the Wireless Controller.

**Answer:** C

#### NEW QUESTION 53

A client is failing EAP authentication and a debug shows that the server is sending an Access-Reject message. Which action must you take to resolve authentication?

- A. Verify that the Validate server certificate on the client is disabled.
- B. Verify that the client certificates are from the proper CA and server certificate.

- C. Verify that the client server certificate has the proper Windows OIDs.
- D. Verify that the user account is the same in the client certificate.
- E. Verify that the user is using the same password that is on the server

**Answer:** B

#### NEW QUESTION 57

Refer to the exhibit.

RAP1	RAP2
<pre>dot11 ssid wlan1 authentication open eap eap authentication network-eap eap authentication key-management wpa version 2 dot1x credentials wgb dot1x eap profile eap1 no ids mfp client eap profile eap1 method fast eap profile eap11 method tls dot1x credentials wgb username cisco password 7 1511021F0725 interface Dot11Radio0 encryption mode ciphers aes-ccm ssid wlan1</pre>	<pre>dot11 ssid wlan1 authentication open eap eap authentication network-eap eap authentication key-management wpa version 2 dot1x credentials wgb dot1x eap profile eap1 no ids mfp client eap profile eap1 method fast eap profile eap11 method tls dot1x credentials wgb username cisco password 7 1511021F0725 interface Dot11Radio0 encryption mode ciphers aes-ccm ssid wlan1</pre>

A mobile station in a factory contains an AP configured as a work group bridge that authenticates to a root AP using EAP-FAST. To be able to use the mobile station in further parts of the factory, another root AP is installed and also configured for EAP-FAST. When the mobile station is attempting to roam to the other AP, it loses connection yet can still authenticate to the first one. What is the cause for the failed authentication on RAP2?

- A. RAP1 is using a different authentication protocol than RAP2.
- B. RAP2 has a different SSID than RAP1.
- C. RAP1 is using a different encryption than RAP2.
- D. The authentication username and password is differen

**Answer:** A

#### NEW QUESTION 60

An alarm is reporting that one of four ports of a lag group have gone down on a wireless LAN controller. Which troubleshooting methodology can be used to begin the troubleshooting process?

- A. shoot from the hip
- B. bottom-up
- C. top-down
- D. follow the path
- E. divide and conquer

**Answer:** B

#### NEW QUESTION 64

A WLC receives a coverage hole detection alert from an AP. What two conditions must occur for the controller to dynamically mitigate the situation? (Choose two.)

- A. The AP serving the troubled client must currently have a power level 2 or lower.
- B. The client must be able to dynamically raise its power level to match the new AP power.
- C. The AP must be RF visible to additional APs on the other side of the coverage hole for calibration.
- D. The client must have WMM-PS disabled to allow for the increased power usage.
- E. The AP serving the troubled client must currently have a power level higher than 2.

**Answer:** AB

#### NEW QUESTION 65

When implementing interface groups, how are the IP addresses sourced via DHCP for wireless clients?

- A. through the primary interface of the group
- B. through round robin between interfaces
- C. through interface group definition
- D. through the interface receiving the first response

**Answer:** B

#### NEW QUESTION 67

An engineer is troubleshooting reports from a Cisco 7925 user that is experiencing consistent gaps in audio when roaming from one area of the facility to another. Packet analysis shows that the phone is flapping between two access points due to poor SNR. Which action fixes this issue?

- A. Add access points to the areas that have a noise floor below -90 dBm.
- B. Adjust the roaming threshold of the WLC to -67 dBm for improved access point performance.
- C. Use coverage hole detection to allow the access points to compensate for the poor roaming.
- D. Redesign the area for sufficient overlap with access points running at reduced power level

**Answer: C**

#### NEW QUESTION 70

An engineer has discovered that a number of new access points are failing to join the wireless controller module that has been recently enabled on a switch stack of three Cisco Catalyst 3850 switches running 3.02.03 SE version of Cisco IOS-XE. All cables have been verified and all access point switch port configurations are identical. Which options is the likely root cause of the issue?

- A. Stacked Cisco Catalyst 3850 switches only support 100 CAPWAP termination licences.
- B. Cisco IOS-XE version 3.02.03 SE supports only access points on the master switch.
- C. The EULA has not been accepted on the switch wireless controller module.
- D. When stacked, the Cisco Catalyst 3850 cannot use the wireless controller modul

**Answer: D**

#### NEW QUESTION 75

In a high-density deployment on a customer site with ID 339696181, how do you mitigate the cell size in a large coverage area?

- A. Disable ClientLink on the WLC.
- B. Set a high supported data rate.
- C. Increase the power of the AP.
- D. Set a high mandatory

**Answer: C**

#### NEW QUESTION 79

A training class has 15 laptops connecting to the WLAN using the same Active Directory training credentials. Users report that they cannot connect until someone else logs off. At any one time, only half of the class connect to the internet. Which option must be checked first?

- A. Maximum Allowed Clients
- B. Client Exclusion
- C. Co-channel interference
- D. DHCP address pool

**Answer: A**

#### NEW QUESTION 83

Which statement about the process of rogue containment performed on a rogue AP and rogue clients is true?

- A. Trusted clients are configured to ignore the rogue AP so that only the rogue clients can connect.
- B. An RF jammer is used to prevent the rogue AP from transmitting.
- C. An authorized AP spoofs de-authentication packets that have the spoofed source address of the rogue AP.
- D. A trusted AP is configured to mimic the rogue AP and to prevent clients from associating to the rogue AP.

**Answer: C**

#### NEW QUESTION 85

Which three options are characteristics of a rogue AP that poses a high-security risk? (Choose three.)

- A. a high RSSI
- B. accepts clients
- C. a foreign SSID
- D. a distant location
- E. open authentication
- F. a low RSSI

**Answer: BEF**

#### NEW QUESTION 90

Which three details are contained within the LWAPP discovery response sent by each WLC to enable the LAP to choose a WLC? (Choose three.)

- A. the controller sysName
- B. an AP-manager IP address
- C. the WLC IOS version
- D. the mobility domain name
- E. the master controller flag
- F. the DNS server address

**Answer: ABE**



**NEW QUESTION 95**

An engineer is troubleshooting a DHCP configuration that is being used to discover two WLCs with the IP addresses of 192.168.10.10 and 192.168.10.11. Which string is used for configuration?

- A. option 80 hex f108.c0a8.0a0A.c0a8.0a0b
- B. option 60 ip 192.168.10.10 192.168.10.11
- C. option 43 ip f108.c0a8.0a0A.c0a8.0a0b
- D. option 43 hex f108.c0a8.0a0A.c0a0b

**Answer:** D

**NEW QUESTION 96**

After you perform a post-installation RF survey for a customer with ID 339696181, you discover that all areas have at least -67 dBm RSSI, 25 dB SNR, and 10 percent cell overlap. The customer, however, reports one-way audio issues on VoWLAN phones. Which option is a possible cause of the issue?

- A. The cell overlap is too low.
- B. There are coverage black spots.
- C. Non Wi-Fi interference causes a high noise floor.
- D. The RSSI is too high

**Answer:** D

**NEW QUESTION 97**

An engineer is attempting to resolve wireless channel overlap issues in the 2.4 GHz network. Which network change reduces channel overlap?

- A. Shut down 802.11b/g/n radios.
- B. Enable 40 MHz channel bonding on 802.11b/g/n.
- C. Enable 802.11b data rates.
- D. Enable all 802.11b/g/n channel

**Answer:** D

**NEW QUESTION 100**

Refer to the exhibit. Which configuration must be addresses to correct this issue?

```
*Dec 12 00:59:44.069: %CAPMAP-3-EVENTLOG: Go Join the next controller
*Dec 12 00:59:44.069: %CAPMAP-3-EVENTLOG: Selected MWAR 'REMOTE' (index 0).
*Dec 12 00:59:44.069: %CAPMAP-3-EVENTLOG: Ap mgr count=1
*Dec 12 00:59:44.069: %CAPMAP-3-EVENTLOG: Go Join a capwap controller
*Dec 12 00:59:44.069: %CAPMAP-3-EVENTLOG: Choosing AP Mgr with index 0, IP =
0xA0AC8FE , Load = 4..
*Dec 12 00:59:44.069: %CAPMAP-3-EVENTLOG: Synchronizing time with AC time.
*Dec 12 00:58:39.324: %PKI-3-CERTIFICATE_INVALID_NOT_YET_VALID: Certificate
chain validation has failed. The certificate (SN: 46469F4C0000000A4C34) is
not yet valid Validity period starts on 22:50:55 UTC Aug 30 2012
*Dec 12 00:58:39.324: %CAPWAP-3-ERRORLOG: Certificate verification failed!
*Dec 12 00:58:39.324: DTLS_CLIENT_ERROR: ../capwap/capwap_wtp_dtls.c:352
Certificate verified failed!
*Dec 12 00:58:39.324: %DTLS-4-BAD-CERT: Certificate verification failed. Peer
IP: 10.10.200.254
*Dec 12 00:58:39.324: %DTLS-5-SEND_ALERT: Send FATAL : Bad certificate Alert
to 10.10.200.254:5246
*Dec 12 00:58:39.324: %DTLS-3-BAD_RECORD: Erroneous record received from
10.10.200.254: Malformed Certificate
*Dec 12 00:58:39.324: %DTLS-5-SEND_ALERT: Send FATAL: Close notify Alert to
10.10.200.254:5246
*Dec 12 00:58:39.324: %CAPWAP-3-ERRORLOG: Invalid event 38 & state 3
combination
```

- A. self-signed certificate
- B. DHCP Option 43
- C. Network Time Protocol
- D. AP authorization list

**Answer:** A

**NEW QUESTION 104**

You are troubleshooting an AP that fails to join a WLC. Which step of the DTLS handshake is first when establishing a secure CAPWAP connection?

- A. ServerHello
- B. HelloVerifyRequest
- C. Server-ChangeCipherSpec

D. ClientHello

**Answer:** D

#### NEW QUESTION 105

Which three options can be configured as roaming triggers on a WGB? (Choose three.)

- A. SNR
- B. co-channel interference
- C. RSSI
- D. packet fragmentation
- E. packet retries
- F. minimum data rate

**Answer:** CEF

#### NEW QUESTION 109

Refer to the exhibit.

	Name	Management IP Address (IPv4/IPv6)
Primary Controller	WLC-Primary	192.168.1.11
Secondary Controller	WLC-Secondary	10.42.98.11
Tertiary Controller		

AP Failover Priority: Low

An engineer has determined that during a recent controller failure, some access points did not fail over to their secondary controller, which has sufficient licenses for all APs. The controllers are not in a mobility group, but have A records for their hostnames in DNS. Using these high availability settings, which option is the most likely cause of this issue?

- A. The AP failover priority was not set high enough.
- B. The controllers must be in the same mobility.
- C. DNS hostnames are required to be FQDN.
- D. The secondary controller IP address is incorrect.

**Answer:** A

#### NEW QUESTION 110

Which three components are needed to identify the zone of impact for non-802.11 sources of 2.4 GHz and 5.0 GHz interference? (Choose three.)

- A. WLC
- B. MSE
- C. RF site survey tool
- D. Wi-Fi analyzer
- E. CleanAir AP
- F. spectrum analyzer

**Answer:** CEF

#### NEW QUESTION 115

An engineer ran the debug packet logging enable all command, but only 25 packets are shown and none from the client the engineer wants to see. Which command helps find data that is specific to the client?

- A. debug packet logging enable rx
- B. debug packet logging acl lwapp-ip
- C. debug packet logging enable format
- D. debug packet logging acl ip

**Answer:** B

#### NEW QUESTION 120

You are debugging a WGB client. Which description of the client is true?

- A. disconnected from the wired device
- B. triggered to reauthenticate
- C. disconnected from the authentication server
- D. triggered to roam

**Answer:** D

#### NEW QUESTION 123

In a new deployment, your team has connected many access points in a single switch and you noticed that some access points are not getting power. Which command on a Cisco switch can give you the remaining power (Watts) to confirm if it is a PoE issue?

- A. show power inline
- B. show power
- C. show post
- D. show poe

**Answer:** A

#### **NEW QUESTION 125**

.....



## Thank You for Trying Our Product

### We offer two products:

1st - We have Practice Tests Software with Actual Exam Questions

2nd - Questions and Answers in PDF Format

### 300-370 Practice Exam Features:

- \* 300-370 Questions and Answers Updated Frequently
- \* 300-370 Practice Questions Verified by Expert Senior Certified Staff
- \* 300-370 Most Realistic Questions that Guarantee you a Pass on Your First Try
- \* 300-370 Practice Test Questions in Multiple Choice Formats and Updates for 1 Year

**100% Actual & Verified — Instant Download, Please Click**  
**[Order The 300-370 Practice Test Here](#)**