

Oracle

Exam Questions 1Z0-071

Oracle Database 12c SQL



NEW QUESTION 1

Which three statements are true regarding subqueries?

- A. Multiple columns or expressions can be compared between the main query and subquery.
- B. Subqueries can contain ORDER BY but not the GROUP BY clause.
- C. Main query and subquery can get data from different tables.
- D. Subqueries can contain GROUP BY and ORDER BY clauses.
- E. Main query and subquery must get data from the same tables.
- F. Only one column or expression can be compared between the main query and subquery.

Answer: ACD

Explanation:

References:
<http://docs.oracle.com/javadb/10.6.2.1/ref/rrefsqlj13658.html>

NEW QUESTION 2

Which two statements are true regarding the COUNT function?

- A. A SELECT statement using the COUNT function with a DISTINCT keyword cannot have a WHERE clause.
- B. COUNT (DISTINCT inv_amt) returns the number of rows excluding rows containing duplicates and NULL values in the INV_AMT column.
- C. COUNT (cust_id) returns the number of rows including rows with duplicate customer IDs and NULL value in the CUST_ID column.
- D. COUNT (*) returns the number of rows including duplicate rows and rows containing NULL value in any of the columns.
- E. The COUNT function can be used only for CHAR, VARCHAR2, and NUMBER data types.

Answer: BD

NEW QUESTION 3

Evaluate this ALTER TABLE statement: (Choose the best answer.) ALTER TABLE orders SET UNUSED (order_date); Which statement is true?

- A. After executing the ALTER TABLE command, a new column called ORDER_DATE can be added to the ORDERS table.
- B. The ORDER_DATE column must be empty for the ALTER TABLE command to execute successfully.
- C. ROLLBACK can be used to restore the ORDER_DATE column.
- D. The DESCRIBE command would still display the ORDER_DATE column.

Answer: A

NEW QUESTION 4

Which task can be performed by using a single Data Manipulation Language (DML) statement?

- A. Removing all data only from a single column on which a primary key constraint is defined.
- B. Removing all data from a single column on which a unique constraint is defined.
- C. Adding a column with a default value while inserting a row into a table.
- D. Adding a column constraint while inserting a row into a table.

Answer: A

NEW QUESTION 5

You must display details of all users whose username contains the string 'ch_'. (Choose the best answer.) Which query generates the required output?

- A. SELECT * FROM users Where user_name LIKE '%ch_';
- B. SELECT * FROM usersWhere user_name LIKE '%ch_%'ESCAPE'%';
- C. SELECT * FROM users Where user_name LIKE 'ch_%' ESCAPE '_';
- D. SELECT * FROM users Where user_name LIKE '%ch_%' ESCAPE '\';

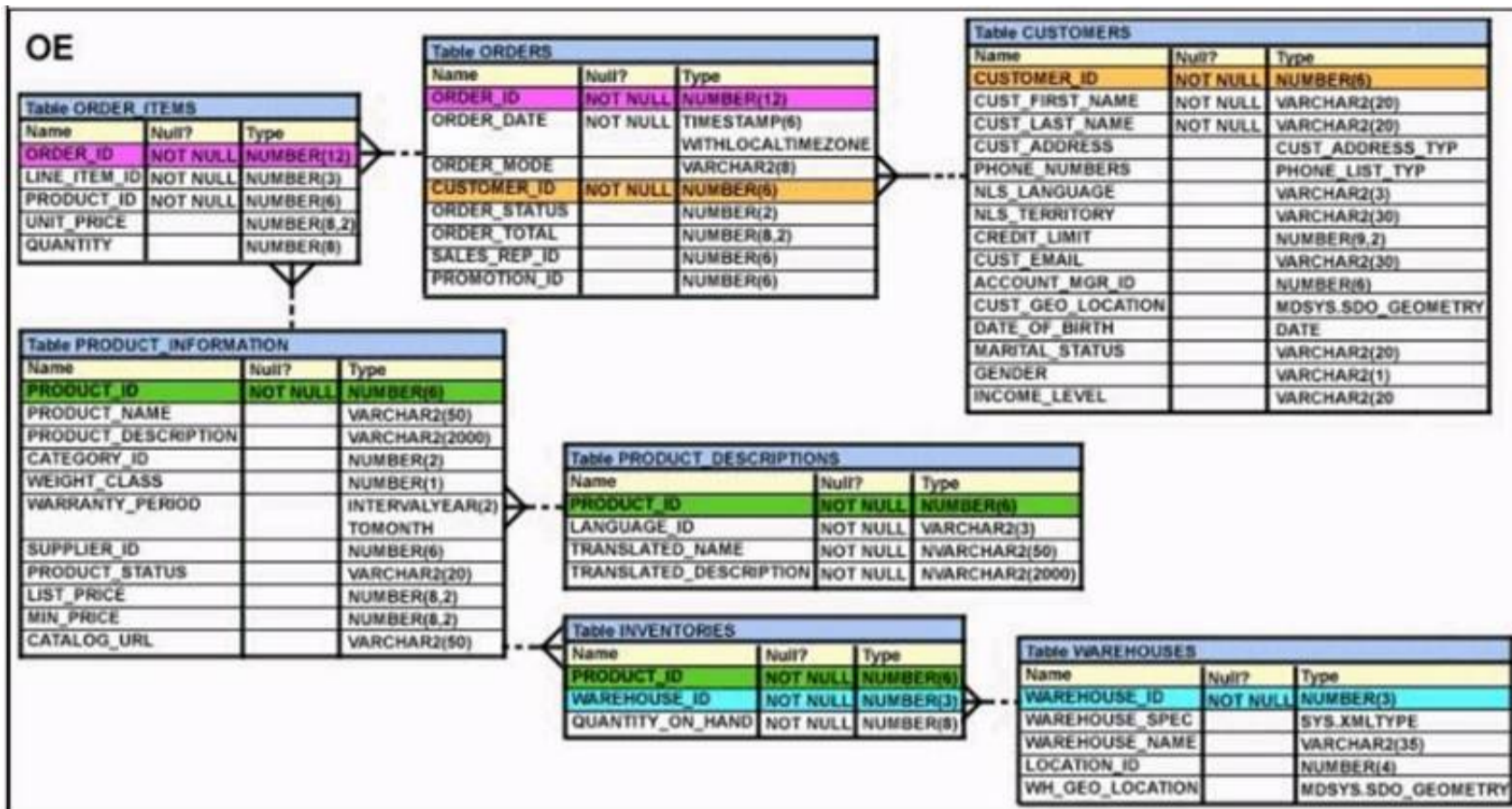
Answer: B

NEW QUESTION 6

View the Exhibit and examine the structure of ORDERS and ORDER_ITEMS tables.

ORDER_ID is the primary key in the ORDERS table. It is also the foreign key in the ORDER_ITEMS table wherein it is created with the ON DELETE CASCADE option.

Which DELETE statement would execute successfully?



- A. DELETE orders o, order_items IWHERE o.order_id = i.order_id;
- B. DELETEFROM ordersWHERE (SELECT order_idFROM order_items);
- C. DELETE ordersWHERE order_total < 1000;
- D. DELETE order_idFROM ordersWHERE order_total < 1000;

Answer: B

NEW QUESTION 7

View the exhibit and examine the structure of the PROMOTIONS table.

Name	Null?	Type
PROMO_ID	NOT NULL	NUMBER(6)
PROMO_NAME	NOT NULL	VARCHAR2(30)
PROMO_SUBCATEGORY	NOT NULL	VARCHAR2(30)
PROMO_SUBCATEGORY_ID	NOT NULL	NUMBER
PROMO_CATEGORY	NOT NULL	VARCHAR2(30)
PROMO_CATEGORY_ID	NOT NULL	NUMBER
PROMO_COST	NOT NULL	NUMBER(10,2)
PROMO_BEGIN_DATE	NOT NULL	DATE
PROMO_END_DATE	NOT NULL	DATE

You have to generate a report that displays the promo name and start date for all promos that started after the last promo in the 'INTERNET' category. Which query would give you the required output?

- A. SELECT promo_name, promo_begin_date FROM promotionsWHERE promo_begin_date > ALL (SELECT MAX (promo_begin_date)FROM promotions) ANDpromo_category= 'INTERNET';
- B. SELECT promo_name, promo_begin_date FROM promotionsWHERE promo_begin_date IN (SELECT promo_begin_dateFROM promotionsWHERE promo_category= 'INTERNET');
- C. SELECT promo_name, promo_begin_date FROM promotionsWHERE promo_begin_date > ALL (SELECT promo_begin_dateFROM promotionsWHERE promo_category = 'INTERNET');
- D. SELECT promo_name, promo_begin_date FROM promotionsWHERE promo_begin_date > ANY (SELECT promo_begin_dateFROM promotionsWHERE promo_category= 'INTERNET');

Answer: C

NEW QUESTION 8

On your Oracle 12c database, you invoked SQL *Loader to load data into the EMPLOYEES table in the HR schema by issuing the following command:
 \$> sqlldr hr/hr@pdb table=employees
 Which two statements are true regarding the command?

- A. It succeeds with default settings if the EMPLOYEES table belonging to HR is already defined in the database.
- B. It fails because no SQL *Loader data file location is specified.
- C. It fails if the HR user does not have the CREATE ANY DIRECTORY privilege.
- D. It fails because no SQL *Loader control file location is specified.

Answer: AC

NEW QUESTION 9

Examine the structure of the EMPLOYEES table. NameNull?Type

```
----- EMPLOYEE_IDNOT NULLNUMBER(6) FIRST_NAMEVARCHAR2(20) LAST_NAMENOT NULLVARCHAR2(25) EMAILNOT
NULLVARCHAR2(25) PHONE_NUMBERVARCHAR2(20) HIRE_DATENOT NULLDATE JOB_IDNOT NULLVARCHAR2(10) SALARYNUMBER(8,2)
COMMISSION_PCTNUMBER(2,2) MANAGER_IDNUMBER(6) DEPARTMENT_IDNUMBER(4)
```

There is a parent/child relationship between EMPLOYEE_ID and MANAGER_ID.

You want to display the last names and manager IDs of employees who work for the same manager as the employee whose EMPLOYEE_ID is 123.

Which query provides the correct output?

- A. SELECT e.last_name, m.manager_idFROM employees e RIGHT OUTER JOIN employees mon (e.manager_id = m.employee_id)AND e.employee_id = 123;
- B. SELECT e.last_name, m.manager_idFROM employees e RIGHT OUTER JOIN employees mon (e.employee_id = m.manager_id)WHERE e.employee_id = 123;
- C. SELECT e.last_name, e.manager_idFROM employees e RIGHT OUTER JOIN employees mon (e.employee_id = m.employee_id)WHERE e.employee_id = 123;
- D. SELECT m.last_name, e.manager_idFROM employees e LEFT OUTER JOIN employees mon (e.manager_id = m.manager_id)WHERE e.employee_id = 123;

Answer: B

NEW QUESTION 10

Which two statements are true regarding the EXISTS operator used in the correlated subqueries? (Choose two.)

- A. The outer query stops evaluating the result set of the inner query when the first value is found.
- B. It is used to test whether the values retrieved by the inner query exist in the result of the outer query.
- C. It is used to test whether the values retrieved by the outer query exist in the result set of the inner query.
- D. The outer query continues evaluating the result set of the inner query until all the values in the result set are processed.

Answer: AC

Explanation:

References:

<http://www.techonthenet.com/oracle/exists.php>

NEW QUESTION 10

View the Exhibit and examine the structure of the PROMOTION table.

Table PROMOTIONS		
Name	Null?	Type
PROMO_ID	NOT NULL	NUMBER(6)
PROMO_NAME	NOT NULL	VARCHAR2(30)
PROMO_SUBCATEGORY	NOT NULL	VARCHAR2(30)
PROMO_SUBCATEGORY_ID	NOT NULL	NUMBER
PROMO_CATEGORY	NOT NULL	VARCHAR2(30)
PROMO_CATEGORY_ID	NOT NULL	NUMBER
PROMO_COST	NOT NULL	NUMBER(10,2)
PROMO_BEGIN_DATE	NOT NULL	DATE
PROMO_END_DATE	NOT NULL	DATE

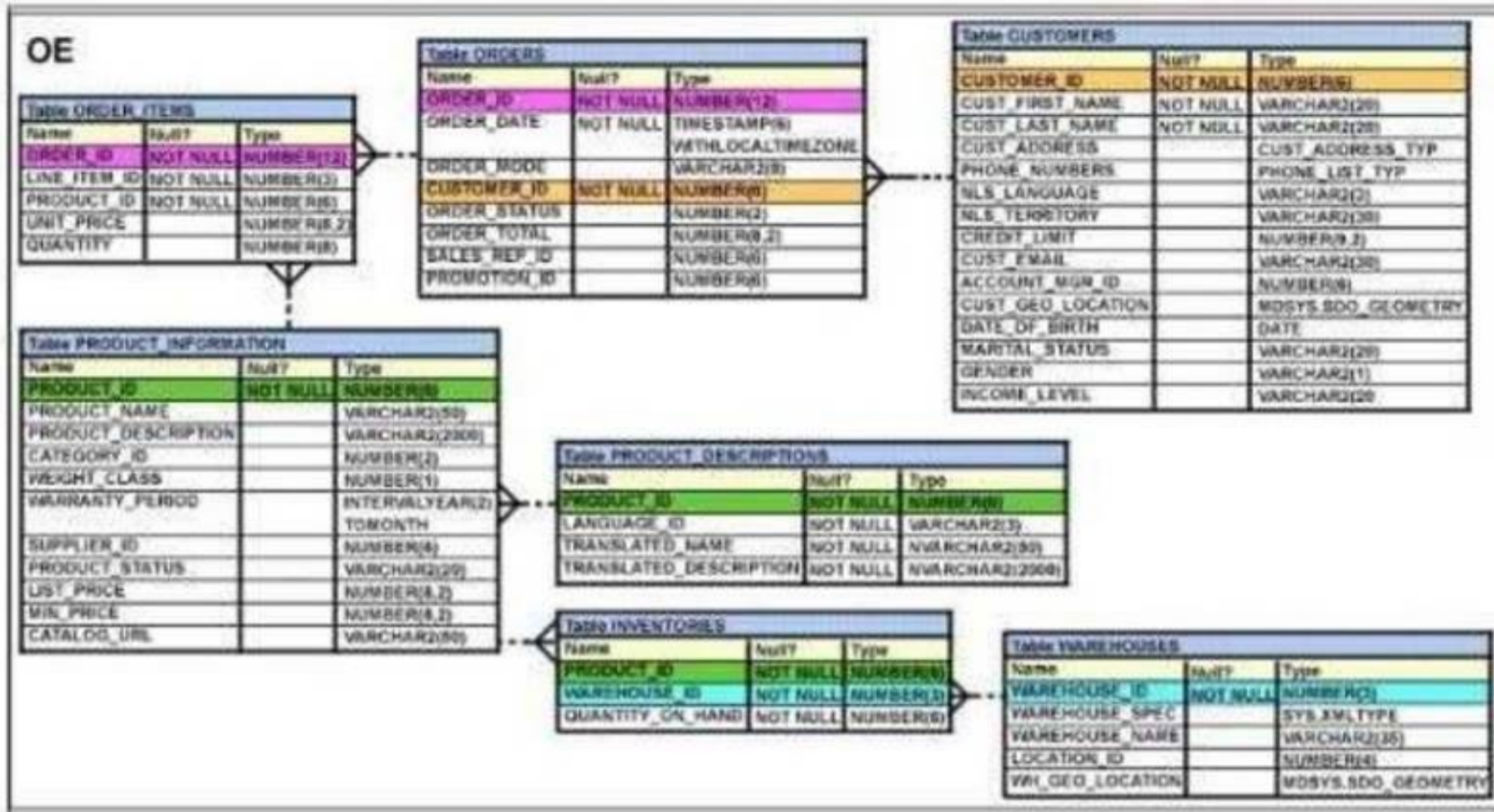
You have to generate a report that displays the promo named start data for all promos that started after that last promo in the 'INTERNET' category.

- A. Select promo_name, promo_being_date FROM promotions WHERE promo_being_data > ANY (SELCT promo_being-date FROM promotionsWHERE promo_category = 'INTERNET'
- B. SELECT promo_neme, promo_being_date FROM promotions WHERE promo_being_date > All (SELECT promo_beinjg-date FROM promotionsWHERE promo_category ='INTERNET');
- C. SELECT promo-name, promo-being _date FROM promotionsWhere promo_being_data >ALL (SELECT MAX (promo_being-date) FROM promotions) ANDPromo-category ='INTERNET';
- D. SELECT promo-name, promo-being_date FROM promotion WHERE promo-being-date IN (SELECT promo_biing_date FROM promotionsWHERE promo_category='INTYERNET');

Answer: B

NEW QUESTION 14

View the Exhibit and examine the structure of the PORDUCT_INFORMATION table. (Choose the best answer.)



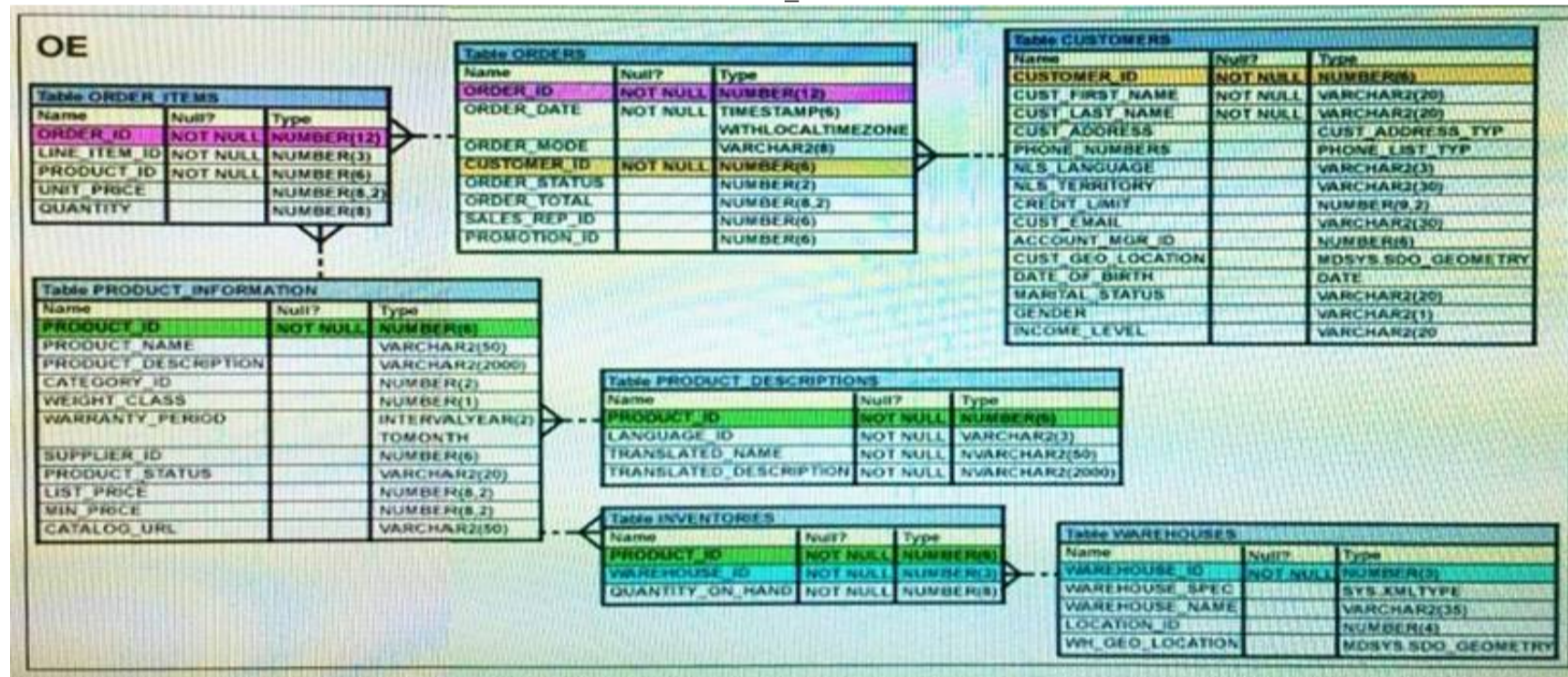
PRODUCT_ID column is the primary key. You create an index using this command: SQL > CREATE INDEX upper_name_idx ON product_information(UPPER(product_name)); No other indexes exist on the PRODUCT_INFORMATION table. Which query would use the UPPER_NAME_IDX index?

- A. SELECT product_id, UPPER(product_name) FROM product_information WHERE UPPER(product_name) = 'LASERPRO' OR list_price > 1000;
- B. SELECT UPPER(product_name) FROM product_information;
- C. SELECT UPPER(product_name) FROM product_information WHERE product_id = 2254;
- D. SELECT product_id FROM product_information WHERE UPPER(product_name) IN ('LASERPRO', 'CABLE');

Answer: D

NEW QUESTION 18

View the exhibit and examine the structure in ORDERS and ORDER_ITEMS tables.



You need to create a view that displays the ORDER_ID, ORDER_DATE, and the total number of items in each order. Which CREATE VIEW statement would create the views successfully?

- A. CREATE OR REPLACE VIEW ord_vu AS SELECT o.order_id, o.order_date, COUNT (i.line_item_id) FROM orders o JOIN order_items i ON (o.order_id = i.order_id) GROUP BY o.order_id, o.order_date;
- B. CREATE OR REPLACE VIEW ord_vu (order_id, order_date) AS SELECT o.order_id, o.order_date, COUNT (i.line_item_id) "NO OF ITEMS" FROM orders o JOIN order_items i ON (o.order_id = i.order_id) GROUP BY o.order_id, o.order_date;
- C. CREATE OR REPLACE VIEW ord_vu AS SELECT o.order_id, o.order_date, COUNT (i.line_item_id) "NO OF ITEMS" FROM orders o JOIN order_items i ON (o.order_id = i.order_id) GROUP BY o.order_id, o.order_date;
- D. CREATE OR REPLACE VIEW ord_vu AS SELECT o.order_id, o.order_date, COUNT (i.line_item_id) || "NO OF ITEMS" FROM orders o JOIN order_items i ON (o.order_id = i.order_id) GROUP BY o.order_id, o.order_date WITH CHECK OPTION;

Answer: C

NEW QUESTION 23

Examine the SQL statement used to create the TRANSACTION table. (Choose the best answer.)
 SQL > CREATE TABLE transaction (trn_id char(2) primary key, Start_date date DEFAULT SYSDATE, End_date date NOT NULL);
 The value 'A1' does not exist for trn_id in this table.

Which SQL statement successfully inserts a row into the table with the default value for START_DATE?

- A. INSERT INTO transaction VALUES ('A1', DEFAULT, TO_DATE(DEFAULT+10))
- B. INSERT INTO transaction VALUES ('A1', DEFAULT, TO_DATE('SYSDATE+10'))
- C. INSERT INTO transaction (trn_id, end_date) VALUES ('A1', '10-DEC-2014')
- D. INSERT INTO transaction (trn_id, start_date, end_date) VALUES ('A1', , '10-DEC-2014')

Answer: C

NEW QUESTION 28

View the Exhibit and examine the data in the PRODUCTS table. (Choose the best answer.)

PRODUCTS

PROD_ID	PROD_NAME	PROD_CATEGORY	PROD_MIN_PRICE	PROD_UNIT_OF_MEASURE
101	Envoy 156MB-40GB	Hardware	6000	Nos.
102	Y Box	Electronics	9000	
103	DVD-R Disc, 4.7 GB	Software/Other	2000	Nos.
104	Documentation	Software/Other	4000	

You must display product names from the PRODUCTS table that belong to the 'Software/other' category with minimum prices as either \$2000 or \$4000 and with no unit of measure.

You issue this query:

SQL > SELECT prod_name, prod_category, prod_min_price FROM products

Where prod_category LIKE '%Other%' AND (prod_min_price = 2000 OR prod_min_price = 4000) AND prod_unit_of_measure <> '';

Which statement is true?

- A. It executes successfully but returns no result.
- B. It executes successfully and returns the required result.
- C. It generates an error because the condition specified for PROD_UNIT_OF_MEASURE is not valid.
- D. It generates an error because the condition specified for the PROD_CATEGORY column is not valid.

Answer: A

NEW QUESTION 29

You execute the following commands: SQL > DEFINE hiredate = '01-APR-2011'

SQL > SELECT employee_id, first_name, salary FROM employees

WHERE hire_date > '&hiredate' AND manager_id > &mgr_id;

For which substitution variables are you prompted for the input?

- A. none, because no input required
- B. both the substitution variables 'hiredate' and 'mgr_id'.
- C. only hiredate'
- D. only 'mgr_id'

Answer: D

NEW QUESTION 30

Evaluate the following statement. INSERT ALL

WHEN order_total < 10000 THEN INTO small_orders

WHEN order_total > 10000 AND order_total < 20000 THEN INTO medium_orders

WHEN order_total > 20000 AND order_total < 20000 THEN INTO large_orders

SELECT order_id, order_total, customer_id FROM orders;

Which statement is true regarding the evaluation of rows returned by the subquery in the INSERT statement?

- A. They are evaluated by all the three WHEN clauses regardless of the results of the evaluation of any other WHEN clause.
- B. They are evaluated by the first WHEN clause
- C. If the condition is true, then the row would be evaluated by the subsequent WHEN clauses.
- D. They are evaluated by the first WHEN clause
- E. If the condition is false, then the row would be evaluated by the subsequent WHEN clauses.
- F. The insert statement would give an error because the ELSE clause is not present for support in case none of WHEN clauses are true.

Answer: A

Explanation:

References:

<http://psoug.org/definition/WHEN.htm>

NEW QUESTION 32

Which three statements are true reading subqueries?

- A. A Main query can have many subqueries.

- B. A subquery can have more than one main query.
- C. The subquery and main query must retrieve data from the same table.
- D. The subquery and main query can retrieve data from different tables.
- E. Only one column or expression can be compared between the subquery and main query.
- F. Multiple columns or expressions can be compared between the subquery and main query.

Answer: ADF

NEW QUESTION 36

View the Exhibit and examine the structures of the employees and departments tables.

EMPLOYEES		
Name	Null?	Type
EMPLOYEE_ID	NOT NULL	NUMBER(6)
FIRST_NAME		VARCHAR2(20)
LAST_NAME	NOT NULL	VARCHAR2(25)
HIRE_DATE	NOT NULL	DATE
JOB_ID	NOT NULL	VARCHAR2(10)
SALARY		NUMBER(10,2)
COMMISSION		NUMBER(6,2)
MANAGER_ID		NUMBER(6)
DEPARTMENT_ID		NUMBER(4)

DEPARTMENTS		
Name	Null?	Type
DEPARTMENT_ID	NOT NULL	NUMBER(4)
DEPARTMENT_NAME	NOT NULL	VARCHAR2(30)
MANAGER_ID		NUMBER(6)
LOCATION_ID		NUMBER(4)

You must update the employees table according to these requirements::

- Update only those employees who work in Boston or Seattle (locations 2900 and 2700).
- Set department_id for these employees to the department id corresponding to London (locationid 2100).
- Set the employees' salary in location_id 2100 to 1.1 times the average salary of their department.
- Set the employees' commission in location_id 2100 to 1.5 times the average commission of their department. You issue this command:

```
SQL> UPDATE employees
  SET department_id =
    (SELECT department_id
     FROM departments
     WHERE location_id = 2100),
    (salary, commission) =
    (SELECT 1.1*AVG(salary), 1.5*AVG(commission)
     FROM employees, departments
     WHERE departments.location_id IN(2900,2700,2100))
 WHERE department_id IN
    (SELECT department_id
     FROM departments
     WHERE location_id = 2900
     OR location_id = 2700);
```

What is the result?

- A. It executes successfully but does not produce the desired update.
- B. It executes successfully and produces the desired update.
- C. It generates an error because multiple columns cannot be specified together in an UPDATE statement.
- D. It generates an error because a subquery cannot have a join condition in an update statement.

Answer: A

NEW QUESTION 40

You execute the SQL statement: SQL> CREATE TABLE citizens (citizen_id CHAR (10) PRIMARY KEY, last_name VARCHAR2 (50) NOT NULL, first_name VARCHAR2 (50), address VARCHAR2 (100), city VARCHAR2 (30) DEFAULT 'SEATTLE' NOT NULL, CONSTRAINT cnames CHECK (first_name<>last_name)); What is the outcome?

- A. It fails because the NOT NULL and DEFAULT options cannot be combined for the same column.
- B. It succeeds and CITY can contain only 'SEATTLE' or null for all rows.
- C. It fails because the condition for the CANAMES constraint is not valid.
- D. It succeeds and an index is crated for CITIZEN_ID.

Answer: A

NEW QUESTION 43

View the exhibits and examine the structures of the COSTS and PROMOTIONS tables.

Table COSTS		
Name	Null?	Type
PROD_ID	NOT NULL	NUMBER
TIME_ID	NOT NULL	DATE
PROMO_ID	NOT NULL	NUMBER
CHANNEL_ID	NOT NULL	NUMBER
UNIT_COST	NOT NULL	NUMBER(10,2)
UNIT_PRICE	NOT NULL	NUMBER(10,2)

Table PROMOTIONS		
Name	Null?	Type
PROMO_ID	NOT NULL	NUMBER(6)
PROMO_NAME	NOT NULL	VARCHAR2(30)
PROMO_SUBCATEGORY	NOT NULL	VARCHAR2(30)
PROMO_SUBCATEGORY_ID	NOT NULL	NUMBER
PROMO_CATEGORY	NOT NULL	VARCHAR2(30)
PROMO_CATEGORY_ID	NOT NULL	NUMBER
PROMO_COST	NOT NULL	NUMBER(10,2)
PROMO_BEGIN_DATE	NOT NULL	DATE
PROMO_END_DATE	NOT NULL	DATE

Evaluate the following SQL statement: SQL> SELECT prod_id FROM costs WHERE promo_id IN (SELECT promo_id FROM promotions WHERE promo_cost < ALL (SELECT MAX(promo_cost) FROM promotions GROUP BY (promo_end_date- promo_begin_date))); What would be the outcome of the above SQL statement?

- A. It displays prod IDs in the promo with the lowest cost.
- B. It displays prod IDs in the promos with the lowest cost in the same time interval.
- C. It displays prod IDs in the promos with the highest cost in the same time interval.
- D. It displays prod IDs in the promos which cost less than the highest cost in the same time interval.

Answer: D

NEW QUESTION 45

Which statements are true? (Choose all that apply.)

- A. The data dictionary is created and maintained by the database administrator.
- B. The data dictionary views consists of joins of dictionary base tables and user-defined tables.
- C. The usernames of all the users including the database administrators are stored in the data dictionary.
- D. The USER_CONS_COLUMNS view should be queried to find the names of the columns to which a constraint applies.
- E. Both USER_OBJECTS and CAT views provide the same information about all the objects that are owned by the user.
- F. Views with the same name but different prefixes, such as DBA, ALL and USER, use the same base tables from the data dictionary.

Answer: CDF

Explanation:

References:
https://docs.oracle.com/cd/B10501_01/server.920/a96524/c05dicti.htm

NEW QUESTION 48

Which statement is true regarding the INTERSECT operator?

- A. The names of columns in all SELECT statements must be identical.
- B. It ignores NULL values.
- C. Reversing the order of the intersected tables alters the result.
- D. The number of columns and data types must be identical for all SELECT statements in the query.

Answer: D

Explanation:

INTERSECT Returns only the rows that occur in both queries' result sets, sorting them and removing duplicates. The columns in the queries that make up a compound query can have different names, but the output result set will use the names of the columns in the first query.

References:
<http://oraclexpert.com/using-the-set-operators/>

NEW QUESTION 51

Which two statements are true regarding constraints?

- A. A table can have only one primary key and one foreign key.
- B. A table can have only one primary key but multiple foreign keys.
- C. Only the primary key can be defined at the column and table levels.
- D. The foreign key and parent table primary key must have the same name.
- E. Both primary key and foreign key constraints can be defined at both column and table levels.

Answer: BE

NEW QUESTION 52

View the exhibit and examine the descriptions of the DEPT and LOCATIONS tables.

DEPT		
Name	Null?	Type
DEPARTMENT_ID		NUMBER(4)
DEPARTMENT_NAME	NOT NULL	VARCHAR2(30)
MANAGER_ID		NUMBER(6)
LOCATION_ID		NUMBER(4)
CITY		VARCHAR2(30)

LOCATIONS		
Name	Null?	Type
LOCATION_ID	NOT NULL	NUMBER(4)
STREET_ADDRESS		VARCHAR2(40)
POSTAL_CODE		VARCHAR2(12)
CITY	NOT NULL	VARCHAR2(30)
STATE_PROVINCE		VARCHAR2(25)
COUNTRY_ID		CHAR(2)

You want to update the CITY column of the DEPT table for all the rows with the corresponding value in the CITY column of the LOCATIONS table for each department.

Which SQL statement would you execute to accomplish the task?

- A. UPDATE dept dSET city = ALL (SELECT cityFROM locations IWHERE d.location_id = I.location_id);
- B. UPDATE dept dSET city = (SELECT cityFROM locations I)WHERE d.location_id = I.location_id;
- C. UPDATE dept dSET city = ANY (SELECT cityFROM locations I)
- D. UPDATE dept dSET city = (SELECT cityFROM locations IWHERE d.location_id = I.location_id);

Answer: D

NEW QUESTION 57

View the Exhibit and examine the structure of the CUSTOMERS table.

Table CUSTOMERS		
Name	Null?	Type
CUST_ID	NOT NULL	NUMBER
CUST_FIRST_NAME	NOT NULL	VARCHAR2 (20)
CUST_LAST_NAME	NOT NULL	VARCHAR2 (40)
CUST_GENDER	NOT NULL	CHAR (1)
CUST_YEAR_OF_BIRTH	NOT NULL	NUMBER (4)
CUST_MARITAL_STATUS		VARCHAR2 (20)
CUST_STREET_ADDRESS	NOT NULL	VARCHAR2 (40)
CUST_POSTAL_CODE	NOT NULL	VARCHAR2 (10)
CUST_CITY	NOT NULL	VARCHAR2 (30)
CUST_STATE_PROVINCE	NOT NULL	VARCHAR2 (40)
COUNTRY_ID	NOT NULL	NUMBER
CUST_INCOME_LEVEL		VARCHAR2 (30)
CUST_CREDIT_LIMIT		NUMBER
CUST_EMAIL		VARCHAR2 (30)

Using the CUSTOMERS table, you must generate a report that displays a credit limit increase of 15% for all customers. Customers with no credit limit should have "Not Available" displayed. Which SQL statement would produce the required result?

- A. SELECT NVL (TO_CHAR(cust_credit_limit*.15), 'Not Available') "NEW CREDIT" FROM customers
- B. SELECT TO_CHAR(NVL(cust_credit_limit*.15), 'Not Available') "NEW CREDIT" FROMcustomers
- C. SELECT NVL (cust_credit_limit*.15, 'Not Available') "NEW CREDIT" FROM customers
- D. SELECT NVL (cust_credit_limit, 'Not Available')*.15 "NEW CREDIT" FROM customers

Answer: C

NEW QUESTION 59

Which task can be performed by using a single Data Manipulation Language (DML) statement?

- A. adding a column constraint when inserting a row into a table
- B. adding a column with a default value when inserting a row into a table
- C. removing all data only from one single column on which a unique constraint is defined
- D. removing all data only from one single column on which a primary key constraint is defined

Answer: C

NEW QUESTION 63

Which statement is true regarding the default behavior of the ORDER BY clause?

- A. In a character sort, the values are case-sensitive.
- B. NULL values are not considered at all by the sort operation.
- C. Only those columns that are specified in the SELECT list can be used in the ORDER BY clause.
- D. Numeric values are displayed from the maximum to the minimum value if they have decimal positions.

Answer: A

NEW QUESTION 64

Which three statements are true regarding group functions? (Choose three.)

- A. They can be used on columns or expressions.
- B. They can be passed as an argument to another group function.
- C. They can be used only with a SQL statement that has the GROUP BY clause.
- D. They can be used on only one column in the SELECT clause of a SQL statement.
- E. They can be used along with the single-row function in the SELECT clause of a SQL statement.

Answer: ABE

Explanation:

References:
<https://www.safaribooksonline.com/library/view/mastering-oracle-sql/0596006322/ch04.html>

NEW QUESTION 66

Evaluate the following SQL statement:

```
SELECT product_name || 'it's not available for order' FROM product_information
WHERE product_status = 'obsolete';
```

You received the following error while executing the above query: ERROR

ORA-01756: quoted string not properly terminated What would you do to execute the query successfully?

- A. Use Quote (q) operator and delimiter to allow the use of single quotation mark in the literal character string.
- B. Enclose the literal character string in the SELECT clause within the double quotation marks.
- C. Do not enclose the character literal string in the SELECT clause within the single quotation marks.
- D. Use escape character to negate the single quotation mark inside the literal character string in the SELECT clause.

Answer: A

Explanation:

References:
http://docs.oracle.com/cd/B19306_01/server.102/b14200/sql_elements003.htm

NEW QUESTION 71

You must create a table EMPLOYEES in which the values in the columns EMPLOYEES_ID and LOGIN_ID must be unique and not null. (Choose two.) Which two SQL statements would create the required table?

- A. CREATE TABLE employees(employee_id NUMBER,Login_id NUMBER,Employee_name VARCHAR2(100),Hire_date DATE,CONSTRAINT emp_id_ukUNIQUE (employee_id, login_id));
- B. CREATE TABLE employees(employee_id NUMBER,login_id NUMBER,employee_name VARCHAR2(25),hire_date DATE,CONSTRAINT emp_id_pk PRIMARY KEY (employee_id, login_id));
- C. CREATE TABLE employees(employee_id NUMBER CONSTRAINT emp_id_pk PRIMARY KEY, Login_id NUMBER UNIQUE, Employee_name VARCHAR2(25),Hire_date DATE);
- D. CREATE TABLE employees(employee_id NUMBER,Login_id NUMBER,Employee_name VARCHAR2(100),Hire_date DATE,CONSTRAINT emp_id_uk UNIQUE (employee_id, login_id);CONSTRAINT emp_id_nn NOT NULL (employee_id, login_id));
- E. CREATE TABLE employees(employee_id NUMBER CONSTRAINT emp_id_nn NOT NULL, Login_id NUMBER CONSTRAINT login_id_nn NOT NULL,Employee_name VARCHAR2(100),Hire_date DATE,CONSTRAINT emp_id_ukUNIQUE (employee_id, login_id));

Answer: BE

NEW QUESTION 74

Examine the structure of the BOOKS_TRANSACTIONS table:

Name	Null?	Type
TRANSACTION_ID	NOT NULL	VARCHAR2 (6)
BORROWED_DATE		DATE
DUE_DATE		DATE
BOOK_ID		VARCHAR2 (6)
MEMBER_ID		VARCHAR2 (6)

You want to display the member IDs, due date, and late fee as \$2 for all transactions. Which SQL statement must you execute?

- A. SELECT member_id AS "MEMBER ID", due_date AS "DUE DATE", \$2 AS "LATE FEE" FROM BOOKS_TRANSACTIONS
- B. SELECT member_id AS "MEMBER ID", due_date AS "DUE DATE", '\$2' AS "LATE FEE" FROM BOOKS_TRANSACTIONS
- C. SELECT member_id 'MEMBER ID', due_date 'DUE DATE', '\$2 AS LATE FEE' FROM BOOKS_TRANSACTIONS;
- D. SELECT member_id AS MEMBER_ID, due_date AS DUE_DATE, \$2 AS LATE_FEE FROM BOOKS_TRANSACTIONS

Answer: B

NEW QUESTION 79

Which three statements are true about multiple-row subqueries?

- A. They can contain a subquery within a subquery.
- B. They can return multiple columns as well as rows.
- C. They cannot contain a subquery within a subquery.
- D. They can return only one column but multiple rows.
- E. They can contain group functions and GROUP BY and HAVING clauses.
- F. They can contain group functions and the GROUP BY clause, but not the HAVING clause.

Answer: ABE

NEW QUESTION 84

Examine the following query:

```
SQL> SELECT prod_id, amount_sold FROM sales
ORDER BY amount_sold
FETCH FIRST 5 PERCENT ROWS ONLY;
```

What is the output of this query?

- A. It displays 5 percent of the products with the highest amount sold.
- B. It displays the first 5 percent of the rows from the SALES table.
- C. It displays 5 percent of the products with the lowest amount sold.
- D. It results in an error because the ORDER BY clause should be the last clause.

Answer: C

Explanation:

References:
<https://oracle-base.com/articles/12c/row-limiting-clause-for-top-n-queries-12cr1>

NEW QUESTION 86

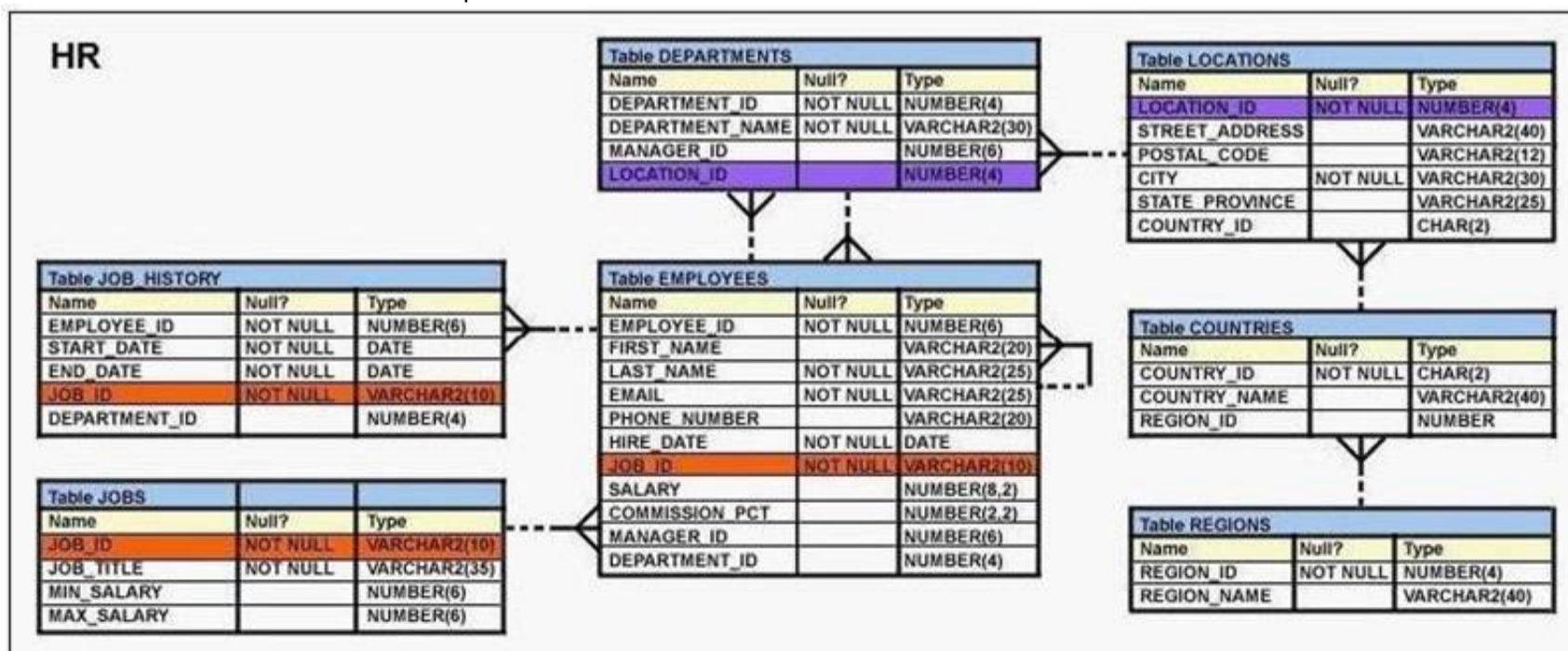
Which two statements are true regarding constraints? (Choose two.)

- A. A constraint is enforced only for an INSERT operation on a table.
- B. A foreign key cannot contain NULL values.
- C. The column with a UNIQUE constraint can store NULLS.
- D. You can have more than one column in a table as part of a primary key.

Answer: CD

NEW QUESTION 91

View the Exhibit and examine the description of the EMPLOYEES table.



You want to calculate the total remuneration for each employee. Total remuneration is the sum of the annual salary and the percentage commission earned for a year. Only a few employees earn commission.

Which SQL statement would you execute to get the desired output?

- A. SELECT first_name, salary, salary*12+(salary*NVL2 (commission_pct, salary,salary+commission_pct))"Total"FROM EMPLOYEES;
- B. SELECT first_name, salary, salary*12+salary*commission_pct "Total"FROM EMPLOYEES;
- C. SELECT first_name, salary (salary + NVL (commission_pct, 0)*salary)*12 "Total"FROM EMPLOYEES;
- D. SELECT first_name, salary*12 + NVL(salary,0)*commission_pct, "Total"FROM EMPLOYEES;

Answer: A

NEW QUESTION 95

Which statement is true about SQL query processing in an Oracle database instance? (Choose the best answer.)

- A. During parsing, a SQL statement containing literals in the WHERE clause that has been executed by any session and which is cached in memory, is always reused for the current execution.
- B. During executing, the oracle server may read data from storage if the required data is not already in memory.
- C. During row source generation, rows that satisfy the query are retrieved from the database and stored in memory.
- D. During optimization, execution plans are formulated based on the statistics gathered by the database instance, and the lowest cost plan is selected for execution.

Answer: B

NEW QUESTION 96

Which two statements are true regarding constraints? (Choose two.)

- A. All constraints can be defined at the column level and at the table level.
- B. A constraint can be disabled even if the constraint column contains data.
- C. A column with the UNIQUE constraint can contain NULLS.
- D. A foreign key column cannot contain NULLS.
- E. A constraint is enforced only for INSERT operations.

Answer: BC

NEW QUESTION 101

You issue the following command to drop the PRODUCTS table: (Choose all that apply.) SQL > DROP TABLE products;
Which three statements are true about the implication of this command?

- A. All data along with the table structure is deleted.
- B. A pending transaction in the session is committed.
- C. All indexes on the table remain but they are invalidated.
- D. All views and synonyms on the table remain but they are invalidated.
- E. All data in the table is deleted but the table structure remains.

Answer: ABD

NEW QUESTION 104

Evaluate the following query:

```
SQL> SELECT TRUNC (ROUND (156.00, -1),-1) FROM DUAL;
```

What would be the outcome?

- A. 150
- B. 200
- C. 160
- D. 16
- E. 100

Answer: C

Explanation:

References:

https://docs.oracle.com/cd/B19306_01/server.102/b14200/functions135.htm https://docs.oracle.com/cd/B28359_01/olap.111/b28126/dml_functions_2127.htm

NEW QUESTION 108

The user SCOTT who is the owner of ORDERS and ORDER_ITEMS tables issues the following GRANT command:

```
GRANT ALL
```

```
ON orders, order_items TO PUBLIC;
```

What correction needs to be done to the above statement?

- A. PUBLIC should be replaced with specific usernames.
- B. ALL should be replaced with a list of specific privileges.
- C. WITH GRANT OPTION should be added to the statement.
- D. Separate GRANT statements are required for ORDERS and ORDER_ITEMS tables.

Answer: D

Explanation:

References:

<http://docs.oracle.com/javadb/10.8.3.0/ref/rrefsqljgrant.html>

NEW QUESTION 113

Which two statements are true about Data Manipulation Language (DML) statements?

- A. An INSERT INTO...VALUES.. statement can add multiple rows per execution to a table.
- B. An UPDATE... SET... statement can modify multiple rows based on multiple conditions on a table.

- C. ADELETE FROM..... statement can remove rows based on only a single condition on a table.
- D. An INSERT INTO... VALUES..... statement can add a single row based on multiple conditions on a table.
- E. ADELETE FROM..... statement can remove multiple rows based on multiple conditions on a table.
- F. An UPDATE....SET.... statement can modify multiple rows based on only a single condition on a table.

Answer: BE

Explanation:

References:
http://www.techonthenet.com/sql/and_or.php

NEW QUESTION 116

View the exhibit and examine the structure of ORDERS and CUSTOMERS tables. ORDERS

Name Null? Type

ORDER_ID NOT NULL NUMBER(4) ORDER_DATE NOT NULL DATE ORDER_MODE VARCHAR2(8) CUSTOMER_ID NOT NULL NUMBER(6)
 ORDER_TOTAL NUMBER(8, 2) CUSTOMERS

Name Null? Type

CUSTOMER_ID NOT NULL
 NUMBER(6) CUST_FIRST_NAME NOT NULL VARCHAR2(20) CUST_LAST_NAME NOT NULL VARCHAR2(20) CREDIT_LIMIT NUMBER(9,2)
 CUST_ADDRESS VARCHAR2(40)

Which INSERT statement should be used to add a row into the ORDERS table for the customer whose CUST_LAST_NAME is Roberts and CREDIT_LIMIT is 600? Assume there exists only one row with CUST_LAST_NAME as Roberts and CREDIT_LIMIT as 600.

- A. INSERT INTO (SELECT o.order_id, o.order_date, o.order_mode, c.customer_id, o.order_total FROM orders o, customers c WHERE o.customer_id = c.customer_id AND c.cust_last_name='Roberts' AND c.credit_limit=600) VALUES (1, '10-mar-2007', 'direct', (SELECT customer_id FROM customers WHERE cust_last_name='Roberts' AND credit_limit=600), 1000);
- B. INSERT INTO orders (order_id, order_date, order_mode, (SELECT customer_id FROM customers WHERE cust_last_name='Roberts' AND credit_limit=600), order_total); VALUES (1, '10-mar-2007', 'direct', &customer_id, 1000);
- C. INSERT INTO orders VALUES (1, '10-mar-2007', 'direct', (SELECT customer_id FROM customers WHERE cust_last_name='Roberts' AND credit_limit=600), 1000);
- D. INSERT INTO orders (order_id, order_date, order_mode, (SELECT customer_id FROM customers WHERE cust_last_name='Roberts' AND credit_limit=600), order_total); VALUES (1, '10-mar-2007', 'direct', &customer_id, 1000);

Answer: C

NEW QUESTION 118

In which three situations does a transaction complete?

- A. when a PL/SQL anonymous block is executed
- B. when a DELETE statement is executed
- C. when a ROLLBACK command is executed
- D. when a data definition language (DDL) statement is executed
- E. when a TRUNCATE statement is executed after the pending transaction

Answer: CDE

Explanation:

References:
https://docs.oracle.com/cd/B19306_01/server.102/b14220/transact.htm

NEW QUESTION 122

View the Exhibit and examine the structure of the EMP table which is not partitioned and not an index-organized table. (Choose two.)

EMP Name	Null?	Type
EMPNO	NOT NULL	NUMBER (4)
FIRST_NAME		VARCHAR2 (20)
LAST_NAME		VARCHAR2
SALARY		NUMBER (10, 2)
DEPTNO		NUMBER (2)

Evaluate this SQL statement: ALTER TABLE emp
 DROP COLUMN first_name; Which two statements are true?

- A. The FIRST_NAME column can be dropped even if it is part of a composite PRIMARY KEY provided the CASCADE option is added to the SQL statement.
- B. The FIRST_NAME column would be dropped provided at least one column remains in the table.
- C. The FIRST_NAME column would be dropped provided it does not contain any data.
- D. The drop of the FIRST_NAME column can be rolled back provided the SET UNUSED option is added to the SQL statement.

Answer: B

NEW QUESTION 126

Which two statements are true about sequences created in a single instance Oracle database?

- A. The numbers generated by an explicitly defined sequence can only be used to insert data in one table.
- B. DELETE <sequencename> would remove a sequence from the database.
- C. CURRVAL is used to refer to the most recent sequence number that has been generated for a particular sequence.
- D. When the MAXVALUE limit for a sequence is reached, it can be increased by using the ALTER SEQUENCE statement.
- E. When the database instance shuts down abnormally, sequence numbers that have been cached but not used are available again when the instance is restarted.

Answer: CD

NEW QUESTION 127

View the Exhibits and examine PRODUCTS and SALES tables. Exhibit 1

Table PRODUCTS		
Name	Null?	Type
PROD_ID	NOT NULL	NUMBER (6)
PROD_NAME	NOT NULL	VARCHAR2 (50)
PROD_DESC	NOT NULL	VARCHAR2 (4000)
PROD_CATEGORY	NOT NULL	VARCHAR2 (50)
PROD_CATEGORY_ID	NOT NULL	NUMBER
PROD_UNIT_OF_MEASURE		VARCHAR2 (20)
SUPPLIER_ID	NOT NULL	NUMBER (6)
PROD_STATUS	NOT NULL	VARCHAR2 (20)
PROD_LIST_PRICE	NOT NULL	NUMBER (8, 2)
PROD_MIN_PRICE	NOT NULL	NUMBER (8, 2)

Exhibit 2

Table SALES		
Name	Null?	Type
PROD_ID	NOT NULL	NUMBER
CUST_ID	NOT NULL	NUMBER
TIME_ID	NOT NULL	DATE
CHANNEL_ID	NOT NULL	NUMBER
PROMO_ID	NOT NULL	NUMBER
QUANTITY_SOLD	NOT NULL	NUMBER (10, 2)

You issue the following query to display product name the number of times the product has been sold:

```
SOL>SELECT p.prod_name, i.item_cnt
      FROM (SELECT prod_id, COUNT(*) item_cnt
            FROM sales
            GROUP BY prod_id) I RIGHT OUTER JOIN products p
      ON i.prod_id = p.prod_id;
```

What happens when the above statement is executed?

- A. The statement executes successfully and produces the required output.
- B. The statement produces an error because a subquery in the FROM clause and outer-joins cannot be used together.
- C. The statement produces an error because the GROUP BY clause cannot be used in a subquery in the FROM clause.
- D. The statement produces an error because ITEM_CNT cannot be displayed in the outer query.

Answer: A

NEW QUESTION 129

Examine the structure of the PROMOTIONS table: (Choose the best answer.)

NAME	NULL?	TYPE
PROMO_ID	NOT NULL	NUMBER(6)
PROMO_NAME	NOT NULL	VARCHAR2(30)
PROMO_CATEGORY	NOT NULL	VARCHAR2(30)
PROMO_COST	NOT NULL	NUMBER(10,2)

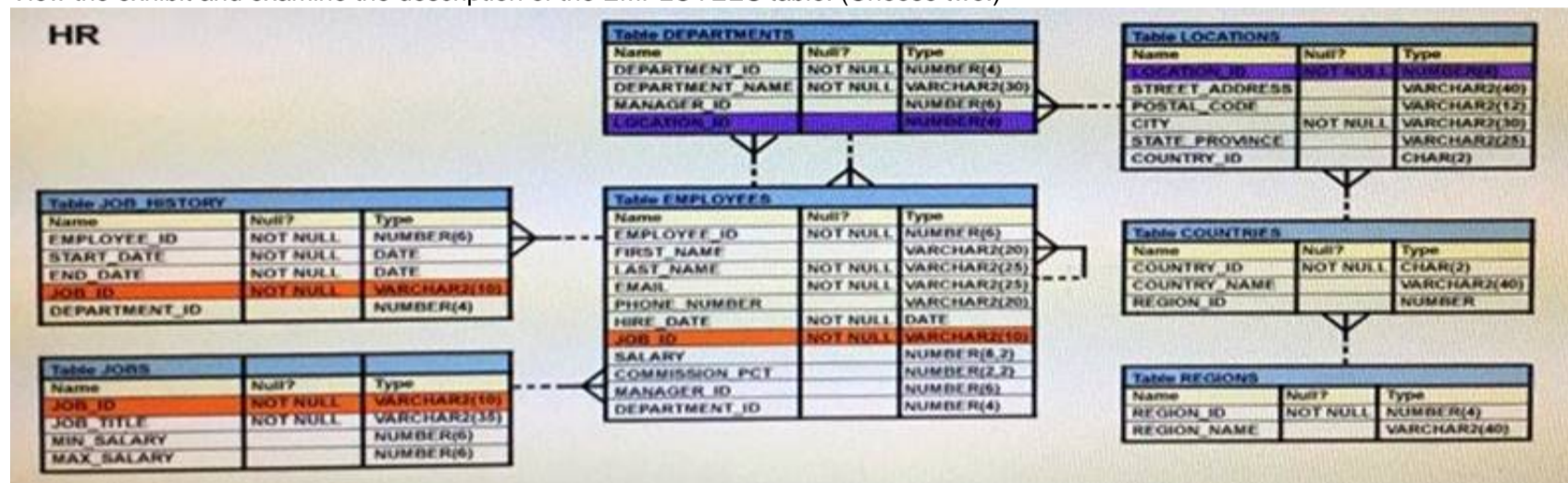
Management requires a report of unique promotion costs in each promotion category. Which query would satisfy this requirement?

- A. SELECT DISTINCT promo_category, promo_cost FROM promotions ORDER BY 1
- B. SELECT promo_category, DISTINCT promo_cost FROM promotions
- C. SELECT DISTINCT promo_cost, promo_category FROM promotions
- D. SELECT DISTINCT promo_cost, DISTINCT promo_category FROM promotions;

Answer: A

NEW QUESTION 131

View the exhibit and examine the description of the EMPLOYEES table. (Choose two.)



You executed this SQL statement: SELECT first_name, department_id, salary FROM employees ORDER BY department_id, first_name, salary desc; Which two statements are true regarding the result?

- A. The values in the SALARY column would be returned in descending order for all employees having the same value in the DEPARTMENT_ID and FIRST_NAME column.
- B. The values in the FIRST_NAME column would be returned in ascending order for all employees having the same value in the DEPARTMENT_ID column.
- C. The values in the SALARY column would be returned in descending order for all employees having the same value in the DEPARTMENT_ID column.
- D. The values in the all columns would be returned in descending order.
- E. The values in the FIRST_NAME column would be returned in descending order for all employees having the same value in the DEPARTMENT_ID column.

Answer: AB

NEW QUESTION 133

View the Exhibit and examine the structure of CUSTOMERS table.

Using the CUSTOMERS table, you need to generate a report that shows an increase in the credit limit by 15% for all customers. Customers whose credit limit has not been entered should have the message "Not Available" displayed. Which SQL statement would produce the required result?

Name	Null?	Type
CUST_ID	NOT NULL	NUMBER
CUST_FIRST_NAME	NOT NULL	VARCHAR2 (20)
CUST_LAST_NAME	NOT NULL	VARCHAR2 (40)
CUST_GENDER	NOT NULL	CHAR (1)
CUST_YEAR_OF_BIRTH	NOT NULL	NUMBER (4)
CUST_MARITAL_STATUS		VARCHAR2 (20)
CUST_STREET_ADDRESS	NOT NULL	VARCHAR2 (40)
CUST_POSTAL_CODE	NOT NULL	VARCHAR2 (10)
CUST_CITY	NOT NULL	VARCHAR2 (30)
CUST_STATE_PROVINCE	NOT NULL	VARCHAR2 (40)
COUNTRY_ID	NOT NULL	NUMBER
CUST_INCOME_LEVEL		VARCHAR2 (30)
CUST_CREDIT_LIMIT		NUMBER
CUST_EMAIL		VARCHAR2 (30)

- A. SELECT NVL (TO CHAR(cust_credit_limit * .15), 'Not Available') "NEW CREDIT"FROM customers;
- B. SELECT TO_CHAR (NVL(cust_credit_limit * .15), 'Not Available') "NEW CREDIT"FROM customers;
- C. SELECT NVL(cust_credit_limit * .15, 'Not Available') "NEW CREDIT"FROM customers;
- D. SELECT NVL(cust_credit_limit), 'Not Available') "NEW CREDIT"FROM customers;

Answer: A

NEW QUESTION 137

The first DROP operation is performed on PRODUCTS table using the following command: DROP TABLE products PURGE;
 Then you performed the FLASHBACK operation by using the following command: FLASHBACK TABLE products TO BEFORE DROP;
 Which statement describes the outcome of the FLASHBACK command?

- A. It recovers only the table structure.
- B. It recovers the table structure, data, and the indexes.
- C. It recovers the table structure and data but not the related indexes.
- D. It is not possible to recover the table structure, data, or the related indexes.

Answer: D

Explanation:

References:
https://docs.oracle.com/cd/B19306_01/server.102/b14200/statements_9003.htm

NEW QUESTION 142

Examine the structure of the EMPLOYEES table. (Choose two.)

Name	Null?	Type
EMPLOYEE_ID	NOT NULL	NUMBER (6)
FIRST_NAME		VARCHAR2 (20)
LAST_NAME	NOT NULL	VARCHAR2 (25)
EMAIL	NOT NULL	VARCHAR2 (25)
PHONE_NUMBER		VARCHAR2 (20)
HIRE_DATE	NOT NULL	DATE
JOB_ID	NOT NULL	VARCHAR2 (10)
SALARY		NUMBER (8, 2)
COMMISSION_PCT		NUMBER (2, 2)
MANAGER_ID		NUMBER (6)
DEPARTMENT_ID		NUMBER (4)

You must display the maximum and minimum salaries of employees hired 1 year ago. Which two statements would provide the correct output?

- A. SELECT MIN(Salary) minsal, MAX(salary) maxsalFROM employeesWHERE hire_date < SYSDATE-365GROUP BY MIN(salary), MAX(salary);
- B. SELECT minsal, maxsalFROM (SELECT MIN(salary) minsal, MAX(salary) maxsal FROM employeesWHERE hire_date < SYSDATE-365)GROUP BY maxsal, minsal;
- C. SELECT minsal, maxsalFROM (SELECT MIN(salary) minsal, MAX(salary) maxsal FROM employeesWHERE hire_date < SYSDATE-365)GROUP BY MIN(salary), MAX(salary);
- D. SELECT MIN(Salary), MAX(salary)FROM (SELECT salary FROM employeesWHERE hire_date < SYSDATE-365);

Answer: BD

NEW QUESTION 147

View the Exhibit and examine the structure of the ORDER_ITEMS table. (Choose the best answer.)

ORDER_ITEMS				
ORDER_ID	LINE_ITEM_ID	PRODUCT_ID	UNIT_PRICE	QUANTITY
2355	4	2322	19	188
2355	5	2323	17	190
2355	9	2359	226.6	204
2355	1	2289	46	200
2356	5	2308	58	47
2356	6	2311	95	51
2356	1	2264	199.1	38
2356	2	2274	148.5	34
2356	3	2293	98	40
2356	4	2299	72	44
2357	2	2245	462	26
2357	3	2252	788.7	26
2357	4	2257	371.8	29
2357	5	2262	95	29

You must select the ORDER_ID of the order that has the highest total value among all the orders in the ORDER_ITEMS table.
 Which query would produce the desired result?

- A. SELECT order_idFROM order_itemsGROUP BY order_idHAVING SUM(unit_price*quantity) = (SELECT MAX (SUM(unit_price*quantity))FROM order_items GROUP BY order_id);

- B. SELECT order_id FROM order_items WHERE (unit_price*quantity) = (SELECT MAX (SUM(unit_price*quantity) FROM order_items) GROUP BY order_id);
- C. SELECT order_id FROM order_items WHERE (unit_price*quantity) = MAX(unit_price*quantity) GROUP BY order_id);
- D. SELECT order_id FROM order_items WHERE (unit_price*quantity) = (SELECT MAX(unit_price*quantity) FROM order_items GROUP BY order_id)

Answer: A

NEW QUESTION 151

View the Exhibit and examine the data in the PRODUCT_INFORMATION table.

PRODUCT_INFORMATION				
PDT_ID	SUP_ID	PDT_STATUS	LIST_PRICE	MIN_PRICE
1797	102094	orderable	349	288
2254	102071	obsolete	453	371
2382	102050	under development	850	731
2459	102099	under development	699	568
3127	102087	orderable	498	444
3353	102071	obsolete	489	413
3354	102066	orderable	543	478

Which two tasks would require subqueries? (Choose two.)

- A. displaying all the products whose minimum list prices are more than average list price of products having the status orderable
- B. displaying the total number of products supplied by supplier 102071 and having product status OBSOLETE
- C. displaying the number of products whose list prices are more than the average list price
- D. displaying all supplier IDs whose average list price is more than 500
- E. displaying the minimum list price for each product status

Answer: AC

NEW QUESTION 154

Which statement is true regarding the default behaviour of the ORDER by clause?

- A. Numeric values are displayed in descending order if they have decimal positions.
- B. Only columns that are specified in the SELECT list can be used in the ORDER by clause.
- C. In a character sort, the values are case-sensitive.
- D. NULLs are not including in the sort operation

Answer: C

NEW QUESTION 156

Examine the structure of the CUSTOMERS table: (Choose two.)

NAME	NULL?	TYPE
CUSTNO	NOT NULL	NUMBER(3)
CUSTNAME	NOT NULL	VARCHAR2(25)
CUSTADDRESS		VARCHAR2(35)
CUST_CREDIT_LIMIT		NUMBER(5)

CUSTNO is the PRIMARY KEY.

You must determine if any customers' details have been entered more than once using a different CUSTNO, by listing all duplicate names.

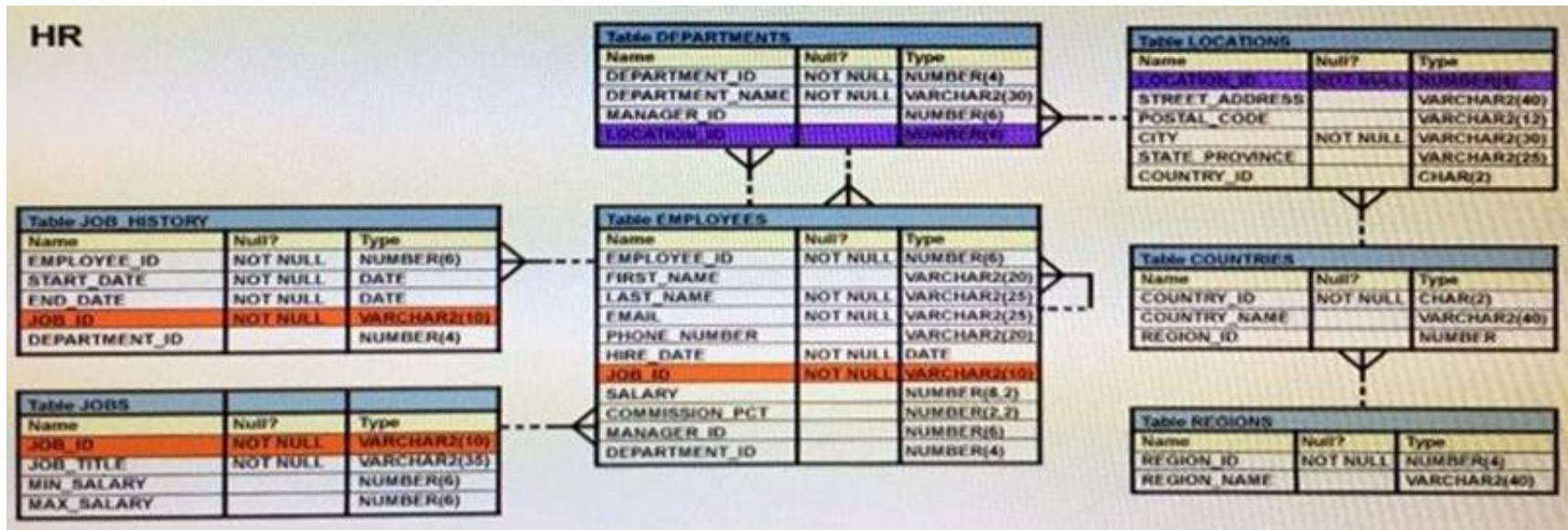
Which two methods can you use to get the required result?

- A. Subquery
- B. Self-join
- C. Full outer-join with self-join
- D. Left outer-join with self-join
- E. Right outer-join with self-join

Answer: AB

NEW QUESTION 160

View the exhibit and examine the description of the DEPARTMENTS and EMPLOYEES tables.



The retrieve data for all the employees for their EMPLOYEE_ID, FIRST_NAME, and DEPARTMENT NAME, the following SQL statement was written:
 SELECT employee_id, first_name, department_name FROM employees
 NATURAL JOIN departments;
 The desired output is not obtained after executing the above SQL statement. What could be the reason for this?

- A. The table prefix is missing for the column names in the SELECT clause.
- B. The NATURAL JOIN clause is missing the USING clause.
- C. The DEPARTMENTS table is not used before the EMPLOYEES table in the FROM clause.
- D. The EMPLOYEES and DEPARTMENTS tables have more than one column with the same column name and data type.

Answer: D

Explanation:

Natural join needs only one column to be the same in each table. The EMPLOYEES and DEPARTMENTS tables have two columns that are the same (Department_ID and Manager_ID)

NEW QUESTION 165

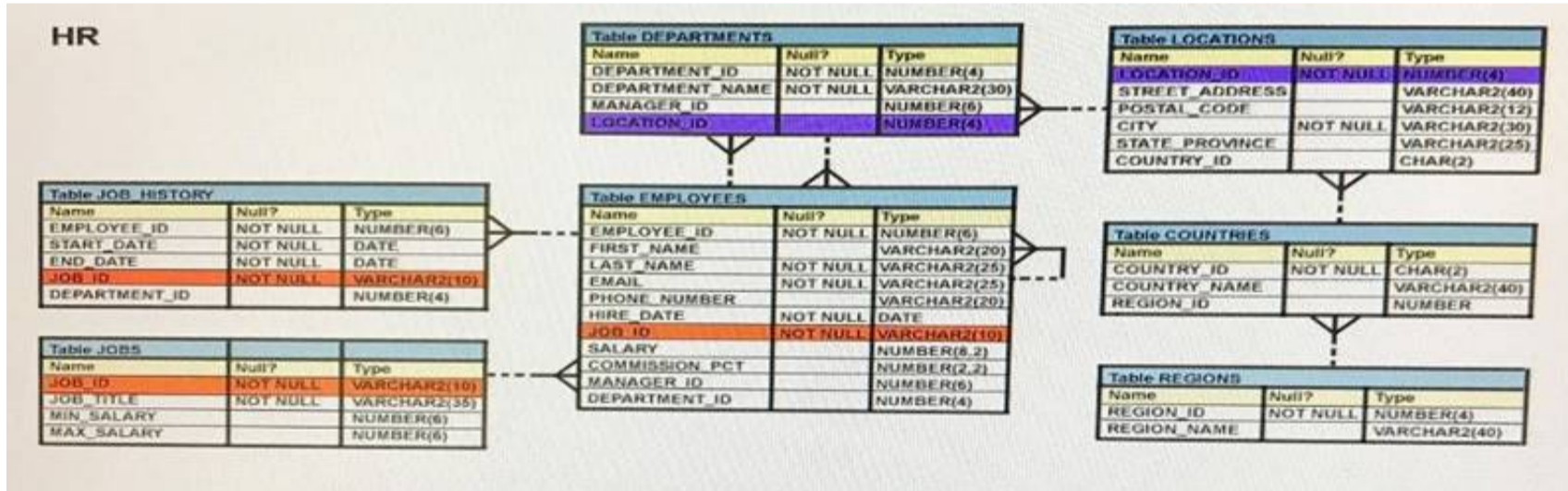
Which statement correctly grants a system privilege?

- A. GRANT CREATE VIEWON table1 TOuser1;
- B. GRANT ALTER TABLETO PUBLIC;
- C. GRANT CREATE TABLETO user1, user2;
- D. GRANT CREATE SESSIONTO ALL;

Answer: C

NEW QUESTION 169

View the Exhibit and examine the structure in the EMPLOYEES tables.



Evaluate the following SQL statement: SELECT employee_id, department_id FROM employees
 WHERE department_id= 50 ORDER BY department_id UNION
 SELECT employee_id, department_id FROM employees
 WHERE department_id=90 UNION
 SELECT employee_id, department_id
 FROM employees
 WHERE department_id=10;
 What would be the outcome of the above SQL statement?

- A. The statement would not execute because the positional notation instead of the column name should be used with the ORDER BY clause.
- B. The statement would execute successfully and display all the rows in the ascending order of DEPARTMENT_ID.
- C. The statement would execute successfully but it will ignore the ORDER BY clause and display the rows in random order.
- D. The statement would not execute because the ORDER BY clause should appear only at the end of the SQL statement, that is, in the last SELECT statement.

Answer: D

NEW QUESTION 170

See the Exhibit and examine the structure of the PROMOTIONS table:

Table PROMOTIONS		
Name	Null?	Type
PROMO_ID	NOT NULL	NUMBER(6)
PROMO_NAME	NOT NULL	VARCHAR2(30)
PROMO_SUBCATEGORY	NOT NULL	VARCHAR2(30)
PROMO_SUBCATEGORY_ID	NOT NULL	NUMBER
PROMO_CATEGORY	NOT NULL	VARCHAR2(30)
PROMO_CATEGORY_ID	NOT NULL	NUMBER
PROMO_COST	NOT NULL	NUMBER(10,2)
PROMO_BEGIN_DATE	NOT NULL	DATE
PROMO_END_DATE	NOT NULL	DATE

Using the PROMOTIONS table, you need to find out the average cost for all promos in the range \$0-2000 and \$2000-5000 in category A. You issue the following SQL statements:

```
SQL>SELECT AVG(CASE
                WHEN promo_cost BETWEEN 0 AND 2000 AND promo_category='A'
                THEN promo_cost
                ELSE null END) "CAT_2000A",
AVG(CASE
    WHEN promo_cost BETWEEN 2001 AND 5000 AND promo_category='A'
    THEN promo_cost
    ELSE null END) "CAT_5000A"
FROM promotions;
```

What would be the outcome?

- A. It generates an error because multiple conditions cannot be specified for the WHEN clause.
- B. It executes successfully and gives the required result.
- C. It generates an error because CASE cannot be used with group functions.
- D. It generates an error because NULL cannot be specified as a return value.

Answer: B

Explanation:

CASE Expression
 Facilitates conditional inquiries by doing the work of an IF-THEN-ELSE statement:
 CASE expr WHEN comparison_expr1 THEN return_expr1 [WHEN comparison_expr2 THEN return_expr2
 WHEN comparison_exprn THEN return_exprn ELSE else_expr]
 END

NEW QUESTION 171

Which statement is true about Data Manipulation Language (DML)?

- A. DML automatically disables foreign key constraints when modifying primary key values in the parent table.
- B. Each DML statement forms a transaction by default.
- C. A transaction can consist of one or more DML statements.
- D. DML disables foreign key constraints when deleting primary key values in the parent table, only when the ON DELETE CASCADE option is set for the foreign key constraint.

Answer: C

NEW QUESTION 172

View the exhibit and examine the data in ORDERS_MASTER and MONTHLY_ORDERS tables.

ORDERS_MASTER ORDER_ID ORDER_TOTAL

- 1
- 1000
- 2
- 2000
- 3
- 3000
- 4

MONTHLY_ORDERS ORDER_ID ORDER_TOTAL

- 2
- 2500
- 3

Evaluate the following MERGE statement: MERGE INTO orders_master o
 USING monthly_orders m ON (o.order_id = m.order_id) WHEN MATCHED THEN
 UPDATE SET o.order_total = m.order_total DELETE WHERE (m.order_total IS NULL) WHEN NOT MATCHED THEN

INSERT VALUES (m.order_id, m.order_total)
 What would be the outcome of the above statement?

- A. The ORDERS_MASTER table would contain the ORDER_IDs 1, 2, 3 and 4.
- B. The ORDERS_MASTER table would contain the ORDER_IDs 1, 2 and 4.
- C. The ORDERS_MASTER table would contain the ORDER_IDs 1, 2 and 3.
- D. The ORDERS_MASTER table would contain the ORDER_IDs 1 and 2.

Answer: B

Explanation:

References:
https://docs.oracle.com/cd/B28359_01/server.111/b28286/statements_9016.htm

NEW QUESTION 176

Which statement is true regarding external tables?

- A. The CREATE TABLE AS SELECT statement can be used to upload data into regular table in the database from an external table.
- B. The data and metadata for an external table are stored outside the database.
- C. The default REJECT LIMIT for external tables is UNLIMITED.
- D. ORACLE_LOADER and ORACLE_DATAPUMP have exactly the same functionality when used with an external table.

Answer: A

Explanation:

References:
https://docs.oracle.com/cd/B28359_01/server.111/b28310/tables013.htm

NEW QUESTION 178

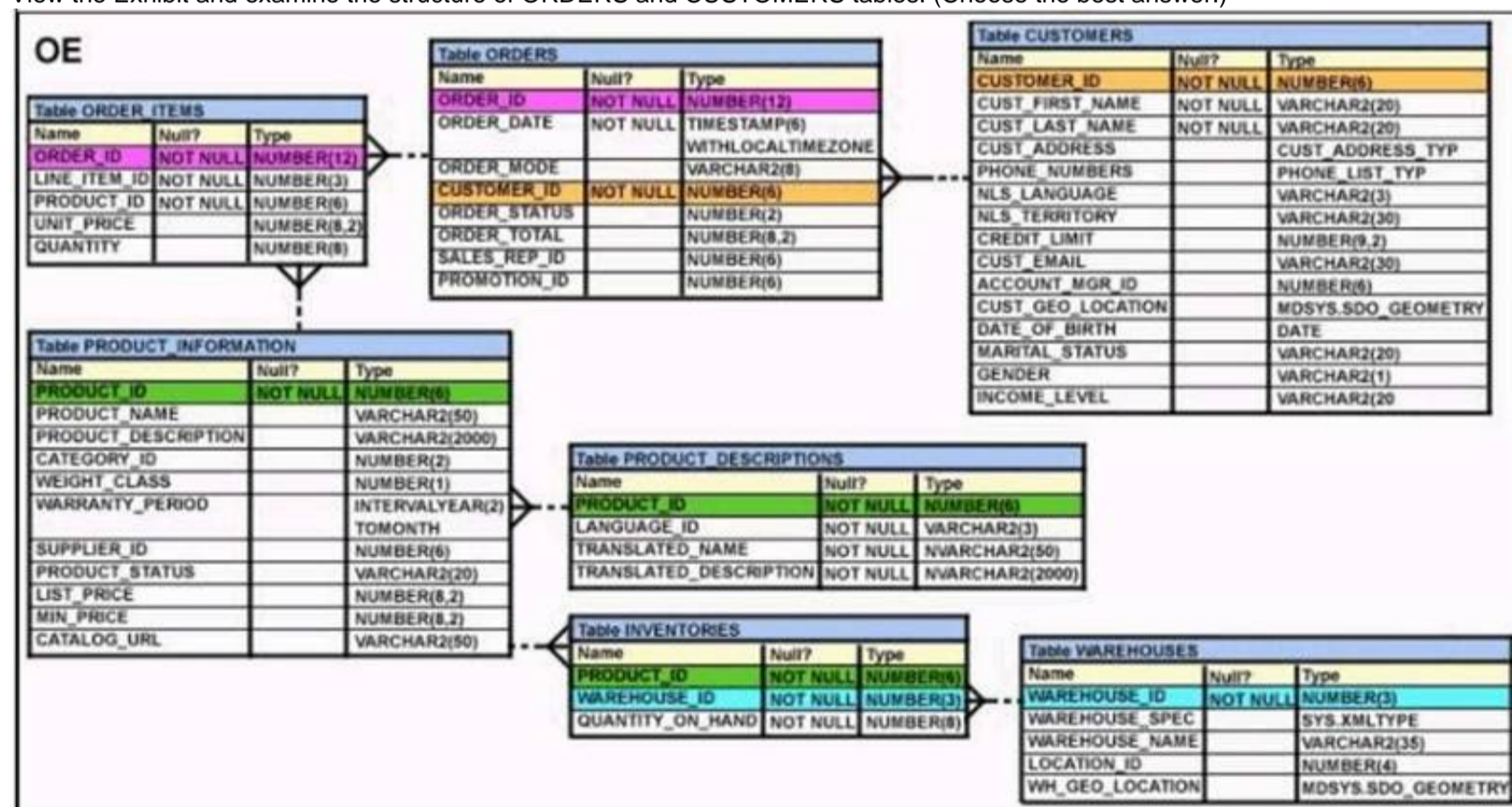
You want to display the date for the first Monday of the next month and issue the following command: SQL>SELECT TO_CHAR(NEXT_DAY(LAST_DAY(SYSDATE), 'MON'), 'dd "is the first Monday for" fmmmonth rrrr') FROM DUAL;
 What is the outcome?

- A. In generates an error because rrrr should be replaced by rr in the format string.
- B. It executes successfully but does not return the correct result.
- C. It executes successfully and returns the correct result.
- D. In generates an error because TO_CHAR should be replaced with TO_DATE.
- E. In generates an error because fm and double quotation marks should not be used in the format string.

Answer: C

NEW QUESTION 180

View the Exhibit and examine the structure of ORDERS and CUSTOMERS tables. (Choose the best answer.)



You executed this UPDATE statement: UPDATE (SELECT order_date, order_total, customer_id FROM orders) Set order_date = '22-mar-2007' WHERE customer_id IN (SELECT customer_id FROM customers WHERE cust_last_name = 'Roberts' AND credit_limit = 600); Which statement is true regarding the execution?

- A. It would not execute because a subquery cannot be used in the WHERE clause of an UPDATE statement.
- B. It would not execute because two tables cannot be referenced in a single UPDATE statement.
- C. It would execute and restrict modifications to the columns specified in the SELECT statement.
- D. It would not execute because a SELECT statement cannot be used in place of a table name.

Answer: C

NEW QUESTION 181

Examine the structure of the MEMBERS table: NameNull?Type
 ----- MEMBER_ID NOT NULL VARCHAR2 (6)

FIRST_NAME VARCHAR2 (50)
 LAST_NAME NOT NULL VARCHAR2 (50)
 ADDRESS VARCHAR2 (50)

You execute the SQL statement:
 SQL > SELECT member_id, ' ', first_name, ' ', last_name "ID FIRSTNAME LASTNAME " FROM members;
 What is the outcome?

- A. It fails because the alias name specified after the column names is invalid.
- B. It fails because the space specified in single quotation marks after the first two column names is invalid.
- C. It executes successfully and displays the column details in a single column with only the alias column heading.
- D. It executes successfully and displays the column details in three separate columns and replaces only the last column heading with the alias.

Answer: D

NEW QUESTION 183

Which three statements are true regarding the WHERE and HAVING clauses in a SQL statement? (Choose three.)

- A. WHERE and HAVING clauses cannot be used together in a SQL statement.
- B. The HAVING clause conditions can have aggregate functions.
- C. The HAVING clause conditions can use aliases for the columns.
- D. The WHERE clause is used to exclude rows before the grouping of data.
- E. The HAVING clause is used to exclude one or more aggregated results after grouping data.

Answer: ABD

NEW QUESTION 186

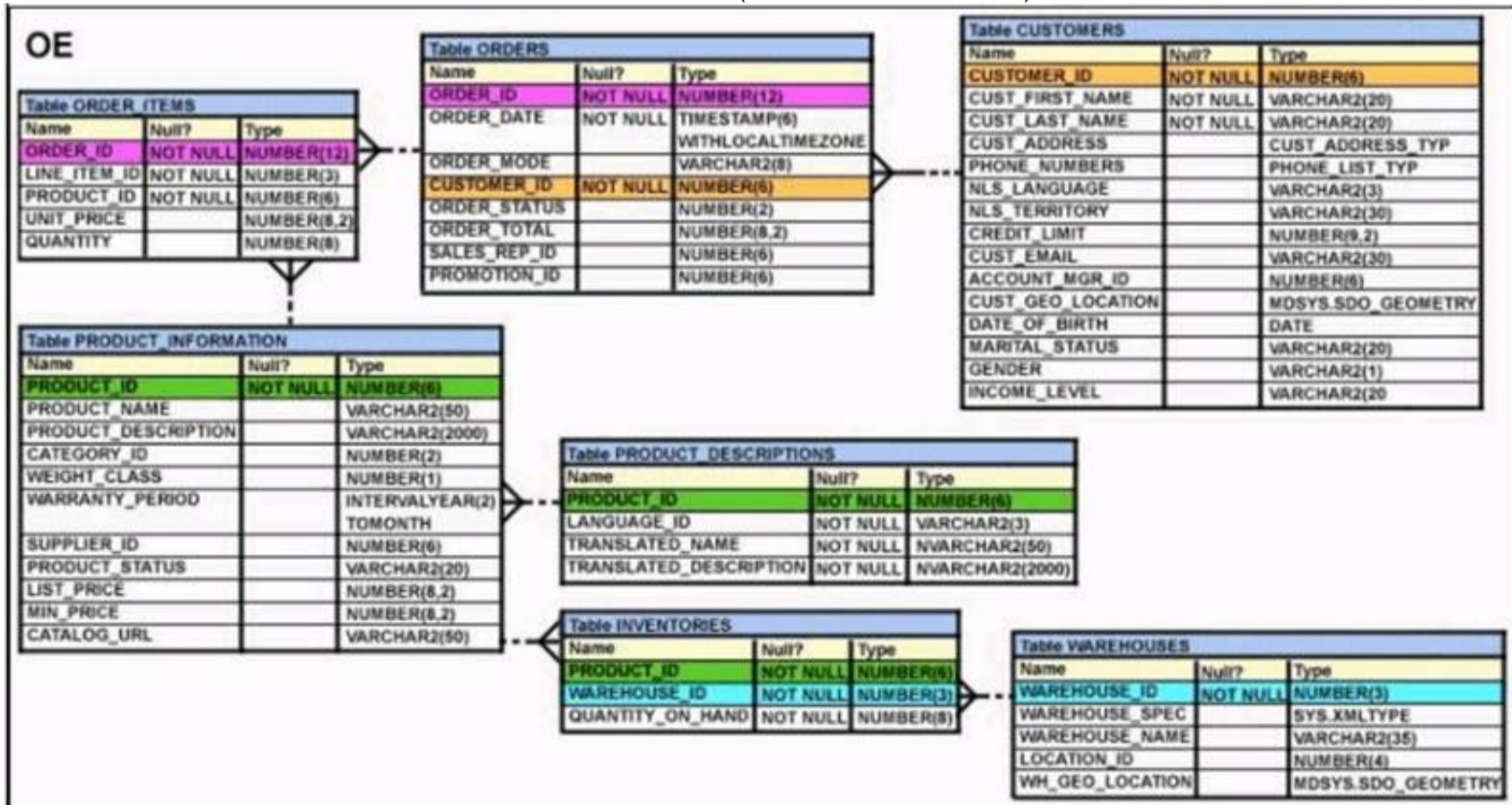
You issued this command:
 CHOOSE THREE
 SQL > DROP TABLE employees; Which three statements are true?

- A. Sequences used in the EMPLOYEES table become invalid.
- B. If there is an uncommitted transaction in the session, it is committed.
- C. All indexes and constraints defined on the table being dropped are also dropped.
- D. The space used by the EMPLOYEES table is always reclaimed immediately.
- E. The EMPLOYEES table can be recovered using the ROLLBACK command.
- F. The EMPLOYEES table may be moved to the recycle bin.

Answer: BCF

NEW QUESTION 188

View the Exhibit and examine the structure of the ORDERS table. (Choose the best answer.)



You must select ORDER_ID and ORDER_DATE for all orders that were placed after the last order placed by CUSTOMER_ID 101. Which query would give you the desired result?

- A. SELECT order_id, order_date FROM orders WHERE order_date > ANY(SELECT order_date FROM orders WHERE customer_id = 101);
- B. SELECT order_id, order_date FROM orders WHERE order_date > ALL(SELECT MAX(order_date) FROM orders) AND customer_id = 101;
- C. SELECT order_id, order_date FROM orders WHERE order_date > ALL(SELECT order_date FROM orders WHERE customer_id = 101);
- D. SELECT order_id, order_date FROM orders WHERE order_date > IN(SELECT order_date FROM orders WHERE customer_id = 101);

Answer: C

NEW QUESTION 193

Which two statements are true regarding the WHERE and HAVING clauses in a SELECT statement? (Choose two.)

- A. The WHERE and HAVING clauses can be used in the same statement only if they are applied to different columns in the table.
- B. The aggregate functions and columns used in the HAVING clause must be specified in the SELECT list of the query.
- C. The WHERE clause can be used to exclude rows after dividing them into groups.
- D. The HAVING clause can be used with aggregate functions in subqueries.
- E. The WHERE clause can be used to exclude rows before dividing them into groups.

Answer: CD

NEW QUESTION 196

Using the CUSTOMERS table, you need to generate a report that shows 50% of each credit amount in each income level. The report should NOT show any repeated credit amounts in each income level.

Which query would give the required result?

- A. `SELECT cust_income_level || ' ' || cust_credit_limit * 0.50 AS "50% Credit Limit" FROM customers.`
- B. `SELECT DISTINCT cust_income_level || ' ' || cust_credit_limit * 0.50 AS "50% Credit Limit" FROM customers.`
- C. `SELECT DISTINCT cust_income_level, DISTINCT cust_credit_limit * 0.50 AS "50% Credit Limit" FROM customers.`
- D. `SELECT cust_income_level, DISTINCT cust_credit_limit * 0.50 AS "50% Credit Limit" FROM customers`

Answer: B

NEW QUESTION 200

.....

Thank You for Trying Our Product

We offer two products:

1st - We have Practice Tests Software with Actual Exam Questions

2nd - Questions and Answers in PDF Format

1Z0-071 Practice Exam Features:

- * 1Z0-071 Questions and Answers Updated Frequently
- * 1Z0-071 Practice Questions Verified by Expert Senior Certified Staff
- * 1Z0-071 Most Realistic Questions that Guarantee you a Pass on Your First Try
- * 1Z0-071 Practice Test Questions in Multiple Choice Formats and Updates for 1 Year

100% Actual & Verified — Instant Download, Please Click
[Order The 1Z0-071 Practice Test Here](#)