

# Microsoft

## Exam Questions AZ-800

Administering Windows Server Hybrid Core Infrastructure



#### NEW QUESTION 1

- (Exam Topic 3)

You have a server named Host1 that has the Hyper-V server role installed. Host1 hosts a virtual machine named VM1. You have a management server named Server1 that runs Windows Server. You remotely manage Host1 from Server1 by using Hyper-V Manager. You need to ensure that you can access a USB hard drive connected to Server1 when you connect to VM1 by using Virtual Machine Connection. Which two actions should you perform? Each correct answer presents part of the solution. NOTE: Each correct selection is worth one point.

- A. From the Hyper-V Settings of Host1, select Allow enhanced session mode
- B. From Disk Management on Host1, attach a virtual hard disk.
- C. From Virtual Machine Connection, switch to a basic session.
- D. From Virtual Machine Connection select Show Options and then select the USB hard drive.
- E. From Disk Management on Host1, select Rescan Disks

**Answer:** AD

#### Explanation:

Reference:

<https://docs.microsoft.com/en-us/windows-server/virtualization/hyper-v/learn-more/use-local-resources-on-hype>

#### NEW QUESTION 2

- (Exam Topic 3)

You have an on-premises server named Server1 that runs Windows Server. You have an Azure virtual network that contains an Azure virtual network gateway. You need to connect only Server1 to the Azure virtual network. What should you use?

- A. Azure Network Adapter
- B. a Site-to-SiteVPN
- C. an ExpressRoute circuit
- D. Azure Extended Network

**Answer:** D

#### Explanation:

Reference:

<https://docs.microsoft.com/en-us/windows-server/manage/windows-admin-center/azure/use-azure-network-adap>

#### NEW QUESTION 3

- (Exam Topic 3)

You have five file servers that run Windows Server.

You need to block users from uploading video files that have the .mov extension to shared folders on the file servers. All other types of files must be allowed. The solution must minimize administrative effort.

What should you create?

- A. a Dynamic Access Control central access policy
- B. a file screen
- C. a Dynamic Access Control central access rule
- D. a data loss prevention (DLP) policy

**Answer:** B

#### Explanation:

Reference:

<https://docs.microsoft.com/en-us/windows-server/storage/fsrm/file-screening-management>

#### NEW QUESTION 4

- (Exam Topic 3)

You have an on-premises network that is connected to an Azure virtual network by using a Site-to-Site VPN. Each network contains a subnet that has the same IP address space. The on-premises subnet contains a virtual machine.

You plan to migrate the virtual machine to the Azure subnet.

You need to migrate the on-premises virtual machine to Azure without modifying the IP address. The solution must minimize administrative effort.

What should you implement before you perform the migration?

- A. Azure Extended Network
- B. Azure Virtual Network NAT
- C. Azure Application Gateway
- D. Azure virtual network peering

**Answer:** A

#### Explanation:

Reference:

<https://docs.microsoft.com/en-us/windows-server/manage/windows-admin-center/azure/azure-extended-network>

#### NEW QUESTION 5

- (Exam Topic 3)

Your network contains a single-domain Active Directory Domain Services (AD DS) forest named conto.com. The forest contains the servers shown in the following exhibit table.

Name	Description
DC1	Domain controller
Server1	Member server

You plan to install a line-of-business (LOB) application on Server1. The application will install a custom windows services. A new corporate security policy states that all custom Windows services must run under the context of a group managed service account (gMSA). You deploy a root key.

You need to create, configure, and install the gMSA that will be used by the new application.

Which two actions should you perform? Each correct answer presents part of the solution. NOTE: Each correct selection is worth one point.

- A. On Server1, run the install-ADServiceAccount cmdlet.
- B. On DC1, run the New-ADServiceAccount cmdlet.
- C. On DC1, run the Set\_ADComputer cmdlet.
- D. ON DC1, run the Install-ADServiceAccount cmdlet.
- E. On Server1, run the Get-ADServiceAccount cmdlet.

**Answer:** AB

**NEW QUESTION 6**

- (Exam Topic 3)

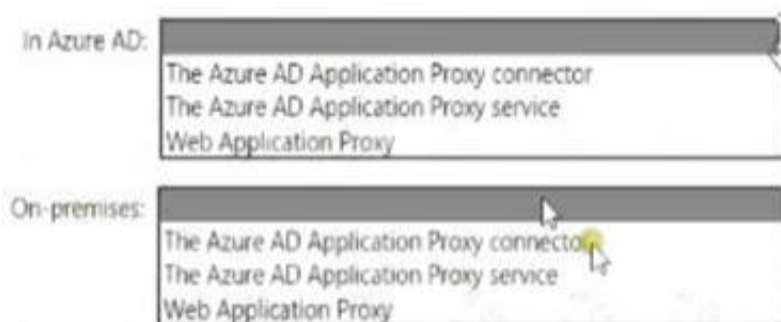
You have an on-premises Active Directory Domain Services (AD DS) domain that syncs with an Azure Active Directory (Azure AD) tenant

You have an on-premises web app named WebApp1 that only supports Kerberos authentication.

You need to ensure that users can access WebApp1 by using their Azure AD account. The solution must minimize administrative effort.

What should you configure? To answer, select the appropriate options in the answer area. NOTE: Each correct selection is worth one point.

Answer Area



- A. Mastered
- B. Not Mastered

**Answer:** A

**Explanation:**

Reference:

<https://docs.microsoft.com/en-us/azure/active-directory/app-proxy/application-proxy-add-on-premises-applicatio>

**NEW QUESTION 7**

- (Exam Topic 3)

Your network contains an Active Directory Domain Services (AD DS) domain- The domain contains 10 servers that run Windows Server. The servers have static IP addresses.

You plan to use DHCP to assign IP addresses to the servers.

You need to ensure that each server always receives the same IP address.

Which type of identifier should you use to create a DHCP reservation for each server?

- A. universally unique identifier (UUID)
- B. fully qualified domain name (FQDN)
- C. NetBIOS name
- D. MAC address

**Answer:** D

**Explanation:**

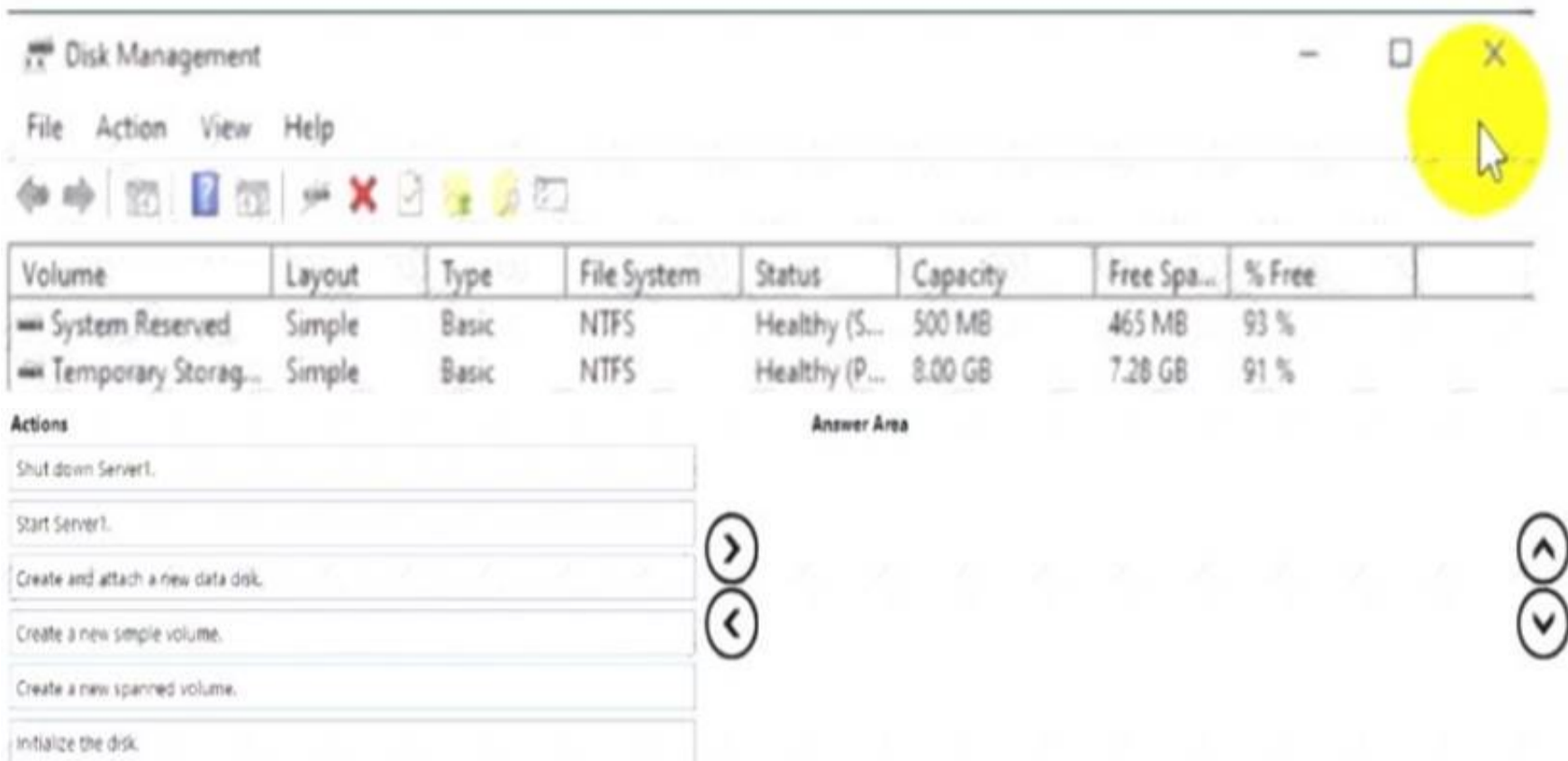
Reference:

<https://docs.microsoft.com/en-us/powershell/module/dhcpserver/add-dhcpserverv4reservation?view=windowsse>

**NEW QUESTION 8**

- (Exam Topic 3)

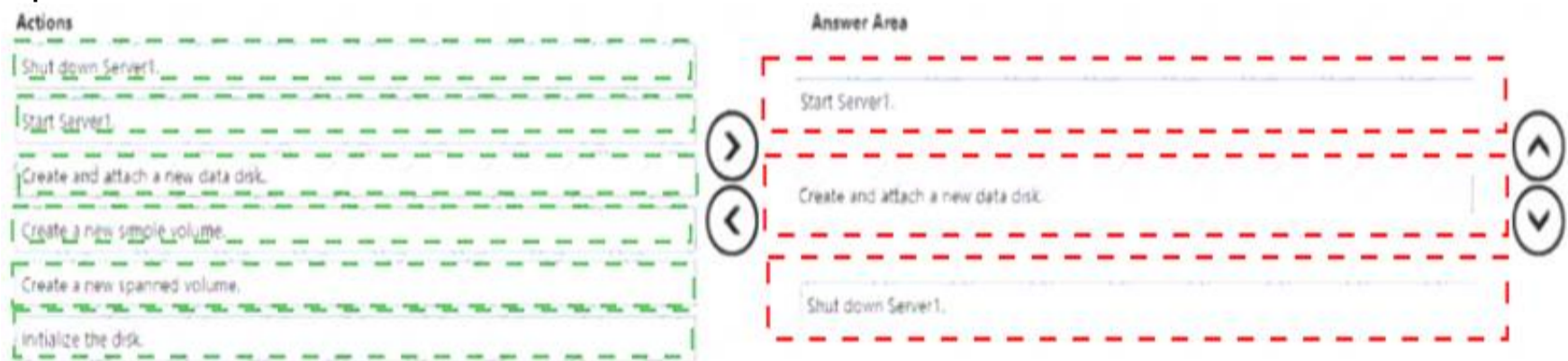
You create an Azure virtual machine named Server1 that runs Windows Server. Server1 has the disk configuration shown in the following exhibit.



- A. Mastered
- B. Not Mastered

**Answer: A**

**Explanation:**



**NEW QUESTION 9**

- (Exam Topic 3)

Your network contains an on-premises Active Directory Domain Services (AD DS) domain named contoso.com. The domain contains three servers that run Windows Server and have the Hyper-V server role installed. Each server has a Switch Embedded Teaming (SET) team. You need to verify that Remote Direct Memory Access (RDMA) and all the required Windows Server settings are configured properly on each server. What should you use?

- A. Server Manager
- B. the validate-DCB cmdlet
- C. the Get-NetAdaptor cmdlet
- D. Failover Cluster Manager

**Answer: B**

**Explanation:**

Reference: <https://github.com/Microsoft/Validate-DCB>

**NEW QUESTION 10**

- (Exam Topic 3)

Your network contains a single domain Active Directory Domain Services (AD DS) forest named contoso.com. The forest contains a single Active Directory site. You plan to deploy a read only domain controller (RODC) to a new datacenter on a server named Server1. A user named User1 is a member of the local Administrators group on Server1.

You need to recommend a deployment plan that meets the following requirements:

- Ensures that a user named User1 can perform the RODC installation on Server1
- Ensures that you can control the AD DS replication schedule to the Server1
- Ensures that Server1 is in a new site named RemoteSite1
- Uses the principle of least privilege

Which three actions should you recommend performing in sequence? To answer, move the appropriate actions from the list of actions to the answer area and arrange them in the correct order.

Actions	Answer Area
Instruct User1 to run the Active Directory Domain Services installation Wizard on Server1.	
Create a site and a subnet.	
Create a site link.	
Pre-create an RODC account.	
Add User1 to the Contoso\Administrators group.	

- A. Mastered
- B. Not Mastered

**Answer:** A

**Explanation:**

Application Description automatically generated with medium confidence

Box 1.

We need to create a site and subnet for the remote site. The new site will be added to the Default IP Site Link so we don't need to create a new site link. You configure the replication schedule on the site link.

Box 2.

When we pre-create an RODC account, we can specify who is allowed to attach the server to the prestaged account. This means that the User1 does not need to be added to the Domain Admins group.

Box3.

User1 can connect the RODC to the prestaged account by running the AD DS installation wizard. Reference:

<https://mehic.se/2018/01/02/how-to-install-and-configure-read-only-domain-controller-rod-2016/>

**NEW QUESTION 10**

- (Exam Topic 3)

You have a server named Server1.

You plan to use Storage Spaces to expand the storage available to Server1. You attach eight physical disks to Server1. Four disks are HDDs and four are SSDs. You need to create a volume on Server1 that will use the storage on all the new disks. The solution must provide the fastest read performance for frequently used files.

Which three actions should you perform in sequence? To answer, move the appropriate actions from the list of actions to the answer area and arrange them in the correct order.

Actions	Answer Area
Create a virtual disk.	
Convert each new disk into a dynamic disk.	
Create a storage pool.	
Create a spanned volume.	
Convert each new disk into a GPT disk.	
Create a simple volume	

- A. Mastered
- B. Not Mastered

**Answer:** A

**Explanation:**

Graphical user interface, text, application Description automatically generated

Reference:

<https://redmondmag.com/articles/2018/07/31/storage-spaces-windows-server-2016-1.aspx> <https://redmondmag.com/articles/2018/08/02/storage-spaces-windows-server-2016-2.aspx>

**NEW QUESTION 13**

- (Exam Topic 3)

Your company has offices in Boston and Montreal. The offices are connected by using a 10-Mbps WAN link that is often saturated. The office in Boston contains the following:

- An Active Directory Domain Services (AD DS) domain controller named DC1.
- A server named Server1 that runs Windows Server and has the File Server role installed.

The office in Montreal contains 20 client computers that run Windows 10. Montreal does NOT have any servers.

The company plans to deploy a new line of business (LOB) application to all the client computers. The installation source files for the application are in \\Server1\Apps.

**Answer Area**

On Server1:

Enable BranchCache in hosted cache mode.  
 Enable BranchCache in Distributed Cache mode.  
 Install the BranchCache for network files role service.

On the client computers:

Enable BranchCache in hosted cache mode.  
 Enable BranchCache in Distributed Cache mode.  
 Install the BranchCache for network files role service.

- A. Mastered
- B. Not Mastered

**Answer: A**

**Explanation:**

**Answer Area**

On Server1:

Enable BranchCache in hosted cache mode.  
 Enable BranchCache in Distributed Cache mode.  
 Install the BranchCache for network files role service.

On the client computers:

Enable BranchCache in hosted cache mode.  
 Enable BranchCache in Distributed Cache mode.  
 Install the BranchCache for network files role service.

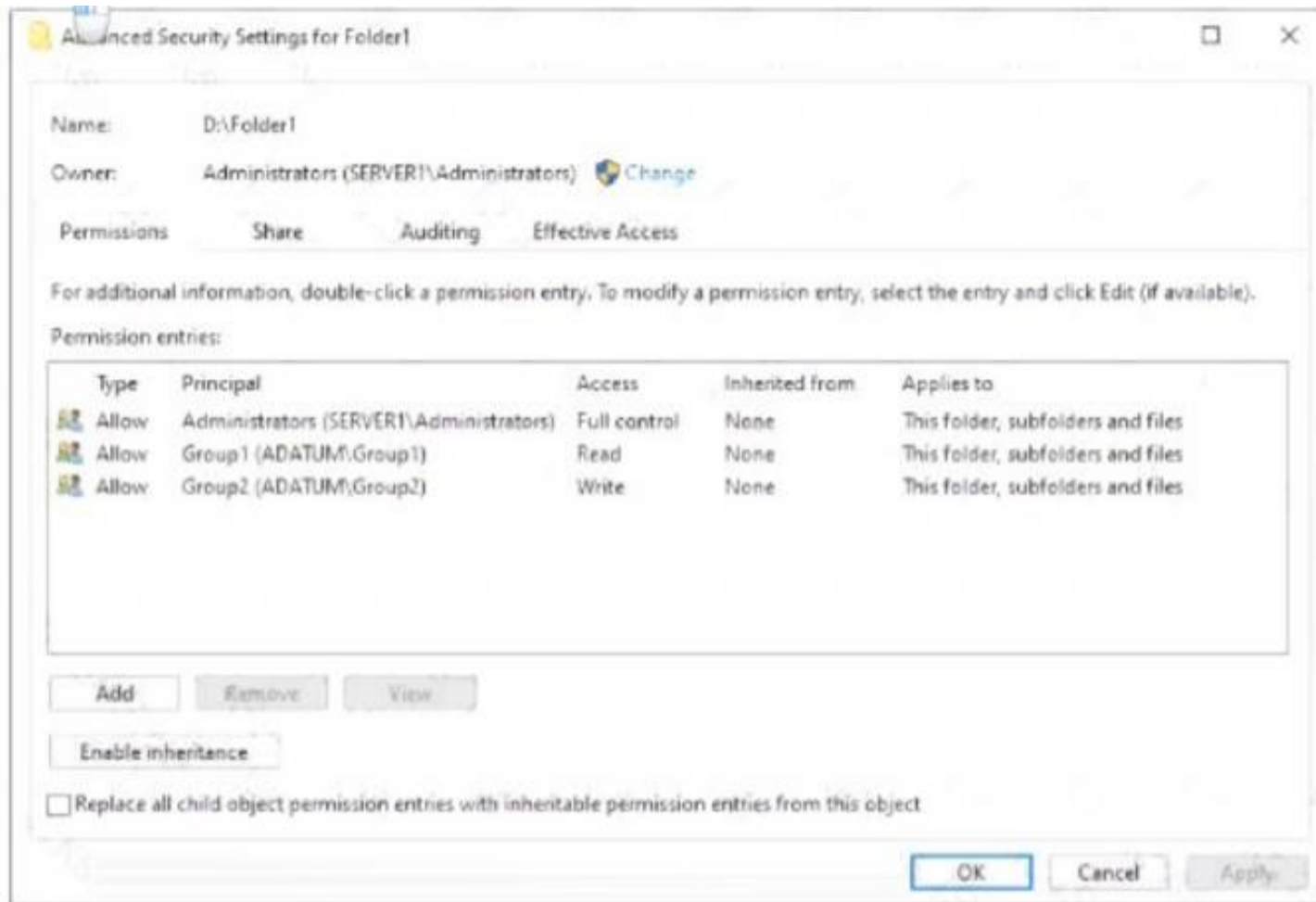
**NEW QUESTION 14**

- (Exam Topic 3)

Your network contains an Active Directory Domain Services (AD DS) domain named adatum.com. The domain contains a server named Server1 and the users shown in the following table.

Name	Member of
User1	Group1
User2	Group2
User3	Group3

Server1 contains a folder named D:\Folder1. The advanced security settings for Folder 1 are configured as shown in the Permissions exhibit. (Click the Permissions tab.)



Folder1 is shared by using the following configurations

Group	Permission
Group1	Allow - Change
Group3	Allow - Full Control

Path : D:\Folder1  
 Name : Share1  
 ShareType : FileSystemDirectory  
 FolderEnumerationMode : Unrestricted

**Answer Area**

Statements	Yes	No
User1 can read the files in Share1.	<input type="radio"/>	<input type="radio"/>
User3 can delete files in Share1.	<input type="radio"/>	<input type="radio"/>
If User2 connects to \\Server1.adatum.com from File Explorer,	<input type="radio"/>	<input type="radio"/>

- A. Mastered
- B. Not Mastered

**Answer: A**

**Explanation:**

**Answer Area**

Statements	Yes	No
User1 can read the files in Share1.	<input checked="" type="radio"/>	<input type="radio"/>
User3 can delete files in Share1.	<input checked="" type="radio"/>	<input type="radio"/>
If User2 connects to \\Server1.adatum.com from File Explorer,	<input type="radio"/>	<input checked="" type="radio"/>

**NEW QUESTION 15**

- (Exam Topic 3)

You have a server named Server1 that runs Windows Server. You plan to host applications in Windows containers. You need to configure Server1 to run containers. What should you install?

- A. Windows Admin Center
- B. the Windows Subsystem for Linux
- C. Docker
- D. Hyper-V

**Answer: C**

**NEW QUESTION 19**

- (Exam Topic 3)

You have an Azure Active Directory Domain Services (Azure AD DS) domain named contoso.com.

You need to provide an administrator with the ability to manage Group Policy Objects (GPOs). The solution must use the principle of least privilege.

To which group should you add the administrator?

- A. AAD DC Administrators
- B. Domain Admins
- C. Schema Admins
- D. Enterprise Admins
- E. Group Policy Creator Owners

**Answer: B**

**Explanation:**

Only the Domain Admins group and the Enterprise Admins group can fully manage GPOs. Members of the Group Policy Creator Owners group can create new GPOs but they can't link the GPOs to sites, the domain or OUs and they cannot manage existing GPOs.

**NEW QUESTION 20**

- (Exam Topic 3)

Note: This question is part of a series of questions that present the same scenario. Each question in the series contains a unique solution that might meet the stated goals. Some question sets might have more than one correct solution, while others might not have a correct solution.

After you answer a question in this section, you will NOT be able to return to it. As a result, these questions will not appear in the review screen.

You are planning the deployment of DNS to a new network.

You have three internal DNS servers as shown in the following table.

Name	Location	IP address	Local DNS zone
Server1	Montreal	10.0.1.10	contoso.local
Server2	Toronto	10.0.2.10	east.contoso.local
Server3	Seattle	10.0.3.10	west.contoso.local

The contoso.local zone contains zone delegations for east.contoso.local and west.contoso.local. All the DNS servers use root hints.

You need to ensure that all the DNS servers can resolve the names of all the internal namespaces and internet hosts.

Solution: You configure Server2 and Server3 to forward DNS requests to 10.0.1.10. Does this meet the goal?

- A. Yes
- B. No

**Answer: B**

**NEW QUESTION 24**

- (Exam Topic 3)

Your network contains an Active Directory Domain Services (AD DS) forest. The forest contains three domains. Each domain contains 10 domain controllers.

You plan to store a DNS zone in a custom Active Directory partition.

You need to create the Active Directory partition for the zone. The partition must replicate to only four of the domain controllers.

What should you use?

- A. ntdsutil.exe
- B. Active Directory Sites and Services
- C. New-ADobject
- D. Active Directory Administrative Center

**Answer: A**

**NEW QUESTION 27**

- (Exam Topic 3)

Your network contains an Active Directory Domain Services (AD DS) domain.

You have a Group Policy Object (GPO) named GPO1 that contains Group Policy preferences. You plan to link GPO1 to the domain.

You need to ensure that the preference in GPO1 apply only to domain member servers and NOT to domain controllers or client computers. All the other Group Policy settings in GPO1 must apply to all the computers. The solution must minimize administrative effort.

Which type of item level targeting should you use?

- A. Domain
- B. Operating System
- C. Security Group
- D. Environment Variable

**Answer: B**

**Explanation:**

Reference:

<https://docs.microsoft.com/en-us/previous-versions/windows/it-pro/windows-server-2012-r2-and-2012/dn78918>

**NEW QUESTION 32**

- (Exam Topic 3)

Your network contains a multi-site Active Directory Domain Services (AD DS) forest. Each Active Directory site is connected by using manually configured site links

and automatically generated connections.

You need to minimize the convergence time for changes to Active Directory. What should you do?

- A. For each site link, modify the options attribute.
- B. For each site link, modify the site link costs.
- C. For each site link, modify the replication schedule.
- D. Create a site link bridge that contains all the site links.

**Answer: C**

**Explanation:**

Reference:

<https://docs.microsoft.com/en-us/windows-server/identity/ad-ds/plan/determining-the-interval>

**NEW QUESTION 35**

- (Exam Topic 3)

You have an Azure subscription that contains the following resources:

- An Azure Log Analytics workspace
- An Azure Automation account
- Azure Arc.

You have an on-premises server named Server1 that is onboarded to Azure Arc. You need to manage Microsoft updates on Server1 by using Azure Arc. Which two actions should you perform? Each correct answer presents part of the solution. NOTE: Each correct selection is worth one point

- A. Add Microsoft Sentinel to the Log Analytics workspace
- B. On Server1, install the Azure Monitor agent
- C. From the Automation account, enable Update Management for Server1.
- D. From the Virtual machines data source of the Log Analytics workspace, connect Server1.

**Answer: BC**

**Explanation:**

Reference:

<https://docs.microsoft.com/en-us/azure/cloud-adoption-framework/manage/hybrid/server/best-practices/arc-upda>

**NEW QUESTION 38**

- (Exam Topic 3)

You have a server named Server1 that runs Windows Server. Server1 has the storage pools shown in the following table.

Name	Number of 7,200-RPM HDDs	Number of 10,000-RPM HDDs	Number of SSDs
Pool1	4	4	None
Pool2	None	2	2
Pool3	8	None	4

You plan to create a virtual disk named VDisk1 that will use storage tiers. Which pools can you use to create VDisk1 ?

- A. Pool2 and Pool3 only
- B. Pool 2only
- C. Pool only
- D. Pool, Pool2, and Pool3
- E. Pool1 and Pool2 only
- F. Pool1 and Pool3 only
- G. Pool3 only

**Answer: A**

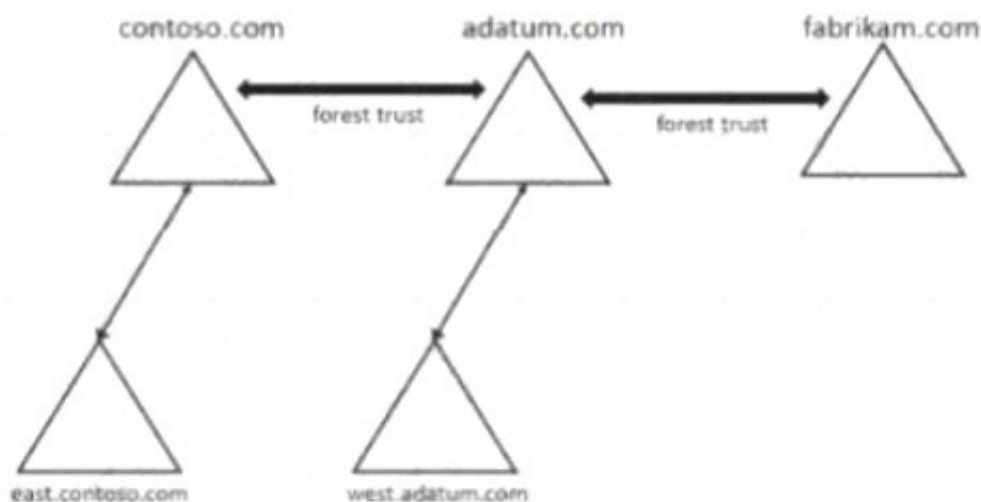
**Explanation:**

Storage tiering requires both standard HDDs and SSDs. We cannot use Pool1 because it does not have any SSDs.

**NEW QUESTION 40**

- (Exam Topic 3)

Your network contains three Active Directory Domain Services (AD DS) forest as shown in the following exhibit.



The network contains the users shown in the following table.

Name	Domain
User1	east.contoso.com
User2	fabrikam.com

The network contains the security groups shown in the following table.

Name	Type	Domain
Group1	Domain local	west.adatum.com
Group2	Universal	contoso.com
Group3	Universal	east.contoso.com

For each of the following statements, select Yes if the statement is true, Otherwise, select No. NOTE: Each correct selection is worth one point.

Answer Area

Statements	Yes	No
You can add User1 to Group1.	<input type="radio"/>	<input type="radio"/>
You can add User2 to Group3.	<input type="radio"/>	<input type="radio"/>
You can grant Group2 permissions to the resources in the fabrikam.com domain.	<input type="radio"/>	<input type="radio"/>

- A. Mastered
- B. Not Mastered

Answer: A

Explanation:

Answer Area

Statements	Yes	No
You can add User1 to Group1.	<input checked="" type="radio"/>	<input type="radio"/>
You can add User2 to Group3.	<input type="radio"/>	<input checked="" type="radio"/>
You can grant Group2 permissions to the resources in the fabrikam.com domain.	<input checked="" type="radio"/>	<input type="radio"/>

**NEW QUESTION 43**

- (Exam Topic 3)

You need to sync files from an on-premises server named Server1 to Azure by using Azure File Sync. You have a cloud tiering policy that is configured for 30 percent free space and 70 days.

Volume f on Server1 is 500 GB.

A year ago, you configured E:\Data on Server1 to sync by using Azure File Sync. The files that are visible in E:\Data are shown in the following table.

Name	Size	Last accessed
File1	200 GB	2 days ago
File2	100 GB	10 days ago
File3	200 GB	60 days ago
File4	50 GB	100 days ago

Volume E does NOT contain any other files.

Where are File1 and file3 located? To answer, select the appropriate options In the answer area.

Answer Area

File1:  Server1 only  The Azure file share only  Server1 and the Azure file share

File3:  Server1 only  The Azure file share only  Server 1 and the Azure file share

- A. Mastered
- B. Not Mastered

Answer: A

Explanation:

Answer Area

File1:  Server1 only  
 The Azure file share only  
 Server1 and the Azure file share

File3:  Server1 only  
 The Azure file share only  
 Server 1 and the Azure file share

**NEW QUESTION 47**

- (Exam Topic 3)

Your network contains an Active Directory Domain Services (AD DS) domain named contoso.com. The domain contains a DNS server named Server1. Server1 hosts a DNS zone named fabrikam.com that was signed by DNSSEC.

You need to ensure that all the member servers in the domain perform DNSSEC validation for the fabrikam.com namespace. What should you do?

- A. On Server1, run the Add-DnsServerTrustAnchor cmdlet.
- B. On each member server, run the Add-DnsServerTrustAnchor cmdlet.
- C. From a Group Policy Object (GPO), add a rule to the Name Resolution Policy Table (NRPT).
- D. From a Group Policy Object (GPO), modify the Network List Manager policies.

**Answer: C**

**NEW QUESTION 49**

- (Exam Topic 3)

You create a new Azure subscription.

You plan to deploy Azure Active Directory Domain Services (Azure AD DS) and Azure virtual machines. The virtual machines will be joined to Azure AD DS.

You need to deploy Active Directory Domain Services (AD DS) to ensure that the virtual machines can be deployed and joined to Azure AD DS.

Which three actions should you perform in sequence? To answer, move the appropriate actions from the list of actions to the answer area and arrange them in the correct order.

**Actions**

**Answer Area**

- Modify the settings of the Azure virtual network.
- Install the Active Directory Domain Services role.
- Install Azure AD Connect.
- Create an Azure virtual network.
- Create an Azure AD DS instance.
- Run the Active Directory Domain Service installation Wizard.



- A. Mastered
- B. Not Mastered

**Answer: A**

**Explanation:**

Graphical user interface, text, application Description automatically generated with medium confidence

Reference:

<https://docs.microsoft.com/en-us/azure/active-directory-domain-services/tutorial-create-instance>

**NEW QUESTION 50**

- (Exam Topic 3)

You have an Azure subscription named sub1 and 500 on-premises virtual machines that run Windows Server. You plan to onboard the on-premises virtual machines to Azure Arc by running the Azure Arc deployment script

You need to create an identity that will be used by the script to authenticate access to sub1. The solution must use the principle of least privilege.

How should you complete the command? To answer, select the appropriate options in the answer area. NOTE: Each correct selection is worth one point.

Answer Area

```
New-AzADAppCredential -DisplayName 'Arc-for-servers' -Role
```

New-AzADAppCredential  
New-AzADServicePrincipal  
New-AzUserAssignedIdentity

Azure Connected Machine Onboarding  
Virtual Machine Contributor  
Virtual Machine User Login

- A. Mastered
- B. Not Mastered

**Answer:** A

**Explanation:**

Text Description automatically generated

Reference:

<https://docs.microsoft.com/en-us/azure/azure-arc/servers/onboard-service-principal>

**NEW QUESTION 53**

- (Exam Topic 3)

You have a server named Server1 that has Windows Admin Center installed. The certificate used by Windows Admin Center was obtained from a certification authority (CA).

The certificate expires.

You need to replace the certificate.

Which three actions should you perform in sequence? To answer, move the appropriate actions from the list of actions to the answer area and arrange them in the correct order.

**Actions**

**Answer Area**

Copy the certificate thumbprint.

From Internet Information Services (IIS) Manager, bind a certificate.

Rerun **Windows Admin Center Setup** and select **Change**.

Rerun **Windows Admin Center Setup** and select **Repair**.

Rerun **Windows Admin Center Setup** and select **Remove**.



- A. Mastered
- B. Not Mastered

**Answer:** A

**Explanation:**

Graphical user interface, text, application Description automatically generated with medium confidence

Reference:

<https://www.starwindsoftware.com/blog/change-the-windows-admin-center-certificate>

**NEW QUESTION 56**

- (Exam Topic 3)

You have two servers that have the Hyper-V server role installed. The servers are joined to a failover cluster both servers can connect to the same disk on an iSCSI storage device. You plan to use the iSCSI storage to store highly available Hyper-V virtual machines that will support live migration functionality. You need to configure a storage resource in the failover cluster to store the virtual machines.

What should you configure?

- A. a storage pool
- B. attributed File System (DFS) Replication
- C. a mirrored volume
- D. Cluster Shared volumes (CSV)

**Answer:** A

**NEW QUESTION 59**

- (Exam Topic 3)

You have an on premises Active Directory Domain Services (AD DS) domain that syncs with an Azure Active Directory (Azure AD) tenant.

You plan to implement self-service password reset (SSPR) in Azure AD.

You need to ensure that users that reset their passwords by using SSPR can use the new password resources in the AD DS domain.

What should you do?

- A. Deploy the Azure AD Password Protection proxy service to the on premises network.
- B. Run the Microsoft Azure Active Directory Connect wizard and select Password writeback.
- C. Grant the Change password permission for the domain to the Azure AD Connect service account.
- D. Grant the impersonate a client after authentication user right to the Azure AD Connect service account.

**Answer:** B

**Explanation:**

Reference:

<https://docs.microsoft.com/en-us/azure/active-directory/authentication/tutorial-enable-sspr-writeback>

**NEW QUESTION 61**

- (Exam Topic 3)

You have a server named Server1 that runs Windows Server. Server1 has a just-a-bunch-of-disks (JBOD) enclosure attached.

You plan to create a storage pool on Server1 and a virtual disk that will use a mirror layout. You are considering whether to use a two-way or a three-way mirror layout.

What is the minimum number of disks required for each type of mirror layout? To answer, select the appropriate options in the answer area.

NOTE: Each correct selection is worth one point.

**Answer Area**

Two-way mirror:

Three-way mirror:

- A. Mastered
- B. Not Mastered

**Answer:** A

**Explanation:**

**Answer Area**

Two-way mirror:

Three-way mirror:

**NEW QUESTION 63**

- (Exam Topic 3)

You have a server named Server1 that runs Windows Server and has the Hyper-V server role installed. You need to limit which Hyper-V module cmdlets helpdesk users can use when administering Server 1 remotely.

You configure Just Enough Administration (JEA) and successfully build the role capabilities and session configuration files.

How should you complete the PowerShell command? To answer, select the appropriate options in the answer area.

NOTE: Each correct selection is worth one point.

Answer Area



- A. Mastered
- B. Not Mastered

**Answer:** A

**Explanation:**

Graphical user interface, text, application, email Description automatically generated

Reference:

<https://docs.microsoft.com/en-us/powershell/scripting/learn/remoting/jea/register-jea?view=powershell-7.2>

**NEW QUESTION 66**

- (Exam Topic 3)

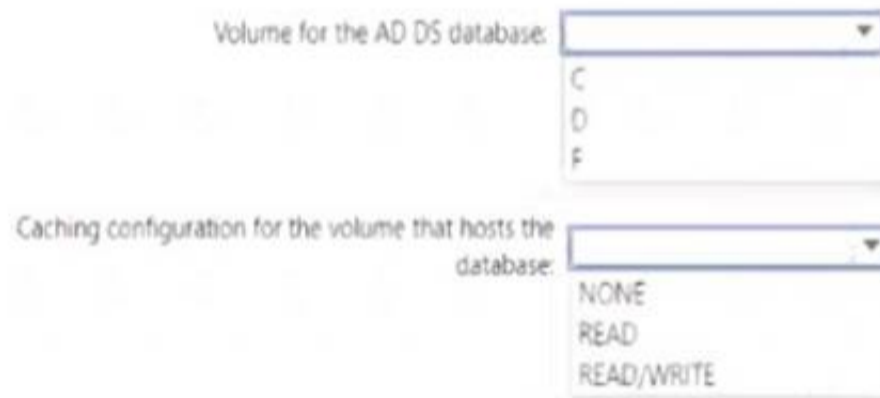
You plan to deploy an Azure virtual machine that will run Windows Server. The virtual machine will host an Active Directory Domain Services (AD DS) domain controller and a drive named f: on a new virtual disk.

You need to configure storage for the virtual machine. The solution must meet the following requirements

- Maximize resiliency for AD DS.
- Prevent accidental data loss.

How should you configure the storage? To answer, select the appropriate options in the answer area. NOTE: Each correct selection is worth one point.

Answer Area



- A. Mastered
- B. Not Mastered

**Answer:** A

**Explanation:**

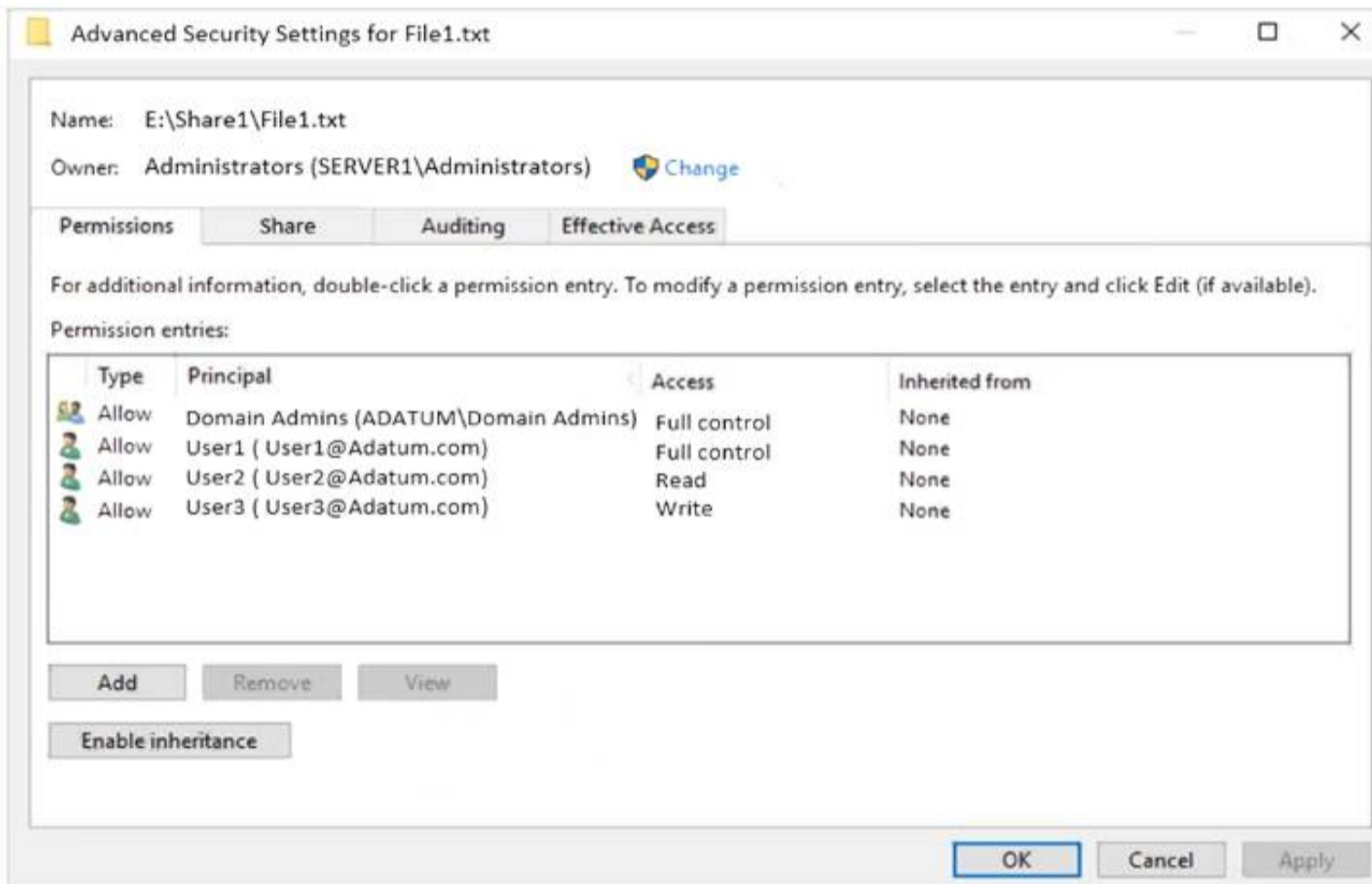
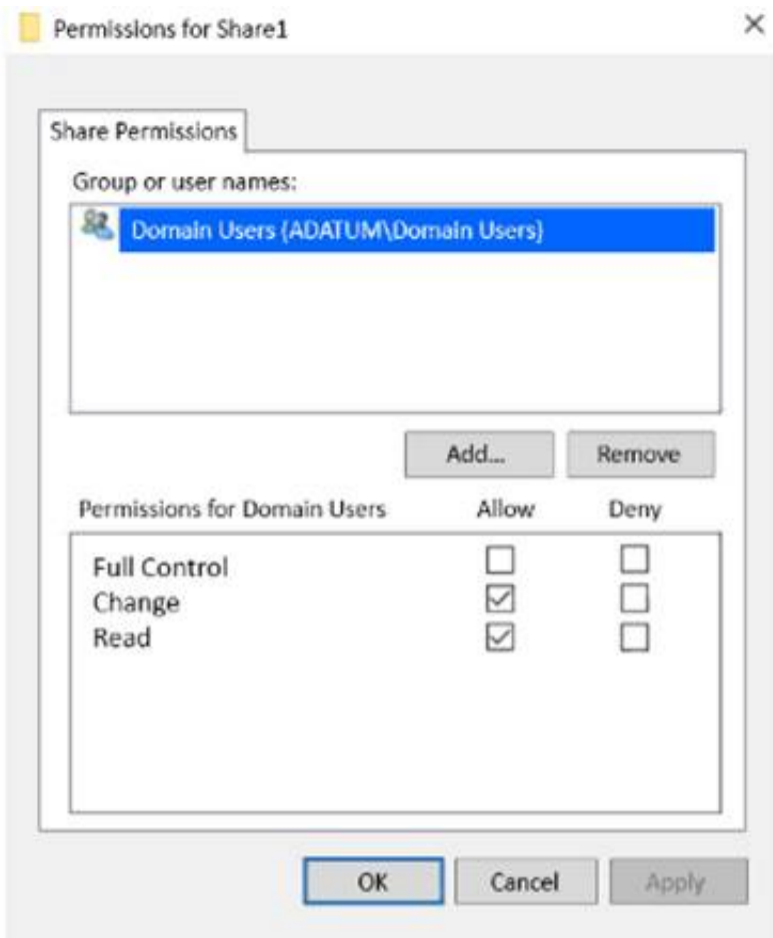
Answer Area



**NEW QUESTION 68**

- (Exam Topic 3)

Your network contains an Active Directory Domain Services (AD DS) domain named adatum.com.



The domain contains a server named Server1 and three users named User1, User2 and User3. Server1 contains a shared folder named Share1 that has the following configurations:

```

ShareState      : Online
AvailabilityType : NonClustered
FolderEnumerationMode : AccessBased
CachingMode     : Manual
LeasingMode     : Full
SmbInstance     : Default
CompressData    : False
ContinuouslyAvailable : False
EncryptData     : False
Name            : Share1
Path            : E:\Share1
ShadowCopy      : False
    
```

The share permissions for Share1 are configured as shown in the Share Permissions exhibit. (Click the Share Permissions tab.)

Share1 contains a file named File1.txt. The advanced security settings for File1.txt are configured as shown in the File Permissions exhibit. (Click the File Permissions tab.)

For each of the following statements, select Yes if the statement is true. Otherwise, select No. NOTE: Each correct selection is worth one point.

**Answer Area**

Statements	Yes	No
When User1 connects to \\Server1.adatum.com\Share1, the user can take ownership of File1.txt.	<input type="radio"/>	<input type="radio"/>
When User2 connects to \\Server1.adatum.com\Share1, File1.txt is visible.	<input type="radio"/>	<input type="radio"/>
When User3 connects to \\Server1.adatum.com\Share1, File1.txt is visible.	<input type="radio"/>	<input type="radio"/>

- A. Mastered
- B. Not Mastered

**Answer:** A

**Explanation:**

Answer Area

Statements	Yes	No
When User1 connects to \\Server1.adatum.com\Share1, the user can take ownership of File1.txt.	<input type="radio"/>	<input checked="" type="radio"/>
When User2 connects to \\Server1.adatum.com\Share1, File1.txt is visible.	<input checked="" type="radio"/>	<input type="radio"/>
When User3 connects to \\Server1.adatum.com\Share1, File1.txt is visible.	<input type="radio"/>	<input checked="" type="radio"/>

**NEW QUESTION 72**

- (Exam Topic 3)

Your network contains an Active Directory Domain Services (AD DS) domain named conioso.com. You need to identify which server is the PDC emulator for the domain.

Solution: from Active Directory Users and Computers, you right-click contoso.com in the console tree, and then select Operations Master  
 Does this meet the goal?

- A. Yes
- B. No

**Answer:** A

**NEW QUESTION 73**

- (Exam Topic 2)

Which three actions should you perform in sequence to meet the security requirements for Webapp1? To answer, move the appropriate actions from the list of actions to the answer area and arrange them in the correct order.

Actions	Answer Area
Create a standalone managed service account (sMSA) in AD DS.	
Configure the IIS application pool to run as Network Service.	
Configure the IIS application pool to run as a specified user account.	
Create a group managed service account (gMSA) in Active Directory.	<input checked="" type="checkbox"/>
Create a system-assigned managed identity in Azure AD.	<input checked="" type="checkbox"/>
Create a user-assigned managed identity in Azure AD.	
Create the Key Distribution Services (KDS) root key in AD DS.	

- A. Mastered
- B. Not Mastered

**Answer:** A

**Explanation:**

Graphical user interface, text, application Description automatically generated

Reference:

<https://docs.microsoft.com/en-us/windows-server/security/group-managed-service-accounts/group-managed-ser>

**NEW QUESTION 75**

- (Exam Topic 1)

Which groups can you add to Group3 and Groups? To answer, select the appropriate options in the answer area. NOTE Each correct selection is worth one point.

**Answer Area**

Group3:

- Group6 only
- Group1 and Group2 only
- Group1 and Group4 only
- Group1, Group2, Group4, and Group5 only
- Group1, Group2, Group4, Group5, and Group6

Group5:

- Group1 only
- Group4 only
- Group6 only**
- Group2 and Group4 only
- Group4 and Group6 only

- A. Mastered
- B. Not Mastered

**Answer:** A

**Explanation:**  
**Answer Area**

Group3:

- Group6 only
- Group1 and Group2 only
- Group1 and Group4 only
- Group1, Group2, Group4, and Group5 only
- Group1, Group2, Group4, Group5, and Group6

Group5:

- Group1 only
- Group4 only
- Group6 only**
- Group2 and Group4 only
- Group4 and Group6 only

**NEW QUESTION 79**

- (Exam Topic 1)

You need to meet the technical requirements for the site links. Which users can perform the required tasks?

- A. Admin1 only
- B. Admin1 and Admin3 only
- C. Admin1 and Admin2 only
- D. Admin3 only
- E. Admin1, Adrrun2. and Admin3

**Answer:** C

**Explanation:**

Membership in the Enterprise Admins group or the Domain Admins group in the forest root domain is required.

**NEW QUESTION 84**

- (Exam Topic 1)

You need to meet the technical requirements for Server4.

Which cmdlets should you run on Server1 and Server4? To answer, select the appropriate options in the answer area.

NOTE: Each correct selection is worth one point.

Server1:

Enable-PSRemoting
Enable-ServerManagerStandardUserRemoting
Set-Item
Start-Service

Server4:

Enable-PSRemoting
Enable-ServerManagerStandardUserRemoting
Set-Item
Start-Service

- A. Mastered
- B. Not Mastered

Answer: A

**Explanation:**

Graphical user interface, text, application, email Description automatically generated

Reference:

<https://4sysops.com/wiki/enable-powershell-remoting/>

**NEW QUESTION 86**

- (Exam Topic 1)

For each of the following statements, select Yes if the statement is true. Otherwise, select No. NOTE: Each correct selection is worth one point.

Answer Area

Statements	Yes	No
Admin1 must use a password that has at least 14 characters.	<input type="radio"/>	<input type="radio"/>
User1 must use a password that has at least 10 characters.	<input type="radio"/>	<input type="radio"/>
If Admin1 creates a new local user on Server1, the password for the new user must be at least eight characters.	<input type="radio"/>	<input type="radio"/>

- A. Mastered
- B. Not Mastered

Answer: A

**Explanation:**

Answer Area

Statements	Yes	No
Admin1 must use a password that has at least 14 characters.	<input type="radio"/>	<input checked="" type="radio"/>
User1 must use a password that has at least 10 characters.	<input checked="" type="radio"/>	<input type="radio"/>
If Admin1 creates a new local user on Server1, the password for the new user must be at least eight characters.	<input type="radio"/>	<input checked="" type="radio"/>

**NEW QUESTION 90**

.....

## **Thank You for Trying Our Product**

### **We offer two products:**

1st - We have Practice Tests Software with Actual Exam Questions

2nd - Questions and Answers in PDF Format

### **AZ-800 Practice Exam Features:**

- \* AZ-800 Questions and Answers Updated Frequently
- \* AZ-800 Practice Questions Verified by Expert Senior Certified Staff
- \* AZ-800 Most Realistic Questions that Guarantee you a Pass on Your FirstTry
- \* AZ-800 Practice Test Questions in Multiple Choice Formats and Updatesfor 1 Year

**100% Actual & Verified — Instant Download, Please Click**  
**[Order The AZ-800 Practice Test Here](#)**