



Salesforce

Exam Questions MuleSoft-Platform-Architect-I

Salesforce Certified MuleSoft Platform Architect 1 Exam (SP24)

About ExamBible

Your Partner of IT Exam

Found in 1998

ExamBible is a company specialized on providing high quality IT exam practice study materials, especially Cisco CCNA, CCDA, CCNP, CCIE, Checkpoint CCSE, CompTIA A+, Network+ certification practice exams and so on. We guarantee that the candidates will not only pass any IT exam at the first attempt but also get profound understanding about the certificates they have got. There are so many alike companies in this industry, however, ExamBible has its unique advantages that other companies could not achieve.

Our Advances

* 99.9% Uptime

All examinations will be up to date.

* 24/7 Quality Support

We will provide service round the clock.

* 100% Pass Rate

Our guarantee that you will pass the exam.

* Unique Gurantee

If you do not pass the exam at the first time, we will not only arrange FULL REFUND for you, but also provide you another exam of your claim, ABSOLUTELY FREE!

NEW QUESTION 1

What API policy would LEAST likely be applied to a Process API?

- A. Custom circuit breaker
- B. Client ID enforcement
- C. Rate limiting
- D. JSON threat protection

Answer: D

NEW QUESTION 2

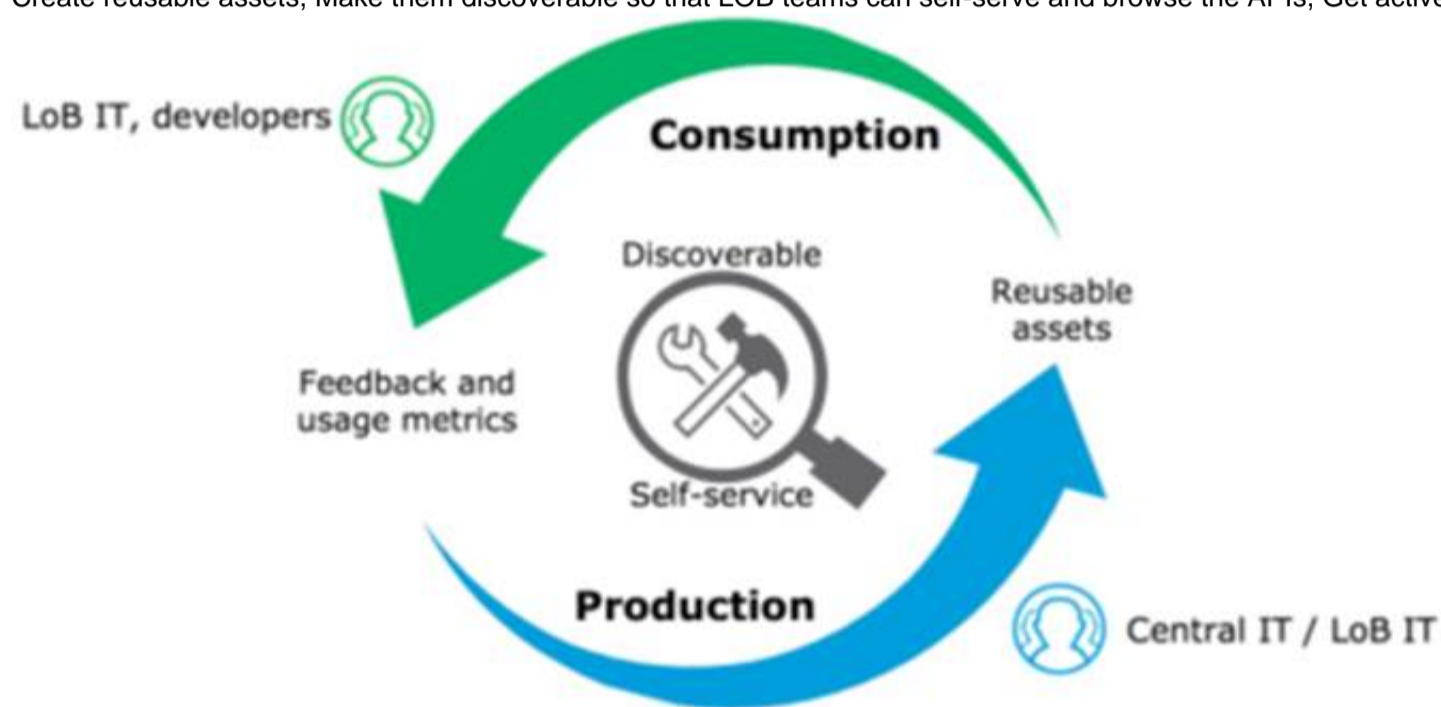
Which of the below, when used together, makes the IT Operational Model effective?

- A. Create reusable assets, Do marketing on the created assets across organization, Arrange time to time LOB reviews to ensure assets are being consumed or not
- B. Create reusable assets, Make them discoverable so that LOB teams can self-serve and browse the APIs, Get active feedback and usage metrics
- C. Create reusable assets, make them discoverable so that LOB teams can self-serve and browse the APIs

Answer: C

Explanation:

Create reusable assets, Make them discoverable so that LOB teams can self-serve and browse the APIs, Get active feedback and usage metrics.



NEW QUESTION 3

An IT Security Compliance Auditor is assessing which nonfunctional requirements (NFRs) are already being implemented to meet security measures.

- * The Web API has Rate-Limiting SLA
- * Basic Authentication - LDAP
- * JSON Threat Protection
- * TP Allowlist policies applied Which two NFRs-are enforced?

- A. The API invocations are coming from a known subnet range
- B. Username/password supported to validate login credentials
- C. Sensitive data is masked to prevent compromising critical information
- D. The API is protected against XML invocation attacks
- E. Performance expectations are to be allowed up to 1,000 requests per second

Answer: AB

NEW QUESTION 4

An API implementation is updated. When must the RAML definition of the API also be updated?

- A. When the API implementation changes the structure of the request or response messages
- B. When the API implementation changes from interacting with a legacy backend system deployed on-premises to a modern, cloud-based (SaaS) system
- C. When the API implementation is migrated from an older to a newer version of the Mule runtime
- D. When the API implementation is optimized to improve its average response time

Answer: A

NEW QUESTION 5

An auto manufacturer has a mature CI/CD practice and wants to automate packaging and deployment of any Mule applications to various deployment targets, including CloudHub workers/replicas, customer-hosted Mule runtimes, and Anypoint Runtime Fabric.

Which MuleSoft-provided tool or component facilitates automating the packaging and deployment of Mule applications to various deployment targets as part of the company's CI/CD practice?

- A. Anypoint Runtime Manager
- B. Mule Maven plugin
- C. Anypoint Platform CLI
- D. Anypoint Platform REST APIs

Answer: B

NEW QUESTION 6

A customer wants to monitor and gain insights about the number of requests coming in a given time period as well as to measure key performance indicators (response times, CPU utilization, number of active APIs). Which tool provides these data insights?

- A. Anypoint Monitoring
- B. APT Manager
- C. Runtime Alerts
- D. Functional Monitoring

Answer: A

NEW QUESTION 7

What CANNOT be effectively enforced using an API policy in Anypoint Platform?

- A. Guarding against Denial of Service attacks
- B. Maintaining tamper-proof credentials between APIs
- C. Logging HTTP requests and responses
- D. Backend system overloading

Answer: A

NEW QUESTION 8

Which of the following sequence is correct?

- A. API Client implements logic to call an API >> API Consumer requests access to API >> API Implementation routes the request to >> API
- B. API Consumer requests access to API >> API Client implements logic to call an API >> API routes the request to >> API Implementation
- C. API Consumer implements logic to call an API >> API Client requests access to API >> API Implementation routes the request to >> API
- D. API Client implements logic to call an API >> API Consumer requests access to API >> API routes the request to >> API Implementation

Answer: B

NEW QUESTION 9

What is the most performant out-of-the-box solution in Anypoint Platform to track transaction state in an asynchronously executing long-running process implemented as a Mule application deployed to multiple CloudHub workers?

- A. Redis distributed cache
- B. java.util.WeakHashMap
- C. Persistent Object Store
- D. File-based storage

Answer: C

NEW QUESTION 10

An organization has implemented a Customer Address API to retrieve customer address information. This API has been deployed to multiple environments and has been configured to enforce client IDs everywhere.

A developer is writing a client application to allow a user to update their address. The developer has found the Customer Address API in Anypoint Exchange and wants to use it in their client application.

What step of gaining access to the API can be performed automatically by Anypoint Platform?

- A. Approve the client application request for the chosen SLA tier
- B. Request access to the appropriate API Instances deployed to multiple environments using the client application's credentials
- C. Modify the client application to call the API using the client application's credentials
- D. Create a new application in Anypoint Exchange for requesting access to the API

Answer: A

NEW QUESTION 10

A System API is designed to retrieve data from a backend system that has scalability challenges. What API policy can best safeguard the backend system?

- A. IPwhitelist
- B. SLA-based rate limiting
- C. Auth 2 token enforcement
- D. Client ID enforcement

Answer: B

NEW QUESTION 14

A retail company is using an Order API to accept new orders. The Order API uses a JMS queue to submit orders to a backend order management service. The

normal load for orders is being handled using two (2) CloudHub workers, each configured with 0.2 vCore. The CPU load of each CloudHub worker normally runs well below 70%. However, several times during the year the Order API gets four times (4x) the average number of orders. This causes the CloudHub worker CPU load to exceed 90% and the order submission time to exceed 30 seconds. The cause, however, is NOT the backend order management service, which still responds fast enough to meet the response SLA for the Order API. What is the MOST resource-efficient way to configure the Mule application's CloudHub deployment to help the company cope with this performance challenge?

- A. Permanently increase the size of each of the two (2) CloudHub workers by at least four times (4x) to one (1) vCore
- B. Use a vertical CloudHub autoscaling policy that triggers on CPU utilization greater than 70%
- C. Permanently increase the number of CloudHub workers by four times (4x) to eight (8) CloudHub workers
- D. Use a horizontal CloudHub autoscaling policy that triggers on CPU utilization greater than 70%

Answer: D

NEW QUESTION 19

A developer from the Central IT team has created an initial version of the RAML definition in Design Center for an OAuth 2.0-protected System API and published it to Exchange. Another developer from LoB IT discovered the System API in Exchange and would like to leverage it in the Process API. What is the MuleSoft-recommended approach for Process API to invoke the System API?

- A. The Process API needs to import an OAuth 2.0 module from Exchange first and update it with OAuth 2.0 credentials before the System API can be invoked
- B. The Process API uses property YAML files to store the System API URLs and uses the HTTP Request Connector to invoke the System API
- C. The Process API uses the REST Connect Connector autogenerated in Exchange for the System API
- D. The Process API manually updates the Process API POM file to include the System API as a dependency

Answer: C

NEW QUESTION 21

A company is building an application network using MuleSoft's recommendations for various API layers. What is the main (default) role of a process API in an application network?

- A. To secure and optimize the data synchronization processing of large data dumps between back-end systems
- B. To manage and process the secure direct communication between a back-end system and an end-user client of mobile device in the application network
- C. To automate parts of business processes by coordinating and orchestrating the invocation of other APIs in the application network
- D. To secure, Manage, and process communication with specific types of end-user client applications or devices in the application network

Answer: C

NEW QUESTION 22

Several times a week, an API implementation shows several thousand requests per minute in an Anypoint Monitoring dashboard. Between these bursts, the dashboard shows between two and five requests per minute. The API implementation is running on Anypoint Runtime Fabric with two non-clustered replicas, reserved vCPU 1.0 and vCPU Limit 2.0.

An API consumer has complained about slow response time, and the dashboard shows the 99 percentile is greater than 120 seconds at the time of the complaint. It also shows greater than 90% CPU usage during these time periods.

In manual tests in the QA environment, the API consumer has consistently reproduced the slow response time and high CPU usage, and there were no other API requests at this time. In a brainstorming session, the engineering team has created several proposals to reduce the response time for requests. Which proposal should be pursued first?

- A. Increase the vCPU resources of the API implementation
- B. Modify the API client to split the problematic request into smaller, less-demanding requests
- C. Increase the number of replicas of the API implementation
- D. Throttle the API client to reduce the number of requests per minute

Answer: A

NEW QUESTION 27

An organization wants to make sure only known partners can invoke the organization's APIs. To achieve this security goal, the organization wants to enforce a Client ID Enforcement policy in API Manager so that only registered partner applications can invoke the organization's APIs. In what type of API implementation does MuleSoft recommend adding an API proxy to enforce the Client ID Enforcement policy, rather than embedding the policy directly in the application's JVM?

- A. A Mule 3 application using APIkit
- B. A Mule 3 or Mule 4 application modified with custom Java code
- C. A Mule 4 application with an API specification
- D. A Non-Mule application

Answer: D

NEW QUESTION 30

A company has started to create an application network and is now planning to implement a Center for Enablement (C4E) organizational model. What key factor would lead the company to decide upon a federated rather than a centralized C4E?

- A. When there are a large number of existing common assets shared by development teams
- B. When various teams responsible for creating APIs are new to integration and hence need extensive training
- C. When development is already organized into several independent initiatives or groups
- D. When the majority of the applications in the application network are cloud based

Answer: C

NEW QUESTION 31

A retail company with thousands of stores has an API to receive data about purchases and insert it into a single database. Each individual store sends a batch of purchase data to the API about every 30 minutes. The API implementation uses a database bulk insert command to submit all the purchase data to a database using a custom JDBC driver provided by a data analytics solution provider. The API implementation is deployed to a single CloudHub worker. The JDBC driver processes the data into a set of several temporary disk files on the CloudHub worker, and then the data is sent to an analytics engine using a proprietary protocol. This process usually takes less than a few minutes. Sometimes a request fails. In this case, the logs show a message from the JDBC driver indicating an out-of-file-space message. When the request is resubmitted, it is successful. What is the best way to try to resolve this throughput issue?

- A. se a CloudHub autoscaling policy to add CloudHub workers
- B. Use a CloudHub autoscaling policy to increase the size of the CloudHub worker
- C. Increase the size of the CloudHub worker(s)
- D. Increase the number of CloudHub workers

Answer: D

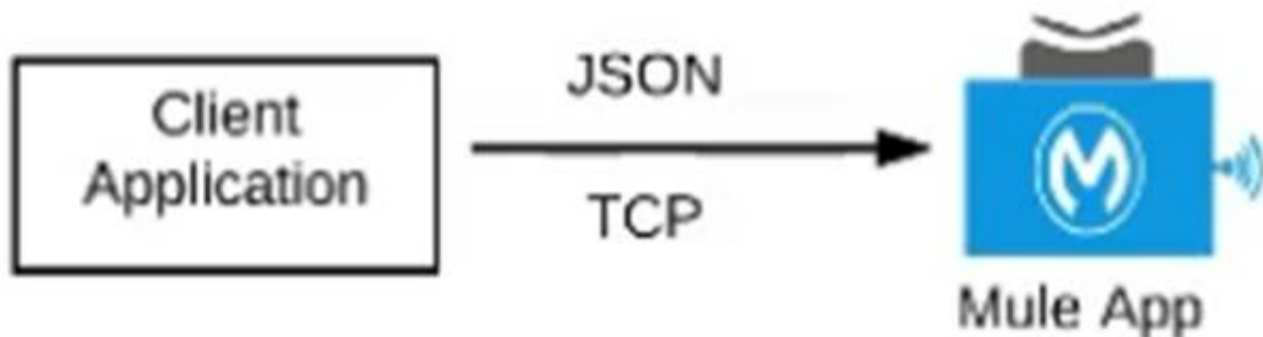
NEW QUESTION 34

What Mule application can have API policies applied by Anypoint Platform to the endpoint exposed by that Mule application?

A) A Mule application that accepts requests over HTTP/1.x



B) A Mule application that accepts JSON requests over TCP but is NOT required to provide a response



C) A Mute application that accepts JSON requests over WebSocket



D) A Mule application that accepts gRPC requests over HTTP/2



- A. Option A
- B. Option B
- C. Option C
- D. Option D

Answer: A

Explanation:

Correct Answer: Option A
 >> Anypoint API Manager and API policies are applicable to all types of HTTP/1.x APIs.
 >> They are not applicable to WebSocket APIs, HTTP/2 APIs and gRPC APIs
 Reference: <https://docs.mulesoft.com/api-manager/2.x/using-policies>

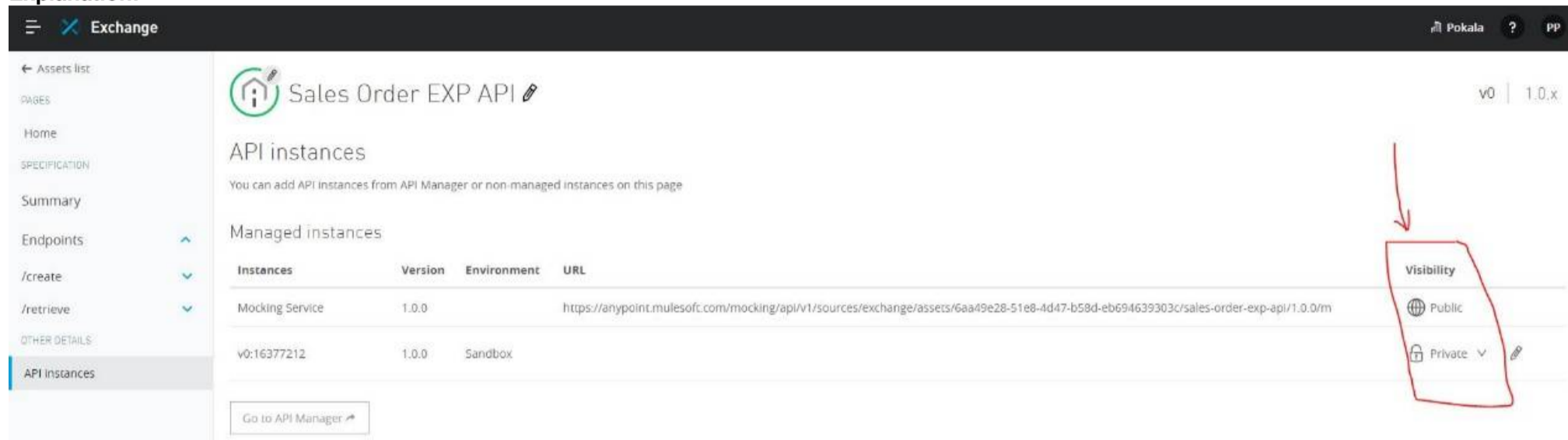
NEW QUESTION 38

What should be ensured before sharing an API through a public Anypoint Exchange portal?

- A. The visibility level of the API instances of that API that need to be publicly accessible should be set to public visibility
- B. The users needing access to the API should be added to the appropriate role in Anypoint Platform
- C. The API should be functional with at least an initial implementation deployed and accessible for users to interact with
- D. The API should be secured using one of the supported authentication/authorization mechanisms to ensure that data is not compromised

Answer: A

Explanation:



Correct Answer: The visibility level of the API instances of that API that need to be publicly accessible should be set to public visibility.

Reference: <https://docs.mulesoft.com/exchange/to-share-api-asset-to-portal>

<https://docs.mulesoft.com/exchange/to-share-api-asset-to-portal>

NEW QUESTION 42

When using CloudHub with the Shared Load Balancer, what is managed EXCLUSIVELY by the API implementation (the Mule application) and NOT by Anypoint Platform?

- A. The assignment of each HTTP request to a particular CloudHub worker
- B. The logging configuration that enables log entries to be visible in Runtime Manager
- C. The SSL certificates used by the API implementation to expose HTTPS endpoints
- D. The number of DNS entries allocated to the API implementation

Answer: C

NEW QUESTION 46

A new upstream API is being designed to offer an SLA of 500 ms median and 800 ms maximum (99th percentile) response time. The corresponding API implementation needs to sequentially invoke 3 downstream APIs of very similar complexity.

The first of these downstream APIs offers the following SLA for its response time: median: 100 ms, 80th percentile: 500 ms, 95th percentile: 1000 ms.

If possible, how can a timeout be set in the upstream API for the invocation of the first downstream API to meet the new upstream API's desired SLA?

- A. Set a timeout of 50 ms; this times out more invocations of that API but gives additional room for retries
- B. Set a timeout of 100 ms; that leaves 400 ms for the other two downstream APIs to complete
- C. No timeout is possible to meet the upstream API's desired SLA; a different SLA must be negotiated with the first downstream API or invoke an alternative API
- D. Do not set a timeout; the invocation of this API is mandatory and so we must wait until it responds

Answer: B

NEW QUESTION 50

An API has been updated in Anypoint Exchange by its API producer from version 3.1.1 to 3.2.0 following accepted semantic versioning practices and the changes have been communicated via the API's public portal.

The API endpoint does NOT change in the new version.

How should the developer of an API client respond to this change?

- A. The update should be identified as a project risk and full regression testing of the functionality that uses this API should be run
- B. The API producer should be contacted to understand the change to existing functionality
- C. The API producer should be requested to run the old version in parallel with the new one
- D. The API client code ONLY needs to be changed if it needs to take advantage of new features

Answer: D

NEW QUESTION 54

When could the API data model of a System API reasonably mimic the data model exposed by the corresponding backend system, with minimal improvements over the backend system's data model?

- A. When there is an existing Enterprise Data Model widely used across the organization
- B. When the System API can be assigned to a bounded context with a corresponding data model
- C. When a pragmatic approach with only limited isolation from the backend system is deemed appropriate
- D. When the corresponding backend system is expected to be replaced in the near future

Answer: C

NEW QUESTION 59

An organization wants to create a Center for Enablement (C4E). The IT director schedules a series of meetings with IT senior managers. What should be on the agenda of the first meeting?

- A. Define C4E objectives, mission statement, guiding principles, a
- B. Explore API monetization options based on identified use cases through MuleSoft
- C. A walk through of common-services best practices for logging, auditing, exception handling, caching, security via policy, and rate limiting/throttling via policy
- D. Specify operating model for the MuleSoft Integrations division

Answer: A

NEW QUESTION 61

What do the API invocation metrics provided by Anypoint Platform provide?

- A. ROI metrics from APIs that can be directly shared with business users
- B. Measurements of the effectiveness of the application network based on the level of reuse
- C. Data on past API invocations to help identify anomalies and usage patterns across various APIs
- D. Proactive identification of likely future policy violations that exceed a given threat threshold

Answer: C

NEW QUESTION 62

In which layer of API-led connectivity, does the business logic orchestration reside?

- A. System Layer
- B. Experience Layer
- C. Process Layer

Answer: C

NEW QUESTION 66

The application network is recomposable: it is built for change because it "bends but does not break"

- A. TRUE
- B. FALSE

Answer: A

NEW QUESTION 71

How are an API implementation, API client, and API consumer combined to invoke and process an API?

- A. The API consumer creates an API implementation, which receives API invocations from an API such that they are processed for an API client
- B. The API client creates an API consumer, which receives API invocations from an API such that they are processed for an API implementation
- C. The API consumer creates an API client, which sends API invocations to an API such that they are processed by an API implementation
- D. The API client creates an API consumer, which sends API invocations to an API such that they are processed by an API implementation

Answer: C

NEW QUESTION 74

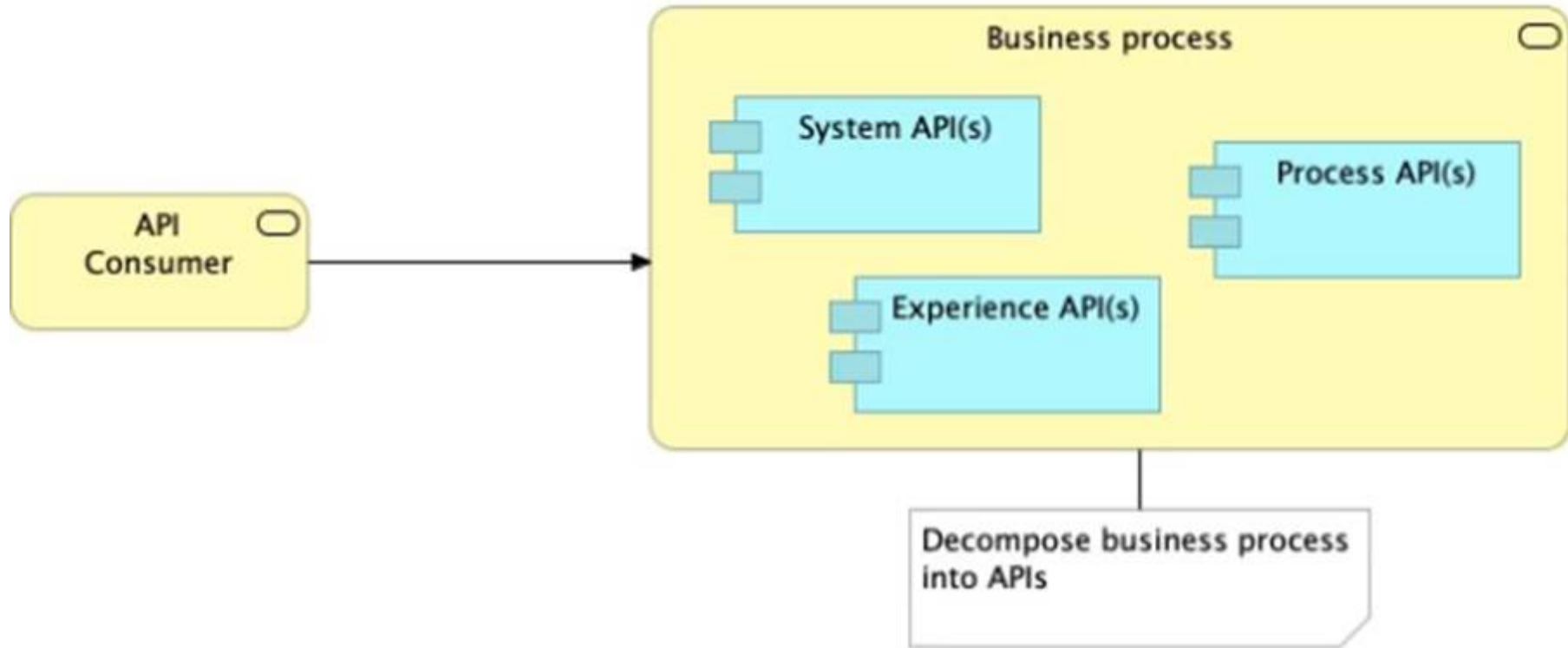
A company wants to move its Mule API implementations into production as quickly as possible. To protect access to all Mule application data and metadata, the company requires that all Mule applications be deployed to the company's customer-hosted infrastructure within the corporate firewall. What combination of runtime plane and control plane options meets these project lifecycle goals?

- A. Manually provisioned customer-hosted runtime plane and customer-hosted control plane
- B. MuleSoft-hosted runtime plane and customer-hosted control plane
- C. Manually provisioned customer-hosted runtime plane and MuleSoft-hosted control plane
- D. iPaaS provisioned customer-hosted runtime plane and MuleSoft-hosted control plane

Answer: A

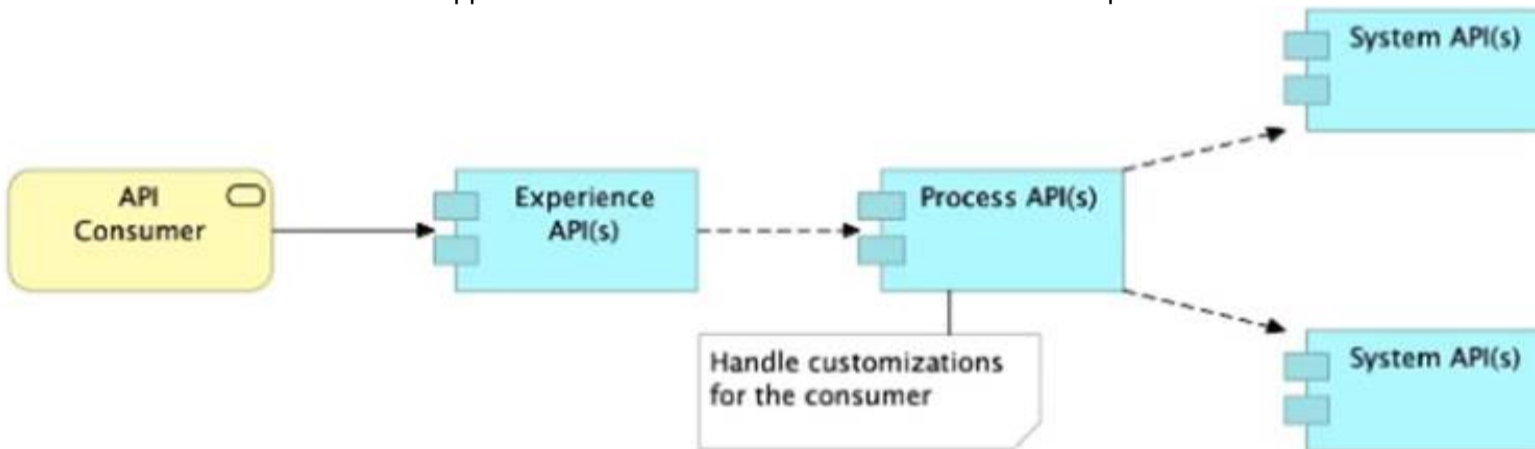
NEW QUESTION 77

Refer to the exhibit.

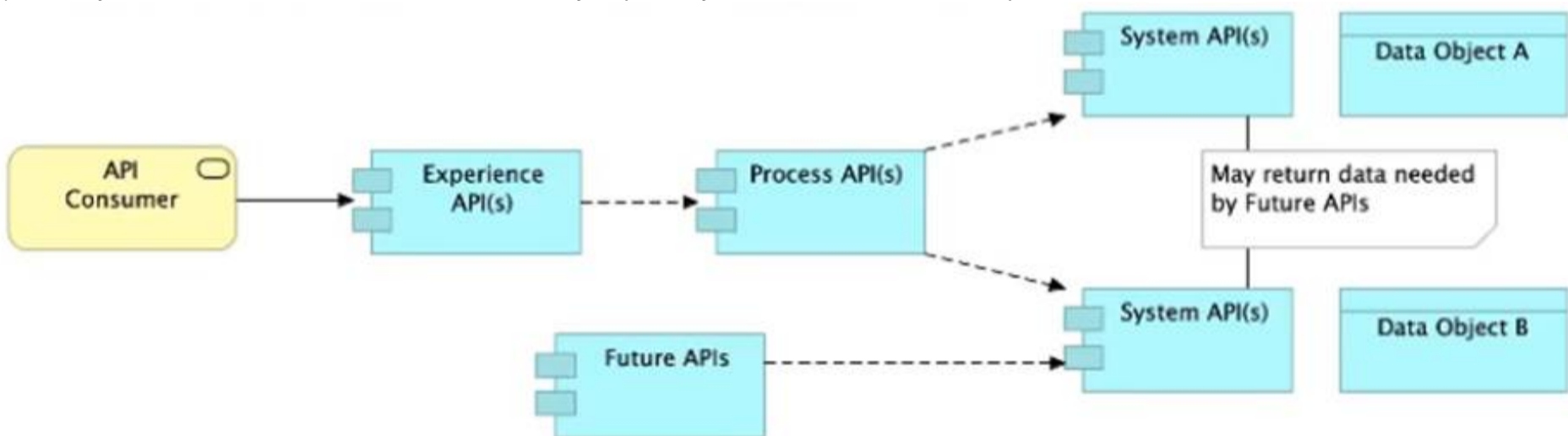


What is the best way to decompose one end-to-end business process into a collaboration of Experience, Process, and System APIs?

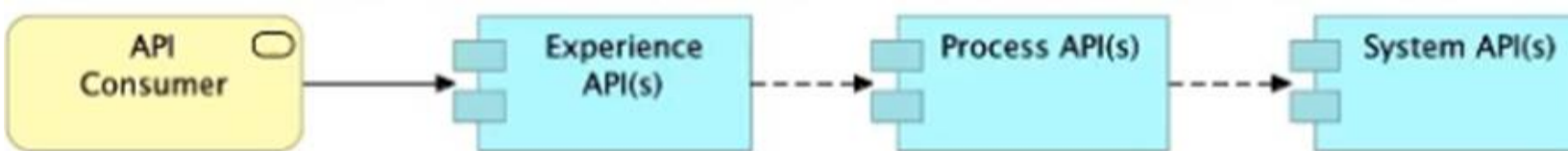
A) Handle customizations for the end-user application at the Process API level rather than the Experience API level



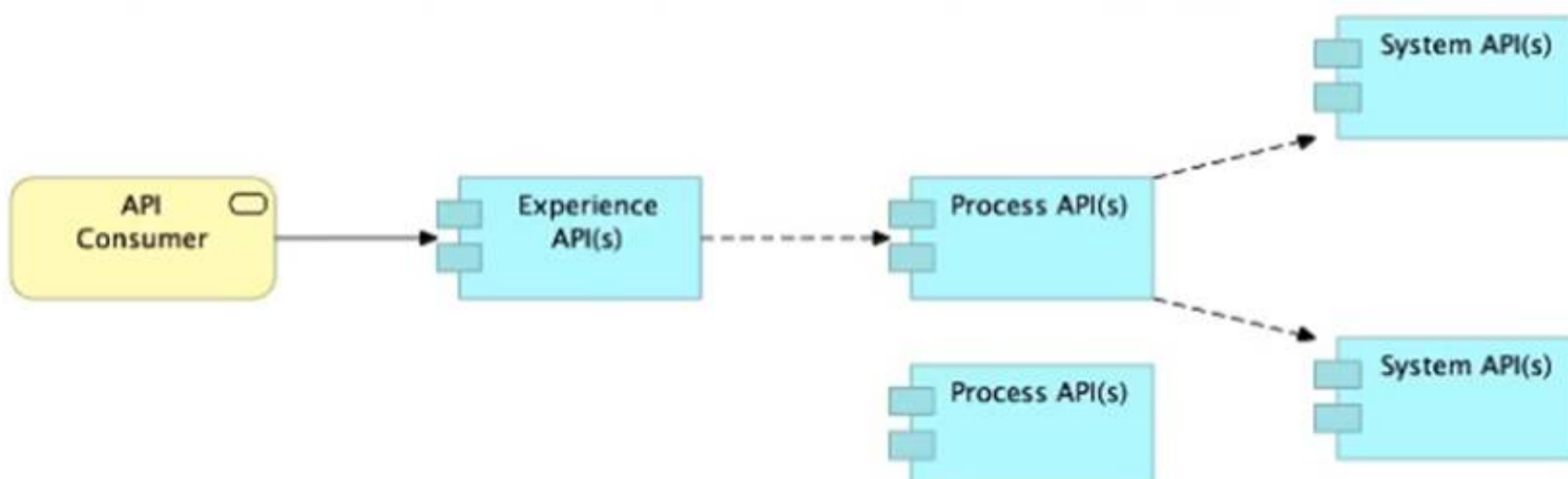
B) Allow System APIs to return data that is NOT currently required by the identified Process or Experience APIs



C) Always use a tiered approach by creating exactly one API for each of the 3 layers (Experience, Process and System APIs)



D) Use a Process API to orchestrate calls to multiple System APIs, but NOT to other Process APIs



- A. Option A
- B. Option B

- C. Option C
- D. Option D

Answer: B

NEW QUESTION 80

When must an API implementation be deployed to an Anypoint VPC?

- A. When the API Implementation must invoke publicly exposed services that are deployed outside of CloudHub in a customer- managed AWS instance
- B. When the API implementation must be accessible within a subnet of a restricted customer-hosted network that does not allow public access
- C. When the API implementation must be deployed to a production AWS VPC using the Mule Maven plugin
- D. When the API Implementation must write to a persistent Object Store

Answer: A

NEW QUESTION 83

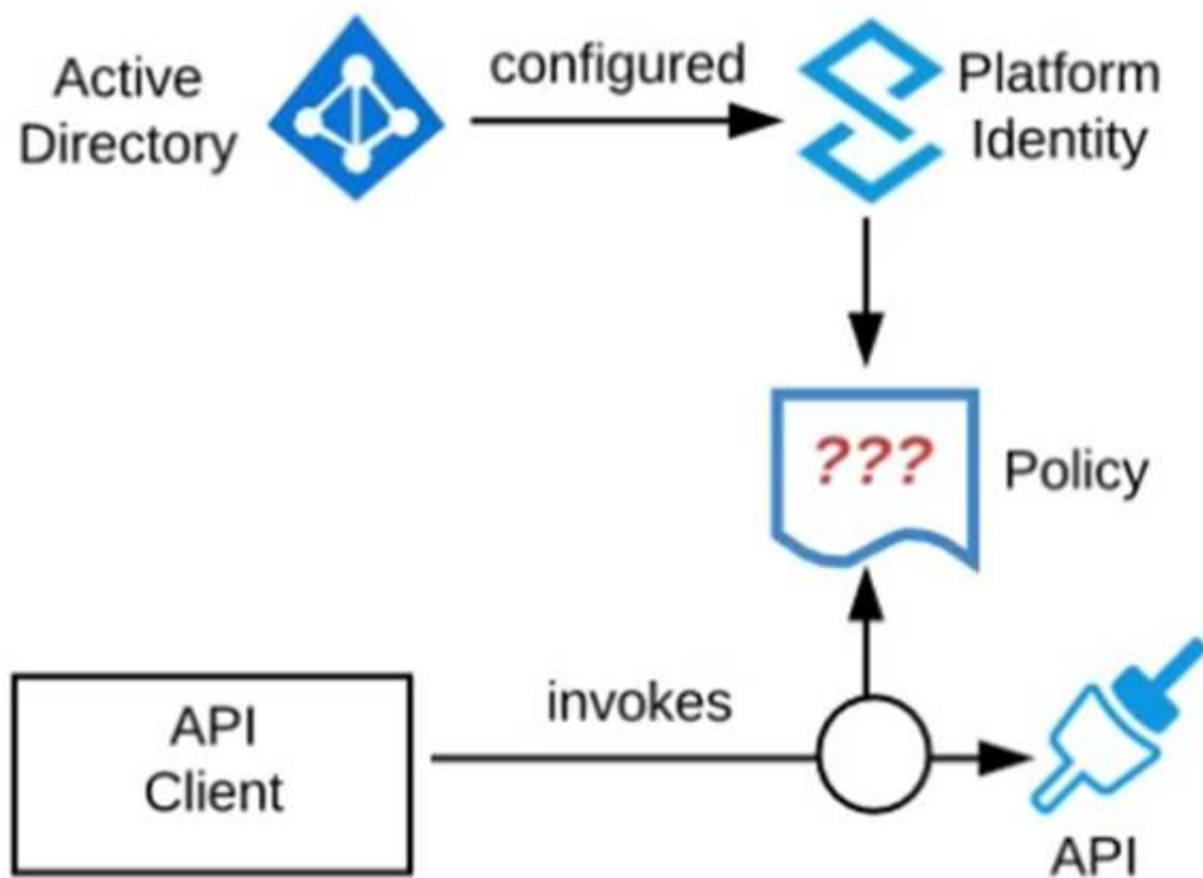
Due to a limitation in the backend system, a system API can only handle up to 500 requests per second. What is the best type of API policy to apply to the system API to avoid overloading the backend system?

- A. Rate limiting
- B. HTTP caching
- C. Rate limiting - SLA based
- D. Spike control

Answer: D

NEW QUESTION 88

Refer to the exhibit. An organization is running a Mule standalone runtime and has configured Active Directory as the Anypoint Platform external Identity Provider. The organization does not have budget for other system components.



What policy should be applied to all instances of APIs in the organization to most effectively restrict access to a specific group of internal users?

- A. Apply a basic authentication - LDAP policy; the internal Active Directory will be configured as the LDAP source for authenticating users
- B. Apply a client ID enforcement policy; the specific group of users will configure their client applications to use their specific client credentials
- C. Apply an IP whitelist policy; only the specific users' workstations will be in the whitelist
- D. Apply an OAuth 2.0 access token enforcement policy; the internal Active Directory will be configured as the OAuth server

Answer: A

NEW QUESTION 91

A business process is being implemented within an organization's application network. The architecture group proposes using a more coarse-grained application network design with relatively fewer APIs deployed to the application network compared to a more fine-grained design. Overall, which factor typically increases with a more coarse-grained design for this business process implementation and deployment compared with using a more fine-grained design?

- A. The complexity of each API implementation
- B. The number of discoverable assets related to APIs deployed in the application network
- C. The number of possible connections between API implementations in the application network
- D. The usage of network infrastructure resources by the application network

Answer: A

NEW QUESTION 93

A circuit breaker strategy is planned in order to meet the goal of improved response time and demand on a downstream API.

* Circuit Open: More than 10 errors per minute for three minutes

* Circuit Half-Open: One error per minute

* Circuit Closed: Less than one error per minute for five minutes

Out of several proposals from the engineering team, which option will meet this goal?

- A. Create a custom policy that implements the circuit breaker and includes policy template expressions for the required settings
- B. Create Anypoint Monitoring alerts for Circuit Open/Closed configurations, and then implement a retry strategy for Circuit Half-Open configuration
- C. Add the Circuit Breaker policy to the API instance, and configure the required settings
- D. Implement the strategy in a Mule application, and provide the settings in the YAML configuration

Answer: C

NEW QUESTION 95

Which three tools automate the deployment of Mule applications? Choose 3 answers

- A. Runtime Manager
- B. Anypoint Platform CLI
- C. Platform APIs
- D. Anypoint Studio
- E. Mule Maven plugin
- F. API Community Manager

Answer: ABC

NEW QUESTION 96

A large lending company has developed an API to unlock data from a database server and web server. The API has been deployed to Anypoint Virtual Private Cloud (VPC) on CloudHub 1.0.

The database server and web server are in the customer's secure network and are not accessible through the public internet. The database server is in the customer's AWS VPC, whereas the web server is in the customer's on-premises corporate data center. How can access be enabled for the API to connect with the database server and the web server?

- A. Set up VPC peering with AWS VPC and a VPN tunnel to the customer's on-premises corporate data center
- B. Set up VPC peering with AWS VPC and the customer's on-premises corporate data center
- C. Setup a transit gateway to the customer's on-premises corporate data center through AWS VPC
- D. Set up VPC peering with the customer's on-premises corporate data center and a VPN tunnel to AWS VPC

Answer: A

NEW QUESTION 100

A Platform Architect inherits a legacy monolithic SOAP-based web service that performs a number of tasks, including showing all policies belonging to a client. The service connects to two back-end systems — a life-insurance administration system and a general-insurance administration system — and then queries for insurance policy information within each system, aggregates the results, and presents a SOAP-based response to a user interface (UI).

The architect wants to break up the monolithic web service to follow API-led conventions. Which part of the service should be put into the process layer?

- A. Combining the insurance policy information from the administration systems
- B. Presenting the SOAP-based response to the UI
- C. Authenticating and maintaining connections to each of the back-end administration systems
- D. Querying the data from the administration systems

Answer: A

NEW QUESTION 102

A developer for a transportation organization is implementing exactly one processing functionality in a Reservation Mule application to process and store passenger records. This Reservation application will be deployed to multiple CloudHub workers/replicas. It is possible that several external systems could send duplicate passenger records to the Reservation application.

An appropriate storage mechanism must be selected to help the Reservation application process each passenger record exactly once as much as possible. The selected storage mechanism must be shared by all the CloudHub workers/replicas in order to synchronize the state information to assist attempting exactly once processing of each passenger record by the deployed Reservation Mule application.

Which type of simple storage mechanism in Anypoint Platform allows the Reservation Mule application to update and share data between the CloudHub workers/replicas exactly once, with minimal development effort?

- A. Persistent Object Store
- B. Runtime Fabric Object Store
- C. Non-persistent Object Store
- D. In-memory Mule Object Store

Answer: A

NEW QUESTION 104

An API implementation is deployed to CloudHub.

What conditions can be alerted on using the default Anypoint Platform functionality, where the alert conditions depend on the API invocations to an API implementation?

- A. When the API invocations are sent directly to the internal DNS record of the API implementation
- B. When the API invocations are not over-a- secure TLS/SSL communication channel

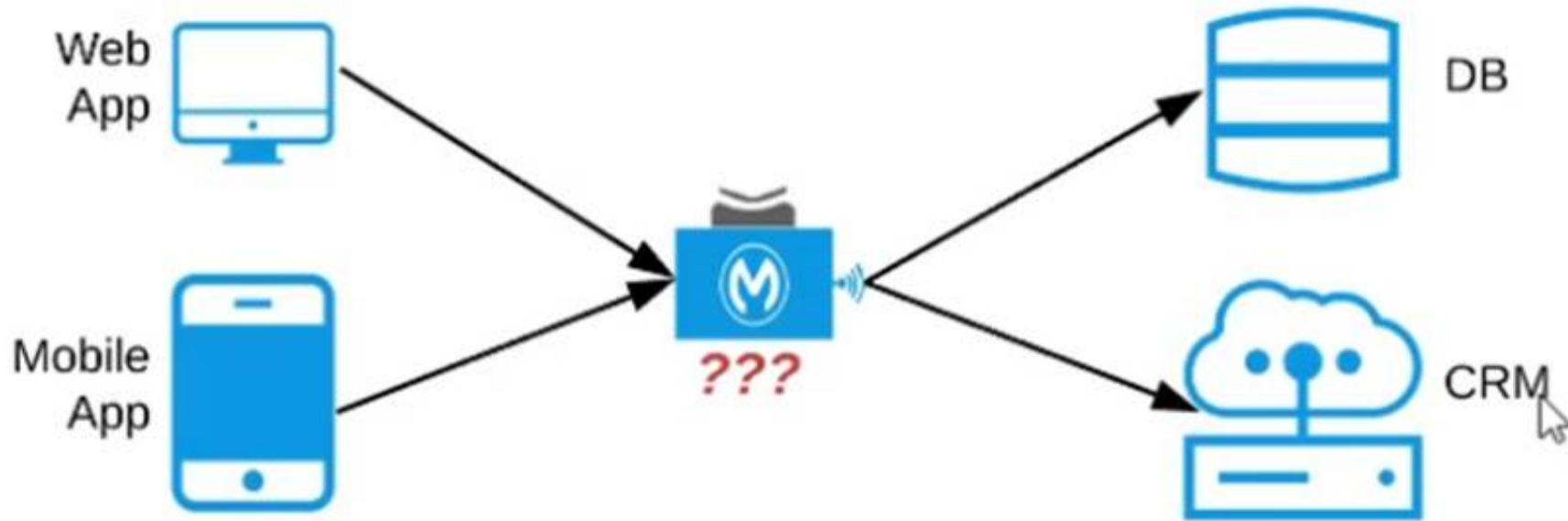
- C. When the APL invocations originate from a geography different than the API
- D. When the number of API invocations are below a threshold

Answer: D

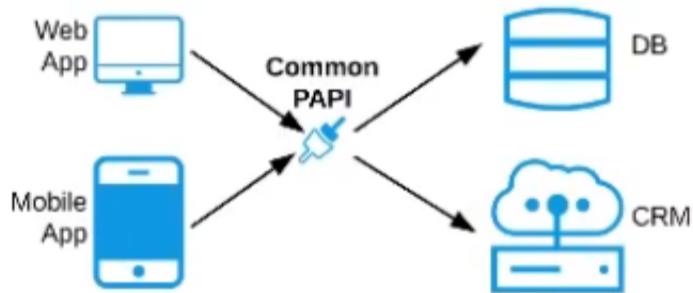
NEW QUESTION 108

Refer to the exhibit. An organization needs to enable access to their customer data from both a mobile app and a web application, which each need access to common fields as well as certain unique fields.

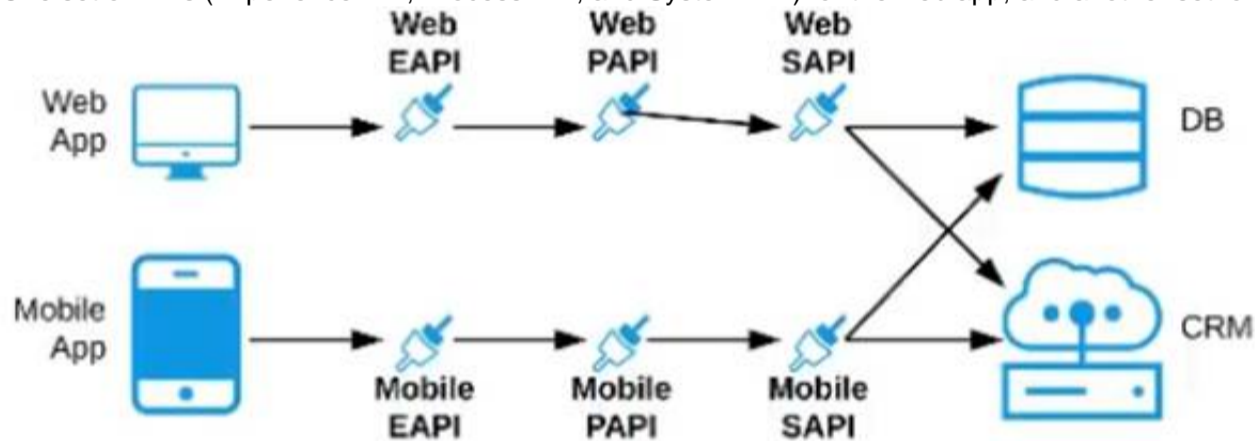
The data is available partially in a database and partially in a 3rd-party CRM system. What APIs should be created to best fit these design requirements?



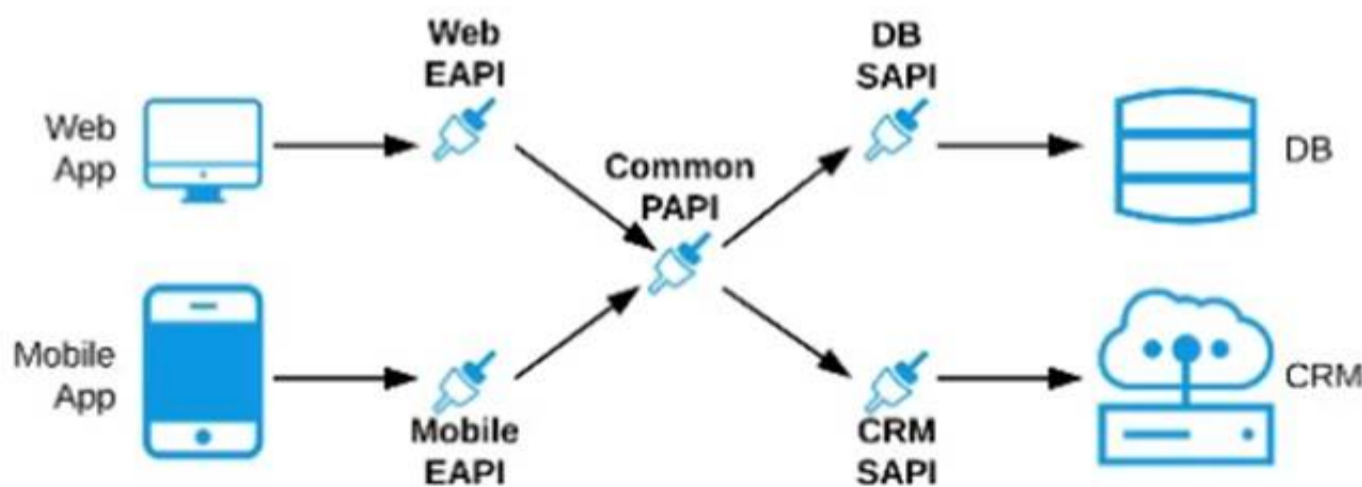
A) A Process API that contains the data required by both the web and mobile apps, allowing these applications to invoke it directly and access the data they need thereby providing the flexibility to add more fields in the future without needing API changes



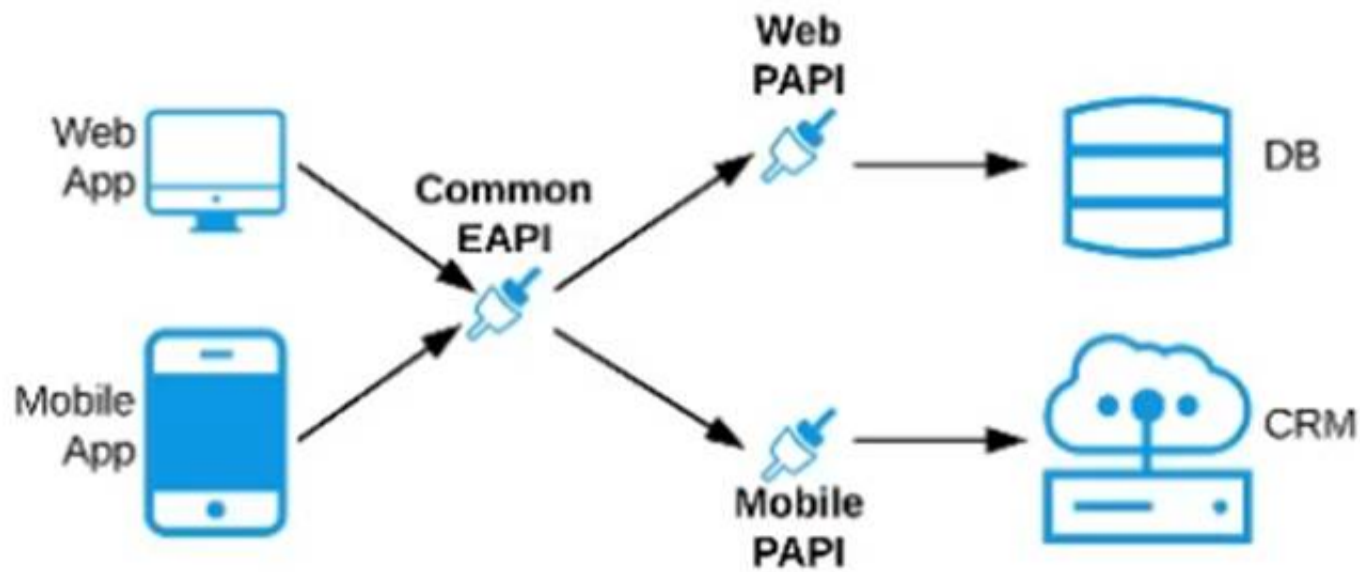
B) One set of APIs (Experience API, Process API, and System API) for the web app, and another set for the mobile app



C) Separate Experience APIs for the mobile and web app, but a common Process API that invokes separate System APIs created for the database and CRM system



D) A common Experience API used by both the web and mobile apps, but separate Process APIs for the web and mobile apps that interact with the database and the CRM System



- A. Option A
- B. Option B
- C. Option C
- D. Option D

Answer: C

NEW QUESTION 111

True or False. We should always make sure that the APIs being designed and developed are self-servable even if it needs more man-day effort and resources.

- A. FALSE
- B. TRUE

Answer: B

NEW QUESTION 113

What Anypoint Platform Capabilities listed below fall under APIs and API Invocations/Consumers category? Select TWO.

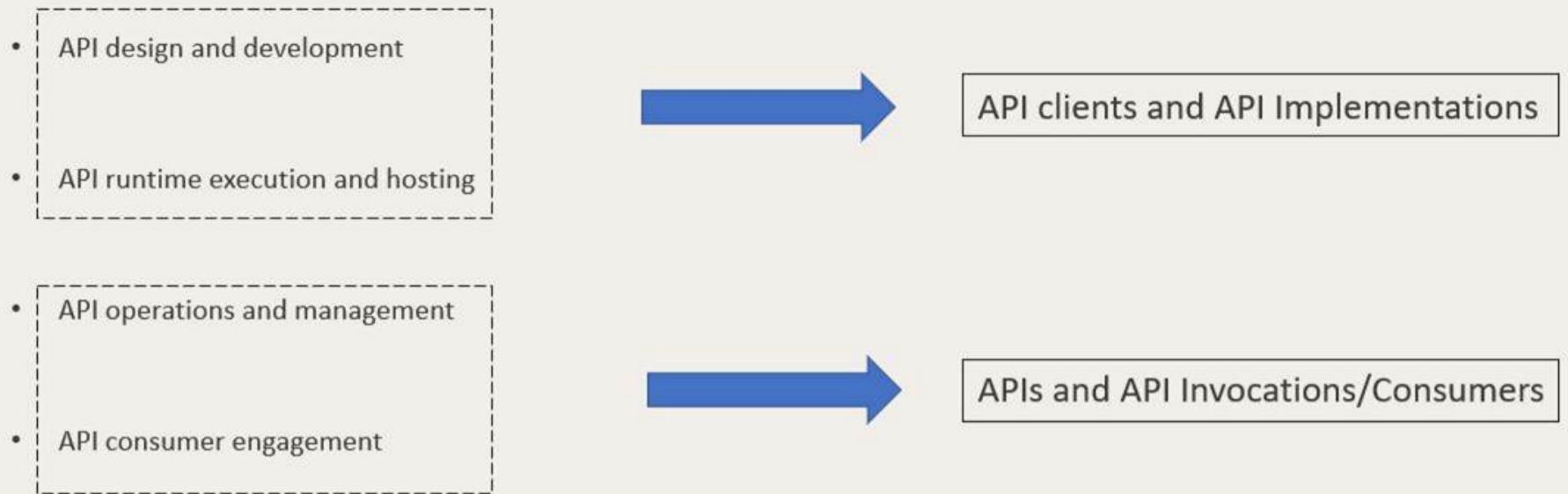
- A. API Operations and Management
- B. API Runtime Execution and Hosting
- C. API Consumer Engagement
- D. API Design and Development

Answer: D

Explanation:

Correct Answers: API Design and Development and API Runtime Execution and Hosting
 >> API Design and Development - Anypoint Studio, Anypoint Design Center, Anypoint Connectors
 >> API Runtime Execution and Hosting - Mule Runtimes, CloudHub, Runtime Services
 >> API Operations and Management - Anypoint API Manager, Anypoint Exchange
 >> API Consumer Management - API Contracts, Public Portals, Anypoint Exchange, API Notebooks

Platform Capabilities



© Prasad Pokala

NEW QUESTION 118

An API implementation is deployed to CloudHub.

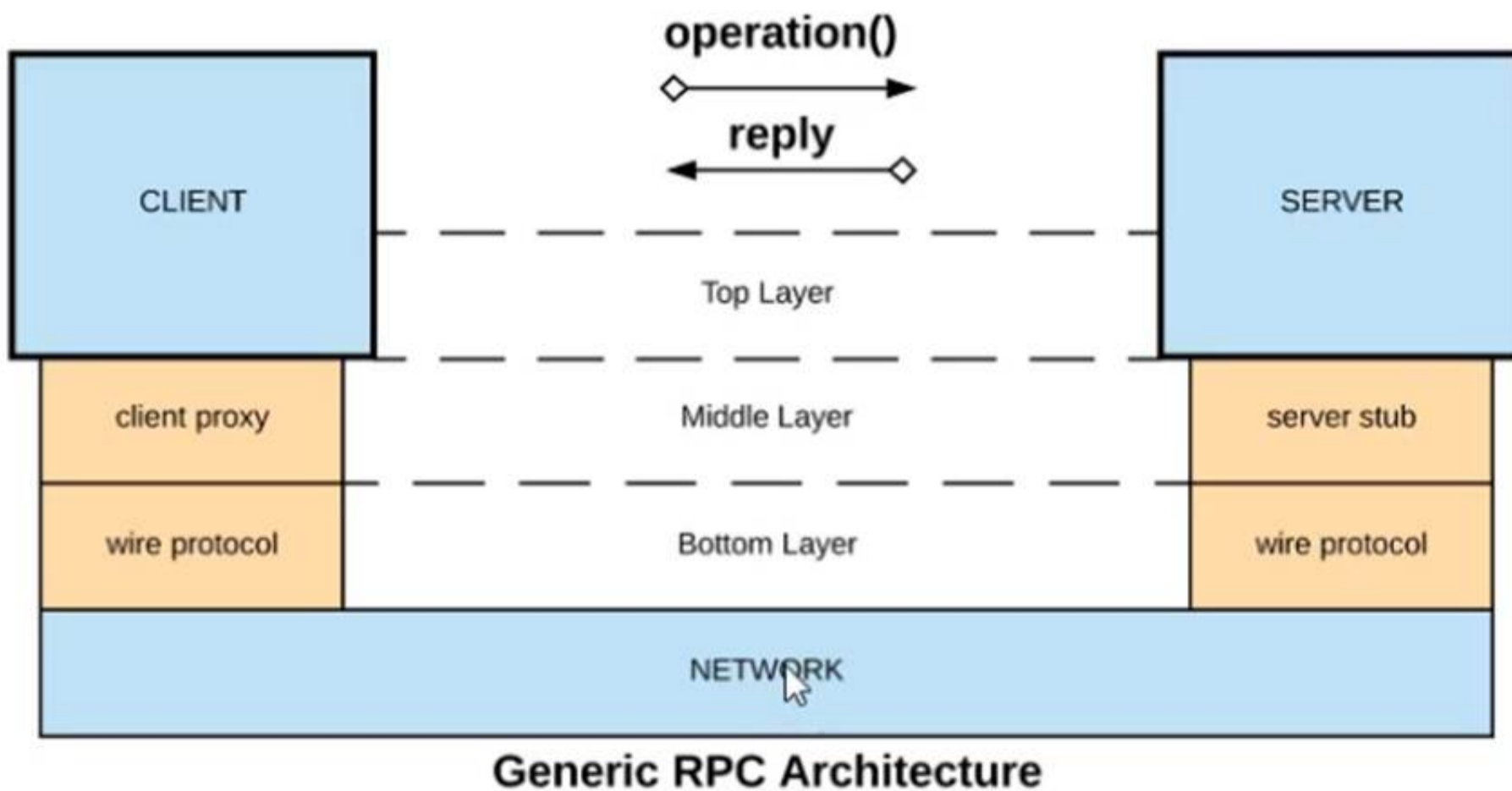
What conditions can be alerted on using the default Anypoint Platform functionality, where the alert conditions depend on the end-to-end request processing of the API implementation?

- A. When the API is invoked by an unrecognized API client
- B. When a particular API client invokes the API too often within a given time period
- C. When the response time of API invocations exceeds a threshold
- D. When the API receives a very high number of API invocations

Answer: C

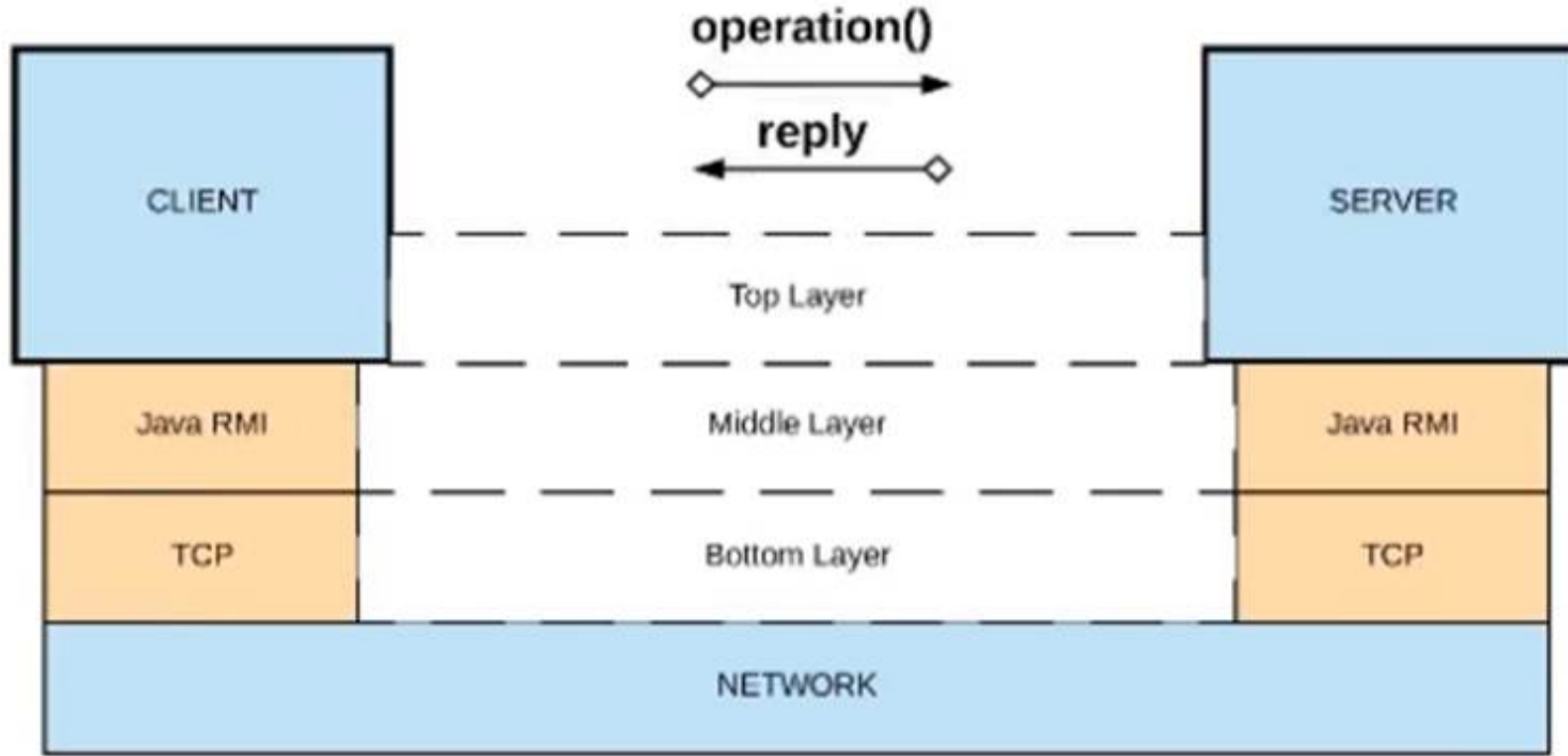
NEW QUESTION 123

Refer to the exhibit.

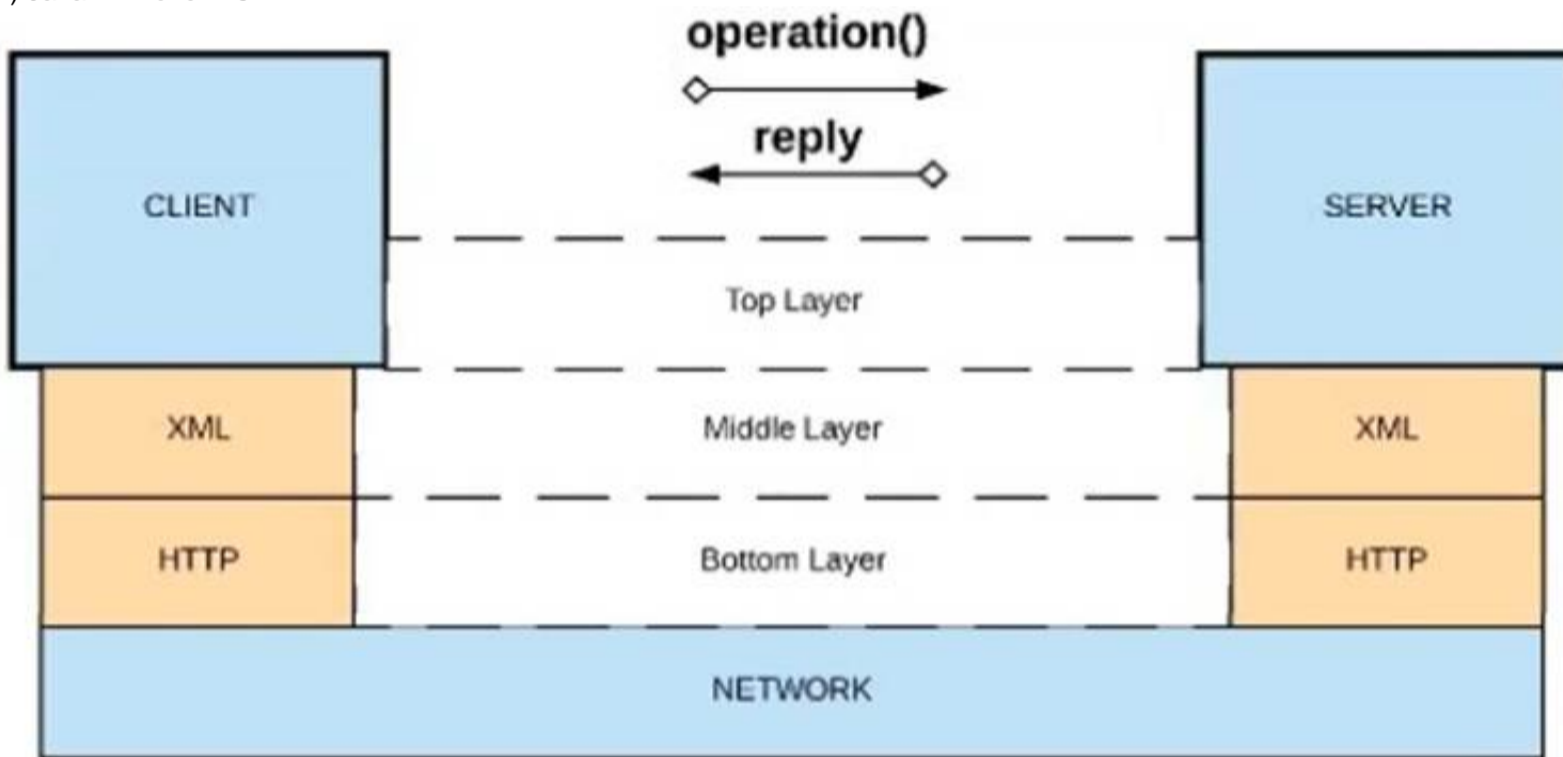


What is a valid API in the sense of API-led connectivity and application networks?

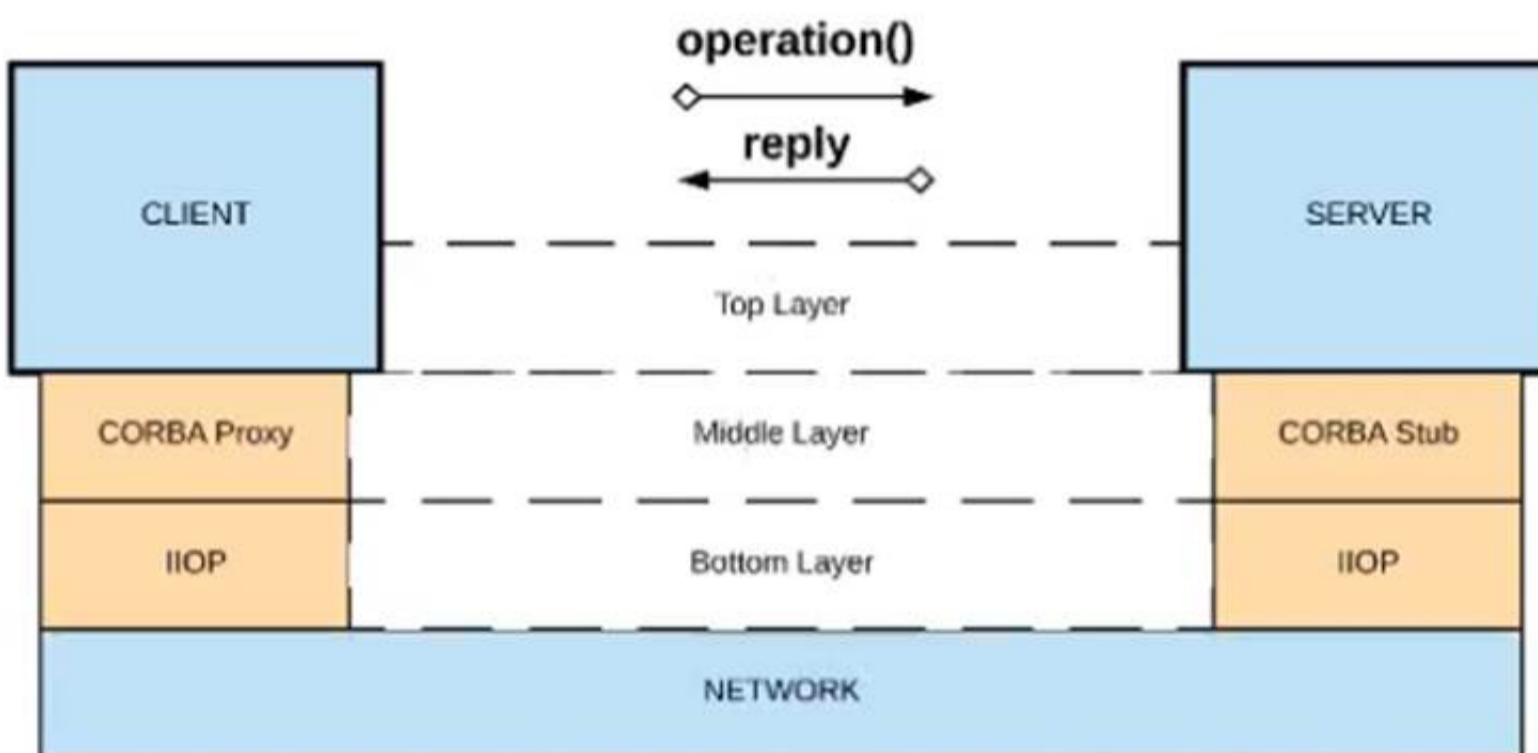
A) Java RMI over TCP



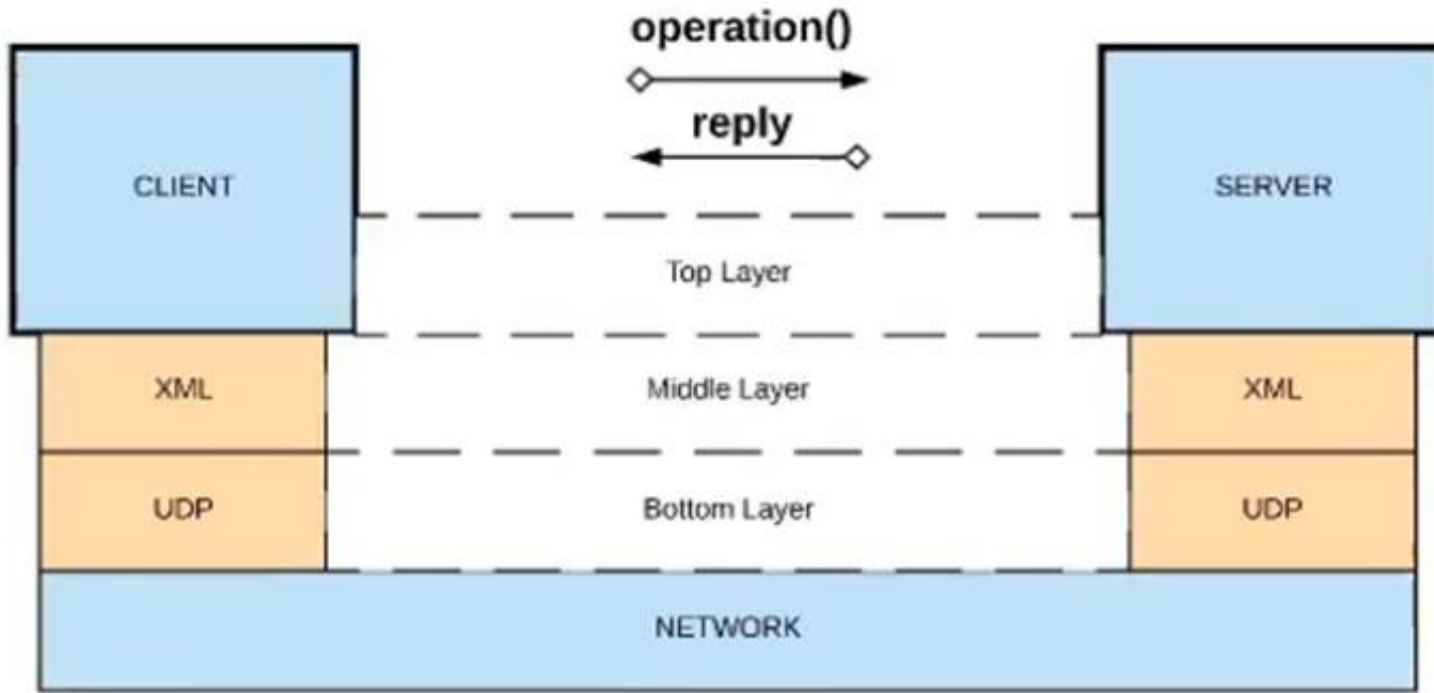
B) Java RMI over TCP



C) CORBA over HOP



D) XML over UDP



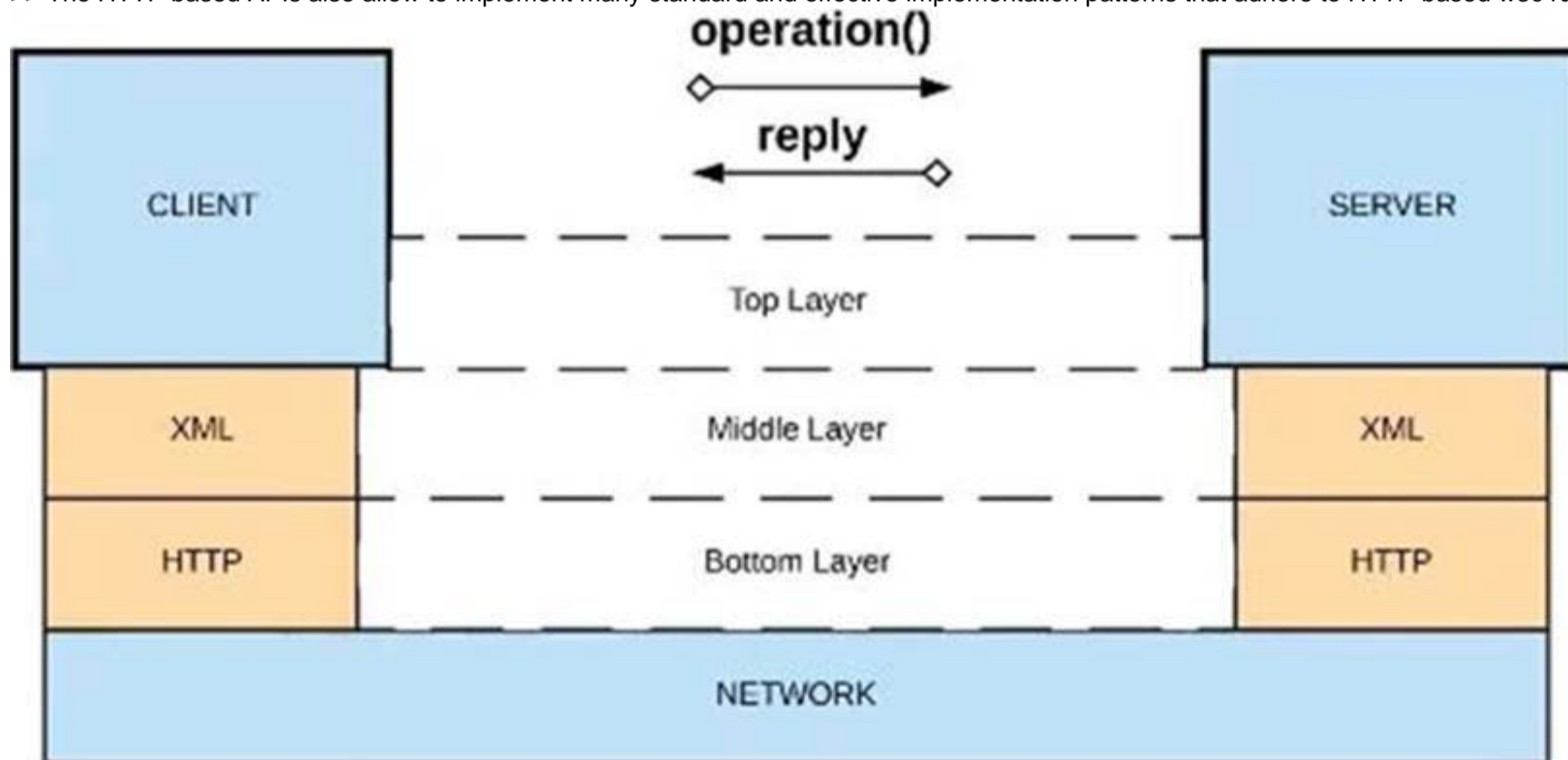
- A. Option A
- B. Option B
- C. Option C
- D. Option D

Answer: D

Explanation:

Correct Answer: XML over HTTP

- >> API-led connectivity and Application Networks urge to have the APIs on HTTP based protocols for building most effective APIs and networks on top of them.
- >> The HTTP based APIs allow the platform to apply various varieties of policies to address many NFRs
- >> The HTTP based APIs also allow to implement many standard and effective implementation patterns that adhere to HTTP based w3c rules.



NEW QUESTION 124

What condition requires using a CloudHub Dedicated Load Balancer?

- A. When cross-region load balancing is required between separate deployments of the same Mule application
- B. When custom DNS names are required for API implementations deployed to customer- hosted Mule runtimes
- C. When API invocations across multiple CloudHub workers must be load balanced
- D. When server-side load-balanced TLS mutual authentication is required between API implementations and API clients

Answer: D

NEW QUESTION 125

An API client calls one method from an existing API implementation. The API implementation is later updated. What change to the API implementation would require the API client's invocation logic to also be updated?

- A. When the data type of the response is changed for the method called by the API client
- B. When a new method is added to the resource used by the API client
- C. When a new required field is added to the method called by the API client

D. When a child method is added to the method called by the API client

Answer: C

NEW QUESTION 129

When can CloudHub Object Store v2 be used?

- A. To store an unlimited number of key-value pairs
- B. To store payloads with an average size greater than 15MB
- C. To store information in Mule 4 Object Store v1
- D. To store key-value pairs with keys up to 300 characters

Answer: D

NEW QUESTION 132

A European company has customers all across Europe, and the IT department is migrating from an older platform to MuleSoft. The main requirements are that the new platform should allow redeployments with zero downtime and deployment of applications to multiple runtime versions, provide security and speed, and utilize Anypoint MQ as the message service.

Which runtime plane should the company select based on the requirements without additional network configuration?

- A. Runtime Fabric on VMs / Bare Metal for the runtime plane
- B. Customer-hosted runtime plane
- C. MuleSoft-hosted runtime plane (CloudHub)
- D. Anypoint Runtime Fabric on Self-Managed Kubernetes for the runtime plane

Answer: C

NEW QUESTION 135

Select the correct Owner-Layer combinations from below options

- A. * 1. App Developers owns and focuses on Experience Layer APIs* 2. Central IT owns and focuses on Process Layer APIs* 3. LOB IT owns and focuses on System Layer APIs
- B. * 1. Central IT owns and focuses on Experience Layer APIs* 2. LOB IT owns and focuses on Process Layer APIs* 3. App Developers owns and focuses on System Layer APIs
- C. * 1. App Developers owns and focuses on Experience Layer APIs* 2. LOB IT owns and focuses on Process Layer APIs* 3. Central IT owns and focuses on System Layer APIs

Answer: C

Explanation:

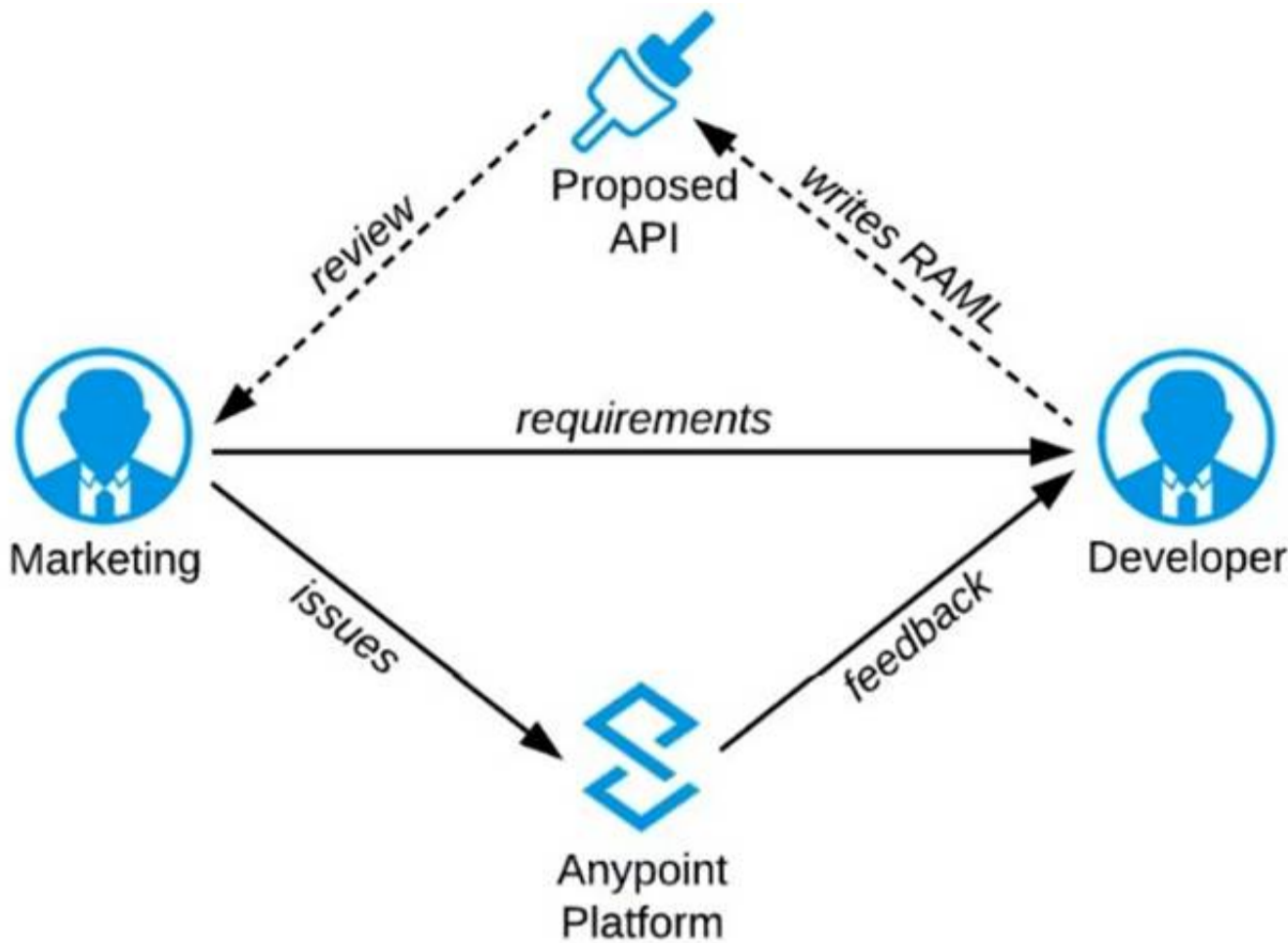
- * 1. App Developers owns and focuses on Experience Layer APIs
- * 2. LOB IT owns and focuses on Process Layer APIs
- * 3. Central IT owns and focuses on System Layer APIs



References:
<https://blogs.mulesoft.com/biz/api/experience-api-ownership/>
<https://blogs.mulesoft.com/biz/api/process-api-ownership/>
<https://blogs.mulesoft.com/biz/api/system-api-ownership/>

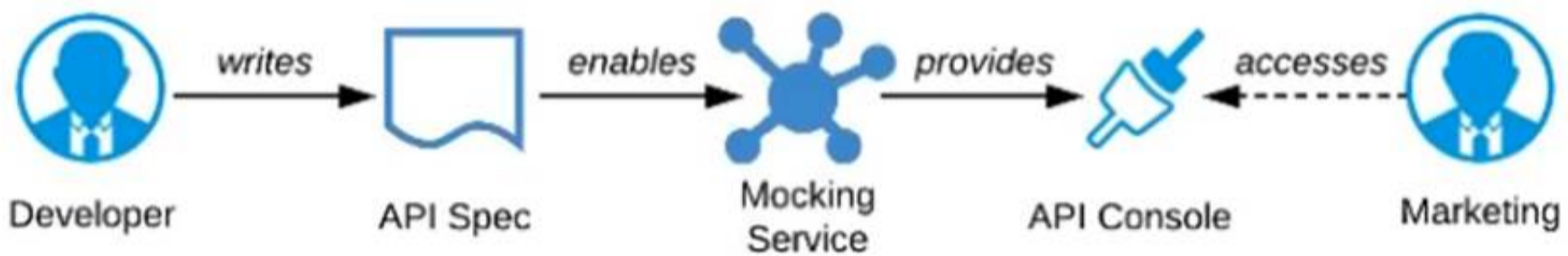
NEW QUESTION 137

Refer to the exhibit.

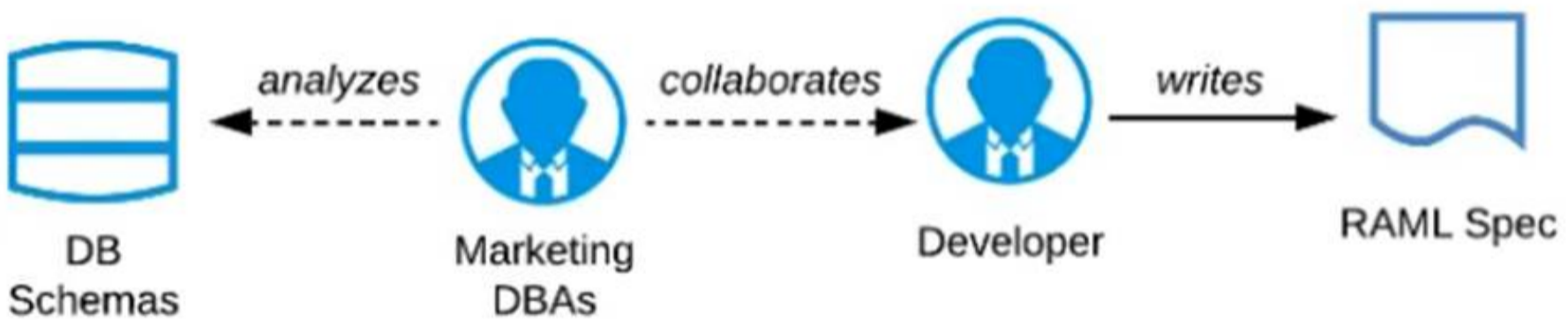


A RAML definition has been proposed for a new Promotions Process API, and has been published to Anypoint Exchange. The Marketing Department, who will be an important consumer of the Promotions API, has important requirements and expectations that must be met. What is the most effective way to use Anypoint Platform features to involve the Marketing Department in this early API design phase?

A) Ask the Marketing Department to interact with a mocking implementation of the API using the automatically generated API Console



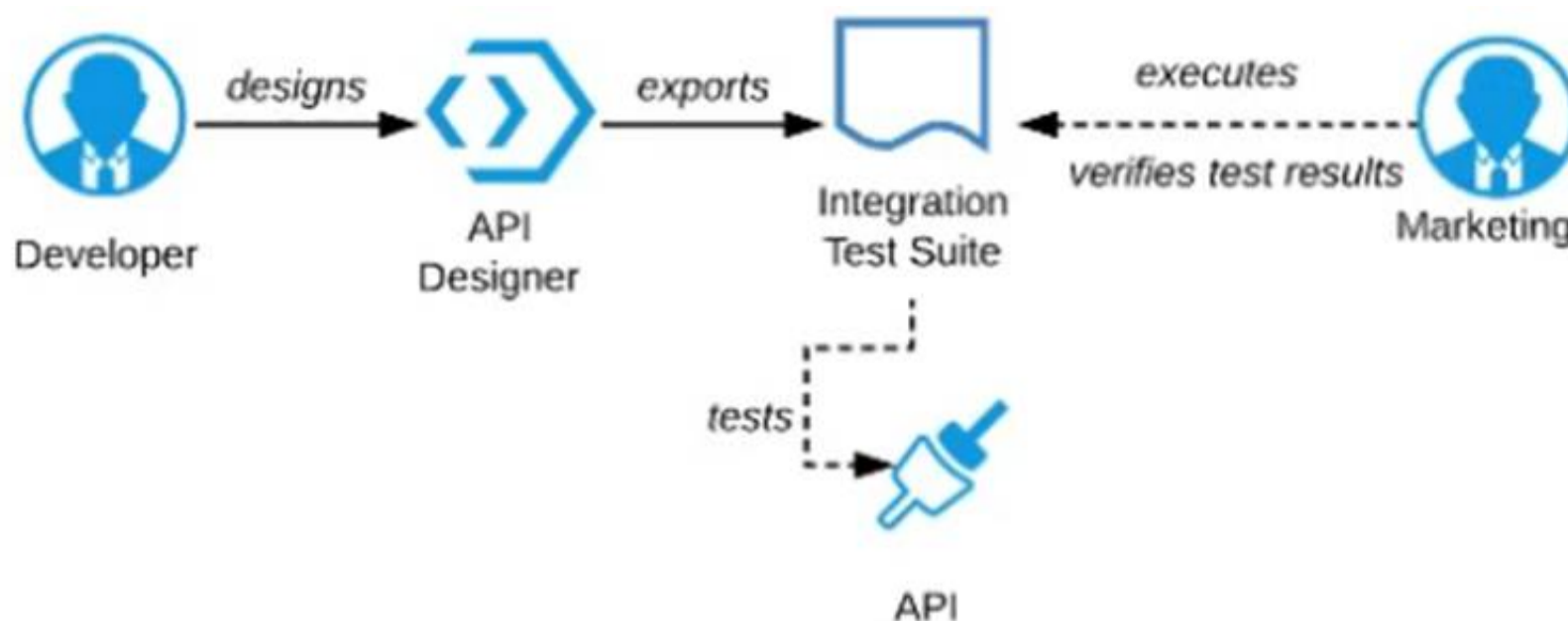
B) Organize a design workshop with the DBAs of the Marketing Department in which the database schema of the Marketing IT systems is translated into RAML



C) Use Anypoint Studio to Implement the API as a Mule application, then deploy that API implementation to CloudHub and ask the Marketing Department to interact with it



D) Export an integration test suite from API designer and have the Marketing Department execute the tests In that suite to ensure they pass



- A. Option A
- B. Option B
- C. Option C
- D. Option D

Answer: A

NEW QUESTION 141

A large organization with an experienced central IT department is getting started using MuleSoft. There is a project to connect a siloed back-end system to a new Customer Relationship Management (CRM) system. The Center for Enablement is coaching them to use API-led connectivity. What action would support the creation of an application network using API-led connectivity?

- A. Invite the business analyst to create a business process model to specify the canonical data model between the two systems
- B. Determine if the new CRM system supports the creation of custom: REST APIs, establishes 4 private network with CloudHub, and supports OAuth 2.0 authentication
- C. To expedite this project, central IT should extend the CRM system and back-end systems to connect to one another using built in integration interfaces
- D. Create a System API to unlock the data on the back-end system using a REST API

Answer: D

NEW QUESTION 146

An eCommerce company is adding a new Product Details feature to their website. A customer will launch the product catalog page, a new Product Details link will appear by product where they can click to retrieve the product detail description. Product detail data is updated with product update releases, once or twice a year. Presently the database response time has been very slow due to high volume. What action retrieves the product details with the lowest response time, fault tolerant, and consistent data?

- A. Select the product details from a database in a Cache scope and return them within the API response
- B. Select the product details from a database and put them in Anypoint MQ; the Anypoint MQ subscriber will receive the product details and return them within the API response
- C. Use an object store to store and retrieve the product details originally read from a database and return them within the API response
- D. Select the product details from a database and return them within the API response

Answer: C

NEW QUESTION 149

An existing Quoting API is defined in RAML and used by REST clients for interacting with the quoting engine. Currently there is a resource defined in the RAML that allows the creation of quotes; however, a new requirement was just received to allow for the updating of existing quotes. Which two actions need to be taken to facilitate this change so it can be processed? Choose 2 answers

- A. Update the API implementation to accommodate the new update request
- B. Remove the old client applications and create new client applications to account for the changes
- C. Update the RAML with new method details for the update request
- D. Deprecate existing versions of the API in Exchange
- E. Add a new API policy to API Manager to allow access to the updated endpoint

Answer: AC

NEW QUESTION 151

A Mule application implements an API. The Mule application has an HTTP Listener whose connector configuration sets the HTTPS protocol and hard-codes the port value. The Mule application is deployed to an Anypoint VPC and uses the CloudHub 1.0 Shared Load Balancer (SLB) for all incoming traffic. Which port number must be assigned to the HTTP Listener's connector configuration so that the Mule application properly receives HTTPS API invocations routed through the SLB?

- A. 8082
- B. 8092
- C. 80
- D. 443

Answer: B

NEW QUESTION 153

When should idempotency be taken into account?

- A. When making requests to update currently locked entities
- B. When storing the results of a previous request for use in response to subsequent requests
- C. When sending concurrent update requests for the same entity
- D. When preventing duplicate processing from multiple sent requests

Answer: D

NEW QUESTION 158

An API experiences a high rate of client requests (TPS) with small message payloads. How can usage limits be imposed on the API based on the type of client application?

- A. Use an SLA-based rate limiting policy and assign a client application to a matching SLA tier based on its type
- B. Use a spike control policy that limits the number of requests for each client application type
- C. Use a cross-origin resource sharing (CORS) policy to limit resource sharing between client applications, configured by the client application type
- D. Use a rate limiting policy and a client ID enforcement policy, each configured by the client application type

Answer: A

NEW QUESTION 162

An organization requires several APIs to be secured with OAuth 2.0, and PingFederate has been identified as the identity provider for API client authorization. The PingFederate Client Provider is configured in access management, and the PingFederate OAuth 2.0 Token Enforcement policy is configured for the API instances required by the organization. The API instances reside in two business groups (Group A and Group B) within the Master Organization (Master Org). What should be done to allow API consumers to access the API instances?

- A. The API administrator should configure the correct client discovery URL in both child business groups, and the API consumer should request access to the API in Ping Identity
- B. The API administrator should grant access to the API consumers by creating contracts in the relevant API instances in API Manager
- C. The API consumer should create a client application and request access to the API in Anypoint Exchange, and the API administrator should approve the request
- D. The API consumer should create a client application and request access to the API in Ping Identity, and the organization's Ping Identity workflow will grant access

Answer: C

NEW QUESTION 165

What is true about automating interactions with Anypoint Platform using tools such as Anypoint Platform REST APIs, Anypoint CU, or the Mule Maven plugin?

- A. Access to Anypoint Platform APIs and Anypoint CU can be controlled separately through the roles and permissions in Anypoint Platform, so that specific users can get access to Anypoint CLI while others get access to the platform APIs
- B. Anypoint Platform APIs can ONLY automate interactions with CloudHub, while the Mule Maven plugin is required for deployment to customer-hosted Mule runtimes
- C. By default, the Anypoint CLI and Mule Maven plugin are NOT included in the Mule runtime, so are NOT available to be used by deployed Mule applications
- D. API policies can be applied to the Anypoint Platform APIs so that ONLY certain LOBs have access to specific functions

Answer: C

NEW QUESTION 167

Which two statements are true about the technology architecture of an Anypoint Virtual Private Cloud (VPC)? Choose 2 answers

- A. Ports 8081 and 8082 are used
- B. CIDR blocks are used
- C. Anypoint VPC is responsible for load balancing the applications
- D. Round-robin load balancing is used to distribute client requests across different applications
- E. By default, HTTP requests can be made from the public internet to workers at port 6091

Answer: BE

NEW QUESTION 170

A team is planning to enhance an Experience API specification, and they are following API-led connectivity design principles. What is their motivation for enhancing the API?

- A. The primary API consumer wants certain kinds of endpoints changed from the Center for Enablement standard to the consumer system standard
- B. The underlying System API is updated to provide more detailed data for several heavily used resources
- C. An IP Allowlist policy is being added to the API instances in the Development and Staging environments
- D. A Canonical Data Model is being adopted that impacts several types of data included in the API

Answer: D

NEW QUESTION 173

A client has several applications running on the Salesforce service cloud. The business requirement for integration is to get daily data changes from Account and

Case Objects. Data needs to be moved to the client's private cloud AWS DynamoDB instance as a single JSON and the business foresees only wanting five attributes from the Account object, which has 219 attributes (some custom) and eight attributes from the Case Object. What design should be used to support the API/ Application data model?

- A. Create separate entities for Account and Case Objects by mimicking all the attributes in SAPI, which are combined by the PAPI and filtered to provide JSON output containing 13 attributes.
- B. Request client's AWS project team to replicate all the attributes and create Account and Case JSON table in DynamoD
- C. Then create separate entities for Account and Case Objects by mimicking all the attributes in SAPI to transfer JSON data to DynamoD for respective Objects
- D. Start implementing an Enterprise Data Model by defining enterprise Account and Case Objects and implement SAPI and DynamoDB tables based on the Enterprise Data Model,
- E. Create separate entities for Account with five attributes and Case with eight attributes in SAPI, which are combined by the PAPI to provide JSON output containing 13 attributes.

Answer: D

NEW QUESTION 174

Which of the following best fits the definition of API-led connectivity?

- A. API-led connectivity is not just an architecture or technology but also a way to organize people and processes for efficient IT delivery in the organization
- B. API-led connectivity is a 3-layered architecture covering Experience, Process and System layers
- C. API-led connectivity is a technology which enabled us to implement Experience, Process and System layer based APIs

Answer: A

NEW QUESTION 175

.....

Relate Links

100% Pass Your MuleSoft-Platform-Architect-I Exam with ExamBible Prep Materials

<https://www.exambible.com/MuleSoft-Platform-Architect-I-exam/>

Contact us

We are proud of our high-quality customer service, which serves you around the clock 24/7.

Viste - <https://www.exambible.com/>