

Exam Questions CISSP

Certified Information Systems Security Professional (CISSP)

<https://www.2passeasy.com/dumps/CISSP/>



NEW QUESTION 1

An important principle of defense in depth is that achieving information security requires a balanced focus on which PRIMARY elements?

- A. Development, testing, and deployment
- B. Prevention, detection, and remediation
- C. People, technology, and operations
- D. Certification, accreditation, and monitoring

Answer: C

NEW QUESTION 2

A company whose Information Technology (IT) services are being delivered from a Tier 4 data center, is preparing a companywide Business Continuity Planning (BCP). Which of the following failures should the IT manager be concerned with?

- A. Application
- B. Storage
- C. Power
- D. Network

Answer: C

NEW QUESTION 3

When assessing an organization's security policy according to standards established by the International Organization for Standardization (ISO) 27001 and 27002, when can management responsibilities be defined?

- A. Only when assets are clearly defined
- B. Only when standards are defined
- C. Only when controls are put in place
- D. Only procedures are defined

Answer: A

NEW QUESTION 4

Which of the following represents the GREATEST risk to data confidentiality?

- A. Network redundancies are not implemented
- B. Security awareness training is not completed
- C. Backup tapes are generated unencrypted
- D. Users have administrative privileges

Answer: C

NEW QUESTION 5

All of the following items should be included in a Business Impact Analysis (BIA) questionnaire EXCEPT questions that

- A. determine the risk of a business interruption occurring
- B. determine the technological dependence of the business processes
- C. Identify the operational impacts of a business interruption
- D. Identify the financial impacts of a business interruption

Answer: B

NEW QUESTION 6

Which of the following actions will reduce risk to a laptop before traveling to a high risk area?

- A. Examine the device for physical tampering
- B. Implement more stringent baseline configurations
- C. Purge or re-image the hard disk drive
- D. Change access codes

Answer: D

NEW QUESTION 7

Intellectual property rights are PRIMARY concerned with which of the following?

- A. Owner's ability to realize financial gain
- B. Owner's ability to maintain copyright
- C. Right of the owner to enjoy their creation
- D. Right of the owner to control delivery method

Answer: D

NEW QUESTION 8

Which of the following types of technologies would be the MOST cost-effective method to provide a reactive control for protecting personnel in public areas?

- A. Install mantraps at the building entrances
- B. Enclose the personnel entry area with polycarbonate plastic
- C. Supply a duress alarm for personnel exposed to the public
- D. Hire a guard to protect the public area

Answer: D

NEW QUESTION 9

Which one of the following affects the classification of data?

- A. Assigned security label
- B. Multilevel Security (MLS) architecture
- C. Minimum query size
- D. Passage of time

Answer: D

NEW QUESTION 10

Which of the following is an effective control in preventing electronic cloning of Radio Frequency Identification (RFID) based access cards?

- A. Personal Identity Verification (PIV)
- B. Cardholder Unique Identifier (CHUID) authentication
- C. Physical Access Control System (PACS) repeated attempt detection
- D. Asymmetric Card Authentication Key (CAK) challenge-response

Answer: C

NEW QUESTION 10

An organization has doubled in size due to a rapid market share increase. The size of the Information Technology (IT) staff has maintained pace with this growth. The organization hires several contractors whose onsite time is limited. The IT department has pushed its limits building servers and rolling out workstations and has a backlog of account management requests.

Which contract is BEST in offloading the task from the IT staff?

- A. Platform as a Service (PaaS)
- B. Identity as a Service (IDaaS)
- C. Desktop as a Service (DaaS)
- D. Software as a Service (SaaS)

Answer: B

NEW QUESTION 14

Which of the following mobile code security models relies only on trust?

- A. Code signing
- B. Class authentication
- C. Sandboxing
- D. Type safety

Answer: A

NEW QUESTION 15

Which security service is served by the process of encrypting plaintext with the sender's private key and decrypting cipher text with the sender's public key?

- A. Confidentiality
- B. Integrity
- C. Identification
- D. Availability

Answer: A

NEW QUESTION 17

Who in the organization is accountable for classification of data information assets?

- A. Data owner
- B. Data architect
- C. Chief Information Security Officer (CISO)
- D. Chief Information Officer (CIO)

Answer: A

NEW QUESTION 22

What is the second phase of Public Key Infrastructure (PKI) key/certificate life-cycle management?

- A. Implementation Phase
- B. Initialization Phase
- C. Cancellation Phase
- D. Issued Phase

Answer: D

Explanation: Topic 4, . Communication and Network Security

NEW QUESTION 27

An external attacker has compromised an organization's network security perimeter and installed a sniffer onto an inside computer. Which of the following is the MOST effective layer of security the organization could have implemented to mitigate the attacker's ability to gain further information?

- A. Implement packet filtering on the network firewalls
- B. Install Host Based Intrusion Detection Systems (HIDS)
- C. Require strong authentication for administrators
- D. Implement logical network segmentation at the switches

Answer: D

NEW QUESTION 31

Which of the following is used by the Point-to-Point Protocol (PPP) to determine packet formats?

- A. Layer 2 Tunneling Protocol (L2TP)
- B. Link Control Protocol (LCP)
- C. Challenge Handshake Authentication Protocol (CHAP)
- D. Packet Transfer Protocol (PTP)

Answer: B

NEW QUESTION 34

What is the purpose of an Internet Protocol (IP) spoofing attack?

- A. To send excessive amounts of data to a process, making it unpredictable
- B. To intercept network traffic without authorization
- C. To disguise the destination address from a target's IP filtering devices
- D. To convince a system that it is communicating with a known entity

Answer: D

NEW QUESTION 37

In a Transmission Control Protocol/Internet Protocol (TCP/IP) stack, which layer is responsible for negotiating and establishing a connection with another node?

- A. Transport layer
- B. Application layer
- C. Network layer
- D. Session layer

Answer: A

NEW QUESTION 38

Which of the following is the BEST network defense against unknown types of attacks or stealth attacks in progress?

- A. Intrusion Prevention Systems (IPS)
- B. Intrusion Detection Systems (IDS)
- C. Stateful firewalls
- D. Network Behavior Analysis (NBA) tools

Answer: D

NEW QUESTION 41

Which of the following factors contributes to the weakness of Wired Equivalent Privacy (WEP) protocol?

- A. WEP uses a small range Initialization Vector (IV)
- B. WEP uses Message Digest 5 (MD5)
- C. WEP uses Diffie-Hellman
- D. WEP does not use any Initialization Vector (IV)

Answer: A

Explanation: Topic 5, . Identity and Access Management (IAM)

NEW QUESTION 46

What is the BEST approach for controlling access to highly sensitive information when employees have the same level of security clearance?

- A. Audit logs
- B. Role-Based Access Control (RBAC)
- C. Two-factor authentication
- D. Application of least privilege

Answer: B

NEW QUESTION 47

Which of the following BEST describes an access control method utilizing cryptographic keys derived from a smart card private key that is embedded within mobile devices?

- A. Derived credential
- B. Temporary security credential
- C. Mobile device credentialing service
- D. Digest authentication

Answer: A

Explanation: Topic 6, . Security Assessment and Testing

NEW QUESTION 50

Which of the following could cause a Denial of Service (DoS) against an authentication system?

- A. Encryption of audit logs
- B. No archiving of audit logs
- C. Hashing of audit logs
- D. Remote access audit logs

Answer: D

NEW QUESTION 53

Which of the following is of GREATEST assistance to auditors when reviewing system configurations?

- A. Change management processes
- B. User administration procedures
- C. Operating System (OS) baselines
- D. System backup documentation

Answer: A

NEW QUESTION 56

Recovery strategies of a Disaster Recovery planning (DRIP) MUST be aligned with which of the following?

- A. Hardware and software compatibility issues
- B. Applications' critically and downtime tolerance
- C. Budget constraints and requirements
- D. Cost/benefit analysis and business objectives

Answer: D

NEW QUESTION 59

A Business Continuity Plan/Disaster Recovery Plan (BCP/DRP) will provide which of the following?

- A. Guaranteed recovery of all business functions
- B. Minimization of the need decision making during a crisis
- C. Insurance against litigation following a disaster
- D. Protection from loss of organization resources

Answer: D

NEW QUESTION 64

A continuous information security monitoring program can BEST reduce risk through which of the following?

- A. Collecting security events and correlating them to identify anomalies
- B. Facilitating system-wide visibility into the activities of critical user accounts
- C. Encompassing people, process, and technology
- D. Logging both scheduled and unscheduled system changes

Answer: B

NEW QUESTION 66

Which of the following is the FIRST step in the incident response process?

- A. Determine the cause of the incident
- B. Disconnect the system involved from the network

- C. Isolate and contain the system involved
- D. Investigate all symptoms to confirm the incident

Answer: D

Explanation: Topic 8, . Software Development Security

NEW QUESTION 68

Which of the following is a web application control that should be put into place to prevent exploitation of Operating System (OS) bugs?

- A. Check arguments in function calls
- B. Test for the security patch level of the environment
- C. Include logging functions
- D. Digitally sign each application module

Answer: B

NEW QUESTION 70

When in the Software Development Life Cycle (SDLC) MUST software security functional requirements be defined?

- A. After the system preliminary design has been developed and the data security categorization has been performed
- B. After the vulnerability analysis has been performed and before the system detailed design begins
- C. After the system preliminary design has been developed and before the data security categorization begins
- D. After the business functional analysis and the data security categorization have been performed

Answer: C

NEW QUESTION 71

A Java program is being developed to read a file from computer A and write it to computer B, using a third computer C. The program is not working as expected. What is the MOST probable security feature of Java preventing the program from operating as intended?

- A. Least privilege
- B. Privilege escalation
- C. Defense in depth
- D. Privilege bracketing

Answer: A

NEW QUESTION 75

The configuration management and control task of the certification and accreditation process is incorporated in which phase of the System Development Life Cycle (SDLC)?

- A. System acquisition and development
- B. System operations and maintenance
- C. System initiation
- D. System implementation

Answer: A

Explanation: Reference <https://online.concordia.edu/computer-science/system-development-life-cycle-phases/>

Topic 9, Exam Set A

NEW QUESTION 78

Which of the following is a method used to prevent Structured Query Language (SQL) injection attacks?

- A. Data compression
- B. Data classification
- C. Data warehousing
- D. Data validation

Answer: D

NEW QUESTION 81

The three PRIMARY requirements for a penetration test are

- A. A defined goal, limited time period, and approval of management
- B. A general objective, unlimited time, and approval of the network administrator
- C. An objective statement, disclosed methodology, and fixed cost
- D. A stated objective, liability waiver, and disclosed methodology

Answer: A

NEW QUESTION 86

Which of the following is the FIRST action that a system administrator should take when it is revealed during a penetration test that everyone in an organization

has unauthorized access to a server holding sensitive data?

- A. Immediately document the finding and report to senior management.
- B. Use system privileges to alter the permissions to secure the server
- C. Continue the testing to its completion and then inform IT management
- D. Terminate the penetration test and pass the finding to the server management team

Answer: A

NEW QUESTION 89

Logical access control programs are MOST effective when they are

- A. approved by external auditors.
- B. combined with security token technology.
- C. maintained by computer security officers.
- D. made part of the operating system.

Answer: D

NEW QUESTION 93

Which of the following is a limitation of the Common Vulnerability Scoring System (CVSS) as it relates to conducting code review?

- A. It has normalized severity ratings.
- B. It has many worksheets and practices to implement.
- C. It aims to calculate the risk of published vulnerabilities.
- D. It requires a robust risk management framework to be put in place.

Answer: C

NEW QUESTION 97

To prevent inadvertent disclosure of restricted information, which of the following would be the LEAST effective process for eliminating data prior to the media being discarded?

- A. Multiple-pass overwriting
- B. Degaussing
- C. High-level formatting
- D. Physical destruction

Answer: C

NEW QUESTION 99

Copyright provides protection for which of the following?

- A. Ideas expressed in literary works
- B. A particular expression of an idea
- C. New and non-obvious inventions
- D. Discoveries of natural phenomena

Answer: B

NEW QUESTION 103

Which layer of the Open Systems Interconnections (OSI) model implementation adds information concerning the logical connection between the sender and receiver?

- A. Physical
- B. Session
- C. Transport
- D. Data-Link

Answer: C

NEW QUESTION 104

What is the term commonly used to refer to a technique of authenticating one machine to another by forging packets from a trusted source?

- A. Man-in-the-Middle (MITM) attack
- B. Smurfing
- C. Session redirect
- D. Spoofing

Answer: D

NEW QUESTION 106

Checking routing information on e-mail to determine it is in a valid format and contains valid information is an example of which of the following anti-spam approaches?

- A. Simple Mail Transfer Protocol (SMTP) blacklist
- B. Reverse Domain Name System (DNS) lookup
- C. Hashing algorithm
- D. Header analysis

Answer: D

NEW QUESTION 111

During an audit of system management, auditors find that the system administrator has not been trained. What actions need to be taken at once to ensure the integrity of systems?

- A. A review of hiring policies and methods of verification of new employees
- B. A review of all departmental procedures
- C. A review of all training procedures to be undertaken
- D. A review of all systems by an experienced administrator

Answer: D

NEW QUESTION 112

Which security action should be taken FIRST when computer personnel are terminated from their jobs?

- A. Remove their computer access
- B. Require them to turn in their badge
- C. Conduct an exit interview
- D. Reduce their physical access level to the facility

Answer: A

NEW QUESTION 117

Which one of these risk factors would be the LEAST important consideration in choosing a building site for a new computer facility?

- A. Vulnerability to crime
- B. Adjacent buildings and businesses
- C. Proximity to an airline flight path
- D. Vulnerability to natural disasters

Answer: C

NEW QUESTION 122

Which of the following is an attacker MOST likely to target to gain privileged access to a system?

- A. Programs that write to system resources
- B. Programs that write to user directories
- C. Log files containing sensitive information
- D. Log files containing system calls

Answer: A

NEW QUESTION 124

The process of mutual authentication involves a computer system authenticating a user and authenticating the

- A. user to the audit process.
- B. computer system to the user.
- C. user's access to all authorized objects.
- D. computer system to the audit process.

Answer: B

NEW QUESTION 125

How can a forensic specialist exclude from examination a large percentage of operating system files residing on a copy of the target system?

- A. Take another backup of the media in question then delete all irrelevant operating system files.
- B. Create a comparison database of cryptographic hashes of the files from a system with the same operating system and patch level.
- C. Generate a message digest (MD) or secure hash on the drive image to detect tampering of the media being examined.
- D. Discard harmless files for the operating system, and known installed programs.

Answer: B

NEW QUESTION 130

Which of the following is the best practice for testing a Business Continuity Plan (BCP)?

- A. Test before the IT Audit
- B. Test when environment changes
- C. Test after installation of security patches
- D. Test after implementation of system patches

Answer: B

NEW QUESTION 131

Which of the following is a strategy of grouping requirements in developing a Security Test and Evaluation (ST&E)?

- A. Standards, policies, and procedures
- B. Tactical, strategic, and financial
- C. Management, operational, and technical
- D. Documentation, observation, and manual

Answer: C

NEW QUESTION 134

A practice that permits the owner of a data object to grant other users access to that object would usually provide

- A. Mandatory Access Control (MAC).
- B. owner-administered control.
- C. owner-dependent access control.
- D. Discretionary Access Control (DAC).

Answer: D

NEW QUESTION 139

Which of the following is a security feature of Global Systems for Mobile Communications (GSM)?

- A. It uses a Subscriber Identity Module (SIM) for authentication.
- B. It uses encrypting techniques for all communications.
- C. The radio spectrum is divided with multiple frequency carriers.
- D. The signal is difficult to read as it provides end-to-end encryption.

Answer: A

NEW QUESTION 140

An auditor carrying out a compliance audit requests passwords that are encrypted in the system to verify that the passwords are compliant with policy. Which of the following is the BEST response to the auditor?

- A. Provide the encrypted passwords and analysis tools to the auditor for analysis.
- B. Analyze the encrypted passwords for the auditor and show them the results.
- C. Demonstrate that non-compliant passwords cannot be created in the system.
- D. Demonstrate that non-compliant passwords cannot be encrypted in the system.

Answer: C

NEW QUESTION 141

Which of the following statements is TRUE for point-to-point microwave transmissions?

- A. They are not subject to interception due to encryption.
- B. Interception only depends on signal strength.
- C. They are too highly multiplexed for meaningful interception.
- D. They are subject to interception by an antenna within proximity.

Answer: D

NEW QUESTION 143

Which one of the following describes granularity?

- A. Maximum number of entries available in an Access Control List (ACL)
- B. Fineness to which a trusted system can authenticate users
- C. Number of violations divided by the number of total accesses
- D. Fineness to which an access control system can be adjusted

Answer: D

NEW QUESTION 147

Which of the following is the MOST important consideration when storing and processing Personally Identifiable Information (PII)?

- A. Encrypt and hash all PII to avoid disclosure and tampering.
- B. Store PII for no more than one year.
- C. Avoid storing PII in a Cloud Service Provider.
- D. Adherence to collection limitation laws and regulations.

Answer: D

NEW QUESTION 151

What would be the PRIMARY concern when designing and coordinating a security assessment for an Automatic Teller Machine (ATM) system?

- A. Physical access to the electronic hardware
- B. Regularly scheduled maintenance process
- C. Availability of the network connection
- D. Processing delays

Answer: A

NEW QUESTION 154

Which one of the following effectively obscures network addresses from external exposure when implemented on a firewall or router?

- A. Network Address Translation (NAT)
- B. Application Proxy
- C. Routing Information Protocol (RIP) Version 2
- D. Address Masking

Answer: A

NEW QUESTION 155

In Business Continuity Planning (BCP), what is the importance of documenting business processes?

- A. Provides senior management with decision-making tools
- B. Establishes and adopts ongoing testing and maintenance strategies
- C. Defines who will perform which functions during a disaster or emergency
- D. Provides an understanding of the organization's interdependencies

Answer: D

NEW QUESTION 160

A security consultant has been asked to research an organization's legal obligations to protect privacy-related information. What kind of reading material is MOST relevant to this project?

- A. The organization's current security policies concerning privacy issues
- B. Privacy-related regulations enforced by governing bodies applicable to the organization
- C. Privacy best practices published by recognized security standards organizations
- D. Organizational procedures designed to protect privacy information

Answer: B

NEW QUESTION 164

The Hardware Abstraction Layer (HAL) is implemented in the

- A. system software.
- B. system hardware.
- C. application software.
- D. network hardware.

Answer: A

NEW QUESTION 166

Which of the following is the FIRST step of a penetration test plan?

- A. Analyzing a network diagram of the target network
- B. Notifying the company's customers
- C. Obtaining the approval of the company's management
- D. Scheduling the penetration test during a period of least impact

Answer: C

NEW QUESTION 169

Which one of the following is a fundamental objective in handling an incident?

- A. To restore control of the affected systems
- B. To confiscate the suspect's computers
- C. To prosecute the attacker
- D. To perform full backups of the system

Answer: A

NEW QUESTION 170

Which type of control recognizes that a transaction amount is excessive in accordance with corporate policy?

- A. Detection
- B. Prevention

- C. Investigation
- D. Correction

Answer: A

NEW QUESTION 173

When transmitting information over public networks, the decision to encrypt it should be based on

- A. the estimated monetary value of the information.
- B. whether there are transient nodes relaying the transmission.
- C. the level of confidentiality of the information.
- D. the volume of the information.

Answer: C

NEW QUESTION 177

Which of the following elements MUST a compliant EU-US Safe Harbor Privacy Policy contain?

- A. An Explanation: of how long the data subject's collected information will be retained for and how it will be eventually disposed.
- B. An Explanation: of who can be contacted at the organization collecting the information if corrections are required by the data subject.
- C. An Explanation: of the regulatory frameworks and compliance standards the information collecting organization adheres to.
- D. An Explanation: of all the technologies employed by the collecting organization in gathering information on the data subject.

Answer: B

NEW QUESTION 181

Which of the following would be the FIRST step to take when implementing a patch management program?

- A. Perform automatic deployment of patches.
- B. Monitor for vulnerabilities and threats.
- C. Prioritize vulnerability remediation.
- D. Create a system inventory.

Answer: D

NEW QUESTION 183

What is the ultimate objective of information classification?

- A. To assign responsibility for mitigating the risk to vulnerable systems
- B. To ensure that information assets receive an appropriate level of protection
- C. To recognize that the value of any item of information may change over time
- D. To recognize the optimal number of classification categories and the benefits to be gained from their use

Answer: B

NEW QUESTION 185

Following the completion of a network security assessment, which of the following can BEST be demonstrated?

- A. The effectiveness of controls can be accurately measured
- B. A penetration test of the network will fail
- C. The network is compliant to industry standards
- D. All unpatched vulnerabilities have been identified

Answer: A

NEW QUESTION 190

While impersonating an Information Security Officer (ISO), an attacker obtains information from company employees about their User IDs and passwords. Which method of information gathering has the attacker used?

- A. Trusted path
- B. Malicious logic
- C. Social engineering
- D. Passive misuse

Answer: C

NEW QUESTION 193

Which of the following defines the key exchange for Internet Protocol Security (IPSec)?

- A. Secure Sockets Layer (SSL) key exchange
- B. Internet Key Exchange (IKE)
- C. Security Key Exchange (SKE)
- D. Internet Control Message Protocol (ICMP)

Answer: B

NEW QUESTION 195

Why MUST a Kerberos server be well protected from unauthorized access?

- A. It contains the keys of all clients.
- B. It always operates at root privilege.
- C. It contains all the tickets for services.
- D. It contains the Internet Protocol (IP) address of all network entities.

Answer: A

NEW QUESTION 199

What maintenance activity is responsible for defining, implementing, and testing updates to application systems?

- A. Program change control
- B. Regression testing
- C. Export exception control
- D. User acceptance testing

Answer: A

NEW QUESTION 201

A software scanner identifies a region within a binary image having high entropy. What does this MOST likely indicate?

- A. Encryption routines
- B. Random number generator
- C. Obfuscated code
- D. Botnet command and control

Answer: C

NEW QUESTION 204

Which of the following actions should be performed when implementing a change to a database schema in a production system?

- A. Test in development, determine dates, notify users, and implement in production
- B. Apply change to production, run in parallel, finalize change in production, and develop a back-out strategy
- C. Perform user acceptance testing in production, have users sign off, and finalize change
- D. Change in development, perform user acceptance testing, develop a back-out strategy, and implement change

Answer: D

NEW QUESTION 206

Who must approve modifications to an organization's production infrastructure configuration?

- A. Technical management
- B. Change control board
- C. System operations
- D. System users

Answer: B

NEW QUESTION 211

An Intrusion Detection System (IDS) is generating alarms that a user account has over 100 failed login attempts per minute. A sniffer is placed on the network, and a variety of passwords for that user are noted. Which of the following is MOST likely occurring?

- A. A dictionary attack
- B. A Denial of Service (DoS) attack
- C. A spoofing attack
- D. A backdoor installation

Answer: A

NEW QUESTION 216

Which of the following is an effective method for avoiding magnetic media data remanence?

- A. Degaussing
- B. Encryption
- C. Data Loss Prevention (DLP)
- D. Authentication

Answer: A

NEW QUESTION 218

What is the MOST important purpose of testing the Disaster Recovery Plan (DRP)?

- A. Evaluating the efficiency of the plan
- B. Identifying the benchmark required for restoration
- C. Validating the effectiveness of the plan
- D. Determining the Recovery Time Objective (RTO)

Answer: C

NEW QUESTION 221

Which of the following is a potential risk when a program runs in privileged mode?

- A. It may serve to create unnecessary code complexity
- B. It may not enforce job separation duties
- C. It may create unnecessary application hardening
- D. It may allow malicious code to be inserted

Answer: D

NEW QUESTION 224

Passive Infrared Sensors (PIR) used in a non-climate controlled environment should

- A. reduce the detected object temperature in relation to the background temperature.
- B. increase the detected object temperature in relation to the background temperature.
- C. automatically compensate for variance in background temperature.
- D. detect objects of a specific temperature independent of the background temperature.

Answer: C

NEW QUESTION 229

When designing a vulnerability test, which one of the following is likely to give the BEST indication of what components currently operate on the network?

- A. Topology diagrams
- B. Mapping tools
- C. Asset register
- D. Ping testing

Answer: B

NEW QUESTION 231

When constructing an Information Protection Policy (IPP), it is important that the stated rules are necessary, adequate, and

- A. flexible.
- B. confidential.
- C. focused.
- D. achievable.

Answer: D

NEW QUESTION 233

Which of the following MUST be done when promoting a security awareness program to senior management?

- A. Show the need for security; identify the message and the audience
- B. Ensure that the security presentation is designed to be all-inclusive
- C. Notify them that their compliance is mandatory
- D. Explain how hackers have enhanced information security

Answer: A

NEW QUESTION 234

Which of the following is the BEST mitigation from phishing attacks?

- A. Network activity monitoring
- B. Security awareness training
- C. Corporate policy and procedures
- D. Strong file and directory permissions

Answer: B

NEW QUESTION 235

An organization is designing a large enterprise-wide document repository system. They plan to have several different classification level areas with increasing levels of controls. The BEST way to ensure document confidentiality in the repository is to

- A. encrypt the contents of the repository and document any exceptions to that requirement.
- B. utilize Intrusion Detection System (IDS) set drop connections if too many requests for documents are detected.
- C. keep individuals with access to high security areas from saving those documents into lower security areas.
- D. require individuals with access to the system to sign Non-Disclosure Agreements (NDA).

Answer: C

NEW QUESTION 239

By allowing storage communications to run on top of Transmission Control Protocol/Internet Protocol (TCP/IP) with a Storage Area Network (SAN), the

- A. confidentiality of the traffic is protected.
- B. opportunity to sniff network traffic exists.
- C. opportunity for device identity spoofing is eliminated.
- D. storage devices are protected against availability attacks.

Answer: B

NEW QUESTION 240

The goal of software assurance in application development is to

- A. enable the development of High Availability (HA) systems.
- B. facilitate the creation of Trusted Computing Base (TCB) systems.
- C. prevent the creation of vulnerable applications.
- D. encourage the development of open source applications.

Answer: C

NEW QUESTION 241

Why must all users be positively identified prior to using multi-user computers?

- A. To provide access to system privileges
- B. To provide access to the operating system
- C. To ensure that unauthorized persons cannot access the computers
- D. To ensure that management knows what users are currently logged on

Answer: C

NEW QUESTION 244

Which of the following wraps the decryption key of a full disk encryption implementation and ties the hard disk drive to a particular device?

- A. Trusted Platform Module (TPM)
- B. Preboot eXecution Environment (PXE)
- C. Key Distribution Center (KDC)
- D. Simple Key-Management for Internet Protocol (SKIP)

Answer: A

NEW QUESTION 248

An engineer in a software company has created a virus creation tool. The tool can generate thousands of polymorphic viruses. The engineer is planning to use the tool in a controlled environment to test the company's next generation virus scanning software. Which would BEST describe the behavior of the engineer and why?

- A. The behavior is ethical because the tool will be used to create a better virus scanner.
- B. The behavior is ethical because any experienced programmer could create such a tool.
- C. The behavior is not ethical because creating any kind of virus is bad.
- D. The behavior is not ethical because such a tool could be leaked on the Internet.

Answer: A

NEW QUESTION 250

Which of the following Disaster Recovery (DR) sites is the MOST difficult to test?

- A. Hot site
- B. Cold site
- C. Warm site
- D. Mobile site

Answer: B

NEW QUESTION 253

Which of the following statements is TRUE of black box testing?

- A. Only the functional specifications are known to the test planner.
- B. Only the source code and the design documents are known to the test planner.
- C. Only the source code and functional specifications are known to the test planner.
- D. Only the design documents and the functional specifications are known to the test planner.

Answer: A

NEW QUESTION 257

Two companies wish to share electronic inventory and purchase orders in a supplier and client relationship. What is the BEST security solution for them?

- A. Write a Service Level Agreement (SLA) for the two companies.
- B. Set up a Virtual Private Network (VPN) between the two companies.
- C. Configure a firewall at the perimeter of each of the two companies.
- D. Establish a File Transfer Protocol (FTP) connection between the two companies.

Answer: B

NEW QUESTION 259

Which Hyper Text Markup Language 5 (HTML5) option presents a security challenge for network data leakage prevention and/or monitoring?

- A. Cross Origin Resource Sharing (CORS)
- B. WebSockets
- C. Document Object Model (DOM) trees
- D. Web Interface Definition Language (IDL)

Answer: B

NEW QUESTION 260

At a MINIMUM, a formal review of any Disaster Recovery Plan (DRP) should be conducted

- A. monthly.
- B. quarterly.
- C. annually.
- D. bi-annually.

Answer: C

NEW QUESTION 262

In Disaster Recovery (DR) and business continuity training, which BEST describes a functional drill?

- A. A full-scale simulation of an emergency and the subsequent response functions
- B. A specific test by response teams of individual emergency response functions
- C. A functional evacuation of personnel
- D. An activation of the backup site

Answer: B

Explanation: Topic 10, Exam Set B

NEW QUESTION 263

Which of the following is a process within a Systems Engineering Life Cycle (SELC) stage?

- A. Requirements Analysis
- B. Development and Deployment
- C. Production Operations
- D. Utilization Support

Answer: A

NEW QUESTION 265

Which of the following violates identity and access management best practices?

- A. User accounts
- B. System accounts
- C. Generic accounts
- D. Privileged accounts

Answer: C

NEW QUESTION 269

Refer to the information below to answer the question.

A large, multinational organization has decided to outsource a portion of their Information Technology (IT) organization to a third-party provider's facility. This provider will be responsible for the design, development, testing, and support of several critical, customer-based applications used by the organization. The organization should ensure that the third party's physical security controls are in place so that they

- A. are more rigorous than the original controls.
- B. are able to limit access to sensitive information.
- C. allow access by the organization staff at any time.
- D. cannot be accessed by subcontractors of the third party.

Answer: B

NEW QUESTION 273

Which of the following describes the concept of a Single Sign-On (SSO) system?

- A. Users are authenticated to one system at a time.
- B. Users are identified to multiple systems with several credentials.
- C. Users are authenticated to multiple systems with one login.
- D. Only one user is using the system at a time.

Answer: C

NEW QUESTION 276

Which of the following is an example of two-factor authentication?

- A. Retina scan and a palm print
- B. Fingerprint and a smart card
- C. Magnetic stripe card and an ID badge
- D. Password and Completely Automated Public Turing test to tell Computers and Humans Apart(CAPTCHA)

Answer: B

NEW QUESTION 281

When dealing with compliance with the Payment Card Industry-Data Security Standard (PCI-DSS), an organization that shares card holder information with a service provider MUST do which of the following?

- A. Perform a service provider PCI-DSS assessment on a yearly basis.
- B. Validate the service provider's PCI-DSS compliance status on a regular basis.
- C. Validate that the service providers security policies are in alignment with those of the organization.
- D. Ensure that the service provider updates and tests its Disaster Recovery Plan (DRP) on a yearly basis.

Answer: B

NEW QUESTION 284

Which of the following provides effective management assurance for a Wireless Local Area Network (WLAN)?

- A. Maintaining an inventory of authorized Access Points (AP) and connecting devices
- B. Setting the radio frequency to the minimum range required
- C. Establishing a Virtual Private Network (VPN) tunnel between the WLAN client device and a VPN concentrator
- D. Verifying that all default passwords have been changed

Answer: A

NEW QUESTION 288

What physical characteristic does a retinal scan biometric device measure?

- A. The amount of light reflected by the retina
- B. The size, curvature, and shape of the retina
- C. The pattern of blood vessels at the back of the eye
- D. The pattern of light receptors at the back of the eye

Answer: C

NEW QUESTION 292

Refer to the information below to answer the question.

An organization experiencing a negative financial impact is forced to reduce budgets and the number of Information Technology (IT) operations staff performing basic logical access security administration

functions. Security processes have been tightly integrated into normal IT operations and are not separate and distinct roles.

Which of the following will be the PRIMARY security concern as staff is released from the organization?

- A. Inadequate IT support
- B. Loss of data and separation of duties
- C. Undocumented security controls
- D. Additional responsibilities for remaining staff

Answer: B

NEW QUESTION 297

An online retail company has formulated a record retention schedule for customer transactions. Which of the following is a valid reason a customer transaction is kept beyond the retention schedule?

- A. Pending legal hold
- B. Long term data mining needs
- C. Customer makes request to retain
- D. Useful for future business initiatives

Answer: A

NEW QUESTION 299

What does secure authentication with logging provide?

- A. Data integrity
- B. Access accountability
- C. Encryption logging format
- D. Segregation of duties

Answer: B

NEW QUESTION 304

Refer to the information below to answer the question.

During the investigation of a security incident, it is determined that an unauthorized individual accessed a system which hosts a database containing financial information.

If it is discovered that large quantities of information have been copied by the unauthorized individual, what attribute of the data has been compromised?

- A. Availability
- B. Integrity
- C. Accountability
- D. Confidentiality

Answer: D

NEW QUESTION 308

Refer to the information below to answer the question.

A security practitioner detects client-based attacks on the organization's network. A plan will be necessary to address these concerns.

In addition to web browsers, what PRIMARY areas need to be addressed concerning mobile code used for malicious purposes?

- A. Text editors, database, and Internet phone applications
- B. Email, presentation, and database applications
- C. Image libraries, presentation and spreadsheet applications
- D. Email, media players, and instant messaging applications

Answer: D

NEW QUESTION 313

Which item below is a federated identity standard?

- A. 802.11i
- B. Kerberos
- C. Lightweight Directory Access Protocol (LDAP)
- D. Security Assertion Markup Language (SAML)

Answer: D

NEW QUESTION 317

Which of the following is the MOST difficult to enforce when using cloud computing?

- A. Data access
- B. Data backup
- C. Data recovery
- D. Data disposal

Answer: D

NEW QUESTION 322

Refer to the information below to answer the question.

A security practitioner detects client-based attacks on the organization's network. A plan will be necessary to address these concerns.

What MUST the plan include in order to reduce client-side exploitation?

- A. Approved web browsers
- B. Network firewall procedures
- C. Proxy configuration
- D. Employee education

Answer: D

NEW QUESTION 325

What is the MOST effective method for gaining unauthorized access to a file protected with a long complex password?

- A. Brute force attack
- B. Frequency analysis
- C. Social engineering
- D. Dictionary attack

Answer: C

NEW QUESTION 328

Which of the following are required components for implementing software configuration management systems?

- A. Audit control and signoff
- B. User training and acceptance
- C. Rollback and recovery processes
- D. Regression testing and evaluation

Answer: C

NEW QUESTION 329

Which of the following is required to determine classification and ownership?

- A. System and data resources are properly identified
- B. Access violations are logged and audited
- C. Data file references are identified and linked
- D. System security controls are fully integrated

Answer: A

NEW QUESTION 333

Refer to the information below to answer the question.

A large, multinational organization has decided to outsource a portion of their Information Technology (IT) organization to a third-party provider's facility. This provider will be responsible for the design, development, testing, and support of several critical, customer-based applications used by the organization. The third party needs to have

- A. processes that are identical to that of the organization doing the outsourcing.
- B. access to the original personnel that were on staff at the organization.
- C. the ability to maintain all of the applications in languages they are familiar with.
- D. access to the skill sets consistent with the programming languages used by the organization.

Answer: D

NEW QUESTION 335

Which of the following BEST mitigates a replay attack against a system using identity federation and Security Assertion Markup Language (SAML) implementation?

- A. Two-factor authentication
- B. Digital certificates and hardware tokens
- C. Timed sessions and Secure Socket Layer (SSL)
- D. Passwords with alpha-numeric and special characters

Answer: C

NEW QUESTION 340

Given the various means to protect physical and logical assets, match the access management area to the technology.

Area		Technolog
Facilities		Encryption
Devices		Window
Information		Firewall
Systems		Authenticatid

Answer:

Explanation:

Area		Technolog
Facilities	Information	Encryption
Devices	Facilities	Window
Information	Devices	Firewall
Systems	Systems	Authenticatid

NEW QUESTION 344

Refer to the information below to answer the question.

A large organization uses unique identifiers and requires them at the start of every system session. Application access is based on job classification. The organization is subject to periodic independent reviews of access controls and violations. The organization uses wired and wireless networks and remote access. The organization also uses secure connections to branch offices and secure backup and recovery strategies for selected information and processes. What MUST the access control logs contain in addition to the identifier?

- A. Time of the access
- B. Security classification
- C. Denied access attempts
- D. Associated clearance

Answer: A

NEW QUESTION 345

What is the BEST first step for determining if the appropriate security controls are in place for protecting data at rest?

- A. Identify regulatory requirements
- B. Conduct a risk assessment
- C. Determine business drivers
- D. Review the security baseline configuration

Answer: B

NEW QUESTION 348

What is the PRIMARY advantage of using automated application security testing tools?

- A. The application can be protected in the production environment.
- B. Large amounts of code can be tested using fewer resources.
- C. The application will fail less when tested using these tools.
- D. Detailed testing of code functions can be performed.

Answer: B

NEW QUESTION 351

What component of a web application that stores the session state in a cookie can be bypassed by an attacker?

- A. An initialization check
- B. An identification check
- C. An authentication check
- D. An authorization check

Answer: C

NEW QUESTION 356

What is a common challenge when implementing Security Assertion Markup Language (SAML) for identity integration between on-premise environment and an external identity provider service?

- A. Some users are not provisioned into the service.
- B. SAML tokens are provided by the on-premise identity provider.
- C. Single users cannot be revoked from the service.
- D. SAML tokens contain user information.

Answer: A

NEW QUESTION 358

A business has implemented Payment Card Industry Data Security Standard (PCI-DSS) compliant handheld credit card processing on their Wireless Local Area Network (WLAN) topology. The network team partitioned the WLAN to create a private segment for credit card processing using a firewall to control device access and route traffic to the card processor on the Internet. What components are in the scope of PCI-DSS?

- A. The entire enterprise network infrastructure.
- B. The handheld devices, wireless access points and border gateway.
- C. The end devices, wireless access points, WLAN, switches, management console, and firewall.
- D. The end devices, wireless access points, WLAN, switches, management console, and Internet

Answer: C

NEW QUESTION 363

A security manager has noticed an inconsistent application of server security controls resulting in vulnerabilities on critical systems. What is the MOST likely cause of this issue?

- A. A lack of baseline standards
- B. Improper documentation of security guidelines
- C. A poorly designed security policy communication program
- D. Host-based Intrusion Prevention System (HIPS) policies are ineffective

Answer:

A

NEW QUESTION 368

Refer to the information below to answer the question.

A new employee is given a laptop computer with full administrator access. This employee does not have a personal computer at home and has a child that uses the computer to send and receive e-mail, search the web, and use instant messaging. The organization's Information Technology (IT) department discovers that a peer-to-peer program has been installed on the computer using the employee's access. Which of the following documents explains the proper use of the organization's assets?

- A. Human resources policy
- B. Acceptable use policy
- C. Code of ethics
- D. Access control policy

Answer: B

NEW QUESTION 371

Which of the following is a critical factor for implementing a successful data classification program?

- A. Executive sponsorship
- B. Information security sponsorship
- C. End-user acceptance
- D. Internal audit acceptance

Answer: A

NEW QUESTION 373

Which of the following is the BEST solution to provide redundancy for telecommunications links?

- A. Provide multiple links from the same telecommunications vendor.
- B. Ensure that the telecommunications links connect to the network in one location.
- C. Ensure that the telecommunications links connect to the network in multiple locations.
- D. Provide multiple links from multiple telecommunications vendors.

Answer: D

NEW QUESTION 378

Which of the following actions MUST be taken if a vulnerability is discovered during the maintenance stage in a System Development Life Cycle (SDLC)?

- A. Make changes following principle and design guidelines.
- B. Stop the application until the vulnerability is fixed.
- C. Report the vulnerability to product owner.
- D. Monitor the application and review code.

Answer: C

NEW QUESTION 379

Refer to the information below to answer the question.

An organization experiencing a negative financial impact is forced to reduce budgets and the number of Information Technology (IT) operations staff performing basic logical access security administration functions. Security processes have been tightly integrated into normal IT operations and are not separate and distinct roles.

Which of the following will indicate where the IT budget is BEST allocated during this time?

- A. Policies
- B. Frameworks
- C. Metrics
- D. Guidelines

Answer: C

NEW QUESTION 383

Refer to the information below to answer the question.

A security practitioner detects client-based attacks on the organization's network. A plan will be necessary to address these concerns. In the plan, what is the BEST approach to mitigate future internal client-based attacks?

- A. Block all client side web exploits at the perimeter.
- B. Remove all non-essential client-side web services from the network.
- C. Screen for harmful exploits of client-side services before implementation.
- D. Harden the client image before deployment.

Answer: D

NEW QUESTION 386

When implementing a secure wireless network, which of the following supports authentication and authorization for individual client endpoints?

- A. Temporal Key Integrity Protocol (TKIP)

- B. Wi-Fi Protected Access (WPA) Pre-Shared Key (PSK)
- C. Wi-Fi Protected Access 2 (WPA2) Enterprise
- D. Counter Mode with Cipher Block Chaining Message Authentication Code Protocol (CCMP)

Answer: C

NEW QUESTION 390

With data labeling, which of the following MUST be the key decision maker?

- A. Information security
- B. Departmental management
- C. Data custodian
- D. Data owner

Answer: D

NEW QUESTION 393

Refer to the information below to answer the question.

An organization experiencing a negative financial impact is forced to reduce budgets and the number of Information Technology (IT) operations staff performing basic logical access security administration functions. Security processes have been tightly integrated into normal IT operations and are not separate and distinct roles.

Which of the following will MOST likely allow the organization to keep risk at an acceptable level?

- A. Increasing the amount of audits performed by third parties
- B. Removing privileged accounts from operational staff
- C. Assigning privileged functions to appropriate staff
- D. Separating the security function into distinct roles

Answer: C

NEW QUESTION 398

Refer to the information below to answer the question.

An organization has hired an information security officer to lead their security department. The officer has adequate people resources but is lacking the other necessary components to have an effective security program. There are numerous initiatives requiring security involvement.

Which of the following is considered the MOST important priority for the information security officer?

- A. Formal acceptance of the security strategy
- B. Disciplinary actions taken against unethical behavior
- C. Development of an awareness program for new employees
- D. Audit of all organization system configurations for faults

Answer: A

NEW QUESTION 399

Which of the following BEST describes Recovery Time Objective (RTO)?

- A. Time of data validation after disaster
- B. Time of data restoration from backup after disaster
- C. Time of application resumption after disaster
- D. Time of application verification after disaster

Answer: C

NEW QUESTION 403

A large bank deploys hardware tokens to all customers that use their online banking system. The token generates and displays a six digit numeric password every 60 seconds. The customers must log into their bank accounts using this numeric password. This is an example of

- A. asynchronous token.
- B. Single Sign-On (SSO) token.
- C. single factor authentication token.
- D. synchronous token.

Answer: D

NEW QUESTION 404

A system is developed so that its business users can perform business functions but not user administration functions. Application administrators can perform administration functions but not user business functions. These capabilities are BEST described as

- A. least privilege.
- B. rule based access controls.
- C. Mandatory Access Control (MAC).
- D. separation of duties.

Answer: D

NEW QUESTION 407

Which of the following problems is not addressed by using OAuth (Open Standard to Authorization) 2.0 to integrate a third-party identity provider for a service?

- A. Resource Servers are required to use passwords to authenticate end users.
- B. Revocation of access of some users of the third party instead of all the users from the third party.
- C. Compromise of the third party means compromise of all the users in the service.
- D. Guest users need to authenticate with the third party identity provider.

Answer: C

NEW QUESTION 410

Refer to the information below to answer the question.

A large organization uses unique identifiers and requires them at the start of every system session. Application access is based on job classification. The organization is subject to periodic independent reviews of access controls and violations. The organization uses wired and wireless networks and remote access. The organization also uses secure connections to branch offices and secure backup and recovery strategies for selected information and processes. Following best practice, where should the permitted access for each department and job classification combination be specified?

- A. Security procedures
- B. Security standards
- C. Human resource policy
- D. Human resource standards

Answer: B

NEW QUESTION 415

Refer to the information below to answer the question.

A new employee is given a laptop computer with full administrator access. This employee does not have a personal computer at home and has a child that uses the computer to send and receive e-mail, search the web, and use instant messaging. The organization's Information Technology (IT) department discovers that a peer-to-peer program has been installed on the computer using the employee's access.

Which of the following could have MOST likely prevented the Peer-to-Peer (P2P) program from being installed on the computer?

- A. Removing employee's full access to the computer
- B. Supervising their child's use of the computer
- C. Limiting computer's access to only the employee
- D. Ensuring employee understands their business conduct guidelines

Answer: A

NEW QUESTION 420

Refer to the information below to answer the question.

A new employee is given a laptop computer with full administrator access. This employee does not have a personal computer at home and has a child that uses the computer to send and receive e-mail, search the web, and use instant messaging. The organization's Information Technology (IT) department discovers that a peer-to-peer program has been installed on the computer using the employee's access.

Which of the following methods is the MOST effective way of removing the Peer-to-Peer (P2P) program from the computer?

- A. Run software uninstall
- B. Re-image the computer
- C. Find and remove all installation files
- D. Delete all cookies stored in the web browser cache

Answer: B

NEW QUESTION 422

A Business Continuity Plan (BCP) is based on

- A. the policy and procedures manual.
- B. an existing BCP from a similar organization.
- C. a review of the business processes and procedures.
- D. a standard checklist of required items and objectives.

Answer: C

NEW QUESTION 425

Place the following information classification steps in sequential order.

Steps		Order
Declassify information when appropriate		Step
Apply the appropriate security markings		Step
Conduct periodic classification reviews		Step
Assign a classification level		Step
Document the information assets		Step

Answer:

Explanation:

Steps		Order
Declassify information when appropriate	Document the information assets	Step
Apply the appropriate security markings	Assign a classification level	Step
Conduct periodic classification reviews	Apply the appropriate security markings	Step
Assign a classification level	Conduct periodic classification reviews	Step
Document the information assets	Declassify information when appropriate	Step

NEW QUESTION 427

Which of the following is the MAIN goal of a data retention policy?

- A. Ensure that data is destroyed properly.
- B. Ensure that data recovery can be done on the data.
- C. Ensure the integrity and availability of data for a predetermined amount of time.
- D. Ensure the integrity and confidentiality of data for a predetermined amount of time.

Answer: C

NEW QUESTION 432

Refer to the information below to answer the question.

A security practitioner detects client-based attacks on the organization's network. A plan will be necessary to address these concerns. What is the BEST reason for the organization to pursue a plan to mitigate client-based attacks?

- A. Client privilege administration is inherently weaker than server privilege administration.
- B. Client hardening and management is easier on clients than on servers.
- C. Client-based attacks are more common and easier to exploit than server and network based attacks.
- D. Client-based attacks have higher financial impact.

Answer: C

NEW QUESTION 433

Refer to the information below to answer the question.

A large organization uses unique identifiers and requires them at the start of every system session. Application access is based on job classification. The organization is subject to periodic independent reviews of access controls and violations. The organization uses wired and wireless networks and remote access. The organization also uses secure connections to branch offices and secure backup and recovery strategies for selected information and processes. In addition to authentication at the start of the user session, best practice would require re-authentication

- A. periodically during a session.

- B. for each business process.
- C. at system sign-off.
- D. after a period of inactivity.

Answer: D

NEW QUESTION 436

A large university needs to enable student access to university resources from their homes. Which of the following provides the BEST option for low maintenance and ease of deployment?

- A. Provide students with Internet Protocol Security (IPSec) Virtual Private Network (VPN) client software.
- B. Use Secure Sockets Layer (SSL) VPN technology.
- C. Use Secure Shell (SSH) with public/private keys.
- D. Require students to purchase home router capable of VPN.

Answer: B

NEW QUESTION 437

Refer to the information below to answer the question.

In a Multilevel Security (MLS) system, the following sensitivity labels are used in increasing levels of sensitivity: restricted, confidential, secret, top secret. Table A lists the clearance levels for four users, while Table B lists the security classes of four different files.

User	Clearance Level
A	Restricted
B	Confidential
C	Secret
D	Top Secret

Files	Security Class
1	Restricted
2	Confidential
3	Secret
4	Top Secret

In a Bell-LaPadula system, which user has the MOST restrictions when writing data to any of the four files?

- A. User A
- B. User B
- C. User C
- D. User D

Answer: D

NEW QUESTION 439

Refer to the information below to answer the question.

An organization has hired an information security officer to lead their security department. The officer has adequate people resources but is lacking the other necessary components to have an effective security program. There are numerous initiatives requiring security involvement. The security program can be considered effective when

- A. vulnerabilities are proactively identified.
- B. audits are regularly performed and reviewed.
- C. backups are regularly performed and validated.
- D. risk is lowered to an acceptable level.

Answer: D

NEW QUESTION 440

An organization decides to implement a partial Public Key Infrastructure (PKI) with only the servers having digital certificates. What is the security benefit of this implementation?

- A. Clients can authenticate themselves to the servers.
- B. Mutual authentication is available between the clients and servers.
- C. Servers are able to issue digital certificates to the client.
- D. Servers can authenticate themselves to the client.

Answer: D

NEW QUESTION 441

Which of the following secure startup mechanisms are PRIMARILY designed to thwart attacks?

- A. Timing
- B. Cold boot
- C. Side channel
- D. Acoustic cryptanalysis

Answer: B

NEW QUESTION 444

From a security perspective, which of the following is a best practice to configure a Domain Name Service (DNS) system?

- A. Configure secondary servers to use the primary server as a zone forwarder.
- B. Block all Transmission Control Protocol (TCP) connections.
- C. Disable all recursive queries on the name servers.
- D. Limit zone transfers to authorized devices.

Answer: D

NEW QUESTION 446

An organization's data policy MUST include a data retention period which is based on

- A. application dismissal.
- B. business procedures.
- C. digital certificates expiration.
- D. regulatory compliance.

Answer: D

NEW QUESTION 450

Refer to the information below to answer the question.

An organization experiencing a negative financial impact is forced to reduce budgets and the number of Information Technology (IT) operations staff performing basic logical access security administration functions. Security processes have been tightly integrated into normal IT operations and are not separate and distinct roles.

When determining appropriate resource allocation, which of the following is MOST important to monitor?

- A. Number of system compromises
- B. Number of audit findings
- C. Number of staff reductions
- D. Number of additional assets

Answer: B

NEW QUESTION 451

A risk assessment report recommends upgrading all perimeter firewalls to mitigate a particular finding. Which of the following BEST supports this recommendation?

- A. The inherent risk is greater than the residual risk.
- B. The Annualized Loss Expectancy (ALE) approaches zero.
- C. The expected loss from the risk exceeds mitigation costs.
- D. The infrastructure budget can easily cover the upgrade costs.

Answer: C

NEW QUESTION 456

During an audit, the auditor finds evidence of potentially illegal activity. Which of the following is the MOST appropriate action to take?

- A. Immediately call the police
- B. Work with the client to resolve the issue internally
- C. Advise the person performing the illegal activity to cease and desist
- D. Work with the client to report the activity to the appropriate authority

Answer: D

NEW QUESTION 460

Refer to the information below to answer the question.

A large, multinational organization has decided to outsource a portion of their Information Technology (IT) organization to a third-party provider's facility. This provider will be responsible for the design, development, testing, and support of several critical, customer-based applications used by the organization.

What additional considerations are there if the third party is located in a different country?

- A. The organizational structure of the third party and how it may impact timelines within the organization
- B. The ability of the third party to respond to the organization in a timely manner and with accurate information
- C. The effects of transborder data flows and customer expectations regarding the storage or processing of their data
- D. The quantity of data that must be provided to the third party and how it is to be used

Answer: C

NEW QUESTION 461

Refer to the information below to answer the question.

An organization has hired an information security officer to lead their security department. The officer has adequate people resources but is lacking the other necessary components to have an effective security program. There are numerous initiatives requiring security involvement.

The effectiveness of the security program can PRIMARILY be measured through

- A. audit findings.
- B. risk elimination.
- C. audit requirements.
- D. customer satisfaction.

Answer: A

NEW QUESTION 465

When using third-party software developers, which of the following is the MOST effective method of providing software development Quality Assurance (QA)?

- A. Retain intellectual property rights through contractual wording.
- B. Perform overlapping code reviews by both parties.
- C. Verify that the contractors attend development planning meetings.
- D. Create a separate contractor development environment.

Answer: B

NEW QUESTION 468

Which of the following is critical for establishing an initial baseline for software components in the operation and maintenance of applications?

- A. Application monitoring procedures
- B. Configuration control procedures
- C. Security audit procedures
- D. Software patching procedures

Answer: B

NEW QUESTION 469

What is the MOST important reason to configure unique user IDs?

- A. Supporting accountability
- B. Reducing authentication errors
- C. Preventing password compromise
- D. Supporting Single Sign On (SSO)

Answer: A

NEW QUESTION 472

Refer to the information below to answer the question.

During the investigation of a security incident, it is determined that an unauthorized individual accessed a system which hosts a database containing financial information.

Aside from the potential records which may have been viewed, which of the following should be the PRIMARY concern regarding the database information?

- A. Unauthorized database changes
- B. Integrity of security logs
- C. Availability of the database
- D. Confidentiality of the incident

Answer: A

NEW QUESTION 475

Refer to the information below to answer the question.

Desktop computers in an organization were sanitized for re-use in an equivalent security environment. The data was destroyed in accordance with organizational policy and all marking and other external indications of the sensitivity of the data that was formerly stored on the magnetic drives were removed.

Organizational policy requires the deletion of user data from Personal Digital Assistant (PDA) devices before disposal. It may not be possible to delete the user data if the device is malfunctioning. Which destruction method below provides the BEST assurance that the data has been removed?

- A. Knurling
- B. Grinding
- C. Shredding
- D. Degaussing

Answer: C

Explanation: Topic 11, Exam Set C

NEW QUESTION 478

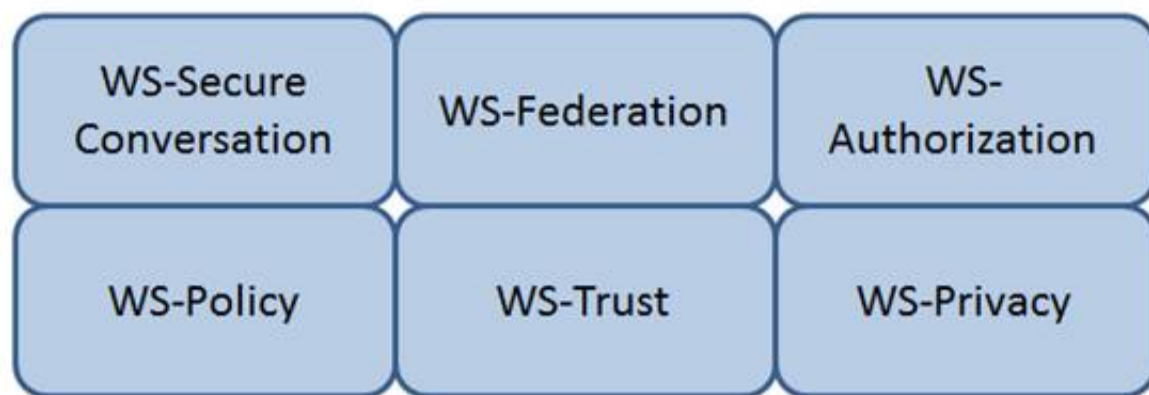
What is the process called when impact values are assigned to the security objectives for information types?

- A. Qualitative analysis
- B. Quantitative analysis
- C. Remediation
- D. System security categorization

Answer: D

NEW QUESTION 479

Which Web Services Security (WS-Security) specification handles the management of security tokens and the underlying policies for granting access? Click on the correct specification in the image below.



Answer:

Explanation: WS-Authorization

Reference: Java Web Services: Up and Running" By Martin Kalin page 228

NEW QUESTION 482

Which of the following BEST describes the purpose of performing security certification?

- A. To identify system threats, vulnerabilities, and acceptable level of risk
- B. To formalize the confirmation of compliance to security policies and standards
- C. To formalize the confirmation of completed risk mitigation and risk analysis
- D. To verify that system architecture and interconnections with other systems are effectively implemented

Answer: B

NEW QUESTION 485

The application of which of the following standards would BEST reduce the potential for data breaches?

- A. ISO 9000
- B. ISO 20121
- C. ISO 26000
- D. ISO 27001

Answer: D

NEW QUESTION 489

What is the MOST effective method of testing custom application code?

- A. Negative testing
- B. White box testing
- C. Penetration testing
- D. Black box testing

Answer: B

NEW QUESTION 494

Which of the following is generally indicative of a replay attack when dealing with biometric authentication?

- A. False Acceptance Rate (FAR) is greater than 1 in 100,000
- B. False Rejection Rate (FRR) is greater than 5 in 100
- C. Inadequately specified templates
- D. Exact match

Answer: D

NEW QUESTION 499

What is the GREATEST challenge to identifying data leaks?

- A. Available technical tools that enable user activity monitoring.
- B. Documented asset classification policy and clear labeling of assets.

- C. Senior management cooperation in investigating suspicious behavior.
- D. Law enforcement participation to apprehend and interrogate suspects.

Answer: B

NEW QUESTION 501

Which of the following BEST describes a Protection Profile (PP)?

- A. A document that expresses an implementation independent set of security requirements for an IT product that meets specific consumer needs.
- B. A document that is used to develop an IT security product from its security requirements definition.
- C. A document that expresses an implementation dependent set of security requirements which contains only the security functional requirements.
- D. A document that represents evaluated products where there is a one-to-one correspondence between a PP and a Security Target (ST).

Answer: A

NEW QUESTION 506

Changes to a Trusted Computing Base (TCB) system that could impact the security posture of that system and trigger a recertification activity are documented in the

- A. security impact analysis.
- B. structured code review.
- C. routine self assessment.
- D. cost benefit analysis.

Answer: A

NEW QUESTION 510

Which of the following statements is TRUE regarding state-based analysis as a functional software testing technique?

- A. It is useful for testing communications protocols and graphical user interfaces.
- B. It is characterized by the stateless behavior of a process implemented in a function.
- C. Test inputs are obtained from the derived boundaries of the given functional specifications.
- D. An entire partition can be covered by considering only one representative value from that partition.

Answer: A

NEW QUESTION 513

What should happen when an emergency change to a system must be performed?

- A. The change must be given priority at the next meeting of the change control board.
- B. Testing and approvals must be performed quickly.
- C. The change must be performed immediately and then submitted to the change board.
- D. The change is performed and a notation is made in the system log.

Answer: B

NEW QUESTION 514

Which of the following is a reason to use manual patch installation instead of automated patch management?

- A. The cost required to install patches will be reduced.
- B. The time during which systems will remain vulnerable to an exploit will be decreased.
- C. The likelihood of system or application incompatibilities will be decreased.
- D. The ability to cover large geographic areas is increased.

Answer: C

NEW QUESTION 517

If compromised, which of the following would lead to the exploitation of multiple virtual machines?

- A. Virtual device drivers
- B. Virtual machine monitor
- C. Virtual machine instance
- D. Virtual machine file system

Answer: B

NEW QUESTION 522

Which of the following has the GREATEST impact on an organization's security posture?

- A. International and country-specific compliance requirements
- B. Security violations by employees and contractors
- C. Resource constraints due to increasing costs of supporting security
- D. Audit findings related to employee access and permissions process

Answer: A

NEW QUESTION 523

Which of the following PRIMARILY contributes to security incidents in web-based applications?

- A. Systems administration and operating systems
- B. System incompatibility and patch management
- C. Third-party applications and change controls
- D. Improper stress testing and application interfaces

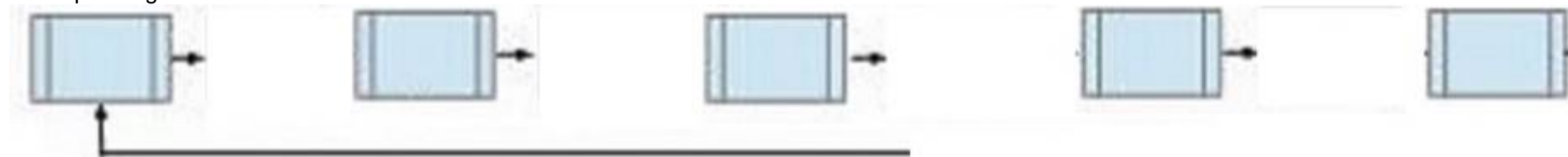
Answer: C

NEW QUESTION 527

During the risk assessment phase of the project the CISO discovered that a college within the University is collecting Protected Health Information (PHI) data via an application that was developed in-house. The college collecting this data is fully aware of the regulations for Health Insurance Portability and Accountability Act (HIPAA) and is fully compliant.

What is the best approach for the CISO?

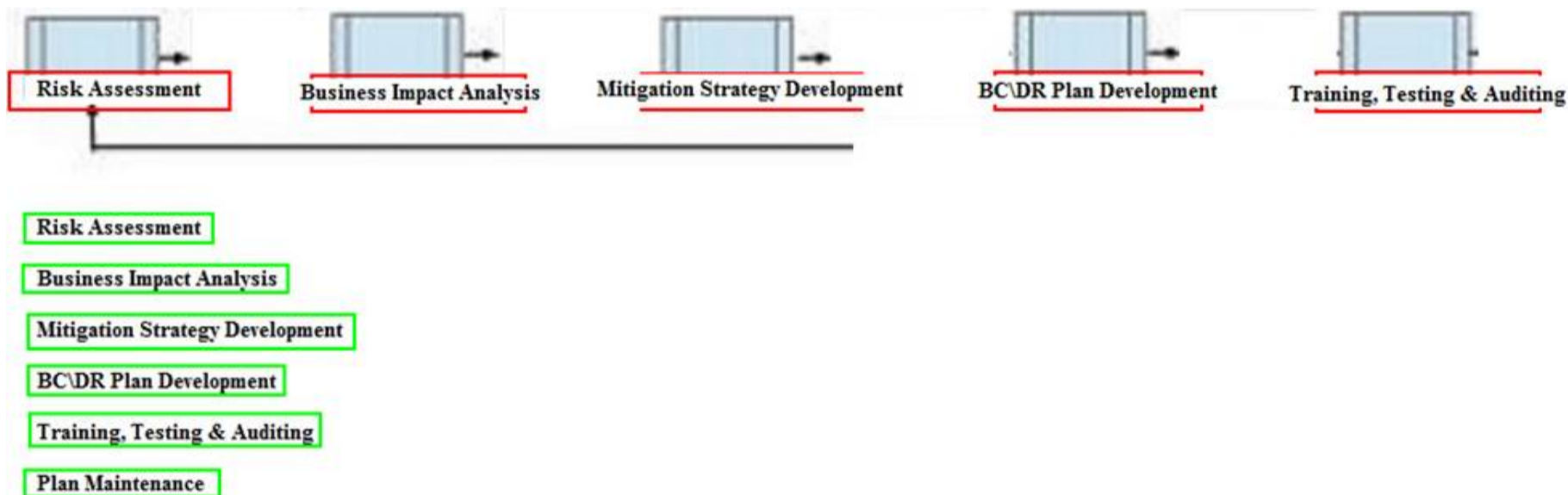
Below are the common phases to creating a Business Continuity/Disaster Recovery (BC/DR) plan. Drag the remaining BC\DR phases to the appropriate corresponding location.



- Risk Assessment
- Business Impact Analysis
- Mitigation Strategy Development
- BC\DR Plan Development
- Training, Testing & Auditing
- Plan Maintenance

Answer:

Explanation:



NEW QUESTION 528

Regarding asset security and appropriate retention, which of the following INITIAL top three areas are important to focus on?

- A. Security control baselines, access controls, employee awareness and training
- B. Human resources, asset management, production management
- C. Supply chain lead time, inventory control, encryption
- D. Polygraphs, crime statistics, forensics

Answer: A

NEW QUESTION 533

Which of the following analyses is performed to protect information assets?

- A. Business impact analysis
- B. Feasibility analysis
- C. Cost benefit analysis
- D. Data analysis

Answer: A

NEW QUESTION 536

Which of the following entities is ultimately accountable for data remanence vulnerabilities with data replicated by a cloud service provider?

- A. Data owner
- B. Data steward
- C. Data custodian
- D. Data processor

Answer: A

NEW QUESTION 538

Discretionary Access Control (DAC) restricts access according to

- A. data classification labeling.
- B. page views within an application.
- C. authorizations granted to the user.
- D. management accreditation.

Answer: C

NEW QUESTION 541

Which of the following standards/guidelines requires an Information Security Management System (ISMS) to be defined?

- A. International Organization for Standardization (ISO) 27000 family
- B. Information Technology Infrastructure Library (ITIL)
- C. Payment Card Industry Data Security Standard (PCIDSS)
- D. ISO/IEC 20000

Answer: A

NEW QUESTION 542

Which of the following roles has the obligation to ensure that a third party provider is capable of processing and handling data in a secure manner and meeting the standards set by the organization?

- A. Data Custodian
- B. Data Owner
- C. Data Creator
- D. Data User

Answer: B

NEW QUESTION 546

An organization lacks a data retention policy. Of the following, who is the BEST person to consult for such requirement?

- A. Application Manager
- B. Database Administrator
- C. Privacy Officer
- D. Finance Manager

Answer: C

NEW QUESTION 551

Which of the following are Systems Engineering Life Cycle (SELC) Technical Processes?

- A. Concept, Development, Production, Utilization, Support, Retirement
- B. Stakeholder Requirements Definition, Architectural Design, Implementation, Verification, Operation
- C. Acquisition, Measurement, Configuration Management, Production, Operation, Support
- D. Concept, Requirements, Design, Implementation, Production, Maintenance, Support, Disposal

Answer: B

NEW QUESTION 555

During a fingerprint verification process, which of the following is used to verify identity and authentication?

- A. A pressure value is compared with a stored template
- B. Sets of digits are matched with stored values
- C. A hash table is matched to a database of stored value
- D. A template of minutiae is compared with a stored template

Answer: D

NEW QUESTION 558

How does Encapsulating Security Payload (ESP) in transport mode affect the Internet Protocol (IP)?

- A. Encrypts and optionally authenticates the IP header, but not the IP payload

- B. Encrypts and optionally authenticates the IP payload, but not the IP header
- C. Authenticates the IP payload and selected portions of the IP header
- D. Encrypts and optionally authenticates the complete IP packet

Answer: B

NEW QUESTION 563

Which of the following command line tools can be used in the reconnaissance phase of a network vulnerability assessment?

- A. dig
- B. ifconfig
- C. ipconfig
- D. nbtstat

Answer: A

NEW QUESTION 565

Which of the following describes the BEST configuration management practice?

- A. After installing a new system, the configuration files are copied to a separate back-up system and hashed to detect tampering.
- B. After installing a new system, the configuration files are copied to an air-gapped system and hashed to detect tampering.
- C. The firewall rules are backed up to an air-gapped system.
- D. A baseline configuration is created and maintained for all relevant systems.

Answer: D

NEW QUESTION 570

A software security engineer is developing a black box-based test plan that will measure the system's reaction to incorrect or illegal inputs or unexpected operational errors and situations. Match the functional testing techniques on the left with the correct input parameters on the right.

<u>Functional Testing Techniques</u>		<u>Input Parameter Selection</u>
State-Based Analysis		Select one input that does not belong to any of the identified partitions.
Equivalence Class Analysis		Select inputs that are at the external limits of the domain of valid values.
Decision Table Analysis		Select invalid combinations of input values.
Boundary Value Analysis		Select unexpected inputs corresponding to each known condition.

Answer:

Explanation:

Functional Testing Techniques

State-Based Analysis

Equivalence Class Analysis

Input Parameter Selection

Select one input that does not belong to any of the identified partitions.

Equivalence Class Analysis

Boundary Value Analysis

Select inputs that are at the external limits of the domain of valid values.

Decision Table Analysis

Decision Table Analysis

Select invalid combinations of input values.

Boundary Value Analysis

State-Based Analysis

Select unexpected inputs corresponding to each known condition.

NEW QUESTION 571

Retaining system logs for six months or longer can be valuable for what activities?

- A. Disaster recovery and business continuity
- B. Forensics and incident response
- C. Identity and authorization management
- D. Physical and logical access control

Answer: B

NEW QUESTION 573

To protect auditable information, which of the following MUST be configured to only allow read access?

- A. Logging configurations
- B. Transaction log files
- C. User account configurations
- D. Access control lists (ACL)

Answer: B

NEW QUESTION 577

Which of the following explains why record destruction requirements are included in a data retention policy?

- A. To comply with legal and business requirements
- B. To save cost for storage and backup
- C. To meet destruction guidelines
- D. To validate data ownership

Answer: A

NEW QUESTION 582

The BEST example of the concept of "something that a user has" when providing an authorized user access to a computing system is

- A. the user's hand geometry.
- B. a credential stored in a token.
- C. a passphrase.
- D. the user's face.

Answer: B

NEW QUESTION 585

Which of the following is the PRIMARY concern when using an Internet browser to access a cloud-based service?

- A. Insecure implementation of Application Programming Interfaces (API)
- B. Improper use and storage of management keys
- C. Misconfiguration of infrastructure allowing for unauthorized access
- D. Vulnerabilities within protocols that can expose confidential data

Answer: D

NEW QUESTION 589

Which of the following is an essential step before performing Structured Query Language (SQL) penetration tests on a production system?

- A. Verify countermeasures have been deactivated.
- B. Ensure firewall logging has been activated.
- C. Validate target systems have been backed up.
- D. Confirm warm site is ready to accept connections.

Answer: C

NEW QUESTION 593

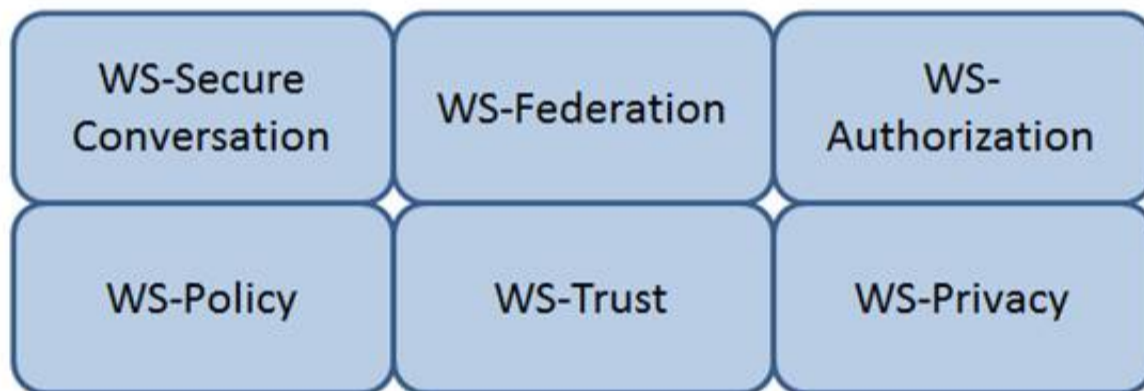
What type of encryption is used to protect sensitive data in transit over a network?

- A. Payload encryption and transport encryption
- B. Authentication Headers (AH)
- C. Keyed-Hashing for Message Authentication
- D. Point-to-Point Encryption (P2PE)

Answer: A

NEW QUESTION 595

Which Web Services Security (WS-Security) specification maintains a single authenticated identity across multiple dissimilar environments? Click on the correct specification in the image below.



Answer:

Explanation: WS-Federation

Reference: Java Web Services: Up and Running” By Martin Kalin page 228

NEW QUESTION 597

Match the objectives to the assessment questions in the governance domain of Software Assurance Maturity Model (SAMM).

Secure Architecture

Do you advertise shared security services with guidance for project teams?

Education & Guidance

Are most people tested to ensure a baseline skill- set for secure development practices?

Strategy & Metrics

Does most of the organization know about what's required based on risk ratings?

Vulnerability Management

Are most project teams aware of their security point(s) of contact and response team(s)?

Answer:

Explanation:

Secure Architecture

Education & Guidance

Strategy & Metrics

Vulnerability Management

Secure Architecture

Education & Guidance

Strategy & Metrics

Vulnerability Management

Do you advertise shared security services with guidance for project teams?

Are most people tested to ensure a baseline skill- set for secure development practices?

Does most of the organization know about what's required based on risk ratings?

Are most project teams aware of their security point(s) of contact and response team(s)?

NEW QUESTION 600

A security professional is asked to provide a solution that restricts a bank teller to only perform a savings deposit transaction but allows a supervisor to perform corrections after the transaction. Which of the following is the MOST effective solution?

- A. Access is based on rules.
- B. Access is determined by the system.
- C. Access is based on user's role.
- D. Access is based on data sensitivity.

Answer: C

NEW QUESTION 605

For privacy protected data, which of the following roles has the highest authority for establishing dissemination rules for the data?

- A. Information Systems Security Officer
- B. Data Owner
- C. System Security Architect
- D. Security Requirements Analyst

Answer: B

NEW QUESTION 606

Secure Sockets Layer (SSL) encryption protects

- A. data at rest.
- B. the source IP address.
- C. data transmitted.
- D. data availability.

Answer: C

NEW QUESTION 610

Which methodology is recommended for penetration testing to be effective in the development phase of the life-cycle process?

- A. White-box testing
- B. Software fuzz testing
- C. Black-box testing
- D. Visual testing

Answer: A

NEW QUESTION 615

The PRIMARY characteristic of a Distributed Denial of Service (DDoS) attack is that it

- A. exploits weak authentication to penetrate networks.
- B. can be detected with signature analysis.
- C. looks like normal network activity.
- D. is commonly confused with viruses or worms.

Answer: C

NEW QUESTION 616

The implementation of which features of an identity management system reduces costs and administration overhead while improving audit and accountability?

- A. Two-factor authentication
- B. Single Sign-On (SSO)
- C. User self-service
- D. A metadirectory

Answer: C

NEW QUESTION 620

Application of which of the following Institute of Electrical and Electronics Engineers (IEEE) standards will prevent an unauthorized wireless device from being attached to a network?

- A. IEEE 802.1F
- B. IEEE 802.1H
- C. IEEE 802.1Q
- D. IEEE 802.1X

Answer: D

NEW QUESTION 621

Drag the following Security Engineering terms on the left to the BEST definition on the right.

Security Engineering

Security Risk Treatment

Definition

The method used to identify the confidentiality, integrity, and availability requirements for organizational and system assets and to characterize the adverse impact or consequences should the asset be lost, modified, degraded, disrupted, compromised, or become unavailable.

Threat Assessment

A measure of the extent to which an entity is threatened by a potential circumstance or event, the adverse impacts that would arise if the circumstance or event occurs, and the likelihood of occurrence.

Protection Needs

The method used to identify and characterize the dangers anticipated throughout the life cycle of the system.

Risk

The method used to identify feasible security risk mitigation options and plans.

Answer:

Explanation:

Security Engineering

Definition

Security Risk Treatment

Protection Needs

The method used to identify the confidentiality, integrity, and availability requirements for organizational and system assets and to characterize the adverse impact or consequences should the asset be lost, modified, degraded, disrupted, compromised, or become unavailable.

Threat Assessment

Risk

A measure of the extent to which an entity is threatened by a potential circumstance or event, the adverse impacts that would arise if the circumstance or event occurs, and the likelihood of occurrence.

Protection Needs

Threat Assessment

The method used to identify and characterize the dangers anticipated throughout the life cycle of the system.

Risk

Security Risk Treatment

The method used to identify feasible security risk mitigation options and plans.

NEW QUESTION 623

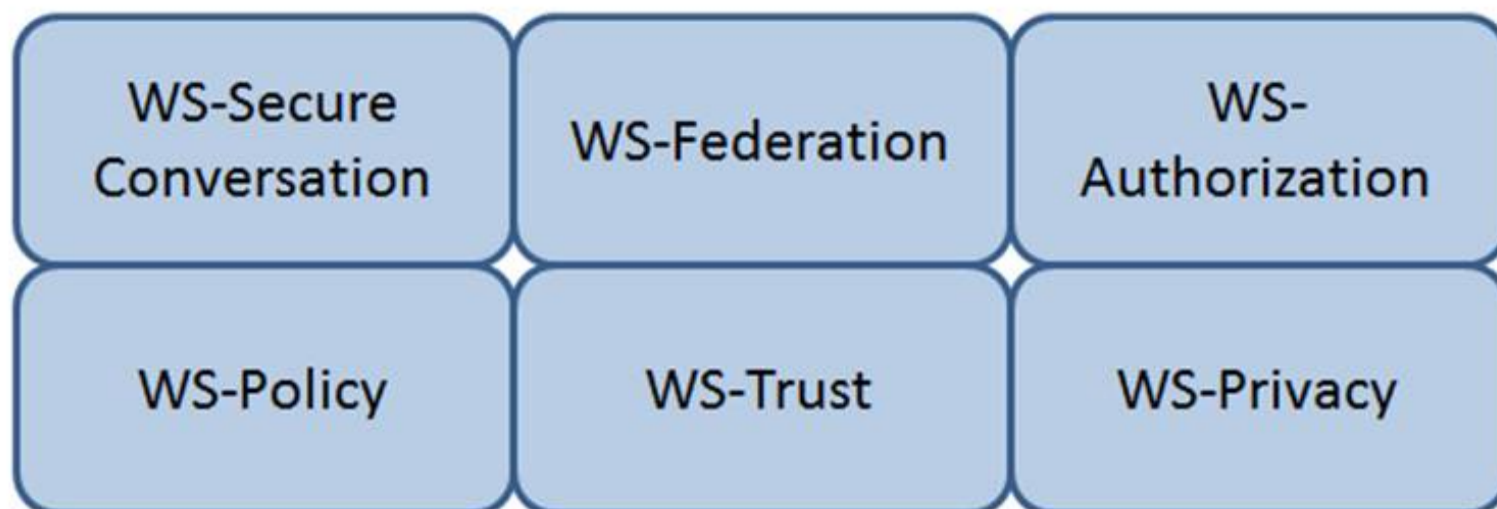
Which of the following statements is TRUE regarding value boundary analysis as a functional software testing technique?

- A. It is useful for testing communications protocols and graphical user interfaces.
- B. It is characterized by the stateless behavior of a process implemented in a function.
- C. Test inputs are obtained from the derived threshold of the given functional specifications.
- D. An entire partition can be covered by considering only one representative value from that partition.

Answer: C

NEW QUESTION 624

Which Web Services Security (WS-Security) specification negotiates how security tokens will be issued, renewed and validated? Click on the correct specification in the image below.



Answer:

Explanation: WS-Trust

The protocol used for issuing security tokens is based on WS-Trust. WS-Trust is a Web service specification that builds on WS-Security. It describes a protocol used for issuance, exchange, and validation of security tokens. WS-Trust provides a solution for interoperability by defining a protocol for issuing and exchanging security tokens, based on token format, namespace, or trust boundaries.

Reference: <https://msdn.microsoft.com/en-us/library/ff650503.aspx>

NEW QUESTION 625

Software Code signing is used as a method of verifying what security concept?

- A. Integrity
- B. Confidentiality
- C. Availability
- D. Access Control

Answer: A

NEW QUESTION 626

What does an organization FIRST review to assure compliance with privacy requirements?

- A. Best practices
- B. Business objectives
- C. Legal and regulatory mandates
- D. Employee's compliance to policies and standards

Answer: C

NEW QUESTION 628

An organization has decided to contract with a cloud-based service provider to leverage their identity as a service offering. They will use Open Authentication (OAuth) 2.0 to authenticate external users to the organization's services.

As part of the authentication process, which of the following must the end user provide?

- A. An access token
- B. A username and password
- C. A username
- D. A password

Answer: A

NEW QUESTION 632

Which one of the following is a common risk with network configuration management?

- A. Patches on the network are difficult to keep current.

- B. It is the responsibility of the systems administrator.
- C. User ID and passwords are never set to expire.
- D. Network diagrams are not up to date.

Answer: D

NEW QUESTION 637

Which of the following is the MOST effective method of mitigating data theft from an active user workstation?

- A. Implement full-disk encryption
- B. Enable multifactor authentication
- C. Deploy file integrity checkers
- D. Disable use of portable devices

Answer: D

NEW QUESTION 639

The goal of a Business Continuity Plan (BCP) training and awareness program is to

- A. enhance the skills required to create, maintain, and execute the plan.
- B. provide for a high level of recovery in case of disaster.
- C. describe the recovery organization to new employees.
- D. provide each recovery team with checklists and procedures.

Answer: A

NEW QUESTION 643

What security risk does the role-based access approach mitigate MOST effectively?

- A. Excessive access rights to systems and data
- B. Segregation of duties conflicts within business applications
- C. Lack of system administrator activity monitoring
- D. Inappropriate access requests

Answer: A

NEW QUESTION 647

What is the PRIMARY goal for using Domain Name System Security Extensions (DNSSEC) to sign records?

- A. Integrity
- B. Confidentiality
- C. Accountability
- D. Availability

Answer: A

NEW QUESTION 650

What type of test assesses a Disaster Recovery (DR) plan using realistic disaster scenarios while maintaining minimal impact to business operations?

- A. Parallel
- B. Walkthrough
- C. Simulation
- D. Tabletop

Answer: C

NEW QUESTION 652

For an organization considering two-factor authentication for secure network access, which of the following is MOST secure?

- A. Challenge response and private key
- B. Digital certificates and Single Sign-On (SSO)
- C. Tokens and passphrase
- D. Smart card and biometrics

Answer: D

NEW QUESTION 655

Which of the following BEST avoids data remanence disclosure for cloud hosted resources?

- A. Strong encryption and deletion of the keys after data is deleted.
- B. Strong encryption and deletion of the virtual host after data is deleted.
- C. Software based encryption with two factor authentication.
- D. Hardware based encryption on dedicated physical servers.

Answer: A

NEW QUESTION 659

What is the GREATEST challenge of an agent-based patch management solution?

- A. Time to gather vulnerability information about the computers in the program
- B. Requires that software be installed, running, and managed on all participating computers
- C. The significant amount of network bandwidth while scanning computers
- D. The consistency of distributing patches to each participating computer

Answer: B

NEW QUESTION 664

Who is ultimately responsible to ensure that information assets are categorized and adequate measures are taken to protect them?

- A. Data Custodian
- B. Executive Management
- C. Chief Information Security Officer
- D. Data/Information/Business Owners

Answer: B

NEW QUESTION 667

Which of the following BEST describes the purpose of the security functional requirements of Common Criteria?

- A. Level of assurance of the Target of Evaluation (TOE) in intended operational environment
- B. Selection to meet the security objectives stated in test documents
- C. Security behavior expected of a TOE
- D. Definition of the roles and responsibilities

Answer: C

NEW QUESTION 672

A Simple Power Analysis (SPA) attack against a device directly observes which of the following?

- A. Static discharge
- B. Consumption
- C. Generation
- D. Magnetism

Answer: B

NEW QUESTION 677

Which of the following activities BEST identifies operational problems, security misconfigurations, and malicious attacks?

- A. Policy documentation review
- B. Authentication validation
- C. Periodic log reviews
- D. Interface testing

Answer: C

NEW QUESTION 680

While inventorying storage equipment, it is found that there are unlabeled, disconnected, and powered off devices. Which of the following is the correct procedure for handling such equipment?

- A. They should be recycled to save energy.
- B. They should be recycled according to NIST SP 800-88.
- C. They should be inspected and sanitized following the organizational policy.
- D. They should be inspected and categorized properly to sell them for reuse.

Answer: C

NEW QUESTION 684

In the Open System Interconnection (OSI) model, which layer is responsible for the transmission of binary data over a communications network?

- A. Application Layer
- B. Physical Layer
- C. Data-Link Layer
- D. Network Layer

Answer: B

NEW QUESTION 688

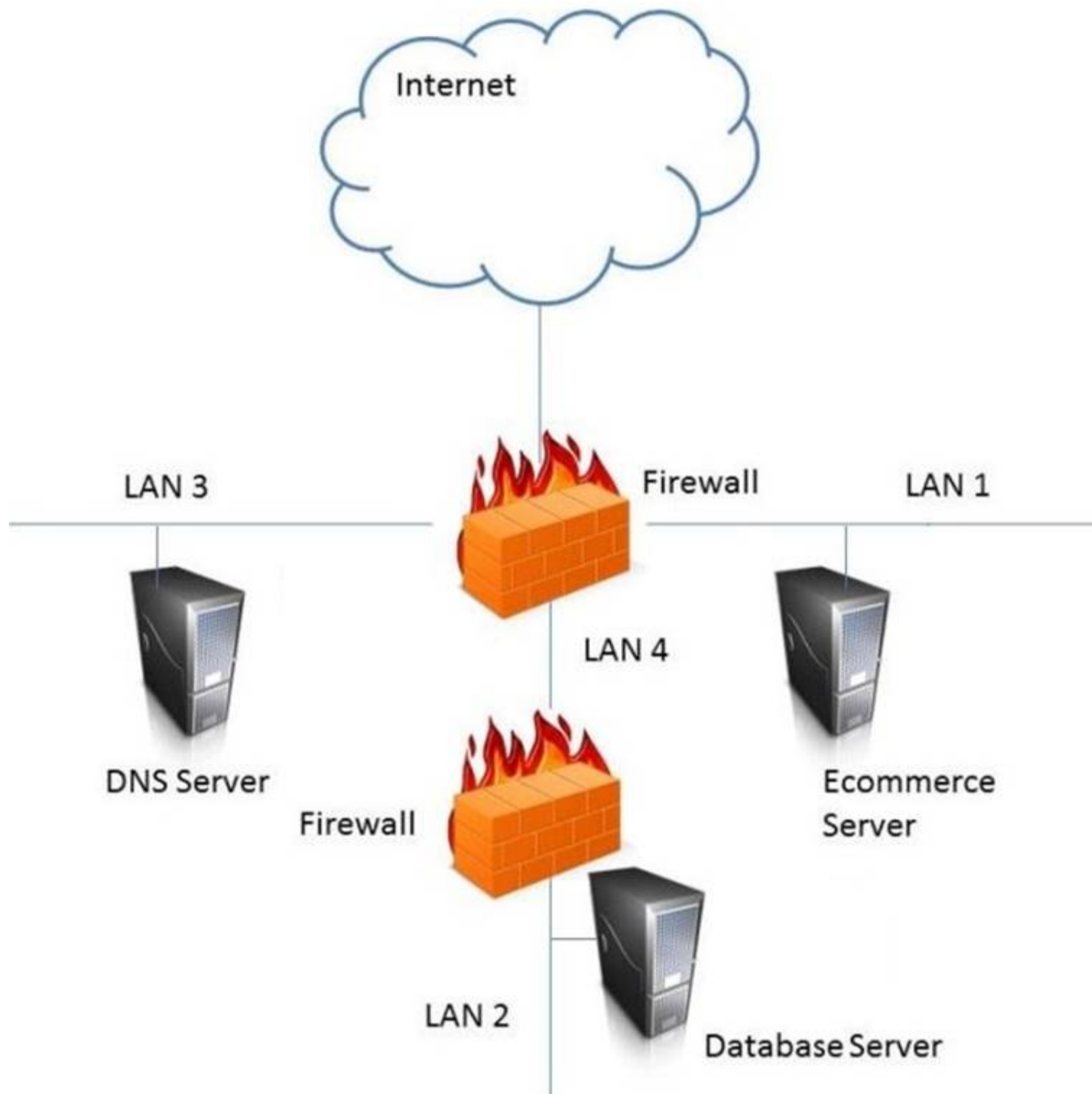
While investigating a malicious event, only six days of audit logs from the last month were available. What policy should be updated to address this problem?

- A. Retention
- B. Reporting
- C. Recovery
- D. Remediation

Answer: A

NEW QUESTION 692

In the network design below, where is the MOST secure Local Area Network (LAN) segment to deploy a Wireless Access Point (WAP) that provides contractors access to the Internet and authorized enterprise services?



Answer:

Explanation: LAN 4

NEW QUESTION 695

Which of the following is the MOST important output from a mobile application threat modeling exercise according to Open Web Application Security Project (OWASP)?

- A. Application interface entry and endpoints
- B. The likelihood and impact of a vulnerability
- C. Countermeasures and mitigations for vulnerabilities
- D. A data flow diagram for the application and attack surface analysis

Answer: D

NEW QUESTION 699

Which of the following is the PRIMARY issue when collecting detailed log information?

- A. Logs may be unavailable when required
- B. Timely review of the data is potentially difficult
- C. Most systems and applications do not support logging
- D. Logs do not provide sufficient details of system and individual activities

Answer: B

NEW QUESTION 702

An organization is found lacking the ability to properly establish performance indicators for its Web hosting solution during an audit. What would be the MOST probable cause?

- A. Improper deployment of the Service-Oriented Architecture (SOA)
- B. Absence of a Business Intelligence (BI) solution
- C. Inadequate cost modeling
- D. Insufficient Service Level Agreement (SLA)

Answer: D

NEW QUESTION 707

In order for a security policy to be effective within an organization, it MUST include

- A. strong statements that clearly define the problem.
- B. a list of all standards that apply to the policy.
- C. owner information and date of last revision.
- D. disciplinary measures for non compliance.

Answer: D

NEW QUESTION 711

By carefully aligning the pins in the lock, which of the following defines the opening of a mechanical lock without the proper key?

- A. Lock pinging
- B. Lock picking
- C. Lock bumping
- D. Lock bricking

Answer: B

NEW QUESTION 715

Which of the following could elicit a Denial of Service (DoS) attack against a credential management system?

- A. Delayed revocation or destruction of credentials
- B. Modification of Certificate Revocation List
- C. Unauthorized renewal or re-issuance
- D. Token use after decommissioning

Answer: B

NEW QUESTION 716

In which order, from MOST to LEAST impacted, does user awareness training reduce the occurrence of the events below?

<u>Event</u>		<u>Order</u>
Disloyal employees		1
User-instigated		2
Targeted infiltration		3
Virus infiltrations		4

Answer:

Explanation:

Event		Order
Disloyal employees	Disloyal employees	1
User-instigated	User-instigated	2
Targeted infiltration	Targeted infiltration	3
Virus infiltrations	Virus infiltrations	4

Topic 12, NEW QUESTIONS A

NEW QUESTION 719

A proxy firewall operates at what layer of the Open System Interconnection (OSI) model?

- A. Transport
- B. Data link
- C. Network
- D. Application

Answer: D

NEW QUESTION 720

What is the difference between media marking and media labeling?

- A. Media marking refers to the use of human-readable security attributes, while media labeling refers to the use of security attributes in internal data structures.
- B. Media labeling refers to the use of human-readable security attributes, while media marking refers to the use of security attributes in internal data structures.
- C. Media labeling refers to security attributes required by public policy/law, while media marking refers to security required by internal organizational policy.
- D. Media marking refers to security attributes required by public policy/law, while media labeling refers to security attributes required by internal organizational policy.

Answer: D

NEW QUESTION 722

Which of the following is a remote access protocol that uses a static authentication?

- A. Point-to-Point Tunneling Protocol (PPTP)
- B. Routing Information Protocol (RIP)
- C. Password Authentication Protocol (PAP)
- D. Challenge Handshake Authentication Protocol (CHAP)

Answer: C

NEW QUESTION 725

Which of the following information MUST be provided for user account provisioning?

- A. Full name
- B. Unique identifier
- C. Security question
- D. Date of birth

Answer: B

NEW QUESTION 727

Which of the following is the BEST method to reduce the effectiveness of phishing attacks?

- A. User awareness
- B. Two-factor authentication
- C. Anti-phishing software
- D. Periodic vulnerability scan

Answer: A

NEW QUESTION 732

A company has decided that they need to begin maintaining assets deployed in the enterprise. What approach should be followed to determine and maintain ownership information to bring the company into compliance?

- A. Enterprise asset management framework
- B. Asset baseline using commercial off the shelf software
- C. Asset ownership database using domain login records
- D. A script to report active user logins on assets

Answer: A

NEW QUESTION 734

Which of the following is the MOST important goal of information asset valuation?

- A. Developing a consistent and uniform method of controlling access on information assets
- B. Developing appropriate access control policies and guidelines
- C. Assigning a financial value to an organization's information assets
- D. Determining the appropriate level of protection

Answer: D

NEW QUESTION 739

Which of the following is the MAIN reason for using configuration management?

- A. To provide centralized administration
- B. To reduce the number of changes
- C. To reduce errors during upgrades
- D. To provide consistency in security controls

Answer: D

NEW QUESTION 743

Which of the following sets of controls should allow an investigation if an attack is not blocked by preventive controls or detected by monitoring?

- A. Logging and audit trail controls to enable forensic analysis
- B. Security incident response lessons learned procedures
- C. Security event alert triage done by analysts using a Security Information and Event Management (SIEM) system
- D. Transactional controls focused on fraud prevention

Answer: C

NEW QUESTION 746

Match the types of e-authentication tokens to their description.
 Drag each e-authentication token on the left to its corresponding description on the right.

E-Authentication Token

Memorized Secret Token

Out-of-Band Token

Look-up Secret Token

Pre-registered Knowledge Token

Description

A physical or electronic token that stores a set of secrets between the claimant and the credential service provider

A physical token that is uniquely addressable and can receive a verifier-selected secret for one-time use

A series of responses to a set of prompts or challenges established by the subscriber and credential service provider during the registration process

A secret shared between the subscriber and credential service provider that is typically character strings

Answer:

Explanation: Look-up secret token - A physical or electronic token that stores a set of secrets between the claimant and the credential service provider
 Out-of-Band Token - A physical token that is uniquely addressable and can receive a verifier-selected secret for one-time use
 Pre-registered Knowledge Token - A series of responses to a set of prompts or challenges established by the subscriber and credential service provider during the registration process
 Memorized Secret Token - A secret shared between the subscriber and credential service provider that is typically character strings

NEW QUESTION 750

An application developer is deciding on the amount of idle session time that the application allows before a timeout. The BEST reason for determining the session timeout requirement is

- A. organization policy.
- B. industry best practices.
- C. industry laws and regulations.
- D. management feedback.

Answer: A

NEW QUESTION 753

What type of wireless network attack BEST describes an Electromagnetic Pulse (EMP) attack?

- A. Radio Frequency (RF) attack
- B. Denial of Service (DoS) attack
- C. Data modification attack
- D. Application-layer attack

Answer: B

NEW QUESTION 755

Which of the following is a document that identifies each item seized in an investigation, including date and time seized, full name and signature or initials of the person who seized the item, and a detailed description of the item?

- A. Property book
- B. Chain of custody form
- C. Search warrant return
- D. Evidence tag

Answer: D

NEW QUESTION 758

Which type of security testing is being performed when an ethical hacker has no knowledge about the target system but the testing target is notified before the test?

- A. Reversal
- B. Gray box
- C. Blind
- D. White box

Answer: B

NEW QUESTION 760

Which of the following is an advantage of on-premise Credential Management Systems?

- A. Lower infrastructure capital costs
- B. Control over system configuration
- C. Reduced administrative overhead
- D. Improved credential interoperability

Answer: B

NEW QUESTION 761

What does the Maximum Tolerable Downtime (MTD) determine?

- A. The estimated period of time a business critical database can remain down before customers are affected.
- B. The fixed length of time a company can endure a disaster without any Disaster Recovery (DR) planning
- C. The estimated period of time a business can remain interrupted beyond which it risks never recovering
- D. The fixed length of time in a DR process before redundant systems are engaged

Answer: C

NEW QUESTION 766

The PRIMARY purpose of accreditation is to:

- A. comply with applicable laws and regulations.
- B. allow senior management to make an informed decision regarding whether to accept the risk of operating the system.
- C. protect an organization's sensitive data.
- D. verify that all security controls have been implemented properly and are operating in the correct manner.

Answer: B

NEW QUESTION 768

Which of the following media sanitization techniques is MOST likely to be effective for an organization using public cloud services?

- A. Low-level formatting
- B. Secure-grade overwrite erasure
- C. Cryptographic erasure
- D. Drive degaussing

Answer: B

NEW QUESTION 773

Match the access control type to the example of the control type. Drag each access control type net to its corresponding example.

<u>Access Control Type</u>		<u>Example</u>
Administrative		Labeling of sensitive data
Technical		Biometrics for authentication
Logical		Constrained user interface
Physical		Radio Frequency Identification (RFID) badge

Answer:

Explanation: Administrative – labeling of sensitive data
 Technical – Constrained user interface
 Logical – Biometrics for authentication
 Physical – Radio Frequency Identification (RFID) badge

NEW QUESTION 775

Which of the following BEST describes Recovery Time Objective (RTO)?

- A. Time of application resumption after disaster
- B. Time of application verification after disaster.
- C. Time of data validation after disaster.
- D. Time of data restoration from backup after disaster.

Answer: A

NEW QUESTION 778

Which of the following command line tools can be used in the reconnaissance phase of a network vulnerability assessment?

- A. dig
- B. ipconfig
- C. ifconfig
- D. nbstat

Answer: A

NEW QUESTION 782

Determining outage costs caused by a disaster can BEST be measured by the

- A. cost of redundant systems and backups.
- B. cost to recover from an outage.
- C. overall long-term impact of the outage.
- D. revenue lost during the outage.

Answer: C

NEW QUESTION 785

In general, servers that are facing the Internet should be placed in a demilitarized zone (DMZ). What is MAIN purpose of the DMZ?

- A. Reduced risk to internal systems.
- B. Prepare the server for potential attacks.
- C. Mitigate the risk associated with the exposed server.
- D. Bypass the need for a firewall.

Answer: A

NEW QUESTION 786

Although code using a specific program language may not be susceptible to a buffer overflow attack,

- A. most calls to plug-in programs are susceptible.
- B. most supporting application code is susceptible.
- C. the graphical images used by the application could be susceptible.

D. the supporting virtual machine could be susceptible.

Answer: C

NEW QUESTION 788

.....

THANKS FOR TRYING THE DEMO OF OUR PRODUCT

Visit Our Site to Purchase the Full Set of Actual CISSP Exam Questions With Answers.

We Also Provide Practice Exam Software That Simulates Real Exam Environment And Has Many Self-Assessment Features. Order the CISSP Product From:

<https://www.2passeasy.com/dumps/CISSP/>

Money Back Guarantee

CISSP Practice Exam Features:

- * CISSP Questions and Answers Updated Frequently
- * CISSP Practice Questions Verified by Expert Senior Certified Staff
- * CISSP Most Realistic Questions that Guarantee you a Pass on Your FirstTry
- * CISSP Practice Test Questions in Multiple Choice Formats and Updatesfor 1 Year