



Microsoft

Exam Questions MS-102

Microsoft 365 Administrator Exam

About ExamBible

Your Partner of IT Exam

Found in 1998

ExamBible is a company specialized on providing high quality IT exam practice study materials, especially Cisco CCNA, CCDA, CCNP, CCIE, Checkpoint CCSE, CompTIA A+, Network+ certification practice exams and so on. We guarantee that the candidates will not only pass any IT exam at the first attempt but also get profound understanding about the certificates they have got. There are so many alike companies in this industry, however, ExamBible has its unique advantages that other companies could not achieve.

Our Advances

* 99.9% Uptime

All examinations will be up to date.

* 24/7 Quality Support

We will provide service round the clock.

* 100% Pass Rate

Our guarantee that you will pass the exam.

* Unique Gurantee

If you do not pass the exam at the first time, we will not only arrange FULL REFUND for you, but also provide you another exam of your claim, ABSOLUTELY FREE!

NEW QUESTION 1

- (Exam Topic 1)

You need to ensure that User1 can enroll the devices to meet the technical requirements. What should you do?

- A. From the Azure Active Directory admin center, assign User1 the Cloud device administrator role.
- B. From the Azure Active Directory admin center, configure the Maximum number of devices per user setting.
- C. From the Intune admin center, add User1 as a device enrollment manager.
- D. From the Intune admin center, configure the Enrollment restrictions.

Answer: C

Explanation:

References:

<https://docs.microsoft.com/en-us/sccm/mdm/deploy-use/enroll-devices-with-device-enrollment-manager>

NEW QUESTION 2

- (Exam Topic 1)

Note: This question is part of a series of questions that present the same scenario. Each question in the series contains a unique solution that might meet the stated goals. Some question sets might have more than one correct solution, while others might not have a correct solution.

After you answer a question in this section, you will NOT be able to return to it. As a result, these questions will not appear in the review screen.

Your network contains an Active Directory domain named contoso.com that is synced to Microsoft Azure Active Directory (Azure AD).

You manage Windows 10 devices by using Microsoft System Center Configuration Manager (Current Branch).

You configure a pilot for co-management.

You add a new device named Device1 to the domain. You install the Configuration Manager client on Device1.

You need to ensure that you can manage Device1 by using Microsoft Intune and Configuration Manager. Solution: Define a Configuration Manager device collection as the pilot collection. Add Device1 to the collection.

Does this meet the goal?

- A. Yes
- B. NO

Answer: A

Explanation:

Device1 has the Configuration Manager client installed so you can manage Device1 by using Configuration Manager. To manage Device1 by using Microsoft Intune, the device has to be enrolled in Microsoft Intune. In the Co-management Pilot configuration, you configure a Configuration Manager Device Collection that determines which devices are auto-enrolled in Microsoft Intune. You need to add Device1 to the Device Collection so that it auto-enrolls in Microsoft Intune. You will then be able to manage Device1 using Microsoft Intune. Reference: <https://docs.microsoft.com/en-us/configmgr/comanage/how-to-enable>

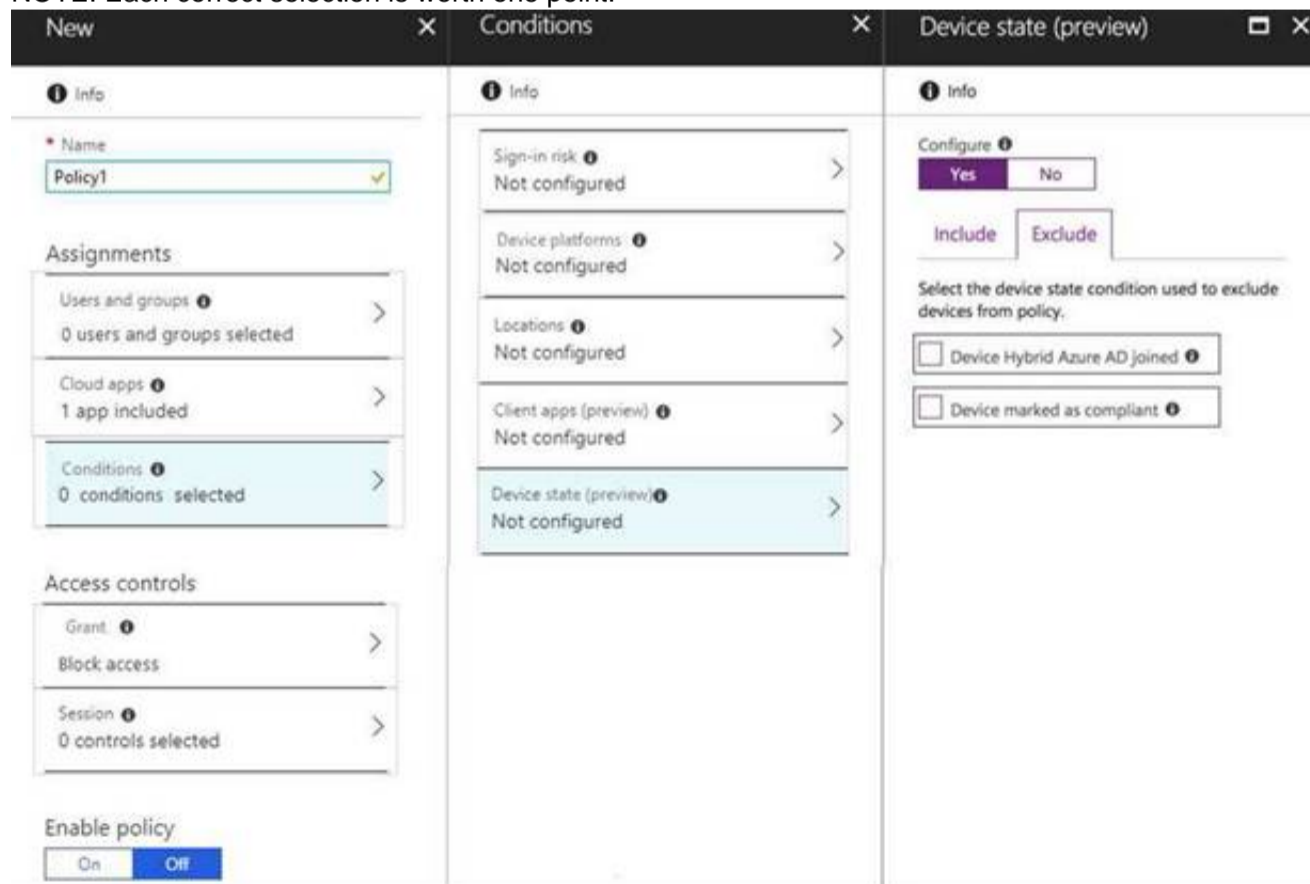
NEW QUESTION 3

- (Exam Topic 1)

You need to configure a conditional access policy to meet the compliance requirements. You add Exchange Online as a cloud app.

Which two additional settings should you configure in Policy1? To answer, select the appropriate options in the answer area.

NOTE: Each correct selection is worth one point.



- A. Mastered
- B. Not Mastered

Answer: A

Explanation:

Suggested Answer

References: <https://docs.microsoft.com/en-us/intune/create-conditional-access-intune>

NEW QUESTION 4

- (Exam Topic 2)

You need to meet the technical requirement for the EU PII data. What should you create?

- A. a retention policy from the Security & Compliance admin center.
- B. a retention policy from the Exchange admin center
- C. a data loss prevention (DLP) policy from the Exchange admin center
- D. a data loss prevention (DLP) policy from the Security & Compliance admin center

Answer: A

Explanation:

References:

<https://docs.microsoft.com/en-us/office365/securitycompliance/retention-policies>

EU PII wants both documents and email message to be preserved so S&C Admin Center for Retention. If this was for Email only, this probably could have been done in EAC.

NEW QUESTION 5

- (Exam Topic 2)

You need to meet the technical requirement for the SharePoint administrator. What should you do? To answer, select the appropriate options in the answer area.

NOTE: Each correct selection is worth one point.

From the Security & Compliance admin center, perform a search by using:

▼
Audit log
Data governance events
DLP policy matches
eDiscovery

Filter by:

▼
Activity
Detail
Item
User agent

- A. Mastered
- B. Not Mastered

Answer: A

Explanation:

References:

<https://docs.microsoft.com/en-us/office365/securitycompliance/search-the-audit-log-in-security-and-compliance>

NEW QUESTION 6

- (Exam Topic 3)

You need to create the DLP policy to meet the technical requirements. What should you configure first?

- A. sensitive info types
- B. the Insider risk management settings
- C. the event types
- D. the sensitivity labels

Answer: A

Explanation:

Reference:

<https://docs.microsoft.com/en-us/microsoft-365/compliance/create-test-tune-dlp-policy?view=o365-worldwide>

NEW QUESTION 7

- (Exam Topic 3)

You need to configure the information governance settings to meet the technical requirements.


Which type of policy should you configure, and how many policies should you configure? To answer, select the appropriate options in the answer area.

NOTE: Each correct selection is worth one point.

Answer Area

Policy type: 

- Label
- Retention
- Auto-labeling

Number of required policies: 

- 1
- 2
- 3

- A. Mastered
- B. Not Mastered


Answer: A

Explanation:

Answer Area

Policy type: 

- Label
- Retention
- Auto-labeling

Number of required policies: 

- 1
- 2
- 3

NEW QUESTION 8

- (Exam Topic 4)

You are evaluating the required processes for Project1.

You need to recommend which DNS record must be created while adding a domain name for the project. Which DNS record should you recommend?

- A. host (A)
- B. host information
- C. text (TXT)
- D. pointer (PTR)

Answer: A

Explanation:

When you add a custom domain to Office 365, you need to verify that you own the domain. You can do this by adding either an MX record or a TXT record to the DNS for that domain.

Note:

There are several versions of this question in the exam. The question has two possible correct answers: Text (TXT)

Mail exchanger (MX)

incorrect answer options you may see on the exam include the following: alias (CNAME)

Host (A) host (AAA)

Pointer (PTR) Name Server (NS)

host information (HINFO) pointer (PTR)

Reference:

<https://docs.microsoft.com/en-us/office365/admin/get-help-with-domains/create-dns-records-at-any-dns-hosting>

NEW QUESTION 9

- (Exam Topic 5)

Your network contains an Active Directory forest named contoso.local.

You purchase a Microsoft 365 subscription.

You plan to move to Microsoft 365 and to implement a hybrid deployment solution for the next 12 months. You need to prepare for the planned move to Microsoft 365.

What is the best action to perform before you implement directory synchronization? More than one answer choice may achieve the goal. Select the BEST answer.

- A. Purchase a third-party X.509 certificate.
- B. Create an external forest trust.
- C. Rename the Active Directory forest.
- D. Purchase a custom domain name.

Answer: D

Explanation:

The first thing you need to do before you implement directory synchronization is to purchase a custom domain name. This could be the domain name that you use in your on-premise Active Directory if it's a routable domain name, for example, contoso.com.

If you use a non-routable domain name in your Active Directory, for example contoso.local, you'll need to add the routable domain name as a UPN suffix in Active Directory.

Incorrect:

Not C: No need to rename the Active Directory forest. As we use a non-routable domain name contoso.local, we just need to add the routable domain name as a UPN suffix in Active Directory.

Reference:

<https://docs.microsoft.com/en-us/office365/enterprise/set-up-directory-synchronization>

NEW QUESTION 10

- (Exam Topic 5)

Your company purchases a cloud app named App1.

You need to ensure that you can use Microsoft Cloud App Security to block downloads in App1. App1 supports session controls.

Which three actions should you perform in sequence? To answer, move the appropriate actions from the list of actions to the answer area and arrange them in the correct order.

Actions

Answer Area

Deploy Azure Active Directory (Azure AD) Application Proxy.		
From the Cloud App Security admin center, add an app connector.		
Sign in to App1.	⬅	⬆
Create a conditional access policy.	➡	⬇
From the Azure Active Directory admin center, configure the Diagnostic settings.		
From the Azure Active Directory admin center, add an app registration for App1.		

- A. Mastered
- B. Not Mastered

Answer: A

Explanation:

Graphical user interface, text, application Description automatically generated

Reference:

<https://docs.microsoft.com/en-us/cloud-app-security/getting-started-with-cloud-app-security>

NEW QUESTION 10

- (Exam Topic 5)

You have a Microsoft 365 subscription that links to an Azure Active Directory (Azure AD) tenant named contoso.onmicrosoft.com.

A user named User1 stores documents in Microsoft OneDrive.

You need to place the contents of User1's OneDrive account on an eDiscovery hold.

Which URL should you use for the eDiscovery hold? To answer, select the appropriate options in the answer area.

NOTE: Each correct selection is worth one point.

https://

<input type="checkbox"/> onedrive.live.com/ <input type="checkbox"/> contoso.onmicrosoft.com/ <input type="checkbox"/> contoso.sharepoint.com/ <input type="checkbox"/> contoso-my.sharepoint.com/	<input type="checkbox"/> User1 <input type="checkbox"/> Sites/User1 <input type="checkbox"/> contoso_onmicrosoft_com/User1 <input type="checkbox"/> personal/User1_contoso_onmicrosoft_com
---	---

- A. Mastered
- B. Not Mastered

Answer: A

Explanation:

Reference:

<https://docs.microsoft.com/en-us/microsoft-365/compliance/create-ediscovery-holds>

NEW QUESTION 11

- (Exam Topic 5)

Your company has a Microsoft 365 tenant

You plan to allow users that are members of a group named Engineering to enroll their mobile device in mobile device management (MDM)

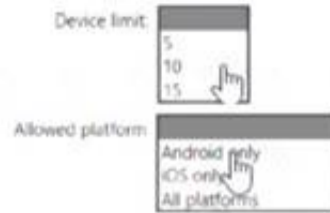
The device type restriction are configured as shown in the following table.

Priority	Name	Allowed platform	Assigned to
1	iOS	iOS	Marketing
2	Android	Android	Engineering
Default	All users	All platforms	All users

The device limit restriction are configured as shown in the following table.

Priority	Name	Device limit	Assigned to
1	Engineering	15	Engineering
2	West Region	5	Engineering
Default	All users	10	All users

Answer Area



- A. Mastered
- B. Not Mastered

Answer: A

Explanation:

<https://docs.microsoft.com/en-us/mem/intune/enrollment/enrollment-restrictions-set#change-enrollment-restricti>

NEW QUESTION 15

- (Exam Topic 5)

You have a Microsoft 365 E5 tenant that contains 500 Windows 10 devices. The devices are enrolled in Microsoft intune. You plan to use Endpoint analytics to identify hardware issues. You need to enable Window health monitoring on the devices to support Endpoint analytics What should you do?

- A. Configure the Endpoint analytics baseline regression threshold.
- B. Create a configuration profile.
- C. Create a Windows 10 Security Baseline profile
- D. Create a compliance policy.

Answer: B

NEW QUESTION 20

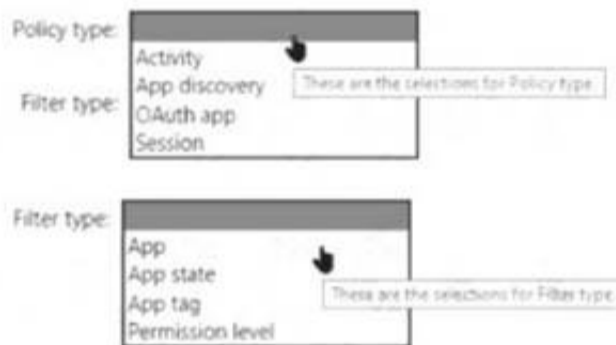
- (Exam Topic 5)

You have a Microsoft 365 E5 subscription that uses Microsoft Defender for Cloud Apps.

You need to create a policy that will generate an email alert when a banned app is detected requesting permission to access user information or data in the subscription.

What should you configure? To answer, select the appropriate options in the answer area. NOTE: Each correct selection is worth one point.

Answer Area

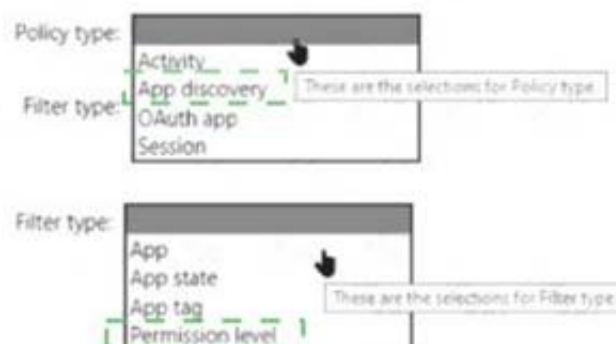


- A. Mastered
- B. Not Mastered

Answer: A

Explanation:

Answer Area



NEW QUESTION 21

- (Exam Topic 5)

You have a Microsoft 365 subscription that contains three groups named All users, Sales team, and Office users, and two users shown in the following table.

Name	Member of
User1	All users, Sales team
User2	All users, Office users

In Microsoft Endpoint Manager, you have the Policies for Office apps settings shown in the following exhibit.

The screenshot shows the 'Policy configurations' section in Microsoft Endpoint Manager. It lists three policies with their respective priorities:

Name	Priority	Recommendation status
Office Users Policy	0	
Sales Team Policy	1	
All users	2	

The policies use the settings shown in the following table.

Policy	Default Shared Folder Location	Default Office Theme
All users	https://sharepoint.contoso.com/addins_all_users	Colorful
Office Users Policy	https://sharepoint.contoso.com/addins_office_users	White
Sales Team Policy	https://sharepoint.contoso.com/addins_sales_team_users_	Dark Gray

What is the default share folder location for User1 and the default Office theme for User2? To answer, select the appropriate options in the answer area.

NOTE: Each correct selection is worth one point.

The default shared folder location for User1 is:

- https://sharepoint.contoso.com/addins_all_users
- https://sharepoint.contoso.com/addins_office_users
- https://sharepoint.contoso.com/addins_sales_team_users_

The default Office theme for User 2 is:

- Colorful
- Dark Gray
- White

- A. Mastered
- B. Not Mastered

Answer: A

Explanation:

Table Description automatically generated

Reference:

<https://docs.microsoft.com/en-us/deployoffice/overview-office-cloud-policy-service>

NEW QUESTION 22

- (Exam Topic 5)

Your network contains an on-premises Active Directory domain named contoso.local. The domain contains five domain controllers.

Your company purchases Microsoft 365 and creates an Azure AD tenant named contoso.onmicrosoft.com. You plan to install Azure AD Connect on a member server and implement pass-through authentication. You need to prepare the environment for the planned implementation of pass-through authentication. Which three actions should you perform? Each correct answer presents part of the solution.

NOTE: Each correct selection is worth one point.

- A. From a domain controller install an Authentication Agent
- B. From the Microsoft Entra admin center, configure an authentication method.
- C. From Active Director, Domains and Trusts add a UPN suffix
- D. Modify the email address attribute for each user account.
- E. From the Microsoft Entra admin center, add a custom domain name.
- F. Modify the User logon name for each user account.

Answer: ABE

Explanation:

Deploy Azure AD Pass-through Authentication Step 1: Check the prerequisites

Ensure that the following prerequisites are in place. In the Entra admin center

* 1. Create a cloud-only Hybrid Identity Administrator account or a Hybrid Identity administrator account on your Azure AD tenant. This way, you can manage the

configuration of your tenant should your on-premises services fail or become unavailable.

(E) 2. Add one or more custom domain names to your Azure AD tenant. Your users can sign in with one of these domain names.

(A) In your on-premises environment

* 1. Identify a server running Windows Server 2016 or later to run Azure AD Connect. If not enabled already, enable TLS 1.2 on the server. Add the server to the same Active Directory forest as the users whose passwords you need to validate. It should be noted that installation of Pass-Through Authentication agent on Windows Server Core versions is not supported.

* 2. Install the latest version of Azure AD Connect on the server identified in the preceding step. If you already have Azure AD Connect running, ensure that the version is supported.

* 3. Identify one or more additional servers (running Windows Server 2016 or later, with TLS 1.2 enabled) where you can run standalone Authentication Agents. These additional servers are needed to ensure the high availability of requests to sign in. Add the servers to the same Active Directory forest as the users whose passwords you need to validate.

* 4. Etc.

(B) Step 2: Enable the feature

Enable Pass-through Authentication through Azure AD Connect.

If you're installing Azure AD Connect for the first time, choose the custom installation path. At the User

sign-in page, choose Pass-through Authentication as the Sign On method. On successful completion, a Pass-through Authentication Agent is installed on the same server as Azure AD Connect. In addition, the Pass-through Authentication feature is enabled on your tenant.

Incorrect:

Not C: From Active Directory Domains and Trusts, add a UPN suffix Not D. Modify the email address attribute for each user account.

Not F. Modify the User logon name for each user account. Reference:

<https://learn.microsoft.com/en-us/azure/active-directory/hybrid/connect/how-to-connect-pta-quick-start>

NEW QUESTION 25

- (Exam Topic 5)

Note: This question is part of a series of questions that present the same scenario. Each question in the series contains a unique solution that might meet the stated goals. Some question sets might have more than one correct solution, while others might not have a correct solution.

After you answer a question in this section, you will NOT be able to return to it. As a result, these questions will not appear in the review screen.

You have a Microsoft 365 E5 subscription.

You create an account for a new security administrator named SecAdmin1.

You need to ensure that SecAdmin1 can manage Microsoft Defender for Office 365 settings and policies for Microsoft Teams, SharePoint, and OneDrive.

Solution: From the Microsoft 365 admin center, you assign SecAdmin1 the Exchange admin role. Does this meet the goal?

A. Yes

B. No

Answer: B

Explanation:

You need to assign the Security Administrator role. Reference:

<https://docs.microsoft.com/en-us/microsoft-365/security/office-365-security/office-365-atp?view=o365-worldwi>

NEW QUESTION 29

- (Exam Topic 5)

You have a Microsoft 365 E5 tenant that contains 500 Android devices enrolled in Microsoft Intune. You need to use Microsoft Endpoint Manager to deploy a managed Google Play app to the devices.

Which four actions should you perform in sequence? To answer, move the appropriate actions from the list of actions to the answer area and arrange them in the correct order.

Actions

Answer Area

Create an app configuration policy
Link the account to Intune
Create a Microsoft account
Configure a mobile device management (MDM) push certificate
Add the app
Create a Google account
Assign the app

A. Mastered

B. Not Mastered

Answer: A

Explanation:

Graphical user interface, text, application Description automatically generated

Reference:

<https://docs.microsoft.com/en-us/mem/intune/apps/apps-add-android-for-work#assign-a-managed-google-play-a>

NEW QUESTION 32

- (Exam Topic 5)

DRAG DROP

You have a Microsoft 365 E5 subscription. Several users have iOS devices.

You plan to enroll the iOS devices in Microsoft Endpoint Manager.

You need to ensure that you can create an iOS/iPadOS enrollment profile in Microsoft Endpoint Manager.

Which three actions should you perform in sequence? To answer, move the appropriate actions from the list of actions to the answer area and arrange them in the correct order.

Actions

Answer Area

- From the Microsoft Endpoint Manager admin center, add a device enrollment manager.
- From the Microsoft Endpoint Manager admin center, download a certificate signing request.
- Upload an Apple MDM push certificate to Microsoft Endpoint Manager.
- Create a certificate from the Apple Push Certificates Portal.
- From the Microsoft Endpoint Manager admin center, configure device enrollment restrictions.

- A. Mastered
- B. Not Mastered

Answer: A

Explanation:

Reference:

<https://docs.microsoft.com/en-us/mem/intune/enrollment/apple-mdm-push-certificate-get>

NEW QUESTION 35

- (Exam Topic 5)

You have several devices enrolled in Microsoft Endpoint Manager.

You have a Microsoft Azure Active Directory (Azure AD) tenant that includes the users shown in the following table.

Name	Member of
User1	Group1
User2	Group1, Group2
User3	None

The device type restrictions in Endpoint Manager are configured as shown in the following table.

Priority	Name	Allowed platform	Assigned to
1	Policy1	Android, iOS, Windows (MDM)	None
2	Policy2	Windows (MDM)	Group2
3	Policy3	Android, iOS	Group1
Default	All users	Android, Windows (MDM)	All users

Answer Area

Statements	Yes	No
User1 can enroll Windows devices in Endpoint Manager.	<input type="radio"/>	<input type="radio"/>
User2 can enroll Android devices in Endpoint Manager.	<input type="radio"/>	<input type="radio"/>
User3 can enroll iOS devices in Endpoint Manager.	<input type="radio"/>	<input type="radio"/>

- A. Mastered
- B. Not Mastered

Answer: A

Explanation:

Answer Area

Statements	Yes	No
User1 can enroll Windows devices in Endpoint Manager.	<input type="radio"/>	<input checked="" type="radio"/>
User2 can enroll Android devices in Endpoint Manager.	<input type="radio"/>	<input checked="" type="radio"/>
User3 can enroll iOS devices in Endpoint Manager.	<input checked="" type="radio"/>	<input type="radio"/>

NEW QUESTION 38

- (Exam Topic 5)

You have a Microsoft 365 tenant.

You need to retain Azure Active Directory (Azure AD) audit logs for two years. Administrators must be able to query the audit log information by using the Azure Active Directory admin center.

What should you do? To answer, select the appropriate options in the answer area. NOTE: Each correct selection is worth one point.

Answer Area

Save the audit logs to:

Azure Active Directory admin center blade to use to view the saved audit logs:

- A. Mastered
- B. Not Mastered

Answer: A

Explanation:

Answer Area

Save the audit logs to: Azure Log Analytics

Azure Active Directory admin center blade to use to view the saved audit logs: Audit logs

NEW QUESTION 39

- (Exam Topic 5)

Note: This question is part of a series of questions that present the same scenario. Each question in the series contains a unique solution that might meet the stated goals. Some question sets might have more than one correct solution, while others might not have a correct solution.

After you answer a question in this section, you will NOT be able to return to it. As a result, these questions will not appear in the review screen.

You have a Microsoft 365 E5 subscription.

You create an account for a new security administrator named SecAdmin1.

You need to ensure that SecAdmin1 can manage Office 365 Advanced Threat Protection (ATP) settings and policies for Microsoft Teams, SharePoint, and OneDrive.

Solution: From the Microsoft 365 admin center, you assign SecAdmin1 the SharePoint admin role. Does this meet the goal?

- A. Yes
- B. No

Answer: B

Explanation:

You need to assign the Security Administrator role. Reference:

<https://docs.microsoft.com/en-us/microsoft-365/security/office-365-security/office-365-atp?view=o365-worldwi>

NEW QUESTION 42

- (Exam Topic 5)

You have a Microsoft 365 F5 subscription.

You plan to deploy 100 new Windows 10 devices.

You need to order the appropriate version of Windows 10 for the new devices. The version must Meet the following requirements.

Be serviced for a minimum of 24 months.

Support Microsoft Application Virtualization (App-V) Which version should you identify?

- A. Window 10 Pro, version 1909
- B. Window 10 Pro, version 2004
- C. Window 10 Pro, version 1909
- D. Window 10 Enterprise, version 2004

Answer: D

Explanation:

Reference:

<https://docs.microsoft.com/en-us/windows/release-health/release-information> <https://docs.microsoft.com/en-us/windows/application-management/app-v/appv-supported-configurations>

NEW QUESTION 47

- (Exam Topic 5)

You have a Microsoft 365 E5 tenant that connects to Microsoft Defender for Endpoint. You have devices enrolled in Microsoft Intune as shown in the following table.

Name	Platform
Device1	Windows 10
Device2	Windows 8.1
Device3	iOS
Device4	Android

You plan to use risk levels in Microsoft Defender for Endpoint to identify whether a device is compliant. Noncompliant devices must be blocked from accessing corporate resources.

You need to identify which devices can be onboarded to Microsoft Defender for Endpoint, and which Endpoint security policies must be configured.

What should you identify? To answer, select the appropriate options in the answer area.

NOTE: Each correct selection is worth one point.

Devices that can onboarded to Microsoft Defender for Endpoint:

Device 1 only
Device 1 and Device 2 only
Device 1 and Device 3 only
Device 1 and Device 4 only
Device 1, Device 2, and Device 4 only
Device 1, Device 2, Device 3, and Device 4

Endpoint security policies that must be configured:

A conditional access policy only
A device compliance policy only
A device configuration profile only
A device configuration profile and a conditional access policy only
Device configuration profile, device compliance policy, and conditional access policy

- A. Mastered
- B. Not Mastered

Answer: A

Explanation:

Text, table Description automatically generated with medium confidence

Reference:

<https://docs.microsoft.com/en-us/microsoft-365/security/defender-endpoint/configure-machines-onboarding?vie>

NEW QUESTION 50

- (Exam Topic 5)

You use Microsoft Defender for Endpoint.

You have the Microsoft Defender for Endpoint device groups shown in the following table

Name	Rank	Members
Group1	1	Operating system in Windows 10
Group2	2	Name ends with London
Group3	3	Operating system in Windows Server 2016
Ungrouped machines (default)	Last	Not applicable

You plan to onboard computers to Microsoft Defender for Endpoint as shown in the following table.

Name	Operating system
Computer1-London	Windows 10
Server1-London	Windows Server 2016

Answer Area

Computer1-London:

Group1
Group2
Group3
Ungrouped machines

Server1-London:

Group1
Group2
Group3
Ungrouped machines

- A. Mastered
- B. Not Mastered

Answer: A

Explanation:

Answer Area

Computer1-London: ▼

Group1
Group2
Group3
Ungrouped machines

Server1-London: ▼

Group1
Group2
Group3
Ungrouped machines

NEW QUESTION 51

- (Exam Topic 5)

You have a Microsoft 365 E5 tenant that uses Microsoft Intune. You need to configure Intune to meet the following requirements:

- > Prevent users from enrolling personal devices.
- > Ensure that users can enroll a maximum of 10 devices.

What should you use for each requirement? To answer, select the appropriate options in the answer area.

NOTE: Each correct selection is worth one point.

Prevent users from enrolling personal devices:

 ▼

Conditional access policies
Device categories
Device limit restrictions
Device type restrictions

Ensure that users can enroll a maximum of 10 devices:

 ▼

Conditional access policies
Device categories
Device limit restrictions
Device type restrictions

- A. Mastered
- B. Not Mastered

Answer: A

Explanation:

Graphical user interface, text, application, chat or text message Description automatically generated

Reference:

<https://docs.microsoft.com/en-us/mem/intune/enrollment/enrollment-restrictions-set#blocking-personal-window>

NEW QUESTION 56

- (Exam Topic 5)

You have a Microsoft 365 E5 subscription.

Conditional Access is configured to block high-risk sign-ins for all users.

All users are in France and are registered for multi-factor authentication (MFA). Users in the media department will travel to various countries during the next month.

You need to ensure that if the media department users are blocked from signing in while traveling, the users can remediate the issue without administrator intervention. What should you configure?

- A. an exclusion group
- B. the MFA registration policy
- C. named locations
- D. self-service password reset (SSPR)

Answer: D

Explanation:

Self-remediation with self-service password reset

If a user has registered for self-service password reset (SSPR), then they can also remediate their own user risk by performing a self-service password reset.

Reference:

<https://learn.microsoft.com/en-us/azure/active-directory/identity-protection/howto-identity-protection-remediate>

NEW QUESTION 57

- (Exam Topic 5)
 HOTSPOT

You have a Microsoft 365 subscription.

You need to review metrics for the following: The daily active users in Microsoft Teams Recent Microsoft service issues

What should you use? To answer, select the appropriate options in the answer area. NOTE: Each correct selection is worth one point.

Answer Area



- A. Mastered
- B. Not Mastered

Answer: A

Explanation:

Box 1: Usage reports

The daily active users in Microsoft Teams

Microsoft 365 Reports in the admin center - Microsoft Teams usage activity

The brand-new Teams usage report gives you an overview of the usage activity in Teams, including the number of active users, channels and messages so you can quickly see how many users across your organization are using Teams to communicate and collaborate. It also includes other Teams specific activities, such as the number of active guests, meetings, and messages.

Box 2: Service Health

Recent Microsoft service issues

You can view the health of your Microsoft services, including Office on the web, Yammer, Microsoft Dynamics CRM, and mobile device management cloud services, on the Service health page in the Microsoft 365 admin center. If you are experiencing problems with a cloud service, you can check the service health to determine whether this is a known issue with a resolution in progress before you call support or spend time troubleshooting.

Reference:

<https://learn.microsoft.com/en-us/microsoft-365/admin/activity-reports/microsoft-teams-usage-activity> <https://learn.microsoft.com/en-us/microsoft-365/enterprise/view-service-health>

NEW QUESTION 58

- (Exam Topic 5)
 HOTSPOT

You have a Microsoft 365 E5 subscription that contains a Microsoft SharePoint site named Site1 and a data loss prevention (DLP) policy named DLP1. DLP1 contains the rules shown in the following table.

Name	Priority	Action
Rule1	0	Notify users by using email and policy tips. Customize the policy tip as Rule1 tip. Disable user overrides.
Rule2	1	Notify users by using email and policy tips. Customize the policy tip as Rule2 tip. Restrict access to the content. Disable user overrides.
Rule3	2	Notify users by using email and policy tips. Customize the policy tip as Rule3 tip. Restrict access to the content. Enable user overrides.
Rule4	3	Notify users by using email and policy tips. Customize the policy tip as Rule4 tip. Restrict access to the content. Disable user overrides.

Site1 contains the files shown in the following table.

Name	Matched DLP rule
File1.docx	Rule1, Rule2, Rule3
File2.docx	Rule1, Rule3, Rule4

Which policy tips are shown for each file? To answer, select the appropriate options in the answer area.

NOTE: Each correct selection is worth one point.

Answer Area

File1.docx:

- Rule1 tip only
- Rule2 tip only
- Rule3 tip only
- Rule1 tip and Rule2 tip only
- Rule1 tip, Rule2 tip, and Rule3 tip

File2.docx:

- Rule1 tip only
- Rule3 tip only
- Rule4 tip only
- Rule1 tip and Rule4 tip only
- Rule1 tip, Rule3 tip, and Rule4 tip

- A. Mastered
- B. Not Mastered

Answer: A

Explanation:

Box 1: Rule1 tip only

File1 matches Rule1, Rule2, and Rule3. Rule1 has the highest priority.

Note: The Priority parameter specifies a priority value for the policy that determines the order of policy processing. A lower integer value indicates a higher priority, the value 0 is the highest priority, and policies can't have the same priority value.

Box 2: Rule1 tip only

Note: User Override support

The option to override is per rule, and it overrides all of the actions in the rule (except sending a notification, which can't be overridden).

It's possible for content to match several rules in a DLP policy or several different DLP policies, but only the policy tip from the most restrictive, highest-priority rule will be shown (including policies in Test mode). For example, a policy tip from a rule that blocks access to content will be shown over a policy tip from a rule that simply sends a notification. This prevents people from seeing a cascade of policy tips.

If the policy tips in the most restrictive rule allow people to override the rule, then overriding this rule also

overrides any other rules that the content matched. Reference:

<https://learn.microsoft.com/en-us/microsoft-365/compliance/dlp-overview-plan-for-dlp> <https://learn.microsoft.com/en-us/microsoft-365/compliance/use-notifications-and-policy-tips>

NEW QUESTION 59

- (Exam Topic 5)

You have a Microsoft 365 E5 subscription.

You configure a new alert policy as shown in the following exhibit.

How do you want the alert to be triggered?

Every time an activity matches the rule

When the volume of matched activities reaches a threshold

More than or equal to activities

During the last minutes

On

When the volume of matched activities becomes unusual

On

You need to identify the following:

- > How many days it will take to establish a baseline for unusual activity.
- > Whether alerts will be triggered during the establishment of the baseline.

What should you identify? To answer, select the appropriate options in the answer area.

NOTE: Each correct selection is worth one point.

How many days it will take to establish the baseline:

1
5
7
10

Whether the alerts will be triggered during the establishment of the baseline:

Alerts will be triggered.
Alerts will not be triggered.
Alerts will be triggered only after the process to establish the baseline has been running for one day.

- A. Mastered
- B. Not Mastered

Answer: A

Explanation:

Graphical user interface, text, application Description automatically generated

Reference:

<https://docs.microsoft.com/en-us/microsoft-365/compliance/alert-policies?view=o365-worldwide>

NEW QUESTION 61

- (Exam Topic 5)

Your company has 10,000 users who access all applications from an on-premises data center. You plan to create a Microsoft 365 subscription and to migrate data to the cloud.

You plan to implement directory synchronization.

User accounts and group accounts must sync to Azure AD successfully. You discover that several user accounts fail to sync to Azure AD.

You need to resolve the issue as quickly as possible. What should you do?

- A. From Active Directory Administrative Center, search for all the users, and then modify the properties of the user accounts.
- B. Run idfix.exe, and then click Edit.
- C. From Windows PowerShell, run the start-AdSyncSyncCycle -PolicyType Delta command.
- D. Run idfix.exe, and then click Complete.

Answer: B

Explanation:

IdFix is used to perform discovery and remediation of identity objects and their attributes in an on-premises Active Directory environment in preparation for migration to Azure Active Directory. IdFix is intended for the Active Directory administrators responsible for directory synchronization with Azure Active Directory.

Reference:

<https://docs.microsoft.com/en-us/office365/enterprise/prepare-directory-attributes-for-synch-with-idfix>

NEW QUESTION 63

- (Exam Topic 5)

You have a Microsoft 365 subscription that contains a user named User1 and a Microsoft SharePoint Online site named Site1. User1 is assigned the Owner role for Site1. To Site1, you publish the file plan retention labels shown in the following table.

Name	Retention period	During the retention period
Retention1	5 years	Retain items even if users delete
Retention2	5 years	Mark items as a record
Retention3	5 years	Mark items as a regulatory record

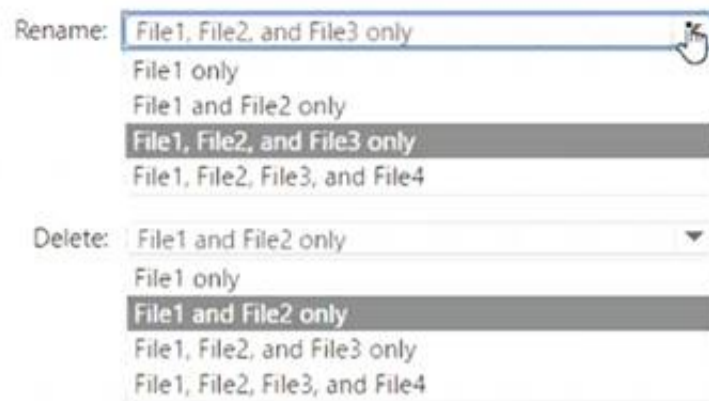
Site1 contains the files shown in the following table.

Name	Label
File1	None
File2	Retention1
File3	Retention2
File4	Retention3

Which files can User1 rename, and which files can User1 delete? To answer, select the appropriate options in the answer area.

NOTE: Each correct selection is worth one point.

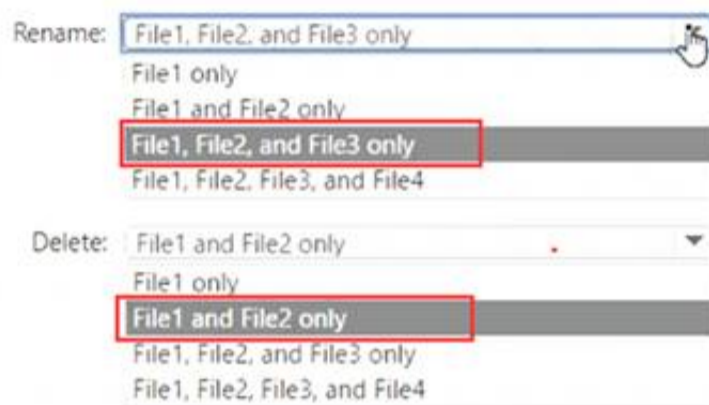
Answer Area



- A. Mastered
- B. Not Mastered

Answer: A

Explanation:
 Answer Area



NEW QUESTION 65

- (Exam Topic 5)

You have a Microsoft 365 E5 subscription.

All users have Mac computers. All the computers are enrolled in Microsoft Endpoint Manager and onboarded to Microsoft Defender for Endpoint. You need to configure Microsoft Defender for Endpoint on the computers. What should you create from the Endpoint Management admin center?

- A. a Microsoft Defender for Endpoint baseline profile
- B. an update policy for iOS
- C. a device configuration profile
- D. a mobile device management (MDM) security baseline profile

Answer: D

NEW QUESTION 70

- (Exam Topic 5)

You have a Microsoft 365 E5 subscription that uses Microsoft Defender for Office 365. You have the policies shown in the following table.

Name	Type
Policy1	Anti-phishing
Policy2	Anti-spam
Policy3	Anti-malware
Policy4	Safe Attachments

All the policies are configured to send malicious email messages to quarantine. Which policies support a customized quarantine retention period?

- A. Policy1 and Policy2 only
- B. Policy2 and Policy4 only
- C. Policy3 and Policy4 only
- D. Policy1 and Policy3 only

Answer: A

NEW QUESTION 73

- (Exam Topic 5)

You have a Microsoft 365 E5 tenant.

You configure a device compliance policy as shown in the following exhibit.

Compliance settings [Edit](#)

Microsoft Defender ATP

Require the device to be at or under the machine risk score. Low

Device Health

Rooted devices
 Require the device to be at or under the Device Threat Level Block

System Security

Require a password to unlock mobile devices Require
 Required password type Device default
 Encryption of data storage on device Require
 Block apps from unknown sources Block

Actions for noncompliance [Edit](#)

Action	Schedule
Mark device noncompliant	Immediately
Retire the noncompliant device	Immediately

Use the drop-down menus to select the answer choice that completes each statement based on the information presented in the graphic.
 NOTE: Each correct selection is worth one point.

When a device reports a medium threat level, the device will

be locked remotely

display a notification

marked as compliant

marked as noncompliant

removed from the database

Rooted devices will be

allowed to access company resources

marked as compliant

prevented from accessing company resources

reported with a low device threat

- A. Mastered
- B. Not Mastered

Answer: A

Explanation:
 Graphical user interface, text, application, email Description automatically generated
 Reference:
<https://docs.microsoft.com/en-us/mem/intune/protect/compliance-policy-create-android>

NEW QUESTION 76

- (Exam Topic 5)
 HOTSPOT

You have a Microsoft 365 E5 subscription linked to an Azure Active Directory (Azure AD) tenant. The tenant contains a group named Group1 and the users shown in the following table:

Name	Role
Admin1	Conditional Access administrator
Admin2	Security administrator
Admin3	User administrator

The tenant has a conditional access policy that has the following configurations: Name: Policy1
 Assignments:

- Users and groups: Group1
- Cloud apps or actions: All cloud apps
- > Access controls:
 - > Grant, require multi-factor authentication
 - > Enable policy: Report-only

You set Enabled Security defaults to Yes for the tenant.
 For each of the following settings select Yes, if the statement is true. Otherwise, select No.
 NOTE: Each correct selection is worth one point.

Statements	Yes	No
Admin1 can set Enable policy for Policy1 to On .	<input type="radio"/>	<input type="radio"/>
Admin2 can set Enable policy for Policy1 to Off .	<input type="radio"/>	<input type="radio"/>
Admin3 can set Users and groups for Policy1 to All users .	<input type="radio"/>	<input type="radio"/>

- A. Mastered
- B. Not Mastered

Answer: A

Explanation:

Report-only mode is a new Conditional Access policy state that allows administrators to evaluate the impact of Conditional Access policies before enabling them in their environment. With the release of report-only mode:

- > Conditional Access policies can be enabled in report-only mode.
- > During sign-in, policies in report-only mode are evaluated but not enforced.
- > Results are logged in the Conditional Access and Report-only tabs of the Sign-in log details.
- > Customers with an Azure Monitor subscription can monitor the impact of their Conditional Access policies using the Conditional Access insights workbook.

Reference:

<https://docs.microsoft.com/en-us/azure/active-directory/conditional-access/concept-conditional-access-report-on>

NEW QUESTION 79

- (Exam Topic 5)

HOTSPOT

You have a Microsoft 365 E5 tenant that contains the users shown in the following table.

Name	Role
User1	Global admin
User2	None
User3	None

You provision the private store in Microsoft Store for Business.

You assign Microsoft Store for Business roles to the users as shown in the following table.

Name	Role
User1	None
User2	Purchaser
User3	Basic Purchaser

You need to identify which users can add apps to the private store, and which users can assign apps from Microsoft Store for Business.

Which users should you identify? To answer, select the appropriate options in the answer area.

NOTE: Each correct selection is worth one point.

Can add apps to the private store:

▼

User2 only

User1 and User2 only

User2 and User3 only

User1, User2, and User3

Can assign apps from Microsoft Store for Business:

▼

User2 only

User1 and User2 only

User2 and User3 only

User1, User2, and User3

- A. Mastered
- B. Not Mastered

Answer: A

Explanation:

Graphical user interface, text, application Description automatically generated

Reference:

<https://docs.microsoft.com/en-us/microsoft-store/roles-and-permissions-microsoft-store-for-business> <https://docs.microsoft.com/en-us/education/windows/education-scenarios-store-for-business#basic-purchaser-rol>

NEW QUESTION 84

- (Exam Topic 5)

You have a Microsoft Azure Active Directory (Azure AD) tenant named Contoso.com. You create a Microsoft Defender for identity instance Contoso. The tenant contains the users shown in the following table.

Name	Member of group	Azure AD role
User1	Defender for Identity Contoso Administrators	None
User2	Defender for Identity Contoso Users	None
User3	None	Security administrator
User4	Defender for Identity Contoso Users	Global administrator

You need to modify the configuration of the Defender for identify sensors.

Solutions: You instruct User1 to modify the Defender for identity sensor configuration. Does this meet the goal?

- A. Yes
- B. No

Answer: A

NEW QUESTION 86

- (Exam Topic 5)

You have a Microsoft 365 E5 subscription that contains a user named User1.

User1 exceeds the default daily limit of allowed email messages and is on the Restricted entities list. You need to remove User1 from the Restricted entities list. What should you use?

- A. the Exchange admin center
- B. the Microsoft Purview compliance portal
- C. the Microsoft 365 admin center
- D. the Microsoft 365 Defender portal
- E. the Microsoft Entra admin center

Answer: D

Explanation:

Admins can remove user accounts from the Restricted entities page in the Microsoft 365 Defender portal or in Exchange Online PowerShell.

Remove a user from the Restricted entities page in the Microsoft 365 Defender portal

In the Microsoft 365 Defender portal at <https://security.microsoft.com>, go to Email & collaboration > Review

> Restricted entities. Or, to go directly to the Restricted entities page, use <https://security.microsoft.com/restrictedentities>.

Reference:

<https://learn.microsoft.com/en-us/microsoft-365/security/office-365-security/removing-user-from-restricted-user>

NEW QUESTION 90

- (Exam Topic 5)

You have a Microsoft 365 tenant that contains the compliance policies shown in the following table.

Name	Require BitLocker	Require the device to be at or under the machine risk score
Policy1	Required	High
Policy2	Not configured	Medium
Policy3	Required	Low

The tenant contains the devices shown in the following table.

Name	BitLocker Drive Encryption (BitLocker)	Microsoft Defender for Endpoint risk status	Policies applied
Device1	Configured	High	Policy1, Policy3
Device2	Not configured	Medium	Policy2, Policy3
Device3	Not configured	Low	Policy1, Policy2

For each of the following statements, select Yes if the statement is true. Otherwise, select No.

Statements

Yes No

Device1 is marked as compliant.

Device2 is marked as compliant.

Device3 is marked as compliant.

- A. Mastered
- B. Not Mastered

Answer: A

Explanation:

Graphical user interface, text, application Description automatically generated

NEW QUESTION 94

- (Exam Topic 5)

You have a Microsoft 365 subscription.

Your company has a customer ID associated to each customer. The customer IDs contain 10 numbers followed by 10 characters. The following is a sample customer ID: 12-456-7890-abc-de-fghij.

You plan to create a data loss prevention (DLP) policy that will detect messages containing customer IDs. D18912E1457D5D1DDCDBD40AB3BF70D5D

What should you create to ensure that the DLP policy can detect the customer IDs?

- A. a sensitive information type
- B. a sensitivity label
- C. a supervision policy
- D. a retention label

Answer: A

Explanation:

Reference:

<https://docs.microsoft.com/en-us/microsoft-365/compliance/custom-sensitive-info-types?view=o365-worldwide>

NEW QUESTION 99

- (Exam Topic 5)

You have a Microsoft 365 tenant that has Enable Security defaults set to No in Azure Active Directory (Azure AD). The tenant has two Compliance Manager assessments as shown in the following table.

Name	Score	Status	Assessment progress	Your improvement actions	Microsoft actions	Group	Product	Regulation
SP800	15444	Incomplete	72%	3 of 450 completed	887 of 887 completed	Group1	Microsoft 365	NIST 800-53
Data Protection Baseline	14370	Incomplete	70%	3 of 489 completed	835 of 835 completed	Group2	Microsoft 365	Data Protection Baseline

The SP800 assessment has the improvement actions shown in the following table.

Improvement action	Test status	Impact	Points achieved	Regulations
Establish a threat intelligence program	None	+9 points	0/9	NIST 800-53, Data Protection Baseline
Establish and document a configuration management program	None	+9 points	0/9	NIST 800-53, Data Protection Baseline

You perform the following actions:

- > For the Data Protection Baseline assessment, change the Test status of Establish a threat intelligence program to Implemented.
- > Enable multi-factor authentication (MFA) for all users.

For each of the following statements, select Yes if the statement is true. Otherwise, select No.

NOTE: Each correct selection is worth one point.

Statements	Yes	No
Establish a threat intelligence program will appear as Implemented in the SP800 assessment.	<input type="radio"/>	<input type="radio"/>
The SP800 assessment score will increase by 54 points.	<input type="radio"/>	<input type="radio"/>
The Data Protection Baseline score will increase by 9 points.	<input type="radio"/>	<input type="radio"/>

- A. Mastered
- B. Not Mastered

Answer: A

Explanation:

Graphical user interface, text Description automatically generated

Reference:

<https://docs.microsoft.com/en-us/microsoft-365/compliance/compliance-manager-assessments?view=o365-worl> <https://docs.microsoft.com/en-us/microsoft-365/compliance/compliance-score-calculation?view=o365-worldwid>

NEW QUESTION 103

- (Exam Topic 5)

You have a Microsoft 365 E5 subscription that uses Microsoft Defender for Endpoint.

When users attempt to access the portal of a partner company, they receive the message shown in the following exhibit.



You need to enable user access to the partner company's portal. Which Microsoft Defender for Endpoint setting should you modify?

- A. Alert notifications

- B. Alert suppression
- C. Custom detections
- D. Advanced hunting
- E. Indicators

Answer: E

Explanation:

This Website Is Blocked By Your Organization

Custom indicators will block malicious IPs, URLs, and domains. Then, they will display the above message for the user.

Reference:

<https://jadexstrategic.com/web-protection/>

NEW QUESTION 106

- (Exam Topic 5)

You have a Microsoft 365 E5 subscription that contains the users shown in the following table.

Name	Member of
User1	Group1, Group2
User2	Group2, Group3
User3	Group1, Group3

In Microsoft Endpoint Manager, you have the Policies for Office apps settings shown in the following table.

Name	Priority	Applies to
Policy1	0	Group1
Policy2	1	Group2
Policy3	2	Group3

The policies use the settings shown in the following table.

Name	Cursor movement	Clear cache on close
Policy1	Logical	Disabled
Policy2	Not configured	Enabled
Policy3	Visual	Enabled

For each of the following statements, select Yes if the statement is true. Otherwise, select No.

NOTE: Each correct selection is worth one point.

Statements	Yes	No
User1 has their cache cleared on close.	<input type="radio"/>	<input type="radio"/>
User2 has Cursor movement set to Visual.	<input type="radio"/>	<input type="radio"/>
User3 has Cursor movement set to Visual.	<input type="radio"/>	<input type="radio"/>

- A. Mastered
- B. Not Mastered

Answer: A

Explanation:

Graphical user interface, text, application Description automatically generated

Reference:

<https://docs.microsoft.com/en-us/deployoffice/overview-office-cloud-policy-service>

NEW QUESTION 108

- (Exam Topic 5)

You have a Microsoft 365 subscription that contains the users shown in the following table.

Name	Member of	Azure Active Directory (Azure AD) role
User1	Group1	Global administrator
User2	Group2	Cloud device administrator

You configure an Enrollment Status Page profile as shown in the following exhibit.

Settings

The enrollment status page appears during initial device setup. If enabled, users can see the installation progress of assigned apps and profiles.

Show app and profile installation progress. Yes No

Show time limit error when installation takes longer than specified number of minutes.

Show custom message when time limit error occurs. Yes No

Allow users to collect logs about installation errors. Yes No

Only show page to devices provisioned by out-of-box experience (OOBE) Yes No

Block device use until all apps and profiles are installed Yes No

You assign the policy to Group1.

You purchase the devices shown in the following table.

Name	Platform
Device1	Windows 10
Device2	Android

For each of the following statements, select Yes if the statement is true. Otherwise, select No.

NOTE: Each correct selection is worth one point.

Statements	Yes	No
If User1 performs the initial device enrollment for Device1, the Enrollment Status Page will show.	<input type="radio"/>	<input type="radio"/>
If User1 performs the initial device enrollment for Device2, the Enrollment Status Page will show.	<input type="radio"/>	<input type="radio"/>
If User2 performs the initial device enrollment for Device2, the Enrollment Status Page will show.	<input type="radio"/>	<input type="radio"/>

- A. Mastered
- B. Not Mastered

Answer: A

Explanation:

Reference:

<https://docs.microsoft.com/en-us/mem/intune/enrollment/windows-enrollment-status>

NEW QUESTION 112

- (Exam Topic 5)

You have 2,500 Windows 10 devices and a Microsoft 365 E5 tenant that contains two users named User1 and User2. The devices are not enrollment in Microsoft Intune.

In Microsoft Endpoint Manager, the Device limit restrictions are configured as shown in the following exhibit.

Device limit restrictions

Define how many devices each user can enroll.

Priority	Name	Device limit	Assigned
Default	All Users	2	Yes

In Azure Active Directory (Azure AD), the Device settings are configured as shown in the following exhibit.

Users may register their devices with Azure AD 

All None

 Learn more on how this setting works

Require Multi-Factor Auth to join devices 

Yes No

Maximum number of devices per user 

From Microsoft Endpoint Manager, you add User2 as a device enrollment manager (DEM). For each of the following statement, select Yes if the statement is true. Otherwise, select No. NOTE: Each correct selection is worth one point.

Answer Area

Statements	Yes	No
User1 can enroll only five devices in Intune.	<input type="radio"/>	<input type="radio"/>
User1 can join only five devices to Azure AD.	<input type="radio"/>	<input type="radio"/>
User2 can enroll all the devices in Intune.	<input type="radio"/>	<input type="radio"/>

- A. Mastered
- B. Not Mastered

Answer: A

Explanation:

Answer Area

Statements	Yes	No
User1 can enroll only five devices in Intune.	<input type="radio"/>	<input checked="" type="radio"/>
User1 can join only five devices to Azure AD.	<input type="radio"/>	<input checked="" type="radio"/>
User2 can enroll all the devices in Intune.	<input checked="" type="radio"/>	<input type="radio"/>

NEW QUESTION 117

- (Exam Topic 5)

You have a Microsoft 365 E5 tenant that contains four devices enrolled in Microsoft Intune as shown in the following table.

Name	Platform
Device1	Windows 10
Device2	Android
Device3	macOS
Device4	iOS

You plan to deploy Microsoft 365 Apps for enterprise by using Microsoft Endpoint Manager. To which devices can you deploy Microsoft 365 Apps for enterprise?

- A. Device1 only
- B. Device1 and Device3 only
- C. Device2 and Device4 only
- D. Device1, Device2, and Device3 only
- E. Device1, Device2, Device3, and Device4

Answer: B

Explanation:

Reference:

<https://docs.microsoft.com/en-us/mem/intune/apps/apps-add>

NEW QUESTION 118

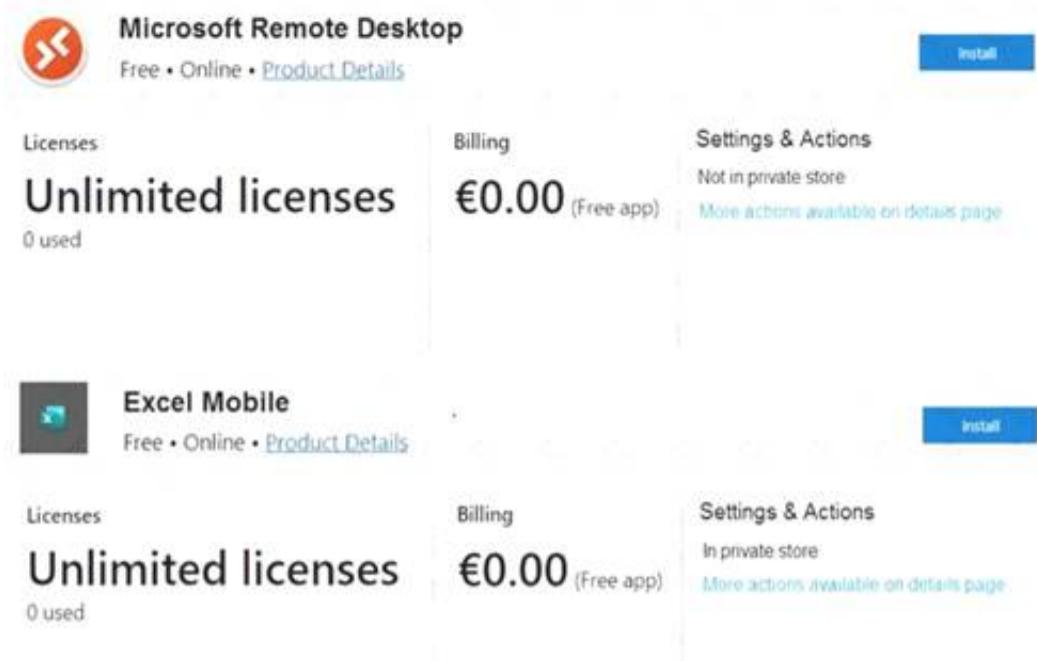
- (Exam Topic 5)

You have a Microsoft 365 tenant that is signed up for Microsoft Store for Business and contains the users shown in the following table.

Name	Microsoft Store for Business role	Azure Active Directory (Azure AD) role
User1	Purchaser	Billing administrator
User2	Admin	Global administrator
User3	Basic Purchaser	None
User4	Basic Purchaser, Device Guard signer	Global reader

All users have Windows 10 Enterprise devices.

The Products & services settings in Microsoft Store for Business are shown in the following exhibit.



Microsoft Remote Desktop
Free • Online • [Product Details](#) Install

Licenses: **Unlimited licenses** (0 used)
 Billing: **€0.00** (Free app)
 Settings & Actions: Not in private store
[More actions available on details page](#)

Excel Mobile
Free • Online • [Product Details](#) Install

Licenses: **Unlimited licenses** (0 used)
 Billing: **€0.00** (Free app)
 Settings & Actions: In private store
[More actions available on details page](#)

For each of the following statements, select Yes if the statement is true. Otherwise, select No.
 NOTE: Each correct selection is worth one point.

Statements	Yes	No
User2 can install the Microsoft Remote Desktop app from the private store.	<input type="radio"/>	<input type="radio"/>
User1 can install the Microsoft Remote Desktop app from Microsoft Store for Business.	<input type="radio"/>	<input type="radio"/>
User4 can manage the Microsoft Remote Desktop app from the private store.	<input type="radio"/>	<input type="radio"/>

- A. Mastered
- B. Not Mastered

Answer: A

Explanation:

Text Description automatically generated

Reference:

<https://docs.microsoft.com/en-us/microsoft-store/roles-and-permissions-microsoft-store-for-business>

NEW QUESTION 122

- (Exam Topic 5)

Note: This question is part of a series of questions that present the same scenario. Each question in the series contains a unique solution that might meet the stated goals. Some question sets might have more than one correct solution, while others might not have a correct solution.

After you answer a question in this section, you will NOT be able to return to it. As a result, these questions will not appear in the review screen.

You have a Microsoft 365 subscription.

You need to prevent users from accessing your Microsoft SharePoint Online sites unless the users are connected to your on-premises network.

Solution: From the Endpoint Management admin center, you create a device configuration profile. Does this meet the goal?

- A. Yes
- B. No

Answer: B

Explanation:

You need to create a trusted location and a conditional access policy.

NEW QUESTION 126

- (Exam Topic 5)

HOTSPOT

You have a Microsoft 365 E5 subscription. You need to meet the following requirements:

Automatically encrypt documents stored in Microsoft OneDrive and SharePoint.

Enable co-authoring for Microsoft Office documents encrypted by using a sensitivity label.

Which two settings should you use in the Microsoft Purview compliance portal? To answer, select the appropriate settings in the answer area.

NOTE: Each correct selection is worth one point.

Answer Area



- A. Mastered
- B. Not Mastered

Answer: A

Explanation:

Box 1: Information protection

Automatically encrypt documents stored in Microsoft OneDrive and SharePoint.

How to integrate Microsoft Purview Information Protection with Defender for Cloud Apps Enable Microsoft Purview Information Protection

All you have to do to integrate Microsoft Purview Information Protection with Defender for Cloud Apps is

select a single checkbox. By enabling automatic scan, you enable searching for sensitivity labels from Microsoft Purview Information Protection on your Office 365 files without the need to create a policy. After you enable it, if you have files in your cloud environment that are labeled with sensitivity labels from Microsoft Purview Information Protection, you'll see them in Defender for Cloud Apps.

To enable Defender for Cloud Apps to scan files with content inspection enabled for sensitivity labels: In the Microsoft 365 Defender portal, select Settings. Then choose Cloud Apps. Then go to Information Protection -> Microsoft Information Protection.

Note: Encryption of data at rest

Encryption at rest includes two components: BitLocker disk-level encryption and per-file encryption of customer content.

BitLocker is deployed for OneDrive for Business and SharePoint Online across the service. Per-file encryption is also in OneDrive for Business and SharePoint Online in Microsoft 365 multi-tenant and new dedicated environments that are built on multi-tenant technology.

Box 2: Settings

Enable co-authoring for Microsoft Office documents encrypted by using a sensitivity label.

- * 1. Sign in to the Microsoft Purview compliance portal as a global admin for your tenant.
- * 2. From the navigation pane, select Settings > Co-authoring for files with sensitivity files.
- * 3. On the Co-authoring for files with sensitivity labels page, read the summary description, prerequisites, and what to expect.
- * 4. Then select Turn on co-authoring for files with sensitivity labels, and Apply.
- * 5. Wait 24 hours for this setting to replicate across your environment before you use this new feature for co-authoring.

Reference:

<https://learn.microsoft.com/en-us/defender-cloud-apps/azip-integration> <https://learn.microsoft.com/en-us/microsoft-365/compliance/sensitivity-labels-coauthoring>

NEW QUESTION 127

- (Exam Topic 5)

You have a Microsoft 365 subscription that uses Microsoft Defender for Office 365. You need to configure policies to meet the following requirements:

- > Customize the common attachments filter.
- > Enable impersonation protection for sender domains.

Which type of policy should you configure for each requirement? To answer, drag the appropriate policy types to the correct requirements. Each policy type may be used once, more than once, or not at all. You may need to drag the split bar between panes or scroll to view content.

NOTE: Each correct selection is worth one point.

Policy Types

Answer Area

Anti-malware

Customize the common attachments filter:

Anti-phishing

Enable impersonation protection for sender domains:

Anti-spam

Safe Attachments

- A. Mastered
- B. Not Mastered

Answer: A

Explanation:

A close-up of a question Description automatically generated

Box 1: Anti-malware

Customize the common attachments filter. See step 5 below.

* 1. Use the Microsoft 365 Defender portal to create anti-malware policies

In the Microsoft 365 Defender portal at <https://security.microsoft.com>, go to Email & Collaboration > Policies

& Rules > Threat policies > Anti-Malware in the Policies section. To go directly to the Anti-malware page, use <https://security.microsoft.com/antimalwarev2>

* 2. On the Anti-malware page, select Create to open the new anti-malware policy wizard. On the Name your policy page, configure these settings:

Name: Enter a unique, descriptive name for the policy. Description: Enter an optional description for the policy.

* 3. When you're finished on the Name your policy page, select Next.

* 4. On the Users and domains page, identify the internal recipients that the policy applies to (recipient conditions)

* 5. On the Protection settings page, configure the following settings: Protection settings section:

Enable the common attachments filter: If you select this option, messages with the specified attachments are treated as malware and are automatically quarantined. You can modify the list by clicking Customize file types and selecting or deselecting values in the list.

* 6. Etc.

Box 2: Anti-phishing

Enable impersonation protection for sender domains. Anti-phishing policies in Microsoft 365

The high-level differences between anti-phishing policies in EOP and anti-phishing policies in Defender for Office 365 are described in the following table:

Feature	Anti-phishing policies in EOP	Anti-phishing policies in Defender for Office 365
Automatically created default policy	✓	✓
Create custom policies	✓	✓
Common policy settings*	✓	✓
Spoof settings	✓	✓
First contact safety tip	✓	✓
Impersonation settings		✓
Advanced phishing thresholds		✓

Reference:

<https://learn.microsoft.com/en-us/microsoft-365/security/office-365-security/anti-malware-policies-configure> <https://learn.microsoft.com/en-us/microsoft-365/security/office-365-security/anti-phishing-policies-about>

NEW QUESTION 131

- (Exam Topic 5)

You have a Microsoft 365 subscription.

You plan to implement Microsoft Purview Privileged Access Management. Which Microsoft Office 365 workloads support privileged access?

- A. Microsoft Exchange Online only
- B. Microsoft Teams only
- C. Microsoft Exchange Online and SharePoint Online only
- D. Microsoft Teams and SharePoint Online only
- E. Microsoft Teams, Exchange Online, and SharePoint Online

Answer: A

Explanation:

Privileged access management

Having standing access by some users to sensitive information or critical network configuration settings in Microsoft Exchange Online is a potential pathway for compromised accounts or internal threat activities. Microsoft Purview Privileged Access Management helps protect your organization from breaches and helps to meet compliance best practices by limiting standing access to sensitive data or access to critical configuration settings. Instead of administrators having constant access, just-in-time access rules are implemented for tasks that need elevated permissions. Enabling privileged access management for Exchange Online in Microsoft 365 allows your organization to operate with zero standing privileges and provide a layer of defense against standing administrative access vulnerabilities.

Note: When will privileged access support Office 365 workloads beyond Exchange? Privileged access management will be available in other Office 365 workloads soon. Reference:

<https://learn.microsoft.com/en-us/microsoft-365/compliance/privileged-access-management-solution-overview> <https://learn.microsoft.com/en-us/microsoft-365/compliance/privileged-access-management>

NEW QUESTION 134

- (Exam Topic 5)

You have a Microsoft 365 E5 subscription.

You need to compare the current Safe Links configuration to the Microsoft recommended configurations. What should you use?

- A. Microsoft Purview
- B. Azure AD Identity Protection
- C. Microsoft Secure Score
- D. the configuration analyzer

Answer: C

NEW QUESTION 138

- (Exam Topic 5)

You have a Microsoft 365 subscription.

You need to configure a compliance solution that meets the following requirements: Defines sensitive data based on existing data samples

Automatically prevents data that matches the samples from being shared externally in Microsoft SharePoint or email messages

Which two components should you configure? Each correct answer presents part of the solution.

NOTE: Each correct selection is worth one point.

- A. a trainable classifier
- B. a sensitive info type
- C. an insider risk policy
- D. an adaptive policy scope
- E. a data loss prevention (DLP) policy

Answer: AE

Explanation:

A: Classifiers

This categorization method is well suited to content that isn't easily identified by either the manual or automated pattern-matching methods. This method of categorization is more about using a classifier to identify an item based on what the item is, not by elements that are in the item (pattern matching). A classifier learns how to identify a type of content by looking at hundreds of examples of the content you're interested in identifying.

Where you can use classifiers

Classifiers are available to use as a condition for: Office auto-labeling with sensitivity labels

Auto-apply retention label policy based on a condition Communication compliance

Sensitivity labels can use classifiers as conditions, see Apply a sensitivity label to content automatically. Data loss prevention

E: Organizations have sensitive information under their control such as financial data, proprietary data, credit card numbers, health records, or social security numbers. To help protect this sensitive data and reduce risk, they need a way to prevent their users from inappropriately sharing it with people who shouldn't have it. This practice is called data loss prevention (DLP).

Reference:

<https://learn.microsoft.com/en-us/microsoft-365/compliance/classifier-learn-about> <https://learn.microsoft.com/en-us/microsoft-365/compliance/dlp-learn-about-dlp>

NEW QUESTION 142

- (Exam Topic 5)

HOTSPOT

You have a Microsoft 365 subscription.

You are planning a threat management solution for your organization.

You need to minimize the likelihood that users will be affected by the following threats:

- > Opening files in Microsoft SharePoint that contain malicious content
- > Impersonation and spoofing attacks in email messages

Which policies should you create in Microsoft 365 Defender? To answer, select the appropriate options in the answer area.

NOTE: Each correct selection is worth one point.

Answer Area

Opening files in SharePoint that contain malicious content:

<input type="checkbox"/>	Anti-spam
<input type="checkbox"/>	Anti-Phishing
<input type="checkbox"/>	Safe Attachments
<input type="checkbox"/>	Safe Links

Impersonation and spoofing attacks in email messages:

<input type="checkbox"/>	Anti-spam
<input type="checkbox"/>	Anti-Phishing
<input type="checkbox"/>	Safe Attachments
<input type="checkbox"/>	Safe Links

- A. Mastered
- B. Not Mastered

Answer: A

Explanation:

Answer Area

Opening files in SharePoint that contain malicious content:

<input type="checkbox"/>	Anti-spam
<input type="checkbox"/>	Anti-Phishing
<input checked="" type="checkbox"/>	Safe Attachments
<input type="checkbox"/>	Safe Links

Impersonation and spoofing attacks in email messages:

<input type="checkbox"/>	Anti-spam
<input checked="" type="checkbox"/>	Anti-Phishing
<input type="checkbox"/>	Safe Attachments
<input type="checkbox"/>	Safe Links

NEW QUESTION 146

- (Exam Topic 5)

You have a Microsoft 365 E5 tenant.

Industry regulations require that the tenant comply with the ISO 27001 standard. You need to evaluate the tenant based on the standard

- A. From Policy in the Azure portal, select Compliance, and then assign a policy
- B. From Compliance Manager, create an assessment
- C. From the Microsoft 365 compliance center, create an audit retention policy.
- D. From the Microsoft 365 admin center enable the Productivity Score.

Answer: B

NEW QUESTION 148

- (Exam Topic 5)

Note: This question is part of a series of questions that present the same scenario. Each question in the series contains a unique solution that might meet the stated goals. Some question sets might have more than one correct solution, while others might not have a correct solution.

After you answer a question in this section, you will NOT be able to return to it. As a result, these questions will not appear in the review screen.

Your network contains an on-premises Active Directory domain. The domain contains domain controllers that run Windows Server 2019. The functional level of the forest and the domain is Windows Server 2012 R2.

The domain contains 100 computers that run Windows 10 and a member server named Server1 that runs Windows Server 2012 R2.

You plan to use Server1 to manage the domain and to configure Windows 10 Group Policy settings. You install the Group Policy Management Console (GPMC) on Server1.

You need to configure the Windows Update for Business Group Policy settings on Server1.

Solution: You raise the domain functional level to Windows Server 2019. You copy the Group Policy Administrative Templates from a Windows 10 computer to the Netlogon share on all the domain controllers.

Does this meet the goal?

- A. Yes
- B. No

Answer: B

NEW QUESTION 152

- (Exam Topic 5)

HOTSPOT

You have a Microsoft 365 E5 subscription that contains a user named User1. Azure AD Password Protection is configured as shown in the following exhibit.

User1 attempts to update their password to the following passwords:

- > F@lcon
- > Project22
- > T4il\$pin45dg4

Use the drop-down menus to select the answer choice that completes each statement based on the information presented in the graphic.

NOTE: Each correct selection is worth one point.

Answer Area

[Answer choice] will be accepted as a password.

- Only T4il\$pin45dg4
- Only F@lcon and T4il\$pin45dg4
- Only Project22 and T4il\$pin45dg4
- F@lcon, Project22, and T4il\$pin45dg4

If User1 enters the same wrong password 15 times, waits 11 minutes, and then enters the same wrong password again, the user [answer choice].

- will be locked out
- will trigger a user risk
- can attempt to sign in again immediately

- A. Mastered
- B. Not Mastered

Answer: A

Explanation:

Box 1: Only T4il\$pin45dg4

Box 2: can attempt to sign in immediately Note: Manage Azure AD smart lockout values

Based on your organizational requirements, you can customize the Azure AD smart lockout values. Customization of the smart lockout settings, with values specific to your organization, requires Azure AD Premium P1 or higher licenses for your users. Customization of the smart lockout settings is not available for Azure China 21Vianet tenants.

To check or modify the smart lockout values for your organization, complete the following steps:

- > Sign in to the Entra portal.
- > Search for and select Azure Active Directory, then select Security > Authentication methods > Password protection.
- > Set the Lockout threshold, based on how many failed sign-ins are allowed on an account before its first lockout.
- > The default is 10 for Azure Public tenants and 3 for Azure US Government tenants.
- > Set the Lockout duration in seconds, to the length in seconds of each lockout.
- > The default is 60 seconds (one minute).

If the first sign-in after a lockout period has expired also fails, the account locks out again. If an account locks repeatedly, the lockout duration increases.

Reference:

<https://learn.microsoft.com/en-us/azure/active-directory/authentication/howto-password-smart-lockout>

NEW QUESTION 155

- (Exam Topic 5)

You have a Microsoft 365 E5 tenant that contains five devices enrolled in Microsoft Intune as shown in the following table.

Name	Platform
Device1	Windows 10
Device2	Android 8.1.0
Device3	Android 10
Device4	iOS 12
Device5	iOS 14

All the devices have an app named App1 installed.

You need to prevent users from copying data from App1 and pasting the data into other apps.

Which policy should you create in Microsoft Endpoint Manager, and what is the minimum number of required policies? To answer, select the appropriate options in the answer area.

NOTE: Each correct selection is worth one point.

Policy to create in Microsoft Endpoint Manager:

▼

An app configuration policy

An app protection policy

A conditional access policy

A device compliance policy

Minimum number of required policies:

▼

1

2

3

5

- A. Mastered
- B. Not Mastered

Answer: A

Explanation:

Graphical user interface, application, table Description automatically generated

Reference:

<https://docs.microsoft.com/en-us/mem/intune/apps/app-protection-policy>

NEW QUESTION 158

- (Exam Topic 5)

You have a Microsoft 365 tenant that contains 1,000 Windows 10 devices. The devices are enrolled in Microsoft Intune.

Company policy requires that the devices have the following configurations:

- > Require complex passwords.
- > Require the encryption of removable data storage devices.
- > Have Microsoft Defender Antivirus real-time protection enabled.

You need to configure the devices to meet the requirements. What should you use?

- A. an app configuration policy
- B. a compliance policy
- C a security baseline profile
- D a conditional access policy

Answer: B

Explanation:

Reference:

<https://docs.microsoft.com/en-us/mem/intune/protect/device-compliance-get-started>

NEW QUESTION 159

- (Exam Topic 5)

HOTSPOT

Your network contains an Active Directory domain named fabrikam.com. The domain contains the objects shown in the following table.

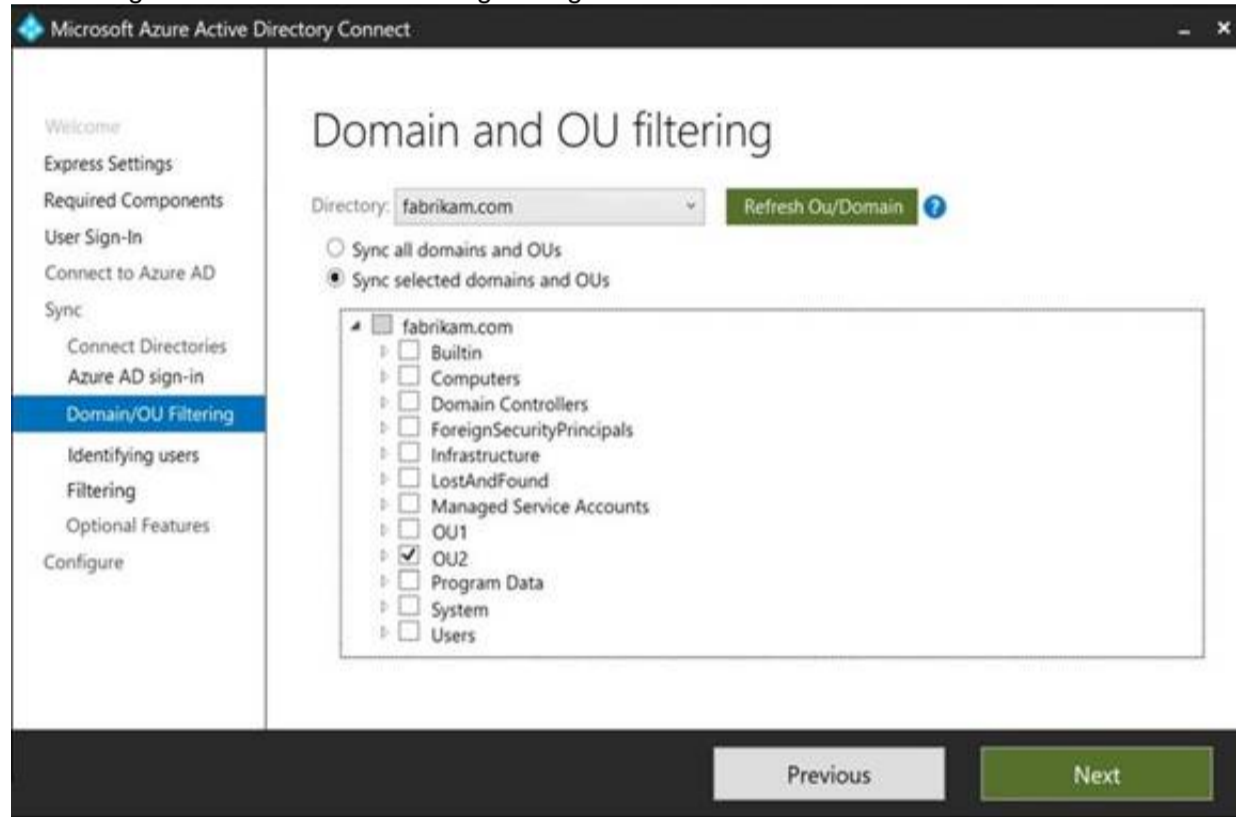
Name	Type	In organizational unit (OU)
User1	User	OU1
User2	User	OU1
Group1	Security Group – Global	OU1
User3	User	OU2
Group2	Security Group – Global	OU2

The groups have the members shown in the following table.

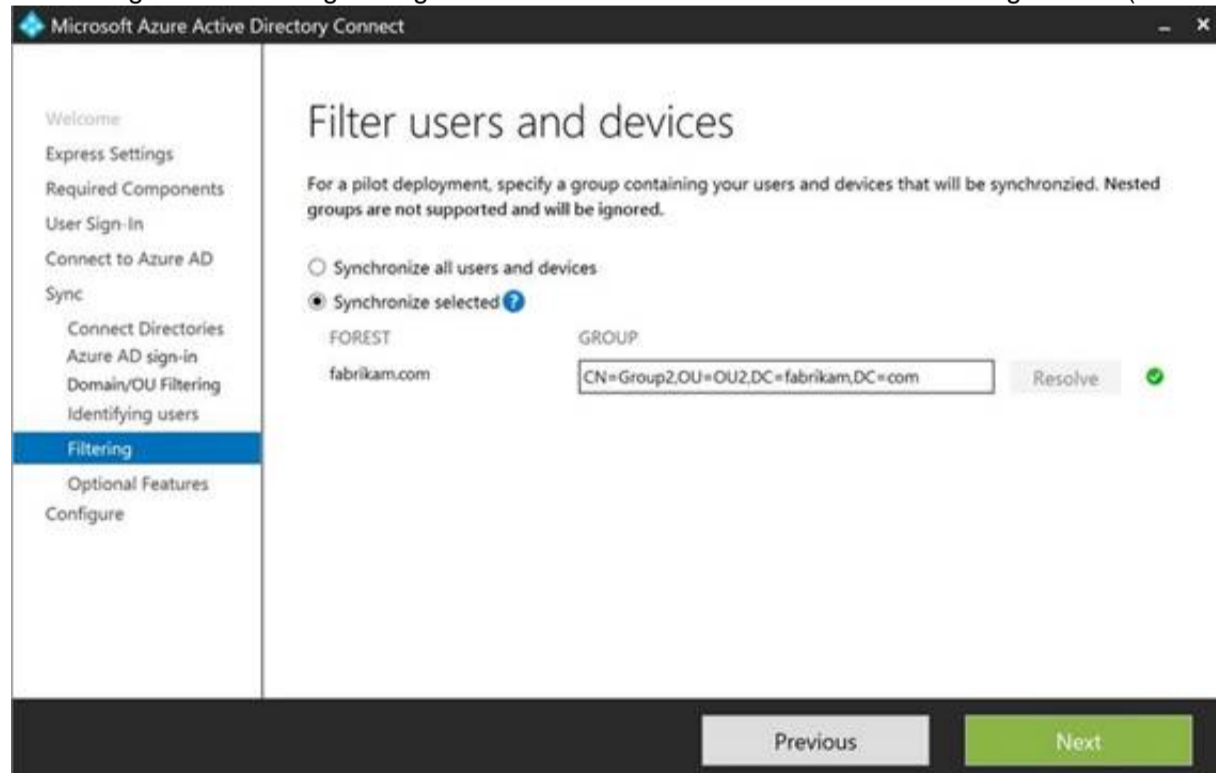
Group	Members
Group1	User1
Group2	User2, User3, Group1

You are configuring synchronization between fabrikam.com and an Azure AD tenant.

You configure the Domain/OU Filtering settings in Azure AD Connect as shown in the Domain/OU Filtering exhibit (Click the Domain/OU Filtering tab.)



You configure the Filtering settings in Azure AD Connect as shown in the Filtering exhibit. (Click the Filtering tab.)



For each of the following statements, select Yes if the statement is true. Otherwise, select No.

NOTE: Each correct selection is worth one point.

Answer Area

Statements	Yes	No
User2 will synchronize to Azure AD.	<input checked="" type="checkbox"/>	<input type="checkbox"/>
Group2 will synchronize to Azure AD.	<input type="checkbox"/>	<input type="checkbox"/>
User3 will synchronize to Azure AD.	<input type="checkbox"/>	<input type="checkbox"/>

- A. Mastered
- B. Not Mastered

Answer: A

Explanation:

Box 1: No

The filtering is configured to synchronize Group2 and OU2 only. The effect of this is that only members of Group2 who are in OU2 will be synchronized.

User2 is in Group2. However, the User2 account object is in OU1 so User2 will not synchronize to Azure AD. Box 2: Yes

Group2 is in OU2 so Group2 will synchronize to Azure AD. However, only members of the group who are in OU2 will synchronize. Members of Group2 who are in OU1 will not synchronize.

Box 3: Yes

User3 is in Group2 and in OU2. Therefore, User3 will synchronize to Azure AD. Reference:

<https://docs.microsoft.com/en-us/azure/active-directory/hybrid/how-to-connect-sync-configure-filtering#group-b>

NEW QUESTION 164

- (Exam Topic 5)

You have a Microsoft 365 E5 subscription that uses Microsoft Intune.

In the Microsoft Endpoint Manager admin center, you discover many stale and inactive devices. You enable device clean-up rules.

What can you configure as the minimum number of days before a device is removed automatically?

- A. 10
- B. 30
- C. 45
- D. 90

Answer: D

NEW QUESTION 167

- (Exam Topic 5)

You have a Microsoft 365 E5 subscription that has auditing turned on. The subscription contains the users shown in the following table.

Name	License
Admin1	Microsoft Office 365 E5
Admin2	None

✕
New audit retention policy

Name *:

Description

Record Types

Activities

Users:

Duration *:
 90 Days
 6 Months
 1 Year

Priority *:

You plan to create a new user named User1.
 How long will the user creation audit event be available if Admin1 or Admin2 creates User1? To answer, select the appropriate options in the answer area.
 Each correct selection is worth one point.

Admin1:

30 days

90 days

6 months

1 year

Admin2:

30 days

90 days

6 months

1 year

- A. Mastered
- B. Not Mastered

Answer: A

Explanation:

Admin1:

30 days

90 days

6 months

1 year

Admin2:

30 days

90 days

6 months

1 year

NEW QUESTION 169

- (Exam Topic 5)
 HOTSPOT

You have a Microsoft 365 E5 subscription that contains two users named Admin1 and Admin2. All users are assigned a Microsoft 365 Enterprise E5 license and

auditing is turned on.

You create the audit retention policy shown in the exhibit. (Click the Exhibit tab.)

New audit retention policy
✕

Name :

Description

Record Types

Activities

Users:

Duration :

90 Days

6 Months

1 Year

Priority :

After Policy1 is created, the following actions are performed:

- > Admin1 creates a user named User1.
- > Admin2 creates a user named User2.

How long will the audit events for the creation of User1 and User2 be retained? To answer, select the appropriate options in the answer area.

NOTE: Each correct selection is worth one point.

User1:

	▼
0 days	
30 days	
90 days	
180 days	
365 days	

User2:

	▼
0 days	
30 days	
90 days	
180 days	
365 days	

- A. Mastered
- B. Not Mastered

Answer: A

Explanation:

Reference:

<https://docs.microsoft.com/en-us/microsoft-365/compliance/audit-log-retention-policies?view=o365-worldwide>

NEW QUESTION 173

- (Exam Topic 5)

You have a hybrid deployment of Microsoft 365 that contains the users shown in the following table.

Name	Source	Last sign in
User1	Azure AD	Yesterday
User2	Active Directory Domain Services (AD DS)	Two days ago
User3	Active Directory Domain Services (AD DS)	Never

Azure AD Connect has the following settings:

- > Password Hash Sync: Enabled
- > Pass-through authentication: Enabled

You need to identify which users will be able to authenticate by using Azure AD if connectivity between on-premises Active Directory and the internet is lost. Which users should you identify?

- A. none
- B. Used only1
- C. User1 and User2 only
- D. User1, User2, and User3

Answer: D

Explanation:

Reference:

<https://docs.microsoft.com/en-us/azure/active-directory/hybrid/choose-ad-authn>

NEW QUESTION 176

- (Exam Topic 5)

DRAG DROP

Your network contains an on-premises Active Directory domain that syncs to Azure Active Directory (Azure AD). The domain contains the servers shown in the following table.

Name	Operating system	Configuration
Server1	Windows Server 2016	File Server Resource Manager (FSRM)
Server2	Windows Server 2016	None

You use Azure Information Protection.

You need to ensure that you can apply Azure Information Protection labels to the file stores on Server1. Which three actions should you perform in sequence? To answer, move the appropriate actions from the list of actions to the answer area and arrange them in the correct order.

Actions

Answer Area

- Authorize Server1.
- Install the Microsoft Rights Management connector on Server2.
- Install a certificate on Server2.
- Install a certificate on Server1.
- Register a service principal name for Server1.
- Run GenConnectorConfig.ps1 on Server1.
- Run GenConnectorConfig.ps1 on Server2.

- A. Mastered
- B. Not Mastered

Answer: A

Explanation:

Reference:

<https://docs.microsoft.com/en-us/azure/information-protection/install-configure-rms-connector> <https://docs.microsoft.com/en-us/azure/information-protection/configure-servers-rms-connector>

NEW QUESTION 178

- (Exam Topic 5)

You have a Microsoft 365 E5 tenant that contains the resources shown in the following table.

Name	Type
Mailbox1	Microsoft Exchange Online mailbox
Account1	Microsoft OneDrive account
Site1	Microsoft SharePoint Online site
Channel	Microsoft Teams channel

To which resources can you apply a sensitivity label by using an auto-labeling policy?

- A. Mailbox1 and Site1 only
- B. Mailbox1, Account1, and Site1 only
- C. Account1 and Site1 only
- D. Mailbox1, Account1, Site1, and Channel1
- E. Account1, Site1, and Channel1 only

Answer: E

Explanation:

Reference:
<https://docs.microsoft.com/en-us/microsoft-365/compliance/sensitivity-labels?view=o365-worldwide>

NEW QUESTION 181

- (Exam Topic 5)

You have a Microsoft 365 E5 subscription that.

You need to identify whenever a sensitivity label is applied, changed, or removed within the subscription. Which feature should you use, and how many days will the data be retained? To answer, select the appropriate options in the answer area.

NOTE Each correct selection is worth one point.

Answer Area

Feature:
 Activity explorer
 Compliance Manager
 Content explorer

Number of days the data will be retained:
 30
 60
 120

- A. Mastered
- B. Not Mastered

Answer: A

Explanation:

Answer Area

Feature:
 Activity explorer
 Compliance Manager
 Content explorer

Number of days the data will be retained:
 30
 60
 120

NEW QUESTION 186

- (Exam Topic 5)

HOTSPOT

You have a Microsoft 365 E5 subscription that contains the users shown in the following table.

Name	Member of
Admin1	Group1
Admin2	Group2
Admin3	Group1, Group2

You add the following assignment for the User Administrator role:

- > Scope type: Directory
- > Selected members: Group1
- > Assignment type: Active
- > Assignment starts: Mar 15, 2023
- > Assignment ends: Aug 15, 2023

You add the following assignment for the Exchange Administrator role:

- > Scope type: Directory
- > Selected members: Group2
- > Assignment type: Eligible

- > Assignment starts: Jun 15, 2023
- > Assignment ends: Oct 15, 2023

For each of the following statements, select Yes if the statement is true. Otherwise, select No.

NOTE: Each correct selection is worth one point.

Answer Area

Statements	Yes	No
On July 15, 2023, Admin1 can reset the password of a user.	<input type="checkbox"/>	<input type="checkbox"/>
On June 20, 2023, Admin2 can manage Microsoft Exchange Online.	<input type="checkbox"/>	<input type="checkbox"/>
On May 1, 2023, Admin3 can reset the password of a user.	<input type="checkbox"/>	<input type="checkbox"/>

- A. Mastered
- B. Not Mastered

Answer: A

Explanation:

Box 1: Yes

Admin1 is member of Group1.

The User Administrator role assignment has Group1 as a member. The assignment type: Active

July 15, 2023 is with the assignment period.

A User Administrator can manage all aspects of users and groups, including resetting passwords for limited admins.

Box 2: No

Admin2 is member of Group2.

The Exchange Administrator role assignment has Group2 as a member. The assignment type: Eligible

June 20, 2023 is with the assignment period. The assignment must be approved.

Note: Eligible assignment requires member or owner to perform an activation to use the role. Activations may also require providing a multi-factor authentication (MFA), providing a business justification, or requesting approval from designated approvers.

Box 3: Yes

Admin3 is member of Group1 and Group2.

The User Administrator role assignment has Group1 as a member.

The assignment type: Active

May 1, 2023 is with the assignment period. Reference:

<https://learn.microsoft.com/en-us/azure/active-directory/roles/permissions-reference> <https://learn.microsoft.com/en-us/azure/active-directory/privileged-identity-management/groups-assign-member>

NEW QUESTION 189

- (Exam Topic 5)

You have an Azure AD tenant and a Microsoft 365 E5 subscription. The tenant contains the users shown in the following table.

Name	Role
User1	Security Administrator
User2	Security Operator
User3	Security Reader
User4	Compliance Administrator

You plan to implement Microsoft Defender for Endpoint.

You verify that role-based access control (RBAC) is turned on in Microsoft Defender for Endpoint. You need to identify which user can view security incidents from the Microsoft 365 Defender portal. Which user should you identify?

- A. User1
- B. User2
- C. User3
- D. User4

Answer: A

NEW QUESTION 190

- (Exam Topic 5)

HOTSPOT

Your company uses a legacy on-premises LDAP directory that contains 100 users. The company purchases a Microsoft 365 subscription.

You need to import the 100 users into Microsoft 365 by using the Microsoft 365 admin center.

Which type of file should you use and which properties are required? To answer, select the appropriate options in the answer area.

NOTE: Each correct selection is worth one point.

Answer Area

File type to use:

CSV
JSON
PST
XML

Required properties for each user:

Display Name and Department
First Name and Last Name
User Name and Department
User Name and Display Name

- A. Mastered
- B. Not Mastered

Answer: A

Explanation:

Box 1: CSV

Add multiple users in the Microsoft 365 admin center

- > Sign in to Microsoft 365 with your work or school account.
- > In the admin center, choose Users > Active users.
- > Select Add multiple users.
- > On the Import multiple users panel, you can optionally download a sample CSV file with or without sample data filled in.
- > Etc.

Note: More information about how to add users to Microsoft 365 Not sure what CSV format is?

A CSV file is a file with comma separated values. You can create or edit a file like this with any text editor or spreadsheet program, such as Excel.

Box 2: User Name and Display Name

What if I don't have all the information required for each user? The user name and display name are required, and you cannot add a new user without this information. If you don't have some of the other information, such as the fax, you can use a space plus a comma to indicate that the field should remain blank.

Reference:

<https://learn.microsoft.com/en-us/microsoft-365/enterprise/add-several-users-at-the-same-time>

NEW QUESTION 194

- (Exam Topic 5)

You have a Microsoft 365 tenant that contains two groups named Group1 and Group2.

You need to prevent the members of Group1 from communicating with the members of Group2 by using Microsoft Teams. The solution must comply with regulatory requirements and must not affect other user in the tenant.

What should you use?

- A. information barriers
- B. communication compliance policies
- C. moderated distribution groups
- D. administrator units in Azure Active Directory (Azure AD)

Answer: A

NEW QUESTION 196

.....

Relate Links

100% Pass Your MS-102 Exam with ExamBible Prep Materials

<https://www.exambible.com/MS-102-exam/>

Contact us

We are proud of our high-quality customer service, which serves you around the clock 24/7.

Viste - <https://www.exambible.com/>