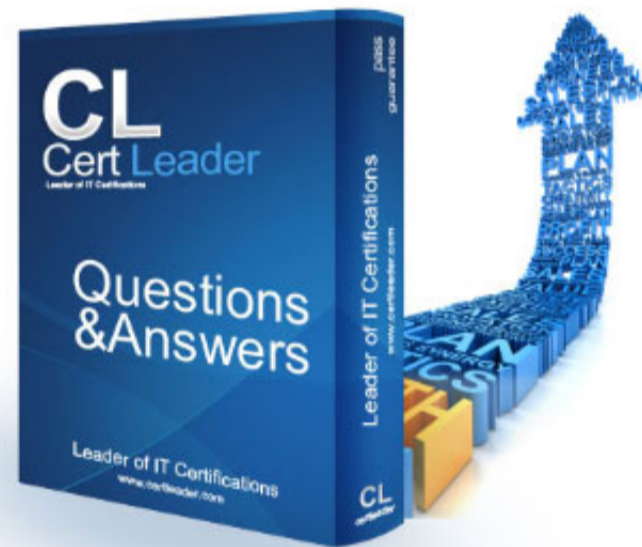


## 200-901 Dumps

# Developing Applications and Automating Workflows using Cisco Core Platforms (DEVASC)

<https://www.certleader.com/200-901-dumps.html>



**NEW QUESTION 1**

Refer to the exhibit.

**URL:** https://<ASA\_IP>/api/access/global/rules  
**Method:** POST  
**Payload:**

```

{
  "destinationAddress": {
    "kind": "IPv4Address",
    "value": "10.1.1.1"
  },
  "remarks": [ ],
  "active": true
  "permit": true,
  "sourceAddress": {
    "kind": "IPv4Address",
    "value": "192.168.1.1"
  }
}

```

**Response Status Code:** 400 Bad Request

```

{"messages":[{"level":"Error","code":"JSON-PARSE-ERROR","details":"
Unexpected character ('\'' (code 34)):"

```

Which JSON is equivalent to the XML –encoded data?

### List Messages

Lists all messages in a room. Each message will include content attachments if present.

The list sorts the messages in descending order by creation date.

Long result sets will be split into [pages](#).

**GET** /v1/messages

### Query Parameters

**roomId**  
string **Required**  
List messages in a room, by ID.

**mentionedPeople**  
array  
List messages with these people mentioned, by ID. Use me as a shorthand for the current API user.

**before**  
string  
List messages sent before a date and time.

**beforeMessage**  
string  
List messages sent before a message, by ID.

**max**  
number  
Limit the maximum number of messages in the response.  
Default:

Try it
Example

**GET** /v1/messages(?roomId,mentionedPeople,before,beforeMessage)

### Header

Authorization  Use personal access token

**Bearer** .....

This limited-duration personal access token is hidden for your security.

### Query Parameters

**roomId** **Required**

**mentionedPeople**

**before**

**beforeMessage**

**max**

```
bash-3.2$ curl -H "Content-Type: application/json" -H "Authorization:
Fj2zzzykEa091ic9GK2j8LtE1Hk1Hk1H6oRHPQdw1Pat60i7ndtHHnWzL2b5pqMg14Kk_B9EI59isacLy7-
NarA02n9H-tGgt-SxQ39iDejgcs" -i -X POST -d "{ \"roomId\":
\\\"Y2geK53sjEknoSrC7SwQ5ZGL99pHgiuScB7DfNvU8Xx4wDKLiPORcEkryAnM3QmK9LQZsP0G4\\\"
, \"text\": \"test2\" }" https://api.ciscopark.com/v1/messages

HTTP/1.1 401 Unauthorized
Via: 1.1 linkerD
TrackingID: ROUTER_5E0FDC8C-EB6F-01BB-00EF-806BF1BD00EF
Date: Sat, 04 Jan 2020 00:30:04 GMT
Server: Redacted
Content-Length: 267
Content-Type: application/json
Strict-Transport-Security: max-age=63072000; includeSubDomains; preload

{"message": "The request requires a valid access token set in the Authorization request
header.", "errors": [{"description": "The request requires a valid access token set in the
Authorization request
header."}], "trackingId": "ROUTER_5E0FDC8C-EB6F-01BB-00EF-806BF1BD00EF"}

bash-3.2$
```

- A. Option A
- B. Option B
- C. Option C
- D. Option D

Answer: A

**NEW QUESTION 2**

Refer to the exhibit.

```
$ diff -u5 fish.py cat.py
--- fish.py      2020-01-02 09:41:02.840000000 +0100
+++ cat.py      2020-01-02 09:41:06.8859999800 +0100
@@ -160,11 +160,12 @@

    @single_request_timeout.setter
    def single_request_timeout(self, value):
        """The timeout (seconds) for a single HTTP REST API request."""
        check_type(value, int, optional=True)
-       assert value is None or value > 0
+       if value is not None and value <= 0:
+           raise ValueError("single_request_timeout must be positive integer")
        self._single_request_timeout = value

    @property
    def wait_on_rate_limit(self)
        """Automatic rate-limit handling.
```

What does the python function do?

- A. It returns DNAC user and password.
- B. It returns HTTP Basic Authentication.
- C. It returns an authorization token.
- D. It reads a token from a local JSON file and posts the token to the DNAC URL.

Answer: C

**NEW QUESTION 3**

What are two advantages of version control software? (Choose two.)

- A. It supports tracking and comparison of changes in binary formate files.
- B. It allows old versions of packaged applications to be hosted on the Internet
- C. It provides wiki collaboration software for documentation.
- D. It supports comparisons between revisions of source code files.
- E. It allows new team members to access the current code and history.

Answer: DE

**NEW QUESTION 4**

Drag and drop the network automation interfaces from the left onto the transport protocols that they support on the right. (Not all Options are used)

400	Unauthorized
401	Not Found
403	Bad Request
404	Forbidden

- A. Mastered
- B. Not Mastered

Answer: A

**Explanation:**

Grpc == http/2 , netconfig == ssh , restconfig == https

**NEW QUESTION 5**

Refer to the exhibit.

DELETE	Create
GET	Read
PATCH	Update
POST	Update
PUT	Delete

A REST API return this JSON output for a GET HTTP request, Which has assigned to a variable called "vegetables" Using python, which output is the result of this command?

DELETE	POST
GET	GET
PATCH	PATCH
POST	PUT
PUT	DELETE

- A. Lettuce
- B. Kiwi
- C. ['kiwi', 'grape']
- D. {'color': 'green', 'items': ['kiwi', 'grape']}

Answer: B

**NEW QUESTION 6**

Which two use cases are supported by Meraki APIs? (Choose two.)

- A. Retrieve live streams from a Meraki Camera.
- B. Build a custom Captive Portal for Mobile Apps.
- C. Configure network devices via the Dashboard API.
- D. Build location-aware apps from Wi-Fi and LoRaWAN devices.
- E. Deploy applications onto the devices.

**Answer:** BC

**NEW QUESTION 7**

Refer to the exhibit.

```
curl -X [redacted] -H "[redacted]: application/json" \
-H "[redacted]: Bearer AbCdEf123456" http://localhost/api/myresource
```

Which two statements describe the configuration of the Ansible script is run? (Choose two.)

- A. Traffic on port 0/2 and 0/3 is connected to port 0/6.
- B. Traffic from ports 0/2 to 0/5 can flow on port 0/1 due to the trunk.
- C. Traffic can flow between ports 0/2 to 0/5 due to the trunk on port 0/1.
- D. GigabitEthernet0/2 and GigabitEthernet0/3 are access ports for VLAN 6.
- E. GiabitEthernet0/1 is left unconfigured.

**Answer:** BD

**NEW QUESTION 8**

Drag and drop the network component names from the left onto the correct descriptions on the right. Not all options are used.

```
#!/bin/bash
BACKUPTIME = `date +%b-%d-%y`
DESTINATION = /home/usr/path/backup-$BACKUPTIME.tar.gz
SOURCEFOLDER = /home/usr/path/data_folder
tar -cpzf $DESTINATION $SOURCEFOLDER
```

- A. Mastered
- B. Not Mastered

**Answer:** A

**Explanation:**

1 – A, 2 – B, 3 – D, 4 – C

**NEW QUESTION 9**

What is the outcome of executing this command?

```
git clone ssh://john@example.com/path/to/my-project_git
```

- A. Creates a local copy of a repository called "my project"
- B. Creates a copy of a branch called "my project"
- C. Initiates a new Git repository called "my project"
- D. Creates a new branch called "my project"

**Answer:** A

**NEW QUESTION 10**

Which two items are Cisco DevNet resources? (Choose two.)

- A. TAC support
- B. Bitbucket
- C. Sandbox
- D. Software research
- E. API Documentation

**Answer:** CE

**NEW QUESTION 10**

Which way should be used to safely the API keys?

- A. In an environment variable unique to the system database
- B. Encrypted in a configuration file that is separate from the code
- C. Encrypted in the code in a function
- D. Plain text in the code as a constant

Answer: B

**NEW QUESTION 11**

A developer is writing an application that a REST API and the application requires a valid from the API which element of the response is used in the conditional check?

- A. URL
- B. Status code
- C. Link
- D. Body
- E. Headers

Answer: B

**NEW QUESTION 14**

Which is an advantage of using network programmability?

- A. It removes CLI access for devices.
- B. It provides for more scalable and replicable network provisioning.
- C. Manual configuration is faster.
- D. No cloud abstraction occurs.

Answer: B

**NEW QUESTION 17**

Refer to the exhibit.

```
A. [ {  
  "books": {  
    "science": {  
      "biology": "10.00",  
      "geology": "9.00",  
      "chemistry": "8.00"  
    },  
    "math": {  
      "calculus": "20.00",  
      "algebra": "12.00"  
    }  
  }  
}]
```

```
B. {  
  "books": [  
    "science": {  
      "biology": "10.00",  
      "geology": "9.00",  
      "chemistry": "8.00"  
    },  
    "math": {  
      "calculus": "20.00",  
      "algebra": "12.00"  
    }  
  ]  
}
```

Which python data structure does my\_json contain?

- A. List
- B. Json
- C. Map
- D. Dict

Answer: D

**NEW QUESTION 22**

Which two NETCONF operations cover the RESTCONF GET operation? (Choose two.)

- A. <get>
- B. <edit>
- C. <get-update>
- D. <modify-config>
- E. <get-config>

Answer: AE

**NEW QUESTION 25**

Which platform has an API that be used to obtain a list of vulnerable software on user devices?

- A. Cisco Umbrella
- B. Cisco Firepower
- C. Cisco Identity Services Engine
- D. Cisco Advanced Malware Protection

Answer: D

**NEW QUESTION 26**

When using the Bash shell, how it the output of the devnet command saved to a file named "output.txt"?

- A. devnet & output.txt
- B. devnet > output.txt
- C. devnet < output.txt
- D. devnet | output.txt

Answer: B

**NEW QUESTION 27**

Refer to the exhibit.

FROM ubuntu:12.04	informs Docker that the container listens on the specified network port(s) at runtime
VOLUME ["/var/www", "/var/log/apache2", "/etc/apache2"]	creates a mount point with the specified name
RUN apt-get update && apt-get install -y --force-yes apache2	configures a container that runs as an executable
ENTRYPOINT ["/usr/sbin/apache2ctl", "-D", "FOREGROUND"]	must be the first instruction in the Docker file
EXPOSE 1521	

Fill in the blank to complete the query parameter and value so that the result set is returned in reverse chronological order (most recent first) based on when message were entered.

FROM ubuntu:12.04	EXPOSE 1521
VOLUME ["/var/www", "/var/log/apache2", "/etc/apache2"]	VOLUME ["/var/www", "/var/log/apache2", "/etc/apach
RUN apt-get update && apt-get install -y --force-yes apache	ENTRYPOINT ["/usr/sbin/apache2ctl", "-D", "FOREGROU
ENTRYPOINT ["/usr/sbin/apache2ctl", "-D", "FOREGROUND"]	FROM ubuntu:12.04
EXPOSE 1521	

- A. Mastered
- B. Not Mastered

Answer: A

**Explanation:**

?sortBy=lastactivity

```
<books>
  <science>
    <biology>10.00</biology>
    <geology>9.00</geology>
    <chemistry>8.00</chemistry>
  </science>
  <math>
    <calculus>20.00</calculus>
    <algebra>12.00</algebra>
  </math>
</books>
```

**NEW QUESTION 32**

Which CI/CD tool is an automation tool used to build, test, and deploy software?

- A. Nagios
- B. Gradle
- C. Jenkins
- D. Git

**Answer: C**

**NEW QUESTION 36**

Which type of HTTP method is used by the Meraki nad webex teams APIs to send webhook notifications?

- A. HTTP GET
- B. HTTP PUT
- C. HTTP HEAD
- D. HTTP POST

**Answer: D**

**NEW QUESTION 41**

A function my\_func() returns True when it executes normally. Which python snippet tests my\_func()?

For CLI commands that support XML, the `clid()` method returns JSON output. An exception is thrown when XML is not used. Executes CLI commands. Takes CLI command string and returns show command output in a JSON form.

*Note: The "clid" API can be useful when searching the output of show commands using JSON tools as shown in the example.*

**PYTHON**

```
Example:
>>> import json
>>> from cli import *
>>> jversion = json.loads(clid("show
version"))
>>> jversion[bios_ver_str']
'08.06'
```

**Arguments:**

- `cmd`: Single CLI command or a batch of CLI commands. Delimiter for multiple CLI commands is a space followed by a semicolon. Configuration commands must be in a fully qualified form.

**Returns:**

- `string`: JSON-formatted output of show commands.

- A. Option A
- B. Option B
- C. Option C
- D. Option D

**Answer: B**

**NEW QUESTION 45**

An automation script fails to connect to an internal server exactly 1 out of 2 times it is executed. This behavior is seen from different clients. Which networking

device must be at fault?

- A. Laptop on which the script is running
- B. Router
- C. Switch
- D. Load balancer

Answer: D

**NEW QUESTION 48**

Which status code is used by a REST API to indicate that the submitted payload is incorrect?

- A. 400
- B. 403
- C. 405
- D. 429

Answer: A

**NEW QUESTION 52**

Refer to the exhibit.

```
leaf IPPeer {  
  type union {  
    type inet:ipv4-address;  
    type inet:ipv6-address;  
  }  
}
```

Drag and drop the descriptors from the left onto the correct parts of the API request and response on the right.

- {  
 "IPPeer": "10.1.1.1"  
}
- {  
 "IPPeer": "10.1.1.1 2001:db::1"  
}
- {  
 "IPPeer": [  
 "10.1.1.1",  
 "2001:db::1"  
 ]  
}
- {  
 "IPPeer": [  
 "10.1.1.1"  
 ]  
}

- A. Mastered
- B. Not Mastered

Answer: A

**Explanation:**

A - E, B - D, C - B, D - C, E - A, F - F

**NEW QUESTION 54**

A developer is reviewing a code that was written by a colleague. It runs fine, but there are many lines of code to do a seemingly simple task repeatedly. Which action organizes the code?

- A. Refactor the code by removing any unnecessary tests
- B. Using functions, rewrite any pieces of code that are repeated
- C. Reverse engineer and rewrite the code logic
- D. Modify the code to use loops

Answer: B

**NEW QUESTION 58**

Which two statements describe the role of an artifact repository in a CI/CD pipeline? (Choose two.)

- A. An artifact repository allows to compare and merge changes in the source code of files involved in a build process.
- B. An artifact repository is needed only for CI/CD pipeline executed on a public cloud infrastructure.
- C. An artifact repository provides traceability, search, and management of binary files.
- D. An artifact repository is needed only for managing open source software.
- E. An artifact repository stores files needed and generated during the build process.

Answer: CE

**NEW QUESTION 60**

On which port does NETCONF operate by default?

- A. 23
- B. 443
- C. 822
- D. 830

Answer: D

**NEW QUESTION 61**

Drag and drop the requests from the left into the correct order on the right to create and check the path trace between two devices using Cisco DNA center API.

HTTP GET /v1/rooms ?sortBy=lastactivity

- A. Mastered
- B. Not Mastered

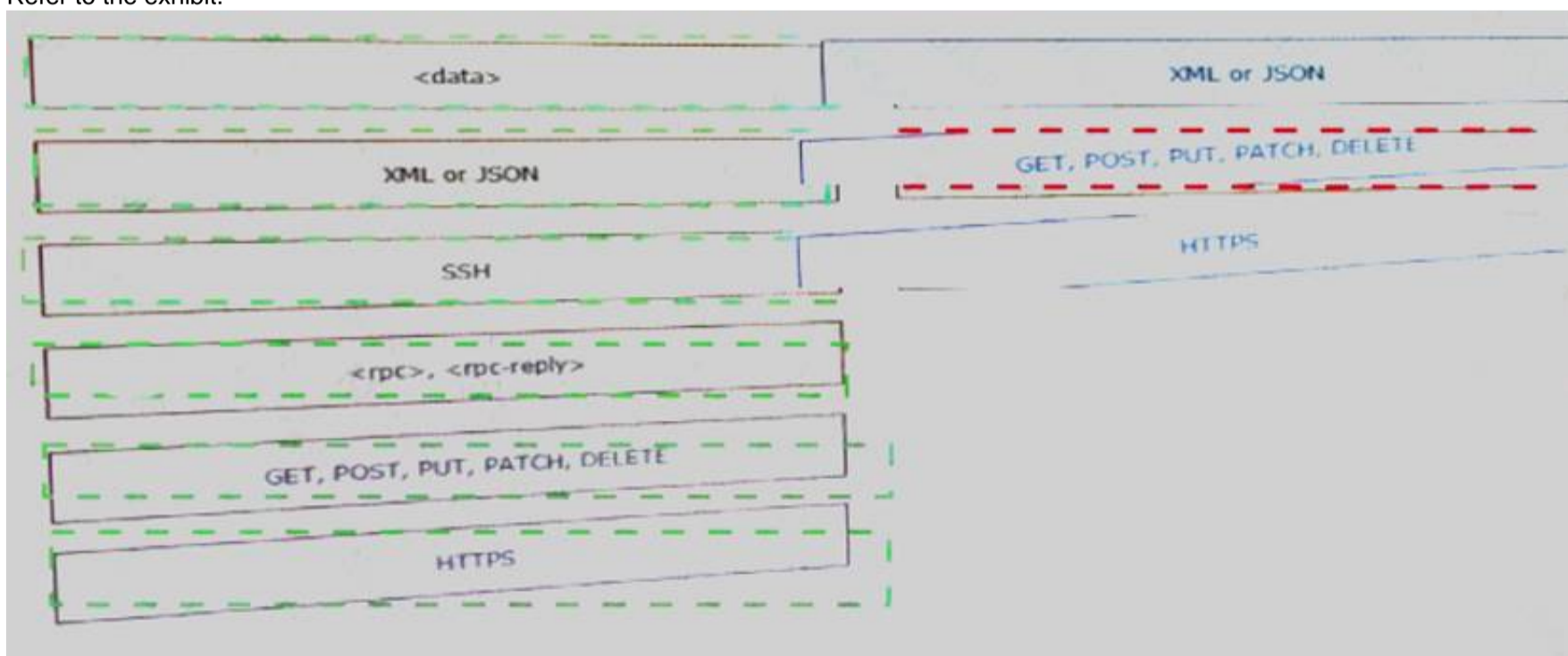
Answer: A

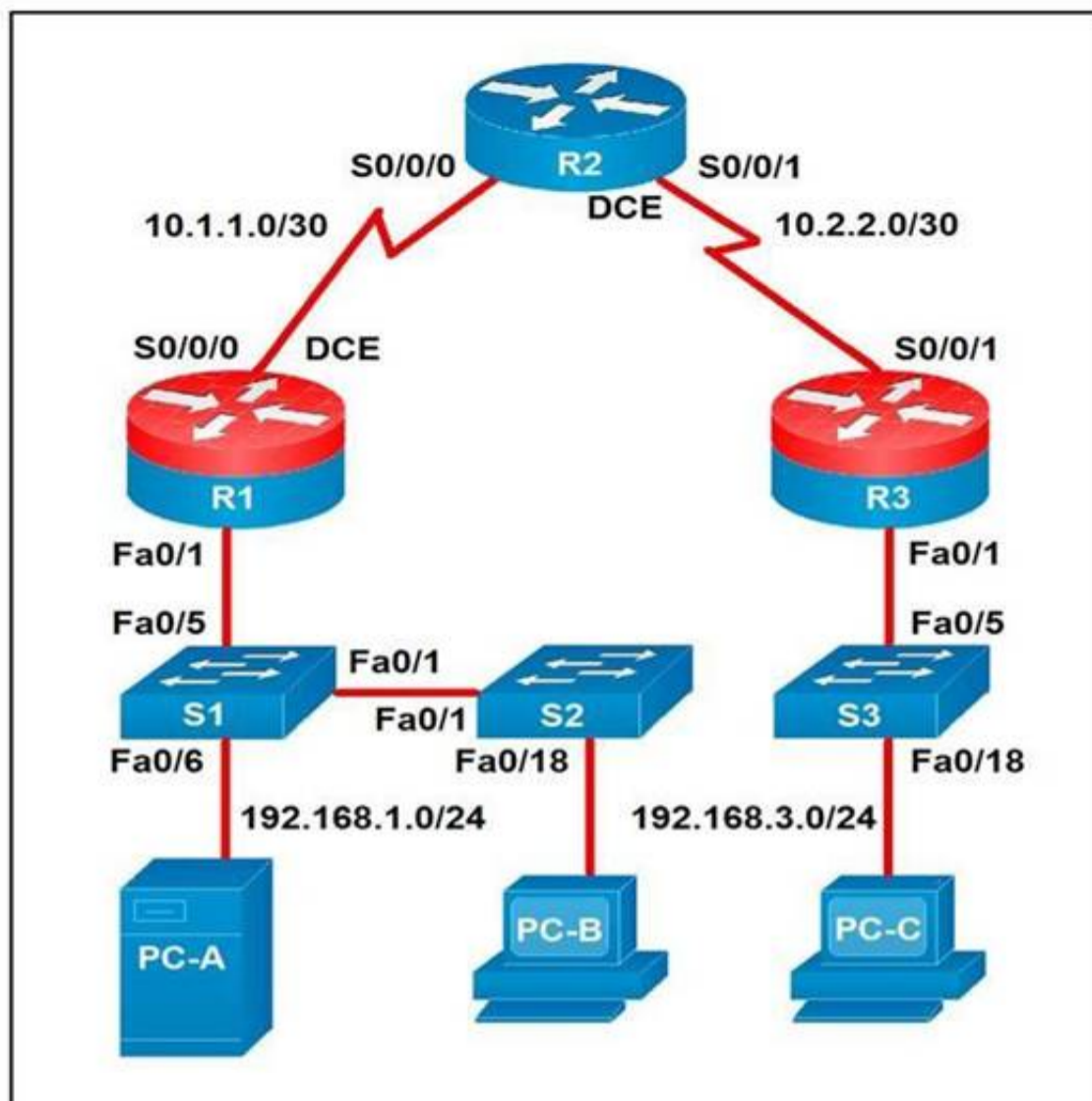
**Explanation:**

1 - C, 2 - D, 3 - B, 4 - A

**NEW QUESTION 64**

Refer to the exhibit.





A developer is troubleshooting an API with the given API with the given API documentation and cURL command. What is the cause of this problem?

- A. The user is not allowed to post messages from their account
- B. The request body is missing or incomplete
- C. The API token specified is expired
- D. The authorization header is missing or incomplete

**Answer:** C

**NEW QUESTION 68**

Refer to the exhibit.

blocks networks traffic by default
uses traffic inspection to make routing decisions
ports are different broadcast domain by default
ports can be in the same broadcast domain

Given the API documentation for the UCS SDK python class, UcsHandle, which code snippet creates a handle instance?

```

---
- hosts: switch2960cx
  gather_facts: no

  tasks:
    - ios_l2_interface:
      name: GigabitEthernet0/1
      state: unconfigured

    - ios_l2_interface:
      name: GigabitEthernet0/1
      mode: trunk
      native_vlan: 1
      trunk_allowed_vlans: 6-8
      state: present

    - ios_vlan:
      vlan_id: 6
      name: guest-vlan
      interfaces:
        - GigabitEthernet0/2
        - GigabitEthernet0/3

    - ios_vlan:
      vlan_id: 7
      name: corporate-vlan
      interfaces:
        - GigabitEthernet0/4

    - ios_vlan:
      vlan_id: 8
      name: iot-vlan
      interfaces:
        - GigabitEthernet0/5

```

- A. Option A
- B. Option B
- C. Option C
- D. Option D

**Answer:** B

**NEW QUESTION 69**

Which Cisco DevNet resource allows access to products in a development lab to explore, learn, and build application that use Cisco APLs?

- A. DevNet communities
- B. DevNet code Exchange
- C. DevNet Automation Exchange
- D. DevNet sandbox

**Answer:** D

**NEW QUESTION 74**

In DNS, which record specifies an alias that refers to another name that ultimately resolves to an IP address?

- A. AAA
- B. SOA
- C. NS
- D. CNAME

**Answer:** D

**NEW QUESTION 75**

Which device is a system that monitors and controls incoming and outgoing network traffic based on predetermined security rules?

- A. Switch

- B. Router
- C. Firewall
- D. Load balancer

**Answer:** C

**NEW QUESTION 80**

Drag and drop the element of the Finesse API on the left onto the description of its functionality on the right.

```

module ex-ethernet {
  namespace "http://example.com/Ethernet";
  prefix "eth";
  import ietf-interfaces {
    prefix if;
  }
  augment "/if:interfaces/if:interface" {
    when "if:type = 'ethernetCsmacd'";
    container ethernet {
      must "../if:location" {
        description
          "An Ethernet interface must specify the physical location of the ethernet hardware.";
      }
      choice transmission-params {
        case auto {
          leaf auto-negotiate {
            type empty;
          }
        }
        case manual {
          leaf duplex {
            type enumeration {
              enum "half";
              enum "full";
            }
          }
          leaf speed {
            type enumeration {
              enum "10Mb";
              enum "100Mb";
              enum "1Gb";
              enum "10Gb";
            }
          }
        }
      }
    }
  } // other ethernet specific params...
}

```

- A. Mastered
- B. Not Mastered

**Answer:** A

**Explanation:**

1 - D, 2 - F, 3 - A, 4 - E, 5 - B, 6 - G, 7 - C

**NEW QUESTION 84**

Which action does the Git command git merge allow the development to perform?

- A. Combine multiple sequence of commits into one unified history.
- B. Push changes to the remote repository
- C. Switch between branches
- D. Create, list, rename, and delete branches

**Answer:** A

**NEW QUESTION 87**

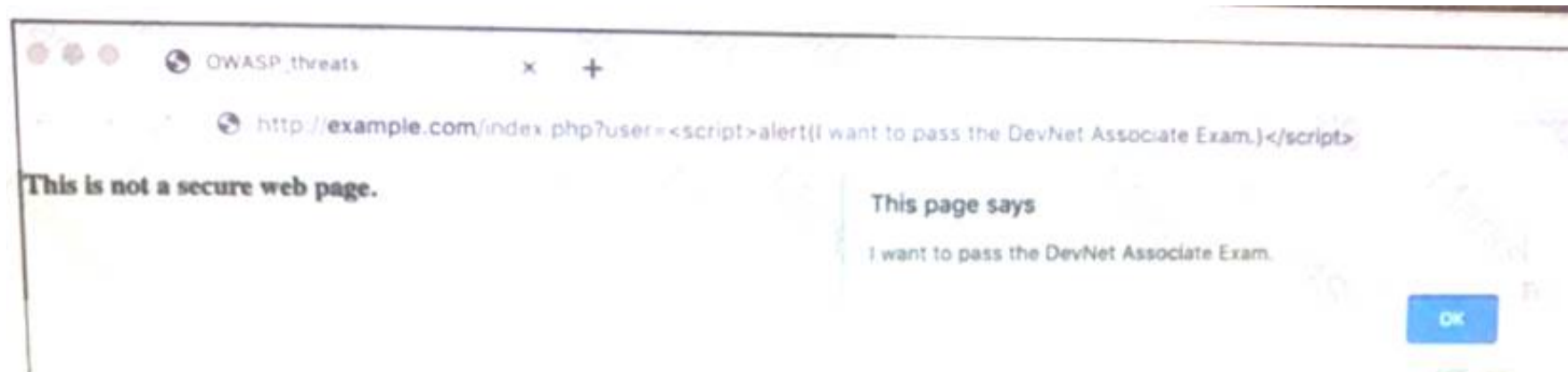
Which model-driven programmability protocol does Cisco IOS XE Software support?

- A. CORBA
- B. SSH
- C. gNMI
- D. SOAP

**Answer:** C

**NEW QUESTION 88**

Fill in the blanks to complete the cURL command that invokes a RESTful API to retrieve a resource in JSON format using OAuth.



```
curl -X _____ -H " _____: application/json" \
-H " _____: Bearer AbCdEf123456" https://localhost/api/myresource
```

- A. Mastered
- B. Not Mastered

**Answer:** A

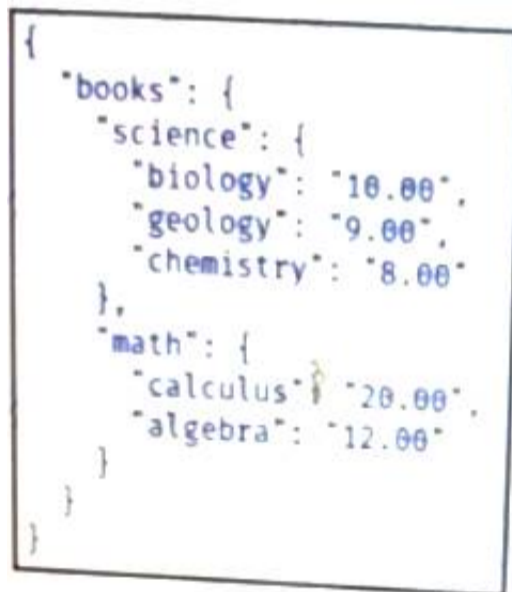
**Explanation:**

See the solution below.

```
<books>
  <science>
    <biology>10.00</biology>
    <geology>9.00</geology>
    <chemistry>8.00</chemistry>
  </science>
  <math>
    <calculus>20.00</calculus>
    <algebra>12.00</algebra>
  </math>
</books>
```

**NEW QUESTION 90**

Drag and drop the descriptions from the left onto correct application deployment models on the right.



- A. Mastered
- B. Not Mastered

**Answer:** A

**Explanation:**

1 – B, 2 – E, 3 – C, 4 – D, 5 – A

**NEW QUESTION 95**

Refer to the exhibit.

```
{  
  "books": [  
    "science", {  
      "biology": "10.00",  
      "geology": "9.00",  
      "chemistry": "8.00"  
    },  
    "math", {  
      "calculus": "20.00",  
      "algebra": "12.00"  
    }  
  ]  
}
```

Drag and drop the variables from the left onto the item numbers on the right that match the missing assignments in the exhibit.

```
{  
  "books": [  
    "science": {  
      "biology": "10.00",  
      "geology": "9.00",  
      "chemistry": "8.00"  
    },  
    "math": {  
      "calculus": "20.00",  
      "algebra": "12.00"  
    }  
  ]  
}
```

- A. Mastered
- B. Not Mastered

**Answer:** A

**Explanation:**  
1 - A, 2 - C, 3 - B

**NEW QUESTION 97**

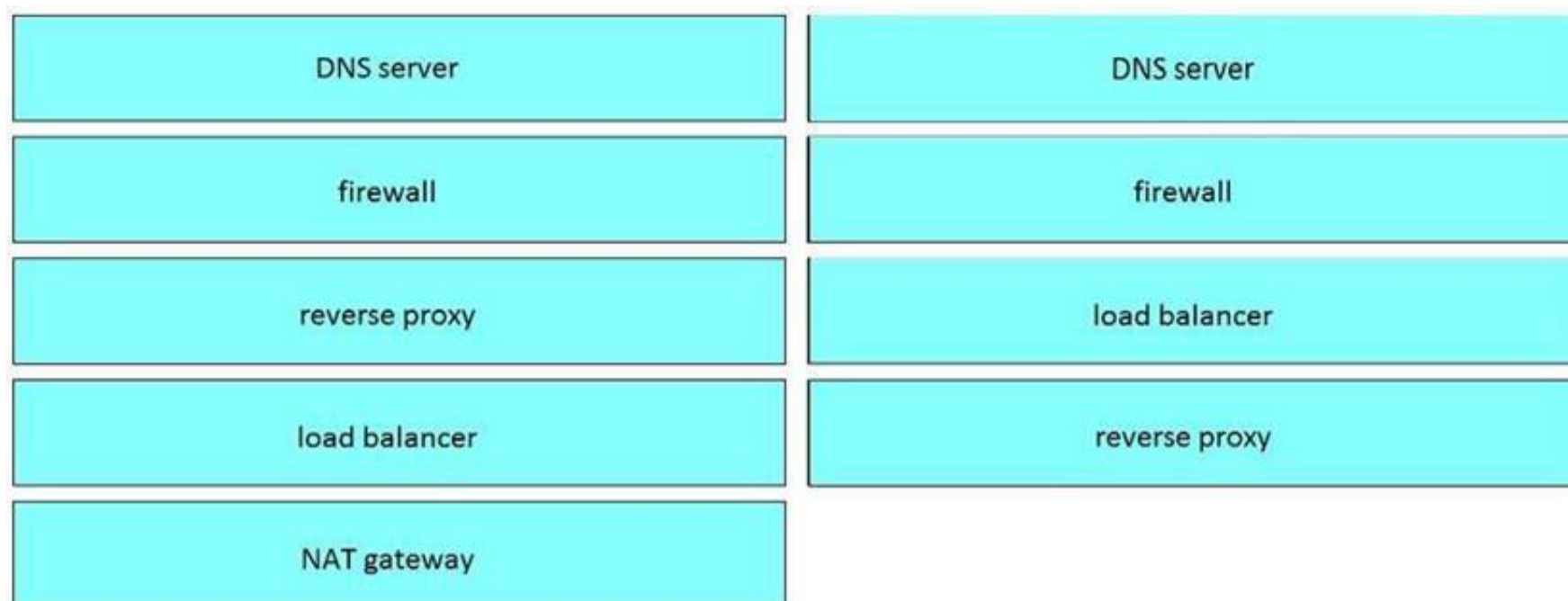
Which mechanism is used to consume a RESTful API design when large amounts of data are returned?

- A. Data sets
- B. Scrolling
- C. Blobs
- D. Pagination

**Answer:** D

**NEW QUESTION 99**

Refer to the exhibit.



Which two statements about the network diagram are true? (Choose two.)

- A. PC-A and PC-B are in the same subnet.
- B. One of the routers has two connected serial interfaces.
- C. The subnet of PC-C can contain 256 hosts.
- D. R1 and R3 are in the same subnet.
- E. The subnet address of PC-B has 18 bits dedicated to the network portion.

**Answer:** BC

**NEW QUESTION 103**

Which two encoding formats do YANG interfaces support?

- A. JSON
- B. XML
- C. XHTML
- D. Plain text
- E. BER

**Answer:** AB

**NEW QUESTION 105**

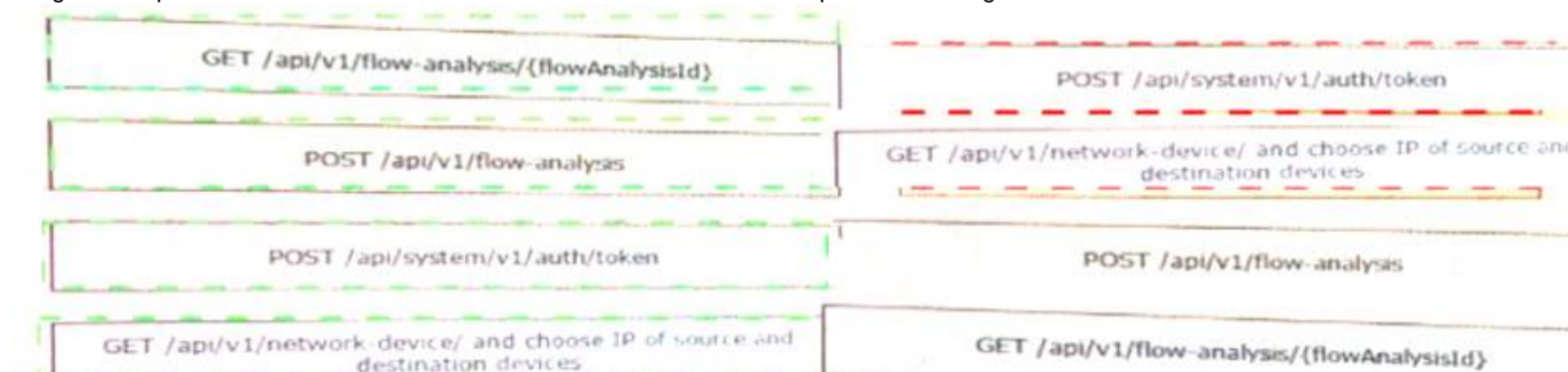
Which platform is run directly using a hypervisor?

- A. Virtual
- B. Bare metal systems
- C. Containers
- D. Applications

**Answer:** C

**NEW QUESTION 108**

Drag and drop the HTTP status codes from the left onto the correct descriptions on the right.



- A. Mastered
- B. Not Mastered

**Answer:** A

**Explanation:**

1 – B, 2 – D, 3 – A, 4 – C

**NEW QUESTION 109**

Which detail is included in a routing table?

- A. IP protocol

- B. Broadcast address
- C. TCP or UDP port number
- D. Destination next hop or outgoing interface

**Answer:** D

**NEW QUESTION 111**

Which two statements about JSON and XML are true? (Choose two.)

- A. JSON objects are collection of key value pairs.
- B. The syntax of JSON contains tags, elements, and attributes.
- C. JSON arrays are an unordered set of key value pairs.
- D. The syntax of XML contains tags, elements, and attributes.
- E. XML objects are collections of key-value pairs.

**Answer:** AD

**NEW QUESTION 112**

What are two advantages of the Model-view-controller software design pattern? (Choose two.)

- A. simplifies network automation
- B. allows for multiple views of the same model
- C. makes code easier to deploy using CI/CD pipelines
- D. reduces need for error handling
- E. separates responsibilities of the code, which makes future modifications easier

**Answer:** BE

**NEW QUESTION 116**

What are two security benefits of a Docker-based application?

- A. easier to patch because Docker containers include only dependencies that the application requires
- B. prevents information leakage that can occur when unhandled exceptions are returned in HTTP responses
- C. allows for separation of application that traditionally run in the same host
- D. natively secures access to secrets that are used by the running application
- E. guarantees container images are secured and free of vulnerabilities

**Answer:** AC

**NEW QUESTION 118**

Which statement describes the benefit of using functions in programming?

- A. Functions allow problems to be split into simpler, smaller groups, and reduce code repetition, which makes the code easier to read.
- B. Functions ensure that a developer understands the inner logic contained before using them as part of a script or application.
- C. Functions create the implementation of secret and encrypted algorithms.
- D. Functions store mutable values within a script or application.

**Answer:** A

**NEW QUESTION 119**

Refer to the exhibit.

List the clients that have used this network in the timespan

**HTTP REQUEST**

GET /networks/ {networkId}/clients

**PARAMETERS**

**t0**  
The beginning of the timespan for the data. The maximum lookback period is 31 days from today.

---

**timespan**  
The timespan for which the information will be fetched. If specifying timespan, do not specify parameter t0. The value must be in seconds and be less than or equal to 31 days. The default is 1 day.

---

**perPage**  
The number of entries per page returned. Acceptable range is 3 – 1000. Default is 10.

---

**startingAfter**  
A token used by the server to indicate the start of the page. Often this is a timestamp or an ID but it is not limited to those. This parameter should not be defined by client applications. The link for the first, last, prev, or next page in the HTTP Link header should define it.

---

**endingBefore**  
A token used by the server to indicate the end of the page. Often this is a timestamp or an ID but it is not limited to those. This parameter should not be defined by client applications. The link for the first, last, prev, or next page in the HTTP Link header should define it.

The output of a unified diff when comparing two versions of a python script is shown. Which two “single\_request \_ timeout ()”

```
base_url = https://api.meraki.com/api/v0"
network_id = "L_12345678910"
api_key = "1098hadpfsiapsf8ahf8ohp"
requests.<item 1> (
    <item 2> + "/<item 3>/" + /<item 4>, "/<item 5>",
    headers = {
        "X-Cisco-Meraki-API-Key": "<item 6>",
        "Content-Type": "<item 7>"
    },
    <item 8>={"<item 9>":/<item 10>}}
```

- A. Option A
- B. Option B
- C. Option C
- D. Option D

**Answer:** BC

**NEW QUESTION 124**

Package updates from a local server fail to download. However, the same updates work when a much slower external repository is used. Why are local updates failing?

- A. The update utility is trying to use a proxy to access the internal resource.
- B. The Internet connection is too slow.
- C. The Internet is down at the moment, which causes the local server to not be able to respond.
- D. The server is running out of disk space.

**Answer:** A

**NEW QUESTION 127**

Fill in the blanks to complete the python script to retrieve a list of network devices using the Cisco DNA center API.

params	<item 1>
networks	<item 2>
timespan	<item 3>
get	<item 4>
432000	<item 5>
base_url	<item 6>
application/json	<item 7>
network_id	<item 8>
clients	<item 9>
api_key	<item 10>

- A. Mastered
- B. Not Mastered

Answer: A

Explanation:

params	get
networks	base_url
timespan	networks
get	network_id
432000	clients
base_url	api_key
application/json	application/json
network_id	params
clients	timespan
api_key	432000

**NEW QUESTION 131**

.....

## Thank You for Trying Our Product

\* 100% Pass or Money Back

All our products come with a 90-day Money Back Guarantee.

\* One year free update

You can enjoy free update one year. 24x7 online support.

\* Trusted by Millions

We currently serve more than 30,000,000 customers.

\* Shop Securely

All transactions are protected by VeriSign!

**100% Pass Your 200-901 Exam with Our Prep Materials Via below:**

<https://www.certleader.com/200-901-dumps.html>