

# Microsoft

## Exam Questions AZ-800

Administering Windows Server Hybrid Core Infrastructure



**NEW QUESTION 1**

SIMULATION - (Topic 4)

Task 1

You need to prevent domain users from saving executable files in a share named \\SRV\Data. The users must be able to save other files to the share.

- A. Mastered
- B. Not Mastered

**Answer: A**

**Explanation:**

One possible solution to prevent domain users from saving executable files in a share named \\SRV\Data is to use file screening on the file server. File screening allows you to block certain files from being saved based on their file name extension. Here are the steps to configure file screening:

- ? On the file server, open File Server Resource Manager from the Administrative Tools menu.
- ? In the left pane, expand File Screening Management and click on File Groups.
- ? Right-click on File Groups and select Create File Group.
- ? In the File Group Properties dialog box, enter a name for the file group, such as Executable Files.
- ? In the Files to include box, enter the file name extensions that you want to block, such as .exe, .bat, .cmd, .com, .msi, .scr. You can use wildcards to specify multiple extensions, such as \*.exe.
- ? Click OK to create the file group.
- ? In the left pane, click on File Screen Templates.
- ? Right-click on File Screen Templates and select Create File Screen Template. such as Block Executable Files.
- ? In the File Screen Template Properties dialog box, enter a name for the template.
- ? On the Settings tab, select the option Active screening. Do not allow users to save unauthorized files.
- ? On the File Groups tab, check the box next to the file group that you created, such as Executable Files.
- ? On the Notification tab, you can configure how to notify users and administrators when a file screening event occurs, such as sending an email, logging an event, or running a command or script. You can also customize the message that users see when they try to save a blocked file.
- ? Click OK to create the file screen template.
- ? In the left pane, click on File Screens.
- ? Right-click on File Screens and select Create File Screen.
- ? In the Create File Screen dialog box, enter the path of the folder that you want to apply the file screening to, such as \\SRV\Data.
- ? Select the option Drive properties from this file screen template (recommended) and choose the template that you created, such as Block Executable Files.
- ? Click Create to create the file screen.

Now, domain users will not be able to save executable files in the share named \\SRV\Data. They will be able to save other files to the share.

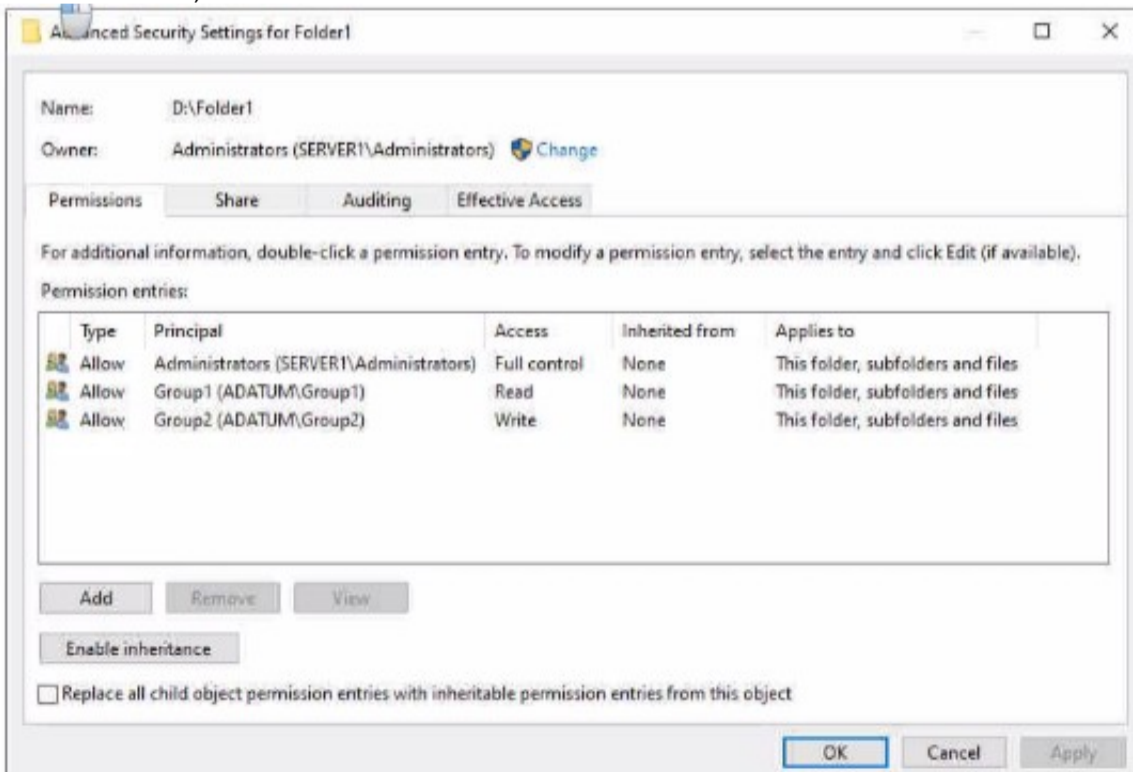
**NEW QUESTION 2**

HOTSPOT - (Topic 3)

Your network contains an Active Directory Domain Services (AD DS) domain named adatum.com. The domain contains a server named Server1 and the users shown in the following table.

Name	Member of
User1	Group1
User2	Group2
User3	Group3

Server1 contains a folder named D:\Folder1. The advanced security settings for Folder 1 are configured as shown in the Permissions exhibit. (Click the Permissions tab.)



Folder1 is shared by using the following configurations

Group	Permission
Group1	Allow - Change
Group3	Allow - Full Control

Path : D:\Folder1  
 Name : Share1  
 ShareType : FileSystemDirectory  
 FolderEnumerationMode : Unrestricted

Answer Area

Statements	Yes	No
User1 can read the files in Share1.	<input type="radio"/>	<input type="radio"/>
User3 can delete files in Share1.	<input type="radio"/>	<input type="radio"/>
If User2 connects to \\Server1.adatum.com from File Explorer,	<input type="radio"/>	<input type="radio"/>

- A. Mastered
- B. Not Mastered

**Answer: A**

**Explanation:**

Answer Area

Statements	Yes	No
User1 can read the files in Share1.	<input checked="" type="radio"/>	<input type="radio"/>
User3 can delete files in Share1.	<input checked="" type="radio"/>	<input type="radio"/>
If User2 connects to \\Server1.adatum.com from File Explorer,	<input type="radio"/>	<input checked="" type="radio"/>

**NEW QUESTION 3**

- (Topic 3)

Your network contains an Active Directory Domain Services (AD DS) domain named contoso.com. The domain contains two servers named Server1 and Server2. Server1 contains a disk named Disk2. Disk2 contains a folder named UserData. UserData is shared to the Domain Users group. Disk2 is configured for deduplication. Server1 is protected by using Azure Backup.

Server1 fails.

You connect Disk2 to Server2.

You need to ensure that you can access all the files on Disk2 as quickly as possible. What should you do?

- A. Create a storage pool.
- B. Restore files from Azure Backup.
- C. Install the File Server Resource Manager server role.
- D. Install the Data Deduplication server role.

**Answer: C**

**Explanation:**

Reference:

<https://docs.microsoft.com/en-us/windows-server/storage/data-deduplication/overview>

**NEW QUESTION 4**

- (Topic 3)

Your network contains an Active Directory Domain Services (AD DS) forest. The forest contains three Active Directory sites named Site1, Site2, and Site3. Each site contains two domain controllers. The sites are connected by using DEFAULTIPSITELINK.

You open a new branch office that contains only client computers.

You need to ensure that the client computers in the new office are primarily authenticated by the domain controllers in Site1.

Solution: You create a new subnet object that is associated to Site1. Does this meet the goal?

- A. Yes
- B. No

**Answer: B**

**NEW QUESTION 5**

- (Topic 3)

Your network contains a DHCP server.

You plan to add a new subnet and deploy Windows Server to the subnet. You need to use the server as a DHCP relay agent.

Which role should you install on the server?

- A. Network Policy and Access Services
- B. Remote Access

- C. Network Controller
- D. DHCP Server

**Answer: B**

**NEW QUESTION 6**

- (Topic 3)

Your network contains a single-domain Active Directory Domain Services (AD DS) forest named conto.com. The forest contains the servers shown in the following exhibit table.

Name	Description
DC1	Domain controller
Server1	Member server

You plan to install a line-of-business (LOB) application on Server1. The application will install a custom windows services.

A new corporate security policy states that all custom Windows services must run under the context of a group managed service account (gMSA). You deploy a root key.

You need to create, configure, and install the gMSA that will be used by the new application.

Which two actions should you perform? Each correct answer presents part of the solution. NOTE: Each correct selection is worth one point.

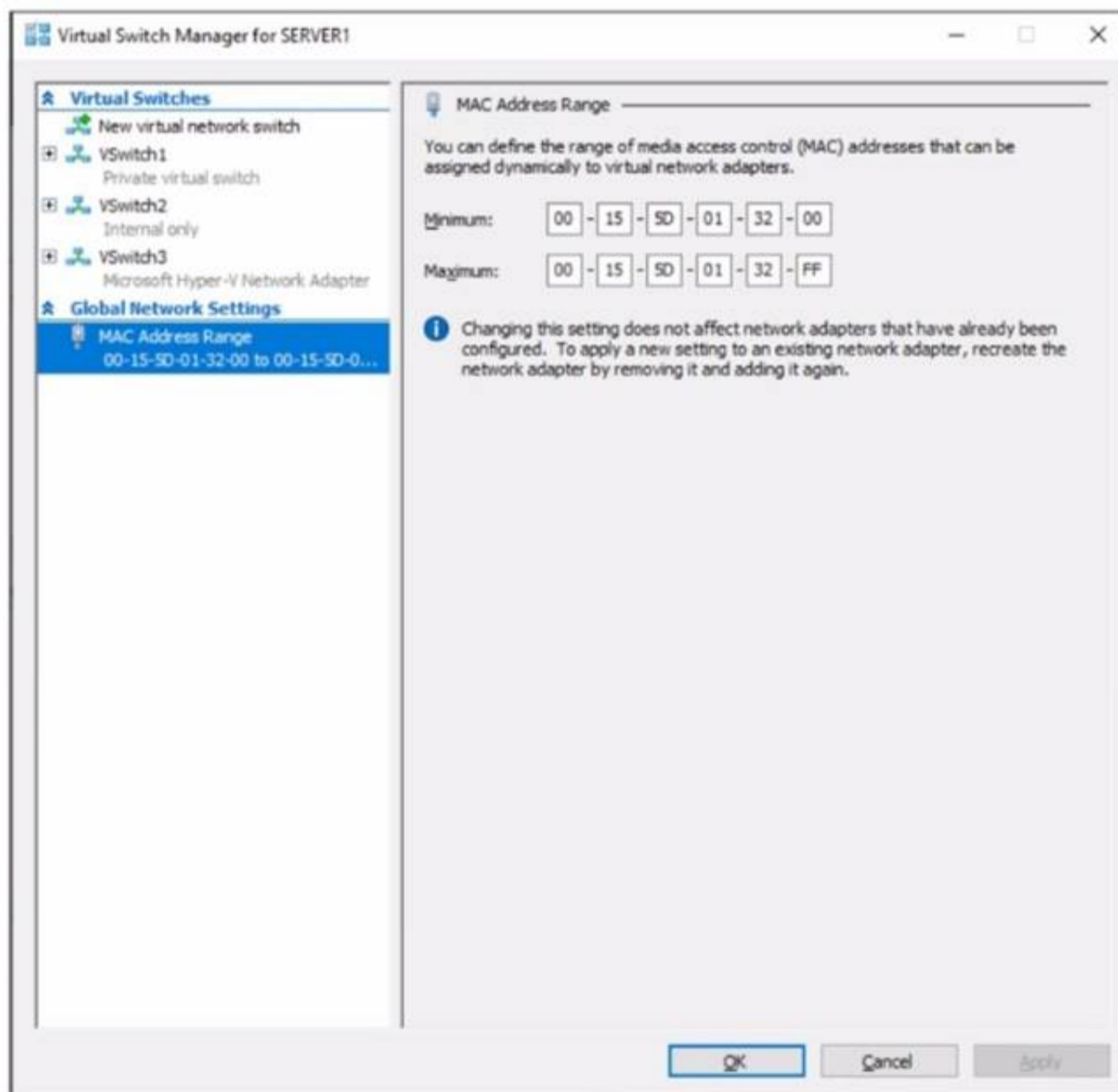
- A. On Server1, run the install-ADServiceAccount cmdlet.
- B. On DC1, run the New-ADServiceAccount cmdlet.
- C. On DC1, run the Set\_ADComputer cmdlet.
- D. ON DC1, run the Install-ADServiceAccount cmdlet.
- E. On Server1, run the Get-ADServiceAccount cmdlet.

**Answer: AB**

**NEW QUESTION 7**

HOTSPOT - (Topic 3)

You have a server named Server1 that runs Windows Server. Server1 has a single network interface and the Hyper-V virtual switches shown in the following exhibit.



Use the drop-down menus to select the answer choice that completes each statement based on the information presented in the graphic. NOTE: Each correct selection is worth one point.

**Answer Area**

On Server1, you can create additional **[answer choice]**.

- private and internal virtual switches only
- internal virtual switches only
- private virtual switches only
- private and internal virtual switches only**
- private, internal, and external virtual switches

Server1 can access network shares on virtual machines that are connected to **[answer choice]**.

- VSwitch1, VSwitch2, or VSwitch3
- VSwitch2 only
- VSwitch3 only
- VSwitch1 or VSwitch2 only
- VSwitch2 or VSwitch3 only
- VSwitch1, VSwitch2, or VSwitch3**

- A. Mastered
- B. Not Mastered

**Answer:** A

**Explanation:**

**Answer Area**

On Server1, you can create additional **[answer choice]**.

- private and internal virtual switches only
- internal virtual switches only
- private virtual switches only
- private and internal virtual switches only**
- private, internal, and external virtual switches

Server1 can access network shares on virtual machines that are connected to **[answer choice]**.

- VSwitch1, VSwitch2, or VSwitch3
- VSwitch2 only
- VSwitch3 only
- VSwitch1 or VSwitch2 only
- VSwitch2 or VSwitch3 only
- VSwitch1, VSwitch2, or VSwitch3**

**NEW QUESTION 8**

- (Topic 3)

You have an on-premises server named Server 1 that runs Windows Server. You have an Azure subscription that contains a virtual network named VNet1. You need to connect Server1 to VNet1 by using Azure Network Adapter. What should you use?

- A. the Azure portal
- B. Azure AD Connect
- C. Device Manager
- D. Windows Admin Center

**Answer:** B

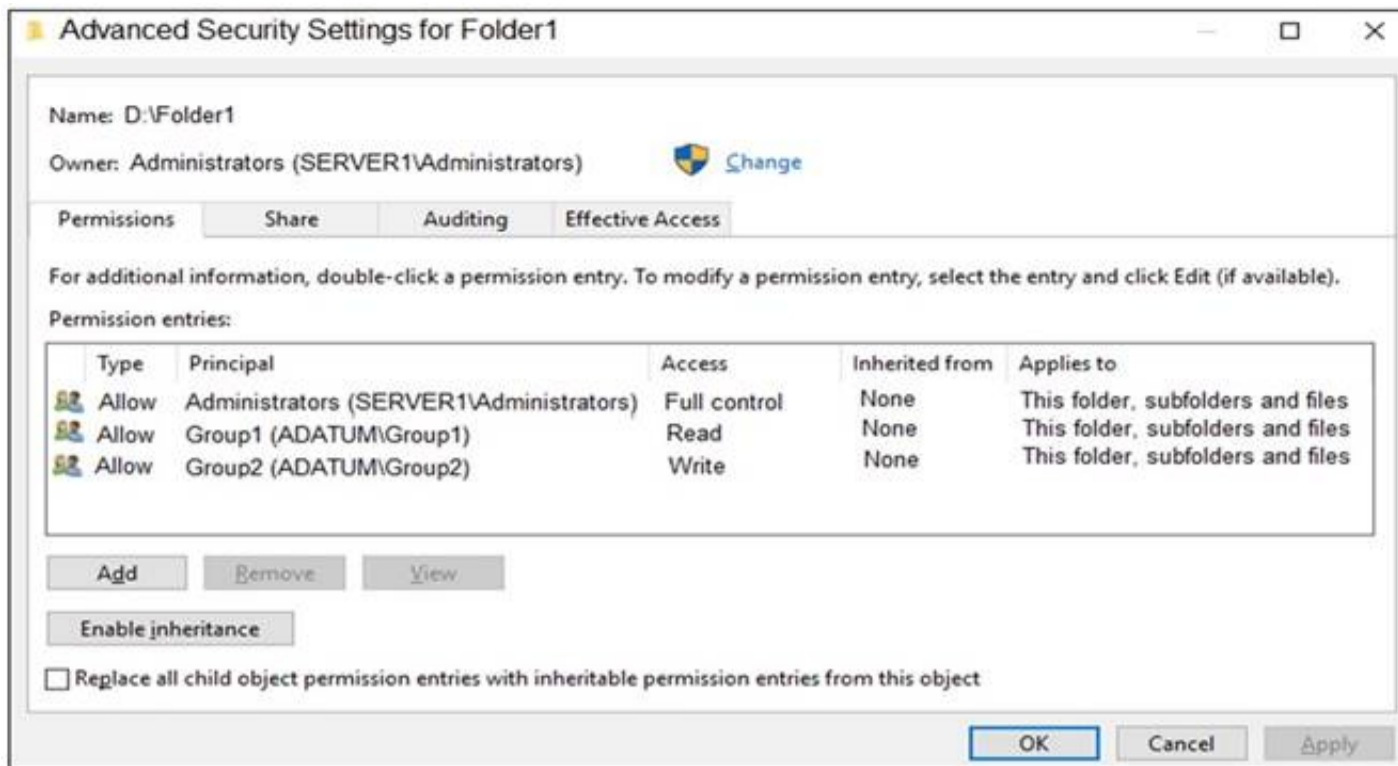
**NEW QUESTION 9**

HOTSPOT - (Topic 3)

Your network contains an Active Directory Domain Services (AD DS) domain named adatum.com. The domain contains a server named Server1 and the users shown in the following table.

Name	Member of
User1	Group1
User2	Group2
User3	Group3

Server1 contains a folder named D:\Folder1. The advanced security settings for Folder1 are configured as shown in the Permissions exhibit. (Click the Permissions tab.)



Folder1 is shared by using the following configurations:

```
Path           : D:\Folder1
Name           : Share1
ShareType      : FileSystemDirectory
FolderEnumerationMode : Unrestricted
```

The share permissions for Share1 are shown in the following table.

Group	Permission
Group1	Allow – Change
Group3	Allow – Full Control

For each of the following statements, select Yes if the statement is true. Otherwise, select No.  
 NOTE: Each correct selection is worth one point.

Statements	Yes	No
User1 can read the files in Share1.	<input type="radio"/>	<input type="radio"/>
User3 can delete files in Share1.	<input type="radio"/>	<input type="radio"/>
If User2 connects to \\Server1.adatun.com from File Explorer, Share1 will be listed.	<input type="radio"/>	<input type="radio"/>

- A. Mastered
- B. Not Mastered

**Answer: A**

**Explanation:**

To access files in a shared folder, you need to be granted permissions on the folder (NTFS permissions) AND permissions on the share. The most restrictive permission of the folder permissions and share permissions apply.

Box 1: Yes

Group1 has Read access to Folder1 and Change access to Share1. Therefore, User1 can read the files in Share1.

Box 2: No

Group3 has Full Control access to Share1. However, Group3 has no permissions configured Folder1. Therefore, User3 cannot access the files in Share1.

Box 3: Yes

Group2 has write permission to Folder1. However, Group2 has no permission on Share1. Therefore, users in Group2 cannot access files in the shared folder. Access Based Enumeration when enabled hides files and folders that users do not have permission to access. However, Access Based Enumeration is not enabled on Share1.

This is indicated by the FolderEnumerationMode – Unrestricted setting. Therefore, the share will be visible to User2 even though User2 cannot access the shared folder.

**NEW QUESTION 10**

DRAG DROP - (Topic 3)

You have a disaggregated cluster deployment. The deployment contains a scale-out file server (SOFS) cluster that runs Windows Server and a compute duster

that has the Hyper- V role enabled.

You need to implement Storage Quality of Service (QoS). The solution must ensure that you can control the bandwidth usage between the SOFS cluster and the Hyper-V cluster.

Which cmdlet should you run on each cluster? To answer, drag the appropriate cmdlets to the correct clusters. Each cmdlet may be used once, more than once, or not at all. You may need to drag the split bar between panes or scroll to view content.

NOTE: Each correct selection is worth one point.

- A. Mastered
- B. Not Mastered

**Answer: A**

**Explanation:**

**NEW QUESTION 10**

HOTSPOT - (Topic 3)

Your network contains an Active Directory Domain Services (AD DS) domain named contoso.com. The domain contains a server named Server1 that has the DFS Namespaces role service installed. Server1 hosts a domain-based Distributed File System (DFS) Namespace named Files.

The domain contains a file server named Server2. Server2 contains a shared folder named Share1. Share1 contains a subfolder named Folder 1.

In the Files namespace, you create a folder named Folder1 that has a target of \\Server2.contoso.com\Share1\Folder1.

You need to configure a logon script that will map drive letter M to Folder1. The solution must use the path of the DFS Namespace.

How should you complete the command to map the drive letter? To answer, select the appropriate options in the answer area.

NOTE: Each correct selection is worth one point.

Answer Area

- A. Mastered
- B. Not Mastered

**Answer: A**

**Explanation:**

Answer Area

**NEW QUESTION 14**

- (Topic 3)

You have an Azure subscription that contains the following resources:

- An Azure Log Analytics workspace
- An Azure Automation account
- Azure Arc.

You have an on-premises server named Server1 that is onboarded to Azure Arc. You need to manage Microsoft updates on Server1 by using Azure Arc.

Which two actions should you perform? Each correct answer presents part of the solution. NOTE: Each correct selection is worth one point.

- A. Add Microsoft Sentinel to the Log Analytics workspace
- B. On Server1, install the Azure Monitor agent
- C. From the Automation account, enable Update Management for Server1.
- D. From the Virtual machines data source of the Log Analytics workspace, connect Server1.

**Answer: BC**

**Explanation:**

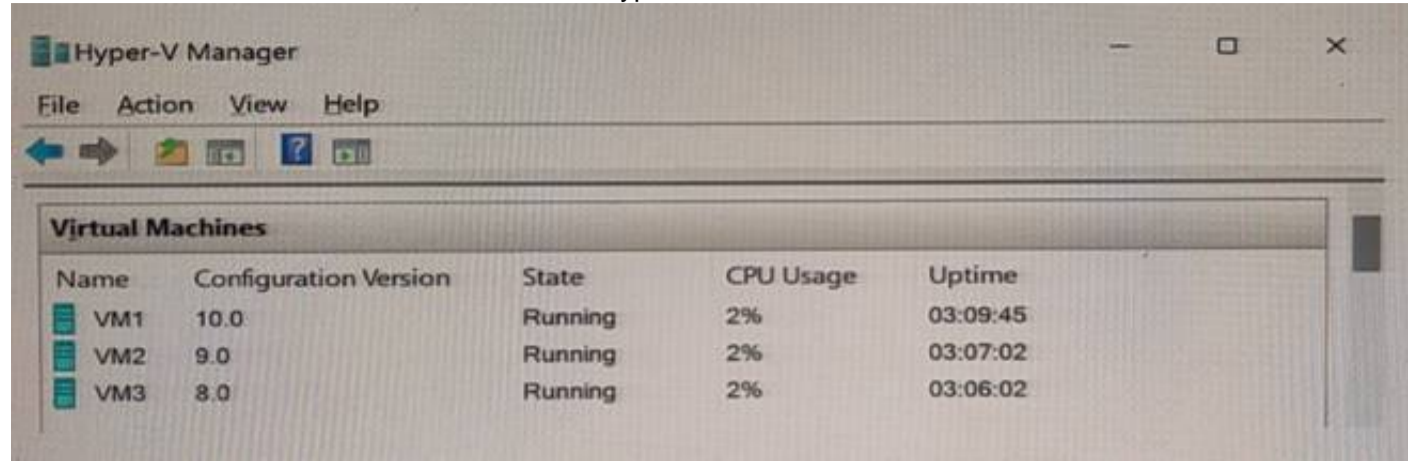
Reference:

<https://docs.microsoft.com/en-us/azure/cloud-adoption-framework/manage/hybrid/server/best-practices/arc-update-management>

**NEW QUESTION 15**

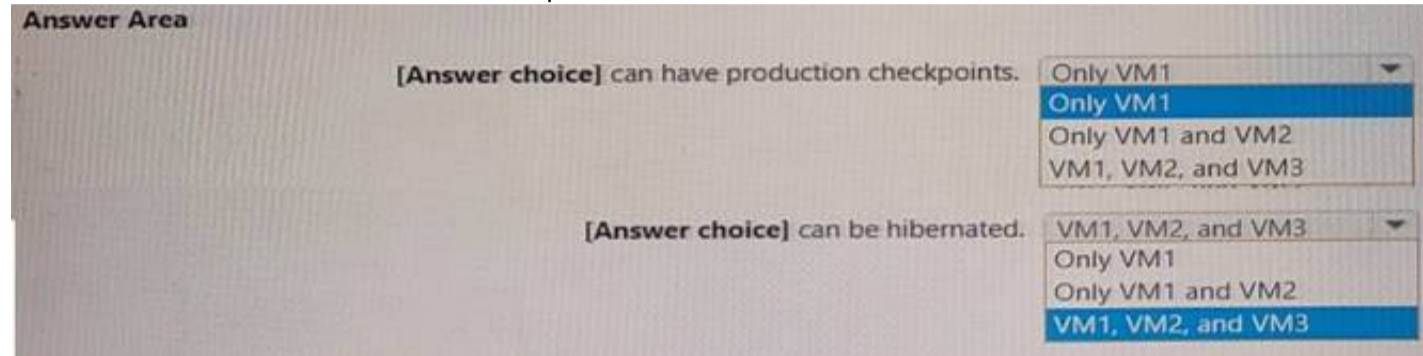
HOTSPOT - (Topic 3)

You have a server named Server1 that has the Hyper-V server role installed. Server1 hosts the virtual machines shown in the following exhibit.



Use the drop-down menus to select the answer choice that completes each statement based on the information presented in the graphic.

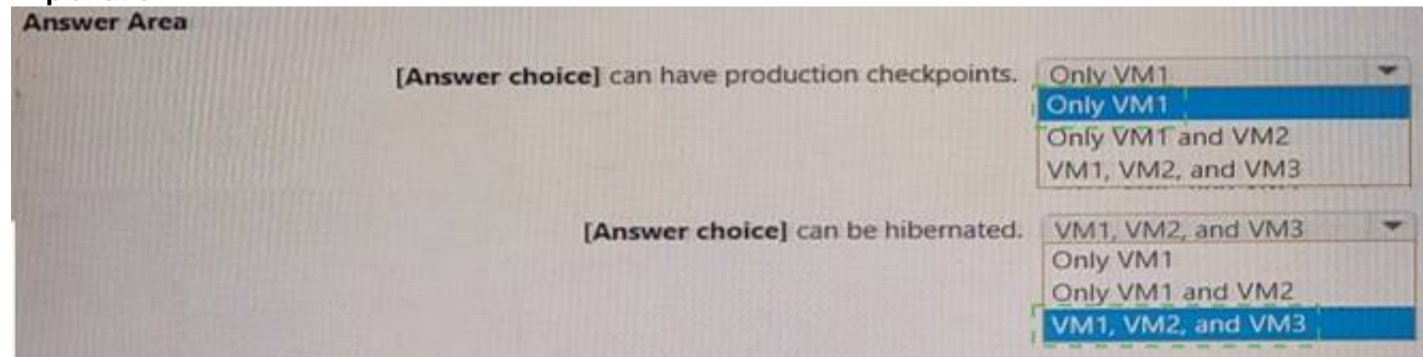
NOTE: Each correct selection is worth one point.



- A. Mastered
- B. Not Mastered

**Answer: A**

**Explanation:**



**NEW QUESTION 17**

HOTSPOT - (Topic 3)

Your company has a main office and 10 branch offices that are connected by using WAN links. The network contains an Active Directory domain.

All users have laptops and regularly travel between offices. You plan to implement BranchCache in the branch offices.

In each branch office, you install a server that runs Windows Server and the BranchCache feature. You register the servers in Active Directory.

You need to configure the laptops to use the local BranchCache server automatically. The solution must minimize administrative effort.

Which two Group Policy settings should you configure? To answer, select the settings in the answer area.

NOTE: Each correct selection is worth one point.

**Answer Area**

Setting	State
Turn on BranchCache	Not configured
Set BranchCache Distributed Cache mode	Not configured
Set BranchCache Hosted Cache mode	Not configured
Enable Automatic Hosted Cache Discovery by Service Connection...	Not configured
Configure Hosted Cache Servers	Not configured
Configure BranchCache for network files	Not configured
Set percentage of disk space used for client computer cache	Not configured
Set age for segments in the data cache	Not configured
Configure Client BranchCache Version Support	Not configured

- A. Mastered
- B. Not Mastered

**Answer: A**

**Explanation:**

- > Turn on BranchCache
- > Enable Automatic Hosted Cache Discovery by Service Connection ...

**NEW QUESTION 22**

- (Topic 3)

Your network contains an Active Directory Domain Services (AD DS) forest named contoso.com. The root domain contains the domain controllers shown in the following table.

Name	FSMO role
DC1	Domain naming master
DC2	RID master
DC3	PDC emulator
DC4	Schema master
DC5	Infrastructure master

A failure of which domain controller will prevent you from creating application partitions?

- A. DC1
- B. DC2
- C. DC3
- D. DC4
- E. DC5

**Answer:** A

**Explanation:**

Reference:  
<https://docs.microsoft.com/en-us/troubleshoot/windows-server/identity/fsmo-roles>

**NEW QUESTION 27**

- (Topic 3)

You have servers that run Windows Server 2022 as shown in the following table.

Name	Location	Description
Server1	On-premises	Hosts a Microsoft SQL Server 2019 instance
Server2	Azure	Contains the .NET SDK

Server2 contains a .NET app named App1.

You need to establish a WebSocket connection from App1 to the SQL Server instance on Server1. The solution must meet the following requirements:

- Minimize the number of network ports that must be open on the on-premises network firewall.
- Minimize administrative effort. What should you create first?

- A. an Azure Relay namespace
- B. an Azure VPN gateway
- C. a WFC relay connection
- D. a hybrid connection

**Answer:** D

**NEW QUESTION 32**

- (Topic 3)

Your network contains an Active Directory Domain Services (AD DS) domain named contoso.com.

You need to identify which server is the PDC emulator for the domain.

Solution: From Active Directory Sites and Services, you right-click Default-First-Site-Name in the console tree, and then select Properties.

Does this meet the goal?

- A. Yes
- B. No

**Answer:** B

**NEW QUESTION 36**

HOTSPOT - (Topic 3)

You have a server named Server1 that runs Windows Server and has the Hyper-V server role installed.

You need to limit which Hyper-V module cmdlets helpdesk users can use when administering Server 1 remotely.

You configure Just Enough Administration (JEA) and successfully build the role capabilities and session configuration files.

How should you complete the PowerShell command? To answer, select the appropriate options in the answer area.

NOTE: Each correct selection is worth one point.

**Answer Area**



- A. Mastered
- B. Not Mastered

**Answer:** A

**Explanation:**  
 Answer Area



**NEW QUESTION 37**  
 HOTSPOT - (Topic 3)

You have on-premises servers that run Windows Server as shown in the following table.

Name	Local content
Server1	D:\Folder1\File1.docx
Server2	D:\Data1\File3.docx

You have an Azure file share named share1 that stores two files named File2.docx and File3.docx. You create an Azure File Sync sync group that includes the following endpoints:

- ? share
- ? D:\Folder1 on Server1
- ? D:\Data1 on Server2

For each of the following statements, select Yes if the statement is true. Otherwise, select No. NOTE: Each correct selection is worth one point.

Statements	Yes	No
You can create a file named File2.docx in D:\Folder1 on Server1.	<input type="checkbox"/>	<input type="checkbox"/>
You can create a file named File1.docx in D:\Data1 on Server2.	<input type="checkbox"/>	<input type="checkbox"/>
File3.docx will sync to Server1.	<input type="checkbox"/>	<input type="checkbox"/>

- A. Mastered
- B. Not Mastered

**Answer:** A

**Explanation:**

Statements	Yes	No
You can create a file named File2.docx in D:\Folder1 on Server1.	<input checked="" type="checkbox"/>	<input type="checkbox"/>
You can create a file named File1.docx in D:\Data1 on Server2.	<input checked="" type="checkbox"/>	<input type="checkbox"/>
File3.docx will sync to Server1.	<input type="checkbox"/>	<input checked="" type="checkbox"/>

**NEW QUESTION 39**  
 HOTSPOT - (Topic 3)

Your network contains an Azure AD Domain Services domain named contoso.com.

You need to configure a password policy for the local user accounts on the Azure virtual machines joined to contoso.com. What should you do? To answer, select the appropriate options in the answer area. NOTE: Each correct selection is worth one point.

Answer Area

Sign in by using a user account that is a member of the:

- AAD DC Administrators group
- Administrators group
- Domain Admins group

Use a Group Policy Object (GPO) linked to the:

- AADD Users organizational unit (OU)
- AADD Computers organizational unit (OU)
- Computers container

Answer:

Answer Area

Sign in by using a user account that is a member of the:

- AAD DC Administrators group
- Administrators group
- Domain Admins group

Use a Group Policy Object (GPO) linked to the:

- AADD Users organizational unit (OU)
- AADD Computers organizational unit (OU)
- Computers container

- A. Mastered
- B. Not Mastered

Answer: A

**NEW QUESTION 41**

- (Topic 3)

Note: This question is part of a series of questions that present the same scenario. Each question in the series contains a unique solution that might meet the stated goals. Some question sets might have more than one correct solution, while others might not have a correct solution.

After you answer a question in this section, you will NOT be able to return to it. As a result, these questions will not appear in the review screen.

You are planning the deployment of DNS to a new network.

You have three internal DNS servers as shown in the following table.

Name	Location	IP address	Local DNS zone
Server1	Montreal	10.0.1.10	contoso.local
Server2	Toronto	10.0.2.10	east.contoso.local
Server3	Seattle	10.0.3.10	west.contoso.local

The contoso.local zone contains zone delegations for east.contoso.local and west.contoso.local. All the DNS servers use root hints.

You need to ensure that all the DNS servers can resolve the names of all the internal namespaces and internet hosts.

Solution: On Server2 and Server3, you configure a conditional forwarder for contoso.local. Does this meet the goal?

- A. Yes
- B. No

Answer: B

**Explanation:**

[https://docs.microsoft.com/en-us/previous-versions/windows/it-pro/windows-server-2008-r2-and-2008/cc794735\(v=ws.10\)](https://docs.microsoft.com/en-us/previous-versions/windows/it-pro/windows-server-2008-r2-and-2008/cc794735(v=ws.10))

**NEW QUESTION 43**

- (Topic 3)

You have an on-premises Active Directory Domain Services (AD DS) domain that syncs with an Azure Active Directory (Azure AD) tenant. You plan deploy 100 new Azure virtual machines that will run Windows Server. You need to ensure that each new virtual machine is joined to the AD DS domain. What should you use?

- A. Azure AD Connect
- B. a Group Policy Object (GPO)
- C. an Azure Resource Manager (ARM) template
- D. an Azure management group

Answer: C

**Explanation:**

Reference:

<https://www.ludovicmedard.com/create-an-arm-template-of-a-virtual-machine-automatically-joined-to-a-domain/>

**NEW QUESTION 46**

HOTSPOT - (Topic 3)

Your network contains an Active Directory Domain Services (AD DS) domain named contoso.com. The domain contains the VPN servers shown in the following table.

Name	IP address
VPN1	172.16.0.254
VPN2	131.10.15.254
VPN3	10.10.0.254

You have a server named NPS1 that has Network Policy Server (NPS) installed. NPS1 has the following RADIUS clients:

```
Name           : NPSclient1
Address        : 172.16.0.254
AuthAttributeRequired : False
SharedSecret   : Pa55w.rd
VendorName     : RADIUS Standard
Enabled        : False
```

```
Name           : NPSclient2
Address        : 131.10.15.254
AuthAttributeRequired : False
SharedSecret   : Pa55w.rd
VendorName     : RADIUS Standard
Enabled        : True
```

```
Name           : NPSclient3
Address        : 172.16.1.254
AuthAttributeRequired : False
SharedSecret   : Pa55w.rd
VendorName     : RADIUS Standard
Enabled        : True
```

VPN1, VPN2, and VPN3 use NPS1 for RADIUS authentication. All the users in contoso.com are allowed to establish VPN connections. For each of the following statements, select Yes if the statement is true. Otherwise, select No. NOTE: Each correct selection is worth one point.

Answer Area

Statements	Yes	No
The contoso.com users can authenticate successfully when they establish a VPN connection to VPN1.	<input type="radio"/>	<input type="radio"/>
The contoso.com users can authenticate successfully when they establish a VPN connection to VPN2.	<input type="radio"/>	<input type="radio"/>
The contoso.com users can authenticate successfully when they establish a VPN connection to VPN3.	<input type="radio"/>	<input type="radio"/>

- A. Mastered
- B. Not Mastered

**Answer: A**

**Explanation:**

Answer Area

Statements	Yes	No
The contoso.com users can authenticate successfully when they establish a VPN connection to VPN1.	<input type="radio"/>	<input checked="" type="radio"/>
The contoso.com users can authenticate successfully when they establish a VPN connection to VPN2.	<input checked="" type="radio"/>	<input type="radio"/>
The contoso.com users can authenticate successfully when they establish a VPN connection to VPN3.	<input type="radio"/>	<input checked="" type="radio"/>

**NEW QUESTION 48**

HOTSPOT - (Topic 3)

You have a server named Server1 that runs Windows Server Server1 has a just-a-bunch- of-disks (JBOD) enclosure attached.

You plan to create a storage pool on Server1 and a virtual disk that will use a mirror layout. You are considering whether to use a two-way or a three-way mirror layout.

What is the minimum number of disks required for each type of mirror layout? To answer, select the appropriate options in the answer area.

NOTE: Each correct selection is worth one point.

**Answer Area**

Two-way mirror:  1  
 2  
 3  
 4  
 5  
 6

Three-way mirror:  1  
 2  
 3  
 4  
 5  
 6

- A. Mastered
- B. Not Mastered

**Answer:** A

**Explanation:**  
**Answer Area**

Two-way mirror:  1  
 2  
 3  
 4  
 5  
 6

Three-way mirror:  1  
 2  
 3  
 4  
 5  
 6

**NEW QUESTION 51**

- (Topic 3)

You plan to deploy a containerized application that requires .NET Core. You need to create a container image for the application. The image must be as small as possible. Which base image should you use?

- A. Nano Server
- B. Server Cote
- C. Windows Server
- D. Windows

**Answer:** A

**Explanation:**

Reference:

<https://techcommunity.microsoft.com/t5/containers/nano-server-x-server-core-x-server-which-base-image-is-the-right/ba-p/2835785>

**NEW QUESTION 54**

- (Topic 3)

You have an on-premises Active Directory Domain Services (AD DS) domain that syncs with an Azure Active Directory (Azure AD) tenant. The on-premises network is connected to Azure by using a Site-to-Site VPN. You have the DNS zones shown in the following table.

Name	Location	Description
contoso.com	A domain controller named DC1 on the on-premises network	Provides name resolution on-premises
fabrikam.com	An Azure private DNS zone.	Provides name resolution for all Azure virtual networks

You need to ensure that names from (aDiifcam.com can be resolved from the on-premises network. Which two actions should you perform? Each correct answer presents part of the solution, NOTE: Each correct selection is worth one point

- A. Create a conditional forwarder for fabrikam.com on DC1.
- B. Create a stub zone for fabrikam.com on DC1.
- C. Create a secondary zone for fabnlcam.com on DO.
- D. Deploy an Azure virtual machine that runs Windows Serve
- E. Modify the DNS Servers settings for the virtual network.
- F. Deploy an Azure virtual machine that runs Windows Serve
- G. Configure the virtual machine &s a DNS forwarder.

**Answer:** AE

**Explanation:**

Reference:

<https://docs.microsoft.com/en-us/azure/private-link/private-endpoint-dns#on-premises-workloads-using-a-dns-forwarder>

**NEW QUESTION 58**

- (Topic 3)

Your network contains an Active Directory Domain Services (AD DS) domain. The domain contains the resources shown in the following table.

Name	Description
CLIENT1	Client computer that runs Windows
DC1	Domain controller
Server1	File server
Server2	File server

You plan to replicate a volume from Server1 to Server2 by using Storage Replica. You need to configure Storage Replica. Where should you install Windows Admin Center?

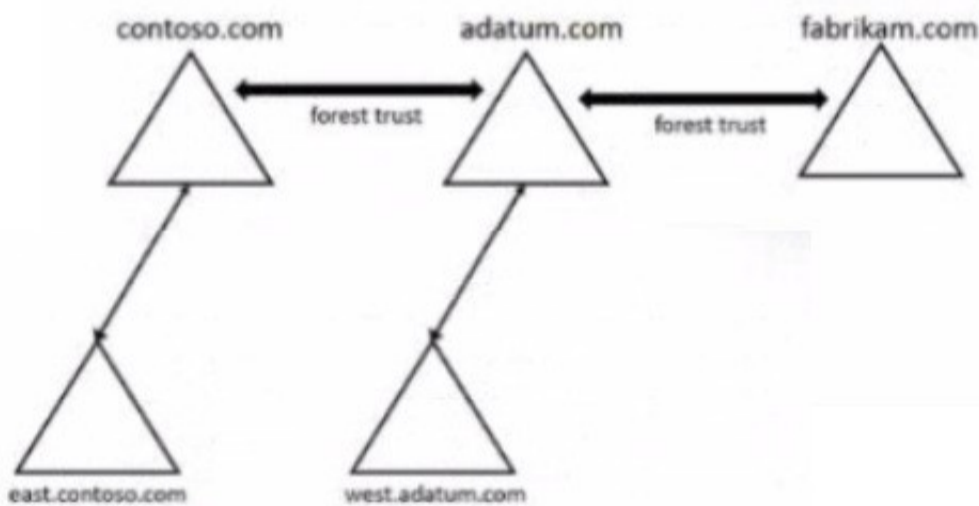
- A. Server 1
- B. CLIENT1
- C. DC1
- D. Server2

**Answer:** A

**NEW QUESTION 62**

HOTSPOT - (Topic 3)

Your network contains three Active Directory Domain Services (AD DS) forest as shown in the following exhibit.



The network contains the users shown in the following table.

Name	Domain
User1	east.contoso.com
User2	fabrikam.com

The network contains the security groups shown in the following table.

Name	Type	Domain
Group1	Domain local	west.adatum.com
Group2	Universal	contoso.com
Group3	Universal	east.contoso.com

For each of the following statements, select Yes if the statement is true, Otherwise, select No.

NOTE: Each correct selection is worth one point.

**Answer Area**

Statements	Yes	No
You can add User1 to Group1.	<input type="radio"/>	<input type="radio"/>
You can add User2 to Group3.	<input type="radio"/>	<input type="radio"/>
You can grant Group2 permissions to the resources in the fabrikam.com domain.	<input type="radio"/>	<input type="radio"/>

- A. Mastered
- B. Not Mastered

**Answer:** A

**Explanation:**

**NEW QUESTION 66**

- (Topic 3)

Your network contains an Active Directory Domain Services (AD DS) forest. The forest contains three Active Directory sites named Site1, Site2, and Site3. Each site contains two domain controllers. The sites are connected by using DEFAULTIPSITELINK.

You open a new branch office that contains only client computers.

You need to ensure that the client computers in the new office are primarily authenticated by the domain controllers in Site1.

Solution: You configure the Try Next Closest Site Group Policy Object (GPO) setting in a GPO that is linked to Site1.

Does this meet the goal?

- A. Yes
- B. No

**Answer:** B

**NEW QUESTION 71**

HOTSPOT - (Topic 3)

You have an on-premises server named Server1 that runs Windows Server and has internet connectivity.

You have an Azure subscription.

You need to monitor Server1 by using Azure Monitor.

Which resources should you create in the subscription, and what should you install on Server1? To answer, select the appropriate options in the answer area.

NOTE: Each correct selection is worth one point.

In the subscription, create:

<input type="checkbox"/>
<input type="checkbox"/> An Azure Files storage account
<input type="checkbox"/> A Log Analytics workspace
<input type="checkbox"/> An Azure SQL database and a data collection rule
<input type="checkbox"/> An Azure Blob Storage account and a data collection rule

On Server1, install:

<input type="checkbox"/>
<input type="checkbox"/> The Azure Monitor agent
<input type="checkbox"/> The Analytics gateway
<input type="checkbox"/> The Device Health Attestation server role

- A. Mastered
- B. Not Mastered

**Answer:** A

**Explanation:**

**NEW QUESTION 73**

HOTSPOT - (Topic 3)

Your on-premises network contains an Active Directory domain named contoso.com and 500 servers that run Windows Server. All the servers are Azure Arc-enabled and joined to contoso.com.

You need to implement PowerShell Desired State Configuration (DSC) on all the servers. The solution must minimize administrative effort.

Where should you store the DSC scripts, and what should you use to apply DSC to the servers? To answer, select the appropriate options in the answer area.

NOTE: Each correct selection is worth one point.

**Answer Area**

Store in:

Use:

- A. Mastered
- B. Not Mastered

**Answer:** A

**Explanation:**

**Answer Area**

Store in:

Use:

**NEW QUESTION 78**

- (Topic 3)

You have servers that have the DNS Server role installed. The servers are configured as shown in the following table.

Name	Office	Local DNS zone	IP address
Server1	Paris	contoso.com	10.1.1.1
Server2	New York	None	10.2.2.2

All the client computers in the New York office use Server2 as the DNS server. You need to configure name resolution in the New York office to meet the following requirements:

- ? Ensure that the client computers in New York can resolve names from contoso.com.
- ? Ensure that Server2 forwards all DNS queries for internet hosts to 131.107.100.200.

The solution must NOT require modifications to Server1. Each correct answer presents part of the solution. NOTE: Each correct selection is worth one point.

- A. a forwarder
- B. a conditional forwarder
- C. a delegation
- D. a secondary zone
- E. a reverse lookup zone

**Answer:** AB

**Explanation:**

A conditional forwarder is required for contoso.com. A forwarder is required for all other domains. When you have a conditional forwarder and a forwarder configured, the conditional forwarder will be used for the specified domain. You could use a secondary zone for contoso.com but that would require a configuration change on Server1.

**NEW QUESTION 81**

DRAG DROP - (Topic 2)

You need to meet the security requirements for passwords.

Where should you configure the components for Azure AD Password Protection? To answer, drag the appropriate components to the correct locations. Each component may be used once, more than once, or not at all. You may need to drag the split bar between panes or scroll to view content.

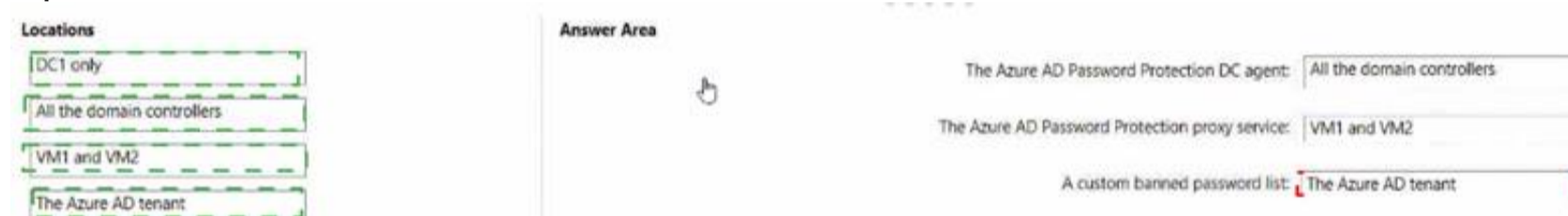
NOTE Each correct selection is worth one point.



- A. Mastered
- B. Not Mastered

**Answer:** A

**Explanation:**



**NEW QUESTION 82**

- (Topic 2)

You need to configure remote administration to meet the security requirements. What should you use?

- A. just in time (JIT) VM access
- B. Azure AD Privileged Identity Management (PIM)
- C. the Remote Desktop extension for Azure Cloud Services
- D. an Azure Bastion host

**Answer:** A

**Explanation:**

Reference:

<https://docs.microsoft.com/en-us/azure/defender-for-cloud/just-in-time-access-usage?tabs=jit-config-asc%2Cjit-request-asc>

**NEW QUESTION 86**

HOTSPOT - (Topic 1)

Which groups can you add to Group3 and Group5? To answer, select the appropriate options in the answer area.

NOTE: Each correct selection is worth one point.

Group3:

Group6 only
Group1 and Group2 only
Group1 and Group4 only
Group1, Group2, Group4, and Group5 only
Group1, Group2, Group4, Groups, and Group6

Group5:

Group1 only
Group4 only
Group6 only
Group2 and Group4 only
Group4 and Group6 only

- A. Mastered
- B. Not Mastered

Answer: A

Explanation:

Group3:

Group6 only
Group1 and Group2 only
Group1 and Group4 only
Group1, Group2, Group4, and Group5 only
Group1, Group2, Group4, Groups, and Group6

Group5:

Group1 only
Group4 only
Group6 only
Group2 and Group4 only
Group4 and Group6 only

**NEW QUESTION 90**

- (Topic 1)

You need to meet the technical requirements for the site links. Which users can perform the required tasks?

- A. Admin1 only
- B. Admin1 and Admin3 only
- C. Admin1 and Admin2 only
- D. Admin3 only
- E. Admin1, Adrrun2. and Admin3

Answer: C

Explanation:

Membership in the Enterprise Admins group or the Domain Admins group in the forest root domain is required.

**NEW QUESTION 91**

.....

## **Thank You for Trying Our Product**

### **We offer two products:**

1st - We have Practice Tests Software with Actual Exam Questions

2nd - Questions and Answers in PDF Format

### **AZ-800 Practice Exam Features:**

- \* AZ-800 Questions and Answers Updated Frequently
- \* AZ-800 Practice Questions Verified by Expert Senior Certified Staff
- \* AZ-800 Most Realistic Questions that Guarantee you a Pass on Your FirstTry
- \* AZ-800 Practice Test Questions in Multiple Choice Formats and Updatesfor 1 Year

**100% Actual & Verified — Instant Download, Please Click**  
**[Order The AZ-800 Practice Test Here](#)**