



Microsoft

Exam Questions 70-697

Configuring Windows Devices

NEW QUESTION 1

You manage a Microsoft Azure RemoteApp deployment. The deployment consists of a cloud collection named CloudCollection1 and a hybrid collection named HybridCollection1. Both collections reside in a subscription named Subscription1. Subscription1 contains two Active Directory instances named AzureAD1 and AzureAD2. AzureAD1 is the associated directory of Subcsription1. AzureAD1 is synchronized to an on-premises Active Directory forest named constoso.com. Passwords are synchronized between AzureAD1 and the on-premises Active Directory. You have the following user accounts:

User Name	Account Type
User1	Microsoft account
User2	AzureAD1 account
User3	Contoso.com account

You need to identify to which collections each user can be assigned access. What should you identify? To answer, select the appropriate options in the answer area.

Answer Area

User1:

User2:

User3:

User1:

None

CloudCollection1 only

HybridCollection1 only

CloudCollection1 and HybridCollection1

User2:

None

CloudCollection1 only

HybridCollection1 only

CloudCollection1 and HybridCollection1

User3:

None

CloudCollection1 only

HybridCollection1 only

CloudCollection1 and HybridCollection1

Answer:

Explanation: A Microsoft account can only access a cloud collection. An Azure Active Directory (Azure AD) account can access a cloud collection and it can access a hybrid collection if directory synchronization with password sync is deployed. An on-premise domain account that does not exist in any Azure Active Directory cannot access Azure cloud resources. References: <https://azure.microsoft.com/en-gb/documentation/articles/remoteapp-collections/>

NEW QUESTION 2

You manage Microsoft Intune for a company named Contoso. You have an administrative computer named Computer1 that runs Windows 10 Enterprise. You need to add a Windows Store universal app named App1 to the Company Portal Apps list for all users. Which three actions should you perform in sequence? To answer, move the appropriate actions from the list of actions to the answer area and arrange them in the correct order.

Actions

From the Microsoft Intune administration console, manage the deployment settings of App1.

Log on to Computer1 by using your domain account.

On Computer1, run the Add Software - Microsoft Intune Software Publisher wizard.

From Windows Store, install App1 on Computer1.

Log on to Computer1 by using the built-in Administrator account.

Answer Area

Answer:

Explanation: Log into your computer using a domain account.
Run the Microsoft Intune Software Publisher wizard app. Configure the deployment settings of the app.

NEW QUESTION 3

You have an image of Windows 10 Enterprise named Image1. Image1 has version number 1.0.0.0 of a custom, line-of-business universal app named App1. You deploy Image1 to Computer1 for a user named User1. You need to update App1 to version 1.0.0.1 on Computer1 for User1 only. What command should you run? To answer, select the appropriate options in the answer area.

Answer Area

Answer Area

Add-AppxPackage	-dependancypath
Add-AppxProvisionedPackage	-MainPackage
Set-AppxProvisionedDataFile	-path

Answer:

Explanation: In this question, we need to update App1 to version1.0.0.1 onComputer1 “for User1 only”. The Add–AppxPackage cmdlet adds a signed app package (.appx) to a user account. To update the application, we need to use the –path parameter to specify the path to the upgraded application.

NEW QUESTION 4

You administer a Windows 10 Enterprise computer that runs Hyper-V. The computer hosts a virtual machine with multiple snapshots. The virtual machine uses one virtual CPU and 512 MB of RAM. You discover that the virtual machine pauses automatically and displays the state as paused-critical. You need to identify the component that is causing the error. Which component should you identify?

- A. no virtual switch defined
- B. insufficient memory
- C. insufficient hard disk space
- D. insufficient number of virtual processors

Answer: C

Explanation: In this question, the VM has “multiple snapshots” which would use up a lot of disk space. Virtual machines will go into the “Paused-Critical” state in Hyper-V if the free space on the drive that contains the snapshots goes below 200MB. One thing that often trips people up is if they have their virtual hard disks configured on one drive – but have left their snapshot files stored on the system drive. Once a virtual machine snapshot has been taken– the base virtual hard disk stops expanding and the snapshot file stores new data that is written to the disk – so it is critical that there is enough space in the snapshot storage location.

NEW QUESTION 5

Employees are permitted to bring personally owned portable Windows 10 Enterprise computers to the office. They are permitted to install corporate applications by using the management infrastructure agent and access corporate email by using the Mail app. An employee’s personally owned portable computer is stolen. You need to protect the corporate applications and email messages on the computer. Which two actions should you perform? Each correct answer presents part of

the solution.

- A. Prevent the computer from connecting to the corporate wireless network.
- B. Change the user's password.
- C. Disconnect the computer from the management infrastructure.
- D. Initiate a remote wipe.

Answer: BD

Explanation: The personally owned portable Windows10Enterprise computers being managed by the management infrastructure agent enables the use of remote wipe. By initiating a remote wipe, we can erase all company data including email from the stolen device.

Microsoft Intune provides selective wipe, full wipe, remote lock, and passcode reset capabilities. Because mobile devices can store sensitive corporate data and provide access to many corporate resources, you can issue a remote device wipe command from the Microsoft Intune administrator console to wipe a lost or stolen device.

Changing the user's password should be the first step. If the stolen computer is accessed before the remote wipe happens, the malicious user could be able to access company resources if the laptop has saved passwords.

NEW QUESTION 6

You deploy several tablet PCs that run Windows 10 Enterprise.

You need to minimize power usage when the user presses the sleep button. What should you do?

- A. In Power Options, configure the sleep button setting to Sleep.
- B. In Power Options, configure the sleep button setting to Hibernate.
- C. Configure the active power plan to set the system cooling policy to passive.
- D. Disable the C-State control in the computer's BIOS.

Answer: B

Explanation: We can minimize power usage on the tablet PCs by configuring them to use Hibernation mode. A computer in hibernation mode uses no power at all.

Hibernation is a power-saving state designed primarily for laptops. While sleep puts your work and settings in memory and draws a small amount of power, hibernation puts your open documents and programs on your hard disk, and then turns off your computer. Of all the power-saving states in Windows, hibernation uses the least amount of power. On a laptop, use hibernation when you know that you won't use your laptop for an extended period and won't have an opportunity to charge the battery during that time.

NEW QUESTION 7

You have a Microsoft Intune subscription.

You have three security groups named Security1, Security2 and Security3. Security1 is the parent group of Security2. Security2 has 100 users.

You need to change the parent group of Security2 to be Security3. What should you do first?

- A. Edit the properties of Security1.
- B. Edit the properties of Security2.
- C. Delete security2.
- D. Remove all users from Security2.

Answer: C

Explanation: You cannot change the parent group of a security group in Microsoft Intune. You can only delete the group and recreate another group with the correct parent.

Deleting a group does not delete the users that belong to that group. Therefore, you do not need to remove the users from the group; you can just delete the group and recreate it.

NEW QUESTION 8

You manage Microsoft Intune for a company named Contoso. Intune client computers run Windows 10 Enterprise.

You notice that there are 25 mandatory updates listed in the Intune administration console.

You need to prevent users from receiving prompts to restart Windows following the installation of mandatory updates.

Which policy template should you use?

- A. Microsoft Intune Agent Settings
- B. Windows Configuration Policy
- C. Microsoft Intune Center Settings
- D. Windows Custom Policy (Windows 10 and Windows 10 Mobile)

Answer: A

Explanation: To configure the Prompt user to restart Windows during Intune client agent mandatory updates update policy setting you have to configure the Microsoft Intune Agent Settings policy. Setting the Prompt user to restart Windows during Intune client agent mandatory updates setting to No would prevent users from receiving prompts to restart Windows following the installation of mandatory updates.

NEW QUESTION 9

You have an Active Directory domain named contoso.com that contains a deployment of Microsoft System Center 2012 Configuration Manager Service Pack 1 (SP1). You have a Microsoft Intune subscription that is synchronized to contoso.com by using the Microsoft Azure Active Directory Synchronization Tool (DirSync.)

You need to ensure that you can use Configuration Manager to manage the devices that are registered to your Microsoft Intune subscription.

Which two actions should you perform? Each correct answer presents a part of the solution.

- A. In Microsoft Intune, create a new device enrollment manager account.
- B. Install and configure Azure Active Directory Synchronization Services (AAD Sync.)
- C. In Microsoft Intune, configure an Exchange Connector.
- D. In Configuration Manager, configure the Microsoft Intune Connector role.
- E. In Configuration Manager, create the Microsoft Intune subscription.

Answer: DE

Explanation: To allow Configuration Manager to manage mobile devices in the same context as other devices, it requires you to create a Windows Intune subscription and synchronize user accounts from Active Directory to Microsoft Online. to achieve that, you are required to complete the following tasks:

References:

<http://blogs.technet.com/b/configmgrteam/archive/2013/03/20/configuring-configuration-manager-sp1-to-manag>

Topic 4, Configure networking

NEW QUESTION 10

A company has 100 client computers that run Windows 10 Enterprise.

A new company policy requires that all client computers have static IPv6 addresses. You need to assign static IPv6 addresses to the client computers.

Which Network Shell (netsh) command should you run?

- A. add address
- B. set interface
- C. set global
- D. set address

Answer: A

Explanation: The add address Network Shell (netsh) command adds an IPv6 address to a specified interface.

NEW QUESTION 10

A company has 10 portable client computers that run Windows 10 Enterprise.

The portable client computers have the network connections described in the following table.

Network name	Connection type	Network profile
CorpWired	Wired	Private
CorpWifi	Wireless	Public
HotSpot	Public hotspot	Public

None of the computers can discover other computers or devices, regardless of which connection they use. You need to configure the connections so that the computers can discover other computers or devices only while connected to the CorpWired or CorpWifi connections.

What should you do on the client computers?

- A. For the CorpWifi connection, select Yes, turn on sharing and connect to devices.
- B. Turn on network discovery for the Public profile.
- C. Change the CorpWired connection to publi
- D. Turn on network discovery for the Public profil
- E. For the HotSpot connection, select No, don't turn on sharing or connect to devices.
- F. For the CorpWired connection, select Yes, turn on sharing and connect to devices.
- G. Turn on network discovery for the Private profile.

Answer: C

Explanation: Of the answers given, this is the only single answer that meets the requirements.

Network discovery is a network setting that affects whether your computer can see (find) other computers and devices on the network and whether other computers on the network can see your computer. By default, Windows Firewall blocks network discovery, but you can enable it.

When we change the CorpWired connection to public, all networks will be in the Public profile. Enabling network discovery for the Public profile will enable the computers to see other computers on each network (including HotSpot).

To prevent network discovery on the HotSpot network, we can select No, don't turn on sharing or connect to devices for that network. This will disable Network discovery for the computer's connection to the HotSpot network.

Topic 5, Configure storage

NEW QUESTION 14

You administer Windows 10 Enterprise desktop computers that are members of an Active Directory domain. You want to create an archived copy of user profiles that are stored on the desktops. You create a standard

domain user account to run a backup task.

You need to grant the backup task user account access to the user profiles. What should you do?

- A. Add the backup task account to the Remote Management Users group on a domain controller.
- B. Add the backup task account to the Backup Operators group on every computer.
- C. Add the backup task account to the Backup Operators group on a domain controller.
- D. Set the backup task account as NTFS owner on all the profiles.

Answer: B

Explanation: The Local Backup Operators group can back up and restore files on a computer, regardless of any permission that protect those files.

NEW QUESTION 15

You have a Windows 10 Enterprise computer. You have a 1-terabyte external hard drive. You purchase a second 1-terabyte external hard drive. You need to create a fault-tolerant volume that includes both external hard drives. You also need to ensure that additional external hard drives can be added to the volume.

Which three actions should you perform in sequence? To answer, move the appropriate actions from the list of actions to the answer area and arrange them in the correct order.

Actions

- Restore your data from the backup.
- From Storage Spaces, create a new storage pool. Set the Resiliency Type to **two-way mirror**.
- From Storage Spaces, create a new storage pool. Set the Resiliency Type to **parity**.
- From Storage Spaces, create a new storage pool. Set the Resiliency Type to **three-way mirror**.
- Back up the existing data on your original external hard drive.
- From Disk Management, create and format a new volume on the second external drive.
- From Disk Management, create a mirrored volume containing the two external drives.



Answer Area



Answer:

Explanation: Storage Spaces can combine multiple hard drives into a single virtual drive. To create a storage space, you'll have to connect two or more additional internal or external drives to your computer to create a storage pool. When creating the pool, any existing data on the disks will be lost. It is therefore important to back up the data if you do not want to lose it. You can also specify an arbitrarily large logical size. When your existing drive begins to fill up and nears the physical limit, Windows will display a notification in the Action Center, prompting you to add additional physical storage space. Selecting the Two-way mirror resiliency type allows Windows to store two copies of your data, so that you won't lose your data if one of your drives fails.

References:

<http://www.howtogeek.com/109380/how-to-use-windows-8s-storage-spaces-to-mirror-combine-drives/>

NEW QUESTION 19

You manage a network that includes Windows 10 Enterprise computers. All of the computers on the network are members of an Active Directory domain. The company recently proposed a new security policy that prevents users from synchronizing applications settings, browsing history, favorites, and passwords from the computers with their Microsoft accounts.

You need to enforce these security policy requirements on the computers. What should you do?

- A. On the Group Policy Object, configure the Accounts: Block Microsoft accounts Group Policy setting to Users can't add Microsoft accounts.
- B. On the Group Policy Object, configure the Accounts: Block Microsoft accounts Group Policy setting to Users can't add or log on with Microsoft accounts.
- C. From each computer, navigate to Change Sync Settings and set the Sync Your Settings options for Apps, Browser, and Passwords to Off.
- D. From each computer, navigate to Change Sync Settings and set the Sync Your Settings option to Off.

Answer: B

Explanation: The computers are members of a domain so the users should be using domain user accounts. We need to block the use of Microsoft accounts. We could use the Users can't add Microsoft accounts setting which would mean that users will not be able to create new Microsoft accounts on a computer, switch a local account to a Microsoft account, or connect a domain account to a Microsoft account.

Alternatively, we can also deny the ability to log on to a domain computer with a Microsoft account (and sync computer settings) by using the Users can't add or log on with Microsoft accounts. This will ensure that the company policy is enforced.

NEW QUESTION 20

A company has Windows 10 Enterprise client computers. Client computers are connected to a corporate private network. You deploy a Remote Desktop Gateway, DirectAccess, and a VPN server at the corporate main office.

Users are currently unable to connect from their home computers to their work computers by using Remote Desktop

You need to ensure that users can remotely connect to their office computers by using Remote Desktop. Users must not be able to access any other corporate network resource from their home computers.

What should you do?

- A. Configure a Virtual Private Network connection.
- B. Configure the local resource settings of the Remote Desktop connection.
- C. Configure a DirectAccess connection.
- D. Configure the Remote Desktop Gateway IP address in the advanced Remote Desktop Connection settings on each client.

Answer: D

Explanation: The solution is to deploy Remote Desktop Gateway in the office. Remote users can then connect to their computers on the office network by using Remote Desktop client on their home computers configured with the IP address of the Remote DesktopGateway.
 Remote Desktop Gateway (RD Gateway) is a role service that enables authorized remote users to connect to resources on an internal corporate or private network, from any Internet-connected device that can run the Remote Desktop Connection (RDC) client. The network resources can be Remote Desktop Session Host (RD Session Host) servers, RD Session Host servers running RemoteApp programs, or computers with Remote Desktop enabled.
 RD Gateway uses the Remote Desktop Protocol (RDP) over HTTPS to establish a secure, encrypted connection between remote users on the Internet and the internal network resources on which their productivity applications run.
 RD Gateway provides a comprehensive security configuration model that enables you to control access to specific internal network resources. RD Gateway provides a point-to-point RDP connection, rather than allowing remote users access to all internal network resources.

Topic 8, Manage apps

NEW QUESTION 23

You plan to deploy a Microsoft Azure RemoteApp collection by using a custom template image. The image will contain Microsoft Word and Excel Office 365 ProPlus programs.

You need to install the Word and Excel programs. The solution must minimize the amount of Internet traffic used during installation.

Which four actions should you perform in sequence? To answer, move the appropriate actions from the list of actions to the answer area and arrange them in the correct order.

Actions

- Download the Office Deployment Tool.
- Modify the Click-to-Run for Office 365 Configuration.xml file.
- Run **setup.exe /configure**.
- Download Office 365 Deployment Readiness Tool.
- Run **setup.exe /packager**.
- Run **setup.exe /download**.

Answer Area



Answer:

Explanation: The first step is to download the Office Deployment Tool.

You then need to modify the configuration file. This will be used to specify the installation options for Word and Excel.

You then run Setup.exe from the Office Deployment Tool with the /download option to download the required software based on the options in the configuration file.

The final step is to install Word and Excel by running Setup.exe from the Office Deployment Tool with the /configure option to install the required software based on the options in the configuration file.

NEW QUESTION 27

You have a computer named Computer1 that runs Windows 10 Enterprise. Computer1 is a member of an Active Directory domain named contoso.com.

You have a line-of-business universal app named App1. App1 is developed internally.

You need to ensure that you can run App1 on Computer1. The solution must meet the following requirements: Minimize costs to deploy the app.

Minimize the attack surface on Computer1. What should you do?

- A. Have App1 certified by the Windows Store.
- B. Sign App1 with a certificate issued by a third-party certificate authority.
- C. From the Update & Security setting on Computer1, enable the Sideload apps setting.
- D. Run the Add-AppxProvisionedPackage cmdlet.

Answer: C

Explanation: To install the application, you need to 'Sideload' it. First you need to enable the Sideload apps setting. LOBW indows Store apps that are not signed by the Windows Store can be sideloaded or added to a PC in the enterprise through scripts at runtime on a per-user basis. They can also be provisioned in an image by the enterprise so that the app is registered to each new user profile that's created on the PC. The requirements to sideload the app per-user or in the image are the same, but the Windows PowerShell cmdlets you use to add, get, and remove the apps are different.

Before you can sideload LOB Windows Store apps that are not signed by the Windows Store, you will need to configure the PC.

NEW QUESTION 32

You plan to deploy a Microsoft Azure RemoteApp collection by using a custom template image. The image will contain Microsoft Office 365 ProPlus apps.

You need to ensure that multiple users can run Office 365 ProPlus from the custom template image simultaneously.

What should you include in the configuration file?

- A. <Property Name = "FORCEAPPSHUTDOWN" Value = "FALSE" />
- B. <Product ID = "0365ProPlusRetail" />
- C. <Property Name = "SharedComputerLicensing" Value = "1" />
- D. <Property Name = "AUTOACTIVATE" Value = "1" />

Answer: C

Explanation: To make Microsoft Office 365 ProPlusapps available as RemoteApps, you need to enable Shared computer activation. You do this by including the

following text in the configuration file:

```
<Property Name = "SharedComputerLicensing" Value= "1" />
```

Shared computer activation lets you to deploy Office 365 ProPlus to a computer in your organization that is accessed by multiple users. For example, several nurses at a hospital connect to the same remote server to use their applications or a group of workers share a computer at a factory.

The most common shared computer activation scenario is to deploy Office 365 ProPlus to shared computers by using Remote Desktop Services (RDS). By using RDS, multiple users can connect to the same remote computer at the same time. The users can each run Office 365 ProPlus programs, such as Word or Excel, at the same time on the remote computer.

Topic 9, Manage updates and recovery

NEW QUESTION 36

You administer a Windows 10 Enterprise computer. The computer has File History turned on, and system protection turned on for drive C.

You accidentally delete a folder named Libraries\Customers by using the Shift+Delete keyboard shortcut. You need to restore the most recent version of the folder to its original location.

Which approach should you use to restore the folder?

- A. Recycle Bin
- B. the latest restore point
- C. File History
- D. a manually selected restore point

Answer: C

Explanation: File History is similar to Previous Versions in previous versions of Windows. It takes regular backups of your data and saves them to a separate disk volume or external drive. When File History is enabled, it backs up all the system libraries and your custom libraries by default.

To restore a deleted folder, you can browse to the parent folder or library and select Restore Previous Versions. The Previous Versions tab will list the previous versions that can be restored to its original location or restored to an alternative location.

NEW QUESTION 40

You use a Windows 8.1 tablet. The tablet receives Windows Update updates automatically from the Internet. The tablet has Wi-Fi and is connected to a 3G mobile broadband Wi-Fi hot spot.

You need to minimize data usage while connected to this hot spot. What should you do?

- A. Turn on Airplane Mode.
- B. Disable File and Print Sharing for mobile broadband connections.
- C. Configure the interface metric of IP settings for Wi-Fi connection as 1.
- D. Edit the Inbound Rule of Windows Firewall, and then disable Internet Control Message Protocol (ICMP) traffic.
- E. Configure the broadband connection as a metered network.

Answer: E

Explanation: You can limit the bandwidth used by the broadband connection by configuring it as a metered network. A metered network is a network where data downloaded is 'metered'(measured) and you are charged for the amount of data downloaded.

Setting a connection as metered prevents Windows from automatically using bandwidth in a number of ways including the following:

Disables automatic downloading of Windows updates: Windows won't automatically download updates from Windows Update on metered Internet connections.

You'll get a "Download" button you can click whenever you want to install updates.

Disables automatic downloading of app updates: The Windows Store won't automatically download updates for your installed "Store apps" on metered connections, either. Desktop apps like Chrome, Firefox, and others will continue updating themselves normally.

Tiles may not update: Microsoft says that the live tiles on your Start menu or Start screen "may" stop updating on a metered connection:

NEW QUESTION 44

You have a computer named Computer1 that runs Windows 10 Enterprise. You plan to install the most recent updates to Computer1.

You need to ensure that you can revert to the current state of Computer1 in the event that the computer becomes unresponsive after the update.

What should you include in your solution?

- A. The Reset this PC option from the Recovery section of the Settings app
- B. The Sync your settings options from the Accounts section of the Settings app
- C. The Backup and Restore (Windows 7) control panel item
- D. The Refresh your PC option from the PC Settings

Answer: C

Explanation: The question states that you need to ensure that you can revert to the current state of Computer1. The question does not specify what exactly the current state is in terms of software configuration but it would be safe to assume that Computer1 has Windows Store Apps installed, desktop applications installed and some previous Windows Updates installed.

The only way to recover the computer to its 'current' state is to perform a full backup of the computer before updating it. Then if the computer becomes unresponsive after the update, we can simply restore the backup to return the computer to its state at the time of the backup.

NEW QUESTION 47

You administer a group of 10 client computers that run Windows 10. The client computers are members of a local workgroup. Employees log on to the client computers by using their Microsoft accounts.

The company plans to use Windows BitLocker Drive Encryption. You need to back up the BitLocker recovery key.

Which two options can you use? (Each correct answer presents a complete solution. Choose two.)

- A. Save the recovery key to a file on the BitLocker-encrypted drive.
- B. Save the recovery key in the Credential Store.

- C. Save the recovery key to OneDrive.
- D. Print the recovery key.

Answer: CD

Explanation: C: The Bitlocker recovery key is saved in your OneDrive account in the cloud. D: The recovery key can be printed.

NEW QUESTION 48

You are using sysprep to prepare a system for imaging.

You want to reset the security ID (SID) and clear the event logs. Which option should you use?

- A. /generalize
- B. /oobe
- C. /audit
- D. /unattend

Answer: A

Explanation: Generalize prepares the Windows installation to be imaged.

If this option is specified, all unique system information is removed from the Windows installation. The security ID (SID) resets, any system restore points are cleared, and event logs are deleted.

The next time the computer starts, the specialize configuration pass runs. A new security ID (SID) is created, and the clock for Windows activation resets, if the clock has not already been reset three times.

NEW QUESTION 49

Which term is used to refer to installing apps directly to a device without going through the Windows Store?

- A. SQL Injection
- B. BranchCache
- C. DLL Hijack
- D. Sideload

Answer: D

Explanation: When you side load an app, you deploy a signed app package to a device. You maintain the signing, hosting, and deployment of these apps, instead of installing the apps from Windows Store.

NEW QUESTION 51

At home, you use a Windows 10 desktop computer. At work, you use a Windows 10

laptop that is connected to a corporate network. You use the same Microsoft account to log on to both computers.

You have a folder with some personal documents on your desktop computer. The folder must be available and synced between both computers.

You need to ensure that the latest version of these files is available. What should you do?

- A. Create a folder by using OneDrive for Window
- B. Move all of the personal documents to the new folder.
- C. Move the folder to the Libraries folde
- D. Go to PC Setting
- E. Under Sync your settings, enable App settings.
- F. Right-click the folder and click Propertie
- G. Under Security, provide Full Control for the Microsoft account.
- H. Right-click the folder and select Share With, and then select Homegroup (view and edit).

Answer: A

Explanation: To save a doc you're working on to OneDrive, select a OneDrive folder from the list of save locations. To move files to OneDrive, open File Explorer and then drag them into a OneDrive folder.

Note: OneDrive (previously SkyDrive, Windows Live SkyDrive, and Windows Live Folders) is a file hosting service that allows users to sync files and later access them from a web browser or mobile device. Users can share files publicly or with their contacts; publicly shared files do not require a Microsoft account to access them. OneDrive is included in the suite of online services formerly known as WindowsLive.

NEW QUESTION 53

You are a systems administrator of a small branch office. Computers in the office are joined to a Windows 10 HomeGroup.

The HomeGroup includes one shared printer and several shared folders.

You join a new computer to the HomeGroup and try to access the HomeGroup shared folders. You discover that the shared folders are unavailable, and you receive an error message that indicates the password is incorrect.

You need to reconfigure the new computer in order to access the HomeGroup resources.

What should you do?

- A. Adjust the time settings on the new computer to match the time settings of the HomeGroup computers.
- B. Change the Enterprise password and re-enter it on the computers of all members of the HomeGroup.
- C. Change the default sharing configuration for the shared folders on the HomeGroup computers.
- D. Reset your account password to match the HomeGroup password.

Answer: A

Explanation: Symptoms

When joining a system to a HomeGroup, you may receive the following error message "The password is incorrect", even though you have typed the password correctly.

Cause

This can be caused by a difference in the Date and Time settings on the computer

trying to join the HomeGroup, and not an invalid password. If the date/time of the computer joining a HomeGroup is greater than 24 hours apart from the date/time of the system that owns the HomeGroup, this will cause the error.

Resolution

Adjust the date/time settings on the system joining the HomeGroup, to match the system that owns the HomeGroup, and then try to join again.

NEW QUESTION 56

Your company has Windows 10 client computers. All of the computers are managed by using Windows Intune. You need to provide a user with the ability to deploy software to the computers by using Windows Intune.

The solution must minimize the number of permissions assigned to the user. Which role should you use?

- A. User management administrator from the Windows Intune account portal
- B. Global administrator from the Windows Intune account portal
- C. Service administrator from the Windows Intune administrator console
- D. Service administrator from the Windows Intune account portal

Answer: C

Explanation: As a service administrator, you use the Microsoft Intune administrator console to manage day-to-day tasks, such as deploying applications, for Intune.

NEW QUESTION 60

DRAG DROP

You administer Windows 10 Enterprise computers. Your company has a team of technical writers that is preparing technical manuals and help files. The team manager wants to ensure that the technical writers are able to restore any documents that been modified within the last year.

You need to ensure that the technical writers can restore Microsoft Word files to any previous versions for up to one year.

Which three actions should you perform in sequence?

Actions	Answers
Create a network share, configure NTFS, and then share permissions.	
Turn on System Protection and create a restore point.	
Turn on File History.	
Configure the Keep Saved Versions setting	

Answer:

Explanation: We need a NTFS folder.

In the Advanced settings we can configure the Keep SavedVersions settings. Finally we turn on File History.

NEW QUESTION 65

DRAG DROP

You have a Windows 8 computer. You need to migrate from Windows 8 to Windows 10 while retaining as much data as possible. You load the Windows 10 media into the DVD drive.

Which three actions should you perform next in sequence?

Actions	Answers
Under installation options, choose Keep personal files.	
Run the Setup.exe file from the DVD.	
Enter the license key.	
Under installation options, choose Windows settings.	

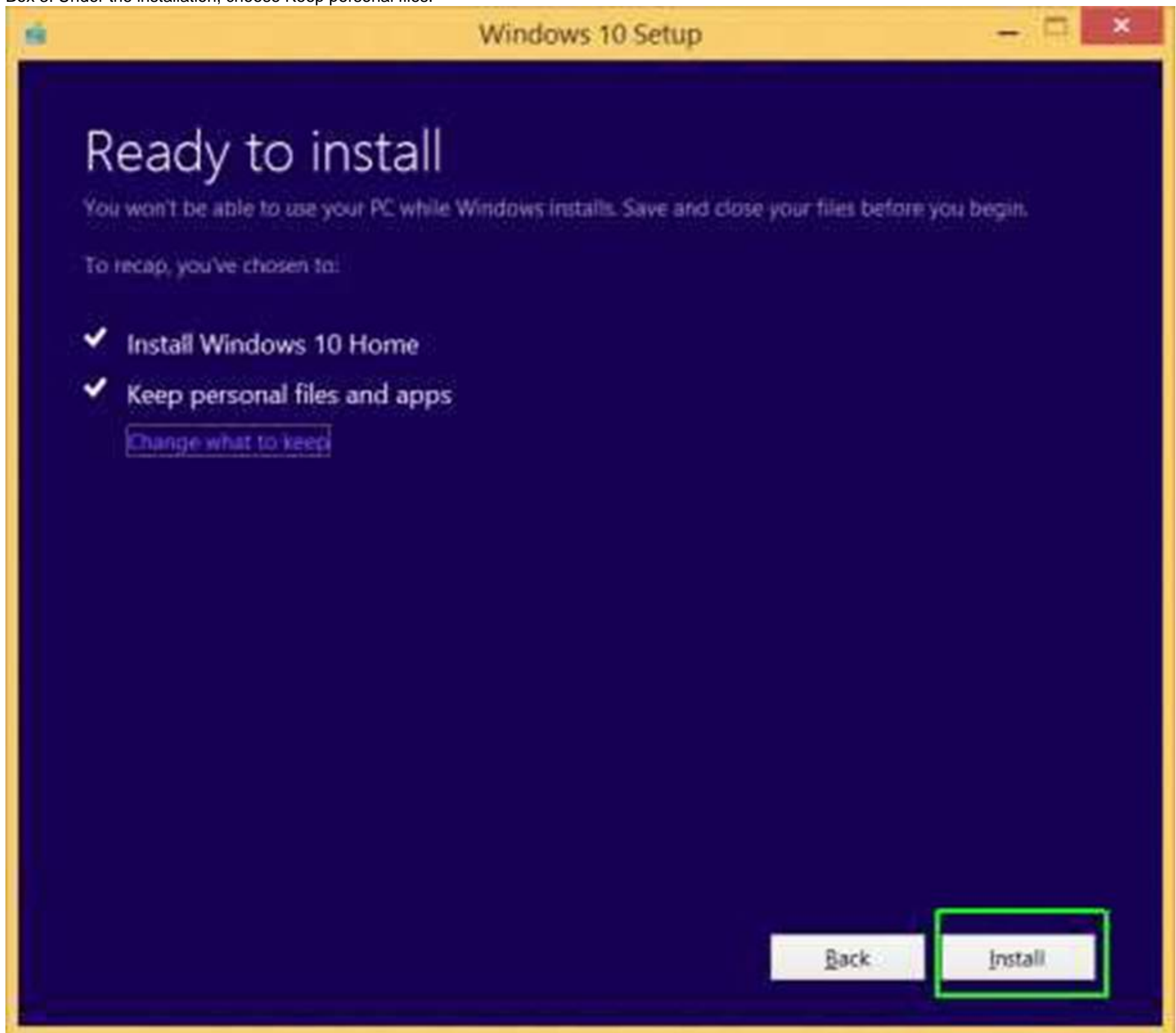
Answer:

Explanation: Box 1: Run the Setup.exe file from the DVD.

Launch setup.exe on the DVD drive to start the upgrade process. Box 2: Enter the license key.

You will be prompted for the license key.

Box 3: Under the installation, choose Keep personal files.



References: <http://www.laptopmag.com/articles/how-to-upgrade-windows-10>

NEW QUESTION 69

DRAG DROP

You administer 50 laptops that run Windows 7 Professional 32-bit. You want to install Windows 10 Enterprise 64-bit on every laptop. Users will keep their own laptops.

You need to ensure that user application settings, Windows settings, and user files are maintained after Windows 10 Enterprise is installed.

Which four actions should you perform in sequence?

	Answer Area
Run the Scanstate.exe c:\store / i:migdocs.xml /i:migapp.xml /v:13 /c / hardlink /nocompress command.	
Copy the User State Migration Tool (USMT) files and tools to the source computer.	
Run the Scanstate.exe c:\store / i:migdocs.xml /i:migapp.xml /v:13 /c command.	
Install Windows 8 Pro on the existing Windows partition with no formatting or repartitioning. Install standard operating environment applications.	
Run the Loadstate.exe c:\store / i:migdocs.xml /i:migapp.xml /v:13 /c / hardlink /nocompress command.	
Install Windows 8 Pro by deleting all existing partitions and creating a new one. Install standard operating environment applications.	

Answer:

Explanation: Box 1: First we copy the User State Migration Tool to the source computer. Box 2: Scanstatewith /nocompress
The ScanState command is usedwith the User State Migration Tool (USMT) 5.0 to scan the source computer, collect the files and settings, and create a store. We use the /nocompress option as the only available loadstate option, in step 4, uses /nocompress.
Box 3: Delete old partitions, and install windows 8 on a new partition.
After you create a migration store on a server, you will install Windows 8 and load the files and settings from that migration store onto the destination computer. You can reformat the source computer (PC refresh) and use it as your destination computer, or you can use an additional computer (PC replacement).
Box 4: Loadstate
To apply migrated data to your hard drives, you connect the computer to your network, install USMT (this step is missing in this question),and then run LoadState.
References: <https://technet.microsoft.com/en-us/library/hh824873.aspx>

NEW QUESTION 72

DRAG DROP

Your network contains an Active Directory domain and 100 Windows 10 Enterprise client computers. All software is deployed by using Microsoft Application Virtualization (App-V) 5.0.
Users are NOT configured as local administrators. Your company purchases a subscription to Microsoft Office 365 that includes Office 365 ProPlus.
You need to create an App-V package for Office 365 ProPlus. Which three actions should you perform in sequence?

Actions	Answer Area
Run the App-V Sequencer.	
Download the Office Deployment Tool for Click-to-Run.	
Run Setup /Download .	
Run the Office Customization Tool (OCT).	
Run Setup /Packager .	
Run Setup /Admin .	

Answer:

Explanation: Step 1: First we download the Office Deployment Tool for Click-to Run.
Step 2: We use the tool to download files to create an Office 15 installation with the Run Setup/Download command.
Step 3: Finally we produce the App-V package with by running the Setup /Packager. The Office Deployment Tool allows the administrator to customize and manage Office 2013 Volume License or Office 365 Click-to-Run deployments.

The Office Deployment Tool Setup runs the following tasks:
Setup /Download – Downloads files to create an Office 15 installation Setup /Configure – Adds, removes, or configures an Office 15 installation Setup/Packager – Produces an Office 15 App-V package

NEW QUESTION 76

DRAG DROP

You have a computer that runs Windows 10. You need to meet the following requirements:

?Users must use complex passwords.

?Users must change their password every 180 days.

?Users must be prompted to change their password seven days before the password expires.

Which policy setting should you configure for each requirement? To answer, drag the appropriate policy settings to the correct requirements. Each policy setting may be used once, more than once, or not at all. You may need to drag the split bar between panes or scroll to view content.

Answer Area

Account Lockout Policy

Audit Policy

Password Policy

Security Options

User Rights Assignment

Users must change their password every 180 days:

Policy Setting

Users must use complex passwords:

Policy Setting

Users must be prompted to change their password seven days before the password expires:

Policy Setting

Answer:

Explanation: References: [https://technet.microsoft.com/en-us/library/jj852243\(v=ws.11\).aspx](https://technet.microsoft.com/en-us/library/jj852243(v=ws.11).aspx)

NEW QUESTION 78

You administer Windows 10 Enterprise client computers in your company network. A user reports that her Internet connection is slower than usual.

You need to identify the Process Identifiers (PIDs) of applications that are making connections to the Internet.

Which command should you run?

- A. netstat -an
- B. netsh show netdls
- C. netsh set audit-logging
- D. netstat -o
- E. ipconfig /showclassid

Answer: D

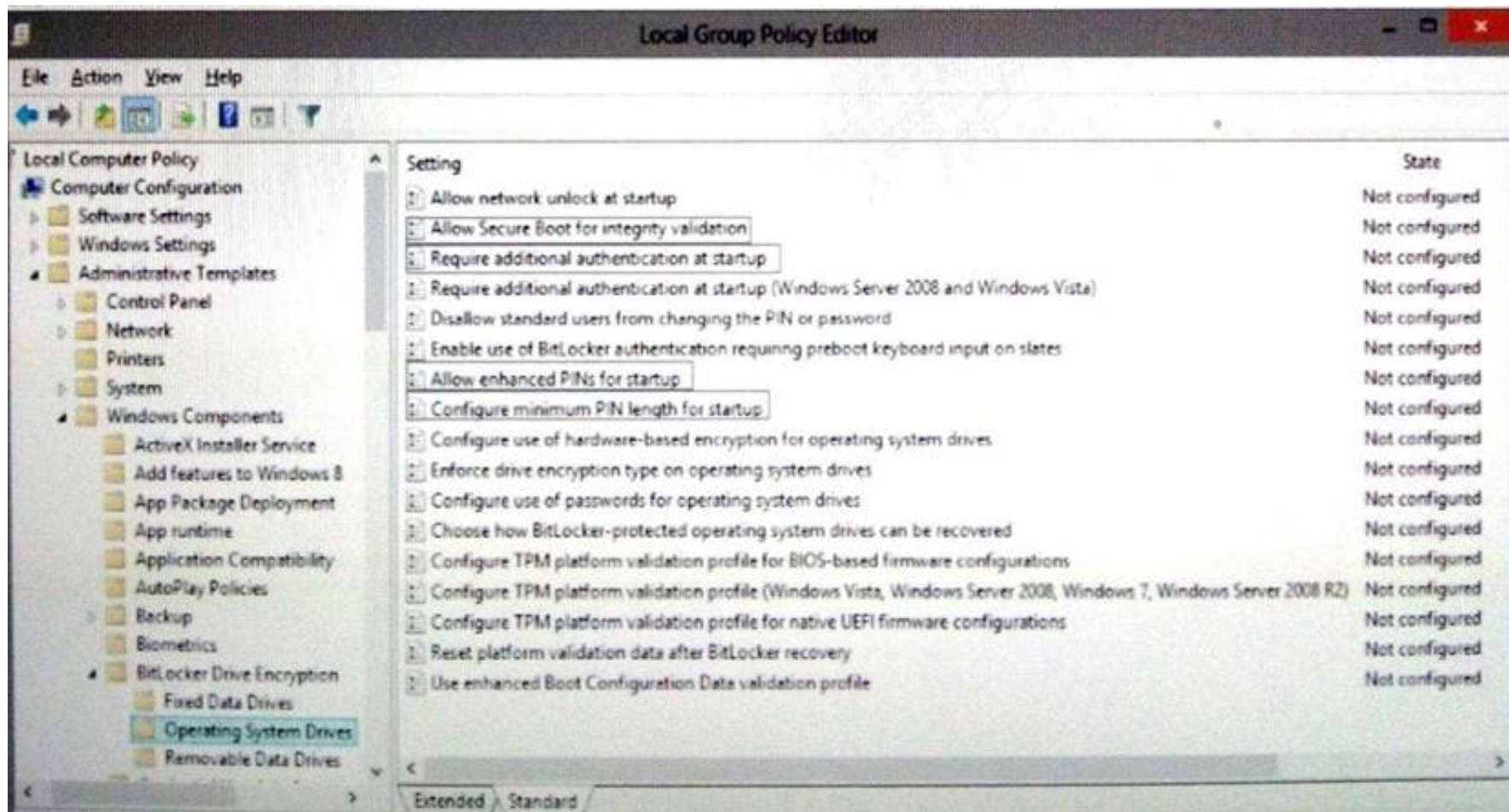
NEW QUESTION 79

HOTSPOT

You administer Windows 10 Enterprise computers in your company network. All computers include Windows 10 Enterprise compatible Trusted Platform Module (TPM).

You configure a computer that will run a credit card processing application.

You need to ensure that the computer requires a user to enter a PIN code when starting the computer.



Answer:

Explanation: Require additional authentication at startup"

References: <http://www.howtogeek.com/192894/how-to-set-up-bitlocker-encryption-on-windows/>

NEW QUESTION 82

HOTSPOT

You have an Active Directory domain named contoso.com. You have a server that runs Windows Server 2012 R2 and that is a Remote Desktop server. The RD Web Access Web application settings are shown in the following graphic.

Internet Information Services (IIS) Manager

SERVER1 > Sites > Default Web Site > RDWeb > Pages

Application Settings

Use this feature to store name and value pairs that managed code applications can use at runtime.

Group by: No Grouping

Name	Value	Entry Type
DefaultCentralPublishingPort	5504	Inherited
DefaultTSGateway		Local
GatewayCredentialsSource	4	Local
LocalHelp	false	Local
OptimizeExperienceState	false	Local
PasswordChangeEnabled	true	Local
PrivateModeSessionTimeoutInMinutes	240	Local
PublicModeSessionTimeoutInMinutes	20	Local
radcmserver		Inherited
ShowDesktops	true	Local
ShowOptimizeExperience	false	Local
WorkspaceDescription		Inherited
WorkspaceID	Server1.contoso.com	Inherited
WorkspaceName		Inherited
ws08r2rdserver		Inherited
xClipboard	true	Local
xDriveRedirection	false	Local
xPnPRedirection	false	Local
xPortRedirection	false	Local
xPrinterRedirection	true	Local

Configuration: 'Default Web Site/RDWeb/Pages' web.config

Use the drop-down menus to select the answer choice that completes each statement based on the information presented in the graphic. NOTE: Each correct selection is worth one point.

Answer Area

When a user connects to the RDWeb site,
 [answer choice] will appear.

☐

only RemoteApps
 only Remote Desktop Connections
 both RemoteApps and remoteDesktop Connections

Users that have Android devices can [answer choice] from the RDWeb site.

☐

never change their passwords
 only change expired passwords
 only change unexpired passwords

Answer:

Explanation:

Answer Area

When a user connects to the RDWeb site,
 [answer choice] will appear.

☐

only RemoteApps
 only Remote Desktop Connections
both RemoteApps and remoteDesktop Connections

Users that have Android devices can [answer choice] from the RDWeb site.

☐

never change their passwords
only change expired passwords
 only change unexpired passwords

NEW QUESTION 85

HOTSPOT

You plan to deploy a Microsoft Azure RemoteApp hybrid collection.

You plan to use a custom template image named Image1 to deploy the hybrid collection.

You need to identify the role and feature that must be enabled in the image to support the deployment of the hybrid collection.

What should you identify? To answer, select the appropriate options in the answer area.

NOTE: Each correct selection is worth one point.

Answer Area

Role:

▼

Remote Desktop Connection Broker
Remote Desktop Licensing Server
Remote Desktop Session Host
Remote Desktop Virtualization Host

Feature:

▼

Desktop Experience
Quality Windows Audio Video Experience
Windows Internal Database

Answer:

Explanation: References: <https://azure.microsoft.com/en-gb/documentation/articles/remoteapp-create-custom-image/>

NEW QUESTION 87

Your network contains an Active Directory domain named contoso.com. All users have email addresses in the @adatum.com domain. You need to ensure that users can register Windows 10 mobile devices for mobile device management (MDM). Which DNS record should you create?

- A. Enterpriseregistration.adatum.com
- B. Deviceregistration.adatum.com
- C. Deviceregistration.contoso.com
- D. Enterpriseregistration.contoso.com

Answer: D

Explanation: References: <https://technet.microsoft.com/en-us/windows/dn771709.aspx>

NEW QUESTION 88

You purchase a new Windows 10 Enterprise desktop computer. You have six external USB hard drives. You want to create a single volume by using the six USB drives. You want the volume to be expandable, portable, and resilient in the event of simultaneous failure of two USB hard drives. You need to create the required volume. What should you do?

- A. From Control Panel, create a new Storage Space across 6 USB hard drive
- B. Set resiliency type to Parity.
- C. From Disk Management, create a new striped volume.
- D. From Disk Management, create a new spanned volume.
- E. From Control Panel, create a new Storage Space across 6 USB hard drive
- F. Set resiliency type to Three-way mirror.

Answer: D

NEW QUESTION 91

Note: This question is part of a series of questions that use the same or similar answer choices. An answer choice may be correct for more than one question in the series. Each question is independent of the other questions in this series. Information and details provided in a question apply only to that question. You have a computer that runs Windows 10 and is used by 10 users. The computer is joined to an Active Directory domain. All of the users are members of the Administrators group. Each user has an Active Directory account. You have a Microsoft Word document that contains confidential information. You need to ensure that you are the only user who can open the document. What should you configure?

- A. account policies

- B. application control policies
- C. HomeGroup settings
- D. software restriction policies
- E. NTFS permissions
- F. Microsoft OneDrive
- G. share permissions
- H. Encrypting File System (EFS) settings

Answer: H

NEW QUESTION 94

Note: This question is part of a series of questions that use the same or similar answer choices. An answer choice may be correct for more than one question in the series. Each question is independent of the other questions in this series.

Information and details provided in a question apply only to that question.

You have a computer that runs Windows 10 and is used by 10 users. The computer is joined to an Active Directory domain. Each user has an Active Directory account. You need to ensure that all of the users can access the files located in one another's libraries.

What should you configure?

- A. Microsoft OneDrive
- B. HomeGroup settings
- C. Encrypting File System (EFS) settings
- D. NTFS permissions
- E. Account policies
- F. Share permissions
- G. Software restriction policies
- H. Application control policies

Answer: D

NEW QUESTION 96

All client computers in a company's network environment run Windows 10 Enterprise. A client computer has drives that are configured as shown in the following table.

Drive	Location	Type
C:	Internal	Dynamic
D:	Internal	Dynamic
E:	Internal	Optical
F:	External	Basic
Z:	Network	Mapped

You are choosing a backup destination for drive C. You have the following requirements:

?Ensure that the backup file is available if drive C: fails.

?Ensure that the backup file can be accessed by other computers on the network.

?Support the storage of multiple versions of system image backups. You need to select a backup destination that meets the requirements.

Which destination should you select?

- A. drive D:
- B. drive F:
- C. drive E:
- D. drive Z:

Answer: D

NEW QUESTION 99

HOTSPOT

You have an Active Directory domain. All of the client computers in the domain run Windows 10 Enterprise.

You need to configure the client computers to download updates from a Windows Server Update Service server.

Which two settings should you configure? To answer, select the appropriate settings in the answer area.

Local Group Policy Editor		
File Action View Help		
Setting State Comment		
<input checked="" type="checkbox"/> Configure Automatic Updates	Not configured	No
<input checked="" type="checkbox"/> Defer Upgrade	Not configured	No
<input checked="" type="checkbox"/> Delay Restart for scheduled installations	Not configured	No
<input checked="" type="checkbox"/> Do not adjust default option to 'Install Updates and Shut Do...	Not configured	No
<input checked="" type="checkbox"/> Do not connect to any Windows Update Internet locations	Not configured	No
<input checked="" type="checkbox"/> Do not display 'Install Updates and Shut Down' option in Sh...	Not configured	No
<input checked="" type="checkbox"/> Enable client-side targeting	Not configured	No
<input checked="" type="checkbox"/> Enabling Windows Update Power Management to automati...	Not configured	No
<input checked="" type="checkbox"/> No auto-restart with logged on users for scheduled automat...	Not configured	No
<input checked="" type="checkbox"/> Re-prompt for restart with scheduled installations	Not configured	No
<input checked="" type="checkbox"/> Reschedule Automatic Updates scheduled installations	Not configured	No
<input checked="" type="checkbox"/> Specify intranet Microsoft update service location	Not configured	No
<input checked="" type="checkbox"/> Turn on recommended updates via Automatic Updates	Not configured	No
Extended Standard		

Answer:

Explanation: Configure Automatic Updates
Specify intranet Microsoft update service location

NEW QUESTION 103

You manage a client Windows 10 Enterprise computer named Computer1. You have a OneDrive synchronized folder that contains .pdf files. You need to ensure that you can restore previous versions of the .pdf files. What should you do?

- A. Enable File History.
- B. Configure System Restore.
- C. Configure Computer1 as a trusted PC.
- D. Enable Sync your settings on Computer1.

Answer: A

NEW QUESTION 105

DRAG DROP

You administer Windows 10 Enterprise tablets and virtual desktop computers that are joined to an Active Directory domain. Your company provides virtual desktop computers to all users. Employees in the sales department also use tablets, sometimes connected to the company network and sometimes disconnected from the company network. You want sales department employees to have the same personal data, whether they are using their virtual desktop or their tablets. You need to configure the network environment to meet the requirements. Which three actions should you perform in sequence? To answer, move the appropriate actions from the list of actions to the answer area and arrange them in the correct order. More than one order to answer choices may be correct. You will receive credit for any of the correct orders you select.

Actions

- Enable slow-link mode for the tablets.
- Create a network share.
- Configure offline files for the tablets.
- Disable offline files on the network share.
- Configure folder redirection for the employees' domain accounts to the network share.
- Specify the file share for which you want to enable Always Offline mode and set the value to 1.
- Set the primary computer for all employees from the sales department.

Answer Area



Answer:

Explanation: Create a network share.
 Configure offline files for the tablets.
 Configure folder redirection for the employees' domain accounts to the network share.
 References: [https://technet.microsoft.com/en-us/library/cc732275\(v=ws.11\).aspx](https://technet.microsoft.com/en-us/library/cc732275(v=ws.11).aspx)

NEW QUESTION 106

You administer Windows 10 Enterprise client computers that are members of an Active Directory domain that includes Active Directory Certificate Services (AD CS). You restored a computer from a backup that was taken 45 days ago. Users are no longer able to log on to that computer by using their domain accounts. An error message states that the trust relationship between the computer and the primary domain has failed. What should you do?

- A. Renew the certificates issued to the client computer.
- B. Reset the passwords of all affected domain users.
- C. Logon as a local administrator and issue the netdom resetpwd command.
- D. Log off and restart the computer.
- E. Restore the client computer from a known good backup that was taken two weeks earlier than the backup you previously restored.

Answer: C

Explanation: References: <http://theitbros.com/fix-trust-relationship-failed-without-domain-rejoining/>

NEW QUESTION 110

DRAG DROP

You have a computer named Client1 that runs Windows 10 Enterprise. Client1 is a member of an Active Directory domain.

A domain administrator provisions a certificate template for a virtual smart card logon.

In the BIOS of Client1, you enable the Trusted Platform Module (TPM). You need to enable the virtual smartcard logon on Client1.

Which three actions should you perform in sequence? To answer, move the appropriate actions from the list of actions to the answer area and arrange them in the correct order.

Actions

Run the `tpmvscmgr.exe` command.

Use the Certificate Enrollment wizard.

Run the `vaultcmd.exe` command.

Run the `tpmunit.exe` command.

Run the `certmgr.exe` command

Answer Area



Answer:

Explanation: Run the `tpmunit.exe` command.

Run the `tpmvscmgr.exe` command. Use the Certificate Enrolment wizard.

References: [https://technet.microsoft.com/en-us/library/cc753140\(v=ws.11\).aspx](https://technet.microsoft.com/en-us/library/cc753140(v=ws.11).aspx)

<http://ss64.com/nt/run.html>

[https://technet.microsoft.com/en-us/library/cc730689\(v=ws.11\).aspx](https://technet.microsoft.com/en-us/library/cc730689(v=ws.11).aspx)

NEW QUESTION 115

You have an unsecured wireless network for users to connect to from their personal Windows 10 devices.

You need to prevent Wi-Fi Sense from sharing information about the unsecured wireless network.

What should you do?

- A. Configure the SSID of the unsecured wireless to contain `_optout`.
- B. Instruct the users to disable Internet Protocol Version 6 (TCP/IPv6) on their wireless network adapters.
- C. Configure the SSID of the guest wireless to be hidden.
- D. Instruct the users to turn off Network Discovery on their devices.

Answer: A

Explanation: References: <http://www.pcworld.com/article/2951824/windows/how-to-disable-windows-10s-wi-fi-sense-password-sharing.html>

NEW QUESTION 118

You have a computer that runs Windows 10.

You need to block all outbound and inbound communications that occur over TCP 9997, TCP 9999, and TCP 4000.

What is the minimum number of rules that you must create?

- A. 1
- B. 2
- C. 3
- D. 6

Answer: D

Explanation: References: [https://technet.microsoft.com/en-us/library/dd421709\(v=ws.10\).aspx](https://technet.microsoft.com/en-us/library/dd421709(v=ws.10).aspx)

NEW QUESTION 120

You have a laptop that has connections for three WiFi network named WiFi1, WiFi2, and WiFi 3.

You need to ensure that the laptop connects to WiFi1 when multiple WiFi1 networks are available.

What should you do?

- A. From Netsh, configure the WLAN context.
- B. From Network Connections in Control Panel, modify the bindings for the WiFi.
- C. From the Windows Settings app, configure the Wi-Fi Sense settings.
- D. From Network Connections in Control Panel, modify the network provider order.

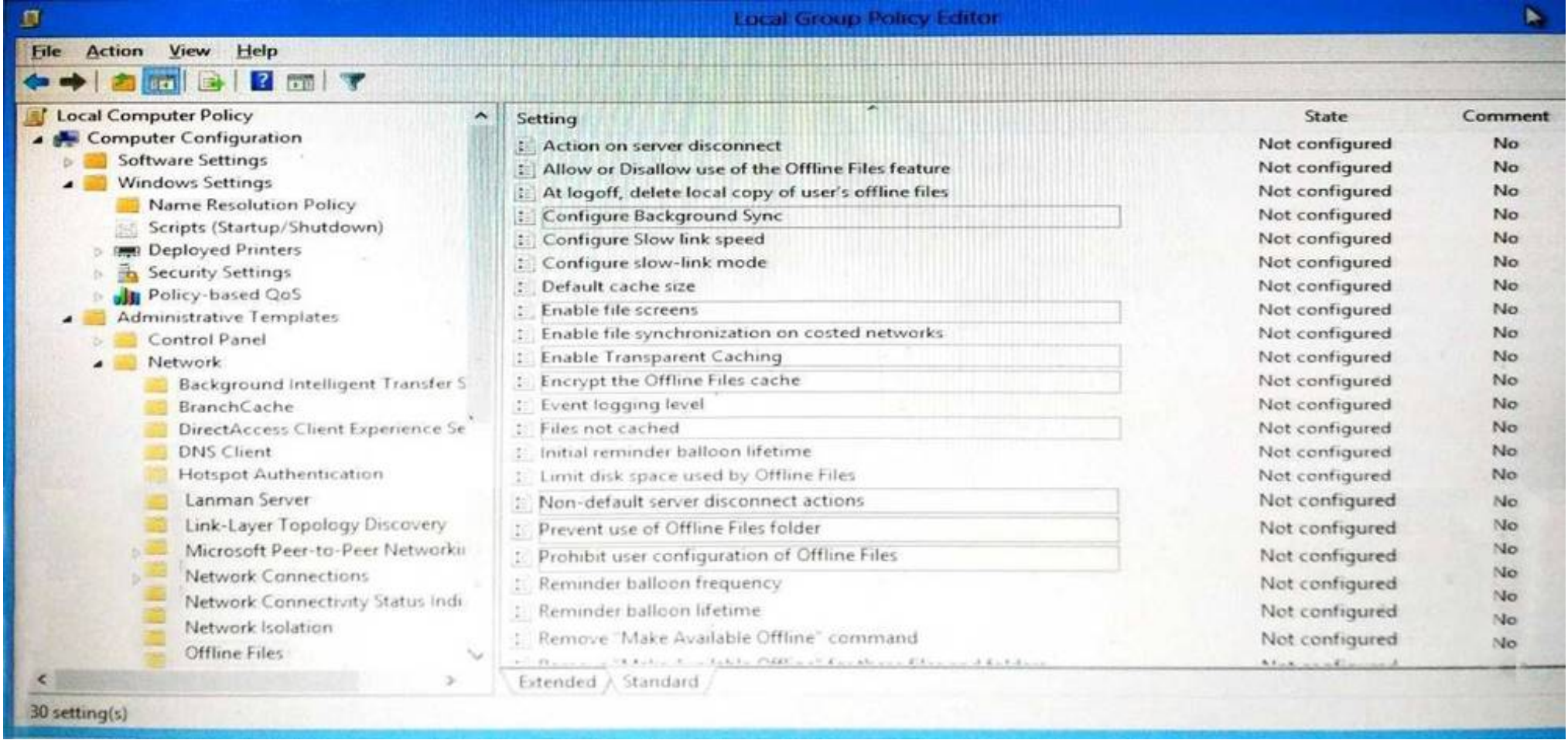
Answer: D

Explanation: References:

<http://www.quepublishing.com/articles/article.aspx?p=2455390&seqNum=3>

NEW QUESTION 125
HOTSPOT

You install Windows 10 Enterprise on a new laptop that will be shipped to a remote user. You logon to the laptop with the user credentials, map network drives, and configure the network drives to be always available offline.
Company policy requires that files with a .db1 extension should be excluded from offline file synchronization.
You need to prevent the user from creating files with a .db1 extension on the mapped drives.
In the Local Group Policy Editor, which setting should you configure? To answer, select the appropriate setting in the answer area.
Answer Area



Answer:

Explanation: Enable file screens.
References: <https://www.windows-security.org/1941654bad9040dfcb8ffaba2724b014/enable-file-screens>

NEW QUESTION 127

You have a Windows 10 Enterprise computer that has File History enabled You create a folder named Data in the root of the C: drive.
You need to ensure that Data is protected by File History.
What are two possible ways to achieve the goal? Each correct answer presents a complete solution.

- A. From File Explorer, include Data in an existing library.
- B. Modify the Advanced settings from the File History Control Panel item.
- C. From File Explorer, create a new library that contains Data
- D. From File Explorer, modify the system attribute of Data.

Answer: AC

Explanation: References: <http://www.digitalcitizen.life/introducing-windows-8-how-backup-data- file-history>

NEW QUESTION 130

HOTSPOT
You run the Get-AppvClientConfiguration cmdlet and you receive the following output.

Name	Value
-----	-----
PackageInstallationRoot	%programdata%\App-V
PackageSourceRoot	
LocationProvider	
AutoLoad	1
EnablePackageScripts	0
ReestablishmentInterval	5
ReestablishmentRetries	3
CertFilterForClientSsl	LOCAL_MACHINE\MY\1.3.6.1.5.5.7.3.2
VerifyCertificateRevocationList	1
SharedContentStoreMode	0
MigrationMode	0
RoamingFileExclusions	
RoamingRegistryExclusions	SOFTWARE\CLASSES
AllowHighCostLaunch	0
PackageStoreAccessControl	0
IntegrationRootUser	%LOCALAPPDATA%\Microsoft\AppV\Client\Integration
IntegrationRootGlobal	%ALLUSERSPROFILE%\Microsoft\AppV\Client\Integration
VirtualizableExtensions	exe,com,bat,cmd,vbs,ps1,cp1,jar,wsf,wsh,msc
IgnoreLocationProvider	0
ReportingEnabled	1
ReportingStartTime	1
ReportingRandomDelay	30
ReportingInterval	1
ReportingServerURL	http://SERVER10:8082
ReportingDataCacheLimit	
ReportingDataBlockSize	
ExperienceImprovementOptIn	0
EnablePublishingRefreshUI	0
ProcessesUsingVirtualComponents	{%SystemRoot%\explorer.exe, %ProgramFiles%\Internet Explore...
EnableDynamicVirtualization	1

Use the drop-down menus to select the answer choice that completes each statement based on the information presented in the output.

Answer Area

Microsoft Application Virtualization (App-V) packages launched
by a user will [answer choice]

▼

not be cached
be cached on the local disk
be cached in the memory only

Background streaming is [answer choice]

▼

disabled for all applications
enabled for all applications
enabled for previously launched applications

Answer:

Explanation:

Answer Area

Microsoft Application Virtualization (App-V) packages launched
by a user will [answer choice]

▼

not be cached
be cached on the local disk
be cached in the memory only

Background streaming is [answer choice]

▼

disabled for all applications
enabled for all applications
enabled for previously launched applications

NEW QUESTION 133

You plan to deploy a Microsoft Azure Remote App collection by using a custom template image. The image will contain Microsoft Office 365 apps. The image will be used to deploy a collection that will be accessed by 50 users.

You need to identify licensing requirements for the deployment.

Which two requirements should you identify? Each correct answer presents part of the solution.

- A. An activated Office 365 ProPlus installation
- B. Windows client access licenses (CALs) assigned to the users
- C. Office 365 ProPlus licenses assigned to the users
- D. Remote Desktop client access licenses (CALs) assigned to the users
- E. Office 365 Enterprise E3 service plan

Answer: A

Explanation: References: <https://docs.microsoft.com/en-us/azure/remoteshell/remoteshell-licensing>

NEW QUESTION 137

Note: This question is part of a series of questions that use the same or similar answer choices. An answer choice may be correct for more than one question in the series. Each question is independent of the other questions in this series. Information and details in a question apply only to that question.

You have a laptop that is joined to an Active Directory domain. You establish a WiFi connection to a customer's WiFi network.

You need to identify whether the current network location of the WiFi connection is private or public.

Which Control Panel application should you use?

- A. Phone and Modem
- B. RemoteApp and Desktop Connections
- C. System
- D. Credential Manager
- E. Work Folders
- F. Power Options
- G. Sync Center
- H. Network and Sharing Center

Answer: H

NEW QUESTION 139

You have 100 Windows computers that are managed by using Microsoft Intune.

You need to ensure that when a new critical update is released, the update is approved automatically and deployed to the computers within 24 hours of approval.

What should you do from the Microsoft Intune administration portal?

- A. From the updates node, select Critical Updates, and then modify the Approval settings.
- B. From the Admin node, click Enrollment Rules, and then modify the device enrollment rules.
- C. From the Policy node, click Configuration Policies, and then create a new Windows policy.
- D. From the Policy node, click Compliance Policies, and then create a new compliance policy.

Answer: A

Explanation: References: <https://docs.microsoft.com/en-us/intune/deploy-use/keep-windows-pcs-up-to-date-with-software-updates-in-microsoft-intune>

NEW QUESTION 144

You plan to deploy a customized Windows To Go workspace that uses an Unattend.xml file.

You need to prevent a local fixed disk from appearing in File Explorer when a computer starts from Windows To Go.

Which setting should you modify in Unattend.xml?

- A. Start Menu
- B. Storage
- C. Deviceaccess
- D. SanPolicy

Answer: D

Explanation: References: [https://technet.microsoft.com/en-us/library/jj592680\(v=ws.11\).aspx](https://technet.microsoft.com/en-us/library/jj592680(v=ws.11).aspx)

NEW QUESTION 149

Note: This question is part of a series of questions that use the same or similar answer choices. An answer choice may be correct for more than one question in the series. Each question is independent of the other questions in this series. Information and details in a question apply only to that question.

On the corporate network, you have an Active Directory user account. The domain contains a sync share named Share1.

You have a personal computer that runs Windows 10. The computer is a member of a workgroup.

You need to access the files in Share1.

Which Control Panel application should you use?

- A. Phone and Modem
- B. Network and Sharing Center
- C. RemoteApp and Desktop Connections
- D. Power Options
- E. System
- F. Sync Center

G. Credential Manager
H. Work Folders

Answer: F

Explanation: References: <http://www.thewindowsclub.com/windows-10-sync-center>

NEW QUESTION 154

Note: This question is part of a series of questions that use the same or similar answer choices. An answer choice may be correct for more than one question in the series. Each question is independent of the other questions in this series. Information and details in a question apply only to that question.

Your network contains a shared folder that is located at \\server1\data.

On a computer, you make the shared folder available for offline use.

You need to ensure that you have the most up-to-date version of the folder cached. Which Control Panel application should you use?

- A. Credential Manager
- B. Phone and Modem
- C. Work Folders
- D. System
- E. RemoteApp and DesktopConnections
- F. Network and Sharing Center
- G. Sync Center
- H. Power Options

Answer: C

NEW QUESTION 155

Note: This question is part of a series of questions that use the same or similar answer choices. An answer choice may be correct for more than one question in the series. Each question is independent of the other questions in this series. Information and details in a question apply only to that question.

You make a folder available for offline use.

Currently, the folder is synchronizing and will take approximately 15 minutes to complete.

You need to ensure that the files continue to synchronize when you close the lid of the computer.

Which Control Panel application should you use?

- A. System
- B. RemoteApp and Desktop Connections
- C. Work Folders
- D. Power Options
- E. Network and Sharing Center
- F. Credential Manager
- G. Phone and Modem
- H. Sync Center

Answer: D

NEW QUESTION 156

You administer Windows 10 Enterprise client computers in your company network. A computer that is used by non-administrator users has a directory named C:\Folder1. A shared collection of Microsoft Excel files is stored in the C:\Folder1 directory, with non-administrator users being granted modify permissions to the directory.

You discover that some files have been incorrectly modified by a user.

You need to determine which users are making changes to the files in the directory. Which two actions should you perform? Each correct answer presents part of the solution.

NOTE: Each correct selection is worth one point.

- A. Set local policy: Computer Configuration\Windows Settings\SecuritySettings\Local Policies\Audit Policy\Audit object access to Failure.
- B. From the Auditing Entry for Folder1, set the Principal to Everyone, and then set the Type to Failure for the Modify permission.
- C. From the Auditing Entry for Folder1, set the Principal to Guests, and then set the Type to Success for the Modify permission.
- D. Set local policy: Computer Configuration\Windows Settings\Security Settings\Local Policies\Audit Policy\Audit object access to Success.
- E. From the Auditing Entry for Folder1, set the Principal to Guests, and then set the Type to Failure for the Modify permission.
- F. From the Auditing Entry for Folder, set the Principal to Everyone, and then set the Type to Success for the Modify permission.

Answer: DF

NEW QUESTION 159

DRAG DROP

As part of its upgrade to Windows 10 Enterprise, your company is implementing additional security controls relating to data access.

You need to implement a solution that meets the following requirements:

?Secure all data on local hard drives.

?Limit users' ability to modify files.

Which feature should you use to meet each requirement? To answer, drag the appropriate feature or features to the correct requirement or requirements. Each feature may be used once, more than once, or not at all. You may need to drag the split bar between panes or scroll to view content.

NOTE: Each correct selection is worth one point.

Features

NTFS Permissions

Remote Business Data Removal

EFS

BitLocker

Answer Area

Secure all data on local hard drives.

Limit users' ability to modify files.

Answer:

Explanation:

Features

NTFS Permissions

Remote Business Data Removal

EFS

BitLocker

Answer Area

Secure all data on local hard drives.

Limit users' ability to modify files.

BitLocker

NTFS Permissions

NEW QUESTION 160

DRAG DROP

You are a desktop support technician for your company. You support more than 100 Windows 8 and Windows 10 Enterprise desktop computers.

You are preparing an installation image of a Windows 10 Enterprise computer by using the Deployment and Imaging Tools Environment command prompt on your own computer. The image includes a customized instance of the Windows Recovery Environment (Windows RE).

You need to extract and mount the Windows RE image.

Which three actions should you perform in sequence? To answer, move the appropriate three actions from the list of actions to the answer area and arrange them in the correct order.

Actions

Register the Windows RE location in the Windows registry.

Mount the install.wim file by running the **dism /mount image** command.

Mount the winre.wim file by running the **dism /mount -image** command.

Create a mount.ini file to specify the image file and mount point.

Copy the Windows image file from the Windows product DVD to a local drive.

Answer Area



Answer:

Explanation:

Actions

Register the Windows RE location in the Windows registry.

Mount the install.wim file by running the **dism /mount image** command.

Mount the winre.wim file by running the **dism /mount -image** command.

Create a mount.ini file to specify the image file and mount point.

Copy the Windows image file from the Windows product DVD to a local drive.

Answer Area

Copy the Windows image file from the Windows product DVD to a local drive.

Mount the install.wim file by running the **dism /mount image** command.



Mount the winre.wim file by running the **dism /mount -image** command.



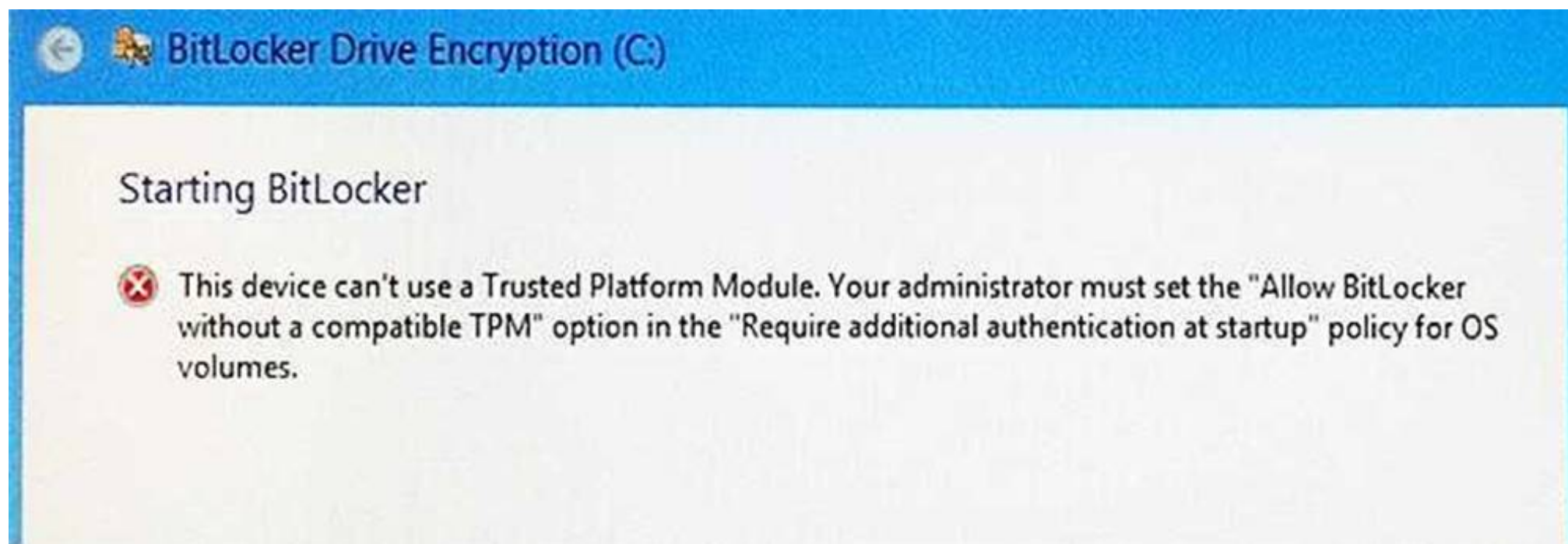
NEW QUESTION 161

HOTSPOT

You are the PC support specialist for Contoso, Ltd.

Your department upgrades your company's laptops to Windows 10 Enterprise.

You need to use BitLocker to encrypt the system drives on these laptops. You attempt to encrypt several laptops but receive an error message shown in the following image:



Use the drop-down menus to select the answer choice that completes each statement.
 Note: Each correct selection is worth one point.

Answer Area

In order to encrypt your system drive with BitLocker, set the BitLocker Startup Preferences to **[answer choice]**.

	▼
Use BitLocker without additional key	
Require a PIN at every startup.	
Require a Startup key at every startup.	

Once the drive is encrypted, **[answer choice]** each time you boot the computer.

	▼
type a PIN when prompted.	
insert a USB drive with the saved	
select Automatic Unlock at prompt	

Answer:

Explanation:

Answer Area

In order to encrypt your system drive with BitLocker, set the BitLocker Startup Preferences to **[answer choice]**.

	▼
Use BitLocker without additional key	
Require a PIN at every startup.	
Require a Startup key at every startup.	

Once the drive is encrypted, **[answer choice]** each time you boot the computer.

	▼
type a PIN when prompted.	
insert a USB drive with the saved	
select Automatic Unlock at prompt	

NEW QUESTION 162

DRAG DROP

You administer Windows 7 and Windows 8 client computers in your company network.

You add 100 new client computers that have Windows 10 Enterprise installed.

You need to migrate user profiles, local groups membership, and network mapped drives to the new client computers. You download and copy User State Migration Tool (USMT) files to a network share.

Which three actions should you perform next, in sequence? To answer, move the appropriate three actions from the list of actions to the answer area and arrange them in the correct order.

Actions

Run the LoadState tool on the Windows 10 Enterprise computers.

Run the System Preparation (Sysprep) tool on the Windows 7 and Windows 8 computers.

Run the System Preparation (Sysprep) tool on the Windows 10 Enterprise computers.

Modify the custom.ini file.

Run the ScanState tool on the Windows 7 and Windows 8 computers.

Modify the custom.xml file.

Answer Area



Answer:

Explanation:

Actions

Run the LoadState tool on the Windows 10 Enterprise computers.

Run the System Preparation (Sysprep) tool on the Windows 7 and Windows 8 computers.

Run the System Preparation (Sysprep) tool on the Windows 10 Enterprise computers.

Modify the custom.ini file.

Run the ScanState tool on the Windows 7 and Windows 8 computers.

Modify the custom.xml file.

Answer Area

Modify the custom.xml file.

Run the ScanState tool on the Windows 7 and Windows 8 computers.



Run the LoadState tool on the Windows 10 Enterprise computers.



NEW QUESTION 164

DRAG DROP

You plan to use Microsoft Intune to manage application updates for non-Microsoft applications.

You create a new Intune subscription.
You need to test the deployment of the updates on a computer. The solution must ensure that the updates are deployed only if the test computer has the corresponding application installed already.
Which three actions should you perform in sequence? To answer, move the appropriate actions from the list of actions to the answer area and arrange them in the correct order.

Actions

- Install the Intune client on the test computers.
- From the Microsoft Intune administration portal, run the Upload Update - Microsoft Intune Software Publisher wizard.
- From the Microsoft Intune administration portal, run the Add Software - Microsoft Intune Software Publisher wizard.
- From the Microsoft Intune administration portal, click **Manage Deployment**.
- From the Microsoft Intune administration portal, click **Approve**.

Answer Area



Answer:
Explanation:

Actions

Install the Intune client on the test computers.

From the Microsoft Intune administration portal, run the Upload Update - Microsoft Intune Software Publisher wizard.

From the Microsoft Intune administration portal, run the Add Software - Microsoft Intune Software Publisher wizard.

From the Microsoft Intune administration portal, click **Manage Deployment**.

From the Microsoft Intune administration portal, click **Approve**.

Answer Area

Install the Intune client on the test computers.

From the Microsoft Intune administration portal, run the Add Software - Microsoft Intune Software Publisher wizard.



From the Microsoft Intune administration portal, click **Manage Deployment**.



NEW QUESTION 165

Your network contains an Active Directory domain named contoso.com. All client computers run Windows 10 Enterprise and Microsoft Office 2013. All of the computers are joined to the domain.

Your company purchases a subscription to Office 365. An administrator creates an Office 365 account for each user and deploys a federated solution for Office 365.

You need to prevent the users from being prompted for a user account and a password each time they access services from Office 365.

Which account should you instruct the users to use when they sign in to their computer?

- A. a Microsoft account
- B. a local user account
- C. an Office 365 account
- D. a contoso.com account

Answer: D

NEW QUESTION 169

You have a computer named Client1. Client 1 is joined to an Active Directory domain.

You need to join Client1 to an Azure Active Directory (Azure AD) tenant. What should you do first?

- A. From User Accounts in Control Panel, configure the Manage User Accounts settings.
- B. From Computer Management, modify the membership for the Network Configuration Operators group.
- C. From the System in the Settings app, click Disconnect from organization.
- D. From the Local Group Policy Editor, modify the Add workstations to domain policy.

Answer: C

NEW QUESTION 171

You support Windows 10 Enterprise computers. Your company protects all laptops by using the BitLocker Network Unlock feature.

Some employees work from home.

You need to ensure that employees can log on to their laptops when they work from home.

What should you do?

- A. Have users run the Manage-bde.exe -unlock command before they disconnect from the company network.
- B. Ensure that the Trusted Platform Module (TPM) chips in the laptops are version 1.2 or greater.
- C. Enable BitLocker to Go.
- D. Provide employees with their BitLocker PINs.

Answer: D

NEW QUESTION 172

You administer Windows 10 Enterprise tablets that are members of an Active Directory domain.

You want to create an archived copy of My Documents folders that are stored on the tablets. You create a standard domain user account to run a backup task.

You need to grant the backup task user account access to the folders. What should you do?

- A. Add the backup task account to the Remote Management Users group on a domain controller.
- B. Add the backup task account to the Backup Operators group on every tablet.
- C. Add the backup task account to the Backup Operators group on a domain controller.
- D. Set the backup task account as NTFS owner on all the folders.

Answer: B

NEW QUESTION 176

You are an IT professional for a bank. All of the user's files on the external drives are encrypted by using EFS.

You replace a user's computer with a new Windows 10 Enterprise computer. The user needs to connect her external hard drive to the new computer. You have the original computer's certificate and key.

You need to import the certificate and key onto the new computer.

Into which certificate store should you import the certificate and key?

- A. Untrusted Certificates
- B. Trusted Root Certification Authorities
- C. Personal
- D. Trusted Publishers

Answer: C

NEW QUESTION 177

You have a computer named Client1. Client1 is joined to an Active Directory domain.

You need to join Client1 to an Azure Active Directory (Azure AD) tenant. What should you do first?

- A. From the Local Group Policy Editor, modify the Add workstations to domain policy.
- B. From the network adapter properties, modify the DNS suffix.
- C. From System Control Panel, configure the computer to be a member of a workgroup.
- D. From the System in the Settings app, modify the sign-in options.

Answer: D

Explanation: <https://blogs.technet.microsoft.com/enterprisemobility/2015/05/28/azure-ad-join-on- windows-10-devices/>

NEW QUESTION 178

DRAG DROP

You support Windows 10 Enterprise laptops.

You need to configure the laptops to support offline file access.

Which three actions should you perform in sequence? To answer, move the appropriate actions from the list of actions to the answer area and arrange them in the correct order.

Actions

Select **Manage offline files.**

On the laptop, right-click the network share folder and select **Always available offline.**

Select **Offline Files**, and then select **Set up.**

Select **Sync Setup.**

Select **Set up new sync partnerships.**

Select **Enable offline files.**

Answer Area

>
<

↑
↓

Answer:

Explanation: <http://www.thewindowsclub.com/windows-10-sync-center>

NEW QUESTION 180

Your company network includes a main office and multiple small branch offices. All of the computers in the branch offices run Windows 10 Enterprise and are members

of an Active Directory domain. The company has no plans to deploy any servers in the branch offices.

Users from some branch offices report that it takes a long time to open documents from a file server that is located in the main office.

You need to enable BranchCache on all computers located in the branch offices. What should you do?

- A. Open Group Policy Editor and enable BranchCache in Distributed Cache mode for the computers in the branch offices.

- B. Open PowerShell and run the Enable-BCHostedClients cmdlet on the computers in the branch offices.
- C. Open Group Policy Editor and Enable BranchCache in a Hosted Cache mode for the computers in the branch offices.
- D. Open PowerShell, run the Set-BCCache cmdlet on computers in the branch offices.

Answer: A

Explanation: <http://www.computerstepbystep.com/set-branchcache-distributed-cache-mode.html> [https://technet.microsoft.com/en-us/library/hh831696\(v=ws.11\).aspx](https://technet.microsoft.com/en-us/library/hh831696(v=ws.11).aspx)

NEW QUESTION 184

You administer Windows 10 Enterprise tablets that are members of an Active Directory domain. Your company policy allows users to download and install only certain few Windows Store apps.

You have created a new AppLocker Packaged Apps policy to help enforce the company policy.

You need to test the new AppLocker Packaged Apps policy before you implement it for the entire company.

What should you do?

- A. Open PowerShell and run the Get-AppLockerPolicy -Effective cmdlet to retrieve the AppLocker effective policy.
- B. Open Group Policy Management console and enforce the new AppLocker policy in Audit Only mode.
- C. Open Group Policy Management console and run the Group Policy Modeling Wizard.
- D. Open Group Policy Management console and run the Group Policy Results Wizard.

Answer: B

Explanation: [https://technet.microsoft.com/en-us/library/hh831440\(v=ws.11\).aspx](https://technet.microsoft.com/en-us/library/hh831440(v=ws.11).aspx) <https://docs.microsoft.com/en-us/windows/device-security/applocker/determine-your-application-control-objectives>

NEW QUESTION 188

You administer computers that run Windows XP Professional. These computers have a wide range of line of business (LOB) applications installed.

You want to migrate from Windows XP Professional to Windows 10 Enterprise. You need to identify which application will prompt users for elevated privileges.

What should you do first?

- A. Configure the advanced audit setting on the Windows 10 Enterprise computers before you install the LOB applications.
- B. Install the Microsoft Assessment and Planning (MAP) Toolkit.
- C. Install the Microsoft Application Compatibility Toolkit (ACT).
- D. Install User Experience Virtualization (UE-V) on the Windows 10 Enterprise computers before you install the LOB applications.

Answer: C

Explanation: [https://technet.microsoft.com/en-us/library/ee449434\(v=ws.10\).aspx](https://technet.microsoft.com/en-us/library/ee449434(v=ws.10).aspx)

NEW QUESTION 191

DRAG DROP

You administer Windows 7 and Windows 10 Enterprise computers. You run an application that saves files that contain local settings unique to each user.

You want to allow users to synchronize settings for an application to any enterprise computer when they log on to the enterprise computer.

You need to implement a solution that will move a user's settings files to any computer. You also need to ensure that you can roll back the changes if necessary.

Which required task or tasks should you perform with each approach? To answer, drag the appropriate required task to the corresponding approach. Each required task may be used once, more than once, or not at all. You may need to drag the split bar between panes or scroll to view content.

NOTE: Each correct selection is worth one point.

Required Tasks

Create a setting location template.

Place the settings location template.

Enable Folder Redirection.

Deploy the User Experience Virtualization (UE-V) Agent.

Answer Area

Generator

Template Catalog Path

Microsoft Desktop Optimization Pack (MDOP)

Required Task

Required Task

Required Task

Answer:

Explanation: <https://docs.microsoft.com/en-us/microsoft-desktop-optimization-pack/uev-v2/prepare-a-ue-v-2x-deployment-new-uevv2>

NEW QUESTION 195

A company has an Active Directory Domain Services (AD DS) domain. All client computers run Windows 10 Enterprise and are joined to the domain. Corporate policy prohibits homegroups on the corporate network. You need to ensure that client computer network adapter settings do not support joining a homegroup. What should you do?

- A. Disable IPv6.
- B. Disable IPv4.
- C. Enable IPv6.
- D. Enable IPv4.

Answer: A

Explanation: <https://h30434.www3.hp.com/t5/Notebook-Wireless-and-Networking/Windows-10-can-t-set-up-a-homegroup-on-this-computer/td-p/5581558>

NEW QUESTION 198

You have a computer named Computer1 that runs Windows 10 Enterprise. You plan to install the most recent updates to Computer1. You need to ensure that you can revert to the current state of Computer1 in the event that the computer becomes unresponsive after the update. What should you include in your solution?

- A. A volume snapshot by using the fsutil.exe command with the volume parameter
- B. The Restore personal files option from the File History control panel item
- C. The Refresh your PC option from the PC Settings
- D. The Backup and Restore (Windows 7) control panel item

Answer: D

Explanation: <http://www.pcadvisor.co.uk/how-to/windows/how-back-up-windows-10-3635397/>

NEW QUESTION 199

A company has Windows 10 Enterprise client computers. Users store data files in their user profile libraries. You need to ensure that you can restore data files to any date while minimizing system overhead. Which two actions should you perform? Each answer presents part of the solution. NOTE Each correct selection is worth one point.

- A. Turn on File History.
- B. Configure Windows 7 File Recovery.
- C. Configure settings to save copies of files daily.
- D. Enable Storage Spaces.

Answer: AC

Explanation: <http://www.pcworld.com/article/2974385/windows/how-to-use-windows-10s-file-history-backup-feature.html>

NEW QUESTION 202

You administer Windows 10 Enterprise computers. Users are able to download applications from the Internet and install them on their computers. You need to ensure that users can install only digitally signed applications from approved publishers. What should you do?

- A. Create AppLocker Publisher rules.
- B. Turn on Windows SmartScreen.
- C. Enable the Check for signatures on downloaded programs option.
- D. Add publishers' websites to the Trusted Sites zone.

Answer: A

NEW QUESTION 207

You are a desktop support technician for your company. You deliver new Windows 10 Enterprise laptops to the software developers. The software developers frequently use laptops to work remotely and are often disconnected from the corporate network. One of the software developers works on an application that must run on Windows XP, Windows Vista, Windows 7, and Windows 10 Enterprise. The software developer needs the ability to test the application natively on each of these operating systems. You need to provide the software developer with a way to test the application on all operating system versions on the new laptop. The software developer must be able to perform the testing while working remotely without access to corporate resources. What should you do?

- A. Use Hyper-V to create three virtual machines that provide Windows XP, Windows Vista, and Windows 7 environments.
- B. Install the Windows PE version of Windows XP, Windows Vista, and Windows 7 on three USB drives and boot from each drive to test each operating system version.
- C. Change the compatibility mode settings of the application to Windows XP, Windows Vista, and Windows 7 before testing each operating system version.
- D. Create three virtual machines for Windows XP, Windows Vista, and Windows 7 on a company Windows Server 2012 that is running Hyper-V.

Answer:

A

NEW QUESTION 208

DRAG DROP

You support Windows 10 Enterprise computers. AppLocker policies are deployed. Company policy states that AppLocker must be disabled.

You need to disable AppLocker.

Which three actions should you perform in sequence? (To answer, move the appropriate actions from the list of actions to the answer area and arrange them in the correct order.)

Actions	Answer Area
Delete all Software Restriction Policy rules.	
Run the gpupdate /force command.	
Run the gpresult /v command.	
Disable the Application Identity service.	
Delete all AppLocker rules.	
Disable the Application Information service.	

Answer:

Explanation: Box 1: Delete all AppLocker rules.

Box 2: Disable the Application Identity service.

Box 3: Run the gpupdate /force command. Note:

* Before you can enforce AppLocker policies, you must start the Application Identity service by using the Services snap-in console.

* The Application Identity service determines and verifies the identity of an application. Stopping this service will prevent AppLocker policies from being enforced.

The gpresult command is used to display the Resultant Set of Policy (RSOP) information for a remote user and computer. And used in conjunction with the /v parameter – it displays verbose policy information. This includes detailed settings that were applied with a precedence of 1.

References:

<http://technet.microsoft.com/en-us/library/hh852337.aspx> <http://technet.microsoft.com/en-us/library/cc733160.aspx>

NEW QUESTION 213

The computers in your company's finance department run Windows XP Professional. These computers have multiple line of business (LOB) applications installed. You add a new Windows 10 Enterprise computer in the finance department. You discover that an application used by the finance department does not work on this computer.

You need to run the application on the new computer. What should you do first?

- A. Install Client Hyper-V.
- B. Run Refresh your PC.
- C. Install Windows XP Mode.
- D. Create a Windows To Go workspace.

Answer: A

NEW QUESTION 218

You support Windows 10 Enterprise tablets. The tablets have the Application Virtualization (App-V) client installed.

Company policy requires that all published App-V applications be available to users only when they are connected to the company network.

You need to configure the tablets so that the company policy requirements are enforced.

What should you do?

- A. Configure mandatory profiles for tablet users.
- B. Reset the App-V client FileSystem cache on the tablets.
- C. Disable the Disconnected operation mode on the tablets.
- D. Change user permissions to the App-V applications.

Answer: C

NEW QUESTION 222

You support Windows 10 Enterprise tablets that are part of a workgroup.

You have been given a tablet on which Windows Mobility Center will not start. You need to make it possible to start Windows Mobility Center on the tablet. What should you do?

- A. Run gpedit.msc and set Turn off Windows Mobility Center to Not Configured.
- B. Repair the installation of Windows Mobility Center by using Programs and Features.

- C. Turn on XPS Services by using Turn Windows features on or off in Programs and Features.
- D. Run control.exe, and then select Programs and Feature
- E. Click Turn Windows features on or off.

Answer: A

NEW QUESTION 225

Your company has a main office and a branch office. Each office contains several servers that run Windows Server 2012. You need to configure BranchCache for the client computers in the branch office. The solution must ensure that all of the cached content is in a central location. What should you run on each client computer?

- A. the Enable-BCDistributed cmdlet
- B. the Enable-BCHostedClient cmdlet
- C. the Enable-BCLocal cmdlet
- D. the Enable-BCHostedServer cmdlet

Answer: D

NEW QUESTION 226

You administer a Windows 10 Enterprise computer. The computer is configured to encrypt several folders by using a self-signed Encrypted File System (EFS) certificate. You need to make a backup copy of the encryption keys. What should you do?



- A. Open the Certificates console and connect to the user account certificate
- B. Export the self-signed EFS certificate from the Trusted People folder to a Canonical Encoding Rules (CER) file.
- C. Open the Certificates console and connect to the user account certificate
- D. Find the personal self-signed EFS certificate and export it to a Personal Information Exchange (PFX) file.
- E. Open the Certificates console and connect to the user account certificate
- F. Export the personal self-signed EFS certificate from the Trusted Root Certification Authority folder to a Personal Information Exchange (PFX) file.
- G. Open the Certificates console and connect to the computer account certificate
- H. Export the self-signed EFS certificate from the Trusted People folder to a Canonical Encoding Rules(CER) file.

Answer: B

NEW QUESTION 230

DRAG DROP

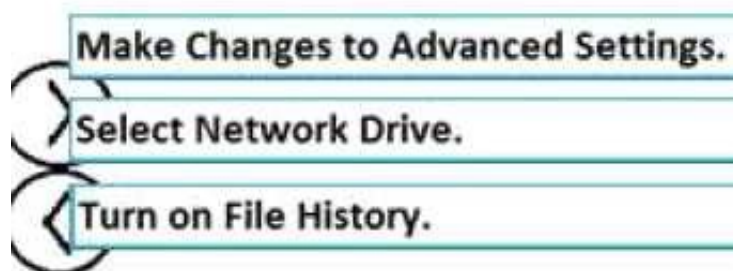
You are a desktop administrator for a small company and have just upgraded two laptops from Windows 8 to Windows 10 Enterprise. When the computers were running Windows 8, Backup and Restore was active and was scheduled to back up data files two times a day to an external hard disk. You need to enable File History so that copies of files are saved to a network drive. Which three actions should you perform in sequence? To answer, move the appropriate three actions from the list of actions to the answer area and arrange them in the correct order.

Actions		Answer Area
Select Network Drive.		
Make Changes to Advanced Settings.		
Turn on File History.		
Disable the Windows 8 Backup schedule.		

Answer:

Explanation:

Answer Area



NEW QUESTION 234

You have a portable Windows 10 Enterprise computer. You are creating a backup plan. You have the following requirements: Automatically back up the files in your Documents folder every hour. Ensure that you can recover different versions of the backed-up files. Do not back up the Windows operating system files. You need to configure the computer to meet the requirements. Which two actions should you perform? Each correct answer presents part of the solution. NOTE: Each correct selection is worth one point.

- A. Connect an external hard drive to the computer.
- B. Turn on File History.

- C. Create a volume mount point in your Documents folder.
- D. Schedule a task to create a restore point every hour.
- E. Create a recovery drive on drive C.

Answer: AB

NEW QUESTION 238

Your network contains an Active Directory domain. All client computers run Windows 10 Enterprise.

Your company uses virtual smart cards.

A user named User1 requires a virtual smart card on a new client computer named Computer1.

Which two actions should you perform? Each correct answer presents part of the solution.

NOTE: Each correct selection is worth one point.

- A. Run the tpmvscmgr.exe command.
- B. Enroll Computer1 for a certificate.
- C. Run the Enable-BitLocker cmdlet.
- D. Enroll User1 for a certificate.

Answer: AD

NEW QUESTION 241

Your network contains an Active Directory domain. The domain contains 100 computers that run Windows 10.

You plan to develop a line-of-business application and to deploy the application by using Windows Store for Business.

You need to ensure that users can see the private store of your company when they sign in to the Windows Store for Business.

What should you do first?

- A. Provision a Windows Dev Center dev account for each user.
- B. Provision a Microsoft Azure Active Directory (Azure AD) account for each user.
- C. Assign the Windows Store Purchaser role to each user.
- D. Assign the Windows Store Admin role to each user.
- E. Provision a Microsoft account for each user.

Answer: B

NEW QUESTION 246

You support Windows 10 Enterprise desktop computers and tablets that are members of an Active Directory domain. The domain includes Active Directory Certificate Services. All users use virtual smart cards to log on to their computers.

A domain user wants to log on to both his desktop computer and his tablet computer by using the same domain user account.

You need to configure the desktop and tablet computers to support two-factor authentication for the same domain user account. What should you do?

- A. Enroll the user for two separate certificates based on the Smartcard Logon template
- B. Install one certificate in a virtual smart card on each of the user's computers/
- C. After the user has logged on to one computer, disable the Trusted Platform Module (TPM) on the second computer
- D. Run the tpmvscmgr.exe utility on each of the computers.
- E. Issue a temporary physical smart card
- F. Use this smart card for an initial logon on each computer, then disconnect the tablet from the office network and destroy the temporary smart card.
- G. Export the private key from the desktop computer
- H. Import the private key to the tablet.

Answer: A

NEW QUESTION 247

You configure VPN auto trigger for five Windows 10 Enterprise computers. When you test the computers, they trigger the VPN all the time, even in the office.

You need to configure VPN auto trigger to function only when VPN is required. Which command should you use?

- A. Set -VpnConnectionTriggerDnsConfiguration [-Name] <string> [-DnsSuffix<String>] [-DnsIPAddress <string[]>] [-DnsSuffixSearchList
- B. Add -VpnConnectionTriggerApplication [-Name] <string> -ApplicationID<String[]> -PassThru
- C. Add -VpnConnectionTriggerTrusted Network [-Name] <string> [-DnsSuffix<string[]>
- D. Add -VpnConnectionTriggerDnsConfiguration [-Name] <string> -DnsSuffix<String> [-DnsIPAddress <string[]>] -PassThru

Answer: C

NEW QUESTION 252

A company has Windows 10 Enterprise client computers. The company uses Windows BitLocker Drive Encryption with the data-only option on all client computers.

You delete a file containing highly confidential information from your computer.

You need to clear the free space on the hard drive to minimize the chance of the confidential information being recovered.

Which command should you run on the client computer?

- A. diskpart clean
- B. manage-bde -w
- C. chkdsk /spotfix
- D. BdeHdCfig -target c: shrink

Answer: B

NEW QUESTION 253

DRAG DROP

A Windows 10 Enterprise computer has a single hard disk drive.

You add a second, unformatted, hard disk drive to the computer. You plan to provision Windows BitLocker

Drive Encryption on the second hard drive in preparation for installing an operating system on the hard drive for use in another computer.

You need to configure encryption for the new hard drive without fully completing BitLocker activation.

Which four actions should you perform in sequence? To answer, move the appropriate actions from the list of actions to the answer area and arrange them in the correct order.

Actions

Run the bcdboot command.

Run the manage-bde command.

Enable BitLocker on the new hard drive from Control Panel.

Run the BdeHdCfg command.

Use the **Disk Management** tool to enable BitLocker on the drive.

Use the **Disk Management** tool to initialize the disk.

Use the **Disk Management** tool to create a volume on the drive.

Answer Area

>

<

^

v

Answer:

Explanation:

Answer Area

Use the **Disk Management** tool to create a volume on the drive.

Run the bcdboot command.

Run the BdeHdCfg command.

Run the manage-bde command.

NEW QUESTION 254

Your company uses Microsoft Office 365.

You need to ensure that users are prompted to label and classify documents while they edit documents.

Solution: You configure an Office 365 data loss prevention (DLP) policy. Does the solution meet the goal?

- A. Yes
- B. No

Answer: B

NEW QUESTION 257

You manage a corporate network. All servers run Windows Server 2016. All servers and client devices are joined to an Active Directory Domain Services (AD DS) domain named adatum.com.

The use of VPN servers on the network is strictly prohibited.

Users must be able to access the corporate network in addition to Work Folders when they work at home on Windows 10 devices. You install, configure, and publish the certificate revocation list (CRL) for an internal Active Directory Certificate Services (AD CS) server.

You need to configure the environment to allow your users to register devices. Solution: You create a DNS CNAME record of enterpriseregistration.adatum.com.

You deploy a Web

Application Proxy server and point the DNS record to your Web Application Proxy server.

Does the solution meet the goal?

- A. Yes
- B. No

Answer: B

Explanation: References: <https://blog.nextxpert.com/2013/11/27/publishing-work-folders-with-web-application-proxy-2/>

NEW QUESTION 259

You work for a company that uses customized applications. The applications are published to 150 Windows 10 Enterprise laptops that are deployed in the field. All users must use the same version of the applications at the same time. You need to deploy and manage the applications updates centrally. What should you do?

- A. Deploy the applications as a Microsoft Application Virtualization.
- B. Use System Center Configuration Manager to deploy the application updates to the client.
- C. Deploy application updates as a shim through System Center Configuration.
- D. Use Intune to deploy the applications with the appropriate settings through the Windows Store.

Answer: B

Explanation: References:

<https://docs.microsoft.com/en-us/sccm/mdm/deploy-use/management-tasks-applications#deploying-andmonitoring-apps>
<https://docs.microsoft.com/en-us/sccm/apps/deploy-use/revise-and-supersede-applications#applicationsupersedence>

NEW QUESTION 262

You support Windows 10 Enterprise computers that are members of an Active Directory domain. All of the computers have a dedicated recovery partition. A computer indicates that the domain is unavailable. The password of a local administrator account on the computer is unknown. You need to reset the password for the local administrator account on the computer. What should you do?

- A. Run Windows To Go workspace from a USB flash drive.
- B. Run the Windows 10 Enterprise installation wizard from a USB flash drive.
- C. Run Microsoft Diagnostic and Recovery Tool (DaRT) from a USB flash drive.
- D. Run Windows Recovery Environment (WinRE) from a recovery partition.

Answer: C

Explanation: References: <https://www.top-password.com/knowledge/reset-windows-10-password.html>

NEW QUESTION 263

You are the system administrator for a company. All devices run Windows 10 and use a variety of Microsoft Store for Business apps. All user reports issues updating a Windows Store app. You need to troubleshoot the issue. Winch three actions should you perform? Each correct answer presents a complete solution. NOTE: Each correct selection is worth one point.

- A. Run the SFC command.
- B. Run the repair-bde command.
- C. Run the net start wuauserv command.
- D. Run the Windows App Troubleshooter.
- E. Use the Programs and Features Control Panel applet to repair the application.

Answer: ADE

NEW QUESTION 267

You administer a corporate network. Employees use docking stations for Windows 10 devices when the employees are working in their offices. The wireless adapters of the devices are connected to a specific network. The docking stations are connected to a separate network that uses twisted pair cabling. You need to ensure that the devices can access all resources from each network using either network adapter. What should you do?

- A. Configure a network bridge.
- B. Configure Internet Connection Sharing (ICS).
- C. Configure VPN Reconnect.
- D. Turn on Network Discovery.

Answer: C

NEW QUESTION 269

You have a Windows Server 2012 R2 server that runs Remote Desktop services. Users report that they cannot connect to RemoteApp programs. You observe that users do not know the proper connection details to access the Remote Desktop Web Access server. You need to simplify the process for connecting from Windows 10 devices to the Remote Desktop Web Access server. What should you create?

- A. Connection Manager Administration Kit connection profile
- B. Remote Desktop Connection configuration file
- C. Windows Remote Management script
- D. client configuration file

Answer:

A

Explanation: References: [https://docs.microsoft.com/en-us/previous-versions/windows/it-pro/windows-server-2008-R2-and-2008/cc753977\(v=ws.10\)](https://docs.microsoft.com/en-us/previous-versions/windows/it-pro/windows-server-2008-R2-and-2008/cc753977(v=ws.10))

NEW QUESTION 270

DRAG DROP

You install Widows 10 Enterprise on 15 computers. The computers require a static IP address to accommodate designated firewall policies. You need to configure a static IP address, a primary DNS server with an IP address of 192.168.1.101, and an additional DNS server with an IP address of 192.168.1.102.

Which NETSH commands should you use to achieve these objectives? To answer, drag the appropriate commands from the list of commands to the correct locations in the answer area. Each command may be used once, more than once, or not at all. You may need to drag the split bar between panes or scroll to view content.

NOTE: Each correct selection is worth one point.

Commands		Answer Area
<pre>set address Local Area Connection static 192.168.1.201 255.255.255.0 192.168.1.1</pre>		Assign an IP address, subnet mask, and gateway. <div>Command</div>
<pre>set dns Local Area Connection static 192.168.1.101</pre>		Assign the first DNS server. <div>Command</div>
<pre>add dns 192.168.1.102 index-2</pre>	•	
	•	
<pre>set address Local Area Connection static 192.168.1.201 255.255.255.0 10.168.10.1</pre>	•	Assign the second DNS server. <div>Command</div>
	•	
<pre>set dns 192.168.1.102</pre>		
<pre>add dns Local Area Connection static 192.168.1.101 index-1</pre>		

Answer:

Explanation:

Assign an IP address, subnet mask, and gateway.	<pre>set address Local Area Connection static 192.168.1.201 255.255.255.0 192.168.1.1</pre>
Assign the first DNS server.	<pre>set dns Local Area Connection static 192.168.1.101</pre>
Assign the second DNS server.	<pre>add dns 192.168.1.102 index-2</pre>

NEW QUESTION 275

A company has an Active Directory Domain Services (AD DS) domain with Windows 10 Enterprise client computers. You need to minimize the amount of Trusted Platform Module (TPM) authorization information that is stored in the registry. What should you do?

- A. Create a Group Policy Object (GPO) that enables the Turn on TPM Local Encryption policy setting.
- B. Enable Platform Configuration Register indices (PCRs) 0, 2, 4, and 11 for the Configure TPM validationprofile for native UEFI firmware configuration policy setting.
- C. Create a Group Policy Object (GPO) that disables the Configure the level of TPM owner authorizationinformation available to operating system policy setting.
- D. Create a Group Policy Object (GPO) that sets the Configure the level of TPM owner authorizationinformation available to operating system policy setting to None.

Answer: D

Explanation: References: [https://docs.microsoft.com/en-us/previous-versions/windows/it-pro/windows-8.1-and-8/jj679889\(v=ws.11\)#BKMK_tpmgp_oauthos](https://docs.microsoft.com/en-us/previous-versions/windows/it-pro/windows-8.1-and-8/jj679889(v=ws.11)#BKMK_tpmgp_oauthos)

NEW QUESTION 277

DRAG DROP

You plan to deploy Microsoft Office 365 for all users in an organization. You have the following requirements:

Users need to utilize Microsoft SharePoint Online. Use Office 365 Advanced Security Management.

You need to deploy Office 365 to meet the requirements.

Which three actions should you perform in sequence. To answer, move the appropriate actions from the list of actions to the answer area and arrange them in the correct order.

Actions		Answer Area
Purchase and assign Office 365 Enterprise E3 licenses for all users.		
Launch the Security and Compliance Center portal and turn on Advanced Security Management.		
Go to the Advance Security Management portal and create a new policy and alert.	➔	⬆
Launch the Microsoft Azure portal and turn on Advance Security Management.	⬅	⬇
Purchase and assign Office 365 Enterprise E5 licenses for all users.		

Answer:

Explanation:

Answer Area

Purchase and assign Office 365 Enterprise E3 licenses for all users.
Launch the Security and Compliance Center portal and turn on Advanced Security Management.
Go to the Advance Security Management portal and create a new policy and alert.

NEW QUESTION 280

You administer Windows 10 Enterprise desktops.

You discover that a company employee enabled file encryption on several folders by using a self-signed Encrypted File System (EFS) certificate.

You need to ensure that you are able to decrypt the encrypted files if the user profile is deleted.

What should you do?

- A. Open the Certificates console and connect to the user account certificate
- B. Export the personal self-signedEFS certificate from the Trusted Root Certification Authority folder to a Personal Information Exchange(PFX) file.
- C. Open the Certificates console and connect to the user account certificate
- D. Find the personal self-signedEFS certificate and export it to a Personal Information Exchange (PFX) file.
- E. Open the Certificates console and connect to the computer account certificates.Export the self-signed EFScertificate from the Trusted People folder to a Canonical Encoding Rules (CER) file.
- F. Open the Certificates console and connect to the user account certificate
- G. Export the self-signed EFScertificate from the Trusted People folder to a Canonical Encoding Rules (CER) file.

Answer: B

Explanation: References: <https://docs.microsoft.com/en-us/windows/security/information-protection/windows-informationprotection/create-and-verify-an-efs-dra->

certificate

NEW QUESTION 284

? company has an Active Directory Domain Services (AD DS) domain. All client computers run Windows 10 Enterprise. A client computer named COMPUTER1 has a shared printer named PRINTER1 installed and Remote Desktop enabled. A user named Intern is a member of a security group named Sales. The Sales group is a member of the Remote Desktop Users group on COMPUTER1. Only the Sales group has access to PRINTER1. You need to configure COMPUTER1 to meet the following requirements: Allow all members of the Sales group other than Intern to establish Remote Desktop connections to COMPUTER1. Allow Intern to print to PRINTER1. What should you do?

- A. Remove the Sales group from the Remote Desktop Users group.
- B. Assign Intern the Deny log on through Remote Desktop Services user right.
- C. Assign Intern the Deny access to this computer from the network user right.
- D. Assign the Sales group theAllow log on locally user right.
- E. Remove Intern from the Sales group.

Answer: D

NEW QUESTION 288

HOTSPOT

You have a folder that you plan to share. You need to configure security for the shared folder to meet the following requirements: Members of a security group named Group1 must be able to modify permissions of files and folders. Members of a security group named Group2 must be able to read files and folders only. Members of a security group named Group3 must be able to take ownership of files. Which permission should you assign to each group? To answer, select the appropriate options in the answer area. NOTE: Each correct selection is worth one point.

Answer Area

Share permissions for Everyone:

	▼
Read	
Change	
Full control	

NTFS permissions for Group1:

	▼
Read	
Read and Write	
Modify	
Full control	

NTFS permissions for Group2:

	▼
Read	
Read and Write	
Modify	
Full control	

NTFS permissions for Group3:

	▼
Read	
Read and Write	
Modify	
Full control	

Answer:

Explanation:

Answer Area

Share permissions for Everyone:

	▼
Read	
Change	
Full control	

NTFS permissions for Group1:

	▼
Read	
Read and Write	
Modify	
Full control	

NTFS permissions for Group2:

	▼
Read	
Read and Write	
Modify	
Full control	

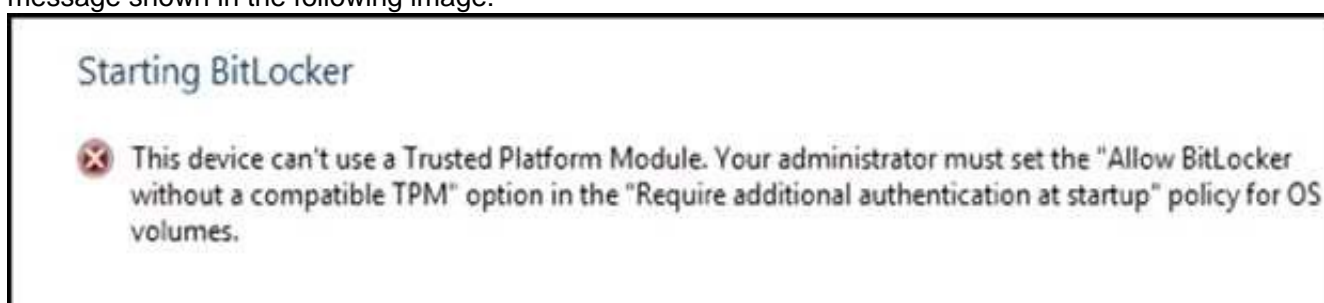
NTFS permissions for Group3:

	▼
Read	
Read and Write	
Modify	
Full control	

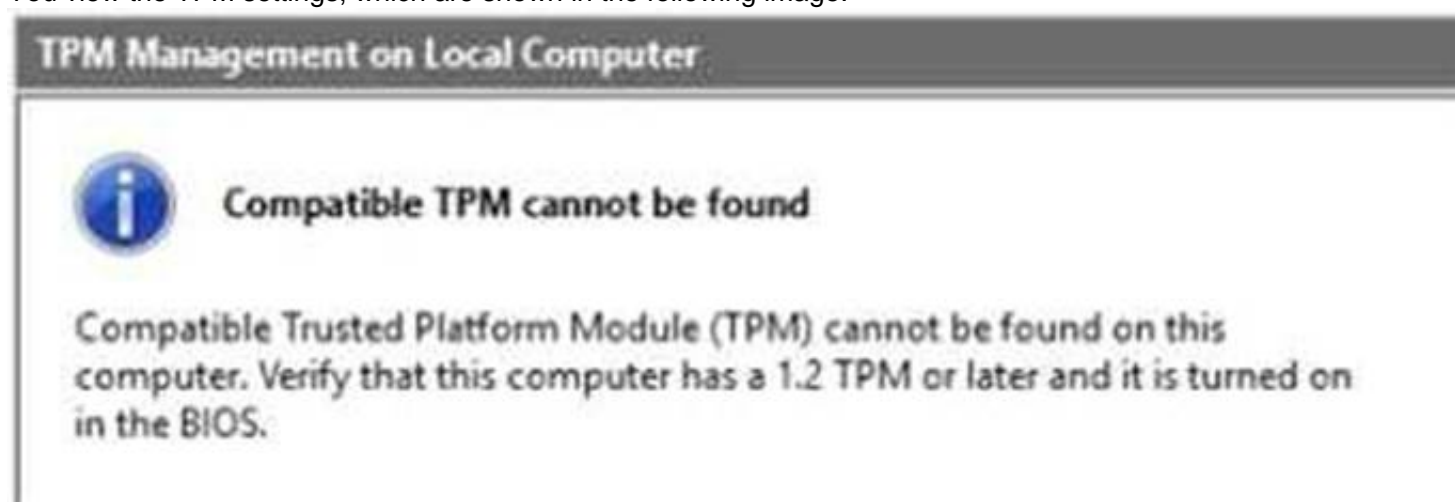
NEW QUESTION 291

HOTSPOT

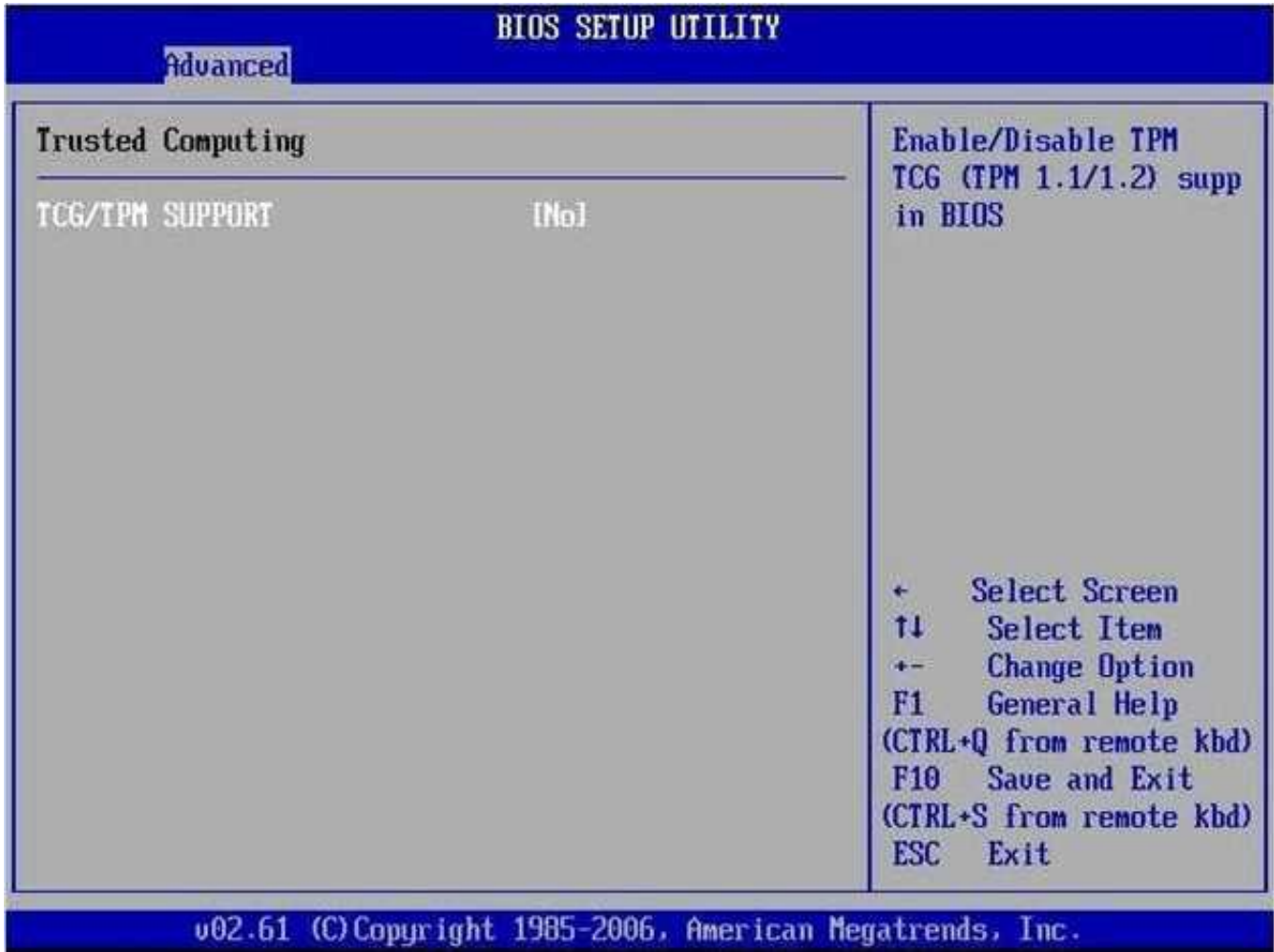
You provide support for a small company. The company purchases a Windows 10 Enterprise laptop for an employee who travels often. The company wants to use BitLocker to secure the hard drive for the laptop in case it is lost or stolen. While attempting to enable BitLocker, you receive the error message shown in the following image:



You view the TPM settings, which are shown in the following image:



Finally, you view the BIOS, which is shown in the following image:



For each of the following statement, select Yes if the statement is true. Otherwise, select No.
NOTE: Each correct selection is worth one point.

	Yes	No
A supported configuration for BitLocker is possible on this laptop.	<input type="radio"/>	<input type="radio"/>
The laptop BIOS supports TPM.	<input type="radio"/>	<input type="radio"/>
The laptop supports the necessary version of TPM.	<input type="radio"/>	<input type="radio"/>

Answer:

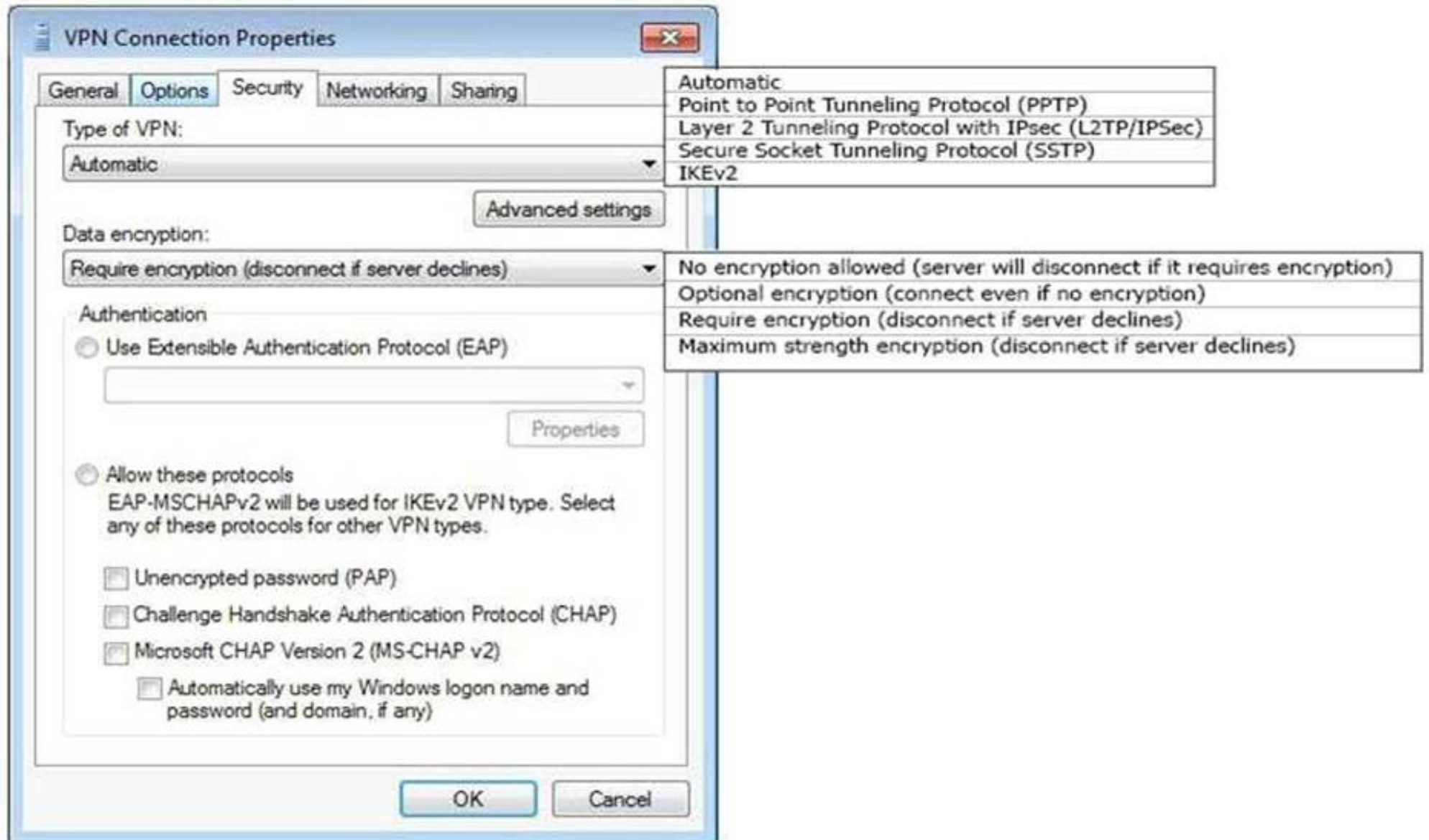
Explanation:

	Yes	No
A supported configuration for BitLocker is possible on this laptop.	<input checked="" type="radio"/>	<input type="radio"/>
The laptop BIOS supports TPM.	<input type="radio"/>	<input checked="" type="radio"/>
The laptop supports the necessary version of TPM.	<input type="radio"/>	<input checked="" type="radio"/>

NEW QUESTION 292

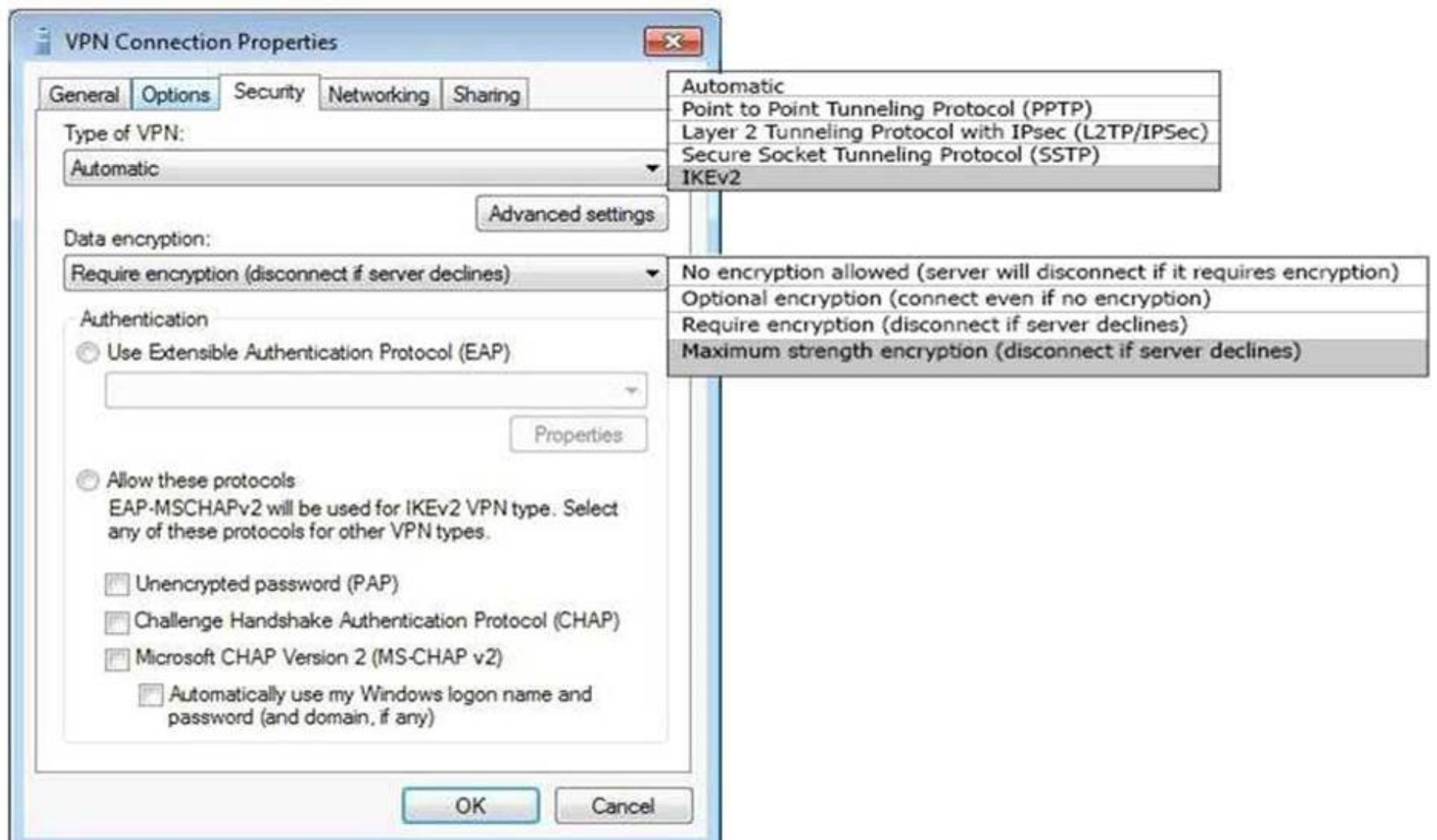
HOTSPOT

You use a Windows 10 Enterprise laptop that is configured with a VPN connection to the Windows Server 2012 Direct Access service on the company network. You use the VPN connection over a mobile broadband Internet connection. Internet connectivity is often interrupted. You need to configure your laptop to use the Windows 10 Enterprise VPN Reconnect feature with a 15-minute network outage time setting. Which two VPN Connection Properties should you select? To answer, select the appropriate objects in the answer area.



Answer:

Explanation:



NEW QUESTION 294

You have Windows 10 Enterprise desktop computer and a Windows 10 Enterprise laptop computer. You connect from the desktop to the laptop by using Remote Desktop. You are unable to copy any files between the desktop and the laptop during the Remote Desktop session. You need to ensure that you can copy files between the computers during the Remote Desktop session. What should you do?

- A. On the desktop, add the laptop to the trusted hosts in Windows Remote Management (WinRM).
- B. On the laptop, open Remote Desktop Connection and configure the Local devices and resources settings.

- C. On the desktop, open Remote Desktop Connection and configure the Local devices and resources settings.
- D. On the laptop, add the desktop to the trusted hosts in Windows Remote Management (WinRM).

Answer: C

Explanation: References: <https://www.technipages.com/unable-to-copy-and-paste-to-remote-desktop-session>

NEW QUESTION 295

You provide IT support for a small business.

A member of the team needs the ability to use Remote Desktop and VPN to access a desktop computer from a laptop when traveling. This desktop computer is running Windows 10 Enterprise, while the laptop is running Windows 8.

You need to set up a secure Remote Desktop connection on the desktop computer. Which two actions should you perform? Each correct answer presents part of the solution.

NOTE: Each correct selection is worth one point.

- A. Make the user account a standard user.
- B. Allow remote connections.
- C. Require Network Level Authentication.
- D. Disable Remote Assistance connections.

Answer: BC

Explanation: References: <https://docs.microsoft.com/en-us/windows-server/remote/remote-desktop-services/clients/remotedesktop-allow-access>

NEW QUESTION 299

A company has an Active Directory Domain Services (AD DS) domain with Windows 10 Enterprise client computers.

You need to configure 20 portable computers so that they sleep after 20 minutes when running on battery power. You must accomplish this goal by using the least amount of administrative effort.

Which two actions should you perform? Each correct answer presents part of the complete solution.

NOTE: Each correct selection is worth one point.

- A. Create a Group Policy object (GPO) that configures the Sleep Management settings.
- B. Edit the local Group Policy to configure the Power Management settings.
- C. Edit the local Group Policy to configure the Shut Down options.
- D. Link the Group Policy object (GPO) to the organizational unit containing the portable computers.
- E. Create a Group Policy object (GPO) that configures the Power Management settings.

Answer: AD

Explanation: References: <http://sourcedaddy.com/windows-7/configuring-power-management-settings-using-grouppolicy.html>

NEW QUESTION 303

You have a Windows 10 Enterprise computer. The computer has 500 gigabytes (GB) of free disk space.

You receive a request to extract several files from a 200-GB virtual hard drive (VHD) file. You copy the file to your computer.

You need to access data from the VHD file. What should you do?

- A. From PowerShell, run the Get-Volume cmdlet.
- B. From Windows Explorer, right-click the VHD file and mount the disk.
- C. From Disk Management, select Create VHD and point to the VHD file.
- D. From Disk Management, rescan the disks.

Answer: B

Explanation: References: <https://www.howtogeek.com/51174/mount-and-unmount-a-vhd-file-in-windows-explorer-via-a-rightclick/>

NEW QUESTION 305

Your network contains an Active Directory domain. The domain contains Windows 10 Enterprise client computers.

Users frequently use USB drives to store sensitive files that are used on multiple computers.

Your corporate security policy states that all removable storage devices such as USB data drives, must be encrypted.

You need to ensure that if a user forgets the password for a USB disk that is encrypted by using BitLocker To Go, the user can resolve the issue themselves. What should you do?

- A. Instruct the user to open BitLocker Drive Encryption, select Back up recovery key, and then select Save to a file.
- B. From an elevated command prompt, run Manage-BDE -ForceRecovery.
- C. For each computer, create a USB startup key.
- D. Implement the BitLocker Network Unlock feature.

Answer: A

NEW QUESTION 309

You administer Windows 10 Enterprise laptops. The laptops are configured to connect to an unsecured wireless access point. You plan to configure the wireless

access point to encrypt wireless traffic and turn off SSID broadcast.
You need to ensure the laptops will join the secured wireless network automatically after the configuration changes.
What should you do?

- A. Create a network profile.
- B. Create an ad hoc network.
- C. Set Network Discovery to Enabled for the Public profile.
- D. Set the Unidentified Networks Properties User permissions to User can change location.

Answer: A

Explanation: References: <http://ecross.mvps.org/howto/connect-to-wireless-network-with-windows-10.htm>

NEW QUESTION 310

DRAG DROP

You are a systems administrator for a small company. You deploy five Windows 10 Enterprise computers. You need to create a system image backup for each computer and save the image to a network share. How should you construct the PowerShell command? To answer, drag the appropriate command component to the correct target. Each command component may be used once, more than once, or not at all. You may need to drag the split bar between panes or scroll to view content. NOTE: Each correct selection is worth one point.

Command Components

wbadmin

start backup

-allCritical -quiet

Run sysprep

-backupTarget:C:

enable backup

Answer Area

-backupTarget: \\remoteComputer\Folder -include:C:

Answer:

Explanation:

wbadmin

start backup

-backupTarget: \\remoteComputer\Folder -include:C:

-allCritical -quiet

NEW QUESTION 312

You have a computer named Computer1 that runs Windows 10 Enterprise. You need to identify the locations that you can select as a File History drive. What are two possible locations? Each correct answer presents a complete solution?

- A. the operating system volume
- B. an unformatted partition
- C. a non-system volume
- D. a network share

Answer: CD

Explanation: You can use a non-system volume as a File History drive. This can be a volume on a hard drive in a computer, a Virtual Hard Drive (VHD) or an external USB drive. You can also use a network share as a File History drive. In the File History Control Panel item, you can click the "Select Drive" option. This will display a list of all detected drives that are suitable for use as the File History drive. Under the list of drives, there is a link "Add Network Location". You can click the link and browse to or enter the path to the network share.
Incorrect Answers:
A: You cannot use the operating system volume (usually the C: drive) as the File History drive.
B: The volume used for the File History drive must be a formatted volume. References: <http://computerbeginnersguides.com/blog/2015/08/23/enable-file-history-backups-in-windows-10/>

NEW QUESTION 316

You administer Windows 10 Enterprise computers in your company network. The computers are configured to allow remote connections. You attempt to create a Remote Desktop Connection to a computer named Computer1. You receive the following message:
 "Remote Desktop can't connect to the remote computer." You are able to ping Computer1. You discover that Remote Desktop Firewall rules are not present on Computer1. You need to connect to Computer1 by using Remote Desktop. Which PowerShell commands should you run on Computer1?

- A. Set-NetFirewallRule -Name RemoteSvcAdmin-in-TCP -Enable True
- B. Set -NetFirewallRule -Name RemoteFwAdmin-In-TCP -Enable True
- C. New-NetFirewallRule -DisplayName RdpTCPIn -localPort 3389 - Protocol TCP
- D. New-NetFirewallRule -DisplayName RdpTCPout -localPort 3389 - Protocol TCP-Direction Out -Action Allow

Answer: C

Explanation:

New-NetFirewallRule

Creates a new inbound or outbound firewall rule and adds the rule to the target computer.

Syntax

New-NetFirewallRule -DisplayName <String> [-Action <Action>] [-AsJob] [- Authentication

<Authentication>] [- CimSession <CimSession[]>] [-Description <String>] [-

Direction <Direction>] [-

DynamicTarget <DynamicTransport>] [-EdgeTraversalPolicy <EdgeTraversal>] [- Enabled <Enabled>] [-

Encryption <Encryption>] [-GPOSession <String>] [-Group <String>] [-IcmpType

<String[]>] [-InterfaceAlias

<WildcardPattern[]>] [-InterfaceType <InterfaceType>] [-LocalAddress <String[]>] [- LocalOnlyMapping

<Boolean>] [-LocalPort <String[]>] [-LocalUser<String>] [-LooseSourceMapping

<Boolean>] [-Name <String>

] [-OverrideBlockRules<Boolean>] [-Owner <String>] [- Package <String>] [- Platform <String[]>] [-

PolicyStore<String>] [-Profile <Profile>] [-Program <String>] [-Protocol <String>] [- RemoteAddress<String[]>]

[- RemoteMachine <String>] [-RemotePort <String[]>] [-RemoteUser <String>] [- Service <String>] [-

ThrottleLimit <Int32>] [-Confirm] [-WhatIf] [<CommonParameters>] TheNew-

NetFirewallRule cmdlet creates

an inbound or outbound firewall rule and adds the rule to the target computer. http://en.wikipedia.org/wiki/Remote_Desktop_Protocol

Remote Desktop Protocol

By default, the server listens on TCP port 3389 and UDP port 3389.

References: [https://docs.microsoft.com/en-us/powershell/module/netsecurity/new-netfirewallrule?](https://docs.microsoft.com/en-us/powershell/module/netsecurity/new-netfirewallrule?view=winserver2012r2-ps)

view=winserver2012r2-ps

NEW QUESTION 318

DRAG DROP

A company has an Active Directory Domain Services (AD DS) domain. All client computers run Windows 8.1. The company has three departments named Accounting, Human Resources (HR), and Marketing. User account objects are stored in their respective departmental AD security groups and have full access to shared folders for each department.

A new company policy requires that the following access rules are in place:

?Users must have complete access only to their department's shared folder.

?Accounting department users must be able to change files in the HR folder.

?HR department users must be able to change files in the Marketing folder.

?Marketing department users must be able to change files in the Accounting folder.

You need to comply with the company policy.

Which permissions should you assign? (To answer, drag the appropriate security group or groups to the correct location or locations in the answer area. Security groups may be used once, more than once, or not at all. You may need to drag the split bar between panes or scroll to view content.)

Security Groups	Answer Area																
Accounting	<table border="1"> <thead> <tr> <th rowspan="2">Shared folder</th> <th colspan="2">Access Control List</th> </tr> <tr> <th>Full Control</th> <th>Modify</th> </tr> </thead> <tbody> <tr> <td>Accounting</td> <td>Security Group</td> <td>Security Group</td> </tr> <tr> <td>HR</td> <td>Security Group</td> <td>Security Group</td> </tr> <tr> <td>Marketing</td> <td>Security Group</td> <td>Security Group</td> </tr> </tbody> </table>			Shared folder	Access Control List		Full Control	Modify	Accounting	Security Group	Security Group	HR	Security Group	Security Group	Marketing	Security Group	Security Group
Shared folder					Access Control List												
				Full Control	Modify												
Accounting				Security Group	Security Group												
HR	Security Group	Security Group															
Marketing	Security Group	Security Group															
Users																	
Everyone																	
HR																	
Marketing																	

Answer:

Explanation: <http://technet.microsoft.com/en-us/library/bb727008.aspx> File and Folder Permissions

On NTFS volumes, you can set security permissions on files and folders. These permissions grant or deny access to the files and folders.

..

File and Folder Permissions:

Permission	Meaning for Folders	
Read	Permits viewing and listing of files and subfolders	Permit
Write	Permits adding of files and subfolders	Permit
Read & Execute	Permits viewing and listing of files and subfolders as well as executing of files; inherited by files and folders	Permit
List Folder Contents	Permits viewing and listing of files and subfolders as well as executing of files; inherited by folders only	N/A
Modify	Permits reading and writing of files and subfolders; allows deletion of the folder	Permit
Full Control	Permits reading, writing, changing, and deleting of files and subfolders	Permit

NEW QUESTION 321

A company has client computer that run Win 10 enterprise. The corporate network is configured for IPv4 and IPv6. You need to disable IPv6 on the client computer without affecting IPv4 communicatins. What should you do on each computer?

- A. Run the Set-NetIPv4Protocol Windows PowerShell cmdlet
- B. Run the Set-NetIPv6Protocol Windows PowerShell cmdlet
- C. Run Disable-NetAdapter Windows PowerShell cmdlet
- D. Run the Disable-NetAdapterBinding Windows PowerShell cmdlet

Answer: D

Explanation: References: <http://juventusitprofessional.blogspot.co.za/2013/11/powershell-windows-2012-disable-ipv6.html>

NEW QUESTION 325

You manage a branch office of a company named Contoso. The branch office contains 20 computers that run Windows 10 Enterprise. The main office of Contoso hosts a Win Server Update Service server. (WSUS). Branch office computers are configured to download updates from the Internet. You need to prevent computers in the branch office from sharing updates with other computers. What should you do?

- A. Modify the branch cache hosted mode settings
- B. Modify branch cache distributed cache mode settings
- C. Modify the Chose how updates are delivered settings
- D. Deploy a downstream WSUS server to the branch office

Answer: C

Explanation: References: <https://www.howtogeek.com/223068/what-you-need-to-know-about-windows-update-on-windows-10/>

NEW QUESTION 329

DRAG DROP

You are the desktop administrator for a small company. Your workgroup environment consists of Windows 10 Enterprise computers. You want to prevent 10 help desk computers from sleeping. However, you want the screens to shut off after a certain period of time if the computers are not being used. You need to configure and apply a standard power configuration scheme for the 10 help desk computers on your network. Which four Actions should you perform in sequence?

Actions:	Answer Area:	
Run the powercfg/d command	1	
Run the powercfg /import command	2	
Run the powercfg/setacvalueindex command	3	
Run the powercfg /export command	4	
Run the powercfg /s command		
Run the powercfg /x command		

Answer:

Explanation:

Answer Area:

1	Run the powercfg /import command
2	Run the powercfg /s command
3	Run the powercfg /x command
4	Run the powercfg /export command

NEW QUESTION 332

DRAG DROP

A company plans to upgrade its client computer operating systems from Windows 8 to Windows 10 Enterprise. You need to customize the User State Migration Tool (USMT) to exclude all files in the user's Documents folders. Which command should you run on the client computers before the upgrade? To answer, drag the appropriate command elements to the correct location or locations in the answer area. Each command may be used once, more than once, or not at all. You may need to drag the split bar between panes or scroll to view content.
NOTE: Each correct selection is worth one point.

Commands

config.xml	/genconfig:	/i:	migapp.xml
migdocs.xml	miguser.xml	scanstate	loadstate

Answer Area

Command	Command	Command
---------	---------	---------

Answer:

Explanation:

References: <https://docs.microsoft.com/en-us/windows/deployment/usmt/usmt-customize-xml-files>

NEW QUESTION 335

.....

Thank You for Trying Our Product

We offer two products:

1st - We have Practice Tests Software with Actual Exam Questions

2nd - Questions and Answers in PDF Format

70-697 Practice Exam Features:

- * 70-697 Questions and Answers Updated Frequently
- * 70-697 Practice Questions Verified by Expert Senior Certified Staff
- * 70-697 Most Realistic Questions that Guarantee you a Pass on Your First Try
- * 70-697 Practice Test Questions in Multiple Choice Formats and Updates for 1 Year

100% Actual & Verified — Instant Download, Please Click
[Order The 70-697 Practice Test Here](#)