

# Cisco

## Exam Questions 300-070

Implementing Cisco IP Telephony & Video, Part 1 v1.0



#### NEW QUESTION 1

Which two can be targets of a route pattern? (Choose two.)

- A. gateway
- B. gatekeeper
- C. route group
- D. route list
- E. translation pattern
- F. CTI Port

**Answer:** AD

#### NEW QUESTION 2

Which two options can a route pattern be assigned? (Choose two.)

- A. a gateway that is not assigned to a route group
- B. a gateway that is assigned to a route group
- C. a route list with no route groups configured
- D. a route list with one or more route groups configured

**Answer:** AD

**Explanation:** Reference: [http://www.cisco.com/c/en/us/td/docs/voice\\_ip\\_comm/cucm/admin/7\\_1\\_2/ccmsys/accm-712cm/a03rp.html](http://www.cisco.com/c/en/us/td/docs/voice_ip_comm/cucm/admin/7_1_2/ccmsys/accm-712cm/a03rp.html) (Route Plan Overview)

#### NEW QUESTION 3

Which three statements about the default VoIP dial peer are true? (Choose three.)

- A. VAD is disabled.
- B. RSVP is not supported.
- C. Only the G.711 codec is supported.
- D. The G.729 and G.711 codecs are supported.
- E. Fax-rate service is supported.
- F. DTMF relay is supported.

**Answer:** BDE

#### NEW QUESTION 4

Which three options are valid SIP URI formats? (Choose three.)

- A. jsmith@cisco.com
- B. tel:98765@cisco.com
- C. phone:98765@cisco.com
- D. sip:12345@10.10.10.10:5060;user=phone
- E. sip:bob.cisco.com

**Answer:** ABD

#### NEW QUESTION 5

Which two of the following DSPs can be used in heterogeneous conferencing to achieve the required trans-sizing and transcoding functionality? (Choose two.)

- A. PVDM3-256
- B. PVDM2-256
- C. PVDM-192
- D. PVDM3-32
- E. PVDM3-192
- F. PVDM2-128

**Answer:** AE

#### NEW QUESTION 6

What is the best tool to test end verify a dial plan during the implementing phase?

- A. Translator X
- B. CUCM Dialed Number Analyzer.
- C. Real-Time Monitoring Tool.
- D. Cisco Prime Collaboration Tool.

**Answer:** B

#### NEW QUESTION 7

Which two codecs are the best codecs to use in WAN and LAN? (Choose two.)

- A. WAN codec G.711

- B. LAN codec G.729
- C. WAN codec G.729
- D. LAN codec G.711

**Answer:** CD

#### NEW QUESTION 8

What are the characteristics of a Cisco Unified Communications Manager group?

- A. Each call-processing server can be assigned to a single Cisco Unified Communications Manager group.
- B. A Cisco Unified Communications Manager group is a prioritized list of (one or more) callprocessing and application servers.
- C. Each device has to have a Cisco Unified Communications Manager group assigned, which will determine the primary and backup servers to which it can register.
- D. A single Cisco Unified Communications Manager group can exist in a single cluster.

**Answer:** B

#### NEW QUESTION 9

A customer recently installed a Cisco TelePresence MCU 5320. The customer wants a virtual meeting room that restricts participants from communicating before the customer joins the call.

Which feature in the MCU enables this functionality?

- A. numeric ID
- B. floor and chair control
- C. owner
- D. PIN codes

**Answer:** B

#### NEW QUESTION 10

Which parameter is required on MCU for ad hoc conferencing?

- A. Media Port reservation
- B. incoming calls to unknown conferences or auto-attendants
- C. DSP reservation for video
- D. MCU type
- E. MCU Conference Bridge SIP Port

**Answer:** A

#### NEW QUESTION 10

You are a Voice Engineer at ABC Company. You want to implement a voice translation profile to perform the following manipulation: The incoming DNIS 9876562XXX should be modified to 2XXX. Which four commands are required to configure the translation profile? (Choose four.)

- A. voice translation-rule 1
- B. rule 1 /^ 9876562/ /2/
- C. voice translation-profile incoming-calls
- D. translate called 1
- E. rule 1 /^ 9876562\$/ /2/ type subscriber
- F. translation-profile incoming incoming-calls
- G. translate calling 1
- H. translate called rule 1

**Answer:** ABCD

#### NEW QUESTION 11

Which two components must an engineer configure before configuring SIP route pattern? (Choose two.)

- A. route filter
- B. SIP trunk
- C. route partition
- D. calling search space
- E. SIP profile

**Answer:** BE

**Explanation:** Reference:

[http://www.cisco.com/c/en/us/td/docs/voice\\_ip\\_comm/cucm/admin/8\\_6\\_1/ccmcfg/bccm-861cm/b03siprp.html](http://www.cisco.com/c/en/us/td/docs/voice_ip_comm/cucm/admin/8_6_1/ccmcfg/bccm-861cm/b03siprp.html)

#### NEW QUESTION 13

Which discard digits instruction removes the access code from a number before passing the number onto an adjacent system?

- A. PreDot
- B. PreAt
- C. NoDigits
- D. Trailing-#

**Answer:** A

#### NEW QUESTION 14

Which three steps must you take on Cisco Unified Communications Manager to configure Cisco TelePresence Conductor for ad hoc and rendezvous conferences? (Choose three.)

- A. Verify the location configuration.
- B. Verify the certificate trusts.
- C. Configure one ICT trunk to TelePresence Conductor.
- D. Configure one SIP trunk to TelePresence Conductor.
- E. Configure two ICT trunks to TelePresence Conductor.
- F. Configure two SIP trunks to TelePresence Conductor.

**Answer:** ABF

#### NEW QUESTION 16

Which statement regarding Cisco IP voice media streaming application is correct?

- A. It should be activated on the gateway in cluster that supports the TFTP service
- B. It should be activated on the gatekeeper in cluster that supports the TFTP service
- C. It should be activated on the node in cluster that does not support the TFTP service
- D. It should be activated on the node in cluster that supports the TFTP service

**Answer:** D

**Explanation:** When more than one MOH server is active in the network, make sure that all the configured MOH files are available for all MOH servers. You might need to copy the files manually to the root directories of all the TFTP servers.

#### NEW QUESTION 20

Hackers are sending calls through a gateway router that is running SIP. The engineer blocks all SIP messages to the router except from their SIP server, which has an IP address of 208.177.10.1. The customer also must connect via SIP to their Cisco Expressway server with an IP address of 10.1.10.110. Which series of commands secures the router from the hackers?

- A. voice service voip voip security allowipv4 208.177.10.1 255.255.255.255ipv4 10.1.10.110 255.255.255.255
- B. voice service voipip address trusted listipv4 208.177.10.1 255.255.255.255ipv4 10.1.10.110 255.255.255.255
- C. voice service voipallow-connections sip to sipipv4 208.177.10.1 255.255.255.255ipv4 10.1.10.110 255.255.255.255
- D. voice service voip address-hidingipv4 208.177.10.1 255.255.255.255ipv4 10.1.10.110 255.255.255.255

**Answer:** B

**Explanation:** Reference: <http://www.cisco.com/c/en/us/support/docs/voice/call-routing-dial-plans/112083tollfraud-ios.html>

#### NEW QUESTION 23

An organization with a centralized dial plan has user extensions as the last four digits of the external DID number. Some users at the head office have overlapping extensions with the users at the branch offices. Which action fixes this issue without changing user extensions and allowing users to call each other across sites?

- A. Use site codes.
- B. Use different CSSs for both sites.
- C. Place both extensions in different partitions.
- D. Change the number of digits in the internal extensions.

**Answer:** A

#### NEW QUESTION 25

The CSS on a line includes the partitions 911, internal and local. The CSS on the device includes the partitions 911, internal, local and long distance. Which CSS will be used if the phone user dials a local number?

- A. The device CSS will be used since the device CSS is always used first on an IP phone.
- B. Since the dialed digits are a match to a partition in both Calling Search Spaces the call will use both matched partitions in both Calling Search Spaces in a round-robin format.
- C. If there is both a line and device CSS the line device will only be used.
- D. The line and device CSSs will be combined and the device CSS will take precedence.
- E. The line and device CSSs will be combined and the line CSS will take precedence.

**Answer:** E

#### NEW QUESTION 26

Which Cisco Unified Communications Manager menu path is used to access the softkey template configuration window?

- A. Device > Device Settings > Softkey Templates
- B. Device Settings > Softkey Templates
- C. IP Phone > Template > Softkey
- D. Device > IP Phone > Template > Softkey

**Answer:** A

**NEW QUESTION 31**

You need to delete an auto-registration Cisco Unified Communications Manager group for a cluster. What should you do?

- A. Remove the Cisco Unified CallManager group devices.
- B. Disable auto-registration settings in the Cisco Unified CallManager group.
- C. Assign a different call group as the auto-registration Cisco Unified CallManager group.
- D. Delete the auto-registration Cisco Unified CallManager group without performing any action.

**Answer:** C

**NEW QUESTION 35**

Which option describes how you add software conference bridges to Cisco Unified Communications Manager?

- A. By adding a Cisco Unified CM server to the cluster.
- B. By adding a software conference bridge using Conference Bridge Configuration.
- C. By installing DSP to a Cisco Unified CM server.
- D. By reassigning other media resources to conference resources.

**Answer:** A

**NEW QUESTION 38**

What is a VoIP dial peer?

- A. A nonaddressable call endpoint.
- B. A call routing mechanism to send and receive calls based on called or calling digits.
- C. A physical connection for call legs.
- D. A logical connection for call legs.

**Answer:** B

**NEW QUESTION 42**

Which route pattern is used when 25911 is dialed from an endpoint with a CSS that can access the required partition?

- A. 25XXX
- B. 2[56]XXX
- C. 2591[12]
- D. 259XX

**Answer:** C

**NEW QUESTION 43**

Refer to the exhibit.

```
dial-peer voice 204 pots
description LLAMADA_CELULAR_SCZ_SALIENTE_SRST
destination-pattern 9[67].....$
port 0/1/0
forward-digits 7
```

What is the problem when 237 dials 972551915?

- A. The problem is in "forward-digits 7"; the dial peer should be with "forward-digits 9."
- B. The problem is in "forward-digits 7"; the dial peer should be with "forward-digits 5."
- C. The problem is in "forward-digits 7"; the dial peer should be with "forward-digits 2."
- D. The problem is in "forward-digits 7"; the dial peer should be with "forward-digits 8."

**Answer:** D

**NEW QUESTION 44**

A Cisco Unified Communications Manager group specifies a prioritized list of how many Cisco Unified Communications Managers?

- A. 1
- B. 2
- C. 3
- D. 4
- E. 5
- F. 6
- G. 7

**Answer:** D

#### NEW QUESTION 46

Which of these media resources can be configured in Cisco Unified Communication manager?  
(Choose Three)

- A. MOH Server
- B. Voice Termination Point DSP
- C. Transcoder
- D. Auto Attendant
- E. Conference Bridge

**Answer:** ACE

#### NEW QUESTION 49

Which route pattern is the best match for the range of 6000 to 6599?

- A. 65XX
- B. 60XX
- C. 6[05]XX
- D. 6XXX
- E. 6[0-5]

**Answer:** E

#### NEW QUESTION 51

Which statement best describes Urgent Priority operations in relation to call routing in Cisco Unified Communications Manager?

- A. An Urgent Priority operation is initiated whenever an IP phone user presses the # key for immediate dialing.
- B. An Urgent Priority operation can be configured on a route pattern to force immediate routing when a first match is detected, even if there are longer route patterns that are also potential matches.
- C. Urgent Priority operations are automatically performed in translation patterns and emergency route patterns in order to force immediate routing when a first match is detected, even if there are longer route patterns that are also potential matches.
- D. Urgent Priority operations cannot be used for VoIP route patterns; they are only applicable to PSTN route patterns.

**Answer:** B

**Explanation:** The Urgent Priority check box is often used to force immediate routing of certain calls as soon as a match is detected, without waiting for the T302 timer to expire when additional longer potential matches exist.

#### NEW QUESTION 53

Which of these determines the Cisco Unified Communications Manager server to which an IP phone registers?

- A. The Cisco Unified Communications Manager group is configured with a Device Pool that designates the primary, secondary, and tertiary servers in the group.
- B. Each IP phone is configured with a Device Pool containing the Cisco Unified Communications Manager group that determines which server the IP phone will use as its primary, secondary, and tertiary server.
- C. Each IP phone is configured with its primary, secondary, and tertiary server.
- D. The Cisco Unified Communications Manager group is configured in the publisher to designate the IP phone groups that will register with the primary, secondary, and tertiary servers in the group.

**Answer:** B

#### NEW QUESTION 55

Which protocol is recommended to be used between Cisco Unified Communications Manager and the voice gateway to simplify the dial plan?

- A. SIP.
- B. SCCP.
- C. H323.
- D. RSVP.
- E. MGCP.

**Answer:** E

#### NEW QUESTION 56

What are two characteristics of a Cisco Unified Communications Manager dial plan? (Choose two.)

- A. partitions and calling search spaces
- B. COR
- C. dial peers
- D. voice translation rules
- E. route patterns

**Answer:** AE

#### NEW QUESTION 61

ABC SA de CV is a Company located in New York City and has 3 Branch Offices in Laredo, Bryan, and Houston Texas. The network Administrator has the requirement to configure that all international calls goes out first for Houston Texas, if the GW of Houston goes down then the international call goes out for Bryan



Texas and if GW of Bryan goes down, the international call will go out of Laredo Texas. What does the Administrator have to configure to achieve this requirement?

- A. Configure a Route Pattern selecting all possible gateways.
- B. Configure a Line Group for international calls selecting the first option GW of Houston, then Bryan and finally Lared
- C. After this he has to configure a Hunt List for international calls selecting the Line Group for international calls and finally create the Hunt Pilot for International calls selecting the Hunt List created for international calls.
- D. Configure a New Partition and New CSS for international calls.
- E. Configure a Route Group for international calls selecting the first option GW of Houston, then Bryan and finally Lared
- F. After this he has to configure a Route List for international calls selecting the Route Group for international calls and finally create the Route Pattern for International calls selecting the Route List created for international calls.

**Answer:** D

#### NEW QUESTION 63

Which two codecs are supported by the Cisco Unified Communications Manager software conferencing media resource? (Choose two.)

- A. G.723
- B. G.729
- C. wideband
- D. GSM
- E. G.711

**Answer:** CE

#### NEW QUESTION 64

Which three characteristics of a video stream require the implementation of QoS? (Choose three.)

- A. variable packet rate
- B. constant bandwidth
- C. small packets
- D. high MTU
- E. high packet rate

**Answer:** ADE

#### NEW QUESTION 69

You are a Voice Engineer working at ABC Company. You are asked to configure Cisco Unified Border Element in Cisco Unified Communications Manager. Which two configurations are required? (Choose two.)

- A. Configure a SIP profile with Early Offer support for voice and video calls; insert MTP as needed.
- B. Change the SIP trunk security profile to a nonsecure SIP trunk profile.
- C. Under the SIP information configuration, set the destination port to 5061.
- D. Bind the SIP signaling to the Cisco Unified Border Element interface.
- E. Configure dial peers on Cisco Unified Border Element for inbound and outbound calls appropriately.

**Answer:** AB

#### NEW QUESTION 73

Refer to the following Exhibits.

Exhibit 1	
<b>Pattern Definition</b>	
Translation Pattern	0.00!#
Partition	HQ_Intl_Pt
Description	
Numbering Plan	< None >
Route Filter	< None >
MLPP Precedence*	Default
Resource Priority Namespace Network Domain	< None >
Route Class*	Default
Calling Search Space	PSTN.CSS
External Call Control Profile	< None >
Route Option	<input checked="" type="radio"/> Route this pattern <input type="radio"/> Block this pattern No Error

**Exhibit 2**

<b>Pattern Definition</b>	
Translation Pattern	0.00!#
Partition	HQ_Blkg_Intl_Pt
Description	
Numbering Plan	< None >
Route Filter	< None >
MLPP Precedence*	Default
Resource Priority Namespace Network Domain	< None >
Route Class*	Default
Calling Search Space	PSTN.CSS
External Call Control Profile	< None >
Route Option	<input type="radio"/> Route this pattern <input checked="" type="radio"/> Block this pattern
	No Error

**Exhibit 3**

CSS	Partition
Phone Device CSS	HQ_Blkg_Intl_pt
Phone Line CSS	HQ_Intl_pt
PSTN.CSS	PSTN_Pt

Assume that route pattern for international calls is assigned to the PSTN\_Pt partition. After applying the CSSs shown in the exhibit to a phone and placing a call to 00014087071222#, which of the following statements is true?

- A. The call will be blocked because the line and device CSS will be combined and partitions in the device CSS will take precedence.
- B. The call will be permitted because the line and device CSS will be combined and partitions in the line CSS will take precedence.
- C. The call will be blocked because any translation pattern that is blocked will take precedence.
- D. Only calls from the primary line will be permitted.
- E. Secondary lines will be blocked.

**Answer: B**

**Explanation:** the Line CSS configured on the directory number associated with the user's device profile. Link: [http://www.cisco.com/en/US/docs/voice\\_ip\\_comm/cucm/srnd/8x/cmapps.html](http://www.cisco.com/en/US/docs/voice_ip_comm/cucm/srnd/8x/cmapps.html)

#### NEW QUESTION 76

When implementing a global dial plan, which digit manipulation feature in CUCM does Cisco recommend for adding +1 to all outbound calls?

- A. Called party transformation.
- B. Calling party transformation.
- C. Translation pattern.
- D. External phone mask.

**Answer: A**

#### NEW QUESTION 79

What are three features of Cisco Unified Border Element? (Choose three).

- A. Protocol Interworking.
- B. Bandwidth Control.
- C. Admission Request.
- D. Automated Alternate Routing.
- E. Address Hiding.
- F. Security.
- G. Video Integration.

**Answer: AFG**

#### NEW QUESTION 80

What is the maximum number of 1080p30 HD Conference Participants if an MSE 8000 has four MSE8710 blades clustered?



- A. 48.
- B. 180
- C. 720
- D. 800

**Answer:** A

**NEW QUESTION 84**

What is the recommended default value that is used between regions for video calls?

- A. 384 Kbps.
- B. G.722.
- C. G.711.
- D. G.728.

**Answer:** A

**NEW QUESTION 86**

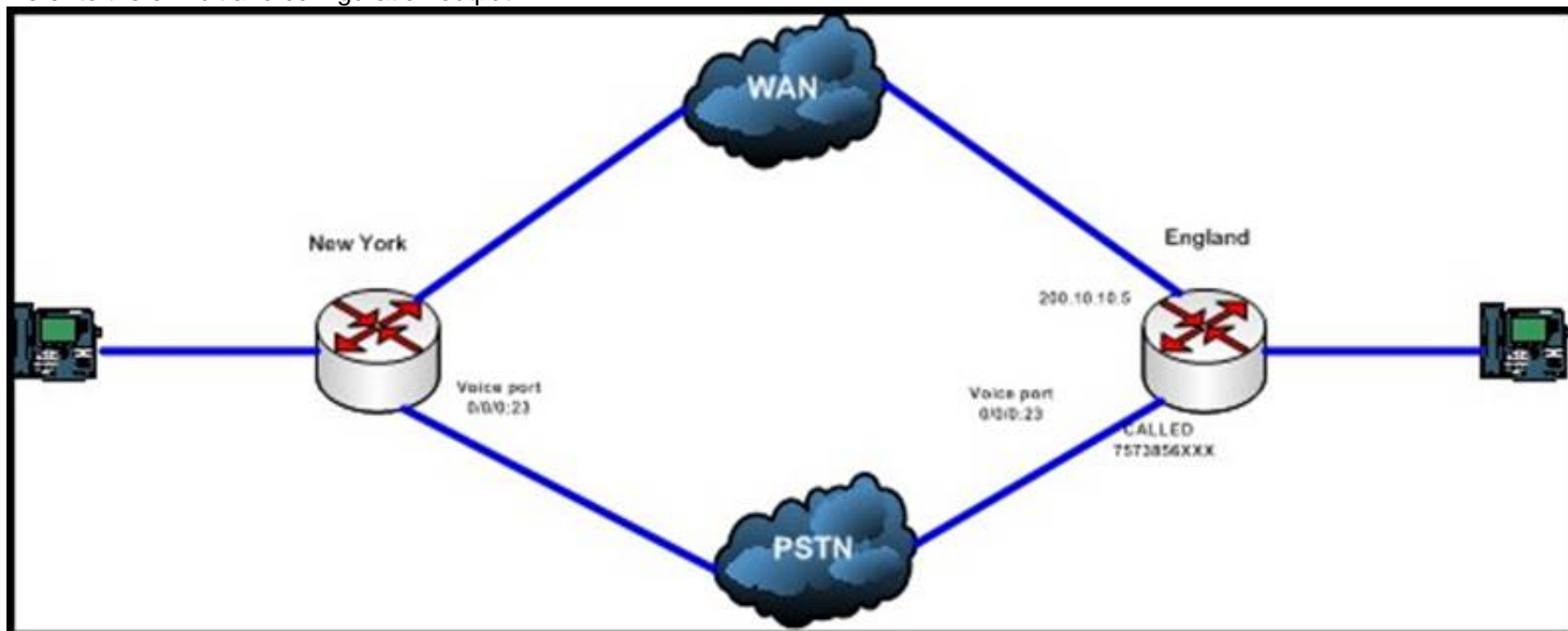
Managers have asked to be able to have an extension call them back if it is busy when they try to call it. In what two places can this feature be assigned to the Managers phone? (Choose two.)

- A. Device Settings > Softkey Template
- B. Device Settings > Default Device Profile Configuration
- C. Device Settings > Phone Button Template
- D. Device Settings > Device Profile
- E. Device Settings > Device Defaults
- F. Device Settings > Firmware Load Information

**Answer:** AD

**NEW QUESTION 91**

Refer to the exhibit and configuration output.



What are the two main ways from New York to call Extension 6001 in England? (Choose two.)

```
sh run | s Dial-peer dial-peer voice 2 voip destination-pattern 6... preference 0
session-target ipv4: 200.10.10.5
dtmf-relay sip-notify dial-peer voice 3 pots destination-pattern 6...
preference 1 port 0/0/0:23 prefix 757385
dtmf-relay sip-notify
```

- A. The first way is WAN.
- B. The first way is PSTN.
- C. The second way is WAN.
- D. The second way is PSTN.

**Answer:** AD

**NEW QUESTION 95**

If a SIP phone has neither KPML nor a set of dial rules configured, how are digits sent to Cisco Unified Communications Manager for further processing?

- A. the user must press the # key
- B. the user must press the Dial softkey
- C. the user must press the enbloc softkey
- D. when the user finishes dialing, the digits will be sent automatically

**Answer:** B

**NEW QUESTION 97**

The Cisco IP Phone of your company operator is on extension 7000. However, users normally dial 0 to get the operator. Which action sends calls that were made

to 0 to the operator?

- A. Create a route pattern of 0 and use a called party transform mask of 7XXX.
- B. Create a translation pattern for 7000 and a called party transform mask of 0.
- C. Create a translation pattern for 0 and a called party transform mask of 7000.
- D. Create the IP phone overlay feature so the operator's line has 0 and 7000 assigned to it.
- E. Create a translation pattern for 0 and a calling party transform mask of 7000.

**Answer: C**

#### NEW QUESTION 102

Which statement about the DiffServ QoS deployment architecture is true?

- A. DiffServ does not differentiate traffic types and thus cannot provide service levels.
- B. DiffServ architecture differentiates and classifies various types of traffic and provides several levels of service based on that classification.
- C. Resource Reservation Protocol is an example of a DiffServ mechanism where each router on the path for packet transmission is informed of the upcoming packet stream.
- D. DiffServ architecture provides QoS by assuring treatment for a specific traffic flow.

**Answer: B**

#### NEW QUESTION 104

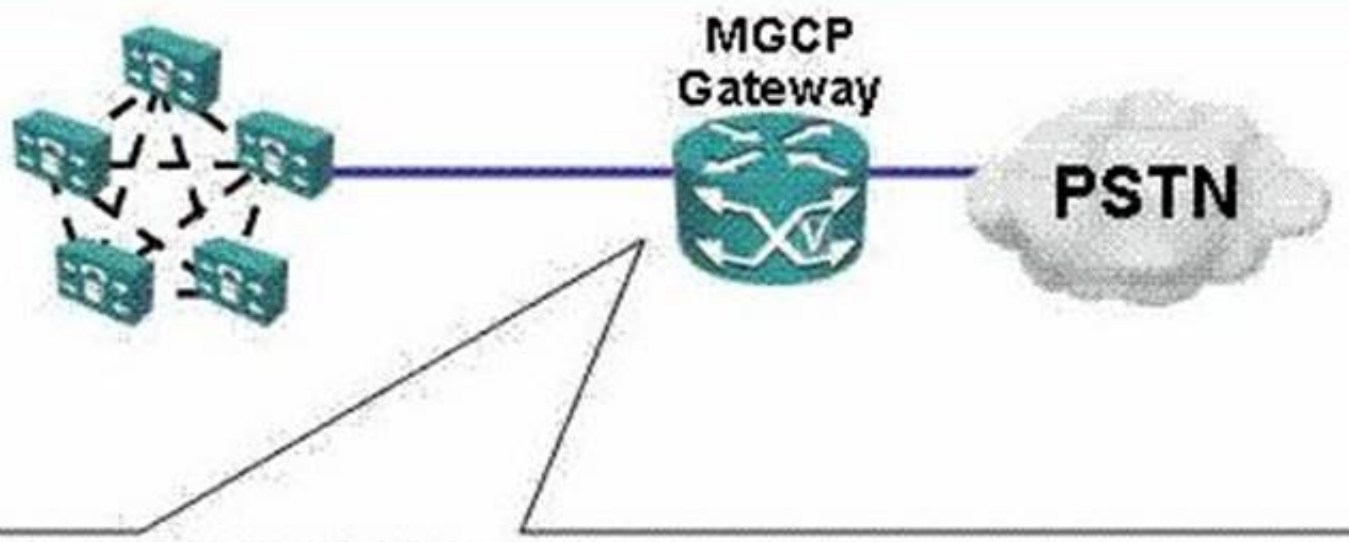
Where is a Local Route Group configuration applied?

- A. In each IP phone
- B. In each device pool
- C. In each location
- D. In each region
- E. In each route list

**Answer: B**

#### NEW QUESTION 107

Refer to the exhibit. What should be entered in the Name field when configuring Cisco Unified Communications Manager to control voice port T1 1/0/0 in BR2 GW?



```
BR2_GW#show interface FastEthernet0/0
FastEthernet0/0 is up, line protocol is up
  Hardware is Gt96k FE, address is 0012.005f.eef0 (bia 002.005f.eef0)
  Internet address is 10.2.120.1/24
  MTU 1500 bytes, BW 100000 Kbit, DLY 1000000 usec,
    reliability 255/255, txload 1/255, rxload 1/255
  Encapsulation ARPA, loopback not set
  ARP type: ARPA, ARP Timeout 04:00:00
```

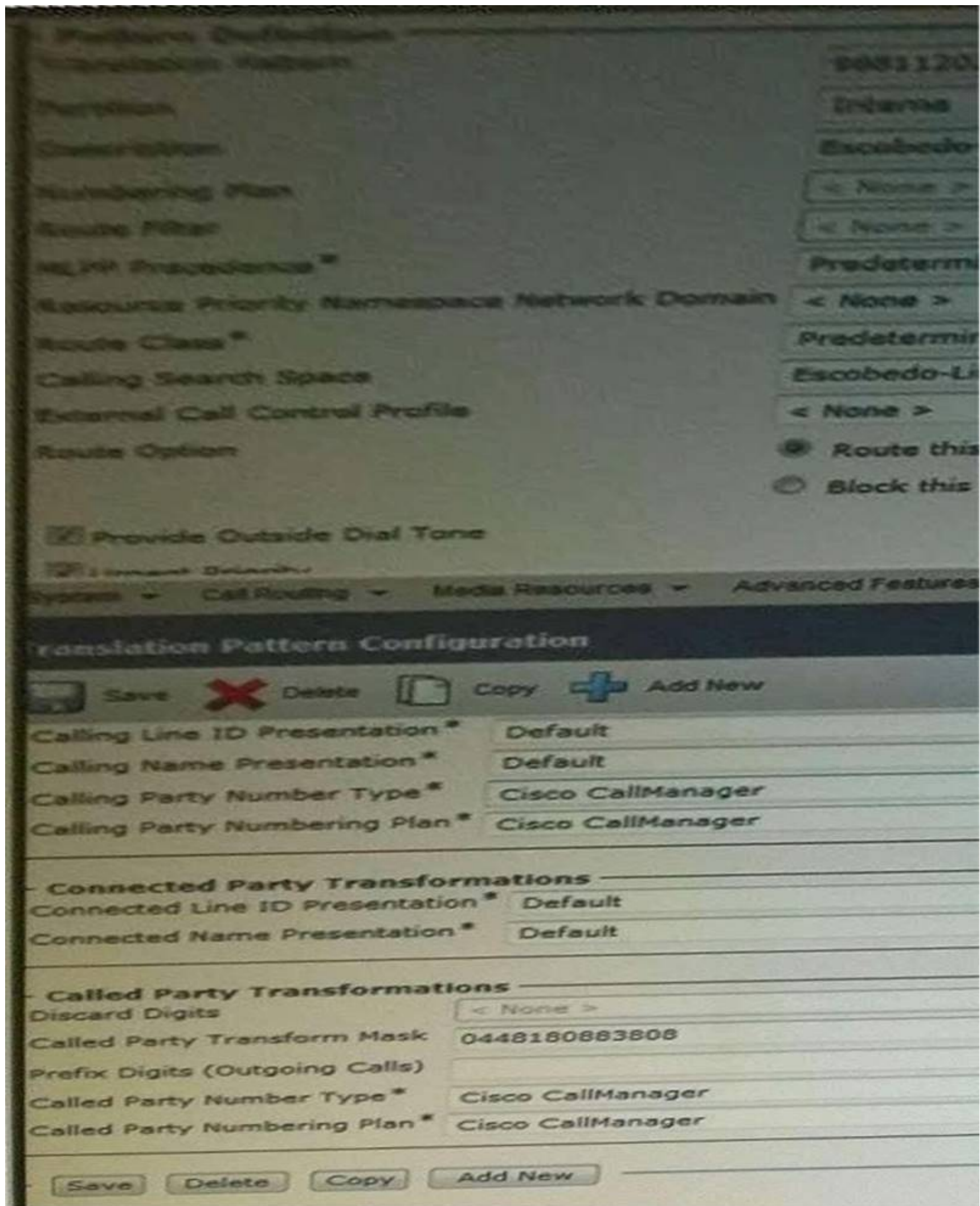
- A. S0/DS1-0@BR2\_GW
- B. BR2\_GW
- C. 10.2.120.1
- D. S0/DS1@SDA0012005FEEF0

**Answer: B**

#### NEW QUESTION 110

Refer to the exhibit.





ABC Company uses the digit 9 to get a dial tone and type a DN. A user needs to type 8811202 and automatically send the call to a cellphone. The Network Administrator did this configuration, but it is not working. Which two actions can the Administrator take to solve this problem? (Choose two)

- A. In the Translation Pattern option, delete the digit "8".
- B. In the Translation Pattern option, delete the digit "9".
- C. In the Route Option option, select Block this Pattern.
- D. In the Called Party Transform Mask option, prefix the digit "9".

**Answer:** BD

#### NEW QUESTION 113

Which two options are IOS conference bridge types in CUCM? (Choose two)

- A. Cisco IOS Enhanced Conference Bridge
- B. Cisco IOS Standard Conference Bridge
- C. Cisco IOS Software Conference Bridge
- D. Cisco IOS Hardware Conference Bridge
- E. Cisco IOS Conference Bridge

**Answer:** AE

#### NEW QUESTION 114

Which two algorithms are valid to distribute calls in a route group? (Choose two.)

- A. broadcast
- B. circular
- C. top-down
- D. bottom-up
- E. round-robin

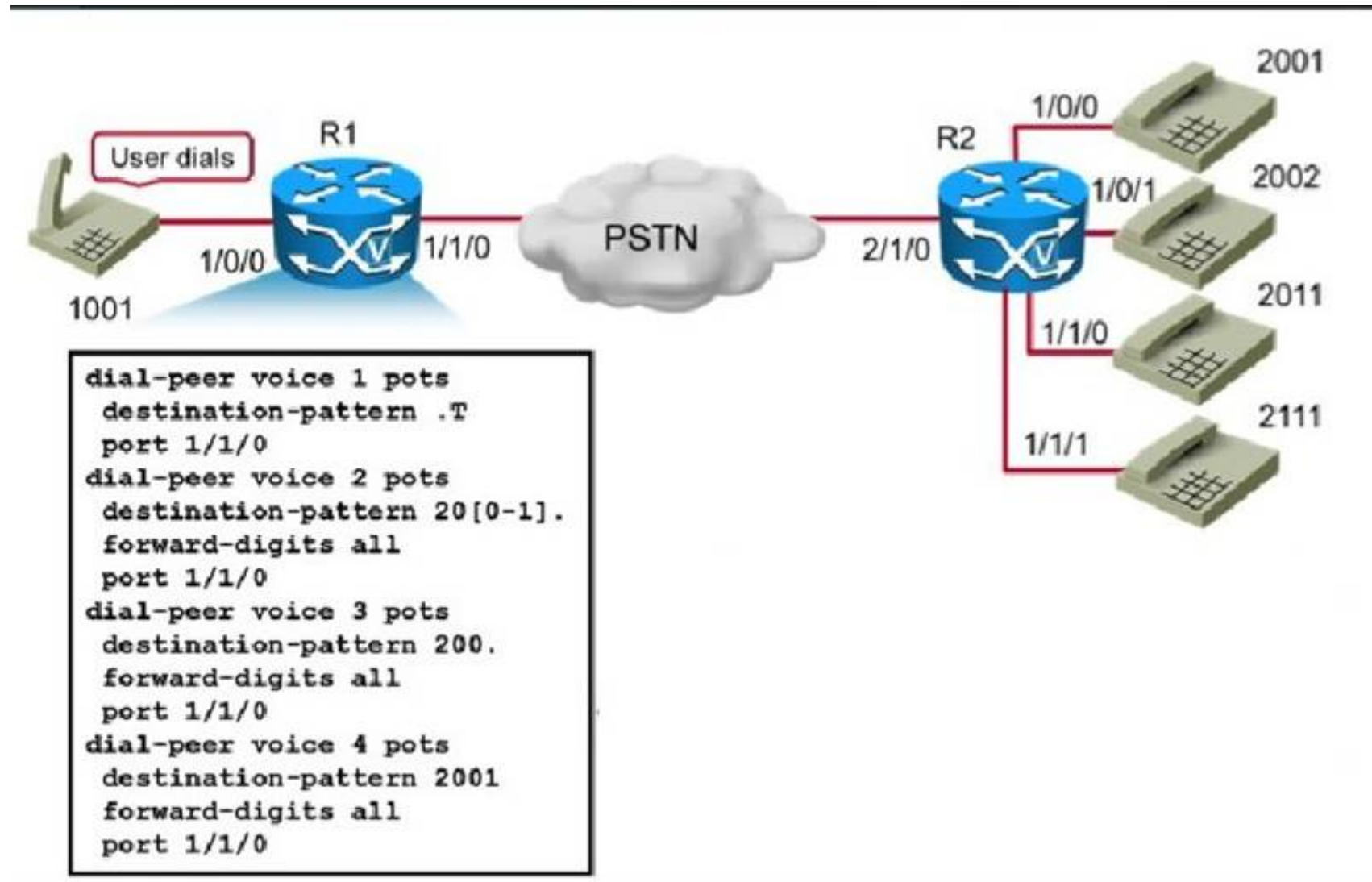
**Answer:** BC

**Explanation:** Reference:

[http://www.cisco.com/c/en/us/td/docs/voice\\_ip\\_comm/cucm/admin/7\\_1\\_2/ccmcf/bccm-712cm/b03rtgrp.pdf](http://www.cisco.com/c/en/us/td/docs/voice_ip_comm/cucm/admin/7_1_2/ccmcf/bccm-712cm/b03rtgrp.pdf) (page 2)

#### NEW QUESTION 116

Refer to Exhibit:



If the user at extension 1001 dials the user at extension 2111, which dial peer is used to route the call?

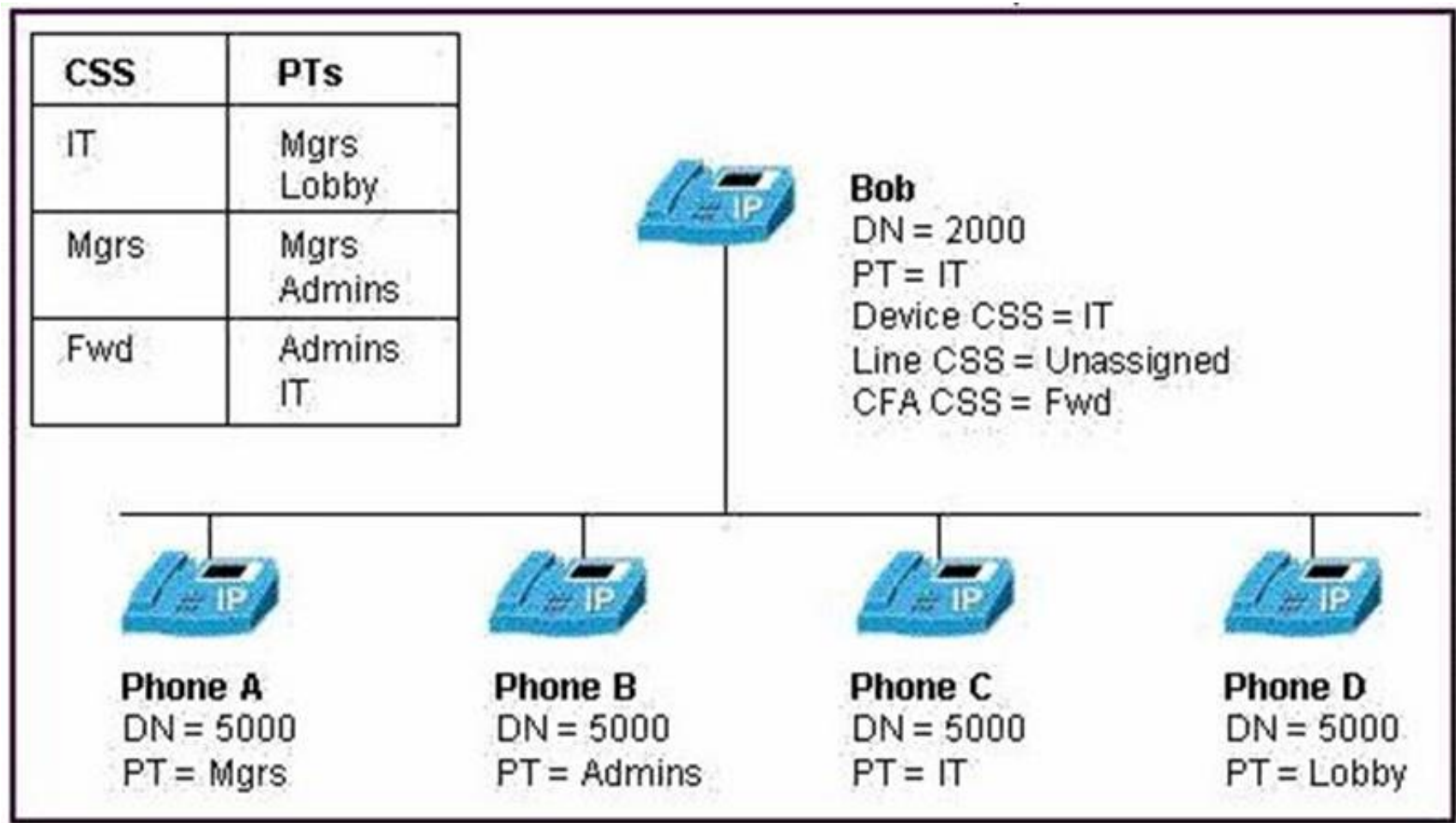
- A. 3
- B. 2
- C. 4
- D. 1

**Answer:** D

#### NEW QUESTION 121

Refer to the exhibit. Bob has set his phone to forward calls to extension 5000. When a call is placed to extension 2000, which phone will ring?






- A. Phone A
- B. Phone B
- C. Phone C
- D. Phone D

Answer: B

NEW QUESTION 122

Refer to the exhibit.

 Cisco Unified CM Administration  
For Cisco Unified Communications Solutions

System ▾ Call Routing ▾ Media Resources ▾ Advanced Features ▾ Device ▾ Application ▾ User Management ▾ Bulk Administration ▾ Help ▾

Gateway Configuration

Save

Delete

Copy

Reset

Apply Config

Add New

Status

Status: Ready

Device Information

Product

Device Protocol

Registration:

IPv4 Address:

⚠ Device is not trusted

Device Name\*

Description

Device Pool\*

Common Device Configuration

Call Classification\*

Media Resource Group List

Packet Capture Mode\*

Packet Capture Duration

H.323 Gateway

H.225

Unknown

10.200.6.3

DP-Monterrey

▾

< None >

▾

OffNet

▾

MRGL-Monterrey

▾

None

▾

A Network Administrator needs to create a SIP route pattern to communicate with Monterrey's Gateway. The Administrator does not understand why this is not working properly. Which two statements explain the issue and resolve the problem? (Choose two.)

- A. The Administrator needs to set up a SIP trunk between Monterrey's Gateway and Cisco UnifiedCommunications Manager.
- B. The Administrator should type the reload command into Monterrey's Gateway
- C. The issue is caused by a failure of communication between the Monterrey's Gateway and Cisco Unified Communications Manager
- D. The issue is caused by incorrect protocol integration between Monterrey's Gateway and CiscoUnified Communications Manager.

Answer: AD

NEW QUESTION 123

If the route patterns 5XXX, 51XX, 513X, and 5134 exist within a call route database, which pattern would be matched if the dialed number was 5124?



- A. 5XXX
- B. 51XX
- C. 513X
- D. 5134

**Answer:** B

#### NEW QUESTION 125

Which three Cisco Unified CallManager configuration steps are required to support third party SIP phones? (Choose three.)

- A. Configure the device in Cisco Unified CallManager.
- B. Change the proxy address in the SIP phone to an IP address or the Fully Qualified Domain Name (FQDN) of Cisco Unified CallManager.
- C. Associate the device with the end user.
- D. Configure the phone with the TLS username and password.
- E. Configure the end user in Cisco Unified CallManager.
- F. Add the MAC address of the Cisco Unified CallManager server to the SIP phone configuration page.

**Answer:** ACE

#### NEW QUESTION 127

When the Cisco IOS router or gateway receives a call setup request, what is the PID value of the default dial peer?

- A. ID:3
- B. PID:6
- C. PID:0
- D. PID:4
- E. PID:5
- F. PID:1
- G. PID:2
- H. PID:7

**Answer:** C

#### NEW QUESTION 132

Which three Cisco Unified Communications Manager settings can be used to support IP phone services? (Choose three.)

- A. Device Defaults
- B. Enterprise Parameters
- C. IP Phone Service Configuration window
- D. Common Phone Profile
- E. Service Parameters
- F. Phone Configuration window

**Answer:** BDF

#### NEW QUESTION 133

After you configure a dial plan to call a particular prefix in the PSTN, you notice that some outbound calls are taking longer than usual (15 seconds) before you hear a connecting tone. What is the likely cause of this issue?

- A. The outbound gateway must be configured with the new prefix.
- B. The endpoint is choosing the best codec to use.
- C. The new prefix is overlapping other route patterns.
- D. With some prefixes, this is normal behavior of the PSTN.

**Answer:** C

#### NEW QUESTION 137

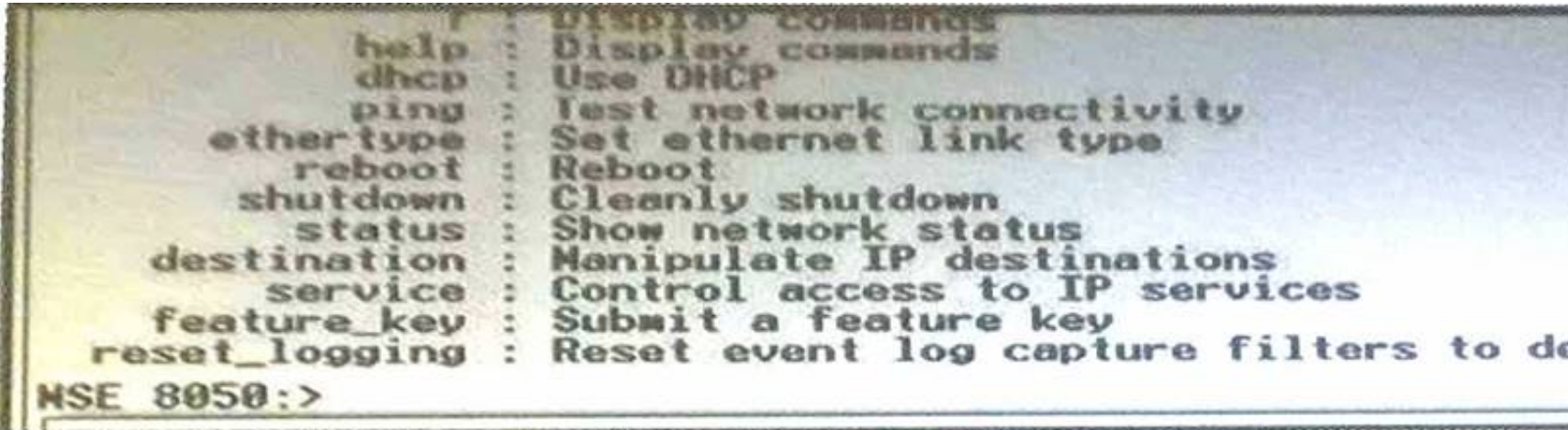
When creating a route pattern, which two of these options should you avoid? (Choose two)

- A. Lowercase characters, such as a, b, c
- B. Wildcards.
- C. Numbers.
- D. Uppercase characters, such as A, B, C.
- E. Spaces.
- F. Special characters and escape sequences, such as @ and \+.

**Answer:** AE

#### NEW QUESTION 142

Refer to the exhibit.



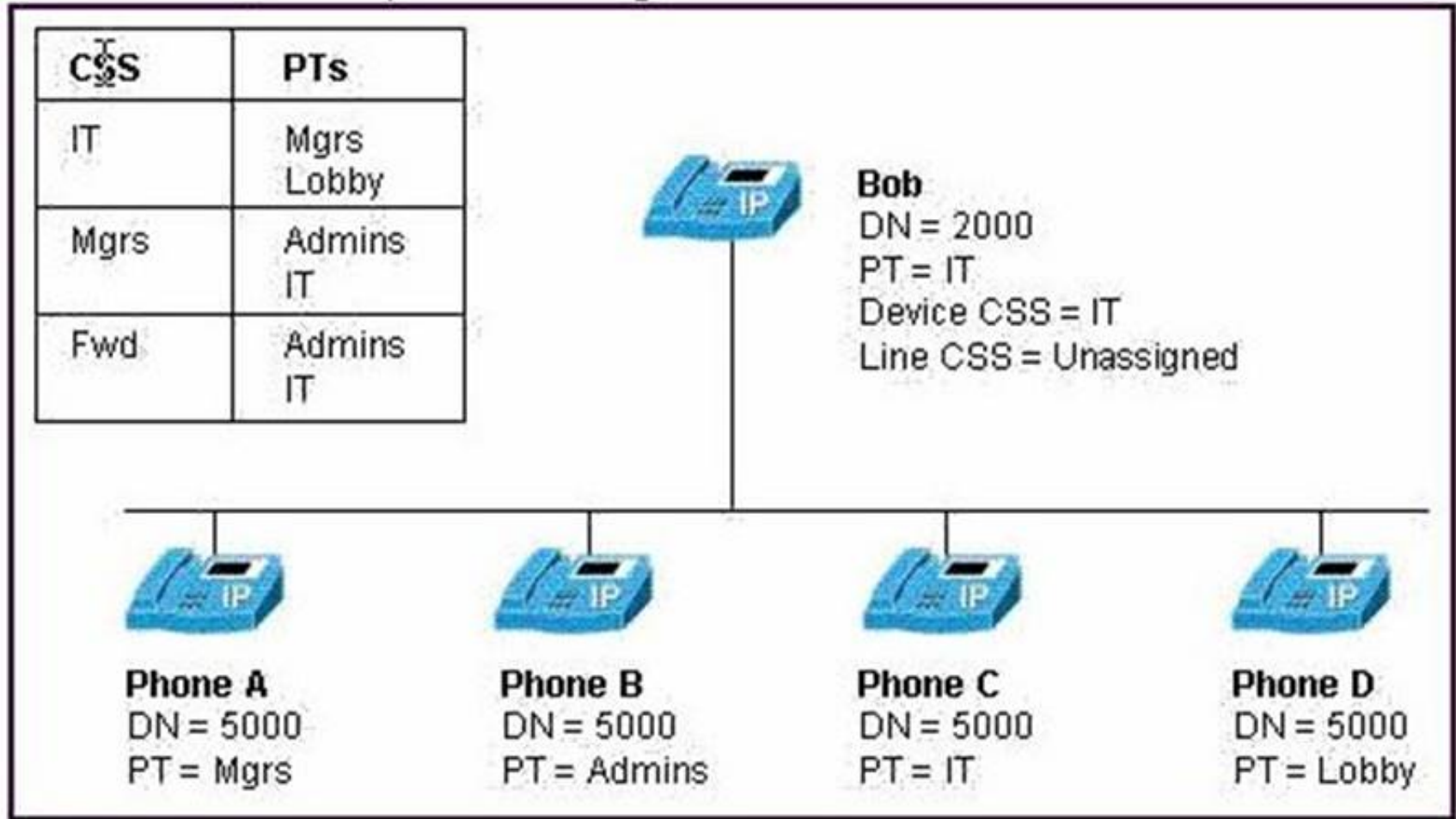
What is the command to place the static IP address by CLI in the Cisco TelePresence MSE 8000?

- A. MSE 8050: static 0 10.10.2.13 255.255.255.255 10.10.2.1 200.87.100.10 200.87.100.20.
- B. MSE 8050: static 0 10.10.2.13 255.255.255.0 10.10.2.1 200.87.100.10 200.87.100.20.
- C. MSE 8050: static 1 10.10.2.13 255.255.255.0 10.10.2.1 200.87.100.10 200.87.100.20.
- D. MSE 8050: static ip 0 10.10.2.13 255.255.255.0 10.10.2.1 200.87.100.10 200.87.100.20.

Answer: B

NEW QUESTION 146

Refer to the exhibit. When Bob dials extension 5000, which phone will ring?



- A. Phone A
- B. Phone B
- C. Phone C
- D. Phone D

Answer: A

NEW QUESTION 150

By default, what value is voice traffic marked as on a Cisco Catalyst Switch?

- A. DSCP EF value 46, Cos 5.
- B. DSCP EF value 46, Cos 7.
- C. DSCP CAS6 value 21, Cos 3.
- D. DSCP AF21, Cos 5.

Answer: A

NEW QUESTION 153

When CUCM is configured with a route pattern, translation transformation, which is matched first when a user dials 914085551212?

- A. route pattern
- B. translation pattern
- C. called-party transformation
- D. calling-party transformation

**Answer:** B

**Explanation:** Link:

[http://www.cisco.com/en/US/docs/voice\\_ip\\_comm/cucm/admin/8\\_5\\_1/ccmcfg/b03txpat.htm](http://www.cisco.com/en/US/docs/voice_ip_comm/cucm/admin/8_5_1/ccmcfg/b03txpat.htm) I

Route pattern is used to route calls to external entities. The calling and called party numbers resulting from the digit transformations configured in the route pattern and/or route lists are then processed by any Transformation Patterns configured for the devices contained in the chosen Route Group.

#### NEW QUESTION 158

Which two are enterprise parameters? (Choose two.)

- A. User search limit
- B. T302 parameter
- C. Enable Call Detail Records
- D. Enable Dependency Records
- E. codecs parameters for voice media-streaming applications

**Answer:** AD

#### NEW QUESTION 160

Refer to the exhibit.

9.1[2-9]XX[2-9]XXXXXX

9.18[0,6-8][0,6-8]XXXXXX

9.1900XXXXXX

9011.!

9011.!#

To reach an external number, a user first dials a 9. Which route pattern will be matched if a user dials an international number 011442288223001 and terminates the interdigit timeout?

- A. 9.1[2-9]XX[2-9]XXXXXX.
- B. 9.18[0,6-8][0,6-8]XXXXXX.
- C. 9.1900XXXXXX.
- D. 9011.!
- E. 9011.!#.

**Answer:** E

#### NEW QUESTION 165

Which three options can belong to specific partitions? (Choose three.)

- A. voice-mail servers
- B. directory numbers
- C. translation patterns
- D. gateways
- E. IP phones
- F. route patterns

**Answer:** BCF

**Explanation:** Reference: [http://www.cisco.com/c/en/us/td/docs/voice\\_ip\\_comm/cucm/admin/7\\_1\\_2/ccmcfg/bccm-712cm/b02devpl.html](http://www.cisco.com/c/en/us/td/docs/voice_ip_comm/cucm/admin/7_1_2/ccmcfg/bccm-712cm/b02devpl.html) (configuring a device pool)

#### NEW QUESTION 168

The abc.com Lumber Company would like to use AAR to reroute calls made from HQ to remote locations when those calls are rejected by the IP WAN because of insufficient bandwidth. The abc.com Lumber Company uses 5-digit dialing to all locations.

abc.com Headquarters has a DID range from 770-555-0001 to 770-557-0500 and the Macon facility has a DID range from 912-556-0500 to 912-556-0550.

How should the external phone masks be configured?

- A. 770557XXXX
- B. 9125560XXX
- C. 770555XXXX
- D. 77055XXXXX

**Answer:** D

#### NEW QUESTION 169

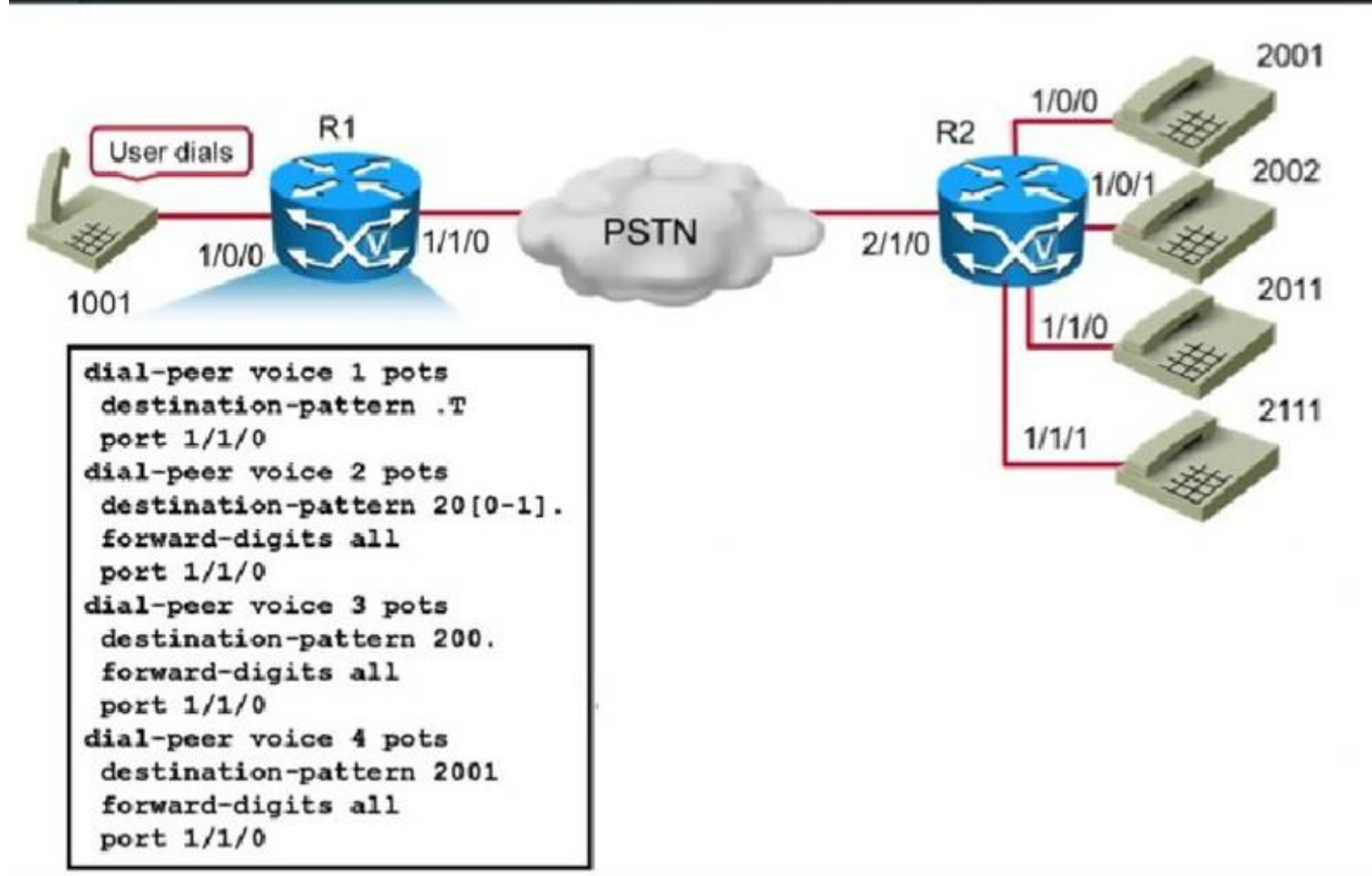
When dialing off-hook from an SCCP phone, how does Cisco Unified Communications Manager analyze the incoming dialed digits?

- A. SIP dial rules
- B. en bloc dialing
- C. digit-by-digit analysis
- D. KPML

**Answer:** C

#### NEW QUESTION 170

Refer to Exhibit:



If the user at extension 1001 dials the user at extension 2011, which dial peer is used to route the call?

- A. 3
- B. 2
- C. 4
- D. 1

**Answer: B**

#### NEW QUESTION 173

Users that are subscribed to the default corporate directory are complaining that when they press the Directories button, they receive an error message regarding the URL. Which two parameters need to be edited? (Choose two.)

- A. Verify that the corporate directory has the Enabled check box checked in the Enterprise Parameter> Phone URL Parameters page.
- B. Reset the Enterprise Phone URL Parameters.
- C. Reset the Service Parameter > Phone URL Parameters.
- D. Change the URLs under Enterprise Parameters to match the DNS name or the IP address being used by the server being configured and reset the IP phones.
- E. Verify that the corporate directory has the Enabled check box checked in the IP Phone Services > Configuration Service Information page.
- F. Select the Service Parameter for the appropriate server and Cisco CallManager (active) and change the URLs for each service to match the DNS name or IP address of the server being configured.

**Answer: DE**

#### NEW QUESTION 175

What is the correct procedure for implementing call coverage?

- A. configure directory numbers, partitions, hunt pilot, hunt list, line groups
- B. configure partitions, line groups, hunt lists, hunt pilot, directory numbers
- C. configure partitions, directory numbers, line groups, hunt lists, hunt pilot
- D. configure partitions, directory numbers, hunt pilot, hunt list, line groups

**Answer: C**

#### NEW QUESTION 177

On Cisco Unified Communications Manager, where can you change the softkey templates from your IP phone?

- A. Cisco Unified Communications Manager Serviceability > Device > Device Settings > Softkey Templates.
- B. Cisco Unified Communications Manager Administration > Device > Device Settings > Softkey Templates.
- C. Cisco Unified Communications Manager Administration > Device > Device Settings > Phone ButtonTemplate.
- D. Cisco Unified Communications Manager Administration > Device > Device Settings > Device Defaults.

**Answer: B**

#### NEW QUESTION 181

Which four call coverage features are used by voice gateways? (Choose four.)



- A. call hunt
- B. Call Park
- C. Call Pickup
- D. call redirecting
- E. overlaid phone-dn
- F. basic automatic call distribution
- G. overlaid ephone-dn
- H. basic manual call distribution

**Answer:** ACFG

#### NEW QUESTION 186

A voice engineer is troubleshooting an issue that involves incoming calls to POTS lines. Which command verifies the digits that are received by voice-port?

- A. debug voip dial-per
- B. debug vtsp session
- C. debug vtsp dsp
- D. debug call treatment
- E. debug voice protocol

**Answer:** B

#### NEW QUESTION 190

The abc.com Lumber Company uses a centralized call processing model to connect their saw mills in Albany and Columbus. Each mill is configured as a separate Location in Cisco Unified CallManager at HQ. Each Location has been configured with 256 Kbps of voice bandwidth. How many G.729 calls can be placed between Locations simultaneously?

- A. 8
- B. 10
- C. 5
- D. 23

**Answer:** B

#### NEW QUESTION 192

An organization has built their video infrastructure to perform ad hoc video calls, but they also need to conduct managed video conference calls. Which hardware component is needed to conduct these calls?

- A. VCS-E
- B. IOS gateway
- C. MCU
- D. TelePresence server

**Answer:** D

#### NEW QUESTION 194

Which three CLI commands allow you to verify the correct VoIP dial-peer matching? (Choose three.)

- A. debug ccsp messages
- B. debug voip ccapi inout
- C. debug dialpeer match
- D. debug voip dialpeer inout
- E. show dialplan number

**Answer:** BDE

#### NEW QUESTION 196

When configuring an H.323 gateway, which configuration option can be used to set whether an incoming call is considered off the network (OffNet) or on the network (OnNet)?

- A. call classification
- B. call location
- C. device pool
- D. signaling port

**Answer:** A

#### NEW QUESTION 199

Which discard digits instruction removes all digits prior to the North American Numbering Plan portion of the route pattern?

- A. PreDot
- B. PreAt
- C. Pre
- D. PreNANP

**Answer:** B



#### NEW QUESTION 204

Which distribution algorithm is used for a route group?

- A. Circular, top down.
- B. Longest idle, broadcast.
- C. Circular, top down, longest idle, broadcast.
- D. Top down, broadcast, circular.

**Answer:** A

#### NEW QUESTION 209

An IP phone user has dialed "15152421234". Which route pattern will be used?

- A. 1515[^0-1]4[123]+
- B. 1515[^0-2]4[01234]
- C. 1515[^0-1]42[1234]
- D. 1515[^0-1]421[1-4]+

**Answer:** D

#### NEW QUESTION 211

What is the correct path selection for a call that is routed through a Cisco Unified Communications Manager system?

- A. Devices -> Route Group -> Route List -> Route Pattern
- B. Route List -> Route Pattern -> Route Group -> Devices
- C. Route Pattern -> Route List -> Route Group -> Devices
- D. Route Group -> Devices -> Route Pattern -> Route List

**Answer:** C

#### NEW QUESTION 215

Which DiffServ PHB classification is recommended by Cisco for interactive video traffic?

- A. AF31
- B. CS3
- C. EF
- D. AF41
- E. CS4

**Answer:** D

#### NEW QUESTION 219

Which two options can a route pattern be assigned? (Choose two.)

- A. a gateway that is not assigned to a route group
- B. a gateway that is assigned to a route group
- C. a route list with no route groups configured
- D. a route list with one or more route groups configured

**Answer:** BD

#### NEW QUESTION 222

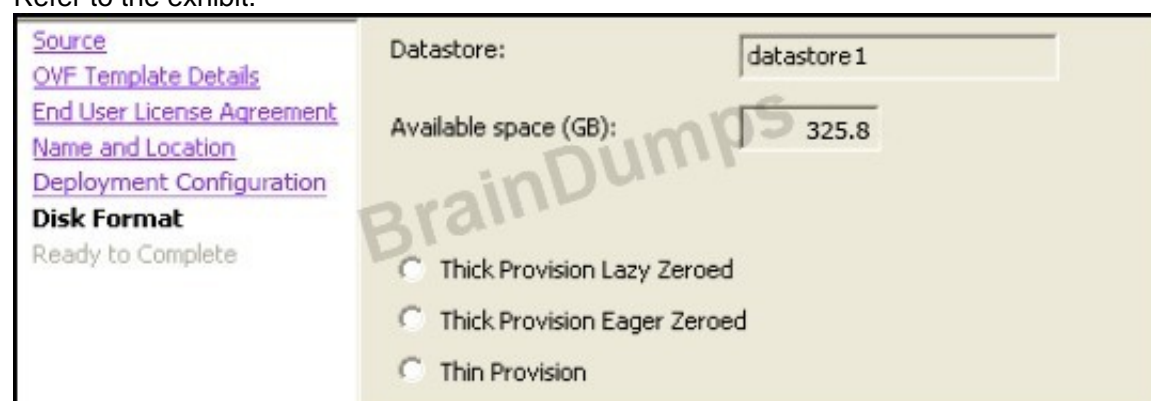
Which type of dial plan implements destinations by using a format that is similar to email addresses?

- A. H.323.
- B. E.164.
- C. DNS.
- D. URI.

**Answer:** D

#### NEW QUESTION 227

Refer to the exhibit.



Which option is the most highly recommended option to install Cisco TelePresence Conductor on the virtual machine?

- A. Thick Provision Eager Zeroed
- B. Thick Provision Lazy Zeroed
- C. Thick Provision
- D. Thin Provision

**Answer:** B

**Explanation:** Reference:

[http://www.cisco.com/c/dam/en/us/td/docs/telepresence/infrastructure/conductor/install\\_guide/TelePresence-Conductor-Virtual-Machine-Install-Guide-XC3-0.pdf](http://www.cisco.com/c/dam/en/us/td/docs/telepresence/infrastructure/conductor/install_guide/TelePresence-Conductor-Virtual-Machine-Install-Guide-XC3-0.pdf)  
(page 8)

#### NEW QUESTION 232

When dialing 1234, which rule is matched first?

- A. route pattern 1XXX
- B. route pattern 12[123]X
- C. translation pattern 12[123]X
- D. translation pattern 1XXX
- E. directory number 12345

**Answer:** C

#### NEW QUESTION 235

When a call is attempted during a particular time of day, what determines the partitions where calling devices search?

- A. time schedules
- B. calling periods
- C. dial schedules
- D. time periods

**Answer:** A

#### NEW QUESTION 236

Route lists determine the order of preference for route group usage. If a route list is configured, what is the minimum number of route groups that you must configure?

- A. 1
- B. 2
- C. 3
- D. 4
- E. 5
- F. 6
- G. 7
- H. 8

**Answer:** A

#### NEW QUESTION 237

On what equipment do you configure Layer 2 to Layer 3 QoS mapping?

- A. switch
- B. router
- C. firewall
- D. Cisco Unified Communications Manager
- E. bridge

**Answer:** A

**Explanation:** <http://www.cisco.com/c/en/us/td/docs/switches/lan/catalyst4500/12-2/31sg/configuration/guide/conf/qos.html>

#### NEW QUESTION 242

In a centralized call-processing solution, there are five sites connected through an IP WAN. To optimize the utilization of the IP WAN, CAC needs to be implemented.

How should CAC be implemented?

- A. Use a gatekeeper to control allocated bandwidth properly.
- B. Use locations CAC with a single location.
- C. Use a gatekeeper and Cisco Unified Border Element to provide CAC to sites that use a combination of SIP and MGCP gateways.
- D. Use a gatekeeper to only control those locations that use H.323 gateways and a Cisco Unified BorderElement to control those sites that use MGCP or SIP gateways.
- E. Use locations CAC with five locations in addition to Hub none.

**Answer:** E

#### NEW QUESTION 245

The Cisco TelePresence Conductor will not handle conference requests if the administrator username/ password is configured as which of these options?

- A. admin/TANDBERG
- B. administrator/TANDBERG
- C. tandberg/Cisco
- D. admin/Cisco
- E. cisco/Cisco
- F. administrator/Cisco
- G. cisco/TANDBERG

**Answer: A**

#### NEW QUESTION 250

A customer recently installed a Cisco TelePresence MCU 5320. The customer wants a virtual meeting room that restricts participants from communicating before the customer joins the call.

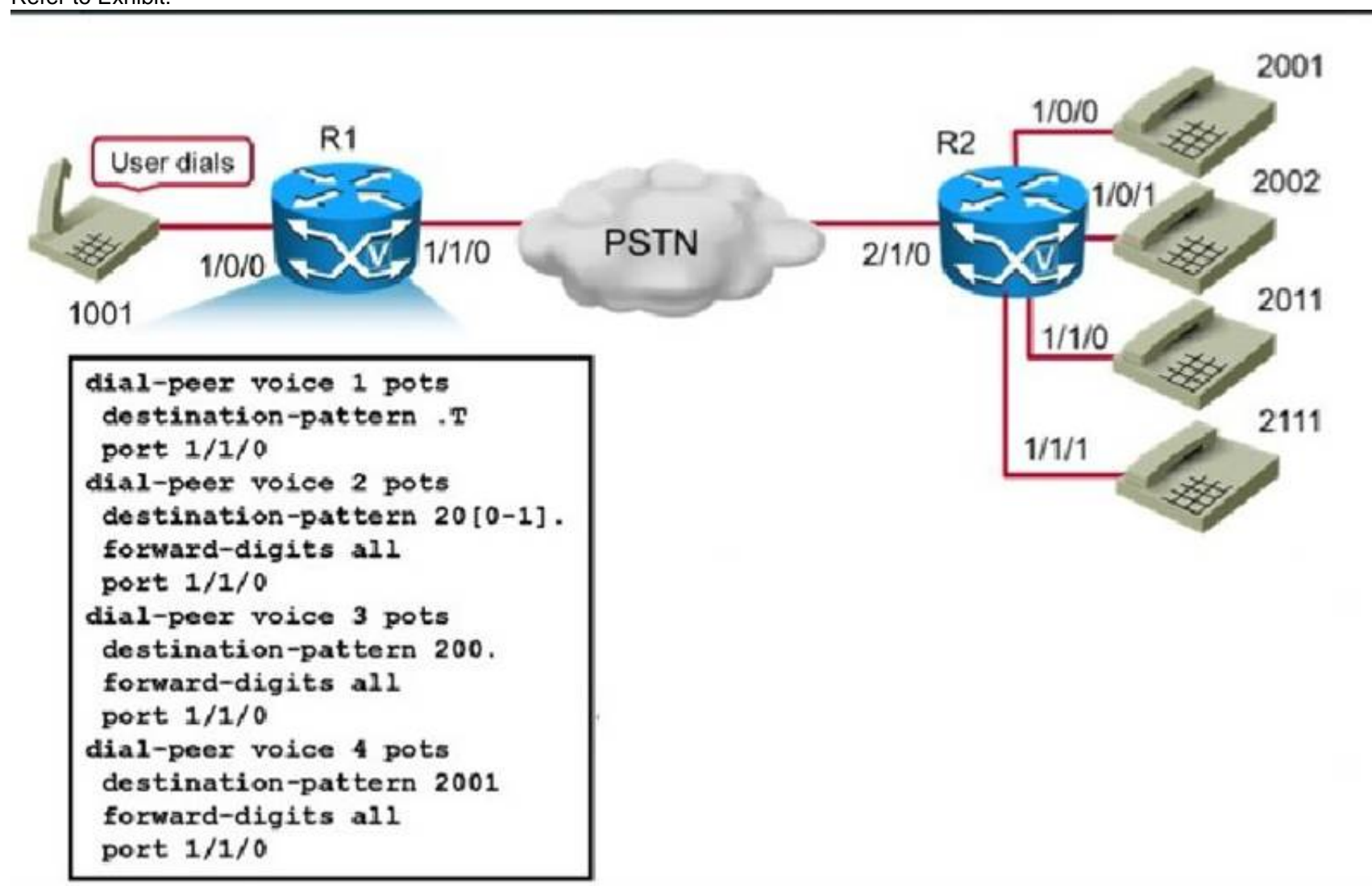
Which feature in the MCU enables this functionality?

- A. Floor and chair control.
- B. Numeric ID.
- C. PIN codes.
- D. Owner.

**Answer: A**

#### NEW QUESTION 251

Refer to Exhibit:



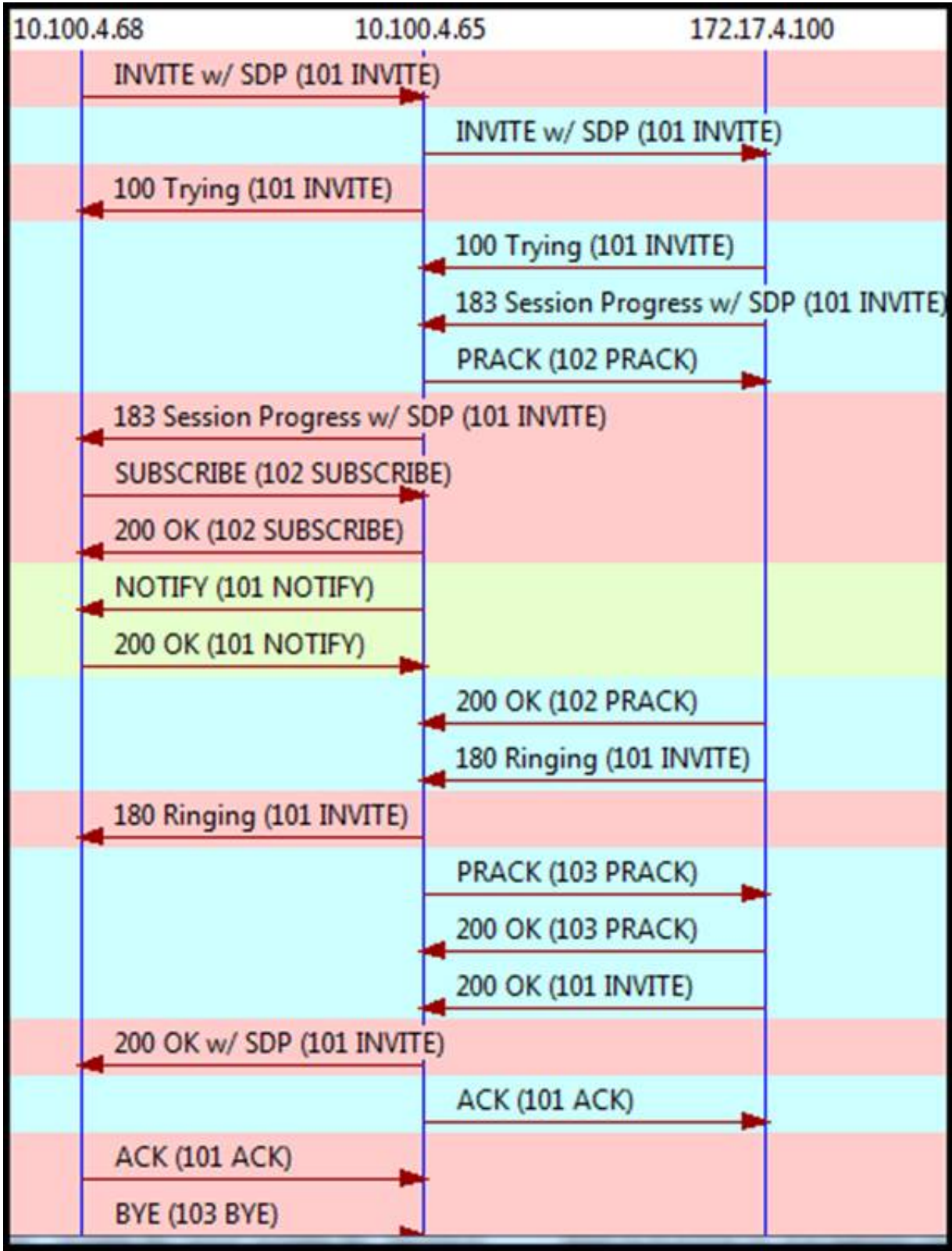
If the user at extension 1001 dials the user at extension 2001, which dial peer is used to route the call?

- A. 3
- B. 2
- C. 4
- D. 1

**Answer: C**

#### NEW QUESTION 253

Refer to the exhibit.



Which party has a SIP B2BUA role in the call?

- A. 172.17.4.100
- B. 10.100.4.65 and 172.17.4.100
- C. 10.100.4.65
- D. None of the parties has a B2BUA role in the call.
- E. 10.100.4.68 and 10.100.4.65

Answer: C

NEW QUESTION 257

.....

## Thank You for Trying Our Product

### We offer two products:

1st - We have Practice Tests Software with Actual Exam Questions

2nd - Questions and Answers in PDF Format

### 300-070 Practice Exam Features:

- \* 300-070 Questions and Answers Updated Frequently
- \* 300-070 Practice Questions Verified by Expert Senior Certified Staff
- \* 300-070 Most Realistic Questions that Guarantee you a Pass on Your First Try
- \* 300-070 Practice Test Questions in Multiple Choice Formats and Updates for 1 Year

**100% Actual & Verified — Instant Download, Please Click**  
**[Order The 300-070 Practice Test Here](#)**