

# VMware

## Exam Questions 2V0-621D

VMware Certified Professional 6 – Data Center Virtualization Delta Beta



#### NEW QUESTION 1

An object has inherited permissions from two parent objects. What is true about the permissions on the object?

- A. The common permissions between the two are applied and the rest are discarded.
- B. The permissions are combined from both parent objects.
- C. No permissions are applied from the parent objects.
- D. The permission is randomly selected from either of the two parent objects.

**Answer:** B

**Explanation:** Most inventory objects inherit permissions from a single parent object in the hierarchy. For example, a datastore inherits permissions from either its parent datastore folder or parent datacenter. Virtual machines inherit permissions from both the parent virtual machine folder and the parent host, cluster, or resource pool simultaneously. To restrict a user's privileges on a virtual machine, you must set permissions on both the parent folder and the parent host, cluster, or resource pool for that virtual machine.

Reference: [http://pubs.vmware.com/vsphere-4-esx-vcenter/index.jsp?topic=/com.vmware.vsphere.dcadm.doc\\_41/vsp\\_dc\\_admin\\_guide/managing\\_users\\_groups\\_roles\\_and\\_permissions/c\\_hierarchical\\_inheritance\\_of\\_permissions.html](http://pubs.vmware.com/vsphere-4-esx-vcenter/index.jsp?topic=/com.vmware.vsphere.dcadm.doc_41/vsp_dc_admin_guide/managing_users_groups_roles_and_permissions/c_hierarchical_inheritance_of_permissions.html)

#### NEW QUESTION 2

Which two are valid Identity Sources when configuring vCenter Single Sign-On? (Choose two.)

- A. Radius
- B. NIS
- C. OpenLDAP
- D. LocalOS

**Answer:** CD

**Explanation:** Active Directory (Integrated Windows Authentication)

Use this option for native Active Directory implementations. The machine on which the vCenter Single Sign-On service is running must be in an Active Directory domain if you want to use this option.

See Active Directory Identity Source Settings.

Active Directory as an LDAP Server

This option is available for backward compatibility. It requires that you specify the domain controller and other information. See Active Directory LDAP Server and OpenLDAP Server Identity Source Settings.

OpenLDAP

Use this option for an OpenLDAP identity source. See Active Directory LDAP Server and OpenLDAP Server Identity Source Settings.

LocalOS

Use this option to add the local operating system as an identity source. You are prompted only for the name of the local operating system. If you select this option, all users on the specified machine are visible to vCenter Single Sign-On, even if those users are not part of another domain.

Reference: <http://pubs.vmware.com/vsphere-60/index.jsp?topic=%2Fcom.vmware.vsphere.security.doc%2FGUID-B23B1360-8838-4FF2-B074-71643C4CB040.html>

#### NEW QUESTION 3

An administrator would like to use the VMware Certificate Authority (VMCA) as an Intermediate Certificate Authority (CA). The first two steps performed are:

? Replace the Root Certificate

? Replace Machine Certificates (Intermediate CA)

Which two steps would need to be performed next? (Choose two.)

- A. Replace Solution User Certificates (Intermediate CA)
- B. Replace the VMware Directory Service Certificate (Intermediate CA)
- C. Replace the VMware Directory Service Certificate
- D. Replace Solution User Certificates

**Answer:** AC

**Explanation:** You can replace the VMCA root certificate with a third-party CA-signed certificate that includes VMCA in the certificate chain. Going forward, all certificates that VMCA generates include the full chain. You can replace existing certificates with newly generated certificates. This approach combines the security of third-party CA-signed certificate with the convenience of automated certificate management.

Reference:

<http://pubs.vmware.com/vsphere-60/index.jsp?topic=%2Fcom.vmware.vsphere.security.doc%2FGUID-5FE583A2-3737-4B62-A905-5BB38D479AE0.html>

#### NEW QUESTION 4

An administrator has been instructed to secure existing virtual machines in vCenter Server.

Which two actions should the administrator take to secure these virtual machines? (Choose two.)

- A. Disable native remote management services
- B. Restrict Remote Console access
- C. Use Independent Non-Persistent virtual disks
- D. Prevent use of Independent Non-Persistent virtual disks

**Answer:** BD

**Explanation:** Reference: <http://www.vmware.com/files/pdf/techpaper/VMW-TWP-vSPHR-SECRTY-HRDNG-USLET-101-WEB-1.pdf> (page 11, see the tables)

#### NEW QUESTION 5

An administrator wants to configure an ESXi 6.x host to use Active Directory (AD) to manage users and groups. The AD domain group ESX Admins is planned for administrative access to the host.

Which two conditions should be considered when planning this configuration? (Choose two.)

- A. If administrative access for ESX Admins is not required, this setting can be altered.
- B. The users in ESX Admins are not restricted by Lockdown Mode.
- C. An ESXi host provisioned with Auto Deploy cannot store AD credentials.
- D. The users in ESX Admins are granted administrative privileges in vCenter Server.

**Answer:** AC

**Explanation:** The setting can be altered if administrative access for ESX admins is not required. The second rule is that the ESX admins users should not be restricted by Lockdown mode.

#### NEW QUESTION 6

An administrator needs two vCenter Servers to be visible within a single vSphere Web Client session.

Which two vCenter Server and Platform Services Controller (PSC) configurations would accomplish this? (Choose two.)

- A. Install a single PSC with two vCenter Servers registered to it.
- B. Install two PSCs in the same Single Sign-On domain with one vCenter Server registered to each PSC.
- C. Install a single PSC with two vCenter Servers registered to it and configure Linked Mode.
- D. Install two PSCs in the same Single Sign-On domain with one vCenter Server registered to each PSC and configure Linked Mode.

**Answer:** AB

**Explanation:** To have two vcenter servers visible within a single vSphere web client session, you have to install a single PSC with both vCenter servers registered. You also need to install two PSCs in the same SSO domain with one vCenter Server registered to each PSC.

#### NEW QUESTION 7

An administrator decides to change the root password for an ESXi 6.x host to comply with the company's security policies.

What are two ways that this can be accomplished? (Choose two.)

- A. Use the Direct Console User Interface to change the password.
- B. Use the passwd command in the ESXi Shell.
- C. Use the password command in the ESXi Shell.
- D. Use the vSphere client to update local users.

**Answer:** AB

**Explanation:** To prevent unauthorized access to the vCenter Server Appliance Direct Console User Interface, you can change the password of the root user. The default root password for the vCenter Server Appliance is the password you enter during deployment of the virtual appliance.

Reference: <http://pubs.vmware.com/vsphere-60/index.jsp?topic=%2Fcom.vmware.vsphere.vcsa.doc%2FGUID-48BAF973-4FD3-4FF3-B1B6-5F7286C9B59A.html>

#### NEW QUESTION 8

An administrator wants to provide users restricted access. The users should only be able to perform the following tasks:

- ? Create and consolidate virtual machine snapshots
- ? Add/Remove virtual disks
- ? Snapshot Management

Which default role in vCenter Server would meet the administrator's requirements for the users?

- A. Virtual machine user
- B. Virtual machine power user
- C. Virtual Datacenter administrator
- D. VMware Consolidated Backup user

**Answer:** B

**Explanation:** Virtual Machine Power User is a sample role that grants a user access rights only to virtual machines; can alter the virtual hardware or create snapshots of the VM.

Reference: <http://blog.pluralsight.com/vmware-access-control-101-roles-and-permissions>

#### NEW QUESTION 9

An administrator is able to manage an ESXi 6.x host connected to vCenter Server using the vSphere Web Client but is unable to connect to the host directly.

Which action should the administrator take to correct this behavior?

- A. Restart management agents on the ESXi host.
- B. Disable Lockdown Mode on the ESXi host through vCenter Server.
- C. Disable the ESXi firewall with the command `esxcli network firewall unload`.
- D. Reboot the ESXi host.

**Answer:** B

**Explanation:** Disable lockdown mode through the DCUI and then enable it through the vCenter Server instead. The vCenter Server does not keep track of lockdown mode state changes that initiated outside of the vCenter Server itself.

Reference: [http://kb.vmware.com/selfservice/microsites/search.do?language=en\\_US&cmd=displayKC&externalId=2040768](http://kb.vmware.com/selfservice/microsites/search.do?language=en_US&cmd=displayKC&externalId=2040768)

#### NEW QUESTION 10

Which two statements are correct regarding vSphere certificates? (Choose two.)

- A. ESXi host upgrades do not preserve the SSL certificate and reissue one from the VMware Certificate Authority (VMCA).
- B. ESXi host upgrades preserve the existing SSL certificate.
- C. ESXi hosts have assigned SSL certificates from the VMware Certificate Authority (VMCA) during install.
- D. ESXi hosts have self-signed SSL certificates by default.

**Answer:** BC

**Explanation:** Of course, ESXi host upgrades preserve existing SSL certificate and it also have assigned SSL certificates from VMCA during the installation process.

#### NEW QUESTION 10

Which three options are available for ESXi Certificate Replacement? (Choose three.)

- A. VMware Certificate Authority mode
- B. Custom Certificate Authority mode
- C. Thumbprint mode
- D. Hybrid Deployment
- E. VMware Certificate Endpoint Authority Mode

**Answer:** ABC

**Explanation:** You can perform different types of certificate replacement depending on company policy and requirements for the system that you are configuring. You can perform each replacement with the vSphere Certificate Manager utility or manually by using the CLIs included with your installation. VMCA is included in each Platform Services Controller and in each embedded deployment. VMCA provisions each node, each vCenter Server solution user, and each ESXi host with a certificate that is signed by VMCA as the certificate authority. vCenter Server solution users are groups of vCenter Server services. See vSphere Security for a list of solution users.

You can replace the default certificates. For vCenter Server components, you can use a set of command-line tools included in your installation. You have several options.

Reference:

<http://pubs.vmware.com/vsphere-60/index.jsp?topic=%2Fcom.vmware.vsphere.install.doc%2FGUID-4469A6D3-048A-471C-9CB4-518A15EA2AC0.html>

#### NEW QUESTION 14

When attempting to log in with the vSphere Web Client, users have reported the error: Incorrect Username/Password

The administrator has configured the Platform Services Controller Identity Source as:

? Type: Active Directory as an LDAP Server

? Domain: vmware.com

? Alias: VMWARE

? Default Domain: Yes

Which two statements would explain why users cannot login to the vSphere Web Client? (Choose two.)

- A. Users are typing the password incorrectly.
- B. Users are in a forest that has 1-way trust.
- C. Users are in a forest that has 2-way trust.
- D. Users are logging into vCenter Server with incorrect permissions.

**Answer:** AB

**Explanation:** The possible explanation for this error might be that the users are typing password incorrectly or they are in a forest with has only 1-way trust. You need 2-way trust to get the credentials accepted.

#### NEW QUESTION 16

Which two methods are recommended for managing the VMware Directory Service? (Choose two.)

- A. Utilize the vmdir command.
- B. Manage through the vSphere Web Client.
- C. Manage using the VMware Directory Service.
- D. Utilize the dc rep command.

**Answer:** AB

**Explanation:** To manage VMware directory service, you can use vmdir command and vsphere web client. VMware directory service is always managed using vmdir command which is specifically used for directory services.

#### NEW QUESTION 18

What are two sample roles that are provided with vCenter Server by default? (Choose two.)

- A. Virtual machine User
- B. Network Administrator
- C. Content Library Administrator
- D. Storage Administrator

**Answer:** AB

**Explanation:** Reference: [https://books.google.com.pk/books?id=35TE4cSycNAC&pg=PA97&lpg=PA97&dq=sample+roles+that+are+provided+with+vCenter+Server+by+default&source=bl&ots=ggd5VKGky5&sig=-lc0Juby-tkvddWsrG\\_zHgEDTQY&hl=en&sa=X&ved=0CDcQ6AEwBWovChMIIZH2x8WExglVxDoUCh2N1AC2#v=onepage&q=sample%20roles%20that%20are%20provided%20with%20vCenter%20Server%20by%20default&f=false](https://books.google.com.pk/books?id=35TE4cSycNAC&pg=PA97&lpg=PA97&dq=sample+roles+that+are+provided+with+vCenter+Server+by+default&source=bl&ots=ggd5VKGky5&sig=-lc0Juby-tkvddWsrG_zHgEDTQY&hl=en&sa=X&ved=0CDcQ6AEwBWovChMIIZH2x8WExglVxDoUCh2N1AC2#v=onepage&q=sample%20roles%20that%20are%20provided%20with%20vCenter%20Server%20by%20default&f=false)

#### NEW QUESTION 21

An administrator wishes to give a user the ability to manage snapshots for virtual machines. Which privilege does the administrator need to assign to the user?

- A. Datastore.Allocate Space
- B. Virtual machine.Configuration.create snapshot
- C. Virtual machine.Configuration.manage snapshot
- D. Datastore.Browse Datastore

**Answer:** A

**Explanation:** Datastore.Allocate space allows allocating space on a datastore for a virtual machine, snapshot, clone, or virtual disk.  
Reference: <https://pubs.vmware.com/vsphere-51/index.jsp?topic=%2Fcom.vmware.vsphere.security.doc%2FGUID-B2426ACC-D73F-4732-8BBC-DE9B1B2263D9.html>

#### NEW QUESTION 24

An administrator with global administrator privileges creates a custom role but fails to assign any privileges to it. Which two privileges would the custom role have? (Choose two.)

- A. System.View
- B. System.Anonymous
- C. System.User
- D. System.ReadOnly

**Answer:** AB

**Explanation:** When you add a custom role and do not assign any privileges to it, the role is created as a Read Only role with three system-defined privileges: System.Anonymous, System.View, and System.Read.  
Reference: <https://pubs.vmware.com/vsphere-51/index.jsp?topic=%2Fcom.vmware.vsphere.security.doc%2FGUID-93B962A7-93FA-4E96-B68F-AE66D3D6C663.html>

#### NEW QUESTION 26

Which Advanced Setting should be created for the vCenter Server to change the expiration policy of the vpxuser password?

- A. VimPasswordExpirationInDays
- B. VimExpirationPasswordDays
- C. VimPassExpirationInDays
- D. VimPasswordRefreshDays

**Answer:** A

**Explanation:** vCenter Server creates the vpxuser account on each ESX/ESXi host that it manages. The password for each vpxuser account is auto-generated when an ESX/ESXi host is added. The password is updated by default every 30 days.  
To modify default password settings:  
? Connect vSphere Client to vCenter Server.  
? Click Administration > vCenter Server Settings > Advanced Settings.  
? Scroll to the parameter VirtualCenter.VimPasswordExpirationInDays and change the value from the default.  
Reference: [http://kb.vmware.com/selfservice/microsites/search.do?language=en\\_US&cmd=displayKC&externalId=1016736](http://kb.vmware.com/selfservice/microsites/search.do?language=en_US&cmd=displayKC&externalId=1016736)

#### NEW QUESTION 28

Which password meets ESXi 6.x host password requirements?

- A. 8kMVnn2x!
- B. zNgtnJBA2
- C. Nvgt34kn44
- D. !b74wr

**Answer:** A

**Explanation:** A valid password requires a mix of upper and lower case letters, digits, and other characters. You can use a 7-character long password with characters from at least three of these four classes, or a 6-character long password containing characters from all the classes. A password that begins with an upper case letter and ends with a numerical digit does not count towards the number of character classes used. It is recommended that the password does not



contain the username.

A passphrase requires at least 3 words, can be 8 to 40 characters long, and must contain enough different characters.

Reference: [http://kb.vmware.com/selfservice/microsites/search.do?language=en\\_US&cmd=displayKC&externalId=1012033](http://kb.vmware.com/selfservice/microsites/search.do?language=en_US&cmd=displayKC&externalId=1012033)

#### NEW QUESTION 31

Which three options are available for replacing vCenter Server Security Certificates? (Choose three.)

- A. Replace with Certificates signed by the VMware Certificate Authority.
- B. Make VMware Certificate Authority an Intermediate Certificate Authority.
- C. Do not use VMware Certificate Authority, provision your own Certificates.
- D. Use SSL Thumbprint mode.
- E. Replace all VMware Certificate Authority issued Certificates with self-signed Certificates.

**Answer:** ABC

**Explanation:** There are three options for replace vCenter server security certificates. You can replace it with certificates signed by VMware certificate authority; you can make the VMCA an intermediate certificate authority. Likewise, you can provision your own certificates.

#### NEW QUESTION 36

Which three connection types are supported between a remote site and vCloud Air? (Choose three.)

- A. Secure Internet Connectivity
- B. Private Connect
- C. Direct Connect
- D. Internet Connectivity
- E. Secure VPN

**Answer:** ACE

**Explanation:** The connection types supported between a remote site and vcloud Air is secure VPN, direct connect and Secure Internet Connectivity.

#### NEW QUESTION 40

An administrator is assigning a user the Content Library administrator role. The user will only be creating the library for a single vCenter Server. What is the lowest level of the permission heirarchy that this role can be granted to the user and still allow them to create a Content Library?

- A. Global
- B. Datacenter Folder
- C. Virtual Center
- D. Datacenter

**Answer:** A

**Explanation:** To let a user manage a content library and its items, an Administrator can assign the Content Library Administrator role to that user as a global permission. The Content Library Administrator role is a sample role in the vSphere Web Client. Users who are Administrators can also manage libraries and their contents. If a user is an Administrator at a vCenter Server level, they have sufficient privileges to manage the libraries that belong to this vCenter Server instance, but cannot see the libraries unless they have a Read-Only role as a global permission. Reference: [http://pubs.vmware.com/vsphere-60/index.jsp?topic=%2Fcom.vmware.vsphere.vm\\_admin.doc%2FGUID-18F4B892-D685-4473-AC25-3195D68DFD90.html](http://pubs.vmware.com/vsphere-60/index.jsp?topic=%2Fcom.vmware.vsphere.vm_admin.doc%2FGUID-18F4B892-D685-4473-AC25-3195D68DFD90.html)

#### NEW QUESTION 43

An administrator has recently audited the environment and found numerous virtual machines with sensitive data written to the configuration files. To prevent this in the future, which advanced parameter should be applied to the virtual machines?

- A. isolation.tools.setinfo.disable = true
- B. isolation.tools.setinfo.enable = true
- C. isolation.tools.setinfo.disable = false
- D. isolation.tools.setinfo.enable = false

**Answer:** A

**Explanation:** It is configured on a per-VM basis. You can increase the guest operating system variable memory limit if large amounts of custom information are being stored in the configuration file. You can also prevent guests from writing any name-value pairs to the configuration file. To do so, use the following setting, and set it to 'true':

#### NEW QUESTION 44

An administrator has configured three vCenter Servers and vRealize Orchestrator within a Platform Services Controller domain, and needs to grant a user privileges that span all environments. Which statement best describes how the administrator would accomplish this?

- A. Assign a Global Permission to the user.
- B. Assign a vCenter Permission to the user.
- C. Assign vsphere.local membership to the user.
- D. Assign an ESXi Permission to the user.

**Answer:** A

**Explanation:** Global permissions are applied to a global root object that spans solutions, for example, both vCenter Server and vCenter Orchestrator. Use global permissions to give a user or group privileges for all objects in all object hierarchies.

Reference: <http://pubs.vmware.com/vsphere-60/index.jsp?topic=%2Fcom.vmware.vsphere.security.doc%2FGUID-C7702E31-1623-4189-89CB-E1136AA27972.html>

#### NEW QUESTION 47

An administrator would like to use a passphrase for their ESXi 6.x hosts which has these characteristics:

? Minimum of 21 characters

? Minimum of 2 words

Which advanced options must be set to allow this passphrase configuration to be used?

A. retry=3 min=disabled, disabled, 7, 21, 7 passphrase=2

B. retry=3 min=disabled, disabled, 21, 7, 7 passphrase=2

C. retry=3 min=disabled, disabled, 2, 21, 7

D. retry=3 min=disabled, disabled, 21, 21, 2

**Answer:** B

**Explanation:** To force a specific password complexity and disable all others, replace the number with the word with disabled. For example, to force passwords containing characters from all four- character classes:

password requisite /lib/security/\$ISA/pam\_passwdqc.so retry=3 min= disabled,disabled,disabled,disabled,7

Reference: [http://kb.vmware.com/selfservice/microsites/search.do?language=en\\_US&cmd=displayKC](http://kb.vmware.com/selfservice/microsites/search.do?language=en_US&cmd=displayKC)

&externalId=1012033

#### NEW QUESTION 48

Which secondary Private VLAN (PVLAN) type can communicate and send packets to an Isolated PVLAN?

A. Community

B. Isolated

C. Promiscuous

D. Primary

**Answer:** C

**Explanation:** A node attached to a port in a promiscuous secondary PVLAN may send and receive packets to any node in any others secondary VLAN associated to the same primary. Routers are typically attached to promiscuous ports.

Reference: <https://communities.vmware.com/thread/483486>

#### NEW QUESTION 50

A common root user account has been configured for a group of ESXi 6.x hosts.

Which two steps should be taken to mitigate security risks associated with this configuration? (Choose two.)

A. Remove the root user account from the ESXi host.

B. Set a complex password for the root account and limit its use.

C. Use ESXi Active Directory capabilities to assign users the administrator role.

D. Use Lockdown mode to restrict root account access.

**Answer:** BC

**Explanation:** To address the security risks, yo need to set a complex password for the root account and make sure only authorized personnel use it. The second step is to use ESXi active directory to assign the administrator role to users.

#### NEW QUESTION 55

An administrator creates a Private VLAN with a Primary VLAN ID of 2. The administrator then creates three Private VLANs as follows:

? Marketing

? PVLAN ID. 4

? PVLAN Type. Isolated

? Accounting

? PVLAN ID. 5

? PVLAN Type. Community

? Secretary

? PVLAN ID. 17

? PVLAN Type. Isolated

Users in the Accounting PVLAN are reporting problems communicating with servers in the Marketing PVLAN.

Which two actions could the administrator take to resolve this problem? (Choose two.)

A. Change the PVLAN type for the Accounting network to Promiscuous.

B. Change the PVLAN ID for the Accounting network to 2.

C. Change the PVLAN type for Marketing network to Promiscuous.

D. Change the PVLAN ID for Accounting network to 4.

**Answer:** AB

**Explanation:** Change the PVLAN type for the accounting network to Promiscuous and the PVLAN ID to 2. This way, the servers in Marketing PVLAN will communicate effectively.

#### NEW QUESTION 60

To reduce the attack vectors for a virtual machine, which two settings should an administrator set to false? (Choose two.)

- A. ideX:Y.present
- B. serial.present
- C. ideX:Y.enabled
- D. serial.enabled

**Answer:** AB

**Explanation:** Reference: <http://jackiechen.org/2012/10/05/vsphere-5-0-security-hardening-recommended-vm-settings-configure-script/>

#### NEW QUESTION 61

Which two advanced features should be disabled for virtual machines that are only hosted on a vSphere system? (Choose two.)

- A. isolation.tools.unity.push.update.disable
- B. isolation.tools.ghi.launchmenu.change
- C. isolation.tools.bbs.disable
- D. isolation.tools.hgfsServerSet.enable

**Answer:** AB

**Explanation:** Because VMware virtual machines run in many VMware products in addition to vSphere, some virtual machine parameters do not apply in a vSphere environment. Although these features do not appear in vSphere user interfaces, disabling them reduces the number of vectors through which a guest operating system could access a host. Use the following

.vmx setting to disable these features:

isolation.tools.unity.push.update.disable = "TRUE" isolation.tools.ghi.l"unch"enu.change = "TRUE" isolation.tools.ghi.a"tolo"on.disable = "TRUE"

isolation.tools.hgfsS"rver"et.disable = "TRUE" isolation.tools.memSc"edFa"eSampleStats.disable = "TRUE" isolation.tools.getCr"ds.d"sable = "TRUE"

Reference:

<https://pubs.vmware.com/vsphere-51/index.jsp?topic=%2Fcom.vmware.vmtools.install.doc%2FGUID-685722FA-9009-439C-9142-18A9E7C592EA.html>

#### NEW QUESTION 65

Which three traffic types can be configured for dedicated Vmkernel adapters? (Choose three.)

- A. Discovery traffic
- B. vMotion traffic
- C. vSphere Replication NFC traffic
- D. Provisioning traffic
- E. vSphere Custom traffic

**Answer:** BCD

**Explanation:** Topic 3, Configure and Administer Advanced vSphere Storage

#### NEW QUESTION 70

Which two solutions require Physical Mode Raw Device Mapping (RDM)? (Choose two.)

- A. Direct access to the storage array device
- B. Virtual Machine Snapshots
- C. Hardware Acceleration
- D. Guest Clustering across ESXi hosts

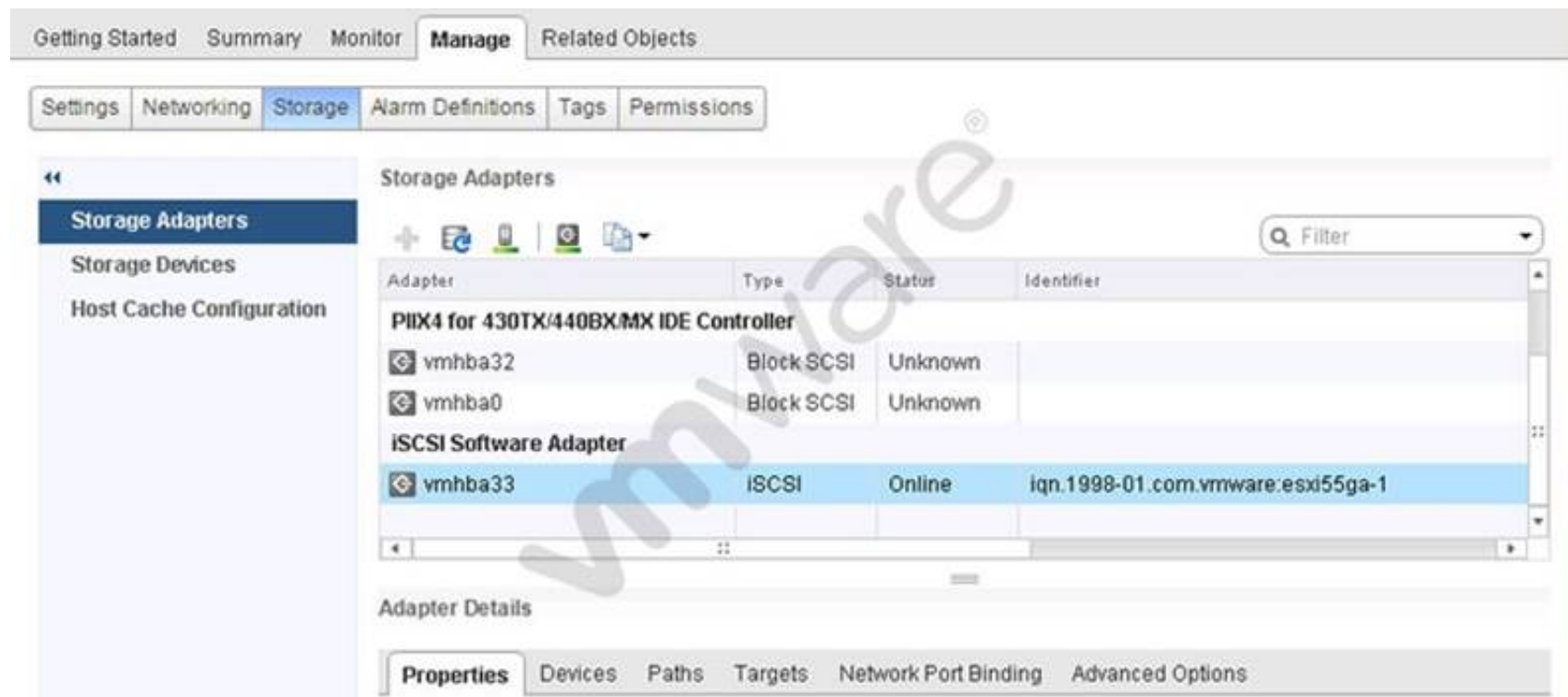
**Answer:** AD

**Explanation:** Normally, Direct access to storage array device and guest clustering across ESXi hosts required the use of Physical Mode raw device mapping.

#### NEW QUESTION 72

Refer to the Exhibit.





An administrator would like to add Challenge Handshake Authentication Protocol (CHAP) to an iSCSI adapter. The administrator accesses the Storage Adapters menu as shown in the Exhibit.  
 In which tab can the task be accomplished?

- A. Properties
- B. Advanced Options
- C. Targets
- D. Devices

**Answer:** A

**Explanation:** Reference: <http://www.vmwarebits.com/content/install-and-configure-openfiler-esxi-shared-storage-nfs-and-iscsi>

#### NEW QUESTION 75

Which three statements are correct regarding Fibre Channel over Ethernet (FCOE)? (Choose three.)

- A. The network switch must have Priority-based Flow Control (PFC) set to AUTO.
- B. The network switch must have Priority-based Flow Control (PFC) set to ON.
- C. Each port on the FCoE card must reside on the same vSwitch.
- D. Each port on the FCoE card must reside on a separate vSwitch.
- E. The ESXi host will require a reboot after moving an FCoE card to a different vSwitch.

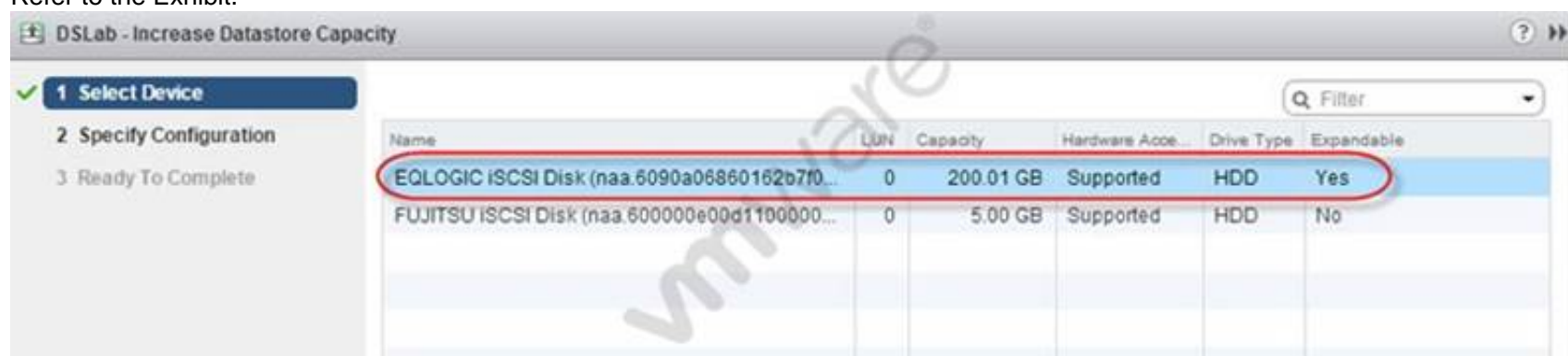
**Answer:** ADE

**Explanation:** Reference:

<https://pubs.vmware.com/vsphere-55/index.jsp?topic=%2Fcom.vmware.vsphere.storage.doc%2FGUID-6B49866F-7005-4099-84AC-4FB2A1A91F64.html>

#### NEW QUESTION 76

Refer to the Exhibit.



What will be the result of selecting the highlighted device?

- A. Datastore will grow up to 200.01GB using the remaining free space on the device.
- B. Datastore will add 200.01GB by adding the device as a second extent.
- C. The device size can be expanded to be larger than 200.01 GB in size.
- D. The device is not suitable for this operation.

**Answer:** A

**Explanation:** The datastore will use up 200.01 GB of free space on the device.

#### NEW QUESTION 78

An administrator needs to recover disk space on a previously-used thin provisioned virtual disk. The volumes where the administrator needs to recover the disk blocks are on VAAI- compliant storage arrays.  
 Which two actions should the administrator take accomplish this task? (Choose two.)

- A. Perform a Storage vMotion to another volume in order to force free space recovery to occur
- B. This recreates the volume in a new location and recovers all unused space.
- C. Use VMware Converter to migrate the virtual machine to a new datastore
- D. This will recreate the volumes and recover all unused space.
- E. Issue the vmkfstools -vmfs unmap command within the VMFS volume directory on the ESXi host console.
- F. Execute the esxcli storage vmfs unmap command.

**Answer:** BD

**Explanation:** Reference: <http://www.boche.net/blog/index.php/2013/09/13/vsphere-5-5-unmap-deep-dive/>

#### NEW QUESTION 81

Which two tasks does the Pluggable Storage Architecture (PSA) perform? (Choose two.)

- A. Handles I/O queueing to the logical devices.
- B. Handles physical path discovery, but is not involved in the removal.
- C. Handles physical path discovery and removal.
- D. Handles I/O queueing to FC storage HBAs.

**Answer:** AC

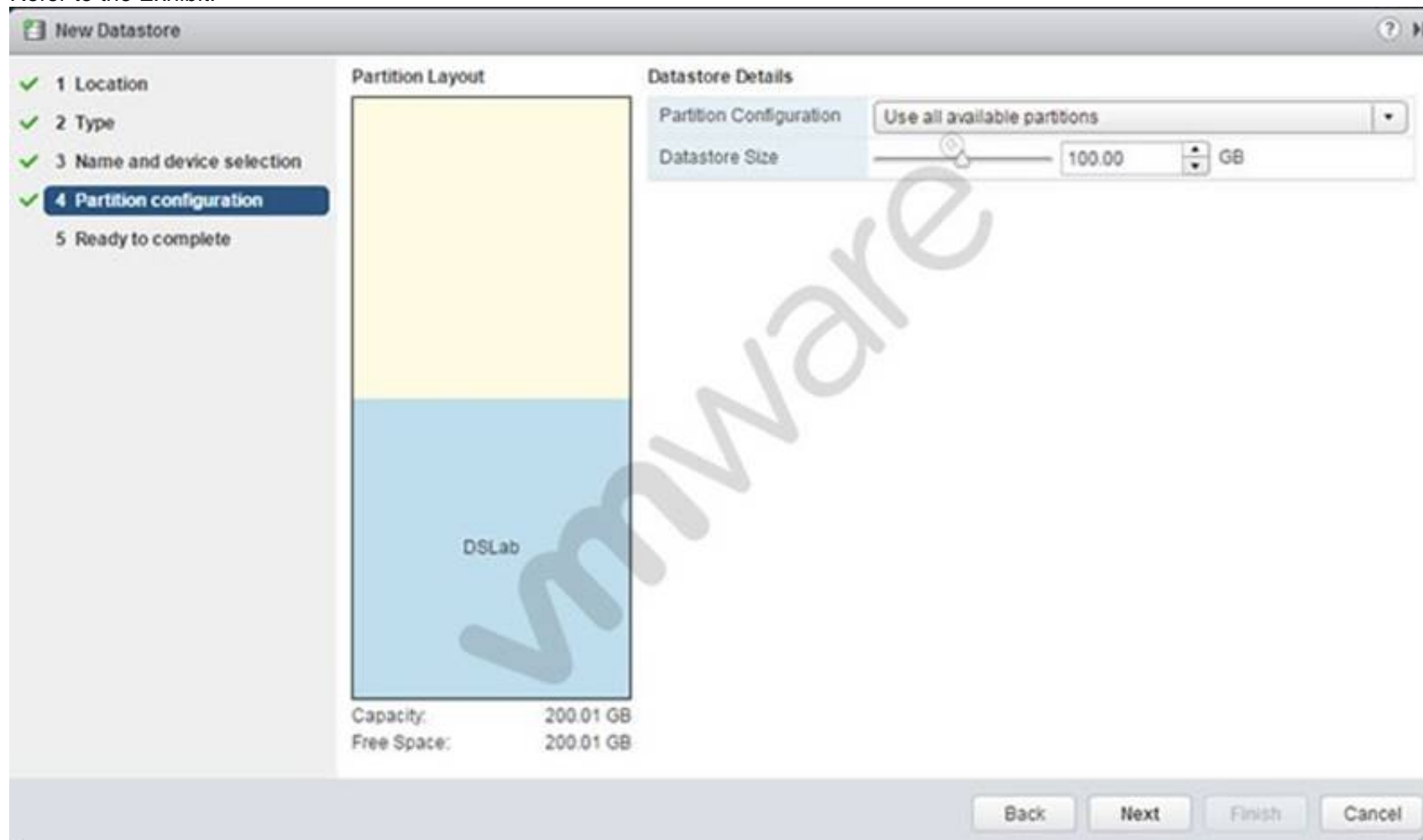
**Explanation:** When coordinating the VMware NMP and any installed third-party MPPs, the PSA performs the following tasks:

- ? Loads and unloads multipathing plug-ins.
- ? Hides virtual machine specifics from a particular plug-in.
- ? Routes I/O requests for a specific logical device to the MPP managing that device.
- ? Handles I/O queueing to the logical devices.
- ? Implements logical device bandwidth sharing between virtual machines.
- ? Handles I/O queueing to the physical storage HBAs.
- ? Handles physical path discovery and removal.
- ? Provides logical device and physical path I/O statistics.

Reference: <http://pubs.vmware.com/vsphere-51/index.jsp?topic=%2Fcom.vmware.vsphere.storage.doc%2FGUID-C1C4A725-8BE4-4875-919E-693812961366.html>

#### NEW QUESTION 86

Refer to the Exhibit.



What will be created upon completion of the steps in this wizard?

- A. 100GB VMFS5 datastore with free space available for expansion
- B. 100GB VMFS5 datastore with free space available for a second datastore
- C. 100GB VMFS3 datastore
- D. 200.01 GB VMFS5 datastore

**Answer:** A

**Explanation:** As you can see in the exhibit, the 100GB VMFS5 datastore is created with free space available for expansion.

#### NEW QUESTION 89

An administrator is having a problem configuring Storage I/O Control on a Datastore. Which two conditions could explain the issue? (Choose two.)

- A. A host is running ESXi 4.0.
- B. An ESXi host does not have appropriate licensing.
- C. The vCenter Server version is 5.0.
- D. The vCenter Server License is Standard.

**Answer:** AB

**Explanation:** Reference: [http://kb.vmware.com/selfservice/microsites/search.do?language=en\\_US&cmd=displayKC&externalId=2021530](http://kb.vmware.com/selfservice/microsites/search.do?language=en_US&cmd=displayKC&externalId=2021530)

#### NEW QUESTION 93

Which three are requirements for configuring Storage I/O Control (SIOC)? (Choose three.)

- A. The datastore must consist of only one extent.
- B. The datastore is managed by a single vCenter Server.
- C. Auto-tiered storage must be compatible with SIOC.
- D. Auto-tiered storage must be SSD or SATA.
- E. The datastore must be VMFS.

**Answer:** ABC

**Explanation:** Storage I/O Control (SIOC) is used to control the I/O usage of a virtual machine and to gradually enforce the predefined I/O share levels. SIOC is supported on Fibre Channel and iSCSI connected storage in ESX/ESXi 4.1 and 5.0. With ESXi 5.0 support for NFS with SIOC was also added. Datastores with multiple extents or Raw Device Mapping (RDM) are currently not supported.

Reference: [http://kb.vmware.com/selfservice/microsites/search.do?language=en\\_US&cmd=displayKC&externalId=1022091](http://kb.vmware.com/selfservice/microsites/search.do?language=en_US&cmd=displayKC&externalId=1022091)

#### NEW QUESTION 94

An administrator created a six node Virtual SAN cluster, created a fault domain, and moved three of the six nodes into that domain.

A node that is a member of the fault domain fails. What is the expected result?

- A. The remaining two fault domain members are treated as failed.
- B. The remaining two fault domain members stay protected by the domain.
- C. One of the non-member nodes will be automatically added to the fault domain.
- D. VMware High Availability will restart virtual machines on remaining nodes in the domain.

**Answer:** A

**Explanation:** When the member of the fault domain fails, the remaining two fault domain members are treated as failed too.

#### NEW QUESTION 98

An administrator observes that virtual machine storage activity on an ESXi 6.x host is negatively affecting virtual machine storage activity on another host that is accessing the same VMFS Datastore.

Which action would mitigate the issue?

- A. Enable Storage IO Control.
- B. Configure Storage DRS.
- C. Enable the Dynamic Queue Depth Throttling option.
- D. Configure the Disk.SchedNumReqOutstanding parameter.

**Answer:** A

**Explanation:** SIOC is extremely powerful, it can increase your consolidation ratios on the storage side, allowing more VM's per datastore. Which leads to lower storage costs and less administrative overhead.

So how does it work? At a basic level SIOC is monitoring the end to end latency of a datastore. When there is congestion (the latency is higher than the configured value) SIOC reduces the latency by throttling back VM's who are using excessive I/O. Now you might say, I need that VM to have all of those I/O's, which in many cases is true, you simply need to give the VMDK(s) of that VM a higher share value. SIOC will use the share values assigned to the VM's VMDK's to prioritize access to the datastore.

Just simply turning SIOC on will guarantee each VMDK has equal access to the datastore, shares fine tune that giving you the ability to give VMDK's more or less priority during times of contention.

Reference: <http://blogs.vmware.com/vsphere/2014/05/enabling-monitoring-storage-io-control.html>

#### NEW QUESTION 100

Which two statements are true regarding VMFS3 volumes in ESXi 6.x? (Choose two.)

- A. Creation of VMFS3 volumes is unsupported.
- B. Upgrading VMFS3 volumes to VMFS5 is supported.
- C. Existing VMFS3 volumes are unsupported.
- D. Upgrading VMFS3 volumes to VMFS5 is unsupported.

**Answer:** AB

**Explanation:** While a VMFS-3, which is upgraded to VMFS-5, provides you with most of the capabilities as a newly created VMFS-5, there are some differences. Both upgraded and newly created VMFS-5 support single-extent volumes up to 64TB and both support VMDK sizes of ~2TB, no matter what the VMFS file-block size is. However additional differences, although minor, should be considered when making a decision whether to upgrade to VMFS-5 or create new VMFS-5

volumes.

Reference: [http://www.vmware.com/files/pdf/techpaper/VMFS-5\\_Upgrade\\_Considerations.pdf](http://www.vmware.com/files/pdf/techpaper/VMFS-5_Upgrade_Considerations.pdf)

#### NEW QUESTION 103

An administrator is writing a kickstart script to upgrade an ESXi 6.x host. In which three locations can the script reside? (Choose three.)

- A. NFS
- B. USB
- C. HTTP
- D. TFTP
- E. PXE

**Answer:** ABC

**Explanation:** The installation script ( ks.cfg) can reside in any of these locations:

- ? FTP
- ? HTTP/HTTPS
- ? NFS Share
- ? USB flash drive
- ? CD/DVD device

Reference: [http://kb.vmware.com/selfservice/microsites/search.do?language=en\\_US&cmd=displayKC&externalId=2004582](http://kb.vmware.com/selfservice/microsites/search.do?language=en_US&cmd=displayKC&externalId=2004582)

#### NEW QUESTION 105

Which two supported tools can be used to upgrade virtual machine hardware? (Choose two.)

- A. vSphere Web Client
- B. vSphere Update Manager
- C. vmware-vmupgrade.exe
- D. esxcli vm hardware upgrade

**Answer:** AB

**Explanation:** VMware offers the following tools for upgrading virtual machines:

vSphere Client

Requires you to perform the virtual machine upgrade one step at a time, but does not require vSphere Update Manager.

vSphere Update Manager

Automates the process of upgrading and patching virtual machines, thereby ensuring that the steps occur in the correct order. You can use Update Manager to directly upgrade virtual machine hardware, VMware Tools, and virtual appliances. You can also patch and update third-party software running on the virtual machines and virtual appliances.

Reference: [https://pubs.vmware.com/vsphere-50/index.jsp?topic=%2Fcom.vmware.vsphere.upgrade.doc\\_50%2FGUID-EE77B0A9-F8FF-4785-BEAD-B6F04EE04492.html](https://pubs.vmware.com/vsphere-50/index.jsp?topic=%2Fcom.vmware.vsphere.upgrade.doc_50%2FGUID-EE77B0A9-F8FF-4785-BEAD-B6F04EE04492.html)

#### NEW QUESTION 109

Which log file would you examine to identify an issue which occurred during the pre-upgrade phase of a vCenter Server upgrade process?

- A. vcdb\_req.out
- B. vcdb\_export.out
- C. vcdb\_import.out
- D. vcdb\_inplace.out

**Answer:** A

**Explanation:** The vcdb\_req.err file tracks any errors that were identified during the pre-upgrade phase.

Reference: <http://pubs.vmware.com/vsphere-60/index.jsp?topic=%2Fcom.vmware.vsphere.upgrade.doc%2FGUID-5EAC8B84-0A95-41EC-AAF4-6CBBB3A5152A.html>

#### NEW QUESTION 114

An administrator is upgrading a vCenter Server Appliance and wants to ensure that all the prerequisites are met. What action must be taken before upgrading the vCenter Server Appliance?

- A. Install the Client Integration Plug-in.
- B. Install the database client.
- C. Install the ODBC connector.
- D. Install the Update Manager Plug-in.

**Answer:** A

**Explanation:** You must install the Client Integration Plug-in before you deploy or upgrade the vCenter Server Appliance.

Reference: <https://pubs.vmware.com/vsphere-60/index.jsp?topic=%2Fcom.vmware.vsphere.upgrade.doc%2FGUID-CA16F78B-7890-4357-9760-AF8648806FE7.html>

#### NEW QUESTION 119

What three supported methods can be used to upgrade a host from ESXi 5.x to ESXi 6.x? (Choose three.)



- A. vSphere Update Manager
- B. vihostupdate
- C. esxcli
- D. vSphere Auto Deploy
- E. esxupdate

**Answer:** ACD

**Explanation:** Reference: <https://pubs.vmware.com/vsphere-60/index.jsp?topic=%2Fcom.vmware.vsphere.upgrade.doc%2FGUID-FE668788-1F32-4CB2-845C-5547DD59EB48.html>

#### NEW QUESTION 120

An administrator has upgraded a Distributed vCenter Server environment from 5.5 to 6.0. What is the next step that should be taken?

- A. vCenter Inventory Service must be manually stopped and removed.
- B. vCenter Inventory Service must be changed from manual to automatic.
- C. vCenter Inventory Service must be manually stopped and restarted.
- D. vCenter Inventory Service must be changed from automatic to manual.

**Answer:** A

**Explanation:** Reference:  
<http://pubs.vmware.com/vsphere-60/index.jsp?topic=%2Fcom.vmware.vsphere.upgrade.doc%2FGUID-4BFB12D8-9FCA-4AB1-A44F-2986966F0AD5.html>

#### NEW QUESTION 122

During a vCenter Server upgrade, an ESXi 6.x host in a High Availability (HA) cluster fails. Which statement is true?

- A. HA will fail the virtual machines over to an available host during the vCenter Server upgrade process.
- B. HA is unavailable during the vCenter Server upgrade process.
- C. HA will fail the virtual machines over to an available host after the vCenter Server upgrade completes.
- D. HA will successfully vMotion the virtual machines during the host failure.

**Answer:** A

**Explanation:** High availability is designed to fail over the virtual machines to another available host during the upgrade process.

#### NEW QUESTION 123

What are three recommended prerequisites before upgrading virtual machine hardware? (Choose three.)

- A. Create a backup or snapshot of the virtual machine.
- B. Upgrade VMware Tools to the latest version.
- C. Verify that the virtual machine is stored on VMFS3, VMFS5, or NFS datastores.
- D. Detach all CD-ROM/ISO images from the virtual machines.
- E. Set the Advanced Parameter virtualHW.version = 11

**Answer:** ABC

**Explanation:** Reference: [https://pubs.vmware.com/vsphere-50/index.jsp?topic=%2Fcom.vmware.vsphere.upgrade.doc\\_50%2FGUID-A45CBEE5-C4D2-484E-A699-A5A577244DE0.html](https://pubs.vmware.com/vsphere-50/index.jsp?topic=%2Fcom.vmware.vsphere.upgrade.doc_50%2FGUID-A45CBEE5-C4D2-484E-A699-A5A577244DE0.html)

#### NEW QUESTION 127

Which file determines the location of the installation script during a scripted upgrade?

- A. boot.cfg
- B. ks.cfg
- C. script.cfg
- D. upgrade.cfg

**Answer:** A

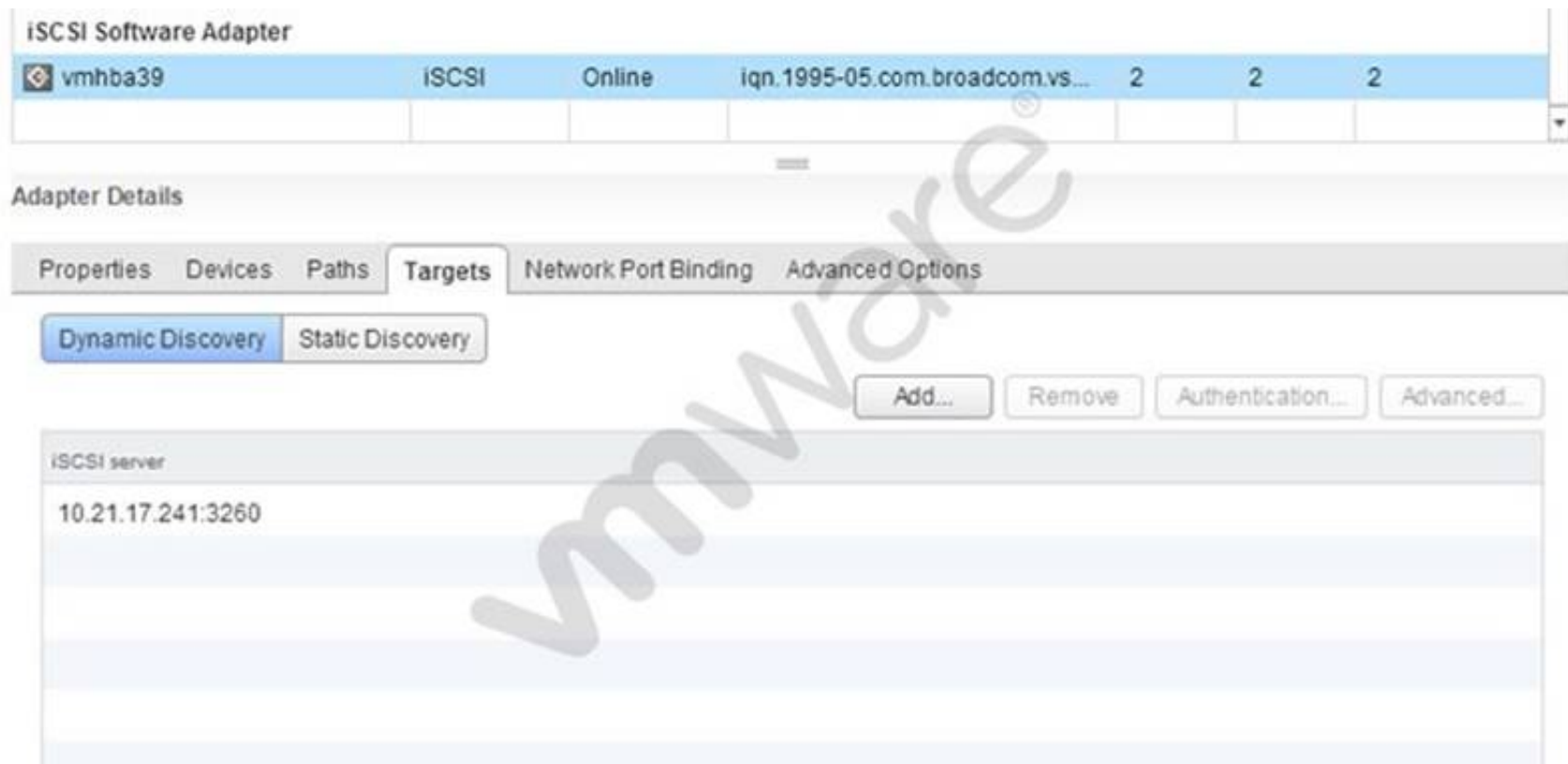
**Explanation:** You can Modify the boot.cfg file to specify the location of the installation or upgrade script using the kernelopt option.

Topic 5, Administer and Manage vSphere Resources

#### NEW QUESTION 131

Refer to the Exhibit.





Which tab shows the Hardware Acceleration support status?

- A. Devices
- B. Properties
- C. Paths
- D. Advanced Options

**Answer:** A

**Explanation:** Reference: [https://pubs.vmware.com/vsphere-4-esx-vcserver/index.jsp?topic=/com.vmware.vsphere.config\\_iscsi.doc\\_41/esx\\_server\\_config/managing\\_storage/c\\_hardware\\_acceleration\\_status.html](https://pubs.vmware.com/vsphere-4-esx-vcserver/index.jsp?topic=/com.vmware.vsphere.config_iscsi.doc_41/esx_server_config/managing_storage/c_hardware_acceleration_status.html)

#### NEW QUESTION 133

What is the minimum Virtual Hardware version required for vFlash Read Cache?

- A. Version 8
- B. Version 9
- C. Version 10
- D. Version 11

**Answer:** C

**Explanation:** Version 10 is the minimum version needed for vFlash Read cache.  
 Reference: <https://virtualizationreview.com/articles/2014/01/16/flash-read-cache.aspx>

#### NEW QUESTION 134

Refer to the Exhibit.



An administrator reviews the Health of a virtual machine, as shown in the Exhibit.  
 Based on the exhibit, which three metrics can be used to determine the virtual machine's Workload characteristics? (Choose three.)

- A. CPU
- B. Memory
- C. Network IO
- D. Threads
- E. vNUMA Stats

**Answer:** ABC

**Explanation:** The three most important metrics that are needed to be observed to ensure virtual machine health are CPU, memory and Network I/O because they are directly related to how the virtual machine will perform during peak load hours.

Topic 6, Backup and Recover a vSphere Deployment

#### NEW QUESTION 137

Which three statements are true when restoring a Resource Pool Tree? (Choose three.)

- A. Distributed Resource Scheduler must be set to manual.
- B. Restoring a snapshot can only be done on the same cluster from which it was taken.
- C. No other resource pools can be present in the cluster.
- D. Restoring a resource pool tree must be done in the vSphere Web Client.
- E. Enabling Enhanced vMotion Compatibility on the cluster is required.

**Answer:** BCD

**Explanation:** Reference: <https://pubs.vmware.com/vsphere-51/index.jsp?topic=%2Fcom.vmware.vsphere.resmgmt.doc%2FGUID-43B3A1EF-B7FF-421C-96FA-33FA230688BB.html>

#### NEW QUESTION 141

When importing an existing SSL certificate into vSphere Replication Server, which file format is required?

- A. PKCS#12
- B. DER
- C. PEM
- D. PKCS#7

**Answer:** A

**Explanation:** vSphere Replication can only import and use certificates and private keys from a file in the PKCS#12 format. Sometimes these files have a .pfx extension.

Reference: <https://pubs.vmware.com/vsphere-51/topic/com.vmware.ICbase/PDF/vsphere-replication-51-admin.pdf>

#### NEW QUESTION 146

Vmware vSphere Replication protects virtual machines from partial or complete site failures by replicating the virtual machines between which three sites? (Choose three.)

- A. From a source site to a target site.
- B. From within a single site from one cluster to another.
- C. From multiple source sites to a shared remote target site.
- D. From a single source site to multiple remote target sites.
- E. From multiple source sites to multiple remote target sites.

**Answer:** ABC

**Explanation:** vSphere Replication replaces storage-based replication. It protects virtual machines from partial or complete site failures by replicating the virtual machines from a primary site to a secondary site.

Reference: [https://pubs.vmware.com/vsphere-51/index.jsp?topic=%2Fcom.vmware.vsphere.replication\\_admin.doc%2FGUID-C987AD18-7C2D-4FA6-B6E4-6B0DDA915A7A.html](https://pubs.vmware.com/vsphere-51/index.jsp?topic=%2Fcom.vmware.vsphere.replication_admin.doc%2FGUID-C987AD18-7C2D-4FA6-B6E4-6B0DDA915A7A.html)

#### NEW QUESTION 149

Which three parameters should be considered when calculating the bandwidth for vSphere Replication? (Choose three.)

- A. Data change rate
- B. Traffic rates
- C. Link speed
- D. Application type
- E. Hardware type

**Answer:** ABC

**Explanation:** Reference: <http://blogs.vmware.com/smb/2015/05/vsphere-replication-bandwidth-requirements.html>

#### NEW QUESTION 153

Which keystore would a vSphere Replication administrator use to manually add an additional Certificate Authority certificate?

- A. hms-truststore.jks
- B. hms-keystore.jks
- C. certificates.ks
- D. cacerts.ks

**Answer:** A

**Explanation:** Reference: [http://kb.vmware.com/selfservice/microsites/search.do?language=en\\_US&cmd=displayKC&externalId=2080395](http://kb.vmware.com/selfservice/microsites/search.do?language=en_US&cmd=displayKC&externalId=2080395)

#### NEW QUESTION 157

An administrator subscribes to the vCloud Air Disaster Recovery service. Which replicated objects can be directly monitored and managed?

- A. Virtual machine Snapshots
- B. vApps
- C. Virtual machines
- D. ESXi Hosts

**Answer:** C

**Explanation:** You use vSphere Replication at your source site to configure your environment and replicate virtual machines to vCloud Air. You can use vSphere Replication, the vCloud Air portal, or the vCloud Air plug-in to monitor and manage the replicated virtual machines in the cloud.  
Reference: [http://pubs.vmware.com/vchsplugin-15/topic/com.vmware.ICbase/PDF/vca\\_plugin\\_using.pdf](http://pubs.vmware.com/vchsplugin-15/topic/com.vmware.ICbase/PDF/vca_plugin_using.pdf)

#### NEW QUESTION 160

What is the compression algorithm used by vSphere Replication to compress data at the source?

- A. FastLZ
- B. Lz4
- C. Lzr
- D. Lzx

**Answer:** A

**Explanation:** vSphere Replication 6.0 utilizes the FastLZ compression library. This provides a nice balance of speed, minimal CPU overhead, and compression efficiency. When using vSphere 6.0 and vSphere Replication 6.0 at both the source and target locations, updates are compressed at the source and stay compressed until they are written to storage at the target. In cases where there is a mixed configuration, packets may be decompressed at some point in the replication path. For example, if a vSphere 6.0 host is connecting to a vSphere Replication 5.8 virtual appliance, packets will not be compressed over the network. Another example: vSphere 6.0 replicating to a vSphere Replication 6.0 virtual appliance, which is writing to vSphere 5.5 host storage - packets are compressed from the source to the vSphere Replication 6.0 virtual appliance, but are decompressed in the appliance before being written to the vSphere 5.5 storage at the target. Performing this decompression in the vSphere Replication virtual appliance will cause higher vCPU utilization in the appliance. As you can imagine, the most benefit from compression will be realized when running vSphere 6.0 and vSphere Replication 6.0 at both the source and target locations.  
Reference: <http://blogs.vmware.com/vsphere/2015/03/vr-60-compression.html>

#### NEW QUESTION 163

What is the maximum number of snapshot instances in vSphere Replication that can be configured to recover a virtual machine at a specific point in time?

- A. 16
- B. 24
- C. 48
- D. 72

**Answer:** B

**Explanation:** When you configure replication of a virtual machine, you can enable multiple point in time (PIT) instances in the recovery settings in the Configure Replication wizard. vSphere Replication retains a number of snapshot instances of the virtual machine on the target site based on the retention policy that you specify. vSphere Replication supports maximum of 24 snapshot instances. After you recover a virtual machine, you can revert it to a specific snapshot.  
Reference: <https://pubs.vmware.com/srm-55/index.jsp?topic=%2Fcom.vmware.srm.admin.doc%2FGUID-F3C8A2E9-183E-4DFF-A7D1-43CAEE584149.html>

Topic 7, Troubleshoot a vSphere Deployment

#### NEW QUESTION 164

An administrator is troubleshooting a performance problem with a virtual machine (VM). The VM and ESXi host configuration is as follows:

- ? The application which runs within the virtual machine is highly sensitive to memory latency, but has low processor utilization.
- ? The virtual machine has 6 vCPUs.
- ? The ESXi host CPU topology has 2 Physical CPU Sockets, each with 8 Logical CPUs.
- ? The ESXi host CPU has Hyper Threading enabled.

The administrator would like to improve CPU performance for this VM. Other VMs on the host have no performance issues. Which action should the administrator take to resolve the issue?

- A. Set the Advanced Parameter numa.vcpu.preferHT = TRUE in the virtual machine configuration file.
- B. Set the Advanced Parameter numa.vcpu.preferHT = FALSE in the virtual machine configuration file.
- C. Set the Advanced Parameter numa.PreferHT = 1 in the ESXi host configuration file.
- D. Set the Advanced Parameter numa.PreferHT = 0 in the ESXi host configuration file.

**Answer:** A

**Explanation:** Set advanced parameter numa.vcpu.preferHT = TRUE in the VM configuration file to increase CPU performance.

#### NEW QUESTION 165

What are two reasons why a local flash device would be unavailable for use with Virtual SAN? (Choose two.)

- A. It has a VMFS datastore present.
- B. It is in use by the vFlash Read Cache feature.
- C. It is smaller than the minimum capacity required for Virtual SAN usage.
- D. It does not have any partitions created.

**Answer:** AB

**Explanation:** Reference: <http://pubs.vmware.com/vsphere-60/index.jsp?topic=%2Fcom.vmware.vsphere.troubleshooting.doc%2FGUID-A17F5D39-C1F3-47B1-9645-5C247412F370.html>

#### NEW QUESTION 167

An administrator is troubleshooting a virtual machine that has unexpectedly powered off. Which two logs should be used to troubleshoot the issue? (Choose two.)

- A. vmware.log
- B. hostd.log
- C. syslog.log
- D. shell.log

**Answer:** AB

**Explanation:** Vmware.log and hostd.log should be checked when the VM unexpectedly powers off.  
Reference:  
[http://kb.vmware.com/selfservice/microsites/search.do?language=en\\_US&cmd=displayKC&externalId=1019064](http://kb.vmware.com/selfservice/microsites/search.do?language=en_US&cmd=displayKC&externalId=1019064)

#### NEW QUESTION 170

A failed upgrade from vCenter Server version 5.x to version 6.0 produces the following error:  
[00800 error 'Default'] Database version id '600' is incompatible with this release of VirtualCenter.  
What is the cause of the upgrade failure?

- A. There was a database schema upgrade failure during the installation.
- B. The VMWAREVCMSDS service was upgraded before the vCenter Server service.
- C. The Vmware Directory Service database failed during the installation.
- D. There was an incompatible ODBC driver version for the database.

**Answer:** A

**Explanation:** The error shows that the database schema upgrade failed during installation.

#### NEW QUESTION 175

An administrator has a virtual machine configured with the following settings:  
? ESXi version: 5.1  
? CPU: vCPUs 6  
? Memory: 48GB  
? Hardware version: 7  
? VMware Tools: Installed  
Which two actions must the administrator take in order to utilize vNUMA? (Choose two.)

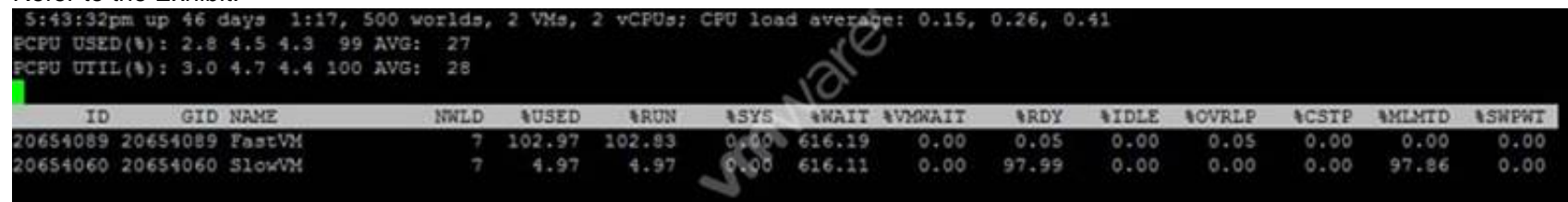
- A. Upgrade the ESXi host to vSphere 5.5 or later.
- B. Upgrade to Virtual Hardware version 8.
- C. Configure numa.vcpu.min to 5
- D. Configure numa.vcpu.min to 6

**Answer:** BC

**Explanation:** vNUMA can be used by upgrading to virtual hardware version 8. To enable vNUMA on 8 way or smaller VMs, modify the numa.vcpu.min setting.  
Reference: <http://community.spiceworks.com/topic/589415-vmware-cpu-settings>

#### NEW QUESTION 179

Refer to the Exhibit.



ID	GID	NAME	HWID	%USED	%RUN	%SYS	%WAIT	%VMWAIT	%RDY	%IDLE	%OVRLP	%CSTP	%MLMTD	%SWPWT
20654089	20654089	FastVM	7	102.97	102.83	0.00	616.19	0.00	0.05	0.00	0.05	0.00	0.00	0.00
20654060	20654060	SlowVM	7	4.97	4.97	0.00	616.11	0.00	97.99	0.00	0.00	0.00	97.86	0.00

Examine the esxtop command output shown in the Exhibit.  
Which option would improve application performance for the SlowVM virtual machine?

- A. Increase the number of vCPUs provided to SlowVM.
- B. Decrease the number of vCPUs provided to SlowVM.
- C. Move SlowVM to another ESXi host with more physical CPU resources available.
- D. Increase the CPU limit assigned to SlowVM.

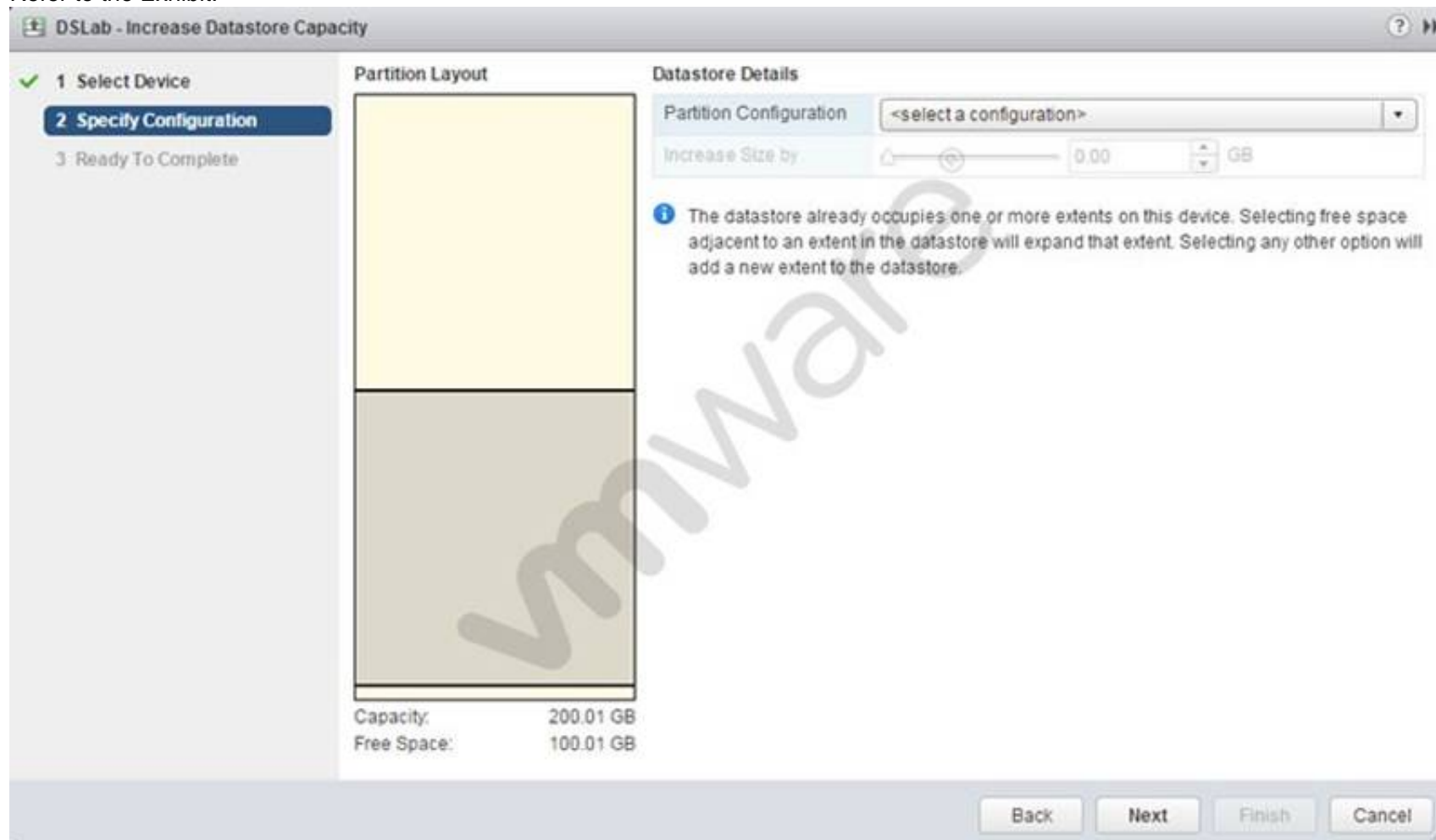


**Answer:** D

**Explanation:** You have to increase the CPU limit assigned to SlowVM to improve application performance.

#### NEW QUESTION 184

Refer to the Exhibit.



An administrator wants to increase the capacity of a VMFS5 datastore; but the Increase Size by slider is not available, as shown in the Exhibit. How should the administrator resolve this problem?

- A. Select a valid partition configuration from the drop-down menu.
- B. Use fdisk utility to manually resize the partition.
- C. Use the mouse to resize the partition indicated in the Partition Layout.
- D. Clicking Next will prompt for available usable space.

**Answer:** A

**Explanation:** To increase the capacity of VMFS5 datastore, you can select the drop down menu on the right panel and select a partition configuration that can help increase the capacity.

#### NEW QUESTION 186

An administrator notices that a Windows virtual machine is using 95% CPU in Task Manager. Which two actions should be taken to resolve this issue? (Choose two.)

- A. Increase the memory reservation of the virtual machine.
- B. Increase the CPU Shares on the resource pool where the virtual machine resides.
- C. Decrease the CPU reservation of the virtual machine.
- D. Increase the CPU limit on the resource pool where the virtual machine resides.

**Answer:** BD

**Explanation:** There are two ways to resolve high CPU usage. First increase CPU shares on resource pool where the VM resides. Secondly, increase CPU limit on the resource pool that serves the concerned VM.

#### NEW QUESTION 187

An administrator is unable to patch an ESXi 6.x host using VMware Update Manager. What is an alternative option for patching a host?

- A. Upload the offline bundle to a datastore and execute the command `esxcli software vib install -d` to apply it manually.
- B. Upload the vib to a datastore and execute the command `esxcli software vib install -d` to apply it manually.
- C. Upload the offline bundle to a datastore and execute the command `esxupdate install -v` to apply it manually.
- D. Upload the vib to a datastore and execute the command `esxupdate install -v` to apply it manually.

**Answer:** A

**Explanation:** To patch a host, upload the offline bundle to a datastore and use `esxcli software vib install -d` to apply it manually.

Reference: <http://pubs.vmware.com/vsphere-60/topic/com.vmware.vsphere.install.doc/GUID-16B7EA91-03E6-40FA-8C9F-46F3881F1BAF.html>



#### NEW QUESTION 192

An administrator wants to select a Host Power Management Policy for an ESXi 6.x host that will disable most hardware power management features. Which Host Power Management Policy should be selected to meet this requirement?

- A. High Performance
- B. Balanced
- C. Low Power
- D. Disabled

**Answer:** A

**Explanation:** Reference: <http://www.vmware.com/files/pdf/hpm-perf-vsphere5.pdf>

#### NEW QUESTION 197

An administrator tries to run esxtop to troubleshoot CPU performance issues, but no output is displayed. How can the issue be resolved?

- A. esxtop is deprecated in vSphere 6.x, resxtop must be used to produce the desired output.
- B. In esxtop, press f and place an asterisk next to each field that should be displayed.
- C. sudo should be run in front of esxtop to give the administrator the proper permissions.
- D. The esxtop command must be run from the /proc directory to produce output.

**Answer:** B

**Explanation:** When you press f and place an asterisk next to each field that you want displayed, esxtop will definitely display performance issues, if any.

#### NEW QUESTION 201

An administrator is troubleshooting a CPU issue for a virtual machine. The following is seen in esxtop:

? CPU0 is at 100% usage  
? The remaining logical CPUs are close to 0%  
? %RDY value is consistently above 10%  
What is likely the cause of the CPU issue?

- A. The virtual machine has a CPU limit configured.
- B. The virtual machine's guest operating system is configured for SMP.
- C. The virtual machine has CPU affinity configured.
- D. The virtual machine is configured with a CPU reservation.

**Answer:** C

**Explanation:** By setting a CPU affinity on the virtual machine you are limiting the available CPUs on which the virtual machine can run. It does not dedicate that CPU to that virtual machine and therefore does not restrict the CPU scheduler from using that CPU for other virtual machines.

Reference: <http://frankdenneman.nl/2011/01/11/beating-a-dead-horse-using-cpu-affinity/>

#### NEW QUESTION 205

The command esxcli network vm list displays four virtual machines connected to the Production vSwitch. Within the vSphere Web Client, five virtual machines are seen. What explains this behavior?

- A. The fifth virtual machine is currently powered off.
- B. The fifth virtual machine has two vnics.
- C. The fifth virtual machine has an invalid IP address.
- D. The fifth virtual machine has an invalid MAC address.

**Answer:** A

**Explanation:** The vSphere client shows all the virtual machines whether they are powered on or off. The fifth virtual machine in this scenario might be powered off. Esxcli network list display virtual machines that are active.

#### NEW QUESTION 207

When attempting to place a datastore in Maintenance Mode, the task remains at 1%. What are two potential causes for this? (Choose two.)

- A. Storage DRS is disabled on one or more virtual machine(s) disk(s).
- B. Storage DRS rules prevent migration recommendations for the disk.
- C. Storage DRS datastores have insufficient space to accommodate failover.
- D. Storage DRS provisioning network has been limited with I/O control policies.

**Answer:** AB

**Explanation:** You place a datastore in maintenance mode when you must take it out of usage to service it. A datastore enters or leaves maintenance mode only as a result of a user request.

Reference: <https://pubs.vmware.com/vsphere-51/index.jsp?topic=%2Fcom.vmware.vsphere.troubleshooting.doc%2FGUID-91D4FBBC-0677-44DA-B0F2-43A3504F8CA0.html>

#### NEW QUESTION 211

After successfully adding a new ESXi 6.x host to vCenter Server, an administrator sees it as Not Responding in the vSphere Web Client interface a few minutes later.

If the issue is caused by a network firewall blocking traffic, which port must be opened to correct this specific problem?

- A. 443 (TCP)
- B. 443 (UDP)
- C. 902 (TCP)
- D. 902 (UDP)

**Answer:** D

**Explanation:** Reference: [http://kb.vmware.com/selfservice/microsites/search.do?language=en\\_US&cmd=displayKC&externalId=2020669](http://kb.vmware.com/selfservice/microsites/search.do?language=en_US&cmd=displayKC&externalId=2020669)

#### NEW QUESTION 214

Attempting to update an ESXi 6.x host using the following command: `esxcli software vib update -d update.zip`

Generates the following error:

Could not download from depot at /tmp/index.xml, skipping (('tmp/index.xml', '[Errno 4] IOError: <urlopen error [Error 2] No such file or directory: 'tmp/index.xml'>')) url =

/tmp/index.xml

What action should be taken to correct the problem?

- A. Add the full file path to the command.
- B. Use the update option instead of install.
- C. Use the switch `-d` instead of `-v`.
- D. Replace `esxcli` with `esxupdate`.

**Answer:** A

**Explanation:** You have to add full file path to the command instead of mentioning the file name only.

#### NEW QUESTION 216

Which two scenarios would cause a Fault Tolerance-enabled virtual machine to fail to power the Secondary virtual machine? (Choose two.)

- A. The host has entered a Network Partitioned state.
- B. vSphere High Availability (HA) is disabled on the host cluster.
- C. Enhanced vMotion Compatibility (EVC) is enabled on the host cluster.
- D. vSphere Distributed Power Management (DPM) is enabled on the host cluster.

**Answer:** AB

**Explanation:** Reference:

[http://kb.vmware.com/selfservice/microsites/search.do?language=en\\_US&cmd=displayKC&externalId=1010631](http://kb.vmware.com/selfservice/microsites/search.do?language=en_US&cmd=displayKC&externalId=1010631)

#### NEW QUESTION 217

An administrator is attempting to enable Fault Tolerance on a virtual machine with 4 vCPUs and observes the following in the vSphere Web Client:

Fault Tolerance has not been licensed on host <hostname>.

What is the minimum licensed edition that supports this configuration?

- A. Enterprise
- B. Enterprise Plus
- C. Standard
- D. Essentials Plus

**Answer:** A

**Explanation:** Fault Tolerance is not licensed in all editions of VMware vSphere. Check the edition you are running and upgrade to an edition that includes Fault Tolerance.

Reference: [http://kb.vmware.com/selfservice/microsites/search.do?language=en\\_US&cmd=displayKC&externalId=1033634](http://kb.vmware.com/selfservice/microsites/search.do?language=en_US&cmd=displayKC&externalId=1033634)

#### NEW QUESTION 220

Refer to the Exhibit.

Storage Adapters

Adapter	Type	Status	Identifier	Targets	Devices	Paths
vmhba34	Block SCSI	Unknown		0	0	0
<b>QLogic NetXtreme II iSCSI Adapter</b>						
vmhba32	iSCSI	Unbound	bnx2i-001018ed2ab0(iqn.1998...	0	0	0
vmhba33	iSCSI	Unbound	bnx2i-001018ed2ab2(iqn.1998...	0	0	0
<b>iSCSI Software Adapter</b>						
vmhba39	iSCSI	Online	iqn.1995-05.com.broadcom.vs...	1	1	1

The Exhibit shows the status of vmhba32 and vmhba33 as Unbound. What is a likely reason for this status?

- A. The host bus adapter is not associated with a vmknfc.
- B. The Dynamic Target Discovery was not configured.
- C. The Static Target Discovery was not configured.
- D. The host bus adapter is not associated with a vmnic.

**Answer: A**

**Explanation:** Reference: [http://kb.vmware.com/selfservice/microsites/search.do?language=en\\_US&cmd=displayKC&externalId=1025644](http://kb.vmware.com/selfservice/microsites/search.do?language=en_US&cmd=displayKC&externalId=1025644)

#### NEW QUESTION 225

An administrator is troubleshooting network communications between the vCenter Server and the ESXi 6.x host. Which log shows the interaction events between these components?

- A. /var/log/syslog.log
- B. /var/log/hostd.log
- C. /var/log/vpxa.log
- D. /var/log/fdm.log

**Answer: C**

**Explanation:** When an ESXi 5.1 / 5.5 host is managed by vCenter Server 5.1 and 5.5, two components are installed, each with its own logs:  
 ? /var/log/vpxa.log: vCenter Server vpxa agent logs, including communication with vCenter Server and the Host Management hostd agent.  
 ? /var/log/fdm.log: vSphere High Availability logs, produced by the fdm service.  
 Reference: [http://kb.vmware.com/selfservice/microsites/search.do?language=en\\_US&cmd=displayKC&externalId=2032076](http://kb.vmware.com/selfservice/microsites/search.do?language=en_US&cmd=displayKC&externalId=2032076)

#### NEW QUESTION 230

An administrator is concerned about possible vCPU over-commitment for an ESXi 6.x host. Which two Performance Counters should be reviewed in the vSphere Web Client Performance Charts to confirm if there is contention on the host? (Choose two.)

- A. Wait
- B. Ready
- C. Core Utilization
- D. Co-Stop

**Answer: BD**

**Explanation:** Reference: <http://www.gabesvirtualworld.com/how-too-many-vcpus-can-negatively-affect-your-performance/>

#### NEW QUESTION 231

An administrator is attempting to enable Legacy Fault Tolerance (FT) on a virtual machine and observes the following in the vSphere Web Client: Fault Tolerance has not been licensed on host <hostname>. What is the minimum licensed edition that supports this configuration?

- A. Standard
- B. Enterprise
- C. Enterprise Plus
- D. Essentials Plus

**Answer: A**

**Explanation:** Fault Tolerance is not licensed in all editions of VMware vSphere. Check the edition you are running and upgrade to an edition that includes Fault Tolerance.  
 Reference: [http://kb.vmware.com/selfservice/microsites/search.do?language=en\\_US&cmd=displayKC&externalId=1033634](http://kb.vmware.com/selfservice/microsites/search.do?language=en_US&cmd=displayKC&externalId=1033634)

#### NEW QUESTION 232

A user notifies an administrator that Content Libraries are not visible. What is a possible solution?

- A. Assign the user the read-only role at the global permission level.
- B. Assign the user the read-only role at the vCenter Server root level.
- C. Assign the user the read-only role at the vCenter Server data center level.
- D. Assign the user the read-only role at the vCenter Server cluster level.

**Answer:** A

**Explanation:** The direct parent for content libraries is the global root. This means that if you set a permission at a vCenter Server level and propagate it to the children objects, the permission applies to data centers, folders, clusters, hosts, virtual machines, and so on, but does not apply to the content libraries that you see and operate with in this vCenter Server instance. To assign a permission on a content library, an Administrator must grant the permission to the user as a global permission. Global permissions support assigning privileges across solutions from a global root object.

Reference:

[http://pubs.vmware.com/vsphere-60/index.jsp?topic=%2Fcom.vmware.vsphere.vm\\_admin.doc%2FGUID-18F4B892-D685-4473-AC25-3195D68DFD90.html](http://pubs.vmware.com/vsphere-60/index.jsp?topic=%2Fcom.vmware.vsphere.vm_admin.doc%2FGUID-18F4B892-D685-4473-AC25-3195D68DFD90.html)

#### NEW QUESTION 236

An administrator is unable to upgrade a vCenter Server Appliance from version 5.1 Update 2 to version 6.0.  
 What is a likely reason for this?

- A. vCenter Server Appliance 6.0 does not support upgrades from version 5.1 Update 2.
- B. vCenter Server Appliance must be joined to an Active Directory domain before upgrading to version 6.0.
- C. vCenter Server Appliance 5.1 Update 2 uses an incompatible database for upgrading to version 6.0.
- D. vCenter Server Appliance 6.0 must be upgraded using the vSphere Web Client.

**Answer:** A

**Explanation:** Reference: <http://pubs.vmware.com/vsphere-60/topic/com.vmware.vsphere.upgrade.doc/GUID-6A5C596D-103E-4024-9353-5569263EB427.html>

#### NEW QUESTION 238

An administrator wants to monitor virtual machines on a host and send notifications when memory usage reaches 80%.  
 What should the administrator create in vCenter Server to accomplish this?

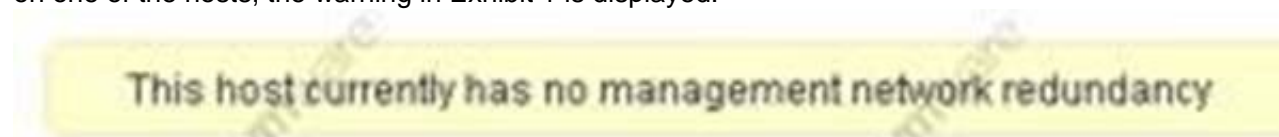
- A. A host alarm that will monitor virtual machine memory usage and set a trigger to email the notification.
- B. A vCenter Server alarm that will monitor virtual machine memory usage and set an action to email the notification.
- C. A host alarm that will monitor virtual machine memory usage and set an action to email the notification.
- D. A vCenter Server alarm that will monitor virtual machine memory usage and set a trigger to email the notification.

**Answer:** B

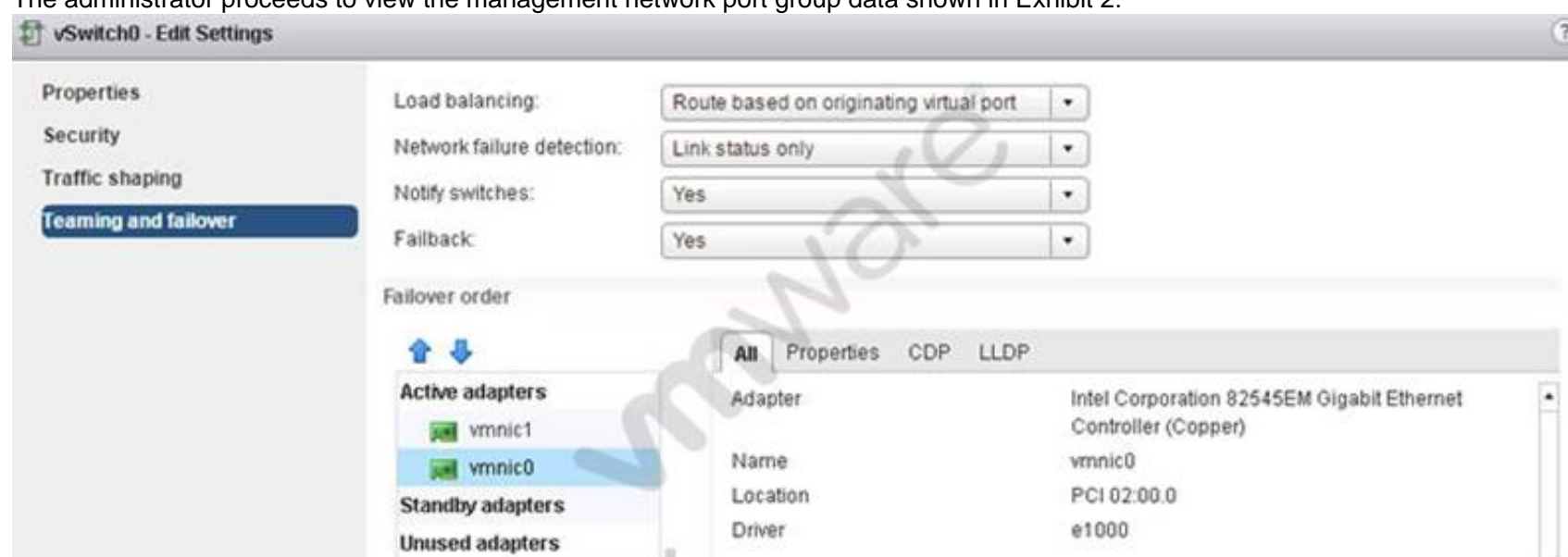
**Explanation:** For notifications, set the vCenter Server alarm to monitor virtual machine memory usage and configure set action to email the notification.

#### NEW QUESTION 243

An administrator has recently configured HA on a cluster. After reviewing the summary tab on one of the hosts, the warning in Exhibit 1 is displayed:



The administrator proceeds to view the management network port group data shown in Exhibit 2:



The administrator then views the management network vSwitch as shown in Exhibit 3:





Based on the exhibits, which two steps should be taken to ensure redundancy on the management network? (Choose two.)

- A. Move vmnic1 to Standby adapters.
- B. Add an additional vmnic to the Network Adapters and move it to Active adapters.
- C. Set the advanced HA configuration parameter das.ignoreRedundantNetWarning to True.
- D. Uncheck the Override Failover Checkbox on the management network port group.

**Answer:** AD

**Explanation:** Enabling redundancy is important for fault tolerance. Move vmnic1 to standby adapters and uncheck the override failover checkbox on the management network port group.

#### NEW QUESTION 246

Which condition would cause a vCenter Server installation to fail when installing on a Windows virtual machine?

- A. The virtual machine does not have at least four vCPUs.
- B. The virtual machine is running Windows Server 2008.
- C. The virtual machine has an E1000 network device.
- D. The virtual machine does not have 16GB of RAM.

**Answer:** B

**Explanation:** If you use Simple Install to install vCenter Server and components on a Windows Server 2008 R2 or Windows 2012 host, and the host is configured to use DHCP IP addressing, the installation fails with warning and error messages.

Reference: <https://www.vmware.com/support/vsphere5/doc/vsphere-vcenter-server-550b-release-notes.html#installissues>

#### NEW QUESTION 251

An administrator notices that the time on an ESXi 6.x host is incorrect.

Which two actions should the administrator take to correct this issue? (Choose two.)

- A. Modify the time for the host using the vSphere client.
- B. Correct the NTP settings in the /etc/ntp.conf file.
- C. Configure NTP from the Direct Console User Interface.
- D. Use the vicfg-ntp command from the vSphere Management Appliance.

**Answer:** AB

**Explanation:** Reference: [http://kb.vmware.com/selfservice/microsites/search.do?language=en\\_US&cmd=displayKC&externalId=1005092](http://kb.vmware.com/selfservice/microsites/search.do?language=en_US&cmd=displayKC&externalId=1005092)

#### NEW QUESTION 254

An administrator suspects that the MTU value for a vSphere Standard Switch is misconfigured.

Which two commands can determine the value? (Choose two.)

- A. esxcfg-vswitch -l
- B. esxcli network vswitch standard list
- C. esxcfg-vss -l
- D. esxcli network standard vswitch list

**Answer:** AB

**Explanation:** Reference: [http://kb.vmware.com/selfservice/microsites/search.do?language=en\\_US&cmd=displayKC&externalId=1007654](http://kb.vmware.com/selfservice/microsites/search.do?language=en_US&cmd=displayKC&externalId=1007654)

#### NEW QUESTION 255

After deploying a vSphere Platform Services Controller (PSC), an administrator is unable to install vCenter Server. The error displayed is: Could not contact Lookup Service. Please check VM\_ssoreg.log. Which two actions can be taken to correct this problem? (Choose two.)

- A. Verify that the clocks on the host machines running the PSC, vCenter Server, and the vSphere Web Client are synchronized.
- B. Configure a valid Identity Source for the Platform Services Controller in the vSphere Web Client.
- C. Ensure that there is no firewall blocking port 7444 between the PSC and vCenter Server.
- D. Uninstall and reinstall the Platform Services Controller software.



**Answer:** AC

**Explanation:** Reference: [http://kb.vmware.com/selfservice/microsites/search.do?language=en\\_US&cmd=displayKC&externalId=2033880](http://kb.vmware.com/selfservice/microsites/search.do?language=en_US&cmd=displayKC&externalId=2033880)

#### NEW QUESTION 259

A vSphere Web Client task fails while creating a VMFS datastore on a disk with these characteristics:

? The disk was formatted with an Master Boot Record (MBR) partition table

? The disk was not erased

? The disk is visible in the vSphere Web Client

What action needs to be performed to resolve the issue?

A. Delete the partitions manually with partedUtil.

B. Create a VMFS3 file system first, then upgrade it.

C. Create a VMFS5 file system with the command esxcli storage filesystem add.

D. Delete the data with the vmkfstools command.

**Answer:** A

**Explanation:** You can use the partedUtil command line utility to directly manipulate partition tables for local and remote SAN disks on ESXi and ESX.

The partedUtil command line only is supported for disk partitioning from ESXi 5.x. The command line utility fdisk does not work with LUNs formatted with VMFS5.

Reference: [http://kb.vmware.com/selfservice/microsites/search.do?language=en\\_US&cmd=displayKC](http://kb.vmware.com/selfservice/microsites/search.do?language=en_US&cmd=displayKC)

&externalId=1036609

#### NEW QUESTION 264

An administrator notices that 8 out of 10 virtual machines have memory ballooning and swapping. However, virtual machine 9 is not ballooning or swapping and virtual machine 10 is not ballooning but is swapping.

Which two statements explain the behavior of virtual machine 9 and virtual machine 10? (Choose two.)

A. Virtual machine 9 has a 100% memory reservation.

B. Virtual machine 10 has a memory limit configured.

C. Virtual machine 9 has memory shares set to HIGH.

D. Virtual machine 10 does not have Vmware Tools enabled or installed.

**Answer:** AD

**Explanation:** It seems that VM 9 has 100% memory reservation and VM 10 has a memory limit configured.

#### NEW QUESTION 268

An administrator is upgrading an ESXi 5.5 host to ESXi 6.x and gets the following error: MEMORY\_SIZE

What does this indicate?

A. Insufficient memory on the ESXi host to complete the upgrade.

B. Insufficient memory for Auto Deploy to complete the upgrade.

C. Insufficient memory in vCenter Server to complete the upgrade.

D. Insufficient memory for Update Manager to complete the upgrade.

**Answer:** A

**Explanation:** When you install less than 4GB of memory, Memory\_Size error occurs because ESXi host requires at least 4 GB of memory.

#### NEW QUESTION 273

What is the name of the command line utility that checks for VMFS5 metadata corruption?

A. vmkfstools --check

B. voma

C. vmfsanalyzer

D. esxcli vmfs check

**Answer:** B

**Explanation:** It is possible to check VMFS for metadata inconsistency with a tool called VOMA (Vmware Ondisk Metadata Analyser). With VOMA you can check VMFS3 and VMFS5 datastores.

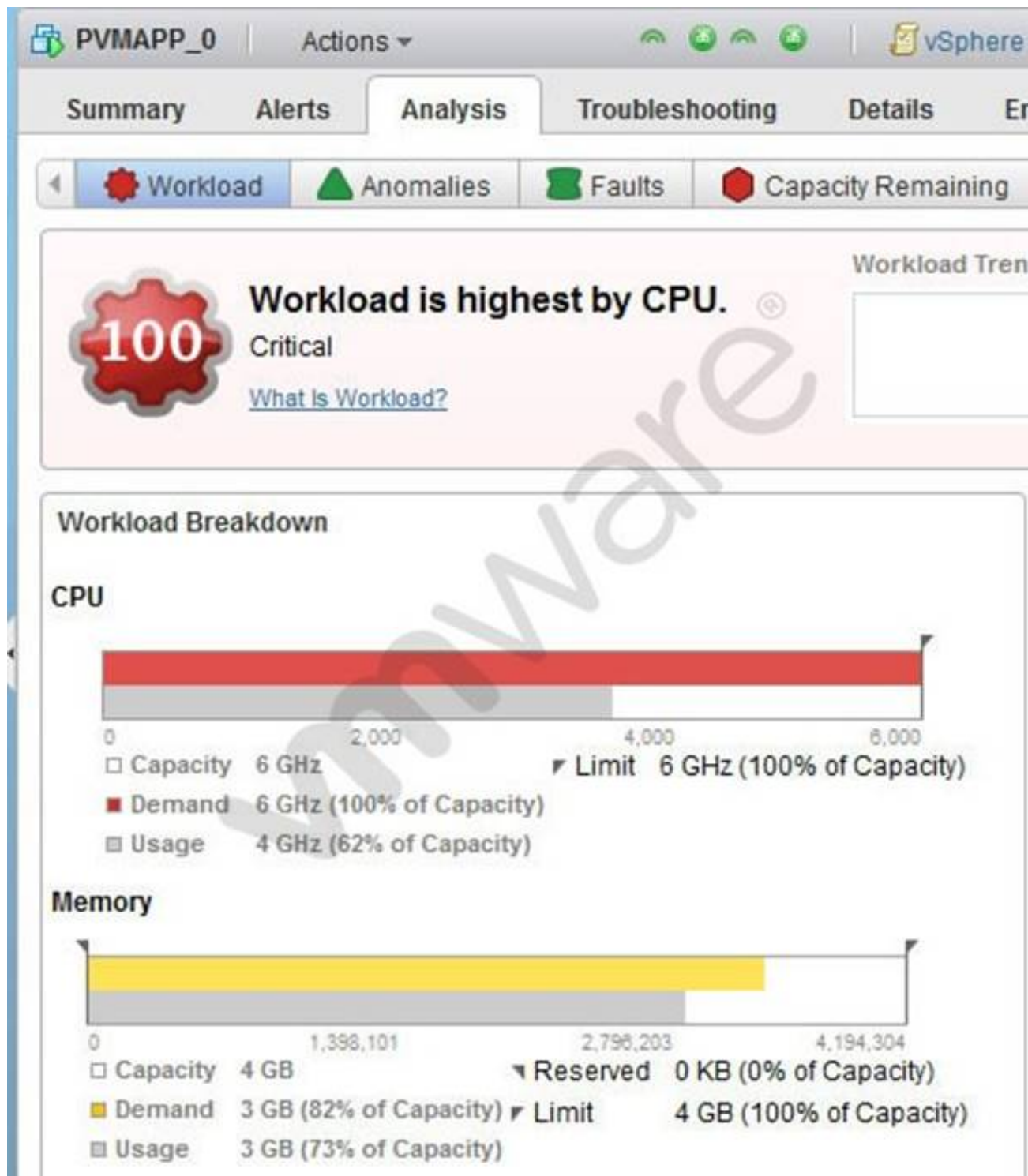
Please note, that the tool can only identify problems, as it runs in a read-only mode. So it does not help you to fix detected errors.

Reference: <http://www.running-system.com/how-to-check-vmfs-for-metadata-corruption-esxi-5-1-and-later/>

Topic 8, Deploy and Consolidate vSphere Data Center

#### NEW QUESTION 277

Refer to the Exhibit.



An administrator receives vRealize Operations alerts for the Health of the virtual machine PVMAPP\_0 as shown in Exhibit 1:  
 The administrator clicks on the Analysis pane, as shown in Exhibit 2:



Based on the exhibits, what action would correctly address the performance problems observed?

- A. Increase the number of vCPUs for PVMAPP\_0.
- B. Increase the allocation of memory for PVMAPP\_0.
- C. Increase the Memory limit for PVMAPP\_0.
- D. Increase the reservation in MHz for vCPUs for PVMAPP\_0.

**Answer:** A

**Explanation:** The CPU workload is high so the logical step is to increase the number of vCPUs for PVMAPP\_0.

#### NEW QUESTION 278

Which two are valid compliance results that indicate the need to apply a Host Profile? (Choose two.)

- A. Non-compliant
- B. Inconsistent
- C. Unknown
- D. Disconnected

**Answer:** AC

**Explanation:** Reference: [http://kb.vmware.com/selfservice/microsites/search.do?language=en\\_US&cmd=displayKC&externalId=1010732](http://kb.vmware.com/selfservice/microsites/search.do?language=en_US&cmd=displayKC&externalId=1010732)

**NEW QUESTION 279**

An administrator has decided to create 10 ESXi 6.x hosts via Auto Deploy for a new Test/Dev cluster. The hosts are configured to obtain their networking configuration via DHCP.

Which Direct Console User Interface option should the administrator use to renew the DHCP lease for the hosts?

- A. Restore Network Settings
- B. Test Management Network
- C. Restart Management Network
- D. Network Restore Options

**Answer:** C

**Explanation:** Reference: <http://www.virtuallyghetto.com/2014/01/how-to-restart-esxi-management-network.html>

**NEW QUESTION 280**

Refer to the Exhibit.

To provide access to a service or client, check the corresponding box.

By default, daemons will start automatically when any of their ports are opened, and stop when all of their ports are closed.

Name	Incoming Ports	Outgoing Ports	Protocols	Daemon
<b>Required Services</b>				
Secure Shell				
<input type="checkbox"/> SSH Client		22	TCP	N/A
<input checked="" type="checkbox"/> SSH Server	22		TCP	N/A
Simple Network Man...				
Ungrouped				

Service Details

N/A

Status

N/A

Allowed IP Addresses

Connections not allowed from all IP address

IP Addresses

☐ Allow connections from any IP address

192.168.1.0/24,192.168.2.220

Enter a comma-separated list of IP addresses. E.g.: 111.111.111.111, 111.111.111/22

OK

Cancel

An administrator has configured a firewall rule as shown in the Exhibit. Which statement best describes the ESXi 6.x firewall rule?

- A. Connections from the ESXi host to all devices on the 192.168.1.0 network and 192.168.2.220 on port 22 are allowed.
- B. Connections coming from IP addresses from the 192.168.1.0 network and 192.168.2.220 on port 22 are allowed.
- C. TCP Connections coming from IP addresses from the 192.168.1.0 network and 192.168.2.220 on port 22 are not allowed.
- D. TCP Connections from the ESXi host to all devices on the 192.168.1.0 network and 192.168.2.220 on port 22 are not allowed.

**Answer:** B

**Explanation:** As stated clearly in the IP addresses box, connections coming from 192.168.1.0 and 192.168.2.220 on port 22 are allowed.

**NEW QUESTION 281**

Refer to the Exhibit.




VM/Host Rules

Add...

Edit...

Delete

Name	Type	Enabled	Conflicts	Defined By
 Marketing Rule	Run VMs on Hosts	No	0	User

VM/Host Rule Details

Virtual Machines that are members of the VM Group should run on hosts that are members of the Host Group.


Add...

Remove


Add...

Remove

Marketing Group Members

 Marketing

Primary Group Members

 10.21.38.106

vSphere HA Rule Settings

Edit...

vSphere HA can enforce VM/Host rules when restarting virtual machines.

VM anti-affinity rules	vSphere HA must respect rules during failover
VM to Host affinity rules	vSphere HA should respect rules during failover

An administrator manages a High Availability (HA)/Distributed Resource Scheduler (DRS)- enabled cluster and has configured the affinity rule shown in the Exhibit. Which two statements best describe the configuration shown in the exhibit? (Choose two.)

- A. HA will not failover Marketing to ESXi hosts that are not in the Host Group.
- B. HA will failover Marketing to ESXi hosts that are not in the Host group.
- C. DRS will attempt to keep Marketing on the ESXi host 10.21.38.106.
- D. DRS will not attempt to keep Marketing on the ESXi host 10.21.28.106.

**Answer:** BD

**Explanation:** Based on the scenario, HA will failover marketing to ESXi hosts that not in the host group and the DRS will not keep Marketing on ESXi Host 10.21.28.106 because it is a primary group member.

#### NEW QUESTION 285

Which two features are available for virtual machines configured with DirectPath I/O? (Choose two.)

- A. Fault Tolerance
- B. Suspend and Resume
- C. Virtual Symmetric Multi-Processing (vSMP)
- D. Virtual Non-Uniform Memory Access (vNUMA)

**Answer:** CD

**Explanation:** VMs configured with DirectPath I/O have vSMP and vNUMA.

#### NEW QUESTION 287

An administrator attempts to place a Storage DRS enabled Datastore into Maintenance Mode. The task never completes, and the Entering Maintenance Mode status remains at 1%.

Which two actions should the administrator take to resolve this problem? (Choose two.)

- A. Set the Storage DRS advanced option IgnoreAffinityRulesForMaintenance = 1.
- B. Set the Storage DRS advanced option IgnoreAffinityRulesForMaintenance = 0.
- C. Disable Storage DRS affinity rules associated with this datastore cluster.
- D. Enable Storage DRS affinity rules associated with this datastore cluster.

**Answer:** AC

**Explanation:** Reference: <https://pubs.vmware.com/vsphere-51/index.jsp?topic=%2Fcom.vmware.vsphere.troubleshooting.doc%2FGUID-91D4FBBC-0677-44DA-B0F2-43A3504F8CA0.html>

#### NEW QUESTION 290

An administrator enables High Availability (HA) on a Virtual SAN cluster. There are four vmkernel port groups with the following IP addresses assigned:  
 ? Management: 192.168.12.10

? vMotion: 192.168.13.10  
 ? Virtual SAN: 192.168.14.10  
 ? Fault Tolerance: 192.168.15.10  
 Which IP address will HA use for traffic?

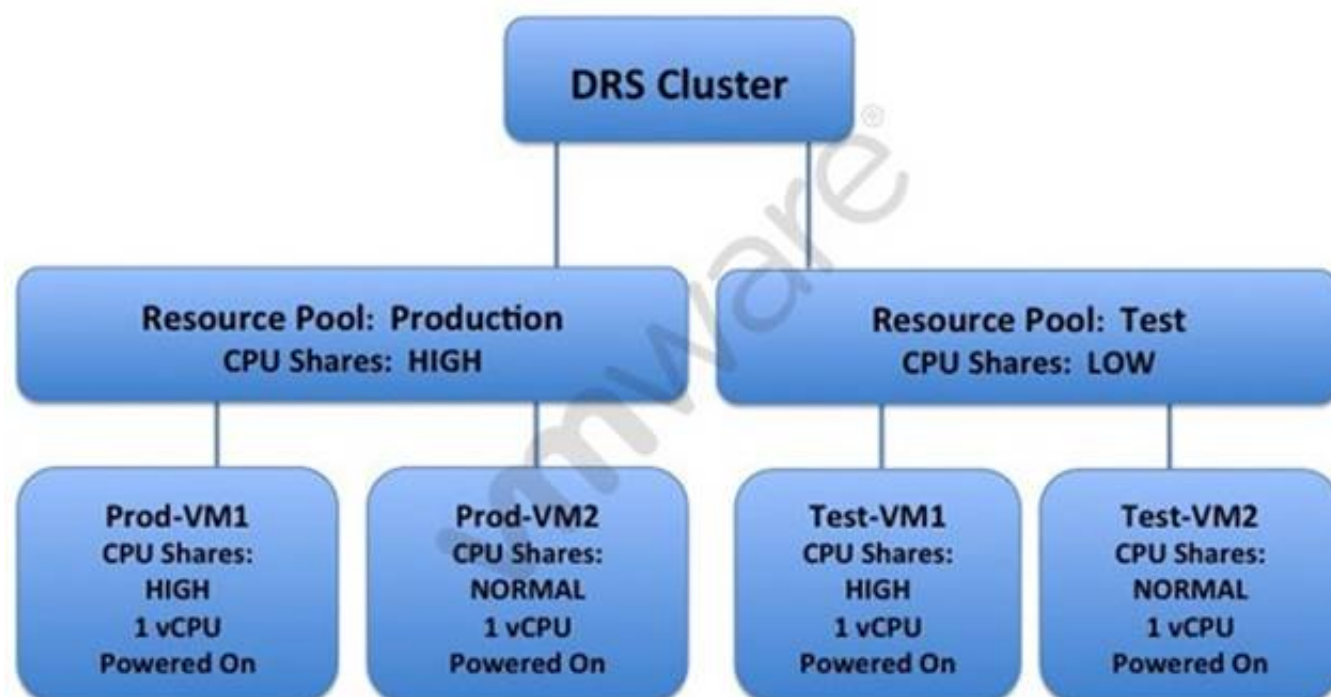
- A. 192.168.12.10
- B. 192.168.13.10
- C. 192.168.14.10
- D. 192.168.15.10

**Answer: C**

**Explanation:** Since the IP address of Virtual SAN is 192.168.14.10, HA will use this for traffic because HA uses the original IP of the entity that needs High availability.

#### NEW QUESTION 293

Refer to the Exhibit.



An administrator has created the DRS cluster shown in the Exhibit. Based on the exhibit, which statement is true?

- A. Under CPU contention, Prod-VM1 receives four times the CPU resources than Test- VM1.
- B. The Prod-VM1 will always have more CPU resources than all other virtual machines.
- C. The Test-VM2 will always have less CPU resources than all other virtual machines.
- D. Under CPU contention, Test-VM1 will receive 25% of the total CPU resources.

**Answer: A**

**Explanation:** Prod-VM1 will receive four times the CPU resources the Test-VM1 because the CPU contention is high compared to the test resource pool.

#### NEW QUESTION 295

What are two ways to view the DNS settings for an ESXi 6.x host? (Choose two.)

- A. Use the vicfg-dns command from the vSphere Management Appliance.
- B. View the /etc/resolv.conf file on the ESXi host.
- C. Use vicfg-dns command on the ESXi host.
- D. View the /etc/dns.conf file on the ESXi host.

**Answer: AB**

**Explanation:** Reference: <http://chansblog.com/tag/vicfg/>

#### NEW QUESTION 297

An administrator tries to capture network traffic for a virtual machine, but cannot see the expected traffic in the packet capture tool. Which step can resolve the problem?

- A. Migrate the virtual machine to a Distributed Virtual Switch.
- B. Enable Promiscuous Mode on the relevant port group.
- C. Modify the default value of MAC Address changes.
- D. Enable Forged Transmits on the virtual machine.

**Answer: B**

**Explanation:** Although it is not a good practice to enable promiscuous mode on a distributed virtual switch, you can enable it to solve the problem of traffic stats in packet capture tool.



#### NEW QUESTION 298

An administrator is building a large virtual machine that will require as many vCPUs as the host can support. An ESXi 6.x host has these specifications:

- ? Six 32-core Intel Xeon Processors
- ? 256 GB of Memory
- ? 512 GB Local disk space using VMFS5

What is the maximum number of virtual CPUs that the virtual machine can be allocated?

- A. 64
- B. 128
- C. 192
- D. 256

**Answer:** B

**Explanation:** Reference: <http://www.intel.com/content/dam/www/public/us/en/documents/white-papers/virtualization-xeon-core-count-impacts-performance-paper.pdf>

#### NEW QUESTION 301

An administrator wants to prevent a priority virtual machine that resides in a vSphere DRS cluster from migrating to other hosts in the cluster.

What configuration step will accomplish this without affecting other virtual machines?

- A. Set VM Overrides to Partially Automated.
- B. Set VM Overrides to Manual.
- C. Configure a VM/Host Rule with the setting Must run on hosts in group.
- D. Configure a VM/Host Rule with the setting Should run on hosts in group.

**Answer:** B

**Explanation:** Set VM overrides to manual. This way, you can prevent a priority VM in DRS cluster from migration to other hosts in the cluster.

#### NEW QUESTION 302

After configuring a Virtual SAN cluster, an administrator using the vSphere Web Client notices that the Virtual SAN datastore is smaller than expected. The cluster contains:

- ? Three ESXi hosts
- ? Each host has one 10GB SDD
- ? Each host has one 100GB HDD

Why would the Virtual SAN datastore show as 100GB instead of 300GB?

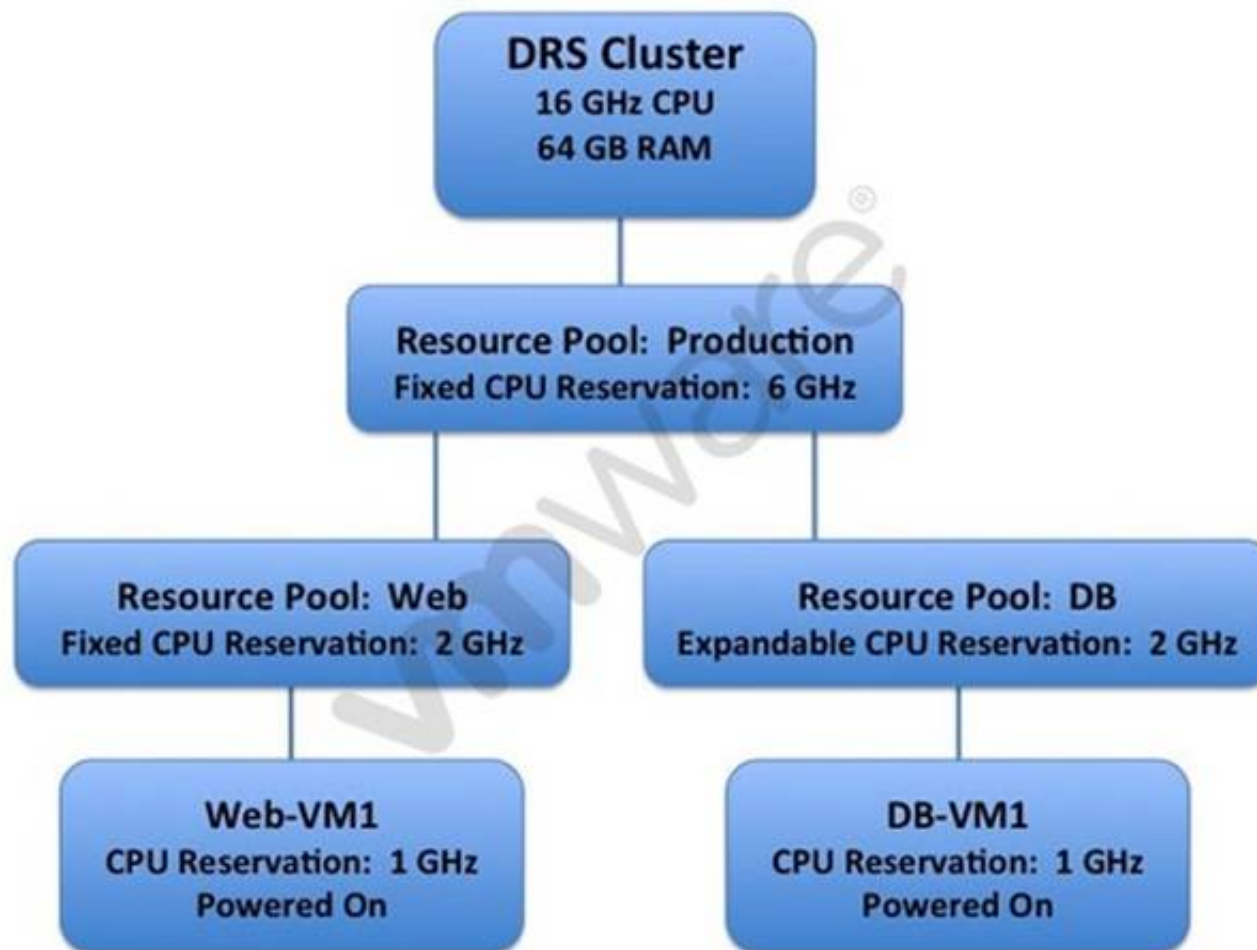
- A. There is a network problem with the Virtual SAN vmkernel ports.
- B. The Virtual SAN VASA provider is disabled.
- C. vSphere High Availability is enabled on the Virtual SAN cluster.
- D. The Virtual SAN cluster must be managed using the vSphere Web Client.

**Answer:** A

**Explanation:** Reference: [http://kb.vmware.com/selfservice/microsites/search.do?language=en\\_US&cmd=displayKC&externalId=2058368](http://kb.vmware.com/selfservice/microsites/search.do?language=en_US&cmd=displayKC&externalId=2058368)

#### NEW QUESTION 306

Refer to the Exhibit.



A vSphere 6.x DRS cluster is configured as shown in the Exhibit. Based on the exhibit, which statement is true?

- A. A virtual machine can be powered on in the Web Resource Pool with a 3 GHz CPU Reservation.
- B. A virtual machine can be powered on in the Web Resource Pool with a 4 GHz CPU Reservation.
- C. A virtual machine can be powered on in the DB Resource Pool with a 3 GHz CPU Reservation.
- D. A virtual machine can be powered on in the DB Resource Pool with a 4 GHz CPU Reservation.

**Answer: C**

#### NEW QUESTION 309

Which two statements regarding Distributed Resource Scheduler (DRS) affinity rules are true? (Choose two.)

- A. When two VM-VM affinity rules conflict, the older one takes precedence and the newer rule is disabled.
- B. Using Specify Failover Hosts admission control policy, VM-VM affinity rules are not supported.
- C. DRS gives higher precedence to preventing violations of anti-affinity rules than violations of affinity rules.
- D. It is not possible to create an affinity rule that conflicts with the other rules being used.

**Answer: AC**

**Explanation:** When you create a VM-Host affinity rule, its ability to function in relation to other rules is not checked. So, it is possible for you to create a rule that conflicts with the other rules you are using. When two VM-Host affinity rules conflict, the older one takes precedence and the newer rule is disabled. DRS only tries to satisfy enabled rules and disabled rules are ignored.

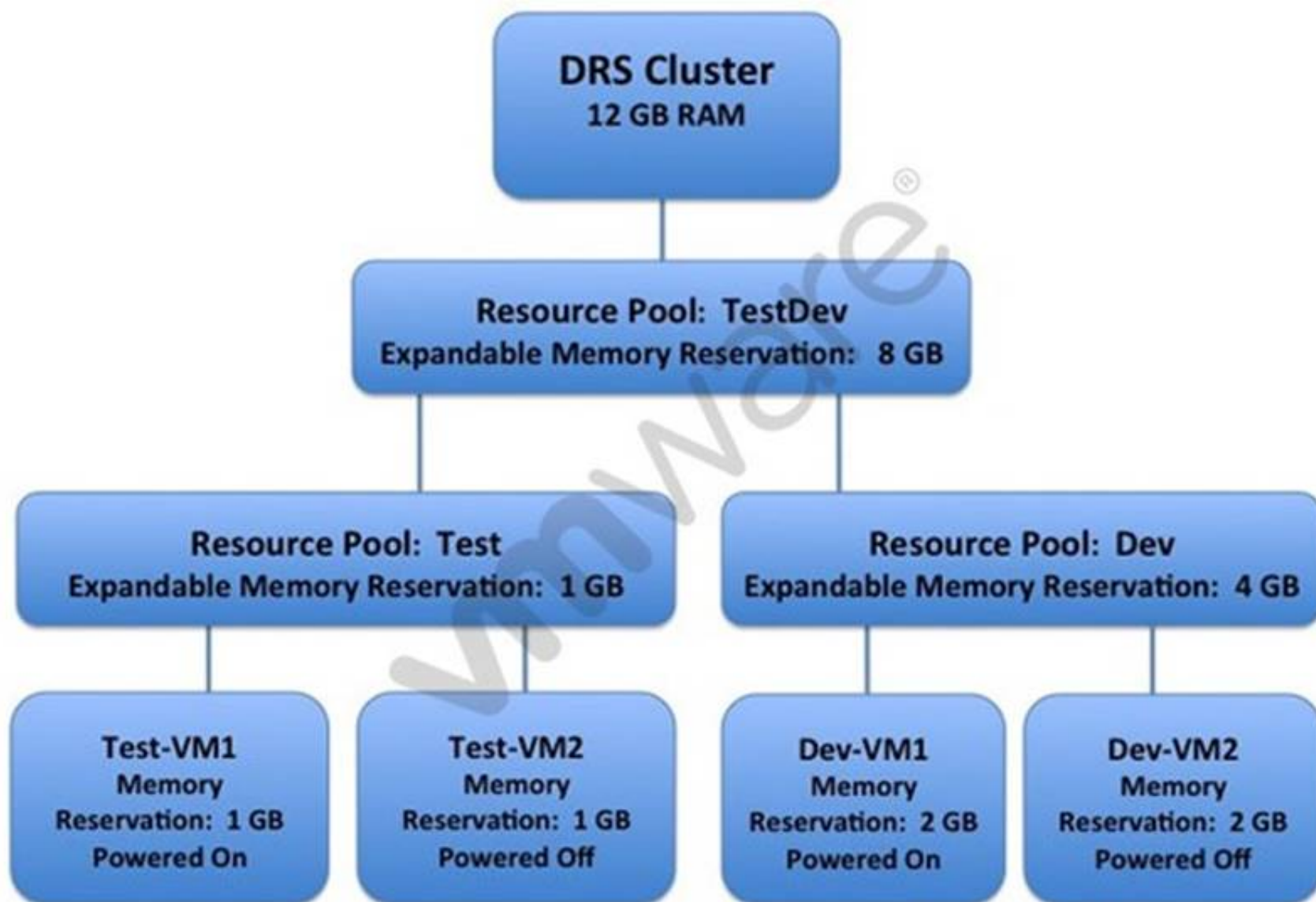
DRS, vSphere HA, and vSphere DPM never take any action that results in the violation of required affinity rules (those where the virtual machine DRS group 'must run on' or 'must not run on' the host DRS group). Accordingly, you should exercise caution when using this type of rule because of its potential to adversely affect the functioning of the cluster. If improperly used, required VM-Host affinity rules can fragment the cluster and inhibit the proper functioning of DRS, vSphere HA, and vSphere DPM.

Reference:

<https://pubs.vmware.com/vsphere-55/index.jsp?topic=%2Fcom.vmware.vsphere.resmgmt.doc%2FGUID-793013E2-0976-43B7-9A00-340FA76859D0.html>

#### NEW QUESTION 312

Refer to the Exhibit.



An administrator has configured a vSphere 6.x DRS cluster as shown in the Exhibit. Based on the exhibit, which statement is true?

- A. A virtual machine can be powered on in the Test Resource Pool with a 6 GB Memory Reservation.
- B. A virtual machine can be powered on in the Dev Resource Pool with a 8 GB Memory Reservation.
- C. A virtual machine from both the Test Resource Pool and the Dev Resource Pool can be powered on with a 4 GB Memory Reservation.
- D. No more virtual machines can be powered on due to insufficient resources.

**Answer: A**

**Explanation:** Using 6 GB reservation, a VM can be powered on in the test resource pool. IT has an expandable memory reservation that can help starta VM in the resource pool.

#### NEW QUESTION 317

An administrator wants to reduce the memory overhead for a 3D graphics enabled virtual machine (VM). What advanced feature can be added to the VM configuration file to reduce memory overhead?

- A. vga.vgaOnly=TRUE
- B. vga.svgaEnable=FALSE
- C. svgaEnabled=FALSE
- D. svgaDisable=TRUE

**Answer: A**

**Explanation:** Reference: [http://pubs.vmware.com/vsphere-60/index.jsp?topic=%2Fcom.vmware.vsphere.vm\\_admin.doc%2FGUID-FAB0E2C3-3474-461D-99BC-549F7E21FE85.html](http://pubs.vmware.com/vsphere-60/index.jsp?topic=%2Fcom.vmware.vsphere.vm_admin.doc%2FGUID-FAB0E2C3-3474-461D-99BC-549F7E21FE85.html)

#### NEW QUESTION 319

What will occur if the .nvram file is deleted from a powered off virtual machine?

- A. The .nvram file will get created the next time the virtual machine is powered on.
- B. Restoring the file from backup is needed to allow the virtual machine to power on.
- C. The virtual machine will fail to power on and enter an Orphaned state.
- D. The virtual machine will fail to power on and enter an Inaccessible state.

**Answer: A**

**Explanation:** The .nvram file. This small file contains the BIOS that is used when the VM boots. It is similar to a physical server that has a BIOS chip that lets you set hardware configuration options. A VM also has a virtual BIOS that is contained in the NVRAM file. The BIOS can be accessed when a VM first starts up by pressing the F2 key. Whatever changes are made to the hardware configuration of the VM are then saved in the NVRAM file. This file is in binary format and if deleted it will be automatically re-created when a VM is powered on.

Reference: <http://searchvmware.techtarget.com/tip/Understanding-the-files-that-make-up-a-VMware-virtual-machine>

#### NEW QUESTION 320

An administrator tries to connect the vSphere 5.5 Client to an ESXi 6.x host. What will happen when this takes place?

- A. The operation will fail, since the vSphere Client is deprecated in vSphere 6.x.
- B. The operation will fail and the administrator will need to delete the client and install the 6.x version.
- C. The operation will prompt the administrator to run a script to upgrade the vSphere Client.
- D. The operation will update the vSphere Client silently in the background, then connect.

**Answer:** C

**Explanation:** The operation will fail because vSphere client 5.5 is deprecated in vSphere 6.x. You simply cannot connect a 5.5 vSphere client to a 6.x host because they are not compatible.

#### NEW QUESTION 323

An administrator needs to migrate a legacy physical application server to a virtual machine within a vSphere 6 cluster. As part of the conversion, the administrator must reduce the size of the virtual disks.

What action should the administrator take to create a virtual machine with smaller virtual disks than the original physical server?

- A. Shut down the physical server and use VMware Converter cold cloning with volume-based cloning at the disk level.
- B. Use VMware Converter hot cloning with volume-based cloning at the block level.
- C. Shut down the physical server and use VMware Converter cold cloning with volume-based cloning at the file level.
- D. Use VMware Converter hot cloning with volume-based cloning at the file level.

**Answer:** D

**Explanation:** Use VMware converter hot cloning with volume-based cloning at the file level to create a virtual machine with smaller virtual disks.

#### NEW QUESTION 324

An administrator wants to allow users to login to the vSphere Web Client using the Use Windows session authentication check box for faster authentication.

Which three requirements must be met for this feature to be available and functional? (Choose three.)

- A. Install the vSphere Web Client Integration browser plug-in on the vCenter Server and Platform Services Controller machines.
- B. Install the vSphere Web Client Integration browser plug-in on each workstation from where a user will sign in.
- C. The users must be signed into Windows using Active Directory user accounts.
- D. The administrator must create a valid Identity Source in Single Sign-On for the users domain.
- E. The administrator must create a valid Single Sign-On Identity Source using Integrated Windows Authentication.

**Answer:** BCD

**Explanation:** To enable Windows session authentication, install the vSphere Web Client Integration browser plug-in on each workstation from where a user will sign in. The users must be signed into Windows using Active Directory user accounts. The administrator must create a valid Identity Source in Single Sign-On for the users domain.

#### NEW QUESTION 329

Which two statements are true regarding upgrading ESXi 6.x hosts using a USB flash drive? (Choose two.)

- A. The ks.cfg file must be available to the ESXi 6.x host during bootup on a TFTP server.
- B. The USB flash drive must be formatted using Fat32.
- C. A partition table must be manually created on the USB flash device.
- D. The USB flash drive must be mounted from a Windows device with sysconfig installed.

**Answer:** BC

#### NEW QUESTION 331

An administrator is building a large virtual machine that will require as many vCPUs as the host can support. An ESXi 6.x host has these specifications:

- Four 24-core Intel Xeon Processors
- 256 GB of Memory
- 512 GB Local disk space using VMFS5

What is the maximum number of virtual CPUs that the virtual machine can be allocated?

- A. 64
- B. 96
- C. 128
- D. 192

**Answer:** B

#### NEW QUESTION 333

An administrator is configuring Storage I/O Control. After enabling, the administrator notices high device latency and poor storage performance.

Which two actions would likely reduce latency and improve functionality? (Choose two.)

- A. Set the congestion threshold to 15ms
- B. Set the congestion threshold value to 5ms
- C. Ensure that each datastore has independent spindles
- D. Ensure that each datastore uses shared spindles



**Answer:** AC

**NEW QUESTION 338**

An administrator needs to configure a storage solution for a vSphere 6.x implementation with these characteristics:

- Snapshot support
- vMotion Capability
- Clustering across multiple ESXi hosts
- Database application with high transaction count
- vFlash Read Cache

Which solution meets all of the stated requirements?

- A. A vmrk located on a Shared VMFS datastore
- B. A Physical Mode Raw Device Mapped LUN
- C. A Virtual Mode Raw Device Mapped LUN
- D. A Virtual SAN-based vmrk

**Answer:** C

**NEW QUESTION 343**

An administrator is creating a new Content Library. It will subscribe to another remote Content Library without authentication enabled. Optimal performance is desired for the configuration.

What two steps should be taken to set up the library? (Choose two.)

- A. The Subscription URL should be provided.
- B. The library should be published externally.
- C. A file system should be used for this library.
- D. A datastore should be used for this library.

**Answer:** AD

**NEW QUESTION 345**

An administrator observes that virtual machine storage activity on an ESXi 6.x host is negatively affecting virtual machine storage activity on another host that is accessing the same VMFS Datastore.

Which action would mitigate the issue?

- A. Enable Storage I/O Control.
- B. Configure Storage DRS.
- C. Enable the Dynamic Queue Depth Throttling option.
- D. Configure the Disk.SchedNumReqOutstanding parameter.

**Answer:** A

**NEW QUESTION 348**

Which VMware Single Sign-On component handles STS authentication requests?

- A. Security Token Service
- B. Administration Server
- C. VMware Directory Service
- D. Identity Management Service

**Answer:** D

**NEW QUESTION 351**

An administrator is configuring resource pools for a vSphere 6.x cluster. The cluster has these characteristics:

- Five ESXi 6.x hosts
- Six cores per host
- 70 virtual machines with 1 vCPU each

The administrator configures three resource pools and places the virtual machines into the pools, as follows:

- Production pool - High Share value with 40 virtual machines
- Infrastructure pool - Medium Share value with 20 virtual machines
- Development pool - Low Share value with 10 virtual machines

Given this configuration, what is the expected performance for each group of virtual machines during contention?

- A. Virtual machines in the Production pool will perform two times as well as those in the Infrastructure pool.
- B. Virtual machines in the Infrastructure pool will perform four times as well as those in the Development pool.
- C. Virtual machines in all resource pools will perform equally.
- D. Virtual machines in the Development pool will perform two times as well as those in the Infrastructure pool.

**Answer:** C

**NEW QUESTION 353**

.....

## Thank You for Trying Our Product

### We offer two products:

1st - We have Practice Tests Software with Actual Exam Questions

2nd - Questions and Answers in PDF Format

### 2V0-621D Practice Exam Features:

- \* 2V0-621D Questions and Answers Updated Frequently
- \* 2V0-621D Practice Questions Verified by Expert Senior Certified Staff
- \* 2V0-621D Most Realistic Questions that Guarantee you a Pass on Your FirstTry
- \* 2V0-621D Practice Test Questions in Multiple Choice Formats and Updatesfor 1 Year

**100% Actual & Verified — Instant Download, Please Click**  
**[Order The 2V0-621D Practice Test Here](#)**