



Cisco

Exam Questions 300-208

Implementing Cisco Secure Access Solutions (SISAS)

NEW QUESTION 1

What are three portals provided by PSN? (Choose three.)

- A. Monitoring
- B. Troubleshooting
- C. Sponsor
- D. Guest
- E. My devices
- F. Admin

Answer: CDE

NEW QUESTION 2

Which command is useful when troubleshooting AAA Authentication between a Cisco router and the AAA server?

- A. test aaa-server test cisco cisco123 all new-code
- B. test aaa group7 tacacs+ auth cisco123 new-code
- C. test aaa group tacacs+ cisco cisco123 new-code
- D. test aaa-server tacacs+ group7 cisco cisco123 new-code

Answer: C

NEW QUESTION 3

What is the first step that occurs when provisioning a wired device in a BYOD scenario?

- A. The smart hub detects that the physically connected endpoint requires configuration and must use MAB to authenticate.
- B. The URL redirects to the Cisco ISE Guest Provisioning portal.
- C. Cisco ISE authenticates the user and deploys the SPW package.
- D. The device user attempts to access a network URL.

Answer: A

NEW QUESTION 4

What is the purpose of configuring Native Supplicant Profile on the Cisco ISE?

- A. It provides posture assessments and remediation for devices that are attempting to gain access to the corporate network.
- B. It is used to register personal devices on the network.
- C. It enforces the use of MSCHAPv2 or EAP-TLS for 802 1X authentication
- D. It helps employees add and manage new devices by entering the MAC address for the device.

Answer: C

NEW QUESTION 5

Which command configures console port authorization under line con 0?

- A. authorization default|WORD
- B. authorization exec line con 0|WORD
- C. authorization line con 0|WORD
- D. authorization exec default|WORD

Answer: D

NEW QUESTION 6

Which network component would issue the CoA?

- A. switch
- B. endpoint
- C. Admin Node
- D. Policy Service Node

Answer: D

NEW QUESTION 7

Which action do you take to restrict network access for endpoints that are not posture compliant?

- A. Configure a dACL on the NAD.
- B. Configure client provisioning services on the Cisco ISE Server
- C. Assign a dynamic VLAN on the NAD.
- D. Define the policy by configuring a standard profile.

Answer: A

NEW QUESTION 8

When you add a new PSN for guest access services, which two options must be enabled under deployment settings? (Choose two.)

- A. Admin
- B. Monitoring
- C. Policy Service
- D. Session Services
- E. Profiling

Answer: CD

NEW QUESTION 9

Which three pieces of information can be found in an authentication detail report? (Choose three.)

- A. DHCP vendor ID
- B. user agent string
- C. the authorization rule matched by the endpoint
- D. the EAP method the endpoint is using
- E. the RADIUS username being used
- F. failed posture requirement

Answer: CDE

NEW QUESTION 10

Which statement about Cisco ISE BYOD is true?

- A. Dual SSID allows EAP-TLS only when connecting to the secured SSID.
- B. Single SSID does not require endpoints to be registered.
- C. Dual SSID allows BYOD for guest users.
- D. Single SSID utilizes open SSID to accommodate different types of users.
- E. Single SSID allows PEAP-MSCHAPv2 for native supplicant provisioning.

Answer: E

NEW QUESTION 10

What is the purpose of the Cisco ISE Guest Service Sponsor Portal?

- A. It tracks and stores user activity while connected to the Cisco ISE.
- B. It securely authenticates guest users for the Cisco ISE Guest Service.
- C. It filters guest users from account holders to the Cisco ISE.
- D. It creates and manages Guest User accounts.

Answer: D

NEW QUESTION 11

The corporate security policy requires multiple elements to be matched in an authorization policy. Which elements can be combined to meet the requirement?

- A. Device registration status and device activation status
- B. Network access device and time condition
- C. User credentials and server certificate
- D. Built-in profile and custom profile

Answer: B

NEW QUESTION 13

In the command 'aaa authentication default group tacacs local', how is the word 'default' defined?

- A. Command set
- B. Group name
- C. Method list
- D. Login type

Answer: C

NEW QUESTION 15

Which identity store option allows you to modify the directory services that run on TCP/IP?

- A. Lightweight Directory Access Protocol
- B. RSA SecurID server
- C. RADIUS
- D. Active Directory

Answer: A

NEW QUESTION 19

Which two portals can be configured to use portal FQDN? (Choose two.)

- A. admin
- B. sponsor
- C. guest
- D. my devices
- E. monitoring and troubleshooting

Answer: BD

NEW QUESTION 24

Which advanced authentication setting is needed to allow an unknown device to utilize Central WebAuth?

- A. If Authentication failed > Continue
- B. If Authentication failed > Drop
- C. If user not found > Continue
- D. If user not found > Reject

Answer: C

NEW QUESTION 25

Which two protocols does Cisco Prime Infrastructure use for device discovery? (Choose two.)

- A. SNAP
- B. LLDP
- C. RARP
- D. DNS
- E. LACP

Answer: BD

NEW QUESTION 28

Which two options are advantages of using the Cisco IOS Device Sensor as compared to other profiling probes'? (Choose two.)

- A. uses RADIUS authentication messages to send gathered data to a Cisco ISE server
- B. provides DHCP information to a Cisco ISE server without using an IP helper address
- C. reduces the amount of traffic going to a Cisco ISE server
- D. collects switch CPU and RAM usage for monitoring purposes
- E. replaces all the other profiling probes

Answer: AD

NEW QUESTION 31

Which two attributes must match between two Cisco ASA devices to properly enable high availability? (Choose two.)

- A. model, interface configuration, and RAM
- B. major and minor software release
- C. tcp dead-peer detection protocol
- D. 802.1x authentication identity

Answer: AB

NEW QUESTION 35

Which two identity databases are supported when PEAP-MSCHAPv2 is used as EAP type? (Choose two.)

- A. Windows Active Directory
- B. LDAP
- C. RADIUS token server
- D. internal endpoint store
- E. internal user store
- F. certificate authentication profile
- G. RSA SecurID

Answer: AE

NEW QUESTION 36

An ISE1.3 environment, which path does a network engineer use to set up a self-registered guest portal?

- A. Guest Access > Configure > Guest Portals
- B. Security > Access Control Lists > Guest Portals
- C. Policy > Settings > Guest Portals
- D. Policy > Authorization > Guest Portals

Answer: A

NEW QUESTION 39

Which Cisco IOS IPS feature allows to you remove one or more actions from all active signatures based on the attacker and/or target address criteria, as well as

the event risk rating criteria?

- A. signature event action filters
- B. signature event action overrides
- C. signature attack severity rating
- D. signature event risk rating

Answer: A

NEW QUESTION 43

Which two statements about RADIUS are true? (Choose two.)

- A. It uses UDP ports 1812 and 1813.
- B. It encrypts the payload.
- C. It encrypts the password only
- D. It uses TCP ports 1812 and 1813.
- E. It separates authorization and authentication functions

Answer: AC

NEW QUESTION 47

Certain endpoints are missing DHCP profiling data.

Which option describes what can be used to determine if DHCP requests from clients are reaching Cisco ISE?

- A. output of show interface gigabitEthernet 0 from the CLI
- B. output of debug logging all 7 from the CLI
- C. output of show logging application profiler.log from the CLI
- D. the TCP dump diagnostic tool through the GUI
- E. the posture troubleshooting diagnostic tool through the GUI

Answer: D

NEW QUESTION 50

An organization has recently deployed ISE with Trustsec capable Cisco switches and would like to allow differentiated network access based on user groups. Which solution is most suitable for achieving these goals?

- A. Cyber Threat Defense for user group control by leveraging Netflow exported from the Cisco switches and identity information from ISE
- B. MACsec in Multiple-Host Mode in order to encrypt traffic at each hop of the network infrastructure
- C. Identity-based ACLs preconfigured on the Cisco switches with user identities provided by ISE
- D. Cisco Security Group Access Policies to control access based on SGTs assigned to different user groups

Answer: D

NEW QUESTION 55

Which two accounting types are used to implement accounting with RADIUS? (Choose two.)

- A. Network
- B. User
- C. Attribute
- D. Device
- E. Resource

Answer: AE

NEW QUESTION 60

A security engineer has configured a switch port in x closed mode. Which protocol is allowed to pass?

- A. HTTP
- B. EAPOL
- C. Bootps
- D. ARP
- E. PXE

Answer: B

NEW QUESTION 64

A security engineer must provision dynamic TrustSec classifications. Which two classification options must the engineer select to accomplish this task? (Choose two.)

- A. interface
- B. 802.1X
- C. MAB
- D. IP subnet
- E. VLAN

Answer: BE

NEW QUESTION 67

A wireless deployment must check guest device compliance before allowing access to the network. Which type of guest deployment is needed to allow the Client Provisioning portal?

- A. central web authentication
- B. sponsored
- C. hotspot
- D. self-registered

Answer: B

NEW QUESTION 71

In an 802.1X authorization process, a network access device provides which three functions? (Choose three.)

- A. Filters traffic prior to authentication
- B. Passes credentials to authentication server
- C. Enforces policy provided by authentication server
- D. Hosts a central web authentication page
- E. Confirms supplicant protocol compliance
- F. Validates authentication credentials

Answer: ABC

NEW QUESTION 73

In AAA, what function does authentication perform?

- A. It identifies the actions that the user can perform on the device.
- B. It identifies the user who is trying to access a device.
- C. It identifies the actions that a user has previously taken.
- D. It identifies what the user can access.

Answer: B

NEW QUESTION 76

A network administrator configured DUAL SSID, where the first SSID is used for guest provisioning and the other SSID for Employee provisioning. Which option he can use for layer 2 security provision?

- A. MAB
- B. 802.1x
- C. authentication open
- D. shared secret

Answer: A

NEW QUESTION 78

Which command can check a AAA server authentication for server group Group1, user cisco, and password cisco555 on a Cisco ASA device?

- A. ASA# test aaa-server authentication Group1 username cisco password cisco555
- B. ASA# test aaa-server authentication group Group1 username cisco password cisco555
- C. ASA# aaa-server authorization Group1 username cisco password cisco555
- D. ASA# aaa-server authentication Group1 roger cisco555

Answer: A

NEW QUESTION 80

Which characteristic of an 3GT enforcement policy is true?

- A. An SGFW has an implicit permit at the beginning.
- B. An SGFW has an implicit deny at the end.
- C. An SGACL has an implicit deny at the end.
- D. An SGACL has an explicit deny at the beginning.

Answer: C

NEW QUESTION 82

Which two Cisco Catalyst switch interface commands allow only a single voice device and a single data device to be connected to the IEEE 802.1X-enabled interface? (Choose two.)

- A. authentication host-mode single-host
- B. authentication host-mode multi-domain
- C. authentication host-mode multi-host
- D. authentication host-mode multi-auth

Answer: AB

NEW QUESTION 83

A customer is concerned with the use of the issued laptops even when devices are not on the corporate network. Which agent continues to be operational even when the host is not on the Cisco ISE network?

- A. Cisco ISE Agent
- B. Cisco NAC Agent
- C. Cisco Custom Agent
- D. Cisco NAC Web Agent

Answer: B

NEW QUESTION 88

Which ISE deployment mode is similar to the industry standard 802.1X behavior?

- A. policy mode
- B. monitor mode
- C. closed mode
- D. low-impact mode

Answer: C

NEW QUESTION 90

An engineer is designing a BYOD environment utilizing Cisco ISE for devices that do not support native supplicants. Which portals must the security engineer configure to accomplish this task?

- A. Client Provisioning Portals
- B. BYOD Portals
- C. My Devices Portals
- D. MDM Portals

Answer: C

NEW QUESTION 94

What is the first Step for configuring Cisco ISE for the onboarding process?

- A. Configure the default action that must be taken when .in unsupported device attempts to connect and cannot be provisioned
- B. Create the native supplicant profile that is sent to the end user device.
- C. Configure different web portals based on a number of attributes available from the authentication request
- D. Configure the action that is taken when an unsupported device attempts to connect to a secure network

Answer: B

NEW QUESTION 99

If the user is in a non-compliant state and wants to Get out of quarantine, what must be done?

- A. download posture
- B. download profiling
- C. download mab
- D. download web agent

Answer: A

NEW QUESTION 102

You are finding that the 802.1X-configured ports are going into the error-disable state. Which command will show you the reason why the port is in the error-disable state, and which command will automatically be re-enabled after a specific amount of time? (Choose two.)

- A. show error-disable status
- B. show error-disable recovery
- C. show error-disable flap-status
- D. error-disable recovery cause security-violation
- E. error-disable recovery cause dot1x
- F. error-disable recovery cause l2ptguard

Answer: BD

NEW QUESTION 107

Which two EAP types require server side certificates? (Choose two.)

- A. EAP-TLS
- B. PEAP
- C. EAP-MD5
- D. LEAP
- E. EAP-FAST
- F. MSCHAPv2

Answer:

AB

NEW QUESTION 109

ACisco ISE deployment wants to use Active Directory as an external identity source. Which technology is a prerequisite to configure ISE/Active Directory integration?

- A. WINS
- B. NTP
- C. PTP
- D. CHAP

Answer: B

NEW QUESTION 111

What are two client-side requirements of the NAC Agent and NAC Web Agent installation? (Choose two.)

- A. Administrator workstation rights
- B. Active Directory Domain membership
- C. Allowing of web browser activex installation
- D. WSUS service running

Answer: AC

NEW QUESTION 113

A network administrator noticed that wireless guests are able to access internal resources which should not be accessible. Looking at the settings on the Cisco ISE, the administrator notices that the correct ACL is applied in Authorization Profile Settings and guests are being authorized using the correct authorization profile. Why is this happening"

- A. Number ACL must be applied.
- B. Airespace ACL Name must be configured instead of DACL Name.
- C. Access Type must be changed to ACCESS_REJECT with GUEST_ACL
- D. GUEST_ACL syntax is incorrect

Answer: C

NEW QUESTION 116

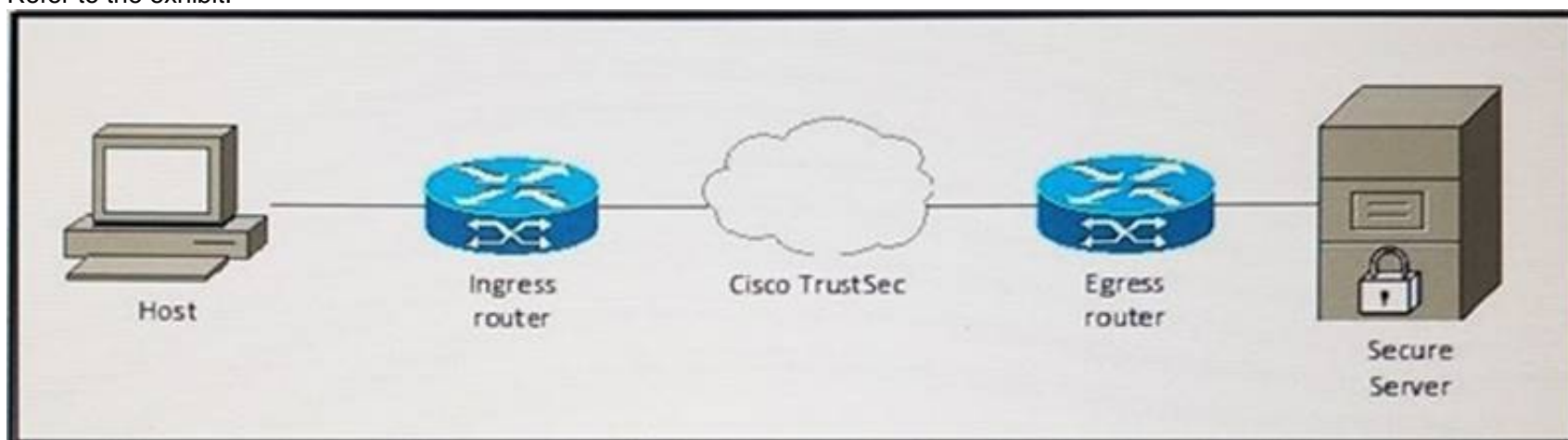
A manager of Company A is hosting a conference. Conference participants use a code on the AUP page of the hot-spot guest portal Which code must the manager create on Cisco ISE before the meeting?

- A. user code
- B. pass code
- C. access code
- D. registration code

Answer: D

NEW QUESTION 120

Refer to the exhibit.



If the host sends a packet across the Cisco TrustSec domain, where is the SGACL enforced?

- A. At the egress router
- B. Dynamically at the host
- C. After the packet enters the Cisco TrustSec domain
- D. At the ingress router.

Answer: A

NEW QUESTION 124

In a basic ACS deployment consisting of two servers, for which three tasks is the primary server responsible? (Choose three.)

- A. configuration
- B. authentication
- C. sensing

- D. policy requirements
- E. monitoring
- F. repudiation

Answer: ABD

NEW QUESTION 125

What are the two values Cisco recommends that you configure and test when deploying MAB 802.1x? (Choose two.)

- A. supp-timeout
- B. server-timeout
- C. max-req
- D. max-reauth-req
- E. tx-period

Answer: BD

NEW QUESTION 129

An engineer must enable SGACL policy globally for a Cisco TrustSec –enabled routed interface. Which command must be used?

- A. cts role-based monitor enable
- B. cts role-based enforcement
- C. cts role-based sgt-caching with-enforcement
- D. cts role-based monitor permissions from {sgt_num} to {dgt_num}][ipv4| ipv6]

Answer: B

NEW QUESTION 131

Which RADIUS attribute can be used to dynamically assign the inactivity active timer for MAB users from Cisco ISE node?

- A. Idle-timeout attribute
- B. Session-timeout attribute
- C. Radius-server timeout
- D. Termination-action attribute

Answer: A

NEW QUESTION 135

Cisco IOS IPS uses which alerting protocol with a pull mechanism for getting IPS alerts to the network management application?

- A. HTTPS
- B. SMTP
- C. SNMP
- D. syslog
- E. SDEE
- F. POP3

Answer: E

NEW QUESTION 139

Which type of SGT propagation does a WLC in a data center require?

- A. SXP
- B. SGT
- C. SGT inline
- D. SGT Reflector

Answer: A

NEW QUESTION 141

When RADIUS NAC and AAA Override are enabled for a WLC on a Cisco ISE, which two statements about RADIUS NAC are true? (Choose two.)

- A. It returns an access-accept and sends the redirection URL for all users.
- B. It establishes secure connectivity between the RADIUS server and the Cisco ISE.
- C. It allows the Cisco ISE to send a CoA request that indicates when the user is authenticated.
- D. It is used for posture assessment, so the Cisco ISE changes the user profile based on posture result.
- E. It allows multiple users to authenticate at the same time.

Answer: CD

NEW QUESTION 143

Which protocol provides the real time request to the service running on the CA?

- A. DOS
- B. FILE

- C. MAB
- D. OCSP

Answer: D

NEW QUESTION 146

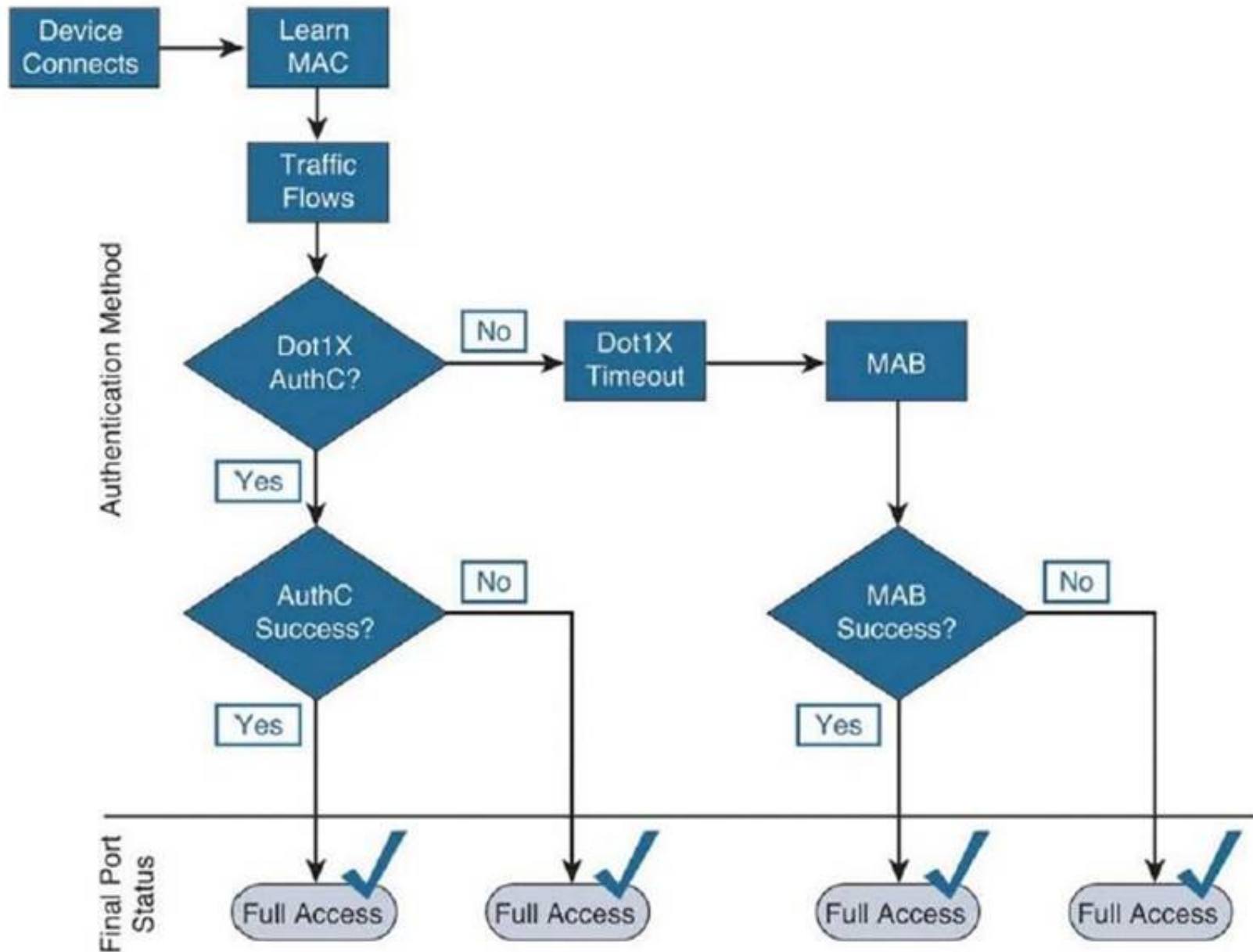
Which command in the My Devices Portal can restore a previously lost device to the network?

- A. Reset
- B. Found
- C. Reinstate
- D. Request

Answer: C

NEW QUESTION 148

Refer to the exhibit.



Which ISE flow mode does this diagram represent?

- A. Closed mode
- B. Monitor mode
- C. Application mode
- D. Low-impact mode

Answer: B

NEW QUESTION 152

Where is client traffic decrypted in a controller-based wireless network protected with WPA2 Security?

- A. Access Point
- B. Switch
- C. Wireless LAN Controller
- D. Authentication Server

Answer: A

NEW QUESTION 154

In the command 'aaa authentication default group tacacs local', how is the word 'default' defined?

- A. Command set
- B. Group name
- C. Method list

D. Login type

Answer: C

NEW QUESTION 157

Which model does Cisco support in a RADIUS change of authorization implementation?

- A. push
- B. pull
- C. policy
- D. security

Answer: A

NEW QUESTION 161

A company has implemented a dual SSID BYOD design. A provisioning SSID is used for user registration, and an employee SSID is used for company network access. How is the layer 2 security of the provisioning SSID configured?

- A. 802.1X
- B. Open
- C. WPA2
- D. MAC filtering disabled

Answer: B

NEW QUESTION 162

Which two components are required to connect to a WLAN network that is secured by EAP-TLS authentication? (Choose two.)

- A. Kerberos authentication server
- B. AAA/RADIUS server
- C. PSKs
- D. CA server

Answer: BD

NEW QUESTION 167

Which two statements about administrative access to the ACS Solution Engine are true? (Choose two.)

- A. The ACS Solution Engine supports command-line connections through a serial-port connection.
- B. For GUI access, an administrative GUI user must be created with the add-guiadmin command.
- C. The ACS Solution Engine supports command-line connections through an Ethernet interface.
- D. An ACL-based policy must be configured to allow administrative-user access.
- E. GUI access to the ACS Solution Engine is not supported.

Answer: AB

Explanation: who possess the proper administrative credentials.

The CLI administrator does not have access to the ACS web GUI.

To create an initial GUI administrator account that allows web access to the ACS SE GUI, use the add-guiadmin command to create a GUI account.

add-guiadmin :

Adds a GUI account that allows access to the SE using the ACS web GUI.

NEW QUESTION 172

Which of these allows you to add event actions globally based on the risk rating of each event, without having to configure each signature individually?

- A. event action summarization
- B. event action filter
- C. event action override
- D. signature event action processor

Answer: C

NEW QUESTION 177

Which three statement about Windows Server Update Services remediation are true?

- A. WSUS can install the latest service pack available
- B. WSUS checks for automatic update configuration on Windows
- C. WSUS checks for client behavior anomalies
- D. WSUS remediates Windows client from a locally manage WSUS server
- E. WSUS remediates Windows client from a Microsoft manage WSUS server
- F. WSUS provides links to update AV/AS

Answer: ADE

NEW QUESTION 181

Which three personas can a Cisco ISE assume in a deployment? (Choose three.)

- A. connection
- B. authentication
- C. administration
- D. testing
- E. policy service
- F. monitoring

Answer: CEF

NEW QUESTION 182

While troubleshooting a posture assessment issue on a Windows PC, the NAC Agent is not popping up as expected. Which two logs would help in isolating the issue? (Choose two.)

- A. Cisco AnyConnect ISE posture logs
- B. NAC agent logs
- C. Dart bundle
- D. Cisco ISE profiler log file
- E. Cisco ISE ise-psc.log file

Answer: BE

NEW QUESTION 187

Refer to the exhibit.

```
device(config)#aaa new-model
device(config)#tacacs-server host 209.165.200.226
device(config)#tacacs-server host 209.165.200.227
device(config)#tacacs-server key 0 $$5@#$%!!1
```

Which three statements about the given configuration are true? (Choose three.)

- A. TACACS+ authentication configuration is complete.
- B. TACACS+ authentication configuration is incomplete.
- C. TACACS+ server hosts are configured correctly.
- D. TACACS+ server hosts are misconfigured.
- E. The TACACS+ server key is encrypted.
- F. The TACACS+ server key is unencrypted.

Answer: BCF

NEW QUESTION 191

Which three network access devices allow for static security group tag assignment? (Choose three.)

- A. intrusion prevention system
- B. access layer switch
- C. data center access switch
- D. load balancer
- E. VPN concentrator
- F. wireless LAN controller

Answer: BCE

NEW QUESTION 195

Which two of these are potential results of an attacker performing a DHCP server spoofing attack? (Choose two.)

- A. DHCP snooping
- B. DoS
- C. confidentiality breach
- D. spoofed MAC addresses
- E. switch ports being converted to an untrusted state

Answer: BC

NEW QUESTION 196

Which type of SGT propagation does a WLC in a datacenter require?

- A. SXP
- B. inline
- C. Trust
- D. Inherit

Answer: D

NEW QUESTION 201

Which two values are compared by the binary comparison function in authentication that is based on Active Directory?

- A. subject alternative name and the common name
- B. user-presented password hash and a hash stored in Active Directory
- C. user-presented certificate and a certificate stored in Active Directory
- D. MS-CHAPv2 provided machine credentials and credentials stored in Active Directory

Answer: AD

NEW QUESTION 204

When performing NAT, which of these is a limitation you need to account for?

- A. exhaustion of port number translations
- B. embedded IP addresses
- C. security payload identifiers
- D. inability to provide mutual connectivity to networks with overlapping address spaces

Answer: B

NEW QUESTION 207

What is the result of configuring the command dot1x system-auth-control on a Cisco Catalyst switch?

- A. enables the switch to operate as the 802.1X supplicant
- B. globally enables 802.1X on the switch
- C. globally enables 802.1X and defines ports as 802.1X-capable
- D. places the configuration sub-mode into dot1x-auth mode, in which you can identify the authentication server parameters

Answer: B

NEW QUESTION 208

Under which circumstance would an inline posture node be deployed?

- A. When the NAD does not support CoA
- B. When the NAD cannot support the number of connected endpoints
- C. When a PSN is overloaded
- D. To provide redundancy for a PSN

Answer: A

NEW QUESTION 213

The NAC Agent v4.9.x uses which ports and protocols to communicate with an ISE Policy Service Node?

- A. tcp/8905, http/80, ftp/21
- B. tcp/8905, http/80, https/443
- C. udp/8905, telnet/23, https/443
- D. udp/8906, http/80, https/443

Answer: B

NEW QUESTION 216

Which set of commands allows IPX inbound on all interfaces?

- A. ASA1(config)# access-list IPX-Allow ethertype permit ipxASA1(config)# access-group IPX-Allow ininterface global
- B. ASA1(config)# access-list IPX-Allow ethertype permit ipxASA1(config)# access-group IPX-Allow in interface inside
- C. ASA1(config)# access-list IPX-Allow ethertype permit ipxASA1(config)# access-group IPX-Allow in interface outside
- D. ASA1(config)# access-list IPX-Allow ethertype permit ipxASA1(config)# access-group IPX-Allow out interface global

Answer: A

NEW QUESTION 220

How long are sessions kept in the ISE Monitoring and Troubleshooting node If there is authentication but no accounting?

- A. 5 hours
- B. 5 days
- C. 1 hour
- D. 1 day

Answer: C

Explanation: https://www.cisco.com/c/en/us/td/docs/security/ise/2-1/admin_guide/b_ise_admin_guide_21/b_ise_admin_guide

NEW QUESTION 222

An administrator can leverage which attribute to assign privileges based on Microsoft Active Directory user groups?

- A. member of
- B. group
- C. class
- D. person

Answer: A

NEW QUESTION 223

From which location can you run reports on endpoint profiling?

- A. Reports > Operations > Catalog > Endpoint
- B. Operations > Reports > Catalog > Endpoint
- C. Operations > Catalog > Reports > Endpoint
- D. Operations > Catalog > Endpoint

Answer: B

NEW QUESTION 225

You are troubleshooting reported connectivity issues from remote users who are accessing corporate headquarters via an IPsec VPN connection. What should be your first step in troubleshooting these issues?

- A. issue a show crypto isakmp policy command to verify matching policies of the tunnel endpoints
- B. ping the tunnel endpoint
- C. run a traceroute to verify the tunnel path
- D. debug the connection process and look for any error messages in tunnel establishment

Answer: B

NEW QUESTION 229

Which two components are required for creating native supplicant profile? (Choose two.)

- A. Operating System
- B. Connection type wired/wireless
- C. IOS SUTTEN
- D. BYOD

Answer: AB

NEW QUESTION 231

What steps must you perform to deploy a CA-signed identify certificate on an ISE device?

- A. 1. Download the CA server certificate.2. Generate a signing request and save it as a file.3. Access the CA server and submit the ISE request.4. Install the issued certificate on the ISE.
- B. 1. Download the CA server certificate.2. Generate a signing request and save it as a file.3. Access the CA server and submit the ISE request.4. Install the issued certificate on the CA server.
- C. 1. Generate a signing request and save it as a file.2. Download the CA server certificate.3. Access the ISE server and submit the CA request.4. Install the issued certificate on the CA server.
- D. 1. Generate a signing request and save it as a file.2. Download the CA server certificate.3. Access the CA server and submit the ISE request.4. Install the issued certificate on the ISE.

Answer: A

NEW QUESTION 235

You must recover a wireless client from quarantine. You disconnect the client from the network. Which action do you take next?

- A. Reboot the client machine after the idle timeout period expires.
- B. Start a manual reassessment
- C. Reconnect to the network after the idle timeout period expires.
- D. Turn off the MIC of the client

Answer: C

NEW QUESTION 239

A user is on a wired connection and the posture status is noncompliant. Which state will their EPS session be placed in?

- A. disconnected
- B. limited
- C. no access
- D. quarantined

Answer: D

NEW QUESTION 243

A network administrator needs to implement a service that enables granular control of IOS commands that can be executed. Which AAA authentication method

should be selected?

- A. TACACS+
- B. RADIUS
- C. Windows Active Directory
- D. Generic LDAP

Answer: A

NEW QUESTION 244

A network administrator must enable which protocol to utilize EAP-Chaining?

- A. EAP-FAST
- B. EAP-TLS
- C. MSCHAPv2
- D. PEAP

Answer: A

NEW QUESTION 246

Cisco ISE distributed deployments support which three features? (Choose three.)

- A. global implementation of the profiler service CoA
- B. global implementation of the profiler service in Cisco ISE
- C. configuration to send system logs to the appropriate profiler node
- D. node-specific probe configuration
- E. server-specific probe configuration
- F. NetFlow probes

Answer: ACD

NEW QUESTION 248

You have a VPN client that is quarantined. Which action do you take to restart the posture session?

- A. Send a CoA message
- B. Reconnect the VPN tunnel.
- C. Configure a authentication timer
- D. Enable periodic reassessment

Answer: A

NEW QUESTION 251

Which characteristic of static SGT classification is true?

- A. uses MAB
- B. maps a tag to an IP address
- C. maps a tag to a MAC address
- D. uses web authentication

Answer: A

NEW QUESTION 252

An engineer must limit the configuration parameters that can be executed on the Cisco ASAs deployed throughout the network. Which command allows the engineer to complete this task?

- A. AAA-server tacacs1(inside) host 10.5.109.18\$3cr37 timeout2!aaa authorization command tacacs1
- B. AAA-server tacacs1(inside) host 10.5.109.18\$3cr37 timeout2!aaa authentication ssh console tacacs1
- C. AAA-server tacacs1(inside) host 10.5.109.18\$3cr37 timeout2!aaa authorization exec authentication-server
- D. AAA-server tacacs1(inside) host 10.5.109.18\$3cr37 timeout2!aaa authentication exclude ssh

Answer: A

NEW QUESTION 256

The switch 2960-x the below configuration: (sw-if)# switchport mode access
(sw-if)# authentication port-control auto (sw-if)# dot1x pae authenticator
After you connected unmanaged switch to the port dot1x failed, what is the problem ?

- A. missing command "mab"
- B. there is no Bpdu in the port
- C. eapol packet not received in the port
- D. missing command "authentication host-mode multi-host"
- E. missing command "authentication host-mode multi-auth"

Answer: A

NEW QUESTION 260

When is it most appropriate to choose IPS functionality based on Cisco IOS software?

- A. when traffic rates are low and a complete signature is not required
- B. when accelerated, integrated performance is required using hardware ASIC-based IPS inspections
- C. when integrated policy virtualization is required
- D. when promiscuous inspection meets security requirements

Answer: A

NEW QUESTION 265

In the redirect URL authorization attribute, which Cisco ISE node acts as the web server when performing CWA?

- A. Administration
- B. Monitoring
- C. Policy Service
- D. pxGrid

Answer: C

NEW QUESTION 269

What are the initial steps must you perform to add the ISE to the WLC?

- A. 1. With a Web browser, establish an HTTP connection to the WLC pod.2. Navigate to Administration > Authentication > New.3. Enter server values to begin the configuration.
- B. 1. With a Web browser, establish an FTP connection to the WLC pod.2. Navigate to Security > Administration > New.3. Add additional security features for FTP authentication.
- C. 1. With a Web browser, establish an HTTP connection to the WLC pod.2. Navigate to Authentication > New.3. Enter ACLs and Authentication methods to begin the configuration.
- D. 1. With a Web browser connect, establish an HTTPS connection to the WLC pod.2. Navigate to Security > Authentication > New.3. Enter server values to begin the configuration.

Answer: D

NEW QUESTION 272

Which method of registering devices on the BYOD My Devices Portal requires that the user have a supplicant installed?

- A. MAB
- B. single SSID
- C. web authentication
- D. dual SSID

Answer: B

NEW QUESTION 274

A new consultant must be granted network access for only six months. Which type of ISE default guest account must be used to allow this access?

- A. contractor
- B. temporary
- C. employee
- D. annual

Answer: A

NEW QUESTION 275

Which two statements about Cisco NAC Agents that are installed on clients that interact with the Cisco ISE profiler are true? (Choose two.)

- A. They send endpoint data to AAA servers.
- B. They collect endpoint attributes.
- C. They interact with the posture service to enforce endpoint security policies.
- D. They block access from the network through noncompliant endpoints.
- E. They store endpoints in the Cisco ISE with their profiles.
- F. They evaluate clients against posture policies, to enforce requirements.

Answer: CF

NEW QUESTION 280

Cisco 802.1X phasing enables flexible deployments through the use of open, low-impact, and closed modes. What is a unique characteristic of the most secure mode?

- A. Granular ACLs applied prior to authentication
- B. Per user dACLs applied after successful authentication
- C. Only EAPoL traffic allowed prior to authentication
- D. Adjustable 802.1X timers to enable successful authentication

Answer: C

NEW QUESTION 281

Which three statements about the Cisco ISE profiler are true? (Choose three.)

- A. It sends endpoint data to AAA servers.
- B. It collects endpoint attributes.
- C. It stores MAC addresses for endpoint systems.
- D. It monitors and polices router and firewall traffic.
- E. It matches endpoints to their profiles.
- F. It stores endpoints in the Cisco ISE database with their profiles.

Answer: BEF

NEW QUESTION 282

When 802.1X is implemented, how do the client (supplicant) and authenticator communicate?

- A. RADIUS
- B. TACACS+
- C. MAB
- D. EAPOL

Answer: D

NEW QUESTION 283

When configuring a BYOD portal, which two tasks must be completed? (Choose two.)

- A. Enable policy services.
- B. Create endpoint identity groups
- C. Customize device portals
- D. Create a client provisioning portal.
- E. Create external identity sources.

Answer: AE

NEW QUESTION 286

Which option restricts guests from connecting more than one device at a time?

- A. Guest Portal policy > Set Device registration portal limit
- B. Guest Portal Policy > Set Allow only one guest session per user
- C. My Devices Portal > Set Maximum number of devices to register
- D. Multi-Portal Policy > Guest users should be able to do device registration

Answer: B

NEW QUESTION 289

Which statement about system time and NTP server configuration with Cisco ISE is true?

- A. The system time and NTP server settings can be configured centrally on the Cisco ISE.
- B. The system time can be configured centrally on the Cisco ISE, but NTP server settings must be configured individually on each ISE node.
- C. NTP server settings can be configured centrally on the Cisco ISE, but the system time must be configured individually on each ISE node.
- D. The system time and NTP server settings must be configured individually on each ISE node.

Answer: D

NEW QUESTION 292

Which action does the command private-vlan association 100,200 take?

- A. configures VLANs 100 and 200 and associates them as a community
- B. associates VLANs 100 and 200 with the primary VLAN
- C. creates two private VLANs with the designation of VLAN 100 and VLAN 200
- D. assigns VLANs 100 and 200 as an association of private VLANs

Answer: B

NEW QUESTION 295

Which two switchport commands enable MAB and allow non-802.1X capable devices to immediately run through the MAB process? (Choose two.)

- A. authentication order mab dot1x
- B. authentication order dot1x mab
- C. no authentication timer
- D. dot1x timeout tx-period
- E. authentication open
- F. mab

Answer: AF

NEW QUESTION 299

In an ISE 1.3 environment which two remediation types are supported on the NAC agent for Macintosh1? (Choose two.)

- A. antivirus remediation (manual)
- B. link remediation (automatic)
- C. link remediation (manual)
- D. antivirus remediation (automatic)
- E. antispware remediation (manual)

Answer: BD

NEW QUESTION 304

Which of these is a configurable Cisco IOS feature that triggers notifications if an attack attempts to exhaust critical router resources and if preventative controls have been bypassed or are not working correctly?

- A. Control Plane Protection
- B. Management Plane Protection
- C. CPU and memory thresholding
- D. SNMPv3

Answer: C

NEW QUESTION 309

Which two authentication stores are supported to design a wireless network using PEAP EAP-MSCHAPv2 as the authentication method? (Choose two.)

- A. Microsoft Active Directory
- B. ACS
- C. LDAP
- D. RSA Secure-ID
- E. Certificate Server

Answer: AB

NEW QUESTION 311

How frequently does the Profiled Endpoints dashlet refresh data?

- A. every 30 seconds
- B. every 60 seconds
- C. every 2 minutes
- D. every 5 minutes

Answer: B

NEW QUESTION 314

Which three are required steps to enable SXP on a Cisco ASA? (Choose three).

- A. configure AAA authentication
- B. configure password
- C. issue the aaa authorization command aaa-server group command
- D. configure a peer
- E. configure TACACS
- F. issue the cts sxp enable command

Answer: BDF

NEW QUESTION 315

What are Supplicant and Authentication server that support EAP Chaining?

- A. Cisco Anyconnect NAM
- B. ACS
- C. ISE
- D. NFL

Answer: C

NEW QUESTION 320

Which five portals are provided by PSN? (Choose five.)

- A. guest
- B. sponsor
- C. my devices
- D. blacklist
- E. client provisioning
- F. admin
- G. monitoring and troubleshooting

Answer:

ABCDE

NEW QUESTION 321

Which two are valid ISE posture conditions? (Choose two.)

- A. Dictionary
- B. memberOf
- C. Profile status
- D. File
- E. Service

Answer: DE

NEW QUESTION 325

Which two services are included in the Cisco ISE posture service? (Choose two.)

- A. posture administration
- B. posture run-time
- C. posture monitoring
- D. posture policing
- E. posture catalog

Answer: AB

NEW QUESTION 329

An organization has recently deployed ISE with the latest models of Cisco switches, and it plans to deploy Trustsec to secure its infrastructure. The company also wants to allow different network access policies for different user groups (e.g., administrators). Which solution is needed to achieve these goals?

- A. Cisco Security Group Access Policies in order to use SGACLs to control access based on SGTs assigned to different users
- B. MACsec in Multiple-Host Mode in order to open or close a port based on a single authentication
- C. Identity-based ACLs on the switches with user identities provided by ISE
- D. Cisco Threat Defense for user group control by leveraging Netflow exported from the switches and login information from ISE

Answer: A

NEW QUESTION 331

Which two options are valid for configuring IEEE 802.1AE MACSec between switches in a TrustSec network? (Choose two.)

- A. manually on links between supported switches
- B. in the Cisco Identity Services Engine
- C. in the global configuration of a TrustSec non-seed switch
- D. dynamically on links between supported switches
- E. in the Cisco Secure Access Control System
- F. in the global configuration of a TrustSec seed switch

Answer: AD

NEW QUESTION 335

Which description of SXP is true?

- A. applies SGT along every hop in the network path
- B. propagates SGT on a device upon which SGT inline tagging is unsupported
- C. removes SGT from every in the network path
- D. propagates SGT on a device which inline tagging is supported

Answer: D

NEW QUESTION 340

What is another term for 802.11i wireless network security?

- A. 802.1x
- B. WEP
- C. TKIP
- D. WPA
- E. WPA2

Answer: E

NEW QUESTION 341

Which two are technologies that secure the control plane of the Cisco router? (Choose two.)

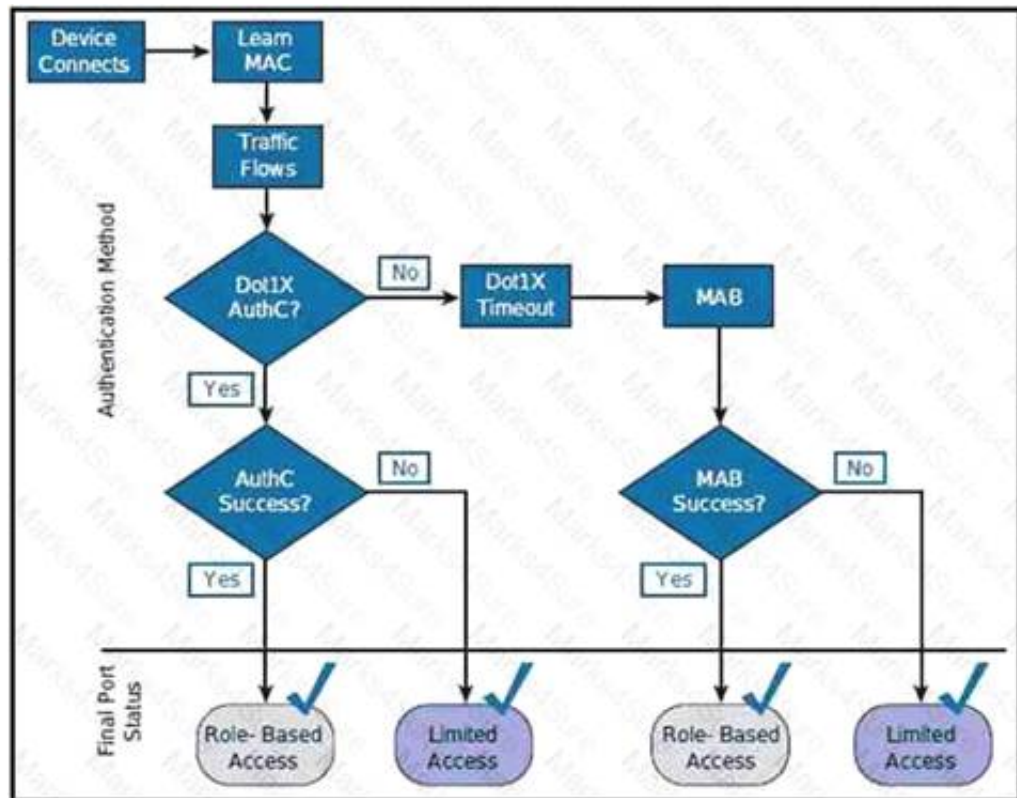
- A. Cisco IOS Flexible Packet Matching
- B. uRPF
- C. routing protocol authentication
- D. CPPr

- E. BPDU protection
- F. role-based access control

Answer: CD

NEW QUESTION 345

Refer to the exhibit.



Which ISE flow mode does this diagram represent?

- A. closed mode
- B. low-impact mode
- C. application mode
- D. monitor mode

Answer: C

NEW QUESTION 349

Which statement about IOS accounting is true?

- A. A named list of AAA methods must be defined.
- B. A named list of accounting methods must be defined.
- C. Authorization must be configured before accounting.
- D. A named list of tracking methods must be defined.

Answer: C

NEW QUESTION 352

Which Cisco ISE 1.x protocol can be used to control admin access to network access devices?

- A. TACACS+
- B. RADIUS
- C. EAP
- D. Kerberos

Answer: B

NEW QUESTION 353

Refer to the exhibit.

```

asal(config)# time-range WeekendHours
asal(config-time-range)# periodic friday 18:00 to monday 8:00
asal(config)# access-list Outside extended deny ip any object-group vpnserver time-range WeekendHours log
asal(config)# access-group Outside in outside
    
```

If the given configuration is applied to the object-group vpnserver, during which time period are external users able to connect?

- A. From Friday at 6:00 p.
- B. until Monday at 8:00 a.m.
- C. From Monday at 8:00 a.
- D. until Friday at 6:00 p.m.
- E. From Friday at 6:01 p.
- F. until Monday at 8:01 a.m.
- G. From Monday at 8:01 a.
- H. until Friday at 5:59 p.m.

Answer: A

NEW QUESTION 358

A network administrator must remediate unpatched servers by redirecting them to their remediation portal. Which conditions in the authorization policy must the network administrator provision on Cisco ISE to accomplish this task?

- A. noncompliant
- B. quarantine
- C. compliant
- D. URL redirect

Answer: A

NEW QUESTION 361

What implementation must be added to the WLC to enable 802.1X and CoA for wireless endpoints?

- A. the ISE
- B. an ACL
- C. a router
- D. a policy server

Answer: A

NEW QUESTION 363

What are two functions of Diagnostic tool? (Choose two.)

- A. enable
- B. network down
- C. TCP dump
- D. Execute network device command

Answer: CD

NEW QUESTION 368

An administrator is configuring an ASA firewall for to secure access on ASA firewall in the essence of controlling configuration command executed on the Firewall. Which command will he use?

- A. aaa authorization ssh console
- B. aaa authorization commands
- C. aaa authentication ssh console
- D. aaa authentication exec server-authentication

Answer: D

NEW QUESTION 371

When configuring the Auto Update feature for Cisco IOS IPS, what is a recommended best practice?

- A. Synchronize the router's clock to the PC before configuring Auto Update.
- B. Clear the router's flash of unused signature files.
- C. Enable anonymous TFTP downloads from Cisco.com and specify the download frequency.
- D. Create the appropriate directory on the router's flash memory to store the download signature files.
- E. Download the realm-cisco.pub.key file and update the public key stored on the router.

Answer: A

NEW QUESTION 376

In an 802.1X environment, which feature allows for non-802.1X-supported devices such as printers and fax machines to authenticate?

- A. multiauth
- B. WebAuth
- C. MAB
- D. 802.1X guest VLAN

Answer: C

NEW QUESTION 377

Which two types of web portals are related to guest services? (Choose two)

- A. limited access portal
- B. sponsor portal
- C. guest services portal
- D. user portal
- E. admin portal

Answer: BC

NEW QUESTION 382

A company has implemented a dual SSID BYOD design. A provisioning SSID is used for user registration, and an employee SSID is used for company network access. Which controller option must be enabled to allow a user to switch immediately from the provisioning SSID to the employee SSID after registration has been completed?

- A. AAA override
- B. User Idle Timeout
- C. Fast SSID Change
- D. AP Fallback

Answer: C

NEW QUESTION 384

What sends the redirect ACL that is configured in the authorization profile back to the Cisco WLC?

- A. Event
- B. Cisco-av-pair
- C. State attribute
- D. Class attribute

Answer: B

NEW QUESTION 386

Which WLC debug command would be used to troubleshoot authentication issues on a 802.1X enabled WLAN?

- A. debug dot11 aaa manager all
- B. debug wps mfp lwapp
- C. debug dot11 state
- D. debug dot1x events

Answer: A

NEW QUESTION 387

Security Group Access requires which three syslog messages to be sent to Cisco ISE? (Choose three.)

- A. IOS-7-PROXY_DROP
- B. AP-1-AUTH_PROXY_DOS_ATTACK
- C. MKA-2-MACDROP
- D. AUTHMGR-5-MACMOVE
- E. ASA-6-CONNECT_BUILT
- F. AP-1-AUTH_PROXY_FALLBACK_REQ

Answer: BDF

NEW QUESTION 392

What is a required configuration step for an 802.1X capable switch to support dynamic VLAN and ACL assignments?

- A. Configure the VLAN assignment.
- B. Configure the ACL assignment.
- C. Configure 802.1X authenticator authorization.
- D. Configure port security on the switch port.

Answer: C

NEW QUESTION 397

Which three statements about the Cisco wireless IPS solution are true? (Choose three.)

- A. It enables stations to remain in power-save mode, except at specified intervals to receive data from the access point.
- B. It detects spoofed MAC addresses.
- C. It identifies potential RF jamming attacks.
- D. It protects against frame and device spoofing.
- E. It allows the WLC to failover because of congestion.

Answer: BCD

NEW QUESTION 401

Which type of probe is required when using a Cisco IOS Sensor-enabled network switch?

- A. network scan probe
- B. HTTP probe
- C. RADIUS probe
- D. NetFlow probe

Answer: D

NEW QUESTION 405

In a split ACS deployment with primary and secondary servers, which three statements about AAA load handling are true? (Choose three.)

- A. During normal operations, each server processes the full workload of both servers.
- B. If a AAA connectivity problem occurs, the servers split the full load of authentication requests.
- C. If a AAA connectivity problem occurs, each server processes the full workload of both servers.
- D. During normal operations, the servers split the full load of authentication requests.
- E. During normal operations, each server is used for specific operations, such as device administration and network admission.
- F. The primary servers are used to distribute policy information to other servers in the enterprise.

Answer: CDE

NEW QUESTION 409

When MAB is configured, how often are ports reauthenticated by default?

- A. every 60 seconds
- B. every 90 seconds
- C. every 120 seconds
- D. never

Answer: D

NEW QUESTION 410

Which authorization method is the Cisco best practice to allow endpoints access to the Apple App store or Google Play store with Cisco WLC software version 7.6 or newer?

- A. dACL
- B. DNS ACL
- C. DNS ACL defined in Cisco ISE
- D. redirect ACL

Answer: B

NEW QUESTION 412

What is a feature of Cisco WLC and IPS synchronization?

- A. Cisco WLC populates the ACLs to prevent repeat intruder attacks.
- B. The IPS automatically send shuns to Cisco WLC for an active host block.
- C. Cisco WLC and IPS synchronization enables faster wireless access.
- D. IPS synchronization uses network access points to provide reliable monitoring.

Answer: B

NEW QUESTION 415

Which effect does the ip http secure-server command have on a Cisco ISE?

- A. It enables the HTTP server for users to connect on the command line.
- B. It enables the HTTP server for users to connect by using web-based authentication.
- C. It enables the HTTPS server for users to connect by using web-based authentication.
- D. It enables the HTTPS server for users to connect on the command line.

Answer: C

NEW QUESTION 416

When you are configuring DHCP snooping, how should you classify access ports?

- A. untrusted
- B. trusted
- C. promiscuous
- D. private

Answer: A

NEW QUESTION 418

Which three features should be enabled as best practices for MAB? (Choose three.)

- A. MD5
- B. IP source guard
- C. DHCP snooping
- D. storm control
- E. DAI
- F. URPF

Answer: BCE

NEW QUESTION 422

Which RADIUS attribute is used primarily to differentiate an IEEE 802.1x request from a Cisco MAB request?

- A. RADIUS Attribute (5) NAS-Port
- B. RADIUS Attribute (6) Service-Type
- C. RADIUS Attribute (7) Framed-Protocol
- D. RADIUS Attribute (61) NAS-Port-Type

Answer: B

NEW QUESTION 425

Which two Cisco ISE administration options are available in the Default Posture Status setting? (Choose two.)

- A. Unknown
- B. Compliant
- C. FailOpen
- D. FailClose
- E. Noncompliant

Answer: BE

NEW QUESTION 426

Which debug command on a Cisco WLC shows the reason that a client session was terminated?

- A. debug dot11 state enable
- B. debug dot1x packet enable
- C. debug client mac addr
- D. debug dtls event enable
- E. debug ap enable cisco ap

Answer: C

NEW QUESTION 428

Which action do you take to define the global authorization exception policy by using a Device Admin Policy Set?

- A. Configure the policy by using Proxy Sequence mode.
- B. Configure a rule-based condition in a policy set.
- C. Define the policy for each group of devices.
- D. Define the policy by configuring a standard profile

Answer: B

NEW QUESTION 432

You are troubleshooting wired 802.1X authentications and see the following error: "Authentication failed: 22040 Wrong password or invalid shared secret." What should you inspect to determine the problem?

- A. RADIUS shared secret
- B. Active Directory shared secret
- C. Identity source sequence
- D. TACACS+ shared secret
- E. Certificate authentication profile

Answer: A

NEW QUESTION 436

Which two EAP types require server side certificates? (Choose two.)

- A. EAP-TLS
- B. EAP-FAST/TLS
- C. EAP-MD5
- D. EAP-PEAP
- E. EAP-FAST/GTC

Answer: AD

NEW QUESTION 441

Which method does Cisco prefer to securely deploy guest wireless access in a BYOD implementation?

- A. deploying a dedicated Wireless LAN Controller in a DMZ
- B. configuring a guest SSID with WPA2 Enterprise authentication
- C. configuring guest wireless users to obtain DHCP centrally from the corporate DHCP server
- D. disabling guest SSID broadcasting

Answer: A

NEW QUESTION 444

Which two options can a sponsor select to create bulk guest accounts from the sponsor portal? (Choose two.)

- A. Known
- B. Random
- C. Monthly
- D. Imported
- E. Daily
- F. Yearly

Answer: BD

NEW QUESTION 446

Which operating system type needs access to the Internet to download the application that is required for BYOD on-boarding?

- A. iOS
- B. OSX
- C. Android
- D. Windows

Answer: C

NEW QUESTION 448

Which option is the correct format of username in MAB authentication?

- A. host/LSB67.cisco.com
- B. chris@cisco.com
- C. 10:41:7F:46:9F:89
- D. CISCO\chris

Answer: C

NEW QUESTION 452

During client provisioning on a Mac OS X system, the client system fails to renew its IP address. Which change can you make to the agent profile to correct the problem?

- A. Enable the Agent IP Refresh feature.
- B. Enable the Enable VLAN Detect Without UI feature.
- C. Enable CRL checking.
- D. Edit the Discovery Host parameter to use an IP address instead of an FQDN.

Answer: A

NEW QUESTION 457

Which configuration must you perform on a switch to deploy Cisco ISE in low-impact mode?

- A. Configure an ingress port ACL on the switchport.
- B. Configure DHCP snooping globally.
- C. Configure IP-device tracking.
- D. Configure BPDU filtering.

Answer: A

NEW QUESTION 460

By default, how many days does Cisco ISE wait before it purges the expired guest accounts?

- A. 1
- B. 10
- C. 15
- D. 20

Answer: C

NEW QUESTION 464

Which protocol sends authentication and accounting in different requests?

- A. RADIUS
- B. TACACS+
- C. EAP-Chaining
- D. PEAP
- E. EAP-TLS

Answer: B

NEW QUESTION 466

What three changes require restarting the application service on an ISE node? (Choose three.)

- A. Registering a node.
- B. Changing the primary node to standalone.
- C. Promoting the administration node.
- D. Installing the root CA certificate.
- E. Changing the guest portal default port settings.
- F. Adding a network access device.

Answer: ABC

NEW QUESTION 468

Drag and drop the BYOD user experiences on an iPad on the left into the correct order on the right.	
The CSR is generated on the endpoint and is sent to the Cisco ISE, which forwards it to the SCEP server	1
The user opens a web browser and is redirected to a registration portal	2
A CoA is issued and the endpoint is reconnected to the network with the proper access	3
The endpoint installs a signed certificate that is returned from the Cisco ISE along with the wireless network setting	4
The endpoint authenticates to secure SSID using the username and password	5

Answer:

Explanation:

Drag and drop the BYOD user experiences on an iPad on the left into the correct order on the right.	
The CSR is generated on the endpoint and is sent to the Cisco ISE, which forwards it to the SCEP server	The endpoint authenticates to secure SSID using the username and password
The user opens a web browser and is redirected to a registration portal	The user opens a web browser and is redirected to a registration portal
A CoA is issued and the endpoint is reconnected to the network with the proper access	The CSR is generated on the endpoint and is sent to the Cisco ISE, which forwards it to the SCEP server
The endpoint installs a signed certificate that is returned from the Cisco ISE along with the wireless network setting	The endpoint installs a signed certificate that is returned from the Cisco ISE along with the wireless network setting
The endpoint authenticates to secure SSID using the username and password	A CoA is issued and the endpoint is reconnected to the network with the proper access

NEW QUESTION 470

When you configure an endpoint profiling policy rule, which option describes the purpose of the minimum certainty factor?

- A. It is compared to the total certainty metric of an individual endpoint to determine whether the endpoint can be trusted.
- B. It is compared to the assigned certainty value of an individual endpoint in a device database to determine whether the endpoint can be trusted.
- C. It is used to compare the policy condition to other active policies.
- D. It is used to determine the likelihood that an endpoint is an active, trusted device on the network.

Answer: A

NEW QUESTION 474

Refer to the exhibit.

```
12153 EAP-FAST failed SSL/TLS handshake because the
client rejected the ISE local-certificate.
```

Which two things must be verified if authentication is failing with this error message? (Choose two.)

- A. Cisco ISE EAP identity certificate is valid.
- B. CA cert chain of Cisco ISE EAP certificate is installed on the trusted certs store of the client machine.
- C. CA cert chain of the client certificate is installed on Cisco ISE.
- D. Cisco ISE HTTPS/admin certificate is valid.
- E. Cisco ISE server certificate is installed on the client.

Answer: AB

NEW QUESTION 479

Which two statements about MAB are true? (Choose two.)

- A. It requires a preexisting database of the MAC addresses of permitted devices.
- B. It is unable to control network access at the edge.
- C. If MAB fails, the device is unable to fall back to another authentication method.
- D. It is unable to link the IP and MAC addresses of a device.
- E. It is unable to authenticate individual users.

Answer: AE

NEW QUESTION 484

You discover that the Cisco ISE is failing to connect to the Active Directory server. Which option is a possible cause of the problem?

- A. NTP server time synchronization is configured incorrectly.
- B. There is a certificate mismatch between Cisco ISE and Active Directory.
- C. NAT statements required for Active Directory are configured incorrectly.
- D. The RADIUS authentication ports are being blocked by the firewall.

Answer: A

NEW QUESTION 489

Which three remediation actions are supported by the Web Agent for Windows? (Choose three.)

- A. Automatic Remediation
- B. Message text
- C. URL Link
- D. File Distribution
- E. AV definition update
- F. Launch Program

Answer: BCD

NEW QUESTION 492

What is the function of the SGACL policy matrix on a Cisco TrustSec domain with SGT Assignment?

- A. It determines which access policy to apply to the endpoint.
- B. It determines which switches are trusted within the TrustSec domain.
- C. It determines the path the SGT of the packet takes when entering the Cisco TrustSec domain.
- D. It lists all servers that are permitted to participate in the TrustSec domain.
- E. It lists all hosts that are permitted to participate in the TrustSec domain.

Answer: A

NEW QUESTION 494

Which configuration is required in the Cisco ISE Authentication policy to allow Central Web Authentication

- A. Dot1x and if authentication failed continue
- B. MAB and if user not found continue
- C. MAB and if authentication failed continue
- D. Dot1x and if user not found continue

Answer: B

NEW QUESTION 498

Refer to the exhibit.

```
Jun  7 04:05:11.350: RADIUS(00000000): Config NAS IP: 10.1.1.100
Jun  7 04:05:11.350: RADIUS(00000000): Config NAS IPv6: ::
Jun  7 04:05:11.350: RADIUS(00000000): sending
Jun  7 04:05:11.350: RADIUS/DECODE(00000000): There is no General DB. Want server details may not be specified
Jun  7 04:05:11.350: RADIUS(00000000): Sending a IPv4 Radius Packet
Jun  7 04:05:11.350: RADIUS(00000000): Send Access-Request to 10.1.1.108:1812 id 1645/61, len 60
Jun  7 04:05:11.350: RADIUS:  authenticator 20 40 EF 41 E6 06 9A 11 - E5 3B 64 68 F0 B7 89 9E
Jun  7 04:05:11.351: RADIUS:  User-Password      [2]  18  *
Jun  7 04:05:11.351: RADIUS:  User-Name          [1]  10  "jdoe"
Jun  7 04:05:11.351: RADIUS:  Service-Type       [6]   6   Login
Jun  7 04:05:11.351: RADIUS:  NAS-IP-Address    [4]   6   10.1.1.100
Jun  7 04:05:11.351: RADIUS(00000000): Started 5 sec timeout
Jun  7 04:05:11.457: RADIUS: Received from id 1645/61 10.1.1.108:1812, Access-Reject, len 20
Jun  7 04:05:11.457: RADIUS:  authenticator 6A 48 81 FA BC BC 1D 9B - 31 CA 84 AC 24 8F 0B 8B
Jun  7 04:05:11.457: RADIUS/DECODE(00000000): There is no General DB. Reply server details may not be recorded
Jun  7 04:05:11.457: RADIUS(00000000): Received from id 1645/61
```

You are troubleshooting RADIUS issues on the network and the debug radius command returns the given output. What is the most likely reason for the failure?

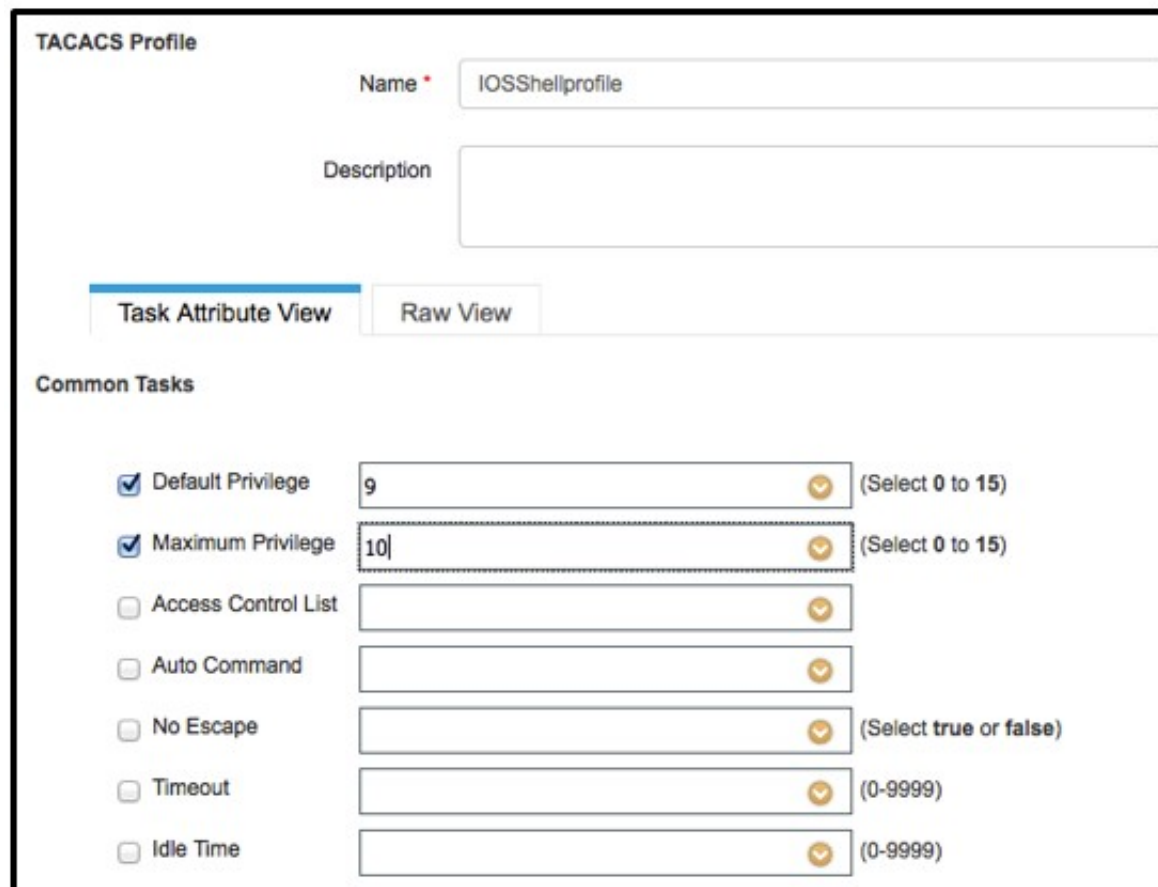
- A. An invalid username or password was entered.
- B. The RADIUS port is incorrect.
- C. The NAD is untrusted by the RADIUS server.
- D. The RADIUS server is unreachable.

E. RADIUS shared secret does not match

Answer: A

NEW QUESTION 503

Refer to the exhibit.



TACACS Profile

Name * IOSShellprofile

Description

Task Attribute View Raw View

Common Tasks

<input checked="" type="checkbox"/> Default Privilege	9	(Select 0 to 15)
<input checked="" type="checkbox"/> Maximum Privilege	10	(Select 0 to 15)
<input type="checkbox"/> Access Control List		
<input type="checkbox"/> Auto Command		
<input type="checkbox"/> No Escape		(Select true or false)
<input type="checkbox"/> Timeout		(0-9999)
<input type="checkbox"/> Idle Time		(0-9999)

If the user matches the given TACACS+ profile on Cisco ISE, which command can the user enter from shell prompt on a Cisco switch?

- A. enable
- B. enable 10
- C. show run
- D. configure terminal

Answer: B

NEW QUESTION 504

How many bits are in a security group tag?

- A. 64
- B. 8
- C. 16
- D. 32

Answer: C

NEW QUESTION 508

Which functionality does the Cisco ISE self-provisioning flow provide?

- A. It provides support for native supplicants, allowing users to connect devices directly to the network.
- B. It provides the My Devices portal, allowing users to add devices to the network.
- C. It provides support for users to install the Cisco NAC agent on enterprise devices.
- D. It provides self-registration functionality to allow guest users to access the network.

Answer: A

NEW QUESTION 512

What EAP method supports mutual certificate-based authentication?

- A. EAP-TTLS
- B. EAP-MSCHAP
- C. EAP-TLS
- D. EAP-MD5

Answer: C

NEW QUESTION 515

You enabled the guest session limit feature on the Cisco ISE. However, end users report that the same guest can log in from multiple devices simultaneously. Which configuration is missing on the network access device?

- A. RADIUS authentication
- B. RADIUS accounting
- C. DHCP required

D. AAA override

Answer: B

NEW QUESTION 516

Which feature enables the Cisco ISE DHCP profiling capabilities to determine and enforce authorization policies on mobile devices?

- A. disabling the DHCP proxy option
- B. DHCP option 42
- C. DHCP snooping
- D. DHCP spoofing

Answer: A

NEW QUESTION 517

What are two possible reasons why a scheduled nightly backup of ISE to a FTP repository would fail? (Choose two.)

- A. ISE attempted to write the backup to an invalid path on the FTP server.
- B. The ISE and FTP server clocks are out of sync.
- C. The username and password for the FTP server are invalid.
- D. The server key is invalid or misconfigured.
- E. TCP port 69 is disabled on the FTP server.

Answer: AC

NEW QUESTION 520

Which profiling probe collects the user-agent string?

- A. NetFlow
- B. DHCP
- C. Network Scan
- D. HTTP

Answer: D

NEW QUESTION 523

Which action must an administrator take after joining a Cisco ISE deployment to an Active Directory domain?

- A. Choose an Active Directory user.
- B. Configure the management IP address.
- C. Configure replication.
- D. Choose an Active Directory group.

Answer: D

NEW QUESTION 524

You are installing Cisco ISE on nodes that will be used in a distributed deployment. After the initial bootstrap process, what state will the Cisco ISE nodes be in?

- A. Remote
- B. Policy service
- C. Administration
- D. Standalone

Answer: D

NEW QUESTION 528

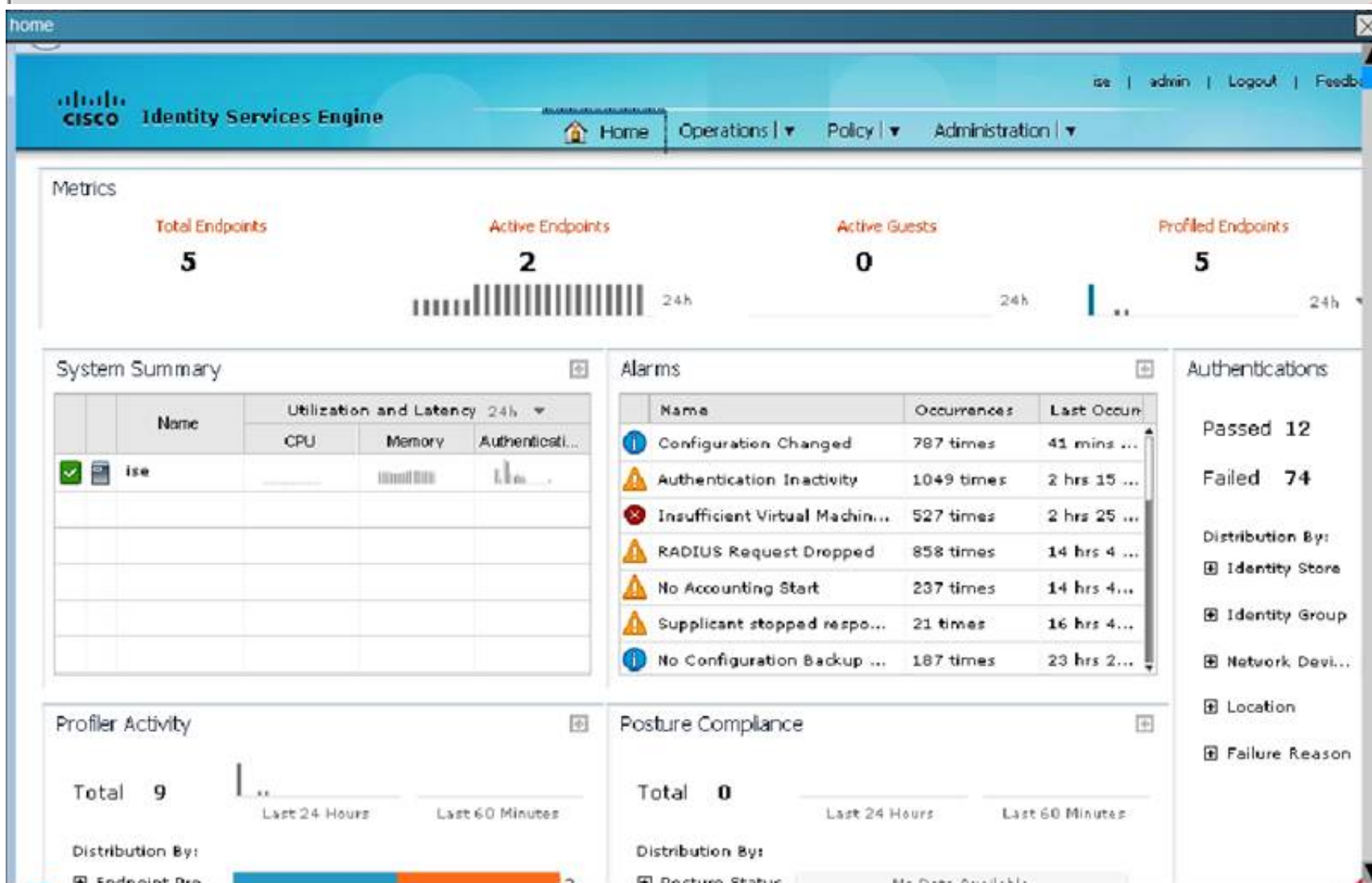
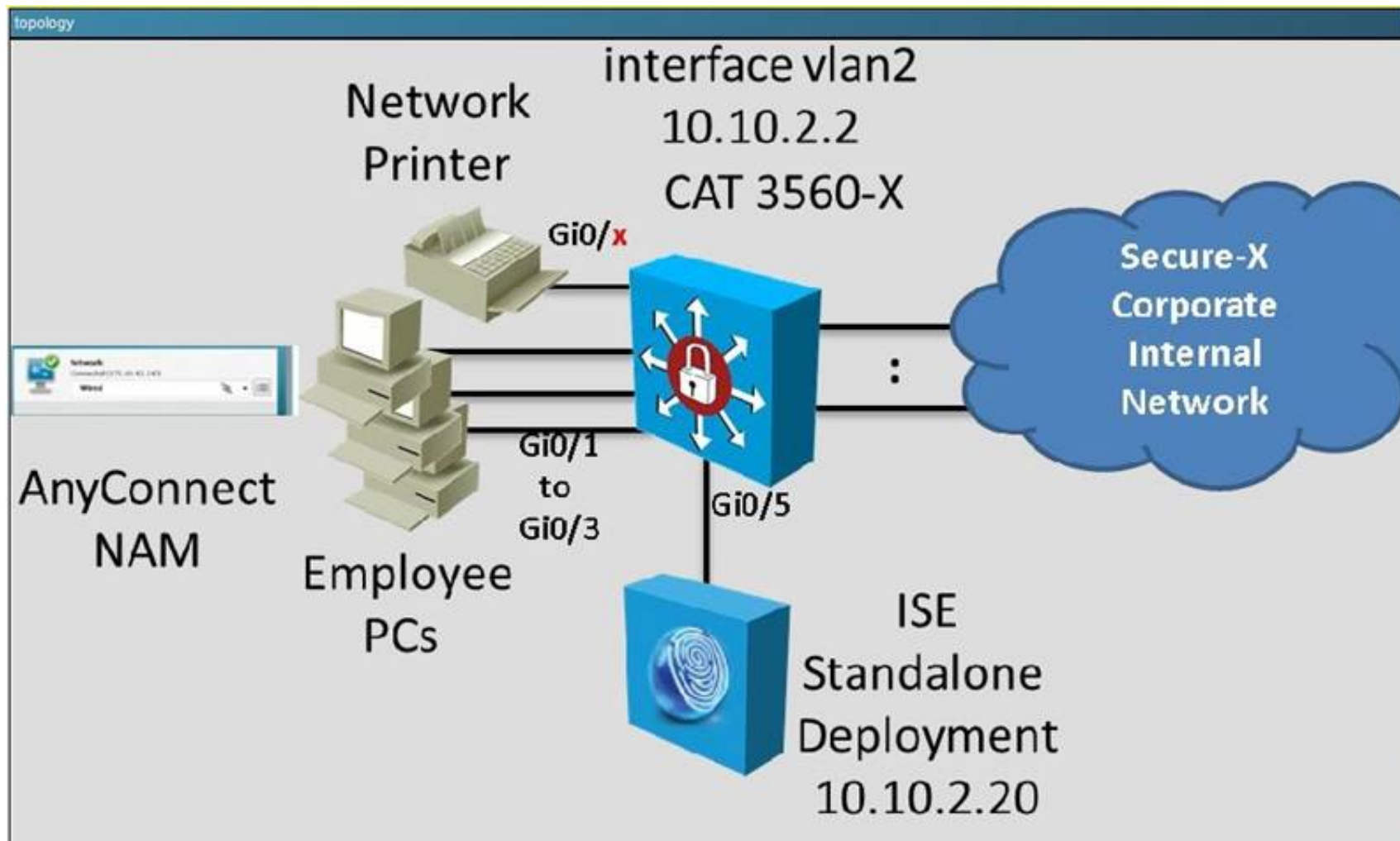
Which three host modes support MACsec? (Choose three.)

- A. multidomain authentication host mode
- B. multihost mode
- C. multi-MAC host mode
- D. single-host mode
- E. dual-host mode
- F. multi-auth host mode

Answer: ABD

NEW QUESTION 530

In this simulation, you are task to examine the various authentication events using the ISE GUI. For example, you should see events like Authentication succeeded. Authentication failed and etc...



Which three statements are correct regarding the events with the 20 repeat count that occurred at 2014-05-07 00:22:48.748? (Choose three.)

- A. The device was successfully authenticated using MAB.
- B. The device matched the Machine_Corp authorization policy.
- C. The Print Servers authorization profile were applied.
- D. The device was profiled as a Linksys-PrintServer.
- E. The device MAC address is 00:14:BF:70:B5:FB.
- F. The device is connected to the Gi0/1 switch port and the switch IP address is 10.10.2.2.

Answer: ADE

Explanation: Event Details:

MAB

There have been 20 repeated authentications with the same authentication result. The authentication details of the first passed attempt is shown here.

Location

HQ

NAS IP Address

10.10.2.2

NAS Port Id

GigabitEthernet0/19

NAS Port Type

Ethernet

Authorization Profile

Machine_Corp

Posture Status

NotApplicable

Security Group

Response Time

20

Overview

Event	5200 Authentication succeeded
Username	00:14:BF:70:B5:FB
Endpoint Id	00:14:BF:70:B5:FB
Endpoint Profile	Linksys-PrintServer
Authorization Profile	Machine_Corp
AuthorizationPolicyMatchedRule	Print Servers
ISEPolicySetName	Default
IdentitySelectionMatchedRule	Default

Authentication Details

Source Timestamp	2014-05-05 17:20:50.32
Received Timestamp	2014-05-05 17:20:50.32
Policy Server	ise
Event	5200 Authentication succeeded
Failure Reason	
Resolution	
Root cause	
Username	00:14:BF:70:B5:FB

Other Attributes

ConfigVersionId	5
DestinationPort	1645
Protocol	Radius
NAS-Port	50019
Framed-MTU	1500
OriginalUserName	0014b70b5fb
AcSSessionID	ise/188683442/5
UseCase	Host Lookup
SelectedAuthenticationIdentityStoresInternal Endpoints	
AuthorizationPolicyMatchedRule	Print Servers
CPMSessionID	0A0A02020000003300670553
EndPointMACAddress	00-14-BF-70-B5-FB
ISEPolicySetName	Default

...continued:

MAB

Authentication Details

Source Timestamp	2014-05-05 17:20:50.32
Received Timestamp	2014-05-05 17:20:50.32
Policy Server	ise
Event	5200 Authentication succeeded
Failure Reason	
Resolution	
Root cause	
Username	00:14:BF:70:B5:FB
User Type	Host
Endpoint Id	00:14:BF:70:B5:FB
Endpoint Profile	Linksys-PrintServer
IP Address	
Identity Store	Internal Endpoints
Identity Group	Linksys-PrintServer
Audit Session Id	0A0A02020000003300670553
Authentication Method	mab
Authentication Protocol	Lookup
Service Type	Call Check
Network Device	HQ-SW
Device Type	
Location	HQ

Destination Port

1645

Protocol

Radius

NAS-Port

50019

Framed-MTU

1500

OriginalUserName

0014b70b5fb

AcSSessionID

ise/188683442/5

UseCase

Host Lookup

SelectedAuthenticationIdentityStoresInternal Endpoints

AuthorizationPolicyMatchedRule

Print Servers

CPMSessionID

0A0A02020000003300670553

EndPointMACAddress

00-14-BF-70-B5-FB

ISEPolicySetName

Default

AllowedProtocolMatchedRule

MAB

IdentitySelectionMatchedRule

Default

HostIdentityGroup

Endpoint Identity Groups:Profiled:Linksys

Location

Location#All Locations#HQ

Device Type

Device Type#All Device Types

RADIUS Username

00:14:BF:70:B5:FB

Device IP Address

10.10.2.2

Called-Station-ID

4C:4E:35:52:FE:93

CiscoAVPair

service-type=Call Check

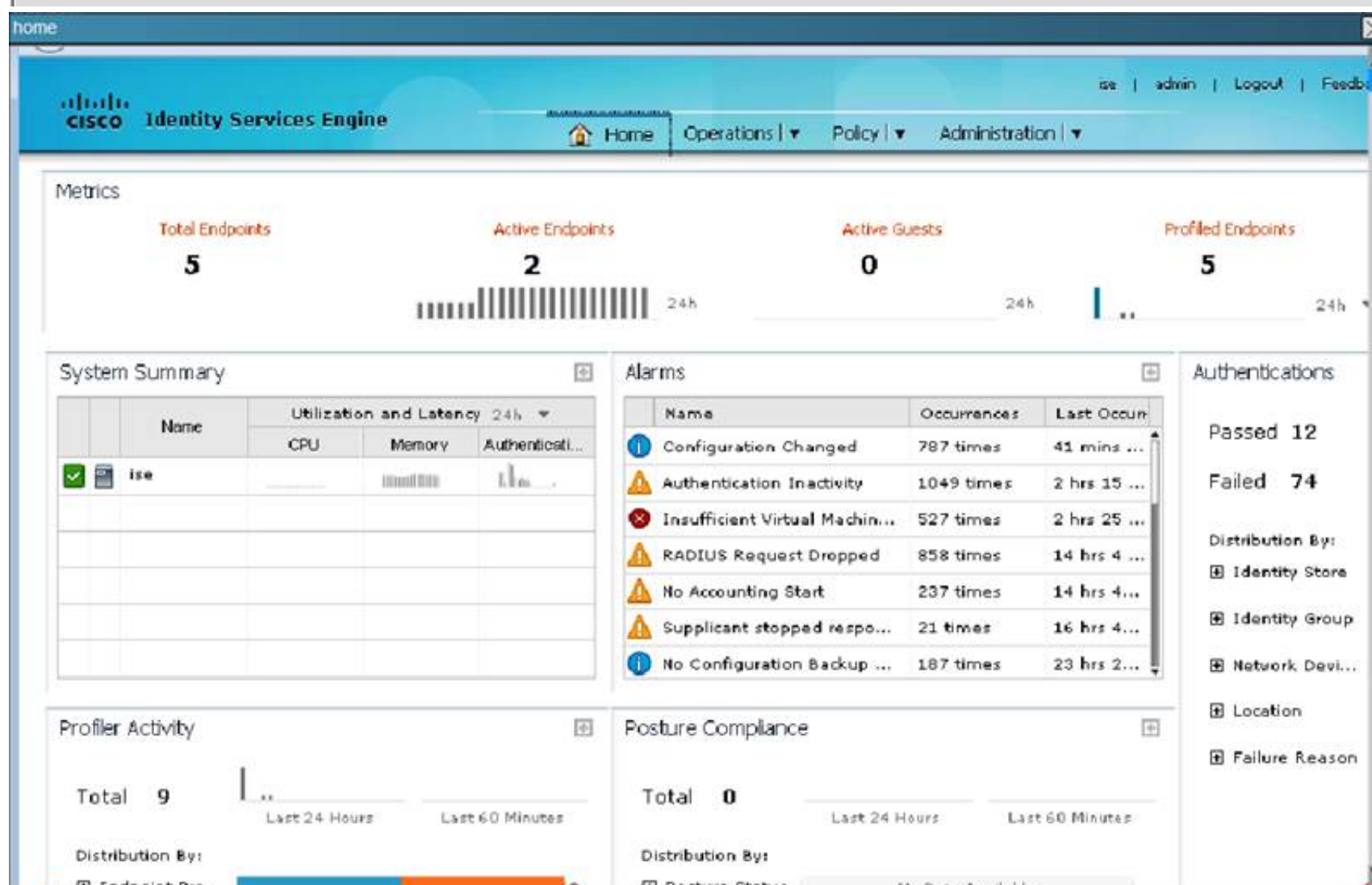
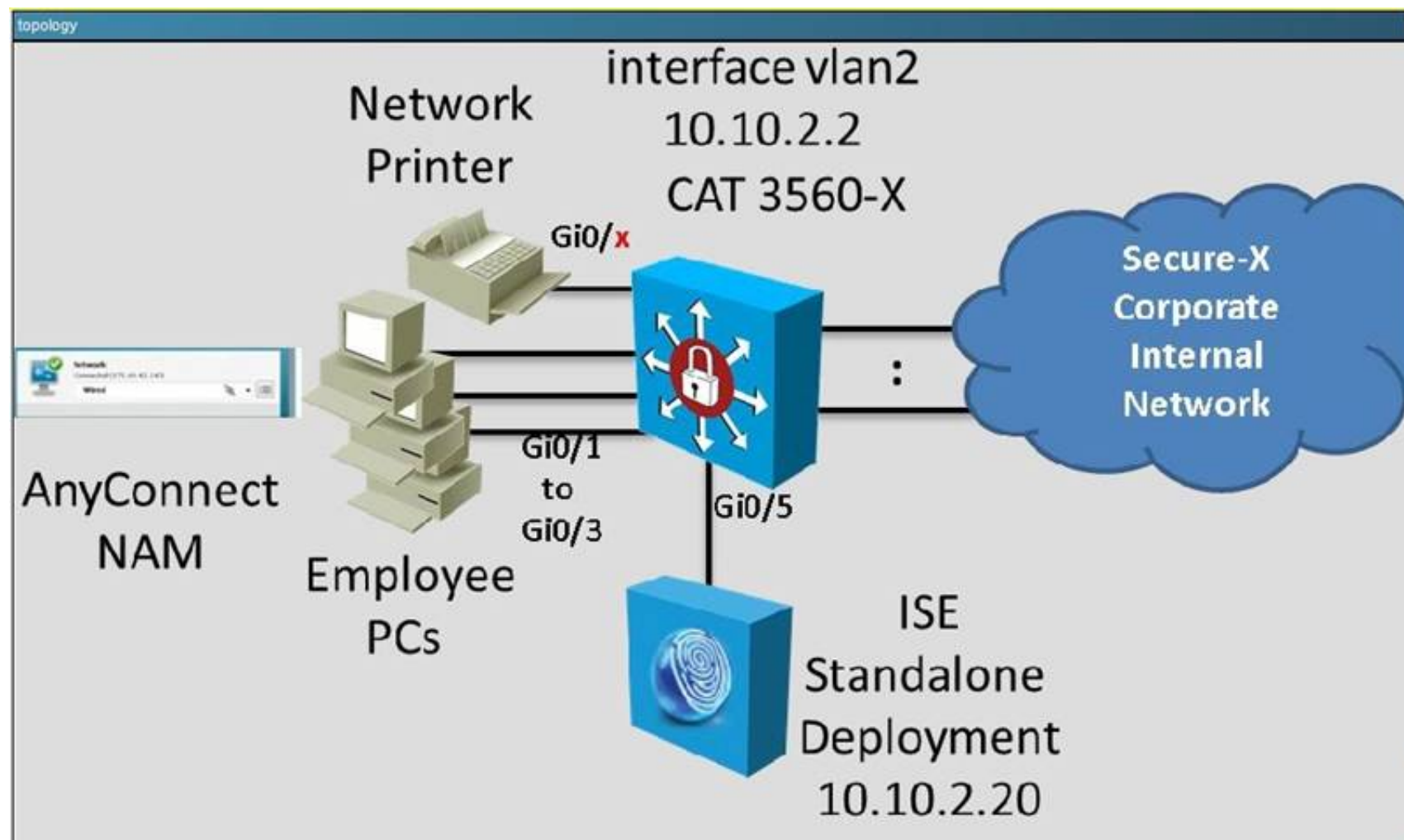
audit-session-id

0A0A02020000003300670553

display continue → **Result**

NEW QUESTION 532

In this simulation, you are task to examine the various authentication events using the ISE GUI. For example, you should see events like Authentication succeeded. Authentication failed and etc...



Which two statements are correct regarding the event that occurred at 2014-05-07 00:16:55.393? (Choose two.)

- A. The failure reason was user entered the wrong username.
- B. The supplicant used the PAP authentication method.
- C. The username entered was it1.
- D. The user was authenticated against the Active Directory then also against the ISE internal user database and both fails.
- E. The NAS switch port where the user connected to has a MAC address of 44:03:A7:62:41:7F
- F. The user is being authenticated using 802.1X.
- G. The user failed the MAB.
- H. The supplicant stopped responding to ISE which caused the failure.

Answer: CF

Explanation: Event Details:

it1 failed

Overview

Event	5400 Authentication failed
Username	it1
Endpoint Id	44:03:A7:62:41:7F
Endpoint Profile	
Authorization Profile	
ISEPolicySetName	Default
IdentitySelectionMatchedRule	Default

Authentication Details

Source Timestamp	2014-05-07 00:16:55.392
Received Timestamp	2014-05-07 00:16:55.393
Policy Server	ise
Event	5400 Authentication failed
Failure Reason	24408 User authentication against Active Directory failed since user has entered the wrong password
Resolution	Check the user password credentials. If the RADIUS request is using PAP for authentication, also check the Shared Secret configured for the Network Device
Root cause	User authentication against Active Directory failed since user has entered the

it1 failed

Authentication Details

Source Timestamp	2014-05-07 00:16:55.392
Received Timestamp	2014-05-07 00:16:55.393
Policy Server	ise
Event	5400 Authentication failed
Failure Reason	24408 User authentication against Active Directory failed since user has entered the wrong password
Resolution	Check the user password credentials. If the RADIUS request is using PAP for authentication, also check the Shared Secret configured for the Network Device
Root cause	User authentication against Active Directory failed since user has entered the wrong password
Username	it1
User Type	
Endpoint Id	44:03:A7:62:41:7F
Endpoint Profile	
IP Address	
Identity Store	AD1
Identity Group	
Audit Session Id	0A0A0202000000D0070A368F
Authentication Method	dot1x
Authentication Protocol	PEAP (EAP-MSCHAPv2)

CISENU300_208_12182015.dat

NEW QUESTION 533

Which mechanism does Cisco ISE use to force a device off the network if it is reported lost or stolen?

- A. CoA
- B. dynamic ACLs
- C. SGACL
- D. certificate revocation

Answer: A

NEW QUESTION 538

Which two options are EAP methods supported by Cisco ISE? (Choose two.)

- A. EAP-FAST
- B. EAP-TLS
- C. EAP-MS-CHAPv2
- D. EAP-GTC

Answer: AB

NEW QUESTION 541

Which option is one method for transporting security group tags throughout the network?

- A. by embedding the SGT in the IP header
- B. via Security Group Exchange Protocol
- C. by embedding the SGT in the 802.1Q header
- D. by enabling 802.1AE on every network device

Answer: B

NEW QUESTION 544

When you select Centralized Web Auth in the ISE Authorization Profile, which two components host the web authentication portal? (Choose two.)

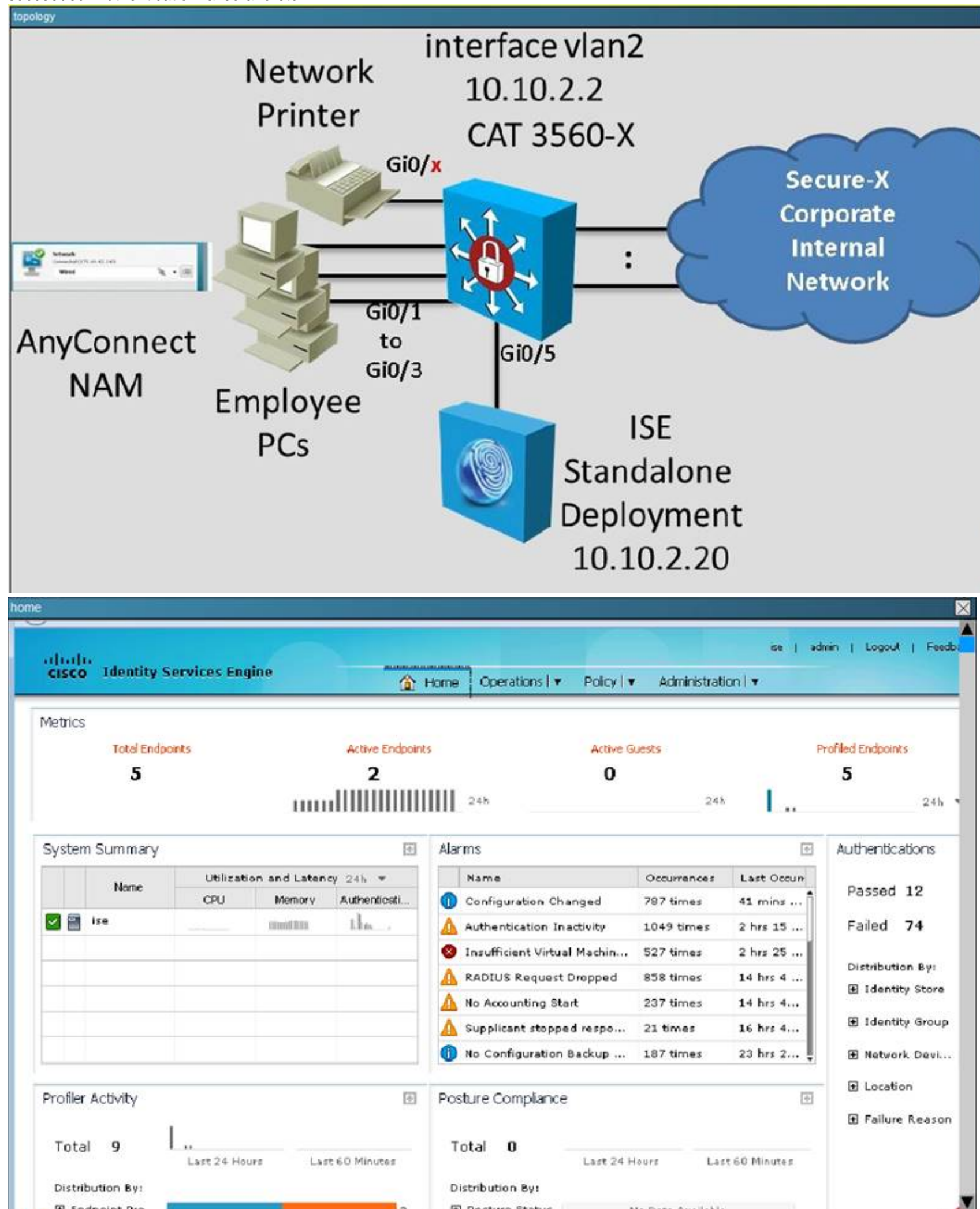
- A. ISE

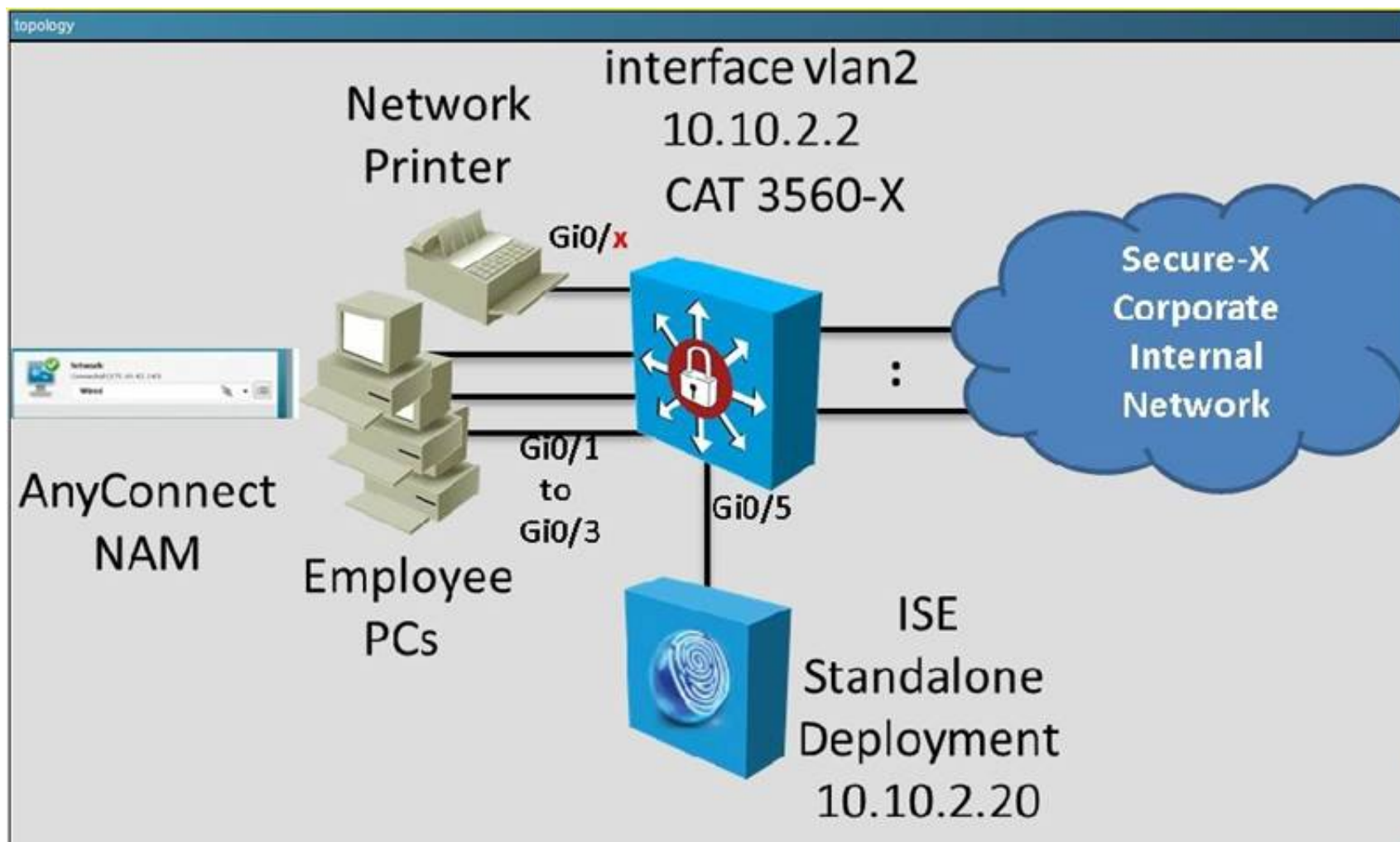
- B. the WLC
- C. the access point
- D. the switch
- E. the endpoints

Answer: BD

NEW QUESTION 549

In this simulation, you are task to examine the various authentication events using the ISE GUI. For example, you should see events like Authentication succeeded. Authentication failed and etc...





Which two statements are correct regarding the event that occurred at 2014-05-07 00:22:48.175? (Choose two.)

- A. The DACL will permit http traffic from any host to 10.10.2.20
- B. The DACL will permit http traffic from any host to 10.10.3.20
- C. The DACL will permit icmp traffic from any host to 10.10.2.20
- D. The DACL will permit icmp traffic from any host to 10.10.3.20
- E. The DACL will permit https traffic from any host to 10.10.3.20

Answer: AE

Explanation: Event Details:

dACL detail

Overview

Event	5232 DACL Download Succeeded
Username	#ACSACL#-IP-Employee_Restricted_DACL-52777cc3
Endpoint Id	
Endpoint Profile	
Authorization Profile	

Authentication Details

Source Timestamp	2014-05-07 00:22:48.174
Received Timestamp	2014-05-07 00:22:48.175
Policy Server	ise
Event	5232 DACL Download Succeeded
Failure Reason	
Resolution	
Root cause	
Username	#ACSACL#-IP-Employee_Restricted_DACL-52777cc3
User Type	
Endpoint Id	
Endpoint Profile	

Other Attributes

NAS Port Type	
Authorization Profile	
Posture Status	
Security Group	
Response Time	3
ConfigVersionId	8
DestinationPort	1045
Protocol	Radius
AcSesssionID	ise/188683442/376
CPMSessionID	0a0a0214000000635
Location	Location#All Location
Device Type	Device Type#All Devi
RADIUS Username	#ACSACL#-IP-Empl
Device IP Address	10.10.2.2
CiscoAVPair	aaa:service=ip_admin
aaa:event	dcl-download

NEW QUESTION 562

Which profiling capability allows you to gather and forward network packets to an analyzer?

- A. collector
- B. spanner
- C. retriever
- D. aggregator

Answer: A

NEW QUESTION 564

Which statement about a distributed Cisco ISE deployment is true?

- A. It can support up to two monitoring Cisco ISE nodes for high availability.
- B. It can support up to three load-balanced Administration ISE nodes.
- C. Policy Service ISE nodes can be configured in a redundant failover configuration.
- D. The Active Directory servers of Cisco ISE can be configured in a load-balanced configuration.

Answer: A

NEW QUESTION 569

Which type of access list is the most scalable that Cisco ISE can use to implement network authorization enforcement for a large number of users?

- A. downloadable access lists
- B. named access lists
- C. VLAN access lists
- D. MAC address access lists

Answer: A

NEW QUESTION 570

Which Cisco ISE feature can differentiate a corporate endpoint from a personal device?

- A. EAP chaining
- B. PAC files
- C. authenticated in-band provisioning
- D. machine authentication

Answer: A

NEW QUESTION 574

A user configured a Cisco Identity Service Engine and switch to work with downloadable access list for wired dot1x users, though it is failing to work. Which command must be added to address the issue?

- A. ip dhcp snooping
- B. ip device tracking
- C. dot1x pae authenticator
- D. aaa authentication dot1x default group radius

Answer: B

NEW QUESTION 575

Which error in a redirect ACL can cause the redirection of an endpoint to the provisioning portal to fail?

- A. The redirect ACL is blocking access to ports 80 and 443.
- B. The redirect ACL is applied to an incorrect SVI.
- C. The redirect ACL is blocking access to the client provisioning portal.
- D. The redirect ACL is blocking access to Cisco ISE port 8905.

Answer: A

NEW QUESTION 576

Refer to the exhibit.

Permit any command that is not listed below ☐

<input type="checkbox"/>	Grant	Command	Arguments	
<input type="checkbox"/>	PERMIT	ping	.*	
<input type="checkbox"/>	DENY	show	c*	
<input type="checkbox"/>	PERMIT	conf	t*	
<input type="checkbox"/>	PERMIT	s*w	.*	
<input type="checkbox"/>	DENY_ALWAYS	ping		

If a user with privilege 15 is matching this command set on Cisco ISE 2.0, which three commands can the user execute? (Choose three.)

- A. configure terminal
- B. show run
- C. show clock
- D. ping 10.10.100.1
- E. exit
- F. show ip interface brief

Answer: ABF

NEW QUESTION 580

You are configuring SGA on a network device that is unable to perform SGT tagging. How can the device propagate SGT information?

- A. The device can use SXP to pass IP-address-to-SGT mappings to a TrustSec-capable hardware peer.
- B. The device can use SXP to pass MAC-address-to-STG mappings to a TrustSec-capable hardware peer.
- C. The device can use SXP to pass MAC-address-to-IP mappings to a TrustSec-capable hardware peer.
- D. The device can propagate SGT information in an encapsulated security payload.
- E. The device can use a GRE tunnel to pass the SGT information to a TrustSec-capable hardware peer.

Answer: A

NEW QUESTION 583

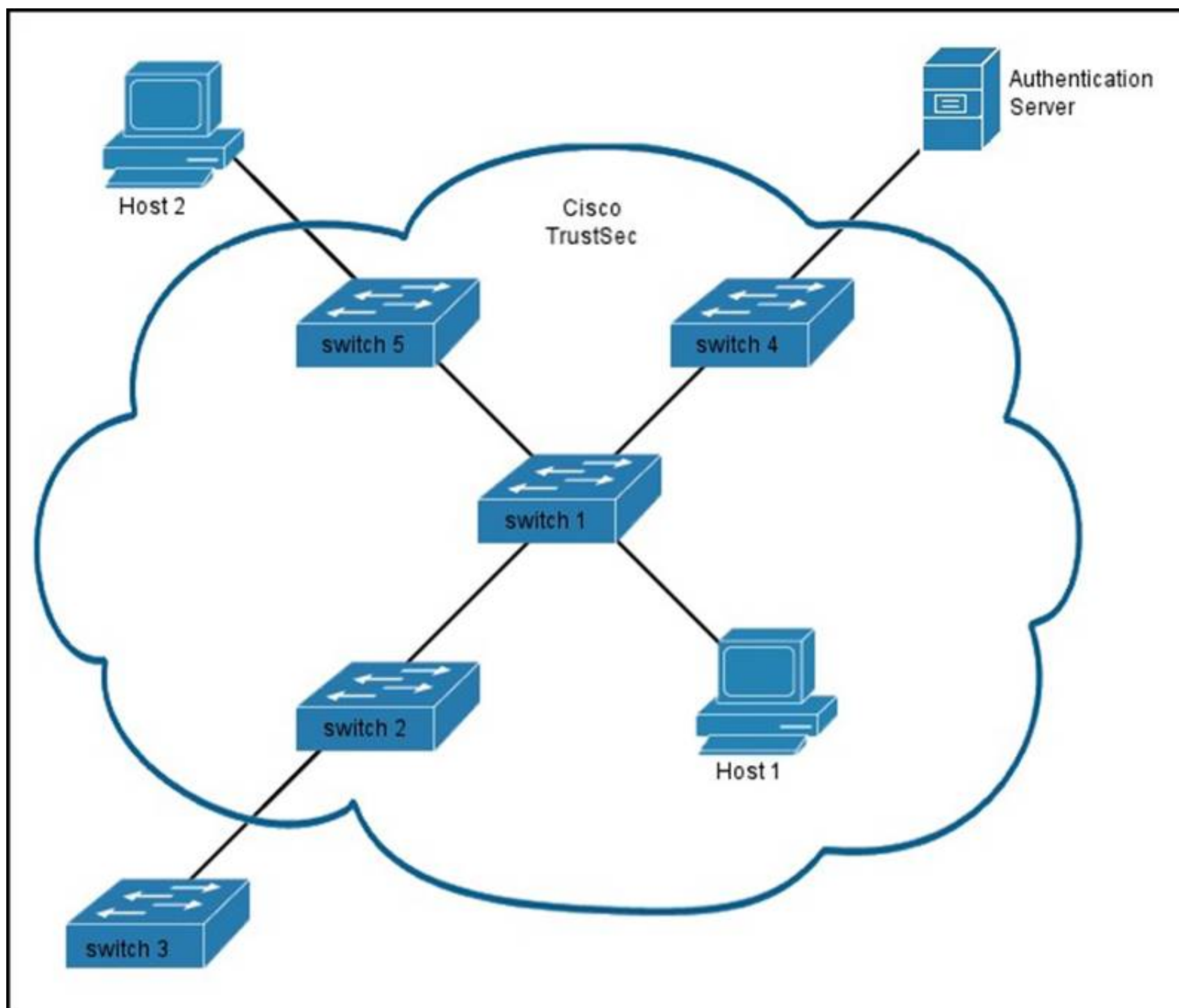
What type of identity group is the Blacklist identity group?

- A. endpoint
- B. user
- C. blackhole
- D. quarantine
- E. denied systems

Answer: A

NEW QUESTION 585

Refer to the exhibit.



The links outside the TrustSec area in the given SGA architecture are unprotected. On which two links does EAC take place? (Choose two.)

- A. between switch 2 and switch 3
- B. between switch 5 and host 2
- C. between host 1 and switch 1
- D. between the authentication server and switch 4
- E. between switch 1 and switch 2
- F. between switch 1 and switch 5

Answer: AB

NEW QUESTION 586

Which two NAC agents support file remediation? (Choose two.)

- A. Web Agent for Macintosh
- B. NAC Agent for Windows
- C. NAC Agent for Macintosh
- D. Web Agent for UNIX
- E. Web Agent for Windows

Answer: BE

NEW QUESTION 591

A network administrator has just added a front desk receptionist account to the Cisco ISE Guest Service sponsor group. Using the Cisco ISE Guest Sponsor Portal, which guest services can the receptionist provide?

- A. Authenticate guest users to Cisco ISE.
- B. Keep track of guest user activities.
- C. Create and manage guest user accounts.
- D. Configure authorization setting for guest users.

Answer: C

NEW QUESTION 593

Which advanced option within a WLAN must be enabled to trigger central web authentication for wireless users?

- A. AAA override
- B. Static IP tunnelling

- C. Diagnostic channel
- D. DHCP server

Answer: A

NEW QUESTION 597

Which interface-level command is needed to turn on dot1x authentication?

- A. authentication pae authenticator
- B. aaa server radius dynamic-author
- C. authentication host-mode single-host
- D. dot1x system-auth-control

Answer: C

Explanation: In order to enable 802.1x functionality, enter this command: Switch(config)# dot1x system-auth-control

NEW QUESTION 602

Which remediation type ensures that Automatic Updates configuration is turned on Windows clients per security policy to remediate Windows clients for posture compliance?

- A. AS Remediation
- B. File Remediation
- C. Launch Program Remediation
- D. Windows Update Remediation
- E. Windows Server Update Services Remediation

Answer: C

NEW QUESTION 606

Scenario:

Currently, many users are experiencing problems using their AnyConnect NAM supplicant to login to the network. The IT desktop support staff have already examined and verified the AnyConnect NAM configuration is correct.

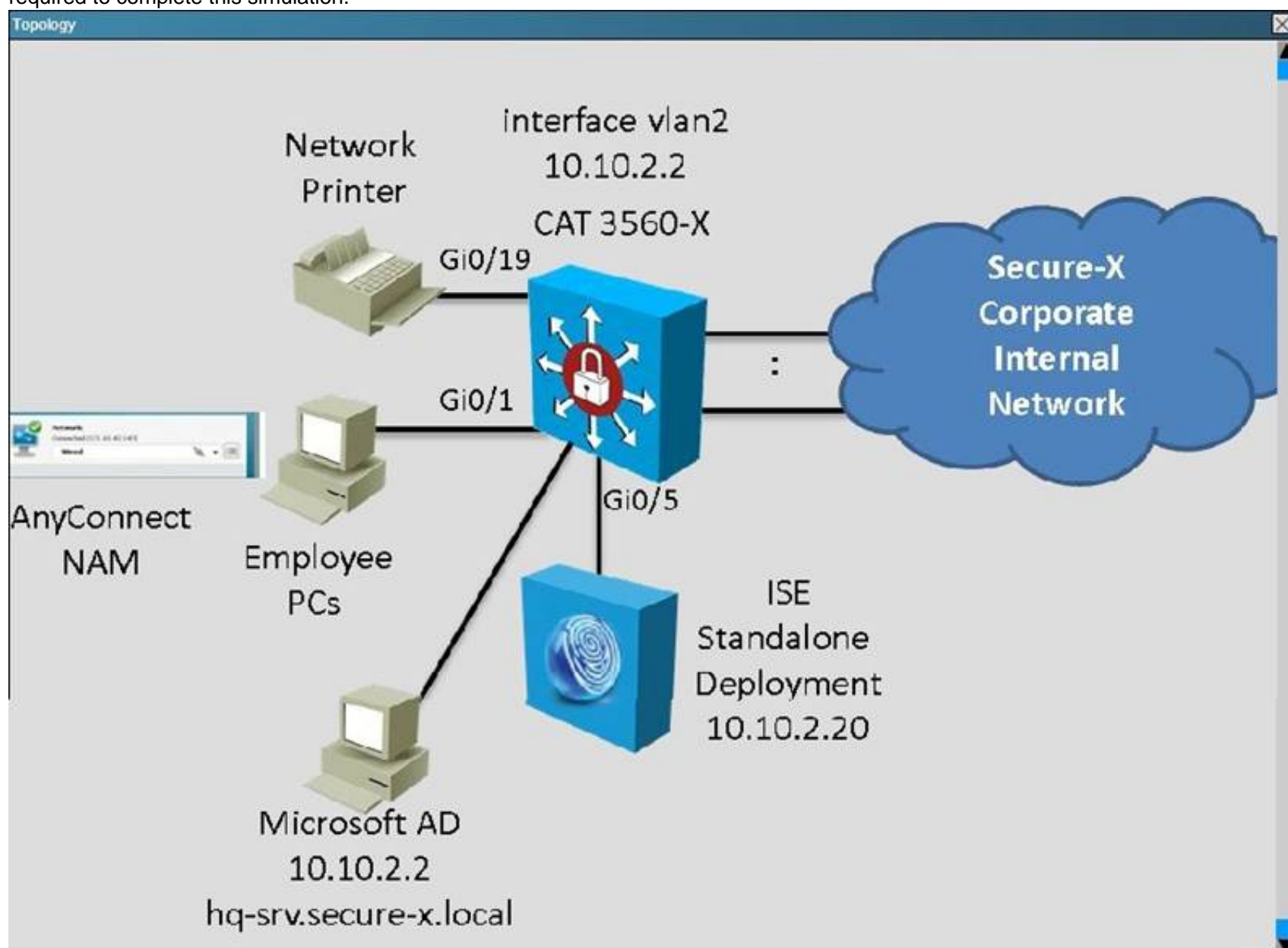
In this simulation, you are tasked to examine the various ISE GUI screens to determine the ISE current configurations to help isolate the problems. Based on the current ISE configurations, you will need to answer three multiple choice questions.

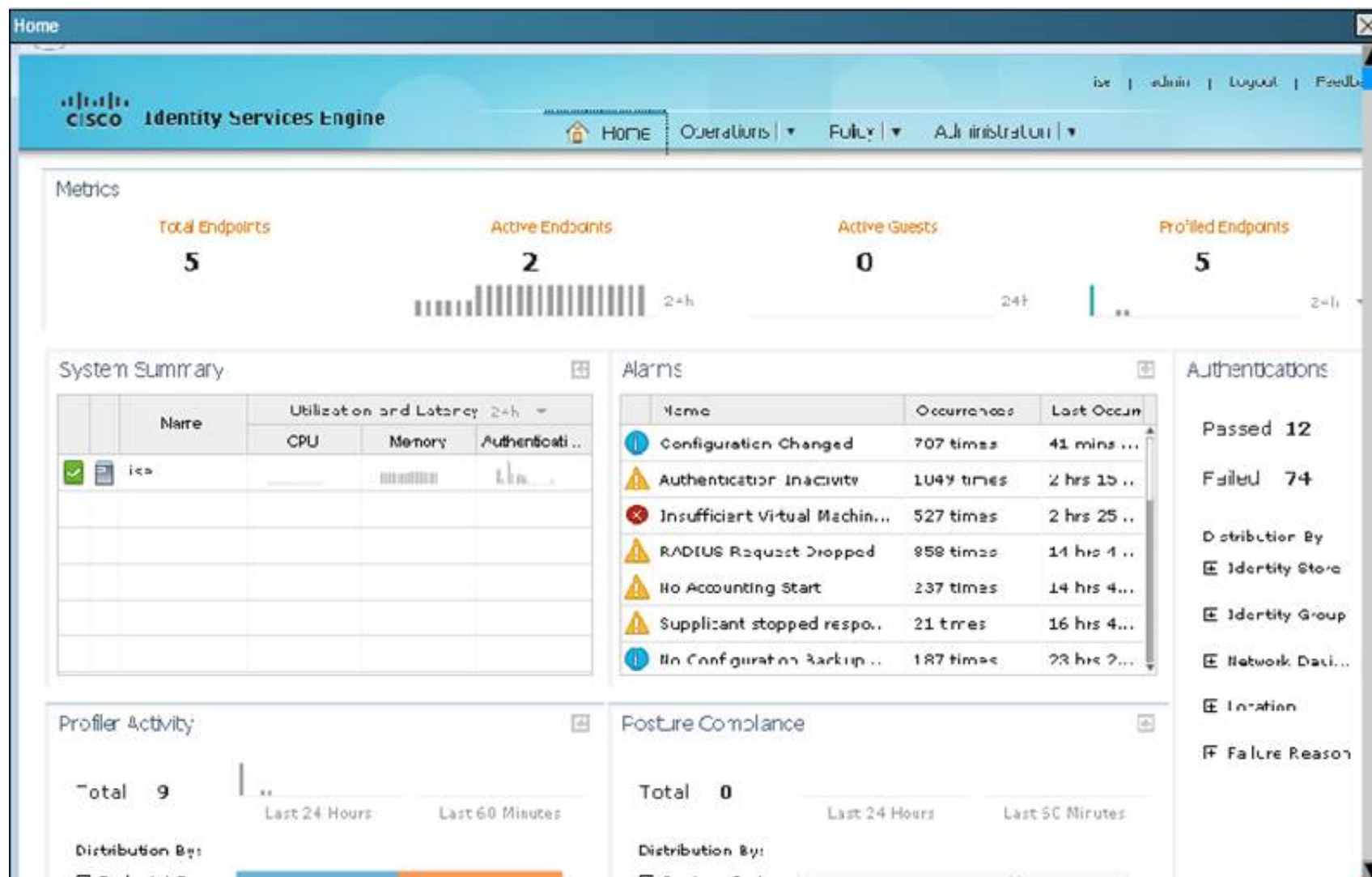
To access the ISE GUI, click on the ISE icon in the topology diagram to access the ISE GUI.

Not all the ISE GUI screen are operational in this simulation and some of the ISE GUI operations have been reduced in this simulation.

Not all the links on each of the ISE GUI screen works, if some of the links are not working on a screen, click Home to go back to the Home page first. From the Home page, you can access all the required screens.

To view some larger GUI screens, use the simulation window scroll bars. Some of the larger GUI screens only shows partially but will include all information required to complete this simulation.





Which two of the following statements are correct? (Choose two.)

- A. The ISE is not able to successfully connect to the hq-srv.secure-
- B. local AD server.
- C. The ISE internal endpoints database is used to authenticate any users not in the Active Directory domain.
- D. The ISE internal user database has two accounts enabled: student and test that maps to the Employee user identity group.
- E. Guest_Portal_Sequence is a built-in identity source sequence.

Answer: BD

NEW QUESTION 608

Refer to the exhibit.

```
aaa new-model
radius-server host 10.0.0.12 key secret12
```

Which statement about the authentication protocol used in the configuration is true?

- A. There is separate authentic and authorization request packet.
- B. The authentication request contains only a password.
- C. The authentication and authorization requests are grouped in a single packet.
- D. The authentication request contains only a username.

Answer: B

NEW QUESTION 611

When you configure an endpoint profiling policy rule, which option describes the purpose of the minimum certainty factor?

- A. It is compared to the total certainty metric of an individual endpoint to determine whether the endpoint can be trusted.
- B. It is compared to the assigned certainty value of an individual endpoint in a device database to determine whether the endpoint can be trusted.
- C. It is used to compare the policy condition to other active policies.
- D. It is used to determine the likelihood that an endpoint is an active, trusted device on the network.

Answer: A

NEW QUESTION 613

A network security engineer is considering configuring 802.1x port authentication such that a single host is allowed to be authenticated for data and another single host for voice. Which port authentication host mode can be used to achieve this configuration?

- A. single-host
- B. multihost
- C. multauth
- D. multidomain

Answer: D

NEW QUESTION 617

Which protocol is EAP encapsulated in for communications between the authenticator and the authentication server ?

- A. EAP-MD5
- B. IPSec
- C. EAPOL
- D. Radius

Answer: D

NEW QUESTION 619

Which two profile attributes can be collected by a Cisco Wireless LAN Controller that supports Device Sensor? (Choose two.)

- A. LLDP agent information
- B. user agent
- C. DHCP options
- D. open ports
- E. CDP agent information
- F. FQDN

Answer: BC

NEW QUESTION 624

A user reports that a switch's RADIUS accounting packets are not being seen on the Cisco ISE server. Which command is the user missing in the switch's configuration?

- A. radius-server vsa send accounting
- B. aaa accounting network default start-stop group radius
- C. aaa accounting resource default start-stop group radius
- D. aaa accounting exec default start-stop group radius

Answer: A

NEW QUESTION 628

Which command would be used in order to maintain a single open connection between a network access device and a tacacs server?

- A. tacacs-server host timeout
- B. tacacs-server host single-connection
- C. tacacs-server host <ip address>
- D. tacacs-server host <ip address> single-connection

Answer: D

NEW QUESTION 633

An engineer is investigating an issue with their Posture Run-time Services implementation. Which protocol services are used by NAC Agents to communicate with NAC Servers?

- A. SWISS
- B. IPsec
- C. IKEv2
- D. FIX

Answer: A

NEW QUESTION 635

Within a BYOD environment, when employees add devices using the My Devices Portal, which Identity Group does Cisco ISE add the endpoints to?

- A. Registered
- B. Employee
- C. Guest
- D. Profiled

Answer: D

NEW QUESTION 638

Which three events immediately occur when a user clicks "Register" on their device in a single-SSID BYOD onboarding registration process (Choose three).

- A. CA certificate is sent to the device from Cisco ISE
- B. An endpoint is added to a RegisterDevices identity group
- C. RADIUS access request is sent to Cisco ISE
- D. The profile service is sent to the device from Cisco ISE
- E. dACL is sent to the device from Cisco ISE
- F. BYOD registration flag is set by Cisco ISE

Answer: ABF

NEW QUESTION 640

When using a DHCP probe in a Cisco ISE deployment, which type of request triggers an endpoint to be reprofiled?

- A. DHCP Inform
- B. REBINDING
- C. RENEWING
- D. INIT-REBOOT

Answer: D

NEW QUESTION 643

SGt assignment when authentication is not available or SGT method for non authenticating devices ? Answer: dynamic

Answer:

NEW QUESTION 648

When using endpoint access control, which two access methods are valid for authentication and authorization? (Choose two.)

- A. Microsoft Challenge Handshake Authentication
- B. Protected extensible authentication
- C. MAC Authentication Bypass
- D. Password Authentication Protocol Bypass
- E. Web authentication

Answer: CE

NEW QUESTION 653

Which command defines administrator CLI access in ACS5.x?

- A. Application reset-passwd acs username
- B. username username password password role admin
- C. username username password plain password role admin
- D. password-policy

Answer: C

NEW QUESTION 654

Which two statements about administrative access to the ACS Solution Engine are true? (Choose two.)

- A. The ACS Solution Engine supports command-line connections through a serial-port connection.
- B. For GUI access, an administrative GUI user must be created with the add-guiadmin command.
- C. The ACS Solution Engine supports command-line connections through an Ethernet interface.
- D. An ACL-based policy must be configured to allow administrative-user access.
- E. GUI access to the ACS Solution Engine is not supported.

Answer: BD

NEW QUESTION 659

An engineer of company A will be sending guest credentials through SMS to conference participants. Which portal must be used to create them?

- A. SMS
- B. Sponsor
- C. Guest
- D. User

Answer: A

NEW QUESTION 664

if user want to use his corporate laptop in another network ,what is only agent can work with this environment?

Answer:

Explanation: Cisco NAC agent.

NEW QUESTION 667

Which statement about the CAK is true?

- A. It is the master key that generates the other keys that MACsec requires.
- B. Failed MACsec connections fall back to MAB by default.
- C. It is the key that is used to discover MACsec peers and perform key negotiation between the peers.

- D. It is the secret key that encrypts traffic during the connection.
- E. It is the key that is used to negotiate session encryption keys.

Answer: A

NEW QUESTION 671

What are the four code fields which identify the type of an EAP packet?

- A. Request, Reply, Accept, Reject
- B. Request, Reply, Success, Failure
- C. Request, Response, Success, Failure
- D. Request, Respons
- E. Accept Reject

Answer: C

NEW QUESTION 673

Which two attributes are delivered by the DHCP probe to the Cisco ISE? (Choose two.)

- A. dhcp-client-identifier
- B. framed-IP-address
- C. host-name
- D. calling-station-ID
- E. MAC address

Answer: AC

NEW QUESTION 676

Which port does Cisco ISE use for native supplicant provisioning of a Windows computer?

- A. TCP 8443
- B. TCP/UDP 8905
- C. TCP/UDP 8909
- D. TCP 443

Answer: C

Explanation: 8909 : web, cisco nac agent, supplicant provisioning wizard installation 8905 : Cisco NAC agent update

NEW QUESTION 679

Which two Active Directory authentication methods are supported by Cisco ISE? (Choose two.)

- A. MS-CHAPv2
- B. PEAP
- C. PPTP
- D. EAP-PEAP
- E. PPP

Answer: AB

NEW QUESTION 680

A company wants to allow employees to register and manage their own devices that do not support NSP. Which portals enable this ability?

- A. MDM portals
- B. Client provisioning portals
- C. My devices portals
- D. BYOD Portals

Answer: A

NEW QUESTION 682

if the user in non-compliant state and want to Get out of quarantine ?

Answer:

Explanation: download posture

NEW QUESTION 686

Which RADIUS attribute can be used to dynamically assign the Inactivity active timer for MAB users from the Cisco ISE node?

- A. radius-server timeout
- B. idle-timeout attribute

- C. session-timeout attribute
- D. termination-action attribute

Answer: B

Explanation:

https://www.cisco.com/c/en/us/products/collateral/ios-nx-os-software/identity-based-networking-services/config_guide_c17-663759.html

When the inactivity timer is enabled, the switch monitors the activity from authenticated endpoints. When the inactivity timer expires, the switch removes the authenticated session.

The inactivity timer for MAB can be statically configured on the switch port, or it can be dynamically assigned using the RADIUS Idle-Timeout attribute (Attribute 28).

Cisco recommends setting the timer using the RADIUS attribute because this approach lets gives you control over which endpoints are subject to this timer and the length of the timer for each class of endpoints.

For example, endpoints that are known to be quiet for long periods of time can be assigned a longer inactivity timer value than chatty endpoints.

NEW QUESTION 691

Which 802.1x command is needed for ACL to be applied on a switch port?

- A. dot1x system-auth-control
- B. dot1x pae authenticator
- C. authentication port-control auto
- D. radius-server vsa send authentication
- E. aaa authorization network default group radius

Answer: D

NEW QUESTION 696

Which two are best practices to implement profiling services in a distributed environment? (Choose two)

- A. use of device sensor feature
- B. configuration to send syslogs to the appropriate profiler node
- C. netflow probes enabled on central nodes
- D. node-specific probe configuration
- E. global enablement of the profiler service

Answer: BD

Explanation: https://www.cisco.com/en/US/docs/security/ise/1.0/user_guide/ise10_prof_pol.html#wp1340515

You can deploy the Cisco ISE profiler service either in a standalone environment (on a single node), or in a distributed environment (on multiple nodes).

Depending on the type of your deployment and the license you have installed, the profiler service of Cisco ISE can run on a single node or on multiple nodes.

You need to install either the base license to take advantage of the basic services or the advanced license to take advantage of all the services of Cisco ISE.

The ISE distributed deployment includes support for the following:

- The Deployment Nodes page supports the infrastructure for the distributed nodes in the distributed deployment.
- A node specific configuration of probes—The Probe Config page allows you to configure the probe per node.
- Global Implementation of the profiler Change of Authorization (CoA).
- Configuration to allow syslogs to be sent to the appropriate profiler node.

NEW QUESTION 701

How does the device sensor send information to a RADIUS server?

- A. Accounting
- B. Authorization
- C. Analyzer
- D. Collector

Answer: D

NEW QUESTION 704

Which option is the code field of n EAP packet?

- A. one byte and 1=request, 2=response 3=failure 4=success
- B. two byte and 1=request, 2=response, 3=success, 4=failure
- C. two byte and 1=request 2=response 3=failure 4=success
- D. one byte and 1=request 2=response 3=success 4=failure

Answer: D

NEW QUESTION 706

During BYOD flow, where does a Microsoft Windows 8.1 PC download the Network Setup Assistant from?

- A. from Cisco App Store
- B. from Cisco ISE directly
- C. from Microsoft App Store
- D. It uses the native OTA functionality.

Answer: B

NEW QUESTION 711

which command used to enable SGACL globally ?

Answer:

Explanation: cts role-based-enforcement

NEW QUESTION 714

Which devices support download of environmental data and IP from Cisco ISE to SGT bindings in their SGFW implementation?

- A. Cisco ASA devices
- B. Cisco ISR G2 and later devices with ZBFW
- C. Cisco ISR G3 devices with ZBFW
- D. Cisco ASR devices with ZBFW

Answer: C

NEW QUESTION 715

You have configured a Cisco ISE1.2 deployment for self registration of guest users. What two options can you select from to determine when the account duration timer begins(Choose two)?

- A. Createtime
- B. Firstlogin
- C. Approvertime
- D. Custom
- E. Starttime

Answer: AB

NEW QUESTION 716

Which two component are required for creating native supplicant profile ?

- A. Operative System
- B. Connection type wired/wireless
- C. los Sutzen
- D. BYOD

Answer: AB

NEW QUESTION 718

In Cisco ISE 1.3, where is BYOD enabled with dual-SSID onboarding?

- A. client provisioning policy
- B. client provisioning resources
- C. BYOD portal
- D. guest portal

Answer: D

NEW QUESTION 720

Which two options enable security group tags to the assigned to a session?

- A. Firewall
- B. DHCP
- C. ACL
- D. Source VLAN
- E. ISE

Answer: AE

NEW QUESTION 721

When using CA for identity source, which method can be used to provide real-time certificate validation?

- A. X.509
- B. PKI
- C. OCSP
- D. CRL

Answer: D

NEW QUESTION 726

What are two actions that can occur when an 802.1X-enabled port enters violation mode? (Choose two.)

- A. The port is error disabled.
- B. The port drops packets from any new device that sends traffic to the port.
- C. The port generates a port resistance error.
- D. The port attempts to repair the violation.
- E. The port is placed in quarantine state.
- F. The port is prevented from authenticating indefinitely.

Answer: AB

NEW QUESTION 728

Which two profile attributes can be collected by a Cisco Catalyst Switch that supports Device Sensor? (Choose two.)

- A. LLDP agent information
- B. user agent
- C. DHCP options
- D. open ports
- E. operating system
- F. trunk ports

Answer: AC

NEW QUESTION 731

Which definition of “posturing” as it relates to a general network infrastructure and access into the internal network is true?

- A. The process by which an operating system or application running on an endpoint provides critical information about internet activity being used by the endpoint.
- B. The process by which an endpoint device can be monitored while connected to the network to determine if it could contain viruses or potential harmful programs running.
- C. The process by which an operating system or application running on an endpoint provides critical information about the software that is actively running on the device.
- D. The process when software is uploaded to an end device before it is allowed to gain access to a secure network.

Answer: D

NEW QUESTION 732

In a Cisco ISE deployment, which traffic is permitted by the default dynamic ACL?

- A. all IP traffic
- B. management traffic only
- C. TCP traffic only
- D. UDP traffic only

Answer: A

NEW QUESTION 737

Scenario:

Currently, many users are experiencing problems using their AnyConnect NAM supplicant to login to the network. The IT desktop support staff have already examined and verified the AnyConnect NAM configuration is correct.

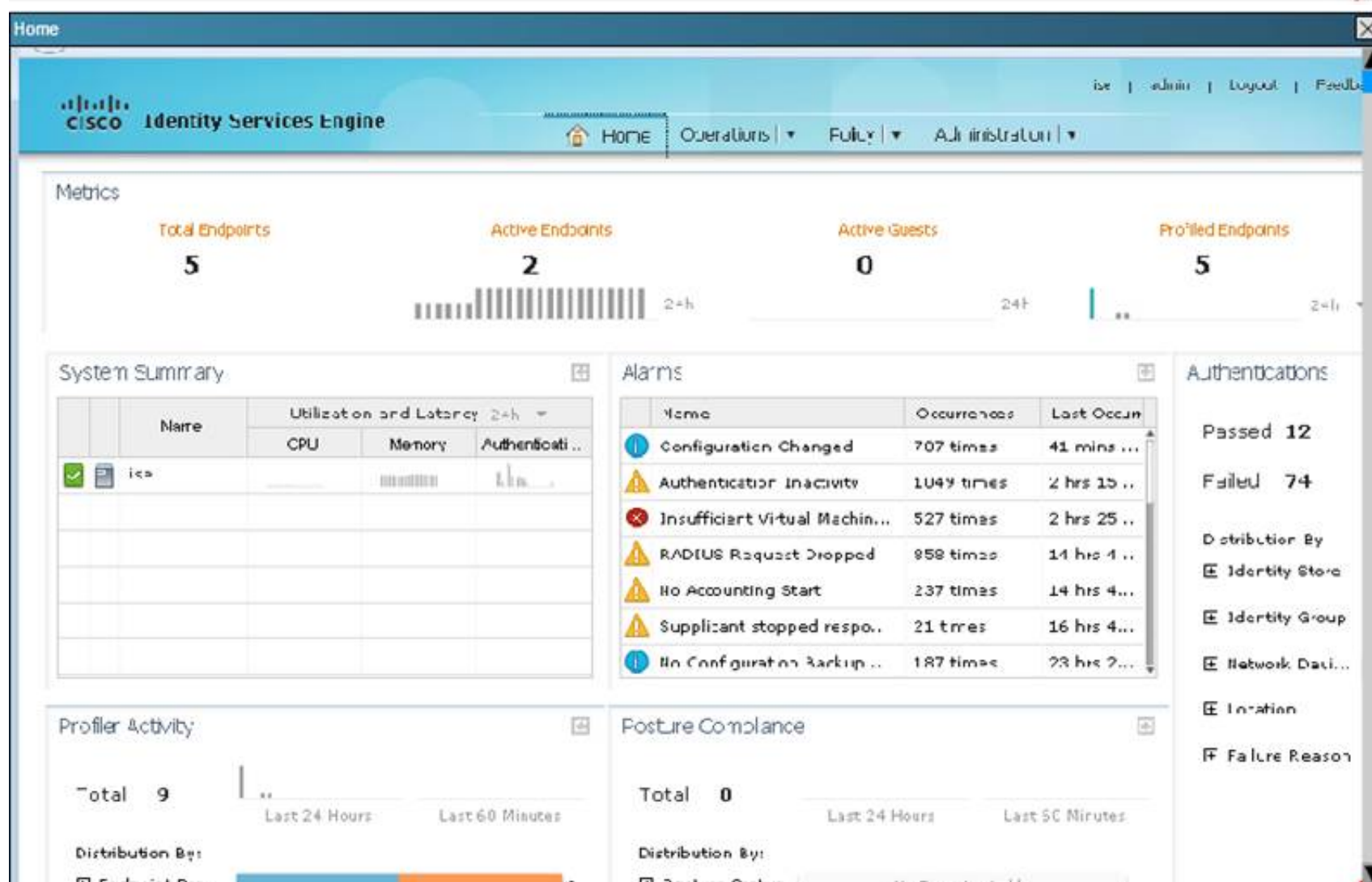
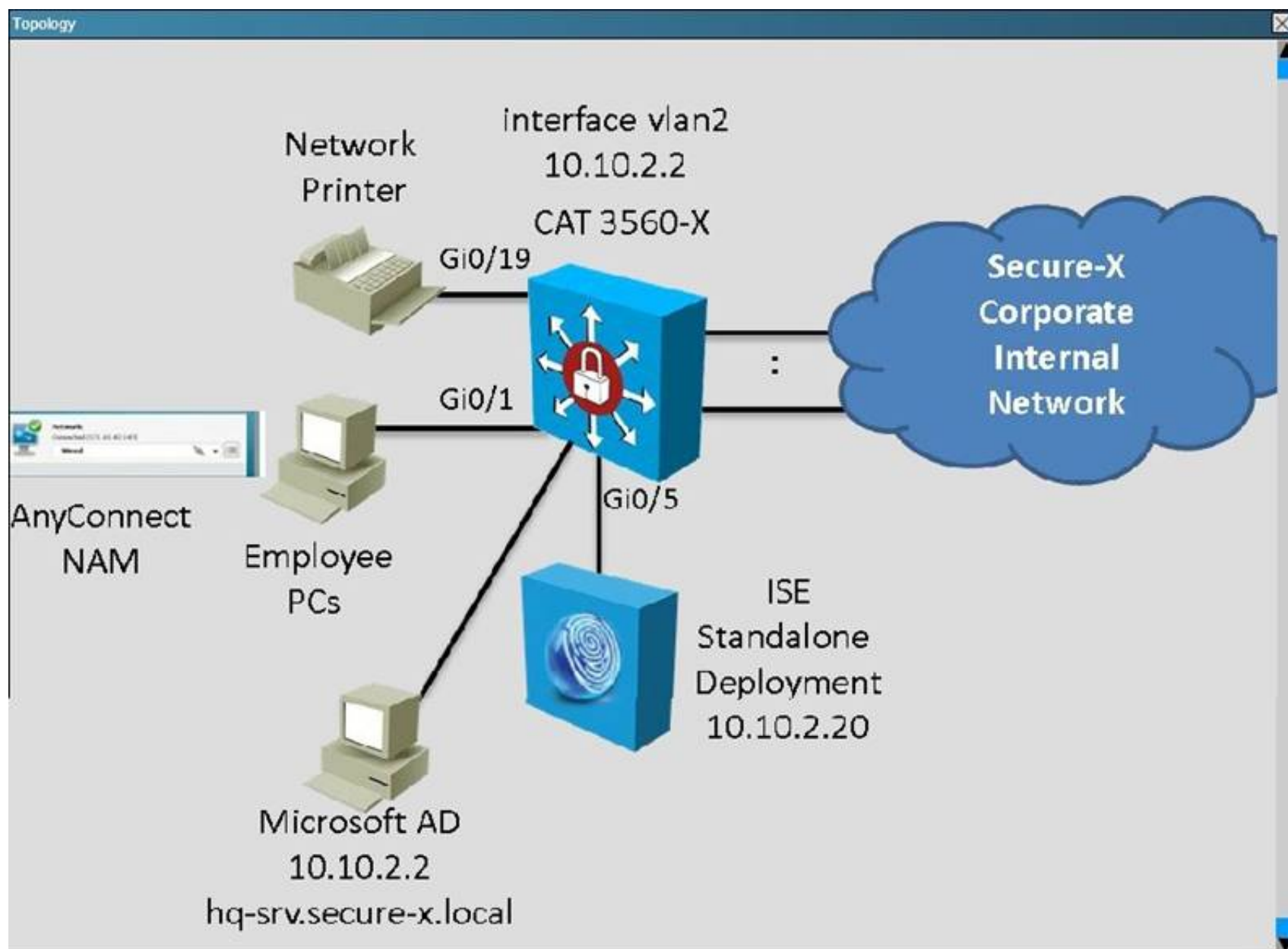
In this simulation, you are tasked to examine the various ISE GUI screens to determine the ISE current configurations to help isolate the problems. Based on the current ISE configurations, you will need to answer three multiple choice questions.

To access the ISE GUI, click on the ISE icon in the topology diagram to access the ISE GUI.

Not all the ISE GUI screens are operational in this simulation and some of the ISE GUI operations have been reduced in this simulation.

Not all the links on each of the ISE GUI screens work, if some of the links are not working on a screen, click Home to go back to the Home page first. From the Home page, you can access all the required screens.

To view some larger GUI screens, use the simulation window scroll bars. Some of the larger GUI screens only show partially but will include all information required to complete this simulation.



Which of the following statement is correct?

- A. Currently, IT users who successfully authenticate will have their packets tagged with a SGT of 3.
- B. Currently, IT users who successfully authenticate will be assigned to VLAN 9.
- C. Currently, any domain administrator who successfully authenticates will be assigned to VLAN 10.
- D. Computers belonging to the secure-x domain which pass machine authentication but failed user authentication will have the Employee_Restricted_DACL applied.
- E. Print Servers matching the Linksys-PrintServer identity group will have the following access restrictions: permit icmp any host 10.10.2.20 permit tcp any host 10.10.2.20 eq 80 permit icmp any host 10.10.3.20 permit tcp any host 10.10.3.20 eq 80 deny ip any any

Answer: C

NEW QUESTION 740

Which ISE feature is used to facilitate a BYOD deployment?

- A. self-service personal device registration and onboarding
- B. Guest Service Sponsor Portal
- C. Local Web Auth
- D. Guest Identity Source Sequence

Answer: A

NEW QUESTION 745

An engineer must ensure that all client operating systems have the AnyConnect Agent for an upcoming posture implementation. Which two versions of OS does the AnyConnect posture agent support? (Choose two.)

- A. Google Android
- B. Ubuntu
- C. Apple Mac OS X
- D. Microsoft Windows
- E. Red Hat Enterprise Linux

Answer: CD

NEW QUESTION 750

A security engineer has a new TrustSec project and must create a few static security group tag classifications as a proof of concept. Which two classifications can the tags be mapped to? (Choose two.)

- A. VLAN
- B. user ID
- C. interface
- D. switch ID
- E. MAC address

Answer: AC

Explanation: In static classification the tag maps to some thing (an IP, subnet, VLAN, or interface) rather than relying on an authorization from the Cisco ISE. This process of assigning the SGT is defined as "classification." These classifications are then transported deeper into the network for policy enforcement

NEW QUESTION 751

A malicious user gained network access by spoofing printer connections that were authorized using MAB on four different switch ports at the same time. What two catalyst switch security features will prevent further violations? (Choose two)

- A. DHCP Snooping
- B. 802.1AE MacSec
- C. Port security
- D. IP Device tracking
- E. Dynamic ARP inspection
- F. Private VLANs

Answer: AE

Explanation: https://www.cisco.com/c/en/us/products/collateral/ios-nx-os-software/identity-based-networking-services/config_guide_c17-663759.html

DHCP snooping is fully compatible with MAB and should be enabled as a best practice.

Dynamic Address Resolution Protocol (ARP) Inspection (DAI) is fully compatible with MAB and should be enabled as a best practice.

In general, Cisco does not recommend enabling port security when MAB is also enabled.

Since MAB enforces a single MAC address per port (or per VLAN when multidomain authentication is configured for IP telephony), port security is largely redundant and may in some cases interfere with the expected operation of MAB.

NEW QUESTION 753

A network administrator is seeing a posture status "unknown" for a single corporate machine on the Cisco ISE authentication report, whereas the other machines are reported as "compliant". Which option is the reason for machine being reported as "unknown"?

- A. Posture agent is not installed on the machine.
- B. Posture policy does not support the OS.
- C. Posture compliance condition is missing on the machine.
- D. Posture service is disabled on Cisco ISE.

Answer: A

NEW QUESTION 758

Which technology performs CoA support Posture Service?

- A. External root CA
- B. Cisco ACS
- C. Cisco ISE
- D. Internal root CA

Answer: C

NEW QUESTION 761

Which ISE deployment mode is similar to the industry standard 802.1X behavior?

- A. Monitor mode
- B. Low-impact mode
- C. Policy mode
- D. Closed mode

Answer: D

NEW QUESTION 766

Why does Cisco recommend assigning dynamic classification security group tag assignment at the access layer?

- A. Static security group assignments are more scalable.
- B. Security group assignment occurs as users enter the network.
- C. To use SXP to transport STG to IP mappings.
- D. Security group assignment occurs as users leave the network.

Answer: B

NEW QUESTION 769

What is the function of the SGACL policy matrix on a Cisco TrustSec domain with SGT Assignment?

- A. It determines which access policy to apply to the endpoint.
- B. It determines which switches are trusted within the TrustSec domain.
- C. It determines the path the SGT of the packet takes when entering the Cisco TrustSec domain.
- D. It lists all servers that are permitted to participate in the TrustSec domain.
- E. It lists all hosts that are permitted to participate in the TrustSec domain.

Answer: A

NEW QUESTION 774

.....

Thank You for Trying Our Product

We offer two products:

1st - We have Practice Tests Software with Actual Exam Questions

2nd - Questions and Answers in PDF Format

300-208 Practice Exam Features:

- * 300-208 Questions and Answers Updated Frequently
- * 300-208 Practice Questions Verified by Expert Senior Certified Staff
- * 300-208 Most Realistic Questions that Guarantee you a Pass on Your First Try
- * 300-208 Practice Test Questions in Multiple Choice Formats and Updates for 1 Year

100% Actual & Verified — Instant Download, Please Click
[Order The 300-208 Practice Test Here](#)