

## 200-355 Dumps

# Implementing Cisco Wireless Network Fundamentals

<https://www.certleader.com/200-355-dumps.html>



**NEW QUESTION 1**

A customer cannot access the GUI on the Cisco 5508 Wireless Controller from the management interface due to network failure. Which interface can the customer use to access the WLC GUI until the network issues are resolved?

- A. virtual
- B. dynamic
- C. console port
- D. service port

**Answer:** D

**NEW QUESTION 2**

Which two principles must be considered when deploying a wireless network through a wooded area? (Choose two.)

- A. absorption
- B. reflection
- C. diffraction
- D. scattering
- E. refraction

**Answer:** AD

**NEW QUESTION 3**

Which interface is used to connect the foreign and anchor controllers?

- A. management
- B. service
- C. virtual
- D. dynamic

**Answer:** A

**NEW QUESTION 4**

An engineer wants to deploy a 2504 controller as the anchor controller for a guest WLAN that resides on a 5508 controller in a different mobility group. What configuration change must be applied to support this deployment strategy?

- A. UDP 16666 and IP Protocol 97 must be enabled on the 2504 controller
- B. UDP 5246 and TCP Protocol 97 must be enabled on the router
- C. The 2504 controller must be added to the same mobility group as the 5508.
- D. DHCP Option 43 must be added to the neighboring switchport

**Answer:** C

**NEW QUESTION 5**

Which four options are the characteristics of the original 802.11 protocol? (Choose four.)

- A. Defined DSSS and FHSS as possible methods for modulation
- B. Designed to operate in the 5 GHz ISM frequency spectrum
- C. The most common deployment is three non-overlapping channels that are 20 MHz wide
- D. The protocol sets the maximum throughput at 1 Mb/s or 2 Mb/s
- E. Defined FHSS and OFDM as possible methods for modulation
- F. The most common deployment is three non-overlapping channels that are 22 MHz wide
- G. Designed to operate in the 2.4 GHz ISM frequency spectrum
- H. The protocol sets the maximum throughput at 1 Mb/s

**Answer:** ADFG

**NEW QUESTION 6**

You have an organization that has a growing number of standalone APs. You would like to migrate to lightweight APs and manage them through Cisco WCS. Which software platform allows you to make this migration?

- A. The enterprise version of Cisco WCS allows this migration and provides the most flexibility in the number of APs supported.
- B. CiscoWorks WLSE is the only management platform that allows this migration, but it is limited to 500 APs.
- C. You can migrate your network to Cisco WCS single server with the CiscoWorks WLSE upgrade software upgrade.
- D. You can migrate the network by using either the single server or enterprise software platforms, both using the CiscoWorks WLSE upgrade software upgrade.

**Answer:** C

**NEW QUESTION 7**

Drag the characteristics on the left that are associated with the specific controller-based AP deployment mode and drop them in the appropriate category on the right.

available on Cisco 3500 Series APs

A minimum of a 500-byte MTU is supported between the AP and the controller.

allows APs to act as a network-connected sensor

may operate in connected or standalone modes

mode used to set up a mesh network, either indoor or outdoor

APs can switch client data traffic locally and perform client authentication locally when their connection to a centralized controller is lost.

**AP SE-Connect Mode**

Target

Target

**AP Bridging Mode**

Target

**H-REAP**

Target

Target

Target

**Answer:**

**Explanation:**

Drag the characteristics on the left that are associated with the specific controller-based AP deployment mode and drop them in the appropriate category on the right.

available on Cisco 3500 Series APs

A minimum of a 500-byte MTU is supported between the AP and the controller.

allows APs to act as a network-connected sensor

may operate in connected or standalone modes

mode used to set up a mesh network, either indoor or outdoor

APs can switch client data traffic locally and perform client authentication locally when their connection to a centralized controller is lost.

**AP SE-Connect Mode**

available on Cisco 3500 Series APs

allows APs to act as a network-connected sensor

**AP Bridging Mode**

mode used to set up a mesh network, either indoor or outdoor

**H-REAP**

A minimum of a 500-byte MTU is supported between the AP and the controller.

may operate in connected or standalone modes

APs can switch client data traffic locally and perform client authentication locally when their connection to a centralized controller is lost.

#### NEW QUESTION 8

When deploying a Cisco Cloud Wireless Infrastructure, what two destination ports must be open? (Choose two.)

- A. TCP/5246
- B. UDP/5246
- C. TCP/5247
- D. UDP/5247
- E. TCP/7351

F. UDP/7351  
G. TCP/7734  
H. UDP/7734

**Answer:** FG

**NEW QUESTION 9**

What are three primary components that describe TKIP? (Choose three.)

A. broadcast key rotation  
B. dynamic WEP  
C. message integrity check  
D. per-packet key hashing  
E. symmetric key cipher  
F. WPA2 enterprise mode

**Answer:** ACD

**NEW QUESTION 10**

A help desk engineer is attempting to perform a remote packet capture on the wireless network. Which access point mode is necessary to perform this function?

A. sniffer  
B. SE-Connect  
C. monitor  
D. rogue detector  
E. FlexConnect

**Answer:** A

**NEW QUESTION 10**

Which two statements about AES-CCMP are true? (Choose two.)

A. It is an encryption algorithm used in the 802.11i security protocol.  
B. It is defined in 802.1X.  
C. It is the encryption algorithm used in TKIP implementations.  
D. It is required in WPA.  
E. It is required in WPA2.

**Answer:** AE

**NEW QUESTION 15**

Which statement about an infrastructure basic service set is true according to IEEE 802.11 specifications?

A. The set also is called an ad hoc network.  
B. The BSSID is generated from the first wireless client that starts up in the IBSS.  
C. The set enables the use of ESS.  
D. No signals are relayed from one client to another client.

**Answer:** C

**NEW QUESTION 16**

After you configure the Cisco 5508 Wireless Controller v7.6, a customer requests an SSID that allows for client web authentication with email input. Which authentication method should be used?

A. pass-through  
B. authentication  
C. splash page web redirect  
D. conditional web redirect  
E. on MAC filter failure

**Answer:** A

**NEW QUESTION 21**

Which type of frames are ACK and CF-ACK?

A. control  
B. management  
C. RTS/CTS  
D. association

**Answer:** A

**NEW QUESTION 23**



General	Security	QoS	Policy-Mapping
Quality of Service (QoS)		Gold (video)	
Application Visibility		<input checked="" type="checkbox"/> Enabled	
AVC Profile		none	
Netflow Monitor		none	
<b>WMM</b>			
WMM Policy		Disabled	
7920 AP CAC		<input type="checkbox"/> Enabled	
7920 Client CAC		<input type="checkbox"/> Enabled	
<b>Media Stream</b>			
Multicast Direct		<input checked="" type="checkbox"/> Enabled	

Refer to the exhibit. A help desk ticket has been entered for the wireless infrastructure. A wireless client is not able to connect at IEEE 802.11n rates. Which option allows for connectivity?

- A. Set WMM mode to Optional or Required.
- B. Set Quality of Service (QoS) to Silver.
- C. Set Quality of Service (QoS) to Platinum.
- D. Set 7920 AP CAC to Enabled.

**Answer:** A

#### NEW QUESTION 25

A wireless engineer is designing the wireless networking for a company with offices in two different locations. Which two regulatory bodies should they check to find the maximum EIRP allowed? (Choose two.)

- A. IEEE
- B. FCC
- C. ITU-R
- D. ETSI
- E. Wi-Fi Alliance

**Answer:** BD

#### NEW QUESTION 30

```
interface GigabitEthernet2/1
no ip address
switchport
switchport trunk encapsulation dot1q
switchport trunk allowed vlan 1,5,15,20,25,30,35,40,45,50,55,100
switchport trunk native vlan 44
switchport mode trunk
end
```

Refer to the exhibit. An engineer is configuring a SSID to utilize the management interface on the WLC. The management interface is configured with an untagged VLAN in the wireless controller interface settings. The controller is connected to a neighboring switch via the interface shown in the diagram. Which VLAN will traffic coming from the newly created SSID use to traverse the wired network?

- A. 1
- B. 20
- C. 44
- D. 50

**Answer:** C

#### NEW QUESTION 32

Which RRM feature allows an access point to avoid non-IEEE 802.11 interference?

- A. DCA
- B. TPC
- C. RF groups
- D. coverage hole detection

**Answer:** A

#### NEW QUESTION 34

An engineer is trying to identify if radar has impacted the wireless network at a customer site. When using the controller GUI, which dashboard in the Monitor section presents this information?

- A. 802.11a/n - Air Quality Reports
- B. Clean Air - Worst Air Quality Report
- C. 802.11b/g/n - Interfering Devices
- D. Statistics - Mobility Statistics

**Answer:** A

#### NEW QUESTION 38

How many dBm is 40 mW?

- A. 10 dBm
- B. 16 dBm
- C. 20 dBm
- D. 22 dBm
- E. 40 dBm

**Answer:** B

#### NEW QUESTION 39

An engineer wants to set up guest wireless that requires users to log in via a splash page prior to accessing the network. Which authentication method should be configured?

- A. LDAP
- B. RADIUS
- C. local authentication
- D. WebAuth
- E. PSK

**Answer:** D

#### NEW QUESTION 40

A customer has ordered a Cisco 5760 Wireless Controller. What speed and quantity of ports are needed for full-speed operation?

- A. 6 x 1 Gb
- B. 6 x 10 Gb
- C. 2 x 10 Gb
- D. 2 x 1 Gb
- E. 8 x 1 Gb
- F. 8 x 10 Gb

**Answer:** B

#### NEW QUESTION 45

A customer wants to deploy Cisco Cloud Wireless architecture with 802.11ac capabilities. Which two access points would meet the customers requirements? (Choose two.)

- A. Cisco 3700 Access Points
- B. Cisco MR34 Access Points
- C. Cisco MR18 Access Points
- D. Cisco 3600 Access Points
- E. Cisco MR72 Access Points
- F. Cisco 1570 Access Points
- G. Cisco MR26 Access Points

**Answer:** BE

#### NEW QUESTION 48

Which wireless topology supports roaming?

- A. IBSS
- B. BSS
- C. ESS
- D. bridging

**Answer:** C

**NEW QUESTION 49**

A customer wants to deploy a mesh network with 2 root access points and 10 mesh access points. The root access points should be configured as which mode on the WLC?

- A. mesh
- B. FlexConnect
- C. bridge
- D. rouge detection
- E. sniffer

**Answer:** C

**NEW QUESTION 50**

You are designing a wireless network in a medical facility. Which three areas are bad locations in which to install a wireless access point? (Choose three.)

- A. in front of the elevators doors
- B. in the hallways
- C. next to the electrical room
- D. inside offices
- E. near medical imaging devices
- F. in the lobby

**Answer:** ACE

**NEW QUESTION 54**

You are testing a new autonomous Cisco Aironet 1260 AP that has booted for the first time on the existing corporate network, which includes voice, data, and location services.

How do you reach the GUI of the AP?

- A. HTTP to 10.0.0.1.
- B. HTTP to 192.168.1.1.
- C. HTTP to the DHCP address.
- D. HTTPS to 10.0.0.1.
- E. HTTPS to the 192.168.1.1.
- F. HTTPS to the DHCP address.

**Answer:** C

**NEW QUESTION 57**

During the deployment of a wireless network for data and location services, an engineer is to fine-tune the location services. What is this type of survey called?

- A. passive fingerprinting
- B. passive calibrating
- C. active fingerprinting
- D. active calibrating

**Answer:** A

**NEW QUESTION 60**

An engineer needs an AP with at least two spatial streams, four receivers, and three transmitters. Which device meets these requirements?

- A. 2x4:3
- B. 2x3:4
- C. 4x3:2
- D. 3x4:2

**Answer:** D

**NEW QUESTION 63**

Microsoft Active Directory integrated machines are not authenticating to the internal WLAN. The WLAN settings are WPA2-AES-802.1x and are authenticating to a Cisco Identity Services Engine server. You investigate and note that non-domain authenticated machines are properly authenticating to the WLAN using their Active Directory credentials. Why would this problem occur?

- A. The WLAN is configured improperly in group policy.
- B. The ACS server is not joined to the domain, causing authentications to fail.
- C. The domain machines are configured to disable the wireless adapter.
- D. The non-domain machines are using local accounts that are not authenticated through the domain.

**Answer:** A

**NEW QUESTION 65**

Which governing body analyzes the applications and environments in which wireless networks are used?

- A. EIRP
- B. ETSI
- C. FCC
- D. IEEE

E. WiFi Alliance

**Answer:** D

**NEW QUESTION 67**

Which device divides a signal between two antennas?

- A. splitter
- B. lightening arrestor
- C. attenuator
- D. amplifier

**Answer:** A

**NEW QUESTION 69**

An engineer has been asked to upgrade the FUS on the Wireless LAN controller. How can they monitor the status of the upgrade?

- A. WLC GUI
- B. WLC CLI
- C. WLC Console
- D. WLC Management in Prime Infrastructure

**Answer:** C

**NEW QUESTION 70**

Which statement best describes the ability of a wireless client to access and transmit a data frame to an AP?

- A. The client listens to the media until polled by the AP using PCF to send its data.
- B. The client listens to the media until a data frame is finished, at which time it transmits, unless a collision of data frames has occurred.
- C. The client uses random countdown timers to start the transmission of a data frame.
- D. The client listens to the media and countdown timers to start the transmission of a data frame.

**Answer:** D

**NEW QUESTION 72**



Refer to the exhibit. In an effort to identify RF characteristics at a customer location, an RF engineer uses the Spectrum Analyzer tool that is shown. Which feature that is native to the Spectrum Analyzer is identified by the exhibit?

- A. Real-Time FFT
- B. Duty Cycle
- C. Max Hold
- D. Time Domain

**Answer:** A

**NEW QUESTION 74**

Which calculation computes the EIRP of an antenna?

- A.  $EIRP = Tx \text{ power (dBm)} + \text{Antenna Gain (dBi)} - \text{Cable Loss (dB)}$
- B.  $EIRP = \text{Cable Loss (dB)} + \text{Antenna Gain (dBi)} - Tx \text{ power (dBm)}$
- C.  $EIRP = \text{Cable Loss (dB)} + \text{Antenna Gain (dBi)} / Tx \text{ power (dBm)}$



- D. EIRP = Tx power (dBm) + Antenna Gain (dBi) / Cable Loss (dB)
- E. EIRP = Antenna Gain (dBi) - Cable Loss (dB) \* Tx power (dBm)
- F. EIRP = Tx power (dBm) \* Antenna Gain (dBi) / Cable Loss (dB)

**Answer:** A

#### NEW QUESTION 78

What is an interferer that an engineer may see in Cisco CleanAir?

- A. microwave ovens
- B. rogue APs
- C. malicious clients
- D. co-channel interference

**Answer:** A

#### NEW QUESTION 80

Which statement describes spread spectrum technology in wireless communications?

- A. Signal is spread across optical pulses.
- B. Signal is spread across variations of amplitudes.
- C. Signal is spread across one frequency.
- D. Signal is spread across a whole band of frequencies.

**Answer:** D

#### NEW QUESTION 83

A WLAN deployment uses a combination of Cisco Aironet 1260 APs and multiple Cisco 5500 Wireless LAN Controllers to provide wireless LAN access to end-users. The network administrator has decided to use DHCP Option 43 to enable the APs to discover the wireless LAN controllers.

When configuring the DHCP scope, which format should be used for the Cisco WLC addresses?

- A. a comma-separated ASCII string of Cisco WLC AP-manager addresses
- B. a comma-separated ASCII string of Cisco WLC management addresses
- C. a comma-separated ASCII string of Cisco WLC virtual IP addresses
- D. a hexadecimal string of Cisco WLC AP-manager addresses
- E. a hexadecimal string of Cisco WLC management addresses
- F. a hexadecimal string of Cisco WLC virtual IP addresses

**Answer:** E

#### NEW QUESTION 84

An engineer wants to have users who connect to a WLAN be redirected to a terms-of-service page with the company logo and a login. What should be configured on the WLAN to enable this capability?

- A. Layer 2 IEEE 802.1x
- B. Web Policy Slash Page Web Redirect
- C. Web Policy Authentication
- D. AAA Servers
- E. Web Policy Passthrough

**Answer:** C

#### NEW QUESTION 87

What does RF determine?

- A. cycle pattern size
- B. how often a wave occurs
- C. signal size
- D. quantity of energy injected in a signal

**Answer:** B

#### NEW QUESTION 92

Which two pieces of information are needed for the wireless client to connect to the wireless network? (Choose two.)

- A. SSID
- B. security settings
- C. channel number
- D. AP name

**Answer:** AB

#### NEW QUESTION 93

If an antenna has a dBd of 8.6, what is the dBi value?

- A. 6.2
- B. 6.46
- C. 8.6
- D. 10.74
- E. 12.88

**Answer:** D

#### NEW QUESTION 95

What are three characteristics of the 802.11g standard? (Choose three.)

- A. speed of as much as 11 Mb/s
- B. speed of as much as 54 Mb/s
- C. backward-compatibility with 802.11a
- D. backward-compatibility with 802.11b
- E. OFDM as an additional modulation technique
- F. OFDM and CCK as additional modulation techniques

**Answer:** BDE

#### NEW QUESTION 99

A network engineer is connected via wireless to a Cisco AireOS WLC and wants to download the configuration but is unable to do so. Which change will correct the issue?

- A. enable management via wireless
- B. connect via wired network
- C. enable Telnet
- D. enable WebAuth SecureWeb
- E. connect on 5-GHz SSID

**Answer:** B

#### NEW QUESTION 101

```
(Cisco Controller) >show network summary
RF-Network Name..... Cisco
Web Mode..... Disable
Secure Web Mode..... Disable
Secure Web Mode Cipher-Option High..... Disable
Secure Web Mode Cipher-Option SSLv2..... Disable
Secure Web Mode RC4 Cipher Preference..... Disable
OCSP..... Disabled
OCSP responder URL.....
Secure Shell (ssh)..... Enable
Telnet..... Disable
Ethernet Multicast Forwarding..... Disable
Ethernet Broadcast Forwarding..... Disable
IPv4 AP Multicast/Broadcast Mode..... Multicast Address : 239.0.1.1
IGMP snooping..... Disabled
IGMP timeout..... 60 seconds
IGMP Query Interval..... 20 seconds
MLD snooping..... Disabled
MLD timeout..... 60 seconds
MLD query interval..... 20 seconds
User Idle Timeout..... 300 seconds
ARP Idle Timeout..... 300 seconds
```

Refer to the exhibit. A customer is using central web authentication with a Cisco 5508 Wireless Controller and Cisco Identity Services Engine. An error occurs when wireless clients are redirected to the hosted splash page. What is causing the client error?

- A. Secure Web Mode is disabled on the WLC.
- B. OCSP is disabled on the WLC.
- C. Management Via Dynamic Interface is disabled on the WLC.
- D. Ethernet Multicast Forwarding is enabled on the WLC.

**Answer:** A

#### NEW QUESTION 102

A network engineer at a retail store needs a wireless deployment that can be easily maintained and verified for PCI compliance. What solution will meet this need with the least work?

- A. Cloud
- B. Autonomous
- C. FlexConnect
- D. Centralized

**Answer:** A

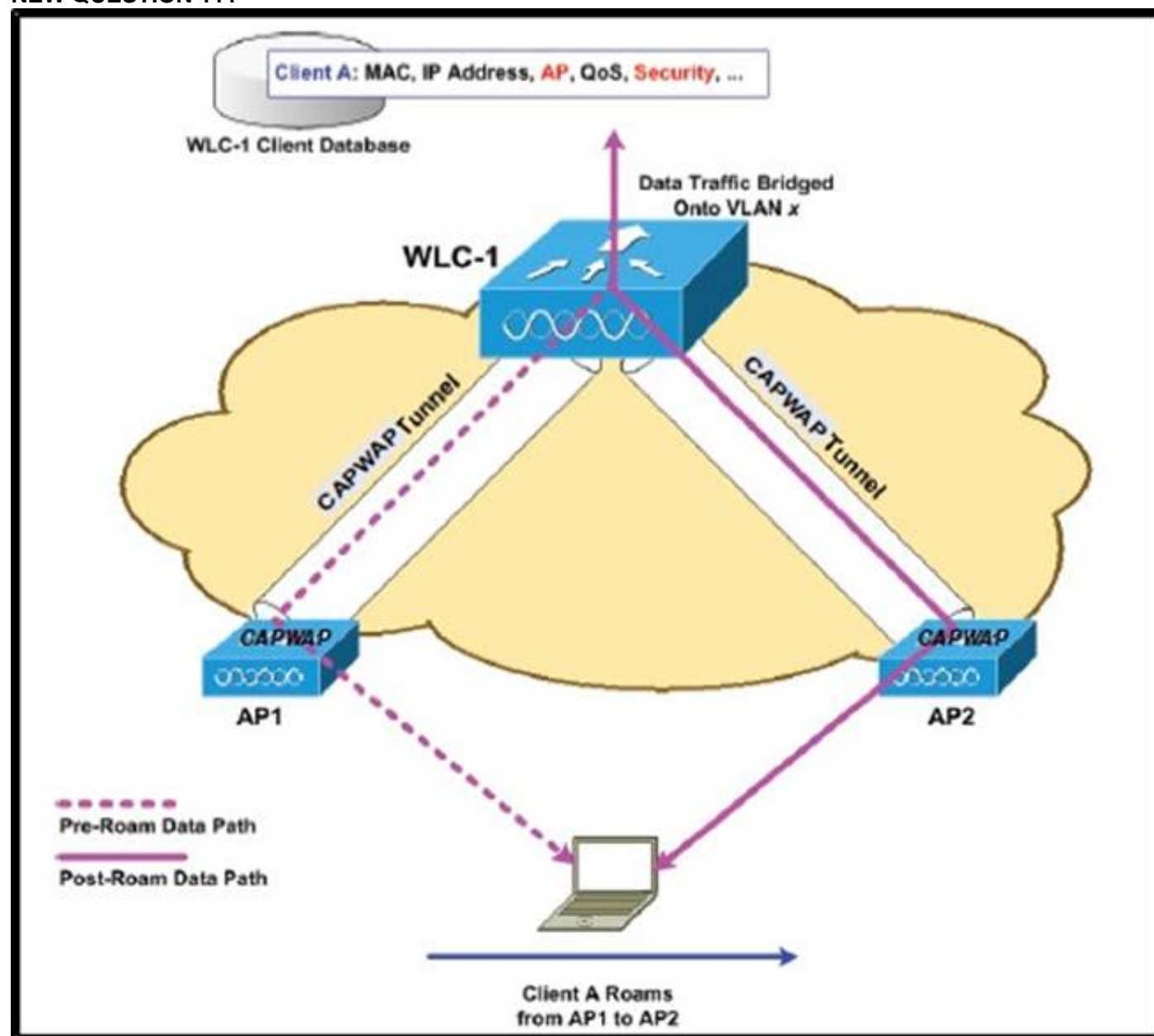
#### NEW QUESTION 107

What are the three primary functions of the Cisco Unified Wireless LWAPP architecture? (Choose three.)

- A. control and management of the CAPWAP
- B. tunneling of VPN clients over the WAN
- C. tunneling of WLAN client traffic to the WLC
- D. collection of 802.1Q trunks
- E. collection of 802.11 data for management
- F. control and management of VTP

**Answer:** ACE

#### NEW QUESTION 111



Refer to the exhibit. Which two wireless functions is the client experiencing? (Choose two.)

- A. Inter-controller Roaming
- B. Intra-controller Roaming
- C. Layer 2 Roaming
- D. Layer 3 Roaming
- E. Inter-subnet roaming
- F. Re-authentication

**Answer:** BC

#### NEW QUESTION 114

When using a Split MAC architecture, how many CAPWAP data tunnels will be built to an AP with four SSIDs across two VLANs?

- A. 1
- B. 2
- C. 3
- D. 4

**Answer:** A

**NEW QUESTION 119**

What is the IEEE name for a group of access points that are connected by using the Ethernet?

- A. ESS
- B. BSS
- C. IBSS
- D. ISS

**Answer:** A

**NEW QUESTION 121**

What suite of algorithms results in slower connection rates when using 802.11N technology?

- A. WPA2
- B. CCMP
- C. TKIP
- D. AES

**Answer:** C

**NEW QUESTION 124**

A customer has asked for the proper port configuration to allow for LAG on a Cisco 2504 Wireless Controller to a Cisco IOS switch. Which EtherChannel mode should be used on the switch to allow for the WLC to connect?

- A. on
- B. auto
- C. desirable
- D. passive
- E. active

**Answer:** A

**NEW QUESTION 125**

Which two algorithms are available in RRM? (Choose two.)

- A. coverage-hole detection
- B. dynamic channel assignment
- C. RSSI normalizer
- D. transmitting channel expander
- E. rogue detection

**Answer:** AB

**NEW QUESTION 129**

A customer has a corporate SSID that is configured to authenticate against an ACS server to validate client credentials on the corporate SSID. The customer has a firewall logically positioned on the network between the WLC and the ACS server in the network architecture. Which port must the firewall allow to ensure that authentication can occur?

- A. 43
- B. 1812
- C. 5146
- D. 8143

**Answer:** B

**NEW QUESTION 130**

What is the EIRP value for a transmitter that has a transmitter capable of 15 dBm, an antenna that has a gain of 12 dBi, and a cable that connects the transmitter to the antenna that has 1 db loss?

- A. 26 dBm
- B. 100 mW
- C. .86 dBm
- D. 165 dBm
- E. 1000 mW

**Answer:** A

**NEW QUESTION 134**

During Layer 2 intercontroller roaming, which two items change? (Choose two.)

- A. SSID
- B. VLAN
- C. IP address
- D. AP
- E. controller



**Answer:** DE

**NEW QUESTION 136**

A customer has asked for its wireless equipment to be managed as securely as possible. Which three management protocols will provide encrypted access to the equipment? (Choose three.)

- A. Secure Shell
- B. HTTPS
- C. SNMPv3
- D. Telnet
- E. SNMPv2c
- F. HTTP

**Answer:** ABC

**NEW QUESTION 137**

Which two items are needed to discover the IP address of a new Cisco Aironet 1260 autonomous AP that just finished booting? (Choose two.)

- A. username = "cisco" and password = "cisco"
- B. username = "Admin" and password = "Cisco"
- C. username=Cisco and password=Cisco
- D. show int vlan1
- E. show int bvi1
- F. show int gigabitethernet0
- G. show int radio0-802.11n
- H. show int radio1-802.11n

**Answer:** CE

**NEW QUESTION 140**

What is an MBSSID?

- A. a virtual AP configured on a physical AP that share a single physical device, which is one half-duplex radio
- B. a set of physical APs configured in a BSA to form cells that are controlled by a single controller
- C. the group of clients that are allowed to gain access to one or more SSIDs configured in an AP
- D. the identified overlap area between two cells, which identifies the clients that are operating in that area at any given time

**Answer:** A

**NEW QUESTION 141**

The network administrator has used VLANs to separate VoIP frames from data frames in the wired network. What must the administrator use to separate those frames in the wireless network?

- A. multiple SSIDs
- B. multiple authentications
- C. multiple WEP or WPA keys
- D. multiple channels
- E. multiple 802.11 radios (a, b, g, n)

**Answer:** A

**NEW QUESTION 144**

Which of the following are three functions of Cisco RRM? (Choose three.)

- A. TPC
- B. intercontroller roaming
- C. dynamic channel assignment
- D. intracontroller roaming
- E. coverage hole detection

**Answer:** ACE

**NEW QUESTION 149**

Which two statements about the requirements to configure inter-controller roaming are true? (Choose two.)

- A. The same mobility domain names are configured across controllers.
- B. The same RF group names are configured across controllers.
- C. The same controller hardware version is configured across controllers.
- D. The same AP manager interface is configured across controllers.
- E. The same virtual interface is configured across controllers.
- F. The same controller software version is configured across controllers.

**Answer:** AE

**NEW QUESTION 153**



Refer to the exhibit. The site in this AirMagnet Survey heat map is ready for which level of service?

- A. data
- B. voice
- C. location
- D. RFID

**Answer: A**

#### NEW QUESTION 154

Which type of basic radiation pattern does a Yagi antenna have?

- A. circular
- B. semicircular
- C. straight line
- D. cone

**Answer: D**

#### NEW QUESTION 156

An engineer would like to setup secure authentication for a wireless network that will utilize single sign-on. Which two authentication methods can be used to accomplish this? (Choose two.)

- A. LDAP
- B. RADIUS
- C. Local authentication
- D. WEP
- E. PSK

**Answer: AB**

#### NEW QUESTION 159

An engineer is trying to convert the IP Address of the wireless controller to amend DHCP Option 43 configuration on the DHCP server. What mathematical format must the IP address of the Wireless controller be converted to in order to function correctly?

- A. Hexadecimal
- B. Binary
- C. Decimal
- D. ASCII

**Answer: A**

#### NEW QUESTION 164

Which IEEE 802.11n client feature can combine the signal from multiple antennas and radio chains to improve SNR?

- A. channel aggregation
- B. spatial multiplexing
- C. MAC layer efficiency
- D. TxBF
- E. MRC
- F. MCS

**Answer:** E

**NEW QUESTION 167**

A customer is using the access point GUI to upgrade the software on an autonomous access point to convert it to a lightweight access point. Which two transfer protocols are valid for conducting this transfer from the WLC? (Choose two.)

- A. FTP
- B. RCP
- C. SFTP
- D. HTTP
- E. SCP
- F. TFTP

**Answer:** DF

**NEW QUESTION 171**

What is the difference between the IEEE, the WiFi Alliance, and the FCC, ETSI, and TELEC?

- A. The IEEE and FCC are responsible for the standards that apply to wireless network
- B. The WiFi Alliance, ETSI, and TELEC are the governmental agencies that regulate compliance with local standards.
- C. The IEEE is responsible for Layer 1 and Layer 2 protocol
- D. The WiFi Alliance is responsible for interoperability testin
- E. The FCC, ETSI, and TELEC are responsible for radio frequency and transmission power-level regulations and standards in the U.S., Europe, and Japan.
- F. The IEEE is responsible for Layer 1 and Layer 2 protocol
- G. The FCC, ETSI, and TELEC are responsible for interoperability testing and complianc
- H. The WiFi Alliance is responsible for radio frequency and transmission power-level regulations and standards on a global basis.
- I. The IEEE and FCC are responsible for the Layer 3 protocol support and frequency and power-level regulations in the United State
- J. ETSI and TELEC are responsible for frequency and power-level regulations in Europe and Japa
- K. The WiFi Alliance is responsible to interoperability testing.

**Answer:** B

**NEW QUESTION 172**

An engineer is trying to determine from the controller CLI whether or not Telnet is enabled on the wireless controller. Which command can be entered to display this information?

- A. show network summary
- B. show aaa auth
- C. show radius summary
- D. show ldap statistics

**Answer:** A

**NEW QUESTION 175**

A wireless engineer has been asked to plan a deployment covering the aisles of a warehouse with optimal coverage while bleeding RF across aisles. Which antenna type provides the necessary coverage?

- A. patch
- B. omnidirectional
- C. Yagi
- D. parabolic dish

**Answer:** A

**NEW QUESTION 180**

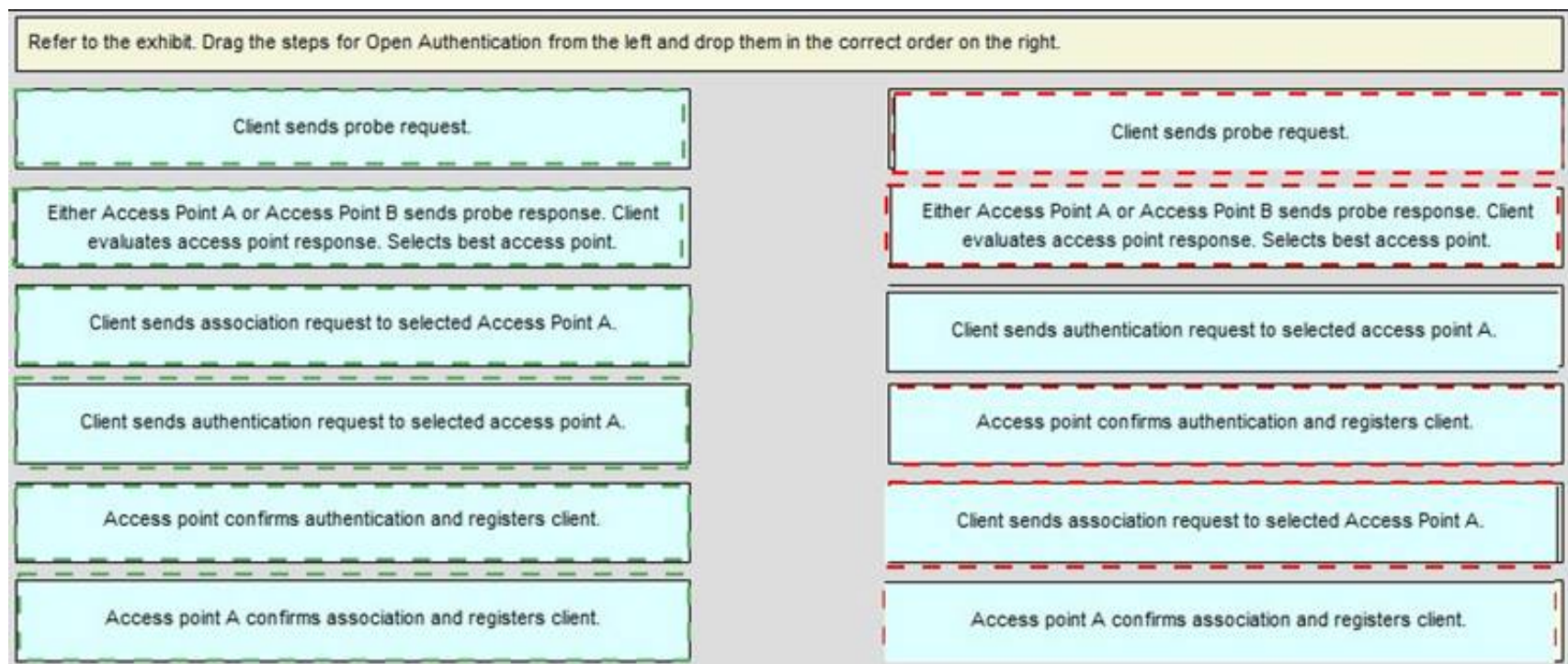
Refer to the exhibit. Drag the steps for Open Authentication from the left and drop them in the correct order on the right.

Client sends probe request.	Target
Either Access Point A or Access Point B sends probe response. Client evaluates access point response. Selects best access point.	Target
Client sends association request to selected Access Point A.	Target
Client sends authentication request to selected access point A.	Target
Access point confirms authentication and registers client.	Target
Access point A confirms association and registers client.	Target



**Answer:**

**Explanation:**



#### NEW QUESTION 181

During an upgrade, the wireless infrastructure has seen a few access points join and then drop off the network. After further investigation, it appears the access points may have an IOS code version that is causing issues. Where in the controller is this information found?

- A. GUI > Wireless > Access Point > General
- B. CLI > show ap image all
- C. GUI > Monitor > Software Version
- D. CLI > show sysinfo

**Answer: A**

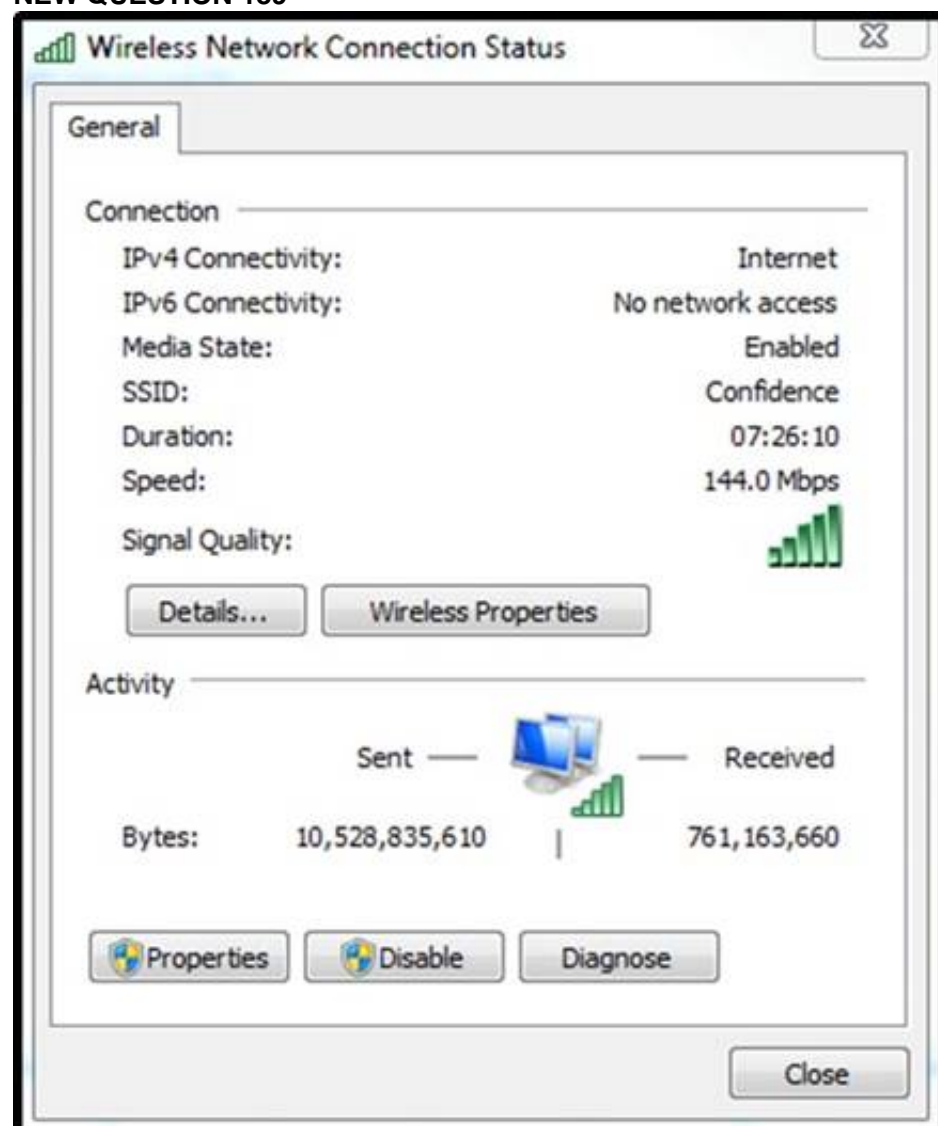
#### NEW QUESTION 184

What protocol is used to determine the best pathway back to a root access point?

- A. CCKM
- B. WNMP
- C. AWPP
- D. LWAP

**Answer: C**

#### NEW QUESTION 189





Refer to the exhibit. A customer is determining whether a Windows 7 laptop is operating on the correct IEEE 802.11 standard. Which standard is being used by the laptop in the exhibit?

- A. 802.11b
- B. 802.11g
- C. 802.11n
- D. 802.11p

**Answer:** C

**NEW QUESTION 194**

The network administrator receives complaints of slow wireless network performance and performs a sniffer trace of the wireless network in preparation for migration to 802.11n. The sample capture shows frames that contains AP beacons with NonERP\_Present bit set to 1 and frames with RTS/CTS. Which two conclusions can be interpreted from these frames? (Choose two.)

- A. The network is performing slowly because 802.11n clients are already mixed with 802.11g clients.
- B. The network is performing slowly because 802.11b clients still exist in the network.
- C. The network is performing slowly because a wireless client is incorrectly configured, which results inRF interference.
- D. Possible 802.11b wireless clients are located only in the AP cell radius where the sniffer capture was performed.
- E. Possible 802.11b wireless clients could be located anywhere in the wireless network.

**Answer:** BE

**NEW QUESTION 199**

Refer to the exhibit. Drag the MAC addresses on the left that will allow the wireless station Host A to send a frame through a controller based AP to the wired station Host B and drop them in the correct order on the right. Not all options are used.

controller	Target
Host A	Target
AP	Target
Empty	Target
Host B	

**Answer:**

**Explanation:**

Refer to the exhibit. Drag the MAC addresses on the left that will allow the wireless station Host A to send a frame through a controller based AP to the wired station Host B and drop them in the correct order on the right. Not all options are used.

controller	AP
Host A	Host A
AP	Host B
Empty	Empty
Host B	

**NEW QUESTION 202**

What is the approximate time difference for a client to perform an intracontroller roam compared to an intercontroller roam?

- A. 1 ms
- B. 10 ms
- C. 20 ms
- D. 30 ms

**Answer:** B

**NEW QUESTION 206**

What is the equivalent of 26 dBm in milliwatts?

- A. 4 mW
- B. 40 mW
- C. 100 mW
- D. 400 mW
- E. 1000 mW

**Answer:** D

#### NEW QUESTION 210

How does an LWAP receive a configuration file?

- A. It is configured manually.
- B. It receives a configuration from the controller.
- C. It automatically ships with a configuration.
- D. It receives a configuration from a TFTP server.

**Answer:** B

**Explanation:** Topic 2, Exam Bank B

#### NEW QUESTION 214

Cisco WLCs running version 7.0 can be enabled for CleanAir functionality by using an AQI rating from 1 to 100. Event-driven RRM can take immediate action on AQI levels based on three sensitivity thresholds (Low, Medium, High), which are configurable in the web-based GUI. The network administrator must understand what AQI value is set using these sensitivity thresholds in version 7.0. Drag the AQI values on the left and drop them on the threshold name they belong to on the right.

20	Low
35	Medium
40	High
45	
50	
60	
70	

**Answer:**

**Explanation:**

Cisco WLCs running version 7.0 can be enabled for CleanAir functionality by using an AQI rating from 1 to 100. Event-driven RRM can take immediate action on AQI levels based on three sensitivity thresholds (Low, Medium, High), which are configurable in the web-based GUI. The network administrator must understand what AQI value is set using these sensitivity thresholds in version 7.0. Drag the AQI values on the left and drop them on the threshold name they belong to on the right.

20	35
35	50
40	60
45	
50	
60	
70	

#### NEW QUESTION 217

Which command path correctly describes how to access and troubleshoot clients with Cisco WCS version 7.0?

- A. Tools > Clients > select displayed client's MAC address
- B. Tools > Clients > enter client's MAC address
- C. Monitor > Clients > click displayed client's MAC address
- D. Monitor > Clients > enter client's MAC address

**Answer:** C

#### NEW QUESTION 220

Which user group has the ability to configure all features of the Cisco WCS except the user accounts and passwords?

- A. Admin
- B. SuperUser
- C. Root
- D. Supervisor

**Answer:** A

**NEW QUESTION 223**

Refer to the exhibit.



What does the yellow shield with the exclamation mark indicate?

- A. The network uses open authentication and no encryption.
- B. The network uses an unsupported channel.
- C. The signal is too distorted to connect.
- D. The AP that is transmitting this SSID uses the wrong RF domain.
- E. This is the ad-hoc network.

**Answer:** A

**NEW QUESTION 226**

Which two of the following authentication methods used for WiFi security require the use of certificates? (Choose two.)

- A. PEAP
- B. EAP-FAST
- C. WPA2
- D. WPA1
- E. EAP-TLS
- F. EAP-MD5

**Answer:** AE

**NEW QUESTION 231**

An AP was reset while working on the correct association to a Cisco WCS version 7.0. Which item was cleared during the reset?

- A. static IP address
- B. the location ID of the AP
- C. WLC primary, secondary, tertiary
- D. AP name
- E. certificate
- F. Nothing was cleared.

**Answer:** F

**NEW QUESTION 234**



Instructions

- THIS TASK DOES NOT REQUIRE DEVICE CONFIGURATION.
- To access the multiple-choice question, click on the numbered box on the left of the top panel.
- There is **one** multiple-choice question with this task. Be sure to answer the question before selecting the Next button.

Scenario

A wireless LAN controller, AP, IOS switch, and wireless client have been properly configured. Use the exhibits to answer the question.

Topology

```
graph TD
    AP1[AP1] ---|Gig 0/1| SW1[SW1]
    SW1 ---|Gig 0/10| WLC1[WLC1]
    AP1 ---|Wireless| Laptop[Laptop]
```

WLC1 - Interface Groups

MONITORWLANsCONTROLLERWIRELESSSECURITYMANAGEMENTCOMMANDS

Interface Groups > Edit

Interface Group Name

intgroup

Description

Interface Group

Property

Non-Quarantine

Interface Name

management

Add Interface

Interface Name

vlan20

Interface Name

vlan40

Interface Name

vlan50

WLC1 - Interfaces

MONITORWLANsCONTROLLERWIRELESSSECURITYMANAGEMENTCOMMANDSHelpFEEDBACK

Interfaces

Interface Name	VLAN Identifier	IP Address	Interface Type	Dynamic AP Management
<a href="#">unlabeled</a>	unlabeled	10.10.10.10	Static	Enabled
<a href="#">virtual</a>	N/A	192.0.2.1	Static	Nct Supported
<a href="#">vlan20</a>	20	172.16.12.10	Dynamic	Disabled
<a href="#">vlan30</a>	30	172.16.23.10	Dynamic	Disabled
<a href="#">vlan40</a>	40	192.168.14.10	Dynamic	Disabled
<a href="#">vlan50</a>	50	192.168.25.10	Dynamic	Disabled



WLC1 - Monitor Summary

MONITOR **WLANs** CONTROLLER WIRELESS SECURITY MANAGEMENT COMMANDS HELP FEEDBACK

Summary

5 Access Points Supported



**Controller Summary**

Management IP Address	10.10.10.10
Software Version	7.3.116.0
Field Recovery Image Version	1.0.0
License Level	base
System Name	WLC1
Up Time	0 days, 4 hours, 13 minutes
System Time	Thu Apr 19 12:44:41 2012
Internal Temperature	+32 C
802.11a Network State	Enabled
802.11b/g Network State	Enabled

**Rogue Summary**

Active Rogue APs	21	<a href="#">Detail</a>
Active Rogue Clients	0	<a href="#">Detail</a>
Adhoc Rognes	0	<a href="#">Detail</a>
Rogues on Wired Network	0	

**Top WLANs**

Profile Name	# of Clients	
ExamSSID	1	<a href="#">Detail</a>

WLC1 - WLANs

MONITOR **WLANs** CONTROLLER WIRELESS SECURITY MANAGEMENT COMMANDS HELP FEEDBACK

WLANs > Edit 'ExamSSID'

**General** **Security** QoS Advanced

Profile Name: ExamSSID

Type: WLAN

SSID: ExamSSID

Status: ☒ Enabled

Security Policies: None  
(Modifications done under security tab will appear after applying the changes.)

Radio Policy: All

Interface/Interface Group(G): intgroup (G)

Multicast VLAN Feature: ☐ Enabled

Broadcast SSID: ☒ Enabled

When a client associates to ExamSSID, which network address will be assigned?

- A. The IP address assigned will be based on the AP network assignment of 10.10.10.0.
- B. The IP address assigned will be based on the AP network assignment of 172.16.23.0.
- C. The IP address will be assigned in a round-robin format based on the 172.16.12.0, 172.16.23.0,192.168.14.0 address pools.
- D. The IP address will be assigned in a round-robin format based on the 172.16.12.0, 192.168.14.0,192.168.25.0 pools.
- E. The IP address will be assigned in a round-robin format based on the 172.16.12.0, 172.16.23.0,192.168.14.0,192.168.25.0 pools.

Answer: D

#### NEW QUESTION 239

The administrator has noticed that the configuration on a controller is different than in Cisco WCS. How can the administrator fix this issue?

- A. The configuration can be copied from the controller to the Cisco WCS or from the WCS to the controller.
- B. The configuration can be copied only from the Cisco WCS to the controller.
- C. The configuration can be copied only from the controller to the Cisco WCS.
- D. The controller must be removed from the Cisco WCS and then added again.

Answer: A

#### NEW QUESTION 242

Drag the correct visual description from left to the matching Windows 7 wireless client description on the right.

three boxes with gold shield	Open BSS
three boxes without gold shield	Secure BSS
three boxes with gold star	Open IBSS
three boxes without gold star	Secure IBSS
five bars with shield	
five bars without shield	
five bars with gold star	
five bars without gold star	

**Answer:**

**Explanation:**

Drag the correct visual description from left to the matching Windows 7 wireless client description on the right.

three boxes with gold shield	five bars with shield
three boxes without gold shield	five bars without shield
three boxes with gold star	three boxes with gold shield
three boxes without gold star	three boxes without gold shield
five bars with shield	
five bars without shield	
five bars with gold star	
five bars without gold star	

#### NEW QUESTION 243

When adding a controller to manage through Cisco WCS, which address type is used and which SNMP function does the Cisco WCS perform?

- A. The controller is managed through its MAC address and the Cisco WCS acts as a SNMP TRAP authenticator.
- B. The IP address of the controller is used and the Cisco WCS acts as a SNMP TRAP receiver.
- C. The controller is managed through its MAC address and the Cisco WCS acts as a SNMP agent.
- D. The controller connects through its MAC address to the Cisco WCS and the Cisco WCS uses the SNMP to manage the controller for all configured SNMP parameters.

**Answer:** B

#### NEW QUESTION 247

What is a risk when initiating the containment of a rogue AP?

- A. disassociating clients of valid access points that are operated by a neighboring organization
- B. disrupting transmission of neighboring AP clients
- C. breaking the radio of the containing AP
- D. breaking the rogue client radio or its firmware

**Answer:** A

#### NEW QUESTION 248

Refer to the exhibit.



Which two options does this icon represent about the status of the respective AP on a Cisco WCS version 7.0 map? (Choose two.)

- A. The 802.11a/n radio is administratively disabled.
- B. The 802.11a/n radio has a minor fault.
- C. The 802.11a/n radio has a major fault.
- D. The 802.11b/g/n radio is administratively disabled.
- E. The 802.11b/g/n radio has a minor fault.
- F. The 802.11b/g/n radio has a major fault.

**Answer:** CD

#### NEW QUESTION 249

The introduction of consumer phones and tablets into enterprise WLANs can have an impact on 802.11a/b/g/n deployments. The Apple iPhone 4 and iPad 2 are very common examples.

Which statement best describes the abilities of these devices?

- A. The Apple iPhone 4 and the iPad 2 use 2.4 GHz and 5 GH
- B. The Apple iPhone 4 uses only one spatial stream and the iPad 2 uses two spatial streams.
- C. The Apple iPhone 4 uses only 2.4 GHz and the iPad 2 only uses 5 GH
- D. The Apple iPhone 4 uses only one spatial stream and the iPad 2 uses two spatial streams.
- E. The Apple iPhone 4 uses 2.4 GHz and the iPad 2 uses 2.4 GHz or 5 GH
- F. The Apple iPhone 4 only uses one spatial stream and the iPad 2 uses two spatial streams.
- G. The Apple iPhone 4 uses 2.4 GHz and the iPad 2 uses 2.4 GHz or 5 GH
- H. The Apple iPhone 4 and the iPad 2 use only one spatial stream.

**Answer:** D

#### NEW QUESTION 252

Which three Cisco Unified Wireless Network capabilities use information that is provided by Radio Resource Management neighbor messages? (Choose three.)

- A. aggressive load balancing
- B. dynamic channel assignment
- C. hybrid remote edge access point
- D. inter controller mobility (that is, mobility groups)
- E. over-the-air provisioning
- F. rogue AP classification

**Answer:** BEF

#### NEW QUESTION 254

Which CLI command is used on a Cisco WLC to troubleshoot mobility, rogue detection, and load-balancing events?

- A. debug dot11
- B. debug capwap all
- C. show dot11 details
- D. show capwap details

**Answer:** A

#### NEW QUESTION 256

A lightweight AP has been deployed in local mode in a network that consists of 10 wireless LAN controllers in a single mobility group. The AP has been configured to use primary, secondary, and tertiary Cisco WLCs. Due to a major power failure, all those Cisco WLCs are unavailable.

Which step does the AP take next?

- A. The AP reboots and repeatedly attempts to join the configured primary, secondary, and tertiary Cisco WLCs in that orde
- B. The process continues until one of the configured Cisco WLCs is available.
- C. The AP attempts to join a Cisco WLC configured as a master controller.
- D. The AP attempts to join the Cisco WLC that has the greatest capacity available.
- E. The AP state transitions to AP Fallback Mode and continues to provide limited WLAN services (that is, no new client authentications) until a Cisco WLC is available.

**Answer:** B

#### NEW QUESTION 257

When a wireless client is authenticated in a controller-based wireless network, which three pieces of source identification information can be used by the controller for an Access-Request message that is sent to an external RADIUS server? (Choose three.)

- A. wireless client IP address
- B. controller IP address
- C. AP IP address
- D. wireless client MAC address
- E. controller MAC address
- F. AP MAC address

**Answer:** BEF

#### NEW QUESTION 261



Which information on the Monitoring page of a Cisco WLC verifies that the wireless network is operational?

- A. In the Access Point Summary section, the All APs number in the Up column is the same as in the Total column.
- B. In the Client Summary section, the Current Clients number is positive.
- C. In the Controller Summary section, the 802.11b/g Network State is shown as Enabled.
- D. In the Controller Summary section, the CPU Usage number is positive.

**Answer:** A

#### NEW QUESTION 263

An AP has been configured for personal wireless access to the Internet using appropriate security and cloaking. Which two items should be configured on the wireless client? (Choose two.)

- A. RF channel
- B. BSS
- C. PSK
- D. 802.1X/EAP
- E. broadcast SSID
- F. manual SSID
- G. IBSS

**Answer:** CF

#### NEW QUESTION 264

When using multiple SSIDs on a lightweight AP, how does the traffic of each SSID reach the 802.3 network?

- A. provide routing between them at the core so that the SSIDs can reach the internet
- B. configure 802.11q trunking on the Ethernet switch port that is connected to the AP
- C. configure ACLs at the switch port that will allow all desired SSIDs to pass traffic
- D. configure the SSIDs on the WLC and it will regulate the traffic based on traffic type

**Answer:** B

#### NEW QUESTION 267

In a network with a deployed Cisco WLC, which two entities must be configured with the shared secret key for 802.1X authentication? (Choose two.)

- A. WLC
- B. RADIUS server
- C. AP
- D. supplicant
- E. wireless client

**Answer:** AB

#### NEW QUESTION 272

Which method is used to shield the client from class 3 management attacks?

- A. client MFP
- B. WEP
- C. WPA
- D. client protection suite
- E. 802.1X

**Answer:** A

#### NEW QUESTION 275

Which option is needed to earn the Cisco Compatible credential for Cisco Compatible Extensions Lite?

- A. Foundation and Management are required.
- B. Location and Management are required.
- C. Foundation and Location are required.
- D. Foundation and Voice are required.
- E. Voice is required.
- F. Foundation is required.
- G. Location is required.
- H. Management is required.

**Answer:** F

#### NEW QUESTION 277

What path displays the current maps within the WCS version 7 GUI?

- A. Monitor > Maps
- B. Reports > Maps
- C. Services > Maps
- D. Administration > Maps
- E. Configure > Maps



F. Tools > Maps

**Answer:** A

#### NEW QUESTION 279

When the enterprise-based authentication method is used for WPA2, a bidirectional handshake exchange occurs between the client and the authenticator. Which five options are results of that exchange being used on a controller-based network? (Choose five.)

- A. a bidirectional exchange of a nonce used for key generation
- B. binding of a Pairwise Master Key at the client and the controller
- C. creation of the Pairwise Transient Key
- D. distribution of the Group Transient Key
- E. distribution of the Pairwise Master key for caching at the access point
- F. proof that each side is alive

**Answer:** ABCDF

#### NEW QUESTION 283

Refer to the exhibit.

**Add Controllers**  
Configure > Controllers > Add Controllers

**General Parameters**

Add Format Type: Device Info  
IP Addresses: 10.10.1.30 (comma-separated IP Addresses)  
Network Mask: 255.255.255.0  
☐ Verify Telnet/SSH Capabilities

**SNMP Parameters**

Version: v2c  
Retries: 2  
Timeout: 10 (secs)  
Community: private

**Telnet/SSH Parameters**

User Name: admin  
Password: \*\*\*\*\*  
Confirm Password: \*\*\*\*\*  
Retries: 3  
Timeout: 60 (secs)

OK Cancel

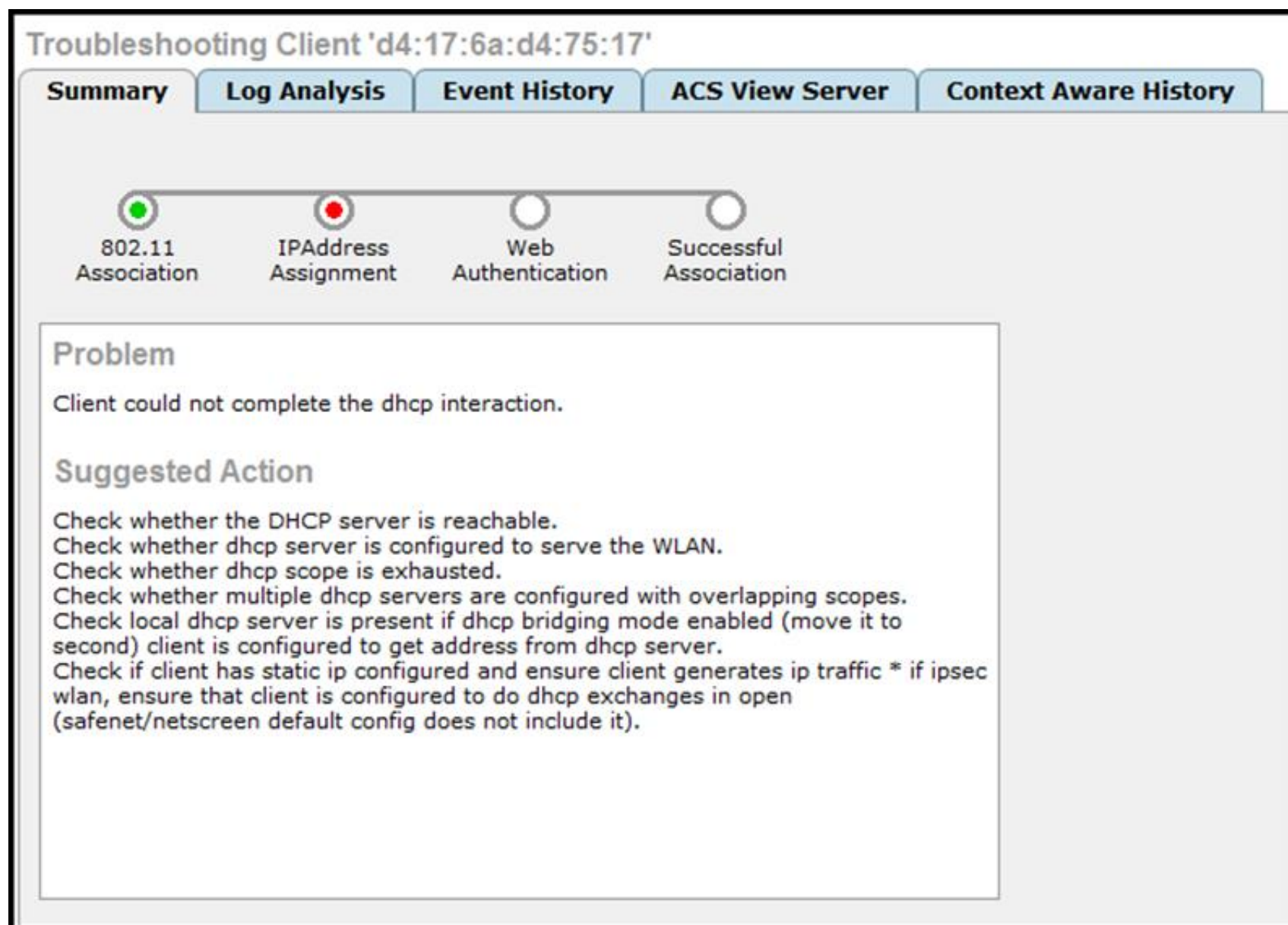
How do improperly set Telnet/SSH parameters effect the configuration of a controller with Cisco WCS?

- A. The CLI and GUI management of the controller both fail because Cisco WCS checks these credentials before opening a session.
- B. The Telnet/SSH username must have sufficient privileges to execute commands in CLI templates.
- C. The GUI management of the controller fails because the Cisco WCS uses the Telnet/SSH parameters to login to the controller.
- D. The controller remains configured in the Cisco WCS, but no management is possible through GUI from other client browsers.

**Answer:** B

#### NEW QUESTION 286

Refer to the exhibit.



Which tool is shown?

- A. Cisco WCS client troubleshooting tool
- B. Cisco WLC client troubleshooting tool
- C. WLAN Client Debug Analyzer
- D. Cisco WLAN Connection Advisor

**Answer:** A

#### NEW QUESTION 289

Which protocol helps the administrator to determine whether a detected rogue AP is in the network of the organization?

- A. RLDP
- B. RCP
- C. RDP
- D. RAPP

**Answer:** A

#### NEW QUESTION 294

Which two features are available in the Cisco WCS Plus license over the base license? (Choose two.)

- A. ad hoc rogue detection
- B. high availability between two Cisco WCS stations
- C. mobility service engine management
- D. auto discovery and containment or notification of rogue APs
- E. client location to the nearest AP

**Answer:** BC

#### NEW QUESTION 299

You run minimum PEAP-GTC authentication in your wireless environment. Which version of Cisco Compatible Extensions supports PEAP-GTC?

- A. Cisco Compatible Extensions v1
- B. Cisco Compatible Extensions v2
- C. Cisco Compatible Extensions v3
- D. Cisco Compatible Extensions v4
- E. Cisco Compatible Extensions v5

**Answer:** B

#### NEW QUESTION 301

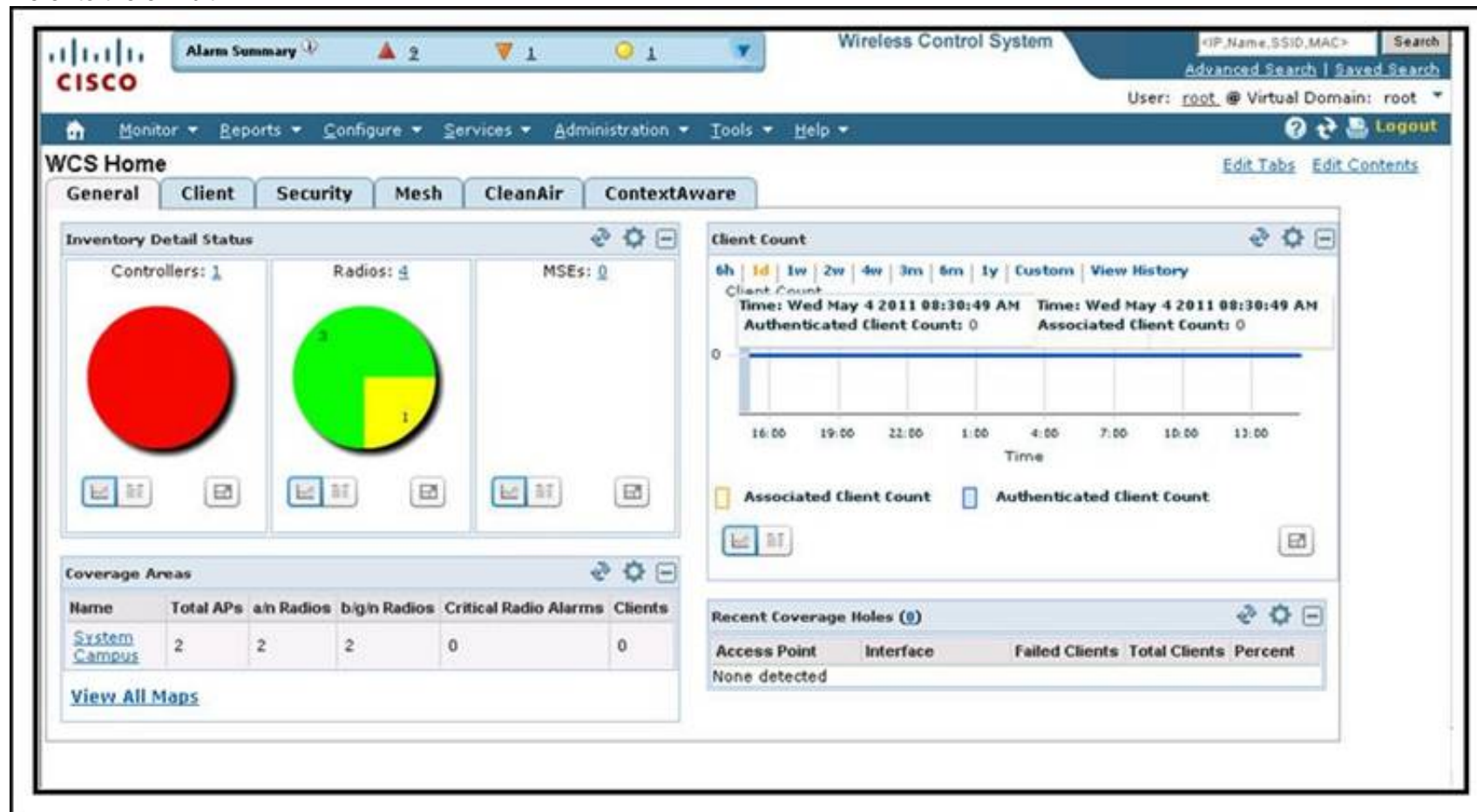
Which open standard defines the combination of Extensible Authentication Protocol with Advanced Encryption Standard for providing strong wireless LAN client security?

- A. IEEE 802.1X
- B. IEEE 802.11i
- C. WEP
- D. WPA
- E. WPA2

**Answer:** B

#### NEW QUESTION 304

Refer to the exhibit.



Which GUI item do you click to configure maps with APs in Cisco WCS?

- A. Configure
- B. Client
- C. CleanAir
- D. Services
- E. Administration
- F. Monitor

**Answer:** F

#### NEW QUESTION 307

A network engineer in the GUI of WCS version 7 wants to add an access point to a map. Where can this command be found within the drop-down menu?

- A. Monitor > Maps
- B. Reports > Maps
- C. Monitor > Network Summary
- D. Configure > Maps

**Answer:** A

#### NEW QUESTION 310

How can you protect the configuration file from eavesdropping, when uploading from a Cisco WLC?

- A. Use the Configuration File Encryption option.
- B. Choose an SCP as the transfer method.
- C. Connect to the Cisco WLC by using HTTPS.
- D. Connect to the Cisco WLC by using SSH.

**Answer:** A

#### NEW QUESTION 311

When a wireless guest network is implemented using auto-anchor mobility in a controller-based wireless network, which controller is responsible for a guest client's IP address and their security configuration?

- A. any controller that supports the same VLAN
- B. foreign controller
- C. anchor controller
- D. master controller
- E. RF group master controller

**Answer:** C

**NEW QUESTION 316**

Which two formats are supported for uploading background graphics to create a network map in Cisco WCS? (Choose two.)

- A. PNG
- B. JPEG
- C. DWG
- D. TIFF

**Answer:** AB

**NEW QUESTION 317**

Which protocol is used for Cisco WCS to communicate with Cisco WLC?

- A. SNMP
- B. CAPWAP
- C. HTTPS
- D. SSH

**Answer:** A

**NEW QUESTION 322**

Which two actions would you use to begin to troubleshoot an access point that fails to join a wireless LAN controller successfully? (Choose two.)

- A. SSH to the AP.
- B. SSH to the Cisco WCS.
- C. SSH to the Cisco WLC.
- D. Issue the Cisco WLC command debug capwap events enable
- E. Issue the Cisco WLC command show capwap events

**Answer:** CD

**NEW QUESTION 327**

The Cisco WCS administrator wants to create an accurate RF heat map based on RF prediction data. Which statement about map creation in Cisco WCS is true?

- A. The administrator must manually add walls, doors, and windows to the map.
- B. Cisco WCS automatically detects walls, doors, and windows and adds them to the map, but only when Cisco WCS Navigator is available.
- C. Cisco WCS automatically detects walls, doors, and windows and adds them to the map, but only when a Cisco 3300 Series MSE is available.
- D. All walls, doors, and windows must be included in the file that is uploaded as a background map.

**Answer:** A

**NEW QUESTION 331**

Which Cisco WLC command family can help to troubleshoot communication between an AP and the WLC?

- A. (Cisco Controller) >debug capwap
- B. (Cisco Controller) >debug ap
- C. (Cisco Controller) >debug cac
- D. (Cisco Controller) >debug dot11

**Answer:** A

**NEW QUESTION 335**

Which Cisco AnyConnect module allows troubleshooting for core AnyConnect problems?

- A. telemetry
- B. web security
- C. VPN
- D. NAM
- E. DART
- F. posture
- G. CSSC

**Answer:** E

**NEW QUESTION 340**

To implement a more secure means of communication for voice and data, what technology successfully resists interference by utilizing a wider bandwidth than needed for the transmitting signal?

- A. Spread Spectrum
- B. Microwave
- C. Extended U-NII2
- D. ISM Bands

**Answer:** A



**NEW QUESTION 341**

Which Cisco AnyConnect module provides wireless connectivity?

- A. telemetry
- B. web security
- C. VPN
- D. NAM
- E. DART
- F. posture
- G. CSSC

**Answer: D**

**NEW QUESTION 342**

What is the maximum number of lightweight APs that can be supported from a single Cisco WCS Navigator management console with Cisco WCS and Cisco WLC running version 7.0 code?

- A. 10,000
- B. 20,000
- C. 25,000
- D. 30,000
- E. 60,000

**Answer: D**

**NEW QUESTION 345**

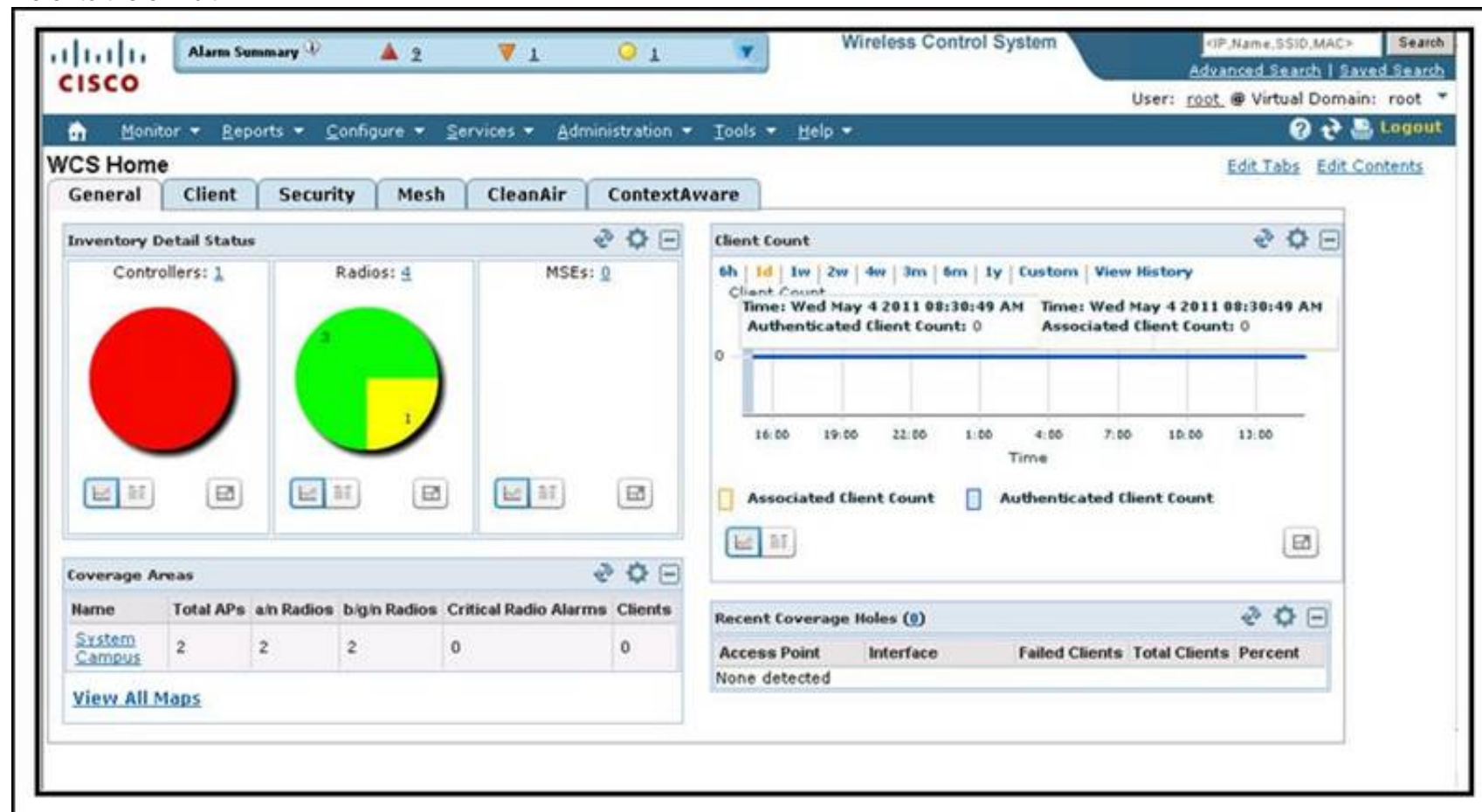
Which encryption algorithm does WPA use?

- A. RC4
- B. DES
- C. AES
- D. DH5

**Answer: A**

**NEW QUESTION 348**

Refer to the exhibit.



If Cisco WCS version 7.0 needs to have APs added, relocated, or removed on a respective map, which menu leads to the correct location to make that adjustment?

- A. Security
- B. Monitor
- C. Configure
- D. Services
- E. Administration
- F. Tools

**Answer: B**

**NEW QUESTION 352**

You are in a coffee shop and you have connected to their wireless hot-spot. Your Windows 7 wireless client shows five green bars with a yellow shield.

Which statement about the level of signal strength and the WLAN security that is present is true?

- A. You have excellent signal strength and a secure network connection.
- B. Your wireless client needs a username and password before it can connect to the WLAN.
- C. You have excellent signal strength and the client is waiting for you to enter a username and password.
- D. Your laptop is not receiving a signal.
- E. Your laptop is receiving an excellent signal and the network security is open.

**Answer:** E

#### NEW QUESTION 357

Which type of management tasks can be completed on a Cisco WLC remotely from a wireless client?

- A. All management and configuration tasks can be performed from a wireless client except for using debug commands.
- B. In the default configuration, no management or configuration is possible through the GUI or CLI on the Cisco WLC.
- C. The default configuration of the Cisco WLC allows only CLI access and then only the use of show commands, so no configuration is possible.
- D. All management and configuration tasks, except uploads from and downloads to the Cisco WLC, are permitted.

**Answer:** B

#### NEW QUESTION 362

Configurations are commonly uploaded and downloaded to a WLC.

Which options are other examples of a file that can be uploaded from a Cisco 2500 Series WLC?

- A. packet capture
- B. crash file
- C. code
- D. login banner
- E. PAC

**Answer:** B

#### NEW QUESTION 366

Drag the feature descriptions from the left and drop them onto the corresponding AP operational mode names on the right.

Layer 2 forwarding for remote analysis	local mode
wIPS, MSE	monitor mode
AWPP, local bridging	rogue detector mode
Layer 1 forwarding for remote analysis	bridge mode
VLAN trunk access, wired IDS	H-REAP mode
local bridging, wIPS, OEAP, VLAN trunk access	SE-Connect mode
site survey, wIPS, MSE	sniffer mode

**Answer:**

**Explanation:**

Drag the feature descriptions from the left and drop them onto the corresponding AP operational mode names on the right.

Layer 2 forwarding for remote analysis	site survey, wIPS, MSE
wIPS, MSE	wIPS, MSE
AWPP, local bridging	VLAN trunk access, wired IDS
Layer 1 forwarding for remote analysis	AWPP, local bridging
VLAN trunk access, wired IDS	local bridging, wIPS, OEAP, VLAN trunk access
local bridging, wIPS, OEAP, VLAN trunk access	Layer 1 forwarding for remote analysis
site survey, wIPS, MSE	Layer 2 forwarding for remote analysis

#### NEW QUESTION 367

Which official port should be used when configuring external RADIUS authentication on a Cisco WLC version 7.0?

- A. 49
- B. 1645
- C. 1646
- D. 1812
- E. 1813

**Answer:** D

#### NEW QUESTION 371

An AP has been configured for personal wireless access to the Internet. Which item should be configured on the wireless client?

- A. RF channel
- B. BSS
- C. PSK
- D. 802.1X/EAP
- E. broadcast SSID
- F. IBSS

**Answer:** C

#### NEW QUESTION 372

Which key combination provides a detailed wireless connection status for an Apple MacBook running 10.6?

- A. Command + Click the SSID of the network
- B. Alt + Click the SSID of the network
- C. Command + the Airport icon
- D. Option + the Airport icon
- E. Ctrl + the Airport Icon
- F. Option + Click the SSID of the network

**Answer:** D

#### NEW QUESTION 377

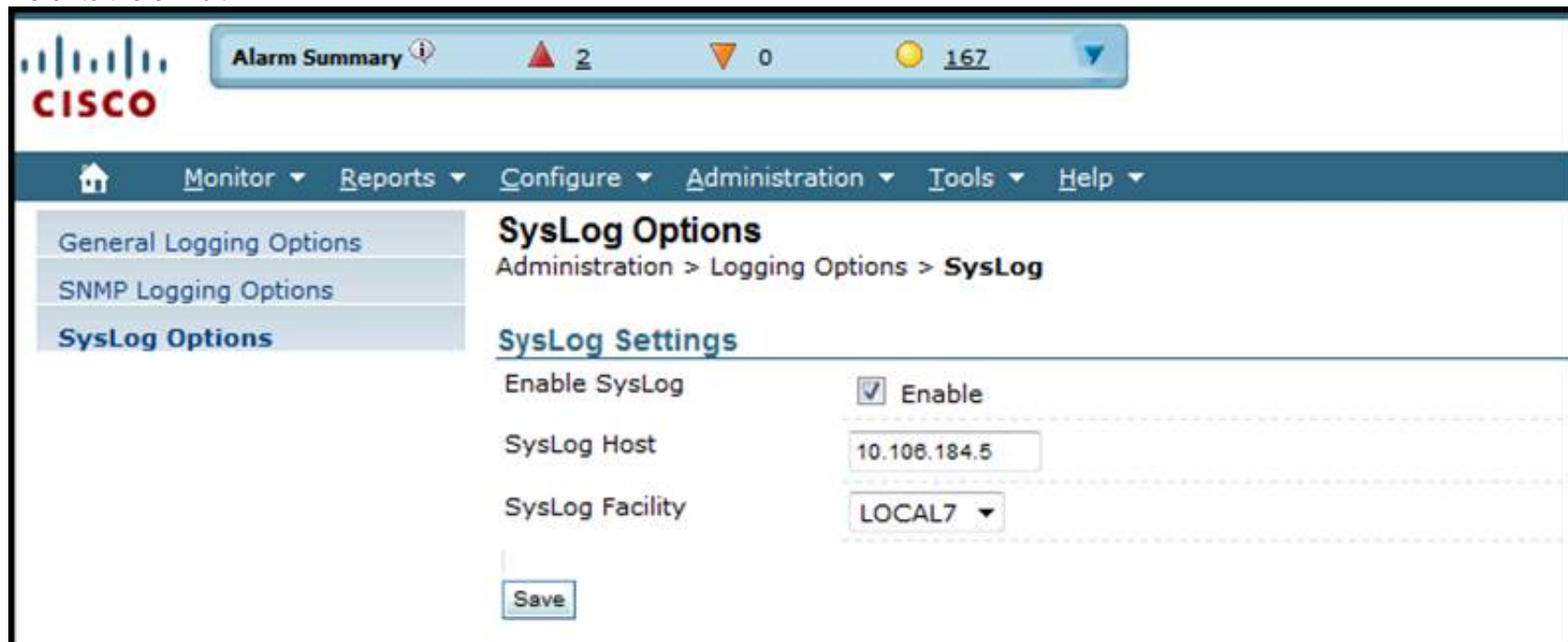
You are configuring an IP address on an autonomous access point. Which interface do you use to configure the IP address?

- A. BVI1
- B. FastEthernet 0
- C. Dot11Radio0
- D. VLAN 1

**Answer:** A

#### NEW QUESTION 380

Refer to the exhibit.



Which syslog facility option is shown?

- A. an information field, which is added to every message that comes from the WLC
- B. a security feature, which is set on the syslog server
- C. the type of syslog server
- D. the Cisco WLC identifier for this syslog server

**Answer:** A

#### NEW QUESTION 382

The wireless network is using controller-based APs and version 7.0 MR1. The APs appear to be connected properly to the controllers. A wireless user near one of



the APs reports that they are unable to connect to the network with their pre-shared key.  
Which option shows the GUI path where you can check the connection status of that client?

- A. WLANs > WLAN\_ID > Advanced
- B. Security > Clients
- C. Security > Advanced > Clients
- D. Monitor > Clients
- E. Wireless > 802.11b/g/n > clients

**Answer:** D

**NEW QUESTION 386**

Drag the Cisco WCS report from the left and drop it on the category it reports on to the right.	
Executive Summary	CleanAir
Configuration Audit	Devices
Inventory	Compliance
Security Risk Interferers	Network Summary

**Answer:**

**Explanation:**

Drag the Cisco WCS report from the left and drop it on the category it reports on to the right.	
Executive Summary	Security Risk Interferers
Configuration Audit	Inventory
Inventory	Configuration Audit
Security Risk Interferers	Executive Summary

**NEW QUESTION 388**

Strong security is required, but a centralized RADIUS authenticator has not been implemented.  
Which two steps must you take to provide maximum security when using a pre-shared key? (Choose two.)

- A. Change the TKIP on a weekly basis.
- B. Use a key that includes mixed-case letters, numbers, and symbols with a length greater than 10 characters.
- C. Use only with WPA and WPA2, following proper strong key guidelines.
- D. Use the longest possible WEP key in your security policy.

**Answer:** BC

**NEW QUESTION 390**

What are the interface statuses of a lightweight AP working in rogue-detection mode?

- A. radios turned off, Ethernet interface up
- B. radios and Ethernet interfaces up
- C. radios turned on, Ethernet interface shut down
- D. radios turned on, Ethernet interface status controlled by Cisco WLC

**Answer:** A

**NEW QUESTION 394**



When working with alarms in Cisco WCS version 7.0, several actions can be performed on respective alarms. Common actions include "Assign to me," "Unassign," or "Email Notification." However, three other action types provide similar, but important differences. Drag the alarm action names from the left and drop them on the correct corresponding definitions on the right.

Acknowledge	Remove from Alarm Summary. Allow alarm to show again. Remove alarm from database
Delete	Remove from Alarm Summary. Allow alarm to show again. Keep alarm in database for up to 30 days.
Clear	Remove from Alarm Summary. Prevent alarm from showing again. Keep alarm in database.

Answer:

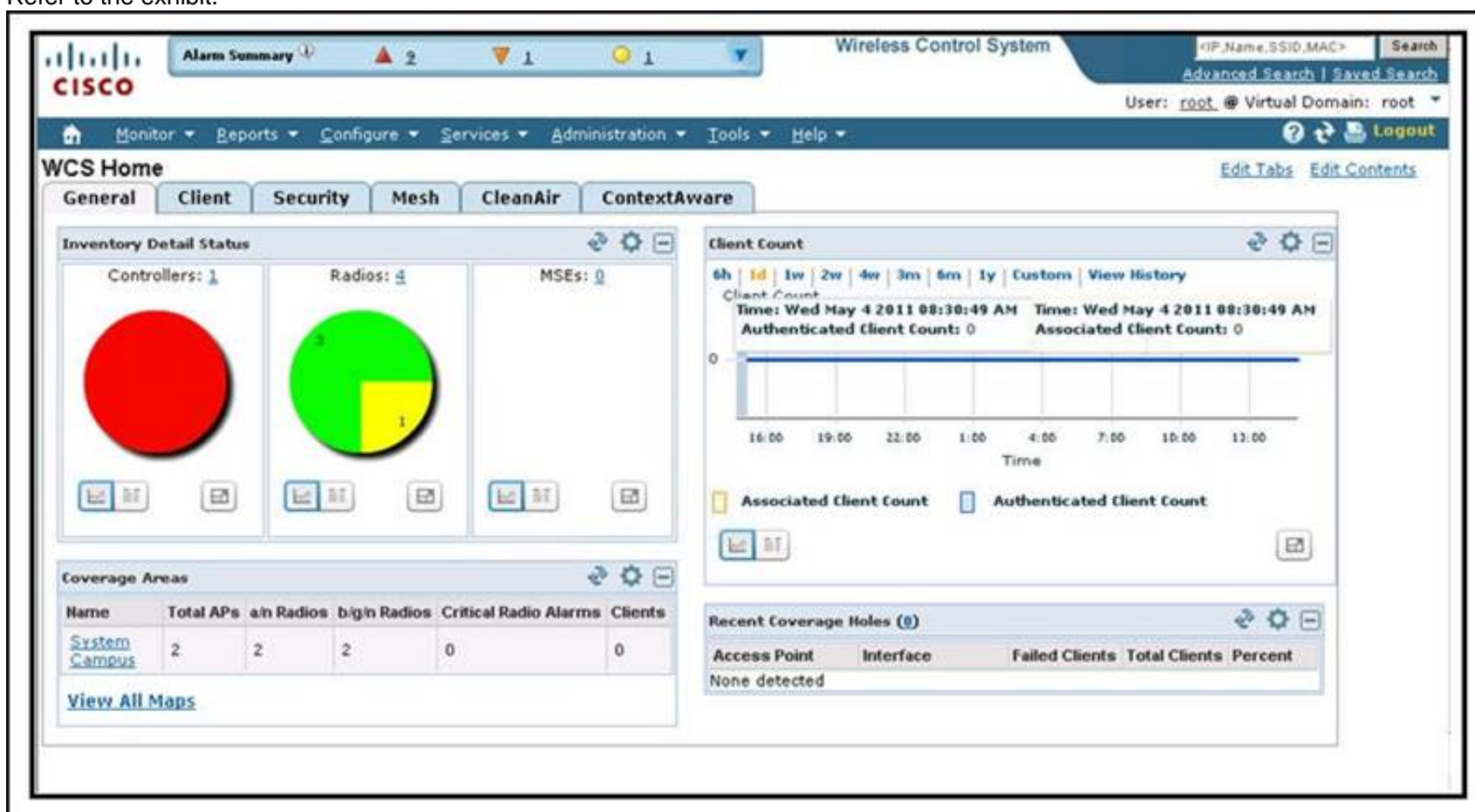
Explanation:

When working with alarms in Cisco WCS version 7.0, several actions can be performed on respective alarms. Common actions include "Assign to me," "Unassign," or "Email Notification." However, three other action types provide similar, but important differences. Drag the alarm action names from the left and drop them on the correct corresponding definitions on the right.

Acknowledge	Delete
Delete	Clear
Clear	Acknowledge

### NEW QUESTION 399

Refer to the exhibit.



You made a manual configuration change to a controller and now you need to compare the controller configuration seen on Cisco WCS to the configuration that is present in the controller.

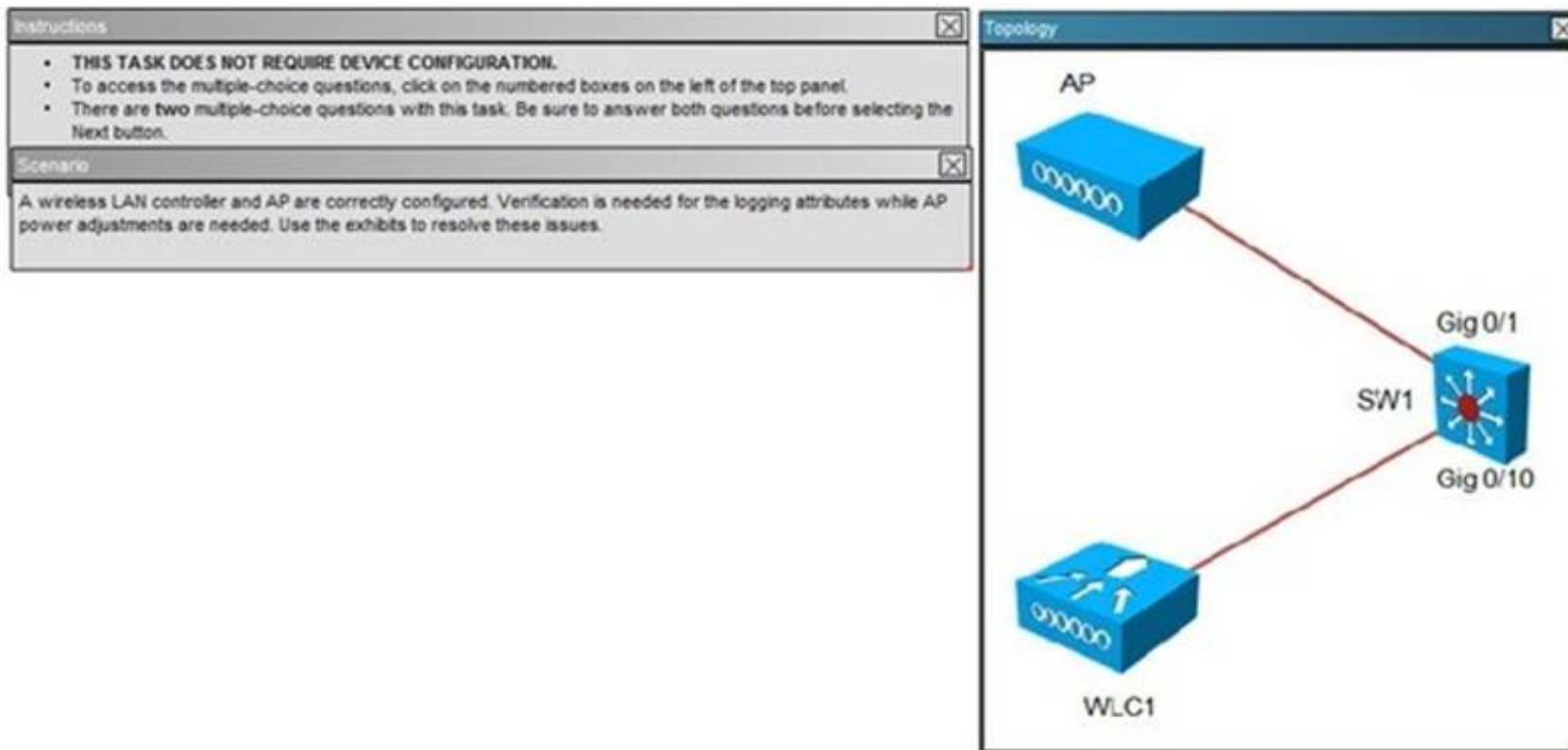
Which menu can you use to do compare the configurations?

- A. Reports
- B. Monitor
- C. Configure
- D. Services

E. Administration  
F. Tools

Answer: C

#### NEW QUESTION 403



WLC 802.11bgn AP

802.11b/g/n Cisco APs > Configure

**General**

AP Name	AP442b.036d.4d0f
Admin Status	Enable ▼
Operational Status	UP
Slot #	0

**11n Parameters**

11n Supported	Yes
ClientLink	<input type="checkbox"/>

**CleanAir**

CleanAir Capable	No
CleanAir Admin Status	Disable ▼

**Antenna Parameters**

Antenna Type	Internal ▼
A	<input checked="" type="checkbox"/>
B	<input checked="" type="checkbox"/>
C	<input checked="" type="checkbox"/>

**RF Channel Assignment**

Current Channel	11
Channel Width	20 MHz ▼
Assignment Method	<input checked="" type="radio"/> Global <input type="radio"/> Custom

*Note: Only Channels 1, 6 and 11 are nonoverlapping*

**Tx Power Level Assignment**

Current Tx Power Level	5
Assignment Method	<input type="radio"/> Global <input checked="" type="radio"/> Custom 5 ▼

**Performance Profile**

View and edit Performance Profile for this AP

Performance Profile

*Note: Changing any of the parameters causes the Radio to be temporarily disabled and this may result in loss of connectivity for some clients.*



WLC 802.11a/n AP

802.11a/n Cisco APs > Configure

General

AP Name

AP442b.036d.4d0f

Admin Status

Enable

Operational Status

UP

Slot #

1

11n Parameters

11n Supported

Yes

ClientLink

CleanAir

CleanAir Capable

No

CleanAir Admin Status

Disable

Antenna Parameters

Antenna Type

Internal

Antenna

A

☒

D

☒

C

☒

RF Channel Assignment

Current Channel

149

Channel Width \*

20 MHz

\* Channel width can be configured only when channel configuration mode

Assignment Method

Global

Custom

Tx Power Level Assignment

Current Tx Power Level

4

Assignment Method

Global

Custom

4

Performance Profile

View and edit Performance Profile for this AP

Performance Profile

Note: Changing any of the parameters causes the Radio to be temporarily disabled and thus may result in loss of connectivity for some clients.

Logging

MONITOR

WLANs

CONTROLLER

WIRELESS

SECURITY

MANAGEMENT

COMMANDS

HELP

FEEDBACK

Syslog Configuration

Syslog Server IP Address

Add

Syslog Server

10.10.10.25

Remove

Syslog Level

Errors

Syslog Facility

Local Use 0

Msg Log Configuration

Buffered Log Level

Alerts

Console Log Level

Critical

File Info

☒

Trace Info

☒

What APTx Power Level Assignment would be required to increase power by 3 dBm on 2.4GHz radio?

- A. 1
- B. 2
- C. 3
- D. 4
- E. 5
- F. 6
- G. 7
- H. 8

Answer: D

NEW QUESTION 404

Drag the appropriate EAP descriptions on the left and drop them in the correct sequence of events for PEAP on the right.

Client sends fictitious identity.	Event 1
Client sends its certificate.	Event 2
Client sends its real identity.	Event 3
RADIUS server sends a fictitious username.	
RADIUS server sends its certificate.	
RADIUS server sends a real username.	

**Answer:**

**Explanation:**

Drag the appropriate EAP descriptions on the left and drop them in the correct sequence of events for PEAP on the right.

Client sends fictitious identity.	Client sends fictitious identity.
Client sends its certificate.	RADIUS server sends its certificate.
Client sends its real identity.	Client sends its real identity.
RADIUS server sends a fictitious username.	
RADIUS server sends its certificate.	
RADIUS server sends a real username.	

#### NEW QUESTION 407

A network engineer in the GUI of WCS version 7 wants to add an autonomous access point. Where can this command be found in the drop-down menu?

- A. Configure > Access Point > Add Autonomous APs
- B. Manage > Access Points > Add Autonomous APs
- C. Administration > Access Point > Add Autonomous APs
- D. Location > Access Point > Add Autonomous APs

**Answer:** A

#### NEW QUESTION 408

Which type of authentication is used initially by a controller-based AP so that a guest client can get an IP address?

- A. 802.1x
- B. EAP
- C. LEAP
- D. open authentication
- E. TLS
- F. SSL

**Answer:** D

#### NEW QUESTION 410

Which two Cisco WLC management-access methods are available as the default setting? (Choose two.)

- A. SSH
- B. HTTPS
- C. Telnet
- D. HTTP

**Answer:** AB

#### NEW QUESTION 413

The administrator needs to create a report that shows all controllers, APs, and Cisco 3300 Series MSEs in the WLAN, including hardware and software information. Which report includes this information?

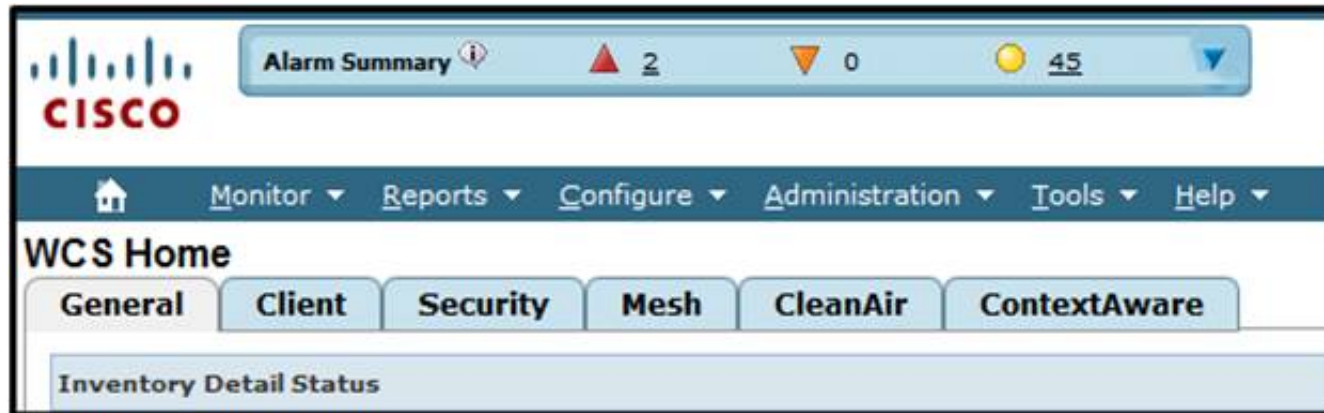
- A. Device > Inventory
- B. Mesh > Nodes
- C. Network Summary > Executive Summary
- D. Network Summary > 802.11 Summary



Answer: A

#### NEW QUESTION 414

Refer to the exhibit.



What is the meaning of the inverted orange triangle (marked "0") in the Alarm Summary tab of Cisco WCS?

- A. number of major alarms
- B. number of minor alarms
- C. number of critical alarms
- D. number of system alarms

Answer: A

#### NEW QUESTION 419

You need to set up an ad hoc connection to another client in a conference room to exchange files using Windows 7. Which two items do you need to create this connection? (Choose two.)

- A. SSID name
- B. RF channel
- C. 802.1X/EAP credentials
- D. pre-shared key
- E. Telnet
- F. IBSS name
- G. SSH

Answer: DF

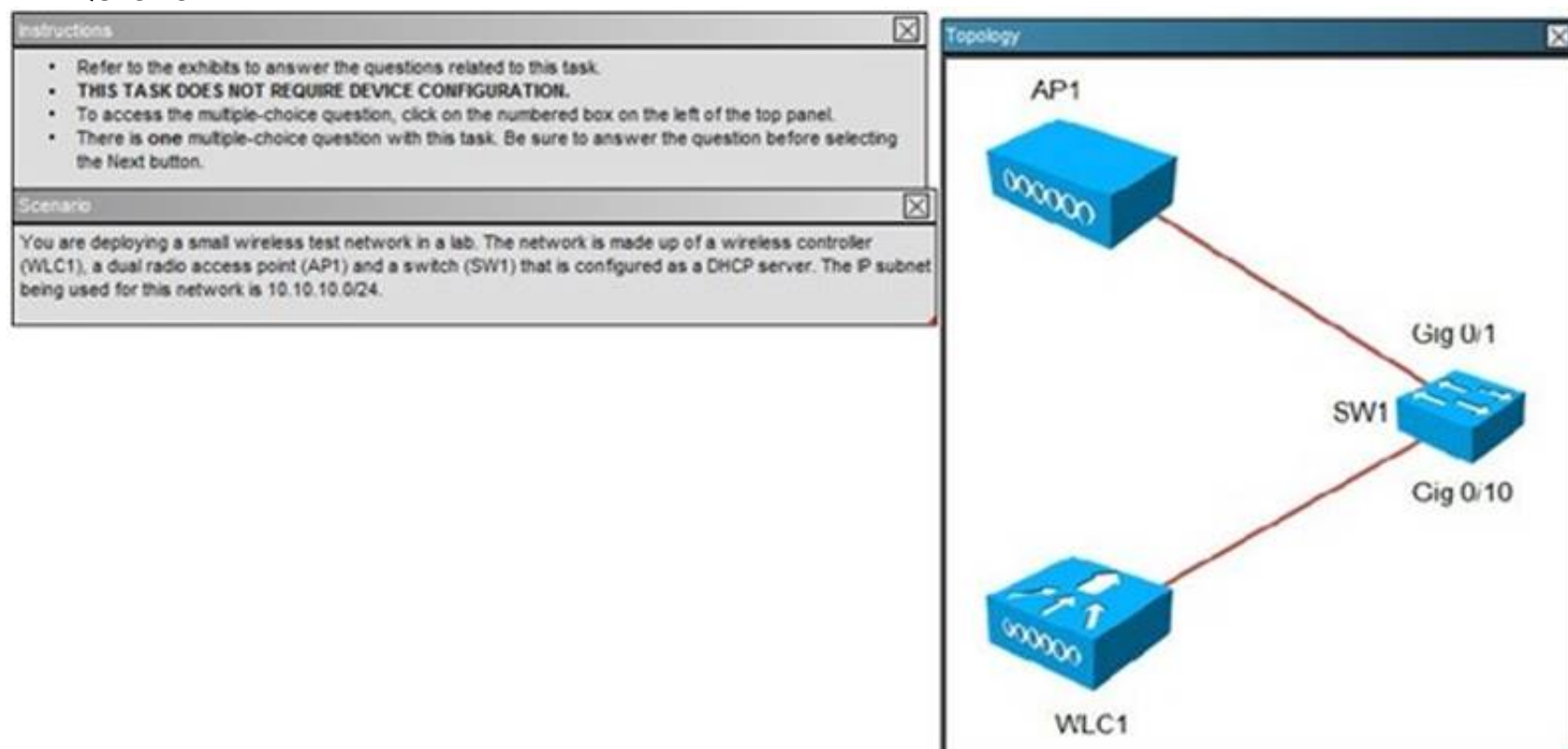
#### NEW QUESTION 420

An installation uses a 21dBi parabolic dish. It is connected to the 802.11n radio via low loss antenna coax rated at 4dB loss/100 feet. After testing, it has been determined that 2mW of power will be lost in the cable. An EIRP producing 200mW is desired. What should the transmit power be set to?

- A. 8mW
- B. 3dBm
- C. 3.16mW
- D. 5mW

Answer: C

#### NEW QUESTION 422



WLC1 - Monitor Clients

MONITOR
WLANs
CONTROLLER
WIRELESS
SECURITY
MANAGEMENT
COMMANDS
HELP
FEEDBACK

Monitor
Clients > Detail

Summary
Access Points
Cisco CleanAir
Statistics
CDP
Regues
Clients
Multicast

Client Properties

AP Properties

MAC Address

00:1d:e3:46:f3:2d

AP Address

3c:ce:73:6c:c6:d0

IP Address

10.10.10.130

AP Name

AP1

Client Type

Regular

AP Type

802.11bn

User Name

WLAN Profile

HoHo

Port Number

1

Status

Associated

Interface

management

Association ID

1

VLAN ID

0

802.11 Authentication

Open System

CCX Version

CCXv4

Reason Code

1

E2E Version

E2Ev1

Status Code

0

Mobility Role

Local

CF Pullable

Not Implemented

Mobility Peer IP Address

N/A

CF Poll Request

Not Implemented

Policy Manager State

RUN

Short Preamble

Implemented

Management Frame Protection

No

P3CC

Not Implemented

UpTime (Sec)

112

Channel Agility

Not Implemented

Power Save Mode

ON

Timeout

1000

Current TxRateSet

m15


WEP State

WEP Disable

Data RateSet

1.0,2.0,5.5,11.0,6.0,9.0,12.0,18.0,24.0,36.0,48.0,54.0

WLC1 - Intf Mgt



MONITOR
WLANs
CONTROLLER
WIRELESS
SECURITY

Controller
General
Inventory
Interfaces
Interface Groups
Multicast
Internal DHCP Server
Mobility Management
Ports
NIP
CDP
Advanced

## Interfaces > Edit

### General Information

Interface Name	management
MAC Address	d0:c2:82:e0:53:80

### Configuration

Quarantine	<input type="checkbox"/>
Quarantine VLAN ID	<input type="text" value="0"/>

### NAT Address

Enable NAT Address	<input type="checkbox"/>
--------------------	--------------------------

### Interface Address

VLAN Identifier	<input type="text" value="0"/>
IP Address	<input type="text" value="10.10.10.10"/>
Netmask	<input type="text" value="255.255.255.0"/>
Gateway	<input type="text" value="10.10.10.1"/>

### Physical Information

Port Number	<input type="text" value="1"/>
Backup Port	<input type="text" value="0"/>
Active Port	<input type="text" value="1"/>
Enable Dynamic AP Management	<input checked="" type="checkbox"/>

### DHCP Information

Primary DHCP Server	<input type="text" value="10.10.10.10"/>
Secondary DHCP Server	<input type="text" value="10.10.10.1"/>

### Access Control List

ACL Name	<input type="text" value="none"/>
----------	-----------------------------------

*Note: Changing the Interface parameters causes the WLANs to be temporarily disabled and thus may result in loss of connectivity for some clients.*



```

interface GigabitEthernet0/50
interface GigabitEthernet0/51
interface GigabitEthernet0/52
interface TenGigabitEthernet0/1
interface TenGigabitEthernet0/2
interface Vlan1
 ip address 10.10.10.1 255.255.255.0
!
ip classless
ip http server
ip http secure-server
!
!
control-plane
!
!
line con 0
line vty 0 4
 login
line vty 5 15
 login
!
end

```

The screenshot shows the Cisco WLC1 - WLAN configuration page for 'ExamSSID'. The 'Advanced' tab is selected, showing various configuration options. The 'DHCP' section is expanded, showing the DHCP server configuration. The 'DHCP' section includes options for 'DHCP Server', 'DHCP Addr. Assignment', 'Management Frame Protection (MFP)', 'MFP Client Protection', 'DTIM Period (in beacon intervals)', 'NAC', and 'Load Balancing and Band Select'.

General	Security	QoS	Advanced
Allow AAA Override	<input type="checkbox"/> Enabled		
Coverage Hole Detection	<input checked="" type="checkbox"/> Enabled		
Enable Session Timeout	<input checked="" type="checkbox"/> 1800		
Aironet IE	<input checked="" type="checkbox"/> Enabled		
Diagnostic Channel	<input type="checkbox"/> Enabled		
IPv6 enable	<input type="checkbox"/>		
Override Interface ACL	None		
P2P Blocking Action	Disabled		
Client Exclusion	<input checked="" type="checkbox"/> Enabled	60	
Maximum Allowed Clients	U		
Static IP Tunneling	<input type="checkbox"/> Enabled		
Off Channel Scanning Defer			
Scan Defer Priority	0 1 2 3 4 5 6 7		
	<input type="checkbox"/> <input type="checkbox"/> <input type="checkbox"/> <input type="checkbox"/> <input checked="" type="checkbox"/> <input checked="" type="checkbox"/> <input checked="" type="checkbox"/> <input type="checkbox"/>		
DHCP			
DHCP Server		<input type="checkbox"/> Override	
DHCP Addr. Assignment		<input type="checkbox"/> Required	
Management Frame Protection (MFP)			
MFP Client Protection		optional	
DTIM Period (in beacon intervals)			
802.11a/n (1 - 255)		1	
802.11b/g/n (1 - 255)		1	
NAC			
NAC State		None	
Load Balancing and Band Select			
Client Load Balancing		<input type="checkbox"/>	
Client Band Select		<input type="checkbox"/>	

In setting up the wireless network, it is desired that the DHCP server that is configured in WLC1 provides IP addressing to the WLAN. When devices attempt to join the network, they fail to receive an IP address in the range provided by the DHCP server in WLC1, but they do receive an IP address from the DHCP server in SW1. What is causing this issue?

- A. The external DHCP server in SW1 will always be the preferred DHCP server and WLC1 will always be the secondary DHCP server in the WLAN.
- B. The DHCP server address for SW1 needs to be removed from the DHCP server configuration in WLC1.
- C. The primary DHCP server address in WLC1 is incorrect.
- D. The primary DHCP server configured in WLC1 is not enabled.

Answer: D

#### NEW QUESTION 425

Which two formats are available for Cisco WCS reports? (Choose two.)

- A. PDF
- B. CSV
- C. HTML
- D. TXT

Answer: AB



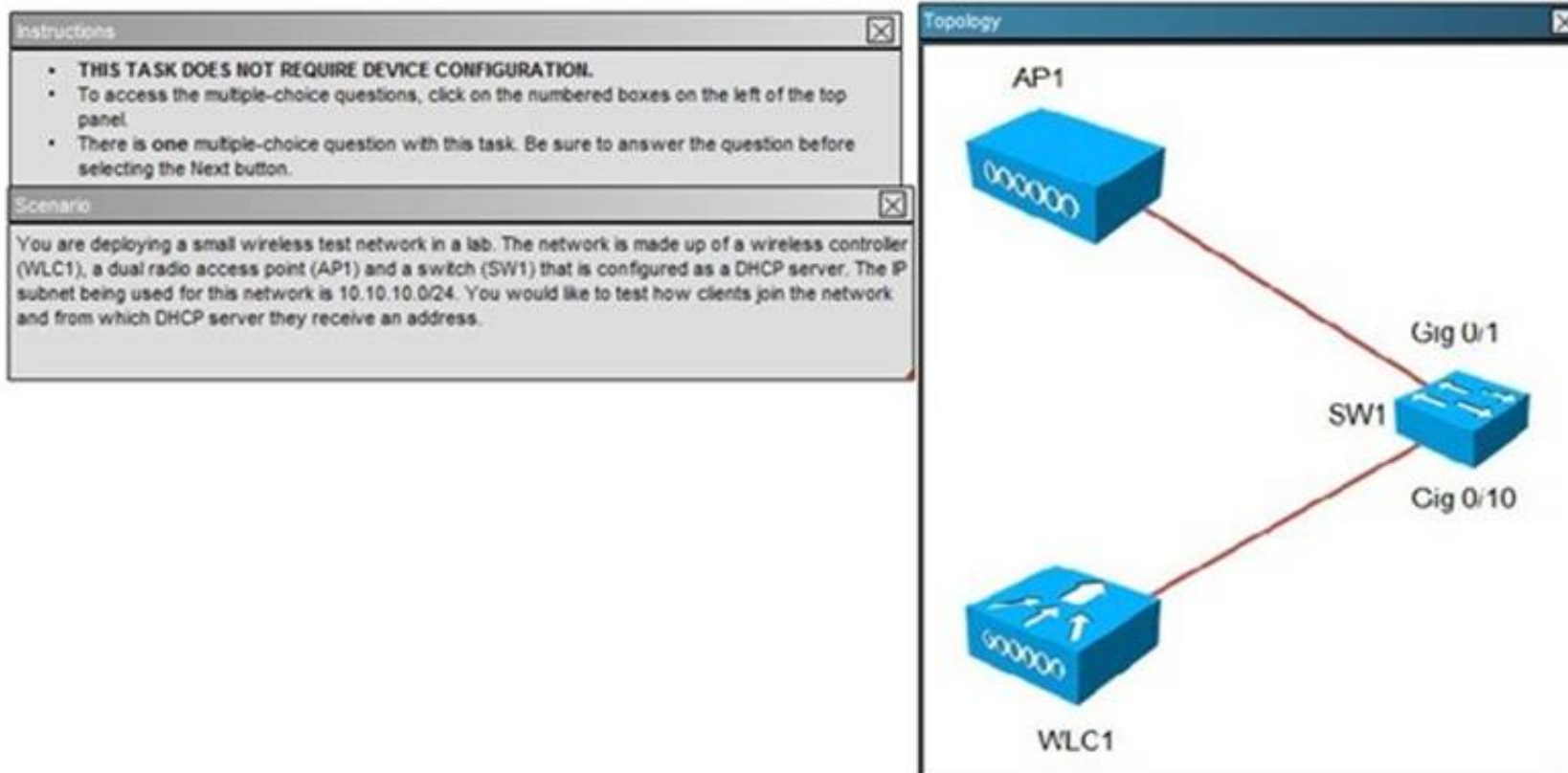
#### NEW QUESTION 426

When a guest client is authenticated, which type of connection is created between the controller-based AP and the client?

- A. as SSL connection
- B. a TLS encrypted tunnel
- C. an unsecured connection
- D. a 802.1x/EAP tunnel
- E. an IPsec tunnel

**Answer: C**

#### NEW QUESTION 429



WLC1 - DHCP Scope

**CISCO** MONITOR WLANs **CONTROLLER** WIRELESS SECURITY MANAGEMENT COMMANDS HELP FEEDBACK

Controller

**DHCP Scope > Edit**

General	Scope Name	IP Address
Inventory	Pool Start Address	10.10.10.20
Interfaces	Pool End Address	10.10.10.127
Interface Groups	Network	10.10.10.3
Multicast	Netmask	255.255.255.3
Internal DHCP Server	Lease time (seconds)	86400
DHCP Scope	Default Routers	10.10.10.1 0.0.0.0 0.0.0.0
DHCP Allocated Leases	DNS Domain Name	
Mobility Management	DNS Servers	0.0.0.3 0.0.0.0 0.0.0.0
Ports	Netbios Name Servers	0.0.0.3 0.0.0.0 0.0.0.0
NTP	Status	Enabled
CDP		
Advanced		

WLC1 - WLAN Advanced ✕

Save Configuration | Ping

MONITOR **WLANs** CONTROLLER WIRELESS SECURITY MANAGEMENT COMMANDS ICLP FEEDBACK

WLANs > Edit 'ExamSSID' < Back

General Security **QoS** Advanced

Allow AAA Override ☐ Enabled

Coverage Hole Detection ☒ Enabled

Enable Session Timeout ☒ 1800  
Session Timeout (secs)

Airone: IE ☒ Enabled

Diagnostic Channel ☐ Enabled

IPv6 Enable ☐

Override Interface ACL

P2P Blocking Action

Client Exclusion ☒ Enabled 60  
Timeout Value (secs)

Maximum Allowed Clients

Static IP Tunneling ☐ Enabled

Off Channel Scanning Defer

Scan Defer Priority	0	1	2	3	4	5	6	7
	<input type="checkbox"/>	<input type="checkbox"/>	<input type="checkbox"/>	<input type="checkbox"/>	<input checked="" type="checkbox"/>	<input checked="" type="checkbox"/>	<input checked="" type="checkbox"/>	<input type="checkbox"/>

DHCP

DHCP Server ☐ Override

DHCP Addr. Assignment ☐ Required

Management Frame Protection (MFP)

MFP Client Protection

DTIM Period (in beacon intervals)

802.11a/n (1 - 255)	<input type="text" value="1"/>
802.11b/g/n (1 - 255)	<input type="text" value="1"/>

NAC

NAC State

Load Balancing and Band Select

Client Load Balancing ☐

Client Band Select ☐

[illegible]



*The Leader of IT Certification*



```

!
interface GigabitEthernet0/50
!
interface GigabitEthernet0/51
!
interface GigabitEthernet0/52
!
interface TenGigabitEthernet0/1
!
interface TenGigabitEthernet0/2
!
interface Vlan1
 ip address 10.10.10.1 255.255.255.0
!
ip classless
ip http server
ip http secure-server
!
!
control-plane
!
!
line con 0
line vty 0 4
 login
line vty 5 15
 login
!
end

```

WLC1 - Intf Mgt

MONITOR
WLANs
CONTROLLER
WIRELESS
SECURITY

Controller

General
Inventory
Interfaces
Interface Groups
Multicast
Internal DHCP Server
Mobility Management
Ports
NIP
CDP
Advanced

Interfaces > Edit

General Information

Interface Namemanagement
MAC Addressd0:c2:82:e0:53:80

Configuration

Quarantine
Quarantine VLAN ID0

NAT Address

Enable NAT Address

Interface Address

VLAN Identifier0
IP Address10.10.10.10
Netmask255.255.255.0
Gateway10.10.10.1

Physical Information

Port Number1
Backup Port0
Active Port1
Enable Dynamic AP Management

DHCP Information

Primary DHCP Server10.10.10.10
Secondary DHCP Server10.10.10.1

Access Control List

ACL Namenone

Note: Changing the Interface parameters causes the WLANs to be temporarily disabled and thus may result in loss of connectivity for some clients.

WLC1 - DHCP Scope

MONITOR WLANs **CONTROLLER** WIRELESS SECURITY MANAGEMENT COMMANDS HELP

DHCP Scope > Edit

Scope Name	IP Address		
Pool Start Address	10.10.10.20		
Pool End Address	10.10.10.127		
Network	10.10.10.0		
Netmask	255.255.255.0		
Lease Time (seconds)	86400		
Default Routers	10.10.10.1	0.0.0.0	0.0.0.0
DNS Domain Name			
DNS Servers	0.0.0.0	0.0.0.0	0.0.0.0
Netbios Name Servers	0.0.0.0	0.0.0.0	0.0.0.0
Status	Disabled ▼		

All equipment is operational. Through which two methods can a wireless client receive an IP address when associating to the WLAN? (Choose two.)

- A. The clients can receive an IP address from SW1.
- B. The clients can receive an IP address from WLC1.
- C. The clients will not receive an IP address from either DHCP server because of overlapping address ranges.
- D. The clients can receive an IP address in a round-robin manner from either SW1 or WLC1.
- E. The clients can use a static IP address.

**Answer:** BE

#### NEW QUESTION 432

An engineer is seeing a pattern closest to that of an Isotropic Radiator. What other antenna will produce a similar pattern?

- A. 5 dBi patch
- B. 13.5 dBi Yagi
- C. 2.2 dBi omni
- D. 21 dBi parabolic

**Answer:** C

#### NEW QUESTION 437

Which four parameters must be configured for local EAP-FAST on the controller? (Choose four.)

- A. authority ID
- B. authority ID Information
- C. client key
- D. PAC
- E. server key
- F. TTL for PAC
- G. monitor key
- H. NTP source

**Answer:** ABEF

#### NEW QUESTION 440

You have a lightweight AP that has been moved to a new subnet and has become stranded because DNS and DHCP servers are unavailable. The AP cannot connect to the controller.

When connected to the console port, which three minimum parameters must you configure? (Choose three.)

- A. AP IP address
- B. controller name
- C. AP hostname
- D. default gateway IP address
- E. controller IP address
- F. username and password

**Answer:** ADE

#### NEW QUESTION 445

What are two security threats to wireless networks? (Choose two.)

- A. ad-hoc networks
- B. client misassociation
- C. port redirection
- D. cross-site scripting

**Answer:** AB

**NEW QUESTION 447**

How many RADIUS servers can be configured globally and per WLAN on a Cisco WLC version 7.0?

- A. 7 global; additional 1 per WLAN
- B. 7 global; additional 3 per WLAN
- C. 17 global; additional 1 per WLAN
- D. 17 global; additional 3 per WLAN
- E. 7 global; reuse of up to 1 maximum per WLAN
- F. 17 global; reuse of up to 1 maximum per WLAN
- G. 17 global; reuse of up to 3 maximum per WLAN

**Answer:** G

**NEW QUESTION 449**

What are two modules of the CCX Lite program? (Choose two.)

- A. foundation
- B. voice
- C. RF power
- D. roaming

**Answer:** AB

**NEW QUESTION 450**

Drag the commands on the left that are enabled during a SSH or Telnet session with a lightweight AP and drop them on the right.

config terminal	Target
debug	Target
show	Target
enable	
clear	
delete	
reload	
upgrade	

**Answer:**

**Explanation:**

Drag the commands on the left that are enabled during a SSH or Telnet session with a lightweight AP and drop them on the right.

config terminal	debug
debug	show
show	enable
enable	
clear	
delete	
reload	
upgrade	

**NEW QUESTION 455**

What are two wireless configuration utilities for Apple Mac computers? (Choose two.)

- A. AirPort



- B. AirPort Extreme
- C. AirManager
- D. AirManager Supreme
- E. AirAssistant Ultimate

**Answer:** AB

#### NEW QUESTION 459

**Instructions**

- THIS TASK DOES NOT REQUIRE DEVICE CONFIGURATION
- To access the multiple-choice questions, click on the numbered boxes on the left of the top panel.
- There are two multiple-choice questions with this task. Be sure to answer both questions before selecting the Next button.

**Scenario**

You are deploying a small wireless test network in a lab. The network is made up of a wireless LAN controller, a dual radio AP, and an IOS switch. You are testing the ability of wireless clients to access the network and are experiencing problems. Use the exhibits to resolve the issues.

**Topology**

```

graph LR
    AP[AP] --- SW1[SW1]
    WLC1[WLC1] --- SW1
    subgraph SW1
        G01[Gig 0/1]
        G010[Gig 0/10]
    end
    style SW1 fill:none,stroke:none
    style G01 fill:none,stroke:none
    style G010 fill:none,stroke:none
        
```

**802.11an Network**

[MONITOR](#) [WLANs](#) [CONTROLLER](#) [WIRELESS](#) [SECURITY](#) [MANAGEMENT](#) [COMMANDS](#) [HELP](#) [FEEDBACK](#)

### 802.11a Global Parameters

**General**

802.11a Network Status	<input checked="" type="checkbox"/> Enabled
Beacon Period (milliseconds)	100
Fragmentation Threshold (bytes)	2346
DTPC Support	<input checked="" type="checkbox"/> Enabled

**802.11a Band Status**

Low Band	Enabled
Mid Band	Enabled
High Band	Enabled

**11n Parameters**

Client link	<input checked="" type="checkbox"/> Enabled
-------------	---

**Data Rates**

6 Mbps	Mandatory
9 Mbps	Supported
12 Mbps	Mandatory
18 Mbps	Supported
24 Mbps	Mandatory
36 Mbps	Supported
48 Mbps	Supported
54 Mbps	Supported

**CCX Location Measurement**

Mode	<input checked="" type="checkbox"/> Enabled
------	---



802.11a/n AP

MONITOR
WLANs
CONTROLLER
WIRELESS
SECURITY
MANAGEMENT
COMMANDS
HELP
FEEDBACK

802.11a/n Cisco APs > Configure

General

AP NameAP442b.036d.4dcf
Acmr StatusEnable
Operational StatusUP
Slot #1

11n Parameters

11n SupportedYes
ClientLink

CleanAir

CleanAir CapableNo
CleanAir Admin StatusDisable

Antenna Parameters

Antenna TypeInternal
Antenna
A
B
C

RF Channel Assignment

Current Channel149
Channel Width \*20 MHz
\* Channel width can be configured only when channel configuration mode
Assignment MethodGlobal
Custom

Tx Power Level Assignment

Current Tx Power Level4
Assignment MethodGlobal
Custom4

Performance Profile

View and edit Performance Profile for this AP
Performance Profile
Note: Changing any of the parameters causes the radio to be temporarily disabled and thus may result in loss of connectivity for some clients.

802.11bg Network

MONITOR
WLANs
CONTROLLER
WIRELESS
SECURITY
MANAGEMENT
COMMANDS
HELP
FEEDBACK

802.11b/g Global Parameters

General

802.11b/g Network StatusEnabled
802.11g SupportEnabled
Beacon Period (milliseconds)100
Short PreambleEnabled
Fragmentation Threshold (bytes)2346
DTPC SupportEnabled

11n Parameters

ClientLinkEnabled

CCX Location Measurement

ModeEnabled

Data Rates\*\*

1 MbpsDisabled
2 MbpsDisabled
5.5 MbpsDisabled
5 MbpsSupported
9 MbpsSupported
11 MbpsDisabled
12 MbpsMandatory
18 MbpsSupported
24 MbpsSupported
36 MbpsSupported
48 MbpsSupported
54 MbpsSupported

802.11bg AP

MONITOR

WLANs

CONTROLLER

WIRELESS

SECURITY

MANAGEMENT

COMMANDS

HELP

FEEDBACK

802.11b/g/n Cisco APs > Configure

General

AP Name

AP442b.U3bd.4dof

Admin Status

Enable

Operational Status

UP

Slot #

0

11n Parameters

11n Supported

Yes

ClientLink

CleanAir

CleanAir Capable

No

CleanAir Admin Status

Disable

Antenna Parameters

Antenna Type

Internal

A

☒

B

☒

C

☒

RF Channel Assignment

Current Channel

11

Channel Width

20 MHz

Assignment Method

Global

Custom

Note: Only Channels 1,6 and 11 are nonoverlapping

Tx Power Level Assignment

Current Tx Power Level

5

Assignment Method

Global

Custom

5

Performance Profile

View and edit Performance Profile for this AP

Performance Profile

Note: Changing any of the parameters causes the Radio to be temporarily disabled and thus may result in loss of connectivity for some clients.

WLAN General

MONITOR

WLANs

CONTROLLER

WIRELESS

SECURITY

MANAGEMENT

COMMANDS

HELP

FEEDBACK

WLANs > Edit 'ExamSSID'

General

Security

QoS

Advanced

Profile Name

ExamSSID

Type

WLAN

SSID

ExamSSID

Status

☒ Enabled

Security Policies

[WPA2][Auth(PSK)]

(Modifications done under security tab will appear after applying the changes.)

Radio Policy

802.11b/g only

Interface/Interface Group(G)

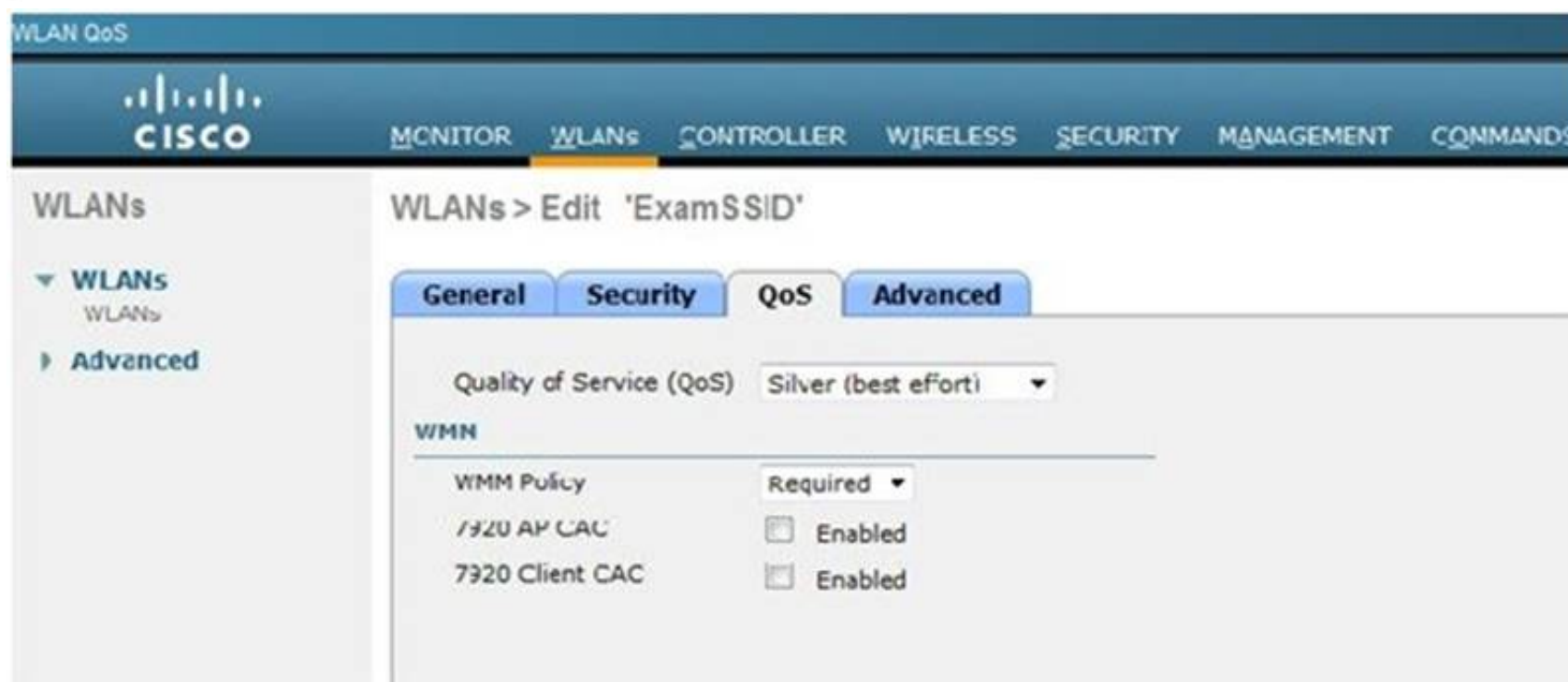
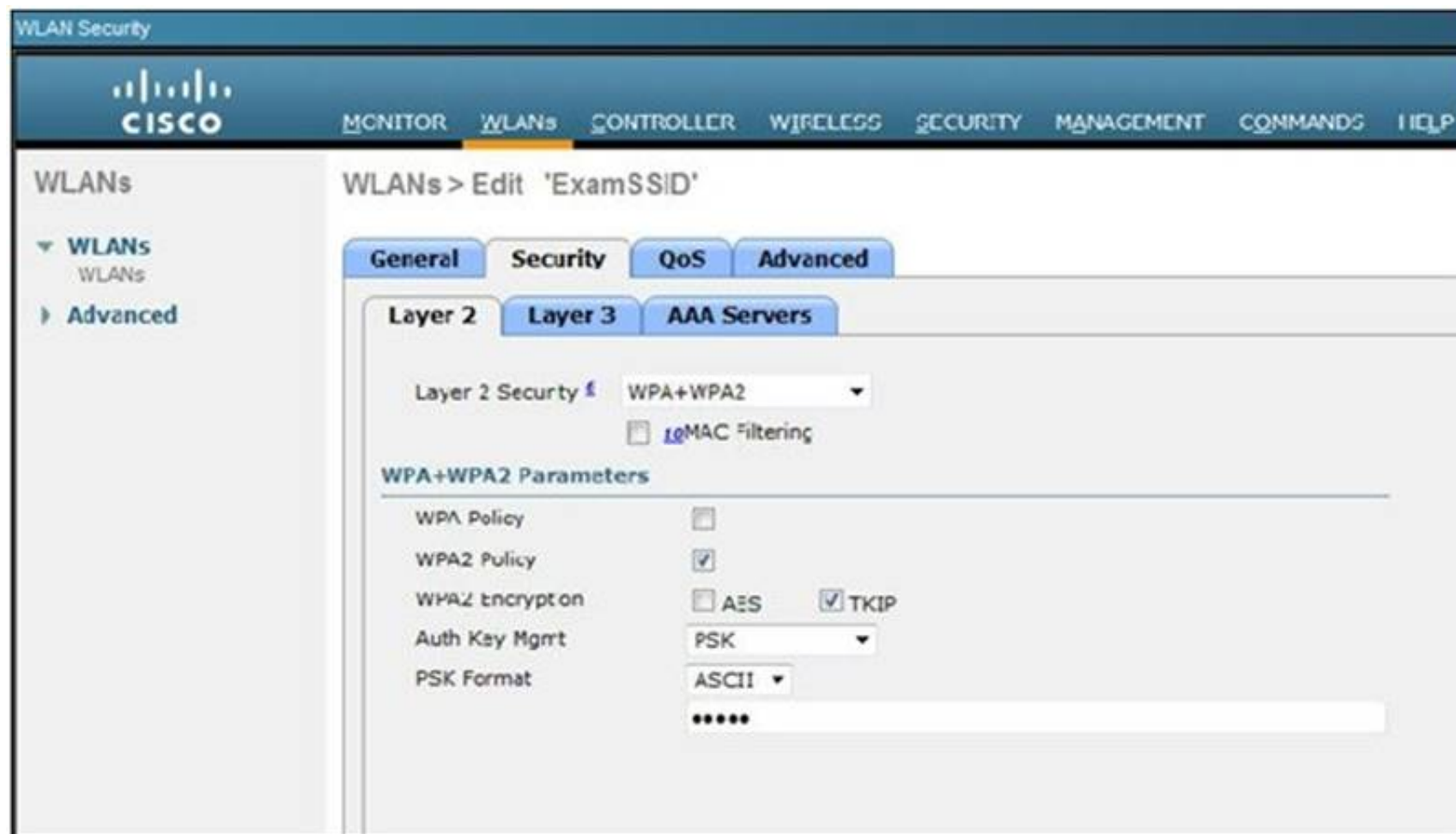
management

Multicast Vlan Feature

☐ Enabled

Broadcast SSID

☐ Enabled



Old 2.4-GHz wireless laptops are unable to connect. What is the most likely cause of this problem?

- A. WLAN > General properties are incorrectly configured.
- B. WLAN > QoS properties are incorrectly configured.
- C. WLAN > Security properties are incorrectly configured.
- D. WLAN > Advanced properties are incorrectly configured.
- E. Wireless > AP > 802.11 b/g/n AP is incorrectly configured.
- F. Wireless > AP > 802.11 b/g/n > Network is incorrectly configured.

**Answer:** F

#### NEW QUESTION 464

A wireless bridge is being installed near an airport. An organization informs the city council about complying with max power levels that could be used and settings on any 5GHz channels used that might interfere with the airport radar. What organization is this?

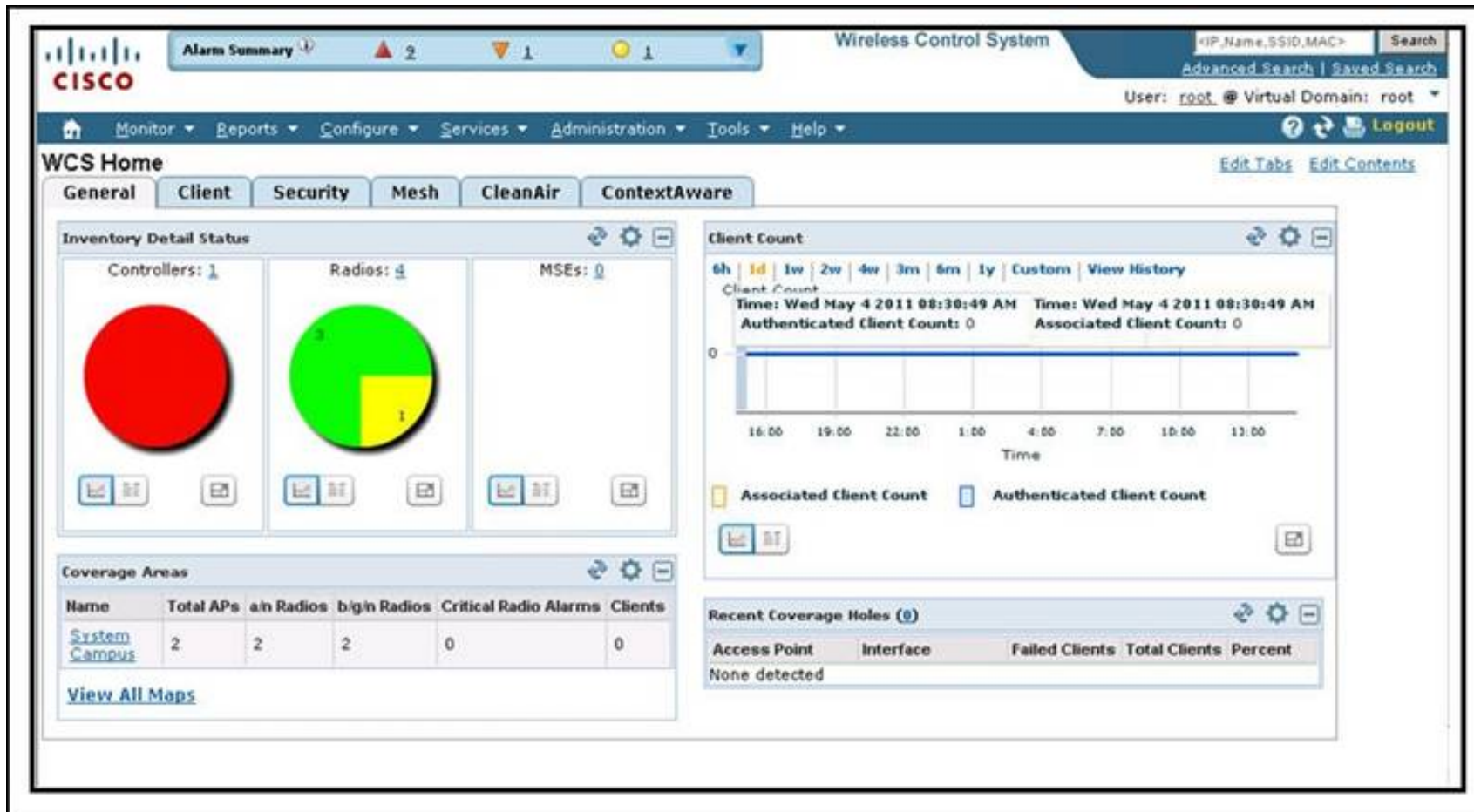
- A. Institute of Electrical and Electronics Engineers
- B. Internet Engineering Task Force
- C. Federal Communications Commission
- D. Wireless Fidelity Alliance

**Answer:** C

#### NEW QUESTION 466

Refer to the exhibit.





Which action allows you to view a summary count by alarm types for the displayed total of 11 alarms?

- A. Choose Monitor > Alarms
- B. Click the Security tab
- C. Click a respective number in the Alarm Summary
- D. Click the Alarm Summary blue arrow
- E. Choose Home (house icon) > Alarm Summary

**Answer: D**

#### NEW QUESTION 468

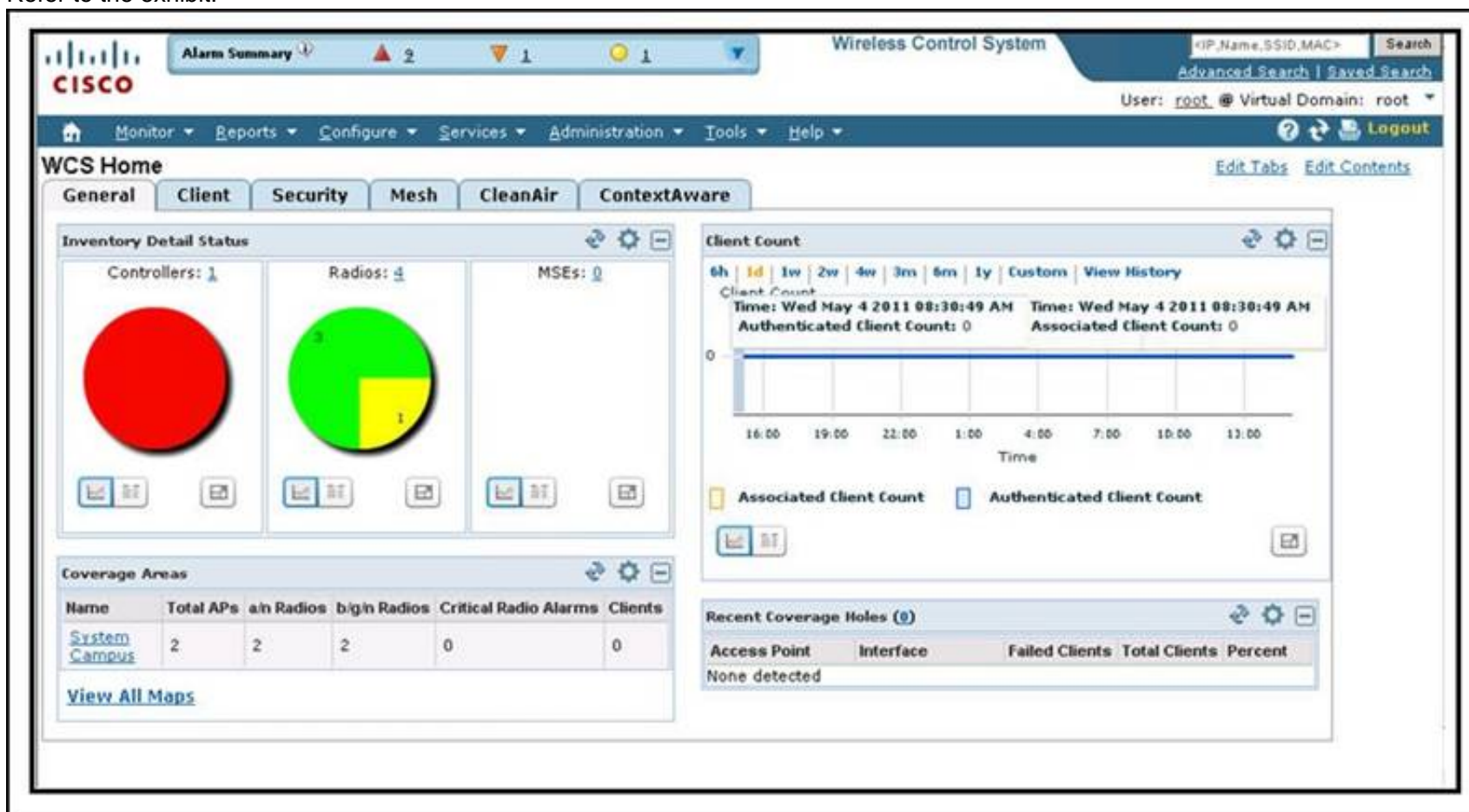
Which two destinations can Cisco WCS administrators specify for a scheduled report? (Choose two.)

- A. a file on the Cisco WCS
- B. a specified email address
- C. a specified World Wide Web server
- D. a TFTP server

**Answer: AB**

#### NEW QUESTION 471

Refer to the exhibit.



Which GUI item do you click to configure authentication and authorization in Cisco WCS?

- A. Security
- B. Monitor
- C. Configure

- D. Services
- E. Administration
- F. Tools

**Answer:** E

#### NEW QUESTION 475

What tab contains access point configuration in the WCS?

- A. Controller > Access Points
- B. Configure > Access Points
- C. General > Configure > Access Points
- D. System > Configure > Access Points

**Answer:** B

#### NEW QUESTION 476

You have brought your MacBook Pro running OS 10.6 to work and intend use the enterprise wireless network. This network is using EAP-FAST and 2.4 GHz for data and 5 GHz for VoWLAN.

Which statement about the laptop configuration and wireless connection is true?

- A. Install a USB wireless adapter and configure
- B. Install Apple EAP-Fast plug-in and configure
- C. Install Cisco AnyConnect v2.4 and configure
- D. Configure Apple network preferences for EAP-FAST
- E. The laptop does not support EAP-FAST and will be unable to connect
- F. The laptop only supports 5 GHz and will be unable to connect

**Answer:** D

#### NEW QUESTION 478

Which two protocols are available to download or upload files to or from Cisco WLC? (Choose two.)

- A. FTP
- B. TFTP
- C. SCP
- D. HTTP
- E. HTTPS

**Answer:** AB

#### NEW QUESTION 480

A client is attached to the Cisco Unified Wireless Network using controllers.

When the client is using WPA2 and EAP authentication, where are the wireless encryption keys located during the active user session? (Choose two.)

- A. On the access point
- B. On the RADIUS server
- C. On the Cisco WCS
- D. On the client
- E. On the Cisco WLC

**Answer:** AD

#### NEW QUESTION 482

Which action secures the SNMPv2C protocol in a Cisco WLC?

- A. configure new communities and disable default communities
- B. use digital certificates to authenticate and encrypt transmissions
- C. enable password or transfer encryption
- D. set a username and difficult-to-guess password

**Answer:** A

#### NEW QUESTION 486

You are on the phone working with a colleague that is console connected to a lightweight AP that has lost its configuration. Which three actions are necessary to allow the AP to connect to a controller? (Choose three.)

- A. Configure the AP IP address.
- B. Configure the controller name.
- C. Configure the controller IP address.
- D. Configure the AP hostname.
- E. Configure the AP IP default-gateway.
- F. Configure the AP username and password.

**Answer:** ACE

NEW QUESTION 487

Instructions



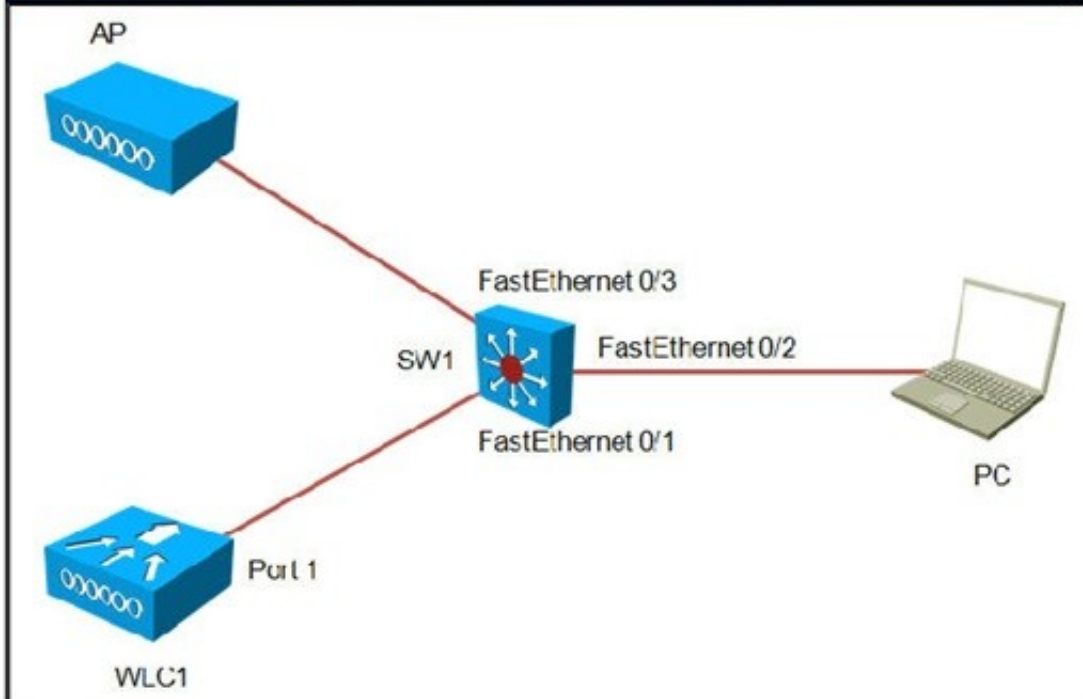
- **THIS TASK DOES NOT REQUIRE DEVICE CONFIGURATION.**
- To access the multiple-choice question, click on the numbered box on the left of the top panel.
- There is **one** multiple-choice question with this task. Be sure to answer the question before selecting the Next button.

Scenario



You have just finished configuring a WLC2504 through the console CLI. The WLC is attached to an existing production network switch. However, you are not able to reach the WLC via `https://10.10.10.10`.

Topology





#### SW1 Show Run

```
SW1#sh run
Building configuration...

Current configuration : 4504 bytes
!
version 12.2
no service password-encryption
service timestamps debug datetime msec
service timestamps log datetime msec
no service password-encryption
!
hostname Switch
!
boot-start-marker
boot-end-marker
!
enable secret 5 $1$Uy4r$xs.hQpilRFTXJNigR3oxe1
!
!
!
no aaa new-model
system mtu routing 1500
ip routing
ip dhcp excluded-address 10.10.10.1 10.10.10.50
ip dhcp excluded-address 192.168.14.1 192.168.14.50
ip dhcp excluded-address 192.168.25.1 192.168.25.50
ip dhcp excluded-address 172.16.12.1 172.16.12.50
ip dhcp excluded-address 172.16.23.1 172.16.23.50
!
ip dhcp pool vlan1
network 10.10.10.0 255.255.255.0
default-router 10.10.10.1
!
ip dhcp pool vlan40
network 192.168.14.0 255.255.255.0
default-router 192.168.14.1
!
ip dhcp pool vlan50
network 192.168.25.0 255.255.255.0
default-router 192.168.25.1
!
ip dhcp pool vlan20
network 172.16.12.0 255.255.255.0
default-router 172.16.12.1
!
ip dhcp pool vlan30
network 172.16.23.0 255.255.255.0
default-router 172.16.23.1
!
!
no ip domain-lookup
!
!
spanning-tree mode pwt
spanning-tree extend system-id
!
!
vlan internal allocation policy ascending
!
!
interface FastEthernet0/1
description VLC1
switchport trunk encapsulation dot1q
switchport mode trunk
!
interface FastEthernet0/2
description PC
switchport mode access
spanning-tree portfast
!
interface FastEthernet0/3
description AP
switchport mode access
spanning-tree portfast
!
interface FastEthernet0/4
switchport mode access
spanning-tree portfast
!
interface FastEthernet0/5
switchport access vlan 20
switchport mode access
spanning-tree portfast
!
interface FastEthernet0/6
switchport access vlan 20
switchport mode access
spanning-tree portfast
!
interface FastEthernet0/7
switchport access vlan 30
switchport mode access
spanning-tree portfast
!
!
interface FastEthernet0/7
switchport access vlan 30
switchport mode access
spanning-tree portfast
!
interface FastEthernet0/8
switchport access vlan 30
switchport mode access
```

```

ip classless
ip http server
ip http secure-server
!
ip sla enable reaction-alerts
!
!
line con 0
line vty 0 4
  password cisco
  login
line vty 5 15
  login
!
end

```

#### SW1 Show Intf Switchport

```

SW1#show int faste0/1 switchport
Name: Fa0/1
Switchport: Enabled
Administrative Mode: trunk
Operational Mode: trunk
Administrative Trunking Encapsulation: dot1q
Operational Trunking Encapsulation: dot1q
Negotiation of Trunking: on
Access Mode VLAN: 1 (default)
Trunking Native Mode VLAN: 1 (default)
Administrative Native VLAN tagging: enabled
Voice VLAN: none
Administrative private-vlan host-association: none
Administrative private-vlan mapping: none
Administrative private-vlan trunk native VLAN: none
Administrative private-vlan trunk Native VLAN tagging: enabled
Administrative private-vlan trunk encapsulation: dot1q
Administrative private-vlan trunk normal VLANs: none
Administrative private-vlan trunk associations: none
Administrative private-vlan trunk mappings: none
Operational private-vlan: none
Trunking VLANs Enabled: ALL
Pruning VLANs Enabled: 2-1001
Capture Mode Disabled
Capture VLANs Allowed: ALL

Protected: false
Unknown unicast blocked: disabled
Unknown multicast blocked: disabled
Appliance trust: none
SW1#

```



#### SW1 Show Interface

```
SW1#sh int fast0/1
FastEthernet0/1 is up, line protocol is up (connected)
Hardware is Fast Ethernet, address is 2c36.f866.a701 (bia 2c36.f866.a701)
Description: WLC1
MTU 1500 bytes, BW 100000 kbit, DLY 100 usec,
  reliability 255/255, txload 1/255, rxload 1/255
Encapsulation ARPA, loopback not set
Keepalive set (10 sec)
Full-duplex, 100Mb/s, media type is 10/100BaseTX
input flow-control is off, output flow-control is unsupported
ARP type: ARPA, ARP Timeout 04:00:00
Last input 00:00:05, output 00:00:00, output hang never
Last clearing of "show interface" counters never
Input queue: 0/75/0/0 (size/max/drops/flushes); Total output drops: 0
Queueing strategy: fifo
Output queue: 0/40 (size/max)
5 minute input rate 0 bits/sec, 0 packets/sec
5 minute output rate 1000 bits/sec, 3 packets/sec
 15220 packets input, 5567664 bytes, 0 no buffer
   Received 9/8 broadcasts (0% multicasts)
    0 runs, 0 giants, 0 throttles
    0 input errors, 0 CRC, 0 frame, 0 overrun, 0 ignored
    0 watchdog, 756 multicast, 0 pause input
    0 input packets with dribble condition detected
108786 packets output, 10214445 bytes, 0 underruns
    0 output errors, 0 collisions, 1 interface resets
    0 babbles, 0 late collision, 0 deferred
    0 lost carrier, 0 no carrier, 0 PAUSE output
    0 output buffer failures, 0 output buffers swapped out

SW1#
```

#### SW1 Show VLAN

```
SW1#show vlan brief
```

VLAN	Name	Status	Ports
1	default	active	fa0/2, fa0/3, fa0/4, Gi0/1 Gi0/2
20	vlan20	active	Fa0/5, Fa0/6
30	vlan30	active	Fa0/7, Fa0/8
40	vlan40	active	Fa0/9, Fa0/10
50	vlan50	active	Fa0/11, Fa0/12
1002	fddi-default	act/unsup	
1003	token-ring-default	act/unsup	
1004	fddinet-default	act/unsup	
1005	trnet-default	act/unsup	

```
SW1#
```



```

WLC1 - Setup
System Name [Cisco_e0:52:04] (31 characters max): WLC1
Enter Administrative User Name (24 characters max): admin
Enter Administrative Password (3 to 24 characters): 
Re-enter Administrative Password : 
Management Interface IP Address: 10.10.10.10
Management Interface Netmask: 255.255.255.0
Management Interface Default Router: 10.10.10.1
Management Interface VLAN Identifier (0 - untagged): 1
Management Interface Port Num (1 to 4): 1
Management Interface DHCP Server IP Address: 10.10.10.1

Virtual Gateway IP Address: 192.0.2.1

Mobility/RF Group Name: Mobility

Network Name (SSID): ExamSSID

Configure DHCP Bridging Mode [yes][no]:
Allow Static IP Addresses [YES][no]:

Configure a RADIUS Server now? [YES][no]: no
Warning! The default WLAN security policy requires a RADIUS server.
Please see documentation for more details.

Enter Country Code list (enter 'help' for a list of countries) [US]:

Enable 802.11b Network [YES][no]: no
Enable 802.11a Network [YES][no]: yes
Enable Auto-RF [YES][no]: yes

Configure a NTP server now? [YES][no]: no
Configure the system time now? [YES][no]: no

Warning! No AP will come up unless the time is set.
Please see documentation for more details.

Configuration correct? If yes, system will save it and reset. [yes][no]: yes

.....reboot info deleted.....

User: admin
Password: 
<Cisco Controller> >ping 10.10.10.1

Send count=3, Receive count=0 from 10.10.10.1

<Cisco Controller> >

```

Which change can correct inband access to the WLC?

- A. change the switch FastEthernet0/1 duplex setting
- B. change the switch FastEthernet0/1 speed setting
- C. enable the switch FastEthernet0/1 spanning-tree port-fast trunk
- D. change the switch FastEthernet0/1 trunk encapsulation
- E. change the WLC management interface to use DHCP
- F. change the WLC management interface VLAN
- G. change the WLC configuration of NTP
- H. browse to WLC via <http://10.10.10.10>

**Answer:** D

#### NEW QUESTION 491

An AP using version 7.0 MR1 broadcasts a Layer 3 CAPWAP discovery message on the local IP subnet. Which step does the AP take next?

- A. Determine if the controller responses include the primary controller.
- B. Determine if the controller responses include the master controller.
- C. Send a discovery request using DHCP option 43.
- D. Send a discovery request using DNS.
- E. Send a discovery request using locally stored information on the AP.
- F. Send a discovery request using OTAP.

**Answer:** E

#### NEW QUESTION 496

What are four features of WPA? (Choose four.)

- A. a larger initialization vector, increased to 48 bits
- B. a message integrity check protocol to prevent forgeries
- C. authenticated key management using 802.1X
- D. support for a key caching mechanism
- E. unicast and broadcast key management

F. requires AES-CCMP

**Answer:** ABCE

**NEW QUESTION 501**

Which key is established using the four-way handshake during the WPA authentication process?

- A. Pairwise Master Key
- B. Pairwise Multiple Key
- C. Pairwise Session Key
- D. Pairwise Transient Key
- E. Pairwise Transverse Key

**Answer:** D

**NEW QUESTION 505**

Which description best describes upfade in a multipath environment?

- A. In this situation, multiple signal paths are not sent at exactly the same time
- B. The receiver receives a positive crest on the primary signal and a negative crest on the secondary signal.
- C. In this situation, the multiple signal paths are distorted and difficult to understand.
- D. In this situation, the multiple signal paths are weaker than they should be because the signals are out of phase with each other.
- E. In this situation, the signal is stronger than it should be because multiple signal paths are received twice at exactly the same time, which results in the multiple signals being in-phase.

**Answer:** D

**NEW QUESTION 508**

Cisco Client Management Frame Protection is running on a mobility group with two controllers. Which two MFP requirements protect the network? (Choose two.)

- A. forces clients to authenticate, using a secure EAP method only
- B. implements the validation of wireless management frames
- C. requires Cisco Compatible Extensions v5
- D. requires the use of a nonbroadcast SSID
- E. requires Cisco Compatible Extensions v4

**Answer:** BC

**NEW QUESTION 510**

Which CAPWAP AP management-access method is available as the default setting?

- A. only the console port
- B. the console port and SSH
- C. the console port, SSH, and HTTPS
- D. SSH only

**Answer:** A

**NEW QUESTION 513**

When Cisco AnyConnect modules are installed on a PC, which module must be installed first?

- A. telemetry
- B. web security
- C. VPN
- D. NAM
- E. DART
- F. posture
- G. CSSC

**Answer:** C

**NEW QUESTION 518**

You are configuring SNMPv1/v2c on a WLC. What should you do for improved security?

- A. Remove the default SNMPv1 community.
- B. Remove the default SNMPv1 and SNMPv2 communities.
- C. Remove the default SNMPv2 community.
- D. Remove the default SNMPv3 users.

**Answer:** B

**NEW QUESTION 520**

The existing Cisco Unified Wireless Controller is running version 7.0 code for both the controllers and the Cisco WCS. A controller has been configured with an appropriate rogue rule condition to report discovered APs to the Cisco WCS.

Which default alarm level is used to display all rogue APs in the Alarm Summary?

- A. Critical
- B. Flash
- C. Urgent
- D. Major
- E. Minor

**Answer:** E

#### NEW QUESTION 524

Which option best describes the limitation of a client that is attempting to manage a WLC while using the client wireless adapter connection to the wireless infrastructure?

- A. Controllers must be managed using only secure protocols (that is, SSH and HTTPS), not nonsecure protocols (that is, HTTP and Telnet).
- B. Read-write access is not available; only read-only access is supported.
- C. Uploads and downloads from the controller are not allowed.
- D. Wireless clients can manage other controllers, but not the same controller and the AP to which the client is associated.

**Answer:** C

#### NEW QUESTION 525

A network engineer is troubleshooting a LAP that is unable to join the controller and receives the message below: LWAPP\_CLIENT\_ERROR\_DEBUG. No more AP manager IP addresses remain  
What does the log indicate?

- A. Two or more LAPs have the same IP address.
- B. An AP manager has the same IP address as another AP manager.
- C. A LAP has the same IP address as the AP manager.
- D. Two or more controllers have the same IP address.

**Answer:** C

#### NEW QUESTION 528

Which three options relate to event-driven RRM? (Choose three.)

- A. any 802.11n AP models
- B. specific AP models
- C. minimum of AP and WLC
- D. minimum of AP, WLC, and WCS
- E. minimum of AP, WLC, WCS, and MSE
- F. configurable in WLC at 802.11b/g/n > RRM > TPC
- G. configurable in WLC at 802.11b/g/n > RRM > DCA

**Answer:** BCG

#### NEW QUESTION 533

Which Cisco AnyConnect module provides wireless connectivity?

- A. telemetry
- B. web security
- C. VPN
- D. NAM
- E. DART
- F. posture
- G. CSSC

**Answer:** D

#### NEW QUESTION 534

When using Cisco WCS version 7.0, which two features are available for the client troubleshooting tool when a Cisco Compatible Extensions v5 wireless client gets connected? (Choose two.)

- A. Request CleanAir reports from the client
- B. Send text messages to the client
- C. Aggregated Cisco ACS authentication client information
- D. Request the client to ping the DHCP-supplied IP gateway
- E. Display a summary of client event history

**Answer:** BD

#### NEW QUESTION 539

What must be done for Cisco WLC and Cisco WCS to communicate?

- A. The IP address and subnet mask of the Cisco WLC must be configured in the Cisco WCS.
- B. The IP address and subnet mask of the Cisco WCS must be configured in the Cisco WLC.
- C. The identity certificate of the Cisco WLC must be added to the Cisco WCS.
- D. The Cisco WLC and Cisco WCS must exchange identity certificates.



Answer: A

#### NEW QUESTION 544

Drag from the left the characteristics that are associated with the specific controller-based AP deployment mode and drop them in the appropriate category on the right.

can be used for site surveys		AP Sniffer Mode
no client connectivity		Target
seeks rouge APs and clients		Target
requires external server to capture data		AP Monitor Mode
works with third-party products		Target
data services		Target
		AP Local Mode
		Target
		Target

Answer:

Explanation:

Drag from the left the characteristics that are associated with the specific controller-based AP deployment mode and drop them in the appropriate category on the right.

can be used for site surveys		AP Sniffer Mode
no client connectivity		requires external server to capture data
seeks rouge APs and clients		works with third-party products
requires external server to capture data		AP Monitor Mode
works with third-party products		no client connectivity
data services		seeks rouge APs and clients
		AP Local Mode
		can be used for site surveys
		data services

#### NEW QUESTION 548

Which three WLC debug commands are appropriate to troubleshoot a wireless client that is associated to an AP? (Choose three.)

- A. debug capwap
- B. debug mac addr
- C. debug dot11
- D. debug dhcp
- E. debug ap
- F. debug dtls

Answer: BCD

Explanation: Topic 3, Exam Bank C (NEW)

#### NEW QUESTION 552

Which description of the procedure for a lightweight AP to successfully establish a connection to a controller is true?

- A. The AP sends its certificate to the RADIUS serve
- B. The AP then authenticates the controller certificate as valid.
- C. The AP sends its certificate to the RADIUS serve
- D. The AP then authenticates the RADIUS certificate as valid.
- E. The AP authenticates the received Cisco WLC certificate as vali
- F. The AP then sends its certificate to the controller.

- G. The AP sends its certificate to the controller
- H. The AP then authenticates the received Cisco WLC certificate as valid.

**Answer:** D

#### NEW QUESTION 554

An engineer wants to setup WPA2 Enterprise using EAP-TLS and a remote RADIUS server. What device(s) would the engineer specify the EAP type on?

- A. the supplicant and authentication server
- B. the supplicant and authenticator
- C. the authenticator and authentication server
- D. the supplicant only
- E. the authentication server only

**Answer:** A

#### NEW QUESTION 559

An engineer is gathering information for a wireless survey of a hospital. What two pieces of information must be collected for an active survey to access the outcome best suited for the facility? (Choose two.)

- A. type of devices present on the new wireless network
- B. utilization of Location Services or voice applications
- C. existing Network Switch types and model numbers
- D. use of wireless for secure records
- E. spectrum analysis to locate all the computer work stations

**Answer:** AB

#### NEW QUESTION 564

An engineer removed an antenna that was providing 3 dB of gain and replaced it with one that provides 16 dB of gain. How has the power level changed?

- A. 20 times stronger
- B. 16 times stronger
- C. 20 times weaker
- D. 16 times weaker

**Answer:** A

#### NEW QUESTION 566

An access point named Cisco AP is configured on a wireless controller. Which command must you use in the controller to view access point system messages?

- A. show ap eventlog Cisco\_AP
- B. debug ap eventlog Cisco\_AP
- C. config logging Cisco\_AP
- D. show logging

**Answer:** A

#### NEW QUESTION 571

Which signal does Cisco recommend using at the cell edge when performing a site survey for VoWLAN applications?

- A. -56 dBm
- B. -67 dBm
- C. -78 dBm
- D. -85 dBm

**Answer:** B

#### NEW QUESTION 574

What protocol overcomes the weaknesses of LEAP?

- A. EAP-TLS
- B. PEAP
- C. EAP-FAST
- D. EAP-TTLS

**Answer:** C

#### NEW QUESTION 577

What is the numerical value in dBm that corresponds to a power level of 50 mW?

- A. 16
- B. 17
- C. 18
- D. 20

**Answer:** D

**NEW QUESTION 582**

When reading a radiation pattern for an antenna, at which two drops in signal and power is the beamwidth measured? (Choose two.)

- A. 3 dB
- B. 6 dB
- C. 9 dB
- D. 10 dB
- E. 1/2 power
- F. 1/4 power
- G. 1/8 power
- H. 1/10 power

**Answer:** AE

**NEW QUESTION 587**

What authentication method requires a certificate on both the client and authentication server?

- A. PEAP
- B. EAP-TLS
- C. EAP-FAST
- D. WPA-PSK
- E. WEP
- F. EAP-TTLS

**Answer:** B

**NEW QUESTION 591**

Which two elements are needed to create a secure SSID on an autonomous AP? (Choose two.)

- A. SSID name
- B. WLC MAC address
- C. PSK
- D. LDAP server
- E. WLC IP

**Answer:** AC

**NEW QUESTION 594**

Drag the propagation behavior on the left to the corresponding environment on the right.

Drag the propagation behavior on the left to the corresponding environment on the right.

Absorption	Distant Point to Point Line of Sight
Diffraction	Distant Point to Point with Obstacles
Scattering	Metal Cabinets in Dense Office
Reflection	Pass Through a Wooden Wall
Free Space Path Loss	Pass Through Rain
Multipath	Point to Point Over Body of Water

**Answer:**

**Explanation:**



Drag the propagation behavior on the left to the corresponding environment on the right.

Absorption	Free Space Path Loss
Diffraction	Diffraction
Scattering	Multipath
Reflection	Absorption
Free Space Path Loss	Scattering
Multipath	Reflection

#### NEW QUESTION 599

What encryption standards describe WPA and WPA2?

- A. WPA mandates AES with TKIP optional, WPA2 mandates TKIP
- B. WPA mandates TKIP with AES optional, WPA2 mandates AES
- C. WPA mandates CKIP, WPA2 mandates AES
- D. WPA mandates CKIP with AES optimal, WPA2 mandates AES

**Answer:** B

#### NEW QUESTION 602

An engineer recently removed a WLC from a WCS, but the APs associated to the WLC are still showing on the WCS. What is a reason for this?

- A. The associated APs must be removed manually.
- B. The APs must be removed from the WCS map.
- C. The hold-down timer must expire before the APs will be removed.
- D. The APs must be audited.

**Answer:** A

#### NEW QUESTION 605

Which two options are requirements of real-time applications? (Choose two.)

- A. voice
- B. high packet loss
- C. web browsing
- D. low jitter
- E. low latency

**Answer:** DE

#### NEW QUESTION 609

Which option is the maximum power setting for an access point in any regulatory domain on a Cisco Wireless LAN Controller?

- A. 5
- B. 8
- C. 1
- D. 10

**Answer:** C

#### NEW QUESTION 614

Refer to the exhibit.

### Data Rates\*\*

6 Mbps	Disabled ↕
9 Mbps	Supported ↕
12 Mbps	Mandatory ↕
18 Mbps	Supported ↕
24 Mbps	Mandatory ↕
36 Mbps	Supported ↕
48 Mbps	Mandatory ↕
54 Mbps	Supported ↕

Given the WLC data rate configuration, a control frame is sent at which speed?

- A. 9 Mbps
- B. 12 Mbps
- C. 48 Mbps
- D. 54 Mbps

**Answer:** D

#### NEW QUESTION 617

On which two OSI layers does the IEEE focus in 802 standardization? (Choose two.)

- A. physical
- B. data-link
- C. network
- D. transport
- E. session
- F. presentation
- G. application

**Answer:** AB

#### NEW QUESTION 620

What is the channel width of an 802.11b wireless channel?

- A. 10 MHz
- B. 20 MHz
- C. 5 MHz
- D. 22 MHz

**Answer:** D

#### NEW QUESTION 622

An engineer has been asked to disable all OFDM rates in the wireless environment. What three rates should be disabled to fulfill this requirement? (Choose three.)

- A. 2
- B. 5.5
- C. 6
- D. 9
- E. 11
- F. 12
- G. 18

**Answer:** ABE

#### NEW QUESTION 624

During the deployment of a wireless network for data and location services, an engineer is to fine-tune the location services. What is this type of survey called?

- A. passive fingerprinting
- B. passive calibrating

- C. active fingerprinting
- D. active calibrating

**Answer:** A

**NEW QUESTION 628**

What AnyConnect module can be used to provide a detailed scan list of the Wi-Fi environment?

- A. DART
- B. Telemetry
- C. Web Security
- D. NAM
- E. Posture

**Answer:** A

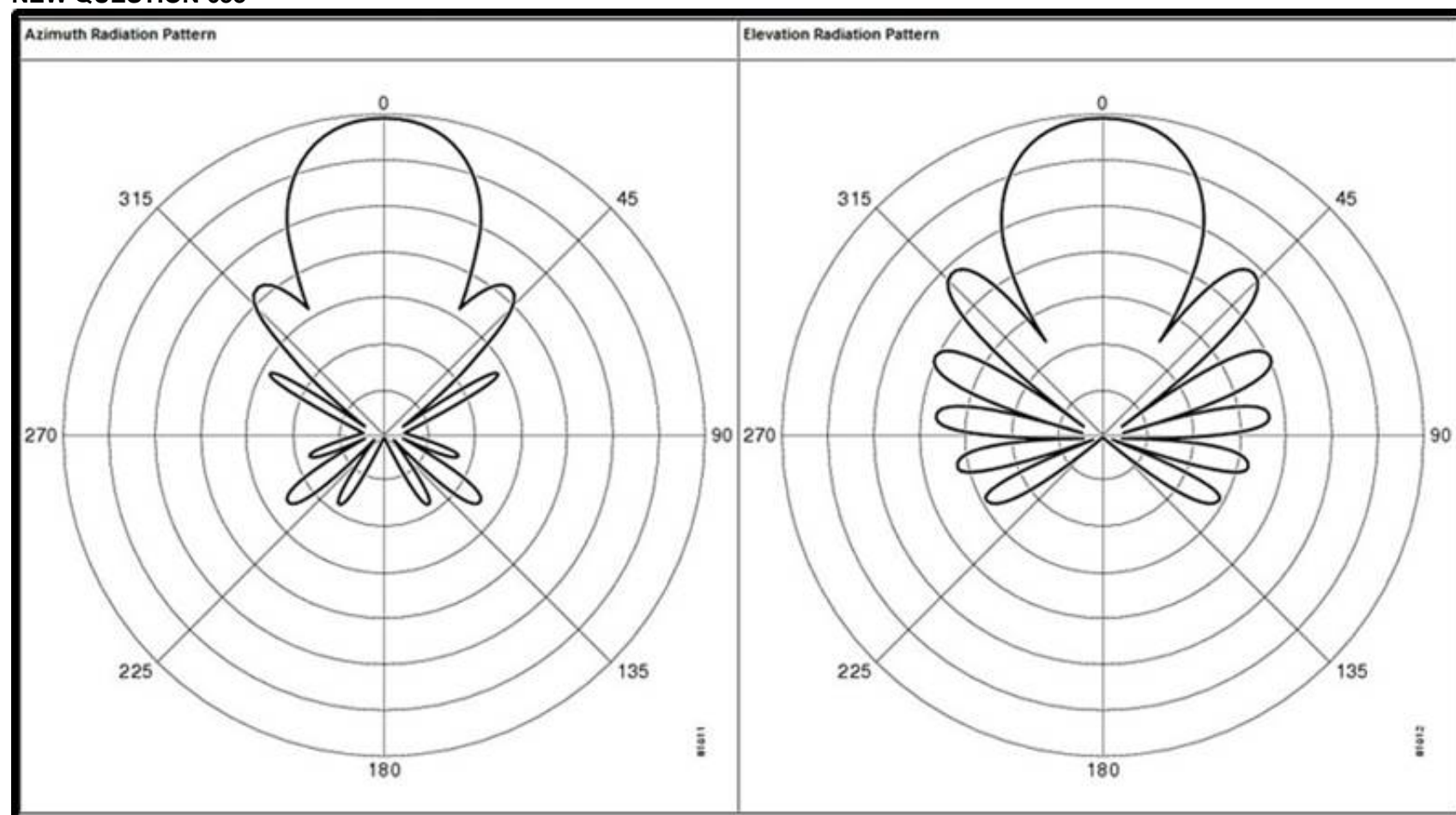
**NEW QUESTION 630**

A company wants to implement wireless in all 20 remote office locations and wants centralized management of these remote sites. What application would meet the requirements?

- A. Control And Provisioning of Wireless Access Points
- B. Cisco point- to multi-point wireless bridging
- C. Cisco autonomous access points in FlexConnect mode
- D. Split MAC architecture utilizing LWAPP and WLC

**Answer:** D

**NEW QUESTION 633**



Refer to the exhibit. A wireless engineer has an antenna with the radiation pattern shown in the exhibit. What type of antenna is it?

- A. Patch
- B. Yagi
- C. Parabolic dish
- D. Dipole
- E. Internal omni

**Answer:** B

**NEW QUESTION 636**

A user is unable to access a lobby administration web page when using a wireless laptop; however, the user can access the page with a wired desktop computer. Which management feature needs to be enabled on the WLC to allow laptop access?

- A. management via wireless
- B. dynamic interface management
- C. HTTP
- D. HTTPS
- E. TACACS
- F. SSH

**Answer:** A



**NEW QUESTION 640**

An engineer is using WCS' client troubleshooting tool to investigate issues with a client device. What is the longest log capture they will be able to take?

- A. 2 minutes
- B. 5 minutes
- C. 10 minutes
- D. 30 minutes

**Answer:** C

**NEW QUESTION 644**

Which join process is performed when a Windows client initially attempts to connect to a wireless network?

- A. The machine transmits probes that contain an ad hoc advertisement request for SSID name
- B. The machine transmits beacon requests that contain a null or empty SSID name
- C. The machine transmits probe requests that contain a null or empty SSID name
- D. The machine transmits beacons that contain an ad hoc advertisement request for SSID name

**Answer:** C

**NEW QUESTION 646**

What tool can be used to increase accuracy of WCS heat maps?

- A. Map Editor
- B. Planning Tool
- C. CleanAir
- D. Cisco Spectrum Expert

**Answer:** A

**NEW QUESTION 649**

A customer wants to identify the amount of BSSID traffic that is propagating through its facility from neighboring networks. Which tool can be used to identify BSSID traffic in the facility?

- A. Wi-Fi scanner
- B. wireless attenuator
- C. RF jammer
- D. Cisco Identity Services Engine

**Answer:** A

**NEW QUESTION 650**

Which option describes the major capability of mobility groups?

- A. allowing for seamless client roaming and WLC redundancy
- B. helping to discover rogue APs
- C. allowing for seamless client roaming only
- D. helping to restrict clients to a specific subnet

**Answer:** D

**NEW QUESTION 651**

When calculating the link budget for a wireless point-to-point bridge, the engineer notices that one antenna has its gain marked as 2.85 dBd. With a 20-mW access point and 3-dBi loss for the cable, what is the approximate EIRP?

- A. 15 dBm
- B. 18 dBm
- C. 22 dBm
- D. 25 dBm

**Answer:** A

**NEW QUESTION 654**

Wireless clients are experiencing loss of connectivity while roaming between controllers. To fix this, what configuration should be the same on all controllers within the mobility group?

- A. management interface IP address
- B. IP address of the virtual interface
- C. AP Manager interface IP address
- D. IP address of the Service Port

**Answer:** B

**NEW QUESTION 655**

What two methods of authentication are available for Local EAP?

- A. LDAP and RADIUS
- B. Local and RADIUS
- C. Local Only
- D. LDAP and Local

**Answer:** D

**NEW QUESTION 657**

What three configuration options can be executed by navigating to the WCS Administration > AAA menu? (Choose three.)

- A. Add a Lobby Ambassador guest
- B. Add a LDAP server
- C. Add an administrative user
- D. Add a MAC address list filter
- E. Add a RADIUS server
- F. Add a TACAS+ server

**Answer:** CEF

**NEW QUESTION 658**

What two AP configurations will show RF prediction on maps in WCS? (Choose two.)

- A. Lightweight APs with internal antennas
- B. Lightweight APs with external Cisco antennas
- C. Lightweight APs with external 3rd Party antennas
- D. Autonomous APs with internal antennas
- E. Autonomous APs with external Cisco antennas
- F. Autonomous APs with external 3rd Party antennas

**Answer:** AB

**NEW QUESTION 659**

What two capabilities would be present on a wireless client device that supports CCXv3? (Choose two.)

- A. WPA2
- B. 802.1x
- C. PEAP-MSCHAP
- D. NAC
- E. MFP
- F. EAP-TLS

**Answer:** AB

**NEW QUESTION 660**

Which three criteria are used when choosing the type of external antenna to connect to an indoor AP? (Choose three.)

- A. potential interferers
- B. AP radio frequency
- C. PoE draw
- D. signal coverage area
- E. antenna manufacturer
- F. number of SSIDs

**Answer:** ABD

**NEW QUESTION 663**

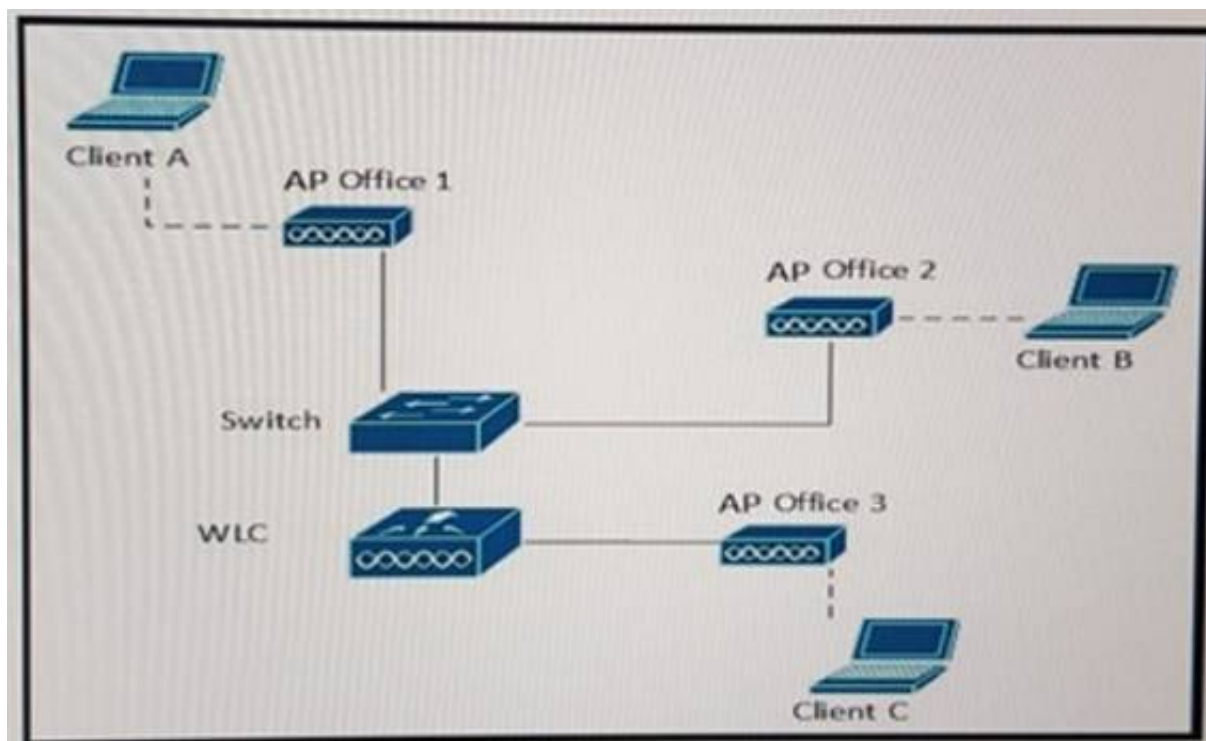
An engineer is troubleshooting why wireless clients have not been able to connect to the network. Where would an engineer verify the total number of excluded clients in the last day?

- A. Security > Miscellaneous
- B. Security > Rogues
- C. Alarms
- D. Events
- E. Clients > Troubleshoot
- F. Access Points

**Answer:** A

**NEW QUESTION 667**

Refer to the exhibit.



A Company added a Cisco Wireless LAN Controller to the network and converted all Aps to lightweight Aps. What is the hop order of the data packets when travelling from Client A to Client B, if the Aps are in local mode?

- A. AP Office 1, Switch, WLC, Switch, AP Office 2
- B. AP Office 1, WLC, AP Office 2
- C. AP Office 1, WLC, Switch, AP Office 2
- D. AP Office 1, Switch, WLC, AP Office 2

**Answer:** B

#### NEW QUESTION 671

A customer wants to use Cisco Prime Infrastructure to manage its current wireless infrastructure. The customer has 4 wireless controllers and 97 wireless access points. What is the minimum amount of licensing that is required on Cisco Prime Infrastructure to support the desired wireless infrastructure?

- A. 4 Lifecycle licenses and 125 Base licenses
- B. 100 Lifecycle licenses and 1 Base license
- C. 100 Lifecycle licenses and 4 Base licenses
- D. 125 Lifecycle licenses and 1 Base license

**Answer:** B

#### NEW QUESTION 675

Due to the terrain, a deployment requires a point-to-point wireless bridge to allow for network connectivity to a remote building. What 5GHz band would permitted to use the highest power in the U.S.?

- A. U-NII-3
- B. U-NII-2 Extended
- C. U-NII-2
- D. U-NII-1

**Answer:** A

#### NEW QUESTION 676

What WCS report displays hardware type, software distribution, and CDP information?

- A. Device > AP Profile Status
- B. Device > AP Summary
- C. Network Summary > Executive Summary
- D. Device > Inventory
- E. Network Summary > 802.11n Summary

**Answer:** D

#### NEW QUESTION 680

Which three primary components describe TKIP? (Choose three.)

- A. broadcast key rotation
- B. per-packet key hashing
- C. dynamic WEP
- D. message integrity check
- E. symmetric key cipher
- F. WPA2 enterprise mode

**Answer:** ABD

#### NEW QUESTION 684



Which two services require an RToWLAN design? (Choose two.)

- A. wVoIP
- B. video conferencing
- C. multicast video
- D. Telnet
- E. SSH

**Answer:** AB

#### NEW QUESTION 688

Which software application tool can be used for verification of signal strength?

- A. inSSIDer
- B. LANDnav
- C. WLC-EAP
- D. ICMP

**Answer:** B

#### NEW QUESTION 690

Which two access point modes support infrastructure MFP? (Choose two.)

- A. sniffer
- B. rogue detector
- C. bridge
- D. local
- E. FlexConnect

**Answer:** DE

#### NEW QUESTION 691

Which signal strength reading indicates that the engineer is closest to the access point?

- A. -43 dBm
- B. -67 dBm
- C. -87 dBm
- D. -100 dBm

**Answer:** A

#### NEW QUESTION 692

What three components are required to configure Mobility Group Members between Wireless LAN Controllers? (Choose three.)

- A. Controller Management IP Address
- B. Controller Virtual IP Address
- C. Controller Multicast IP Address
- D. Controller MAC Address
- E. Controller Mobility Group Name
- F. Controller AP Management IP Address
- G. Controller RFGROUP Name

**Answer:** ADE

#### NEW QUESTION 694

From which type of diagnostic equipment must you request screenshots and recordings of possible sources of interference when you have a survey vendor perform a site survey?

- A. data link circuit identifier
- B. access point
- C. virtual path virtual circuit
- D. spectrum analysis software

**Answer:** D

#### NEW QUESTION 699

Which two statements are characteristics of 2.4 GHz frequency band in a wireless environment? (Choose two.)

- A. 14 available channels.
- B. FCC allows channels 1 through 11.
- C. FCC allow channels 1 through 14.
- D. FCC allow channels 1 through 15.
- E. 11 available channels.

**Answer:** AB

**NEW QUESTION 701**

An AP using version 8.0 broadcasts a Layer 3 CAPWAP discovery message on the local IP subnet. Which step does the AP take next?

- A. Send a discovery request using locally stored information on the AP.
- B. Determine if the controller responses include the primary controller.
- C. Send a discovery request using DNS.
- D. Send a discovery request using DHCP option 43.

**Answer:** A

**NEW QUESTION 704**

When using OFDM, how many subcarriers are devoted to carrying data?

- A. 4
- B. 12
- C. 44
- D. 48
- E. 52

**Answer:** D

**NEW QUESTION 705**

A wireless engineer is designing a network for the London branch of a company. Which 5-GHz band allows the branch to use the highest EIRP?

- A. 2.4-GHz ISM
- B. UNII-1
- C. UNII-2
- D. UNII-2 Extended

**Answer:** D

**NEW QUESTION 707**

Top 5 APs				
AP Name	Map Location	a/n Clients	b/g/n Clients	Total
<a href="#">1252-1</a>	<a href="#">Campus1 &gt; Building1 &gt; Floor1</a>	2	0	2
<a href="#">1252-2</a>	<a href="#">Campus1 &gt; Building1 &gt; Floor1</a>	0	0	0
<a href="#">1250-3</a>	Unassigned	0	0	0
<a href="#">1250-4</a>	Unassigned	0	0	0

Refer to the exhibit. In WCS, what Monitor submenu would provide the table shown?

- A. Clients
- B. Access Points
- C. Controllers
- D. Security
- E. Alarms

**Answer:** A

**NEW QUESTION 711**

Which is recommended minimum SNR for a data cell with a data rate of 54 Mb/s?

- A. 10
- B. 25
- C. 4
- D. 6

**Answer:** B

**NEW QUESTION 712**

What are three functions of RRM? (Choose three.)

- A. dynamic channel assignment
- B. detection and avoidance of interference
- C. dynamic antenna polarization
- D. dynamic transmit power control
- E. dynamic controller selection
- F. detection and avoidance of AP client load

**Answer:** ABD

**NEW QUESTION 717**

An engineer is deploying an autonomous AP, and the customer requests that all IEEE 802.11b data rates be disabled on the AP. Which interface must be amended to disable the 802.11b data rates on a Cisco Aironet 1252 Series Access Point?

- A. Dot11radio0
- B. Dot11radio1
- C. GigabitEthernet0
- D. BVI1

**Answer:** A

**NEW QUESTION 720**

Which way to upgrade the image on RexConnect access points is the most efficient?

- A. Unified access points operating in FlexConnect mode download the new software image from the controller designated as "masters"
- B. Unified access points operating in FlexConnect mode download the new software image from the controller designated as "secondary".
- C. Unified access points operating in RexConnect mode download the new software image from access points designated as "slaves"
- D. Unified access points operating in FlexConnect mode download the new software image from access points designated as "masters"

**Answer:** D

**NEW QUESTION 722**

An engineer is connecting a Cisco 5508 Wireless Controller that must connect to an out-of-band management network for management only. Which two options should be used for the port on the WLC and the cable type? (Choose two.)

- A. service port
- B. redundancy port
- C. console port
- D. distribution system port
- E. straight through cable
- F. crossover cable
- G. console cable

**Answer:** AE

**NEW QUESTION 725**

When using DHCP option 43, the discovery option supports vendor specific identifiers in order to obtain what IP address?

- A. core router's gateway
- B. closest distribution switch
- C. local WLAN controller
- D. local Radius Server

**Answer:** C

**NEW QUESTION 730**

Which command is used to upgrade the operational code when upgrading a Cisco IOS-XE WLC?

- A. software install source switch
- B. software install file path:code.bin
- C. software tftp://code.bin flash:/code.bin
- D. software expand running

**Answer:** B

**NEW QUESTION 731**

A network engineer is upgrading the WLC image through the GUI for maintenance. What three transfer methods are available? (Choose three.)

- A. FTP
- B. SNMP
- C. TFTP
- D. SFTP
- E. HTTP
- F. SMB
- G. HTTPS
- H. SCP

**Answer:** ACD

**NEW QUESTION 736**

Which tool can be used for active and passive site surveys?

- A. Fluke Networks AirMagnet Planner
- B. Ekahau Site Survey
- C. Fluke Networks AirMagnet Survey Pro
- D. Cisco Predictive RF Planner



**Answer:** C

**NEW QUESTION 740**

Periodically, Radio Resource Management can reconfigure the wireless network for best efficiency. Which two functions can be changed to meet network demands? (Choose two.)

- A. Remove clients that use too much bandwidth.
- B. Transmit Power Control
- C. Disable AP radios that do not provide adequate coverage.
- D. Change channels to non-country channels if needed
- E. Radio Monitoring for noise and interference.

**Answer:** BE

**NEW QUESTION 742**

A customer is using the wireless controller GUI to back up the Cisco 5508 Wireless Controller configuration data. The controller is running IOS version 7.6 release. Which three transfer protocols are valid for conducting this transfer from the WLC? (Choose three.)

- A. FTP
- B. TFTP
- C. SFTP
- D. HTTP
- E. SCP
- F. Xmodem

**Answer:** ABC

**NEW QUESTION 744**

A customer who recently implemented Mac OS X Yosemite finds that the laptops have been autonegotiating the authentication protocols when performing RADIUS authentication to Cisco Identity Services Engine. What must the administrator do to statically set the correct settings for the Mac clients?

- A. Create a new network profile with the desired settings, using either the Apple iPhone Configuration Utility or Profile Manager and upload to all Mac OS X machines.
- B. Set the authentication configuration to use the desired settings under the System Preferences > Network> Advanced menu.
- C. Delete the SSID and have the users go through the authentication process again, this time selecting the settings during authentication.
- D. Select the SSID and change the settings to the desired configuration under Control Panel > Network > Wireless Networks and export to other machines.

**Answer:** A

**NEW QUESTION 747**

End-to-end encryption is a management requirement for a wireless deployment. When importing the WLCs into Cisco Prime infrastructure 2.0, Which two options represent the version of SNMP and remote access parameter that fulfill this requirement? (Choose two)

- A. HTTPS
- B. SNMPv3
- C. SNMPv2c
- D. SNMPv1
- E. SSH

**Answer:** AD

**NEW QUESTION 752**

In version 8.0 code for CUWN, what interface can be assigned an IPv6 address?

- A. management
- B. dynamic
- C. AP-manager
- D. virtual
- E. service-port

**Answer:** A

**NEW QUESTION 755**

What is a function of the service port on a WLC?

- A. controls mobility manager communications on all physical ports
- B. controls out-of-band management for system recovery and maintenance
- C. controls communication with Cisco Aps
- D. controls communications for all physical ports

**Answer:** B

**NEW QUESTION 758**

A client is deploying lightweight APs. Those with LAN connections to the controller would be considered what mode of deployment, while access points deployed across a higher latency connection are deployed in what mode?

- A. HREAP; Bridge
- B. Local; Bridge
- C. HREAP; Flex Connect
- D. Local; Flex Connect

**Answer:** D

**NEW QUESTION 763**

When roaming between APs in an ESS, which value changes?

- A. BSSID
- B. SSID
- C. VLAN
- D. IP range

**Answer:** A

**NEW QUESTION 767**

An autonomous AP maps the SSID to what on the wired network?

- A. BSSID
- B. VLAN
- C. QoS tag
- D. SG tag

**Answer:** B

**NEW QUESTION 772**

Refer to the exhibit.

All APs > Details for 27021-A

General | Credentials | Interfaces | High Availability | Inventory | Advanced

General

AP Name: 27021-A

Location:

AP MAC Address: 7c:0e:ce:f5:24:dc

Base Radio MAC: 80:17:06:08:94:f0

Admin Status: Enable

AP Mode: local

AP Sub Mode: None

Operational Status: REG

Port Number: 1

Venue Group: Unspecified

Venue Type: Unspecified

Add New Venue

Language: English

Network Spectrum Interface Key: B564808B12EBA80EF02FCC4494243D5C

GPS Location: No

GPS Present: No

Hardware Reset

Perform a hardware reset on this AP

Reset AP Now

Set to Factory Defaults

Clear configuration on this AP and reset it to factory defaults

Clear All Config

Clear Config Except Static IP

Versions

Primary Software Version: 8.3.121.0

Backup Software Version: 0.0.0.0

Predownload Status: None

Predownload Version: None

Predownload Next Retry Time: NA

Predownload Retry Count: NA

Boot Version: 15.2.4.5

IOS Version: 15.3(3)IOS1

Mini IOS Version: 7.6.100.0

IP Config

CAPWAP Preferred Mode: IPv4 (Global Config)

DHCP IPv4 Address: 192.168.156.105

Static IP (IPv4/IPv6):

Time Statistics

UP Time: 30 d, 23 h 05 m 09 s

Controller Associated Time: 35 d, 22 h 54 m 24 s

Controller Association Latency: 0 d, 00 h 05 m 52 s

When the Admin Status of an access point is enabled, what does this mean in radios?

- A. 802.11a/n/ac is DOWN
- B. but the 802.11 b/g/n radio is UP by default.
- C. 802.11a/rVac is U
- D. but the 802.11 b/g/n radio is DOWN by default.
- E. 802.11a/n/ac and 802.11 b/g/n radios can be UP or DOWN.
- F. 802.11a/n/ac and 802.11 b/g/n radios must be UP.

**Answer:** A

#### NEW QUESTION 777

Which three operations does the lightweight access point manage in a split-MAC design? (Choose three.)

- A. association and re-association
- B. frame exchange and client handshake
- C. RF and mobility management
- D. beacons and probe responses
- E. MAC layer data encryption and decryption
- F. authentication and key management

**Answer:** BDE

#### NEW QUESTION 778

Which three access point modes service clients? (Choose three.)

- A. FlexConnect
- B. bridge
- C. sniffer
- D. local
- E. monitor
- F. SE-Connect

**Answer:** ABD

#### NEW QUESTION 782

A company has all IEEE 802.11a/802.11g devices; however, its network administrator recommends installing 802.11n access points to provide greater performance. Which feature on an 802.11n AP provides better performance to legacy devices?

- A. channel aggregation
- B. transmit beam-forming
- C. maximal-ratio combining
- D. spatial multiplexing

**Answer:** B

#### NEW QUESTION 785

When configuring a WLC to support multiple WLANs, which type of interface must be created?

- A. dynamic
- B. ap-manager
- C. virtual
- D. management

**Answer:** A

#### NEW QUESTION 790

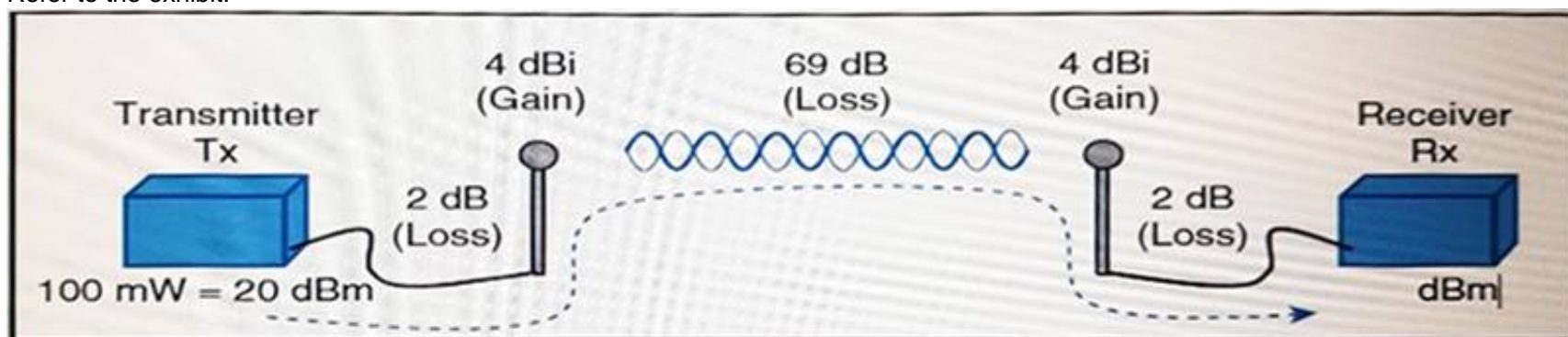
After the initial deployment at a customer site, the master controller mode function was left enabled on the secondary controller after access points were primed and statically configured with primary, secondary, and tertiary controller failover. The guest anchor controller was also deployed in the architecture. The access points reboot after a power failure. Which controller will the access points associate to when the reboot process is completed?

- A. primary controller
- B. secondary controller
- C. tertiary controller
- D. guest anchor controller

**Answer:** B

#### NEW QUESTION 794

Refer to the exhibit.



Which option is the received signal power level at the receiver?

- A. -46
- B. -49.28
- C. -45
- D. -40.72

**Answer:** C



**NEW QUESTION 795**

A customer is reviewing Cisco Prime Infrastructure to identify malicious rogue access points that are operating within the customer environment. Which dashboard in Cisco Prime Infrastructure displays this information by default?

- A. Context Aware
- B. CleanAir
- C. Security
- D. General

**Answer:** C

**NEW QUESTION 796**

A customer is expecting wireless traffic in excess of 20 Gbps to traverse a single controller. Which wireless controller model fulfills this requirement?

- A. Cisco 5760 Wireless Controller
- B. Cisco Wireless Services Module 2
- C. Cisco 2504 Wireless Controller
- D. Cisco 8510 Wireless Controller
- E. Cisco 5500 Wireless Controller
- F. Cisco Virtual Wireless Controller

**Answer:** A

**NEW QUESTION 799**

Which three statements must be true for Cisco WLC to support roaming? (Choose three.)

- A. Controllers are in the same mobility group.
- B. Controllers operate in different LWAPP modes.
- C. ACLs are the same.
- D. Virtual interface IP addresses are the same.
- E. Controllers have different versions of code.
- F. Controllers need to have the same hostname.

**Answer:** ADF

**NEW QUESTION 800**

A wireless client with ID28720486 is trying to connect to wireless network. What must be configured on the client side to connect to an infrastructure WLAN that broadcasts its SSID and uses WPA2 PSK?

- A. PSK
- B. type of EAP protocol
- C. username and password
- D. channel number

**Answer:** A

**NEW QUESTION 804**

A customer is concerned about ease of wireless management. Which deployment model requires the highest administrative overhead to deploy and manage?

- A. autonomous
- B. local mode
- C. cloud
- D. converged

**Answer:** A

**NEW QUESTION 806**

Which two are considered as characteristics of the original 802.11 protocol? (Choose two.)

- A. Defined DSSS and FHSS as possible methods for modulation.
- B. Designed to operate in the 5 GHz ISM frequency spectrum.
- C. The most common deployment is three non-overlapping channels that are 20 MHz wide.
- D. Defined FHSS and OFDM as possible methods for modulation.

**Answer:** AC

**NEW QUESTION 809**

A customer is deploying the Cisco 5508 Wireless Controller in a unified wireless solution. Which command must be configured on the neighboring switch port if the management interface on the WLC is configured to send untagged traffic to ensure that management traffic utilizes VLAN 10?

- A. switchport trunk native vlan 10
- B. spanning-tree portfast
- C. switchport trunk allowed vlan 10
- D. channel-group 10

**Answer:**

A

**NEW QUESTION 810**

A customer suspects that a continuous transmitter is causing instability with the wireless clients that are operating on the 2.4-GHz wireless band. The customer is trying to determine which channel is being impacted by this transmitter. Which dashboard on the WLC GUI identifies this information?

- A. 802.11a/n - Air Quality Reports
- B. Clean Air - Worst Air Quality Report
- C. 802.11b/g/n - Interference Devices
- D. Statistics - Mobility Statistics

**Answer: C**

**NEW QUESTION 812**

Which two characteristics are components of mobility anchoring? (Choose two.)

- A. It is enabled as a global setting.
- B. Only one mobility anchor is allowed per WLAN.
- C. It is enabled on a per WLAN basis.
- D. Client traffic is tunneled to predefined WLC(s).
- E. It acts as master controller for a mobility group.

**Answer: CD**

**NEW QUESTION 817**

.....

## Thank You for Trying Our Product

\* 100% Pass or Money Back

All our products come with a 90-day Money Back Guarantee.

\* One year free update

You can enjoy free update one year. 24x7 online support.

\* Trusted by Millions

We currently serve more than 30,000,000 customers.

\* Shop Securely

All transactions are protected by VeriSign!

**100% Pass Your 200-355 Exam with Our Prep Materials Via below:**

<https://www.certleader.com/200-355-dumps.html>