

Microsoft

Exam Questions 70-341

Core Solutions of Microsoft Exchange Server 2013



NEW QUESTION 1

DRAG DROP

You are evaluating the implementation of a second Edge Transport server named EDGE2 in the Amsterdam office. You need to recommend which tasks must be performed to ensure that email messages can be sent by the organization if a single Edge Transport server fails. Which three actions should you include in the recommendation? To answer, move the three appropriate actions from the list of actions to the answer area and arrange them in the correct order.

Actions	Answer Area
From EDGE2, run the exportedgeconfig.ps1 script.	
Update the Send connectors on both Edge Transport servers.	
From EDGE1, run the exportedgeconfig.ps1 script.	
Create a new Edge Subscription to EDGE2.	
From EDGE2, run the importedgeconfig.ps1 script.	
Create a new Edge Subscription to EDGE1.	
From EDGE1, run the importedgeconfig.ps1 script.	

Answer:

Explanation: From EDGE1, run the exportedgeconfig.ps1 script. From EDGE2, run the importedgeconfig.ps1 script. Create a new Edge Subscription to EDGE2.

NEW QUESTION 2

An administrator recommends removing EDGE1 from the implementation plan and adding a new Client Access server named CAS-8 instead. You need to identify which anti-spam feature will NOT be available on CAS-8. Which anti-spam feature should you identify?

- A. Connection Filtering
- B. Sender Filtering
- C. Content Filtering
- D. Recipient Filtering

Answer: A

NEW QUESTION 3

You need to recommend which recovery solution will restore access to all of the mailboxes in AccountingDB if EX1 fails. The solution must restore access to email messages as quickly as possible. Which recovery solution should you recommend?

- A. On EX2, create a new mailbox databas
- B. Restore the database files, and then mount the databas
- C. Run the New-MailboxRestoreRequest cmdlet for all of the mailboxes in the database.
- D. On EX2, create a new mailbox databas
- E. Restore the database files, and then mount the databas
- F. Run the Set-Mailbox cmdlet for all of the mailboxes in the database.
- G. On replacement hardware, run setup /mode:recoverserve
- H. Restore the database files, and then mount the databas
- I. Run the Set-Mailbox cmdlet.
- J. On replacement hardware, run setup /mode:recoverserve
- K. Restore the database files, and then mount the databas
- L. Run the New-MailboxRestoreRequest cmdlet for all of the mailboxes in the database.

Answer: A

NEW QUESTION 4

DRAG DROP

You need to recommend to a solution to deploy the Outlook app. Which three actions should you recommend performing in sequence?

Answer Area

Run the **\$Data=Get-Content -Path "C:\Apps\SocialMediaApp.xml" -Encoding Byte -ReadCount 0** command.

Run the **New-App -FileData \$Data** command.

Run the **Set-App** cmdlet.

Run the **Get-App** cmdlet.

Install the Outlook app.

Answer:

Explanation: Install the Outlook app.

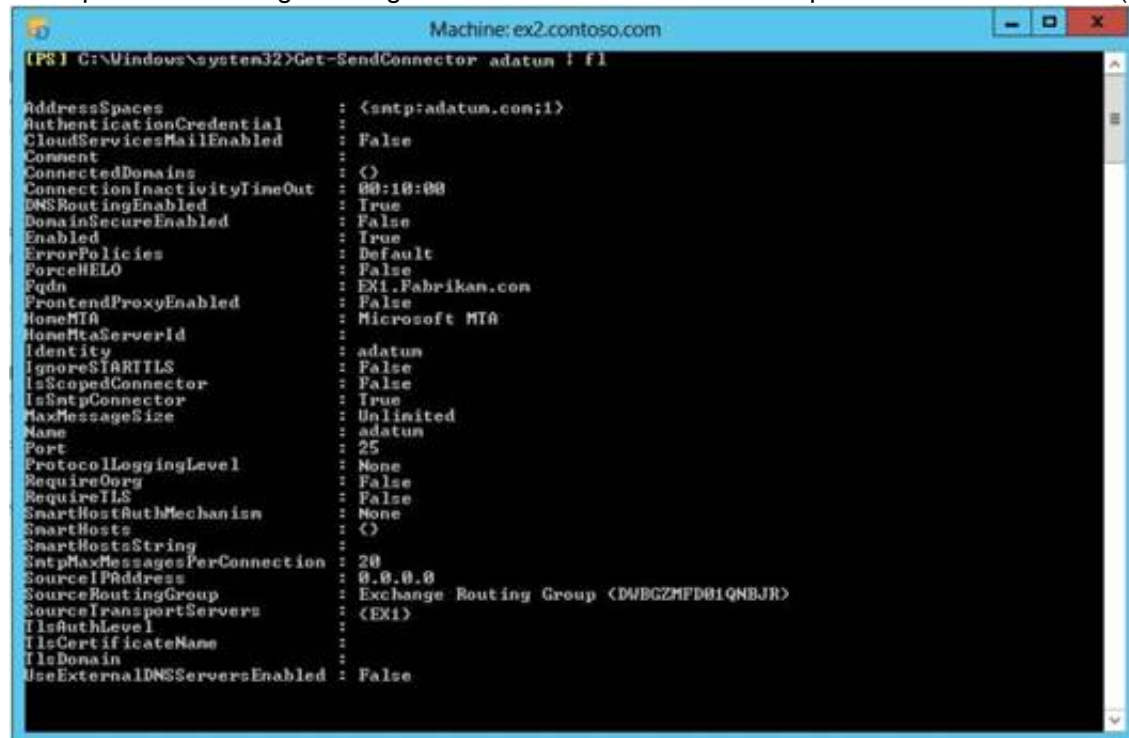
Run the Get-App cmdlet. Run the Set-App cmdlet.

NEW QUESTION 5

You are testing the planned implementation of Domain Security.

You discover that users fail to exchange domain-secured email messages.

You open the Exchange Management Shell and discover the output shown in the exhibit. (Click the Exhibit button.)



```
[PS] C:\Windows\system32>Get-SendConnector adatum | fl

AddressSpaces           : {smtp:adatum.com;1}
AuthenticationCredential :
CloudServicesMailEnabled : False
Connect                 :
ConnectedDomains        : {}
ConnectionInactivityTimeout : 00:10:00
DNSRoutingEnabled       : True
DomainSecureEnabled     : False
Enabled                 : True
ErrorPolicies            : Default
ForceHELO               : False
Fqdn                    : EX1.Fabrikam.com
FrontendProxyEnabled    : False
HomeMta                 : Microsoft MTA
HomeMtaServerId         :
Identity                : adatum
IgnoreStartTLS           : False
IsScopedConnector       : False
IsSmtplibConnector      : True
MaxMessageSize          : Unlimited
Name                    : adatum
Port                    : 25
ProtocolLoggingLevel    : None
RequireOrg              : False
RequireTLS               : False
SmarthostAuthMechanism  : None
Smarthosts              : {}
SmarthostsString        :
SmtplibMaxMessagesPerConnection : 20
SourceIPAddress         : 0.0.0.0
SourceRoutingGroup      : Exchange Routing Group (DVBGCZHFDB1QNBJR)
SourceTransportServers  : {EX1}
TlsAuthLevel            :
TlsCertificateName      :
TlsDomain               :
UseExternalDNSServersEnabled : False
```

You need to ensure that users can exchange email messages by using Domain Security. Which two parameters should you modify by using the Set-SendConnector cmdlet? (Each correct answer presents part of the solution. Choose two.)

- A. tlsauthlevel
- B. requiretls
- C. ignorestarttls
- D. tlsdomain
- E. domainsecureenabled
- F. smarthostauthmechanism

Answer: BE

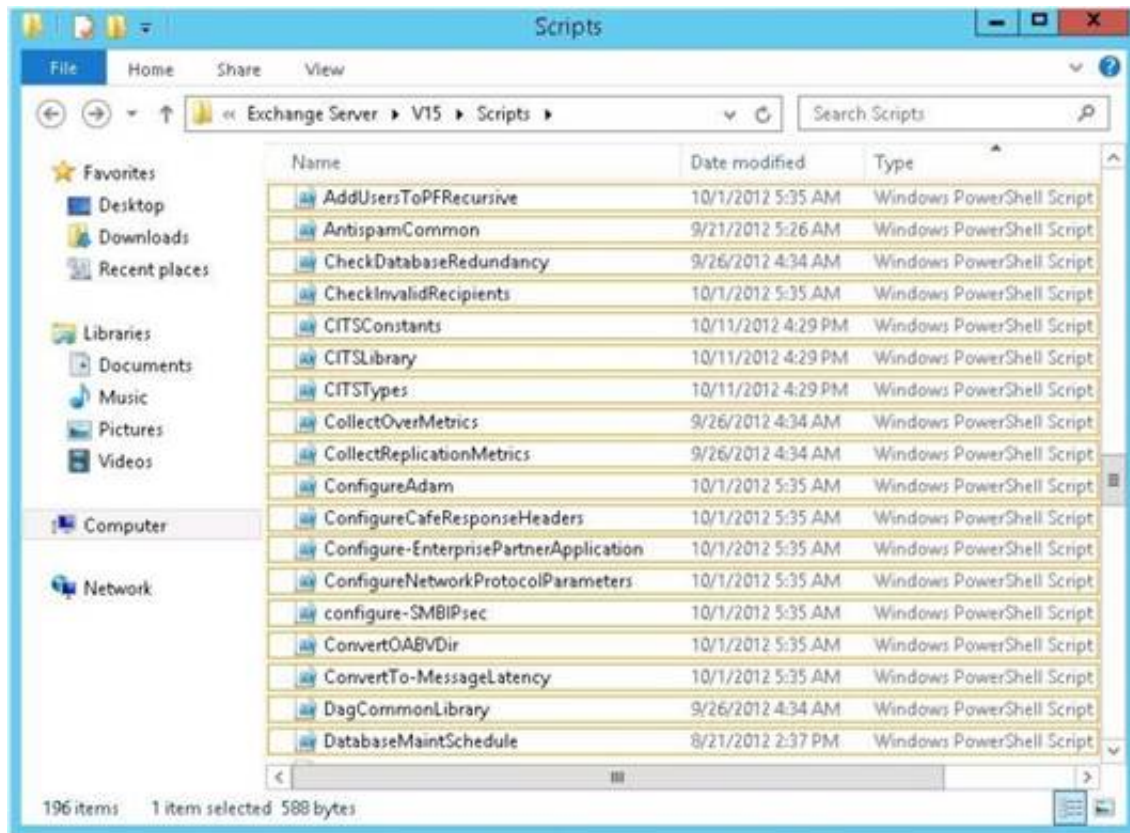
NEW QUESTION 6

HOTSPOT

You need to recommend which script the administrators must run to create the reports required to meet the technical requirements.

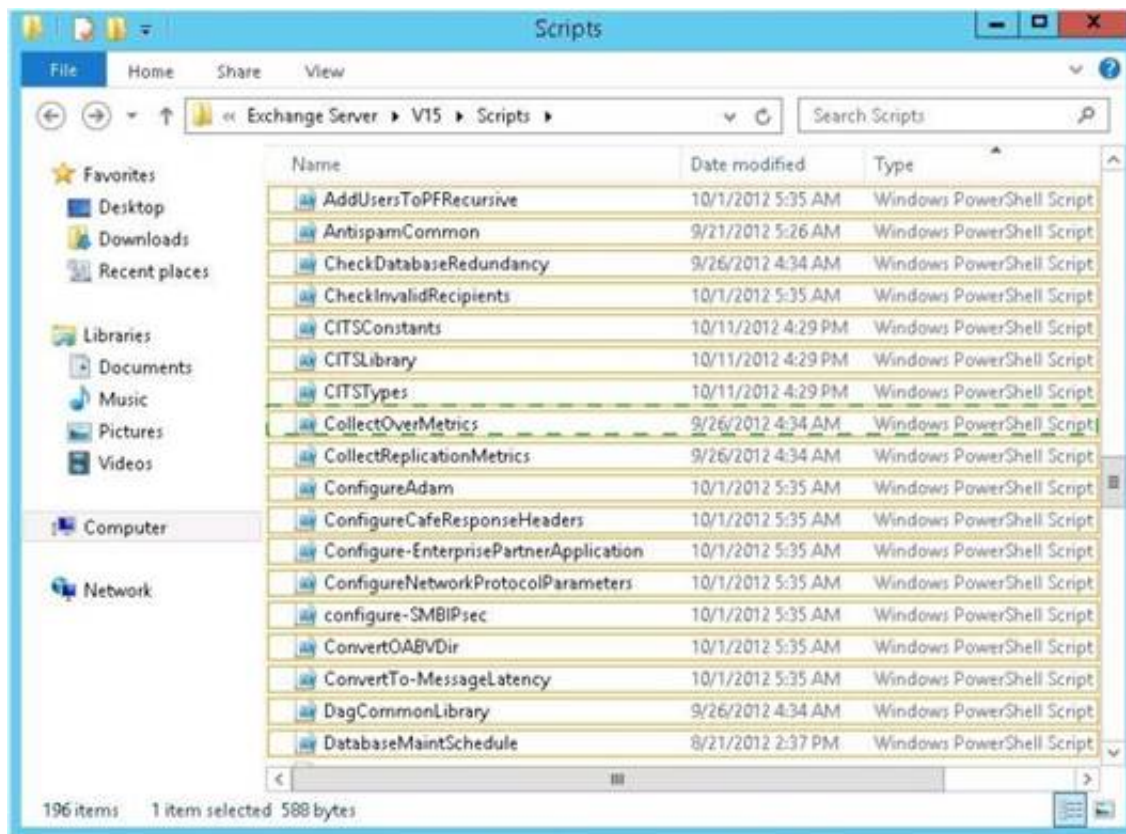
Which script should you recommend?

To answer, select the appropriate script in the answer area.



Answer:

Explanation:



NEW QUESTION 7

You need to recommend which tasks must be performed to meet the technical requirements of the research and development (R&D) department. Which two tasks should you recommend? (Each correct answer presents part of the solution. Choose two.)

- A. Create a new global address list (GAL) and a new address book policy.
- B. Modify the permissions of the default global address list (GAL), and then create a new GAL.
- C. Run the Update AddressList cmdlet.
- D. Run the Set-Mailbox cmdlet.
- E. Create an OAB virtual directory.

Answer: AD

NEW QUESTION 8

You need to recommend which type of group must be used to create the planned department lists. Which type of group should you recommend?

- A. Universal Distribution
- B. Dynamic Distribution
- C. Global Security
- D. Universal Security

Answer: A

NEW QUESTION 9

You need to recommend which task is required to prepare Active Directory for the planned Exchange Server 2013 implementation. What should you recommend?

- A. On any domain controller in the Paris office, run setup.exe /preparead.
- B. On any domain controller in the Amsterdam office, run setup.exe /preparead.
- C. On any domain controller in the Paris office, run setup.exe /preparealldomains.
- D. On any domain controller in the Amsterdam office, run setup.exe /preparedomain.

Answer: B

Explanation: Topic 2, Contoso Ltd

Overview

General Overview

Contoso, Ltd., is a scientific research and supply company that has offices along the east coast of North America. The company recently completed an upgrade to Exchange Server 2013.

Physical Locations

The company has three sales offices and a research office. The sales offices are located in Atlanta, New York, and Montreal. The research office is located in Miami.

Existing Environment

Active Directory Environment

The network contains one Active Directory forest named contoso.com. The Miami office has its own domain named research.contoso.com.

Each office is configured as an Active Directory site. Each site contains two domain controllers that run Windows Server 2008 R2 x64. All of the FSMO roles for contoso.com are owned by a domain controller in the New York site. All of the FSMO roles for the research.contoso.com domain are owned by a domain controller in the Miami site.

One domain controller in each site is configured as a global catalog server. All of the domain controllers are configured as DNS servers.

The functional level of the forest and domains is Windows Server 2008 R2.

Network Infrastructure

All client computers are configured to connect to the DNS servers in their respective office only.

Contoso.com has a standalone certification authority (CA) on a server that runs Windows Server 2008 R2.

All offices connect to the New York office by using a high-speed WAN link.

Email Infrastructure

The Exchange Server 2013 organization contains four servers in the New York office. The servers are configured as shown in the following table.

Server name	Server role	Data availability group (DAG) name
NY-EX1	Mailbox server Client Access server	NY-DAG
NY-EX2	Mailbox server Client Access server	NY-DAG
NY-EX3	Mailbox server Client Access server	NY-DAG
NY-EX4	Mailbox server Client Access server	NY-DAG

All external access for the contoso.com organization is provided through an Internet link at the New York office. Load balancing is provided by using DNS round robin. All inbound and outbound email for the domain is routed through a mail appliance in the New York office.

The Exchange Server 2013 organization contains four servers in the Atlanta office. The servers are configured as shown in the following table.

Server name	Server role	Data availability group (DAG) name
ATL-EX1	Mailbox server Client Access server	NY-DAG
ATL-EX2	Mailbox server Client Access server	NY-DAG
ATL-EX3	Mailbox server Client Access server	NY-DAG
ATL-EX4	Mailbox server Client Access server	NY-DAG

The file share witness for NY-DAG is on a file server in the Atlanta office.

The Exchange Server 2013 organization contains two servers in the Montreal office and two servers in the Miami office. The servers are configured as shown the following table.

Server name	Server role	Office
MIA-EX1	Mailbox server Client Access server	Miami
MIA-EX2	Mailbox server Client Access server	Miami
MTL-EX3	Mailbox server Client Access server	Montreal
MTL-EX4	Mailbox server Client Access server	Montreal

All external access to the organization of the research.contoso.com domain is provided through the Internet link at the Miami office. Load balancing is provided by

using DNS round robin. All inbound and outbound email for the domain goes through an email appliance in the Miami office.
 All Exchange Server 2013 servers run Windows Server 2012 Standard.

All users have Windows Phone devices that connect to the Exchange organization by using Exchange ActiveSync.

User Issues

You discover the following user issues:

? Some users report that, intermittently, they fail to connect to their email from their

Windows Phone device.

? Some users from the New York office report that some searches from Outlook Web App return incomplete results.

? Some of the users in each office report that they fail to access their mailbox during the maintenance period of the Active Directory domain controllers.

You verify that all of the remote users can connect to the network successfully by using a VPN connection, and can then launch Outlook successfully.

Partnerships

Contoso recently entered into a partnership with a company named A. Datum Corporation.

A. Datum has a main office and four branch offices. The main office is located in Toronto.

A. Datum has a messaging infrastructure configured as shown in the following table.

Server name	Server role	Exchange Server version	Office
Server1	Mailbox server Client Access server Hub Transport server	Exchange Server 2010	Branch office
Server2	Mailbox server Client Access server Hub Transport server	Exchange Server 2010	Branch office
Server3	Mailbox server Client Access server Hub Transport server	Exchange Server 2010	Branch office
Server4	Mailbox server Client Access server Hub Transport server	Exchange Server 2010	Branch office
Server5	Mailbox server Client Access server Hub Transport server	Exchange Server 2010	Main office
Server6	Mailbox server Client Access server Hub Transport server	Exchange Server 2010	Main office

Requirements Planned Changes

Contoso plans to deploy a hardware load balancer in the New York office. The load balancer must bridge all SSL connections to the Exchange servers.

You plan to deploy two new Exchange Server 2013 servers in a virtual server environment in the Miami office. The servers will host a few mailboxes as part of an evaluation of

resource utilization for virtualized Exchange servers.

You also plan to deploy a high availability solution for Mailbox servers in the

You plan to replace the email appliance in New York because of recent power outages.

Business Requirements

Contoso identifies the following business requirements:

? Minimize the hardware costs required for a load balancing solution.

? Minimize the software costs required for a load balancing solution.

? Minimize user interruptions if a service fails on a Mailbox server.

? Minimize user interruptions if a service fails on a Client Access server.

NEW QUESTION 10

You need to recommend a temporary solution to reroute all of the outbound email messages through the Miami mail appliance during the planned replacement of the New York mail appliance.

What are three possible ways to achieve the goal? (Each correct answer presents a complete solution. Choose three.)

A. Modify the value of the SmartHost of the Send connector in the New York office.

B. Increase the cost of the Send connector in the Miami office.

C. Increase the cost of the Send connector in the New York office.

D. Decrease the cost of the Send connector in the New York office,

E. Modify the value of the SmartHost of the Send connector in the Miami office.

F. Disable the Send connector in the New York office.

Answer: ACF

NEW QUESTION 10

You need to resolve the search issue reported by the users in the New York office.

You restart the Microsoft Exchange Search service and discover that the active copy of the mailbox database has a content indexing status of Unknown.

What should you do next?

A. Rebuild the content index.

B. Run the Update-MailboxDatabaseCopy cmdlet and specify the -manualresume parameter.

C. Restart the Microsoft Exchange Mailbox Replication service.

D. Run the Update-MailboxDatabaseCopy cmdlet and specify the -catalogonly parameter.

Answer: D

NEW QUESTION 12

You need to ensure that all of the email messages sent from the Internet to adatum.com are routed through the contoso.com organization. What should you create in contoso.com? (Each correct answer presents part of the solution. Choose all that apply.)

- A. A contact object for each adatum.com recipient
- B. An internal relay accepted domain for adatum.com
- C. A Send connector that is configured to point to the contoso.com transport servers
- D. A Send connector that is configured to point to the adatum.com transport servers
- E. An authoritative accepted domain for adatum.com

Answer: BD

Explanation: Topic 3, Litware, Inc

Overview

Litware, Inc., is a manufacturing company located in North America.

The company has a main office and two branch offices. The main office is located in Chicago. The branch offices are located in Baltimore and Los Angeles.

Existing Environment

Active Directory Environment

The network contains one Active Directory forest named litwareinc.com. Each office is configured as an Active Directory site.

All domain controllers in the Los Angeles office run Windows Server 2008 R2. All domain controllers in the Chicago office run Windows Server 2003 Service Pack 1 (SP1). All domain controllers in the Baltimore office run Windows Server 2012.

All of the FSMO roles are located on a domain controller in the Baltimore office. All of the domain controllers are configured as global catalog servers.

You have a distribution group for each department. The distribution groups contain all of the users in each respective department.

Network Infrastructure

The servers in each office are configured as shown in the following table.

Office location	Server name	Server role	Exchange Server version
Los Angeles	LA-EX1	Mailbox server	Exchange Server 2010
Los Angeles	LA-EX2	Client Access server Hub Transport server	Exchange Server 2010
Baltimore	BA-EX1	Mailbox server Client Access server Hub Transport server	Exchange Server 2007

The Baltimore and Chicago offices have independent Internet connections. Internet connectivity for the Los Angeles office is provided through Chicago.

Users frequently send large email messages to other users in the company. Recently, you increased the maximum message size to 50 MB.

Planned Changes

The company plans to deploy a new Exchange Server 2013 infrastructure that will contain two Clients Access servers and two Mailbox servers in the Chicago office. The servers will be configured as shown in the following table.

Server name	Server role
CH-EX2	Mailbox server
CH-EX3	Mailbox server
CH-EX4	Client Access server
CH-EX5	Client Access server

All client connections to the Exchange Server organization will be routed through a hardware load balancer. The name client.litwareinc.com will point to the virtual IP address of the hardware load balancer.

Once the transition to Exchange Server 2013 in the Chicago office is complete, all mail flow to and from the Internet will be managed centrally through that office by using a Send connector that has the following configurations:

? Connector name: CH-to-Internet

? Address space: *

? Source servers: CH-EX2, CH-EX3

? Cost: 10

NEW QUESTION 15

HOTSPOT

You need to identify which names must be used as the URLs of each virtual directory on the planned Exchange Server 2013 servers.

Which names should you identify?

To answer, configure the appropriate name for each server in the answer area.

Answer Area

CH-EX2

CH-EX2.litwareinc.com
CH-EX3.litwareinc.com
CH-EX4.litwareinc.com
CH-EX5.litwareinc.com
client.litwareinc.com
outlook.litwareinc.com

CH-EX3

CH-EX2.litwareinc.com
CH-EX3.litwareinc.com
CH-EX4.litwareinc.com
CH-EX5.litwareinc.com
client.litwareinc.com
outlook.litwareinc.com

CH-EX4

CH-EX2.litwareinc.com
CH-EX3.litwareinc.com
CH-EX4.litwareinc.com
CH-EX5.litwareinc.com
client.litwareinc.com
outlook.litwareinc.com

CH-EX5

CH-EX2.litwareinc.com
CH-EX3.litwareinc.com
CH-EX4.litwareinc.com
CH-EX5.litwareinc.com
client.litwareinc.com
outlook.litwareinc.com

Answer:

Explanation:

Answer Area

CH-EX2

CH-EX2.litwareinc.com
CH-EX3.litwareinc.com
CH-EX4.litwareinc.com
CH-EX5.litwareinc.com
client.litwareinc.com
outlook.litwareinc.com

CH-EX3

CH-EX2.litwareinc.com
CH-EX3.litwareinc.com
CH-EX4.litwareinc.com
CH-EX5.litwareinc.com
client.litwareinc.com
outlook.litwareinc.com

CH-EX4

CH-EX2.litwareinc.com
CH-EX3.litwareinc.com
CH-EX4.litwareinc.com
CH-EX5.litwareinc.com
client.litwareinc.com
outlook.litwareinc.com

CH-EX5

CH-EX2.litwareinc.com
CH-EX3.litwareinc.com
CH-EX4.litwareinc.com
CH-EX5.litwareinc.com
client.litwareinc.com
outlook.litwareinc.com

NEW QUESTION 17

You need to recommend changes to the network to ensure that you can deploy the planned Exchange Server 2013 infrastructure. What should you recommend?

- A. Transfer of the FSMO roles to a domain controller in the Chicago office.
- B. Change the forest functional level.
- C. Change the domain functional level.
- D. Change the operating system on one of the domain controllers in the Chicago office

Answer: D

NEW QUESTION 21

DRAG DROP

You need to identify which external namespaces must be used for the Exchange servers in each office.

Which external namespaces should you identify for each office?

To answer, drag the appropriate namespace to the correct office in the answer area. Each namespace may be used once, more than once, or not at all. Additionally, you may need to drag the split bar between panes or scroll to view content.

Namespaces

\$null

autodiscover.litwareinc.com

client.litwareinc.com

failbackurl.litwareinc.com

legacy.litwareinc.com

Answer Area

Baltimore

Namespace

Los Angeles

Namespace

Chicago

Namespace

Namespace

Answer:

Explanation:

Namespaces	Answer Area
\$null	Baltimore legacy.litwareinc.com
autodiscover.litwareinc.com	Los Angeles \$null
client.litwareinc.com	Chicago client.litwareinc.com
failbackurl.litwareinc.com	
legacy.litwareinc.com	autodiscover.litwareinc.com

NEW QUESTION 24

You are testing the planned implementation of Exchange Server 2013. After you begin moving several mailboxes to Exchange Server 2013, you discover that users on the internal network that have been moved are prompted repeatedly for their credentials when they run Microsoft Outlook. You run the Get-OutlookAnywhere cmdlet on CH-EX4, and receive the following output:

```
SSLOffloading: True
ExternalHostname: Client.litwareinc.com
InternalHostname: CH-EX4.litwareinc.com
ExternalClientAuthenticationMethod: Basic
InternalClientAuthenticationMethod: NTLM
IISAuthenticationMethods: <Basic>
```

You need to prevent the internal users from being prompted for their credentials when they connect to their mailbox by using Outlook. Which property should you modify by using the Set-OutlookAnywhere cmdlet?

- A. IISAuthenticationMethods
- B. InternalHostname
- C. ExternalHostname
- D. ExternalClientAuthenticationMethod
- E. InternalClientAuthenticationMethod

Answer: A

NEW QUESTION 28

DRAG DROP

You are planning the upgrade to Exchange Server 2013. You plan to perform the following tasks:
? Identify the number of email messages sent and received by the users in the current Exchange Server organization.
? Identify how many IOPS are required to provide adequate access to mailboxes for all of the users in the planned organization.
? Validate that all of the planned servers will meet the IOPS requirements of the planned organization.

You need to identify which tool must be used to achieve each task. Which tools should you identify?
To answer, drag the appropriate tool to the correct task in the answer area. Each tool may be used once, more than once, or not at all. Additionally, you may need to drag the split bar between panes or scroll to view content.

Tools	Answer Area
Exchange Mailbox Server Role Requirements Calculator	Identify the number of email messages sent and received by the users in the current Exchange Server organization. Tool
Microsoft Exchange Server Deployment Assistant	Identify how many IOPS are required to provide adequate access to mailboxes for all of the users in the planned organization. Tool
Microsoft Exchange Server Jetstress 2010	Validate that all of the planned servers will meet the IOPS requirements of the planned organization. Tool
Microsoft Exchange Server Profile Analyzer	

Answer:

Explanation: Box 1: Microsoft Exchange Server Profile Analyzer
Box 2: Exchange Mailbox Server Role Requirements Calculator Box 3: Microsoft Exchange Server JetStress 2010

NEW QUESTION 32

DRAG DROP

You need to recommend a solution to meet the mailbox creation requirements. Which three actions should you recommend performing in sequence? (To answer, move the appropriate three actions from the list of actions to the answer area and arrange them in the correct order.)

Actions	Answer Area
Copy the ScriptingAgentConfig.xml file to all of the Mailbox servers.	
Run the Enable-CmdletExtensionAgent "Scripting Agent" command.	
Run the Set-CmdletExtensionAgent "Scripting Agent" command.	
Copy the ScriptingAgentConfig.xml file to all of the Client Access servers.	
Edit the ScriptingAgentConfig.xml.sample file, and then rename the file as ScriptingAgentConfig.xml.	

Answer:

Explanation: Edit the ScriptingAgentConfig.xml.sample file, and then rename the file as ScriptingAgentConfig.xml.
Copy the ScriptingAgentConfig.xml file to all of the Mailbox servers Run the Enable-CmdletExtensionAgent "Scripting Agent" command

NEW QUESTION 35

You are evaluating the deployment of the additional Exchange Server 2013 servers.
You need to recommend changes to the transport configurations to ensure that all email messages sent from the Detroit office are routed through EX2.
What should you include in the recommendation?

- A. Increase the cost of the CHI-NY site link to 15.
- B. Specify an Exchange-specific cost of 20 for the CHI-DET site link.
- C. Decrease the cost of the CHI-NY and the DET-NY site links to 4.
- D. Increase the cost of the DET-NY site link to 15.

Answer: B

NEW QUESTION 36

HOTSPOT
You need to recommend a solution to meet the technical requirements for mailbox size restrictions.
Which command should you include in the recommendation? (To answer, select the appropriate options in the answer area.)

Answer Area		
<div><div></div><div>Get-Mailbox Get-MailboxDatabase Set-Mailbox Set-MailboxDatabase</div></div>	<div><div></div><div>Get-Mailbox Get-MailboxDatabase Set-Mailbox Set-MailboxDatabase</div></div>	<div><div></div><div>-IssueWarningQuota -ProhibitSendQuota -ProhibitSendReceiveQuota</div></div> 5GB

Answer:

Explanation:

Answer Area		
<div><div></div><div>Get-Mailbox Get-MailboxDatabase Set-Mailbox Set-MailboxDatabase</div></div>	<div><div></div><div>Get-Mailbox Get-MailboxDatabase Set-Mailbox Set-MailboxDatabase</div></div>	<div><div></div><div>-IssueWarningQuota -ProhibitSendQuota -ProhibitSendReceiveQuota</div></div> 5GB

NEW QUESTION 39

You are evaluating the planned deployment of the additional Exchange Server 2013 servers.
You need to recommend changes to the DNS records to ensure that email messages are routed to the Detroit site if the servers in the New York site are unavailable.
What should you recommend adding?

- A. An MX record that has a preference value of 10 that points to EX4
- B. An MX record that has a preference value of 20 that points to EX4
- C. An MX record that has a preference value of 10 that points to EX3
- D. An MX record that has a preference value of 20 that points to EX3

Answer: B

Explanation: Topic 5, Proseware, Inc

Overview

General Overview

Proseware, Inc., is an international manufacturing company that has 3,000 users. Proseware has a sales department, a marketing department, a research department, and a human resources department.

Proseware recently purchased a small competitor named Contoso, Ltd.

Physical Locations

Proseware has two offices. The offices are located in New York and London. The offices connect to each other by using a WAN link. Each office connects directly to the Internet. Contoso has one office in Chicago.

Existing Environment

Active Directory Environment

The network of Proseware contains an Active Directory forest named proseware.com. The forest contains a single domain and two sites named London and New York. Each site contains two domain controllers that run Windows Server 2008 R2. The domain controllers in the New York site are named DC1 and DC2. The domain controllers in the London site are named DC3 and DC4.

All FSMO roles are hosted on DC3 and DC4.

The network of Contoso contains an Active Directory forest named contoso.com. The forest contains five domain controllers and one site.

Exchange Server Organization

Proseware has an Exchange Server 2013 organization that contains two database availability groups (DAGs) named DAG-NYC and DAG-LON. The DAGs are configured as shown in the following table.

Server name	Role	Site	DAG membership
EX1	Client Access Mailbox	New York	DAG-NYC
EX2	Client Access Mailbox	New York	DAG-NYC
EX3	Client Access Mailbox	London	DAG-NYC
EX4	Client Access Mailbox	London	DAG-LON
EX5	Client Access Mailbox	London	DAG-LON
EX6	Client Access Mailbox	New York	DAG-LON

The certificate used for Exchange Server 2013 has a subject name of mail.proseware.com and a Subject Alternative Name (SAN) of autodiscover.proseware.com. Each mailbox database has three copies. All users connect to an active copy of the database on a server in their respective office. Native data protection is implemented.

NTLM communication is used exclusively for Outlook Anywhere both internally and externally.

Problem Statements

Proseware identifies the following issues:

? Users report that sometimes, they fail to access the free/busy information of the other users. You also discover that some users fail to retrieve Autodiscover settings.

? Users in the London office report that during a 24-hour WAN outage, they could see only new users in the global address list (GAL) from Outlook Web App.

? The manager of the human resources department in the New York office cannot see new London office users in the GAL until several hours after the help desk confirms that the users were created.

? A hung MSExchangeOWAAppPool in Internet Information Services (IIS) on EX1 causes all of the database copies to fail over. Despite having the same CopyQueueLength and ReplayQueueLength as the copies on EX2, the copies on EX3, which have a higher activation preference, are activated, forcing user connections over the WAN.

? A custom application named App1 recently malfunctioned and sent hundreds of false positive email notifications that had a subject of System Alert: Sales Database Reaching Capacity to all of the users in the organization. While attempting to remove the email messages, an administrator ran the Search-Mailbox -DeleteContent command and erroneously deleted valid email messages from the mailboxes of some executives.

Requirements Business Goal

Proseware identifies the following business goals:

? Reduce the costs associated with using bandwidth on the WAN links.

? Improve social media integration by using a Microsoft Outlook app that will be deployed to all of the users in the sales department.

Planned Changes

Proseware plans to make the following changes:

? Implement a lagged copy for the mailbox database of the executives.

? Implement an RBAC-linked role group for the administrators at Contoso to manage the mailboxes of the Proseware users.

Technical Requirements

Proseware identifies the following technical requirements:

? End users must be notified after one hour if the email messages that they send are not delivered.

? If mailbox database storage fails, the IT department must be able to recover old email messages that were sent up to five days earlier to the mailboxes of the executives.

? All new users hired at Contoso must have a user account in contoso.com and an Exchange Server mailbox in proseware.com. All new user accounts in contoso.com must have a user principal name (UPN) that ends with proseware.com.

? Administrators at Contoso must be able to create and manage recipient objects in the Exchange Server organization of Proseware by using their existing contoso.com administrator account. All Contoso recipient objects must reside in an organizational unit (OU) named proseware.com

Security Requirements

The Chief Security Officer (CSO) introduces the following security requirements:

? All Outlook users who connect from the Internet must use Basic authentication only.

? All Outlook users who connect from the internal network must use NTLM authentication only.

SLA Requirements

Due to productivity losses during some recent maintenance windows, the Chief Information Officer (CIO) introduces a new service level agreement (SLA) requiring that all servers entering or exiting a maintenance window must be taken in and out of service properly.

The SLA contains the following requirements:

? All mounted databases on the server undergoing maintenance must be activated on another server.

? All message queues on the server undergoing maintenance must be empty before maintenance can begin.

? The server undergoing maintenance must be prevented from becoming a Primary Active Manager (PAM).

? Databases copies on the server undergoing maintenance must not be activated while maintenance is occurring.

NEW QUESTION 44

You need to recommend a solution to resolve the issue of the human resources department manager.

What should you include in the recommendation?

- A. Run Set-ADServerSettings -ConfigurationDomainController dcl.proseware.com on all of the Exchange servers in the London site.
- B. Move the PDC emulator to the New York office.
- C. Modify the replication interval on the Active Directory site link.
- D. Schedule a task that runs the Update-AddressList command to run once per hour.

Answer: C

NEW QUESTION 48

CORRECT TEXT

You need to recommend a solution to meet the technical requirement for message recovery.

Which command should you include in the recommendation? (To answer, configure the appropriate options in the answer area.)

Answer Area

Set-TransportConfig Set-TransportServer Set-TransportService	-MessageExpirationTimeout -SafetyNetHoldTime -ShadowRedundancyEnable	\$false \$true 5.00:00:00
--	--	---------------------------------

Answer:

Explanation: Pending

NEW QUESTION 52

HOTSPOT

You are attempting to resolve the database activation issue. You need to identify why the database copies are activated on EX3 instead of EX2.

Which command should you use? (To answer, select the appropriate options in the answer area.)

Answer Area

<input type="text"/> ? {\$_ . HealthSetName -like "owa*"}	<input type="text"/>
Get-AvailabilityReportOutage Get-HealthReport Get-ServerHealth	Get-AvailabilityReportOutage Get-HealthReport Get-ServerHealth

Answer:

Explanation:

Answer Area

<input type="text"/> ? {\$_ . HealthSetName -like "owa*"}	<input type="text"/>
Get-AvailabilityReportOutage Get-HealthReport Get-ServerHealth	Get-AvailabilityReportOutage Get-HealthReport Get-ServerHealth

NEW QUESTION 53

You are implementing a solution to meet the security requirements for Outlook authentication.

You purchase a new certificate that has a subject name of mail.proseware.com and SANs of autodiscover.proseware.com and oa.proseware.com.

You create a host (A) record for oa.proseware.com in the public DNS zone. Remote users report that they fail to connect to their mailbox by using Outlook.

You need to ensure that the remote users can connect to their mailbox from Outlook. The solution must meet the security requirements.

Which two commands should you run? (Each correct answer presents part of the solution. Choose two.)

- A. Set-OutlookProvider EXPR -CertPrincipalName msstd:mail.proseware.com
- B. Set-OutlookAnywhere -ExternalHostName oa.proseware.com - ExternalClientAuthenticationMethod Basic -ExternalClientsRequireSsl \$true - InternalHostName mail.proseware.com -InternalClientAuthenticationMethod NTLM - InternalClientsRequireSsl Strue

C. Set-OutlookProvider EXPR -CertPrincipalName msstd:oa.proseware.com
D. Set-OutlookAnywhere -ExternalHostName mail.proseware.com- ExternalClientAuthenticationMethod Basic -ExternalClientsRequireSsl \$true - InternalHostName oa.proseware.com -InternalClientAuthenticationMethod NTLM - InternalClientsRequireSsl \$true

Answer: AB

NEW QUESTION 54

You need to recommend a solution to resolve the issue for the London office users. What should you do?

- A. Modify the properties of the OAB virtual directory.
- B. Create a new address book policy.
- C. Modify the properties of the default offline address book (OAB).
- D. Create a new arbitration mailbox.

Answer: D

NEW QUESTION 58

DRAG DROP

You need to recommend to a solution to deploy the Outlook app.
Which three actions should you recommend performing in sequence? (To answer, move the appropriate three actions from the list of actions to the answer area and arrange them in the correct order.)

Answer Area

Run the **Set-App** cmdlet.

Run the **Get-App** cmdlet.

Install the Outlook app.

Run the **\$Data=Get-Content -Path "C:\Apps\SocialMediaApp.xml" - Encoding Byte -ReadCount 0** command.

Run the **New-App -FileData \$Data** command.

Answer:

Explanation: Install the Outlook app. Run the Get-App cmdlet. Run the Set-App cmdlet.

NEW QUESTION 61

HOTSPOT

You need to implement the SCL configurations to support the planned changes.
Which value should you set for each SCL option? (To answer, configure the appropriate options in the dialog box in the answer area.)

Answer Area

SCLRejectThreshold

SCLDeleteThreshold

SCLQuarantineThreshold

Answer Area

SCLRejectThreshold

7

8

9

SCLDeleteThreshold

7

8

9

SCLQuarantineThreshold

7

8

9

Answer:

Explanation: Answer Area

SCLRejectThreshold

7

8

9

SCLDeleteThreshold

7

8

9

SCLQuarantineThreshold

7

8

9

NEW QUESTION 65

You need to ensure that if a volume fails on EX2 again, a mailbox database copy is recreated automatically on a different volume. Which command should you run?

- A. Set-MailboxDatabase
- B. Set-MailboxDatabaseCopy
- C. Set-DatabaseAvailabilityGroup
- D. Set-MailboxAutoRcplyConfigu ration

Answer: C

NEW QUESTION 70

HOTSPOT

You need to ensure that the help desk application can use EX4 as an SMTP relay to send email messages. The solution must ensure that the sender of the email messages is displayed as Help Desk.

What authentication and permission group should you configure for the Receive Connector? (To answer, configure the appropriate options in the answer area.)

Answer Area

Authentication:

Permission group:

Answer Area

Authentication:

Basic authentication
Exchange Server authentication
Externally secured (for example, by using IPsec)
Integrated Windows authentication
Transport Layer Security (TLS)

Permission group:

Anonymous users
Exchange servers
Exchange Server users
Legacy Exchange servers
Partners

Answer:

Explanation: **Answer Area**

Authentication:

Basic authentication
Exchange Server authentication
Externally secured (for example, by using IPsec) |
Integrated Windows authentication
Transport Layer Security (TLS)

Permission group:

Anonymous users
Exchange servers |
Exchange Server users
Legacy Exchange servers
Partners

NEW QUESTION 75

HOTSPOT

You need to recommend a solution to resolve the issue for the finance department users.
Which command should you include in the recommendation? (To answer, select the appropriate options in the answer area.)

Answer Area

-OrganizationalUnit Finance | -ActiveSyncEnabled

Answer Area

Get-CashMailbox
Get-Mailbox
Get-User

 -OrganizationalUnit Finance |

Set-CashMailbox
Set-Mailbox
Set-User

 -ActiveSyncEnabled

\$false
\$null
\$true

Answer:

Explanation: **Answer Area**

Get-CashMailbox |
Get-Mailbox
Get-User

 -OrganizationalUnit Finance |

Set-CashMailbox |
Set-Mailbox
Set-User

 -ActiveSyncEnabled

\$false |
\$null
\$true

NEW QUESTION 77

HOTSPOT

You create a workload management policy named EX4.
You need to create a new workload policy to resolve the hardware resources issue on EX4. Which commands should you run? (To answer, select the appropriate options in the answer area.)

Answer Area

New-WorkloadPolicy IMAP -WorkloadType IMAP –
WorkloadManagementPolicy EX4 IMAP –WorkloadClassification

New-WorkloadPolicy OWA -WorkloadType OWA –
WorkloadManagementPolicy EX4 IMAP –WorkloadClassification

Answer Area

New-WorkloadPolicy IMAP -WorkloadType IMAP –
WorkloadManagementPolicy EX4 IMAP –WorkloadClassification

Customer Expectation
Discretionary
Internal Maintenance
Urgent

New-WorkloadPolicy OWA -WorkloadType OWA –
WorkloadManagementPolicy EX4 IMAP –WorkloadClassification

Customer Expectation
Discretionary
Internal Maintenance
Urgent

Answer:

Explanation: Answer Area

New-WorkloadPolicy IMAP -WorkloadType IMAP –
WorkloadManagementPolicy EX4 IMAP –WorkloadClassification

Customer Expectation
Discretionary
Internal Maintenance
Urgent

New-WorkloadPolicy OWA -WorkloadType OWA –
WorkloadManagementPolicy EX4 IMAP –WorkloadClassification

Customer Expectation
Discretionary
Internal Maintenance
Urgent

NEW QUESTION 79

DRAG DROP

You are evaluating the implementation of the address rewrite feature in the Fabrikam forest.

You need to recommend a solution for the Trey Research forest and the Fabrikam forest to share the SMTP domain name of treyresearch.com. Which actions should you recommend performing in each forest? (To answer, drag the appropriate actions to the correct forests. Each action may be used once, more than once, or not at all. You may need to drag the split bar between panes or scroll to view content)

Actions

Create mail-enabled users.

Create mail-enabled contacts.

Create a Send connector.

Create a Receive connector.

Configure an authoritative accepted domain.

Configure an accepted domain as an internal relay domain.

Answer Area

Trey Research forest

Action

Action

Fabrikam forest

Action

Answer:

Explanation: Trey research forest
Configure authoritative accepted domain
Create send connector
Fabricam Forest
Configure an accepted domain as an internal relay domain

NEW QUESTION 80

You need to ensure that users can create new public folders when EX4 is unavailable. What should you do?

- A. Run the New-PublicFolderMoveRequest cmdlet.
- B. Add EX4 to DAG1.
- C. Create a new public folder database.
- D. Run the New-MoveRequest cmdlet.

Answer: B

Explanation: Topic 7, Mix Questions

NEW QUESTION 82

You have an Exchange Server 2013 organization that contains an accepted domain named contoso.com. A partner company has an Exchange Server 2013 organization named nwtraders.com. Nwtraders.com contains an SMTP server named mail.nwtraders.com. Both organizations only use certificates from the same trusted third-party certification authority (CA). You need to ensure that all email messages received from the SMTP domain named nwtraders.com are protected by using mutual TLS. What command should you run? (To answer, select the appropriate options in the answer area.)

Answer Area

Answer Area

Set-DeliveryAgentConnector

Set-ReceiveConnector

Set-TransportConfig

-SourceTransportServers

-TlsDomainCapabilities

-TLSSReceiveDomainSecureList

-TLSSendDomainSecureList

Contoso.com

Mail.nwtraders.com

nwtraders.com

Answer:

Explanation: Answer Area

Set-DeliveryAgentConnector

Set-ReceiveConnector

Set-TransportConfig

-SourceTransportServers

-TlsDomainCapabilities

-TLSSReceiveDomainSecureList

-TLSSendDomainSecureList

Contoso.com

Mail.nwtraders.com

nwtraders.com

NEW QUESTION 86

You have an Exchange Server 2013 organization and a Microsoft Office 365 tenant that are configured for hybrid coexistence. Five hundred users have mailboxes in the Exchange Server 2013 organization. Six hundred users have mailboxes in Office 365. You need to implement a mailbox solution for the support department. The solution must meet the following requirements:

- All users must be able to send email messages to a dedicated mailbox for support.
- All of the users from the support department must be able to log on to the dedicated support mailbox and read the email messages in the mailbox.
- All of the users from the support department must be able to reply to the email messages sent to the dedicated support mailbox. The replies must identify to the name of the user replying.

Must apply the principle of least privileges.

What should you do? To answer, select the appropriate options in the answer area.

Answer area

Type of mailbox:

Linked Mailbox

User Mailbox

Public Folder Mailbox

Mailbox permission:

Read and Send As

Read and Send on Behalf of

Full Access and Send As

Full Access and Send on Behalf of

Answer:

Explanation: References:
<https://support.office.com/en-us/article/give-mailbox-permissions-to-another-user-in-office-365-admin-help-1db>

NEW QUESTION 90

You have an Exchange Server 2013 organization named adatum.com. The organization contains two servers named EX1 and EX2 that are configured as shown in the table.

Server name	Role
EX1	Mailbox, Client Access
EX2	Mailbox, Client Access

Both servers are members of a database availability group (DAG). EX1 has the active copy of a database named Database1. Several users who have mailboxes in Database1 discover that all of their outbound email messages remain in their Drafts folder when they use Outlook Web App. You need to ensure that the email messages are delivered. What should you do?

- A. On EX2, retry the message queues.
- B. On EX1, start the Microsoft Exchange Mailbox Transport Submission service.
- C. On EX2, start the Microsoft Exchange Mailbox Transport Submission service.
- D. On EX1, retry the message queues.

Answer: B

NEW QUESTION 92

You need to create an exclusion for two helpdesk RBAC (Role Based Access Control) groups to not have access to managers. You will need to pick 3 powershell commands from the available choices

- A. New-ManagementRole, New-ManagementScope,Set-ManagementScope (Guessed)
- B. New-ManagementScope, RecipientRestrictionFilter ,New-ManagementRoleAssignment (Guessed)
- C. New-ManagementScope, New-ManagementRoleAssignment, CustomRecipientWriteScope (Guessed)
- D. Unsure of commands and correct answer

Answer: C

NEW QUESTION 94

You have an Exchange Server 2013 organization named adatum.com. The organization contains a server named Server1. Server1 is a member of a Database Availability Group (DAG) named DAG1. You have a user named Sales1 in the Sales department. You need to prevent Sales1 from submitting more than 75 email messages per minute to the Exchange Server organization by using Microsoft Outlook. Which three commands should you run in sequence? (To answer, move the appropriate three commands from the list of commands to the answer area and arrange them in the correct order.)

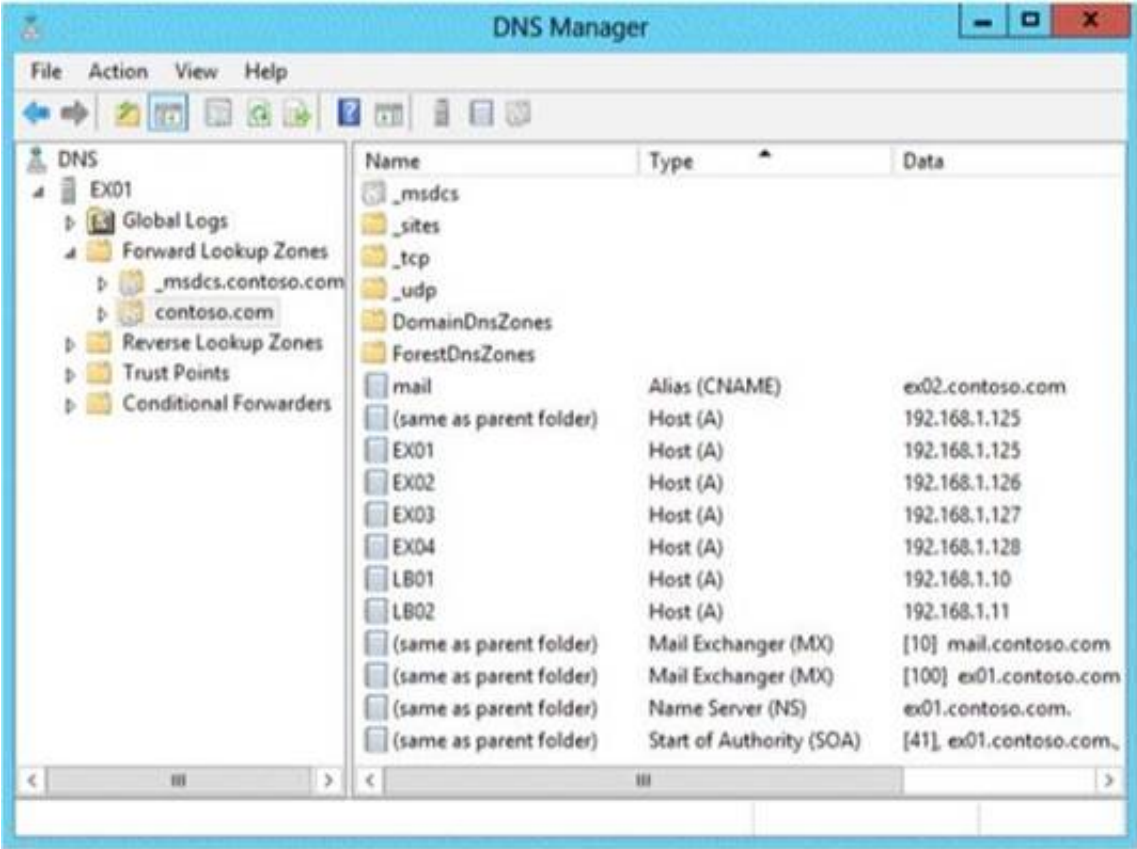
Commands	Answer Area
<code>\$b = get-throttlingpolicy limits</code>	
<code>set-mailbox -identity sales1 -throttlingpolicy \$b</code>	
<code>new-throttlingpolicy limits -recipientratelimit 75</code>	
<code>new-throttlingpolicy limits -messengeratelimit 75</code>	
<code>set-transportserver -identity server1 -maxoutboundconnections \$b</code>	
<code>set-mailbox -identity sales1 -recipientlimits 75</code>	
<code>new-workloadpolicy -workloadtype transport 75</code>	

Answer:

Explanation: new-throttlingpolicy limits –messengeratelimit 75
\$b = get-throttlingpolicy limits
set-mailbox –identity sales1 –throttlingpolicy \$b

NEW QUESTION 99

Your company has an Exchange Server 2013 organization. All servers have the Client Access server role and the Mailbox server role installed. The DNS Manager is shown in the exhibit. (Click the Exhibit button.)



Use the drop-down menus to select the answer choice that completes each statement.

Answer Area

The server named [answer choice] receives all incoming email from the Internet.

To load balance the inbound SMTP communication between two Exchange servers, [answer choice]

Answer Area

The server named [answer choice] receives all incoming email from the Internet.

To load balance the inbound SMTP communication between two Exchange servers, [answer choice]

Answer:

Explanation: Answer Area

The server named [answer choice] receives all incoming email from the Internet.

To load balance the inbound SMTP communication between two Exchange servers, [answer choice]

NEW QUESTION 101

Your company has two data centers named Main1 and Main2. Each data center connects directly to the Internet and has a link to the other data center. All servers run Windows Server 2012 R2.

The network contains an Active Directory forest. Each data center is configured as an Active Directory site. You plan to deploy two Exchange Server 2013 servers to each data center. Each data center will host 500 user mailboxes for its respective users. All of the users will connect remotely to access their mailbox.

You need to recommend a deployment solution that meets the following requirements:

The users from both data centers must be able to access their mailbox if the link between the data centers fails.

The users from both data centers must be able to access their mailbox if a single server fails.

The solution must minimize manual intervention if a site fails.

What is the best recommendation to achieve the goal? More than one answer choice may achieve the goal. Select the BEST answer.

- A. two database availability groups (DAGs) that each contains one server from each data center
- B. one database availability group (DAG) that contains all of the servers
- C. two database availability groups (DAGs) that each contains all of the servers
- D. one database availability group (DAG) that contains all of the servers in Main1 and one DAG that contains all of the servers in Main2.

Answer: B

Explanation:

References:

[https://technet.microsoft.com/en-us/library/dd638129\(v=exchg.150\).aspx](https://technet.microsoft.com/en-us/library/dd638129(v=exchg.150).aspx)

NEW QUESTION 106

You plan to deploy three Exchange Server 2013 servers. Each server has eight 1-TB internal hard disk drives for mailbox database storage. All of the mailbox databases will replicate to all of the servers.

You need to recommend a disk configuration for the servers that meets the following requirements:

Users must be able to access their mailbox if a single disk fails.

The amount of space available for mailbox data must be maximized.

Which disk configuration should you use on each server?

- A. JBOD
- B. RAID 5
- C. RAID 1
- D. RAID 10

Answer: B

NEW QUESTION 109

You have an Exchange Server 2013 organization named fabrikam.com.

You have a distribution group named DL1 and a user named User1. The managedBy attribute of DL1 is fabrikam.com\users\User1.

User1 attempts to add a user named User2 to DL1 and receives the following error message: "Changes to the public group membership cannot be saved. You do not have sufficient permissions to perform this operation on this object."

You need to ensure that User1 can add User2 to DLL

What are two possible ways to achieve this goal? (Each correct answer presents a complete solution. Choose two.)

- A. From Exchange Management Shell, run New-ManagementRoleAssignment -Name "Default Role Assignment Policy- MyDistributionGroupMembership" -Policy "Default Role Assignment Policy"-Role "MyDistributionGroupMembership"
- B. From Exchange Admin Center, edit the Default Role Assignment Policy and select MyDistributionGroups
- C. From Exchange Management Shell, run New-ManagementRoleAssignment -Name "Default Role Assignment Policy-MyDistributionGroups" -Policy "Default Role Assignment Policy" -Role "MyDistributionGroups".
- D. From Exchange Admin Center, edit the Default Role Assignment Policy and select MyDistributionGroupMembership.

Answer: AC

NEW QUESTION 114

You have an Exchange Server 2013 organization that contains a database availability group (DAG) named DAG1. DAG1 contains two servers named EX01 and EX02.

On EX01, you have three networks. The networks are configured as shown in the following table.

Network name	Subnet	Connected to
DAG1\DAGNetwork01	192.168.1.0/24	Corporate LAN
DAG1\DAGNetwork02	10.0.0.0/24	EX02
DAG1\DAGNetwork03	10.1.0.0/24	iSCSI

You need to ensure that DAGNetwork02 is the primary replication network and DAGNetwork03 is configured for iSCSI traffic only.

What two commands should you run? (To answer, select the appropriate options in the answer area.)

Answer Area

<input type="text"/>	-Identity DAG1\DAGNetwork01	<input type="text"/>	<input type="text"/>
<input type="text"/>	-Identity DAG1\DAGNetwork03	<input type="text"/>	<input type="text"/>

Answer Area

<input type="text"/> Set-DatabaseAvailabilityGroup Set-DatabaseAvailabilityGroupNetwork Set-MailboxDatabaseCopy	-Identity DAG1\DAGNetwork01	<input type="text"/> -ReplicationEnabled:\$false -ReplicationEnabled:\$true	<input type="text"/> IgnoreNetwork:\$false IgnoreNetwork:\$true
<input type="text"/> Set-DatabaseAvailabilityGroup Set-DatabaseAvailabilityGroupNetwork Set-MailboxDatabaseCopy	-Identity DAG1\DAGNetwork03	<input type="text"/> -ReplicationEnabled:\$false -ReplicationEnabled:\$true	<input type="text"/> IgnoreNetwork:\$false IgnoreNetwork:\$true

Answer:

Explanation: **Answer Area**

<input type="text"/> Set-DatabaseAvailabilityGroup Set-DatabaseAvailabilityGroupNetwork Set-MailboxDatabaseCopy	-Identity DAG1\DAGNetwork01	<input type="text"/> -ReplicationEnabled:\$false -ReplicationEnabled:\$true	<input type="text"/> IgnoreNetwork:\$false IgnoreNetwork:\$true
<input type="text"/> Set-DatabaseAvailabilityGroup Set-DatabaseAvailabilityGroupNetwork Set-MailboxDatabaseCopy	-Identity DAG1\DAGNetwork03	<input type="text"/> -ReplicationEnabled:\$false -ReplicationEnabled:\$true	<input type="text"/> IgnoreNetwork:\$false IgnoreNetwork:\$true

NEW QUESTION 115

You have an Exchange Server 2013 organization that contains five servers.
 All users connect to their mailbox by using a mobile device.
 All of the users in the finance department are in an organizational unit (OU) named OU1.
 You need to prevent the finance users from accessing the extended storage on their mobile device. What should you do?

- A. Create a new mobile device mailbox policy, and then run the Set-CasMailboxcmdlet.
- B. Create a new device access rule, and then run the Set-Mailbox cmdlet.
- C. Create a new mobile device mailbox policy, and then run the Set-Mailboxcmdlet.
- D. Create a new device access rule, and then run the Set-CasMailboxcmdlet.

Answer: A

NEW QUESTION 116

You have an Exchange Server 2013 organization. You enable single item recovery for all users.
 A user named User1 accidentally deletes important email messages sent from a user named User2. User1 reports that he cannot locate the email messages in his Deleted Items folder.
 You need to recover the items.
 What command should you run? (To answer, select the appropriate options in the answer area.)

Answer Area

-TargetFolder "Recovered Items"

Answer Area

New-MailboxExportRequest

Search-Mailbox

Start-MailboxSearch

User1

-SentTo User1

-SourceMailbox User1

-DestinationMailbox

-RecoveryMailbox

-TargetMailbox

User1

User2

"Discovery Search Mailbox"

-MailFrom User2

-SearchQuery "FROM:User2"

-Sender User2

-TargetFolder "Recovered Items"

Answer:

Explanation: **Answer Area**

New-MailboxExportRequest

Search-Mailbox

Start-MailboxSearch

User1

-SentTo User1

-SourceMailbox User1

-DestinationMailbox

-RecoveryMailbox

-TargetMailbox

User1

User2

"Discovery Search Mailbox"

-MailFrom User2

-SearchQuery "FROM:User2"

-Sender User2

-TargetFolder "Recovered Items"

NEW QUESTION 117

Your network contains an Active Directory forest named contoso.com. The forest contains four sites named Site1, Site2, Site3, and Site4.
 You have an Exchange Server 2013 organization that contains several servers in each site.
 You need to prevent users who have mailboxes in Site2 from sending email messages that are larger than 2 MB to recipients in Site3.
 What should you do?

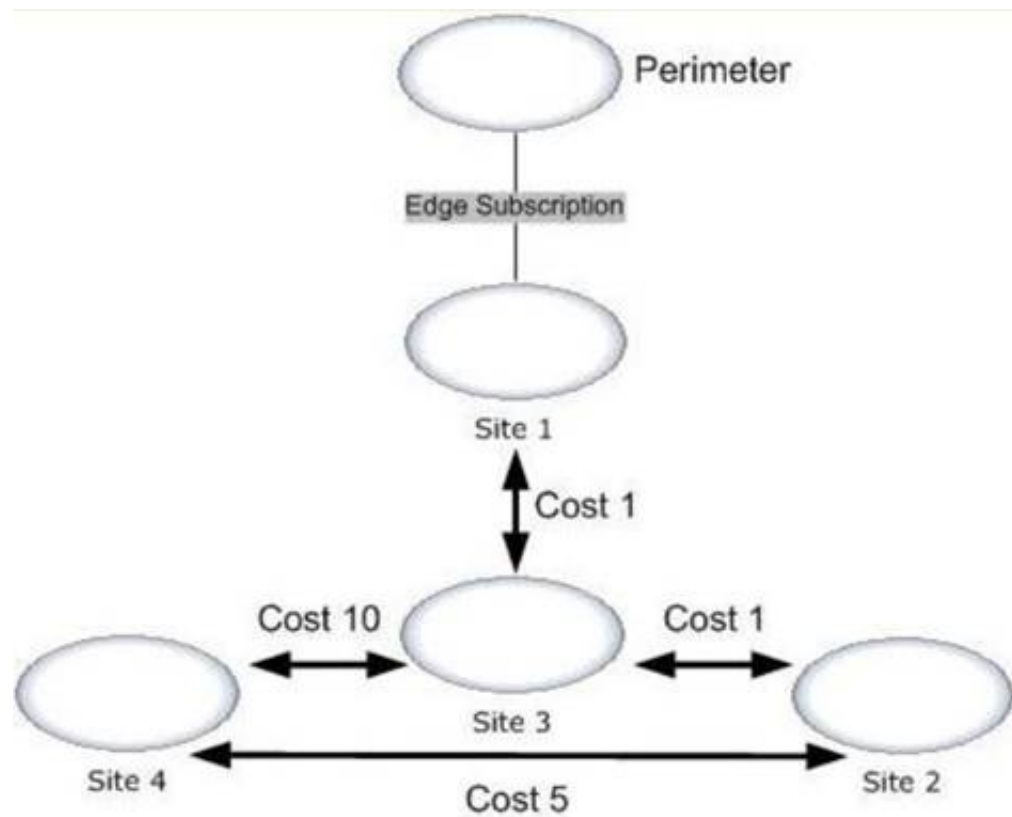
- A. Run the Set-ADSiteLink cmdlet.
- B. Create a message classification.
- C. Create a custom Send connector.
- D. Run the Set-ADSite cmdlet.

Answer: A

Explanation: References:
[https://technet.microsoft.com/en-us/library/bb123696\(v=exchg.141\).aspx](https://technet.microsoft.com/en-us/library/bb123696(v=exchg.141).aspx)

NEW QUESTION 120

Your network contains an internal network and a perimeter network. The internal network contains four offices. The perimeter network is located in a separate office. Each internal office has a direct WAN link to all other internal offices.
 Each of the four offices that make up the internal network is configured as an Active Directory site. The Active Directory sites and site links are configured as shown in the exhibit. (Click the Exhibit button.)



Your company has an Exchange Server 2013 organization. Each site contains two servers that have the Mailbox server role and the Client Access server role installed.

To the perimeter network, you deploy two servers that have Exchange Server 2010 Service Pack 2 (SP2) and the Edge Transport server role installed. You configure an Edge Subscription to Site1.

You deploy a new email notification application to Site4. The application will send 25,000 email messages daily to external recipients.

You need to identify which WAN links will have increased traffic from the new email application.

Which WAN link or links should you identify? (Each answer presents part of the solution. Choose all that apply.)

- A. The WAN link between Site4 and the perimeter network
- B. The WAN link between Site4 and Site3
- C. The WAN link between Site1 and the perimeter network
- D. The WAN link between Site4 and Site1
- E. The WAN link between Site4 and Site2

Answer: CE

NEW QUESTION 122

You have an Exchange Server 2013 organization that contains four servers. The servers are configured as shown in the following table.

Server name	Role	Active Directory site name
EX1	Mailbox server Client Access server	Site1
EX2	Mailbox server	Site1
EX3	Mailbox server Client Access server	Site2
EX4	Mailbox server	Site2

You run Get-TransportConfig and receive the output shown in the exhibit. (Click the Exhibit button.)

```
Machine: EX1.Contoso.com

[PS] C:\Windows\system32>Get-TransportConfig

AnonymousSenderToRecipientRatePerHour : 1800
ClearCategories                         : True
ConvertDisclaimerWrapperToEnl         : False
DSNConversionNode                      : UseExchangeDSNs
ExternalDelayDsnEnabled               : True
ExternalDsnDefaultLanguage            : 
ExternalDsnLanguageDetectionEnabled   : True
ExternalDsnMaxMessageAttachSize       : 10 MB (10,485,760 bytes)
ExternalDsnReportingAuthority         : 
ExternalDsnSendHtml                   : True
ExternalPostmasterAddress              : 
GenerateCopyOfDSNFor                  : 
HygieneSuite                           : Standard
InternalDelayDsnEnabled               : True
InternalDsnDefaultLanguage            : 
InternalDsnLanguageDetectionEnabled   : True
InternalDsnMaxMessageAttachSize       : 10 MB (10,485,760 bytes)
InternalDsnReportingAuthority         : 
InternalDsnSendHtml                   : True
InternalSMTPServers                   : 
JournalingReportNdrTo                 : 
LegacyJournalingMigrationEnabled       : False
LegacyArchiveJournalingEnabled        : False
LegacyArchiveLiveJournalingEnabled    : False
RedirectUnprovisionedUserMessagesForLegacyArchiveJournaling : False
RedirectDlMessagesForLegacyArchiveJournaling : False
MaxDumpsterSizePerDatabase            : 10 MB (10,485,760 bytes)
MaxDumpsterTime                       : 7:00:00:00
MaxReceiveSize                        : 10 MB (10,485,760 bytes)
MaxRecipientEnvelopeLimit              : 500
MaxRetriesForLocalSiteShadow           : 2
MaxRetriesForRemoteSiteShadow         : 0
MaxSendSize                           : 10 MB (10,485,760 bytes)
MigrationEnabled                      : False
OpenDomainRoutingEnabled              : False
RejectMessageOnShadowFailure           : False
Rfc2231EncodingEnabled                : False
SafetyNetHoldTime                     : 2:00:00:00
ShadowHeartbeatFrequency               : 00:02:00
ShadowMessageAutoDiscardInterval      : 2:00:00:00
ShadowMessagePreferenceSetting        : LocalOnly
ShadowRedundancyEnabled                : True
ShadowResubmitTimeSpan                : 03:00:00
SupervisionTags                       : <Reject, Allow>
TLSReceiveDomainSecureList            : 
TLSSendDomainSecureList               : 
VerifySecureSubmitEnabled              : False
VoicemailJournalingEnabled            : True
HeaderPromotionModeSetting            : NoCreate
Xexch50Enabled                        : True
```


Use the drop-down menus to select the answer choice that completes each statement.

Answer Area

Shadow copies of messages will be created on
[answer choice]

The maximum duration that shadow copies of
messages will be stored is [answer choice]

Answer Area

Shadow copies of messages will be created on
[answer choice]

The maximum duration that shadow copies of
messages will be stored is [answer choice]

Answer:

Explanation: Answer Area

Shadow copies of messages will be created on [answer choice]	<div>servers in all sites. the local server only. servers in the same site only. servers in the remote site only.</div>
The maximum duration that shadow copies of messages will be stored is [answer choice]	<div>two minutes. three hours. two days. four day.</div>

NEW QUESTION 127

Your company named Contoso, Ltd., has an Exchange Server 2013 organization named contoso.com. The network contains an Active Directory domain. The domain contains an organizational unit (OU) named SalesOU. SalesOU contains two users named User1 and User2.

Contoso purchases a domain name adatum.com.

You need to change the primary SMTP address of all the users in SalesOU to use the SMTP suffix of adatum.com. The solution must not remove the contoso.com email address.

Which two actions should you perform? (Each correct answer presents part of the solution. Choose two.)

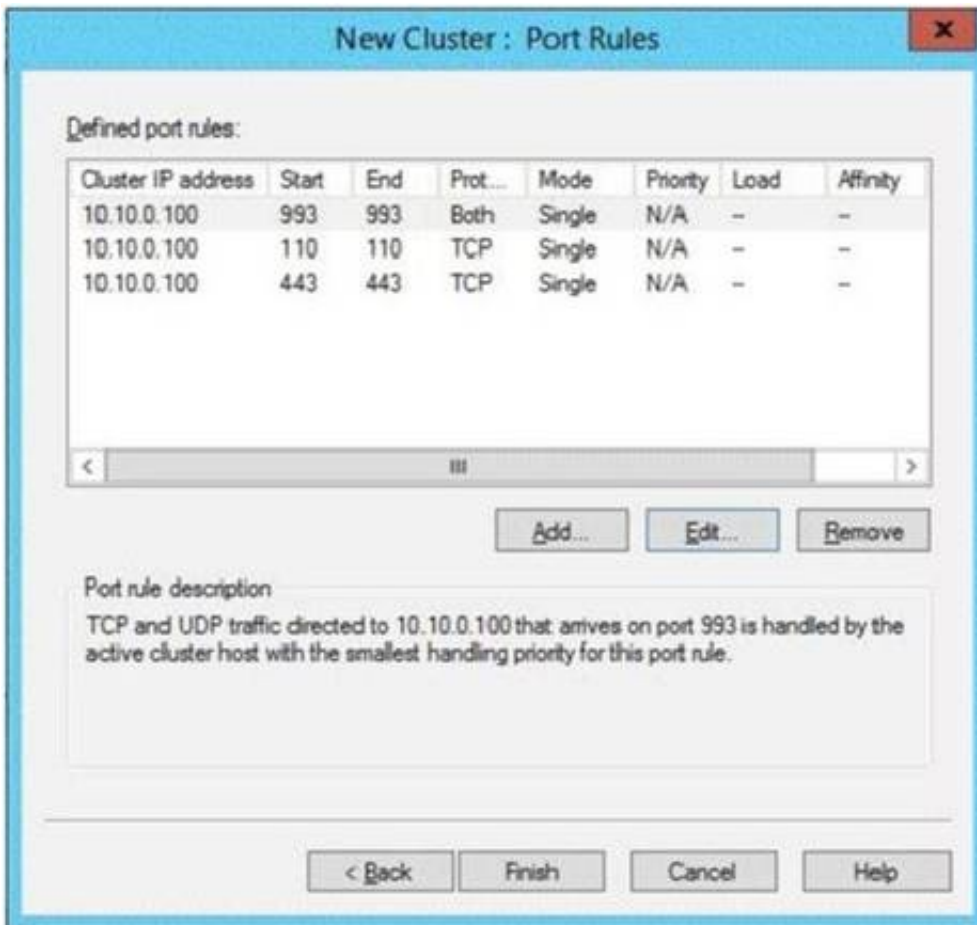
- A. Create a new email address policy and apply the policy to the users in SalesOU.
- B. Change the default email address policy to include adatum.com.
- C. Create a new remote domain for adatum.com.
- D. Create a new accepted domain for adatum.com and set the domain type to Authoritative Domain.
- E. Create a new accepted domain for adatum.com and set the domain type to External RelayDomain.

Answer: AD

NEW QUESTION 129

Your network contains three Exchange Server 2013 servers that have the Client Access server role installed. Each server is configured as a POP3 server and an IMAP4 server.

You deploy the Network Load Balancing (NLB) feature on the servers and configure NLB as shown in the exhibit (Click the Exhibit button.)



Use the drop-down menus to select the answer choice that completes each statement.

Answer Area

If a client has an existing connection to 10.10.0.100:443, subsequent connections will be [answer choice]

Connections that use [answer choice] will NOT be load balanced by NLB.

Answer Area

If a client has an existing connection to 10.10.0.100:443, subsequent connections will be [answer choice]

received by all of the Client Access servers, randomly distributed to a Client Access server, processed by the same Client Access server.

Connections that use [answer choice] will NOT be load balanced by NLB.

IMAP over SSL
Outlook Anywhere
POP3 over SSL

Answer:

Explanation: Answer Area

If a client has an existing connection to 10.10.0.100:443, subsequent connections will be [answer choice]

received by all of the Client Access servers, randomly distributed to a Client Access server, processed by the same Client Access server.

Connections that use [answer choice] will NOT be load balanced by NLB.

IMAP over SSL
Outlook Anywhere
POP3 over SSL

NEW QUESTION 134

You have an Exchange Server 2013 organization that contains two Edge Transport servers. The Edge Transport servers are configured to perform recipient filtering.

You deploy a new Edge Transport server named Edge3. You need to ensure that Edge3 performs recipient filtering. What should you do?

- A. Create a new Edge Subscription for Edge3.
- B. Run the Set-TransportConfig cmdlet on Edge3.
- C. Export the Edge Subscription from an existing Edge Transport server and import the Edge Subscription to Edge3.
- D. Run the ExportEdgeConfig.ps1 and the ImportEdgeConfig.ps1 scripts.

Answer: D

Explanation: We copy the configuration from an existing Edge Transport server with the ExportEdgeConfig.ps1 script and apply to new server Edge3 with ImportEdgeConfig.ps1 script.

Note: Configure Edge Transport server using cloned configuration

You can use the provided Exchange Management Shell scripts (located in %ExchangeInstallPath%Scripts) to duplicate the configuration of an Edge Transport server. This process is referred to as cloned configuration. Cloned configuration is the practice of deploying new Edge Transport servers based on configuration information from a previously configured source server. The configuration information from the previously configured source server is copied and exported to an XML file, which is then imported to the target server

NEW QUESTION 138

You have an Exchange Server 2013 organization named contoso.com that contains several servers. The organization contains 3,000 mailboxes. You plan to deploy a hybrid coexistence solution and move 1,000 mailboxes to Exchange Online. You also plan to configure all mail exchanger (MX) records for contoso.com to point to Exchange Online and to enable centralized mail transport. You need to identify how mail will be routed.

What should you identify? To answer, drag the appropriate mail route to the correct option. Each mail route may be used once, more than once, or not at all. You may need to drag the split bar between panes or scroll to view content.

Mail Routes	Answer Area
routed through Exchange Online only	Outbound email messages from Exchange Online mailboxes to the Internet will be: Mail route
routed through Exchange Server 2013 on-premises only	Inbound email messages from Internet to Exchange Online mailboxes will be: Mail route
routed through both Exchange Online and Exchange on-premises	Outbound email messages from Exchange on-premises mailboxes to the Internet will be: Mail route

Answer:

Explanation:

Mail Routes	Answer Area
routed through Exchange Online only	Outbound email messages from Exchange Online mailboxes to the Internet will be: routed through both Exchange Online and Exchange on-premises
routed through Exchange Server 2013 on-premises only	Inbound email messages from Internet to Exchange Online mailboxes will be: routed through Exchange Online only
routed through both Exchange Online and Exchange on-premises	Outbound email messages from Exchange on-premises mailboxes to the Internet will be: routed through Exchange Server 2013 on-premises only

NEW QUESTION 143

You have an Exchange Server 2013 organization that contains 20 servers. You plan to deploy Exchange Server 2013 RTM Cumulative Update 1 (CU1) to the first Exchange server in the organization. You need to ensure that a user named ExchangeAdmin can deploy CU1 to the first server. The solution must minimize the number of permissions assigned to ExchangeAdmin. To which groups should you add ExchangeAdmin?

- A. Schema Admins, Domain Admins, and Enterprise Admins
- B. Schema Admins, Domain Admins, and Delegated Setup
- C. Domain Admins and Organization Management
- D. Enterprise Admins and Organization Management

Answer: A

NEW QUESTION 147

A user fails to connect to his mailbox by using Outlook Anywhere. The user successfully connects to the mailbox by using an Exchange ActiveSync-enabled mobile device and Outlook Web App. You need to identify what prevents the users from connecting to the mailbox by using Outlook Anywhere. Which tool should you use?

- A. Microsoft Outlook Connectivity Test
- B. Microsoft Exchange RPC Extractor
- C. Microsoft Exchange Server Profile Analyzer
- D. Exchange Server MAPI Editor

Answer: A

NEW QUESTION 151

You have an Exchange Server 2013 organization. You plan to delegate the following administrative tasks:
 ? View the status of the message queue.
 ? Create, mount, and dismount databases.
 ? Restore mailboxes from a recovery database,
 ? Modify the settings of Exchange ActiveSync devices.

You need to identify which role group must be used to delegate each administrative task.

The solution must ensure that the role group that has the fewest administrative privileges is used.

Which role groups should you identify? (To answer, drag the appropriate role groups to the correct tasks. Each role group may be used once, more than once, or not at all. You may need to drag the split bar between panes or scroll to view content.)

Role Groups	Answer Area
Discovery Management	View the status of the message queue. Role group
Help Desk	Create, mount, and dismount databases. Role group
Organization Management	Restore mailboxes from a recovery database. Role group
Recipient Management	Modify the settings of Exchange ActiveSync devices. Role group
Server Management	
View-Only Organization Management	

Answer:

Explanation:

Role Groups	Answer Area
Discovery Management	View the status of the message queue. View-Only Organization Management
Help Desk	Create, mount, and dismount databases. Server Management
Organization Management	Restore mailboxes from a recovery database. Organization Management
Recipient Management	Modify the settings of Exchange ActiveSync devices. Recipient Management
Server Management	
View-Only Organization Management	

NEW QUESTION 155

You network contains an Active Directory forest named contoso.com. The forest contains four sites named Site1, Site2, Site3, and Site4. You have an Exchange Server 2013 organization that contains several servers in each site. You need to prevent users who have mailboxes in Site2 from sending email messages that are larger than 2MB to recipients in Site3. What should you do?

- A. Modify the attributes of the Active Directory IP site link between Site 2 and Site3.
- B. Create a custom Send connector that has all mailboxes servers from Site 2 as source servers.
- C. Create a custom Receive connector that has the remote IP address range of Site 2.
- D. Modify the attributes of the Active Directory SMTP site link between Site 2 and Site3.

Answer: B

NEW QUESTION 158

You have an Exchange Server 2013 organization that contains two distribution groups named Group1 and Group2. You need to prevent the members of Group1 and Group2 from communicating with each other by using email, unless the email messages contain the string Press Release in the subject. Users whose email messages are rejected must receive a non-delivery report (NDR) that contains a status code of 5.7.3. Which command should you run? (To answer, configure the appropriate options in the answer area.)

<div> <div>BlockMessages1</div> <div> <div>New-DlpPolicy</div> <div>New-MessageClassification</div> <div>New-TransportRule</div> </div> </div>	<div> <div>"BlockMessages1" -BetweenMemberOf1 "Group1" -BetweenMemberOf2 "Group2"</div> <div>insWords "Press Release"</div> </div>	<div> <div>5.7.3</div> <div> <div>-ClassificationID</div> <div>-RejectMessageEnhancedStatusCode</div> <div>-SmtpRejectMessageRejectStatusCode</div> </div> </div>
--	--	---

Answer:

Explanation: Box 1: New-TransportRule
 Box 2: SmtpRejectMessageRejectStatusCode

NEW QUESTION 159

You have an Exchange Server 2013 organization that contains two servers named EX1 and EX2. EX1 and EX2 are members of a database availability group (DAG) named DAG1. You need to identify the last several times that a mailbox database named MBX1 failed over from EX1 to EX2. What command should you run? To answer, select the appropriate options in the answer area.

Answer Area		
<div> <div>Get-MailboxDatabaseStatus</div> <div>Get-MailboxDatabase</div> <div>CollectOverMetrics.ps1</div> <div>CollectReplicationMetrics.ps1</div> </div>	<div> <div>-DatabaseAvailabilityGroup DAG1</div> <div> <div>-Database MBX1</div> <div>-Database \$true</div> <div>-SwitchOver:\$true</div> </div> </div>	<div>GenerateHTMLReport</div>

Answer:

Explanation: References:
[https://technet.microsoft.com/en-us/library/dd351258\(v=exchg.150\).aspx](https://technet.microsoft.com/en-us/library/dd351258(v=exchg.150).aspx)

NEW QUESTION 163

You have an Exchange Server 2013 organization. Each user has an In-Place Archive.
 You discover that several items in a user's In-Place Archive are corrupt. You need to ensure that the user can access the corrupt items.
 Which tool should you use?

- A. The Repair-FileIntegrity cmdlet
- B. The Isinteg command
- C. The New-MailboxRepairRequest cmdlet
- D. The Eseutil command

Answer: C

NEW QUESTION 168

You have an Exchange Server 2013 organization.
 You deploy an anti-spam appliance and you connect the appliance to the Exchange Server organization. You need to disable keyword filtering of email messages that are received from the Internet.
 Which Windows PowerShell cmdlet should you use?

- A. Set-SendConnector
- B. Remove-DeliveryAgentConnector
- C. Set-ContentConfig
- D. Disable-Service

Answer: B

Explanation: References: [https://technet.microsoft.com/en-us/library/dd297929\(v=exchg.160\).aspx](https://technet.microsoft.com/en-us/library/dd297929(v=exchg.160).aspx)

NEW QUESTION 172

You have an Exchange Server 2013 organization that contains five servers. Several employees plan to use Microsoft Outlook to collaborate on some projects. You need to configure access to Outlook to meet the following requirements:
 Several employees must be able to open only the Inbox of a user named User1.
 Several employees must be able to copy email messages from any folder in the mailbox of a user named User2.
 Several employees must be able to create only contacts in the mailbox of a user named User3.
 Which cmdlets should you use?
 To answer, drag the appropriate cmdlet to the correct requirement in the answer area. Each cmdlet may be used once, more than once, or not at all. Additionally, you may need to drag the split bar between panes or scroll to view content.

Cmdlets	Answer Area
Add-MailboxFolderPermission	Several employees must be able to open only the Inbox of a user named User1. Cmdlet
Add-MailboxPermission	Several employees must be able to copy email messages from any folder in the mailbox of a user named User2. Cmdlet
Set-Mailbox	Several employees must be able to create only contacts in the mailbox of a user named User3. Cmdlet

Answer:

Explanation:

Cmdlets	Answer Area
Add-MailboxFolderPermission	Several employees must be able to open only the Inbox of a user named User1. Add-MailboxFolderPermission
Add-MailboxPermission	Several employees must be able to copy email messages from any folder in the mailbox of a user named User2. Add-MailboxPermission
Set-Mailbox	Several employees must be able to create only contacts in the mailbox of a user named User3. Add-MailboxFolderPermission

NEW QUESTION 173

You have an Exchange Server 2013 organization that contains a server named EX1. EX1 has the Mailbox server role and the Client Access server role installed.
 You plan to enable anti-spam protection on EX1.
 You need to configure the message hygiene settings for email messages received from the Internet. The solution must meet the following requirements:
 ? Place email messages that contain the word Contoso in a quarantine folder.
 ? Block all email messages sent to former employees who no longer work for the company.

? Reject all email messages sent from a source that has a sender reputation level (SRL) of 7 or greater.
What should you configure? (To answer, drag the appropriate transport objects to the correct requirements.
Each object may be used once, more than once, or not at all. You may need to drag the split bar between panes or scroll to view content.)

Transport Objects	Answer Area
Content Filter agent	Place email messages that contain the word Contoso in a quarantine folder.
Protocol Analysis agent	Block all email messages sent to former employees who no longer work for the company.
Receive connector	Reject all email messages sent from a source that has a sender reputation level (SRL) of 7 or greater.
Recipient Filter agent	
Sender Filter agent	

Answer:

Explanation:

Transport Objects	Answer Area
Content Filter agent	Place email messages that contain the word Contoso in a quarantine folder.
Protocol Analysis agent	Block all email messages sent to former employees who no longer work for the company.
Receive connector	Reject all email messages sent from a source that has a sender reputation level (SRL) of 7 or greater.
Recipient Filter agent	
Sender Filter agent	

NEW QUESTION 176

You have an Exchange Server 2013 organization.
Your company has a Service Level Agreement (SLA) stating that you must be able to reconnect disconnected mailboxes to user accounts for up to 365 days. After 365 days, disconnected mailboxes must be deleted permanently.
You need to recommend a solution to meet the SLA. What should you include in the recommendation?

- A. Create a retention policy and apply the policy to all mailboxes.
- B. Configure the deleted mailbox retention setting for all databases.
- C. Configure the deleted item retention setting for all databases.
- D. Implement a database availability group (DAG) that contains a lagged copy.

Answer: B

NEW QUESTION 181

You have an Exchange Server 2013 organization that contains two servers named EX1 and EX2.
EX1 and EX2 are the members of a database availability group (DAG) named DAG1. DAG1 contains a database named DB1. DB1 is active on EX1.
You deploy a new Exchange Server 2013 server named Ex3. You add EX3 as a member of DAG1.
You need to add a copy of DB1 to EX3 by using an offline copy of the database.
Which three actions should you perform in sequence? (To answer, move the appropriate three actions from the list of actions to the answer area and arrange them in the correct order.)

Actions	Answer Area
Run the Move-ActiveMailboxDatabase cmdlet.	
Run the Add-MailboxDatabaseCopy cmdlet.	
Manually copy the database files to EX3.	
Dismount DB1 on EX2.	
Run the Update-MailboxDatabaseCopy cmdlet.	

Answer:

Explanation:

Actions	Answer Area
Run the Move-ActiveMailboxDatabase cmdlet.	Dismount DB1 on EX2.
Run the Add-MailboxDatabaseCopy cmdlet.	Manually copy the database files to EX3.
Manually copy the database files to EX3.	Run the Add-MailboxDatabaseCopy cmdlet.
Dismount DB1 on EX2.	
Run the Update-MailboxDatabaseCopy cmdlet.	

NEW QUESTION 184

You have an Exchange Server 2013 organization that contains one server named ex1.contoso.com. The server has the Mailbox server role and the Client Access server role installed.

You plan to configure users to work from home and to access their email by using the Outlook Anywhere feature.

Upon testing the planned configuration, you discover that the users can connect and synchronize email from home, but they cannot execute the following tasks:

Set automatic replies for Out of Office.

Download changes to the offline address book.

View availability data when scheduling meetings with coworkers.

The users can execute these tasks when they work from the office.

You need to ensure that the users can execute the tasks when they work from home.

Which two actions should you perform? (Each correct answer presents part of the solution. Choose two.)

- A. Install a new certificate on ex1.contoso.com
- B. Modify the EWS virtual directory.
- C. Create a new Autodiscover virtual directory.
- D. Renew the certificate on ex1.contoso.com.
- E. Modify the OAB virtual directory.

Answer: BE

NEW QUESTION 185

Your network contains an Active Directory forest. The forest contains two sites named Site1 and Site2.

You have an Exchange Server 2013 organization. Site1 contains two Mailbox servers and one Client Access server. Site2 contains two Mailbox servers and two Client Access servers.

You need to prevent messages that cannot be protected by shadow redundancy from being delivered. What command should you run? (To answer, select the appropriate options in the answer area.)

Answer Area

<input type="text"/>	<input type="text"/>	<input type="text"/>
----------------------	----------------------	----------------------

Answer Area

<input type="text"/> Set-TransportAgent Set-TransportConfig Set-TransportRule Set-TransportServer Set-TransportService	<input type="text"/> -RejectMessageOnShadowFailure -SafetyNetHoldTime -ShadowMessageAutoDiscardInterval -ShadowRedundancyEnabled -TransportSyncEnabled	<input type="text"/> 0 1 2 \$false \$true
---	---	--

Answer:

Explanation: **Answer Area**

<input type="text"/> Set-TransportAgent Set-TransportConfig Set-TransportRule Set-TransportServer Set-TransportService	<input type="text"/> -RejectMessageOnShadowFailure -SafetyNetHoldTime -ShadowMessageAutoDiscardInterval -ShadowRedundancyEnabled -TransportSyncEnabled	<input type="text"/> 0 1 2 \$false \$true
---	---	--

NEW QUESTION 189

Your company has offices in New York, Paris, and Montreal. An Active Directory site exists for each office.

You have an Exchange Server 2013 organization that contains two servers in each site. One server in each site has the Mailbox server role installed and the other server in each site has the Client Access server role installed.

You need to ensure that all of the outbound email from each site is routed through the Client Access server in that site.

Which should you do?

- A. Remove the Mailbox servers from the list of source servers on each Send connector.
- B. Disable the Microsoft Exchange Transport service on each Mailbox server.
- C. Run the Set-SendConnector cmdlet and specify the -FrontendProxyEnabled.True parameter.
- D. Run the Set-TransportConfig cmdlet and specify the -InternatSMTPServers:\$null parameter.

Answer: C

NEW QUESTION 190

You have an Exchange Server 2013 organization that contains one Client Access server. The Client Access server is accessible from the Internet by using a network address translation (NAT) device.
 You deploy an additional Client Access server.
 You also deploy an L4 hardware load balancer between the Client Access servers and the NAT device.
 After deploying the hardware load balancer, you discover that all of the Exchange Server traffic is directed to a single Client Access server.
 You need to ensure that the hardware load balancer distributes traffic evenly across both Client Access servers. What should you do?

A. Change the default route of the Client Access servers to point to the hardware load balancer.
 B. Configure the NAT device to pass the original source IP address of all connections from the Internet.
 C. Configure the Client Access servers to have a second IP address and web sit
 D. Create the Exchange virtual directories in the new sites.
 E. Configure SSL offloading on the hardware load balancer and the Client Access servers.

Answer: B

NEW QUESTION 192

You have an Exchange Server 2013 organization that contains two servers. The servers are configured as shown in the following table.

Server name	Server role
Ex1	Mailbox server Client Access server
Ex2	Mailbox server Client Access server

You need to create a new database availability group (DAG) that contains EX1 and EX2. Which three actions should you perform?
 To answer, move the three appropriate actions from the list of actions to the answer area and arrange them in the correct order.

Actions

Add the Exchange Trusted Subsystem universal security group to the local Administrators group on Server1.

Create a new DAG and specify Server1 as the file share witness.

Install Exchange Server 2013 on Server1.

Add the Exchange Trusted Subsystem universal security group to the local Administrators group on EX1 and EX2.

Create a new DAG and let Exchange Server select the file share witness automatically.

Add EX1 and EX2 to the DAG.

Answer Area

Answer:

Explanation: Box 1: Add the Exchange Trusted Subsystem universal security group to the local Administrators group on Server1.
 Box 2: Create a new DAG and specify Server1 as the file share witness. Box 3: Add EX1 and EX2 to the DAG.

NEW QUESTION 193

In Europe, your company has one main office and five branch offices. In Asia, the company has one main office and five branch offices. Each main office contains a data center.
 The network contains an Active Directory forest. The forest contains a single domain named contoso.com. Each office is configured as an Active Directory site.
 All client computers are joined to the domain.
 You plan to deploy Exchange Server 2013 servers to both data centers.
 You need to recommend a client connectivity solution that meets the following requirements:
 Users who connect from the Internet must be configured automatically to connect to their mailbox by using Outlook Anywhere.
 Users from the branch offices must use Outlook Anywhere to connect to the Client Access servers in their respective region.
 What should you include in the recommendation?

- A. A service connection point (SCP) in Active Directory and a host (A) record in the public DNS zone
 B. A service location (SRV) record in the internal DNS zone and a service location (SRV) record in the public DNS zone
 C. A service connection point (SCP) in Active Directory and an inbound port rule for TCP 389
 D. A service location (SRV) record in the public DNS zone and an inbound port rule for TCP 389

Answer: B

NEW QUESTION 196

You have an Exchange Server 2010 organization.
 You deploy a server that has Exchange Server 2013 installed.
 You plan to install five additional servers that have Exchange Server 2013 installed. You are a member of the Organization Management management role group.

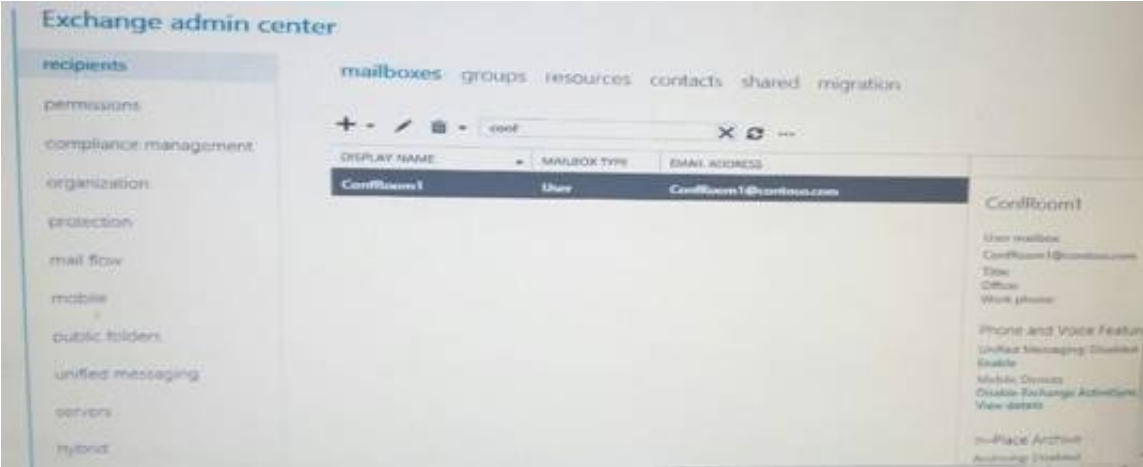
Your company hires an external IT consultant named Admin1.
 The company's security policy states that all external consultants must have the minimum number of required permissions on the network.
 You need to ensure that Admin1 can install a server named EX2. The solution must meet the requirements of the security policy.
 Which two tasks should you perform? (Each correct answer presents part of the solution. Choose two.)

- A. Add Admin1 to the Exchange Server role group.
- B. Create a new management role and a new role assignment policy.
- C. Run setup and specify the/newprovisionectservernex2 parameter.
- D. Add Admin1 to the Delegated Setup management role group.

Answer: CD

NEW QUESTION 197

You create a mailbox named ConfRoom1 as shown in the exhibit. (Click the Exhibit button.)



Users report that when they schedule meetings and attempt to locate ConfRoom1 in the All Rooms address list, they do not see ConfRoom1 on the list.
 You need to ensure that the users can locate ConfRoom1 on the All Rooms address list. What should you do?

- A. Modify the Sharing Policy that is associated to ConfRoom1.
- B. Run the Update-AddressList command and specify the -Identity parameter.
- C. Run the Set-Mailbox command and specify the -IsRootPublicFolderMailbox parameter.
- D. Delete the ConfRoom1 mailbox, and create a new resource mailbox.

Answer: D

NEW QUESTION 198

Your company has two offices. The offices are configured as shown in the following table.

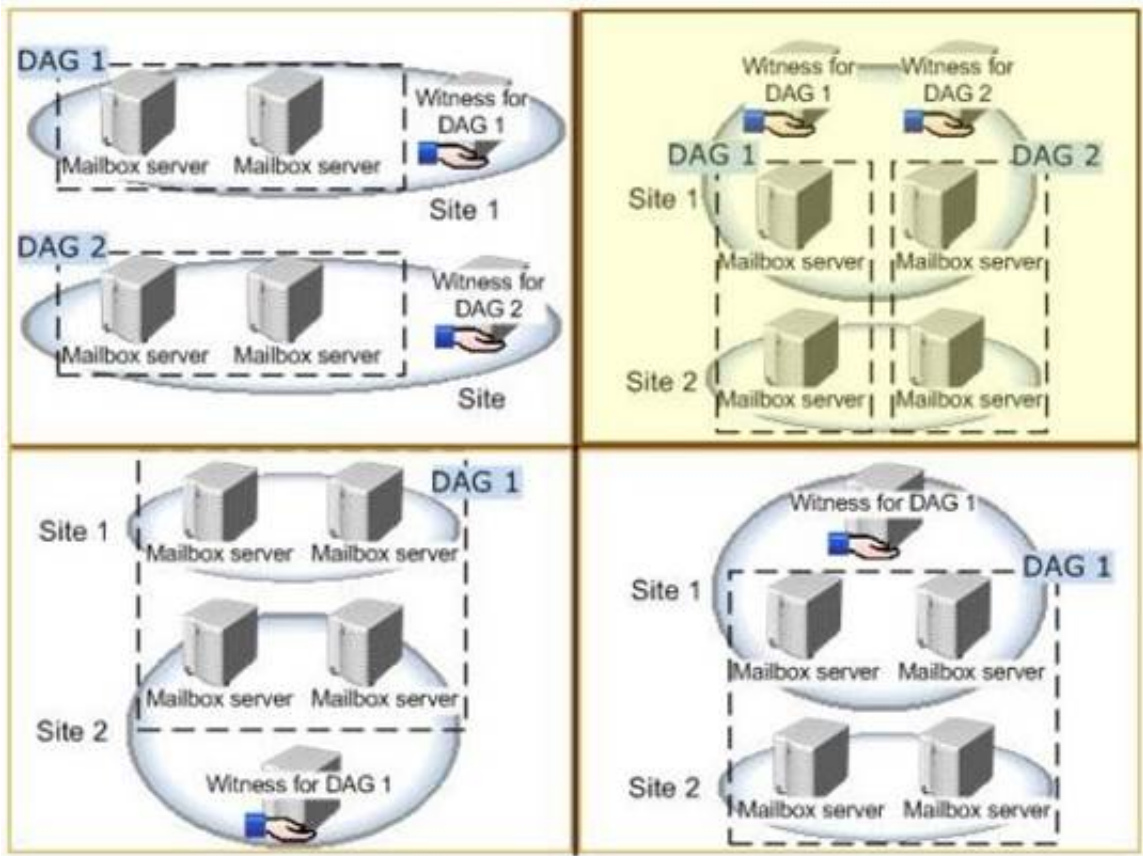
Office name	Number of users	Office site name
Office 1	2,000	Site 1
Office 2	2,000	Site 2

The offices connect to each other by using a WAN link that has a latency of more than 700 ms. You plan to deploy an Exchange Server 2013 organization to meet the following requirements:

- Ensure that users can access their mailbox if the WAN link fails.
- Ensure that users can access their mailbox if a single server fails.
- Ensure that users can access their mailbox if a single database fails.

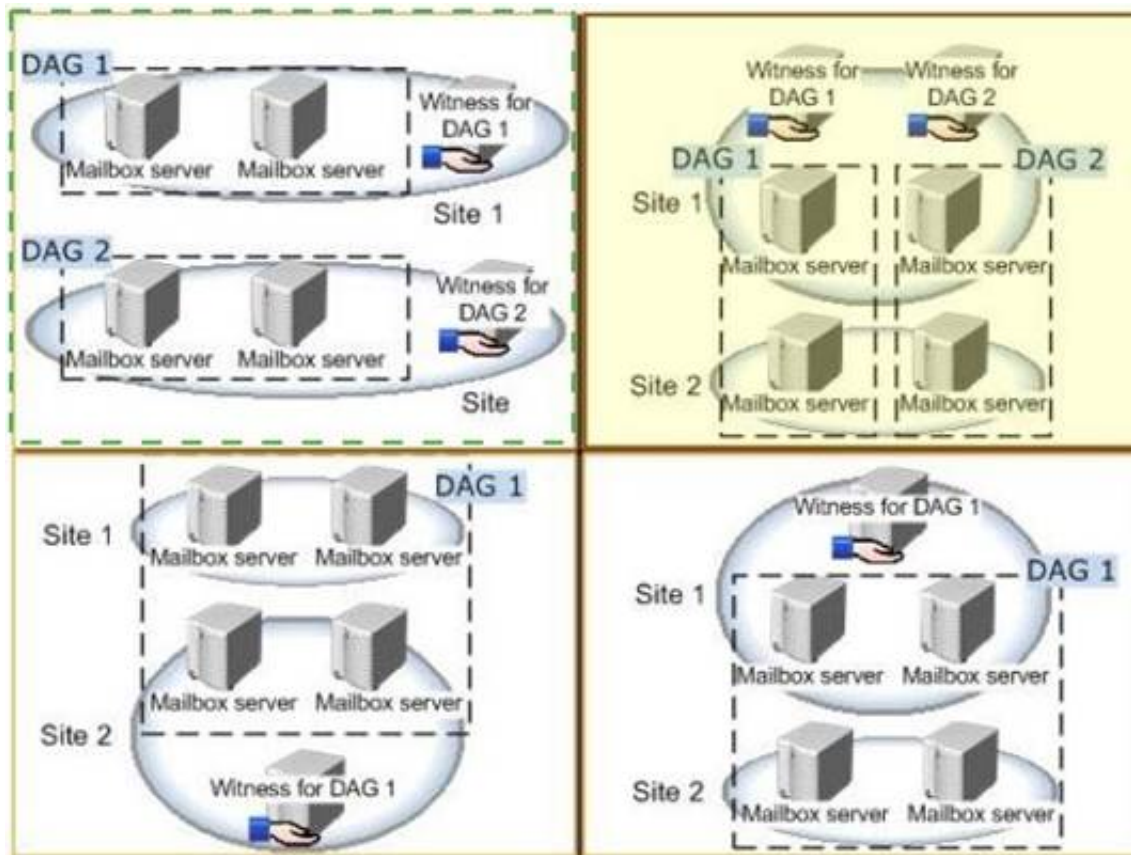
You recommend deploying one or more database availability groups (DAGs) and mailbox database copies. You need to identify which design meets the requirements for the planned deployment.
 Which design should you identify?

To answer, select the appropriate design in the answer area.



Answer:

Explanation:



NEW QUESTION 201

You have an Exchange Server 2013 organization that contains a server named EX1.

Your network contains a non-critical internal application that regularly connects to the POP3 Service on EX1. Users report that Outlook Web App performs more slowly than usual.

You discover that EX1 frequently has a CPU utilization that is greater than 85 percent.

You need to configure EX1 temporarily to allocate more processor resources to Outlook Web App and to allocate less processor resources to POP3.

Which two new policies should you create? (Each correct answer presents part of the solution. Choose two.)

- A. a throttling policy that sets OWAMaxConcurrency to 25
- B. a workload policy for POP3 that sets the WorkloadClassification to Discretionary
- C. a workload policy for Outlook Web App that sets the WorkloadClassification to Discretionary
- D. a throttling policy that sets PopMaxConcurrency to 25
- E. a workload policy for POP3 that sets the WorkloadClassification to CustomerExpectation
- F. a workload policy for Outlook Web App that sets the WorkloadClassification to CustomerExpectation

Answer: BF

NEW QUESTION 204

You have an Exchange Server 2013 organization named Contoso. The organization contains a server named Server1 that has Exchange Server 2013 installed. Server1 has the Mailbox server role and the Client Access server role installed.

Server1 has a Send connector for a partner company. The Send connector is configured for Domain Security with a domain named adatum.com.

The only certificate installed on Server1 expires.

You discover that all email messages sent to adatum.com remain in the queue on Server1. On Server1, you install a new certificate from a trusted third-party.

You need to ensure that the email messages are delivered to adatum.com. What should you do?

- A. Assign the new certificate to the IIS service.
- B. Send the new certificate to the administrator at adatum.com.
- C. Assign the new certificate to the SMTP service.
- D. Create a new send connector that contains an address space to adatum.com.

Answer: C

NEW QUESTION 206

You have an exchange Server 2013 organization that contains one server.

A user named User 1 report that he cannot view several email messages from his mobile device. He confirms that he can view the email messages by using Microsoft Outlook.

You need to enable and view the Exchange ActiveSync log for User1. Which two actions should you perform?

Each correct answer presents part of the solution.

- A. Run the Get-CasMailbox cmdlet.
- B. Modify the TraceSessions.config file.
- C. Run the Set-Mailbox cmdlet.
- D. Run the Set-CasMailbox cmdlet.
- E. Run the Get-MobileDeviceStatistics cmdlet

Answer: AE

NEW QUESTION 208

Your network contain an Active Directory forest. The forest contains a single domain named contoso.com. The network contains a legacy mail system that uses a SMTP namespace of contoso.com.

You plan to deploy Exchange Server 2013.

There will be a period of interoperability while the email is migrated from the legacy system to Exchange Server 2013.

During the period of interoperability, you need to ensure that all incoming email is received by an Exchange Server 2013 server, and then routed to the legacy mail system if an Exchange Server email recipient cannot be found.

You configure the firewall in the perimeter network to route SMTP traffic to the Exchange Server 2013 organization.

What should you do next?

- A. Modify the existing accepted domain for contoso.com and create a new Send connector.
- B. Add a new external relay accepted domain for contoso.com and create a new Send connector.
- C. Add a new authoritative domain for contoso.com and create a new email address policy.
- D. Add a new internal relay accepted domain for contoso.com and create a new email address policy.

Answer: A

NEW QUESTION 212

You have an Exchange Server 2013 on-premises organization and a Microsoft Office 365 tenant. All mailboxes are hosted on-premises.

You need to implement an archiving solution for all users. The solution must ensure that all mailbox content older than 18 months is moved to Personal Archives in Office 365.

What should you implement?

- A. a retention policy and a retention policy tag (RPT)
- B. a retention hold and a retention policy tag (RPT)
- C. a retention policy and a personal tag
- D. a retention policy and a default policy tag (DPT)

Answer: D

NEW QUESTION 213

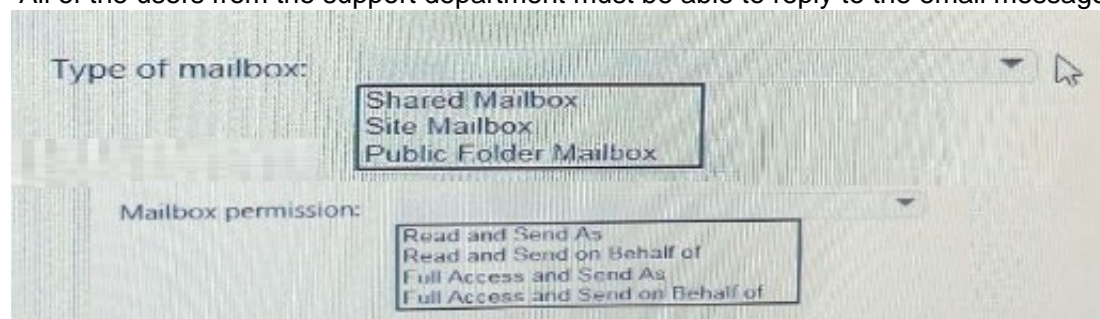
You have an Exchange Server 2013 organization and a Microsoft Office 365 tenant that are configured for hybrid coexistence. Eight hundred users have mailboxes in the Exchange Server 2013 organization. Six hundred users have mailboxes in Office 365.

You need to implement a mailbox solution for the support department. The solution must meet the following requirements:

All users must be able to send email messages to a dedicated mailbox for support.

All of the users from the support department must be able to log on to the dedicated support mailbox and read the email messages in the mailbox.

All of the users from the support department must be able to reply to the email messages sent to the dedicated support mailbox.



Answer:

Explanation: References:

<https://ette.zendesk.com/hc/en-us/articles/215481528-Understanding-Shared-Mailboxes-vs-Standard-Mailboxes->

NEW QUESTION 214

You have an Exchange Server 2013 organization that contains two Client Access servers named CAS1 and CAS2.

You deploy a Network Load Balancing (NLB) cluster for Exchange client access. You configure all HTTPS connections to the cluster to be equally balanced between both servers.

In the next few weeks, you plan to replace CAS1.

You need to ensure that all HTTP connections to the cluster are redirected to CAS2 only. The HTTPS connections must continue to be balanced equally between both servers.

What should you do?

- A. Modify the cluster operation mode.
- B. Create a port rule for port 80.
- C. Set the priority of CAS1 to a higher number than CAS2.
- D. Set the priority of CAS2 to a higher number than CAS1.

Answer: B

NEW QUESTION 216

Your company has offices in Miami, Singapore and Montreal. An Active Directory site exists for each office. You have an Exchange Server 2013 organization that contains a server in each site. Each server has the Mailbox server role and the Client Access Server role installed.

All users connect to the Miami servers to retrieve the public folder hierarchy.

You need to create several public folders on the server in the Singapore office to meet the following requirements:

Ensure that the public folders are available if a single Mailbox server fails.

Ensure that the users in the Singapore office connect to their local server to retrieve the public folder hierarchy.

Which actions should you perform? (Each correct answer presents part of the solution. Choose all that apply.)

- A. Create a new public folder mailbox.

- B. Create a new public folder database.
- C. Run the Add-MailboxDatabaseCopy cmdlet.
- D. For each mailbox in the Singapore office, run the Set-Mailbox cmdlet and specify the–defaultpublicfoldermailbox parameter.
- E. Run the Set-PublicFolderDatabase cmdlet.
- F. For each public folder mailbox, run the Set-Mailbox cmdlet and specify the –defaultpublicfoldermailbox parameter.

Answer: ACD

NEW QUESTION 221

You plan to deploy an Exchange Server 2013 organization.
 The security department identifies the following requirements for the planned deployment:
 Only members of a security group named ExSecure must be able to create Exchange Server recipients.
 Only members of a security group named ExSecureAdmin must be able to manage Exchange Server organization configurations.
 Members of ExSecure and ExSecureAdmin must be able to use the Exchange Management Shell to manage Active Directory objects.
 You need to identify which permission model must be used to meet each requirement. What should you identify? To answer, select the appropriate options in the answer area.

Answer area

Only members of a security group named ExSecure must be able to create Exchange Server recipients.

Active Directory Split Permissions

RBAC Split Permissions

Only members of a security group named ExSecureAdmin must be able to manage Exchange Server organization configurations.

Active Directory Split Permissions

RBAC Split Permissions

Members of ExSecure and ExSecureAdmin must be able to use the Exchange Management Shell to manage Active Directory objects.

Active Directory Split Permissions

RBAC Split Permissions

Answer:

Explanation: References:
[https://technet.microsoft.com/en-us/library/dd638106\(v=exchg.150\).aspx](https://technet.microsoft.com/en-us/library/dd638106(v=exchg.150).aspx)

NEW QUESTION 223

You deploy an Exchange Server 2013 organization to a test network for evaluation.
 You install the Mailbox server role and the Client Access server role on a server named ex01.contoso.com. You do not perform any other configurations.
 All of the ports from the Internet to ex01.contoso.com are open. You successfully connect to ex01.contoso.com from the Internet and from the internal network.
 You need to identify which types of Exchange Server clients will connect successfully to the organization without any further configurations. What should you identify?

- A. Internal Outlook Web App connections
- B. Android Phones using Activesync
- C. Windows RT devices running the Mail app
- D. Windows Phones that use Exchange ActiveSync

Answer: A

NEW QUESTION 228

You are migrating an existing Exchange Server 2007 organization to Exchange Server 2013. You expect the migration to last several weeks.
 The servers in the organization are configured as shown in the following table.

Server name	Active Directory site name	Server role	Exchange Server version
EX1	Main	Mailbox server Client Access server Hub Transport server	Exchange Server 2007
EX2	Main	Mailbox server	Exchange Server 2013
EX3	Main	Mailbox server	Exchange Server 2013
EX4	Main	Client Access server	Exchange Server 2013
EX5	Main	Client Access server	Exchange Server 2013

Users who have mailboxes on all of the servers will access Outlook Anywhere by using the mail.contoso.com name.
 You need to recommend which servers must be associated to the autodiscover.contoso.com and mail.contoso.com names.
 Which servers should you identify for each name?
 To answer, drag the appropriate servers to the correct name in the answer area. Each server may be used once, more than once, or not at all. Additionally, you may need to drag the split bar between panes or scroll to view content.

Servers	Answer Area	
EX1	mail.contoso.com	Server
EX2		
EX3		
EX4		
EX5		

Answer:

Explanation:

Servers	Answer Area	
EX1	mail.contoso.com	EX5
EX2		EX4
EX3		
EX4		
EX5		

NEW QUESTION 229

You have an Exchange Server 2013 organization.
 You need to ensure that an administrator named Admin1 receives a daily email message that contains a log of all the Exchange Server administrative actions.
 Which cmdlet should you use in a scheduled task?

- A. Search-AdminAuditLog
- B. Set-AdminAuditLogConfig
- C. New-AdminAuditLogSearch
- D. Write-AdminAuditLog

Answer: C

NEW QUESTION 234

You plan to deploy an Exchange Server 2013 organization.
 You need to recommend a solution to ensure that a user named User1 can access email messages by using Exchange ActiveSync on an Android device.
 The solution must prevent all other users from using Android devices to access email by using Exchange ActiveSync.
 What should you recommend doing first?

- A. Run the Set-CasMailbox cmdlet.
- B. Create a device access rule.
- C. Modify the Quarantine Notification settings.
- D. Create a mobile device mailbox policy.

Answer: B

NEW QUESTION 237

Fabrikam, Ltd. has an Exchange Server organization that contains two servers. The servers are configured as shown in the following table.

Server name	Role	Exchange Server version	Site location
EX1	Mailbox server Client Access server Hub Transport server	Exchange Server 2010	New York
EX2	Mailbox server Client Access server	Exchange Server 2013	New York

Recently, the internal and external namespaces named mail.fabrikam.com and autodiscover.fabrikam.com were changed to point to EX2.
 You configure all of the users on EX2 to access their mailbox by using Microsoft Outlook from the Internet.
 You enable Outlook Anywhere on EX1.
 You need to ensure that users who have mailboxes on EX1 can connect to their mailbox from the Internet. What should you do on EX1?

- A. Set the ExternalHostName value to NULL.
- B. Set the ExternalClientAuthenticationMethod value to Basic and NTLM.
- C. Set the IISAuthenticationMethods value to Basic and NTLM.
- D. Set the InternalHostName value to NULL

Answer: C

NEW QUESTION 241

You have an Exchange Server 2013 organization that contains mailboxes for multiple companies. You need to segment the address lists in the organization per company.
What should you assign to the users of each company?

- A. Address book policies (ABPs)
- B. Address lists
- C. Global Address Lists (GALs)
- D. Email address policies

Answer: A

NEW QUESTION 244

Your network contains an Active Directory forest named contoso.com. The forest contains one domain and two sites named Site1 and Site2. Site1 connects directly to the Internet.
You have an Exchange Server 2010 organization.
Users access their email remotely by using Outlook Web App and Outlook Anywhere by connecting to the name mail.contoso.com.
You plan to migrate to Exchange Server 2013.
Exchange Server 2010 and Exchange Server 2013 will co-exist for several months during the migration. During the co-existence phase, the organization will contain seven servers. The servers will be configured as shown in the following table.

Server name	Active Directory site	Role	Exchange Server version
EX1	Site1	Client Access	Exchange Server 2010
EX2	Site1	Mailbox Hub Transport	Exchange Server 2010
EX3	Site2	Client Access Hub Transport	Exchange Server 2010
EX4	Site2	Mailbox	Exchange Server 2010
EX5	Site1	Client Access	Exchange Server 2013
EX6	Site1	Mailbox	Exchange Server 2013
EX7	Site2	Mailbox	Exchange Server 2013

You need to identify which host names must be associated to which servers. The solution must ensure that the users can access mailboxes on EX2, EX4, EX6, and EX7.
What should you do? (To answer, select the appropriate target for each host name in the dialog box in the answer area.)

Answer Area

Host name	Target
Autodiscover.contoso.com	<div></div>
Mail.contoso.com	<div></div>

Answer Area

Host name	Target
Autodiscover.contoso.com	<div><div></div><div>EX1</div><div>EX2</div><div>EX3</div><div>EX4</div><div>EX5</div><div>EX6</div><div>EX7</div></div>
Mail.contoso.com	<div><div></div><div>EX1</div><div>EX2</div><div>EX3</div><div>EX4</div><div>EX5</div><div>EX6</div><div>EX7</div></div>

Answer:

Explanation:

Answer Area

Host name	Target
Autodiscover.contoso.com	<div><div>▼</div><div>EX1 EX2 EX3 EX4 EX5 EX6 EX7</div></div>
Mail.contoso.com	<div><div>▼</div><div>EX1 EX2 EX3 EX4 EX5 EX6 EX7</div></div>

NEW QUESTION 245

You have an Exchange Server 2013 organization that contains 10 mailbox servers.
You have a custom workload management policy named App1Policy. App1Policy is applied to three Mailbox servers.
You deploy a new Mailbox server named EX11.
You need to ensure that App1Policy is applied to EX11.
Which command should you run? (To answer, configure the appropriate options in the answer area.)

Answer Area

▼

Set-ExchangeServer
Set-ResourcePolicy
Set-ThrottlingPolicy
Set-ThrottlingPolicyAssociation

▼

-Identity App1Policy
-Identity EX11

▼

-DiscretionaryOverloadedThreshold 80
-MessageRateLimit 80
-ThrottlingPolicy App1Policy
-WorkloadManagementPolicy App1Policy

Answer:

Explanation:

Answer Area

▼

Set-ExchangeServer
Set-ResourcePolicy
Set-ThrottlingPolicy
Set-ThrottlingPolicyAssociation

▼

-Identity App1Policy
-Identity EX11

▼

-DiscretionaryOverloadedThreshold 80
-MessageRateLimit 80
-ThrottlingPolicy App1Policy
-WorkloadManagementPolicy App1Policy

NEW QUESTION 248

You have an Exchange Server 2013 organization that contains a server named Server1.
Server1 has an IP address of 10.1.100.16 and is configured to use a default gateway of 10.1.100.1. You deploy a hardware load balancer that is configured to use the IP addresses of 192.168.101.31 and 10.1.100.31.
A user named User1 has a client computer that has an IP address of 102.168.101.201. User1 reports that he cannot view his mailbox by using Outlook Web App.
When you review the IIS logs on Server1, you discover the following information:
#Fields: date time cs-method cs-uri-stem s-port c-ipcs(Referer) sc-status2013-01-09 00:08:55 POST
/owa/ev.owa2 443 192.168.101.201 https://owa.fabrikam.com/owa/ 200
You need to ensure that User1 can access his mailbox successfully from Outlook Web App.
What are two possible ways to achieve this goal? (Each correct answer presents a complete solution. Choose two.)

- A. Configure the hardware load balancer to use the same certificate as the certificate used on Server1.
- B. Configure the hardware load balancer to use source NAT (SNAT).
- C. Configure the computer of User1 to ignore response headers.
- D. Modify the default gateway of Server1.

Answer: BD

NEW QUESTION 251

You have an Exchange Server 2013 organization that contains a server named Server1.
A user named User1 has an administrative assistant named Assistant1. A user named User2 has an administrative assistant named Assistant2.
You need to configure access to Outlook to meet the following requirements:
? Assistant1 must be able to send email messages as a User1.

? Assistant2 must be able to send email messages on behalf of User2.
Which cmdlets should you use? (To answer, drag the appropriate cmdlets to the correct requirements. Each cmdlet may be used once, more than once, or not at all. You may need to drag the split bar between panes or scroll to view content.)

Cmdlets

Add-MailboxFolderPermission

Add-MailboxPermission

Add-ADPermission

Set-Mailbox

Answer Area

Assistant1 must be able to send email messages as User1.

Cmdlet

Assistant2 must be able to send email messages on behalf of User2.

Cmdlet

Answer:

Explanation:

Cmdlets

Add-MailboxFolderPermission

Add-MailboxPermission

Add-ADPermission

Set-Mailbox

Answer Area

Assistant1 must be able to send email messages as User1.

Add-ADPermission

Assistant2 must be able to send email messages on behalf of User2.

Set-Mailbox

NEW QUESTION 255

You have an Exchange Server 2013 organization that contains a database availability group (DAG) named DAG1. The organization contains three servers. The servers are configured as shown in the following table.

Server name	Role
EX1	Mailbox server
EX2	Mailbox server
EX3	Client Access server

EX1 and EX2 are members of DAG1. EX1 has an active copy of a database named DB1 and a passive copy of a database named DB2. EX2 has a passive copy of DB1 and an active copy of DB2.
You plan to create a public folder named Invoices.
You need to ensure that users can access the Invoices public folder if one of the DAG members fails. The solution must ensure that the users can send email messages to the Invoices public folder.
Which three actions should you perform in sequence? (To answer, move the appropriate three actions from the list of actions to the answer area and arrange them in the correct order.)

Actions

Add an email address for the public folder mailbox.

Create a public folder mailbox.

Mail-enable the public folder.

Update the public folder hierarchy.

Create a public folder.

Answer Area

Answer:

Explanation:

Actions

Add an email address for the public folder mailbox.

Create a public folder mailbox.

Mail-enable the public folder.

Update the public folder hierarchy.

Create a public folder.

Answer Area

Create a public folder mailbox.

Mail-enable the public folder.

Create a public folder.

NEW QUESTION 259

Your company has four regional offices and 20 branch offices. The regional offices connect to each other by using a 30-Mbps WAN link. Each branch office connects to its nearest regional office by using a 1-Mbps WAN link.
The network contains an Active Directory forest. The forest contains a domain controller in each office. Each office maps to an Active Directory site. Each branch

office site connects to the nearest regional office site by using an Active Directory site link.
You have an Exchange Server 2013 organization that contains one server in each office. You need to implement a messaging solution to meet the following requirements:
The users in the branch offices must only be able to send email messages that are up to 2 MB to the users in the other offices.
The users in the regional offices must be prevented from sending email messages that are larger than 5 MB to the users in any of the regional offices.
Which cmdlet should you run?

- A. Set-TransportRule
- B. Set-ADSite
- C. Set-AdSiteLink
- D. Set-RoutingGroupConnector

Answer: C

NEW QUESTION 263

You have an Exchange Server organization that contains five servers.
Users who have their mailbox on a server named EX1 report that they fail to receive email messages.
You verify that the email messages sent to the mailboxes on EX1 are delivered successfully to the server. You also verify that all of the mailbox databases on EX1 are mounted.
You discover that the hard disk drive on EX1 has only 10 GB of free space. You delete 20 GB of unnecessary data on EX1.
Users report that now they are receiving all of their email messages successfully to their mailbox.
You need to ensure that EX1 will prevent the delivery of email messages to mailboxes only if less than 2 GB of hard disk space is available.
What should you do?

- A. Modify the Organization transport settings.
- B. Modify the mailbox database settings.
- C. Modify the EdgeTransport.exe.config file.
- D. Disable the Safety Net feature.

Answer: C

Explanation:

References:
[https://technet.microsoft.com/en-us/library/bb201658\(v=exchg.160\).aspx#File](https://technet.microsoft.com/en-us/library/bb201658(v=exchg.160).aspx#File)

NEW QUESTION 264

You have an Exchange Server 2013 organization that contains two Mailbox servers named MBX1 and MBX2. You create a database availability group (DAG) named DAG1. DAG1 is configured as shown in the exhibit. (Click the Exhibit button.)

NAME	WITNESS SERVER	MEMBER SERVERS
dag1	cas1.contoso.com	MBX2,MBX1

dag1

Member Servers

MBX2

MBX1

Witness Server

cas1.contoso.com

DAG Network

MapiDagNetwork

ReplicationDagNetwork01

You need to ensure that replication only occurs over the replication network.
Which two commands should you run? (Each correct answer presents part of the solution. Choose two.)

- A. Set-DatabaseAvailabilityGroupNetwork ReplicationDagNetwork01 –ReplicationEnabled \$true
- B. Set-DatabaseAvailabilityGroupNetworkMapiDagNetwork –ReplicationEnabled \$false
- C. Set-DatabaseAvailabilityGroup Dag1 –ManualDagNetworkConfiguration \$true
- D. Set-DatabaseAvailabilityGroup Dag1 –ManualDagNetworkConfiguration \$false

Answer: BC

NEW QUESTION 266

You have an Exchange Server 2013 organization that contains a database availability group (DAG) named DAG1. DAG1 has two members.
You create a mailbox database copy for each database on each DAG member.
You plan to implement a service level agreement (SLA) that meets the following requirements: All deleted mailboxes must be recoverable for up to six months after they are deleted.
When a mailbox is recovered, the entire contents of the mailbox must be recovered. You need to recommend a solution that meets the requirements.
What should you recommend?

- visit - <https://www.surepassexam.com>

NEW QUESTION 276

You have an Exchange Server 2013 organization that contains five servers. Several employees plan to use Microsoft Outlook to collaborate on some projects. You need to configure access to Outlook to meet the following requirements:

Several employees must be able to send email messages as a user named User1.

Several employees must be able to send email messages on behalf of a user named User2.

Which cmdlets should you use?

To answer, drag the appropriate cmdlet to the correct requirement in the answer area. Each cmdlet may be used once, more than once, or not at all. Additionally, you may need to drag the split bar between panes or scroll to view content.

Cmdlets	Answer Area
Add-MailboxFolderPermission	Several employees must be able to send email messages as a user named User1. <input type="text" value="Cmdlet"/>
Add-MailboxPermission	
Add-ADPermission	Several employees must be able to send email messages on behalf of a user named User2. <input type="text" value="Cmdlet"/>
Set-Mailbox	

Answer:

Explanation:

Cmdlets	Answer Area
Add-MailboxFolderPermission	Several employees must be able to send email messages as a user named User1. <input type="text" value="Add-ADPermission"/>
Add-MailboxPermission	
Add-ADPermission	
Set-Mailbox	Several employees must be able to send email messages on behalf of a user named User2. <input type="text" value="Set-Mailbox"/>

NEW QUESTION 278

You have an Exchange Server 2013 organization.

You need to ensure that users receive a notification if the delivery of a message is delayed for more than one hour.

Which cmdlet should you use?

- A. Set-FrontEndTransportService
- B. Set-MailboxTransportService
- C. Set-TransportConfig
- D. Set-TransportService

Answer: D

NEW QUESTION 279

You have an Exchange Server 2013 organization that contains two servers named EX1 and EX2.

EX1 and EX2 are the members of a database availability group (DAG) named DAG1. DAG1 contains two mailbox databases named DB1 and DB2. DB1 is active on EX1. DB2 is active on EX2.

A disk on EX2 fails. DB2 fails over to EX1.

Users who have mailboxes in DB2 report that Microsoft Outlook can no longer connect to the Exchange Server organization.

You discover that DB2 is dismounted on EX1.

When you attempt to mount DB2 on EX1, the operation fails. You need to identify what prevents DB2 from mounting on EX1. What should you do?

- A. Run the Resume-MailboxdatabaseCopy cmdlet.
- B. Run the Update-MailboxdatabaseCopy cmdlet.
- C. Run the eseutil.exe command and specify the A parameter.
- D. Run the eseutil.exe command and specify the /mft parameter.

Answer: B

NEW QUESTION 282

You have an Exchange Server 2013 organization that contains five servers. The organization contains 5,000 mailboxes.

One hundred users plan to leave your company during the next 48 hours to run a new company named Fabrikam, Inc.

The mailboxes of the 100 users are in a mailbox database named DB5. The deleted item retention setting for DB5 is two days.

You need to implement a solution to meet the following security requirements:

The 100 users must be prevented from permanently deleting any email messages from their mailbox.

In 48 hours, you must create a copy of only the email messages that contain the word "Fabrikam".

The solution must be implemented as quickly as possible.

What should you do?

- A. Modify the deleted item retention period for DB5, and then run the New-MailboxSearch cmdlet in 48 hours.
- B. Enable In-Place Hold for the 100 mailboxes, and then run the Search-Mailbox cmdlet in 48 hours.
- C. Enable Single Item Recovery for the 100 mailboxes, and then run the New-MailboxSearch cmdlet in 48 hours.
- D. Modify the deleted item retention period for the 100 mailboxes, and then run the New-MailboxSearch cmdlet in 48 hours.

Answer: B

Explanation: A. New-MailboxSearch alone will just create a search. You would need to run the Start-MailboxSearch cmdlet to actually run the search.

References:

[https://technet.microsoft.com/en-us/library/ee364752\(v=exchg.150\).aspx](https://technet.microsoft.com/en-us/library/ee364752(v=exchg.150).aspx) [https://technet.microsoft.com/en-us/library/dd298173\(v=exchg.160\).aspx](https://technet.microsoft.com/en-us/library/dd298173(v=exchg.160).aspx)

NEW QUESTION 287

Your company has five main offices. Each office contains a data center.

You plan to deploy an Active Directory forest and an Exchange Server 2013 organization. Each office will be configured as a separate Active Directory site. User mailboxes will be hosted in each site.

You need to recommend an Exchange Server 2013 deployment strategy that meets the following requirements:

Provides redundancy for all mailbox databases

Creates a temporary copy of outbound email messages

Minimizes the number of servers deployed to the network

Provides redundancy for client access by using Network Load Balancing (NLB) What should you recommend?

A. In each site, deploy one server that has both the Mailbox server role and the Client Access server role installed and another server that has the Client Access server role installed.

B. In each site, deploy one server that has the Mailbox server role installed and two servers that have the Client Access server role installed.

C. In each site, deploy one server that has both the Mailbox server role and the Client Access server role installed.

D. In each site, deploy two servers that have both the Mailbox server role and the Client Access server role installed.

Answer: B

Explanation: WNLB can't be used on Exchange servers where mailbox DAGs are also being used because WNLB is incompatible with Windows failover clustering. If you're using an Exchange 2013 DAG and you want to use WNLB, you need to have the Client Access server role and the Mailbox server role running on separate servers.

References:

[https://technet.microsoft.com/en-us/library/jj898588\(v=exchg.150\).aspx](https://technet.microsoft.com/en-us/library/jj898588(v=exchg.150).aspx)

NEW QUESTION 288

You have an Exchange Server 2013 organization that contains four servers. All users access their email by using Microsoft Outlook 2010.

An administrator deploys a shared mailbox named Project.

You assign all of the users in the marketing department Full Access permissions to Project.

You discover that Project automatically appears in Outlook to all of the marketing department users.

You need to ensure that Project only appears in Outlook to the marketing department users who add the mailbox manually to their Outlook profile.

Which two cmdlets should you run? (Each correct answer presents part of the solution. Choose two.)

A. Remove-MailboxPermission

B. Set-Mailbox

C. Remove-Mailbox

D. Add-MailboxPermission

E. New-Mailbox

Answer: AB

NEW QUESTION 292

You have an Exchange Server 2013 organization.

A new policy requires that all iPhone users access their on-premises mailbox by using the OWA for iPhone app.

You need to ensure that push notifications for the OWA for iPhone app are configured before the users install the app.

Which three actions should you perform? Each correct answer presents part of the solution.

A. Configure Microsoft Azure Active Directory Sync (Azure AD Sync).

B. Modify the EWS virtual directory.

C. Enable push notifications proxy.

D. Enroll in Microsoft Office 365 for business.

E. Modify the OWA virtual directory.

F. Set up on premises Exchange 2013 to Office 365 Authentication.

Answer: CDF

Explanation: Configuring push notifications proxying for OWA for DevicesTo enable push notifications, the admin must:1.

(D) Enroll your organization in Office 365 for business.2. Update all on-premises servers to Exchange Server

2013 Cumulative Update 3 (CU3) or later.3. (F) Set up On-premises Exchange 2013 to Office 365 Authentication4. (C) Enable push notifications from the on-

premises Exchange Server 2013 to Office 365 and verify that push notifications are working.Illustration below:

NEW QUESTION 293

How would you disable the anti malware filtering and ensure that engine updates from microsoft are downloaded and updated.

A. Disable-Antimalwareagent.ps1

B. Set-malwarefilteringserver

C. Disable-Antimalwaresharing.ps1 (probable option)

D. Update-MalwareFilteringServer.ps1 (guessed option)

Answer: C

NEW QUESTION 298

Your company has an Exchange Server 2013 organization. The company hires 200 temporary employees.

You create a mailbox for each temporary employee.

You create a new management role named CustomBaseOptions that uses MyBaseOptions as a parent. You create a new management role named CustomContactInfo that uses MyContactInfo as a parent.

You plan to apply the new management roles to the temporary employees.

You need to identify which management roles must be modified to prevent the temporary employees from performing the following task:

Adding a user photo

Viewing delivery reports

Viewing the Install Apps feature

Changing the value of the office location

Which management roles should you identify?

To answer, select the appropriate management role for each task in the answer area.

Task	Management Role
Adding a user photo	<input type="text"/>
Viewing delivery reports	<input type="text"/>
Viewing the Install Apps feature	<input type="text"/>
Changing the value of the office location	<input type="text"/>

Task	Management Role
Adding a user photo	<input type="text"/> CustomBaseOption CustomContactInfo
Viewing delivery reports	<input type="text"/> CustomBaseOption CustomContactInfo
Viewing the Install Apps feature	<input type="text"/> CustomBaseOption CustomContactInfo
Changing the value of the office location	<input type="text"/> CustomBaseOption CustomContactInfo

Answer:

Explanation: Box 1: CustomBaseOption

Box 2: CustomBaseOption

Box 3: CustomBaseOption

Box 4: CustomContactInfo

NEW QUESTION 303

Your network contains two Active Directory forests named contoso.com and fabrikam.com. Contoso.com is configured as a user forest. Fabrikam.com is configured as a resource forest.

You deploy an Exchange Server 2013 organization.

You need to recommend a solution to provide five administrators in contoso.com with the ability to manage the Exchange Server resources by using role-based administration.

What should you recommend creating?

- A. a new management role group in fabrikam.com and a new universal security group in contoso.com
- B. a linked role group and a universal security group in contoso.com and linked mailboxes in fabrikam.com
- C. a linked role group in fabrikam.com and a universal security group in contoso.com
- D. linked mailboxes and a role group in fabrikam.com

Answer: C

Explanation: References:

[https://technet.microsoft.com/en-us/library/dd638105\(v=exchg.150\).aspx#Linked](https://technet.microsoft.com/en-us/library/dd638105(v=exchg.150).aspx#Linked)

NEW QUESTION 308

You have network contoso.com. contoso.com consist of AD DS Domain contoso.com. All Servers running Windows Server 2012 and all Clients running Windows 8 Pro. Server1 runs Mailbox Server Role and Client Access Server Role.

You are configuring Anti-Spam Filtering on Server1.

You need to ensure that all emails with the words "Free Credit Check" are rejected unless the email is sent to Finance Distribution Group.

You also need to ensure that all emails from partner company Domain name adatum.com bypass the Anti-Spam Filter.

You run the Add-ContentFilterPhrase and add the words "Free Credit Check" What should you do next?

- A. Run the Set-TransportConfig and Set-ContentFilterConfig

- B. Run the Set-SenderReputationConfig and Set-TransportConfig
- C. Run the Set-ContentFilterConfig and Set-RecipientFilterConfig
- D. Run the Set-SenderFilterConfig and Set-RecipientFilterConfig

Answer: C

NEW QUESTION 310

You have an Exchange Server 2013 organization.

All users connect to their mailbox by using a mobile device.

You need to ensure that an event is written to the application log when a user attempts to connect to the organization by using a second mobile device.

What command should you run? To answer, select the appropriate options in the answer area.

Answer Area

<div>▼</div> <div>Set-Mailbox</div> <div>Set-ServerMonitor</div> <div>Set-ThrottlingPolicy</div> <div>Set-ThrottlingPolicyAssociation</div>	-name MultipleDevices	<div>▼</div> <div>-AnonymousMaxConcurrency 1</div> <div>-EasCutoffBalance 1</div> <div>-EasMaxConcurrency 1</div> <div>-EasMaxDevices 1</div>	<div>▼</div> <div>-PushNotificationSamplingPeriodPerDevice \$true</div> <div>-ThrottlingPolicyScope Organization</div> <div>-ThrottlingPolicyScope Regular</div>
---	-----------------------	---	--

Answer:

Explanation: References:

[https://technet.microsoft.com/en-us/library/dd298094\(v=exchg.160\).aspx](https://technet.microsoft.com/en-us/library/dd298094(v=exchg.160).aspx)

NEW QUESTION 312

You have an Exchange Server 2013 organization that contains two Client Access servers named SERVER1 and SERVER2 and two Mailbox servers named SERVER3 and SERVER4.

You have a firewall that controls all of the traffic between the internal network and the Internet. SERVER3 and SERVER4 are prevented from communicating with Internet hosts.

SERVER1 and SERVER3 are in a site named Main. SERVER2 and SERVER4 are in a site named Main_2. All outbound email is sent through SERVER1.

Main fails.

You discover that email messages for the Internet are queued on SERVER4. You create a new send connector in Main_2.

You discover that all of the outbound email is queued on SERVER4 and is not delivered to the Internet.

You verify that the client computers on the network can receive email messages from the Internet successfully. You need to ensure that the email messages are delivered successfully to the Internet.

Which cmdlet should you run?

- A. Set-SendConnector
- B. Set-TransportService
- C. Set-ExchangeServer
- D. Set-ADSite

Answer: A

NEW QUESTION 315

You have an internal network and a perimeter network. On the perimeter network, you deploy two Exchange Server 2013 servers that have the Edge Transport server role installed. On the internal network, you deploy five Exchange Servers that have the Mailbox server role and the Client Access server role installed.

You need to recommend a solution to ensure that email messages are received by the organization if the Edge Transport server fails. The solution must ensure that the server are load balanced.

What is the best recommendation to achieve the goal? More than one answer choice may achieve the goal. Select the BEST answer.

- A. For each Edge Transport server, create a host (A) record
- B. Create mail exchanger (MX) records that point to the A record
- C. Set the preference of both MX records to a value of 100.
- D. Create a mail exchanger (MX) record that points to the IP address of each Edge Transport serve
- E. Set the preference of both MX records to a value of 10.
- F. For each Edge Transport server, create a host (A) record
- G. Create mail exchanger (MX) records that point to the A record
- H. Set the preference of one of the MX records to a value of 11. Set preference of the other MX record to a value of 12.
- I. Create a host (A) record named mail.contoso.com that contains the IP addresses for both Edge Transport server
- J. Create a mail exchanger (MX) record that points to mail.contoso.com.

Answer: A

NEW QUESTION 319

You have an Exchange Server 2013 organization.

You are troubleshooting an email delivery problem.

You need to disable temporarily the antimalware scanning on a server that has Exchange Server 2013 installed. The solution must ensure that the antimalware engine continues to download updates.

What should you run?

- A. The Set-TransportConfig cmdlet

- B. The New-MalwareFilterPolicy cmdlet
- C. The Disable-Antimalwarescanning.ps1 script
- D. The Set-MalwarServer cmdlet

Answer: D

NEW QUESTION 324

You have an Exchange Server 2013 organization that contains five servers. The organization contains 5,000 mailboxes. One hundred users plan to leave your company during the next 48 hours to run a new company named Fabrikam, Inc. The mailboxes of the 100 users are in a mailbox database named DB5. The deleted item retention setting for DB5 is two days. You need to implement a solution to meet the following security requirements:

The 100 users must be prevented from permanently deleting any email messages from their mailbox.

In 48 hours, you must create a copy of only the email messages that contain the word "Fabrikam".

The solution must be implemented as quickly as possible.

What should you do?

- A. Modify the deleted item retention period for DB5, and then run the New-MailboxSearch cmdlet in 48 hours.
- B. Modify the deleted item retention period for the 100 mailboxes, and then run the New-MailboxSearch cmdlet in 48 hours.
- C. Modify the deleted item retention period for DB5, and then run the Search-Mailbox cmdlet in 48 hours.
- D. Enable Single Item Recovery for the 100 mailboxes, and then run the New-MailboxSearch cmdlet in 48 hours.

Answer: C

NEW QUESTION 325

You have an Exchange Server 2013 organization that contains the servers configured as shown in the following table.

Server name	Database availability group (DAG) name	Windows Server version
EX1	DAG1	Windows Server 2008 R2 Enterprise
EX2	DAG1	Windows Server 2008 R2 Enterprise
EX3	DAG2	Windows Server 2012 R2 Datacenter
EX4	DAG2	Windows Server 2012 R2 Datacenter
EX5	None	Windows Server 2008 R2 Standard

You need to add EX2 to DAG2. The solution must maintain redundancy for all mailbox databases.

Which five actions should you perform in sequence before you can add EX2 to DAG2? To answer, move the appropriate actions from the list of actions to the answer area and arrange them in the correct order.

Actions	Answer Area
Disable DAG replication for DAG1	
On EX2, remove all of the mailbox database copies	
Remove on DAG network from DAG1	
Rename EX5 as EX2	
Remove EX2 from DAG1	
Add EX5 to DAG1	
On EX2 install Windows Server 2012 R2 and Exchange Server 2013	
Create Mailbox database copies on EX5	

Answer:

Explanation: Box 1: Add EX5 to DAG1

Box 2: Create Mailbox database copies on EX5

Box 3: On EX2, remove all of the mailbox database copies. Box 4: Remove EX2 from DAG1

Box 5: On EX2 install Windows Server 2012 R2 and Exchange Server 2013

NEW QUESTION 326

You are evaluating the implementation of a Database Availability Group (DAG).

You need to recommend changes to the planned implementation to minimize the loss of large email messages if a single DAG member fails.

What should you recommend changing?

- A. The preference of the mail exchanger (MX) records
- B. The duration of single item recovery
- C. The intervals of shadow redundancy
- D. The size of the transport dumpster

Answer: C

NEW QUESTION 330

You have an Exchange Server 2013 organization.

Users connect to their mailbox by using Microsoft Outlook 2013 and mobile devices. A user named User1 loses a mobile device.

You need to wipe the mobile device remotely. Which cmdlet should you use?

- A. Remove-MobileDevice
- B. Clear-MobileDevice
- C. Set-Mailbox
- D. Remove-ActiveSyncDevice

Answer: B

NEW QUESTION 331

You plan to deploy an Exchange Server 2013 organization. The organization will contain the servers configured as shown in the following table.

Server name	Role	Network
Server1	Client Access, Mailbox	Internal
Server2	Client Access, Mailbox	Internal
Server3	Client Access, Mailbox	Internal

Server1, Server2, and Server3 will be members of a database availability group (DAG) named DAG1. You deploy a firewall between the internal network and the Internet.

You need to recommend a solution to meet the following requirements:

- Ensure that users can access their mailbox from the Internet by using Microsoft Outlook if a server fails.
- Ensure that users can access Unified Messaging (UM) services from the Internet if a server fails.
- Minimize costs.

What should you recommend? To answer, select the appropriate options in the answer area.

Answer area

Firewall ports to open:

80 and 443

80, 5060, and 5061

443, 5060, and 5061

443, 5062, and 5063

5060, 5061, and 5062

Load balancing strategy:

DNS round robin

Hardware load balancer

Network Load Balancing (NLB) cluster

Answer:

Explanation: References: <https://practical365.com/exchange-server/exchange-2013-client-access-server-high-availability/>

NEW QUESTION 333

Your company has five main offices. Each office contains a data center.

You plan to deploy an Active Directory forest and an Exchange Server 2013 organization. Each office will be configured as a separate Active Directory site.

You need to recommend an Exchange Server 2013 deployment strategy that meets the following requirements:

- Replicates user mailboxes across multiple servers
- Creates a temporary copy of outbound email messages
- Minimizes the number of servers deployed to the network

What should you recommend?

- A. In each site, deploy one server that has both the Mailbox server role and the Client Access server role installed.
- B. In each site, deploy two servers that have the Mailbox server role installed and two servers that have the Client Access server role installed.
- C. In each site, deploy two servers that have both the Mailbox server role and the Client Access server role installed.
- D. In one site, deploy two servers that have the Mailbox server role installed.
- E. In all other sites, deploy one server that has the Client Access server role installed.

Answer: A

NEW QUESTION 336

You need to recommend a solution to deploy the Outlook app

Which three actions should you recommend performing in sequence? (To answer, move the appropriate three actions from the list of actions to the answer area and arrange them in the order)

(Apps for Outlook can help you personalize your messages or speed up the way you access information on the web.

For example, the Bing Maps app that comes with Outlook shows an online map whenever you open a message that contains a street address.

<http://office.microsoft.com/en-us/store/apps-for-outlook-FX102804983.aspx>Outlook App Office Store)

	Answer Area
Run the Set-App cmdlet.	
Run the Get-App cmdlet.	
Install the Outlook app.	
Run the \$Data=Get-Content -Path "C:\Apps\SocialMediaApp.xml" -Encoding Byte -ReadCount 0 command.	
Run the New-App -FileData \$Data command.	

Answer:

Explanation:

	Answer Area
Run the Set-App cmdlet.	Run the \$Data=Get-Content -Path "C:\Apps\SocialMediaApp.xml" -Encoding Byte -ReadCount 0 command.
Run the Get-App cmdlet.	
Install the Outlook app.	Run the New-App -FileData \$Data command.
Run the \$Data=Get-Content -Path "C:\Apps\SocialMediaApp.xml" -Encoding Byte -ReadCount 0 command.	
Run the New-App -FileData \$Data command.	Run the Set-App cmdlet.

NEW QUESTION 338

You have an Exchange Server 2013 organization.
You deploy an anti-spam appliance and you connect the appliance to the Exchange Server organization.
You need to disable keyword filtering of email messages that are received from the Internet. Which Windows PowerShell cmdlet should you use?

- A. Set-SendConnector
- B. Remove-DeliveryAgentConnector
- C. Set-ContentConfig
- D. Disable-Service

Answer: B

Explanation: References: [https://technet.microsoft.com/en-us/library/dd297929\(v=exchg.160\).aspx](https://technet.microsoft.com/en-us/library/dd297929(v=exchg.160).aspx)

NEW QUESTION 342

.....

Thank You for Trying Our Product

We offer two products:

1st - We have Practice Tests Software with Actual Exam Questions

2nd - Questions and Answers in PDF Format

70-341 Practice Exam Features:

- * 70-341 Questions and Answers Updated Frequently
- * 70-341 Practice Questions Verified by Expert Senior Certified Staff
- * 70-341 Most Realistic Questions that Guarantee you a Pass on Your First Try
- * 70-341 Practice Test Questions in Multiple Choice Formats and Updates for 1 Year

100% Actual & Verified — Instant Download, Please Click
[Order The 70-341 Practice Test Here](#)