



VMware

Exam Questions 2V0-620

vSphere 6 Foundations Beta Exam

NEW QUESTION 1

A company has decided to implement Virtual SAN within their vSphere 6.x environment. The Virtual SAN cluster will be composed of three ESXi 6.x hosts that are on the Virtual SAN Ready Node list.

Each ESXi host includes:

- ? Two SAS Controllers that support Passthrough Mode
- ? Four Solid State Drives (SSDs) 1TB in size each
- ? 20 SAS Magnetic Disks (MDs) 1TB in size each
- ? The SSDs and MDs are evenly split between the two SAS controllers

The company will pilot a Virtual SAN cluster utilizing VMware best practices while maximizing storage capacity. The Virtual SAN cluster will use Manual Mode. Which two Disk Group configurations would meet the stated configuration requirements? (Choose two.)

- A. 4 disk groups with 1 SSD and 5 MDs each
- B. 2 disk groups with 1 SSD and 7 MDs each
- C. 2 disk groups with 2 SSDs and 7 MDs each
- D. 2 disk groups with 1 SSD and 10 MDs each

Answer: AB

NEW QUESTION 2

VMware tools is failing to install on a Microsoft Windows virtual machine.

What are two possible situations that would prevent the installation? (Choose two.)

- A. The VMware tools installation media is corrupt.
- B. The incorrect Operating System was selected in the virtual machine options.
- C. The software prerequisites have not been installed.
- D. The prerequisite services have not been started.

Answer: AB

NEW QUESTION 3

An administrator wants to monitor the health status of an ESXi 6.x host. However, when the administrator clicks the Hardware Status tab the following error is displayed.

This program cannot display the webpage What might cause this problem?

- A. The VMware VirtualCenter Management Webservices Service is not started.
- B. The required plug-in is not enabled.
- C. The VMware ESXi Management Webservices Service is not started
- D. The name of the vCenter Server system could not be resolved.

Answer: A

Explanation: Verify that the VMware VirtualCenter Management Webservices service is running on the vCenter Server system. Navigate to the vCenter Server system in the inventory and select Monitor > Service Health. The page displays the following message if the VMware VirtualCenter Management Webservices service is not started.

Could not get vCenter Health status

If you see this error message, start the VMware VirtualCenter Management Webservices service.

NEW QUESTION 4

A vApp template recently added to a Content Library is not displayed.

Which two actions could correct this problem? (Choose two.)

- A. Manually synchronize the library
- B. Select the Download all library content immediately option
- C. Select the Sync subscribed library option
- D. Manually download the vApp template

Answer: AB

NEW QUESTION 5

By default, each ESXi 6.x host is provisioned with a certificate from which root certificate authority?

- A. RedHat Certificate Authority
- B. VMware Certificate Authority
- C. DigiCert Certificate Authority
- D. Verisign Certificate Authority

Answer: B

NEW QUESTION 6

An administrator attempts to migrate a suspended virtual machine to a newly deployed vSphere 6.x cluster. The compatibility check fails.

What condition could cause this behavior?

- A. The new vSphere 6.x cluster is running Intel CPUs instead of AMD CPUs.
- B. A suspended virtual machine cannot be migrated.
- C. The hardware virtualization feature of the CPU is not enabled on the new hosts.

D. A vSphere Distributed Switch is required to migrate a suspended virtual machine.

Answer: A

NEW QUESTION 7

An administrator is trying to open a remote console session to a virtual machine using the vSphere Web Client. With each attempt, an error message is displayed that reads:

HTTP ERROR 404

What is the most likely cause for the error?

- A. Port 902 is blocked by the firewall.
- B. Another program or process is using port 903.
- C. Outgoing UDP is enabled for port 902 on the firewall.
- D. Another program or process is using port 9443.

Answer: D

NEW QUESTION 8

What is required when changing a virtual machine name using the vSphere Web Client?

- A. Verify connectivity to the ESXi host where the virtual machine is running and its inventory list is accessible.
- B. Verify in which datastore the virtual machine resides and that you have access and its inventory list is accessible.
- C. Verify that virtual machine files are stored in the same datastore and can be accessed in the datastore browser list.
- D. Verify the virtual machine is not running in Fault Tolerant mode and that it is not in a Distributed Resource Scheduler cluster.

Answer: A

NEW QUESTION 9

An administrator is configuring the Maximum Transmission Unit value on a vSphere Distributed Switch.

Which two options are typical values for ESXi networking? (Choose two.)

- A. 1492
- B. 1500
- C. 9000
- D. 9089

Answer: BC

NEW QUESTION 10

What are two benefits of using NFS 4.1 with vSphere 6.x as compared to NFS 3? (Choose two.)

- A. NFS 4.1 supports Kerberos Authentication
- B. NFS 4.1 supports multipathing
- C. NFS 4.1 supports IPv6
- D. NFS 4.1 supports hardware acceleration

Answer: AB

NEW QUESTION 10

What is the effective vSphere licensing level during the 60 day evaluation period?

- A. vSphere Foundation Essentials Plus
- B. vSphere Standard
- C. vSphere Enterprise
- D. vSphere Enterprise Plus

Answer: D

NEW QUESTION 14

What must be enabled to ensure that VM Component Protection (VMCP) works in a High Availability cluster?

- A. VMware Tools Virtual Machine Communication Interface (VMCI)
- B. Fault Tolerance
- C. Atomic Test and Set (ATS)
- D. All Paths Down (APD) Timeout

Answer: D

NEW QUESTION 17

From which two locations in the inventory hierarchy can you deploy a virtual machine using a template? (Choose two.)

- A. Directly from the template.
- B. From a compute resource.
- C. From an existing virtual machine.
- D. From a Datastore.

Answer: AB

NEW QUESTION 21

An administrator is using Update Manager 5.x to update virtual appliances in a vSphere environment. The environment is using the vCenter Server Virtual Appliance (vCSA).

What would cause the remediation to fail?

- A. Updating of the appliance can only be done if the vCenter Server Virtual Appliance (vCSA) has been put into Maintenance Mode.
- B. Remediation must be configured on the Appliance Administration page before use.
- C. Remediation of the vCenter Server Virtual Appliance (vCSA) with Update Manager is not supported.
- D. Remediation requires the hosts to be connected to vCenter using an IPv4 address.

Answer: D

Explanation: Update Manager 5.0 does not support virtual machine patch baselines. If a host is connected to vCenter Server by using an IPv6 address, you cannot scan and remediate virtual machines and virtual appliances that run on the host.

NEW QUESTION 23

What virtual machine action listed below can be performed on a template?

- A. Power on
- B. Clone
- C. Edit Settings
- D. Migrate

Answer: B

Explanation: Reference: <http://robertparten.com/vmware-difference-between-clone-and-template/>

NEW QUESTION 28

What information is required as part of an interactive ESXi 6.x installation?

- A. Keyboard layout
- B. IP Address
- C. Root password
- D. DNS information

Answer: A

NEW QUESTION 32

Which two allow for the disabling of Network Rollback operations? (Choose two.)

- A. Modifying the vpxd advanced configuration options and adding the config.vpxd.network.rollback key
- B. Modifying the C:\ProgramData\VMware\CIS\cfg\vmware-vpx\vpzd.cfg file and adjusting the <rollback> xml tag
- C. Modifying the C:\ProgramData\VMware\CIS\cfg\vmware-vpx\vpzd.cfg file and adjusting the <networkrollback> xml tag
- D. Modifying the C:\ProgramData\VMware\CIS\cfg\vmware-vpx\firstboot\vpzd-service- spec.prop file and adjusting the <rollback> xml tag

Answer: AB

NEW QUESTION 37

Which two settings are required by the deployment wizard when installing the VMware vCenter Server Virtual Appliance (vCSA)? (Choose two.)

- A. Number of CPUs
- B. Datastore to install on
- C. Linked-mode
- D. Name of the vCenter server

Answer: BD

Explanation: Reference: <http://pubs.vmware.com/vsphere-51/index.jsp?topic=%2Fcom.vmware.vsphere.install.doc%2FGUID-25FCBA87-5D2F-4CB6-85D7-88899B4AC174.html>

NEW QUESTION 39

An administrator is moving a virtual machine into a resource pool. The VM and resource pool are configured as shown:

VM configuration:

? 2GHz CPU reservation

? 1GB Memory limit

Resource Pool configuration:

? 6GHz CPU reservation

? 1GB Memory reservation

? No limit to memory

What happens to the virtual machine's resource settings when it is moved into the pool?

- A. The VM inherits the resource settings of the resource pool if expandable reservations is enabled.
- B. The VM's reservations and limits are ignored and removed.
- C. The VM keeps the 2GHz CPU reservation but receives the 1GB memory reservation.
- D. The VM keeps the 2GHz CPU reservation and the 1GB Memory limit.

Answer: D

NEW QUESTION 40

An administrator has recently upgraded their Update Manager infrastructure to vSphere

5.x. Several hosts and virtual machines have not been upgraded yet.

Which vSphere component when upgraded will have the least impact to the existing environment?

- A. Virtual Machine Hardware
- B. ESX Hosts
- C. VMFS datastores
- D. VMware Tools

Answer: D

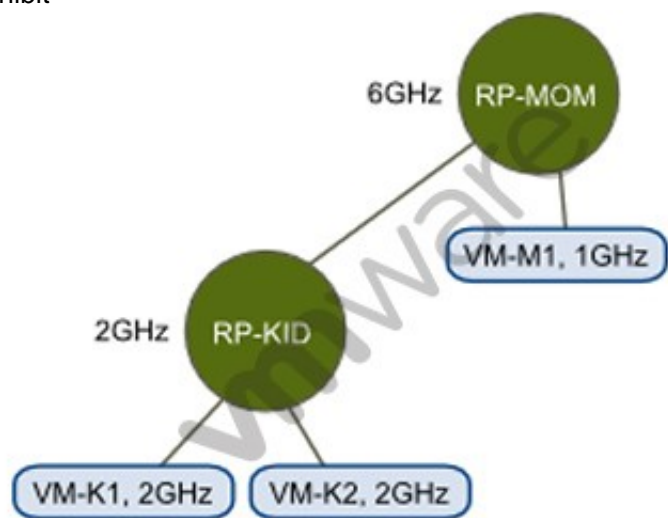
Explanation: VMware Tools isn't a single application but a set of drivers, services and user processes that's installed in a guest operating system. They add a wide assortment of functionality to VMware infrastructures -- everything from improving color depth and video resolution in the vSphere Client to memory optimization.

Typically, an outdated version of VMware Tools doesn't have an immediate impact. But with every update to vSphere, you'll likely have to update VMware Tools on every virtual machine.

NEW QUESTION 43

Refer to the Exhibit.

-- Exhibit --



-- Exhibit --

An administrator has created the resource pool configuration shown in the Exhibit.

Based on the exhibit, which virtual machine(s) can be successfully powered on?

- A. VM-M1 only
- B. VM-K1 only
- C. VM-K1 and VM-K2 only
- D. VM-K1, VM-K2, and VM-M1

Answer: D

NEW QUESTION 46

An administrator has deployed a vCenter Server Appliance to manage a virtual environment.

The administrator has been asked to develop a plan for handling major upgrades to the application.

What should be included in the upgrade plan?

- A. Utilize vCenter Configuration Manager to upgrade the vCenter Server in place
- B. Install a new vCenter Server and import the information from the existing vCenter Server
- C. Install a new vCenter Server over the existing vCenter Server as an in-place upgrade
- D. Utilize Update Manager to upgrade the vCenter Server in place

Answer: B

Explanation: Page 131 of vsphere-update-manager-50-install-administration-guide.pdf

NOTE

Update Manager 5.0 does not support virtual machine patch baselines.

If a host is connected to vCenter Server by using an IPv6 address, you cannot scan and remediate virtual machines and virtual appliances that run on the host. Remediation of VMware vCenter Server Appliance is not supported. For more information about upgrading the virtual appliance, see the vCenter Server upgrade documentation.

Page 56 of vsphere-esxi-vcenter-server-50-upgrade-guide.pdf

Upgrade the VMware vCenter Server Appliance

Because the VMware vCenter Server Appliance was first released with vSphere 5.0, upgrading the appliance is not required until a future release. This information helps you plan for future upgrades.

Procedure

1. Deploy the new version of the vCenter Server Appliance. The new appliance has a default network configuration, and the vCenter Server service is

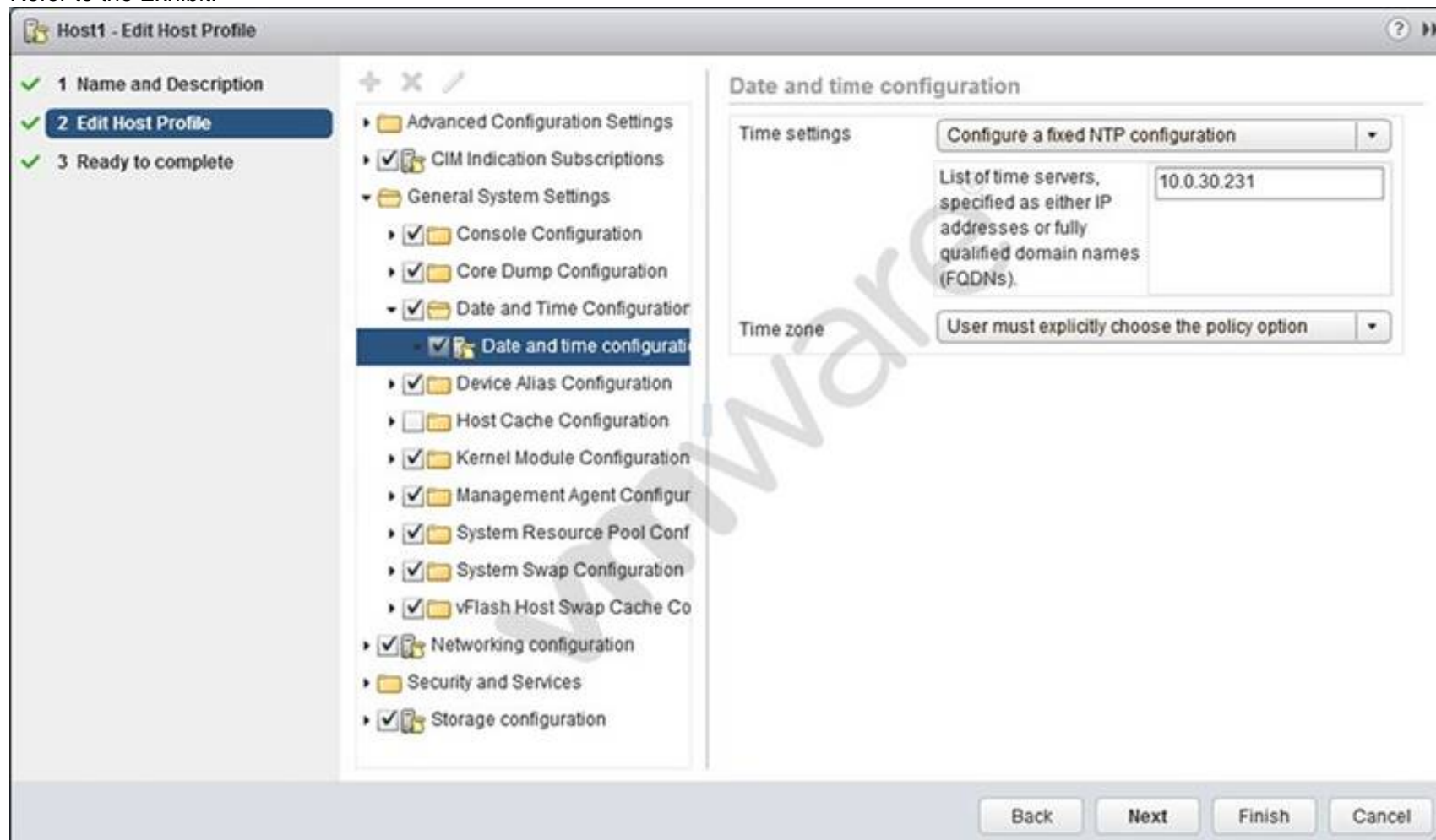
unconfigured and disabled.

2. Connect to both the old and new appliances in separate browser windows.
3. In the Upgrade tab of the new appliance, select destination for the appliance role, and click Set role.
4. In the Upgrade tab of the old appliance, select source for the appliance role, and click Set role.
5. In each appliance, click Establish Trust. The local appliance key appears.
6. In the new appliance, copy the local appliance key.
7. Paste the local appliance key into the Remote appliance key field of the old appliance.
8. Click Import remote key in the old appliance.
9. In the old appliance, copy the local appliance key.
10. Paste the local appliance key into the Remote appliance key field of the new appliance.
11. Click Import remote key in the new appliance.
12. In the new appliance, click Import, and click Start import.

The new appliance shuts down the old appliance and assumes the network identity of the old appliance. This process can take several minutes. When the import is complete, the new vCenter Server Appliance starts.

NEW QUESTION 48

Refer to the Exhibit.



An administrator has configured a host profile so that ESXi 6.x hosts will point to the corporate NTP server for time synchronization. The NTP server is located at 10.0.30.213, but time has not been synchronized properly across the ESXi hosts.

The administrator reviews Host Profile settings as shown in the Exhibit.

Which two steps are required to resolve the issue? (Choose two.)

- A. Correct the NTP server IP address.
- B. Check the host for host profile compliance.
- C. Remediate the host based on the updated host profile.
- D. Change the NTP server to the FQDN as IP Addresses are not supported.

Answer: AC

NEW QUESTION 50

If you create a custom role and do not assign privileges what system-defined privileges are added? (Choose two.)

- A. System.Anonymous
- B. System.Read
- C. System.Write
- D. System.Administrator

Answer: AB

Explanation: Reference: <http://pubs.vmware.com/vsphere-51/index.jsp?topic=%2Fcom.vmware.vsphere.security.doc%2FGUID-93B962A7-93FA-4E96-B68F-AE66D3D6C663.html>

NEW QUESTION 55

Which two actions are required when enabling vFlash Read Cache for a virtual machine's virtual disk? (Choose two.)

- A. A value in the Virtual Flash Read Cache text box must be entered.
- B. A Flash Resource Pool for Cache size reservation must be entered.
- C. The Device backing and the block size must be configured.
- D. The Enable virtual flash host swap cache check box must be selected.

Answer: AD

NEW QUESTION 57

Which load balancing policy, previously limited to vSphere Distributed Switches, is now available on vSphere Standard Switches with vSphere 6.x?

- A. Route based on physical NIC workload
- B. Route based on IP Hash
- C. Route based on the originating virtual port
- D. Route based on Source MAC Hash

Answer: A

NEW QUESTION 62

An administrator is working to update the hosts and virtual machines in a vSphere 5.x deployment using Update Manager Baselines. Other than host patches, which three items require a separate procedure or process to update? (Choose three.)

- A. Operating system patches
- B. Virtual Appliance updates
- C. Virtual Machine Virtual Hardware upgrades
- D. VMware Tools on machines without VMware Tools already installed
- E. Application patches within the virtual machine

Answer: ADE

Explanation: Operating system patches are related to operating system so they need a separate procedure altogether. Same is the case with VMware tools and applications patches because applications are stand alone pieces of code that need separate procedure to apply a patch.

NEW QUESTION 66

A vApp named Sales has a Memory Limit of 32 GB and a CPU Limit of 12,000 MHz. There are three virtual machines within the vApp:

- ? Sales-DB -- Has a memory reservation of 20 GB.
- ? Sales-DC -- Has a memory reservation of 8 GB.
- ? Sales-Web -- Has a memory reservation of 8 GB.

Which statement is correct?

- A. All three virtual machines can power on, but will have memory contention.
- B. All three virtual machines can power on without memory contention.
- C. Only two of the three virtual machines can power on.
- D. Only one of the virtual machines can power on.

Answer: C

NEW QUESTION 68

An administrator is troubleshooting basic network connectivity issues.

Which two scenarios are potential issues that this administrator might face? (Choose two.)

- A. The vSwitch is not attached to the correct physical network.
- B. The portgroup is not configured to use correct VLAN.
- C. Traffic shaping is configured incorrectly.
- D. Jumbo frames is configured incorrectly.

Answer: AB

NEW QUESTION 70

What component must be installed prior to deploying a vCenter Server in vSphere 6.x?

- A. vCenter Identity Services
- B. Platform Services Controller
- C. vCenter Single Sign-On
- D. Client Integration Plug-In

Answer: B

NEW QUESTION 71

Which three are requirements when using vMotion to move a virtual machine across vCenter Server systems? (Choose three.)

- A. Both vCenter Servers must be using Enhanced Linked Mode.
- B. Both vCenter Servers must be in the same Single Sign-On Domain.
- C. Time must be synchronized.
- D. Duplicate VM MAC addresses must be configured.
- E. Both vCenter Servers must have High Availability enabled on source and destination clusters.

Answer: ABC

NEW QUESTION 74

Which two badges are major badges in vRealize Operations? (Choose two.)

- A. Risk
- B. Efficiency
- C. Workload
- D. Faults

Answer: AB

NEW QUESTION 79

A vApp is running out of compute resources when overall activity is high within the resource pool. At other times, everything is fine. What should be done to resolve this issue?

- A. Increase the size of the resource pool Shares.
- B. Set the vApp's CPU and Memory Reservation Type to Expandable.
- C. Set the vApp's CPU and Memory Limit to Unlimited.
- D. Create a new resource pool with the existing hardware configuration.

Answer: B

NEW QUESTION 84

Users of an application are reporting performance issues. The following performance values are observed in the vSphere Web Client:

- ? Host CPU utilization is 90%
- ? Virtual Machine memory utilization is consistently greater than 90%
- ? CPU Ready values are higher than 20%

What could be the cause of the application performance issue?

- A. The host is lacking the CPU resources required to meet the demand.
- B. The host is lacking the memory resources required to meet the demand.
- C. The virtual machine is lacking the CPU resources required to meet the demand.
- D. The virtual machine is lacking the memory resources required to meet the demand.

Answer: A

NEW QUESTION 87

When you add an ESXi 6.x host to a new Cluster, which vSphere object owns the CPU and Memory resources of the hosts?

- A. vCenter Server
- B. Datacenter
- C. Cluster
- D. Host

Answer: C

NEW QUESTION 90

You want to deploy a vApp and dynamically assign IP addresses without a DHCP server on the network. Which action would you take to accomplish this task?

- A. Enable IP pools.
- B. Configure a local DHCP server in the vApp.
- C. Enable NAT on the vApp router.
- D. Configure the guest OS for workgroup and WINS.

Answer: A

NEW QUESTION 91

An administrator is only able to see the Health Badge when using the vRealize Operations user interface. What is the likely cause of this behavior?

- A. The vRealize Operations Foundation License is in use.
- B. The vmware-sps service failed to start.
- C. The vRealize Operations Standard License is in use.
- D. The vmware-rbd-watchdog service failed to start.

Answer: A

NEW QUESTION 94

Which three steps must be taken to use vSphere Update Manager 6.x to upgrade an ESXi 5.5 host to vSphere 6.x? (Choose three.)

- A. Download an ESXi Image.
- B. Configure the vSphere Update Manager Download Service.
- C. Create a baseline and attach it to the ESXi Host.
- D. Scan the vCenter Content Library for the ESXi Image.
- E. Remediate the ESXi Host.

Answer: ACE

NEW QUESTION 98

When configuring vSphere Replication for a virtual machine, what is the lowest Recovery Point Objective (RPO) that can be selected?

- A. 1 min
- B. 5 min
- C. 10 min
- D. 15min

Answer: B

NEW QUESTION 103

Which two vCenter plug-ins are installed with a default vSphere Client installation? (Choose two.)

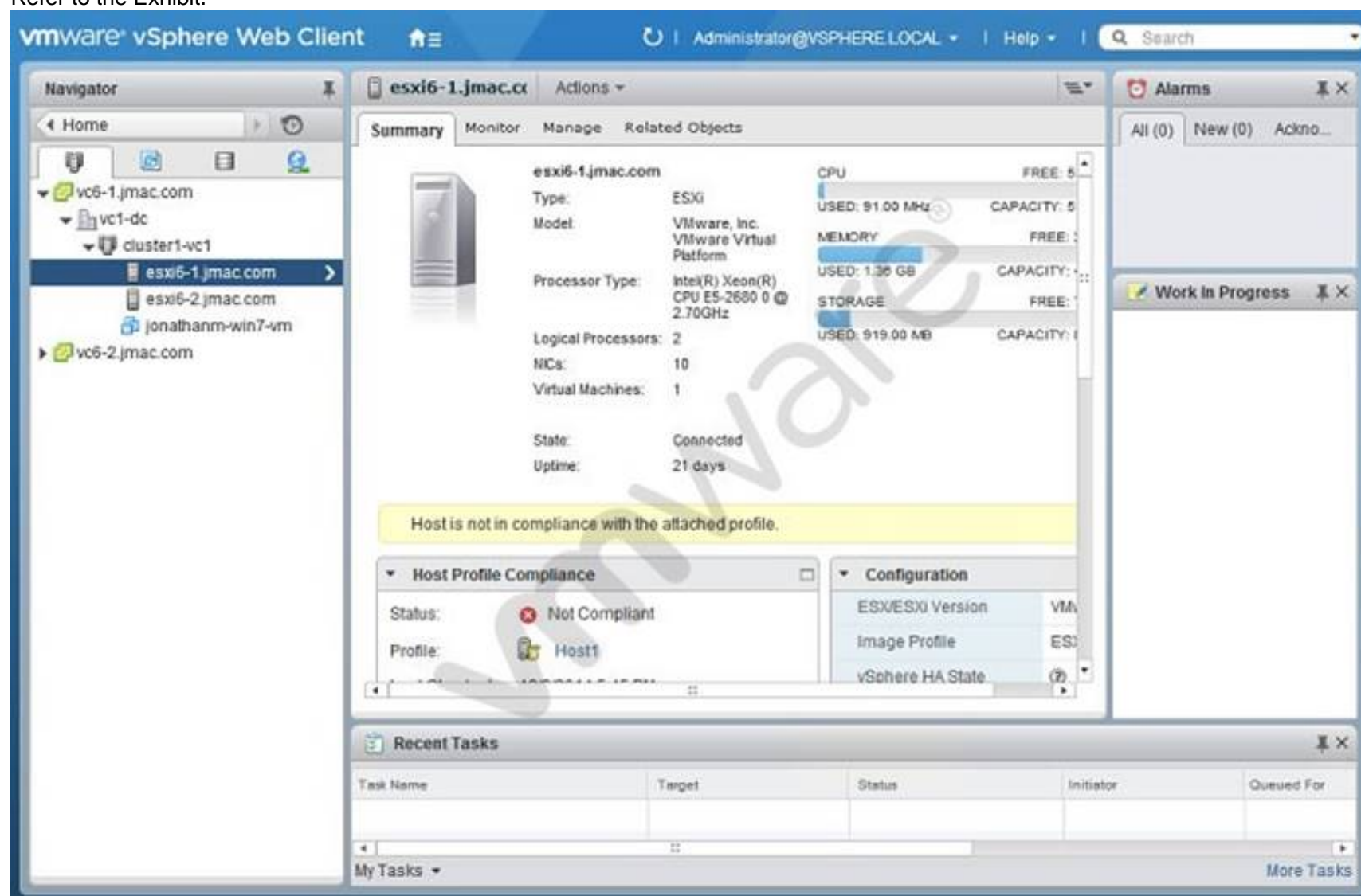
- A. vCenter Hardware Status
- B. VMware ESXi Service Status
- C. VMware vSphere Update Manager
- D. VMware vCenter Storage Monitoring Service

Answer: AD

Explanation: Reference: <http://pubs.vmware.com/vsphere-51/topic/com.vmware.ICbase/PDF/vsphere-esxi-vcenter-server-51-host-management-guide.pdf> (page 19, first para)

NEW QUESTION 106

Refer to the Exhibit.



An administrator logs into the vSphere Web Client and sees the warning shown in the Exhibit.

During a change control window, the warning was addressed.

What should be done to verify that the host is no longer showing the warning?

- A. Run a Remediate host operation.
- B. Recheck the compliance of the host.
- C. Restart the host to get rid of the warning.
- D. Install VMware tools to clear the warning.

Answer: B

NEW QUESTION 107

Which scenario shows a reason for VMware Tools failing to install?

- A. Virtual machine has a CD-ROM configured.
- B. Guest OS Antivirus is blocking the VMware Tools installation.
- C. Guest OS has 64-bit ldd (list dynamic dependencies) utility installed.
- D. Virtual machine is powered on.

Answer: B

NEW QUESTION 112

Which two actions are prerequisites to adding ESXi 6.x hosts to a vSphere Distributed Switch? (Choose two.)

- A. Verify that there is at least one Distributed Port Group on the Distributed Switch.
- B. Verify that the Distributed Port Group have active uplinks configured in its teaming and failover policy.
- C. Verify that the Distributed Switch has been configured with a Network Profile.
- D. Verify that Network I/O control for Management Traffic is configured for the highest share value.

Answer: AB

NEW QUESTION 115

What is true regarding datastores on ESXi 6.x?

- A. NFS 4.1 datastore does not support Fault Tolerance (FT)
- B. VMFS3 and VMFS5 datastores can be newly created
- C. NFS datastore can be concurrently mounted using NFS 4.1 on one host and NFS on another
- D. NFS 3.0 datastore does not support Fault Tolerance (FT)

Answer: A

NEW QUESTION 120

An administrator enables High Availability (HA) on a Virtual SAN cluster.
Which network is used for HA Network Heartbeat configuration?

- A. The Management network.
- B. The vMotion network.
- C. The Virtual SAN network.
- D. The Provisioning Traffic network.

Answer: C

NEW QUESTION 122

An administrator is creating a new Virtual SAN cluster on a Layer 2 network. There is an existing Virtual SAN cluster on the same Layer 2 network.
Which two actions would allow the new Virtual SAN cluster to coexist with the older cluster? (Choose two.)

- A. Change the default Multicast Address on the new Virtual SAN cluster.
- B. Change the default Unicast Address on the new Virtual SAN Cluster.
- C. Create a separate VLAN for each cluster.
- D. Create an ARP Alias for the Virtual SAN VMkernel Network Adapter.

Answer: AC

NEW QUESTION 123

Which three are architecture components of vRealize Operations? (Choose three.)

- A. Identity Server
- B. Administrative Server
- C. Analytics Server
- D. Database Server
- E. Connection Broker

Answer: BCD

NEW QUESTION 126

How are ports scaled on vSphere Standard Switches (vSS)?

- A. Ports on a vSS can be dynamically scaled up and down.
- B. Ports on a vSS can only be statically scaled up or down.
- C. Ports on a vSS can only be dynamically scaled down.
- D. Ports on a vSS can only be dynamically scaled up.

Answer: A

NEW QUESTION 127

Which two are true about the Risk badge in vRealize Operations? (Choose two.)

- A. The Risk badge indicates potential future problems that may degrade the performance of the system.
- B. Risks may require attention in the near future.
- C. The Risk badge indicates problems that are degrading performance of the system.
- D. Risks require attention now to correct system performance problems.

Answer: AB

NEW QUESTION 131

An administrator is cloning and configuring five new web server virtual machines. What would be the benefit of configuring resource shares for the new VMs?

- A. To prioritize access to a resource during contention.
- B. To guarantee access to a resource during contention.
- C. To prioritize access to a resource before contention occurs.
- D. To guarantee access to a resource before contention occurs.

Answer: A

NEW QUESTION 135

You are editing the management network configuration of an ESXi 6.x Host from the vSphere Web Client. You mistakenly put the incorrect VLAN in place for the management network.

What action do you need to take to correct this?

- A. You need to manually edit the configuration on the host with command line utilities.
- B. No action is require
- C. By default ESXi rolls back configuration changes that disconnect the host.
- D. The ESXi host system configuration will need to be restored to the factory configuration to fix the issue.
- E. The change can be reverted in the vSphere Web Client by simply editing the switch again.

Answer: B

NEW QUESTION 140

Why are some virtual machines orphaned after rebooting a High Availability (HA) enabled host?

- A. The Orphaned virtual machines have HA restart disabled.
- B. The Orphaned virtual machines moved recently and the change did not persist.
- C. The host is attached to failed storage.
- D. The host just came out of maintenance mode.

Answer: A

NEW QUESTION 144

A series of Auto Deploy ESXi 6.x hosts, which utilize vSphere Standard Switches, are unable to boot. In prior testing, all of the hosts were able to boot successfully.

Which two conditions might cause this issue? (Choose two.)

- A. The Hosts are unable to connect to the SAN.
- B. The TFTP server is down.
- C. The DNS server is down.
- D. The DHCP server is down.

Answer: BD

Explanation: If the TFTP server is down, ESXi will not boot because it needs TFTP to get the information. Similarly, when DHCP is down, it will not assign the IP addresses and ESXi needs IP address to boot properly.

NEW QUESTION 148

An application running in a virtual machine is experiencing performance issues. When utilizing performance monitoring utilities, it is noted that the CPU Utilization of the application is at 100%.

Which two scenarios are probable causes of the CPU contention for the application? (Choose two.)

- A. There is a network I/O constraint.
- B. There is a storage I/O constraint.
- C. There is insufficient disk space assigned to the virtual machine.
- D. The application is not virtualization aware.

Answer: AB

NEW QUESTION 149

Which two statements are true regarding VMware vSphere Flash Read Cache (vFRC)? (Choose two.)

- A. Cache fills and cache evictions happen in the granularity of a cache block size.
- B. vFRC caches data from both read and write I/Os, but write I/Os are always serviced by the underlying storage.
- C. vFRC caches data from both read and write I/Os, but write I/Os are always serviced by the underlying cache data.
- D. Cache fills and cache evictions happen in the granularity of the disk block size.

Answer: AB

NEW QUESTION 154

An administrator has been tasked with upgrading an existing host from ESX 4.1 to ESXi6.x. The existing host has only vSwitch0 with all the default settings. The upgraded host will have the following new requirements:

1. 116 virtual machines will be connected.
2. Four uplinks configured for port-based load balancing.
3. The switch will include a secondary heartbeat network for HA. Which two statements are true about this configuration? (Choose two.)

- A. The Service Console Port will be removed during the upgrade
- B. The configuration requires only one VMkernel Port
- C. The default vSwitch0 is sufficient for this configuration
- D. A change to vSwitch0 Properties is required

Answer: AD

Explanation: VMware has removed the service console port group with the release of vSphere 5. You can execute the same command, which you used to do on vSphere 4 service console using vMA, CLI and PowerCLI.

NEW QUESTION 157

Which two parameters are required when adding an iSCSI target to an iSCSI Software Adapter using Dynamic Discovery? (Choose two.)

- A. The iSCSI device's IP Address or Fully Qualified Domain Name
- B. The Port Number
- C. The iSCSI device's iSCSI Qualified Name (IQN)
- D. The Default Gateway IP Address

Answer: AB

NEW QUESTION 159

After installation of a host in your test environment, you need to move it to production. The only major change that needs to be made is that the hostname of the server needs to change.

What are two ways that an administrator can change the host name without editing configuration files on the host directly? (Choose two.)

- A. Login to the Direct Console User Interface and change it from here.
- B. Edit the Default TCP/IP Configuration from the vSphere Web Client.
- C. Use the Ruby vSphere Client to send a script to the ESXi host that updates the hostname.
- D. Update the information in DNS and the ESXi host will automatically update with these changes.

Answer: AB

NEW QUESTION 162

Your manager has given you a bash script that retrieves data for ESXi 6.x host configurations. This data needs to be collected right after the installation of a host and must be run directly on the host.

Which two actions can be used to run this script on an ESXi host? (Choose two.)

- A. Connect to the host with Ruby vSphere Console and run the script from there.
- B. Enable SSH access from the Direct Console User Interface.
- C. Enable the ESXi Shell from the Direct Console User Interface.
- D. Run the script directly from the vSphere Web Client.

Answer: BC

NEW QUESTION 163

How many Link Aggregation Groups (LAGs) can be configured on a vSphere 6.x Distributed Switch?

- A. 64
- B. 96
- C. 128
- D. 256

Answer: A

NEW QUESTION 164

Which three tasks can be selected from the home page of an ESXi 6.x host? (Choose three.)

- A. Browse objects managed by the host
- B. Browse NFS mounts for this host
- C. Download VMware vCenter or the vSphere client from vmware.com
- D. Shutdown or restart the host
- E. Download the PowerCLI installer

Answer: ABC

Explanation: PowerCLI is an extension, which builds upon Windows Powershell and can be downloaded from www.vmware.com/go/powercli. vSphere Remote CLI is a separate application which can be downloaded in Windows, 32-Bit Linux or 64-Bit Linux formats from <https://my.vmware.com/web/vmware/details/vcli40/ZCV0YmRkJSpidHdw>

So from the options given you can Download VMware vCenter or the vSphere client, browse objects mounted by this host, and browse datastores (which could be Network File System (NFS) mounted).

NEW QUESTION 168

An administrator has been tasked with enabling High Availability (HA) on a cluster in a vSphere 6.x environment with default settings. The cluster configures

properly and there are no errors. The next day when powering on a virtual machine, an error is presented:

Not Enough Failover Resources

Which three scenarios are likely causes of this error message? (Choose three.)

- A. The default VM Monitoring Sensitivity is set too high.
- B. There are not enough datastore heartbeat datastores configured by default.
- C. The default slot size in the cluster is set too high.
- D. There are virtual machines with large CPU reservations.
- E. A host is in maintenance mode for a replacement of a failed Hard Drive.

Answer: CDE

NEW QUESTION 173

vMotion can be performed between which three physical boundaries? (Choose three.)

- A. Between two vCenter Server Systems
- B. Between two vSphere Distributed Virtual Switches
- C. Between two vCenter Server Datacenter objects
- D. Between two VMware NSX Layer 4 segments
- E. Between two NFS datastores

Answer: ABC

NEW QUESTION 177

Which three VLAN Tagging modes are available in vSphere 6.x? (Choose three.)

- A. External Switch Tagging
- B. Private VLAN Tagging
- C. Virtual Switch Tagging
- D. VXLAN Tagging
- E. Virtual Guest Tagging

Answer: ACE

NEW QUESTION 178

You are creating a virtual machine in the Web Client using the New Virtual Machine wizard.

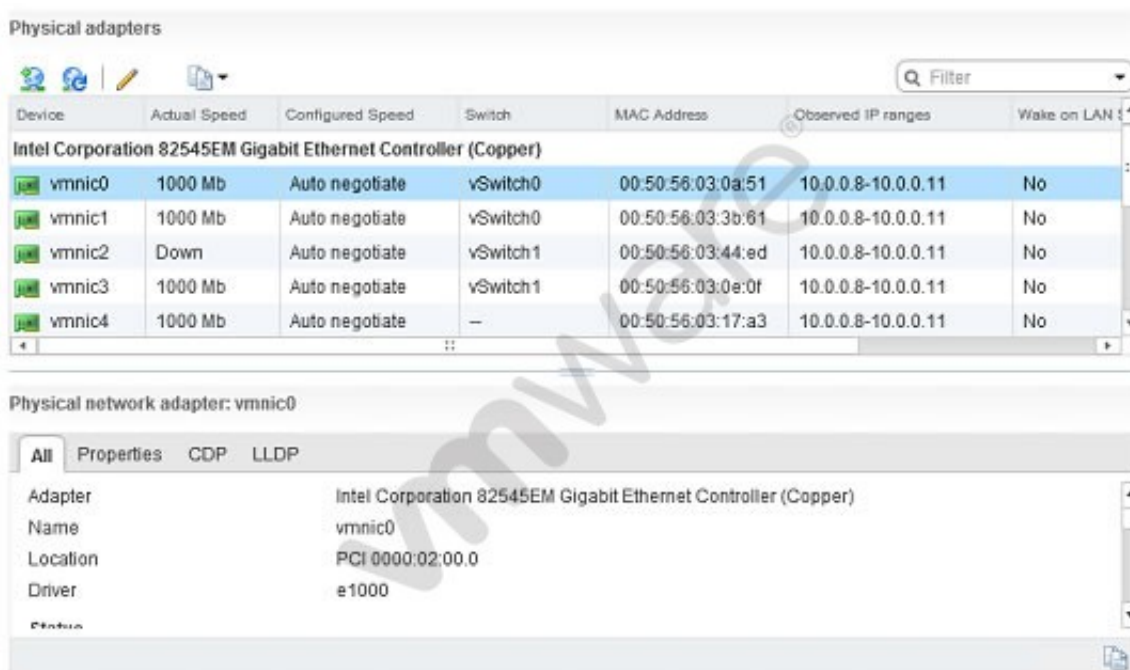
Which two steps are required? (Choose two.)

- A. Select a valid name.
- B. Select a cluster for the compute resource.
- C. Select a network adapter.
- D. Select the virtual machine compatibility.

Answer: AD

NEW QUESTION 181

Refer to the Exhibit.



The exhibit shows two screenshots from the vSphere Web Client. The top screenshot displays a table of physical adapters. The bottom screenshot shows the details for the selected adapter, vmnic0.

| Device | Actual Speed | Configured Speed | Switch | MAC Address | Observed IP ranges | Wake on LAN |
|---|--------------|------------------|----------|-------------------|--------------------|-------------|
| Intel Corporation 82545EM Gigabit Ethernet Controller (Copper) | | | | | | |
| vmnic0 | 1000 Mb | Auto negotiate | vSwitch0 | 00:50:56:03:0a:51 | 10.0.0.8-10.0.0.11 | No |
| vmnic1 | 1000 Mb | Auto negotiate | vSwitch0 | 00:50:56:03:3b:61 | 10.0.0.8-10.0.0.11 | No |
| vmnic2 | Down | Auto negotiate | vSwitch1 | 00:50:56:03:44:ed | 10.0.0.8-10.0.0.11 | No |
| vmnic3 | 1000 Mb | Auto negotiate | vSwitch1 | 00:50:56:03:0e:0f | 10.0.0.8-10.0.0.11 | No |
| vmnic4 | 1000 Mb | Auto negotiate | --- | 00:50:56:03:17:a3 | 10.0.0.8-10.0.0.11 | No |

| Physical network adapter: vmnic0 | |
|----------------------------------|--|
| Adapter | Intel Corporation 82545EM Gigabit Ethernet Controller (Copper) |
| Name | vmnic0 |
| Location | PCI 0000:02:00.0 |
| Driver | e1000 |

An administrator is configuring an ESXi 6.x host to use multiple NICs to resolve a management network redundancy error. After configuring a second NIC, the server is not able to communicate when the primary connection is taken down. The administrator analyzes the Exhibit shown here.

Based on the exhibit, what is the likely cause of the issue?

- A. vmnic4 is not attached to a vSwitch.
- B. vmnic2 is not connected to a physical switch.
- C. E1000 is the incorrect NIC Driver for this card.
- D. There is a MAC address conflict on the network.

Answer: B

NEW QUESTION 183

What differentiates a private cloud from a vSphere Infrastructure?

- A. A private cloud requires pooled resources including storage and networking.
- B. vSphere Infrastructure assumes a secure location for the workloads.
- C. vSphere Infrastructure allows consumption of resources over open standards.
- D. A private cloud assumes the consumer will maintain their portion of the infrastructure.

Answer: A

Explanation: Since private cloud requires pooled resources which includes storage and networking, it is different from vSphere infrastructure that doesn't require pooled resources.

NEW QUESTION 184

An attempt to enable vSphere Fault Tolerance for a powered-on virtual machine fails. Which two scenarios would result in this failure? (Choose two.)

- A. The virtual machine has three vCPUs configured.
- B. The host on which the virtual machine is running has insufficient memory resources.
- C. The virtual machine has insufficient resources to accommodate full reservation plus the overhead memory.
- D. VMware High Availability is enabled on the cluster of which this host is a member.

Answer: BC

NEW QUESTION 188

An administrator is setting up vSphere Auto Deploy to deploy 25 ESXi 6.x hosts using the vCenter Server Virtual Appliance (vCSA). What would be considered best practices for Auto Deploy? (Choose three.)

- A. Enable vSphere HA on the cluster.
- B. Protect the vCenter server with Fault Tolerance.
- C. Install the Auto Deploy service on the VCSA.
- D. Include the vmware-fdm VIB in the image profile.
- E. Use PowerCLI to write a rule that assigns a custom image profile to the target hosts.

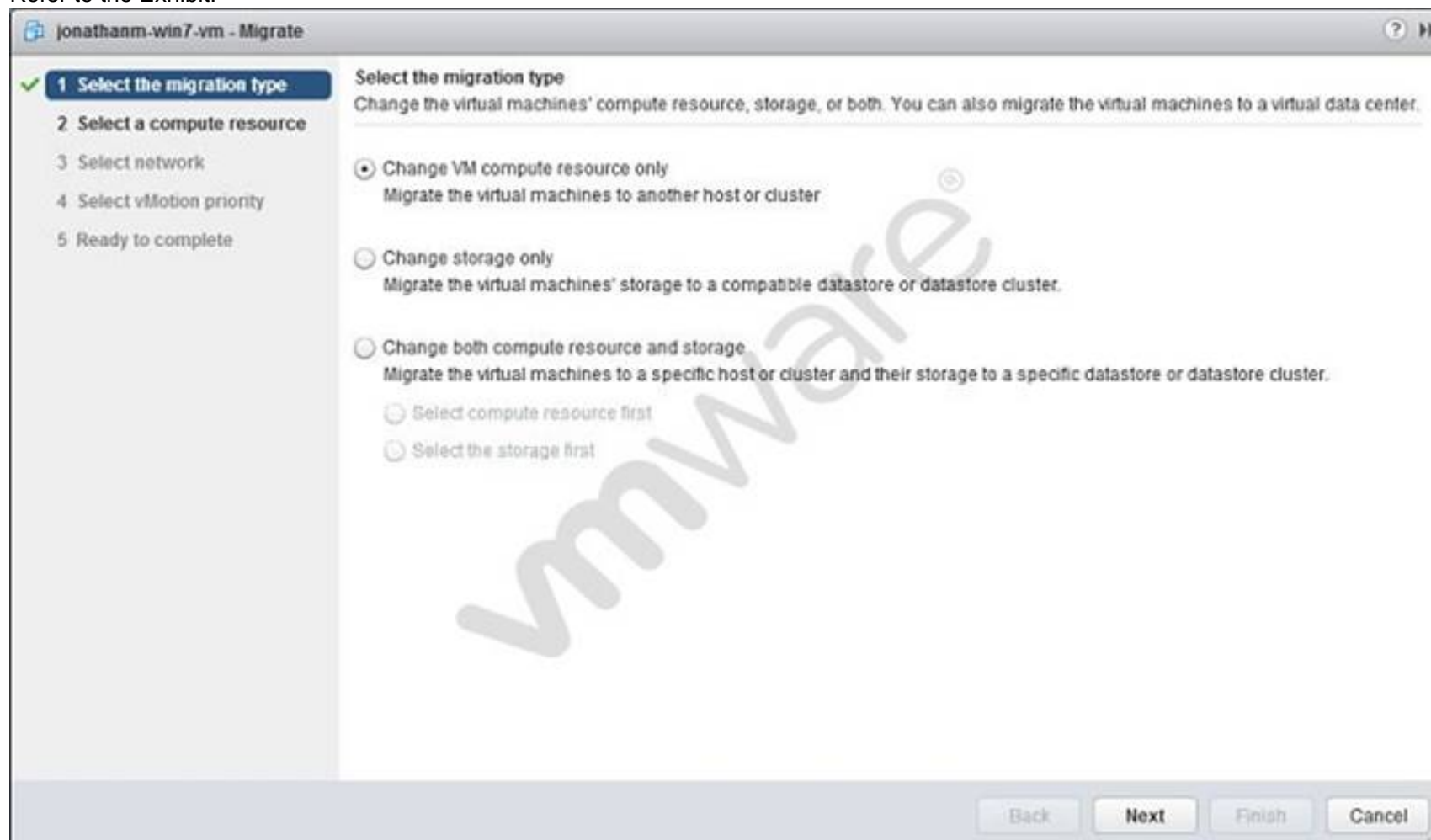
Answer: ADE

Explanation: Reference:

http://pubs.vmware.com/vsphere-50/index.jsp?topic=%2Fcom.vmware.vsphere.install.doc_50%2FGUID-980D9E38-633E-4557-9144-AC422FA239C5.html

NEW QUESTION 193

Refer to the Exhibit.



An administrator is migrating a powered-on virtual machine, as shown in the exhibit. Which option should be selected to perform a Storage vMotion of the VM?

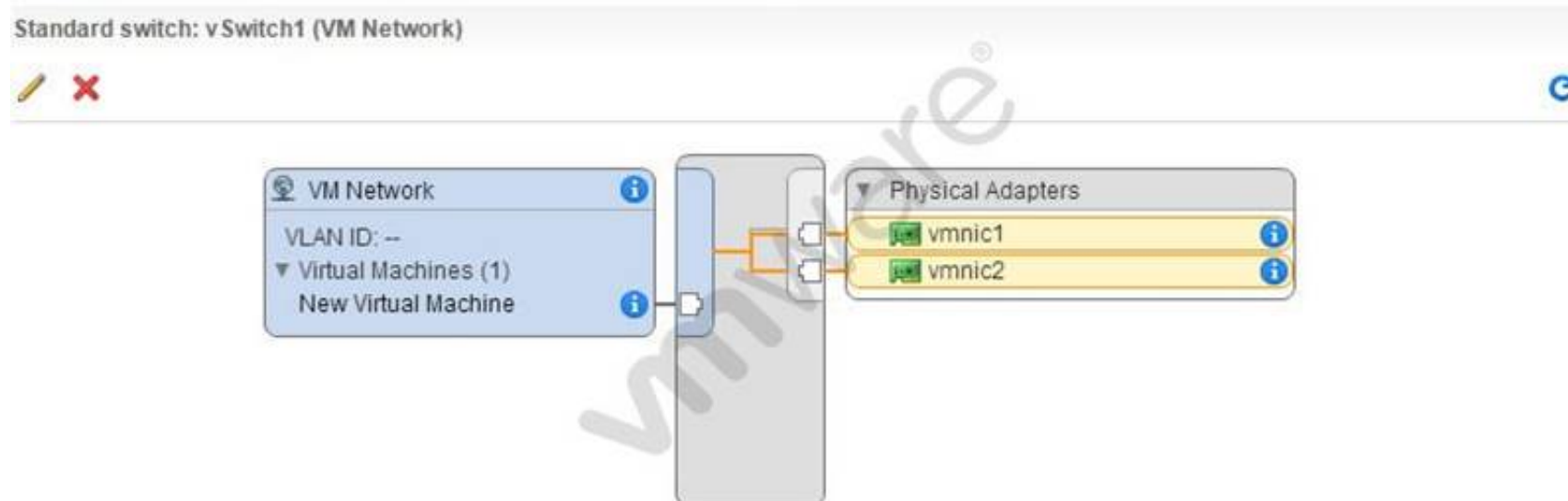
- A. Change storage only
- B. Change VM compute resource only
- C. Change both compute resource and storage, changing the compute resource first.
- D. Change both compute resource and storage, changing the storage resource first.

Answer: A

NEW QUESTION 198

Refer to the Exhibit.

-- Exhibit --



-- Exhibit --

An administrator has configured network connectivity for a new virtual machine, as shown in the Exhibit.

What will occur with the network traffic of this virtual machine when communicating externally from vSwitch1?

- A. The virtual machine will communicate on both uplinks
- B. The virtual machine will only communicate on vmnic1
- C. The virtual machine will only communicate on vmnic2
- D. The virtual machine will fail to communicate externally

Answer: D

NEW QUESTION 201

What are three goals of resource management within a cluster? (Choose three.)

- A. To prevent virtual machines from monopolizing resources and to guarantee predictable service rates.
- B. To exploit undercommitted resources and overcommit with graceful degradation.
- C. To provide solutions to potential problems that you might encounter when using vCenter Server.
- D. To control the relative importance of virtual machines and provide flexible dynamic partitioning.
- E. To provide additional network administration capabilities.

Answer: ABD

NEW QUESTION 202

An administrator is attempting to power on a virtual machine, but is unable to do so.

Which two reasons are probable causes of the failure? (Choose two.)

- A. Storage access to the virtual machine swap file has been lost.
- B. One of the virtual machine VMDK files is locked.
- C. Virtual machine is running CentOS 7.0 64-bit.
- D. Virtual machine has Hyper-Threading enabled.

Answer: AB

NEW QUESTION 203

An administrator is attempting to remove an ESXi 6.x host from a vSphere Distributed Switch (vDS). When the administrator attempts to remove the host, the following error is observed:

The resource '16' is still in use.

What three steps are needed to successfully remove the host from the switch? (Choose three.)

- A. Select Manage Ports on the vDS for the host.
- B. Locate all ports currently in use on the vDS for the host.
- C. Migrate or delete any vmkernel or virtual machine adapters associated with the switch.
- D. Remove all network cards from the switch before trying to remove the host.
- E. Create a standard switch for everything to be automatically be migrated to.

Answer: ABC

NEW QUESTION 204

After selecting an object in vRealize Operations, how can a user compare the badge values of related child objects?

- A. Use the Scoreboard tab
- B. Use the Relationship tab
- C. Use the Members tab
- D. Use the Overview tab

Answer: A

NEW QUESTION 207

A user is trying to retrieve objects from a SharePoint server and finds the request is taking an excessive amount of time. An administrator tries to isolate the issue and notes the following:

- ? Application performance is poor when compared to virtual machines on other hosts.
 - ? Performance improves when the virtual machine is moved to another host.
 - ? The virtual machine encounters higher than expected CPU %Ready times.
- What conclusion can be reached regarding the performance issues for this virtual machine?

- A. Host Power Management is directly impacting virtual machine performance.
- B. The virtual machine has a large number of snapshots.
- C. The Path Selection Policy for the storage device is set differently on the affected host.
- D. Network I/O control is configured for the portgroup.

Answer: A

NEW QUESTION 209

Which three connection types are available when configuring a vSwitch in the vSphere Web Client? (Choose three.)

- A. VMkernel Network Adapter
- B. Physical Network Adapter
- C. Virtual Machine Port Group for a Standard Switch
- D. vMotion Network Adapter
- E. vSAN Network Adapter

Answer: ABC

NEW QUESTION 213

A new vApp was built and tested in the corporate headquarters datacenter running vSphere 6.x.

What condition would explain why the virtual machine is failing to boot in an offsite datacenter running on vSphere 5.5?

- A. The virtual machine was built with the default hardware version.
- B. The VMFS 5 datastore is not compatible with virtual machines configured with vSphere 6.x.
- C. A DRS 5.5 cluster cannot run virtual machines configured with vSphere 6.x.
- D. The VMDK file is locked.

Answer: A

NEW QUESTION 218

An administrator is unable to remove an ESXi 6.x host from a vSphere Distributed Switch.

What are two likely reasons for this issue? (Choose two.)

- A. Vmkernel interfaces on the switch are still in use.
- B. VM Network port group adapters are connected to different switch.
- C. Physical NICs are migrated to different switch.
- D. VM Network adapters are connected to this switch.

Answer: AD

NEW QUESTION 221

An administrator has configured an alarm to be notified when a virtual machine meets either of these conditions:

- ? High virtual CPU
- ? High active memory consumption.

The alarm is only triggering when both of the conditions are met.

What can be done to correct the alarm behavior?

- A. Edit the alarm and select Trigger if ANY of the following conditions are satisfied.
- B. Edit the alarm and select Trigger if ALL of the following conditions are satisfied.
- C. Create two separate alarms, one for CPU and one for memory and link them together with ESXCLI.
- D. Delete the existing alarm and create a new event based alarm.

Answer: A

NEW QUESTION 222

What are two ways to identify TCP/IP stack information? (Choose two.)

- A. Using the vSphere Web Client
- B. Using esxcli network ip netstack
- C. Using esxcfg-netstack
- D. Using the vSphere Client

Answer: AB

NEW QUESTION 227

An administrator is attempting to restore a number of files in a directory within the Operating System of a virtual machine.

How can the administrator restore the files from a previous backup?

- A. Use the File Level Restore option from the selected backup of the virtual machine in the vSphere Web Client.
- B. Connect to the File Level Restore tool from a web browser in the virtual machine.
- C. Connect to the File Level Restore tool from the VMware Data Protection appliance.
- D. Use the File Level Restore option from the selected backup of the virtual machine in the vSphere Client.

Answer: B

NEW QUESTION 232

Which functions can be performed with the Plug-in Manager? (Choose two.)

- A. Enable an installed plug-in
- B. Remove permissions for a plug-in
- C. View the status of installed plug-ins
- D. Uninstall a plug-in

Answer: AC

Explanation: Reference: http://www.kumatech.ca/download/docs/110_6081-EN_R3_HIT_VE_Installation_Guide_web.pdf (page 13)

NEW QUESTION 236

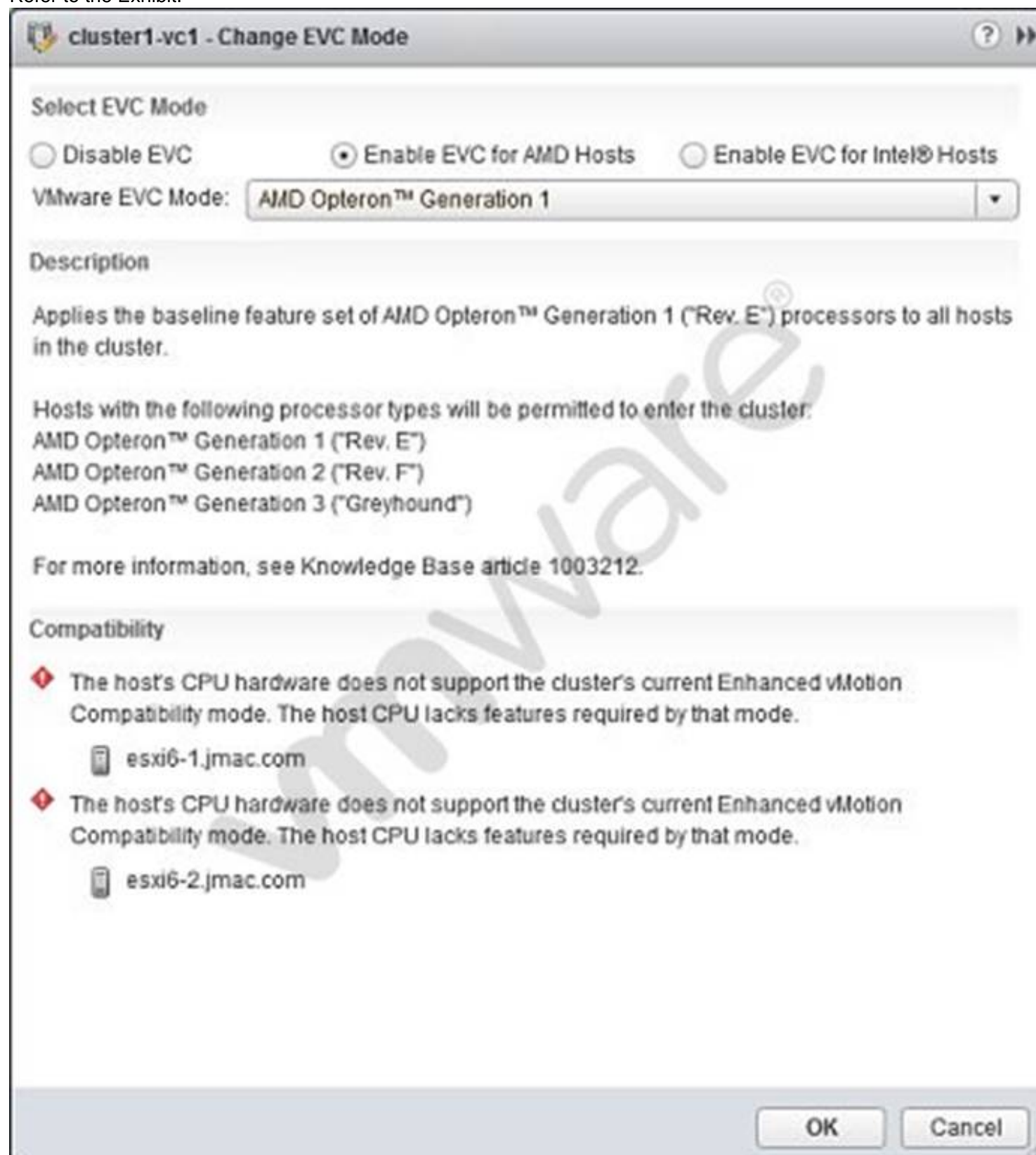
Which vSphere 6 Enterprise Edition feature will allow an organization to ensure that critical multi-threaded applications have the maximum possible uptime?

- A. Fault Tolerance
- B. High Availability
- C. Distributed Resource Scheduler
- D. App HA

Answer: A

NEW QUESTION 241

Refer to the Exhibit.



-- Exhibit --

An administrator attempts to enable Enhanced vMotion Compatibility (EVC) on a cluster. The operation results in a compatibility error, as shown in the exhibit. What is the likely cause of this error?

- A. The CPUs in the ESXi host are not AMD CPUs.
- B. The CPUs in the ESXi host do not support hardware virtualization capabilities.
- C. The XD/NX CPU features have not been enabled in the BIOS of the server.
- D. There is no shared storage between the hosts in the cluster.

Answer: A

NEW QUESTION 243

Which two SMTP Notification Event Details are specific to alarms triggered by events? (Choose two.)

- A. User Name
- B. Summary
- C. Old Status
- D. Target

Answer: AB

NEW QUESTION 244

Which two Virtual SAN related actions might start resynchronization of virtual machine objects? (Choose two.)

- A. Editing a virtual machine storage policy to increase the number of replicas.
- B. Editing a virtual machine storage policy to reduce the number of replicas.
- C. Editing a virtual machine storage policy to increase the number of disk stripes.
- D. Editing a virtual machine storage policy to reduce the number of disk stripes.

Answer: AC

NEW QUESTION 247

An administrator deploys vRealize Operations into a vSphere 6.x environment. After the deployment, the administrator notices that badges are not appearing. What is a likely cause of this behavior?

- A. Badges do not appear until you register vRealize Operations with vCenter Server.
- B. Badges do not appear until you register a vCenter Server in vRealize Operations.
- C. The vRealize Operations appliance needs to be redeployed.
- D. The vCenter Server appliance needs to be redeployed.

Answer: A

NEW QUESTION 248

An ESXi 6.x host consists of 24 logical cores. Hyperthreading is enabled on the host. What is the maximum number of vCPUs that can be assigned to a virtual machine on this host?

- A. 24
- B. 48
- C. 64
- D. 128

Answer: A

NEW QUESTION 250

An administrator must determine an appropriate backup solution, given these conditions:

? 50 of the virtual machines are in a resource pool named Finance.

? 50 of the virtual machines are in a resource pool named QA.

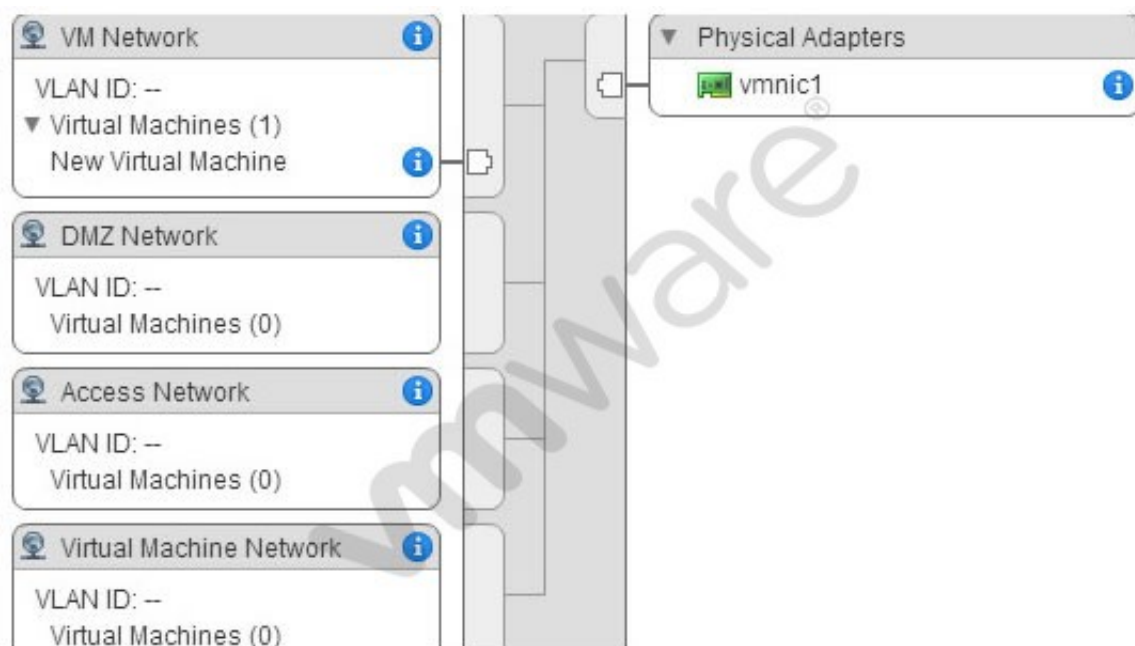
Which solution allows an administrator the ability to backup 100 virtual machines?

- A. Use Snapshot Manager on the vCenter Server to backup the virtual machines.
- B. Use the VMware Consolidated Backup (vcb) tool on the ESXi Host to backup the virtual machines.
- C. Use the VMware Data Recovery (VDR) Appliance on the vCenter Server to backup the virtual machines.
- D. Use the VMware Data Protection (VDP) Appliance on one of the ESXi Hosts to backup the virtual machines.

Answer: D

NEW QUESTION 253

Refer to the Exhibit.



A vSphere 6.x Standard Switch is configured with 4 virtual machine portgroups, as shown in the exhibit. Which portgroup would be utilized by default when creating a new virtual machine?

- A. Access Network
- B. DMZ Network
- C. VM Network
- D. Virtual Machine Network

Answer: A

NEW QUESTION 258

Which three operations occur during a cold migration of a virtual machine? (Choose three.)

- A. The virtual machine disks are moved if the datastore is being changed.
- B. The virtual machine is registered with the destination server.
- C. The source virtual machine is removed from the old hosts.
- D. The virtual machine hardware is upgraded.
- E. The virtual machine files are quiesced prior to the migration.

Answer: ABC

NEW QUESTION 260

Which two configurable options apply to both virtual machine CPU and memory allocation? (Choose two.)

- A. Reservation
- B. Shares
- C. Resource Pool
- D. Reserve All

Answer: AB

NEW QUESTION 263

A virtual machine is experiencing performance issues. The following performance metrics are observed:

? CPU usage value for the virtual machine is above 90%

? CPU ready value for the virtual machine is above 20%

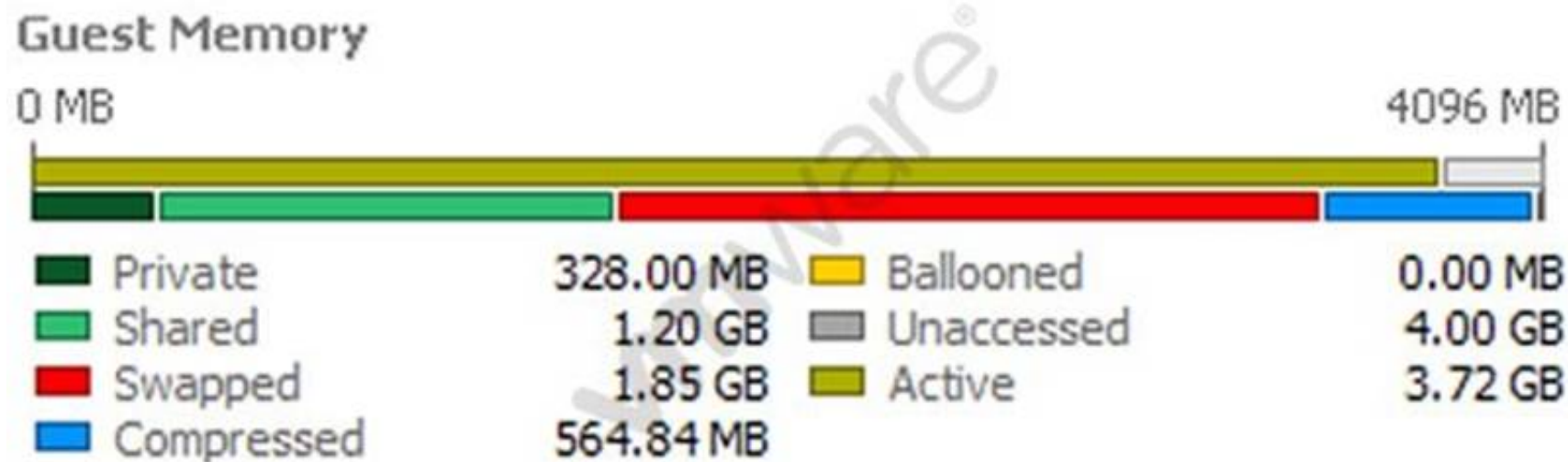
Which two activities will likely resolve the performance issues? (Choose two.)

- A. Set a CPU reservation for the virtual machine.
- B. Increase the CPU limit on the virtual machine.
- C. Decrease CPU shares equally for all virtual machines on the host.
- D. Increase CPU shares equally for all virtual machines on the host.

Answer: AB

NEW QUESTION 267

Refer to the Exhibit.



-- Exhibit --

A 4 GB Memory virtual machine is experiencing extended memory issues, as shown in the Exhibit.
 What potential issues could be attributed to this memory pressure?

- A. A limit is imposed on the virtual memory of this virtual machine.
- B. The Balloon driver has been uninstalled.
- C. A limit has been imposed on the Virtual CPU of the virtual machine.
- D. Storage IO control has been enabled for the virtual machine causing the swapped memory.

Answer: AB

NEW QUESTION 269

Which two events happen when Distributed Resource Scheduler (DRS) is disabled? (Choose two.)

- A. The cluster's resource pool heirarchy and affinity rules are re-established when DRS is turned back on.
- B. The cluster's resource pool hierarchy and affinity rules are not re-established when DRS is turned back on.
- C. The cluster's resource pools are removed from the cluster.
- D. The cluster's resource pools are removed from the cluster and assigned to the hosts.

Answer: BC

NEW QUESTION 270

Which three conditions would prevent Storage I/O Control from being enabled on a group of datastores? (Choose three.)

- A. The datastores planned for the solution are used by different vSphere clusters.
- B. A datastore planned for the solution is configured as a Raw Device Mapping file.
- C. A datastore planned for the solution has three extents.
- D. A datastore planned for the solution is configured as NFS.
- E. The organization has an Enterprise license.

Answer: BCE

NEW QUESTION 272

You need to add an object to an existing vApp using the vSphere Web Client. How is this accomplished?

- A. Create an Object Inside the vApp.
- B. Add an Object to a vApp.
- C. Add an Object to the Datastore the vApp is located in.
- D. Move all Objects to a new Datastore folder.

Answer: AB

NEW QUESTION 277

An administrator has an application that requires connection directly to PCI devices through a virtual machine.
 What is a limitation of this configuration?

- A. Devices must be reserved for PCI passthrough on at least one host on which the virtual machine will run.
- B. Snapshots are not supported with DirectPath I/O passthrough devices.
- C. A maximum of 18 PCI vSphere DirectPath devices can be added to a virtual machine.
- D. Only one PCI controller can be presented to the virtual machine.

Answer: B

NEW QUESTION 278

Which two VMware software components can be updated by Update Manager? (Choose two.)

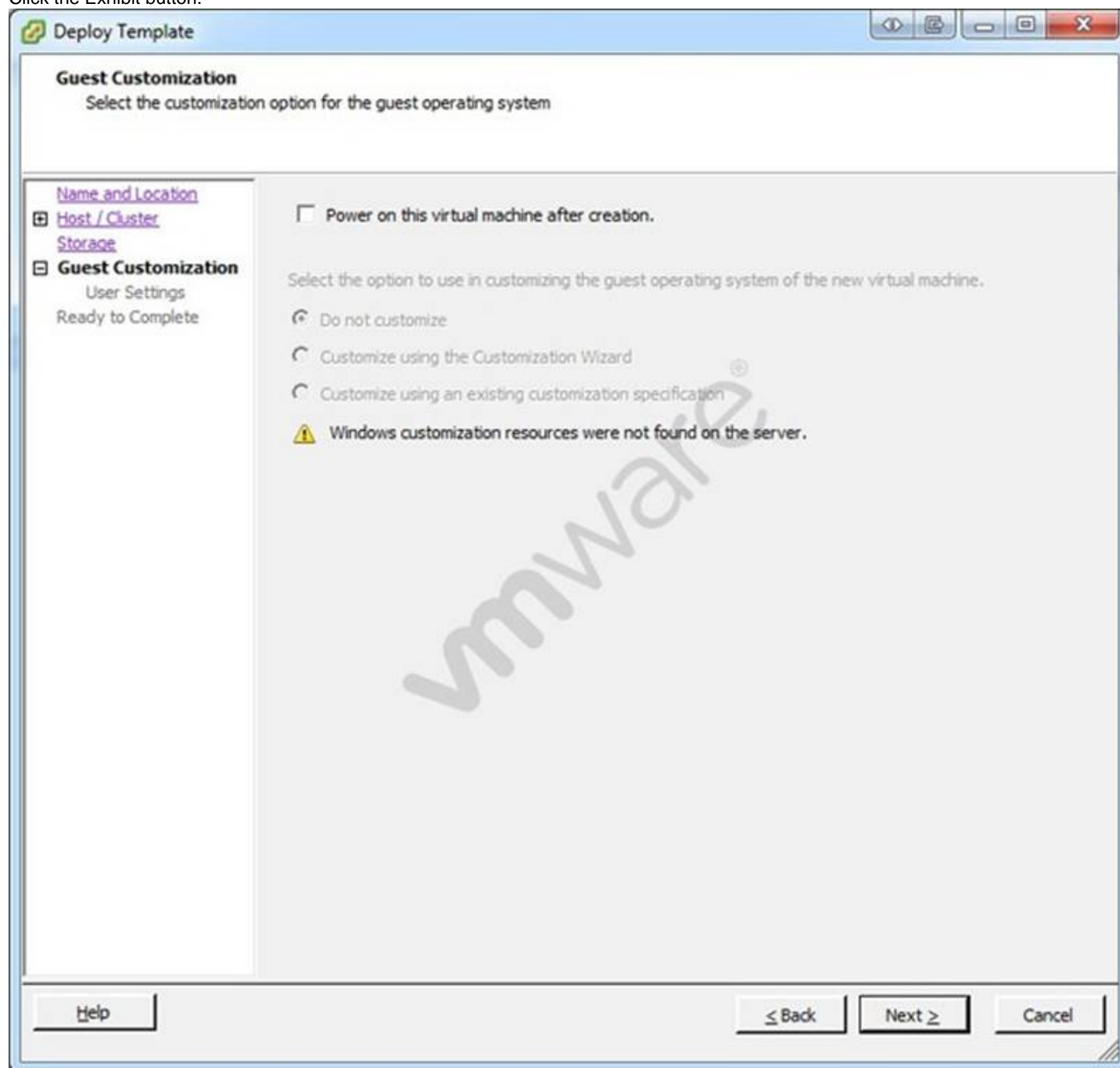
- A. ESX 3.5
- B. Virtual Appliances
- C. vCenter Server
- D. Guest OS

Answer: BD

Explanation: Reference: <http://www.vmware.com/support/vsphere5/doc/vsphere-update-manager-51-release-notes.html>

NEW QUESTION 283

Click the Exhibit button.



An administrator has implemented a new vSphere 5 environment and is deploying their first Windows 2008 R2 template. When running the Deploy Template wizard, the error shown in the exhibit appears. What can be done to correct the problem?

- A. Select the correct guest OS setting for the virtual machine.
- B. Windows 2003 x64 cannot be customized.
- C. Download and install the Microsoft Sysprep tool into the virtual machine to be customized.
- D. Download the Microsoft Sysprep tool to the appropriate vCenter Server directory.

Answer: D

Explanation: <http://communities.vmware.com/thread/45830>

See the table at: http://kb.vmware.com/selfservice/microsites/search.do?language=en_US&cmd=displayKC&externalId=1005593

NEW QUESTION 286

What are two possible causes of Storage Distributed Resource Scheduler (SDRS) being disabled on one or more virtual machine disks in a datastore cluster? (Choose two.)

- A. The virtual machine has vSphere Fault Tolerance disabled.
- B. The virtual machine is a template.
- C. The virtual machine swap file is on a shared datastore.
- D. The disk is a CD-ROM/ISO file.

Answer: BD

NEW QUESTION 290

What is a valid example of a vSphere Update Manager upgrade?

- A. A VMware Tools upgrade on a Fault Tolerant machine with automatic snapshots.
- B. Upgrading and patching multiple ESXi hosts simultaneously in a selected cluster.
- C. Upgrading an ESX 4.1 host to ESXi 6.x with a sufficient boot partition.
- D. An ESXi 6.x host update with automatically deleted snapshots.

Answer: C

Explanation: Reference: <http://www.vmadmin.co.uk/vmware/35-esxserver/283-vsphere4to5migrateesx4toesxi5>

NEW QUESTION 295

What is a benefit of vCenter Linked-Mode?

- A. Allows the vCenter Server Virtual Appliance (vCSA) to manage multiple sites
- B. Pools vRAM entitlement
- C. Increases vCenter security
- D. Increases vCenter reliability

Answer: B

Explanation: Reference: http://pubs.vmware.com/vsphere-50/index.jsp?topic=%2Fcom.vmware.vsphere.vcenterhost.doc_50%2FGUID-EC40636E-0DD4-4A17-B163-5CFBDC31666C.html

NEW QUESTION 298

Which three actions can be taken as a result of executing the vSphere Update Manager 6.x scan and remediation wizards? (Choose three.)

- A. Install and upgrade software in virtual machines.
- B. Upgrade the firmware on ESXi host devices.
- C. Upgrade and Patch ESXi hosts.
- D. Install and update third-party software on hosts.
- E. Upgrade virtual machine hardware.

Answer: CDE

NEW QUESTION 302

An administrator has configured an alarm to be notified when a virtual machine meets two conditions:
? high virtual CPU
? high active memory consumption
The alarm is malfunctioning and triggering when either condition is met instead of both.
What can be done to correct the issue?

- A. Edit the alarm and select Trigger if ALL of the following conditions are satisfied.
- B. Edit the alarm and select Trigger if ANY of the following conditions are satisfied.
- C. Create two separate alarms, one for CPU and one for memory.
- D. Delete the existing alarm and create a new event based alarm.

Answer: A

NEW QUESTION 306

An administrator logs into the vSphere Web Client, but is unable to see any hosts and clusters.
Which two options could fix the problem? (Choose two.)

- A. Verify that the client web browser and vCenter Server are in the same broadcast domain.
- B. Verify that the vCenter Server system is registered with the same Platform Services Controller as the vSphere Web Client.
- C. Log in to the vCenter Server as a user within the Active Directory domain.
- D. Log in to the vSphere Web Client as a user with permissions on the vCenter Server system.

Answer: BD

NEW QUESTION 308

A vCenter Operations Manager 5.7 environment is upgraded to vRealize Operations. After the upgrade, the analytics services fail to start.
Which three steps must be taken to resolve the problem? (Choose three.)

- A. Take the vRealize Operations cluster offline.
- B. Delete the activity persistence files.
- C. Bring the cluster back online.
- D. Remove any unresponsive nodes.
- E. Stop the CaSA service.

Answer: ABC

NEW QUESTION 310

Which three modules are optional components that can be added from the vCenter Server installer? (Choose three.)

- A. VMware vCenter Syslog Collector
- B. VMware vCenter License Server
- C. VMware vSphere Authentication Proxy
- D. VMware vCenter Host Update Utility
- E. VMware vSphere Auto Deploy

Answer: ACE

Explanation: Reference: http://pubs.vmware.com/vsphere-50/index.jsp?topic=%2Fcom.vmware.vsphere.install.doc_50%2FGUID-78933728-7F02-43AF-ABD8-0BDCE10418A6.html (see optional components)

NEW QUESTION 314

Which three features are not supported when using Fault Tolerance in vSphere 6.x? (Choose three.)

- A. Virtual Volumes (VVOLS)
- B. Storage vMotion
- C. Virtual Machine Component Protection
- D. vMotion
- E. vSphere Distributed Switches

Answer: ABC

NEW QUESTION 315

An administrator is performing upgrades to ESXi 6.x from ESX 3.x and ESX 4.x hosts. What is true about this procedure?

- A. A direct, in-place upgrade can be performed only on ESX 4.1 and later hosts.
- B. ESX 3.x hosts can be upgraded, but require an upgrade to 4.x before 5.x.
- C. A direct, in-place upgrade can be performed only on ESX 4.5 and later hosts.
- D. A direct, in-place upgrade can be performed only on ESX 3.5 and later hosts.

Answer: B

Explanation: You must upgrade version 3.x ESX and ESXi hosts to ESX or ESXi version 4.x before you can upgrade them to ESXi 5.1.x. See the vSphere 4.x upgrade documentation.

Alternatively, you might find it simpler and more cost effective to do a fresh installation of ESXi 5.1.x.

NEW QUESTION 320

What two Advanced IP Allocation Schemes are available? (Choose two.)

- A. Fixed
- B. DHCP
- C. OVF Environment
- D. Transient

Answer: BC

NEW QUESTION 323

Which three actions can be executed when an alarm is triggered? (Choose three.)

- A. Send an email.
- B. Send an SNMP trap.
- C. Run a script or command.
- D. Run an Orchestrator workflow.
- E. Send a trigger to syslog.

Answer: ABC

NEW QUESTION 326

Refer to the Exhibit.

Adapter Details

Properties Devices Paths

Enable Disable

| Runtime Name | Target | LUN | Status |
|-----------------|------------------------------------|-----|--------------|
| vmhba2:C0:T3:L0 | 50:06:01:60:c7:20:6a:a4 50:06:0... | 0 | Active (I/O) |
| vmhba2:C0:T2:L0 | 50:06:01:60:c7:20:6a:a4 50:06:0... | 0 | Active (I/O) |
| vmhba2:C0:T1:L0 | 50:06:01:60:c7:20:6a:a4 50:06:0... | 0 | Dead (I/O) |
| vmhba2:C0:T0:L0 | 50:06:01:60:c7:20:6a:a4 50:06:0... | 0 | Active (I/O) |
| | | | |
| | | | |
| | | | |

A storage administrator is not seeing full utilization of all bandwidth from an ESXi host. The vSphere administrator observes the adapter details, as shown in the Exhibit.

What is the probable cause of this issue?

- A. Another path needs to be used to allow full utilization of the bandwidth.
- B. The array is not setup to use the correct multipathing policy.
- C. There are no virtual machines on the host.
- D. No traffic is being sent across it because a path failed.

Answer: D

NEW QUESTION 331

An administrator attempts to create a Thick Provisioned Virtual Disk (VMDK) on an NFS datastore; but it fails. Which two reasons would explain the failure? (Choose two.)

- A. Datastore is on an NFS 3 storage server that does not support Hardware Acceleration
- B. Datastore is on an NFS 4.1 storage server
- C. Only VMFS datastores support "Thick Provisioned" VMDK
- D. The NFS datastore was not created on a "Thick Provisioned" device

Answer: AB

NEW QUESTION 336

An administrator deploys vCenter Server using the embedded Platform Services Controller. After testing the deployment for a couple of months, it is determined that the environment would be better served with an external Platform Services Controller. What should the administrator do to meet this new requirement?

- A. Deploy a fresh instance of vCenter Server with an external Platform Services Controller.
- B. Perform a fresh install of an external Platform Services Controller.
- C. Migrate the embedded Platform Services Controller to an external Platform Services Controller.
- D. Upgrade the embedded Platform Services Controller to an external Platform Services Controller.

Answer: D

NEW QUESTION 337

Which three configuration settings will be migrated when upgrading a host from ESX 4.x Classic to ESXi 6.x? (Choose three.)

- A. The SSH configuration in /etc/ssh
- B. The host configuration in /etc/vmware/esx.conf
- C. The NFS configuration in /etc/fstab
- D. The services information in /etc/services
- E. The licensing information in /etc/licenses/license.conf

Answer: ABC

Explanation: http://kb.vmware.com/selfservice/microsites/search.do?language=en_US&cmd=displayKC&externalId=2005054

Files Migrated During Migration or Upgrade from ESX/ESXi 4.x to ESXi 5.0

This table provides the list of files migrated during upgrade from ESX/ESXi 4.x to ESXi 5.0: FileNotes

/etc/sfcb/sfcb.cfg

CIM "indication" conf files

/etc/ntp.conf

/etc/ntp.drift

/etc/ntp.keys

/etc/syslog.confMigrated for ESXi, not migrated for ESX.

/etc/security/access.confNeeded for PAM configurations.

/etc/security/login.mapNo comment.

/etc/sysconfig/networkService Console NICs areconverted to VMkernel NICs.

/etc/sysconfig/keyboardAny entries not supported will default to English.

***etc/sshOpenSSH is now included in ESXi 6.x
 /etc/nsswitch.confUsed generically for various configurations, most helpful for Active Directory authentication.
 /etc/krb.confNeeded for Likewise to have Active Directory support.
 /etc/krb.realmsNeeded for Likewise to have Active Directory support.
 /etc/krb5.confNeeded for Likewise to have Active Directory support.
 /etc/krb5.aclNeeded for Likewise to have Active Directory support.
 /etc/krb5.keytabNeeded for Likewise to have Active Directory support.
 /etc/krb5.logNeeded for Likewise to have Active Directory support.
 /etc/krb5.mkeyNeeded for Likewise to have Active Directory support.
 /etc/pam.d/* (Partial)
 Needed for authentication and authorization.
 Note: Custom edits made to settings in /etc/pam.d/system-auth in ESX 4.x are reset to the default values by the upgrade to ESXi 6.x To maintain the custom values, reset them manually after the upgrade.
 /etc/snmp/snmpd.confMigrated to /etc/vmware/snmp.xml.
 etc/motdA note is appended saying the system was upgraded to ESX 5.x.
 /etc/likewise/*Used for Likewise configurations.
 /etc/vmware/vmkiscsid/*
 ***etc/vmware/esx.conf
 /etc/vmware/hostd/*
 /etc/vmware/vmauth/authentication.confUsed for Likewise configurations
 /etc/vmware/vmauth/provider.xmlUsed for Likewise configurations
 /etc/hosts
 /etc/resolv.conf
 ***etc/fstab (Partial)Only NFS entries will be migrated to ESXi.
 /etc/passwd (Partial)Only the root user password will be saved, if possible.
 /etc/shadowOnly the root user password will be saved, if possible

NEW QUESTION 340

What is a benefit of using VMware Data Protection (VDP)?

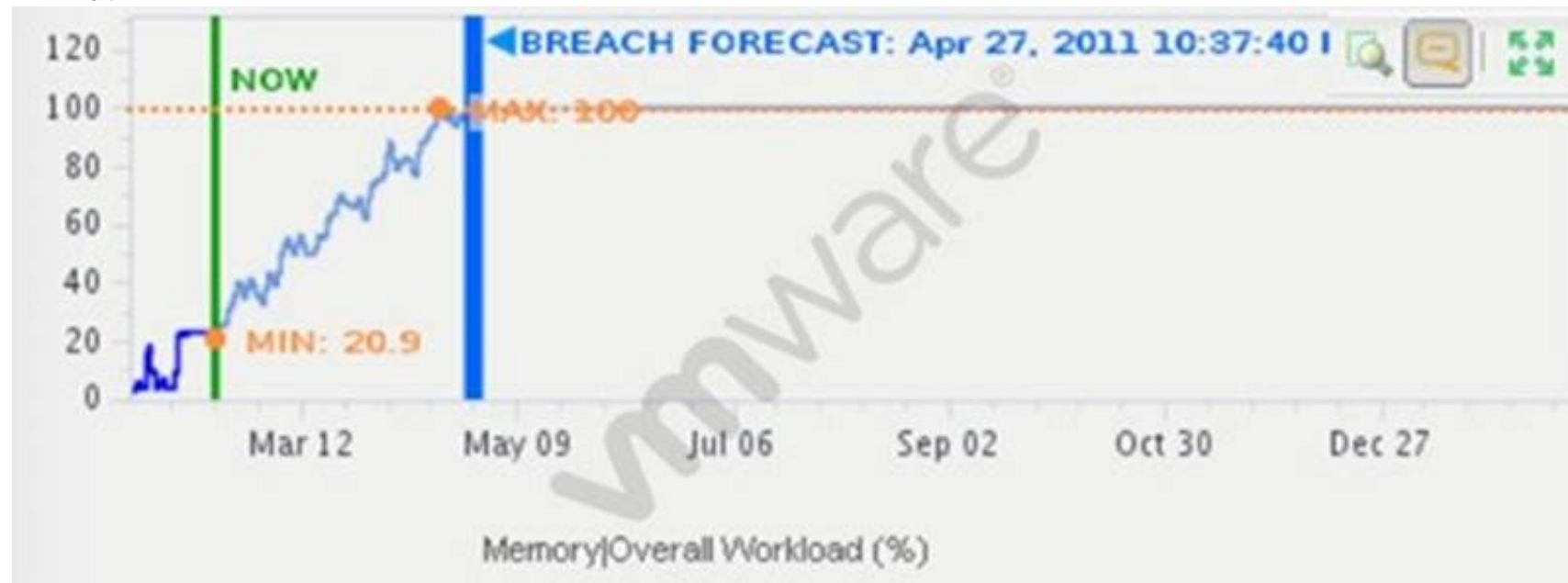
- A. Provides support for guest-level backups and restores of Microsoft SQL Servers, Exchange Servers, and Share Point Servers.
- B. Provides support for advanced storage services including replication, encryption, deduplication, and compression.
- C. Provides direct access to VDP configuration integrated into the vSphere Client.
- D. Reduces disk space consumed by virtual machine data using deduplication.

Answer: D

NEW QUESTION 343

Refer to the Exhibit.

-- Exhibit --



An administrator is analyzing a virtual machine as shown in the Exhibit. What is the current long term risk for this virtual machine?

- A. The virtual machine may run out of memory before April 27.
- B. The virtual machine may continue to function after April 27.
- C. The virtual machine has adequate memory configured for operation for the next 120 days.
- D. The virtual machine has adequate memory reservation configured for operation for the next 120 days.

Answer: A

NEW QUESTION 345

What are two valid use cases for vCenter Server Linked Mode? (Choose two.)

- A. An administrator wants to migrate running virtual machines between vCenter Server instances.
- B. An administrator wants to increase the vRAM entitlement pool.
- C. An administrator wants to manage a virtual server environment and a View environment from the same pane of glass.
- D. An administrator wants to search all inventory objects across multiple vCenter Server Virtual Appliance (vCSA) instances from one vSphere Client

Answer: BC

Explanation: Reference: <http://pubs.vmware.com/vsphere-50/topic/com.vmware.ICbase/PDF/vsphere-esxi-vcenter-server-50-host-management-guide.pdf> (page

53)

NEW QUESTION 347

An administrator creates a DRS cluster of eight ESXi 6.x hosts. There are 10 virtual machines balanced across the hosts. An attempt to place the first host into maintenance mode fails.

What are two reasons that the host failed to enter maintenance mode? (Choose two.)

- A. The DRS cluster Automation Level is set to Partially Automated mode.
- B. One of the virtual machines on the ESXi Host entering maintenance mode is configured with a DRS Host affinity rule Should run on hosts in group.
- C. One of the virtual machines on the ESXi Host entering maintenance mode is configured with a DRS Host affinity rule Must run on hosts in group.
- D. One of the virtual machines on the ESXi Host entering maintenance mode is configured with an individual Automation Level set to Partially Automated.

Answer: AD

NEW QUESTION 351

A user wants to monitor a business-critical virtual machine to ensure that it doesn't run out of resources.

What metric could be monitored in vRealize Operations to address this concern?

- A. Time Remaining badge
- B. Compliance badge
- C. Reclaimable Waste badge
- D. Density badge

Answer: A

NEW QUESTION 356

An administrator has purchased a new 10GB Converged Network Adapter (CNA) for installation in a system that is running ESXi 6.x. The administrator has downloaded the latest driver from the hardware vendor and wants to include the driver in an image. The image profile acceptance level is set to VMwareSupported. The acceptance level of the driver is VMwareSupported.

Which two statements are true about the inclusion of this driver in the image? (Choose two.)

- A. Support calls for the driver will be directed to the partner.
- B. The image can be built, but the driver will not be included in the image.
- C. The image can be built and the driver will be included.
- D. Support calls for the driver will be handled by VMware.

Answer: AC

Explanation: The acceptance level of all VIBs on a host must be at least as high as the host acceptance level. For example, if the host acceptance level is VMware Accepted, you can install VIBs with acceptance levels of VMware Certified and VMware Accepted, but you cannot install VIBs with acceptance levels of Partner Supported or Community Supported. To install a VIB with a less restrictive acceptance level than that of the host, you can change the acceptance level of the host by using the vSphere Client or by running esxcli software acceptance commands.

Setting host acceptance levels is a best practice that allows you to specify which VIBs can be installed on a host and used with an image profile, and the level of support you can expect for a VIB. For example, a Community Supported VIB might not be recommended for an ESXi server in a production environment.

http://pubs.vmware.com/vsphere-50/index.jsp?topic=%2Fcom.vmware.vsphere.upgrade.doc_50%2FGUID-27BBBAB8-01EA-4238-8140-1C3C3EFC0AA6.html

NEW QUESTION 361

Which two NFS Protocol versions does vSphere 6 support? (Choose two.)

- A. Version 3
- B. Version 3.1
- C. Version 4
- D. Version 4.1

Answer: AD

NEW QUESTION 363

What is a requirement when enabling a Virtual SAN cluster in an existing High Availability (HA) and Distributed Resource Scheduler (DRS) Cluster?

- A. Disable DRS and HA before enabling Virtual SAN
- B. Enable DRS before enabling Virtual SAN
- C. Disable HA before enabling Virtual SAN
- D. Enable Storage DRS before enabling Virtual SAN

Answer: C

NEW QUESTION 368

.....

Thank You for Trying Our Product

We offer two products:

1st - We have Practice Tests Software with Actual Exam Questions

2nd - Questions and Answers in PDF Format

2V0-620 Practice Exam Features:

- * 2V0-620 Questions and Answers Updated Frequently
- * 2V0-620 Practice Questions Verified by Expert Senior Certified Staff
- * 2V0-620 Most Realistic Questions that Guarantee you a Pass on Your First Try
- * 2V0-620 Practice Test Questions in Multiple Choice Formats and Updates for 1 Year

100% Actual & Verified — Instant Download, Please Click
[Order The 2V0-620 Practice Test Here](#)