

## Exam Questions 300-365

Deploying Cisco Wireless Enterprise Networks

<https://www.2passeasy.com/dumps/300-365/>



#### NEW QUESTION 1

Which two options are limitations of using an AP as a workgroup bridge? (Choose two.)

- A. Only factory-configured MAPs can support WGB mode.
- B. MAPs that are configured in WGB mode do not answer S36 radio measurement requests.
- C. A limited subset of Layer 2 security types are supported for wireless clients of a WGB.
- D. There is a limit of 20 wired client devices.
- E. Multiple VLANs are not supported for wireless client

**Answer:** BD

#### NEW QUESTION 2

On which AP radio or radios is Cisco WGB association supported?

- A. 2.4 GHz only
- B. 2.4 or 5 GHz only
- C. 2.4, 5, or 4.9 GHz
- D. 5 GHz only

**Answer:** B

#### NEW QUESTION 3

A customer has implemented several WLANs in an auditorium utilizing a newly dedicated WLC and is experiencing excessive channel utilization regardless of occupancy. Which action reduces channel utilization without removing SSIDs?

- A. Disable MCS data rates 0 through 11.
- B. Disable MCS data rates used by 40 MHz channels.
- C. Disable data rates that use CCK.
- D. Disable VHT data rate

**Answer:** C

#### NEW QUESTION 4

An engineer used an interface group under the SSID configuration, but noticed that a test client is getting an IP assigned in a different VLAN from the DHCP server. Which two options override the interface group configuration on the SSID? (Choose two.)

- A. static VLAN on client
- B. ACL
- C. AP group
- D. static IP on client
- E. MAC filtering
- F. RF group
- G. AAA override

**Answer:** CG

#### NEW QUESTION 5

The customer has deployed C7960 phones with clients connected to them. What switch feature could be enabled to distinguish IP voice traffic from client data traffic?

- A. VoiceVLAN
- B. QoS routing
- C. WME
- D. Weighted Queuing
- E. QBSS

**Answer:** A

#### NEW QUESTION 6

A network engineer is experiencing issues enabling LAG on the WLC. Which four characteristics should be validated to ensure LAG configuration? (Choose four.)

- A. All ports participate in the LAG by default when LAG is enabled on the controller, y
- B. Dynamic interfaces and management are moved to port 1
- C. Primary and secondary ports are needed for each interface.
- D. Multiple untagged interfaces to the same port are not allowed.
- E. EtherChannel must be configured for mode "on" on the switch.
- F. Only one functional physical port is needed to continue to pass traffic.
- G. Multiple LAGs are permitted on the controller.
- H. The WLC does not need to be rebooted to enable the LAG configuratio

**Answer:** ADEF

#### NEW QUESTION 7

A customer requires wireless traffic from the branch to be routed through the firewall at corporate headquarters. There is a RADIUS server in each branch location. Which FlexConnect state should be

used in this scenario?

- A. local authentication and local switching
- B. local authentication and central switching
- C. central authentication and central switching
- D. central authentication and local switching

**Answer:** C

#### NEW QUESTION 8

After a wireless deployment, users report that wireless voice clients are experiencing an unacceptable amount of delay while roaming during a call on the Cisco Unified 7925 Series phones. The customer environment consists of multiple controllers, all running 7.4.121.0 code, operating in a centralized deployment. What configuration issue is most likely contributing to the problem?

- A. The authentication should be set to WPA2-PSK to allow for 802.11n speeds for the Cisco Unified 7925 phones.
- B. The access points on that floor are all on one controller and should be load balanced evenly across multiple controllers.
- C. The access points for that floor are salt and peppered across multiple controllers and should be moved to the primary controller.
- D. The wireless phones are operating in the 2.4 GHz band and should be configured for the 5 GHz band.

**Answer:** C

#### NEW QUESTION 9

What is the default NMSP echo interval between a Mobility Services Engine and Wireless LAN Controller?

- A. 30Seconds
- B. 15 Seconds
- C. 10 Seconds
- D. 60 Seconds

**Answer:** B

#### NEW QUESTION 10

A network engineer has installed 802.11ac access points with 80 MHz enabled; however, in the conference rooms, co-channel interference is being noticed. Under which tab in the RF profiles configuration can the engineer find the settings to tune the channel width for a group of APs?

- A. 802.11
- B. RRM
- C. High Density
- D. General

**Answer:** B

#### NEW QUESTION 10

A customer has limited staff to manage a wireless network. The customer wants a solution that requires minimum hardware. Which type of architecture do you propose?

- A. centralized
- B. distributed
- C. cloud-based
- D. unified

**Answer:** C

#### NEW QUESTION 12

Controllers WLC\_1 and WLC\_2 are in the same mobility group. A wireless client that does not have the same VLAN interface roams from WLC\_1 to WLC\_2. What happens to the client roaming?

- A. The client context is deleted in controller WLC\_1, and a new client context is created in WLC\_2 to become the anchor controller
- B. The client context is moved from controller WLC\_1 to controller WLC\_2. The result is that the WLC\_1 client context is deleted and WLC\_2 becomes the anchor controller.
- C. The client context is copied from controller WLC\_1 to controller WLC\_2. The result is that WLC\_1 becomes the foreign controller and WLC\_2 becomes the anchor controller.
- D. The client context is copied from controller WLC\_1 to controller WLC\_2. The result is that WLC\_1 becomes the anchor controller and WLC\_2 becomes the foreign controller.

**Answer:** D

#### NEW QUESTION 15

By default, how long does a Mobility Services Engine wait for an echo response from a Wireless LAN Controller before declaring the neighbor dead?

- A. 10 Seconds
- B. 60 Seconds
- C. 15 Seconds
- D. 30 Seconds

**Answer:** D

#### NEW QUESTION 16

Which network is connected by default when connecting to the unused Ethernet port of a MAP?

- A. the native VLAN that the MAP is connected to
- B. the VLAN that is associated with WLAN number 1 in the WLC
- C. the native VLAN that the WLC is connected to
- D. the VLAN that is associated with the SSID that the MAPs are communicating on

**Answer:** A

#### NEW QUESTION 19

DRAG DROP

Drag the QoS values from the left and drop them in the correct descending order of priority on the right.

CS1	
CS3	
CS4	
CS6	
AF11	
AF31	
EF	

**Answer:**

**Explanation:**

CS6
EF
CS4
AF31
CS3
AF11
CS1

#### NEW QUESTION 24

A FlexConnect remote office deployment is using five 2702i APs indoors and two 1532i APs outdoors. When a code upgrade is performed and FlexConnect Smart AP Image Upgrade is leveraged, but no FlexConnect Master AP has been configured. How many image transfers between the WLC and APs will occur?

- A. 7
- B. 1
- C. 5
- D. 2

**Answer:** D

#### NEW QUESTION 28

What devices can be tracked with the Cisco Context Aware Services?

- A. Only wired devices.
- B. Both wired and wireless devices.
- C. Only Cisco certified wireless devices.
- D. Only wireless device

**Answer:** B

#### NEW QUESTION 29

A network engineer is viewing the QBSS information in a packet sniff. Which two QBSS characteristics are crucial for successful troubleshooting? (Choose two.)

- A. When only WMM is enabled, information element number 1 QBSS Load information element is sent out in the beacons and probe responses.
- B. When only WMM is enabled, information element number 3 QBSS Load information element is sent out in the beacons and probe responses.
- C. When the client CAC limit is supported, information element number 2 is sent out in the beacons and probe responses on the bg radios.
- D. When the client CAC limit is supported, information element number 1 is sent out in the beacons and probe responses on the bg radios.
- E. When only WMM is enabled, information element number 2 QBSS Load information element is sent out in the beacons and probe responses.

**Answer:** DE

#### NEW QUESTION 34

You have just added a new MSE to Prime Infrastructure and want to synchronize the MSE with your 5508 WLC. which is located behind a firewall in a DMZ. You notice that NMSP messages are failing between the two devices. What traffic needs to be allowed on the Firewall to ensure the MSE and WLC can communicate using NMSP?

- A. UDP 16113
- B. TCP 1613
- C. TCP 16113
- D. UDP 1613

**Answer:** C

#### NEW QUESTION 38

A network engineer must ensure that corporate wireless users have a better experience than guest wireless users. Which two configurations fulfil requirement? (Choose two.)

- A. Override per-SSID bandwidth contracts on the corporate WLAN to reserve bandwidth.
- B. Modify the corporate WLAN to the Platinum QoS policy.
- C. Enable 802.1p tag on the Gold QoS pofccyto honor prioritized traffic.
- D. Adjust the guest WLAN radio policy to 80211 b/g only.
- E. Change the guest WLAN to the Bronze QoS polic

**Answer:** BE

#### NEW QUESTION 43

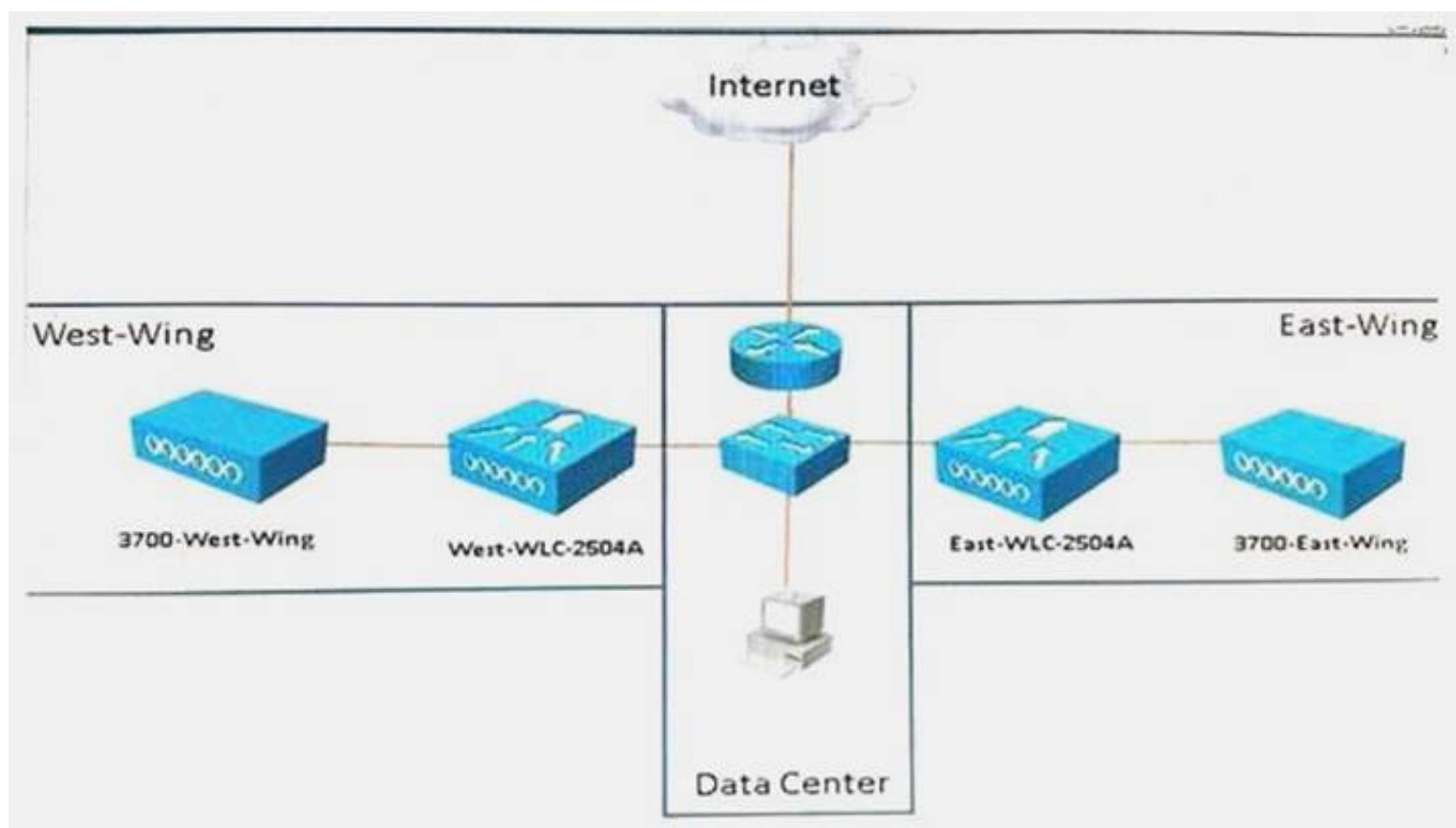
Scenario

There is a problem with the East-WLC-2504 A. When configuration changes are made to the Employees-East-Wing AP Group that covers the East-Wing, none of the APs receive the updates. Refer to the exhibits to determine where the problems are.

SSID Name:	Employees
WLAN ID	10
APs:	Preconfigured on WLC
Dynamic Interface Name:	east-wing
Dynamic Interface IP Address:	172.16.1.6/24
Dynamic Interface Gateway IP Address:	172.16.1.1/24
VLAN:	22
Port Number:	1
AP Group Name:	Employees-East-Wing

Note, not all menu items, text boxes, or radio buttons are active.





What needs to be changed in the configuration of the East-WLC-2504A controller to restore functionality to the Employees-East-Wing AP Group? (Choose four.)

- A. Change the AP in the Employees-East-Wing AP Group.
- B. Change the IP Address in the east-wing interface.
- C. Change the VLAN Identifier in the east-wing interface.
- D. Enable Dynamic AP Management in the east-wing interface.
- E. Change the Port Number to 2 in the east-wing interface.
- F. Add the Primary Controller and IP address to the 3700-East-Wing AP.
- G. Change the SSID in the Employees-East-Wing AP Group.
- H. Change the Interface/Interface Group In the Employees-East-Wing AP Group.

**Answer:** DFGH

#### NEW QUESTION 46

A client reports that video is not streaming. The administrator determines the client is connecting at a data rate of 12 Mbps and is trying to stream to a valid multicast address on the network. What three items should the administrator check next to troubleshoot the issue? (Choose three)

- A. IGMP snooping is turned off because the client cannot request to join a group, only access points can.
- B. Video-stream for the multicast video is configured in the controller.
- C. WLAN has been set for a QoS value of Platinum.
- D. WLAN has been configured to allow multicast-direct to work correctly and multicast-direct has been enabled globally.
- E. WLAN has been set for a QoS value of Gold.
- F. RTSP is used to stream the video due to wireless multicast not using acknowledgement

**Answer:** BDE

#### NEW QUESTION 48

A wireless engineer at a convention center has been asked to provision an SSID that can accommodate 4,000 users during a conference. Which interface group configuration should be used?

- A. One interface with /20 mask
- B. Two interfaces with /21 mask
- C. Four interfaces with /22 mask
- D. Eight interfaces with /23 mask

**Answer:** D

#### NEW QUESTION 49

A customer recently implemented WLC wireless multicast. Clients are connecting at the highest mandatory wireless rate of 24 Mbps and are receiving multicast traffic, but WLC cpu utilization and wired side network load has increased substantially. What three actions should the engineer take next to optimize the configuration? (Choose Three)

- A. verify that Global Multicast mode has been enabled
- B. verify that IGMP snooping is disabled on the wireless controller since the access points are handing IGMP messages from the clients.
- C. make sure the highest mandatory rate is set to 54 Mbps so that the multicast traffic has sufficient bandwidth
- D. verify Multicast Listener Discovery (MLD) v1 snooping has been enabled to keep track of and deliver IPv4 multicast flows
- E. change the wireless controller from Multicast-Unicast mode to Multicast-Multicast mode and assign a multicast address in the 239.X.X.X/8 subnet
- F. verify that the L3 interfaces are configured for p2p sparse-dense-mode on the VLAN servicing the wireless access points as well as the wireless controller's management VLAN

**Answer:** ABE

#### NEW QUESTION 52

A customer has implemented a N+1 high availability plan in a multistory building. All APs on odd numbered floors are set as primary to WLC-A and all APs on even

numbered floors are set as primary to WLC-8. Which two problems are likely to arise from this design? (Choose two)

- A. inconsistent CleanAir data due to multiple WLCs
- B. floor-to-floor bleed-through that causes intercontroller roaming delays
- C. AVC inconsistency due to multiple mobility group members
- D. legacy device compatibility with multiple WLC configuration that causes disconnects
- E. unpredictable AP loading during a WLC failure

Answer: AC

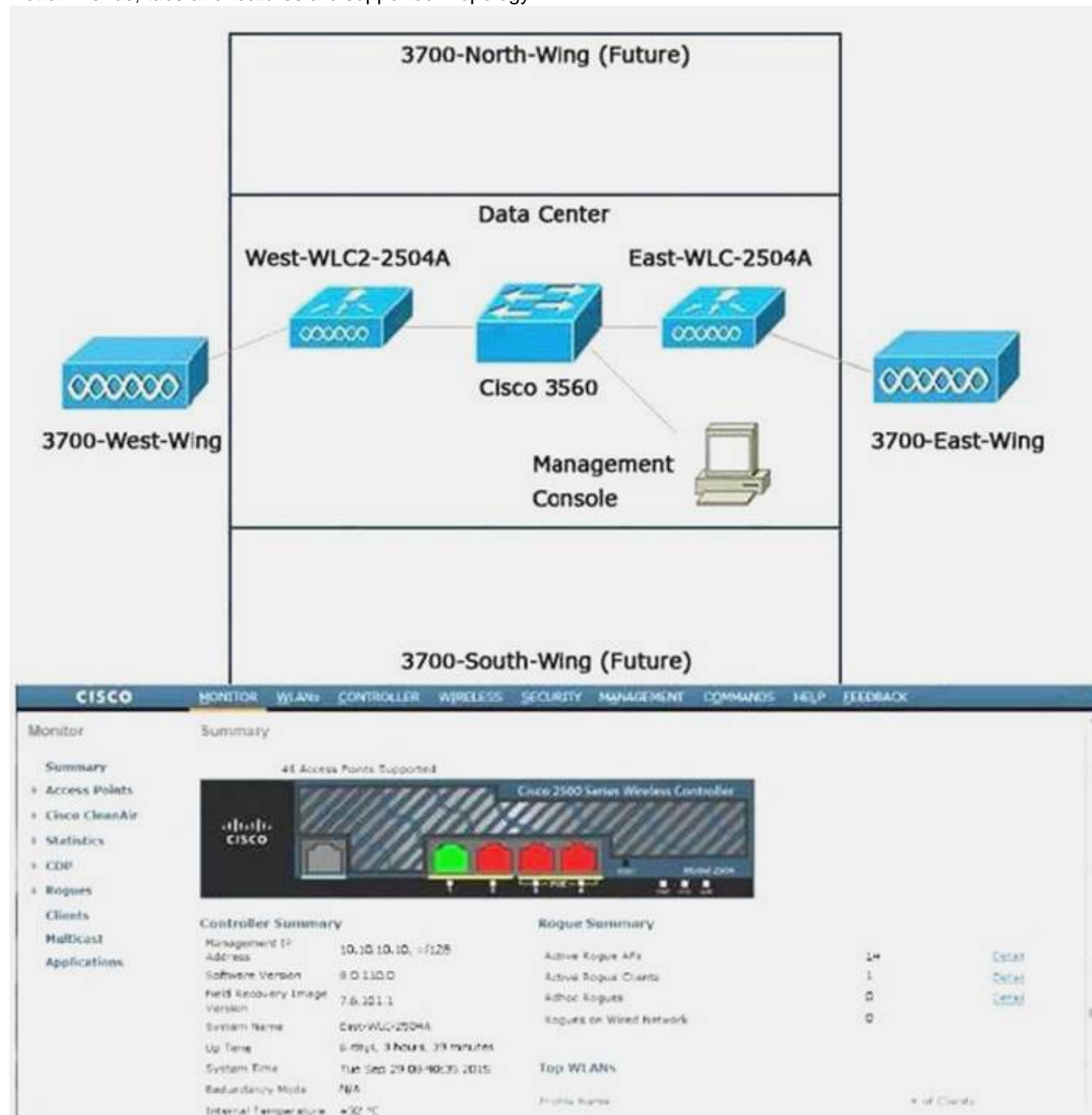
#### NEW QUESTION 54

##### SIMULATION

##### Scenario

One of your colleagues has setup a test network in the lab to simulate a new building at one of your regional offices. Your team is testing AP failover. Your colleague has requested you to configure the WLCs so that in the event of a loss of one of the WLCs the other wings APs will fail over to the remaining WLC. The APs on the East-WLC-2504A should fail over to the West-WLC2-2504A, and the APs on the West-WLC2-2504A should fail over to the East-WLC-2504A. Set the priority of the APs so the backup controller recognizes the join request from the higher priority AP and if necessary disassociates a lower-priority AP to provide access to an available port.

Not all menus, tabs and features are supported. Topology





802.11a Network State: Enabled  
802.11b/g Network State: Enabled  
Local Mobility Group: testlab  
CPU(s) Usage: 0%  
Individual CPU Usage: 0%/1%, 0%/1%  
Memory Usage: 53%

Most Recent Traps  
Fogus AP: 00:23:69:a1:05 detected on Base Radio MAC: b8:30:61:91:F3:00 Interface no: 0(802.11b/g)  
Fogus AP: 60:02:b4:49:a1:0b removed from Base Radio MAC: b8:30:61:91:F3:00 Interface no: 1(802.11  
Fogus AP: 74:05:2a:77:b5:49 detected on Base Radio MAC: b8:30:61:91:F3:00 Interface no: 0(802.11n/2  
Fogus AP: 40:16:7e:a1:07:40 removed from Base Radio MAC: b8:30:61:91:F3:00 Interface no: 0(802.11  
Fogus AP: 74:05:2a:77:b5:51 detected on Base Radio MAC: b8:30:61:91:F3:00 Interface no: 1(802.11ac)  
[View All](#)

Access Point Summary

	Total	Up	Down	
802.11a/n/g Radios	1	1	0	<a href="#">Details</a>
802.11n/g/n Radios	1	1	0	<a href="#">Details</a>
Dual-Band Radios	0	0	0	<a href="#">Details</a>
All APs	1	1	0	<a href="#">Details</a>

Client Summary

Top Applications

Application Name	Packet Count	Byte Count

This page refreshes every 30 seconds.

CISCO MONITOR WLANs CONTROLLER WIRELESS SECURITY MANAGEMENT COMMANDS HELP

WLANs

WLANs

Current Filter: None [\[Change Filter\]](#) [\[Clear Filter\]](#)

WLAN ID	Type	Profile Name	WLAN SSID	Admin Status	Security Policies
10	WLAN	East	EAST	Enabled	[WPA2][Auth(802.1X)]

CISCO MONITOR WLANs CONTROLLER WIRELESS SECURITY MANAGEMENT

WLANs

WLANs > Edit 'TestWLAN'

General Security QoS Policy-Mapping Advanced

Profile Name: East  
Type: WLAN  
SSID: EAST  
Status: ☒ Enabled  
Security Policies: None  
(Modifications done under security tab will appear after)

Foot Notes

- 1 Web Policy cannot be used in combination with IPsec.
- 2(a) FlexConnect Local Switching is not supported with IPsec, CRANITE authentication, Override Interface ACLs
- 2(b) When flexconnect local authentication is enabled, irrespective of AP on connected or stand-alone mode the AP will act as NAS
- 2(c) When flexconnect local authentication is disabled, AP on connected mode will use VILC as NAS and AP as NAS while it's on stand-alone mode
- 3 When client exclusion is enabled, a Timeout Value of zero means infinity (will require administrative override to reset excluded clients)
- 4 Client MPP is not active unless WPA2 is configured
- 5 Learn Client IP is configurable only when FlexConnect Local Switching is enabled
- 6 WMM and open or AES security should be enabled to support higher 11n rates
- 7 Value zero implies there is no restriction on maximum clients allowed.
- 8 MAC Filtering is not supported with FlexConnect Local authentication
- 9 MAC Filtering should be enabled.
- 10 Guest tunneling, Local switching, DHCP Required should be disabled.
- 11 Max-associated-clients feature and Central Assoc feature are not supported with FlexConnect Local Authentication.
- 12 VLAN based central switching is not supported with FlexConnect Local Authentication.
- 13 Enabling gtk-randomize will prevent clients from decrypting broadcast and multicast packets.
- 14 Fast Transition is supported with WPA2 and open security policy
- 15 Override Bandwidth Contracts parameters are specific to per Radio of AP. A value of zero (0) indicates that the value specified in the selected QoS
- 17 When Diagnostic Channel is enabled, P2P Blocking Action will be assigned to Drop Action

Answer:

Explanation:

#### Foot Notes

- 1 Web Policy cannot be used in combination with IPsec.
- 2(a) FlexConnect Local Switching is not supported with IPsec, CRANITE authentication, Override Interface ACLs
- 2(b) When flexconnect local authentication is enabled, irrespective of AP on connected or stand-alone mode the AP will act as NAS
- 2(c) When flexconnect local authentication is disabled, AP on connected mode will use VILC as NAS and AP as NAS while it's on stand-alone mode
- 3 When client exclusion is enabled, a Timeout Value of zero means infinity (will require administrative override to reset excluded clients)
- 4 Client MPP is not active unless WPA2 is configured
- 5 Learn Client IP is configurable only when FlexConnect Local Switching is enabled
- 6 WMM and open or AES security should be enabled to support higher 11n rates
- 7 Value zero implies there is no restriction on maximum clients allowed.
- 8 MAC Filtering is not supported with FlexConnect Local authentication
- 9 MAC Filtering should be enabled.
- 10 Guest tunneling, Local switching, DHCP Required should be disabled.
- 11 Max-associated-clients feature and Central Assoc feature are not supported with FlexConnect Local Authentication.
- 12 VLAN based central switching is not supported with FlexConnect Local Authentication.
- 13 Enabling gtk-randomize will prevent clients from decrypting broadcast and multicast packets.
- 14 Fast Transition is supported with WPA2 and open security policy
- 15 Override Bandwidth Contracts parameters are specific to per Radio of AP. A value of zero (0) indicates that the value specified in the selected QoS
- 17 When Diagnostic Channel is enabled, P2P Blocking Action will be assigned to Drop Action



#### NEW QUESTION 56

What are two functions of the RAP in a mesh network? (Choose two.)

- A. It provides a wired connection for the wireless mesh APs.
- B. It adds capacity and resilience to a mesh area.
- C. it creates a centralized management location for the mesh network.
- D. it reduces the hop count to the wireless network that is connected to the edge.
- E. it routes traffic from the wireless mesh to the wired network

**Answer:** BD

#### NEW QUESTION 59

What address do PIM routers listen to in order to automatically discover the best RP for each multicast group?

- A. 224.0.0.13
- B. 224.0.1.39
- C. 224.0.0.14
- D. 224.0.140

**Answer:** D

#### NEW QUESTION 63

Which statement about when you configure FlexConnect APs and you want to set up Cisco Centralized Key Management fast roaming is true?

- A. FlexConnect groups are required for Cisco Centralized Key Management fast roaming to work with FlexConnect access points.
- B. APs that are in the same FlexConnect group but associated to different WLCs support Cisco Centralized Key Management.
- C. Cisco Centralized Key Management fast roaming among FlexConnect and non-FlexConnect access points is supported.
- D. The FlexConnect access point must be in standalone mode to support Cisco Centralized Key Management.

**Answer:** A

#### NEW QUESTION 67

A network engineer observes a spike in controller CPU overhead and overall network utilization after enabling multicast on a controller with 500 APs. What feature is necessary to correct the issue?

- A. controller IGMP snooping
- B. unicast AP Multicast Mode
- C. broadcast forwarding
- D. multicast AP Multicast Mode

**Answer:** B

#### NEW QUESTION 70

An engineer would like to capture NetFlowdata on PI. Which resource is required to allow this?

- A. Cisco MSE as NetFlow exporter
- B. Prime Infrastructure 1.0 or later
- C. Cisco NAC as NetFlow exporter
- D. Cisco ISE as NetFlow exporter

**Answer:** B

#### NEW QUESTION 75

What is the best practice for setting the WLC v7.0 use of WLAN QoS settings to support SIP phones on a VoWLAN?

- A. Configure SIP with static CAC only with SIP call snooping.
- B. Configure SIP with static CAC only without SIP call snooping.
- C. Configure SIP with load-based CAC only with SIP call snooping.
- D. Configure SIP with load-based CAC only without SIP call snooping.
- E. Configure SIP with load-based CAC and TSPEC only with SIP call snooping

**Answer:** A

#### NEW QUESTION 76

A downstream packet containing a DSCP value arrives at the WLC Ethernet interface from the wired source network. The WLC is configured for QoS WLAN 802.1p mapping. How does the WLC treat the CAPWAP QoS marking when leaving the controller interface for the respective AP and final wireless client destination?

- A. No outer CAPWAP or inner QoS tagging is applied.
- B. No outer CAPWAP QoS tag is applied, but the original DSCP is maintained inside CAPWAP.
- C. The outer CAPWAP CoS is marked and capped while the inner DSCP maintains the original marking.
- D. The outer CAPWAP DHCP is marked and capped without any inner DSCP value.

**Answer:** C

#### NEW QUESTION 81

VoWLAN implementation plans for a current mix of existing Cisco Unified Wireless IP Phones 7920G and 7921G to a final migration of Wireless IP Phones 7925G in a single WLAN. What would be the most appropriate WLC WLAN configuration to end with Wireless IP Phones 7925G?

- A. 7920 Client CAC = enabled only; Radio Policy = All; WMM = Disabled
- B. 7920 AP CAC = enabled only; Radio Policy = All; WMM = Allowed
- C. 7920 Client CAC = enabled only; Radio Policy = 802.11a only; WMM = Disabled
- D. 7920 AP CAC = enabled only; Radio Policy = 802.11a only; WMM = Allowed
- E. 7920 Client CAC = enabled only; Radio Policy = 802.11b/g only; WMM = Disabled
- F. 7920 AP CAC = enabled only; Radio Policy = 802.11b/g only; WMM = Allowed

**Answer:** B

#### NEW QUESTION 84

An engineer has enabled Cisco Centralized Key Management on a WLAN with local and FlexConnect mode APs. The engineer notices that Cisco CKM is not working for the FlexConnect APs when looking at roaming, but is working for local mode APs. Which change is needed on the controller for Cisco CKM to work for the FlexConnect APs?

- A. Place APs in FlexConnect group.
- B. Enable FlexConnect Central Assoc.
- C. Use local authentication.
- D. Configure VLAN-based central switching.

**Answer:** A

**Explanation:** Reference:

[https://www.cisco.com/c/en/us/td/docs/wireless/controller/8-1/Enterprise-Mobility-8-1-Design-Guide/Enterprise\\_Mobility\\_8-1\\_Deployment\\_Guide/ch7\\_HREA.html](https://www.cisco.com/c/en/us/td/docs/wireless/controller/8-1/Enterprise-Mobility-8-1-Design-Guide/Enterprise_Mobility_8-1_Deployment_Guide/ch7_HREA.html)

#### NEW QUESTION 89

Five identical APs at a branch office must be upgraded. You consider using the FlexConnect AP Upgrade feature. Which two statements about this feature are true? (Choose two.)

- A. All APs download the upgrade image over the WAN link at the same time.
- B. A slave AP eventually downloads the image from the WLC, if the master AP is unavailable.
- C. Full images are downloaded to each AP over the WAN link, but only when no client activity is seen on the AP.
- D. Only one AP downloaded the upgrade image over the WAN link.
- E. All APs downloaded the upgrade image from the WLC using the pre-image download feature.

**Answer:** DE

**Explanation:** Reference:

[https://www.cisco.com/c/en/us/td/docs/wireless/controller/7-4/configuration/guides/consolidated/b\\_cg74\\_CONSOLIDATED/b\\_cg74\\_CONSOLIDATED\\_chapter\\_010010001.html](https://www.cisco.com/c/en/us/td/docs/wireless/controller/7-4/configuration/guides/consolidated/b_cg74_CONSOLIDATED/b_cg74_CONSOLIDATED_chapter_010010001.html)

#### NEW QUESTION 91

Which feature must be configured on Cisco WLC to prioritize multicast traffic over a wireless network?

- A. client link
- B. mDNS
- C. client band select
- D. media stream

**Answer:** B

#### NEW QUESTION 95

Which three fields are required when creating a new NetFlow Exporter? (Choose three.)

- A. IP address
- B. AP group
- C. WLAN ID
- D. port number
- E. SSID
- F. exporter name

**Answer:** ADF

**Explanation:** Reference:

<https://www.cisco.com/c/en/us/td/docs/ios-xml/ios/fnetflow/configuration/15-mt/fnf-15-mtbook/cfgdefnflow-exprts.html>

#### NEW QUESTION 96

Which option is a physical entity in converged access wireless network design?

- A. mobility domain
- B. switch peer group

- C. mobility group
- D. mobility agent

**Answer:** C

#### NEW QUESTION 97

When CAPWAP protocol runs over IPv4, which UDP port numbers are used for control and data traffic, respectively?

- A. control 5246, data – UDP-Lite(IP Protocol 136)
- B. control 5247, data – 5246
- C. control 5246, data – 5247
- D. control 5247, data – UDP-Lite(IP Protocol 136)

**Answer:** C

#### NEW QUESTION 102

A security engineer wants all guest users to be terminated on the DMZ of their firewall. Which two configurations must be implemented to fulfill this new requirement? (Choose two.)

- A. TCP port 16666 and 16113 in an ACL on the controller
- B. UDP ports 16666 and IP protocol 97 on the firewall
- C. a mobility group with a controller in an isolated network on the firewall
- D. an RF group with a controller in an isolated network on the firewall
- E. UDP ports 1812 and 1645 in an ACL on the controller

**Answer:** BC

#### NEW QUESTION 107

An engineer needs to address roaming issues with sticky clients in high-density areas on a campus. Which feature must the engineer configure?

- A. Layer 3 roaming
- B. load balancing and band select
- C. optimized roaming
- D. Layer 2 roaming

**Answer:** C

#### NEW QUESTION 110

What is the AQ sensitivity when the EDRRM is set to high?

- A. 60
- B. 35
- C. 40
- D. 50

**Answer:** A

**Explanation:** The EDRRM AQ threshold value for low sensitivity is 35, medium sensitivity is 50, and high sensitivity is 60.

#### NEW QUESTION 113

A network engineer just finished deploying a converged access wireless infrastructure. The configuration consists of Cisco Catalyst 3850 Series switches operating as mobility controllers and agents in multiple switch peer groups and mobility subdomains. Which change must be made to allow for seamless roaming between switch peer groups?

- A. Add one Cisco 5760 WLC as a mobility oracle and configure on each of the mobility controllers in the converged access infrastructure.
- B. Add another Cisco Catalyst 3850 switch as a mobility oracle and configure on each of the mobility controllers in the converged access infrastructure.
- C. Convert one controller to a mobility oracle while the other mobility controllers and agents should be configured in the same mobility domain.
- D. Configure all switches as mobility controllers in the same switch peer group to allow for seamless roaming.

**Answer:** D

#### NEW QUESTION 116

You have VoWiFi running on FlexConnect AP with centrally-switched SSID. Which configuration must be performed to preserve marking for central-switching SSID?

- A. Trust DSCP
- B. This will not work
- C. The WLAN should be locally switched and we need to trust CoS.
- D. Trust CoS
- E. No need to trust anything
- F. It should work fine because the WLAN is centrally switched

**Answer:** A



#### NEW QUESTION 118

An engineer is attempting to send multicast data to all multicast routers in the network with ID 338789750. Which IP address should be used?

- A. 224.0.0.1
- B. 224.0.0.2
- C. 224.0.0.4
- D. 224.0.0.3

**Answer:** B

#### NEW QUESTION 122

An engineer wants to identify historical data collected by the Cisco MSE on rogue access points over the past two years. If the Cisco MSE is configured for maximum historical data retention, how many months can be searched?

- A. 24
- B. 36
- C. 6
- D. 12

**Answer:** D

#### NEW QUESTION 125

A wireless engineer must optimize RF performance for multiple bindings with multiple types of construction and user density. Which two actions must be taken? (Choose two.)

- A. Enable DTPC on the network.
- B. Configure RF Profiles for each area type.
- C. Configure WMM profiles for each building.
- D. Configure FlexConnect groups for each building.
- E. Configure AP groups for each area typ

**Answer:** BE

#### NEW QUESTION 130

A customer has configured a wireless LAN controller and set the 802.11a/n data rates. All rates are enabled where 5.5 Mbps, 11Mbps, and 24 Mbps are set to Mandatory. What will APs send over the 24 Mbps data rate?

- A. channel announcements
- B. DTPC support
- C. multicast broadcast
- D. beacons

**Answer:** C

#### NEW QUESTION 133

Which IEEE standard allows for the client-AP handshake to be completed before the client roams?

- A. 802.11v
- B. 802.11e
- C. 802.11r
- D. 802.11k

**Answer:** C

#### NEW QUESTION 138

An engineer has found that voice traffic on the WLAN with ID 338789750 is being sent at best effort from a client that is experiencing issues despite having QoS and CAC enabled. Which option causes the traffic to be sent at best effort?

- A. The QoS profile for Platinum has been left at default settings.
- B. The client does not support TSPEC.
- C. WMM is configured as required.
- D. msl qos trust cos is not required on the switchpor

**Answer:** B

#### NEW QUESTION 139

Branch wireless users report that they can no longer access services from head office but can access services locally at the site. New wireless users can associate to the wireless while the WAN is down. Which three options (Cisco FlexConnect state, operation mode, and authentication method) are seen in this scenario? (Choose three.)

- A. authentication-central/switch-local
- B. standalone mode
- C. authentication-central/switch-central
- D. WPA2 personal
- E. authentication-local/switch-local

F. WPA2 enterprise

**Answer:** BDE

#### NEW QUESTION 140

An engineer has enabled FlexConnect AP Upgrade for a FlexConnect group, but did not manually select any master APs. Which AP receives the update directly from the controller when a FlexConnect Upgrade is initiated?

- A. one AP with the lowest MAC address in each subnet in the group
- B. one AP of each model with the lowest MAC address in the group
- C. one AP with the lowest MAC address in the group
- D. one AP with the highest MAC address in the group

**Answer:** C

**Explanation:** Reference:

[https://www.cisco.com/c/en/us/td/docs/wireless/controller/8-3/config-guide/b\\_cg83/b\\_cg83\\_chapter\\_0110001.pdf](https://www.cisco.com/c/en/us/td/docs/wireless/controller/8-3/config-guide/b_cg83/b_cg83_chapter_0110001.pdf)

#### NEW QUESTION 141

Which two components comprise the NetFlow architecture? (Choose two.)

- A. collector
- B. gateway
- C. event correlator
- D. exporter
- E. application transcoder

**Answer:** AD

#### NEW QUESTION 145

Refer to the exhibit.

Interface Name	VLAN Identifier	IP Address
client	2	192.168.2.2
guest	3	192.168.3.2
management	untagged	192.168.1.2
virtual	N/A	1.1.1.1

WLAN ID	Type	Profile Name	WLAN SSID	Admin Status	Security Policies
2	WLAN	CORP-DATA-SSID	CORP-DATA	Enabled	[WPA2] [Auth(802.1X)]
3	WLAN	GUEST-DATA-SSID	GUEST-DATA	Enabled	Web-Auth

A wireless tech must add an AP group mapping with the interface on VLAN 3 and the GUEST-DATASSID to the existing AP group “lobbyAPs”. Which command makes this change?

- A. config wlan apgroup interface-mapping add lobbyAPs 3 GUEST-DATA-SSID
- B. config wlan apgroup interface-mapping add lobbyAPs 4 3
- C. config wlan apgroup interface-mapping add lobbyAPs 4 guests
- D. config wlan apgroup interface-mapping add lobbyAPs 3 GUEST-DATA

**Answer:** C

**Explanation:** Reference:

<https://www.cisco.com/c/en/us/support/docs/wireless-mobility/wireless-vlan/71477-ap-groupvlanswlc.html>

#### NEW QUESTION 149

You configure a Cisco Aironet 600 Series OfficeExtend AP for a user who works remotely. Which option is configured on the Cisco WLC to allow the user to print to a printer on his home network?

- A. AP failover priority
- B. split tunneling
- C. FlexConnect
- D. SE-connect

**Answer:** C

#### NEW QUESTION 150

A customer is concerned about the number of associations on the guest WLAN and wants to reduce load to ensure there are sufficient resources for the High Density WLAN. Which configuration setting meets this need?

- A. Change the QoS profile of the guest WLAN to Bronze.
- B. Set a low Maximum Allowed Clients on the Guest WLAN.
- C. Configure MFP client protection on the high density WLAN.
- D. Enable DHCP Profiling and restrict guest devices using a policy map.

**Answer:** B

#### NEW QUESTION 153

A customer called with a requirement that internal clients must be on different subnets depending on the building they are in. All access points are operating in local mode and will not be modified, and this is a single controller solution. Which configuration change creates the desired result?

- A. Set the SSID to the desired VLAN under WLANs, configure 802.1x ACS to assign the correct VLAN based on the SSID the client is authenticating from.
- B. Create AP groups for each desired location, map the correct VLANs to the internal SSID, and add the access point for that location.
- C. Configure the access point in the FlexConnect mode and set the correct VLAN to SSID mapping based on location.
- D. Create mobility anchors for the SSID, and on the controller under the internal SSID, create a foreign map to the desired VLAN based on location.

**Answer:** A

#### NEW QUESTION 155

A customer has implemented an N+1 cluster of WLCs without using an AP high availability configuration and is experiencing an unacceptable delay when clients are roaming. Which two configuration changes can improve roaming? (Choose two.)

- A. Set master controller mode on the least loaded WLC.
- B. Set the AP failover priority identically on contiguous access points.
- C. Put all WLCs in the same mobility group.
- D. Place all WLCs in the same RF group.
- E. Define a primary controller on contiguous access point.

**Answer:** CE

#### NEW QUESTION 156

A wireless engineer must design a wireless mesh network for the courtyard at a local university to support a large number of students. Which description of how the engineer designs the mesh network to provide additional capacity is true?

- A. Configure multiple RAPs to support bridge mode.
- B. Configure multiple RAPs on different channels.
- C. Configure multiple RAPs to support hardware diversity.
- D. Configure multiple RAPs with different antennas.

**Answer:** C

#### NEW QUESTION 160

An engineer has all of the remote locations using a pair of FlexConnect WLCs with locally switched WLANs and must leverage local certificate-based authentication. Which component must be configured?

- A. Configure the APs in FlexConnect Central Auth.
- B. Manually install certificates on access points.
- C. Upload the vendor certificate to the Cisco WLC.
- D. Cisco WLC must be integrated with LDAP.

**Answer:** A

#### NEW QUESTION 162

A network engineer is designing a high capacity WLAN for a conference area.

- A. The enterprise is concerned about non-business traffic consuming excessive bandwidth and impacting performance.
- B. What can be used in the design to allow the controller to block or throttle applications?
- C. AVC
- D. CMX
- E. DSCP
- F. RXSOP

**Answer:** A

#### NEW QUESTION 163

An engineer is designing a wireless deployment for a university auditorium. Which two features can be used to help deal with the issues introduced by high AP count? (Choose two.)

- A. TPC
- B. LSS
- C. RXSOP
- D. TSPEC
- E. DFS

**Answer:** AE

#### NEW QUESTION 165

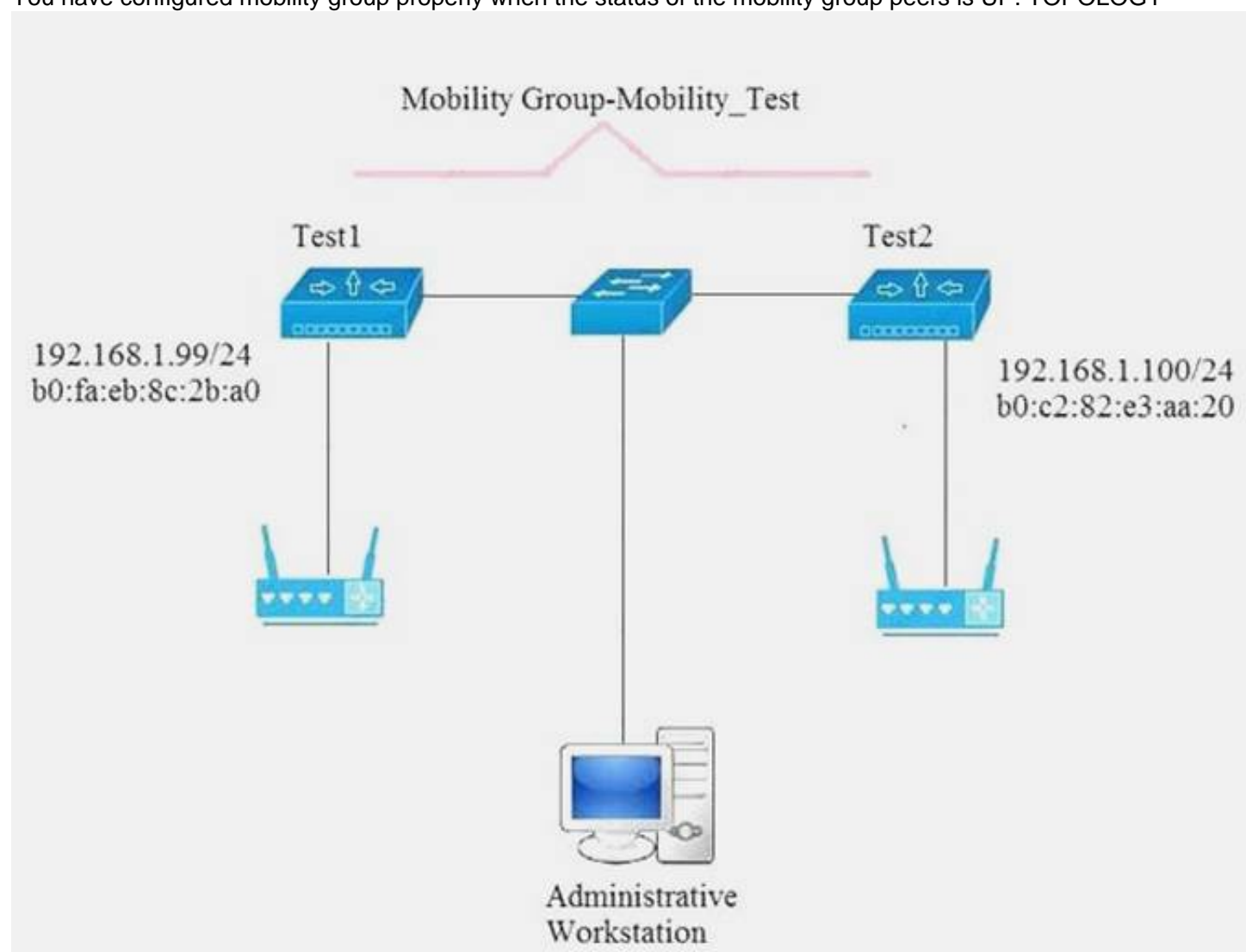
##### SIMULATION

Scenario:

You have been tasked with setting up a mobility group (Mobility\_Test) in a test lab. There are two WLCs that you will need to configure (Test1 and Test2). Use the



Administrative Workstation to access the Test1 and Test2 WLCs. Once configured you will need to verify that the mobility group peers are communicating properly.  
 Mobility Group Name: Mobility\_Test Mobility Group Members: Test1  
 IP Address: 192.168.1.99  
 MAC Address: b0:fa:eb:8c:2b:a0 Mobility Group Members: Test2 Ip Address 192.168.1.100  
 MAC Address: d0:c2:82:e3:aa:20  
 You have configured mobility group properly when the status of the mobility group peers is UP. TOPOLOGY



#### VIRTUAL TERMINAL

The screenshot shows the Cisco Wireless Controller Monitor interface. The top navigation bar includes links for Monitor, WLANs, CONTROLLER, WIRELESS, SECURITY, MANAGEMENT, COMMANDS, HELP, and FEEDBACK. The 'Monitor' tab is selected, showing a 'Summary' view. On the left, there is a sidebar with various monitoring options: Summary, Access Points, Cisco CleanAir, Statistics, CDP, Rogues, Clients, Sleeping Clients, Multicast, Applications, and Local Profiling. The main content area displays a 'Controller Summary' for a Cisco 2500 Series Wireless Controller, Model 2504. The summary includes the following details:

Controller Summary	
Management IP Address	192.168.1.99 / 1/128
Software Version	8.0.110.0
Field Recovery Image Version	7.6.101.1
System Name	Test1
Up Time	0 days, 0 hours, 18 minutes
System Time	Fri Oct 20 09:03:39 2017
Redundancy Mode	N/A
Internal Temperature	+33 C
802.11a Network State	Enabled
802.11b/g Network State	Enabled

At the top right of the summary section, it states '5 Access Points Supported'. The background of the summary section features a graphic of the Cisco 2500 Series Wireless Controller hardware.

**CISCO** MONITOR WLANs **CONTROLLER** WIRELESS SECURITY MANAGEMENT COMMANDS

Controller General

General

Inventory

Interfaces

Interface Groups

Multicast

Internal DHCP Server

Mobility Management

Ports

NTP

CDP

IPv6

mDNS

Advanced

Name: Test1

802.3x Flow Control Mode: Disabled

LAG Mode on next reboot: Disabled (LAG Mode is currently disabled)

Broadcast Forwarding: Disabled

AP Multicast Mode: Multicast 239.1.1.1 Multicast Group Address

AP IPv6 Multicast Mode: Multicast :: IPv6 Multicast Group Address

AP Fallback: Enabled

CAPWAP Preferred Mode: ipv4

Fast SSID change: Disabled

Link Local Bridging: Disabled

Default Mobility Domain Name: Mobility\_Test

RF Group Name: Mobility\_Test

User Idle Timeout (seconds): 300

ARP Timeout (seconds): 300

Web Radius Authentication: PAP

Operating Environment: Commercial (0 to 40 C)

**CISCO** MONITOR **WLANs** CONTROLLER WIRELESS SECURITY MANAGEMENT COMMANDS HELP FEEDBACK

Monitor Summary

Summary

Access Points

Cisco CleanAir

Statistics

CDP

Rogues

Clients

Sleeping Clients

Multicast

Applications

Local Profiling

Controller Summary

Management IP Address: 192.168.1.100: 1/128

Software Version: 8.0.110.0

Field Recovery Image Version: 7.6.101.1

System Name: Test2

Up Time: 0 days, 2 hours, 41 minutes

System Time: Fri Oct 20 09:03:39 2017

Redundancy Mode: N/A

Internal Temperature: +33C

802.11a Network State: Enabled

802.11b/g Network State: Enabled

Local Mobility Group: Mobility\_Test

CPU(s) Usage: 0%

Individual CPU Usage: 0% 1% 0% 0%

5 Access Points Supported



The screenshot shows the Cisco Controller configuration interface. The top navigation bar includes: MONITOR, WLANs, CONTROLLER (selected), WIRELESS, SECURITY, MANAGEMENT, and COMMANDS. The left sidebar lists various configuration categories: General, Inventory, Interfaces, Interface Groups, Multicast, Internal DHCP Server, Mobility Management, Ports, NTP, CDP, IPv6, mDNS, and Advanced. The main content area is titled 'General' and shows configuration for a mobility group named 'Test 2'. The settings are as follows:

Setting	Value
Name	Test 2
802.3x Flow Control Mode	Disabled
LAG Mode on next reboot	Disabled (LAG Mode is currently disabled)
Broadcast Forwarding	Disabled
AP Multicast Mode	Multicast (239.1.1.1 Multicast Group Address)
AP IPv6 Multicast Mode	Multicast (::: IPv6 Multicast Group Address)
AP Fallback	Enabled
CAPWAP Preferred Mode	ipv4
Fast SSID change	Disabled
Link Local Bridging	Disabled
Default Mobility Domain Name	Mobility_Test
RF Group Name	Mobility_Test
User Idle Timeout (seconds)	300
ARP Timeout (seconds)	300
Web Radius Authentication	PAP
Operating Environment	Commercial (0 to 40 C)
Internal Temp Alarm Limits	0 to 65 C
WebAuth Proxy Redirection Mode	Disabled
WebAuth Proxy Redirection Port	0

**Answer:**

**Explanation:** Mobility Controllers belong to only one group, and can know several mobility groups On Test 1 WLC

1. Choose Controller> Mobility Management > Mobility Peer

2. Click New

3. Enter the following details of Test 2:

- a) Mobility Member IP
- b) Mobility Member Public IP
- c) Mobility Member Group Name
- d) Multicast IP Address

4. Apply and Save

Similarly log in to Test 2 and enter details of Test1

#### NEW QUESTION 166

Refer to the exhibit. To which setting is the client limitation for WLAN LAP1 configured?



WLANs > Edit 'LAP1'

**General** **Security** **QoS** **Advanced**

Allow AAA Override ☐ Enabled

Coverage Hole Detection ☒ Enabled

Enable Session Timeout ☒ 1800  
 Session Timeout (secs)

Aironet IE ☒ Enabled

Diagnostic Channel ☐ Enabled

IPv6 Enable ☐

Override Interface ACL

P2P Blocking Action

Client Exclusion ☒ Enabled 60  
 Timeout Value (secs)

Maximum Allowed Clients

Static IP Tunneling ☐ Enabled

- A. 60
- B. 1800
- C. Client exclusion is not enabled
- D. 25

**Answer:** D

#### NEW QUESTION 171

An engineer must implement WLC features that enhance roaming. Which two technologies fulfill this requirement? (Choose two.)

- A. 802.11v
- B. WPA2
- C. Cisco Centralized Key Management
- D. 802.1X
- E. 802.11r

**Answer:** AE

#### NEW QUESTION 176

Which value is the default Rx SOP threshold on a WLC?

- A. auto
- B. low
- C. medium
- D. high

**Answer:** A

#### NEW QUESTION 181

An engineer is integrating a new Cisco Mobility Services Engine with Cisco Prime Infrastructure to use Cisco CMX Location Analytics. Which action is required?

- A. Enable Context Aware and CMX Browser Engage
- B. Enable tracking parameters in Cisco Mobility Service Engine
- C. Set history parameters in Cisco Mobility Service Engine
- D. Install Cisco Prime infrastructure with floor maps

**Answer:** B

#### NEW QUESTION 184

.....

## THANKS FOR TRYING THE DEMO OF OUR PRODUCT

Visit Our Site to Purchase the Full Set of Actual 300-365 Exam Questions With Answers.

We Also Provide Practice Exam Software That Simulates Real Exam Environment And Has Many Self-Assessment Features. Order the 300-365 Product From:

<https://www.2passeasy.com/dumps/300-365/>

## Money Back Guarantee

### 300-365 Practice Exam Features:

- \* 300-365 Questions and Answers Updated Frequently
- \* 300-365 Practice Questions Verified by Expert Senior Certified Staff
- \* 300-365 Most Realistic Questions that Guarantee you a Pass on Your FirstTry
- \* 300-365 Practice Test Questions in Multiple Choice Formats and Updatesfor 1 Year