

## 300-080 Dumps

# Troubleshooting Cisco IP Telephony and Video

<https://www.certleader.com/300-080-dumps.html>



**NEW QUESTION 1**

Which two troubleshooting tools would initially be the best to use when troubleshooting the PSTN gateway side of a Call routing issue while using Cisco Unified Communications Manager? (Choose two.)

- A. RTMT trace output
- B. Cisco IOS debug commands
- C. Dialed Number Analyzer output
- D. Cisco Unified Communications Manager alerts
- E. Cisco IOS show commands

**Answer:** BE

**NEW QUESTION 2**

Refer to the exhibit.

```
Invite to CUCMfor the number 6500
08212567.002 |19:54:34.362 |AppInfo |SIPtcp- wait_SdIReadResp: Incoming SIP TCP message
from 10.64.126.18 on port 25091 index 791 with 1274 bytes: [3385498,NET]
INVITE sip:6500@vcs.abc.org SIP/2.0
Via: SIP/2.0/TCP 10.64.126.18:5060;egress-
zone=CUCM;branch=z9hG4bK882fc47c9eeb20b5f03861032a512c4f86476.33073954ac
66c862ebd093dbc29621d6;proxy-call-id=503a0192-3207-11e3-8a26-0010f320f95a;rport
Via: SIP/2.0/TLS 172.30.16.17:7001;egress-
zone=TraversalZone;branch=z9hG4bKb828ee50d723aed0c96a71e3d4ee887b1588.57007
d902258db5356f90f11d5861c8e;proxy-call-id=5020894c-3207-11e3-add6-
010f3207bb4;received=172.30.16.17;rport=7001;ingress-zone=TraversalZone
```

```
Digit Analysis shows the following
08212591.001 |19:54:34.364 |AppInfo |Digit Analysis: star_DaReq:
daReq.partitionSearchSpace(1e41dc4d-c7bc-6489-4350-d60d6d0de577),
filteredPartitionSearchSpaceString(Directory URI:P_SYSTEM_TELEPRESENCE:DirectoryURI),
partitionSearchSpaceString(DirectoryURI:P_SYSTEM_TELEPRESENCE:Directory URI)
08212591.002 |19:54:34.364 |AppInfo |DigitAnalysis: Host Address=vcs.abc.org DOES NOT
MATCH any active CUCM node in this cluster.
08212591.003 |19:54:34.364 |AppInfo |DigitAnalysis: Host Address=vcs.abc.org DOES NOT
MATCH top level org domain.
08212591.004 |19:54:34.364 |AppInfo |DigitAnalysis: star_DaReq:Matching SIP URL, Host
Domain, host=abc.fcc.acv
```

```
CUCMsends a SIP 404 not found
08212597.001 |19:54:34.365 |AppInfo |SIPtcp- wait_SdISPISignal: Outgoing SIP TCP
message to 10.64.126.18 on port 25091 index 791 [3385500,NET]
SIP/2.0 404 Not Found
Via: SIP/2.0/TCP 10.64.126.18:5060;egress-
zone=CUCM;branch=z9hG4bK882fc47c9eeb20b5f03861032a512c4f86476.33073954ac66c862ebd093db
c29621d6;proxy-call=503a0192-3207-11e3-8a26-
```

Inbound calls via a SIP trunk to the Cisco IP phones that are registered on Cisco Unified Communications Manager are failing. Based on the Cisco CallManager service trace, which action should you take to fix the issue?

- A. Add xyz.com in the Organization Top Level Domain field on Cisco Unified Communications Manager.
- B. Set the Incoming Transport Type to TLS on the SIP trunk security profile that is assigned to the SIP trunk.
- C. Check whether the calling search space for incoming calls on the SIP trunk has access to the partition of the Cisco IP phone that is being called.
- D. Add vcs.abc.org in the Organization Top Level Domain field on Cisco Unified Communications Manager.

**Answer:** C

**NEW QUESTION 3**

Which meaning does the universal keyword have in this dspfarm profile configuration?

```
dspfarm profile 1 transcode universal
codec g711alaw
codec g711ulaw
codec g722-64
codec g729r8
codec g729ar8
maximum sessions 4
associate application SCCP
```

- A. The profile allocates DSP resources in flexible mode.
- B. The profile allows transcoding between any configured codecs.

- C. The profile can be used not only as transcoder but also as MTP.  
D. No special meaning, this is the default setting.

**Answer:** B

#### NEW QUESTION 4

Some users report that they cannot dial out from headquarters on their Cisco IP Phones to PSTN users, but others can. Which troubleshooting approach is the most direct to isolate the source of the failure of the users that cannot dial out to the PSTN?

- A. Use DNA to analyze the dialing permissions of the Cisco IP Phones.  
B. Use DNA to generate actual calls to the PSTN.  
C. Use RTMT to analyze the dialing permissions of the Cisco IP Phones.  
D. Use RTMT to generate actual calls to the PSTN.

**Answer:** A

#### NEW QUESTION 5

Company XYZ reports that their SAF calls are being routed through the PSTN. Which cause of the issue is true?

- A. TCP Connection Failure has occurred between the SAF Forwarder and Cisco Unified CommunicationsManager.  
B. Cisco Unified Communications Managed did not increment the service number correctly.  
C. The maximum number of learned patterns have being reached.  
D. Cisco Unified Communications Manager did not construct the SAF message correctly.

**Answer:** A

#### NEW QUESTION 6

After you install the Cisco Jabber client, it fails to register with the Cisco Unified Communications Manager server. Which two actions can you take to troubleshoot the problem? (Choose two.)

- A. Verify that the DNS SRV record is correctly configured.  
B. Verify that the LMHOST file is installed on the PC.  
C. Verify that the corporate firewall allows connections to andFrom the Jabber client.  
D. Reboot the Cisco Unified Border Element Gateway.  
E. Verify Layer 3 connectivity on the gateway.

**Answer:** AC

#### NEW QUESTION 7

A user is dialing an external PSTN number with a prefix of 01 from a Cisco TelePresence SX10 Quick Set in a Cisco VCS environment. In the past, the Cisco VCS and the ISDN gateway were correctly configured with a prefix of 01, but the calls are now failing. What are three possible causes? (Choose three.)

- A. The Cisco VCS Control is down.  
B. The interworking setting is turned off.  
C. The audio feature in the Cisco TelePresence SX10 is turned off.  
D. The SIP trunk is not configured on the gateway.  
E. 01 is not a valid prefix.  
F. ISDN is not enabled on the Cisco TelePresence SX10.  
G. The Cisco TelePresence SX10 is not registered to the Cisco VCS Control.  
H. The Cisco TelePresence SX10 is not registered to the Cisco Express C.

**Answer:** ABG

#### NEW QUESTION 8

Refer to the exhibits.

Pattern Definition	
Route Pattern *	3XXX
Route Partition	Internal_Pt
Description	
Numbering Plan	-- Not Selected --
Route Filter	< None >
MLPP Precedence *	Default
Resource Priority Namespace Network Domain	< None >
Route Class *	Default
Gateway/Route List *	SIP_Trunk (Edit)
Route Option	<input checked="" type="radio"/> Route this pattern <input type="radio"/> Block this pattern No Error
Call Classification *	OffNet
<input type="checkbox"/> Allow Device Override <input checked="" type="checkbox"/> Provide Outside Dial Tone <input type="checkbox"/> Allow Overlap Sending <input type="checkbox"/> Urgent Priority	

Purge and Block SAF CCD Learned Routes Information	
Learned Pattern	3XXX
Learned Pattern Prefix	
Remote Call Control Identity	
Remote IP	



Assume that all learned SAF routes are placed in the SAF\_Pt partition. The 3XXX directory number pattern is being advertised by a remote cluster and is also being blocked by the local cluster that is shown in the exhibit. An IP phone is attached to the local cluster and is configured with ACSS that contains the following partitions: SAF\_Pt and Internal\_Pt in this order. When the IP phone places a Call to 3001, what will occur?

- A. The call will succeed and will be placed via the SIP\_Trunk.
- B. The call will fail because it will be blocked by the CCD Blocked Learned Route configuration.
- C. The call will be placed in a round-robin fashion between the SAF network and SIP\_Trunk.
- D. The call will placed in a round-robin fashion between the SAF network and SIP\_Trunk.
- E. Every other call will fail.

Answer: A

NEW QUESTION 9

Refer to Exhibit:



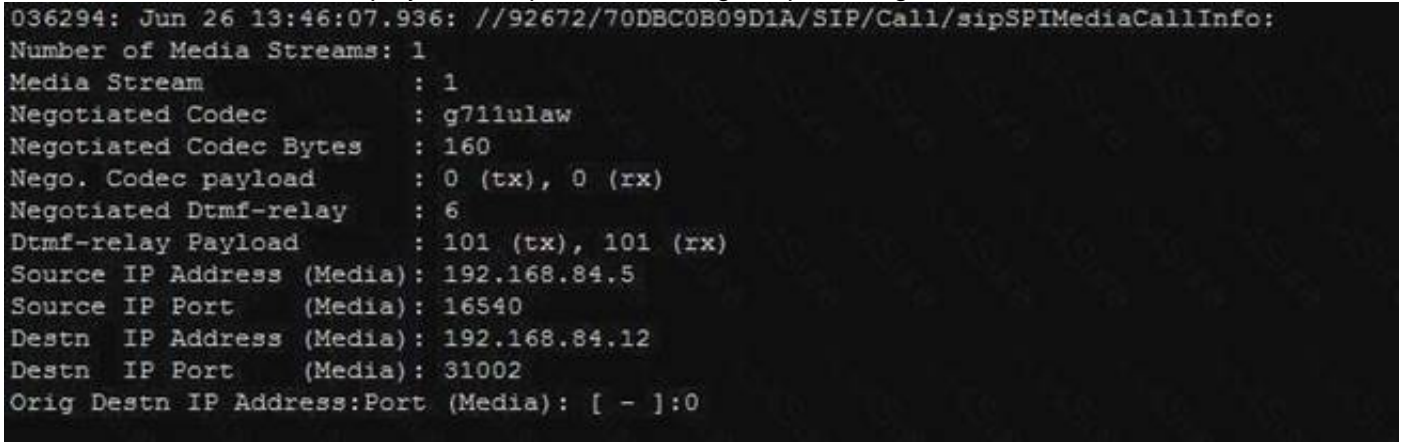
What type of trace file is this considered to be?

- A. sdl
- B. dbl
- C. dbnotify
- D. calllogs
- E. sdi

Answer: E

NEW QUESTION 10

Refer to the exhibit, which displays the output of the debug ccsip messages command on a Cisco router.



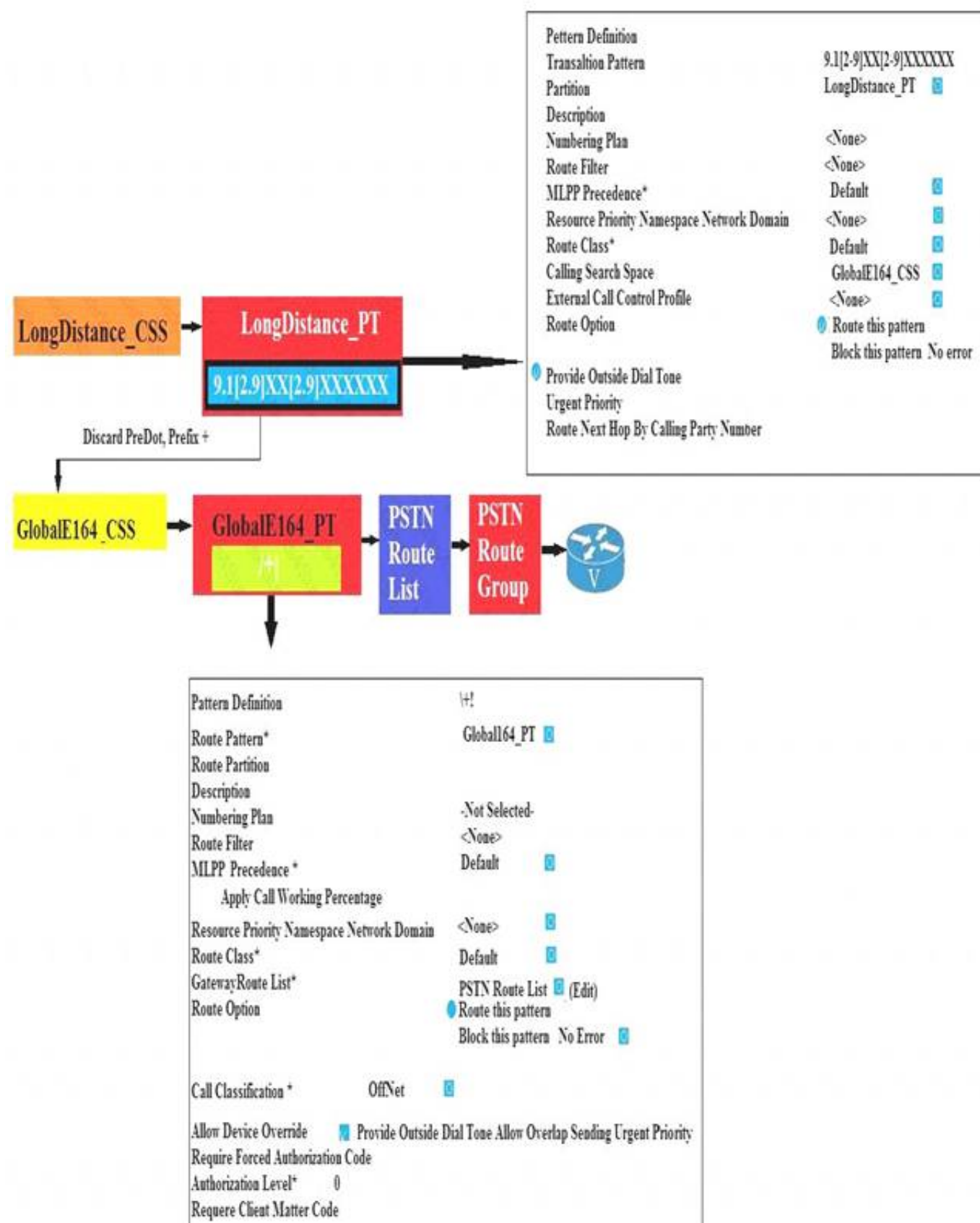
What is the negotiated dual tone multifrequency on this call?

- A. h245-alphanumeric
- B. rtp-nte
- C. sip-kpml
- D. sip-notify
- E. cisco-rtp
- F. h245-signal

Answer: B

NEW QUESTION 10

Refer to the exhibit.



In this CUCM dial-plan, a localized translation pattern 9.1[2-9]XX[2-9]XXXXXX is configured in the Calling Search Space named LongDistance\_CSS. This Translation Pattern is used to globalize the User's dialed digits followed by matching a/+! Route Pattern as seen in the Exhibit. Users with Devices/Lines assigned to the LongDistance\_CSS are reporting their calls are not proceeding until after the inter-digit timeout of 15 seconds. For example, after dialing digits 91555678309 the user does not hear ringback until after 15 seconds. What two reasons could lead to this inter-digit timeout condition? (Choose two.)

- A. Route Pattern Call Classification set to OffNet.
- B. Route Pattern does not have "Allow Overlap Sending" checked
- C. Translation Pattern has "Provide Outside Dial Tone" checked
- D. Translation Pattern does not have "Urgent Priority" checked
- E. Route Pattern does not have "Urgent Priority" checked

**Answer:** DE

#### NEW QUESTION 14

You are trying to register an H.323-based Cisco TelePresence system to Cisco Unified Communications Manager and a Cisco DX70 system to the Cisco VCS Control. Why do neither of the units want to register?

- A. The H.323-based system needs an E164 number to register to Cisco Unified Communications Manager, and the Cisco DX70 needs to have the MAC address configureDFirst on the Cisco VCS Control.
- B. The H.323-based system needs to register to the Cisco VCS Control with an E.164 number, and the Cisco DX70 needs the TFTP address to register on the Cisco Unified Communications Manager.
- C. Both systems need to register to the Cisco VCS Control, but the H.323-based system needs to have the gatekeeper setting set to "Direct."
- D. Both systems need to register to the Cisco Unified Communications Manager, as the Cisco VCS Control is used only for firewall traversal.
- E. You need Cisco TelePresence Management Suite to register Cisco TelePresence systems.
- F. You need Cisco TelePresence Server to register Cisco TelePresence systems.

**Answer:** B

#### NEW QUESTION 17

When dialing any external SIP URI for ABusiness-to-business call, an endpoint that is registered to the Cisco VCS Control fails to locate the remote endpoint. The



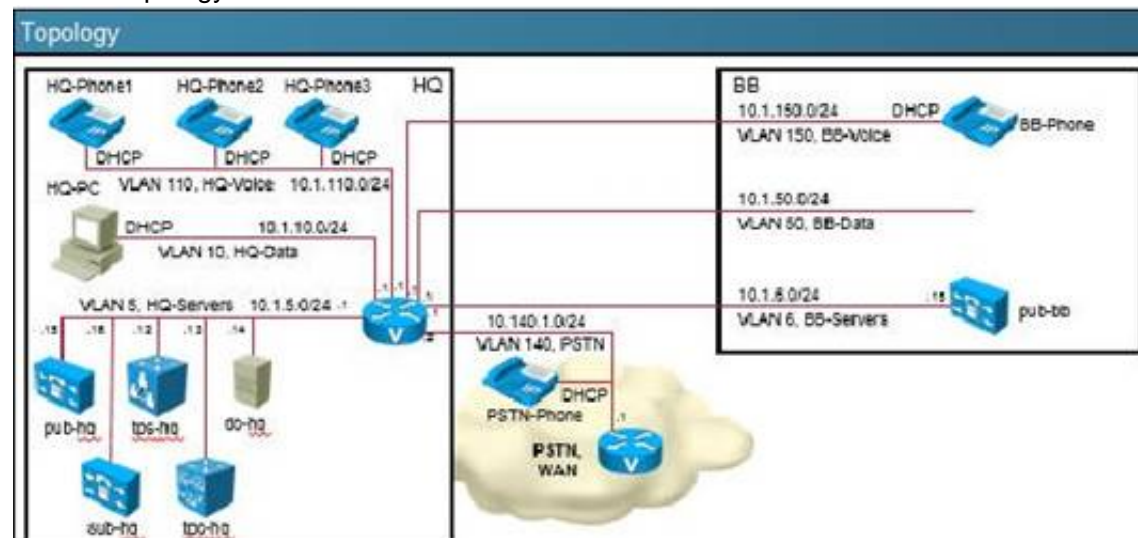
same endpoint can successfully call another endpoint that is registered to the Cisco VCS Expressway. How do you resolve this issue?

- A. Add traversal call licensing on the Cisco VCS Expressway.
- B. Add traversal call licensing on the Cisco VCS Control.
- C. Add a multisite option to the endpoint.
- D. Configure a proper DNS zone on the Cisco VCS Expressway.
- E. Configure a traversal zone between the Cisco VCS Control and the Cisco VCS Expressway.
- F. Configure a SIP route pattern in Cisco Unified Communications Manager.

**Answer: D**

## NEW QUESTION 22

Refer to topology and Exhibits below:



**Exhibit2**

**Gateway Details**

Product	Cisco 3925
Gateway	MGCP-GW
Protocol	MGCP
⚠ Device is not trusted	
Domain Name *	MGCP-GW
Description	MGCP-GW
Cisco Unified Communications Manager Group *	Default

**Configured Slots, VICs and Endpoints**

Module in Slot 0: NM-4VWIC-MBRD

Subunit 0: VWIC2-1MFT-T1E1-T1 0/0/0 T1PRI

**Exhibit3**

**Device Information**

Product	Cisco MGCP T1 Port
Gateway	MGCP-GW
Device Protocol	Digital Access PRI
Registration:	Unknown
IPv4 Address:	None
⚠ Device is not trusted	
End-Point Name *	S0/SU0/DS1-0@MGCP-GW
Description	S0/SU0/DS1-0@MGCP-GW

**Exhibit4**

```

MGCP Domain Name: HQ
Priority      Status      Host
-----
Primary      Backup Ready  10.1.5.25
First Backup  Registering with CM  10.1.5.26
Second Backup  None

Current active Call Manager:  None
Backhaul/Redundant link port: 2428
Failover Interval:           30 seconds
Keepalive Interval:          15 seconds
Last keepalive sent:         21:44:55 UTC Feb 10 2015 (elapsed time: 00:20:03)
Last MGCP traffic time:      22:04:42 UTC Feb 10 2015 (elapsed time: 00:00:15)
Last failover time:          22:04:42 UTC Feb 10 2015 from (10.1.5.25)
Last switchback time:        22:04:12 UTC Feb 10 2015 from (10.1.5.26)
Switchback mode:             Graceful
MGCP fallback mode:           Not Selected
Last MGCP fallback start time: None
Last MGCP fallback end time:  None
MGCP download tones:         Disabled
TFTP retry count to shut ports: 2

FAX mode: disable
Configuration Error History:
  
```

After making AChange to a manually configured MGCP gateway, what step should you take to ensure that the gateway accepts the changes and be operational?

- A. Issue the commands no MGCP, then MGCP.
- B. Issue the commands no SCCP, then SCCP.
- C. Issue the commands Shut, then no shut.
- D. Issue the commands no CCM, then CCM.

**Answer: A**

## NEW QUESTION 24

Refer to Exhibit:



What was the cause for the call termination?

- A. No route to called number
- B. Outbound gateway was not found
- C. Calling party abandoned the call
- D. Called party cancelled the call
- E. Call completed successfully

**Answer: C**

## NEW QUESTION 26

URI dialing is enabled between two clusters with the default options. The engineer that set up the URI dialing verified that all was working properly. However, a user from one of the clusters cannot dial using URI to a user in the same cluster. What do you do to resolve this issue?

- A. Verify the password that is used by the authentication under Intercluster Lookup Service configuration.
- B. Find out if the URI address of the called user has ACapital letter in the URI string.
- C. Verify that Intercluster Lookup Service is set up correctly.
- D. Verify USN Data Synchronization Status.

**Answer: B**

## NEW QUESTION 30

After you deploy a new Cisco Collaboration solution, users report echoes and choppy voice quality. Which two actions correct the problem? (Choose two.)

- A. Upgrade the Cisco IOS version and Flash memory on the Cisco IOS router.
- B. Deploy additional hardware resources
- C. Deploy an echo canceller.
- D. Upgrade Cisco Unified Communications Manager.
- E. Enable QoS on the network.

**Answer: CE**

## NEW QUESTION 34

Refer to the exhibit.



An engineer configured CCD between a Cisco Unified Communications Manager (CUCM) cluster and Cisco Unified Communications Manager Express (CME). When the CUCM agents try to dial ACME extension on the range 7XXX, they receive a Busy signal as soon as the 7 is dialed. What can be done to resolve this issue?

- A. Set the CUCM CCD Requesting Service PSTN prefix to 9 instead of 1
- B. Set the CME profile dn-block type to extension instead of global
- C. Set the CUCM Hosted DN Pattern PSTN Failover Strip Digits field to 1 instead of 0
- D. Set the CME subscribe callcontrol to instance instead of wildcarded

**Answer: A**

## NEW QUESTION 38

If a user receives a reorder tone after dialing a number, the Cisco Unified Communications Manager bandwidth allocation for the location of one of the call end devices may have been exceeded. Which option is true?

- A. If the call is using G.711, Cisco Unified CM subtracts 64k. If the call is using G.723, Cisco Unified CM subtracts 16k.
- B. If the call is using G.729, Cisco Unified CM subtracts 8k.
- C. If the call is using G.711, Cisco Unified CM subtracts 80k. If the call is using G.723, Cisco Unified CM subtracts 24k.
- D. If the call is using G.729, Cisco Unified CM subtracts 24k.
- E. If the call is using G.711, Cisco Unified CM subtracts 80k. If the call is using G.723, Cisco Unified CM subtracts 24k.
- F. If the call is using G.729, Cisco Unified CM subtracts 16k.
- G. If the call is using G.711, Cisco Unified CM subtracts 64k. If the call is using G.723, Cisco Unified CM subtracts 24k.
- H. If the call is using G.729, Cisco Unified CM subtracts 8k.



**Answer: B**

#### NEW QUESTION 43

Which configuration can be dynamically set using the Cisco Unified Communications Manager Device Mobility feature?

- A. phone model and protocol
- B. SRST reference and directory number
- C. CSS and local gateway
- D. partition and CSS
- E. media resources and permanent bridges

**Answer: C**

#### NEW QUESTION 44

What is a Common reason that an IP Phone cannot get its configuration from Cisco Unified Communications Manager after it obtains the correct IP address information?

- A. The DHCP scope is exhausted.
- B. The DHCP server is not reachable.
- C. The DHCP scope is on the wrong subnet.
- D. The DHCP scope has the incorrect Option 150 or 66 defined.

**Answer: D**

#### NEW QUESTION 46

Endpoint A is registered to Cisco Unified Communications Manager as S1@company.com. It is trying to call Endpoint B, which is registered to the same company's Cisco VCS Control with an H.323 ID of S2.internal@company.com. The route pattern is set to "\*" and is pointed to a SIP trunk to the Cisco VCS Control. The search rule for (\*.)\*.internal@company.com is set to search the local zone. The call does not work. What is a possible reason?

- A. There is no search pattern to route the call to System B.
- B. There is no valid route pattern to route from System A to System B.
- C. System B is registered as H.323 and needs to use an E.164 alias number only.
- D. The Cisco VCS Control should be neighbor to the Cisco Unified Communications Manager.
- E. You need an MGCP gateway to route from the Cisco Unified Communications Manager to the Cisco VCS Control.
- F. The Cisco VCS Control is missing the Cisco Unified Communications Manager interop option.
- G. The Cisco VCS Control is missing the interworking option.

**Answer: G**

#### NEW QUESTION 50

When users in headquarters call branch office users over the WAN link, branch users report poor audio quality. Headquarters users consistently experience acceptable audio quality. Which troubleshooting approach most directly improves the audio quality of the branch users?

- A. Make the branch router configuration for LLQ match the headquarters router.
- B. Make the headquarters router configuration for LLQ match the branch router.
- C. Make the branch router configuration for CBWFQ match the headquarters router.
- D. Make the headquarters router configuration for CBWFQ match the branch router.

**Answer: B**

#### NEW QUESTION 55

When a user tries to initiate an Ad Hoc conference call from an IP phone, this message appears: No Conference Bridge Available. Which two actions resolve this issue? (Choose two.)

- A. Make sure that the Join softkey is assigned to the phone.
- B. Make sure that a Conference Bridge resource is registered to Cisco Unified Communications Manager.
- C. Reset the phone, to re-register resources.
- D. Make sure that a Conference Bridge Resource is assigned to the MRGL on the phone that initiates the conference call.

**Answer: BD**

#### NEW QUESTION 58

Which issue would cause an MGCP gateway to fail to register with Cisco Unified Communications Manager?

- A. missing the configuration command isdn bind-l3 ccm-manager under the ISDN interface
- B. mismatched domain name on the MGCP gateway and Cisco Unified Communications Manager gatewayconfiguration
- C. misconfigured route group in Cisco Unified Communications Manager
- D. incorrect MGCP IP address specified in the gateway configuration in Cisco Unified Communications Manager

**Answer: B**

#### NEW QUESTION 61

Which set is likely to resolve an issue with one-way audio on an H.323 gateway?

- A)



```
interface Loopback0

ip address 172.31.255.1 255.240.0.0

ip virtual-reassembly in

h323-gateway voip interface
```

B)

```
interface Loopback0

ip address 172.31.255.1 255.240.0.0

ip virtual-reassembly in

h323-gateway voip interface

h323-gateway voip bind srcaddr 172.31.255.1
```

C)

```
interface Loopback0

ip address 172.31.255.1 255.240.0.0

ip virtual-reassembly in

h323-gateway voip interface

h323-gateway voip h323-id AUDIO
```

D)

```
interface Loopback0

ip address 172.31.255.1 255.240.0.0

ip virtual-reassembly in

h323-gateway voip tech-prefic 212
```

- A. Option A
- B. Option B
- C. Option C
- D. Option D

**Answer:** B**NEW QUESTION 65**

You must integrate a third-party H.323 system with your existing Cisco Unified Communications Manager cluster. When you create an H.323 trunk from the cluster, calls from the cluster to the third-party H.323 system are failing. The vendor of the third-party H.323 device has confirmed that the H.323 call setup time must be reduced. Which two approaches reduce the call setup time from Cisco Unified Communications Manager to the third-party H.323 device? (Choose two.)

- A. Implement a software MTP.
- B. Implement a hardware MTP.
- C. Implement transcoding with the router DSP resources.
- D. Implement transcoding with the Cisco Unified Communications Manager resources.

**Answer:** AB**NEW QUESTION 66**

An engineer is configuring a new conference resource on a Cisco 2911 ISR router. The router has a single PVDM3-32 and one PRI with 23 voice channels. When the engineer configured the conference profile on the router, the following message is received.

Vr-2911-east(config)#dspfarm profile 10 conferenceDspfarm profile 10 :: No resource, check voice card or dspfarm service is not configured  
Which configuration should the engineer add before adding the conference bridge profile?

- A. voice-card 0 dsp services dspfarm dspfarm
- B. voice-card 0 codec complexity medium dsp services dspfarm
- C. voice-card 0 codec complexity flex dsp services dspfarm
- D. voice-card 0 dsp tdm pooling dspfarm

**Answer:** A**NEW QUESTION 71**

Which two items are displayed by checking the VCS via Status > Registration? (Choose two.)

- A. device pool
- B. endpoint name
- C. device type
- D. device description
- E. endpoint MAC address

**Answer:** BC**NEW QUESTION 75**

Refer to the exhibit. a Cisco Jabber user moveDFrom the office. Which description of the issue with the endpoint registration is true?

```
2017-03-31 15:36:32.468 INFO [0x92a42930] [nsutils/android/androidDnsQuery.cpp(135)] [csf.dns] [makeDnsQuery] -
Removing any existing DNS cache records for _cisco-uds._tcp.ciscoccnr.com.
2017-03-31 15:36:32.472 INFO [0x92a42930] [nsutils/android/androidDnsQuery.cpp(241)] [csf.dns] [makeQuery] -
About to make an SRV record Query with request ' _cisco-uds._tcp.ciscoccnr.com
2017-03-31 15:36:32.475 INFO [0x92943930] [nsutils/android/androidDnsQuery.cpp(241)] [csf.dns] [makeQuery] -
About make an SRV record Query with request ' _cuplogin._tcp.ciscoccnr.com.'
2017-03-31 15:36:32.482 INFO [0x92943930] [nsutils/android/androidDnsQuery.cpp(268)] [csf.dns] [makeQuery] -
The SRV result for ' _cuplogin._tcp.ciscoccnr.com.' doesn't have any data
2017-03-31 15:36:32.485 WARN [0x92943930] [nsutils/android/androidDnsQuery.cpp(192)] [csf.dns] [makeDnsQuery] -
*---* DNS query _cuplogin._tcp.ciscoccnr.com. has failed: NO_ANSWER.
2017-03-31 15:36:32.485 INFO [0x92a42930] [rc/dnsutils/DnsQueryResolverImpl.cpp(74)] [csf.dns] [onDnsQueryResultReceived] -
DnsQueryResolverImpl::onDnsQueryResultReceived: request _cuplogin._tcp.ciscoccnr.com.
2017-03-31 15:36:32.492 INFO [0x92a42930] [nsutils/android/androidDnsQuery.cpp(268)] [csf.dns] [makeQuery] -
The SRV result for ' _cisco-uds._tcp.ciscoccnr.com.' doesn't have any data
2017-03-31 15:36:32.496 WARN [0x92a42930] [nsutils/android/androidDnsQuery.cpp(192)] [csf.dns] [makeDnsQuery] -
*---* DNS query _cisco-uds._tcp.ciscoccnr.com. has failed: NO_ANSWER.
2017-03-31 15:36:32.496 INFO [0x92a42930] [rc/dnsutils/DnsQueryResolverImpl.cpp(74)] [csf.dns] [onDnsQueryResultReceived] -
DnsQueryResolverImpl::onDnsQueryResultReceived: request _cisco-uds._tcp.ciscoccnr.com.
2017-03-31 15:36:32.496 INFO [0x93ee0930] [atnondiscovery/DiscoveryLogUtils.cpp(53)] [service-discovery]
[LogServiceInformationVect]*---*DNS services found:
2017-03-31 15:36:32.496 INFO [0x93ee0930] [DnsEdgeServiceDiscoveryRequest.cpp(128)] [service-discovery]
[getServiceInformationFromUcServiceLocator]- Dns Retrieval Result from Uc Service Locator with domain 'cisco-uds'
2017-03-31 15:36:32.496 WARN [0x93ee0930] [t/DnsEdgeServiceDiscoveryRequest.cpp(49)] [service-discovery] [makeDiscoveryRequest] -
Dns Service Discovery could not find either _cisco-uds or _cuplogin using the 'ciscoccnr.com' domain. Because of this trying Edge.
2017-03-31 15:36:32.496 DEBUG [0x93ee0930] [servicelocator/EdgeServiceLocator.cpp(15)] [service-discovery] [getServiceInformationFromEdge]
- About to try Edge Service Location.
2017-03-31 15:36:32.497 DEBUG [0x93ee0930] [ls/src/edge/GlobalEdgeStateImpl.cpp(780)] [csf.edge] [checkPrecondition]
- Acquired scoped lock (visibilityMutex)
2017-03-31 15:36:32.497 DEBUG [0x93ee0930] [sf-netutils/src/common/PolicySet.cpp(84)] [csf.common.PolicySet] [getPolicy]
- Successfully found Policy with nature EDGE_CAPABILITY [EDGE_ENABLED]
```

- A. The Android device does not have access to the Internet.
- B. The ISP is preventing Jabber from performing SRV lookups.
- C. The Jabber user is within the enterprise.
- D. The IOS device does not have a valid IP address.

**Answer:** A

#### NEW QUESTION 77

An engineer is analyzing an issue about system connection under Cisco TMS connection, where endpoints handled by TMS automatically change from reachable on LAN to behind the firewall status. Which protocol does the network engineer need to troubleshoot the network between managed device Cisco TMS?

- A. SDP
- B. XMPP
- C. FTP
- D. HTTP

**Answer:** D

#### NEW QUESTION 82

You observe that EMCC restriction on the cluster fails when a user with a different profile logs in to another cluster. Which action can you take to correct the problem?

- A. Enable logical partitioning.
- B. Set SIP session timers to 0.
- C. Set SIP session timers to 3800.
- D. Configure the regions in Cisco Unified Communications Manager to allow EMCC.

**Answer:** D

#### NEW QUESTION 84

During ABusiness-to-business video call through the Cisco Expressway solution, the internal endpoint can call out to the remote endpoint on the Internet, but it does not receive audio or video. The remote endpoint receives both audio and video. What is causing the issue?

- A. The Cisco Expressway does not have a Rich Media Session license.
- B. The firewall is blocking SIP signaling.
- C. The Cisco Unified Communications Manager is not configuredDFor business-to-business calling.
- D. The firewall is blocking inbound RTP ports.
- E. The Advanced Networking option is not installed on the Expressway Edge.

**Answer:** D

#### NEW QUESTION 87

Which reason for calls being disconnected just after connection is true?

- A. An incompatible MTP type is allocated to the call.
- B. Codec are mismatched between phones.
- C. Firewall is blocking RTP packets.
- D. Phone A is using SCCP and phone B is using SIP.

**Answer:** B

#### NEW QUESTION 92

What is the default hold time for two peering SAF Forwarders that are connected on a LAN?

- A. 240 seconds
- B. 15 seconds
- C. 60 seconds
- D. 45 seconds
- E. 120 seconds

**Answer:** B

#### NEW QUESTION 93

Refer to the exhibit.

System	
CCT Regression Test Only *	0
CDR Enabled Flag *	True
CDR Log Calls with Zero Duration Flag *	False
Digit Analysis Complexity *	StandardAnalysis
Database Debounce Timer *	0
Maximum Phone Fallback Queue Depth *	10
Maximum Number of Registered Devices *	5000
System Initialization Timer *	60

SDL Trace	
SDL Trace Data Flags *	0x00000111
SDL Trace Flush Immediately *	False
SDL Trace Data Size *	0
SDL Trace Flag *	True
SDL Trace Max File Size *	2
SDL Trace Total Number of Files *	375
SDL TraceType Flags *	0x8000EB15

An engineer is troubleshooting an outbound call and needs to see each step of the dial plan as it is being parsed in the system. The engineer is not able to see all of the steps in the trace output. How can this problem be resolved?

- A. Change the Digit Analysis Complexity to Translation And Alternate Pattern Analysis.
- B. Change the SDL Trace Max File Size to a higher number because it is not large enough to display dial plan steps.
- C. Change the SSL TraceType Flag to 0x9000EC44.
- D. Change the SSL Trace Flush Immediately to True.

**Answer:** A

#### NEW QUESTION 96

Which two issues can prevent an IP Phone from receiving an IP address via DHCP? (Choose two.)

- A. The DHCP server is not on the same VLAN as the phone.
- B. The DHCP scope's leases are exhausted.
- C. DHCP Option 150 is incorrect.
- D. The TFTP server is not reachable.
- E. The DHCP scope is not definedFor the subnet of the phone.

**Answer:** AB

#### NEW QUESTION 100

Refer to the exhibit.



User Hold MOH Audio Source	< None >	
Network Hold MOH Audio Source	< None >	
Location*	Hub_None	
AAR Group	< None >	
User Locale	< None >	
Network Locale	< None >	
Built In Bridge*	Default	
Privacy*	Default	
Device Mobility Mode*	Default	<a href="#">View Curr</a>
Owner User ID	< None >	<b>Find</b>
Phone Personalization*	Default	
Services Provisioning*	Default	
Phone Load Name		
Single Button Barge	Default	
Join Across Lines	Default	

A roaming device retains its home location device pool settings, even though all configuration settings are in place. What is causing this issue?

- A. The device mobility group settings are incorrect.
- B. The device mobility mode service parameter is set to Off.
- C. The device mobility mode service parameter is set to True.
- D. The device mobility information entry matches the device IP address.

**Answer: B**

#### NEW QUESTION 104

Which configuration is required on Cisco TelePresence Server, in order to support 1080p resolution?

- A. Screen licenses must be configured.
- B. Cisco TelePresence Server must be in remotely managed mode.
- C. Cisco TelePresence Server must be in HD mode.
- D. Cisco TelePresence Server must be configured with Cisco TelePresence Conductor.
- E. Cisco TelePresence Server must be in Full HD mode.

**Answer: E**

#### NEW QUESTION 105

Refer to the exhibit.

```

C:\>telnet 10.10.10.10 22
#Payout Max=1000(rs), Fax Num=200(rs)
23447: Jun 26 10:30:21.828: //92009/389C36000000/CCAPI/cc_api_caps_ack:
Destination interface=0x2CFDE01C, Destination call id=92009, Source call id=92009,
Caps(Codec=0711u1a(0x1), Fax Rate=MAX_RATE_VOICE(0x2), Vad=OFF(0x1),
Modem=OFF(0x0), Codec Bytes=160, Signal Type=2, Seq Num Start=6427)
23448: Jun 26 10:30:21.828: //92009/389C36000000/CCAPI/cc_api_caps_ack:
Destination interface=0x2CFDE01C, Destination call id=92009, Source call id=92009,
Caps(Codec=0711u1a(0x1), Fax Rate=INVALID(0x0), Vad=INVALID(0x0),
Modem=INVALID(0xFFFFFFF), Codec Bytes=0, Signal Type=0, Seq Num Start=-1)
23449: Jun 26 10:30:21.828: //92008/389C36000000/CCAPI/cc_api_event_indication:
Event=175, Call id=92008
23450: Jun 26 10:30:21.828: //92008/389C36000000/CCAPI/cc_api_event_indication:
Event Is Sent To Conferenced SPI(s) Directly
23451: Jun 26 10:30:21.828: //92008/389C36000000/CCAPI/cc_api_event_indication:
Event=197, Call id=92008
23452: Jun 26 10:30:21.828: //92008/389C36000000/CCAPI/cc_api_event_indication:
Event Is Sent To Conferenced SPI(s) Directly
23453: Jun 26 10:30:22.248: //92008/389C36000000/CCAPI/cc_generateToneInfo:
Stop Tone On Digit=FALSE, Tone=null,
Tone Direction=Sum Network, Params=0x0, Call id=92008
23454: Jun 26 10:30:22.248: //92009/389C36000000/CCAPI/cc_api_event_indication:
Event=185, Call id=92009
23455: Jun 26 10:30:22.248: //92009/389C36000000/CCAPI/cc_api_event_indication:
Event Is Sent To Conferenced SPI(s) Directly
23456: Jun 26 10:30:22.248: //92008/XXXXXXXXXXXX/CCAPI/cc_api_get_xcode_stream:
23457: Jun 26 10:30:22.248: cc_api_get_xcode_stream : 4803
23458: Jun 26 10:30:22.248: //92009/XXXXXXXXXXXX/CCAPI/cc_api_get_xcode_stream:
23459: Jun 26 10:30:22.248: cc_api_get_xcode_stream : 4803
23460: Jun 26 10:30:22.248: //92008/XXXXXXXXXXXX/CCAPI/cc_api_get_xcode_stream:
23461: Jun 26 10:30:22.248: cc_api_get_xcode_stream : 4803
23462: Jun 26 10:30:22.248: //92008/XXXXXXXXXXXX/CCAPI/cc_api_get_xcode_stream:
23463: Jun 26 10:30:22.248: cc_api_get_xcode_stream : 4803
23464: Jun 26 10:30:22.248: //92009/XXXXXXXXXXXX/CCAPI/cc_api_get_xcode_stream:
23465: Jun 26 10:30:22.252: cc_api_get_xcode_stream : 4803
23466: Jun 26 10:30:22.252: //92008/XXXXXXXXXXXX/CCAPI/cc_api_get_xcode_stream:
23467: Jun 26 10:30:22.252: cc_api_get_xcode_stream : 4803
23468: Jun 26 10:30:22.252: //92009/XXXXXXXXXXXX/CCAPI/cc_api_get_xcode_stream:
23469: Jun 26 10:30:22.252: cc_api_get_xcode_stream : 4803
23470: Jun 26 10:30:22.252: //92009/XXXXXXXXXXXX/CCAPI/cc_api_get_xcode_stream:
23471: Jun 26 10:30:22.252: cc_api_get_xcode_stream : 4803
23472: Jun 26 10:30:22.288: //92009/389C36000000/CCAPI/cc_api_call_facility:
Interface=0x2CFDE01C, Call id=92009
23473: Jun 26 10:30:22.288: //92009/389C36000000/CCAPI/cc_api_event_indication:
Event=197, Call id=92009
N-C2921-CME#
23474: Jun 26 10:30:22.288: //92009/389C36000000/CCAPI/cc_api_event_indication:
Event Is Sent To Conferenced SPI(s) Directly
N-C2921-CME#
23475: Jun 26 10:30:29.895: //92008/389C36000000/CCAPI/cc_generateToneInfo:
Stop Tone On Digit=FALSE, Tone=null,
Tone Direction=Sum Network, Params=0x0, Call id=92008
23476: Jun 26 10:30:29.895: //92009/389C36000000/CCAPI/cc_api_call_disconnected:
Cause Value=16, Interface=0x2CFDE01C, Call id=92009
23477: Jun 26 10:30:29.895: //92009/389C36000000/CCAPI/cc_api_call_disconnected:
Call Entry(Reason=TRUE, Cause Value=16, Retry Count=0)
23478: Jun 26 10:30:29.895: //92008/389C36000000/CCAPI/cc_conferenceDestroy:
Conference Id=0x11A8, Tag=0x0
23479: Jun 26 10:30:29.895: //92008/389C36000000/CCAPI/cc_api_bridge_drop_done:
Conference Id=0x11A8, Source Interface=0x2CFDE01C, Source Call id=92008,
Destination Call id=92009, Disposition=0x0, Tag=0x0
23480: Jun 26 10:30:29.895: //92009/389C36000000/CCAPI/cc_api_bridge_drop_done:
Conference Id=0x11A8, Source Interface=0x2CFDE01C, Source Call id=92009,
Destination Call id=92008, Disposition=0x0, Tag=0x0
23481: Jun 26 10:30:29.895: //92008/389C36000000/CCAPI/cc_generic_bridge_done:
Conference Id=0x11A8, Source Interface=0x2CFDE01C, Source Call id=92009,
Destination Call id=92008, Disposition=0x0, Tag=0x0
23482: Jun 26 10:30:29.895: //92008/389C36000000/CCAPI/cc_callDisconnect:
Cause Value=16, Tag=0x0, Call Entry(Previous Disconnect Cause=0, Disconnect Cause=0)
23483: Jun 26 10:30:29.895: //92008/389C36000000/CCAPI/cc_callDisconnect:
Cause Value=16, Call Entry(Reason=TRUE, Cause Value=16)
23484: Jun 26 10:30:29.899: //92009/389C36000000/CCAPI/cc_callDisconnect:
Cause Value=16, Tag=0x0, Call Entry(Previous Disconnect Cause=0, Disconnect Cause=16)
23485: Jun 26 10:30:29.899: //92009/389C36000000/CCAPI/cc_callDisconnect:
Cause Value=16, Call Entry(Reason=TRUE, Cause Value=16)
23486: Jun 26 2015 10:30:29.899 CDT: SVOIPAAA-S-VOIP_CALL_HISTORY: CallLegType 2, ConnectionId 389C3600100003BAFC54A8C0, SetupTime
0:30:11.529 CDT Fri Jun 26 2015, PeerAddress 4445556666, PeerSubaddress, DisconnectCause 10, DisconnectText normal call clearing
16), connectTime 10:30:21.799 CDT Fri Jun 26 2015, DisconnectTime 10:30:29.899 CDT Fri Jun 26 2015, CallOrigin 1, ChargedUnits 0,
InfoType 2, TransmitPackets 398, TransmitBytes 63840, ReceivePackets 384, ReceiveBytes 61440
23487: Jun 26 10:30:29.899: //1/XXXXXXXXXXXX/CCAPI/cc_build_feature_vsa:
23488: Jun 26 10:30:29.899: :inside cc_build_feature_vsa
23489: Jun 26 10:30:29.899: //1/XXXXXXXXXXXX/CCAPI/cc_build_feature_vsa:
23490: Jun 26 10:30:29.899: feature call basic
23491: Jun 26 10:30:29.899: //1/XXXXXXXXXXXX/CCAPI/cc_build_feature_vsa:
23492: Jun 26 10:30:29.899: cc_build_feature_vsa attr is fn:TW,ft:06/26/2015
0:30:11.528,cgn:111222333,cdn:4445556666,frs:0,fid:11393,fcid:389C3600100003BAFC54A8C0,legid:16789
23493: Jun 26 2015 10:30:29.899 CDT: SVOIPAAA-S-VOIP_FEAT_HISTORY: FEAT_VSA=fn:TW,ft:06/26/2015
0:30:11.528,cgn:111222333,cdn:4445556666,frs:0,fid:11393,fcid:389C3600100003BAFC54A8C0,legid:16789,bguld:389C36000001000000003BAFC
54A8C0
23494: Jun 26 10:30:29.899: //92009/389C36000000/CCAPI/cc_api_call_disconnect_done:
Disposition=0, Interface=0x2CFDE01C, Tag=0x0, Call id=92009,
Call Entry(Disconnect Cause=16, Voice Class Cause Code=0, Retry Count=0)
23495: Jun 26 10:30:29.899: //92009/389C36000000/CCAPI/cc_api_call_disconnect_done:
Call Disconnect event sent
23496: Jun 26 10:30:29.899: //1/XXXXXXXXXXXX/CCAPI/cc_free_feature_vsa:
23497: Jun 26 10:30:29.899: :cc_free_feature_vsa freeing 280F1DC8
23498: Jun 26 10:30:29.899: //1/XXXXXXXXXXXX/CCAPI/cc_free_feature_vsa:
23499: Jun 26 10:30:29.899: vsacount in free is 3
23500: Jun 26 10:30:29.899: //1/XXXXXXXXXXXX/CCAPI/covenpoolTDFreeHelper:
data = 34850B34
23501: Jun 26 10:30:29.899: covenpoolTDFreeHelper:mem_mgr_neepool_free: mem_refcnt(28F04A0C)=0 - neepool cleanup
23502: Jun 26 2015 10:30:29.915 CDT: SVOIPAAA-S-VOIP_CALL_HISTORY: CallLegType 2, ConnectionId 389C3600100003BAFC54A8C0, SetupTime
0:30:11.525 CDT Fri Jun 26 2015, PeerAddress 111222333, PeerSubaddress, DisconnectCause 10, DisconnectText normal call clearing
16), connectTime 10:30:21.805 CDT Fri Jun 26 2015, DisconnectTime 10:30:29.915 CDT Fri Jun 26 2015, CallOrigin 2, ChargedUnits 0,
InfoType 2, TransmitPackets 384, TransmitBytes 61440, ReceivePackets 400, ReceiveBytes 64000
23503: Jun 26 10:30:29.915: //1/XXXXXXXXXXXX/CCAPI/cc_build_feature_vsa:
23504: Jun 26 10:30:29.915: :inside cc_build_feature_vsa
23505: Jun 26 10:30:29.915: //1/XXXXXXXXXXXX/CCAPI/cc_build_feature_vsa:
23506: Jun 26 10:30:29.915: feature call basic
23507: Jun 26 10:30:29.915: //1/XXXXXXXXXXXX/CCAPI/cc_build_feature_vsa:
23508: Jun 26 10:30:29.915: cc_build_feature_vsa attr is fn:TW,ft:06/26/2015
0:30:11.524,cgn:111222333,cdn:4445556666,frs:0,fid:11392,fcid:389C3600100003BAFC54A8C0,legid:16788
23509: Jun 26 2015 10:30:29.919 CDT: SVOIPAAA-S-VOIP_FEAT_HISTORY: FEAT_VSA=fn:TW,ft:06/26/2015
0:30:11.524,cgn:111222333,cdn:4445556666,frs:0,fid:11392,fcid:389C3600100003BAFC54A8C0,legid:16788,bguld:389C36000001000000003BAFC
54A8C0

```

According to the output of the debug voip ccapi inout command, why was this call dropped?

- A. Normal call clearing
- B. User busy
- C. Call rejected
- D. Invalid number
- E. No circuit
- F. No resource

**Answer: A**

## NEW QUESTION 110

Refer to the exhibit.

<http://172.16.1.1:8080/emapp/EMAppServlet?device=#DEVICENAME#&EMCC=#EMCC#>

a Cisco Unified Communications Manager Extension Mobility enabled user attempts to log in to a new phone where Cisco Extension Mobility Cross Cluster Service is configured with the URL that is displayed in the exhibit. The service is configured on a Cisco Unified CM 9.X or later Unified CM cluster. After the user enters the user ID and PIN, the phone displays “Login is Unavailable (23).”

Which configuration requirement supports Cisco EMCC and avoids this error condition?

- A. The device must be subscribed to Cisco EMCC Services.
- B. The given user ID is not found in the remote cluster.
- C. The user must associate a device profile.
- D. The Cisco IP Phone Services configuration for Cisco EMCC must set the enterprise subscription.

**Answer: A**

#### NEW QUESTION 113

You have 50 hardware MTP resources and 200 software MTP resources. You want to use hardware resources first, but software is being used first. Where can you confirm the MTP selection order?

- A. Media Resource Group List
- B. Cisco Unified Real-Time Monitoring Tool
- C. MTP list
- D. phone device pool
- E. calling search space
- F. MGCP gateway

**Answer:** A

#### NEW QUESTION 116

You are troubleshooting media issues during SIP calls on AC-series collaboration endpoint that is running TC6.3 software. You are asked to recreate the problem and to provide a packet capture from the endpoint. Which four of the following are required to accurately perform a packet capture on AC-series endpoint? (Choose four.)

- A. Stop the capture by pressing the key combination Ctrl + C.
- B. Set up administrator access on the endpoint.
- C. Start the capture by entering the tcpdump command string and then start the call.
- D. Set up root access on the endpoint.
- E. Start the call, and then enter the tcpdump command string to begin the capture.
- F. On the endpoint, set the default transport to TLS.
- G. Set the default transport to TCP.

**Answer:** ACDG

#### NEW QUESTION 121

You have been presented with a trouble ticket from an end user who works at a remote location that is served by a Cisco Unified Communications Manager Express. The user reports being unable to place calls to international numbers, but all other calls work properly and other users at this location can place international calls. Which two troubleshooting techniques would be helpful in resolving this issue? (Choose two.)

- A. Cisco IOS debug tools
- B. Class of Restriction baseline configuration for the user on Cisco Unified Communications Manager Express
- C. show output of the ephone and DEphone-dn configurations
- D. show output of the voice translation rules in the voice gateway
- E. show output for the T1 controller and voice port configuration in the voice gateway

**Answer:** AB

#### NEW QUESTION 126

Refer to the exhibit.

RTP Phone Device Configuration	Partitions	RTP Phone DN Configuration	Partitions
Device CSS	RTP_Emergency ALL_Phones	Line CSS	RTP_Local RTP_LongDistance RTP_International
AAR CSS	RTP_LongDistance	AAR Group	AAR

U.K. User Device Profile	Partitions	Partition	Route Pattern
Line CSS	U.K_Emergency ALL_Phones	RTP_Emergency	9.911
AAR Group	AAR	RTP_Local	9.[2-9]XXXXXX
		RTP_LongDistance	9.1[2-9]XX[2-9]XXXXXX
		RTP_International	9.011#
		U.K_Emergency	0.000
		U.K_PSTN	9.1

Assume a Centralized Cisco Unified Communications Manager topology with the headquarters at RTP and remote located at the U.K. All route patterns are assigned a route list that contains a route group pointing to the local gateway. RTP route patterns use the RTP gateway, and U.K. route patterns use the U.K. gateway.

When a U.K. user logs into an RTP phone using the Cisco Extension Mobility feature and places an emergency call to 0000, which statement about the emergency call is true?

- A. The call will match the U.K\_Emergency route pattern partition and will egress at the RTP gateway.
- B. The call will match the U.K\_Emergency route pattern partition and will egress at the U. gateway.
- C. gateway.
- D. The call will match the RTP\_Emergency route pattern partition and will egress at the RTP gateway.
- E. The call will match the RTP\_Emergency route pattern partition and will egress at the U. gateway.
- F. gateway.
- G. The call will fail.



**Answer: B**

#### NEW QUESTION 127

In a single-site deployment model, the internal endpoints are unable to dial from one to the other. What are two possible causes? (Choose two.)

- A. The PSTN gateway is not configured.
- B. The calleDEndpoint does not have the SIP trunk enabled.
- C. The calleDEndpoint is not registered.
- D. The calling endpoint is not in the CSS of the calleDEndpoint.
- E. The calleDEndpoint is not in the partition of the calling endpoint.
- F. The calling endpoint is not configuredFor the correct CoS.

**Answer: CF**

#### NEW QUESTION 131

Where in Cisco TMS would you see if a system is registered to a Cisco VCS or a Cisco Unified Communications Manager?

- A. Systems > Registration
- B. Navigation > Systems > Registrations
- C. under Registration on the System Administration tab
- D. System Overview
- E. Settings > Provisioning
- F. where you start the Cisco Unified Communications Manager RTMT under Systems and Reports

**Answer: D**

#### NEW QUESTION 133

Which command is used on an IOS Router that is acting as a SAF Forwarder to confirm its registration status with a SAF Client?

- A. show ip asf-forwarder status details
- B. show ospf neighbor details
- C. show ip interface details
- D. show cdp neighbor details
- E. show eigrp service-family ipv4 clients details
- F. show service-family asf-forwarder details

**Answer: E**

#### NEW QUESTION 136

An engineer is troubleshooting an issue where aliases that contain an identity “@abc.com” are unable to register with an endpoint due to an entry in the registration restriction configuration in Expressway-E. Where is the alias being blocked in Expressway-E?

- A. regex list
- B. hunt list
- C. black list
- D. allow list

**Answer: C**

#### NEW QUESTION 137

Which two issues can cause a Cisco Unified Communications Manager to fail to register with its Cisco SAF Forwarder? (Choose two.)

- A. An H.323 SAF trunk was configured instead of a SIP SAF trunk.
- B. No directory number patterns were configured on the Cisco Unified Communications Manager.
- C. CCD advertising service was not activated.
- D. Incorrect user credentials were used on the SAF Forwarder.
- E. CCD requesting service was not activated.

**Answer: DE**

#### NEW QUESTION 141

Which of these reasons can cause intrasite calls within a Cisco Unified Communications Manager cluster to fail?

- A. The route partition that is configured in the CCD requesting service is not listed in the calling phone CSS.
- B. The trunk CSS does not include the partition for the called directory number.
- C. The MGCP gateway is not registered.
- D. The calling phone does not have the correct CSS configured.
- E. The calling phone does not have the correct partition configured.

**Answer: D**

#### NEW QUESTION 142

In a network with two Cisco Unified Communications Manager clusters, Phone 1 on Cluster A dials jsmith@cisco.com to reach Phone 2 on Cluster B, and the call fails. What are two possible causes for this problem? (Choose two.)

- A. Cluster A does not have a SIP trunk to reach Cluster B.
- B. Cisco UDS is not enabled on Cluster B.
- C. Cluster B Does not have a SIP trunk to reach Cluster A.
- D. The calling space on Phone 1 contains the partition with a pattern that matches jsmith@cisco.com
- E. Cisco UDS is not enabled on Cluster A.

**Answer:** AC

#### NEW QUESTION 144

Which command is used to check if an MGCP gateway is currently registered with Cisco CallManager?

- A. Router# show ccm-manager gateway
- B. Router# show mgcp ccm-manager
- C. Router# show ccm-manager
- D. Router# show ccm manager

**Answer:** C

#### NEW QUESTION 148

Refer to the exhibit.

Audio/Video Call: Video Stream Statistics					
Local	10.10.10.100:25654				
Remote	10.10.10.26:16654				
Average Latency (Call)	0				
Average Latency (Period)	0				
	Center	LEGACY	Presentation (1 or 5 FPS)	Presentation (30 FPS)	
<b>Transmit</b>					
Is Active	0	0	0	0	
Media Type	H.264	H.264	H.264	H.264	
Frames Per Second	30.00	30.00	5.00	30.00	
Total Bytes	256836441	5386	0	0	
Total Packets	279459	62	0	0	
<b>Receive</b>					
Is Active	0	0	0	0	
Media Type	H.264	N/A	N/A	H.264	
Frames Per Second	30.00	30.00	5.00	30.00	
Total Bytes	1710890943	0	0	350683593	
Total Packets	1749089	0	0	370595	
Lost Packets	2129	0	0	332	
Lost Packets % (Call)	0.1216	0.0000	0.0000	0.0895	
Lost Packets % (Period)	0.0000	0.0000	0.0000	0.2058	
Duplicate Packets	0	0	0	0	
Late Packets	0	0	0	0	
Failed SRTP Authentication Packets	0	0	0	0	
Average Jitter (Call)	9	0	0	9	
Average Jitter (Period)	7	0	0	9	
Audio-Only Call: Stream Statistics					
Refresh page every 10 minutes Refresh					

Which timeframe does the Lost Packets % (Period) value refer to?

- A. total packets lost during the active call
- B. total packets lost within the last 10 seconds
- C. total packets lost within the last 10 minutes
- D. total packets lost within the last second

**Answer:** B

#### NEW QUESTION 150

Refer to the exhibit.

Pattern Definition	
Translation Pattern	2XXX
Partition	Internal_Pt
Description	
Numbering Plan	< None >
Route Filter	< None >
MLPP Precedence*	Default
Resource Priority Namespace Network Domain	< None >
Route Class*	Default
Calling Search Space	Vml.CSS
External Call Control Profile	< None >
Route Option	<input type="radio"/> Route this pattern <input checked="" type="radio"/> Block this pattern No Error

All phones are placed in the Internal\_Pt partition. The CSS for all phones contains the partition Internal\_Pt, and Vml.CSS contains the voicemail hunt pilot. When a call is placed from extension 2001 to 2002, which statement is true?

- A. Extension 2002 will ring.
- B. The call will be blocked.

- C. The call will be answered by voicemail.  
D. Extension 2002 will ring, and if the call is not answered, the call will match the translation pattern and then be blocked.  
E. Extension 2002 will ring, and if the call is not answered, the call will match the translation pattern and then be forwarded to voicemail.

**Answer:** A

#### NEW QUESTION 153

How does an IP Phone react upon initialization, if there is no CTL and ITL files present on the device?

- A. The phone downloads only the files that are signed to that device.  
B. The phone blindly trusts the next series of downloaded Files.  
C. The file matches the signature against the files on TFTP.  
D. The phone displays the message, Unprovisioned.

**Answer:** D

#### NEW QUESTION 156

Which CLI command is used to troubleshoot ILS network connection issues within the local Cisco Unified CM cluster to determine which server within the cluster is the xnode?

- A. utils ils lookup  
B. utils ils showpeerinfo  
C. utils ils display xnode  
D. utils ils find xnode

**Answer:** D

#### NEW QUESTION 157

Refer to the exhibit.

Profile 1		
CallSetup Mode	Gatekeeper	Save
PortAllocation	Dynamic	Save
<b>Authentication</b>		
LoginName		Save (0 to 50 characters)
Mode	Off	Save
Password		Save (0 to 50 characters)
<b>Gatekeeper</b>		
Address	192.168.1.23	Save (0 to 255 characters)
Discovery	Manual	Save
E164		Save (0 to 30 characters)
ID	endpoint@domain.com	Save (0 to 49 characters)

These settings are configured on a Cisco TelePresence System EX90. What is the result?

- A. The endpoint successfully registers to Cisco Unified Communications Manager as a SIP endpoint.  
B. The endpoint does not register to Cisco VCS as a SIP endpoint, because the domain information is missing.  
C. The endpoint does not register to Cisco Unified Communications Manager as a SIP endpoint, because the domain information is missing.  
D. The endpoint successfully registers to Cisco VCS as a SIP endpoint.  
E. The endpoint successfully registers to Cisco Unified Communications Manager as an H.323 endpoint.  
F. The endpoint successfully registers to Cisco VCS as an H.323 endpoint.

**Answer:** F

#### NEW QUESTION 160

You are troubleshooting video quality issues on a Cisco TelePresence TX9000 Series system. Which CLI command shows the total number of lost video packets and the received jitter during a Call in progress?

- A. show call statistics video  
B. show call statistics all  
C. show call statistics detail  
D. show call statistics video detail

**Answer:** D

#### NEW QUESTION 161

Which two statements about Cisco Unified CM location bandwidth deduction are true? (Choose two.)

- A. If a Call uses G.711, Cisco Unified Communications Manager subtracts 64k.  
B. If a Call uses G.711, Cisco Unified Communications Manager subtracts 80k.  
C. If a Call uses G.723, Cisco Unified Communications Manager subtracts 16k.  
D. If a Call uses G.729, Cisco Unified Communications Manager subtracts 16k.  
E. If a Call uses G.729, Cisco Unified Communications Manager subtracts 24k.



**Answer:** BE

**NEW QUESTION 162**

Which statement indicates something that can cause an inbound PSTN call to an H.323 gateway that is configured in Cisco Unified Communications Manager to fail to ring an IP phone?

- A. The gateway is not registered in Cisco Unified Communications Manager.
- B. The gateway IP address that is configured in Cisco Unified Communications Manager does not match the IP address that is configured at the gateway in the h323-gateway voip bind srcaddr command.
- C. The Cisco Unified Communications Manager does not have a matching route pattern to match the called number.
- D. The gateway is missing the command allow-connections h323 to h323 under the voice service voip configuration.

**Answer:** B

**NEW QUESTION 165**

Which tool allows the administrator to analyze call routing in Cisco Unified Communications Manager without physically placing a Call?

- A. Cisco Unified Communications Manager Dialed Number Analyzer
- B. Cisco IOS Gateway debug commands
- C. Cisco Unified Communications Manager RTMT trace output
- D. base configuration information for this user that specifies Class of Restriction, Partition, and Calling Search Space information
- E. Cisco Unified Communications Manager Serviceability tools
- F. Cisco Unified Communications Manager OS Administration

**Answer:** A

**NEW QUESTION 170**

In a SAF deployment, the registration status looks correct and the learned patterns appear reachable, but calls are not routed. What is causing this issue?

- A. network connection failure between the SAF Forwarder and Cisco Unified Communications Manager
- B. network connection failure between the primary and backup SAF Forwarders
- C. TCP connection failure with the primary SAF Forwarder
- D. TCP connection failure with the backup SAF Forwarder

**Answer:** A

**NEW QUESTION 172**

When the command `utils dbreplication status` is executed on the Cisco Unified Communications Manager CLI, which step should be taken next to check the database replication status?

- A. View the `activelog` file.
- B. Run the same command on all nodes of the cluster.
- C. Restart the Cisco CallManager service.
- D. The command `utils dbreplication runtimestate` must be run on the publisher.
- E. The command `utils dbreplication runtimestate` must be run on the subscriber.

**Answer:** A

**NEW QUESTION 174**

Several users at your site have reported that they receive a fast busy when they call another site within the same cluster. Which action can you take to connect the problem?

- A. Rebuild the SIP trunk between Cisco Unified Communications Manager and the gateway.
- B. Run RTMT to check the status of the Cisco Unified Communications Manager services.
- C. Reset the intercluster trunk from your site to the remote site.
- D. Correct the grouping of the site partitions and calling search spaces.

**Answer:** D

**NEW QUESTION 175**

Refer to topology and Exhibits below:

Exhibit1

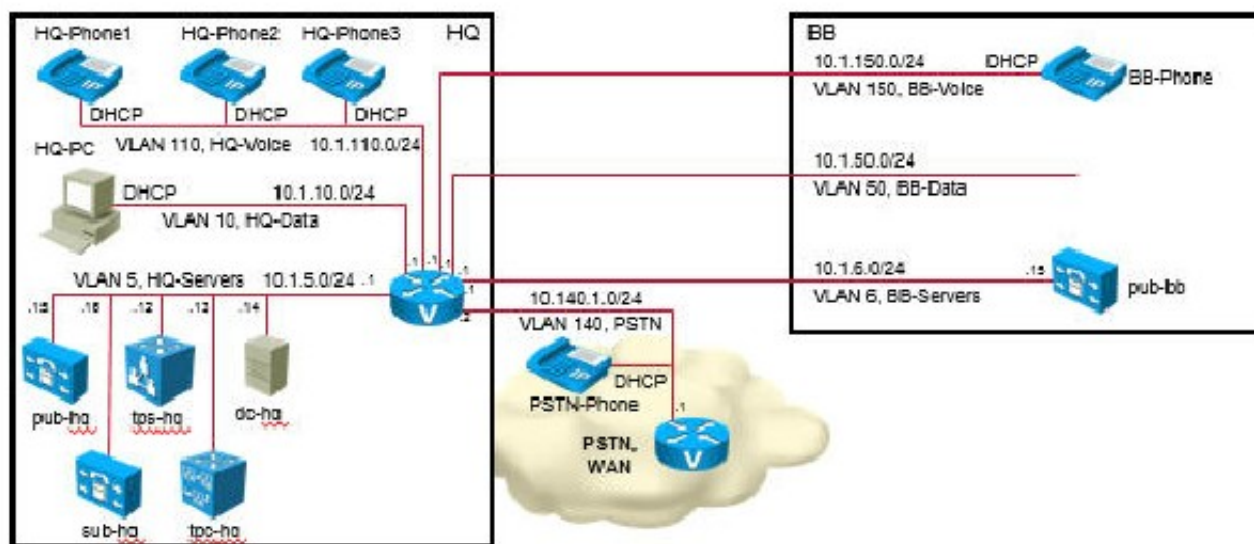


Exhibit2

**Pattern Definition**

Pattern Usage: Domain Routing

IPv4 Pattern\*: v360.cisco.com

IPv6 Pattern:

Description:

Route Partition: < None >

SIP Trunk/Route List\*: Trunk-VCS (Edit)

☐ Block Pattern

Exhibit3

**Trunk Configuration**

Save Delete Reset Add New

**Destination**

☐ Destination Address is an SRV

Destination Address: 10.1.5.29 Destination Address IPv6: Destination Port: 5060

MTP Preferred Originating Codec\*: 711ulaw

BLF Presence Group\*: Standard Presence group

SIP Trunk Security Profile\*: VCS Non Secure SIP Trunk Profile

Rerouting Calling Search Space: < None >

Out-Of-Dialog Refer Calling Search Space: < None >

SUBSCRIBE Calling Search Space: < None >

SIP Profile\*: Standard SIP Profile (View Details)

DTMF Signaling Method\*: RFC 2833

Exhibit4

Name	Type	Calls	Bandwidth used	H323 status	SIP status	Search rule status
DefaultZone	Default zone	0	0 kbps	On	On	
UCM	Neighbor	0	0 kbps	Off	Active	Enabled search rules: 2

Exhibit5

tvcs: Event="Call Rejected" Service="SIP" Src-ip="10.1.5.29" Src-port="5060" Src-alias-type="SIP" Src-alias="sip:2001@10.1.5.29" Dst-alias-type="SIP" Dst-alias="sip:sx20-p16@v360.cisco.com" Call-serial-number="9183df89-ebd2-46c6-86ed-bbb6c2f68b43" Tag="3ff200fd-8a4e-4260-a7a1-65f6a5f86ca6" Detail="Not Found" Protocol="TCP" Response-code="404" Level="1" UTCtime="2015-02-12 21:22:47.131"

Exhibit6

Priority	Rule name	Protocol	Source	Authentication required	Mode	Pattern type	Pattern string	Pattern behavior	On match	Target	State	Actions
50	LocalZoneMatch	Any	Any	No	Any alias				Continue	LocalZone	Disabled	ViewEdit   Clone
100	UCM	Any	Any	No	Any alias				Continue	UCM	Enabled	ViewEdit   Clone
100	UCM2	SIP	Any	No	Alias pattern match	Regex	2...	Leave	Stop	UCM	Enabled	ViewEdit   Clone

Exhibit7

tvcs: Event="Call Disconnected" Service="SIP" Src-ip="10.1.150.11" Src-port="5061" Src-alias-type="SIP" Src-alias="sip:sx20-p16@v360.cisco.com" Dst-alias-type="SIP" Dst-alias="sip:2001@v360.cisco.com" Call-serial-number="3045badb-7615-4a8a-b64a-98ad237497fc" Tag="2a8d5d57-8f8f-4e37-a817-7d4160affa3b" Protocol="TLS" Level="1" UTCtime="2015-02-12 21:37:29.082"

tvcs: Event="Call Disconnected" Service="SIP" Src-ip="10.1.5.29" Src-port="5073" Src-alias-type="SIP" Src-alias="sip:sx20-p16@v360.cisco.com" Dst-alias-type="SIP" Dst-alias="sip:2001@v360.cisco.com" Call-serial-number="280ddd00-3d67-4482-adb4-2c2587061def" Tag="2a8d5d57-8f8f-4e37-a817-7d4160affa3b" Protocol="TLS" Level="1" UTCtime="2015-02-12 21:37:28.614"

tvcs: Event="Search Completed" Service="SIP" Src-alias-type="SIP" Src-alias="sx20-p16@v360.cisco.com" Dst-alias-type="SIP" Dst-alias="sip:2001@v360.cisco.com" Call-serial-number="3045badb-7615-4a8a-b64a-98ad237497fc" Tag="2a8d5d57-8f8f-4e37-a817-7d4160affa3b" Detail="found true, searchtype INVITE" Call-routed="YES" Level="1" UTCtime="2015-02-12 21:37:18.592"

tvcs: Event="Call Connected" Service="SIP" Src-ip="10.1.150.11" Src-port="5061" Src-alias-type="SIP" Src-alias="sip:sx20-p16@v360.cisco.com" Dst-alias-type="SIP" Dst-alias="sip:2001@v360.cisco.com" Call-serial-number="3045badb-7615-4a8a-b64a-98ad237497fc" Tag="2a8d5d57-8f8f-4e37-a817-7d4160affa3b" Protocol="TLS" Call-routed="YES" Level="1" UTCtime="2015-02-12 21:37:18.592"



Priority	Rule name	Protocol	Source	Authentication required	Mode	Pattern type	Pattern string	Pattern behavior	On match	Target	State	Actions
50	LocalZoneMatch	Any	Any	No	Any alias				Continue	LocalZone	Enabled	<a href="#">View/Edit</a>   <a href="#">Clone</a>
100	UCM	Any	Any	No	Any alias				Continue	UCM	Enabled	<a href="#">View/Edit</a>   <a href="#">Clone</a>
100	UCM2	SIP	Any	No	Alias pattern match	Regex	2...	Leave	Stop	UCM	Disabled	<a href="#">View/Edit</a>   <a href="#">Clone</a>

a Call from a SX20 in the BackBone (not shown) with a URI extension is dialing a HQ Ph 1 that is registered to the HQ CUCM. Determine if the call fails and if so, what are the two causes? (Choose two).

- A. The call succeeds.
- B. The call fails.
- C. There are no issues, so the call succeeds.
- D. The SIP port is incorrect on the Cisco Unified Communications Manager CUCM SIP trunk.
- E. The Local Zone Match Rule state is disabled.
- F. Rule name UCM2 is set to stop on Match

**Answer:** AC

#### NEW QUESTION 178

Which Cisco Unified Communications Manager troubleshooting tool can be used to look at detailed specific Events, such as dial plan digit analysis, as they are happening?

- A. RTMT real-time trace
- B. Cisco Unified Dialed Number Analyzer
- C. syslog output
- D. RTMT performance log viewer

**Answer:** B

**Explanation:** Reference: [https://www.cisco.com/c/en/us/td/docs/voice\\_ip\\_comm/cucm/dna/8\\_6\\_1/dnaguide/dnai.html](https://www.cisco.com/c/en/us/td/docs/voice_ip_comm/cucm/dna/8_6_1/dnaguide/dnai.html)

#### NEW QUESTION 179

Refer to Exhibit:

2015/02/09 11:13:27.672[SIP]0(TCP)IN[10.1.5.25]5060[SEP8478ACE71D1F]10.1.111.3[50740]1,100,14,146,30*10.1.111.3**[1728478ace7-1d1f0005-43f1b7ba-45b75221b@10.1.111.3]INVITE
2015/02/09 11:13:27.672[SIP]0(TCP)OUT[10.1.5.25]5060[SEP8478ACE71D1F]10.1.111.3[50740]1,100,14,146,30*10.1.111.3**[1728478ace7-1d1f0005-43f1b7ba-45b75221b@10.1.111.3]100 Trying
2015/02/09 11:13:29.371[CC]SETUP[2332919623329197]2001[2003]2003
2015/02/09 11:13:29.438[SIP]23329197(TCP)OUT[10.1.5.25]5060[SEP54AEDCF7BC79]10.1.111.2[49499]1,100,14,1,12***[186]b9a7d900-4d9106d9-9-1905010a@10.1.5.25[INVITE
2015/02/09 11:13:29.438[CC]OFFERED[2332919623329197]2001[2003]2003[SEP8478ACE71D1F]SEP54AEDCF7BC79
2015/02/09 11:13:29.538[SIP]23329197(TCP)IN[10.1.5.25]5060[SEP54AEDCF7BC79]10.1.111.2[49499]1,100,14,119,29*10.1.111.2**[186]b9a7d900-4d9106d9-9-1905010a@10.1.5.25[100 Trying
2015/02/09 11:13:29.567[SIP]23329197(TCP)IN[10.1.5.25]5060[SEP54AEDCF7BC79]10.1.111.2[49499]1,100,14,119,29*10.1.111.2**[197]b9a7d900-4d9106d9-9-1905010a@10.1.5.25[180 Ringing
2015/02/09 11:13:29.670[SIP]23329196(TCP)OUT[10.1.5.25]5060[SEP8478ACE71D1F]10.1.111.3[50740]1,100,14,119,29*10.1.111.2**[192]b9a7d900-4d9106d9-9-1905010a@10.1.5.25[180 Ringing
2015/02/09 11:13:38.651[SIP]23329196(TCP)IN[10.1.5.25]5060[SEP8478ACE71D1F]10.1.111.3[50740]1,100,14,146,45*10.1.111.3**[192]b9a7d900-4d9106d9-9-1905010a@10.1.111.3[CANCEL
2015/02/09 11:13:38.651[SIP]23329196(TCP)OUT[10.1.5.25]5060[SEP8478ACE71D1F]10.1.111.3[50740]1,100,14,146,45*10.1.111.3**[197]b9a7d900-4d9106d9-9-1905010a@10.1.5.25[200 OK
2015/02/09 11:13:38.671[SIP]23329197(TCP)OUT[10.1.5.25]5060[SEP54AEDCF7BC79]10.1.111.2[49499]1,100,14,146,45*10.1.111.3**[197]b9a7d900-4d9106d9-9-1905010a@10.1.5.25[CANCEL
2015/02/09 11:13:38.772[SIP]23329196(TCP)OUT[10.1.5.25]5060[SEP8478ACE71D1F]10.1.111.3[50740]1,100,14,146,45*10.1.111.3**[197]b9a7d900-4d9106d9-9-1905010a@10.1.5.25[Request Cancelled
2015/02/09 11:13:38.774[SIP]23329197(TCP)IN[10.1.5.25]5060[SEP54AEDCF7BC79]10.1.111.2[49499]1,100,14,119,27*10.1.111.2**[200]b9a7d900-4d9106d9-9-1905010a@10.1.5.25[200 OK
2015/02/09 11:13:38.775[CC]RELEASE[2332919623329197]116
2015/02/09 11:13:38.851[SIP]23329197(TCP)IN[10.1.5.25]5060[SEP54AEDCF7BC79]10.1.111.2[49499]1,100,14,119,29*10.1.111.2**[201]b9a7d900-4d9106d9-9-1905010a@10.1.5.25[487 Request Cancelled
2015/02/09 11:13:38.851[SIP]23329197(TCP)OUT[10.1.5.25]5060[SEP54AEDCF7BC79]10.1.111.2[49499]1,100,14,119,29*10.1.111.2**[202]b9a7d900-4d9106d9-9-1905010a@10.1.5.25[ACK

After reviewing the trace in the exhibit, what was the Directory number of the calling party?

- A. 2001
- B. 5010
- C. 1905
- D. 2003

**Answer:** A

#### NEW QUESTION 180

a Company has a headquarters site and a remote site. Cisco Unified Communications Manager acts as a DHCP server. Both sites use their local voice gateways for PSTN calls. At the headquarters site, the PSTN prefix is 9, and the emergency number is 911. At the remote site, the PSTN prefix is 0, and the emergency number is 112. Here are the deployment policies for roaming devices:

- Softphones can roam between two sites.
- A roaming softphone uses the local gateway for all PSTN calls.
- The user keeps home dial habits on a roaming softphone, with the exception of the emergency number. When a headquarters user uses a softphone at the remote site, the administrator notices that the PSTN calls are still going via voice gateway in the headquarters. The administrator enabled Device Mobility in the system parameters and on all phones. What are the next two components that the administrator must check, according to the flow of Device Mobility operation? (Choose two.)

- A. IP address of the softphone
- B. Cisco Unified CM Group
- C. Device Mobility Info
- D. Physical Location
- E. Device Mobility Group

**Answer:** AE

#### NEW QUESTION 183

An endpoint has a SIP trunk configured between Cisco Unified Communications Manager (CUCM) and a Cisco VCS cluster. When a Call is made from a Cisco TelePresence System EX60 that is registered to the Cisco VCS to a Cisco IP Phone 9971 that is registered to CUCM, it rings. But upon picking up the call, ABusy tone is heard. What should be checked to resolve this issue?



- A. CUCM zone on the Cisco VCS.
- B. SIP trunk and phone region settings.
- C. SIP trunk registration.
- D. authentication on the SIP trunk.

**Answer:** B

#### NEW QUESTION 184

Which database replication value indicates that the server no longer has an active logical connection to receive database tables?

- A. 1
- B. 2
- C. 3
- D. 4

**Answer:**

#### NEW QUESTION 189

You configured a Cisco ISR G2 as a SIP gateway, but the gateway does not show that it is registered with Cisco Unified Communications Manager. What is causing this issue?

- A. Cisco Unified Communications Manager does not support SIP gateways.
- B. The gateway does not have the UC license installed.
- C. The gateway does not have Cisco Unified Border Element session licensing.
- D. Cisco Unified Communications Manager does not show a SIP gateway as registered if it is not properly configured.
- E. Cisco Unified Communications Manager never shows a SIP gateway as registered. Even when it is properly configured.
- F. The Cisco ISR G2 cannot be a SIP gateway.

**Answer:** E

#### NEW QUESTION 191

Refer to the exhibit.

```
{output omitted}

controller T1 0/0/0
 framing esf
 linecode b8zs
 cablelength short 133
 pri-group timeslots 1-24
 description PRI to PSTN

interface Serial0/0/0:23
 description PSTN
 no ip address
 encapsulation hdlc
 isdn switch-type primary-ni
 isdn incoming-voice voice
 isdn negotiate-bchan
 no cdp enable

dial-peer voice 210 pots
 destination-pattern 91456.....
 port 0/0/1:23
 prefix 456

{output omitted}
```

Local 10-digit dialing in the North American Numbering Plan to area Code 456 is failing. Which two changes are needed to enable 10-digit dialing? (Choose two.)

- A. Change dial peer 210 to destination-pattern 456.....
- B. Change dial peer 210 to destination-pattern 9456.....
- C. Change dial peer 210 to port 0/0/0:23.
- D. Remove the command prefix 456 from dial peer 210.

**Answer:** BC

#### NEW QUESTION 194

Refer to the exhibit.

SIP/ 2.0 503 Service Unavailable Via: SIP/ 2.0/TCP 10.10.10.10:  
5060;branch=z9hG4bK954956da2012413dfb6ef80d6bc9e373.1; rportFrom:  
<sip:2000@10.100.250.3>;tag=47c3821d0db85e1aTo:  
<sip:3000@10.100.250.3>;tag=176762~44dd1c5b-eda9-42cd-c53a-  
27cb5234b711-21373445Date:  
Sat, 15 Apr 2017 11:10:05 GMTCall-ID:  
d14ce1bdcddfd063fa4de654fab32cdCSeq: 100 INVITEAllow-Events:  
presenceReason: Q.850;cause=47Content-Length:0

An engineer is troubleshooting a video audio issue where the video endpoint logs are showing this error message. Which two actions must the engineer take to fix the issue? (Choose two.)

- A. Assign the transcoder to the MRGL, which is in turn assigned to the MRG; apply the MRG to the endpoint device pool of the video.
- B. Assign the transcoder to the MRG, which is in turn assigned to the MRGL; apply the MRGL directly to the endpoint of the video.
- C. Assign the transcoder to the MRGL, which is in turn assigned to the MRG; apply the MRG directly to the endpoint of the video.
- D. Assign the transcoder to the MRG, which is in turn assigned to the MRGL; apply the MRGL to the video's endpoint device pool.
- E. Assign the transcoder directly to the endpoint of the video.

**Answer:** AE

#### NEW QUESTION 195

In Cisco Unified Communications Manager, what is the default maximum number of learned patterns for the call control discovery feature parameter?

- A. 5000
- B. 10000
- C. 20000
- D. 500
- E. 50000

**Answer:** C

#### NEW QUESTION 196

After an IP Phone gets IP address information from DHCP, what is the next step in the initialization process?

- A. CTL and ITL files are downloaded.
- B. The phone requests its VLAN information.
- C. The DHCP offer is sent from the phone
- D. The TFTP server is contacted for configuration information.
- E. Nothing else is required, the phone is operational at this stage

**Answer:** D

#### NEW QUESTION 200

Cisco TelePresence System EX90-A and EX90-B are in a Call. EX90-A tries to call EX90-C. When the call is dialed, EX90-B is put on hold. EX90-A and EX90-C are connected, but there is no merge button on the touch panel. What is causing this issue?

- A. The multisite option key is missing.
- B. The multisite configuration is missing.
- C. The conference option key is missing.
- D. The conference configuration is missing.
- E. CiscoTelePresence systems cannot make multipoint calls without a Cisco TelePresence Server.
- F. The multipoint option key is missing.

**Answer:** A

#### NEW QUESTION 202

An engineer encounters an issue where a customer wants to enable multiple Cisco Telepresence conference bridges, but can enable only one. Which option is the cause of this issue?

- A. No valid release key is installed on the TS Conductor.
- B. TS Conductor can support only one conference bridge.
- C. Conference bridge in Cisco Unified Communications Manager under Diagnostics > Conference Bridge is not enabled.
- D. All conference bridges are not added in media resources under MRG in Cisco Unified Communications Manager.

**Answer:** D

#### NEW QUESTION 205

Where do you configure the phone book provisioning synchronization for an endpoint that is reentered to Cisco VCS?

- A. in Cisco Unified Communications Manager, under the SIP trunk to Cisco VCS
- B. on the Cisco Express C
- C. in the Cisco TelePresence Management suite in the Cisco VCS configuration
- D. on the Cisco VCS Expressway
- E. on the Cisco VCS Control

F. in the Cisco TelePresence Management Suite under Administration > Provisioning

**Answer:** F

#### NEW QUESTION 207

Which two behaviors are correct when Cisco Unified CM has a CallManager group that consists of two subscribers? (Choose two.)

- A. If a subscriber is rebooted, endpoint registrations switch to the other subscriber, then switch back when the rebooted subscriber is back in service.
- B. Endpoints attempt to register with both subscribers in a load-balanced method
- C. If a subscriber is rebooted, endpoints deregister until the rebooted subscriber is back in service
- D. Endpoints attempt to register with the bottom subscriber in the list
- E. Endpoints attempt to register with the top subscriber in the list

**Answer:** AE

#### NEW QUESTION 210

You need to add transcoding support for g711alaw between two different sites. The current configuration is as follows:

```
dspfarm profile 1 transcode codec g711 ulaw  
codec g729ar8 codec g729abr8 codec g729br8 codec g729r8 maximum sessions 4  
associate application SCCP
```

Which two steps do you need to take in order to add support for this codec? (Choose two)

- A. Issue the command no associate application SCCP.
- B. Issue the command shutdown under the dspfarm profile.
- C. Add the command codec g711alaw and issue the no shutdown command.
- D. Disassociate the profile under the CCM group.
- E. Add the command codec g711alaw and issue the command no sccp followed by the command sccp.

**Answer:** CE

#### NEW QUESTION 211

When viewing the configuration of Intercluster Lookup Service, this command is used to look up the URI of a remote cluster user:

```
Admin:utils ils lookup user1@acme.com
```

```
Routing string is cucm1.cisco.com
```

Which configuration is required on Cisco Unified Communications Manager, in order to allow routing calls to the URI of this remote cluster user?

- A. SIP route pattern for domain\*.acme.com
- B. SIP trunk with destination cucm1.cisco.com
- C. end user with directory URI user1@acme.com
- D. SIP route pattern for domain\*cisco.com

**Answer:** A

#### NEW QUESTION 212

While you deploy SAF CCD in a remote location, you are unable to enable the SAF CCD service on an Cisco IOS-based device. Which action can you take to troubleshoot the problem?

- A. Verify that Cisco Unity Express is operational.
- B. Verify that IOS Release 15.0(1)M is installed.
- C. Verify that DSP Farm resources are configured on the device.
- D. Verify that the device has sufficient RAM to run SAF CCD.
- E. Verify the integrity of the flash installation.

**Answer:** A

#### NEW QUESTION 217

After a Cisco Unified Communications Manager system is installed, users report problems when more than four users attempt to join a Meet-Me conference. Which parameter should you increase?

- A. Maximum Ad Hoc Conference, Call Manager Service Parameter
- B. Maximum Ad Hoc Conference, Enterprise Parameters Configuration
- C. Maximum Meet-Me Conference, Call Manager Service Parameter
- D. Maximum Meet-Me Conference, Enterprise Parameters Configuration

**Answer:** C

#### NEW QUESTION 219

Replication fails in a large Cisco Unified Communications Manager cluster that contains eight nodes. There are no issues with reachability between cluster nodes, and the utils dbreplication runtimestate command shows “out of sync” or “not requested” statuses. Which reason that is occurring is true?

- A. The replication timeout is too small
- B. Authentication failed on at least one of the nodes
- C. The clock of the Publisher is not synchronized
- D. The tables on one or more nodes are mismatched

**Answer:** A



**NEW QUESTION 222**

Which two fields are required parameters when manually creating users on Cisco Unity Connection with predefined templates? (Choose two.)

- A. username (alias)
- B. extension
- C. first name and last name
- D. employee ID
- E. title

**Answer:** AB

**NEW QUESTION 224**

While troubleshooting a transcoding issue, where you need 32 G.711 to G.729a sessions, you realize the DSP capacity may be undersized. Which two can support your requirement? (Choose two.)

- A. PVDM4-128
- B. PVDM4-32
- C. PVDM4-48
- D. PVDM4-16
- E. PVDM4-64

**Answer:** BE

**NEW QUESTION 225**

As a Voice Administrator, you have configured the Service Advertisement Call Control Discovery (CCD) feature. When you encounter CCD issues, which command would you use on the IOS interface to check all the learned routes on the IOS device?

- A. show eigrp service-family ipv4 topology
- B. show voice safndb all
- C. show ccm-manager
- D. show eigrp service-family ipv4 interfaces
- E. show voice saf client
- F. show voice saf dial-peer outbound

**Answer:** B

**NEW QUESTION 228**

You are configuring the Call Control Discovery feature. You need to configure Hosted DN Group Configuration settings. What is the range of values that you can define in the PSTN Failover Strip Digits field?

- A. 0-10
- B. 0-12
- C. 0-14
- D. 0-16
- E. 0-18
- F. 0-20

**Answer:** D

**NEW QUESTION 230**

Two Cisco DX80 collaboration endpoints that support high-definition video are registered to a Cisco Unified Communications Manager in a single-site deployment model. However, the video that is displayed is pixelated and appears as sub-HD. To enable the Cisco DX80s to make high-definition video calls, which configuration option do you check?

- A. Check the configuration in the Cisco DX80 settings menu, and Enable high-definition video.
- B. Check the Maximum Session Bit Rate for Video Calls in the Cisco Unified Communications Manager Regions Configuration.
- C. Check that Video Capabilities are enabled under the Product Specific Configuration area for the device in Cisco Unified Communications Manager.
- D. Check the DSCP for Video Calls value in the Cisco Unified Communications Manager clusterwide parameters QoS configuration.

**Answer:** B

**NEW QUESTION 232**

Upon completion of a failover task you notice that all the CTI devices are still pointing to the backup server rather than the primary server. How should you resolve this issue?

- A. Stop the CTI Manager Service on the Secondary server so that all devices using CTI register with the primary.
- B. Stop the CTI Manager Service on the Primary server so that all devices using CTI stay registered with the primary CTI server.
- C. Restart the subscriber with the CTI Manager Service on the secondary.
- D. Do nothing and wait for the next failover assuming this will revert back to the primary CTI server.

**Answer:** A

**NEW QUESTION 236**

In a Cisco UCM multisite WAN with centralized call-processing deployment model, what redundancy feature should be configured on remote site routers to supply basic IP telephony services in the event of a WAN outage?

- A. AAR

- B. SRST
- C. CAC
- D. V3PN

**Answer: B**

#### NEW QUESTION 238

Refer to the exhibit.

ACUCM user has been configured to use the Mobility feature and is expecting their home phone 408-555-6016 to ring simultaneously when their office phone is called. What configuration change needs to be made to allow this happen?

- A. Select the Enable Move to Mobile check box.
- B. Select the Enable Extend and Connect check box.
- C. Select the Line Association check box.
- D. Deselect the Enable Single Number Reach check box.

**Answer: C**

#### NEW QUESTION 239

Which set ensures that all SAF clients receive all service advertisements?

A)

```
(config)#router eigrp saf
(config)#service-family ipv4 autonomous –system 208
(config-router-sf)#
(config-router-sf)#sf-interface gigabitEthernet0/0
(config-router-sf)#hello-interval 10
(config-router-sf)#split-horizon
```

B)

```
(config)#router eigrp saf
(config)#service-family ipv4 autonomous –system 208
(config-router-sf)#
(config-router-sf)#sf-interface gigabitEthernet0/0
(config-router-sf)#hello-interval 10
```

C)

```
(config)#router eigrp saf
(config)#service-family ipv4 autonomous –system 208
(config-router-sf)#
(config-router-sf)#sf-interface gigabitEthernet0/0
(config-router-sf)#hello-interval 10
(config-router-sf)#no split-horizon
```

D)

```
(config)#router eigrp saf
(config)#service-family ipv4 autonomous –system 208
(config-router-sf)#
(config-router-sf)#sf-interface gigabitEthernet0/0
(config-router-sf)#hello-interval 50
(config-router-sf)#split-horizon
```

- A. Option A
- B. Option B
- C. Option C
- D. Option D

**Answer: C**

#### NEW QUESTION 241

Refer to the exhibit.

```
!
sccp local Vlan5
sccp ccm 10.10.5.1 identifier 5 version 8.6.2
sccp
!
sccp ccm group 5
bind interface Vlan1
associate ccm 5 priority 1
associate profile 5 register MTPHW1
!
dspfarm profile 5 mtp
codec g711ulaw
codec pass-through
maximum sessions software 500
!
```

You are trying to configure a new Cisco IOS MTP to register with Cisco Unified Communications Manager, but it fails to register. Which two changes are required so that the MTP registers successfully? (Choose two.)

- A. Restart the router.
- B. Bind the interface to Vlan5.
- C. The sccp ccm group should be 1.
- D. Associate the application with SCCP.
- E. Change the maximum sessions to 1.

**Answer:** BD

#### NEW QUESTION 243

A user gets the following error on the IP phone: [205]-User Profile Absent  
What could be the probable cause?

- A. The user profile is missing.
- B. The device profile is not attached to the user.
- C. The Enable Extension Mobility option is not enabled in the phone configuration window.
- D. User ID and password are incorrectly entered on the phone.
- E. User is assigned to another phone.
- F. User is logged on to another phone.

**Answer:** B

#### NEW QUESTION 247

A system administrator observes that settings on an endpoint revert to unknown values every day, without the administrator's knowledge.  
What are two likely causes of this issue? (Choose two.)

- A. Persistent settings on the endpoint are causing the issue.
- B. A persistent template is applied for the endpoint on the TMS.
- C. The external server periodically restores the configuration on the endpoint.
- D. The TMS reverts the configuration backup of the endpoint.
- E. The endpoint can be set periodically revert to a specific configuration.

**Answer:** AD

#### NEW QUESTION 250

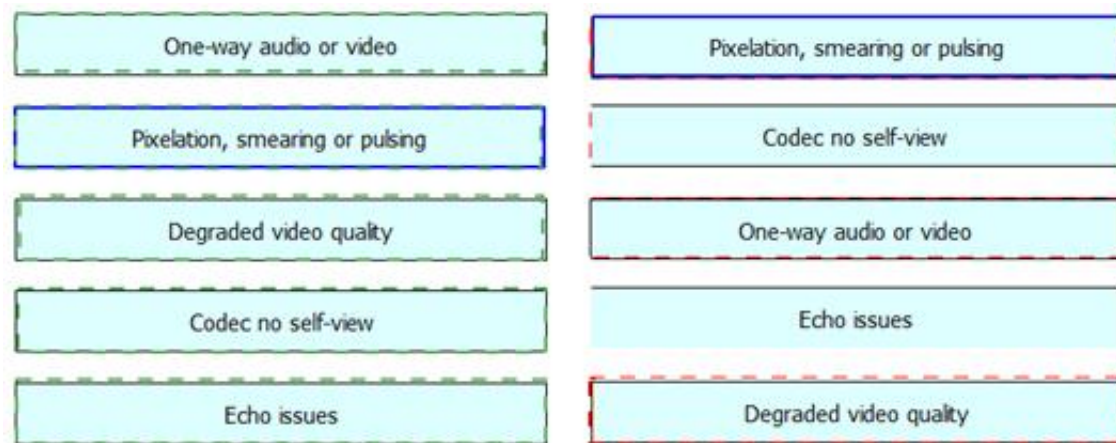
Drag the network-related video issue on the left to its root cause on the right.

One-way audio or video	Different system manufacturers
Pixelation, smearing or pulsing	Firewall with packet inspection enabled
Degraded video quality	Very high noise level
Codec no self-view	Packet loss
Echo issues	Main source is not main camera

**Answer:**

**Explanation:**





#### NEW QUESTION 252

Calls drop right after the called party tries to answer the call. Which of the below reasons is true?

- A. Phone A is using SCCP and phone B is using SIP
- B. Firewall is blocking RTP packets
- C. An incompatible MTP type is allocated to the call
- D. Codec are mismatched between phones

**Answer: D**

#### NEW QUESTION 254

Which Cisco IOS command is used to display information for active connections that are controlled by the Media Gateway Control Protocol?

- A. show mgcp connection
- B. show mgcp statistics
- C. show mgcp endpoint
- D. show mgcp nas

**Answer: A**

#### NEW QUESTION 258

In Cisco Unified Communications Manager (CUCM), the primary Service Advertisement Framework (SAF) forwarder is deleted from the database. If there were total of three SAF forwarders configured, which two will happen next? (Choose two.)

- A. The backup SAF forwarder will automatically become the primary SAF forwarder.
- B. The third SAF forwarder will become the primary SAF forwarder.
- C. The third SAF forwarder will become the backup SAF forwarder.
- D. You need to designate the backup SAF forwarder as the primary SAF forwarder.
- E. Through an election, the backup and the third SAF forwarder will be designated as primary SAF forwarder.
- F. CUCM will wait for the primary SAF forwarder to come alive.

**Answer: AC**

#### NEW QUESTION 263

Refer to the exhibit.

```
#R1
!
interface Loopback0
 ip address 192.168.91.220 255.255.255.255
!
router eigrp saf
!
 service-family ipv4 autonomous-system 1
!
 topology base
  external-client cucm
 exit-sf-topology
 exit-service-family
!
 service-family external-client listen ipv4 5050
  external-client cucm
  username safuser
!
#R1
```

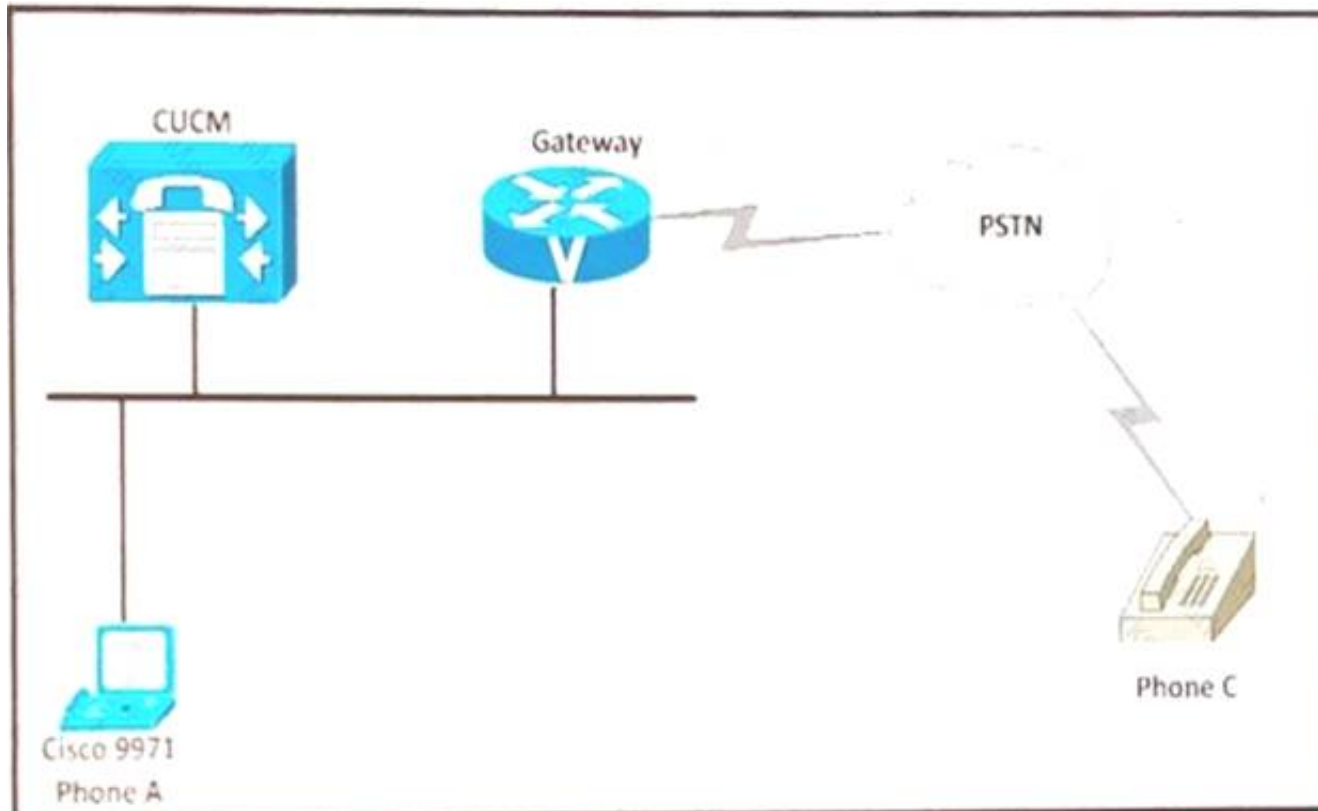
Cisco Unified Communication Manager has been configured with a SAF Security Profile and a SAF Forwarder. In which section of the R1 router configuration should the SAF Forwarder password be entered?

- A. interface loopback 0
- B. router eigrp saf
- C. service-family external client
- D. service-family ipv4

**Answer: C**

#### NEW QUESTION 267

Refer to the exhibit.



When Phone A makes a Call to Phone C, this message is observed Cause i = 0x80C1 – Bearer capability not implemented. How do you resolve this error?

- A. Reset Phone A
- B. Migrate Phone A from SCCP to SIP
- C. Set the bearer capability on the gateway to match the provider capability
- D. Open a Cisco TAC case

**Answer: C**

#### NEW QUESTION 270

You are experiencing bad video quality in calls, and you suspect packet loss in the network. Both the network switch and the collaboration endpoint network interfaces are set to autonegotiation, but the reported port speed and duplex settings do not match. Which action should you take?

- A. Set the collaboration endpoint to use a manual speed and duplex setting of 100 Mbps and Full duplex, and keep the switch port setting as "auto."
- B. Configure the switch port to use a manual speed and duplex setting of 100 Mbps and half duplex, and keep the collaboration endpoint setting as "auto."
- C. Keep both the switch port and collaboration endpoint settings as "auto," because this configuration is not responsible for the mismatched settings that were reported.
- D. Set both the collaboration endpoint and the switch port to use manual speed and duplex settings of 100 Mbps and Full duplex.

**Answer: D**

#### NEW QUESTION 273

Which two tasks are performed by the RAS signaling function of H.225.0? (Select two.)

- A. Performs bandwidth changes.
- B. Transports audio messages between endpoints.
- C. Performs disengage procedures between endpoints and a gatekeeper.
- D. Allows endpoints to create connections between call agents.

**Answer: AC**

#### NEW QUESTION 275

Refer to the exhibit.

Conference 1
Refresh
Collapse all
Expand all

ActiveControl Mode
Auto

CallProtocolIPStack
IPv4

Encryption Mode
BestEffort

IncomingMultisiteCall Mode
Allow

MaxReceiveCallRate
6000
(64 to 6000)

MaxTotalReceiveCallRate
10000
(64 to 10000)

MaxTotalTransmitCallRate
10000
(64 to 10000)

MaxTransmitCallRate
6000
(64 to 6000)

MicUnmuteOnDisconnect Mode
On

Multipoint Mode
MultiSite

AutoAnswer

Delay
1
(0 to 50)

Mode
On

Mute
On

DefaultCall

Protocol
Sip

Rate
6000
(64 to 6000)

You are trying to establish a multipoint call via a Cisco TelePresence SX20 that is registered to Cisco Unified Communications Manager. When you attempt to bring a third party into the call, you receive an error that the call cannot be completed. You confirm that your MCU resources are configured correctly on Cisco Unified Communications Manager and that other devices are able to establish multipoint calls. What is the cause of this issue?

- A. The multipoint mode should be set to Multiway.
- B. The call protocol should be H.323.
- C. The MCU is at capacity.
- D. The multipoint mode should be set to Cisco Unified Communications Manager Resource Group.
- E. The multipoint mode should be set to None.

**Answer:** D

#### NEW QUESTION 277

Users are complaining of problems when they make SIP calls by dialing URIs. To help users complete calls, what must you do?

- A. Adjust the URI lookup policy to case desensitive.
- B. Adjust the URI lookup policy to case sensitive.
- C. Adjust the URI lookup policy to case insensitive.
- D. Adjust the URI lookup policy to case nonsensitive.

**Answer:** C

#### NEW QUESTION 281

Cisco Unified Communications Manager is configured to collect H.245 and H 225 traces through the Cisco Serviceability web interface. What do you use to download and view the trace files?

- A. Cisco Unified OS Administration
- B. Cisco Unified Serviceability
- C. Bulk Administration > upload/DownloadDFiles
- D. Cisco Unified Real-Time monitoring Tool

**Answer:** D

#### NEW QUESTION 282

A network administrator for the ACME Corporation is adding a new remote site to the existing network infrastructure. DHCP is already provisionedFor this site. When the administrator connects the Cisco IP phone to the network, the phone keeps displaying the word "Registering." The administrator is able to ping the phone's IP address from a laptop. Which two actions should the administrator take to troubleshoot the problem? (Choose two.)

- A. Check DHCP option 150.
- B. If a laptop is connected to the PC port, check whether the network driver on the PC is up to date.
- C. Check network connectivity between IP phone at the remote site and Cisco Unified Communications Manager server at the main site.
- D. Check the NTP configuration on the phone.
- E. Check DHCP option 67.

**Answer:** BC

#### NEW QUESTION 283

You have installed a Cisco Unified IP 8831 Conference Phone that is failing to register. Which two actions must you take to troubleshoot the problem? (Choose



two)

- A. Verify that the RJ-11 cable is plugged into the PC port.
- B. Verify that the phone's network can access the option 150 server.
- C. Disable HSRP on the access layer switch.
- D. Verify that the correct drivers are installed on the switch port of the phone.
- E. Verify that the switch port of the phone is enabled.
- F. Check the RJ-65 cable.

**Answer:** BE

#### NEW QUESTION 284

Refer to the exhibit.

```
00004894.001 |17:15:59.826 |AppInfo |Digit Analysis: star_DaReq:
    daReq.partitionSearchSpace(), filteredPartitionSearchSpaceString(),
partitionSearchSpaceString()
00004894.002 |17:15:59.826 |AppInfo |Digit Analysis: star_DaReq: Matching
Legacy
    Numeric, digits=2
0004894.003 |17:15:59.826 |AppInfo |Digit Analysis: getDaRes data:
daRes.ssType=[0]
    Intercept DAMR.sstype=[0], TPcount=[0], DAMR.NotifyCount=[0],
DaRes.NotifyCount=[0]
00004894.004 |17:15:59.826 |AppInfo |Digit Analysis: getDaRes - Remote
Destination []
isURI[1]
00004894.005 |17:15:59.826 |AppInfo |Digit analysis: patternUsage=2
00004894.006 |17:15:59.826 |AppInfo |Digit analysis:
match(pi="2",fqcn="1000",
cn="1000", plv="5", pss="", TodFilteredPss="", dd="2", dac="0")
00004894.007 |17:15:59.826 |AppInfo |Digit analysis:
potentialMatches=NoPotentialMatchesExist
```

a Cisco Unified Communications Manager engineer configured CCD in two clusters. The patterns were successfully learned, however, the call attempt from the cluster 1 agent to the cluster 2 agent fails. Based on the output of this cluster 1 trace, what is the root cause of the issue?

- A. The CCD partition is missing from the CCD Requesting Service configuration
- B. The CSS is missing from the phones and line configuration
- C. The Activated Feature check in the CCD Requesting Service configuration is missing
- D. The pattern that was dialed has been added to the Blocked Learned Pattern configuration

**Answer:** B

#### NEW QUESTION 287

Refer to the exhibit.

```
dspfarm profile 1 mtp
  codec g711ulaw
  maximum sessions software 100
  associate application SCCP
```

Media Termination Point is required when the H.264 codec-capable video endpoints route calls via a specific Cisco Unified Communications Manager SIP trunk, in order to provide DTMF interworking capabilities. In the exhibit, a designated IOS Software MTP is configured. However, calls establish as audio only when using this particular MTP. Which codec is missing from this IOS MTP configuration?

- A. codec pass-through
- B. codec h264 cif
- C. codec h263 cif
- D. codec h264 720p

**Answer:** A

#### NEW QUESTION 289

A network administrator is troubleshooting a support ticket with ID33118456 regarding video bandwidth issues. On a Cisco TelePresence VCS, the administrator can configure bandwidth control for which two VCS configuration options? (Choose two)

- A. links and pipes
- B. subzones
- C. CPL
- D. Bandwidth restrictions can be configured only on endpoints.
- E. zones

**Answer:** AB

#### NEW QUESTION 291

You are configuring Troubleshooting Perfmon Data-Logging parameters.

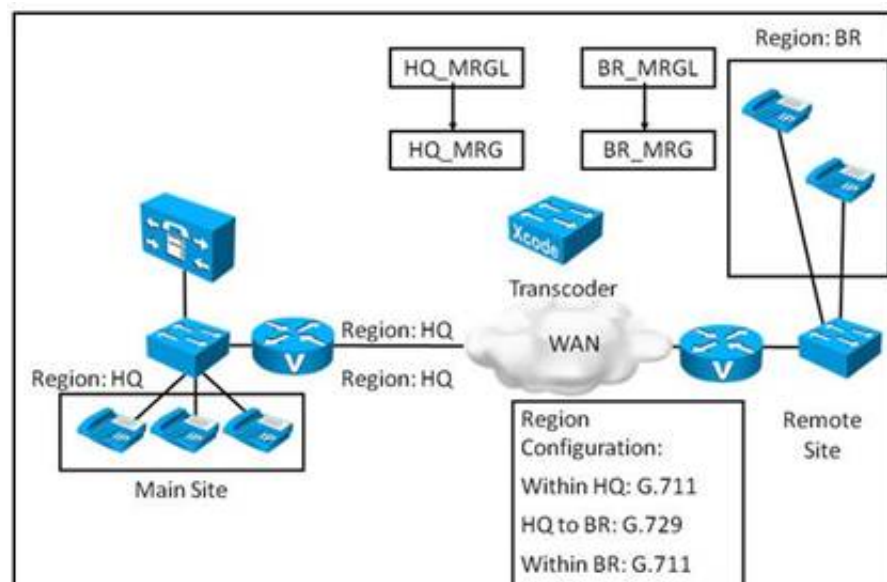
You want to specify the Cisco recommended File size that can be stored in a perfmon log file. What is the maximum file size value that you must specify?

- A. 5 MB
- B. 50 MB
- C. 100 MB
- D. 150 MB
- E. 500 MB
- F. 600 MB

**Answer: C**

#### NEW QUESTION 295

Refer to the exhibit.



HQ\_MRGL is assigned to the HQ IP phones BR\_MRGL is assigned to the BR IP phones. The remote site BR IP phones only support G.711 codec. When a Call is placed From an HQ phone to ABR phone, the call fails. Which statement indicates how this issue is resolved?

- A. Configure the transcoder at the HQ site and assign it to HQ\_MRG
- B. A transcoder is not needed
- C. The HQ phones will automatically change over to G.711 codec.
- D. The transcoder should be assigned to its own MRG, which should then be assigned to the default device pool at HQ.
- E. Configure the transcoder at the BR site and assign it to BR\_MRG

**Answer: D**

#### NEW QUESTION 297

What is the default directory format that you need to specify for Default TFTP MOH File Path field on the Cisco Unified Communications Manager (CUCM) server?

- A. \MoH
- B. \TFTPPATHMoH
- C. \TFTPPATH
- D. \MoHTFTPPATH
- E. \TFTPPATHMoHFiles
- F. \MoHFiles

**Answer: C**

#### NEW QUESTION 298

Partitions can be assigned to which two items? (Choose two)

- A. directory numbers
- B. trunks
- C. devices
- D. gateways
- E. IP phones

**Answer: AD**

#### NEW QUESTION 301

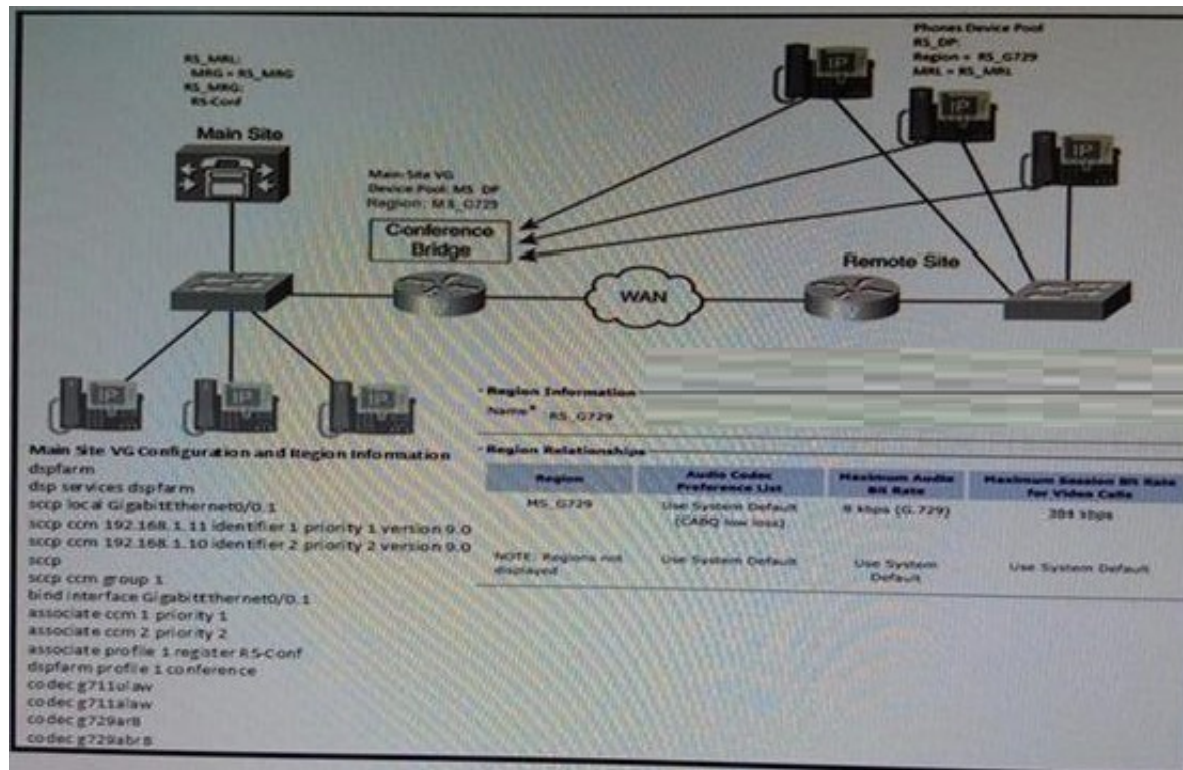
You have configured a new MGCP gateway on your Cisco Unified Communications Manager servers but the endpoints are shown with status "None". What are two possible solutions for this registration issue? (Choose two)

- A. Configure the voice-VLAN interface of the MGCP gateway with mgcp-gateway voip interface command to set the source IP address of the MGCP packets correctly.
- B. Ensure that you have configured the mgcp call-agent command with the Cisco Unified Communications Manager server address or hostname.
- C. Enable the endpoint voice interface for backhauling in interface configuration mode with the isdn bind-l3 ccm-manager command
- D. Ensure that you have configured the ccm-manager call-agent command with the correct Cisco Unified Communications Manager server address or hostname.
- E. Activate the MGCP Feature service on all call-processing servers in the cluster.

**Answer: BD**

### NEW QUESTION 305

Refer to the Exhibit.



What happens if the three phones at the remote site try to establish a Conference call with each other?

- A. The call fails, because the main site conference bridge is not registered with CUCM
- B. The call establishes and uses codec G.711 because the main site VG is configured to use codec
- C. 711 as the preferred codec.
- D. The call fails, because the main site VG cannot support three participants in a Conference call.
- E. The call establishes and uses codec G.729, because the RS region is set to use codec G.729 with the MS region in CUCM

**Answer: D**

### NEW QUESTION 310

Refer to the exhibit.

```

Received
SIP/2.0 503 Service Unavailable
Via: SIP/2.0/UDP 192.168.1.1:5060;branch=z9hG4bK19A240C
From: "Joe Doe" <sip:1002@192.168.1.4>;tag=C865BC-1D1
To: <sip:4001@192.168.1.3>;tag=129582830
Date: Wed, 28 Oct 2015 15:34:25 GMT
Call-ID: E5195C1E-7CBF11E5-8376C4E8-E4AE0459@192.168.1.1
Cseq: 101 INVITE
Allow-Events: presence
Warning: 399 INT-CUCM"Unable to find a device handler for the request received on port 54394 from 192.168.1.1"
Content-Length: 0
  
```

ACustomer has two Cisco Unified Communications Manager clusters (NY and CAL). The customer recently tried to enable intercluster communication between these clusters. When NY users call CAL, they get a fast-busy tone. A network administrator collects Cisco CallManager traces and sees the displayed SIP message coming from the remote Cisco Unified Communication Manager (CAL cluster). What is a likely reason for this?

- A. Cisco CallManager service is shut down on the CAL cluster.
- B. The SIP service is shut down on the CAL cluster.
- C. The SIP trunk on the CAL cluster is configured incorrectly.
- D. Cisco CTI Manager service is shut down on the CAL cluster.
- E. The remote Cisco IP phone is not registered.

**Answer: E**

### NEW QUESTION 311

Users on your network report fast busy signals when they attempt to place calls. While troubleshooting, you verify that the codecs are configured correctly and determine that the network carries up to 200 concurrent calls at different times of the day. Which two actions correct the problem? (Choose two)

- A. Add more Cisco Unified Communications Managers to the cluster.
- B. Add more DSPs to the NM-HD
- C. Increase the number of sessions to the maximum allowed by system resources.
- D. Implement an SRST-CMF gateway to improve resource allocation.
- E. Add a Cisco Catalyst switch to the environment to increase port density
- F. Bind the network PRIs to add additional bandwidth

**Answer: CF**



**NEW QUESTION 316**

A user takes an IP phone from one office to another and just called you to inform that the phone does not work in the new location. Which three things should you check to resolve the issue? (Choose three)

- A. Make sure that the device mobility information contains the correct IP subnet information.
- B. Make sure that physical locations are properly assigned under device pools.
- C. Recreate the phone under a new cluster.
- D. Make sure that the device pool is assigned to a device mobility group.
- E. Reconfigure the remote destination profile.
- F. Check whether the phone is registered under a different MAC address.
- G. Check the local DHCP information for possible clues.

**Answer:** ABG

**NEW QUESTION 319**

An engineer integrated a voice gateway with Cisco Unified Communications Manager using H.323, but the calls through it are failing. Which debug command helps isolate this issue?

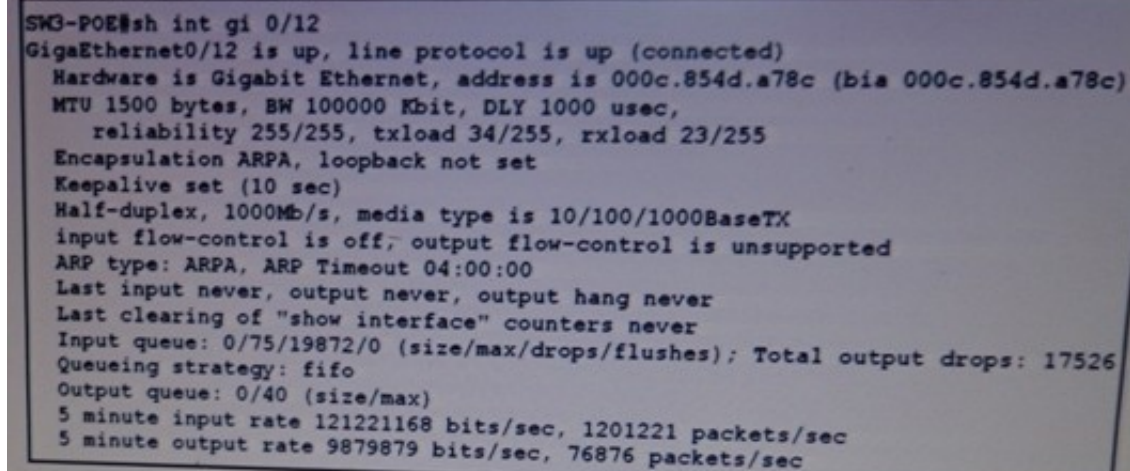
- A. debug call-mgmt
- B. debug ras
- C. debug voip ccapi inout
- D. debug mgcp errors
- E. debug ccsip error

**Answer:** C

**NEW QUESTION 320**

An engineer configured a Cisco TelePresence server with two Cisco acquired Codian devices. Users are reporting that the image looks frozen and the audio contains static and is garbled on one of the devices. What is the root cause of the issue?

Refer to the exhibit.



```
SW3-POE#sh int gi 0/12
GigaEthernet0/12 is up, line protocol is up (connected)
  Hardware is Gigabit Ethernet, address is 000c.854d.a78c (bia 000c.854d.a78c)
  MTU 1500 bytes, BW 100000 Kbit, DLY 1000 usec,
    reliability 255/255, txload 34/255, rxload 23/255
  Encapsulation ARPA, loopback not set
  Keepalive set (10 sec)
  Half-duplex, 1000Mb/s, media type is 10/100/1000BaseTX
  input flow-control is off, output flow-control is unsupported
  ARP type: ARPA, ARP Timeout 04:00:00
  Last input never, output never, output hang never
  Last clearing of "show interface" counters never
  Input queue: 0/75/19872/0 (size/max/drops/flushes); Total output drops: 17526
  Queueing strategy: fifo
  Output queue: 0/40 (size/max)
  5 minute input rate 121221168 bits/sec, 1201221 packets/sec
  5 minute output rate 9879879 bits/sec, 76876 packets/sec
```

- A. There is a mismatch in the port configuration.
- B. The input flow control is off.
- C. The QoS that is configured on the port is set to FIFO
- D. There are packet drops in the ingress queues

**Answer:** D

**NEW QUESTION 321**

As administrator replaced a faulty IP phone with a new one by replacing the hardware and Editing the phone MAC address in the device configuration in Cisco Unified Communications Manager.

When the administrator tries to save the configuration, the old MAC address still appears under the device configuration. What is the most likely cause of this issue?

- A. The administrator does not have full access privileges in Cisco Unified Communications Manager.
- B. The administrator must edit the new phone MAC address under the Phone Enterprise settings page.
- C. The Cisco Unified Communications Manager needs to be enabled for autoregistration.
- D. The subscriber the phone is registered to may have database replication issues.
- E. The MAC address for the new IP phone must be configured in the publisher instead of the subscriber.

**Answer:** D

**NEW QUESTION 326**

A Company has a headquarters and a remote site. Cisco Unified Communications Manager (CUCM) acts as a DHCP server. Both sites use their local voice gateways for PSTN calls. At the headquarters site, the PSTN prefix is 9, and the emergency number is 911. At the remote site, the PSTN prefix is 0, and the emergency number is 112. Here are the deployment policies for roaming devices:

- Softphones can roam between two sites.
- A roaming softphone uses the local gateway for all PSTN calls.
- The user keeps home dial habits on a roaming softphone, with the exception of the emergency number. When a headquarters user uses a softphone at the remote site, prefix 9 can be used to make PSTN calls via voice gateway in the remote site, but emergency number 112 does not work. Which setting on CUCM should be checked?

- A. Device Mobility Group

- B. Physical Location
- C. DHCP subnet
- D. Device Mobility Info

**Answer:** D

#### NEW QUESTION 327

In a SIP direct call setup, the originating UAC sends what message to the UAS of the recipient?

- A. INVITE
- B. RINGING
- C. ACK
- D. OK

**Answer:** A

#### NEW QUESTION 329

A user is trying to call a mobile phone using the number 547895341, where 5 is the prefix to can off-net numbers. Calls to mobile phones have worked in past, but now the call does not work. Which three areas should you check, to resolve the issue? (Choose three)

- A. Verify that the Cisco Unified Border Element is running.
- B. Verify the search pattern.
- C. Verity the route pattern, route list, and route group.
- D. Check that Cisco VCS Control and Cisco VCS Express are getting through the firewall.
- E. Verify that me PSTN line is connected to the cisco Unified Communications Manager.
- F. Verify that the connection to anDFrom the Cisco Unified Border Element is good.

**Answer:** ACE

#### NEW QUESTION 331

Refer to the exhibit.

```
SIP URL, Alphanumeric User, uri=JOE @cisco.com
28022445.003 |16:03:40.531 |AppInfo |Digit Analysis: star_DaReq: Matched
URI in remoteroutingpatternable.uri = JOE @cisco.com, routeString=Americas
28022445.004 |16:03:40.531 |AppInfo |star_DaReq: Attempt Match on Route
String Host: Americas
28022445.005 |16:03:40.531 |AppInfo |star_DaReq: new ils callableEndpoint
28022445.006 |16:03:40.531 |AppInfo |star_DaReq: sendDMPidReq
28022446.000 |16:03:40.531 |SdISig |DmPidReq |initialized
|DeviceManager(2,100,205,1) |Da(2,100,211,1)
|2,100,14,1042.580^172.24.18.24^SEP1CDF0F772424 |[T:N-
H:0,N:0,L:0,V:0,Z:0,D:0] Cepn=Id=3832024920
28022447.000 |16:03:40.531 |SdISig |DmPidErr |wait
|Da(2,100,211,1) |DeviceManager(2,100,205,1)
|2,100,14,1042.580^172.24.18.24^SEP1CDF0F772424 |[R:N-
H:0,N:0,L:0,V:0,Z:0,D:0] Cepn=Id=3832024920 Pid=0,0,0,0
28022448.000 |16:03:40.531 |SdISig |DaRes |setup_da
|Cdcc(2,100,219,5315) |Da(2,100,211,1)
|2,100,14,1042.580^172.24.18.24^SEP1CDF0F772424 |[R:N-
H:0,N:0,L:0,V:0,Z:0,D:0] CI=37720843 Block NoPotentialMatchesExist
OnNetpatternUsage=28requestID=0
28022449.000 |16:03:40.531 |SdISig |CcDisconnReq
```

A network administrator in Cisco recently configured ILS in the network. The administrator attempted a Call to Joe's SIP URI (JOE@cisco.com), but the call failed. The administrator collected Cisco CallManager traces using Cisco Unified Communications Manager RTMT. What should the administrator do to solve this issue?

- A. Create a route pattern for "americas" to route out the SIP trunk that is configuredFor the remote ILS cluster.
- B. Joe's phone is currently using the SIP protoco
- C. Change the protocol to SCCP.
- D. Use the utils dbreplication reset all command to synchronize databases between ILS clusters.
- E. Check the "MTP Required" check box on the ILS trunk.

**Answer:** A

#### NEW QUESTION 336

Which two statements about software MTP devices are true? (Choose two.)

- A. The RTMT can monitor the number of registered and in-use MTPs.
- B. A single MTP can register with multiple Cisco Unified Communications Managers.
- C. Each server can support up to four instances of the Cisco IP Voice Media Streaming Application.
- D. The Cisco IP Voice Media Streaming Application can reduce the performance of the Cisco Unified Communications Manager if it is installed on the same server.
- E. When you configure and restart the MTP, the changes are applied immediately to active calls.
- F. When you configure and reset the MTP, the changes are applied immediately to active calls.

**Answer:** AE

#### NEW QUESTION 337

Which three items are displayed on the endpoint registration verification page in Cisco VCS? (Choose three.)

- A. E.164 address
- B. endpoint name
- C. endpoint MAC address
- D. endpoint registration status
- E. device description
- F. device type
- G. device pool

**Answer:** ABF

#### NEW QUESTION 338

In a Cisco UCM multisite WAN with centralized call-processing deployment model, what redundancy feature should be configured on remote site routers to provide basic IP telephony services in the event of a WAN outage?

- A. AAR
- B. SRST
- C. CAC
- D. V3PN

**Answer:** B

#### NEW QUESTION 343

An administrator decides to factory reset a Cisco TelePresence System EX90 after the log analysis failed to provide the reason for an intermittent one-way audio issue.

What can the Administrator expect after the reset is performed?

- A. The release keys and option keys are deleted.
- B. The release keys and option keys are preserved.
- C. The system needs to be manually powered up after the factory reset.
- D. The call logs are preserved.

**Answer:** C

#### NEW QUESTION 347

You need to collect debug Information in a production environment on urgent basis to troubleshoot a problem. Which two commands are recommended by Cisco that you should run?

(Choose two.)

- A. no debug all
- B. undebug all
- C. no logging console
- D. logging buffered
- E. show debug
- F. show logging info

**Answer:** CD

#### NEW QUESTION 351

An engineer notices that some SCCP phones are not displaying the correct time, but the phones are registered and working properly. Which three options should be performed in Cisco Unified Communications Manager to fix the phone time issue? (Choose three.)

- A. Verify that the device pool has the coned Date/Time Group configured.
- B. Ensure that the phone on time field on the phone configuration page is chosen.
- C. Check the CUCM OS Admin page to ensure that NTP servers are accessible.
- D. Verify that the Date/Time Group has the correct phone NTP reference configured.
- E. Check the phone NTP Reference configuration for configured server.
- F. Verify that the Date/Time group has the correct time zone configured.

**Answer:** ADF

#### NEW QUESTION 356

The CLI command `utils dbreplication reset all` was run on a Cisco Unified Communications Manager. However, replication failed to restart. Which course of action should be taken to resolve this issue?



- A. Issue the CLI command `utils dbreplication clusterreset`.
- B. Issue the CLI command `utils dbreplication reset`.
- C. Restart the replication from the Cisco Unified communications Manager RTMT tool
- D. Issue the CLI command `utils dbreplication runtimestate`.
- E. Issue the CLI command `utils dbreplication clusterreset all`.

**Answer:** C

#### NEW QUESTION 357

A Call transfer from a video phone on Cisco Unified CM to VCS fails. Which is true?

- A. The DTMF signaling method was set to RFC 2833
- B. The UCM security mode was misconfigured
- C. The DTMF signaling method was set to no preference
- D. The SIP trunk between UCM and VCS was reset

**Answer:** A

#### NEW QUESTION 359

Users are making calls from Cisco IP Phones that are registered on a Cisco Unified Communications Manager cluster through an H.323 gateway to the PSTN phones. Sometimes these users report that calls are dropped after they talked for some time. Different Cisco Unified CM servers have been rebooted for testing during production hours. Currently Cisco IOS 12.0 is used on the H.323 gateway. Which change helps to prevent calls from dropping when a Cisco Unified CM server is rebooted during testing?

- A. There is no scenario where rebooting an H.323 gateway will allow call survivability.
- B. Upgrade the gateway Cisco IOS software to a version later than 12.4(4)9T.
- C. A misconfiguration of calling search spaces must exist. Reconfigure the CSS.
- D. A misconfiguration of VoIP dial peers to the Cisco Unified CM servers must exist.
- E. Reconfigure the VoIP dial peers.

**Answer:** A

#### NEW QUESTION 364

Refer to the exhibit.

```
RTR1#  eigrp service-family ipv4 nei det
EIGRP-SFv4 VR(SAF) Service-Family Neighbors for AS(100)
H      Address  Interface    Hold Uptime    SRTT    RTO      Q      Seq
              (sec)          (ms)                Cnt      Num
1  172.17.0.2  Lo0          12  00:00:07    24     300      0       20
Static neighbor
Version 6.0/3.0, Retrans: 1, Retries: 0
Topology-ids from peer - 0
0  1.1.1.2     Se0/1/0.103  14  00:00:10   1593   5000      0       21
      Version 6.0/3.0, Retrans: 0, Retries: 0
      Topology-ids from peer - 0
```

An engineer is troubleshooting a SAF forwarder adjacency in which two interfaces from the same router are being advertised to all other neighbors. Which set of IOS commands successfully stops the router from advertising the Loopback0 interface?

- A. `route eigrp SAFservice-family ipv4 autonomous-system 100 sf-interface Loopback0 no dampening-change`
- B. `router eigrp SAFservice-family ipv4 autonomous-system 100 sf-interface Loopback0 exit-sf-interface`
- C. `router eigrp SAFservice-family ipv4 autonomous-system 100 sf-interface Loopback0 no split-horizon`
- D. `router eigrp SAFservice-family ipv4 autonomous-system 100 sf-interface Loopback0 shutdown`

**Answer:** D

#### NEW QUESTION 366

In a Cisco Unified Communications Manager (CUCM) cluster, you receive a Database Communication Error when you attempt to login to the Publisher server. You need to resolve this issue.

Which two solutions should you try to resolve this issue? (Choose two.)

- A. Revert the changes for hostname or IP address on the Publisher server.
- B. Verify and ensure that the replication is working on all nodes in the cluster.
- C. Restart the DBL service on the publisher.
- D. Modify the hostname for all Subscriber nodes in the cluster.
- E. Reboot all nodes in the cluster.
- F. Restart the DNS service in the cluster.

**Answer:** AB

#### NEW QUESTION 369

During a Conference that is hosted on a Cisco TelePresence Server, which three circumstances determine that some participants do not have video, but they do have audio? (Choose three.)

- A. The participants have no video component.
- B. No free screen licensing ports are available.
- C. No video ports are available in a slave Cisco TelePresence Server configuration.

- D. The maximum number of participants is exceeded.
- E. In all Cisco TelePresence deployments, some participants are connected only via audio.
- F. No video ports are available in a single Cisco TelePresence Server configuration.

**Answer:** BCF

#### NEW QUESTION 374

ACME Corporation is deploying a new voice gateway. The network administrator is trying to configure the ISDN PRI T1 cards. However the router does not accept the controller t1 0/0/0 command. The administrator sees this error message: "% Invalid input detected at '^' marker." To diagnose this problem, which two commands should the administrator use? (Choose two.)

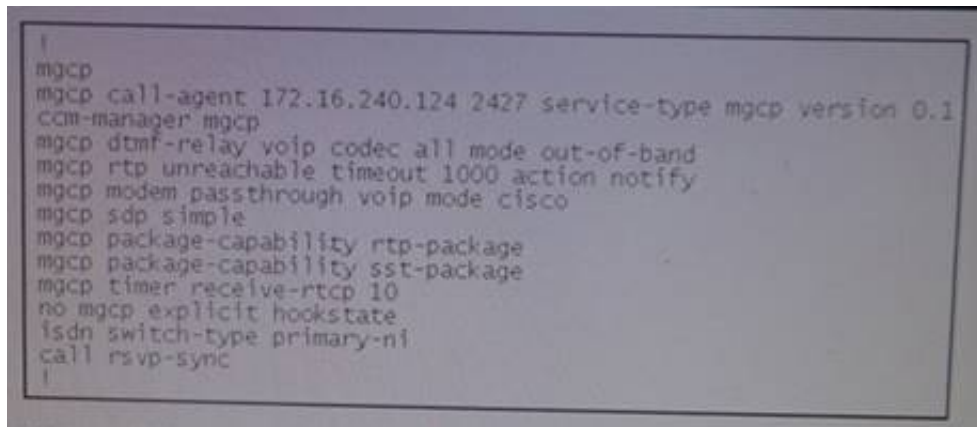
- A. Use the card type t1 command
- B. Use the show call active voice brief command
- C. Use the show inventory command
- D. Use the feature activate isdn command
- E. Use the clock source line command

**Answer:** BE

#### NEW QUESTION 375

ACustomer reports trial calls that are made through the PSTN gateway drop after few seconds of being placed on mute. Which MGCP configuration command can you issue in the gateway to resolve this problem?

Refer to the exhibit.



```
mgcp
mgcp call-agent 172.16.240.124 2427 service-type mgcp version 0.1
ccm-manager mgcp
mgcp dtmf-relay voip codec all mode out-of-band
mgcp rtp unreachable timeout 1000 action notify
mgcp modem passthrough voip mode cisco
mgcp sdp simple
mgcp package-capability rtp-package
mgcp package-capability sst-package
mgcp timer receive-rtcp 10
no mgcp explicit hookstate
isdn switch-type primary-ni
call rsvp-sync
!
```

- A. mgcp explicit hookstate
- B. mgcp max-walling-delay
- C. no mgcp rtp unreachable timeout
- D. no mgcp timer receive-rtcp

**Answer:** C

#### NEW QUESTION 376

You implement multiple registrars for SIP trunks for the Cisco Unified Border Element to ensure redundant PSTN access, you see receive an error that indicates that the registration server is invalid. Which two commands correct the problem? (Choose two.)

- A. registrar 2 ipv4:1.1.1.1 expires 360
- B. CUSP registrar 9 dns:cisco.com expires 60
- C. no registrar 2 dns:cisco.com expires 60
- D. registrar 20 dns:cisco.com
- E. registrar 1 dns:cisco.com expires 180

**Answer:** AE

#### NEW QUESTION 378

Cisco TelePresence system ex90#1 is trying to call EX90 #2. Both endpoints are registered to Cisco Unified Communications Manager. The call connects, but the quality is not good. The video image is breaking up on EX90 #2. The media path from A to B supports only 2 Mb. Which three reasons are possible causes? (choose three.)

- A. The camera on system B has a loose cable.
- B. The line is congested, and QoS is not configured correctly between the sites.
- C. Bandwidth Limitation between IP zones is set too low for video.
- D. Bandwidth Limitation between regions is set too low for video.
- E. The autonegotiation protocol H 296 is tuned off on one of the EX90s.
- F. The system is set to use a higher bandwidth than the media path allows.

**Answer:** BDE

#### NEW QUESTION 383

Which Cisco Unified Communications Manager tool can you use to troubleshoot issues with international calling?

- A. Cisco Prime
- B. Cisco Deployment Tool
- C. RTMT
- D. Dialed Number Analyzer

**Answer:** C

**NEW QUESTION 384**

Which call control model does MGCP use?

- A. Distributed
- B. Centralized
- C. Ad hoc
- D. Hybrid

**Answer:** B

**NEW QUESTION 385**

The link from your local Cisco Unity Connection site to another site has gone down. While troubleshooting, you discover that the local gateway is unable to reach a DNS server. Which action can you take to reestablish the link?

- A. Restart the Connection Manager series on the local gateway
- B. Create an intersite link manually using the IP address of the remote gateway.
- C. Synchronize the two Cisco Unity Connection sites.
- D. Create an intersite link manually using the FQDN of the remote gateway.
- E. Configure the directory synchronization task schedule on the remote gateway.

**Answer:** A

**NEW QUESTION 386**

You recently configured a system for B2B SIP URI calls, and users confirmed that they could make calls. You are receiving multiple reports that inbound calls are failing and that users are not receiving calls to their URI. You confirm that all zones between expressways are active, and the trunk between Cisco Unified Communications Manager and Cisco VCS Expressway is active. You also see that the inbound call is sent from Cisco VCS Expressway C to Cisco Unified Communications Manager. Why are the calls failing?

- A. The Cisco Unified Communications Manager FQDN was not set.
- B. The cluster FQDN was not set in Enterprise Parameters.
- C. The certificate is not valid.
- D. The cluster FQDN was not set in Service Parameters.
- E. The FQDN was not registered in DNS.

**Answer:** B

**NEW QUESTION 388**

You discover that ACCD client is failing to learn patterns with RTMT. Which two actions can you take to troubleshoot the problem? (Choose two.)

- A. Verify that the SIP trunk between Cisco Unified Communications Manager and the Cisco Unified Presence Server is configured correctly.
- B. Verify that the trunk is selected for the CCD advertising service.
- C. Verify that the trunk is selected for the CCD requesting service
- D. Verify that EIGRP topology information is available to the SAF Forwarders.
- E. Verify the SAF configuration.

**Answer:** CE

**NEW QUESTION 392**

.....



## Thank You for Trying Our Product

\* 100% Pass or Money Back

All our products come with a 90-day Money Back Guarantee.

\* One year free update

You can enjoy free update one year. 24x7 online support.

\* Trusted by Millions

We currently serve more than 30,000,000 customers.

\* Shop Securely

All transactions are protected by VeriSign!

**100% Pass Your 300-080 Exam with Our Prep Materials Via below:**

<https://www.certleader.com/300-080-dumps.html>