

Exam Questions 98-349

Windows Operating System Fundamentals

<https://www.2passeasy.com/dumps/98-349/>



NEW QUESTION 1

- (Exam Topic 1)

Every time you insert a music CD, you receive a dialog box that asks which action you want Windows to perform.

Which should you configure so that your personal computer automatically identifies an audio CD and starts playing music?

- A. The Autoplay settings
- B. The Ease of Access settings
- C. A desktop gadget
- D. The Personalization settings

Answer: A

NEW QUESTION 2

- (Exam Topic 1)

A Windows 7 library:

- A. Organizes user files from disparate locations.
- B. Makes copies of user files in a central location.
- C. Encrypts files by using the Encrypting File System (EFS).
- D. Restores files from system backup.

Answer: A

NEW QUESTION 3

- (Exam Topic 1)

Windows hides some files by default to:

- A. Avoid accidental modification or deletion of system files.
- B. Protect the confidentiality of the contents of files.
- C. Improve access to system files.
- D. Save disk space.

Answer: A

NEW QUESTION 4

- (Exam Topic 1)

Your computer is running slower than usual.

Where should you look to find out which applications are consuming the maximum number of resources?

- A. Administrative Tools
- B. Device Manager
- C. System Tray
- D. Task Manager
- E. Network and Sharing Center

Answer: D

NEW QUESTION 5

- (Exam Topic 1)

You attempt to update your video driver. Your screen stops responding. You need to be able to restore the previous video driver.

Which Windows feature should you use?

- A. Disk Defragmenter
- B. Disk Cleanup
- C. Check Disk (Chkdsk)
- D. Safe Mode

Answer: D

NEW QUESTION 6

- (Exam Topic 1)

You need to configure a mouse for a left-handed user. What should you do?

- A. Configure alternate input devices.
- B. Use Device Manager to modify settings in the Mouse Properties dialog box.
- C. Use Control Panel to modify settings in the Mouse Properties dialog box.
- D. Use the manufacturer's website to update the mouse driver.

Answer: C

NEW QUESTION 7

- (Exam Topic 1)

Which is the largest single file that you can store on a FAT32 file system?

- A. 4GB

- B. 8GB
- C. 16GB
- D. 32GB

Answer: A

NEW QUESTION 8

- (Exam Topic 1)

Which two descriptions of Windows PowerShell are accurate? (Choose two.)

- A. A utility for upgrading your Windows operating system
- B. Designed to synchronize files between a computer and a network location
- C. Allows you to run scripts to perform various administrative tasks
- D. An interface that is an enhancement of the capabilities of the Windows Command window

Answer: CD

NEW QUESTION 9

- (Exam Topic 1)

Which Windows feature should you use to assign a drive letter to a shared folder on the network?

- A. Public Folder Sharing
- B. Computer Management Console
- C. Advanced Sharing
- D. Map Network Drive

Answer: D

NEW QUESTION 10

- (Exam Topic 1)

Which feature ensures that your personal computer always has the latest patches and fixes for the operating system?

- A. Reliability and Performance Monitor
- B. Programs and Features
- C. System Configuration Utility
- D. Windows Update

Answer: D

NEW QUESTION 10

- (Exam Topic 1)

Which feature allows you to transfer information from your computer to your mobile phone?

- A. Windows Mobility Center
- B. Device Manager
- C. Sync Center
- D. Windows Easy Transfer

Answer: B

Explanation:

Ref:

<http://windows.microsoft.com/en-us/windows7/sync-music-pictures-contacts-and-calendars-with-a-mobile-devic>

NEW QUESTION 12

- (Exam Topic 1)

Which feature allows you to change the display resolution of a computer monitor?

- A. Computer Management Console
- B. System Configuration Tool
- C. Appearance and Personalization
- D. Device Manager

Answer: C

NEW QUESTION 15

- (Exam Topic 1)

You need to be able to recover an encrypted file even if you lose the key. What should you do?

- A. Use the Encrypting File System (EFS).
- B. Use System Restore to create a system restore point.
- C. Use Bitlocker encryption.
- D. Create a recovery certificate and store it on a portable device.

Answer: D

NEW QUESTION 17

- (Exam Topic 1)

Which two features are supported by the Infrared Data Association (IrDA) protocol? (Each correct answer presents a complete solution. Choose two.)

- A. Data can be transferred across short distances.
- B. One computer can control another computer through a wireless connection.
- C. Some features of another computer can be controlled by using a remote control unit.
- D. The computer can identify Bluetooth devices.

Answer: AC

NEW QUESTION 21

- (Exam Topic 1)

Which Windows feature should you use to protect a computer against spyware?

- A. Group Policy
- B. User Account Control
- C. Windows Defender
- D. Encrypting File System

Answer: C

NEW QUESTION 22

- (Exam Topic 1)

You need to find out the amount of physical memory available to Windows 7. Which command should you use?

- A. sysedit.exe
- B. msinfo32.exe
- C. msconfig.exe
- D. wmimgmt.msc

Answer: B

NEW QUESTION 27

- (Exam Topic 1)

You attempt to install Windows 7 on your personal computer. You receive an error message stating that your product key is not valid. What is causing the error?

- A. You accidentally entered the product key in lower case.
- B. Your product key does not match the version of Windows that you are installing.
- C. The product key you are trying to use has expired.
- D. You reformatted your hard disk drive before you installed Windows.

Answer: B

NEW QUESTION 31

- (Exam Topic 1)

The purpose of a Public folder is to:

- A. share files with only one person on a network.
- B. share files with everyone on a network.
- C. share files with a selected group of people on a network.
- D. back up files to a location on a network.

Answer: B

NEW QUESTION 35

- (Exam Topic 1)

Which action will trigger a user account control (UAC) prompt in Windows?

- A. Accessing the Internet
- B. Changing the time zone
- C. Installing a new program
- D. Restarting Windows
- E. Changing settings in the Display Properties dialog box

Answer: C

NEW QUESTION 39

- (Exam Topic 1)

You plan to upgrade your computer to Windows 7.

You need to view a report that identifies potential compatibility problems with your computer's hardware, devices, and programs.

Which tool should you use?

- A. Sync Center
- B. Windows Anytime Upgrade
- C. Windows Upgrade Advisor
- D. Windows Easy Transfer

Answer: C

NEW QUESTION 44

- (Exam Topic 1)

You want to repair Windows by using the Windows 7 System Recovery Disc. Before you begin, which files should you back up to protect your personal data?

- A. All files in the Program Files directory.
- B. All files in the Windows directory.
- C. All files in drive C.
- D. Everything in My Documents.

Answer: D

NEW QUESTION 49

- (Exam Topic 1)

You plan to upgrade your computer to Windows 7.

Which tool should you use to find out whether your current applications will run on Windows 7?

- A. Application Compatibility Toolkit
- B. Windows Anytime Upgrade
- C. Windows Update
- D. Windows Service Pack

Answer: A

NEW QUESTION 53

- (Exam Topic 1)

Which Windows 7 feature should you use to ensure that only administrators can install new software?

- A. Network and Sharing Center
- B. User Account Control
- C. Microsoft Management Console
- D. Ease of Access

Answer: B

NEW QUESTION 57

- (Exam Topic 1)

Where will you find information about removing computer viruses?

- A. Help and Support
- B. System Restore
- C. Disk Cleanup
- D. System Information

Answer: A

NEW QUESTION 59

- (Exam Topic 1)

What is the maximum size of a virtual hard disk?

- A. 2 terabytes
- B. 5 terabytes
- C. 16 terabytes
- D. 500GB

Answer: A

NEW QUESTION 63

- (Exam Topic 1)

Which feature should you use to restrict certain actions only to an administrator account on a Windows 7 computer?

- A. Windows Experience Index
- B. User Account Control
- C. BitLocker
- D. Computer Management

Answer: B

NEW QUESTION 67

- (Exam Topic 1)

You need to manage service dependencies on your Windows 7 computer. Which feature should you use?

- A. Action Center
- B. Event Viewer

- C. Task Scheduler
- D. Computer Management Console

Answer: D

NEW QUESTION 69

- (Exam Topic 1)

Which is a potential risk when redirecting a USB storage device during a Remote Desktop session?

- A. Access can be slower.
- B. The device can stop working.
- C. The session can stop responding.
- D. Data can be lost.

Answer: D

NEW QUESTION 70

- (Exam Topic 1)

You have several active jobs in the print queue. You need to view the print queue.

What should you do?

- A. Use the Printer icon on the system tray.
- B. Use the Windows Task Manager.
- C. Click the Print button in the application that is printing.
- D. Use the Computer Management console.

Answer: A

NEW QUESTION 72

- (Exam Topic 1)

Your computer is slow to start, and file access in Windows is slow. Which Windows feature should you use to improve performance?

- A. System Restore
- B. windows Defender
- C. Disk Defragmenter
- D. Disk Format

Answer: C

NEW QUESTION 77

- (Exam Topic 1)

You want to change your default home page in Internet Explorer. In which location should you modify settings?

- A. Trusted Sites
- B. View
- C. Internet Options
- D. Favorites

Answer: C

NEW QUESTION 80

- (Exam Topic 2)

You want to use your home computer to access your work computer.

Which two actions should you perform before connecting the computers? (Each correct answer presents part of the solution. Choose two.)

- A. Obtain the IP address of the work computer.
- B. Obtain the IP address of the home computer.
- C. Obtain the MAC address of the home computer.
- D. Allow Remote Desktop on the home computer.
- E. Allow Remote Desktop on the work computer,
- F. Obtain the MAC address of the work computer.

Answer: DE

NEW QUESTION 82

- (Exam Topic 2)

You need to find out whether a computer is running a 32-bit or 64-bit version of the Windows operating system. What should you do?

- A. From the Start menu, type 64-bit in the Search programs and files field.
- B. From Control Panel, select System.
- C. Open Device Manager and select Processors.
- D. From the Windows Help and Support feature, type 64-bit system in the Search field.

Answer: B

NEW QUESTION 85

- (Exam Topic 2)

In which location of Control Panel will you find the shortcut to manage the services on your Windows 7 computer?

- A. The Hardware and Sound group under Devices and Printers
- B. The Programs group under Programs and Features
- C. The System and Security group under Administrative Tools
- D. The Network and Internet group under Network and Sharing Center

Answer: C

NEW QUESTION 89

- (Exam Topic 2)

This question requires that you evaluate the underlined text to determine if it is correct.

To actively scan for spyware and viruses, you should ensure Action Center is installed and running. Select the correct answer if the underlined text does not make the statement correct. Select "No change is needed" if the underlined text makes the statement correct.

- A. Windows Defender
- B. The Malicious Software Removal Tool
- C. Microsoft Security Essentials
- D. No change is needed.

Answer: C

NEW QUESTION 90

- (Exam Topic 2)

How can you create a connection to a network share without having to type its network address each time you need to connect?

- A. Add the computer to the shared workgroup.
- B. Add a Network Location.
- C. Map a network drive.
- D. Create a HomeGroup.

Answer: C

NEW QUESTION 95

- (Exam Topic 2)

Which task can be accomplished by a standard user, regardless of the system security settings?

- A. Installing a program
- B. Changing an account name or type
- C. Changing their own password
- D. Adding a driver for new hardware

Answer: D

NEW QUESTION 97

- (Exam Topic 2)

You want to configure Windows to periodically and automatically check for the most recent driver for your video card Which Windows feature should you use?

- A. Windows Update
- B. Device Manager
- C. Windows Installer
- D. Programs and Features

Answer: A

NEW QUESTION 98

- (Exam Topic 2)

You want to share a document with everyone on your school network. Which Windows 7 feature should you use?

- A. Map Network Drive
- B. Public Folder
- C. Computer Management Console
- D. Documents Library

Answer: B

NEW QUESTION 101

- (Exam Topic 2)

What are three functions of Windows 7 Upgrade Advisor? (Choose three.)

- A. Determines if your computer is capable of running Windows 7
- B. Obtains any drivers necessary to perform a Windows 7 upgrade
- C. Gives you the option to run an installation wizard
- D. Determines if there are any compatibility issues
- E. Determines which Windows 7 editions work on your computer

F. Helps with the installation of a new Windows 7 system

Answer: ADE

NEW QUESTION 104

- (Exam Topic 2)

Which two versions of Windows 7 support the Encrypting File System (EFS) functionality? (Each correct answer presents a complete solution. Choose two.)

- A. Professional Edition
- B. Ultimate Edition
- C. Home Premium Edition
- D. Starter Edition

Answer: BD

NEW QUESTION 107

- (Exam Topic 2)

You are setting up accounts on your computer so your roommates can log on to your computer and browse the web.

You decide to use the graphical Local Users and Groups tool to configure the user account on your computer. What does the Action display when you select a user name?

- A. A history of all actions you have performed on that user
- B. All pending actions the computer will execute
- C. Buttons to record the action you take on that user
- D. Available actions based on that user

Answer: D

NEW QUESTION 108

- (Exam Topic 2)

You need to find out the speed of the processor that your Windows 7 computer is running. What should you do?

- A. From Hardware and Sound, select Devices and Printers
- B. From System and Security, select System.
- C. From Administrative Tools, select Event Viewer.
- D. From Administrative Tools, select Services.

Answer: B

NEW QUESTION 112

- (Exam Topic 2)

Where should you configure settings to allow Workgroup users to use a printer connected to your computer?

- A. In the System Configuration Utility
- B. In the Computer Management console
- C. In the Network and Sharing Center
- D. In the Local Security Policy editor

Answer: C

NEW QUESTION 113

- (Exam Topic 2)

You turn on your computer. You receive the following message: "System Disk Not Found." Which Windows feature should you use to restore your computer?

- A. Check Disk (Chkdsk)
- B. Last Known Good Configuration
- C. safe Mode
- D. Automated System Recovery

Answer: C

NEW QUESTION 117

- (Exam Topic 2)

Windows Security Essentials:

- A. Protects your computer by installing a firewall.
- B. Protects your computer against unauthorized access.
- C. Protects your computer against viruses and other malicious software.
- D. Ensures that all files on your computer are encrypted.

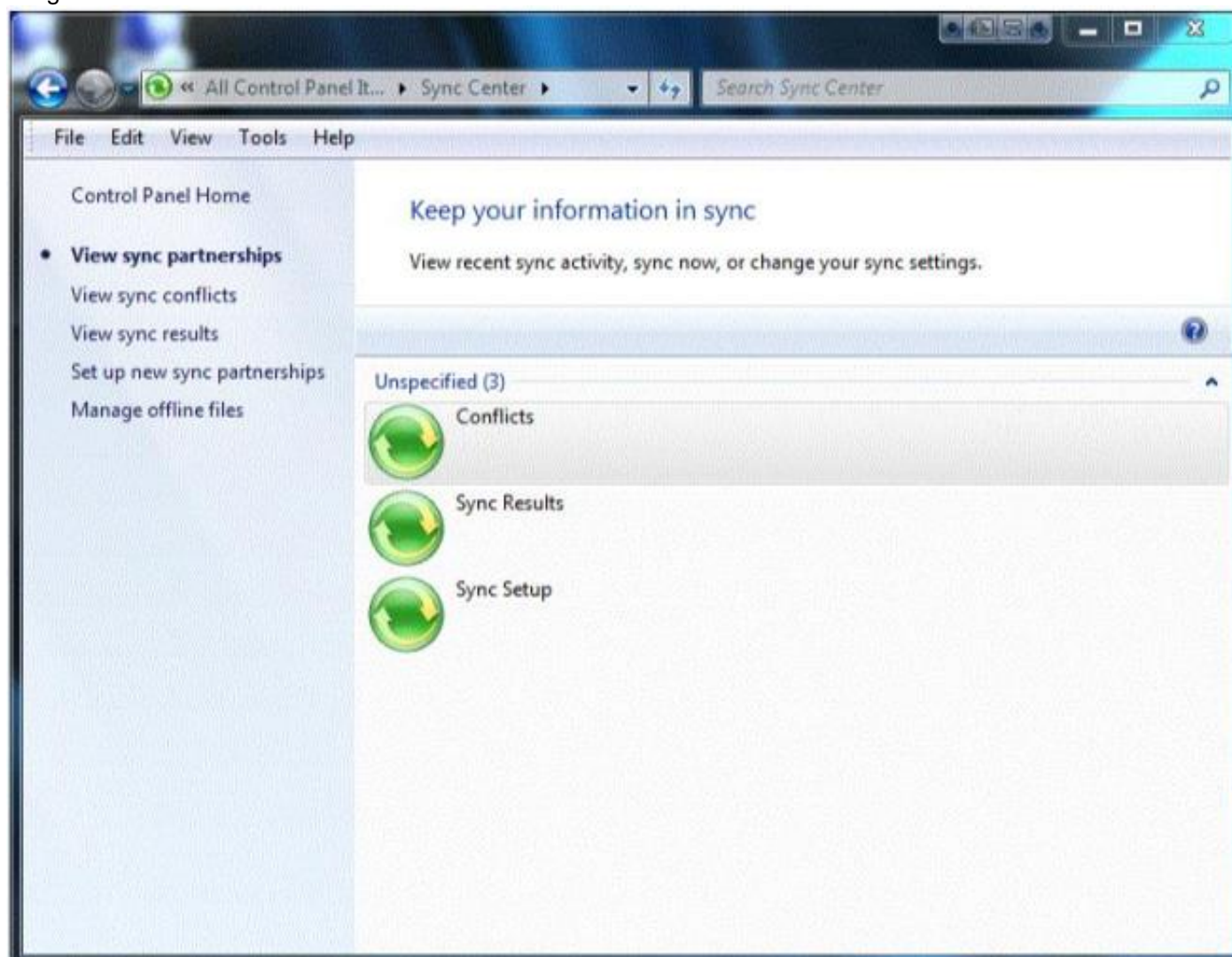
Answer: C

NEW QUESTION 120

- (Exam Topic 2)

You are a teaching assistant for a Basic Networking class. Periodically, you update class assignments in a Microsoft Excel spreadsheet stored on a network drive.

You need to allow students who have laptops to always have a current copy of the assignments spreadsheet. You access Control Panel as shown in the following image:



Use the drop-down menus to select the answer choice that completes each statement. Each correct selection is worth one point.

First, you should [answer choice]

Next, you should [answer choice]

First, you should [answer choice]

set up new sync partnerships.
 view sync conflicts.
 enable offline files.

Next, you should [answer choice]

view sync results.
 set up new sync partnerships.
 view sync conflicts.

- A. Mastered
- B. Not Mastered

Answer: A

Explanation:

First, you should [answer choice]

set up new sync partnerships.
 view sync conflicts.
 enable offline files.

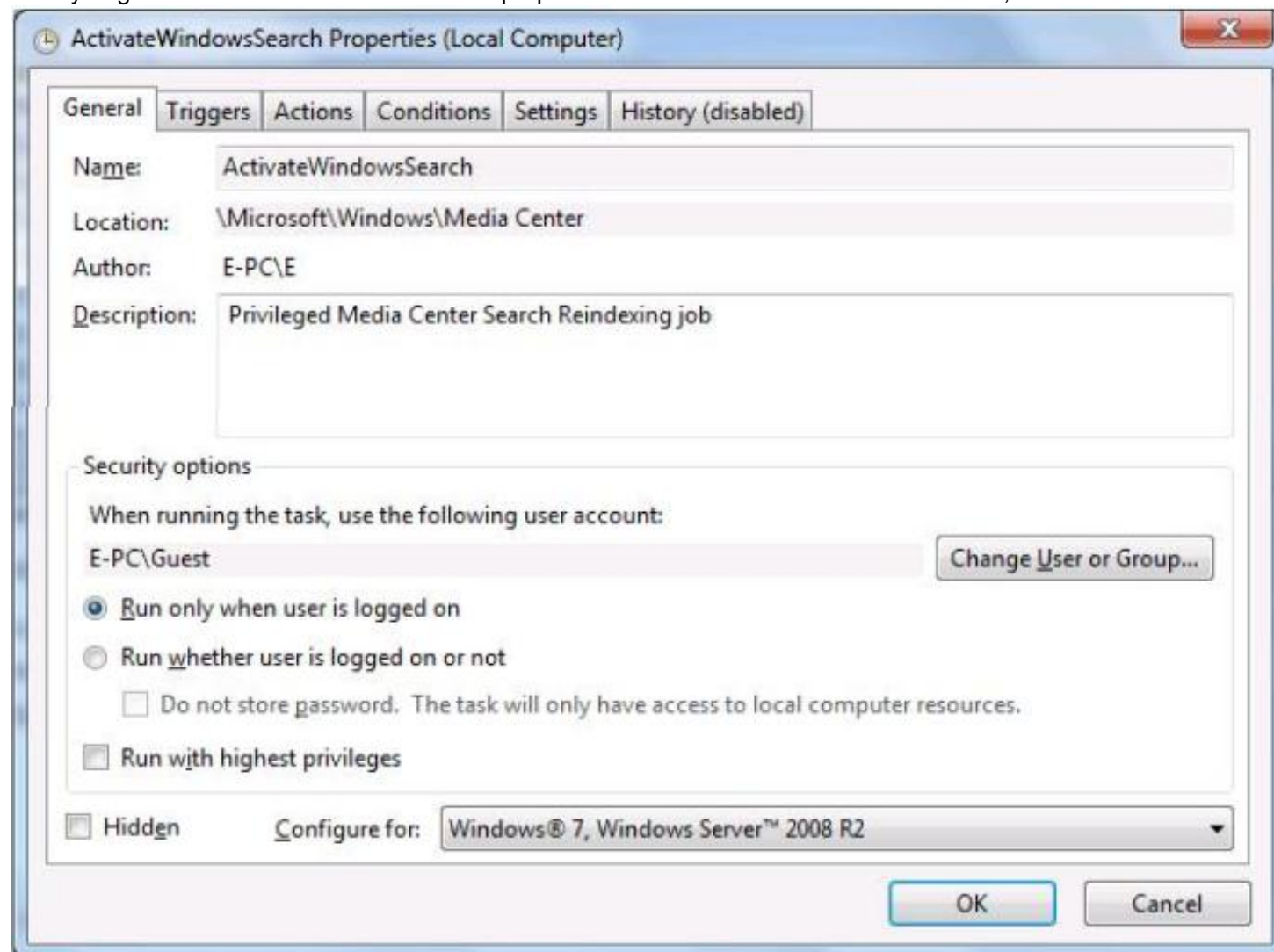
Next, you should [answer choice]

view sync results.
 set up new sync partnerships.
 view sync conflicts.

NEW QUESTION 125

- (Exam Topic 2)

Your roommate complains that her computer is showing an error message that says ActivateWindowsSearch scheduled task failed to run. To troubleshoot the error you go to Task Scheduler and view the properties of the ActivateWindowsSearch task, as shown in the following image:



Use the drop-down menus to select the answer choice that completes each statement. Each correct selection is worth one point.

Answer Area

To resolve the issue, the first task to complete is [answer choice]

To resolve the issue, the second task to complete is [answer choice]

Answer Area

To resolve the issue, the first task to complete is [answer choice]

set the task to run as SYSTEM.
set the task to run as LOCAL SERVICE.
set the task to run as NETWORK SERVICE.

To resolve the issue, the second task to complete is [answer choice]

set the task to run whether the user is logged on or not.
set the task to run with highest privileges.
set the task to "Configure" for Windows Vista.

- A. Mastered
- B. Not Mastered

Answer: A

Explanation:

Answer Area

To resolve the issue, the first task to complete is [answer choice]

set the task to run as SYSTEM.
set the task to run as LOCAL SERVICE.
set the task to run as NETWORK SERVICE.

To resolve the issue, the second task to complete is [answer choice]

set the task to run whether the user is logged on or not.
set the task to run with highest privileges.
set the task to "Configure" for Windows Vista.

NEW QUESTION 126

- (Exam Topic 2)

Which three methods can be used to unlock files on a BitLocker-protected drive? (Each correct answer presents a complete solution. Choose three.)

- A. Automatically unlocking by logging in as the authorized user
- B. Decompressing the files
- C. Using a Smartcard and a PIN
- D. Copying the files into another folder
- E. Unhiding the files
- F. Using a password

Answer: BCF

NEW QUESTION 127

- (Exam Topic 2)

You need to print a paper to give to your professor. A classmate says you can print to a USB printer, which is connected to another computer.

You try to add to your printer list and get prompted for a password that you do not know. Why does adding the printer to your computer require a password?

- A. Your User ID is not part of the local Administrators group.
- B. Your computer is not part of a domain.
- C. Your computer is not on the same network as the printer.
- D. Password Protected Sharing is enabled.

Answer: D

Explanation:

References:<https://www.recoverlostpassword.com/windows-10/how-to-turn-off-password-protected-sharing-in-w>

NEW QUESTION 131

- (Exam Topic 2)

This question requires that you evaluate the underlined text to determine if it is correct. ReadyBoost increases system performance by using flash memory.

Select the correct answer if the underlined text does not make the statement correct. Select "No change is needed" if the underlined text makes the statement correct.

- A. BitLocker
- B. The page file
- C. Disk Compression
- D. No change is needed

Answer: D

NEW QUESTION 136

- (Exam Topic 2)

For each of the following statements, select Yes if the statement is true. Otherwise, select No. Each correct selection is worth one point.

Answer Area

	Yes	No
Use MSINFO32.exe to obtain information about your computer system.	<input type="radio"/>	<input type="radio"/>
Use System Information to obtain details about a computer's hardware resources.	<input type="radio"/>	<input type="radio"/>
Use System Information to obtain details about a computer's software environment.	<input type="radio"/>	<input type="radio"/>

- A. Mastered
- B. Not Mastered

Answer: A

Explanation:

Answer Area

	Yes	No
Use MSINFO32.exe to obtain information about your computer system.	<input checked="" type="radio"/>	<input type="radio"/>
Use System Information to obtain details about a computer's hardware resources.	<input checked="" type="radio"/>	<input type="radio"/>
Use System Information to obtain details about a computer's software environment.	<input checked="" type="radio"/>	<input type="radio"/>

NEW QUESTION 139

- (Exam Topic 2)

This question requires that you evaluate the underlined text to determine if it is correct.

You can export information to a text file by using the msconfig command from a command prompt. Select the correct answer if the underlined text does not make the statement correct. Select "No change is needed" if the underlined text makes the statement correct.

- A. msinfo32
- B. perfmon
- C. taskmgr
- D. No change is needed

Answer: A

NEW QUESTION 142

- (Exam Topic 2)

You add a network folder to a library on your computer. When you look through the list of files, you decide that you do not want to include some of the files in the library. You right-click each file that you want to remove and select Delete.

What is the outcome of these actions?

- A. Only the library's copy of the file is deleted.
- B. The files are only removed from the library's index.
- C. The files are deleted from the original network location.
- D. Nothing happens because the Delete function is disabled when working within a library.

Answer: C

NEW QUESTION 146

- (Exam Topic 2)

The owner of a bookstore asks you to help her set up a printer in exchange for a discount on purchases. She has three Windows 7 computers networked through a wireless router and connected through a HomeGroup. She also has a new USB printer and wants to be able to print from any of the three computers.

First, you install the printer on one of the three computers.

What should you do next to share this printer with the HomeGroup?

- A. Connect the printer directly to the network and share it with the HomeGroup.
- B. From Control Panel, select the HomeGroup feature
- C. Make sure that the Printers checkbox is enabled.
- D. Connect to the printer over TCP/IP and then share it with the HomeGroup.
- E. Configure each computer's firewall to allow port 631 because HomeGroup's printer sharing feature uses the IPP protocol.

Answer: B

NEW QUESTION 151

- (Exam Topic 2)

This question requires that you evaluate the underlined text to determine if it is correct.

FAT32 is the preferred file system for Windows 7.

Select the correct answer if the underlined text does not make the statement correct. Select "No change is needed" if the underlined text makes the statement correct.

- A. NTFS
- B. FAT16
- C. EFS
- D. No change is needed

Answer: A

NEW QUESTION 155

- (Exam Topic 2)

Your brother asks you for help installing Windows 10 on this laptop. His laptop does not have a DVD drive on it.

Which software should you use to create a bootable USB memory stick that can be used to install Windows?

- A. Media creation tool

- B. Windows Update
- C. Windows Easy transfer
- D. PCmover Express

Answer: A

NEW QUESTION 158

- (Exam Topic 2)

You need to be able to view multiple time zones on your desktop. What should you do?

- A. Add multiple clock gadgets.
- B. Modify the System and Security settings.
- C. Configure dual-display.
- D. Modify the Date and Time properties of the computer.

Answer: B

NEW QUESTION 159

- (Exam Topic 2)

You attach a second Plug and Play monitor to your computer. You need to configure the computer to use both monitors. What should you do?

- A. Configure the USB port.
- B. Use Control Panel to modify settings in the Change display settings dialog box.
- C. Use Control Panel to modify settings in Administrative Tools.
- D. Access Device Manager and select Update Driver Software.

Answer: B

NEW QUESTION 163

- (Exam Topic 2)

You turn on your computer. You receive the following message: "System Disk Not Found." Which Windows feature should you use to restore your computer?

- A. Automated System Recovery
- B. Last Known Good Configuration
- C. Check Disk (Chkdsk)
- D. Safe Mode

Answer: C

NEW QUESTION 164

- (Exam Topic 2)

For each of the following statements, select Yes if the statement is true. Otherwise, select No, Each correct selection is worth one point.

Answer Area

	Yes	No
Only an administrator can install a plug and play device.	<input type="radio"/>	<input type="radio"/>
If a plug and play device driver is placed in the driver store, non-administrative accounts can install the device.	<input type="radio"/>	<input type="radio"/>
A network printer installs automatically on Windows.	<input type="radio"/>	<input type="radio"/>

- A. Mastered
- B. Not Mastered

Answer: A

Explanation:

Answer Area

	Yes	No
Only an administrator can install a plug and play device.	<input type="radio"/>	<input checked="" type="radio"/>
If a plug and play device driver is placed in the driver store, non-administrative accounts can install the device.	<input checked="" type="radio"/>	<input type="radio"/>
A network printer installs automatically on Windows.	<input type="radio"/>	<input checked="" type="radio"/>

NEW QUESTION 166

- (Exam Topic 2)
Which folder permission setting will allow users to view and change but not delete files?

- A. Full control
- B. Modify
- C. Read and Execute
- D. Read and Write

Answer: B

NEW QUESTION 170

- (Exam Topic 2)
Which folder permission allows users to view, change, and delete files?

- A. Full Control
- B. Read and Execute
- C. Modify
- D. Read and Write

Answer: A

NEW QUESTION 172

- (Exam Topic 2)
For each of the following statements, select Yes if the statement is true. Otherwise, select No. Each correct selection is worth one point.

	Yes	No
An application that is installed by using Group Policy may be uninstalled by using Group Policy.	<input type="radio"/>	<input type="radio"/>
An application that is installed by using Group Policy may be uninstalled by using a script.	<input type="radio"/>	<input type="radio"/>
An application that is installed by using Group Policy may be uninstalled manually.	<input type="radio"/>	<input type="radio"/>

- A. Mastered
- B. Not Mastered

Answer: A

Explanation:

	Yes	No
An application that is installed by using Group Policy may be uninstalled by using Group Policy.	<input checked="" type="radio"/>	<input type="radio"/>
An application that is installed by using Group Policy may be uninstalled by using a script.	<input checked="" type="radio"/>	<input type="radio"/>
An application that is installed by using Group Policy may be uninstalled manually.	<input checked="" type="radio"/>	<input type="radio"/>

NEW QUESTION 173

- (Exam Topic 2)

Your roommate has a Windows 8.1 32-bit laptop and wants to upgrade it to Windows 10 64-bit. What should you tell her about such upgrade?

- A. You need to upgrade the existing operating system, preserving the files, applications, and settings.
- B. You need to perform a new installatio
- C. Files, applications, and settings will be deleted.
- D. You cannot upgrade Windows 8.1 32-bit to Windows 10 64-bit.
- E. You need to upgrade to Windows 8.1 64-bit and then upgrade to Windows 10 64-bit.

Answer: B

Explanation:

References:<http://www.intowindows.com/upgrade-to-windows-10-64-bit-from-windows-78-1-32/>

NEW QUESTION 175

- (Exam Topic 2)

You are preparing to install Windows 7 on a new computer. You need to enable BitLocker for encryption. What is required in order to enable BitLocker?

- A. FAT32 system drive
- B. Smart card
- C. NTFS system drive
- D. Trusted Platform Module (TPM)

Answer: C

NEW QUESTION 177

- (Exam Topic 2)

You work for the school library. You are instructed to upgrade all of the library's Windows 8.1 devices to Windows 10 64-bit. What is the minimum memory the devices must have for you to be able to install Windows 10 64-bit?

- A. 8 GB
- B. 4 GB
- C. 1 GB
- D. 2 GB

Answer: D

Explanation:

References:

<https://www.microsoft.com/en-gb/windows/windows-10-specifications>

NEW QUESTION 179

- (Exam Topic 2)

This question requires that you evaluate the underlined text to determine if it is correct.

You need to install Windows 7 on a computer using a USB drive. You need to use a ZIP to create that drive. Select the correct answer if the underlined text does not make the statement correct. Select "No change is needed" if the underlined text makes the statement correct.

- A. An ISO
- B. A PXE
- C. A ZTI

D. No change is needed

Answer: A

NEW QUESTION 181

- (Exam Topic 2)

You have a computer with Windows Vista Home Premium installed.

Which two versions of Windows 7 are you able to upgrade to? (Choose two.)

- A. Home Basic
- B. Home Premium
- C. Professional
- D. Ultimate

Answer: BD

NEW QUESTION 182

- (Exam Topic 2)

Instructions: For each of the following statements, select Yes if the statement is true. Otherwise, select No. NOTE: Each correct selection is worth one point.

	Yes	No
The Hyper-V role can be installed on Windows 10 Home.	<input type="radio"/>	<input type="radio"/>
Hyper-V virtual machines can only run Microsoft operating systems.	<input type="radio"/>	<input type="radio"/>
A private, virtual network can be created among virtual machines.	<input type="radio"/>	<input type="radio"/>

- A. Mastered
- B. Not Mastered

Answer: A

Explanation:

References: <https://docs.microsoft.com/en-us/virtualization/hyper-v-on-windows/quick-start/enable-hyper-v> [https://docs.microsoft.com/en-us/windows-server/virtualization/hyper-v/Supported-Linux-and-FreeBSD-virtual for-Hyper-V-on-Windows](https://docs.microsoft.com/en-us/windows-server/virtualization/hyper-v/Supported-Linux-and-FreeBSD-virtual-for-Hyper-V-on-Windows)
<https://docs.microsoft.com/en-us/virtualization/hyper-v-on-windows/quick-start/connect-to-network>

NEW QUESTION 184

- (Exam Topic 2)

Which is the preferred file system for Windows computers?

- A. NTFS file system
- B. FAT file system
- C. FAT32 file system
- D. CDFS

Answer: A

NEW QUESTION 187

- (Exam Topic 2)

Your friend asks for your help with upgrading his computer to Windows 10. You plan to perform a clean install of Windows 10 on his computer, which has Windows 8.1 installed.

What should you tell your friend he will be able to find on the computer's hard drive after the installation is complete?

- A. previous Windows8.1 installation
- B. backup copy of all personal files
- C. user profiles migrated to Windows 10
- D. Windows 10 installation files

Answer: D

Explanation:

References: <https://www.cnet.com/how-to/clean-install-windows-10/>

NEW QUESTION 188

- (Exam Topic 2)

This requires that you evaluate the underlined text to determine if it is correct.

A Service Account requires local group membership in the Administrators group to start and stop services. Instructions: Review the underlined text. If it makes the statement correct, select “No change is needed.” If the statement is incorrect, select the answer choice that makes the statement correct.

- A. Power Users
- B. Netmon Users
- C. Access Control Assistance Operators
- D. No change is needed

Answer: D

NEW QUESTION 193

- (Exam Topic 2)

For each of the following statements, select Yes if the statement is true. Otherwise, select No. Each correct selection is worth one point.

Answer Area

	Yes	No
Restore deleted data files by using the System Restore Wizard.	<input type="radio"/>	<input type="radio"/>
Restore registry settings by using the System Restore Wizard.	<input type="radio"/>	<input type="radio"/>
Restore data files from a system image backup.	<input type="radio"/>	<input type="radio"/>

- A. Mastered
- B. Not Mastered

Answer: A

Explanation:

Answer Area

	Yes	No
Restore deleted data files by using the System Restore Wizard.	<input type="radio"/>	<input checked="" type="radio"/>
Restore registry settings by using the System Restore Wizard.	<input checked="" type="radio"/>	<input type="radio"/>
Restore data files from a system image backup.	<input checked="" type="radio"/>	<input type="radio"/>

NEW QUESTION 195

- (Exam Topic 2)

Which Windows feature allows you to block access to the Task Manager?

- A. Parental Controls
- B. Group Policy
- C. User Account Control
- D. Device Manager

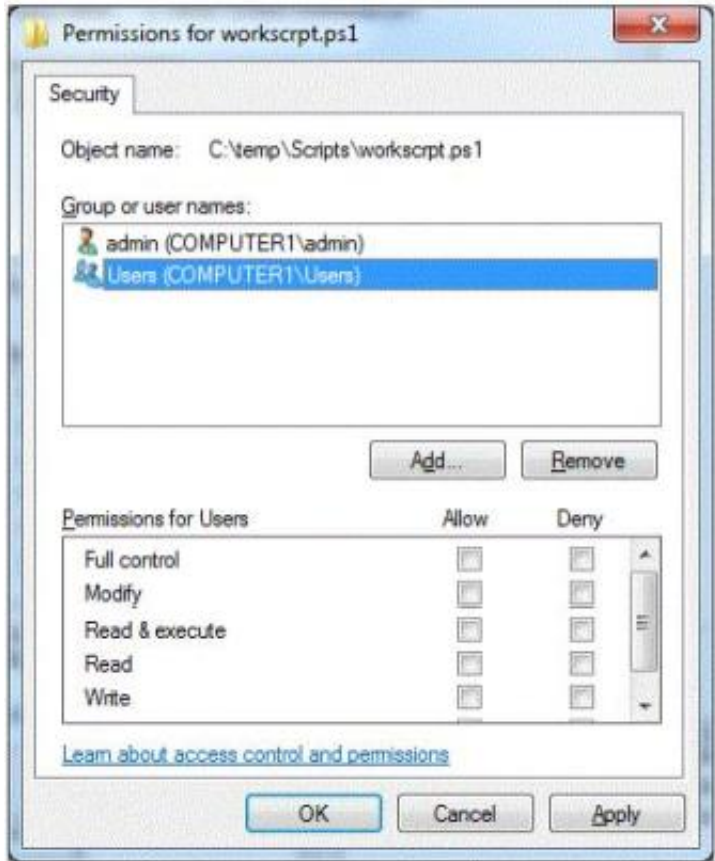
Answer: B

NEW QUESTION 197

- (Exam Topic 2)

You have a file on your Windows 7 workstation located at c:\temp\Scripts\. The file name is workscripts1. You need to allow all users who log in to the workstation the ability to run the script and make changes to it.

You do not want the users to delete the file shown in the following image:



Use the drop-down menus to select the answer choice that completes each statement. Each correct selection is worth one point.

Answer Area

In order for all users to make changes without deleting the file, the [answer choice] permission is required.

In order for all users to run the script, the [answer choice] permission is required.

Answer Area

In order for all users to make changes without deleting the file, the [answer choice] permission is required.

Modify
Read
Write

In order for all users to run the script, the [answer choice] permission is required.

Write
Full Control
Read and execute

- A. Mastered
- B. Not Mastered

Answer: A

Explanation:

In order for all users to make changes without deleting the file, the [answer choice] permission is required.

Modify

In order for all users to run the script, the [answer choice] permission is required.

Read and execute

NEW QUESTION 201

- (Exam Topic 2)

What are two characteristics of Windows Mobility Center? (Choose two.)

- A. Allows you to adjust the brightness of your display
- B. Allows your computer to connect to a remote server
- C. Allows you to configure power options
- D. Provides you with a virtual desktop interface
- E. Allows you to access another computer on a network

Answer: AC

NEW QUESTION 206

- (Exam Topic 2)

For each of the following statements, select Yes if the statement is true. Otherwise, select No. Each correct selection is worth one point.

Answer Area

	Yes	No
You can perform an in-place upgrade to Windows 7 from both Windows XP and Windows Vista.	<input type="radio"/>	<input type="radio"/>
It is possible to upgrade to a 32-bit version of Windows 7 only from a 32-bit previous version of Windows.	<input type="radio"/>	<input type="radio"/>
All upgrades to Windows 7 must be performed as clean installs.	<input type="radio"/>	<input type="radio"/>

- A. Mastered
- B. Not Mastered

Answer: A

Explanation:

Answer Area

	Yes	No
You can perform an in-place upgrade to Windows 7 from both Windows XP and Windows Vista.	<input type="radio"/>	<input checked="" type="radio"/>
It is possible to upgrade to a 32-bit version of Windows 7 only from a 32-bit previous version of Windows.	<input checked="" type="radio"/>	<input type="radio"/>
All upgrades to Windows 7 must be performed as clean installs.	<input type="radio"/>	<input checked="" type="radio"/>

NEW QUESTION 210

- (Exam Topic 2)

Two students in your class want to work together on a project over the summer break- Courtney is staying on campus, and Ty is taking an internship in Japan. They want to know how to share files in order to work remotely. You suggest Microsoft OneDrive. Which three features of OneDrive can help Ty and Courtney? (Choose three.)

- A. OneDrive automatically keeps track of the previous 25 versions of all documents.
- B. OneDrive provides the ability to view and control someone's computer desktop to allow for easier collaboration.
- C. When the OneDrive desktop application is installed on a Windows 7 computer, Microsoft Office applications can save directly to OneDrive folders.
- D. OneDrive provides automatic BitLocker encryption of the files stored in the local OneDrive folder and the OneDrive.com folders.
- E. OneDrive allows access to files from any networked device by using OneDrive.com or a OneDrive application on their mobile device.

Answer: ACE

NEW QUESTION 213

- (Exam Topic 2)

Which two tools should you use to gather basic real-time performance information about the computer's system settings? (Choose two.)

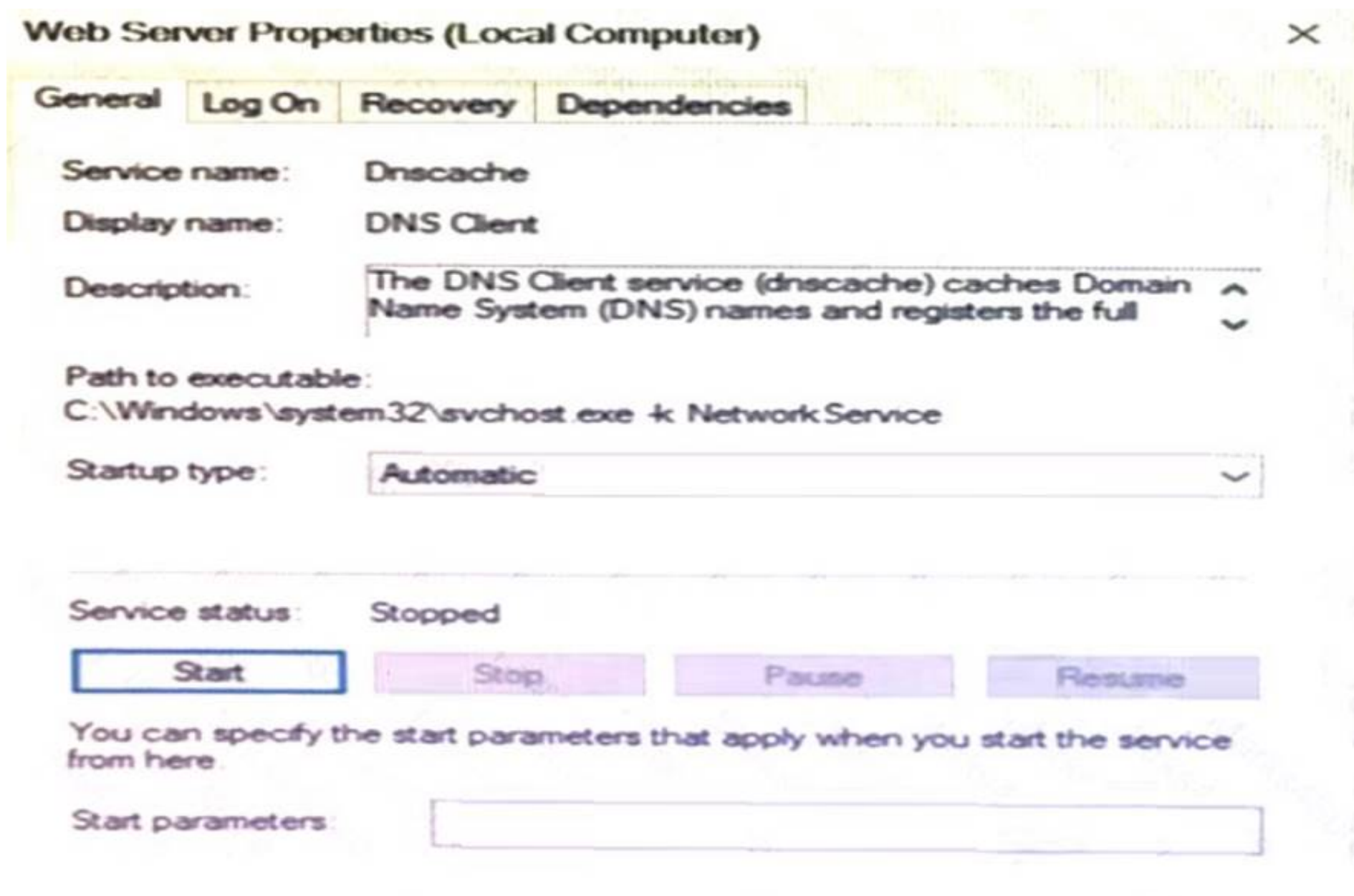
- A. System Properties
- B. Task Manager
- C. System Information
- D. Resource Monitor
- E. Computer Management

Answer: BD

NEW QUESTION 216

- (Exam Topic 2)

You set up a Web Server for your group project for a Web Development class. You install the Web Server service on your Windows 10 machine. The Web Server service fails to start even though it is set to automatic. You need to view other services that may have caused the failure. Which area on the graphic should you select to accomplish this goal? Instructions: To answer select the appropriate object in the answer area.



- A. Mastered
- B. Not Mastered

Answer: A

Explanation:

References:<https://www.howtogeek.com/school/using-windows-admin-tools-like-a-pro/lesson8/>

NEW QUESTION 221

.....

THANKS FOR TRYING THE DEMO OF OUR PRODUCT

Visit Our Site to Purchase the Full Set of Actual 98-349 Exam Questions With Answers.

We Also Provide Practice Exam Software That Simulates Real Exam Environment And Has Many Self-Assessment Features. Order the 98-349 Product From:

<https://www.2passeasy.com/dumps/98-349/>

Money Back Guarantee

98-349 Practice Exam Features:

- * 98-349 Questions and Answers Updated Frequently
- * 98-349 Practice Questions Verified by Expert Senior Certified Staff
- * 98-349 Most Realistic Questions that Guarantee you a Pass on Your FirstTry
- * 98-349 Practice Test Questions in Multiple Choice Formats and Updatesfor 1 Year