

70-345 Dumps

Designing and Deploying Microsoft Exchange Server 2016

<https://www.certleader.com/70-345-dumps.html>



NEW QUESTION 1

You need to recommend changes to the existing environment to meet the high-availability requirements for the mailbox databases. What should you recommend?

- A. Run the Suspend-MailboxDatabaseCopy cmdlet
- B. Run the Update-MailboxDatabaseCopy cmdlet.
- C. Deploy a file share witness to a branch office.
- D. Modify the cluster resource properties.

Answer: A

Explanation: Scenario:

Mailbox databases that contain mailboxes for the New York office users must only be activated on the servers in the London office manually. We can use the Suspend-MailboxDatabaseCopy cmdlet with the -ActivationOnly parameter.

NEW QUESTION 2

You deploy Layer 7 load balancers to the New York and London offices.

You are planning the namespace configuration that will be used once you complete the planned upgrade to Exchange Server 2016.

You need to recommend a solution to meet the connectivity requirements for the namespaces. What should you recommend?

- A. On the New York office servers, change the internal URLs to mail.fabrikam.com.
- B. On all of the branch office servers, change the external URLs to Snull.
- C. On all of the branch office servers, change the external URLs to mail.fabnkam.com.
- D. On the New York office servers, change the internal URLs to Snull.

Answer: C

Explanation: Scenario:

Fabrikam connectivity requirements include: The number of namespaces used for client access must be minimized.

Each office is configured to use a separate namespace for client access. The New York office is configured to use a namespace of mail.fabrikam.com.

NEW QUESTION 3

You begin to implement the Exchange Server 2016 servers and plan to decommission the Exchange Server 2013 servers during the next six months.

You need to recommend which actions must be performed to support the planned changes for document collaboration.

You install Microsoft Office Online Server on a new server.

Which two cmdlets should you recommend running next? Each correct answer presents part of the solution.

- A. New-OfficeWebAppsFarm
- B. Set-PartnerApplication
- C. Set-MailboxServer
- D. New-OfficeWebAppsHost
- E. Set-OrganizationConfig

Answer: AC

NEW QUESTION 4

You need to recommend changes to the messaging infrastructure. The changes must meet the connectivity requirements after the planned upgrade. Which two actions should you recommend? Each correct answer presents part of the solution.

- A. From the Mailbox servers, import the Edge Subscription file.
- B. On the Edge Transport Servers, start Edge Synchronization.
- C. On the Edge Transport servers, import the Edge Subscription file.
- D. On the Edge Transport servers, create an Edge Subscription file.
- E. On the Mailbox servers, restart the Microsoft Exchange Transport service.

Answer: AE

NEW QUESTION 5

You need to prevent all of the users from deleting certain email messages after the planned upgrade. The solution must meet the compliance requirements.

Which three actions should you perform in sequence? To answer, move the appropriate actions from the list of actions to the answer area and arrange them in the correct order.

Actions		Answer Area	
Modify the compliance search.			
Create and start a compliance search.			
Create a retention policy tag (RPT).	➤		⬆
Create a retention policy.	⬅		⬇
Create and start a mailbox search.			
Modify the mailbox search.			

Answer:

Explanation:

Actions		Answer Area	
Modify the compliance search.			
Create and start a compliance search.		Create and start a compliance search.	
Create a retention policy tag (RPT).	➤	Create and start a mailbox search.	⬆
Create a retention policy.	⬅	Modify the mailbox search.	⬇
Create and start a mailbox search.			
Modify the mailbox search.			

NEW QUESTION 6

You are planning the deployment of the Exchange servers.

You need to recommend which configurations must be performed after the installation of Exchange Server 2016 to ensure that the users can access the mailboxes without receiving error messages.

Which two actions should you recommend? Each correct answer presents part of the solution.

- A. Add the new server to the Exchange Servers group.
- B. Create a Send Connector.
- C. Import the certificate from EX3 and assign the certificate.
- D. Configure the virtual directory URLs.
- E. Create a Receive Connector.

Answer: CD

Explanation: References: [https://technet.microsoft.com/EN-US/librarv/mt634322\(v=exchg.160\).aspx](https://technet.microsoft.com/EN-US/librarv/mt634322(v=exchg.160).aspx)

NEW QUESTION 7

You need to ensure that members of a group named Relecloudadmins can create user accounts and mailboxes for new employees by using Exchange Admin Center (EAC) after the planned upgrade.

What should you do first?

- A. Run the New-ManagementRole cmdlet.
- B. Run the New-ManagementRoleAssignment cmdlet.
- C. Run setup.exe and specify the /PrepareDomain parameter.
- D. Run setup.exe and specify the /prepareAD parameter.

Answer: B

Explanation: References:
[https://technet.microsoft.com/en-us/library/dd335193\(v=exchg.160\).aspx](https://technet.microsoft.com/en-us/library/dd335193(v=exchg.160).aspx)

NEW QUESTION 8

After deploying new servers, you configure the development applications to send email notifications by using a new server that runs Exchange Server 2016. You need to reduce the likelihood that the email messages will be identified incorrectly as spam. What should you do?

- A. On the new server run, theSet-TransportConfigcmdlet and specify the-/nterna/SMTPServersparameter.
- B. Create a new internal relay accepted domain.
- C. Upgrade EdgeEX to Exchange Server 2016.
- D. On the new server run, run theSet-TransportServercmdlet and specifyXhe-AntiSpamAgentsEnabledar\6\et

Answer: A

Explanation: References:
www.techieshelp.com/exchange-2013-enable-anti-spam/>
<http://www.techieshelp.com/exchange-2013-enable-anti-spam/>

NEW QUESTION 9

You need to meet the compliance requirements for the creation of new mailboxes after the planned upgrade. What command should you run? To answer, select the appropriate options in the answer area.

Answer Area

<div>▼</div> <div>New-Mailbox Set-AdminAuditLogConfig Set-Mailbox</div>	<div>▼</div> <div>-AdminAuditLogCmdlets -AuditEnabled -AuditOwner</div>	<div>▼</div> <div>-"Mailbox" -"New-Mailbox" \$True</div>
---	---	--

Answer:

Explanation: Answer Area

<div>▼</div> <div>New-Mailbox Set-AdminAuditLogConfig Set-Mailbox</div>	<div>▼</div> <div>-AdminAuditLogCmdlets -AuditEnabled -AuditOwner</div>	<div>▼</div> <div>-"Mailbox" -"New-Mailbox" \$True</div>
---	---	--

Topic 3, Contoso Ltd,

Overview

General Overview

Contoso. Ltd. is an international company that has 3,000 employees. The company has sales, marketing, research, and human resource departments.

Physical Locations

Contoso has two main offices. The offices are located in New York and Chicago. Each office has a data center.

The New York office uses a network subnet of 10.1.0.0/16. The Chicago office uses a network subnet of 10.128.0.0/16.

The offices connect to each other by using a WAN link. Each office connects directly to the Internet.

Existing Environment

Active Directory

The network contains an Active Directory forest named contoso.com. The forest contains a single domain. All domain controllers run Windows Server 2012 R2.

The forest functional level is Windows Server 2012 R2.

The forest contains six domain controllers configured as shown in the following table.

Server name	Office	Global Catalog
DC01	Chicago	YES
DC02	Chicago	YES
DC03	Chicago	NO
DC04	New York	YES
DC05	New York	YES
DC06	New York	YES

The forest is configured as a single Active Directory site.

Active Directory administrators manage the Active Directory schema. Exchange Server administrators do not have access to modify the schema.

Contoso has deployed Active Directory Rights Management Services (AD RMS).

Current Business Model

Contoso partners with a company names Fabrikam. Inc. on manufacturing initiatives. The partnership between Contoso and Fabrikam requires that both companies share confidential information frequently.

Requirements

Business Goals

Contoso plans to install Exchange Server 2016 to provide messaging services for its users.

It must be as easy as possible for the users at Contoso to share free/busy information with the users at Fabrikam.

As much as possible. Contoso plans to minimize the costs associated with purchasing hardware and software.

Planned Changes

Contoso plans to implement the following changes before installing Exchange Server 2016:

- Install hardware Network Load Balancing (NLB) in the New York and Chicago offices.
- Implement Microsoft Office Online Servers in the New York and Chicago offices.
- Provide Contoso users with company-approved tablets.

Planned Messaging Infrastructure

You plan to create an Exchange Server 2016 organization named Contoso. You plan to deploy seven servers that will have Exchange Server 2016 installed. The servers

will be configured as shown in the following table.

Server name	Office	Global Catalog
EX01	Chicago	Mailbox server
EX02	Chicago	Mailbox server
EX03	Chicago	Mailbox server
EX04	New York	Mailbox server
EX05	New York	Mailbox server
EX06	New York	Mailbox server
FS1	Chicago	File share witness

All of the servers will be members of a database availability group (DAG) named DAG01.

Client Access Requirements

Contoso identifies the following client access requirements for the planned deployment:

- Users must be able to configure their tablet to synchronize email by using Autodiscover.
- Users must be able to access the Exchange Server organization by using the following names:
 - o Mail.contoso.com
 - o Autodiscover.contoso.com

- Users must be able to access Outlook on the web internally and externally from their tablet.

- Users must be able to access Office Online Server by using the URL of office-online.contoso.com.

Security Requirements

Contoso identifies the following security requirements for the planned deployment:

- Exchange Server mailbox databases must be encrypted while at rest.
- Users must be prevented from using Outlook on the web while they are offline.
- Contoso users must be able to share Calendar details with approved external domains only.
- Email messages sent to the users in the fabrikam.com SMTP domain must be encrypted automatically.
- Whenever possible, client computers must be directed to the same Exchange server for log collection.
- Users must be able to access their mailbox by using Exchange ActiveSync on the company-approved tablets only.
- Email messages sent from the users in the human resources department of Contoso must be protected by using AD RMS. regardless of the mail client.

Availability Requirements

Contoso identifies the following high-availability requirements for the planned deployment:

- Servers must be able to complete a restart without administrative intervention.
- The network load balancer must be able to probe the health of each workload.
- If a data center fails, the databases in the other data center must be activated automatically.
- Redundant copies of all email messages must exist in the transport pipeline before and after delivery.
- Email messages must be made highly available by the Exchange Server organization before and after delivery.
- If you manually mount the databases following the data center failure, the databases in the failed site must be prevented from mounting automatically.

NEW QUESTION 10

You need to recommend a solution that meets the security requirements for mobile devices.

Which two objects should you include in the recommendation? Each correct answer presents part of the solution.

- A. a device access rule
- B. a mobile device mailbox policy
- C. a data loss prevention (DLP) policy
- D. an Outlook Web App policy

Answer: AD

Explanation: References:

<https://technet.microsoft.com/en-us/library/dn792010.aspx> [https://technet.microsoft.com/en-us/library/dd297989\(v=exchg.160\).aspx](https://technet.microsoft.com/en-us/library/dd297989(v=exchg.160).aspx)

NEW QUESTION 10

You run the Get-SendConnector cmdlet and you receive the following output.

```
AddressSpaces                : {SMTP:*;1}
AuthenticationCredential     :
CloudServicesMailEnabled     : False
Comment                       :
ConnectedDomains              : {}
ConnectionInactivityTimeout  : 00:10:00
ConnectorType                 : Default
DNSRoutingEnabled            : True
DomainSecureEnabled          : False
Enabled                       : True
ErrorPolicies                 : Default
ForceHELO                    : False
Fqdn                         : smtp.contoso.com
FrontendProxyEnabled         : False
HomeMTA                      : Microsoft MTA
HomeMTAServerID              : EX01
Identity                     : Internet Mail
IgnoreSTARTTLS                : False
IsScopedConnector            : False
IsSmtplibConnector           : True
MaxMessageSize                : 35 MB (36,700,160, bytes)
Name                         : Internet Mail
Port                         : 25

ProtocolLoggingLevel          : None
RequireOorg                   : False
RequireTLS                    : False
SmartHostAuthMechanism        : None
SmartHosts                    : {}
SmartHostsString              :
SmtplibMaxMessagesPerConnection : 20
SourceIPAddress               : 0.0.0.0
SourceRoutingGroup            : Exchange Routing Group (DWBGZMFD01QNBJR)
SourceTransportServers        : {EX01, EX02}
TlsAuthLevel                  :
TlsCertificateName            :
TlsDomain                     :
UseExternalDNSServerEnabled   : False
```

You need to recommend which actions are required to secure email connectivity between the contoso.com SMTP domain and the fabrikam.com SMTP domain.

Which two actions should you recommend? Each correct answer presents part of the solution.

- A. Import a server certificate that has a subject name of ex01.contoso.com and a subject alternate name of ex02.contoso.com.
- B. Create an Outlook protection rule.
- C. Import a server certificate that has a subject name of smtp.contoso.com.
- D. Configure the TlsSendDomainSecureListparameter for the organization.
- E. Modify the ConnectorTypeparameter for the Send connector.

Answer: CD

Explanation: References:

[https://technet.microsoft.com/en-gb/library/bb123543\(v=exchg.141\).aspx](https://technet.microsoft.com/en-gb/library/bb123543(v=exchg.141).aspx)

NEW QUESTION 15

You need to recommend a solution that meets the security requirements for the tablets.

Which two objects should you include in the recommendation? Each correct answer presents part of the solution.

- A. a mobile device mailbox policy

- B. an Outlook Web App policy
- C. a data loss prevention (DLP) policy
- D. a device access rule

Answer: BD

Explanation: Scenario: Users must be able to access Outlook on the web internally and externally from their tablet. Users must be able to configure their tablet to synchronize email by using Autodiscover.
Users must be able to access their mailbox by using Exchange ActiveSync on the company-approved tablets only

NEW QUESTION 18

You plan to configure the Exchange organization for site failovers.
You need to recommend how many certificates must be deployed to meet the availability requirements and the security requirements.
What is the minimum number of certificates you should recommend deploying?

- A. One
- B. Two
- C. Three
- D. Four

Answer: C

Explanation: Some services, such as Outlook Anywhere and Exchange ActiveSync, require certificates to be configured on your Exchange 2016 server.
From scenario: Security Requirements
Contoso identifies the following security requirements for the planned deployment:
Users must be able to access their mailbox by using Exchange ActiveSync on the company-approved tablets only.
Email messages sent from the users in the human resources department of Contoso must be protected by using AD RMS, regardless of the mail client.
Email messages sent to the users in the fabrikam.com SMTP domain must be encrypted automatically. And others
Exchange Server mailbox databases must be encrypted while at rest.
Users must be prevented from using Outlook on the web while they are offline.
Contoso users must be able to share Calendar details with approved external domains only. Whenever possible, client computers must be directed to the same Exchange server for log collection. References: [https://technet.microsoft.com/en-us/library/mt441782\(v=exchg.150\).aspx](https://technet.microsoft.com/en-us/library/mt441782(v=exchg.150).aspx)

NEW QUESTION 20

Hotspot Question
You need to configure DAG01 to meet the availability requirements.
What command should you run? To answer, select the appropriate options in the answer area.

Answer Area

<div><div>▼</div><div>Set-DatabaseAvailabilityGroup</div><div>Set-MailboxDatabase</div><div>Set-MailboxServer</div></div>	-Identity DAG01	<div><div>▼</div><div>-ActivityState</div><div>-DatabaseCopyAutoActivationPolicy</div><div>-DatacenterActivationMode</div><div>-ForceRediscover</div></div>	<div><div>▼</div><div>Blocked</div><div>DagOnly</div><div>IntrasiteOnly</div><div>Off</div></div>
---	-----------------	---	---

Answer:

Explanation: Answer Area

<div><div>▼</div><div>Set-DatabaseAvailabilityGroup</div><div>Set-MailboxDatabase</div><div>Set-MailboxServer</div></div>	-Identity DAG01	<div><div>▼</div><div>-ActivityState</div><div>-DatabaseCopyAutoActivationPolicy</div><div>-DatacenterActivationMode</div><div>-ForceRediscover</div></div>	<div><div>▼</div><div>Blocked</div><div>DagOnly</div><div>IntrasiteOnly</div><div>Off</div></div>
---	-----------------	---	---

NEW QUESTION 21

You need to instruct the Active Directory administrators how to prepare the Active Directory environment to support the planned Exchange Server 2016 deployment.
What command should you instruct administrators to run? To answer, select the appropriate options in the answer area.

Answer Area

adprep.exe /AcceptExchangeServerLicenseTerms

/DomainPrep

/ForestPrep

/PrepareAD

/PrepareAllDomains

/PrepareDomain

/PrepareSchema

/OrganizationName "Contoso"

/PrepareDomain contoso.com

/TenantOrganizationConfig "Contoso"

Answer:

Explanation:

Answer Area

adprep.exe /AcceptExchangeServerLicenseTerms

/DomainPrep

/ForestPrep

/PrepareAD

/PrepareAllDomains

/PrepareDomain

/PrepareSchema

/OrganizationName "Contoso"

/PrepareDomain contoso.com

/TenantOrganizationConfig "Contoso"

NEW QUESTION 26

You need to recommend a solution that meets the security requirements for the mailbox databases. What should you include in the recommendation?

- A. Resilient File System (ReFS)
- B. Transparent Data Encryption (TDE)
- C. BitLocker Drive Encryption (BitLocker)
- D. Encrypting File System (EFS)

Answer: C

Explanation: Topic 4, Litware

Case study Exchange Server

Litware has an Exchange Server 2016 organization that uses the namespaces of mail.litware.com and autodiscover.litware.com.

The organization contains the servers configured as shown in the following table.

Server name	Server role	Location
HOU-EX1	Edge Transport	Houston
HOU-EX2	Mailbox	Houston
HOU-EX3	Mailbox	Houston
LON-EX1	Mailbox	London

All Internet email is routed through HOU-EX1. Requirements

Business Goals

Litware has security concerns about the data and messaging content of the research and development department. Preventing information leaks is a priority.

All users must be able to access their corporate email from any device.

Litware plans to minimize the costs associated with changing the Exchange Server environment. Planned Changes

Litware plans to implement a site resilience solution ensuring that outbound email messages can be delivered if one of the sites fail. The site resilience solution must allow all users to access their mailbox if a server fails in each site.

Availability Requirements

Litware identifies the following availability requirements: Load balancing must support the following functionalities:

Load balancing must support the following functionalities:

Provide SSL termination

Remove failed Mailbox servers from the server pool.

Data collected by Managed Availability from Outlook on the web must be used.

Target server health must be configured as per-protocol so that only the affected client protocol is directed to another server if a server fails.

The site resilience solution must follow the bound namespace model.

Security Requirements

Litware identifies the following security requirements:

Users in the research and development department must be able to encrypt documents sent to external users. The encrypted email messages must never be forwarded by the external recipients.

Only specific research and development department users must be able to access confidential internal email regarding the high-security government contracts.

All certificates deployed to the Exchange organization must be issued by a trusted third-party certification authority (CA).

The principle of least privilege must be applied to all users and permissions. Compliance Requirements

Litware identifies the following compliance requirements:

Any new mailbox created for the auditing department must have a retention policy named Audit immediately applied manually after the mailbox is created.

Each week, a team of regulation auditors must review the email messages sent and received by all the research and development department users. The regulation auditors must be able to review the email messages of mailboxes placed on Litigation Hold. The regulation auditors must be able to gain quick access to the email messages.

NEW QUESTION 27

You plan to configure the Exchange organization for site failovers. You need to recommend how many certificates must be deployed to meet the availability requirements and the security requirements. What is the minimum number of certificates you should recommend deploying?

- A. one
- B. two
- C. three
- D. four

Answer: A

NEW QUESTION 30

You need to recommend changes to the existing environment to meet the high-availability requirements for the mailbox databases. What should you recommend?

- A. Run the Update-MailboxDatabaseCopy cmdlet.
- B. Deploy a file share witness in Azure.
- C. Run the Set-MailboxServer cmdlet.
- D. Deploy a file share witness to a branch office.

Answer: B

NEW QUESTION 31

You need to build a command to meet the compliance requirements for the regulation auditors. How should you complete the command? To answer, select the appropriate options in the answer area. NOTE: Each correct selection is worth one point.

Answer Area

New-ComplianceSearch

New-MailboxAuditLogSearch

Set-MailboxSearch

Start-ComplianceSearch

-Name "Regulation" -ExchangeLocation" Research and Development"

-AllowNotFoundExchangeLocationsEnabled

\$False

\$NULL

\$True

Answer:

Explanation:

Answer Area

New-ComplianceSearch

New-MailboxAuditLogSearch

Set-MailboxSearch

Start-ComplianceSearch

-Name "Regulation" -ExchangeLocation" Research and Development"

-AllowNotFoundExchangeLocationsEnabled

\$False

\$NULL

\$True

NEW QUESTION 34

You need to recommend a load balancing solution that meets the availability requirements. Which load balancing solution should you recommend?

- A. a Layer-7 load balancer with a single namespace and without session affinity
- B. a Network Load Balancing (NLB) cluster
- C. DNS round robin

D. a Layer-4 load balancer with multiple namespaces and without session affinity

Answer: A

Explanation: From Scenario:

Contoso identifies the following high-availability requirements for the planned deployment: The network load balancer must be able to probe the health of each workload.

Load balancers that work on the Layer 7 of OSI model are intelligent. Layer 7 load balancer is aware of the type of traffic passing through it. This type of load balancer can inspect the content of the traffic between the clients and the Exchange server. From this inspection, it gets that results and uses this information to make its forwarding decisions. For example, it can route traffic based on the virtual directory to which a client is trying to connect, such as /owa, /ecp or /mapi and it can use a different routing logic, depending on the URL the client is connecting to. When using a Layer 7 load balancer, you can also leverage the capabilities of Exchange Server 2016 Managed Availability feature. This built-in feature of Exchange monitors the critical components and services of Exchange server and based on results it can take actions.

Note: Layer 7 load balancer can use this to detect functionality of critical services, and based on that information decide if it will forward client connections to that node. If the load balancer health check receives a 200 status response from health check web page, then the service or protocol is up and running. If the load balancer receives a 403 status code, then it means that Managed Availability has marked that protocol instance down on the Mailbox server.

Although it might look that load balancer actually performs a simple health check against the server nodes in the pool, health check web page provides an information about workload's health by taking into account multiple internal health check probes performed by Managed Availability.

Topic 5, Mix Questions

NEW QUESTION 39

You have an Exchange Server 2016 organization.

Some users access their mailbox by using an Android or an iOS device.

You need to prevent the users from using OWA for Devices to access their mailbox. Which cmdlet should you use?

- A. Set-CASMailbox
- B. Set-MobileMailboxPolicy
- C. Set-OWAVirtualDirectory
- D. Set-OWAMailboxPolicy

Answer: A

NEW QUESTION 41

You have an Exchange Server 2016 organization named Contoso.

You create an organization relationship with a partner's Exchange Server organization named Fabrikam. The users in Fabrikam can view the free/busy information of all the users in Contoso.

You need to ensure that the users in Fabrikam can view the custom Mail Tips configured in Contoso. What command should you run in Contoso? To answer select the appropriate options in the answer area

Answer Area

	▼	"Fabrikam"		▼		▼
Set-IntraOrganizationConnector Set-OrganizationConfig Set-OrganizationRelationship			-MailTipsAccessEnabled -MailTipsAccessLevel -MailTipsAccessScope			\$True All

Answer:

Explanation: Answer Area

	▼	"Fabrikam"		▼		▼
Set-IntraOrganizationConnector Set-OrganizationConfig Set-OrganizationRelationship			-MailTipsAccessEnabled -MailTipsAccessLevel -MailTipsAccessScope			\$True All

NEW QUESTION 42

You have an Exchange Server 2016 organization. The organization contains five servers. The servers are configured as shown in the following table:

Server name	Role	Active Directory site
EX01	Mailbox server	New York
EX02	Mailbox server	New York
EX03	Mailbox server	London
EX04	Mailbox server	London
SRV01	File share witness	New York
SRV02	Alternate file share witness	London

EX01, EX02, EX03, and EX04 are members of a database availability group (DAG) named DAG01. The data center in New York fails. You need to activate DAG01 in the London site.

Which three commands should you run in sequence? To answer, move the appropriate commands from the list of commands to the answer area and arrange them in the correct order.

Commands

Start-DatabaseAvailabilityGroup -Identity DAG01 -ActiveDirectorySite "New York"

Restore-DatabaseAvailabilityGroup -Identity DAG01 -ActiveDirectorySite "New York"

Set-Service -Name clussvc -ComputerName EX03 -Status Stopped
Set-Service -Name clussvc -ComputerName EX04 -Status Stopped

Stop-DatabaseAvailabilityGroup -identity DAG01 -ActiveDirectorySite "New York" -ConfigurationOnly \$TRUE

Stop-DatabaseAvailabilityGroup -identity DAG01 -ActiveDirectorySite "New York" -ConfigurationOnly \$FALSE

Restore-DatabaseAvailabilityGroup -Identity DAG01 -ActiveDirectorySite "London" -AlternateWitnessServer SRV02 -AlternateWitnessDirectory D:\DAG1

Start-DatabaseAvailabilityGroup -Identity DAG01 -ActiveDirectorySite "London"

Set-Service -Name clussvc -ComputerName EX01 -Status Stopped
Set-Service -Name clussvc -ComputerName EX02 -Status Stopped

Answer Area

>

<

Answer:

Explanation:

Commands

Start-DatabaseAvailabilityGroup -Identity DAG01 -ActiveDirectorySite "New York"

Restore-DatabaseAvailabilityGroup -Identity DAG01 -ActiveDirectorySite "New York"

Set-Service -Name clussvc -ComputerName EX03 -Status Stopped
Set-Service -Name clussvc -ComputerName EX04 -Status Stopped

Stop-DatabaseAvailabilityGroup -identity DAG01 -ActiveDirectorySite "New York" -ConfigurationOnly \$TRUE

Stop-DatabaseAvailabilityGroup -identity DAG01 -ActiveDirectorySite "New York" -ConfigurationOnly \$FALSE

Restore-DatabaseAvailabilityGroup -Identity DAG01 -ActiveDirectorySite "London" -AlternateWitnessServer SRV02 -AlternateWitnessDirectory D:\DAG1

Start-DatabaseAvailabilityGroup -Identity DAG01 -ActiveDirectorySite "London"

Set-Service -Name clussvc -ComputerName EX01 -Status Stopped
Set-Service -Name clussvc -ComputerName EX02 -Status Stopped

Answer Area

Stop-DatabaseAvailabilityGroup -identity DAG01 -ActiveDirectorySite "New York" -ConfigurationOnly \$TRUE

Set-Service -Name clussvc -ComputerName EX01 -Status Stopped
Set-Service -Name clussvc -ComputerName EX02 -Status Stopped

Restore-DatabaseAvailabilityGroup -Identity DAG01 -ActiveDirectorySite "London" -AlternateWitnessServer SRV02 -AlternateWitnessDirectory D:\DAG1

>

<

The Leader of IT Certification

visit - <https://www.certleader.com>

NEW QUESTION 46

You have an Exchange Server 2016 organization. The organization contains one Edge Transport server.

A user reports that certain email messages expected from a specific recipient were never received.

You need to search for messages that were blocked by the Edge Transport because they contain attachment types that are blocked by the organization.

In which folder should you search?

- A. QueueViewer
- B. AgentLog
- C. Connectivity
- D. Routing
- E. ProtocolLog

Answer: E

NEW QUESTION 47

You have an Exchange Server 2016 organization. All users use Microsoft Outlook 2016.

You need to configure the Exchange Server organization to meet following requirements:

- Users must be prevented from receiving a notification when they attempt to send an email message to distribution groups that contain less than 100 members.
- Users must be notified before they send email messages to an unmonitored mailbox named Service1.

Which cmdlet should you run to meet each requirement? To answer, drag appropriate cmdlets to the correct requirements. Each cmdlet must be used once, more than once, or not at all. You may need to drag the split bar between panes or scroll to view content.

Users must be prevented from receiving a notification when they attempt to send an email message to distribution groups that contain less than 100 members:

▼

Set-DistributionGroup
Set-OrganizationConfig
Set-Policy TipConfig
Set-TransportConfig

Users must be notified before they send email messages to an unmonitored mailbox named Service1:

▼

Set-Mailbox
Set-OrganizationConfig
Set-Policy TipConfig
Set-TransportConfig

Answer:

Explanation:

Users must be prevented from receiving a notification when they attempt to send an email message to distribution groups that contain less than 100 members:

▼

Set-DistributionGroup
Set-OrganizationConfig
Set-Policy TipConfig
Set-TransportConfig

Users must be notified before they send email messages to an unmonitored mailbox named Service1:

▼

Set-Mailbox
Set-OrganizationConfig
Set-Policy TipConfig
Set-TransportConfig

NEW QUESTION 50

You have an Exchange Server 2016 organization.

You have a user named User1 who must send encrypted email messages to a user named User2 in another organization.

User1 and User2 have certificates issued from a trusted third-party certification authority (CA). You need to ensure that User1 can send the encrypted email messages to User2.

What should you do first?

- A. Instruct User2 to send a digitally signed email message to User1.
- B. Instruct User2 to create a Certificate Signing Request (CSR). Send the CSR to User1.
- C. Instruct User1 to send a digitally signed email message to User2
- D. Instruct User1 to create a Certificate Signing Request (CSR). Send the CSR to User2

Answer: A

Explanation: Sending and viewing encrypted email messages requires both sender and recipient to share their digital ID, or public key certificate. This means that you and the recipient each must send the other a digitally signed message, which enables you to add the other person's certificate to your Contacts. You can't encrypt email messages without a digital ID. So if this is a first time deal then send a digitally signed document at first, once they respond with their own digitally signed email, then you can start encrypting.

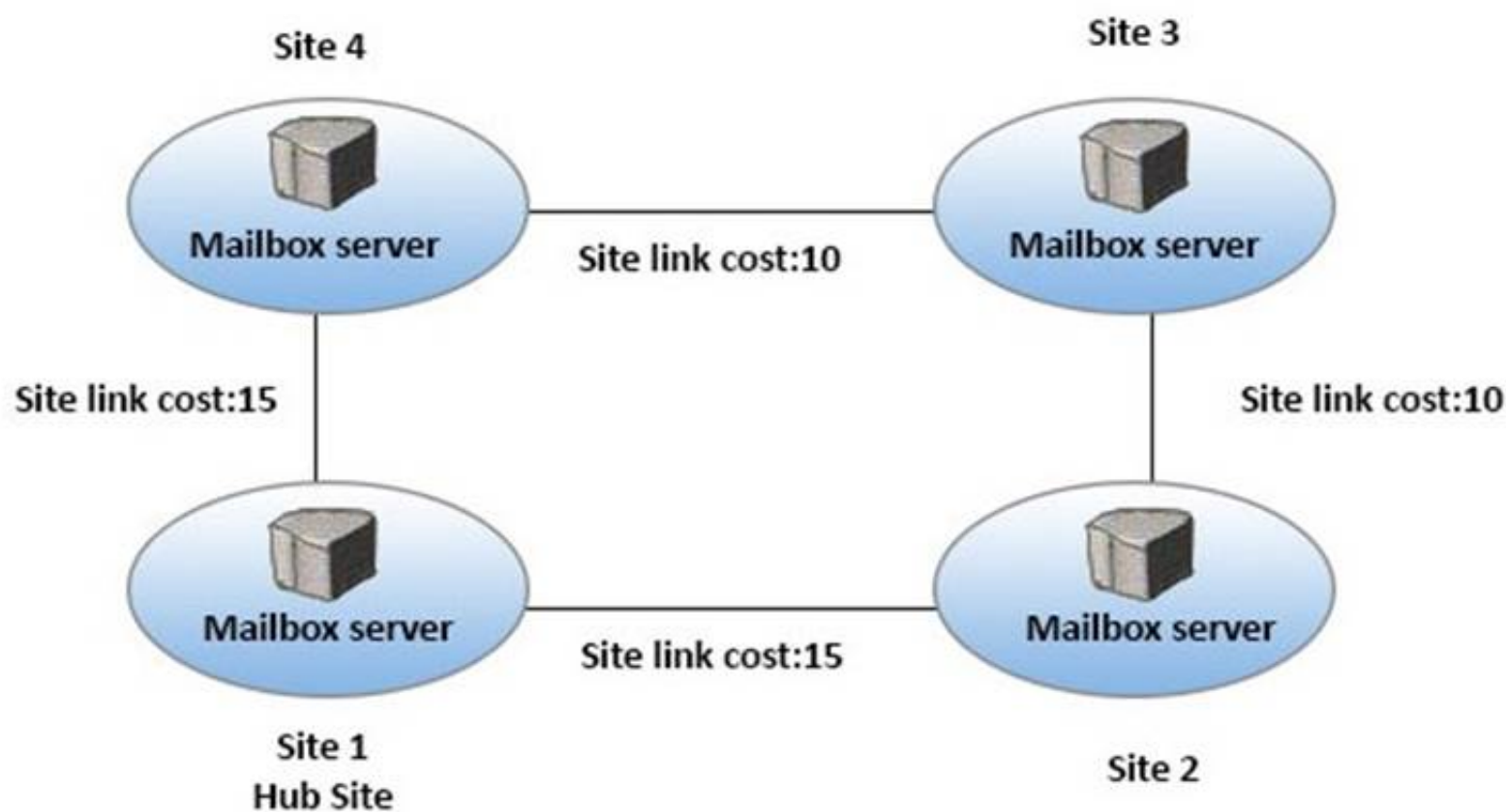
To encrypt messages, you can use the public-key cryptographic system. In this system, each participant has two separate keys: a public encryption key and a private decryption key. When someone wants send you an encrypted message, he or she uses your public key to generate the encryption algorithm. When you receive the message, you must use your private key to decrypt it.

References:

<https://www.ssldsupportdesk.com/digitally-signing-encrypting-email-messages-outlook-guide/> <https://support.mozilla.org/en-US/kb/digitally-signing-and-encrypting-messages>

NEW QUESTION 51

You have an Exchange Server 2016 organization. The Active directory sites are configured as shown in the following graphic.



Use the drop-down menus to select the answer choice that completes each statement based on the information presented in the graphic.

When a user from Site 4 sends an email message to user in Site 2, the message will be [answer choice].

▼

☒ sent directly to Site 2
 ☐ relayed throug Site 1
 ☐ relayed throug Site 3

If the server in Site 2 fails, all of the email messages sent from Site 4 to Site 2 will be queued on a server in [answer choice].

▼

☒ Site 1
 ☐ Site 3
 ☐ Site 4

Answer:

Explanation:

When a user from Site 4 sends an email message to user in Site 2, the message will be [answer choice].

▼

☒ sent directly to Site 2
 ☐ relayed throug Site 1
 ☐ relayed throug Site 3

If the server in Site 2 fails, all of the email messages sent from Site 4 to Site 2 will be queued on a server in [answer choice].

▼

☒ Site 1
 ☐ Site 3
 ☐ Site 4

NEW QUESTION 56

All users connect to their mailbox by using Microsoft Outlook and Outlook on the web.

You need to ensure that all of the users are notified before they send an email message to a distribution group named Executives.

Which cmdlet should you use?

- A. New-TransportRule
- B. Set-Mailbox
- C. New-PolicyTipConfig
- D. Set-DistributionGroup
- E. Set-DLPPolicy

Answer: A

Explanation: You can use a transport rule with the condition. The recipient is a member of. This condition matches messages that contain recipients who are members of the specified distribution group. The distribution group can be listed in the To, Cc, or Bcc fields.

NEW QUESTION 59

You are planning an Exchange Server 2016 organization. The organization will contain two servers. The servers will be configured as shown in the following table.

Server name	Active Directory site
EX01	New York
EX02	London

You plan to purchase an SSL certificate that contains the following names: Mail.contoso.com

Mail.london.contoso.com Mail.newyork.contoso.com

You plan to configure a solution for the sites in New York and London. DNS will resolve the names as shown in the following table.

Host name	Resolves to
Mail.contoso.com	IP addresses of the servers in the New York and London sites
Mail.newyork.contoso.com	IP address of the server in the New York site
Mail.london.contoso.com	IP address of the server in the London site

You need to configure the client protocols to meet the following requirements:

Users who connect to their mailbox by using Outlook on the web must connect directly to a server in the site that hosts their mailbox. All Exchange ActiveSync users must connect to the same namespace.

How should you configure the virtual directories? To answer, select the appropriate options in the answer area.

EX01 OWA virtual directory ExternalUrl:	<div><div></div><div>https://ex01.contoso.com/owa https://mail.contoso.com/owa https://mail.london.contoso.com/owa https://mail.newyork.contoso.com/owa</div></div>
EX02 OWA virtual directory ExternalUrl:	<div><div></div><div>https://ex02.contoso.com/owa https://mail.contoso.com/owa https://mail.london.contoso.com/owa https://mail.newyork.contoso.com/owa</div></div>
EX01 ActiveSync virtual directory ExternalUrl:	<div><div></div><div>https://ex01.contoso.com/Microsoft-Server-ActiveSync https://mail.contoso.com/Microsoft-Server-ActiveSync https://mail.london.contoso.com/Microsoft-Server-ActiveSync</div></div>
EX02 ActiveSync virtual directory ExternalUrl:	<div><div></div><div>https://ex02.contoso.com/Microsoft-Server-ActiveSync https://mail.contoso.com/Microsoft-Server-ActiveSync https://mail.london.contoso.com/Microsoft-Server-ActiveSync</div></div>

Answer:

Explanation:

EX01 OWA virtual directory ExternalUrl:

▼

<https://ex01.contoso.com/owa>
<https://mail.contoso.com/owa>
<https://mail.london.contoso.com/owa>
<https://mail.newyork.contoso.com/owa>

EX02 OWA virtual directory ExternalUrl:

▼

<https://ex02.contoso.com/owa>
<https://mail.contoso.com/owa>
<https://mail.london.contoso.com/owa>
<https://mail.newyork.contoso.com/owa>

EX01 ActiveSync virtual directory ExternalUrl:

▼

<https://ex01.contoso.com/Microsoft-Server-ActiveSync>
<https://mail.contoso.com/Microsoft-Server-ActiveSync>
<https://mail.london.contoso.com/Microsoft-Server-ActiveSync>

EX02 ActiveSync virtual directory ExternalUrl:

▼

<https://ex02.contoso.com/Microsoft-Server-ActiveSync>
<https://mail.contoso.com/Microsoft-Server-ActiveSync>
<https://mail.london.contoso.com/Microsoft-Server-ActiveSync>

NEW QUESTION 60

Your network contains an Active Directory forest. The forest contains domain controllers that run Windows Server 2012 R2. The forest contains an Exchange Server 2016 organization. You need to create a database availability group (DAG). Which two actions should you perform before you create the DAG? Each correct answer presents part of the solution. NOTE: Each correct selection is worth one point.

- A. From Failover Cluster Manager, create a failover cluster.
- B. From the DNS zone, create an alias (CNAME) record for the name of the DAG.
- C. Install at least one domain controller that runs Windows Server 2016.
- D. From Active Directory, create a clustered name object (CNO).
- E. On the witness server, add the Exchange Trusted Subsystem group to the local administrators group.

Answer: AE

NEW QUESTION 62

Your company has three offices. The offices are located in New York, London and Sydney. The offices connect to each other by using a WAN link. Each office connects directly to the Internet. The company has an Exchange Server 2016 organization. The organization contains six Mailbox servers. The servers are configured as shown in the following table.

Server name	Office	Active Directory site	Database Availability group
EX1	New York	Site1	DAG1
EX2	New York	Site1	DAG1
EX3	London	Site2	DAG1
EX4	London	Site2	DAG1
EX5	Sydney	Site3	DAG1
EX6	Sydney	Site3	DAG1

Each office is configured to use a different Send connector to send email messages to the Internet. All connectors have a cost value of 1. You discover that the available bandwidth of the WAN links between the offices is low. You need to reduce the amount of traffic generated by the Mailbox servers on the WAN links. What should you do?

- A. Modify the cost of each Send connector.
- B. Modify the shadow redundancy settings.

- C. Modify the schedule of the site links.
D. Reduce the number of Active Directory sites.

Answer: B

NEW QUESTION 67

You have an exchange Server 2016 organization that uses an SMTP domain named contoso.com. You need to encrypt all of the SMTP traffic from the organization to a partner organization.

The partner organization uses an SMTP domain named litwareinc.com.

Which three commands should you run on your server? Each correct answer presents part of the solution.

- A. New-ReceiveConnector-Name "Connector1"-Usage Internet- Bindings 0.0.0.0:587-DomainSecureEnabled: \$true
B. Set-TransportConfig-TLSSendDomainSecureList litwareinc.com
C. New-SendConnector-Usage Partner-Name "Connector1" -AddressSpaces "litwareinc.com"-IgnoreSTARTTLS \$false-DNSRoutingEnabled \$true -DomainSecureEnabled \$true
D. Set-TransportConfig- TLSReceiveDomainSecureList contoso.com
E. Set-TransportConfig-TLSReceiveDomainSecureList litwareinc.com
F. New-SendConnector- Usage Partner -Name "Connector1" -AddressSpaces "contoso.com"-IgnoreSTARTTLS \$false-DNSRoutingEnabled \$ture -DomainSecureEnabled \$true
G. Set-TransportConfig-TLSSendDomainSecureList contoso.com

Answer: CEG

Explanation: <http://dizdarevic.ba/ddamirblog/?p=78>

[https://technet.microsoft.com/en-us/library/bb124151\(v=exchg.160\).aspx](https://technet.microsoft.com/en-us/library/bb124151(v=exchg.160).aspx) [https://technet.microsoft.com/en-us/library/aa998936\(v=exchg.160\).aspx](https://technet.microsoft.com/en-us/library/aa998936(v=exchg.160).aspx)

NEW QUESTION 69

You have three Hyper-V hosts that each have 20 processor cores and 64 GB of RAM. Nine virtual machines are deployed to the hosts as shown in the following table.

Virtual machine name	Hyper-V host name	Number of processor cores	Amount of memory (GB)
DC1	Host1	4	8
FileServer1	Host1	4	8
WAP1	Host1	4	4
DC2	Host2	4	8
SQL1	Host2	12	32
ADFS1	Host2	4	8
Skype1	Host3	12	16
SharePoint1	Host3	12	16
SCOM1	Host3	8	12

You plan to deploy a two-node Exchange Server 2016 database availability group (DAG) by using the virtual machines. Each node will have 12 processor cores and 24 GB of memory.

You are evaluating whether you can use the existing servers for the deployment or whether you must purchase additional servers.

You need to recommend where to place the Exchange servers. The solution must minimize costs.

What is the best recommendation to achieve the goal? More than one answer choice may achieve the goal. Select the BEST answer.

- A. One Exchange server on Host1 and one Exchange server on a new Hyper-V host.
B. One Exchange server on Host1 and one Exchange server on Host3.
C. Both Exchange servers on Host1.
D. One Exchange server on Host1 and one Exchange server on Host2.
E. One Exchange server on Host2 and one Exchange server on Host3.

Answer: E

NEW QUESTION 72

Your company has a main office and a branch office. An Active Directory site exists for each office. The offices are connected by a WAN link.

You plan to deploy Exchange Server 2016 in each site.

You need to identify the number of Exchange servers required to meet the following requirements:

- Maintain user access to mailboxes if a single server fails
 - Use the minimize account of Exchange servers in each site
- How many servers should you deploy in each site?

- A. 1
B. 2

- C. 3
D. 4

Answer: A

Explanation: The mailbox databases can be replicated to the server in the other site.

NEW QUESTION 77

All the research and development department users are members of a distribution group named rdev. Rdev receives an average of 2,000 email messages daily. You need to ensure that email sent to the rdev distribution group meets the security requirements for confidential email. The solution must minimize administrative effort.

What should you do?

- A. Create linked mailboxes for users without security clearance.
B. Create a transport rule that filters based on keyword predicates.
C. Create mail contacts for users without security clearance.
D. Edit the distribution group properties and enable moderation of the group.

Answer: B

Explanation:

Actions in mail flow rules (also known as transport rules) specify what you want to do to messages that match conditions of the rule.

References: [https://technet.microsoft.com/en-us/library/aa998315\(v=exchg.160\).aspx](https://technet.microsoft.com/en-us/library/aa998315(v=exchg.160).aspx)

NEW QUESTION 80

You have an Exchange Server 2016 organization.

You need to ensure that users in each department download an Offline Address Book (OAB) that only contains the users in their department. The solution must ensure that all of the users can continue to see all the other users in the organization.

Which three actions should you perform? Each correct answer presents part of the solution.

- A. Create an OAB for each department
B. Modify the properties for each user mailbox.
C. Create an address book policy (ABP) for each department.
D. Create an address list for each department.
E. Modify the properties of the default OAB.
F. Create an email address policy for each department.

Answer: ABC

NEW QUESTION 83

You have an Exchange Server 2010 organization. The organization has 500 mailboxes and three servers. The servers are configured as shown in the following table.

Server name	Role
EX10MBX	Mailbox Server
EX10CH	Client Access server, Hub Transport server
EX10EDGE	Edge Transport server

EX10EDGE is located in the perimeter network. EX10CH has an Edge Subscription. All Internet mail flows through EX10EDGE.

You deploy an Exchange Server 2016 Mailbox server named EX16MBX to the organization. You deploy an Exchange Server 2016 Edge Transport server named EX16EDGEtothe perimeter network.

You need to transition all Internet mail to flow through EX16EDGE. The solution must minimize disruptions to the mail flow.

Which three actions should you perform in sequence? To answer, move the appropriate actions from the list of actions to the answer area and arrange them in the correct order.

Actions

Configure the perimeter Firewall to forward HTTPS traffic to EX16EDGE.

Modify the Edge Subscription on EX10CH.

Remove the Edge Subscription on EX10CH and EX10EDGE.

Create an Edge Subscription between EX16EDGE and EX16MBX.

Configure the perimeter firewall to forward SMTP traffic to EX16EDGE.

Cretae an Edge Subscription between EX10EDGE and EX16MBX.

Answer Area



Answer:

Explanation:

Actions

Configure the perimeter Firewall to forward HTTPS traffic to EX16EDGE.

Modify the Edge Subscription on EX10CH.

Remove the Edge Subscription on EX10CH and EX10EDGE.

Create an Edge Subscription between EX16EDGE and EX16MBX.

Configure the perimeter firewall to forward SMTP traffic to EX16EDGE.

Cretae an Edge Subscription between EX10EDGE and EX16MBX.



Answer Area

Cretae an Edge Subscription between EX10EDGE and EX16MBX.

Configure the perimeter firewall to forward SMTP traffic to EX16EDGE.

Remove the Edge Subscription on EX10CH and EX10EDGE.



NEW QUESTION 88

You have an Exchange Server 2016 organization.

You need to create a resource record in DNS to support Autodiscover from the Internet. What type of resource record should you create?

- A. Host (A)
- B. Text (TXT)
- C. Pointer (PTR)
- D. Mail exchange (MX)

Answer: A

NEW QUESTION 89

You have an Exchange Server organization. The organization contains four servers. The servers configured as shown in the following table.

Server name	Exchange Server version	Role	Configuration
EX1	2013	Client Access Server	Provides MAPI access for a third-party application
EX2	2013	Mailbox Server	Hosts public folders that are accessed by using Microsoft Outlook 2013
EX3	2010	Mailbox Server, Hub Transport server	Filters the content of all email messages from the Internet by using the content filtering agent
EX4	2010	Mailbox server	Provides retention by using managed folders

You plan to upgrade the organization to Exchange Server 2016.
You need to identify which servers have functionalities that can be fully achieved by using Exchange Server 2016.
What should you identify? To answer, select the appropriate options in the answer area.

All the functionalities in EX01 can be achieved by using Exchange Server 2016:

☐ Yes
☐ No

All the functionalities in EX02 can be achieved by using Exchange Server 2016:

☐ Yes
☐ No

All the functionalities in EX03 can be achieved by using Exchange Server 2016:

☐ Yes
☐ No

All the functionalities in EX04 can be achieved by using Exchange Server 2016:

☐ Yes
☐ No

Answer:

Explanation:

All the functionalities in EX01 can be achieved by using Exchange Server 2016:

☒ Yes
☒ No

All the functionalities in EX02 can be achieved by using Exchange Server 2016:

☒ Yes
☒ No

All the functionalities in EX03 can be achieved by using Exchange Server 2016:

☒ Yes
☒ No

All the functionalities in EX04 can be achieved by using Exchange Server 2016:

☒ Yes
☒ No

NEW QUESTION 93

You have an Exchange Server 2016 organization. The organization contains a database availability group (DAG). You need to identify the number of transaction logs that are in replay queue. Which cmdlet should you use?

- A. Test-ServiceHealth
- B. Test-ReplicationHealth
- C. Get-DatabaseAvailabilityGroup
- D. Get-MailboxDatabaseCopyStatus

Answer: D

Explanation: References:

[https://technet.microsoft.com/en-us/library/bb691314\(v=exchg.160\).aspx?f=255&MSPPErr=-2147217396](https://technet.microsoft.com/en-us/library/bb691314(v=exchg.160).aspx?f=255&MSPPErr=-2147217396)

NEW QUESTION 95

You need to add a DNS record to provide Autodiscover for each domain. Which type of record should you create in each zone?

- A. PTR
- B. MX
- C. TXT
- D. A

Answer: D

Explanation: Example:

FQDN: autodiscover.contoso.com DNS record type: A

Value: 172.16.10.11

References: [https://technet.microsoft.com/en-us/library/mt473798\(v=exchg.150\).aspx](https://technet.microsoft.com/en-us/library/mt473798(v=exchg.150).aspx)

NEW QUESTION 97

You have an Exchange Server 2016 organization.

Some users access the mailbox on their mobile device by using Exchange ActiveSync.

You need to prevent the users from synchronizing more than one month of email or calendar data to their device.

Solutions: You deploy an Allow/Block/Quarantine policy.

Does this meet the goal?

- A. Yes
- B. No

Answer: B

Explanation:

The Allow/Block/Quarantine policy, or list, feature was designed to help IT organizations control which of the growing number of Exchange ActiveSync-enabled devices are allowed to connect to their Exchange Servers.

With this feature, organizations can choose which devices (or families of devices) can connect using Exchange ActiveSync (and conversely, which are blocked or quarantined).

References:

<https://blogs.technet.microsoft.com/exchange/2010/11/15/controlling-exchange-activesyncdevice-access-using-t>

NEW QUESTION 99

How is the IBM Content Template Catalog delivered for installation?

- A. as an EXE file
- B. as a ZIP file of XML files
- C. as a Web Application Archive file
- D. as a Portal Application Archive file

Answer: D

Explanation: References: <https://greenhouse.lotus.com/plugins/plugincatalog.nsf/ass>

NEW QUESTION 102

You run the Get-DlpPolicy cmdlet and you receive the following output.

```
RunspaceID      : 07479925-f4bf-4bb2-80e0-4d1eab557dfe
Name            : Policy1
Version         : 15.0.3.0
ContentVersion  : 4
ImmutableID     : 4bf920ba-536b-4370-8dc2-4f71157702f1
State           : Enabled
Mode            : AuditAndNotify
Description     :
PublisherName   : Microsoft
Keywords        : {}
Identity        : Policy1
DistinguishedName : CN=CPolicy1,CN=Rules,CN=Transport
                  SettingsCN=Contoso,CN=Microsoft
                  Exchange,CN=Services,CN=Configuration,
                  DC=contoso,DC=com
Guid            : a0a95206-02a3-4f24-a913-a74dbbc8db01
OrganizationID  :
IsValid         : True
```



```
WhenChanged           : 9/15/2015 12:13:25 AM
ExchangeVersion       : 0.20 (15.0.0.0)
MaximumSupportedExchangeObjectVersion : 0.20 (15.0.0.0)
IsReadOnly            : False
ObjectState           : Unchanged
```

Use the drop-down menus to select the answer choice that completes each statement based on the information presented in the output.

If a message matches the conditions of the policy, the message will be
[answer choice].

▼

blocked and the sender will be notified
blocked without notifying the sender
send to the recipient

If a message matches the conditions of the policy, a [answer choice]
will appear in Microsoft Outlook.

▼

mail tip
non-delivery report (NDR)
policy tip

Answer:

Explanation:

If a message matches the conditions of the policy, the message will be
[answer choice].

▼

blocked and the sender will be notified
blocked without notifying the sender
send to the recipient

If a message matches the conditions of the policy, a [answer choice]
will appear in Microsoft Outlook.

▼

mail tip
non-delivery report (NDR)
policy tip

NEW QUESTION 107

You plan to deploy Exchange Server 2016 to a new server. The server will host 1,000 mailboxes. You need to identify whether the new server has the required disk throughput and speed.

Which two tools should you use? Each correct answer presents part of the solution.

NOTE: Each correct selection is worth one point.

- A. LoadGen
- B. the Exchange Server Best Practices Analyzer Tool
- C. Jetstress
- D. Isinteg
- E. the Exchange Server Role Requirements Calculator

Answer: AC

Explanation: To determine how many Exchange servers are required to manage user load, use the following capacity planning tools:

Microsoft Exchange Jetstress Microsoft Exchange Load Generator Note:

The Jetstress tool is designed to simulate Exchange I/O at the database level by interacting directly with the database technology of the Extensible Storage Engine (ESE), also known as Jet, that Exchange is built on.

Jetstress can be configured to test the maximum I/O throughput available to your disk subsystem within the required performance constraints of Exchange, or it can accept a desired profile of user count and I/Os per second per user and validate that the disk subsystem is capable of maintaining an acceptable level of performance with such a profile. Jetstress testing can be used to validate storage reliability and performance prior to the deployment of Exchange servers. You should run Jetstress if you are concerned about your storage subsystem performance or if you need to determine a system's I/O capacity.

The Load Generator (LoadGen) tool is designed to produce a simulated client workload against a test Exchange deployment. This workload can be used to evaluate how Exchange performs, and can also be used to analyze the effect of various configuration changes on Exchange behavior and performance while the system is under load

Use the output from these tests in the following ways: Validate deployments

Calculate the client computer response time for the server configuration under client load Estimate the number of users per server

Identify bottlenecks on the server

References: [https://technet.microsoft.com/en-us/library/dd335108\(v=exchg.141\).aspx](https://technet.microsoft.com/en-us/library/dd335108(v=exchg.141).aspx)

NEW QUESTION 111

You have an Exchange Server 2016 organization.

Some users access the mailbox on their mobile device by using Exchange ActiveSync.

You need to prevent the users from synchronizing more than one month of email or calendar data to their device.

Solution: You deploy an Outlook on the web mailbox policy. Does this meet the goal?

- A. Yes
- B. No

Answer: A

Explanation:

The web mailbox policy includes the Maximum calendar age filter setting, which specifies the maximum range of calendar days that can be synchronized to the mobile phone. The value is specified in days.

References: [https://technet.microsoft.com/en-us/library/bb123484\(v=exchg.141\).aspx](https://technet.microsoft.com/en-us/library/bb123484(v=exchg.141).aspx)

NEW QUESTION 112

You have an Exchange Server 2016 organization and a Microsoft Office 365 subscription configured in a hybrid deployment. The deployment contains 500 user mailboxes.

Users who have mailboxes in Office 365 report that they cannot view the availability information of users who have mailboxes in Exchange Server 2016.

You need to ensure that the users hosted in Office 365 can view the availability information of the mailboxes hosted in on-premises Exchange Server.

Which command should you run on an Exchange Server? To answer, select the appropriate options in the answer area.

<div><div></div><div>Add-AvailabilityAddressSpace Set-AvailabilityConfig Set-OutlookAnywhere Set-WebServicesVirtualDirectory</div></div>	<div><div></div><div>-identify EX1/EWS(Default Website) -identify EX1/OWA(Default Website) -IISAuthentication NTLM</div></div>
<div><div></div><div>-ExternalURL -InternalURL</div></div>	<code>https://mail.contoso.com/ews/Exchange.asmx</code>

Answer:

Explanation:

<div><div></div><div>Add-AvailabilityAddressSpace Set-AvailabilityConfig Set-OutlookAnywhere Set-WebServicesVirtualDirectory</div></div>	<div><div></div><div>-identify EX1/EWS(Default Website) -identify EX1/OWA(Default Website) -IISAuthentication NTLM</div></div>
<div><div></div><div>-ExternalURL -InternalURL</div></div>	<code>https://mail.contoso.com/ews/Exchange.asmx</code>

NEW QUESTION 116

You are designing an Exchange Server 2016 organization. The organization will use a single namespace of mail.contoso.com for all client access protocols. You plan to use load balancers.

You identify the following requirements for the load balancing solution:

- The Edge Transport server log files must contain the original IP address of the SMTP hosts.
- Clients must be able to connect only when they use the approved hostnames and the approved virtual directories.

You need to identify which type of load balancer meets each requirement.

What should you identify? To answer, select the appropriate options in the answer area.

The Edge Transport server log files must contain the original IP address of the SMTP client:

▼

Layer 4 only
Layer 7 only
Both Layer 4 and Layer 7

Users must be able to connect only when they use the approved hostnames and the approved virtual directories:

▼

Layer 4 only
Layer 7 only
Both Layer 4 and Layer 7

Answer:

Explanation:

The Edge Transport server log files must contain the original IP address of the SMTP client:

▼

Layer 4 only
Layer 7 only
Both Layer 4 and Layer 7

Users must be able to connect only when they use the approved hostnames and the approved virtual directories:

▼

Layer 4 only
Layer 7 only
Both Layer 4 and Layer 7

NEW QUESTION 120

Your company has an Exchange Server 2016 organization. All users have a primary mailbox and archive mailboxes.

You create a new retention policy for the users. The policy includes the following types of tags:

A default retention policy tag (RPT) applied to the mailbox: The tag is configured to move email messages older than three years to the archive. An RPT applied to the users' Sent Items folder: The tag is configured to move email messages older than one year to the archive.

The corporate retention policy is applied to all of the mailboxes.

A user creates a personal tag named Tag1. The personal tag is configured to delete items permanently after 180 days.

The user sends an email message that uses Tag1.

You need to identify what will occur to the message. What should you identify?

- A. The message will be deleted in six months.
- B. The message will be moved to the archive in one year
- C. The message will be moved to the archive in one year and deleted six months later.
- D. The message will be moved to the archive in three years.

Answer: A

Explanation: Personal tags allow your users to determine how long an item should be retained. For example, the mailbox can have a DPT to delete items in seven years, but a user can create an exception for items such as newsletters and automated notifications by applying a personal tag to delete them in three days.
References: [https://technet.microsoft.com/en-us/library/dd297955\(v=exchg.150\).aspx](https://technet.microsoft.com/en-us/library/dd297955(v=exchg.150).aspx)

NEW QUESTION 123

You have an Exchange Server 2016 organization.

The organization contains a mailbox database named DB1. DB1 is stored on a volume named Volume1. You plan to use Exchange Native Data protection.

You need to recommend a solution to prevent Volume1 from running out of space for transaction logs. What should you recommend?

- A. an event history retention period
- B. background database maintenance
- C. circular logging
- D. a size limit of the log directory for the managed folders

Answer: C

NEW QUESTION 124

Your company has an Exchange Server 2016 organization.

You plan to allow several users to access the mailboxes of the other group.

You need to ensure that a user named User1 can read and delete the email messages in the mailbox of a user named User2. User1 must add the mailbox of User2 manually to the Microsoft Outlook profile.

What command should you run? To answer, select the appropriate options in the answer area.

Add-MailboxFolderPermission Add-MailboxPermission	-Identify User1 -Identify User2	-User User1 -User User2
-AccessRight ExternalAccount -AccessRight FullAccess -AccessRight ReadPermission	-Atomapping \$false -Atomapping \$true -Confirm \$false -Confirm \$true	-inheritanceType All

Answer:

Explanation:

Add-MailboxFolderPermission Add-MailboxPermission	-Identify User1 -Identify User2	-User User1 -User User2
-AccessRight ExternalAccount -AccessRight FullAccess -AccessRight ReadPermission	-Atomapping \$false -Atomapping \$true -Confirm \$false -Confirm \$true	-inheritanceType All

NEW QUESTION 126

Your company has one Exchange Server 2016 database availability group (DAG) across two data centers. You need to load balance a single namespace across both data centers. The solution must be able to check service health check. Which two solutions should you use? Each correct answer presents part of the solution.

- A. A Layer 7 load balancer
- B. An unbound model
- C. A bound model
- D. DNS round-robin

Answer: AB

Explanation: You should use an unbound model. With an unbound model, a single namespace is used across two datacenters. You should use a Layer 7 load balancer. In this scenario, a DAG has active databases across two datacenters. Users are distributed with a load balancer across the two datacenters. A Layer 7 load balancer checks service health at the application level. You should not use a bound model. A bound model uses two separate namespaces across two datacenters. You should not use DNS round-robin. DNS round-robin load balancing uses a single namespace, but it does not check the health of the application or server.

NEW QUESTION 129

You have an Exchange Server 2016 organization. The organization contains an Edge transport server. Users report that a message with the following anti-spam headers is delivered to their Inbox folder in Microsoft Outlook.
X-MS-Exchange-Organization-PCL : 7 X-MS-Exchange-Organization-SCL : 6
X-MS-Exchange-Organization-Antispam-Report : DV : 3.1.3924.1409; SID : SenderIDStatus Fail; PCL: PhishingLevel SUSPICIOUS; CW: CustomList; PP: Presolved; TIME: TimeBasedFeatures
You need to prevent similar messages from being delivered. The solution must generate a non-delivery report (NDR) when the messages are prevented from being delivered to all user mailboxes. What should you do?

- A. Set the SCL reject threshold to 5.
- B. Run the Set-SenderIdConfig cmdlet.
- C. Set the SCL delete threshold to 7.
- D. Run the Set-TransportConfig cmdlet.

Answer: A

NEW QUESTION 132

You have two servers named EX1 and EX2. You plan to add both servers to a database availability group (DAG) named DAG1. Each server will host a copy of a mailbox database. You calculate that during the lifespan of the servers, the mailbox databases will grow up to 4 TB. The logs will occupy up to 1TB at any given time.

Server name	Disk name	Size	Contents
EX1	C	1 TB	Operating system
	D	2 TB	Empty
	E	5 TB	Empty
EX2	C	1 TB	Operating system
	D	1 TB	Empty
	E	4 TB	Empty
	F	1 TB	Empty
	G	5 TB	Empty

You need to identify which drivers must be used to store the database and log files on the servers.

EX1:

Drive C to store the log files and drive E to store the database files

Drive D to store the log files and drive E to store the database files

Drive E to store the log files and the database files

EX2:

Drive C to store the log files and drive E to store the database files

Drive D to store the log files and drive E to store the database files

Drive E to store the log files and the database files

Answer:

Explanation:

EX1:

Drive C to store the log files and drive E to store the database files

Drive D to store the log files and drive E to store the database files

Drive E to store the log files and the database files

EX2:

Drive C to store the log files and drive E to store the database files

Drive D to store the log files and drive E to store the database files

Drive E to store the log files and the database files

NEW QUESTION 136

You have an Exchange Server 2016 organization.

All users work from a main office and use Microsoft Outlook 2016.

You recently ran the Microsoft Office 365 Hybrid Configuration Wizard and moved most of the user mailboxes to Exchange Online.

A network administrator reports an increase in the amount of outbound SMTP traffic from the network. You need to reduce the amount of bandwidth utilization for the outbound SMTP traffic.

What should you do?

- A. From the Exchange Server organization, create a Receive connector that uses the IP address of Exchange Online as a remote range.
- B. From the public DNS zone, modify the MX record to point to Exchange Online.
- C. From the public DNS zone, modify the SRV record to point to Exchange Online.
- D. From the Exchange Server organization, create a Send connector that uses Exchange Online as an SMTP smart host.

Answer: B

NEW QUESTION 137

A company deploys Microsoft SQL Server on an Azure DS3 _V2_Standard virtual machine (VM). You need to modify the disk caching policy. Which Azure PowerShell cmdlet should you run?

- A. Update-AzureDisk
- B. Update-AzureRmVm
- C. Set-AzureRMVMDDataDisk
- D. Set-AzureRmVmOperatingSystem

Answer: C

NEW QUESTION 138

You have an Exchange Server 2016 organization that contains multiple Hub Transport servers. You need to recommend a message hygiene solution to meet the

following requirements:

- Block servers that are known to send spam
 - Minimize administrative effort
- What should you recommend?

- A. an IP Block list
- B. IP Block list providers
- C. recipient filtering
- D. sender filtering

Answer: B

NEW QUESTION 143

You have an Exchange Server 2016 organization. The organization contains 2,000 mailboxes and 100 distribution groups. You create a distribution group named Managers and you add 20 users to the group.

You need to ensure that the members of Managers can create new groups and modify the membership of those groups. Which three actions should you perform? Each correct answer presents part of the solution.

- A. Create a role assignment policy named Managers.
- B. Create a new role group named Managers.
- C. Assign an address book policy (ABP).
- D. Add the MyBaseOptions and MyDistributionGroupMembership management roles the Managers role assignment policy.
- E. Assign the role assignment policy.
- F. Assign a sharing policy.
- G. Add the MyBaseOptions and MyDistributionGroups management roles to the Managers role assignment policy.

Answer: AEG

NEW QUESTION 144

You manage an Exchange Server 2016 organization that spans two sites. The sites are located in Los Angeles and New York.

You have a database availability group (DAG) named DAG1 that contains four members, two in each site. The names and location of each DAG1 member are as follows:

EX01 and EX02 are in the New York site. EX03 and EX04 are in the Los Angeles site.

A user has a mailbox on a database that is currently active on EX03.

The Front End Transport service on EX01 receives a message from the Internet. The message is addressed only to the user.

Based on this information, how will the Front End Transport service always attempt to route the first delivery attempt of the message?

- A. The Transport service on EX01
- B. The Transport service on EX03
- C. The Transport service on one of the servers in the New York site
- D. The Transport service on one of the servers in the Los Angeles site

Answer: B

Explanation: The Front End Transport service will always attempt to route the first delivery attempt of the message to the Transport service on one of the servers in the New York site. For incoming messages with a single mailbox recipient, the Front End Transport (FET) service will select a mailbox server in the target delivery group, and give a higher priority to whichever mailbox server has the closest proximity based on the Active Directory site topology. In this scenario, the target delivery group is a routable DAG, and the Active Directory site with the closest proximity to the FET instance on EX01 is the Transport Service on EX01 or EX02 in New York.

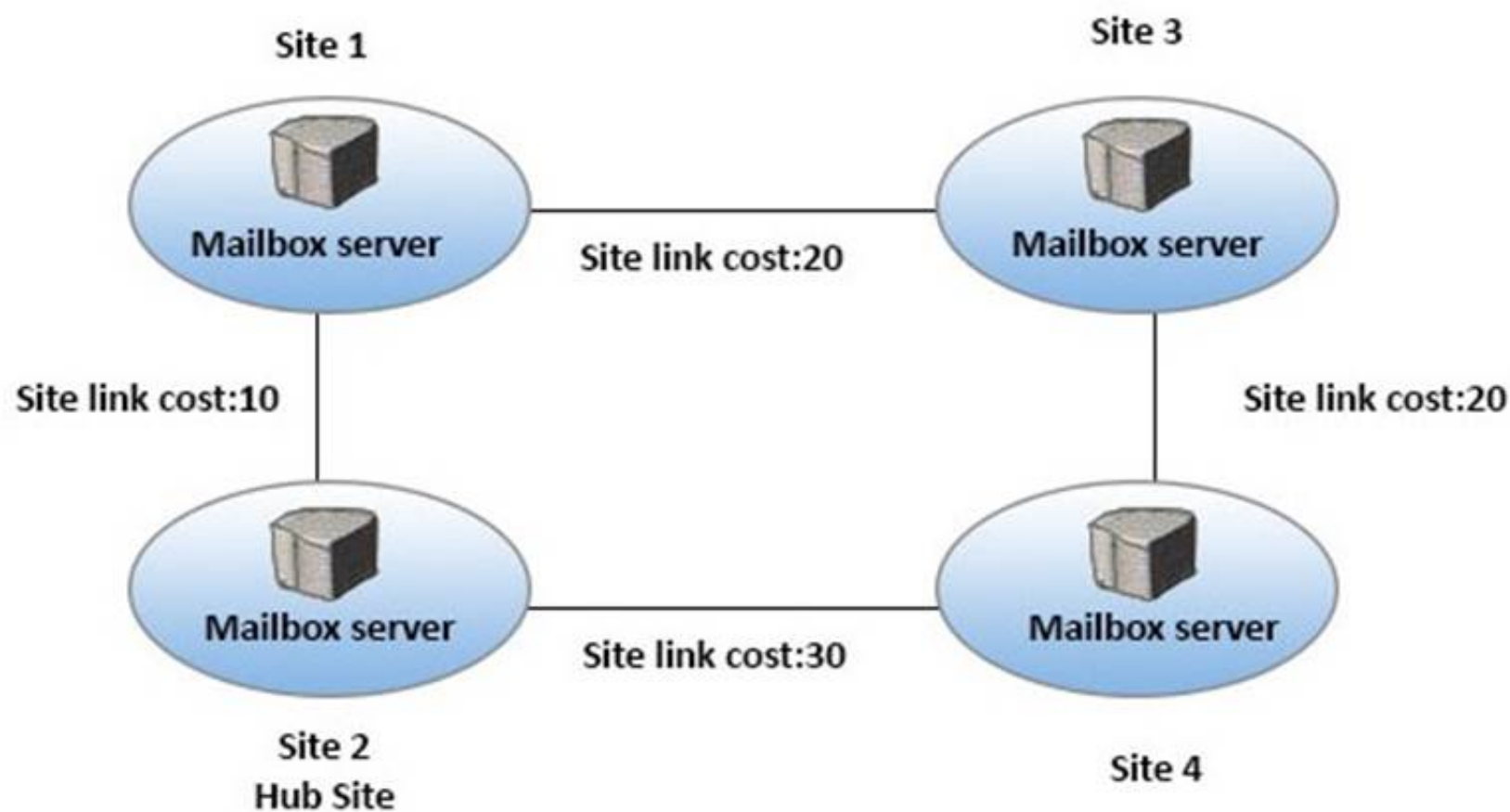
The Front End Transport service will not always attempt to route the first delivery attempt of the message to the Transport service on EX01. While the Transport service on EX01 is a possibility, there is no guarantee that it will be the target of the first delivery attempt from the FET service. All servers in the New York site are equal candidates for being targeted.

The Front End Transport service will not always attempt to route the first delivery attempt of the message to the Transport service on EX03. EX03, as well as any server in the Los Angeles site, would not be targets of the first delivery attempt from the FET service on EX01 because they are not within the closest proximity.

The Front End Transport service will not always attempt to route the first delivery attempt of the message to the Transport service on one of the servers in the Los Angeles site because they are not within the closest proximity, based on the Active Directory topology.

NEW QUESTION 147

You have an Exchange Server 2016 organization. The Active directory sites are configured as shown in the following graphic.



Use the drop-down menus to select the answer choice that completes each statement based on the information presented in the graphic

A message that leaves Site 1 to a destination mailbox in Site 4 will be received next at [answer choice].

▼

Site 2
Site 3
Site 4

A message that leaves Site 3 to a destination mailbox in Site 2 will be received next at [answer choice].

▼

Site 1
Site 2
Site 4

Answer:

Explanation:

A message that leaves Site 1 to a destination mailbox in Site 4 will be received next at [answer choice].

▼

Site 2
Site 3
Site 4

A message that leaves Site 3 to a destination mailbox in Site 2 will be received next at [answer choice].

▼

Site 1
Site 2
Site 4

NEW QUESTION 152

You need to recommend an NLB configuration that meets the availability requirements and the security requirements. Which load balancing solution should you recommend?

- A. Layer 7 load balancing with session affinity
- B. Layer 4 load balancing without session affinity
- C. Layer 4 load balancing with session affinity
- D. Layer 7 load balancing without session affinity

Answer: A

NEW QUESTION 155

You have an Exchange Server 2016 organization.

Users connect to their mailbox by using Microsoft Outlook 2013 and mobile devices. A user named User1 loses a mobile device.

You need to wipe the mobile device remotely. Which cmdlet should you use?

- A. Remove-MobileDevice
- B. Clear-MobileDevice
- C. Set-Mailbox
- D. Remove-ActiveSyncDevice

Answer: B

Explanation: References:

<https://docs.microsoft.com/en-us/powershell/module/exchange/devices/clear-mobiledevice?view=exchange-ps>

NEW QUESTION 157

Your company has three offices. The offices are located in New York, London and Sydney. The offices connect to each other by using a WAN link. Each office connects directly to the Internet.

The company has an Exchange Server organization. The organization contains six mailbox servers. The servers are configured as shown in the following table.

Server name	Office	Active Directory site	Database Availability group
EX1	New York	Site1	DAG1
EX2	New York	Site1	DAG1
EX3	London	Site2	DAG1
EX4	London	Site2	DAG1
EX5	Sydney	Site3	DAG1
EX6	Sydney	Site3	DAG1

Each office is configured to use a different Send connector to send email messages to the Internet.

You need to ensure that the servers route email messages that have Internet recipients through their respective site only.

What should you modify?

- A. the permissions of each Send connector
- B. the settings of the site links
- C. the cost of each Send connector
- D. the scope of each Send connector

Answer: D

Explanation: References:

[https://msdn.microsoft.com/en-us/library/aa998662\(v=exchg.160\).aspx?f=255&MSPPErr=-2147217396](https://msdn.microsoft.com/en-us/library/aa998662(v=exchg.160).aspx?f=255&MSPPErr=-2147217396)

NEW QUESTION 158

You have an Exchange Server 2016 organization.

The organization contains three Mailbox servers named EX01, EX02, and EX03. The servers are members of a database availability group (DAG).

You have a mailbox database named DB01. DB01 is replicated to EX01 and EX02.

You need to add a replica of DB01 to EX03. The replica must meet the following requirements:

- Transaction log files must not be applied to the replica for seven days after they are generated.
- Transaction log files must be preserved for one day after they are applied to the database copy.

What command should you run? To answer, select the appropriate options in the answer area.

Answer Area

▼

Add-MailboxDatabaseCopy
New-MailboxDatabase
Set-DatabaseAvailabilityGroup

▼

-Identity DB01
-Identity EX01\DB01
-Identity EX03\DB01

▼

-MailboxServer EX03
-MailboxServer EX03\DB01
-SourceServer EX01

▼

-ReplayLagTime 01.00:00:00
-ReplayLagTime 07.00:00:00

▼

-TruncationLagTime 01.00:00:00
-TruncationLagTime 07.00:00:00

-ActivationPreference 3

Answer:

Explanation:

Answer Area

<div>▼</div> <div>-Add-MailboxDatabaseCopy</div> <div>-New-MailboxDatabase</div> <div>-Set-DatabaseAvailabilityGroup</div>	<div>▼</div> <div>-Identity DB01</div> <div>-Identity EX01\DB01</div> <div>-Identity EX03\DB01</div>	<div>▼</div> <div>-MailboxServer EX03</div> <div>-MailboxServer EX03\DB01</div> <div>-SourceServer EX01</div>
<div>▼</div> <div>-ReplayLagTime 01:00:00:00</div> <div>-ReplayLagTime 07:00:00:00</div>	<div>▼</div> <div>-TruncationLagTime 01:00:00:00</div> <div>-TruncationLagTime 07:00:00:00</div>	-ActivationPreference 3

NEW QUESTION 162

You have an Exchange Server 2016 organization.

You run the Microsoft Office 365 Hybrid Configuration Wizard and you move all the mailboxes to Exchange Online.

You need to ensure that all of the email services remain available after you remove the Exchange Server 2016 servers from the organization.

Which DNS records should you modify? To answer, drag the appropriate record types to the correct DNS zones. Each record type may be used once, more than once, or not at all. You may need to drag the split bar between panes or scroll to view content.

Record Types

Autodiscover

MX

NX

SRV

Answer Area

Record to modify in the internal DNS zone:

Record Type

Record to modify in the public DNS zone:

Record Type

Record Type

Answer:

Explanation:

Record Types

Autodiscover

MX

NX

SRV

Answer Area

Record to modify in the internal DNS zone:

Autodiscover

Record to modify in the public DNS zone:

Autodiscover

MX

NEW QUESTION 163

You have an exchange server 2016 organization. The organization contains a Mailbox server named EX01. EX01 contains a mailbox database named DB01.

The volume that contains DB01 fails.

You need to perform a dial-tone recovery of the database. What should you create first?

A. a new Recovery Storage Group

- B. a new mailbox database
- C. a mailbox move request
- D. a mailbox restore request
- E. a lagged database copy

Answer: B

NEW QUESTION 168

You deploy an Exchange Server 2016 organization. You create a data loss prevention (DLP) rule package. You need to import the rule package. Which cmdlet should you use?

- A. New-DlpPolicy
- B. New-MessageClassification
- C. New-DataClassification
- D. New-ClassificationRuleCollection

Answer: D

NEW QUESTION 172

You have an Exchange Server 2016 organization. The organization contains 2,000 mailboxes. You need to provide administrators with the ability to perform the following tasks:

An administrator named Admin1 must be able to create custom message classifications.

An administrator named Admin2 must be able to create retention tags.

Which management role group should you assign to each administrator? To answer, drag the appropriate role groups to the correct administrators. Each role group may be used once, more than once, or not at all. You may need to drag the split bar between panes or scroll to view content.

Role Groups	Answer Area
Compliance Management	Admin1 Role group
Discovery Management	Admin2 Role group
Recipient Management	
Records Management	

Answer:

Explanation:

Role Groups	Answer Area
Compliance Management	Admin1 Records Management
Discovery Management	Admin2 Records Management
Recipient Management	
Records Management	

NEW QUESTION 174

HOTSPOT

You run Get-Service | where displayname -like "transport" | FT -AutoSize and you receive the following output:

Status	Name	DisplayName
-----	----	-----
Stopped	MSExchangeDelivery	Microsoft Exchange Mailbox Transport Delivery
Running	MSExchangeFrontEndTransport	Microsoft Exchange Frontend Transport
Running	MSExchangeSubmission	Microsoft Exchange Mailbox Transport Submission
Running	MSExchangeTransport	Microsoft Exchange Transport
Stopped	MSExchangeTransportLogSearch	Microsoft Exchange Transport Log Search

Use the drop-down menus to select the answer choice that completes each statement based on the information presented in the output.
NOTE: Each correct selection is worth one point.

Messages sent to recipients on the server will [answer choice].

▼

Will be received.

Will not be received, the messages will be discarded.

Will not be received, the messages will be kept.

Messages sent from mailboxes on the server by using Outlook on the web will [answer choice].

▼

Will be received.

Will not be received, the messages will be discarded.

Will not be received, the messages will be kept.

Answer:

Explanation: The MSExchangeDelivery service, which is stopped here, receives SMTP messages from the Microsoft Exchange Transport service (on the local or remote Mailbox servers) and delivers them to a local mailbox database using RPC.
References: [https://technet.microsoft.com/en-us/library/ee423542\(v=exchg.160\).aspx](https://technet.microsoft.com/en-us/library/ee423542(v=exchg.160).aspx)

NEW QUESTION 176

You have an exchange server 2016 organization. The organization contains two servers named EX01 and EX02. Both servers are members of a database availability group (DAG) named DAG01. DAG01 contains two mailbox databases named DB01 and DB02. DB01 and DB02 are replicated to all of the members of DAG01.

Name	Status	CopyQueue Length	ReplayQueue Length	LastInspectedLogTime	State
-----	-----	-----	-----	-----	-----
DB01\EX02	FailedAndSuspended	906	0	11/16/2015 9:29:39 AM	Unknown

You run the Get-MailboxDatabaseCopyStatus cmdlet and you receive the following output.

Use the drop-down menus to select the answer choice that completes each statement based on the information presented in the output.

If you run the [answer choice] cmdlet, only uncopied transaction logs will be copied from EX01 to EX02.

▼

Add-MailboxDatabaseCopy

Remove-MailboxDatabaseCopy

Resume-MailboxDatabaseCopy

Set-MailboxDatabaseCopy

Update-MailboxDatabaseCopy

If you run the [answer choice] cmdlet, DB02 will be deleted from EX02 and reseeded from EX01.

▼

Add-MailboxDatabaseCopy

Remove-MailboxDatabaseCopy

Resume-MailboxDatabaseCopy

Set-MailboxDatabaseCopy

Update-MailboxDatabaseCopy

Answer:

Explanation:

If you run the [answer choice] cmdlet, only uncopied transaction logs will be copied from EX01 to EX02.

▼

Add-MailboxDatabaseCopy
Remove-MailboxDatabaseCopy
Resume-MailboxDatabaseCopy
Set-MailboxDatabaseCopy
Update-MailboxDatabaseCopy

If you run the [answer choice] cmdlet, DB02 will be deleted from EX02 and reseeded from EX01.

▼

Add-MailboxDatabaseCopy
Remove-MailboxDatabaseCopy
Resume-MailboxDatabaseCopy
Set-MailboxDatabaseCopy
Update-MailboxDatabaseCopy

NEW QUESTION 177

You have an Exchange Server 2016 organization. The organization contains 5,000 mailboxes. All of the users in the organization share their Calendar with the users in two domains named contoso.com and fabrikam.com. You need to prevent the organization users from sharing their Calendar with the users in the contoso.com domain. What command should you run? To answer, select the appropriate options in the answer area.

Answer Area

▼

identity "Default Sharing Policy (DEFAULT)"

Set-CasMailbox
Set-Mailbox
Set-SharingPolicy

▼

-domains contoso.com: CalendarSharingFreeBusySimple
-domains fabrikam.com: CalendarSharingFreeBusySimple

Answer:

Explanation: Answer Area

▼

identity "Default Sharing Policy (DEFAULT)"

Set-CasMailbox
Set-Mailbox
Set-SharingPolicy

▼

-domains contoso.com: CalendarSharingFreeBusySimple
-domains fabrikam.com: CalendarSharingFreeBusySimple

NEW QUESTION 179

You deploy a server named ex01.contoso.com that has Exchange Server 2016 installed. You need to ensure that when users connect to the URL of http://ex01.contoso.com, they access Outlook on the web over a secure connection. How should you configure the Default Web Site? To answer, select appropriate options in the selected area.

Redirect requests to:

▼

http://ex01.contoso.com
http://ex01.contoso.com/owa
https://ex01.contoso.com
https://ex01.contoso.com/owa

Require SSL:

▼

Disable
Enable

Answer:

Explanation:

Redirect requests to:

http://ex01.contoso.com
http://ex01.contoso.com/owa
https://ex01.contoso.com
https://ex01.contoso.com/owa

Require SSL:

Disable
Enable

NEW QUESTION 182

You have an Active Directory forest named contoso.com that contains an Exchange Server 2016 organization named Contoso. Contoso.com has a two-way forest trust with an Active Directory forest named fabrikam.com. The fabrikam.com forest contains an Exchange Server 2016 organization named Fabrikam.

You need to ensure that the users in Contoso can access the free/busy information of all the users in Fabrikam. An administrator from Fabrikam runs the following command in the organization.

Get-MailboxServer | Add-ADPermission -Accessrights Extendedright -Extendedrights "ms-ExchEPI-Token-Serialization" -User "CONTOSO\Exchange Servers"

What command should you run in Contoso? To answer, select the appropriate options in the answer area.

Answer Area

Add-AvailabilityAddressSpace
Set-AvailabilityConfig

-ForestName Contoso.com
-ForestName Fabrikam.com

-AccessMethod OrgWideFB

-UseServiceAccount \$false
-UseServiceAccount \$true

Answer:

Explanation: **Answer Area**

Add-AvailabilityAddressSpace
Set-AvailabilityConfig

-ForestName Contoso.com
-ForestName Fabrikam.com

-AccessMethod OrgWideFB

-UseServiceAccount \$false
-UseServiceAccount \$true

NEW QUESTION 186

You are planning an Exchange Server 2016 organization. The organization will contain a Mailbox server named EX01.

Users will have primary SMTP email addresses in the following domains:

- Contoso.com
- Fabrikam.com
- Cohowinery.com
- Wingtiptoy.com

You need to add a DNS record to provide Autodiscover for each domain. Which type of record should you create in each zone?

- A. SRV
- B. CERT
- C. MINFO
- D. PTR

Answer: A

NEW QUESTION 187

You have an Exchange Server 2016 organization.

Some users connect to their mailbox by using Microsoft Outlook 2016 for Mac. You verify that the Outlook 2016 users can connect successfully to their mailbox.

You suspect a configuration error on a virtual directory.

You need to identify which virtual directory is the most likely cause of the issue. Which virtual directory should you identify?

- A. Rpc
- B. RpcWithCert
- C. mapi
- D. EWS

Answer: D

NEW QUESTION 191

You have an Exchange Server organization. The organization contains four servers. The servers configured as shown in the following table.

Server name	Exchange Server version	Role	Configuration
EX1	2013	Client Access Server	Provides MAPI access for a third-party application
EX2	2013	Mailbox Server	Hosts public folders that are accessed by using Microsoft Outlook 2013
EX3	2010	Mailbox Server, Hub Transport server	Filters the content of all email messages from the Internet by using the content filtering agent
EX4	2010	Mailbox server	Provides retention by using managed folders

You plan to upgrade the organization to Exchange Server 2016.

You need to identify which functionalities from the current environment can be implemented in Exchange Server 2016.

What should you identify? To answer, select the appropriate options in the answer area

Provide MAPI access for a third-party application:

☐

Yes
No

Host public folders that are accessed by using Microsoft Outlook 2013:

☐

Yes
No

Filter content of all email messages from the Internet by using the content filtering agent:

☐

Yes
No

Provide retention by using managed folders:

☐

Yes
No

Answer:

Explanation:

Provide MAPI access for a third-party application:

☐ Yes
☒ No

Host public folders that are accessed by using Microsoft Outlook 2013:

☐ Yes
☒ No

Filter content of all email messages from the Internet by using the content filtering agent:

☐ Yes
☒ No

Provide retention by using managed folders:

☐ Yes
☒ No

NEW QUESTION 195

You have an Exchange Server 2016 organization and Microsoft Office 365 subscription configured in a hybrid deployment. You need to ensure that any email messages sent to the contoso.com domain are encrypted by using Office 365 Message Encryption. Which three commands should you use? Each correct answer presents part of the solution.

- A. New-MessageClassification
- B. New-TransportRule
- C. Set-IRMConfiguration
- D. New-OutlookProtectionRule
- E. Import-RMSTrustedPublishingDomain

Answer: BCE

NEW QUESTION 196

Your network contains a single domain named contoso.local. You have an Exchange Server 2016 organization that uses a single external SMTP namespace of contoso.com. You establish mail flow to and from the Internet. You plan to deploy a customer relationship management (CRM) solution. The CRM solution will have its own SMTP server and must be able to receive email sent by using various addresses in contoso.com. The addresses will not be managed by the Exchange Server organization. You need to recommend a solution to ensure that the CRM solution can receive email from the Internet. The solution must ensure that internal users can all receive email. Which two action should you recommend? Each correct answer presents part of the solution. NOTE: Each correct selection is worth one point.

- A. Create a Send connector that has a namespace of * and uses the CRM server as a smart host.
- B. Create a Send connector that has a namespace of contoso.com and uses the CRM server as a smart host.
- C. Change the domain type of the contoso.com accepted domain to External Relay Domain.
- D. Create a Send connector that has a namespace of contoso.local and uses the CRM server as a smart host.
- E. Change the domain type of the contoso.com accepted domain to Internal Relay Domain.
- F. Change the domain type of the contoso.local accepted domain to Internal Relay Domain.
- G. Change the domain type of the contoso.local accepted domain to External Relay Domain.

Answer: BE

Explanation: External relay domain: No recipients in the authoritative domain exist in the Exchange organization, so you shouldn't enable Recipient Lookup for the domain. The Send connector that you configure for non-existent recipients in the external relay domain is sourced on an Edge Transport server or Internet-facing Mailbox server.

NEW QUESTION 201

You have an Exchange Server 2016 organization. The organization contains three Mailbox servers. The servers are configured as shown in the following table

Server Name	Active Directory site
EX01	Site1
EX02	Site2
EX03	Site3

You have distribution group named Group1. Group1 contains three members. The members are configured as shown in the following table.

User Name	Mailbox server
User1	EX01
User2	EX02
User3	EX03

You discover that when User1 sends email messages to Group1, all of the messages are delivered to EX02 first. You need to identify why the email messages sent to Group1 are sent to EX02 instead. What should you identify?

- A. EX02 is configured as an expansion server.
- B. The arbitration mailbox is hosted on EX02.
- C. Site2 has universal group membership caching enabled.
- D. Site2 is configured as a hub site.

Answer: A

Explanation: References: [https://technet.microsoft.com/en-us/library/aa998825\(v=exchg.150\).aspx](https://technet.microsoft.com/en-us/library/aa998825(v=exchg.150).aspx)

NEW QUESTION 202

Your company has an Exchange Server 2016 organization and a Microsoft Office 365 subscription configured in a hybrid deployment. You configure the synchronization of on-premises Active Directory accounts to Office 365. All users connect to email services by using Outlook 2016. You plan to deploy Office 365 Message Encryption for the mailboxes of two executives named Exec1 and Exec2. The mailboxes are hosted in Office 365. You need to recommend which actions must be performed to ensure that all of the email messages sent from Exec1 and Exec2 to any recipient on the Internet are encrypted. Which two actions should you recommend? Each correct answer presents part of the solution.

- A. Deploy Microsoft Azure Rights Management (Azure RMS) to the Office 365 subscription.
- B. Deploy Active Directory Rights Management Services (AD RMS) to the network.
- C. Run the Set-MsolUserLicense cmdlet.
- D. From the Office 365 Exchange admin center, create a rule.
- E. Install a certificate on the computer of Exec1 and the computer of Exec2.
- F. From the on-premises Exchange admin center, create a transport rule.

Answer: AF

NEW QUESTION 205

You have an Exchange Server 2016 organization. The organization contains two Mailbox servers. You have a database that is replicated to both servers. The database contains 500 mailboxes. You add new volumes to the Mailbox servers. You need to move all of the mailbox data to the new volumes. The solution must meet the following requirements: Ensure that multiple copies of the mailbox data are available at all times. Minimize downtime for the mailbox users. Which three actions should you perform in sequence? To answer, move the appropriate actions from the list of actions to the answer area and arrange them in the correct order.

Actions		Answer Area
Remove all of the replicated database copies.		<div style="border: 1px solid red; height: 20px; margin-bottom: 5px;"></div> <div style="border: 1px solid red; height: 20px; margin-bottom: 5px;"></div> <div style="border: 1px solid red; height: 20px;"></div>
Create a new database.		
Dismount the replicas of the database.		
Move the database.	➤	
Mount the new database.	➤	
Move the mailboxes.		
Mount the replicas of the database		
Create replicated database copies.		

Answer:

Explanation:

Actions

- Remove all of the replicated database copies.
- Create a new database.
- Dismount the replicas of the database.
- Move the database.
- Mount the new database.
- Move the mailboxes.
- Mount the replicas of the database
- Create replicated database copies.

➤

➤

Answer Area

- Remove all of the replicated database copies.
- Move the database.
- Create replicated database copies.

⬆

⬇

NEW QUESTION 206

Your company has an Exchange Server 2016 organization. The organization has a four-node database availability group (DAG) that spans two data centers. Each data center is configured as a separate Active Directory site. The data centers connect to each other by using a high-speed WAN link. Each data center connects directly to the Internet and has a scoped Send connector configured.

The company's public DNS zone contains one MX record.

You need to ensure that if an Internet link becomes unavailable in one data center, email messages destined to external recipients can be routed through the other data center.

What should you do?

- A. Create a Receive connector in each data center.
- B. Clear the Proxy through Client Access server check box.
- C. Clear the Scoped Send Connector check box.
- D. Create an MX record in the internal DNS zone.

Answer: C

NEW QUESTION 207

You are deploying a new Exchange Server 2016 organization.

You deploy two servers named ex01.contoso.com and ex02.contoso.com to the organization.

You need to configure DNS to ensure that servers on the internet can send email messages to the organization by using an SMTP domain named contoso.com.

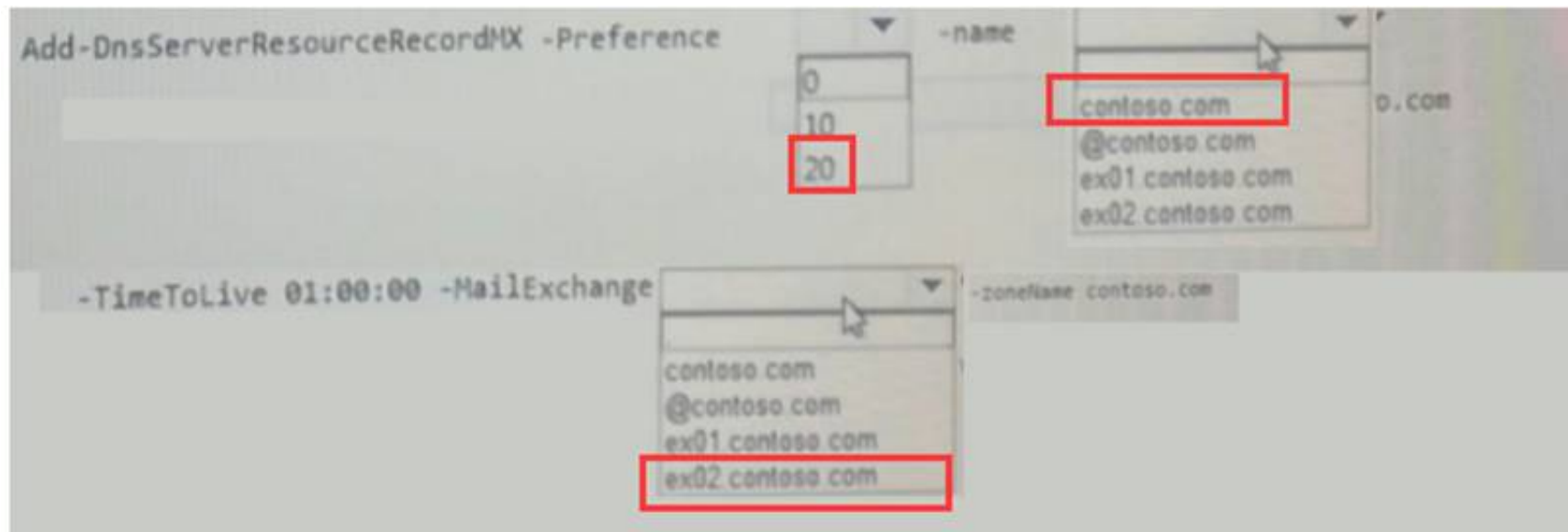
The solution must ensure that ex02.contoso.com is used only if ex01.contoso.com becomes unavailable.

You create an MX record for contoso.com that points to ex01.contoso.com. The record has a preference value of 10

What command should you run? To answer, select the appropriate options in the answer area

Answer:

Explanation:



NEW QUESTION 210

You work for a company named Litware, Inc. that hosts all email in Exchange Online. A user named User1 sends an email message to an external user User 1 discovers that the email message is delayed for two hours before being delivered. The external user sends you the message header of the delayed message. You need to identify which host in the message path is responsible for the delivery delay. What should you do?

- A. Review the contents of the protocol logs.
- B. Search the message tracking logs.
- C. Search the delivery reports for the message
- D. Review the contents of the application log
- E. Input the message header to the Exchange Remote Connectivity Analyzer

Answer: E

NEW QUESTION 213

You have an Exchange Server 2016 organization. The organization has two Mailbox servers named EX01 and EX02. Both servers are members of a database availability group (DAG) named DAG01. A mailbox database named DB01 is replicated to EX01 and EX02. You plan to move the database file and the transaction logs of DB01 to a new location. You create a new folder structure on EX01 and EX02 to store the DB01 database file and transaction logs. You need to complete the move. The solution must minimize the amount of network traffic between EX01 and EX02. You dismount DB01. Which five actions should you perform in sequence? To answer, move the appropriate actions from the list of actions to the answer area and arrange them in the correct order. NOTE: More than one order of answer choices is correct. You will receive credit for any of the correct orders you select.

Actions	Answer Area
Add a copy of DB01 to EX02.	
Mount DB01.	
Run the Move-ActiveMailboxDatabase cmdlet on EX01.	
Run the Move-DatabasePath cmdlet on EX01.	
Run the Set-MailboxDatabase cmdlet on EX01.	
Move the database file and the transaction logs on EX02.	
Remove the copy of DB01 from EX02.	
Run the eseutil.exe command on EX01.	

>

<

⤴

⤵

Answer:

Explanation:

Actions	Answer Area
Add a copy of DB01 to EX02.	Run the Set-MailboxDatabase cmdlet on EX01.
Mount DB01.	Remove the copy of DB01 from EX02.
Run the Move-ActiveMailboxDatabase cmdlet on EX01.	Move the database file and the transaction logs on EX02.
Run the Move-DatabasePath cmdlet on EX01.	Run the Move-DatabasePath cmdlet on EX01.
Run the Set-MailboxDatabase cmdlet on EX01.	Add a copy of DB01 to EX02.
Move the database file and the transaction logs on EX02.	
Remove the copy of DB01 from EX02.	
Run the eseutil.exe command on EX01.	

NEW QUESTION 216

You need to configure the Sender Policy Framework (SPF) for a domain named contoso.com to ensure that only the following senders are authorized to send email for contoso.com:

Hosts listed in the contoso.com MX records IP addresses in the 131.107.1.0/24 subnet.

How should you configure the DNS record for the SPF? To answer, drag the appropriate values to the correct targets.

Each value may be used once, more than once, or not at all. You may need to drag the split bar between panes or scroll to view content.

Values	Answer Area
?all	contoso.com IN TXT "v=spf1 Value : Value Value Value "
+all	
-all	
131.107.1.0/24	
A	
contoso.com	
IP4	
MX	

Answer:

Explanation:

Values	Answer Area
?all	contoso.com IN TXT "v=spf1
+all	IP4
-all	: 131.107.1.0/24
131.107.1.0/24	contoso.com
A	-all
contoso.com	
IP4	
MX	

NEW QUESTION 217

You remove the namespaces for the branch offices.

The branch office users report that they fail to connect to their mailbox by using Exchange ActiveSync from their mobile device.

You need to ensure that all of the users can access their mailbox by using Exchange ActiveSync. What should you do?

- A. Instruct the users to recreate the Exchange ActiveSync partnership on their device.
- B. Create a new device access rule.
- C. Run the Set-MobileDeviceMailboxPolicy cmdlet.
- D. Run the Set-ActiveSyncOrganizationSettings cmdlet.

Answer: C

Explanation:

In Exchange 2016, you can create mobile device mailbox policies to apply a common set of policies or security settings to a collection of users. After you deploy Exchange ActiveSync in your Exchange 2016 organization, you can create new mobile device mailbox policies or modify existing policies. Use the Set-MobileDeviceMailboxPolicy cmdlet to modify mobile device mailbox policies.

NEW QUESTION 218

Your company has an Exchange Server 2016 Organization. The Organization contains three servers and 2000 mailboxes.

The company's compliance policy has the following requirements:

- * A compliance officer named OfficerAdmin must be able to search all of the mailboxes for email messages that contain specific Keywords.
- * OfficerAdmin must be able to read all of the email messages that contains specific keywords.
- * OfficerAdmin must be able to prevent specific users from deleting email messages that contain specific keywords.

You need to identify which management roles must be assigned to OfficerAdmin to meet the requirements.

Which management role group should you identify for each requirement?

Management Role Groups	Answer Area
Discovery Management	OfficerAdmin must be able to search all of the mailboxes for email messages that contain specific keywords: Management role
Organization Management	OfficerAdmin must be able to read all of the email messages that contain specific keywords: Management role
Recipient Management	OfficerAdmin must be able to prevent specific users from deleting email messages that contain specific keywords: Management role
Records Management	

Answer:

Explanation:

Management Role Groups	Answer Area
Discovery Management	OfficerAdmin must be able to search all of the mailboxes for email messages that contain specific keywords: Discovery Management
Organization Management	OfficerAdmin must be able to read all of the email messages that contain specific keywords: Organization Management
Recipient Management	OfficerAdmin must be able to prevent specific users from deleting email messages that contain specific keywords: Records Management
Records Management	

NEW QUESTION 222

You have an Exchange Server 2016 organization. The organization contains two Mailbox servers. You have a database that is replicated to both servers. The database contains 500 mailboxes. You add new volumes to the Mailbox servers.

You need to move all of the mailbox data to the new volumes. The solution must meet the following requirements:

- Ensure that multiple copies of the mailbox data are available at all times.
- Minimize downtime for the mailbox users.

Which three actions should you perform in sequence? To answer, move the appropriate actions from the list of actions to the answer area and arrange them in the correct order.

Actions

Remove all of the replicated database copies.

Create a new database.

Dismount the replicas of the database.

Move the database.

Mount the new database.

Mount the replicas of the database

Create replicated database copies.

➤

➤

Answer Area

⬅

⬅

Answer:

Explanation:

Actions

Remove all of the replicated database copies.

Create a new database.

Dismount the replicas of the database.

Move the database.

Mount the new database.

Mount the replicas of the database

Create replicated database copies.

➤

➤

Answer Area

Remove all of the replicated database copies.

Move the database.

Create replicated database copies.

⬅

⬅

NEW QUESTION 223

Your company has two offices. The offices are located in San Francisco and Los Angeles. Each office contains a data center. Each data center has a local connection to the Internet.

You deploy an Exchange Server 2016 organization named Contoso and install three servers in each data center.

All of the servers are members of a single database availability group (DAG). Each data center hosts 2,000 mailboxes that replicate to the other data center.

You create four records in DNS. The records are configured as shown in the following table.

Record Name	Type	Points to	Zone
Lamail.contoso.com	A	Los Angeles data center	Public
Sfmail.contoso.com	A	San Francisco data center	Public
Mail.contoso.com	CNAME	Lamail.contoso.com Sfmail.contoso.com	Public
Mail.contoso.com	A	Los Angeles data center	Internal

You need to recommend a client access solution for the organization to meet the following requirements: When connecting from the Internet, all users must connect to the same namespace for Outlook on the Web. If a connection to the Internet fails at one data center, all users must be able to access their mailbox from the Internet.

When connecting from the Internet, all user connections to Exchange ActiveSync must be balanced equally across both data centers.

What is the best recommendation to achieve the goal? More than one answer choice may achieve the goal. Select the BEST answer.

- A. in the San Francisco office, configure the internal URLs of the servers to use the internal URL of sfmail.contoso.co
- B. In the Los Angeles office, configure
- C. in the San Francisco office, configure the external URLs of the servers to use the internal URL of sfmail.contoso.co
- D. In the Los Angeles office, configure
- E. Deploy a hardware-based load balancer to each office and configure all of the internal URLs to use mail.contoso.com.
- F. Deploy a hardware-based load balancer to each office and configure all of the external URLs to use mail.contoso.com.

Answer: D

NEW QUESTION 228

You have a hybrid Exchange Server 2016 organization.

Some of the mailboxes in the research department are hosted on-premises. Other mailboxes in the research department are stored in Microsoft Office 365.

You need to search the mailboxes in the research department for email messages that contain a specific keyword in the message body.

What should you do?

- A. From the Exchange Online Exchange admin center, search the delivery reports.
- B. From the on-premises Exchange center, search the delivery reports.
- C. From the Exchange Online Exchange admin center, create a new In-Place eDiscovery & Hold.
- D. From the Office 365 Compliance Center, create a new Compliance Search.
- E. From the on-premises Exchange admin center, create a new In-Place eDiscovery & Hold.

Answer: E

NEW QUESTION 232

You deploy a new Exchange Server 2016 organization. The organization contains Two Mailbox servers. You need to reject email messages if a redundant copy of the messages cannot be generated.

What command should you run? To answer, select the appropriate options in the answer area

Answer Area

Set-TransportConfig	-RejectMessageOnShadowFailure	\$false
Set-TransportServer	-ShadowMessageAutoDiscardInterval	\$null
Set-TransportService	-ShadowRedundancyEnabled	\$true

Answer:

Explanation: **Answer Area**

Set-TransportConfig	-RejectMessageOnShadowFailure	\$false
Set-TransportServer	-ShadowMessageAutoDiscardInterval	\$null
Set-TransportService	-ShadowRedundancyEnabled	\$true

NEW QUESTION 237

You have an Exchange Server 2016 on-premises organization and a Microsoft Office 365 tenant. All mailboxes are hosted on-premises.

You need to implement an archiving solution for all users.

The solution must ensure that all mailbox content older than 18 months is moved to Personal Archives in Office 365.

What should you implement?

- A. A default policy tag (DPT)
- B. A retention policy
- C. A personal tag
- D. A retention policy tag (RPT)
- E. A retention hold

Answer: B

NEW QUESTION 238

You have an Exchange Server 2016 organization. Users store sales information in public folders.

You need to create a public folder that can receive email from external users.

Which three commands should you use? Each correct answer presents part of the solution.

- A. Add-MailboxPermission
- B. Add-PublicFolderClientPermission
- C. Update-PublicFolderMailbox
- D. Enable-MailPublicFolder
- E. Add-RecipientPermission
- F. New-PublicFolder
- G. New-Mailbox

Answer: BDF

NEW QUESTION 239

You have a server named EX01 that runs Exchange Server 2016. The disks on EX01 are configured as shown in the following table.

Volume name	Type	Contents
C	RAID1	Operating system
D	RAID10	Mailbox database named DB1
E	RAID10	Mailbox database named DB2

All users access their email by using Microsoft Outlook 2013.

From Performance Monitor, you discover that the MSExchange Database\I/O Database Reads Average Latency counter displays values that are higher than normal.

You need to identify the impact of the high counter values on user connections in the Exchange Server organization.

What are two client connections that will report slower performance when opening email messages? Each correct answer presents a complete solution.

NOTE: Each correct selection is worth one point.

- A. Outlook in Online Mode
- B. Outlook in Cached Exchange Mode
- C. Outlook on the web
- D. IMAP4 clients
- E. mobile devices using Exchange Active Sync

Answer: AC

NEW QUESTION 242

Your company has a data center. The data center contains a server that has Exchange Server 2016 and the Mailbox server role installed. Outlook anywhere clients connect to the Mailbox server by using the name outlook.contoso.com.

The company plans to open a second data center and to provision a database availability group (DAG) that spans both data centers.

You need to ensure that Outlook Anywhere clients can connect if one of the data centers becomes unavailable. What should you add to DNS?

- A. one A record
- B. two TXT records
- C. two SRV records
- D. one MX record

Answer: A

Explanation: References:

[https://technet.microsoft.com/en-gb/library/dd638104\(v=exchg.150\).aspx?f=255&MSPPErrors=-2147217396](https://technet.microsoft.com/en-gb/library/dd638104(v=exchg.150).aspx?f=255&MSPPErrors=-2147217396)

NEW QUESTION 245

You have an Exchange Server 2016 organization. You plan to enable Federated Sharing.

You need to create a DNS record to store the Application Identifier (AppID) of the domain for the federated trust.

Which type of record should you create?

- A. A
- B. CNAME
- C. SRV
- D. TXT

Answer: D

Explanation: When you create a federation trust with the Azure AD authentication system, an application identifier (AppID) is automatically generated for your Exchange organization and provided in the output of the Get-FederationTrust cmdlet. The AppID is used by the Azure AD authentication system to uniquely identify your Exchange organization. It's also used by the Exchange organization to provide proof that your organization owns the domain for use with the Azure AD authentication system. This is done by creating a text (TXT) record in the public Domain Name System (DNS) zone for each federated domain.

References:

[https://technet.microsoft.com/en-us/library/dd335047\(v=exchg.150\).aspx](https://technet.microsoft.com/en-us/library/dd335047(v=exchg.150).aspx)

NEW QUESTION 248

You have an Exchange Server 2016 organization.
You plan to configure the organization in a hybrid deployment.
You need to identify which firewall ports must be open for Microsoft Azure Active Directory Connect (Azure AD Connect) to communicate with Azure Active Directory (Azure AD).
Which two TCP ports should you identify? Each correct answer presents part of the solution. NOTE: Each correct selection is worth one point.

- A. 80
- B. 389
- C. 443
- D. 636
- E. 3289

Answer: AC

Explanation: References:
<https://docs.microsoft.com/en-us/azure/active-directory/connect/active-directory-aadconnect-ports>

NEW QUESTION 249

Your company has an Exchange Server 2016 organization. The organization contains three Mailbox servers.
You need to ensure that email messages sent to the company meet the following requirements:
- All of the messages sent from the SMTP domain of fabrikam.com must be blocked.
- All of the messages that contain the words "Fabrikam" or "Litware" must be quarantined.
Which anti-spam agent should you configure for each requirement? To answer, drag the appropriate agents to the correct requirements. Each agent may be used once, more than once, or not at all. You may need to drag the split bar between panes or scroll to view content.

Answer Area

Agents

Connection Filtering

Content Filter

Protocol Analysis

Recipient Filter

Sender Filter

All of the messages sent from fabrikam.com must be blocked:

All of the messages that contain the words "Fabrikam" or "Litware" must be quarantined:

Agent

Agent

Answer:

Explanation:

Answer Area

Agents

Connection Filtering

Content Filter

Protocol Analysis

Recipient Filter

Sender Filter

All of the messages sent from fabrikam.com must be blocked:

All of the messages that contain the words "Fabrikam" or "Litware" must be quarantined:

Sender Filter

Content Filter

NEW QUESTION 252

You have an Exchange Server 2016 organization.
You plan to audit all the tasks performed by administrators.
You need to configure a weekly automated email notification that reports each time an administrator permanently deletes a mailbox.
How should you complete the command? To answer, select the appropriate options in the answer area. NOTE: Each correct selection is worth one point.

Answer Area

New-AdminAuditLogSearch
New-MailboxAuditLogSearch
Set-AdminAuditLogConfig
Set-AuditLogConfig

-Name "Permanent mailbox removal"

-ScheduleEnabled \$true
-Force
-AdminAuditLogEnabled \$true
-AdminAuditLogParameters

-StartDate \$startweek -EndDate \$endweek

-StatusMailRecipients auditmailbox@adatum.com

Answer:

Explanation: Box 1: Set-AdminAuditLogConfig

You can use administrator audit logging in Exchange Server 2016 to log when a user or administrator makes a change in your organization. You configure audit logging with the Set-AdminAuditLogConfig cmdlet.

The Name parameter specifies the name of the AdminAuditLogConfig object. Box 2: -AdminAuditLogEnabled \$true

The AdminAuditLogEnabled parameter specifies whether administrator audit logging is enabled. The default value is \$false. The valid values are \$true and \$false. You must specify an administrator audit log mailbox before you enable logging.

References: [https://technet.microsoft.com/en-us/library/dd298169\(v=exchg.160\).aspx](https://technet.microsoft.com/en-us/library/dd298169(v=exchg.160).aspx)

NEW QUESTION 254

You have an Exchange Server 2016 organization. The organization contains accepted domains for contoso.com and litwareinc.com. The antimalware engine is enabled on Mailbox servers and uses the default policy. You do not create any custom malware rules. You need to notify internal senders when a malware attachment is detected. The rule must apply only when the recipient domain is contoso.com.

Which two cmdlets should you use? Each correct answer presents part of the solution.

- A. Set-MalwareFilterPolicy
- B. New-MalwareFilterRule
- C. New-MalwareFilterPolicy
- D. Set-MalwareFilterRule

Answer: BC

Explanation: References:

[https://technet.microsoft.com/en-us/library/dn306062\(v=exchg.160\).aspx?f=255&MSPPErrors=-2147217396](https://technet.microsoft.com/en-us/library/dn306062(v=exchg.160).aspx?f=255&MSPPErrors=-2147217396) [https://technet.microsoft.com/en-us/library/p15680\(v=exchg.160\).aspx?f=255&MSPPErrors=-2147217396](https://technet.microsoft.com/en-us/library/p15680(v=exchg.160).aspx?f=255&MSPPErrors=-2147217396)

NEW QUESTION 256

You have an Exchange Server 2016 organization.

You are planning a Messaging Records Management (MRM) strategy.

You need to configure the organization to meet the following requirements:

Implement an organization-wide setting that permanently deletes all email messages in default folders after five years.

Ensure that users can override the organization-wide email deletion setting.

Ensure that users can modify the default email archive schedule.

Implement an organization –wide setting that permanently deletes all email messages in default folders after five years:

	▼
Retention policy tags	
Personal tags	
Default policy tags	

Ensure that users can override the organization-wide email deletion setting:

	▼
Retention policy tags	
Personal tags	
Default policy tags	

Ensure that users can modify the default email archive schedule:

	▼
Retention policy tags	
Personal tags	
Default policy tags	

Answer:

Explanation: Box 1: Retention policy tags

Assigning retention policy tags (RPTs) to default folders, such as the Inbox and Deleted Items. Box 2: Personal tags

Allowing the user to assign personal tags to custom folders and individual items. Box 3: Default policy tags

Applying default policy tags (DPTs) to mailboxes to manage the retention of all untagged items. References: [https://technet.microsoft.com/en-us/library/dd297955\(v=exchg.160\).aspx](https://technet.microsoft.com/en-us/library/dd297955(v=exchg.160).aspx)

NEW QUESTION 259

You have an Exchange Server 2016 organization. The organization contains 20 resource mailboxes.

You need to ensure that an administrator named Admin 1 approves all of the meeting requests sent to the mailboxes.

What command should you run? To answer, select the appropriate options in the answer area.

`Get-Mailbox -recipienttypedetails RoomMailbox |`

	▼
New-ManagementRole	
Set-CalendarProcessing	
Set-CasMailbox	
Set-MailboxAutoReplyConfiguration	
Set-User	

	▼
-AssistantName	
-AutomateProcessing	
-Manager	
-OrganizerInfo	
-ResourceDelegates	

Admin1

Answer:

Explanation: Box 1: Set-CalendarProcessing:

Use the Set-CalendarProcessing cmdlet to modify calendar processing options for resource mailboxes, which include the Calendar Attendant, resource booking assistant, and calendar configuration. Note that this cmdlet is effective only on resource mailboxes.

Box 2: - ResourceDelegates

The ResourceDelegates parameter specifies a comma-separated list of users who are resource mailbox delegates. Resource mailbox delegates can approve or reject requests sent to the resource mailbox.

NEW QUESTION 263

You have two standalone Exchange Server 2016 servers.

You perform daily full backups of the Exchange server databases. A user accidentally deletes some critical items.

You need to restore the critical items.

Which three actions should you perform in sequence? To answer, move the appropriate actions from the list of actions to the answer area and arrange them in the correct order.

Actions	Answer Area
Install another Exchange Server 2016 server in a temporary organization.	
Run the New-MailboxRestoreRequest cmdlet.	
Create a new mailbox database. Move the mailbox of the user to the new mailbox database.	⬆
Restore the mailbox database.	⬇
Run the New-MailboxDatabase cmdlet and specify the -Recovery switch.	

Answer:

Explanation: Box 1: Create a recovery database.

A recovery database (RDB) is a special kind of mailbox database that allows you to mount and extract data from a restored mailbox database as part of a recovery operation. RDBs allow you to recover data from a backup or copy of a database without disrupting user access to current data.

Box 2: Restore the mailbox database.

After you create an RDB, you can restore a mailbox database into the RDB by using a backup application or by copying a database and its log files into the RDB folder structure.

Box 3: New-MailboxRestoreRequest with -Recovery

Use the New-MailboxRestoreRequest cmdlet to restore a mailbox or items from the recovery database to a production mailbox.

Note: A recovery database (RDB) is a special kind of mailbox database that allows you to mount and extract data from a restored mailbox database as part of a recovery operation. RDBs allow you to recover data from a backup or copy of a database without disrupting user access to current data.

After you create an RDB, you can restore a mailbox database into the RDB by using a backup application or by copying a database and its log files into the RDB folder structure. Then you can use the

New-MailboxRestoreRequest cmdlet to extract data from the recovered database. Once extracted, the data can then be exported to a folder or merged into an existing mailbox.

References: [https://technet.microsoft.com/en-us/library/ee332351\(v=exchg.160\).aspx#Use the Exchange Management Shell to recover data using a recovery database](https://technet.microsoft.com/en-us/library/ee332351(v=exchg.160).aspx#Use the Exchange Management Shell to recover data using a recovery database)

NEW QUESTION 267

You have an Exchange Server 2016 organization.

You allow mobile devices to connect to the organization from the Internet.

You discover that a specific version of the operating system on mobile devices causes performance issues on an Exchange server when the devices connect to the organization by using Exchange ActiveSync.

You need to prevent the mobile devices from connecting to the Exchange Server organization. The solution must allow all other mobile devices to connect.

Which command should you use?

- A. New-ActiveSyncDeviceAccessRule
- B. New-ActiveSyncMailboxPolicy
- C. Remove-ActiveSyncDevice
- D. Set-ActiveSyncOrganizationSettings

Answer: A

Explanation: References:

<https://docs.microsoft.com/en-us/powershell/module/exchange/devices/new-activesyncdeviceaccessrule?view=e>

NEW QUESTION 268

Your company has an Exchange Server 2016 organization. The organization contains 2,000 mailboxes and five Mailbox servers, including one server named EX1. Five hundred users retrieve email from their mailboxes by using an IMAP4 client application from the Internet.

The users also connect to EX1 to send email messages. All of the email messages are secured by using TLS. An administrator recently replaced the company's firewall.

Users now report that they fail to send email messages from the IMAP4 client application. You verify that the users can retrieve email messages from their mailbox successfully.

You need to recommend which TCP port must be allowed so that the users can send email messages from the IMAP4 application successfully.

Which TCP port should you recommend?

- A. 443
- B. 587
- C. 993
- D. 995

Answer: C

NEW QUESTION 273

Note: This question is part of a series of questions that present the same scenario. Each question in the series contains a unique solution that might meet the stated goals. Some question sets might have more than one correct solution, while others might not have a correct solution.

After you answer a question in this section, you will NOT be able to return to it. As a result, these questions will not appear in the review screen.

You have an Exchange Server 2016 organization.

Some users access the mailbox on their mobile device by using Exchange ActiveSync.
You need to prevent the users from synchronizing more than one month of email or calendar data to their device.
Solution: You create a throttling policy for the mobile device users. Does this meet the goal?

- A. Yes
- B. No

Answer: B

NEW QUESTION 276

.....

Thank You for Trying Our Product

* 100% Pass or Money Back

All our products come with a 90-day Money Back Guarantee.

* One year free update

You can enjoy free update one year. 24x7 online support.

* Trusted by Millions

We currently serve more than 30,000,000 customers.

* Shop Securely

All transactions are protected by VeriSign!

100% Pass Your 70-345 Exam with Our Prep Materials Via below:

<https://www.certleader.com/70-345-dumps.html>