

Exam Questions 70-742

Identity with Windows Server 2016

<https://www.2passeasy.com/dumps/70-742/>



NEW QUESTION 1

Your network contains an Active Directory domain named contoso.com. You need to create a central store for Group Policy administrator templates. What should you use?

- A. Server Manager
- B. File Explorer
- C. Dcgpofix.exe
- D. Group Policy Management Console (GPMC)

Answer: B

NEW QUESTION 2

A technician named Tech1 is assigned the task of joining the laptops to the domain. The computer accounts of each laptop must be in an organizational unit (OU) that is associated to the department of the user who will use that laptop. The laptop names must start with four characters indicating the department followed by a four-digit number

Tech1 is a member of the Domain Users group only. Tech1 has the administrator logon credentials for all the laptops.

You need Tech1 to join the laptops to the domain. The solution must ensure that the laptops are named correctly, and that the computer accounts of the laptops are in the correct OUs.

Solution: You script the creation of files for an offline domain join, and then you give the files to Tech1. You instruct Tech1 to sign in to each laptop, and then to run djoin.exe.

Does this meet the goal?

- A. Yes
- B. No

Answer: A

NEW QUESTION 3

Your network contains an Active Directory domain named contoso.com. A Group Policy object (GPO) named GPO1 is linked to contoso.com.

GPO1 has computer configuration policies, user configuration policies and user preferences configured.

You need to ensure that the user preferences in GPO1 apply only to users who sign in to computers that runs Windows 10. All the other settings in GPO1 must be applied, regardless of the computer to which the user sign in.

What should you configure?

- A. Security Settings
- B. WMI filtering
- C. Security Filtering
- D. item-level targeting

Answer: D

NEW QUESTION 4

Note: This question is part of a series of questions that present the same scenario. Each question in the series contains a unique solution that might meet the stated goals. Some question sets might have more than one correct solution, while others might not have a correct solution.

After you answer a question in this section, you will NOT be able to return to it. As a result, these questions will not appear in the review screen.

Your network contains an Active Directory domain named contoso.com. The domain contains a server named Server1 that runs Windows Server 2016. The computer account for Server1 is in organizational unit (OU) named OU1.

You create a Group Policy object (GPO) named GPO1 and link GPO1 to OU1.

You need to add a domain user named User1 to the local Administrators group on Server1.

Solution: From the Computer Configuration node of GPO1, you configure the Account Policies settings. Does this meet the goal?

- A. Yes
- B. No

Answer: B

NEW QUESTION 5

Your network contains an Active Directory domain named contoso.com.

The user account for a user named User1 is in an organizational unit (OU) named OU1. You need to enable User1 to sign in as user1@adatum.com.

Solution: From Active Directory Domains and Trusts, you configure an alternative UPN suffix, From Active Directory Administrative Center, you configure the User UPN logon property of User1.

Does this meet the goal?

- A. Yes
- B. No

Answer: A

NEW QUESTION 6

Your network contains an Active Directory forest named contoso.com. All domain controllers run Windows Server 2012 R2. You deploy a new server named Server1 that runs Windows Server 2016.

A server administrator named ServerAdmin01 is a member of the Domain users group. You add ServerAdmin01 to the Administrators group on Server1.

ServerAdmin01 signs in to Server1 and successfully configures a new Active Directory flights Management Services (AD RMS) cluster.

You need to ensure that clients can discover the AD RMS cluster by querying Active Directory. What should you do?

- A. Register a Service Connection Point (SCP).

- B. Modify the Security settings of the computer account of Server1.
- C. Update the Active Directory schema.
- D. Upgrade one domain controller to Windows Server 2016.

Answer: A

NEW QUESTION 7

You network contains an Active Directory domain named contoso.com. The domain contains an enterprise certification authority (CA) named CA1. You have a test environment that is isolated physically from the corporate network and the Internet. You deploy a web server to the test environment. On CA1, you duplicate the Web Server template, and you name the template Web_Cert_Test. For the web server, you need to request a certificate that does not contain the revocation information of CA1. What should you do first?

- A. From the properties of CA1, allow certificates to be published to the file system.
- B. From the properties of CA1, select Restrict enrollment agents, and then add Web_Cert_Test to the restricted enrollment agent.
- C. From the properties of Web_Cert_Test, assign the Enroll permission to the guest account.
- D. From the properties of Web_Cert_Test, set the Compatibility setting of CA1 to Windows Server 2016.

Answer: D

NEW QUESTION 8

Note: This question is part of a series of questions that use the same or similar answer choices. An answer choice may be correct for more than one question in the series. Each question is independent of the other questions in this series. Information and details provided in a question apply only to that question. Your network contains an Active Directory domain named contoso.com. You need to limit the number of Active Directory Domain Services (AD DS) objects that a user can create in the domain. Which tool should you use?

- A. Dsadd quota
- B. Dsmmod
- C. Active Directory Administrative Center
- D. Dsacis
- E. Dsmain
- F. Active Directory Users and Computers
- G. Ntdsutil
- H. Group Policy Management Console

Answer: A

NEW QUESTION 9

Your network contains an Active Directory domain named contoso.com. The domain contains a username User1, a group named Group1, and an organizational unit (OU) named OU1. You need to enable User1 to link Group Policies to OU1. Solution: From Active Directory Administrative Center, you add User1 to Group1. From ADSI Edit, you grant Group1 Full Control permissions to the “CN=Policies, CN=System, DC=Contoso, DC=com” object. Does this meet the goal?

- A. Yes
- B. NO

Answer: B

NEW QUESTION 10

Your network contains an Active Directory forest named contoso.com. The forest contains three domains named contoso.com, corp.contoso.com, and ext.contoso.com. The forest contains three Active Directory sites named Site1, Site2, and Site3. You have the three administrators as described in the following table.

Administrator name	Group membership	Domain
Admin1	Domain Admins	Contoso.com
Admin2	Domain Admins	Corp.contoso.com
Admin3	Enterprise Admins	Contoso.com

You create a Group Policy object (GPO) named GPO1. Which administrator or administrators can link GPO1 to Site2?

- A. Admin1 and Admin2 only
- B. Admin1, Admin2, and Admin3
- C. Admin3 only
- D. Admin1 and Admin3 only

Answer: D

Explanation:

References:
[https://technet.microsoft.com/en-us/library/cc732979\(v=ws.11\).aspx](https://technet.microsoft.com/en-us/library/cc732979(v=ws.11).aspx)

NEW QUESTION 10

Note: This question is part of a series of questions that present the same scenario. Each question in the series contains a unique solution that might meet the stated goals. Some question sets might have more than one correct solution, while others might not have a correct solution.
After you answer a question in this section, you will NOT be able to return to it. As a result, these questions will not appear in the review screen.
Your network contains an Active Directory domain named contoso.com. The domain contains a server named Server1 that runs Windows Server 2016. The Computer account for Server1 is in organizational unit (OU) named OU1.
You create a Group Policy object (GPO) named GPO1 and link GPO1 to OU1.
You need to add a domain user named user1 to the local Administrators group on Server1.
Solution: From the Computer Configuration node of GPO1, you configure the local Users and Groups preference.
Does this meet the goal?

- A. Yes
- B. No

Answer: A

NEW QUESTION 15

Your company has multiple offices.
The network contains an Active Directory domain named contoso.com. An Active Directory site exists for each office. All of the sites connect to each other by using DEFAULTIPSITELINK.
The company plans to open a new office. The new office will have a domain controller and 100 client computers.
You install Windows Server 2016 on a member server in the new office. The new server will become a domain controller.
You need to deploy the domain controller to the new office. The solution must ensure that the client computers in the new office will authenticate by using the local domain controller.
Which three actions should you perform next in sequence? To answer, move the appropriate actions from the list of actions to the answer area and arrange them in the correct order.

Actions

Answer Area

Create a new site object.
Create a new connection object.
Promote the member server to a domain controller.
Create a new subnet object.
Move the server object of the domain controller.

- A. Mastered
- B. Not Mastered

Answer: A

Explanation:

Actions

Answer Area

Create a new site object.	Create a new site object.
Create a new connection object.	Create a new subnet object.
Promote the member server to a domain controller.	Promote the member server to a domain controller.
Create a new subnet object.	
Move the server object of the domain controller.	

NEW QUESTION 16

Your network contains an Active Directory domain named contoso.com. The domain contains two servers named Server1 and Server2 that run Windows Server 2016.
Server1 has Microsoft System Center 2016 Virtual Machine Manager (VMM) installed. Server2 has IP Address Management (IPAM) installed.
You create a domain user named User1.
You need to integrate IPAM and VMM. VMM must use the account of User1 to manage IPAM. The solution must use the principle of least privilege.
What should you do on each server? To answer, select the appropriate options in the answer area.

Answer Area

On Server1:

Create a Run as Account that uses User1

Add User1 to the Fabric Administrator user role

Add User1 to the Remote Management Users group

On Server2:

Add User1 to IPAM Administrator Role

Add User1 to IPAM ASM Administrator Role

Add User1 to IPAM MSM Administrator Role

- A. Mastered
- B. Not Mastered

Answer: A

Explanation:

References:
[https://technet.microsoft.com/en-us/library/dn783349\(v=ws.11\).aspx](https://technet.microsoft.com/en-us/library/dn783349(v=ws.11).aspx)

NEW QUESTION 20

Your network contains an Active Directory domain. The domain contains an Active Directory Rights Management Services (AD RMS) cluster and a certification authority (CA).
You need to ensure that all the documents that are protected by using AD RMS can be decrypted if the account used to encrypt the documents is deleted.
What should you do?

- A. Back up the AD RMS-protected files by using Windows Server Backup.
- B. Configure key archival on the CA.
- C. Manually configure the AD RMS cluster key password.
- D. Configure super users in the AD RMS deployment.

Answer: D

Explanation:

<https://social.technet.microsoft.com/wiki/contents/articles/91111.disaster-recovery-guide-for-active-directory-righ>

NEW QUESTION 21

Your network contains an Active Directory domain. The domain contains a domain controller named DC1 that runs Windows Server 2016.
You start DC1 in Directory Services Restore Mode (DSRM). You need to compact the Active Directory database on DC1. Which three action should you perform in sequence?

Actions

Run ntdsutil.exe.

From the Metadata Cleanup context, select an operation target.

Run dsamain.exe.

From the Semantic Database Analysis context, run go fixup.

Run activate instance ntds.

From the Files context, run compact.

Answer Area

1.

2.

3.

- A. Mastered
- B. Not Mastered

Answer: A

Explanation:

[https://technet.microsoft.com/en-us/library/cc794920\(v=ws.10\).aspx](https://technet.microsoft.com/en-us/library/cc794920(v=ws.10).aspx)

NEW QUESTION 26

Your network contains an Active directory domain named conloso.com. The domain has an enterprise certification authority (CA).

You duplicate the Basic EFS template, and you name the template Template1. You configure the CA to issue Template1.

Users are configured to obtain a new certificate automatically when they sign in to a computer in the domain. You need to enable the users to automatically obtain a certificate based on Template1.

What should you modify?

- A. the Security settings for Template1
- B. the Request Handling properties for the CA
- C. the Publication Settings for the CA
- D. the Request Handling properties for Template1

Answer: A

NEW QUESTION 27

You have a server named Server1 that runs Windows Server 2016. Server1 has the Web Application Proxy role service installed.

You publish an application named App1 by using the Web Application Proxy.

You need to change the URL that users use to connect to App1 when they work remotely. Which command should you run? To answer, select the appropriate options in the answer area.

Answer Area

▼	-ID 874A4543-7983-77A3-1E6D-1163E7419AC1
Set-WebApplicationProxyApplication	
Set-WebApplicationProxyConfiguration	
Set-WebApplicationProxySslCertificate	

▼	https://SP.Contoso.com/
-ADFSUrl	
-BackendServerUrl	
-ExternalURL	

- A. Mastered
- B. Not Mastered

Answer: A

Explanation:

The Set-WebApplicationProxyApplication cmdlet modifies settings of a web application published through Web Application Proxy. Specify the web application to modify by using its ID. Note that the method of preauthentication cannot be changed. The cmdlet ensures that no other applications are already configured to use any specified ExternalURL or BackendServerURL.

References: <https://technet.microsoft.com/itpro/powershell/windows/wap/set-webapplicationproxyapplication>

NEW QUESTION 30

Your network contains an Active Directory forest. The forest functional level is Windows Server 2016. You have a failover cluster named Cluster1. Cluster1 has two nodes named Server1 and Server2. All the optional features in Active Directory are enabled.

A junior administrator accidentally deletes the computer object named Cluster1. You discover that Cluster1 is offline.

You need to restore the operation of Cluster1 in the least amount of time possible. What should you do?

- A. Run the Enable-ADAccount cmdlet from Windows PowerShell.
- B. Perform an authoritative restore by running ntdutil.exe.
- C. Perform a tombstone reanimation by running ldp.exe.
- D. Recover a deleted object from the Active Directory Recycle Bin.

Answer: D

NEW QUESTION 35

Your network contains an Active Directory domain named adatum.com. The domain contains a security group named G_Research and an organizational unit (OU) named OU_Research.

All the users in the research department are members of G_Research and their user accounts are in OU_Research.

You need to ensure that all the research department users change their password every 28 days and enforce a complex password that is characters long.

What should you do?

- A. From Group Policy Management, create and link a Group Policy object (GPO) to the domain.
- B. Modify the password policy in the GPO Filter the GPO to apply to G_Research only.
- C. From Active Directory Administrative Center, create a new Password Settings object (PSO).
- D. From Active Directory Users and Computers, modify the properties of the Password Settings Container.
- E. From Group Policy Management, create and link a Group Policy object (GPO) to OU_Research.
- F. Modify the password policy in the GPO.

Answer: C

NEW QUESTION 40

Note: This question is part of a series of questions that present the same scenario. Each question in the series contains a unique solution that might meet the stated goals. Some question sets might have more than one correct solution, while others might not have a correct solution.

After you answer a question in this section, you will NOT be able to return to it. As a result, these questions will not appear in the review screen.

You deploy a new Active Directory forest.

You need to ensure that you can create a group Managed Service Account (gMSA) for multiple member servers.

Solution: You configure Kerberos constrained delegation on the computer account of each domain controller. Does this meet the goal?

- A. Yes
- B. No

Answer: B

NEW QUESTION 45

Your network contains an Active Directory domain named contoso.com. The domain contains five domain controllers.

You have a branch office that has a local support technician named Tech1. Tech1 installs Windows Server 2016 on a server named RODC1 in a workgroup.

You need Tech1 to deploy RODC1 as a read-only domain controller (RODC) in the contoso.com domain.

Which three actions should you perform? Each correct answer presents part of the solution.

- A. Instruct Tech1 to run the Active Directory Domain Services Configuration Wizard.
- B. Create an RODC computer account by using Active Administrative Center.
- C. Instruct Tech1 to run dcpromo.exe on RODC1.
- D. Instruct Tech1 to install the Active Directory Domain Services server role on RODC1.
- E. Modify the permissions of the Domain Controllers organizational unit (OU).

Answer: ACD

NEW QUESTION 48

You are deploying a web application named WebApp1 to your internal network. WebApp1 is hosted on a server named Web1 that runs Windows Server 2016.

You deploy an Active Directory Federation Services (AD FS) infrastructure and a Web Application Proxy to provide access to WebApp1 for remote users.

You need to ensure that Web1 can authenticate the remote users. What should you do?

- A. Publish WebApp1 by using pass-through preauthentication.
- B. Publish WebApp 1 as a Remote Desktop Gateway (RD Gateway) application in the Web Application Proxy.
- C. Publish WebApp1 by using AD FS preauthentication.
- D. Publish WebApp1 by using client certificate preauthentication.

Answer: A

NEW QUESTION 53

You deploy a new certification authority (CA) to a server that runs Windows Server 2016. You need to configure the CA to support recovery of certificates.

What should you do first?

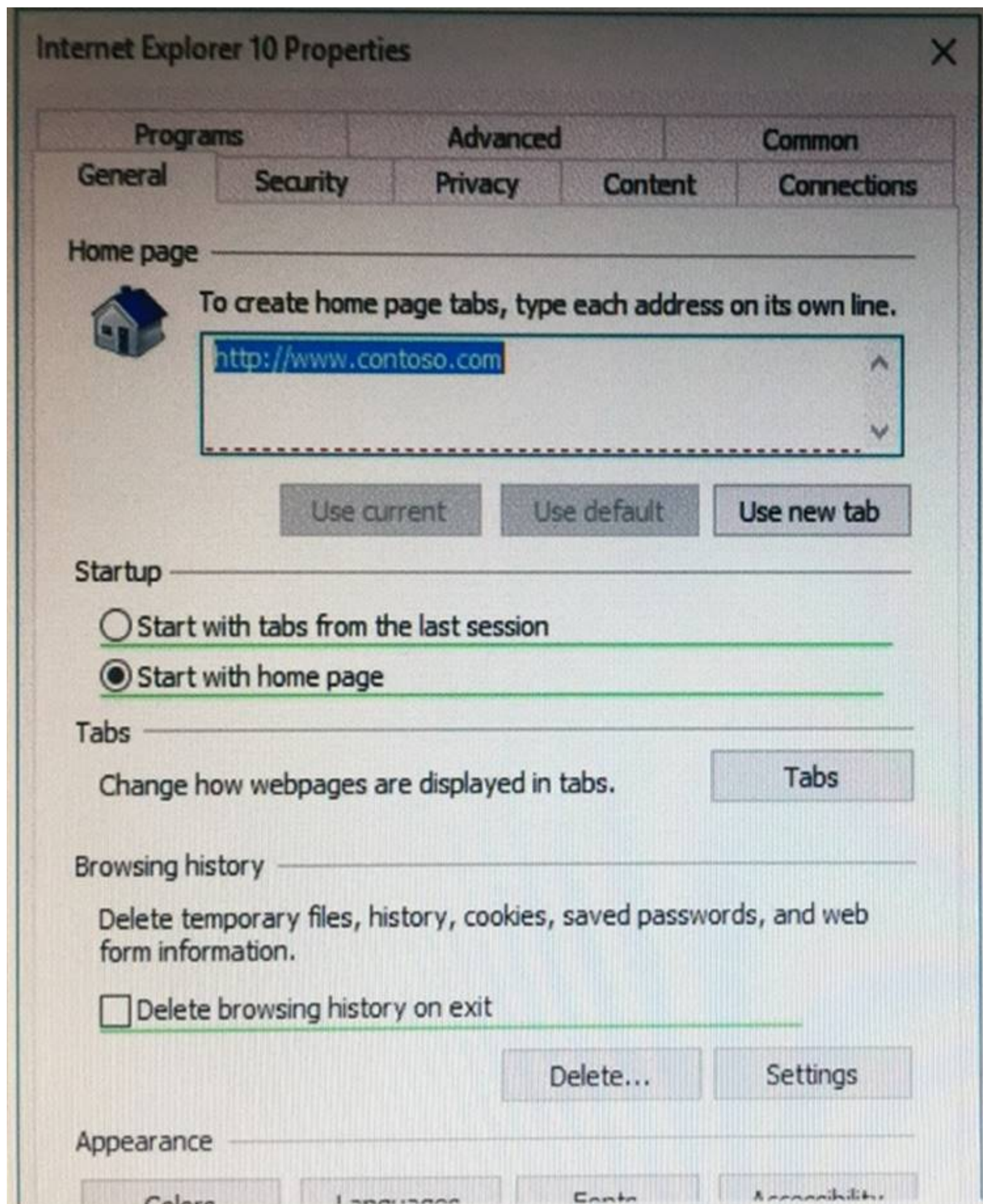
- A. Modify the extensions of the OCSP Response Signing template
- B. Modify the Recovery Agents settings from the properties of the CA.
- C. Assign the Request Certificates permission to the user account that will be responsible for recovering certificates.
- D. Configure the Key Recovery Agent template as a certificate template to issue.

Answer: A

NEW QUESTION 57

Your network contains an Active Directory domain named contoso.com. The domain contains a Group Policy object (GPO) named GPO1.

You configure the Internet Settings preference in GPO1 as shown in the exhibit. (Click the Exhibit button.)



A user reports that the homepage of Internet Explorer is not set to <http://www.contoso.com>. You confirm that the other settings in GPO1 are applied. You need to configure GPO1 to set the Internet Explorer homepage. What should you do?

- A. Edit the GPO1 preference and press F5.
- B. Modify Security Settings for GPO1.
- C. Modify WMI Filtering for GPO1.
- D. Modify the GPO1 preference to use item-level targeting.

Answer: A

Explanation:

The red dotted line under the homepage URL means that setting is disabled. Pressing F5 enables all settings.

NEW QUESTION 58

Your network contains an Active Directory domain named contoso.com. The domain contains a user named User1, a group named Group1, and an Organizational unit (OU) named OU1.

You need to enable User1 to link Group Policies to OU1.

Solution: From Active Directory Users and Computers, you add User1 to the Group Policy Creator Owner group.

Does this meet the goal?

- A. Yes
- B. No

Answer: B

NEW QUESTION 61

Your network contains an Active Directory forest named contoso.com.

You have an Active Directory Federation Services (AD FS) farm. The farm contains a server named Server1 that runs Windows Server 2012 R2.

You add a server named Server2 to the farm. Server2 runs Windows Server 2016. You remove Server1 from the farm.

You need to ensure that you can use role separation to manage the farm. Which cmdlet should you run?

- A. Set-AdfsFarmInformation
- B. Update-AdfsRelyingPartyTrust
- C. Set-AdfsProperties
- D. Invoke-AdfsFarmBehaviorLevelRaise

Answer: D

Explanation:

AD FS for Windows Server 2016 introduces the ability to have separation between server administrators and AD FS service administrators.

After upgrading our ADFS servers to Windows Server 2016, the last step is to raise the Farm Behavior Level using the Invoke-AdfsFarmBehaviorLevelRaise PowerShell cmdlet.

To upgrade the farm behavior level from Windows Server 2012 R2 to Windows Server 2016 use the Invoke-ADFSFarmBehaviorLevelRaise cmdlet.

References: [https://technet.microsoft.com/en-us/library/mt605334\(v=ws.11\).aspx](https://technet.microsoft.com/en-us/library/mt605334(v=ws.11).aspx)

NEW QUESTION 64

Your network contains an Active Directory domain named contoso.com. The domain contains two servers named Server1 and Server2 that run Windows Server 2016. The computer accounts of Server1 and Server2 are in the Computers container.

A Group Policy object (GPO) named GPO1 is linked to the domain. GPO1 has multiple computer settings defined and has following configurations.

DisplayName:	GPO1
Domain Name:	Contoso.com
Owner:	CONTOSO\Domain Admins
Id:	bf3b4d96-59f6-4d0f-84c3-b9c37180b9ca
GpoStatus:	UserSettingsDisabled
Description:	
CreationTime:	2/18/2017 7:11:30 AM
ModificationTime:	2/18/2017 9:33:04 AM
UserVersion:	AD Version 18, SysVol Version: 18
ComputerVersion:	AD Version 6, SysVol Version: 6
WmiFilter:	WMI1

An administrator discovers that GPO1 is not applied to Server1. GPO1 is applied to Server2. Which configuration possibly prevents GPO1 from being applied to Server1?

- A. The permissions on the domain object of contoso.com
- B. The WMI filter settings
- C. The Enforced setting of GPO1
- D. The GpoStatus property

Answer: B

NEW QUESTION 67

Note: This question is part of a series of questions that use the same scenario. For your convenience, the scenario is repeated in each question. Each question presents a different goal and answer choices, but the text of the scenario is exactly the same in each question in this series.

Start of repeated scenario.

You work for a company named Contoso, Ltd.

The network contains an Active Directory forest named contoso.com. A forest trust exists between contoso.com and an Active Directory forest named adatum.com.

The contoso.com forest contains the objects configured as shown in the following table.

Object name	Object type	Group scope	Group type
User1	User	<i>Not applicable</i>	<i>Not applicable</i>
User2	User	<i>Not applicable</i>	<i>Not applicable</i>
Computer1	Computer	<i>Not applicable</i>	<i>Not applicable</i>
Group1	Group	Domain local	Security
Group2	Group	Domain local	Security
Group3	Group	Universal	Security
Group4	Group	Global	Security
Group5	Group	Universal	Security

Group1 and Group2 contain only user accounts.

Contoso hires a new remote user named User3. User3 will work from home and will use a computer named Computer3 that runs Windows 10. Computer3 is currently in a workgroup.

An administrator named Admin1 is a member of the Domain Admins group in the contoso.com domain. From Active Directory Users and Computers, you create an organizational unit (OU) named OU1 in the contoso.com domain, and then you create a contact named Contact1 in OU1.

An administrator of the adatum.com domain runs the Set-ADUser cmdlet to configure a user named User1 to have a user logon name of User1@litwareinc.com. End or repeated scenario.

You need to ensure that Admin1 can add Group2 as a member of Group3. What should you modify?

- A. Modify the Security settings of Group3.
- B. Modify the group scope of Group3.
- C. Modify the group type of Group3.
- D. Set Admin1 as the manager of Group3.

Answer: B

NEW QUESTION 71

You network contains an Active Directory forest. The forest contains an Active Directory Federation Services (AD FS) deployment.

The AD FS deployment contains the following:

- * An AD FS server named server1.contoso.com that runs Windows Server 2016
- * A Web Application Proxy used to publish AD FS
- * A LIPN that uses the contoso.com suffix
- * A namespace named adfs.contoso.com

You create a Microsoft Office 365 tenant named contoso.onmicrosoft.com. You use Microsoft Azure Active Directory Connect (AD Connect) to synchronize all of the users and the UPNs from the contoso.com forest to Office 365.

You need to configure federation between Office 365 and the on-premises deployment of Active Directory. Which three commands should you run in sequence from Server1? To answer, move the appropriate commands from the list of commands to the answer area and arrange them in the correct order.

Commands

Answer Area

Convert-MsolDomainToFederated -DomainName contoso.com

Enter-PSSession -Name Office365

Convert_MsolDomainToFederated -DomainName adfs.contoso.com

Set-MsolADFSContext -Computer server1contoso.com

Connect-MsolService

Set-MsolADFSContext -Computer contoso.com

- A. Mastered
- B. Not Mastered

Answer: A

Explanation:

Commands	Answer Area
Convert-MsolDomainToFederated -DomainName contoso.com	Connect-MsolService
Enter-PSSession -Name Office365	Set-MsolADFSContext -Computer server1contoso.com
Convert_MsolDomainToFederated -DomainName adfs.contoso.com	Convert-MsolDomainToFederated -DomainName contoso.com
Set-MsolADFSContext -Computer server1contoso.com	
Connect-MsolService	
Set-MsolADFSContext -Computer contoso.com	

NEW QUESTION 74

Note: This question is part of a series of questions that use the same scenario. For you convenience, the scenario is repeated in each question. Each question presents a different goal and answer choices, but the text of the scenario is exactly the same in each question in this series.

Start of repeated scenario.

You work for a company named Contoso, Ltd.

The network contains an Active Directory forest named contoso.com. A forest trust exists between contoso.com and an Active Directory forest named adatum.com.

The contoso.com forest contains the objects configured as shown in the following table.

Object name	Object type	Group scope	Group type
User1	User	Not applicable	Not applicable
User2	User	Not applicable	Not applicable
Computer1	Computer	Not applicable	Not applicable
Group1	Group	Domain local	Security
Group2	Group	Domain local	Security
Group3	Group	Universal	Security
Group4	Group	Global	Security
Group5	Group	Universal	Security

Group1 and Group2 contain only user accounts.

Contoso hires a new remote user named User3. User3 will work from home and will use a computer named Computer3 that runs Windows 10. Computer3 is currently in a workgroup.

An administrator named Admin1 is a member of the Domain Admins group in the contoso.com domain. From Active Directory Users and Computers, you create an organizational unit (OU) named OU1 in the contoso.com domain, and then you create a contact named Contact1 in OU1.

An administrator of the adatum.com domain runs the Set-ADUser cmdlet to configure a user named User1 to have a user logon name of User1@litwareinc.com.

End of repeated scenario.

You need to ensure that User2 can add Group4 as a member of Group5. What should you modify?

- A. the group scope of Group5
- B. the Managed By settings of Group4
- C. the group scope of Group4
- D. the Managed By settings of Group5

Answer: D

NEW QUESTION 78

Note: This question is part of a series of questions that present the same scenario. Each question in the series contains a unique solution that might meet the stated goals. Some question sets might have more than one correct solution, while others might not have a correct solution.

After you answer a question in this section, you will NOT be able to return to it. As a result, these questions will not appear in the review screen.

Your network contains an Active Directory domain named contoso.com. A user named User1 is in an organizational unit (OU) named OU1.

You need to enable User1 to sign in as user1@adatum.com.

You need a list of groups to which User1 is either a direct member or an indirect member.

Solution: From Windows PowerShell, you run Set -Aduser User1 -UserPrincipalName User1@Adatum.com. Does this meet the goal?

- A. Yes
- B. No

Answer: B

NEW QUESTION 82

Note: This question is part of a series of questions that present the same scenario. Each question in the series contains a unique solution. Determine whether the solution meets the stated goals.

Your network contains an Active Directory domain named contoso.com. The domain contains a DNS server named Server1. All client computers run Windows 10. On Server1, you have the following zone configuration.

ZoneName	ZoneType	IsAutoCreated	IsDsIntegrated	IsReverseLookupZone	IsSigned
_nsdcs.contoso.com	Primary	False	True	False	False
0.in-addr.arpa	Primary	True	False	True	False
127.in-addr.arpa	Primary	True	False	True	False
255.in-addr.arpa	Primary	True	False	True	False
adatum.com	Forwarder	False	False	False	False
contoso.com	Primary	False	True	False	False
fabrikam.com	Primary	False	True	False	True
TrustAnchors	Primary	False	True	False	False

You need to ensure that all of the client computers in the domain perform DNSSEC validation for the fabrikam.com namespace.

Solution: From a Group Policy object (GPO) in the domain, you add a rule to the Name Resolution Policy Table (NRPT).

Does this meet the goal?

- A. Yes
- B. No

Answer: A

Explanation:

The NRPT stores configurations and settings that are used to deploy DNS Security Extensions (DNSSEC), and also stores information related to DirectAccess, a remote access technology.

Note: The Name Resolution Policy Table (NRPT) is a new feature available in Windows Server 2008 R2. The NRPT is a table that contains rules you can configure to specify DNS settings or special behavior for names or namespaces. When performing DNS name resolution, the DNS Client service checks the NRPT before sending a DNS query. If a DNS query or response matches an entry in the NRPT, it is handled according to settings in the policy. Queries and responses that do not match an NRPT entry are processed normally.

References: [https://technet.microsoft.com/en-us/library/ee649207\(v=ws.10\).aspx](https://technet.microsoft.com/en-us/library/ee649207(v=ws.10).aspx)

NEW QUESTION 86

You create a user account that will be used as a template for new user accounts.

Which setting will be copied when you copy the user account from Active Directory Users and Computers?

- A. the Department attribute
- B. the Description attribute
- C. Permission
- D. Remote Desktop Services Profile

Answer: A

Explanation:

A user template in Active Directory can be used if you are creating users for a specific department, with exactly the same properties, and membership to the same user groups. A user template is nothing more than a disabled user account that has all these settings already in place.

References:

<http://www.rebeladmin.com/2014/07/create-users-with-user-templates-in-ad/>

NEW QUESTION 89

Your network contains an Active Directory domain named contoso.com. The domain contains a user named User1 and an organizational unit (OU) named OU1.

What should you do?

- A. Modify the security settings of GPO1.
- B. Modify the security settings of OU1.
- C. Add User1 to the Group Policy Creator Owner group.
- D. Modify the security settings of User.

Answer: B

NEW QUESTION 92

Your network contains an Active Directory domain.

You have a user account that is a member of the Domain Admins group.

You have 100 laptops that have a standard corporate image installed. The laptops are in workgroups and have random names.

A technician named Tech1 is assigned the task of joining the laptops to the domain. The computer accounts of each laptop must be in an organizational unit (OU) that is associated to the department of the user who will use the laptop. The laptop names must start with four characters indicating the department, followed by a fourdigit number.

Tech1 is a member of the Domain Users group only. Tech1 has the administrator logon credentials for all the laptops.

You need Tech1 to join the laptops to the domain. The solution must ensure that the laptops are named correctly, and the computer accounts of the laptops are in

the correct OUs.

Solution: You pre-create the computer account of each laptop in Active Directory Users and Computers.

You instruct Tech1 to sign in to each laptop, to rename each laptop, and then to join each laptop to the domain by using System in Control Panel.

Does this meet the goal?

- A. Yes
- B. No

Answer: B

NEW QUESTION 94

Your network contains an Active Directory forest named contoso.com. The forest contains several domains. An administrator named Admin01 installs Windows Server 2016 on a server named Server1 and then joins

Server1 to the contoso.com domain.

Admin01 plans to configure Server1 as an enterprise root certification authority (CA).

You need to ensure that Admin01 can configure Server1 as an enterprise CA. The solution must use the principle of least privilege.

To which group should you add Admin01?

- A. Server Operators in the contoso.com domain
- B. Cert Publishers on Server1
- C. Enterprise Key Admins in the contoso.com domain
- D. Enterprise Admins in the contoso.com domain.

Answer: D

NEW QUESTION 96

Your network contains an Active Directory domain named contoso.com.

You have an organizational unit (OU) named TestOU that contains test computers.

You need to enable a technician named Tech1 to create Group Policy objects (GPOs) and to link the GPOs to TestOU. The solution must use the principle of least privilege.

Which two actions should you perform? Each correct answer presents part of the solution.

- A. Add Tech1 to the Group Policy Creator Owners group.
- B. From Group Policy Management, modify the Delegation settings of the TestOU OU.
- C. Add Tech1 to the Protected Users group.
- D. From Group Policy Management, modify the Delegation settings of the contoso.com container.
- E. Create a new universal security group and add Tech1 to the group.

Answer: AB

NEW QUESTION 99

You network contains an active Directory domain. The domain contains 20 domain controllers.

You discover that some Group Policy objects (PROs) are not being applied by all the domain controllers. You need to verify whether GPOs replicate successfully to all the domain controllers.

What should you do?

- A. Set BurFlags in the registry, and then restart the File Replication Service (FRS). Run dcdiag.exe for each domain controller.
- B. Set BurFlags in the registry, and then restart the File Replication Service (FRS). View the Directory Service event log.
- C. From Group Policy Management, view the Status tab for the domain.
- D. Run repadmin.exe for each GPO.

Answer: D

NEW QUESTION 100

You have a server named Server1 that runs Windows Server 2016. Server1 has the Windows Application Proxy role service installed.

You need to publish Microsoft Exchange ActiveSync services by using the Publish New Application Wizard. The ActiveSync services must use preauthentication.

How should you configure Server1? To answer, select the appropriate options in the answer area.

Answer Area

Preauthentication method:

	▼
Active Directory Federation Services (AD FS)	
Pass-through	

Preauthentication type:

	▼
HTTP Basic	
OAuth2	
Web and MS-OFBA	

- A. Mastered
- B. Not Mastered

Answer: A

Explanation:

Answer Area

Preauthentication method:

	▼
Active Directory Federation Services (AD FS)	
Pass-through	

Preauthentication type:

	▼
HTTP Basic	
OAuth2	
Web and MS-OFBA	

NEW QUESTION 103

Your company has a main office and three branch offices. The network contains an Active Directory domain named contoso.com. The main office contains three domain controllers. Each branch office contains one domain controller. You discover the new settings in the Default Domain Policy are not applied in one of the branch offices, but all other Group Policy objects (GPOs) are applied. You need to check the replication of the Default Domain Policy for the branch office. What should you do from a domain controller in the main office?

- A. From Group Policy Management, click Default Domain Policy under Contoso.com, and then open the Scope tab.
- B. From a command prompt, run dcdiag.exe.
- C. From Group Policy Management, click Default Domain Policy under the Group Policy Objects container, and then open the Status tab.
- D. From Windows PowerShell, run the Get-ADReplicationConnection cmdlet.

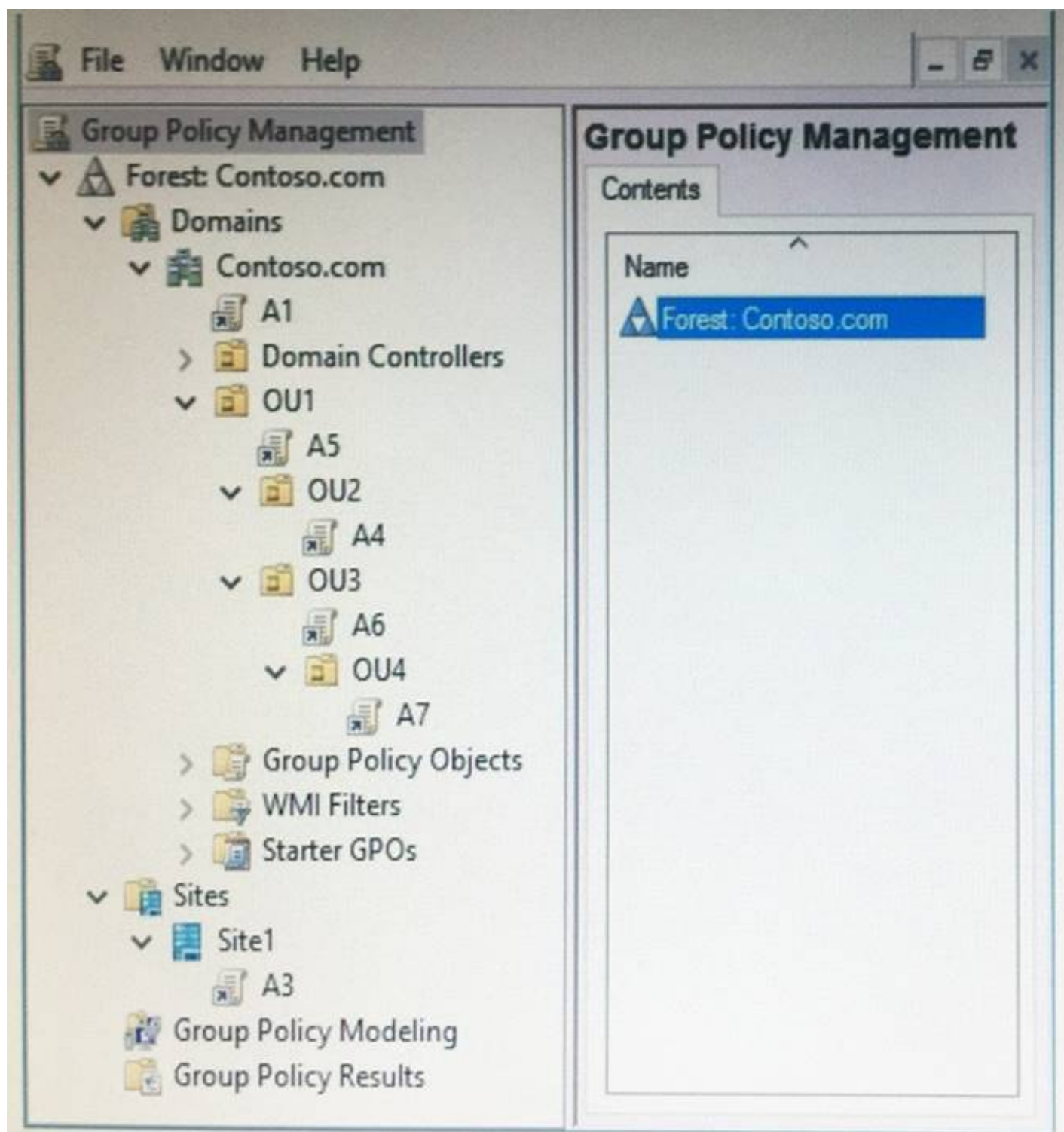
Answer: C

NEW QUESTION 106

Note: This question is part of a series of questions that use the same scenario. For your convenience, the scenario is repeated in each question. Each question presents a different goal and answer choices, but the text of the scenario is exactly the same in each question in this series.

Start of repeated scenario.

Your network contains an Active Directory domain named contoso.com. The domain contains a single site named Site1. All computers are in Site1. The Group Policy objects (GPOs) for the domain are configured as shown in the exhibit. (Click the Exhibit button.)



The relevant users and client computer in the domain are configured as shown in the following table.

Object name	Object type	Object location
Computer	Computer	OU4
User1	User	OU4
User2	User	OU2

End of repeated scenario.

You are evaluating what will occur when you disable the Group Policy link for A6.

Which GPOs will apply to User2 when the user signs in to Computer1 after the link for A6 is disabled?

- A. A1 and A5 only
- B. A3, A1, and A5 only
- C. A3, A1, A5, and A4 only
- D. A3, A1, A5, and A7

Answer: D

NEW QUESTION 107

Your network contains an Active Directory domain named contoso.com.

You have an application named App1 that is deployed to all the client computers in the domain. App1 writes a registry value named LocalStorage on all the client computers.

You need to delete the LocalStorage registry value from all the client computers in the domain that have less than 100 GB of free disk space on their system volume.

What should you do?

- A. Configure Software Settings in a Group Policy object (GPO) and enable a WMI filter.
- B. Configure a Group Policy setting to modify the security of the LocalStorage registry value.
- C. Create an administrative template file that contains the LocalStorage registry setting, and then add the administrative template to a Group Policy object (GPO).
- D. Configure a Group Policy preference that uses item-level targeting.

Answer: D

Explanation:

In Windows Server 2008 Microsoft introduced a Group Policy extension, named Group Policy Preferences (GPP). GPP that includes registry settings, allows you to add, remove or modify key values.

References: <https://theitbros.com/add-modify-and-delete-registry-keys-using-group-policy/>

NEW QUESTION 109

Note: This question is part of a series of questions that present the same scenario. Each question in the series contains a unique solution that might meet the stated goals. Some question sets might have more than one correct solution, while others might not have a correct solution.

After you answer a question in this section, you will NOT be able to return to it. As a result, these questions will not appear in the review screen.

You have a server named Web1 that runs Windows Server 2016.

You need to list all the SSL certificates on Web1 that will expire during the next 60 days. Solution: You run the following command.

Get-ChildItem Cert:\LocalMachine\My |? { \$_.NotAfter -lt (Get-Date).AddDays(60) } Does this meet the goal?

- A. Yes
- B. No

Answer: B

NEW QUESTION 111

Note: This question is part of a series of questions that present the same scenario. Each question in the series contains a unique solution that might meet the stated goals. Some question sets might have more than one correct solution, while others might not have a correct solution.

After you answer a question in this section, you will NOT be able to return to it. As a result, these questions will not appear in the review screen.

Your network contains an Active Directory domain named contoso.com. The domain contains two domain controllers named DC1 and DC2.

DC1 holds the RID master operations role. DC1 fails and cannot be repaired. You need to move the RID role to DC2.

Solution: On DC2, you open the command prompt, run dsmgmt.exe, connect to DC2, and use the Seize RID master opinion.

Does this meet the goal?

- A. Yes
- B. No

Answer: B

NEW QUESTION 113

Note: This question is part of a series of questions that use the same or similar answer choices. An answer choice may be correct for more than one question in the series. Each question is independent of the other questions in this series.

Information and details provided in a question apply only to that question.

Your network contains an Active Directory domain named contoso.com. The domain contains 5,000 user accounts.

You have a Group Policy object (GPO) named DomainPolicy that is linked to the domain and a GPO named DCPolicy that is linked to the Domain Controllers organizational unit (OU).

You need to configure the Documents folder of every user to be stored on a server named FileServer1. What should you do?

- A. From the Computer Configuration node of DCPolicy, modify Security Settings.
- B. From the Computer Configuration node of DomainPolicy, modify Security Settings.
- C. From the Computer Configuration node of DomainPolicy, modify Administrative Templates.
- D. From the User Configuration node of DCPolicy, modify Security Settings.
- E. From the User Configuration node of DomainPolicy, modify Folder Redirection.
- F. From user Configuration node of DomainPolicy, modify Administrative Templates.
- G. From Preferences in the User Configuration node of DomainPolicy, modify Windows Settings.
- H. From Preferences in the Computer Configuration node of DomainPolicy, modify Windows Settings.

Answer: E

NEW QUESTION 116

Your network contains an Active Directory forest. The forest contains a domain named contoso.com. The domain contains three domain controllers.

A domain controller named lon-dc1 fails. You are unable to repair lon-dc1.

You need to prevent the other domain controllers from attempting to replicate to lon-dc1. Solution: From ntdsutil.exe, you perform a metadata cleanup.

Does this meet the goal?

- A. Yes
- B. NO

Answer: A

NEW QUESTION 121

Your network contains an Active Directory forest. The forest contains two domains named litwareinc.com and contoso.com. The contoso.com domain contains two domain controllers named LON-DC01 and LON-DC02. The domain controllers are located in a site named London that is associated to a subnet of 192.168.10.0/24.

You discover that LON-DC02 is not a global catalog server. You need to configure LON-DC02 as a global catalog server.

What should you do?

- A. From Active Directory Sites and Services, modify the NTDS Settings object of the London site.
- B. From Windows Power Shell, run the Enable-ADOptionalFeature cmdlet.
- C. From the properties of the LON-DC02 computer account in Active Directory Users and Computers modify the NTDS settings.
- D. From the properties of the LON-DC02 computer account in Active Directory Users and Computers, modify the City attribute.

Answer: C

NEW QUESTION 125

Your company has a marketing department and a security department.

The network contains an Active Directory domain named contoso.com. The domain contains an enterprise certification authority (CA).

You have two organizational units (OUs) named MKT_UsersOU and MKT_ComputersOU. MKT_UsersOU contains the user accounts for the users in the marketing department. MKT_ComputersOU contains the computer accounts for the computers in the marketing department.

A Group policy object (GPO) named GPO1 is linked to MKT_UsersOU. A GPO named GPO2 linked to MKT_ComputersOU.

You plan to deploy a web application for the marketing department users. The application will require certificates for authentication.

The security department configures the CA to support the planned deployment.

You need to ensure that the web application can authenticate the marketing department users. What should you do?

- A. From the User Configuration node of GPO1, create an Internet Setting preference.
- B. From the User Configuration node of GPO1, configure the Certificate Services Client - Auto enrollment settings.
- C. From the Computer Configuration node of GPO2, configure the Certificate Services Client - Certificate Enrollment Policy settings.
- D. From the Computer Configuration node of GPO2, create the Automatic Certificate Request Settings.

Answer: A

NEW QUESTION 126

Note: This question is part of a series of questions that present the same scenario. Each question in the series contains a unique solution that might meet the stated goals. Some question sets might have more than one correct solution, while others might not have a correct solution.

After you answer a question in this section, you will NOT be able to return to it. As a result, these questions will not appear in the review screen.

Your network contains an Active Directory forest named contoso.com. The forest contains an Active Directory

Rights Management Services (AD RMS) deployment.

Your company establishes a partnership with another company named Fabrikam, Inc. The network of Fabrikam contains an Active Directory forest named fabrikam.com and an AD RMS deployment.

You need to ensure that the users in contoso.com can access rights protected documents sent by the users in fabrikam.com.

Solution: From AD RMS in contoso.com, you configure fabrikam.com as a trusted publisher domain. Does this meet the goal?

- A. Yes
- B. No

Answer: A

NEW QUESTION 127

Your network contains an Active Directory forest. The forest contains two domains named litwarenc.com and contoso.com. The contoso.com domain contains two domains controllers named LON-DC01 and LON-DC02.

The domain controllers are located in a site named London that is associated to a subnet of 192.168.10.0/24

You discover that LON-DC02 is not a global catalog server. You need to configure LON-DC02 as a global catalog server.

What should you do?

- A. From the properties of the LON-DC02 computer account in Active Directory Users and Computers, modify the NTDS settings.
- B. From the properties of the LON-DC02 computer account in Active Directory Users and Computers, modify the City attribute.
- C. From Active Directory Sites and Services, modify the properties of the 192.168.10.0/24 IP subnet.
- D. From the properties of the Domain Controllers organizational unit (OU) in Active Directory Users and Computers, modify the Security settings.

Answer: A

NEW QUESTION 128

Your company has a marketing department.

The network contains an Active Directory domain named contoso.com.

The main office contains three domain controllers. Each branch office contains one domain controller.

You discover that new settings in the Default Domain Policy are not applied on one of the branch offices, but all other Group Policy objects (GPOs) are applied.

You need to check the replication of the Default Domain Policy for the branch Office. What should you do from a domain controller in the main office?

- A. From Windows Power Shell, run the Get-GPO Report cmdlet.
- B. From a command prompt, run repadmin.exe.
- C. From a command prompt, run dcdiag.exe.
- D. From Group Policy Management, click Default Domain Policy under Contoso.com

Answer: A

NEW QUESTION 129

Note: This question is part of a series of questions that use the same or similar answer choice. An answer choice may be correct for more than one question in the series. Each question is Independent of the other questions in this series. Information and details provided in a question apply only to that question.

Your network contains an Active Directory domain named contoso.com. The domain functional level is Windows Server 2012 R2.

Your company hires 3 new security administrators to manage sensitive user data. You create a user account named Secury1 for the security administrator.

You need to ensure that the password for Secury1 has at least 12 characters and is modified every 10 days. The solution must apply to Security 1 only.

Which tool should you use?

- A. Dsadd quota
- B. Dsmod
- C. Active Directory Administrative Center
- D. Dsacis
- E. Dsamain

Answer: C

Explanation:

Using Fine-Grained Password Policies you specify multiple password policies in a single domain and apply different restrictions for password and account lockout policies to different sets of users in a domain. You can apply stricter settings to privileged accounts and less strict settings to the accounts of other users. To enable

Fine-Grained Password Policies (FGPP), you need to open the Active Directory Administrative Center (ADAC) <https://blogs.technet.microsoft.com/canitpro/2013/05/29/step-by-step-enabling-and-using-fine-grained->

NEW QUESTION 134

Note: This question is part of a series of questions that present the same scenario. Each question in the series contains a unique solution that might meet the stated goals. Some question sets might have more than one correct solution, while others might not have a correct solution.

After you answer a question in this section, you will NOT be able to return to it. As a result, these questions will not appear in the review screen.

Your network contains an Active Directory domain named contoso.com. The domain contains two domain controllers named DC1 and DC2.

DC1 holds the RID master operations role. DC1 fails and cannot be repaired. You need to move the RID role to DC2.

Solution: On DC2, you open Windows PowerShell and run

Move-AddirectoryServerOperationMasterRole -OperationMasterRidMaster -Identity DC2.Adatum.com Does this meet the goal?

- A. Yes
- B. No

Answer: B

Explanation:

You would need to use the -Force parameter because the server that held the role (DC1) is offline.

NEW QUESTION 135

Your network contains two Active Directory forests named fabrikam.com and contoso.com. Each forest contains a single domain

Contoso.com has a Group Policy object (GPO) named Cont_GPO1.

You need to apply the settings from Cont_GPO1 to the computers in fabrikam.com. Which two actions should you perform? Each correct answer presents part of the solution. NOTE: Each correct selection is worth one point.

- A. Back up Cont_GPO1. In fabrikam.com, create and link a new GPO by using the Group Policy Management Console (GPMC), and then run the Import Setting Wizard.
- B. Back up Cont_GPO1. In fabrikam.com, run the Restore-GPO cmdlet, and then run the New-GPLinkcmdlet.
- C. Back up Cont_GPO1. In fabrikam.com run the Import-GPO cmdlet, and then run the New-GPLinkcmdlet.
- D. Copy\\contoso.com\SysVol\contoso.com\Policies to \\fabrikam.com\SysVol\ fabrikam.com\Policies
- E. In fabrikam.com, run the New-GPLink cmdlet.
- F. Back up Cont_GPO1. In fabrikam.com, create and link a new GPO by using the Group Policy Management Console (GPMC), and then run the Restore Group Policy Object Wizard.

Answer: AC

NEW QUESTION 138

Note: This question is part of a series of questions that present the same scenario. Each question in the series contains a unique solution that might meet the stated goals. Some question sets might have more than one correct solution, while others might not have a correct solution.

After you answer a question in this section, you will NOT be able to return to it. As a result, these questions will not appear in the review screen.

You deploy a new Active Directory forest.

You need to ensure that you can create a group Managed Service Account (gMSA) for multiple member servers.

Solution: From Windows PowerShell on a domain controller, you run the Add-KdsRootKey cmdlet.

Does this meet the goal?

- A. Yes
- B. No

Answer: A

NEW QUESTION 140

You have a Nano Server named Nano1 that runs Windows Server 2016. Nano1 is deployed to a virtual machine and is a member of a workgroup.

You need to join Nano1 to a domain named contoso.com.

Which two commands should you run? To answer, select the appropriate options in the answer area. NOTE: Each correct selection is worth one point.

First command to run:

- Add-Computer with the DomainName parameter
- Djoin.exe with the Provision parameter
- Netdom.exe with the JOIN parameter
- New-NanoServerImage with the DomainName parameter
- Nltest.exe with the SC_RESET parameter

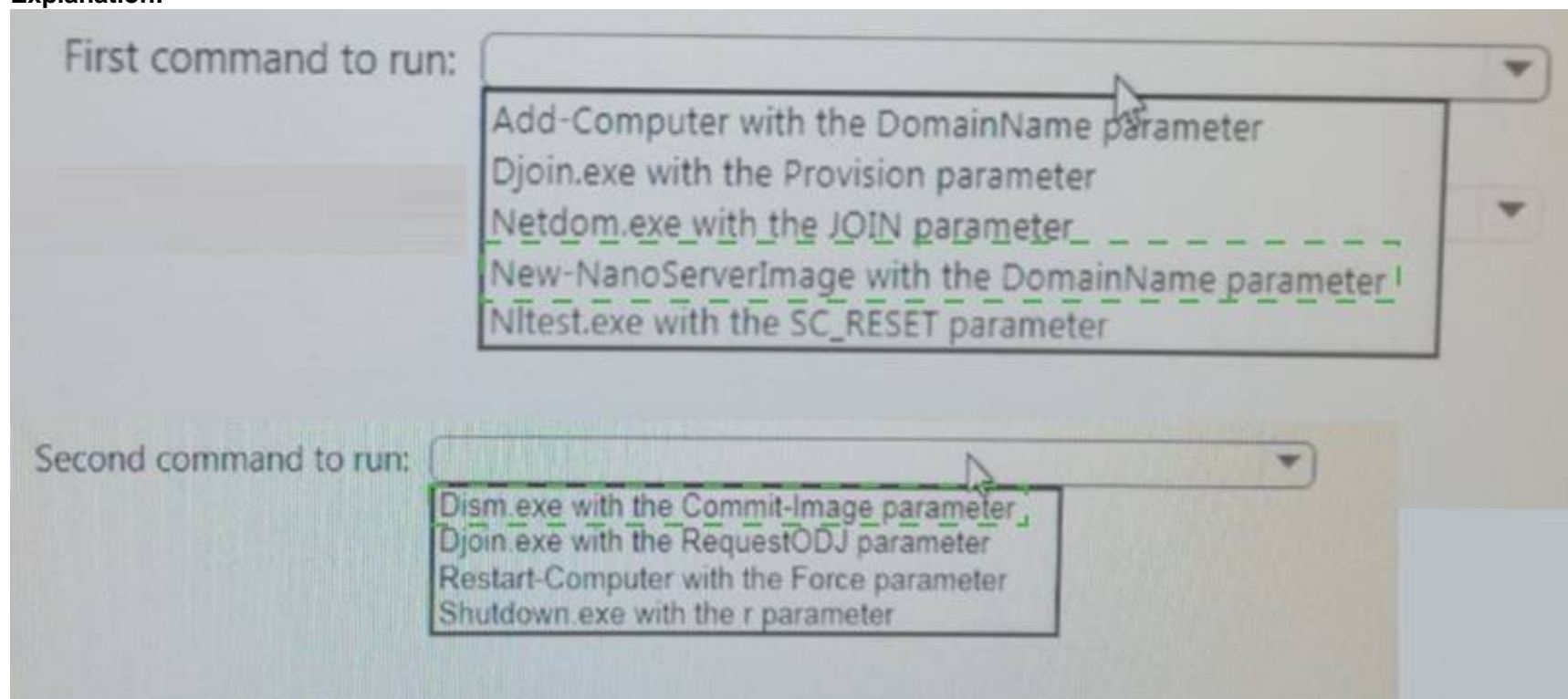
Second command to run:

- Dism.exe with the Commit-Image parameter
- Djoin.exe with the RequestODJ parameter
- Restart-Computer with the Force parameter
- Shutdown.exe with the r parameter

- A. Mastered
- B. Not Mastered

Answer: A

Explanation:



NEW QUESTION 143

Your network contains an Active Directory domain named contoso.com. The domain contains a user named User1, a group named Group1, and an Organizational unit (OU) named OU1.

You need to enable User1 to link Group Policies to OU1.

Solution: From Active Directory Administrative Center, you add User1 to Group1. From Group Policy Management, you click the Group Policy Objects container. From the Delegation tab, you add Group1.

- A. Yes
- B. No

Answer: B

NEW QUESTION 147

Your network contains a single-domain Active Directory forest named contoso.com. The forest functional level is Windows Server 2016. The forest has Dynamic Access Control enabled.

The domain contains two domain controllers named DC1 and DC2. Privileged user accounts used to manage Active Directory reside in a group named Contoso\AD_Admins.

You create an authentication policy named Policy1 and an authentication policy silo named Silo1.

You need to ensure that the accounts in the Contoso\AD-Admins group can sign in to the domain controllers only.

Which three configurations should you perform? Each correction answer presents part of the solution.

- A. Create an access control condition in Policy1.
- B. Create a managed service account and add the account to Permitted Accounts in Silo1.
- C. Add the domain controllers to the Contoso\AD_Admins group.
- D. Add the privileged user accounts and the domain controllers to Permitted Accounts in Silo1.
- E. Assign Silo1 to the privileged user accounts and the domain controllers.

Answer: ADE

NEW QUESTION 152

Your network contains an Active Directory domain named contoso.com. You deploy a standalone root certification authority (CA) named CA1.

You need to auto enroll domain computers for certificates by using a custom certificate template. What should you do first?

- A. Modify the Policy Module for CA1.
- B. Modify the Exit Module for CA1.
- C. Install a standalone subordinate CA.
- D. Install an enterprise subordinate CA.

Answer: D

Explanation:

You can't create templates or configure auto-enrollment on a standalone CA.

NEW QUESTION 157

You create a user account that will be used as a template for new user accounts.

Which setting will be copied when you copy the user account from Active Directory Users and Computers?

- A. Published Certificates
- B. the Member of attribute

- C. the Office attribute
- D. the Description attribute

Answer: B

NEW QUESTION 160

Your network contains an Active Directory forest named contoso.com. The forest contains 10 domains. The root domain contains a global catalog server named DC1.

You remove the global catalog server role from DC1.

You need to decrease the size of the Active Directory database on DC1.

Solution: You restart DC1 in Safe Mode. You run ntdsutil.exe, use the files option, and then restart DC1. Does this meet the goal?

- A. Yes
- B. No

Answer: A

NEW QUESTION 163

Your network contains an Active Directory domain named contoso.com.

All the accounts of the users in the sales department are in an organizational unit (OU) named SalesOU. An application named App1 is deployed to the user accounts in SalesOU by using a Group Policy object

(GPO) named SalesGPO. You need to set the registry value of

\HKEY_CURRENT_USER\Software\App1\Collaboration to 0.

Solution: You add a user preference that has an Replace action. Does this meet the goal?

- A. Yes
- B. No

Answer: A

Explanation:

[https://technet.microsoft.com/en-us/library/cc753092\(v=ws.11\).aspx](https://technet.microsoft.com/en-us/library/cc753092(v=ws.11).aspx)

NEW QUESTION 165

Your network contains an Active Directory domain named contoso.com. The domain contains two servers named Server1 and Server2 that run Windows Server 2016. The computer accounts of Server1 and Server2 are in the Computers container.

A Group Policy object (GPO) named GPO1 is linked to the domain. GPO1 has multiple computer settings defined and has following the configurations.

```
DisplayName      : GPO1
DomainName       : Contoso.com
Owner            : CONTOSO\Domain Admins
Id               : bf3b4d96-59f6-4d0f-84c3-b9c37180b9ca
GpoStatus        : UserSettingsDisabled
Description      :
CreationTime     : 2/18/2017 7:11:30 AM
ModificationTime : 2/18/2017 9:33:04 AM
UserVersion      : AD Version: 18, SysVol Version: 18
ComputerVersion  : AD Version: 6, SysVol Version: 6
WmiFilter        : WMI1
```

An administrator discovers that GPO1 is not applied to Served. GPO1 is applied to Server2. Which configuration possibly prevents GPO1 from being applied to Server1?

- A. the permissions on the computer object of Server1
- B. the permissions on GPO1
- C. the loopback processing mode in GPO1
- D. the permissions on the Computers container

Answer: B

NEW QUESTION 166

You have an offline root certification authority (CA) named CA1. CA1 is hosted on a virtual machine. You only turn on CA1 when the CA must be patched or you must generate a key for subordinate CAs. You start CA1, and you discover that the filesystem is corrupted.

You resolve the filesystem corruption and discover that you must reload the CA root from a backup.

When you attempt to run the Restore-CARoleService cmdlet, you receive the following error message: "The process cannot access the file because it is being used by another process."

- A. Stop the Active Directory Domain Services (AD DS) service.
- B. Run the Restore-CARoleService cmdlet and specify the path to a valid CA key.
- C. Stop the Active Directory Certificate Services (AD CS) service.
- D. Run the Restore-CARoleService cmdlet and specify the Force parameter.

Answer: C

NEW QUESTION 170

Your network contains an Active Directory domain named contoso.com. You discover that users can use passwords that contain only numbers. You need to ensure that all the user passwords in the domain contain at least three of the following types of characters:

- Numbers
 - Uppercase letters
 - Lowercase letters
 - Special characters
- What should you do?

- A. the Default Domain Policy
- B. the local policy on each client computer
- C. the Default Domain Controllers Policy
- D. the local policy on each domain controller

Answer: A

NEW QUESTION 171

Note: This question is part of a series of questions that present the same scenario. Each question in the series contains a unique solution that might meet the stated goals. Some question sets might have more than one correct solution, while others might not have a correct solution.

After you answer a question in this section, you will NOT be able to return to it. As a result, these questions will not appear in the review screen.

Your network contains an Active Directory domain named contoso.com. The domain contains a server named Server1 that runs Windows Server 2016. The Computer account for Server1 is in organizational unit (OU) named OU1.

You create a Group Policy object (GPO) named GPO1 and link GPO1 to OU1.

You need to add a domain user named user1 to the local Administrators group on Server1.

Solution: From the Computer Configuration node of GPO1, you configure the Restricted Groups settings. Does this meet the goal?

- A. Yes
- B. No

Answer: B

NEW QUESTION 172

Your network contains an Active Directory domain named contoso.com. The domain contains a server named Server1 that runs Windows Server 2016.

Server1 has IP Address Management (IPAM) installed. IPAM is configured to use the Group Policy based provisioning method. The prefix for the IPAM Group Policy objects (GPOs) is IP.

From Group Policy Management, you manually rename the IPAM GPOs to have a prefix of IPAM. You need to modify the GPO prefix used by IPAM. What should you do?

- A. Click Configure server discovery in Server Manager.
- B. Run the Set-IPAMConfiguration cmdlet.
- C. Run the Invoke-IPAMGpoProvisioning cmdlet.
- D. Click Provision the IPAM server in Server Manager.

Answer: B

Explanation:

The Set-IPAMConfiguration cmdlet modifies the configuration for the computer that runs the IPAM server. The -GpoPrefix<String> parameter specifies the unique Group Policy object (GPO) prefix name that IPAM

uses to create the group policy objects. Use this parameter only when the value of the ProvisioningMethod parameter is set to Automatic.

References: <https://technet.microsoft.com/en-us/library/jj590816.aspx>

NEW QUESTION 173

Your network contains an Active Directory forest. The forest contains two domains named litwareinc.com and contoso.com. The contoso.com domain contains two domain controllers named LON-DC01 and LON-DC02. The domain controllers are located in a site named London that is associated to a subnet of 192.168.10.0/24

You discover that LON-DC02 is not a global catalog server. You need to configure LON-DC02 as a global catalog server. What should you do?

- A. From Active Directory Sites and Services, modify the properties of the 192.168.10.0/24 IP subnet.
- B. From Windows PowerShell, run the Set-NetNatGlobal cmdlet.
- C. From Active Directory Sites and Services, modify the NTDS Settings object of LON-DC02.
- D. From Windows PowerShell, run the Enable-ADOptionalFeature cmdlet.

Answer: C

NEW QUESTION 177

Your network contains an Active Directory domain named contoso.com. The domain contains an administrative workstation named WKS1 that runs Windows 10. You have a Group Policy object (GPO) named GPO1.

You download a custom administrative template that contains the following files:

You need to ensure that you can configure GPO1 by using the settings in the new administrative template. To where should you copy each file? To answer, select the appropriate options in the answer area.

NOTE: Each correct selection is worth one point.

Answer Area

App1.adml:

▼

C:\Windows\PolicyDefinitions
C:\Windows\PolicyDefinitions\en-US
C:\Windows\System32\Configuration
C:\Windows\System32\en-US

App1.admx:

▼

C:\Windows\PolicyDefinitions
C:\Windows\PolicyDefinitions\en-US
C:\Windows\System32\Configuration
C:\Windows\System32\en-US

- A. Mastered
- B. Not Mastered

Answer: A

Explanation:

References:

<https://support.microsoft.com/en-us/help/918239/how-to-write-custom-adm-and-admx-administrative-template-f>

NEW QUESTION 182

Your network contains an Active Directory forest. The forest contains two domains named contoso.com and fabrikam.com. The functional level of the forest and the domains is Windows Server 2008 R2.

You have a global group named Group1 in the contoso.com domain. Group1 contains the user accounts in contoso.com. You need to ensure that you can add the user accounts in the fabrikam.com domain to Group1. What should you do?

- A. Run the Set-LocalGroup cmdlet.
- B. Assign the Domain Controllers group in fabrikam.com permissions to Group1
- C. Modify the scope of Group1 to Domain local.
- D. Change Group1 to a distribution group.

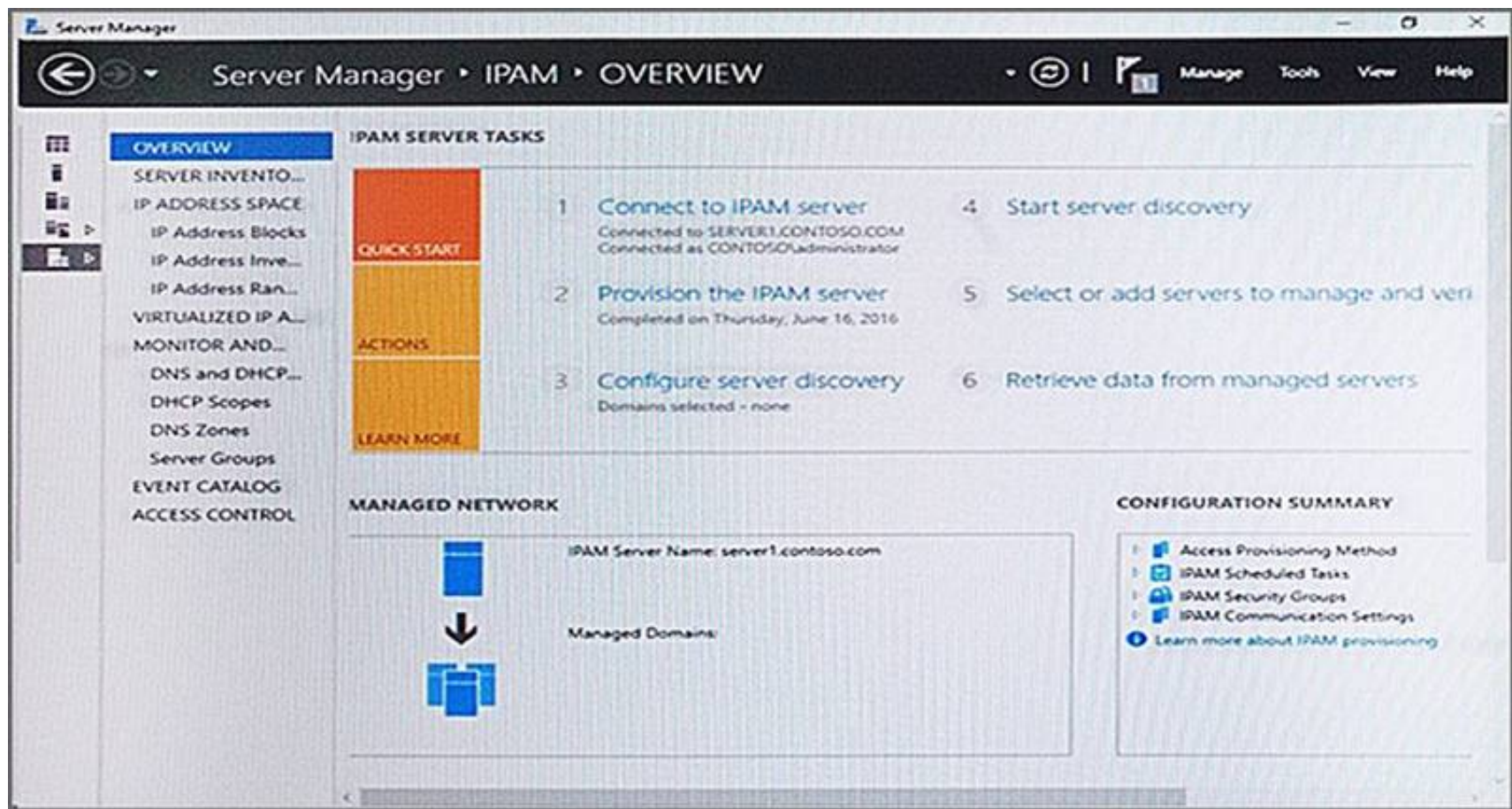
Answer: C

NEW QUESTION 183

Your company has a testing environment that contains an Active Directory domain named contoso.com. The domain contains a server named Server1 that runs Windows Server 2016. Server1 has IP Address Management (IPAM) installed. IPAM has the following configuration.

```
Version           : 6.3.0.1
Port              : 48885
ProvisioningMethod : Automatic
GpoPrefix         : IPAM
HMACKey          : System.Security.SecureString
```

The IPAM Overview page from Server Manager is shown in the IPAM Overview exhibit. (Click the Exhibit button.)



The group policy configurations are shown in the GPO exhibit. (Click the Exhibit button.) For each of the following statements, select Yes if the statement is true. Otherwise, select No.

Answer Area

Statements	Yes	No
If a DNS server is added to contoso.com, the server will be discovered by IPAM automatically.	<input type="radio"/>	<input type="radio"/>
If you manually add a DHCP server named Server3 to IPAM and set the Manageability status to Managed , the IPAM_DHCP Group Policy will apply to Server3.	<input type="radio"/>	<input type="radio"/>
If you click Start server discovery , the domain controllers in contoso.com will be discovered by IPAM.	<input type="radio"/>	<input type="radio"/>

- A. Mastered
- B. Not Mastered

Answer: A

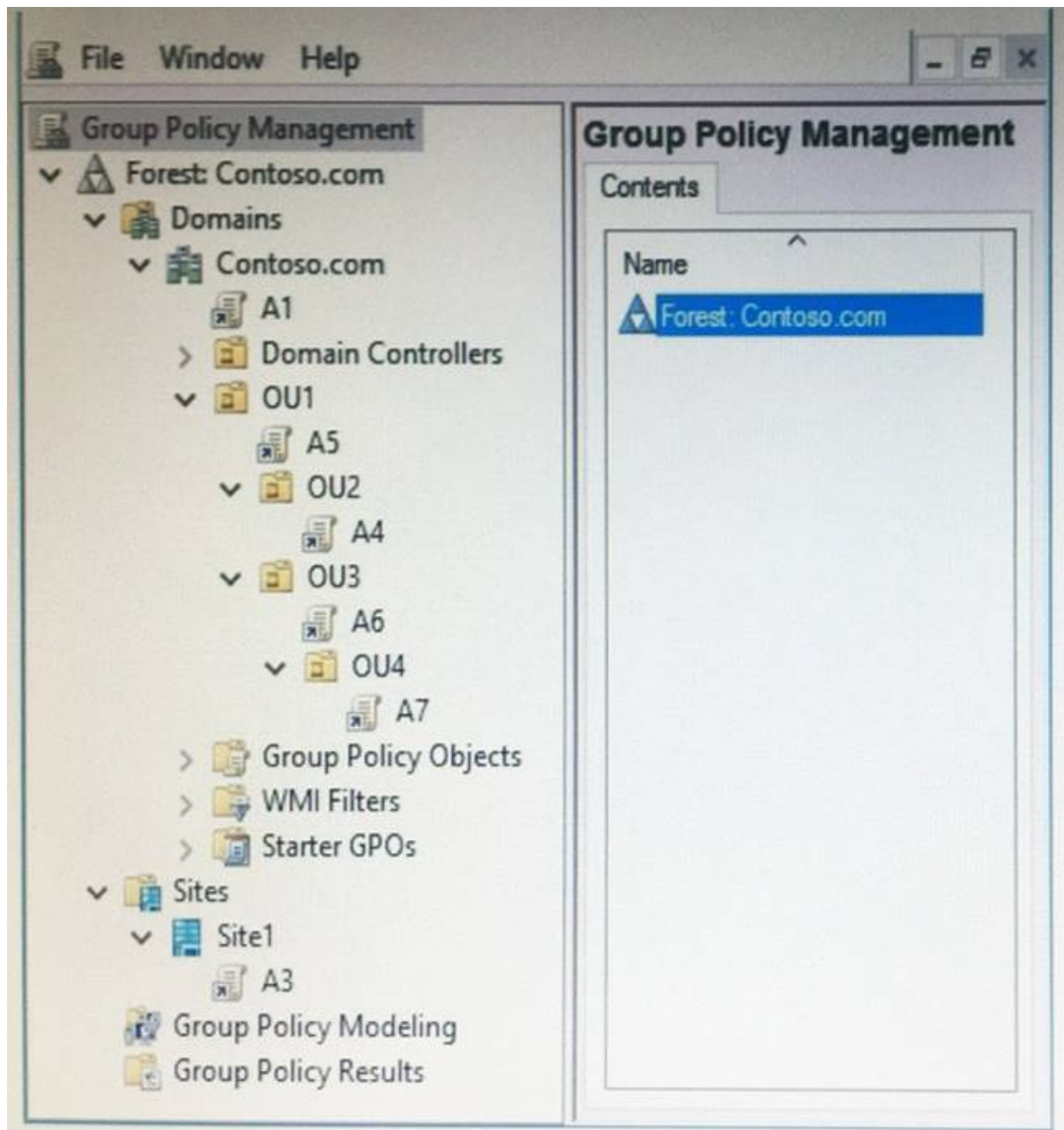
Explanation:

No domains have been selected in the “Configure Server Discovery” option. Therefore, no automatic discovery will take place. Manual addition of a server will also fail because IPAM needs a domain configured for server verification.

NEW QUESTION 185

Note: This question is part of a series of questions that use the same scenario. For your convenience, the scenario is repeated in each question. Each question presents a different goal and answer choices, but the text of the scenario is exactly the same in each question in this series.
Start of repeated scenario.

Your network contains an Active Directory domain named contoso.com. The domain contains a single site named Site1. All computers are in Site1. The Group Policy objects (GPOs) for the domain are configured as shown in the exhibit. (Click the Exhibit button.)



The relevant users and client computer in the domain are configured as shown in the following table.

Object name	Object type	Object location
Computer	Computer	OU4
User1	User	OU4
User2	User	OU2

End of repeated scenario.

Which five GPOs will apply to User1 in sequence when the user signs in to Computer1? To answer, move the appropriate GPOs from the list to the answer area and arrange them in the correct order.

GPOs

Answer Area

A1

A3

A4

A5

A6

A7

- A. Mastered
 B. Not Mastered

Answer: A

Explanation:

GPOs	Answer Area
A1	A3
A3	A1
A4	A5
A5	A6
A6	A7
A7	

NEW QUESTION 186

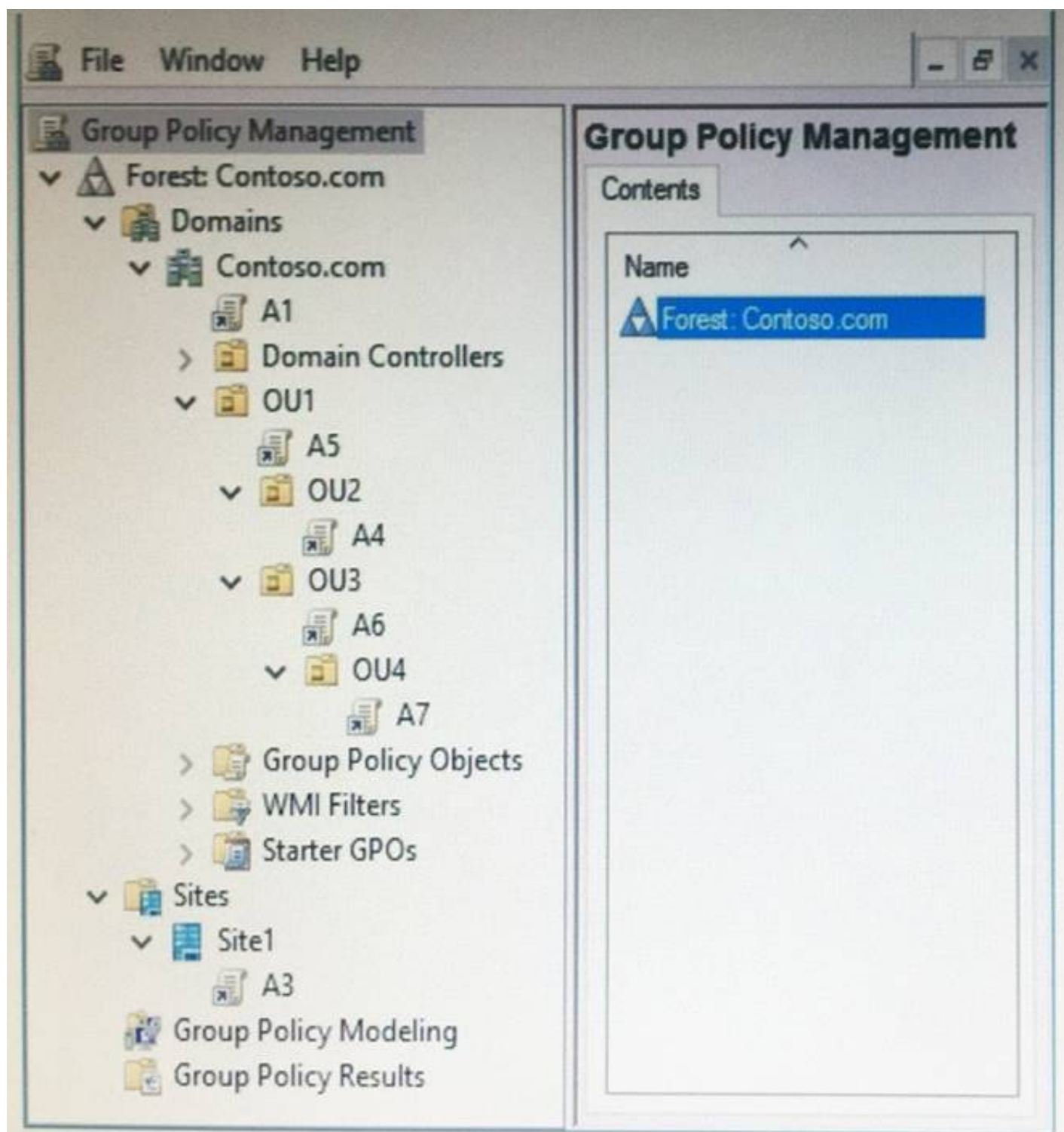
Your company has multiple branch offices.
The network contains an Active Directory domain named contoso.com.
In one of the branch offices, a new technician is hired to add computers to the domain.
After successfully joining multiple computers to the domain, the technician fails to join any more computers to the domain.
You need to ensure that the technician can join an unlimited number of computers to the domain. What should you do?

- A. Run the Delegation of Control Wizard on the Computers container.
- B. Run the redircmp.exe command.
- C. Modify the Security settings of the technician’s user account.
- D. Add the technician to the Windows Authorization Access group.

Answer: A

NEW QUESTION 190

Note: This question is part of a series of questions that use the same scenario. For your convenience, the scenario is repeated in each question. Each question presents a different goal and answer choices, but the text of the scenario is exactly the same in each question in this series.
Start of repeated scenario.
Your network contains an Active Directory domain named contoso.com. The domain contains a single site named Site1. All computers are in Site1.
The Group Policy objects (GPOs) for the domain are configured as shown in the exhibit. (Click the Exhibit button.)



The relevant users and client computer in the domain are configured as shown in the following table.

Object name	Object type	Object location
Computer	Computer	OU4
User1	User	OU4
User2	User	OU2

End of repeated scenario.

You are evaluating what will occur when you disable the Group Policy link for A6.

Which GPOs will apply to User2 when the user signs in to Computer1 after the link for A6 is disabled?

- A. A1 and A5 only
- B. A3, A1, and A5 only
- C. A3, A1, A5, and A4 only
- D. A3, A1, A5, and A7

Answer: C

NEW QUESTION 195

You have a server named Server1 that runs Windows Server 2016. Server1 has the Web Application Proxy role service installed.

You plan to deploy Remote Desktop Gateway (RD Gateway) services. Clients will connect to the RD Gateway services by using various types of devices including Windows, iOS and Android devices.

You need to publish the RD Gateway services through the Web Application Proxy.

Which command should you run? To answer, select the appropriate options in the answer area.

Answer Area

▼	-BackendServerURL 'https://rdg.contoso.com/rdg1/' -ExternalCertificateThumbprint
Add-WebApplicationProxyApplication Set-WebApplicationProxyApplication Set-WebApplicationProxyConfiguration	
'1a2b3c4d5e6f'1a2b3c4d5e6f'1a2b3c4d5e6f1a2b' -ExternalURL 'https://rdg.contoso.com/rdg1' -Name 'RDG1'	
-ExternalPreAuthentication	▼ -ADFSRelyingPartyName 'Default provider'
	ADFS ADFSforOAuth ClientCertificate PassThrough
-BackendServerAuthenticationSPN 'HTTP/RDG1'	

- A. Mastered
 B. Not Mastered

Answer: A

Explanation:

Answer Area

▼	-BackendServerURL 'https://rdg.contoso.com/rdg1/' -ExternalCertificateThumbprint
Add-WebApplicationProxyApplication Set-WebApplicationProxyApplication Set-WebApplicationProxyConfiguration	
'1a2b3c4d5e6f'1a2b3c4d5e6f'1a2b3c4d5e6f1a2b' -ExternalURL 'https://rdg.contoso.com/rdg1' -Name 'RDG1'	
-ExternalPreAuthentication	▼ -ADFSRelyingPartyName 'Default provider'
	ADFS ADFSforOAuth ClientCertificate PassThrough
-BackendServerAuthenticationSPN 'HTTP/RDG1'	

NEW QUESTION 199

Your network contains an Active Directory domain named contoso.com. The domain contains a server named Server1 that runs Windows Server 2016. You install IP Address Management (IPAM) on Server1. You select the automatic provisioning method, and then you specify a prefix of IPAM1. You need to configure the environment for automatic IPAM provisioning. Which cmdlet should you run? To answer, select the appropriate options in the answer area.

Answer Area

▼	-Domain "Contoso.com"	▼
Add-IPAMDiscoveryDomain Enable-IPAMCapability Invoke-IPAMGPOProvisioning Set-IPAMConfiguration		-AssetTag -DiscoverDns -GPOPrefixName -ProvisioningMethod

- A. Mastered
 B. Not Mastered

Answer: A

Explanation:

Answer Area

▼	-Domain "Contoso.com"	▼
Add-IPAMDiscoveryDomain Enable-IPAMCapability Invoke-IPAMGPOProvisioning Set-IPAMConfiguration		-AssetTag -DiscoverDns -GPOPrefixName -ProvisioningMethod

NEW QUESTION 202

Your network contains an Active Directory domain named contoso.com.

You plan to deploy a new Active Directory Rights Management Services (AD RMS) cluster on a server named Server1.

You need to create the AD RMS service account. The solution must use the principle of least privilege. What should you do?

- A. Create a domain user account and add the account to the Account Operators group in the domain.
- B. Create a local user account on Server1 and add the account to the Administrators group on Server1.
- C. Create a domain user account and add the account to the Domain Users group in the domain.
- D. Create a domain user account and add the account to the Administrators group on Server1.

Answer: C

NEW QUESTION 203

Your network contains an Active Directory domain named contoso.com. The domain contains an enterprise certification authority (CA) named CA1.

You duplicate the Computer certificate template, and you name the template Cont_Computers.

You need to ensure that all of the certificates issued based on Cont_Computers have a key size of 4,096 bits. What should you do?

- A. From the properties of CA1, modify the Security settings.
- B. From the properties of CA1, modify the Request Handling settings.
- C. From the properties of the Computer template, modify the Key Attestation settings.
- D. From the properties of Cont_Computers, modify the Cryptography settings.

Answer: C

NEW QUESTION 207

Your network contains an Active Directory domain named contoso.com. The network contains several IP subnets. One of the subnets uses a network ID of 192.168.10.0/24.

You link a Group Policy object (GPO) named GPO1 to the domain.

You need to map a drive to a specific file share on the computers in the 192.168.10.0/24 network only. What should you do?

- A. From the User Configuration node of GPO1, configure the Folder Redirection setting.
- B. Link a WMI filter to GPO1.
- C. From the Computer Configuration node of GPO1, configure the Network Connections setting.
- D. Link a WMI filter to GPO1.
- E. From the User Configuration node of GPO1, create a Group Policy preference that uses item-level targeting.
- F. From the Computer Configuration node of GPO1, create a Group Policy preference that uses item-level targeting.

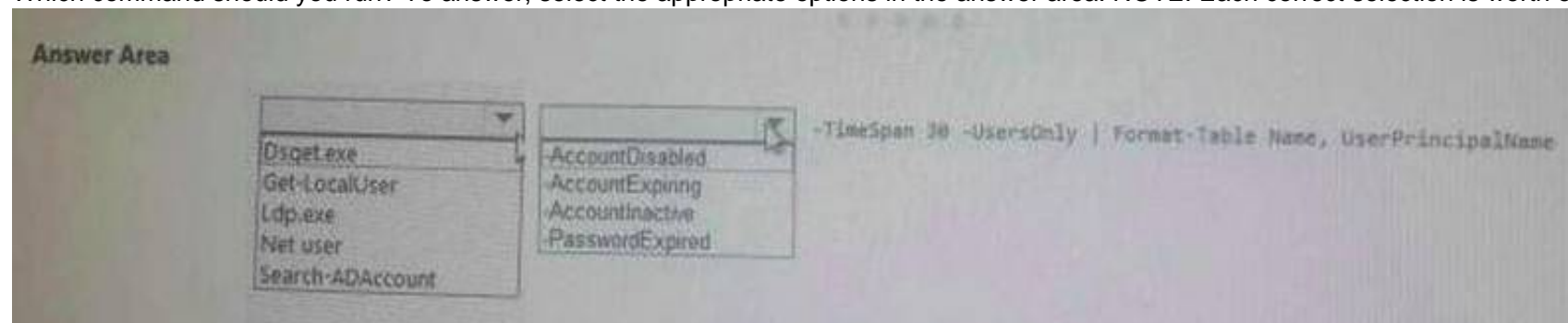
Answer: C

NEW QUESTION 210

Your network contains an Active Directory domain named contoso.com.

You need to view a list of all the domain user accounts that are enabled. But whose users have not signed in during the last 30 days.

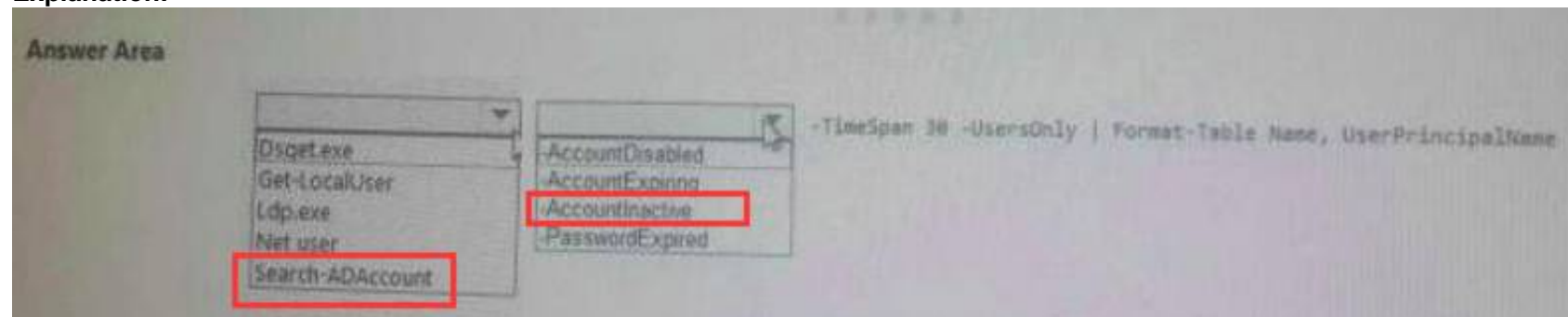
Which command should you run? To answer, select the appropriate options in the answer area. NOTE: Each correct selection is worth one point.



- A. Mastered
- B. Not Mastered

Answer: A

Explanation:

**NEW QUESTION 213**

You have a server named Server1 in a workgroup.

You need to configure a Group Policy setting on Server1 that will apply to only non-administrative users. What should you do?

- A. Open Local Group Policy Editor.
- B. From the File menu, modify the Options settings.

- C. Run mmc.exe Add the Group Policy Object Editor snap-in and change the Group Policy object (GPO).
- D. Open Local Group Policy Edito
- E. From the View menu, modify the Customize settings.
- F. Open Local Users and Groups, Create a new group Run New-GPO.

Answer: A

NEW QUESTION 217

.....

THANKS FOR TRYING THE DEMO OF OUR PRODUCT

Visit Our Site to Purchase the Full Set of Actual 70-742 Exam Questions With Answers.

We Also Provide Practice Exam Software That Simulates Real Exam Environment And Has Many Self-Assessment Features. Order the 70-742 Product From:

<https://www.2passeasy.com/dumps/70-742/>

Money Back Guarantee

70-742 Practice Exam Features:

- * 70-742 Questions and Answers Updated Frequently
- * 70-742 Practice Questions Verified by Expert Senior Certified Staff
- * 70-742 Most Realistic Questions that Guarantee you a Pass on Your FirstTry
- * 70-742 Practice Test Questions in Multiple Choice Formats and Updatesfor 1 Year