

## 70-740 Dumps

# Installation, Storage, and Compute with Windows Server 2016

<https://www.certleader.com/70-740-dumps.html>



### NEW QUESTION 1

You have a server that runs Windows Server 2016 Standard.

You create a new three-way mirror storage space. You format the storage space by using ReFS.

Which two features can you use on the new storage space? Each correct answer presents a complete solution.

- A. file and folder permissions
- B. disk quotas
- C. Encrypting File System (EFS)
- D. long file names
- E. Data Deduplication

**Answer:** AE

### NEW QUESTION 2

Note: This question is part of a series of questions that present the same scenario. Each question in the series contains a unique solution that might meet the stated goals. Some question sets might have more than one correct solution, while others might not have a correct solution.

After you answer a question in this section, you will NOT be able to return to it. As a result, these questions will not appear in the review screen.

You have two servers that run Windows Server 2016.

You have a server named Server1 that runs Windows Server 2016. Server1 has the Hyper-V server role and Docker installed.

You pull the Microsoft/iis Docker image to Server1.

You need to view the available space in the Microsoft/iis Docker image. Solution: You run the following commands.

```
docker run --name container1 --isolation hyperv --d Microsoft/iis docker exec -i container1 cmd.exe dir
```

Does this meet the goal?

- A. Yes
- B. No

**Answer:** B

### NEW QUESTION 3

You have a Hyper-V host named Server1 that runs Windows Server 2016. Server1 hosts a virtual machine named VM1 that runs Windows Server 2016.

On VM1, Dynamic Memory is disabled, MAC spoofing is enabled for the virtual network adapter, and checkpoints are disabled. You need to ensure that you can install the Hyper-V server role on VM1. What should you do?

- A. Shut down VM1, enable Dynamic Memory on VM1 and then start VM1.
- B. Configure VM1 to use standard checkpoints.
- C. Disable Hyper-V integration services for VM1 and then restarts VM1.
- D. Shut down VM1, run the Set-VMProcessor cmdlet and then start VM1.

**Answer:** D

#### Explanation:

References:

<https://docs.microsoft.com/en-us/virtualization/hyper-v-on-windows/user-guide/nested-virtualization>

### NEW QUESTION 4

#### DRAG DROP

Your network contains an Active Directory domain named adatim.com. The domain contains four member servers that run Windows Server 2016.

On each server, you locally attach three disks and install the Failover Clustering feature. You need to create a volume that uses all the disks. The volume must be highly available.

Which three cmdlets should you run in sequence? To answer, move the appropriate cmdlets from the list of cmdlets to the answer area and arrange them in the correct order.

#### Cmdlets

#### Answer Area

New-Cluster

Initialize-Disk

Enable-VMReplication

Enable-ClusterS2D

New-Volume

New-Partition



- A. Mastered
- B. Not Mastered

**Answer:** A

Explanation:

**Answer Area**

New-Cluster

Enable-ClusterS2D

New-Volume

**NEW QUESTION 5**

**HOTSPOT**

Your network contains an Active Directory forest. The forest contains one domain named contoso.com. The domain contains two domain controllers named DC1 and DC2. DC1 holds all of the operations master roles.

During normal network operations, you run the following commands on DC2:

Move-ADDirectoryServerOperationMasterRole -Identity "DC2" -OperationMasterRole PDCEmulator  
Move-ADDirectoryServerOperationMasterRole -Identity "DC2" -OperationMasterRole RIDMaster  
DC1 fails.

You remove DC1 from the network, and then you run the following command:

Move-ADDirectoryServerOperationMasterRole -Identity "DC2" -OperationMasterRole SchemaMaster  
For each of the following statements, select Yes if the statement is true. Otherwise, select No.

Statements	Yes	No
DC2 holds the schema master operations role.	<input type="radio"/>	<input type="radio"/>
DC2 holds the PDC emulator master operations role.	<input type="radio"/>	<input type="radio"/>
Currently, you can add additional domains to the forest.	<input type="radio"/>	<input type="radio"/>

- A. Mastered  
B. Not Mastered

**Answer: A**

Explanation:

Statements	Yes	No
DC2 holds the schema master operations role.	<input type="radio"/>	<input checked="" type="radio"/>
DC2 holds the PDC emulator master operations role.	<input checked="" type="radio"/>	<input type="radio"/>
Currently, you can add additional domains to the forest.	<input type="radio"/>	<input checked="" type="radio"/>

**NEW QUESTION 6**

You have a Nano Server named Nano1.

Which cmdlet should you use to identify whether the DNS Server role is installed on Nano1?

- A. Find-NanoServerPackage  
B. Get-Package  
C. Find-Package  
D. Get-WindowsOptionalFeature

Answer: B

**NEW QUESTION 7**

You deploy a Hyper-V server named Served in an isolated test environment The test environment is prevented from accessing the Internet Server1 runs the Datacenter edition of Windows Server 2016. You plan to deploy the following guest virtual machines on the server

Quantity	Operating system	Domain member
10	Windows Server 2012 R2	Yes
4	Windows Server 2016	No
5	Windows Server 2016	Yes

Which activation model should you use for the virtual machines'?

- A. Multiple Activation Key (MAK)
- B. Automatic Virtual Machine Activation (AVMA)
- C. Original Equipment Manufacturer (OEM) key
- D. Key Management Service (KMS)

Answer: B

**NEW QUESTION 8**

DRAG DROP

You have a server named Server1 that runs Windows Server 2016.

You plan to deploy Internet Information Services (US) in a Windows container. You need to prepare Server1 for the planned deployment.

Which three actions should you perform in sequence? To answer, move the appropriate actions from the list of actions to the answer area and arrange them in the correct order

**Actions**

Install the Hyper-V server role.

Install the Base Container Images.

Install the Container feature.

Install the Web Server role.

Install Docker.

>

<

**Answer Area**

1.

2.

3.

<

>

- A. Mastered
- B. Not Mastered

Answer: A

Explanation:

## Answer Area

1.
2.
3.

### NEW QUESTION 9

Your network contains an Active Directory domain named contoso.com. The domain contains two servers named Server1 and Server2 that have the same hardware configuration

You need to asynchronously replicate volume F: from Server1 to Server2. What should you do?

- A. Run `New-SRPartnership` and specify the `-ReplcationMode` parameter.
- B. install the Failover Clustering feature and create a new cluster resource group.
- C. Install the Failover Clustering feature and use Cluster Shared Volumes (CSV).
- D. Run `Set-DfsrServiceConfiguration` and specify the `-RPCPort` parameter

**Answer:** A

### NEW QUESTION 10

HOTSPOT

You have a server named Server1 that runs Windows Server 2016 Server1 has the Windows Application proxy role service installed

You plan to deploy Remote Desktop Gateway (RD Gateway) services. Clients will connect to the RD Gateway services by using various types of devices including Windows, iOS and Android devices.

You need to publish the RD Gateway services through the Web Application Proxy.

Which command should you run? To answer, select the appropriate options in the answer area.

Add-WebApplicationProxyApplication  
Set-WebApplicationProxyApplication  
Set-WebApplicationProxyConfiguration

-BackendServerURL 'https://rdg.contoso.com/rdg1/'  
-ExternalCertificateThumbprint  
'1a2b3c4d5e6f1a2b3c4d5e6f1a2b3c4d5e6f1a2b'  
-ExternalURL 'https://rdg.contoso.com/rdg1'  
-Name 'RDG1'  
-ExternalPreAuthentication

ADFS  
ADFSforOAuth  
ClientCertificate  
PassThrough

-ADFSRelyingPartyName 'Default provider'  
-BackendServerAuthenticationSPN 'HTTP/RDG1'

- A. Mastered
- B. Not Mastered

**Answer:** A

**Explanation:**



```

-BackendServerURL 'https://rdg.contoso.com/rdg1/'
-ExternalCertificateThumbprint
'1a2b3c4d5e6f1a2b3c4d5e6f1a2b3c4d5e6f1a2b'

-ExternalURL 'https://rdg.contoso.com/rdg1'
-Name 'RDG1'

-ExternalPreAuthentication




-ADFSRelyingPartyName 'Default provider'

-BackendServerAuthenticationSPN 'HTTP/RDG1'
    
```

## NEW QUESTION 10

### HOTSPOT

You have a server named Served that runs Windows Server 2016. Server1 has the Windows Application Proxy role service installed. You are publishing an application named App1 that will use Integrated Windows authentication as shown in the following graphic.



Use the drop-down menus to select the answer choice that completes each statement based on the information presented in the graphic

Before you can complete the wizard, you must [answer choice]

To ensure that users can access App1 externally, you must change the External URL to [answer choice.]

- A. Mastered
- B. Not Mastered

**Answer:** A

**Explanation:**

Before you can complete the wizard, you must [answer choice]

▼

change the external certificate

**configure the Backend server SPN**

select Enable HTTP to HTTPS redirection

To ensure that users can access App1 externally, you must change the External URL to [answer choice.]

▼

https://app1.contoso.com/app1

https://server02.contoso.com/app1

**https://server02.contoso.com/publish/app1**

#### NEW QUESTION 14

You need to create highly available storage spaces that connect to directly attached storage on the hosts Which cmdlet should you use?

- A. Enable-ClusterStorageSpacesDirect
- B. Set-StoragePool
- C. Add-ClusterDisk
- D. Update-ClusterVirtualMachineConfiguration

**Answer: A**

#### NEW QUESTION 15

##### HOTSPOT

Your network contains an Active Directory domain named contoso.com The domain contains four servers named Server 1, Server2, Server3, and Server4 that run Windows Server 2016

Server 1 and Server2 are nodes in Hyper-V cluster named Cluster1 You have a highly available virtual machine named VM1

Server1 is the owner node of VM1 Server3and Server4 are nodes of a scale-out file server named Cluster2,

The storage on Server1 is configured as shown in the following table

Location	Type
C:\ClusterStorage\Volume1	iSCSI Cluster Shared Volumes (CSV)
D:\	A locally attached disk
E:\	An iSCSI LUN
\\Cluster2\Share1	A file share on Cluster2

You need to move the virtual disk of VM1 to a different location

What should you do? To answer, select the appropriate options in the answer area

Tool you should move the virtual disk of VM1:

▼

Disk Management

Failover Cluster Manager

Hyper-V Manager

Server Manager

Location to which you should move the virtual disk of VM1:

▼

\\Cluster2\Share1

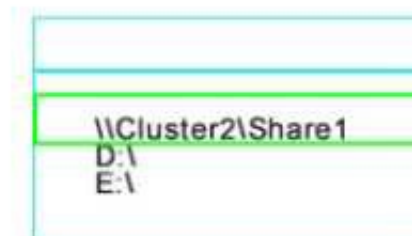
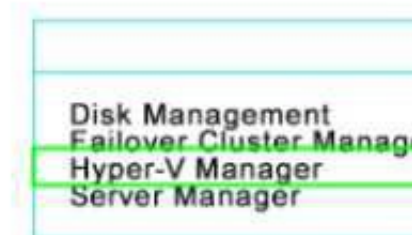
D:\

E:\

- A. Mastered
- B. Not Mastered

**Answer:** A

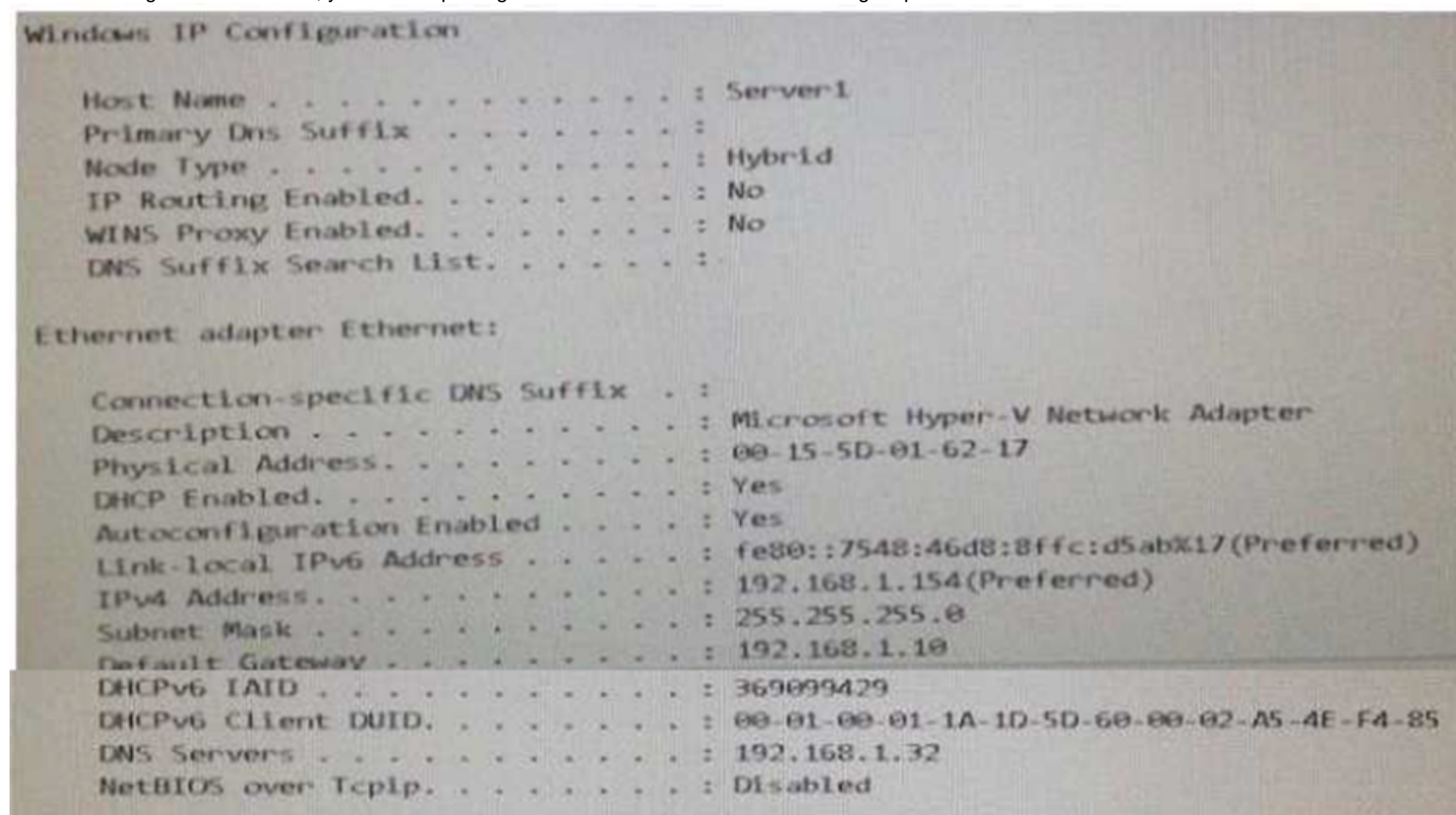
**Explanation:**



#### NEW QUESTION 16

You are configuring a Windows Server 2016 failover cluster in a workgroup.

Before installing one of the nodes, you run the ipconfig /all command and receive the following output



You need to ensure that Server 1 can be added as a node in the cluster. What should you do?

- A. Assign a static IP address
- B. Change the Node Type to Broadcast
- C. Configure a DNS suffix
- D. Enable NetBIOS over TCP/IP

**Answer:** C

#### NEW QUESTION 19

HOTSPOT

Your network contains an Active Directory forest named contoso.com. The forest contains an Active Directory Federation Services (AD FS) farm.

You install Windows Server 2016 on a server named Server2.

You need to configure Server2 as a node in the federation server farm.

Which cmdlets should you run? To answer, select the appropriate options in the answer area.



First cmdlet to run:

▼

Install-AdfsFarm  
Install-Package  
Install-WindowsFeature

Second cmdlet to run:

▼

Install-AdfsFarm  
New-AdfsOrganization  
Set-AdfsFarmInformation  
Set-AdfsProperties

- A. Mastered
- B. Not Mastered

**Answer:** A

**Explanation:**

First cmdlet to run:

▼

Install-AdfsFarm  
Install-Package  
Install-WindowsFeature

Second cmdlet to run:

▼

Install-AdfsFarm  
New-AdfsOrganization  
Set-AdfsFarmInformation  
Set-AdfsProperties

#### NEW QUESTION 20

Your company has 10 offices. Each office has a local network that contains several Hyper-V hosts that run Windows Server 2016. All of the offices are connected by high speed, low latency WAN links.

You need to ensure that you can use QoS policies for Live Migration traffic between the offices. Which component should you install?

- A. the Multipath I/O feature
- B. the Routing role service
- C. the Network Controller server role
- D. the Canary Network Diagnostics feature
- E. the Data Center Bridging feature

**Answer:** CE

#### NEW QUESTION 23

DRAG DROP

You have a physical server named Server1 that runs Windows Server 2016. Server1 is a Hyper-V host. On Server1, you create a virtual machine named VM1 that runs Windows Server 2016.

You plan to install the Hyper-V server role on VM1.

You need to ensure that you can configure VM1 to host virtual machines.

How should you complete the Windows PowerShell script? To answer, drag the appropriate values to the correct targets. Each value may be used once, more than once, or not at all. You may need to drag the split bar between panes or scroll to view content.

**Values**

Set-VMProcessor -VMName VMHOST1 -ExposeVirtualizationExtensions  -Count 2

Set-VMMemory VMHOST1 -DynamicMemoryEnabled

Get-VMNetworkAdapter -VMName VMHOST1 | Set-VMNetworkAdapter -MacAddressSpoofing on

- A. Mastered  
B. Not Mastered

**Answer:** A

**Explanation:**

**Answer Area**

**Values**

Set-VMProcessor -VMName VMHOST1 -ExposeVirtualizationExtensions  -Count 2

Set-VMMemory VMHOST1 -DynamicMemoryEnabled

Get-VMNetworkAdapter -VMName VMHOST1 | Set-VMNetworkAdapter -MacAddressSpoofing on

**NEW QUESTION 28**

You need to modify the GPO prefix by IPAM. What should you do?

- A. Run theSet-IpamConfigurationcmdlet  
B. ClickProvision the IPAM serverin Server Manager.  
C. ClickConfigure server discoveryin Server Manage  
D. Run theInvoke-IpamGpoProvisioningcmdlet

**Answer:** A

**NEW QUESTION 30**

DRAG DROP

Your network contains an Active Directory domain named contoso.com The domain contains two servers named Server1 and Server2 that run Windows Server 2016.

Server1 has IP Address Management (IPAM) installed Server2 has Microsoft System Center 2016 Virtual Machine Manager (VMM) installed.

You need to integrate IPAM and VMM

Which types of objects should you create on each server? To answer, drag the appropriate object types to the correct servers Each object type may be used once, more than once, or not at all You may need to drag the split bar between panes or scroll to view content

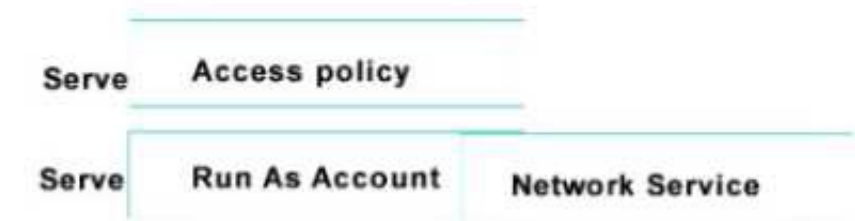
Server1:

Server2:

- A. Mastered  
B. Not Mastered

**Answer:** A

**Explanation:**

**NEW QUESTION 35**

Note: This question is part of a series of questions that use the same similar answer choices. An answer choice may be correct for more than one question in the series. Each question is independent of the other questions in this series. Information and details provided in a question apply only to that question.

You have a Hyper-V host named Server1 that runs Windows Server 2016 and a two-node scale-out file server cluster named Cluster1.

A virtual machine named VM1 runs on Server1.

You need to migrate the storage on VM1 to Cluster1. Which tool should you use?

- A. the clussvc.exe command
- B. the cluster.exe command
- C. the Computer Management console
- D. the configurehyperv.exe command
- E. the Disk Management console
- F. the Failover Cluster Manager console
- G. the Hyper-V Manager console
- H. the Server Manager Desktop app

**Answer: G**

**NEW QUESTION 36**

Note: This question is part of a series of questions that use the same similar answer choices. An answer choice may be correct for more than one question in the series. Each question is independent of the other questions in this series. Information and details provided in a question apply only to that question.

You have a two-node Hyper-V cluster named Cluster1. A virtual machine named VM1 runs on Cluster1.

You need to configure monitoring of VM1. The solution must move VM1 to a different node if the Print Spooler service on VM1 stops unexpectedly. Which tool should you use?

- A. the clussvc.exe command
- B. the cluster.exe command
- C. the Computer Management console
- D. the configurehyperv.exe command
- E. the Disk Management console
- F. the Failover Cluster Manager console
- G. the Hyper-V Manager console
- H. the Server Manager Desktop app

**Answer: F**

**NEW QUESTION 37**

Note: This question is part of a series of questions that use the same similar answer choices. An answer choice may be correct for more than one question in the series. Each question is independent of the other questions in this series. Information and details provided in a question apply only to that question.

You have a Hyper-V host named Server1 that runs Windows Server 2016. Server1 contains a virtual machine named VM1.

You need to ensure that you can use nested virtualization on VM1. What should you run on Server1?

- A. the Mount-VHD cmdlet
- B. the Diskpart command
- C. the Set-VHD cmdlet
- D. the Set-VM cmdlet
- E. the Set-VMHost cmdlet
- F. the Set-VMProcessor cmdlet
- G. the Install-WindowsFeature cmdlet
- H. the Optimize-VHD cmdlet

**Answer: F**

**NEW QUESTION 41**

Note: This question is part of a series of questions that use the same similar answer choices. An answer choice may be correct for more than one question in the series. Each question is independent of the other questions in this series. Information and details provided in a question apply only to that question.

You have a Hyper-V host named Server1 that runs Windows Server 2016. You plan to deploy several shielded virtual machines on Server1.

You deploy a Host Guardian on a new server.

You need to ensure that Server1 can host shielded virtual machines. What should you run first?

- A. the Mount-VHD cmdlet
- B. the Diskpart command
- C. the Set-VHD cmdlet
- D. the Set-VM cmdlet
- E. the Set-VMHost cmdlet
- F. the Set-VMProcessor cmdlet
- G. the Install-WindowsFeature cmdlet

H. the Optimize-VHD cmdlet

**Answer:** G

#### NEW QUESTION 43

In this section, you'll see one or more sets of questions with the same scenario and problem. Each question presents a unique solution to the problem, and you must determine whether the solution meets the stated goals. Any of the solutions might solve the problem. It is also possible that none of the solutions solve the problem.

Once you answer a question in this section, you will NOT be able to return to it. As a result, these questions will not appear in the review screen.

**Note:** This question is part of a series of questions that present the same scenario. Each question in the series contains a unique solution. Determine whether the solution meets the stated goals.

Your network contains an Active Directory forest named contoso.com. The forest contains a member server named Server1 that runs Windows Server 2016. All domain controllers run Windows Server 2012 R2.

Contoso.com has the following configuration:

```
PS C:\> (Get-ADForest). ForestMode
Windows2008R2Forest

PS C:\> (Get-ADDomain). DomainMode
Windows2008R2Domain
PS C:\>
```

You plan to deploy an Active Directory Federation Services (AD FS) farm on Server1 and to configure device registration. You need to configure Active Directory to support the planned deployment. **Solution:** You upgrade a domain controller to Windows Server 2016. Does this meet the goal?

- A. Yes
- B. No

**Answer:** B

#### NEW QUESTION 48

In this section, you'll see one or more sets of questions with the same scenario and problem. Each

question presents a unique solution to the problem, and you must determine whether the solution meets the stated goals. Any of the solutions might solve the problem. It is also possible that none of the solutions solve the problem.

Once you answer a question in this section, you will NOT be able to return to it. As a result, these questions will not appear in the review screen.

**Note:** This question is part of a series of questions that present the same scenario. Each question in the series contains a unique solution. Determine whether the solution meets the stated goals.

Your network contains an Active Directory forest named contoso.com. The forest contains a member server named Server1 that runs Windows Server 2016. All domain controllers run Windows Server 2012 R2.

Contoso.com has the following configuration:

```
PS C:\> (Get-ADForest). ForestMode
Windows2008R2Forest

PS C:\> (Get-ADDomain). DomainMode
Windows2008R2Domain
PS C:\>
```

You plan to deploy an Active Directory Federation Services (AD FS) farm on Server1 and to configure device registration. You need to configure Active Directory to support the planned deployment. **Solution:** You raise the domain functional level to Windows Server 2012 R2.

Does this meet the goal?

- A. Yes
- B. No

**Answer:** B

#### NEW QUESTION 52

In this section, you'll see one or more sets of questions with the same scenario and problem. Each

question presents a unique solution to the problem, and you must determine whether the solution meets the stated goals. Any of the solutions might solve the problem. It is also possible that none of the solutions solve the problem.

Once you answer a question in this section, you will NOT be able to return to it. As a result, these questions will not appear in the review screen.

**Note:** This question is part of a series of questions that present the same scenario. Each question in the series contains a unique solution. Determine whether the solution meets the stated goals.

Your network contains an Active Directory domain named contoso.com. The domain contains a DNS server named Server1. All client computers run Windows 10. On Server1, you have the following zone configuration:



ZoneName	ZoneType	IsAutoCreated	IsDsIntegrated	IsReverseLookupZone	IsSign
-----	-----	-----	-----	-----	-----
_msdcs.contoso.com	Primary	False	True	False	False
adatum.com	Forwarder	False	False	False	
contoso.com	Primary	False	True	False	False
fabrikam.com	Primary	False	False	False	True
TrustAnchors	Primary	False	True	False	False

You have the following subnets defined on Server1.

Name	IPv4Subnet	IPv6Subnet
-----	-----	-----
Subnet1	{10.0.0.0/24}	
Subnet2	{10.0.1.0/24}	
Subnet3	{192.168.15.0/24}	
Subnet4	{172.16.1.0/24}	

You need to prevent Server1 from resolving queries from DNS clients located on Subnet4. Server1 must resolve queries from all other DNS clients.

Solution: From a Group Policy object (GPO) in the domain, you modify the Network List Manager Policies.

Does this meet the goal?

- A. Yes
- B. No

**Answer: B**

#### NEW QUESTION 57

Note: This question is part of a series of questions that present the same scenario. Each question in the series contains a unique solution that might meet the stated goals. Some question sets might have more than one correct solution, while others might not have a correct solution.

After you answer a question in this section, you will NOT be able to return to it. As a result, these questions will not appear in the review screen.

You have two servers that run Windows Server 2016.

You plan to create a Network load Balancing (NLB) cluster that will contain both servers. You need to configure the network cards on the servers for the planned NLB configuration.

Solution: You configure the network cards to be on the same subnet and to have dynamic IP addresses. You configure the cluster to use multicast.

Does this meet the goal?

- A. Yes
- B. No

**Answer: B**

**Explanation:**

References:

<https://technet.microsoft.com/en-us/windows-server-docs/networking/technologies/network-load-balancing>

#### NEW QUESTION 58

Note: This question is part of a series of questions that present the same scenario. Each question in the series contains a unique solution that might meet the stated goals. Some question sets might have more than one correct solution, while others might not have a correct solution.

After you answer a question in this section, you will NOT be able to return to it. As a result, these questions will not appear in the review screen.

You are a server administrator at a company named Contoso, Ltd.

Contoso has a Windows Server 2016 Hyper-V environment configured as shown in the following table.

Hyper-V host name	Configuration	Virtual switch name
Host1	- Uses an Intel processor - Is a member of a SAN named SAN1	Switch1
Host2	- Uses an AMD processor - Has local storage only	Switch2
Host3	- Uses an Intel processor - Is a member of a SAN named SAN1	Switch1
Host4	- Uses an Intel processor - Has local storage only	Switch2

All of the virtual switches are of the external type.

You need to ensure that you can move virtual machines between the hosts without causing the virtual machines to disconnect from the network.

Solution: You implement a Hyper-V Replica between Host2 and Host4. Does this meet the goal?

- A. Yes
- B. No

**Answer: B**

#### NEW QUESTION 63

Note: This question is part of a series of questions that present the same scenario. Each question in the series contains a unique solution that might meet the stated goals. Some question sets might have more than one correct solution, while others might not have a correct solution.

Your network contains an Active Directory forest

You install Windows Server 2016 on 10 virtual machines.

You need to deploy the Web Server (IIS) server role identically to the virtual machines.

Solution: From a Group policy object (GPO), you create an application control policy, and then you apply the policy to the virtual machines.

Does this meet the goal?

- A. Yes
- B. No

**Answer: B**

#### NEW QUESTION 65

Note: This question is part of a series of questions that present the same scenario. Each question in the series contains a unique solution that might meet the stated goals. Some question sets might have more than one correct solution, while others might not have a correct solution.

You have a server named Server1 that runs Windows Server 2016. Server1 hosts a line-of-business application named App1. App1 has a memory leak that occasionally causes the application to consume an excessive amount of memory.

You need to log an event in the Application event log whenever App1 consumes more than 4 GB of memory.

Solution: You create a system configuration information data collector. Does this meet the goal?

- A. Yes
- B. No

**Answer: B**

#### NEW QUESTION 66

You have an Active Directory domain named Contoso.com. The domain contains servers named Server1, Server2, and Server3 that run Windows Server 2016.

Server1 and Server2 are nodes in a Hyper-V cluster named Cluster1. You add a Hyper-V Replica Broker role named Broker1 to Cluster1.

Server3 is a Hyper-V server. A virtual machine named VM1 runs on Server3.

Live Migration is enabled on all three servers and it is configured to use Kerberos authentication only. You need to ensure that you can perform the migration of VM1 to Server2.

What should you do?

- A. Modify the Storage Migration settings on Server3.
- B. Modify the Cluster Permissions for Cluster1.
- C. Add the Server3 computer account to the Replicator group on Server1 and Server2.
- D. Modify the Delegation settings for the Server3 computer account.

**Answer: D**

#### Explanation:

References:

[https://technet.microsoft.com/en-us/library/jj134199\(v=ws.11\).aspx#BKMK\\_Step1](https://technet.microsoft.com/en-us/library/jj134199(v=ws.11).aspx#BKMK_Step1)

#### NEW QUESTION 69

You have a Windows Server 2016 Hyper-V failover cluster that contains two nodes named Node1 and Node2.

On Node1, you create a virtual machine named VM01 by using Hyper-V Manager.

You need to configure VM01 to move to Node2 automatically if Node1 becomes unavailable. What should you do?

- A. From Failover Cluster Manager, run the Configure Role actions.
- B. From Hyper-V Manager, click VM01 and click Enable Replication.
- C. From Hyper-V Manager, click Node1 and modify the Hyper-V settings.
- D. From Windows PowerShell, run the Enable-VMReplication cmdlet.

**Answer: A**

#### Explanation:

<http://windowsitpro.com/hyper-v/make-vm-highly-available-windows-server-2012>

#### NEW QUESTION 72

You have four servers named Server1, Server2, Server3, and Server4 that run Windows Server 2016. Each server has a single 4-TB SATA hard disk.

To each server, you attach a new 4-TB SATA hard disk.

You need to create a new storage cluster that uses Storage Spaces Direct. The storage pool must contain all of the new disks.

Which command should you run before you enable Storage Spaces Direct?

- A. Add-ClusterSharedVolume –Name “Disk 1” –Cluster Cluster1  
B. New-Cluster –Name Cluster1 –Node ‘Server1’, ‘Server2’, ‘Server3’, ‘Server4’ -NoStorage  
C. Get-ClusterAvailableDisk –Cluster Cluster1 | Add-ClusterDisk  
D. New-ClusterStorageEnclosure –id 1 –name Cluster1 –type jbod –ConnectionString “Server1,Server2,Server3,Server4”

**Answer: B**

#### NEW QUESTION 74

Note This question is part of a series of questions that use the same scenario. For your convenience, the scenario is repeated in each question. Each question presents a different goal and answer choices, but the text of the scenario is exactly the same in each question in this series.

Start of Repeated Scenario:

Your network contains an Active Directory domain named contoso.com The functional level of the forest and the domain is Windows Server 2008 R2 All servers in the domain run Windows Server 2016 Standard. The domain contains 300 client computers that run either Windows 8.1 or Windows 10.

The domain contains nine servers that are configured as shown in the following table.

Name	Configuration	Planned changes
Server1	Domain controller	<i>None</i>
Server2	File server	Run Failover Clustering and Storage Spaces Direct
Server3	File server	Run Failover Clustering and Storage Spaces Direct
Server4	Hyper-V host	Run shielded virtual machines
Server5	Hyper-V host	<i>None</i>
Server6	Member server	Run Active Directory Federation Services (AD FS)
VM1	Virtual machine hosted on Server5	<i>None</i>
VM2	Virtual machine hosted on Server5	<i>None</i>
VM3	Virtual machine hosted on Server5	<i>None</i>

The virtual machines are configured as follows:

- Each virtual machine has one virtual network adapter
- VM1 and VM2 are part of a Network Load Balancing (NLB) cluster.
- All of the servers on the network can communicate with all of the virtual machines. End of repeated Scenario.

You need to minimize the likelihood that a virtual machine running malicious code will consume excessive resources on Server5.

What should you do?

- A. Configure the virtual machines as shielded virtual machines.  
B. Run the Set-VMProcessor cmdlet and specify the –EnableHostResourceProtection Parameter.  
C. Run the Set-VMProcessor cmdlet and specify the –MaximumCountPerNumaNode Parameter.  
D. Configure VM Network Adapter Isolation.

**Answer: B**

#### NEW QUESTION 79

Note This question is part of a series of questions that use the same scenario. For your convenience, the scenario is repeated in each question. Each question presents a different goal and answer choices, but the text of the scenario is exactly the same in each question in this series.

Start of Repeated Scenario:

A company named Contoso, Ltd. has several servers that run Windows Server 2016 Contoso has a Hyper V environment that uses failover clustering and Windows Server Update Services (WSUS). The environment contains several Windows containers and several virtual machines.

The WSUS deployment contains one upstream server that is located on the company's perimeter network and several downstream servers located on the internal network, A firewall separates the upstream server from the downstream servers.

You plan to deploy a human resources application to a new server named HRServer5. HRServer5 contains a FAT32-formatted data volume.

The CIO of Contoso identifies the following requirements for the company's IT department:

- Deploy failover cluster to two new virtual machines.
- Store all application databases by using Encrypted File System (EFS).
- Ensure that each Windows container has a dedicated IP address assigned by a DHCP server
- Produce a report that lists the processor time used by all of the processes on a server named Server 1 for five hour.

Encrypt all communication between the internal network and the perimeter network, including all WSUS communications.

- Automatically load balance the virtual machines hosted in the Hyper-V cluster when processor utilization exceeds 70 percent.

End of Repeated Scenario.

You need to modify the Hyper V cluster to meet the load balancing requirement for the virtual machine. Which command should you run?

- A. (Get-ClusterParameter) AutoBalancerMode=2  
B. (Get-Cluster).AutoBalancerMode=2  
C. (Get-ClusterParameter).AutoBalancerLevel=2  
D. (Get-Cluster).AutoBalancerLevel=2

**Answer: D**

#### NEW QUESTION 83

You have a server named Server 1 that runs Windows Server 2016.

Server 1 has Internet connectivity You have a Nano Server image.

You need to download and save a Nano Server package in the Nano Server image. The package is NOT included in the Windows Server 2016 installation media.

Which two cmdlets should you run on Server1.



- A. Set-PackageSource
- B. Install-PackageProvider
- C. Add-AppxProvisionedPackage
- D. Save-NanoServerPackage
- E. Add-WindowsPackage

Answer: BD

NEW QUESTION 86

You have a server named Server 1 that runs Windows Server 2016 and has the Hyper-V server role installed. On Server1, you plan to create a virtual machine named VM1. You need to ensure that you can start VM1 from the network. What are two possible ways to achieve the goal? Each correct answer presents a complete solution.

- A. Create a generation 2 virtual machine.
- B. Create a generation 1 virtual machine and run theEnable-NetAdapterPackageDirectcmdlet.
- C. Create a generation 1 virtual machine that has a legacy network adapter.
- D. Create a generation 1 virtual machine and configure a single root I/O virtualization (SRV-IO) interface for the network adapter.

Answer: AC

NEW QUESTION 88

DRAG DROP

You are planning the configuration of a virtual network switch for a Hyper-V environment. The environment will contain the following Hyper-V hosts:

- A server named Server1 will have 10 virtual machines that must be able to communicate with each other. The virtual machines must be prevented from communicating with Server1 and all other servers on the corporate network.
- A two-code failover cluster named Cluster1 will have 20 virtual machines. The virtual machines will run on both nodes. Hyper-V hosts on the corporate network must be able to connect to the virtual machines.

Which type of virtual switch should you select for each Hyper-V host? To answer, drag the appropriate virtual switch types to the correct hosts. Each virtual switch type must be used once, more than once, or not at all. You may need to drag the split bar between panes or scroll to view content.

### Virtual Switch Types

External

Internal

Private

### Answer Area

10 virtual machines on Server1:

20 virtual machines on Cluster1:

- A. Mastered
- B. Not Mastered

Answer: A

Explanation:

### Virtual Switch Types

External

Internal

Private

### Answer Area

10 virtual machines on Server1: 

Private

20 virtual machines on Cluster1: 

External

NEW QUESTION 90

You have a Hyper-V host named Server1 that runs Windows Server 2016. Server1 contains four virtual machines that are configured as shown in the following table.



Virtual machine name	Configuration
VM1	A shielded virtual machine that runs Windows Server 2012 R2
VM2	A shielded virtual machine that runs Windows Server 2016
VM3	A virtual machine that runs Windows Server 2012 R2 and has Secure Boot enabled
VM4	A virtual machine that runs Windows Server 2016 and has all of its drivers protected by using BitLocker Drive Encryption (BitLocker)

To which machine or machines can you connect by using Virtual Machine Connection from Hyper-V Manager?

- A. VM1, VM2, VM3 and VM4
- B. VM4 only
- C. VM1 and VM2 only
- D. VM3 and VM4 only
- E. VM2 only

**Answer:** D

#### NEW QUESTION 95

After you answer a question in this section, you will NOT be able to return to it. As a result, these questions will not appear in the review screen.

You have a server named Server1 that runs Windows Server 2016.

You plan to use Windows Server Backup to back up all of the data on Server1. You create a new volume on Server1.

You need to ensure that the new volume can be used as a backup target. The backup target must support incremental backups.

Solution: You mount the volume to C:\Backup, and you format the volume by using exFAT. Does this meet the goal?

- A. Yes
- B. No

**Answer:** B

#### NEW QUESTION 97

HOTSPOT

You have a Hyper-V host named Server1 that runs Windows Server 2016. Server1 has a virtual disk file named Disk1.vhdx that contains an installation of Windows Server 2016.

You create a virtual disk file named Disk2.vhdx that is configured as shown in the following exhibit.

```

>_ Administrator: Windows PowerShell

PS C:\> Get-VHD -Path C:\Folder1\Disk2.vhdx

ComputerName      : SERVER1
Path              : c:\folder1\disk2.vhdx
VhdFormat         : VHDX
VhdType           : Differencing
FileSize          : 4194304
Size              : 107374182400
MinimumSize       :
LogicalSelectorSize : 512
PhysicalSelectorSize : 4096
BlockSize         : 2097152
ParentPath        : C:\Folder1\Disk1.vhdx
DiskIdentifier     : 6D447006-DE3B-470A-838A-25B064ABEF39
FragmentationPercentage :
Alignment         : 1
Attached          : False
DiskNumber        :
Number            :

PS C:\>
  
```

Use the drop-down menus to select the answer choice that completes each statement based on the information presented in the graphic.

### Answer Area

When you move Disk1.vhdx to C:\Folder2, you will be able to use Disk2.vhdx only after you run [answer choice].

▼
Merge-VHD
Optimize-VHD
Optimize-VHDSets
Set-VHD
Test-VHD

Before you can copy files directly into Disk2.vhdx, you must first run [answer choice].

▼
Merge-VHD
Mount-VHD
Optimize-VHD
Resize-VHD
Set-VHD

- A. Mastered
- B. Not Mastered

**Answer:** A

**Explanation:**

### Answer Area

When you move Disk1.vhdx to C:\Folder2, you will be able to use Disk2.vhdx only after you run [answer choice].

▼
Merge-VHD
Optimize-VHD
Optimize-VHDSets
Set-VHD
Test-VHD

Before you can copy files directly into Disk2.vhdx, you must first run [answer choice].

▼
Merge-VHD
Mount-VHD
Optimize-VHD
Resize-VHD
Set-VHD

#### NEW QUESTION 100

DRAG DROP

You install a new Nano Server named Nano1. Nano1 is a member of a workgroup and has an IP address of 192.168.1.10.

You have a server named Server1 that runs Windows Server 2016.

From Server1, you need to establish a Windows PowerShell session to Nano1.

How should you complete the PowerShell script? To answer, drag the appropriate cmdlets to the correct targets. Each cmdlet may be used once, more than once, or not at all. You may need to drag the split bar between panes or scroll to view content.

#### Cmdlets

Enable-PSRemoting
Enter-PSSession
Set-Item
Set-ItemProperty
Set-LocalUser

#### Answer Area

\$ip = "192.168.1.10"

\$user = "Administrator"

Cmdlet	WSMan:\localhost\Client\TrustedHosts "192.168.1.10"
Cmdlet	-ComputerName \$ip -Credential \$user

- A. Mastered
- B. Not Mastered

**Answer:** A

**Explanation:**

How to access Nano Server

Because Nano Server does not support a local session, it must be accessed remotely. References: [https://msdn.microsoft.com/en-us/library/mt708805\(v=vs.85\).aspx](https://msdn.microsoft.com/en-us/library/mt708805(v=vs.85).aspx)

#### NEW QUESTION 105

You have Nano Server image named Disk1.vhdx. You mount Disk1.vhdx.

You need to add a folder that contains several files to the image. Which tool or cmdlet you should use?

- A. Copy-Item
- B. Add-WindowsImage
- C. Add-WindowsPackage
- D. Edit-NanoServerImage

**Answer:** A

#### NEW QUESTION 106



Your network contains an Active Directory domain named contoso.com. The domain contains two servers, Server and Server2 that run Windows Server 2016. Each server has an operating system disk and four data disks. All of the disks are locally attached SATA disks. Data disk, is initialized as an MBR disk, and has a single NTFS volume.

You plan to implement Storage Spaces Direct by using the data disks on Server1 and Server2. You need to prepare the data disks for the Storage Spaces Direct implementation.

What should you do?

- A. Convert the data disks to dynamic disks.
- B. Format the volumes on the data disks as exFAT.
- C. Initialize the data disks as GPT disks and create an ReFS volume on each disk.
- D. Delete the volumes from the data disks.

**Answer: D**

#### NEW QUESTION 109

Note: This question is part of a series of questions that use the same or similar answer choices. An answer choice may be correct for more than one question in the series. Each question is independent of the other questions in this series. Information and details provided in a question apply only to that question.

You have two servers named Server1 and Server2 that run Windows Server 2016. Server1 and Server2 have the Hyper-V server role installed and are nodes in a failover cluster.

On Server1, an administrator creates a virtual machine named VM1. You need to configure VM1 for high availability.

Which tool should you use?

- A. the clussvc.exe command
- B. the cluster.exe command
- C. the Computer Management snap-in
- D. the configurehyperv.exe command
- E. the Disk Management snap-in
- F. the Failover Cluster Manager snap-in
- G. the Hyper-V Manager snap-in
- H. the Server Manager app

**Answer: F**

#### Explanation:

References:

<http://windowsitpro.com/hyper-v/make-vm-highly-available-windows-server-2012>

#### NEW QUESTION 114

You create a Nano server image named Nano1.vhdx by using the New-NanoServerImage cmdlet. You attach Nano1.vhdx to a Generation 1 virtual machine named Nano1.

When you start Nano1, you get the following error message: "Boot failure. Reboot and select proper Boot device or Insert Boot Media in selected Boot device"

You need to successfully start Nano server. What should you do?

- A. Attach Nano1.vhdx to a SCSIcontroller.
- B. Recreate Nano1 as a Generation 2 virtual machine.
- C. Increase the memory of Nano1 to 512 Mb.
- D. Modify the BIOS settings of Nano1.

**Answer: B**

#### Explanation:

A Generation 1 VM cannot boot from a vhdx disk; only a Generation 2 VM can boot from an vhdx disk.

#### NEW QUESTION 119

##### HOTSPOT

Your company has a main office and a branch office. The two offices connect to each other by using a WAN link.

Your network contains an Active Directory forest named contoso.com. The forest contains a domain controller named DC1. All of the domain controllers are located in the main office.

You install a read-only domain controller (RODC) named RODC1 in the branch office.

You create a user account for a new user named User1. You add User1 to the Allowed RODC Password Replication Group. User1 starts work on Monday.

You are notified that the WAN link will be down for maintenance on Monday. You need to ensure that User1 can log on in the branch office site on Monday.

Which command should you run? To answer, select the appropriate options in the answer area.

## Answer Area

	▼
clonepr	
ldifde	
repadmin	
replmon	

	▼
/prp	
/replicate	
/rodcpwdrepl	
/syncall	

rodcl.fabrikam.com dcl.fabrikam.com "cn=user1,ou=users,dc=fabrikam,DC=com"



- A. Mastered
- B. Not Mastered

**Answer:** A

**Explanation:**

References:

[https://technet.microsoft.com/en-us/library/cc742095\(v=ws.11\).aspx](https://technet.microsoft.com/en-us/library/cc742095(v=ws.11).aspx)

**NEW QUESTION 120**

HOTSPOT

You have a DNS server named Server1.

The forwarders are configured as shown in the Forwarders exhibit. (Click the Exhibit button.)

SERVER1 Properties

Debug Logging | Event Logging | Monitoring | Security  
Interfaces | **Forwarders** | Advanced | Root Hints

Forwarders are not available because this server does not use recursion.

IP Address	Server FQDN
168.63.129.16	<Unable to resolve>

☒ Use root hints if no forwarders are available Edit...

Note: If conditional forwarders are defined for a given domain, they will be used instead of server-level forwarders. To create or view conditional forwarders, navigate to the Conditional Forwarders node in the scope tree.

OK Cancel Apply Help

The Advanced Settings are configured as shown in the Advanced exhibit. (Click the Exhibit button.)



SERVER1 Properties

Debug Logging    Event Logging    Monitoring    Security  
Interfaces    Forwarders    **Advanced**    Root Hints

Server version number:  
10.0 14300 (0x37dc)

Server options:

- ☒ Disable recursion (also disables forwarders)
- ☐ Enable BIND secondaries
- ☐ Fail on load if bad zone data
- ☒ **Enable round robin**
- ☒ Enable netmask ordering
- ☒ Secure cache against pollution

Name checking:    Multibyte (UTF8)    v

Load zone data on startup:    From Active Directory and registry    v

☐ Enable automatic scavenging of stale records

Scavenging period:    0    days    v

Reset to Default

OK    Cancel    Apply    Help

The Root Hints are configured as shown in the Root Hints exhibit. (Click the Exhibit button.)

SERVER1 Properties

Debug Logging    Event Logging    Monitoring    Security  
Interfaces    Forwarders    Advanced    **Root Hints**

Root hints resolve queries for zones that do not exist on the local DNS server. They are only used if forwarders are not configured or fail to respond.

Name servers:

Server Fully Qualified Domain Name (FQDN)	IP Address
a.root-servers.net.	[2001:503:ba3e::2...
b.root-servers.net.	[2001:500:84:b]
f.root-servers.net.	[2001:500:2f:f]
i.root-servers.net.	[2001:7fe::53]
l.root-servers.net.	[2001:500:9f::42]
m.root-servers.net.	[2001:dc3::35]

Add...    Edit...    Remove    Copy from Server

OK    Cancel    Apply    Help

Server1 does not contain any DNS zones.  
For each of the following statements, select Yes if the statement is true. Otherwise, select No.

## Answer Area

Statements	Yes	No
Server1 can resolve the names of hosts that are located on the Internet.	<input type="radio"/>	<input type="radio"/>
From Server1 Properties, if you perform a test from the Monitoring tab, the recursive test will pass.	<input type="radio"/>	<input type="radio"/>
Server1 is configured as a root DNS server.	<input type="radio"/>	<input type="radio"/>

- A. Mastered
- B. Not Mastered

**Answer:** A

**Explanation:**

Recursion is disabled so internet hosts cannot be resolved. The recursive test fails because recursion is disabled. Server1 is not configured as a root server. The forwarders list would be greyed out if it was.

**NEW QUESTION 124**

You have a Hyper-V host named Server1 that runs Windows Server 2016. The host has two virtual machines (VMs) named VM1 and VM2. On the Hyper-V host, you create two virtual disks named Disk1 and Disk2. You plan to create a test environment for Storage Spaces Direct. You need to configure the VMs to connect to the virtual disks. What should you use?

- A. An iSCSI target
- B. A virtual SCSI controller
- C. A virtual fibre channel adapter
- D. A virtual IDE controller

**Answer:** B

**Explanation:**

References:

<https://blogs.msdn.microsoft.com/clustering/2015/05/27/testing-storage-spaces-direct-using-windows-server-2016-virtual-machines/>

**NEW QUESTION 125**

You have a server named Server1 that runs Windows Server 2016. You need to configure Server1 as a Web Application Proxy. Which server role or role service should you install on Server1?

- A. Web Server (IIS)
- B. Network Policy and Access Services
- C. Direct Access and VPN (RAS)
- D. Active Directory Federation Services
- E. Remote Access

**Answer:** E

**NEW QUESTION 129**

**HOTSPOT**

Your network contains an Active Directory domain named contoso.com. The domain contains two servers named Server1 and Server2 that run Windows Server 2016.

Server1 has Microsoft System Center 2016 Virtual Machine Manager (VMM) installed. Server2 has IP Address Management (IPAM) installed.

You create a domain user named User1.

You need to integrate IPAM and VMM. VMM must use the account of User1 to manage IPAM. The solution must use the principle of least privilege.

What should you do on each server? To answer, select the appropriate options in the answer area.



# Answer Area

On Server1:

Create a Run as Account that uses User1  
Add User1 to the Fabric Administrator user role  
Add User1 to the Remote Management Users group

On Server2:

Add User1 to IPAM Administrator Role  
Add User1 to IPAM ASM Administrator Role  
Add User1 to IPAM MSM Administrator Role

- A. Mastered
- B. Not Mastered

Answer: A

Explanation:

On Server1: Create a Run As Account that uses User1.  
On Server2: Add User1 to IPAM ASM Administrator Role. [https://technet.microsoft.com/en-us/library/dn783349\(v=ws.11\).aspx](https://technet.microsoft.com/en-us/library/dn783349(v=ws.11).aspx) [https://technet.microsoft.com/en-us/library/jj878348\(v=ws.11\).aspx](https://technet.microsoft.com/en-us/library/jj878348(v=ws.11).aspx)

NEW QUESTION 131

DRAG DROP

Your network contains an Active Directory domain named contoso.com. The domain contains a server named Server1 that runs Windows Server 2016. You install IP Address Management (IPAM) on Server1. You need to manually start discovery of the servers that IPAM can manage in contoso.com. Which three cmdlets should you run in sequence? To answer, move the appropriate cmdlets from the list of cmdlets to the answer area and arrange them in the correct order.

## Cmdlets

Add-IpamAddress

Add-IpamDiscoveryDomain

Add-IpamSubnet

Update-IpamServer

Invoke-IpamServerProvisioning

Start-ScheduledTask

## Answer Area



- A. Mastered
- B. Not Mastered

Answer: A

Explanation:

<https://technet.microsoft.com/itpro/powershell/windows/ipam/add-ipamdiscoverydomain> <https://technet.microsoft.com/itpro/powershell/windows/ipam/add-ipamserverinventory> <https://technet.microsoft.com/itpro/powershell/windows/ipam/invoke-ipamserverprovisioning>

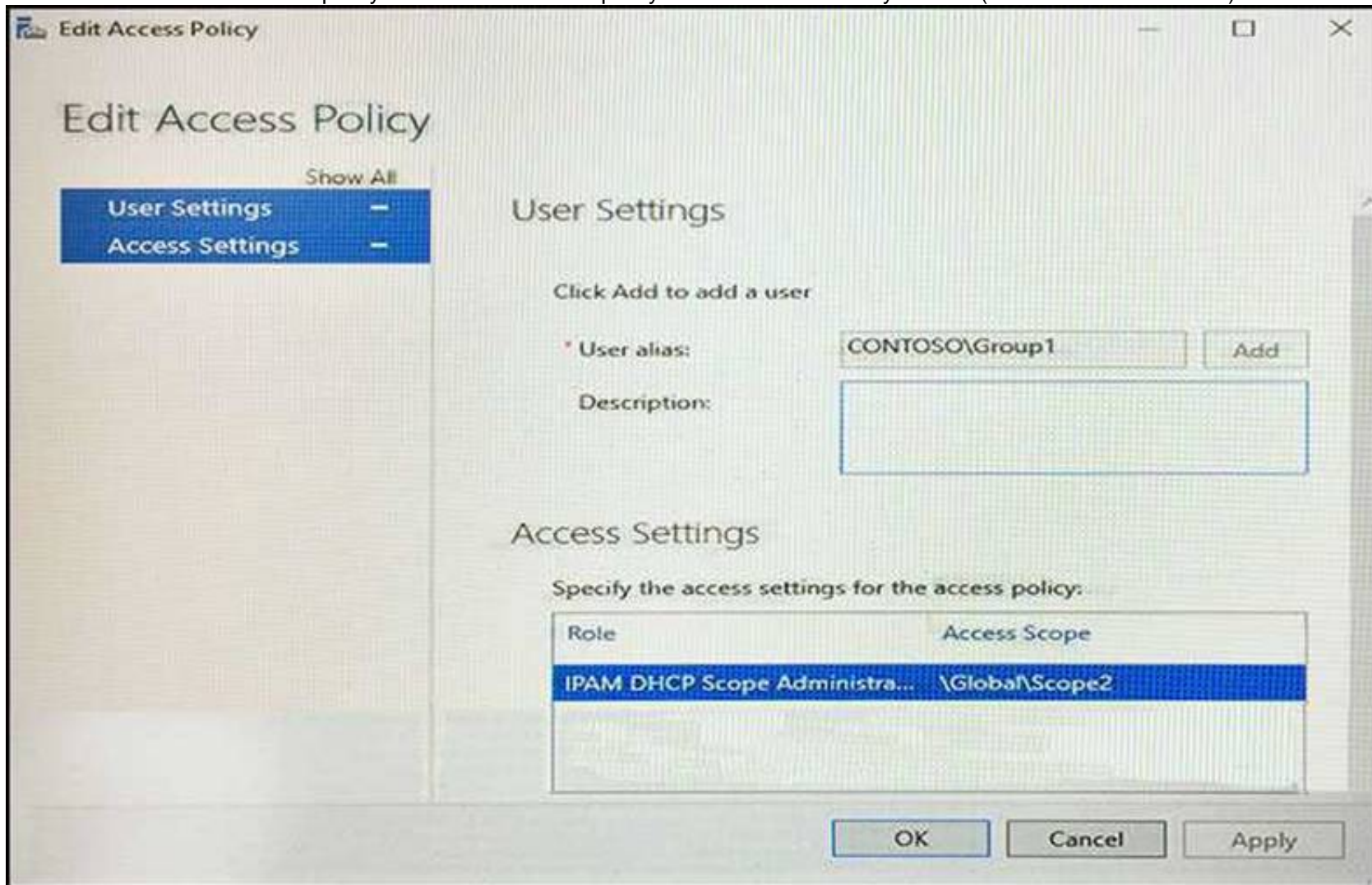
NEW QUESTION 135

HOTSPOT

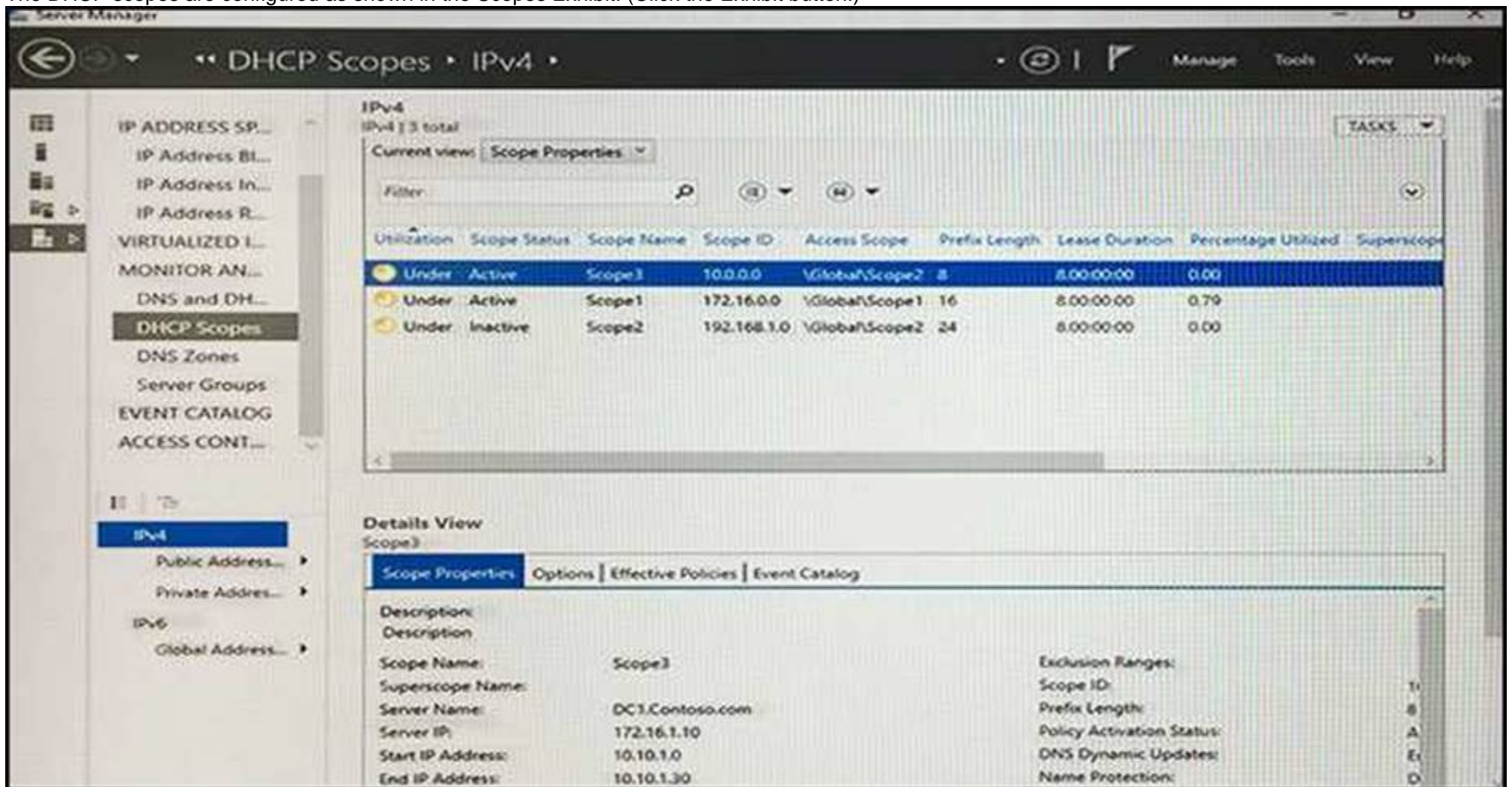
You network contains an Active Directory named contoso.com. The domain contains two servers named Server1 and Server2 that run Windows Server 2016.



Server1 has IP Address Management (IPAM) installed. Server2 has the DHCP Server role installed. The IPAM server retrieves data from Server2. The domain has two users named User1 and User2 and a group named Group1. User1 is the only member of Group1. Server1 has one IPAM access policy. You edit the access policy as shown in the Policy exhibit. (Click the Exhibit button.)



The DHCP scopes are configured as shown in the Scopes Exhibit. (Click the Exhibit button.)



For each of the following statements, select Yes if the statement is true. Otherwise, select No.

# Answer Area

Statements	Yes	No
User1 can modify the description of Scope1.	<input type="radio"/>	<input type="radio"/>
User2 can modify the description of Scope1.	<input type="radio"/>	<input type="radio"/>
User1 can modify the description of Scope2.	<input type="radio"/>	<input type="radio"/>

- A. Mastered
- B. Not Mastered

Answer: A

Explanation:

[https://technet.microsoft.com/en-us/library/dn268500\(v=ws.11\).aspx](https://technet.microsoft.com/en-us/library/dn268500(v=ws.11).aspx)

## NEW QUESTION 136

A company named Contoso, Ltd has five Hyper-V hosts that are configured as shown In the following table.

Hyper-V host name	Configuration
Server1	Windows Sever 2012 R2 and an Intel Xeon E7 processor
Server2	Windows Sever 2012 R2 and an Intel i7 processor
Server3	Windows Sever 2016 and an Intel i7 processor
Server4	Windows Sever 2016 and an AMD Opteron processor
Server5	Windows Sever 2012 R2 and an Intel Xeon E7 processor

What are two valid live migration scenarios for virtual machines in your environment? Each correct answer presents a complete solution.

- A. from Server4 to Server5
- B. from Server1 to Server5
- C. from Server3 to Server4
- D. from Server2 to Server3

Answer: BD

## NEW QUESTION 139

Note: This question is part of a series of questions that use the same scenario. For your convenience, the scenario is repeated in each question. Each question presents a different goal and answer choices, but the text of the scenario is exactly the same in each question in this series.

Start of repeated scenario

Your network contains an Active Directory domain named contoso.com. The functional level of the forest and the domain is Windows Server 2008 R2. All servers in the domain run Windows Server 2016 Standard. The domain contains 300 client computers that run either Windows 8.1 or Windows 10. The domain contains nine servers that are configured as shown in the following table.



Server name	Configuration	Planned changes
Server1	Domain controller	None
Server2	File server	Run Failover Clustering and Storage Spaces Direct
Server3	File server	Run Failover Clustering and Storage Spaces Direct
Server4	Hyper-V host	Run shielded virtual machines
Server5	Hyper-V host	None
Server6	Member server	Run Active Directory Federation Services (AD FS)
VM1	Virtual machine hosted on Server 5	None
VM2	Virtual machine hosted on Server 5	None
VM3	Virtual machine hosted on Server 5	None

The virtual machines are configured as follows:

Each virtual machine has one virtual network adapter.

VM1 and VM2 are part of a Network Load Balancing (NLB) cluster.

All of the servers on the network can communicate with all of the virtual machines. End of repeated scenario.

You plan to implement nested virtual machines on VM1.

Which two features will you be prevented from using for VM1?

- A. NUMA spanning
- B. live migration
- C. Dynamic Memory
- D. Smart Pathing

**Answer:** BC

**Explanation:**

References:

<https://blogs.technet.microsoft.com/virtualization/2015/10/13/windows-insider-preview-nested-virtualization/>

#### NEW QUESTION 142

One of your team previously opened Hyper-V Manager, selected a virtual machine and followed the

Enable Replication wizard.

The process was completed successfully and replications were occurring as expected.

Several weeks later and you now want to run a planned failover. Which of the following steps is the correct starting point?

- A. Right-click the primary VM and select Replication > Planned Failover
- B. Right-click the replica VM and select Replication > Planned Failover
- C. Right-click the primary VM and select Replication > Extend Replication
- D. Right-click the replica VM and select Replication > Test Failover

**Answer:** A

#### NEW QUESTION 144

Virtual Network Manager (available from the Hyper-V Manager snap-in) offers three types of virtual networks that you can use to define various networking topologies for virtual machines and the virtualization server.

Which type of virtual network is isolated from all external network traffic on the virtualization server, as well any network traffic between the management operating system and the external network.

- A. Private virtual network
- B. Internal virtual network

**Answer:** A

#### NEW QUESTION 147

You have decided to install Windows Server 2016 by choosing the Service Core Installation option. If you want to install, configure or uninstall server roles remotely, what tool would you use?

- A. Any of these
- B. Windows PowerShell
- C. Remote Server Administration Tools (RSAT)
- D. Server Manager

**Answer:** A

#### NEW QUESTION 150

When you create a new SET team, you must configure the following team properties: Member adapters and Load balancing mode.

Which Load balancing mode ensures that outbound loads are distributed based on a hash of the TCP Ports and IP addresses.

This mode also re-balances loads in real time so that a given outbound flow can move back and forth between SET team members.

- A. Dynamic
- B. Hyper-V Port

**Answer:** A

#### NEW QUESTION 151

You want to boot a Linux Operating System with the Secure Boot option enabled in a virtual machine. This will be the first time you boot the OS. What must you do?

- A. Set the -BootOrder to HardDiskDrive
- B. Configure the virtual machine to use the Microsoft UEFI Certificate Authority
- C. You can't enable Secure Boot with Linux
- D. Set -EnableSecureBoot without specifying a template

**Answer:** B

#### Explanation:

Linux operating systems running on newer generation virtual machines can boot with the Secure Boot option enabled. Before you boot the virtual machine for the first time, you must configure the virtual machine to use the Microsoft UEFI Certificate Authority. You can do this from Hyper-V Manager, Virtual Machine Manager, or an elevated Windows Powershell session.

#### NEW QUESTION 154

You have two Hyper-V hosts named Server1 and Server2 that run Windows Server 2016. Server1 hosts a virtual machine named VM1 that is in a Running state. On Server1, you export VM1 and then you import VM1 on Server2. What is the current state of VM1 on Server2?

- A. Paused
- B. Off
- C. Saved
- D. Running

**Answer:** C

#### Explanation:

References: <https://blog.workinghardinit.work/2016/06/16/live-export-a-running-virtual-machine-or-a-checkpoint/>

#### NEW QUESTION 156

You have two servers that run Windows Server 2016. The servers are configured as shown in the following table.

Server name	Workgroup	DNS suffix
Server1	Workgroup1	<i>None</i>
Server2	Workgroup2	Contoso.com

You need to create a failover cluster that contains both servers.

Which two commands should you run? Each correct answer presents part of the solution. NOTE: Each correct selection is worth one point.

- A. wmic ComputerSystem Set Workgroup= "Workgroup2"
- B. New-Cluster-Name Cluster1- Node Server1, Server2- AdministrativeAccessPoint DNS
- C. New-Cluster-Name Cluster1- Node Server1, Server2- AdministrativeAccessPoint ActiveDirectoryAndDns
- D. New-Cluster-Name Cluster1- Node Server1, Server2- AdministrativeAccessPoint None
- E. netdom computername Server1/MakePrimary:server1.contoso.com

**Answer:** AB

#### NEW QUESTION 157

You have a server named Server1 that runs Windows Server 2016. Server1 has the Containers feature installed.

You create a text file that contains the commands that will be used to automate the creation of new containers.

You need to ensure that the commands in the text file are used when you create new containers. What should you name the file?

- A. Bootstrap.ini
- B. Config.ini
- C. Dockerfile
- D. Unattend.txt

**Answer:** C

#### NEW QUESTION 158

You have a server named Server1 that runs Windows Server 2016. Server1 is a member of contoso.com. Server1 has the Hyper-V role installed. Virtual machines on Server1 are connected to an external switch named Switch1.

You create a virtual machine named VM1 on Server1 by running the following cmdlets.



```
Add-VM VM1
Add-VMHardDiskDrive -VMName VM1 -ControllerType IDE -Path c:\VMs\Disk1.vhd
Add-VMNetworkAdapter -VMName VM1
```

You need to ensure that you can install the operating system on VM1 by using Windows Deployment Services. What should you do?

- A. Modify the SwitchType parameter of Switch1.
- B. Modify the DefaultFlowMinimumBandwidthWeight parameter of Switch1.
- C. Add a SCSI controller to VM1.
- D. Add a legacy network adapter to VM1.

**Answer: D**

#### NEW QUESTION 162

You have two Hyper-V hosts named Server1 and Server2 that run Windows Server 2016. Server1 hosts a virtual machine named VM1 that is in a Running state. On Server1, you export VM1 and then you import VM1 on Server2. What is the current state of VM1 on Server2?

- A. Off
- B. Running
- C. Paused
- D. Saved

**Answer: B**

#### NEW QUESTION 163

DRAG DROP

You have a server named Server1 that runs Windows Server 2016. On Server1, you create a Nano Server image named Disk1.vhdx. You need to start Server1 by using Disk1.vhdx.

Which three actions should you perform in sequence? To answer, move the appropriate actions from the list of actions to the answer area and arrange them in the correct order.

#### Actions

Restart Server1.

Run the bcdboot.exe command.

Run the bootcfg.exe command.

Run the **Edit-NanoServerImage** cmdlet.

Mark a partition as active.

Mount Disk1.vhdx.

#### Answer Area



- A. Mastered
- B. Not Mastered

**Answer: A**

**Explanation:**

## Actions

Restart Server1.

Run the **bcdboot.exe** command.

Run the **bootcfg.exe** command.

Run the **Edit-NanoServerImage** cmdlet.

Mark a partition as active.

Mount Disk1.vhdx.

## Answer Area

Mount Disk1.vhdx.

Run the **bootcfg.exe** command.

Restart Server1.



### NEW QUESTION 168

#### HOTSPOT

You have a Windows Server 2016 failover cluster that has a cluster network named ClusterNetwork1. You need to ensure that ClusterNetwork1 is enabled for cluster communication only.

What command should you run? To answer, select the appropriate options in the answer area.

## Answer Area

( ▼ ClusterNetwork1) . ▼ =1

Get-ClusterNetwork	ID
Get-ClusterResource	Metric
Set-ClusterParameter	Role
Update-ClusterIPResource	State

- A. Mastered
- B. Not Mastered

**Answer:** A

**Explanation:**

## Answer Area

( ▼ ClusterNetwork1) . ▼ =1

<b>Get-ClusterNetwork</b>	ID
Get-ClusterResource	Metric
Set-ClusterParameter	<b>Role</b>
Update-ClusterIPResource	State

### NEW QUESTION 172

#### HOTSPOT

Note: This question is part of a series of questions that use the same scenario. For your convenience, the scenario is repeated in each question. Each question presents a different goal and answer choices, but the text of the scenario is exactly the same in each question in this series.

Your network contains an Active Directory domain named contoso.com. The functional level of the forest and the domain is Windows Server 2008 R2. All servers in the domain run Windows Server 2016 Standard. The domain contains 300 client computers that run either Windows 8.1 or Windows 10.

The domain contains nine servers that are configured as shown in the following table.

Name	Configuration	Planned changes
Server1	Domain controller	<i>None</i>
Server2	File server	Run Failover Clustering and Storage Spaces Direct
Server3	File server	Run Failover Clustering and Storage Spaces Direct
Server4	Hyper-V host	Run shielded virtual machines
Server5	Hyper-V host	<i>None</i>
Server6	Member server	Run Active Directory Federation Services (AD FS)
VM1	Virtual machine hosted on Server5	<i>None</i>
VM2	Virtual machine hosted on Server5	<i>None</i>
VM3	Virtual machine hosted on Server5	<i>None</i>

The virtual machines are configured as follows:

Each virtual machine has one virtual network adapter.

VM1 and VM2 are part of a Network Load Balancing (NLB) cluster.

All of the servers on the network can communicate with all of the virtual machines. For VM1 and VM2, you plan to use live migration between Server4 and Server5.

You need to ensure that when the virtual machines migrate, they maintain connectivity to the network.

Which virtual switch names and connection types should you use on each server? To answer, select the appropriate options in the answer area.

## Answer Area

Virtual switch connection type on Server4:

▼

External network

Internal network

Private network

Virtual switch connection type on Server5:

▼

External network

Internal network

Private network

Virtual switch name on Server4:

▼

External on Server4

Network switch

Server4

Virtual switch name on Server5:

▼

External on Server5

Network switch

Server5

- A. Mastered
- B. Not Mastered

**Answer:** A

**Explanation:**

## Answer Area

Virtual switch connection type on Server4:

▼

External network

Internal network

Private network

Virtual switch connection type on Server5:

▼

External network

Internal network

Private network

Virtual switch name on Server4:

▼

External on Server4

Network switch

Server4

Virtual switch name on Server5:

▼

External on Server5

Network switch

Server5

### NEW QUESTION 173

#### DRAG DROP

Note: This question is part of a series of questions that use the same scenario. For your convenience, the scenario is repeated in each question. Each question presents a different goal and answer choices, but the text of the scenario is exactly the same in each question in this series.

A company named Contoso, Ltd. has several servers that run Windows Server 2016. Contoso has a Hyper-V environment that uses failover clustering and Windows Server Update Services (WSUS). The environment contains several Windows containers and several virtual machines.

The WSUS deployment contains one upstream server that is located on the company's perimeter network and several downstream servers located on the internal network. A firewall separates the upstream server from the downstream servers.

You plan to deploy a human resources application to a new server named HRServer5. HRServer5 contains a FAT32-formatted data volume.

The CIO of Contoso identifies the following requirements for the company's IT department: Deploy a failover cluster to two new virtual machines.

Store all application databases by using Encrypted File System (EFS).

Ensure that each Windows container has a dedicated IP address assigned by a DHCP server.

Produce a report that lists the processor time used by all of the processes on a server named Server1 for five hours.

Encrypt all communication between the internal network and the perimeter network, including all WSUS communications.

Automatically load balance the virtual machines hosted in the Hyper-V cluster when processor utilization exceeds 70 percent.

You need to configure the storage solution for the planned failover cluster.

You create two new generations 2 virtual machines on two separate Hyper-V hosts named VM11 and VM12.

Which three actions should you perform in sequence next? To answer, move the appropriate actions from the list of actions to the answer area and arrange them in the correct order.



Actions	Answer Area
For each virtual machine, create a new system disk that uses the VNDX format and store the disks in Share1.	
Create a VHDX file and store the file in the Clustered Shared Volume (CSV).	1 <input type="text"/>
For each virtual machine, create a new system disk that uses the VHDX format and store the virtual machines on the Cluster Shared Volume (CSV).	2 <input type="text"/>
Create a network share named Share1.	3 <input type="text"/>
Create a Clustered Shared Volume (CSV).	
To each virtual machine, add the VHDX file as a shared drive.	

- A. Mastered
- B. Not Mastered

Answer: A

Explanation:

Actions	Answer Area
For each virtual machine, create a new system disk that uses the VNDX format and store the disks in Share1.	
	1 Create a Clustered Shared Volume (CSV).
	2 For each virtual machine, create a new system disk that uses the VHDX format and store the virtual machines on the Cluster Shared Volume (CSV).
Create a network share named Share1.	3 Create a VHDX file and store the file in the Clustered Shared Volume (CSV).
To each virtual machine, add the VHDX file as a shared drive.	

#### NEW QUESTION 176

Note This question is part of a series of questions that use the same scenario. For your convenience, the scenario is repeated in each question. Each question

presents a different goal and answer choices, but the text of the scenario is exactly the same in each question in this series.

Start of Repeated Scenario:

A company named Contoso, Ltd. has several servers that run Windows Server 2016. Contoso has a Hyper-V environment that uses failover clustering and Windows Server Update Services (WSUS). The environment contains several Windows containers and several virtual machines.

The WSUS deployment contains one upstream server that is located on the company's perimeter network and several downstream servers located on the internal network. A firewall separates the upstream server from the downstream servers.

You plan to deploy a human resources application to a new server named HRServer5. HRServer5 contains a FAT32-formatted data volume.

The CIO of Contoso identifies the following requirements for the company's IT department:

- Deploy failover cluster to two new virtual machines.
- Store all application databases by using Encrypted File System (EFS).
- Ensure that each Windows container has a dedicated IP address assigned by a DHCP server.
- Produce a report that lists the processor time used by all of the processes on a server named Server 1 for five hours.

Encrypt all communication between the internal network and the perimeter network, including all WSUS communications.

- Automatically load balance the virtual machines hosted in the Hyper-V cluster when processor utilization exceeds 70 percent.

End of Repeated Scenario.

You need to modify the Hyper-V cluster to meet the load balancing requirement for the virtual machine. Which command should you run?

- A. Create a firewall rule 10 allow TCP port 443.
- B. Create a firewall rule to allow TCP port 8531.
- C. Require-SSl on the Client WebService virtual directory.
- D. Require SSI on the Inventory virtual directory.

**Answer:** D

#### NEW QUESTION 180

You have two Hyper-V hosts named Server1 and Server2 that run Windows Server 2016. The hosts are nodes in a failover cluster.

A highly available virtual machine named VM1 is running on Server1. You need to move VM1 to Server2 while minimizing downtime.

What should you do?

- A. From Windows PowerShell, run Move-ClusterGroup.
- B. From Hyper-V Manager, use the Move action.
- C. From Failover Cluster Manager, use the Move Virtual Machine Storage option.
- D. From Windows PowerShell, run Move-VM.

**Answer:** A

#### NEW QUESTION 183

HOTSPOT

You deploy a new Hyper-V host named Server1 that runs Windows Server 2016. You implement receive side scaling (RSS) on Server1.

The chipset on Server1 does not support NetDMA.

All of the equipment on your network supports 10-Gbps connectivity. On Server1, you deploy a virtual machine named VM1.

You configure VM1 to aggregate all of the Windows and non-Windows log files for all of the servers on the network.

VM1 has four virtual processors.

You discover that VM1 drops packets.

Which two options should you run? To answer, select the appropriate options in the answer area.

### Answer Area

First action:

	▼
Enable TCP Chimney Offload on Server1.	
Enable single root I/O virtualization (SR-IOV) on VM1.	
Enable virtual machine queue (VMQ) on Server1 and VM1.	

Second action:

	▼
Enable virtual TCP Chimney Offload on VM1.	
Enable virtual Receive-side Scalling (vRSS) on VM1.	
Enable single root I/O virtualization (SR-IOV) on Server1.	

- A. Mastered
- B. Not Mastered

**Answer:** A

**Explanation:**

## Answer Area

First action:

	▼
Enable TCP Chimney Offload on Server1.	
Enable single root I/O virtualization (SR-IOV) on VM1.	
Enable virtual machine queue (VMQ) on Server1 and VM1.	

Second action:

	▼
Enable virtual TCP Chimney Offload on VM1.	
Enable virtual Receive-side Scalling (vRSS) on VM1.	
Enable single root I/O virtualization (SR-IOV) on Server1.	

### NEW QUESTION 186

#### HOTSPOT

You have a server named Server1 that runs Windows Servers 2016. Server1 has a storage array that contains multiple storage enclosures. The storage hardware supports enclosure awareness.

You need to implement Storage Spaces on Server1. Storage Spaces must remain available if two enclosures fail. The solution must minimize the number of enclosures required and must provide the fastest possible write performance.

Which configurations should you use? To answer, select the appropriate options in the answer area. NOTE: Each correct selection is worth one point.

## Answer Area

Resiliency type:

	▼
Dual parity	
Single parity	
Three-way mirror	
Two-way mirror	

Number of enclosures:

	▼
3	
4	
5	
6	

- A. Mastered
- B. Not Mastered

**Answer:** A

#### Explanation:

References: <https://docs.microsoft.com/en-us/windows-server/storage/storage-spaces/storage-spaces-fault-tolerance#summary>

### NEW QUESTION 187

You have a Hyper-V host named Server1 that runs Windows Server 2016. Server1 host a virtual machine named VM1. VM1 has the following settings: Nested virtualization is enabled.

Dynamic Memory is disabled. VM1 is currently running.

You need to adjust the amount of memory assigned to VM1 as quickly as possible. What should you do first?

- A. Change the memory buffer setting of VM1.
- B. Pause VM1.
- C. Shut down VM1.
- D. Enable Dynamic Memory for VM1.



Answer: D

#### NEW QUESTION 188

DRAG DROP

Your network contains an Active Directory domain named contoso.com. The domain has two clusters named FC1 and FC2. The domain contains servers that run Windows Server 2016. The Servers are configured as shown in the following table.

Server name	Processor	Memory	Cluster
Server1	Intel Xeon E3	128 GB	FC1
Server2	Intel Xeon E3	128 GB	FC1
Server3	Intel Xeon E3	256 GB	FC2
Server4	Intel Xeon E3	256 GB	FC2

Server1 hosts a highly available virtual machine named VM1.

You need to move VM1 from Server1 to Server3 by using live migration.

Which three actions should you perform in sequence? To answer, move the appropriate actions from the list of actions to the answer area and arrange them in the correct order.

Actions

Answer Area

- Add the Virtual Machine role
- Add the Hyper-V Replica Broker role to FC1 and FC2
- Remove VM1 from FC1
- Perform live migration from Failover Cluster Manager
- Perform live migration from Hyper-V Manager



- A. Mastered
- B. Not Mastered

Answer: A

Explanation:

References: <http://www.checkyourlogs.net/?p=16401>

#### NEW QUESTION 191

NOTE: This Question is a part of a series of questions that use the same or similar answer choices. An answer choice may be correct for more than one question in the series Each question is independent of the other questions in this series. Information and details provided in a question apply only to that question.

You have a Hyper –V host named server 1 that runs Windows Server 2016 and a two-node scale-out file server cluster named Cluster1.

You need to migrate the storage on VM1 to Cluster1. Which tool should you use?

- A. the clussvc.exe command
- B. the Cluster.exe command
- C. the Computer Management snap-in
- D. the configure hyperv.exe command
- E. the Disk Management snap-in
- F. the Failover Cluster Manager snap-in
- G. the Hyper-V Manager snap-in
- H. the Server Manger app

Answer: G

#### NEW QUESTION 196

NOTE: This Question is a part of a series of questions that use the same or similar answer choices. An

answer choice may be correct for more than one question in the series Each question is independent of the other questions in this series. Information and details provided in a question apply only to that question.

You have two- node Hyper-V cluster named Cluster1. A virtual machine named VM1 runs on Cluster1.

You need to configure monitoring of VM1. The solution must move VM1 to a different node if the Print Spooler service on VM1 stops unexpectedly.



Which tool should you use?

- A. the clussvc.exe command
- B. the cluster.exe command
- C. the computer Management snap-in
- D. the configurehyper.exe command
- E. the Disk Management snap-in
- F. the Failover Cluster Manager snap-in
- G. the Hyper-V Manager snap-in
- H. the Server Manager app

**Answer:** F

**NEW QUESTION 198**

You have a server named Server1 that runs Windows Server 2016.

Server1 has four SCSI disks and a storage pool named Pool1 that contains three disks. You create a virtual disk named Disk 1 that uses a mirrored layout.

You create a partition named Partition1 that uses all of the available space on Disk 1. You need to extend Partition1.

What should you do first?

- A. From Windows PowerShell, run the Resize-Partition cmdlet.
- B. From Disk Management, modify the properties of Partition1.
- C. From the Storage Pools page in Server Manager, extend a virtual disk.
- D. From Disk Management, extend a volume.

**Answer:** C

**Explanation:**

References: <https://charbelnemnom.com/2015/03/step-by-step-how-to-extend-and-resize-a-two-way-mirrored-storage-tiered-space-storagespaces-ws2012r2/>

**NEW QUESTION 201**

**HOTSPOT**

You have a Windows Server 2016 failover cluster named Cluster1. You need to implement Cloud Witness for Cluster 1.

What should you do? To answer, select the appropriate options in the answer area. NOTE: Each correct selection is worth one point.

**Answer Area**

**In Microsoft Azure, create:**

<b>An availability set</b>
<b>An integration account</b>
<b>A public IP address</b>
<b>A Recovery Services vault</b>
<b>A storage account</b>

**On Cluster1, run:**

<b>Add-ClusterResource</b>
<b>Add-ClusterResourceType</b>
<b>Set-ClusterParameter</b>
<b>Set-ClusterQuorum</b>

- A. Mastered
- B. Not Mastered

**Answer:** A

**Explanation:**

References:

<https://www.vembu.com/blog/deploying-a-azure-cloud-witness-for-a-failover-cluster-in-windows-server-2016/>

<https://docs.microsoft.com/en-us/powershell/module/failoverclusters/set-clusterquorum?view=win10-ps>

**NEW QUESTION 203**

You have a server named Server1 that runs Windows Server 2016.

The server has an application named App1. App1 writes entries to the Application event log when errors are encountered. The events have IDs of either 111 or 112.

You need to restart the service whenever either of these events is logged. What should you do?

- A. From Windows PowerShell, run the Write-EventLog cmdlet and specify the -EventID parameter and the -Source parameter.
- B. From Event Viewer, create a custom view that has a filter for the event IDs.
- C. From Event Viewer, create a subscription that has a filter for the event IDs.
- D. From Task Scheduler, use Create Task to create one task that includes triggers for both event IDs.
- E. From Windows PowerShell, run the Get-SMSEvent cmdlet and pipe the output to the Start-NetEventSession cmdlet.
- F. From Performance Monitor, add an Event Trace Session data collector that uses the Microsoft-Windows-Eventlog provider.

**Answer:** D

**NEW QUESTION 207**

You have a file server named Server1 that runs Windows Server 2016. Object access auditing is configured on Server1.

You need to filter the Security event log to show all log entries that relate to a user named User1. What should you do?

- A. Right-click the Security log, and then click Filter Current Log... On the Filter tab, type a value in the User box.
- B. Right-click the Security log, and then click Filter Current Log... On the Filter tab, select a value from the Event sources box.
- C. Right-click the Security log, and then click Create Custom View... On the Filter tab, type a value in the User box.
- D. Right-click the Security log, and then click Filter Current Log... On the XML tab, modify the QueryList entry and set an EventData tag.

**Answer:** A

**Explanation:**

Right clicking the event log name and selecting the "Filter Current Log" will display various options for filtering the event log.

These options are:

References: <https://blogs.technet.microsoft.com/rmilne/2014/08/06/quick-tip-event-viewer-filtering/>

**NEW QUESTION 209**

Note: This question is part of a series of questions that use the same scenario. For your convenience, the scenario is repeated in each question. Each question presents a different goal and answer choices, but the text of the scenario is exactly the same in each question in this series.

A company named Contoso, Ltd. has several servers that run Windows Server 2016. Contoso has a Hyper-V environment that uses failover clustering and Windows Server Update Services (WSUS). The environment contains several Windows containers and several virtual machines.

The WSUS deployment contains one upstream server that is located on the company's perimeter network and several downstream servers located on the internal network. A firewall separates the upstream server from the downstream servers.

You plan to deploy a human resources application to a new server named HRServer5. HRServer5 contains a FAT32-formatted data volume.

The CIO of Contoso identifies the following requirements for the company's IT department:

Which two actions should you perform to meet the encryption requirement for WSUS? Each correct answer presents part of the solution.

- A. Require SSL on the Inventory virtual directory.
- B. Require SSL on the ClientWebService virtual directory.
- C. Create a firewall rule to allow TCP port 443.
- D. Create a firewall rule to allow TCP port 8531.

**Answer:** BC

**Explanation:**

References:

<https://technet.microsoft.com/en-us/library/bb633246.aspx> [https://en.wikipedia.org/wiki/List\\_of\\_TCP\\_and\\_UDP\\_port\\_numbers](https://en.wikipedia.org/wiki/List_of_TCP_and_UDP_port_numbers)

**NEW QUESTION 212**

You have a server named Server1 that runs Windows Server 2016. Server1 has two network adapters that support single root I/O virtualization (SR-IOV). The network adapters are from two different vendors.

You plan to install the Hyper-V server role on Server1, and then to create a virtual machine named VM1 that runs Windows Server 2016. VM1 will use SR-IOV.

You need to ensure that VM1 can use both network adapters for load balancing and failover. What should you do?

- A. On Server1, create two virtual switches without embedded teamin
- B. On VM1, create one NIC team.
- C. On Server1, create one virtual switch without embedded teamin
- D. On VM1, create one NIC team.
- E. On Server1, create one NIC tea
- F. On VM1, create one NIC team.
- G. On Server1, create one virtual switch that has embedded teamin
- H. On VM1, create two NIC teams.

**Answer:** A

**NEW QUESTION 216**

.....

## Thank You for Trying Our Product

\* 100% Pass or Money Back

All our products come with a 90-day Money Back Guarantee.

\* One year free update

You can enjoy free update one year. 24x7 online support.

\* Trusted by Millions

We currently serve more than 30,000,000 customers.

\* Shop Securely

All transactions are protected by VeriSign!

**100% Pass Your 70-740 Exam with Our Prep Materials Via below:**

<https://www.certleader.com/70-740-dumps.html>