

Exam Questions 70-743

Upgrading Your Skills to MCSA: Windows Server 2016

<https://www.2passeasy.com/dumps/70-743/>



NEW QUESTION 1

Note: This question is part of a series of questions that present the same scenario. Each question in the series contains a unique solution that might meet the stated goals. Some questions sets might have more than one correct solutions, while others might not have a correct solution.

After you answer a question in this section, you will NOT be able to return to it. As a result, these questions will not appear in the review screen.

Your network contains an Active Directory forest named contoso.com. The forest contains a member server named Server1 that runs Windows Server 2016. All domain controllers run Windows Server 2012 R2.

Contoso.com has the following configuration:

```
PS C:\> (Get-ADForest).ForestMode
Windows2008R2Forest

PS C:\> (Get-ADDomain).DomainMode
Windows2008R2Domain
PS C:\>
```

You plan to deploy an Active Directory Federation Services (AD FS) farm on Server1 and to configure device registration.

You need to configure Active Directory to support the planned deployment. Solution: You upgrade a domain controller to Windows Server 2016. Does this meet the goal?

- A. Yes
- B. No

Answer: B

Explanation:

Device registration requires a forest functional level of Windows Server 2012 R2. References:

<https://technet.microsoft.com/en-us/windows-server-docs/identity/ad-fs/deployment/configure-afederation-server-with-device-registration-service>

<https://technet.microsoft.com/en-us/windows-server-docs/identity/ad-fs/design/ad-fsrequirements>

NEW QUESTION 2

Note: This question is part of a series of questions that present the same scenario. Each question in the series contains a unique solution that might meet the stated goals. Some questions sets might have more than one correct solutions, while others might not have a correct solution.

After you answer a question in this section, you will NOT be able to return to it. As a result, these questions will not appear in the review screen.

Your network contains an Active Directory forest named contoso.com. The forest contains a member server named Server1 that runs Windows Server 2016. All domain controllers run Windows Server

2012 R2.

Contoso.com has the following configuration:

```
PS C:\> (Get-ADForest).ForestMode
Windows2008R2Forest

PS C:\> (Get-ADDomain).DomainMode
Windows2008R2Domain
PS C:\>
```

You plan to deploy an Active Directory Federation Services (AD FS) farm on Server1 and to configure device registration.

You need to configure Active Directory to support the planned deployment. Solution: You raise the forest (domain) functional level to Windows Server 2012 R2. Does this meet the goal?

- A. Yes
- B. No

Answer: B

Explanation:

For a Windows Server 2012 R2 AD FS server, this solution would work. However, new installations of AD FS 2016 require the Active Directory 2016 schema (minimum version 85).

References:

<https://technet.microsoft.com/en-us/windows-server-docs/identity/ad-fs/operations/configureddevice-based-conditional-access-on-premises>

NEW QUESTION 3

Note: This question is part of a series of questions that present the same scenario. Each question in the series contains a unique solution. Determine whether the solution meets the stated goals.

Your network contains an Active Directory domain named contoso.com. The domain contains a DNS server named Server1. All client computers run Windows 10. On Server1, you have the following zone configuration.

ZoneName	ZoneType	IsAutoCreated	IsDnsIntegrated	IsReverseLookupZone	IsSigned
_msdcs.contoso.com	Primary	False	True	False	False
0.in-addr.arpa	Primary	True	False	True	False
127.in-addr.arpa	Primary	True	False	True	False
255.in-addr.arpa	Primary	True	False	True	False
adatum.com	Forwarder	False	False	False	
contoso.com	Primary	False	True	False	False
fabrikam.com	Primary	False	True	False	True
TrustAnchors	Primary	False	True	False	False

You need to ensure that all of the client computers in the domain perform DNSSEC validation for the fabrikam.com namespace.

Solution: From a Group Policy object (GPO) in the domain, you add a rule to the Name Resolution Policy Table (NRPT). Does this meet the goal?

- A. Yes
- B. No

Answer: A

Explanation:

The NRPT stores configurations and settings that are used to deploy DNS Security Extensions (DNSSEC), and also stores information related to DirectAccess, a remote access technology.

Note: The Name Resolution Policy Table (NRPT) is a new feature available in Windows Server 2008 R2. The NRPT is a table that contains rules you can configure to specify DNS settings or special behavior for names or namespaces. When performing DNS name resolution, the DNS Client service checks the NRPT before sending a DNS query. If a DNS query or response matches an entry in the NRPT, it is handled according to settings in the policy. Queries and responses that do not match an NRPT entry are processed normally.

References:

[https://technet.microsoft.com/en-us/library/ee649207\(v=ws.10\).aspx](https://technet.microsoft.com/en-us/library/ee649207(v=ws.10).aspx)

NEW QUESTION 4

Note: This question is part of a series of questions that present the same scenario. Each question in the series contains a unique solution. Determine whether the solution meets the stated goals.

Your network contains an Active Directory domain named contoso.com. The domain contains a DNS server named Server1. All client computers run Windows 10. On Server1, you have the following zone configuration.

ZoneName	ZoneType	IsAutoCreated	IsDsIntegrated	IsReverseLookupZone	IsSigned
_msdcs.contoso.com	Primary	False	True	False	False
0.in-addr.arpa	Primary	True	False	True	False
127.in-addr.arpa	Primary	True	False	True	False
255.in-addr.arpa	Primary	True	False	True	False
adatun.com	Forwarder	False	False	False	
contoso.com	Primary	False	True	False	False
fabrikam.com	Primary	False	True	False	True
TrustAnchors	Primary	False	True	False	False

You need to ensure that all of the client computers in the domain perform DNSSEC validation for the fabrikam.com namespace.

Solution: From a Group Policy object (GPO) in the domain, you modify the Network List Manager Policies.

Does this meet the goal?

- A. Yes
- B. No

Answer: B

Explanation:

Network List Manager Policies are security settings that you can use to configure different aspects of how networks are listed and displayed on one computer or on many computers. Network List Manager Policies are not related to DNSSEC.

References:

[https://technet.microsoft.com/en-us/library/jj966256\(v=ws.11\).aspx](https://technet.microsoft.com/en-us/library/jj966256(v=ws.11).aspx) <https://technet.microsoft.com/nl-nl/itpro/windows/keep-secure/network-list-managerpolicies?f=255&MSPPErr=-2147217396>

The right way would be by using network policies:

Add-DnsServerClientSubnet -Name "subnet4" -IPv4Subnet 172.16.1.0/24 -PassThru

Add-DnsServerQueryResolutionPolicy -Name "blockqueries" -Action IGNORE -ClientSubnet "EQ,subnet4" -PassThru

See also: <https://technet.microsoft.com/en-us/windows-server-docs/networking/dns/deploy/apply-filters-on-dns-queries>

NEW QUESTION 5

HOTSPOT

You have a server named Server1 that runs Windows Server 2016. Server1 is a Hyper-V host. You have two network adapter cards on Server1 that are Remote Direct Memory Access (RDMA)- capable.

You need to aggregate the bandwidth of the network adapter cards for a virtual machine on Server1. The solution must ensure that the virtual machine can use the RDMA capabilities of the network adapter cards.

Which commands should you run first? To answer, select the appropriate options in the answer area.

Answer Area

Add-NetLbfoTeamNic

Add-VmNetworkAdapter

Add-VmSwitch

New-NetbfoTeam

New-VmSwitch

-Name Production -NetAdapterName "NIC 1", "NIC 2"

-EnableEmbeddedTeaming

-EnableIov

-EnablePacketDirect

\$true

- A. Mastered
- B. Not Mastered

Answer: A

Explanation:

A new feature of Windows Server 2016 is SET (Switch Embedded Teaming). Create a SET team
 You must create a SET team at the same time that you create the Hyper-V Virtual Switch with the New-VMSwitch Windows PowerShell command.
 When you create the Hyper-V Virtual Switch, you must include the new EnableEmbeddedTeaming parameter in your command syntax.
 In the following example, a Hyper-V switch named TeamedvSwitch with embedded teaming and two initial team members is created.
 New-VMSwitch -Name TeamedvSwitch -NetAdapterName "NIC 1","NIC 2"
 -EnableEmbeddedTeaming \$true References:
<https://technet.microsoft.com/en-gb/library/mt403349.aspx>

NEW QUESTION 6

You have an Active Directory domain that contains several Hyper-V hosts that run Windows Server 2016.
 You plan to deploy network virtualization and to centrally manage Datacenter Firewall policies. Which component must you install for the planned deployment?

- A. the Routing role service
- B. the Canary Network Diagnostics feature
- C. the Network Controller server role
- D. the Data Center Bridging feature

Answer: C

Explanation:

Using Windows PowerShell, the REST API, or a management application, you can use Network Controller to manage the following physical and virtual network infrastructure:
 References:
<https://technet.microsoft.com/en-us/library/dn859239.aspx>

NEW QUESTION 7

HOTSPOT

You have an Active Directory domain named Contoso.com. The domain contains Hyper-V hosts named Server1 and Server2 that run Windows Server 2016. The Hyper-V hosts are configured to use NVGRE for network virtualization.
 You have six virtual machines that are connected to an external switch. The virtual machines are configured as shown.

Virtual Machine Name	Hyper-V host	IP address	Netmask	GRE key
VM1	Server1	192.168.1.16	255.255.255.0	16
VM2	Server2	192.168.1.232	255.255.255.0	32
VM3	Server3	192.168.1.32	255.255.255.0	32
VM4	Server4	192.168.1.25	255.255.255.0	25
VM5	Server5	192.168.1.116	255.255.255.0	16
VM6	Server6	192.168.1.132	255.255.255.0	32

To which virtual machine or virtual machines can VM1 and VM3 connect? To answer, select the appropriate options in the answer area.

Answer Area

VM1 can connect to:

▼

VM2 only

VM5 only

VM2, VM3, VM5, and VM6 only

VM2, VM3, VM4, VM5, and VM6

VM3 can connect to:

▼

VM6 only

VM2, and VM6 only

VM4, VM5, and VM6 only

VM1, VM2, VM5, and VM6 only

VM1, VM2, VM4, VM5, and VM6

- A. Mastered
- B. Not Mastered

Answer: A

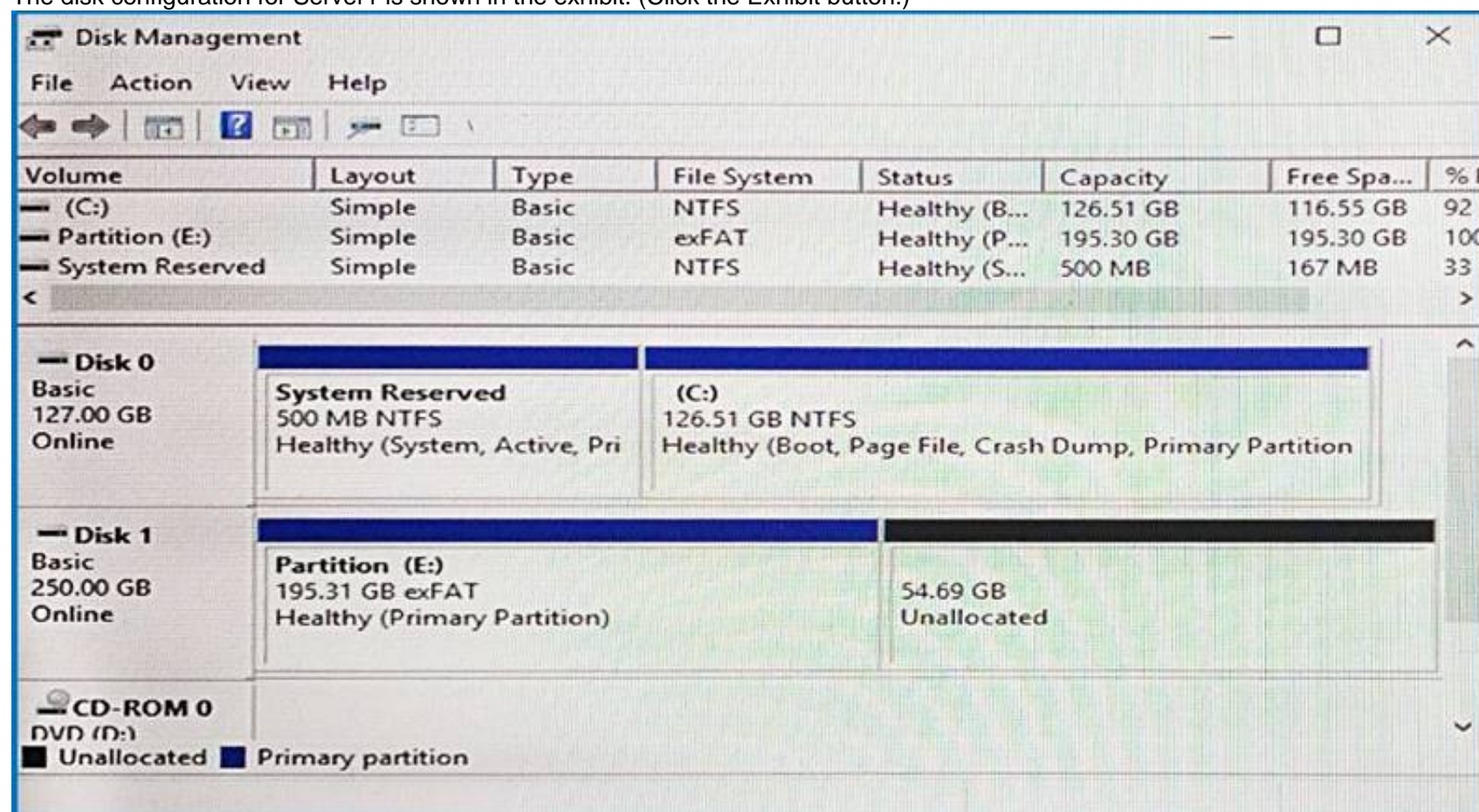
Explanation:

The GRE keys must match.
 To separate the traffic between the two virtualized networks, the GRE headers on the tunneled packets include a GRE Key that provides a unique Virtual Subnet ID for each virtualized network. References:
<https://blogs.technet.microsoft.com/keithmayer/2012/10/08/step-by-step-hyper-v-networkvirtualization-31-days-of-favorite-features-in-winserv-2012-part-8-of-31/>

NEW QUESTION 8

You have a server named Server1 that runs Windows Server 2016.

The disk configuration for Server1 is shown in the exhibit. (Click the Exhibit button.)



You add Server1 to a cluster.

You need to ensure that you can use Disk 1 for Storage Spaces Direct. What should you do first?

- A. Set Disk 1 to offline.
- B. Convert Partition (E:) to ReFS.
- C. Convert Disk 1 to a dynamic disk.
- D. Delete Partition (E:).

Answer: D

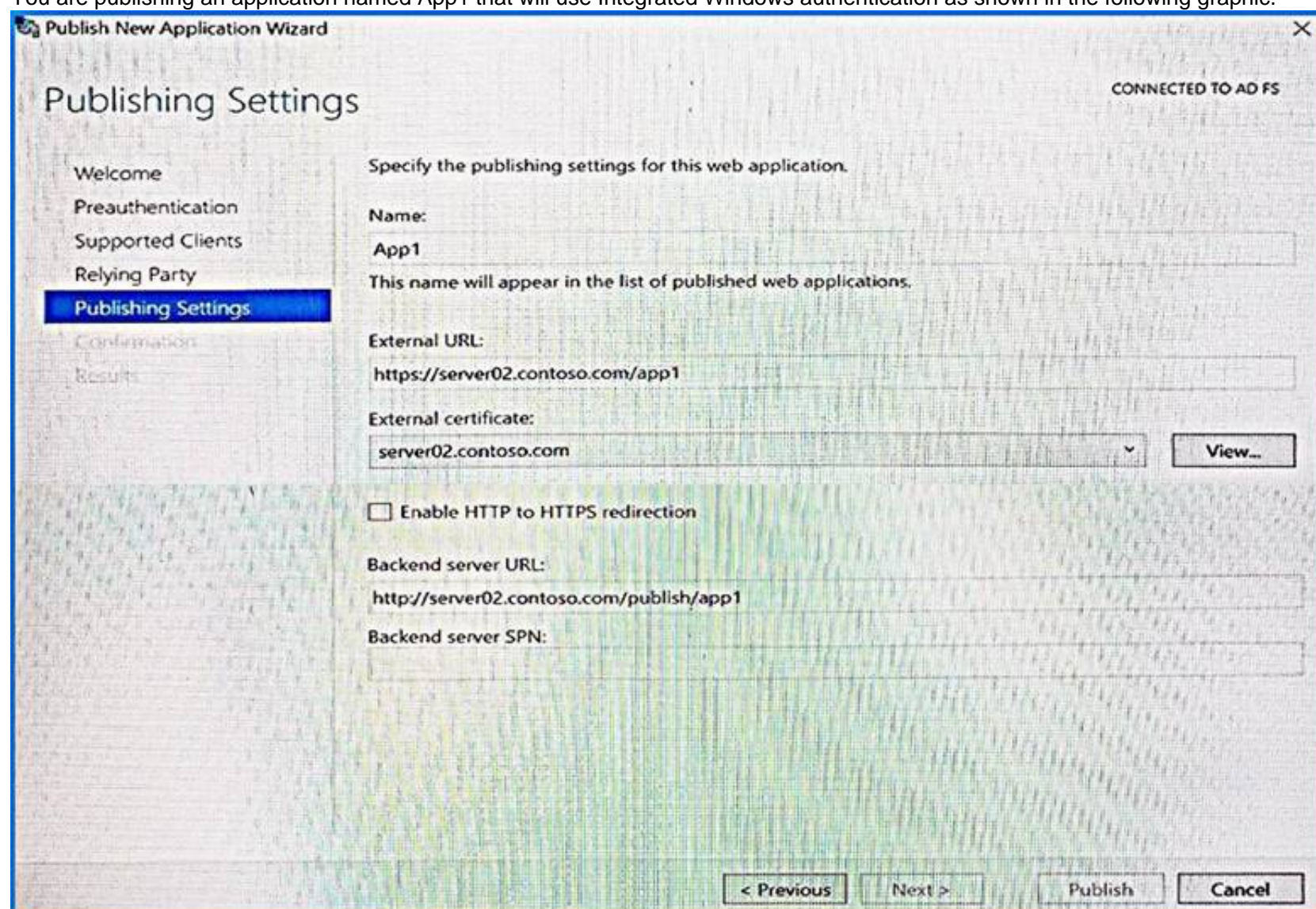
Explanation:

The disks used in Storage Spaces Direct cannot contain existing partitions.

NEW QUESTION 9

HOTSPOT

You have a server named Server1 that runs Windows Server 2016. Server1 has the Web Application Proxy role service installed. You are publishing an application named App1 that will use Integrated Windows authentication as shown in the following graphic.



Use the drop-down menus to select the answer choice that completes each statement based on the information presented in the graphic.

Answer Area

Before you can complete the wizard, you must [answer choice].

	▼
change the external certificate	
configure the Backend server SPN	
select Enable HTTP to HTTPS redirection	

To ensure that users can access App1 externally, you must change the External URL to [answer choice].

	▼
https://app1.contoso.com/app1	
http://server02.contoso.com/app1	
https://server02.contoso.com/publish/app1	

- A. Mastered
- B. Not Mastered

Answer: A

Explanation:

Publish an Integrated Windows authenticated-based Application for WebBrowser Clients Step 1: (configure the Backend server SPN – see first bulleted item below)

Before you begin, make sure that you have done the following: Step 2: http://server2.contoso.com/publish/app1

Use the same URL as the backend server URL.

Web Application Proxy can translate host names in URLs, but cannot translate path names. Therefore, you can enter different host names, but you must enter the same path name. For example, you can enter an external URL of https://apps.contoso.com/app1/ and a backend server URL of http://app-server/app1/. However, you cannot enter an external URL of https://apps.contoso.com/app1/ and a backend server URL of https://apps.contoso.com/internalapp1/. References: [https://technet.microsoft.com/en-us/library/dn383640\(v=ws.11\).aspx](https://technet.microsoft.com/en-us/library/dn383640(v=ws.11).aspx)

NEW QUESTION 10

You are configuring a Windows Server 2016 failover cluster in a workgroup.

Before installing one of the nodes, you run the ipconfig /all command and receive the following output.

```
Windows IP Configuration

Host Name.....: Server1
Primary Dns Suffix.....:
Node Type.....: Hybrid
IP Routing Enabled.....: No
WINS Proxy Enabled.....: No
DNS Suffix Search List.....:

Ethernet adapter Ethernet:

   Connection-specific DNS Suffix...:
   Description.....: Microsoft Hyper-V Network Adapter
   Physical Address.....: 00-15-5D-01-62-17
   DHCP Enabled.....: Yes
   Autoconfiguration Enabled.....: Yes
   Link-local IPv6 Address.....: fe80::7548:46d8:8ffc:d5ab%17(Preferred)
   IPv4 Address.....: 192.168.1.154(Preferred)
   Subnet Mask.....: 255.255.255.0
   Default Gateway.....: 192.168.1.10
   DHCPv6 IAID.....: 369099429
   DHCPv6 Client DUID.....: 00-01-00-01-1A-1D-5D-60-00-02-A5-4E-F4-85
   DNS Servers.....: 192.168.1.32
   NetBios over Tcpip.....: Disabled
```

You need to ensure that Server1 can be added as a node in the cluster. What should you do?

- A. Configure a DNS suffix.
- B. Enable NetBIOS over TCP/IP.
- C. Change the Node Type to Broadcast.
- D. Assign a static IP address

Answer: A

Explanation:

In addition to the pre-requisites of Single-domain clusters, there are additional pre-requisites for Multi-domain or Workgroup clusters in the Windows Server 2016 including Primary DNS Suffix Requirements.

Note: Failover Clusters can now be created in the following configurations: References:
<https://blogs.msdn.microsoft.com/clustering/2015/08/17/workgroup-and-multi-domain-clusters-inwindows-server-2016/>

NEW QUESTION 10

Your network contains an Active Directory forest named contoso.com. The forest contains a member server named Server1 that runs Windows Server 2016. Server1 is located in the perimeter network. You install the Active Directory Federation Services server role on Server1. You create an Active Directory Federation Services (AD FS) farm by using a certificate that has a subject name of sts.contoso.com. You need to enable certificate authentication from the Internet on Server1. Which two inbound TCP ports should you open on the firewall? Each correct answer presents part of the solution.

- A. 389
- B. 443
- C. 3389
- D. 8531
- E. 49443

Answer: BE

Explanation:

Configuring the following network services appropriately is critical for successful deployment of AD FS in your organization:
 Configuring Corporate Firewall References:
[https://technet.microsoft.com/en-us/library/dn554247\(v=ws.11\).aspx](https://technet.microsoft.com/en-us/library/dn554247(v=ws.11).aspx) https://technet.microsoft.com/en-us/windows-server-docs/identity/ad-fs/design/ad-fsrequirements#BKMK_7

NEW QUESTION 11

HOTSPOT

You have a server named Server1 that runs Windows Server 2016. Server1 has the Web Application Proxy role service installed. You publish an application named App1 by using the Web Application Proxy. You need to change the URL that users use to connect to App1 when they work remotely. Which command should you run? To answer, select the appropriate options in the answer area.

Answer Area

Set-WebApplicationProxyApplication	-ID 874A4543-7983-77A3-1E6D-1163E7419AC1
Set-WebApplicationProxyConfiguration	
Set-WebApplicationProxySslCertificate	

-ADFSUrl	https://SP.Contoso.com/
-BackendServerUrl	
-ExternalURL	

- A. Mastered
- B. Not Mastered

Answer: A

Explanation:

The Set-WebApplicationProxyApplication cmdlet modifies settings of a web application published through Web Application Proxy. Specify the web application to modify by using its ID. Note that the method of preauthentication cannot be changed. The cmdlet ensures that no other applications are already configured to use any specified ExternalURL or BackendServerURL.
 References:
<https://technet.microsoft.com/itpro/powershell/windows/wap/set-webapplicationproxyapplication>

NEW QUESTION 12

HOTSPOT

You have a server that runs Windows Server 2016.

```
PS G:\> Get-DedupVolume | ft
```

```
Volume           : G:
VolumeId         : \\?\Volume{2efa2f6e-db4a-4bb1-aa15-31ae8b073d16}\
Enabled          : True
UsageType        : Default
DataAccessEnabled : True
Capacity         : 923.87 GB
FreeSpace        : 393.98 GB
UsedSpace        : 529.89 GB
UnoptimizedSize  : 1008.7 GB
SavedSpace       : 478.82 GB
SavingsRate      : 47%
MinimumFileAgeDays : 3
MinimumFileSize  : 32768
NoCompress       : False
ExcludeFolder    :
ExcludeFileType  :
ExcludeFileTypeDefault : {edb, jrs}
NoCompressionFileType : {asf, mov, wma, wmv...}
ChunkRedundancyThreshold : 100
Verify          : False
OptimizeInUseFiles : False
OptimizePartialFiles : False
```

```
PS G:\> Get-Date
```

```
Tuesday, June 21, 2016 5:29:58 PM
```

```
PS G:\DC01> dir | select Mode,LastWriteTime,Length,Name | ft -AutoSize
```

Mode	LastWriteTime	Length	Name
d----	2/18/2015 11:54:56 AM		Snapshots
d----	2/18/2015 12:11:42 PM		Virtual Machines
-a---	6/21/2016 5:27:40 PM	51539608064	DC01.vhd
-a---	6/18/2016 7:00:00 AM	12400	Readme.txt
-a---	1/5/2015 7:00:00 AM	3939235840	Software.iso

For each of the following statements, select Yes if the statement is true. Otherwise, select No.

Answer Area

Statements	Yes	No
DC01.vhd will be processed by deduplication.	<input type="radio"/>	<input type="radio"/>
Readme.txt will be processed by deduplication.	<input type="radio"/>	<input type="radio"/>
Software.iso will be processed by deduplication.	<input type="radio"/>	<input type="radio"/>

- A. Mastered
- B. Not Mastered

Answer: A

Explanation:

Box 1: No

The LastWriteTime of DC01.vhd was on June 21, 2016, and the current date is also June 21, 2016, but the MinimumFileAgeDays is 3.

MinimumFileAgeDays specifies a number of days. The deduplication engine optimizes files that users have not accessed in the number of days that you specify. If the last access time is not available, then the deduplication engine uses the last modified time.

Box 2: No

The size of Readme.txt, 12400bytes, is less than the Minimum File size, 32768 bytes. MinimumFileSize specifies the minimum size threshold, in bytes, for files that are optimized. The deduplication engine does not optimize files that do not meet the minimum threshold.

Box 3: Yes

The Software ISO file is both large and old enough for deduplication. References:

<https://technet.microsoft.com/en-us/library/hh848438.aspx>

NEW QUESTION 15

Your network contains an Active Directory domain named contoso.com. The domain contains two servers named Server1 and Server2 that run Windows Server 2016. The servers have the same hardware configuration.

You need to asynchronously replicate volume F: from Server1 to Server2. What should you do?

- A. Install the Failover Clustering feature and create a new cluster resource group.
- B. Run Set-DfsrServiceConfiguration and specify the –RPCPort parameter.
- C. Run New-SRPartnership and specify the –ReplicationMode parameter.
- D. Install the Failover Clustering feature and use Cluster Shared Volumes (CSV).

Answer: C

Explanation:

Run New-SRPartnership and specify the –ReplicationMode parameter. References:

<https://www.starwindsoftware.com/blog/how-to-configure-storage-replication-using-windowsserver-2016-part-2>

NEW QUESTION 19

You have a server named Server1 that runs Windows Server 2016. The disks on Server1 are configured as shown in the following table:

Volume	Type	File System	Capacity
C:	Attached locally	NTFS	150 GB
D:	Attached locally	exFAT	100 GB
E:	Attached locally	NTFS	20 GB
F:	Attached locally	ReFS	1 TB
G:	iSCSI LUN	NTFS	2 TB

Windows Server 2016 is installed in C:\Windows.

On which two volumes can you enable data deduplication? Each correct answer presents a complete solution.

- A. C:
- B. D:
- C. E:
- D. F:
- E. G:

Answer: CE

Explanation:

Volumes that are candidates for deduplication must conform to the following requirements: References:

[https://technet.microsoft.com/en-us/library/hh831700\(v=ws.11\).aspx](https://technet.microsoft.com/en-us/library/hh831700(v=ws.11).aspx)

NEW QUESTION 22

Note: This question is part of a series of questions that use the same or similar answer choices. An answer choice may be correct for more than one question in the series. Each question is independent of the other questions in this series. Information and details provided in a question apply only to that question.

You have a Hyper-V host named Server1 that runs Windows Server 2016. You plan to deploy several shielded virtual machines on Server1.

You deploy a Host Guardian on a new server.

You need to ensure that Server1 can host shielded virtual machines. What should you do first?

- A. the Mount-VHD cmdlet
- B. the Diskpart command
- C. the Set-VHD cmdlet
- D. the Set-VM cmdlet
- E. the Set-VMHost cmdlet
- F. the Set-VMProcessor cmdlet
- G. the Install-WindowsFeature cmdlet
- H. the Optimize-VHD cmdlet

Answer: G

Explanation:

Installing Host Guardian Service (HGS) Role

On a machine running Windows Server 2016, install the Host Guardian Service role using Server Manager or Windows PowerShell.

From the command line issue the following command:

Install-WindowsFeature HostGuardianServiceRole –IncludeManagementTools References:

<https://blogs.technet.microsoft.com/datacentersecurity/2016/03/16/windows-server-2016-andhost-guardian-service-for-shielded-vms/>

NEW QUESTION 27

HOTSPOT

Your network contains an Active Directory domain named contoso.com. The domain contains three servers named Server1, Server2, and Server3 that run Windows Server 2016.

Server1 has IP Address Management (IPAM) installed. Server2 and Server3 have the DHCP Server role installed and have several DHCP scopes configured. The IPAM server retrieves data from Server2 and Server3.

A domain user named User1 is a member of the groups shown in the following table.

Server name	Group
Server2	DHCP Administrators
Server3	DHCP Users

On Server1, you create a security policy for User1. The policy grants the IPAM DHCP Scope Administrator Role with the \Global access scope to the user. Which actions can User1 perform? To answer, select the appropriate options in the answer area.

Answer Area

From Server Manager on Server1, User1 can modify the description of the DHCP scopes:

▼

☐ On Server2 only
 ☐ On Server3 only
 ☐ On both Server2 and Server3

From Server Manager on Server1, User1 can create a new DHCP scope:

▼

☐ On Server2 only
 ☐ On Server3 only
 ☐ On both Server2 and Server3

- A. Mastered
- B. Not Mastered

Answer: A

Explanation:

User1 is using Server Manager, not IPAM to perform the administration. Therefore, only the “DHCP Administrators” permission on Server2 and the “DHCP Users” permissions on Server3 are applied. The permissions granted through membership of the “IPAM DHCP Scope Administrator Role” are not applied when the user is not using the IPAM console.

NEW QUESTION 31

HOTSPOT

Your network contains an Active Directory domain named contoso.com. The domain contains four servers named Server1, Server2, Server3, and Server4 that run Windows Server 2016.

Server1 has IP Address Management (IPAM) installed. Server2, Server3, and Server 4 have the DHCP Server role installed. IPAM manages Server2, Server3, and Server4.

A domain user named User1 is a member of the groups shown in the following table.

Server name	Group
Server1	IPAM Users
Server2	DHCP Administrators
Server3	DHCP Users
Server4	Users

Which actions can User1 perform? To answer, select the appropriate options in the answer area.

Answer Area

Actions	Can be performed by User1	Cannot be performed by User1
Use the DHCP console on Server1 to create a DHCP scope on Server2.	<input type="radio"/>	<input type="radio"/>
Use the DHCP console on Server1 to create a DHCP scope on Server3.	<input type="radio"/>	<input type="radio"/>
Use the IPAM node of Server Manager on Server1 to create a DHCP scope on Server4.	<input type="radio"/>	<input type="radio"/>

- A. Mastered
 B. Not Mastered

Answer: A

Explanation:

Box 1: Can be performed by User1

DHCP Administrators can create DHCP scopes. Box 2: Cannot be performed by User1

DHCP Users cannot create scopes. Box 3: Cannot be performed by User1 IPAM users cannot creates copes. References:

[https://technet.microsoft.com/en-us/library/dn741281\(v=ws.11\).aspx#create_access_scope](https://technet.microsoft.com/en-us/library/dn741281(v=ws.11).aspx#create_access_scope)

NEW QUESTION 36

DRAG DROP

You have a network that contains several servers that run Windows Server 2016.

You need to use Desired State Configuration (DSC) to configure the servers to meet the following requirements:

How should you configure the DSC recourses? To answer, drag the appropriate values to the correct locations. Each value may be used once, more than once, or not at all. You may need to drag the split bar between panes or scroll to view content.

Values

Name	Present
Running	Service
Source	Stopped
WindowsFeature	WindowsProcess

Answer Area

Value WebServerRole

```
{
  Ensure = " Value "
  Name = "Web-Server"
}
```

Value WorldWideWebPublising

```
{
  Name = "W3SVC"
  StartupType = "Automatic"
  State = " Value "
}
```

- A. Mastered
 B. Not Mastered

Answer: A

Explanation:

Box 1: WindowsFeature

The WindowsFeature resource in Windows PowerShell Desired State Configuration (DSC) provides a mechanism to ensure that roles and features are added or removed on atarget node.

Box 2: Present

The Ensure Property indicates if the role or feature is added. To ensure that the role or feature is added, set this property to "Present" To ensure that the role or feature is removed, set the property to "Absent".

Example:

WindowsFeature RoleExample

```
{
  Ensure = "Present"
  # Alternatively, to ensure the role is uninstalled, set Ensure to "Absent" Name = "Web-Server"# Use the Name property from Get-WindowsFeature
}
```

Box 3: Service

The Service resource in Windows PowerShell Desired State Configuration (DSC) provides a mechanism to manage services on the target node.

Box 4: Running

The State property indicates the state, either Running or Stopped, you want to ensure for the service. References:

<https://msdn.microsoft.com/en-us/powershell/dsc/windowsfeatureresource> <https://msdn.microsoft.com/en-us/powershell/dsc/serviceresource>

NEW QUESTION 40

You deploy a Hyper-V server named Server1 in an isolated test environment. The test environment is prevented from accessing the Internet. Server1 runs the Datacenter edition of Windows Server 2016. You plan to deploy the following guest virtual machines on the server:

Quantity	Operating system	Domain member
10	Windows Server 2012 R2	Yes
4	Windows Server 2016	No
5	Windows Server 2016	Yes

Which activation model should you use for the virtual machines?

- A. Multiple Activation Key (MAK)
- B. Key Management Service (KMS)
- C. Original Equipment Manufacturer (OEM) key
- D. Automatic Virtual Machine Activation (AVMA)

Answer: D

Explanation:

[https://technet.microsoft.com/en-us/library/dn303421\(v=ws.11\).aspx](https://technet.microsoft.com/en-us/library/dn303421(v=ws.11).aspx)

AVMA lets you install virtual machines on a properly activated Windows server without having to manage product keys for each individual virtual machine, even in disconnected environments. AVMA binds the virtual machine activation to the licensed virtualization server and activates the virtual machine when it starts up. AVMA also provides real-time reporting on usage and historical data on the license state of the virtual machine. Reporting and tracking data is available on the virtualization server.

NEW QUESTION 43

You have two servers named Server1 and Server2. A firewall exists between Server1 and Server2. Both servers run Windows Server Update Services (WSUS). Server1 downloads updates from Microsoft update. Server2 must synchronize updates from Server1. Which port should to open on the firewall?

- A. 80
- B. 443
- C. 3389
- D. 8530

Answer: D

NEW QUESTION 45

You have a server named Server1 that runs Windows Server 2016. Server1 is a Hyper-V host that hosts a virtual machine named VM1. Server1 has three network adapter cards that are connected to virtual switches named vSwitch1, vSwitch2 and vSwitch3. You configure NIC Teaming on VM1 as shown in the exhibit. (Click the Exhibit button.)

NIC Teaming

New team

Team name:

VM1 NIC Team

Member adapters:

In Team	Adapter	Speed	State	Reason
<input type="checkbox"/>	Ethernet	10 Gbps		
<input checked="" type="checkbox"/>	Ethernet 2	10 Gbps		
<input checked="" type="checkbox"/>	Ethernet 3	10 Gbps		

Additional properties

Teaming mode: Switch Independent

Load balancing mode: Address Hash

Standby adapter: None (all adapters Active)

Primary team interface: VM1 NIC Team: Default VLAN

Some settings are not available for servers running in a guest virtual machine.

OK Cancel

You need to ensure that VM1 will retain access to the network if a physical network adapter card fails on Server1. What should you do?

- A. From the properties of the NIC team on VM1, change the load balancing of the NIC team.
- B. From Hyper-V Manager on Server1, modify the settings of VM1.
- C. From Windows PowerShell on Server1, run the Set- VmNetworkAdapterFailoverConfigurationcmdlet.
- D. From Hyper-V Manager on Server1, modify the properties of vSwitch1.

Answer: B

Explanation:

You can configure NIC teaming in the Guest OS; however, before NIC teaming will work in a virtual machine, you need to enable NIC teaming in the Advanced Features section of the VM settings.

NEW QUESTION 50

DRAG DROP

You have a physical server named Server1 that runs Windows Server 2016. Server1 is a Hyper-V host. On Server1, you create a virtual machine named VM1 that runs Windows Server 2016.

You plan to install the Hyper-V server role on VM1.

You need to ensure that you can configure VM1 to host virtual machines.

How should you complete the Windows PowerShell script? To answer, drag the appropriate values to the correct targets. Each value may be used once, more than once, or not at all. You may need to drag the split bar between panes or scroll to view content.

Values

\$false

\$true

\$null

Answer Area

Set-VMProcessor -VMName VM1 -ExposeVirtualizationExtensions Values -Count 2

Set-VMemory -VMName -VM1 -DynamicMemoryEnabled Values

Get-VMNetworkAdapter -VMName VM1 | Set-VMNetworkAdapter -MacAddressSpoofing on

- A. Mastered
- B. Not Mastered

Answer: A

Explanation:

Values

\$false

\$true

\$null

Answer Area

Set-VMProcessor -VMName VM1 -ExposeVirtualizationExtensions \$true -Count 2

Set-VMMemory -VMName -VM1 -DynamicMemoryEnabled \$false

Get-VMNetworkAdapter -VMName VM1 | Set-VMNetworkAdapter -MacAddressSpoofing on

NEW QUESTION 53

HOTSPOT

Your network contains an Active Directory domain named contoso.com. The domain contains two servers named Server1 and Server2 that run Windows Server 2016. Server1 has Microsoft System Center 2016 Virtual Machine Manager (VMM) installed. Server2 has IP Address Management (IPAM) installed. You create a domain user named User1. You need to integrate IPAM and VMM. VMM must use the account of User1 to manage IPAM. The solution must use the principle of least privilege. What should you do on each server? To answer, select the appropriate options in the answer area.

Answer Area

On Server1:

Create a Run as Account that uses User1

Add User1 to the Fabric Administrator user role

Add User1 to the Remote Management Users group

On Server2:

Add User1 to IPAM Administrator Role

Add User1 to IPAM ASM Administrator Role

Add User1 to IPAM MSM Administrator Role

- A. Mastered
- B. Not Mastered

Answer: A

Explanation:

References:
[https://technet.microsoft.com/en-us/library/dn783349\(v=ws.11\).aspx](https://technet.microsoft.com/en-us/library/dn783349(v=ws.11).aspx)

NEW QUESTION 56

HOTSPOT

You have a server named VM1. VM1 is a virtual machine on a Hyper-V host that runs Windows Server 2016. You need to create a checkpoint that includes the virtual machine memory state of VM1. What commands should you run? To answer, select the appropriate options in the answer area.

Answer Area

Checkpoint-VM
Get-VMSnapshot
Set-VM

-Name VM1 -CheckpointType

Production
ProductionOnly
Standard

Checkpoint-VM
Export-VMSnapshot
Get-VHDSnapshot

-Name VM1 -SnapshotName Snapshot1

- A. Mastered
- B. Not Mastered

Answer: A

Explanation:

Answer Area

Checkpoint-VM
Get-VMSnapshot
Set-VM

-Name VM1 -CheckpointType

Production
ProductionOnly
Standard

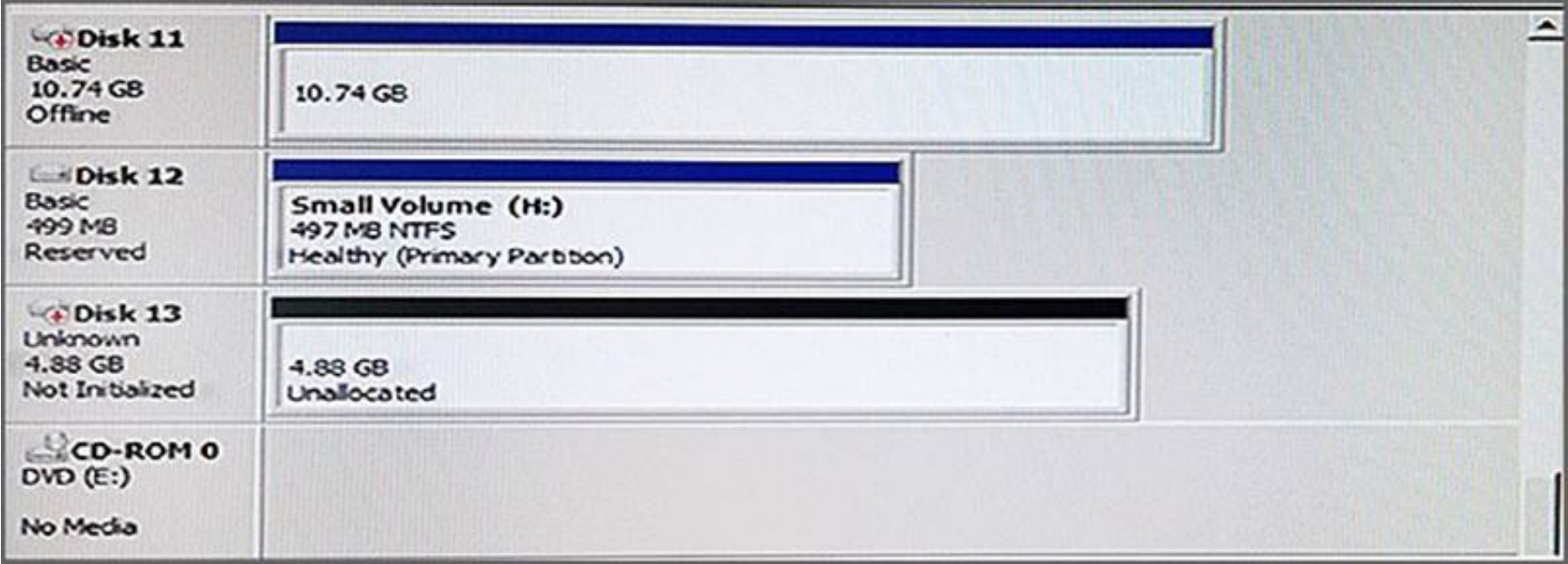
Checkpoint-VM
Export-VMSnapshot
Get-VHDSnapshot

-Name VM1 -SnapshotName Snapshot1

NEW QUESTION 59

HOTSPOT

You have a server named Server1 that runs Windows Server 2016 and has a Hyper-V server role installed. You open Disk Management on Server1 as shown in the following graphic.



You plan to configure Disk 13 as a pass-through disk for a generation 1 virtual machine. Use the drop-down menus to select the answer choice that completes each statement based on the information presented in the graphic.

Answer Area

The status of Disk 13 must be set to [answer choice].

▼

Initializing

Offline

Online

If the virtual machine uses Disk 13 as the system partition, Disk 13 must be attached to [answer choice] in Hyper-V Manager.

▼

a Fibre Channel adapter

an IDE controller

a SCSI controller

- A. Mastered
- B. Not Mastered

Answer: A

Explanation:

Answer Area

The status of Disk 13 must be set to [answer choice].

▼

Initializing

Offline

Online

If the virtual machine uses Disk 13 as the system partition, Disk 13 must be attached to [answer choice] in Hyper-V Manager.

▼

a Fibre Channel adapter

an IDE controller

a SCSI controller

NEW QUESTION 64

HOTSPOT

You have a Hyper-V host that runs Windows Server 2016. The Hyper-V host has a virtual machine named VM1. You have a VHD named VHD1.vhdx that has a generalized image of Windows Server 2016. You plan to create multiple virtual machines that will use the generalized image. You need to create differencing disks based on VHD1.vhdx. What command should you run? To answer, select the appropriate options in the answer area.

Answer Area

▼

Add-VMHardDiskDrive

New-VHD

Set-VHD

Set-VMHardDiskDrive

▼

-ParentPath

-SourceDisk

-Path "C:\VHDs\VHD1Diff.VHDX"

"C:\VHDs\VHD1.VHDX" - Differencing

- A. Mastered
- B. Not Mastered

Answer: A

Explanation:

References:

<https://technet.microsoft.com/en-us/itpro/powershell/windows/hyper-v/new-vhd> <https://blogs.technet.microsoft.com/canitpro/2013/05/28/step-by-step-creating-differencing-disks/>

NEW QUESTION 65

HOTSPOT

You have a DNS server named Server1.

The forwarders are configured as shown in the Forwarders exhibit. (Click the Exhibit button.)

SERVER1 Properties

Debug Logging | Event Logging | Monitoring | Security
 Interfaces | **Forwarders** | Advanced | Root Hints

Forwarders are not available because this server does not use recursion.

IP Address	Server FQDN
168.63.129.16	<Unable to resolve>

☒ Use root hints if no forwarders are available Edit...

Note: If conditional forwarders are defined for a given domain, they will be used instead of server-level forwarders. To create or view conditional forwarders, navigate to the Conditional Forwarders node in the scope tree.

OK Cancel Apply Help

The Advanced Settings are configured as shown in the Advanced exhibit. (Click the Exhibit button.)

SERVER1 Properties

Debug Logging | Event Logging | **Monitoring** | Security
 Interfaces | Forwarders | **Advanced** | Root Hints

Server version number:
 10.0 14300 (0x37dc)

Server options:

- ☒ Disable recursion (also disables forwarders)
- ☐ Enable BIND secondaries
- ☐ Fail on load if bad zone data
- ☒ Enable round robin
- ☒ Enable netmask ordering
- ☒ Secure cache against pollution

Name checking: Multibyte (UTF8) ▼

Load zone data on startup: From Active Directory and registry ▼

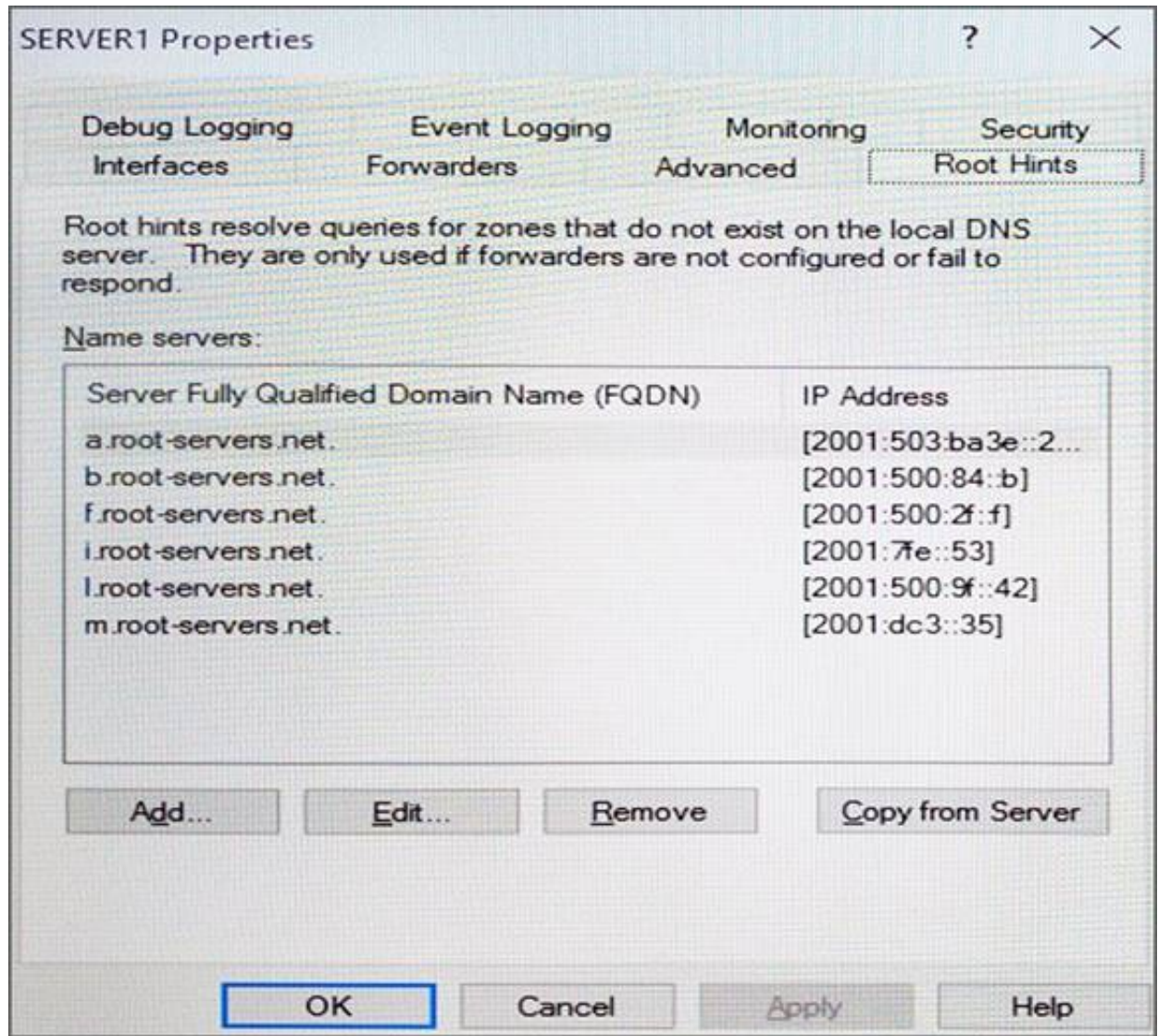
☐ Enable automatic scavenging of stale records

Scavenging period: 0 days ▼

Reset to Default

OK Cancel Apply Help

The Root Hints are configured as shown in the Root Hints exhibit. (Click the Exhibit button.)



Server1 does not contain any DNS zones.
For each of the following statements, select Yes if the statement is true. Otherwise, select No.

Answer Area

Statements	Yes	No
Server1 can resolve the names of hosts that are located on the Internet.	<input type="radio"/>	<input type="radio"/>
From Server1 Properties, if you perform a test from the Monitoring tab, the recursive test will pass.	<input type="radio"/>	<input type="radio"/>
Server1 is configured as a root DNS server.	<input type="radio"/>	<input type="radio"/>

- A. Mastered
- B. Not Mastered

Answer: A

Explanation:
Recursion is disabled so internet hosts cannot be resolved. The recursive test fails because recursion is disabled.
Server1 is not configured as a root server. The forwarders list would be greyed out if it was.

NEW QUESTION 69
You have a server named Server1 that runs Windows Server 2016. You need to install the DNS Server role on Server1. What should you run?

- A. the Install-Package cmdlet
- B. the setup.exe command
- C. the dnscmd.exe command
- D. the Enable-WindowsOptionalFeature cmdlet

Answer: D

NEW QUESTION 71
DRAG DROP
Your network contains an Active Directory domain. The domain contains two domain controllers named DC1 and DC2. DC2 is a virtual machine that is hosted on a Hyper-V host named HyperV1. DC1 holds the PDC emulator operations master role.
You need to create a new domain controller named DC3 by using domain controller cloning. Which five actions should you perform in sequence before you can import the cloned virtual machine? To answer, move the appropriate actions from the list of actions to the answer area and arrange them in the correct order.
NOTE: More than one order of answer choices is correct. You will receive credit for any of the correct orders you select.

Actions

Stop DC2.

Run the **New-ADDCCloneConfigFile** cmdlet.

Modify the group membership of DC3.

Export DC2.

Run the **Get-ADDCCloningExcludedApplicationList** cmdlet.

Modify the group membership of DC2.

Answer Area



- A. Mastered
- B. Not Mastered

Answer: A

Explanation:

Actions

Stop DC2.

Run the **New-ADDCCloneConfigFile** cmdlet.

Modify the group membership of DC3.

Export DC2.

Run the **Get-ADDCCloningExcludedApplicationList** cmdlet.

Modify the group membership of DC2.

Answer Area

Modify the group membership of DC2.

Run the **Get-ADDCCloningExcludedApplicationList** cmdlet.



Run the **New-ADDCCloneConfigFile** cmdlet.

Stop DC2.

Export DC2.



NEW QUESTION 75

Note: This question is part of a series of questions that use the same or similar answer choices. An answer choice may be correct for more than one question in

the series. Each question is independent of the other questions in this series. Information and details provided in a question apply only to that question.
You have a two-node Hyper-V cluster named Cluster1. A virtual machine named VM1 runs on Cluster1.
You need to configure monitoring of VM1. The solution must move VM1 to a different node if the Print Spooler service on VM1 stops unexpectedly.
Which tool should you use?

- A. the clussvc.exe command
- B. the cluster.exe command
- C. the Computer Management snap-in
- D. the configurehyperv.exe command
- E. the Disk Management snap-in
- F. the Failover Cluster Manager snap-in
- G. the Hyper-V Manager snap-in
- H. the Server Manager app

Answer: F

NEW QUESTION 77

You have a server that runs Windows Server 2016.
The server contains a storage pool named Pool1. Pool1 contains five physical disks named Disk1, Disk2, Disk3, Disk4, and Disk5.
A virtual disk named VirtualDisk1 is stored in Pool1. VirtualDisk1 uses the parity storage layout. Disk3 fails.
You need to remove Disk3 from Pool1.
Which two commands should you run? Each correct answer presents part of the solution.

- A. Update-StoragePool –FriendlyName Pool1
- B. Set-ResiliencySetting –StoragePool Pool1 –PhysicalDiskRedundancyDefault 4
- C. Reset-PhysicalDisk –FriendlyName Disk3
- D. Remove-PhysicalDisk –FriendlyName Disk3
- E. Set-PhysicalDisk –FriendlyName Disk3 –Usage Retired

Answer: DE

NEW QUESTION 82

You have an application named App1. App1 is distributed to multiple Hyper-V virtual machines in a multitenant environment.
You need to ensure that the traffic is distributed evenly among the virtual machines that host App1. What should you include in the environment?

- A. Network Controller and Windows Server Software Load Balancing (SLB) nodes
- B. an RAS Gateway and Windows Server Software Load Balancing (SLB) nodes
- C. an RAS Gateway and Windows Server Network Load Balancing (NLB) nodes
- D. Network Controller and Windows Server Network Load Balancing (NLB) nodes

Answer: A

Explanation:

References:
<https://technet.microsoft.com/en-us/library/mt632286.aspx>

NEW QUESTION 87

Your company has 10 offices. Each office has a local network that contains several Hyper-V hosts that run Windows Server 2016. All of the offices are connected by high speed, low latency WAN links. You need to ensure that you can use QoS policies for Live Migration traffic between the offices. Which component should you install?

- A. the Canary Network Diagnostics feature
- B. the Network Controller server role
- C. the Data Center Bridging feature
- D. the Multipath I/O feature
- E. the Routing role service

Answer: C

NEW QUESTION 91

You have a server named Server1 that runs Windows Server 2016.
Server1 has two network cards. One network card connects to your internal network and the other network card connects to the Internet.
You plan to use Server1 to provide Internet connectivity for client computers on the internal network.
You need to configure Server1 as a network address translation (NAT) server. Which server role or role service should you install on Server1 first?

- A. Network Controller
- B. Web Application Proxy
- C. Routing
- D. DirectAccess and VPN (RAS)

Answer: C

NEW QUESTION 94

Note: This question is part of a series of questions that use the same or similar answer choices. An answer choice may be correct for more than one question in the series. Each question is independent of the other questions in this series. Information and details provided in a question apply only to that question.
Your network contains Windows and non-Windows devices.
You have a DHCP server named Server1 that has an IPv4 scope named Scope1.
You need to prevent a client computer that uses the same name as an existing registration from updating the registration.

What should you do?

- A. From the properties of Scope1, modify the Conflict detection attempts setting.
- B. From the properties of Scope1, configure Name Protection.
- C. From the properties of IPv4, configure the bindings.
- D. From IPv4, create a new filter.
- E. From the properties of Scope1, create an exclusion range.
- F. From IPv4 run the DHCP Policy Configuration Wizard.
- G. From Control Panel, modify the properties of Ethernet.
- H. From Scope1, create a reservatio

Answer: F

NEW QUESTION 99

A company named Contoso, Ltd has five Hyper-V hosts that are configured as shown in the following table.

Hyper-V host name	Configuration
Server1	Windows Server 2012 R2 and an Intel Xeon E7 processor
Server2	Windows Server 2012 R2 and an Intel i7 processor
Server3	Windows Server 2016 and an Intel i7 processor
Server4	Windows Server 2016 and an AMD Opteron processor
Server5	Windows Server 2016 and an Intel Xeon E7 processor

What are two valid live migration scenarios for virtual machines in your environment? Each correct answer presents a complete solution.

- A. from Server4 to Server5
- B. from Server1 to Server5
- C. from Server3 to Server4
- D. from Server2 to Server3

Answer: BD

Explanation:

References:

https://docs.microsoft.com/en-us/windows-server/virtualization/hyper-v/deploy/set-up-hosts-forlive-migration-without-failover-clustering

NEW QUESTION 101

DRAG DROP

You have a server named Server1 that runs Windows Server 2016.

On Server1 you use the Basic template to create a new Data Collector Set named CollectorSet1. You need to configure data collection for the performance counters. The configuration must support the following requirements:

? Data collection must run on a schedule.

? Data collection must stop if there is less than 1 GB of free disk space.

What should you modify to meet each requirement? To answer, drag the appropriate settings to the correct requirements. Each setting may be used once, more than once, or not at all. You may need to drag the Split bar between panes or scroll to view content.

Setting to Modify

The Data Manager settings of CollectorSet1

The properties of CollectorSet1

The properties of the performance counter data collector

Answer Area

Data collection must run on a schedule:
Setting to modify

Data collection must stop if there is less than 1 GB of free disk space:
Setting to modify

- A. Mastered
- B. Not Mastered

Answer: A

Explanation:

Setting to Modify

The Data Manager settings of CollectorSet1

The properties of CollectorSet1

The properties of the performance counter data collector

Answer Area

Data collection must run on a schedule:
The properties of CollectorSet1

Data collection must stop if there is less than 1 GB of free disk space:
The properties of the performance counter data collector

NEW QUESTION 106

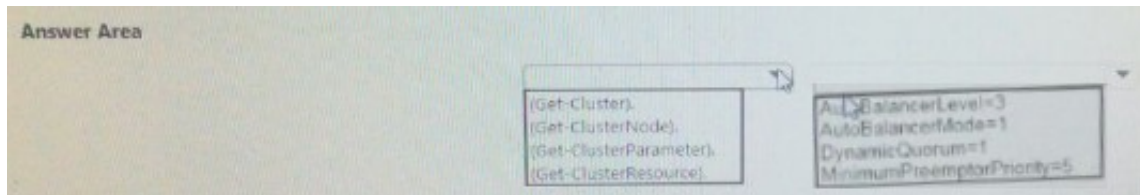
HOT SPOT

You have four Hyper-V hosts named Server1, Server2, Server3 and Server4 that run Windows Server 2016. The hosts are nodes in a failover cluster.

The failover cluster is configured to balance virtual machines when a node is more than 80 percent loaded.

You need to configure the failover cluster to balance the virtual machines when the load of a node is more than five percent higher than the average for the nodes.

Which command should you run? To answer, select the appropriate options in the answer area.



- A. Mastered
- B. Not Mastered

Answer: A

Explanation:

(Get-Cluster).AutoBalancerLevel = <value> AutoBalancerLevel Aggressiveness Behavior 1(default)LowMove when host is more than 80% loaded 2MediumMove when host is more than 70% loaded 3HighAverage nodes and move when host is more than 5% above average References:
<https://blogs.msdn.microsoft.com/clustering/2016/04/29/failover-cluster-node-fairness-inwindows-server-2016/>
<https://www.vembu.com/blog/hyper-v-virtual-machine-load-balancing/>

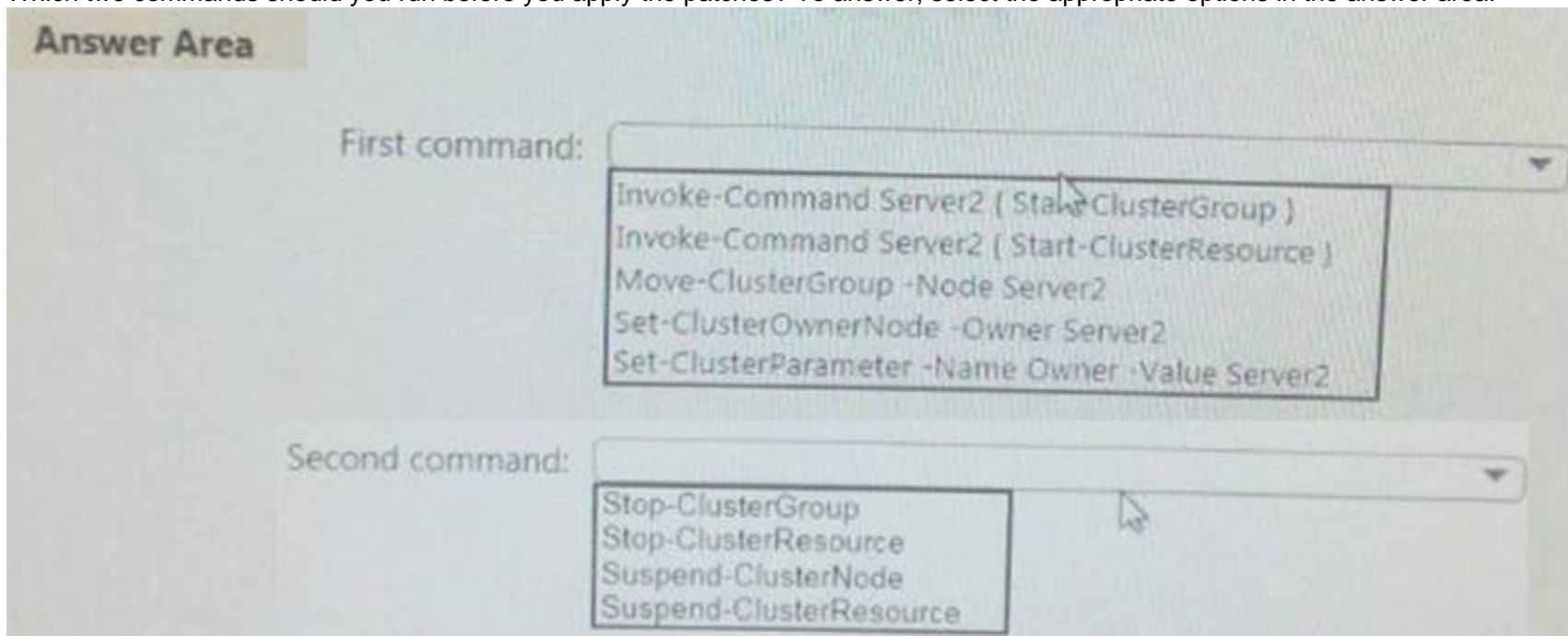
NEW QUESTION 111

HOT SPOT

You have a Windows Server 2016 failover cluster that contains two servers named Server1 and Server2.

You need to apply patches to Server1.

Which two commands should you run before you apply the patches? To answer, select the appropriate options in the answer area.



- A. Mastered
- B. Not Mastered

Answer: A

Explanation:

References:

<https://support.microsoft.com/en-us/help/174799/how-to-update-windows-server-failover-clusters> <https://technet.microsoft.com/en-us/library/ee461003.aspx>

NEW QUESTION 113

Note: This question is part of a series of questions that present the same scenario. Each question in the series contains a unique solution that might meet the stated goals. Some question sets might have more than one correct solution, while others might not have a correct solution.

After you answer a question in this sections, you will NOT be able to return to it. As a result, these questions will not appear in the review screen.

Your network contains an Active Directory domain named contoso.com

You need to create a Nano Server image named Nano1 that will be used as a virtualization host. The windows server 2016 source files are located in drive D.

Solution: You run the following cmdlet.

New-NanoServerImage -Edition Datacenter -DeploymentType Host -Package Microsoft- NanoServer-SCVMM-Package -MediaPath 'D:\' -TargetPath

C:\nano1\Nano1.wim -ComputerName Nano1 -Domainname Contoso.com

Does this meet the goal?

- A. Yes
- B. NO

Answer: A

NEW QUESTION 116

Note: This question is part of a series of questions that present the same scenario. Each question in the series contains a unique solution that might meet the stated goals. Some question sets might have more than one correct solution, while others might not have a correct solution.

After you answer a question in this sections, you will NOT be able to return to it. As a result, these questions will not appear in the review screen.

Your network contains an Active Directory domain named contoso.com

You need to create a Nano Server image named Nano1 that will be used as a virtualization host. The windows server 2016 source files are located in drive D.

Solution: You run the following cmdlet.

New-NanoServerImage -Edition Datacenter -DeploymentType Most -Compute -Media 'D:\' - TargetPath c:\Nano1\Nano1.wim -ComputerName Nano1

–DomainName Contoso.com
 Does this meet the goal?

- A. Yes
- B. NO

Answer: B

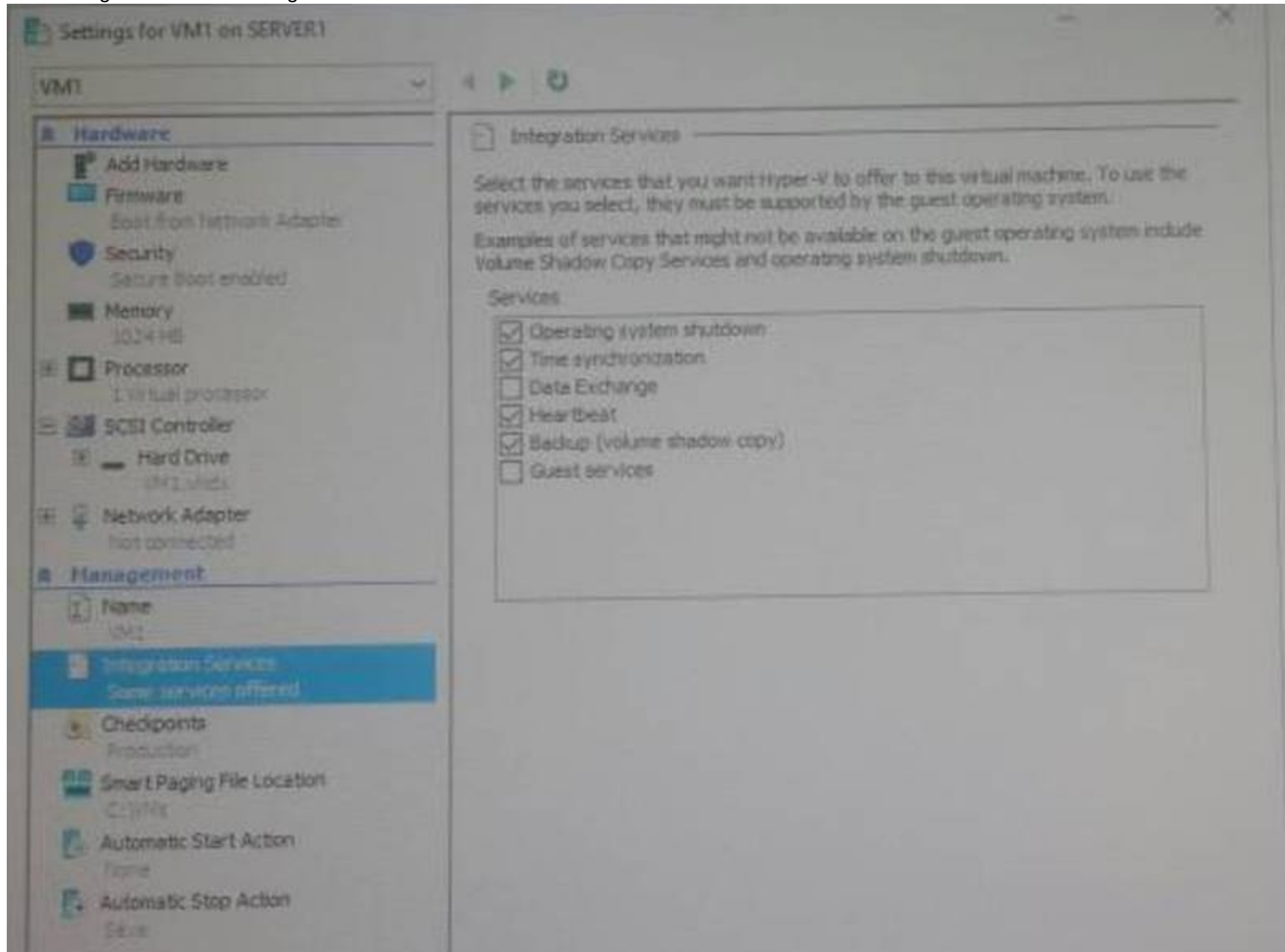
NEW QUESTION 117

Note: This question is part of a series of questions that present the same scenario. Each question in the series contains a unique solution that might meet the stated goals. Some question sets might have more than one correct solution, while others might not have a correct solution.

After you answer a question in this sections, you will NOT be able to return to it. As a result, these questions will not appear in the review screen.

You have a Hyper-V host named Server1 that hosts a virtual machine named VM1. Server1 and VM1 run Windows Server 2016.

The settings for VM1 are configured as shown in the exhibit below.



You need to ensure that you can use the Copy-VMFile cmdlet on Server1 to copy files from VM1. Solution: You need to enable the Data Exchange integration service for VM1.

Does this meet the goal?

- A. YES
- B. NO

Answer: A

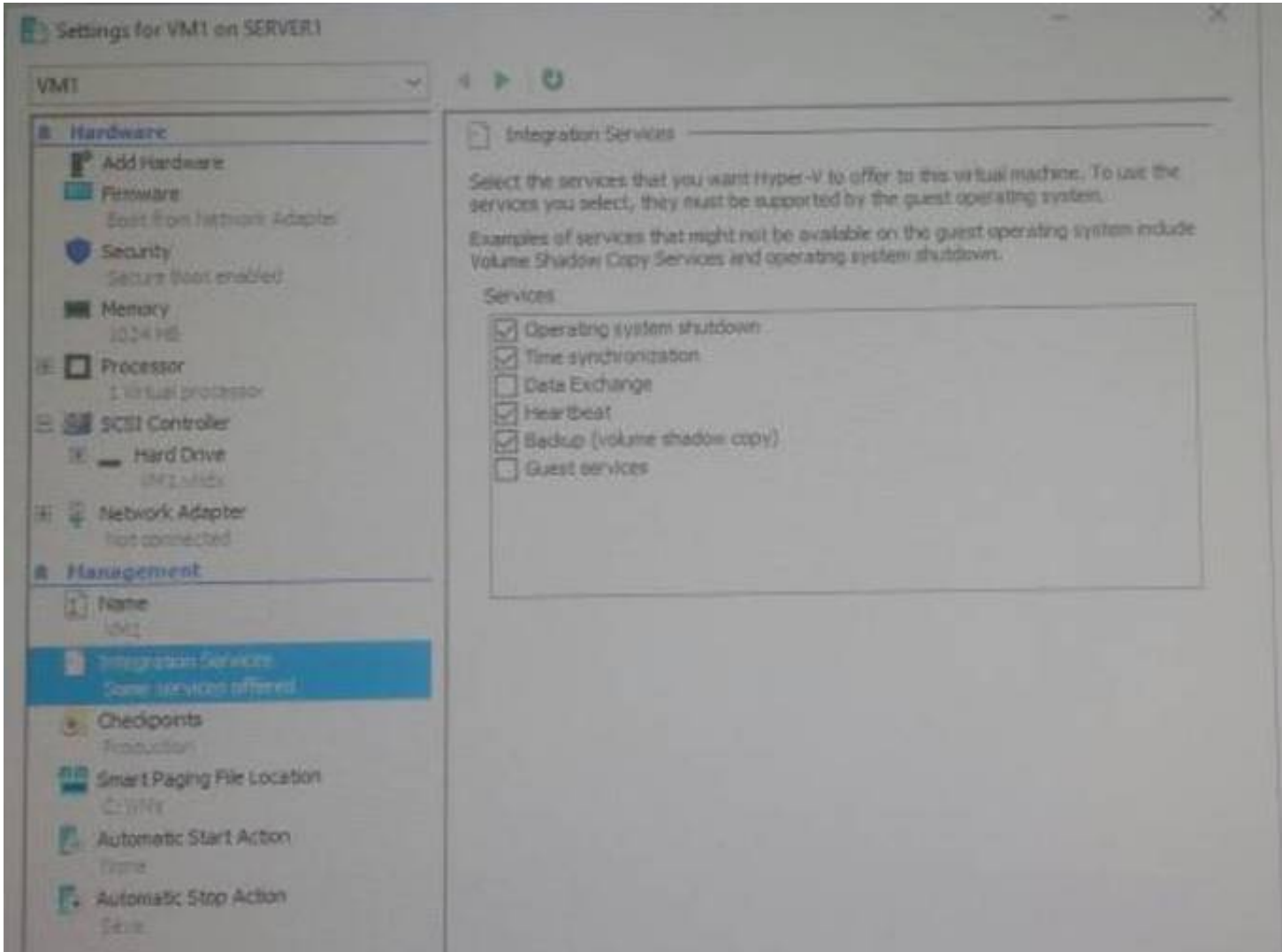
NEW QUESTION 120

Note: This question is part of a series of questions that present the same scenario. Each question in the series contains a unique solution that might meet the stated goals. Some question sets might have more than one correct solution, while others might not have a correct solution.

After you answer a question in this sections, you will NOT be able to return to it. As a result, these questions will not appear in the review screen.

You have a Hyper-V host named Server1 that hosts a virtual machine named VM1. Server1 and VM1 run Windows Server 2016.

The settings for VM1 are configured as shown in the exhibit below.



You need to ensure that you can use the Copy-VMFile cmdlet on Server1 to copy files from VM1. Solution: You need to enable the Guest Service integration service for VM1. Does this meet the goal?

- A. YES
- B. NO

Answer: A

NEW QUESTION 124

You have two Hyper-V hosts named Server1 and Server2 that run windows server 2012 R2. The servers are nodes in a failover cluster named Cluster1. You perform a rolling upgrade of the cluster nodes to Windows Server 2016. You need to ensure that you can implement the Virtual Machine Load Balancing feature. Which cmdlet should you use?

- A. Update-ClusterFunctionalLevel
- B. SetCauClusterRole
- C. Update-ClusterNetWorkNameResource
- D. Set-ClusterGroupSet

Answer: A

NEW QUESTION 128

Your network contains an Active Directory domain named contoso.com. The domain contains a Hyper-V host named Server1 that runs Windows Server 2016. Server1 hosts four machines that are members of the domains. The virtual machines are configured as sown in the following table.

Virtual machine name	Operating system	Virtual machine generation	Type of VHD file
VM1	Windows 10	2	VHD
VM2	Windows Server 2016	2	VHD
VM3	Windows Server 2012 R2	2	VHDX
VM4	Windows Server 2016	1	VHDX

Which virtual machines can you manage by using PowerShell Direct?

- A. Only VM2
- B. VM1, VM2, and VM4
- C. only VM4
- D. VM1, VM2, and VM3

Answer: D

NEW QUESTION 133

Note: This question is part of a series of questions that present the same scenario. Each question in the series contains a unique solution that might meet the

stated goals. Some questions sets might have more than one correct solutions, while others might not have a correct solution. After you answer a question in this section, you will NOT be able to return to it. As a result, these questions will not appear in the review screen. You have a server named Server1 that runs Windows Server 2016. Server1 is configured as a VPN server. Server1 is configured to allow domain users to establish VPN connections from 06:00 to 18:00 everyday of the week. You need to ensure that domain users can establish VPN connections only between Monday and Friday. Solution: From Active Directory Users and Computers, you modify the Dial-in Properties of the user accounts. Does this meet the goal?

- A. Yes
- B. No

Answer: A

NEW QUESTION 136

Note: This question is part of a series of questions that present the same scenario. Each question in the series contains a unique solution that might meet the stated goals. Some questions sets might have more than one correct solutions, while others might not have a correct solution. After you answer a question in this section, you will NOT be able to return to it. As a result, these questions will not appear in the review screen. You have a server named Server1 that runs Windows Server 2016. Server1 is configured as a VPN server. Server1 is configured to allow domain users to establish VPN connections from 06:00 to 18:00 everyday of the week. You need to ensure that domain users can establish VPN connections only between Monday and Friday. Solution: From Server Manager, You modify the Access Policies on Server1. Does this meet the goal?

- A. Yes
- B. No

Answer: A

NEW QUESTION 139

Note: This question is part of a series of questions that present the same scenario. Each question in the series contains a unique solution that might meet the stated goals. Some questions sets might have more than one correct solutions, while others might not have a correct solution. After you answer a question in this section, you will NOT be able to return to it. As a result, these questions will not appear in the review screen. You have a server named Server1 that runs Windows Server 2016. Server1 is configured as a VPN server. Server1 is configured to allow domain users to establish VPN connections from 06:00 to 18:00 everyday of the week. You need to ensure that domain users can establish VPN connections only between Monday and Friday. Solution: From Routing and Remote Access, You configure the Properties of Server1. Does this meet the goal?

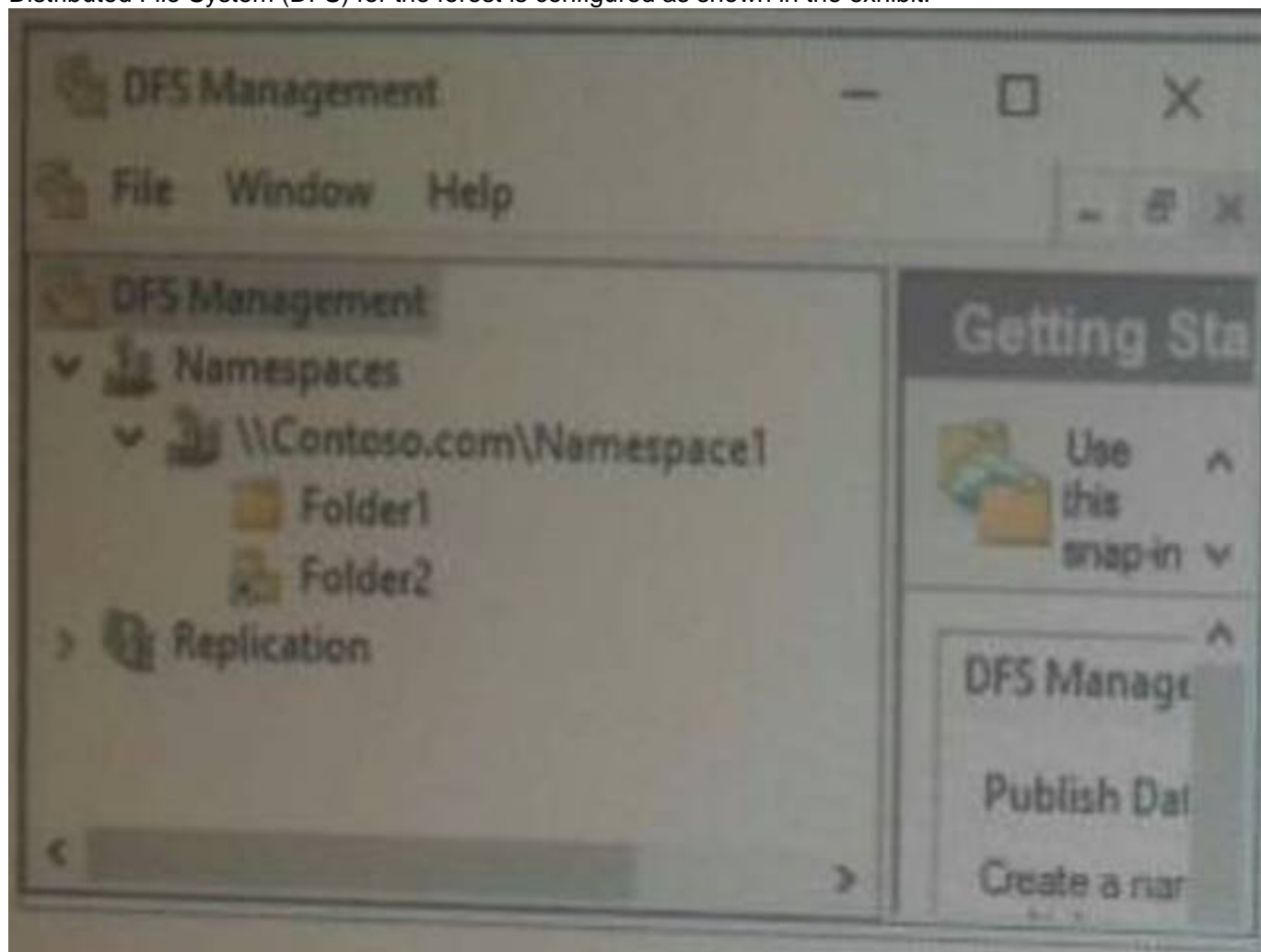
- A. Yes
- B. No

Answer: B

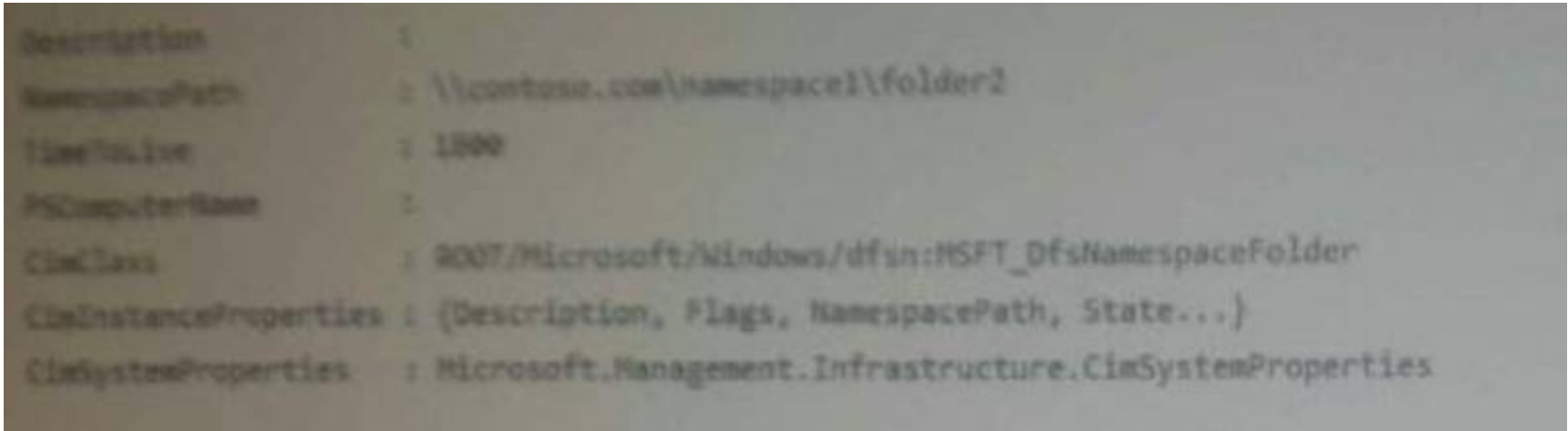
NEW QUESTION 142

HOT SPOT

Your network contains an Active Directory forest named contoso.com. The forest has three sites named Site1, Site2 and Site3. Distributed File System (DFS) for the forest is configured as shown in the exhibit.



The forest contains a server named Server2 that hosts the DFS namespace. \\Contoso.com\Namespace1\Folder2 has the following configuration.



\\Contoso\Namespace1\Folder2 has the targets configured as shown in the following table.

Path	Site	Referral status
\\Server1\Folder2	Site1	True
\\Server2\Folder2	Site2	False
\\Server3\Folder2	Site2	True

For each of the following statement, Select Yes if Statement is true. Otherwise , select No.

Statements	Yes	No
If users from Site1 connect to \\contoso.com\Namespace\Folder2, the users will always be redirected to Server1.	<input type="radio"/>	<input type="radio"/>
If users from Site2 connect to \\contoso.com\Namespace\Folder2, the users will be redirected to either Server2 or Server3.	<input type="radio"/>	<input type="radio"/>
If users from Site3 connect to \\contoso.com\Namespace\Folder2, the users will be redirected to either Server1, Server2, or Server3.	<input type="radio"/>	<input type="radio"/>

- A. Mastered
- B. Not Mastered

Answer: A

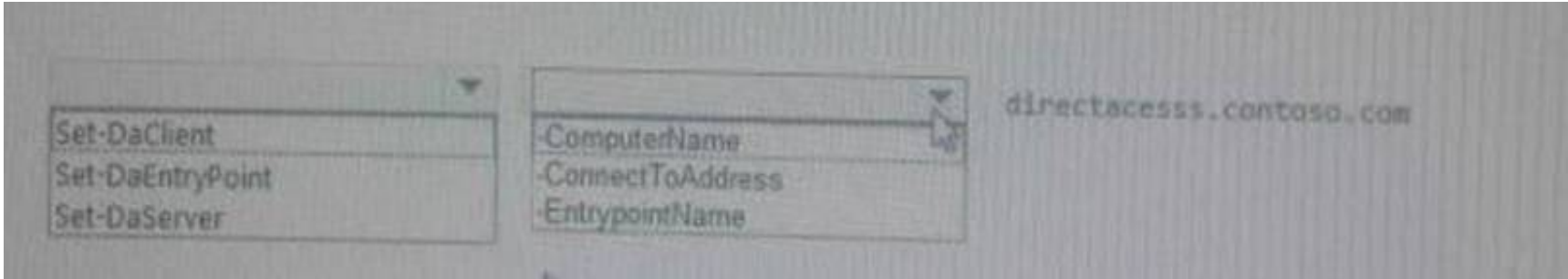
Explanation:

Statements	Yes	No
If users from Site1 connect to \\contoso.com\Namespace\Folder2, the users will always be redirected to Server1.	<input checked="" type="radio"/>	<input type="radio"/>
If users from Site2 connect to \\contoso.com\Namespace\Folder2, the users will be redirected to either Server2 or Server3.	<input type="radio"/>	<input checked="" type="radio"/>
If users from Site3 connect to \\contoso.com\Namespace\Folder2, the users will be redirected to either Server1, Server2, or Server3.	<input type="radio"/>	<input checked="" type="radio"/>

NEW QUESTION 143

HOT SPOT

You have a DirectAccess Server that is accessible by using the name directaccess.fabrikam.com On the DirectAccess server, you install a new server certificate that has a subject name of directaccess.contoso.com, and then you configure DNS records for directaccess.contoso.com You need to change the endpoint name for DirectAccess to directaccess.contoso.com What command should you run? To answer, select the appropriate options in the answer area.



- A. Mastered
- B. Not Mastered

Answer: A

Explanation:

Set-DaClient-ComputerName directaccess.contoso.com

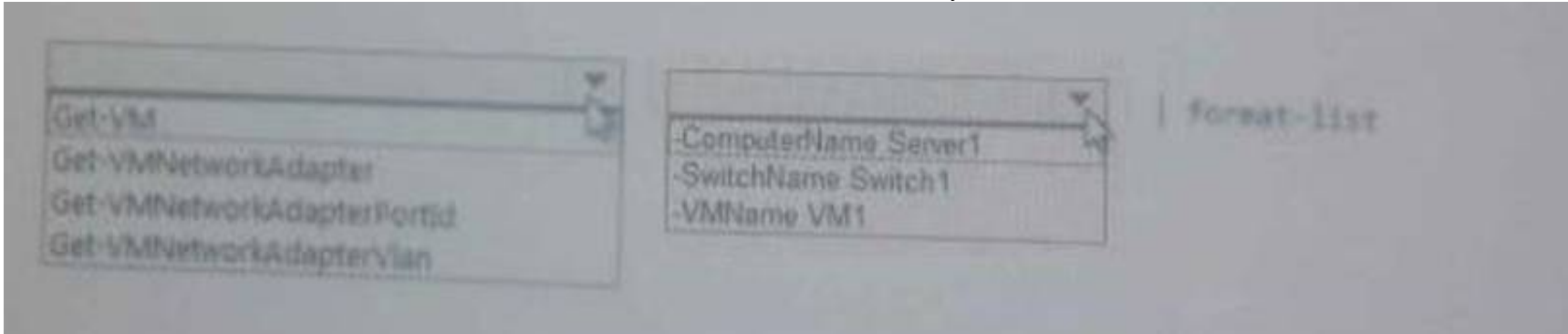
NEW QUESTION 146

HOT SPOT

You have a Hyper-V host named Server1 that runs Windows Server 2016. Server 1 has a virtual switch Switch1. Server1 hosts the virtual machines configured as shown in the following table.

Virtual machine name	Operating system	IP setting
VM1	Windows Server 2016	172.16.1.10/24
VM2	Windows Server 2012 R2	172.16.1.200/24

Windows firewall on VM1 and VM2 is configured to allow ICMP traffic. VM1 and VM2 connect to Switch1. You fail to ping VM1 from VM2. You need to view the VirtualSubnetid to which VM1 connects. Which cmdlet should you run on Server1.



- A. Mastered
- B. Not Mastered

Answer: A

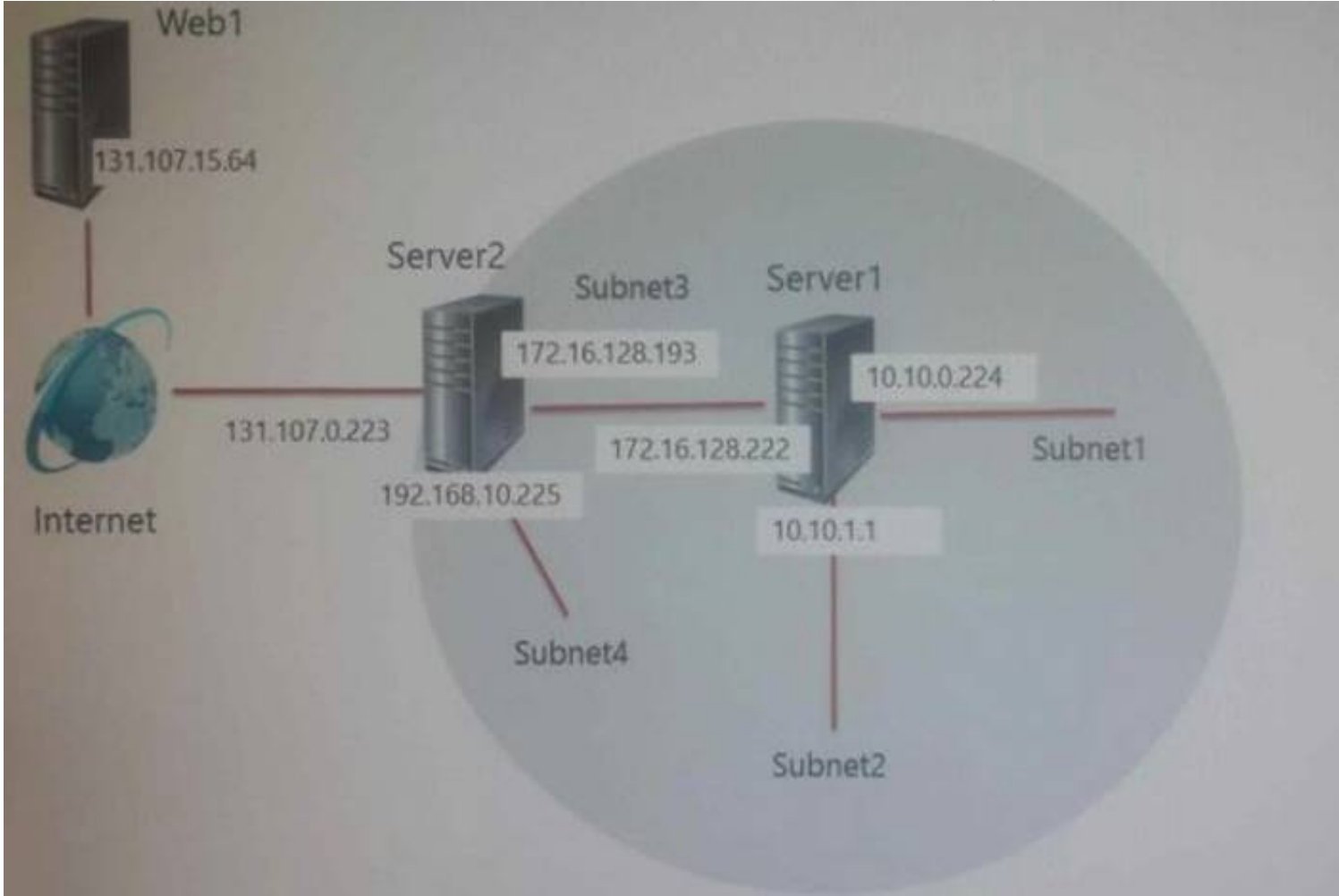
Explanation:

Get-VMNetworkAdapter-VMName VM1 | forest-list

NEW QUESTION 150

Scenario:

You are a network administrator for a company named Contoso,Ltd. The network is configured as shown in the exhibit.



You install the Remote Access server role on Server2. Server2 has the following configured.

- *Network address translation (NAT)
- *The DHCP Server server role
- The Security Policy of Contoso states that only TCP ports 80 and 443 are allowed from the internet to server2
- You identify the following requirements:
- * Add 28 devices to subnet2 for a temporary project.
- * Configure Server2 to accept VPN connections from the internet.
- * Ensure that devices on Subnet2 obtain TCP/IP settings from DHCP on Server2. End of Scenario:

What should you do to meet the DHCP connectivity requirement for Subnet2?

- A. Install the Routing role service on Server2.
- B. Install the IP address Management (IPAM) Server feature on Server2.
- C. Install the Routing role service on Server1.
- D. Install the DHCP Server server role on Server1.

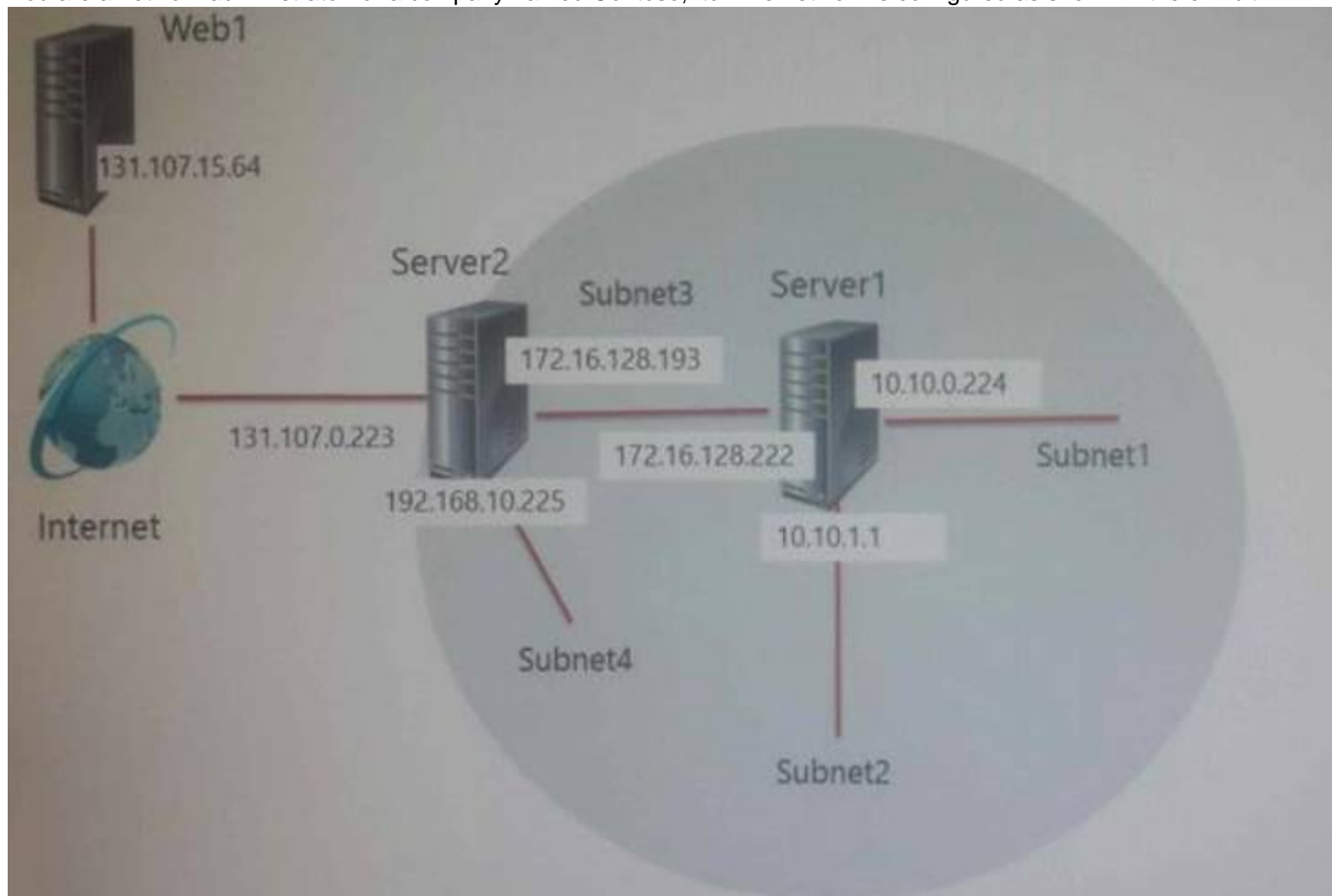
Answer: A

NEW QUESTION 152

HOT SPOT

Scenario:

You are a network administrator for a company named Contoso,Ltd. The network is configured as shown in the exhibit.



You install the Remote Access server role on Server2. Server2 has the following configured.

*Network address translation (NAT)

*The DHCP Server server role

The Security Policy of Contoso states that only TCP ports 80 and 443 are allowed from the internet to server2

You identify the following requirements:

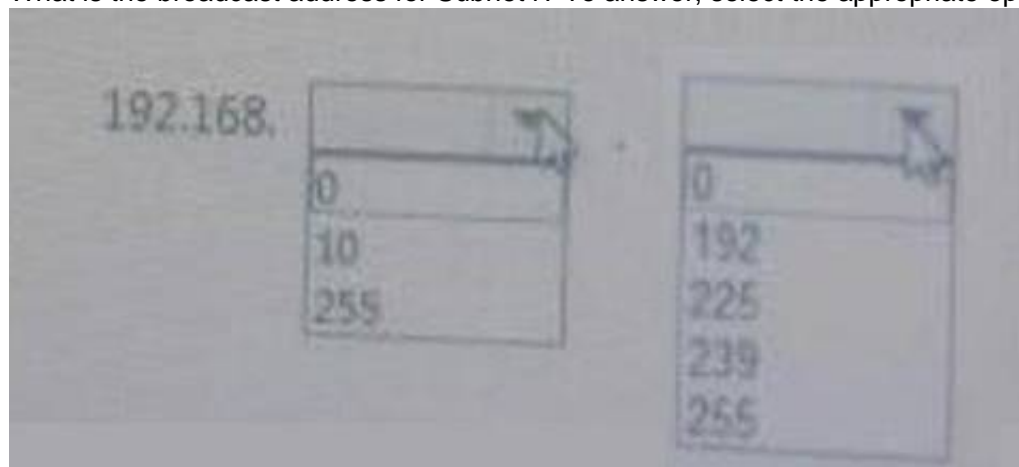
* Add 28 devices to subnet2 for a temporary project.

* Configure Server2 to accept VPN connections from the internet.

* Ensure that devices on Subnet2 obtain TCP/IP settings from DHCP on Server2. End of Scenario:

You deploy a computer named Computer8 to subnet4. Computer8 has an IP address of 192.168.10.230 and a subnet mask of 255.255.255.240

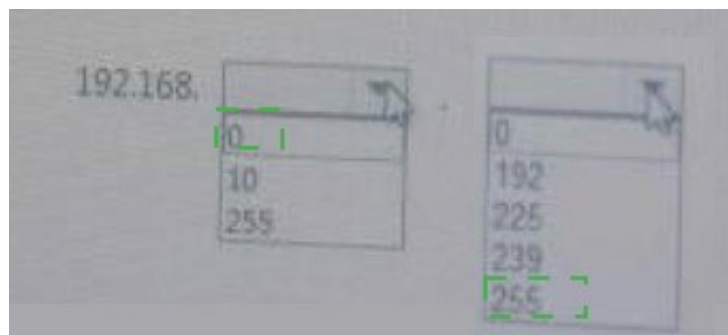
What is the broadcast address for Subnet4? To answer, select the appropriate options in the answer area.



- A. Mastered
- B. Not Mastered

Answer: A

Explanation:



NEW QUESTION 153

Your network contains three subnets, a production subnet that contains production servers, a development network that contains development servers, and a client network that contains client computers.

The development network is used to test applications and reproduces servers that are located on the production network. The development network and the production network use the same IP address range.

A developer has a client computer on the client network. The developer reports that when he attempts to connect to the IP address 10.10.1.6 from his computer, he connects to a server on the production network.

You need to ensure that when the developer connects to 10.10.1.6, he connects to a sever on the development network

Which cmdlet should you use?

- A. New-NetNeighbor
- B. New-NetRoute
- C. Set-NetTcpSetting
- D. Set-NetNeighbir

Answer: B

NEW QUESTION 155

Your network contains an Active Directory domain named contoso.com. The domain contains a domain-based Distributed file System (DFS) namespace named Namespace1 that has access-based enumeration enabled. Namespace1 has a folder named folder1. Folder1 has a target of \\Server1\Folder1.

The Permission for folder1 are configured as shown in the following table.

Account name	Permission type	Permission
User1	NTFS	None
User1	Share	Change
User1	DFS	Read
User2	NTFS	Read
User2	Share	Full control
User2	DFS	None

Access-based enumeration is disabled for the share of Folder1.

You need to ensure that both User1 and User2 can see Folder1 when they access \\Contoso.com\NameSpace1 What should you do?

- A. Enable access-based enumeration for Folder1.
- B. Disable access-based enumeration for Namespace1.
- C. Assign User1 the read NTFS permission to folder1
- D. Deny User1 the read DFS permission to Folder1.

Answer: B

NEW QUESTION 160

Note: This question is part of a series of questions that present the same scenario. Each question in the series contains a unique solution that might meet the stated goals. Some questions sets might have more than one correct solutions, while others might not have a correct solution.

After you answer a question in this section, you will NOT be able to return to it. As a result, these questions will not appear in the review screen.

You have a server named Server1 that runs Windows Server 2016. Server1 is configured as a VPN server.

Server1 is configured to allow domain users to establish VPN connections from 06:00 to 18:00 everyday of the week.

You need to ensure that domain users can establish VPN connections only between Monday and Friday.

Solution: From Network Policy Server, You modify the Network Policies on Server1. Does this meet the goal?

- A. Yes
- B. No

Answer: A

NEW QUESTION 164

You plan to install a Nano Server on a physical server named Nano1. Nano1 will host several virtual machines that will use live migration.

Which package should you install on Nano1?

- A. Microsoft-NanoServer-SecureStartup-Package
- B. Microsoft-NanoServer-ShieldedVM-Package
- C. Microsoft-NanoServer-Compute-Package
- D. Microsoft-NanoServer-FailoverCluster-Package
- E. Microsoft-NanoServer-Storage-Package

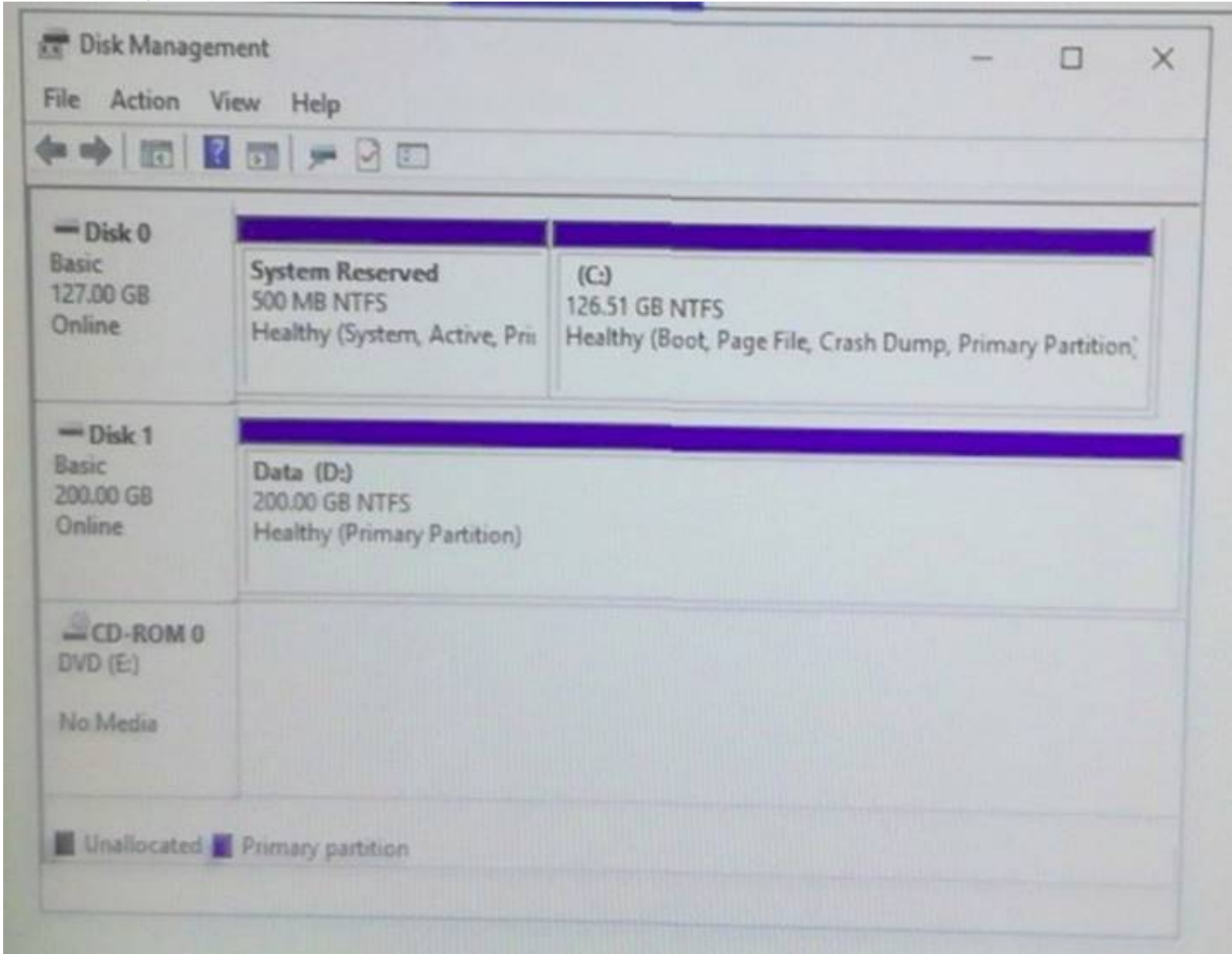
Answer: B

NEW QUESTION 165

DRAG DROP

You have a Hyper-V host named Server1 that runs Windows Server 2016. Server1 hosts a virtual machine named VM1. VM1 runs Windows Server 2016. VM1 uses a VHD for storage.

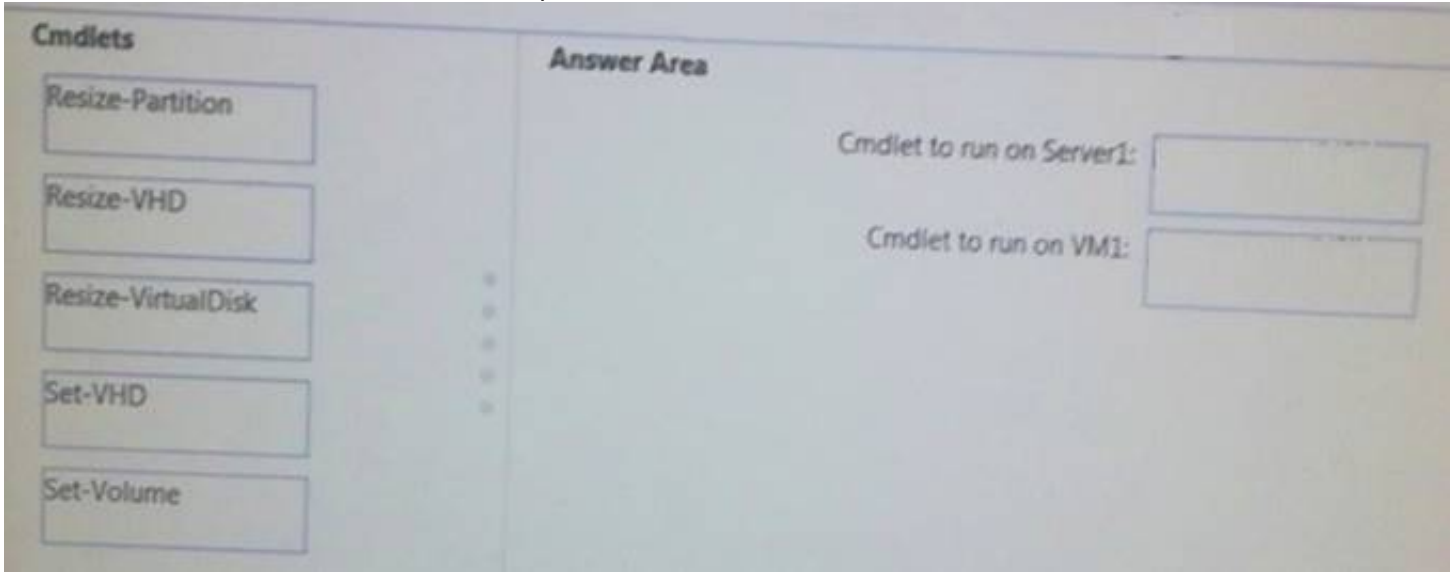
The disk configuration of VM1 is shown in the exhibit.



You need to increase the size of volume D to 400 GB.

Which cmdlets should you run on Server1 and VM1? To answer, drag the appropriate cmdlets to the correct servers. Each cmdlet may be used once, more than once, or not at all. You may need to drag the split bar between panes or scroll to view content.

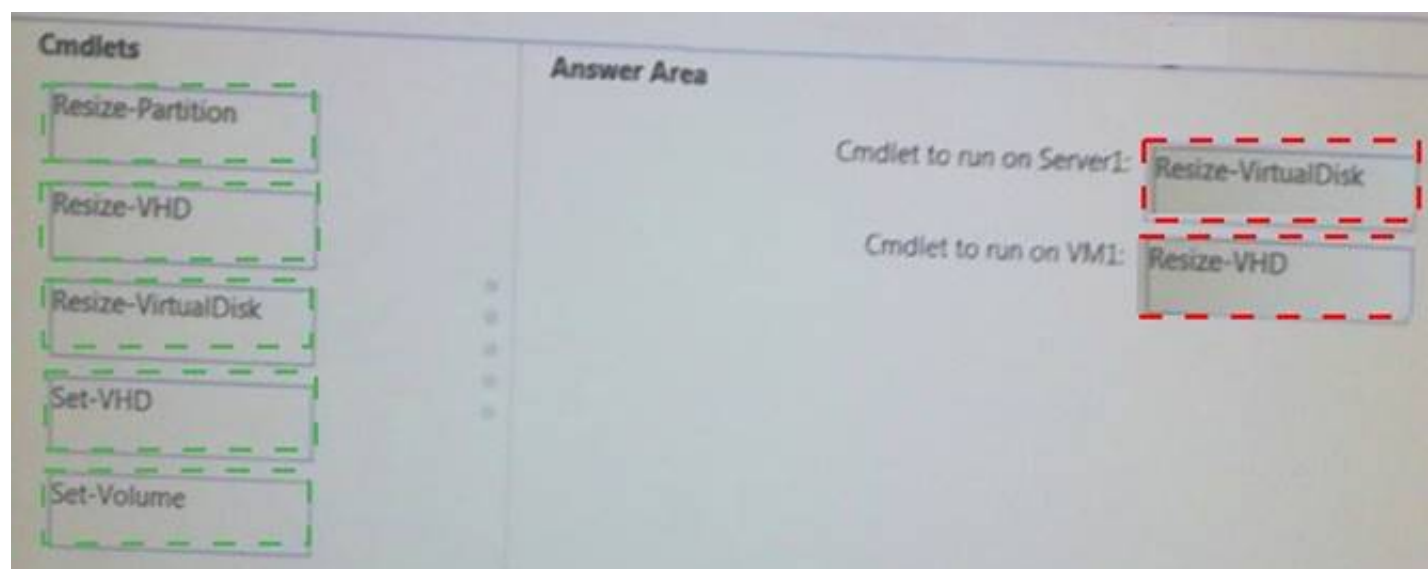
NOTE: Each correct selection is worth one point.



- A. Mastered
- B. Not Mastered

Answer: A

Explanation:



NEW QUESTION 168

You have a container host named Server1 that runs Windows Server 2016. You need to start a Hyper-V container on Server1. Which parameter should you use with the docker run command?

- A. --runtime
- B. --entrypoint
- C. --privileged
- D. --isolation
- E. --expose

Answer: D

Explanation:

<https://docs.microsoft.com/en-us/virtualization/windowscontainers/deploy-containers/systemrequirements>

NEW QUESTION 169

You have a Windows Server 2016 failover cluster that contains two servers named Server1 and Server2. The Cluster Service on Server1 fails. You need to identify the cause of the failure. What should you do?

- A. From Event Viewer, review the Application event log.
- B. From Event Viewer, review the System event log.
- C. From Windows PowerShell, run the Get-ClusterLog cmdlet.
- D. From Windows PowerShell, run the Get-ClusterNode cmdle

Answer: B

NEW QUESTION 173

You have a server named Server1 that runs Windows Server 2016. On Server1, you use the Basic template to create a new Data Collector Set named CollectorSet1. You need to configure CollectorSet1 to generate performance alerts. What should you do before you start CollectorSet1?

- A. Modify the performance counter data collector of CollectorSet1.
- B. Add a new data collector to CollectorSet1.
- C. Modify the configuration data collector of CollectorSet1.
- D. Add a new task to CollectorSet1.

Answer: A

Explanation:

[https://technet.microsoft.com/en-us/library/cc722414\(v=ws.11\).aspx](https://technet.microsoft.com/en-us/library/cc722414(v=ws.11).aspx)

NEW QUESTION 174

Note: This question is part of a series of questions that present the same scenario. Each question in the series contains a unique solution that might meet the stated goals. Some question sets might have more than one correct solution, while others might not have a correct solution.

Your network contains an Active Directory forest

You install Windows Server 2016 on 10 virtual machines.

You need to deploy the Web Server (IIS) server role identically to the virtual machines. Solution: From Windows System Image Manager, you create an answer file, you copy the file to C:\Sysprep on each virtual machine, and then you run the Apply-Image cmdlet.

Does this meet the goal?

- A. Yes
- B. No

Answer: B

NEW QUESTION 175

Note: This question is part of a series of questions that present the same scenario. Each question in the series contains a unique solution that might meet the

stated goals. Some question sets might have more than one correct solution, while others might not have a correct solution. After you answer a question in this sections, you will NOT be able to return to it. As a result, these questions will not appear in the review screen. You network contains an Active Directory domain named contoso.com. The domain contains a member server named Server1 that runs Windows Server 2016 and has the DNS Server role installed. Automatic scavenging of state records is enabled and the scavenging period is set to 10 days. All client computers dynamically register their names in the contoso.com DNS zone on Server1. You discover that the names of multiple client computers that were removed from the network several weeks ago can still be resolved. You need to configure Server1 to automatically remove the records of the client computers that have been offline for more than 10 days. Solution: You set the Expires after value of the zone. Does this meet the goal?

- A. Yes
B. No

Answer: B

Explanation:

[https://technet.microsoft.com/en-us/library/cc772069\(v=ws.11\).aspx](https://technet.microsoft.com/en-us/library/cc772069(v=ws.11).aspx)

NEW QUESTION 177

Note: This question is part of a series of questions that present the same scenario. Each question in the series contains a unique solution. Determine whether the solution meets the stated goals. Your network contains an Active Directory domain named contoso.com. The domain contains a DNS server named Server1. All client computers run Windows 10. On Server1, you have the following zone configuration.

ZoneName	ZoneType	IsAutoCreated	IsDsIntegrated	IsReverseLookupZone	IsSigned
-----	-----	-----	-----	-----	-----
_msdcs.contoso.com	Primary	False	True	False	False
adatum.com	Forwarder	False	False	False	
contoso.com	Primary	False	True	False	False
fabrikam.com	Primary	False	False	False	True
TrustAnchors	Primary	False	True	False	False

You have the following subnets defined on Server1.

Name	IPV4Subnet	IPV6Subnet
----	-----	-----
Subnet1	{10.0.0.0/24}	
Subnet2	{10.0.1.0/24}	
Subnet3	{192.168.15.0/24}	
Subnet4	{172.16.1.0/24}	

You need to prevent Server1 from resolving queries from DNS clients located on Subnet4. Server1 must resolve queries from all other DNS clients. Solution: From the Security Setting of each zone on Server1, you modify the permissions. Does this meet the goal?

- A. Yes
B. No

Answer: B

NEW QUESTION 181

HOT SPOT

You have a DNS server named Server1 that runs Windows Server 2016. Server1 has network interfaces that have the following IP addresses:
? 10.0.0.100
? 131.107.0.100

The internal network uses an IP address space of 10.0.0.0/16.

Server1 provides DNS name resolution to both internal and external clients. Server1 hosts the primary zone for contoso.com.

You need to configure Server1 to meet the following requirements:

- * Internal clients must be able to use Server 1 to resolve internal-based DNS names.
- * External clients must not be able to use Server1 to resolve Internal-based DNS names.
- * External clients must able to use Server1 to resolve names in the contoso.com zone.

Which commands should you run on Server1.? To answer select the appropriate option in answer area.

Add-DnsServerRecursionScope

	▼
-Name. -EnableRecursion \$false	
-Name 'scope1' -EnableRecursion \$true	

Set-DnsServerRecursionScope

	▼
-Name. -EnableRecursion \$false	
-Name 'scope1' -EnableRecursion \$true	

Add-DnsServerQueryResolutionPolicy -Name 'policy1' -Action ALLOW

-ApplyOnRecursion -RecursionScope 'scope1'

	▼
-ClientSubnet 'EQ, internal'	
-ServerInterfaceIP 'EQ.10.0.0.100'	
-ServerInterfaceIP 'EQ.131.107.0.100'	

- A. Mastered
- B. Not Mastered

Answer: A

Explanation:

Add-DnsServerRecursionScope

	▼
-Name. -EnableRecursion \$false	
-Name 'scope1' -EnableRecursion \$true	

Set-DnsServerRecursionScope

	▼
-Name. -EnableRecursion \$false	
-Name 'scope1' -EnableRecursion \$true	

Add-DnsServerQueryResolutionPolicy -Name 'policy1' -Action ALLOW

-ApplyOnRecursion -RecursionScope 'scope1'

	▼
-ClientSubnet 'EQ, internal'	
-ServerInterfaceIP 'EQ.10.0.0.100'	
-ServerInterfaceIP 'EQ.131.107.0.100'	

NEW QUESTION 185

You have an IP Address Management (IPAM) server named IPAM1 that runs Windows Server 2016. IPAM1 manages 10 DHCP servers. You need to provide a user with the ability to track which clients receive which IP addresses from DHCP. The solution must minimize administrative privileges.

- A. IPAM MSM Administrators
- B. IPAM ASM Administrators
- C. IPAM IP Audit Administrators

D. IPAM User

Answer: C

NEW QUESTION 190

You have an IP Address Management (IPAM) deployment that is used to manage all of the DNS servers on your network. IPAM is configured to use Group Policy provisioning.

You discover that a user adds a new mail exchanger (MX) record to one of the DNS zones. You want to identify which user added the record.

You open Event Catalog on an IPAM server, and you discover that the most recent event occurred yesterday. You need to ensure that the operational events in the event catalog are never older than one hour.

What should you do?

- A. From the properties on the DNS zone, modify the refresh interval.
- B. From an IPAM_DNS Group Policy object (GPO), modify the Group Policy refresh interval.
- C. From Task Scheduler, modify the Microsoft\Windows\IPAM\Audit task.
- D. From Task Scheduler, create a scheduled task that runs the Update-IpamServer cmdle

Answer: C

NEW QUESTION 193

HOT SPOT

Your network contains an Active Directory domain named contoso.com. The domain contains a DNS server named Server1.

Server1 configured to use a forwarder named server2.contoso.com that has an IP address of 10.0.0.10.

You need to prevent Server1 from using root hints if the forwarder is unavailable.

What command should you run? To answer, select the appropriate options in the answer area.

▼

Suspend-DnsServerZone

Set-DnsServer

Set-DnsServerForwarder

Set-DnsServerRootHint

▼

-Name *.* -PassThru

-IPAddress 10.0.0.10

-NameServer server2.contoso.com

-UseRootHints. \$false

- A. Mastered
- B. Not Mastered

Answer: A

Explanation:

▼

Suspend-DnsServerZone

Set-DnsServer

Set-DnsServerForwarder

Set-DnsServerRootHint

▼

-Name *.* -PassThru

-IPAddress 10.0.0.10

-NameServer server2.contoso.com

-UseRootHints. \$false

NEW QUESTION 197

You have a server named Server1 that runs Windows Server 2016. Server1 has the DHCP Server and the Windows Deployment Service server roles installed. Server1 is located on the same subnet as client computers.

You need to ensure that clients can perform a PXE boot from Server1.

Which two IPv4 options should you configure in DHCP? Each correct answer presents part of the solution.

- A. 003 Router
- B. 066 Boot Server Host Name
- C. 015 DNS Domain Name
- D. 006 DNS Servers
- E. 060 Option 60

Answer: AB

NEW QUESTION 199

You have a server named Served that runs Windows Server 2016. Server1 will be used as a VPN server. You need to configure Server1 to support VPN Reconnect. Which VPN protocol should you use?

- A. PPTP
- B. L2TP
- C. SSTP
- D. IKEv2

Answer: D

Explanation:

An IKEv2 VPN provides resilience to the VPN client when the client either moves from one wireless hotspot to another or switches from a wireless to a wired connection.

This ability is a requirement of VPN Reconnect

NEW QUESTION 200

HOT SPOT

You have two Hyper-V hosts named Server1 and Server2 that run Windows Server 2016. Server1 and Server2 connect to the same network. Server1 and Server2 have virtual switches configured as shown in the following table.

Switch name	Host	Type	VLAN ID
Switch1	Server1	External	2
Switch2	Server2	External	4
Switch3	Server2	Internal	Not applicable

You have nine virtual machines configured as shown in the following table.

You have nine virtual machines configured as shown in the following table.

Virtual machine name	Connected to	VLAN ID
VM1	Switch1	2
VM2	Switch1	Not applicable
VM3	Switch1	4
VM4	Switch2	2
VM5	Switch2	Not applicable
VM6	Switch2	4
VM7	Switch3	2
VM8	Switch2	Not applicable

All of the virtual machines are configured to have IP addresses from the same network segment. The firewall on each of the virtual machines is configured to allow network connectivity.

To which virtual machines can you connect from VM1 and VM2? To answer, select the appropriate options in the answer area.

Virtual machines to which you can connect from VM1:

VM4 only

VM4 and VM7

VM2, VM4, and VM5

None

Virtual machines to which you can connect from VM2:

VM5 only

VM1 and VM3

VM5 and VM8

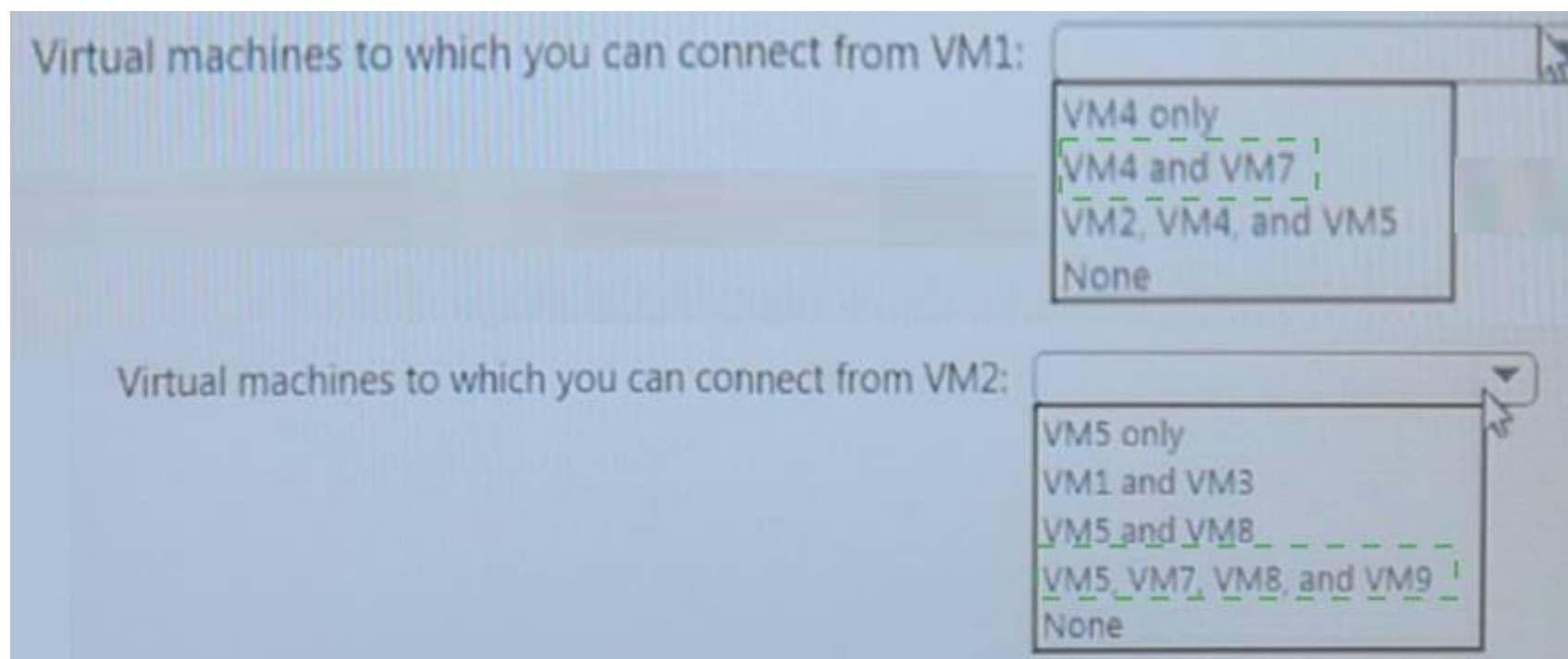
VM5, VM7, VM8, and VM9

None

- A. Mastered
- B. Not Mastered

Answer: A

Explanation:



NEW QUESTION 205

You have a server named Server1 that runs Windows Server 2016.

Server1 is an IP Address Management (IPAM) server that collects DHCP and DNS logs and events for your entire network.

You need to enable a user named TECH1 to create pointer (PTR), host (A) and service location (SRV) records on all of the DNS servers on the network. What should you do on Server1?

- A. Run the Set-IPAMCustomField cmdlet and then run the Set-IPAMAddressSpace cmdlet
- B. From the IPAM node in Server Manager, create a new user role and a new access policy
- C. Run the Set-IPAMCustomField cmdlet and then run the Set-IPAMAccessScope cmdlet
- D. From the IPAM node in Server Manager, create a new user role and a new access scope

Answer: D

NEW QUESTION 208

You have a Hyper-V host named Server1 that runs Windows Server 2016. Server1 hosts a virtual machine named VM1 that runs Windows Server 2016.

On VM1, Dynamic Memory is disabled, MAC spoofing is enabled for the virtual network adapter, and checkpoints are disabled.

You need to ensure that you can install the Hyper-V server role on VM1. What should you do?

- A. Shut down VM1, run the Set-VMProcessor cmdlet, and then start VM1.
- B. Disable Hyper-V integration services for VM1, and then restart VM1.
- C. Configure VM1 to use standard checkpoints.
- D. Shut down VM1, enable Dynamic Memory on VM1, and then start VM1.

Answer: A

NEW QUESTION 209

Your network contains an Active Directory domain named contoso.com. The domain contains an Active Directory Federation Services (AD FS) server named ADFS1, a Web Application Proxy server named WAP1, and a web server named Web1.

You need to publish a website on Web1 by using the Web Application Proxy. Users will authenticate by using OAuth2 preauthentication.

What should you do first?

- A. On Web1, add site bindings.
- B. On ADFS1, add a claims provider trust.
- C. On Web1, add handler mappings.
- D. On ADFS1, enable an endpoint

Answer: D

Explanation:

References: https://docs.microsoft.com/en-us/windows-server/remote/remote-access/webapplication-proxy/publishing-applications-using-ad-fs-preauthentication#BKMK_1.4

NEW QUESTION 210

You have two Hyper-V hosts named Server1 and Server2 that run Windows Server 2016. Server1 hosts a virtual machine named VM1 that is in a Running state.

On Server1, you export VM1 and then you import VM1 on Server2. What is the current state of VM1 on Server2?

- A. Off
- B. Running
- C. Paused
- D. Saved

Answer: B

NEW QUESTION 213

You have a server named Server1 that runs Windows Server 2016 and has the File and Storage Services server role installed. Server1 has an ReFS-formatted

volume named Volume1 that is 512 GB. Volume1 is mounted as C:\App\temp. You need to ensure that you can enable deduplication of Volume1. What should you do?

- A. Format Volume1
- B. Install a Windows feature.
- C. Initialize the physical disk that contains Volume1.
- D. Unmount Volume1.

Answer: B

NEW QUESTION 215

You have a Windows Server 2016 failover cluster named Cluster1 that contains three nodes named Server1, Server2, and Server3. Each node hosts several virtual machines. The virtual machines are configured to fail over to another node in Cluster1 if the hosting node fails. You need to ensure that if the Cluster service fails on one of the nodes, the virtual machine of that node will fail over immediately. Which setting should you configure?

- A. QuarantineDuration
- B. FailureConditionaLevel
- C. ResiliencyPeriod
- D. ResiliencyLevel

Answer: D

NEW QUESTION 219

HOT SPOT

Your network contains an Active Directory domain named contoso.com. The domain contains a DNS server named Server1.

You enable Response Rate Limiting on Server1.

You need to prevent Response Rate Limiting from applying to hosts that reside on the network of 10.0.0.0/24.

Which cmdlets should you run? To answer, select the appropriate options in the answer area

First cmdlet to run:

Add-DnsServerClientSubnet
 Enable-DnsServerPolicy
 Set-DnsServerResponseRateLimiting
 Set-DnsServerResponseRateLimitingExceptionlist

Second cmdlet to run:

Add- DnsServerResponseRateLimitingExceptionlist
 Add-DnsServerQueryResolutionPolicy
 Add-DnsServerZoneScope
 Set-DnsServerDsSetting

- A. Mastered
- B. Not Mastered

Answer: A

Explanation:

First cmdlet to run:

Add-DnsServerClientSubnet
Enable-DnsServerPolicy
Set-DnsServerResponseRateLimiting
Set-DnsServerResponseRateLimitingExceptionlist

Second cmdlet to run:

Add-DnsServerResponseRateLimitingExceptionlist
Add-DnsServerQueryResolutionPolicy
Add-DnsServerZoneScope
Set-DnsServerDsSetting

NEW QUESTION 222

DRAG DROP

You are preparing an image of Windows Server 2016.

The image is missing the driver for a network adapter that is required in your environment. You need to ensure that the image contains the network adapter driver.

Which three cmdlets should you use in sequence? To answer, move the appropriate cmdlets from the list of cmdlets to the answer area and arrange them in the correct order.

Cmdlets

Mount-WindowsImage

Add-WindowsDriver

Get-WindowsImage

Save-WindowsImage

Add-WindowsFeature

Dismount-WindowsImage

Optimize-WindowsImage

Answer Area

1

2

3

- A. Mastered
B. Not Mastered

Answer: A

Explanation:

Cmdlets

- Mount-WindowsImage
- Add-WindowsDriver
- Get-WindowsImage
- Save-WindowsImage
- Add-WindowsFeature
- Dismount-WindowsImage
- Optimize-WindowsImage

Answer Area

- 1 Add-WindowsDriver
- 2 Optimize-WindowsImage
- 3 Dismount-WindowsImage

NEW QUESTION 225

Your network contains an Active Directory forest. The forest contains two domains named litwareinc.com. The contoso.com domain contains two domain controllers named LON-DC01 and LON-DC02. The domain controllers are located in a site named London that is associated to a subnet of 192.168.10.0/24. You discover that LON-DC02 is not a global catalog server. You need to configure LON-DC02 as a global catalog server. What should you do?

- A. From Active Directory Sites and Service
- B. modify the NTDS Settings object of the London site.
- C. From the properties of the LON-DC02 computer account in Active Directory Users and computers, modify the City attribute.
- D. From Active Directory Sites and Services, modify the properties of the 192.168.10.0/24 IP subnet.
- E. From the properties of the LON-DC02 computer account in Active Directory Users and Computers, modify the NTDS settings.

Answer: D

NEW QUESTION 226

Server1 download update from Microsoft update.

You have Server2 that must synchronize update from Server1. Have firewall separate between Server1 and Server2. Which port should to open on Server2 to synchronize?

- A. 80
- B. 443
- C. 3389
- D. 8530

Answer: D

NEW QUESTION 229

HOTSPOT

You deploy a new Hyper-V host named Server1 that runs Windows Server 2016. You implement receive side scaling (RSS) on Server1.

The chipset on Server1 does not support NetDMA.

All of the equipment on your network supports 10-Gbps connectivity. On Server1, you deploy a virtual machine named VM1.

You configure VM1 to aggregate all of the Windows and non-Windows log files for all of the servers on the network.

VM1 has four virtual processors. You discover that VM1 drops packets.

Which two options should you run? To answer, select the appropriate options in the answer area.

Answer Area

First action:

Enable TCP Chimney Offload on Server1.
Enable single root I/O virtualization (SR-IOV) on VM1.
Enable virtual machine queue (VMQ) on Server1 and VM1.

Second action:

Enable virtual TCP Chimney Offload on VM1.
Enable virtual Receive-side Scalling (vRSS) on VM1.
Enable single root I/O virtualization (SR-IOV) on Server1.

- A. Mastered
B. Not Mastered

Answer: A

Explanation:

Answer Area

First action:

Enable TCP Chimney Offload on Server1.
Enable single root I/O virtualization (SR-IOV) on VM1.
Enable virtual machine queue (VMQ) on Server1 and VM1.

Second action:

Enable virtual TCP Chimney Offload on VM1.
Enable virtual Receive-side Scalling (vRSS) on VM1.
Enable single root I/O virtualization (SR-IOV) on Server1.

NEW QUESTION 232

You have two Hyper-V hosts named Server1 and Server2 that run Windows Server 2016. The hosts are nodes in failover cluster. You have a virtual machine named VM1. VM1 connects to a virtual switch named vSwitch1. You discover that VM1 automatically live migrates when vSwitch temporarily disconnects. You need to prevent VM1 from being live migrated when vSwitch1 temporarily disconnects. What should you do?

- A. From the network adapter setting of VM1, disable the Protected network setting.
B. From the network adapter setting of VM1, disable the Heartbeat integration service.
C. Run the Set-VMNetworkAdapter cmdlet and set IsmanagementOS to False.
D. Run the Set-VMNetworkAdapter cmdlet and set StormLimit to 0.

Answer: A

NEW QUESTION 237

DRAG DROP

On a new server, you install Windows Server 2016, and then you install the Hyper-V server role. You need to ensure that you can deploy Windows containers that use an image of the Server Core installation of Windows Server.

Which four commands should you use in sequence? To answer, move the appropriate commands from the list of commands to the answer area and arrange them in the correct order.

Commands

Install-Package -Name docker -ProviderName DockerMsftProvider

Restart-Computer -Force

docker pull docker/windows-x64

Set-VMProcessor -ExposeVirtualizationExtensions \$true

Install-Module -name DockerMsftProvider Repository PSGallery -Force-

docker pull Microsoft/windowsservercore

Install-Package -Name Microsoft/dotnet framework-docker -ProviderName- DockerMsftProvider

Install-WindowsFeature Hyper-V

Answer Area

1

2

3

4

- A. Mastered
 B. Not Mastered

Answer: A

Explanation:

References:

<https://docs.microsoft.com/en-us/virtualization/windowscontainers/deploy-containers/deploycontainers- on-server>

NEW QUESTION 241

You have a server named Server1 that runs Windows Server 2016. You install the Hyper-V server role on Server1. Server1 has eight network adapters that are dedicated to virtual machines. The network adapters are Remote Direct Memory Access (RDMA)-enabled.

You plan to use Software Defined Networking (SDN). You will host the virtual machines for multiple tenants on the Hyper-V host.

You need to ensure that the network connections for the virtual machines are resilient if one or more physical network adapters fail.

What should you implement?

- A. single root I/O virtualization (SR-IOV)
 B. NIC Teaming on the Hyper-V host
 C. virtual Receive-side Scaling (vRSS)
 D. Switch Embedded Teaming (SET)

Answer: D

NEW QUESTION 243

You have a Hyper-V host named Server1 that runs Windows Server 2016. Server1 contains four virtual machines that are configured as shown in the following table.

Virtual machine name	Configuration
VM1	A shielded virtual machine that runs Windows Server 2012 R2
VM2	A shielded virtual machine that runs Windows Server 2016
VM3	A virtual machine that runs Windows Server 2012 R2 and has Secure Boot enabled
VM4	A virtual machine that runs Windows Server 2016 and has all of its drivers protected by using BitLocker Drive Encryption (BitLocker)

To which machine or machines can you connect by using Virtual Machine Connection from Hyper-V Manager?

- A. VM1, VM2, VM3 and VM4
 B. VM4 only
 C. VM1 and VM2 only
 D. VM3 and VM4 only
 E. VM2 only

Answer: D

NEW QUESTION 244

.....

THANKS FOR TRYING THE DEMO OF OUR PRODUCT

Visit Our Site to Purchase the Full Set of Actual 70-743 Exam Questions With Answers.

We Also Provide Practice Exam Software That Simulates Real Exam Environment And Has Many Self-Assessment Features. Order the 70-743 Product From:

<https://www.2passeasy.com/dumps/70-743/>

Money Back Guarantee

70-743 Practice Exam Features:

- * 70-743 Questions and Answers Updated Frequently
- * 70-743 Practice Questions Verified by Expert Senior Certified Staff
- * 70-743 Most Realistic Questions that Guarantee you a Pass on Your FirstTry
- * 70-743 Practice Test Questions in Multiple Choice Formats and Updatesfor 1 Year