

VMware

Exam Questions 2V0-621D

VMware Certified Professional 6 – Data Center Virtualization Delta Beta



NEW QUESTION 1

An object has inherited permissions from two parent objects. What is true about the permissions on the object?

- A. The common permissions between the two are applied and the rest are discarded.
- B. The permissions are combined from both parent objects.
- C. No permissions are applied from the parent objects.
- D. The permission is randomly selected from either of the two parent objects.

Answer: B

Explanation: Most inventory objects inherit permissions from a single parent object in the hierarchy. For example, a datastore inherits permissions from either its parent datastore folder or parent datacenter. Virtual machines inherit permissions from both the parent virtual machine folder and the parent host, cluster, or resource pool simultaneously. To restrict a user's privileges on a virtual machine, you must set permissions on both the parent folder and the parent host, cluster, or resource pool for that virtual machine.

Reference: http://pubs.vmware.com/vsphere-4-esx-vcenter/index.jsp?topic=/com.vmware.vsphere.dcadmin.doc_41/vsp_dc_admin_guide/managing_users_groups_roles_and_permissions/c_hierarchical_inheritance_of_permissions.html

NEW QUESTION 2

Which two are valid Identity Sources when configuring vCenter Single Sign-On? (Choose two.)

- A. Radius
- B. NIS
- C. OpenLDAP
- D. LocalOS

Answer: CD

Explanation: Active Directory (Integrated Windows Authentication)

Use this option for native Active Directory implementations. The machine on which the vCenter Single Sign-On service is running must be in an Active Directory domain if you want to use this option.

See Active Directory Identity Source Settings.

Active Directory as an LDAP Server

This option is available for backward compatibility. It requires that you specify the domain controller and other information. See Active Directory LDAP Server and OpenLDAP Server Identity Source Settings.

OpenLDAP

Use this option for an OpenLDAP identity source. See Active Directory LDAP Server and OpenLDAP Server Identity Source Settings.

LocalOS

Use this option to add the local operating system as an identity source. You are prompted only for the name of the local operating system. If you select this option, all users on the specified machine are visible to vCenter Single Sign-On, even if those users are not part of another domain.

Reference: <http://pubs.vmware.com/vsphere-60/index.jsp?topic=%2Fcom.vmware.vsphere.security.doc%2FGUID-B23B1360-8838-4FF2-B074-71643C4CB040.html>

NEW QUESTION 3

An administrator connects to an ESXi 6.x host console in order to shutdown the host. Which option in the Direct Console User Interface would perform this task?

- A. Press the F12 key
- B. Press the F2 key
- C. Press Alt + F1 simultaneously
- D. Press Alt + F2 simultaneously

Answer: A

Explanation:

Reference: http://pubs.vmware.com/vsphere-4-esxi-embedded-vcenter/index.jsp?topic=/com.vmware.vsphere.setupembedded.doc_40/install/setting_up_esxi_4.0/c_direct_console_user_interface.html

NEW QUESTION 4

Refer to the Exhibit.

Identity source type:

- ☐ Active Directory (Integrated Windows Authentication)
☒ Active Directory as a LDAP Server
☐ Open LDAP
☐ Local OS

Identity source settings

Name:

Base DN for users:

Domain name:

Domain alias:



Base DN for groups:

Primary server URL:

Secondary server URL:

Username:

Password:

An administrator is adding an Active Directory over LDAP Identity Source for vCenter Single Sign-On, as indicated in the Exhibit. What is the correct value to configure for the Domain alias?

- A. The domain's NetBIOS name.
- B. The fully qualified domain name.
- C. vsphere.local
- D. A user defined label.

Answer: A

Explanation: The domain alias is usually NetBIOS name, for example, acme.lab.

Reference: <https://www.virtten.net/2015/02/how-to-add-ad-authentication-in-vcenter-6-0-platform-service-controller/>

NEW QUESTION 5

An administrator needs two vCenter Servers to be visible within a single vSphere Web Client session.

Which two vCenter Server and Platform Services Controller (PSC) configurations would accomplish this? (Choose two.)

- A. Install a single PSC with two vCenter Servers registered to it.
- B. Install two PSCs in the same Single Sign-On domain with one vCenter Server registered to each PSC.
- C. Install a single PSC with two vCenter Servers registered to it and configure Linked Mode.
- D. Install two PSCs in the same Single Sign-On domain with one vCenter Server registered to each PSC and configure Linked Mode.

Answer: AB

Explanation: To have two vcenter servers visible within a single vSphere web client session, you have to install a single PSC with both vCenter servers registered. You also need to install two PSCs in the same SSO domain with one vCenter Server registered to each PSC.

NEW QUESTION 6

An administrator decides to change the root password for an ESXi 6.x host to comply with the company's security policies.

What are two ways that this can be accomplished? (Choose two.)

- A. Use the Direct Console User Interface to change the password.
- B. Use the passwd command in the ESXi Shell.
- C. Use the password command in the ESXi Shell.
- D. Use the vSphere client to update local users.

Answer: AB

Explanation: To prevent unauthorized access to the vCenter Server Appliance Direct Console User Interface, you can change the password of the root user. The default root password for the vCenter Server Appliance is the password you enter during deployment of the virtual appliance.

Reference: <http://pubs.vmware.com/vsphere-60/index.jsp?topic=%2Fcom.vmware.vsphere.vcsa.doc%2FGUID-48BAF973-4FD3-4FF3-B1B6-5F7286C9B59A.html>

NEW QUESTION 7

An administrator is able to manage an ESXi 6.x host connected to vCenter Server using the vSphere Web Client but is unable to connect to the host directly. Which action should the administrator take to correct this behavior?

- A. Restart management agents on the ESXi host.
- B. Disable Lockdown Mode on the ESXi host through vCenter Server.
- C. Disable the ESXi firewall with the command `esxcli network firewall unload`.
- D. Reboot the ESXi host.

Answer: B

Explanation: Disable lockdown mode through the DCUI and then enable it through the vCenter Server instead. The vCenter Server does not keep track of lockdown mode state changes that initiated outside of the vCenter Server itself.

Reference: http://kb.vmware.com/selfservice/microsites/search.do?language=en_US&cmd=displayKC&externalId=2040768

NEW QUESTION 8

Which two statements are correct regarding vSphere certificates? (Choose two.)

- A. ESXi host upgrades do not preserve the SSL certificate and reissue one from the VMware Certificate Authority (VMCA).
- B. ESXi host upgrades preserve the existing SSL certificate.
- C. ESXi hosts have assigned SSL certificates from the VMware Certificate Authority (VMCA) during install.
- D. ESXi hosts have self-signed SSL certificates by default.

Answer: BC

Explanation: Of course, ESXi host upgrades preserve existing SSL certificate and it also have assigned SSL certificates from VMCA during the installation process.

NEW QUESTION 9

When attempting to log in with the vSphere Web Client, users have reported the error: Incorrect Username/Password. The administrator has configured the Platform Services Controller Identity Source as:

? Type: Active Directory as an LDAP Server

? Domain: vmware.com

? Alias: VMWARE

? Default Domain: Yes

Which two statements would explain why users cannot login to the vSphere Web Client? (Choose two.)

- A. Users are typing the password incorrectly.
- B. Users are in a forest that has 1-way trust.
- C. Users are in a forest that has 2-way trust.
- D. Users are logging into vCenter Server with incorrect permissions.

Answer: AB

Explanation: The possible explanation for this error might be that the users are typing password incorrectly or they are in a forest with has only 1-way trust. You need 2-way trust to get the credentials accepted.

NEW QUESTION 10

Which two methods are recommended for managing the VMware Directory Service? (Choose two.)

- A. Utilize the `vmdir` command.
- B. Manage through the vSphere Web Client.
- C. Manage using the VMware Directory Service.
- D. Utilize the `dc rep` command.

Answer: AB

Explanation: To manage VMware directory service, you can use `vmdir` command and vSphere web client. VMware directory service is always managed using `vmdir` command which is specifically used for directory services.

NEW QUESTION 10

An administrator wishes to give a user the ability to manage snapshots for virtual machines. Which privilege does the administrator need to assign to the user?

- A. Datastore.Allocate Space
- B. Virtual machine.Configuration.create snapshot
- C. Virtual machine.Configuration.manage snapshot
- D. Datastore.Browse Datastore

Answer: A

Explanation: Datastore.Allocate space allows allocating space on a datastore for a virtual machine, snapshot, clone, or virtual disk.

Reference: <https://pubs.vmware.com/vsphere-51/index.jsp?topic=%2Fcom.vmware.vsphere.security.doc%2FGUID-B2426ACC-D73F-4732-8BBC->

DE9B1B2263D9.html

NEW QUESTION 11

An administrator with global administrator privileges creates a custom role but fails to assign any privileges to it. Which two privileges would the custom role have? (Choose two.)

- A. System.View
- B. System.Anonymous
- C. System.User
- D. System.ReadOnly

Answer: AB

Explanation: When you add a custom role and do not assign any privileges to it, the role is created as a Read Only role with three system-defined privileges: System.Anonymous, System.View, and System.Read.

Reference: <https://pubs.vmware.com/vsphere-51/index.jsp?topic=%2Fcom.vmware.vsphere.security.doc%2FGUID-93B962A7-93FA-4E96-B68F-AE66D3D6C663.html>

NEW QUESTION 16

Which Advanced Setting should be created for the vCenter Server to change the expiration policy of the vpxuser password?

- A. VimPasswordExpirationInDays
- B. VimExpirationPasswordDays
- C. VimPassExpirationInDays
- D. VimPasswordRefreshDays

Answer: A

Explanation: vCenter Server creates the vpxuser account on each ESX/ESXi host that it manages. The password for each vpxuser account is auto-generated when an ESX/ESXi host is added. The password is updated by default every 30 days.

To modify default password settings:

? Connect vSphere Client to vCenter Server.

? Click Administration > vCenter Server Settings > Advanced Settings.

? Scroll to the parameter VirtualCenter.VimPasswordExpirationInDays and change the value from the default.

Reference: http://kb.vmware.com/selfservice/microsites/search.do?language=en_US&cmd=displayKC&externalId=1016736

NEW QUESTION 21

Which password meets ESXi 6.x host password requirements?

- A. 8kMVnn2x!
- B. zNgtnJBA2
- C. Nvgt34kn44
- D. !b74wr

Answer: A

Explanation: A valid password requires a mix of upper and lower case letters, digits, and other characters. You can use a 7-character long password with characters from at least three of these four classes, or a 6-character long password containing characters from all the classes. A password that begins with an upper case letter and ends with a numerical digit does not count towards the number of character classes used. It is recommended that the password does not contain the username.

A passphrase requires at least 3 words, can be 8 to 40 characters long, and must contain enough different characters.

Reference: http://kb.vmware.com/selfservice/microsites/search.do?language=en_US&cmd=displayKC&externalId=1012033

NEW QUESTION 22

An administrator needs to create an Integrated Windows Authentication (IWA) Identity Source on a newly deployed vCenter Server Appliance (VCSA). Which two actions will accomplish this? (Choose two.)

- A. Use a Service Principal Name (SPN) to configure the Identity Source.
- B. Use a Domain administrator to configure the Identity Source.
- C. Join the VCSA to Active Directory and configure the Identity Source with a Machine Account.
- D. Create a computer account in Active Directory for the VCSA and configure the Identity Source.

Answer: AC

Explanation: Using a machine account when configuring an Active Directory identity source for vCenter Server requires that the Windows system be joined to the domain. If the system is not joined to the domain, SSO cannot leverage the machine account to create the identity source and perform its function as the secure token service user.

To resolve this issue in VCVA 5.5, use only the Use SPN option.

Reference:

http://kb.vmware.com/selfservice/microsites/search.do?language=en_US&cmd=displayKC&externalId=2058919

NEW QUESTION 23

Which two roles can be modified? (Choose two.)

- A. Administrator
- B. Network Administrator
- C. Datastore Consumer
- D. Read-Only

Answer: BC

Explanation: It is a common knowledge that you cannot modify Administrator role and grant whatever privileges you like. Same is the case with read-only. This role is created solely for ready only purposes. So you are left with two viable options – Network administrator and Datastore consumer both of which can be modified to add or delete privileges according to your specifications.

NEW QUESTION 26

An administrator has recently audited the environment and found numerous virtual machines with sensitive data written to the configuration files. To prevent this in the future, which advanced parameter should be applied to the virtual machines?

- A. isolation.tools.setinfo.disable = true
- B. isolation.tools.setinfo.enable = true
- C. isolation.tools.setinfo.disable = false
- D. isolation.tools.setinfo.enable = false

Answer: A

Explanation: It is configured on a per-VM basis. You can increase the guest operating system variable memory limit if large amounts of custom information are being stored in the configuration file. You can also prevent guests from writing any name-value pairs to the configuration file. To do so, use the following setting, and set it to 'true':

NEW QUESTION 29

An administrator has configured three vCenter Servers and vRealize Orchestrator within a Platform Services Controller domain, and needs to grant a user privileges that span all environments. Which statement best describes how the administrator would accomplish this?

- A. Assign a Global Permission to the user.
- B. Assign a vCenter Permission to the user.
- C. Assign vsphere.local membership to the user.
- D. Assign an ESXi Permission to the user.

Answer: A

Explanation: Global permissions are applied to a global root object that spans solutions, for example, both vCenter Server and vCenter Orchestrator. Use global permissions to give a user or group privileges for all objects in all object hierarchies.

Reference: <http://pubs.vmware.com/vsphere-60/index.jsp?topic=%2Fcom.vmware.vsphere.security.doc%2FGUID-C7702E31-1623-4189-89CB-E1136AA27972.html>

NEW QUESTION 31

An administrator is creating a new Content Library. It will subscribe to another remote Content Library without authentication enabled. What information from the published library will they need in order to complete the subscription?

- A. Subscription URL
- B. A security password from the publishing Content Library
- C. Publisher's Items.json file
- D. Username from the publishing Content Library

Answer: A

Explanation: Subscription URL from the published library is needed to complete the subscription.

NEW QUESTION 33

An administrator would like to use a passphrase for their ESXi 6.x hosts which has these characteristics:

? Minimum of 21 characters

? Minimum of 2 words

Which advanced options must be set to allow this passphrase configuration to be used?

- A. retry=3 min=disabled, disabled, 7, 21, 7 passphrase=2
- B. retry=3 min=disabled, disabled, 21, 7, 7 passphrase=2
- C. retry=3 min=disabled, disabled, 2, 21, 7
- D. retry=3 min=disabled, disabled, 21, 21, 2

Answer: B

Explanation: To force a specific password complexity and disable all others, replace the number with the word with disabled. For example, to force passwords containing characters from all four- character classes:

password requisite /lib/security/\$ISA/pam_passwdqc.so retry=3 min= disabled,disabled,disabled,disabled,7

Reference: http://kb.vmware.com/selfservice/microsites/search.do?language=en_US&cmd=displayKC&externalId=1012033

NEW QUESTION 36

An administrator creates a custom ESXi firewall rule using an XML file, however the rules do not appear in the vSphere Web Client. Which action should the administrator take to correct the problem?

- A. Load the new rules using `esxcli network firewall reload`.
- B. Load the new rules using `esxcli network firewall refresh`.
- C. Verify the entries in the XML file and then reboot the ESXi host.
- D. Remove the ESXi host from the inventory and add it back.

Answer: B

Explanation: Refresh the firewall configuration by reading the rule set files if the firewall module is loaded.

Reference: <https://pubs.vmware.com/vsphere-60/index.jsp?topic=%2Fcom.vmware.vsphere.security.doc%2FGUID-7A8BEFC8-BF86-49B5-AE2D-E400AAD81BA3.html>

Topic 2, Configure and Administer Advanced vSphere Networking

NEW QUESTION 39

Which command shows the Physical Uplink status for a vmnic?


- A. `esxcli network ip get`
- B. `esxcli network nic list`
- C. `esxcli network vmnic list`
- D. `esxcli network ifconfig get`

Answer: B

Explanation: Reference: <http://blogs.vmware.com/vsphere/2013/01/network-troubleshooting-using-esxcli-5-1.html>

NEW QUESTION 42

Refer to the Exhibit.



This host currently has no management network redundancy

An administrator is changing the settings on a vSphere Distributed Switch (vDS). During this process, the ESXi Management IP address is set to an address which can no longer communicate with the vCenter Server. What is the most likely outcome of this action?

- A. The host will disconnect from the vCenter Server and remain disconnected.
- B. The host will automatically detect the communication issue and revert the change.
- C. The host will stay connected with the change, but show an alert.
- D. The host will disconnect and migrate the vDS portgroup to a standard switch.

Answer: B

Explanation: ESXi is a flexible environment that automatically detects communication issues and revert the changes made in mistake.

NEW QUESTION 46

A common root user account has been configured for a group of ESXi 6.x hosts.

Which two steps should be taken to mitigate security risks associated with this configuration? (Choose two.)

- A. Remove the root user account from the ESXi host.
- B. Set a complex password for the root account and limit its use.
- C. Use ESXi Active Directory capabilities to assign users the administrator role.
- D. Use Lockdown mode to restrict root account access.

Answer: BC

Explanation: To address the security risks, you need to set a complex password for the root account and make sure only authorized personnel use it. The second step is to use ESXi active directory to assign the administrator role to users.

NEW QUESTION 51

An administrator creates a Private VLAN with a Primary VLAN ID of 2. The administrator then creates three Private VLANs as follows:

- ? Marketing
- ? PVLAN ID. 4
- ? PVLAN Type. Isolated

? Accounting
? PVLAN ID. 5
? PVLAN Type. Community
? Secretary
? PVLAN ID. 17
? PVLAN Type. Isolated

Users in the Accounting PVLAN are reporting problems communicating with servers in the Marketing PVLAN.
Which two actions could the administrator take to resolve this problem? (Choose two.)

- A. Change the PVLAN type for the Accounting network to Promiscuous.
- B. Change the PVLAN ID for the Accounting network to 2.
- C. Change the PVLAN type for Marketing network to Promiscuous.
- D. Change the PVLAN ID for Accounting network to 4.

Answer: AB

Explanation: Change the PVLAN type for the accounting network to Promiscuous and the PVLAN ID to 2. This way, the servers in Marketing PVLAN will communicate effectively.

NEW QUESTION 53

An administrator runs the command `esxcli storage core device list` and sees the following output:
`mpx.vmhba1:C0:T0:L0 Display Name: RAID 5 (mpx.vmhba1:C0:T0:L0) Has Settable Display Name: false SizE. 40960 Device Type: Direct-Access Multipath Plugin: NMP Devfs Path: /vmfs/devices/disks/mpx.vmhba1:C0:T0:L0 Status: off Is Local: true`
What can be determined by this output?

- A. The device is a being used for vFlash Read Cache.
- B. The device is in a Permanent Device Loss (PDL) state.
- C. The device is a local Solid State Device (SSD).
- D. The device is in an All Paths Down (APD) state.

Answer: B

Explanation: Reference: <http://vmwaremine.com/2014/07/07/manage-psa-claimrules-satp-rules-esxcli/#sthash.i6Esax8x.dpbs>

NEW QUESTION 54

Which two groups of settings should be reviewed when attempting to increase the security of virtual machines (VMs)? (Choose two.)

- A. Disable hardware devices
- B. Disable unexposed features
- C. Disable Vmtools devices
- D. Disable VM Template features

Answer: AB

Explanation: Make sure you review hardware devices and disable the unnecessary ones. Also disable unexposed features before increasing virtual machines security.

NEW QUESTION 57

To reduce the attack vectors for a virtual machine, which two settings should an administrator set to false? (Choose two.)

- A. `ideX:Y.present`
- B. `serial.present`
- C. `ideX:Y.enabled`
- D. `serial.enabled`

Answer: AB

Explanation: Reference: <http://jackiechen.org/2012/10/05/vsphere-5-0-security-hardening-recommended-vm-settings-configure-script/>

NEW QUESTION 62

Which two advanced features should be disabled for virtual machines that are only hosted on a vSphere system? (Choose two.)

- A. `isolation.tools.unixtools.push.update.disable`
- B. `isolation.tools.ghi.launchmenu.change`
- C. `isolation.tools.bbs.disable`
- D. `isolation.tools.hgfsServerSet.enable`

Answer: AB

Explanation: Because VMware virtual machines run in many VMware products in addition to vSphere, some virtual machine parameters do not apply in a vSphere environment. Although these features do not appear in vSphere user interfaces, disabling them reduces the number of vectors through which a guest operating system could access a host. Use the following .vmx setting to disable these features:
`isolation.tools.unixtools.push.update.disable = "TRUE" isolation.tools.ghi.launchmenu.change = "TRUE" isolation.tools.ghostools.enable = "TRUE"`

isolation.tools.hgfsS“rver”et.disable = "TRUE" isolation.tools.memSc“edFa”eSampleStats.disable = "TRUE" isolation.tools.getCr“ds.d”sable = "TRUE"
 Reference:
<https://pubs.vmware.com/vsphere-51/index.jsp?topic=%2Fcom.vmware.vmtools.install.doc%2FGUID-685722FA-9009-439C-9142-18A9E7C592EA.html>

NEW QUESTION 63

An administrator is configuring virtual machines to use Worldwide Port Names (WWPNs) to access the storage.
 Which two conditions are required? (Choose two.)

- A. The switches in the fabric must be N-Port ID Virtualization aware.
- B. The virtual machines must be using passthrough Raw Disk Mapping (RDMp).
- C. The virtual machines must be using Virtual Machine Disk (VMDK).
- D. The switches in the fabric must be Storage I/O Control aware.

Answer: AB

Explanation: To configure virtual machines to use WWPNs, you have to set N-Port ID virtualization aware setting on the switches in the fabric and you should also make sure that the virtual machines must be using passthrough raw disk mapping.

NEW QUESTION 64

Which three statements are correct regarding Fibre Channel over Ethernet (FCOE)? (Choose three.)

- A. The network switch must have Priority-based Flow Control (PFC) set to AUTO.
- B. The network switch must have Priority-based Flow Control (PFC) set to ON.
- C. Each port on the FCoE card must reside on the same vSwitch.
- D. Each port on the FCoE card must reside on a separate vSwitch.
- E. The ESXi host will require a reboot after moving an FCoE card to a different vSwitch.

Answer: ADE

Explanation: Reference:

<https://pubs.vmware.com/vsphere-55/index.jsp?topic=%2Fcom.vmware.vsphere.storage.doc%2FGUID-6B49866F-7005-4099-84AC-4FB2A1A91F64.html>

NEW QUESTION 65

Refer to the Exhibit.

Rule-Set 1

Select rules to create your VM storage policy.

- The VM storage policy will match datastores that satisfy any of the rule sets.
- A rule set will match datastores that satisfy all of the selected rules.

Rules based on common capabilities

<Add capability>

Rules based on vendor-specific capabilities

VSAN

Number of failures to tolerate

2

Number of disk stripes per object

3

<Add capability>

Rules based on tags

Add tag-based rule...

Storage Consumption Model

A virtual disk with size 100 GB would consume:

Storage space
300.00 GB

Initially reserved storage space
0.00 B

Reserved flash space
0.00 B

A Storage Policy for a Virtual SAN is set to the default policy, as shown in the Exhibit. Which change would reduce the storage consumption by one third?

- A. Number of failures to tolerate = 1
- B. Number of disk stripes per object = 2
- C. Number of failures to tolerate = 3
- D. Number of disk stripes per object = 1

Answer: A

Explanation: Number of failures to tolerate defines the number of host, disk, or network failures a virtual machine object can tolerate. For n failures tolerated, n+1 copies of the virtual machine object are created and 2n+1 hosts with storage are required.

Default value is 1. Maximum value is 3.

Reference: <http://pubs.vmware.com/vsphere-55/index.jsp?topic=%2Fcom.vmware.vsphere.storage.doc%2FGUID-C8E919D0-9D80-4AE1-826B-D180632775F3.html>

NEW QUESTION 69

Which two statements are true regarding Virtual SAN Fault Domains? (Choose two.)

- A. They enable Virtual SAN to tolerate the failure of an entire physical rack.
- B. Virtual SAN ensures that no two replicas are provisioned on the same domain.
- C. Virtual SAN ensures that all replicas are provisioned on the same domain.
- D. They require VMware High Availability (HA) to ensure component distribution across domains.

Answer: AB

Explanation: A fault domain consists of one or more Virtual SAN hosts grouped together according to their physical location in the data center. When configured, fault domains enable Virtual SAN to tolerate failures of entire physical rack as well as failures of a single host, capacity device, network link or a network switch dedicated to fault domains. Fault domains cannot be configured for stretched or metro clusters.

Reference: <http://pubs.vmware.com/vsphere-60/index.jsp?topic=%2Fcom.vmware.vsphere.virtualsan.doc%2FGUID-8491C4B0-6F94-4023-8C7A-FD7B40D0368D.html>

NEW QUESTION 71

What is the command to list multipathing modules on an ESXi 6.x host?

- A. esxcli storage core list plugin --plugin-class=MP
- B. esxcli storage core list plugin --class-plugin=MP
- C. esxcli storage core plugin list --plugin-class=MP
- D. esxcli storage core plugin list --class-plugin=MP

Answer: C

Explanation: Reference: <http://darrylcauldwell.com/advanced-vsphere-5-x-storage-masking-multipathing-filtering/>

NEW QUESTION 72

An administrator needs to recover disk space on a previously-used thin provisioned virtual disk. The volumes where the administrator needs to recover the disk blocks are on VAAI-compliant storage arrays. Which two actions should the administrator take accomplish this task? (Choose two.)

- A. Perform a Storage vMotion to another volume in order to force free space recovery to occur.
- B. This recreates the volume in a new location and recovers all unused space.
- C. Use VMware Converter to migrate the virtual machine to a new datastore.
- D. This will recreate the volumes and recover all unused space.
- E. Issue the vmkfstools -vmfs unmap command within the VMFS volume directory on the ESXi host console.
- F. Execute the esxcli storage vmfs unmap command.

Answer: BD

Explanation: Reference: <http://www.boche.net/blog/index.php/2013/09/13/vsphere-5-5-unmap-deep-dive/>

NEW QUESTION 74

Which two tasks does the Pluggable Storage Architecture (PSA) perform? (Choose two.)

- A. Handles I/O queueing to the logical devices.
- B. Handles physical path discovery, but is not involved in the removal.
- C. Handles physical path discovery and removal.
- D. Handles I/O queueing to FC storage HBAs.

Answer: AC

Explanation: When coordinating the VMware NMP and any installed third-party MPPs, the PSA performs the following tasks:

- ? Loads and unloads multipathing plug-ins.
- ? Hides virtual machine specifics from a particular plug-in.
- ? Routes I/O requests for a specific logical device to the MPP managing that device.
- ? Handles I/O queueing to the logical devices.
- ? Implements logical device bandwidth sharing between virtual machines.
- ? Handles I/O queueing to the physical storage HBAs.
- ? Handles physical path discovery and removal.
- ? Provides logical device and physical path I/O statistics.

Reference: <http://pubs.vmware.com/vsphere-51/index.jsp?topic=%2Fcom.vmware.vsphere.storage.doc%2FGUID-C1C4A725-8BE4-4875-919E-693812961366.html>

NEW QUESTION 78

What are two use cases for Fibre Channel Zoning in a vSphere environment? (Choose two.)

- A. Increases the number of targets presented to an ESXi host.
- B. Controls and isolates paths in a fabric.
- C. Controls and isolates paths to an NFS share.
- D. Can be used to separate different environments.

Answer:

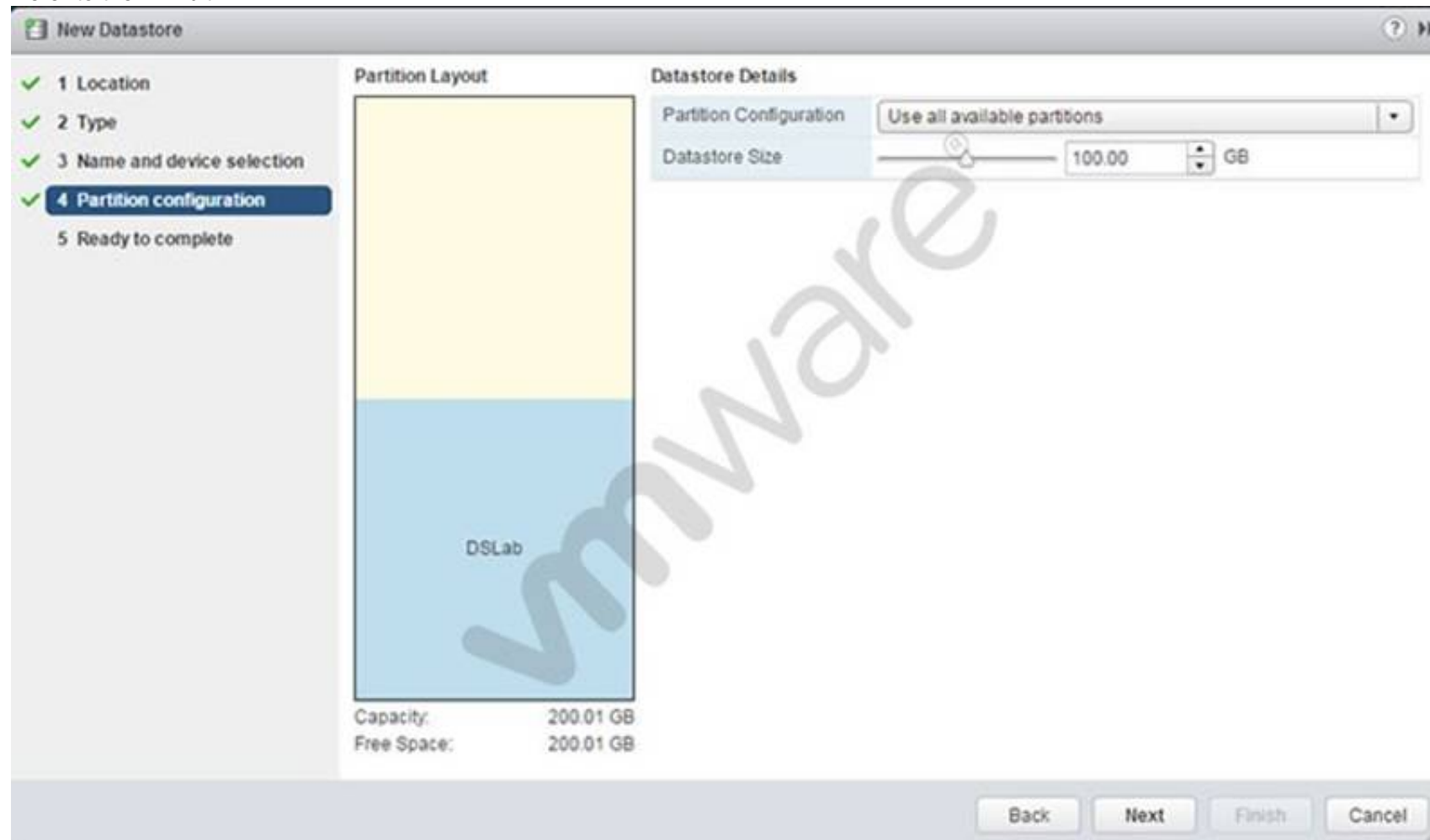
BD

Explanation: Zoning provides access control in the SAN topology. Zoning defines which HBAs can connect to which targets. When you configure a SAN by using zoning, the devices outside a zone are not visible to the devices inside the zone.

Reference: <https://pubs.vmware.com/vsphere-55/index.jsp?topic=%2Fcom.vmware.vsphere.storage.doc%2FGUID-E7818A5D-6BD7-4F51-B4BA-EFBF2D3A8357.html>

NEW QUESTION 80

Refer to the Exhibit.



What will be created upon completion of the steps in this wizard?

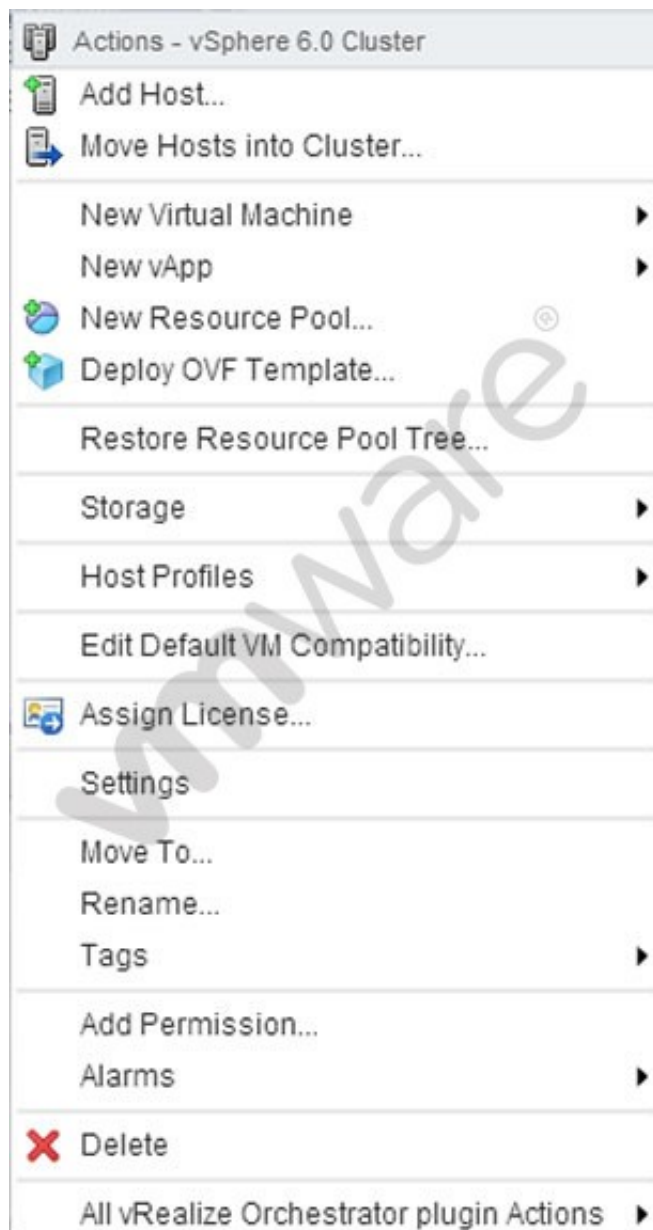
- A. 100GB VMFS5 datastore with free space available for expansion
- B. 100GB VMFS5 datastore with free space available for a second datastore
- C. 100GB VMFS3 datastore
- D. 200.01 GB VMFS5 datastore

Answer: A

Explanation: As you can see in the exhibit, the 100GB VMFS5 datastore is created with free space available for expansion.

NEW QUESTION 85

Refer to the Exhibit.



A vSphere 6.x environment is configured with VMware Virtual Volumes (VVOs). An administrator accesses the cluster Actions menu, as shown in the Exhibit. Which option is used to create a VVOL on an existing VVOL container?

- A. Storage
- B. Deploy OVF Template
- C. New vApp
- D. Settings

Answer: A

Explanation: A storage container is the storage that is available physically on your storage array. Now I say physically but this could also be virtually presented storage even on an ESXi host but somewhere somehow it will be back-ended on some physical medium, be it HDD, SSD or hey, maybe even a super fast memory disk. Basically it's a chunk of physical storage somewhere. Capacity Pools are logical partitions carved out of these to provide a chunk of storage to your VM Admins. Capacity pools may also span multiple storage arrays even across sites. Now you could have a single capacity pool within your storage container or multiple depending on your requirements if you need some sort of logical separation for say separate tenants or separate VM admins needing their own separate chunk of storage but just simply think of it as a chunk of storage presented to your VM admins.

Reference: <http://www.wooditwork.com/2012/10/29/vmware-vvolumes-the-game-changing-future-for-storage-is-demoed/>

NEW QUESTION 90

Which two considerations should an administrator keep in mind when booting from Software Fiber Channel over Ethernet (FCoE)? (Choose two.)

- A. Software FCoE boot configuration can be changed from within ESXi.
- B. Software FCoE boot firmware cannot export information in FBFT format.
- C. Multipathing is not supported at pre-boot.
- D. Boot LUN cannot be shared with other hosts even on shared storage.

Answer: CD

Explanation: When you boot the ESXi host from SAN using software FCoE, certain requirements and considerations apply.

- ? You cannot change software FCoE boot configuration from within ESXi.
- ? Coredump is not supported on any software FCoE LUNs, including the boot LUN.
- ? Multipathing is not supported at pre-boot.
- ? Boot LUN cannot be shared with other hosts even on shared storage.

Reference:

<https://pubs.vmware.com/vsphere-55/index.jsp?topic=%2Fcom.vmware.vsphere.storage.doc%2FGUID-8E57EDC9-F122-4A81-8B80-FE19FFE832B1.html>

NEW QUESTION 93

Which two statements are true regarding Storage Multipathing Plug-Ins? (Choose two.)

- A. The default Path Selection Policy is VMW_PSP_MRU for iSCSI or FC devices.
- B. The default Path Selection Policy is VMW_PSP_FIXED for iSCSI or FC devices.
- C. VMW_PSP_MRU is typically selected for ALUA arrays by default.
- D. VMW_PSP_FIXED is typically selected for ALUA arrays by default.

Answer: BC

Explanation: Reference: https://pubs.vmware.com/vsphere-51/index.jsp?topic=%2Fcom.vmware.vcli.examples.doc%2Fcli_manage_storage.6.5.html

NEW QUESTION 94

Refer to the Exhibit.



```
ds-lab-vsan12.dsl.vmware.com - PuTTY
[root@ds-lab-vsan12:~] esxcli vsan policy getdefault
Policy Class  Policy Value
-----
cluster      (("hostFailuresToTolerate" i1))
vdisk        (("hostFailuresToTolerate" i1))
vmnamespace  (("hostFailuresToTolerate" i1))
vmswap       (("hostFailuresToTolerate" i1) ("forceProvisioning" i1))
vmem         (("hostFailuresToTolerate" i1) ("forceProvisioning" i1))
[root@ds-lab-vsan12:~]
```

An administrator recently created a Virtual SAN but no Storage Policies were defined. A few virtual machines were deployed to this cluster. The administrator analyzes the default Virtual SAN policy as shown in the Exhibit. Based on the exhibit, which two statements are true? (Choose two.)

- A. Losing one cluster node will not affect data availability.
- B. Losing one Hard Disk in a cluster node will not affect data availability.
- C. Creating a virtual machine Swap file will fail if it violates default storage policy.
- D. Creating a virtual machine will succeed even if it violates default storage policy.

Answer: AB

Explanation: The Virtual SAN policy shows that the tolerate level is on so losing a cluster node will not affect data availability. Same is the case with hard disk in cluster node. Losing it will not affect data availability.

NEW QUESTION 96

An administrator observes that virtual machine storage activity on an ESXi 6.x host is negatively affecting virtual machine storage activity on another host that is accessing the same VMFS Datastore. Which action would mitigate the issue?

- A. Enable Storage IO Control.
- B. Configure Storage DRS.
- C. Enable the Dynamic Queue Depth Throttling option.
- D. Configure the Disk.SchedNumReqOutstanding parameter.

Answer: A

Explanation: SIOC is extremely powerful, it can increase your consolidation ratios on the storage side, allowing more VM's per datastore. Which leads to lower storage costs and less administrative overhead. So how does it work? At a basic level SIOC is monitoring the end to end latency of a datastore. When there is congestion (the latency is higher than the configured value) SIOC reduces the latency by throttling back VM's who are using excessive I/O. Now you might say, I need that VM to have all of those I/O's, which in many cases is true, you simply need to give the VMDK(s) of that VM a higher share value. SIOC will use the share values assigned to the VM's VMDK's to prioritize access to the datastore. Just simply turning SIOC on will guarantee each VMDK has equal access to the datastore, shares fine tune that giving you the ability to give VMDK's more or less priority during times of contention. Reference: <http://blogs.vmware.com/vsphere/2014/05/enabling-monitoring-storage-io-control.html>

NEW QUESTION 100

Refer to the Exhibit.

Storage Adapters

PERC H310 Mini Monolithics

Adapter	Type	Status	Identifier	Targets	Devices	Paths
vmhba1	SCSI	Unknown		7	7	7

Patsburg 6 Port SATA AHCI Controller

Adapter	Type	Status	Identifier	Targets	Devices	Paths
vmhba36	Block SCSI	Unknown		0	0	0
vmhba0	Block SCSI	Unknown		0	0	0
vmhba35	Block SCSI	Unknown		0	0	0
vmhba37	Block SCSI	Unknown		1	1	1
vmhba38	Block SCSI	Unknown		0	0	0
vmhba34	Block SCSI	Unknown		0	0	0

Adapter Details

Properties | **Devices** | Paths

Name	Type	Capacity	Operational...	Hardware Acceleration	Drive Type
Local SEAGATE Disk (naa.5000...	disk	279.40 GB	Attached	Unknown	HDD
Local SEAGATE Disk (naa.5000...	disk	279.40 GB	Attached	Unknown	HDD
Local DP Enclosure Svc Dev (t1...	enclosure		Attached	Not supported	HDD
Local SEAGATE Disk (naa.5000...	disk	279.40 GB	Attached	Unknown	HDD
Local ATA Disk (naa.500253825...	disk	93.16 GB	Attached	Unknown	Flash
Local ATA Disk (naa.500253825...	disk	93.16 GB	Attached	Unknown	Flash
Local SEAGATE Disk (naa.5000...	disk	279.40 GB	Attached	Unknown	HDD

The list of devices attached to vmhba1 will be the basis for configuring a VMware Virtual SAN using Manual Mode. Based on the exhibit, which two combinations of devices should be used to create Disk Group(s)? (Choose two.)

- A. One Disk Group with one Flash Drive and three HDDs
- B. Two Disk Groups with one Flash Drive and two HDDs each
- C. One Disk Group with one Flash Drive and four HDDs
- D. Two Disk Groups with two Flash Drives and four HDDs each

Answer: AB

Explanation: To create the disk group, you have to build a disk group with a flash drive and three HDDs or you can build two groups with one flash drive and two HDDs each.

NEW QUESTION 103

A device's vStorage API for Array Integration (VAAI) support status command line output shows:

naa.500253825002a865 VAAI Plugin Name: ATS Status: unsupported Clone Status: unsupported Zero Status: supported Delete Status: unsupported
 What is the corresponding VAAI support status in the vSphere Web Client?

- A. Unknown
- B. Supported
- C. Not supported
- D. Unsupported

Answer: A

Explanation: The VAAI support status will be unknown. Reference:

<https://pubs.vmware.com/vsphere-55/index.jsp?topic=%2Fcom.vmware.vsphere.storage.doc%2FGUID-0520FD37-D7AD-4FBA-9A2E-E5F8211FCBBB.html>

NEW QUESTION 108

Refer to the Exhibit.

```
6:16:06pm up 74 days 19:37, 470 worlds, 3 VMs, 4 vCPUs; CPU load average: 0.13, 0.10, 0.09
```

ADAPTR	PATH	NPTH	CMDS/s	READS/s	WRITES/s	MBREAD/s	MBWRTN/s	DAVG/cmd	KAVG/cmd	GAVG/cmd	QAVG/cmd
vmhba0	-	1	6.68	0.00	0.00	0.00	0.00	0.25	0.03	0.28	0.01
vmhba1	-	1	0.00	0.00	0.00	0.00	0.00	0.00	0.00	0.00	0.00
vmhba32	-	0	0.00	0.00	0.00	0.00	0.00	0.00	0.00	0.00	0.00
vmhba33	-	2	184.06	85.35	97.27	5.31	4.88	160.91	0.01	160.92	0.00

An administrator is using the esxtop command to troubleshoot storage performance issues on a virtual machine. The esxtop capture is shown in the Exhibit. Based on the exhibit, which two statements are true? (Choose two.)

- A. The iSCSI device is experiencing high latency.
- B. The ESXi kernel is experiencing high latency.
- C. The Guest OS is experiencing high latency and response time.
- D. The NFS device is experiencing high latency.

Answer: AC

Explanation: The iSCSI device is having high latency. You can see the response time peaking with high latency for Guest OS.

Topic 4, Upgrade a vSphere Deployment

NEW QUESTION 113

An administrator is writing a kickstart script to upgrade an ESXi 6.x host. In which three locations can the script reside? (Choose three.)

- A. NFS
- B. USB
- C. HTTP
- D. TFTP
- E. PXE

Answer: ABC

Explanation: The installation script (ks.cfg) can reside in any of these locations:

- ? FTP
- ? HTTP/HTTPS
- ? NFS Share
- ? USB flash drive
- ? CD/DVD device

Reference: http://kb.vmware.com/selfservice/microsites/search.do?language=en_US&cmd=displayKC&externalId=2004582

NEW QUESTION 117

An administrator wants to upgrade to vCenter Server 6.x.

The vCenter Server:

- ? Is hosted on a virtual machine server running Microsoft Windows Server 2008 R2, with 8 vCPUs and 16GB RAM.
 - ? Will have an embedded Platform Services Controller.
 - ? Hosts a Large Environment with 1,000 ESXi hosts and 10,000 Virtual Machines.
- Why does the vCenter Server not meet the minimum requirements?

- A. Windows Server 2008 R2 is not a supported Operating System for vCenter Server.
- B. The virtual machine has insufficient resources for the environment size.
- C. The environment is too large to be managed by a single vCenter Server.
- D. The Platform Services Controller must be changed to an External deployment.

Answer: B

Explanation: The environment is very big with 1000 ESXi host and 10,000 virtual machines. Therefore, it is not enough and the vCenter server cannot meet these requirements.

NEW QUESTION 122

Which two supported tools can be used to upgrade virtual machine hardware? (Choose two.)

- A. vSphere Web Client
- B. vSphere Update Manager
- C. vmware-vmupgrade.exe
- D. esxcli vm hardware upgrade

Answer: AB

Explanation: VMware offers the following tools for upgrading virtual machines:

vSphere Client

Requires you to perform the virtual machine upgrade one step at a time, but does not require vSphere Update Manager.

vSphere Update Manager

Automates the process of upgrading and patching virtual machines, thereby ensuring that the steps occur in the correct order. You can use Update Manager to directly upgrade virtual machine hardware, VMware Tools, and virtual appliances. You can also patch and update third-party software running on the virtual machines and virtual appliances.

Reference: https://pubs.vmware.com/vsphere-50/index.jsp?topic=%2Fcom.vmware.vsphere.upgrade.doc_50%2FGUID-EE77B0A9-F8FF-4785-BEAD-B6F04EE04492.html

NEW QUESTION 125

An administrator is upgrading a vCenter Server Appliance and wants to ensure that all the prerequisites are met.

What action must be taken before upgrading the vCenter Server Appliance?

- A. Install the Client Integration Plug-in.
- B. Install the database client.
- C. Install the ODBC connector.
- D. Install the Update Manager Plug-in.

Answer: A

Explanation: You must install the Client Integration Plug-in before you deploy or upgrade the vCenter Server Appliance.
Reference: <https://pubs.vmware.com/vsphere-60/index.jsp?topic=%2Fcom.vmware.vsphere.upgrade.doc%2FGUID-CA16F78B-7890-4357-9760-AF8648806FE7.html>

NEW QUESTION 127

What three supported methods can be used to upgrade a host from ESXi 5.x to ESXi 6.x? (Choose three.)

- A. vSphere Update Manager
- B. vihostupdate
- C. esxcli
- D. vSphere Auto Deploy
- E. esxupdate

Answer: ACD

Explanation: Reference: <https://pubs.vmware.com/vsphere-60/index.jsp?topic=%2Fcom.vmware.vsphere.upgrade.doc%2FGUID-FE668788-1F32-4CB2-845C-5547DD59EB48.html>

NEW QUESTION 129

What command line utility can be used to upgrade an ESXi host?

- A. esxcli
- B. esxupdate
- C. vihostupdate
- D. esxcfg

Answer: A

Explanation: You can use the esxcli software profile update or esxcli software profile install command to upgrade or update an ESXi host.
Reference: <https://pubs.vmware.com/vsphere-51/index.jsp?topic=%2Fcom.vmware.vsphere.upgrade.doc%2FGUID-E51C5DB6-F28E-42E8-ACA4-0EBDD11DF55D.html>

NEW QUESTION 130

When upgrading vCenter Server, an administrator notices that the upgrade fails at the vCenter Single Sign-On installation. What must be done to allow the upgrade to complete?

- A. Verify that the VMware Directory service can stop by manually restarting it.
- B. Verify that the vCenter Single Sign-On service can stop by manually restarting it.
- C. Uninstall vCenter Single Sign-On service.
- D. Uninstall the VMware Directory service.

Answer: A

Explanation: To verify that the VMware Directory Service is in a stable state and can stop, manually restart it. The VMware Directory service must be stopped for the vCenter Server upgrade software to uninstall vCenter Single Sign-On during the upgrade process.

NEW QUESTION 132

Which file determines the location of the installation script during a scripted upgrade?

- A. boot.cfg
- B. ks.cfg
- C. script.cfg
- D. upgrade.cfg

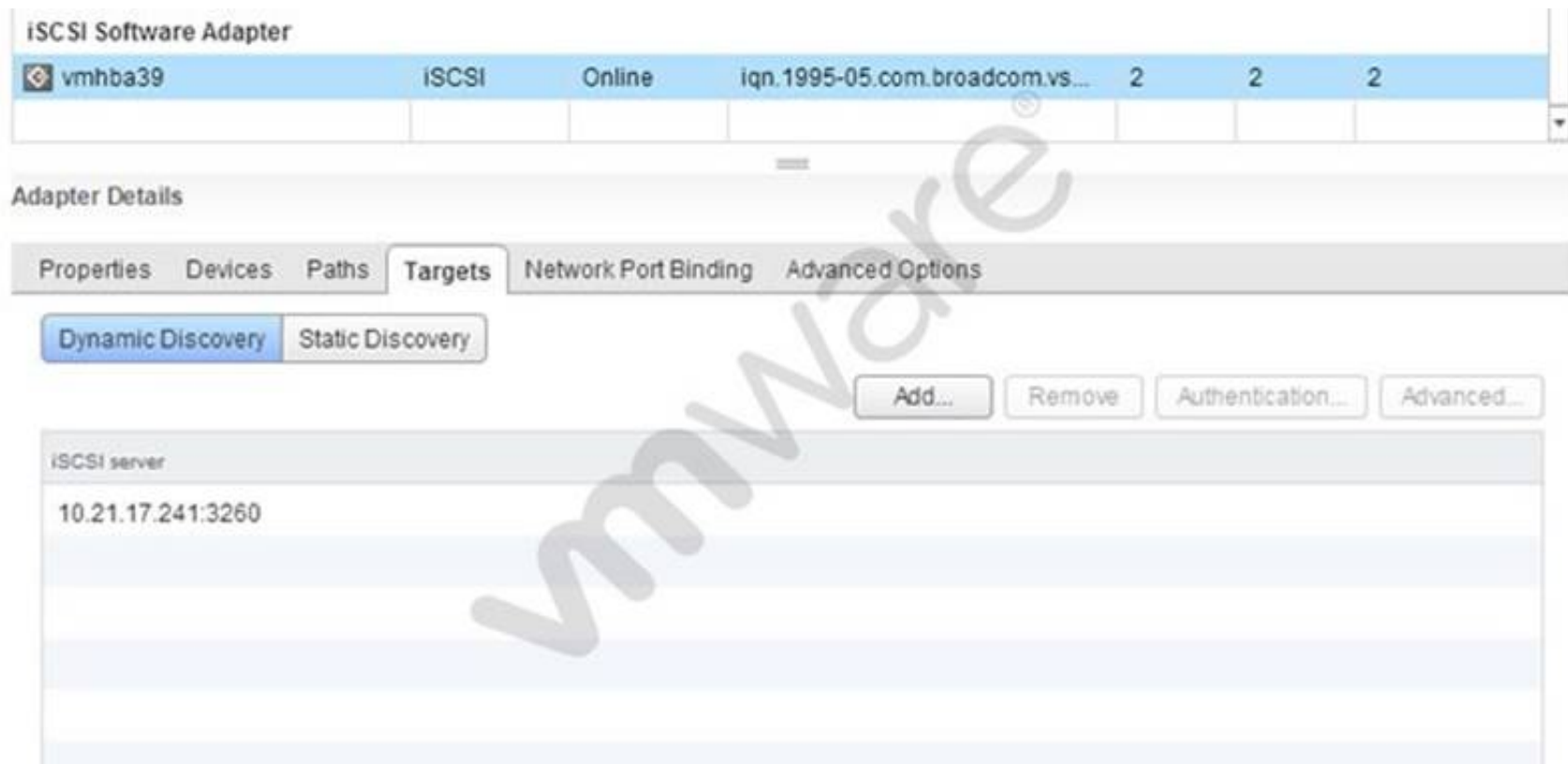
Answer: A

Explanation: You can modify the boot.cfg file to specify the location of the installation or upgrade script using the kernelopt option.

Topic 5, Administer and Manage vSphere Resources

NEW QUESTION 135

Refer to the Exhibit.



Which tab shows the Hardware Acceleration support status?

- A. Devices
- B. Properties
- C. Paths
- D. Advanced Options

Answer: A

Explanation: Reference: https://pubs.vmware.com/vsphere-4-esx-vcenter/index.jsp?topic=/com.vmware.vsphere.config_iscsi.doc_41/esx_server_config/managing_storage/c_hardware_acceleration_status.html

NEW QUESTION 137

Which minor badge items make up the Efficiency badge score for an ESXi host in vCenter Operations Manager?

- A. Workload, Anomalies, Faults
- B. Workload, Stress, Density
- C. Time Remaining, Capacity Remaining
- D. Reclaimable Waste, Density

Answer: D

Explanation: The third major badge that vC Ops reports is Efficiency. We all moved to virtualization in hopes of achieving greater efficiencies but there are varying degrees of efficiency so vC Ops is here to help ensure that you maximize the efficiency of your virtual infrastructure. The efficiency badge score is a weighted combination of Reclaimable Waste and Density.

Reference: <http://blogs.vmware.com/management/2014/04/david-davis-on-vcenter-operations-post-8-understanding-vcenter-operations-badges.html>

NEW QUESTION 140

Refer to the Exhibit.



An administrator reviews the Health of a virtual machine, as shown in the Exhibit.

Based on the exhibit, which three metrics can be used to determine the virtual machine's Workload characteristics? (Choose three.)

- A. CPU
- B. Memory
- C. Network IO
- D. Threads
- E. vNUMA Stats

Answer: ABC

Explanation: The three most important metrics that are needed to be observed to ensure virtual machine health are CPU, memory and Network I/O because they are directly related to how the virtual machine will perform during peak load hours.

Topic 6, Backup and Recover a vSphere Deployment

NEW QUESTION 141

Which three statements are true when restoring a Resource Pool Tree? (Choose three.)

- A. Distributed Resource Scheduler must be set to manual.
- B. Restoring a snapshot can only be done on the same cluster from which it was taken.
- C. No other resource pools can be present in the cluster.
- D. Restoring a resource pool tree must be done in the vSphere Web Client.
- E. Enabling Enhanced vMotion Compatibility on the cluster is required.

Answer: BCD

Explanation: Reference: <https://pubs.vmware.com/vsphere-51/index.jsp?topic=%2Fcom.vmware.vsphere.resmgmt.doc%2FGUID-43B3A1EF-B7FF-421C-96FA-33FA230688BB.html>

NEW QUESTION 143

Vmware vSphere Replication protects virtual machines from partial or complete site failures by replicating the virtual machines between which three sites? (Choose three.)

- A. From a source site to a target site.
- B. From within a single site from one cluster to another.
- C. From multiple source sites to a shared remote target site.
- D. From a single source site to multiple remote target sites.
- E. From multiple source sites to multiple remote target sites.

Answer: ABC

Explanation: vSphere Replication replaces storage-based replication. It protects virtual machines from partial or complete site failures by replicating the virtual machines from a primary site to a secondary site.

Reference: https://pubs.vmware.com/vsphere-51/index.jsp?topic=%2Fcom.vmware.vsphere.replication_admin.doc%2FGUID-C987AD18-7C2D-4FA6-B6E4-6B0DDA915A7A.html

NEW QUESTION 146

Which keystore would a vSphere Replication administrator use to manually add an additional Certificate Authority certificate?

- A. hms-truststore.jks
- B. hms-keystore.jks
- C. certificates.ks
- D. cacerts.ks

Answer: A

Explanation: Reference: http://kb.vmware.com/selfservice/microsites/search.do?language=en_US&cmd=displayKC&externalId=2080395

NEW QUESTION 151

An administrator has created a resource pool named Marketing HTTP with a Memory Limit of 24 GB and a CPU Limit of 10,000 MHz.

The Marketing HTTP resource pool contains three virtual machines:

? Mktg-SQL has a memory reservation of 16 GB.

? Mktg-App has a memory reservation of 6 GB.

? Mktg-Web has a memory reservation of 4 GB.

What would happen if all three virtual machines are powered on?

- A. All three virtual machines can power on, but will have memory contention.
- B. All three virtual machines can power on without memory contention.
- C. Only two of the three virtual machines can power on.
- D. Only one of the virtual machines can power on.

Answer: C

Explanation: Since the limit of 24 GB and CPU limit of 10,000 MH is enforced, only two of the virtual machines can power on simultaneously.

NEW QUESTION 152

What is the compression algorithm used by vSphere Replication to compress data at the source?

- A. FastLZ

- B. Lz4
- C. Lzr
- D. Lzx

Answer: A

Explanation: vSphere Replication 6.0 utilizes the FastLZ compression library. This provides a nice balance of speed, minimal CPU overhead, and compression efficiency. When using vSphere 6.0 and vSphere Replication 6.0 at both the source and target locations, updates are compressed at the source and stay compressed until they are written to storage at the target. In cases where there is a mixed configuration, packets may be decompressed at some point in the replication path. For example, if a vSphere 6.0 host is connecting to a vSphere Replication 5.8 virtual appliance, packets will not be compressed over the network. Another example: vSphere 6.0 replicating to a vSphere Replication 6.0 virtual appliance, which is writing to vSphere 5.5 host storage - packets are compressed from the source to the vSphere Replication 6.0 virtual appliance, but are decompressed in the appliance before being written to the vSphere 5.5 storage at the target. Performing this decompression in the vSphere Replication virtual appliance will cause higher vCPU utilization in the appliance. As you can imagine, the most benefit from compression will be realized when running vSphere 6.0 and vSphere Replication 6.0 at both the source and target locations. Reference: <http://blogs.vmware.com/vsphere/2015/03/vr-60-compression.html>

NEW QUESTION 155

An administrator is troubleshooting a virtual machine that has unexpectedly powered off. Which two logs should be used to troubleshoot the issue? (Choose two.)

- A. vmware.log
- B. hostd.log
- C. syslog.log
- D. shell.log

Answer: AB

Explanation: Vmware.log and hostd.log should be checked when the VM unexpectedly powers off.

Reference:

http://kb.vmware.com/selfservice/microsites/search.do?language=en_US&cmd=displayKC&externalId=1019064

NEW QUESTION 158

Refer to the Exhibit.



An administrator receives an error on a vSphere cluster as shown in the Exhibit.

Based on the exhibit, which three configuration changes can resolve the error? (Choose three.)

- A. Change the Admission Control policy for the cluster.
- B. Adjust CPU and Memory reservations of the virtual machines.
- C. Increase the amount of failover resources in the cluster.
- D. Reconfigure the ESXi host cluster for High Availability.
- E. Disable Virtual Machine Monitoring.

Answer: ABC

Explanation: This is the case of insufficient resources. Change the admission control policy for the cluster and adjust CPU and memory reservations of the VMs. The third logical way to address this problem is to increase failover resources in the cluster.

NEW QUESTION 161

An administrator is troubleshooting a CPU performance issue for a virtual machine. Which three esxtop counters may demonstrate CPU contention? (Choose three.)

- A. %RDY
- B. %RUN
- C. %MLMTD
- D. %WAIT
- E. %CSTP

Answer: ACE

Explanation: Reference: <https://communities.vmware.com/docs/DOC-9279>

NEW QUESTION 166

An administrator has a virtual machine configured with the following settings:

? ESXi version: 5.1

? CPU: vCPUs 6

? Memory: 48GB

? Hardware version: 7

? VMware Tools: Installed

Which two actions must the administrator take in order to utilize vNUMA? (Choose two.)

A. Upgrade the ESXi host to vSphere 5.5 or later.

B. Upgrade to Virtual Hardware version 8.

C. Configure numa.vcpu.min to 5

D. Configure numa.vcpu.min to 6

Answer: BC

Explanation: vNUMA can be used by upgrading to virtual hardware version 8. To enable vNUMA on 8 way or smaller VMs, modify the numa.vcpu.min setting.

Reference: <http://community.spiceworks.com/topic/589415-vmware-cpu-settings>

NEW QUESTION 169

An administrator notices that a Windows virtual machine is using 95% CPU in Task Manager.

Which two actions should be taken to resolve this issue? (Choose two.)

A. Increase the memory reservation of the virtual machine.

B. Increase the CPU Shares on the resource pool where the virtual machine resides.

C. Decrease the CPU reservation of the virtual machine.

D. Increase the CPU limit on the resource pool where the virtual machine resides.

Answer: BD

Explanation: There are two ways to resolve high CPU usage. First increase CPU shares on resource pool where the VM resides. Secondly, increase CPU limit on the resource pool that serves the concerned VM.

NEW QUESTION 174

A virtual machine is exhibiting these symptoms:

? Memory usage is constantly high (94% or greater) or constantly low (24% or less).

? Free memory is consistently 6% or less and swapping frequently occurs

Which three solutions could correct this problem? (Choose three.)

A. Verify that VMware Tools is installed on each virtual machine.

B. Decrease the memory reservation setting, if higher than active memory.

C. Add physical memory to the host.

D. Disable the balloon driver in each virtual machine.

E. Create a memory limit for each virtual machine.

Answer: ABC

Explanation: Make sure VMware tools are installed on each VM. To weed out the problem, decrease the memory reservation setting if it is higher than active memory or add physical memory to the host to increase its capacity.

NEW QUESTION 179

An administrator is troubleshooting a CPU issue for a virtual machine. The following is seen in esxtop:

? CPU0 is at 100% usage

? The remaining logical CPUs are close to 0%

? %RDY value is consistently above 10%

What is likely the cause of the CPU issue?

A. The virtual machine has a CPU limit configured.

B. The virtual machine's guest operating system is configured for SMP.

C. The virtual machine has CPU affinity configured.

D. The virtual machine is configured with a CPU reservation.

Answer: C

Explanation: By setting a CPU affinity on the virtual machine you are limiting the available CPUs on which the virtual machine can run. It does not dedicate that CPU to that virtual machine and therefore does not restrict the CPU scheduler from using that CPU for other virtual machines.

Reference: <http://frankdenneman.nl/2011/01/11/beating-a-dead-horse-using-cpu-affinity/>

NEW QUESTION 183

The command `esxcli network vm list` displays four virtual machines connected to the Production vSwitch. Within the vSphere Web Client, five virtual machines are seen. What explains this behavior?

- A. The fifth virtual machine is currently powered off.
- B. The fifth virtual machine has two vnics.
- C. The fifth virtual machine has an invalid IP address.
- D. The fifth virtual machine has an invalid MAC address.

Answer: A

Explanation: The vSphere client shows all the virtual machines whether they are powered on or off. The fifth virtual machine in this scenario might be powered off. `Esxcli network list` display virtual machines that are active.

NEW QUESTION 188

After successfully adding a new ESXi 6.x host to vCenter Server, an administrator sees it as Not Responding in the vSphere Web Client interface a few minutes later.

If the issue is caused by a network firewall blocking traffic, which port must be opened to correct this specific problem?

- A. 443 (TCP)
- B. 443 (UDP)
- C. 902 (TCP)
- D. 902 (UDP)

Answer: D

Explanation: Reference: http://kb.vmware.com/selfservice/microsites/search.do?language=en_US&cmd=displayKC&externalId=2020669

NEW QUESTION 193

Attempting to update an ESXi 6.x host using the following command: `esxcli software vib update -d update.zip`

Generates the following error:

Could not download from depot at /tmp/index.xml, skipping (('tmp/index.xml', "", "[Errno 4] IOError: <urlopen error [Error 2] No such file or directory: 'tmp/index.xml'>")) url = /tmp/index.xml

What action should be taken to correct the problem?

- A. Add the full file path to the command.
- B. Use the update option instead of install.
- C. Use the switch `-d` instead of `-v`.
- D. Replace `esxcli` with `esxupdate`.

Answer: A

Explanation: You have to add full file path to the command instead of mentioning the file name only.

NEW QUESTION 195

Which two scenarios would cause a Fault Tolerance-enabled virtual machine to fail to power the Secondary virtual machine? (Choose two.)

- A. The host has entered a Network Partitioned state.
- B. vSphere High Availability (HA) is disabled on the host cluster.
- C. Enhanced vMotion Compatibility (EVC) is enabled on the host cluster.
- D. vSphere Distributed Power Management (DPM) is enabled on the host cluster.

Answer: AB

Explanation: Reference:

http://kb.vmware.com/selfservice/microsites/search.do?language=en_US&cmd=displayKC&externalId=1010631

NEW QUESTION 200

An administrator is attempting to enable Fault Tolerance on a virtual machine with 4 vCPUs and observes the following in the vSphere Web Client: Fault Tolerance has not been licensed on host <hostname>.

What is the minimum licensed edition that supports this configuration?

- A. Enterprise
- B. Enterprise Plus
- C. Standard
- D. Essentials Plus

Answer: A

Explanation: Fault Tolerance is not licensed in all editions of VMware vSphere. Check the edition you are running and upgrade to an edition that includes Fault Tolerance.

Reference: http://kb.vmware.com/selfservice/microsites/search.do?language=en_US&cmd=displayKC

&externalId=1033634

NEW QUESTION 202

What are three reasons why a virtual machine might fail to power on? (Choose three.)

- A. The virtual machine is running on an ESXi host which has an expired license.
- B. The virtual machine is running on a datastore which has insufficient disk space for the.vswp file.
- C. The virtual machine is in a cluster with vSphere HA Admission control enabled.
- D. The virtual machine has a disconnected network adapter.
- E. The virtual machine does not have a Virtual Hard Disk assigned.

Answer: ABC

Explanation: Reference: https://pubs.vmware.com/vsphere-50/index.jsp?topic=%2Fcom.vmware.vsphere.troubleshooting.doc_50%2FGUID-D4770546-9F9A-4F1E-AC1C-CF313E6130F4.html

NEW QUESTION 207

Which two reasons would prevent Storage Distributed Resource Scheduler (SDRS) from operating on a datastore? (Choose two.)

- A. The datastore has Storage I/O Control disabled.
- B. The datastore is connected to an unsupported host.
- C. The datastore is hosted on an NFS server.
- D. The datastore is hosted on an iSCSI server.

Answer: AB

NEW QUESTION 208

An administrator is troubleshooting network communications between the vCenter Server and the ESXi 6.x host. Which log shows the interaction events between these components?

- A. /var/log/syslog.log
- B. /var/log/hostd.log
- C. /var/log/vpxa.log
- D. /var/log/fdm.log

Answer: C

Explanation: When an ESXi 5.1 / 5.5 host is managed by vCenter Server 5.1 and 5.5, two components are installed, each with its own logs:
? /var/log/vpxa.log: vCenter Server vpxa agent logs, including communication with vCenter Server and the Host Management hostd agent.
? /var/log/fdm.log: vSphere High Availability logs, produced by the fdm service.
Reference: http://kb.vmware.com/selfservice/microsites/search.do?language=en_US&cmd=displayKC&externalId=2032076

NEW QUESTION 209

An administrator is experiencing network connectivity issues between virtual machines. The virtual machines and hosts are configured as follows:

- ? VM1 is running on Host1
- ? VM2 is running on Host2
- ? Both Host1 and Host2 are attached to the vSphere Distributed Switch dvSwitch1
- ? Both Host1 and Host2 are using vmnic0 and vmnic1 on dvSwitch1
- ? Both virtual machines are using the default portgroup for network traffic

What are three settings the administrator should investigate while troubleshooting the connectivity issue? (Choose three.)

- A. VLANs of the physical NICs
- B. Failover order of the uplinks
- C. Virtual NIC connectivity to the dvSwitch
- D. Security policy of the portgroup
- E. Traffic shaping on the portgroup

Answer: ABC

Explanation: To find out connectivity problems, you can use VLANs of the physical NICs, virtual MIC connectivity to the dvswitch and failover orders of the uplinks.

NEW QUESTION 210

When troubleshooting a performance related issue, an administrator sees the following warning message on an ESXi Console:

Significant imbalance between NUMA nodes detected. Performance may be impacted. Which action should the administrator take to correct this problem?

- A. Ensure that the RAM modules are evenly balanced between processor sockets in the physical server.
- B. Ensure that all memory banks associated with CPU Socket 0 in the physical server are completely filled.
- C. Ensure that the physical server has the maximum amount of RAM modules that it can support.
- D. Ensure that all RAM modules in the host are Error-correcting code (ECC) modules.

Answer: A

Explanation:

Reference: http://kb.vmware.com/selfservice/microsites/search.do?language=en_US&cmd=displayKC&externalId=1018754

NEW QUESTION 211

An ESXi 6.x host in the vCenter Server inventory has disconnected due to an All Paths Down (APD) situation. An administrator has corrected the APD issue on the host, but it still remains disconnected.

What action should the administrator take next?

- A. Select Restart Management Agents from the DCUI.
- B. Execute esxcli system settings advanced set -d /Scsi/FailVMIOonAPD.
- C. Modify the advanced parameter /Disk/ApdTokenRetryCount.
- D. Enable the advanced parameter /Misc/APDHandlingEnable.

Answer: A

Explanation: If the ESXi 6.x in vcenter server inventory has disconnected due to APD, you have to restart management agents from the DCUI.

NEW QUESTION 213

An administrator is observing slow performance of the vCenter Inventory Service and observes the entries from the wrapper.log file:

Exception in thread "tomcat-exec-2" java.lang.OutOfMemoryError: Java heap spaceException in thread "http-bio-0.0.0.0-10443-Acceptor-0"

java.lang.OutOfMemoryError: Java heap space

What should the administrator do to resolve the problem?

- A. Increase the memory resources of the vCenter Server.
- B. Increase the values using cloudvm-ram-size.
- C. Increase the memory resources of the Platform Services Controller.
- D. Increase the wrapper.java.maxmemory value in wrapper.conf.

Answer: A

Explanation: Reference: <http://stackoverflow.com/questions/19769675/tomcat-7-outofmemoryerror-from-uncaughtexceptionhandler>

NEW QUESTION 216

An administrator is troubleshooting a virtual machine performance issue using vRealize Operations.

Which two badges would help to identify possible resource contention concerns? (Choose two.)

- A. Health > Workload
- B. Health > Faults
- C. Risk > Time Remaining
- D. Risk > Stress

Answer: AD

Explanation: Reference: <https://www.vmware.com/files/pdf/vsphere/vSOM6-vRealizeOperationsManager-EvaluationGuide.pdf>

NEW QUESTION 220

When attempting to remove a host from a vSphere Distributed Switch (vDS), an administrator observes the error message:

The resource '16' is in use

What are two reasons why this error would be displayed? (Choose two.)

- A. Vmkernel network adapters on the vDS are in use.
- B. Virtual machine network adapters are connected to the vDS.
- C. Network I/O Control has been configured on the vDS.
- D. There is active network traffic on the vDS.

Answer: AB

Explanation: Reference: <https://pubs.vmware.com/vsphere-55/index.jsp?topic=%2Fcom.vmware.vsphere.troubleshooting.doc%2FGUID-038AC93F-D710-48ED-8E3B-258A23FB2930.html>

NEW QUESTION 223

Users are reporting CPU related performance problems on the virtual machine Email-Prod throughout the day.

The resource settings for the VM and the ESXi host the VM is running on are shown below: VM:

? Email-Prod

? vCPUs: 4

? Memory: 96GB

ESXi host:

? CPU: 2 x 8 Core Processors

? Memory: 128GB

? NUMA rchitecture. 2 Nodes

Which two options would alleviate the observed performance problem for Email-Prod? (Choose two.)

- A. Enable the advanced parameter Numa.PageMigEnable.
- B. Enable the advanced parameter Numa.AutoMemAffinity.

- C. Enable CPU affinity to separate 2 vCPUs for each NUMA node.
- D. Enable CPU affinity to bind all vCPUs to one NUMA node.

Answer: BC

Explanation: Address the performance problem for email prod by enabling advanced parameter numa.automemaffinity and CPU affinity to separate 2 vCPUs for each NUMA node.

NEW QUESTION 227

Which condition would cause a vCenter Server installation to fail when installing on a Windows virtual machine?

- A. The virtual machine does not have at least four vCPUs.
- B. The virtual machine is running Windows Server 2008.
- C. The virtual machine has an E1000 network device.
- D. The virtual machine does not have 16GB of RAM.

Answer: B

Explanation: If you use Simple Install to install vCenter Server and components on a Windows Server 2008 R2 or Windows 2012 host, and the host is configured to use DHCP IP addressing, the installation fails with warning and error messages.

Reference: <https://www.vmware.com/support/vsphere5/doc/vsphere-vcenter-server-550b-release-notes.html#installissues>

NEW QUESTION 232

An administrator notices that the time on an ESXi 6.x host is incorrect.

Which two actions should the administrator take to correct this issue? (Choose two.)

- A. Modify the time for the host using the vSphere client.
- B. Correct the NTP settings in the /etc/ntp.conf file.
- C. Configure NTP from the Direct Console User Interface.
- D. Use the vicfg-ntp command from the vSphere Management Appliance.

Answer: AB

Explanation: Reference: http://kb.vmware.com/selfservice/microsites/search.do?language=en_US&cmd=displayKC&externalId=1005092

NEW QUESTION 236

When a Content Library is deleted, what happens to the files contained on the backing storage?

- A. The files will be unchanged.
- B. The files will be deleted.
- C. The files will remain and be marked as orphaned.
- D. The containing folder will be marked as orphaned.

Answer: B

Explanation: When the content library is deleted, the files in backup storage will also be deleted.

NEW QUESTION 240

After deploying a vSphere Platform Services Controller (PSC), an administrator is unable to install vCenter Server. The error displayed is: Could not contact Lookup Service. Please check VM_ssoreg.log. Which two actions can be taken to correct this problem? (Choose two.)

- A. Verify that the clocks on the host machines running the PSC, vCenter Server, and the vSphere Web Client are synchronized.
- B. Configure a valid Identity Source for the Platform Services Controller in the vSphere Web Client.
- C. Ensure that there is no firewall blocking port 7444 between the PSC and vCenter Server.
- D. Uninstall and reinstall the Platform Services Controller software.

Answer: AC

Explanation: Reference: http://kb.vmware.com/selfservice/microsites/search.do?language=en_US&cmd=displayKC&externalId=2033880

NEW QUESTION 245

An administrator notices that 8 out of 10 virtual machines have memory ballooning and swapping. However, virtual machine 9 is not ballooning or swapping and virtual machine 10 is not ballooning but is swapping.

Which two statements explain the behavior of virtual machine 9 and virtual machine 10? (Choose two.)

- A. Virtual machine 9 has a 100% memory reservation.
- B. Virtual machine 10 has a memory limit configured.
- C. Virtual machine 9 has memory shares set to HIGH.
- D. Virtual machine 10 does not have VMware Tools enabled or installed.

Answer: AD

Explanation: It seems that VM 9 has 100% memory reservation and VM 10 has a memory limit configured.

NEW QUESTION 250

What is the name of the High Availability agent log?

- A. fdm.log
- B. ha.log
- C. vpxa.log
- D. aam.log

Answer: A

Explanation: Reference:

http://kb.vmware.com/selfservice/microsites/search.do?language=en_US&cmd=displayKC&externalId=2004540

NEW QUESTION 254

An administrator has decided to create 10 ESXi 6.x hosts via Auto Deploy for a new Test/Dev cluster. The hosts are configured to obtain their networking configuration via DHCP.

Which Direct Console User Interface option should the administrator use to renew the DHCP lease for the hosts?

- A. Restore Network Settings
- B. Test Management Network
- C. Restart Management Network
- D. Network Restore Options

Answer: C

Explanation: Reference: <http://www.virtuallyghetto.com/2014/01/how-to-restart-esxi-management-network.html>

NEW QUESTION 259

Refer to the Exhibit.

To provide access to a service or client, check the corresponding box.

By default, daemons will start automatically when any of their ports are opened, and stop when all of their ports are closed.

Name	Incoming Ports	Outgoing Ports	Protocols	Daemon
Required Services				
Secure Shell				
<input type="checkbox"/> SSH Client		22	TCP	N/A
<input checked="" type="checkbox"/> SSH Server	22		TCP	N/A
Simple Network Man...				
Ungrouped				

▼ Service Details	N/A
Status	N/A
▼ Allowed IP Addresses	Connections not allowed from all IP address
IP Addresses	<input type="checkbox"/> Allow connections from any IP address
	192.168.1.0/24,192.168.2.220
	Enter a comma-separated list of IP addresses. E.g.: 111.111.111.111, 111.111.111/22

OK Cancel

An administrator has configured a firewall rule as shown in the Exhibit. Which statement best describes the ESXi 6.x firewall rule?

- A. Connections from the ESXi host to all devices on the 192.168.1.0 network and 192.168.2.220 on port 22 are allowed.
- B. Connections coming from IP addresses from the 192.168.1.0 network and 192.168.2.220 on port 22 are allowed.
- C. TCP Connections coming from IP addresses from the 192.168.1.0 network and 192.168.2.220 on port 22 are not allowed.
- D. TCP Connections from the ESXi host to all devices on the 192.168.1.0 network and 192.168.2.220 on port 22 are not allowed.

Answer: B


Explanation: As stated clearly in the IP addresses box, connections coming from 192.168.1.0 and 192.168.2.220 on port 22 are allowed.

NEW QUESTION 264

Refer to the Exhibit.

VM/Host Rules

Add...Edit...Delete


Name	Type	Enabled	Conflicts	Defined By
 Marketing Rule	Run VMs on Hosts	No	0	User

VM/Host Rule Details

Virtual Machines that are members of the VM Group should run on hosts that are members of the Host Group.


Add...Remove

Marketing Group Members

 Marketing

Add...Remove

Primary Group Members

 10.21.38.106

vSphere HA Rule Settings

Edit...

vSphere HA can enforce VM/Host rules when restarting virtual machines.

VM anti-affinity rules	vSphere HA must respect rules during failover
VM to Host affinity rules	vSphere HA should respect rules during failover

An administrator manages a High Availability (HA)/Distributed Resource Scheduler (DRS)- enabled cluster and has configured the affinity rule shown in the Exhibit. Which two statements best describe the configuration shown in the exhibit? (Choose two.)

- A. HA will not failover Marketing to ESXi hosts that are not in the Host Group.
- B. HA will failover Marketing to ESXi hosts that are not in the Host group.
- C. DRS will attempt to keep Marketing on the ESXi host 10.21.38.106.
- D. DRS will not attempt to keep Marketing on the ESXi host 10.21.28.106.

Answer: BD

Explanation: Based on the scenario, HA will failover marketing to ESXi hosts that not in the host group and the DRS will not keep Marketing on ESXi Host 10.21.28.106 because it is a primary group member.

NEW QUESTION 269

An administrator attempts to place a Storage DRS enabled Datastore into Maintenance Mode. The task never completes, and the Entering Maintenance Mode status remains at 1%.

Which two actions should the administrator take to resolve this problem? (Choose two.)

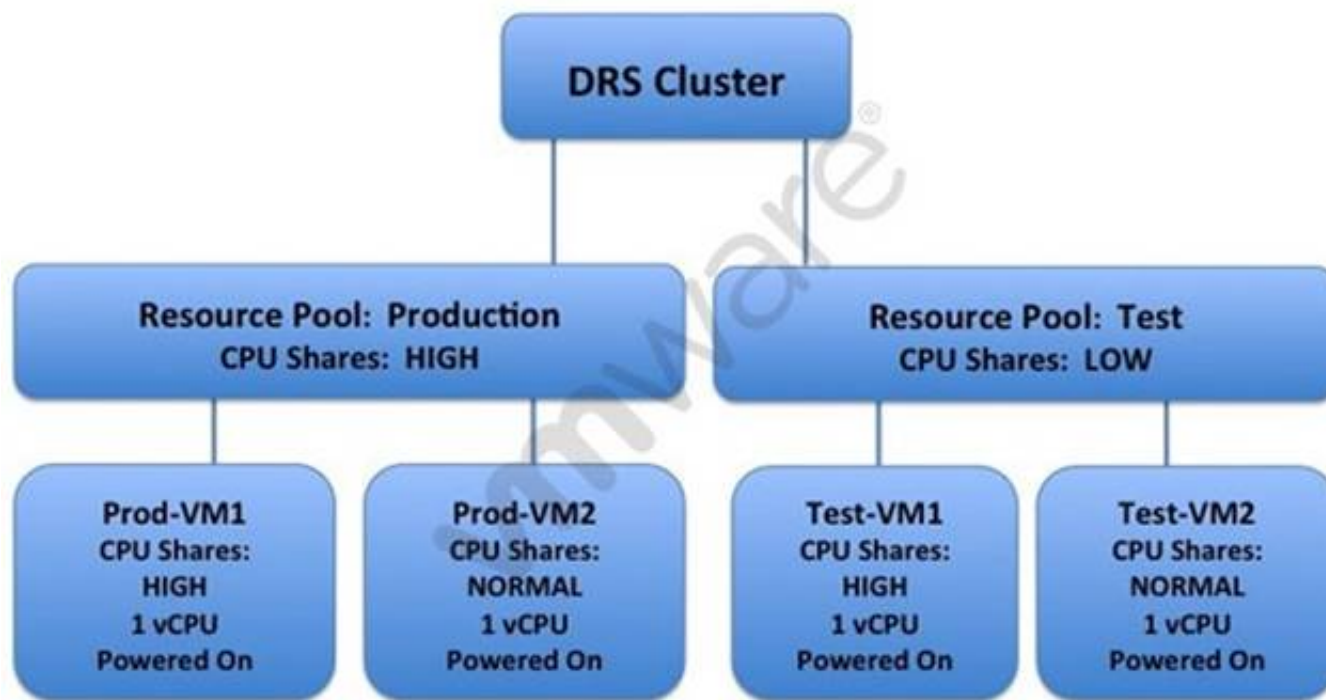
- A. Set the Storage DRS advanced option IgnoreAffinityRulesForMaintenance = 1.
- B. Set the Storage DRS advanced option IgnoreAffinityRulesForMaintenance = 0.
- C. Disable Storage DRS affinity rules associated with this datastore cluster.
- D. Enable Storage DRS affinity rules associated with this datastore cluster.

Answer: AC

Explanation: Reference: <https://pubs.vmware.com/vsphere-51/index.jsp?topic=%2Fcom.vmware.vsphere.troubleshooting.doc%2FGUID-91D4FBBC-0677-44DA-B0F2-43A3504F8CA0.html>

NEW QUESTION 271

Refer to the Exhibit.



An administrator has created the DRS cluster shown in the Exhibit. Based on the exhibit, which statement is true?

- A. Under CPU contention, Prod-VM1 receives four times the CPU resources than Test- VM1.
- B. The Prod-VM1 will always have more CPU resources than all other virtual machines.
- C. The Test-VM2 will always have less CPU resources than all other virtual machines.
- D. Under CPU contention, Test-VM1 will receive 25% of the total CPU resources.

Answer: A

Explanation: Prod-VM1 will receive four times the CPU resources the Test-VM1 because the CPU contention is high compared to the test resource pool.

NEW QUESTION 276

In a vSphere High Availability cluster, what is the VM Monitoring I/O stats interval default value?

- A. 60 seconds
- B. 90 seconds
- C. 120 seconds
- D. 180 seconds

Answer: C

Explanation: Occasionally, virtual machines or applications that are still functioning properly stop sending heartbeats. To avoid unnecessary resets, the VM Monitoring service also monitors a virtual machine's I/O activity. If no heartbeats are received within the failure inter'al, the I/O stats interval (a cluster-level attribute) is checked. The I/O stats interval determines if any disk or network activity has occurred for the virtual machine during the previous two minutes (120 seconds). If not, the virtual machine is reset. This default value (120 seconds) can be changed using the advanced attribute das.iostatsinterval. Reference: https://pubs.vmware.com/vsphere-50/index.jsp?topic=%2Fcom.vmware.vsphere.avail.doc_50%2FGUID-62B80D7A-C764-40CB-AE59-752DA6AD78E7.html

NEW QUESTION 281

An administrator tries to capture network traffic for a virtual machine, but cannot see the expected traffic in the packet capture tool. Which step can resolve the problem?

- A. Migrate the virtual machine to a Distributed Virtual Switch.
- B. Enable Promiscuous Mode on the relevant port group.
- C. Modify the default value of MAC Address changes.
- D. Enable Forged Transmits on the virtual machine.

Answer: B

Explanation: Although it is not a good practice to enable promiscuous mode on a distributed virtual switch, you can enable it to solve the problem of traffic stats in packet capture tool.

NEW QUESTION 282

A vSphere 6 High Availability cluster has been configured with default settings. Four virtual machines in the cluster have been configured with these priorities:

- ? Prod-DB. High
- ? Prod-Email: High
- ? Prod-VC. Medium
- ? Dev-VDI: Low

How many VM Overrides would need to be defined at the cluster level to meet the restart priorities?

- A. 1
- B. 2
- C. 3
- D. 4

Answer: B

Explanation: 2 overrides should be defined at the cluster level to meet restart priorities. VMs are restarted based on the setting defined at the cluster level defined in the window.

NEW QUESTION 283

An administrator wants to prevent a priority virtual machine that resides in a vSphere DRS cluster from migrating to other hosts in the cluster. What configuration step will accomplish this without affecting other virtual machines?

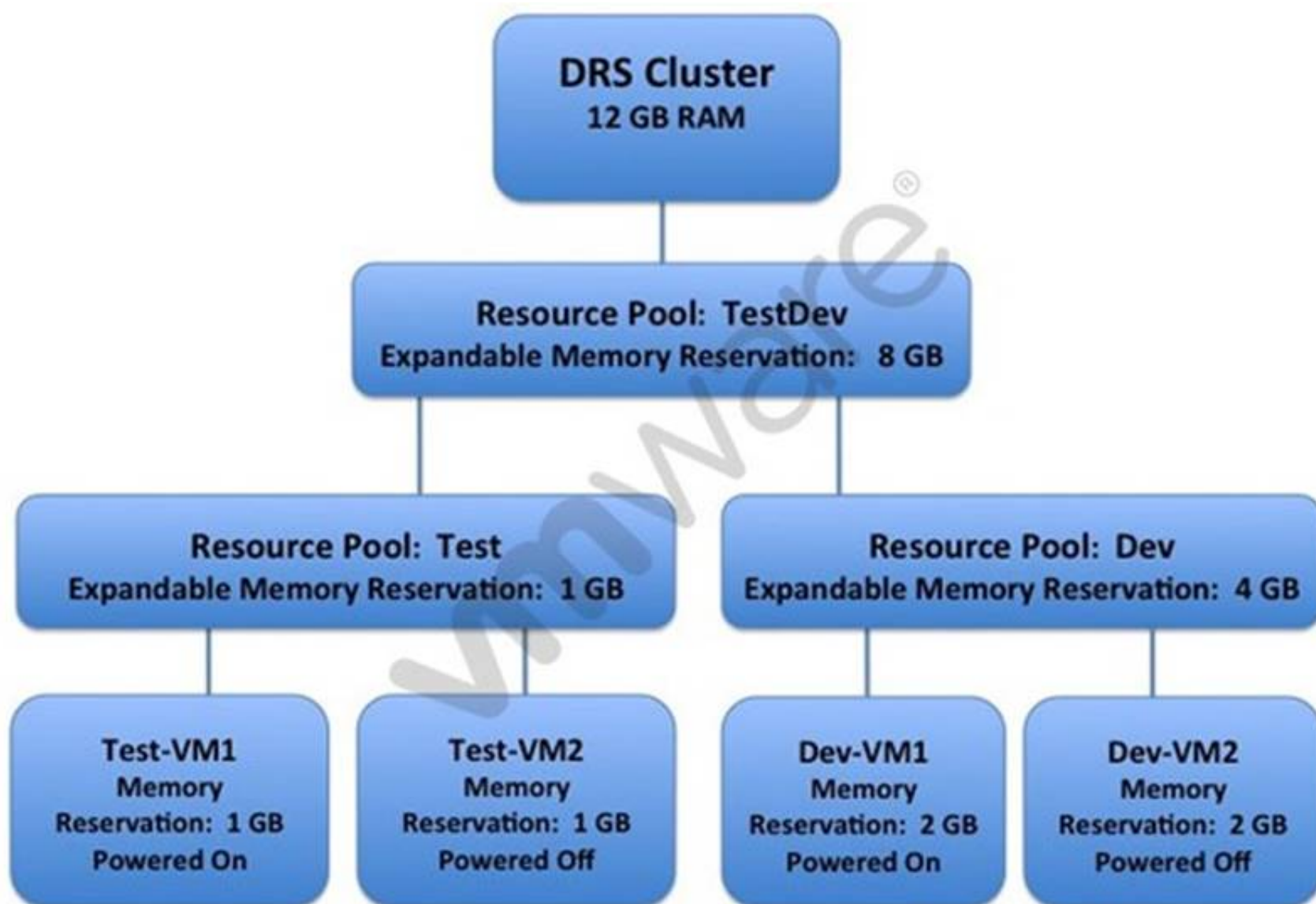
- A. Set VM Overrides to Partially Automated.
- B. Set VM Overrides to Manual.
- C. Configure a VM/Host Rule with the setting Must run on hosts in group.
- D. Configure a VM/Host Rule with the setting Should run on hosts in group.

Answer: B

Explanation: Set VM overrides to manual. This way, you can prevent a priority VM in DRS cluster from migration to other hosts in the cluster.

NEW QUESTION 286

Refer to the Exhibit.



An administrator has configured a vSphere 6.x DRS cluster as shown in the Exhibit. Based on the exhibit, which statement is true?

- A. A virtual machine can be powered on in the Test Resource Pool with a 6 GB Memory Reservation.
- B. A virtual machine can be powered on in the Dev Resource Pool with a 8 GB Memory Reservation.
- C. A virtual machine from both the Test Resource Pool and the Dev Resource Pool can be powered on with a 4 GB Memory Reservation.
- D. No more virtual machines can be powered on due to insufficient resources.

Answer: A

Explanation: Using 6 GB reservation, a VM can be powered on in the test resource pool. IT has an expandable memory reservation that can help starta VM in the resource pool.

NEW QUESTION 291

Which two scenarios could cause Storage DRS to be disabled on a Virtual Disk (VMDK)? (Choose two.)

- A. The VMDK is an independent disk.
- B. The virtual machine has vSphere Fault Tolerance enabled.
- C. The VMDK is hosted on NFS storage.
- D. The virtual machine has a CD-ROM/ISO image connected.

Answer: AB

Explanation: Reference: <https://pubs.vmware.com/vsphere-51/index.jsp?topic=%2Fcom.vmware.vsphere.troubleshooting.doc%2FGUID->

B749AAA0-7B67-4A79-BEDC-395DFEC9FC60.html

Topic 10, Administer and Manage vSphere Virtual Machines

NEW QUESTION 295

An administrator needs to migrate a legacy physical application server to a virtual machine within a vSphere 6 cluster. As part of the conversion, the administrator must reduce the size of the virtual disks.

What action should the administrator take to create a virtual machine with smaller virtual disks than the original physical server?

- A. Shut down the physical server and use VMware Converter cold cloning with volume- based cloning at the disk level.
- B. Use VMware Converter hot cloning with volume-based cloning at the block level.
- C. Shut down the physical server and use VMware Converter cold cloning with volume- based cloning at the file level.
- D. Use VMware Converter hot cloning with volume-based cloning at the file level.

Answer: D

Explanation: Use VMware converter hot cloning with volume-based cloning at the file level to create a virtual machine with smaller virtual disks.

NEW QUESTION 298

An administrator is configuring Storage I/O Control. After enabling, the administrator notices high device latency and poor storage performance.

Which two actions would likely reduce latency and improve functionality? (Choose two.)

- A. Set the congestion threshold to 15ms
- B. Set the congestion threshold value to 5ms
- C. Ensure that each datastore has independent spindles
- D. Ensure that each datastore uses shared spindles

Answer: AC

NEW QUESTION 299

An administrator needs to configure a storage solution for a vSphere 6.x implementation with these characteristics:

- Snapshot support
- vMotion Capability
- Clustering across multiple ESXi hosts
- Database application with high transaction count
- vFlash Read Cache

Which solution meets all of the stated requirements?

- A. A vmrk located on a Shared VMFS datastore
- B. A Physical Mode Raw Device Mapped LUN
- C. A Virtual Mode Raw Device Mapped LUN
- D. A Virtual SAN-based vmrk

Answer: C

NEW QUESTION 300

Which two statements are true regarding upgrading from a Distributed vCenter Server 5.x to vCenter Server 6.x? (Choose two.)

- A. vCenter Single Sign-on becomes part of the Platform Services Controller.
- B. vCenter Inventory Service becomes part of the Platform Services Controller.
- C. The vCenter Server service is not migrated during the upgrade process.
- D. The vSphere License Service is migrated to the new vCenter Server 6.x instance.

Answer: AC

NEW QUESTION 303

An administrator has a virtual machine (VM) that uses a shared USB device.

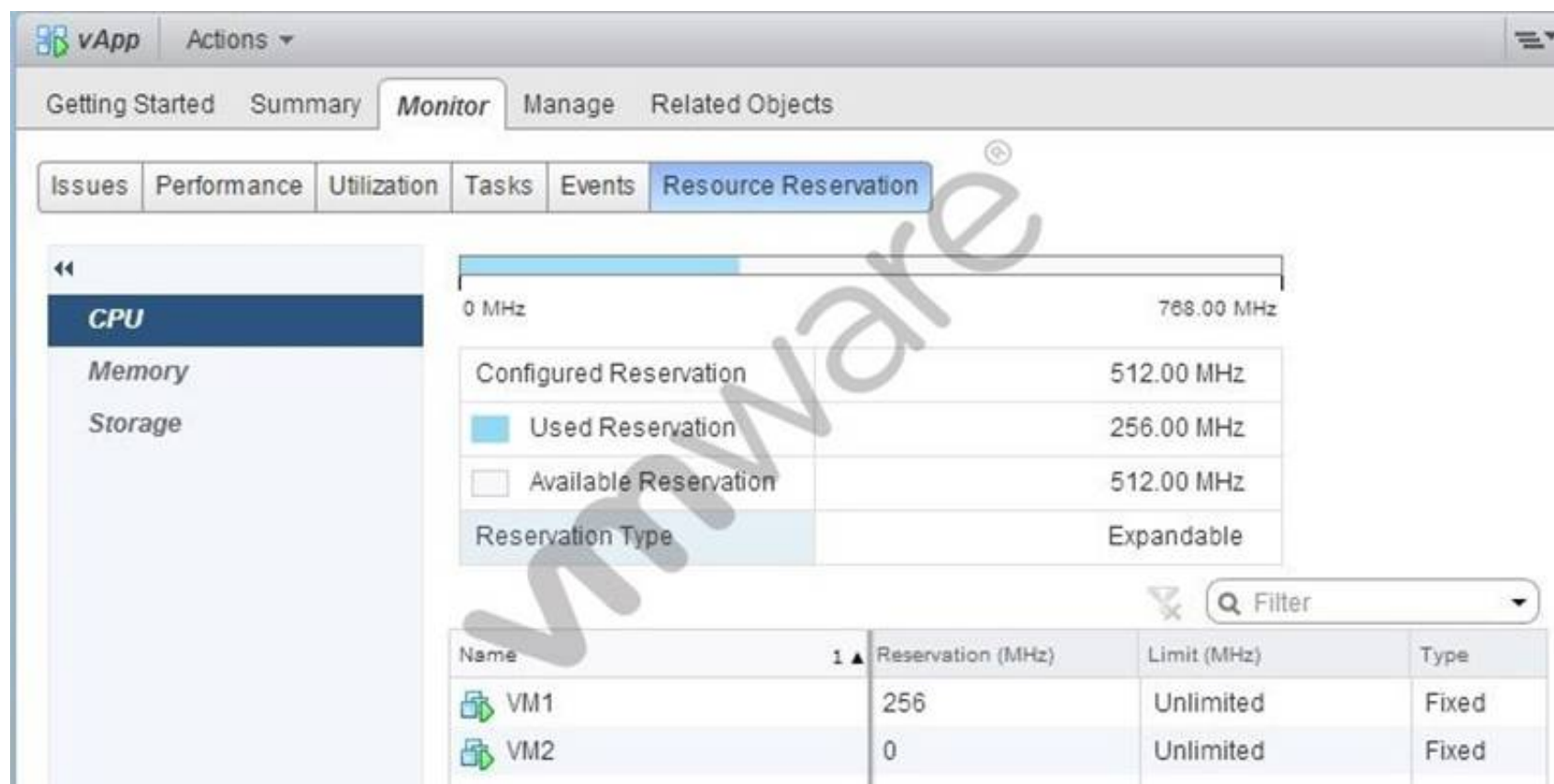
Which option will allow the VM to utilize vMotion while retaining the maximum possible functionality?

- A. Disable the USB device from the VM.
- B. Configure the VM to support vMotion while the device is connected.
- C. Enable migration support for the individual USB device.
- D. Remove the device from the VM.

Answer: B

NEW QUESTION 308

An administrator has noticed that virtual machine VM2 in the vApp shown in the Exhibit is demonstrating poor performance.



Which three changes, if performed separately, would improve the performance of VM2? (Choose three.)

- A. Remove the CPU limit on the vApp.
- B. Remove the CPU limit on the resource pool.
- C. Increase the CPU reservation on virtual machine VM1.
- D. Power off virtual machine VM1.
- E. Increase the CPU reservation on virtual machine VM2.

Answer: ADE

NEW QUESTION 312

An administrator is creating a new Content Library. It will subscribe to another remote Content Library without authentication enabled. Optimal performance is desired for the configuration.

What two steps should be taken to set up the library? (Choose two.)

- A. The Subscription URL should be provided.
- B. The library should be published externally.
- C. A file system should be used for this library.
- D. A datastore should be used for this library.

Answer: AD

NEW QUESTION 313

An administrator observes that virtual machine storage activity on an ESXi 6.x host is negatively affecting virtual machine storage activity on another host that is accessing the same VMFS Datastore.

Which action would mitigate the issue?

- A. Enable Storage I/O Control.
- B. Configure Storage DRS.
- C. Enable the Dynamic Queue Depth Throttling option.
- D. Configure the Disk.SchedNumReqOutstanding parameter.

Answer: A

NEW QUESTION 316

An administrator wants to clone the configuration of an existing ESXi 6.x host to a new group of hosts, but does not want to clone storage specific settings. Which action would accomplish this?

- A. Uncheck sub-profile
- B. Remove sub-profile
- C. Revert profile
- D. Disable VM Storage Profile

Answer: B

NEW QUESTION 321

An administrator is configuring resource pools for a vSphere 6.x cluster. The cluster has these characteristics:

- Five ESXi 6.x hosts
- Six cores per host
- 70 virtual machines with 1 vCPU each

The administrator configures three resource pools and places the virtual machines into the pools, as follows:

- Production pool - High Share value with 40 virtual machines
- Infrastructure pool - Medium Share value with 20 virtual machines
- Development pool - Low Share value with 10 virtual machines

Given this configuration, what is the expected performance for each group of virtual machines during contention?

- A. Virtual machines in the Production pool will perform two times as well as those in the Infrastructure pool.
- B. Virtual machines in the Infrastructure pool will perform four times as well as those in the Development pool.
- C. Virtual machines in all resource pools will perform equally.
- D. Virtual machines in the Development pool will perform two times as well as those in the Infrastructure pool.

Answer: C

NEW QUESTION 324

An administrator has configured a cluster with the Host Failures Cluster Tolerates admission control policy, as shown in the Exhibit:



Based on the exhibit, which two statements are true? (Choose two.)

- A. The number of slots per cluster node is four.
- B. The cluster can sustain loss of only one node.
- C. The number of slots per cluster node is three.
- D. The cluster can sustain the loss of two nodes.

Answer: BC

NEW QUESTION 325

An administrator is creating a new Platform Service Controller Password Policy with the following requirements:

- Minimum length: Minimum of 8 characters.
- Restrict use: 6
- Character requirements: At least one upper-case letter, one number, and one special character.
- Identical adjacent characters: 0

When trying to assign the password "P@\$\$w0rd", the administrator receives an error that the password does not meet the Password Policy requirements. Which part of the Password Policy does this password violate?

- A. Minimum length
- B. Restrict use
- C. Character requirements
- D. Identical adjacent characters

Answer: D

NEW QUESTION 327

.....

Thank You for Trying Our Product

We offer two products:

1st - We have Practice Tests Software with Actual Exam Questions

2nd - Questions and Answers in PDF Format

2V0-621D Practice Exam Features:

- * 2V0-621D Questions and Answers Updated Frequently
- * 2V0-621D Practice Questions Verified by Expert Senior Certified Staff
- * 2V0-621D Most Realistic Questions that Guarantee you a Pass on Your FirstTry
- * 2V0-621D Practice Test Questions in Multiple Choice Formats and Updatesfor 1 Year

100% Actual & Verified — Instant Download, Please Click
[Order The 2V0-621D Practice Test Here](#)