

Exam Questions 70-703

Administering Microsoft System Center Configuration Manager and Cloud Services Integration

<https://www.2passeasy.com/dumps/70-703/>



NEW QUESTION 1

You have a deployment of System Center Configuration Manager (Current Branch) that contains a primary site server named CM01. You have a line-of-business application named App1 that is a Microsoft Application Virtualization (App-V) package. The media for App1 is in the D:\Sources\AppV\App1 folder on CM01. The D:\Sources folder is shared as Sources\$. You need to create a new Configuration Manager application for the deployment of App1. How should you complete the command? To answer, select the appropriate options in the answer area. NOTE: Each correct selection is worth one point.

Answer Area

Add-CMAppv5XDeploymentType

Get-CMApplication

Get-CMPackage

New-CMApplication

New-CMPackage

New-CMProgram

- name "App1"

Add-CMAppv5XDeploymentType

Get-CMApplication

Get-CMPackage

New-CMApplication

New-CMPackage

New-CMProgram

-ContentLocation \\CM01\source\$\Appv\app1

-DeploymentTypeName "Install App1"

Answer:

Explanation: References:
<https://docs.microsoft.com/en-us/powershell/module/configurationmanager/new-cmapplication?view=sccm-ps> <https://docs.microsoft.com/en-us/powershell/module/configurationmanager/add-cmappv5xdeploymenttype?view=sccm-ps>

NEW QUESTION 2

Note: This question is part of a series of questions that use the same scenario. For your convenience, the scenario is repeated in each question. Each question presents a different goal and answer choices, but the text of the scenario is exactly the same in each question in this series.

Start of repeated scenario.

Your network contains an Active directory forest named adatum.com.

All client computers run Windows 10 Enterprise. All the computers are named by using the name of their respective department and an incremental three-digit number. For example, the first computer in the sales department is named Sales001.

Several managers use tablets that run Windows 10 and have 3 GB of RAM. All other client computers have at least 8 GB RAM.

Adatum.com is synchronized to Microsoft Azure Active Directory. Your company implements the Microsoft Store for Business.

You have a deployment of System Center Configuration Manager (Current Branch) that has discovery configured. All the client computers have the Configuration Manager client installed.

The company uses the applications shown in the following table.

Application Name	Description
App1	A Microsoft Application Virtualization (APP-V) virtual application
App2	An app that the company purchased from the Microsoft Store for Business and is licensed for offline use
App3	A 64-bit application that is deployed to all the client computers
SalesAppLite	An application used by users in the sale department on computers that have 3 GB of Ram or less
SalesAppFull	An application used by users in the sale department on computers that have more than 3 GB of Ram.

The company identifies the following requirements for software deployments:

- ▶ View the Upgrade Readiness data of all the client computers.
- ▶ Deploy App1 to the client computers in the marketing department.
- ▶ Deploy App2 to the client computers in the human resources (HR) department.
- ▶ Monitor the usage of App3.
- ▶ Deploy SalesAppLite to sales department computers that have 3 GB of RAM or less.
- ▶ Deploy SalesAppFull to sales department computers that have more than 3 GB of RAM.

You create a cloud-based distribution point that has a public name of d1594d4527614a09b934d470. End of repeated scenario.

You need to ensure that you can deploy App1 to the marketing department computers. What should you do?

- A. Download the App-V client and install the client by using a Group Policy object (GPO).
- B. Sequence App1 by using the App-V Sequencer.
- C. Download the App-V client and deploy the client by using a Configuration Manager application.
- D. Deploy a Group Policy object (GPO) that enables the App-V client.

Answer: C

Explanation: References:

<https://docs.microsoft.com/en-us/windows/application-management/app-v/appv-enable-the-app-v-desktop-client>

NEW QUESTION 3

Note: This question is part of a series of questions that present the same scenario. Each question in the series contains a unique solution that might meet the stated goals. Some question sets might have more than one correct solution, while others might not have a correct solution.

After you answer a question in this section, you will NOT be able to return to it. As a result, these questions will not appear in the review screen.

You plan to deploy System Center Configuration Manager (Current Branch) by using an initial pilot deployment

The pilot deployment will contain five computers that run Windows 10.

You need to deploy the Configuration Manager client to the five computers only. Solution: From each client, you run CMEnroll.exe.

Does this meet the goal?

- A. Yes
- B. No

Answer: B

NEW QUESTION 4

Note: This question is part of a series of questions that present the same scenario. Each question in the series contains a unique solution that might meet the stated goals. Some question sets might have more than one correct solution, while others might not have a correct solution.

After you answer a question in this section, you will NOT be able to return to it. As a result, these questions will not appear in the review screen.

You need to deploy the Configuration Manager client to the five computers only.

Solution: From the Configuration Manager console, you create a custom package. Deploy the package to the All Unknown Computers collection.

Does this meet the goal?

- A. Yes
- B. No

Answer: A

NEW QUESTION 5

You configure a task sequence in System Center Configuration Manager.

You need to ensure that the support department can see the progress of the task sequence only. What should you do?

- A. Assign the db_datareader role to the users in the support department.
- B. Create a monitoring query based on a task sequence.
- C. Create a status message query.
- D. Create a monitoring query that is limited to a collection.

Answer: C

Explanation: References:
<http://www.scconfigmgr.com/2014/02/27/monitor-osd-with-status-message-queries-in-configmgr-2012/>

NEW QUESTION 6

You have a deployment of System Center Configuration Manager (Current Branch). You configure hybrid mobile device management (MDM). You use Configuration Manager to manage Apple iOS and Android devices. You need to prevent users of the devices from incurring roaming data charges. What should you configure for each device? To answer, drag the appropriate configurations to the correct devices. Each configuration may be used once, more than once, or not at all. You may need to drag the split bar between panes or scroll to view content.
 NOTE: Each correct selection is worth one point.

Configurations	Answer Area
A client device setting	Android devices: Configuration
A client user setting	iOS devices: Configuration
A configuration item	
A Configuration Manager application	
A VPN profile	
A Wi-Fi profile	

Answer:

Explanation: References:
<https://docs.microsoft.com/en-us/sccm/mdm/deploy-use/create-configuration-items-for-android-and-samsung-kn>
<https://docs.microsoft.com/en-us/sccm/mdm/deploy-use/create-configuration-items-for-ios-and-mac-os-x-device>

NEW QUESTION 7

Note: This question is part of a series of questions that present the same scenario. Each question in the series contains a unique solution that might meet the stated goals. Some question sets might have more than one correct solution, while others might not have a correct solution.
 After you answer a question in this section, you will NOT be able to return to it. As a result, these questions will not appear in the review screen.
 You deploy the first primary site server to your organization. Discovery is not configured. You need to deploy the Configuration Manager client to five client computers in a workgroup. Solution: You deploy the client by using a software deployment.
 Does this meet the goal?

- A. Yes
- B. No

Answer: B

Explanation: References: <https://docs.microsoft.com/en-us/sccm/core/clients/deploy/deploy-clients-to-windows-computers>

NEW QUESTION 8

Note: This question is part of a series of questions that use the same scenario. For your convenience, the scenario is repeated in each question. Each question presents a different goal and answer choices, but the text of the scenario is exactly the same in each question in this series.
 Start of repeated scenario.
 You work for a company named ADatum Corporation.
 The ADatum network contains an Active Directory domain named adatum.com.
 You have a partner company named Contoso, Ltd. The Contoso network contains an Active Directory domain named adatum.com.
 All the client computers at both companies run Windows 10.
 Each company has a deployment of System Center Configuration Manager (Current Branch). ADatum has sales and IT departments. ADatum has a collection for each department.
 Contoso has research, marketing, and human resources (HR) departments. Contoso has a collection for each department.
 ADatum purchases Contoso.
 You configure on-premises mobile device management (MDM) in adatum.com. You enroll the client computers in the IT department into on-premises MDM.
 You configure hybrid MDM in contoso.com. End of repeated scenario.
 You need to view a detailed hardware inventory of an IT department computer that is currently offline. Which tool should you use?

- A. Resource Explorer
- B. Device Manager
- C. Microsoft Intune in the Microsoft Azure portal

D. the Microsoft Azure portal

Answer: A

Explanation: References: <https://technet.microsoft.com/en-us/library/gg712311.aspx>

NEW QUESTION 9

Note: This question is part of a series of questions that use the same scenario. For your convenience, the scenario is repeated in each question. Each question presents a different goal and answer choices, but the text of the scenario is exactly the same in each question in this series.

Start of repeated scenario

Your network contains an Active directory forest named adatum.com.

All client computers run Windows 10 Enterprise, Semi-Annual Channel targeted). All the computers are named by using the name of their respective department and an incremental three-digit number. For example, the first computer in the sales department is named Sales001.

Several managers use tablets that run Windows 10 and have 3 GB of RAM. All other client computers have at least 8 GB RAM.

Adatum.com is synchronized to Microsoft Azure Active Directory. Your company implements the Microsoft Store for Business.

You have a deployment of System Center Configuration Manager (Current Branch) that has discovery configured. All the client computers have the Configuration Manager client installed.

The company uses the applications shown in the following table.

Application Name	Description
App1	A Microsoft Application Virtualization (APP-V) virtual application
App2	An app that the company purchased from the Microsoft Store for Business and is licensed for offline use
App3	A 64-bit application that is deployed to all the client computers
SalesAppLite	An application used by users in the sale department on computers that have 3 GB of Ram or less
SalesAppFull	An application used by users in the sale department on computers that have more than 3 GB of Ram.

The company identifies the following requirements for software deployments:

- View the Upgrade Readiness data of all the client computers.
- Deploy App1 to the client computers in the marketing department.
- Deploy App2 to the client computers in the human resources (HR) department.
- Monitor the usage of App3.
- Deploy SalesAppLite to sales department computers that have 3 GB of RAM or less.
- Deploy SalesAppFull to sales department computers that have more than 3 GB of RAM.

You create a cloud-based distribution point that has a public name of dl594d4527614a09b934d470. End of repeated scenario.

You need to meet the requirements for the sales department computers.

What are two possible ways to achieve the goal? Each correct answer presents a complete solution. NOTE: Each correct selection is worth one point.

- A. Create two applications that each has one deployment typ
- B. Configure each deployment type to use a device requirement.
- C. Create one application that has two deployment type
- D. Configure each deployment type to use a device requirement.
- E. Create one package that has two program
- F. Configure each program to use a requirement to run on a specific client platform.
- G. Create two packages that each has one progra
- H. Configure each program to use a requirement to run on a specific client platform.

Answer: BC

NEW QUESTION 10

Note: This question is part of a series of questions that use the same scenario. For your convenience, the scenario is repeated in each question. Each question presents a different goal and answer choices, but the text of the scenario is exactly the same in each question in this series.

Start of repeated scenario

Your network contains an Active directory forest named adatum.com.

All client computers run Windows 10 Enterprise, Semi-Annual Channel (Targeted). All the computers are named by using the name of their respective department and an incremental three-digit number. For example, the first computer in the sales department is named Sales001.

Several managers use tablets that run Windows 10 and have 3 GB of RAM. All other client computers have at least 8 GB RAM.

Adatum.com is synchronized to Microsoft Azure Active Directory. Your company implements the Microsoft Store for Business.

You have a deployment of System Center Configuration Manager (Current Branch) that has discovery configured. All the client computers have the Configuration Manager client installed.

The company uses the applications shown in the following table.

Application Name	Description
App1	A Microsoft Application Virtualization (APP-V) virtual application
App2	An app that the company purchased from the Microsoft Store for Business and is licensed for offline use
App3	A 64-bit application that is deployed to all the client computers
SalesAppLite	An application used by users in the sale department on computers that have 3 GB of Ram or less
SalesAppFull	An application used by users in the sale department on computers that have more than 3 GB of Ram.

The company identifies the following requirements for software deployments:

- View the Upgrade Readiness data of all the client computers.
- Deploy App1 to the client computers in the marketing department.
- Deploy App2 to the client computers in the human resources (HR) department.
- Monitor the usage of App3.
- Deploy SalesAppLite to sales department computers that have 3 GB of RAM or less.
- Deploy SalesAppFull to sales department computers that have more than 3 GB of RAM.

You create a cloud-based distribution point that has a public name of dl594d4527614a09b934d470.

End of repeated scenario.

You need to meet the requirements for App3. What should you configure?

- A. a software inventory
- B. a configuration baseline
- C. software metering
- D. an application
- E. a computer agent

Answer: C

Explanation: References:

<https://docs.microsoft.com/en-us/sccm/apps/deploy-use/monitor-app-usage-with-software-metering>

NEW QUESTION 10

You deploy System Center Configuration Manager (Current Branch). You have client computers that run either Windows 7 or Windows 10.

You need to deploy the Configuration Manager client to meet the following requirements:

- Install the client on the Windows 7 computers the next time the computers restart.

How should you deploy each client? To answer, select the appropriate options in the answer area. NOTE: Each correct selection is worth one point.

Answer Area

Windows 7:

☐ Use client push installation
☐ Deploy the client to a collection
☐ Run ccmsetup.exe from a command line.
☐ Enable an automatic site-wide client push installation.
☐ Create a Group Policy object (GPO) that runs a startup script.

Windows 10:

☐ Use client push installation
☐ Deploy the client to a collection
☐ Run ccmsetup.exe from a command line.
☐ Enable an automatic site-wide client push installation.
☐ Create a Group Policy object (GPO) that runs a startup script.

Answer:

Explanation: References: <https://technet.microsoft.com/en-us/library/gg712298.aspx>

NEW QUESTION 15

You deploy System Center Configuration Manager (Current Branch).

You need to manage the malware settings for Configuration Manager clients. What should you do first?

- A. Add an Endpoint Protection point.
- B. Disable Windows Defender.
- C. Create a configuration baseline.
- D. Create a compliance policy.

Answer: A

Explanation: References: <https://docs.microsoft.com/en-us/sccm/protect/deploy-use/endpoint-protection-configure>

NEW QUESTION 18

Your company has offices in New York and Montreal.

You manage all desktop computers by using System Center Configuration Manager (Current Branch). You need to perform the following tasks:

*Redirect the Documents folder to a network share for all the users in the New York office.

*In the Montreal office, configure all the computers that run Windows 10 Professional to run Windows 10 Enterprise.

What should you use in each office? To answer, drag the appropriate options to the correct offices. Each option may be used once, more than once, or not at all.

You may need to drag the split bar between panes or scroll to view content.

Answer:

Explanation: A configuration item
 A user data and profiles configuration

NEW QUESTION 23

You deploy the first System Center Configuration Manager primary site server to your organization.

You need to create the first user collection. The collection must contain members from an Active Directory security group and must update automatically.

Which two actions should you perform? Each correct answer presents part of the solution. NOTE: Each correct selection is worth one point.

- A. Create a user collection that has membership based on a direct rule.
- B. Configure Active Directory Forest Discovery.
- C. Create a user collection that has membership based on a query rule.
- D. Configure Active Directory Group Discovery.
- E. Create a user collection that has membership based on an include collection rule.

Answer: CD

Explanation: References:
<https://docs.microsoft.com/en-us/sccm/core/servers/deploy/configure/configure-discovery-methods> <https://technet.microsoft.com/en-us/library/gg712295.aspx>

NEW QUESTION 25

Note: This question is part of a series of questions that present the same scenario. Each question in the series contains a unique solution that might meet the stated goals. Some question sets might have more than one correct solution, while others might not have a correct solution.

After you answer a question in this section, you will NOT be able to return to it. As a result, these questions will not appear in the review screen.

You have a deployment of System Center Configuration Manager (Current Branch). You configure a cloud management gateway for Configuration Manager.

You have a client computer that is currently on the corporate network.

You need to force the computer to get the location of the cloud management gateway immediately. Solution: You restart the SMS Agent Host service.

Does this meet the goal?

- A. Yes
- B. No

Answer: A

NEW QUESTION 26

Note: This question is part of a series of questions that present the same scenario. Each question in the series contains a unique solution that might meet the stated goals. Some question sets might have more than one correct solution, while others might not have a correct solution.

After you answer a question in this section, you will NOT be able to return to it. As a result, these questions will not appear in the review screen.

Your company uses a network ID of 10.0.0.0/8.

The company opens a new office that uses a network ID of 10.5.0.0/16. The office has three floors. Each floor has a VLAN. The network ID of each VLAN is 10.5.10.0/24, 10.5.20.0/24, and 10.5.30.0/24.

You create a distribution point for the new office.

You need to ensure that the clients in the new office obtain content from the new distribution point. Solution: Create an Active Directory site associated to the 10.5.0.0/16 subnet, and then create an Active Directory site boundary.

Does this meet the goal?

A. Yes

B. No

Answer: B

NEW QUESTION 29

Note: This question is part of a series of questions that present the same scenario. Each question in the series contains a unique solution that might meet the stated goals. Some question sets might have more than one correct solution, while others might not have a correct solution.

After you answer a question in this section, you will NOT be able to return to it. As a result, these questions will not appear in the review screen.

Your company uses a network ID of 10.0.0.0/8.

The company opens a new office that uses a network ID of 10.5.0.0/16. The office has three floors. Each floor has a VLAN. The network ID of each VLAN is 10.5.10.0/24, 10.5.20.0/24, and 10.5.30.0/24.

You create a distribution point for the new office.

You plan to distribute content to clients in the new office from the new distribution point. You need to create a boundary for the new office.

Solution: Create an IP subnet boundary for 10.5.10.0/24, 10.5.20.0/24, and 10.5.30.0/24. Does this meet the goal?

A. Yes

B. No

Answer: B

NEW QUESTION 31

Note: This question is part of a series of questions that present the same scenario. Each question in the series contains a unique solution that might meet the stated goals. Some question sets might have more than one correct solution, while others might not have a correct solution.

After you answer a question in this section, you will NOT be able to return to it. As a result, these questions will not appear in the review screen.

Your company has client computers that run either the 32-bit version of Windows 8 or the 64-bit version of Windows 10.

You need to install a line-of-business application to the computers. The 64-bit version of the application must be installed on the Windows 10 computers.

Solution: Create two applications that each has one deployment type. Configure a requirement for each deployment type.

Does this meet the goal?

A. Yes

B. No

Answer: B

Explanation: References:

<https://blogs.technet.microsoft.com/canitpro/2013/06/02/step-by-step-managing-multiple-versions-of-the-same-a>

NEW QUESTION 36

Note: This question is part of a series of questions that present the same scenario. Each question in the series contains a unique solution that might meet the stated goals. Some question sets might have more than one correct solution, while others might not have a correct solution.

After you answer a question in this section, you will NOT be able to return to it. As a result, these questions will not appear in the review screen.

Your company has client computers that run either the 32-bit version of Windows 8 or the 64-bit version of Windows 10.

You need to install a line-of-business application to the computers. The 64-bit version of the application must be installed on the Windows 10 computers.

Solution: Create one application that has one deployment type. Configure two requirements for the deployment type.

Does this meet the goal?

A. Yes

B. No

Answer: B

Explanation: References:

<https://blogs.technet.microsoft.com/canitpro/2013/06/02/step-by-step-managing-multiple-versions-of-the-same-a>

NEW QUESTION 41

You have a deployment of System Center Configuration Manager (Current Branch) that was implemented by a user named Admin1. Configuration Manager includes the administrative users shown in the following table.

User name	Security role	Security scope
User1	Infrastructure Administrator	Default, Scope1
User2	Asset Manager	Scope1
User3	Full Administrator	Default
User4	Operating System Deployment Manager	Scope1
User5	Operating System Deployment Manager	Default
User6	Operations Administrator	Scope1
User7	Operations Administrator	Default
User8	Company Resource Access Manager	Default, Scope1

You add a boot image named Boot1 to Configuration Manager. You set the security scope of Boot1 to Scope1. Which user can create a task sequence that uses Boot1?

- A. User8
- B. User1
- C. User3
- D. User6

Answer: C

Explanation: References:
<https://technet.microsoft.com/en-us/library/gg682108.aspx>

NEW QUESTION 45

You use System Center Configuration Manager (Current Branch) to manage client computers that run Windows 7. You have a Microsoft Application Visualization (App-V) package named Appl.

You need to deploy App1 to the computers by using Configuration Manager and ensure that the App1 runs. What should you do first?

- A. Install the App-V Sequencer on a reference computer.
- B. From the Configuration Manager console, create an App-V virtual environment.
- C. Deploy the App-V client to the computers.
- D. Configure the Enable App-V Client setting by using a Group Policy object (GPO).

Answer: D

Explanation: References:
<https://docs.microsoft.com/en-us/windows/application-management/app-v/appv-enable-the-app-v-desktop-client>

NEW QUESTION 46

You have a deployment of System Center Configuration Manager (Current Branch). You configure hybrid mobile device management (MDM).

You need to enroll company-owned Android devices into MDM. What should you do first?

- A. Install the Company Portal app on the Android devices.
- B. Create predeclared devices in Configuration Manager.
- C. Create computer objects in Active Directory for the Android devices.
- D. Purchase a Microsoft Office 365 subscription.

Answer: B

Explanation: References: <https://docs.microsoft.com/en-us/sccm/mdm/deploy-use/predeclare-devices-with-hardware-id>

NEW QUESTION 50

Note: This question is part of a series of questions that present the same scenario. Each question in the series contains a unique solution that might meet the stated goals. Some question sets might have more than one correct solution, while others might not have a correct solution.

After you answer a question in this section, you will NOT be able to return to it. As a result, these questions will not appear in the review screen.

Your company uses a network ID of 10.0.0.0/8.

The company opens a new office that uses a network ID of 10.5.0.0/16. The office has three floors. Each floor has a VLAN. The network ID of each VLAN is 10.5.10.0/24, 10.5.20.0/24, and 10.5.30.0/24.

You create a distribution point for the new office.

You plan to distribute content to clients in the new office from the new distribution point. You need to create a boundary for the new office.

Solution: Create an IP address range boundary from 10.5.1.1 to 10.5.255.255. Does this meet the goal?

- A. Yes
- B. No

Answer: A

NEW QUESTION 53

Note: This question is part of a series of questions that present the same scenario. Each question in the series contains a unique solution that might meet the stated goals. Some question sets might have more than one correct solution, while others might not have a correct solution.
 After you answer a question in this section, you will NOT be able to return to it. As a result, these questions will not appear in the review screen.
 Your company uses a network ID of 10.0.0.0/8.
 The company opens a new office that uses a network ID of 10.5.0.0/16. The office has three floors. Each floor has a VLAN. The network ID of each VLAN is 10.5.10.0/24, 10.5.20.0/24, and 10.5.30.0/24.
 You create a distribution point for the new office.
 You plan to distribute content to clients in the new office from the new distribution point. You need to create a boundary for the new office.
 Solution: Create an IP subnet boundary for 10.5.0.0/16. Does this meet the goal?

- A. Yes
- B. No

Answer: B

NEW QUESTION 55

You have a deployment of System Center Configuration Manager (Current Branch) that has one distribution point.
 Configuration Manager has the boundaries defined as shown in the following table.

Boundary name	Network ID	Boundary group
Boundary1	172.16.1.0	BG1
Boundary2	172.16.8.0	BG2

The distribution point is associated to BG1 and BG2.
 The PXE settings for the distribution point are shown in the PXE exhibit. (Click the Exhibit button.)

Distribution point Properties

Pull Distribution Point

General | **PXE** | Multicast | Group Relationships | Content | Content Validation | Boundary Groups | Schedule | Rate Limits

☒ Enable PXE support for clients
 Windows Deployment Services will be installed if required

☒ Allow this distribution point to respond to incoming PXE requests

☐ Enable unknown computer support

☐ Require a password when computers use PXE

Password:

Confirm password:

User device affinity:

Network interfaces

☒ Respond to PXE requests on all network interfaces

☐ Respond to PXE requests on specific network interfaces

Specify the PXE server response delay (seconds):

OK Cancel Apply

The multicast settings for the distribution point are shown in the Multicast exhibit. (Click the Exhibit button.)

Distribution point Properties

Pull Distribution Point

General | PXE | **Multicast** | Group Relationships | Content | Content Validation | Boundary Groups | Schedule | Rate Limits

☒ Enable multicast to simultaneously send data to multiple clients
 Windows Deployment Services will be installed if required

Multicast Connection Account

☒ Use the computer account of this distribution point to connect to the primary site database
☐ Use another account

Multicast address settings

☒ Use IPv4 addresses within any range
☐ Use IPv4 addresses from the following range:

Start: End:

UDP port range for multicast:

Start: 64001 End: 65000

Client transfer rate: 100 Mbps
 Maximum clients: 100

☐ Enable scheduled multicast

Session start delay (minutes): 15
 Minimum session size (clients): 20

OK Cancel Apply

You configure an operating system deployment in Configuration Manager.

For each of the following statements, select Yes if the statement is true. Otherwise, select False. NOTE: Each correct selection is worth one point.

Statements	Yes	No
If you start three new computers on the 172.16.1.0 network, they will be deployed by using Multicast.	<input type="radio"/>	<input type="radio"/>
You can deploy an operating system to a new computer that has an IP address of 172.16.8.15 by using the operating system deployment.	<input type="radio"/>	<input type="radio"/>
You can deploy an operating system to an existing Configuration Manager client that has an IP address of 172.16.1.99 by using the operating system deployment.	<input type="radio"/>	<input type="radio"/>

Answer:

Explanation:

Statements	Yes	No
If you start three new computers on the 172.16.1.0 network, they will be deployed by using Multicast.	<input checked="" type="checkbox"/>	<input type="checkbox"/>
You can deploy an operating system to a new computer that has an IP address of 172.16.8.15 by using the operating system deployment.	<input checked="" type="checkbox"/>	<input type="checkbox"/>
You can deploy an operating system to an existing Configuration Manager client that has an IP address of 172.16.1.99 by using the operating system deployment.	<input checked="" type="checkbox"/>	<input type="checkbox"/>

NEW QUESTION 60

Your company has a main office and a branch office. The branch office connects to the main office by using a VPN over DSL connection. The branch office contains 500 client computers that run Windows 8.1. All the computers are on the same subnet. You plan to upgrade the operating system on the computers by using Configuration Manager. During the upgrade process, you will maintain the user state and the files. You need to recommend a solution to reduce the amount of WAN traffic during the operating system deployments. Which two components should you include in the recommendation? Each correct answer presents part of the solution. NOTE: Each correct selection is worth one point.

- A. a state migration point
- B. a distribution point
- C. a management point
- D. a cloud-based distribution point
- E. a cloud management gateway
- F. a fallback status point

Answer: BC

Explanation: References:

<https://docs.microsoft.com/en-us/sccm/core/servers/deploy/configure/install-and-configure-distribution-points>

NEW QUESTION 61

You have a deployment of System Center Configuration Manager (Current Branch). You configure hybrid mobile device management (MDM). You run WINVER on client computer named Computer1 as shown in the following exhibit.



You need to create a compliance policy that has a condition specifying a minimum version of the operating system. The condition must use the same operating system version as Computer1. Which version should you specify in the condition?

- A. 10.0.16299.15
- B. 10.0.1709
- C. 10.1709
- D. 10.1709.16299.15

Answer: A

Explanation: References: <https://docs.microsoft.com/en-us/intune/compliance-policy-create-windows>

NEW QUESTION 65

Note: This question is part of a series of questions that present the same scenario. Each question in the series contains a unique solution that might meet the stated goals. Some question sets might have more than one correct solution, while others might not have a correct solution.
After you answer a question in this section, you will NOT be able to return to it. As a result, these questions will not appear in the review screen.
You have a deployment of System Center Configuration Manager (Current Branch). You configure a cloud management gateway for Configuration Manager.
You have a client computer that is currently on the corporate network.
You need to force the computer to get the location of the cloud management gateway immediately. Solution: You restart the Network Location Awareness service.
Does this meet the goal?

- A. Yes
- B. No

Answer: B

NEW QUESTION 68

Note: This question is part of a series of questions that present the same scenario. Each question in the series contains a unique solution that might meet the stated goals. Some question sets might have more than one correct solution, while others might not have a correct solution.
After you answer a question in this section, you will NOT be able to return to it. As a result, these questions will not appear in the review screen.
You have a deployment of System Center Configuration Manager that collects the hardware inventory of Windows and Linux client computers.
You need to capture additional information about the hardware on the Linux computers. Solution: You extend the inventory by importing a new inventory class.
Does this meet the goal?

- A. Yes
- B. No

Answer: A

NEW QUESTION 70

You have a deployment of System Center Configuration Manager (Current Branch). You configure hybrid mobile device management (MDM).
You need to ensure that you can manage Apple iOS devices by using Configuration Manager.
Which four actions should you perform in sequence? To answer, move the appropriate actions to the answer area and arrange them in the correct order.

Actions

Add an Apple Volume Purchase Program token to Configuration Manager.

Upload an Apple Push Notification (APN) certificate to Microsoft Intune.

Download sideloading keys.

Download an Apple Push Notification (APN) certificate.

Submit a request to the Apple Push Notification Certification Portal.

Create an Apple Push Notification (APN) certificate request.

Answer Area

⏪

⏩

⏴

⏵

Answer:

Explanation: References: <https://www.systemcenterdudes.com/enroll-ios-device-sccm/>

NEW QUESTION 74

Your network contains as Active Directory forest named adatum.com. The forest has a deployment of System Center Configuration Manager (Current Branch).
The adatum.com domain contains the organizational units (OUs) shown in the following table.

Passing Certification Exams Made Easy

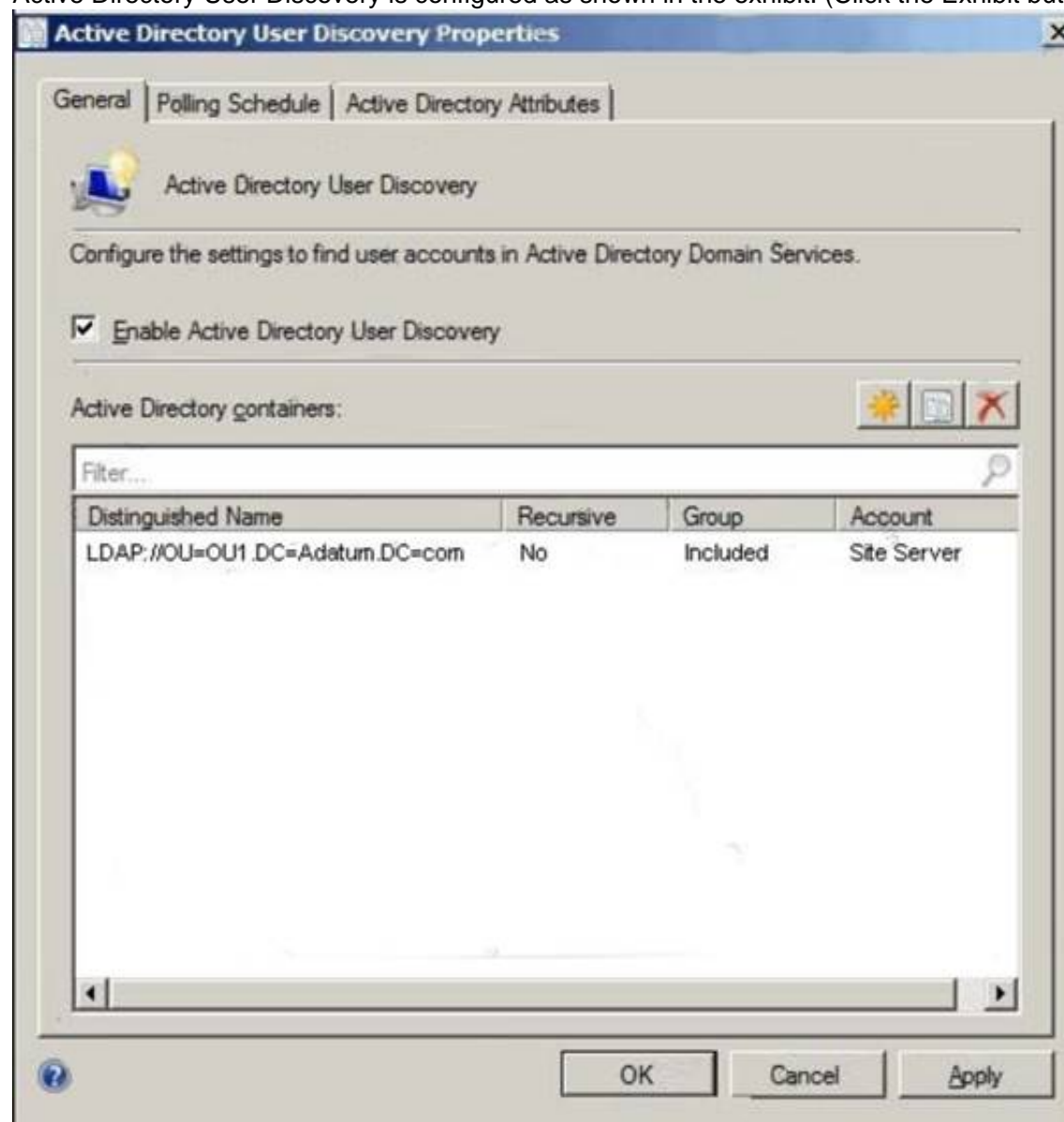
visit - <https://www.2PassEasy.com>

OU name	Parent
OU1	Adatum.com
OU2	Adatum.com
OU11	OU1

The adatum.com domain contains the groups shown in the following table.

Group Name	OU
Group 1	OU1
Group2	OU11

Active Directory User Discovery is configured as shown in the exhibit. (Click the Exhibit button.) Exhibit:



You perform the following actions:

- ▶ Create a user named User1 in OU11.
- ▶ Create a user named User2 in OU2 and add User2 to Group2.
- ▶ Create a user named User3 in OU2 and add User3 to Group1.

For each of the following statements, select Yes if the statement is true. Otherwise, select False. NOTE: Each correct selection is worth one point.

Answer Area

Statements	Yes	No
Configuration Manager will discover User1.	<input type="radio"/>	<input type="radio"/>
Configuration Manager will discover User2.	<input type="radio"/>	<input type="radio"/>
Configuration Manager will discover User3.	<input type="radio"/>	<input type="radio"/>

Answer:

Explanation: References: <https://technet.microsoft.com/en-us/library/bb693489.aspx>

NEW QUESTION 75

You have a deployment of System Center Configuration Manager (Current Branch). You use the deployment to manage client computers that run Windows 7. You need to deploy a Microsoft Application Virtualization (App-V) package to the computers by using Configuration Manager. What should you do first?

- A. Configure the Enable App-V Client setting by using a Group Policy object (GPO).
- B. Deploy the App-V client to the computers.
- C. Install the App-V Sequencer on a reference computer.
- D. From the Configuration Manager console, create an App-V virtual environment.

Answer: B

NEW QUESTION 78

You install the System Center Configuration Manager client on a computer. When you check the Configuration Manager console, the computer does not appear in the console. Other computers appear in the console. You need to review the Configuration Manager logs for the computer. What should you use?

- A. the cmtrace.exe command
- B. the Configuration Manager console
- C. the statview.exe command
- D. the Event Viewer console

Answer: A

Explanation: References: <https://docs.microsoft.com/en-us/sccm/core/plan-design/hierarchy/log-files>

NEW QUESTION 82

You have a deployment of System Center Configuration Manager (Current Branch). You need to configure the Configuration Manager clients to meet the following requirements:

- ▶ Manage Microsoft Office 365 updates.
- ▶ Configure the times at which updates can be applied.
- ▶ Allow unsigned Windows PowerShell scripts to be executed.

What should you use to meet each requirement? To answer, drag the appropriate settings to the correct requirements. Each setting may be used once, more than once, or not at all. You may need to drag the split bar between panes or scroll to view content.

NOTE: Each correct selection is worth one point.

Settings	Answer Area
Client Settings	Manage Office 365 updates: Setting
Collection properties	
Hierarchy Settings properties	Allow unsigned PowerShell scripts to be executed: Setting
Security scopes	
	Configure the times at which updates can be applied: Setting

Answer:

Explanation:

Settings	Answer Area
Client Settings	Manage Office 365 updates: Client Settings
Collection properties	
Hierarchy Settings properties	Allow unsigned PowerShell scripts to be executed: Security scopes
Security scopes	
	Configure the times at which updates can be applied: Client Settings

NEW QUESTION 84

Note: This question is part of a series of questions that present the same scenario. Each question in the series contains a unique solution that might meet the stated goals. Some question sets might have more than one correct solution, while others might not have a correct solution.
After you answer a question in this section, you will NOT be able to return to it. As a result, these questions will not appear in the review screen.
You have a deployment of System Center Configuration Manager (Current Branch). You configure hybrid mobile device management (MDM).
You enroll several Apple iOS devices and deploy compliance policies. One of the devices is marked as noncompliant.
You need to retrieve the logs from the device.
Solution: On the device, you open the Company Portal app, and then you manually synchronize. Does this meet the goal?

- A. Yes
- B. No

Answer: B

NEW QUESTION 85

Note: This question is part of a series of questions that present the same scenario. Each question in the series contains a unique solution that might meet the stated goals. Some question sets might have more than one correct solution, while others might not have a correct solution.
After you answer a question in this section, you will NOT be able to return to it. As a result, these questions will not appear in the review screen.
You have a deployment of System Center Configuration Manager (Current Branch). You deploy the first primary site server to your organization. Discovery is not configured. You need to deploy the Configuration Manager client to five client computers in a workgroup. Solution: You deploy the client by using a Group Policy software installation. Does this meet the goal?

- A. Yes
- B. No

Answer: B

NEW QUESTION 86

Note: This question is part of a series of questions that use the same scenario. For your convenience, the scenario is repeated in each question. Each question presents a different goal and answer choices, but the text of the scenario is exactly the same in each question in this series.

Start of repeated scenario.

You work for a company named ADatum Corporation.

The ADatum network contains an Active Directory domain named adatum.com.

You have a partner company named Contoso, Ltd. The Contoso network contains an Active Directory domain named adatum.com.

All the client computers at both companies run Windows 10.

Each company has a deployment of System Center Configuration Manager (Current Branch). ADatum has sales and IT departments. ADatum has a collection for each department.

Contoso has research, marketing, and human resources (HR) departments. Contoso has a collection for each department.

ADatum purchases Contoso.

You configure on-premises mobile device management (MDM) in adatum.com. You enroll the client computers in the IT department into on-premises MDM.

You configure hybrid MDM in contoso.com. End of repeated scenario.

You need to enroll the computers of the managers into MDM.

What are two possible ways to achieve the goal? Each correct answer presents a complete solution.

NOTE: Each correct selection is worth one point.

- A. Instruct the managers to run the Add-Computer cmdlet.
- B. Distribute a provisioning package to the manager
- C. Instruct the managers to run the provisioning package.
- D. Instruct the managers to use the Settings app to connect to a work or school account.
- E. Instruct the managers to modify the network ID from the System settings.

Answer: BC

Explanation: References:

<https://docs.microsoft.com/en-us/windows/client-management/mdm/bulk-enrollment-using-windows-provisioning> <https://docs.microsoft.com/en-us/sccm/mdm/deploy-use/user-enroll-devices-on-premises-mdm>

NEW QUESTION 89

You have a deployment of System Center Configuration Manager (Current Branch).

You need to deploy an application to the users in the sales department. The deployment must meet the following requirements:

- Install the application on client computers that have at least 5 GB of RAM.
- Validate that the deployment of the application was successful. Which settings should you configure for the deployment?

- A. Detection Method and Requirements
- B. Dependencies and User Experience
- C. Install Behavior and Dependencies
- D. User Experience and Detection Method
- E. Requirements and Dependencies

Answer: A

Explanation: References:

<https://blogs.msdn.microsoft.com/scstr/2012/05/31/how-to-create-an-application-in-configuration-manager-2012>

NEW QUESTION 90

You deploy System Center Configuration Manager (Current Branch) to manage desktop computers. On the reporting services point, you discover that the following reports are missing:

- ▶ Application Deployment – Historical
- ▶ List of Malware Detected – Historical
- ▶ General Software Inventory – Historical
- ▶ General Hardware Inventory – Historical
- ▶ Infrastructure Health Overview – Historical
- ▶ Software Distribution Summary – Historical
- ▶ Endpoint Protection and Software Update Compliance – Historical

You need to ensure that you can generate reports for long-term historical data.
What should you do first?

- A. Create report subscriptions.
- B. Install Microsoft SQL Server Report Builder.
- C. Modify the properties of the reporting services point.
- D. Add a Data Warehouse service point.

Answer: D

Explanation: References: <https://docs.microsoft.com/en-us/sccm/core/servers/manage/data-warehouse>

NEW QUESTION 91

You have a deployment of System Center Configuration Manager (Current Branch).
The manufacturing department has 100 client computers that run Windows 10. The computers are prevented from accessing the Internet.
You purchase a new Microsoft Store for Business app named App1 that is licensed for offline use. You need to deploy App1 to the computers.
Which two actions should you perform? Each correct answer presents part of the solution. NOTE: Each correct selection is worth one point.

- A. Configure the account settings to show offline-licensed apps.
- B. Configure the Application Catalog website point.
- C. Create an application in the Software Library.
- D. Configure synchronization between Configuration Manager and the Microsoft Store for Business.
- E. Extract the APPX file to a folder that can be accessed by using Configuration Manager.
- F. Install App1 from the Microsoft Store for Business on a client computer that has access to the Internet.

Answer: AC

NEW QUESTION 92

Your network contains clustered file servers and application servers that have local shares.
You plan to use Hardware Inventory to capture the Win32_ClusterShare class.
You need to find all the file shares on the servers on the network. The solution must minimize the amount of information that is captured.
Which four actions should you perform in sequence? To answer, move the appropriate actions from the list of actions to the answer area and arrange them in the correct order.

Actions	Answer Area
From Default Client Settings, click Hardware Inventory and disable the Win32_ClusterShare class.	
Deploy the new custom Client Device Settings object to the All Systems collection.	
From Default Client Settings, click Hardware Inventory and add the Win32_ClusterShare WMI class.	
Create a custom Client Device Settings object. From Hardware Inventory, enable the Win32_ClusterShare class.	
Create a collection named All Servers that uses a query to limit the collection to the servers. Deploy the custom Client Device Settings object to the collection.	
Update the Sms_def.mof file.	

Answer:

Explanation:

Actions	Answer Area
From Default Client Settings, click Hardware Inventory and disable the Win32_ClusterShare class.	From Default Client Settings, click Hardware Inventory and disable the Win32_ClusterShare class.
Deploy the new custom Client Device Settings object to the All Systems collection.	
From Default Client Settings, click Hardware Inventory and add the Win32_ClusterShare WMI class.	Create a custom Client Device Settings object. From Hardware Inventory, enable the Win32_ClusterShare class.
Create a custom Client Device Settings object. From Hardware Inventory, enable the Win32_ClusterShare class.	Create a collection named All Servers that uses a query to limit the collection to the servers. Deploy the custom Client Device Settings object to the collection.
Create a collection named All Servers that uses a query to limit the collection to the servers. Deploy the custom Client Device Settings object to the collection.	
Update the Sms_def.mof file.	Deploy the new custom Client Device Settings object to the All Systems collection.

NEW QUESTION 95

You have a deployment of System Center Configuration Manager (Current Branch) that contains a collection named Restricted. Restricted contains only client computers that run Windows 10.

You need to ensure that only trusted executable files can run on the computers in the Restricted collection.

What should you do?

- A. Deploy custom Client Device Settings.
- B. Create a Windows Defender Application Control (WDAC) policy.
- C. Modify the Default Client Settings.
- D. Create a device compliancy policy.

Answer: B

Explanation: References:

<https://docs.microsoft.com/en-us/sccm/protect/deploy-use/use-device-guard-with-configuration-manager>

NEW QUESTION 98

You have a deployment of System Center Configuration Manager (Current Branch) that contains the servers shown in the following table.

Server name	Site system role
Server1	Management point
Server2	Distribution point
Server3	Enrollment point
Server4	Software update point

You need to configure the environment to ensure that operating systems can be deployed by using operating system deployment.

On which server should you enable PXE support?

- A. Server1
- B. Server2
- C. Server3
- D. Server4

Answer: B

Explanation: References: <https://technet.microsoft.com/en-us/library/gg712266.aspx>

NEW QUESTION 102

Note: This question is part of a series of questions that present the same scenario. Each question in the series contains a unique solution that might meet the stated goals. Some question sets might have more than one correct solution, while others might not have a correct solution.

After you answer a question in this section, you will NOT be able to return to it. As a result, these questions will not appear in the review screen.

You have a deployment of System Center Configuration Manager that collects the hardware inventory of Windows and Linux client computers.

You need to capture additional information about the hardware on the Linux computers. Solution: You create a custom hardware inventory provider by using the OMI source. Does this meet the goal?

- A. Yes
- B. No

Answer: B

NEW QUESTION 103

You have a deployment of System Center Configuration Manager (Current Branch) that you use to manage devices on the corporate network. You need to ensure that you can deploy software to Configuration Manager clients on the Internet. What should you deploy?

- A. a management point on a perimeter network and a cloud management gateway in Microsoft Azure
- B. a cloud-based distribution point in Microsoft Azure and the Microsoft Operations Management Suite (OMS) connector
- C. a distribution point and a management point on a perimeter network
- D. a cloud management gateway and the Microsoft Azure Service for Cloud Management in Microsoft Azure

Answer: A

Explanation: References: <https://docs.microsoft.com/en-us/sccm/core/clients/manage/cmgy/plan-cloud-management-gateway>

NEW QUESTION 105

Note: This question is part of a series of questions that use the same scenario. For your convenience, the scenario is repeated in each question. Each question presents a different goal and answer choices, but the text of the scenario is exactly the same in each question in this series.

Start of repeated scenario.

You work for a company named ADatum Corporation.

The ADatum network contains an Active Directory domain named adatum.com.

You have a partner company named Contoso, Ltd. The Contoso network contains an Active Directory domain named adatum.com.

All the client computers at both companies run Windows 10.

Each company has a deployment of System Center Configuration Manager (Current Branch). ADatum has sales and IT departments. ADatum has a collection for each department.

Contoso has research, marketing, and human resources (HR) departments. Contoso has a collection for each department.

ADatum purchases Contoso.

You configure on-premises mobile device management (MDM) in adatum.com. You enroll the client computers in the IT department into on-premises MDM.

You configure hybrid MDM in contoso.com. End of repeated scenario.

You need to enroll the client computers in the sales department into MDM. What should you do on the sales department computers?

- A. Install the Configuration Manager client.
- B. Run the Add-Computer cmdlet.
- C. Use the Settings app to connect the computers to a work or school account.
- D. Install the Microsoft Intune software client.

Answer: C

Explanation: References: <https://docs.microsoft.com/en-us/sccm/mdm/deploy-use/user-enroll-devices-on-premises-mdm>

NEW QUESTION 108

You have a deployment of System Center Configuration Manager (Current Branch). You have several thousand client computers that run Windows 10.

You need to prepare the environment for co-management.

Which two site system roles should you install? Each correct answer presents part of the solution. NOTE: Each correct selection is worth one point.

- A. HTTP-enabled Management point
- B. HTTPS-enabled Distribution point
- C. Cloud management gateway connection point
- D. HTTPS-enabled Management point
- E. HTTP-enabled Distribution point

Answer: AE

NEW QUESTION 110

You have a System Center Configuration Manager (Current Branch) hierarchy that contains a single primary server named cm01.contoso.corp.

You have a Web Application Proxy that presents the management point and the distribution point to the Internet as sccm.contoso.com.

You have a user who has a client computer that runs Windows 10. The user currently works at a customer site. The user has access to the Internet but cannot access the customer's corporate network.

You discover that the Configuration Manager client on the computer has an issue. You need to reinstall the Configuration Manager client on the computer.

Which command should you run? To answer, select the appropriate options in the answer area. NOTE: Each correct selection is worth one point.

Answer Area

<div> <div>▼</div> <div> ccmsetup.exe ccmsetupcmd.exe client.msi </div> </div>	<div> <div>▼</div> <div> /mp:sccm.contoso.com /noservice CCMHTTPSPORT=443 DNSSUFFIX=contoso.com SMSSITECODE=AUTO </div> </div>	<div> <div>▼</div> <div> /UsePKICert /noCRLCheck </div> </div>
--	---	--

Answer:

Explanation: References: <https://docs.microsoft.com/en-us/sccm/core/clients/deploy/about-client-installation-properties>

NEW QUESTION 112

You have offices in the United Kingdom and Sweden.

You have a deployment of System Center Configuration Manager that you use to manage the client computers in the offices.

All the managed computers run Windows 10. The computers in the United Kingdom office use the English (United Kingdom) en-GB language pack. The computers in the Sweden office use the Swedish (Sweden) sv-SE language pack.

You need to create a servicing plan for Windows 10 in Configuration Manager to update the computers to the latest version of Windows 10.

The solution must meet the following requirements:

Values	Answer Area
<10>	Required: Value
>=10	Title: Value
>10	
en-GB AND sv-SE	
en-GB OR sv-SE	
"en-GB, sv-SE"	
ten	

Answer:

Explanation: References: <https://docs.microsoft.com/en-us/sccm/osd/deploy-use/manage-windows-as-a-service>

NEW QUESTION 113

You have a deployment of System Center Configuration Manager (Current Branch). You configure hybrid mobile device management (MDM).

Your company allows users to use their personal devices to access corporate data.

A user named User1 has a personal tablet that runs Windows 10. The tablet is enrolled in Microsoft Intune. User1 leaves the company.

You plan to perform a selective wipe of the tablet. What will be deleted from the tablet?

- A. all the apps that are installed from the Microsoft Store for Business
- B. all the files located in %ProgramData%\Package Cache
- C. all the user profiles
- D. all the files located in %USERPROFILE%\AppData\Roaming

Answer: A

Explanation: References: <https://docs.microsoft.com/en-us/sccm/mdm/deploy-use/wipe-lock-reset-devices>

NEW QUESTION 118

Note: This question is part of a series of questions that present the same scenario. Each question in the series contains a unique solution that might meet the stated goals. Some question sets might have more than one correct solution, while others might not have a correct solution.

After you answer a question in this section, you will NOT be able to return to it. As a result, these questions will not appear in the review screen.

You have a deployment of System Center Configuration Manager (Current Branch). You configure hybrid mobile device management (MDM).

You enroll several Apple iOS devices and deploy compliance policies. One of the devices is marked as noncompliant.

You need to retrieve the logs from the device.

Solution: You install the Apple Configurator tool on a Mac computer. You connect the device to the computer. From All Devices, you double-click the device to review and save the log file.

Does this meet the goal?

- A. Yes
- B. No

Answer: A

NEW QUESTION 121

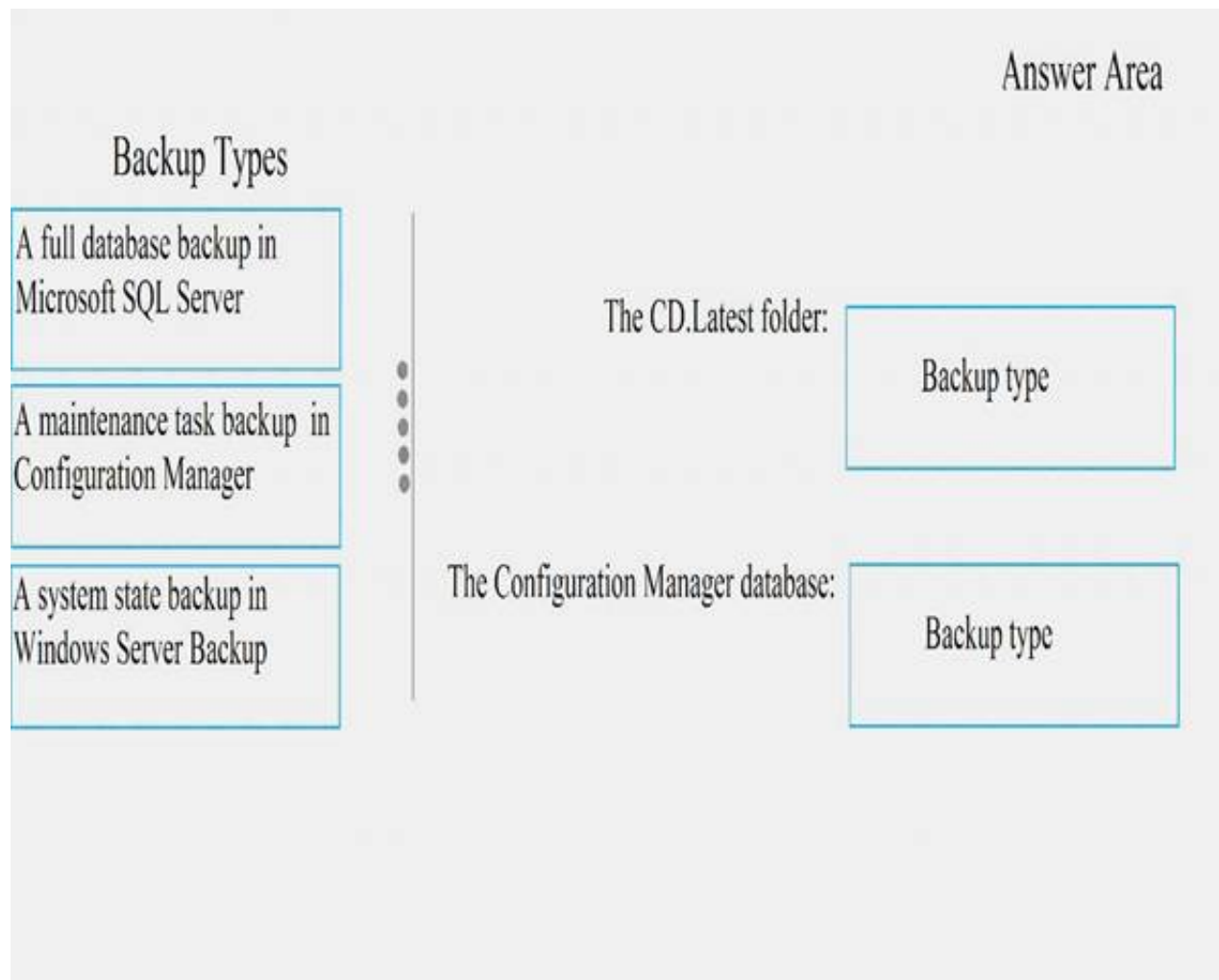
You have a deployment of System Center Configuration Manager (Current Branch).

You need to back up the CD.Latest folder and the Configuration Manager database. The solution must meet the following requirements:

- Compress the backup of the Configuration Manager database.
- Ensure that the backups can be restored to a consistent state.

Which type of backups should you use? To answer, drag the appropriate options to the correct content types. Backup type may be used once, more than once, or not at all. You may need to drag the split bar between panes or scroll to view content.

NOTE: Each correct selection is worth one point.



Answer:

Explanation: References: <https://docs.microsoft.com/en-us/sccm/protect/understand/backup-and-recovery>

NEW QUESTION 122

You have a deployment of System Center Configuration Manager (Current Branch).
 You need to recommend a solution to manage and reduce the attack surface of applications used in your environment.
 What should you include in the recommendation?

- A. Windows Defender Exploit Guard
- B. antimalware policies
- C. Windows Defender Advanced Threat Protection (ATP) policies
- D. compliance policies

Answer: A

NEW QUESTION 127

You have a deployment of System Center Configuration Manager (Current Branch).
 You configure reporting in Configuration Manager and verify that users can view reports.
 You need to ensure that the users can subscribe to the reports and that the reports are delivered by using email. What should you do?

- A. In Active Directory Users and Computers, configure the email address of the users.
- B. In Configuration Manager, configure the Report Options.
- C. In Reporting Services Configuration Manager, configure the E-mail Settings.
- D. In Microsoft SQL Server Management Studio, configure Database Mail.

Answer: C

Explanation: References:
<https://github.com/MicrosoftDocs/SCCMdocs/blob/master/sccm/core/servers/manage/operations-and-maintenan>
[https://docs.microsoft.com/en-us/previous-versions/sql/sql-server-2008/ms159155\(v=sql.100\)](https://docs.microsoft.com/en-us/previous-versions/sql/sql-server-2008/ms159155(v=sql.100))

NEW QUESTION 132

Note: This question is part of a series of questions that present the same scenario. Each question in the series contains a unique solution that might meet the stated goals. Some question sets might have more than one correct solution, while others might not have a correct solution.
 After you answer a question in this section, you will NOT be able to return to it. As a result, these questions will not appear in the review screen.
 You have a deployment of System Center Configuration Manager (Current Branch). You configure hybrid mobile device management (MDM).
 You enroll several Apple iOS devices and deploy compliance policies. One of the devices is marked as noncompliant.
 You need to retrieve the logs from the device.
 Solution: You open the Company Portal app, shake the device, and then tap Send Diagnostic Report when the diagnostics alert appears.
 Does this meet the goal?

- A. Yes
- B. No

Answer: B

NEW QUESTION 133

Your network contains an Active Directory forest named adatum.com.

A stand-alone primary System Center Configuration Manager (Current Branch) site named S01 is deployed to adatum.com.

The Configuration Manager deployment includes the servers shown in the following table.

Server name	Configuration
Server1	Configuration Manager
Server2	Microsoft SQL Server 2016 Service Pack 1 (SP1)

You perform regular site backups by using Configuration Manager.

You have a test environment that contains the servers shown in the following table.

Server name	Configuration
ServerA	Member server
ServerB	SQL Server 2016 SP1

The test environment has a domain controller that hosts a copy of the adatum.com forest. You plan to recover Configuration Manager in the test environment.

You need to prepare the test environment to support the planned recovery.

How should you complete each action? To answer, select the appropriate options in the answer area. NOTE: Each correct selection is worth one point.

Configuration Manager can access the SQL server, you must:

Run the setspn.exe command for ServerA
Run the setspn.exe command for ServerB
Add the computer account of ServerA to the local Administrators group on ServerB
Add the computer account of ServerB to the local Administrators group on ServerA

Before you install Configuration Manager, you must first:

Rename ServerA and ServerB
Run the extadsch.exe command
Create an empty database named CM_501
Run the Restore-DscConfiguration cmdlet

Answer:

Explanation: <https://docs.microsoft.com/en-us/sql/database-engine/configure-windows/register-a-service-principal-name-for-> <https://docs.microsoft.com/en-us/sccm/core/get-started/set-up-your-lab>

NEW QUESTION 136

You have a deployment of System Center Configuration Manager (Current Branch). You have offices in Montreal and Seattle.

You need to deploy software to the client computers in the Montreal office only. What should you do first?

- A. Create an Active Directory container.
- B. Create a user collection that contains the users in the Montreal office.
- C. Configure a boundary group for client assignment.
- D. Create a boundary for the Montreal office that uses IP subnets.

Answer: D

NEW QUESTION 139

Note: This question is part of a series of questions that present the same scenario. Each question in the series contains a unique solution that might meet the stated goals. Some question sets might have more than one correct solution, while others might not have a correct solution.

After you answer a question in this section, you will NOT be able to return to it. As a result, these questions will not appear in the review screen.

You have a deployment of System Center Configuration Manager (Current Branch). You configure hybrid mobile device management (MDM).

You have a support technician named User1. Your company purchases 300 Apple iPhones.

You need to ensure that User1 can enroll the iPhones.

Solution: From Default Client Settings, you set an enrollment profile. Does this meet the goal?

- A. Yes
- B. No

Answer: B

Explanation: References:
<https://docs.microsoft.com/en-us/sccm/mdm/deploy-use/enroll-devices-with-device-enrollment-manager>

NEW QUESTION 142

You have a deployment of System Center Configuration Manager (Current Branch). You need to identify computers that have a specific registry value set in the registry. Which three actions should you perform in sequence? To answer, move the appropriate actions from the list of actions to the answer area and arrange them in the correct order.

Actions

Deploy a package to a collection.

Create a configuration baseline.

Create a configuration item and add an assembly.

Create a package.

Deploy a configuration baseline to a collection.

Create a compliance policy.

Create a configuration item that has a registry value and a compliance rule.

Answer Area

Answer:

Explanation:

Actions

Deploy a package to a collection.

Create a configuration baseline.

Create a configuration item and add an assembly.

Create a package.

Deploy a configuration baseline to a collection.

Create a compliance policy.

Create a configuration item that has a registry value and a compliance rule.

Answer Area

Create a configuration baseline.

Create a configuration item that has a registry value and a compliance rule.

Deploy a configuration baseline to a collection.

NEW QUESTION 146

You have a collection of devices that run an application named SaleApp1. Every week, the sales manager publishes an updated price list to a file share. To use the new price list, the list must be copied to the application folder on the devices. You need to ensure that SalesApp1 receives a new price list weekly. What should you configure?

- A. a weekly maintenance window for the target collection
- B. a weekly schedule for the Update Application Available Targeting maintenance task
- C. a weekly content validation schedule on the distribution point
- D. a package that has a weekly recurrence schedule

Answer: D

NEW QUESTION 148

You deploy Microsoft Office 365 ProPlus by using Configuration Manager. You need to use Configuration Manager to update Office 365 ProPlus as soon as possible. Which three actions should you perform in sequence? To answer, move the appropriate actions from the list of actions to the answer area and arrange them in the correct order.

Actions	Answer Area
Create an Office 2016 Deployment Toolkit (ODT) configuration file	
Set the OfficeMgmtCOM attribute to True in Configuration.xml	
Add the Office 365 updates to a software update group	
Install the Windows Server Update Services (WSUS) administration console on the same system as the Office 2016 Deployment Tool (ODT)	
Configure the software update point to include Office 365 Client Update	
Synchronize updates	

Answer:

Explanation: <https://docs.microsoft.com/en-us/deployoffice/manage-updates-to-office-365-proplus-with-system-center-config>

NEW QUESTION 153

Your company has a main office and a branch office.

You have a deployment of System Center Configuration Manager (Current Branch).

The main office has a software update point. Currently, all client computers receive Microsoft updates from the main office.

You need to ensure that the computers in the branch office receive updates from a local server. The solution must meet the following requirements:

- ☒ Ensure that the updates are managed by using Configuration Manager.
- ☒ Ensure that the computers in the branch office scan for updates against a local catalog. What should you deploy to the branch office?

- A. a software update point, a service connection point, and an Application Catalog website point
- B. a software update point, a distribution point, and a reporting services point
- C. Windows Server Update Services (WSUS), a service connection point, and a management point
- D. Windows Server Update Services (WSUS), a software update point, and a distribution point

Answer: D

NEW QUESTION 157

You have a deployment of System Center Configuration Manager (Current Branch). You configure discovery.

You have a query that returns all devices without the Configuration Manager client installed. You create a collection that uses the query.

You need to deploy the Configuration Manager client to the members of the collection only. Which deployment method should you use?

- A. a package deployment
- B. a software update point-based installation
- C. a manual client push installation
- D. a Group Policy installation

Answer: C

NEW QUESTION 161

Note: This question is part of a series of questions that use the same scenario. For your convenience, the scenario is repeated in each question. Each question presents a different goal and answer choices, but the text of the scenario is exactly the same in each question in this series.

Start of repeated scenario.

Your network contains an Active directory forest named adatum.com.

All client computers run Windows 10 Enterprise. All the computers are named by using the name of their respective department and an incremental three-digit number. For example, the first computer in the sales department is named Sales001.

Several managers use tablets that run Windows 10 and have 3 GB of RAM. All other client computers have at least 8 GB RAM.

Adatum.com is synchronized to Microsoft Azure Active Directory. Your company implements the Microsoft Store for Business.

You have a deployment of System Center Configuration Manager (Current Branch) that has discovery configured. All the client computers have the Configuration Manager client installed.

The company uses the applications shown in the following table.

Application name	Description
App1	A Microsoft Application Virtualization (App-V) virtual application
App2	An app that the company purchased from the Microsoft Store for Business and is licensed for offline use
App3	A 64-bit application that is deployed to all the client computers
SalesAppLite	An application used by users in the sales department on computers that have 3 GB of RAM or less
SalesAppFull	An application used by the sales department users on computers that have more than 3 GB of RAM

The company identifies the following requirements for software deployments:

- ▶ View the Upgrade Readiness data of all the client computers.
- ▶ Deploy App1 to the client computers in the marketing department.
- ▶ Deploy App2 to the client computers in the human resources (HR) department.
- ▶ Monitor the usage of App3.
- ▶ Deploy SalesAppLite to sales department computers that have 3 GB of RAM or less.
- ▶ Deploy SalesAppFull to sales department computers that have more than 3 GB of RAM.

You create a cloud-based distribution point that has a public name of d1594d4527614a09b934d470. End of repeated scenario.

You need to meet the requirements for the HR department computers.

Which two actions should you perform? Each correct answer presents part of solution. NOTE: Each correct selection is worth one point.

- A. Add the Microsoft Store for Business service to the Configuration Manager console.
- B. Create an App-V package.
- C. Add a cloud management gateway.
- D. Configure the Microsoft Operations Management Suite (OMS) connector.
- E. Create an application in Configuration Manager.

Answer: AE

Explanation: References: <https://www.petervanderwoude.nl/post/windows-store-for-business-synchronized-with-configmgr/>

NEW QUESTION 165

You have a deployment of System Center Configuration Manager (Current Branch).

You deploy several Microsoft Store for Business apps to client computers by using Configuration Manager. You purchase a new Microsoft Store for Business app named App1. App1 is licensed for offline use.

You need to ensure that you can deploy App1 immediately by using Configuration Manager. What should you do?

- A. From the Configuration Manager console, synchronize the Windows Store for Business.
- B. From the Microsoft Azure portal, add App1 to Azure Active Directory.
- C. From the Configuration Manager console, run the Azure Services Wizard.
- D. From Microsoft Intune in the Microsoft Azure portal, add App1 to Intune.

Answer: A

Explanation: References: <https://www.petervanderwoude.nl/post/windows-store-for-business-synchronized-with-configmgr/>

NEW QUESTION 170

You have a deployment of System Center Configuration Manager (Current Branch).

The software updates available in Configuration Manager are shown in the following table.

Update title	Product	Required
Update for Windows 10 (KB3125217)	Windows 10 LTSC, Windows 10	3
Security Update for Adobe Flash Player for Windows 10 (KB4014329)	Windows 10 LTSC, Windows 10	5
Definition Update for Windows Defender - KB2267602 (Definition 1.239.999.0)	Windows Default	10
Update for Windows 10 (KB3173427)	Windows 10 LTSC, Windows 10	0

You create the automatic deployment rules (ADRs) as shown in the following table.

ADR name	Software update search criteria	Deployment package to create
ADR1	Required : > 2 Title:- Adobe	Package1
ADR2	Product: "Windows 10" Title: update	Package1

You ran ADR1 and ADR2.

How many updates are in Package1 and Package2? To answer, select the appropriate options in the answer area.

NOTE: Each correct selection is worth one point.

Answer Area

Number of software updates in Package1:

▼

0

1

2

3

4

Number of software updates in Package2:

▼

0

1

2

3

4

Answer:

Explanation:

Answer Area

Number of software updates in Package1:

▼

0

1

2

3

4

Number of software updates in Package2:

▼

0

1

2

3

4

NEW QUESTION 175

You have a deployment of System Center Configuration Manager (Current Branch) that contains a single primary server named CM01. CM01 is configured as a distribution point.

The main office of your company has multiple floors. Each floor has a VLAN and a subnet. A DHCP server named DC01 currently hosts all the DHCP scopes.

You need to ensure that you can use Configuration Manager to deploy operating systems to the client computers on each floor by using the PXE.

Which two actions should you perform? Each correct answer presents part of the solution. NOTE: Each correct selection is worth one point.

- A. Configure option 60 for each DHCP scope.
- B. Use the Configuration Manager console to distribute the boot image to CM01.
- C. Add the IP address of CM01 to the IP Helper of each VLAN.
- D. Copy the RemoteInstall folder to CM01.

Answer: CD

NEW QUESTION 180

Note: This question is part of a series of questions that present the same scenario. Each question in the series contains a unique solution that might meet the stated goals. Some question sets might have more than one correct solution, while others might not have a correct solution.

After you answer a question in this section, you will NOT be able to return to it. As a result, these questions will not appear in the review screen.

Your company uses a network ID of 10.0.0.0/8.

The company opens a new office that uses a network ID of 10.5.0.0/16. The office has three floors. Each floor has a VLAN. The network ID of each VLAN is

10.5.10.0/24, 10.5.20.0/24, and 10.5.30.0/24.

You create a distribution point for the new office.

You need to ensure that the clients in the new office obtain content from the new distribution point. Solution: Create an IP address range boundary from 10.5.0.0/16.

Does this meet the goal?

- A. Yes
- B. No

Answer: B

NEW QUESTION 182

You have a deployment of System Center Configuration Manager (Current Branch). The domain contains the users shown in the following table.

User name	Members of
Account1	Domain Users
Account2	Help Desk Users
Account3	Enterprise Admins
Account4	Support Techs

Support Techs is a member of the Administrators group on each client computer. Help Desk Users is a member of the Power Users group on each client computer.

You need to deploy Configuration Manager agents by using a client push installation. The solution must use the principle of least privilege.

Which account should you configure as the client push installation account?

- A. Account1
- B. Account2
- C. Account3
- D. Account4

Answer: B

NEW QUESTION 184

Note: This question is part of a series of questions that use the same scenario. For your convenience, the scenario is repeated in each question. Each question presents a different goal and answer choices, but the text of the scenario is exactly the same in each question in this series.

Start of repeated scenario.

You work for a company named ADatum Corporation.

The ADatum network contains an Active Directory domain named adatum.com.

You have a partner company named Contoso, Ltd. The Contoso network contains an Active Directory domain named contoso.com.

All the client computers at both companies run Windows 10.

Each company has a deployment of System Center Configuration Manager (Current Branch). ADatum has sales and IT departments. ADatum has a collection for each department.

Contoso has research, marketing, and human resources (HR) departments. Contoso has a collection for each department.

ADatum purchases Contoso.

You configure on-premises mobile device management (MDM) in adatum.com. You enroll the client computers in the IT department into on-premises MDM.

You configure hybrid MDM in contoso.com. End of repeated scenario.

You need to ensure that when managers join Microsoft Azure Active Directory, their computers are enrolled automatically into MDM.

What should you do? To answer, select the appropriate options in the answer area. NOTE: Each correct selection is worth one point.

Tool to use:

the Active Directory Sites and Services console
the Configuration Manager console
the Group Policy Management Editor
the Microsoft Azure portal
the Microsoft Intune portal

Setting to configure:

Add workstations to domain
Device configuration
Device enrollment
Mobility (MDM and MAM)

Answer:

Explanation: <https://docs.microsoft.com/en-us/sccm/mdm/deploy-use/enroll-hybrid-windows>

NEW QUESTION 185

You have a deployment of System Center Configuration Manager (Current Branch). You configure hybrid mobile device management (MDM).

Your company hires a new employee. The employee has an Apple iPhone.

You make several iOS apps available to the employee. The employee reports that the apps are unavailable on the iPhone.

You need to ensure that the employee can use the apps.

Which two actions should you instruct the employee to perform? To answer, drag the appropriate actions to the correct targets. Each action may be used once, more than once, or not at all. You may need to drag the split bar between panes or scroll to view content.

NOTE: Each correct selection is worth one point.

Actions

Enroll the device.

Add a license key.

Install a trusted root certificate.

Connect to the company's Wi-Fi network.

Install the Microsoft Intune Company Portal app.

Answer Area

First action:

Action

Second action:

Action

Answer:

Explanation: References: <https://docs.microsoft.com/en-us/sccm/mdm/deploy-use/enroll-user-owned-devices>

NEW QUESTION 186

You have a deployment of System Center Configuration Manager (Current Branch) that was implemented by a user named Admin1.

Configuration Manager includes the administrative users shown in the following table:

User name	Security role	Security scope
User1	Infrastructure Administrator	Default, Scope1
User2	Asset Manager	Scope1
User3	Full Administrator	Default
User4	Operating System Deployment Manager	Scope1
User5	Operating System Deployment Manager	Default
User6	Operations Administrator	Scope1
User7	Operations Administrator	Default
User8	Company Resource Access Manager	Default, Scope1

You add a boot image named Boot1 to Configuration Manager. You set the security scope of Boot1 to Scope1. Which user can create a task sequence that uses Boot1?

- A. User4
- B. User5
- C. User7
- D. User1

Answer: A

Explanation: References: <https://technet.microsoft.com/en-us/library/gg682108.aspx>

NEW QUESTION 190

You have a deployment of System Center Configuration Manager (Current Branch). You manage 100 client computers that run Windows 10.

You purchase new computers that will replace the existing computers. You need to perform a side-by-side migration of the computers.

Which four actions should you perform in sequence? To answer, move the appropriate actions from the list of actions to the answer area and arrange them in the correct order.

NOTE: More than one order of answer choices is correct. You will receive credit for any of the correct orders you select.

Actions

Create computer associations

Capture the user data

Deploy the task sequence and re-store the user data

Create an in-place upgrade task sequence

Create an existing image package task sequence

Update the boot image

Answer Area

Answer:

Explanation: References:
<https://docs.microsoft.com/en-us/sccm/osd/get-started/manage-boot-images>
<https://docs.microsoft.com/en-us/sccm/osd/deploy-use/create-a-task-sequence-to-install-an-operating-system>

NEW QUESTION 194

Your company has offices in New York and London. All client computers run Windows 10. You have a deployment of System Center Configuration Manager (Current Branch) that you use to manage the computers. The company has the applications shown in the following table.

Application Name	Description
App1	Installed by using an Windows Installer (MSI) package
App2	Installed by using an Windows Installer (MSI) package and dependent on App1
App3	Installed by using an executable file named Setup.exe

You need to deploy the applications to meet the following requirements:

- ▶ Deploy App2 to all the computers in the New York office.
- ▶ Deploy App3 to all the computers in the London office.
- ▶ Minimize administrative effort.

What should you create in Configuration Manager for each deployment? To answer, drag the appropriate options to the correct applications. Each option may be used once, more than once, or not at all. You may need to drag the split bar between panes or scroll to view content.

NOTE: Each correct selection is worth one point.

Options

an application

a deployment package

a package

a software update group

Answer Area

App2:

Option

App3:

Option

Answer:

Explanation: References: <https://docs.microsoft.com/en-us/sccm/apps/deploy-use/create-applications> <https://docs.microsoft.com/en-us/sccm/apps/deploy-use/packages-and-programs>

NEW QUESTION 196

You have a deployment of System Center Configuration Manager (Current Branch). You have the servers shown in the following table.

Server name	Site system role	
CM01	Primary Site Server Management Point	Windows Server 2012 R2
CM02	Distributuion point	Windows Server 2012 R2

You have one subnet that contains all the servers and several subnets that contain client computers. A firewall restricts network traffic to the server subnet. You install a new server named CM03 that runs Windows Server 2016. You install Windows Server Update Services (WSUS) on CM03 by using the default options. You configure CM03 as the software update point. You need to ensure that the client computers can access the software update point. Which port should you open on the firewall?

- A. 80
- B. 443
- C. 8080
- D. 8530

Answer: A

Explanation: References: https://technet.microsoft.com/en-us/library/hh427328.aspx#BKMK_PortsSUP-WSUS

NEW QUESTION 200

You have a deployment of System Center Configuration Manager (Current Branch). You need to ensure that the CIO of your company automatically receives the Antimalware overall status and history report by email every week. What should you do first?

- A. Configure the SMTP Settings in Microsoft SQL Server Reporting Services (SSRS).
- B. Create a subscription in Configuration Manager.
- C. Configure the execution account for Microsoft SQL Server Reporting Services (SSRS).
- D. Configure the Subscription Schedule in Configuration Manager.

Answer: B

Explanation: References:
<https://github.com/MicrosoftDocs/SCCMdocs/blob/master/sccm/core/servers/manage/operations-and-maintenan>

NEW QUESTION 201

You have a deployment of System Center Configuration Manager (Current Branch). You plan to configure content management by creating distribution points and distribution point groups. Which type of object can you associate to the distribution points and the distribution point groups? To answer, select the appropriate options in the answer area. NOTE: Each correct selection is worth one point.

Distribution Points:

<input type="checkbox"/>	An Active Directory site
<input type="checkbox"/>	A boundary group
<input type="checkbox"/>	A collection
<input type="checkbox"/>	A subnet

Distribution point groups:

<input type="checkbox"/>	An Active Directory site
<input type="checkbox"/>	A boundary group
<input type="checkbox"/>	A collection
<input type="checkbox"/>	A subnet

Answer:

Explanation: References:
<https://docs.microsoft.com/en-us/sccm/core/servers/deploy/configure/install-and-configure-distribution-points>

NEW QUESTION 205

You have a deployment of System Center Configuration Manager (Current Branch). You use Configuration Manager to deploy Windows 10. You discover that newly deployed images of Windows 10 are missing several Windows 10 updates.

When you attempt to deploy the updates by using the Schedule Updates Wizard, the process fails, and you receive the following error message: "Failed to apply one or more updates."

Which log file should you view to get additional information about the failure?

- A. ScanAgent.log
- B. UpdatesHandler.log
- C. OfflineServicingMgr.log
- D. UpdatesDeployment.log
- E. WUAHandler.log

Answer: C

Explanation: References: <https://technet.microsoft.com/en-us/library/hh427342.aspx>

NEW QUESTION 207

Note: This question is part of a series of questions that use the same scenario. For your convenience, the scenario is repeated in each question. Each question presents a different goal and answer choices, but the text of the scenario is exactly the same in each question in this series.

Start of repeated scenario.

Your network contains an Active directory forest named adatum.com.

All client computers run Windows 10 Enterprise. All the computers are named by using the name of their respective department and an incremental three-digit number. For example, the first computer in the sales department is named Sales001.

Several managers use tablets that run Windows 10 and have 3 GB of RAM. All other client computers have at least 8 GB RAM.

Adatum.com is synchronized to Microsoft Azure Active Directory. Your company implements the Microsoft Store for Business.

You have a deployment of System Center Configuration Manager (Current Branch) that has discovery configured. All the client computers have the Configuration Manager client installed.

The company uses the applications shown in the following table.

Application Name	Description
App1	A Microsoft Application Virtualization (APP-V) virtual application
App2	An app that the company purchased from the Microsoft Store for Business and is licensed for offline use
App3	A 64-bit application that is deployed to all the client computers
SalesAppLite	An application used by users in the sale department on computers that have 3 GB of Ram or less
SalesAppFull	An application used by users in the sale department on computers that have more than 3 GB of Ram.

The company identifies the following requirements for software deployments:

- ▶ View the Upgrade Readiness data of all the client computers.
- ▶ Deploy App1 to the client computers in the marketing department.
- ▶ Deploy App2 to the client computers in the human resources (HR) department.
- ▶ Monitor the usage of App3.
- ▶ Deploy SalesAppLite to sales department computers that have 3 GB of RAM or less.
- ▶ Deploy SalesAppFull to sales department computers that have more than 3 GB of RAM.

You create a cloud-based distribution point that has a public name of d1594d4527614a09b934d470. End of repeated scenario.

You need to create the Upgrade Readiness report.

Which Group Policy object (GPO) setting should you configure?

- A. Diagnostics: Configure Scenario Execution Level
- B. Specify intranet Microsoft update service location
- C. Configure the Commercial ID
- D. Configure forwarder resource usage
- E. Audit Other Account Logon Events

Answer: C

Explanation: References: <https://www.anoopcnaair.com/methods-to-configure-telemetry-for-upgrade-readiness/>

NEW QUESTION 208

Note: This question is part of a series of questions that use the same scenario. For your convenience, the scenario is repeated in each question. Each question presents a different goal and answer choices, but the text of the scenario is exactly the same in each question in this series.

Start of repeated scenario.

Your network contains an Active directory forest named adatum.com.

All client computers run Windows 10 Enterprise. All the computers are named by using the name of their respective department and an incremental three-digit number. For example, the first computer in the sales department is named Sales001.

Several managers use tablets that run Windows 10 and have 3 GB of RAM. All other client computers have at least 8 GB RAM.

Adatum.com is synchronized to Microsoft Azure Active Directory. Your company implements the Microsoft Store for Business.

You have a deployment of System Center Configuration Manager (Current Branch) that has discovery configured. All the client computers have the Configuration Manager client installed.

The company uses the applications shown in the following table.

Application Name	Description
App1	A Microsoft Application Virtualization (APP-V) virtual application
App2	An app that the company purchased from the Microsoft Store for Business and is licensed for offline use
App3	A 64-bit application that is deployed to all the client computers
SalesAppLite	An application used by users in the sale department on computers that have 3 GB of Ram or less
SalesAppFull	An application used by users in the sale department on computers that have more than 3 GB of Ram.

The company identifies the following requirements for software deployments:

- ▶ View the Upgrade Readiness data of all the client computers.
- ▶ Deploy App1 to the client computers in the marketing department.
- ▶ Deploy App2 to the client computers in the human resources (HR) department.
- ▶ Monitor the usage of App3.
- ▶ Deploy SalesAppLite to sales department computers that have 3 GB of RAM or less.
- ▶ Deploy SalesAppFull to sales department computers that have more than 3 GB of RAM.

You create a cloud-based distribution point that has a public name of d1594d4527614a09b934d470. End of repeated scenario.

The company creates a new department named research.

You need to deploy App2 and App3 to the client computers in the research department.

How should you configure the membership rule for the Research collection? To answer, select the appropriate options in the answer area.

NOTE: Each correct selection is worth one point.

Answer Area

System Resource.Name

is euqal to is greater than is greater than or equal to is less than is less then or euqal to is like is not equal to is not like	Research% Research* Research??? Research_
--	--

Answer:

Explanation: References: <https://technet.microsoft.com/en-us/library/hh967533.aspx> <https://technet.microsoft.com/en-us/library/gg712323.aspx>

NEW QUESTION 213

Your network contains an Active Directory forest named adatum.com that has an enterprise certification authority (CA) named CA1. The certificate revocation list (CRL) is published to Active Directory and to a website.

You deploy on-premises mobile device management (MDM) by using System Center Configuration Manager (Current Branch).

The Configuration Manager site systems use certificates issued by CA1. You have the devices shown in the following table.

Device name	Operating system	Member of
Device1	Windows 8.1 Enterprise	Adatum.com
Device2	Windows 10 Pro	A workgroup

You need to enroll Device1 and Device2 to the on-premises MDM.

What should you do before you can enroll each device? To answer, select the appropriate options in the answer area.

NOTE: Each correct selection is worth one point.

Device1:

Add CA1 as a trusted root CA
Request a certificate from CA1
Upgrade the operating system
Install a Configuration Manager agent

Device2:

Add CA1 as a trusted root CA
Request a certificate from CA1
Upgrade the operating system
Install a Configuration Manager agent

Answer:

Explanation: https://docs.microsoft.com/en-us/sccm/mdm/deploy-use/user-enroll-devices-on-premises-mdm#bkmk_enrollDes <https://docs.microsoft.com/en-us/sccm/mdm/get-started/set-up-device-enrollment-on-premises-mdm>

NEW QUESTION 216

Note: This question is part of a series of questions that present the same scenario. Each question in the series contains a unique solution that might meet the stated goals. Some question sets might have more than one correct solution, while others might not have a correct solution.

After you answer a question in this section, you will NOT be able to return to it. As a result, these questions will not appear in the review screen.

You have a deployment of System Center Configuration Manager that collects the hardware inventory of Windows and Linux client computers.

You need to capture additional information about the hardware on the Linux computers. Solution: You extend the inventory by adding a new inventory class.

Does this meet the goal?

- A. Yes
- B. No

Answer: A

Explanation: References: <https://docs.microsoft.com/en-us/sccm/core/clients/manage/inventory/extend-hardware-inventory>

NEW QUESTION 218

You have a deployment of System Center Configuration Manager (Current Branch).

Your company has a main office and a branch office. The branch office has five users. Some users use laptops and some users use desktop computers.

All the servers for the company are located in the main office. The branch office connects to the main office by using a VPN over a DSL connection to the main office.

You need to minimize the bandwidth used to deploy updates to branch office clients over the VPN connection. The solution must minimize costs.

What should you configure in the branch office?

- A. a distribution point
- B. a software update point
- C. a secondary site server
- D. a cloud-based distribution point

Answer: C

Explanation: References: <https://docs.microsoft.com/en-us/sccm/core/plan-design/hierarchy/design-a-hierarchy-of-sites>

NEW QUESTION 221

You have a deployment of System Center Configuration Manager (Current Branch). All the users at your company access their email by using Microsoft Exchange Online.

You need to prevent the users from connecting to their email from a jailbroken or rooted device. Which two items should you deploy? Each correct answer presents part of the solution.

NOTE: Each correct selection is worth one point.

- A. a conditional access policy
- B. a compliance policy
- C. custom Client Device Settings
- D. an email profile

Answer: AB

NEW QUESTION 225

You have a deployment of System Center Configuration Manager (Current Branch). You manage client computer that run either Windows 7 or Windows 10. You plan to deploy two applications named App2 and App3. The deployment must meet the following requirements:

- ▶ App2 must replace a deployed application named App1.
- ▶ App3 must be installed only on client computers that have at least 8GB of RAM.

What should you configure for each application? To answer, drag the appropriate options to the correct applications. Each option may be used once, more than once, or not at all. You may need to drag the split bar between panes or scroll to view content.

NOTE: Each correct selection is worth one point.

Options

A dependency

A detection method

A requirement

Supersedence

Answer Area

App2:

App3:

Option

Option

Answer:

Explanation: References: <https://docs.microsoft.com/en-us/sccm/apps/deploy-use/revise-and-supersede-applications>
<http://www.windowsmanagementexperts.com/sccm-2012-application-deployment-requirements/sccm-2012-app>

NEW QUESTION 228

Note: This question is part of a series of questions that use the same scenario. For your convenience, the scenario is repeated in each question. Each question presents a different goal and answer choices, but the text of the scenario is exactly the same in each question in this series.

Start of repeated scenario.

You work for a company named ADatum Corporation.

The ADatum network contains an Active Directory domain named adatum.com.

You have a partner company named Contoso, Ltd. The Contoso network contains an Active Directory domain named adatum.com.

All the client computers at both companies run Windows 10.

Each company has a deployment of System Center Configuration Manager (Current Branch). ADatum has sales and IT departments. ADatum has a collection for each department.

Contoso has research, marketing, and human resources (HR) departments. Contoso has a collection for each department.

ADatum purchases Contoso.

You configure on-premises mobile device management (MDM) in adatum.com. You enroll the client computers in the IT department into on-premises MDM.

You configure hybrid MDM in contoso.com. End of repeated scenario.

You need to ensure that when the users at Contoso enroll into MDM, they accept the usage policy of Contoso. What should you do?

- A. From Microsoft Intune in the Microsoft Azure portal, click Device compliance and configure the Compliance policy settings.
- B. From the Configuration Manager console, open the Assets and Compliance workspace and configure the terms and conditions.
- C. From Microsoft Intune in the Microsoft Azure portal, click Device enrollment and configure the terms and conditions.
- D. From the Configuration manager console, open the Assets and Compliance workspace and configure a compliance policy.

Answer: B

Explanation: References: <https://docs.microsoft.com/en-us/sccm/mdm/deploy-use/terms-and-conditions>

NEW QUESTION 231

.....

THANKS FOR TRYING THE DEMO OF OUR PRODUCT

Visit Our Site to Purchase the Full Set of Actual 70-703 Exam Questions With Answers.

We Also Provide Practice Exam Software That Simulates Real Exam Environment And Has Many Self-Assessment Features. Order the 70-703 Product From:

<https://www.2passeasy.com/dumps/70-703/>

Money Back Guarantee

70-703 Practice Exam Features:

- * 70-703 Questions and Answers Updated Frequently
- * 70-703 Practice Questions Verified by Expert Senior Certified Staff
- * 70-703 Most Realistic Questions that Guarantee you a Pass on Your FirstTry
- * 70-703 Practice Test Questions in Multiple Choice Formats and Updatesfor 1 Year