

## Exam Questions 98-349

Windows Operating System Fundamentals

<https://www.2passeasy.com/dumps/98-349/>



#### NEW QUESTION 1

- (Exam Topic 1)

Which two versions of Windows 7 support the Encrypting File System (EFS) functionality? (Each correct answer presents a complete solution. Chose two.)

- A. Ultimate Edition
- B. Home Premium Edition
- C. Professional Edition
- D. Starter Edition

**Answer:** AC

#### **Explanation:**

EFS is not fully supported on Windows 7 Starter, Windows 7 Home Basic, and Windows 7 Home Premium.

#### NEW QUESTION 2

- (Exam Topic 1)

A Windows 7 library:

- A. Organizes user files from disparate locations.
- B. Makes copies of user files in a central location.
- C. Encrypts files by using the Encrypting File System (EFS).
- D. Restores files from system backup.

**Answer:** A

#### NEW QUESTION 3

- (Exam Topic 1)

Which online service allows you to store and retrieve files over the Internet?

- A. Windows Future Storage
- B. Windows Live SkyDrive
- C. Windows Media Center
- D. Windows Storage Server

**Answer:** B

#### NEW QUESTION 4

- (Exam Topic 1)

Which prevents you from establishing a Remote Desktop connection to a remote computer?

- A. Incorrect monitor settings in Device Manager.
- B. Incorrect screen resolution in the Display Properties dialog box.
- C. Incorrect port settings in Windows Firewall.
- D. Incorrect security settings in Internet Explorer.

**Answer:** C

#### NEW QUESTION 5

- (Exam Topic 1)

You need to migrate files and settings from a Windows XP computer to another computer that runs Windows 7. Which tool should you use?

- A. Windows Easy Transfer
- B. Windows 7 Compatibility Checker
- C. Windows Upgrade Advisor
- D. Application Compatibility Toolkit

**Answer:** A

#### NEW QUESTION 6

- (Exam Topic 1)

Which feature should you use to install the most recent definitions for Windows Defender?

- A. Windows Update
- B. Sync Center
- C. Windows Installer
- D. Programs and Features

**Answer:** A

#### NEW QUESTION 7

- (Exam Topic 1)

Which feature ensures that your personal computer always has the latest patches and fixes for the operating system?

- A. Reliability and Performance Monitor

- B. Programs and Features
- C. System Configuration Utility
- D. Windows Update

**Answer:** D

#### NEW QUESTION 8

- (Exam Topic 1)

Which feature ensures that the latest device drivers are installed on your computer?

- A. Reliability and Performance Monitor
- B. Windows Update
- C. Task Scheduler
- D. System configuration Utility

**Answer:** B

#### NEW QUESTION 9

- (Exam Topic 1)

Which feature allows you to transfer information from your computer to your mobile phone?

- A. Windows Mobility Center
- B. Device Manager
- C. Sync Center
- D. Windows Easy Transfer

**Answer:** B

#### Explanation:

Ref:

<http://windows.microsoft.com/en-us/windows7/sync-music-pictures-contacts-and-calendars-with-a-mobile-devic>

#### NEW QUESTION 10

- (Exam Topic 1)

Which feature allows you to change the display resolution of a computer monitor?

- A. Computer Management Console
- B. System Configuration Tool
- C. Appearance and Personalization
- D. Device Manager

**Answer:** C

#### NEW QUESTION 10

- (Exam Topic 1)

Which two features are supported by the Infrared Data Association (IrDA) protocol? (Each correct answer presents a complete solution. Choose two.)

- A. Data can be transferred across short distances.
- B. One computer can control another computer through a wireless connection.
- C. Some features of another computer can be controlled by using a remote control unit.
- D. The computer can identify Bluetooth devices.

**Answer:** AC

#### NEW QUESTION 15

- (Exam Topic 1)

Which Windows feature should you use to protect a computer against spyware?

- A. Group Policy
- B. User Account Control
- C. Windows Defender
- D. Encrypting File System

**Answer:** C

#### NEW QUESTION 20

- (Exam Topic 1)

You need to upgrade your computer from the FAT file system to an NTFS file system. What should you do?

- A. Use the Backup and Restore tool.
- B. Clear the hard disk drive by using the Format tool.
- C. Use the Convert C:/fs:ntfs command.
- D. Run the Windows Easy Transfer tool.

**Answer:** C

#### NEW QUESTION 25

- (Exam Topic 1)

Which Windows feature allows secure printing over the Internet?

- A. Secure Transfer Protocol (STP)
- B. Internet Printing Protocol (IPP) by using HTTPS
- C. Voce over Internet Protocol (VoIP)
- D. Web2Print

**Answer:** B

#### NEW QUESTION 27

- (Exam Topic 1)

Which two steps should you perform to install a local printer that connects directly to your personal computer? (Each correct answer presents part of the solution. Choose two.)

- A. Connect the printer to an available USB port and allow Windows to locate and install the appropriate driver.
- B. Connect the Ethernet cable from your printer to the RJ45 connector on the personal computer and follow the Windows prompts.
- C. Follow the manufacturer's directions by using the installation CD provided along with the printer.
- D. Use the Add Network Printer feature from Control Panel.

**Answer:** AD

#### NEW QUESTION 30

- (Exam Topic 1)

What is the maximum size of a virtual hard disk?

- A. 2 terabytes
- B. 5 terabytes
- C. 16 terabytes
- D. 500GB

**Answer:** A

#### NEW QUESTION 33

- (Exam Topic 1)

You need to manage service dependencies on your Windows 7 computer. Which feature should you use?

- A. Action Center
- B. Event Viewer
- C. Task Scheduler
- D. Computer Management Console

**Answer:** D

#### NEW QUESTION 35

- (Exam Topic 1)

You want to connect to a wireless access point. You need to view a list of available networks.

Which two actions should you perform? (Each correct answer presents a complete solution. Choose two.)

- A. Click the network icon in the notification area.
- B. From Control Panel, use Windows Mobility Center.
- C. From Control Panel, use Network and Sharing Center.
- D. From Control Panel, use Sync Center.
- E. From Control Panel, use Ease of Access.

**Answer:** AC

#### NEW QUESTION 36

- (Exam Topic 2)

Match the Device Manager icon description to its meaning.

To answer, drag the appropriate icon description from the column on the left to its meaning on the right. Each icon description may be used once, more than once, or not at all. Each correct match is worth one point.

Icons	Answer Area	
black exclamation point on a yellow background	The device was manually disabled.	icon
red X	A critical error has occurred and the device has been disabled by the operating system.	icon
white circle with a black down arrow	The device is NOT functioning properly.	icon

- A. Mastered  
B. Not Mastered

Answer: A

Explanation:

Icons	Answer Area	
black exclamation point on a yellow background	The device was manually disabled.	white circle with a black down arrow
red X	A critical error has occurred and the device has been disabled by the operating system.	red X
white circle with a black down arrow	The device is NOT functioning properly.	black exclamation point on a yellow background

NEW QUESTION 40

- (Exam Topic 2)

You need to find out whether a computer is running a 32-bit or 64-bit version of the Windows operating system. What should you do?

- A. From the Start menu, type 64-bit in the Search programs and files field.  
B. From Control Panel, select System.  
C. Open Device Manager and select Processors.  
D. From the Windows Help and Support feature, type 64-bit system in the Search field.

Answer: B

NEW QUESTION 45

- (Exam Topic 2)

You want to upgrade your computer from Windows 8.1 to Windows 10.

What is the minimum processor speed required to run a 64-bit version of Windows 10?

- A. 1.2 GHz  
B. 1.8 GHz

- C. 800 MHz
- D. 1.0 GHz

**Answer:** D

**Explanation:**

References:

<https://www.microsoft.com/en-gb/windows/windows-10-specifications>

**NEW QUESTION 46**

- (Exam Topic 2)

You want to enable or disable the programs that automatically start when Windows starts. Which Windows feature should you use?

- A. System Configuration Utility
- B. Reliability and Performance Monitor
- C. Performance Information and Tools
- D. Computer Management Console

**Answer:** D

**NEW QUESTION 48**

- (Exam Topic 2)

How can you create a connection to a network share without having to type its network address each time you need to connect?

- A. Add the computer to the shared workgroup.
- B. Add a Network Location.
- C. Map a network drive.
- D. Create a HomeGroup.

**Answer:** C

**NEW QUESTION 50**

- (Exam Topic 2)

Windows presents a UAC prompt when you configure:

- A. Battery power options
- B. The desktop background
- C. Automatic updates
- D. Accessibility options

**Answer:** C

**NEW QUESTION 51**

- (Exam Topic 2)

You need to secure the contents of your entire hard disk drive even if an unauthorized user steals your computer.

Which method should you use?

- A. Rights Management Services
- B. File-level share permissions
- C. Password-protection
- D. BitLocker encryption

**Answer:** D

**NEW QUESTION 54**

- (Exam Topic 2)

You are an intern for Tailspin Toys and are creating a slideshow that shows pictures of certain new products that your company is working on. You are accessing the network using a Windows 7 laptop, and the pictures are located on several different network shares.

You need to be able to perform a rich content search on all of the network shares at the same time. What should you do?

- A. Enable file and printer sharing on the laptop.
- B. Copy all of the pictures to a folder on your laptop and search that folder.
- C. Add the network shares to your Pictures Librar
- D. Then perform a search on your Pictures Library.
- E. Access the network shares via the Network link in Windows 7 Explore
- F. Then search each share individually.

**Answer:** C

**NEW QUESTION 55**

- (Exam Topic 2)

After you remove malicious software from an infected computer, the user still experiences problems. When the user opens the browser, it redirects to compromised websites.

You need to troubleshoot the problem.

Which three areas should you investigate? (Choose three.)

- A. The system's hosts file



- B. The proxy settings
- C. The Windows Action Center
- D. The browser's security zone settings
- E. The browser's home page setting

Answer: CDE

NEW QUESTION 57

- (Exam Topic 2)

You are working as a technical intern for Tailspin Toys. A product developer plans to attend a convention in France and wants to bring a company-owned Windows 7 Ultimate laptop. Your manager is concerned about the security of the information contained on the laptop and asks you to turn on BitLocker. You receive the error message shown in the following image:



Use the drop-down menus to select the answer choice that completes each statement. Each correct selection is worth one point

Answer Area

You check [answer choice] on the system to see if a TPM was disabled.

If it is determined that the system does not have a TPM, you should use [answer choice] to allow you to enable BitLocker on the computer.

Answer Area

You check [answer choice] on the system to see if a TPM was disabled.

System Bios  
Disk Management  
Devices and Printers

If it is determined that the system does not have a TPM, you should use [answer choice] to allow you to enable BitLocker on the computer.

Local Security Policy  
Disk Management  
BitLocker Administration

- A. Mastered
- B. Not Mastered

Answer: A

Explanation:

You check [answer choice] on the system to see if a TMP was disabled.  
System Bios  
If it is determined that the system does not have a TPM, you should use [answer choice] to allow you to enable BitLocker on the computer.  
Local Security Policy

NEW QUESTION 58

- (Exam Topic 2)

For each of the following statements, select Yes if the statement is true. Otherwise, select No. Each correct selection is worth one point.

Answer Area	Yes	No
NTFS and FAT32 both support a file size of over 4 GB.	<input type="radio"/>	<input type="radio"/>
NTFS and FAT32 can both use permissions and encryption.	<input type="radio"/>	<input type="radio"/>
NTFS and FAT32 can both be used as the format for Windows 7.	<input type="radio"/>	<input type="radio"/>

- A. Mastered
- B. Not Mastered

Answer: A

Explanation:

## Answer Area

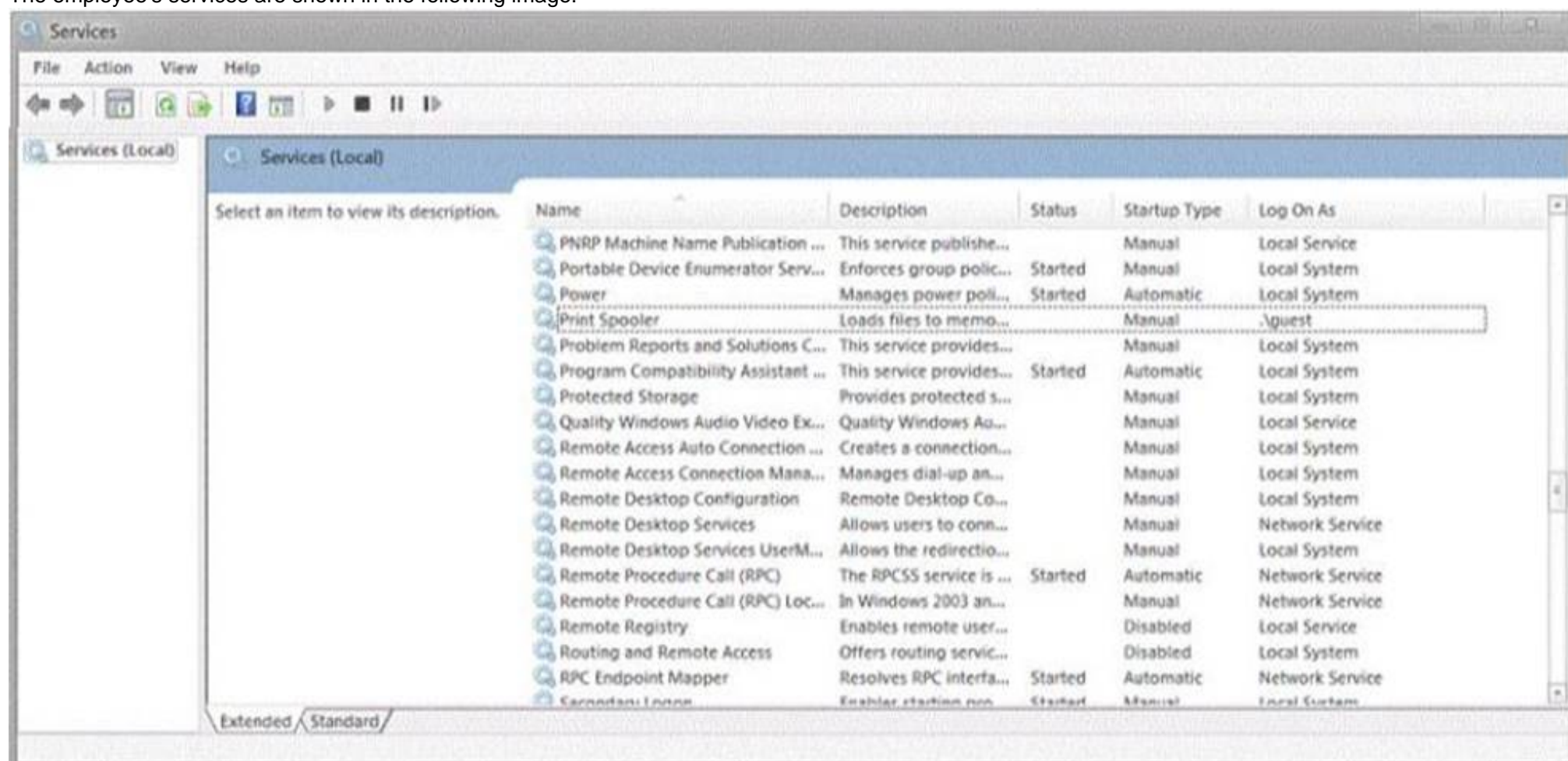
	Yes	No
NTFS and FAT32 both support a file size of over 4 GB.	<input type="radio"/>	<input checked="" type="radio"/>
NTFS and FAT32 can both use permissions and encryption.	<input type="radio"/>	<input checked="" type="radio"/>
NTFS and FAT32 can both be used as the format for Windows 7.	<input checked="" type="radio"/>	<input type="radio"/>

## NEW QUESTION 61

- (Exam Topic 2)

During your summer job at Lucerne Publishing, an employee's computer is infected by a virus, which is then removed. However, this virus made changes to a service on the computer, and now the employee is unable to print or even see networked printers.

The employee's services are shown in the following image:



Use the drop-down menus to select the answer choice that completes each statement. Each correct selection is worth one point.

## Answer Area

Set the Print Spooler service to a startup type of [answer choice]

Set the Print Spooler service to the [answer choice] level of privileges.

## Answer Area

Set the Print Spooler service to a startup type of [answer choice]

Set the Print Spooler service to the [answer choice] level of privileges.

- A. Mastered
- B. Not Mastered

Answer: A



Explanation:

### Answer Area

Set the Print Spooler service to a startup type of [answer choice]

  
 Automatic.  
 Manual.  
 Disabled.

Set the Print Spooler service to the [answer choice] level of privileges.

  
 Local System  
 Local Service  
 Network Service

### NEW QUESTION 62

- (Exam Topic 2)

Where should you configure settings to allow Workgroup users to use a printer connected to your computer?

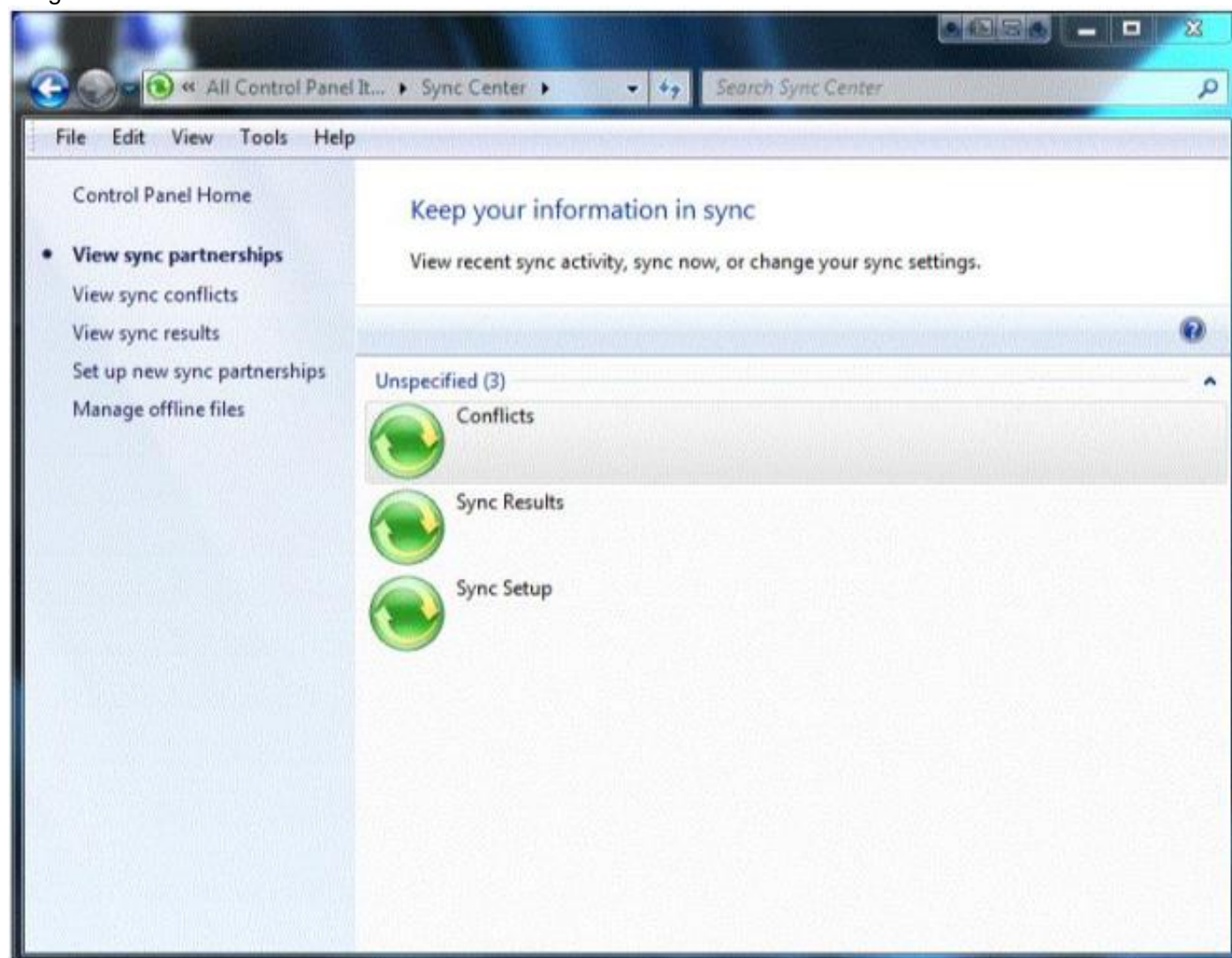
- A. In the System Configuration Utility
- B. In the Computer Management console
- C. In the Network and Sharing Center
- D. In the Local Security Policy editor

Answer: C

### NEW QUESTION 66

- (Exam Topic 2)

You are a teaching assistant for a Basic Networking class. Periodically, you update class assignments in a Microsoft Excel spreadsheet stored on a network drive. You need to allow students who have laptops to always have a current copy of the assignments spreadsheet. You access Control Panel as shown in the following image:



Use the drop-down menus to select the answer choice that completes each statement. Each correct selection is worth one point.

First, you should [answer choice]

Next, you should [answer choice]

First, you should [answer choice]

set up new sync partnerships.  
view sync conflicts.  
enable offline files.

Next, you should [answer choice]

view sync results.  
set up new sync partnerships.  
view sync conflicts.

- A. Mastered
- B. Not Mastered

Answer: A

Explanation:

First, you should [answer choice]

set up new sync partnerships.  
view sync conflicts.  
enable offline files.

Next, you should [answer choice]

view sync results.  
set up new sync partnerships.  
view sync conflicts.

#### NEW QUESTION 67

- (Exam Topic 2)

Your roommate, Tanya, has a Windows 7 computer. Tanya leaves her computer running while she is on a month-long vacation. When Tanya returns, she discovers that updates have not been automatically updated on her computer. What are two ways to ensure that the latest scheduled updates install on Tanya's computer? (Choose two.)

- A. Run Windows Update files from the hard drive.
- B. Restore hidden updates in Windows.
- C. Run Windows Update manually.
- D. Turn on automatic updates in Windows.

Answer: CD

#### NEW QUESTION 68

- (Exam Topic 2)

Which three tasks can you perform by using Microsoft Management Console (MMC)? (Choose three.)

- A. Add new snap-ins to Windows administrative tools.
- B. View a remote user's desktop to troubleshoot and resolve problems.
- C. Create Taskpads to provide a custom view of available options.
- D. Create custom consoles containing assortments of administrative tools.
- E. Run cmdlets to run various system operations.
- F. Run a remote server application to perform a function.

Answer: ACD

#### NEW QUESTION 70

- (Exam Topic 2)

For each of the following statements, select Yes if the statement is true. Otherwise, select No. Each correct selection is worth one point.

Answer Area

	Yes	No
Use MSINFO32.exe to obtain information about your computer system.	<input type="radio"/>	<input type="radio"/>
Use System Information to obtain details about a computer's hardware resources.	<input type="radio"/>	<input type="radio"/>
Use System Information to obtain details about a computer's software environment.	<input type="radio"/>	<input type="radio"/>

- A. Mastered  
B. Not Mastered

Answer: A

Explanation:

Answer Area

	Yes	No
Use MSINFO32.exe to obtain information about your computer system.	<input checked="" type="radio"/>	<input type="radio"/>
Use System Information to obtain details about a computer's hardware resources.	<input checked="" type="radio"/>	<input type="radio"/>
Use System Information to obtain details about a computer's software environment.	<input checked="" type="radio"/>	<input type="radio"/>

NEW QUESTION 73

- (Exam Topic 2)

Your brother asks you for help installing Windows 10 on this laptop. His laptop does not have a DVD drive on it. Which software should you use to create a bootable USB memory stick that can be used to install Windows?

- A. Media creation tool  
B. Windows Update  
C. Windows Easy transfer  
D. PCmover Express

Answer: A

NEW QUESTION 74

- (Exam Topic 2)

For each of the following statements, select Yes if the statement is true. Otherwise, select No. Each correct selection is worth one point.

Answer Area

	Yes	No
Users logged in to Windows 7 as administrators are given a standard user token in addition to their administrator token.	<input type="radio"/>	<input type="radio"/>
A standard user account is able to make changes to services or drivers that affect other users of the computer.	<input type="radio"/>	<input type="radio"/>
To make changes to how UAC operates, you must be logged in as an administrator.	<input type="radio"/>	<input type="radio"/>

- A. Mastered  
B. Not Mastered

Answer: A

Explanation:

#### Answer Area

	Yes	No
Users logged in to Windows 7 as administrators are given a standard user token in addition to their administrator token.	<input checked="" type="radio"/>	<input type="radio"/>
A standard user account is able to make changes to services or drivers that affect other users of the computer.	<input type="radio"/>	<input checked="" type="radio"/>
To make changes to how UAC operates, you must be logged in as an administrator.	<input checked="" type="radio"/>	<input type="radio"/>

#### NEW QUESTION 77

- (Exam Topic 2)

Your aunt uses her new Windows 10 laptop to read articles. However, she finds that reading for long periods strains her eyes. You want to adjust the text on the screen to make it easier for your aunt to read for long periods without experiencing eye strain. Which option should you select?

- A. Custom Scaling
- B. Screen Resolution
- C. Clear Type
- D. Change Text Size of Menus

**Answer:** B

#### NEW QUESTION 78

- (Exam Topic 2)

This question requires that you evaluate the underlined text to determine if it is correct.

To change a file system from FAT32 to NTFS, you should run the fdisk command at the command prompt. Select the correct answer if the underlined text does not make the statement correct. Select "No change is needed" if the underlined text makes the statement correct.

- A. convert
- B. diskpart
- C. change
- D. No change is needed.

**Answer:** A

#### NEW QUESTION 83

- (Exam Topic 2)

You are an IT intern for Contoso, Ltd., which has five regional offices, all networked separately. Glen works in the marketing department and has a Windows 7 Professional laptop computer. He has access to numerous network printers at each regional office. He also routinely brings his computer home and prints to his home printer. In total, he has 20 printers in his list of printers, and he is frustrated that he has to change printers for each location. What should you do to help Glen?

- A. Instruct Glen that he must set the default printer when he visits each location for the first time.
- B. Under Devices and Printers, select a printer
- C. Set the Manage default printers option to Change my default printer when I change networks.
- D. Upgrade Glen's laptop to Windows 7 Enterprise to enable location-aware printing.
- E. Under Devices and Printers, right-click the default printer and select the Set as default printer option.

**Answer:** B

#### NEW QUESTION 85

- (Exam Topic 2)

This question requires that you evaluate the underlined text to determine if it is correct.

To actively scan for spyware and viruses, you should ensure Action Center is installed and running. Select the correct answer if the underlined text does not make the statement correct. Select "No change is needed" if the underlined text makes the statement correct.

- A. Windows Defender
- B. The Malicious Software Removal Tool
- C. Microsoft Security Essentials
- D. No change is needed.

**Answer:** C

#### NEW QUESTION 89

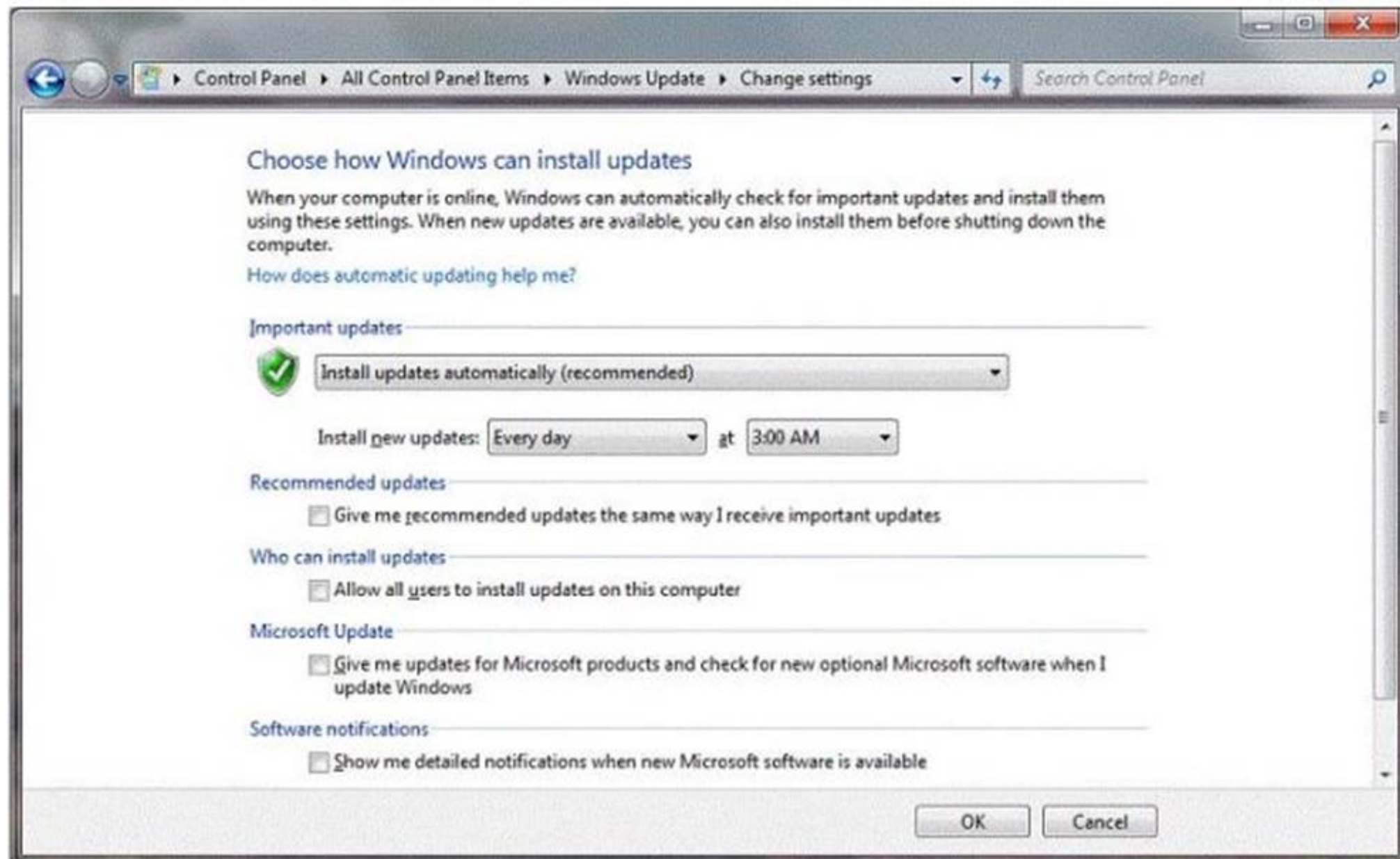
- (Exam Topic 2)

You have an administrator account on your computer. You set up standard user accounts for each of your roommates.

You want to ensure that your computer automatically receives the latest updates, even when your roommates are using the computer. You review the information



in the following image:



Use the drop-down menus to select the answer choice that completes each statement. Each correct selection is worth one point.

Answer Area

To allow updates to install when your roommates are using the computer, select the [Answer choice]

To allow one of your roommates to install Driver Updates, select the [Answer choice]

Answer Area

To allow updates to install when your roommates are using the computer, select the [Answer choice]

To allow one of your roommates to install Driver Updates, select the [Answer choice]

- A. Mastered
- B. Not Mastered

Answer: A

Explanation:



Answer Area

To allow updates to install when your roommates are using the computer, select the [Answer choice]

"Allow all users to install updates on this computer" box.

"Give me recommended updates the same way I receive important updates" box.

"Give me updates for Microsoft products and check for new optional Microsoft Software when I update Windows" box.

To allow one of your roommates to install Driver Updates, select the [Answer choice]

"Give me recommended updates the same way I receive important updates" box.

"Allow all users to install updates on this computer" box.

"Give me updates for Microsoft products and check for new optional Microsoft Software when I update Windows" box.

NEW QUESTION 94

- (Exam Topic 2)  
You are preparing to install Windows 7 on a new computer. You need to enable BitLocker for encryption. What is required in order to enable BitLocker?

- A. FAT32 system drive
- B. Smart card
- C. NTFS system drive
- D. Trusted Platform Module (TPM)

Answer: C

NEW QUESTION 98

- (Exam Topic 2)  
You have a computer with Windows Vista Home Premium installed. Which two versions of Windows 7 are you able to upgrade to? (Choose two.)

- A. Home Basic
- B. Home Premium
- C. Professional
- D. Ultimate

Answer: BD

NEW QUESTION 100

- (Exam Topic 2)  
Which is the preferred file system for Windows computers?

- A. NTFS file system
- B. FAT file system
- C. FAT32 file system
- D. CDFS

Answer: A

NEW QUESTION 102

- (Exam Topic 2)  
For each of the following statements, select Yes if the statement is true. Otherwise, select No. Each correct selection is worth one point.

Answer Area	Yes	No
Installing Windows XP Mode requires a separate license for Windows XP.	<input type="radio"/>	<input type="radio"/>
Programs from an XP Mode installation display in both the Windows 7 list of programs and the XP Mode list of programs.	<input type="radio"/>	<input type="radio"/>
Windows XP Mode is available for Windows 7 Home.	<input type="radio"/>	<input type="radio"/>

- A. Mastered
- B. Not Mastered

Answer: A

Explanation:

NEW QUESTION 103

Answer Area

Yes

No

Installing Windows XP Mode requires a separate license for Windows XP.

☐☒

Programs from an XP Mode installation display in both the Windows 7 list of programs and the XP Mode list of programs.

☒☐

Windows XP Mode is available for Windows 7 Home.

☐☒

#### NEW QUESTION 104

- (Exam Topic 2)

Last time you turned on your computer, Windows started correctly. Now Windows starts but fails before the login prompt. What is the first step you should try to troubleshoot this problem?

- A. Restart the computer, press F8, and select Safe Mode with Command Prompt.
- B. Restore a system image to the drive.
- C. Restart the computer, press F8, and select Start Windows Normally.
- D. Restart the computer, press F8, and select Last Known Good Configuration.

Answer: D

#### NEW QUESTION 106

- (Exam Topic 2)

Your computer starts slowly, and Windows accesses files slowly.

Which two Windows features should you use to improve performance? (Choose two.)

- A. Disk Defragmenter
- B. Disk Format
- C. System Restore
- D. Disk Cleanup

Answer: AD

#### NEW QUESTION 109

- (Exam Topic 2)

This QUESTION requires that you evaluate the underlined text to determine if it is correct.

Running Windows Update will automatically download and install device drivers for Bluetooth devices. Instructions: Review the underlined text. If it makes the statement correct, select "No change is needed." If the statement is incorrect, select the answer choice that makes the statement correct.

- A. Device Manager
- B. Hardware Wizard
- C. No change is needed.
- D. Bluetooth Support Service

Answer: C

#### Explanation:

References:<https://support.microsoft.com/en-za/help/4028443/windows-update-drivers-in-windows-10>

#### NEW QUESTION 113

- (Exam Topic 2)

For each of the following statements, select Yes if the statement is true. Otherwise, select No. Each correct selection is worth one point.

Answer Area

Yes

No

You can perform an in-place upgrade to Windows 7 from both Windows XP and Windows Vista.

☐☐

It is possible to upgrade to a 32-bit version of Windows 7 only from a 32-bit previous version of Windows.

☐☐

All upgrades to Windows 7 must be performed as clean installs.

☐☐

- A. Mastered
- B. Not Mastered

Answer: A

Explanation:

Answer Area

Yes No

You can perform an in-place upgrade to Windows 7 from both Windows XP and Windows Vista.

☐☒

It is possible to upgrade to a 32-bit version of Windows 7 only from a 32-bit previous version of Windows.

☒☐

All upgrades to Windows 7 must be performed as clean installs.

☐☒

#### NEW QUESTION 118

- (Exam Topic 2)

You have a Windows 7 Enterprise workstation that is used by multiple users. You need to allow each of them to encrypt their own files on this workstation. Which tool should you use?

- A. EFS
- B. BitLocker
- C. ZIP
- D. Convert

Answer: A

#### NEW QUESTION 123

- (Exam Topic 2)

You are an IT intern for Contoso, Ltd. You are responsible for deploying Windows 7 to a staff of more than 100 users.

The IT department plans to execute the upgrades by using the network. You start the deployment on each computer. You guide the installs through the initial steps.

Which deployment method are you using?

- A. MSI
- B. LTI
- C. WMI
- D. ZTI

Answer: B

#### NEW QUESTION 127

- (Exam Topic 2)

A Windows 10 library:

- A. Organizes user files from disparate locations.
- B. Encrypts files by using the Encrypting File System (EFS).
- C. Makes copies of user files in a central location.
- D. Restores files from system backup.

Answer: A

Explanation:

References:<https://docs.microsoft.com/en-us/windows/client-management/windows-libraries>

#### NEW QUESTION 132

- (Exam Topic 2)

What is the largest single file that you can store on an NTFS file system?

- A. 4 TB
- B. 8 TB
- C. 16 TB
- D. 32 GB

Answer: C

#### NEW QUESTION 133

.....

## THANKS FOR TRYING THE DEMO OF OUR PRODUCT

Visit Our Site to Purchase the Full Set of Actual 98-349 Exam Questions With Answers.

We Also Provide Practice Exam Software That Simulates Real Exam Environment And Has Many Self-Assessment Features. Order the 98-349 Product From:

<https://www.2passeasy.com/dumps/98-349/>

## Money Back Guarantee

### 98-349 Practice Exam Features:

- \* 98-349 Questions and Answers Updated Frequently
- \* 98-349 Practice Questions Verified by Expert Senior Certified Staff
- \* 98-349 Most Realistic Questions that Guarantee you a Pass on Your FirstTry
- \* 98-349 Practice Test Questions in Multiple Choice Formats and Updatesfor 1 Year