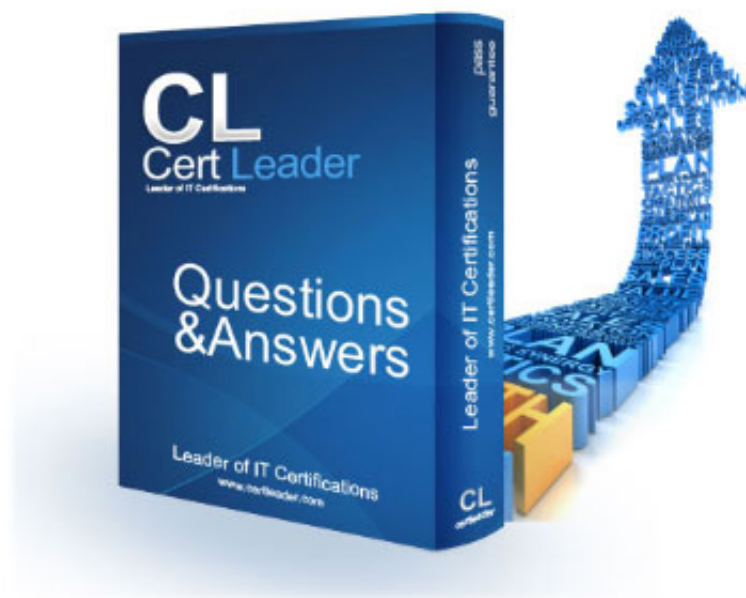


## 2V0-621D Dumps

# VMware Certified Professional 6 – Data Center Virtualization Delta Beta

<https://www.certleader.com/2V0-621D-dumps.html>



**NEW QUESTION 1**

An object has inherited permissions from two parent objects. What is true about the permissions on the object?

- A. The common permissions between the two are applied and the rest are discarded.
- B. The permissions are combined from both parent objects.
- C. No permissions are applied from the parent objects.
- D. The permission is randomly selected from either of the two parent objects.

**Answer:** B

**Explanation:** Most inventory objects inherit permissions from a single parent object in the hierarchy. For example, a datastore inherits permissions from either its parent datastore folder or parent datacenter. Virtual machines inherit permissions from both the parent virtual machine folder and the parent host, cluster, or resource pool simultaneously. To restrict a user's privileges on a virtual machine, you must set permissions on both the parent folder and the parent host, cluster, or resource pool for that virtual machine.

Reference: [http://pubs.vmware.com/vsphere-4-esx-vcenter/index.jsp?topic=/com.vmware.vsphere.dcadmin.doc\\_41/vsp\\_dc\\_admin\\_guide/managing\\_users\\_groups\\_roles\\_and\\_permissions/c\\_hierarchical\\_inheritance\\_of\\_permissions.html](http://pubs.vmware.com/vsphere-4-esx-vcenter/index.jsp?topic=/com.vmware.vsphere.dcadmin.doc_41/vsp_dc_admin_guide/managing_users_groups_roles_and_permissions/c_hierarchical_inheritance_of_permissions.html)

**NEW QUESTION 2**

Which two are valid Identity Sources when configuring vCenter Single Sign-On? (Choose two.)

- A. Radius
- B. NIS
- C. OpenLDAP
- D. LocalOS

**Answer:** CD

**Explanation:** Active Directory (Integrated Windows Authentication)

Use this option for native Active Directory implementations. The machine on which the vCenter Single Sign-Onservice is running must be in an Active Directory domain if you want to use this option.

See Active Directory Identity Source Settings.

Active Directory as an LDAP Server

This option is available for backward compatibility. It requires that you specify the domain controller and other information. See Active Directory LDAP Server and OpenLDAP Server Identity Source Settings.

OpenLDAP

Use this option for an OpenLDAP identity source. See Active Directory LDAP Server and OpenLDAP Server Identity Source Settings.

LocalOS

Use this option to add the local operating system as an identity source. You are prompted only for the name of the local operating system. If you select this option, all users on the specified machine are visible to vCenter Single Sign-On, even if those users are not part of another domain.

Reference: [http://pubs.vmware.com/vsphere-60/index.jsp?topic=%2Fcom.vmware.vsphere.security.doc%2FGUID-](http://pubs.vmware.com/vsphere-60/index.jsp?topic=%2Fcom.vmware.vsphere.security.doc%2FGUID-B23B1360-8838-4FF2-B074-71643C4CB040.html)

[B23B1360-8838-4FF2-B074-71643C4CB040.html](http://pubs.vmware.com/vsphere-60/index.jsp?topic=%2Fcom.vmware.vsphere.security.doc%2FGUID-B23B1360-8838-4FF2-B074-71643C4CB040.html)

**NEW QUESTION 3**

An administrator would like to use the VMware Certificate Authority (VMCA) as an Intermediate Certificate Authority (CA). The first two steps performed are:

? Replace the Root Certificate

? Replace Machine Certificates (Intermediate CA)

Which two steps would need to be performed next? (Choose two.)

- A. Replace Solution User Certificates (Intermediate CA)
- B. Replace the VMware Directory Service Certificate (Intermediate CA)
- C. Replace the VMware Directory Service Certificate
- D. Replace Solution User Certificates

**Answer:** AC

**Explanation:** You can replace the VMCA root certificate with a third-party CA-signed certificate that includes VMCA in the certificate chain. Going forward, all certificates that VMCA generates include the full chain. You can replace existing certificates with newly generated certificates. This approach combines the security of third-party CA-signed certificate with the convenience of automated certificate management.

Reference:

<http://pubs.vmware.com/vsphere-60/index.jsp?topic=%2Fcom.vmware.vsphere.security.doc%2FGUID-5FE583A2-3737-4B62-A905-5BB38D479AE0.html>

**NEW QUESTION 4**

An administrator has been instructed to secure existing virtual machines in vCenter Server.

Which two actions should the administrator take to secure these virtual machines? (Choose two.)

- A. Disable native remote management services
- B. Restrict Remote Console access
- C. Use Independent Non-Persistent virtual disks
- D. Prevent use of Independent Non-Persistent virtual disks

**Answer:** BD

**Explanation:** Reference: <http://www.vmware.com/files/pdf/techpaper/VMW-TWP-vSPHR-SECRTY-HRDNG-USLET-101-WEB-1.pdf> (page 11, see the tables)

**NEW QUESTION 5**

An administrator connects to an ESXi 6.x host console in order to shutdown the host. Which option in the Direct Console User Interface would perform this task?

- A. Press the F12 key
- B. Press the F2 key
- C. Press Alt + F1 simultaneously
- D. Press Alt + F2 simultaneously

**Answer:** A

**Explanation:**

Reference: [http://pubs.vmware.com/vsphere-4-esxi-embedded-vcenter/index.jsp?topic=/com.vmware.vsphere.setupembedded.doc\\_40/install/setting\\_up\\_esxi\\_4.0/c\\_direct\\_console\\_user\\_interface.html](http://pubs.vmware.com/vsphere-4-esxi-embedded-vcenter/index.jsp?topic=/com.vmware.vsphere.setupembedded.doc_40/install/setting_up_esxi_4.0/c_direct_console_user_interface.html)

**NEW QUESTION 6**

In which two vsphere.local groups should an administrator avoid adding members?  
(Choose two.)

- A. SolutionUsers
- B. Administrators
- C. DCAdmins
- D. ExternalPDUsers

**Answer:** AB

**Explanation:** The vsphere.local domain includes several predefined groups. Assign users to one of those groups to be able to perform the corresponding actions. For all objects in the vCenter Server hierarchy, permissions are assigned by pairing a user and a role with the object. For example, you can select a resource pool and give a group of users read privileges to that resource pool by giving them the corresponding role.

For some services that are not managed by vCenter Server directly, privileges are determined by membership to one of the vCenter Single Sign-On groups. For example, a user who is a member of the Administrator group can manage vCenter Single Sign-On. A user who is a member of the CAAdmins group can manage the VMware Certificate Authority, and a user who is in the LicenseService.Administrators group can manage licenses.

Reference:

<https://pubs.vmware.com/vsphere-60/index.jsp?topic=%2Fcom.vmware.vsphere.security.doc%2FGUID-87DA2F34-DCC9-4DAB-8900-1BA35837D07E.html>

**NEW QUESTION 7**

An administrator decides to change the root password for an ESXi 6.x host to comply with the company's security policies. What are two ways that this can be accomplished? (Choose two.)

- A. Use the Direct Console User Interface to change the password.
- B. Use the passwd command in the ESXi Shell.
- C. Use the password command in the ESXi Shell.
- D. Use the vSphere client to update local users.

**Answer:** AB

**Explanation:** To prevent unauthorized access to the vCenter Server Appliance Direct Console User Interface, you can change the password of the root user. The default root password for the vCenter Server Appliance is the password you enter during deployment of the virtual appliance.

Reference: <http://pubs.vmware.com/vsphere-60/index.jsp?topic=%2Fcom.vmware.vsphere.vcsa.doc%2FGUID-48BAF973-4FD3-4FF3-B1B6-5F7286C9B59A.html>

**NEW QUESTION 8**

Strict Lockdown Mode has been enabled on an ESXi host.

Which action should an administrator perform to allow ESXi Shell or SSH access for users with administrator privileges?

- A. Grant the users the administrator role and enable the service.
- B. Add the users to Exception Users and enable the service.
- C. No action can be taken, Strict Lockdown Mode prevents direct access.
- D. Add the users to vsphere.local and enable the service.

**Answer:** B

**Explanation:** Reference: <https://pubs.vmware.com/vsphere-60/index.jsp?topic=%2Fcom.vmware.vsphere.security.doc%2FGUID-F8F105F7-CF93-46DF-9319-F8991839D265.html>

**NEW QUESTION 9**

An administrator wants to provide users restricted access. The users should only be able to perform the following tasks:

- ? Create and consolidate virtual machine snapshots
- ? Add/Remove virtual disks
- ? Snapshot Management

Which default role in vCenter Server would meet the administrator's requirements for the users?

- A. Virtual machine user
- B. Virtual machine power user
- C. Virtual Datacenter administrator
- D. VMware Consolidated Backup user

**Answer:** B

**Explanation:** Virtual Machine Power User is a sample role that grants a user access rights only to virtual machines; can alter the virtual hardware or create snapshots of the VM.

Reference: <http://blog.pluralsight.com/vmware-access-control-101-roles-and-permissions>

#### NEW QUESTION 10

Which two statements are correct regarding vSphere certificates? (Choose two.)

- A. ESXi host upgrades do not preserve the SSL certificate and reissue one from the VMware Certificate Authority (VMCA).
- B. ESXi host upgrades preserve the existing SSL certificate.
- C. ESXi hosts have assigned SSL certificates from the VMware Certificate Authority (VMCA) during install.
- D. ESXi hosts have self-signed SSL certificates by default.

**Answer:** BC

**Explanation:** Of course, ESXi host upgrades preserve existing SSL certificate and it also have assigned SSL certificates from VMCA during the installation process.

#### NEW QUESTION 10

Which three options are available for ESXi Certificate Replacement? (Choose three.)

- A. VMware Certificate Authority mode
- B. Custom Certificate Authority mode
- C. Thumbprint mode
- D. Hybrid Deployment
- E. VMware Certificate Endpoint Authority Mode

**Answer:** ABC

**Explanation:** You can perform different types of certificate replacement depending on company policy and requirements for the system that you are configuring. You can perform each replacement with the vSphere Certificate Manager utility or manually by using the CLIs included with your installation.

VMCA is included in each Platform Services Controller and in each embedded deployment. VMCA provisions each node, each vCenter Server solution user, and each ESXi host with a certificate that is signed by VMCA as the certificate authority. vCenter Server solution users are groups of vCenter Server services. See vSphere Security for a list of solution users.

You can replace the default certificates. For vCenter Server components, you can use a set of command-line tools included in your installation. You have several options.

Reference:

<http://pubs.vmware.com/vsphere-60/index.jsp?topic=%2Fcom.vmware.vsphere.install.doc%2FGUID-4469A6D3-048A-471C-9CB4-518A15EA2AC0.html>

#### NEW QUESTION 14

Which group in the vsphere.local domain will have administrator privileges for the VMware Certificate Authority (VMCA)?

- A. SolutionUsers
- B. CAAdmins
- C. DCAAdmins
- D. SystemConfiguration.Administrators

**Answer:** B

**Explanation:** Members of the CAAdmins group have administrator privileges for VMCA. Adding members to these groups is not usually recommended.

Reference:

<https://pubs.vmware.com/vsphere-60/index.jsp?topic=%2Fcom.vmware.vsphere.security.doc%2FGUID-87DA2F34-DCC9-4DAB-8900-1BA35837D07E.html>

#### NEW QUESTION 19

Lockdown Mode has been enabled on an ESXi 6.x host and users are restricted from logging into the Direct Console User Interface (DCUI).

Which two statements are true given this configuration? (Choose two.)

- A. A user granted administrative privileges in the Exception User list can login.
- B. A user defined in the DCUI.Access without administrative privileges can login.
- C. A user defined in the ESXi Admins domain group can login.
- D. A user set to the vCenter Administrator role can login.

**Answer:** AB

**Explanation:** Reference: <https://pubs.vmware.com/vsphere-60/index.jsp?topic=%2Fcom.vmware.vsphere.security.doc%2FGUID-F8F105F7-CF93-46DF-9319-F8991839D265.html>

#### NEW QUESTION 24

When attempting to log in with the vSphere Web Client, users have reported the error: Incorrect Username/Password

The administrator has configured the Platform Services Controller Identity Source as:

? Type. Active Directory as an LDAP Server

? Domain: vmware.com

? Alias: VMWARE

? Default Domain: Yes

Which two statements would explain why users cannot login to the vSphere Web Client? (Choose two.)

- A. Users are typing the password incorrectly.
- B. Users are in a forest that has 1-way trust.
- C. Users are in a forest that has 2-way trust.
- D. Users are logging into vCenter Server with incorrect permissions.

**Answer:** AB

**Explanation:** The possible explanation for this error might be that the users are typing password incorrectly or they are in a forest with has only 1-way trust. You need 2-way trust to get the credentials accepted.

#### NEW QUESTION 27

What are two sample roles that are provided with vCenter Server by default? (Choose two.)

- A. Virtual machine User
- B. Network Administrator
- C. Content Library Administrator
- D. Storage Administrator

**Answer:** AB

**Explanation:** Reference: [https://books.google.com.pk/books?id=35TE4cSycNAC&pg=PA97&lpg=PA97&dq=sample+roles+that+are+provided+with+vCenter+Server+by+default&source=bl&ots=ggd5VKGky5&sig=lc0Juby-tkvddWsrG\\_zHgEDTQY&hl=en&sa=X&ved=0CDcQ6AEwBWoVChMIIZH2x8WEExglVxDoUCh2N1AC2#v=onepage&q=sample%20roles%20that%20are%20provided%20with%20vCenter%20Server%20by%20default&f=false](https://books.google.com.pk/books?id=35TE4cSycNAC&pg=PA97&lpg=PA97&dq=sample+roles+that+are+provided+with+vCenter+Server+by+default&source=bl&ots=ggd5VKGky5&sig=lc0Juby-tkvddWsrG_zHgEDTQY&hl=en&sa=X&ved=0CDcQ6AEwBWoVChMIIZH2x8WEExglVxDoUCh2N1AC2#v=onepage&q=sample%20roles%20that%20are%20provided%20with%20vCenter%20Server%20by%20default&f=false)

#### NEW QUESTION 32

Which Advanced Setting should be created for the vCenter Server to change the expiration policy of the vpxuser password?

- A. VimPasswordExpirationInDays
- B. VimExpirationPasswordDays
- C. VimPassExpirationInDays
- D. VimPasswordRefreshDays

**Answer:** A

**Explanation:** vCenter Server creates the vpxuser account on each ESX/ESXi host that it manages. The password for each vpxuser account is auto-generated when an ESX/ESXi host is added. The password is updated by default every 30 days.

To modify default password settings:

? Connect vSphere Client to vCenter Server.

? Click Administration > vCenter Server Settings > Advanced Settings.

? Scroll to the parameter VirtualCenter.VimPasswordExpirationInDays and change the value from the default.

Reference: [http://kb.vmware.com/selfservice/microsites/search.do?language=en\\_US&cmd=displayKC&externalId=1016736](http://kb.vmware.com/selfservice/microsites/search.do?language=en_US&cmd=displayKC&externalId=1016736)

#### NEW QUESTION 36

Which password meets ESXi 6.x host password requirements?

- A. 8kMVnn2x!
- B. zNgtnJBA2
- C. Nvgt34kn44
- D. lb74wr

**Answer:** A

**Explanation:** A valid password requires a mix of upper and lower case letters, digits, and other characters. You can use a 7-character long password with characters from at least three of these four classes, or a 6-character long password containing characters from all the classes. A password that begins with an upper case letter and ends with a numerical digit does not count towards the number of character classes used. It is recommended that the password does not contain the username.

A passphrase requires at least 3 words, can be 8 to 40 characters long, and must contain enough different characters.

Reference: [http://kb.vmware.com/selfservice/microsites/search.do?language=en\\_US&cmd=displayKC&externalId=1012033](http://kb.vmware.com/selfservice/microsites/search.do?language=en_US&cmd=displayKC&externalId=1012033)

#### NEW QUESTION 38

Which Platform Service Controller Password Policy determines the number of days a password can exist before the user must change it?

- A. Maximum Lifetime
- B. Password Age
- C. Maximum Days
- D. Password Lifetime

**Answer:** A



**Explanation:** You can configure the following parameters for password policy:

? Description – Password policy description. Required.

? Maximum lifetime – Maximum number of days that a password can exist before it has to be changed.

? Restrict re-use – Number of the user's previous passwords that cannot be set again.

? Maximum length – Maximum number of characters that are allowed in the password.

? Minimum length – Minimum number of characters required in the password.

? Character requirements – Minimum number of different character types required in the password.

? Identical adjacent characters – Maximum number of identical adjacent characters allowed in the password.

Reference: <http://www.vladan.fr/vcp6-dcv-objective-1-3-enable-ss0-and-active-directory-integration/>

#### NEW QUESTION 40

An administrator needs to create an Integrated Windows Authentication (IWA) Identity Source on a newly deployed vCenter Server Appliance (VCSA).

Which two actions will accomplish this? (Choose two.)

A. Use a Service Principal Name (SPN) to configure the Identity Source.

B. Use a Domain administrator to configure the Identity Source.

C. Join the VCSA to Active Directory and configure the Identity Source with a Machine Account.

D. Create a computer account in Active Directory for the VCSA and configure the Identity Source.

**Answer:** AC

**Explanation:** Using a machine account when configuring an Active Directory identity source for vCenter Server requires that the Windows system be joined to the domain. If the system is not joined to the domain, SSO cannot leverage the machine account to create the identity source and perform its function as the secure token service user.

To resolve this issue in VCVA 5.5, use only the Use SPN option.

Reference:

[http://kb.vmware.com/selfservice/microsites/search.do?language=en\\_US&cmd=displayKC&externalId=2058919](http://kb.vmware.com/selfservice/microsites/search.do?language=en_US&cmd=displayKC&externalId=2058919)

#### NEW QUESTION 45

Which three connection types are supported between a remote site and vCloud Air? (Choose three.)

A. Secure Internet Connectivity

B. Private Connect

C. Direct Connect

D. Internet Connectivity

E. Secure VPN

**Answer:** ACE

**Explanation:** The connection types supported between a remote site and vcloud Air is secure VPN, direct connect and Secure Internet Connectivity.

#### NEW QUESTION 50

An administrator has recently audited the environment and found numerous virtual machines with sensitive data written to the configuration files.

To prevent this in the future, which advanced parameter should be applied to the virtual machines?

A. isolation.tools.setinfo.disable = true

B. isolation.tools.setinfo.enable = true

C. isolation.tools.setinfo.disable = false

D. isolation.tools.setinfo.enable = false

**Answer:** A

**Explanation:** It is configured on a per-VM basis. You can increase the guest operating system variable memory limit if large amounts of custom information are being stored in the configuration file. You can also prevent guests from writing any name-value pairs to the configuration file. To do so, use the following setting, and set it to 'true':

#### NEW QUESTION 53

Which secondary Private VLAN (PVLAN) type can communicate and send packets to an Isolated PVLAN?

A. Community

B. Isolated

C. Promiscuous

D. Primary

**Answer:** C

**Explanation:** A node attached to a port in a promiscuous secondary PVLAN may send and receive packets to any node in any others secondary VLAN associated to the same primary. Routers are typically attached to promiscuous ports.

Reference: <https://communities.vmware.com/thread/483486>

#### NEW QUESTION 57

An administrator notices that there is an all paths down (APD) event occurring for the software FcoE storage.

What is a likely cause?

- A. Spanning Tree Protocol is enabled on the network ports.
- B. Spanning Tree Protocol is disabled on the network ports.
- C. Spanning Tree Protocol is enabled on the storage processors.
- D. Spanning Tree Protocol is disabled on the storage processors.

**Answer:** A

**Explanation:** Prevent all paths down event on FcoE storage by disabling STP on network ports.

#### NEW QUESTION 59

Which two features are deprecated in Network I/O Control 3 (NIOC3)? (Choose two.)

- A. Class Of Service (COS) Tagging
- B. Bandwidth Allocation
- C. User-defined network resource pools
- D. Admission control

**Answer:** AC

**Explanation:** Class of Service tagging and user-defined resource pools are deprecated in NIOC3.

#### NEW QUESTION 61

Which two groups of settings should be reviewed when attempting to increase the security of virtual machines (VMs)? (Choose two.)

- A. Disable hardware devices
- B. Disable unexposed features
- C. Disable Vmtools devices
- D. Disable VM Template features

**Answer:** AB

**Explanation:** Make sure you review hardware devices and disable the unnecessary ones. Also disable unexposed features before increasing virtual machines security.

#### NEW QUESTION 63

What are two limitations of Link Aggregation Control Protocol (LACP) on a vSphere Distributed Switch? (Choose two.)

- A. IP Hash load balancing is not a supported Teaming Policy.
- B. Software iSCSI multipathing is not compatible.
- C. Link Status Network failover detection must be disabled.
- D. It does not support configuration through Host Profiles.

**Answer:** BD

#### NEW QUESTION 66

Which three traffic types can be configured for dedicated Vmkernel adapters? (Choose three.)

- A. Discovery traffic
- B. vMotion traffic
- C. vSphere Replication NFC traffic
- D. Provisioning traffic
- E. vSphere Custom traffic

**Answer:** BCD

**Explanation:** Topic 3, Configure and Administer Advanced vSphere Storage

#### NEW QUESTION 68

An administrator is configuring virtual machines to use Worldwide Port Names (WWPNs) to access the storage. Which two conditions are required? (Choose two.)

- A. The switches in the fabric must be N-Port ID Virtualization aware.
- B. The virtual machines must be using passthrough Raw Disk Mapping (RDMp).
- C. The virtual machines must be using Virtual Machine Disk (VMDK).
- D. The switches in the fabric must be Storage I/O Control aware.

**Answer:** AB

**Explanation:** To configure virtual machines to use WWPNs, you have to set N-Port ID virtualization aware setting on the switches in the fabric and you should also make sure that the virtual machines must be using passthrough raw disk mapping.

#### NEW QUESTION 71

Which statement is true for the Path Selection Plug-In VMW\_PSP\_MRU?

- A. VMW\_PSP\_MRU is default for a majority of active-active and active-passive arrays.
- B. VMW\_PSP\_MRU will remain on the selected path even if the state were to change.
- C. VMW\_PSP\_MRU is recommended for Virtual SAN.
- D. VMW\_PSP\_MRU will have no preferred path setting for the Plug-In.

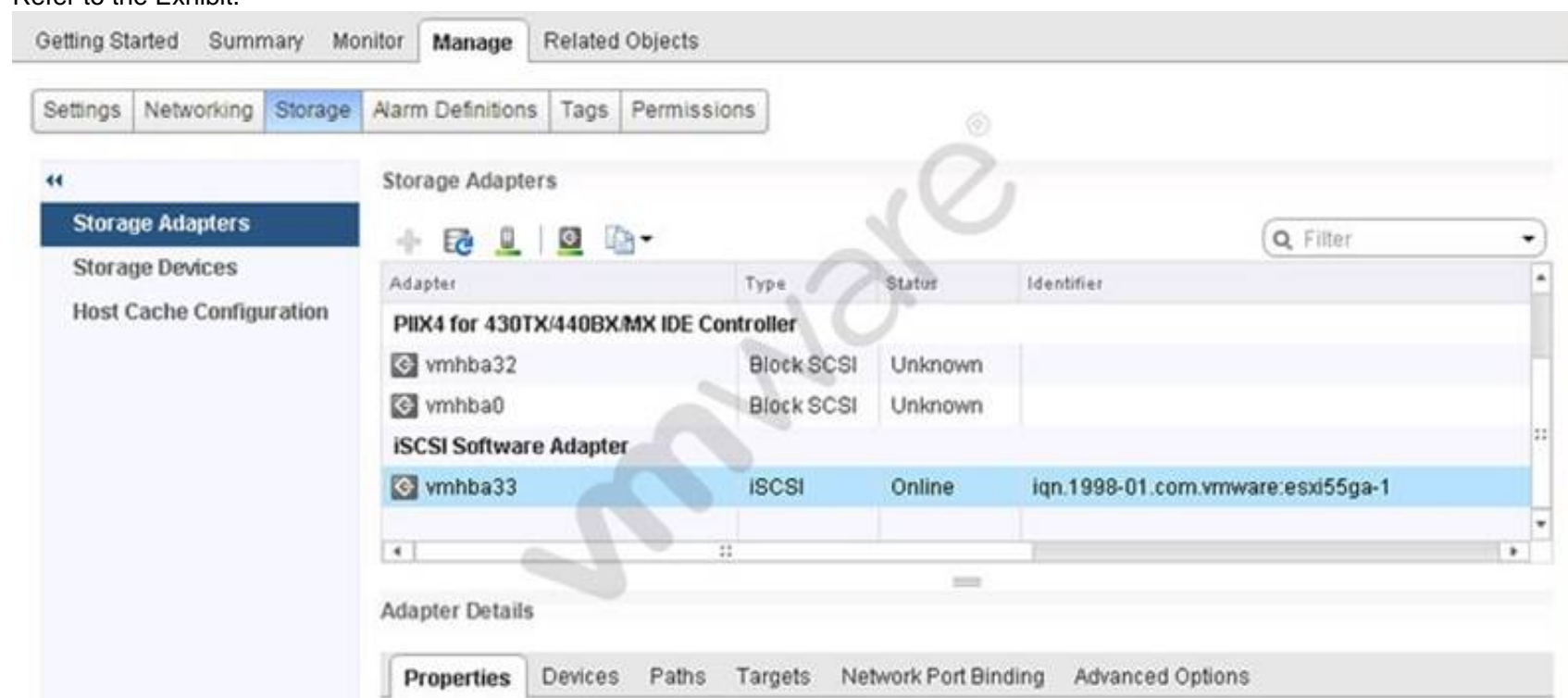
**Answer:** D

**Explanation:** The host selects the path that it used most recently. When the path becomes unavailable, the host selects an alternative path. The host does not revert back to the original path when that path becomes available again. There is no preferred path setting with the MRU policy. MRU is the default policy for active-passive storage devices.

Reference: [http://pubs.vmware.com/vsphere-60/index.jsp?topic=%2Fcom.vmware.vcli.examples.doc%2Fcli\\_manage\\_storage.6.7.html](http://pubs.vmware.com/vsphere-60/index.jsp?topic=%2Fcom.vmware.vcli.examples.doc%2Fcli_manage_storage.6.7.html)

#### NEW QUESTION 73

Refer to the Exhibit.



An administrator would like to add Challenge Handshake Authentication Protocol (CHAP) to an iSCSI adapter. The administrator accesses the Storage Adapters menu as shown in the Exhibit.

In which tab can the task be accomplished?

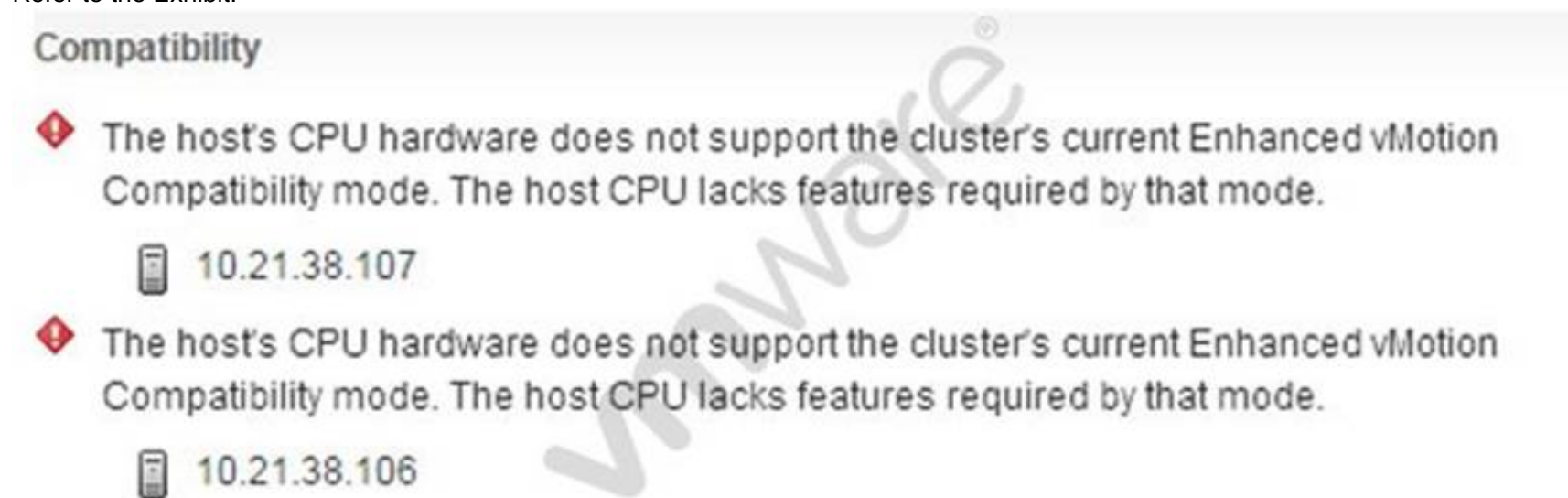
- A. Properties
- B. Advanced Options
- C. Targets
- D. Devices

**Answer:** A

**Explanation:** Reference: <http://www.vmwarebits.com/content/install-and-configure-openfiler-esxi-shared-storage-nfs-and-iscsi>

#### NEW QUESTION 74

Refer to the Exhibit.



An administrator is attempting to enable Enhanced vMotion Compatibility (EVC), but receives the error shown in the Exhibit. Which condition would explain the error?

- A. The ESXi hosts are not licensed for EVC.
- B. The administrator does not have privileges to enable EVC.
- C. The ESXi host CPU has the Intel No-Execute feature disabled.
- D. The administrator has turned on Intel Virtualization Technology.

**Answer:** C



**Explanation:** EVC requires all hosts to have the CPU features enabled for Virtualization and No Execute Reference:  
[http://kb.vmware.com/selfservice/microsites/search.do?language=en\\_US&cmd=displayKC&externalId=2008403](http://kb.vmware.com/selfservice/microsites/search.do?language=en_US&cmd=displayKC&externalId=2008403)

**NEW QUESTION 78**

What is the command to list multipathing modules on an ESXi 6.x host?

- A. esxcli storage core list plugin --plugin-class=MP
- B. esxcli storage core list plugin --class-plugin=MP
- C. esxcli storage core plugin list --plugin-class=MP
- D. esxcli storage core plugin list --class-plugin=MP

**Answer:** C

**Explanation:** Reference: <http://darrylcauldwell.com/advanced-vsphere-5-x-storage-masking-multipathing-filtering/>

**NEW QUESTION 79**

An administrator is having a problem configuring Storage I/O Control on a Datastore. Which two conditions could explain the issue? (Choose two.)

- A. A host is running ESXi 4.0.
- B. An ESXi host does not have appropriate licensing.
- C. The vCenter Server version is 5.0.
- D. The vCenter Server License is Standard.

**Answer:** AB

**Explanation:** Reference: [http://kb.vmware.com/selfservice/microsites/search.do?language=en\\_US&cmd=displayKC&externalId=2021530](http://kb.vmware.com/selfservice/microsites/search.do?language=en_US&cmd=displayKC&externalId=2021530)

**NEW QUESTION 84**

Which two considerations should an administrator keep in mind when booting from Software Fiber Channel over Ethernet (FCoE)? (Choose two.)

- A. Software FCoE boot configuration can be changed from within ESXi.
- B. Software FCoE boot firmware cannot export information in FBFT format.
- C. Multipathing is not supported at pre-boot.
- D. Boot LUN cannot be shared with other hosts even on shared storage.

**Answer:** CD

**Explanation:** When you boot the ESXi host from SAN using software FCoE, certain requirements and considerations apply.

? You cannot change software FCoE boot configuration from within ESXi.

? Coredump is not supported on any software FCoE LUNs, including the boot LUN.

? Multipathing is not supported at pre-boot.

? Boot LUN cannot be shared with other hosts even on shared storage.

Reference:

<https://pubs.vmware.com/vsphere-55/index.jsp?topic=%2Fcom.vmware.vsphere.storage.doc%2FGUID-8E57EDC9-F122-4A81-8B80-FE19FFE832B1.html>

**NEW QUESTION 86**

Refer to the Exhibit.



An administrator is configuring a storage device as shown in the Exhibit. What is the expected effect on the stated device after running the command?

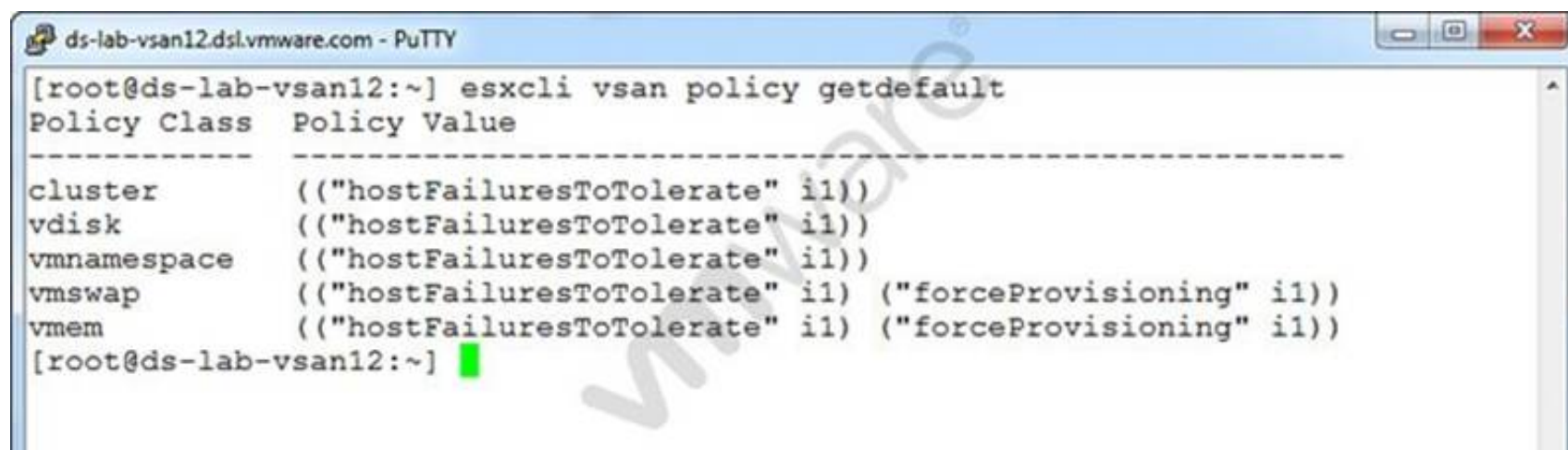
- A. I/O will rotate on all storage targets regardless of port group state.
- B. I/O will rotate on all storage targets that are Active Optimized state only.
- C. I/O will rotate on all storage targets that are Active Unoptimized state only.
- D. I/O will rotate on all storage targets that are on Available Nodes only.

**Answer:** B

**Explanation:** When the command is run, I/O will rotate on all storage targets regardless of port group state.

**NEW QUESTION 89**

Refer to the Exhibit.



```
ds-lab-vsan12.dsl.vmware.com - PuTTY
[root@ds-lab-vsan12:~] esxcli vsan policy getdefault
Policy Class  Policy Value
-----
cluster      (("hostFailuresToTolerate" i1))
vdisk        (("hostFailuresToTolerate" i1))
vmnamespace  (("hostFailuresToTolerate" i1))
vmswap       (("hostFailuresToTolerate" i1) ("forceProvisioning" i1))
vmem         (("hostFailuresToTolerate" i1) ("forceProvisioning" i1))
[root@ds-lab-vsan12:~]
```

An administrator recently created a Virtual SAN but no Storage Policies were defined. A few virtual machines were deployed to this cluster. The administrator analyzes the default Virtual SAN policy as shown in the Exhibit.

Based on the exhibit, which two statements are true? (Choose two.)

- A. Losing one cluster node will not affect data availability.
- B. Losing one Hard Disk in a cluster node will not affect data availability.
- C. Creating a virtual machine Swap file will fail if it violates default storage policy.
- D. Creating a virtual machine will succeed even if it violates default storage policy.

**Answer:** AB

**Explanation:** The Virtual SAN policy shows that the tolerate level is on so losing a cluster node will not affect data availability. Same is the case with hard disk in cluster node. Losing it will not affect data availability.

#### NEW QUESTION 90

An administrator wants to upgrade to vCenter Server 6.x.

The vCenter Server:

? Is hosted on a virtual machine server running Microsoft Windows Server 2008 R2, with 8 vCPUs and 16GB RAM.

? Will have an embedded Platform Services Controller.

? Hosts a Large Environment with 1,000 ESXi hosts and 10,000 Virtual Machines.

Why does the vCenter Server not meet the minimum requirements?

- A. Windows Server 2008 R2 is not a supported Operating System for vCenter Server.
- B. The virtual machine has insufficient resources for the environment size.
- C. The environment is too large to be managed by a single vCenter Server.
- D. The Platform Services Controller must be changed to an External deployment.

**Answer:** B

**Explanation:** The environment is very big with 1000 ESXi host and 10,000 virtual machines. Therefore, it is not enough and the vCenter server cannot meet these requirements.

#### NEW QUESTION 94

Which log file would you examine to identify an issue which occurred during the pre- upgrade phase of a vCenter Server upgrade process?

- A. vcdb\_req.out
- B. vcdb\_export.out
- C. vcdb\_import.out
- D. vcdb\_inplace.out

**Answer:** A

**Explanation:** The vcdb\_req.err file tracks any errors that were identified during the pre-upgrade phase.

Reference: <http://pubs.vmware.com/vsphere-60/index.jsp?topic=%2Fcom.vmware.vsphere.upgrade.doc%2FGUID-5EAC8B84-0A95-41EC-AAF4-6CBBB3A5152A.html>

#### NEW QUESTION 97

What three supported methods can be used to upgrade a host from ESXi 5.x to ESXi 6.x? (Choose three.)

- A. vSphere Update Manager
- B. vihostupdate
- C. esxcli
- D. vSphere Auto Deploy
- E. esxupdate

**Answer:** ACD

**Explanation:** Reference: <https://pubs.vmware.com/vsphere-60/index.jsp?topic=%2Fcom.vmware.vsphere.upgrade.doc%2FGUID-FE668788-1F32-4CB2-845C-5547DD59EB48.html>

#### NEW QUESTION 99

An administrator has upgraded a Distributed vCenter Server environment from 5.5 to 6.0. What is the next step that should be taken?

- A. vCenter Inventory Service must be manually stopped and removed.
- B. vCenter Inventory Service must be changed from manual to automatic.
- C. vCenter Inventory Service must be manually stopped and restarted.
- D. vCenter Inventory Service must be changed from automatic to manual.

**Answer:** A

**Explanation:** Reference:

<http://pubs.vmware.com/vsphere-60/index.jsp?topic=%2Fcom.vmware.vsphere.upgrade.doc%2FGUID-4BFB12D8-9FCA-4AB1-A44F-2986966F0AD5.html>

#### NEW QUESTION 101

What command line utility can be used to upgrade an ESXi host?

- A. esxcli
- B. esxupdate
- C. vihostupdate
- D. esxcfg

**Answer:** A

**Explanation:** You can use the esxcli software profile update or esxcli software profile install command to upgrade or update an ESXi host.

Reference: <https://pubs.vmware.com/vsphere-51/index.jsp?topic=%2Fcom.vmware.vsphere.upgrade.doc%2FGUID-E51C5DB6-F28E-42E8-ACA4-0EBDD11DF55D.html>

#### NEW QUESTION 103

When upgrading vCenter Server, an administrator notices that the upgrade fails at the vCenter Single Sign-On installation. What must be done to allow the upgrade to complete?

- A. Verify that the VMware Directory service can stop by manually restarting it.
- B. Verify that the vCenter Single Sign-On service can stop by manually restarting it.
- C. Uninstall vCenter Single Sign-On service.
- D. Uninstall the VMware Directory service.

**Answer:** A

**Explanation:** To verify that the VMware Directory Service is in a stable state and can stop, manually restart it. The VMware Directory service must be stopped for the vCenter Server upgrade software to uninstall vCenter Single Sign-On during the upgrade process.

#### NEW QUESTION 105

During a vCenter Server upgrade, an ESXi 6.x host in a High Availability (HA) cluster fails. Which statement is true?

- A. HA will fail the virtual machines over to an available host during the vCenter Server upgrade process.
- B. HA is unavailable during the vCenter Server upgrade process.
- C. HA will fail the virtual machines over to an available host after the vCenter Server upgrade completes.
- D. HA will successfully vMotion the virtual machines during the host failure.

**Answer:** A

**Explanation:** High availability is designed to fail over the virtual machines to another available host during the upgrade process.

#### NEW QUESTION 109

Which two vCenter Server services are migrated automatically as part of an upgrade from a Distributed vCenter Server running 5.x? (Choose two.)

- A. vCenter Single Sign-on Service
- B. vSphere Web Client
- C. vSphere Inventory Service
- D. Storage Policy Based Management

**Answer:** BC

**Explanation:** vSphere web client and vSphere inventory services are migrated automatically during the Distributed vcenter server 5.x upgrade.

#### NEW QUESTION 112

Which file determines the location of the installation script during a scripted upgrade?

- A. boot.cfg
- B. ks.cfg
- C. script.cfg
- D. upgrade.cfg

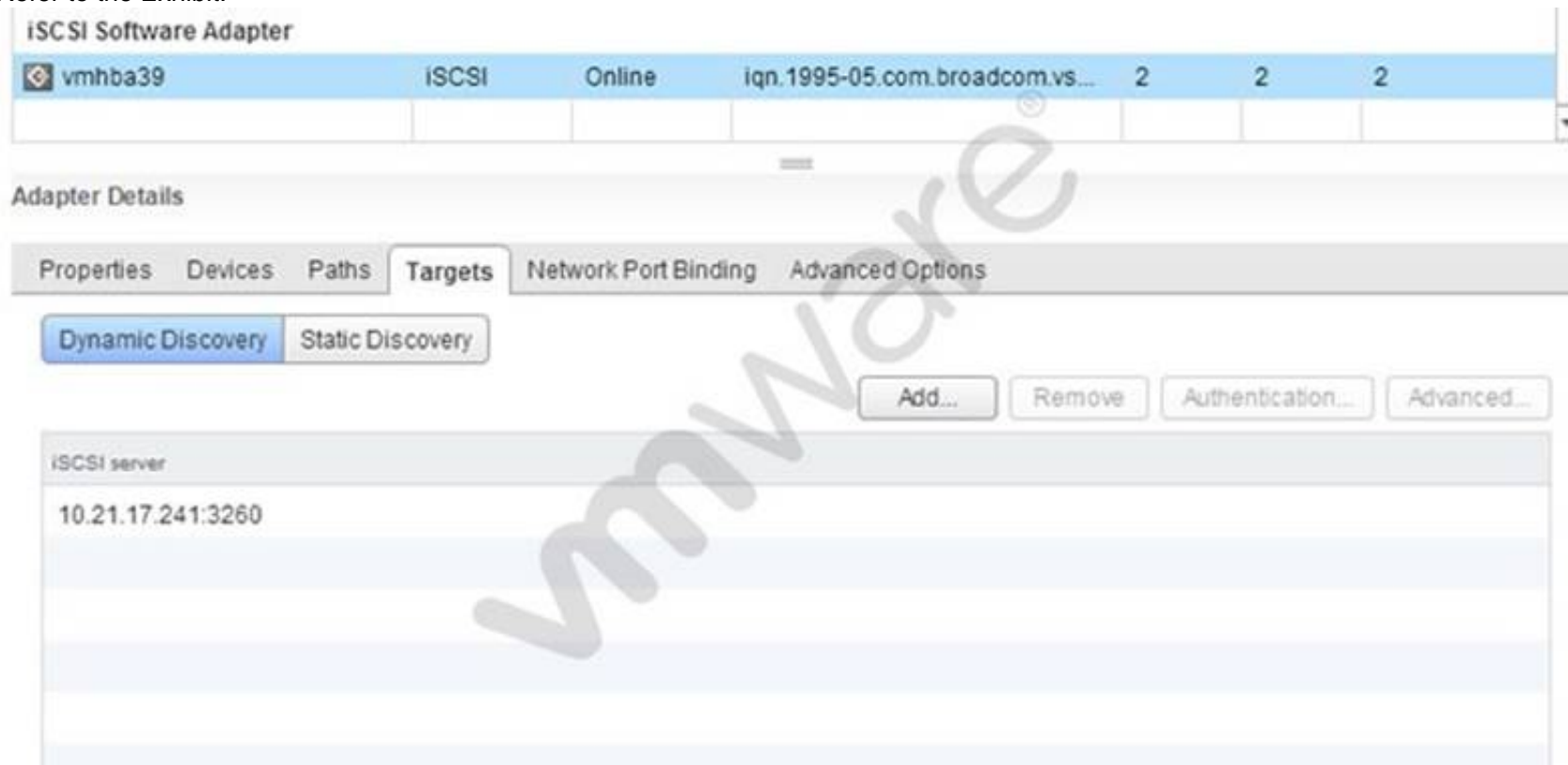
**Answer:** A

**Explanation:** You can Modify the boot.cfg file to specify the location of the installation or upgrade script using the kernelopt option.

Topic 5, Administer and Manage vSphere Resources

#### NEW QUESTION 113

Refer to the Exhibit.



Which tab shows the Hardware Acceleration support status?

- A. Devices
- B. Properties
- C. Paths
- D. Advanced Options

**Answer:** A

**Explanation:** Reference: [https://pubs.vmware.com/vsphere-4-esx-vcenter/index.jsp?topic=/com.vmware.vsphere.config\\_iscsi.doc\\_41/esx\\_server\\_config/managing\\_storage/c\\_hardware\\_acceleration\\_status.html](https://pubs.vmware.com/vsphere-4-esx-vcenter/index.jsp?topic=/com.vmware.vsphere.config_iscsi.doc_41/esx_server_config/managing_storage/c_hardware_acceleration_status.html)

#### NEW QUESTION 115

Which three statements are true when restoring a Resource Pool Tree? (Choose three.)

- A. Distributed Resource Scheduler must be set to manual.
- B. Restoring a snapshot can only be done on the same cluster from which it was taken.
- C. No other resource pools can be present in the cluster.
- D. Restoring a resource pool tree must be done in the vSphere Web Client.
- E. Enabling Enhanced vMotion Compatibility on the cluster is required.

**Answer:** BCD

**Explanation:** Reference: <https://pubs.vmware.com/vsphere-51/index.jsp?topic=%2Fcom.vmware.vsphere.resmgmt.doc%2FGUID-43B3A1EF-B7FF-421C-96FA-33FA230688BB.html>

#### NEW QUESTION 117

When importing an existing SSL certificate into vSphere Replication Server, which file format is required?

- A. PKCS#12
- B. DER
- C. PEM
- D. PKCS#7

**Answer:** A

**Explanation:** vSphere Replication can only import and use certificates and private keys from a file in the PKCS#12 format. Sometimes these files have a .pfx extension.

Reference: <https://pubs.vmware.com/vsphere-51/topic/com.vmware.ICbase/PDF/vsphere-replication-51-admin.pdf>

#### NEW QUESTION 118

Vmware vSphere Replication protects virtual machines from partial or complete site failures by replicating the virtual machines between which three sites? (Choose three.)



- A. From a source site to a target site.
- B. From within a single site from one cluster to another.
- C. From multiple source sites to a shared remote target site.
- D. From a single source site to multiple remote target sites.
- E. From multiple source sites to multiple remote target sites.

**Answer:** ABC

**Explanation:** vSphere Replication replaces storage-based replication. It protects virtual machines from partial or complete site failures by replicating the virtual machines from a primary site to a secondary site.

Reference: [https://pubs.vmware.com/vsphere-51/index.jsp?topic=%2Fcom.vmware.vsphere.replication\\_admin.doc%2FGUID-C987AD18-7C2D-4FA6-B6E4-6B0DDA915A7A.html](https://pubs.vmware.com/vsphere-51/index.jsp?topic=%2Fcom.vmware.vsphere.replication_admin.doc%2FGUID-C987AD18-7C2D-4FA6-B6E4-6B0DDA915A7A.html)

#### NEW QUESTION 119

Which three parameters should be considered when calculating the bandwidth for vSphere Replication? (Choose three.)

- A. Data change rate
- B. Traffic rates
- C. Link speed
- D. Application type
- E. Hardware type

**Answer:** ABC

**Explanation:** Reference: <http://blogs.vmware.com/smb/2015/05/vsphere-replication-bandwidth-requirements.html>

#### NEW QUESTION 122

What is the compression algorithm used by vSphere Replication to compress data at the source?

- A. FastLZ
- B. Lz4
- C. Lzr
- D. Lzx

**Answer:** A

**Explanation:** vSphere Replication 6.0 utilizes the FastLZ compression library. This provides a nice balance of speed, minimal CPU overhead, and compression efficiency. When using vSphere 6.0 and vSphere Replication 6.0 at both the source and target locations, updates are compressed at the source and stay compressed until they are written to storage at the target. In cases where there is a mixed configuration, packets may be decompressed at some point in the replication path. For example, if a vSphere 6.0 host is connecting to a vSphere Replication 5.8 virtual appliance, packets will not be compressed over the network. Another example: vSphere 6.0 replicating to a vSphere Replication 6.0 virtual appliance, which is writing to vSphere 5.5 host storage - packets are compressed from the source to the vSphere Replication 6.0 virtual appliance, but are decompressed in the appliance before being written to the vSphere 5.5 storage at the target. Performing this decompression in the vSphere Replication virtual appliance will cause higher vCPU utilization in the appliance. As you can imagine, the most benefit from compression will be realized when running vSphere 6.0 and vSphere Replication 6.0 at both the source and target locations.

Reference: <http://blogs.vmware.com/vsphere/2015/03/vr-60-compression.html>

#### NEW QUESTION 125

A vSphere Replication user needs to connect a source site to a target site. What privilege is needed at both sites?

- A. VRM remote.Manage VRM
- B. VRM datastore mapper.Manage
- C. Host.vSphere Replication.Manage replication
- D. Virtual machine.vSphere Replication.Manage replication

**Answer:** A

**Explanation:** When connecting sites, users at both sites must have VRM remote.Manage VRM privilege. When you connect sites that are part of the same SSO, you need to select the target site only without providing authentication details, as you are already logged in. After connecting the sites, you can monitor the connectivity state between them at Target Sites tab.

Reference: <https://pubs.vmware.com/vsphere-55/topic/com.vmware.ICbase/PDF/vsphere-replication-55-admin.pdf>

#### NEW QUESTION 129

An administrator is troubleshooting a performance problem with a virtual machine (VM). The VM and ESXi host configuration is as follows:

? The application which runs within the virtual machine is highly sensitive to memory latency, but has low processor utilization.

? The virtual machine has 6 vCPUs.

? The ESXi host CPU topology has 2 Physical CPU Sockets, each with 8 Logical CPUs.

? The ESXi host CPU has Hyper Threading enabled.

The administrator would like to improve CPU performance for this VM. Other VMs on the host have no performance issues. Which action should the administrator take to resolve the issue?

- A. Set the Advanced Parameter numa.vcpu.preferHT = TRUE in the virtual machine configuration file.
- B. Set the Advanced Parameter numa.vcpu.preferHT = FALSE in the virtual machine configuration file.
- C. Set the Advanced Parameter numa.PreferHT = 1 in the ESXi host configuration file.
- D. Set the Advanced Parameter numa.PreferHT = 0 in the ESXi host configuration file.

**Answer:** A

**Explanation:** Set advanced parameter numa.vcpu.preferHT = TRUE in the VM configuration file to increase CPU performance.

#### NEW QUESTION 131

Which three logs can be reviewed to troubleshoot a vCenter Server upgrade failure? (Choose three.)

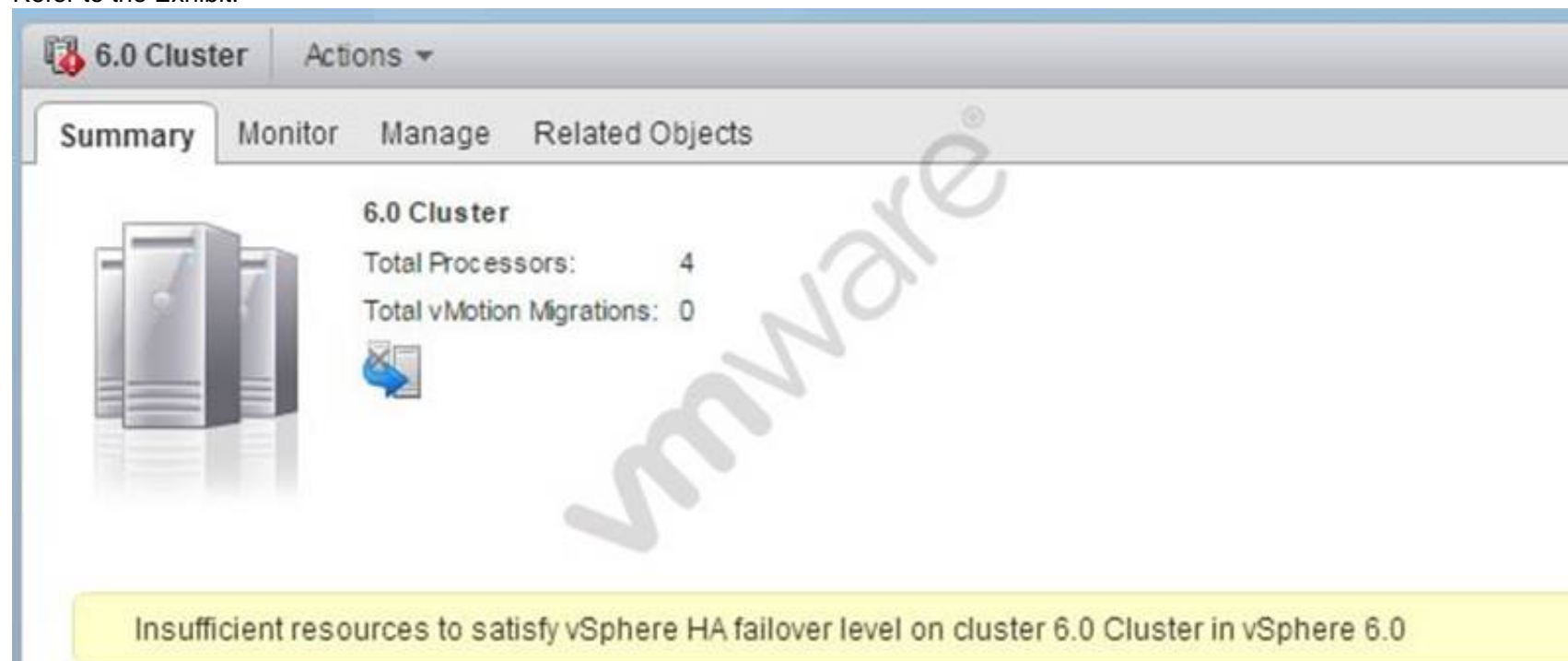
- A. vminst.log
- B. vim-vcs-msi.log
- C. pkgmgr.log
- D. vc-upgrade.log
- E. firstboot.log

**Answer:** ABC

**Explanation:** Reference: [http://kb.vmware.com/selfservice/microsites/search.do?language=en\\_US&cmd=displayKC&externalId=2007864](http://kb.vmware.com/selfservice/microsites/search.do?language=en_US&cmd=displayKC&externalId=2007864)

#### NEW QUESTION 133

Refer to the Exhibit.



An administrator receives an error on a vSphere cluster as shown in the Exhibit. Based on the exhibit, which three configuration changes can resolve the error? (Choose three.)

- A. Change the Admission Control policy for the cluster.
- B. Adjust CPU and Memory reservations of the virtual machines.
- C. Increase the amount of failover resources in the cluster.
- D. Reconfigure the ESXi host cluster for High Availability.
- E. Disable Virtual Machine Monitoring.

**Answer:** ABC

**Explanation:** This is the case of insufficient resources. Change the admission control policy for the cluster and adjust CPU and memory reservations of the VMs. The third logical way to address this problem is to increase failover resources in the cluster.

#### NEW QUESTION 134

An administrator has a virtual machine configured with the following settings:

- ? ESXi version: 5.1
- ? CPU: vCPUs 6
- ? Memory: 48GB
- ? Hardware version: 7
- ? VMware Tools: Installed

Which two actions must the administrator take in order to utilize vNUMA? (Choose two.)

- A. Upgrade the ESXi host to vSphere 5.5 or later.
- B. Upgrade to Virtual Hardware version 8.
- C. Configure numa.vcpu.min to 5
- D. Configure numa.vcpu.min to 6

**Answer:** BC

**Explanation:** vNUMA can be used by upgrading to virtual hardware version 8. To enable vNUMA on 8 way or smaller VMs, modify the numa.vcpu.min setting. Reference: <http://community.spiceworks.com/topic/589415-vmware-cpu-settings>

#### NEW QUESTION 136

Refer to the Exhibit.

```

5:43:32pm up 46 days 1:17, 500 worlds, 2 VMs, 2 vCPUs: CPU load average: 0.15, 0.26, 0.41
PCPU USED(%): 2.8 4.5 4.3 99 AVG: 27
PCPU UTIL(%): 3.0 4.7 4.4 100 AVG: 28

```

ID	GID	NAME	NWLD	%USED	%RUN	%SYS	%WAIT	%VMWAIT	%RDY	%IDLE	%OVRLP	%CSTP	%MLMTD	%SNPWT
20654089	20654089	FastVM	7	102.97	102.83	0.00	616.19	0.00	0.05	0.00	0.05	0.00	0.00	0.00
20654060	20654060	SlowVM	7	4.97	4.97	0.00	616.11	0.00	97.99	0.00	0.00	0.00	97.86	0.00

Examine the esxtop command output shown in the Exhibit.

Which option would improve application performance for the SlowVM virtual machine?

- A. Increase the number of vCPUs provided to SlowVM.
- B. Decrease the number of vCPUs provided to SlowVM.
- C. Move SlowVM to another ESXi host with more physical CPU resources available.
- D. Increase the CPU limit assigned to SlowVM.

**Answer: D**

**Explanation:** You have to increase the CPU limit assigned to SlowVM to improve application performance.

#### NEW QUESTION 140

An administrator notices that a Windows virtual machine is using 95% CPU in Task Manager.

Which two actions should be taken to resolve this issue? (Choose two.)

- A. Increase the memory reservation of the virtual machine.
- B. Increase the CPU Shares on the resource pool where the virtual machine resides.
- C. Decrease the CPU reservation of the virtual machine.
- D. Increase the CPU limit on the resource pool where the virtual machine resides.

**Answer: BD**

**Explanation:** There are two ways to resolve high CPU usage. First increase CPU shares on resource pool where the VM resides. Secondly, increase CPU limit on the resource pool that serves the concerned VM.

#### NEW QUESTION 142

An administrator uses the df -h command and notices that an NFS datastore is reporting a capacity of 0 Bytes.

What condition would cause this to occur?

- A. The NFS server on which the datastore resides is down.
- B. The datastore was mounted as Read/Write.
- C. The datastore was mounted as Read-Only.
- D. The datastore was created with NFS version 4.1.

**Answer: A**

**Explanation:** IF the NFS datastore is showing 0 bytes of capacity when you use df -h command, it means that the NFS server that hosts datastore is down.

#### NEW QUESTION 143

A virtual machine is exhibiting these symptoms:

? Memory usage is constantly high (94% or greater) or constantly low (24% or less).

? Free memory is consistently 6% or less and swapping frequently occurs

Which three solutions could correct this problem? (Choose three.)

- A. Verify that Vmware Tools is installed on each virtual machine.
- B. Decrease the memory reservation setting, if higher than active memory.
- C. Add physical memory to the host.
- D. Disable the balloon driver in each virtual machine.
- E. Create a memory limit for each virtual machine.

**Answer: ABC**

**Explanation:** Make sure Vmware tools are installed on each VM. To weed out the problem, decrease the memory reservation setting if it is higher than active memory or add physical memory to the host to increase its capacity.

#### NEW QUESTION 144

An administrator tries to run esxtop to troubleshoot CPU performance issues, but no output is displayed.

How can the issue be resolved?

- A. esxtop is deprecated in vSphere 6.x, resxtop must be used to produce the desired output.
- B. In esxtop, press f and place an asterisk next to each field that should be displayed.
- C. sudo should be run in front of esxtop to give the administrator the proper permissions.
- D. The esxtop command must be run from the /proc directory to produce output.

**Answer: B**

**Explanation:** When you press f and place an asterisk next to each field that you want displayed, esxtop will definitely display performance issues, if any.

#### NEW QUESTION 147

Refer to the Exhibit.

The number of vSphere HA heartbeat datastores for this host is 1, which is less than required: 2

An administrator receives the error message shown in the Exhibit. Which two actions can be taken to clear the warning? (Choose two.)

- A. Add a Virtual SAN datastore and configure it for High Availability heartbeating.
- B. Set the advanced High Availability parameter Das.heartbeatdsperhost to 1.
- C. Set the advanced High Availability parameter Das.ignoreInsufficientHbDatastore to true.
- D. Add a shared datastore and reconfigure High Availability.

**Answer:** CD

**Explanation:** Reference: [http://kb.vmware.com/selfservice/microsites/search.do?language=en\\_US&cmd=displayKC&externalId=2004739](http://kb.vmware.com/selfservice/microsites/search.do?language=en_US&cmd=displayKC&externalId=2004739)

#### NEW QUESTION 150

The command `esxcli network vm list` displays four virtual machines connected to the Production vSwitch. Within the vSphere Web Client, five virtual machines are seen. What explains this behavior?

- A. The fifth virtual machine is currently powered off.
- B. The fifth virtual machine has two vnics.
- C. The fifth virtual machine has an invalid IP address.
- D. The fifth virtual machine has an invalid MAC address.

**Answer:** A

**Explanation:** The vSphere client shows all the virtual machines whether they are powered on or off. The fifth virtual machine in this scenario might be powered off. `Esxcli network list` display virtual machines that are active.

#### NEW QUESTION 154

Refer to the Exhibit.

Storage Adapters						
Adapter	Type	Status	Identifier	Targets	Devices	Paths
vmhba34	Block SCSI	Unknown		0	0	0
QLogic NetXtreme II iSCSI Adapter						
vmhba32	iSCSI	Unbound	bnx2i-001018ed2ab0(iqn.1998...	0	0	0
vmhba33	iSCSI	Unbound	bnx2i-001018ed2ab2(iqn.1998...	0	0	0
iSCSI Software Adapter						
vmhba39	iSCSI	Online	iqn.1995-05.com.broadcom.vs...	1	1	1

The Exhibit shows the status of vmhba32 and vmhba33 as Unbound. What is a likely reason for this status?

- A. The host bus adapter is not associated with a vmknfc.
- B. The Dynamic Target Discovery was not configured.
- C. The Static Target Discovery was not configured.
- D. The host bus adapter is not associated with a vmnic.

**Answer:** A

**Explanation:** Reference: [http://kb.vmware.com/selfservice/microsites/search.do?language=en\\_US&cmd=displayKC&externalId=1025644](http://kb.vmware.com/selfservice/microsites/search.do?language=en_US&cmd=displayKC&externalId=1025644)

#### NEW QUESTION 155

Which two reasons would prevent Storage Distributed Resource Scheduler (SDRS) from operating on a datastore? (Choose two.)

- A. The datastore has Storage I/O Control disabled.
- B. The datastore is connected to an unsupported host.
- C. The datastore is hosted on an NFS server.
- D. The datastore is hosted on an iSCSI server.

**Answer:** AB



**NEW QUESTION 156**

An administrator is unable to see performance statistics for only the Past Week performance data. The vCenter Server is using a Microsoft SQL Server Database. What are three likely causes contributing to this issue? (Choose three.)

- A. Performance statistics are turned off.
- B. The Past Day rollup job is not present.
- C. The stats\_rollup\_1\_proc is not present.
- D. The VMware Performance Charts Service is stopped.
- E. The JDBC URL is incorrect in the vcdb.properties file.

**Answer:** ABC

**Explanation:** If you are unable to see the performance data, it means that either the performance statistics is off or the past day roll up job is not present. Stats\_rollup\_proc also seems not to be present.

**NEW QUESTION 161**

An administrator is experiencing network connectivity issues between virtual machines. The virtual machines and hosts are configured as follows:

- ? VM1 is running on Host1
- ? VM2 is running on Host2
- ? Both Host1 and Host2 are attached to the vSphere Distributed Switch dvSwitch1
- ? Both Host1 and Host2 are using vmnic0 and vmnic1 on dvSwitch1
- ? Both virtual machines are using the default portgroup for network traffic

What are three settings the administrator should investigate while troubleshooting the connectivity issue? (Choose three.)

- A. VLANs of the physical NICs
- B. Failover order of the uplinks
- C. Virtual NIC connectivity to the dvSwitch
- D. Security policy of the portgroup
- E. Traffic shaping on the portgroup

**Answer:** ABC

**Explanation:** To find out connectivity problems, you can use VLANs of the physical NICs, virtual NIC connectivity to the dvswitch and failover orders of the uplinks.

**NEW QUESTION 165**

When troubleshooting a performance related issue, an administrator sees the following warning message on an ESXi Console:

Significant imbalance between NUMA nodes detected. Performance may be impacted. Which action should the administrator take to correct this problem?

- A. Ensure that the RAM modules are evenly balanced between processor sockets in the physical server.
- B. Ensure that all memory banks associated with CPU Socket 0 in the physical server are completely filled.
- C. Ensure that the physical server has the maximum amount of RAM modules that it can support.
- D. Ensure that all RAM modules in the host are Error-correcting code (ECC) modules.

**Answer:** A

**Explanation:** Reference: [http://kb.vmware.com/selfservice/microsites/search.do?language=en\\_US&cmd=displayKC&externalId=1018754](http://kb.vmware.com/selfservice/microsites/search.do?language=en_US&cmd=displayKC&externalId=1018754)

**NEW QUESTION 168**

An administrator notices that one virtual machine is in an orphaned state.

What are two reasons that a virtual machine can appear as orphaned? (Choose two.)

- A. A VMware High Availability host failure has occurred.
- B. The virtual machine was unregistered directly on the host.
- C. The ESXi host is disconnected.
- D. The user does not have privilege to access the virtual machine.

**Answer:** AB

**Explanation:** Virtual machines can become orphaned if a host failover is unsuccessful, or when the virtual machine is unregistered directly on the host. If this situation occurs, move the orphaned virtual machine to another host in the datacenter that has access to the datastore on which the virtual machine files are stored.

Reference: [https://pubs.vmware.com/vsphere-50/index.jsp?topic=%2Fcom.vmware.vsphere.troubleshooting.doc\\_50%2FGUID-BFD8C9BC-30FB-4A92-AFEC-2FC9FF387920.html](https://pubs.vmware.com/vsphere-50/index.jsp?topic=%2Fcom.vmware.vsphere.troubleshooting.doc_50%2FGUID-BFD8C9BC-30FB-4A92-AFEC-2FC9FF387920.html)

**NEW QUESTION 173**

A user notifies an administrator that Content Libraries are not visible. What is a possible solution?

- A. Assign the user the read-only role at the global permission level.
- B. Assign the user the read-only role at the vCenter Server root level.
- C. Assign the user the read-only role at the vCenter Server data center level.
- D. Assign the user the read-only role at the vCenter Server cluster level.

**Answer:** A

**Explanation:** The direct parent for content libraries is the global root. This means that if you set a permission at a vCenter Server level and propagate it to the children objects, the permission applies to data centers, folders, clusters, hosts, virtual machines, and so on, but does not apply to the content libraries that you see and operate with in this vCenter Server instance. To assign a permission on a content library, an Administrator must grant the permission to the user as a global permission. Global permissions support assigning privileges across solutions from a global root object.

Reference:

[http://pubs.vmware.com/vsphere-60/index.jsp?topic=%2Fcom.vmware.vsphere.vm\\_admin.doc%2FGUID-18F4B892-D685-4473-AC25-3195D68DFD90.html](http://pubs.vmware.com/vsphere-60/index.jsp?topic=%2Fcom.vmware.vsphere.vm_admin.doc%2FGUID-18F4B892-D685-4473-AC25-3195D68DFD90.html)

#### NEW QUESTION 175

An administrator has migrated a vCenter Server Appliance from version 5.5 to version 6.x. During the migration, the administrator selected DHCP for the appliance and obtained a hostname from the DHCP server. The administrator adjusts the hostname after the migration and uses a static IP and hostname.

What should the administrator do immediately after this change to prevent service failures?

- A. Regenerate the SSL certificates.
- B. Re-register components to Single Sign-On.
- C. Update the /etc/hosts file.
- D. Execute the command `services.restart vmware-vpxd`.

**Answer:** A

**Explanation:** To resolve this issue, regenerate the vCenter Server certificate using a stronger public key strength.

Reference: [http://kb.vmware.com/selfservice/microsites/search.do?language=en\\_US&cmd=displayKC&externalId=2074942](http://kb.vmware.com/selfservice/microsites/search.do?language=en_US&cmd=displayKC&externalId=2074942)

#### NEW QUESTION 179

An administrator is unable to upgrade a vCenter Server Appliance from version 5.1 Update 2 to version 6.0.

What is a likely reason for this?

- A. vCenter Server Appliance 6.0 does not support upgrades from version 5.1 Update 2.
- B. vCenter Server Appliance must be joined to an Active Directory domain before upgrading to version 6.0.
- C. vCenter Server Appliance 5.1 Update 2 uses an incompatible database for upgrading to version 6.0.
- D. vCenter Server Appliance 6.0 must be upgraded using the vSphere Web Client.

**Answer:** A

**Explanation:** Reference: <http://pubs.vmware.com/vsphere-60/topic/com.vmware.vsphere.upgrade.doc/GUID-6A5C596D-103E-4024-9353-5569263EB427.html>

#### NEW QUESTION 182

When attempting to remove a host from a vSphere Distributed Switch (vDS), an administrator observes the error message:

The resource '16' is in use

What are two reasons why this error would be displayed? (Choose two.)

- A. Vmkernel network adapters on the vDS are in use.
- B. Virtual machine network adapters are connected to the vDS.
- C. Network I/O Control has been configured on the vDS.
- D. There is active network traffic on the vDS.

**Answer:** AB

**Explanation:** Reference: <https://pubs.vmware.com/vsphere-55/index.jsp?topic=%2Fcom.vmware.vsphere.troubleshooting.doc%2FGUID-038AC93F-D710-48ED-8E3B-258A23FB2930.html>

#### NEW QUESTION 185

Which condition would cause a vCenter Server installation to fail when installing on a Windows virtual machine?

- A. The virtual machine does not have at least four vCPUs.
- B. The virtual machine is running Windows Server 2008.
- C. The virtual machine has an E1000 network device.
- D. The virtual machine does not have 16GB of RAM.

**Answer:** B

**Explanation:** If you use Simple Install to install vCenter Server and components on a Windows Server 2008 R2 or Windows 2012 host, and the host is configured to use DHCP IP addressing, the installation fails with warning and error messages.

Reference: <https://www.vmware.com/support/vsphere5/doc/vsphere-vcenter-server-550b-release-notes.html#installissues>

#### NEW QUESTION 188

When a Content Library is deleted, what happens to the files contained on the backing storage?

- A. The files will be unchanged.
- B. The files will be deleted.
- C. The files will remain and be marked as orphaned.
- D. The containing folder will be marked as orphaned.

**Answer:** B

**Explanation:** When the content library is deleted, the files in backup storage will also be deleted.

#### NEW QUESTION 191

Which three troubleshooting actions should an administrator take to address slow performance when deploying a virtual machine template? (Choose three.)

- A. Increase network throughput by adding additional uplinks to the vSwitch.
- B. Change the destination datastore or volume for the virtual machine template.
- C. Configure a Provisioning Traffic vmkernel port to perform the deployment operation.
- D. Reduce the size of the virtual machine template's virtual disk.
- E. Deploy the virtual machine template to the cluster and allow Distributed Resource Scheduler to register the virtual machine.

**Answer:** ABC

**Explanation:** Slow performance while deploying a virtual machine template can be annoying. To address this problem, you can increase network throughput by adding uplinks to the vSwitch. You can also change the destination datastore for the virtual machine template. Similarly, you can configure provisioning traffic vmkernel port to do the deployment operation.

#### NEW QUESTION 193

A vSphere Web Client task fails while creating a VMFS datastore on a disk with these characteristics:

- ? The disk was formatted with an Master Boot Record (MBR) partition table
- ? The disk was not erased
- ? The disk is visible in the vSphere Web Client

What action needs to be performed to resolve the issue?

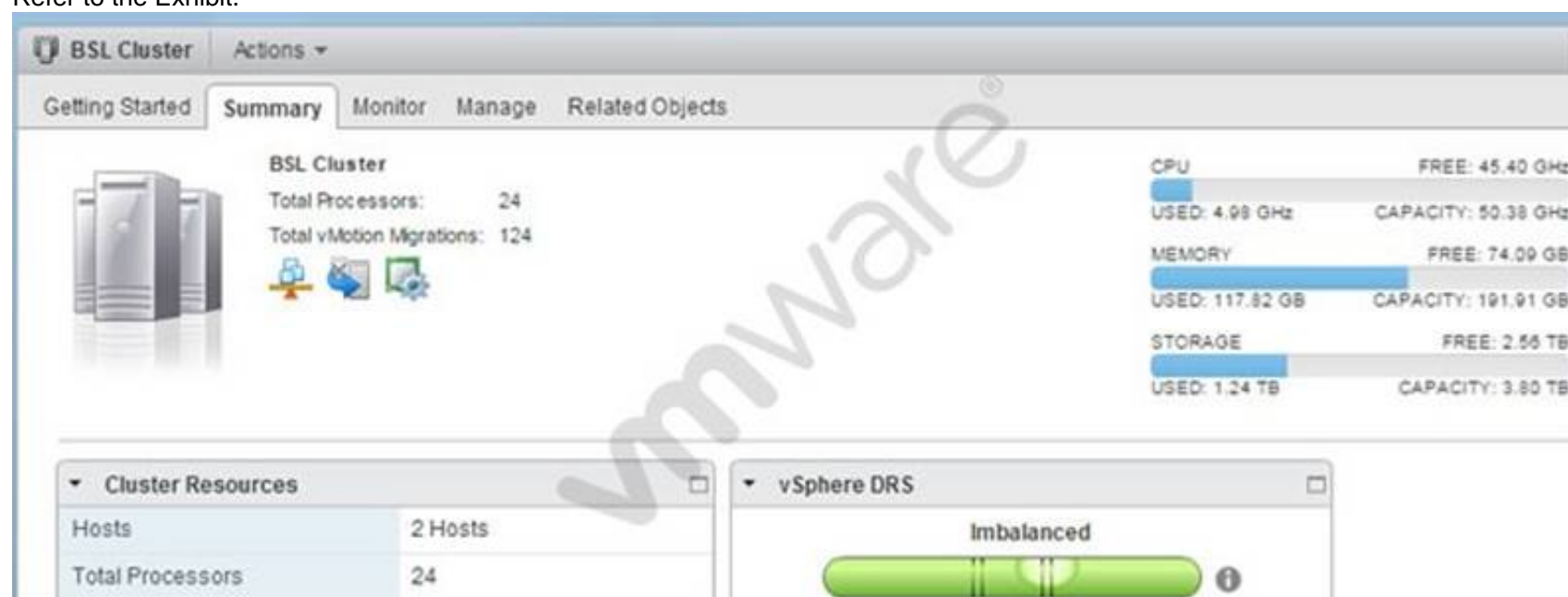
- A. Delete the partitions manually with partedUtil.
- B. Create a VMFS3 file system first, then upgrade it.
- C. Create a VMFS5 file system with the command `esxcli storage filesystem add`.
- D. Delete the data with the `vmkfstools` command.

**Answer:** A

**Explanation:** You can use the partedUtil command line utility to directly manipulate partition tables for local and remote SAN disks on ESXi and ESX. The partedUtil command line only is supported for disk partitioning from ESXi 5.x. The command line utility fdisk does not work with LUNs formatted with VMFS5. Reference: [http://kb.vmware.com/selfservice/microsites/search.do?language=en\\_US&cmd=displayKC&externalId=1036609](http://kb.vmware.com/selfservice/microsites/search.do?language=en_US&cmd=displayKC&externalId=1036609)

#### NEW QUESTION 195

Refer to the Exhibit.



An administrator is reviewing a vSphere Distributed Resource Scheduler (DRS) enabled Cluster and observes unexpected behavior as shown in the Exhibit. What are three potential causes of the cluster imbalance? (Choose three.)

- A. A local device is mounted to one or more virtual machines.
- B. DRS rules prevent virtual machines from being moved.
- C. vMotion is not configured and enabled.
- D. There are insufficient cluster resources to perform the migration.
- E. DRS has been configured for a conservative migration threshold.

**Answer:** ABC

**Explanation:** Cluster imbalance is often caused by a local device mounted to one or more VMs and the DRS rules are preventing the VMs from being moved. Similarly, check vMotion to see if it is configured and enabled.

#### NEW QUESTION 198

An administrator is upgrading an ESXi 5.5 host to ESXi 6.x and gets the following error: MEMORY\_SIZE  
What does this indicate?

- A. Insufficient memory on the ESXi host to complete the upgrade.
- B. Insufficient memory for Auto Deploy to complete the upgrade.
- C. Insufficient memory in vCenter Server to complete the upgrade.
- D. Insufficient memory for Update Manager to complete the upgrade.

**Answer:** A

**Explanation:** When you install less than 4GB of memory, Memory\_Size error occurs because ESXi host requires at least 4 GB of memory.

#### NEW QUESTION 200

What is the name of the command line utility that checks for VMFS5 metadata corruption?

- A. vmkfstools –check
- B. voma
- C. vmfsanalyzer
- D. esxcli vmfs check

**Answer:** B

**Explanation:** It is possible to check VMFS for metadata inconsistency with a tool called VOMA (Vmware Ondisk Metadata Analyser). With VOMA you can check VMFS3 and VMFS5 datastores.

Please note, that the tool can only identify problems, as it runs in a read-only mode. So it does not help you to fix detected errors.

Reference: <http://www.running-system.com/how-to-check-vmfs-for-metadata-corruption-esxi-5-1-and-later/>

Topic 8, Deploy and Consolidate vSphere Data Center

#### NEW QUESTION 205

Which two identification sources can a vSphere Auto Deploy rule use to identify target hosts? (Choose two.)

- A. Processor Serial Number
- B. Security Identifier
- C. SMBIOS information
- D. BIOS UUID

**Answer:** CD

**Explanation:** Rules can assign image profiles and host profiles to a set of hosts, or specify the location (folder or cluster) of a host on the target vCenter Server system. A rule can identify target hosts by boot MAC address, SMBIOS information, BIOS UUID, Vendor, Model, or fixed DHCP IP address. In most cases, rules apply to multiple hosts. You create rules by using Auto Deploy PowerCLI cmdlets. After you create a rule, you must add it to a rule set. Only two rule sets, the active rule set and the working rule set, are supported. A rule can belong to both sets, the default, or only to the working rule set. After you add a rule to a rule set, you can no longer change the rule. Instead, you copy the rule and replace either items or patterns. By default, Auto Deploy uses the name of the rule for the copy and hides the original rule.

Reference: [https://pubs.vmware.com/vsphere-50/index.jsp?topic=%2Fcom.vmware.vsphere.install.doc\\_50%2FGUID-EB22DCFF-C606-43CB-A7BC-068AC79A6237.html](https://pubs.vmware.com/vsphere-50/index.jsp?topic=%2Fcom.vmware.vsphere.install.doc_50%2FGUID-EB22DCFF-C606-43CB-A7BC-068AC79A6237.html)

#### NEW QUESTION 208

An administrator is using Auto Deploy to create several ESXi 6.x hosts that will be connected to a vSphere Distributed Switch. After the hosts are deployed, the administrator notices that LACP packets are not being sent between them.

Which statement best describes why this issue is occurring?

- A. LACP is not enabled on the vCenter Server.
- B. The LACP support settings do not exist in the host profile.
- C. The LACP installation bundle is not included in the image profile.
- D. LACP has not been configured on the Auto Deploy server.

**Answer:** B

**Explanation:** Link Aggregation Control Protocol (LACP) on a vSphere distributed switch allows network devices to negotiate automatic bundling of links by sending LACP packets to a peer. However, there are some limitations when using LACP with a vSphere-distributed switch.

? LACP only works with IP Hash load balancing and Link Status Network failover detection.

? LACP is not compatible with iSCSI software multipathing.

? vSphere only supports one LACP group per distributed switch, and only one LACP group per host.

? LACP settings do not exist in host profiles.

? LACP between two nested ESXi hosts is not possible.

? LACP does not work with port mirroring.

#### NEW QUESTION 211

Which two are valid compliance results that indicate the need to apply a Host Profile? (Choose two.)

- A. Non-compliant
- B. Inconsistent
- C. Unknown
- D. Disconnected



**Answer:** AC

**Explanation:** Reference: [http://kb.vmware.com/selfservice/microsites/search.do?language=en\\_US&cmd=displayKC&externalId=1010732](http://kb.vmware.com/selfservice/microsites/search.do?language=en_US&cmd=displayKC&externalId=1010732)

#### NEW QUESTION 215

An administrator has decided to create 10 ESXi 6.x hosts via Auto Deploy for a new Test/Dev cluster. The hosts are configured to obtain their networking configuration via DHCP.

Which Direct Console User Interface option should the administrator use to renew the DHCP lease for the hosts?

- A. Restore Network Settings
- B. Test Management Network
- C. Restart Management Network
- D. Network Restore Options

**Answer:** C

**Explanation:** Reference: <http://www.virtuallyghetto.com/2014/01/how-to-restart-esxi-management-network.html>

#### NEW QUESTION 219

Refer to the Exhibit.

To provide access to a service or client, check the corresponding box.  
By default, daemons will start automatically when any of their ports are opened, and stop when all of their ports are closed.

Name	Incoming Ports	Outgoing Ports	Protocols	Daemon
<b>Required Services</b>				
Secure Shell				
<input type="checkbox"/> SSH Client		22	TCP	N/A
<input checked="" type="checkbox"/> SSH Server	22		TCP	N/A
Simple Network Man...				
Ungrouped				

Service Details

N/A

Status

N/A

Allowed IP Addresses

Connections not allowed from all IP address

IP Addresses

☐ Allow connections from any IP address  
192.168.1.0/24,192.168.2.220  
Enter a comma-separated list of IP addresses. E.g.: 111.111.111.111, 111.111.111/22

OK

Cancel

An administrator has configured a firewall rule as shown in the Exhibit. Which statement best describes the ESXi 6.x firewall rule?

- A. Connections from the ESXi host to all devices on the 192.168.1.0 network and 192.168.2.220 on port 22 are allowed.
- B. Connections coming from IP addresses from the 192.168.1.0 network and 192.168.2.220 on port 22 are allowed.
- C. TCP Connections coming from IP addresses from the 192.168.1.0 network and 192.168.2.220 on port 22 are not allowed.
- D. TCP Connections from the ESXi host to all devices on the 192.168.1.0 network and 192.168.2.220 on port 22 are not allowed.

**Answer:** B

**Explanation:** As stated clearly in the IP addresses box, connections coming from 192.168.1.0 and 192.168.2.220 on port 22 are allowed.

#### NEW QUESTION 222

Which two features are available for virtual machines configured with DirectPath I/O? (Choose two.)

- A. Fault Tolerance
- B. Suspend and Resume
- C. Virtual Symmetric Multi-Processing (vSMP)
- D. Virtual Non-Uniform Memory Access (vNUMA)

**Answer:** CD

**Explanation:** VMs configured with DirectPath I/O have vSMP and vNUMA.

#### NEW QUESTION 223

Which two settings are required for Virtual Machine Component Protection (VMCP) to protect from All Paths Down (APD) and Permanent Device Loss (PDL)? (Choose two.)

- A. Host Monitoring
- B. VM Restart Priority
- C. Virtual machine Monitoring
- D. Response for Host Isolation

**Answer:** AB

**Explanation:** VM Component Protection (VMCP) is enabled, vSphere HA can detect datastore accessibility failures and provide automated recovery for affected virtual machines. If either the Host Monitoring or VM Restart Priority settings are disabled, VMCP cannot perform virtual machine restarts. Storage health can still be monitored and events can be issued, however.

Reference: <http://pubs.vmware.com/vsphere-60/index.jsp?topic=%2Fcom.vmware.vsphere.avail.doc%2FGUID-F01F7EB8-FF9D-45E2-A093-5F56A788D027.html>

#### NEW QUESTION 225

How does vSphere High Availability calculate the memory slot size of a virtual machine?

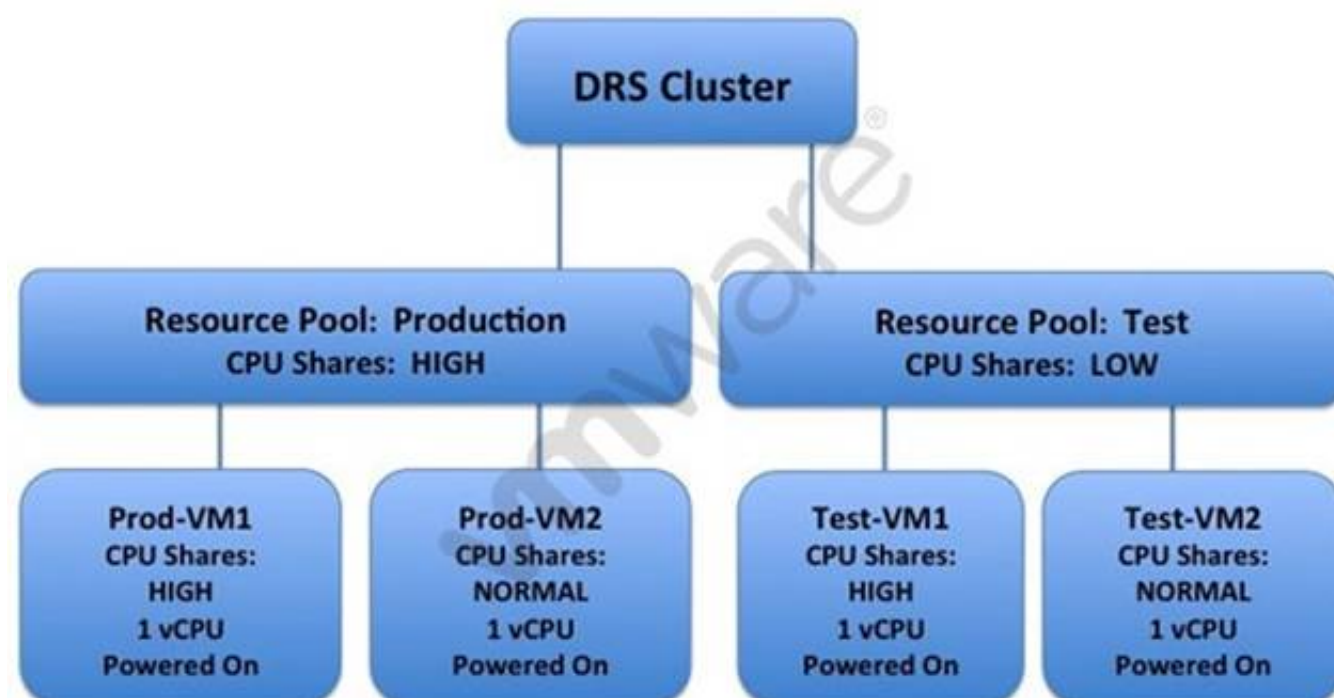
- A. Virtual machine memory reservation + overhead of largest virtual machine
- B. Virtual machine memory reservation – overhead of largest virtual machine
- C. Virtual machine memory reservation + overhead of smallest virtual machine
- D. Virtual machine memory reservation – overhead of smallest virtual machine

**Answer:** A

**Explanation:** Reference: <http://www.yellow-bricks.com/2009/08/12/ha-and-slot-sizes/>

#### NEW QUESTION 229

Refer to the Exhibit.



An administrator has created the DRS cluster shown in the Exhibit. Based on the exhibit, which statement is true?

- A. Under CPU contention, Prod-VM1 receives four times the CPU resources than Test- VM1.
- B. The Prod-VM1 will always have more CPU resources than all other virtual machines.
- C. The Test-VM2 will always have less CPU resources than all other virtual machines.
- D. Under CPU contention, Test-VM1 will receive 25% of the total CPU resources.

**Answer:** A

**Explanation:** Prod-VM1 will receive four times the CPU resources the Test-VM1 because the CPU contention is high compared to the test resource pool.

#### NEW QUESTION 230

In a vSphere High Availability cluster, what is the VM Monitoring I/O stats interval default value?

- A. 60 seconds
- B. 90 seconds
- C. 120 seconds
- D. 180 seconds

**Answer:** C

**Explanation:** Occasionally, virtual machines or applications that are still functioning properly stop sending heartbeats. To avoid unnecessary resets, the VM Monitoring service also monitors a virtual machine's I/O activity. If no heartbeats are received within the failure inter'al, the I/O stats interval (a cluster-level attribute) is checked. The I/O stats interval determines if any disk or network activity has occurred for the virtual machine during the previous two minutes (120

seconds). If not, the virtual machine is reset. This default value (120 seconds) can be changed using the advanced attribute das.iostatsinterval. Reference: [https://pubs.vmware.com/vsphere-50/index.jsp?topic=%2Fcom.vmware.vsphere.avail.doc\\_50%2FGUID-62B80D7A-C764-40CB-AE59-752DA6AD78E7.html](https://pubs.vmware.com/vsphere-50/index.jsp?topic=%2Fcom.vmware.vsphere.avail.doc_50%2FGUID-62B80D7A-C764-40CB-AE59-752DA6AD78E7.html)

**NEW QUESTION 235**

An administrator is building a large virtual machine that will require as many vCPUs as the host can support. An ESXi 6.x host has these specifications:

? Six 32-core Intel Xeon Processors

? 256 GB of Memory

? 512 GB Local disk space using VMFS5

What is the maximum number of virtual CPUs that the virtual machine can be allocated?

- A. 64
- B. 128
- C. 192
- D. 256

**Answer:** B

**Explanation:** Reference: <http://www.intel.com/content/dam/www/public/us/en/documents/white-papers/virtualization-xeon-core-count-impacts-performance-paper.pdf>

**NEW QUESTION 240**

An administrator wants to prevent a priority virtual machine that resides in a vSphere DRS cluster from migrating to other hosts in the cluster.

What configuration step will accomplish this without affecting other virtual machines?

- A. Set VM Overrides to Partially Automated.
- B. Set VM Overrides to Manual.
- C. Configure a VM/Host Rule with the setting Must run on hosts in group.
- D. Configure a VM/Host Rule with the setting Should run on hosts in group.

**Answer:** B

**Explanation:** Set VM overrides to manual. This way, you can prevent a priority VM in DRS cluster from migration to other hosts in the cluster.

**NEW QUESTION 242**

An administrator wants to set a non-default isolation address of 192.168.1.2 for High Availability.

Which advanced setting would accomplish this task?

- A. Das.isolationaddress0=192.168.1.2
- B. Das.useisolationaddress0=192.168.1.2
- C. Das.defaultisolationaddress0=192.168.1.2
- D. Das.haisolationaddress0=192.168.1.2

**Answer:** A

**Explanation:** Multiple isolation response addresses can be specified using the das.isolationaddress0 through das.isolationaddress0 options. Reference: [http://kb.vmware.com/selfservice/microsites/search.do?language=en\\_US&cmd=displayKC&externalId=1002117](http://kb.vmware.com/selfservice/microsites/search.do?language=en_US&cmd=displayKC&externalId=1002117)

**NEW QUESTION 244**

After configuring a Virtual SAN cluster, an administrator using the vSphere Web Client notices that the Virtual SAN datastore is smaller than expected. The cluster contains:

? Three ESXi hosts

? Each host has one 10GB SDD

? Each host has one 100GB HDD

Why would the Virtual SAN datastore show as 100GB instead of 300GB?

- A. There is a network problem with the Virtual SAN vmkernel ports.
- B. The Virtual SAN VASA provider is disabled.
- C. vSphere High Availability is enabled on the Virtual SAN cluster.
- D. The Virtual SAN cluster must be managed using the vSphere Web Client.

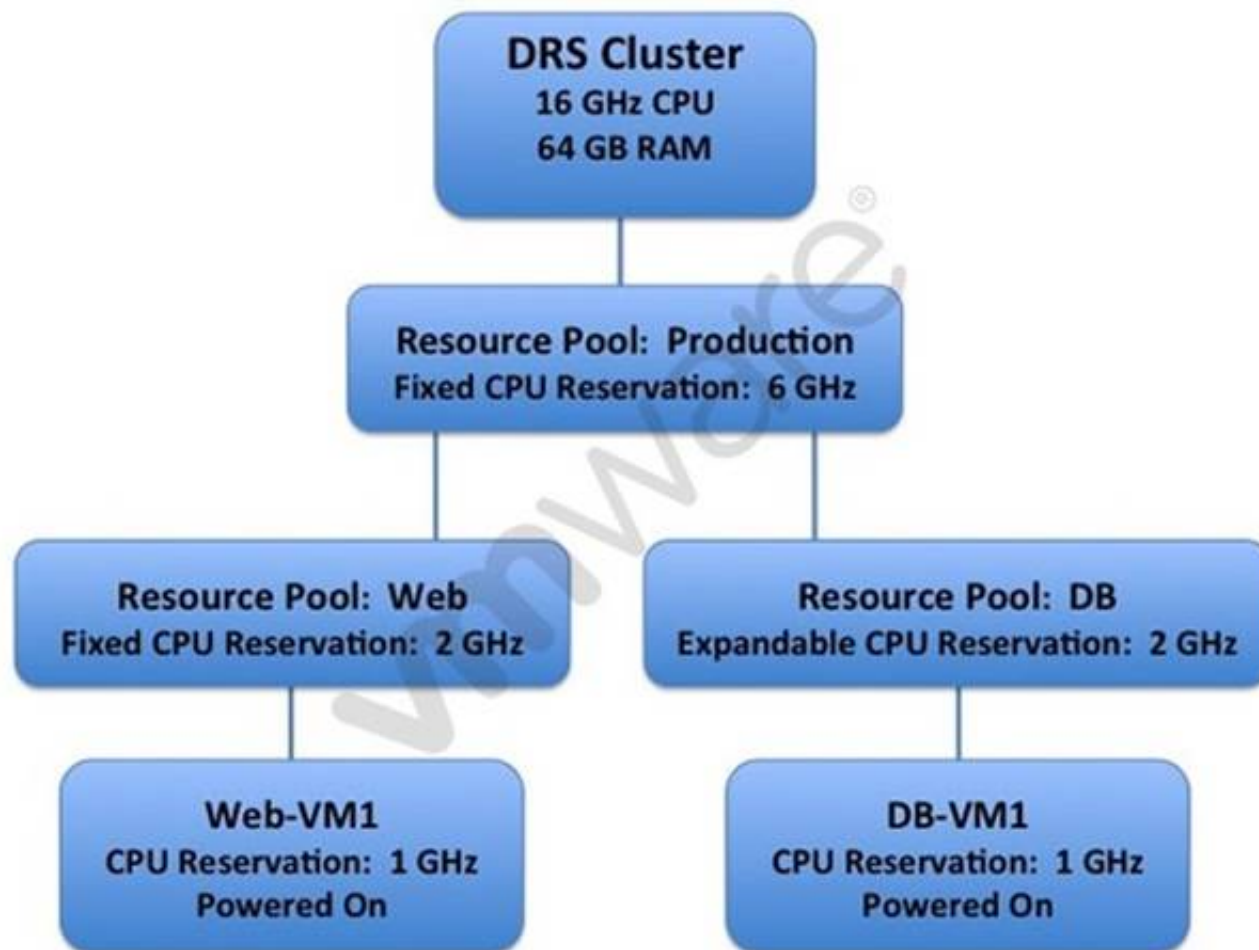
**Answer:** A

**Explanation:** Reference: [http://kb.vmware.com/selfservice/microsites/search.do?language=en\\_US&cmd=displayKC&externalId=2058368](http://kb.vmware.com/selfservice/microsites/search.do?language=en_US&cmd=displayKC&externalId=2058368)

**NEW QUESTION 246**

Refer to the Exhibit.





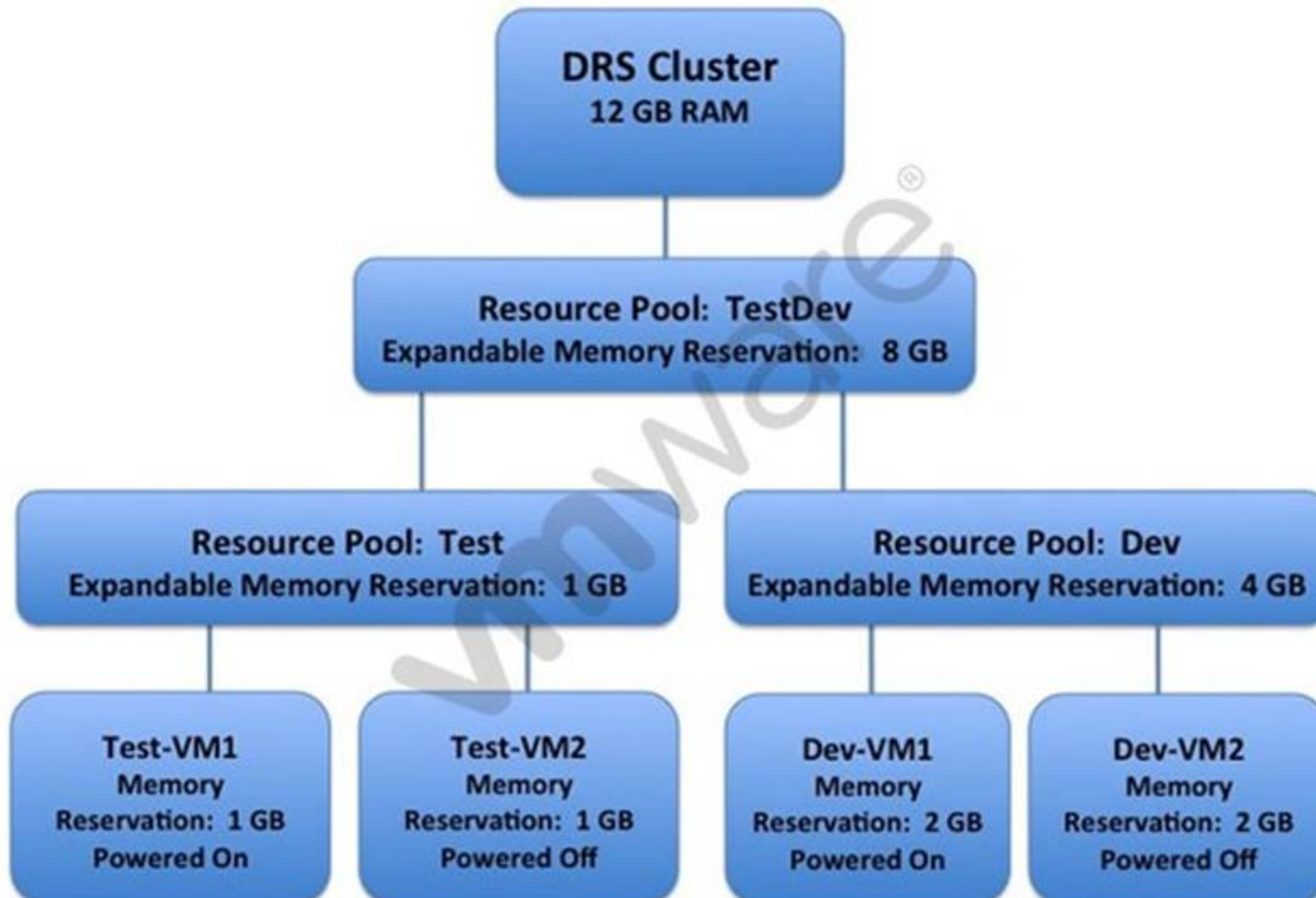
A vSphere 6.x DRS cluster is configured as shown in the Exhibit. Based on the exhibit, which statement is true?

- A. A virtual machine can be powered on in the Web Resource Pool with a 3 GHz CPU Reservation.
- B. A virtual machine can be powered on in the Web Resource Pool with a 4 GHz CPU Reservation.
- C. A virtual machine can be powered on in the DB Resource Pool with a 3 GHz CPU Reservation.
- D. A virtual machine can be powered on in the DB Resource Pool with a 4 GHz CPU Reservation.

**Answer: C**

#### NEW QUESTION 248

Refer to the Exhibit.



An administrator has configured a vSphere 6.x DRS cluster as shown in the Exhibit. Based on the exhibit, which statement is true?

- A. A virtual machine can be powered on in the Test Resource Pool with a 6 GB Memory Reservation.
- B. A virtual machine can be powered on in the Dev Resource Pool with a 8 GB Memory Reservation.
- C. A virtual machine from both the Test Resource Pool and the Dev Resource Pool can be powered on with a 4 GB Memory Reservation.
- D. No more virtual machines can be powered on due to insufficient resources.

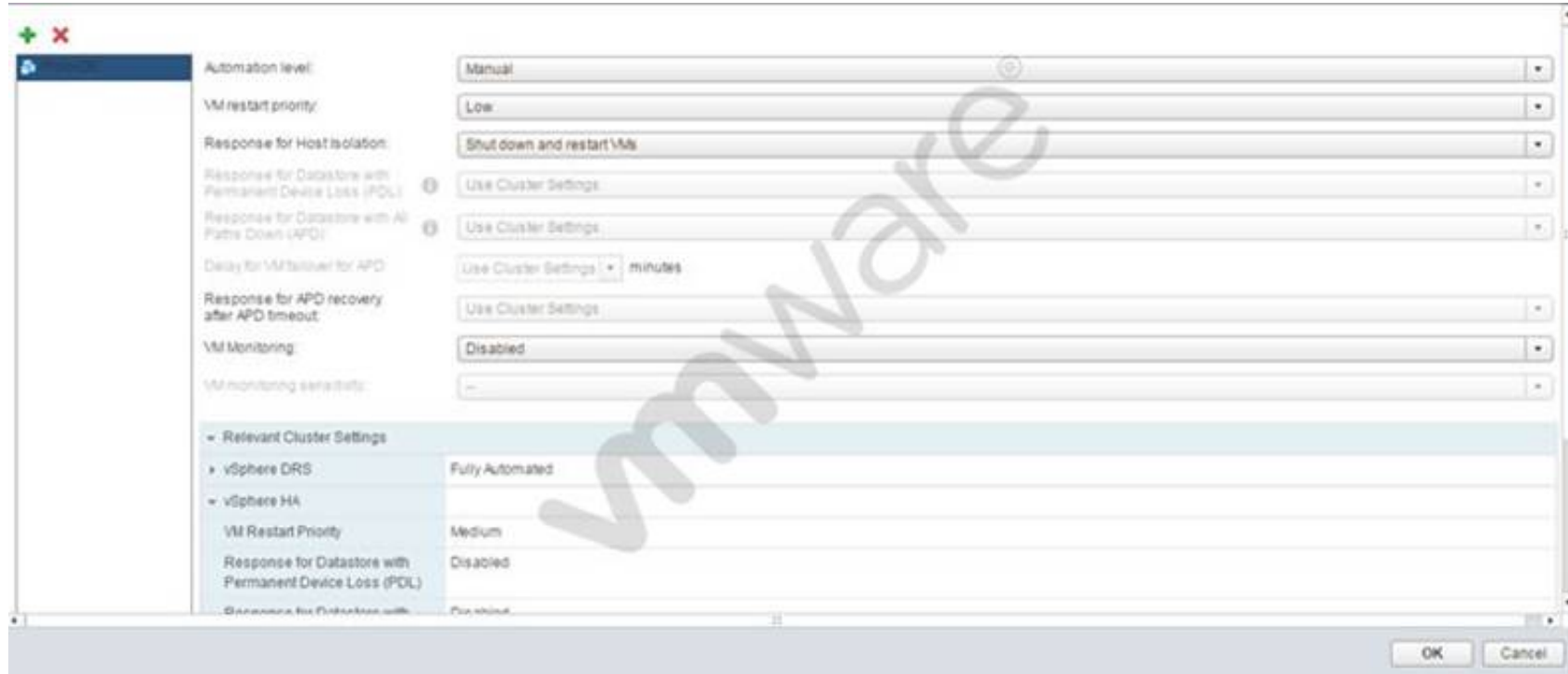
**Answer: A**



**Explanation:** Using 6 GB reservation, a VM can be powered on in the test resource pool. IT has an expandable memory reservation that can help start a VM in the resource pool.

#### NEW QUESTION 249

Refer to the Exhibit.



The Prod-DB virtual machine has a VM Override as shown in the Exhibit. What step, if taken, would require all virtual machines in the cluster to migrate automatically?

- A. Deselect the virtual machine from VM Overrides.
- B. Add all virtual machines to the VM Overrides.
- C. Change Response for Host Isolation to Use Cluster Settings.
- D. Change the Automation level to Use Cluster Settings.

**Answer:** D

**Explanation:** After you create a DRS cluster, you can customize the automation level for individual virtual machines to override the cluster's default automation level.

For example, you can select Manual for specific virtual machines in a cluster with full automation, or Partially Automated for specific virtual machines in a manual cluster.

If a virtual machine is set to Disabled, vCenter Server does not migrate that virtual machine or provide migration recommendations for it. This is known as pinning the virtual machine to its registered host.

Reference: <https://pubs.vmware.com/vsphere-51/index.jsp?topic=%2Fcom.vmware.vsphere.resmgmt.doc%2FGUID-E83A6B62-37F8-46D0-8D0A-D6A9181979F2.html>

#### NEW QUESTION 254

Which two scenarios could cause Storage DRS to be disabled on a Virtual Disk (VMDK)? (Choose two.)

- A. The VMDK is an independent disk.
- B. The virtual machine has vSphere Fault Tolerance enabled.
- C. The VMDK is hosted on NFS storage.
- D. The virtual machine has a CD-ROM/ISO image connected.

**Answer:** AB

**Explanation:** Reference: <https://pubs.vmware.com/vsphere-51/index.jsp?topic=%2Fcom.vmware.vsphere.troubleshooting.doc%2FGUID-B749AAA0-7B67-4A79-BEDC-395DFEC9FC60.html>

Topic 10, Administer and Manage vSphere Virtual Machines

#### NEW QUESTION 259

When attempting to connect to a vCenter Server, an administrator observes the following at the top of the vSphere Web Client:

Could not connect to one or more vCenter Server Systems: <https://vCenter.corp.com:443/sdk>

What three reasons could be preventing the vSphere Web Client from communicating with this vCenter Server? (Choose three.)

- A. The vCenter Server machine is not responding via the network.
- B. An incorrect entry for this vCenter Server exists in the Single Sign-On service.
- C. The SSL certificates do not match the FQDN address for the server.
- D. The Platform Services Controller is external to this vCenter Server.
- E. The DNS entry for the vCenter Server is incorrect.

**Answer:** ABC

**Explanation:** Reference: <https://communities.vmware.com/message/2265668>

#### NEW QUESTION 260

What will occur if the .nvram file is deleted from a powered off virtual machine?

- A. The .nvram file will get created the next time the virtual machine is powered on.
- B. Restoring the file from backup is needed to allow the virtual machine to power on.
- C. The virtual machine will fail to power on and enter an Orphaned state.
- D. The virtual machine will fail to power on and enter an Inaccessible state.

**Answer:** A

**Explanation:** The .nvram file. This small file contains the BIOS that is used when the VM boots. It is similar to a physical server that has a BIOS chip that lets you set hardware configuration options. A VM also has a virtual BIOS that is contained in the NVRAM file. The BIOS can be accessed when a VM first starts up by pressing the F2 key. Whatever changes are made to the hardware configuration of the VM are then saved in the NVRAM file. This file is in binary format and if deleted it will be automatically re-created when a VM is powered on.

Reference: <http://searchvmware.techtarget.com/tip/Understanding-the-files-that-make-up-a-VMware-virtual-machine>

#### NEW QUESTION 264

Which three ports are used by the vSphere Web Client when connecting directly to an ESXi 6.x host? (Choose three.)

- A. 443 TCP
- B. 902 TCP and UDP
- C. 903 TCP
- D. 5480 TCP
- E. 9443 TCP and UDP

**Answer:** ABC

**Explanation:** Reference: [http://kb.vmware.com/selfservice/microsites/search.do?language=en\\_US&cmd=displayKC&externalId=1021199](http://kb.vmware.com/selfservice/microsites/search.do?language=en_US&cmd=displayKC&externalId=1021199)

#### NEW QUESTION 267

An administrator tries to connect the vSphere 5.5 Client to an ESXi 6.x host. What will happen when this takes place?

- A. The operation will fail, since the vSphere Client is deprecated in vSphere 6.x.
- B. The operation will fail and the administrator will need to delete the client and install the 6.x version.
- C. The operation will prompt the administrator to run a script to upgrade the vSphere Client.
- D. The operation will update the vSphere Client silently in the background, then connect.

**Answer:** C

**Explanation:** The operation will fail because vSphere client 5.5 is deprecated in vSphere 6.x. You simply cannot connect a 5.5 vsphere client to a 6.x host because they are not compatible.

#### NEW QUESTION 271

An administrator wants to power on a virtual machine (VM) while connected to an ESXi host using SSH. The VM has the following Name and ID:

? VM Name = SQL001

? VMID = 12345

Which command would successfully power on the virtual machine?

- A. vim-cmd vmsvc/power.on 12345
- B. vim-cmd vmsvc/power.on SQL001
- C. vmware-vim-cmd vmsvc/power.on 12345
- D. vmware-vim-cmd vmsvc/power.on SQL001

**Answer:** A

**Explanation:** Reference: <http://pingforinfo.com/cronjob-poweron-vm/>

Topic 11, Mixed Questions

#### NEW QUESTION 275

Which two statements are true regarding upgrading ESXi 6.x hosts using a USB flash drive? (Choose two.)

- A. The ks.cfg file must be available to the ESXi 6.x host during bootup on a TFTP server.
- B. The USB flash drive must be formatted using Fat32.
- C. A partition table must be manually created on the USB flash device.
- D. The USB flash drive must be mounted from a Windows device with sysconfig installed.

**Answer:** BC

#### NEW QUESTION 280

An administrator has decided to create 10 ESXi 6.x hosts via Auto Deploy for a new Test/Dev cluster. The hosts are configured to obtain their networking configuration via DHCP.

Which condition would explain why none of the hosts are able to receive a valid DHCP address?

- A. The BIOS DHCP File Name was incorrectly entered on the DHCP server.
- B. The DHCP scope was set too small.
- C. The DHCP lease duration is set too short.
- D. The Boot Server Host Name has been set to the TFTP server.

**Answer:** A

#### NEW QUESTION 283

An administrator is configuring an identity source for Single Sign-On. The administrator will use the machine that Single Sign-On is running on, but does not want all users on the machine to be visible to SSO.  
Which Identity Source meets this requirement?

- A. Active Directory (Integrated Windows Authentication)
- B. Active Directory as an LDAP Service
- C. OpenLDAP
- D. LocalOS

**Answer:** A

#### NEW QUESTION 285

Which two conditions would prevent an administrator from upgrading an existing vCenter Appliance to vSphere 6.x? (Choose two.)

- A. The appliance has been configured to use an external Single Sign-On server.
- B. The administrator did not export the appliance configuration.
- C. The administrator is using an appliance with an embedded Platform Services Controller.
- D. The ESXi Host that the appliance will run on has not been placed into Maintenance Mode.

**Answer:** AB

#### NEW QUESTION 287

Which two statements are true regarding upgrading from a Distributed vCenter Server 5.x to vCenter Server 6.x? (Choose two.)

- A. vCenter Single Sign-on becomes part of the Platform Services Controller.
- B. vCenter Inventory Service becomes part of the Platform Services Controller.
- C. The vCenter Server service is not migrated during the upgrade process.
- D. The vSphere License Service is migrated to the new vCenter Server 6.x instance.

**Answer:** AC

#### NEW QUESTION 288

An administrator has a virtual machine (VM) that uses a shared USB device.  
Which option will allow the VM to utilize vMotion while retaining the maximum possible functionality?

- A. Disable the USB device from the VM.
- B. Configure the VM to support vMotion while the device is connected.
- C. Enable migration support for the individual USB device.
- D. Remove the device from the VM.

**Answer:** B

#### NEW QUESTION 292

An administrator is creating a new Content Library. It will subscribe to another remote Content Library without authentication enabled. Optimal performance is desired for the configuration.  
What two steps should be taken to set up the library? (Choose two.)

- A. The Subscription URL should be provided.
- B. The library should be published externally.
- C. A file system should be used for this library.
- D. A datastore should be used for this library.

**Answer:** AD

#### NEW QUESTION 297

An administrator wants to ensure that all datastores defined on an ALUA-based storage array have load balancing enabled by default. The storage configuration is:

- Storage Array Type = VMW\_SATP\_DEFAULT\_AA
- Path Selection Policy = VMW\_PSP\_FIXED

Which configuration would support the stated requirements?

- A. Change the Storage Array Type Policy to = VMW\_SATP\_ALUA and the Path Selection Policy = VMW\_PSP\_RR.
- B. Change the Path Selection Policy = VMW\_PSP\_RR and leave the Storage Array Type Policy as is.
- C. Change the Storage Array Type Policy to = VMW\_SATP\_ALUA and leave the Path Selection Policy as is.
- D. Change the Path Selection Policy = NMP and leave the Storage Array Type Policy as is.

**Answer:** A

#### NEW QUESTION 298

An administrator has configured Network I/O Control to support bandwidth allocation to a group of virtual machines running on a vSphere 6.x HA/DRS Cluster. Which two conditions would cause DRS to migrate one of these virtual machines to another host in the cluster? (Choose two.)

- A. The reservation is changed to a value that the initial host can no longer satisfy.
- B. A physical adapter that carries traffic from the virtual machine is offline.
- C. A physical adapter cannot supply the minimum bandwidth in accordance with the teaming policy.
- D. A reservation for a VM network adapter is less than the free quota in the network resource pool.

**Answer:** AB

#### NEW QUESTION 299

Which VMware Single Sign-On component handles STS authentication requests?

- A. Security Token Service
- B. Administration Server
- C. VMware Directory Service
- D. Identity Management Service

**Answer:** D

#### NEW QUESTION 302

An administrator is configuring resource pools for a vSphere 6.x cluster. The cluster has these characteristics:

- Five ESXi 6.x hosts
- Six cores per host
- 70 virtual machines with 1 vCPU each

The administrator configures three resource pools and places the virtual machines into the pools, as follows:

- Production pool - High Share value with 40 virtual machines
- Infrastructure pool - Medium Share value with 20 virtual machines
- Development pool - Low Share value with 10 virtual machines

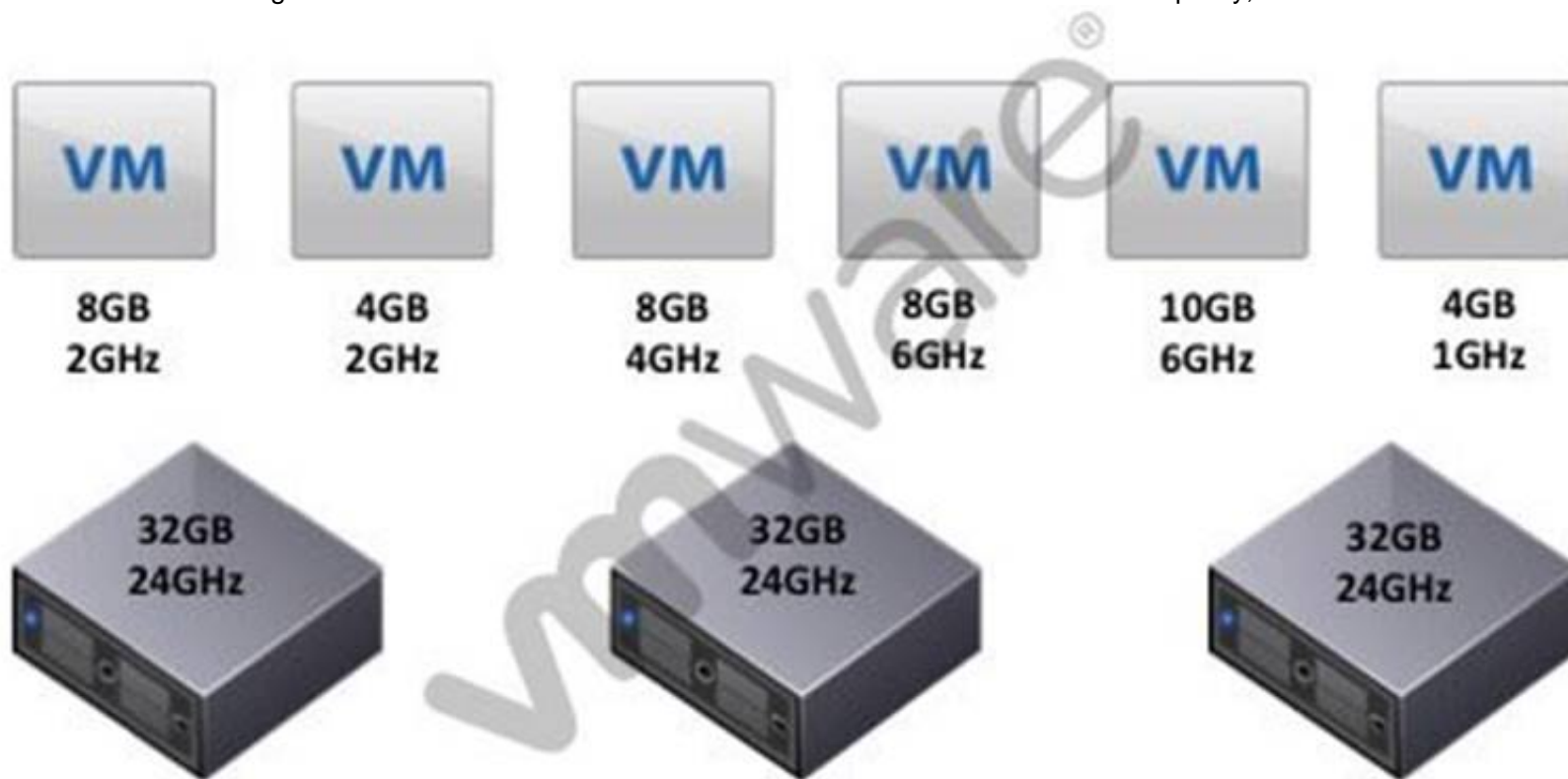
Given this configuration, what is the expected performance for each group of virtual machines during contention?

- A. Virtual machines in the Production pool will perform two times as well as those in the Infrastructure pool.
- B. Virtual machines in the Infrastructure pool will perform four times as well as those in the Development pool.
- C. Virtual machines in all resource pools will perform equally.
- D. Virtual machines in the Development pool will perform two times as well as those in the Infrastructure pool.

**Answer:** C

#### NEW QUESTION 305

An administrator has configured a cluster with the Host Failures Cluster Tolerates admission control policy, as shown in the Exhibit:



Based on the exhibit, which two statements are true? (Choose two.)

- A. The number of slots per cluster node is four.
- B. The cluster can sustain loss of only one node.
- C. The number of slots per cluster node is three.
- D. The cluster can sustain the loss of two nodes.

**Answer:** BC

#### NEW QUESTION 309

.....



## Thank You for Trying Our Product

\* 100% Pass or Money Back

All our products come with a 90-day Money Back Guarantee.

\* One year free update

You can enjoy free update one year. 24x7 online support.

\* Trusted by Millions

We currently serve more than 30,000,000 customers.

\* Shop Securely

All transactions are protected by VeriSign!

**100% Pass Your 2V0-621D Exam with Our Prep Materials Via below:**

<https://www.certleader.com/2V0-621D-dumps.html>