

## Exam Questions 1Z0-632

PeopleSoft PeopleTools 8.5x Implementation Essentials

<https://www.2passeasy.com/dumps/1Z0-632/>



NEW QUESTION 1

Which two PeopleCode excerpts contain syntax errors?

1	If All(PSU_CRS_SESSN.START_DATE, PSU_CRS_SESSN.END_DATE) And PSU_CRS_SESSN.START_DATE > PSU_CRS_SESSN.END_DATE Then Error MsgGet(1040, 3, "Message Not Found.") End-If;
2	If PSU_EMP_RVW_RVR.REVIEW_TYPE = "E" Then COMMENT Reviewer is an employee; COMMENT Disable REVIEWER_ID; PSU_EMP_RVW_RVR.REVIEWER_ID.Value = PSU_EMP_RVW_RVR.EMPLID; PSU_EMP_RVW_RVR.REVIEWER_ID.Enabled = False; End-If;
3	Local Message &request, &response; Local Row &Row; Local Rowset &Rowset;
4	Local Field &Crstype;  &Crstype = GetField(PSU_COURSE_TBL.COURSE_TYPE); &Crstype.Value = "T"; &Crstype.Enabled = False;
5	&OLD_PRICE > &TOTAL_PRICE; &TOTAL_PRICE = &QTY_ORDERED * &PRICE; &GRAND_TOTAL = &GRAND_TOTAL + &TOTAL_PRICE - &OLD_PRICE;

- A. 2
- B. 4
- C. 5
- D. 1
- E. 3

Answer: CE

NEW QUESTION 2

What are the required steps for using a PeopleCode application class? Arrange them in the correct order.

1. Declare an object of the application class.
2. Import the application class.
3. Invoke methods or use properties.
4. Instantiate the object.
5. Initialize the object.

- A. 1, 2, 5, 3
- B. 1, 2, 4, 5, 3
- C. 2, 1, 4, 3
- D. 1, 2, 4, 3
- E. 2, 1, 4, 5, 3

Answer: E

NEW QUESTION 3

At line number 7 in this record definition, the PSU\_ADDRESS\_XXX field name represents a .

T1_CUST_TBL (Record)						
Record Fields		Record Type				
Num	Field Name	Type	Len	Format	Short Name	Long Name
1	CUSTOMER_ID	Char	6	Upper	Customer	Customer
2	DESCR	Char	30	Mixed	Descr	Description
3	DESCRSHORT	Char	10	Mixed	Short Desc	Short Description
4	CUSTOMER_TYPE	Char	1	Upper	Type	Customer Type
5	INDUSTRY_ID	Char	30	Upper	Industry ID	Industry ID
6	PHONE	Char	24	Custm	Phone	Telephone
7	PSU_ADDRESS_XXX	XXX				
	STREET1	Char	30	Mixed	Street	Street (line1)
	CITY	Char	30	Mixed	City	City
	STATE	Char	6	Upper	St	State
	ZIP	Char	10	Num	Zip	Zip Code
	COUNTRY	Char	3	Upper	Crtry	Country
8	CONTRACT_DT	Date	10		Contract Dt	Contract Date
9	TRAINING_UNITS	Nbr	4.1		Units	Training Units

- A. Subpage
- B. Compound field
- C. Subrecord
- D. Derived/Work record
- E. Composite field

Answer: C

NEW QUESTION 4

Match each valid PeopleCode variable scope in the first column with its corresponding duration in the second column and its description in the third column.

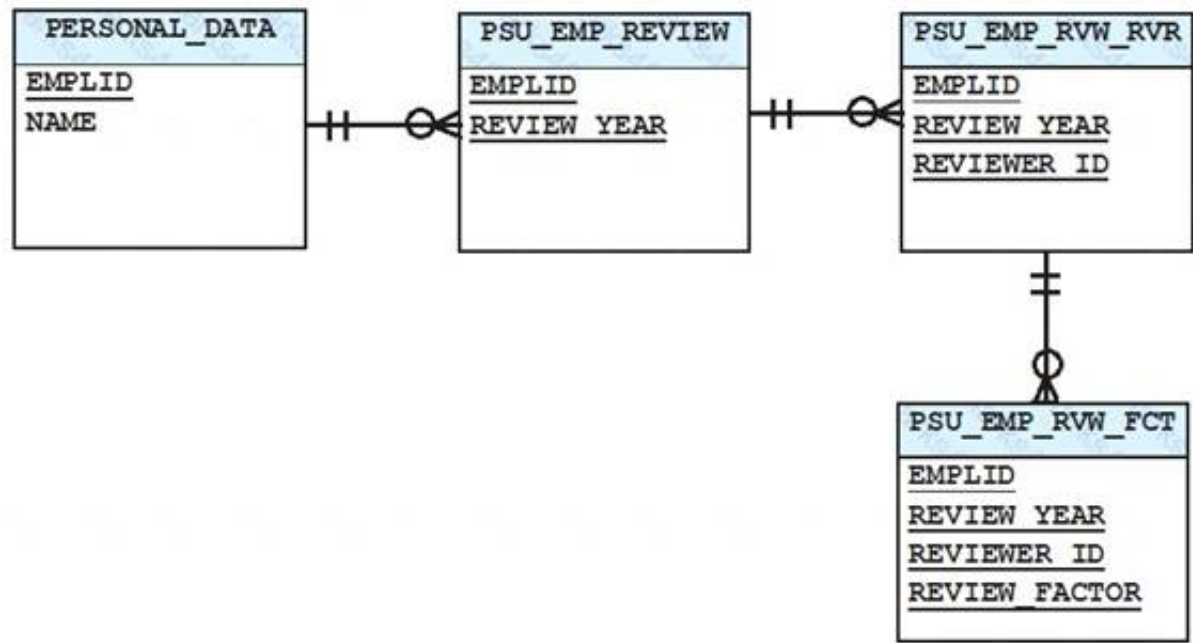
Scope	Duration	Description
1. Local	A. The current PeopleSoft session.	a. Transfer values between PeopleCode programs in the current component.
2. Derived	B. Concurrent PeopleSoft sessions.	b. Pass parameters between functions.
3. Global	C. The current PeopleCode program.	c. Transfer values between components.
4. Component	D. The current PeopleSoft component.	d. Eliminate concern about conflict with same-named variables.
5. Private	E. The current method.	e. Prevent other programs from modifying variables.

- A. 1Cd, 3Cc, 5Ee
- B. 1Ed, 3Bc, 4Da
- C. 1Cd, 3Ac, 4Da
- D. 1Cb, 2Ca, 3Aa
- E. 1Cd, 3Bc, 5Ee
- F. 1Cd, 3Ac, 4Da

Answer: D

NEW QUESTION 5

If you were to create a page displaying information from each of the tables listed in the exhibit, at what occurs level would the fields of the PSU\_EMP\_RVW\_FCT table be on?



- A. 3
- B. 2
- C. 1
- D. 4

Answer: D

NEW QUESTION 6

This SQL definition uses effective-date logic to return the current row from PSXLATITEM.

```
SQLExec ("SELECT A.XLATSHORTNAME, A.XLATLONGNAME
FROM PSXLATITEM A
WHERE A.EFFDT = (
SELECT MAX(B.EFFDT)
FROM PSXLATITEM B
WHERE A.FIELDNAME = B.FIELDNAME
AND A.FIELDVALUE = B.FIELDVALUE
AND B.EFFDT <= date)");
```

Which meta-SQL element should be substituted for date so the SQL correctly returns the current row as of the run date for all supported database platforms?

- A. %CurretnDateIn
- B. %CurrentDateOut
- C. %Date
- D. %DateTime
- E. %EffDtCheck

Answer: D

NEW QUESTION 7

Which two statements are true about how PeopleCode on the SavePreChange and SavePostChange events is processed? (Choose two.)

- A. When placed at the component record level, such PeopleCode triggers a Save when a row is changed
- B. When placed at the component record level, such PeopleCode runs once per row when the user clicks Save
- C. When placed at the component record level, such PeopleCode runs once when the user clicks Save

- D. When placed at the component level, such PeopleCode triggers a Save when data on the page is changed
- E. When placed at the component level, such PeopleCode runs once when the user clicks Save
- F. When placed at the component level, such PeopleCode runs once per row when the user clicks Save

Answer: BD

### NEW QUESTION 8

View the exhibits.

Question Exhibit 1 Exhibit 2

PSU\_STUDENT.GBL (Component)

	Page Name	Item Name	Hidden	Item Label	Folder Tab Label	Allow Deferred Processing
1	PSU_STUDENT_P	PSU_STUDENT_DATA	<input type="checkbox"/>	Personal Details		<input type="checkbox"/>
2	PSU_STUDENT_S	PSU_STUDENT_SKED	<input type="checkbox"/>	Education and Skills		<input checked="" type="checkbox"/>

**Professional Details**

Student ID 2924

\*Student Name

\*Customer  Friends-Little Egg Lighthouse

Project Role

☒ Same address as Customer Telephone

Street

City

Country  United States

State  New Jersey

Zip Code

**Student Emphasis**

☐ Functional

☒ Technical

Save Return to Search Previous in List Next in List Add Update/Display

Personal Details | Education and Skills

You just added a second page to the student component as shown in Exhibit 1. When you test the page as shown in Exhibit 2, no tabs are displayed. What do you need to do to display the tabs?

- A. On the Internet tab of the Component Properties dialog box, select the Display Hyperlinks check box
- B. On the Internet tab of the Component Properties dialog box, select the Display Folder Tabs check box
- C. Enter the labels for the folder tab labels and on the Use tab of the Component Properties dialog box, select the Include in Navigation check box
- D. On the Use tab of the Component Properties dialog box, select the Include in Navigation check box
- E. Enter the labels for the folder tab labels

Answer: A

### NEW QUESTION 9

You configure embedded pop-up help for a scroll area header or a grid header by .

- A. using the Insert menu to insert a Popup help button on the grid header or scroll area header in place of the Navigation bar
- B. adding a hyperlink or push button to the header linking to the delivered online help
- C. adding a hyperlink or push button to the header linking to your custom online help
- D. selecting Message Catalog Popup on the Label tab of the Grid Properties Dialog box or the Scroll Area Properties dialog box

Answer: D

### NEW QUESTION 10

You have been asked to modify the search record for the instructor table to include course type. What should you select on the Use tab of the record field properties for the COURSE\_TYPE field?

- A. List Box Item
- B. Duplicate Order Key
- C. Alternate Search Key
- D. Key
- E. Search Key

Answer: E

### NEW QUESTION 10

Which event or events should you use for PeopleCode to autogenerate the purchase order number, the high-level key for the orders page?

- A. SaveEdit
- B. SavePostChange



- C. SaveEdit and SavePreChange
- D. SavePreChange
- E. SaveEdit and SavePostChange

**Answer:** B

#### NEW QUESTION 13

Instructors have complained that they do not have access to a newly registered component and page. The Instructor role that includes the Instructor permission list already exists; both are available for your use. Select the two correct methods that add access for just this user group. (Choose two.)

- A. Modify the content reference (CREF) definition in the portal registry and enable the Author Access option
- B. Re-run the Registration Wizard
- C. Select the option to modify only a permission list, and add the Instructor permission list to this component
- D. Modify the CREF definition in the portal registry and add the Instructor role
- E. Modify the Instructor permission list definition and add access to the new component and page
- F. Modify the CREF definition in the portal registry and add the Instructor permission list
- G. Modify the CREF definition in the portal registry and enable the Public Access option

**Answer:** BD

#### NEW QUESTION 16

When you are modifying, customizing, or configuring PeopleSoft application definitions using Application Designer, which two statements are true regarding the impact on other application elements? (Choose two.)

- A. Running an alter table process in Application Designer is required only during major upgrades, not after small changes to a single record definition
- B. PeopleTools provides utilities to help you determine relationships between application definitions, such as PeopleTools cross-reference reports and the Find Definition References option
- C. If you modify field definition properties or record definition properties, the PeopleTools system insanity and automatically synchronizes the definition changes with the underlying SQL database table
- D. Changing a single field property, such as the field name or type, typically has no effect on other definitions such as records or pages
- E. If you alter a table, you must rebuild any views that reference the altered table

**Answer:** BE

#### NEW QUESTION 17

Select two true statements about translate values. (Select two.)

- A. You can assign translate values to any character field that is four characters long or less
- B. The default label for a page field is the translate long name
- C. You can inactivate any translate value by changing the value of the effective status field to "I"
- D. You must maintain translate values through Application Designer
- E. You must enter a translate short name

**Answer:** AE

#### NEW QUESTION 19

Examine this PeopleCode program excerpt:

```
&Row_Level1 = &RS_Level1(&I);  
&Rec_Empl = &Row_Level1.EMPL;  
&Fld_Role = &Rec_Empl.ROLE;  
&Pos = &Fld_Role.Value;
```

Select the option that correctly combines these four statements into one valid PeopleCode statement.

- A  

```
&Pos = &Row_Level1(Record.EMPL).ROLE.Value;
```
- B  

```
&Pos = &RS_Level1(&I).EMPL.ROLE.Value;
```
- C  

```
&Pos = &Row_Level1(&I).EMPL.ROLE.Value;
```
- D  

```
&Pos = &RS_Level1.Row_Level1.Rec_Empl.ROLE.Value;
```
- E  

```
&Pos = &RS_Level1.&I.EMPL.ROLE.Value;
```

- A. Option A
- B. Option B
- C. Option C
- D. Option D

E. Option E

Answer: C

NEW QUESTION 24

In this exhibit, identify two settings on the Internet tab of the Component Properties dialog box that apply to fluid components. (Choose two.)

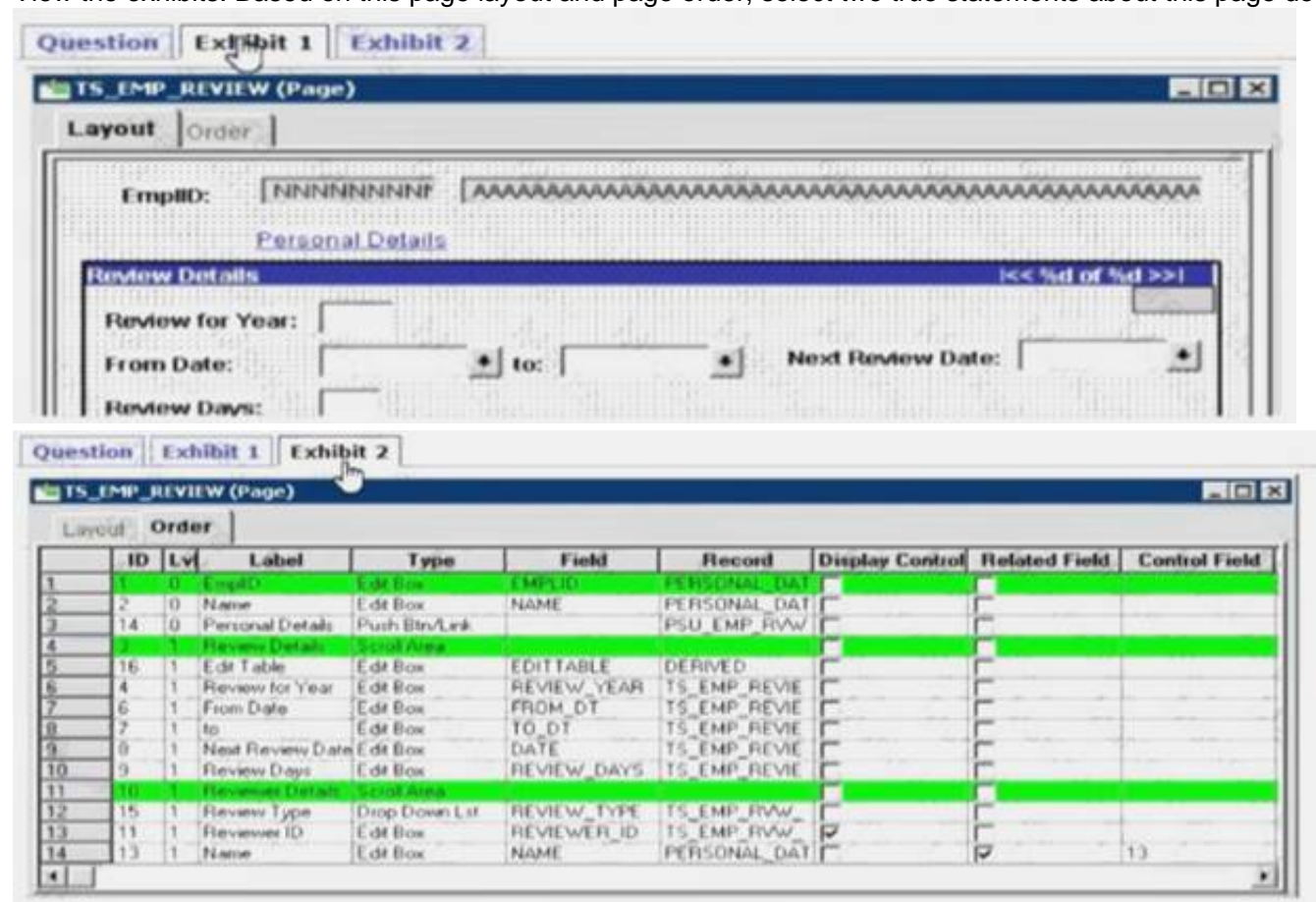


- A. In the Search Page group box: Primary Action
- B. In the Search Page group box: Instructional Text
- C. In the Pagebar group box: Help Link
- D. In the Toolbar group box: Notify
- E. In the Toolbar group box: Save
- F. In the Multi-Page Navigation group box: Display Folder Tabs (top)

Answer: AF

NEW QUESTION 25

View the exhibits. Based on this page layout and page order, select two true statements about this page definition.

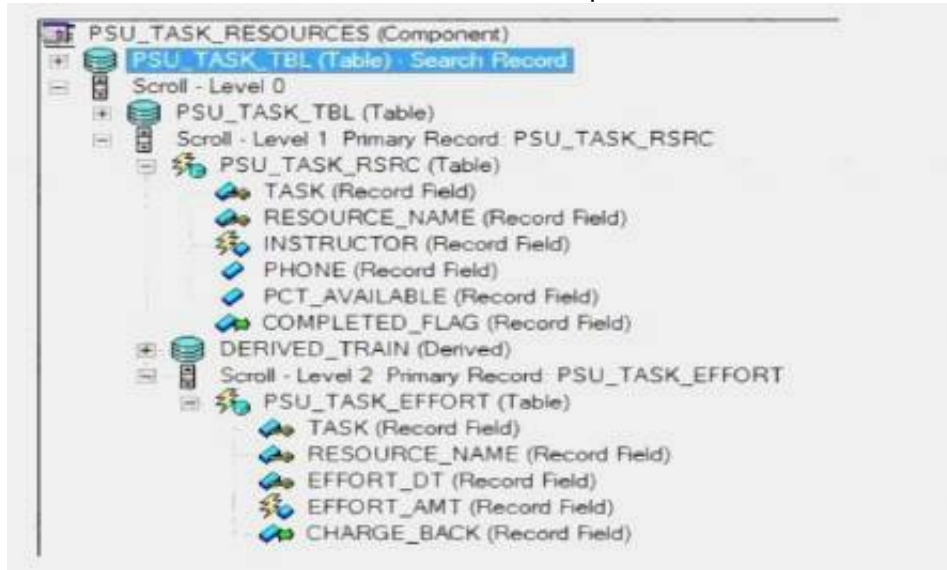


- A. The TS\_EMP\_REVIEW page is saved without error
- B. The TS\_EMP\_REVIEW page contains a parent/child design error
- C. The TS\_EMP\_REVIEW page is saved with a related field error
- D. The TS\_EMP\_REVIEW page is saved with a duplicate record field warning

Answer: A

### NEW QUESTION 29

This exhibit shows the Structure tab of the component definition.



The following PeopleCode program has been placed on the RowInit event for the Level 2 component record (PSU\_TASK\_EFFORT)

```
If PSU_TASK_RSRC.COMPLETED_FLAG = "Y" Then
    Local Record &Rec_TaskEffort = GetRecord();
    For &i = 1 To &Rec_TaskEffort.FieldCount
        &Rec_TaskEffort.GetField(&i).Enabled = False;
    End-For;
End-If;
```

Which three changes are required to move this program to the RowInit event for the Level 1 component record (PSU\_TASK\_RSRC)? (Choose three.)

- A. Add an outer loop to loop through each row in the level 2 rowset
- B. Instantiate the level 2 rowset from the level 1 row
- C. Add on outer loop to loop through each record in the level 2 rowset
- D. Instantiate the level 1 row
- E. For each level 2 row, instantiate a record object
- F. Instantiate a record object for the level 1 row

**Answer:** BCF

### NEW QUESTION 33

Examine this PeopleCode statement:

&Date = ORDER.DATE;

Select the object-oriented equivalent.

- A. 

```
&Field.Value = GetField(ORDER.DATE);
```
- B. 

```
Field = GetField(ORDER.DATE);
&Date = &Field.Value;
```
- C. 

```
&Field = CreateField();
&Date = &Field(ORDER.DATE);
```
- D. 

```
&Date.GetValue = ORDER.DATE;
```
- E. 

```
&Date = GetValue(ORDER.DATE);
```

- A. Option A
- B. Option B
- C. Option C
- D. Option D
- E. Option E

**Answer:** A

### NEW QUESTION 35

Examine this PeopleCode program excerpt:

```
class OCP_ROWSET extends Rowset

    property integer FilledRowCount get;
    method OCP_ROWSET(&strRecName As string, &strDataFld As string, &strGetOrCreate As
string);
    method InsertRow(&iRow As integer) Returns boolean;

end-class;
```

Select the three correct statements. (Choose three.)

- A. The OCP\_ROWSET method runs automatically whenever an object is instantiated from the OCP\_ROWSET class



- B. OCP\_ROWSET is the constrictor method for the OCP\_ROWSET class
- C. Executing the RO\_ROWSET method instantiates an object of the OCP\_ROWSET class
- D. The OCP\_ROWSET method must initialize an object of the Rowset class
- E. The OCP\_ROWSET method is added to the Rowset class, and, by extension, to any instances of the Rowset class

**Answer:** ABD

#### NEW QUESTION 37

Identify three true statements describing PeopleTools tables. (Choose three.)

- A. PeopleTools tables can be updated equally using PeopleTools, such as Application Designer, or the SQL editing tool for your database platform
- B. PeopleTools tables use the naming convention of having the prefix PD\*, as in PSRECDEFN
- C. PeopleTools tables store metadata that defines the elements of a PeopleSoft application
- D. PeopleTools tables contain the same content, regardless of the PeopleSoft application installed on the database
- E. PeopleTools tables have a consistent structure, regardless of the PeopleSoft application installed on the database
- F. PeopleTools tables are empty until the implementation team has loaded the application's transactional data

**Answer:** ABC

#### NEW QUESTION 41

You surround a set of page controls with a group box on a fluid page. When rendered in HTML, what tag will those page controls be within?

- A. <div>
- B. <embed>
- C. <iframe>
- D. <datalist>
- E. <frame>
- F. <area>

**Answer:** E

#### NEW QUESTION 45

Which two PeopleCode excerpts contain syntax errors? (Choose two.)

1	If EO_RATECALC_HDR.GENERATE_CROSS_RT = "Y" Then &RS1.ShowAllRows(); EO_RATECALC_HDR.RATE_TRIANGULATE = "N"; End-If;
2	&OLD_PRICE = &TOTAL_PRICE; &TOTAL_PRICE + &NEW_PRICE = &GRAND_TOTAL; GRAND_TOTAL = &GRAND_TOTAL + &TOTAL_PRICE - &OLD_PRICE;
3	Local Field &Crstype;  &Crstype = GetField(PSU_COURSE_TBL.COURSE_TYPE); &Crstype.Valyue = "T" &Crstype.Enabled <> False;
4	Local Rowset &Rowset = GetRowset(); Local Row &Row1, &Row2;
5	If PSU_EMP_REVIEW.FROM_DT > PSU_EMP_REVIEW.TO_DT Then Error ("From date should be prior to To date."); End-If;

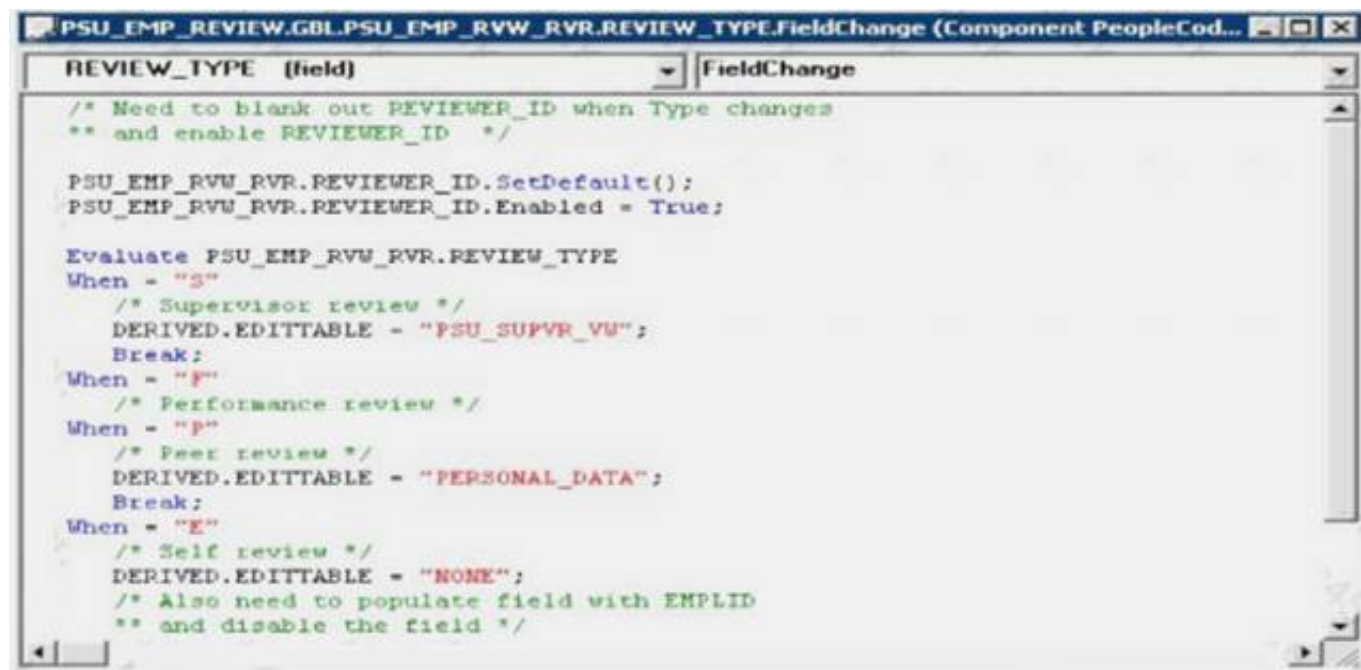
- A. 1
- B. 4
- C. 5
- D. 2
- E. 3

**Answer:** DE

#### NEW QUESTION 50

The following FieldChange program conditionally populates DERIVED.EDITABLE, based on the value of PSU\_EMP\_RVW\_RVR.REVIEW\_TYPE.





Another similar program should be placed in a companion event. In which other event should the other PeopleCode program be placed?

- A. SavePreChange
- B. FieldEdit
- C. Rowinit
- D. Rowinsert

Answer: C

### NEW QUESTION 53

Review the definition of the Calculate user-defined function.

```

1 Function Calculate(&rate As number in, &output As number out)
2   &output = &output * (1 + &rate);
3   &rate = 0; /* Reset the rate to zero */
4 End-Function;

```

Then, review the invocation of this Calculate function in a FieldChange program:

```

1 Local number &incr = 0.12;
2
3 Declare Function Calculate PeopleCode FUNCLIB_ED_SVCS.CALC FieldFormula;
4 Calculate(&incr, EMPLOYEE.SALARY);

```

Which two corrections are required to allow these PeopleCode programs to be saved as syntactically correct programs that produce valid results? (Choose two.)

- A. In the FieldChange program, move line 3 to become line 1
- B. In the function definition, delete the in and out modifiers on line 1
- C. Delete line 3 from the function definitio
- D. In the FieldChange program, add the following as line 5:&incr = 0;
- E. Replace line 4 in the FieldChange program with the following:

Answer: BD

### NEW QUESTION 56

An end user saves the data after making a change to their personal address, and the system updates the table for that page. In this case, that personal address information is also stored in a table used to generate reports. Upon saving the address, the system also updates the equivalent information stored in the reporting table.

What form of maintaining referential integrity has been implemented in this scenario?

- A. Parent-child relationship
- B. Occurs level
- C. Prompt table edit
- D. PeopleCode running a SQLExec statement
- E. Expert entry

Answer: C

### NEW QUESTION 61

.....

## THANKS FOR TRYING THE DEMO OF OUR PRODUCT

Visit Our Site to Purchase the Full Set of Actual 1Z0-632 Exam Questions With Answers.

We Also Provide Practice Exam Software That Simulates Real Exam Environment And Has Many Self-Assessment Features. Order the 1Z0-632 Product From:

<https://www.2passeasy.com/dumps/1Z0-632/>

## Money Back Guarantee

### 1Z0-632 Practice Exam Features:

- \* 1Z0-632 Questions and Answers Updated Frequently
- \* 1Z0-632 Practice Questions Verified by Expert Senior Certified Staff
- \* 1Z0-632 Most Realistic Questions that Guarantee you a Pass on Your FirstTry
- \* 1Z0-632 Practice Test Questions in Multiple Choice Formats and Updatesfor 1 Year