



Microsoft

Exam Questions 70-742

Identity with Windows Server 2016

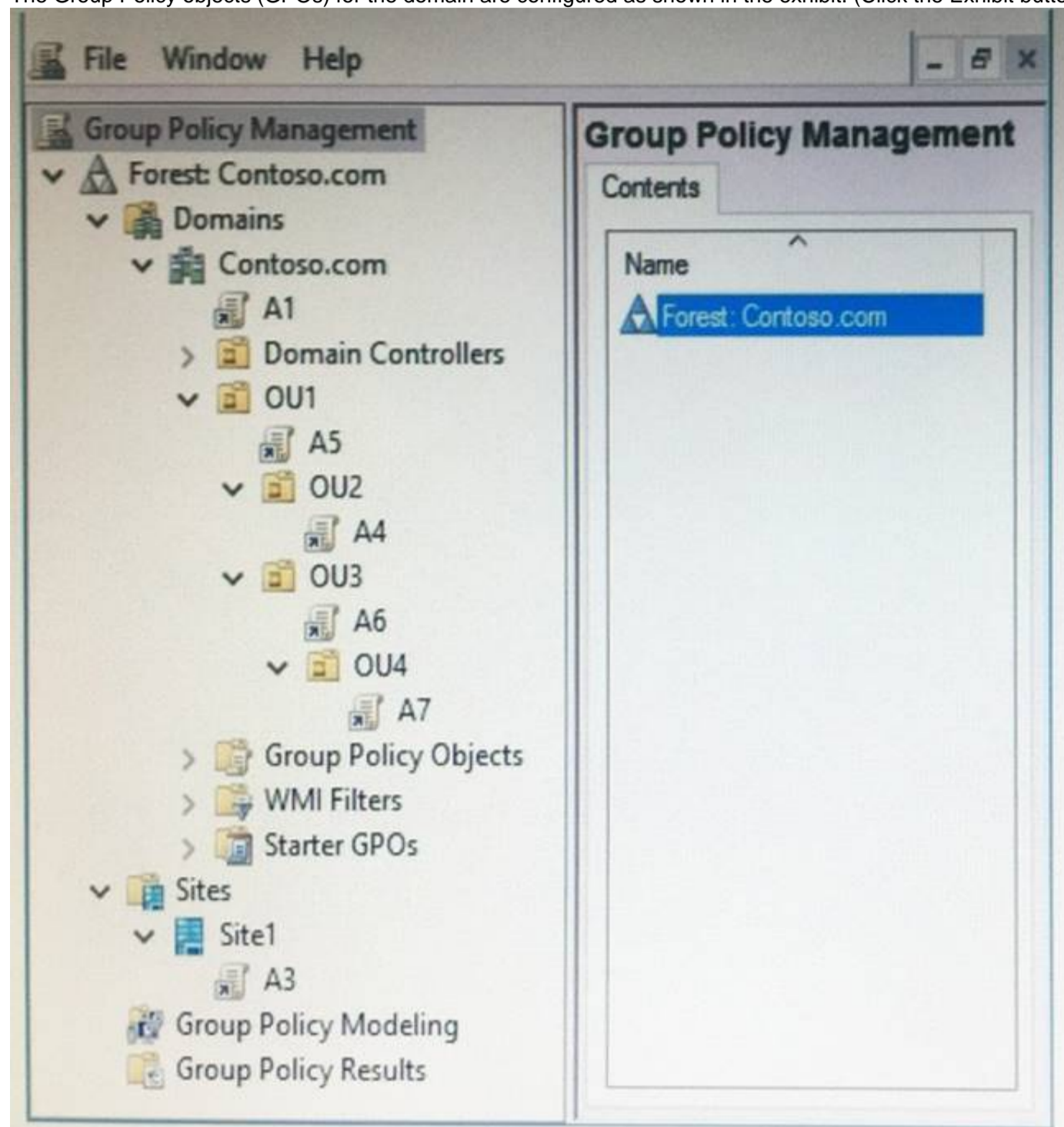
NEW QUESTION 1

Note: This question is part of a series of questions that use the same scenario. For your convenience, the scenario is repeated in each question. Each question presents a different goal and answer choices, but the text of the scenario is exactly the same in each question in this series.

Start of repeated scenario.

Your network contains an Active Directory domain named contoso.com. The domain contains a single site named Site1. All computers are in Site1.

The Group Policy objects (GPOs) for the domain are configured as shown in the exhibit. (Click the Exhibit button.)



The relevant users and client computer in the domain are configured as shown in the following table.

Object name	Object type	Object location
Computer	Computer	OU4
User1	User	OU4
User2	User	OU2

End of repeated scenario.

Which five GPOs will apply to User1 in sequence when the user signs in to Computer1? To answer, move the appropriate GPOs from the list to the answer area and arrange them in the correct order.

GPOs

Answer Area

A1

A3

A4

A5

A6

A7

- A. Mastered
B. Not Mastered

Answer: A

Explanation:

GPOs

Answer Area

A1

A3

A4

A5

A6

A7

A3

A1

A5

A6

A7

NEW QUESTION 2

Note: This question is part of a series of questions that use the same or similar answer choices. An answer choice may be correct for more than one question in the series. Each question is independent of the other questions in this series.
Information and details provided in a question apply only to that question.
Your network contains an Active Directory domain named contoso.com. The domain contains 5,000 user accounts.
You have a Group Policy object (GPO) named DomainPolicy that is linked to the domain and a GPO named DCPolicy that is linked to the Domain Controllers organizational unit (OU).
You need to ensure that the members of the Backup Operators group can back up domain controllers. What should you do?

- A. From the Computer Configuration node of DCPolicy, modify Security Settings.
B. From the Computer Configuration node of DomainPolicy, modify Security Settings.
C. From the Computer Configuration node of DomainPolicy, modify Administrative Templates.
D. From the User Configuration node of DCPolicy, modify Security Settings.
E. From the User Configuration node of DomainPolicy, modify Folder Redirection.
F. From user Configuration node of DomainPolicy, modify Administrative Templates.
G. From Preferences in the User Configuration node of DomainPolicy, modify Windows Settings.
H. From Preferences in the Computer Configuration node of DomainPolicy, modify Windows Settings.

Answer: D

NEW QUESTION 3

Your network contains an Active Directory forest. The forest contains two domain controllers named DC1 and DC2 that run Windows Server 2016. DC1 holds all of the operations master roles.
DC1 experiences a hardware failure.
You plan to use an automated process that will create 1,000 user accounts. You need to ensure that the automated process can complete successfully.
Which command should you run? To answer, select the appropriate options in the answer area.

Answer Area

Move-ADDirectoryServerOperationMasterRole
ntdsutil

-identity "DC2" -OperationMasterRole

InfrastructureMaster
PDCEmulator
RIDMaster
SchemaMaster

-Force
Seize pdc

- A. Mastered
- B. Not Mastered

Answer: A

Explanation:
Box 1: Move-ADDirectoryServerOperationMasterRole
Box 2: RIDMaster
Box 3: -Force

NEW QUESTION 4

A technician named Tech1 is assigned the task of joining the laptops to the domain. The computer accounts of each laptop must be in an organizational unit (OU) that is associated to the department of the user who will use that laptop. The laptop names must start with four characters indicating the department followed by a four-digit number
Tech1 is a member of the Domain Users group only. Tech1 has the administrator logon credentials for all the laptops.
You need Tech1 to join the laptops to the domain. The solution must ensure that the laptops are named correctly, and that the computer accounts of the laptops are in the correct OUs.
Solution: You script the creation of files for an offline domain join, and then you give the files to Tech1. You instruct Tech1 to sign in to each laptop, and then to run djoin.exe.
Does this meet the goal?

- A. Yes
- B. No

Answer: A

NEW QUESTION 5

Your company has multiple branch offices.
The network contains an Active Directory domain named contoso.com.
In one of the branch offices, a new technician is hired to add computers to the domain.
After successfully joining multiple computers to the domain, the technician fails to join anymore computers to the domain.
You need to ensure that the technician can join an unlimited number of computers to the domain. What should you do?

- A. Modify the Security settings of the technician's user account.
- B. Modify the Security settings of the Computers container.
- C. Configure the technician's user account as a managed service account.
- D. Run the redircmp.exe command.

Answer: B

NEW QUESTION 6

Your network contains an Active Directory domain named contoso.com. The relevant objects in the domain are configured as shown in the following table.

Object name	Type
Server1	Member server
OU1	Organizational unit (OU)
OU2	Organizational unit (OU)
GPO1	Group Policy object (GPO)
User1	User account
User2	User account
Group1	Global group
Group2	Global group
Group3	Global group

You have the following configurations:

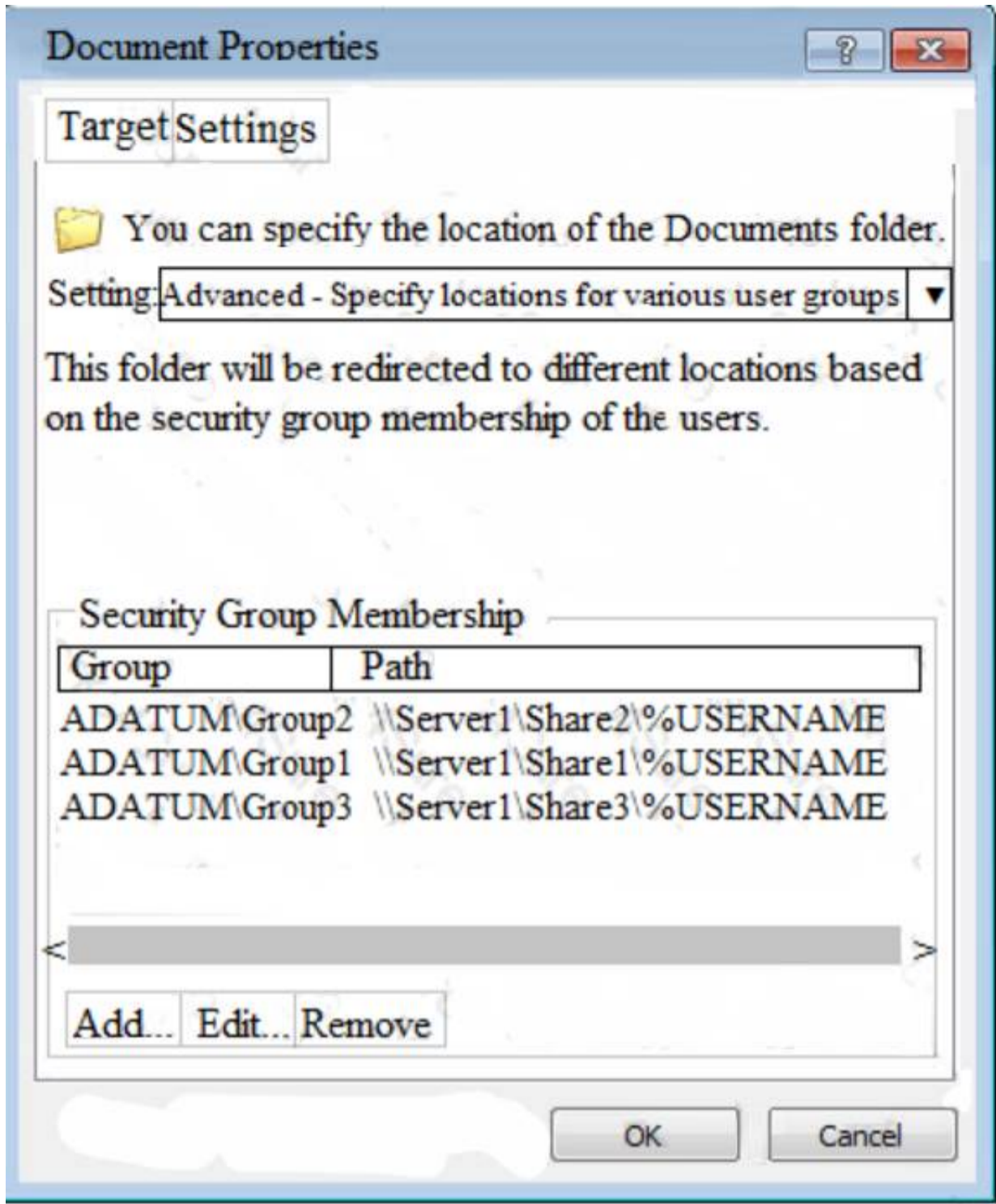
User1 is in OU1 and is a member of Group1 and Group2

User2 is in OU2 and is a member of Group1 and Group3

GPO1 is linked to OU1.

Server1 has three shares named Share1, Share2, and Share3. The Domain Users group permissions to all three shares.

GPO1 is configured as shown in the exhibit. (Click the Exhibit button.)



For each of the following statements, select Yes if the statement is true. Otherwise, select No. NOTE: Each correct selection is worth one point.

Answer Area

Statements	Yes	No
When User1 signs in to Server1, the user's Documents folder will be redirected to \\Server1\Share1.	<input type="radio"/>	<input type="radio"/>
If you add User1 to Group3, and then User1 signs in to Server1, the user's Documents folder will be redirected to \\Server1\Share3.	<input type="radio"/>	<input type="radio"/>
When User2 signs in to Server1, the user's Documents folder will be redirected to \\Server1\Share1	<input type="radio"/>	<input type="radio"/>

- A. Mastered
- B. Not Mastered

Answer: A

Explanation:

Answer Area

Statements

Yes

No

When User1 signs in to Server1, the user's Documents folder will be redirected to \\Server1\Share1.

☐
☐

If you add User1 to Group3, and then User1 signs in to Server1, the user's Documents folder will be redirected to \\Server1\Share3.

☐
☐

When User2 signs in to Server1, the user's Documents folder will be redirected to \\Server1\Share1

☐
☐

NEW QUESTION 7

Note: This question is part of a series of questions that use the same or similar answer choices. An answer choice may be correct for more than one question in the series. Each question is independent of the other questions in this series. Information and details provided in a question apply only to that question.

Your network contains an Active Directory domain named contoso.com.

You need to limit the number of Active Directory Domain Services (AD DS) objects that a user can create in the domain.

Which tool should you use?

- A. Dsadd quota
- B. Dsmode
- C. Active Directory Administrative Center
- D. Dsacls
- E. Dsmain
- F. Active Directory Users and Computers
- G. Ntdsutil
- H. Group Policy Management Console

Answer: A

NEW QUESTION 8

Your network contains an Active Directory forest named contoso.com. The forest contains three domains named contoso.com, corp.contoso.com, and ext.contoso.com. The forest contains three Active Directory sites named Site1, Site2, and Site3.

You have the three administrators as described in the following table.

Administrator name	Group membership	Domain
Admin1	Domain Admins	Contoso.com
Admin2	Domain Admins	Corp.contoso.com
Admin3	Enterprise Admins	Contoso.com

You create a Group Policy object (GPO) named GPO1.

Which administrator or administrators can link GPO1 to Site2?

- A. Admin1 and Admin2 only
- B. Admin1, Admin2, and Admin3
- C. Admin3 only
- D. Admin1 and Admin3 only

Answer: D

Explanation:

References:

[https://technet.microsoft.com/en-us/library/cc732979\(v=ws.11\).aspx](https://technet.microsoft.com/en-us/library/cc732979(v=ws.11).aspx)

NEW QUESTION 9

Your network contains an Active Directory forest. The forest contains a domain named contoso.com. The domain contains three domain controllers.

A domain controller named lon-dc1 fails. You are unable to repair lon-dc1.

You need to prevent the other domain controllers from attempting to replicate to lon-dc1. Solution: From Active Directory Sites and Services, you remove the object of lon-dc1. Does this meet the goal?

- A. Yes
- B. No

Answer: B

NEW QUESTION 10

Your company recently deployed a new child domain to an Active Directory forest. You discover that a user modified the Default Domain Policy to configure several Windows components in the child domain. A company policy states that the Default Domain Policy must be used only to configure domain-wide security settings. You create a new Group Policy object (GPO) and configure the settings for the Windows components in the new GPO. You need to restore the Default Domain Policy to the default settings from when the domain was first installed. What should you do?

- A. From Group Policy Management, click Starter GPOs, and then click Manage Backups.
- B. From a command prompt, run the dcgpofix.exe command.
- C. From Windows PowerShell, run the Copy-GPO cmdlet.
- D. Run ntdsutil.exe to perform a metadata cleanup and a semantic database analysis.

Answer: B

NEW QUESTION 10

Your company has an office in Montreal. The network contains an Active Directory domain named conloso.com. You have an organizational unit (OU) named Montreal that contains all of the users accounts for the users in the Montreal office. An office manager in the Montreal office knows each user personally. You need to ensure that the office manager can provide the users with a new password if the users forget their password. What should you do?

- A. Create a Group Policy object (GPO) and link the GPO to the Montreal O
- B. Assign the office manager the Apply Group Policy permission on the GP
- C. Configure the Password Policy settings on the GPO.
- D. From the Security settings of the Montreal OU, assign the office manager the Reset Password permission.
- E. From the Security settings of each user account in the Montreal OU, assign the office manager the Change Password permission.
- F. Create a Group Policy object (GPO) and link the GPO to the OU of the domai
- G. Filter the GPO to the Montreal user
- H. Assign the office manager the Apply Group Policy permission on the GP
- I. Configure the Password Policy settings of the GPO.

Answer: A

NEW QUESTION 15

Your network contains an Active Directory forest. The forest contains a domain named contoso.com. The domain contains three domain controllers. A domain controller named lon-dc1 fails. You are unable to repair lon-dc1. You need to prevent the other domain controllers from attempting to replicate to lon-dc1. Solution: From Active Directory Domains and Trusts, you transfer the operations master roles from lon-dc1. Does this meet the goal?

- A. Yes
- B. No

Answer: B

NEW QUESTION 20

Your company has multiple offices. The network contains an Active Directory domain named contoso.com. An Active Directory site exists for each office. All of the sites connect to each other by using DEFAULTIPSITELINK. The company plans to open a new office. The new office will have a domain controller and 100 client computers. You install Windows Server 2016 on a member server in the new office. The new server will become a domain controller. You need to deploy the domain controller to the new office. The solution must ensure that the client computers in the new office will authenticate by using the local domain controller. Which three actions should you perform next in sequence? To answer, move the appropriate actions from the list of actions to the answer area and arrange them in the correct order.

Actions

Answer Area

- Create a new site object.
- Create a new connection object.
- Promote the member server to a domain controller.
- Create a new subnet object.
- Move the server object of the domain controller.

- A. Mastered
- B. Not Mastered

Answer: A

Explanation:

Actions	Answer Area
Create a new site object.	Create a new site object.
Create a new connection object.	Create a new subnet object.
Promote the member server to a domain controller.	Promote the member server to a domain controller.
Create a new subnet object.	
Move the server object of the domain controller.	

NEW QUESTION 23

Your network contains an Active Directory domain named contoso.com. The domain contains a web application that uses Kerberos authentication. You change the domain name of the web application. You need to ensure that the service principal name (SPN) for the application is registered. Which tool should you use?

- A. Repladmin
- B. Setspn
- C. Netsh
- D. Pdspnf

Answer: B

Explanation:

<https://social.technet.microsoft.com/wiki/contents/articles/18996.active-directory-powershell-script-to-list-all-sp>

NEW QUESTION 26

Note: This question is part of a series of questions that use the same scenario. For you convenience, the scenario is repeated in each question. Each question presents a different goal and answer choices, but the text of the scenario is exactly the same in each question in this series.

Start of repeated scenario.

You work for a company named Contoso, Ltd.

The network contains an Active Directory forest named contoso.com. A forest trust exists between contoso.com and an Active Directory forest named adatum.com.

The contoso.com forest contains the objects configured as shown in the following table.

Object name	Object type	Group scope	Group type
User1	User	<i>Not applicable</i>	<i>Not applicable</i>
User2	User	<i>Not applicable</i>	<i>Not applicable</i>
Computer1	Computer	<i>Not applicable</i>	<i>Not applicable</i>
Group1	Group	Domain local	Security
Group2	Group	Domain local	Security
Group3	Group	Universal	Security
Group4	Group	Global	Security
Group5	Group	Universal	Security

Group1 and Group2 contain only user accounts.

Contoso hires a new remote user named User3. User3 will work from home and will use a computer named Computer3 that runs Windows 10. Computer3 is currently in a workgroup.

An administrator named Admin1 is a member of the Domain Admins group in the contoso.com domain. From Active Directory Users and Computers, you create an organizational unit (OU) named OU1 in the contoso.com domain, and then you create a contact named Contact1 in OU1.

An administrator of the adatum.com domain runs the Set-ADUser cmdlet to configure a user named User1 to have a user logon name of User1@litwareinc.com. End of repeated scenario.

You need to join Computer3 to the contoso.com domain by using offline domain join.

Which command should you use in the contoso.com domain and on Computer3? To answer, select the appropriate options in the answer area.

Answer Area

The contoso.com domain:

▼
Add-Computer with the-DomainName parameter
Djoin.exe with the /provision parameter
Djoin.exe with the /requestodj parameter
Net computer with the /add parameter
Netdom.exe with the join parameter

Computer3:

▼
Add-Computer with the-DomainName parameter
Djoin.exe with the /provision parameter
Djoin.exe with the /requestodj parameter
Net computer with the /add parameter
Netdom.exe with the join parameter

- A. Mastered
- B. Not Mastered

Answer: A

Explanation:

Answer Area

The contoso.com domain:

▼
Add-Computer with the-DomainName parameter
Djoin.exe with the /provision parameter
Djoin.exe with the /requestodj parameter
Net computer with the /add parameter
Netdom.exe with the join parameter



Computer3:

▼
Add-Computer with the-DomainName parameter
Djoin.exe with the /provision parameter
Djoin.exe with the /requestodj parameter
Net computer with the /add parameter
Netdom.exe with the join parameter

NEW QUESTION 31

Your network contains an Active Directory domain named contoso.com. The domain contains a domain controller named DC1. You create and link a Group Policy object (GPO) named SalesAppGPO to an organizational unit (OU) named SalesOU. All the computer accounts are in the Computers container. All the user accounts of the users in the sales department are in SalesOU. You have a line-of-business application named SalesApp that is installed by using a Windows Installer package. You need to make SalesApp available to only the sales department users.



Which three actions should you perform in sequence? To answer move the appropriate actions from the list of actions to the answer area and arrange them in the correct order.

Actions		Answer Area
On DC1, create a WebDAV folder named SalesApp.		
Copy the Windows Installer package to SalesApp.		
In GPO1, add a package to Computer Configuration\Policies\Software Settings\Software installation.		
On DC1, create a shared folder named SalesApp.	 	
In GPO1, add a package to User Configuration\Policies\Software Settings\Software installation.		
In GPO1, create a software restriction policy in Computer Configuration\Policies\Windows Settings\Security Settings.		
In GPO1, create a software restriction policy in User Configuration\Policies\Windows Settings\Security Settings.		

- A. Mastered
- B. Not Mastered

Answer: A

Explanation:

Actions		Answer Area
On DC1, create a WebDAV folder named SalesApp.		On DC1, create a shared folder named SalesApp.
Copy the Windows Installer package to SalesApp.		Copy the Windows Installer package to SalesApp.
In GPO1, add a package to Computer Configuration\Policies\Software Settings\Software installation.		In GPO1, add a package to Computer Configuration\Policies\Software Settings\Software installation.
On DC1, create a shared folder named SalesApp.	 	
In GPO1, add a package to User Configuration\Policies\Software Settings\Software installation.		
In GPO1, create a software restriction policy in Computer Configuration\Policies\Windows Settings\Security Settings.		
In GPO1, create a software restriction policy in User Configuration\Policies\Windows Settings\Security Settings.		

NEW QUESTION 32

Your network contains an Active directory domain named conloso.com. The domain has an enterprise certification authority (CA). You duplicate the Basic EFS template, and you name the template Template1. You configure the CA to issue Template1. Users are configured to obtain a new certificate automatically when they sign in to a computer in the domain. You need to enable the users to automatically obtain

a certificate based on Template1.
 What should you modify?

- A. the Security settings for Template1
- B. the Request Handling properties for the CA
- C. the Publication Settings for the CA
- D. the Request Handling properties for Template1

Answer: A

NEW QUESTION 34

You have a server named Server1 that runs Windows Server 2016. Server1 has the Web Application Proxy role service installed.

You publish an application named App1 by using the Web Application Proxy.

You need to change the URL that users use to connect to App1 when they work remotely. Which command should you run? To answer, select the appropriate options in the answer area.

Answer Area

	▼	-ID 874A4543-7983-77A3-1E6D-1163E7419AC1
Set-WebApplicationProxyApplication		
Set-WebApplicationProxyConfiguration		
Set-WebApplicationProxySslCertificate		

	▼	https://SP.Contoso.com/
-ADFSUrl		
-BackendServerUrl		
-ExternalURL		

- A. Mastered
- B. Not Mastered

Answer: A

Explanation:

The Set-WebApplicationProxyApplication cmdlet modifies settings of a web application published through Web Application Proxy. Specify the web application to modify by using its ID. Note that the method of preauthentication cannot be changed. The cmdlet ensures that no other applications are already configured to use any specified ExternalURL or BackendServerURL.

References: <https://technet.microsoft.com/itpro/powershell/windows/wap/set-webapplicationproxyapplication>

NEW QUESTION 37

Your network contains an Active Directory forest. The forest functional level is Windows Server 2016. You have a failover cluster named Cluster1. Cluster1 has two nodes named Server1 and Server2. All the optional features in Active Directory are enabled.

A junior administrator accidentally deletes the computer object named Cluster1. You discover that Cluster1 is offline.

You need to restore the operation of Cluster1 in the least amount of time possible. What should you do?

- A. Run the Enable-ADAccount cmdlet from Windows PowerShell.
- B. Perform an authoritative restore by running ntdutil.exe.
- C. Perform a tombstone reanimation by running ldp.exe.
- D. Recover a deleted object from the Active Directory Recycle Bin.

Answer: D

NEW QUESTION 40

Your network contains an Active Directory domain named adatum.com. The domain contains a security group named G_Research and an organizational unit (OU) named OU_Research.

All the users in the research department are members of G_Research and their user accounts are in OU_Research.

You need to ensure that all the research department users change their password every 28 days and enforce a complex password that is characters long. What should you do?

- A. From Group Policy Management, create and link a Group Policy object (GPO) to the domain.
- B. Modify the password policy in the GPO Filter the GPO to apply to G_Research only.
- C. From Active Directory Administrative Center, create a new Password Settings object (PSO).
- D. From Active Directory Users and Computers, modify the properties of the Password Settings Container.
- E. From Group Policy Management, create and link a Group Policy object (GPO) to OU_Research.
- F. Modify the password policy in the GPO.

Answer: C

NEW QUESTION 44

You deploy a new certification authority (CA) to a server that runs Windows Server 2016. You need to configure the CA to support recovery of certificates.

What should you do first?

- A. Modify the extensions of the OCSP Response Signing template
- B. Modify the Recovery Agents settings from the properties of the CA.
- C. Assign the Request Certificates permission to the user account that will be responsible for recovering certificates.
- D. Configure the Key Recovery Agent template as a certificate template to issue.

Answer: A

NEW QUESTION 49

Note: This question is part of a series of questions that use the same or similar answer choices. An answer choice may be correct for more than one question in the series. Each question is independent of the other questions in this series. Information and details provided in a question apply only to that question.

Your network contains an Active Directory domain named contoso.com. The domain contains a domain controller named Server1.

You recently restored a backup of the Active Directory database from Server1 to an alternate Location. The restore operation does not interrupt the Active Directory services on Server1.

You need to make the Active Directory data in the backup accessible by using Lightweight Directory Access Protocol (LDAP).

Which tool should you use?

- A. Dsadd quota
- B. Dsmod
- C. Active Directory Administrative Center
- D. DsacIs
- E. Dsamain
- F. Active Directory Users and Computers
- G. Ntdsutil
- H. Group Policy Management Console

Answer: E

NEW QUESTION 53

Your network contains an Active Directory forest. The forest contains a domain named contoso.com. The domain contains three domain controllers.

A domain controller named lon-dc1 fails. You are unable to repair lon-dc1.

You need to prevent the other domain controllers from attempting to replicate to lon-dc1.

Solution: From Active Directory Sites and Trusts, you transfer the operations master roles from lon-dc1. Does this meet the goal?

- A. Yes
- B. NO

Answer: B

NEW QUESTION 58

Your network contains an Active Directory forest named contoso.com.

You have an Active Directory Federation Services (AD FS) farm. The farm contains a server named Server1 that runs Windows Server 2012 R2.

You add a server named Server2 to the farm. Server2 runs Windows Server 2016. You remove Server1 from the farm.

You need to ensure that you can use role separation to manage the farm. Which cmdlet should you run?

- A. Set-AdfsFarmInformation
- B. Update-AdfsRelyingPartyTrust
- C. Set-AdfsProperties
- D. Invoke-AdfsFarmBehaviorLevelRaise

Answer: D

Explanation:

AD FS for Windows Server 2016 introduces the ability to have separation between server administrators and AD FS service administrators.

After upgrading our ADFS servers to Windows Server 2016, the last step is to raise the Farm Behavior Level using the Invoke-AdfsFarmBehaviorLevelRaise PowerShell cmdlet.

To upgrade the farm behavior level from Windows Server 2012 R2 to Windows Server 2016 use the Invoke-ADFSFarmBehaviorLevelRaise cmdlet.

References: [https://technet.microsoft.com/en-us/library/mt605334\(v=ws.11\).aspx](https://technet.microsoft.com/en-us/library/mt605334(v=ws.11).aspx)

NEW QUESTION 63

Note: This question is part of a series of questions that use the same scenario. For your convenience, the scenario is repeated in each question. Each question presents a different goal and answer choices, but the text of the scenario is exactly the same in each question in this series.

Start of repeated scenario.

You work for a company named Contoso, Ltd.

The network contains an Active Directory forest named contoso.com. A forest trust exists between contoso.com and an Active Directory forest named adatum.com.

The contoso.com forest contains the objects configured as shown in the following table.

Object name	Object type	Group scope	Group type
User1	User	<i>Not applicable</i>	<i>Not applicable</i>
User2	User	<i>Not applicable</i>	<i>Not applicable</i>
Computer1	Computer	<i>Not applicable</i>	<i>Not applicable</i>
Group1	Group	Domain local	Security
Group2	Group	Domain local	Security
Group3	Group	Universal	Security
Group4	Group	Global	Security
Group5	Group	Universal	Security

Group1 and Group2 contain only user accounts.

Contoso hires a new remote user named User3. User3 will work from home and will use a computer named Computer3 that runs Windows 10. Computer3 is currently in a workgroup.

An administrator named Admin1 is a member of the Domain Admins group in the contoso.com domain. From Active Directory Users and Computers, you create an organizational unit (OU) named OU1 in the contoso.com domain, and then you create a contact named Contact1 in OU1.

An administrator of the adatum.com domain runs the Set-ADUser cmdlet to configure a user named User1 to have a user logon name of User1@litwareinc.com. End or repeated scenario.

You need to ensure that Admin1 can add Group2 as a member of Group3. What should you modify?

- A. Modify the Security settings of Group3.
- B. Modify the group scope of Group3.
- C. Modify the group type of Group3.
- D. Set Admin1 as the manager of Group3.

Answer: B

NEW QUESTION 68

You network contains an Active Directory forest. The forest contains an Active Directory Federation Services (AD FS) deployment.

The AD FS deployment contains the following:

- * An AD FS server named server1.contoso.com that runs Windows Server 2016
- * A Web Application Proxy used to publish AD FS
- * A LIPN that uses the contoso.com suffix
- * A namespace named adfs.contoso.com

You create a Microsoft Office 365 tenant named contoso.onmicrosoft.com. You use Microsoft Azure Active Directory Connect (AD Connect) to synchronize all of the users and the UPNs from the contoso.com forest to Office 365.

You need to configure federation between Office 365 and the on-premises deployment of Active Directory. Which three commands should you run in sequence from Server1? To answer, move the appropriate commands from the list of commands to the answer area and arrange them in the correct order.

Commands

Answer Area

Convert-MsolDomainToFederated -DomainName contoso.com

Enter-PSSession -Name Office365

Convert_MsolDomainToFederated -DomainName adfs.contoso.com

Set-MsolADFSContext -Computer server1contoso.com

Connect-MsolService

Set-MsolADFSContext -Computer contoso.com

- A. Mastered
- B. Not Mastered

Answer: A

Explanation:

Commands	Answer Area
Convert-MsolDomainToFederated -DomainName contoso.com	Connect-MsolService
Enter-PSSession -Name Office365	Set-MsolADFSContext -Computer server1contoso.com
Convert_MsolDomainToFederated -DomainName adfs.contoso.com	Convert-MsolDomainToFederated -DomainName contoso.com
Set-MsolADFSContext -Computer server1contoso.com	
Connect-MsolService	
Set-MsolADFSContext -Computer contoso.com	

NEW QUESTION 69

You have a server named Server1 that runs Windows Server 2016. Server1 has the Web Application Proxy role service installed. You need to publish Microsoft Exchange Server 2013 services through the Web Application Proxy. The solution must use preauthentication whenever possible. How should you configure the preauthentication method for each service? To answer, select the appropriate options in the answer area.

Answer Area

Exchange ActiveSync:

Active Directory Federation Services (AD FS)

Pass-through

Outlook Web App:

Active Directory Federation Services (AD FS)

Pass-through

Outlook Anywhere:

Active Directory Federation Services (AD FS)

Pass-through

- A. Mastered
- B. Not Mastered

Answer: A

Explanation:

Box 1: Pass-through
 Box 2: Active Directory Federation Services (ADFS) Box 3: Pass-through
 The following table describes the Exchange services that you can publish through Web Application Proxy and the supported preauthentication for these services:

Exchange service	Preauthentication
Outlook Web App	<ul style="list-style-type: none"> AD FS using non-claims-based authentication Pass-through AD FS using claims-based authentication for on-premises Exchange 2013 Service Pak 1 (SP1)
Exchange Control Panel	Pass-through
Outlook Anywhere	Pass-through
Exchange ActiveSync	Pass-through

References: [https://technet.microsoft.com/en-us/library/dn528827\(v=ws.11\).aspx](https://technet.microsoft.com/en-us/library/dn528827(v=ws.11).aspx)

NEW QUESTION 71

Your network contains an Active Directory forest named contoso.com. The forest contains a member server named Server1. Server1 has several line-of-business applications. Each application runs as a service that uses the Network Service account. You need to configure the line-of-business applications to run by using a virtual account. What should you do?

- A. From the Services console, modify the Log On properties of the services.
- B. From the Microsoft Application Compatibility Toolkit (ACT), create a shim.
- C. From Windows PowerShell, run the Install-ADServiceAccount cmdlet.
- D. From Windows PowerShell, run the New-ADServiceAccount cmdlet.

Answer: A

NEW QUESTION 75

Note: This question is part of a series of questions that use the same or similar answer choices. An answer choice may be correct for more than one question in the series. Each question is independent of the other questions in this series. Information and details provided in a question apply only to that question.

Your network contains an Active Directory domain named contoso.com. The domain functional level is Windows Server 2012 R2.

Your company hires a new security administrator to manage sensitive user data. You create a user account named Security1 for the security administrator. You need to ensure that the password for Security1 has at least 12 characters and is modified every 10 days. The solution must apply to Security1 only. Which tool should you use?

- A. Dsadd quota
- B. Dsmod
- C. Active Directory Administrative Center
- D. DsacIs
- E. Dsmain
- F. Active Directory Users and Computers
- G. Ntdsutil
- H. Group Policy Management Console

Answer: F

NEW QUESTION 77

Note: This question is part of a series of questions that present the same scenario. Each question in the series contains a unique solution. Determine whether the solution meets the stated goals.

Your network contains an Active Directory domain named contoso.com. The domain contains a DNS server named Server1. All client computers run Windows 10. On Server1, you have the following zone configuration.

ZoneName	ZoneType	IsAutoCreated	IsDsIntegrated	IsReverseLookupZone	IsSigned
_nsdcs.contoso.com	Primary	False	True	False	False
0.in-addr.arpa	Primary	True	False	True	False
127.in-addr.arpa	Primary	True	False	True	False
255.in-addr.arpa	Primary	True	False	True	False
adatum.com	Forwarder	False	False	False	False
contoso.com	Primary	False	True	False	False
fabrikam.com	Primary	False	True	False	True
TrustAnchors	Primary	False	True	False	False

You need to ensure that all of the client computers in the domain perform DNSSEC validation for the fabrikam.com namespace.

Solution: From a Group Policy object (GPO) in the domain, you add a rule to the Name Resolution Policy Table (NRPT).

Does this meet the goal?

- A. Yes
- B. No

Answer: A

Explanation:

The NRPT stores configurations and settings that are used to deploy DNS Security Extensions (DNSSEC), and also stores information related to DirectAccess, a remote access technology.

Note: The Name Resolution Policy Table (NRPT) is a new feature available in Windows Server 2008 R2. The NRPT is a table that contains rules you can configure to specify DNS settings or special behavior for names or namespaces. When performing DNS name resolution, the DNS Client service checks the NRPT before sending a DNS query. If a DNS query or response matches an entry in the NRPT, it is handled according to settings in the policy. Queries and responses that do not match an NRPT entry are processed normally.

References: [https://technet.microsoft.com/en-us/library/ee649207\(v=ws.10\).aspx](https://technet.microsoft.com/en-us/library/ee649207(v=ws.10).aspx)

NEW QUESTION 80

You deploy a new certification authority (CA) to a server that runs Windows Server 2016. You need to configure the CA to support recovery of certificates. What should you do first?

- A. Modify the Recovery Agents settings from the properties of the CA.
- B. Assign the Request Certificates permission to the user account that will be responsible for recovering certificates.
- C. Configure the Key Recovery Agent template as a certificate template to issue.
- D. Modify the extensions of the OCSP Response Signing template.

Answer: C

Explanation:

References:

<http://markgossa.blogspot.co.uk/2017/03/enable-key-archival-in-server-2012-r2.html>

NEW QUESTION 81

Your network contains an Active Directory forest.

Some users report experiencing difficulties signing in to domain controllers. You suspect that the service location (SRV) records might be causing the issue.

What are two possible commands that you can run to verify the SRV records? Each correct answer presents a complete solution.

NOTE: Each correct selection is worth one point.

- A. dcdiag.exe /test:connectivity
- B. dnscmd /info
- C. dnscmd /DirectoryPartitionInfo
- D. dcdiag.exe /test:dns /DnsRecordRegistration
- E. dcdiag.exe /test:dns
- F. dnscmd /IPValidate

Answer: BD

Explanation:

<https://docs.microsoft.com/en-us/windows-server/identity/ad-ds/manage/troubleshoot/verify-dns-functionality-to>

NEW QUESTION 82

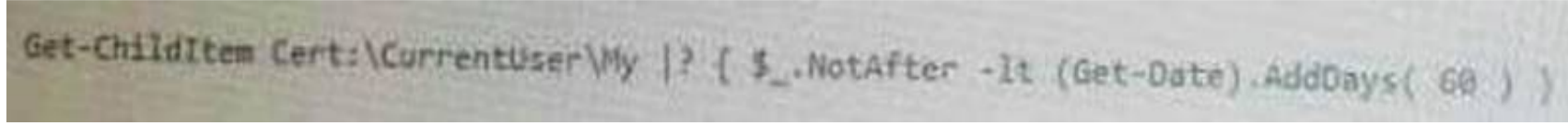
Note: This question is part of a series of questions that present the same scenario. Each question in the series contains a unique solution that might meet the stated goals. Some question sets might have more than one correct solution, while others might not have a correct solution.

After you answer a question in this section, you will NOT be able to return to it. As a result, these questions will not appear in the review screen.

You have a server named Web1 that runs Windows Server 2016.

You need to list all the SSL certificates on Web1 that will expire during the next 60 days. Solution: You run the following command.

Get-ChildItem Cert:\LocalMachine\Trust |? { \$_.NotAfter -lt (Get-Date).AddDays(60) }



Does this meet the goal?

- A. Yes
- B. No

Answer: A

NEW QUESTION 85

Your network contains an Active Directory forest named contoso.com. The forest contains several domains. An administrator named Admin01 installs Windows Server 2016 on a server named Server1 and then joins

Server1 to the contoso.com domain.

Admin01 plans to configure Server1 as an enterprise root certification authority (CA).

You need to ensure that Admin01 can configure Server1 as an enterprise CA. The solution must use the principle of least privilege.

To which group should you add Admin01?

- A. Server Operators in the contoso.com domain
- B. Cert Publishers on Server1
- C. Enterprise Key Admins in the contoso.com domain
- D. Enterprise Admins in the contoso.com domain.

Answer: D

NEW QUESTION 87

Your network contains an Active Directory forest named contoso.com. The forest contains 10 domains. The root domain contains a global catalog server named DC1.

You remove the global catalog server role from DC1.

You need to decrease the size of the Active Directory database on DC1.

Solution: You stop the NTDS service on DC1. You run ntdsutil.exe, use the metadata cleanup option, and then start the NTDS

Does this meet the goal?

- A. Yes
- B. No

Answer: B

Explanation:

You need to run ntdsutil.exe with the 'compact to' option. References:

<https://theitbros.com/active-directory-database-compact-defrag/>

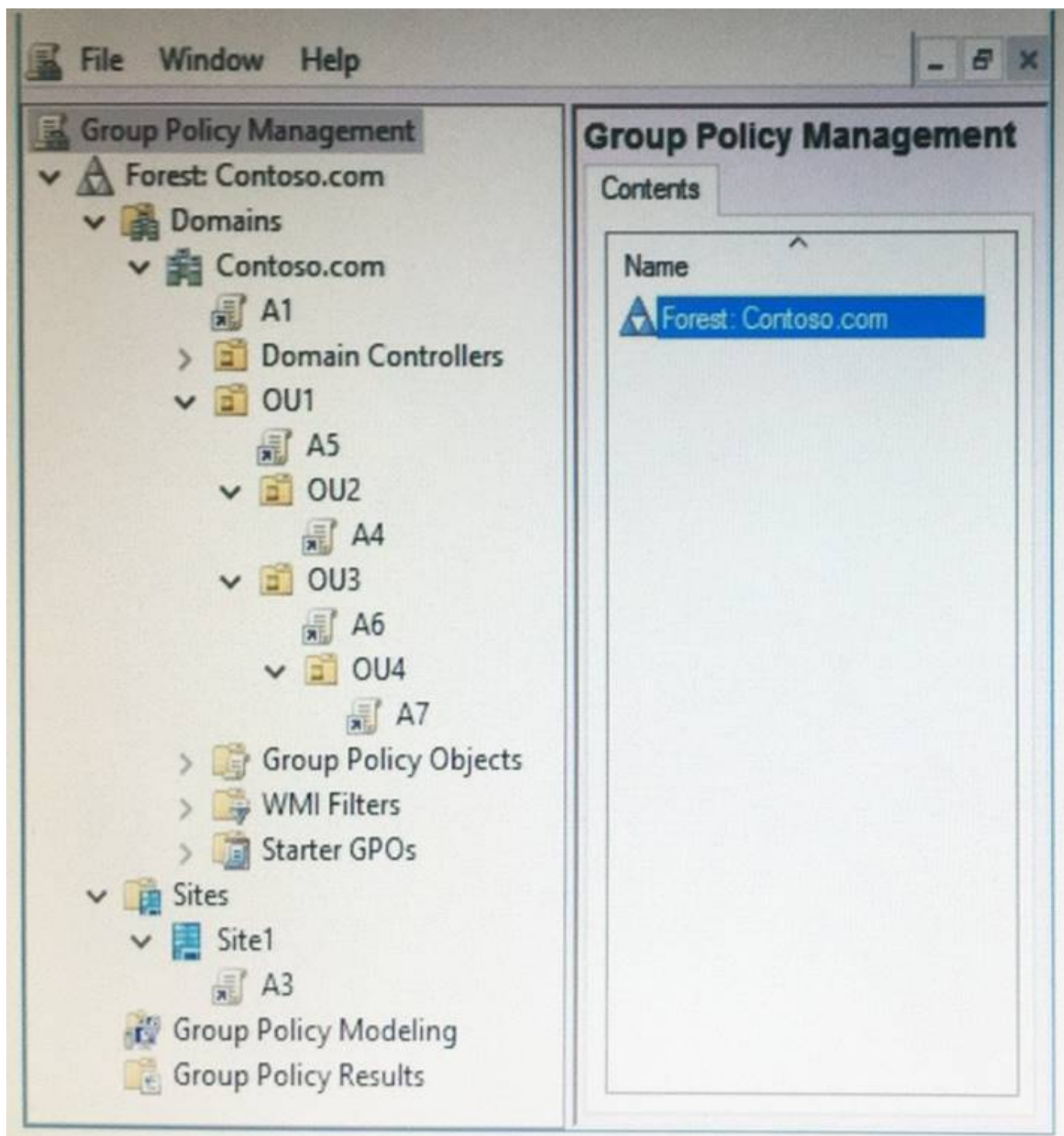
NEW QUESTION 90

Note: This question is part of a series of questions that use the same scenario. For your convenience, the scenario is repeated in each question. Each question presents a different goal and answer choices, but the text of the scenario is exactly the same in each question in this series.

Start of repeated scenario.

Your network contains an Active Directory domain named contoso.com. The domain contains a single site named Site1. All computers are in Site1.

The Group Policy objects (GPOs) for the domain are configured as shown in the exhibit. (Click the Exhibit button.)



The relevant users and client computer in the domain are configured as shown in the following table.

Object name	Object type	Object location
Computer	Computer	OU4
User1	User	OU4
User2	User	OU2

End of repeated scenario.

You plan to enforce the GPO link for A6.

Which five GPOs will apply to User1 in sequence when the user signs in to Computer1 after the link is enforced? To answer, move the appropriate GPOs from the list of GPOs to the answer area and arrange them in the correct order.

GPOs

Answer Area

A1

A2

A3

A4

A5

A6

A7

- A. Mastered
- B. Not Mastered

Answer: A

Explanation:

GPOs

Answer Area

A1

A2

A3

A4

A5

A6

A7

A3

A1

A5

A7

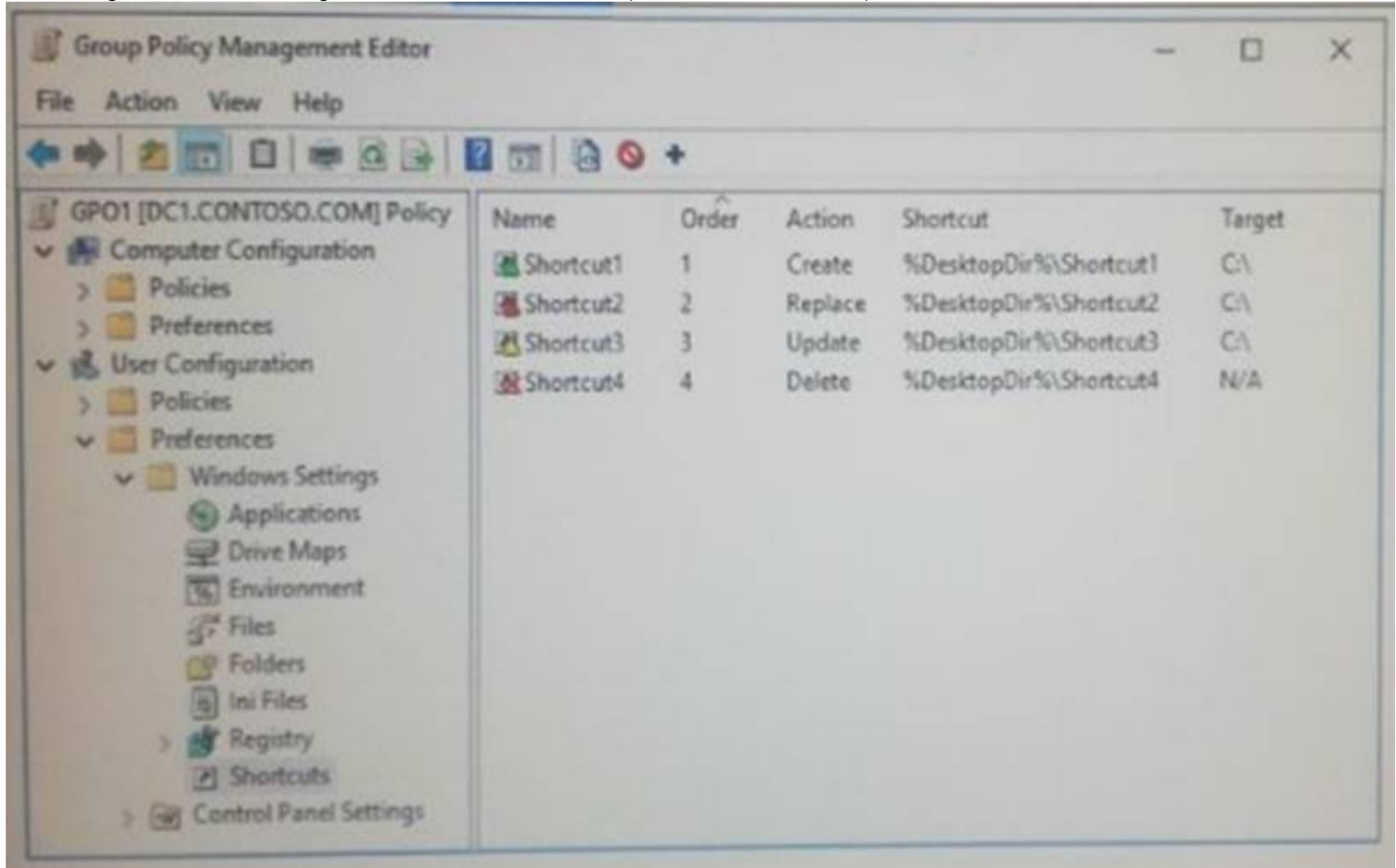
A6

NEW QUESTION 92

User1 is in OU1. GPO1 is linked to OU1.

Object name	Type
Computer1	Domain computer
OU1	Organizational unit (OU)
GPO1	Group Policy object (GPO)
User1	User account

The settings in GPO1 are configured as shown in the exhibit. (Click the Exhibit button)



Computer1 does not have any shortcuts on the desktop.

- A. 1
- B. 2
- C. 3
- D. 4

Answer: D

NEW QUESTION 96

Your company has a main office and three branch offices. The network contains an Active Directory domain named contoso.com. The main office contains three domain controllers. Each branch office contains one domain controller. You discover the new settings in the Default Domain Policy are not applied in one of the branch offices, but all other Group Policy objects (GPOs) are applied. You need to check the replication of the Default Domain Policy for the branch office. What should you do from a domain controller in the main office?

- A. From Group Policy Management, click Default Domain Policy under Contoso.com, and then open the Scope tab.
- B. From a command prompt, run dcdiag.exe.
- C. From Group Policy Management, click Default Domain Policy under the Group Policy Objects container, and then open the Status tab.
- D. From Windows PowerShell, run the Get-ADReplicationConnection cmdlet.

Answer: C

NEW QUESTION 99

Your network contains an enterprise root certification authority (CA) named CA1. Multiple computers on the network successfully enroll for certificates that will expire in one year. The certificates are based on a template named Secure_Computer. The template uses schema version 2. You need to ensure that new certificates based on Secure_Computer are valid for three years. What should you do?

- A. Modify the Validity period for the certificate template.
- B. Instruct users to request certificates by running the certreq.exe command.
- C. Instruct users to request certificates by using the Certificates console.
- D. Modify the Validity period for the root CA certificate.

Answer: A

NEW QUESTION 103

Your network contains an Active Directory domain named contoso.com. The domain contains an enterprise root certification authority (CA) on a server that runs Windows Server 2016. You need to configure the CA to support Online Certificate Status Protocol (OCSP) responders. Which two actions should you perform? Each correct selection presents part of the solution. NOTE: Each correct selection is worth one point.

- A. Add a new certificate template to issue.
- B. Modify the Authority Information Access (AIA) of the CA.
- C. Configure an enrollment agent.
- D. Install a standalone subordinate CA.
- E. Modify the CRL distribution point (CDP) of the CA.

Answer: AB

Explanation:

Once the OCSP service is configured, we need to configure the OCSP Response Signing template. This process includes adding an Authority Information Access (AIA) extension and then issuing a new certificate template.

References:

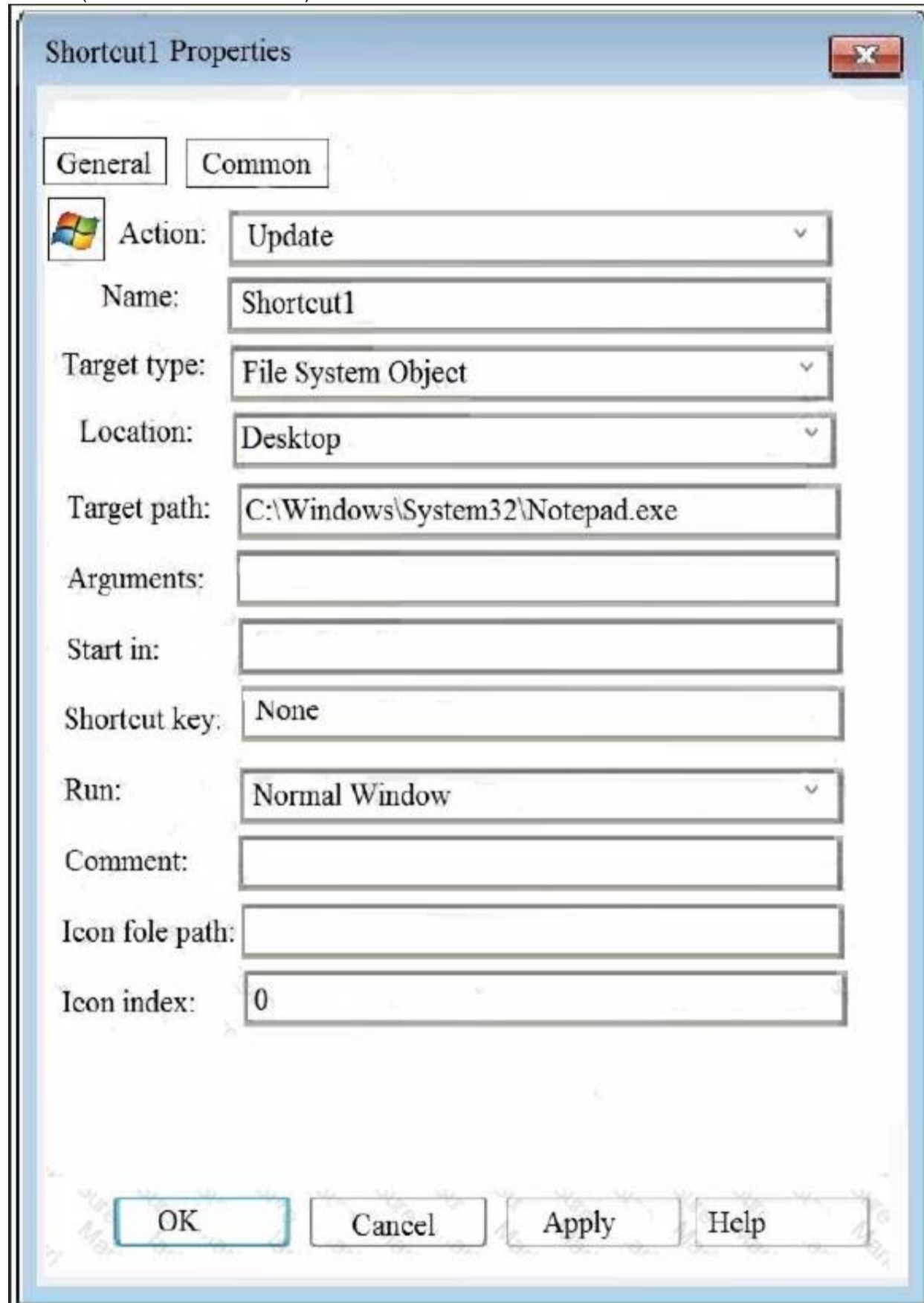
<https://www.poweradmin.com/blog/deploying-active-directory-certificate-services-and-online-responder/>

NEW QUESTION 107

Your network contains an Active Directory domain named contoso.com.


A user named User1 and a computer named Computer1 are in an organizational unit OU1. A user named User2 and a computer named Computer 2 are in an OU named OU2.

A Group Policy object (GPO) named GPO1 is linked to the domain. GPO1 contains a user preference that is configured as shown in the Shortcut1 Properties exhibit. (Click the Exhibit button.)



Shortcut1 Properties

General | Common

 Action: Update

Name: Shortcut1

Target type: File System Object

Location: Desktop

Target path: C:\Windows\System32\Notepad.exe

Arguments:

Start in:

Shortcut key: None

Run: Normal Window

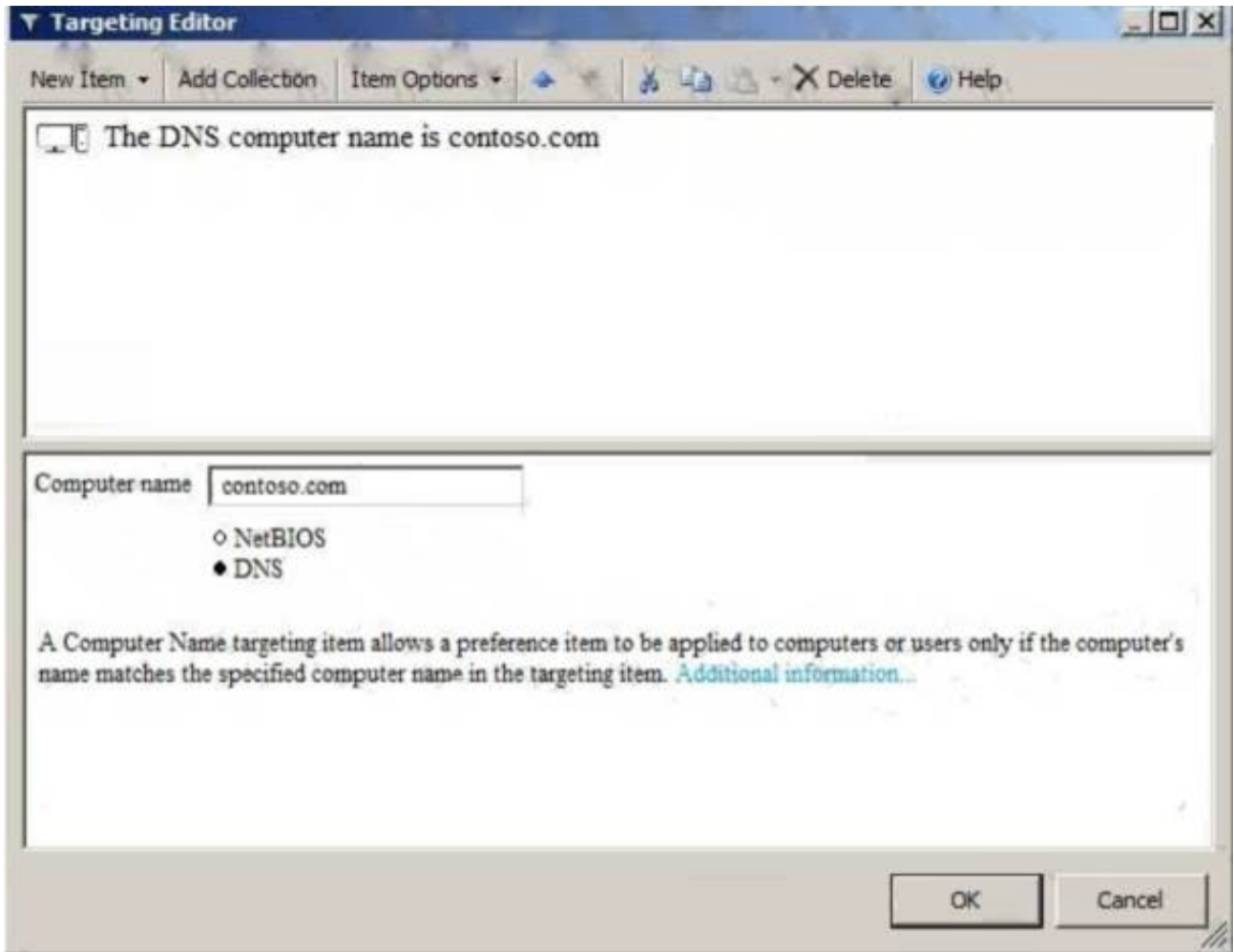
Comment:

Icon file path:

Icon index: 0

OK Cancel Apply Help

Item-level targeting for the user preference is configured as shown in the Targeting exhibit. (Click the Exhibit button.)



For each of the following statements, select Yes if the statement is true. Otherwise, select No. NOTE: Each correct selection is worth one point.

Statements	Yes	No
If User1 signs in to Computer1, Shortcut1 will appear on the desktop.	<input type="radio"/>	<input type="radio"/>
If User1 signs in to Computer2, Shortcut1 will appear on the desktop.	<input type="radio"/>	<input type="radio"/>
If User2 signs in to Computer1, Shortcut1 will appear on the desktop.	<input type="radio"/>	<input type="radio"/>

- A. Mastered
- B. Not Mastered

Answer: A

Explanation:

References:

https://docs.microsoft.com/en-us/previous-versions/windows/it-pro/windows-server-2008-R2-and-2008/cc73075

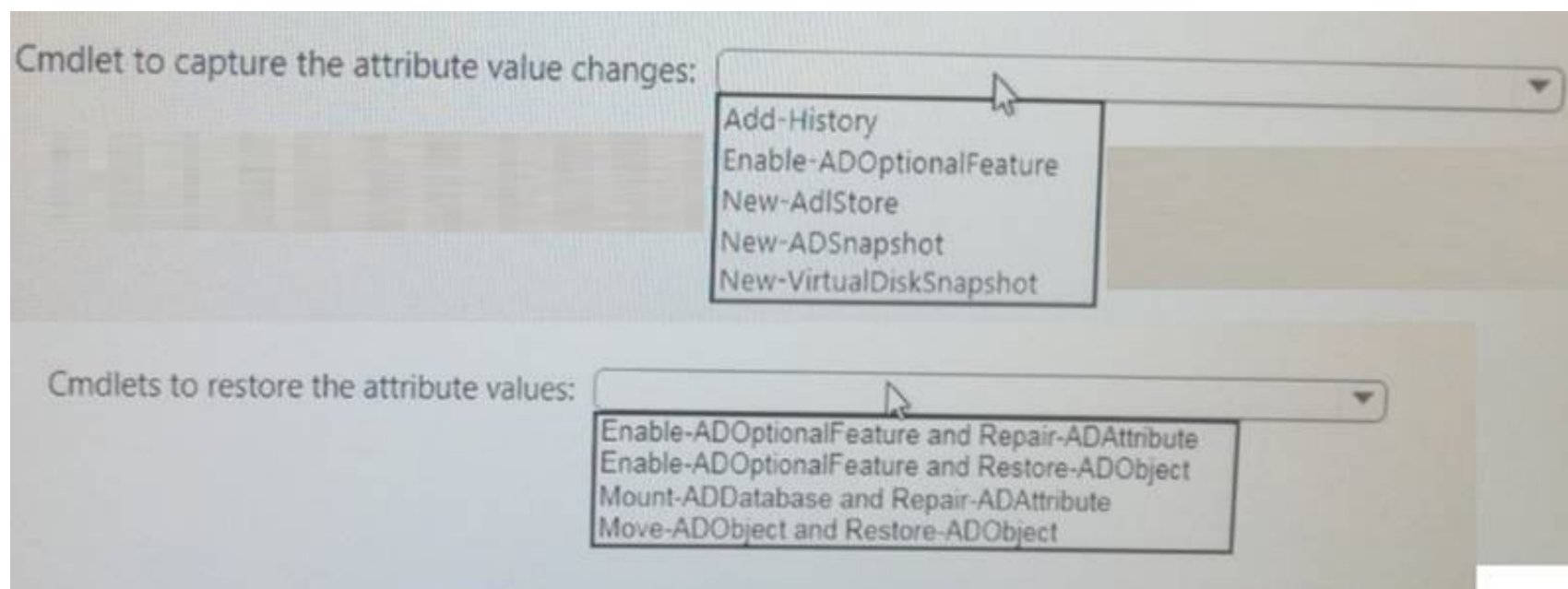
NEW QUESTION 111

Your network contains a single-domain Active Directory forest named contoso.com. The forest functional level is Windows Server 2016. The Active Directory Recycle Bin feature is enabled.

You need to design a procedure to restore the values of user object attributes if the values are changed accidentally.

Which cmdlets should you include in the procedure? To answer, select the appropriate options in the answer area.

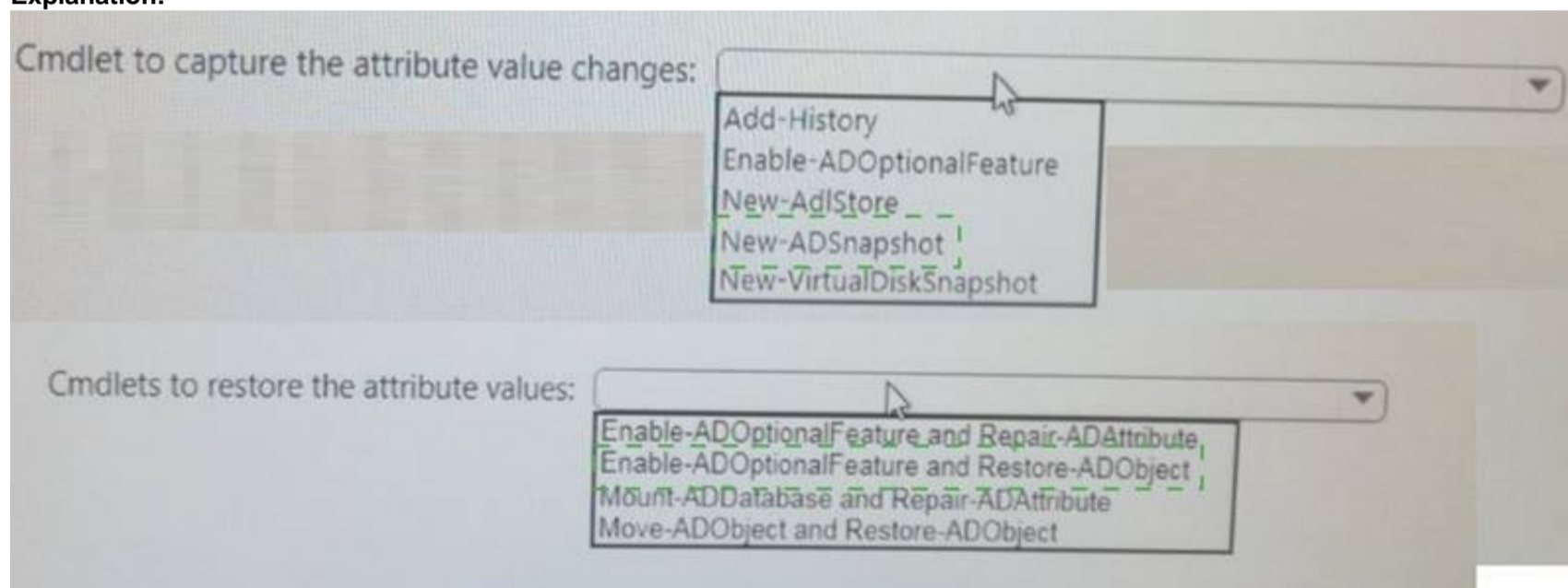
NOTE: Each correct selection is worth one point.



- A. Mastered
- B. Not Mastered

Answer: A

Explanation:



NEW QUESTION 112

Note: This question is part of a series of questions that use the same or similar answer choices. An answer choice may be correct for more than one question in the series. Each question is independent of the other questions in this series.

Information and details provided in a question apply only to that question.

Your network contains an Active Directory domain named contoso.com. The domain contains 5,000 user accounts.

You have a Group Policy object (GPO) named DomainPolicy that is linked to the domain and a GPO named DCPolicy that is linked to the Domain Controllers organizational unit (OU).

You need to configure the Documents folder of every user to be stored on a server named FileServer1. What should you do?

- A. From the Computer Configuration node of DCPolicy, modify Security Settings.
- B. From the Computer Configuration node of DomainPolicy, modify Security Settings.
- C. From the Computer Configuration node of DomainPolicy, modify Administrative Templates.
- D. From the User Configuration node of DCPolicy, modify Security Settings.
- E. From the User Configuration node of DomainPolicy, modify Folder Redirection.
- F. From user Configuration node of DomainPolicy, modify Administrative Templates.
- G. From Preferences in the User Configuration node of DomainPolicy, modify Windows Settings.
- H. From Preferences in the Computer Configuration node of DomainPolicy, modify Windows Settings.

Answer: E

NEW QUESTION 115

Your network contains an Active Directory forest. The forest contains two domains named litwareinc.com and contoso.com. The contoso.com domain contains two domain controllers named LON-DC01 and LON-DC02. The domain controllers are located in a site named London that is associated to a subnet of 192.168.10.0/24.

You discover that LON-DC02 is not a global catalog server. You need to configure LON-DC02 as a global catalog server.

What should you do?

- A. From Active Directory Sites and Services, modify the NTDS Settings object of the London site.
- B. From Windows Power Shell, run the Enable-ADOptionalFeature cmdlet.
- C. From the properties of the LON-DC02 computer account in Active Directory Users and Computers modify the NTDS settings.
- D. From the properties of the LON-DC02 computer account in Active Directory Users and Computers, modify the City attribute.

Answer: C

NEW QUESTION 116

Note: This question is part of a series of questions that use the same or similar answer choices. An answer choice may be correct for more than one question in the series. Each question is independent of the other questions in this series. Information and details provided in a question apply only to that question.
Your network contains an Active Directory domain named contoso.com. You recently deleted 5,000 objects from the Active Directory database. You need to reduce the amount of disk space used to store the Active Directory database on a domain controller.

- A. Dsadd quota
- B. Dsmmod
- C. Active Directory Administrative Center
- D. Dsacsls
- E. Domain
- F. Active Directory Users and Computers
- G. Ntdsutil
- H. Group Policy Management Console

Answer: G

NEW QUESTION 120

Your network contains an Active Directory forest named contoso.com
Your company plans to hire 500 temporary employees for a project that will last 90 days.
You create a new user account for each employee. An organizational unit (OU) named Temp contains the user accounts for the employees. You need to prevent the new users from accessing any of the resources in the domain after 90 days. What should you do?

- A. Run the Get-ADUser cmdlet and pipe the output to the Set-ADUser cmdlet.
- B. Create a group that contains all of the users in the Temp O
- C. Create a Password Setting object (PSO) for the new group.
- D. Create a Group Policy object (GPO) and link the GPO to the Temp O
- E. Modify the Password Policy settings of the GPO.
- F. Run the GET-ADOrganizationalUnit cmdlet and pipe the output to the Set-Date cmdlet.

Answer: A

NEW QUESTION 123

Your network contains an Active Directory domain named contoso.com. The domain functional level is Windows Server 2012 R2. You need to secure several high-privilege user accounts to meet the following requirements: What should you do?

- A. Create a universal security group for the user accounts and modify the Security settings of the group.
- B. Add the users to the Windows Authorization Access Group group.
- C. Add the user to the Protected Users group.
- D. Create a separate organizational unit (OU) for the user accounts and modify the Security settings of the OU.

Answer: C

NEW QUESTION 128

Your company implements Active Directory Federation Services (AD FS).
You confirm that the company meets all the prerequisites for using Microsoft Azure Multi-Factor Authentication (MFA) and AD FS.
You need to ensure that you can select MFA as the primary authentication method for AD FS.
Which three actions should you perform in sequence? To answer move the appropriate actions from the list of actions to the answer area and arrange them in the correct order.

Actions

Add a claims provider trust.

Run the New-AdfsAzureMfatenant Certificate cmdlet.

Run the New-MsolServicePrincipal Credential cmdlet.

Edit the authentication methods.

Run the Set-AdfsAzureMfaTenant cmdlet.

Answer Area

1.

2.

3.

- A. Mastered
- B. Not Mastered

Answer: A

Explanation:

Actions	Answer Area
Add a claims provider trust.	1. Run the New-AdfsAzureMfatenant Certificate cmdlet.
Run the New-AdfsAzureMfatenant Certificate cmdlet.	2. Run the New-MsolServicePrincipal Credential cmdlet.
Run the New-MsolServicePrincipal Credential cmdlet.	3. Run the Set-AdfsAzureMfaTenant cmdlet.
Edit the authentication methods.	
Run the Set-AdfsAzureMfaTenant cmdlet.	

NEW QUESTION 129

Note: This question is part of a series of questions that present the same scenario. Each question in the series contains a unique solution that might meet the stated goals. Some question sets might have more than one correct solution, while others might not have a correct solution. After you answer a question in this section, you will NOT be able to return to it. As a result, these questions will not appear in the review screen. You have a server named Web1 that runs Windows Server 2016. You need to list all the SSL certificates on Web1 that will expire during the next 60 days. Solution: You run the following command.

```
Get-Childitem Cert:\LocalMachine\My |? { $_.NotAfter -lt (Get-Date).AddDays( 60 ) }
```

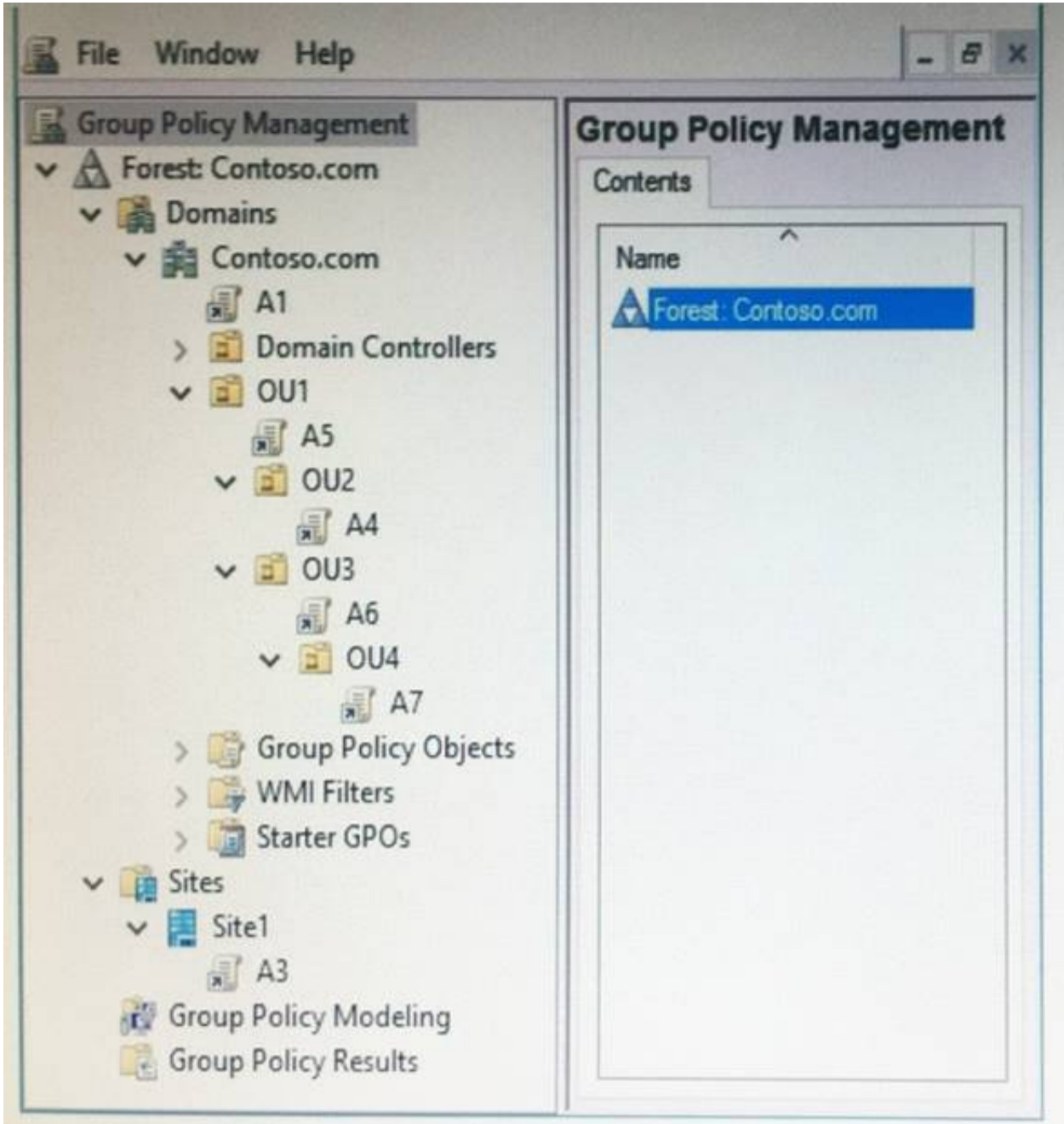
Does this meet the goal?

- A. Yes
- B. No

Answer: B

NEW QUESTION 131

Note: This question is part of a series of questions that use the same scenario. For your convenience, the scenario is repeated in each question. Each question presents a different goal and answer choices, but the text of the scenario is exactly the same in each question in this series. Start of repeated scenario. Your network contains an Active Directory domain named contoso.com. The domain contains a single site named Site1. All computers are in Site1. The Group Policy objects (GPOs) for the domain are configured as shown in the exhibit. (Click the Exhibit button.)



The relevant users and client computer in the domain are configured as shown in the following table.

Object name	Object type	Object location
Computer1	Computer	OU4
User1	User	OU4
User2	User	OU2

End of repeated scenario.
You are evaluating what will occur when you set user Group Policy loopback processing mode to Replace in A4.
Which GPO or GPOs will apply to User2 when the user signs in to Computer1 after loopback processing is configured?

- A. A1, A5, A6 and A4
- B. A3, A1, A4, A6 and A7
- C. A3, A1, A5 and A4
- D. A4 only

Answer: A

NEW QUESTION 135

Your network contains an Active Directory domain named contoso.com. The domain contains a user named User1 and an organizational unit (OU) named OU1. You create a Group Policy object (GPO) named GPO1. You need to ensure that User1 can link GPO1 to OU1. What should you do?

- A. Modify the security setting of User1.
- B. Add User1 to the Group Policy Creator Owner group.
- C. Modify the security setting of OU1.
- D. Modify the security setting of GPO1.

Answer: D

NEW QUESTION 140

Note: This question is part of a series of questions that present the same scenario. Each question in the series contains a unique solution that might meet the stated goals. Some question sets might have more than one correct solution, while others might not have a correct solution.
After you answer a question in this section, you will NOT be able to return to it. As a result, these questions will not appear in the review screen.
Your network contains an Active Directory domain named contoso.com. The domain contains two domain controllers named DC1 and DC2.
DC1 holds the RID master operations role. DC1 fails and cannot be repaired. You need to move the RID role to DC2.
Solution: On DC2, you open Windows PowerShell and run
Move-AddirectoryServerOperationMasterRole -OperationMasterRidMaster -Identity DC2.Adatum.com Does this meet the goal?

- A. Yes
- B. No

Answer: B

Explanation:

You would need to use the -Force parameter because the server that held the role (DC1) is offline.

NEW QUESTION 144

Your network contains an Active Directory domain named contoso.com. The domain contains a web application that uses Kerberos authentication.

You change the domain name of the web application.

You need to ensure that the service principal name (SPN) for the application is registered. Which tool should you use?

- A. Rdsrnf
- B. Active Directory Users and Computers
- C. Dnscmd
- D. Ldifde

Answer: B

NEW QUESTION 149

Your network contains an Active Directory domain named contoso.com. The domain contains a user named User1, a group named Group1, and an organizational unit (OU) named OU1.

You need to enable User1 to link Group Policies to OU1.

Solution: From Active Directory Administrative Center, you add User1 to Group1 and grant Group1 Full Control permission to OU1.

Does this meet the goal?

- A. Yes
- B. No

Answer: A

NEW QUESTION 152

You create a user account that will be used as a template for new user accounts.

Which setting will be copied when you copy the user account from Active Directory Users and Computers?

- A. Published Certificates
- B. the Member of attribute
- C. the Office attribute
- D. the Description attribute

Answer: B

NEW QUESTION 153

You have an enterprise certification authority (CA) named ContosoCA. Recovery agents are configured for ContosoCA.

You duplicate the User certificate template and name it Cont_User. You plan to issue the certificates based on Cont_User to provide users with the ability to encrypt email messages and files.

You need to ensure that the recovery agents can access any user-encrypted files and email messages if the users lose their certificate.

What should you do?

- A. Issue a certificate based on a key recovery agent certificate.
- B. Modify the Recovery Agents settings for ContosoCA.
- C. Modify the Request Handling settings for Cont_User.
- D. On ContosoCA, configure the Key Recovery Agent template as a certificate template to issue.

Answer: C

NEW QUESTION 158

You have a standalone root certification authority (CA).

You have a new security policy requirement specifying that any changes to the CA configuration must be logged.

You need to ensure that the CA meets the new security requirement.

Which two actions should you perform? Each correct answer presents part of the solution.

- A. From Local Group Policy Editor, configure auditing for policy change.
- B. From Local Group Policy Editor, configure auditing for object access.
- C. From the Certification Authority console, modify the Security settings for the CA.
- D. From the Certification Authority console, modify the Auditing settings for the CA.
- E. From the Certification Authority console, modify the Certificate Managers settings for the CA.

Answer: AE

NEW QUESTION 161

You have an offline root certification authority (CA) named CA1. CA1 is hosted on a virtual machine. You only turn on CA1 when the CA must be patched or you must generate a key for subordinate CAs. You start CA1, and you discover that the filesystem is corrupted.

You resolve the filesystem corruption and discover that you must reload the CA root from a backup.

When you attempt to run the Restore-CARoleService cmdlet, you receive the following error message: "The process cannot access the file because it is being used by another process."

- A. Stop the Active Directory Domain Services (AD DS) service.
- B. Run the Restore-CARoleService cmdlet and specify the path to a valid CA key.

- C. Stop the Active Directory Certificate Services (AD CS) service.
- D. Run the Restore-CARoleService cmdlet and specify the Force parameter.

Answer: C

NEW QUESTION 166

Note: This question is part of a series of questions that present the same scenario. Each question in the series contains a unique solution that might meet the stated goals. Some question sets might have more than one correct solution, while others might not have a correct solution.

After you answer a question in this section, you will NOT be able to return to it. As a result, these questions will not appear in the review screen.

Your network contains an Active Directory domain named contoso.com. The domain contains two domain controllers named DC1 and DC2.

DC1 holds the RID master operations role. DC1 fails and cannot be repaired. You need to move the RID role to DC2.

Solution: On DC2, you open Active Directory Users and Computers, click Operations Masters., verify that dc2.contoso.com is listed on the RID tab, and click Change.

Does this meet the goal?

- A. Yes
- B. No

Answer: B

Explanation:

This would work if DC1 was still online. In that case we would be “transferring” the role. However, as DC1 is offline, we need to “seize” the role which can only be done by using the ntdsutil command or the Move-AddirectoryServerOperationMasterRole PowerShell cmdlet with the -Force parameter.

NEW QUESTION 170

Your network contains an Active Directory domain named contoso.com. You discover that users can use passwords that contain only numbers.

You need to ensure that all the user passwords in the domain contain at least three of the following types of characters:

- Numbers
 - Uppercase letters
 - Lowercase letters
 - Special characters
- What should you do?

- A. the Default Domain Policy
- B. the local policy on each client computer
- C. the Default Domain Controllers Policy
- D. the local policy on each domain controller

Answer: A

NEW QUESTION 172

Your network contains an Active Directory forest named contoso.com. You need to add a new domain named fabrikam.com to the forest.

What command should you run? To answer, select the appropriate options in the answer area.

Answer Area

<div style="border: 1px solid #ccc; padding: 2px;">▼</div> <div style="border: 1px solid #ccc; padding: 2px;">Install-ADDSDomain</div> <div style="border: 1px solid #ccc; padding: 2px;">Install-ADDSDomainController</div> <div style="border: 1px solid #ccc; padding: 2px;">Install-ADDSTForest</div>	-DomainType	<div style="border: 1px solid #ccc; padding: 2px;">▼</div> <div style="border: 1px solid #ccc; padding: 2px;">TreeDomain</div> <div style="border: 1px solid #ccc; padding: 2px;">ChildDomain</div>	<div style="border: 1px solid #ccc; padding: 2px;">-InstallDns:\$true -NewDomainName fabrikam.com -ParentDomainName contoso.com</div>
---	-------------	---	---

- A. Mastered
- B. Not Mastered

Answer: A

Explanation:

References:

[https://technet.microsoft.com/en-us/library/hh974722\(v=wps.630\).aspx](https://technet.microsoft.com/en-us/library/hh974722(v=wps.630).aspx)

NEW QUESTION 176

Note: This question is part of a series of questions that present the same scenario. Each question in the series contains a unique solution that might meet the stated goals. Some question sets might have more than one correct solution, while others might not have a correct solution.

After you answer a question in this section, you will NOT be able to return to it. As a result, these questions will not appear in the review screen.

Your network contains an Active Directory domain named contoso.com. The domain contains a server named Server1 that runs Windows Server 2016. The Computer account for Server1 is in organizational unit (OU) named OU1.

You create a Group Policy object (GPO) named GPO1 and link GPO1 to OU1.

You need to add a domain user named user1 to the local Administrators group on Server1.

Solution: From the Computer Configuration node of GPO1, you configure the Restricted Groups settings. Does this meet the goal?

- A. Yes

B. No

Answer: B

NEW QUESTION 178

Your network contains an Active Directory forest named contoso.com. The forest contains a single domain. The domain contains a server named Server1. An administrator named Admin01 plans to configure Server1 as a standalone certification authority (CA). You need to identify to which group Admin01 must be a member to configure Server1 as a standalone CA. The solution must use the principle of least privilege. To which group should you add Admin01?

- A. Administrators on Server1.
- B. Domain Admins in contoso.com
- C. Cert Publishers on Server1
- D. Key Admins in contoso.com

Answer: A

NEW QUESTION 179

Your network contains an Active Directory domain named contoso.com. The domain contains an administrative workstation named WKS1 that runs Windows 10. You have a Group Policy object (GPO) named GPO1. You download a custom administrative template that contains the following files: You need to ensure that you can configure GPO1 by using the settings in the new administrative template. To where should you copy each file? To answer, select the appropriate options in the answer area.
NOTE: Each correct selection is worth one point.

Answer Area

App1.adml:

C:\Windows\PolicyDefinitions

C:\Windows\PolicyDefinitions\en-US

C:\Windows\System32\Configuration

C:\Windows\System32\en-US

App1.admx:

C:\Windows\PolicyDefinitions

C:\Windows\PolicyDefinitions\en-US

C:\Windows\System32\Configuration

C:\Windows\System32\en-US

- A. Mastered
- B. Not Mastered

Answer: A

Explanation:

References:

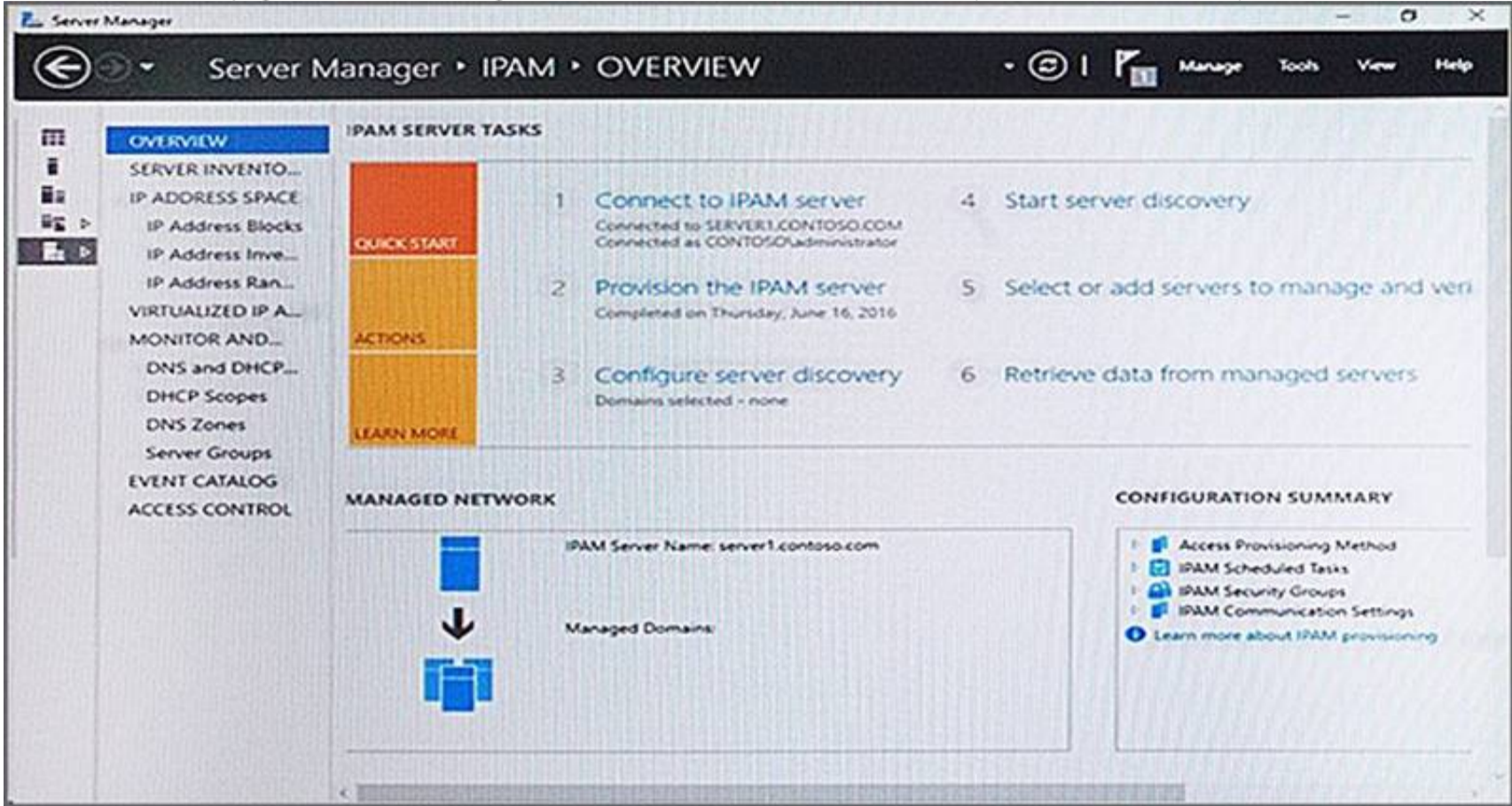
<https://support.microsoft.com/en-us/help/918239/how-to-write-custom-adm-and-admx-administrative-template-f>

NEW QUESTION 184

Your company has a testing environment that contains an Active Directory domain named contoso.com. The domain contains a server named Server1 that runs Windows Server 2016. Server1 has IP Address Management (IPAM) installed. IPAM has the following configuration.

```
Version           : 6.3.0.1
Port              : 48885
ProvisioningMethod : Automatic
GpoPrefix         : IPAM
HMACKey           : System.Security.SecureString
```

The IPAM Overview page from Server Manager is shown in the IPAM Overview exhibit. (Click the Exhibit button.)



The group policy configurations are shown in the GPO exhibit. (Click the Exhibit button.) For each of the following statements, select Yes if the statement is true. Otherwise, select No.

Answer Area

Statements	Yes	No
If a DNS server is added to contoso.com, the server will be discovered by IPAM automatically.	<input type="radio"/>	<input type="radio"/>
If you manually add a DHCP server named Server3 to IPAM and set the Manageability status to Managed , the IPAM_DHCP Group Policy will apply to Server3.	<input type="radio"/>	<input type="radio"/>
If you click Start server discovery , the domain controllers in contoso.com will be discovered by IPAM.	<input type="radio"/>	<input type="radio"/>

- A. Mastered
- B. Not Mastered

Answer: A

Explanation:

No domains have been selected in the “Configure Server Discovery” option. Therefore, no automatic discovery will take place. Manual addition of a server will also fail because IPAM needs a domain configured for server verification.

NEW QUESTION 186

Your network contains an Active Directory domain named contos.com.
You need to create a central store for Group Policy administrative templates. What should you use?

- A. Group Policy Management Console (GPMC)
- B. Copy-Item
- C. Group Policy Management Editor
- D. Copy-GPO

Answer: B

NEW QUESTION 188

Your network contains an Active Directory domain named contoso.com. All the accounts of the users in the sales department are in an organizational unit (OU) named SalesOU.
 An application named App1 is deployed to the user accounts in SalesOU by using a Group Policy object (GPO) named Sales GPO.
 You need to set the registry value of \HKEY_CURRENT_USER\Software\App1\Collaboration to 0. Solution: You add a computer preference that has a Replace action.
 Does this meet the goal?

- A. Yes
- B. NO

Answer: A

NEW QUESTION 192

You have an enterprise certification authority (CA). You create a global security group named Group1.
 You need to provide members of Group1 with the ability to issue and manage certificates. The solution must prevent the Group1 members from managing certificates requested by members of the Domain Admins group.
 Which two actions should you perform? Each correct answer presents part of the solution. NOTE: Each correct selection is worth one point.

- A. From the CA properties, modify the Policy Module settings.
- B. From the Certificate Templates console, modify the Security settings of the Administrator certificate template.
- C. From the CA properties, modify the security settings.
- D. From the CA properties, modify the Enrollment Agents settings.
- E. From the CA properties, modify the Certificate Managers Settings.
- F. From the Certificate Templates console, modify the Security settings of the User certificate template.

Answer: AE

NEW QUESTION 194

You have a server named Server1 that runs Windows Server 2016. Server1 has the Web Application Proxy role service installed.
 You plan to deploy Remote Desktop Gateway (RD Gateway) services. Clients will connect to the RD Gateway services by using various types of devices including Windows, iOS and Android devices.
 You need to publish the RD Gateway services through the Web Application Proxy.
 Which command should you run? To answer, select the appropriate options in the answer area.

Answer Area

▼	-BackendServerURL 'https://rdg.contoso.com/rdg1/' -ExternalCertificateThumbprint
Add-WebApplicationProxyApplication	
Set-WebApplicationProxyApplication	
Set-WebApplicationProxyConfiguration	
'1a2b3c4d5e6f'1a2b3c4d5e6f'1a2b3c4d5e6f1a2b' -ExternalURL 'https://rdg.contoso.com/rdg1' -Name 'RDG1'	
-ExternalPreAuthentication	▼ -ADFSRelyingPartyName 'Default provider'
	ADFS
	ADFSforOAuth
	ClientCertificate
	PassThrough
-BackendServerAuthenticationSPN 'HTTP/RDG1'	

- A. Mastered
- B. Not Mastered

Answer: A

Explanation:

Answer Area

▼	-BackendServerURL 'https://rdg.contoso.com/rdg1/' -ExternalCertificateThumbprint
Add-WebApplicationProxyApplication	
Set-WebApplicationProxyApplication	
Set-WebApplicationProxyConfiguration	
'1a2b3c4d5e6f'1a2b3c4d5e6f'1a2b3c4d5e6f1a2b' -ExternalURL 'https://rdg.contoso.com/rdg1' -Name 'RDG1'	
-ExternalPreAuthentication	▼ -ADFSRelyingPartyName 'Default provider'
	ADFS
	ADFSforOAuth
	ClientCertificate
	PassThrough
-BackendServerAuthenticationSPN 'HTTP/RDG1'	

NEW QUESTION 195

Your network contains an Active Directory domain named contoso.com. The domain contains a server named Server1 that runs Windows Server 2016.

You install IP Address Management (IPAM) on Server1. You select the automatic provisioning method, and then you specify a prefix of IPAM1. You need to configure the environment for automatic IPAM provisioning. Which cmdlet should you run? To answer, select the appropriate options in the answer area.

Answer Area

Add-IPAMDiscoveryDomain

Enable-IPAMCapability

Invoke-IPAMGPOProvisioning

Set-IPAMConfiguration

-Domain "Contoso.com"

-AssetTag

-DiscoverDns

-GPOPrefixName

-ProvisioningMethod

- A. Mastered
- B. Not Mastered

Answer: A

Explanation:

Answer Area

Add-IPAMDiscoveryDomain

Enable-IPAMCapability

Invoke-IPAMGPOProvisioning

Set-IPAMConfiguration

-Domain "Contoso.com"

-AssetTag

-DiscoverDns

-GPOPrefixName

-ProvisioningMethod

NEW QUESTION 199

Your network contains an Active Directory forest. The forest contains one domain named contoso.com. The domain contains two domain controllers named DC1 and DC2. DC1 holds all of the operations master roles. During normal network operations, you run the following commands on DC2: Move-ADDirectoryServerOperationMasterRole -Identity "DC2" -OperationMasterRole PDCEmulator Move- ADDirectoryServerOperationMasterRole –Identity "DC2" -OperationMasterRole RIDMaster DC1 fails. You remove DC1 from the network, and then you run the following command: Move-ADDirectoryServerOperationMasterRole –Identity "DC2" -OperationMasterRole SchemaMaster For each of the following statements, select Yes if the statement is true. Otherwise, select No.

Answer Area

Statements	Yes	No
DC2 holds the schema master operations role.	<input type="radio"/>	<input type="radio"/>
DC2 holds the PDC emulator master operations role.	<input type="radio"/>	<input type="radio"/>
Currently, you can add additional domains to the forest.	<input type="radio"/>	<input type="radio"/>

- A. Mastered
- B. Not Mastered

Answer: A

Explanation:

Answer Area

Statements	Yes	No
DC2 holds the schema master operations role.	<input type="radio"/>	<input checked="" type="radio"/>
DC2 holds the PDC emulator master operations role.	<input checked="" type="radio"/>	<input type="radio"/>
Currently, you can add additional domains to the forest.	<input type="radio"/>	<input checked="" type="radio"/>

NEW QUESTION 200

Your network contains an Active Directory domain named contoso.com. The domain contains an enterprise certification authority (CA) named CA1. You duplicate the Computer certificate template, and you name the template Cont_Computers. You need to ensure that all of the certificates issued based on Cont_Computers have a key size of 4,096 bits. What should you do?

- A. From the properties of CA1, modify the Security settings.
- B. From the properties of CA1, modify the Request Handling settings.
- C. From the properties of the Computer template, modify the Key Attestation settings.
- D. From the properties of Cont_Computers, modify the Cryptography settings.

Answer: C

NEW QUESTION 205

Your network contains an Active Directory domain named contoso.com. The domain contains a server named Server1 that runs Windows Server 2016. You install IP Address Management (IPAM) on Server1. You need to manually start discovery of servers that IPAM can manage in contoso.com. Which three cmdlets should you run in sequence? To answer, move the appropriate cmdlets from the list of cmdlets to the answer area and arrange them in the correct order.

Actions

Start-ScheduledTask

Invoke-IpamServerProvisioning

Update-IpamServer

Add-IpamSubnet

Add-IpamAddress

Add-IpamDiscoveryDomain

Answer Area

⏪

⏩

⏴

⏵

- A. Mastered
- B. Not Mastered

Answer: A

Explanation:

Step 1: Invoke-IpamServerProvisioning Choose a provisioning method
The Invoke-IpamGpoProvisioning cmdlet creates and links three group policies specified in the Domain parameter for provisioningrequired access settingson the server roles managed by the computer running the IP Address Management (IPAM) server.
Step 2: Add-IpamDiscoveryDomain Configure the scope of discovery
The Add-IpamDiscoveryDomain cmdlet adds an Active Directory discovery domain for an IP AddressManagement (IPAM) server. A discovery domain is a domain that IPAM searches to find infrastructure servers. An IPAM server uses the list of discovery domains to determine what type of servers to add. By default, IPAM discovers all domain controllers, Dynamic Host Configuration Protocol (DHCP) servers, and Domain Name System (DNS) servers.
Step 3: Start-ScheduledTask Start server discovery

To begin discovering servers on the network, click Start server discovery to launch the IPAM ServerDiscovery task or use the Start-ScheduledTask command.

NEW QUESTION 209

Note: This question is part of a series of questions that present the same scenario. Each question in the series contains a unique solution that might meet the stated goals. Some question sets might have more than one correct solution, while others might not have a correct solution.

After you answer a question in this section, you will NOT be able to return to it. As a result, these questions will not appear in the review screen.

You network contains an Active Directory forest named contoso.com. The forest contains an Active Directory Rights Management Services (AD RMS) deployment. Your company establishes a partnership with another company named Fabrikam, Inc. The network of Fabrikam contains an Active Directory forest named fabrikam.com and an AD RMS deployment.

You need to ensure that the users in contoso.com can access rights protected documents sent by the users in fabrikam.com.

Solution: From AD RMS in contoso.com, you configure fabrikam.com as a trusted user domain. Does this meet the goal?

- A. Yes
- B. No

Answer: B

Explanation:

Contoso would need to be the Trusted User Domain.

NEW QUESTION 212

.....

Thank You for Trying Our Product

We offer two products:

1st - We have Practice Tests Software with Actual Exam Questions

2nd - Questions and Answers in PDF Format

70-742 Practice Exam Features:

- * 70-742 Questions and Answers Updated Frequently
- * 70-742 Practice Questions Verified by Expert Senior Certified Staff
- * 70-742 Most Realistic Questions that Guarantee you a Pass on Your First Try
- * 70-742 Practice Test Questions in Multiple Choice Formats and Updates for 1 Year

100% Actual & Verified — Instant Download, Please Click
[Order The 70-742 Practice Test Here](#)