

Exam Questions 70-741

Networking with Windows Server 2016

<https://www.2passeasy.com/dumps/70-741/>



NEW QUESTION 1

You have multiple servers that run Windows Server 2016.

The DNS Server server role is installed on a server named Server1.

You need to configure Server1 to use a DNS forwarder that has an IP address of 192.168.10.15. What should you run?

- A. dism.exe
- B. dns.exe
- C. dnscmd.exe
- D. netsh.exe
- E. Set-DhcpServerDatabase
- F. Set-DhcpServerv4DnsSetting
- G. Set-DhcpServerv6DnsSetting
- H. Set-DNSServerSetting

Answer: C

NEW QUESTION 2

Your network contains an Active Directory named contoso.com. The domain contains two servers named Server1 and Server2 that run Windows Server 2016.

Server1 has IP Address Management (IPAM) installed. Server2 has the DHCP Server role installed. The IPAM server retrieves data from Server2.

The domain has two users named User1 and User2 and a group named Group1. User1 is the only member of Group1.

Server1 has one IPAM access policy. You edit the access policy as shown in the Policy exhibit. (Click the Exhibit button.)

Edit Access Policy

Show All

User Settings

Click Add to add a user

* User alias: CONTOSO\Group1 Add

Description:

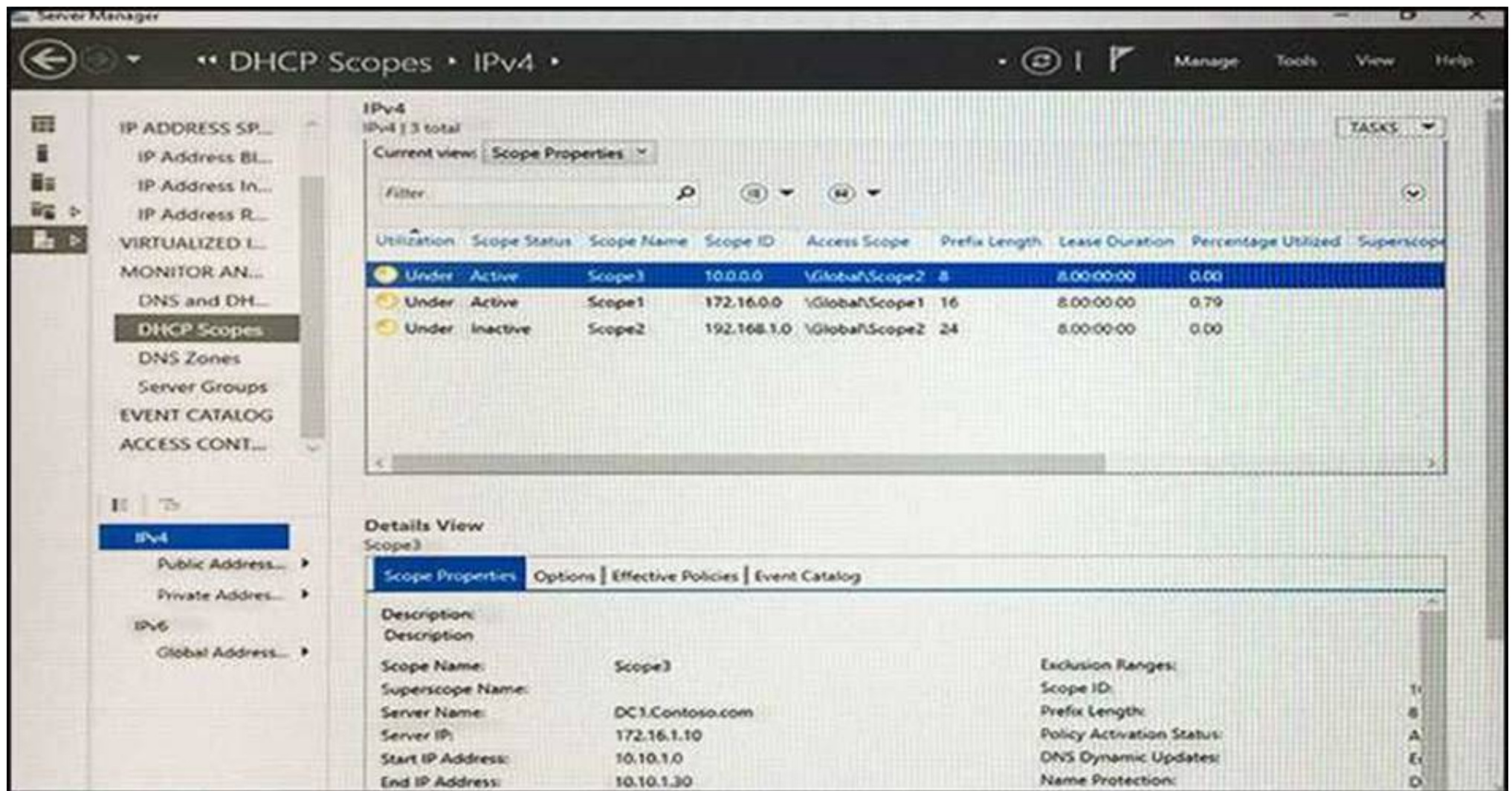
Access Settings

Specify the access settings for the access policy:

Role	Access Scope
IPAM DHCP Scope Administra...	\Global\Scope2

OK Cancel Apply

The DHCP scopes are configured as shown in the Scopes Exhibit. (Click the Exhibit button.)



For each of the following statements, select Yes if the statement is true. Otherwise, select No.

Answer Area

Statements	Yes	No
User1 can modify the description of Scope1.	<input type="radio"/>	<input type="radio"/>
User2 can modify the description of Scope1.	<input type="radio"/>	<input type="radio"/>
User1 can modify the description of Scope2.	<input type="radio"/>	<input type="radio"/>

- A. Mastered
 B. Not Mastered

Answer: A

Explanation:

[https://technet.microsoft.com/en-us/library/dn268500\(v=ws.11\).aspx](https://technet.microsoft.com/en-us/library/dn268500(v=ws.11).aspx)

NEW QUESTION 3

You have a Hyper-V host named Host1 that runs Windows Server 2016 Datacenter. Host1 has eight network adapters that support Remote Direct Memory Access (RDMA).

You plan to configure Host1 as part of a four-node Hyper-V converged solution. You enable the Data Center Bridging (DCB) feature.

You need to enable Switch Embedded Teaming (SET) and RDMA.

Which three cmdlets should you run in sequence? To answer move the appropriate cmdlets from the list of cmdlets to the answer area and arrange them in the correct order.

Cmdlets

Add-VMNetworkAdapter

Enable-NetAdapterRDMA

Install-WindowsFeature

Set-NetAdapterRss

New-VMSwitch



- A. Mastered
 B. Not Mastered

Answer: A

Explanation:

Cmdlets

Add-VMNetworkAdapter

Enable-NetAdapterRDMA

Install-WindowsFeature

Set-NetAdapterRss

New-VMSwitch



NEW QUESTION 4

You have an IP Address Management (IPAM) server named IPAM1 that runs Window Server 2016. IPAM1 manages all of the DHCP servers on your network. You are troubleshooting an issue for a client that fails to receive an IP address from DHCP. You need to ensure that from IPAM1, you can view all of the event data for the DHCP leases from the last 24 hours. Solution: From Server Manager, you run Retrieve Event Catalog Data. Does this meet the goal?

- A. Yes
 B. No

Answer: A

Explanation:

References:

<http://www.techblogopedia.com/blog/ip-address-managementipam-windows-server-2012-r2-part-3/>

NEW QUESTION 5

You are implementing IPv6 addressing for your company by using the following specifications:

- ▶ The global address space is 2001:db8:1234.
- ▶ The company has 100 locations worldwide.
- ▶ Each location has up to 300 subnets.
- ▶ 64 bits will be used for hosts.

You need to identify how many bits to use for the locations and the subnets.

How many bits should you identify? To answer, drag the appropriate amounts to the correct targets. Each amount may be used once, more than once, or not at all.

You may need to drag the split bar between panes or scroll to view content.

NOTE: Each correct selection is worth one point.

Locations:

	▼
33	
25	
17	
9	
7	

Subnets:

	▼
33	
25	
17	
9	
7	

- A. Mastered
- B. Not Mastered

Answer: A

Explanation:

Locations:

	▼
33	
25	
17	
9	
7	

Subnets:

	▼
33	
25	
17	
9	
7	

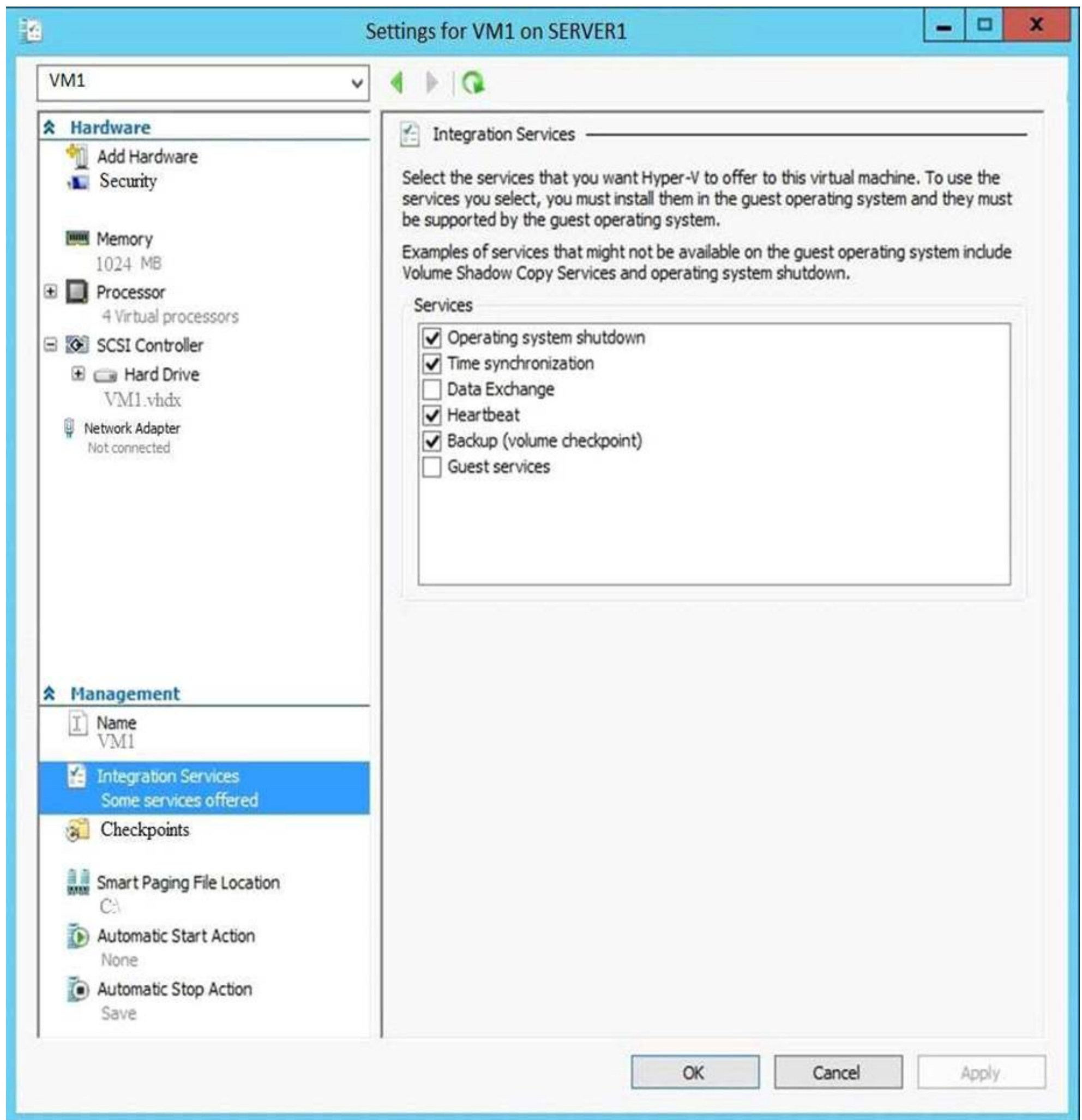
NEW QUESTION 6

Note: This question is part of a series of questions that present the same scenario. Each question in the series contains a unique solution that might meet the stated goals. Some question sets might have more than one correct solution, while others might not have a correct solution.

After you answer a question in this sections, you will NOT be able to return to it. As a result, these questions will not appear in the review screen.

You have a Hyper-V host named Server1 that hosts a virtual machine named VM1. Server1 and VM1 run Windows Server 2016.

The settings for VM1 are configured as shown in the exhibit below.



You need to ensure that you can use the Copy-VMFile cmdlet on Server1 to copy files from VM1.

Solution: You need to enable the Data Exchange integration service for VM1. Does this meet the goal?

- A. YES
- B. NO

Answer: B

NEW QUESTION 7

Your network contains an Active Directory domain named contoso.com that contains a domain controller named DC1. All DNS servers for the network run BIND 10.

Your perimeter network contains a DHCP server named DHCP1 that runs Windows Server 2016. DHCP1 is a member of a workgroup named WORKGROUP. DHCP1 provides IP address leases to guests accessing the Wi-Fi network.

Several engineers access the network remotely by using a VPN connection to a remote access server that runs Windows Server 2016. All of the VPN connections use certificate-based authentication and are subject to access policies in Network Policy Server (NPS). Certificates are issued by an enterprise certification authority (CA) named CA1.

All Windows computers on the network are activated by using Key Management Service (KMS). On-premises users use Remote Desktop Services (RDS). You plan to deploy IP Address Management (IPAM) to the network. Which action can you perform on the network by using IPAM?

- A. Audit user and device logon event from NPS.
- B. Audit logon events on the RDS server.
- C. Audit configuration changes to the remote access server.
- D. Audit certificate enrollment requests on CA1.

Answer: A

Explanation:

References:

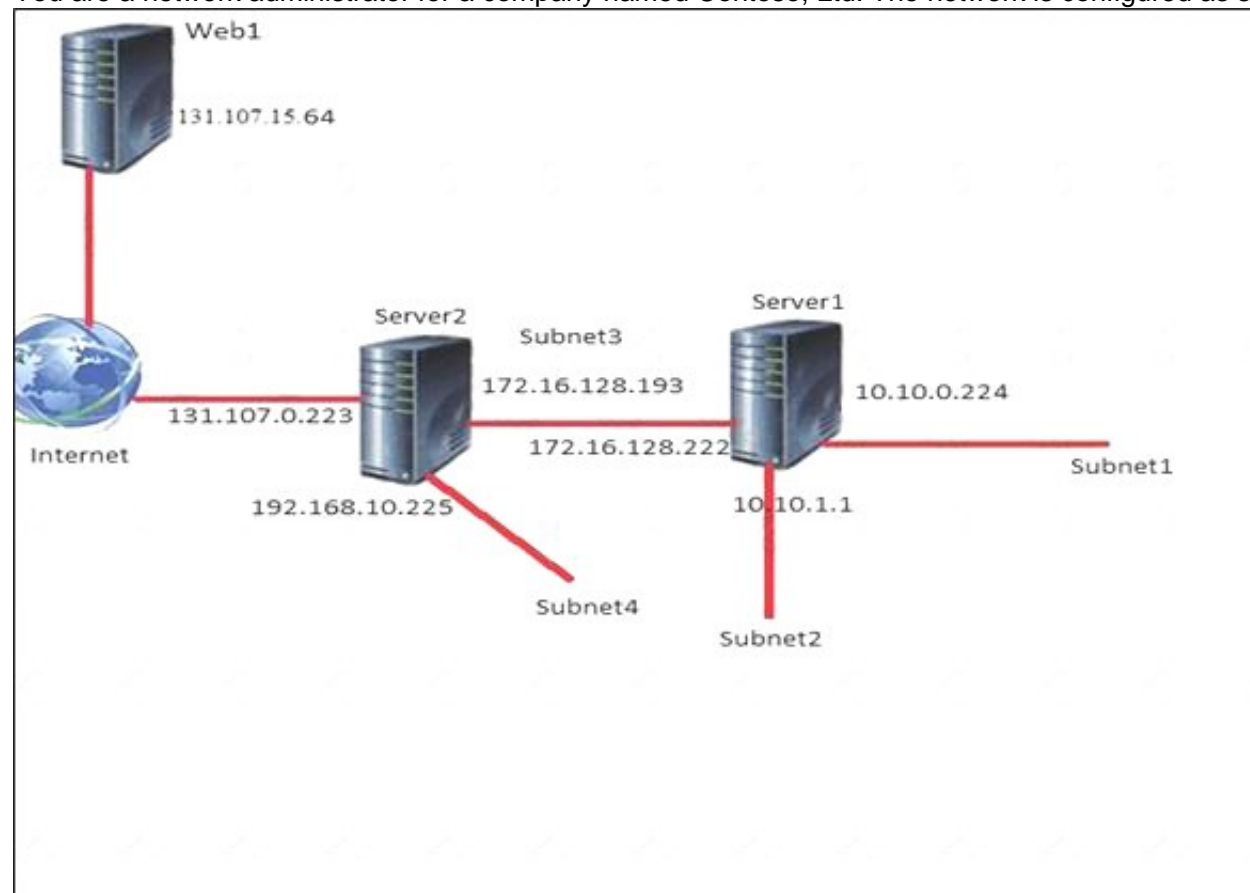
<https://blogs.technet.microsoft.com/canitpro/2013/08/15/step-by-step-setup-windows-server-2012-ipam-in-your->

NEW QUESTION 8

Note: This question is part of a series of questions that present the same scenario. Each question in the series contains a unique solution that might meet the stated goals. Some question sets might have more than one correct solution, while others might not have a correct solution.

After you answer a question in this sections, you will NOT be able to return to it. As a result, these questions will not appear in the review screen.

You are a network administrator for a company named Contoso, Ltd. The network is configured as shown in the exhibit.



You install the Remote Access server role on Server2. Server2 has the following configured:

- ▶ Network address translation (NAT)
- ▶ The DHCP Server server role

The Security Policy of Contoso states that only TCP ports 80 and 443 are allowed from the internet to Server2. You identify the following requirements:

- ▶ Add 28 devices to subnet2 for a temporary project.
- ▶ Configure Server2 to accept VPN connections from the internet.
- ▶ Ensure that devices on Subnet2 obtain TCP/IP settings from DHCP on Server2. Which VPN protocol should you configure on Server2?

- A. L2TP
- B. IKEv2
- C. PPTP
- D. SSTP

Answer: C

NEW QUESTION 9

Note: This question is part of a series of questions that present the same scenario. Each question in the series contains a unique solution that might meet the stated goals. Some question sets might have more than one correct solution, while others might not have a correct solution.

After you answer a question in this sections, you will NOT be able to return to it. As a result, these questions will not appear in the review screen.

Your network contains an Active Directory domain named contoso.com

You need to create a Nano Server image named Nano1 that will be used as a virtualization host. The windows server 2016 source files are located in drive D.

Solution: You run the following cmdlet.

New-NanoServerImage -Edition Datacenter -DeploymentType Host -Package Microsoft-NanoServerCompute-Package -MediaPath 'D:\' -TargetPath C:\Nano1\Nano1.wim -ComputerName Nano1 -DomainName Contoso.com Does this meet the goal?

- A. Yes
- B. NO

Answer: A

NEW QUESTION 10

Note: This question is part of a series of questions that present the same scenario. Each question in the series contains a unique solution that might meet the stated goals. Some question sets might have more than one correct solution, while others might not have a correct solution.

After you answer a question in this sections, you will NOT be able to return to it. As a result, these questions will not appear in the review screen.

You network contains an Active Directory domain named contoso.com. The domain contains a member server named Server1 that runs Windows Server 2016 and has the DNS Server role installed. Automatic scavenging of state records is enabled and the scavenging period is set to 10 days.

All client computers dynamically register their names in the contoso.com DNS zone on Server1.

You discover that the names of multiple client computers that were removed from the network several weeks ago can still be resolved.

You need to configure Server1 to automatically remove the records of the client computers that have been offline for more than 10 days.

Solution: You set the Time to live (TTL) value of all of the records in the zone. Does this meet the goal?

- A. Yes
- B. No

Answer: B

Explanation:

<https://technet.microsoft.com/en-us/library/cc958972.aspx>

NEW QUESTION 10

You have a server named Server1 that runs Windows Server 2016. Server1 has the following IP configuration.

```
Windows IP Configuration
Ethernet adapter Ethernet 2:

Connection-specific DNS Suffix  : 
Link-local IPv6 Address . . . . .: fe80::f9f7:59de:2550:ebec%10
Autoconfiguration IPv4 Address  : 169.254.235.236
Subnet Mask . . . . .           : 255.255.0.0
Default Gateway . . . . .       : 

Ethernet adapter Ethernet 3:

Connection-specific DNS Suffix  : contoso.com
IPv6 Address . . . . .          : 2001:db8:abcd:10:fc1b:5888:6c17:a38a
Link-local IPv6 Address . . . . .: fe80::d5aa:888f:eb75:7c2a%6
IPv4 Address . . . . .          : 192.168.0.213
Subnet Mask . . . . .           : 255.255.255.0
Default Gateway . . . . .       : 192.168.0.1

Tunnel adapter isatap.contoso.com:

Media State . . . . .           : Media disconnected
Connection-specific DNS Suffix  : contoso.com
Tunnel adapter isatap.{CD467C1F-2AFC-4AE1-B91F-755E888FF514}:

Media State . . . . .           : Media disconnected
Connection-specific DNS Suffix  :
```

You need to configure the default gateway on Server1 to allow for connectivity to other subnets via IPv6. Which command should you run? To answer, select the appropriate options in the answer area.

NOTE: Each correct selection is worth one point.

Answer Area

\$var1 =

	▼
"::/0"	

"::1/128"	
"0.0.0.0/0"	
"2001::/32"	

\$var2 =

	▼
"2"	

"3"	
"6"	
"10"	

\$var3 =

	▼
"2001:db8:abcd:10::253"	

"::"	
"::1/128"	
"0.0.0.0"	
"fe80::253"	

```
New-NetRoute -AddressFamily IPv6 -DestinationPrefix  
$var1 -InterfaceIndex $var2 -NextHop $var3
```

- A. Mastered
- B. Not Mastered

Answer: A

Explanation:

References: <https://docs.microsoft.com/en-us/powershell/module/nettcpip/new-netroute?view=win10-ps>

NEW QUESTION 13

You have a remote access server named Server1 that runs Windows Server 2016. Server1 has DirectAccess enabled. You have a proxy server named Server2. All computers on the internal network connect to the Internet by using the proxy. On Server1, you run the command Set-DAClient -forceTunnel Enabled. You need to ensure that when a DirectAccess client connects to the network, the client accesses all the Internet resources through the proxy. What should you run on Server1?

- A. Set-DnsClientGlobalSetting
- B. Set-DAEntryPoint
- C. Set-DnsClientNrptRule
- D. Set-DnsClientNrptGlobal

Answer: B

NEW QUESTION 15

Note: This question is part of a series of questions that present the same scenario. Each question in the series contains a unique solution. Determine whether the solution meets the stated goals.

Your network contains an Active Directory domain named contoso.com. The domain contains a DNS server named Server1. All client computers run Windows 10. On Server1, you have the following zone configuration.

ZoneName	ZoneType	IsAutoCreated	IsDsIntegrated	IsReverseLookupZone	IsSigned
-----	-----	-----	-----	-----	-----
_msdcs.contoso.com	Primary	False	True	False	False
adatum.com	Forwarder	False	False	False	
contoso.com	Primary	False	True	False	False
fabrikam.com	Primary	False	False	False	True
TrustAnchors	Primary	False	True	False	False

You have the following subnets defined on Server1.

Name	IPv4Subnet	IPv6Subnet
-----	-----	-----
Subnet1	{10.0.0.0/24}	
Subnet2	{10.0.1.0/24}	
Subnet3	{192.168.15.0/24}	
Subnet4	{172.16.1.0/24}	

You need to prevent Server1 from resolving queries from DNS clients located on Subnet4. Server1 must resolve queries from all other DNS clients. Solution: From a Group Policy object (GPO) in the domain, you modify the Network List Manager Policies. Does this meet the goal?

- A. Yes
- B. No

Answer: B

Explanation:

https://technet.microsoft.com/en-us/library/jj966256(v=ws.11).aspx

NEW QUESTION 18

Your network contains an Active Directory domain named contoso.com. The functional level of the forest and the domain is Windows Server 2008 R2. All servers in the domain run Windows Server 2016 Standard. The domain contains 300 client computers that run either Windows 8.1 or Windows 10. The domain contains nine servers that are configured as shown in the following table.

Name	Configuration	Planned changes
Server1	Domain controller	None
Server2	File server	Run Failover Clustering and Storage Spaces Direct
Server3	File server	Run Failover Clustering and Storage Spaces Direct
Server4	Hyper-V host	Run shielded virtual machines
Server5	Hyper-V host	None
Server6	Member server	Run Active Directory Federation Services (AD FS)
VM1	Virtual machine hosted on Server5	None
VM2	Virtual machine hosted on Server5	None
VM3	Virtual machine hosted on Server5	None

The virtual machines are configured as follows:

- ▶ Each virtual machine has one virtual network adapter.
- ▶ VM1 and VM2 are part of a Network Load Balancing (NLB) cluster.
- ▶ All of the servers on the network can communicate with all of the virtual machines.

You need to install the correct edition of Windows Server 2016 to support the planned changes for Server2, Server3, Server4, and Server6.

Which edition or editions should you choose for each server? To answer, drag the appropriate editions to the correct servers. Each edition may be used once, more than once, or not at all. You may need to drag the split bar between panes or scroll to view content.

Editions

Standard only	Datacenter only
Standard or Datacenter	

Answer Area

Server2:	Edition
Server3:	Edition
Server4:	Edition
Server6:	Edition

- A. Mastered
- B. Not Mastered

Answer: A

Explanation:

Editions

Standard only

Standard or Datacenter

Datacenter only

Answer Area

Server2: Datacenter only

Server3: Datacenter only

Server4: Datacenter only

Server6: Standard or Datacenter

NEW QUESTION 19

You have two servers named Server1 and Server2 that run Windows Server 2016. Both servers have the DHCP Server server role installed. Server1 has a DHCP scope named Scope1. Server2 has a DHCP scope named Scope2. You need to ensure that client computers can get an IP address if a single DHCP server fails. You must be able to control the percentage of requests to which each DHCP server responds during normal network operations. What should you do?

- A. Add Server1 and Server2 as nodes in a failover cluster, and then configure the DHCP Server server role.
- B. Add Server1 and Server2 as nodes in a failover cluster, and then configure the quorum mode.
- C. On Server1 and Server2, configure DHCP failover for Scope1 and Scope2.
- D. Add Server1 and Server2 as nodes in a failover cluster, and then configure port rules for UDP 67 and UDP 68.

Answer: C

NEW QUESTION 21

You company has a main office in London. The company has 1,000 users who are located in many countries. You plan to deploy a large remote access solution for the company. The London office has three servers named Server1, Server2, and Server3 that run Windows Server 2016. You plan to use Server1 as a VPN server, Server2 as a RADIUS proxy, and Server3 as a RADIUS server. You need to configure Server2 to support the planned deployment. Which three actions should you perform on Server2? Each correct answer presents part of the solution.

- A. Create a connection request policy.
- B. Deploy a Windows container.
- C. Add a RADIUS client.
- D. Create a network policy.
- E. Create a remote RADIUS server group.

Answer: ACE

Explanation:

<https://ittrainingday.com/2014/01/03/how-to-configure-radius-proxy-servers/>

NEW QUESTION 24

You have a server named Server1 that runs Windows Server 2016. Server1 is an IP Address Management (IPAM) server that collects DHCP and DNS logs and events for your entire network. You need to get the IP addresses that were assigned to a client computer named Computer1 during the last week. What should you do on Server1?

- A. Open Event Viewer and click Windows Log
- B. Filter the Security log for Computer1.
- C. From the IPAM node in Server Manager, click Event Catalog, and then review the IP Address Tracking.
- D. Run the Get-IpamDhcpConfigurationEvent cmdlet.
- E. Open Event Viewer and click Windows Log
- F. Filter the Forwarded Events log for Computer1.

Answer: C

Explanation:

References:

<https://docs.microsoft.com/en-us/powershell/module/ipamserver/get-ipamipaddressauditevent?view=win10-ps>

NEW QUESTION 27

You have an IP Address Management (IPAM) server named IPAM1 that runs Window Server 2016. IPAM1 manages all of the DHCP servers on your network. You are troubleshooting an issue for a client that fails to receive an IP address from DHCP. You need to ensure that from IPAM1, you can view all of the event data for the DHCP leases from the last 24 hours. Solution: From Windows PowerShell, you run the Set-IpamDHCPsServer cmdlet. Does this meet the goal?

- A. Yes
- B. No

Answer: B

NEW QUESTION 32

Your network contains an Active Directory forest named contoso.com. The forest contains two domains named contoso.com and litwareinc.com. Your company recently deployed DirectAccess for the members of a group named DA_Computers. All client computers are members of DA_Computers. You discover that DirectAccess clients can access the resources located in the contoso.com domain only. The clients can access the resources in the litwareinc.com domain by using an L2TP VPN connection to the network. You need to ensure that the DirectAccess clients can access the resources in the litwareinc.com domain. What should you do?

- A. From a Group Policy object (GPO), modify the Name Resolution Policy Table (NRPT).
- B. From the properties of the servers in litwareinc.com, configure the delegation settings.
- C. On an external DNS server, create a zone delegation for litwareinc.com.
- D. Add the servers in litwareinc.com to the RAS and IAS Servers group.

Answer: A

Explanation:

<https://blogs.technet.microsoft.com/tomshinder/2010/04/01/directaccess-client-location-awareness-nrpt-name-re>

NEW QUESTION 35

You have a DHCP server named Server1 that runs Windows Server 2016. Server1 has the scopes configured as shown in the following table.

Scope name	Address pool	Default gateway	DNS server
Desktops	192.168.0.0/24	192.168.0.1	192.168.0.140
Visitors	192.168.1.0/24	192.168.1.1	192.168.0.140

All other scope settings are set to the default values. There is no available address space for another scope to be created. Your network has 150 desktop computers that have access to the corporate network. Your company also provides visitors with WI-FI access to the network. There can be up to 200 visitors each day. You discover that some visitors fail to access the WI-FI network because there are no available addresses to allocate to the visitors. You need to prevent this issue from reoccurring. What should you do?

- A. For the Visitors scope, run the Dhcp Split Configuration Wizard.
- B. Run Set-DhcpServerv4Scope -ActivatePolicies \$True -Name Mobil -MaxBootPClients 200
- C. Configure a superscope that contains the Visitors scope.
- D. Run Set-DhcpServerv4Scope -Name Mobile -LeaseDuration 0.02:00:00

Answer: B

Explanation:

References:

<https://docs.microsoft.com/en-us/previous-versions/windows/desktop/dhcpserverpsprov/dhcpserverv4scope>

NEW QUESTION 36

Note: This question is part of a series of questions that present the same scenario. Each question in the series contains a unique solution that might meet the stated goals. Some question sets might have more than one correct solution, while others might not have a correct solution. After you answer a question in this section, you will NOT be able to return to it. As a result, these questions will not appear in the review screen. You have a Hyper-V host named Server 1. The network adapters on Server1 have single root I/O virtualization (SR-IOV) enabled. Server1 hosts a virtual machine named VM1 that runs Windows Server 2016. You need to identify whether SR-IOV is used by VM1. Solution: You sign in to VM1. You run the Get-NetAdapterSriov cmdlet. Does this meet the goal?

- A. Yes
- B. No

Answer: A

Explanation:

References:

<https://docs.microsoft.com/en-us/powershell/module/netadapter/get-netadaptersriov?view=win10-ps>

NEW QUESTION 38

You have two servers named Server1 and Server2 that run Windows Server 2016. Server1 and Server2 have the Network Policy Server role service installed. Server1 is configured to forward connection requests to Server2. Incoming connection requests to Server1 contain the User Name attribute. The User Name attribute does not contain the domain name suffix. You need to ensure that the User Name attribute will be replaced by using a format of username@contoso.com. How should you configure the attribute manipulation role on Server1? To answer, select the appropriate options in the answer area. NOTE: Each correct selection is worth one point.

Answer Area

Find:

\$
\
^

Replace with:

@\$2
@contoso.com
contoso.com

- A. Mastered
- B. Not Mastered

Answer: A

Explanation:

Answer Area

Find:

\$
\
^

Replace with:

@\$2
@contoso.com
contoso.com

NEW QUESTION 42

You have an application named App1. App1 is distributed to multiple Hyper-V virtual machines in a multitenant environment. You need to ensure that the traffic is distributed evenly among the virtual machines that host App1. What should you include in the environment?

- A. Network Controller and Windows Server Network Load Balancing (NLB) nodes
- B. an RAS Gateway and Windows Server Software Load Balancing (SLB) nodes
- C. an RAS Gateway and Windows Server Network Load Balancing (NLB) nodes
- D. Network Controller and Windows Server Software Load Balancing (SLB) nodes

Answer: B

Explanation:

[https://technet.microsoft.com/en-us/library/mt403307\(v=ws.11\).aspx#bkmk_slb](https://technet.microsoft.com/en-us/library/mt403307(v=ws.11).aspx#bkmk_slb)

NEW QUESTION 44

You install the DHCP Server role on a server1. You create a new scope on Server1. The scope properties are configured as shown in the following exhibit.

Use the drop down menus to select the answer choice that completes each statement based on the information presented in the graphics.

If a DHCP client requests an IP address from Server1, the client will [answer choice].

	▼
fail to receive an IP address	
receive an IP address of 192.168.213.1	
receive an IP address of 192.168.213.6	

If a client computer that runs Windows 10 receives an IP address from myScope, the first attempt to renew the lease will be in [answer choice] days.

	▼
two	
four	
six	
eight	

- A. Mastered
- B. Not Mastered

Answer: A

Explanation:

If a DHCP client requests an IP address from Server1, the client will [answer choice].

	▼
fail to receive an IP address	
receive an IP address of 192.168.213.1	
receive an IP address of 192.168.213.6	

If a client computer that runs Windows 10 receives an IP address from myScope, the first attempt to renew the lease will be in [answer choice] days.

	▼
two	
four	
six	
eight	

NEW QUESTION 48

Note: This question is part of a series of questions that present the same scenario. Each question in the series contains a unique solution that might meet the stated goals. Some question sets might have more than one correct solution, while others might not have a correct solution.

After you answer a question in this sections, you will NOT be able to return to it. As a result, these questions will not appear in the review screen.

You have an IP Address Management (IPAM) server named IPAM1 that runs Windows Server 2016. IPAM1 manages all of the DHCP servers on your network. You are troubleshooting an issue for a client that fails to receive an IP address from DHCP.

You need to ensure that from IPAM1, you can view all of the event data for the DHCP leases from the last 24 hours.

Solution: From Task Scheduler, you run the Microsoft\Windows\IPAM\Audit task. Does this meet the goal?

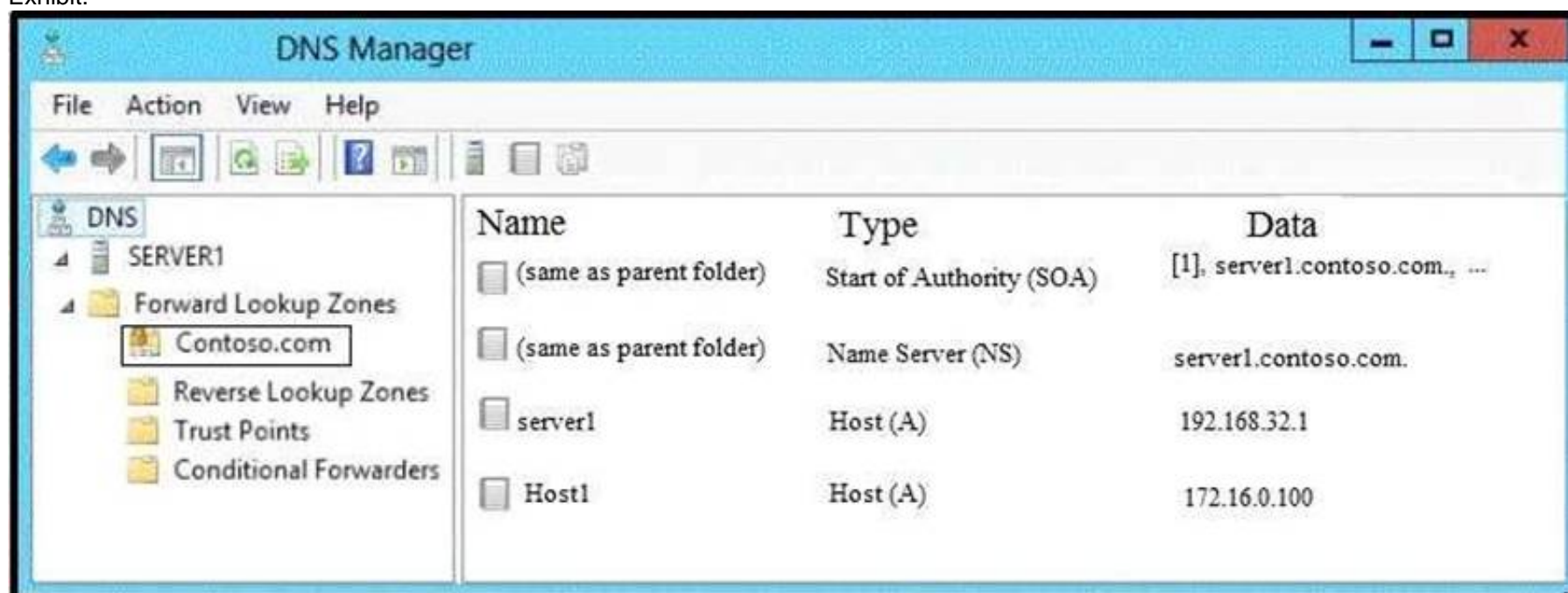
- A. Yes
- B. No

Answer: B

NEW QUESTION 51

You have a DNS server named Server1 that runs Windows Server 2016. Server 1 has a forward lookup zone for Contoso.com. The records in the zone are shown in the exhibit. (Click the Exhibit button.)

Exhibit:



You run the following commands on Server1.

```
Add-DnsServerClientSubnet -Name "Subnet1" -IPv4Subnet "172.16.0.0/24"

Add-DnsServerClientSubnet -Name "Subnet2" -IPv4Subnet "172.16.1.0/24"

Add-DnsServerZoneScope -ZoneName "Contoso.com" -Name "Scope1"

Add-DnsServerResourceRecord -ZoneName "Contoso.com" -A -Name "Host2"

-IPv4Address "172.16.99.99" -ZoneScope "Scope1"

Add-DnsServerQueryResolutionPolicy -Name "Policy1" -Action ALLOW

-ClientSubnet "EQ,Subnet1" -ZoneScope "Scope1,1" -ZoneName "Contoso.com"

Add-DnsServerQueryResolutionPolicy -Name "Policy2" -Action IGNORE

-ClientSubnet "NE,Subnet2" -FQDN "EQ,host1.contoso.com"
```

What are two results of the configuration? Each correct answer presents a complete solution. NOTE: Each correct selection is worth one point.

- A. When a client computer that has an IP address of 172.16.0.10 attempts to resolve host1.contoso.com, host1.contoso.com resolves to 172.16.99.99.
- B. When a client computer that has an IP address of 172.16.0.10 attempts to resolve host1.contoso.com, the name resolution fails to return an IP address.
- C. When a client computer that has an IP address of 172.16.1.56 attempts to resolve host1.contoso.com, host1.contoso.com resolves to 172.16.99.99.
- D. When a client computer that has an IP address of 172.16.1.56 attempts to resolve host1.contoso.com, host1.contoso.com resolves to 172.16.0.100.
- E. When a client computer that has an IP address of 172.16.1.56 attempts to resolve host1.contoso.com, the name resolution fails to return an IP address.
- F. When a client computer that has an IP address of 172.16.0.10 attempts to resolve host1.contoso.com, host1.contoso.com resolves to 172.16.0.100.

Answer: BE

Explanation:

References:

<https://docs.microsoft.com/en-us/powershell/module/dnsserver/add-dnsserverqueryresolutionpolicy?view=win1>

NEW QUESTION 53

You have a server named Server1 that runs Windows Server 2016.

Server1 has two network cards. One network card connects to your internal network and the other network card connects to the Internet.

You plan to use Server1 to provide Internet connectivity for client computers on the internal network. You need to configure Server1 as a network address translation (NAT) server.

Which server role or role service should you install on Server1 first?

- A. Network Controller
- B. Web Application Proxy
- C. Routing
- D. DirectAccess and VPN (RAS)

Answer: C

NEW QUESTION 57

Note: This question is part of a series of questions that present the same scenario. Each question in the series contains a unique solution that might meet the stated goals. Some questions sets might have more than one correct solutions, while others might not have a correct solution.

After you answer a question in this section, you will NOT be able to return to it. As a result, these questions will not appear in the review screen.

Your network contains an Active Directory forest named contoso.com. The forest has three sites located in London, Paris and Berlin.

The London site contains a web server named Web1 that runs Windows Server 2016.

You need to configure Web1 as an HTTP content server for the hosted cache servers located in the Paris and Berlin sites.

Solution: You install the BranchCache feature, and then you start the BranchCache service. Does this meet the goal?

- A. Yes
- B. No

Answer: A

NEW QUESTION 62

Note: This question is part of a series of questions that use the same scenario. For your convenience, the scenario is repeated in each question. Each question presents a different goal and answer choices, but the text of the scenario is exactly the same in each question in this series.

Your network contains an Active Directory domain named contoso.com. The functional level of the domain is Windows Server 2012.

The network uses an address space of 192.168.0.0/16 and contains multiple subnets. The network is not connected to the Internet.

The domain contains three servers configured as shown in the following table.

Server name	Configuration
Server1	Domain controller and DNS server
Server2	Member server
Server3	DHCP server

Client computers obtain TCP/IP setting from Server3.
You add a second network adapter to Server2. You connect the new network adapter to the Internet. You install the Routing role service on Server2.
Server1 has four DNS zones configured as shown in the following table.

DNS zone name	Type	Zone file name
Contoso.com	Active Directory-integrated	None
Fabrikam.com	Primary	Fabrikam.com.dns
Tailspintoys.com	Primary	Tailspintoys.com.dns
168.192.in-addr.arpa	Primary	168.192.in-addr.arpa.dns

You need to ensure that computers in the domain can resolve the following:
The name server2.contoso.com to the name nat.contoso.com
The 192.168.10.50 IP address to the name host7.fabrikam.com
The name server7.tailspintoys.com to the 192.168.100.101 IP address
Which types of DNS records should you use? To answer, drag the appropriate DNS record types to the correct requirements. Each DNS record type may be used once, more than one, or not at all. You may need to drag the split bar between panes or scroll to view content.

DNS Record Types

Alias (CNAME)

Host (AAAA)

Name server (NS)

Service location (SVR)

Host (A)

Mail exchanger (MX)

Pointer (PTR)

Text (TXT)

Answer Area

The name server2.contoso.com to the name nat.contoso.com:

The 192.168.10.50 IP address to the name host7.fabrikam.com:

The name server7.tailspintoys.com to the 192.168.100.101 IP address:

DNS record type

DNS record type

DNS record type

- A. Mastered
- B. Not Mastered

Answer: A

Explanation:

DNS Record Types

Alias (CNAME)

Host (AAAA)

Name server (NS)

Service location (SVR)

Host (A)

Mail exchanger (MX)

Pointer (PTR)

Text (TXT)

Answer Area

The name server2.contoso.com to the name nat.contoso.com:

The 192.168.10.50 IP address to the name host7.fabrikam.com:

The name server7.tailspintoys.com to the 192.168.100.101 IP address:

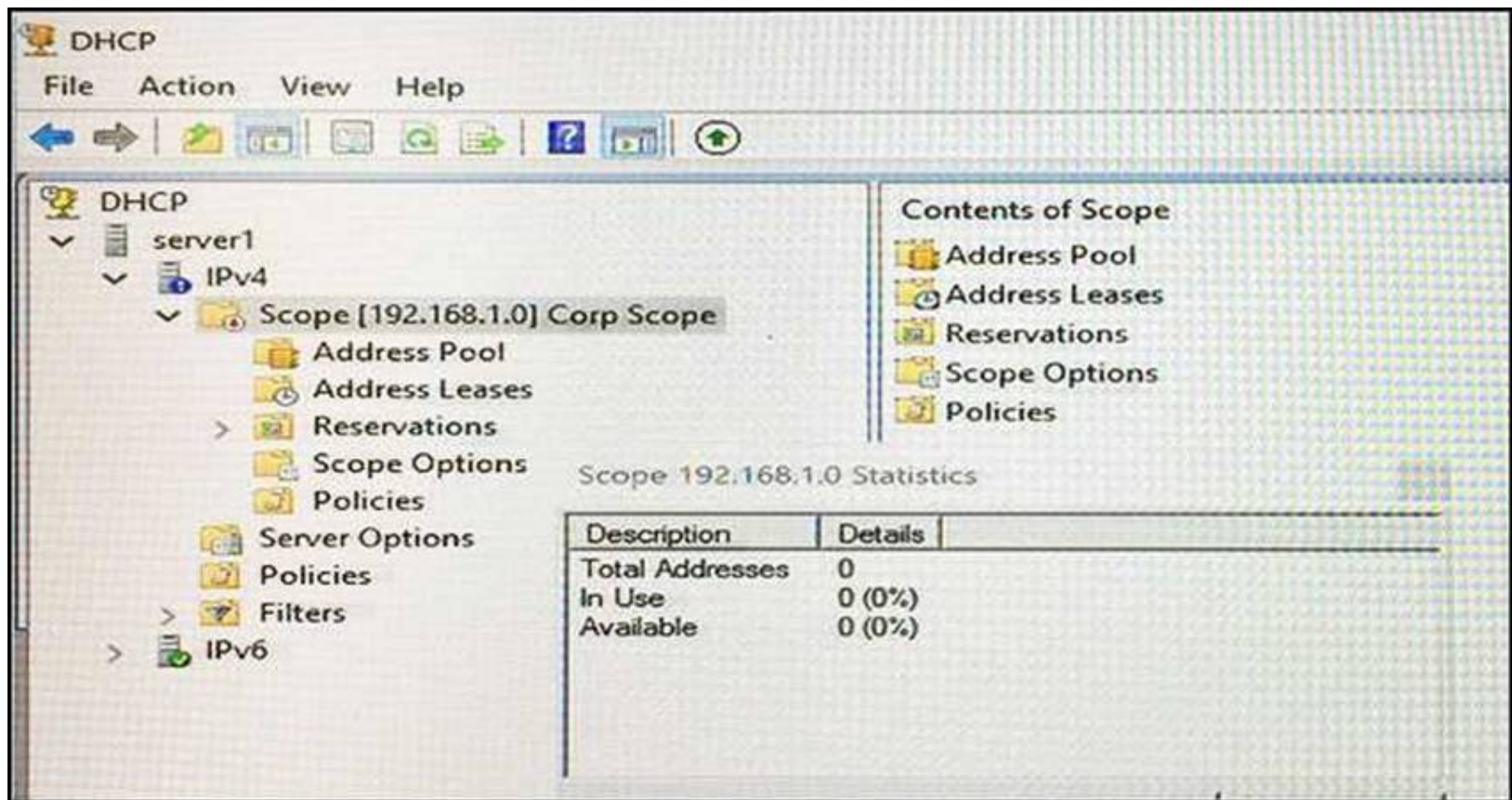
Alias (CNAME)

Pointer (PTR)

Host (A)

NEW QUESTION 66

Note: This question is part of a series of questions that present the same scenario. Each question in the series contains a unique solution that might meet the stated goals. Some question sets might have more than one correct solution, while others might not have a correct solution.
After you answer a question in this sections, you will NOT be able to return to it. As a result, these questions will not appear in the review screen.
You network contains an Active Directory domain named contoso.com. The domain contains a DHCP server named Server1. All client computers run Windows 10 and are configured as DHCP clients.
Your helpdesk received calls today from users who failed to access the network from their Windows 10 computer.
You open the DHCP console as shown in the exhibit. (Click the Exhibit button.)



You need to ensure that all of the Windows 10 computers can receive a DHCP lease. Solution: You start the DHCP Server service. Does this meet the goal?

- A. Yes
- B. No

Answer: B

Explanation:

[https://technet.microsoft.com/en-us/library/dd183581\(v=ws.10\).aspx](https://technet.microsoft.com/en-us/library/dd183581(v=ws.10).aspx)

NEW QUESTION 71

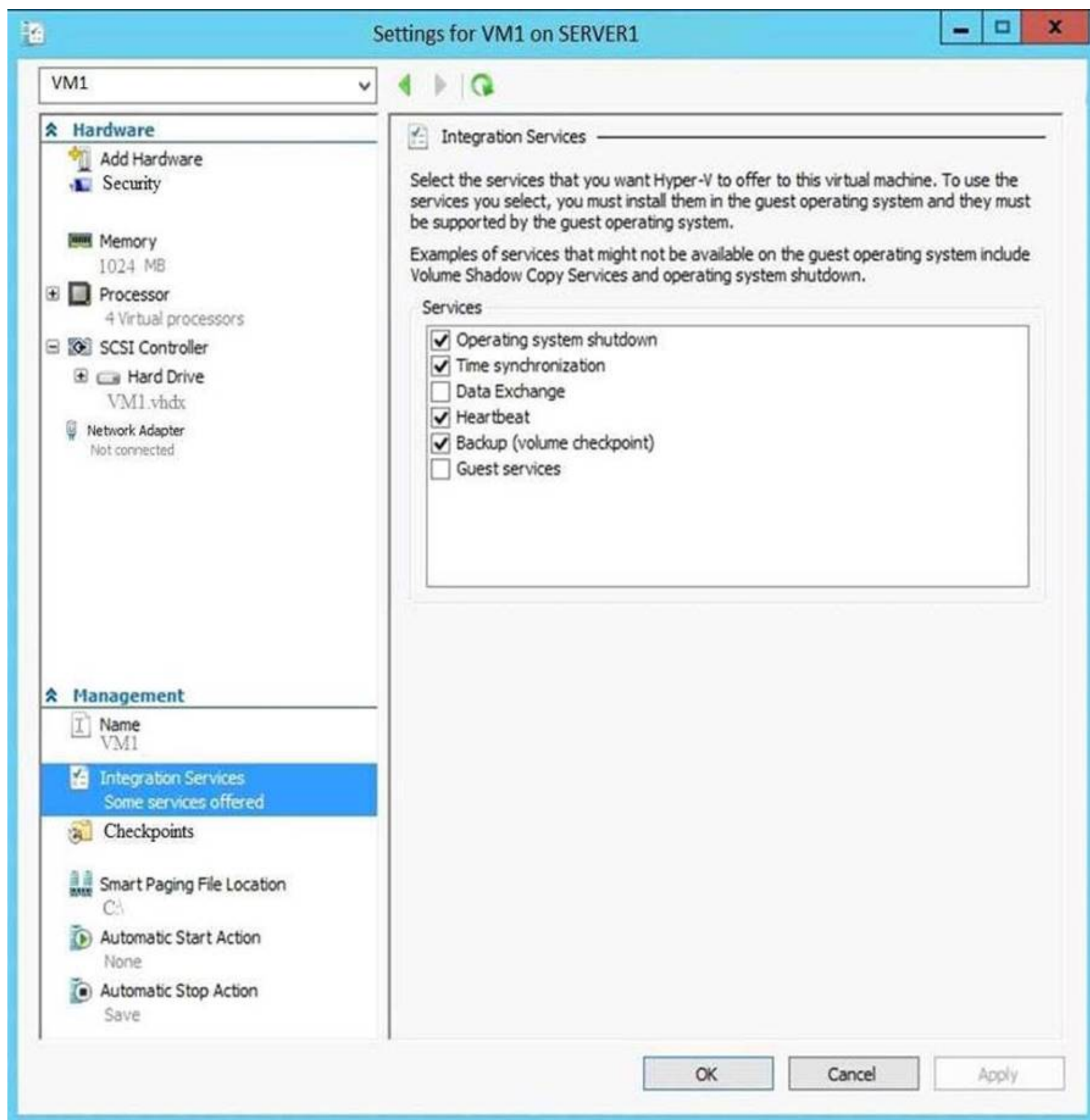
Note: This question is part of a series of questions that present the same scenario. Each question in the series contains a unique solution that might meet the stated goals. Some questions sets might have more than one correct solutions, while others might not have a correct solution. After you answer a question in this section, you will NOT be able to return to it. As a result, these questions will not appear in the review screen. Your network contains an Active Directory forest named contoso.com. The forest has three sites located in London, Paris and Berlin. The London site contains a web server named Web1 that runs Windows Server 2016. You need to configure Web1 as an HTTP content server for the hosted cache servers located in the Paris and Berlin sites. Solution: You install the DFS Replication role service, and then you start the Network Connections service. Does this meet the goal?

- A. Yes
- B. No

Answer: B

NEW QUESTION 75

Note: This question is part of a series of questions that present the same scenario. Each question in the series contains a unique solution that might meet the stated goals. Some question sets might have more than one correct solution, while others might not have a correct solution. After you answer a question in this sections, you will NOT be able to return to it. As a result, these questions will not appear in the review screen. You have a Hyper-V host named Server1 that hosts a virtual machine named VM1. Server1 and VM1 run Windows Server 2016. The settings for VM1 are configured as shown in the exhibit below.



You need to ensure that you can use the Copy-VMFile cmdlet on Server1 to copy files from VM1.

Solution: You need to enable the Guest Service integration service for VM1. Does this meet the goal?

- A. YES
- B. NO

Answer: A

NEW QUESTION 78

You have a DirectAccess Server that is accessible by using the name `directaccess.fabrikam.com`. On the DirectAccess server, you install a new server certificate that has a subject name of `directaccess.contoso.com`, and then you configure DNS records for `directaccess.contoso.com`. You need to change the endpoint name for DirectAccess to `directaccess.contoso.com`. What command should you run? To answer, select the appropriate options in the answer area.

	▼
Set-DaClient	
Set-DaEntryPoint	
Set-DaServer	

	▼
-ComputerName	
-ConnectToAddress	
-EntrypointName	

`directaccess.contoso.com`

- A. Mastered
- B. Not Mastered

Answer: A

Explanation:

<div><div></div><div>Set-DaClient</div><div>Set-DaEntryPoint</div><div>Set-DaServer</div></div>	<div><div></div><div>-ComputerName</div><div>-ConnectToAddress</div><div>-EntrypointName</div></div>	directaccess.contoso.com
---	--	--------------------------

NEW QUESTION 82

Note: This question is part of a series of questions that use the same or similar answer choices. An answer choice may be correct for more than one question in the series. Each question is independent of the other questions in this series. Information and details provided in a question apply only to that question.

Your network contains Windows and non-Windows devices.

You have a DHCP server named Server1 that has an IPv4 scope named Scope1.

You need to prevent a client computer that uses the same name as an existing registration from updating the registration.

What should you do?

- A. From the properties of Scope1, modify the Conflict detection attempts setting.
- B. From the properties of Scope1, configure Name Protection.
- C. From the properties of IPv4, configure the bindings.
- D. From IPv4, create a new filter.
- E. From the properties of Scope1, create an exclusion range.
- F. From IPv4 run the DHCP Policy Configuration Wizard.
- G. From Control Panel, modify the properties of Ethernet.
- H. From Scope1, create a reservation.

Answer: B

NEW QUESTION 86

You have a RADIUS server named RADIUS1. RADIUS1 is configured to use an IP address of 172.23.100.101.

You add a wireless access point (wap) named WAP-Secure to your network. You configure WAP-Secure to use an IP address of 10.0.100.101.

You need to ensure that WAP-Secure can authenticate to RADIUS1 by using a shared secret key. What command should you run? To answer, select the appropriate options in answer area.

<div><div></div><div>Import-NpsConfiguration</div><div>New-NpsRadiusClient</div></div>	<div><div></div><div>-address 10.0.100.101</div><div>-address 172.23.100.101</div></div>	<div><div></div><div>-enabled \$true</div><div>-name WAP-Secure</div></div>	-SharedSecret "001001001001"
--	--	---	------------------------------

- A. Mastered
- B. Not Mastered

Answer: A

Explanation:

<div><div></div><div>Import-NpsConfiguration</div><div>New-NpsRadiusClient</div></div>	<div><div></div><div>-address 10.0.100.101</div><div>-address 172.23.100.101</div></div>	<div><div></div><div>-enabled \$true</div><div>-name WAP-Secure</div></div>	-SharedSecret "001001001001"
--	--	---	------------------------------

NEW QUESTION 89

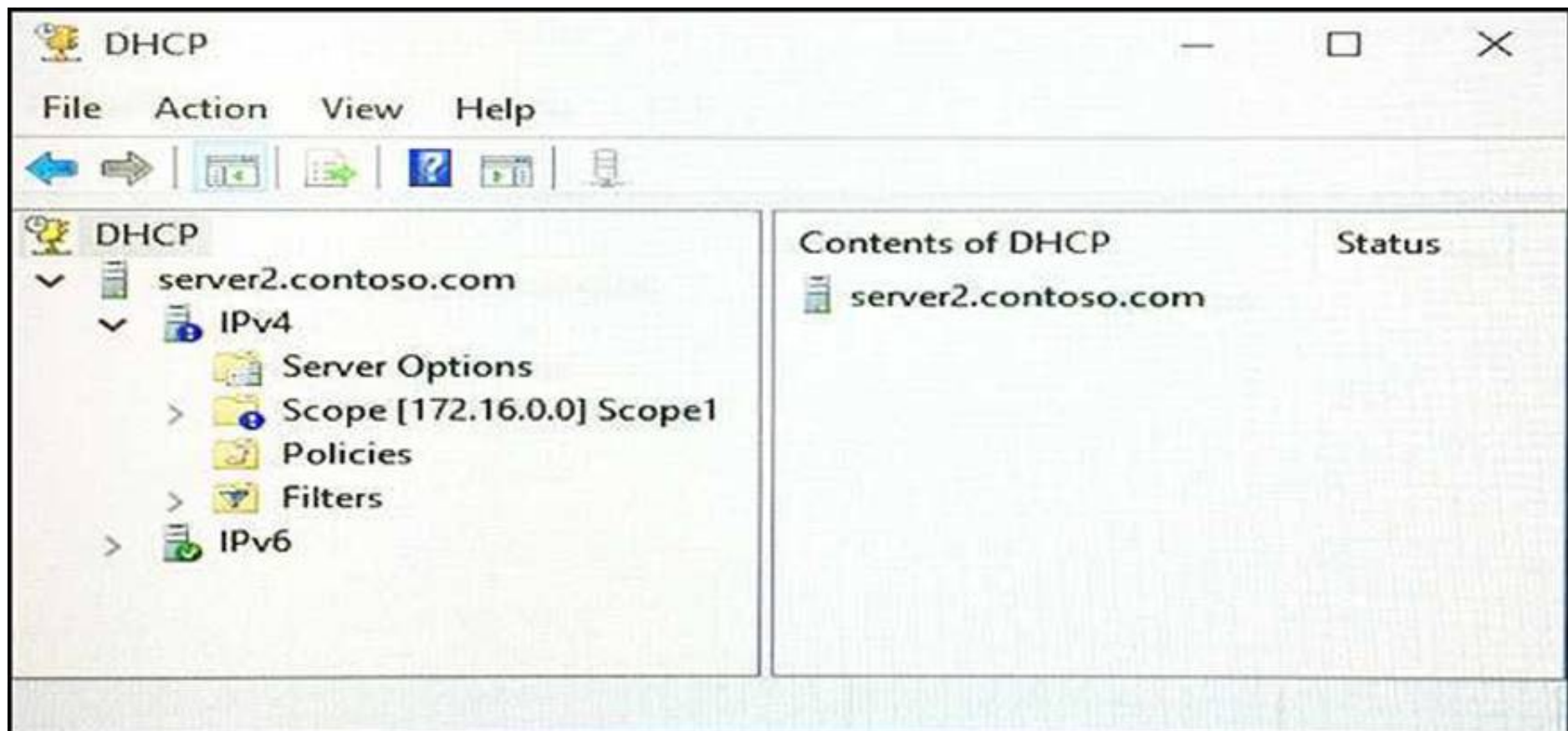
Note: This question is part of a series of questions that present the same scenario. Each question in the series contains a unique solution that might meet the stated goals. Some question sets might have more than one correct solution, while others might not have a correct solution.

After you answer a question in this sections, you will NOT be able to return to it. As a result, these questions will not appear in the review screen.

You network contains an Active Directory domain named contoso.com. The domain contains a DHCP server named Server2 than runs Windows Server 2016.

Users report that their client computers fail to obtain an IP address.

You open the DHCP console as shown in the Exhibit. (Click the Exhibit button.)



Scope1 has an address range of 172.16.0.10 to 172.16.0.100 and a prefix length of 23 bits.

You need to ensure that all of the client computers on the network can obtain an IP address from Server2. Solution: You run the Set-DhcpServerv4Scope cmdlet. Does this meet the goal?

- A. Yes
- B. No

Answer: A

Explanation:

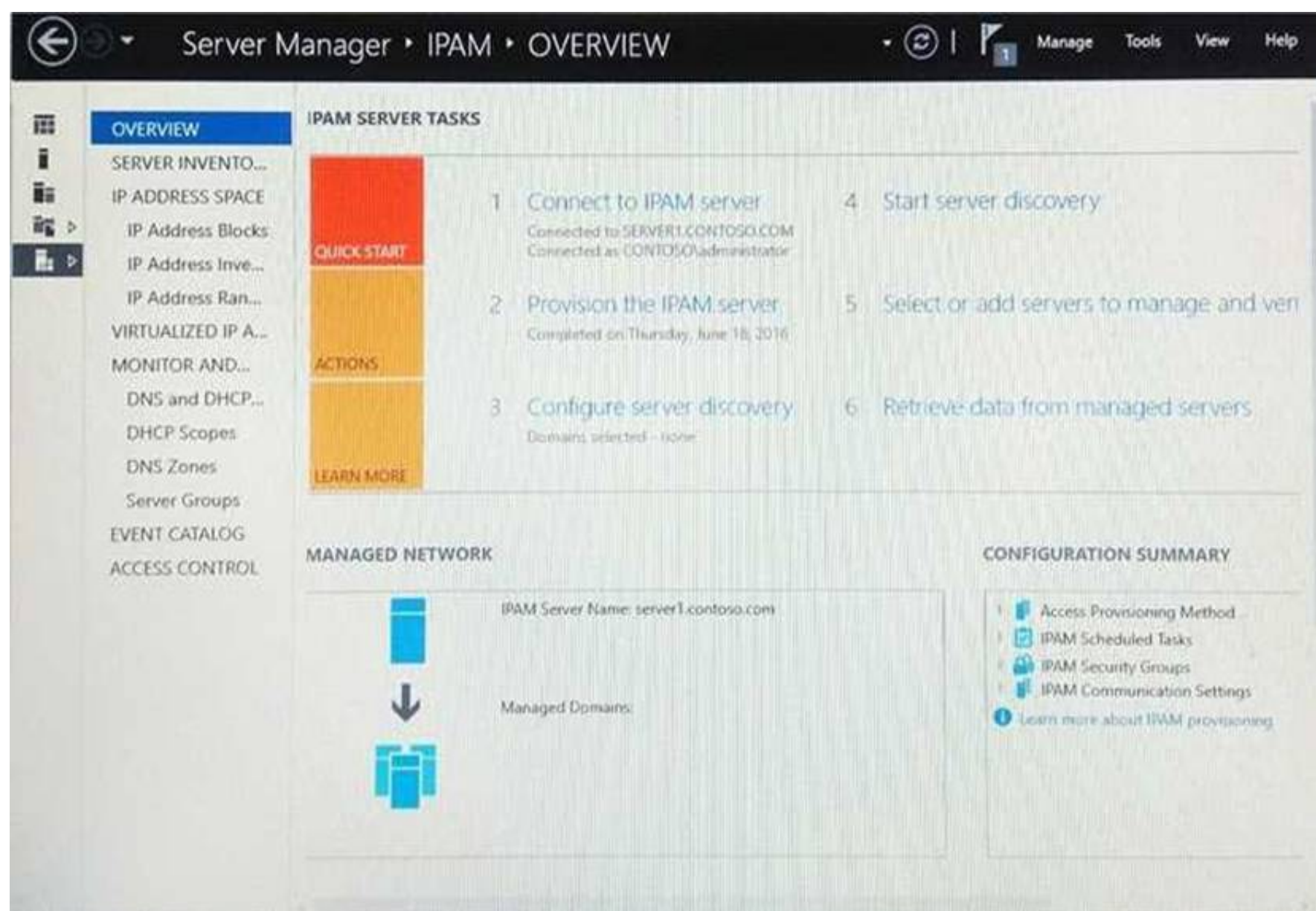
<https://technet.microsoft.com/itpro/powershell/windows/dhcp-server/set-dhcpserverv4scope>

NEW QUESTION 94

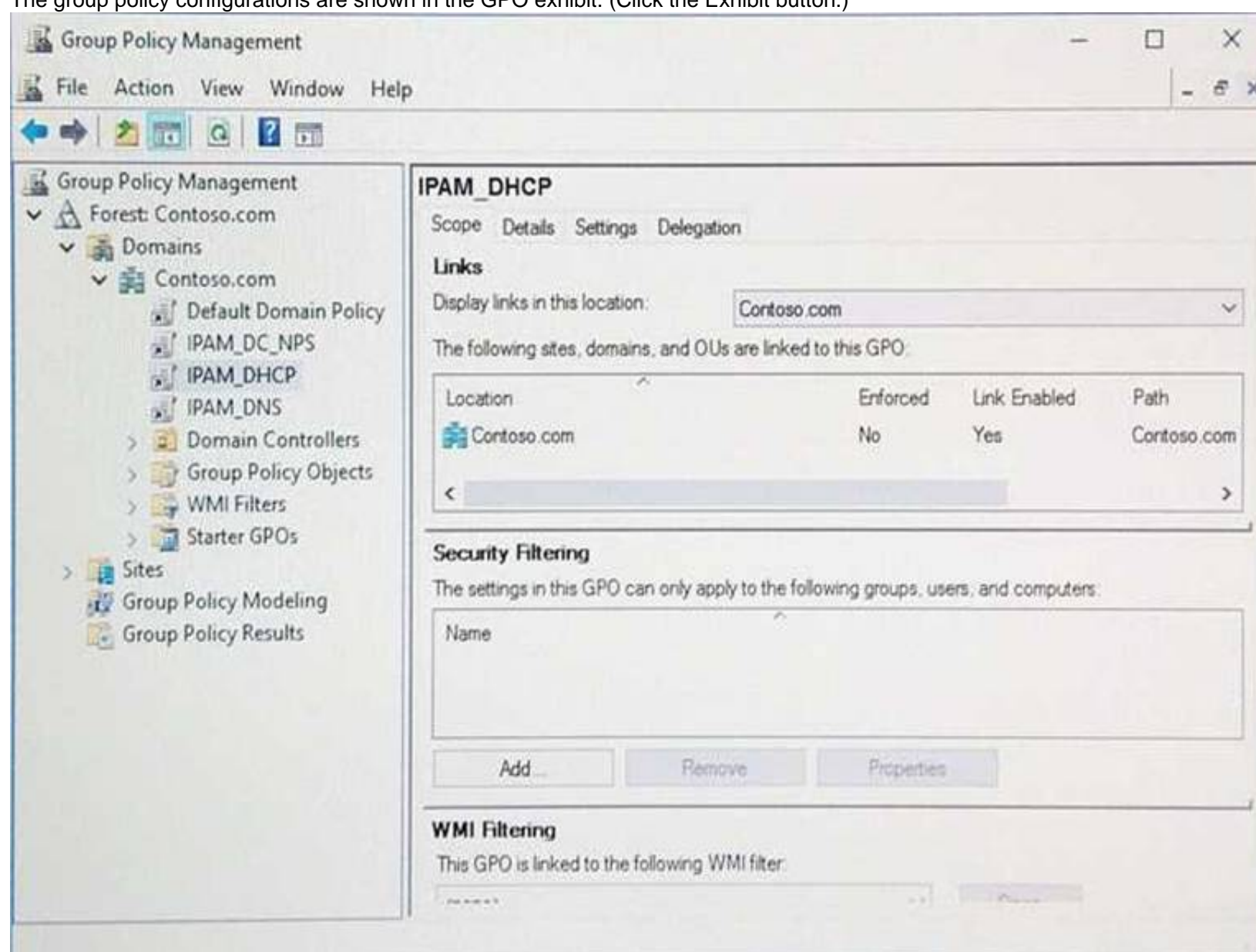
Your company has a testing environment that contains an Active Directory domain named contoso.com. The domain contains a server named Server1 that runs Windows Server 2016. Server1 has IP Address Management (IPAM) installed. IPAM has the following configuration.

```
Version           : 6.3.0.1
Port              : 48885
ProvisioningMethod : Automatic
GpoPrefix         : IPAM
HMACKey           : System.Security.SecureString
```

The IPAM Overview page from Server Manager is shown in the IPAM Overview exhibit. (Click the Exhibit button.)



The group policy configurations are shown in the GPO exhibit. (Click the Exhibit button.)



For each of the following statements, select Yes if the statement is true. Otherwise, select No.

Statements	Yes	No
If a DNS server is added to contoso.com, the server will be discovered by IPAM automatically.	<input type="radio"/>	<input type="radio"/>
If you manually add a DHCP server named Server3 to IPAM and set the Manageability status to Managed , the IPAM_DHCP Group Policy will apply to Server3.	<input type="radio"/>	<input type="radio"/>
If you click Start server discovery , the domain controllers in contoso.com will be discovered by IPAM.	<input type="radio"/>	<input type="radio"/>

- A. Mastered
 B. Not Mastered

Answer: A

Explanation:

Statements	Yes	No
If a DNS server is added to contoso.com, the server will be discovered by IPAM automatically.	<input type="radio"/>	<input checked="" type="radio"/>
If you manually add a DHCP server named Server3 to IPAM and set the Manageability status to Managed , the IPAM_DHCP Group Policy will apply to Server3.	<input type="radio"/>	<input checked="" type="radio"/>
If you click Start server discovery , the domain controllers in contoso.com will be discovered by IPAM.	<input type="radio"/>	<input checked="" type="radio"/>

NEW QUESTION 98

Note: This question is part of a series of questions that present the same scenario. Each question in the series contains a unique solution that might meet the stated goals. Some question sets might have more than one correct solution, while others might not have a correct solution.

After you answer a question in this sections, you will NOT be able to return to it. As a result, these questions will not appear in the review screen.

Your network contains an Active Directory domain named contoso.com

You need to create a Nano Server image named Nano1 that will be used as a virtualization host. The windows server 2016 source files are located in drive D.

Solution: You run the following cmdlet.

```
New-NanoServerImage -Edition Datacenter -DeploymentType Host -Compute
```

```
-Media 'D:\' -TargetPath c:\Nano1\Nano1.wim -ComputerName Nano1 -DomainName Contoso.com
```

Does this meet the goal?

- A. Yes
 B. NO

Answer: A

NEW QUESTION 101

Your network contains multiple wireless access points (WAPs) that use WPA2-Personal authentication. The network contains an enterprise root certification authority (CA).

The security administrator at your company plans to implement WPA2-Enterprise authentication on the WAPs.

To support the authentication change, you deploy a server that has Network Policy Server (NPS) installed. You need to configure NPS to authenticate the wireless clients.

What should you do on the NPS server?

- A. Add RADIUS clients and configure network policies.
 B. Create a remote RADIUS server group and configure connection request policies.
 C. Create a remote RADIUS server group and install a server certificate.
 D. Add RADIUS clients and configure connection request policies.

Answer: A

Explanation:

<https://ittrainingday.com/2013/12/25/how-to-configure-a-windows-radius-server-for-802-1x-wireless-or-wired-c>

NEW QUESTION 102

Your network contains an Active Directory domain. The domain contains a certification authority (CA) and a Network Policy Server (NPS) server. You plan to deploy Remote Access Always On VPN. Which authentication method should you use?

- A. Microsoft: EAP-TTLS
- B. Microsoft: Secured password
- C. Microsoft: Protected EAP
- D. Microsoft: EAP-AKA

Answer: C

NEW QUESTION 105

Note: This question is part of a series of questions that present the same scenario. Each question in the series contains a unique solution that might meet the stated goals. Some question sets might have more than one correct solution, while others might not have a correct solution.

After you answer a question in this sections, you will NOT be able to return to it. As a result, these questions will not appear in the review screen.

You network contains an Active Directory domain named contoso.com. The domain contains a member server named Server1 that runs Windows Server 2016 and has the DNS Server role installed. Automatic scavenging of state records is enabled and the scavenging period is set to 10 days.

All client computers dynamically register their names in the contoso.com DNS zone on Server1.

You discover that the names of multiple client computers that were removed from the network several weeks ago can still be resolved.

You need to configure Server1 to automatically remove the records of the client computers that have been offline for more than 10 days.

Solution: You run the dnscmd.exe command and specify the /AgeAllRecords parameter for the zone. Does this meet the goal?

- A. Yes
- B. No

Answer: B

Explanation:

[https://technet.microsoft.com/en-us/library/cc772069\(v=ws.11\).aspx](https://technet.microsoft.com/en-us/library/cc772069(v=ws.11).aspx)

NEW QUESTION 110

Note: This question is part of a series of questions that use the same or similar answer choices. An answer choice may be correct for more than one question in the series. Each question is independent of the other questions in this series. Information and details provided in a question apply only to that question.

You have a DHCP server named Server1 that has an IPv4 scope named Scope1.

Users report that when they turn on their client computers, it takes a long time to access the network. You validate that it takes a long time for the computers to receive an IP address from Server1.

You monitor the network traffic and discover that Server1 issues five ping commands on the network before leasing an IP address.

You need to reduce the amount of time it takes for the computers to receive an IP address. What should you do?

- A. From the properties of Scope1, modify the Conflict detection attempts setting.
- B. From the properties of Scope1, configure Name Protection.
- C. From the properties of IPv4, configure the bindings.
- D. From IPv4, create a new filter.
- E. From the properties of Scope1, create an exclusion range.
- F. From IPv4, run the DHCP Policy Configuration Wizard.
- G. From Control Panel, modify the properties of Ethernet.
- H. From Scope1, create a reservation.

Answer: A

Explanation:

[https://technet.microsoft.com/en-us/library/ee941125\(v=ws.10\).aspx](https://technet.microsoft.com/en-us/library/ee941125(v=ws.10).aspx)

NEW QUESTION 112

Your network contains an Active Directory domain named contoso.com. The domain contains two servers named Server1 and Server2 that run Windows Server 2016.

Server1 has Microsoft System Center 2016 Virtual Machine Manager (VMM) installed. Server2 has IP Address Management (IPAM) installed.

You create a domain user named User1.

You need to integrate IPAM and VMM. VMM must use the account of User1 to manage IPAM. The solution must use the principle of least privilege.

What should you do on each server? To answer, select the appropriate options in the answer area.

Answer Area

On Server1:

▼
Create a Run as Account that uses User1
Add User1 to the Fabric Administrator user role
Add User1 to the Remote Management Users group

On Server2:

▼
Add User1 to IPAM Administrator Role
Add User1 to IPAM ASM Administrator Role
Add User1 to IPAM MSM Administrator Role

- A. Mastered
- B. Not Mastered

Answer: A

Explanation:

On Server1: Create a Run As Account that uses User1.

On Server2: Add User1 to IPAM ASM Administrator Role. [https://technet.microsoft.com/en-us/library/dn783349\(v=ws.11\).aspx](https://technet.microsoft.com/en-us/library/dn783349(v=ws.11).aspx) [https://technet.microsoft.com/en-us/library/jj878348\(v=ws.11\).aspx](https://technet.microsoft.com/en-us/library/jj878348(v=ws.11).aspx)

NEW QUESTION 116

You have a server named Server1 that runs Windows Server 2016. Server1 is located on the perimeter network, and only inbound TCP port 443 is allowed to connect Server1 from the Internet.

You install the Remote Access server role on Server1.

You need to configure Server1 to accept VPN connections over port 443.

Which VPN protocol should you use?

- A. PPTP
- B. SSTP
- C. L2TP
- D. IKEv2

Answer: B

Explanation:

[https://technet.microsoft.com/en-us/library/dd458955\(v=ws.10\).aspx](https://technet.microsoft.com/en-us/library/dd458955(v=ws.10).aspx)

NEW QUESTION 121

You have the servers configured as shown in the following table.

Server name	Operating system	Configuration
Server1	Windows Server 2016	Domain controller, DNS server, and DHCP server
Server2	Windows Server 2016	Hyper-V host
Server3	Windows Server 2012 R2	File server and web server
Server4	Windows Server 2016	None

Your network uses an internal address space of 10.10.0.0/24. Client computers are allocated addresses from 10.10.0.60 to 10.10.0.199. Server4 has the IPv4 configuration shown in the following table.

Interface name	IPv4 address	Default gateway
External	131.12.11.121	131.12.11.254
Internal	10.10.0.200	10.10.0.254

You need to configure Server4 to provide Internet access to the computers on the network.

Which three actions should you perform in sequence? To answer move the appropriate actions from the list of actions to the answer area and arrange them in the correct order.

Actions

Install the Remote Access server role.

Enable DirectAccess and VPN.

Open the **Routing and Remote Access** console.

Run the Routing and Remote Access Server Setup Wizard. Add 131.12.11.121 to the NAT interface.

Install the Remote Desktop Services server role.

Run the **Routing and Remote Access Server Setup Wizard**. Add 10.10.0.200 to the NAT interface.

Open the **Remote Access Management Console**.

Answer Area



- A. Mastered
- B. Not Mastered

Answer: A

Explanation:

Actions

Install the Remote Access server role.

Enable DirectAccess and VPN.

Open the **Routing and Remote Access** console.

Run the Routing and Remote Access Server Setup Wizard. Add 131.12.11.121 to the NAT interface.

Install the Remote Desktop Services server role.

Run the **Routing and Remote Access Server Setup Wizard**. Add 10.10.0.200 to the NAT interface.

Open the **Remote Access Management Console**.

Answer Area

Install the Remote Access server role.

Open the **Routing and Remote Access** console.

Run the Routing and Remote Access Server Setup Wizard. Add 131.12.11.121 to the NAT interface.



NEW QUESTION 122

Refer to Exhibit:

Administrator: Windows PowerShell

```
PS C:\> Get-DfsnRoot- namespace\\ Server1.Adatum. com\Namespace1| fl

State                : Online
Flags                : {Site Costing, AccessBased Enumeration}
Type                 : Standalone
Path                 : \\Server1.Adatum.com\ Namespace1
TimeToLiveSec        : 300
Description           :
NamespacePath         : \\Server1.Adatum.com\Namespace1
TimeToLive            : 300
GrantAdminAccess      : {BUILTIN\Administrators, NT AUTHORITY\SYSTEM}
PSComputerName         :
CimClass              : ROOT/Microsoft/Windows/dfs: MSFT_DFSNamespace
CimInstanceProperties : {Description, Flags, NamespacePath, State...}
CimSystemProperties    : Microsoft.Management.Infrastructure.CimSystemProperties
```

PS C:\>

\\Server1.adatum.com\namespace1 has a folder target maned Folder1. A user named User1 has Full Control share and NTFS permissions to Folder1. Folder1 contains a file named File1.doc. User1 has only Write NTFS permissions to File1.doc. Use the drop-down menus to select the answer choice that completes each statement based on the information presented in the graphic.

When you want to provide redundancy for the DFS namespace on Server1, you must [answer choice].

▼

implement DFS Replication

implement Failover Clustering

install an additional domain controller

User1 will be [answer choice].

▼

Able to see File1.doc in File Explorer and will be able to open the file

Able to see File1.doc in File Explorer and will be prevented from opening the file

Prevented from seeing File1.doc in File Explorer but will be able to delete the file

- A. Mastered
- B. Not Mastered

Answer: A

Explanation:

When you want to provide redundancy for the DFS namespace on Server1, you must [answer choice].

- implement DFS Replication
- implement Failover Clustering
- install an additional domain controller

User1 will be [answer choice].

- Able to see File1.doc in File Explorer and will be able to open the file
- Able to see File1.doc in File Explorer and will be prevented from opening the file
- Prevented from seeing File1.doc in File Explorer but will be able to delete the file

NEW QUESTION 124

Note: This question is part of a series of questions that present the same scenario. Each question in the series contains a unique solution that might meet the stated goals. Some questions sets might have more than one correct solutions, while others might not have a correct solution.

After you answer a question in this section, you will NOT be able to return to it. As a result, these questions will not appear in the review screen.

You have a server named Server1 that runs Windows Server 2016. Server1 is configured as a VPN server.

Server1 is configured to allow domain users to establish VPN connections from 06:00 to 18:00 everyday of the week.

You need to ensure that domain users can establish VPN connections only between Monday and Friday.

Solution: From Routing and Remote Access, You configure the Properties of Server1. Does this meet the goal?

- A. Yes
- B. No

Answer: B

NEW QUESTION 127

You have an IP Address Management (IPAM) server named Server1 that runs Windows Server 2016. You have five DHCP servers. Server1 manages all of the DHCP servers.

On Server1, an administrator uses Purge Event Catalog Data to remove all of the events from the last 30 days. You need to view all of the lease requests that were denied during the last two days.

What should you do?

- A. On each DHCP server, run the \Microsoft\Windows\Server Manager\CleanUpOldPerfLogs scheduled task, and then review the event catalog on Server1.
- B. On Server1, run the Purge Event Catalog Data action and then open Event Viewer on Server1.
- C. Review the log data in C:\Windows\System32\ipam\Database on Server1.
- D. On each DHCP server, review the DHCP Server operational event log.

Answer: C

NEW QUESTION 130

Your company has three offices. The offices are located in Seattle, Chicago, and Montreal.

You are configuring a new WAN link between the three offices by using the Remote Access server role in Windows Server 2016. You will use Border Gateway Protocol (BGP) as a routing protocol between the sites.

You need to configure the server in the Seattle office for BGP routing. What should you do first?

- A. From Routing and Remote Access, add a new IPv4 routing protocol
- B. From Windows PowerShell, run the Add-BgpPeer cmdlet and specify the -LocalASN parameter
- C. From Routing and Remote Access, add a new IPv6 routing protocol
- D. From Windows PowerShell, run the Add-BgpRouter cmdlet and specify the -LocalASN parameter

Answer: D

NEW QUESTION 135

Your network contains three subnets, a production subnet that contains production servers, a development network that contains development servers, and a client network that contains client computers.

The development network is used to test applications and reproduces servers that are located on the production network. The development network and the production network use the same IP address range.

A developer has a client computer on the client network. The developer reports that when he attempts to connect to the IP address 10.10.1.6 from his computer, he connects to a server on the production network.

You need to ensure that when the developer connects to 10.10.1.6, he connects to a sever on the development network

Which cmdlet should you use?

- A. New-NetNeighbor
- B. New-NetRoute
- C. Set-NetTcpSetting
- D. Set-NetNeighbor

Answer: B

NEW QUESTION 140

You have a server named Server1 that runs Windows Server 2016. You install the Hyper-V server role on Server1. Server1 has eight network adapters that are dedicated to virtual machines. The network adapters are Remote Direct Memory Access (RDMA)-enabled.

You plan to use Software Defined Networking (SDN). You will host the virtual machines for multiple tenants on the Hyper-V host.

You need to ensure that the network connections for the virtual machines are resilient if one or more physical network adapters fail.

What should you implement?

- A. single root I/O virtualization (SR-IOV)
- B. NIC Teaming on the Hyper-V host
- C. virtual Receive-side Scaling (vRSS)
- D. Switch Embedded Teaming (SET)

Answer: D

NEW QUESTION 145

You are implementing a secure network. The network contains a DHCP server named Server1 that runs Windows Server 2016.

You create a DHCP allow filter that contains all of the computers on the network that are authorized to receive IP addresses.

You discover that unauthorized computers can obtain an IP address from Server1.

You need to ensure that only authorized computers can receive an IP address from Server1. Solution: You run the following command.

Add-DHCPServer4Filter -ComputerName Server1 -MacAddress -List Allow Does this meet the goal?

- A. Yes
- B. No

Answer: A

Explanation:

References:

<https://docs.microsoft.com/en-us/powershell/module/dhcpserver/add-dhcpserverv4filter?view=win10-ps>

NEW QUESTION 149

Your network contains an Active Directory domain named contoso.com. The domain contains a DNS server named Server1. You enable Response Rate Limiting on Server1. You need to prevent Response Rate Limiting from applying to hosts that reside on the network of 10.0.0.0/24. Which cmdlets should you run? To answer, select the appropriate options in the answer area.

First cmdlet to run:

Add-DnsServerClientSubnet
 Enable-DnsServerPolicy
 Set-DnsServerResponseRateLimiting
 Set-DnsServerResponseRateLimitingExceptionlist

Second cmdlet to run:

Add- DnsServerResponseRateLimitingExceptionlist
 Add-DnsServerQueryResolutionPolicy
 Add-DnsServerZoneScope
 Set-DnsServerDsSetting

- A. Mastered
- B. Not Mastered

Answer: A

Explanation:

Set-DnsServerResponseRateLimiting

Add-DnsServerResponseRateLimitingExceptionlist

<https://docs.microsoft.com/en-us/powershell/module/dnsserver/set-dnsserverresponseratelimiting?view=win10-p>

NEW QUESTION 150

You are implementing a secure network. The network contains a DHCP server named Server1 that runs Windows Server 2016. You create a DHCP allow filter that contains all of the computers on the network that are authorized to receive IP addresses. You discover that unauthorized computers can obtain an IP address from Server1. You need to ensure that only authorized computers can receive an IP address from Server1. Solution: You run the following command. Add-DHCPServer4Filter -ComputerName Server1 -MacAddress -List Deny Does this meet the goal?

- A. Yes
- B. No

Answer: B

Explanation:

References:

<https://docs.microsoft.com/en-us/powershell/module/dhcpserver/add-dhcpserverv4filter?view=win10-ps>

NEW QUESTION 153

You have a DNS server named Server1 that runs Windows Server 2016. Server1 has an Active Directory-integrated zone named adatum.com. All client computers run Windows 10. You recently encountered unexpected responses to DNS client queries in the adatum.com zone. You need to log all the records written to the zone. Which cmdlet should you run?

- A. Set-DnsServerDsSetting
- B. Set-DnsServerDiagnostics
- C. Set-DnsServer
- D. Add-DnsServerQueryResolutionPolicy

Answer: B

NEW QUESTION 154

Note: This question is part of a series of questions that use the same scenario. For your convenience, the scenario is repeated in each question. Each question presents a different goal and answer choices, but the text of the scenario is exactly the same in each question in this series.

Start of the repeated scenario

Your network contains an Active Directory domain named contoso.com. The functional level of the domain is Windows Server 2012.

The network uses an address space of 192.168.0.0/16 and contains multiple subnets. The network is not connected to the Internet.

The domain contains three servers configured as shown in the following table.

Server name	Configuration
Server1	Domain controller and DNS server
Server2	Member server
Server3	DHCP server

Client computers obtain TCP/IP settings from Server3.

You add a second network adapter to Server2. You connect the new network adapter to the Internet. You install the Routing role service on Server2.

Server1 has four DNS zones configured as shown in the following table.

DNS zone name	Type	Zone file name
Contoso.com	Active Directory-integrated	None
Fabrikam.com	Primary	Fabrikam.com.dns
Tailspintoys.com	Primary	Tailspintoys.com.dns
168.192.in-addr.arpa	Primary	168.192.in-addr.arpa.dns

End of the repeated scenario

You need to ensure that when computers query for records in tailspintoys.com, the query results are based on the subnet of the computer that generates the query.

What should you do?

- A. Enable DNS round robin.
- B. Configure DNS policies.
- C. Create zone delegation records.
- D. Modify the Priority settings of each resource record.

Answer: B

NEW QUESTION 155

You have a network policy server (NPS) server named NPS1. One network policy is enabled on NPS1. The policy is configured as shown in the following exhibit.

Conditions – If the following conditions are met:

Condition	Value
Day and time restrictions	Monday 08:00-18:00 Tuesday 08:00-18:00 Wednesday 08:00-18:00 Thursday 08:00-18:00 Friday 08:00-18:00
Windows Groups	DEMO\Protected Users OR DEMO\Domain Admins

Use the drop-down menus to select the answer choice that completes each statement based on the information in the graphic.

If a user is only a member of the Domain Users group, the policy [answer choice].

	▼
applies to the user on weekdays between 08:00 and 18:00	
applies to the user on weekdays between 18:00 and 08:00	
applies to the user on weekends between 08:00 and 18:00	
never applies to the user	

If the policy applies to a user who is a member of the Protected Users group, the user can use [answer choice] to be authenticated.

	▼
a password	
a static IP address	
a virtual smart card	

- A. Mastered
- B. Not Mastered

Answer: A

Explanation:

If a user is only a member of the Domain Users group, the policy [answer choice].

	▼
applies to the user on weekdays between 08:00 and 18:00	
applies to the user on weekdays between 18:00 and 08:00	
applies to the user on weekends between 08:00 and 18:00	
never applies to the user	

If the policy applies to a user who is a member of the Protected Users group, the user can use [answer choice] to be authenticated.

	▼
a password	
a static IP address	
a virtual smart card	

NEW QUESTION 156

You have a Nano Server that has one network interface. The server is configured to obtain an IP address automatically. You need to configure the server to have the following IP configurations:

- IP address 172.16.3.100
- Default gateway: 172.163.1
- Subnet mask: 255.255.255.0

What command should you run? To answer, select the appropriate options in the answer area.

Answer Area

▼

Netsh

New-NetIPAddress

Set-NetIPAddress

-Interfacealias Ethernet -IPAddress
172.16.3.100 -DefaultGateway
172.16.3.1

-AddressFamily

▼

IPV4

IPV6

-PrefixLength

▼

8

16

24

32

- A. Mastered
B. Not Mastered

Answer: A

Explanation:

References: <https://docs.microsoft.com/en-us/powershell/module/nettcpip/new-netipaddress?view=win10-ps>

NEW QUESTION 158

You have a DHCP server named Server1.

Server1 has an IPv4 scope that contains 100 addresses for a subnet named Subnet1. Subnet1 provides guest access to the Internet. There are never more than 20 client computers on Subnet1 simultaneously; however, the computers that connect to Subnet 1 are rarely the same computers.

You discover that some client computers are unable to access the network. The computers that have the issue have IP addresses in the range of 169.254.0.0/16.

You need to ensure that all of the computers can connect successfully to the network to access the Internet. What should you do?

- A. Create a new scope that uses IP addresses in the range of 169.254.0.0/16.
B. Modify the scope options.
C. Modify the lease duration.
D. Configure Network Access Protection (NAP) integration on the existing scope.

Answer: C

NEW QUESTION 160

Note: This question is part of a series of questions that use the same scenario. For your convenience, the scenario is repeated in each question. Each question presents a different goal and answer choices, but the text of the scenario is exactly the same in each question in this series.

Your network contains an Active Directory domain named contoso.com. The functional level of the domain is Windows Server 2012.

The network uses an address space of 192.168.0.0/16 and contains multiple subnets.

The network is not connected to the Internet.

The domain contains three servers configured as shown in the following table.

Server name	Configuration
Server1	Domain controller and DNS server
Server2	Member server
Server3	DHCP server

Client computers obtain TCP/IP settings from Server3.

You add a second network adapter to Server2. You connect the new network adapter to the Internet. You install the Routing role service on Server2.

Server1 has four DNS zones configured as shown in the following table.

DNS zone name	Type	Zone file name
Contoso.com	Active Directory-integrated	None
Fabrikam.com	Primary	Fabrikam.com.dns
Tailspintoys.com	Primary	Tailspintoys.com.dns
168.192.in-addr.arpa	Primary	168.192.in-addr.arpa.dns

You need to create a zone to ensure that Server1 can resolve single-label names. What should you name the zone on Server1?

- A. . (root)
B. WINS
C. NetBIOS
D. GlobalNames

Answer: D

Explanation:

[https://technet.microsoft.com/en-us/library/cc816610\(v=ws.10\).aspx](https://technet.microsoft.com/en-us/library/cc816610(v=ws.10).aspx)

NEW QUESTION 165

You have a server named Server1 that runs Windows Server 2016. Server1 has the DHCP Server and the Windows Deployment Service server roles installed. Server1 is located on the same subnet as client computers.

You need to ensure that clients can perform a PXE boot from Server1.

Which two IPv4 options should you configure in DHCP? Each correct answer presents part of the solution.

- A. 003 Router
- B. 066 Boot Server Host Name
- C. 015 DNS Domain Name
- D. 006 DNS Servers
- E. 060 Option 60

Answer: BE

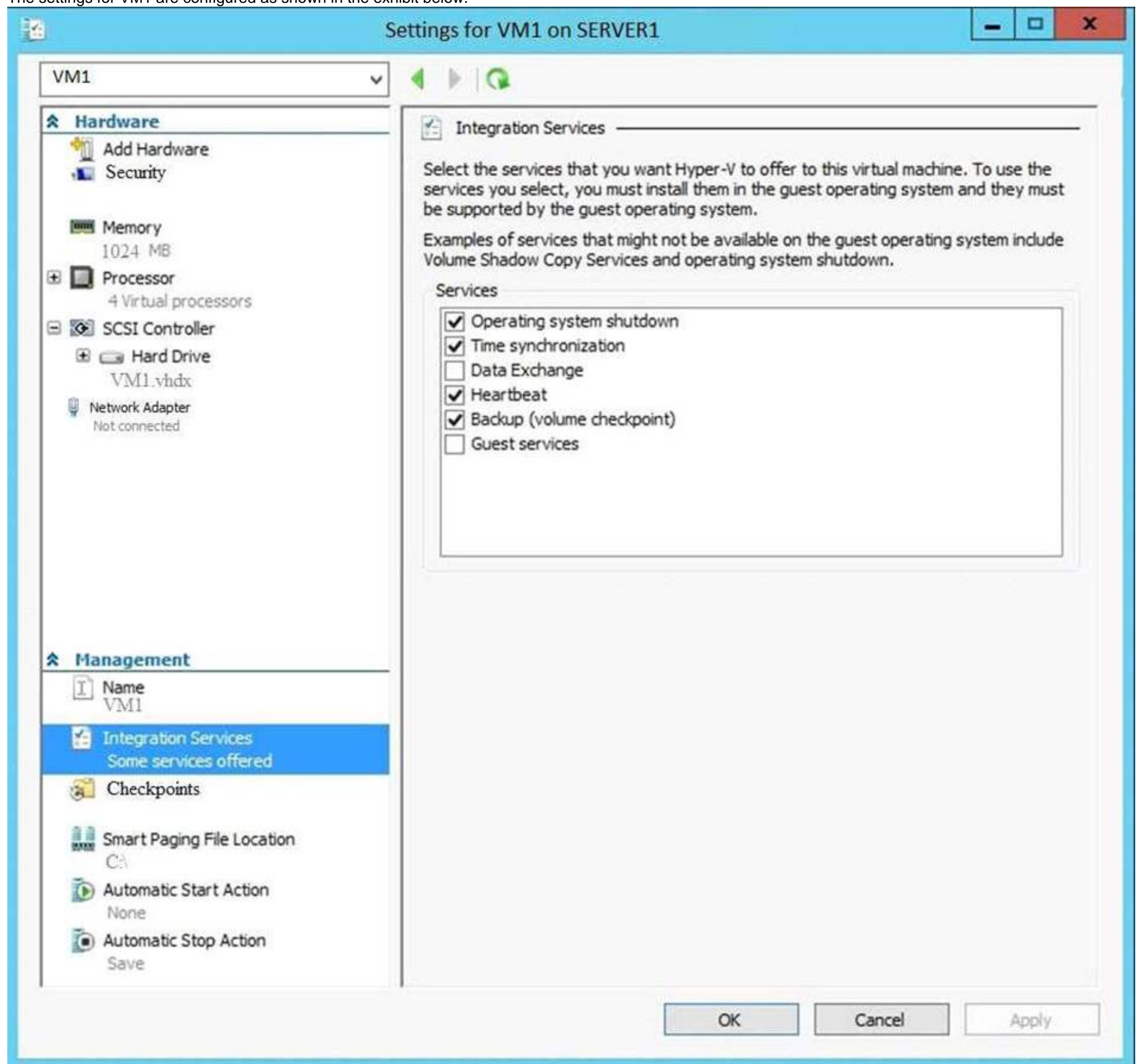
NEW QUESTION 168

Note: This question is part of a series of questions that present the same scenario. Each question in the series contains a unique solution that might meet the stated goals. Some question sets might have more than one correct solution, while others might not have a correct solution.

After you answer a question in this sections, you will NOT be able to return to it. As a result, these questions will not appear in the review screen.

You have a Hyper-V host named Server1 that hosts a virtual machine named VM1. Server1 and VM1 run Windows Server 2016.

The settings for VM1 are configured as shown in the exhibit below.



You need to ensure that you can use the Copy-VMFile cmdlet on Server1 to copy files from VM1.

Solution: You start the Hyper-V Guest Service Interface service on VM1. Does this meet the goal?

- A. YES
- B. NO

Answer: B

NEW QUESTION 171

You have servers named Server1 and DHCP1. Both servers run Windows Server 2016. DHCP1 contains an IPv4 scope named Scope1.

You have 1,000 client computers.

You need to configure Server1 to lease IP addresses for Scope1. The solution must ensure that Server1 is used to respond to up to 30 percent of the DHCP client requests only.

You install the DHCP Server server role on Server1. What should you do next?

- A. From the DHCP console, run the Configure Failover wizard.
- B. From Server Manager, install the Network Load Balancing feature.
- C. From Server Manager, install the Failover Clustering feature.
- D. From the DHCP console, create a superscope.

Answer: A

Explanation:

[https://technet.microsoft.com/en-us/library/hh831385\(v=ws.11\).aspx](https://technet.microsoft.com/en-us/library/hh831385(v=ws.11).aspx)

NEW QUESTION 176

You plan to deploy several Hyper-V hosts that run Windows Server 2016. The deployment will use Software defined Networking (SDN) and VXLAN.

Which server role should you install on the network to support the planned deployment?

- A. Network Controller
- B. Network Policy and Access Services
- C. Remote Access
- D. Host Guardian Service

Answer: A

NEW QUESTION 177

You have a DHCP server named Server1 that runs Windows Server 2016. You plan to implement IPv6 on your network.

You need to configure Server1 for stateless DHCPv6. What should you do from the DHCP console?

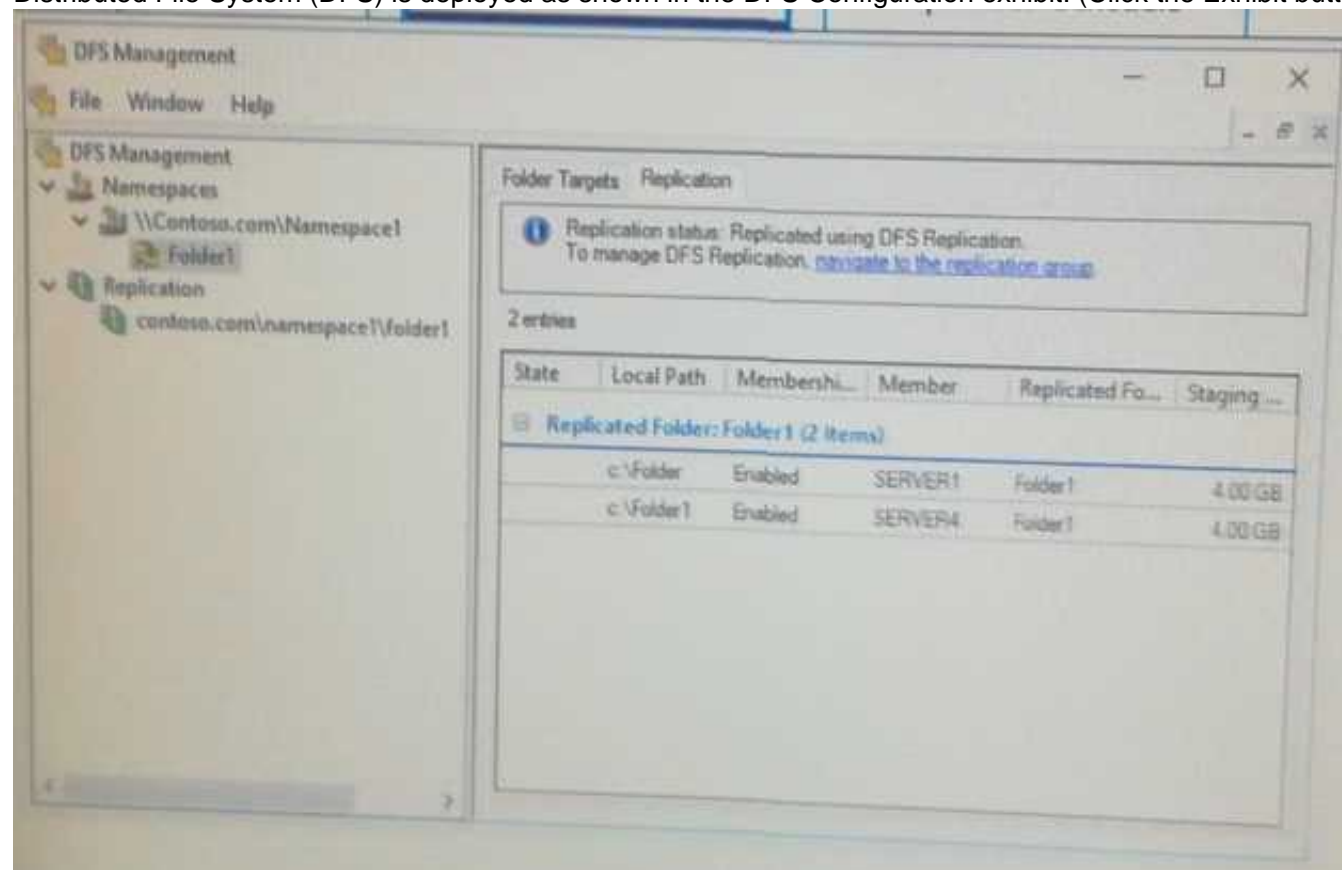
- A. Configure the Advanced Properties for Server1
- B. Configure the IPv6 Server Options
- C. Create an IPv6 scope
- D. Configure the General IPv6 Properties

Answer: B

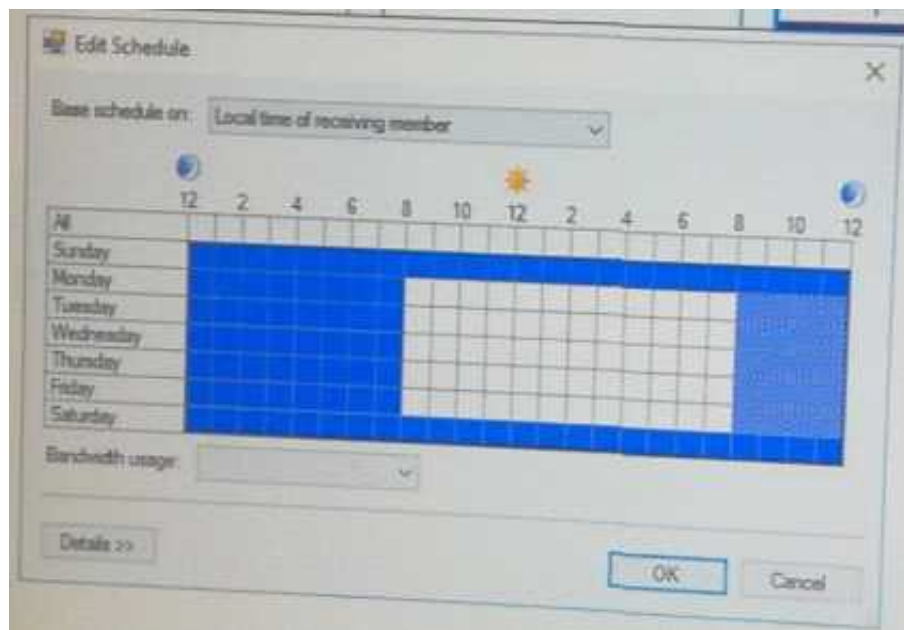
NEW QUESTION 180

Your network contains an Active Directory domain named contoso.com. The domain contains three servers named Server1, Server4, and Server5 that run Windows Server 2016.

Distributed File System (DFS) is deployed as shown in the DFS Configuration exhibit. (Click the Exhibit button.)



You configure the replication schedule for \\Contoso.com\Namespace1\Folder1 as shown in the Replication Schedule exhibit. (Click the Exhibit button.)



Use the drop-down menus to select the answer choice that completes each statement based on the information presented in the graphics.

If you copy a file to \\Server1\Folder on Monday at 14:00, the file will [answer choice].

▼

never replicate to Server4
start replicating to Server4 at 20:00
start replicating to Server4 the next day
start replicating immediately

If you copy a file to \\Server4\Folder1 on Friday at 06:00, the file will [answer choice].

▼

never replicate to Server1
start replicating to Server1 at 08:00
start replicating to Server1 at 20:00
start replicating to Server1 immediately

- A. Mastered
- B. Not Mastered

Answer: A

Explanation:

The Replicated Folder (Folder1) refers to the name of the DFS target, not the name of the local folder. It does not matter if the local folder name does not match the name of the DFS target. Therefore, replication will work as normal according to the configured schedule.

NEW QUESTION 184

You have 2000 devices. One hundred of the devices are mobile devices that have physical addresses beginning with 98-5F. You have a DHCP server named Server1. You need to ensure that the mobile devices register their host name by using a DNS suffix of mobile.contoso.com

- A. From the properties of Scope1, Modify the Conflict detection attempts setting.
- B. From the properties of Scope1, Configure Name Protection.
- C. From the Properties of IPV4, configure the bindings.
- D. From IPV4, create a new filter.
- E. From the properties of Scope1, create an exclusion range.
- F. From IPV4, run the DHCP Policy Configuration Wizard.
- G. From Control Panel, modify the properties of Ethernet.
- H. From Scope1, create a reservation

Answer: F

NEW QUESTION 187

You have a server named Server1 that runs Windows Server 2016. Server1 will be used as a VPN server. You need to configure Server1 to support VPN Reconnect. Which VPN protocol should you use?

- A. IKEv2
- B. L2TP
- C. PPTP
- D. SSTP

Answer: B

NEW QUESTION 189

Note: This question is part of a series of questions that present the same scenario. Each question in the series contains a unique solution. Determine whether the solution meets the stated goals.

Your network contains an Active Directory domain named contoso.com. The domain contains a DNS server named Server1. All client computers run Windows 10. On Server1, you have the following zone configuration.

ZoneName	ZoneType	IsAutoCreated	IsDsIntegrated	IsReverseLookupZone	IsSigned
-----	-----	-----	-----	-----	-----
_msdcs.contoso.com	Primary	False	True	False	False
adatum.com	Forwarder	False	False	False	
contoso.com	Primary	False	True	False	False
fabrikam.com	Primary	False	False	False	True
TrustAnchors	Primary	False	True	False	False

You have the following subnets defined on Server1.

Name	IPv4Subnet	IPv6Subnet
-----	-----	-----
Subnet1	{10.0.0.0/24}	
Subnet2	{10.0.1.0/24}	
Subnet3	{192.168.15.0/24}	
Subnet4	{172.16.1.0/24}	

You need to prevent Server1 from resolving queries from DNS clients located on Subnet4. Server1 must resolve queries from all other DNS clients.

Solution: From Windows PowerShell on Server1, you run the Add-DnsServerQueryResolutionPolicy cmdlet. Does this meet the goal?

- A. Yes
- B. No

Answer: A

Explanation:

<https://technet.microsoft.com/en-us/itpro/powershell/windows/dns-server/add-dnsserverqueryresolutionpolicy>

NEW QUESTION 192

Your network contains an Active Directory domain named contoso.com. The domain contains a domain-based Distributed file System (DFS) namespace named Namespace1 that has access-based enumeration enabled. Namespace1 has a folder named folder1. Folder1 has a target of \\Server1\Folder1. The Permission for folder1 are configured as shown in the following table.

Account name	Permission type	Permission
User1	NTFS	None
User1	Share	Change
User1	DFS	Read
User2	NTFS	Read
User2	Share	Full control
User2	DFS	None

Access-based enumeration is disabled for the share of Folder1.

You need to ensure that both User1 and User2 can see Folder1 when they access \\Contoso.com\NameSpace1. What should you do?

- A. Enable access-based enumeration for Folder1.
- B. Disable access-based enumeration for Namespace1.
- C. Assign User1 the read NTFS permission to folder1
- D. Deny User1 the read DFS permission to Folder1.

Answer: C

NEW QUESTION 197

You have a DNS server named Server1 that runs Windows Server 2016. Server1 has two Active Directory-integrated zones named contoso.com and adatum.com. All client computers run Windows 10.

Server1 recently experienced millions of erroneous DNS queries causing a denial of service.

You need to reduce the likelihood that a similar attack will cause a denial of service. The solution must ensure that Server1 continues to resolve names for clients. What should you do?

- A. Sign both adatum.com and contoso.com zones.
- B. Implement DNS-based Authentication of named Entities (DANS).
- C. Configure DNS policies on Server1.
- D. Enable Response Rate Limiting (RRL) on Server1.

Answer: D

NEW QUESTION 198

You are deploying a small network that has 30 client computers. The network uses the 192.168.1.0/24 address space. All computers obtain IP configurations from a DHCP server named Server1.

You install a server named Server2 that runs Windows Server 2016. Server2 has two network adapters named internal and Internet. Internet connects to an Internet service provider (ISP) and obtains the 131.107.0.10 IP address. Internal connects to the internal network and is configured to use the 192.168.1.250 IP address.

You need to provide Internet connectivity for the client computers. What should you do?

- A. On Server2 run The New-NetNat -Name NAT1 -InternalIPInterfaceAddressPrefix 192.168.1.0/24 cmdle
- B. Configure Server1 to provide the 003 Router option of 192.168.1.250.
- C. On Server2 run the New-NetNat -Name NAT1 -InternalIPInterfaceAddressPrefix 192.168.1.0/24 cmdle
- D. Configure Server1 to provide the 003 Router option of 131.107.0.10.
- E. On Server1, stop the DHCP serve
- F. On the Internet network adapter on Server2, enable Internet Connection Sharing (ICS).
- G. Recreate the DHCP scope on Server1 to lease addresses from the 131.107.0.0/24 address spac
- H. On Server2, change the IP address of the internal network adapter to 131.107.0. 1. Configure Server 1 to provide the 003 Router option of 131.107.0. 1.

Answer: C

NEW QUESTION 201

Your network contains an Active Directory domain named contoso.com. The domain contains a server named Server1 that runs Windows Server 2016.

Server1 has IP Address Management (IPAM) installed. IPAM is configured to use the Group Policy based provisioning method. The prefix for the IPAM Group Policy objects (GPOs) is IP.

From Group Policy Management, you manually rename the IPAM GPOs to have a prefix of IPAM. You need to modify the GPO prefix used by IPAM.

What should you do?

- A. Click Configure server discovery in Server Manager.
- B. Run the Set-IPAMConfiguration cmdlet.
- C. Click Provision the IPAM server in Server Manager.
- D. Run the Invoke-IPAMGPOProvisioning cmdlet.

Answer: B

Explanation:

The Set-IPAMConfiguration cmdlet modifies the configuration for the computer that runs the IPAM server. The -GpoPrefix<String> parameter specifies the unique Group Policy object (GPO) prefix name that IPAM

uses to create the group policy objects. Use this parameter only when the value of the ProvisioningMethod parameter is set to Automatic.

References:

<https://technet.microsoft.com/en-us/library/jj590816.aspx>

NEW QUESTION 206

Your network contains an Active Directory domain named contoso.com. The domain contains three servers named Server1, Server2, and Server3 that run Windows Server 2016.

Server1 has IP Address Management (IPAM) installed. Server2 and Server3 have the DHCP Server role installed and have several DHCP scopes configured. The IPAM server retrieves data from Server2 and Server3.

A domain user named User1 is a member of the groups shown in the following table.

Server name	Group
Server2	DHCP Administrators
Server3	DHCP Users

On Server1, you create a security policy for User1. The policy grants the IPAM DHCP Scope Administrator Role with the \Global access scope to the user.

Which actions can User1 perform? To answer, select the appropriate options in the answer area.

Answer Area

From Server Manager on Server1, User1 can modify the description of the DHCP scopes:

On Server2 only

On Server3 only

On both Server2 and Server3

From Server Manager on Server1, User1 can create a new DHCP scope:

On Server2 only

On Server3 only

On both Server2 and Server3

- A. Mastered
B. Not Mastered

Answer: A

Explanation:

[https://technet.microsoft.com/en-us/library/dn268500\(v=ws.11\).aspx](https://technet.microsoft.com/en-us/library/dn268500(v=ws.11).aspx)

NEW QUESTION 210

Your company has 5,000 users who work remotely.

You have 40 VPN servers that host the remote connections for the users. You plan to deploy a RADIUS solution that contains five RADIUS servers.

You need to ensure that client authentication requests are distributed evenly between the five RADIUS servers.

What should you do?

- A. Install the Network Load Balancing role service on all of the RADIUS server.
B. Configure all of the RADIUS clients to connect to a virtual IP address.
C. Deploy RAS Gateway to a new server.
D. Configure all of the RADIUS clients to connect to RAS Gateway.
E. Install the Failover Clustering role service on all of the RADIUS server.
F. Configure all of the RADIUS clients to connect to the IP address of the cluster.
G. Deploy a RADIUS proxy to a new server.
H. Configure all of the RADIUS clients to connect to the RADIUS proxy.

Answer: D

Explanation:

[https://technet.microsoft.com/en-us/library/dd197433\(v=ws.10\).aspx](https://technet.microsoft.com/en-us/library/dd197433(v=ws.10).aspx)

NEW QUESTION 215

You have an Active Directory domain named contoso.com. The domain contains servers named Server1 and Server2 that run Windows Server 2016. You install the Remote Access server role on Server1. You install the Network Policy and Access Services server role on Server2. You need to configure Server1 to use Server2 as a RADIUS server. What should you do?

- A. From Routing and Remote Access, configure the authentication provider.
B. From the Connection Manager Administration Kit, create a Connection Manager profile.
C. From Server Manager, create an Access Policy.
D. From Active Directory Users and Computers, modify the Delegation settings of the Server1 computer account.

Answer: A

NEW QUESTION 219

A company named Contoso, Ltd has five Hyper-V hosts that are configured as shown in the following table.

Hyper-V host name	Configuration
Server1	Windows Server 2012 R2 and an Intel Xeon E7 processor
Server2	Windows Server 2012 R2 and an Intel i7 processor
Server3	Windows Server 2016 and an Intel i7 processor
Server4	Windows Server 2016 and an AMD Opteron processor
Server5	Windows Server 2016 and an Intel Xeon E7 processor

What are two valid live migration scenarios for virtual machines in your environment?

- A. from Server1 to server5
B. from Server4 to Server 5
C. from Server2 to Server3
D. from Server3 to Server4

Answer: AC

NEW QUESTION 222

Note: This question is part of a series of questions that present the same scenario. Each question in the series contains a unique solution that might meet the stated goals. Some question sets might have more than one correct solution, while others might not have a correct solution.

After you answer a question in this sections, you will NOT be able to return to it. As a result, these questions will not appear in the review screen.

Your network contains an Active Directory domain named contoso.com

You need to create a Nano Server image named Nano1 that will be used as a virtualization host. The windows server 2016 source files are located in drive D.

Solution: You run the following cmdlet.

New-NanoServerImage -Edition Datacenter -DeploymentType Host -Package

Microsoft-NanoServerSCVMM-Package -MediaPath 'D:\' -TargetPath C:\nano1\Nano1.wim

-ComputerName Nano1 - Domainname Contoso.com

Does this meet the goal?

- A. Yes
- B. NO

Answer: B

NEW QUESTION 227

You have a Hyper-V host named Server1 that runs Windows Server 2016. Server1 has a virtual switch named Switch1. Server1 hosts the virtual machines configured as shown in the following table.

Virtual machine name	Operating system	IP setting
VM1	Windows Server 2016	172.16.1.10/24
VM2	Windows Server 2012 R2	172.16.1.200/24

Windows Firewall on VM1 and VM2 is configured to allow ICMP traffic. VM1 and VM2 connect to Switch1. You fail to ping VM1 from VM2. You need to view the VirtualSubnetId to which VM1 connects. Which cmdlet should you run on Server1? To answer, select the appropriate options in the answer area. NOTE: Each correct selection is worth one point.

▼

Get-VM

Get-VMNetworkAdapter

Get-VMNetworkAdapterPortId

Get-VMNetworkAdapterVlan

▼

-VMName VM1

-SwitchName Switch1

-ComputerName Server1

| format-list

- A. Mastered
- B. Not Mastered

Answer: A

Explanation:

▼

Get-VM

Get-VMNetworkAdapter

Get-VMNetworkAdapterPortId

Get-VMNetworkAdapterVlan

▼

-VMName VM1

-SwitchName Switch1

-ComputerName Server1

| format-list

NEW QUESTION 232

Note: This question is part of a series of questions that present the same scenario. Each question in the series contains a unique solution. Determine whether the solution meets the stated goals. Your network contains an Active Directory domain named contoso.com. The domain contains a DNS server named Server1. All client computers run Windows 10. On Server1, you have the following zone configuration.

ZoneName	ZoneType	IsAutoCreated	IsDsIntegrated	IsReverseLookupZone	IsSigned
-----	-----	-----	-----	-----	-----
_msdcs.contoso.com	Primary	False	True	False	False
adatum.com	Forwarder	False	False	False	
contoso.com	Primary	False	True	False	False
fabrikam.com	Primary	False	False	False	True
TrustAnchors	Primary	False	True	False	False

You have the following subnets defined on Server1.

Name	IPv4Subnet	IPv6Subnet
----	-----	-----
Subnet1	{10.0.0.0/24}	
Subnet2	{10.0.1.0/24}	
Subnet3	{192.168.15.0/24}	
Subnet4	{172.16.1.0/24}	

You need to prevent Server1 from resolving queries from DNS clients located on Subnet4. Server1 must resolve queries from all other DNS clients. Solution: From the Security Setting of each zone on Server1, you modify the permissions. Does this meet the goal?

- A. Yes
- B. No

Answer: B

NEW QUESTION 235

You have a Scale-Out File Server that has a share named Share1. Share1 contains a virtual disk file named Disk1.vhd. You plan to create a guest failover cluster. You need to ensure that you can use the virtual disk as a shared virtual disk for the guest failover cluster. Which cmdlet should you use?

- A. Optimize VHD
- B. Optimize VHDSets
- C. Convert-VHD
- D. Set-VHD

Answer: C

NEW QUESTION 237

You need to implement network virtualization. On which object should you configure the virtual subnet ID?

- A. Virtual switch
- B. Hyper-V server
- C. VM
- D. Virtual network adapter

Answer: D

NEW QUESTION 240

Refer to Exhibit:

Server name	Configuration
FabDC1	Domain controller and DNS server
FabFS1	DHCP server and file server
FabRA1	Remote access server
FabRS1	Network Policy Server (NPS) server
FabRP1	Network Policy Server (NPS) server

You plan to implement a VPN. FabRA1 will use the RADIUS proxy for authentication. You need to ensure that VPN clients can be authenticated and can access internal resources. The solution must ensure that FabRS1 is used as a RADIUS server and FabRPI is used as a RADIUS proxy. Which two actions should you perform? Each correct answer presents part of the solution.

- A. Create a connection request policy on FabRSI.
- B. Create a connection request policy on FabRPI.
- C. Create a network policy on FabRSI.
- D. Delete the default connection request policy on FabRSI.
- E. Create a network policy on FabRPI.

Answer: BC

NEW QUESTION 245

Your network contains an Active Directory domain named contoso.com. The domain contains a domain controller named Server1 and a member server named Server2. Server1 has the DNS Server role installed. Server2 has IP Address Management (IPAM) installed. The IPAM server retrieves zones from Server1 as shown in the following table.

Zone name	Dynamic update setting	Access scope
Adatum.com	Secure	\Global
Fabrikam.com	None	\Global \Scope2

The IPAM server has one access policy configured as shown in the exhibit. (Click the Exhibit button.)

For each of the following statements, select Yes if the statement is true. Otherwise, select No.

Answer Area

Statements	Yes	No
User1 can add a host (A) record to adatum.com	<input type="radio"/>	<input type="radio"/>
User1 can add a host (A) record to fabrikam.com	<input type="radio"/>	<input type="radio"/>
User1 can delete the fabrikam.com zone.	<input type="radio"/>	<input type="radio"/>

- A. Mastered
- B. Not Mastered

Answer: A

Explanation:

Box 1: Yes

As a member of the IPAM DNS Administrator Role of the ADatum zone, User1 can add DNS records to it. Box 2: Yes

As a member of the DNS Record Administrator Role of the Fabrikam zone, User1 can add DNS records to it. Box 3: No

DNS Record Administrators cannot delete zones, only administer DNS records. References: [https://technet.microsoft.com/en-us/library/hh831353\(v=ws.11\).aspx](https://technet.microsoft.com/en-us/library/hh831353(v=ws.11).aspx)

NEW QUESTION 246

You have an Active Directory domain named Contoso.com. The domain contains servers named Server1 and Server2 that run Windows Server 2016.

You install the Remote Access server role on Server1. You install the Network Policy and Access Services server role on Server2.

You need to configure Server1 to use Server2 as a RADIUS server. What should you do?

- A. From the Connection Manager Administration Kit, create a Connection Manager profile.
- B. From Routing and Remote Access, configure the authentication provider.
- C. From Active Directory Users and Computers, modify the Delegation settings of the Server1 computer account.
- D. From Server Manager, create an Access Policy.

Answer: D

Explanation:

<http://www.nyazit.com/configure-network-policy-server-2016/>

NEW QUESTION 247

Your network contains an Active Directory domain named contoso.com. The domain contains a Hyper-V host named Server1 that runs Windows Server 2016. Server1 hosts four machines that are members of the domains. The virtual machines are configured as shown in the following table.

Virtual machine name	Operating system	Virtual machine generation	Type of VHD file
VM1	Windows 10	2	VHD
VM2	Windows Server 2016	2	VHD
VM3	Windows Server 2012 R2	2	VHDX
VM4	Windows Server 2016	1	VHDX

Which virtual machines can you manage by using PowerShell Direct?

- A. Only VM2
- B. VM1, VM2, and VM4
- C. only VM4
- D. VM1, VM2, and VM3

Answer: B

NEW QUESTION 251

.....

THANKS FOR TRYING THE DEMO OF OUR PRODUCT

Visit Our Site to Purchase the Full Set of Actual 70-741 Exam Questions With Answers.

We Also Provide Practice Exam Software That Simulates Real Exam Environment And Has Many Self-Assessment Features. Order the 70-741 Product From:

<https://www.2passeasy.com/dumps/70-741/>

Money Back Guarantee

70-741 Practice Exam Features:

- * 70-741 Questions and Answers Updated Frequently
- * 70-741 Practice Questions Verified by Expert Senior Certified Staff
- * 70-741 Most Realistic Questions that Guarantee you a Pass on Your FirstTry
- * 70-741 Practice Test Questions in Multiple Choice Formats and Updatesfor 1 Year