



**Microsoft**

## **Exam Questions 70-740**

Installation, Storage, and Compute with Windows Server 2016

#### NEW QUESTION 1

You have four servers named Server1, Server2, Server3, and Server4 that run Windows Server 2016.

Server1 and Server2 have the Hyper-V server role installed. Server1 hosts a virtual machine named VM1. Server2 hosts a virtual machine named VM2. Server3 hosts the disks and the configurations of both virtual machines on an SMB share named VMShare.

You use Server4 to manage Hyper-V operations on Server1 and Server2.

From Server4, you attempt to perform a live migration of VM1 and VM2, but you receive the following error message: "No credentials are available in the security package".

You need to ensure that you can perform the live migration of VM1 and VM2 between Server1 and Server2 while signed in to Server4.

What should you do?

- A. From Active Directory Users and Computers, modify the properties of Server4. Configure the delegation settings to trust the computer for delegation of cifs.
- B. From Windows PowerShell on Server3, run the remove-SMBMultiChannelConstraint cmdlet, and then assign Server4 Full Control permissions to VMShare.
- C. From Active Directory Users and Computers, modify the properties of Server1 and Server2. Configure the Delegation settings to trust the computers for delegation of the Microsoft Virtual System Migration Service.
- D. From Active Directory Users and Computers, modify the properties of your user account.
- E. Modify the Account is sensitive and cannot be delegated setting.

**Answer:** C

#### Explanation:

References: <https://docs.microsoft.com/en-us/windows-server/virtualization/hyper-v/deploy/set-up-hosts-for-live-migration-without-failover-clustering>

#### NEW QUESTION 2

Note: This question is part of a series of questions that present the same scenario. Each question in the series contains a unique solution that might meet the stated goals. Some question sets might have more than one correct solution, while others might not have a correct solution.

After you answer a question in this section, you will NOT be able to return to it. As a result, these questions will not appear in the review screen.

You have a server named Server1 that runs Windows Server 2016. Server1 has the Hyper-V server role and Docker installed.

You pull the Microsoft/iis Docker image to Server1.

You need to view the available space in the Microsoft/iis Docker image. Solution: You run the command `docker run -d Microsoft/iis`.

You open Disk Management on Server1. Does this meet the goal?

- A. Yes
- B. No

**Answer:** B

#### NEW QUESTION 3

Note: This question is part of a series of questions that present the same scenario. Each question in the series contains a unique solution that might meet the stated goals. Some question sets might have more than one correct solution, while others might not have a correct solution.

After you answer a question in this section, you will NOT be able to return to it. As a result, these questions will not appear in the review screen.

You have two servers that run Windows Server 2016.

You plan to create a Network Load Balancing (NLB) cluster that will contain both servers. You need to configure the network cards on the servers for the planned NLB configuration.

Solution: You configure the network cards to be on a separate subnet and to have static IP addresses. You configure the cluster to use unicast.

Does this meet the goal?

- A. Yes
- B. No

**Answer:** B

#### Explanation:

References: <https://technet.microsoft.com/en-us/windows-server-docs/networking/technologies/network-load-balancing>

#### NEW QUESTION 4

You have two Hyper V hosts named Server1 and Server2 that run Windows Server 2012 R2. The servers are nodes in a failover cluster named Cluster1.

You perform a rolling upgrade of the cluster nodes to Windows Server 2016.

You need to ensure that you can implement the Virtual Machine Load Balancing feature. Which cmdlet should you use?

- A. Update-ClusterNetWorkNameResource
- B. Set-GusterGroupSet
- C. Update-ClusterFunctionalLevel
- D. Set-CauClosterRole

**Answer:** C

#### Explanation:

<https://docs.microsoft.com/en-us/windows-server/failover-clustering/cluster-operating-system-rollingupgrade#cluster-os-rolling-upgrade-process>

#### NEW QUESTION 5

DRAG DROP

Your network contains an Active Directory domain named adatum.com. The domain contains four member servers that run Windows Server 2016.

On each server, you locally attach three disks and install the Failover Clustering feature. You need to create a volume that uses all the disks. The volume must be highly available.

Which three cmdlets should you run in sequence? To answer, move the appropriate cmdlets from the list of cmdlets to the answer area and arrange them in the correct order.

Cmdlets

Answer Area

New-Cluster

Initialize-Disk

Enable-VMReplication

Enable-ClusterS2D

New-Volume

New-Partition



- A. Mastered
- B. Not Mastered

Answer: A

Explanation:

Answer Area

New-Cluster

Enable-ClusterS2D

New-Volume



NEW QUESTION 6

You deploy a Hyper-V server named Served in an isolated test environment The test environment is prevented from accessing the Internet Server1 runs the Datacenter edition of Windows Server 2016. You plan to deploy the following guest virtual machines on the server

Quantity	Operating system	Domain member
10	Windows Server 2012 R2	Yes
4	Windows Server 2016	No
5	Windows Server 2016	Yes

Which activation model should you use for the virtual machines'?

- A. Multiple Activation Key (MAK)
- B. Automatic Virtual Machine Activation (AVMA)
- C. Original Equipment Manufacturer (OEM) key
- D. Key Management Service (KMS)

Answer: B

NEW QUESTION 7

HOTSPOT

You have a server that runs Windows Server 2016.  
You run the commands shown in the following output.

```
PS G:\> Get-DedupVolume | fl

Volume                : G:
VolumeId              : \\?\Volume{2efa2f6e-db4a-4bb1-aal5-31ae8b073d16}\
Enabled               : True
UsageType             : Default
DataAccessEnabled     : True
Capacity              : 923.87 GB
FreeSpace             : 393.98 GB
UsedSpace             : 529.89 GB
UnoptimizedSize       : 1008.7 GB
SavedSpace            : 478.82 GB
SavingRate            : 47 %
MinimumFileAgeDays    : 3
MinimumFileSize       : 32768
NoCompress            : False
ExcludeFolder         :
ExcludeFileType       :
ExcludeFileTypeDefault : {edb, jrs}
NoCompressionFileType : {asf, mov, wma, wmv...}
ChunkRedundancyThreshold : 100
Verify               : False
OptimizeInUseFiles    : False
OptimizePartialFiles  : False

PS G:\> Get-Date
Tuesday, June 21, 2016 5:29:58 PM

PS G:\DC01> dir | select Mode,LastWriteTime,Length,Name | ft -AutoSize

Mode                LastWriteTime         Length      Name
----                -
d-----           2/18/2015 11:54:56 AM              Snapshots
d-----           2/18/2015 12:11:42 PM            Virtual Machines
-a----           6/21/2016  5:27:40 PM    51539608064    DC01.vhd
-a----           6/18/2016  7:00:00 AM      12400      Readme.txt
-a----           1/5/2015   7:00:00 AM    3939235840    Software.iso
```

For each of the following statements, select Yes if the statement is true. Otherwise, select No.

## Answer Area

Statements	Yes	No
DC01.vhd will be processed by deduplication.	<input type="radio"/>	<input type="radio"/>
Readme.txt will be processed by deduplication.	<input type="radio"/>	<input type="radio"/>
Software.iso will be processed by deduplication.	<input type="radio"/>	<input type="radio"/>

- A. Mastered
- B. Not Mastered

**Answer:** A

**Explanation:**

## Answer Area

Statements	Yes	No
DC01.vhd will be processed by deduplication.	<input type="radio"/>	<input checked="" type="radio"/>
Readme.txt will be processed by deduplication.	<input type="radio"/>	<input checked="" type="radio"/>
Software.iso will be processed by deduplication.	<input checked="" type="radio"/>	<input type="radio"/>

### NEW QUESTION 8

You have a server that runs Windows Server 2016.

The server contains a storage pool named Pool1. Pool1 contains five physical disks named Disk1, Disk2, Disk3, Disk4, and Disk5.

A virtual disk named VirtualDisk1 is stored in pool1. VirtualDisk1 uses the parity storage layout. Disk3 fails.

You need to remove Disk3 from Pool1.

Which two commands should you run? Each correct answer presents part of the solution.

- A. Update-StoragePool -FriendlyName Pool1
- B. Set-ResiliencySetting -StoragePool Pool1 -PhysicalDiskRedundancyDefault 4
- C. Reset-PhysicalDisk -FriendlyName Disk3
- D. Set-PhysicalDisk -FriendlyName Disk3 -Usage Retired
- E. Remove-PhysicalDisk -FriendlyName Disk3

**Answer:** BE

### NEW QUESTION 9

Your network contains an Active Directory domain named contoso.com. The domain contains two servers named Server1 and Server2 that have the same hardware configuration.

You need to asynchronously replicate volume F: from Server1 to Server2. What should you do?

- A. Run New-SRPartnership and specify the -ReplcationMode parameter.
- B. Install the Failover Clustering feature and create a new cluster resource group.
- C. Install the Failover Clustering feature and use Cluster Shared Volumes (CSV).
- D. Run Set-DfsrServiceConfiguration and specify the -RPCPort parameter.

**Answer:** A

### NEW QUESTION 10

HOTSPOT

You have a server named Server1 that runs Windows Server 2016. Server1 has the Windows Application Proxy role service installed.

You plan to deploy Remote Desktop Gateway (RD Gateway) services. Clients will connect to the RD Gateway services by using various types of devices including Windows, iOS, and Android devices.

You need to publish the RD Gateway services through the Web Application Proxy.

Which command should you run? To answer, select the appropriate options in the answer area.

Add-WebApplicationProxyApplication  
Set-WebApplicationProxyApplication  
Set-WebApplicationProxyConfiguration

-BackendServerURL 'https://rdg.contoso.com/rdg1/'  
-ExternalCertificateThumbprint  
'1a2b3c4d5e6f1a2b3c4d5e6f1a2b3c4d5e6f1a2b'  
-ExternalURL 'https://rdg.contoso.com/rdg1'  
-Name 'RDG1'

-ExternalPreAuthentication

ADFS  
ADFSforOAuth  
ClientCertificate  
PassThrough

-ADFSRelyingPartyName 'Default provider'

-BackendServerAuthenticationSPN 'HTTP/RDG1'



- A. Mastered
- B. Not Mastered

Answer: A

Explanation:

▼

Add-WebApplicationProxyApplication  
Set-WebApplicationProxyApplication  
Set-WebApplicationProxyConfiguration

▼

-BackendServerURL 'https://rdg.contoso.com/rdg1/'  
-ExternalCertificateThumbprint  
'1a2b3c4d5e6f1a2b3c4d5e6f1a2b3c4d5e6f1a2b'  
  
-ExternalURL 'https://rdg.contoso.com/rdg1'  
-Name 'RDG1'  
  
-ExternalPreAuthentication  
-ADFSRelyingPartyName 'Default provider'  
  
-BackendServerAuthenticationSPN 'HTTP/RDG1'

▼

ADFS  
ADFSforOAuth  
ClientCertificate  
PassThrough

NEW QUESTION 10

HOTSPOT

Your network contains an Active Directory domain named contoso.com. The domain contains four servers named Server1, Server2, Server3, and Server4 that run Windows Server 2016.

Server1 and Server2 are nodes in Hyper-V cluster named Cluster1. You have a highly available virtual machine named VM1.

Server1 is the owner node of VM1. Server3 and Server4 are nodes of a scale-out file server named Cluster2.

The storage on Server1 is configured as shown in the following table.

Location	Type
C:\ClusterStorage\Volume1	iSCSI Cluster Shared Volumes (CSV)
D:\	A locally attached disk
E:\	An iSCSI LUN
\\Cluster2\Share1	A file share on Cluster2

You need to move the virtual disk of VM1 to a different location.

What should you do? To answer, select the appropriate options in the answer area.

Tool you should move the virtual disk of VM1:

▼

Disk Management  
Failover Cluster Manager  
Hyper-V Manager  
Server Manager

Location to which you should move the virtual disk of VM1:

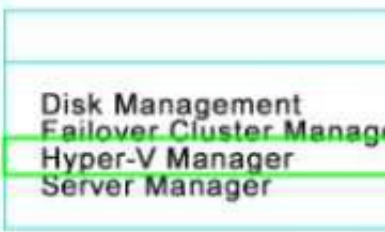
▼

\\Cluster2\Share1  
D:\  
E:\

- A. Mastered
- B. Not Mastered

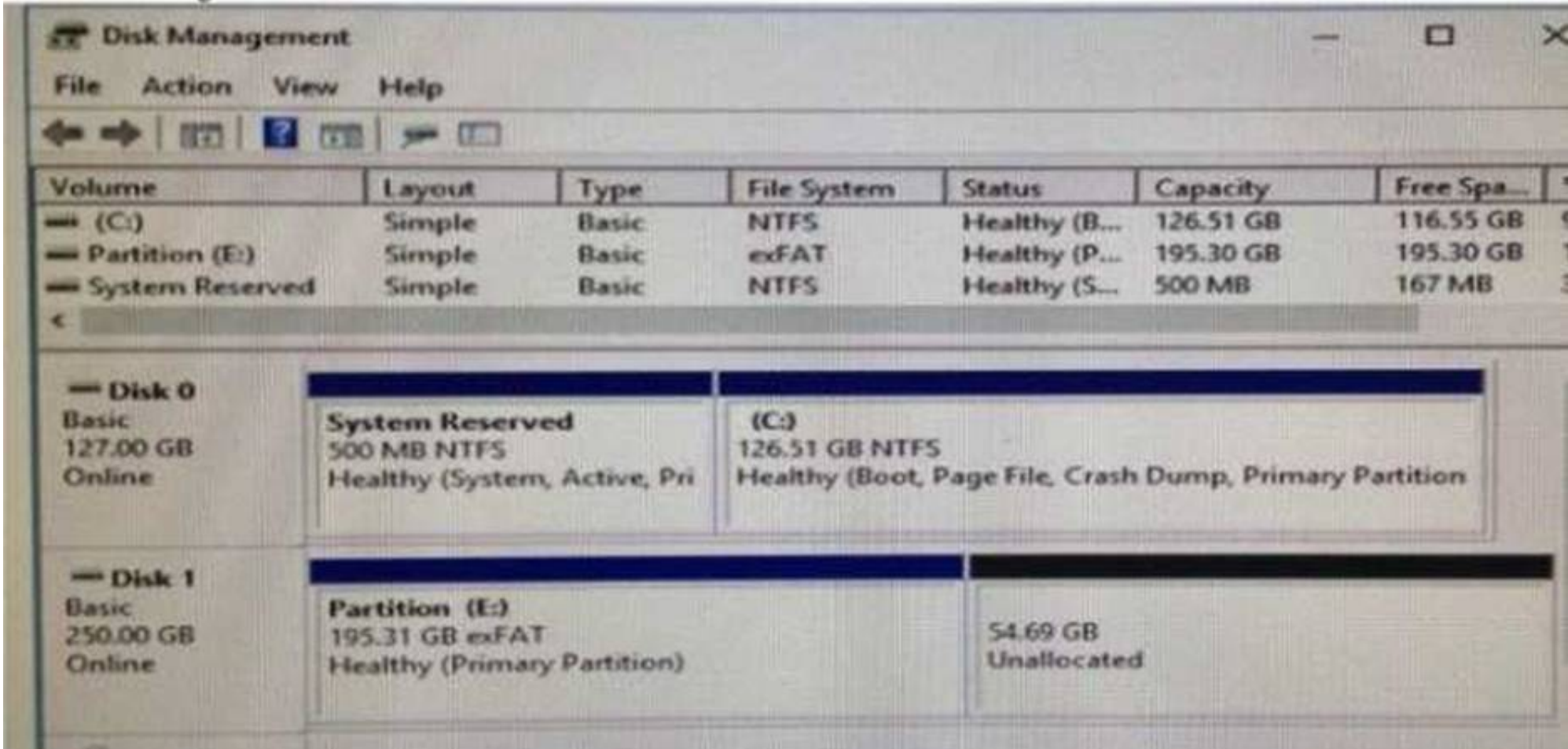
Answer: A

Explanation:



NEW QUESTION 13

You have a server named Server 1 that runs Windows Server 2016 The disk configuration for Served is shown in the exhibit



You add Server1 to a cluster  
You need to ensure that you can use Disk1 (or Storage Spaces Direct What should you do first?

- A. Delete Partition (E:)
- B. Set Disk1 to offline.
- C. Convert Disk 1 to a dynamic disk
- D. Convert Partition (E:) to ReFS

Answer: A

NEW QUESTION 17

HOTSPOT

You have an Active Directory domain named Contoso.com The domain contains Hyper-V hosts named Server1 and Server2 that run Windows Server 2016 The Hyper-V hosts are configured to use NVGRE for network virtualization  
You have four virtual machines that are connected to an external switch The virtual machines are configured as shown  
To which virtual machine or virtual machines can VM1 and VM3 connect"? To answer, select the appropriate options in the answer area

Virtual Machine Name	Hyper-V host	IP address	Netmask	GRE key
VM 1	Server1	192.168.1.16	255.255.255.0	16
VM 2	Server1	192.168.1.232	255.255.255.0	32
VM 3	Server2	192.168.1.32	255.255.255.0	32
VM 4	Server2	192.168.1.25	255.255.255.0	25
VM 5	Server2	192.168.1.116	255.255.255.0	16
VM 6	Server2	192.168.1.132	255.255.255.0	32

VM1 can connect to:

VM2 only  
VM5 only  
VM2, VM3, VM5 and VM6 only  
VM2, VM3, VM4, VM5, and VM6

VM3 can connect to:

VM6 only  
VM2, and VM6 only  
VM4, VM5 and VM6 only  
VM1, VM2, VM5, and VM6 only  
VM1, VM2, VM4, VM5, and VM6

- A. Mastered  
B. Not Mastered

Answer: A

Explanation:

VM1 can connect to:

VM2 only  
VM5 only  
VM2, VM3, VM5 and VM6 only  
VM2, VM3, VM4, VM5, and VM6

VM3 can connect to:

VM6 only  
VM2, and VM6 only  
VM4, VM5 and VM6 only  
VM1, VM2, VM5, and VM6

#### NEW QUESTION 19

##### HOTSPOT

You have a server named Server1 that runs Windows Server 2016 Server1 is a Hyper-V host

You have two network adapter cards on Server1 that are Remote Direct Memory Access (RDMA) - capable.

You need to aggregate the bandwidth of the network adapter cards for a virtual machine on Server1. The solution must ensure that the virtual machine can use the RDMA capabilities of the network adapter cards

Which command should you run first? To answer, select the appropriate options in the answer area.

Add-NetLbfoTeamNic  
Add-VmNetworkAdapter  
New-NetLbfoTeam  
Add-VmSwitch

-Name Production -NetAdapterName "NIC 1", "NIC 2"

-EnableEmbeddedTeaming  
-EnableIov  
-EnablePacketDirect

\$true



- Answer: A**

`Add-NetLbfoTeamNic`  
`Add-VmNetworkAdapter`  
`New-NetLbfoTeam`  
`Add-VmSwitch`

`-Name Production -NetAdapterName "NIC 1", "NIC 2"`

`-EnableEmbeddedTeaming`  
`-EnableIov`  
`-EnablePacketDirect`

`$true`

DRAG DROP

You plan to install the Hyper-V server role on VM1.

How should you complete the Windows PowerShell script? To answer, drag the appropriate values to the correct targets. Each value may be used once, more than once, or not at all. You may need to drag the split bar between panes or scroll to view content.

A. Mastered  
B. Not Mastered

**Answer: A**

**Answer Area**

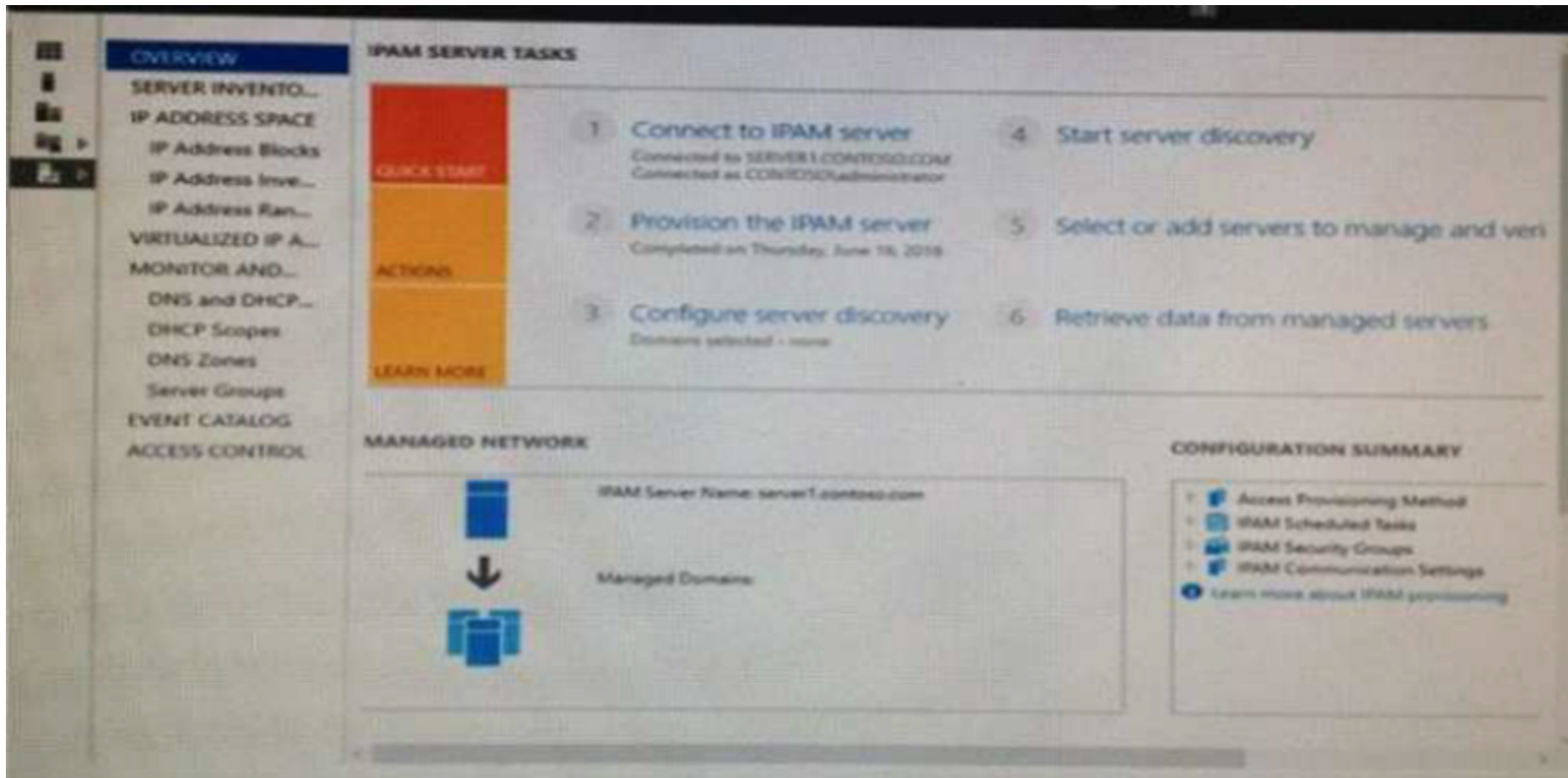
**Values**

\$false	Set-VMProcessor -VMName VMHOST1 -ExposeVirtualizationExtensions	\$true	-Count 2
\$null	Set-VMemory VMHOST1 -DynamicMemoryEnabled	\$false	
\$true	Get-VMNetworkAdapter -VMName VMHOST1   Set-VMNetworkAdapter -MacAddressSpoofing on		

## HOTSPOT

```
Version : 6.3.0.1
Port : 4885
ProvisioningMethod : Automatic
GpoPrefix : IPAM
HMACKey : System.Security.SecureString
```

*Guaranteed success with Our exam guides*



The group policy configurations are shown in the GPO exhibit.



For each of the following statements, select Yes if the statement is true Otherwise, select No

Statements	Yes	No
If a DNS server is added to contoso.com, the server will be discovered by IPAM automatically.	<input type="radio"/>	<input type="radio"/>
If you manually add a DHCP server named Server3 to IPAM and set the Manageability status to Managed, the IPAM_DHCP Group Policy will apply to Server3.	<input type="radio"/>	<input type="radio"/>
If you click Start server discovery, the domain controllers in contoso.com will be discovered by IPAM.	<input type="radio"/>	<input type="radio"/>

A. Mastered  
 B. Not Mastered

Answer: A

Explanation:



Statements	Yes	No
If a DNS server is added to contoso.com, the server will be discovered by IPAM automatically.	<input type="radio"/>	<input checked="" type="radio"/>
If you manually add a DHCP server named Server3 to IPAM and set the Manageability status to Managed, the IPAM_DHCP Group Policy will apply to Server3.	<input checked="" type="radio"/>	<input type="radio"/>
If you click Start server discovery, the domain controllers in contoso.com will be discovered by IPAM.	<input type="radio"/>	<input checked="" type="radio"/>

#### NEW QUESTION 27

Note: This question is part of a series of questions that use the same similar answer choices. An answer choice may be correct for more than one question in the series. Each question is independent of the other questions in this series. Information and details provided in a question apply only to that question.

You have a Hyper-V host named Server1 that runs Windows Server 2016. Server1 contains a virtual machine named VM1.

You need to ensure that you can use nested virtualization on VM1. What should you run on Server1?

- A. the Mount-VHD cmdlet
- B. the Diskpart command
- C. the Set-VHD cmdlet
- D. the Set-VM cmdlet
- E. the Set-VMHost cmdlet
- F. the Set-VMProcessor cmdlet
- G. the Install-WindowsFeature cmdlet
- H. the Optimize-VHD cmdlet

**Answer: F**

#### NEW QUESTION 30

Note: This question is part of a series of questions that use the same similar answer choices. An answer choice may be correct for more than one question in the series. Each question is independent of the other questions in this series. Information and details provided in a question apply only to that question.

You have a Hyper-V host named Server1 that runs Windows Server 2016. You plan to deploy several shielded virtual machines on Server1.

You deploy a Host Guardian on a new server.

You need to ensure that Server1 can host shielded virtual machines. What should you run first?

- A. the Mount-VHD cmdlet
- B. the Diskpart command
- C. the Set-VHD cmdlet
- D. the Set-VM cmdlet
- E. the Set-VMHost cmdlet
- F. the Set-VMProcessor cmdlet
- G. the Install-WindowsFeature cmdlet
- H. the Optimize-VHD cmdlet

**Answer: G**

#### NEW QUESTION 34

In this section, you'll see one or more sets of questions with the same scenario and problem. Each

question presents a unique solution to the problem, and you must determine whether the solution meets the stated goals. Any of the solutions might solve the problem. It is also possible that none of the solutions solve the problem.

Once you answer a question in this section, you will NOT be able to return to it. As a result, these questions will not appear in the review screen.

Note: This question is part of a series of questions that present the same scenario. Each question in the series contains a unique solution. Determine whether the solution meets the stated goals.

Your network contains an Active Directory domain named contoso.com. The domain contains a DNS server named Server1. All client computers run Windows 10. On Server1, you have the following zone configuration:

ZoneName	ZoneType	IsAutoCreated	IsDsIntegrated	IsReverseLookupZone	IsSign
-----	-----	-----	-----	-----	-----
_msdcs.contoso.com	Primary	False	True	False	False
adatum.com	Forwarder	False	False	False	
contoso.com	Primary	False	True	False	False
fabrikam.com	Primary	False	False	False	True
TrustAnchors	Primary	False	True	False	False

You have the following subnets defined on Server1.

Name	IPv4Subnet	IPv6Subnet
-----	-----	-----
Subnet1	{10.0.0.0/24}	
Subnet2	{10.0.1.0/24}	
Subnet3	{192.168.15.0/24}	
Subnet4	{172.16.1.0/24}	

You need to prevent Server1 from resolving queries from DNS clients located on Subnet4 Server1 must resolve queries from all other DNS clients  
Solution From Windows Firewall with Advanced Security on Server1, you create an inbound rule Does this meet the goal?

- A. Yes
- B. No

Answer: A

NEW QUESTION 39

In this section, you'll see one or more sets of questions with the same scenario and problem Each question presents a unique solution to the problem, and you must determine whether the solution meets the stated goals. Any of the solutions might solve the problem. It is also possible that none of the solutions solve the problem.  
Once you answer a question in this section, you will NOT be able to return to it. As a result, these questions will not appear in the review screen  
Note: This question is part of a series of questions that present the same scenario. Each question in the series contains a unique solution. Determine whether the solution meets the stated goals.  
Your network contains an Active Directory domain named contoso.com. The domain contains a DNS server named Server1. All client computers run Windows 10. On Server1, you have the following zone configuration

ZoneName	ZoneType	IsAutoCreated	IsDsIntegrated	IsReverseLookupZone	IsSign
-----	-----	-----	-----	-----	-----
_msdcs.contoso.com	Primary	False	True	False	False
adatum.com	Forwarder	False	False	False	
contoso.com	Primary	False	True	False	False
fabrikam.com	Primary	False	False	False	True
TrustAnchors	Primary	False	True	False	False

You have the following subnets defined on Server1.

Name	IPv4Subnet	IPv6Subnet
-----	-----	-----
Subnet1	{10.0.0.0/24}	
Subnet2	{10.0.1.0/24}	
Subnet3	{192.168.15.0/24}	
Subnet4	{172.16.1.0/24}	

You need to prevent Server1 from resolving queries from DNS clients located on Subnet4 Server1 must resolve queries from all other DNS clients  
Solution From Windows PowerShell on Server1, you run the Export-DnsServerDnsSecPublicKey cmdlet Does this meet the goal?

- A. Yes
- B. No

Answer: B

NEW QUESTION 40

Note: This question is part of a series of questions that present the same scenario. Each question in the series contains a unique solution that might meet the stated goals. Some question sets might have more than one correct solution, while others might not have a correct solution.  
After you answer a question in this section, you will NOT be able to return to it. As a result, these questions will not appear in the review screen.  
You have two servers that run Windows Server 2016.  
You plan to create a Network load Balancing (NLB) cluster that will contain both servers. You need to configure the network cards on the servers for the planned



NLB configuration.  
Solution: You configure the network cards to be on the same subnet and to have dynamic IP addresses. You configure the cluster to use multicast.  
Does this meet the goal?

- A. Yes
- B. No

Answer: B

Explanation:

References:  
<https://technet.microsoft.com/en-us/windows-server-docs/networking/technologies/network-load-balancing>

NEW QUESTION 43

You have a server named Server 1 that runs Windows Server 2016.  
Server 1 has Internet connectivity. You have a Nano Server image.  
You need to download and save a Nano Server package in the Nano Server image. The package is NOT included in the Windows Server 2016 installation media.  
Which two cmdlets should you run on Server1.

- A. Set-PackageSource
- B. Install-PackageProvider
- C. Add-AppxProvisionedPackage
- D. Save-NanoServerPackage
- E. Add-WindowsPackage

Answer: BD

NEW QUESTION 45

DRAG DROP

You are planning the configuration of a virtual network switch for a Hyper-V environment. The environment will contain the following Hyper-V hosts:

- A server named Server1 will have 10 virtual machines that must be able to communicate with each other. The virtual machines must be prevented from communicating with Server1 and all other servers on the corporate network.
- A two-node failover cluster named Cluster1 will have 20 virtual machines. The virtual machines will run on both nodes. Hyper-V hosts on the corporate network must be able to connect to the virtual machines.

Which type of virtual switch should you select for each Hyper-V host? To answer, drag the appropriate virtual switch types to the correct hosts. Each virtual switch type must be used once, more than once, or not at all. You may need to drag the split bar between panes or scroll to view content.

Virtual Switch Types

External

Internal

Private

10 virtual machines on Server1:

20 virtual machines on Cluster1:

- A. Mastered
- B. Not Mastered

Answer: A

Explanation:

Virtual Switch Types

External

Internal

Private

10 virtual machines on Server1:

20 virtual machines on Cluster1:

Private

External

**NEW QUESTION 50**

Your network contains an Active Directory domain. The domain contains a new file server named Server1 that runs a Server Core installation of Windows Server 2016. Server1 has an ReFS-formatted volume D: and NTFS-formatted volume E: The volumes do not contain any data. You install the Data Deduplication role service on Server1. You need to implement Data Deduplication for volumes on D: and E:.

Solution: From Windows PowerShell, you run Format-Volume D: -FileSystem EXFat and Enable- DeDupVolume -Volume D:,E:.

Does this meet the goal?

- A. Yes
- B. No

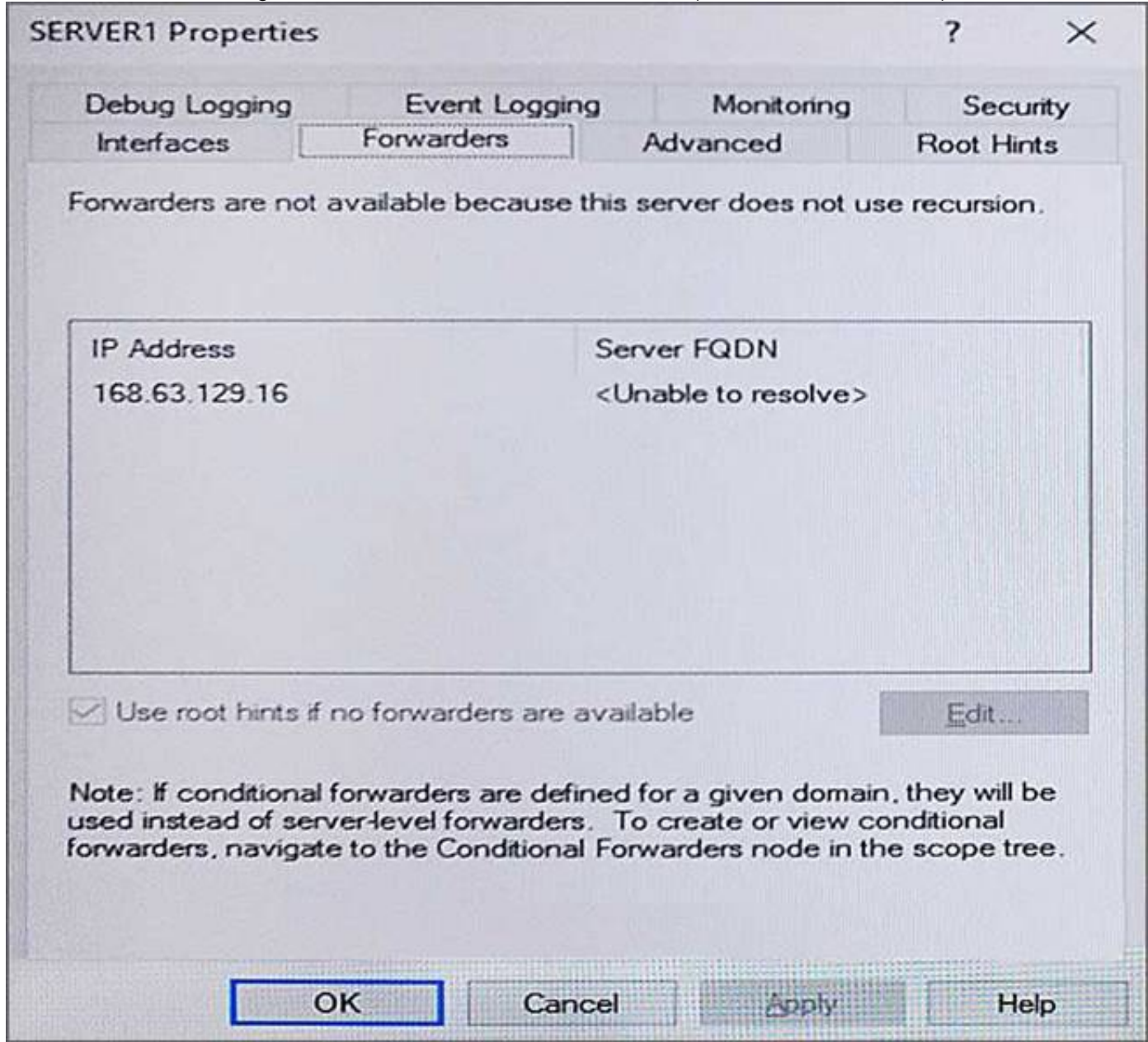
**Answer:** A

**NEW QUESTION 51**

**HOTSPOT**

You have a DNS server named Server1.

The forwarders are configured as shown in the Forwarders exhibit. (Click the Exhibit button.)



The Advanced Settings are configured as shown in the Advanced exhibit. (Click the Exhibit button.)



SERVER1 Properties

Debug Logging    Event Logging    Monitoring    Security  
 Interfaces    Forwarders    **Advanced**    Root Hints

Server version number:  
 10.0 14300 (0x37dc)

Server options:

- ☒ Disable recursion (also disables forwarders)
- ☐ Enable BIND secondaries
- ☐ Fail on load if bad zone data
- ☒ **Enable round robin**
- ☒ Enable netmask ordering
- ☒ Secure cache against pollution

Name checking:    Multibyte (UTF8)    v

Load zone data on startup:    From Active Directory and registry    v

☐ Enable automatic scavenging of stale records

Scavenging period:    0    days    v

Reset to Default

OK    Cancel    Apply    Help

The Root Hints are configured as shown in the Root Hints exhibit. (Click the Exhibit button.)

SERVER1 Properties

Debug Logging    Event Logging    Monitoring    Security  
 Interfaces    Forwarders    Advanced    **Root Hints**

Root hints resolve queries for zones that do not exist on the local DNS server. They are only used if forwarders are not configured or fail to respond.

Name servers:

Server Fully Qualified Domain Name (FQDN)	IP Address
a.root-servers.net.	[2001:503:ba3e::2...
b.root-servers.net.	[2001:500:84:b]
f.root-servers.net.	[2001:500:2f:f]
i.root-servers.net.	[2001:7fe::53]
l.root-servers.net.	[2001:500:9f::42]
m.root-servers.net.	[2001:dc3::35]

Add...    Edit...    Remove    Copy from Server

OK    Cancel    Apply    Help

Server1 does not contain any DNS zones.  
 For each of the following statements, select Yes if the statement is true. Otherwise, select No.



# Answer Area

Statements	Yes	No
Server1 can resolve the names of hosts that are located on the Internet.	<input type="radio"/>	<input type="radio"/>
From Server1 Properties, if you perform a test from the Monitoring tab, the recursive test will pass.	<input type="radio"/>	<input type="radio"/>
Server1 is configured as a root DNS server.	<input type="radio"/>	<input type="radio"/>

- A. Mastered
- B. Not Mastered

Answer: A

## Explanation:

Recursion is disabled so internet hosts cannot be resolved. The recursive test fails because recursion is disabled. Server1 is not configured as a root server. The forwarders list would be greyed out if it was.

## NEW QUESTION 52

### HOTSPOT

Your network contains an Active Directory forest. The forest contains one domain named contoso.com. The domain contains two domain controllers named DC1 and DC2. DC1 holds all of the operations master roles.

During normal network operations, you run the following commands on DC2:

```
Move-ADDirectoryServerOperationMasterRole -Identity "DC2" - OperationMasterRole PDCEmulator
```

```
Move-ADDirectoryServerOperationMasterRole -Identity "DC2" - OperationMasterRole RIDMaster
```

DC1 fails.

You remove DC1 from the network, and then you run the following command:

```
Move-ADDirectoryServerOperationMasterRole -Identity "DC2" - OperationMasterRole SchemaMaster
```

For each of the following statements, select Yes if the statement if true. Otherwise, select No.

# Answer Area

Statements	Yes	No
DC2 holds the schema master operations role.	<input type="radio"/>	<input type="radio"/>
DC2 holds the PDC emulator master operations role.	<input type="radio"/>	<input type="radio"/>
Currently, you can add additional domains to the forest.	<input type="radio"/>	<input type="radio"/>

- A. Mastered
- B. Not Mastered

Answer: A

## Explanation:



# Answer Area

Statements	Yes	No
DC2 holds the schema master operations role.	<input type="radio"/>	<input checked="" type="radio"/>
DC2 holds the PDC emulator master operations role.	<input checked="" type="radio"/>	<input type="radio"/>
Currently, you can add additional domains to the forest.	<input type="radio"/>	<input checked="" type="radio"/>

NEW QUESTION 56

Note: This question is part of a series of questions that present the same scenario. Each question in the series contains a unique solution that might meet the stated goals. Some question sets might have more than one correct solution, while others might not have a correct solution. After your answer a question in this section, you will NOT be able to return to it. As a result, these questions will not appear in the review screen. Your network contains an Active Directory forest named contoso.com. You need to identify which server is the schema master. Solution: From a command prompt, you run netdom query fsmo. Does this meet the goal?

- A. Yes
- B. No

Answer: A

Explanation:

References: <https://blogs.technet.microsoft.com/mempson/2007/11/08/how-to-find-out-who-has-your-fsmo-roles/>

NEW QUESTION 58

Your Network contains one Active Directory domain named contoso.com. You pilot DirectAccess on the network. During the pilot deployment, you enable DirectAccess only for a group Contoso\Test Computers. Once the pilot is complete, you need to enable DirectAccess for all the client computers in the domain. What should you do?

- A. From Windows PowerShell, run the Set-DAClient cmdlet.
- B. From Windows PowerShell, run the Set-DirectAccess cmdlet.
- C. From Active Directory Users and Computers, modify the membership of the Windows Authorization Access Group.
- D. From Group Policy Management, modify the security filtering of an object named Direct Access Client Setting Group Policy.

Answer: D

NEW QUESTION 60

DRAG DROP

You have a Hyper-V host named Server1 that runs Windows Server 2016. The installation source files for Windows Server 2016 are located in D:\Source. You need to create a Nano Server image. Which cmdlets should you run? To answer, drag the appropriate cmdlets to the correct targets. Each cmdlet may be used once, more than once, or not at all. You may need to drag the split bat between panes or scroll to view content.

### Cmdlets

Add-WindowsImage

Import-Module

Install-Module

New-NanoServerImage

New-WindowsCustomImage

### Answer Area

First cmdlet to run:

cmdlet

Second cmdlet to run:

cmdlet

- A. Mastered
- B. Not Mastered

Answer: A

Guaranteed success with Our exam guides

visit - <https://www.certshared.com>

Explanation:

Step 1: Import Module  
Import-Module .\NanoServerImageGenerator.psm1 Step 2: New New-NanoServerImage  
Create Nano Server Image VHDX  
New-NanoServerImage -MediaPath .\Files -BasePath.\Base -TargetPath .\Images\NanoVMGA.vhdx References: <https://technet.microsoft.com/en-us/windows-server-docs/get-started/deploy-nano-server>

NEW QUESTION 64

DRAG DROP  
You have a file server named Server1 that runs Windows Server 2016.  
You need to create a report that lists all of the share permissions assigned to the security principals on Server1.  
How should you complete the command? To answer, drag the appropriate cmdlets to the correct targets. Each cmdlet may be used once, more than once, or not at all. You may need to drag the split bar between panes or scroll to view content.

Cmdlets

Get-Acl

Get-SmbClientConfiguration

Get-SmbShare

Set-SmbPathAcl

Get-Credential

Get-SmbDelegation

Get-SmbShareAccess

Answer Area

Cmdlet

Cmdlet

- A. Mastered
- B. Not Mastered

Answer: A

Explanation:

Cmdlets

Get-Acl

Get-SmbClientConfiguration

Get-SmbShare

Set-SmbPathAcl

Get-Credential

Get-SmbDelegation

Get-SmbShareAccess

Answer Area

Get-SmbShare

Get-SmbShareAccess

NEW QUESTION 69

For Windows Server 2016, Nano Server is distributed on the physical media, where you will find a NanoServer folder; this contains a .wim image and a subfolder called Packages. It is these package files that you use to add server roles and features to the VHD image, which you then boot to.  
Assume that several variables have been configured already, which PowerShell command would you use to create a Nano Server which had the Hyper-V role, clustering, OEM Drivers and antimalware?

- A. New-NanoServerImage -MediaPath \$mediapath -BasePath \$basepath -TargetPath \$targetpath - ComputerName \$computername -OEMDrivers -Clustering -Defender -Compute
- B. New-NanoServerImage -MediaPath \$mediapath -BasePath \$basepath -TargetPath \$targetpath - ComputerName \$computername -OEMDrivers -Clustering -Storage -EnableRemoteManagementPort
- C. New-NanoServerImage -MediaPath \$mediapath -BasePath \$basepath -TargetPath \$targetpath - ComputerName \$computername -OEMDrivers -Defender -Containers - EnableRemoteManagementPort
- D. New-NanoServerImage -MediaPath \$mediapath -BasePath \$basepath -TargetPath \$targetpath - ComputerName \$computername -Defender -Storage -Compute - EnableRemoteManagementPort

**Answer:** A

#### NEW QUESTION 70

You have Hyper-V virtual machines that run 50 web servers, 10 Microsoft SQL Server servers. 10 file servers, and eight domain controllers.

You need to implement a backup strategy that meets the following requirements:

- \*Backs up all servers
  - \*Centralizes backup management
  - \*Performs application-level backups
  - \*Provides the ability to perform bare metal recovery
- What should you use?

- A. Microsoft Azure VM Backup
- B. Microsoft Azure Backup Agent
- C. Windows Server Backup
- D. Microsoft Azure Backup Server

**Answer:** D

#### NEW QUESTION 75

You have a server named Server1 that runs Windows Server 2016.

On Server1, you use the Basic template to create a new Data Collector Set named CollectorSet1. You need to configure CollectorSet1 to generate performance alerts.

What should you do before you start CollectorSet1?

- A. Modify the performance counter data collector of CollectorSet1.
- B. Add a new data collector to CollectorSet1.
- C. Modify the configuration data collector of CollectorSet1.
- D. Add a new task to CollectorSet1.

**Answer:** A

#### Explanation:

[https://technet.microsoft.com/en-us/library/cc722414\(v=ws.11\).aspx](https://technet.microsoft.com/en-us/library/cc722414(v=ws.11).aspx)

#### NEW QUESTION 76

You have a Hyper-V host named Server1 that runs Windows Server 2016. Server1 hosts a virtual machine named VM1 that runs Windows Server 2016. You install the Hyper-V server role on VM1.

You need to ensure that the virtual machines hosted on VM1 can communicate with the virtual machines hosted on Server1.

What should you do?

- A. On Server1, run the Set-VmNetworkAdapterIsolation cmdlet and specify the –MultiTenantStack Off parameter.
- B. On VM1, run the Set-VMNetworkAdapter cmdlet and specify the –MacAddressSpoofing Off parameter.
- C. On VM1, run the Set-VmNetworkAdapterIsolation cmdlet and specify the –MultiTenantStack On parameter.
- D. On Server1, run the Set-VMNetworkAdapter cmdlet and specify the –MacAddressSpoofing On parameter.

**Answer:** C

#### Explanation:

References: <https://docs.microsoft.com/en-us/powershell/module/hyper-v/set-vmnetworkadapterisolation?view=win10-ps>

#### NEW QUESTION 80

Note: This question is part of a series of questions that present the same scenario. Each question in the series contains a unique solution that might meet the stated goals. Some question sets might have more than one correct solution, while others might not have a correct solution.

You have a server named Server1 that runs Windows Server 2016. Server1 hosts a line-of-business application named App1. App1 has a memory leak that occasionally causes the application to consume an excessive amount of memory.

You need to log an event in the Application event log whenever App1 consume more than 4 GB of memory.

Solution: You create a performance counter data collector. Does this meet the goal?

- A. Yes
- B. No

**Answer:** B

#### NEW QUESTION 82

DRAG DROP

Your network contains an Active Directory domain named contoso.com. The domain contains a server named Server1 that runs Windows Server 2016.

Server1 allows inbound connectivity from all computers in the contoso.com domain. Server1 has an IP address of 192.168.0.10.

Server1 hosts a Windows container named Container1. Container1 hosts a website that is accessible on port 80.



You need to ensure that you can use the Docker(?) client to manage Container1 from any computer in the domain.  
Which four cmdlets should you run in sequence? To answer, move the appropriate cmdlets from the list of cmdlets to the answer area and arrange them in the correct order.

Actions

Restart-Service docker

New-ContainerNetwork- Name nat1 – Mode NAT- SubnetPrefix 192.168.0.0/24 – GatewatAddress 192.168.0.10

Add-Content 'c:\programdata\docker\config\daemon.json' '{"hosts": [{"tcp://127.0.0.1:80", "npipe://"} ]}'

Add-Content 'c:\programdata\docker\config\daemon.json' '{"hosts": [{"tcp://0.0.0.0:2375", "npipe://" } ]}'

New-Item-Type File c:\programData\docker\confing\daemon.json

Answer Area

- A. Mastered
- B. Not Mastered

Answer: A

Explanation:

New-Item-Type File  
c:\programData\docker\confing\daemon.json

Add-Content  
'c:\programdata\docker\config\daemon.json'  
{'hosts': [{"tcp://0.0.0.0:2375", "npipe://" } ]}'

Restart-Service docker

New-ContainerNetwork- Name nat1 – Mode NAT- SubnetPrefix 192.168.0.0/24 – GatewatAddress 192.168.0.10

NEW QUESTION 83

HOTSPOT

You are deploying Network Load Balancing (NLB) to three web servers named Server1, Server2, and Server3. The web servers have the following IP addresses:  
Server1: 192.168.2.101  
Server2: 192.168.2.102 Server3:192.168.2.103  
The IP address used by NLB is 192.168.2.120.  
Which IP address or addresses will be configured on each server? To answer, select the appropriate options in the answer area.



## Answer Area

Server1:

	▼
192.168.2.101 only	
192.168.2.120 only	
192.168.2.101 and 192.168.2.120 only	
192.168.2.101, 192.168.2.102, and 192.168.2.103 only	
192.168.2.101, 192.168.2.102, 192.168.2.103 and 192.168.2.120	

Server2:

	▼
192.168.2.102 only	
192.168.2.120 only	
192.168.2.102 and 192.168.2.120 only	
192.168.2.101, 192.168.2.102, and 192.168.2.103 only	
192.168.2.101, 192.168.2.102, 192.168.2.103 and 192.168.2.120	

Server3:

	▼
192.168.2.103 only	
192.168.2.120 only	
192.168.2.103 and 192.168.2.120 only	
192.168.2.101, 192.168.2.102, and 192.168.2.103 only	
192.168.2.101, 192.168.2.102, 192.168.2.103 and 192.168.2.120	

- A. Mastered  
 B. Not Mastered

Answer: A

Explanation:

## Answer Area

Server1:

	▼
192.168.2.101 only	
192.168.2.120 only	
<b>192.168.2.101 and 192.168.2.120 only</b>	
192.168.2.101, 192.168.2.102, and 192.168.2.103 only	
192.168.2.101, 192.168.2.102, 192.168.2.103 and 192.168.2.120	

Server2:

	▼
192.168.2.102 only	
192.168.2.120 only	
<b>192.168.2.102 and 192.168.2.120 only</b>	
192.168.2.101, 192.168.2.102, and 192.168.2.103 only	
192.168.2.101, 192.168.2.102, 192.168.2.103 and 192.168.2.120	

Server3:

	▼
192.168.2.103 only	
192.168.2.120 only	
<b>192.168.2.103 and 192.168.2.120 only</b>	
192.168.2.101, 192.168.2.102, and 192.168.2.103 only	
192.168.2.101, 192.168.2.102, 192.168.2.103 and 192.168.2.120	

#### NEW QUESTION 86

You have two servers named Server1 and Server2 that run Windows Server 2016. Server1 contains a volume named Volume1. You implement a Storage Replica that replicates the contents of Volume1 from Server1 to Server2. Server1 fails. From Server2, you need to ensure that you can access the contents of Volume1. What should you run?

- A. Update-StoragePool
- B. Set-SRPartnership
- C. vssadmin revert shadow
- D. Clear-FileStorageTier

**Answer:** B

#### Explanation:

References:

<https://docs.microsoft.com/en-us/windows-server/storage/storage-replica/server-to-server-storage-replication>

#### NEW QUESTION 90

Note: This question is part of a series of questions that present the same scenario. Each question in the series contains a unique solution that might meet the stated goals. Some question sets might have more than one correct solution, while others might not have a correct solution.

After you answer a question in this section, you will NOT be able to return to it. As a result, these questions will not appear in the review screen.

You network contains an Active Directory domain named contoso.com.

You need to create a Nano Server image named Nano1 that will be used as a virtualization host. The Windows Server 2016 source files are located in drive D.

Solution: You run the following cmdlet.

```
New-NanoServerImage -Edition Datacenter -DeploymentType Host -Compute  
-MediaPath 'D:\' -TargetPath C:\Nano1\Nano1.wim -ComputerName Nano1  
-DomainName Contoso.com
```

Does this meet the goal?

- A. Yes
- B. No

**Answer:** A

#### NEW QUESTION 94

Note: This question is part of a series of questions that present the same scenario. Each question in the series contains a unique solution that might meet the stated goals. Some question sets might have more than one correct solution, while others might not have a correct solution.

After you answer a question in this section, you will NOT be able to return to it. As a result, these questions will not appear in the review screen.

You network contains an Active Directory domain named contoso.com.

You need to create a Nano Server image named Nano1 that will be used as a virtualization host. The Windows Server 2016 source files are located in drive D.

Solution: You run the following cmdlet.

```
New-NanoServerImage -Edition Datacenter -DeploymentType Host -Package  
Microsoft-NanoServer-SCVMM-Package -MediaPath 'D:\' -TargetPath  
C:\Nano1\Nano1.wim -ComputerName Nano1 -DomainName Contoso.com
```

Does this meet the goal?

- A. Yes
- B. No

**Answer:** B

#### NEW QUESTION 97

Note: This question is part of a series of questions that present the same scenario. Each question in the series contains a unique solution that might meet the stated goals. Some question sets might have more than one correct solution, while others might not have a correct solution.

After you answer a question in this section, you will NOT be able to return to it. As a result, these questions will not appear in the review screen.

You have a server named Server1 that runs Windows Server 2016.

Server1 hosts a line-of-business application named App1. App1 has a memory leak that occasionally causes the application to consume an excessive amount of memory.

You need to log an event in the Application event log whenever App1 consumes more than 4 GB of memory.

Solution: You create an event trace data collector. Does this meet the goal?

- A. Yes
- B. No

**Answer:** B

#### NEW QUESTION 100

Note: This question is part of a Series of questions that use the same or similar answer choices. An answer choice may be correct for more than one question In the series. Each question Is Independent of the other questions in this series. Information and details provided in a question apply only to that question.

You have two servers named Server 1 and Server 2 that run Windows Server 2016. Server 1 and server 2 have the Hyper-V server role installed and are nodes in a failover Cluster.

On Server 1, an administrator creates a virtual machine named VM1. You need to configure VM1 for high availability.

Which tool should you use?

- A. the clussvc.exe command
- B. the cluster.exe command
- C. the Computer Management snap in
- D. the configurehyperv.exe command
- E. the Disk Management map-in
- F. the Failover Cluster Manager snap In
- G. the Hyper V Manage map id
- H. the Server Manager app

**Answer:** F

#### NEW QUESTION 105

You have Nano Server image named Disk1.vhdx.

You mount Disk1.vhdx.

You need to add a folder that contains several files to the image. Which tool or cmdlet you should use?

- A. File Explore.
- B. Add-Windows Image
- C. Nano Server Image Builder
- D. Server Manager

**Answer:** D

#### NEW QUESTION 109

DRAG DROP

On a new server, you install Windows Server 2016, and then you install the Hyper-V server role.

You need to ensure that you can deploy Windows containers that use an image of the Server Core installation of Windows Server.

Which four commands should you use in sequence? To answer, move the appropriate commands from the list of commands to the answer area and arrange them in the correct order.

#### Commands

Install-Package -Name docker -ProviderName  
DockerMsftProvider

Restart-Computer -Force

docker pull docker/windows-x64

Set-VMProcessor -ExposeVirtualizationExtensions  
\$true

Install-Module -name DockerMsftProvider  
Repository PSGallery -Force-

docker pull Microsoft/windowsservercore

Install-Package -Name Microsoft/dotnet  
framework-docker -ProviderName-  
DockerMsftProvider

Install-WindowsFeature Hyper-V

#### Answer Area

1

2

3

4



- A. Mastered
- B. Not Mastered

**Answer:** A

**Explanation:**

References: <https://docs.microsoft.com/en-us/virtualization/windowscontainers/deploy-containers/deploy-containers-on-server>

#### NEW QUESTION 113

DRAG DROP

Note: This question is part of a series of questions that use the same scenario. For your convenience, the scenario is repeated in each question. Each question



presents a different goal and answer choices, but the text of the scenario is exactly the same in each question in this series.

A company named Contoso, Ltd. has several servers that run Windows Server 2016. Contoso has a Hyper-V environment that uses failover clustering and Windows Server Update Services (WSUS). The environment contains several Windows containers and several virtual machines.

The WSUS deployment contains one upstream server that is located on the company's perimeter network and several downstream servers located on the internal network. A firewall separates the upstream server from the downstream servers.

You plan to deploy a human resources application to a new server named HRServer5. HRServer5 contains a FAT32-formatted data volume.

The CIO of Contoso identifies the following requirements for the company's IT department: Deploy a failover cluster to two new virtual machines.

Store all application databases by using Encrypted File System (EFS).

Ensure that each Windows container has a dedicated IP address assigned by a DHCP server.

Produce a report that lists the processor time used by all of the processes on a server named Server1 for five hours.

Encrypt all communication between the internal network and the perimeter network, including all WSUS communications.

Automatically load balance the virtual machines hosted in the Hyper-V cluster when processor utilization exceeds 70 percent.

You need to configure the storage solution for the planned failover cluster.

You create two new generations 2 virtual machines on two separate Hyper-V hosts named VM11 and VM12.

Which three actions should you perform in sequence next? To answer, move the appropriate actions from the list of actions to the answer area and arrange them in the correct order.

Actions

For each virtual machine, create a new system disk that uses the VNDX format and store the disks in Share1.

Create a VHDX file and store the file in the Clustered Shared Volume (CSV).

For each virtual machine, create a new system disk that uses the VHDX format and store the virtual machines on the Cluster Shared Volume (CSV).

Create a network share named Share1.

Create a Clustered Shared Volume (CSV).

To each virtual machine, add the VHDX file as a shared drive.

Answer Area

1

2

3

- A. Mastered
- B. Not Mastered

Answer: A

Explanation:



## Actions

## Answer Area

For each virtual machine, create a new system disk that uses the VNDX format and store the disks in Share1.

Create a network share named Share1.

To each virtual machine, add the VHDX file as a shared drive.

1 Create a Clustered Shared Volume (CSV).

2 For each virtual machine, create a new system disk that uses the VHDX format and store the virtual machines on the Cluster Shared Volume (CSV).

3 Create a VHDX file and store the file in the Clustered Shared Volume (CSV).

### NEW QUESTION 118

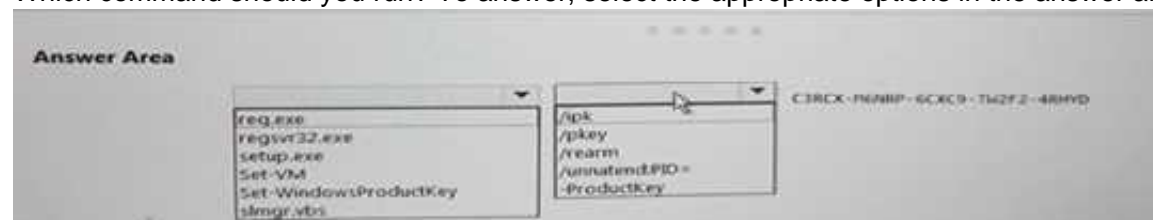
#### HOTSPOT

You have a Hyper-V host named Server1 that runs Windows Server 2016 Datacenter. Server1 is activated.

On Server 1, you deploy a virtual machine named VM1 that has a Server Core installation of Windows Server 2016 Standard.

You need to activate VM1 by using Automatic Virtual Machine Activation (AVMA).

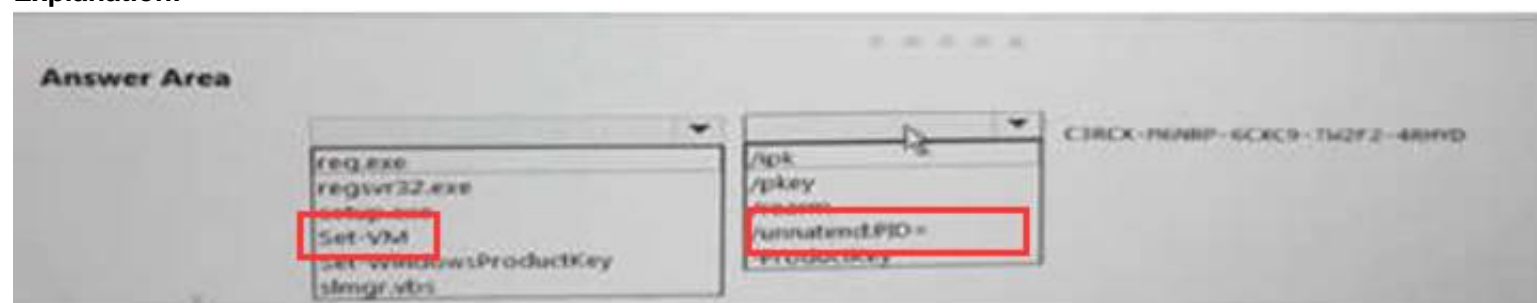
Which command should you run? To answer, select the appropriate options in the answer area. NOTE: Each correct selection is worth one point.



- A. Mastered
- B. Not Mastered

Answer: A

Explanation:



### NEW QUESTION 122

Note: This question is part of a series of questions that present the same scenario. Each question in the series contains a unique solution that might meet the stated goals. Some question sets might have more than one correct solution, while others might not have a correct solution.

After you answer a question in this section, you will NOT be able to return to it. As a result, these questions will not appear in the review screen.

You have a server named Server1 that runs Windows Server 2016. Server1 is a Docker Host.

You are creating a Dockerfile to build 3 Docker images.

You need to add a file named File1.txt from Server1 to C:\folder1\ in the Docker image.

What are two possible commands that you can use to achieve the goal? Each correct answer presents a complete solution.

NOTE: Each correct selection is worth one point.

- A. COPY file1.txt c:/folder1/
- B. copy-item file1.txt folder1\file1.txt

- C. ROBOCOPY file.txt \folder1\
- D. XCOPY file1.txt c:\folder1\
- E. ADD file1.txt /folder1/

**Answer:** AE

#### NEW QUESTION 124

Your network contains an Active Directory domain.

The domain contains two Hyper-V hosts.

You plan to perform live migrations between the hosts.

You need to ensure that the live migration traffic is authenticated by using Kerberos. What should you do first?

- A. From Server Manager, install the Host Guardian Service server role on a domain controller.
- B. From Active Directory Users and Computers, add the computer accounts for both servers to the Cryptographic Operators group.
- C. From Active Directory Users and Computers, modify the Delegation properties of the computer accounts for both servers.
- D. From Server Manager, install the Host Guardian Service server role on both servers.

**Answer:** C

#### Explanation:

If you have decided to use Kerberos to authenticate live migration traffic, configure constrained delegation before you proceed to the rest of the steps.

#### NEW QUESTION 129

You have a Hyper-V failover cluster that contains three nodes. Virtual machines are distributed evenly across the cluster nodes.

You need to ensure that if a node loses connectivity from the other nodes, the virtual machines on the node will be transitioned to one of the remaining nodes after one minute.

Which settings should you modify?

- A. QuarantineDuration and QuarantineThreshold
- B. SameSubnetDelay and CrossSubnetDelay
- C. QuorumArbitrationTimeMax and RequestReplyTimeout
- D. ResiliencyPeriod and ResiliencyLevel

**Answer:** D

#### Explanation:

References: <https://blogs.msdn.microsoft.com/clustering/2015/06/03/virtual-machine-compute-resiliency-in-windows-server-2016/>

#### NEW QUESTION 132

You have a server named Server1 that is an iSCSI target. You have a server named Server2 that runs

Windows Server 2016. Server2 has an iSCSI disk named Disk1 that is hosted on Server1. Disk1 contains one volume that is assigned a drive letter of E.

You need to increase the size of Disk1. What should you do?

- A. Run the Resize-IscsiVirtualDisk cmdlet and specify the -ComputerName Server2 parameter.
- B. Run the Resize-IscsiVirtualDisk cmdlet and specify the -ComputerName Server1 parameter.
- C. Run the Resize-Partition cmdlet and specify the -ComputerName Server1 parameter.
- D. Run the Resize- Partition cmdlet and specify the -ComputerName Server2 parameter.

**Answer:** B

#### Explanation:

The Resize-IscsiVirtualDisk cmdlet resizes a virtual disk either by expanding or compacting an existing virtual disk.

The -ComputerName parameter specifies the computer name, or IP address, of the remote computer, if this cmdlet is run on a remote computer. If you do not specify a value for this parameter, the cmdlet uses the local computer.

#### NEW QUESTION 136

HOTSPOT

You have a server named Server1 that runs Windows Server 2016. You create a storage pool named Pool1. Pool1 contains three disks.

You need to create a two-way mirror storage space from the disks in Pool1.

Which command should you run? To answer, select the appropriate options in the answer area. NOTE: Each correct selection is worth one point.

# Answer Area

New-StorageSunsystemVirtualDisk  
New-VHD  
New-VirtualDisk  
New-Volume

-StoragePoolFirendlyName Pool1 -FirendlyName Space1-  
-UseMaximumSize -ResiliencySettingName Mirror

-NumberofDataCopies

1  
2  
3

-NumberOfColumns-

1  
2  
3

- A. Mastered
- B. Not Mastered

Answer: A

Explanation:  
References: <https://charbelnemnom.com/2014/09/step-by-step-how-to-create-a-two-way-mirrored-storage-space-via-powershell-storagespaces-powershell/>

NEW QUESTION 137

You have a Hyper-V host named Server1 that runs Windows Server 2016. Server1 has ab external virtual switch named Switch1. Server1 hosts a virtual machine named VM1 that runs Windows Server 2016. VM1 has one network adapter. The network adapter connects to Switch1. You need to limit the maximum network bandwidth available to VM1 to 100 Mbps. The solution must limit the bandwidth for VM1 only. Which cmdlet should you run?

- A. Set-NetAdapter
- B. Set-VMNetworkAdapter
- C. Set-VM
- D. Set-NetAdapterVmq
- E. Set-NetworkSwitchPortProperty

Answer: B

Explanation:  
The Set-VMNetworkAdapterVlan cmdlet configures virtual LAN settings for the traffic through a virtual network adapter.

NEW QUESTION 141

NOTE: This Question is a part of a series of questions that use the same or similar answer choices. An answer choice may be correct for more than one question in the series Each question is independent of the other questions in this series. Information and details provided in a question apply only to that question. You have a Hyper -V host named server 1 that runs Windows Server 2016 and a two-node scale-out file server cluster named Cluster1. You need to migrate the storage on VM1 to Cluster1. Which tool should you use?

- A. the clussvc.exe command
- B. the Cluster.exe command
- C. the Computer Management snap-in
- D. the configure hyperv.exe command
- E. the Disk Management snap-in
- F. the Failover Cluster Manager snap-in
- G. the Hyper-V Manager snap-in
- H. the Server Manger app

Answer: G

NEW QUESTION 144

HOTSPOT  
Your network contains an Active Directory domain named contoso.com. The domain contains three clusters named FC1, FC2, and FC3. The domain contains servers that run Windows Server 2016. The servers are configured as shown in the following table.



Server name	CPU	Memory	Cluster
Server1	Intel Xeon E3	128 GB	FC1
Server2	Intel Xeon E3	128 GB	FC1
Server3	Intel Xeon E3	64 GB	FC2
Server4	Intel Xeon E3	64 GB	FC2
Server5	AMD Opteron	256 GB	FC3
Server6	AMD Opteron	256 GB	FC3

Server1 hosts a highly available virtual machine named VM1.  
 You are creating a maintenance plan for the servers, and you are evaluating how to move VM1 to the different clusters.  
 You need to identify the fastest method to move VM1 to FC2 and FC3.  
 Which method should you identify for each cluster? To answer, select the appropriate options in the answer area.  
 NOTE: Each correct selection is worth one point.

Answer Area

Fastest method to move VM1 to FC2:

Export and import

Live migration

Quick migration

Fastest method to move VM1 to FC3:

Export and import

Live migration

Quick migration

- A. Mastered
- B. Not Mastered

Answer: A

Explanation:  
 References: <https://www.petri.com/move-virtual-machine-between-hyper-v-hosts>

NEW QUESTION 146

Note: This question is part of a series of questions that present the same scenario. Each question in the series contains a unique solution that might meet the stated goals. Some question sets might have more than one correct solution, while others might not have a correct solution.  
 After you answer a question in this section, you will NOT be able to return to it. As a result, these questions will not appear in the review screen.  
 You network contains an Active Directory forest named contoso.com. The forest contains a child domain named eu.contoso.com.  
 You plan to implement live migration between two Hyper-V hosts that run Windows Server 2016. The hosts are configured as shown in the following table.

Host name	Configuration
Host1	<ul style="list-style-type: none"> <li>Is a member of the contoso.com domain</li> <li>Uses an Intel Xeon processor released in 2012</li> <li>Has an external virtual switch named Switch1</li> <li>Hosts a virtual machine named VM1 that connects to Switch1</li> </ul>
Host2	<ul style="list-style-type: none"> <li>Is a member of the eu.contoso.com domain</li> <li>Uses an Intel Xeon processor released in 2016</li> <li>Has an external virtual switch named Switch1</li> </ul>

You need to ensure that you can perform a live migration of VM1 from Host1 to Host2. Solution: You move Host2 to the contoso.com domain. Does meet the goal?

- A. Yes
- B. No

**Answer: B**

#### NEW QUESTION 147

Note: This question is part of a series of questions that present the same scenario. Each question in the series contains a unique solution that might meet the stated goals. Some question sets might have more than one correct solution, while others might not have a correct solution.

After you answer a question in this section, you will NOT be able to return to it. As a result, these questions will not appear in the review screen.

You have an Exchange Server 2016 organization.

Some users access the mailbox on their mobile device by using Exchange ActiveSync.

You need to prevent the users from synchronizing more than one month of email or calendar data to their device.

Solution: You deploy an Allow/Block/Quarantine policy. Does this meet the goal?

- A. Yes
- B. No

**Answer: B**

#### NEW QUESTION 150

Note: This question is part of a series of questions that use the same scenario. For your convenience, the scenario is repeated in each question. Each question presents a different goal and answer choices, but the text of the scenario is exactly the same in each question in this series.

A company named Contoso, Ltd. has several servers that run Windows Server 2016. Contoso has a Hyper-V environment that uses failover clustering and Windows Server Update Services (WSUS). The environment contains several Windows containers and several virtual machines.

The WSUS deployment contains one upstream server that is located on the company's perimeter network and several downstream servers located on the internal network. A firewall separates the upstream server from the downstream servers.

You plan to deploy a human resources application to a new server named HRServer5. HRServer5 contains a FAT32-formatted data volume.

The CIO of Contoso identifies the following requirements for the company's IT department:

Which two actions should you perform to meet the encryption requirement for WSUS? Each correct answer presents part of the solution.

- A. Require SSL on the Inventory virtual directory.
- B. Require SSL on the ClientWebService virtual directory.
- C. Create a firewall rule to allow TCP port 443.
- D. Create a firewall rule to allow TCP port 8531.

**Answer: BC**

#### Explanation:

References:

<https://technet.microsoft.com/en-us/library/bb633246.aspx> [https://en.wikipedia.org/wiki/List\\_of\\_TCP\\_and\\_UDP\\_port\\_numbers](https://en.wikipedia.org/wiki/List_of_TCP_and_UDP_port_numbers)

#### NEW QUESTION 153

Note: This question is part of a series of questions that use the same scenario. For your convenience, the scenario is repeated in each question. Each question presents a different goal and answer choices, but the text of the scenario is exactly the same in each question in this series.

A company named Contoso, Ltd. has several servers that run Windows Server 2016. Contoso has a Hyper-V environment that uses failover clustering and Windows Server Update Services (WSUS). The environment contains several Windows containers and several virtual machines.

The WSUS deployment contains one upstream server that is located on the company's perimeter network and several downstream servers located on the internal network. A firewall separates the upstream server from the downstream servers.

You plan to deploy a human resources application to a new server named HRServer5. HRServer5 contains a FAT32-formatted data volume.

The CIO of Contoso identifies the following requirements for the company's IT department:

Deploy a failover cluster to two new virtual machines.

Store all application databases by using Encrypted File System (EFS).

Ensure that each Windows container has a dedicated IP address assigned by a DHCP server.

Produce a report that lists the processor time used by all of the processes on a server named Server1 for five hours.

Encrypt all communication between the internal network and the perimeter network, including all WSUS communications.

Automatically load balance the virtual machines hosted in the Hyper-V cluster when processor utilization exceeds 70 percent.  
Which networking mode should you configure for the Windows containers?

- A. 12tunnel
- B. 12bridge
- C. network address translation (NAT)
- D. transparent

**Answer:** C

**Explanation:**

References: <https://blogs.technet.microsoft.com/virtualization/2016/05/05/windows-container-networking/>

**NEW QUESTION 154**

**HOTSPOT**

You have a Hyper-V host named Server1 that runs Windows Server 2016 datacenter. Server1 is activated.

On Server1, you deploy a virtual machine named VM1 that has a Server Core installation of Windows Server 2016 Standard.

You need to activate VM1 by using Automatic Virtual Machine Activation (AVMA).

Which command should you run? To answer, select the appropriate options in the answer area. NOTE: Each correct selection is worth one point.

**Answer Area**

reg.exe  
regsvr32.exe  
setup.exe  
Set-VM  
Set-WindowsProductKey  
slmgr.vbs

/ipk  
/pkey  
/rearm  
/unattend:PID=  
-ProductKey

C3RCX-M6NRP-6CXC9-TW2F2-4RHYD

- A. Mastered
- B. Not Mastered

**Answer:** A

**Explanation:**

References: <https://blogs.technet.microsoft.com/askcore/2013/11/13/activating-virtual-machines-via-automatic-virtual-machine-activation-in-windows-server-2012-r2/>

**NEW QUESTION 155**

You have a Network Load Balancing (NLB) cluster that contains two nodes named Server1 and Server2. The nodes run Windows Server 2016.

The NLB cluster has the following configuration.



ClusterName	:						
IPAddress	:	172.16.4.1					
Name	:						
ClusterIPAddress	:	172.16.4.1					
ClusterNetworkMask	:	255.255.0.0					
ClusterMacAddress	:	02-bf-ac-10-04-01					
OperationMode	:	UNICAST					
BdaReverseHash	:	False					
BdaTeamActive	:	False					
BdaTeamId	:						
BdaTeamMaster	:	False					

IPAddress	State	Start	End	Protocol	Mode	Affinity	Timeout
-----	-----	-----	-----	-----	-----	-----	-----
All	Enabled	0	65535	Both	Multiple	Single	0

You deploy the Web Server (IIS) server role identically to both servers.  
You need to configure NLB to load balance requests between the web servers. HTTP requests must be stateless. HTTPS requests must be stateful.  
What should you do? Each correct answer presents part of the solution.

- A. Modify the Cluster operation mode.
- B. Suspend the cluster.
- C. Drainstop the cluster.
- D. Add a new port rule.
- E. Edit the existing port rule.

Answer: CD

Explanation:

References:  
<https://www.ntweekly.com/2017/09/04/failover-nlb-cluster-host-member/> <https://docs.microsoft.com/en-us/windows-server/networking/technologies/network-load-balancing>

NEW QUESTION 159

Your network contains an Active Directory domain named contoso.com. The domain contains two servers named Server1 and Server2 that run Windows Server 2016. Server1 and Server2 have multiple local disks attached.  
You need to create a storage pool by using Storage Spaces Direct.  
Which three actions should you perform in sequence? To answer, move the appropriate actions from the list of actions to the answer area and arrange them in the correct order.

Actions

From Server1, run the **New-SpacesPool** cmdlet.

On Server1 and Server2, install the Failover Clustering feature.

From Server1, run the **New-StorageFileServer** cmdlet.

From Server1, run the **New-Cluster** cmdlet.

On Server1 and Server2, install the Storage Replica feature.

From Server1, run the **Enable-ClusterStorageSpacesDirect** cmdlet.

On Server1 and Server2, install the File Server role service.

Answer Area

⏪

⏩

⏴

⏵

- A. Mastered
- B. Not Mastered

Answer: A

Explanation:

References:

<https://docs.microsoft.com/en-us/windows-server/storage/storage-spaces/deploy-storage-spaces-direct>

NEW QUESTION 163

.....

Guaranteed success with Our exam guides

visit - <https://www.certshared.com>

## Thank You for Trying Our Product

### We offer two products:

1st - We have Practice Tests Software with Actual Exam Questions

2nd - Questons and Answers in PDF Format

### 70-740 Practice Exam Features:

- \* 70-740 Questions and Answers Updated Frequently
- \* 70-740 Practice Questions Verified by Expert Senior Certified Staff
- \* 70-740 Most Realistic Questions that Guarantee you a Pass on Your FirstTry
- \* 70-740 Practice Test Questions in Multiple Choice Formats and Updatesfor 1 Year

**100% Actual & Verified — Instant Download, Please Click**  
**[Order The 70-740 Practice Test Here](#)**