

Exam Questions MS-600

Building Applications and Solutions with Microsoft 365 Core Services

<https://www.2passeasy.com/dumps/MS-600/>



NEW QUESTION 1

- (Exam Topic 1)

Which type of authentication flow should you recommend for the planned integration with Office 365?

- A. device code
- B. implicit grant
- C. authorization code
- D. client credentials

Answer: C

Explanation:

To use Microsoft Graph to read and write resources on behalf of a user, your app must get an access token from the Microsoft identity platform and attach the token to requests that it sends to Microsoft Graph.

One common flow used by native and mobile apps and also by some Web apps is the OAuth 2.0 authorization code grant flow.

Scenario: Email the generated invoices to customers on behalf of the current signed-in user. Any emails generated by the system will contain the invoiced.

Use Azure AD to manage identities, authentication, and authorization. Reference: <https://docs.microsoft.com/en-us/graph/auth-v2-user>

NEW QUESTION 2

- (Exam Topic 1)

How can you validate that the JSON notification message is sent from the Microsoft Graph service?

- A. The ClientState must match the value provided when subscribing.
- B. The user_guid must map to a user ID in the Azure AD tenant of the customer.
- C. The tenant ID must match the tenant ID of the customer's Office 365 tenant.
- D. The subscription ID must match the Azure subscription used by ADatum.

Answer: A

Explanation:

clientState specifies the value of the clientState property sent by the service in each notification. The maximum length is 128 characters. The client can check that the notification came from the service by comparing the value of the clientState property sent with the subscription with the value of the clientState property received with each notification.

Note: A subscription allows a client app to receive notifications about changes to data in Microsoft Graph. Reference: <https://docs.microsoft.com/en-us/graph/api/resources/subscription>

NEW QUESTION 3

- (Exam Topic 2)

What is the default permission scope when you request an access token by using MSGraphClient?

- A. User.Read
- B. People.Read.All
- C. People.Read
- D. User.Read.All

Answer: D

Explanation:

By default, the service principal has no explicit permissions granted to access the Microsoft Graph. However, if you request an access token for the Microsoft Graph, you get a token with the user_impersonation permission

scope that can be used for reading information about the users (that is, User.Read.All). Reference: <https://docs.microsoft.com/en-us/sharepoint/dev/spfx/use-msgraph>

NEW QUESTION 4

- (Exam Topic 2)

You have an API that is secured by using Azure Active Directory (Azure AD). You are designing a SharePoint Framework (SPFx) solution.

Which object should you use to connect to the API from the solution?

- A. SPHttpClient
- B. HttpClient
- C. AadHttpClient

Answer: C

Explanation:

By using the AadHttpClient, you can easily connect to APIs secured by using Azure AD without having to implement the OAuth flow yourself.

Reference: <https://docs.microsoft.com/en-us/sharepoint/dev/spfx/use-aadhttpclient>

NEW QUESTION 5

- (Exam Topic 2)

You have an application that has the code shown in the exhibits. (Click the JavaScript Version tab or the C# Version tab.)

For each of the following statements, select Yes if the statement is true. Otherwise, select No. NOTE: Each correct selection is worth one point.

JavaScript Version

```
const fs = require("fs");
const execute = async (accessToken: string, filename: string): Promise<void> => {
  //...
  const stream = await client.api(`/me/drive/root/children/${filename}/content`)
    .getStream();
  let writeStream = fs.createWriteStream(`../${filename}`);
  stream.pipe(writeStream).on("error", (err) => {
    throw err;
  });
  writeStream.on("error", (err) => {
    throw err;
  });
  await new Promise((resolve) => writeStream.on("finish", resolve));
}
//...
```

C# Version

```
namespace MyProject {
    class Handler {
        public async Task Execute(string accessToken, string path) {
            var client = new GraphServiceClient(new GraphAuthProvider(accessToken));
            var pathRequestBuilder = client.Drive.Root.ItemWithPath(path);
            var file = await pathRequestBuilder.Request().GetAsync();
            if (file.File != null)
            {
                using (var content = await pathRequestBuilder.Content.Request().GetAsync())
                using (var diskFile = System.IO.File.Create(file.Name))
                {
                    content.Seek(0, System.IO.SeekOrigin.Begin);
                    await content.CopyToAsync(diskFile);
                    await diskFile.FlushAsync();
                }
            }
        }
    }
}
```

Statements	Yes	No
The code uploads a file to a Microsoft SharePoint Online site.	<input type="radio"/>	<input type="radio"/>
The code creates a file in Microsoft OneDrive.	<input type="radio"/>	<input type="radio"/>
The code downloads a file from Microsoft OneDrive.	<input type="radio"/>	<input type="radio"/>

- A. Mastered
- B. Not Mastered

Answer: A

Explanation:

- Box 1: No
- Box 2: No
- Box 3: Yes

A file is downloaded from OneDrive and saved locally.
Drive/Root is the drive resource is the top level object representing a user's OneDrive or a document library in SharePoint.
Reference: <https://docs.microsoft.com/en-us/graph/api/resources/drive>

NEW QUESTION 6
- (Exam Topic 2)

You are developing an application that will run as an overnight background service on a server. The service will access web-hosted resources by using the application's identity and the OAuth 2.0 client credentials grant flow.
You register the application and grant permissions. The tenant administrator grants admin consent to the application.
You need to get the access token from Azure Active Directory (Azure AD).
Which URI should you use for the POST request? To answer, select the appropriate options in the answer area.
NOTE: Each correct selection is worth one point.

```
https://login.microsoftonline.com/<TenantId>/oauth2/v2.0/
?client_id=<ClientID>
&client_secret=<ClientSecret>
&scope=https://graph.microsoft.com/.default
&grant_type=
```

authorization_code
client_credentials
on_behalf_of
refresh_token
urn:ietf:params:oauth:grant-type:jwt-bearer

authorize
code
keys
token

- A. Mastered
B. Not Mastered

Answer: A

Explanation:

Oauth2 client_id client_secret

The authorization code flow begins with the client directing the user to the /authorize endpoint. Box 1: token

Use the authorization code to request an access token.

Now that you've acquired an authorization code and have been granted permission by the user, you can redeem the code for an access token to the desired resource, by sending a POST request to the /token endpoint:

Box 2: authorization_code

Use the authorization code to request an access token. Example:

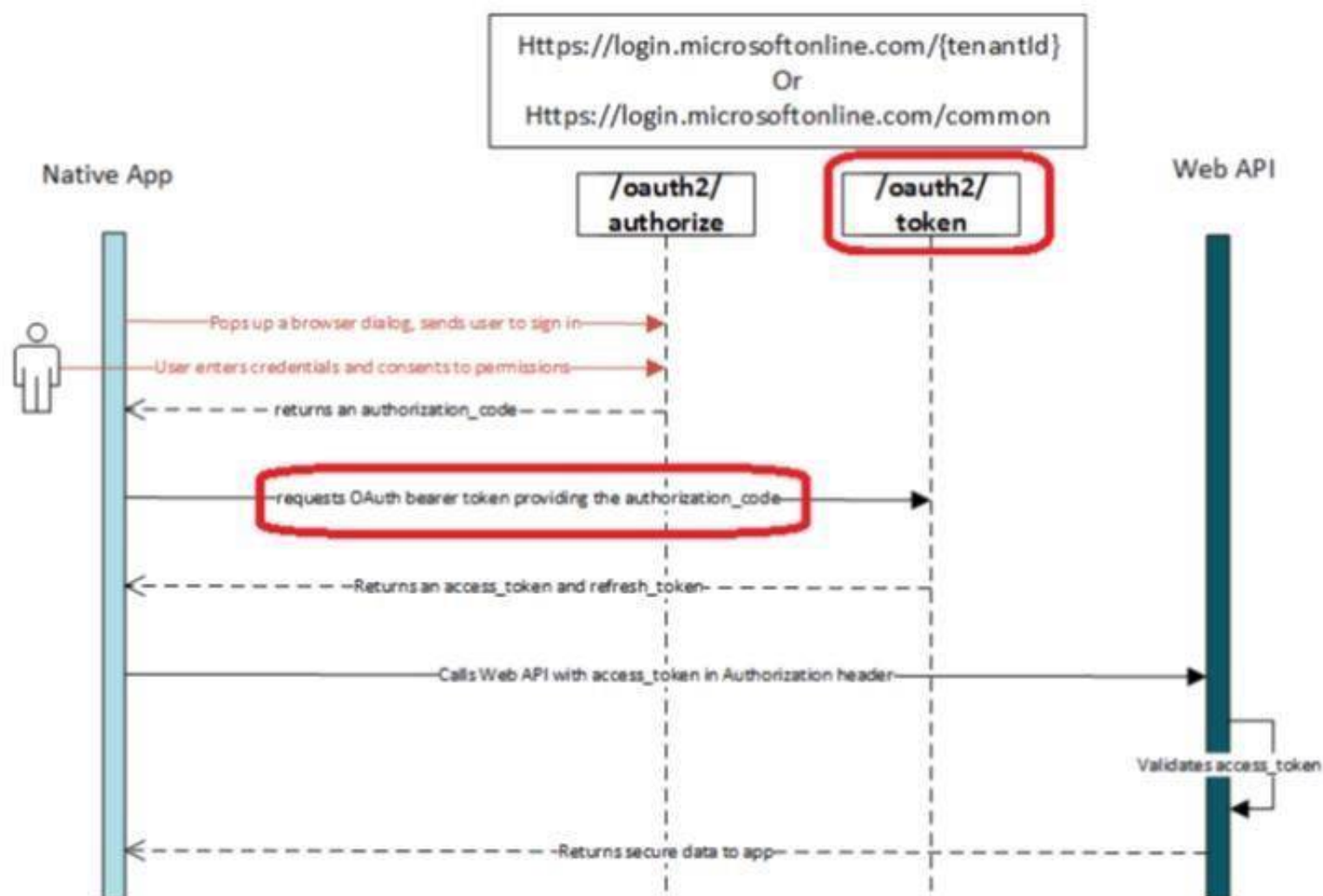
// Line breaks for legibility only

POST /{tenant}/oauth2/token HTTP/1.1 Host: https://login.microsoftonline.com

Content-Type: application/x-www-form-urlencoded grant_type=authorization_code

etc.

Note: At a high level, the entire authorization flow for an application looks a bit like this:



Reference: <https://docs.microsoft.com/en-us/azure/active-directory/develop/v1-protocols-oauth-code>

NEW QUESTION 7

- (Exam Topic 2)

You are developing a Microsoft Teams application.

Which Teams feature provides you with the ability to invoke a model popup by using the minimum amount of custom code?

- A. An adaptive card
B. A bot
C. A connector
D. A task module

Answer: B

NEW QUESTION 8

- (Exam Topic 2)

You are developing a sever-based application that has the following requirements: Prompt the user to fill out a form that contains a keyword. Search the Microsoft OneDrive folder for files that contain the keyword and return the results to the user. Allow the user to select one of the files from the results. Copy the selected file to an Azure Blob storage container.

Which four actions should the application perform in sequence? To answer, move the actions from the list of actions to the answer area and arrange them in the correct order.

Actions

- Store the @microsoft.graph.downloadUrl property in a variable.
- Perform the following REST request.
POST /me/drive/items/{item-id}/copy
- Perform the following REST request.
GET /me/drive/root/search(q='{keyword}')
- Perform the following REST request.
GET /me/drive/items/{item-id}
- Store the webUrl property in a variable.
- Store the file in a Blob storage container.

Answer Area

- A. Mastered
- B. Not Mastered

Answer: A

Explanation:

Actions

- Store the @microsoft.graph.downloadUrl property in a variable.
- Perform the following REST request.
POST /me/drive/items/{item-id}/copy
- Perform the following REST request.
GET /me/drive/root/search(q='{keyword}')
- Perform the following REST request.
GET /me/drive/items/{item-id}
- Store the webUrl property in a variable.
- Store the file in a Blob storage container.

Answer Area

- Perform the following REST request.
GET /me/drive/items/{item-id}
- Store the @microsoft.graph.downloadUrl property in a variable.
- Perform the following REST request.
POST /me/drive/items/{item-id}/copy
- Store the file in a Blob storage container.

NEW QUESTION 9

- (Exam Topic 2)

You have an application that uses the Microsoft Graph API. You need to configure the application to retrieve the groups to which the current signed-in user belongs. The results must contain the extended priorities of the groups.

Which URI should you use?

- A. https://graph.microsoft.com/v1.0/me/getMemberObjects
- B. https://graph.microsoft.com/v1.0/me/getMemberGroups
- C. https://graph.microsoft.com/v1.0/me/memberOf
- D. https://graph.microsoft.com/v1.0/me/checkMemberGroups

Answer: B

Explanation:

Get member groups returns all the groups that the specified user, group, or directory object is a member of. This function is transitive.
 Reference: <https://docs.microsoft.com/en-us/graph/api/directoryobject-getmembergroups>

NEW QUESTION 10

- (Exam Topic 2)

You are building a server-based web app that will use OAuth2 and will be registered with the Microsoft identity platform.

Which two values does the app require to obtain tokens from the Azure Active Directory (Azure AD) authorization endpoint? Each correct answer presents part of the solution.

NOTE: Each correct selection is worth one point.

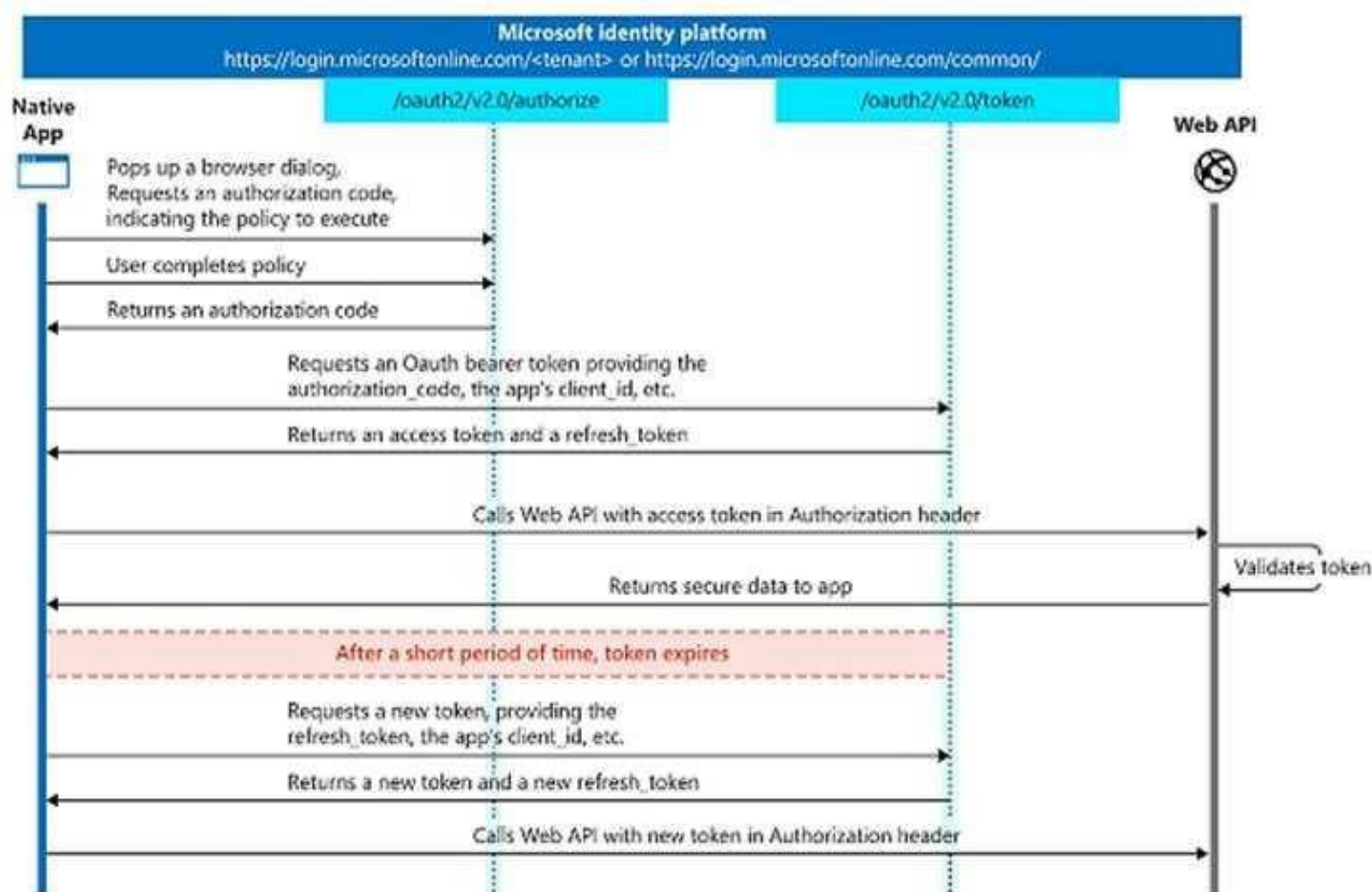
- A. the tenant ID
- B. the context token
- C. the application ID
- D. the application secret
- E. the authorization code

Answer: CE

Explanation:

C: The required client_id is the Application (client) ID that the Azure portal – App registrations experience assigned to your app.

E: The authorization code flow begins with the client directing the user to the /authorize endpoint.



Reference: <https://docs.microsoft.com/en-us/azure/active-directory/develop/v2-oauth2-auth-code-flow>

NEW QUESTION 10

- (Exam Topic 2)

You are developing an Azure function to provision a team in Microsoft Teams.

You need to create a group named Project A, add a classification of Private to the group, and then convert Project A to a team group.

How should you complete the REST requests? To answer, select the appropriate options in the answer area. NOTE: Each correct selection is worth one point.

Request 1:

GET

PATCH

POST

PUT

https://graph.microsoft.com/v1.0/groups

```
{
  "description": "",
  "displayName": "Project A",
  "groupTypes": ["Unified"],
  "mailEnabled": true,
  "mailNickname": "projecta",
  "securityEnabled": "projecta",
  "securityEnabled": false
}
```

Request 2:

GET

PATCH

POST

PUT

https://graph.microsoft.com/v1.0/groups/{GroupID}

```
{
  "classification": "Private"
}
```

Request 3:

GET

PATCH

POST

PUT

https://graph.microsoft.com/v1.0/groups/{GroupID}/team

```
{
  "memberSettings": {
    "allowCreateUpdateChannels": true
  }
}
```

- A. Mastered
B. Not Mastered

Answer: A

Explanation:

Box 1: post

You need to create a group named Project A.

The following example creates an Office 365 group. POST <https://graph.microsoft.com/v1.0/groups> Content-type: application/json

Content-length: 244

```
{
  "description": "Self help community for library", "displayName": "Library Assist",
  "groupTypes": [ "Unified"
],
  "mailEnabled": true, "mailNickname": "library", "securityEnabled": false
}
```

Box 2: PATCH

Add a classification of Private to the group.

You can set the classification property in a PATCH request for the group, if do not set it in the initial POST request that creates the group.

Box 3: put

Then convert Project A to a team group. Syntax: PUT [/groups/{id}/team](#)

References: <https://docs.microsoft.com/en-us/graph/api/group-post-groups> <https://docs.microsoft.com/en-us/graph/api/resources/group>

<https://docs.microsoft.com/en-us/graph/api/team-put-teams>

NEW QUESTION 12

- (Exam Topic 2)

This question requires that you evaluate the underlined text to determine if it is correct.

Microsoft Visual Studio Code contains samples that you can use to quickly prototype a Microsoft Office Web Add-in for Microsoft Word.

Instructions: Review the underlined text. If it makes the statement correct, select "No change is needed." If the statement is incorrect, select the answer choice that makes the statement correct.

- A. No change is needed.
B. Microsoft AppSource
C. The Office UI Fabric
D. The Script Lab add-in

Answer: D

NEW QUESTION 14

- (Exam Topic 2)

You are designing a Microsoft Teams application. The application will enable content authors to start conversations about news coming from a third-party application.

Which development technique should you use?

- A. incoming webhooks
- B. outgoing webhooks
- C. activity feeds
- D. deep links

Answer: D

Explanation:

Create deep links to content and features in Microsoft Teams.

You can create links to information and features within the Teams client. Examples of where this may be useful:

➤ Your app automates or simplifies certain user tasks, such as creating a chat or scheduling a meeting, by pre-populating the deep links with required parameters. This avoids the need for users to manually enter information.

➤ Navigating the user to content within one of your app's tabs.

Reference: <https://docs.microsoft.com/en-us/microsoftteams/platform/concepts/build-and-test/deep-links>

NEW QUESTION 18

- (Exam Topic 2)

You are developing an application that will track changes to the UserPrincipalName attribute of Microsoft 365 accounts.

You need to use a REST request to retrieve the information by using Microsoft Graph. The solution must minimize the amount of data retrieved.

What should you do?

- A. Use GET <https://graph.microsoft.com/v1.0/users/delta> for the first call
- B. Use the state token in subsequent calls.
- C. Use GET [https://graph.microsoft.com/v1.0/users/delta?\\$select=UserPrincipalName](https://graph.microsoft.com/v1.0/users/delta?$select=UserPrincipalName) for the first call
- D. Use the state token in subsequent calls.
- E. Use GET [https://graph.microsoft.com/v1.0/users?\\$select=UserPrincipalName](https://graph.microsoft.com/v1.0/users?$select=UserPrincipalName) for the calls and track the changes.
- F. Use GET <https://graph.microsoft.com/v1.0/users> for the calls and track the changes.

Answer: B

Explanation:

Use delta query to track changes in a resource collection

The typical call pattern is as follows: application begins by calling a GET request with the delta function on the desired resource.

➤ Microsoft

➤ The Graph sends a response containing the requested resource and a state token.

Example: Selecting three properties

The next example shows the initial request selecting three properties for change tracking, with default response behavior.

Note: Delta query enables applications to discover newly created, updated, or deleted entities without performing a full read of the target resource with every request.

Reference: <https://docs.microsoft.com/en-us/graph/api/user-delta>

NEW QUESTION 23

- (Exam Topic 2)

You plan to deploy a SharePoint Framework (SPFx) solution to the tenant app catalog.

Which attribute should you configure in the package-solution.json file to ensure that the solution is available immediately to all site collections?

- A. skipFeatureDeployment
- B. zippedPackage
- C. ClientSideComponentId
- D. isDomainIsolated

Answer: A

Explanation:

You can configure your SharePoint Framework components to be immediately available across the tenant when the solution package is installed to the tenant app catalog. This can be configured by using the skipFeatureDeployment attribute in the package-solution.json file.

Reference: <https://docs.microsoft.com/en-us/sharepoint/dev/spfx/tenant-scoped-deployment>

NEW QUESTION 24

- (Exam Topic 2)

You are developing an application that will use Microsoft Graph.

You attempt to retrieve a list of the groups in your organization by using a URI of <https://graph.microsoft.com/v1.0/groups> on behalf of the user.

The application fails. The diagnostic logs show the following information:

* An HTTP 403 Forbidden status code

* An Authorization_RequestDenied error code

* The following error message: "Insufficient privileges to complete the operation."

You need to ensure that the application can retrieve the list of groups. The solution must use the principle of least privilege. Which two actions should you perform?

Each correct answer presents part of the solution.

NOTE; Each correct selection is worth one point.

- A. In the permission request for the application, request the Group.Read
- B. Read
- C. All permission.
- D. Grant tenant admin consent for the Group.Read
- E. All permission.
- F. Configure the application to use application permissions.
- G. In the permission request for the application, request the Group.Read
- H. Readwrite
- I. All permission

Answer: AD

NEW QUESTION 26

- (Exam Topic 2)

You have an application that employees use to schedule vacations. The application sets an automatic reply and an out-of-office event in the employees' Microsoft 365 calendar.

Employees who access the application from a mobile device report that the application is slow to make changes.

You need to replace the application calls to use batched request. Automatic reply must be set only if an out-of-office event is set successfully.

How should you complete the batch request? To answer, select the appropriate options in the answer area.

Answer Area

DELETE
GET
HEAD
PATCH
POST
PUT

https://graph.microsoft.com/v1.0/\$batch

These are the selections for the first missing value:
application/json

```
{
  "requests": [
    {
      "id": "1",
      "method": "DELETE",
      "url": "/me/event",
      "body": {
        "subject": "Vacation",
        "showAs": "outof",
        "start": {
          "dateTime": "2019-08-27T14:49:06.595Z",
          "timeZone": "UTC"
        }
      },
      "headers": {
        "Content-Type": "application/json"
      }
    },
    {
      "id": "2",
      "dependsOn": [
        "1"
      ],
      "url": "/me/mail",
      "method": "POST",
      "body": {
        "automaticRepliesSetting": {
          "status": "Scheduled",
          "scheduledStartTime": {
            "dateTime": "2020-03-20T18:00:00.0000000",
            "timeZone": "UTC"
          },
          "scheduledEndTime": {
            "dateTime": "2020-03-26T18:00:00.0000000",
            "timeZone": "UTC"
          }
        }
      },
      "headers": {
        "Content-Type": "application/json"
      }
    }
  ]
}
```

- A. Mastered
- B. Not Mastered

Answer: A

Explanation:

Answer Area

DELETE
GET
HEAD
PATCH
POST
PUT

https://graph.microsoft.com/v1.0/\$batch

There are the selections for the first missing value.
application/json

```

"requests": [
  {
    "id": "1",
    "method": "DELETE",
    "url": "/me/event",
    "body": {
      "subject": "on vacation",
      "showAs": "off",
      "start": {
        "dateTime": "2019-08-27T14:49:06.5952",
        "timeZone": "UTC"
      },
      "headers": {
        "Content-Type": "application/json"
      }
    },
    {
      "id": "2",
      "dependsOn": [1],
      "url": "/me/mailFolders",
      "method": ["1", "2"],
      "body": {
        "automaticRepliesSetting": {
          "status": "Scheduled",
          "scheduledStartDateTime": {
            "dateTime": "2020-03-20T18:00:00.0000000",
            "timeZone": "UTC"
          },
          "scheduledEndDateTime": {
            "dateTime": "2020-03-28T18:00:00.0000000",
            "timeZone": "UTC"
          }
        },
        "headers": {
          "Content-Type": "application/json"
        }
      }
    }
  ]
}

```

NEW QUESTION 29

- (Exam Topic 2)

Note: This question is part of a series of questions that present the same scenario. Each question in the series contains a unique solution that might meet the stated goals. Some question sets have more than one correct solution, while others might not have a correct solution.

After you answer a question in this section, you will NOT be able to return to it. As a result, these questions will not appear in the review screen.

You are developing a new application named App1 that uses the Microsoft identity platform to authenticate to Azure Active Directory (Azure AD).

Currently, App1 can read user profile information. You need to allow App1 to read the user's calendar.

Solution: Add <https://graph.windows.net/user.read> to the list of scopes during the initial login request. Does this meet the goal?

A. Yes

B. No

Answer: B

Explanation:

Microsoft Graph Calendars.Read allows the app to read events in user calendars.

For your app to access data in Microsoft Graph, the user or administrator must grant it the correct permissions via a consent process.

Application permissions are used by apps that run without a signed-in user present; for example, apps that run as background services or daemons. Application permissions can only be consented by an administrator.

References: <https://docs.microsoft.com/en-us/azure/active-directory/develop/v2-permissions-and-consent> <https://docs.microsoft.com/en-us/graph/permissions-reference>

NEW QUESTION 32

.....

THANKS FOR TRYING THE DEMO OF OUR PRODUCT

Visit Our Site to Purchase the Full Set of Actual MS-600 Exam Questions With Answers.

We Also Provide Practice Exam Software That Simulates Real Exam Environment And Has Many Self-Assessment Features. Order the MS-600 Product From:

<https://www.2passeasy.com/dumps/MS-600/>

Money Back Guarantee

MS-600 Practice Exam Features:

- * MS-600 Questions and Answers Updated Frequently
- * MS-600 Practice Questions Verified by Expert Senior Certified Staff
- * MS-600 Most Realistic Questions that Guarantee you a Pass on Your FirstTry
- * MS-600 Practice Test Questions in Multiple Choice Formats and Updatesfor 1 Year